

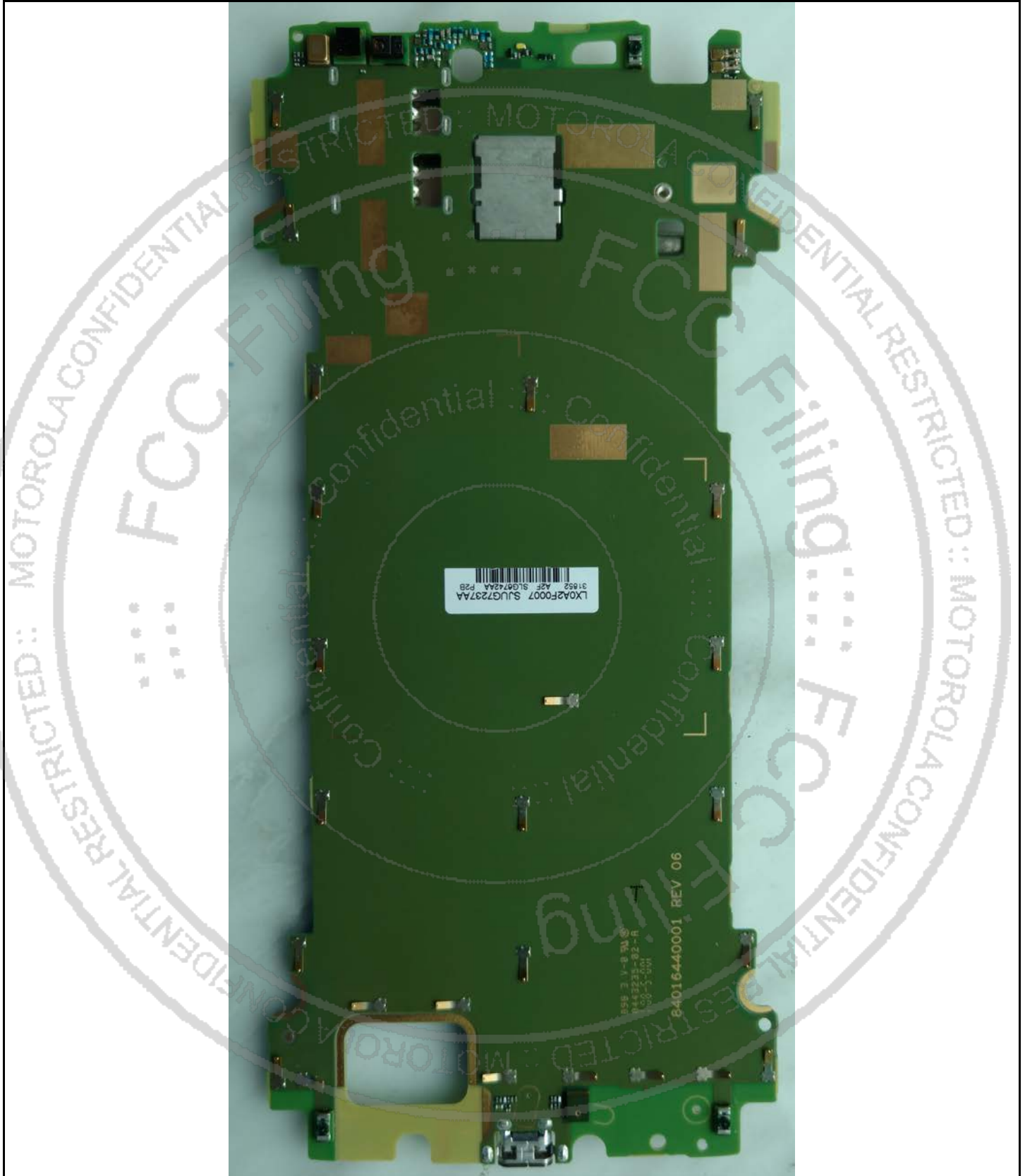
**Temporary Confidentiality Requested**

**Exhibit 9: Internal Photographs -- Pursuant to 47 CFR 2.1033(c)(12) and RSP100, Section 5.**



**Photograph 9-1: Front side view of the device's PC Board, Shields in place.**

**Temporary Confidentiality Requested**



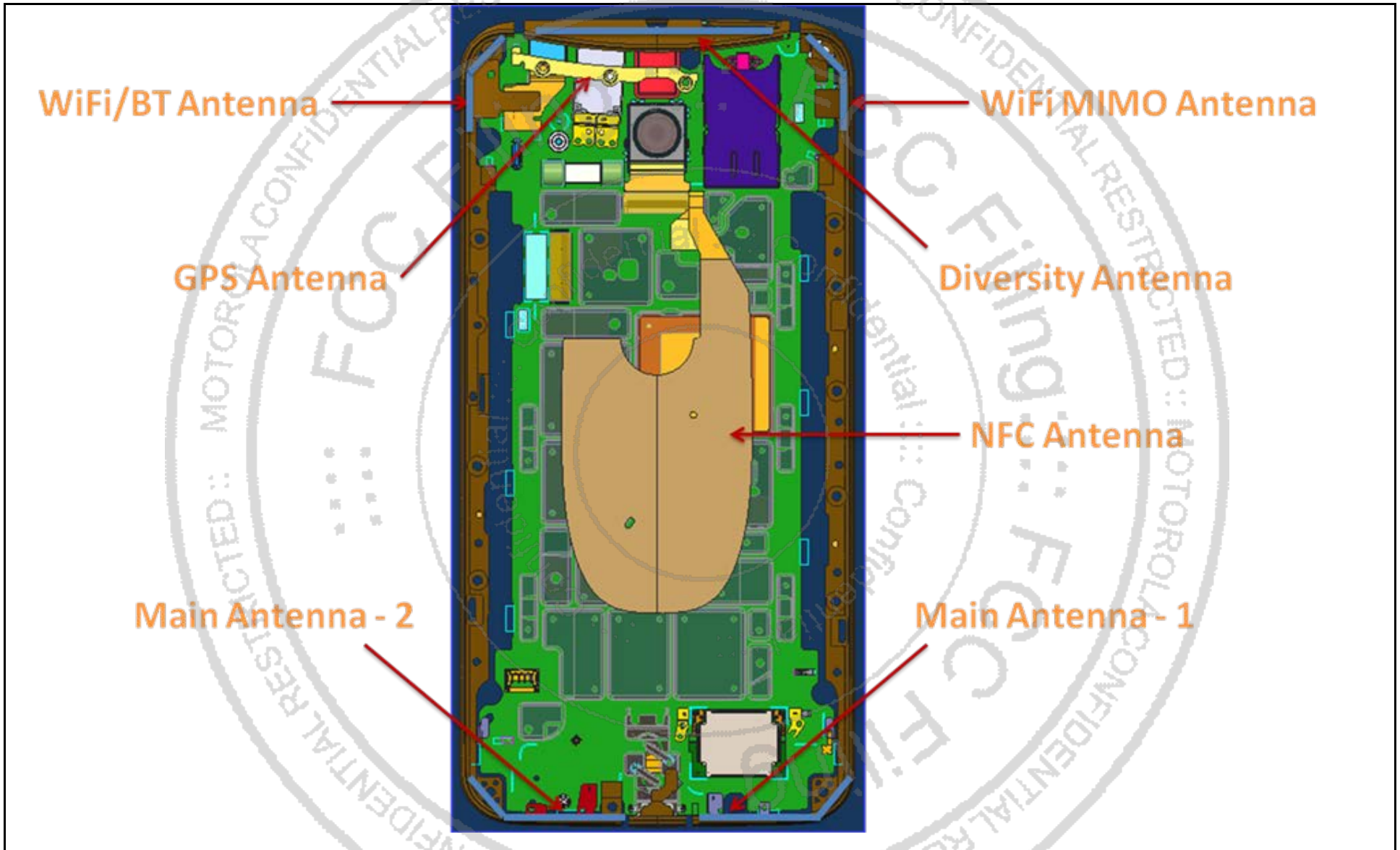
**Photograph 9-2: Back side view of the device's PC Board.**

**Temporary Confidentiality Requested**



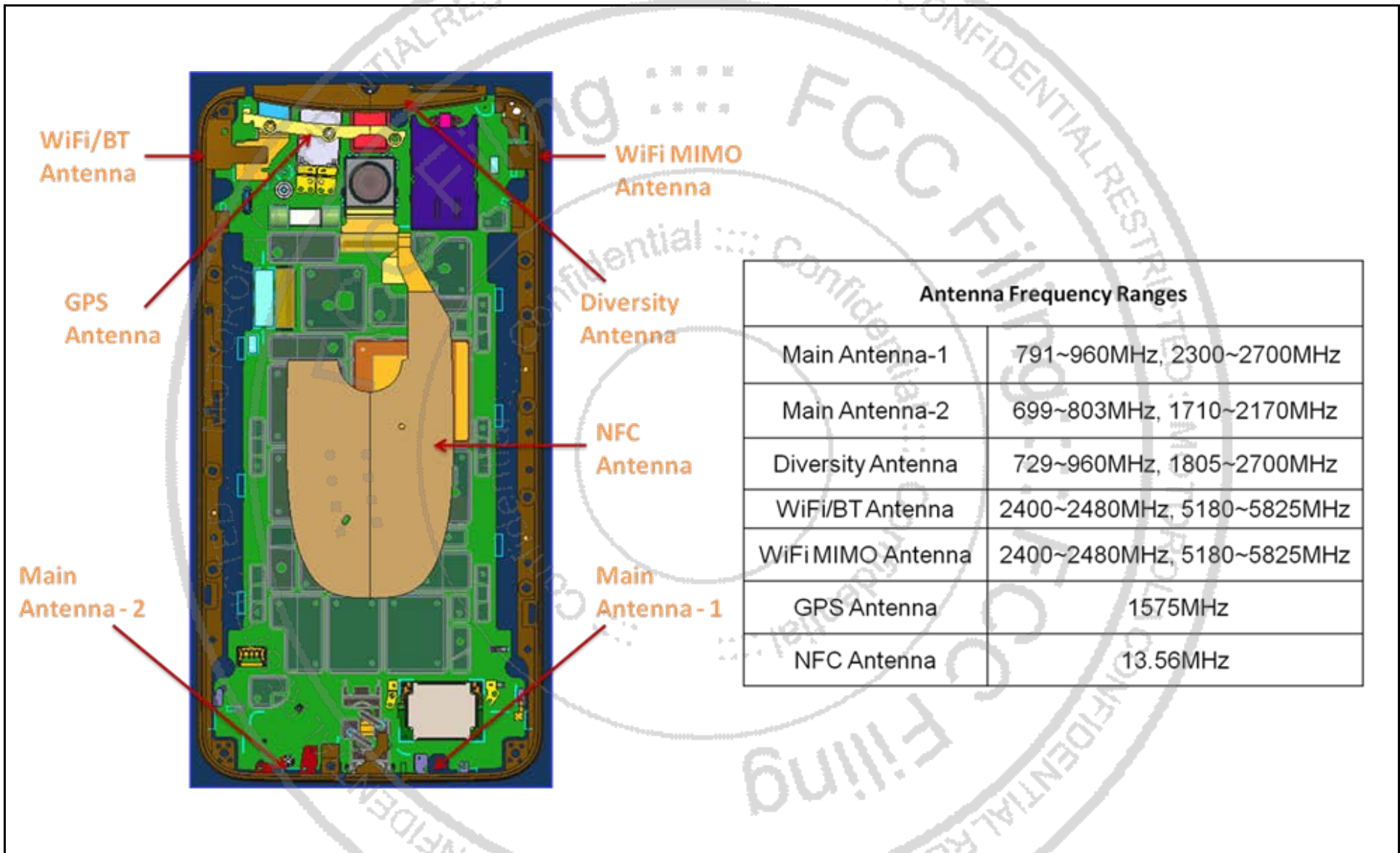
**Photograph 9-3: Front side view of the device's PC Board, Shields Removed.**

**Temporary Confidentiality Requested**



**Photograph 9-4: Antenna Locations and Spacings.**

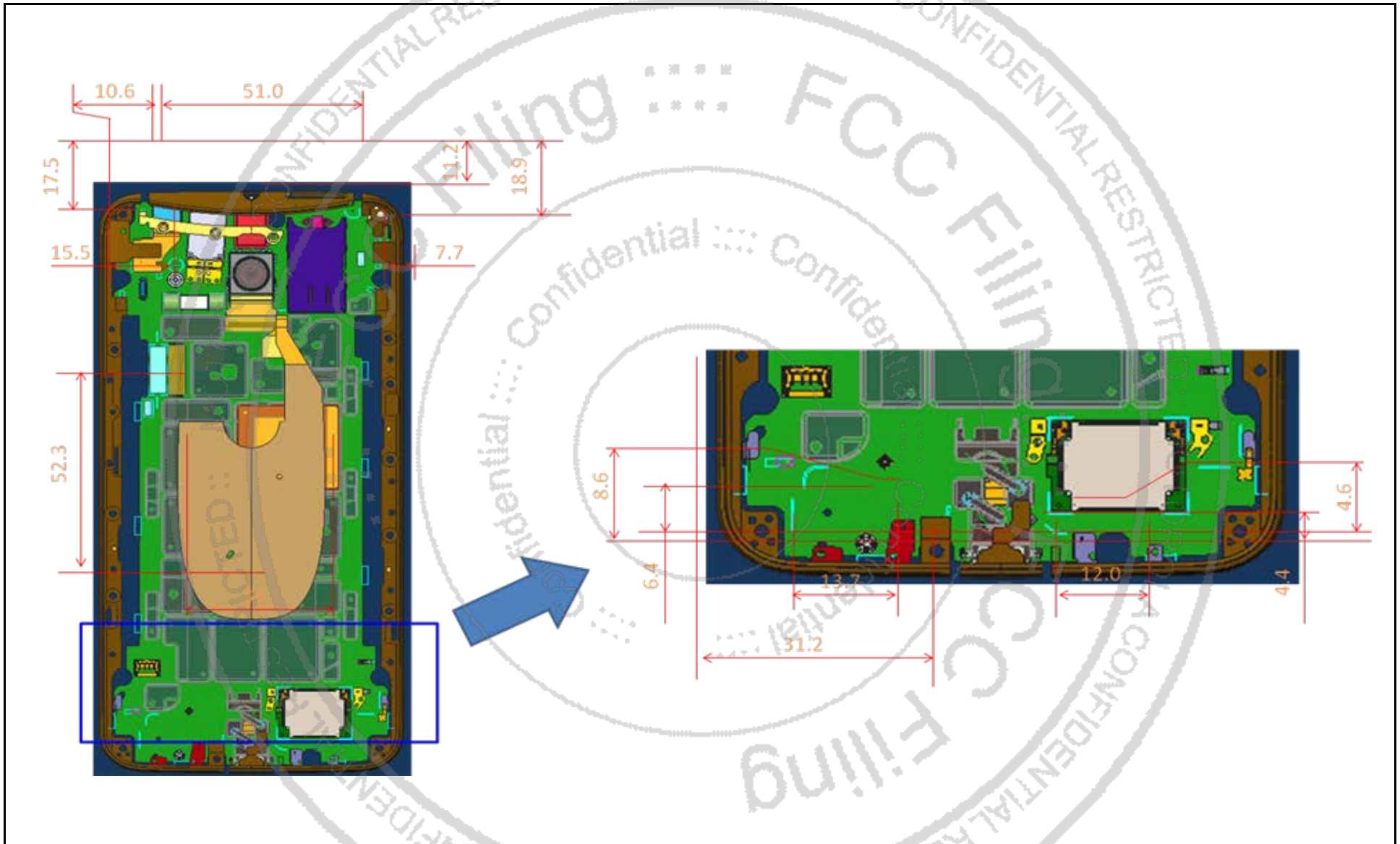
**Temporary Confidentiality Requested**



Antenna Frequency Ranges	
Main Antenna-1	791~960MHz, 2300~2700MHz
Main Antenna-2	699~803MHz, 1710~2170MHz
Diversity Antenna	729~960MHz, 1805~2700MHz
WiFi/BT Antenna	2400~2480MHz, 5180~5825MHz
WiFi MIMO Antenna	2400~2480MHz, 5180~5825MHz
GPS Antenna	1575MHz
NFC Antenna	13.56MHz

**Photograph 9-5: Antenna Locations and Spacings.**

Temporary Confidentiality Requested



Photograph 9-6: Antenna Locations and Spacings.