

#01_GSM850_GPRS (4 Tx slots)_Right Cheek_Ch251

Communication System: GSM850 ; Frequency: 848.8 MHz; Duty Cycle: 1:2.08

Medium: HSL850_150525 Medium parameters used: $f = 849 \text{ MHz}$; $\sigma = 0.91 \text{ S/m}$; $\epsilon_r = 42.757$; $\rho = 1000 \text{ kg/m}^3$

Ambient Temperature : $23.3 \text{ }^\circ\text{C}$; Liquid Temperature : $22.3 \text{ }^\circ\text{C}$

DASY5 Configuration

- Probe: EX3DV4 - SN3931; ConvF(10.32, 10.32, 10.32); Calibrated: 2014/9/25;
- Sensor-Surface: 1.4mm (Mechanical Surface Detection)
- Electronics: DAE3 Sn577; Calibrated: 2014/10/6
- Phantom: SAM_Left; Type: QD000P40CD; Serial: TP:1644
- Measurement SW: DASY52, Version 52.8 (8); SEMCAD X Version 14.6.10 (7331)

Configuration/Ch251/Area Scan (71x121x1): Interpolated grid: $dx=1.500 \text{ mm}$, $dy=1.500 \text{ mm}$

Maximum value of SAR (interpolated) = 0.360 W/kg

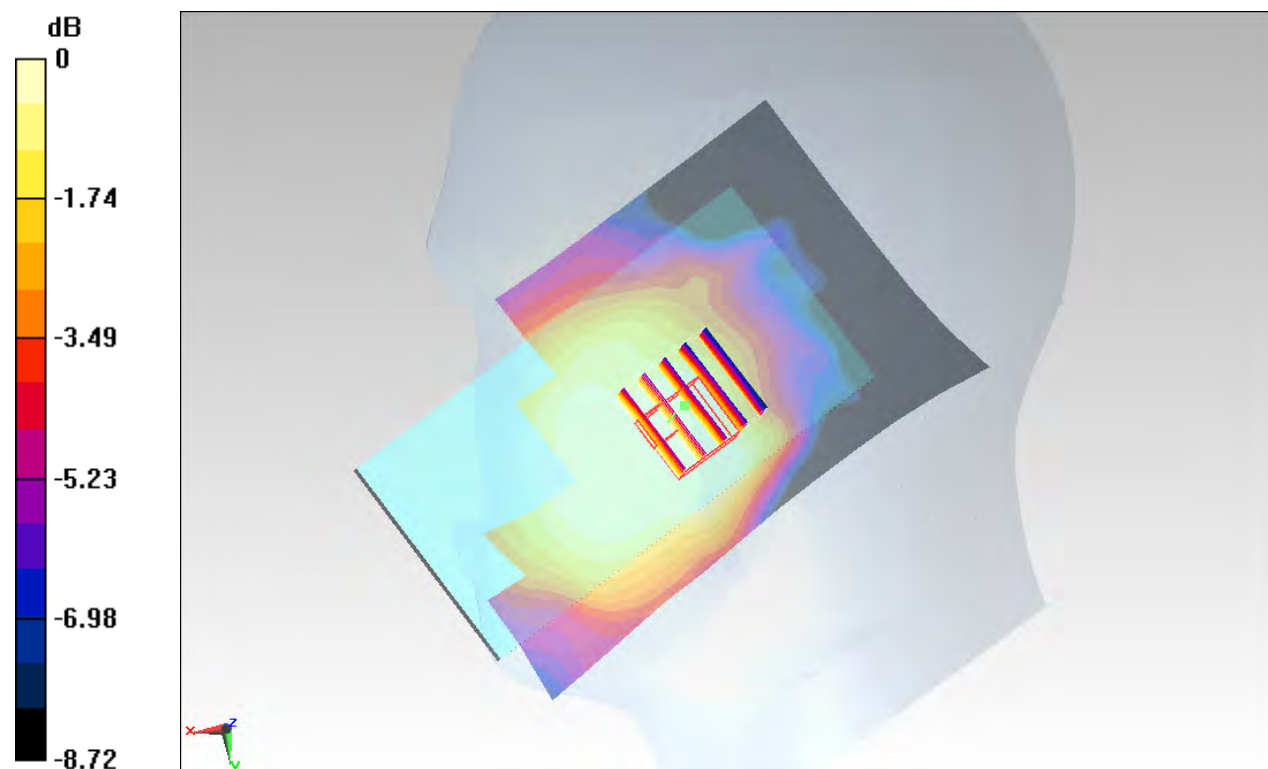
Configuration/Ch251/Zoom Scan (5x5x7)/Cube 0: Measurement grid: $dx=8\text{mm}$, $dy=8\text{mm}$, $dz=5\text{mm}$

Reference Value = 18.17 V/m ; Power Drift = 0.18 dB

Peak SAR (extrapolated) = 0.340 W/kg

SAR(1 g) = 0.263 W/kg ; SAR(10 g) = 0.196 W/kg

Maximum value of SAR (measured) = 0.304 W/kg



0 dB = 0.304 W/kg = -5.17 dBW/kg

#02_GSM1900_GPRS (4 Tx slots)_Left Cheek_Ch512

Communication System: PCS ; Frequency: 1850.2 MHz; Duty Cycle: 1:2.08

Medium: HSL_1900_150525 Medium parameters used: $f = 1850.2$ MHz; $\sigma = 1.36$ S/m; $\epsilon_r = 39.715$;

$\rho = 1000$ kg/m³

Ambient Temperature : 23.3 °C ; Liquid Temperature : 22.3 °C

DASY5 Configuration

- Probe: EX3DV4 - SN3931; ConvF(8.17, 8.17, 8.17); Calibrated: 2014/9/25;
- Sensor-Surface: 1.4mm (Mechanical Surface Detection)
- Electronics: DAE3 Sn577; Calibrated: 2014/10/6
- Phantom: SAM_Left; Type: QD000P40CD; Serial: TP:1644
- Measurement SW: DASY52, Version 52.8 (8); SEMCAD X Version 14.6.10 (7331)

Configuration/Ch512/Area Scan (71x111x1): Interpolated grid: dx=1.500 mm, dy=1.500 mm

Maximum value of SAR (interpolated) = 0.289 W/kg

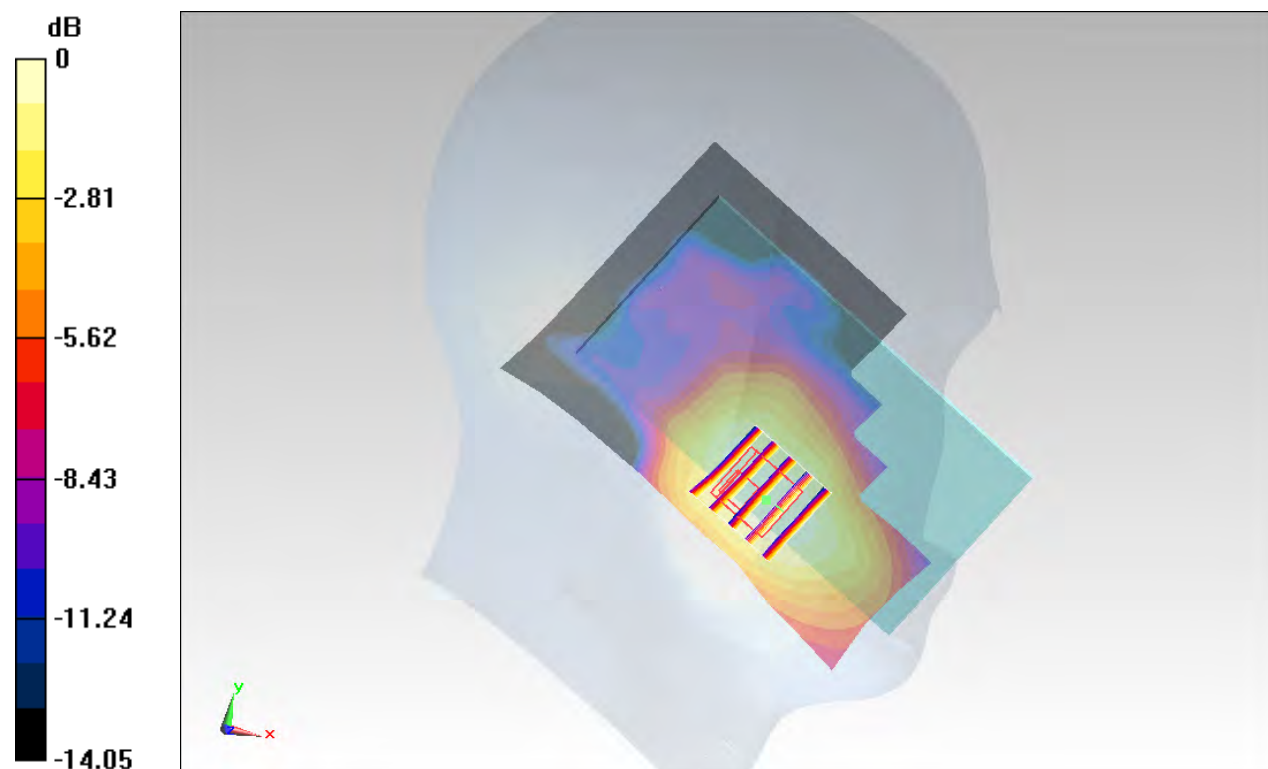
Configuration/Ch512/Zoom Scan (5x5x7)/Cube 0: Measurement grid: dx=8mm, dy=8mm, dz=5mm

Reference Value = 15.05 V/m; Power Drift = 0.15 dB

Peak SAR (extrapolated) = 0.337 W/kg

SAR(1 g) = 0.219 W/kg; SAR(10 g) = 0.145 W/kg

Maximum value of SAR (measured) = 0.292 W/kg



0 dB = 0.292 W/kg = -5.35 dBW/kg

#03_WCDMA V_RMC 12.2Kbps_Left Cheek_Ch4233

Communication System: WCDMA ; Frequency: 846.6 MHz; Duty Cycle: 1:1
 Medium: HSL850_150521 Medium parameters used: $f = 847 \text{ MHz}$; $\sigma = 0.921 \text{ S/m}$; $\epsilon_r = 41.911$; $\rho = 1000 \text{ kg/m}^3$
 Ambient Temperature : $23.5 \text{ }^\circ\text{C}$; Liquid Temperature : $22.5 \text{ }^\circ\text{C}$

DASY5 Configuration

- Probe: EX3DV4 - SN3578; ConvF(9.17, 9.17, 9.17); Calibrated: 2015/3/31;
- Sensor-Surface: 1.4mm (Mechanical Surface Detection)
- Electronics: DAE4 Sn778; Calibrated: 2014/8/21
- Phantom: SAM_Left; Type: QD000P40CD; Serial: TP:1644
- Measurement SW: DASY52, Version 52.8 (8); SEMCAD X Version 14.6.10 (7331)

Configuration/Ch4233/Area Scan (71x121x1): Interpolated grid: $dx=1.500 \text{ mm}$, $dy=1.500 \text{ mm}$

Maximum value of SAR (interpolated) = 0.306 W/kg

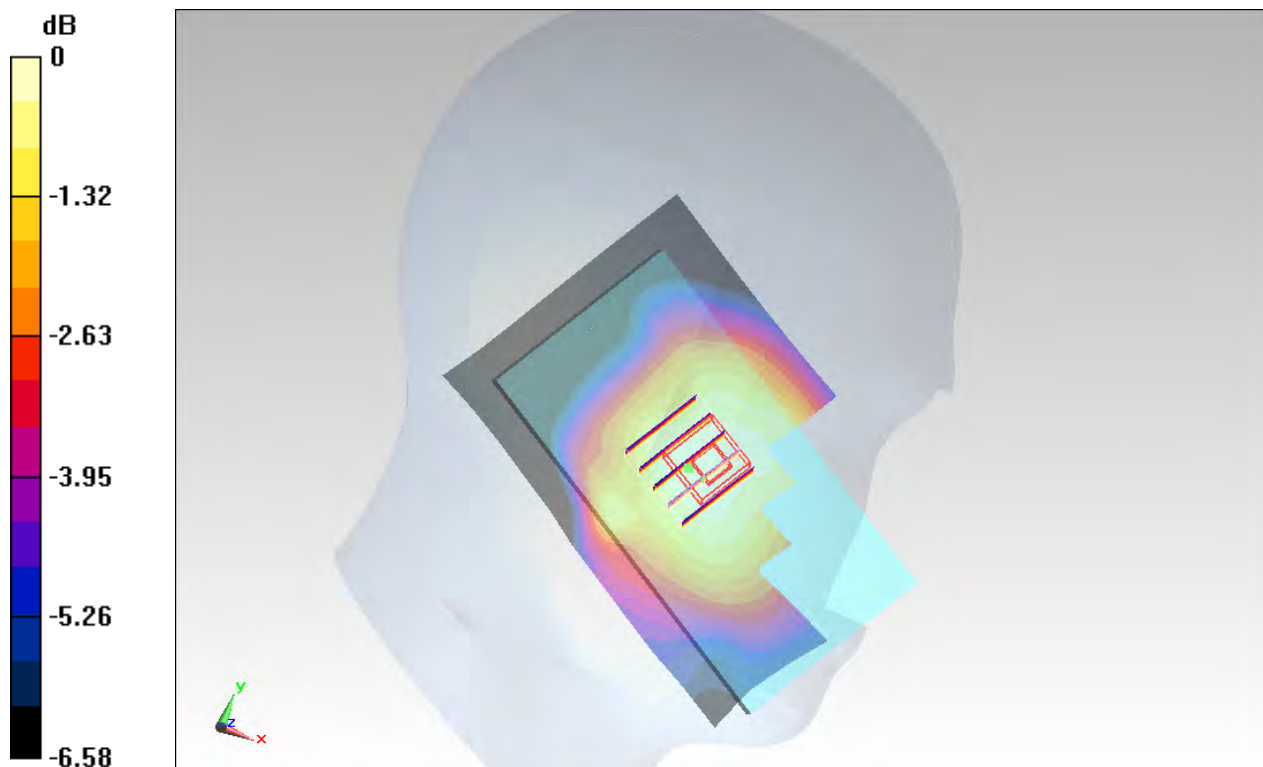
Configuration/Ch4233/Zoom Scan (5x5x7)/Cube 0: Measurement grid: $dx=8\text{mm}$, $dy=8\text{mm}$, $dz=5\text{mm}$

Reference Value = 18.28 V/m ; Power Drift = 0.01 dB

Peak SAR (extrapolated) = 0.328 W/kg

SAR(1 g) = 0.266 W/kg ; SAR(10 g) = 0.214 W/kg

Maximum value of SAR (measured) = 0.307 W/kg



0 dB = $0.307 \text{ W/kg} = -5.13 \text{ dBW/kg}$

#04_WCDMA II_RMC 12.2Kbps_Left Cheek_Ch9262

Communication System: WCDMA ; Frequency: 1852.4 MHz; Duty Cycle: 1:1
 Medium: HSL_1900_150521 Medium parameters used: $f = 1852.4 \text{ MHz}$; $\sigma = 1.348 \text{ S/m}$; $\epsilon_r = 40.583$; $\rho = 1000 \text{ kg/m}^3$
 Ambient Temperature : $23.6 \text{ }^\circ\text{C}$; Liquid Temperature : $22.6 \text{ }^\circ\text{C}$

DASY5 Configuration

- Probe: ES3DV3 - SN3270; ConvF(5.05, 5.05, 5.05); Calibrated: 2014/9/26;
- Sensor-Surface: 2mm (Mechanical Surface Detection)
- Electronics: DAE4 Sn916; Calibrated: 2014/12/29
- Phantom: SAM_Right; Type: QD000P40CD; Serial: TP:1801
- Measurement SW: DASY52, Version 52.8 (8); SEMCAD X Version 14.6.10 (7331)

Configuration/Ch9262/Area Scan (71x121x1): Interpolated grid: $dx=1.500 \text{ mm}$, $dy=1.500 \text{ mm}$

Maximum value of SAR (interpolated) = 0.499 W/kg

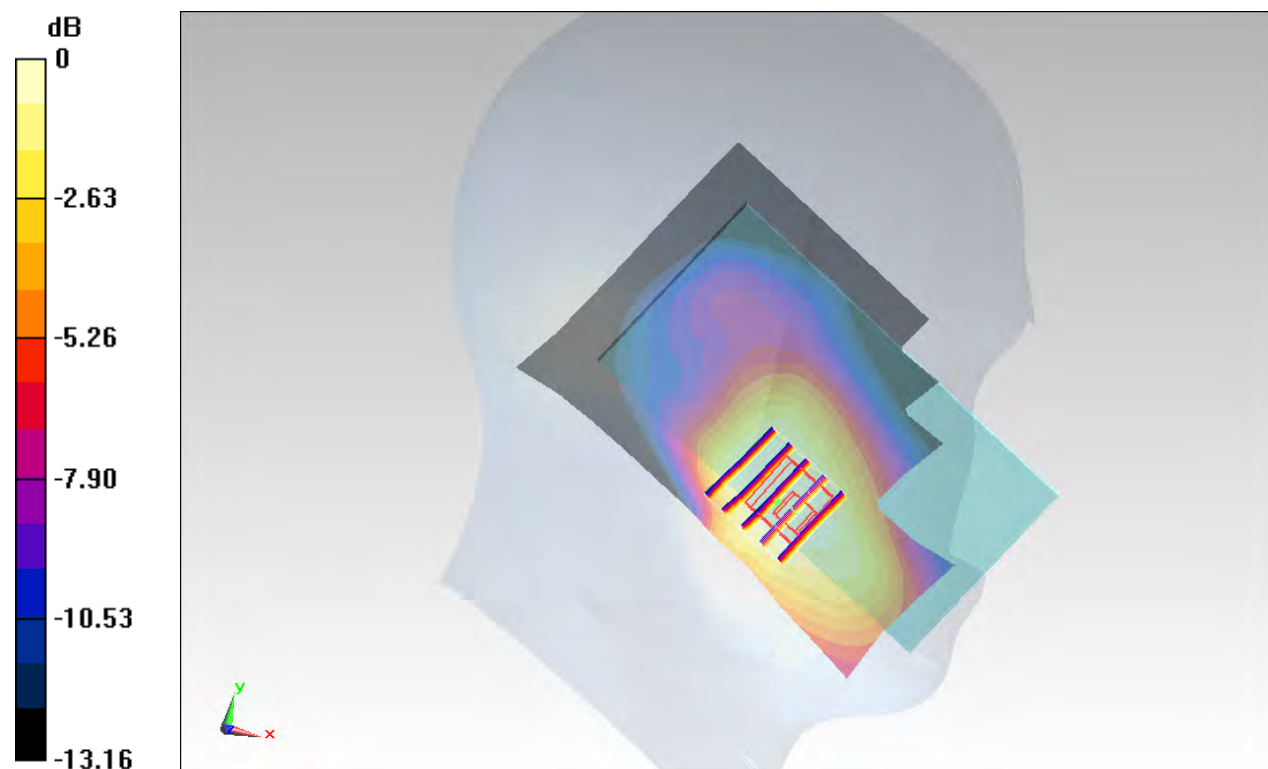
Configuration/Ch9262/Zoom Scan (5x5x7)/Cube 0: Measurement grid: $dx=8\text{mm}$, $dy=8\text{mm}$, $dz=5\text{mm}$

Reference Value = 19.10 V/m ; Power Drift = 0.11 dB

Peak SAR (extrapolated) = 0.579 W/kg

SAR(1 g) = 0.370 W/kg ; SAR(10 g) = 0.244 W/kg

Maximum value of SAR (measured) = 0.474 W/kg



0 dB = $0.474 \text{ W/kg} = -3.24 \text{ dBW/kg}$

#05_CDMA2000 BC0_1xRTT RC3 SO55_Right Cheek_Ch777

Communication System: CDMA; Frequency: 848.31 MHz; Duty Cycle: 1:1
 Medium: HSL850_150521 Medium parameters used: $f = 848.31 \text{ MHz}$; $\sigma = 0.922 \text{ S/m}$; $\epsilon_r = 41.899$;
 $\rho = 1000 \text{ kg/m}^3$
 Ambient Temperature : $23.5 \text{ }^\circ\text{C}$; Liquid Temperature : $22.5 \text{ }^\circ\text{C}$

DASY5 Configuration

- Probe: EX3DV4 - SN3578; ConvF(9.17, 9.17, 9.17); Calibrated: 2015/3/31;
- Sensor-Surface: 1.4mm (Mechanical Surface Detection)
- Electronics: DAE4 Sn778; Calibrated: 2014/8/21
- Phantom: SAM_Left; Type: QD000P40CD; Serial: TP:1644
- Measurement SW: DASY52, Version 52.8 (8); SEMCAD X Version 14.6.10 (7331)

Configuration/Ch777/Area Scan (71x121x1): Interpolated grid: $dx=1.500 \text{ mm}$, $dy=1.500 \text{ mm}$

Maximum value of SAR (interpolated) = 0.520 W/kg

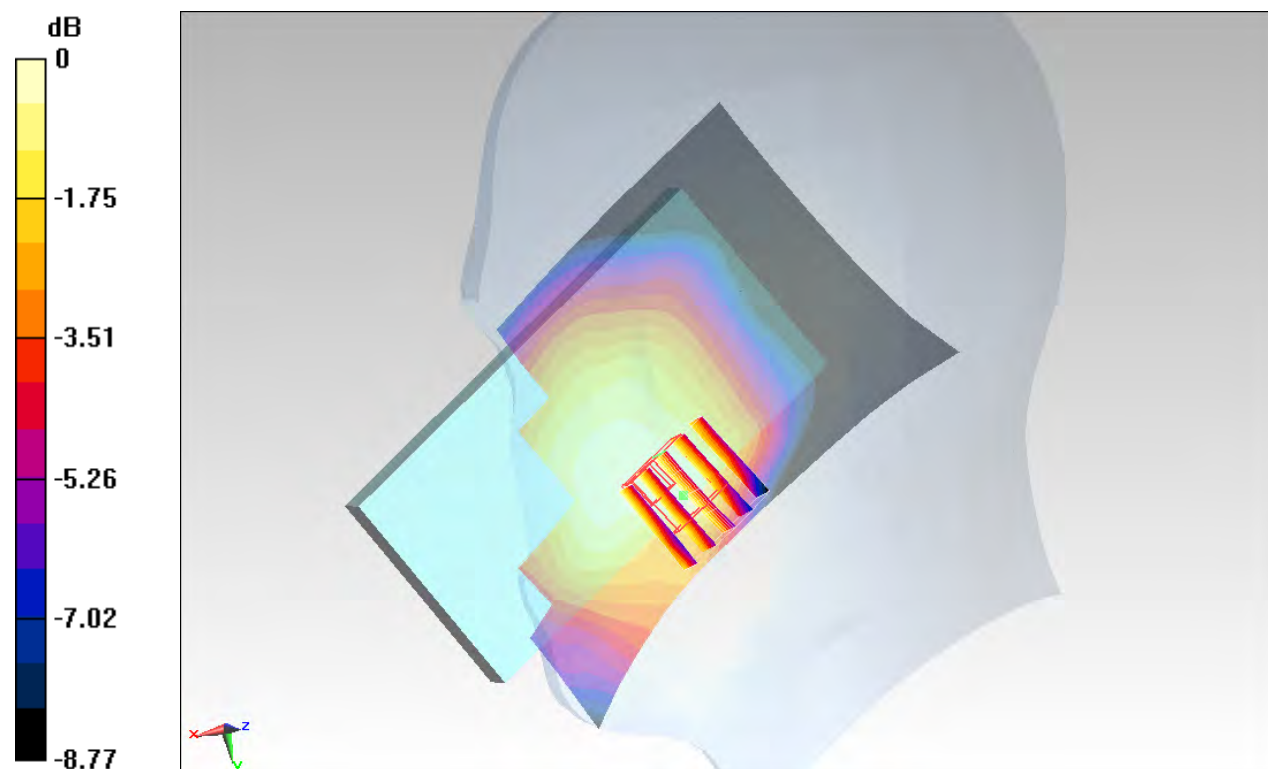
Configuration/Ch777/Zoom Scan (5x5x7)/Cube 0: Measurement grid: $dx=8\text{mm}$, $dy=8\text{mm}$, $dz=5\text{mm}$

Reference Value = 23.59 V/m ; Power Drift = 0.00 dB

Peak SAR (extrapolated) = 0.532 W/kg

SAR(1 g) = 0.403 W/kg ; SAR(10 g) = 0.323 W/kg

Maximum value of SAR (measured) = 0.496 W/kg



0 dB = $0.496 \text{ W/kg} = -3.05 \text{ dBW/kg}$

#06_CDMA2000 BC1_1xRTT RC3 SO55_Left Cheek_Ch1175

Communication System: CDMA; Frequency: 1908.75 MHz; Duty Cycle: 1:1
Medium: HSL_1900_150605 Medium parameters used: $f = 1909$ MHz; $\sigma = 1.446$ S/m; $\epsilon_r = 39.731$; $\rho = 1000$ kg/m³
Ambient Temperature : 23.5 °C; Liquid Temperature : 22.5 °C

DASY5 Configuration:

- Probe: EX3DV4 - SN3931; ConvF(8.17, 8.17, 8.17); Calibrated: 2014/9/25;
- Sensor-Surface: 1.4mm (Mechanical Surface Detection)
- Electronics: DAE3 Sn577; Calibrated: 2014/10/6
- Phantom: SAM-Right; Type: QD 000 P40 C; Serial: TP-1446
- Measurement SW: DASY52, Version 52.8 (8); SEMCAD X Version 14.6.10 (7331)

Configuration/Ch1175/Area Scan (71x121x1): Interpolated grid: dx=1.500 mm, dy=1.500 mm
Maximum value of SAR (interpolated) = 1.13 W/kg

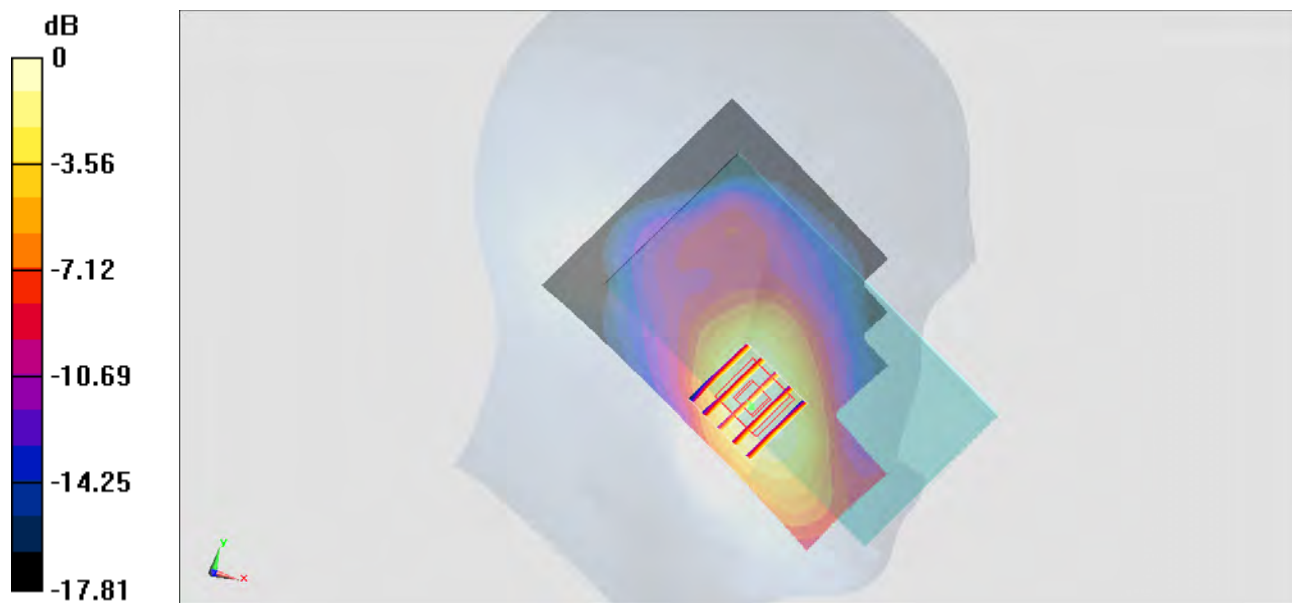
Configuration/Ch1175/Zoom Scan (5x5x7)/Cube 0: Measurement grid: dx=8mm, dy=8mm, dz=5mm

Reference Value = 28.38 V/m; Power Drift = -0.05 dB

Peak SAR (extrapolated) = 1.24 W/kg

SAR(1 g) = 0.824 W/kg; SAR(10 g) = 0.521 W/kg

Maximum value of SAR (measured) = 1.10 W/kg



0 dB = 1.10 W/kg = 0.41 dBW/kg

#07_LTE Band 13_10M_QPSK_1RB_0offset_Right Cheek_Ch23230

Communication System: LTE ; Frequency: 782 MHz;Duty Cycle: 1:1

Medium: HSL_750_150522 Medium parameters used: $f = 782 \text{ MHz}$; $\sigma = 0.923 \text{ S/m}$; $\epsilon_r = 42.283$; $\rho = 1000 \text{ kg/m}^3$

Ambient Temperature : $23.5 \text{ }^\circ\text{C}$; Liquid Temperature : $22.5 \text{ }^\circ\text{C}$

DASY5 Configuration

- Probe: EX3DV4 - SN3578; ConvF(9.59, 9.59, 9.59); Calibrated: 2015/3/31;
- Sensor-Surface: 1.4mm (Mechanical Surface Detection)
- Electronics: DAE4 Sn778; Calibrated: 2014/8/21
- Phantom: SAM_Left; Type: QD000P40CD; Serial: TP:1644
- Measurement SW: DASY52, Version 52.8 (8); SEMCAD X Version 14.6.10 (7331)

Configuration/Ch23230/Area Scan (71x121x1): Interpolated grid: $dx=1.500 \text{ mm}$, $dy=1.500 \text{ mm}$

Maximum value of SAR (interpolated) = 0.423 W/kg

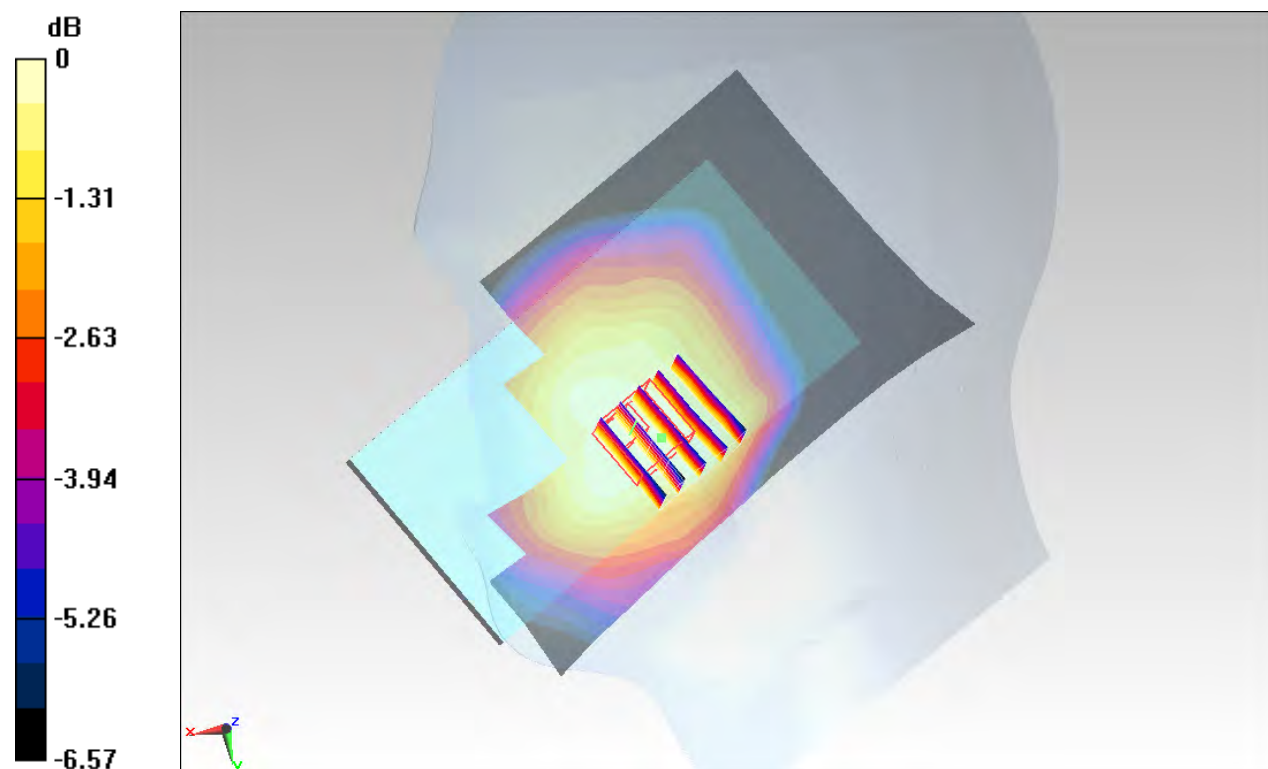
Configuration/Ch23230/Zoom Scan (5x5x7)/Cube 0: Measurement grid: $dx=8\text{mm}$, $dy=8\text{mm}$, $dz=5\text{mm}$

Reference Value = 22.23 V/m ; Power Drift = -0.07 dB

Peak SAR (extrapolated) = 0.446 W/kg

SAR(1 g) = 0.362 W/kg ; SAR(10 g) = 0.293 W/kg

Maximum value of SAR (measured) = 0.418 W/kg



0 dB = $0.418 \text{ W/kg} = -3.79 \text{ dBW/kg}$

#08_LTE Band 5_10M_QPSK_1RB_0offset_Right Cheek_Ch20450

Communication System: LTE ; Frequency: 829 MHz;Duty Cycle: 1:1

Medium: HSL850_150521 Medium parameters used: $f = 829 \text{ MHz}$; $\sigma = 0.904 \text{ S/m}$; $\epsilon_r = 42.134$; $\rho = 1000 \text{ kg/m}^3$

Ambient Temperature : $23.5 \text{ }^\circ\text{C}$; Liquid Temperature : $22.5 \text{ }^\circ\text{C}$

DASY5 Configuration

- Probe: EX3DV4 - SN3578; ConvF(9.17, 9.17, 9.17); Calibrated: 2015/3/31;
- Sensor-Surface: 1.4mm (Mechanical Surface Detection)
- Electronics: DAE4 Sn778; Calibrated: 2014/8/21
- Phantom: SAM_Left; Type: QD000P40CD; Serial: TP:1644
- Measurement SW: DASY52, Version 52.8 (8); SEMCAD X Version 14.6.10 (7331)

Configuration/Ch20450/Area Scan (71x121x1): Interpolated grid: $dx=1.500 \text{ mm}$, $dy=1.500 \text{ mm}$

Maximum value of SAR (interpolated) = 0.391 W/kg

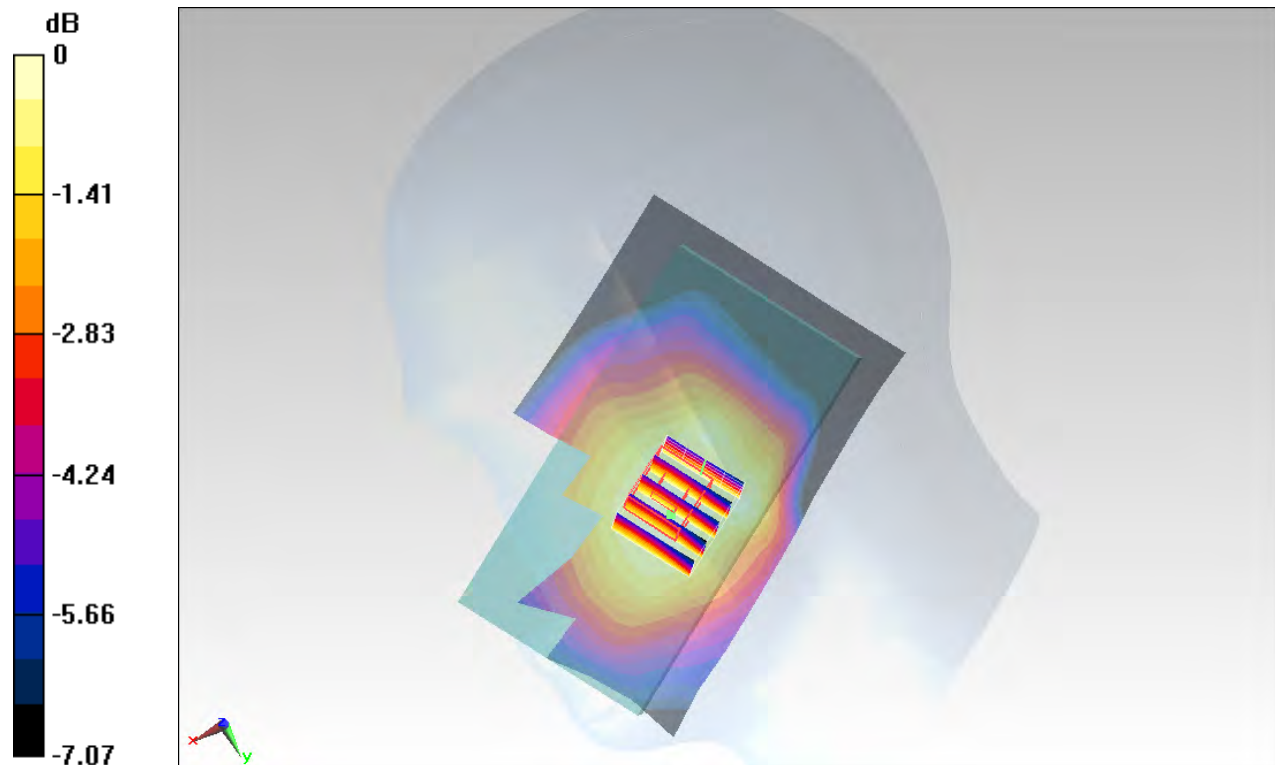
Configuration/Ch20450/Zoom Scan (5x5x7)/Cube 0: Measurement grid: $dx=8\text{mm}$, $dy=8\text{mm}$, $dz=5\text{mm}$

Reference Value = 21.89 V/m ; Power Drift = -0.03 dB

Peak SAR (extrapolated) = 0.440 W/kg

SAR(1 g) = 0.348 W/kg ; SAR(10 g) = 0.278 W/kg

Maximum value of SAR (measured) = 0.410 W/kg



0 dB = 0.410 W/kg = -3.87 dBW/kg

#09_LTE Band 4_20M_QPSK_1RB_0offset_Left Cheek_Ch20050

Communication System: LTE ; Frequency: 1720 MHz;Duty Cycle: 1:1

Medium: HSL_1750_150531 Medium parameters used: $f = 1720$ MHz; $\sigma = 1.341$ S/m; $\epsilon_r = 40.522$; $\rho = 1000$ kg/m³

Ambient Temperature : 23.5 °C; Liquid Temperature : 22.5 °C

DASY5 Configuration:

- Probe: EX3DV4 - SN3931; ConvF(8.48, 8.48, 8.48); Calibrated: 2014/9/25;
- Sensor-Surface: 1.4mm (Mechanical Surface Detection)
- Electronics: DAE3 Sn577; Calibrated: 2014/10/6
- Phantom: SAM-Right; Type: QD 000 P40 C; Serial: TP-1446
- Measurement SW: DASY52, Version 52.8 (8);SEMCAD X Version 14.6.10 (7331)

Configuration/Ch20050/Area Scan (61x11x1): Interpolated grid: dx=1.500 mm, dy=1.500 mm

Maximum value of SAR (interpolated) = 0.482 W/kg

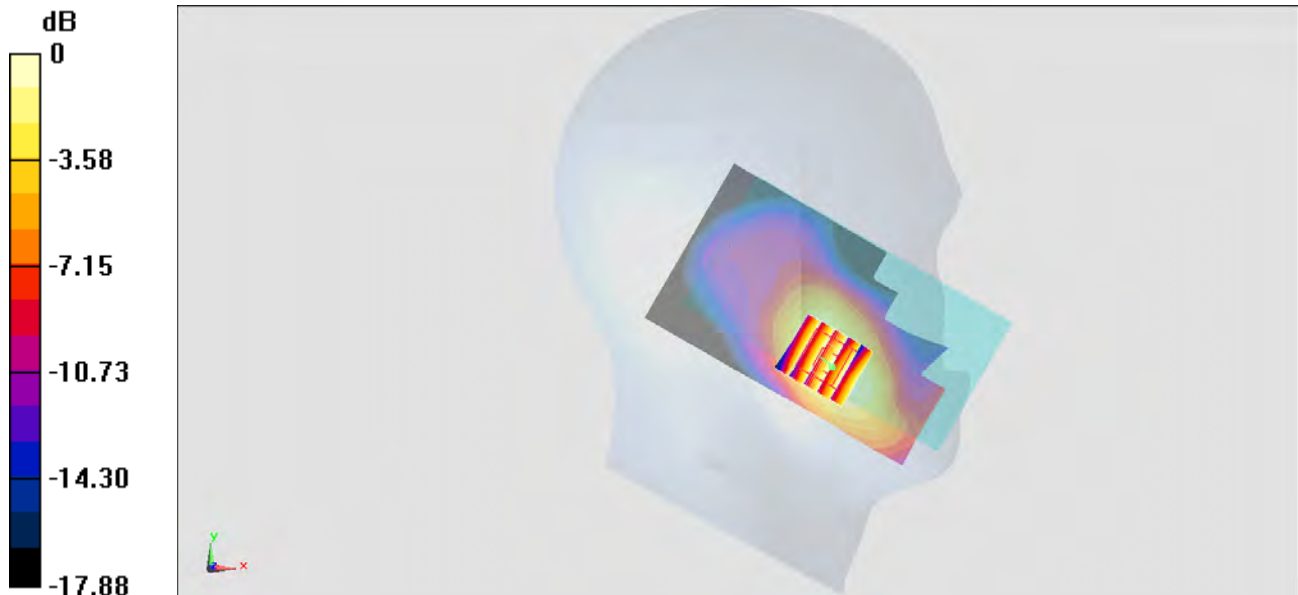
Configuration/Ch20050/Zoom Scan (5x5x7)/Cube 0: Measurement grid: dx=8mm, dy=8mm, dz=5mm

Reference Value = 19.31 V/m; Power Drift = -0.11 dB

Peak SAR (extrapolated) = 0.526 W/kg

SAR(1 g) = 0.364 W/kg; SAR(10 g) = 0.237 W/kg

Maximum value of SAR (measured) = 0.474 W/kg



0 dB = 0.474 W/kg = -3.24 dBW/kg

#10_LTE Band 2_20M_QPSK_1RB_0offset_Left Cheek_Ch18900

Communication System: LTE; Frequency: 1880 MHz; Duty Cycle: 1:1
 Medium: HSL_1900_150521 Medium parameters used: $f = 1880$ MHz; $\sigma = 1.377$ S/m; $\epsilon_r = 40.485$;
 $\rho = 1000$ kg/m³
 Ambient Temperature : 23.6 °C; Liquid Temperature : 22.6 °C

DASY5 Configuration

- Probe: ES3DV3 - SN3270; ConvF(5.05, 5.05, 5.05); Calibrated: 2014/9/26;
- Sensor-Surface: 2mm (Mechanical Surface Detection)
- Electronics: DAE4 Sn916; Calibrated: 2014/12/29
- Phantom: SAM_Right; Type: QD000P40CD; Serial: TP:1801
- Measurement SW: DASY52, Version 52.8 (8); SEMCAD X Version 14.6.10 (7331)

Configuration/Ch18900/Area Scan (71x121x1): Interpolated grid: dx=1.500 mm, dy=1.500 mm

Maximum value of SAR (interpolated) = 0.593 W/kg

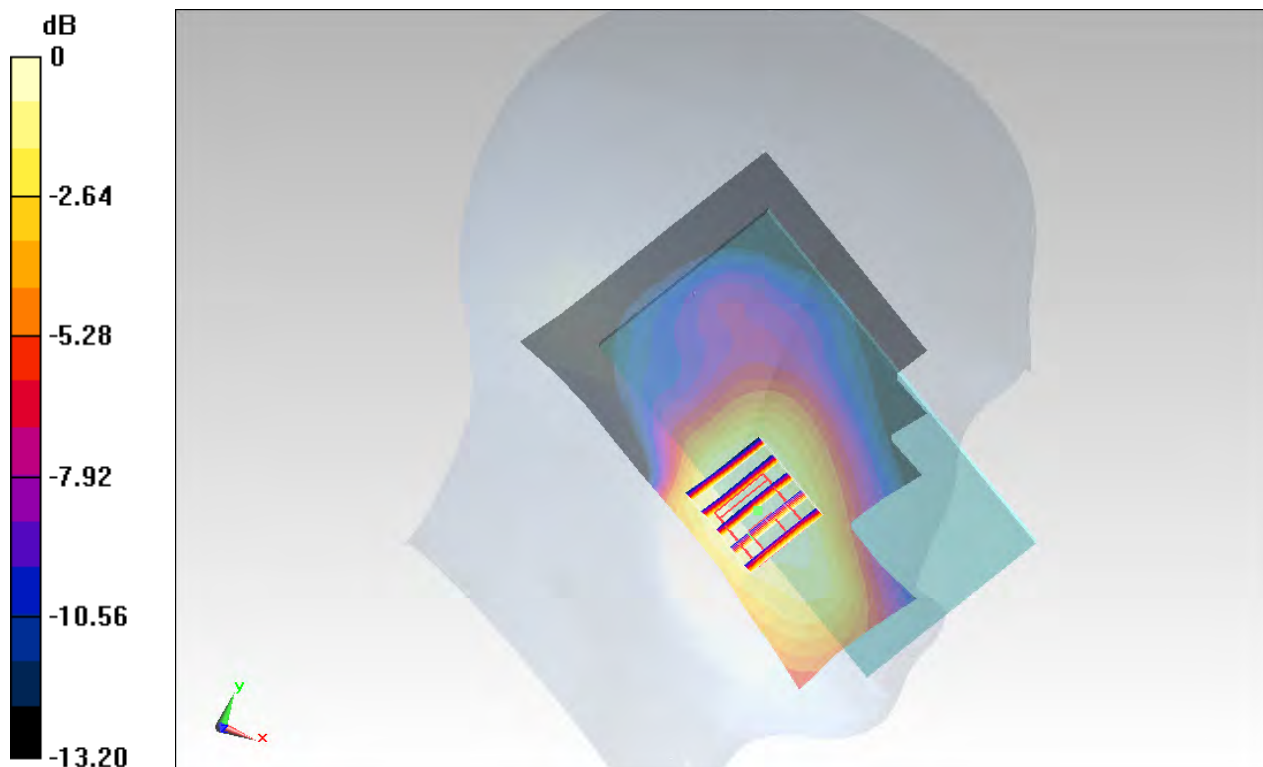
Configuration/Ch18900/Zoom Scan (5x5x7)/Cube 0: Measurement grid: dx=8mm, dy=8mm, dz=5mm

Reference Value = 21.57 V/m; Power Drift = -0.14 dB

Peak SAR (extrapolated) = 0.688 W/kg

SAR(1 g) = 0.442 W/kg; SAR(10 g) = 0.286 W/kg

Maximum value of SAR (measured) = 0.570 W/kg



0 dB = 0.570 W/kg = -2.44 dBW/kg

#11_LTE Band 7_20M_QPSK_1RB_0offset_Right Cheek_Ch21350

Communication System: LTE; Frequency: 2560 MHz; Duty Cycle: 1:1
 Medium: HSL_2600_150521 Medium parameters used: $f = 2560$ MHz; $\sigma = 1.98$ mho/m; $\epsilon_r = 38.584$; $\rho = 1000$ kg/m³
 Ambient Temperature : 23.3 °C; Liquid Temperature : 22.3 °C

DASY5 Configuration:

- Probe: EX3DV4 - SN3955; ConvF(7.21, 7.21, 7.21); Calibrated: 2014/11/21;
- Sensor-Surface: 1.4mm (Mechanical Surface Detection)
- Electronics: DAE4 Sn1399; Calibrated: 2014/11/13
- Phantom: SAM_Right; Type: QD000P40CC; Serial: TP:1383
- Measurement SW: DASY52, Version 52.8 (2); SEMCAD X Version 14.6.6 (6477)

Configuration/Ch21350/Area Scan (71x151x1): Measurement grid: dx=12mm, dy=12mm
 Maximum value of SAR (interpolated) = 0.234 mW/g

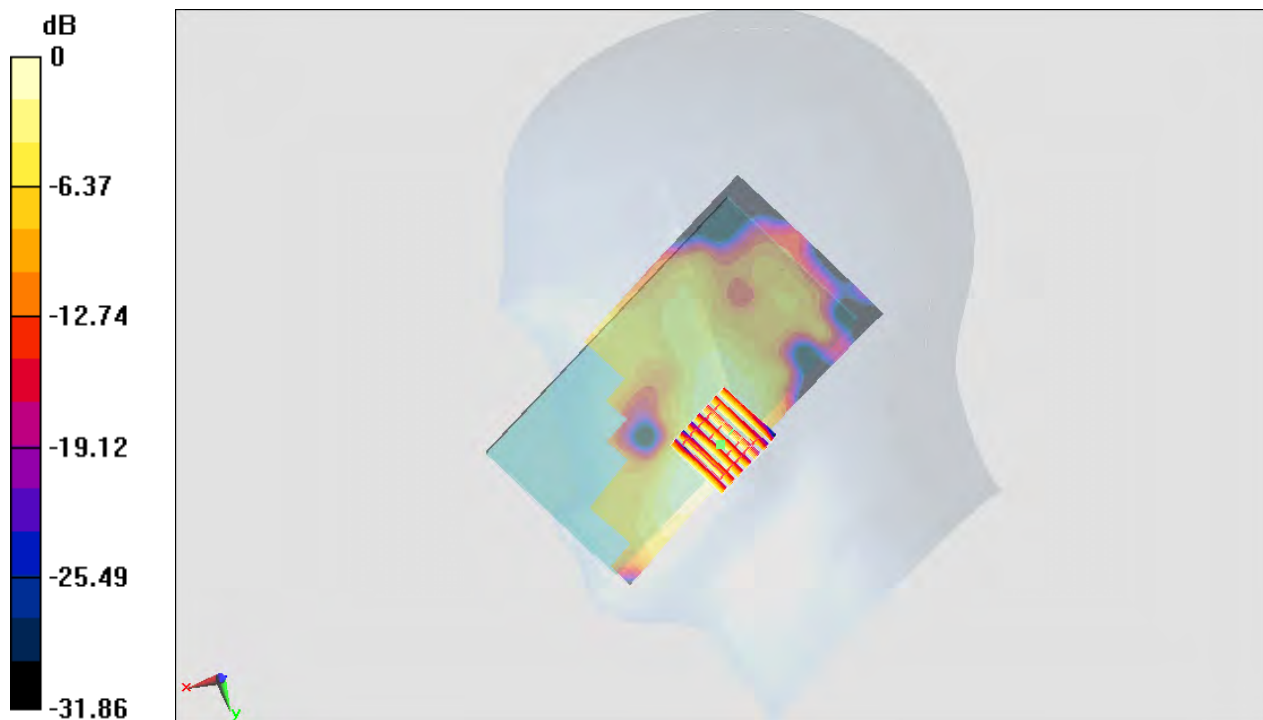
Configuration/Ch21350/Zoom Scan (7x7x7)/Cube 0: Measurement grid: dx=5mm, dy=5mm, dz=5mm

Reference Value = 11.295 V/m; Power Drift = 0.00 dB

Peak SAR (extrapolated) = 0.295 mW/g

SAR(1 g) = 0.160 mW/g; SAR(10 g) = 0.083 mW/g

Maximum value of SAR (measured) = 0.228 mW/g



0 dB = 0.228 mW/g = -12.84 dB mW/g

#12_WLAN2.4GHz_802.11b 1Mbps_Left Cheek_Ch6

Communication System: 802.11b ; Frequency: 2437 MHz;Duty Cycle: 1:1.024

Medium: HSL_2450_150616 Medium parameters used: $f = 2437$ MHz; $\sigma = 1.812$ S/m; $\epsilon_r = 39.457$; $\rho = 1000$ kg/m³

Ambient Temperature : 23.4 °C; Liquid Temperature : 22.4 °C

DASY5 Configuration

- Probe: ES3DV3 - SN3270; ConvF(4.52, 4.52, 4.52); Calibrated: 2014/9/26;
- Sensor-Surface: 2mm (Mechanical Surface Detection)
- Electronics: DAE4 Sn778; Calibrated: 2014/8/21
- Phantom: SAM_RIGHT; Type: QD000P40CD; Serial: 1719
- Measurement SW: DASY52, Version 52.8 (8); SEMCAD X Version 14.6.10 (7331)

Configuration/Ch6/Area Scan (81x141x1): Interpolated grid: dx=1.200 mm, dy=1.200 mm
 Maximum value of SAR (interpolated) = 0.684 W/kg

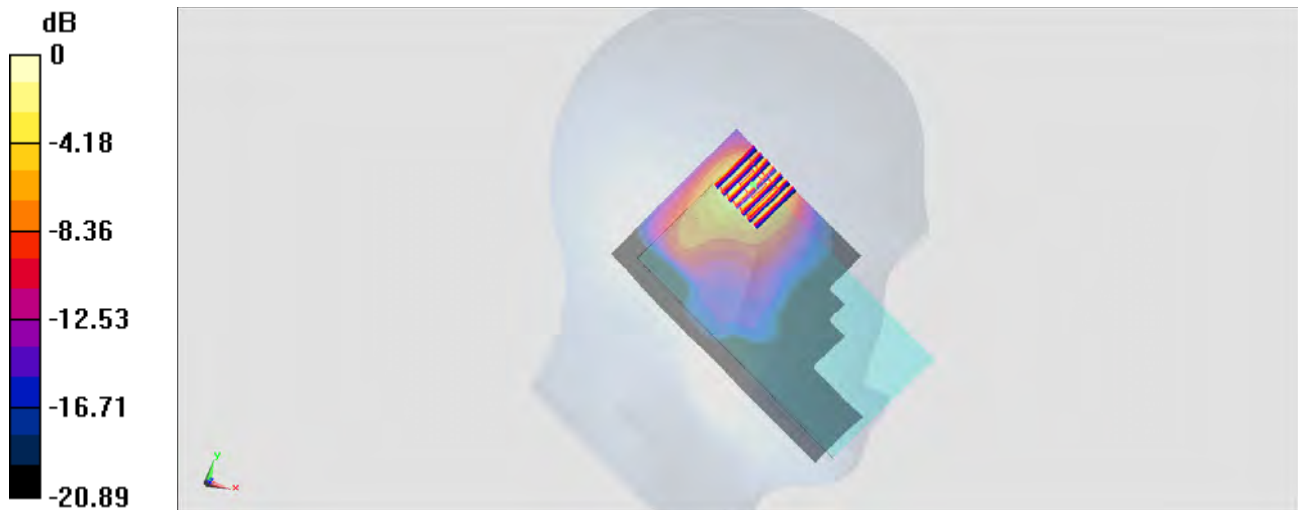
Configuration/Ch6/Zoom Scan (7x7x7)/Cube 0: Measurement grid: dx=5mm, dy=5mm, dz=5mm

Reference Value = 21.01 V/m; Power Drift = 0.01 dB

Peak SAR (extrapolated) = 0.995 W/kg

SAR(1 g) = 0.414 W/kg; SAR(10 g) = 0.194 W/kg

Maximum value of SAR (measured) = 0.650 W/kg



0 dB = 0.650 W/kg = -1.87 dBW/kg

#13_WLAN5GHz_802.11a 6Mbps_Left Cheek_Ch52

Communication System: 802.11a ; Frequency: 5260 MHz;Duty Cycle: 1:1.139

Medium: HSL_5G_150617 Medium parameters used : $f = 5260$ MHz; $\sigma = 4.872$ S/m; $\epsilon_r = 35.38$; $\rho = 1000$ kg/m³

Ambient Temperature : 23.4 °C ; Liquid Temperature : 22.4 °C

DASY5 Configuration

- Probe: EX3DV4 - SN3925; ConvF(5.14, 5.14, 5.14); Calibrated: 2015/5/27;
- Sensor-Surface: 1.4mm (Mechanical Surface Detection)
- Electronics: DAE3 Sn495; Calibrated: 2015/5/22
- Phantom: SAM LEFT; Type: QD000P40CD; Serial: TP:1718
- Measurement SW: DASY52, Version 52.8 (8); SEMCAD X Version 14.6.10 (7331)

Configuration/Ch52/Area Scan (101x181x1): Interpolated grid: dx=1.000 mm, dy=1.000 mm
 Maximum value of SAR (interpolated) = 0.552 W/kg

Configuration/Ch52/Zoom Scan (7x7x7)/Cube 0: Measurement grid: dx=4mm, dy=4mm, dz=1.4mm

Reference Value = 16.76 V/m; Power Drift = -0.16 dB

Peak SAR (extrapolated) = 2.19 W/kg

SAR(1 g) = 0.480 W/kg; SAR(10 g) = 0.112 W/kg

Maximum value of SAR (measured) = 1.24 W/kg



0 dB = 1.24 W/kg = 0.93 dBW/kg

#14_WLAN5GHz_802.11a 6Mbps_Left Cheek_Ch116

Communication System: 802.11a ; Frequency: 5580 MHz;Duty Cycle: 1:1.139

Medium: HSL_5G_150617 Medium parameters used : $f = 5580$ MHz; $\sigma = 5.195$ S/m; $\epsilon_r = 34.769$; $\rho = 1000$ kg/m³

Ambient Temperature : 23.4 °C; Liquid Temperature : 22.4 °C

DASY5 Configuration

- Probe: EX3DV4 - SN3925; ConvF(4.68, 4.68, 4.68); Calibrated: 2015/5/27;
- Sensor-Surface: 1.4mm (Mechanical Surface Detection)
- Electronics: DAE3 Sn495; Calibrated: 2015/5/22
- Phantom: SAM LEFT; Type: QD000P40CD; Serial: TP:1718
- Measurement SW: DASY52, Version 52.8 (8); SEMCAD X Version 14.6.10 (7331)

Configuration/Ch116/Area Scan (101x181x1): Interpolated grid: dx=1.000 mm, dy=1.000 mm

Maximum value of SAR (interpolated) = 0.538 W/kg

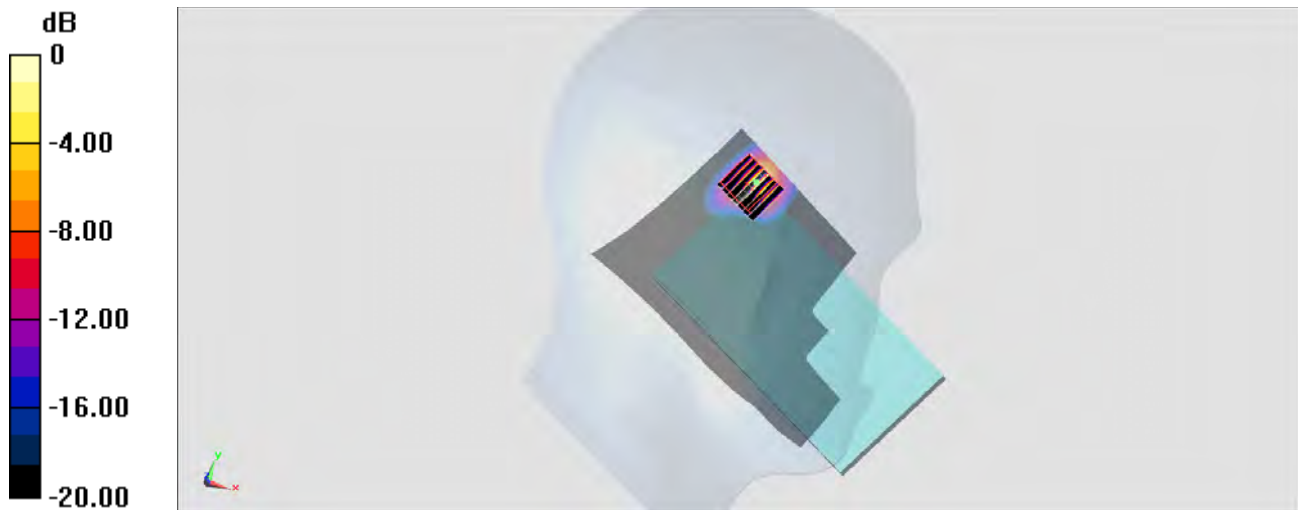
Configuration/Ch116/Zoom Scan (7x7x7)/Cube 0: Measurement grid: dx=4mm, dy=4mm, dz=1.4mm

Reference Value = 16.67 V/m; Power Drift = -0.18 dB

Peak SAR (extrapolated) = 2.03 W/kg

SAR(1 g) = 0.418 W/kg; SAR(10 g) = 0.090 W/kg

Maximum value of SAR (measured) = 1.15 W/kg



0 dB = 1.15 W/kg = 0.61 dBW/kg

#15_WLAN5GHz_802.11a_6Mbps_Left Cheek_Ch157

Communication System: 802.11a; Frequency: 5785 MHz; Duty Cycle: 1:1.139

Medium: HSL_5G_150617 Medium parameters used: $f = 5785$ MHz; $\sigma = 5.395$ S/m; $\epsilon_r = 34.395$; $\rho = 1000$ kg/m³

Ambient Temperature : 23.4 °C; Liquid Temperature : 22.4 °C

DASY5 Configuration

- Probe: EX3DV4 - SN3925; ConvF(4.72, 4.72, 4.72); Calibrated: 2015/5/27;
- Sensor-Surface: 1.4mm (Mechanical Surface Detection)
- Electronics: DAE3 Sn495; Calibrated: 2015/5/22
- Phantom: SAM LEFT; Type: QD000P40CD; Serial: TP:1718
- Measurement SW: DASY52, Version 52.8 (8); SEMCAD X Version 14.6.10 (7331)

Configuration/Ch157/Area Scan (101x181x1): Interpolated grid: dx=1.000 mm, dy=1.000 mm

Maximum value of SAR (interpolated) = 0.521 W/kg

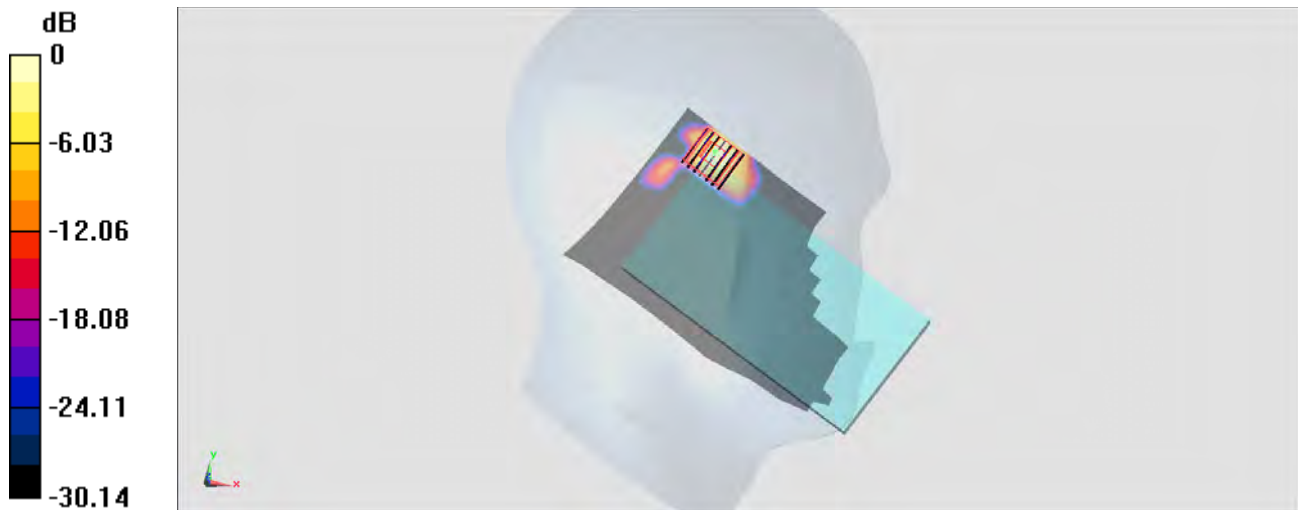
Configuration/Ch157/Zoom Scan (7x7x7)/Cube 0: Measurement grid: dx=4mm, dy=4mm, dz=1.4mm

Reference Value = 10.25 V/m; Power Drift = 0.01 dB

Peak SAR (extrapolated) = 0.952 W/kg

SAR(1 g) = 0.197 W/kg; SAR(10 g) = 0.047 W/kg

Maximum value of SAR (measured) = 0.562 W/kg



0 dB = 0.562 W/kg = -2.50 dBW/kg

#16_Bluetooth_1Mbps_Left Cheek_Ch39

Communication System: Bluetooth; Frequency: 2441 MHz; Duty Cycle: 1:1.2

Medium: HSL_2450_150618 Medium parameters used: $f = 2441$ MHz; $\sigma = 1.841$ S/m; $\epsilon_r = 38.512$; $\rho = 1000$ kg/m³

Ambient Temperature : 23.2 °C; Liquid Temperature : 22.2 °C

DASY5 Configuration

- Probe: EX3DV4 - SN3925; ConvF(7.38, 7.38, 7.38); Calibrated: 2015/5/27;
- Sensor-Surface: 1.4mm (Mechanical Surface Detection)
- Electronics: DAE3 Sn495; Calibrated: 2015/5/22
- Phantom: SAM LEFT; Type: QD000P40CD; Serial: TP:1718
- Measurement SW: DASY52, Version 52.8 (8); SEMCAD X Version 14.6.10 (7331)

Configuration/Ch39/Area Scan (81x141x1): Interpolated grid: dx=1.200 mm, dy=1.200 mm

Maximum value of SAR (interpolated) = 0.110 W/kg

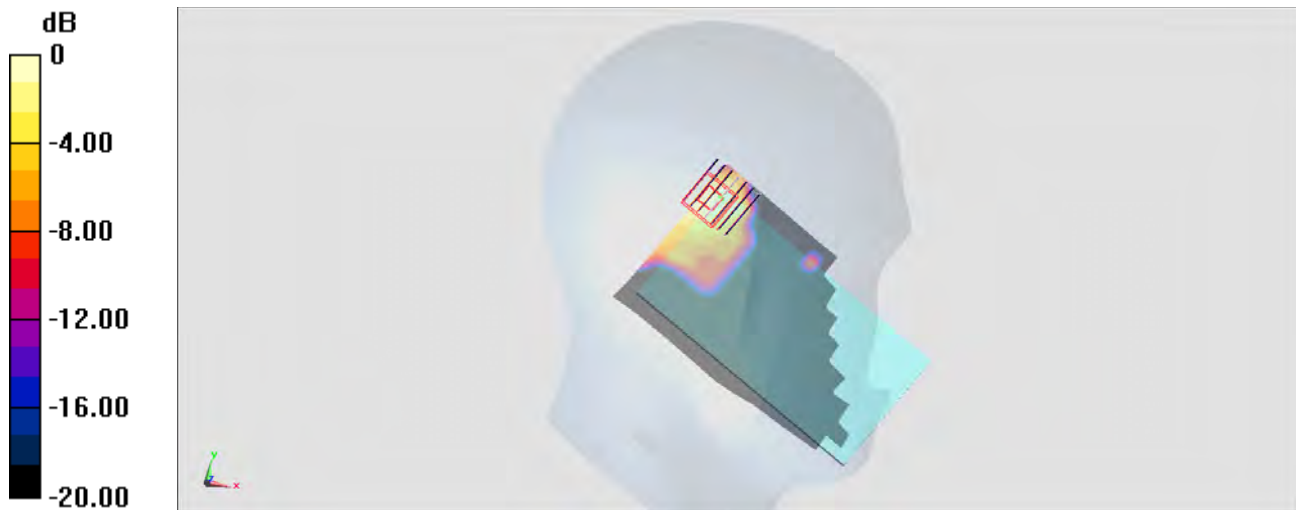
Configuration/Ch39/Zoom Scan (7x7x7)/Cube 0: Measurement grid: dx=5mm, dy=5mm, dz=5mm

Reference Value = 7.311 V/m; Power Drift = 0.02 dB

Peak SAR (extrapolated) = 0.123 W/kg

SAR(1 g) = 0.057 W/kg; SAR(10 g) = 0.026 W/kg

Maximum value of SAR (measured) = 0.0942 W/kg



0 dB = 0.0942 W/kg = -10.26 dBW/kg

#17_GSM850_GPRS (4 Tx slots)_Right Side_10mm_Ch251

Communication System: GSM850; Frequency: 848.8 MHz; Duty Cycle: 1:2.08

Medium: MSL_850_150524 Medium parameters used: $f = 849$ MHz; $\sigma = 0.98$ S/m; $\epsilon_r = 55.096$; $\rho = 1000$ kg/m³

Ambient Temperature : 23.5 °C; Liquid Temperature : 22.5 °C

DASY5 Configuration

- Probe: EX3DV4 - SN3931; ConvF(10.13, 10.13, 10.13); Calibrated: 2014/9/25;
- Sensor-Surface: 1.4mm (Mechanical Surface Detection)
- Electronics: DAE3 Sn577; Calibrated: 2014/10/6
- Phantom: SAM_Left; Type: QD000P40CD; Serial: TP:1644
- Measurement SW: DASY52, Version 52.8 (8); SEMCAD X Version 14.6.10 (7331)

Configuration/Ch251/Area Scan (41x121x1): Interpolated grid: dx=1.500 mm, dy=1.500 mm

Maximum value of SAR (interpolated) = 0.629 W/kg

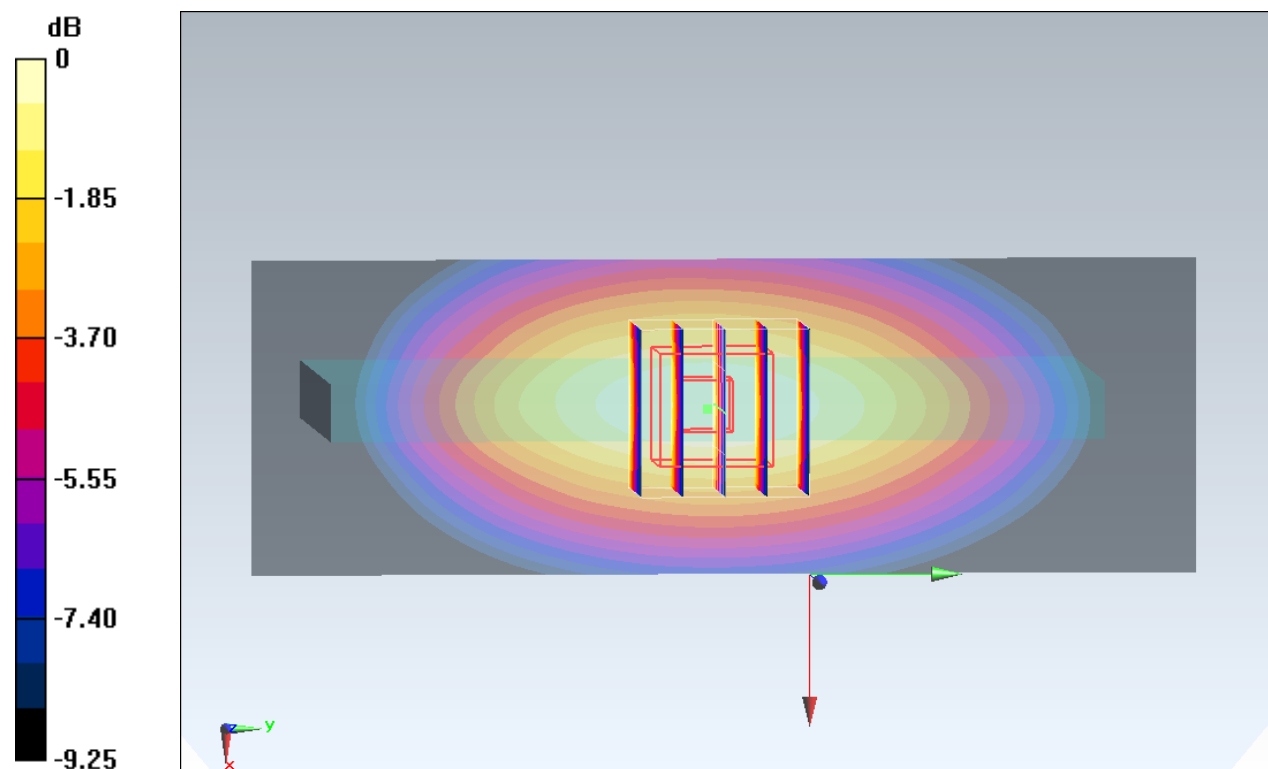
Configuration/Ch251/Zoom Scan (5x5x7)/Cube 0: Measurement grid: dx=8mm, dy=8mm, dz=5mm

Reference Value = 26.52 V/m; Power Drift = -0.11 dB

Peak SAR (extrapolated) = 0.694 W/kg

SAR(1 g) = 0.478 W/kg; SAR(10 g) = 0.332 W/kg

Maximum value of SAR (measured) = 0.619 W/kg



0 dB = 0.619 W/kg = -2.08 dBW/kg

#18_GSM1900_GPRS (4 Tx slots)_Bottom Side_10mm_Ch512

Communication System: PCS ; Frequency: 1850.2 MHz;Duty Cycle: 1:2.08

Medium: MSL_1900_150531 Medium parameters used : $f = 1850.2$ MHz; $\sigma = 1.513$ S/m; $\epsilon_r = 51.749$;

$\rho = 1000$ kg/m³

Ambient Temperature : 23.5 °C; Liquid Temperature : 22.5 °C

DASY5 Configuration:

- Probe: EX3DV4 - SN3931; ConvF(7.8, 7.8, 7.8); Calibrated: 2014/9/25;
- Sensor-Surface: 1.4mm (Mechanical Surface Detection)
- Electronics: DAE3 Sn577; Calibrated: 2014/10/6
- Phantom: SAM-Left; Type: QD 000 P40 C; Serial: TP-1478
- Measurement SW: DASY52, Version 52.8 (8);SEMCAD X Version 14.6.10 (7331)

Configuration/Ch512/Area Scan (41x81x1): Interpolated grid: dx=1.500 mm, dy=1.500 mm

Maximum value of SAR (interpolated) = 1.40 W/kg

Configuration/Ch512/Zoom Scan (5x5x7)/Cube 0: Measurement grid: dx=8mm, dy=8mm,

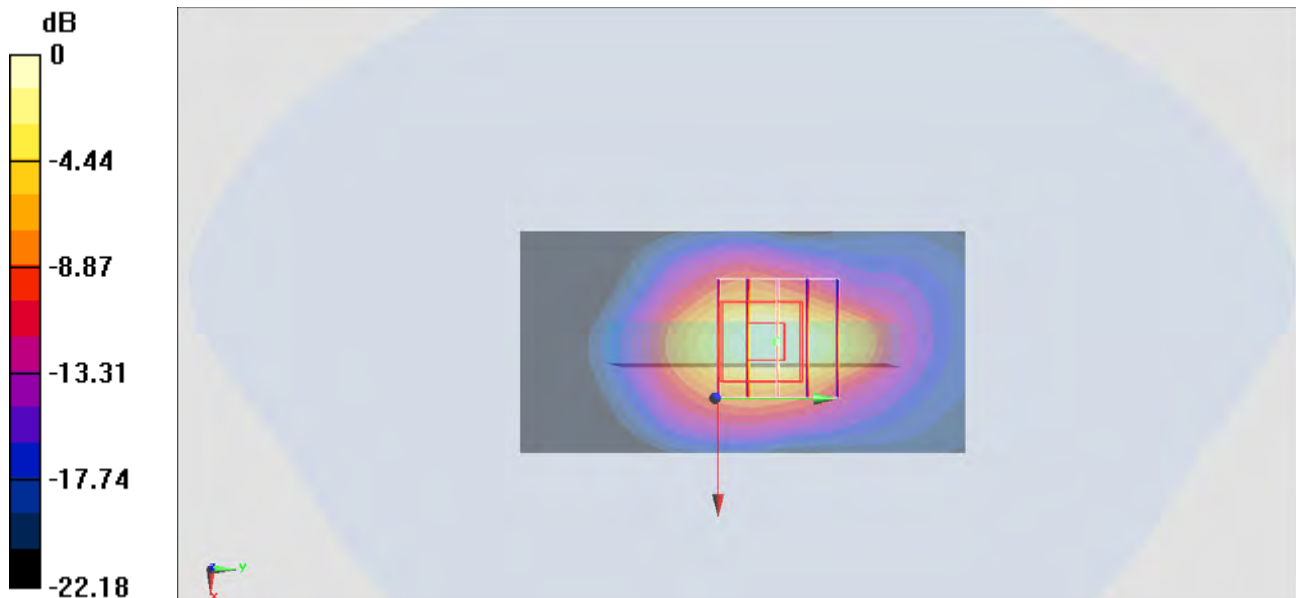
dz=5mm

Reference Value = 30.07 V/m; Power Drift = 0.01 dB

Peak SAR (extrapolated) = 1.53 W/kg

SAR(1 g) = 0.857 W/kg; SAR(10 g) = 0.436 W/kg

Maximum value of SAR (measured) = 1.26 W/kg



0 dB = 1.26 W/kg = 1.00 dBW/kg

#19_WCDMA V_RMC 12.2Kbps_Right Side_10mm_Ch4233

Communication System: WCDMA ; Frequency: 846.6 MHz;Duty Cycle: 1:1
 Medium: MSL_850_150523 Medium parameters used: $f = 847$ MHz; $\sigma = 1.003$ S/m; $\epsilon_r = 57.083$; $\rho = 1000$ kg/m³
 Ambient Temperature : 23.5 °C; Liquid Temperature : 22.5 °C

DASY5 Configuration

- Probe: EX3DV4 - SN3931; ConvF(10.13, 10.13, 10.13); Calibrated: 2014/9/25;
- Sensor-Surface: 1.4mm (Mechanical Surface Detection)
- Electronics: DAE3 Sn577; Calibrated: 2014/10/6
- Phantom: SAM_Left; Type: QD000P40CD; Serial: TP:1644
- Measurement SW: DASY52, Version 52.8 (8); SEMCAD X Version 14.6.10 (7331)

Configuration/Ch4233/Area Scan (41x121x1): Interpolated grid: dx=1.500 mm, dy=1.500 mm

Maximum value of SAR (interpolated) = 0.605 W/kg

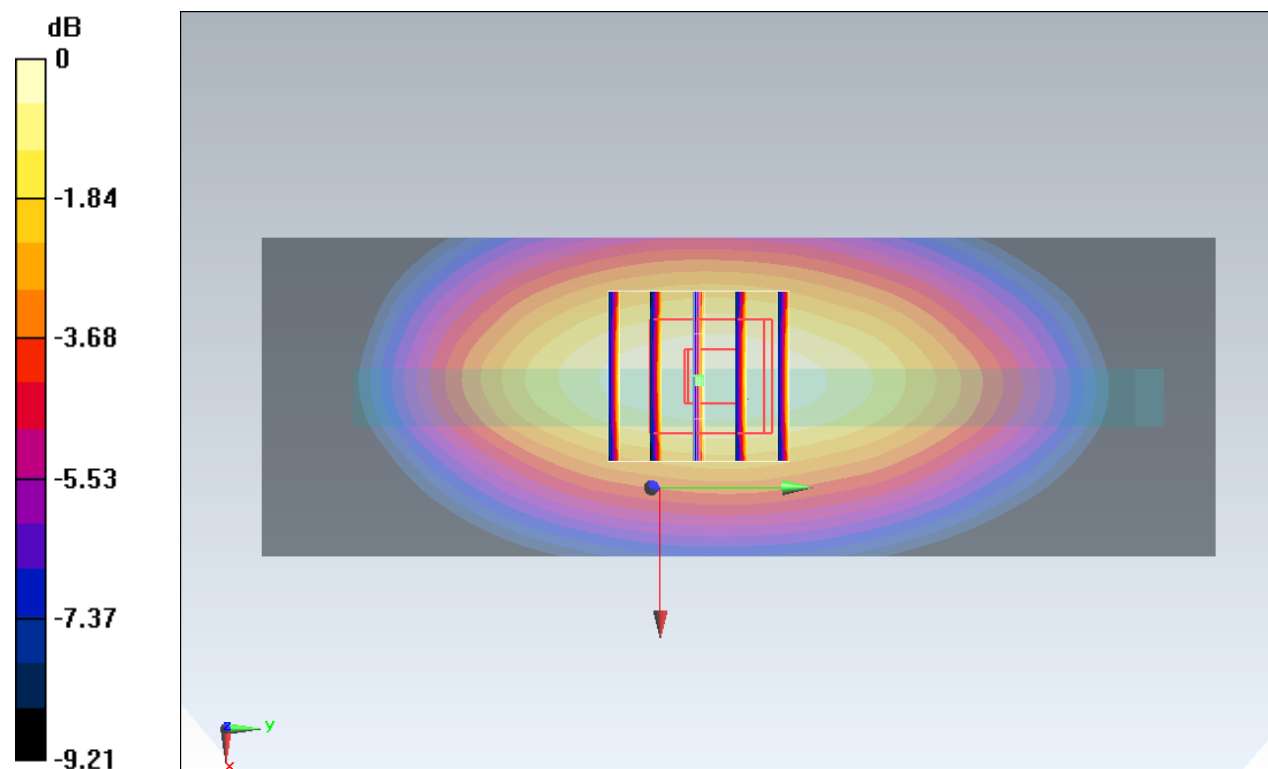
Configuration/Ch4233/Zoom Scan (5x5x7)/Cube 0: Measurement grid: dx=8mm, dy=8mm, dz=5mm

Reference Value = 25.80 V/m; Power Drift = -0.09 dB

Peak SAR (extrapolated) = 0.683 W/kg

SAR(1 g) = 0.472 W/kg; SAR(10 g) = 0.329 W/kg

Maximum value of SAR (measured) = 0.609 W/kg



0 dB = 0.609 W/kg = -2.15 dBW/kg

#20_WCDMA II_RMC 12.2Kbps_Bottom Side_10mm_Ch9538

Communication System: WCDMA; Frequency: 1907.6 MHz; Duty Cycle: 1:1

Medium: MSL_1900_150531 Medium parameters used: $f = 1908 \text{ MHz}$; $\sigma = 1.579 \text{ S/m}$; $\epsilon_r = 51.567$; $\rho = 1000 \text{ kg/m}^3$

Ambient Temperature : $23.5 \text{ }^\circ\text{C}$; Liquid Temperature : $22.5 \text{ }^\circ\text{C}$

DASY5 Configuration:

- Probe: EX3DV4 - SN3931; ConvF(7.8, 7.8, 7.8); Calibrated: 2014/9/25;
- Sensor-Surface: 1.4mm (Mechanical Surface Detection)
- Electronics: DAE3 Sn577; Calibrated: 2014/10/6
- Phantom: SAM-Left; Type: QD 000 P40 C; Serial: TP-1478
- Measurement SW: DASY52, Version 52.8 (8); SEMCAD X Version 14.6.10 (7331)

Configuration/Ch9538/Area Scan (41x81x1): Interpolated grid: $dx=1.500 \text{ mm}$, $dy=1.500 \text{ mm}$
 Maximum value of SAR (interpolated) = 2.43 W/kg

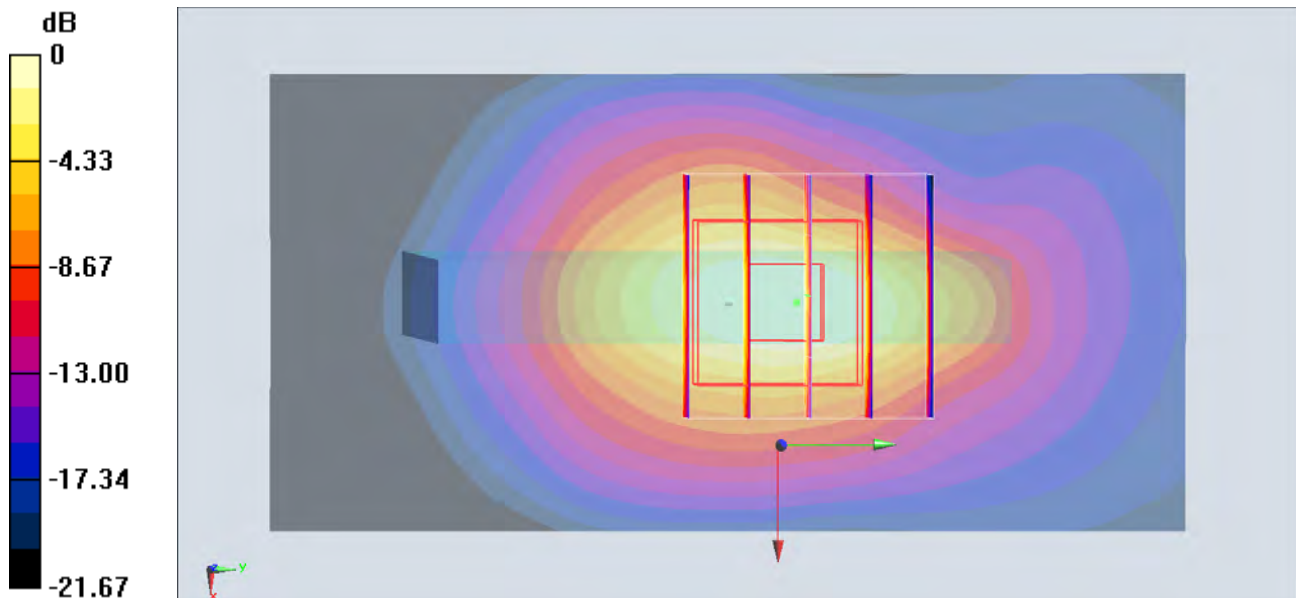
Configuration/Ch9538/Zoom Scan (5x5x7)/Cube 0: Measurement grid: $dx=8\text{mm}$, $dy=8\text{mm}$, $dz=5\text{mm}$

Reference Value = 38.38 V/m ; Power Drift = 0.00 dB

Peak SAR (extrapolated) = 2.56 W/kg

SAR(1 g) = 1.42 W/kg ; SAR(10 g) = 0.723 W/kg

Maximum value of SAR (measured) = 2.11 W/kg



0 dB = $2.11 \text{ W/kg} = 3.24 \text{ dBW/kg}$

#21_CDMA2000 BC0_RTAP 153.6Kbps_Right Side_10mm_Ch777

Communication System: CDMA; Frequency: 848.31 MHz; Duty Cycle: 1:1

Medium: MSL_850_150524 Medium parameters used: $f = 848.31 \text{ MHz}$; $\sigma = 0.979 \text{ S/m}$; $\epsilon_r = 55.103$;
 $\rho = 1000 \text{ kg/m}^3$

Ambient Temperature : $23.5 \text{ }^\circ\text{C}$; Liquid Temperature : $22.5 \text{ }^\circ\text{C}$

DASY5 Configuration

- Probe: EX3DV4 - SN3931; ConvF(10.13, 10.13, 10.13); Calibrated: 2014/9/25;
- Sensor-Surface: 1.4mm (Mechanical Surface Detection)
- Electronics: DAE3 Sn577; Calibrated: 2014/10/6
- Phantom: SAM_Left; Type: QD000P40CD; Serial: TP:1644
- Measurement SW: DASY52, Version 52.8 (8); SEMCAD X Version 14.6.10 (7331)

Configuration/Ch777/Area Scan (41x111x1): Interpolated grid: $dx=1.500 \text{ mm}$, $dy=1.500 \text{ mm}$

Maximum value of SAR (interpolated) = 0.793 W/kg

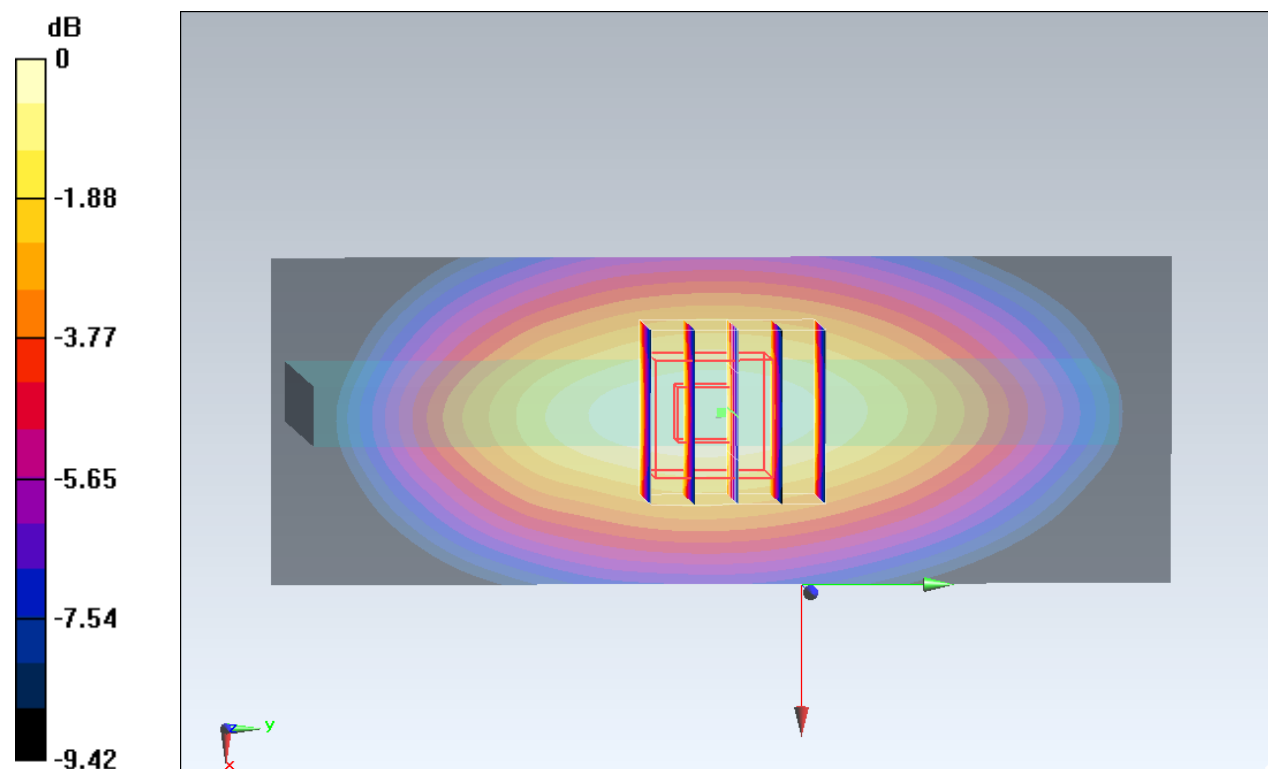
Configuration/Ch777/Zoom Scan (5x5x7)/Cube 0: Measurement grid: $dx=8\text{mm}$, $dy=8\text{mm}$, $dz=5\text{mm}$

Reference Value = 29.79 V/m ; Power Drift = -0.13 dB

Peak SAR (extrapolated) = 0.898 W/kg

SAR(1 g) = 0.605 W/kg ; SAR(10 g) = 0.420 W/kg

Maximum value of SAR (measured) = 0.790 W/kg



0 dB = $0.790 \text{ W/kg} = -1.02 \text{ dBW/kg}$

#22_CDMA2000 BC1_RTAP 153.6Kbps_Bottom Side_10mm_Ch1175

Communication System: CDMA; Frequency: 1908.75 MHz; Duty Cycle: 1:1

Medium: MSL_1900_150601 Medium parameters used: $f = 1909$ MHz; $\sigma = 1.542$ S/m; $\epsilon_r = 53.94$; $\rho = 1000$ kg/m³

Ambient Temperature : 23.2 °C; Liquid Temperature : 22.2 °C

DASY5 Configuration:

- Probe: EX3DV4 - SN3931; ConvF(7.8, 7.8, 7.8); Calibrated: 2014/9/25;
- Sensor-Surface: 1.4mm (Mechanical Surface Detection)
- Electronics: DAE3 Sn577; Calibrated: 2014/10/6
- Phantom: SAM-Left; Type: QD 000 P40 C; Serial: TP-1478
- Measurement SW: DASY52, Version 52.8 (8); SEMCAD X Version 14.6.10 (7331)

Configuration/Ch1175/Area Scan (41x81x1): Interpolated grid: dx=1.500 mm, dy=1.500 mm

Maximum value of SAR (interpolated) = 1.86 W/kg

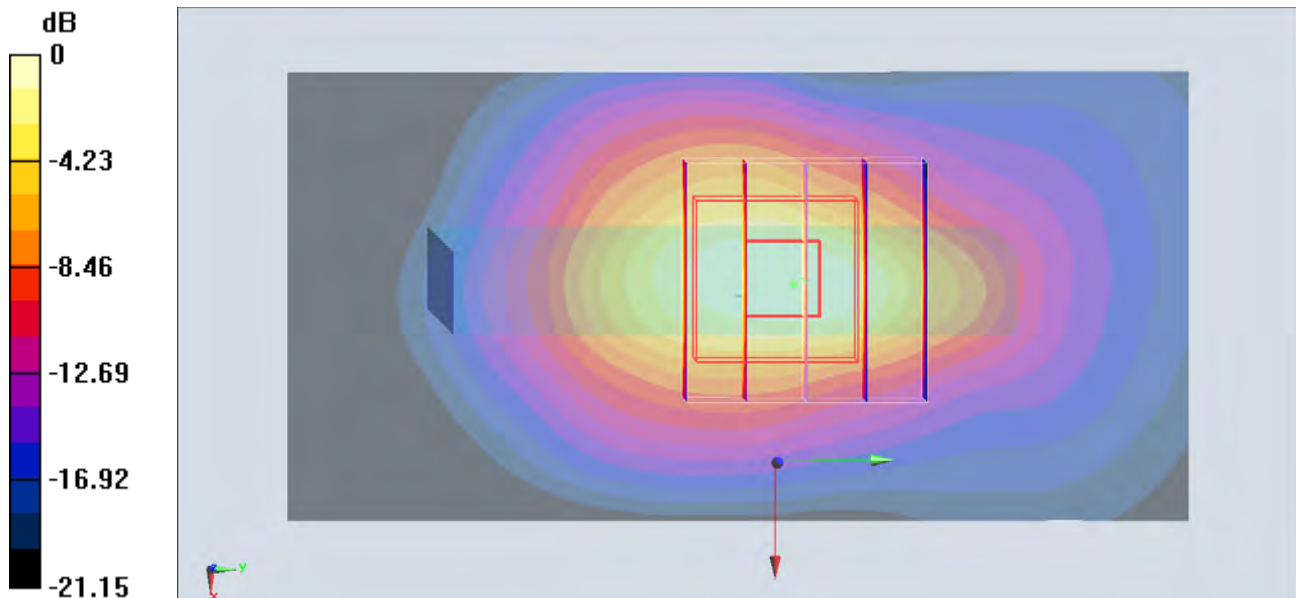
Configuration/Ch1175/Zoom Scan (5x5x7)/Cube 0: Measurement grid: dx=8mm, dy=8mm, dz=5mm

Reference Value = 35.64 V/m; Power Drift = 0.04 dB

Peak SAR (extrapolated) = 2.13 W/kg

SAR(1 g) = 1.18 W/kg; SAR(10 g) = 0.601 W/kg

Maximum value of SAR (measured) = 1.79 W/kg



0 dB = 1.79 W/kg = 2.53 dBW/kg

#23_LTE Band 13_10M_QPSK_1RB_0offset_Right Side_10mm_Ch23230

Communication System: LTE ; Frequency: 782 MHz;Duty Cycle: 1:1

Medium: MSL_750_150523 Medium parameters used: $f = 782$ MHz; $\sigma = 0.991$ S/m; $\epsilon_r = 56.89$; $\rho = 1000$ kg/m³

Ambient Temperature : 23.5 °C ; Liquid Temperature : 22.5 °C

DASY5 Configuration

- Probe: EX3DV4 - SN3931; ConvF(10.1, 10.1, 10.1); Calibrated: 2014/9/25;
- Sensor-Surface: 1.4mm (Mechanical Surface Detection)
- Electronics: DAE3 Sn577; Calibrated: 2014/10/6
- Phantom: SAM_Left; Type: QD000P40CD; Serial: TP:1644
- Measurement SW: DASY52, Version 52.8 (8); SEMCAD X Version 14.6.10 (7331)

Configuration/Ch23230/Area Scan (41x111x1): Interpolated grid: dx=1.500 mm, dy=1.500 mm

Maximum value of SAR (interpolated) = 0.585 W/kg

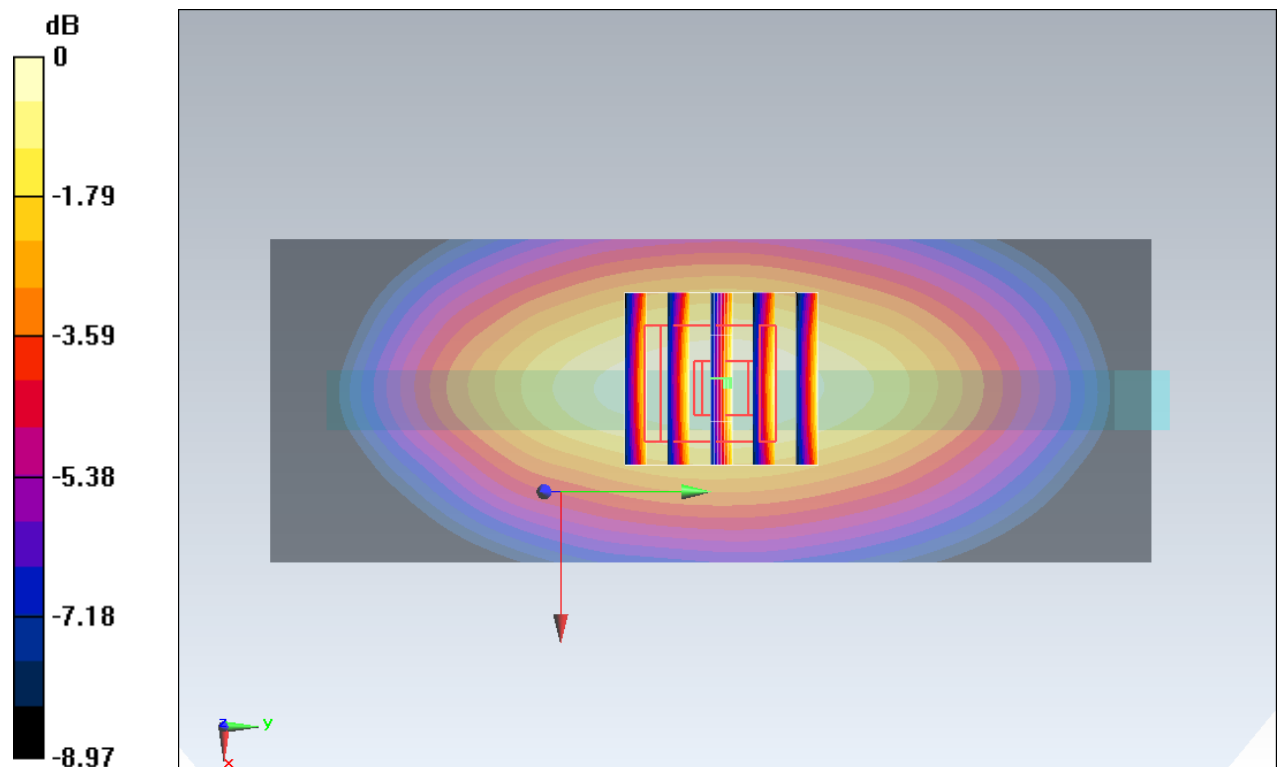
Configuration/Ch23230/Zoom Scan (5x5x7)/Cube 0: Measurement grid: dx=8mm, dy=8mm, dz=5mm

Reference Value = 25.38 V/m; Power Drift = -0.17 dB

Peak SAR (extrapolated) = 0.645 W/kg

SAR(1 g) = 0.448 W/kg; SAR(10 g) = 0.316 W/kg

Maximum value of SAR (measured) = 0.576 W/kg



0 dB = 0.576 W/kg = -2.40 dBW/kg

#24_LTE Band 5_10M_QPSK_1RB_0offset_Right Side_10mm_Ch20450

Communication System: LTE ; Frequency: 829 MHz;Duty Cycle: 1:1

Medium: MSL_850_150523 Medium parameters used: $f = 829$ MHz; $\sigma = 0.986$ S/m; $\epsilon_r = 57.225$; $\rho = 1000$ kg/m³

Ambient Temperature : 23.5 °C; Liquid Temperature : 22.5 °C

DASY5 Configuration

- Probe: EX3DV4 - SN3931; ConvF(10.13, 10.13, 10.13); Calibrated: 2014/9/25;
- Sensor-Surface: 1.4mm (Mechanical Surface Detection)
- Electronics: DAE3 Sn577; Calibrated: 2014/10/6
- Phantom: SAM_Left; Type: QD000P40CD; Serial: TP:1644
- Measurement SW: DASY52, Version 52.8 (8); SEMCAD X Version 14.6.10 (7331)

Configuration/Ch20450/Area Scan (41x111x1): Interpolated grid: dx=1.500 mm, dy=1.500 mm

Maximum value of SAR (interpolated) = 0.664 W/kg

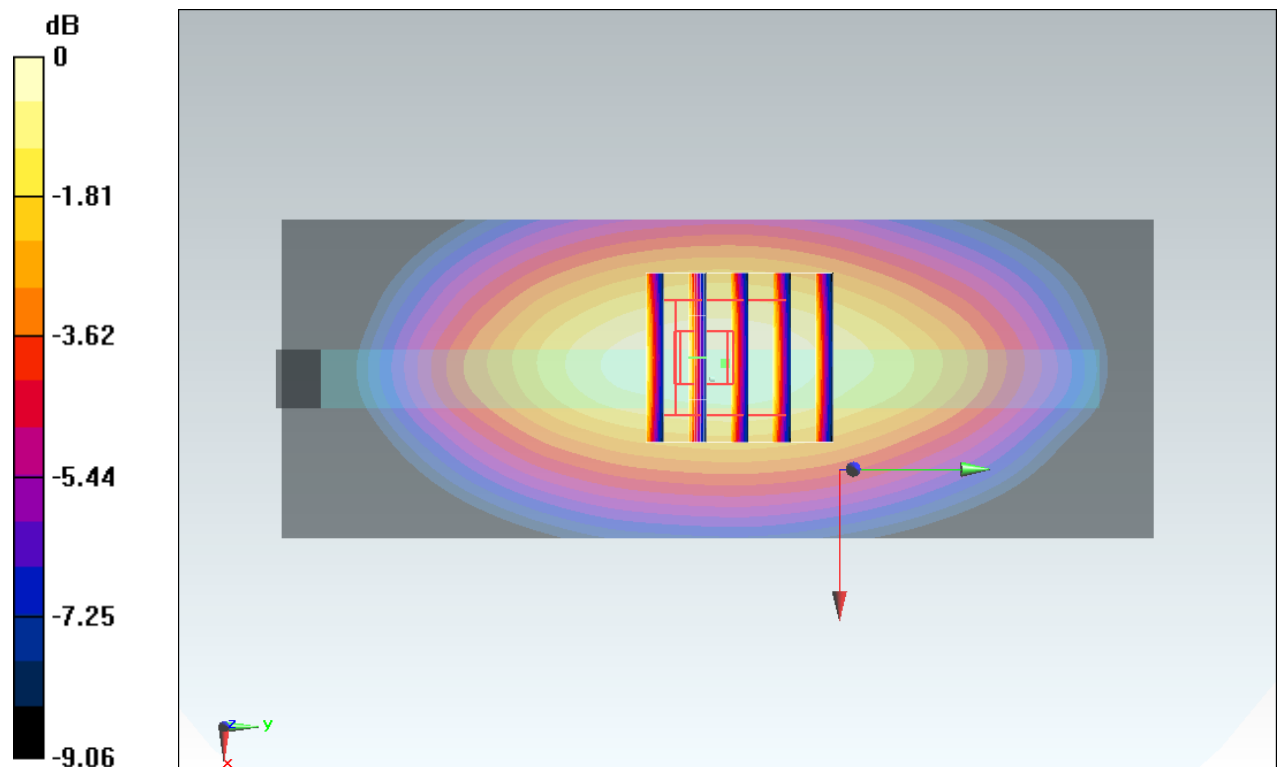
Configuration/Ch20450/Zoom Scan (5x5x7)/Cube 0: Measurement grid: dx=8mm, dy=8mm, dz=5mm

Reference Value = 27.27 V/m; Power Drift = -0.08 dB

Peak SAR (extrapolated) = 0.739 W/kg

SAR(1 g) = 0.504 W/kg; SAR(10 g) = 0.354 W/kg

Maximum value of SAR (measured) = 0.658 W/kg



0 dB = 0.658 W/kg = -1.82 dBW/kg

#25_LTE Band 4_20M_QPSK_1RB_0offset_Bottom Side_10mm_Ch20050

Communication System: LTE; Frequency: 1720 MHz; Duty Cycle: 1:1

Medium: MSL_1750_150530 Medium parameters used: $f = 1720$ MHz; $\sigma = 1.432$ S/m; $\epsilon_r = 53.273$; $\rho = 1000$ kg/m³

Ambient Temperature : 23.4 °C; Liquid Temperature : 22.4 °C

DASY5 Configuration:

- Probe: EX3DV4 - SN3931; ConvF(8.26, 8.26, 8.26); Calibrated: 2014/9/25;
- Sensor-Surface: 1.4mm (Mechanical Surface Detection)
- Electronics: DAE3 Sn577; Calibrated: 2014/10/6
- Phantom: SAM-Left; Type: QD 000 P40 C; Serial: TP-1478
- Measurement SW: DASY52, Version 52.8 (8); SEMCAD X Version 14.6.10 (7331)

Configuration/Ch20050/Area Scan (41x71x1): Interpolated grid: dx=1.500 mm, dy=1.500 mm
 Maximum value of SAR (interpolated) = 1.03 W/kg

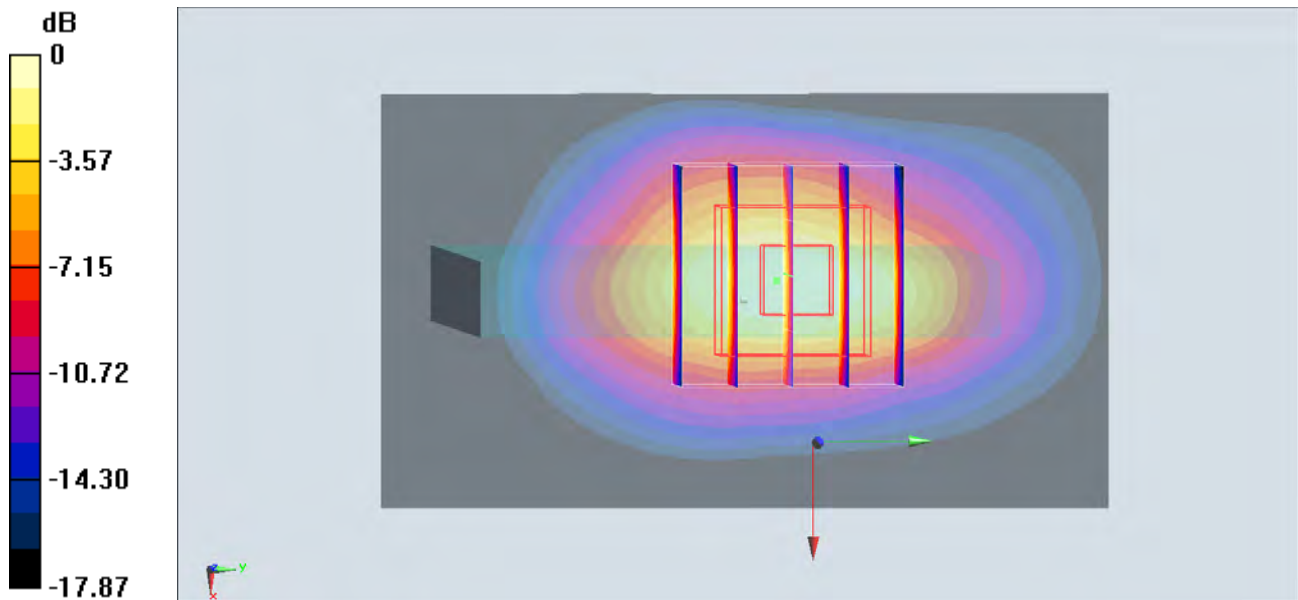
Configuration/Ch20050/Zoom Scan (5x5x7)/Cube 0: Measurement grid: dx=8mm, dy=8mm, dz=5mm

Reference Value = 27.83 V/m; Power Drift = -0.12 dB

Peak SAR (extrapolated) = 1.17 W/kg

SAR(1 g) = 0.683 W/kg; SAR(10 g) = 0.358 W/kg

Maximum value of SAR (measured) = 0.996 W/kg



0 dB = 0.996 W/kg = -0.02 dBW/kg

#26_LTE Band 2_20M_QPSK_1RB_0offset_Bottom Side_10mm_Ch18700

Communication System: LTE; Frequency: 1860 MHz; Duty Cycle: 1:1

Medium: MSL_1900_150531 Medium parameters used: $f = 1860$ MHz; $\sigma = 1.523$ S/m; $\epsilon_r = 51.716$; $\rho = 1000$ kg/m³

Ambient Temperature : 23.5 °C; Liquid Temperature : 22.5 °C

DASY5 Configuration:

- Probe: EX3DV4 - SN3931; ConvF(7.8, 7.8, 7.8); Calibrated: 2014/9/25;
- Sensor-Surface: 1.4mm (Mechanical Surface Detection)
- Electronics: DAE3 Sn577; Calibrated: 2014/10/6
- Phantom: SAM-Left; Type: QD 000 P40 C; Serial: TP-1478
- Measurement SW: DASY52, Version 52.8 (8); SEMCAD X Version 14.6.10 (7331)

Configuration/Ch18700/Area Scan (41x71x1): Interpolated grid: dx=1.500 mm, dy=1.500 mm
 Maximum value of SAR (interpolated) = 2.08 W/kg

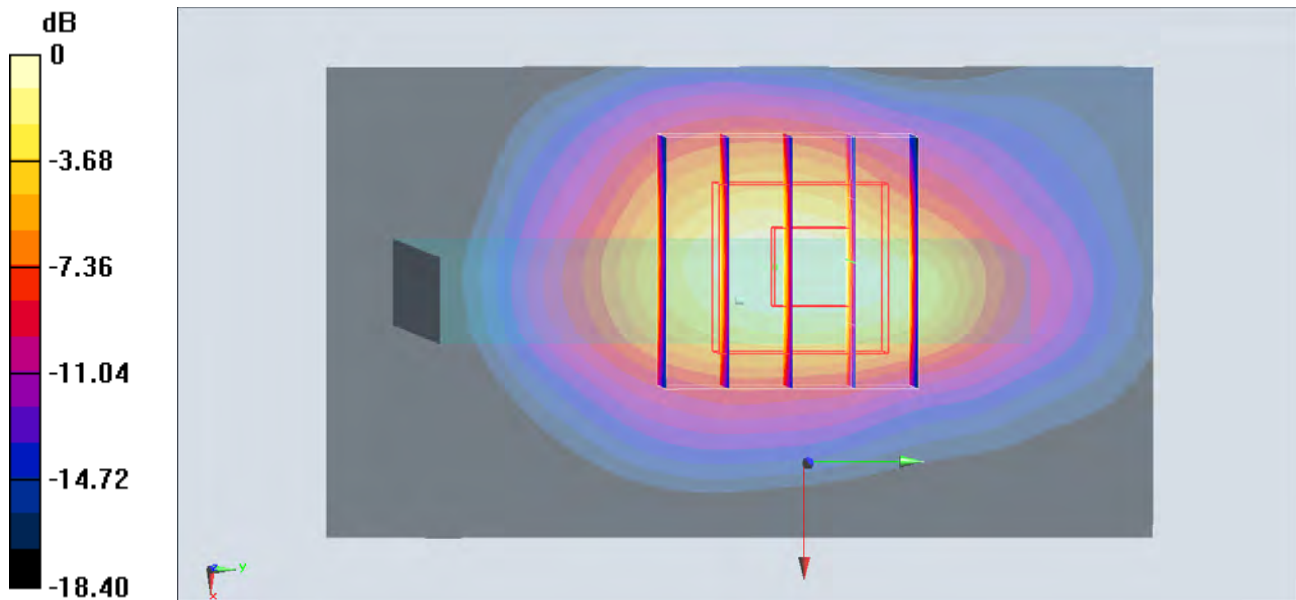
Configuration/Ch18700/Zoom Scan (5x5x7)/Cube 0: Measurement grid: dx=8mm, dy=8mm, dz=5mm

Reference Value = 38.32 V/m; Power Drift = -0.12 dB

Peak SAR (extrapolated) = 2.52 W/kg

SAR(1 g) = 1.41 W/kg; SAR(10 g) = 0.724 W/kg

Maximum value of SAR (measured) = 2.04 W/kg



0 dB = 2.04 W/kg = 3.10 dBW/kg

#27_LTE Band 7_20M_QPSK_1RB_0offset_Bottom Side_10mm_Ch21350

Communication System: LTE; Frequency: 2560 MHz; Duty Cycle: 1:1

Medium: MSL_2600_150522 Medium parameters used: $f = 2560$ MHz; $\sigma = 2.133$ S/m; $\epsilon_r = 52.694$;
 $\rho = 1000$ kg/m³

Ambient Temperature : 23.1 °C ; Liquid Temperature : 22.1 °C

DASY5 Configuration

- Probe: EX3DV4 - SN3578; ConvF(6.69, 6.69, 6.69); Calibrated: 2015/3/31;
- Sensor-Surface: 1.4mm (Mechanical Surface Detection)
- Electronics: DAE4 Sn778; Calibrated: 2014/8/21
- Phantom: SAM_Right; Type: QD000P40CD; Serial: TP:1801
- Measurement SW: DASY52, Version 52.8 (8); SEMCAD X Version 14.6.10 (7331)

Configuration/Ch21350/Area Scan (41x91x1): Interpolated grid: dx=1.200 mm, dy=1.200 mm

Maximum value of SAR (interpolated) = 0.892 W/kg

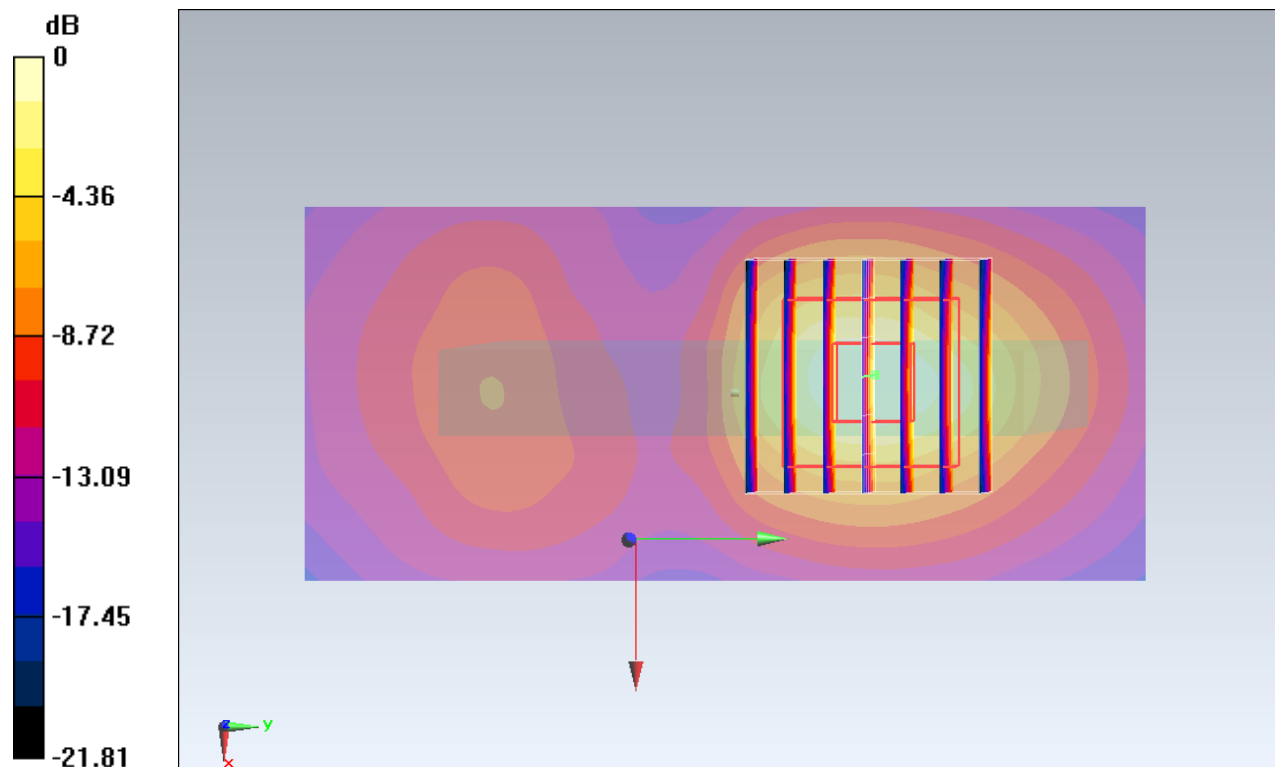
Configuration/Ch21350/Zoom Scan (7x7x7)/Cube 0: Measurement grid: dx=5mm, dy=5mm, dz=5mm

Reference Value = 21.20 V/m; Power Drift = -0.08 dB

Peak SAR (extrapolated) = 1.16 W/kg

SAR(1 g) = 0.547 W/kg; SAR(10 g) = 0.242 W/kg

Maximum value of SAR (measured) = 0.921 W/kg



0 dB = 0.921 W/kg = -0.36 dBW/kg

#28_WLAN2.4GHz_802.11b 1Mbps_Right Side_10mm_Ch1

Communication System: 802.11b ; Frequency: 2412 MHz; Duty Cycle: 1:1.024

Medium: MSL_2450_150615 Medium parameters used: $f = 2412$ MHz; $\sigma = 1.966$ S/m; $\epsilon_r = 53.246$; $\rho = 1000$ kg/m³

Ambient Temperature : 23.3 °C ; Liquid Temperature : 22.3 °C

DASY5 Configuration

- Probe: ES3DV3 - SN3270; ConvF(4.29, 4.29, 4.29); Calibrated: 2014/9/26;
- Sensor-Surface: 2mm (Mechanical Surface Detection)
- Electronics: DAE4 Sn778; Calibrated: 2014/8/21
- Phantom: SAM LEFT; Type: QD000P40CD; Serial: TP:1718
- Measurement SW: DASY52, Version 52.8 (8); SEMCAD X Version 14.6.10 (7331)

Configuration/Ch1/Area Scan (51x151x1): Interpolated grid: dx=1.200 mm, dy=1.200 mm

Maximum value of SAR (interpolated) = 0.274 W/kg

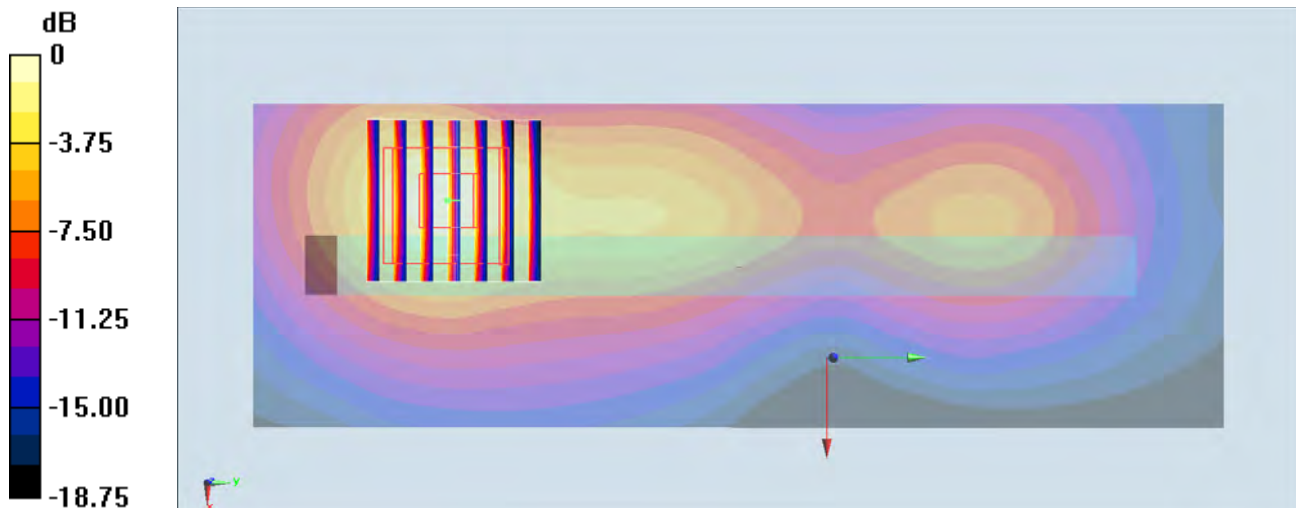
Configuration/Ch1/Zoom Scan (7x7x7)/Cube 0: Measurement grid: dx=5mm, dy=5mm, dz=5mm

Reference Value = 13.21 V/m; Power Drift = 0.02 dB

Peak SAR (extrapolated) = 0.523 W/kg

SAR(1 g) = 0.189 W/kg; SAR(10 g) = 0.088 W/kg

Maximum value of SAR (measured) = 0.301 W/kg



0 dB = 0.301 W/kg = -5.21 dBW/kg

#29_WLAN5GHz_802.11a_6Mbps_Right Side_10mm_Ch44

Communication System: 802.11a; Frequency: 5220 MHz; Duty Cycle: 1:1.139

Medium: MSL_5G_150618 Medium parameters used: $f = 5220$ MHz; $\sigma = 5.446$ S/m; $\epsilon_r = 48.17$; $\rho = 1000$ kg/m³

Ambient Temperature : 23.4 °C; Liquid Temperature : 22.4 °C

DASY5 Configuration

- Probe: EX3DV4 - SN3925; ConvF(4.62, 4.62, 4.62); Calibrated: 2015/5/27;
- Sensor-Surface: 1.4mm (Mechanical Surface Detection)
- Electronics: DAE3 Sn495; Calibrated: 2015/5/22
- Phantom: SAM_RIGHT; Type: QD000P40CD; Serial: 1719
- Measurement SW: DASY52, Version 52.8 (8); SEMCAD X Version 14.6.10 (7331)

Configuration/Ch44/Area Scan (61x181x1): Interpolated grid: dx=1.000 mm, dy=1.000 mm
 Maximum value of SAR (interpolated) = 0.912 W/kg

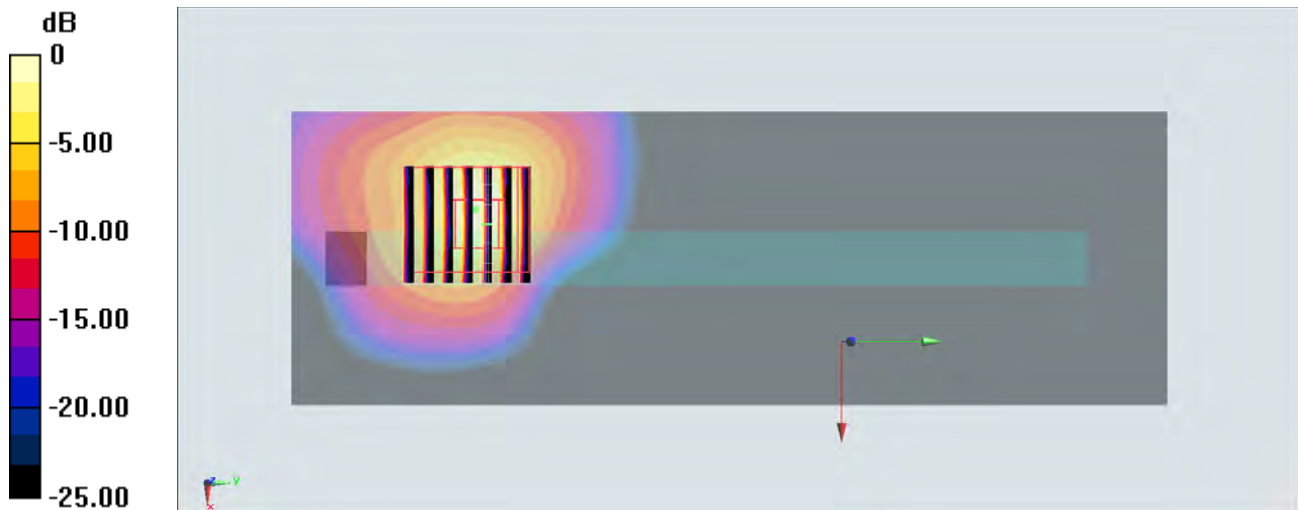
Configuration/Ch44/Zoom Scan (7x7x7)/Cube 0: Measurement grid: dx=4mm, dy=4mm, dz=1.4mm

Reference Value = 14.30 V/m; Power Drift = -0.03 dB

Peak SAR (extrapolated) = 1.67 W/kg

SAR(1 g) = 0.408 W/kg; SAR(10 g) = 0.122 W/kg

Maximum value of SAR (measured) = 0.994 W/kg



0 dB = 0.994 W/kg = -0.03 dBW/kg

#30_WLAN5GHz_802.11a_6Mbps_Right Side_10mm_Ch157

Communication System: 802.11a ; Frequency: 5785 MHz; Duty Cycle: 1:1.139

Medium: MSL_5G_150618 Medium parameters used : $f = 5785$ MHz; $\sigma = 6.198$ S/m; $\epsilon_r = 47.239$; $\rho = 1000$ kg/m³

Ambient Temperature : 23.4 °C; Liquid Temperature : 22.4 °C

DASY5 Configuration

- Probe: EX3DV4 - SN3925; ConvF(4.16, 4.16, 4.16); Calibrated: 2015/5/27;
- Sensor-Surface: 1.4mm (Mechanical Surface Detection)
- Electronics: DAE3 Sn495; Calibrated: 2015/5/22
- Phantom: SAM_RIGHT; Type: QD000P40CD; Serial: 1719
- Measurement SW: DASY52, Version 52.8 (8); SEMCAD X Version 14.6.10 (7331)

Configuration/Ch157/Area Scan (81x181x1): Interpolated grid: dx=1.000 mm, dy=1.000 mm
 Maximum value of SAR (interpolated) = 0.721 W/kg

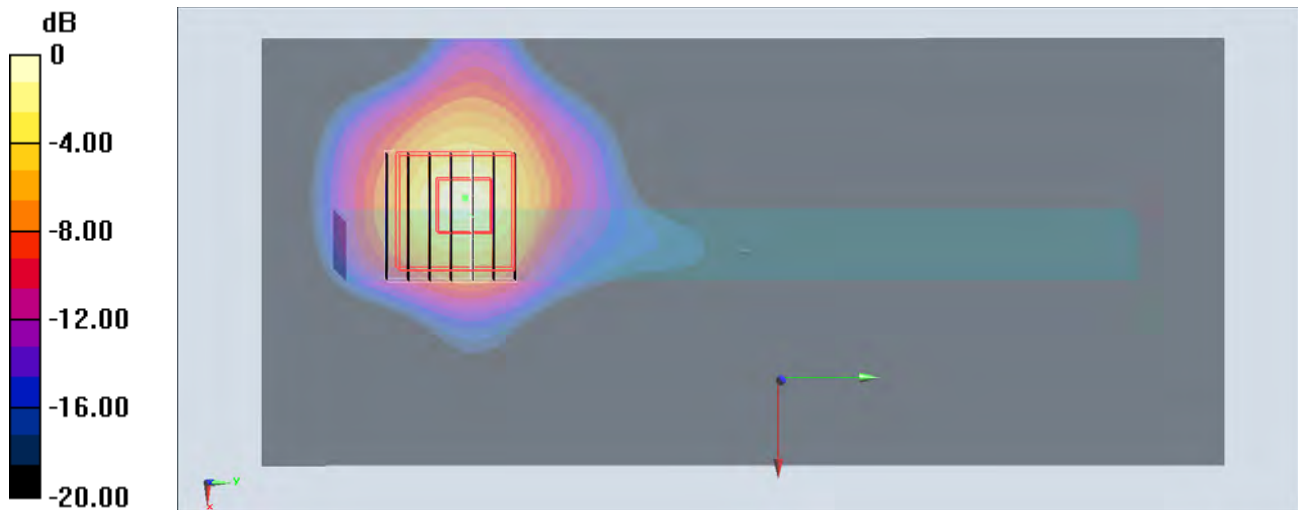
Configuration/Ch157/Zoom Scan (7x7x7)/Cube 0: Measurement grid: dx=4mm, dy=4mm, dz=1.4mm

Reference Value = 0 V/m; Power Drift = 0.00 dB

Peak SAR (extrapolated) = 1.53 W/kg

SAR(1 g) = 0.335 W/kg; SAR(10 g) = 0.097 W/kg

Maximum value of SAR (measured) = 0.840 W/kg



0 dB = 0.840 W/kg = -0.76 dBW/kg

#31_Bluetooth_1Mbps_Back_10mm_Ch39

Communication System: Bluetooth; Frequency: 2441 MHz; Duty Cycle: 1:1.2

Medium: MSL_2450_150619 Medium parameters used: $f = 2441$ MHz; $\sigma = 1.911$ S/m; $\epsilon_r = 53.335$; $\rho = 1000$ kg/m³

Ambient Temperature : 23.6 °C; Liquid Temperature : 22.6 °C

DASY5 Configuration

- Probe: EX3DV4 - SN3925; ConvF(7.54, 7.54, 7.54); Calibrated: 2015/5/27;
- Sensor-Surface: 1.4mm (Mechanical Surface Detection)
- Electronics: DAE3 Sn495; Calibrated: 2015/5/22
- Phantom: SAM_RIGHT; Type: QD000P40CD; Serial: 1719
- Measurement SW: DASY52, Version 52.8 (8); SEMCAD X Version 14.6.10 (7331)

Configuration/Ch39/Area Scan (81x141x1): Interpolated grid: dx=1.200 mm, dy=1.200 mm
 Maximum value of SAR (interpolated) = 0.0430 W/kg

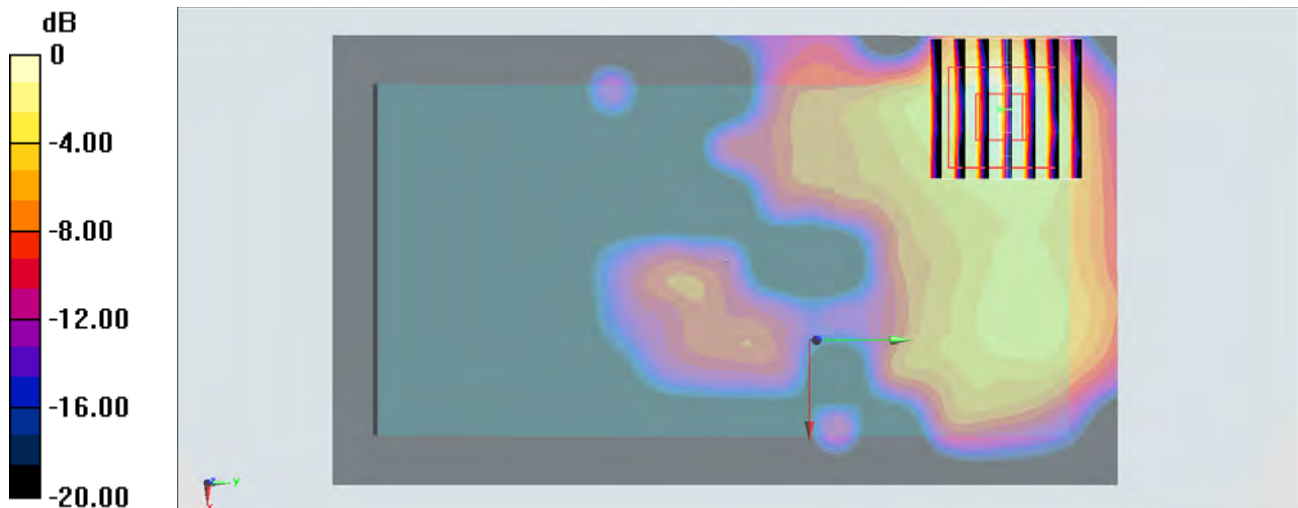
Configuration/Ch39/Zoom Scan (7x7x7)/Cube 0: Measurement grid: dx=5mm, dy=5mm, dz=5mm

Reference Value = 4.771 V/m; Power Drift = -0.16 dB

Peak SAR (extrapolated) = 0.0530 W/kg

SAR(1 g) = 0.025 W/kg; SAR(10 g) = 0.011 W/kg

Maximum value of SAR (measured) = 0.0410 W/kg



0 dB = 0.0410 W/kg = -13.87 dBW/kg

#32_GSM850_GPRS (4 Tx slots)_Front_15mm_Ch251

Communication System: GSM850; Frequency: 848.8 MHz; Duty Cycle: 1:2.08

Medium: MSL_850_150524 Medium parameters used: $f = 849$ MHz; $\sigma = 0.98$ S/m; $\epsilon_r = 55.096$; $\rho = 1000$ kg/m³

Ambient Temperature : 23.5 °C; Liquid Temperature : 22.5 °C

DASY5 Configuration

- Probe: EX3DV4 - SN3931; ConvF(10.13, 10.13, 10.13); Calibrated: 2014/9/25;
- Sensor-Surface: 1.4mm (Mechanical Surface Detection)
- Electronics: DAE3 Sn577; Calibrated: 2014/10/6
- Phantom: SAM_Left; Type: QD000P40CD; Serial: TP:1644
- Measurement SW: DASY52, Version 52.8 (8); SEMCAD X Version 14.6.10 (7331)

Configuration/Ch251/Area Scan (61x121x1): Interpolated grid: dx=1.500 mm, dy=1.500 mm

Maximum value of SAR (interpolated) = 0.380 W/kg

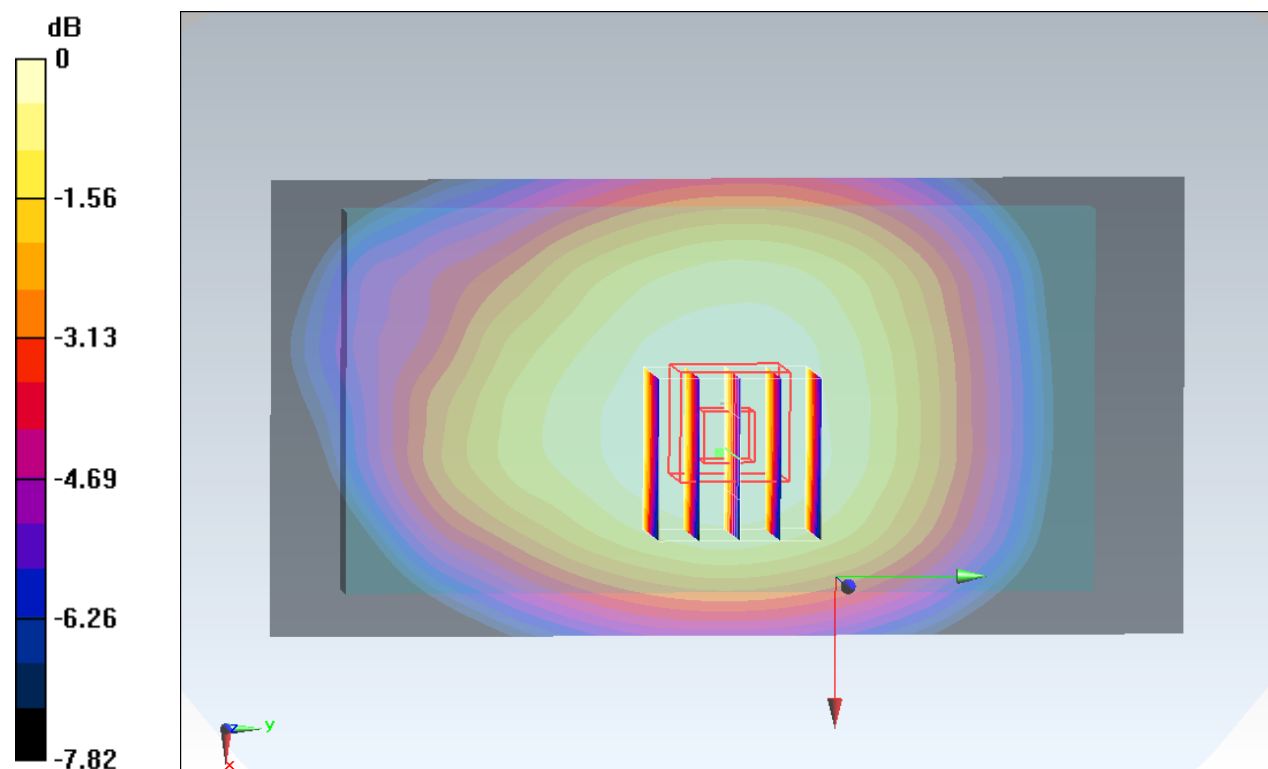
Configuration/Ch251/Zoom Scan (5x5x7)/Cube 0: Measurement grid: dx=8mm, dy=8mm, dz=5mm

Reference Value = 20.44 V/m; Power Drift = -0.09 dB

Peak SAR (extrapolated) = 0.403 W/kg

SAR(1 g) = 0.311 W/kg; SAR(10 g) = 0.241 W/kg

Maximum value of SAR (measured) = 0.371 W/kg



0 dB = 0.371 W/kg = -4.31 dBW/kg

#33_GSM1900_GPRS (4 Tx slots)_Front_15mm_Ch512

Communication System: PCS ; Frequency: 1850.2 MHz;Duty Cycle: 1:2.08
 Medium: MSL_1900_150523 Medium parameters used: $f = 1850.2$ MHz; $\sigma = 1.493$ S/m; $\epsilon_r = 55.121$; $\rho = 1000$ kg/m³
 Ambient Temperature : 23.2 °C ; Liquid Temperature : 22.2 °C

DASY5 Configuration

- Probe: EX3DV4 - SN3931; ConvF(7.8, 7.8, 7.8); Calibrated: 2014/9/25;
- Sensor-Surface: 1.4mm (Mechanical Surface Detection)
- Electronics: DAE3 Sn577; Calibrated: 2014/10/6
- Phantom: SAM_Right; Type: QD000P40CD; Serial: TP:1801
- Measurement SW: DASY52, Version 52.8 (8); SEMCAD X Version 14.6.10 (7331)

Configuration/Ch512/Area Scan (71x121x1): Interpolated grid: dx=1.500 mm, dy=1.500 mm

Maximum value of SAR (interpolated) = 0.549 W/kg

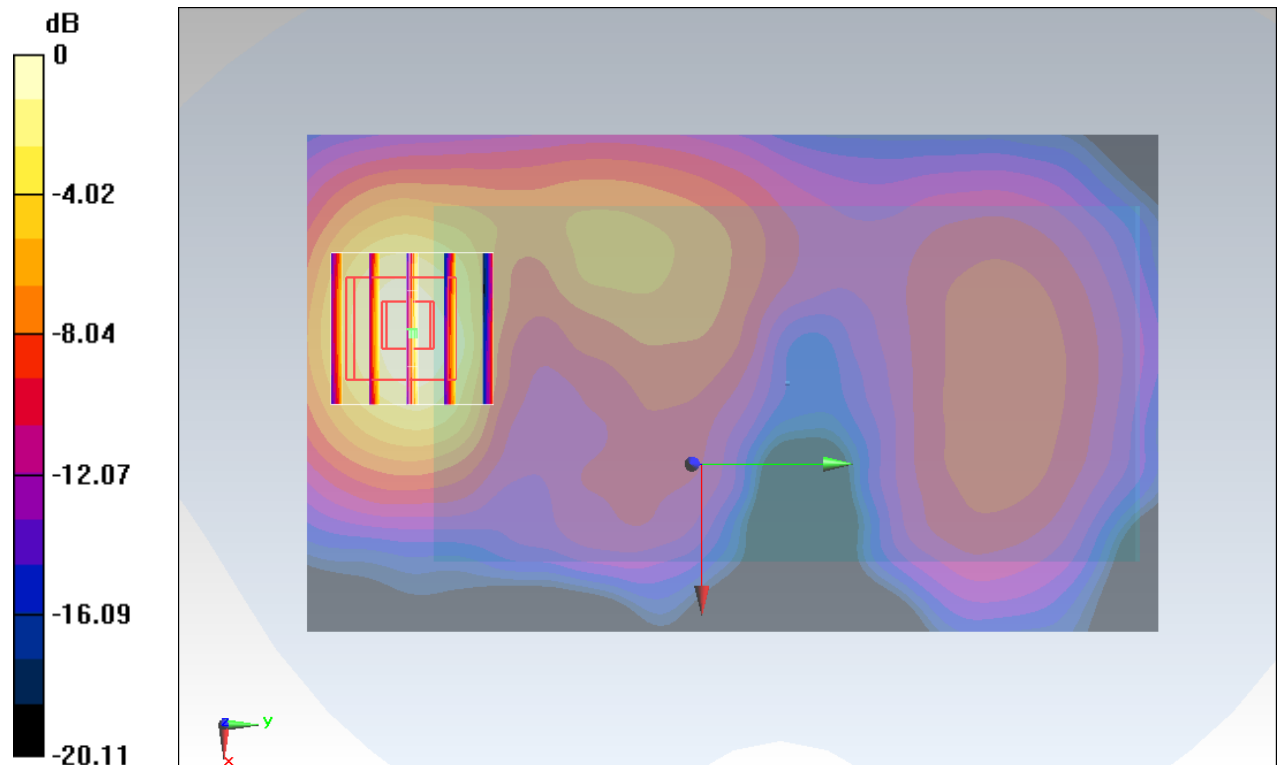
Configuration/Ch512/Zoom Scan (5x5x7)/Cube 0: Measurement grid: dx=8mm, dy=8mm, dz=5mm

Reference Value = 20.34 V/m; Power Drift = -0.05 dB

Peak SAR (extrapolated) = 0.667 W/kg

SAR(1 g) = 0.394 W/kg; SAR(10 g) = 0.217 W/kg

Maximum value of SAR (measured) = 0.564 W/kg



0 dB = 0.564 W/kg = -2.49 dBW/kg

#34_WCDMA V_RMC 12.2Kbps_Front_15mm_Ch4233

Communication System: WCDMA ; Frequency: 846.6 MHz; Duty Cycle: 1:1
 Medium: MSL_850_150523 Medium parameters used: $f = 847 \text{ MHz}$; $\sigma = 1.003 \text{ S/m}$; $\epsilon_r = 57.083$; $\rho = 1000 \text{ kg/m}^3$
 Ambient Temperature : $23.5 \text{ }^\circ\text{C}$; Liquid Temperature : $22.5 \text{ }^\circ\text{C}$

DASY5 Configuration

- Probe: EX3DV4 - SN3931; ConvF(10.13, 10.13, 10.13); Calibrated: 2014/9/25;
- Sensor-Surface: 1.4mm (Mechanical Surface Detection)
- Electronics: DAE3 Sn577; Calibrated: 2014/10/6
- Phantom: SAM_Left; Type: QD000P40CD; Serial: TP:1644
- Measurement SW: DASY52, Version 52.8 (8); SEMCAD X Version 14.6.10 (7331)

Configuration/Ch4233/Area Scan (61x111x1): Interpolated grid: $dx=1.500 \text{ mm}$, $dy=1.500 \text{ mm}$

Maximum value of SAR (interpolated) = 0.429 W/kg

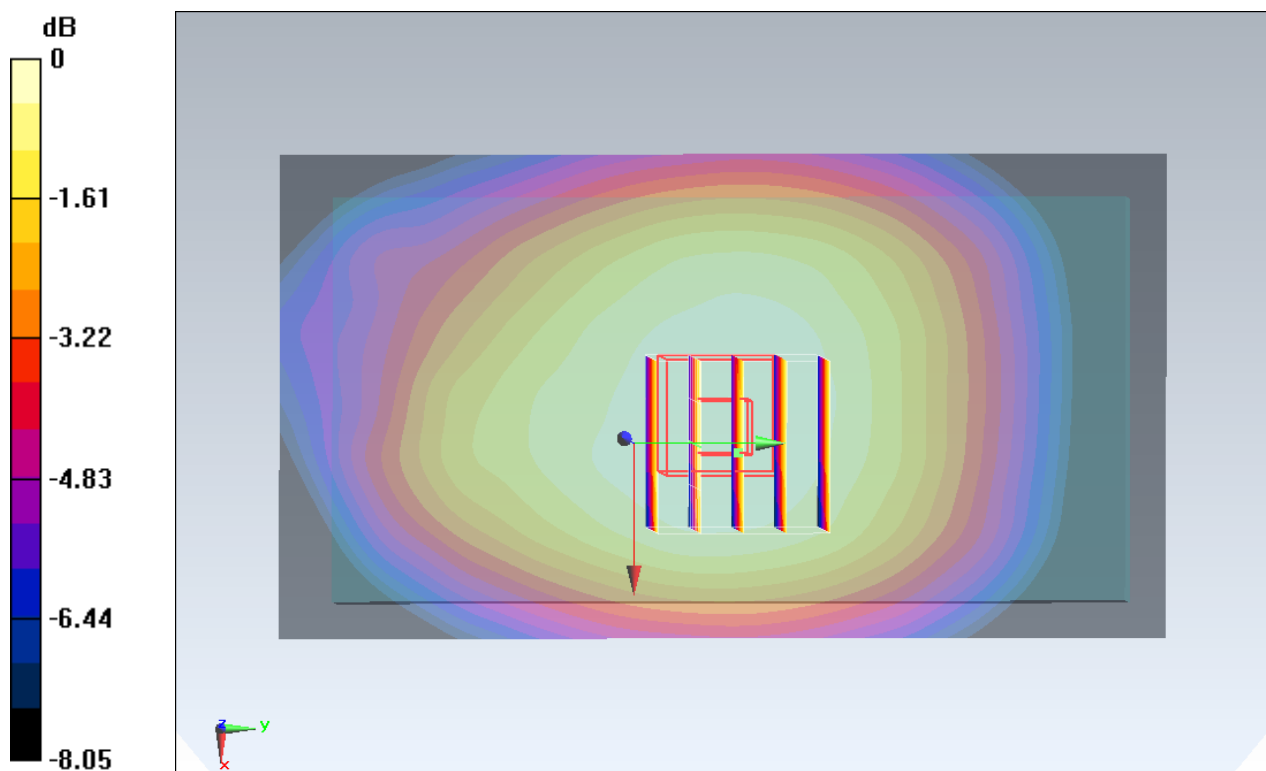
Configuration/Ch4233/Zoom Scan (5x5x7)/Cube 0: Measurement grid: $dx=8\text{mm}$, $dy=8\text{mm}$, $dz=5\text{mm}$

Reference Value = 21.47 V/m ; Power Drift = -0.07 dB

Peak SAR (extrapolated) = 0.459 W/kg

SAR(1 g) = 0.353 W/kg ; SAR(10 g) = 0.274 W/kg

Maximum value of SAR (measured) = 0.421 W/kg



0 dB = $0.421 \text{ W/kg} = -3.76 \text{ dBW/kg}$

#35_WCDMA II_RMC 12.2Kbps_Front_15mm_Ch9538

Communication System: WCDMA ; Frequency: 1907.6 MHz; Duty Cycle: 1:1

Medium: MSL_1900_150523 Medium parameters used: $f = 1908 \text{ MHz}$; $\sigma = 1.554 \text{ S/m}$; $\epsilon_r = 54.885$;
 $\rho = 1000 \text{ kg/m}^3$

Ambient Temperature : 23.2 °C ; Liquid Temperature : 22.2 °C

DASY5 Configuration

- Probe: EX3DV4 - SN3931; ConvF(7.8, 7.8, 7.8); Calibrated: 2014/9/25;
- Sensor-Surface: 1.4mm (Mechanical Surface Detection)
- Electronics: DAE3 Sn577; Calibrated: 2014/10/6
- Phantom: SAM_Right; Type: QD000P40CD; Serial: TP:1801
- Measurement SW: DASY52, Version 52.8 (8); SEMCAD X Version 14.6.10 (7331)

Configuration/Ch9538/Area Scan (71x121x1): Interpolated grid: $dx=1.500 \text{ mm}$, $dy=1.500 \text{ mm}$

Maximum value of SAR (interpolated) = 1.30 W/kg

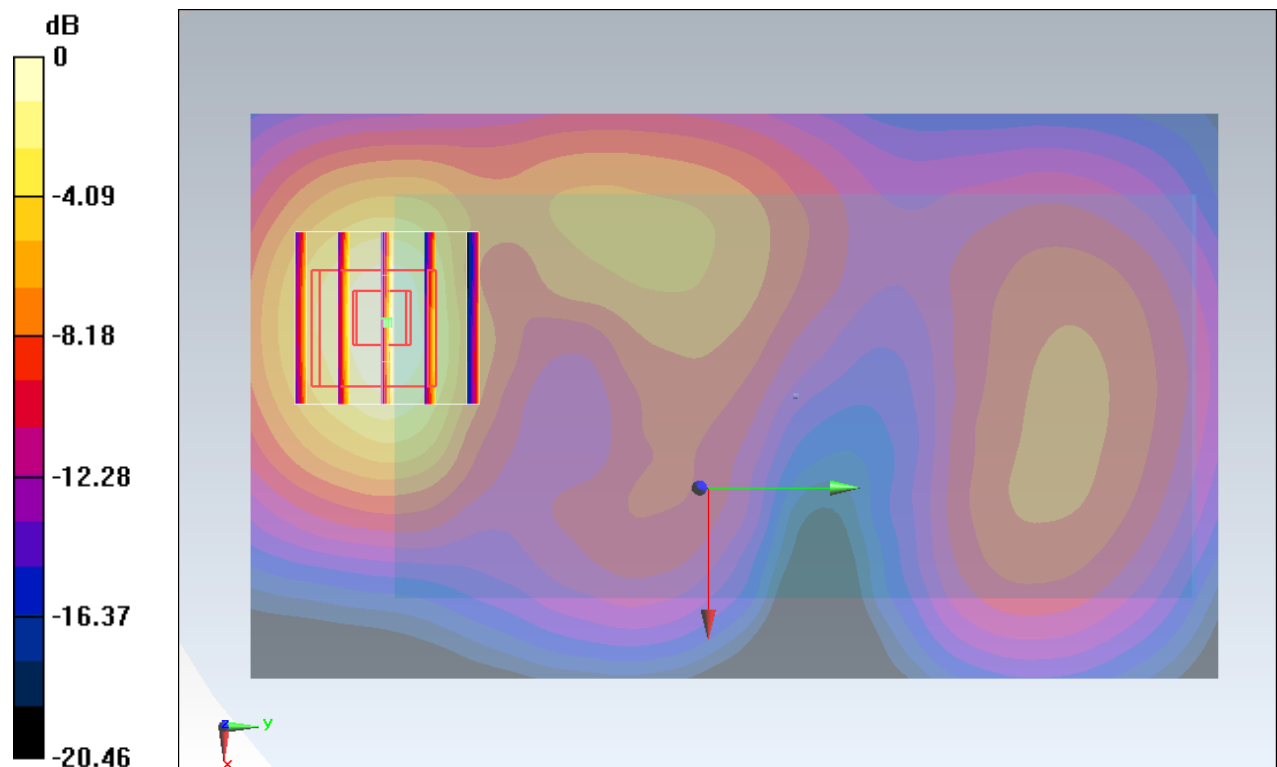
Configuration/Ch9538/Zoom Scan (5x5x7)/Cube 0: Measurement grid: $dx=8\text{mm}$, $dy=8\text{mm}$, $dz=5\text{mm}$

Reference Value = 29.81 V/m; Power Drift = 0.06 dB

Peak SAR (extrapolated) = 1.53 W/kg

SAR(1 g) = 0.880 W/kg; SAR(10 g) = 0.479 W/kg

Maximum value of SAR (measured) = 1.29 W/kg



0 dB = 1.29 W/kg = 1.11 dBW/kg

#36_CDMA2000 BC0_1xRTT RC3 SO32_Front_15mm_Ch384

Communication System: CDMA; Frequency: 836.52 MHz; Duty Cycle: 1:1
 Medium: MSL_850_150524 Medium parameters used: $f = 837$ MHz; $\sigma = 0.968$ S/m; $\epsilon_r = 55.192$; $\rho = 1000$ kg/m³
 Ambient Temperature : 23.5 °C; Liquid Temperature : 22.5 °C

DASY5 Configuration

- Probe: EX3DV4 - SN3931; ConvF(10.13, 10.13, 10.13); Calibrated: 2014/9/25;
- Sensor-Surface: 1.4mm (Mechanical Surface Detection)
- Electronics: DAE3 Sn577; Calibrated: 2014/10/6
- Phantom: SAM_Left; Type: QD000P40CD; Serial: TP:1644
- Measurement SW: DASY52, Version 52.8 (8); SEMCAD X Version 14.6.10 (7331)

Configuration/Ch384/Area Scan (61x111x1): Interpolated grid: dx=1.500 mm, dy=1.500 mm

Maximum value of SAR (interpolated) = 0.516 W/kg

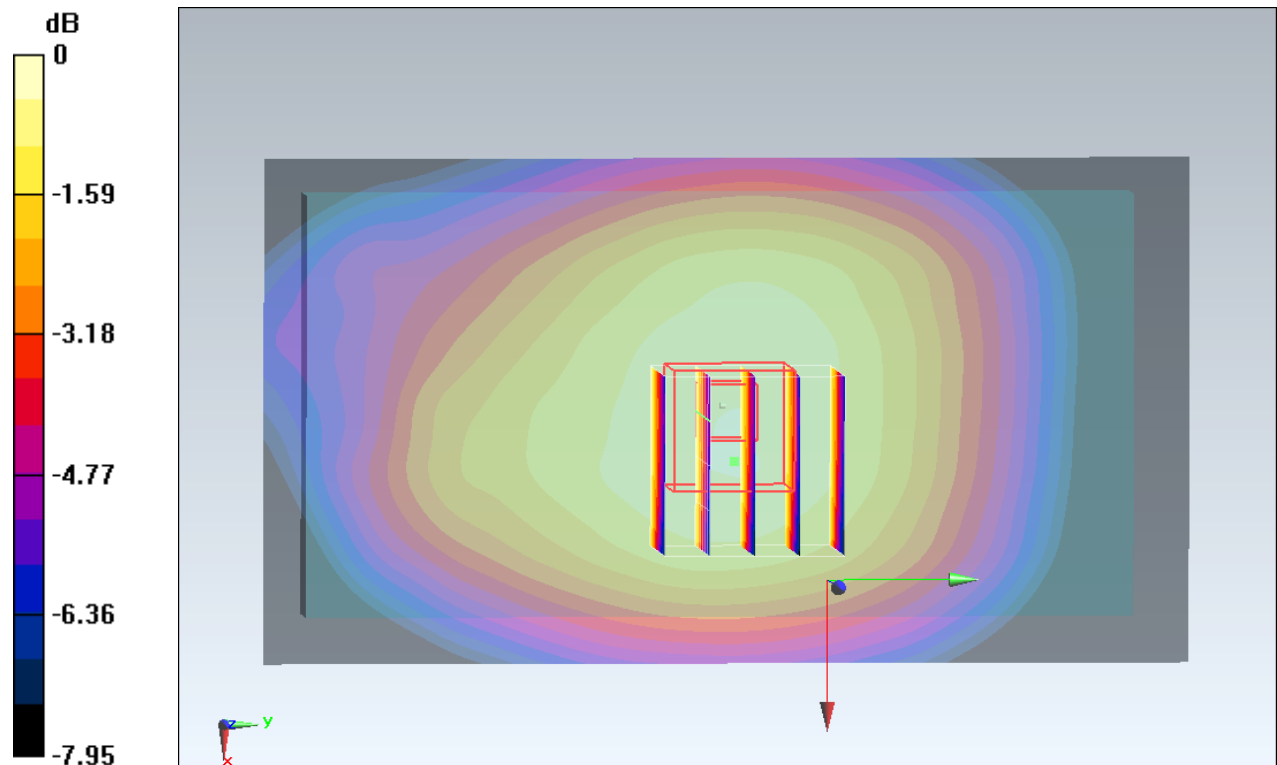
Configuration/Ch384/Zoom Scan (5x5x7)/Cube 0: Measurement grid: dx=8mm, dy=8mm, dz=5mm

Reference Value = 25.48 V/m; Power Drift = -0.10 dB

Peak SAR (extrapolated) = 0.634 W/kg

SAR(1 g) = 0.485 W/kg; SAR(10 g) = 0.379 W/kg

Maximum value of SAR (measured) = 0.579 W/kg



0 dB = 0.579 W/kg = -2.37 dBW/kg

#37_CDMA2000 BC1_1xRTT RC3 SO32_Front_15mm_Ch1175

Communication System: CDMA; Frequency: 1908.75 MHz; Duty Cycle: 1:1

Medium: MSL_1900_150605 Medium parameters used: $f = 1909$ MHz; $\sigma = 1.555$ S/m; $\epsilon_r = 55.109$; $\rho = 1000$ kg/m³

Ambient Temperature : 23.5 °C; Liquid Temperature : 22.5 °C

DASY5 Configuration:

- Probe: EX3DV4 - SN3931; ConvF(7.8, 7.8, 7.8); Calibrated: 2014/9/25;
- Sensor-Surface: 1.4mm (Mechanical Surface Detection)
- Electronics: DAE3 Sn577; Calibrated: 2014/10/6
- Phantom: SAM-Right; Type: QD 000 P40 C; Serial: TP-1446
- Measurement SW: DASY52, Version 52.8 (8); SEMCAD X Version 14.6.10 (7331)

Configuration/Ch1175/Area Scan (71x121x1): Interpolated grid: dx=1.500 mm, dy=1.500 mm
 Maximum value of SAR (interpolated) = 1.24 W/kg

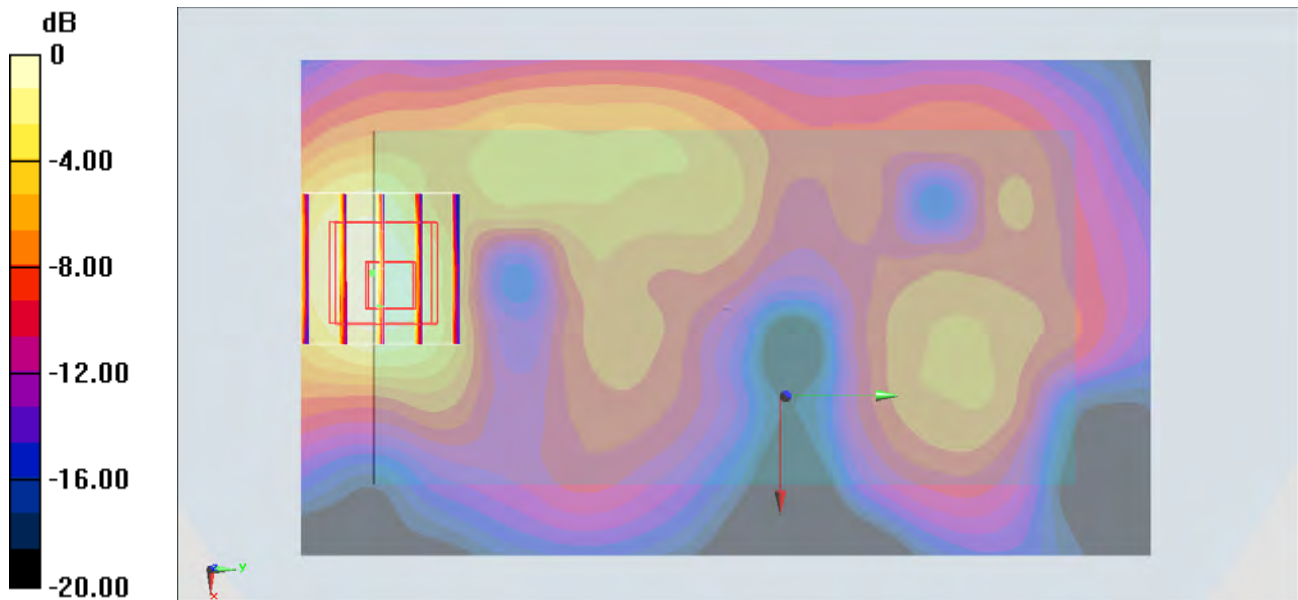
Configuration/Ch1175/Zoom Scan (5x5x7)/Cube 0: Measurement grid: dx=8mm, dy=8mm, dz=5mm

Reference Value = 32.68 V/m; Power Drift = -0.15 dB

Peak SAR (extrapolated) = 1.55 W/kg

SAR(1 g) = 0.855 W/kg; SAR(10 g) = 0.471 W/kg

Maximum value of SAR (measured) = 1.19 W/kg



0 dB = 1.19 W/kg = 0.76 dBW/kg

#38_LTE Band 13_10M_QPSK_1RB_0offset_Front_15mm_Ch23230

Communication System: LTE ; Frequency: 782 MHz;Duty Cycle: 1:1

Medium: MSL_750_150523 Medium parameters used: $f = 782 \text{ MHz}$; $\sigma = 0.991 \text{ S/m}$; $\epsilon_r = 56.89$; $\rho = 1000 \text{ kg/m}^3$

Ambient Temperature : $23.5 \text{ }^\circ\text{C}$; Liquid Temperature : $22.5 \text{ }^\circ\text{C}$

DASY5 Configuration

- Probe: EX3DV4 - SN3931; ConvF(10.1, 10.1, 10.1); Calibrated: 2014/9/25;
- Sensor-Surface: 1.4mm (Mechanical Surface Detection)
- Electronics: DAE3 Sn577; Calibrated: 2014/10/6
- Phantom: SAM_Left; Type: QD000P40CD; Serial: TP:1644
- Measurement SW: DASY52, Version 52.8 (8); SEMCAD X Version 14.6.10 (7331)

Configuration/Ch23230/Area Scan (61x111x1): Interpolated grid: $dx=1.500 \text{ mm}$, $dy=1.500 \text{ mm}$

Maximum value of SAR (interpolated) = 0.487 W/kg

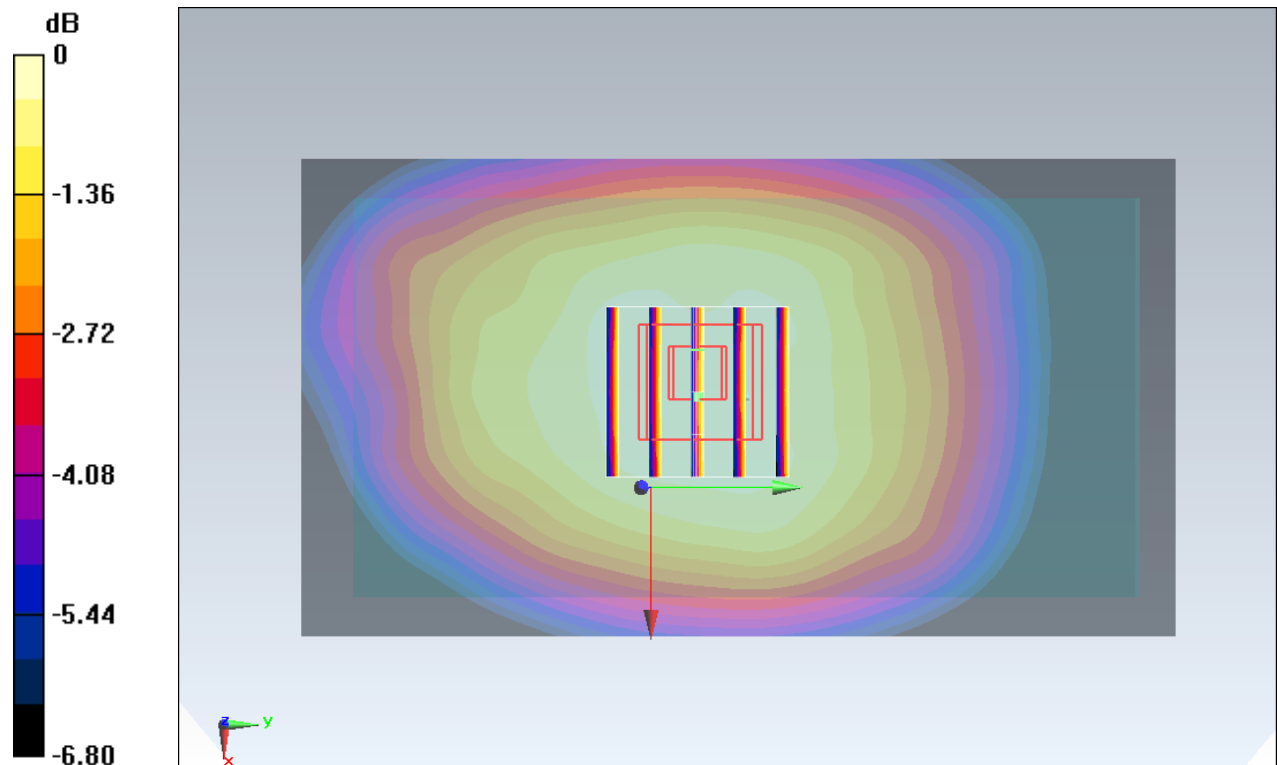
Configuration/Ch23230/Zoom Scan (5x5x7)/Cube 0: Measurement grid: $dx=8\text{mm}$, $dy=8\text{mm}$, $dz=5\text{mm}$

Reference Value = 22.99 V/m ; Power Drift = -0.11 dB

Peak SAR (extrapolated) = 0.525 W/kg

SAR(1 g) = 0.405 W/kg ; SAR(10 g) = 0.320 W/kg

Maximum value of SAR (measured) = 0.485 W/kg



0 dB = $0.485 \text{ W/kg} = -3.14 \text{ dBW/kg}$

#39_LTE Band 5_10M_QPSK_1RB_0offset_Front_15mm_Ch20450

Communication System: LTE ; Frequency: 829 MHz;Duty Cycle: 1:1

Medium: MSL_850_150523 Medium parameters used: $f = 829$ MHz; $\sigma = 0.986$ S/m; $\epsilon_r = 57.225$; $\rho = 1000$ kg/m³

Ambient Temperature : 23.5 °C; Liquid Temperature : 22.5 °C

DASY5 Configuration

- Probe: EX3DV4 - SN3931; ConvF(10.13, 10.13, 10.13); Calibrated: 2014/9/25;
- Sensor-Surface: 1.4mm (Mechanical Surface Detection)
- Electronics: DAE3 Sn577; Calibrated: 2014/10/6
- Phantom: SAM_Left; Type: QD000P40CD; Serial: TP:1644
- Measurement SW: DASY52, Version 52.8 (8); SEMCAD X Version 14.6.10 (7331)

Configuration/Ch20450/Area Scan (61x111x1): Interpolated grid: dx=1.500 mm, dy=1.500 mm

Maximum value of SAR (interpolated) = 0.481 W/kg

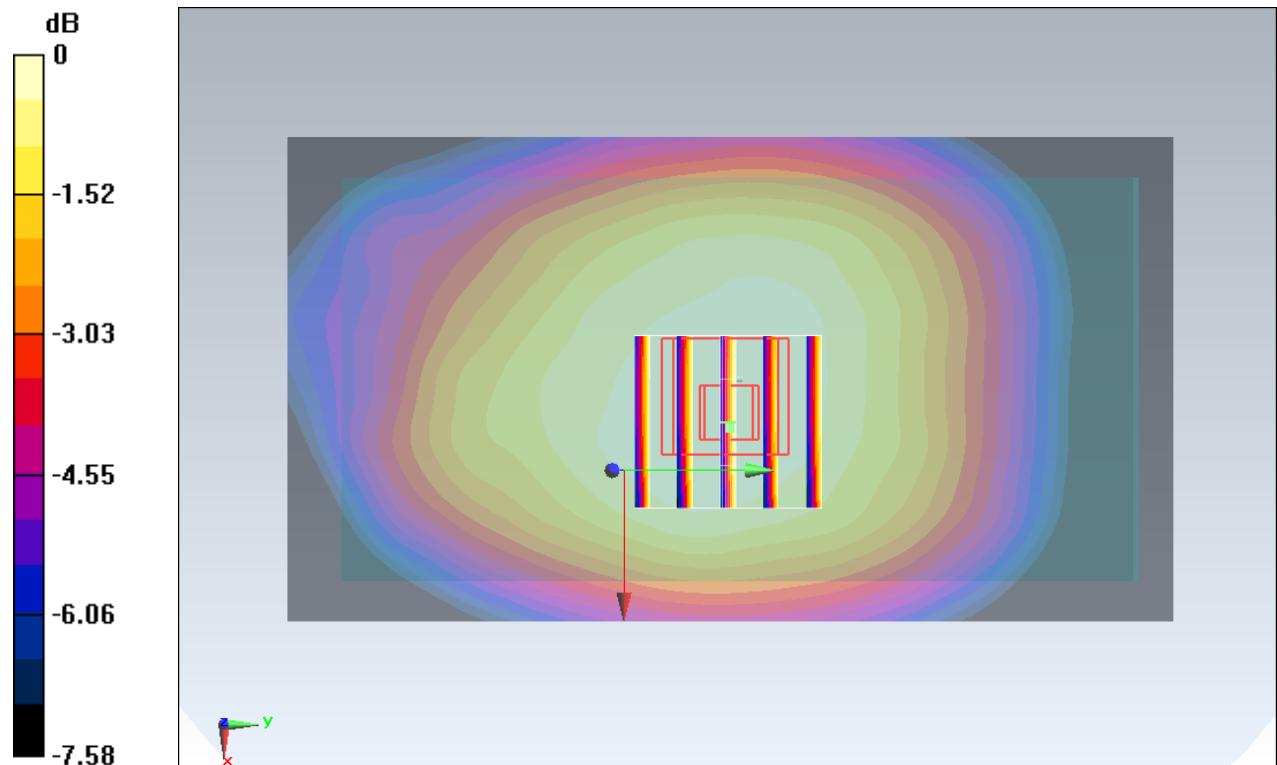
Configuration/Ch20450/Zoom Scan (5x5x7)/Cube 0: Measurement grid: dx=8mm, dy=8mm, dz=5mm

Reference Value = 23.20 V/m; Power Drift = -0.09 dB

Peak SAR (extrapolated) = 0.519 W/kg

SAR(1 g) = 0.404 W/kg; SAR(10 g) = 0.315 W/kg

Maximum value of SAR (measured) = 0.481 W/kg



0 dB = 0.481 W/kg = -3.18 dBW/kg

#40_LTE Band 4_20M_QPSK_1RB_0offset_Front_15mm_Ch20300

Communication System: LTE; Frequency: 1745 MHz; Duty Cycle: 1:1

Medium: MSL_1750_150530 Medium parameters used: $f = 1745$ MHz; $\sigma = 1.458$ S/m; $\epsilon_r = 53.196$; $\rho = 1000$ kg/m³

Ambient Temperature : 23.4 °C; Liquid Temperature : 22.4 °C

DASY5 Configuration:

- Probe: EX3DV4 - SN3931; ConvF(8.26, 8.26, 8.26); Calibrated: 2014/9/25;
- Sensor-Surface: 1.4mm (Mechanical Surface Detection)
- Electronics: DAE3 Sn577; Calibrated: 2014/10/6
- Phantom: SAM-Left; Type: QD 000 P40 C; Serial: TP-1478
- Measurement SW: DASY52, Version 52.8 (8); SEMCAD X Version 14.6.10 (7331)

Configuration/Ch20300/Area Scan (71x131x1): Interpolated grid: dx=1.500 mm, dy=1.500 mm

Maximum value of SAR (interpolated) = 1.50 W/kg

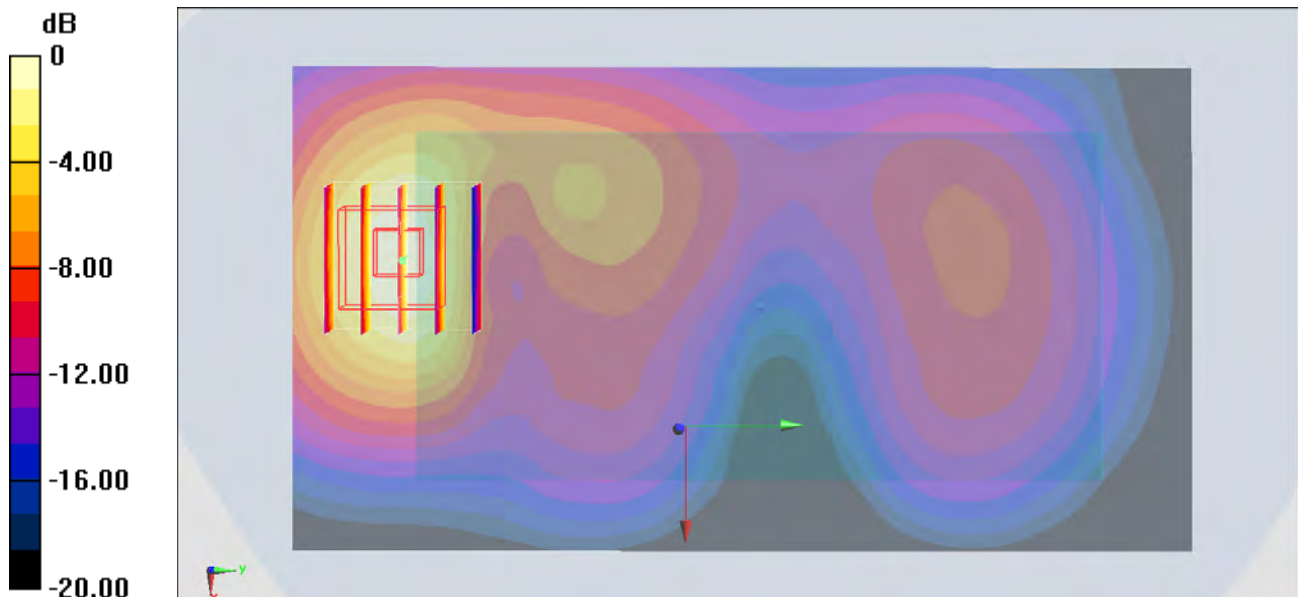
Configuration/Ch20300/Zoom Scan (5x5x7)/Cube 0: Measurement grid: dx=8mm, dy=8mm, dz=5mm

Reference Value = 33.84 V/m; Power Drift = -0.19 dB

Peak SAR (extrapolated) = 1.70 W/kg

SAR(1 g) = 1.09 W/kg; SAR(10 g) = 0.628 W/kg

Maximum value of SAR (measured) = 1.48 W/kg



0 dB = 1.48 W/kg = 1.70 dBW/kg

#41_LTE Band 2_20M_QPSK_1RB_0Offset_Front_15mm_Ch19100

Communication System: LTE; Frequency: 1900 MHz; Duty Cycle: 1:1

Medium: MSL_1900_150524 Medium parameters used: $f = 1900$ MHz; $\sigma = 1.558$ S/m; $\epsilon_r = 54.172$;
 $\rho = 1000$ kg/m³

Ambient Temperature : 23.3 °C ; Liquid Temperature : 22.3 °C

DASY5 Configuration

- Probe: EX3DV4 - SN3931; ConvF(7.8, 7.8, 7.8); Calibrated: 2014/9/25;
- Sensor-Surface: 1.4mm (Mechanical Surface Detection)
- Electronics: DAE3 Sn577; Calibrated: 2014/10/6
- Phantom: SAM_Right; Type: QD000P40CD; Serial: TP:1801
- Measurement SW: DASY52, Version 52.8 (8); SEMCAD X Version 14.6.10 (7331)

Configuration/Ch19100/Area Scan (61x121x1): Interpolated grid: dx=1.500 mm, dy=1.500 mm

Maximum value of SAR (interpolated) = 1.16 W/kg

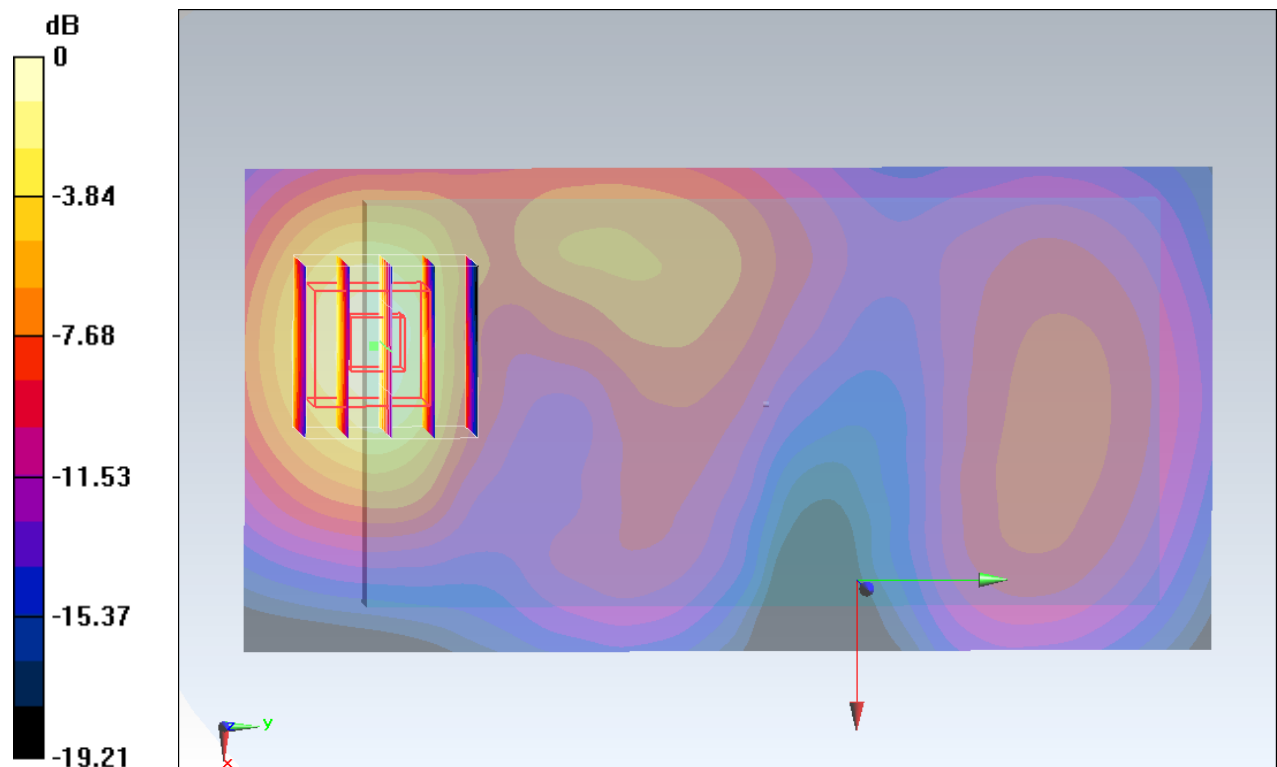
Configuration/Ch19100/Zoom Scan (5x5x7)/Cube 0: Measurement grid: dx=8mm, dy=8mm, dz=5mm

Reference Value = 28.59 V/m; Power Drift = 0.07 dB

Peak SAR (extrapolated) = 1.39 W/kg

SAR(1 g) = 0.813 W/kg; SAR(10 g) = 0.444 W/kg

Maximum value of SAR (measured) = 1.19 W/kg



0 dB = 1.19 W/kg = 0.76 dBW/kg

#42_LTE Band 7_20M_QPSK_1RB_0offset_Front_15mm_Ch21350

Communication System: LTE; Frequency: 2560 MHz; Duty Cycle: 1:1

Medium: MSL_2600_150525 Medium parameters used: $f = 2560$ MHz; $\sigma = 2.157$ S/m; $\epsilon_r = 53.323$;

$\rho = 1000$ kg/m³

Ambient Temperature : 23.3 °C ; Liquid Temperature : 22.3 °C

DASY5 Configuration

- Probe: EX3DV4 - SN3931; ConvF(7.2, 7.2, 7.2); Calibrated: 2014/9/25;

- Sensor-Surface: 1.4mm (Mechanical Surface Detection)

- Electronics: DAE3 Sn577; Calibrated: 2014/10/6

- Phantom: SAM_Right; Type: QD000P40CD; Serial: TP:1801

- Measurement SW: DASY52, Version 52.8 (8); SEMCAD X Version 14.6.10 (7331)

Configuration/Ch21350/Area Scan (81x151x1): Interpolated grid: dx=1.200 mm, dy=1.200 mm

Maximum value of SAR (interpolated) = 0.326 W/kg

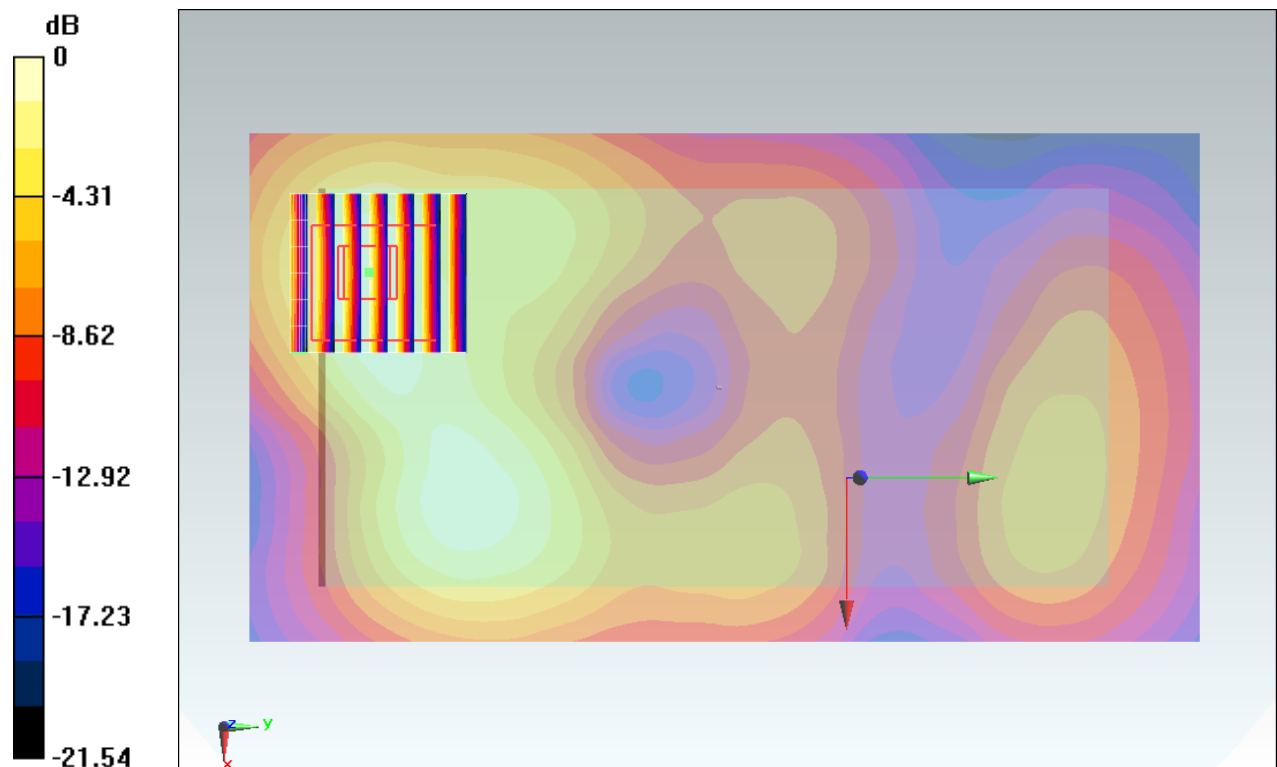
Configuration/Ch21350/Zoom Scan (7x7x7)/Cube 0: Measurement grid: dx=5mm, dy=5mm, dz=5mm

Reference Value = 12.47 V/m; Power Drift = -0.16 dB

Peak SAR (extrapolated) = 0.395 W/kg

SAR(1 g) = 0.202 W/kg; SAR(10 g) = 0.104 W/kg

Maximum value of SAR (measured) = 0.320 W/kg



0 dB = 0.320 W/kg = -4.95 dBW/kg

#43_WLAN2.4GHz_802.11b 1Mbps_Back_15mm_Ch6

Communication System: 802.11b ; Frequency: 2437 MHz;Duty Cycle: 1:1.024

Medium: MSL_2450_150615 Medium parameters used: $f = 2437$ MHz; $\sigma = 2$ S/m; $\epsilon_r = 53.119$; $\rho = 1000$ kg/m³

Ambient Temperature : 23.3 °C; Liquid Temperature : 22.3 °C

DASY5 Configuration

- Probe: ES3DV3 - SN3270; ConvF(4.29, 4.29, 4.29); Calibrated: 2014/9/26;
- Sensor-Surface: 2mm (Mechanical Surface Detection)
- Electronics: DAE4 Sn778; Calibrated: 2014/8/21
- Phantom: SAM LEFT; Type: QD000P40CD; Serial: TP:1718
- Measurement SW: DASY52, Version 52.8 (8); SEMCAD X Version 14.6.10 (7331)

Configuration/Ch6/Area Scan (91x151x1): Interpolated grid: dx=1.200 mm, dy=1.200 mm
 Maximum value of SAR (interpolated) = 0.132 W/kg

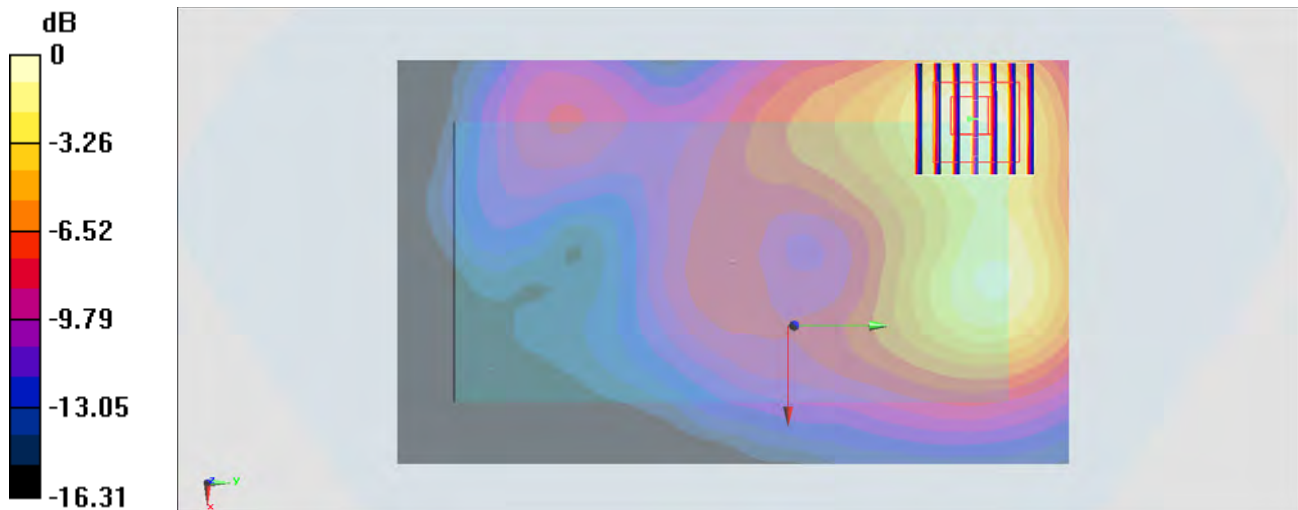
Configuration/Ch6/Zoom Scan (7x7x7)/Cube 0: Measurement grid: dx=5mm, dy=5mm, dz=5mm

Reference Value = 8.405 V/m; Power Drift = 0.11 dB

Peak SAR (extrapolated) = 0.178 W/kg

SAR(1 g) = 0.086 W/kg; SAR(10 g) = 0.045 W/kg

Maximum value of SAR (measured) = 0.125 W/kg



0 dB = 0.125 W/kg = -9.03 dBW/kg

#44_WLAN5GHz_802.11a_6Mbps_Back_15mm_Ch60

Communication System: 802.11a; Frequency: 5300 MHz; Duty Cycle: 1:1.139

Medium: MSL_5G_150618 Medium parameters used: $f = 5300$ MHz; $\sigma = 5.561$ S/m; $\epsilon_r = 48.043$; $\rho = 1000$ kg/m³

Ambient Temperature : 23.4 °C; Liquid Temperature : 22.4 °C

DASY5 Configuration

- Probe: EX3DV4 - SN3925; ConvF(4.43, 4.43, 4.43); Calibrated: 2015/5/27;
- Sensor-Surface: 1.4mm (Mechanical Surface Detection)
- Electronics: DAE3 Sn495; Calibrated: 2015/5/22
- Phantom: SAM_RIGHT; Type: QD000P40CD; Serial: 1719
- Measurement SW: DASY52, Version 52.8 (8); SEMCAD X Version 14.6.10 (7331)

Configuration/Ch60/Area Scan (121x181x1): Interpolated grid: dx=1.000 mm, dy=1.000 mm
 Maximum value of SAR (interpolated) = 0.776 W/kg

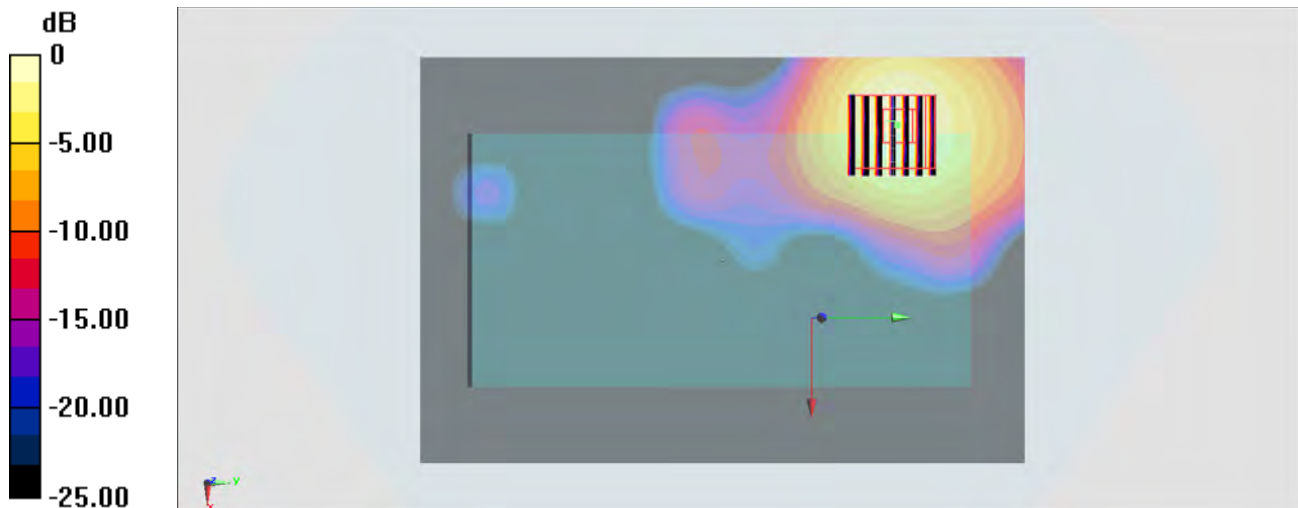
Configuration/Ch60/Zoom Scan (7x7x7)/Cube 0: Measurement grid: dx=4mm, dy=4mm, dz=1.4mm

Reference Value = 13.00 V/m; Power Drift = -0.01 dB

Peak SAR (extrapolated) = 1.29 W/kg

SAR(1 g) = 0.337 W/kg; SAR(10 g) = 0.128 W/kg

Maximum value of SAR (measured) = 0.751 W/kg



0 dB = 0.751 W/kg = -1.24 dBW/kg

#45_WLAN5GHz_802.11a_6Mbps_Back_15mm_Ch100

Communication System: 802.11a; Frequency: 5500 MHz; Duty Cycle: 1:1.139

Medium: MSL_5G_150618 Medium parameters used: $f = 5500$ MHz; $\sigma = 5.815$ S/m; $\epsilon_r = 47.666$; $\rho = 1000$ kg/m³

Ambient Temperature : 23.4 °C; Liquid Temperature : 22.4 °C

DASY5 Configuration

- Probe: EX3DV4 - SN3925; ConvF(4.16, 4.16, 4.16); Calibrated: 2015/5/27;
- Sensor-Surface: 1.4mm (Mechanical Surface Detection)
- Electronics: DAE3 Sn495; Calibrated: 2015/5/22
- Phantom: SAM_RIGHT; Type: QD000P40CD; Serial: 1719
- Measurement SW: DASY52, Version 52.8 (8); SEMCAD X Version 14.6.10 (7331)

Configuration/Ch100/Area Scan (121x181x1): Interpolated grid: dx=1.000 mm, dy=1.000 mm
 Maximum value of SAR (interpolated) = 0.945 W/kg

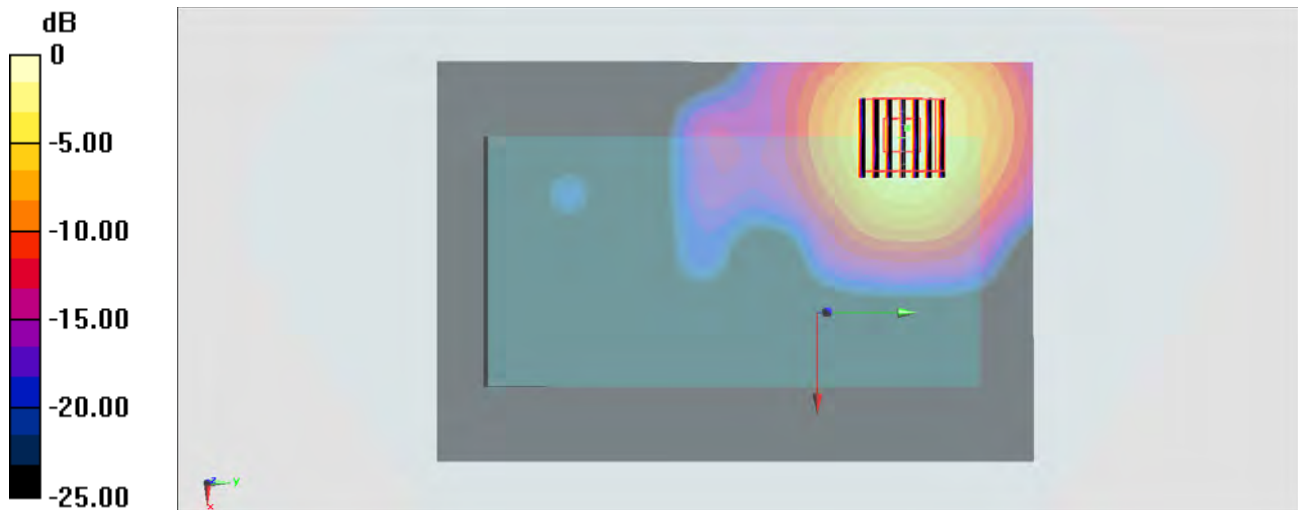
Configuration/Ch100/Zoom Scan (7x7x7)/Cube 0: Measurement grid: dx=4mm, dy=4mm, dz=1.4mm

Reference Value = 14.20 V/m; Power Drift = -0.01 dB

Peak SAR (extrapolated) = 1.64 W/kg

SAR(1 g) = 0.422 W/kg; SAR(10 g) = 0.161 W/kg

Maximum value of SAR (measured) = 0.948 W/kg



0 dB = 0.948 W/kg = -0.23 dBW/kg

#46_WLAN5GHz_802.11a 6Mbps_Back_15mm_Ch157

Communication System: 802.11a; Frequency: 5785 MHz; Duty Cycle: 1:1.139

Medium: MSL_5G_150618 Medium parameters used: $f = 5785 \text{ MHz}$; $\sigma = 6.198 \text{ S/m}$; $\epsilon_r = 47.239$; $\rho = 1000 \text{ kg/m}^3$

Ambient Temperature : $23.4 \text{ }^\circ\text{C}$; Liquid Temperature : $22.4 \text{ }^\circ\text{C}$

DASY5 Configuration

- Probe: EX3DV4 - SN3925; ConvF(4.16, 4.16, 4.16); Calibrated: 2015/5/27;
- Sensor-Surface: 1.4mm (Mechanical Surface Detection)
- Electronics: DAE3 Sn495; Calibrated: 2015/5/22
- Phantom: SAM_RIGHT; Type: QD000P40CD; Serial: 1719
- Measurement SW: DASY52, Version 52.8 (8); SEMCAD X Version 14.6.10 (7331)

Configuration/Ch157/Area Scan (121x181x1): Interpolated grid: $dx=1.000 \text{ mm}$, $dy=1.000 \text{ mm}$

Maximum value of SAR (interpolated) = 0.536 W/kg

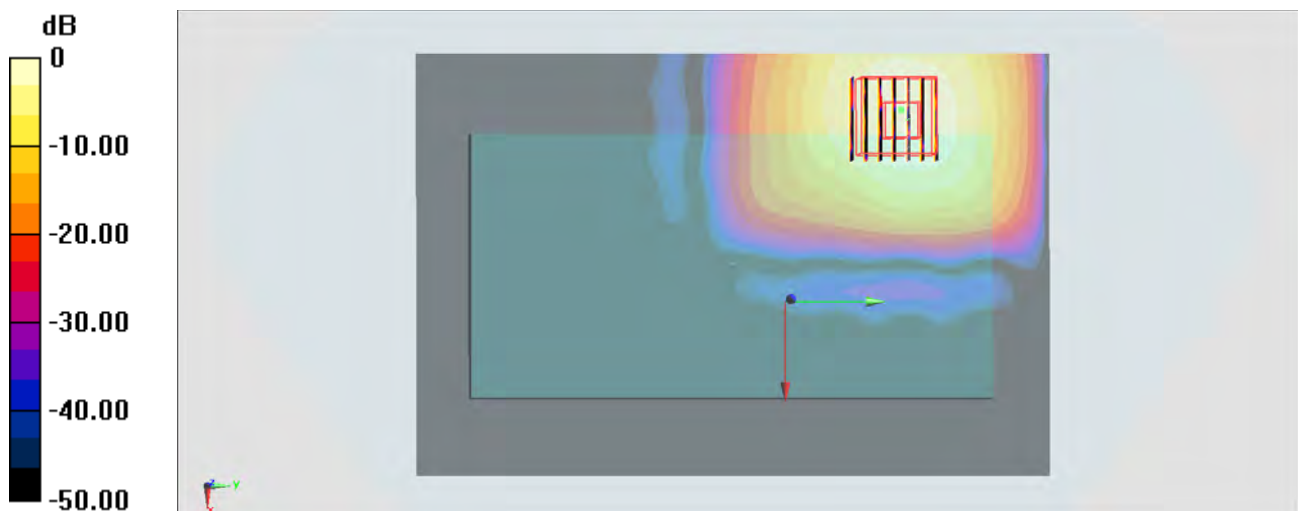
Configuration/Ch157/Zoom Scan (7x7x7)/Cube 0: Measurement grid: $dx=4\text{mm}$, $dy=4\text{mm}$, $dz=1.4\text{mm}$

Reference Value = 10.35 V/m ; Power Drift = -0.06 dB

Peak SAR (extrapolated) = 0.928 W/kg

SAR(1 g) = 0.217 W/kg ; SAR(10 g) = 0.081 W/kg

Maximum value of SAR (measured) = 0.523 W/kg



$0 \text{ dB} = 0.523 \text{ W/kg} = -2.81 \text{ dBW/kg}$

#47_Bluetooth_1Mbps_Back_15mm_Ch39

Communication System: Bluetooth; Frequency: 2441 MHz; Duty Cycle: 1:1.2

Medium: MSL_2450_150619 Medium parameters used: $f = 2441$ MHz; $\sigma = 1.911$ S/m; $\epsilon_r = 53.335$; $\rho = 1000$ kg/m³

Ambient Temperature : 23.6 °C; Liquid Temperature : 22.6 °C

DASY5 Configuration

- Probe: EX3DV4 - SN3925; ConvF(7.54, 7.54, 7.54); Calibrated: 2015/5/27;
- Sensor-Surface: 1.4mm (Mechanical Surface Detection)
- Electronics: DAE3 Sn495; Calibrated: 2015/5/22
- Phantom: SAM_RIGHT; Type: QD000P40CD; Serial: 1719
- Measurement SW: DASY52, Version 52.8 (8); SEMCAD X Version 14.6.10 (7331)

Configuration/Ch39/Area Scan (81x141x1): Interpolated grid: dx=1.200 mm, dy=1.200 mm
 Maximum value of SAR (interpolated) = 0.0171 W/kg

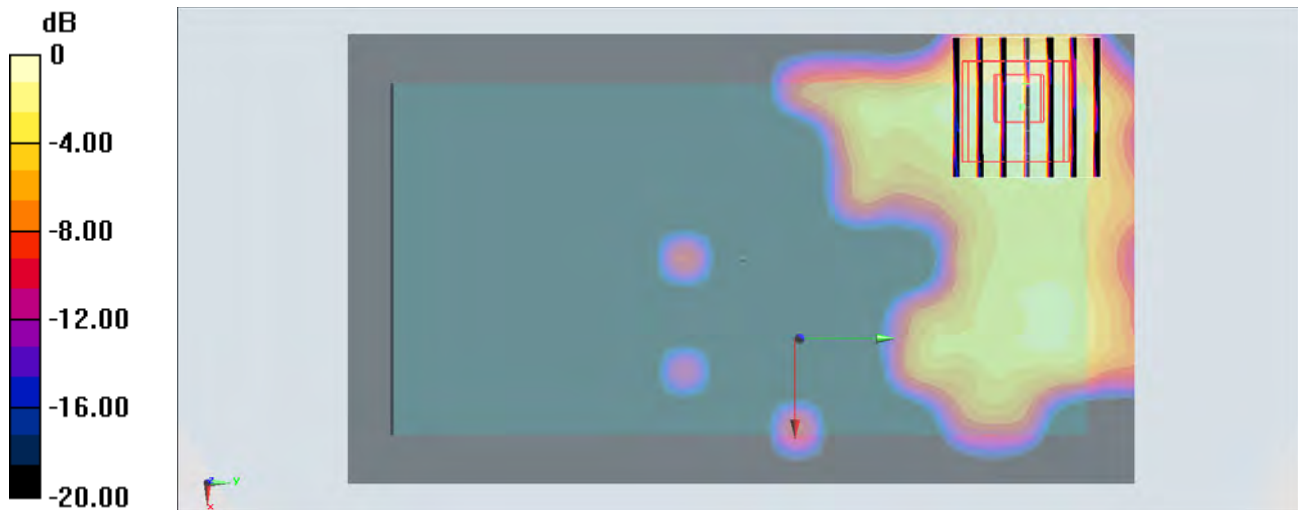
Configuration/Ch39/Zoom Scan (7x7x7)/Cube 0: Measurement grid: dx=5mm, dy=5mm, dz=5mm

Reference Value = 3.092 V/m; Power Drift = -0.10 dB

Peak SAR (extrapolated) = 0.0200 W/kg

SAR(1 g) = 0.010 W/kg; SAR(10 g) = 0.00357 W/kg

Maximum value of SAR (measured) = 0.0176 W/kg



0 dB = 0.0176 W/kg = -17.54 dBW/kg