

#01_GSM850_GPRS (2 Tx slots)_Right Cheek_Ch189

Communication System: GSM850; Frequency: 836.4 MHz; Duty Cycle: 1:4.15

Medium: HSL_850_141213 Medium parameters used: $f = 836.4$ MHz; $\sigma = 0.906$ S/m; $\epsilon_r = 40.282$; $\rho = 1000$ kg/m³

Ambient Temperature : 23.3 °C; Liquid Temperature : 22.3 °C

DASY5 Configuration:

- Probe: EX3DV4 - SN3931; ConvF(10.32, 10.32, 10.32); Calibrated: 2014/9/25;
- Sensor-Surface: 2mm (Mechanical Surface Detection)
- Electronics: DAE3 Sn577; Calibrated: 2014/10/6
- Phantom: SAM-Right; Type: QD 000 P40 C; Serial: TP-1446
- Measurement SW: DASY52, Version 52.8 (8); SEMCAD X Version 14.6.10 (7331)

Configuration/Ch189/Area Scan (61x111x1): Interpolated grid: dx=1.500 mm, dy=1.500 mm

Maximum value of SAR (interpolated) = 0.517 W/kg

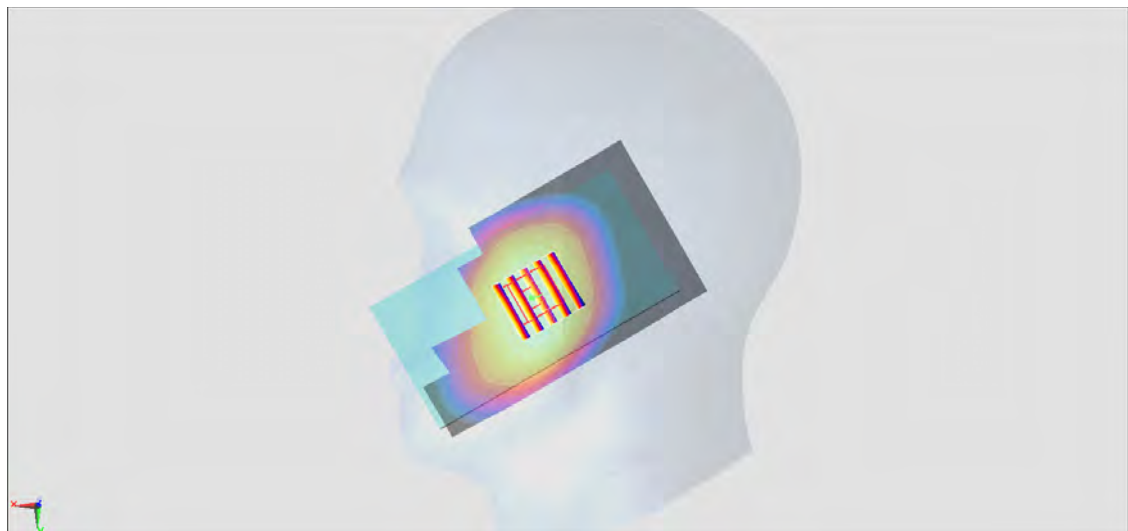
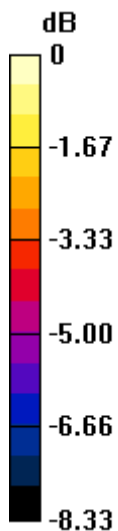
Configuration/Ch189/Zoom Scan (5x5x7)/Cube 0: Measurement grid: dx=8mm, dy=8mm, dz=5mm

Reference Value = 24.21 V/m; Power Drift = -0.07 dB

Peak SAR (extrapolated) = 0.551 W/kg

SAR(1 g) = 0.455 W/kg; SAR(10 g) = 0.356 W/kg

Maximum value of SAR (measured) = 0.510 W/kg



0 dB = 0.510 W/kg = -2.92 dBW/kg

#02_GSM1900_GPRS (2 Tx slots)_Right Cheek_Ch512

Communication System: PCS; Frequency: 1850.2 MHz; Duty Cycle: 1:4.15

Medium: HSL_1900_141107 Medium parameters used: $f = 1850.2$ MHz; $\sigma = 1.402$ S/m; $\epsilon_r = 39.29$; $\rho = 1000$ kg/m³

Ambient Temperature : 23.3 °C; Liquid Temperature : 22.3 °C

DASY5 Configuration:

- Probe: EX3DV4 - SN3925; ConvF(8.26, 8.26, 8.26); Calibrated: 2014/5/22;
- Sensor-Surface: 2mm (Mechanical Surface Detection)
- Electronics: DAE3 Sn495; Calibrated: 2014/5/19
- Phantom: SAM_Right; Type: QD000P40CC; Serial: TP:1383
- Measurement SW: DASY52, Version 52.8 (7); SEMCAD X Version 14.6.10 (7164)

Configuration/Ch512/Area Scan (61x111x1): Interpolated grid: dx=1.500 mm, dy=1.500 mm
 Maximum value of SAR (interpolated) = 0.405 W/kg

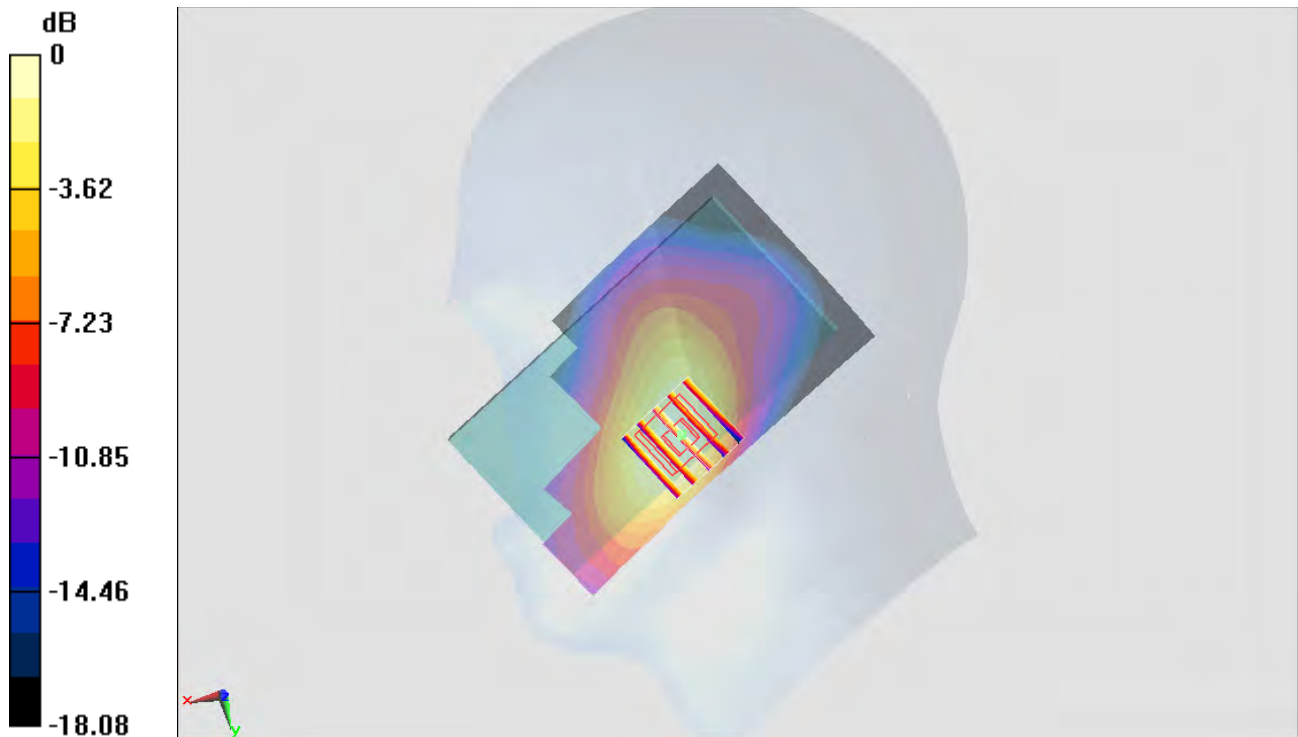
Configuration/Ch512/Zoom Scan (5x5x7)/Cube 0: Measurement grid: dx=8mm, dy=8mm, dz=5mm

Reference Value = 16.800 V/m; Power Drift = -0.01 dB

Peak SAR (extrapolated) = 0.459 W/kg

SAR(1 g) = 0.306 W/kg; SAR(10 g) = 0.190 W/kg

Maximum value of SAR (measured) = 0.387 W/kg



0 dB = 0.387 W/kg = -4.12 dBW/kg

#03_WCDMA V_RMC 12.2Kbps_Left Cheek_Ch4233

Communication System: WCDMA ; Frequency: 846.6 MHz; Duty Cycle: 1:1

Medium: HSL_850_141025 Medium parameters used: $f = 847 \text{ MHz}$; $\sigma = 0.927 \text{ S/m}$; $\epsilon_r = 41.627$; $\rho = 1000 \text{ kg/m}^3$

Ambient Temperature : $23.6 \text{ }^\circ\text{C}$; Liquid Temperature : $22.6 \text{ }^\circ\text{C}$

DASY5 Configuration:

- Probe: EX3DV4 - SN3955; ConvF(9.86, 9.86, 9.86); Calibrated: 2013/12/23;
- Sensor-Surface: 2mm (Mechanical Surface Detection)
- Electronics: DAE4 Sn1399; Calibrated: 2013/11/7
- Phantom: SAM_Right; Type: QD000P40CC; Serial: TP:1383
- Measurement SW: DASY52, Version 52.8 (7); SEMCAD X Version 14.6.10 (7164)

Configuration/Ch4233/Area Scan (61x111x1): Interpolated grid: $dx=1.500 \text{ mm}$, $dy=1.500 \text{ mm}$

Maximum value of SAR (interpolated) = 0.471 W/kg

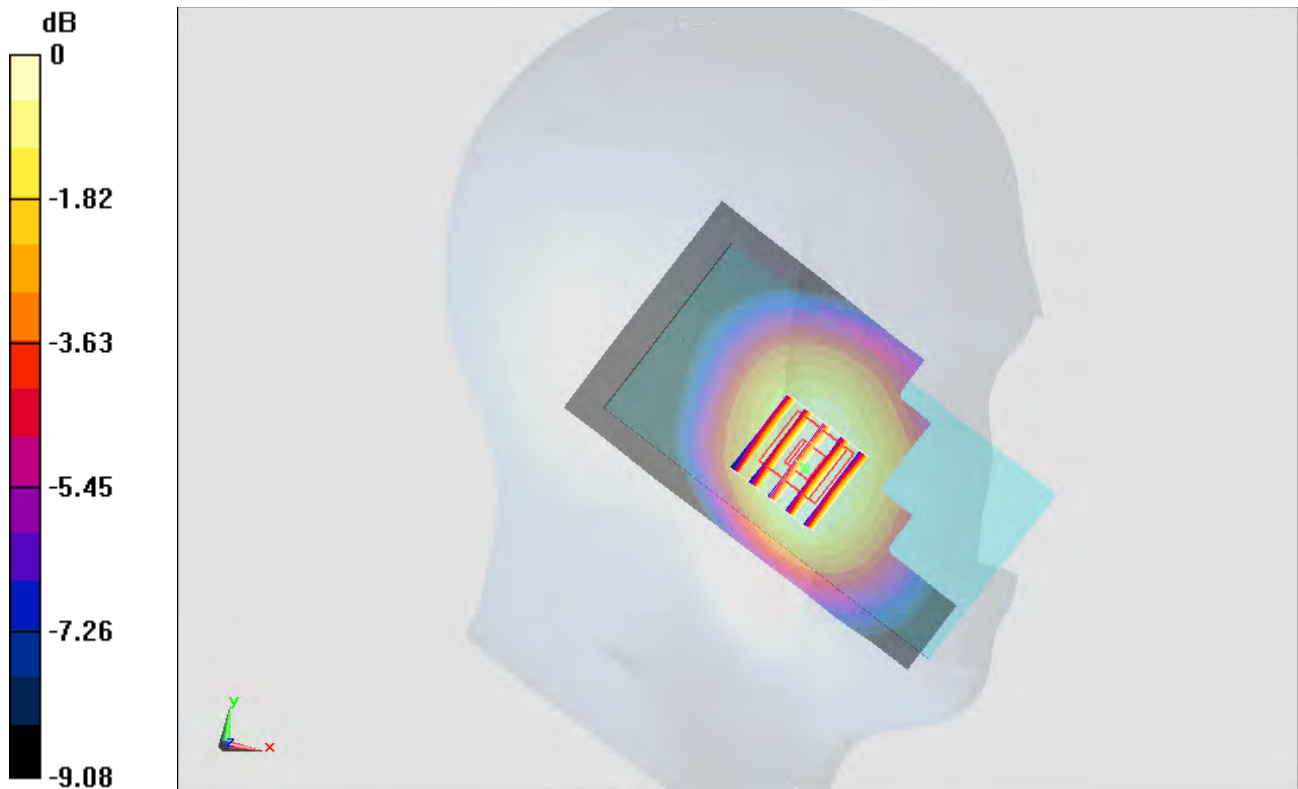
Configuration/Ch4233/Zoom Scan (5x5x7)/Cube 0: Measurement grid: $dx=8\text{mm}$, $dy=8\text{mm}$, $dz=5\text{mm}$

Reference Value = 23.027 V/m ; Power Drift = 0.04 dB

Peak SAR (extrapolated) = 0.520 W/kg

SAR(1 g) = 0.422 W/kg ; SAR(10 g) = 0.329 W/kg

Maximum value of SAR (measured) = 0.474 W/kg



0 dB = $0.474 \text{ W/kg} = -3.24 \text{ dBW/kg}$

#04_WCDMA II_RMC 12.2Kbps_Right Cheek_Ch9538

Communication System: WCDMA; Frequency: 1907.6 MHz; Duty Cycle: 1:1

Medium: HSL_1900_141023 Medium parameters used: $f = 1908$ MHz; $\sigma = 1.461$ S/m; $\epsilon_r = 41.749$; $\rho = 1000$ kg/m³

Ambient Temperature : 23.4 °C; Liquid Temperature : 22.4 °C

DASY5 Configuration:

- Probe: EX3DV4 - SN3925; ConvF(8.26, 8.26, 8.26); Calibrated: 2014/5/22;
- Sensor-Surface: 2mm (Mechanical Surface Detection)
- Electronics: DAE3 Sn495; Calibrated: 2014/5/19
- Phantom: SAM-Right; Type: QD 000 P40 C; Serial: TP-1446
- Measurement SW: DASY52, Version 52.8 (8); SEMCAD X Version 14.6.10 (7331)

Configuration/Ch9538/Area Scan (61x111x1): Interpolated grid: dx=1.500 mm, dy=1.500 mm

Maximum value of SAR (interpolated) = 1.31 W/kg

Configuration/Ch9538/Zoom Scan (5x5x7)/Cube 0: Measurement grid: dx=8mm, dy=8mm, dz=5mm

Reference Value = 29.89 V/m; Power Drift = 0.16 dB

Peak SAR (extrapolated) = 1.57 W/kg

SAR(1 g) = 1.02 W/kg; SAR(10 g) = 0.629 W/kg

Maximum value of SAR (measured) = 1.26 W/kg



0 dB = 1.26 W/kg = 1.00 dBW/kg

#05_WLAN2.4GHz_802.11b 1Mbps_Right Cheek_Ch11

Communication System: 802.11b; Frequency: 2462 MHz; Duty Cycle: 1:1.024

Medium: HSL_2450_141111 Medium parameters used: $f = 2462 \text{ MHz}$; $\sigma = 1.87 \text{ S/m}$; $\epsilon_r = 39.157$; $\rho = 1000 \text{ kg/m}^3$

Ambient Temperature : $23.5 \text{ }^\circ\text{C}$; Liquid Temperature : $22.5 \text{ }^\circ\text{C}$

DASY5 Configuration:

- Probe: EX3DV4 - SN3697; ConvF(6.92, 6.92, 6.92); Calibrated: 2014/9/29;
- Sensor-Surface: 2mm (Mechanical Surface Detection)
- Electronics: DAE4 Sn1388; Calibrated: 2014/9/24
- Phantom: SAM_Right; Type: QD000P40CC; Serial: TP:1383
- Measurement SW: DASY52, Version 52.8 (7); SEMCAD X Version 14.6.10 (7164)

Configuration/Ch11/Area Scan (81x141x1): Interpolated grid: $dx=1.200 \text{ mm}$, $dy=1.200 \text{ mm}$
 Maximum value of SAR (interpolated) = 0.228 W/kg

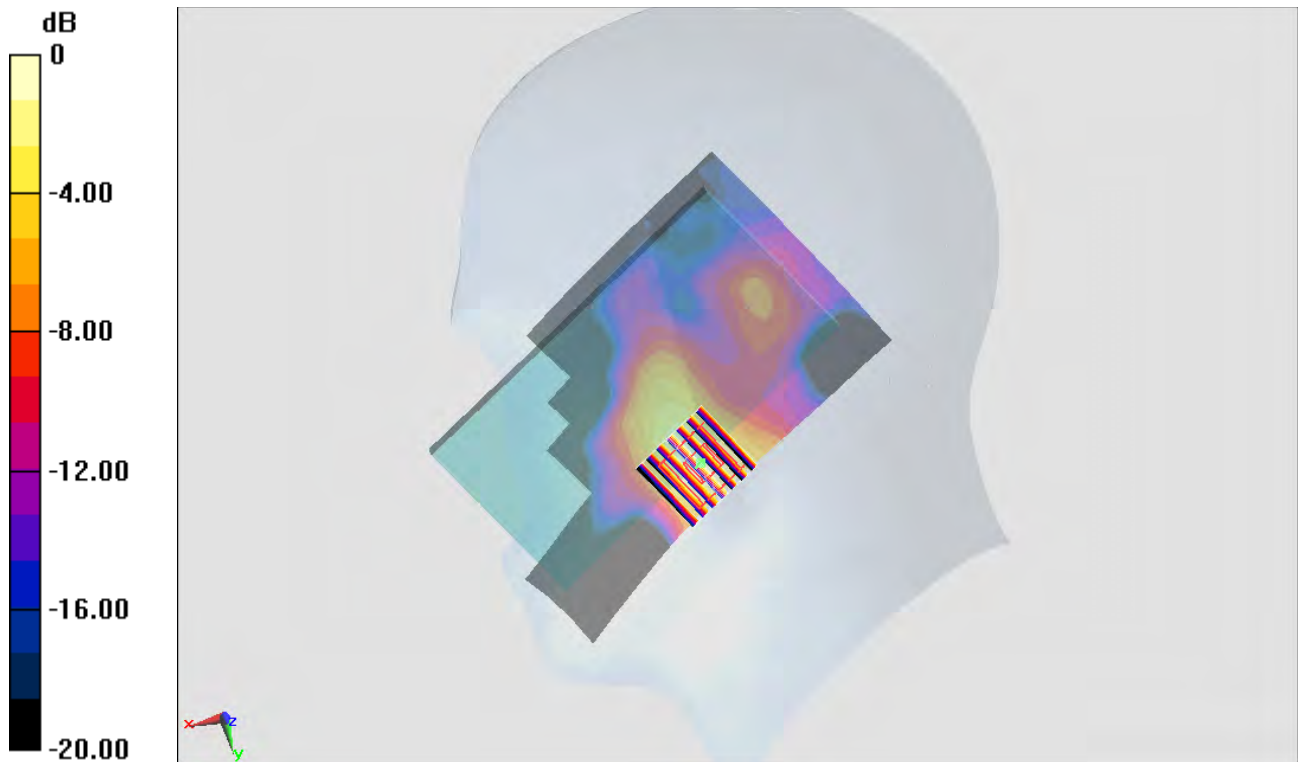
Configuration/Ch11/Zoom Scan (7x7x7)/Cube 0: Measurement grid: $dx=5\text{mm}$, $dy=5\text{mm}$, $dz=5\text{mm}$

Reference Value = 11.082 V/m ; Power Drift = -0.03 dB

Peak SAR (extrapolated) = 0.306 W/kg

SAR(1 g) = 0.152 W/kg ; SAR(10 g) = 0.075 W/kg

Maximum value of SAR (measured) = 0.225 W/kg



0 dB = $0.225 \text{ W/kg} = -6.48 \text{ dBW/kg}$

#06_Bluetooth_1Mbps_Right Tilted_Ch39

Communication System: Bluetooth; Frequency: 2441 MHz; Duty Cycle: 1:1.2

Medium: HSL_2450_141031 Medium parameters used: $f = 2441$ MHz; $\sigma = 1.835$ S/m; $\epsilon_r = 38.639$; $\rho = 1000$ kg/m³

Ambient Temperature : 23.7 °C; Liquid Temperature : 22.7 °C

DASY5 Configuration:

- Probe: EX3DV4 - SN3955; ConvF(7.29, 7.29, 7.29); Calibrated: 2013/11/12;
- Sensor-Surface: 2mm (Mechanical Surface Detection)
- Electronics: DAE4 Sn1399; Calibrated: 2013/11/7
- Phantom: SAM_Right; Type: QD000P40CC; Serial: TP:1383
- Measurement SW: DASY52, Version 52.8 (7); SEMCAD X Version 14.6.10 (7164)

Configuration/Ch39/Area Scan (81x141x1): Interpolated grid: dx=1.200 mm, dy=1.200 mm

Maximum value of SAR (interpolated) = 0.0917 W/kg

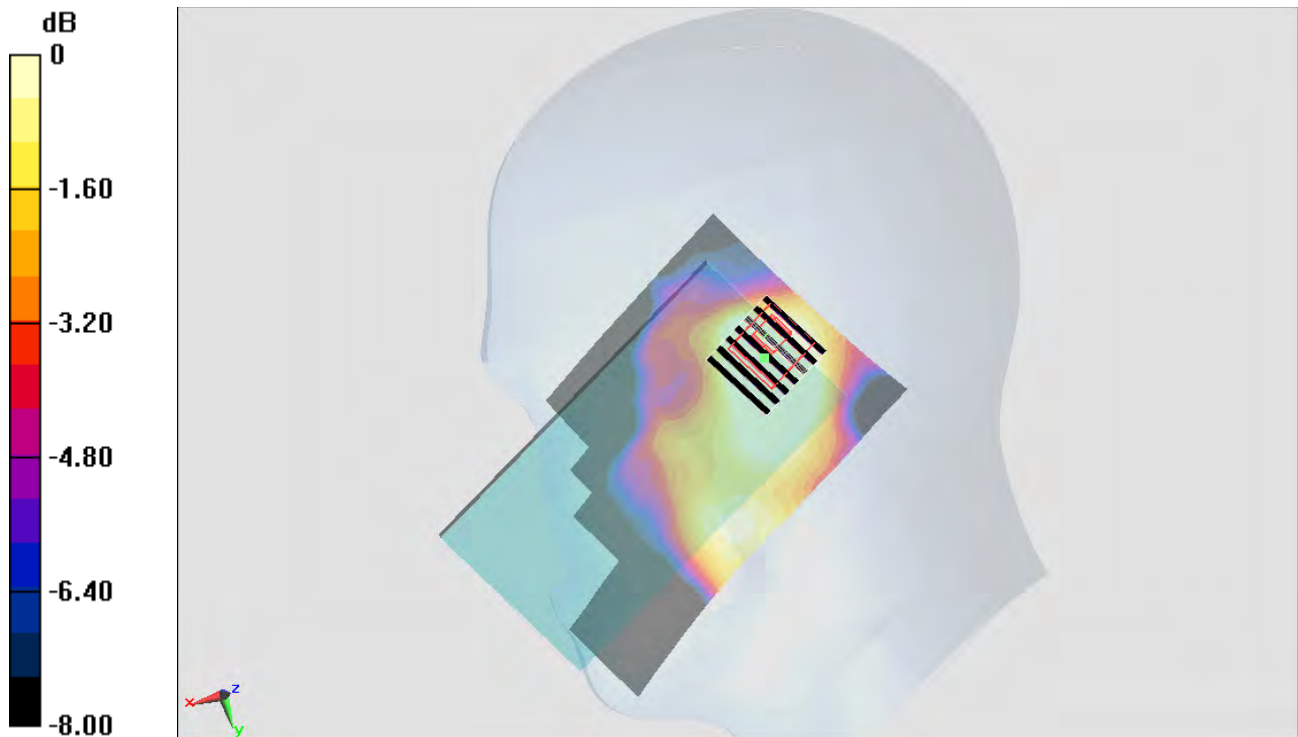
Configuration/Ch39/Zoom Scan (7x7x7)/Cube 0: Measurement grid: dx=5mm, dy=5mm, dz=5mm

Reference Value = 3.081 V/m; Power Drift = -0.06 dB

Peak SAR (extrapolated) = 0.0430 W/kg

SAR(1 g) = 0.018 W/kg; SAR(10 g) = 0.00689 W/kg

Maximum value of SAR (measured) = 0.0302 W/kg



0 dB = 0.0302 W/kg = -15.20 dBW/kg

#09_GSM850_GPRS (2 Tx slots)_Back_1cm_Ch189

Communication System: GSM850; Frequency: 836.4 MHz; Duty Cycle: 1:4.15

Medium: MSL_850_141213 Medium parameters used: $f = 836.4$ MHz; $\sigma = 0.983$ S/m; $\epsilon_r = 55.343$; $\rho = 1000$ kg/m³

Ambient Temperature : 23.3 °C; Liquid Temperature : 22.3 °C

DASY5 Configuration:

- Probe: EX3DV4 - SN3931; ConvF(10.13, 10.13, 10.13); Calibrated: 2014/9/25;
- Sensor-Surface: 2mm (Mechanical Surface Detection)
- Electronics: DAE3 Sn577; Calibrated: 2014/10/6
- Phantom: SAM-Left; Type: QD 000 P40 C; Serial: TP-1478
- Measurement SW: DASY52, Version 52.8 (8); SEMCAD X Version 14.6.10 (7331)

Configuration/Ch189/Area Scan (61x111x1): Interpolated grid: dx=1.500 mm, dy=1.500 mm

Maximum value of SAR (interpolated) = 0.852 W/kg

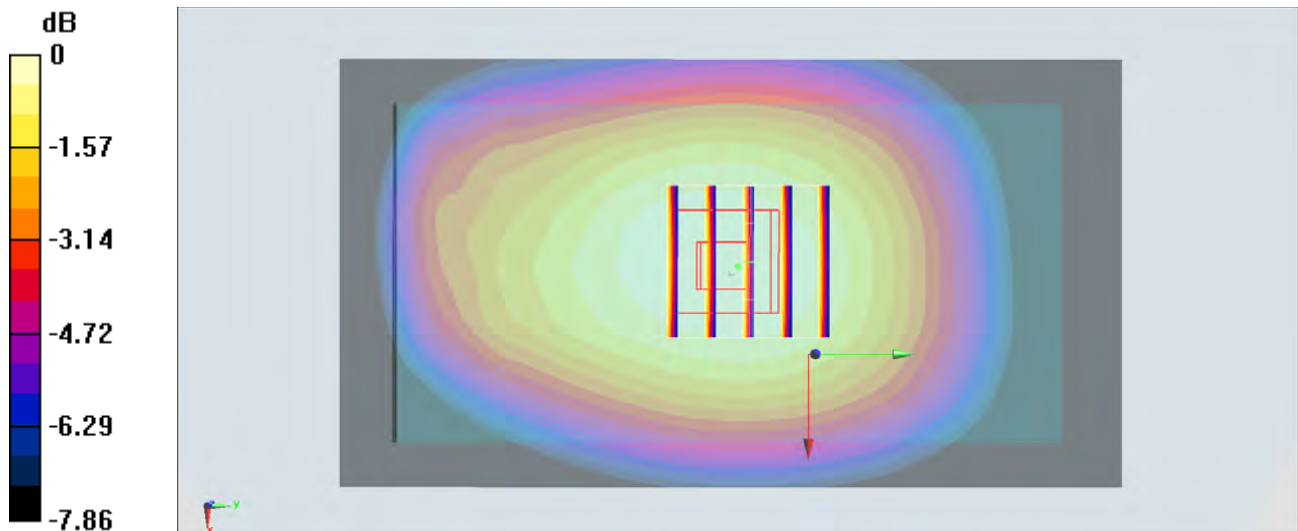
Configuration/Ch189/Zoom Scan (5x5x7)/Cube 0: Measurement grid: dx=8mm, dy=8mm, dz=5mm

Reference Value = 30.06 V/m; Power Drift = -0.01 dB

Peak SAR (extrapolated) = 0.933 W/kg

SAR(1 g) = 0.739 W/kg; SAR(10 g) = 0.567 W/kg

Maximum value of SAR (measured) = 0.849 W/kg



0 dB = 0.849 W/kg = -0.71 dBW/kg

#08_GSM1900_GPRS (2 Tx slots)_Bottom Side_1cm_Ch512

Communication System: PCS; Frequency: 1850.2 MHz; Duty Cycle: 1:4.15

Medium: MSL_1900_141106 Medium parameters used: $f = 1850.2$ MHz; $\sigma = 1.502$ S/m; $\epsilon_r = 52.163$;

$\rho = 1000$ kg/m³

Ambient Temperature : 23.2 °C; Liquid Temperature : 22.2 °C

DASY5 Configuration:

- Probe: EX3DV4 - SN3931; ConvF(7.8, 7.8, 7.8); Calibrated: 2014/9/25;
- Sensor-Surface: 2mm (Mechanical Surface Detection)
- Electronics: DAE3 Sn577; Calibrated: 2014/10/6
- Phantom: SAM_Right; Type: QD000P40CC; Serial: TP:1383
- Measurement SW: DASY52, Version 52.8 (7); SEMCAD X Version 14.6.10 (7164)

Configuration/Ch512/Area Scan (41x71x1): Interpolated grid: dx=1.500 mm, dy=1.500 mm

Maximum value of SAR (interpolated) = 0.782 W/kg

Configuration/Ch512/Zoom Scan (5x5x7)/Cube 0: Measurement grid: dx=8mm, dy=8mm,

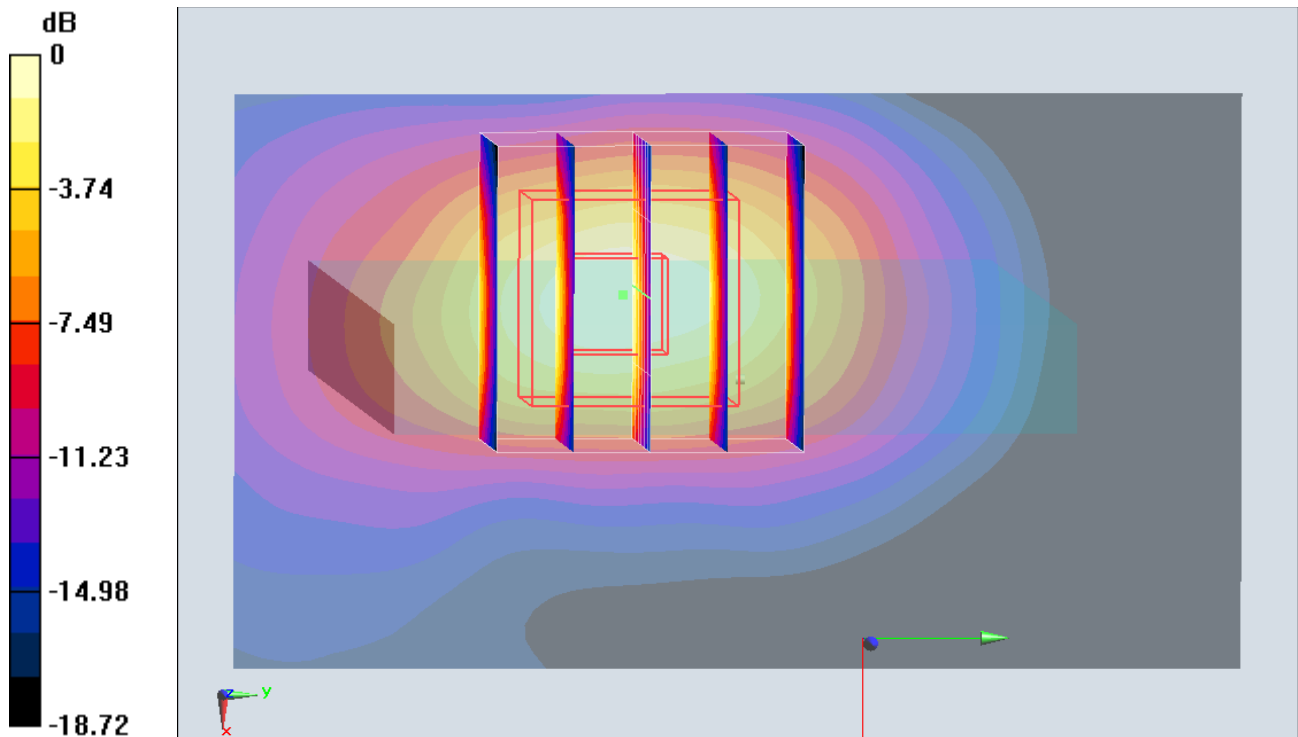
dz=5mm

Reference Value = 23.424 V/m; Power Drift = -0.06 dB

Peak SAR (extrapolated) = 1.00 W/kg

SAR(1 g) = 0.558 W/kg; SAR(10 g) = 0.273 W/kg

Maximum value of SAR (measured) = 0.763 W/kg



0 dB = 0.763 W/kg = -1.17 dBW/kg

#09_WCDMA V_RMC 12.2Kbps_Back_1cm_Ch4233

Communication System: WCDMA ; Frequency: 846.6 MHz; Duty Cycle: 1:1

Medium: MSL_850_141026 Medium parameters used: $f = 847 \text{ MHz}$; $\sigma = 0.974 \text{ S/m}$; $\epsilon_r = 54.43$; $\rho = 1000 \text{ kg/m}^3$

Ambient Temperature : $23.6 \text{ }^\circ\text{C}$; Liquid Temperature : $22.6 \text{ }^\circ\text{C}$

DASY5 Configuration:

- Probe: EX3DV4 - SN3955; ConvF(9.81, 9.81, 9.81); Calibrated: 2013/12/23;
- Sensor-Surface: 2mm (Mechanical Surface Detection)
- Electronics: DAE4 Sn1399; Calibrated: 2013/11/7
- Phantom: SAM_Right; Type: QD000P40CC; Serial: TP:1383
- Measurement SW: DASY52, Version 52.8 (7); SEMCAD X Version 14.6.10 (7164)

Configuration/Ch4233/Area Scan (61x111x1): Interpolated grid: $dx=1.500 \text{ mm}$, $dy=1.500 \text{ mm}$
 Maximum value of SAR (interpolated) = 0.795 W/kg

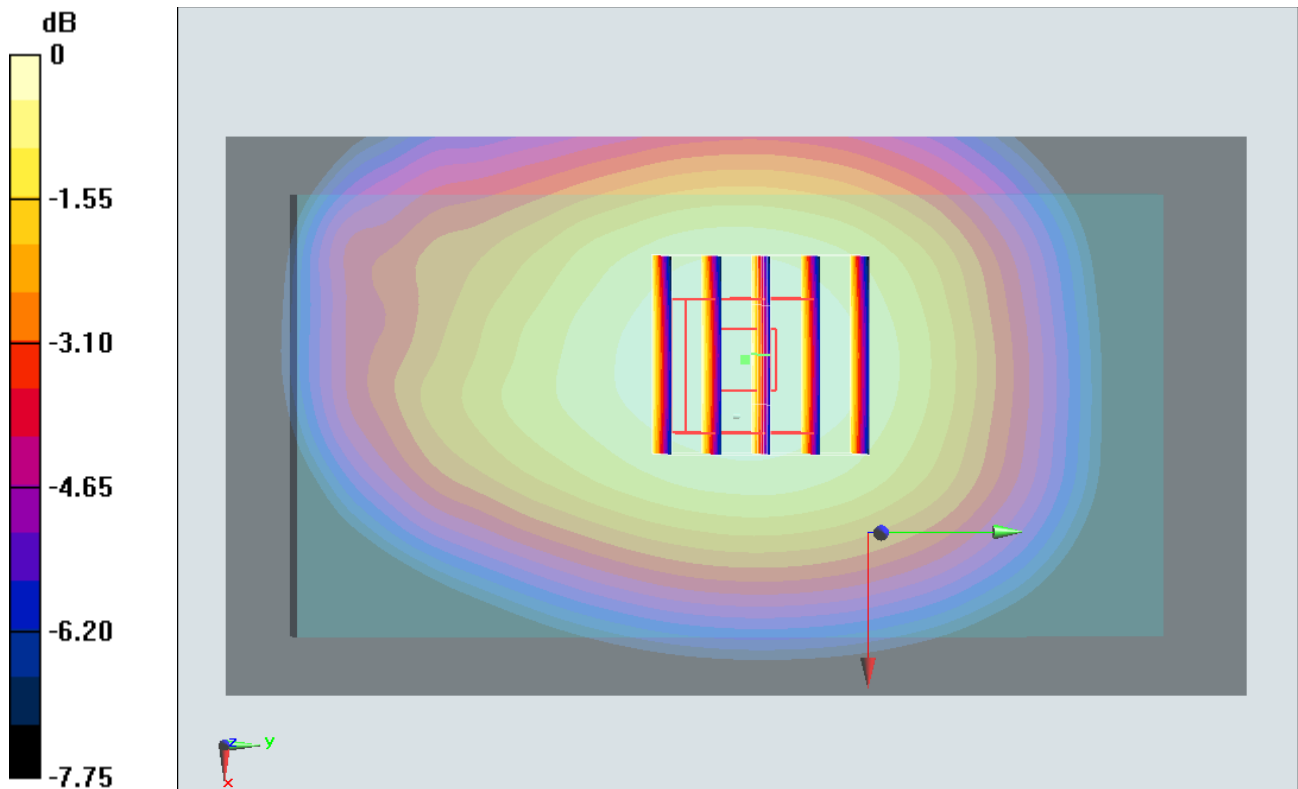
Configuration/Ch4233/Zoom Scan (5x5x7)/Cube 0: Measurement grid: $dx=8\text{mm}$, $dy=8\text{mm}$, $dz=5\text{mm}$

Reference Value = 29.049 V/m ; Power Drift = 0.01 dB

Peak SAR (extrapolated) = 0.863 W/kg

SAR(1 g) = 0.691 W/kg ; SAR(10 g) = 0.533 W/kg

Maximum value of SAR (measured) = 0.786 W/kg



0 dB = $0.786 \text{ W/kg} = -1.05 \text{ dBW/kg}$

#10_WCDMA II_RMC 12.2Kbps_Bottom Side_1cm_Ch9538

Communication System: WCDMA; Frequency: 1907.6 MHz; Duty Cycle: 1:1

Medium: MSL_1900_141106 Medium parameters used: $f = 1908 \text{ MHz}$; $\sigma = 1.553 \text{ S/m}$; $\epsilon_r = 51.91$; $\rho = 1000 \text{ kg/m}^3$

Ambient Temperature : $23.2 \text{ }^\circ\text{C}$; Liquid Temperature : $22.2 \text{ }^\circ\text{C}$

DASY5 Configuration:

- Probe: EX3DV4 - SN3931; ConvF(7.8, 7.8, 7.8); Calibrated: 2014/9/25;
- Sensor-Surface: 2mm (Mechanical Surface Detection)
- Electronics: DAE3 Sn577; Calibrated: 2014/10/6
- Phantom: SAM_Right; Type: QD000P40CC; Serial: TP:1383
- Measurement SW: DASY52, Version 52.8 (7); SEMCAD X Version 14.6.10 (7164)

Configuration/Ch9538/Area Scan (41x71x1): Interpolated grid: $dx=1.500 \text{ mm}$, $dy=1.500 \text{ mm}$

Maximum value of SAR (interpolated) = 1.67 W/kg

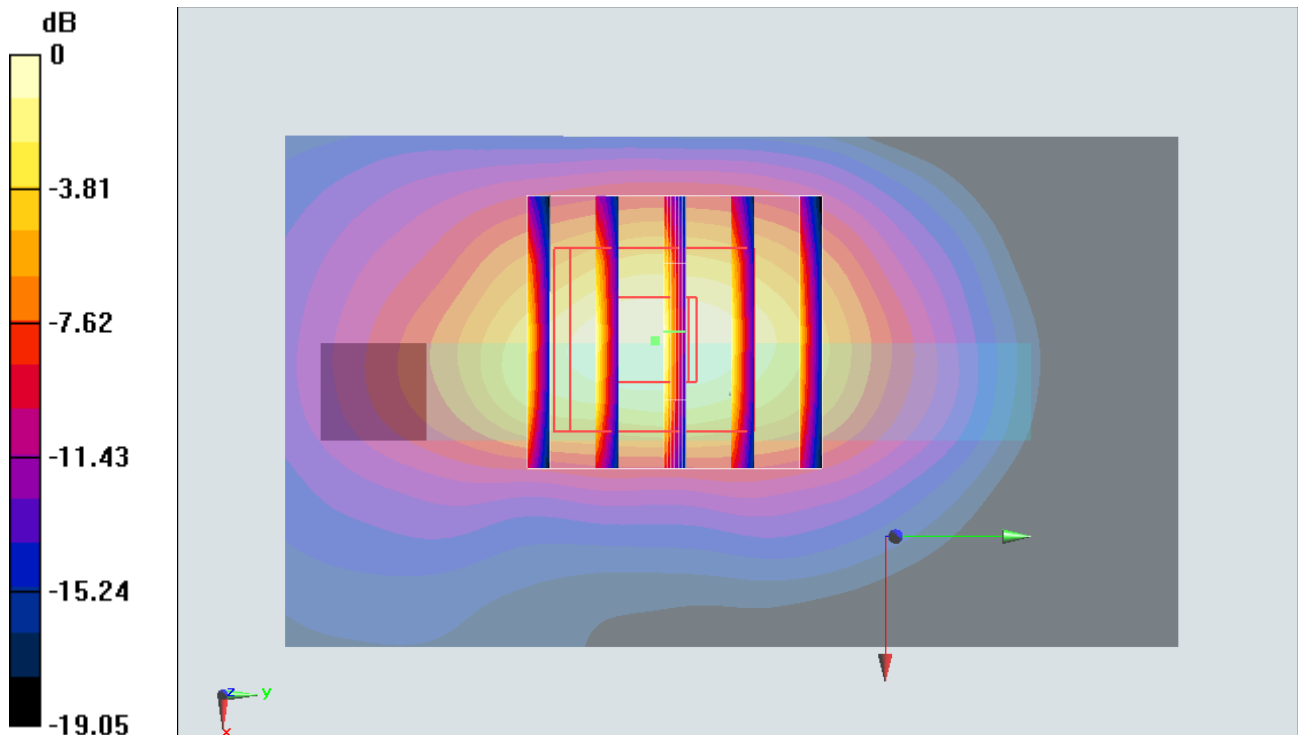
Configuration/Ch9538/Zoom Scan (5x5x7)/Cube 0: Measurement grid: $dx=8\text{mm}$, $dy=8\text{mm}$, $dz=5\text{mm}$

Reference Value = 33.770 V/m ; Power Drift = -0.12 dB

Peak SAR (extrapolated) = 2.10 W/kg

SAR(1 g) = 1.16 W/kg ; SAR(10 g) = 0.567 W/kg

Maximum value of SAR (measured) = 1.62 W/kg



0 dB = $1.62 \text{ W/kg} = 2.10 \text{ dBW/kg}$

#11_WLAN2.4GHz_802.11b 1Mbps_Back_1cm_Ch11

Communication System: 802.11b ; Frequency: 2462 MHz;Duty Cycle: 1:1.024

Medium: MSL_2450_141111 Medium parameters used: $f = 2462$ MHz; $\sigma = 1.944$ S/m; $\epsilon_r = 52.437$; $\rho = 1000$ kg/m³

Ambient Temperature : 23.5 °C ; Liquid Temperature : 22.5 °C

DASY5 Configuration:

- Probe: EX3DV4 - SN3697; ConvF(6.78, 6.78, 6.78); Calibrated: 2014/9/29;
- Sensor-Surface: 2mm (Mechanical Surface Detection)
- Electronics: DAE4 Sn1388; Calibrated: 2014/9/24
- Phantom: SAM_Left; Type: QD000P40CD; Serial: TP:1542
- Measurement SW: DASY52, Version 52.8 (7);SEMCAD X Version 14.6.10 (7164)

Configuration/Ch11/Area Scan (81x141x1): Interpolated grid: dx=1.200 mm, dy=1.200 mm
 Maximum value of SAR (interpolated) = 0.419 W/kg

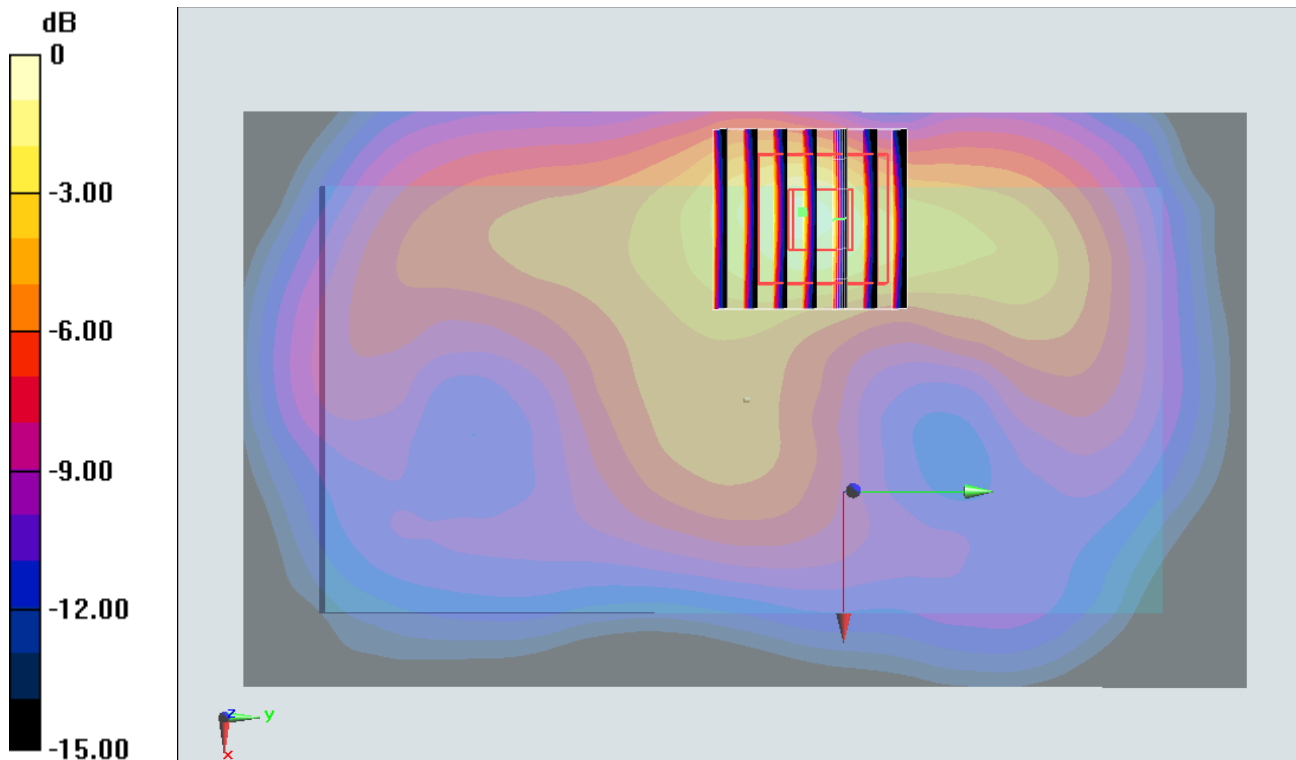
Configuration/Ch11/Zoom Scan (7x7x7)/Cube 0: Measurement grid: dx=5mm, dy=5mm, dz=5mm

Reference Value = 15.539 V/m; Power Drift = -0.09 dB

Peak SAR (extrapolated) = 0.654 W/kg

SAR(1 g) = 0.320 W/kg; SAR(10 g) = 0.150 W/kg

Maximum value of SAR (measured) = 0.488 W/kg



0 dB = 0.488 W/kg = -3.12 dBW/kg

#12_Bluetooth_1Mbps_Back_1cm_Ch39

Communication System: Bluetooth; Frequency: 2441 MHz; Duty Cycle: 1:1.2

Medium: MSL_2450_141031 Medium parameters used: $f = 2441$ MHz; $\sigma = 2.006$ S/m; $\epsilon_r = 53.949$; $\rho = 1000$ kg/m³

Ambient Temperature : 23.7 °C; Liquid Temperature : 22.7 °C

DASY5 Configuration:

- Probe: EX3DV4 - SN3955; ConvF(7.42, 7.42, 7.42); Calibrated: 2013/11/12;
- Sensor-Surface: 2mm (Mechanical Surface Detection)
- Electronics: DAE4 Sn1399; Calibrated: 2013/11/7
- Phantom: SAM_Left; Type: QD000P40CD; Serial: TP:1542
- Measurement SW: DASY52, Version 52.8 (7); SEMCAD X Version 14.6.10 (7164)

Configuration/Ch39/Area Scan (81x141x1): Interpolated grid: dx=1.200 mm, dy=1.200 mm
Maximum value of SAR (interpolated) = 0.0467 W/kg

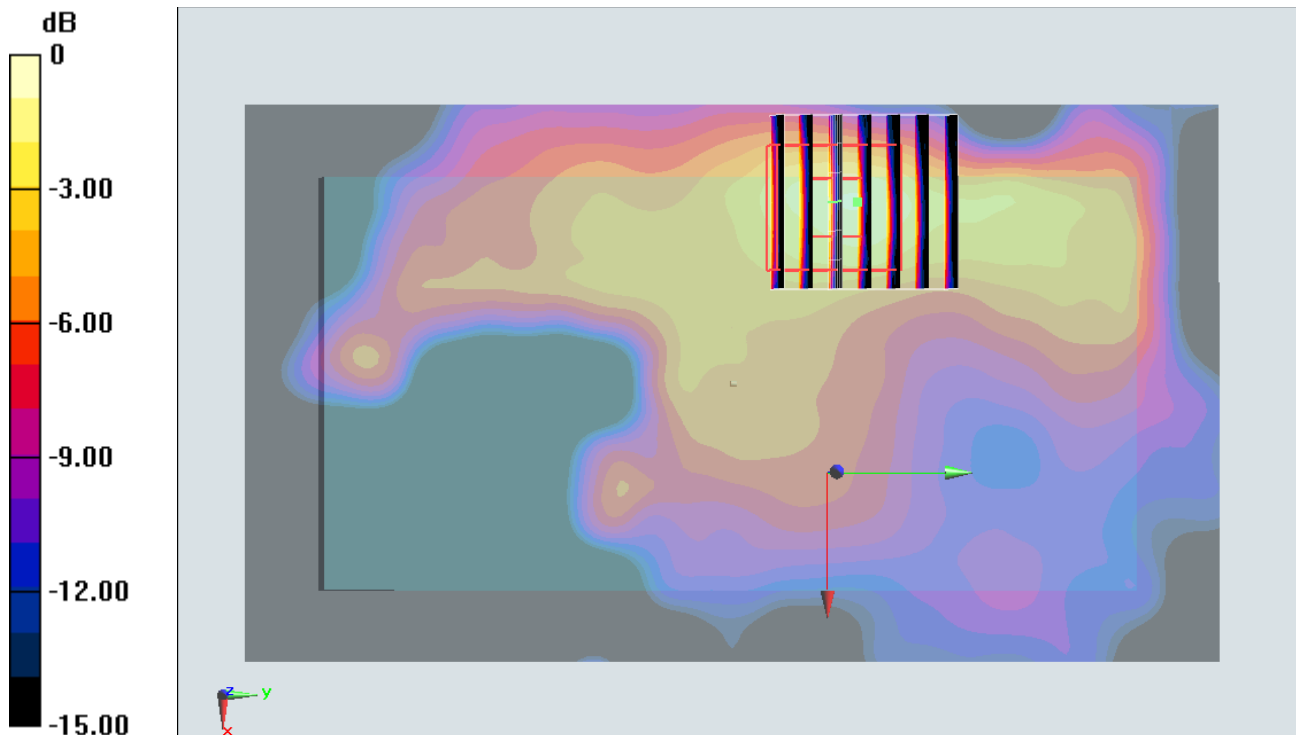
Configuration/Ch39/Zoom Scan (7x7x7)/Cube 0: Measurement grid: dx=5mm, dy=5mm, dz=5mm

Reference Value = 5.153 V/m; Power Drift = -0.12 dB

Peak SAR (extrapolated) = 0.0760 W/kg

SAR(1 g) = 0.036 W/kg; SAR(10 g) = 0.015 W/kg

Maximum value of SAR (measured) = 0.0573 W/kg



0 dB = 0.0573 W/kg = -12.42 dBW/kg

#111_GSM850_GPRS (2 Tx slots)_Back_1.5cm_Ch189

Communication System: GSM850; Frequency: 836.4 MHz; Duty Cycle: 1:4.15

Medium: MSL_850_141213 Medium parameters used: $f = 836.4 \text{ MHz}$; $\sigma = 0.983 \text{ S/m}$; $\epsilon_r = 55.343$; $\rho = 1000 \text{ kg/m}^3$

Ambient Temperature : $23.3 \text{ }^\circ\text{C}$; Liquid Temperature : $22.3 \text{ }^\circ\text{C}$

DASY5 Configuration:

- Probe: EX3DV4 - SN3931; ConvF(10.13, 10.13, 10.13); Calibrated: 2014/9/25;
- Sensor-Surface: 2mm (Mechanical Surface Detection)
- Electronics: DAE3 Sn577; Calibrated: 2014/10/6
- Phantom: SAM-Left; Type: QD 000 P40 C; Serial: TP-1478
- Measurement SW: DASY52, Version 52.8 (8); SEMCAD X Version 14.6.10 (7331)

Configuration/Ch189/Area Scan (61x111x1): Interpolated grid: $dx=1.500 \text{ mm}$, $dy=1.500 \text{ mm}$
 Maximum value of SAR (interpolated) = 0.707 W/kg

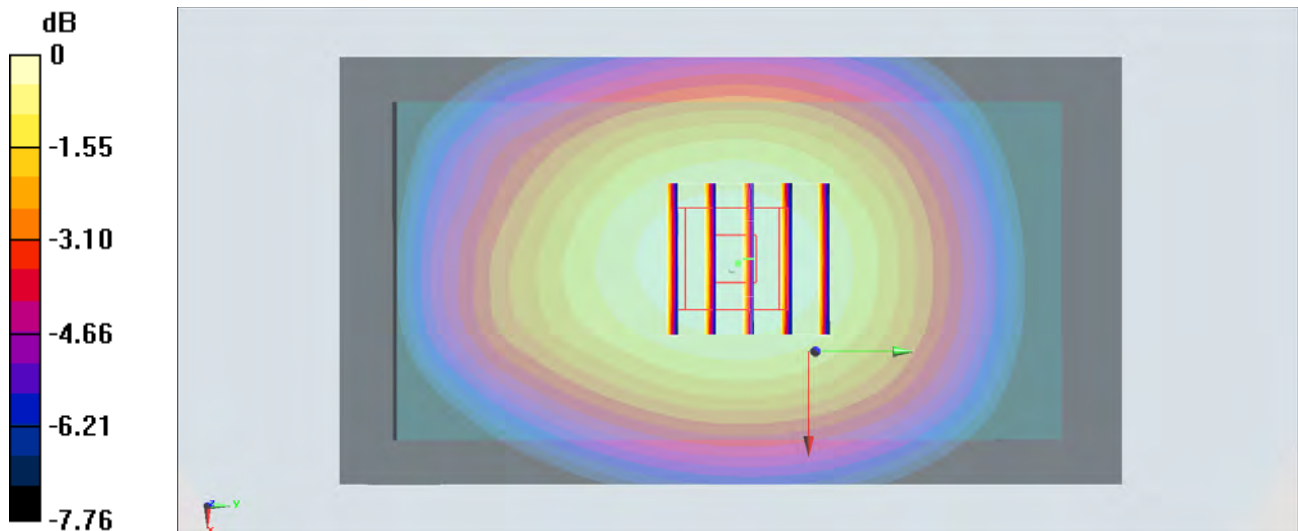
Configuration/Ch189/Zoom Scan (5x5x7)/Cube 0: Measurement grid: $dx=8\text{mm}$, $dy=8\text{mm}$, $dz=5\text{mm}$

Reference Value = 27.42 V/m ; Power Drift = -0.02 dB

Peak SAR (extrapolated) = 0.779 W/kg

SAR(1 g) = 0.616 W/kg ; SAR(10 g) = 0.470 W/kg

Maximum value of SAR (measured) = 0.710 W/kg



$0 \text{ dB} = 0.710 \text{ W/kg} = -1.49 \text{ dBW/kg}$

#14_GSM1900_GPRS (2 Tx slots)_Back_1.5cm_Ch512

Communication System: PCS; Frequency: 1850.2 MHz; Duty Cycle: 1:4.15

Medium: MSL_1900_141106 Medium parameters used: $f = 1850.2$ MHz; $\sigma = 1.502$ S/m; $\epsilon_r = 52.163$;
 $\rho = 1000$ kg/m³

Ambient Temperature : 23.2 °C; Liquid Temperature : 22.2 °C

DASY5 Configuration:

- Probe: EX3DV4 - SN3931; ConvF(7.8, 7.8, 7.8); Calibrated: 2014/9/25;
- Sensor-Surface: 2mm (Mechanical Surface Detection)
- Electronics: DAE3 Sn577; Calibrated: 2014/10/6
- Phantom: SAM_Right; Type: QD000P40CC; Serial: TP:1383
- Measurement SW: DASY52, Version 52.8 (7); SEMCAD X Version 14.6.10 (7164)

Configuration/Ch512/Area Scan (61x111x1): Interpolated grid: dx=1.500 mm, dy=1.500 mm
 Maximum value of SAR (interpolated) = 0.312 W/kg

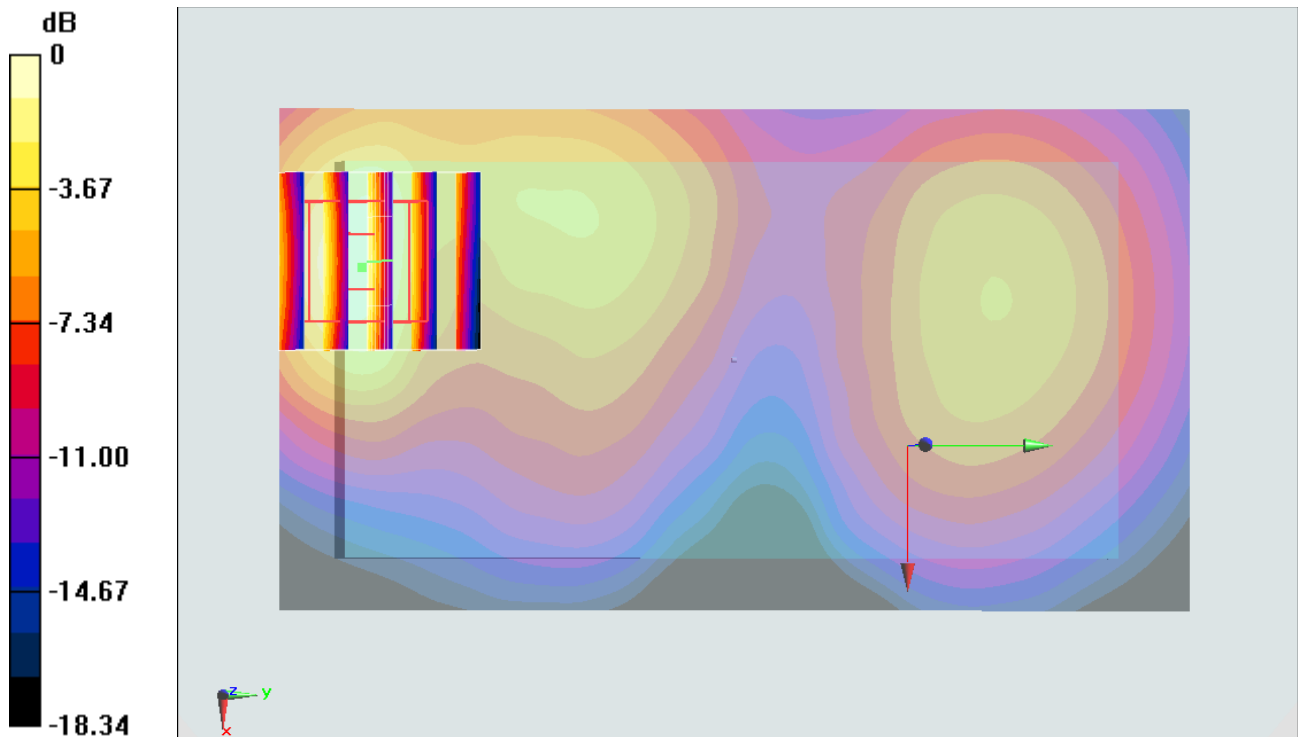
Configuration/Ch512/Zoom Scan (5x5x7)/Cube 0: Measurement grid: dx=8mm, dy=8mm, dz=5mm

Reference Value = 14.613 V/m; Power Drift = -0.07 dB

Peak SAR (extrapolated) = 0.378 W/kg

SAR(1 g) = 0.223 W/kg; SAR(10 g) = 0.120 W/kg

Maximum value of SAR (measured) = 0.305 W/kg



0 dB = 0.305 W/kg = -5.16 dBW/kg

#15_WCDMA V_RMC 12.2Kbps_Back_1.5cm_Ch4233

Communication System: WCDMA ; Frequency: 846.6 MHz; Duty Cycle: 1:1

Medium: MSL_850_141026 Medium parameters used: $f = 847 \text{ MHz}$; $\sigma = 0.974 \text{ S/m}$; $\epsilon_r = 54.43$; $\rho = 1000 \text{ kg/m}^3$

Ambient Temperature : $23.6 \text{ }^\circ\text{C}$; Liquid Temperature : $22.6 \text{ }^\circ\text{C}$

DASY5 Configuration:

- Probe: EX3DV4 - SN3955; ConvF(9.81, 9.81, 9.81); Calibrated: 2013/12/23;
- Sensor-Surface: 2mm (Mechanical Surface Detection)
- Electronics: DAE4 Sn1399; Calibrated: 2013/11/7
- Phantom: SAM_Right; Type: QD000P40CC; Serial: TP:1383
- Measurement SW: DASY52, Version 52.8 (7); SEMCAD X Version 14.6.10 (7164)

Configuration/Ch4233/Area Scan (61x111x1): Interpolated grid: $dx=1.500 \text{ mm}$, $dy=1.500 \text{ mm}$

Maximum value of SAR (interpolated) = 0.603 W/kg

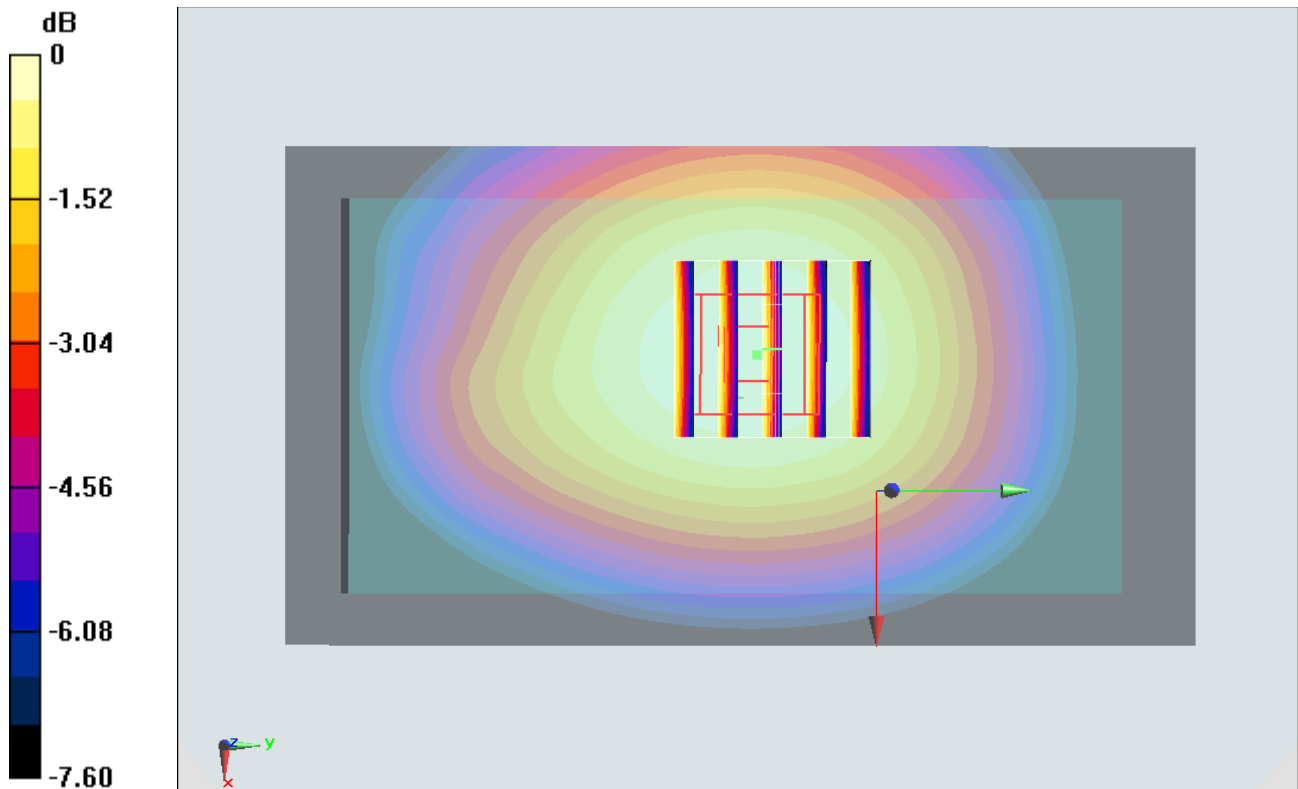
Configuration/Ch4233/Zoom Scan (5x5x7)/Cube 0: Measurement grid: $dx=8\text{mm}$, $dy=8\text{mm}$, $dz=5\text{mm}$

Reference Value = 25.398 V/m ; Power Drift = -0.02 dB

Peak SAR (extrapolated) = 0.661 W/kg

SAR(1 g) = 0.524 W/kg ; SAR(10 g) = 0.402 W/kg

Maximum value of SAR (measured) = 0.601 W/kg



0 dB = $0.601 \text{ W/kg} = -2.21 \text{ dBW/kg}$

#16_WCDMA II_RMC 12.2Kbps_Back_1.5cm_Ch9400

Communication System: WCDMA; Frequency: 1880 MHz; Duty Cycle: 1:1

Medium: MSL_1900_141023 Medium parameters used: $f = 1880$ MHz; $\sigma = 1.523$ S/m; $\epsilon_r = 55.152$; $\rho = 1000$ kg/m³

Ambient Temperature : 23.5 °C; Liquid Temperature : 22.5 °C

DASY5 Configuration:

- Probe: EX3DV4 - SN3925; ConvF(7.87, 7.87, 7.87); Calibrated: 2014/5/22;
- Sensor-Surface: 2mm (Mechanical Surface Detection)
- Electronics: DAE3 Sn495; Calibrated: 2014/5/19
- Phantom: SAM-Left; Type: QD 000 P40 C; Serial: TP-1478
- Measurement SW: DASY52, Version 52.8 (8); SEMCAD X Version 14.6.10 (7331)

Configuration/Ch9400/Area Scan (61x111x1): Interpolated grid: dx=1.500 mm, dy=1.500 mm
 Maximum value of SAR (interpolated) = 0.638 W/kg

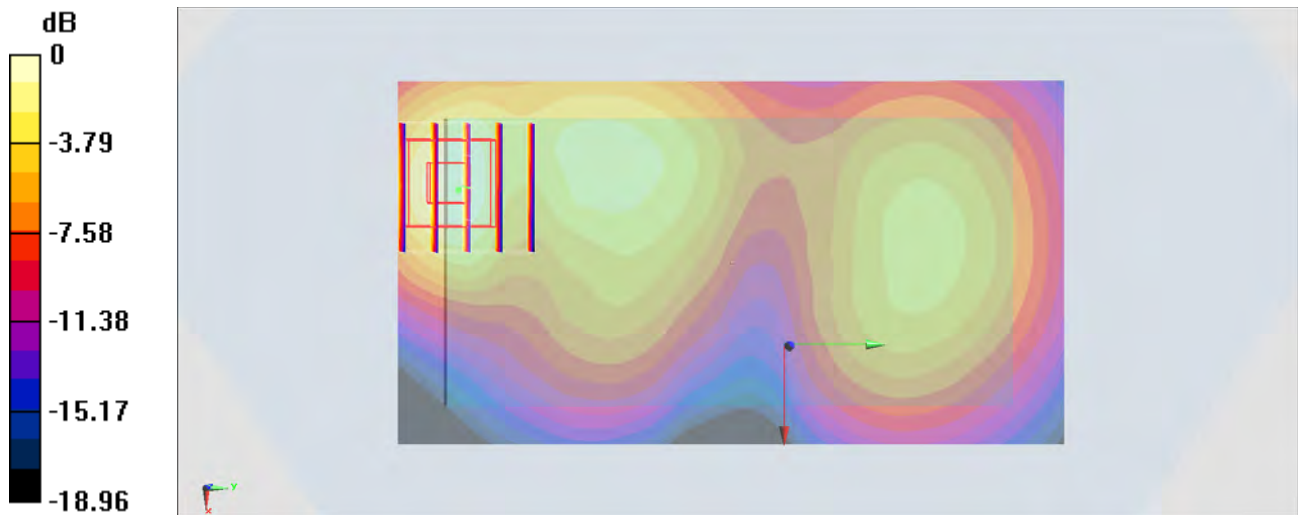
Configuration/Ch9400/Zoom Scan (5x5x7)/Cube 0: Measurement grid: dx=8mm, dy=8mm, dz=5mm

Reference Value = 20.65 V/m; Power Drift = 0.09 dB

Peak SAR (extrapolated) = 0.788 W/kg

SAR(1 g) = 0.460 W/kg; SAR(10 g) = 0.242 W/kg

Maximum value of SAR (measured) = 0.616 W/kg



0 dB = 0.616 W/kg = -2.10 dBW/kg

#17_WLAN2.4GHz_802.11b 1Mbps_Back_1.5cm_Ch11

Communication System: 802.11b ; Frequency: 2462 MHz;Duty Cycle: 1:1.024

Medium: MSL_2450_141111 Medium parameters used: $f = 2462$ MHz; $\sigma = 1.944$ S/m; $\epsilon_r = 52.437$; $\rho = 1000$ kg/m³

Ambient Temperature : 23.5 °C ; Liquid Temperature : 22.5 °C

DASY5 Configuration:

- Probe: EX3DV4 - SN3697; ConvF(6.78, 6.78, 6.78); Calibrated: 2014/9/29;
- Sensor-Surface: 2mm (Mechanical Surface Detection)
- Electronics: DAE4 Sn1388; Calibrated: 2014/9/24
- Phantom: SAM_Left; Type: QD000P40CD; Serial: TP:1542
- Measurement SW: DASY52, Version 52.8 (7);SEMCAD X Version 14.6.10 (7164)

Configuration/Ch11/Area Scan (81x141x1): Interpolated grid: dx=1.200 mm, dy=1.200 mm
 Maximum value of SAR (interpolated) = 0.234 W/kg

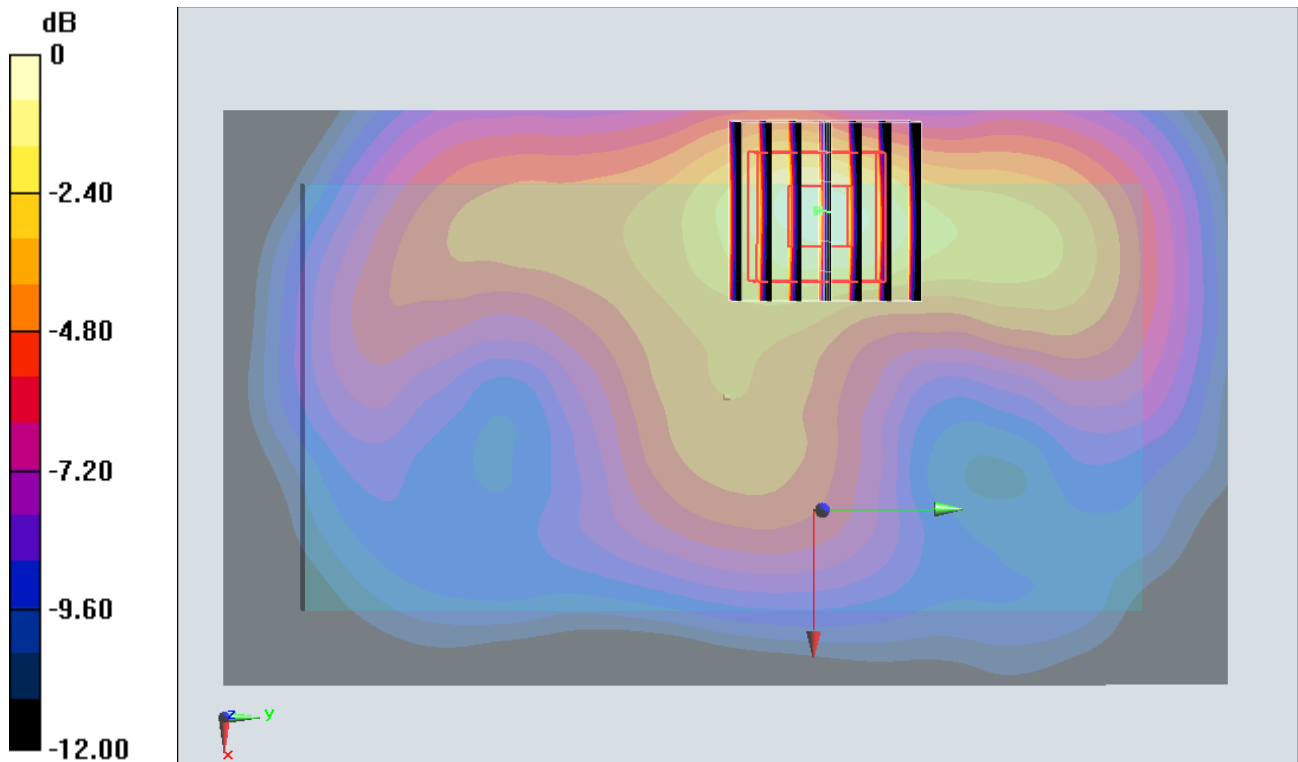
Configuration/Ch11/Zoom Scan (7x7x7)/Cube 0: Measurement grid: dx=5mm, dy=5mm, dz=5mm

Reference Value = 11.324 V/m; Power Drift = -0.15 dB

Peak SAR (extrapolated) = 0.330 W/kg

SAR(1 g) = 0.172 W/kg; SAR(10 g) = 0.087 W/kg

Maximum value of SAR (measured) = 0.248 W/kg



0 dB = 0.248 W/kg = -6.06 dBW/kg

#18_Bluetooth_1Mbps_Back_1.5cm_Ch39

Communication System: Bluetooth; Frequency: 2441 MHz; Duty Cycle: 1:1.2

Medium: MSL_2450_141031 Medium parameters used: $f = 2441$ MHz; $\sigma = 2.006$ S/m; $\epsilon_r = 53.949$; $\rho = 1000$ kg/m³

Ambient Temperature : 23.7 °C; Liquid Temperature : 22.7 °C

DASY5 Configuration:

- Probe: EX3DV4 - SN3955; ConvF(7.42, 7.42, 7.42); Calibrated: 2013/11/12;
- Sensor-Surface: 2mm (Mechanical Surface Detection)
- Electronics: DAE4 Sn1399; Calibrated: 2013/11/7
- Phantom: SAM_Left; Type: QD000P40CD; Serial: TP:1542
- Measurement SW: DASY52, Version 52.8 (7); SEMCAD X Version 14.6.10 (7164)

Configuration/Ch39/Area Scan (81x141x1): Interpolated grid: dx=1.200 mm, dy=1.200 mm
 Maximum value of SAR (interpolated) = 0.0295 W/kg

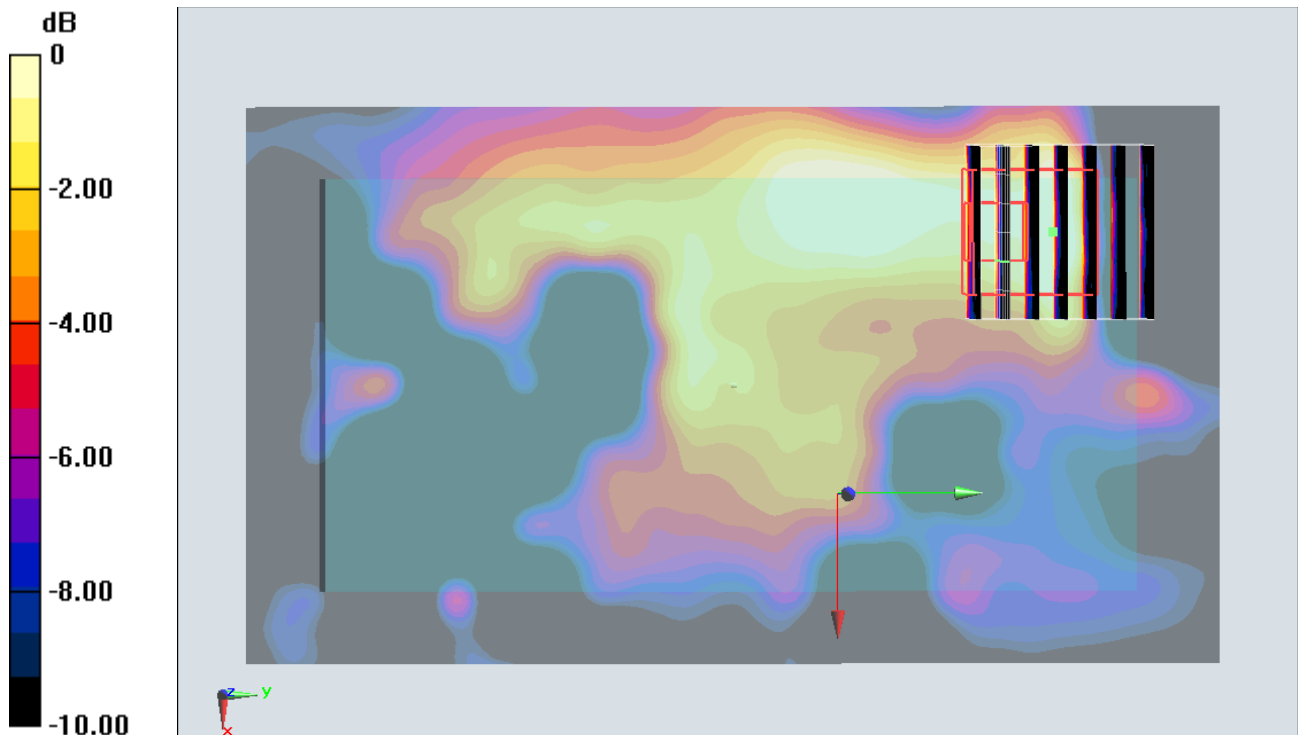
Configuration/Ch39/Zoom Scan (7x7x7)/Cube 0: Measurement grid: dx=5mm, dy=5mm, dz=5mm

Reference Value = 2.677 V/m; Power Drift = -0.06 dB

Peak SAR (extrapolated) = 0.0320 W/kg

SAR(1 g) = 0.012 W/kg; SAR(10 g) = 0.00646 W/kg

Maximum value of SAR (measured) = 0.0201 W/kg



0 dB = 0.0201 W/kg = -16.97 dBW/kg