

### #01\_CDMA BC0\_1xRTT RC3 SO55\_Left Cheek\_Ch384

Communication System: CDMA; Frequency: 836.52 MHz; Duty Cycle: 1:1

Medium: HSL\_850\_141222 Medium parameters used:  $f = 837$  MHz;  $\sigma = 0.904$  S/m;  $\epsilon_r = 43.318$ ;  $\rho = 1000$  kg/m<sup>3</sup>

Ambient Temperature : 23.4 °C; Liquid Temperature : 22.4 °C

DASY5 Configuration:

- Probe: EX3DV4 - SN3931; ConvF(10.32, 10.32, 10.32); Calibrated: 2014/9/25;
- Sensor-Surface: 2mm (Mechanical Surface Detection)
- Electronics: DAE3 Sn577; Calibrated: 2014/10/6
- Phantom: SAM-Left; Type: QD 000 P40 C; Serial: TP-1478
- Measurement SW: DASY52, Version 52.8 (8); SEMCAD X Version 14.6.10 (7331)

**Configuration/Ch384/Area Scan (61x101x1):** Interpolated grid: dx=1.500 mm, dy=1.500 mm  
 Maximum value of SAR (interpolated) = 0.475 W/kg

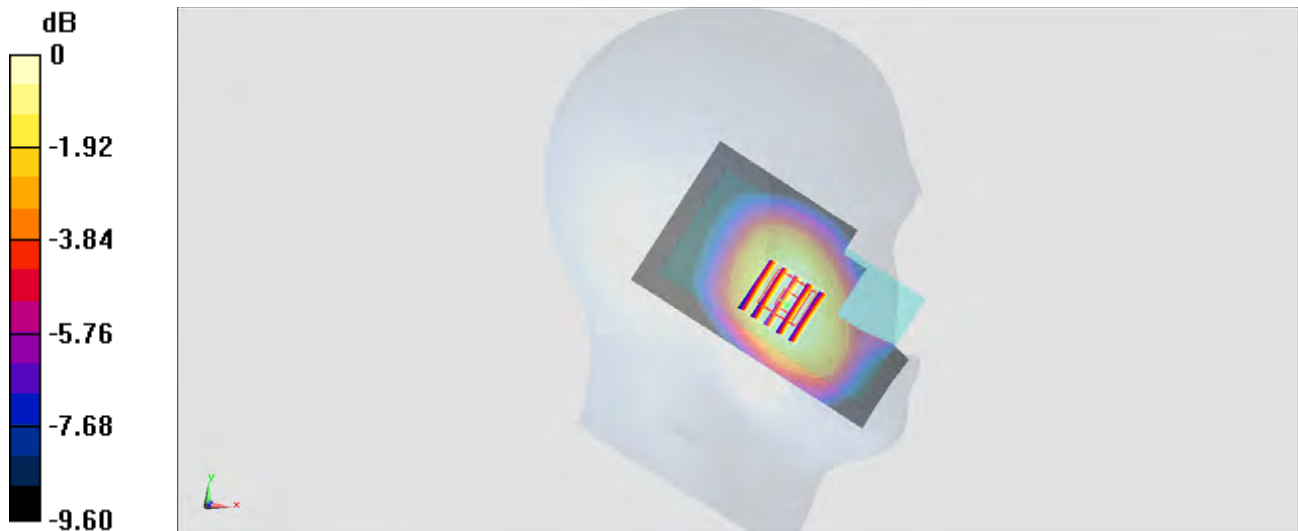
**Configuration/Ch384/Zoom Scan (5x5x7)/Cube 0:** Measurement grid: dx=8mm, dy=8mm, dz=5mm

Reference Value = 22.93 V/m; Power Drift = 0.06 dB

Peak SAR (extrapolated) = 0.534 W/kg

**SAR(1 g) = 0.414 W/kg; SAR(10 g) = 0.312 W/kg**

Maximum value of SAR (measured) = 0.478 W/kg



0 dB = 0.478 W/kg = -3.21 dBW/kg

## #02\_CDMA BC1\_1xRTT RC3 SO55\_Left Cheek\_Ch25

Communication System: CDMA; Frequency: 1851.25 MHz; Duty Cycle: 1:1  
 Medium: HSL\_1900\_141222 Medium parameters used:  $f = 1851.25 \text{ MHz}$ ;  $\sigma = 1.336 \text{ S/m}$ ;  $\epsilon_r = 40.988$ ;  
 $\rho = 1000 \text{ kg/m}^3$   
 Ambient Temperature :  $23.6 \text{ }^\circ\text{C}$ ; Liquid Temperature :  $22.6 \text{ }^\circ\text{C}$

### DASY5 Configuration:

- Probe: EX3DV4 - SN3931; ConvF(8.17, 8.17, 8.17); Calibrated: 2014/9/25;
- Sensor-Surface: 2mm (Mechanical Surface Detection)
- Electronics: DAE3 Sn577; Calibrated: 2014/10/6
- Phantom: SAM-Right; Type: QD 000 P40 C; Serial: TP-1446
- Measurement SW: DASY52, Version 52.8 (8); SEMCAD X Version 14.6.10 (7331)

**Configuration/Ch25/Area Scan (61x101x1):** Interpolated grid:  $dx=1.500 \text{ mm}$ ,  $dy=1.500 \text{ mm}$   
 Maximum value of SAR (interpolated) =  $0.952 \text{ W/kg}$

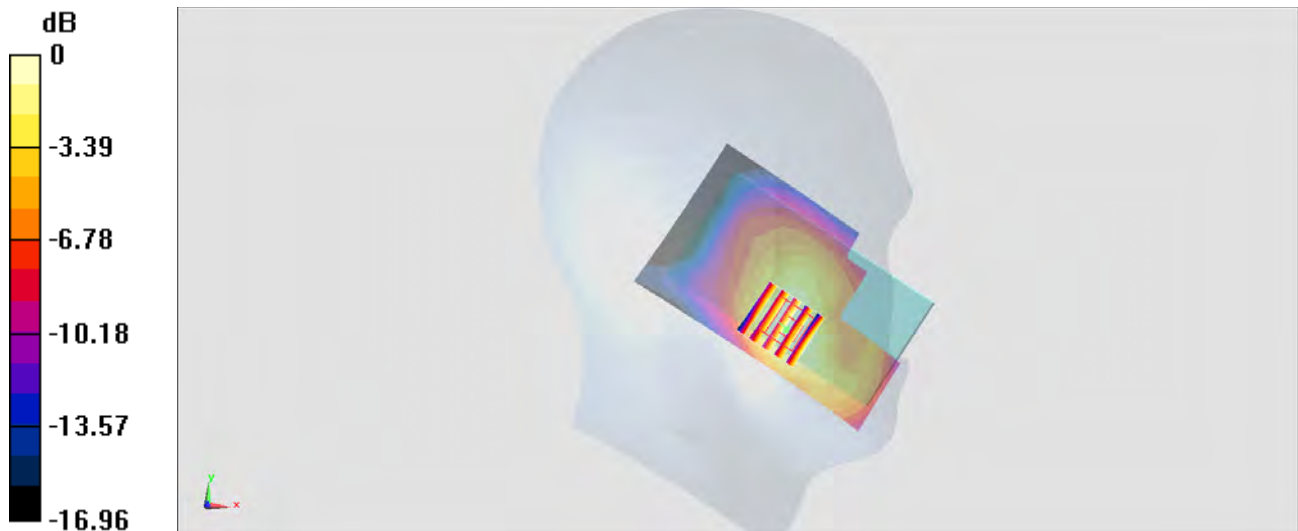
**Configuration/Ch25/Zoom Scan (5x5x7)/Cube 0:** Measurement grid:  $dx=8\text{mm}$ ,  $dy=8\text{mm}$ ,  
 $dz=5\text{mm}$

Reference Value =  $25.19 \text{ V/m}$ ; Power Drift =  $-0.06 \text{ dB}$

Peak SAR (extrapolated) =  $1.10 \text{ W/kg}$

**SAR(1 g) =  $0.743 \text{ W/kg}$ ; SAR(10 g) =  $0.471 \text{ W/kg}$**

Maximum value of SAR (measured) =  $0.928 \text{ W/kg}$



0 dB =  $0.928 \text{ W/kg} = -0.32 \text{ dBW/kg}$

**#03\_LTE Band 13\_10M\_QPSK\_1RB\_0offset\_Right Cheek\_Ch23230**

Communication System: LTE; Frequency: 782 MHz; Duty Cycle: 1:1

Medium: HSL\_750\_141222 Medium parameters used:  $f = 782 \text{ MHz}$ ;  $\sigma = 0.898 \text{ S/m}$ ;  $\epsilon_r = 39.981$ ;  $\rho = 1000 \text{ kg/m}^3$

Ambient Temperature :  $23.5 \text{ }^\circ\text{C}$ ; Liquid Temperature :  $22.5 \text{ }^\circ\text{C}$

DASY5 Configuration:

- Probe: EX3DV4 - SN3931; ConvF(10.75, 10.75, 10.75); Calibrated: 2014/9/25;
- Sensor-Surface: 2mm (Mechanical Surface Detection)
- Electronics: DAE3 Sn577; Calibrated: 2014/10/6
- Phantom: SAM-Left; Type: QD 000 P40 C; Serial: TP-1478
- Measurement SW: DASY52, Version 52.8 (8); SEMCAD X Version 14.6.10 (7331)

**Configuration/Ch23230/Area Scan (61x101x1):** Interpolated grid:  $dx=1.500 \text{ mm}$ ,  $dy=1.500 \text{ mm}$

Maximum value of SAR (interpolated) =  $0.437 \text{ W/kg}$

**Configuration/Ch23230/Zoom Scan (5x5x7)/Cube 0:** Measurement grid:  $dx=8\text{mm}$ ,  $dy=8\text{mm}$ ,  $dz=5\text{mm}$

Reference Value =  $22.78 \text{ V/m}$ ; Power Drift =  $-0.12 \text{ dB}$

Peak SAR (extrapolated) =  $0.487 \text{ W/kg}$

**SAR(1 g) =  $0.367 \text{ W/kg}$ ; SAR(10 g) =  $0.274 \text{ W/kg}$**

Maximum value of SAR (measured) =  $0.423 \text{ W/kg}$



$0 \text{ dB} = 0.423 \text{ W/kg} = -3.74 \text{ dBW/kg}$

### #04\_CDMA BC0\_RTAP 153.6Kbps\_Back\_1cm\_Ch384

Communication System: CDMA; Frequency: 836.52 MHz; Duty Cycle: 1:1

Medium: MSL\_850\_141223 Medium parameters used:  $f = 837$  MHz;  $\sigma = 0.966$  S/m;  $\epsilon_r = 54.452$ ;  $\rho = 1000$  kg/m<sup>3</sup>

Ambient Temperature : 23.3 °C; Liquid Temperature : 22.3 °C

DASY5 Configuration:

- Probe: EX3DV4 - SN3931; ConvF(10.13, 10.13, 10.13); Calibrated: 2014/9/25;
- Sensor-Surface: 2mm (Mechanical Surface Detection)
- Electronics: DAE3 Sn577; Calibrated: 2014/10/6
- Phantom: SAM-Left; Type: QD 000 P40 C; Serial: TP-1478
- Measurement SW: DASY52, Version 52.8 (8); SEMCAD X Version 14.6.10 (7331)

**Configuration/Ch384/Area Scan (61x111x1):** Interpolated grid: dx=1.500 mm, dy=1.500 mm

Maximum value of SAR (interpolated) = 0.884 W/kg

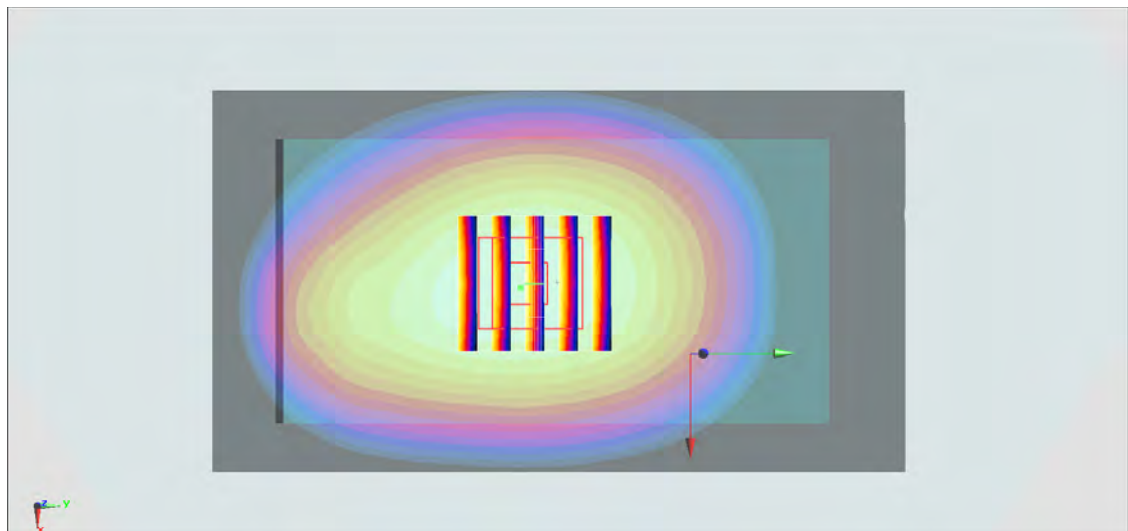
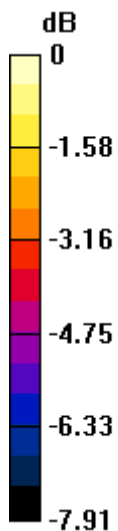
**Configuration/Ch384/Zoom Scan (5x5x7)/Cube 0:** Measurement grid: dx=8mm, dy=8mm, dz=5mm

Reference Value = 30.95 V/m; Power Drift = -0.10 dB

Peak SAR (extrapolated) = 0.955 W/kg

**SAR(1 g) = 0.765 W/kg; SAR(10 g) = 0.581 W/kg**

Maximum value of SAR (measured) = 0.877 W/kg



0 dB = 0.877 W/kg = -0.57 dBW/kg

### #05\_CDMA BC1\_RTAP 153.6Kbps\_Bottom Side\_1cm\_Ch1175

Communication System: CDMA; Frequency: 1908.75 MHz; Duty Cycle: 1:1  
 Medium: MSL\_1900\_141229 Medium parameters used:  $f = 1909$  MHz;  $\sigma = 1.543$  S/m;  $\epsilon_r = 51.95$ ;  $\rho = 1000$  kg/m<sup>3</sup>  
 Ambient Temperature : 23.4 °C; Liquid Temperature : 22.4 °C

**DASY5 Configuration:**

- Probe: EX3DV4 - SN3955; ConvF(7.89, 7.89, 7.89); Calibrated: 2014/11/21;
- Sensor-Surface: 2mm (Mechanical Surface Detection)
- Electronics: DAE4 Sn1399; Calibrated: 2014/11/13
- Phantom: SAM-Right; Type: QD 000 P40 C; Serial: TP-1446
- Measurement SW: DASY52, Version 52.8 (8); SEMCAD X Version 14.6.10 (7331)

**Configuration/Ch1175/Area Scan (41x61x1):** Interpolated grid: dx=1.500 mm, dy=1.500 mm  
 Maximum value of SAR (interpolated) = 1.22 W/kg

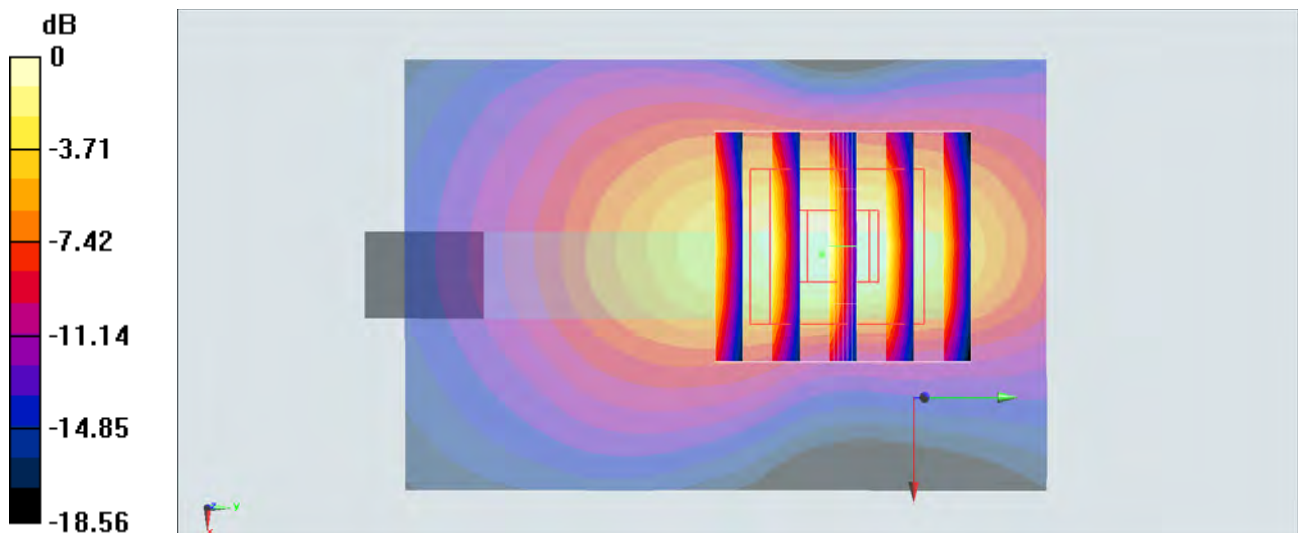
**Configuration/Ch1175/Zoom Scan (5x5x7)/Cube 0:** Measurement grid: dx=8mm, dy=8mm, dz=5mm

Reference Value = 26.83 V/m; Power Drift = 0.16 dB

Peak SAR (extrapolated) = 1.50 W/kg

**SAR(1 g) = 0.859 W/kg; SAR(10 g) = 0.430 W/kg**

Maximum value of SAR (measured) = 1.21 W/kg



0 dB = 1.21 W/kg = 0.83 dBW/kg

**#06\_LTE Band 13\_10M\_1RB\_0offset\_Back\_1cm\_Ch23230**

Communication System: LTE; Frequency: 782 MHz; Duty Cycle: 1:1

Medium: MSL\_750\_141223 Medium parameters used:  $f = 782 \text{ MHz}$ ;  $\sigma = 0.992 \text{ S/m}$ ;  $\epsilon_r = 53.275$ ;  $\rho = 1000 \text{ kg/m}^3$

Ambient Temperature :  $23.6 \text{ }^\circ\text{C}$ ; Liquid Temperature :  $22.6 \text{ }^\circ\text{C}$

DASY5 Configuration:

- Probe: EX3DV4 - SN3931; ConvF(10.1, 10.1, 10.1); Calibrated: 2014/9/25;
- Sensor-Surface: 2mm (Mechanical Surface Detection)
- Electronics: DAE3 Sn577; Calibrated: 2014/10/6
- Phantom: SAM-Left; Type: QD 000 P40 C; Serial: TP-1478
- Measurement SW: DASY52, Version 52.8 (8); SEMCAD X Version 14.6.10 (7331)

**Configuration/Ch23230/Area Scan (61x101x1):** Interpolated grid:  $dx=1.500 \text{ mm}$ ,  $dy=1.500 \text{ mm}$

Maximum value of SAR (interpolated) =  $0.404 \text{ W/kg}$

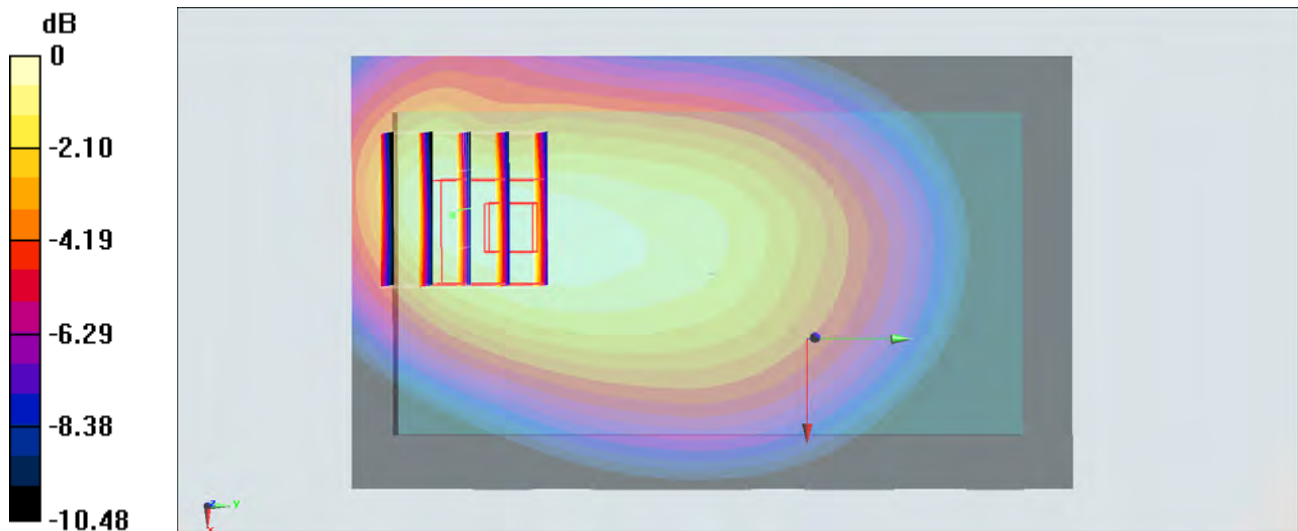
**Configuration/Ch23230/Zoom Scan (5x5x7)/Cube 0:** Measurement grid:  $dx=8\text{mm}$ ,  $dy=8\text{mm}$ ,  $dz=5\text{mm}$

Reference Value =  $20.31 \text{ V/m}$ ; Power Drift =  $-0.01 \text{ dB}$

Peak SAR (extrapolated) =  $0.479 \text{ W/kg}$

**SAR(1 g) =  $0.324 \text{ W/kg}$ ; SAR(10 g) =  $0.219 \text{ W/kg}$**

Maximum value of SAR (measured) =  $0.404 \text{ W/kg}$



$0 \text{ dB} = 0.404 \text{ W/kg} = -3.94 \text{ dBW/kg}$

### #07\_CDMA BC0\_1xRTT RC3 SO32\_Back\_1.5cm\_Ch1013

Communication System: CDMA; Frequency: 824.7 MHz; Duty Cycle: 1:1

Medium: MSL\_850\_141229 Medium parameters used:  $f = 825 \text{ MHz}$ ;  $\sigma = 0.961 \text{ S/m}$ ;  $\epsilon_r = 53.121$ ;  $\rho = 1000 \text{ kg/m}^3$

Ambient Temperature :  $23.2 \text{ }^\circ\text{C}$ ; Liquid Temperature :  $22.2 \text{ }^\circ\text{C}$

DASY5 Configuration:

- Probe: EX3DV4 - SN3955; ConvF(10.03, 10.03, 10.03); Calibrated: 2014/11/21;
- Sensor-Surface: 2mm (Mechanical Surface Detection)
- Electronics: DAE4 Sn1399; Calibrated: 2014/11/13
- Phantom: SAM-Left; Type: QD 000 P40 C; Serial: TP-1478
- Measurement SW: DASY52, Version 52.8 (8); SEMCAD X Version 14.6.10 (7331)

**Configuration/Ch1013/Area Scan (61x101x1):** Interpolated grid:  $dx=1.500 \text{ mm}$ ,  $dy=1.500 \text{ mm}$

Maximum value of SAR (interpolated) =  $0.668 \text{ W/kg}$

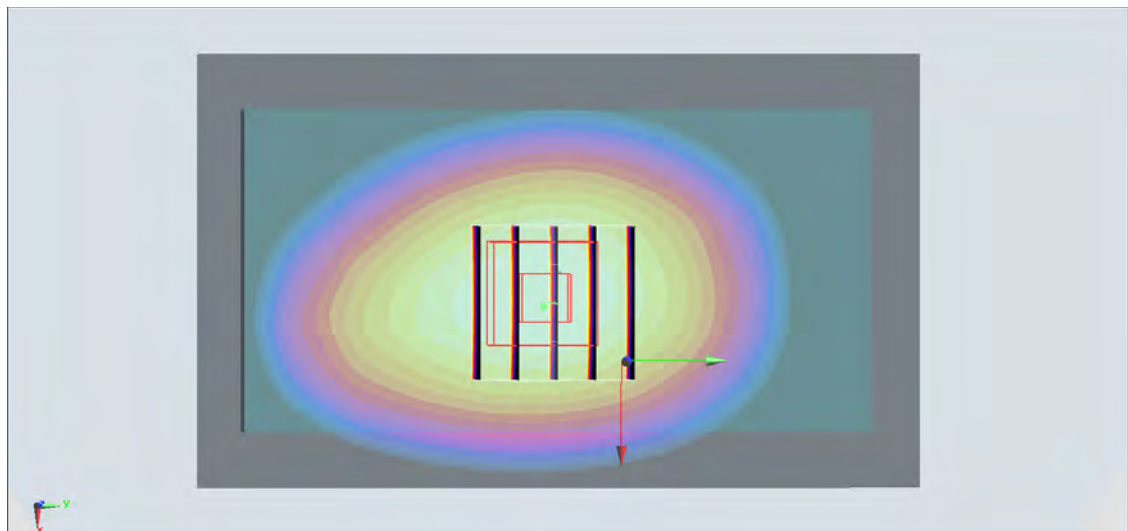
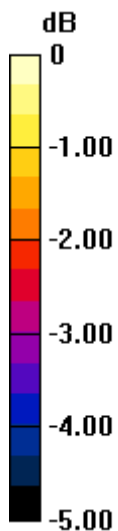
**Configuration/Ch1013/Zoom Scan (5x5x7)/Cube 0:** Measurement grid:  $dx=8\text{mm}$ ,  $dy=8\text{mm}$ ,  $dz=5\text{mm}$

Reference Value =  $26.57 \text{ V/m}$ ; Power Drift =  $-0.02 \text{ dB}$

Peak SAR (extrapolated) =  $0.730 \text{ W/kg}$

**SAR(1 g) =  $0.575 \text{ W/kg}$ ; SAR(10 g) =  $0.438 \text{ W/kg}$**

Maximum value of SAR (measured) =  $0.657 \text{ W/kg}$



0 dB =  $0.657 \text{ W/kg} = -1.82 \text{ dBW/kg}$

### #08\_CDMA BC1\_1xRTT RC3 SO32\_Front\_1.5cm\_Ch25

Communication System: CDMA; Frequency: 1851.25 MHz; Duty Cycle: 1:1  
 Medium: MSL\_1900\_141223 Medium parameters used:  $f = 1851.25 \text{ MHz}$ ;  $\sigma = 1.488 \text{ S/m}$ ;  $\epsilon_r = 52.871$ ;  
 $\rho = 1000 \text{ kg/m}^3$   
 Ambient Temperature :  $23.5 \text{ }^\circ\text{C}$ ; Liquid Temperature :  $22.5 \text{ }^\circ\text{C}$

**DASY5 Configuration:**

- Probe: EX3DV4 - SN3931; ConvF(7.8, 7.8, 7.8); Calibrated: 2014/9/25;
- Sensor-Surface: 2mm (Mechanical Surface Detection)
- Electronics: DAE3 Sn577; Calibrated: 2014/10/6
- Phantom: SAM-Right; Type: QD 000 P40 C; Serial: TP-1446
- Measurement SW: DASY52, Version 52.8 (8); SEMCAD X Version 14.6.10 (7331)

**Configuration/Ch25/Area Scan (61x101x1):** Interpolated grid:  $dx=1.500 \text{ mm}$ ,  $dy=1.500 \text{ mm}$   
 Maximum value of SAR (interpolated) =  $0.678 \text{ W/kg}$

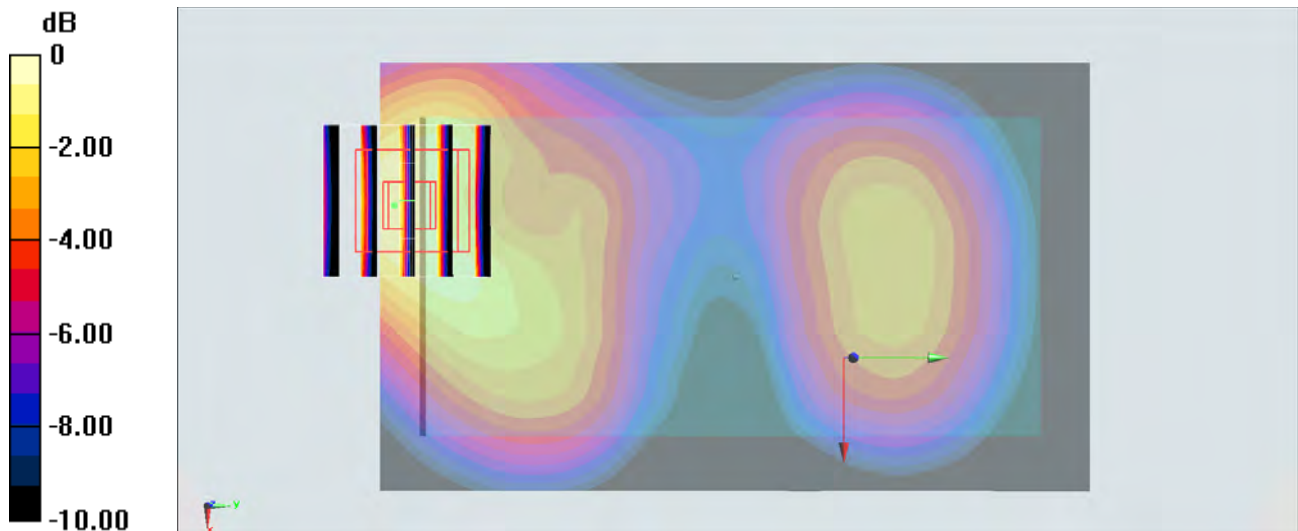
**Configuration/Ch25/Zoom Scan (5x5x7)/Cube 0:** Measurement grid:  $dx=8\text{mm}$ ,  $dy=8\text{mm}$ ,  
 $dz=5\text{mm}$

Reference Value =  $21.05 \text{ V/m}$ ; Power Drift =  $0.02 \text{ dB}$

Peak SAR (extrapolated) =  $0.978 \text{ W/kg}$

**SAR(1 g) =  $0.608 \text{ W/kg}$ ; SAR(10 g) =  $0.353 \text{ W/kg}$**

Maximum value of SAR (measured) =  $0.793 \text{ W/kg}$



$0 \text{ dB} = 0.793 \text{ W/kg} = -1.01 \text{ dBW/kg}$

**#09\_LTE Band 13\_10M\_QPSK\_1RB\_0offset\_Back\_1.5cm\_Ch23230**

Communication System: LTE; Frequency: 782 MHz; Duty Cycle: 1:1

Medium: MSL\_750\_141229 Medium parameters used:  $f = 782 \text{ MHz}$ ;  $\sigma = 1.002 \text{ S/m}$ ;  $\epsilon_r = 53.679$ ;  $\rho = 1000 \text{ kg/m}^3$

Ambient Temperature :  $23.6 \text{ }^\circ\text{C}$ ; Liquid Temperature :  $22.6 \text{ }^\circ\text{C}$

DASY5 Configuration:

- Probe: EX3DV4 - SN3955; ConvF(10.16, 10.16, 10.16); Calibrated: 2014/11/21;
- Sensor-Surface: 2mm (Mechanical Surface Detection)
- Electronics: DAE4 Sn1399; Calibrated: 2014/11/13
- Phantom: SAM-Left; Type: QD 000 P40 C; Serial: TP-1478
- Measurement SW: DASY52, Version 52.8 (8); SEMCAD X Version 14.6.10 (7331)

**Configuration/Ch23230/Area Scan (61x101x1):** Interpolated grid:  $dx=1.500 \text{ mm}$ ,  $dy=1.500 \text{ mm}$

Maximum value of SAR (interpolated) =  $0.259 \text{ W/kg}$

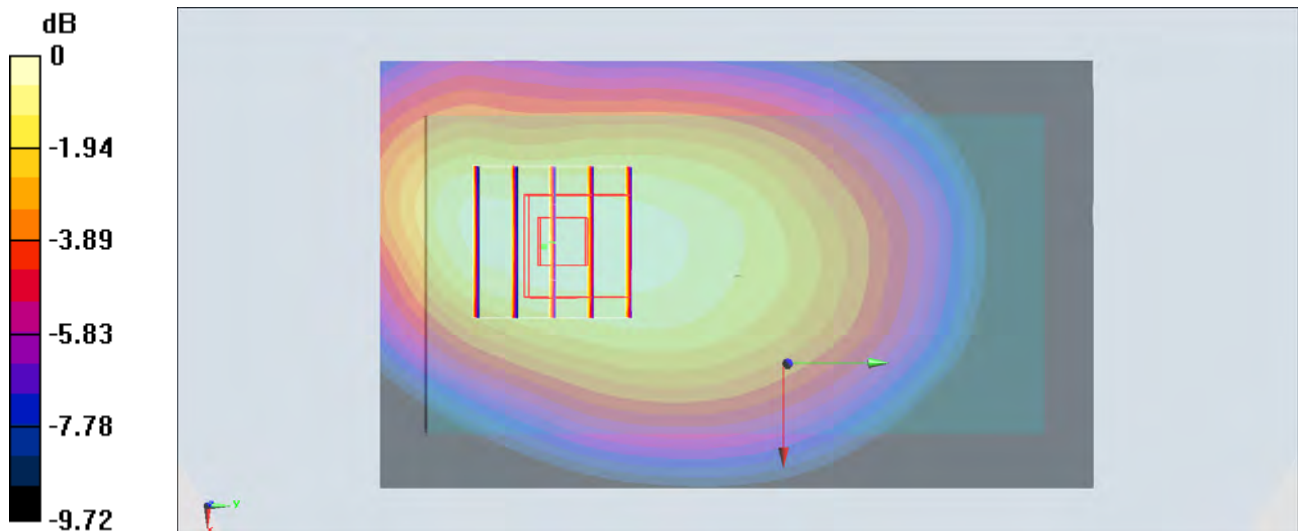
**Configuration/Ch23230/Zoom Scan (5x5x7)/Cube 0:** Measurement grid:  $dx=8\text{mm}$ ,  $dy=8\text{mm}$ ,  $dz=5\text{mm}$

Reference Value =  $15.92 \text{ V/m}$ ; Power Drift =  $0.14 \text{ dB}$

Peak SAR (extrapolated) =  $0.302 \text{ W/kg}$

**SAR(1 g) =  $0.223 \text{ W/kg}$ ; SAR(10 g) =  $0.165 \text{ W/kg}$**

Maximum value of SAR (measured) =  $0.268 \text{ W/kg}$



$0 \text{ dB} = 0.268 \text{ W/kg} = -5.72 \text{ dBW/kg}$