

#01_HAC_E_CDMA BC0_ 1xRTT, RC1 SO3, 18th Rate_Ch1013

Communication System: CDMA2000, RC1, SO3, 1/8th Rate 25 fr.; Frequency: 824.7 MHz; Duty Cycle: 1:17.7419

Medium: Air Medium parameters used: $\sigma = 0$ S/m, $\epsilon_r = 1$; $\rho = 1000$ kg/m³

Ambient Temperature : 23.3 °C

DASY5 Configuration

- Probe: ER3DV6 - SN2358; ConvF(1, 1, 1); Calibrated: 2014/1/30;
- Sensor-Surface: (Fix Surface)
- Electronics: DAE4 Sn778; Calibrated: 2014/8/21
- Phantom: HAC Test Arch with AMCC; Type: SD HAC P01 BA;
- Measurement SW: DASY52, Version 52.8 (7); SEMCAD X Version 14.6.10 (7164)

Ch1013/E Scan - ER3D: 15 mm from Probe Center to the Device/Hearing Aid

Compatibility Test (101x101x1): Interpolated grid: dx=0.5000 mm, dy=0.5000 mm

Device Reference Point: 0, 0, -6.3 mm

Reference Value = 24.26 V/m; Power Drift = 0.06 dB

Applied MIF = 3.26 dB

RF audio interference level = 29.11 dBV/m

Emission category: M4

MIF scaled E-field

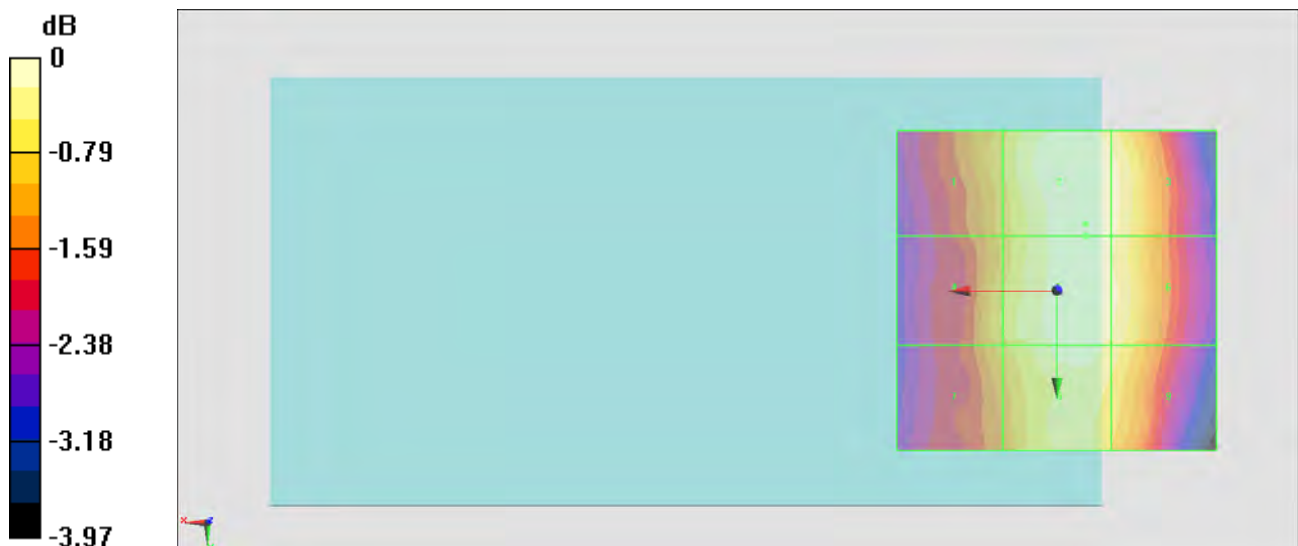
Grid 1 M4 28.34 dBV/m	Grid 2 M4 29.11 dBV/m	Grid 3 M4 28.98 dBV/m
Grid 4 M4 28.37 dBV/m	Grid 5 M4 29.09 dBV/m	Grid 6 M4 28.93 dBV/m
Grid 7 M4 28.21 dBV/m	Grid 8 M4 28.97 dBV/m	Grid 9 M4 28.76 dBV/m

Cursor:

Total = 29.11 dBV/m

E Category: M4

Location: -4.5, -10.5, 8.7 mm



$$0 \text{ dB} = 28.54 \text{ V/m} = 29.11 \text{ dBV/m}$$

#02_HAC_E_CDMA BC0_ 1xRTT, RC1 SO3, 18th Rate_Ch384

Communication System: CDMA2000, RC1, SO3, 1/8th Rate 25 fr.; Frequency: 836.52 MHz; Duty Cycle: 1:17.7419

Medium: Air Medium parameters used: $\sigma = 0$ S/m, $\epsilon_r = 1$; $\rho = 1000$ kg/m³

Ambient Temperature : 23.3 °C

DASY5 Configuration

- Probe: ER3DV6 - SN2358; ConvF(1, 1, 1); Calibrated: 2014/1/30;
- Sensor-Surface: (Fix Surface)
- Electronics: DAE4 Sn778; Calibrated: 2014/8/21
- Phantom: HAC Test Arch with AMCC; Type: SD HAC P01 BA;
- Measurement SW: DASY52, Version 52.8 (7); SEMCAD X Version 14.6.10 (7164)

Ch384/E Scan - ER3D: 15 mm from Probe Center to the Device/Hearing Aid

Compatibility Test (101x101x1): Interpolated grid: dx=0.5000 mm, dy=0.5000 mm

Device Reference Point: 0, 0, -6.3 mm

Reference Value = 28.09 V/m; Power Drift = 0.14 dB

Applied MIF = 3.26 dB

RF audio interference level = 30.53 dBV/m

Emission category: M4

MIF scaled E-field

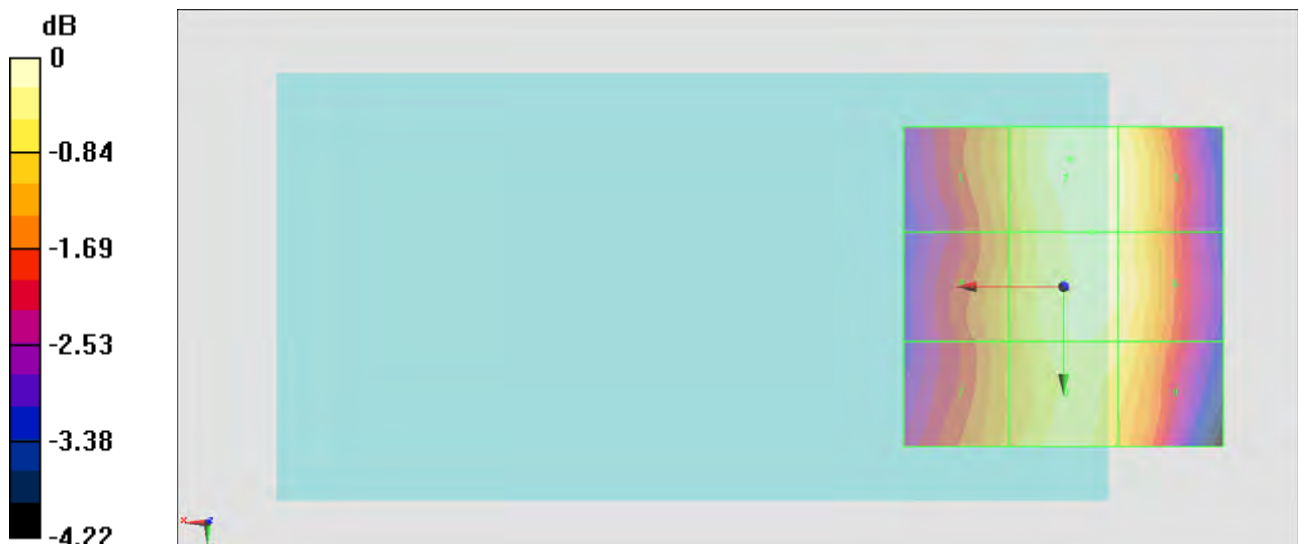
Grid 1 M4 29.62 dBV/m	Grid 2 M4 30.53 dBV/m	Grid 3 M4 30.35 dBV/m
Grid 4 M4 29.59 dBV/m	Grid 5 M4 30.4 dBV/m	Grid 6 M4 30.32 dBV/m
Grid 7 M4 29.58 dBV/m	Grid 8 M4 30.25 dBV/m	Grid 9 M4 30.09 dBV/m

Cursor:

Total = 30.53 dBV/m

E Category: M4

Location: -1, -20, 8.7 mm



$$0 \text{ dB} = 33.62 \text{ V/m} = 30.53 \text{ dBV/m}$$

#03_HAC_E_CDMA BC0_ 1xRTT, RC1 SO3, 18th Rate_Ch777

Communication System: CDMA2000, RC1, SO3, 1/8th Rate 25 fr.; Frequency: 848.31 MHz; Duty Cycle: 1:17.7419

Medium: Air Medium parameters used: $\sigma = 0$ S/m, $\epsilon_r = 1$; $\rho = 1000$ kg/m³

Ambient Temperature : 23.3 °C

DASY5 Configuration

- Probe: ER3DV6 - SN2358; ConvF(1, 1, 1); Calibrated: 2014/1/30;
- Sensor-Surface: (Fix Surface)
- Electronics: DAE4 Sn778; Calibrated: 2014/8/21
- Phantom: HAC Test Arch with AMCC; Type: SD HAC P01 BA;
- Measurement SW: DASY52, Version 52.8 (7); SEMCAD X Version 14.6.10 (7164)

Ch777/E Scan - ER3D: 15 mm from Probe Center to the Device/Hearing Aid

Compatibility Test (101x101x1): Interpolated grid: dx=0.5000 mm, dy=0.5000 mm

Device Reference Point: 0, 0, -6.3 mm

Reference Value = 26.77 V/m; Power Drift = -0.08 dB

Applied MIF = 3.26 dB

RF audio interference level = 30.27 dBV/m

Emission category: M4

MIF scaled E-field

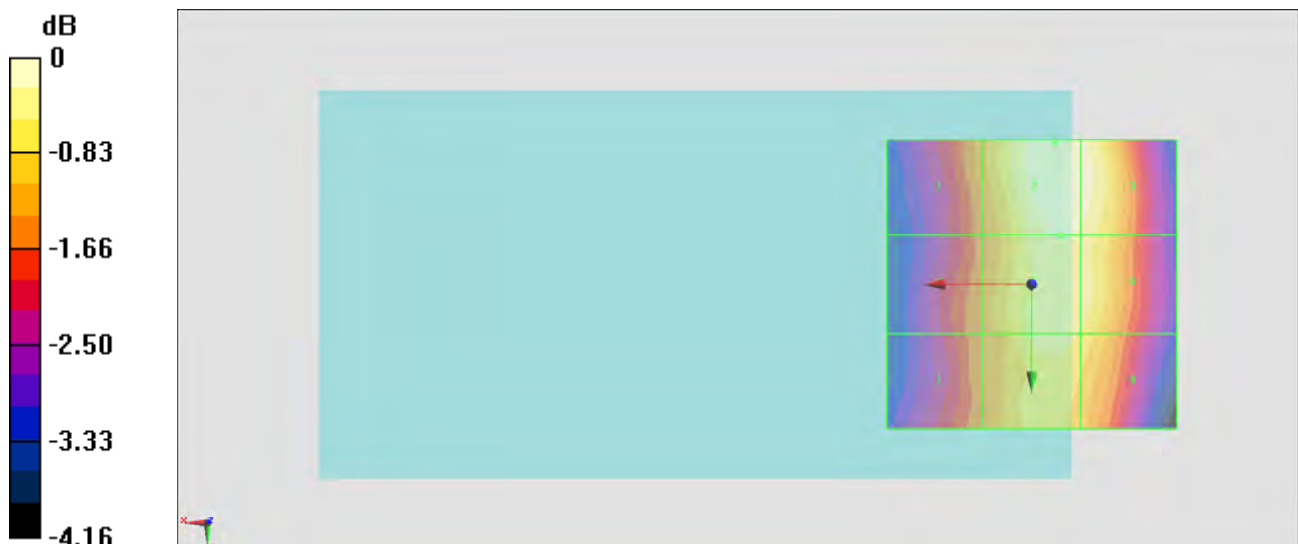
Grid 1 M4 29.09 dBV/m	Grid 2 M4 30.27 dBV/m	Grid 3 M4 30.2 dBV/m
Grid 4 M4 28.95 dBV/m	Grid 5 M4 30.04 dBV/m	Grid 6 M4 29.94 dBV/m
Grid 7 M4 28.91 dBV/m	Grid 8 M4 29.84 dBV/m	Grid 9 M4 29.68 dBV/m

Cursor:

Total = 30.27 dBV/m

E Category: M4

Location: -4, -24.5, 8.7 mm



$$0 \text{ dB} = 32.62 \text{ V/m} = 30.27 \text{ dBV/m}$$

#04_HAC_E_CDMA BC1_ 1xRTT, RC1 SO3, 18th Rate_Ch25

Communication System: CDMA2000, RC1, SO3, 1/8th Rate 25 fr.; Frequency: 1851.25 MHz; Duty Cycle: 1:17.7419

Medium: Air Medium parameters used: $\sigma = 0$ S/m, $\epsilon_r = 1$; $\rho = 1000$ kg/m³

Ambient Temperature : 23.3 °C

DASY5 Configuration

- Probe: ER3DV6 - SN2358; ConvF(1, 1, 1); Calibrated: 2014/1/30;
- Sensor-Surface: (Fix Surface)
- Electronics: DAE4 Sn778; Calibrated: 2014/8/21
- Phantom: HAC Test Arch with AMCC; Type: SD HAC P01 BA;
- Measurement SW: DASY52, Version 52.8 (7); SEMCAD X Version 14.6.10 (7164)

Ch25/E Scan - ER3D: 15 mm from Probe Center to the Device/Hearing Aid Compatibility Test (101x101x1): Interpolated grid: dx=0.5000 mm, dy=0.5000 mm

Device Reference Point: 0, 0, -6.3 mm

Reference Value = 18.73 V/m; Power Drift = -0.05 dB

Applied MIF = 3.26 dB

RF audio interference level = 27.24 dBV/m

Emission category: M4

MIF scaled E-field

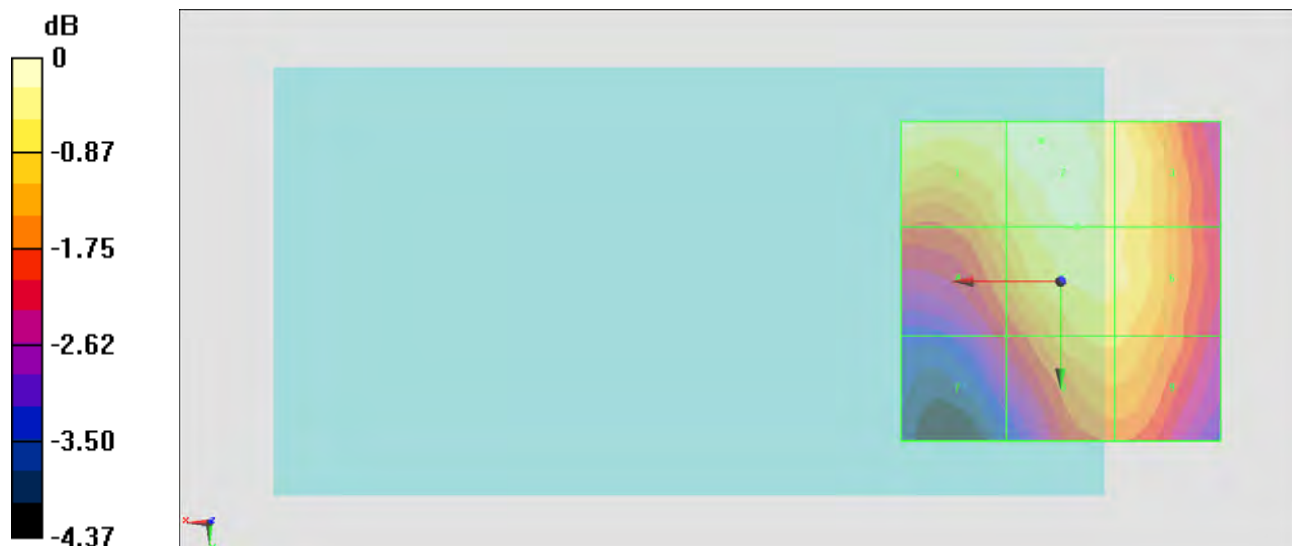
Grid 1 M4 27.12 dBV/m	Grid 2 M4 27.24 dBV/m	Grid 3 M4 26.9 dBV/m
Grid 4 M4 26.36 dBV/m	Grid 5 M4 26.95 dBV/m	Grid 6 M4 26.76 dBV/m
Grid 7 M4 25.17 dBV/m	Grid 8 M4 26.46 dBV/m	Grid 9 M4 26.44 dBV/m

Cursor:

Total = 27.24 dBV/m

E Category: M4

Location: 3, -22, 8.7 mm



$$0 \text{ dB} = 23.03 \text{ V/m} = 27.25 \text{ dBV/m}$$

#05_HAC_E_CDMA BC1_ 1xRTT, RC1 SO3, 18th Rate_Ch600

Communication System: CDMA2000, RC1, SO3, 1/8th Rate 25 fr.; Frequency: 1880 MHz; Duty Cycle: 1:17.7419

Medium: Air Medium parameters used: $\sigma = 0$ S/m, $\epsilon_r = 1$; $\rho = 1000$ kg/m³

Ambient Temperature : 23.3 °C

DASY5 Configuration

- Probe: ER3DV6 - SN2358; ConvF(1, 1, 1); Calibrated: 2014/1/30;
- Sensor-Surface: (Fix Surface)
- Electronics: DAE4 Sn778; Calibrated: 2014/8/21
- Phantom: HAC Test Arch with AMCC; Type: SD HAC P01 BA;
- Measurement SW: DASY52, Version 52.8 (7); SEMCAD X Version 14.6.10 (7164)

Ch600/E Scan - ER3D: 15 mm from Probe Center to the Device/Hearing Aid

Compatibility Test (101x101x1): Interpolated grid: dx=0.5000 mm, dy=0.5000 mm

Device Reference Point: 0, 0, -6.3 mm

Reference Value = 17.70 V/m; Power Drift = -0.06 dB

Applied MIF = 3.26 dB

RF audio interference level = 26.68 dBV/m

Emission category: M4

MIF scaled E-field

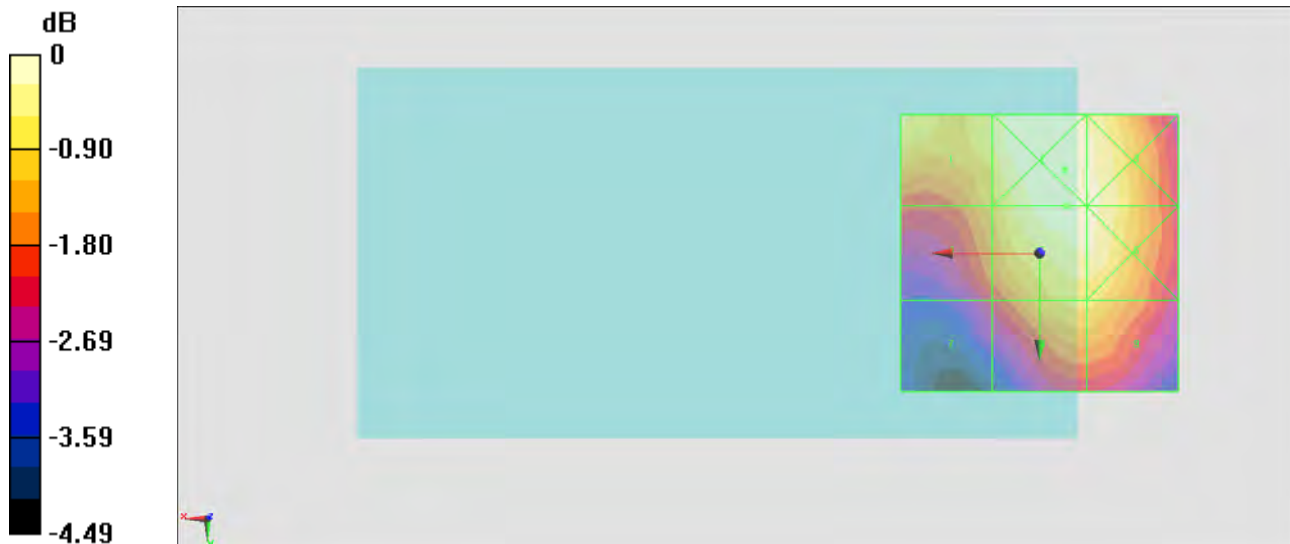
Grid 1 M4 26.33 dBV/m	Grid 2 M4 26.78 dBV/m	Grid 3 M4 26.65 dBV/m
Grid 4 M4 25.75 dBV/m	Grid 5 M4 26.68 dBV/m	Grid 6 M4 26.63 dBV/m
Grid 7 M4 24.61 dBV/m	Grid 8 M4 25.99 dBV/m	Grid 9 M4 25.98 dBV/m

Cursor:

Total = 26.78 dBV/m

E Category: M4

Location: -4.5, -15, 8.7 mm



0 dB = 21.83 V/m = 26.78 dBV/m

#06_HAC_E_CDMA BC1_ 1xRTT, RC1 SO3, 18th Rate_Ch1175

Communication System: CDMA2000, RC1, SO3, 1/8th Rate 25 fr.; Frequency: 1908.75 MHz; Duty Cycle: 1:17.7419

Medium: Air Medium parameters used: $\sigma = 0$ S/m, $\epsilon_r = 1$; $\rho = 1000$ kg/m³

Ambient Temperature : 23.3 °C;

DASY5 Configuration

- Probe: ER3DV6 - SN2358; ConvF(1, 1, 1); Calibrated: 2014/1/30;
- Sensor-Surface: (Fix Surface)
- Electronics: DAE4 Sn778; Calibrated: 2014/8/21
- Phantom: HAC Test Arch with AMCC; Type: SD HAC P01 BA;
- Measurement SW: DASY52, Version 52.8 (7); SEMCAD X Version 14.6.10 (7164)

Ch1175 /E Scan - ER3D: 15 mm from Probe Center to the Device/Hearing Aid

Compatibility Test (101x101x1): Interpolated grid: dx=0.5000 mm, dy=0.5000 mm

Device Reference Point: 0, 0, -6.3 mm

Reference Value = 15.29 V/m; Power Drift = 0.12 dB

Applied MIF = 3.26 dB

RF audio interference level = 25.63 dBV/m

Emission category: M4

MIF scaled E-field

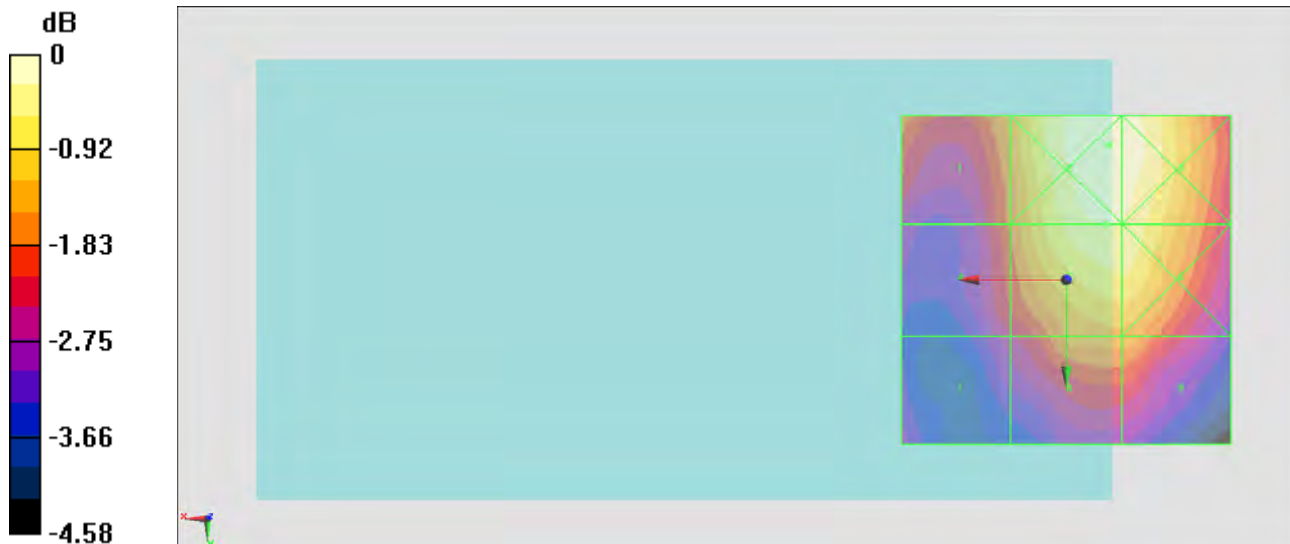
Grid 1 M4 24.55 dBV/m	Grid 2 M4 25.91 dBV/m	Grid 3 M4 25.88 dBV/m
Grid 4 M4 24.15 dBV/m	Grid 5 M4 25.63 dBV/m	Grid 6 M4 25.58 dBV/m
Grid 7 M4 23.42 dBV/m	Grid 8 M4 24.59 dBV/m	Grid 9 M4 24.59 dBV/m

Cursor:

Total = 25.91 dBV/m

E Category: M4

Location: -6.5, -20.5, 8.7 mm



0 dB = 19.75 V/m = 25.91 dBV/m