

### #01\_GSM850\_GPRS (4 Tx slots)\_Left Cheek\_Ch251

Communication System: GSM850; Frequency: 848.8 MHz; Duty Cycle: 1:2.08

Medium: HSL\_850\_141213 Medium parameters used:  $f = 849 \text{ MHz}$ ;  $\sigma = 0.917 \text{ S/m}$ ;  $\epsilon_r = 40.135$ ;  $\rho = 1000 \text{ kg/m}^3$

Ambient Temperature :  $23.3 \text{ }^\circ\text{C}$ ; Liquid Temperature :  $22.3 \text{ }^\circ\text{C}$

DASY5 Configuration:

- Probe: EX3DV4 - SN3931; ConvF(10.32, 10.32, 10.32); Calibrated: 2014/9/25;
- Sensor-Surface: 2mm (Mechanical Surface Detection)
- Electronics: DAE3 Sn577; Calibrated: 2014/10/6
- Phantom: SAM-Right; Type: QD 000 P40 C; Serial: TP-1446
- Measurement SW: DASY52, Version 52.8 (8); SEMCAD X Version 14.6.10 (7331)

**Configuration/Ch251/Area Scan (61x101x1):** Interpolated grid:  $dx=1.500 \text{ mm}$ ,  $dy=1.500 \text{ mm}$

Maximum value of SAR (interpolated) =  $0.366 \text{ W/kg}$

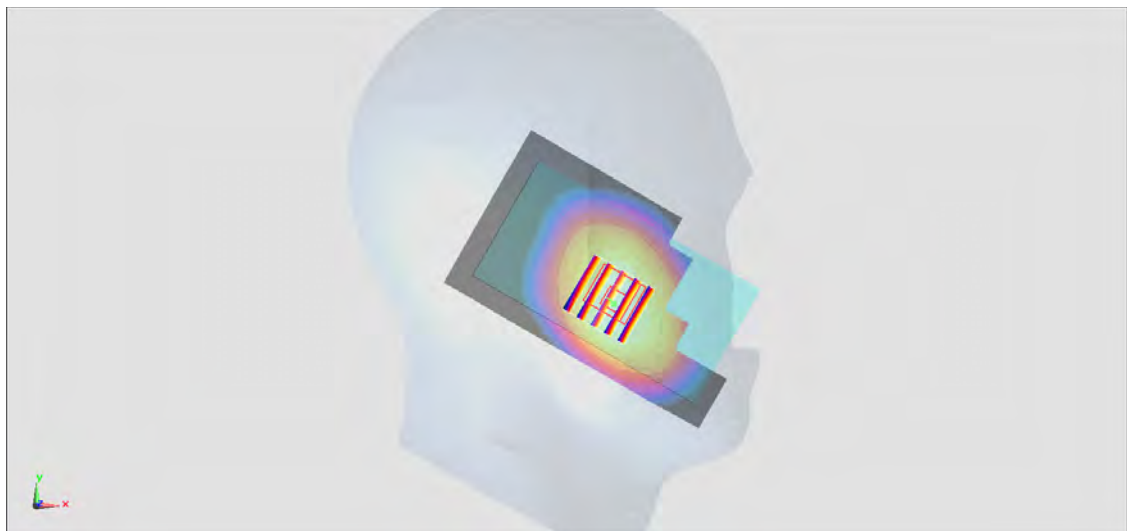
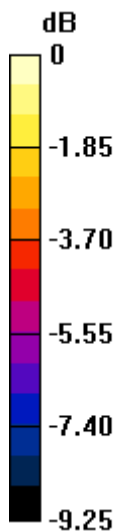
**Configuration/Ch251/Zoom Scan (5x5x7)/Cube 0:** Measurement grid:  $dx=8\text{mm}$ ,  $dy=8\text{mm}$ ,  $dz=5\text{mm}$

Reference Value =  $20.38 \text{ V/m}$ ; Power Drift =  $-0.00 \text{ dB}$

Peak SAR (extrapolated) =  $0.409 \text{ W/kg}$

**SAR(1 g) =  $0.317 \text{ W/kg}$ ; SAR(10 g) =  $0.238 \text{ W/kg}$**

Maximum value of SAR (measured) =  $0.368 \text{ W/kg}$



0 dB =  $0.368 \text{ W/kg} = -4.34 \text{ dBW/kg}$

## #02\_GSM1900\_GPRS (4 Tx slots)\_Left Cheek\_Ch661

Communication System: PCS; Frequency: 1880 MHz; Duty Cycle: 1:2.08

Medium: HSL\_1900\_141214 Medium parameters used:  $f = 1880$  MHz;  $\sigma = 1.412$  S/m;  $\epsilon_r = 39.237$ ;  $\rho = 1000$  kg/m<sup>3</sup>

Ambient Temperature : 23.3 °C; Liquid Temperature : 22.3 °C

DASY5 Configuration:

- Probe: EX3DV4 - SN3931; ConvF(8.17, 8.17, 8.17); Calibrated: 2014/9/25;
- Sensor-Surface: 2mm (Mechanical Surface Detection)
- Electronics: DAE3 Sn577; Calibrated: 2014/10/6
- Phantom: SAM-Left; Type: QD 000 P40 C; Serial: TP-1478
- Measurement SW: DASY52, Version 52.8 (8); SEMCAD X Version 14.6.10 (7331)

**Configuration/Ch661/Area Scan (61x101x1):** Interpolated grid: dx=1.500 mm, dy=1.500 mm

Maximum value of SAR (interpolated) = 0.231 W/kg

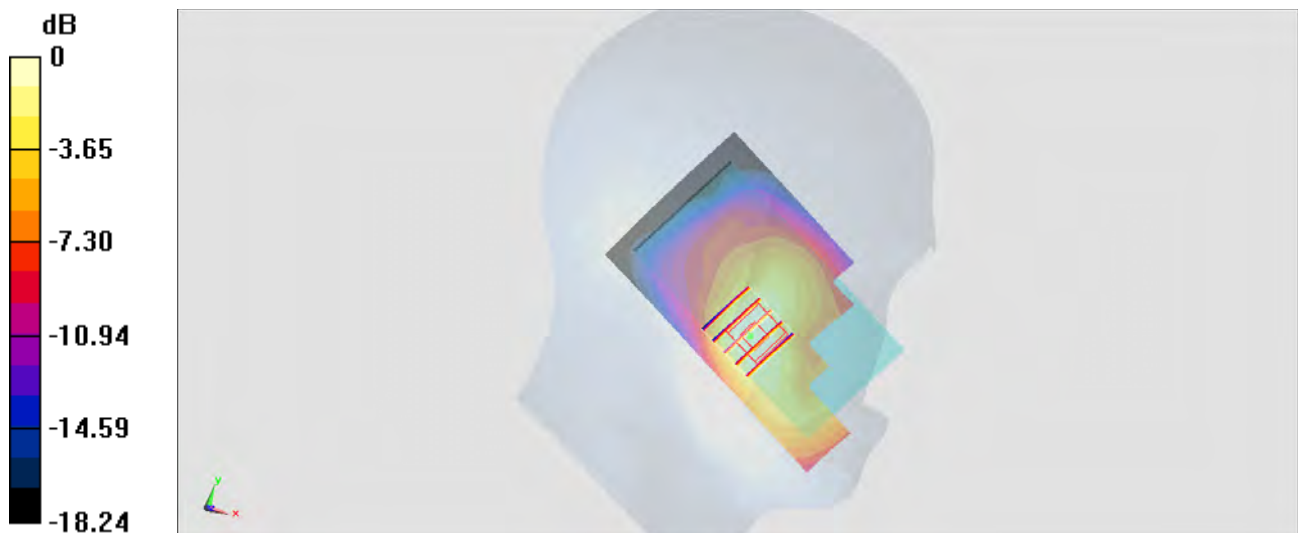
**Configuration/Ch661/Zoom Scan (5x5x7)/Cube 0:** Measurement grid: dx=8mm, dy=8mm, dz=5mm

Reference Value = 12.77 V/m; Power Drift = -0.00 dB

Peak SAR (extrapolated) = 0.266 W/kg

**SAR(1 g) = 0.176 W/kg; SAR(10 g) = 0.110 W/kg**

Maximum value of SAR (measured) = 0.223 W/kg



0 dB = 0.223 W/kg = -6.52 dBW/kg

### #03\_WCDMA V\_RMC 12.2Kbps\_Left Cheek\_Ch4132

Communication System: WCDMA; Frequency: 826.4 MHz; Duty Cycle: 1:1  
 Medium: HSL\_850\_141206 Medium parameters used:  $f = 826.4 \text{ MHz}$ ;  $\sigma = 0.885 \text{ S/m}$ ;  $\epsilon_r = 41.753$ ;  $\rho = 1000 \text{ kg/m}^3$   
 Ambient Temperature :  $23.7 \text{ }^\circ\text{C}$ ; Liquid Temperature :  $22.7 \text{ }^\circ\text{C}$

**DASY5 Configuration:**

- Probe: EX3DV4 - SN3954; ConvF(10.33, 10.33, 10.33); Calibrated: 2014/11/21;
- Sensor-Surface: 2mm (Mechanical Surface Detection)
- Electronics: DAE4 Sn1279; Calibrated: 2014/1/30
- Phantom: SAM-Left; Type: QD 000 P40 C; Serial: TP-1478
- Measurement SW: DASY52, Version 52.8 (8); SEMCAD X Version 14.6.10 (7331)

**Configuration/Ch4132/Area Scan (61x101x1):** Interpolated grid:  $dx=1.500 \text{ mm}$ ,  $dy=1.500 \text{ mm}$   
 Maximum value of SAR (interpolated) =  $0.453 \text{ W/kg}$

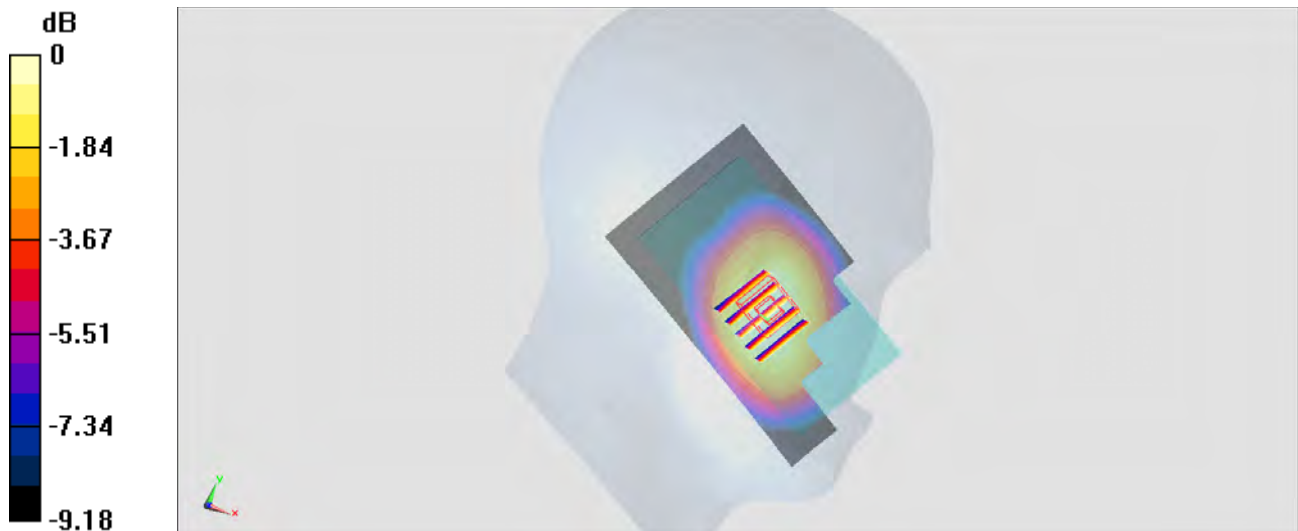
**Configuration/Ch4132/Zoom Scan (5x5x7)/Cube 0:** Measurement grid:  $dx=8\text{mm}$ ,  $dy=8\text{mm}$ ,  $dz=5\text{mm}$

Reference Value =  $22.55 \text{ V/m}$ ; Power Drift =  $0.01 \text{ dB}$

Peak SAR (extrapolated) =  $0.515 \text{ W/kg}$

**SAR(1 g) =  $0.394 \text{ W/kg}$ ; SAR(10 g) =  $0.297 \text{ W/kg}$**

Maximum value of SAR (measured) =  $0.455 \text{ W/kg}$



0 dB =  $0.455 \text{ W/kg} = -3.42 \text{ dBW/kg}$

## #04\_WCDMA IV\_RMC12.2Kbps\_Left Cheek\_Ch1312

Communication System: WCDMA ; Frequency: 1712.4 MHz; Duty Cycle: 1:1

Medium: HSL\_1750\_141207 Medium parameters used :  $f = 1712.4$  MHz;  $\sigma = 1.393$  S/m;  $\epsilon_r = 38.591$ ;

$\rho = 1000$  kg/m<sup>3</sup>

Ambient Temperature : 23.4 °C; Liquid Temperature : 22.4 °C

DASY5 Configuration:

- Probe: EX3DV4 - SN3954; ConvF(8.35, 8.35, 8.35); Calibrated: 2014/11/21;
- Sensor-Surface: 2mm (Mechanical Surface Detection)
- Electronics: DAE4 Sn1279; Calibrated: 2014/1/30
- Phantom: SAM-Right; Type: QD 000 P40 C; Serial: TP-1446
- Measurement SW: DASY52, Version 52.8 (8); SEMCAD X Version 14.6.10 (7331)

**Configuration/Ch1312/Area Scan (61x101x1):** Interpolated grid: dx=1.500 mm, dy=1.500 mm

Maximum value of SAR (interpolated) = 0.764 W/kg

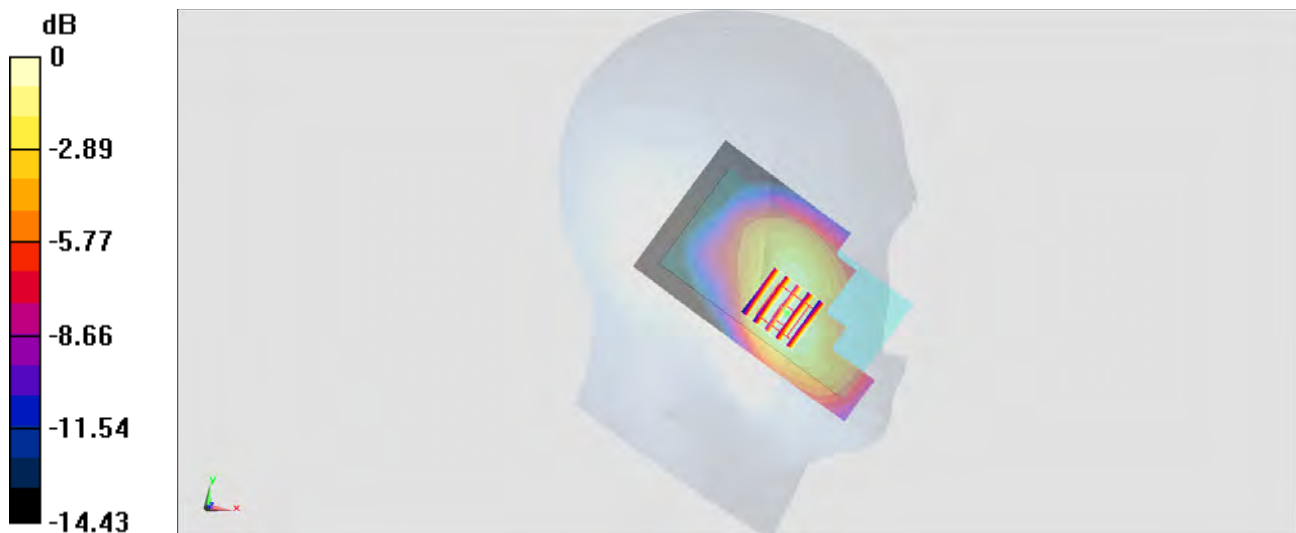
**Configuration/Ch1312/Zoom Scan (5x5x7)/Cube 0:** Measurement grid: dx=8mm, dy=8mm, dz=5mm

Reference Value = 23.75 V/m; Power Drift = -0.03 dB

Peak SAR (extrapolated) = 0.900 W/kg

**SAR(1 g) = 0.626 W/kg; SAR(10 g) = 0.412 W/kg**

Maximum value of SAR (measured) = 0.750 W/kg



0 dB = 0.750 W/kg = -1.25 dBW/kg

### #05\_WCDMA II\_RMC 12.2Kbps\_Left Cheek\_Ch9400

Communication System: WCDMA; Frequency: 1880 MHz; Duty Cycle: 1:1  
 Medium: HSL\_1900\_141206 Medium parameters used:  $f = 1880$  MHz;  $\sigma = 1.416$  S/m;  $\epsilon_r = 39.238$ ;  $\rho = 1000$  kg/m<sup>3</sup>  
 Ambient Temperature : 23.7 °C; Liquid Temperature : 22.7 °C

**DASY5 Configuration:**

- Probe: EX3DV4 - SN3954; ConvF(8.1, 8.1, 8.1); Calibrated: 2014/11/21;
- Sensor-Surface: 2mm (Mechanical Surface Detection)
- Electronics: DAE4 Sn1279; Calibrated: 2014/1/30
- Phantom: SAM-Right; Type: QD 000 P40 C; Serial: TP-1446
- Measurement SW: DASY52, Version 52.8 (8); SEMCAD X Version 14.6.10 (7331)

**Configuration/Ch9400/Area Scan (61x101x1):** Interpolated grid: dx=1.500 mm, dy=1.500 mm  
 Maximum value of SAR (interpolated) = 0.803 W/kg

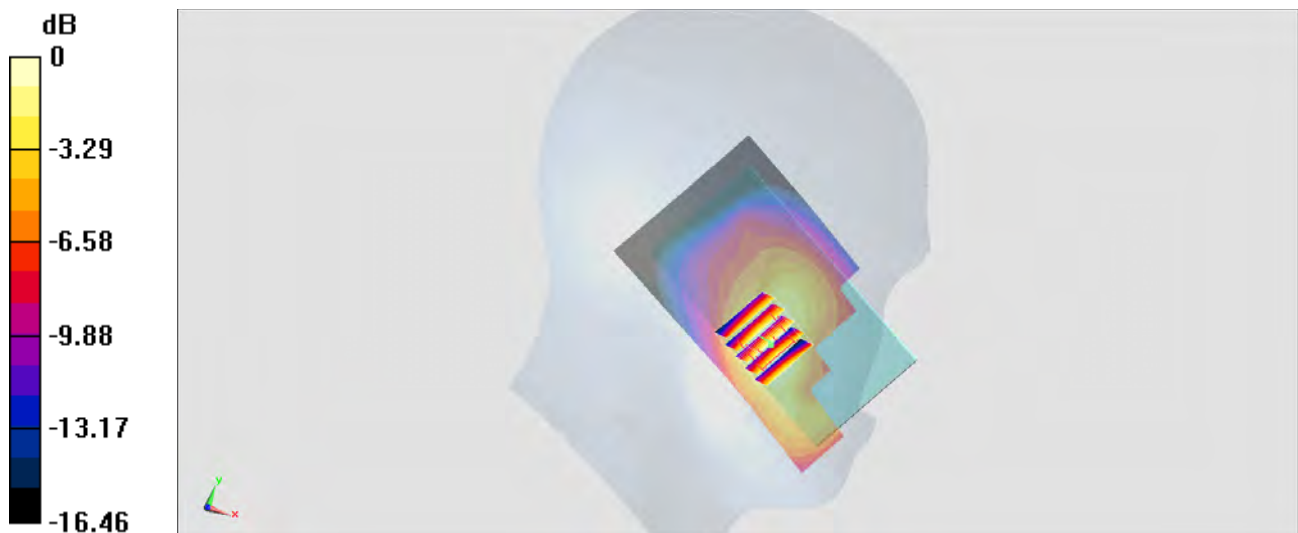
**Configuration/Ch9400/Zoom Scan (5x5x7)/Cube 0:** Measurement grid: dx=8mm, dy=8mm, dz=5mm

Reference Value = 23.92 V/m; Power Drift = 0.01 dB

Peak SAR (extrapolated) = 0.990 W/kg

**SAR(1 g) = 0.637 W/kg; SAR(10 g) = 0.390 W/kg**

Maximum value of SAR (measured) = 0.808 W/kg



0 dB = 0.808 W/kg = -0.93 dBW/kg

### #06\_CDMA BC10\_1xRTT RC3 SO55\_Left Cheek\_Ch684

Communication System: CDMA ; Frequency: 823.1 MHz; Duty Cycle: 1:1

Medium: HSL\_850\_141207 Medium parameters used :  $f = 823.1$  MHz;  $\sigma = 0.894$  S/m;  $\epsilon_r = 40.428$ ;  $\rho = 1000$  kg/m<sup>3</sup>

Ambient Temperature : 23.5 °C ; Liquid Temperature : 22.5 °C

DASY5 Configuration:

- Probe: EX3DV4 - SN3954; ConvF(10.33, 10.33, 10.33); Calibrated: 2014/11/21;
- Sensor-Surface: 2mm (Mechanical Surface Detection)
- Electronics: DAE4 Sn1279; Calibrated: 2014/1/30
- Phantom: SAM-Left; Type: QD 000 P40 C; Serial: TP-1478
- Measurement SW: DASY52, Version 52.8 (8); SEMCAD X Version 14.6.10 (7331)

**Configuration/Ch684/Area Scan (61x101x1):** Interpolated grid: dx=1.500 mm, dy=1.500 mm  
 Maximum value of SAR (interpolated) = 0.525 W/kg

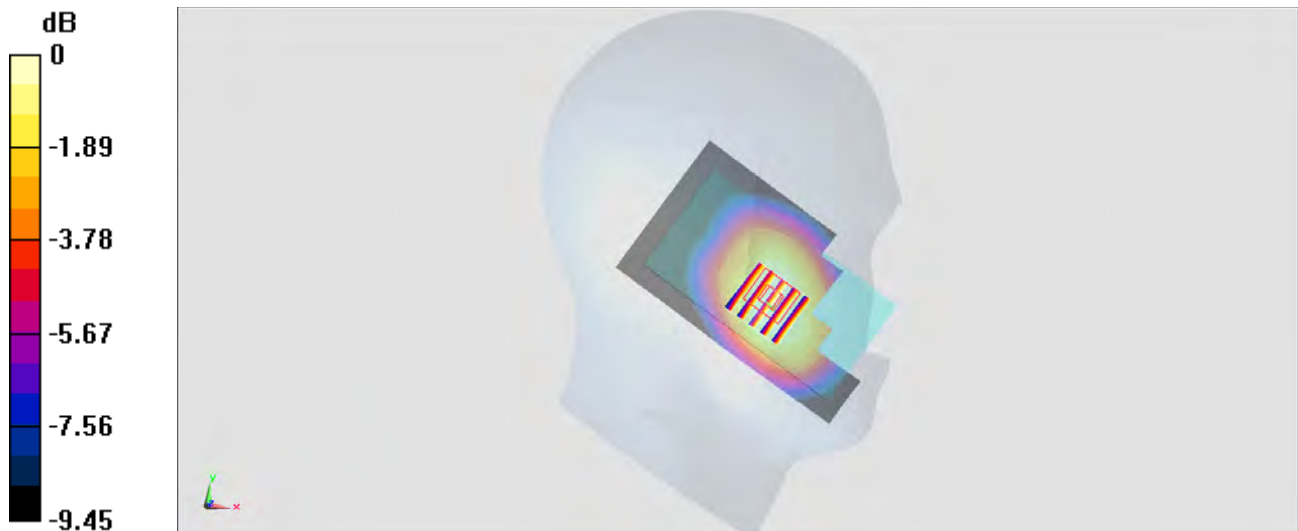
**Configuration/Ch684/Zoom Scan (5x5x7)/Cube 0:** Measurement grid: dx=8mm, dy=8mm, dz=5mm

Reference Value = 23.68 V/m; Power Drift = -0.00 dB

Peak SAR (extrapolated) = 0.560 W/kg

**SAR(1 g) = 0.434 W/kg; SAR(10 g) = 0.324 W/kg**

Maximum value of SAR (measured) = 0.502 W/kg



0 dB = 0.502 W/kg = -2.99 dBW/kg

### #07\_CDMA BC0\_1xRTT RC3 SO55\_Left Cheek\_Ch1013

Communication System: CDMA ; Frequency: 824.7 MHz; Duty Cycle: 1:1

Medium: HSL\_850\_141207 Medium parameters used:  $f = 825 \text{ MHz}$ ;  $\sigma = 0.896 \text{ S/m}$ ;  $\epsilon_r = 40.41$ ;  $\rho = 1000 \text{ kg/m}^3$

Ambient Temperature :  $23.5 \text{ }^\circ\text{C}$ ; Liquid Temperature :  $22.5 \text{ }^\circ\text{C}$

DASY5 Configuration:

- Probe: EX3DV4 - SN3954; ConvF(10.33, 10.33, 10.33); Calibrated: 2014/11/21;
- Sensor-Surface: 2mm (Mechanical Surface Detection)
- Electronics: DAE4 Sn1279; Calibrated: 2014/1/30
- Phantom: SAM-Left; Type: QD 000 P40 C; Serial: TP-1478
- Measurement SW: DASY52, Version 52.8 (8); SEMCAD X Version 14.6.10 (7331)

**Configuration/Ch1013/Area Scan (61x101x1):** Interpolated grid:  $dx=1.500 \text{ mm}$ ,  $dy=1.500 \text{ mm}$

Maximum value of SAR (interpolated) =  $0.560 \text{ W/kg}$

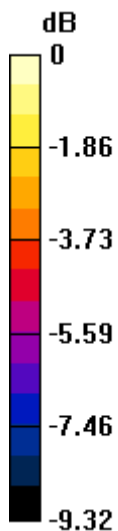
**Configuration/Ch1013/Zoom Scan (5x5x7)/Cube 0:** Measurement grid:  $dx=8\text{mm}$ ,  $dy=8\text{mm}$ ,  $dz=5\text{mm}$

Reference Value =  $24.75 \text{ V/m}$ ; Power Drift =  $0.04 \text{ dB}$

Peak SAR (extrapolated) =  $0.619 \text{ W/kg}$

**SAR(1 g) =  $0.483 \text{ W/kg}$ ; SAR(10 g) =  $0.365 \text{ W/kg}$**

Maximum value of SAR (measured) =  $0.557 \text{ W/kg}$



0 dB =  $0.557 \text{ W/kg} = -2.54 \text{ dBW/kg}$

## #08\_CDMA BC1\_1xRTT RC3 SO55\_Left Cheek\_Ch1175

Communication System: CDMA ; Frequency: 1908.75 MHz; Duty Cycle: 1:1

Medium: HSL\_1900\_141206 Medium parameters used:  $f = 1909$  MHz;  $\sigma = 1.447$  S/m;  $\epsilon_r = 39.188$ ;  $\rho = 1000$  kg/m<sup>3</sup>

Ambient Temperature : 23.7 °C; Liquid Temperature : 22.7 °C

### DASY5 Configuration:

- Probe: EX3DV4 - SN3954; ConvF(8.1, 8.1, 8.1); Calibrated: 2014/11/21;
- Sensor-Surface: 2mm (Mechanical Surface Detection)
- Electronics: DAE4 Sn1279; Calibrated: 2014/1/30
- Phantom: SAM-Right; Type: QD 000 P40 C; Serial: TP-1446
- Measurement SW: DASY52, Version 52.8 (8); SEMCAD X Version 14.6.10 (7331)

**Configuration/Ch1175/Area Scan (61x101x1):** Interpolated grid: dx=1.500 mm, dy=1.500 mm

Maximum value of SAR (interpolated) = 0.854 W/kg

**Configuration/Ch1175/Zoom Scan (5x5x7)/Cube 0:** Measurement grid: dx=8mm, dy=8mm, dz=5mm

Reference Value = 24.52 V/m; Power Drift = 0.01 dB

Peak SAR (extrapolated) = 1.04 W/kg

**SAR(1 g) = 0.666 W/kg; SAR(10 g) = 0.399 W/kg**

Maximum value of SAR (measured) = 0.842 W/kg



0 dB = 0.842 W/kg = -0.75 dBW/kg

**#09\_LTE Band 12\_10M\_QPSK\_1RB\_0offset\_Right Cheek\_Ch23060**

Communication System: LTE ; Frequency: 704 MHz;Duty Cycle: 1:1

Medium: HSL\_750\_141207 Medium parameters used:  $f = 704 \text{ MHz}$ ;  $\sigma = 0.86 \text{ S/m}$ ;  $\epsilon_r = 42.48$ ;  $\rho = 1000 \text{ kg/m}^3$

Ambient Temperature :  $23.4 \text{ }^\circ\text{C}$ ; Liquid Temperature :  $22.4 \text{ }^\circ\text{C}$

DASY5 Configuration:

- Probe: EX3DV4 - SN3954; ConvF(10.93, 10.93, 10.93); Calibrated: 2014/11/21;
- Sensor-Surface: 2mm (Mechanical Surface Detection)
- Electronics: DAE4 Sn1279; Calibrated: 2014/1/30
- Phantom: SAM-Left; Type: QD 000 P40 C; Serial: TP-1478
- Measurement SW: DASY52, Version 52.8 (8);SEMCAD X Version 14.6.10 (7331)

**Configuration/Ch23060/Area Scan (61x101x1):** Interpolated grid:  $dx=1.500 \text{ mm}$ ,  $dy=1.500 \text{ mm}$

Maximum value of SAR (interpolated) =  $0.544 \text{ W/kg}$

**Configuration/Ch23060/Zoom Scan (5x5x7)/Cube 0:** Measurement grid:  $dx=8\text{mm}$ ,  $dy=8\text{mm}$ ,  $dz=5\text{mm}$

Reference Value =  $25.43 \text{ V/m}$ ; Power Drift =  $-0.06 \text{ dB}$

Peak SAR (extrapolated) =  $0.577 \text{ W/kg}$

**SAR(1 g) =  $0.458 \text{ W/kg}$ ; SAR(10 g) =  $0.350 \text{ W/kg}$**

Maximum value of SAR (measured) =  $0.521 \text{ W/kg}$



$0 \text{ dB} = 0.521 \text{ W/kg} = -2.83 \text{ dBW/kg}$

**#10\_LTE Band 17\_10M\_QPSK\_1RB\_0offset\_Right Cheek\_Ch23780**

Communication System: LTE; Frequency: 709 MHz; Duty Cycle: 1:1

Medium: HSL\_750\_141207 Medium parameters used:  $f = 709 \text{ MHz}$ ;  $\sigma = 0.866 \text{ S/m}$ ;  $\epsilon_r = 42.429$ ;  $\rho = 1000 \text{ kg/m}^3$

Ambient Temperature :  $23.4 \text{ }^\circ\text{C}$ ; Liquid Temperature :  $22.4 \text{ }^\circ\text{C}$

DASY5 Configuration:

- Probe: EX3DV4 - SN3954; ConvF(10.93, 10.93, 10.93); Calibrated: 2014/11/21;
- Sensor-Surface: 2mm (Mechanical Surface Detection)
- Electronics: DAE4 Sn1279; Calibrated: 2014/1/30
- Phantom: SAM-Left; Type: QD 000 P40 C; Serial: TP-1478
- Measurement SW: DASY52, Version 52.8 (8); SEMCAD X Version 14.6.10 (7331)

**Configuration/Ch23780/Area Scan (61x101x1):** Interpolated grid:  $dx=1.500 \text{ mm}$ ,  $dy=1.500 \text{ mm}$

Maximum value of SAR (interpolated) =  $0.741 \text{ W/kg}$

**Configuration/Ch23780/Zoom Scan (5x5x7)/Cube 0:** Measurement grid:  $dx=8\text{mm}$ ,  $dy=8\text{mm}$ ,  $dz=5\text{mm}$

Reference Value =  $29.47 \text{ V/m}$ ; Power Drift =  $-0.04 \text{ dB}$

Peak SAR (extrapolated) =  $0.788 \text{ W/kg}$

**SAR(1 g) =  $0.617 \text{ W/kg}$ ; SAR(10 g) =  $0.463 \text{ W/kg}$**

Maximum value of SAR (measured) =  $0.706 \text{ W/kg}$



0 dB =  $0.706 \text{ W/kg} = -1.51 \text{ dBW/kg}$

### #11\_LTE Band 5\_10M\_QPSK\_1RB\_0offset\_Right Cheek\_Ch20600

Communication System: LTE ; Frequency: 844 MHz;Duty Cycle: 1:1

Medium: HSL\_850\_141207 Medium parameters used:  $f = 844 \text{ MHz}$ ;  $\sigma = 0.913 \text{ S/m}$ ;  $\epsilon_r = 40.192$ ;  $\rho = 1000 \text{ kg/m}^3$

Ambient Temperature :  $23.5 \text{ }^\circ\text{C}$ ; Liquid Temperature :  $22.5 \text{ }^\circ\text{C}$

DASY5 Configuration:

- Probe: EX3DV4 - SN3954; ConvF(10.33, 10.33, 10.33); Calibrated: 2014/11/21;
- Sensor-Surface: 2mm (Mechanical Surface Detection)
- Electronics: DAE4 Sn1279; Calibrated: 2014/1/30
- Phantom: SAM-Left; Type: QD 000 P40 C; Serial: TP-1478
- Measurement SW: DASY52, Version 52.8 (8);SEMCAD X Version 14.6.10 (7331)

**Configuration/Ch20600/Area Scan (61x101x1):** Interpolated grid:  $dx=1.500 \text{ mm}$ ,  $dy=1.500 \text{ mm}$

Maximum value of SAR (interpolated) =  $0.677 \text{ W/kg}$

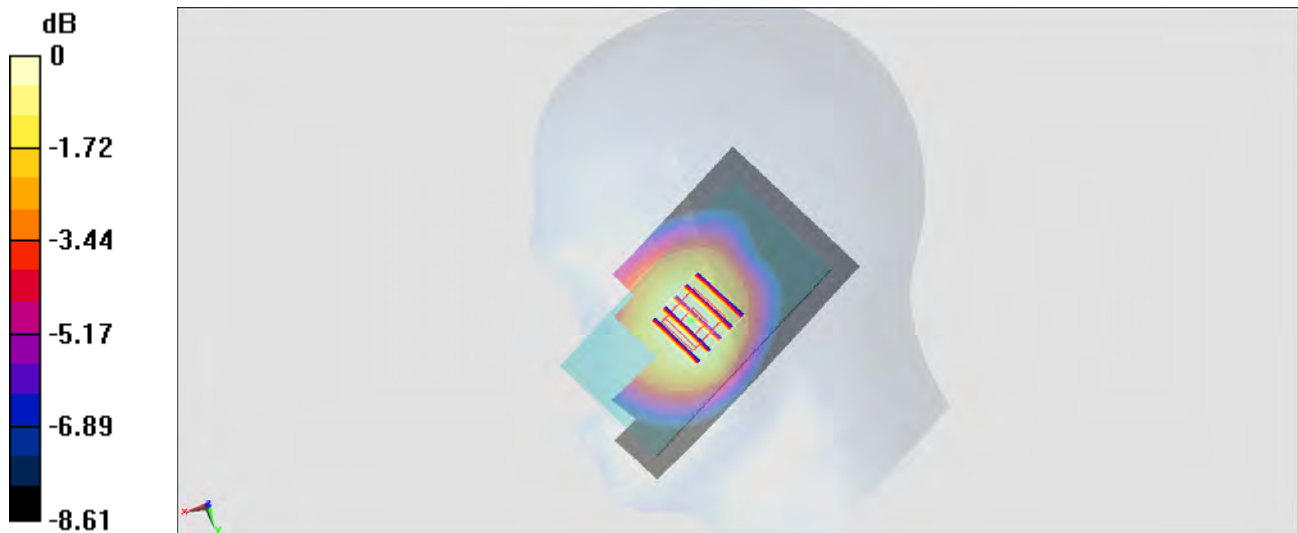
**Configuration/Ch20600/Zoom Scan (5x5x7)/Cube 0:** Measurement grid:  $dx=8\text{mm}$ ,  $dy=8\text{mm}$ ,  $dz=5\text{mm}$

Reference Value =  $26.46 \text{ V/m}$ ; Power Drift =  $-0.16 \text{ dB}$

Peak SAR (extrapolated) =  $0.715 \text{ W/kg}$

**SAR(1 g) =  $0.550 \text{ W/kg}$ ; SAR(10 g) =  $0.417 \text{ W/kg}$**

Maximum value of SAR (measured) =  $0.641 \text{ W/kg}$



0 dB =  $0.641 \text{ W/kg} = -1.93 \text{ dBW/kg}$

**#12\_LTE Band 26\_15M\_QPSK\_1RB\_0offset\_Left Cheek\_Ch26765**

Communication System: LTE ; Frequency: 821.5 MHz;Duty Cycle: 1:1

Medium: HSL\_850\_141207 Medium parameters used:  $f = 821.5$  MHz;  $\sigma = 0.892$  S/m;  $\epsilon_r = 40.446$ ;  $\rho = 1000$  kg/m<sup>3</sup>

Ambient Temperature : 23.5 °C; Liquid Temperature : 22.5 °C

**DASY5 Configuration:**

- Probe: EX3DV4 - SN3954; ConvF(10.33, 10.33, 10.33); Calibrated: 2014/11/21;
- Sensor-Surface: 2mm (Mechanical Surface Detection)
- Electronics: DAE4 Sn1279; Calibrated: 2014/1/30
- Phantom: SAM-Left; Type: QD 000 P40 C; Serial: TP-1478
- Measurement SW: DASY52, Version 52.8 (8);SEMCAD X Version 14.6.10 (7331)

**Configuration/Ch26765/Area Scan (61x101x1):** Interpolated grid: dx=1.500 mm, dy=1.500 mm

Maximum value of SAR (interpolated) = 0.465 W/kg

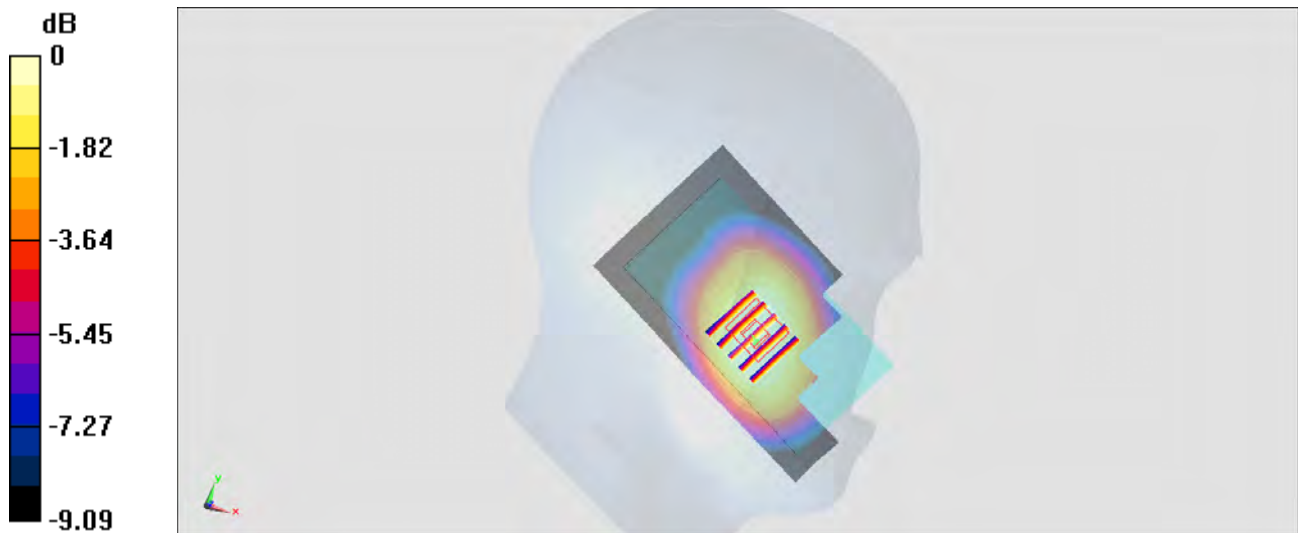
**Configuration/Ch26765/Zoom Scan (5x5x7)/Cube 0:** Measurement grid: dx=8mm, dy=8mm, dz=5mm

Reference Value = 22.50 V/m; Power Drift = -0.01 dB

Peak SAR (extrapolated) = 0.499 W/kg

**SAR(1 g) = 0.383 W/kg; SAR(10 g) = 0.290 W/kg**

Maximum value of SAR (measured) = 0.447 W/kg



0 dB = 0.447 W/kg = -3.50 dBW/kg

**#13\_LTE Band 4\_20M\_QPSK\_1RB\_0offset\_Left Cheek\_Ch20050**

Communication System: LTE; Frequency: 1720 MHz; Duty Cycle: 1:1

Medium: HSL\_1750\_141207 Medium parameters used:  $f = 1720$  MHz;  $\sigma = 1.4$  S/m;  $\epsilon_r = 38.538$ ;  $\rho = 1000$  kg/m<sup>3</sup>

Ambient Temperature : 23.4 °C; Liquid Temperature : 22.4 °C

DASY5 Configuration:

- Probe: EX3DV4 - SN3954; ConvF(8.35, 8.35, 8.35); Calibrated: 2014/11/21;
- Sensor-Surface: 2mm (Mechanical Surface Detection)
- Electronics: DAE4 Sn1279; Calibrated: 2014/1/30
- Phantom: SAM-Right; Type: QD 000 P40 C; Serial: TP-1446
- Measurement SW: DASY52, Version 52.8 (8); SEMCAD X Version 14.6.10 (7331)

**Configuration/Ch20050/Area Scan (61x101x1):** Interpolated grid: dx=1.500 mm, dy=1.500 mm

Maximum value of SAR (interpolated) = 0.711 W/kg

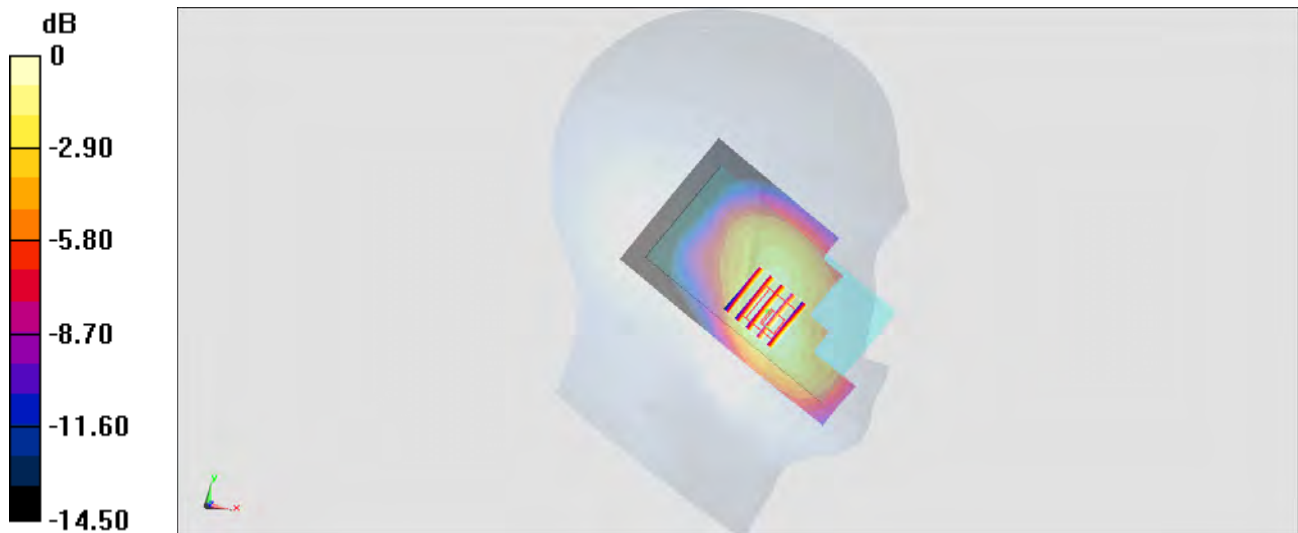
**Configuration/Ch20050/Zoom Scan (5x5x7)/Cube 0:** Measurement grid: dx=8mm, dy=8mm, dz=5mm

Reference Value = 23.07 V/m; Power Drift = 0.03 dB

Peak SAR (extrapolated) = 0.888 W/kg

**SAR(1 g) = 0.608 W/kg; SAR(10 g) = 0.403 W/kg**

Maximum value of SAR (measured) = 0.748 W/kg



0 dB = 0.748 W/kg = -1.26 dBW/kg

**#14\_LTE Band 2\_20M\_QPSK\_1RB\_0offset\_Left Cheek\_Ch18900**

Communication System: LTE; Frequency: 1880 MHz; Duty Cycle: 1:1

Medium: HSL\_1900\_141206 Medium parameters used:  $f = 1880$  MHz;  $\sigma = 1.416$  S/m;  $\epsilon_r = 39.238$ ;  $\rho = 1000$  kg/m<sup>3</sup>

Ambient Temperature : 23.7 °C; Liquid Temperature : 22.7 °C

DASY5 Configuration:

- Probe: EX3DV4 - SN3954; ConvF(8.1, 8.1, 8.1); Calibrated: 2014/11/21;
- Sensor-Surface: 2mm (Mechanical Surface Detection)
- Electronics: DAE4 Sn1279; Calibrated: 2014/1/30
- Phantom: SAM-Right; Type: QD 000 P40 C; Serial: TP-1446
- Measurement SW: DASY52, Version 52.8 (8); SEMCAD X Version 14.6.10 (7331)

**Configuration/Ch18900/Area Scan (61x101x1):** Interpolated grid: dx=1.500 mm, dy=1.500 mm

Maximum value of SAR (interpolated) = 0.746 W/kg

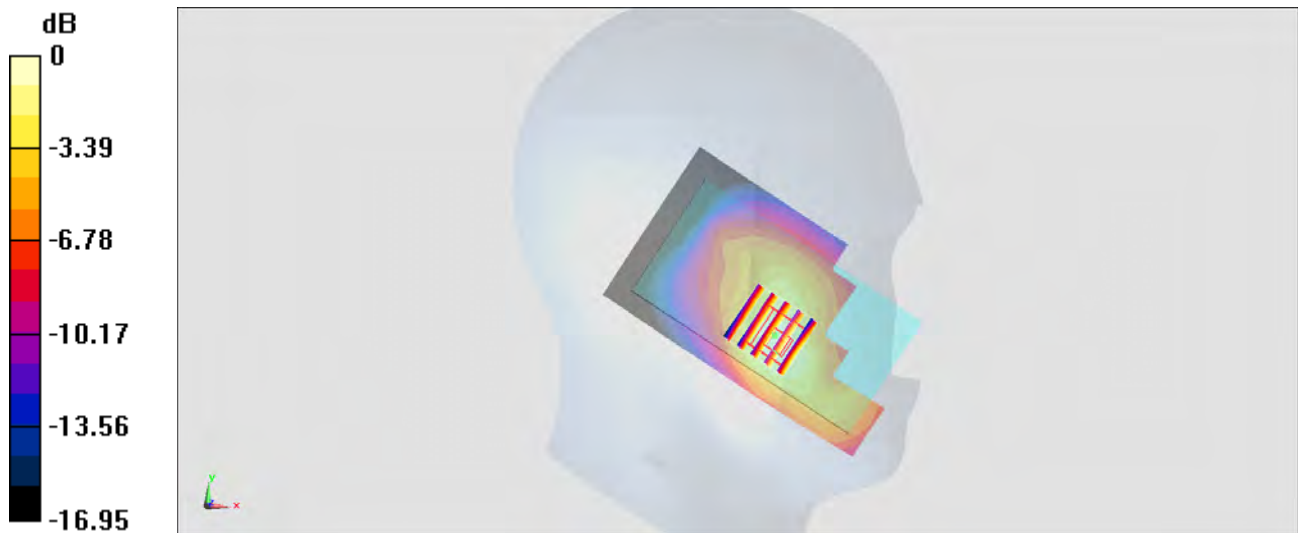
**Configuration/Ch18900/Zoom Scan (5x5x7)/Cube 0:** Measurement grid: dx=8mm, dy=8mm, dz=5mm

Reference Value = 24.10 V/m; Power Drift = -0.02 dB

Peak SAR (extrapolated) = 0.990 W/kg

**SAR(1 g) = 0.629 W/kg; SAR(10 g) = 0.385 W/kg**

Maximum value of SAR (measured) = 0.794 W/kg



0 dB = 0.794 W/kg = -1.00 dBW/kg

**#15\_LTE Band 25\_20M\_QPSK\_1RB\_0offset\_Left Cheek\_Ch26140**

Communication System: LTE; Frequency: 1860 MHz; Duty Cycle: 1:1

Medium: HSL\_1900\_141206 Medium parameters used:  $f = 1860$  MHz;  $\sigma = 1.392$  S/m;  $\epsilon_r = 39.279$ ;  $\rho = 1000$  kg/m<sup>3</sup>

Ambient Temperature : 23.7 °C; Liquid Temperature : 22.7 °C

DASY5 Configuration:

- Probe: EX3DV4 - SN3954; ConvF(8.1, 8.1, 8.1); Calibrated: 2014/11/21;
- Sensor-Surface: 2mm (Mechanical Surface Detection)
- Electronics: DAE4 Sn1279; Calibrated: 2014/1/30
- Phantom: SAM-Right; Type: QD 000 P40 C; Serial: TP-1446
- Measurement SW: DASY52, Version 52.8 (8); SEMCAD X Version 14.6.10 (7331)

**Configuration/Ch26140/Area Scan (61x101x1):** Interpolated grid: dx=1.500 mm, dy=1.500 mm

Maximum value of SAR (interpolated) = 0.778 W/kg

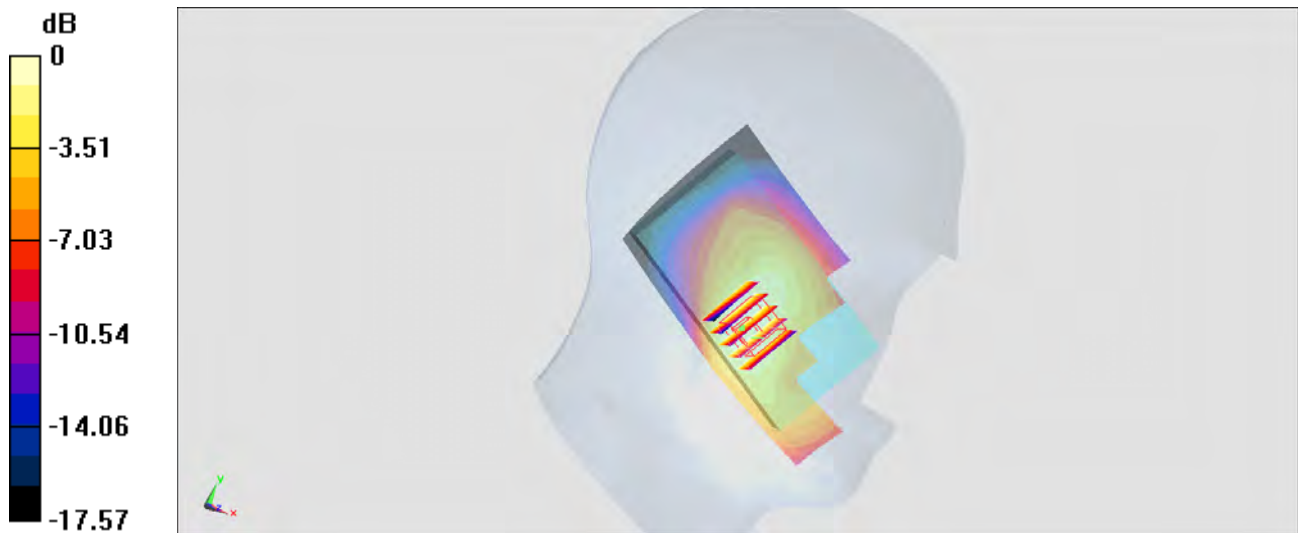
**Configuration/Ch26140/Zoom Scan (5x5x7)/Cube 0:** Measurement grid: dx=8mm, dy=8mm, dz=5mm

Reference Value = 23.40 V/m; Power Drift = -0.17 dB

Peak SAR (extrapolated) = 0.911 W/kg

**SAR(1 g) = 0.602 W/kg; SAR(10 g) = 0.387 W/kg**

Maximum value of SAR (measured) = 0.756 W/kg



0 dB = 0.756 W/kg = -1.21 dBW/kg

**#16\_LTE Band 41\_20M\_QPSK\_50RB\_0offset\_Right Cheek\_Ch40185**

Communication System: LTE ; Frequency: 2549.5 MHz;Duty Cycle: 1:1.59  
 Medium: HSL\_2600\_141208 Medium parameters used : f = 2549.5 MHz;  $\sigma = 1.928$  S/m;  $\epsilon_r = 38.478$ ;  
 $\rho = 1000$  kg/m<sup>3</sup>  
 Ambient Temperature : 23.2 °C; Liquid Temperature : 22.2 °C

**DASY5 Configuration:**

- Probe: EX3DV4 - SN3954; ConvF(7.05, 7.05, 7.05); Calibrated: 2014/11/21;
- Sensor-Surface: 2mm (Mechanical Surface Detection)
- Electronics: DAE4 Sn1279; Calibrated: 2014/1/30
- Phantom: SAM-Right; Type: QD 000 P40 C; Serial: TP-1446
- Measurement SW: DASY52, Version 52.8 (8);SEMCAD X Version 14.6.10 (7331)

**Configuration/Ch40185/Area Scan (71x121x1):** Interpolated grid: dx=1.200 mm, dy=1.200 mm

Maximum value of SAR (interpolated) = 0.845 W/kg

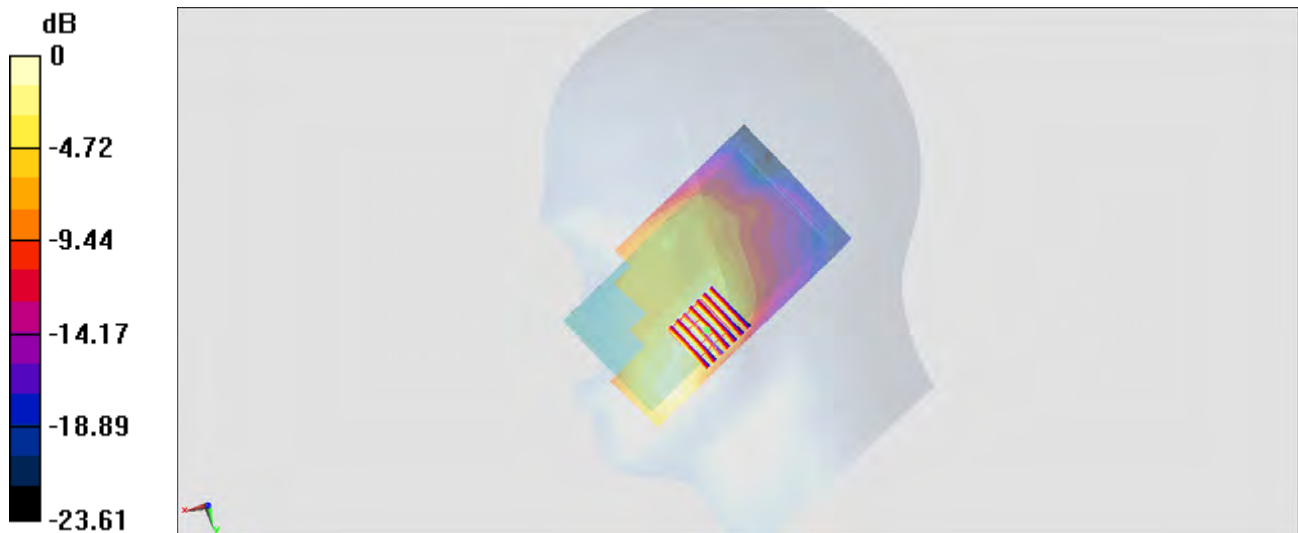
**Configuration/Ch40185/Zoom Scan (7x7x7)/Cube 0:** Measurement grid: dx=5mm, dy=5mm, dz=5mm

Reference Value = 20.71 V/m; Power Drift = -0.10 dB

Peak SAR (extrapolated) = 1.09 W/kg

**SAR(1 g) = 0.582 W/kg; SAR(10 g) = 0.304 W/kg**

Maximum value of SAR (measured) = 0.834 W/kg



0 dB = 0.834 W/kg = -0.79 dBW/kg

### #17\_GSM850\_GPRS (4 Tx slots)\_Front\_1cm\_Ch251

Communication System: GSM850; Frequency: 848.8 MHz; Duty Cycle: 1:2.08

Medium: MSL\_850\_141213 Medium parameters used:  $f = 849$  MHz;  $\sigma = 0.995$  S/m;  $\epsilon_r = 55.271$ ;  $\rho = 1000$  kg/m<sup>3</sup>

Ambient Temperature : 23.3 °C; Liquid Temperature : 22.3 °C

DASY5 Configuration:

- Probe: EX3DV4 - SN3931; ConvF(10.13, 10.13, 10.13); Calibrated: 2014/9/25;
- Sensor-Surface: 2mm (Mechanical Surface Detection)
- Electronics: DAE3 Sn577; Calibrated: 2014/10/6
- Phantom: SAM-Left; Type: QD 000 P40 C; Serial: TP-1478
- Measurement SW: DASY52, Version 52.8 (8); SEMCAD X Version 14.6.10 (7331)

**Configuration/Ch251/Area Scan (71x111x1):** Interpolated grid: dx=1.500 mm, dy=1.500 mm

Maximum value of SAR (interpolated) = 0.591 W/kg

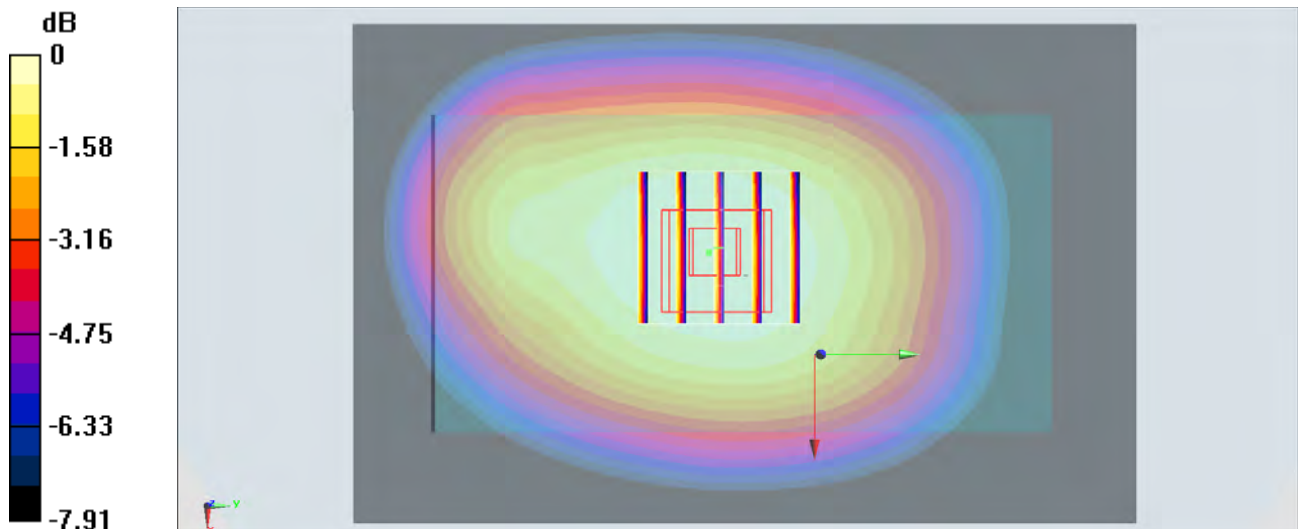
**Configuration/Ch251/Zoom Scan (5x5x7)/Cube 0:** Measurement grid: dx=8mm, dy=8mm, dz=5mm

Reference Value = 24.46 V/m; Power Drift = -0.01 dB

Peak SAR (extrapolated) = 0.607 W/kg

**SAR(1 g) = 0.497 W/kg; SAR(10 g) = 0.382 W/kg**

Maximum value of SAR (measured) = 0.563 W/kg



0 dB = 0.563 W/kg = -2.49 dBW/kg

### #18\_GSM1900\_GPRS (4 Tx slots)\_Bottom Side\_1cm\_Ch661

Communication System: PCS; Frequency: 1880 MHz; Duty Cycle: 1:2.08

Medium: MSL\_1900\_141210 Medium parameters used:  $f = 1880$  MHz;  $\sigma = 1.493$  S/m;  $\epsilon_r = 53.147$ ;  $\rho = 1000$  kg/m<sup>3</sup>

Ambient Temperature : 23.3 °C; Liquid Temperature : 22.3 °C

DASY5 Configuration:

- Probe: EX3DV4 - SN3931; ConvF(7.8, 7.8, 7.8); Calibrated: 2014/9/25;
- Sensor-Surface: 2mm (Mechanical Surface Detection)
- Electronics: DAE3 Sn577; Calibrated: 2014/10/6
- Phantom: SAM-Right; Type: QD 000 P40 C; Serial: TP-1446
- Measurement SW: DASY52, Version 52.8 (8); SEMCAD X Version 14.6.10 (7331)

**Configuration/Ch661/Area Scan (31x61x1):** Interpolated grid: dx=1.500 mm, dy=1.500 mm  
 Maximum value of SAR (interpolated) = 0.590 W/kg

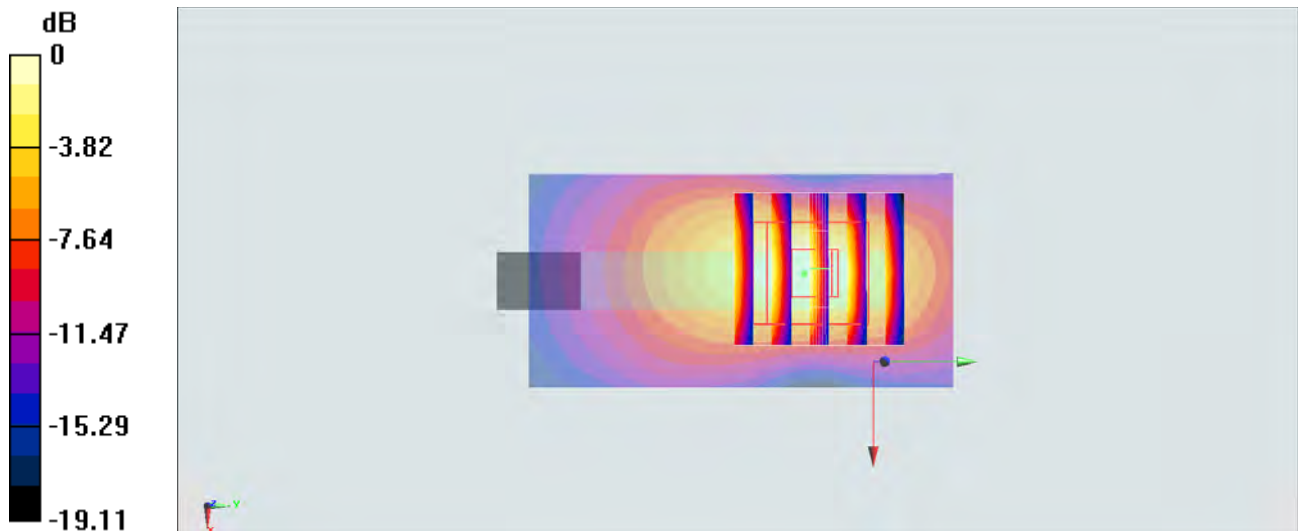
**Configuration/Ch661/Zoom Scan (5x5x7)/Cube 0:** Measurement grid: dx=8mm, dy=8mm, dz=5mm

Reference Value = 19.68 V/m; Power Drift = -0.04 dB

Peak SAR (extrapolated) = 0.689 W/kg

**SAR(1 g) = 0.393 W/kg; SAR(10 g) = 0.196 W/kg**

Maximum value of SAR (measured) = 0.555 W/kg



0 dB = 0.555 W/kg = -2.56 dBW/kg

### #19\_WCDMA V\_RMC 12.2Kbps\_Back\_1cm\_Ch4132

Communication System: WCDMA; Frequency: 826.4 MHz; Duty Cycle: 1:1

Medium: MSL\_850\_141213 Medium parameters used:  $f = 826.4 \text{ MHz}$ ;  $\sigma = 0.973 \text{ S/m}$ ;  $\epsilon_r = 55.4$ ;  $\rho = 1000 \text{ kg/m}^3$

Ambient Temperature :  $23.3 \text{ }^\circ\text{C}$ ; Liquid Temperature :  $22.3 \text{ }^\circ\text{C}$

DASY5 Configuration:

- Probe: EX3DV4 - SN3931; ConvF(10.13, 10.13, 10.13); Calibrated: 2014/9/25;
- Sensor-Surface: 2mm (Mechanical Surface Detection)
- Electronics: DAE3 Sn577; Calibrated: 2014/10/6
- Phantom: SAM-Left; Type: QD 000 P40 C; Serial: TP-1478
- Measurement SW: DASY52, Version 52.8 (8); SEMCAD X Version 14.6.10 (7331)

**Configuration/Ch4132/Area Scan (61x101x1):** Interpolated grid:  $dx=1.500 \text{ mm}$ ,  $dy=1.500 \text{ mm}$

Maximum value of SAR (interpolated) =  $0.785 \text{ W/kg}$

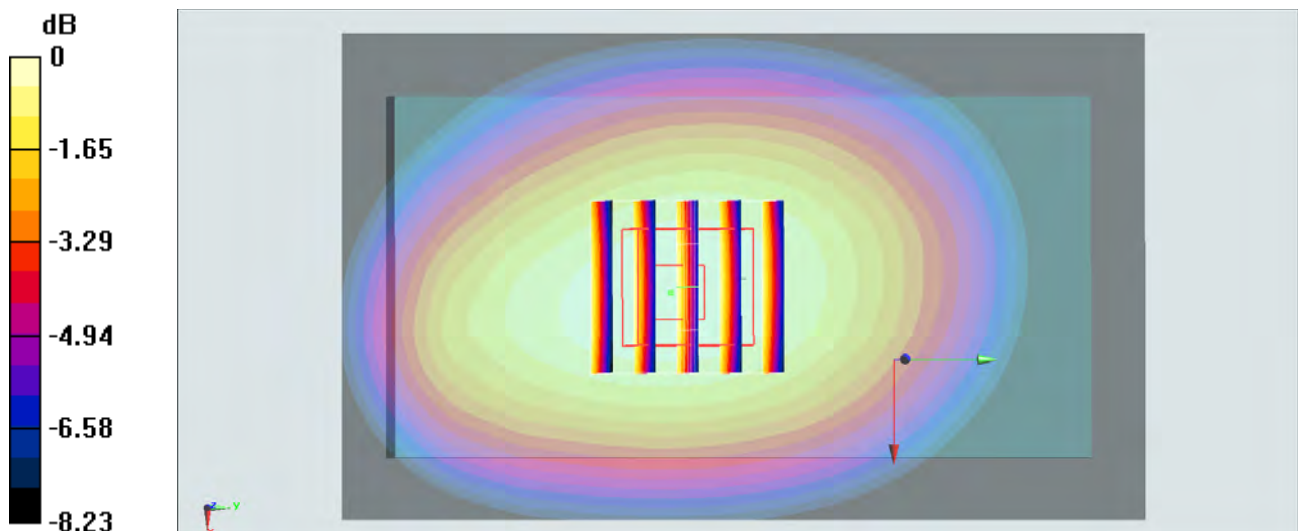
**Configuration/Ch4132/Zoom Scan (5x5x7)/Cube 0:** Measurement grid:  $dx=8\text{mm}$ ,  $dy=8\text{mm}$ ,  $dz=5\text{mm}$

Reference Value =  $29.00 \text{ V/m}$ ; Power Drift =  $-0.01 \text{ dB}$

Peak SAR (extrapolated) =  $0.860 \text{ W/kg}$

**SAR(1 g) =  $0.682 \text{ W/kg}$ ; SAR(10 g) =  $0.515 \text{ W/kg}$**

Maximum value of SAR (measured) =  $0.784 \text{ W/kg}$



$0 \text{ dB} = 0.784 \text{ W/kg} = -1.06 \text{ dBW/kg}$

## #20\_WCDMA IV\_RMC12.2Kbps\_Back\_1cm\_Ch1513

Communication System: WCDMA; Frequency: 1752.6 MHz; Duty Cycle: 1:1

Medium: MSL\_1750\_141215 Medium parameters used:  $f = 1753$  MHz;  $\sigma = 1.52$  S/m;  $\epsilon_r = 52.245$ ;  $\rho = 1000$  kg/m<sup>3</sup>

Ambient Temperature : 23.4 °C; Liquid Temperature : 22.4 °C

DASY5 Configuration:

- Probe: EX3DV4 - SN3931; ConvF(8.26, 8.26, 8.26); Calibrated: 2014/9/25;
- Sensor-Surface: 2mm (Mechanical Surface Detection)
- Electronics: DAE3 Sn577; Calibrated: 2014/10/6
- Phantom: SAM-Right; Type: QD 000 P40 C; Serial: TP-1446
- Measurement SW: DASY52, Version 52.8 (8); SEMCAD X Version 14.6.10 (7331)

**Configuration/Ch1513/Area Scan (61x101x1):** Interpolated grid: dx=1.500 mm, dy=1.500 mm

Maximum value of SAR (interpolated) = 1.58 W/kg

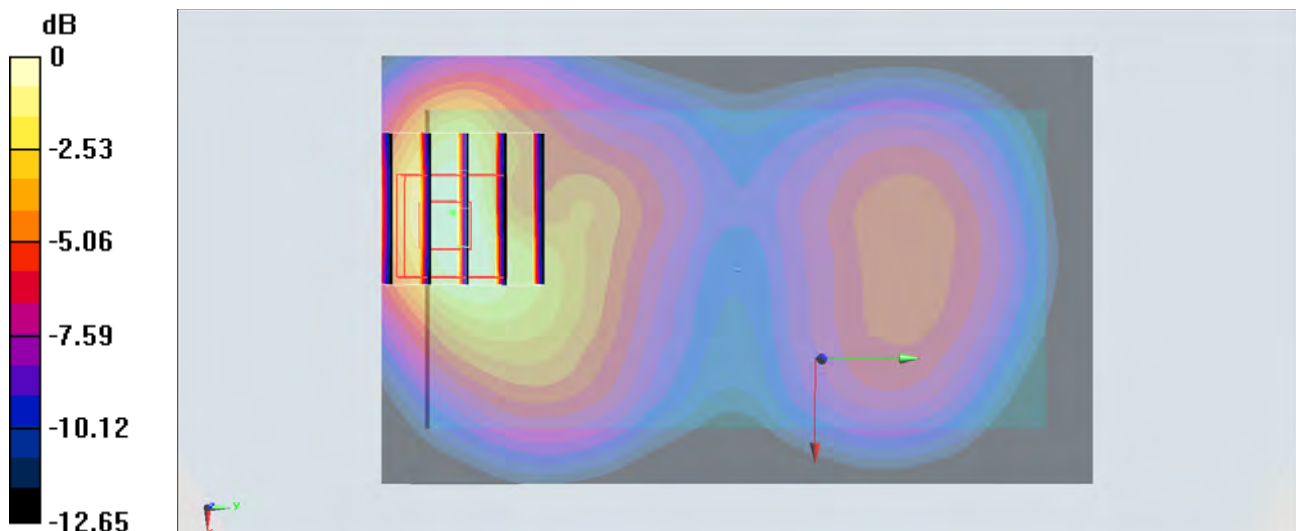
**Configuration/Ch1513/Zoom Scan (5x5x7)/Cube 0:** Measurement grid: dx=8mm, dy=8mm, dz=5mm

Reference Value = 32.64 V/m; Power Drift = -0.04 dB

Peak SAR (extrapolated) = 1.95 W/kg

**SAR(1 g) = 1.12 W/kg; SAR(10 g) = 0.607 W/kg**

Maximum value of SAR (measured) = 1.54 W/kg



0 dB = 1.54 W/kg = 1.88 dBW/kg

### #21\_WCDMA II\_RMC 12.2Kbps\_Bottom Side\_1cm\_Ch9538

Communication System: WCDMA; Frequency: 1907.6 MHz; Duty Cycle: 1:1

Medium: MSL\_1900\_141209 Medium parameters used:  $f = 1908 \text{ MHz}$ ;  $\sigma = 1.538 \text{ S/m}$ ;  $\epsilon_r = 52.824$ ;  $\rho = 1000 \text{ kg/m}^3$

Ambient Temperature :  $23.4 \text{ }^\circ\text{C}$ ; Liquid Temperature :  $22.4 \text{ }^\circ\text{C}$

DASY5 Configuration:

- Probe: EX3DV4 - SN3931; ConvF(7.8, 7.8, 7.8); Calibrated: 2014/9/25;
- Sensor-Surface: 2mm (Mechanical Surface Detection)
- Electronics: DAE3 Sn577; Calibrated: 2014/10/6
- Phantom: SAM-Right; Type: QD 000 P40 C; Serial: TP-1446
- Measurement SW: DASY52, Version 52.8 (8); SEMCAD X Version 14.6.10 (7331)

**Configuration/Ch9538/Area Scan (31x61x1):** Interpolated grid:  $dx=1.500 \text{ mm}$ ,  $dy=1.500 \text{ mm}$   
 Maximum value of SAR (interpolated) =  $1.64 \text{ W/kg}$

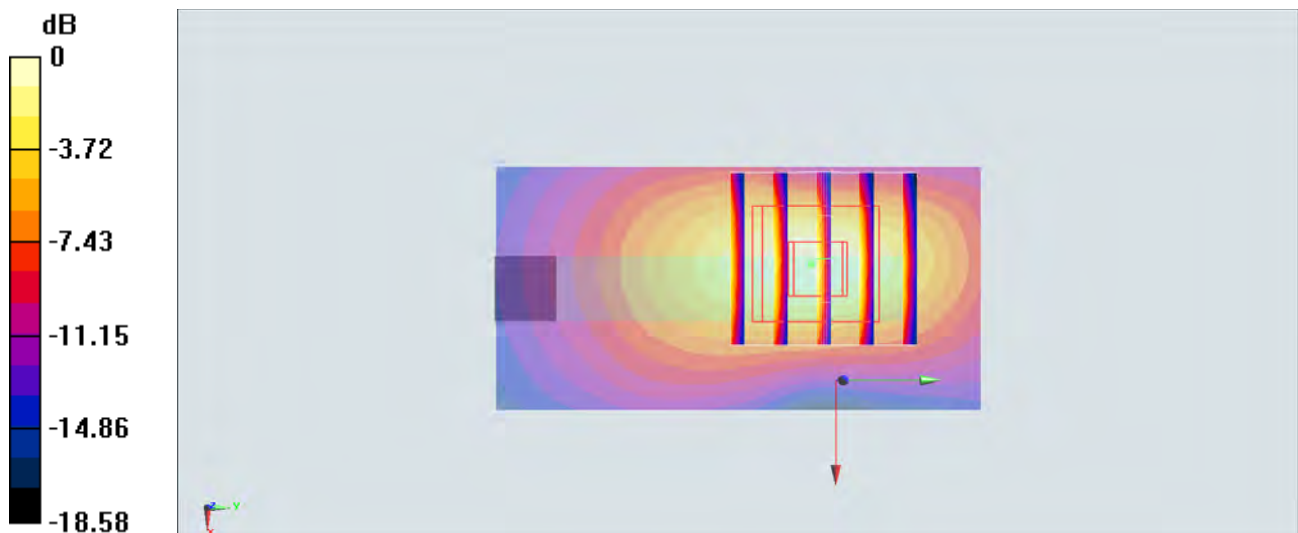
**Configuration/Ch9538/Zoom Scan (5x5x7)/Cube 0:** Measurement grid:  $dx=8\text{mm}$ ,  $dy=8\text{mm}$ ,  $dz=5\text{mm}$

Reference Value =  $31.19 \text{ V/m}$ ; Power Drift =  $-0.11 \text{ dB}$

Peak SAR (extrapolated) =  $2.03 \text{ W/kg}$

**SAR(1 g) =  $1.15 \text{ W/kg}$ ; SAR(10 g) =  $0.587 \text{ W/kg}$**

Maximum value of SAR (measured) =  $1.60 \text{ W/kg}$



0 dB =  $1.60 \text{ W/kg} = 2.04 \text{ dBW/kg}$

## #22\_CDMA BC10\_RTAP 153.6 Kbps\_Back\_1cm\_Ch580

Communication System: CDMA; Frequency: 820.5 MHz; Duty Cycle: 1:1

Medium: MSL\_850\_141211 Medium parameters used:  $f = 820.5$  MHz;  $\sigma = 0.949$  S/m;  $\epsilon_r = 54.699$ ;  $\rho = 1000$  kg/m<sup>3</sup>

Ambient Temperature : 23.3 °C; Liquid Temperature : 22.3 °C

DASY5 Configuration:

- Probe: EX3DV4 - SN3931; ConvF(10.13, 10.13, 10.13); Calibrated: 2014/9/25;
- Sensor-Surface: 2mm (Mechanical Surface Detection)
- Electronics: DAE3 Sn577; Calibrated: 2014/10/6
- Phantom: SAM-Left; Type: QD 000 P40 C; Serial: TP-1478
- Measurement SW: DASY52, Version 52.8 (8); SEMCAD X Version 14.6.10 (7331)

**Configuration/Ch580/Area Scan (61x111x1):** Interpolated grid: dx=1.500 mm, dy=1.500 mm

Maximum value of SAR (interpolated) = 1.02 W/kg

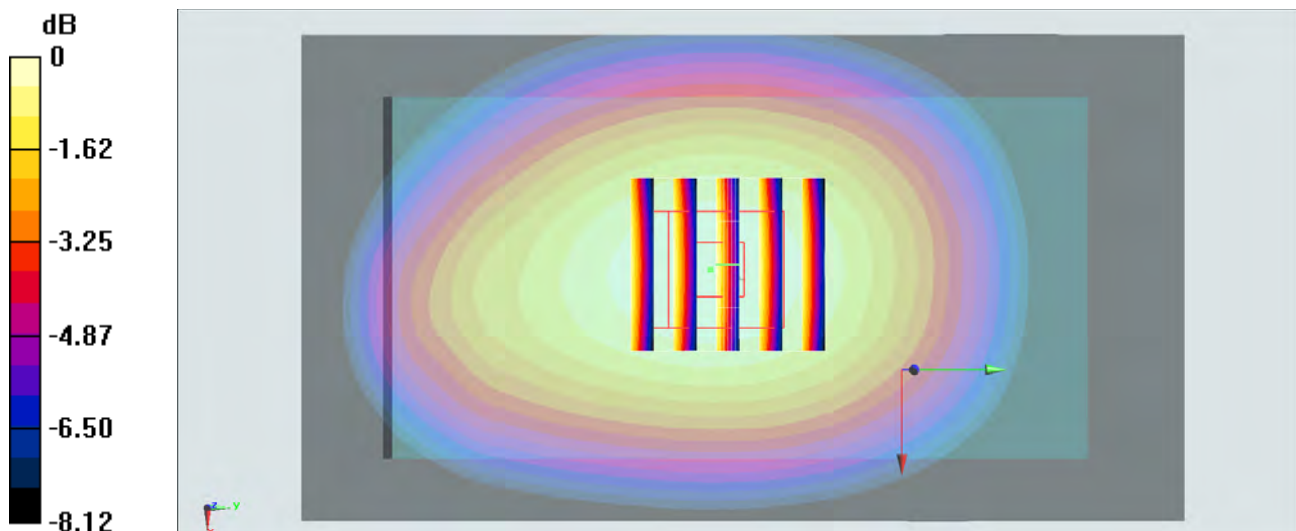
**Configuration/Ch580/Zoom Scan (5x5x7)/Cube 0:** Measurement grid: dx=8mm, dy=8mm, dz=5mm

Reference Value = 33.44 V/m; Power Drift = -0.03 dB

Peak SAR (extrapolated) = 1.12 W/kg

**SAR(1 g) = 0.876 W/kg; SAR(10 g) = 0.658 W/kg**

Maximum value of SAR (measured) = 1.02 W/kg



0 dB = 1.02 W/kg = 0.09 dBW/kg

### #23\_CDMA BC0\_RTAP 153.6 Kbps\_Back\_1cm\_Ch1013

Communication System: CDMA; Frequency: 824.7 MHz; Duty Cycle: 1:1

Medium: MSL\_850\_141211 Medium parameters used:  $f = 825$  MHz;  $\sigma = 0.954$  S/m;  $\epsilon_r = 54.642$ ;  $\rho = 1000$  kg/m<sup>3</sup>

Ambient Temperature : 23.3 °C; Liquid Temperature : 22.3 °C

DASY5 Configuration:

- Probe: EX3DV4 - SN3931; ConvF(10.13, 10.13, 10.13); Calibrated: 2014/9/25;
- Sensor-Surface: 2mm (Mechanical Surface Detection)
- Electronics: DAE3 Sn577; Calibrated: 2014/10/6
- Phantom: SAM-Left; Type: QD 000 P40 C; Serial: TP-1478
- Measurement SW: DASY52, Version 52.8 (8); SEMCAD X Version 14.6.10 (7331)

**Configuration/Ch1013/Area Scan (61x111x1):** Interpolated grid: dx=1.500 mm, dy=1.500 mm

Maximum value of SAR (interpolated) = 0.775 W/kg

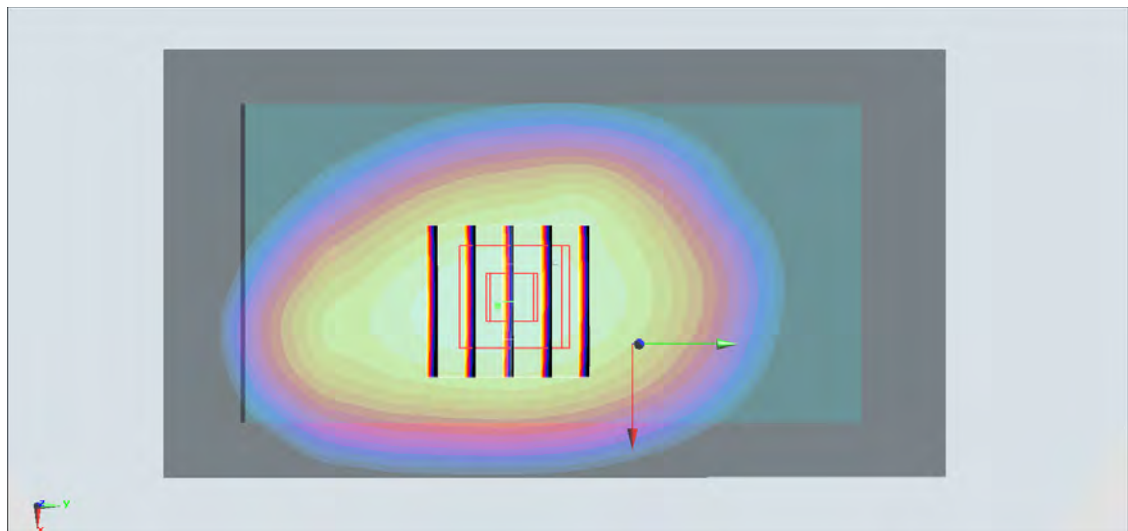
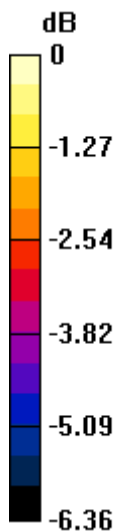
**Configuration/Ch1013/Zoom Scan (5x5x7)/Cube 0:** Measurement grid: dx=8mm, dy=8mm, dz=5mm

Reference Value = 28.54 V/m; Power Drift = -0.01 dB

Peak SAR (extrapolated) = 0.840 W/kg

**SAR(1 g) = 0.677 W/kg; SAR(10 g) = 0.513 W/kg**

Maximum value of SAR (measured) = 0.773 W/kg



0 dB = 0.773 W/kg = -1.12 dBW/kg

## #24\_CDMA BC1\_RTAP 153.6 Kbps\_Bottom Side\_1cm\_Ch1175

Communication System: CDMA; Frequency: 1908.75 MHz; Duty Cycle: 1:1

Medium: MSL\_1900\_141210 Medium parameters used:  $f = 1909$  MHz;  $\sigma = 1.527$  S/m;  $\epsilon_r = 53.136$ ;  $\rho = 1000$  kg/m<sup>3</sup>

Ambient Temperature : 23.3 °C; Liquid Temperature : 22.3 °C

DASY5 Configuration:

- Probe: EX3DV4 - SN3931; ConvF(7.8, 7.8, 7.8); Calibrated: 2014/9/25;
- Sensor-Surface: 2mm (Mechanical Surface Detection)
- Electronics: DAE3 Sn577; Calibrated: 2014/10/6
- Phantom: SAM-Right; Type: QD 000 P40 C; Serial: TP-1446
- Measurement SW: DASY52, Version 52.8 (8); SEMCAD X Version 14.6.10 (7331)

**Configuration/Ch1175/Area Scan (31x61x1):** Interpolated grid:  $dx=1.500$  mm,  $dy=1.500$  mm  
 Maximum value of SAR (interpolated) = 1.73 W/kg

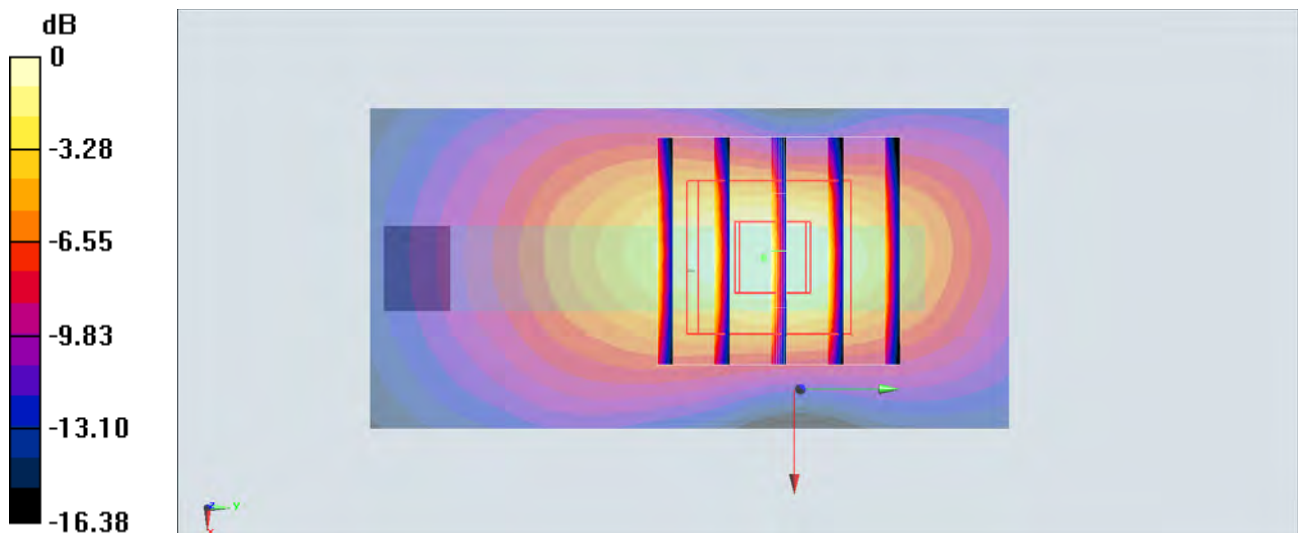
**Configuration/Ch1175/Zoom Scan (5x5x7)/Cube 0:** Measurement grid:  $dx=8$ mm,  $dy=8$ mm,  $dz=5$ mm

Reference Value = 32.93 V/m; Power Drift = -0.10 dB

Peak SAR (extrapolated) = 1.91 W/kg

**SAR(1 g) = 1.1 W/kg; SAR(10 g) = 0.554 W/kg**

Maximum value of SAR (measured) = 1.53 W/kg



0 dB = 1.53 W/kg = 1.85 dBW/kg

**#25\_LTE Band 12\_10M\_QPSK\_1RB\_0offset\_Back\_1cm\_Ch23060**

Communication System: LTE; Frequency: 704 MHz; Duty Cycle: 1:1

Medium: MSL\_750\_141213 Medium parameters used:  $f = 704 \text{ MHz}$ ;  $\sigma = 0.927 \text{ S/m}$ ;  $\epsilon_r = 54.942$ ;  $\rho = 1000 \text{ kg/m}^3$

Ambient Temperature :  $23.3 \text{ }^\circ\text{C}$ ; Liquid Temperature :  $22.3 \text{ }^\circ\text{C}$

DASY5 Configuration:

- Probe: EX3DV4 - SN3931; ConvF(10.1, 10.1, 10.1); Calibrated: 2014/9/25;
- Sensor-Surface: 2mm (Mechanical Surface Detection)
- Electronics: DAE3 Sn577; Calibrated: 2014/10/6
- Phantom: SAM-Right; Type: QD 000 P40 C; Serial: TP-1446
- Measurement SW: DASY52, Version 52.8 (8); SEMCAD X Version 14.6.10 (7331)

**Configuration/Ch23060/Area Scan (61x101x1):** Interpolated grid:  $dx=1.500 \text{ mm}$ ,  $dy=1.500 \text{ mm}$

Maximum value of SAR (interpolated) =  $0.557 \text{ W/kg}$

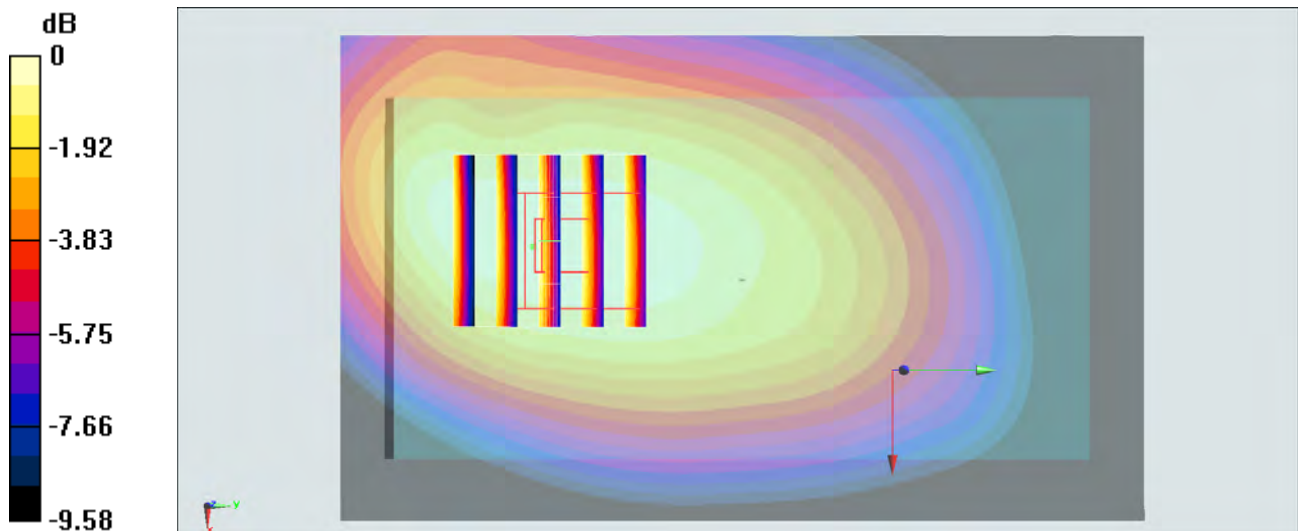
**Configuration/Ch23060/Zoom Scan (5x5x7)/Cube 0:** Measurement grid:  $dx=8\text{mm}$ ,  $dy=8\text{mm}$ ,  $dz=5\text{mm}$

Reference Value =  $24.83 \text{ V/m}$ ; Power Drift =  $-0.01 \text{ dB}$

Peak SAR (extrapolated) =  $0.625 \text{ W/kg}$

**SAR(1 g) =  $0.474 \text{ W/kg}$ ; SAR(10 g) =  $0.351 \text{ W/kg}$**

Maximum value of SAR (measured) =  $0.558 \text{ W/kg}$



$0 \text{ dB} = 0.558 \text{ W/kg} = -2.53 \text{ dBW/kg}$

**#26\_LTE Band 17\_10M\_QPSK\_1RB\_0offset\_Back\_1cm\_Ch23780**

Communication System: LTE; Frequency: 709 MHz; Duty Cycle: 1:1

Medium: MSL\_750\_141213 Medium parameters used:  $f = 709$  MHz;  $\sigma = 0.933$  S/m;  $\epsilon_r = 54.879$ ;  $\rho = 1000$  kg/m<sup>3</sup>

Ambient Temperature : 23.3 °C; Liquid Temperature : 22.3 °C

DASY5 Configuration:

- Probe: EX3DV4 - SN3931; ConvF(10.1, 10.1, 10.1); Calibrated: 2014/9/25;
- Sensor-Surface: 2mm (Mechanical Surface Detection)
- Electronics: DAE3 Sn577; Calibrated: 2014/10/6
- Phantom: SAM-Right; Type: QD 000 P40 C; Serial: TP-1446
- Measurement SW: DASY52, Version 52.8 (8); SEMCAD X Version 14.6.10 (7331)

**Configuration/Ch23780/Area Scan (61x101x1):** Interpolated grid: dx=1.500 mm, dy=1.500 mm

Maximum value of SAR (interpolated) = 0.641 W/kg

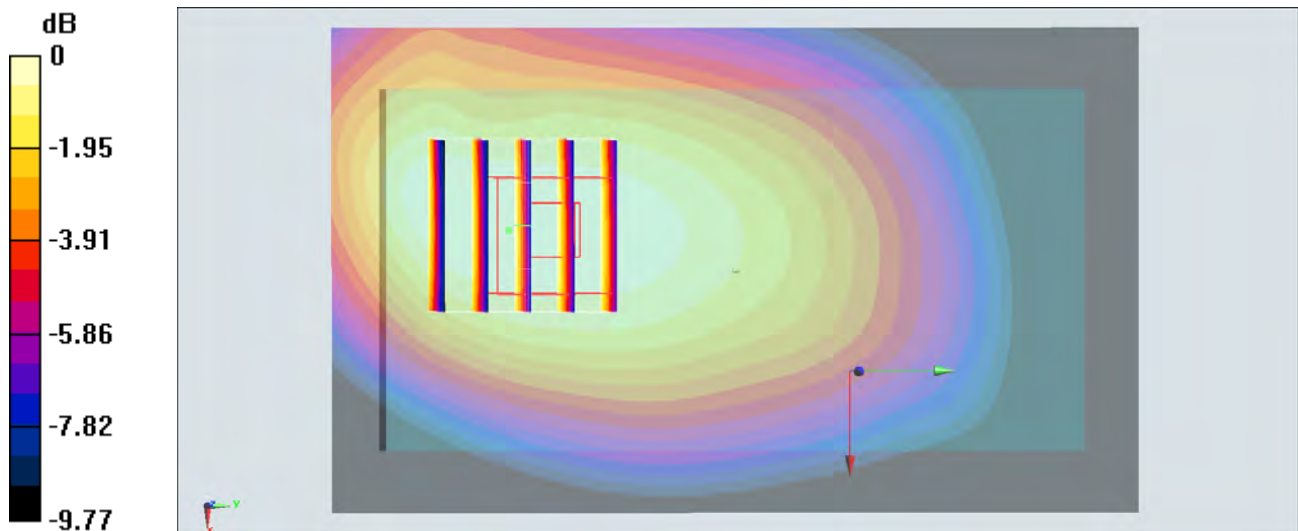
**Configuration/Ch23780/Zoom Scan (5x5x7)/Cube 0:** Measurement grid: dx=8mm, dy=8mm, dz=5mm

Reference Value = 26.47 V/m; Power Drift = -0.09 dB

Peak SAR (extrapolated) = 0.701 W/kg

**SAR(1 g) = 0.520 W/kg; SAR(10 g) = 0.381 W/kg**

Maximum value of SAR (measured) = 0.611 W/kg



0 dB = 0.611 W/kg = -2.14 dBW/kg

**#27\_LTE Band 26\_15M\_QPSK\_1RB\_0offset\_Back\_1cm\_Ch26765**

Communication System: LTE; Frequency: 821.5 MHz; Duty Cycle: 1:1

Medium: MSL\_850\_141212 Medium parameters used:  $f = 821.5$  MHz;  $\sigma = 0.984$  S/m;  $\epsilon_r = 55.495$ ;  $\rho = 1000$  kg/m<sup>3</sup>

Ambient Temperature : 23.5 °C; Liquid Temperature : 22.5 °C

**DASY5 Configuration:**

- Probe: EX3DV4 - SN3931; ConvF(10.13, 10.13, 10.13); Calibrated: 2014/9/25;
- Sensor-Surface: 2mm (Mechanical Surface Detection)
- Electronics: DAE3 Sn577; Calibrated: 2014/10/6
- Phantom: SAM-Left; Type: QD 000 P40 C; Serial: TP-1478
- Measurement SW: DASY52, Version 52.8 (8); SEMCAD X Version 14.6.10 (7331)

**Configuration/Ch26765/Area Scan (71x111x1):** Interpolated grid: dx=1.500 mm, dy=1.500 mm

Maximum value of SAR (interpolated) = 0.627 W/kg

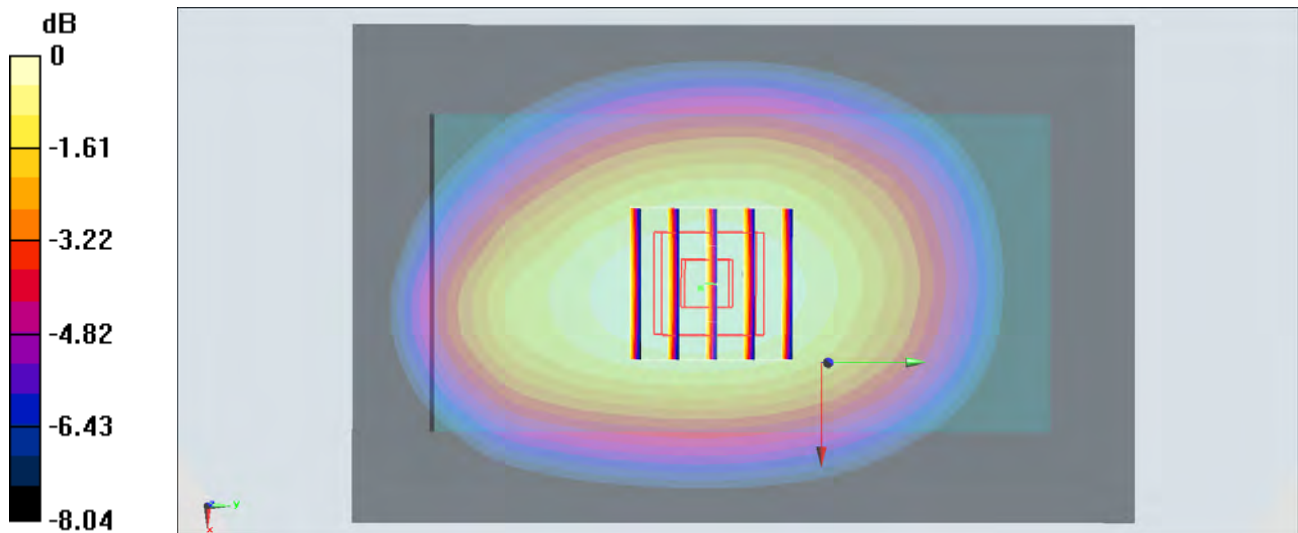
**Configuration/Ch26765/Zoom Scan (5x5x7)/Cube 0:** Measurement grid: dx=8mm, dy=8mm, dz=5mm

Reference Value = 25.25 V/m; Power Drift = -0.05 dB

Peak SAR (extrapolated) = 0.654 W/kg

**SAR(1 g) = 0.521 W/kg; SAR(10 g) = 0.394 W/kg**

Maximum value of SAR (measured) = 0.599 W/kg



0 dB = 0.599 W/kg = -2.23 dBW/kg

**#28\_LTE Band 5\_10M\_QPSK\_1RB\_0offset\_Front\_1cm\_Ch20600**

Communication System: LTE; Frequency: 844 MHz; Duty Cycle: 1:1

Medium: MSL\_850\_141211 Medium parameters used:  $f = 844 \text{ MHz}$ ;  $\sigma = 0.971 \text{ S/m}$ ;  $\epsilon_r = 54.456$ ;  $\rho = 1000 \text{ kg/m}^3$

Ambient Temperature :  $23.3 \text{ }^\circ\text{C}$ ; Liquid Temperature :  $22.3 \text{ }^\circ\text{C}$

DASY5 Configuration:

- Probe: EX3DV4 - SN3931; ConvF(10.13, 10.13, 10.13); Calibrated: 2014/9/25;
- Sensor-Surface: 2mm (Mechanical Surface Detection)
- Electronics: DAE3 Sn577; Calibrated: 2014/10/6
- Phantom: SAM-Left; Type: QD 000 P40 C; Serial: TP-1478
- Measurement SW: DASY52, Version 52.8 (8); SEMCAD X Version 14.6.10 (7331)

**Configuration/Ch20600/Area Scan (71x111x1):** Interpolated grid:  $dx=1.500 \text{ mm}$ ,  $dy=1.500 \text{ mm}$

Maximum value of SAR (interpolated) =  $0.908 \text{ W/kg}$

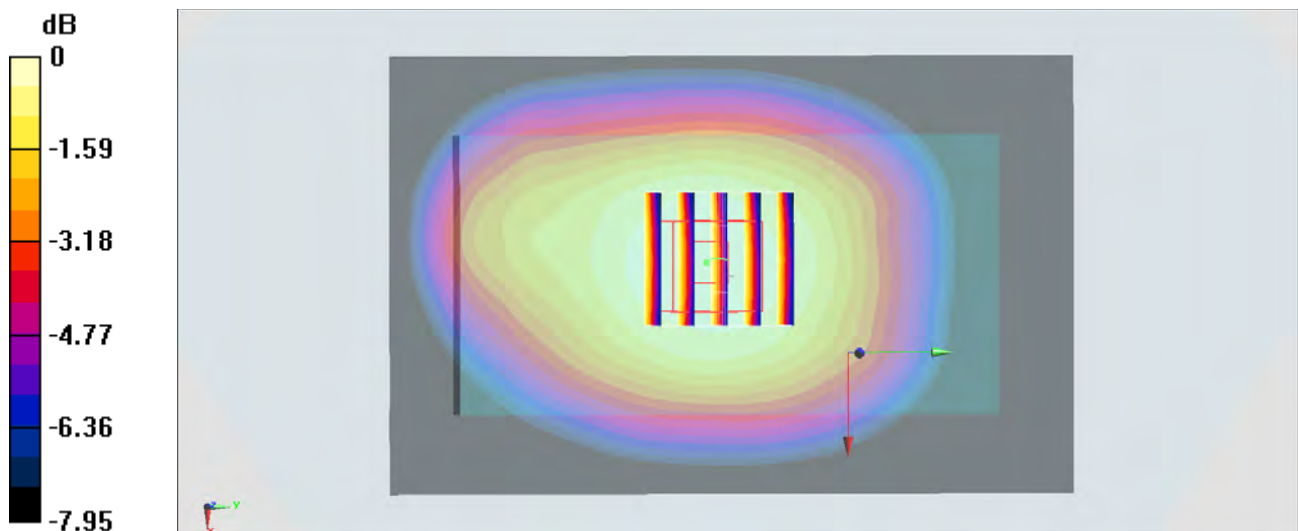
**Configuration/Ch20600/Zoom Scan (5x5x7)/Cube 0:** Measurement grid:  $dx=8\text{mm}$ ,  $dy=8\text{mm}$ ,  $dz=5\text{mm}$

Reference Value =  $31.29 \text{ V/m}$ ; Power Drift =  $0.01 \text{ dB}$

Peak SAR (extrapolated) =  $0.995 \text{ W/kg}$

**SAR(1 g) =  $0.802 \text{ W/kg}$ ; SAR(10 g) =  $0.614 \text{ W/kg}$**

Maximum value of SAR (measured) =  $0.913 \text{ W/kg}$



$0 \text{ dB} = 0.913 \text{ W/kg} = -0.40 \text{ dBW/kg}$

**#29\_LTE Band 4\_20M\_QPSK\_1RB\_0offset\_Front\_1cm\_Ch20300**

Communication System: LTE; Frequency: 1745 MHz; Duty Cycle: 1:1

Medium: MSL\_1750\_141212 Medium parameters used:  $f = 1745$  MHz;  $\sigma = 1.54$  S/m;  $\epsilon_r = 51.761$ ;  $\rho = 1000$  kg/m<sup>3</sup>

Ambient Temperature : 23.3 °C; Liquid Temperature : 22.3 °C

DASY5 Configuration:

- Probe: EX3DV4 - SN3931; ConvF(8.26, 8.26, 8.26); Calibrated: 2014/9/25;
- Sensor-Surface: 2mm (Mechanical Surface Detection)
- Electronics: DAE3 Sn577; Calibrated: 2014/10/6
- Phantom: SAM-Right; Type: QD 000 P40 C; Serial: TP-1446
- Measurement SW: DASY52, Version 52.8 (8); SEMCAD X Version 14.6.10 (7331)

**Configuration/Ch20300/Area Scan (61x101x1):** Interpolated grid: dx=1.500 mm, dy=1.500 mm

Maximum value of SAR (interpolated) = 1.37 W/kg

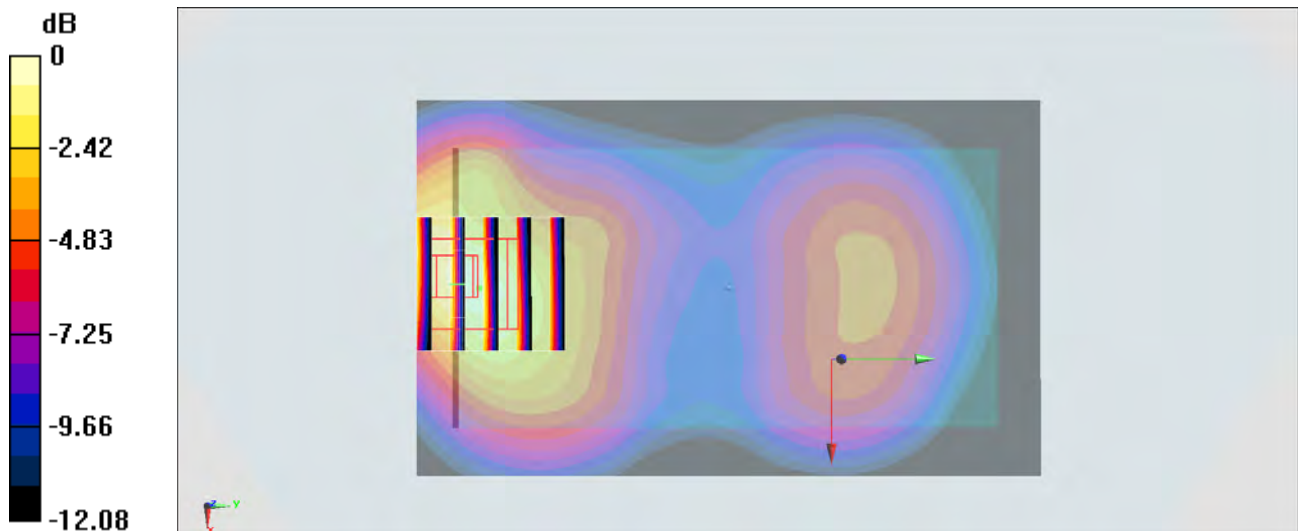
**Configuration/Ch20300/Zoom Scan (5x5x7)/Cube 0:** Measurement grid: dx=8mm, dy=8mm, dz=5mm

Reference Value = 30.68 V/m; Power Drift = 0.01 dB

Peak SAR (extrapolated) = 1.87 W/kg

**SAR(1 g) = 1.09 W/kg; SAR(10 g) = 0.619 W/kg**

Maximum value of SAR (measured) = 1.47 W/kg



0 dB = 1.47 W/kg = 1.67 dBW/kg

**#30\_LTE Band 25\_20M\_QPSK\_1RB\_0offset\_Bottom Side\_1cm\_Ch26340**

Communication System: LTE; Frequency: 1880 MHz; Duty Cycle: 1:1

Medium: MSL\_1900\_141210 Medium parameters used:  $f = 1880$  MHz;  $\sigma = 1.493$  S/m;  $\epsilon_r = 53.147$ ;  $\rho = 1000$  kg/m<sup>3</sup>

Ambient Temperature : 23.3 °C; Liquid Temperature : 22.3 °C

DASY5 Configuration:

- Probe: EX3DV4 - SN3931; ConvF(7.8, 7.8, 7.8); Calibrated: 2014/9/25;
- Sensor-Surface: 2mm (Mechanical Surface Detection)
- Electronics: DAE3 Sn577; Calibrated: 2014/10/6
- Phantom: SAM-Right; Type: QD 000 P40 C; Serial: TP-1446
- Measurement SW: DASY52, Version 52.8 (8); SEMCAD X Version 14.6.10 (7331)

**Configuration/Ch26340/Area Scan (31x61x1):** Interpolated grid: dx=1.500 mm, dy=1.500 mm

Maximum value of SAR (interpolated) = 1.72 W/kg

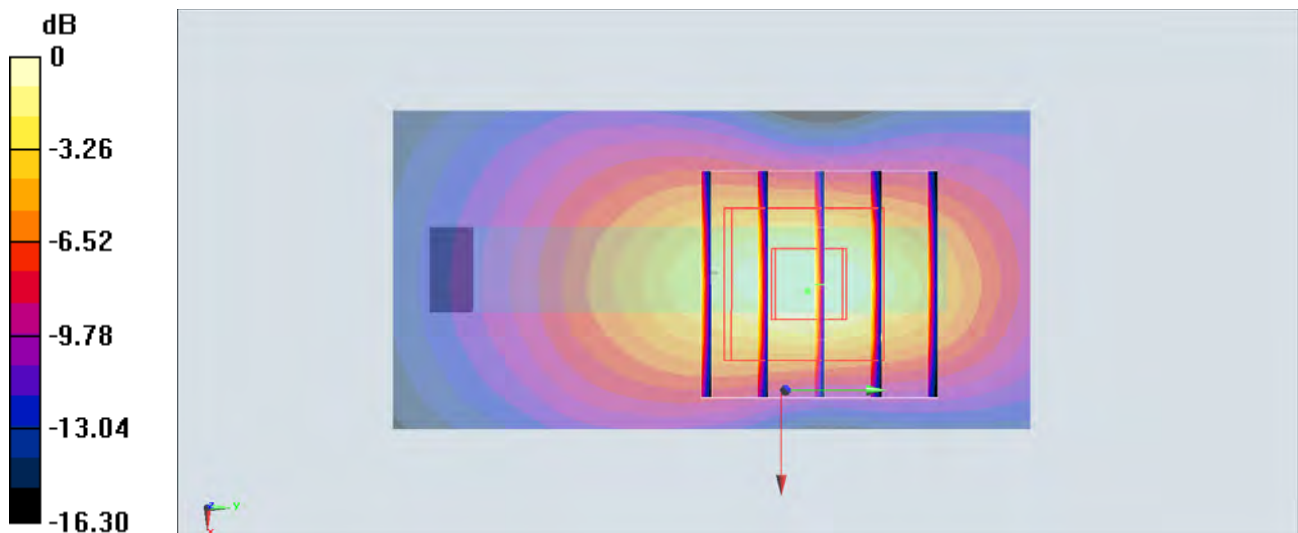
**Configuration/Ch26340/Zoom Scan (5x5x7)/Cube 0:** Measurement grid: dx=8mm, dy=8mm, dz=5mm

Reference Value = 29.23 V/m; Power Drift = -0.05 dB

Peak SAR (extrapolated) = 2.05 W/kg

**SAR(1 g) = 1.18 W/kg; SAR(10 g) = 0.600 W/kg**

Maximum value of SAR (measured) = 1.67 W/kg



0 dB = 1.67 W/kg = 2.23 dBW/kg

**#31\_LTE Band 2\_20M\_QPSK\_1RB\_0offset\_Bottom Side\_1cm\_Ch19100**

Communication System: LTE; Frequency: 1900 MHz; Duty Cycle: 1:1

Medium: MSL\_1900\_141209 Medium parameters used:  $f = 1900$  MHz;  $\sigma = 1.53$  S/m;  $\epsilon_r = 52.859$ ;  $\rho = 1000$  kg/m<sup>3</sup>

Ambient Temperature : 23.4 °C; Liquid Temperature : 22.4 °C

**DASY5 Configuration:**

- Probe: EX3DV4 - SN3931; ConvF(7.8, 7.8, 7.8); Calibrated: 2014/9/25;
- Sensor-Surface: 2mm (Mechanical Surface Detection)
- Electronics: DAE3 Sn577; Calibrated: 2014/10/6
- Phantom: SAM-Right; Type: QD 000 P40 C; Serial: TP-1446
- Measurement SW: DASY52, Version 52.8 (8); SEMCAD X Version 14.6.10 (7331)

**Configuration/Ch19100/Area Scan (31x61x1):** Interpolated grid: dx=1.500 mm, dy=1.500 mm

Maximum value of SAR (interpolated) = 1.52 W/kg

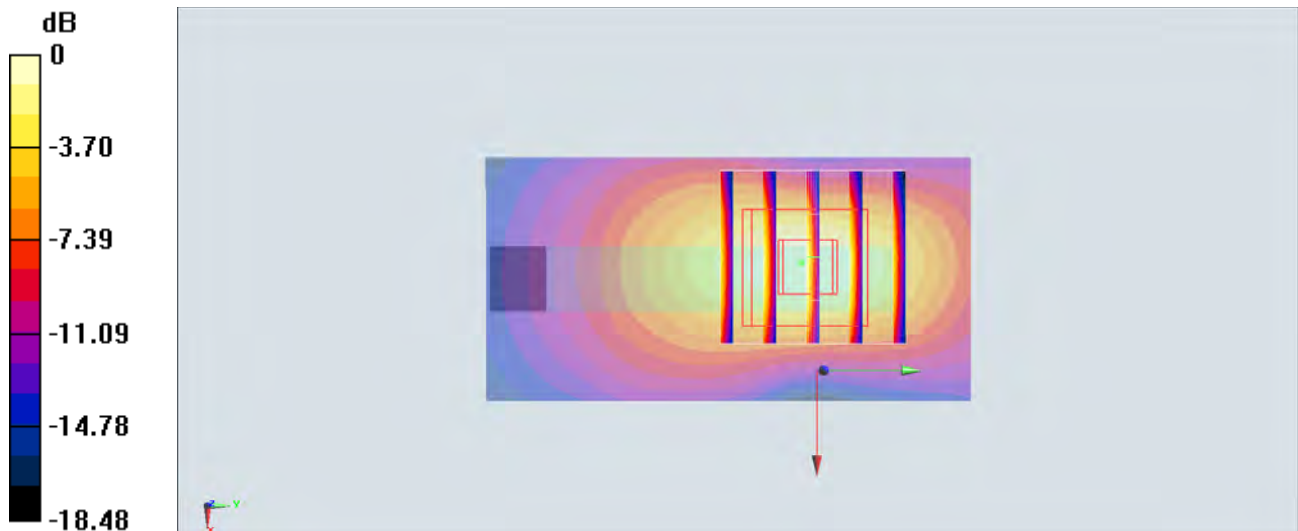
**Configuration/Ch19100/Zoom Scan (5x5x7)/Cube 0:** Measurement grid: dx=8mm, dy=8mm, dz=5mm

Reference Value = 27.70 V/m; Power Drift = -0.16 dB

Peak SAR (extrapolated) = 1.81 W/kg

**SAR(1 g) = 1.05 W/kg; SAR(10 g) = 0.537 W/kg**

Maximum value of SAR (measured) = 1.45 W/kg



0 dB = 1.45 W/kg = 1.61 dBW/kg

**#32\_LTE Band 41\_20M\_QPSK\_1RB\_0offset\_Back\_1cm\_Ch40620**

Communication System: LTE; Frequency: 2593 MHz; Duty Cycle: 1:1.59

Medium: MSL\_2600\_141216 Medium parameters used:  $f = 2593$  MHz;  $\sigma = 2.2$  S/m;  $\epsilon_r = 51.105$ ;  $\rho = 1000$  kg/m<sup>3</sup>

Ambient Temperature : 23.5 °C; Liquid Temperature : 22.5 °C

DASY5 Configuration:

- Probe: EX3DV4 - SN3931; ConvF(7.2, 7.2, 7.2); Calibrated: 2014/9/25;
- Sensor-Surface: 2mm (Mechanical Surface Detection)
- Electronics: DAE3 Sn577; Calibrated: 2014/10/6
- Phantom: SAM-Left; Type: QD 000 P40 C; Serial: TP-1478
- Measurement SW: DASY52, Version 52.8 (8); SEMCAD X Version 14.6.10 (7331)

**Configuration/Ch40620/Area Scan (81x131x1):** Interpolated grid: dx=1.200 mm, dy=1.200 mm

Maximum value of SAR (interpolated) = 1.07 W/kg

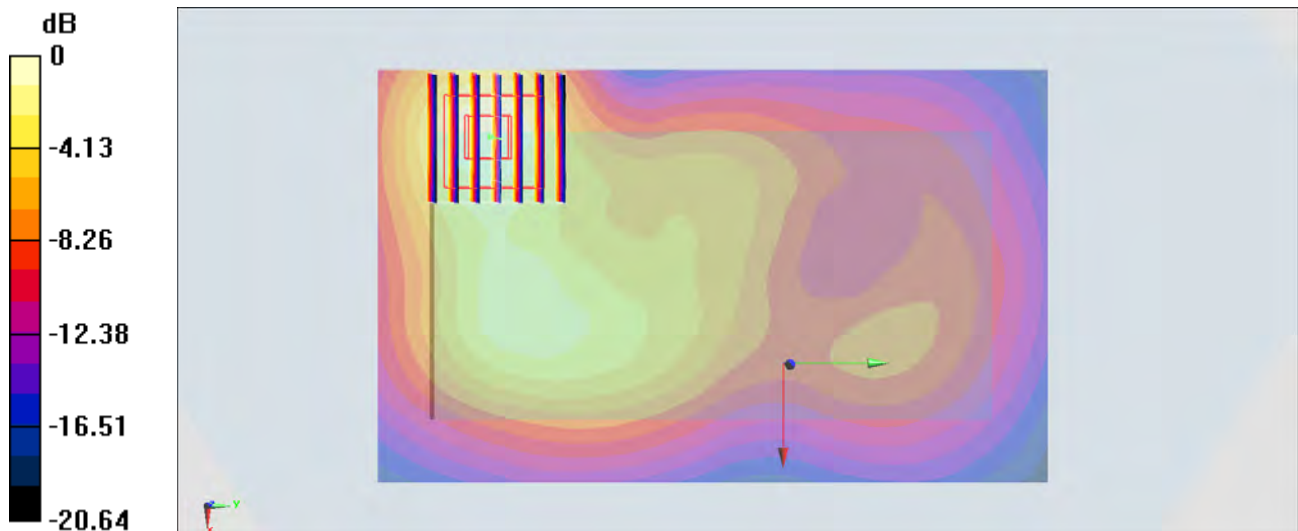
**Configuration/Ch40620/Zoom Scan (7x7x7)/Cube 0:** Measurement grid: dx=5mm, dy=5mm, dz=5mm

Reference Value = 22.11 V/m; Power Drift = -0.04 dB

Peak SAR (extrapolated) = 1.46 W/kg

**SAR(1 g) = 0.713 W/kg; SAR(10 g) = 0.350 W/kg**

Maximum value of SAR (measured) = 1.07 W/kg



0 dB = 1.07 W/kg = 0.29 dBW/kg

### #33\_GSM850\_GPRS (4 Tx slots)\_Front\_1cm\_Ch251

Communication System: GSM850; Frequency: 848.8 MHz; Duty Cycle: 1:2.08

Medium: MSL\_850\_141213 Medium parameters used:  $f = 849$  MHz;  $\sigma = 0.995$  S/m;  $\epsilon_r = 55.271$ ;  $\rho = 1000$  kg/m<sup>3</sup>

Ambient Temperature : 23.3 °C; Liquid Temperature : 22.3 °C

DASY5 Configuration:

- Probe: EX3DV4 - SN3931; ConvF(10.13, 10.13, 10.13); Calibrated: 2014/9/25;
- Sensor-Surface: 2mm (Mechanical Surface Detection)
- Electronics: DAE3 Sn577; Calibrated: 2014/10/6
- Phantom: SAM-Left; Type: QD 000 P40 C; Serial: TP-1478
- Measurement SW: DASY52, Version 52.8 (8); SEMCAD X Version 14.6.10 (7331)

**Configuration/Ch251/Area Scan (71x111x1):** Interpolated grid: dx=1.500 mm, dy=1.500 mm

Maximum value of SAR (interpolated) = 0.591 W/kg

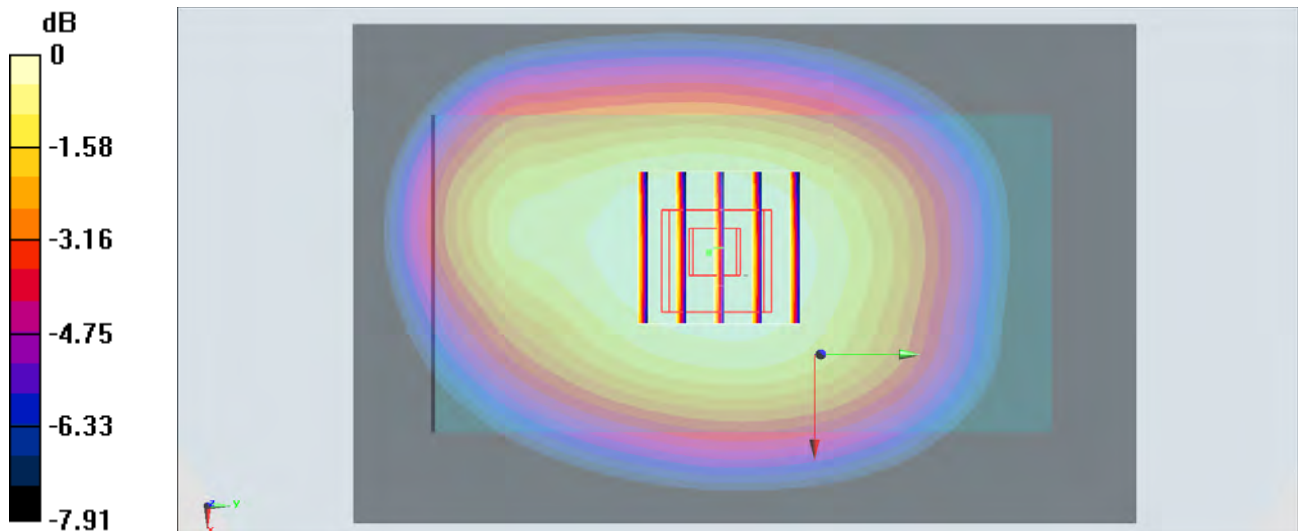
**Configuration/Ch251/Zoom Scan (5x5x7)/Cube 0:** Measurement grid: dx=8mm, dy=8mm, dz=5mm

Reference Value = 24.46 V/m; Power Drift = -0.01 dB

Peak SAR (extrapolated) = 0.607 W/kg

**SAR(1 g) = 0.497 W/kg; SAR(10 g) = 0.382 W/kg**

Maximum value of SAR (measured) = 0.563 W/kg



0 dB = 0.563 W/kg = -2.49 dBW/kg

### #34\_GSM1900\_GPRS (4 Tx slots)\_Front\_1cm\_Ch661

Communication System: PCS; Frequency: 1880 MHz; Duty Cycle: 1:2.08

Medium: MSL\_1900\_141210 Medium parameters used:  $f = 1880$  MHz;  $\sigma = 1.493$  S/m;  $\epsilon_r = 53.147$ ;  $\rho = 1000$  kg/m<sup>3</sup>

Ambient Temperature : 23.3 °C; Liquid Temperature : 22.3 °C

DASY5 Configuration:

- Probe: EX3DV4 - SN3931; ConvF(7.8, 7.8, 7.8); Calibrated: 2014/9/25;
- Sensor-Surface: 2mm (Mechanical Surface Detection)
- Electronics: DAE3 Sn577; Calibrated: 2014/10/6
- Phantom: SAM-Right; Type: QD 000 P40 C; Serial: TP-1446
- Measurement SW: DASY52, Version 52.8 (8); SEMCAD X Version 14.6.10 (7331)

**Configuration/Ch661/Area Scan (61x111x1):** Interpolated grid: dx=1.500 mm, dy=1.500 mm  
 Maximum value of SAR (interpolated) = 0.425 W/kg

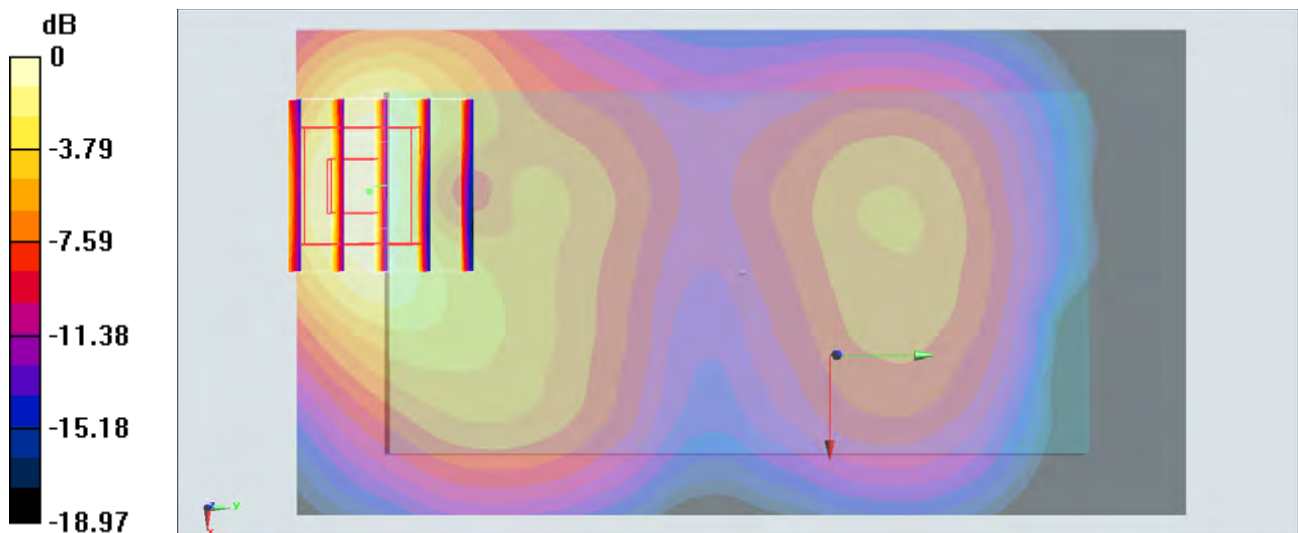
**Configuration/Ch661/Zoom Scan (5x5x7)/Cube 0:** Measurement grid: dx=8mm, dy=8mm, dz=5mm

Reference Value = 17.53 V/m; Power Drift = -0.10 dB

Peak SAR (extrapolated) = 0.549 W/kg

**SAR(1 g) = 0.317 W/kg; SAR(10 g) = 0.166 W/kg**

Maximum value of SAR (measured) = 0.422 W/kg



0 dB = 0.422 W/kg = -3.75 dBW/kg

### #35\_WCDMA V\_RMC 12.2Kbps\_Back\_1cm\_Ch4132

Communication System: WCDMA; Frequency: 826.4 MHz; Duty Cycle: 1:1

Medium: MSL\_850\_141213 Medium parameters used:  $f = 826.4$  MHz;  $\sigma = 0.973$  S/m;  $\epsilon_r = 55.4$ ;  $\rho = 1000$  kg/m<sup>3</sup>

Ambient Temperature : 23.3 °C; Liquid Temperature : 22.3 °C

DASY5 Configuration:

- Probe: EX3DV4 - SN3931; ConvF(10.13, 10.13, 10.13); Calibrated: 2014/9/25;
- Sensor-Surface: 2mm (Mechanical Surface Detection)
- Electronics: DAE3 Sn577; Calibrated: 2014/10/6
- Phantom: SAM-Left; Type: QD 000 P40 C; Serial: TP-1478
- Measurement SW: DASY52, Version 52.8 (8); SEMCAD X Version 14.6.10 (7331)

**Configuration/Ch4132/Area Scan (61x101x1):** Interpolated grid: dx=1.500 mm, dy=1.500 mm

Maximum value of SAR (interpolated) = 0.785 W/kg

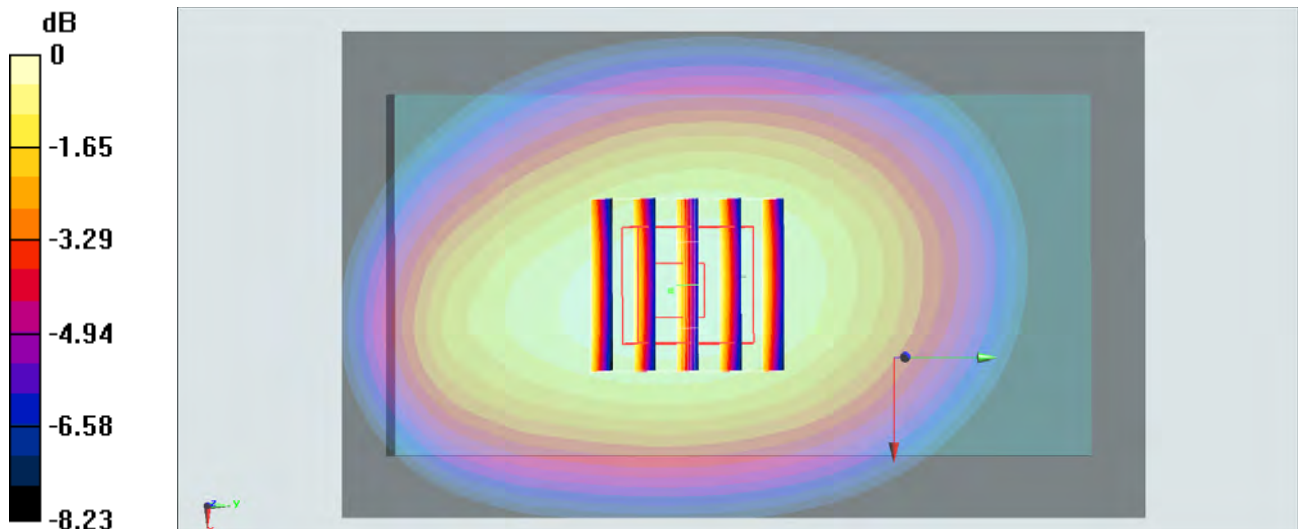
**Configuration/Ch4132/Zoom Scan (5x5x7)/Cube 0:** Measurement grid: dx=8mm, dy=8mm, dz=5mm

Reference Value = 29.00 V/m; Power Drift = -0.01 dB

Peak SAR (extrapolated) = 0.860 W/kg

**SAR(1 g) = 0.682 W/kg; SAR(10 g) = 0.515 W/kg**

Maximum value of SAR (measured) = 0.784 W/kg



0 dB = 0.784 W/kg = -1.06 dBW/kg

### #36\_WCDMA IV\_RMC12.2Kbps\_Front\_1cm\_Ch1513;Headset

Communication System: WCDMA; Frequency: 1752.6 MHz; Duty Cycle: 1:1

Medium: MSL\_1750\_141215 Medium parameters used:  $f = 1753$  MHz;  $\sigma = 1.52$  S/m;  $\epsilon_r = 52.245$ ;  $\rho = 1000$  kg/m<sup>3</sup>

Ambient Temperature : 23.4 °C; Liquid Temperature : 22.4 °C

DASY5 Configuration:

- Probe: EX3DV4 - SN3931; ConvF(8.26, 8.26, 8.26); Calibrated: 2014/9/25;
- Sensor-Surface: 2mm (Mechanical Surface Detection)
- Electronics: DAE3 Sn577; Calibrated: 2014/10/6
- Phantom: SAM-Right; Type: QD 000 P40 C; Serial: TP-1446
- Measurement SW: DASY52, Version 52.8 (8); SEMCAD X Version 14.6.10 (7331)

**Configuration/Ch1513/Area Scan (61x101x1):** Interpolated grid: dx=1.500 mm, dy=1.500 mm

Maximum value of SAR (interpolated) = 1.43 W/kg

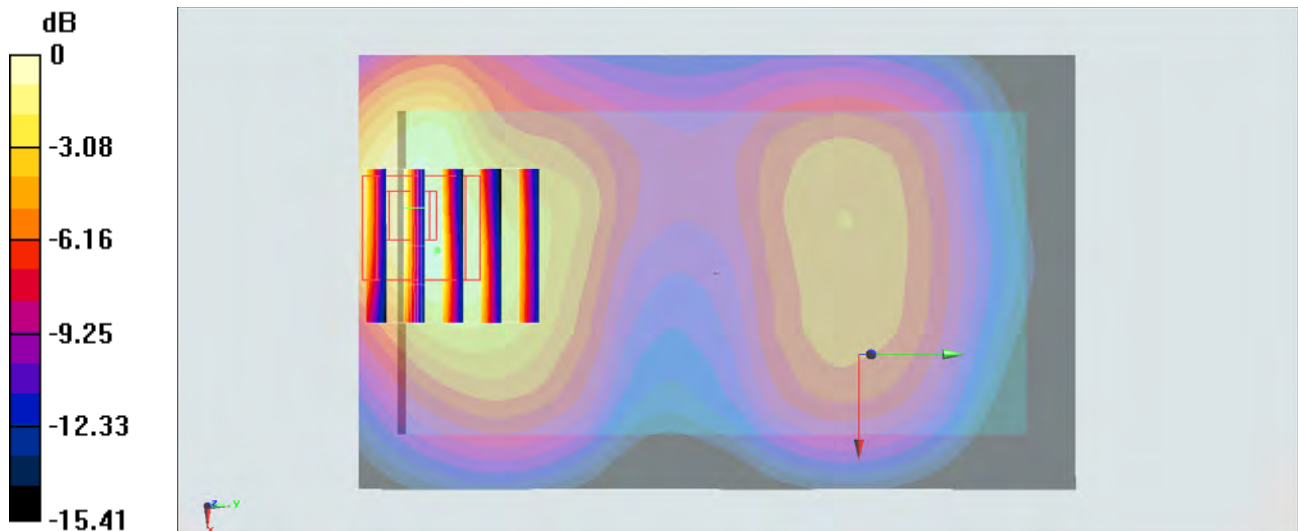
**Configuration/Ch1513/Zoom Scan (5x5x7)/Cube 0:** Measurement grid: dx=8mm, dy=8mm, dz=5mm

Reference Value = 31.18 V/m; Power Drift = 0.07 dB

Peak SAR (extrapolated) = 1.99 W/kg

**SAR(1 g) = 1.12 W/kg; SAR(10 g) = 0.620 W/kg**

Maximum value of SAR (measured) = 1.59 W/kg



0 dB = 1.59 W/kg = 2.01 dBW/kg

### #37\_WCDMA II\_RMC 12.2Kbps\_Front\_1cm\_Ch9538

Communication System: WCDMA ; Frequency: 1907.6 MHz;Duty Cycle: 1:1

Medium: MSL\_1900\_141209 Medium parameters used:  $f = 1908$  MHz;  $\sigma = 1.538$  S/m;  $\epsilon_r = 52.824$ ;  $\rho = 1000$  kg/m<sup>3</sup>

Ambient Temperature : 23.4 °C; Liquid Temperature : 22.4 °C

DASY5 Configuration:

- Probe: EX3DV4 - SN3931; ConvF(7.8, 7.8, 7.8); Calibrated: 2014/9/25;
- Sensor-Surface: 2mm (Mechanical Surface Detection)
- Electronics: DAE3 Sn577; Calibrated: 2014/10/6
- Phantom: SAM-Right; Type: QD 000 P40 C; Serial: TP-1446
- Measurement SW: DASY52, Version 52.8 (8);SEMCAD X Version 14.6.10 (7331)

**Configuration/Ch9538/Area Scan (61x111x1):** Interpolated grid: dx=1.500 mm, dy=1.500 mm

Maximum value of SAR (interpolated) = 1.39 W/kg

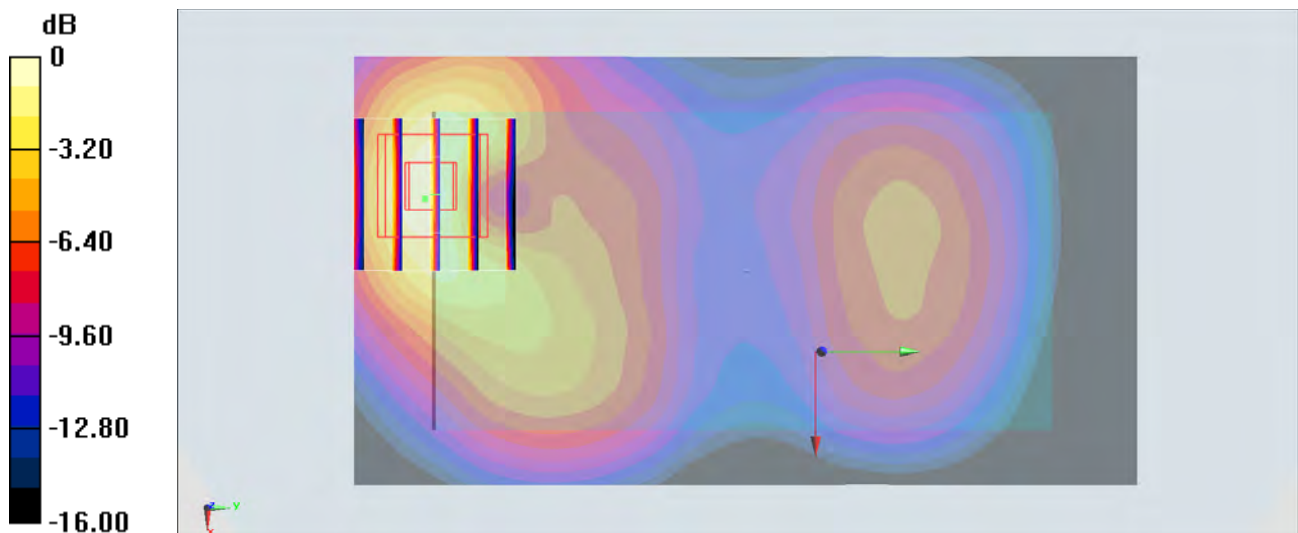
**Configuration/Ch9538/Zoom Scan (5x5x7)/Cube 0:** Measurement grid: dx=8mm, dy=8mm, dz=5mm

Reference Value = 30.85 V/m; Power Drift = -0.10 dB

Peak SAR (extrapolated) = 1.73 W/kg

**SAR(1 g) = 1.01 W/kg; SAR(10 g) = 0.540 W/kg**

Maximum value of SAR (measured) = 1.40 W/kg



0 dB = 1.40 W/kg = 1.46 dBW/kg

### #38\_CDMA BC10\_1xRTT RC3 SO32\_Back\_1cm\_Ch684

Communication System: CDMA; Frequency: 823.1 MHz; Duty Cycle: 1:1

Medium: MSL\_850\_141211 Medium parameters used:  $f = 823.1 \text{ MHz}$ ;  $\sigma = 0.952 \text{ S/m}$ ;  $\epsilon_r = 54.668$ ;  $\rho = 1000 \text{ kg/m}^3$

Ambient Temperature :  $23.3 \text{ }^\circ\text{C}$ ; Liquid Temperature :  $22.3 \text{ }^\circ\text{C}$

DASY5 Configuration:

- Probe: EX3DV4 - SN3931; ConvF(10.13, 10.13, 10.13); Calibrated: 2014/9/25;
- Sensor-Surface: 2mm (Mechanical Surface Detection)
- Electronics: DAE3 Sn577; Calibrated: 2014/10/6
- Phantom: SAM-Left; Type: QD 000 P40 C; Serial: TP-1478
- Measurement SW: DASY52, Version 52.8 (8); SEMCAD X Version 14.6.10 (7331)

**Configuration/Ch684/Area Scan (61x111x1):** Interpolated grid:  $dx=1.500 \text{ mm}$ ,  $dy=1.500 \text{ mm}$

Maximum value of SAR (interpolated) =  $1.03 \text{ W/kg}$

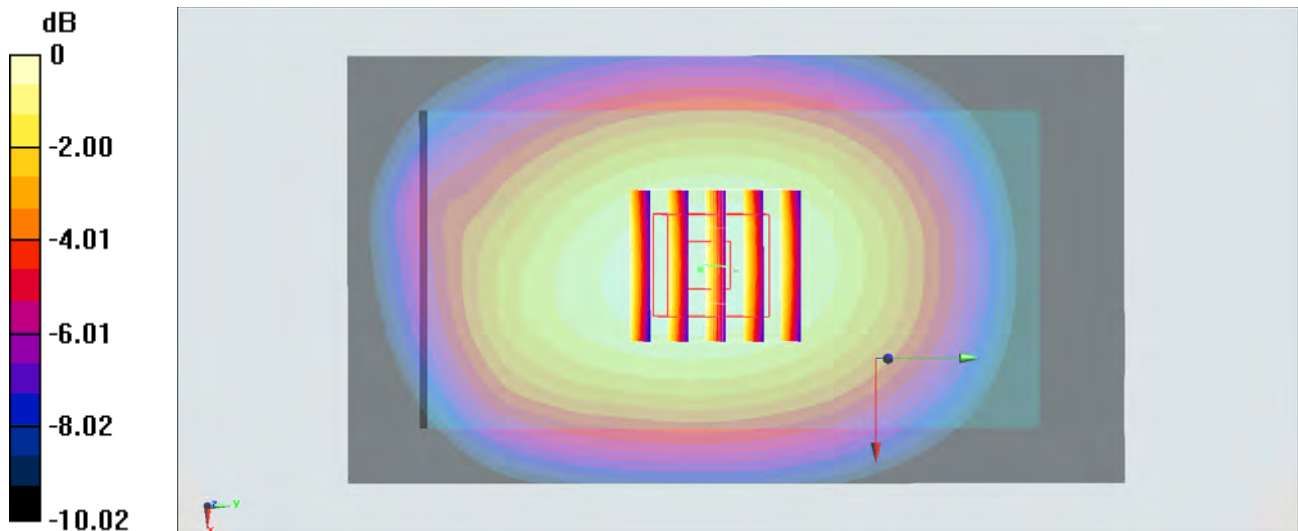
**Configuration/Ch684/Zoom Scan (5x5x7)/Cube 0:** Measurement grid:  $dx=8\text{mm}$ ,  $dy=8\text{mm}$ ,  $dz=5\text{mm}$

Reference Value =  $33.80 \text{ V/m}$ ; Power Drift =  $-0.06 \text{ dB}$

Peak SAR (extrapolated) =  $1.12 \text{ W/kg}$

**SAR(1 g) =  $0.901 \text{ W/kg}$ ; SAR(10 g) =  $0.683 \text{ W/kg}$**

Maximum value of SAR (measured) =  $1.03 \text{ W/kg}$



$0 \text{ dB} = 1.03 \text{ W/kg} = 0.13 \text{ dBW/kg}$

### #39\_CDMA BC0\_1xRTT RC3 SO32\_Back\_1cm\_Ch384

Communication System: CDMA; Frequency: 836.52 MHz; Duty Cycle: 1:1

Medium: MSL\_850\_141211 Medium parameters used:  $f = 837$  MHz;  $\sigma = 0.965$  S/m;  $\epsilon_r = 54.519$ ;  $\rho = 1000$  kg/m<sup>3</sup>

Ambient Temperature : 23.3 °C; Liquid Temperature : 22.3 °C

DASY5 Configuration:

- Probe: EX3DV4 - SN3931; ConvF(10.13, 10.13, 10.13); Calibrated: 2014/9/25;
- Sensor-Surface: 2mm (Mechanical Surface Detection)
- Electronics: DAE3 Sn577; Calibrated: 2014/10/6
- Phantom: SAM-Left; Type: QD 000 P40 C; Serial: TP-1478
- Measurement SW: DASY52, Version 52.8 (8); SEMCAD X Version 14.6.10 (7331)

**Configuration/Ch384/Area Scan (61x111x1):** Interpolated grid: dx=1.500 mm, dy=1.500 mm  
 Maximum value of SAR (interpolated) = 1.31 W/kg

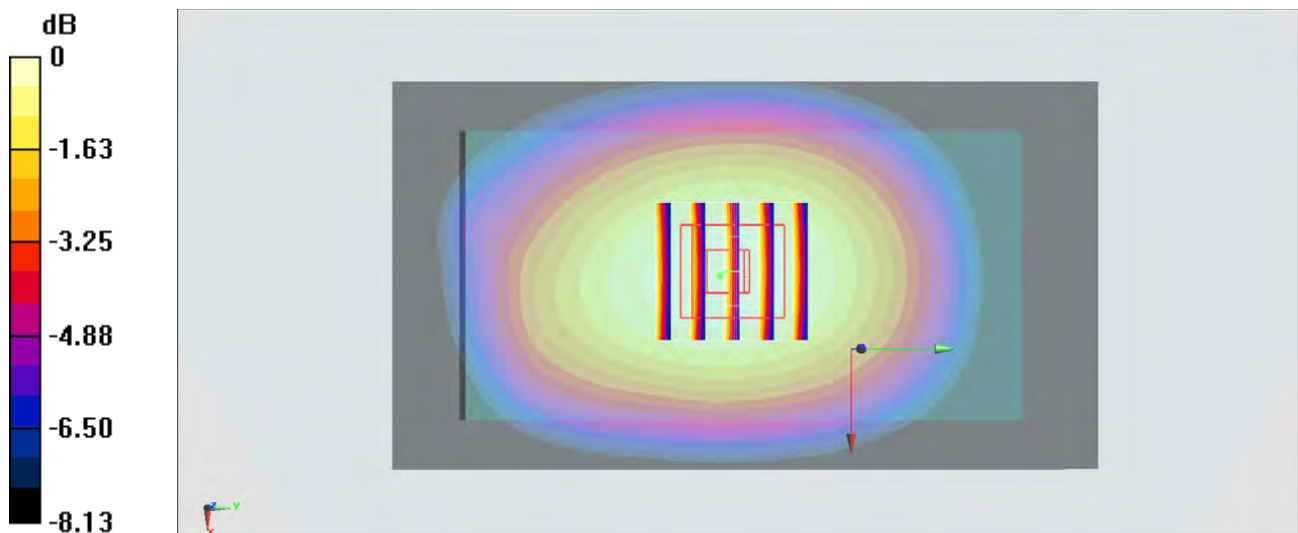
**Configuration/Ch384/Zoom Scan (5x5x7)/Cube 0:** Measurement grid: dx=8mm, dy=8mm, dz=5mm

Reference Value = 37.82 V/m; Power Drift = -0.03 dB

Peak SAR (extrapolated) = 1.45 W/kg

**SAR(1 g) = 1.15 W/kg; SAR(10 g) = 0.872 W/kg**

Maximum value of SAR (measured) = 1.32 W/kg



0 dB = 1.32 W/kg = 1.21 dBW/kg

### #40\_CDMA BC1\_1xRTT RC3 SO32\_Back\_1cm\_Ch1175

Communication System: CDMA; Frequency: 1908.75 MHz; Duty Cycle: 1:1

Medium: MSL\_1900\_141210 Medium parameters used:  $f = 1909$  MHz;  $\sigma = 1.527$  S/m;  $\epsilon_r = 53.136$ ;  $\rho = 1000$  kg/m<sup>3</sup>

Ambient Temperature : 23.3 °C; Liquid Temperature : 22.3 °C

DASY5 Configuration:

- Probe: EX3DV4 - SN3931; ConvF(7.8, 7.8, 7.8); Calibrated: 2014/9/25;
- Sensor-Surface: 2mm (Mechanical Surface Detection)
- Electronics: DAE3 Sn577; Calibrated: 2014/10/6
- Phantom: SAM-Right; Type: QD 000 P40 C; Serial: TP-1446
- Measurement SW: DASY52, Version 52.8 (8); SEMCAD X Version 14.6.10 (7331)

**Configuration/Ch1175/Area Scan (61x111x1):** Interpolated grid: dx=1.500 mm, dy=1.500 mm

Maximum value of SAR (interpolated) = 1.16 W/kg

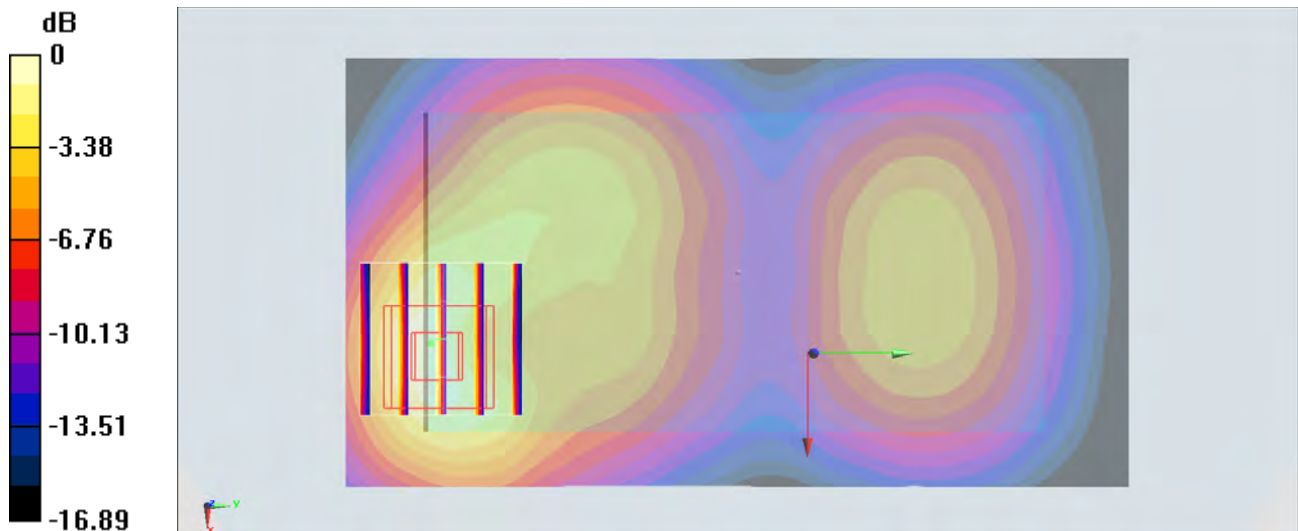
**Configuration/Ch1175/Zoom Scan (5x5x7)/Cube 0:** Measurement grid: dx=8mm, dy=8mm, dz=5mm

Reference Value = 27.46 V/m; Power Drift = -0.05 dB

Peak SAR (extrapolated) = 1.50 W/kg

**SAR(1 g) = 0.900 W/kg; SAR(10 g) = 0.495 W/kg**

Maximum value of SAR (measured) = 1.21 W/kg



0 dB = 1.21 W/kg = 0.83 dBW/kg

**#41\_LTE Band 12\_10M\_QPSK\_1RB\_0offset\_Back\_1cm\_Ch23060**

Communication System: LTE; Frequency: 704 MHz; Duty Cycle: 1:1

Medium: MSL\_750\_141213 Medium parameters used:  $f = 704 \text{ MHz}$ ;  $\sigma = 0.927 \text{ S/m}$ ;  $\epsilon_r = 54.942$ ;  $\rho = 1000 \text{ kg/m}^3$

Ambient Temperature :  $23.3 \text{ }^\circ\text{C}$ ; Liquid Temperature :  $22.3 \text{ }^\circ\text{C}$

**DASY5 Configuration:**

- Probe: EX3DV4 - SN3931; ConvF(10.1, 10.1, 10.1); Calibrated: 2014/9/25;
- Sensor-Surface: 2mm (Mechanical Surface Detection)
- Electronics: DAE3 Sn577; Calibrated: 2014/10/6
- Phantom: SAM-Right; Type: QD 000 P40 C; Serial: TP-1446
- Measurement SW: DASY52, Version 52.8 (8); SEMCAD X Version 14.6.10 (7331)

**Configuration/Ch23060/Area Scan (61x101x1):** Interpolated grid:  $dx=1.500 \text{ mm}$ ,  $dy=1.500 \text{ mm}$

Maximum value of SAR (interpolated) =  $0.557 \text{ W/kg}$

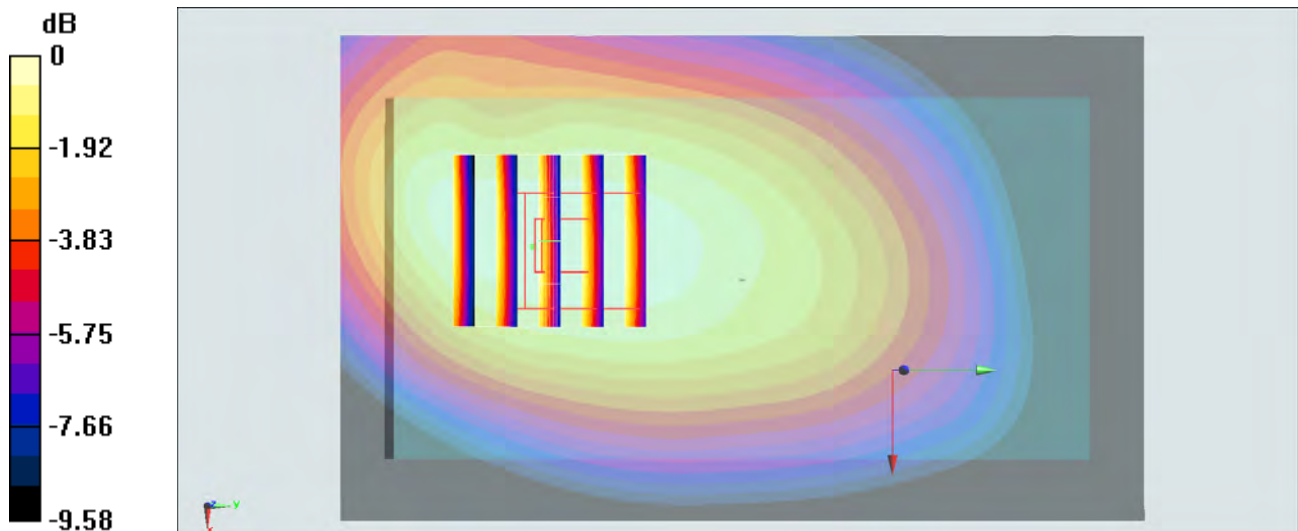
**Configuration/Ch23060/Zoom Scan (5x5x7)/Cube 0:** Measurement grid:  $dx=8\text{mm}$ ,  $dy=8\text{mm}$ ,  $dz=5\text{mm}$

Reference Value =  $24.83 \text{ V/m}$ ; Power Drift =  $-0.01 \text{ dB}$

Peak SAR (extrapolated) =  $0.625 \text{ W/kg}$

**SAR(1 g) =  $0.474 \text{ W/kg}$ ; SAR(10 g) =  $0.351 \text{ W/kg}$**

Maximum value of SAR (measured) =  $0.558 \text{ W/kg}$



$0 \text{ dB} = 0.558 \text{ W/kg} = -2.53 \text{ dBW/kg}$

**#42\_LTE Band 17\_10M\_QPSK\_1RB\_0offset\_Back\_1cm\_Ch23780**

Communication System: LTE; Frequency: 709 MHz; Duty Cycle: 1:1

Medium: MSL\_750\_141213 Medium parameters used:  $f = 709$  MHz;  $\sigma = 0.933$  S/m;  $\epsilon_r = 54.879$ ;  $\rho = 1000$  kg/m<sup>3</sup>

Ambient Temperature : 23.3 °C; Liquid Temperature : 22.3 °C

DASY5 Configuration:

- Probe: EX3DV4 - SN3931; ConvF(10.1, 10.1, 10.1); Calibrated: 2014/9/25;
- Sensor-Surface: 2mm (Mechanical Surface Detection)
- Electronics: DAE3 Sn577; Calibrated: 2014/10/6
- Phantom: SAM-Right; Type: QD 000 P40 C; Serial: TP-1446
- Measurement SW: DASY52, Version 52.8 (8); SEMCAD X Version 14.6.10 (7331)

**Configuration/Ch23780/Area Scan (61x101x1):** Interpolated grid: dx=1.500 mm, dy=1.500 mm

Maximum value of SAR (interpolated) = 0.641 W/kg

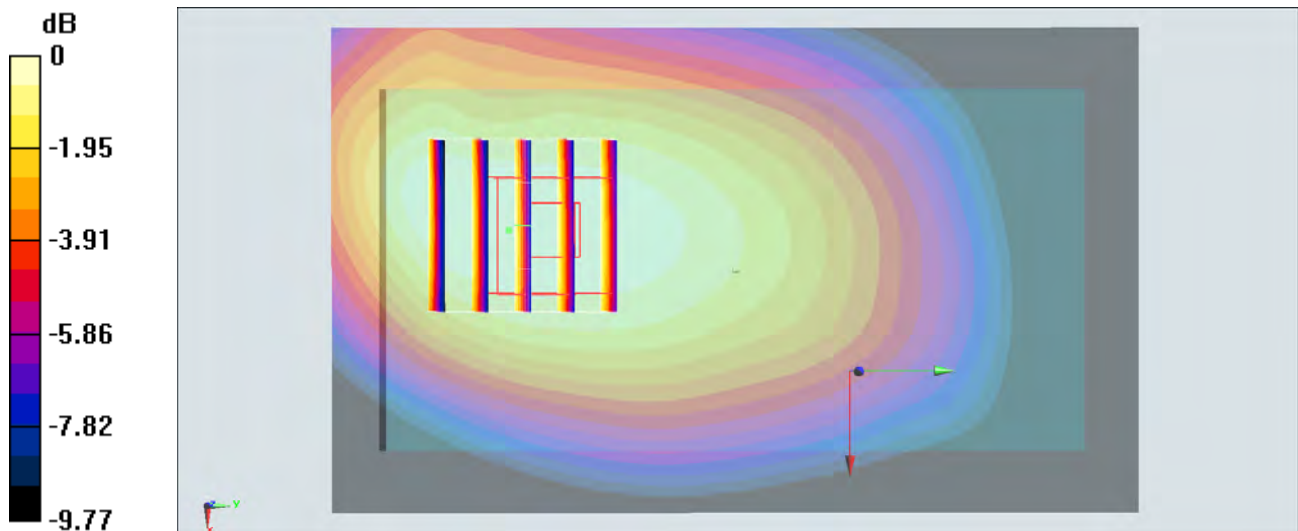
**Configuration/Ch23780/Zoom Scan (5x5x7)/Cube 0:** Measurement grid: dx=8mm, dy=8mm, dz=5mm

Reference Value = 26.47 V/m; Power Drift = -0.09 dB

Peak SAR (extrapolated) = 0.701 W/kg

**SAR(1 g) = 0.520 W/kg; SAR(10 g) = 0.381 W/kg**

Maximum value of SAR (measured) = 0.611 W/kg



0 dB = 0.611 W/kg = -2.14 dBW/kg

**#43\_LTE Band 26\_15M\_QPSK\_1RB\_0offset\_Back\_1cm\_Ch26765**

Communication System: LTE; Frequency: 821.5 MHz; Duty Cycle: 1:1

Medium: MSL\_850\_141212 Medium parameters used:  $f = 821.5$  MHz;  $\sigma = 0.984$  S/m;  $\epsilon_r = 55.495$ ;  $\rho = 1000$  kg/m<sup>3</sup>

Ambient Temperature : 23.5 °C; Liquid Temperature : 22.5 °C

**DASY5 Configuration:**

- Probe: EX3DV4 - SN3931; ConvF(10.13, 10.13, 10.13); Calibrated: 2014/9/25;
- Sensor-Surface: 2mm (Mechanical Surface Detection)
- Electronics: DAE3 Sn577; Calibrated: 2014/10/6
- Phantom: SAM-Left; Type: QD 000 P40 C; Serial: TP-1478
- Measurement SW: DASY52, Version 52.8 (8); SEMCAD X Version 14.6.10 (7331)

**Configuration/Ch26765/Area Scan (71x111x1):** Interpolated grid: dx=1.500 mm, dy=1.500 mm

Maximum value of SAR (interpolated) = 0.627 W/kg

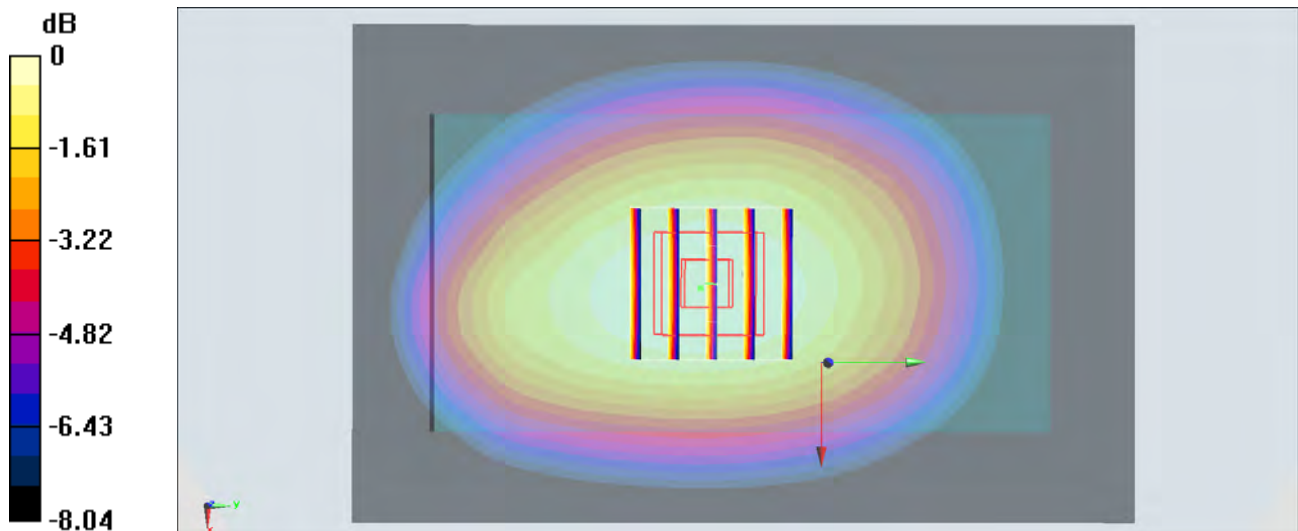
**Configuration/Ch26765/Zoom Scan (5x5x7)/Cube 0:** Measurement grid: dx=8mm, dy=8mm, dz=5mm

Reference Value = 25.25 V/m; Power Drift = -0.05 dB

Peak SAR (extrapolated) = 0.654 W/kg

**SAR(1 g) = 0.521 W/kg; SAR(10 g) = 0.394 W/kg**

Maximum value of SAR (measured) = 0.599 W/kg



0 dB = 0.599 W/kg = -2.23 dBW/kg

**#44\_LTE Band 5\_10M\_QPSK\_1RB\_0offset\_Front\_1cm\_Ch20600**

Communication System: LTE; Frequency: 844 MHz; Duty Cycle: 1:1

Medium: MSL\_850\_141211 Medium parameters used:  $f = 844 \text{ MHz}$ ;  $\sigma = 0.971 \text{ S/m}$ ;  $\epsilon_r = 54.456$ ;  $\rho = 1000 \text{ kg/m}^3$

Ambient Temperature :  $23.3 \text{ }^\circ\text{C}$ ; Liquid Temperature :  $22.3 \text{ }^\circ\text{C}$

DASY5 Configuration:

- Probe: EX3DV4 - SN3931; ConvF(10.13, 10.13, 10.13); Calibrated: 2014/9/25;
- Sensor-Surface: 2mm (Mechanical Surface Detection)
- Electronics: DAE3 Sn577; Calibrated: 2014/10/6
- Phantom: SAM-Left; Type: QD 000 P40 C; Serial: TP-1478
- Measurement SW: DASY52, Version 52.8 (8); SEMCAD X Version 14.6.10 (7331)

**Configuration/Ch20600/Area Scan (71x111x1):** Interpolated grid:  $dx=1.500 \text{ mm}$ ,  $dy=1.500 \text{ mm}$

Maximum value of SAR (interpolated) =  $0.908 \text{ W/kg}$

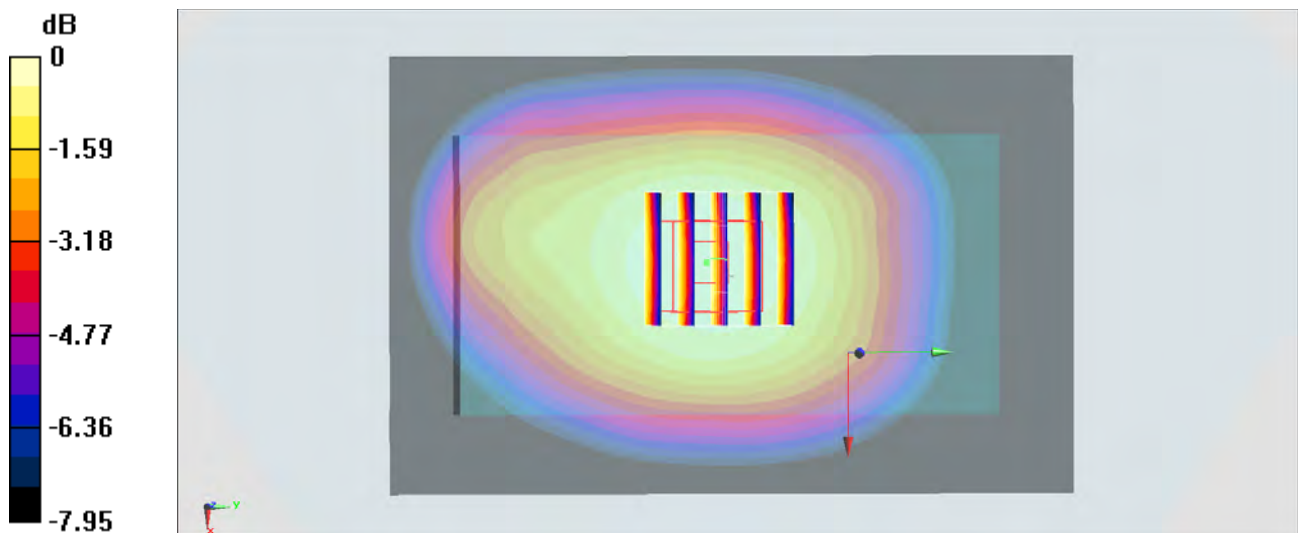
**Configuration/Ch20600/Zoom Scan (5x5x7)/Cube 0:** Measurement grid:  $dx=8\text{mm}$ ,  $dy=8\text{mm}$ ,  $dz=5\text{mm}$

Reference Value =  $31.29 \text{ V/m}$ ; Power Drift =  $0.01 \text{ dB}$

Peak SAR (extrapolated) =  $0.995 \text{ W/kg}$

**SAR(1 g) =  $0.802 \text{ W/kg}$ ; SAR(10 g) =  $0.614 \text{ W/kg}$**

Maximum value of SAR (measured) =  $0.913 \text{ W/kg}$



$0 \text{ dB} = 0.913 \text{ W/kg} = -0.40 \text{ dBW/kg}$

**#45\_LTE Band 4\_20M\_QPSK\_1RB\_0offset\_Front\_1cm\_Ch20300**

Communication System: LTE; Frequency: 1745 MHz; Duty Cycle: 1:1

Medium: MSL\_1750\_141212 Medium parameters used:  $f = 1745$  MHz;  $\sigma = 1.54$  S/m;  $\epsilon_r = 51.761$ ;  $\rho = 1000$  kg/m<sup>3</sup>

Ambient Temperature : 23.3 °C; Liquid Temperature : 22.3 °C

DASY5 Configuration:

- Probe: EX3DV4 - SN3931; ConvF(8.26, 8.26, 8.26); Calibrated: 2014/9/25;
- Sensor-Surface: 2mm (Mechanical Surface Detection)
- Electronics: DAE3 Sn577; Calibrated: 2014/10/6
- Phantom: SAM-Right; Type: QD 000 P40 C; Serial: TP-1446
- Measurement SW: DASY52, Version 52.8 (8); SEMCAD X Version 14.6.10 (7331)

**Configuration/Ch20300/Area Scan (61x101x1):** Interpolated grid: dx=1.500 mm, dy=1.500 mm

Maximum value of SAR (interpolated) = 1.37 W/kg

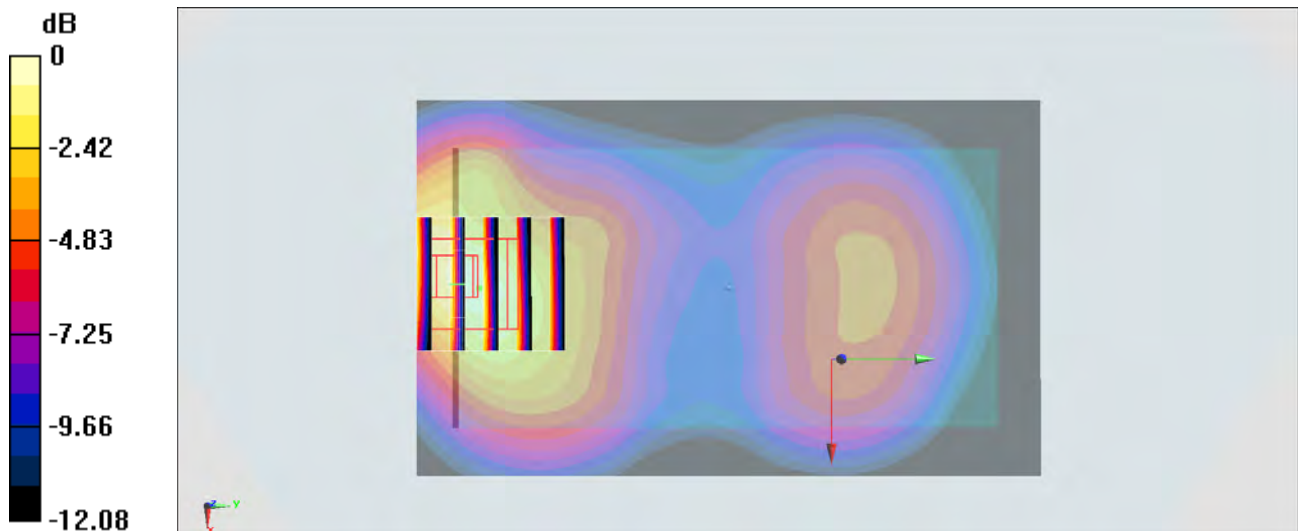
**Configuration/Ch20300/Zoom Scan (5x5x7)/Cube 0:** Measurement grid: dx=8mm, dy=8mm, dz=5mm

Reference Value = 30.68 V/m; Power Drift = 0.01 dB

Peak SAR (extrapolated) = 1.87 W/kg

**SAR(1 g) = 1.09 W/kg; SAR(10 g) = 0.619 W/kg**

Maximum value of SAR (measured) = 1.47 W/kg



0 dB = 1.47 W/kg = 1.67 dBW/kg

**#46\_LTE Band 25\_20M\_QPSK\_1RB\_0offset\_Front\_1cm\_Ch26590**

Communication System: LTE ; Frequency: 1905 MHz;Duty Cycle: 1:1

Medium: MSL\_1900\_141210 Medium parameters used:  $f = 1905 \text{ MHz}$ ;  $\sigma = 1.523 \text{ S/m}$ ;  $\epsilon_r = 53.129$ ;  $\rho = 1000 \text{ kg/m}^3$

Ambient Temperature :  $23.3 \text{ }^\circ\text{C}$ ; Liquid Temperature :  $22.3 \text{ }^\circ\text{C}$

DASY5 Configuration:

- Probe: EX3DV4 - SN3931; ConvF(7.8, 7.8, 7.8); Calibrated: 2014/9/25;
- Sensor-Surface: 2mm (Mechanical Surface Detection)
- Electronics: DAE3 Sn577; Calibrated: 2014/10/6
- Phantom: SAM-Right; Type: QD 000 P40 C; Serial: TP-1446
- Measurement SW: DASY52, Version 52.8 (8);SEMCAD X Version 14.6.10 (7331)

**Configuration/Ch26590/Area Scan (61x111x1):** Interpolated grid:  $dx=1.500 \text{ mm}$ ,  $dy=1.500 \text{ mm}$

Maximum value of SAR (interpolated) =  $1.31 \text{ W/kg}$

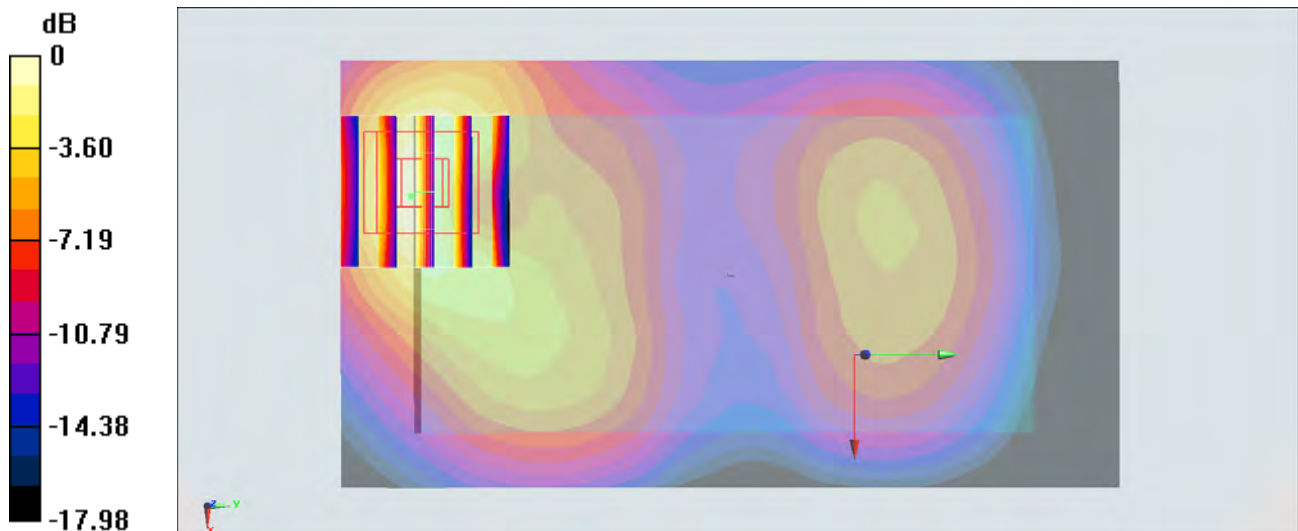
**Configuration/Ch26590/Zoom Scan (5x5x7)/Cube 0:** Measurement grid:  $dx=8\text{mm}$ ,  $dy=8\text{mm}$ ,  $dz=5\text{mm}$

Reference Value =  $30.42 \text{ V/m}$ ; Power Drift =  $-0.03 \text{ dB}$

Peak SAR (extrapolated) =  $1.72 \text{ W/kg}$

**SAR(1 g) =  $1 \text{ W/kg}$ ; SAR(10 g) =  $0.537 \text{ W/kg}$**

Maximum value of SAR (measured) =  $1.38 \text{ W/kg}$



0 dB =  $1.38 \text{ W/kg} = 1.40 \text{ dBW/kg}$

**#47\_LTE Band 2\_20M\_QPSK\_1RB\_0offset\_Front\_1cm\_Ch19100**

Communication System: LTE; Frequency: 1900 MHz; Duty Cycle: 1:1

Medium: MSL\_1900\_141209 Medium parameters used:  $f = 1900$  MHz;  $\sigma = 1.53$  S/m;  $\epsilon_r = 52.859$ ;  $\rho = 1000$  kg/m<sup>3</sup>

Ambient Temperature : 23.4 °C; Liquid Temperature : 22.4 °C

DASY5 Configuration:

- Probe: EX3DV4 - SN3931; ConvF(7.8, 7.8, 7.8); Calibrated: 2014/9/25;
- Sensor-Surface: 2mm (Mechanical Surface Detection)
- Electronics: DAE3 Sn577; Calibrated: 2014/10/6
- Phantom: SAM-Right; Type: QD 000 P40 C; Serial: TP-1446
- Measurement SW: DASY52, Version 52.8 (8); SEMCAD X Version 14.6.10 (7331)

**Configuration/Ch19100/Area Scan (61x111x1):** Interpolated grid: dx=1.500 mm, dy=1.500 mm

Maximum value of SAR (interpolated) = 1.14 W/kg

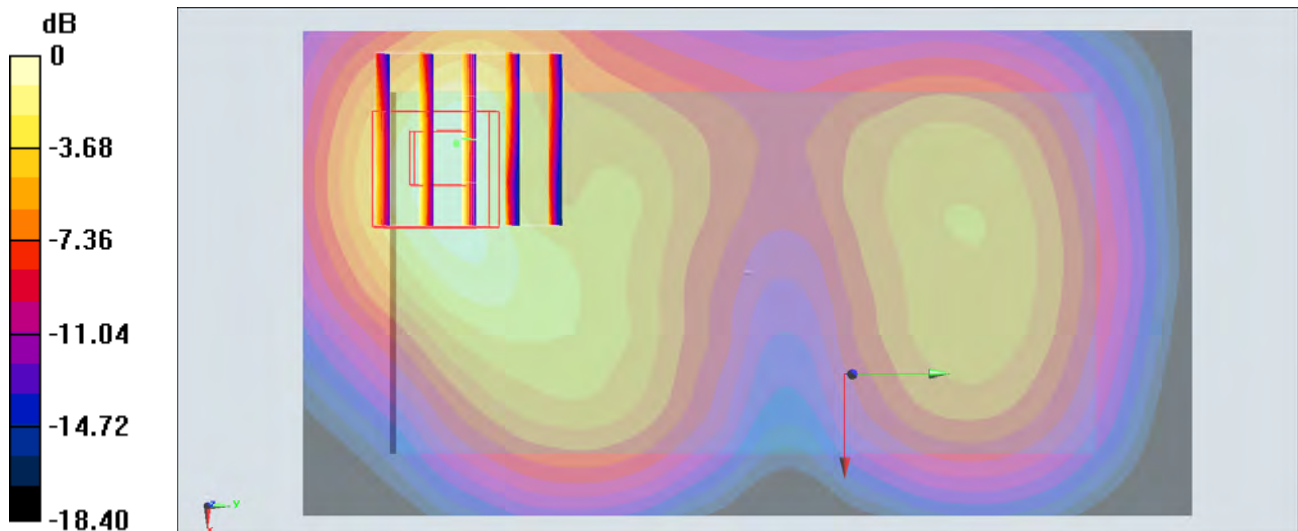
**Configuration/Ch19100/Zoom Scan (5x5x7)/Cube 0:** Measurement grid: dx=8mm, dy=8mm, dz=5mm

Reference Value = 27.03 V/m; Power Drift = -0.08 dB

Peak SAR (extrapolated) = 1.65 W/kg

**SAR(1 g) = 0.960 W/kg; SAR(10 g) = 0.508 W/kg**

Maximum value of SAR (measured) = 1.21 W/kg



0 dB = 1.21 W/kg = 0.83 dBW/kg

**#48\_LTE Band 41\_20M\_QPSK\_1RB\_0offset\_Back\_1cm\_Ch40620**

Communication System: LTE; Frequency: 2593 MHz; Duty Cycle: 1:1.59

Medium: MSL\_2600\_141216 Medium parameters used:  $f = 2593$  MHz;  $\sigma = 2.2$  S/m;  $\epsilon_r = 51.105$ ;  $\rho = 1000$  kg/m<sup>3</sup>

Ambient Temperature : 23.5 °C; Liquid Temperature : 22.5 °C

DASY5 Configuration:

- Probe: EX3DV4 - SN3931; ConvF(7.2, 7.2, 7.2); Calibrated: 2014/9/25;
- Sensor-Surface: 2mm (Mechanical Surface Detection)
- Electronics: DAE3 Sn577; Calibrated: 2014/10/6
- Phantom: SAM-Left; Type: QD 000 P40 C; Serial: TP-1478
- Measurement SW: DASY52, Version 52.8 (8); SEMCAD X Version 14.6.10 (7331)

**Configuration/Ch40620/Area Scan (81x131x1):** Interpolated grid: dx=1.200 mm, dy=1.200 mm

Maximum value of SAR (interpolated) = 1.07 W/kg

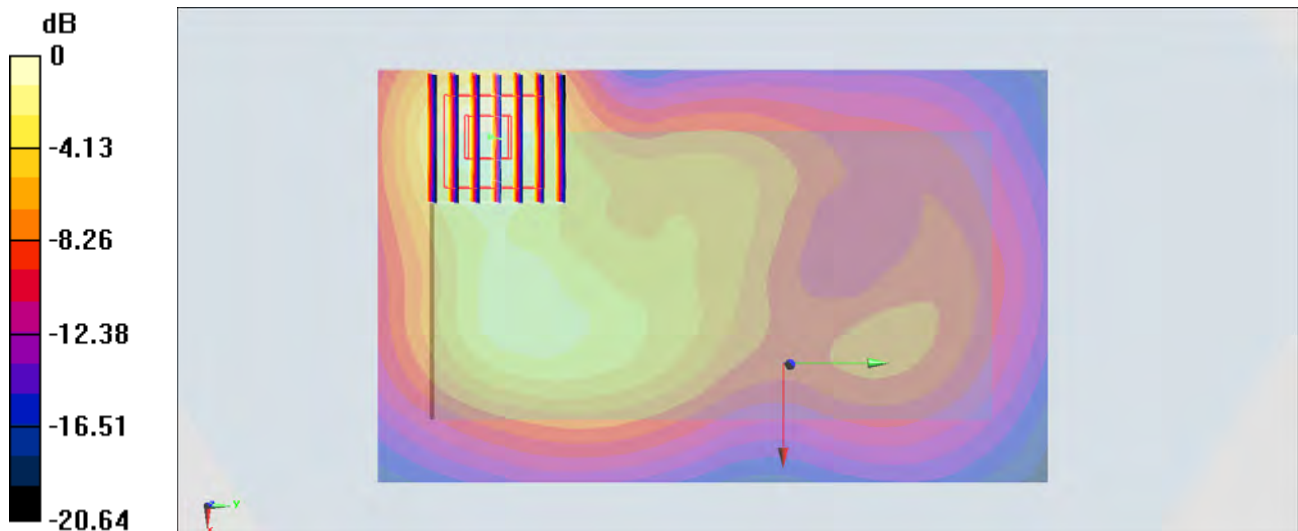
**Configuration/Ch40620/Zoom Scan (7x7x7)/Cube 0:** Measurement grid: dx=5mm, dy=5mm, dz=5mm

Reference Value = 22.11 V/m; Power Drift = -0.04 dB

Peak SAR (extrapolated) = 1.46 W/kg

**SAR(1 g) = 0.713 W/kg; SAR(10 g) = 0.350 W/kg**

Maximum value of SAR (measured) = 1.07 W/kg



0 dB = 1.07 W/kg = 0.29 dBW/kg