

#13_HAC_E_GSM850_GSM Voice_Ch128

Communication System: GSM-FDD (TDMA, GMSK); Frequency: 824.2 MHz; Duty Cycle: 1:8.6896

Medium: Air Medium parameters used: $\sigma = 0$ S/m, $\epsilon_r = 1$; $\rho = 1000$ kg/m³

Ambient Temperature : 23.6 °C

DASY5 Configuration

- Probe: ER3DV6 - SN2358; ConvF(1, 1, 1); Calibrated: 2014/1/30;
- Sensor-Surface: (Fix Surface)
- Electronics: DAE4 Sn1338; Calibrated: 2013/11/5
- Phantom: HAC Test Arch with AMCC; Type: SD HAC P01 BA;
- Measurement SW: DASY52, Version 52.8 (7); SEMCAD X Version 14.6.10 (7164)

Ch128/E Scan - ER3D: 15 mm from Probe Center to the Device/Hearing Aid

Compatibility Test (101x101x1): Interpolated grid: dx=0.5000 mm, dy=0.5000 mm

Device Reference Point: 0, 0, -6.3 mm

Reference Value = 52.86 V/m; Power Drift = 0.05 dB

Applied MIF = 3.63 dB

RF audio interference level = 36.15 dBV/m

Emission category: M4

MIF scaled E-field

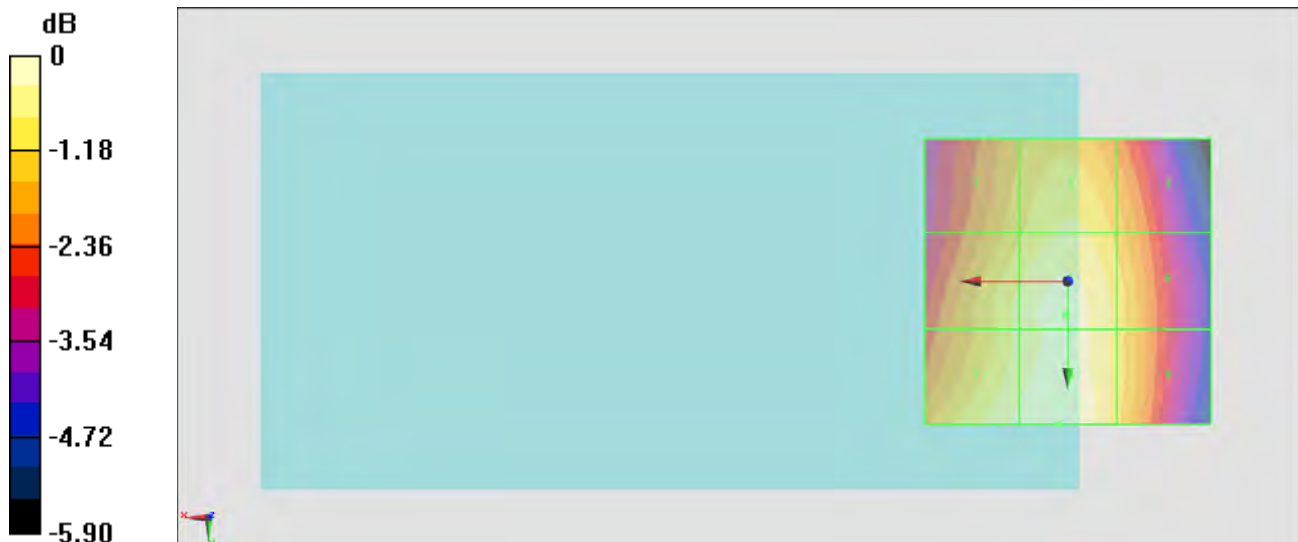
Grid 1 M4 34.91 dBV/m	Grid 2 M4 35.45 dBV/m	Grid 3 M4 34.86 dBV/m
Grid 4 M4 35.5 dBV/m	Grid 5 M4 35.95 dBV/m	Grid 6 M4 35.25 dBV/m
Grid 7 M4 35.91 dBV/m	Grid 8 M4 36.15 dBV/m	Grid 9 M4 35.24 dBV/m

Cursor:

Total = 36.15 dBV/m

E Category: M4

Location: 1.5, 25, 8.7 mm



$$0 \text{ dB} = 64.22 \text{ V/m} = 36.15 \text{ dBV/m}$$

#14_HAC_E_GSM850_GSM Voice_Ch189

Communication System: GSM-FDD (TDMA, GMSK); Frequency: 836.6 MHz; Duty Cycle: 1:8.6896

Medium: Air Medium parameters used: $\sigma = 0$ S/m, $\epsilon_r = 1$; $\rho = 1000$ kg/m³

Ambient Temperature : 23.6 °C

DASY5 Configuration

- Probe: ER3DV6 - SN2358; ConvF(1, 1, 1); Calibrated: 2014/1/30;
- Sensor-Surface: (Fix Surface)
- Electronics: DAE4 Sn1338; Calibrated: 2013/11/5
- Phantom: HAC Test Arch with AMCC; Type: SD HAC P01 BA;
- Measurement SW: DASY52, Version 52.8 (7); SEMCAD X Version 14.6.10 (7164)

Ch189/E Scan - ER3D: 15 mm from Probe Center to the Device/Hearing Aid Compatibility Test (101x101x1): Interpolated grid: dx=0.5000 mm, dy=0.5000 mm

Device Reference Point: 0, 0, -6.3 mm

Reference Value = 56.05 V/m; Power Drift = -0.03 dB

Applied MIF = 3.63 dB

RF audio interference level = 36.65 dBV/m

Emission category: M4

MIF scaled E-field

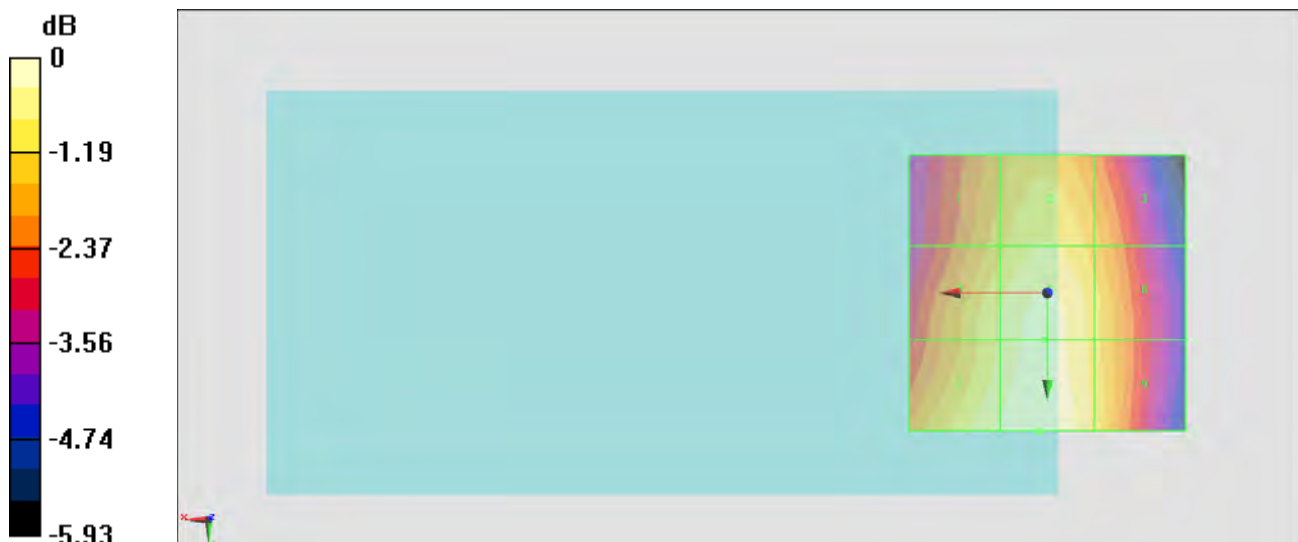
Grid 1 M4 35.34 dBV/m	Grid 2 M4 35.89 dBV/m	Grid 3 M4 35.28 dBV/m
Grid 4 M4 35.95 dBV/m	Grid 5 M4 36.39 dBV/m	Grid 6 M4 35.71 dBV/m
Grid 7 M4 36.35 dBV/m	Grid 8 M4 36.65 dBV/m	Grid 9 M4 35.76 dBV/m

Cursor:

Total = 36.65 dBV/m

E Category: M4

Location: 1.5, 25, 8.7 mm



$$0 \text{ dB} = 67.99 \text{ V/m} = 36.65 \text{ dBV/m}$$

#15_HAC_E_GSM850_GSM Voice_Ch251

Communication System: GSM-FDD (TDMA, GMSK); Frequency: 848.6 MHz; Duty Cycle: 1:8.6896

Medium: Air Medium parameters used: $\sigma = 0$ S/m, $\epsilon_r = 1$; $\rho = 1000$ kg/m³

Ambient Temperature : 23.6 °C

DASY5 Configuration

- Probe: ER3DV6 - SN2358; ConvF(1, 1, 1); Calibrated: 2014/1/30;
- Sensor-Surface: (Fix Surface)
- Electronics: DAE4 Sn1338; Calibrated: 2013/11/5
- Phantom: HAC Test Arch with AMCC; Type: SD HAC P01 BA;
- Measurement SW: DASY52, Version 52.8 (7); SEMCAD X Version 14.6.10 (7164)

Ch251/E Scan - ER3D: 15 mm from Probe Center to the Device/Hearing Aid

Compatibility Test (101x101x1): Interpolated grid: dx=0.5000 mm, dy=0.5000 mm

Device Reference Point: 0, 0, -6.3 mm

Reference Value = 47.47 V/m; Power Drift = -0.01 dB

Applied MIF = 3.63 dB

RF audio interference level = 35.29 dBV/m

Emission category: M4

MIF scaled E-field

Grid 1 M4 33.72 dBV/m	Grid 2 M4 34.5 dBV/m	Grid 3 M4 34.11 dBV/m
Grid 4 M4 34.38 dBV/m	Grid 5 M4 35.07 dBV/m	Grid 6 M4 34.59 dBV/m
Grid 7 M4 34.84 dBV/m	Grid 8 M4 35.29 dBV/m	Grid 9 M4 34.64 dBV/m

Cursor:

Total = 35.29 dBV/m

E Category: M4

Location: 1, 25, 8.7 mm



$$0 \text{ dB} = 58.14 \text{ V/m} = 35.29 \text{ dBV/m}$$

#16_HAC_E_GSM1900_GSM Voice_Ch512

Communication System: GSM-FDD (TDMA, GMSK); Frequency: 1850.2 MHz; Duty Cycle: 1:8.6896

Medium: Air Medium parameters used: $\sigma = 0$ S/m, $\epsilon_r = 1$; $\rho = 1000$ kg/m³

Ambient Temperature : 23.6 °C

DASY5 Configuration

- Probe: ER3DV6 - SN2358; ConvF(1, 1, 1); Calibrated: 2014/1/30;
- Sensor-Surface: (Fix Surface)
- Electronics: DAE4 Sn1338; Calibrated: 2013/11/5
- Phantom: HAC Test Arch with AMCC; Type: SD HAC P01 BA;
- Measurement SW: DASY52, Version 52.8 (7); SEMCAD X Version 14.6.10 (7164)

Ch512/E Scan - ER3D: 15 mm from Probe Center to the Device/Hearing Aid

Compatibility Test (101x101x1): Interpolated grid: dx=0.5000 mm, dy=0.5000 mm

Device Reference Point: 0, 0, -6.3 mm

Reference Value = 11.16 V/m; Power Drift = 0.12 dB

Applied MIF = 3.63 dB

RF audio interference level = 25.60 dBV/m

Emission category: M4

MIF scaled E-field

Grid 1 M4 25.17 dBV/m	Grid 2 M4 25.6 dBV/m	Grid 3 M4 24.95 dBV/m
Grid 4 M4 22.33 dBV/m	Grid 5 M4 23.75 dBV/m	Grid 6 M4 23.51 dBV/m
Grid 7 M4 21.5 dBV/m	Grid 8 M4 22.56 dBV/m	Grid 9 M4 22.48 dBV/m

Cursor:

Total = 25.60 dBV/m

E Category: M4

Location: 0.5, -25, 8.7 mm



$$0 \text{ dB} = 19.05 \text{ V/m} = 25.60 \text{ dBV/m}$$

#17_HAC_E_GSM1900_GSM Voice_Ch661

Communication System: GSM-FDD (TDMA, GMSK); Frequency: 1880 MHz; Duty Cycle: 1:8.6896

Medium: Air Medium parameters used: $\sigma = 0$ S/m, $\epsilon_r = 1$; $\rho = 1000$ kg/m³

Ambient Temperature : 23.6 °C

DASY5 Configuration

- Probe: ER3DV6 - SN2358; ConvF(1, 1, 1); Calibrated: 2014/1/30;
- Sensor-Surface: (Fix Surface)
- Electronics: DAE4 Sn1338; Calibrated: 2013/11/5
- Phantom: HAC Test Arch with AMCC; Type: SD HAC P01 BA;
- Measurement SW: DASY52, Version 52.8 (7); SEMCAD X Version 14.6.10 (7164)

Ch661/E Scan - ER3D: 15 mm from Probe Center to the Device/Hearing Aid

Compatibility Test (101x101x1): Interpolated grid: dx=0.5000 mm, dy=0.5000 mm

Device Reference Point: 0, 0, -6.3 mm

Reference Value = 13.81 V/m; Power Drift = -0.00 dB

Applied MIF = 3.63 dB

RF audio interference level = 27.45 dBV/m

Emission category: M4

MIF scaled E-field

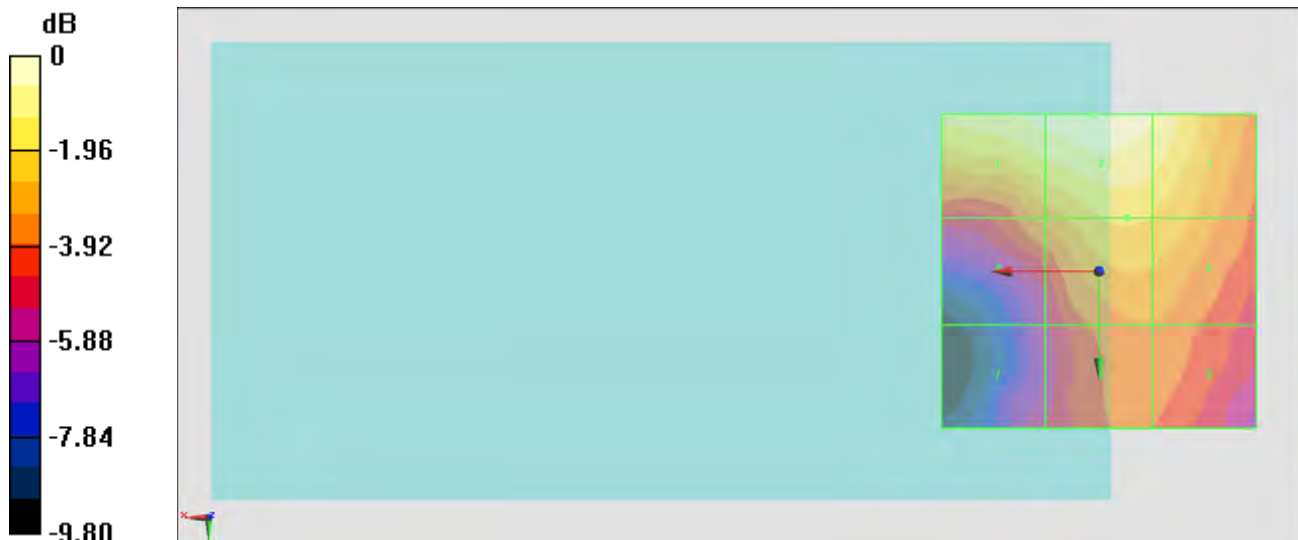
Grid 1 M4 27.13 dBV/m	Grid 2 M4 27.45 dBV/m	Grid 3 M4 26.87 dBV/m
Grid 4 M4 24.46 dBV/m	Grid 5 M4 25.63 dBV/m	Grid 6 M4 25.44 dBV/m
Grid 7 M4 22.3 dBV/m	Grid 8 M4 24.18 dBV/m	Grid 9 M4 24.15 dBV/m

Cursor:

Total = 27.45 dBV/m

E Category: M4

Location: 1, -25, 8.7 mm



$$0 \text{ dB} = 23.58 \text{ V/m} = 27.45 \text{ dBV/m}$$

#18_HAC_E_GSM1900_GSM Voice_Ch810

Communication System: GSM-FDD (TDMA, GMSK); Frequency: 1909.8 MHz; Duty Cycle: 1:8.6896
 Medium: Air Medium parameters used: $\sigma = 0 \text{ S/m}$, $\epsilon_r = 1$; $\rho = 1000 \text{ kg/m}^3$
 Ambient Temperature : 23.6 °C

DASY5 Configuration

- Probe: ER3DV6 - SN2358; ConvF(1, 1, 1); Calibrated: 2014/1/30;
- Sensor-Surface: (Fix Surface)
- Electronics: DAE4 Sn1338; Calibrated: 2013/11/5
- Phantom: HAC Test Arch with AMCC; Type: SD HAC P01 BA;
- Measurement SW: DASY52, Version 52.8 (7); SEMCAD X Version 14.6.10 (7164)

Ch810/E Scan - ER3D: 15 mm from Probe Center to the Device/Hearing Aid Compatibility Test (101x101x1): Interpolated grid: dx=0.5000 mm, dy=0.5000 mm

Device Reference Point: 0, 0, -6.3 mm
 Reference Value = 15.79 V/m; Power Drift = -0.06 dB
 Applied MIF = 3.63 dB
 RF audio interference level = 27.84 dBV/m

Emission category: M4

MIF scaled E-field

Grid 1 M4 27.53 dBV/m	Grid 2 M4 27.84 dBV/m	Grid 3 M4 27.21 dBV/m
Grid 4 M4 24.94 dBV/m	Grid 5 M4 26.44 dBV/m	Grid 6 M4 26.27 dBV/m
Grid 7 M4 23.11 dBV/m	Grid 8 M4 25.24 dBV/m	Grid 9 M4 25.22 dBV/m

Cursor:

Total = 27.84 dBV/m
 E Category: M4
 Location: 2, -25, 8.7 mm



$$0 \text{ dB} = 24.65 \text{ V/m} = 27.84 \text{ dBV/m}$$

#19_HAC_E_CDMA2000 BC0_ 1xRTT, RC1 SO3, 18th Rate_Ch1013

Communication System: CDMA2000, RC1, SO3, 1/8th Rate 25 fr.; Frequency: 824.7 MHz; Duty Cycle: 1:17.7419

Medium: Air Medium parameters used: $\sigma = 0$ S/m, $\epsilon_r = 1$; $\rho = 1000$ kg/m³

Ambient Temperature : 23.6 °C

DASY5 Configuration

- Probe: ER3DV6 - SN2358; ConvF(1, 1, 1); Calibrated: 2014/1/30;
- Sensor-Surface: (Fix Surface)
- Electronics: DAE4 Sn1338; Calibrated: 2013/11/5
- Phantom: HAC Test Arch with AMCC; Type: SD HAC P01 BA;
- Measurement SW: DASY52, Version 52.8 (7); SEMCAD X Version 14.6.10 (7164)

Ch1013/E Scan - ER3D: 15 mm from Probe Center to the Device/Hearing Aid

Compatibility Test (101x101x1): Interpolated grid: dx=0.5000 mm, dy=0.5000 mm

Device Reference Point: 0, 0, -6.3 mm

Reference Value = 23.14 V/m; Power Drift = -0.08 dB

Applied MIF = 3.26 dB

RF audio interference level = 29.90 dBV/m

Emission category: M4

MIF scaled E-field

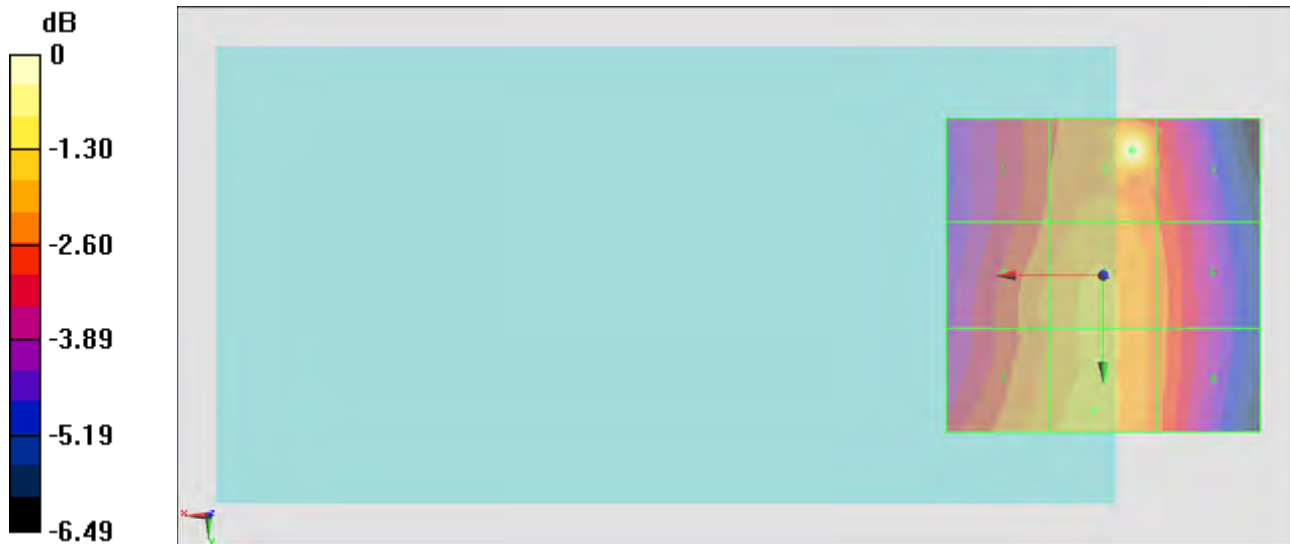
Grid 1 M4 27.44 dBV/m	Grid 2 M4 29.9 dBV/m	Grid 3 M4 27.47 dBV/m
Grid 4 M4 27.92 dBV/m	Grid 5 M4 28.3 dBV/m	Grid 6 M4 27.61 dBV/m
Grid 7 M4 28.16 dBV/m	Grid 8 M4 28.33 dBV/m	Grid 9 M4 27.58 dBV/m

Cursor:

Total = 29.90 dBV/m

E Category: M4

Location: -4.5, -20, 8.7 mm



0 dB = 31.28 V/m = 29.91 dBV/m

#20_HAC_E_CDMA2000 BC0_ 1xRTT, RC1 SO3, 18th Rate_Ch384

Communication System: CDMA2000, RC1, SO3, 1/8th Rate 25 fr.; Frequency: 836.52 MHz; Duty Cycle: 1:17.7419

Medium: Air Medium parameters used: $\sigma = 0$ S/m, $\epsilon_r = 1$; $\rho = 1000$ kg/m³

Ambient Temperature : 23.6 °C

DASY5 Configuration

- Probe: ER3DV6 - SN2358; ConvF(1, 1, 1); Calibrated: 2014/1/30;
- Sensor-Surface: (Fix Surface)
- Electronics: DAE4 Sn1338; Calibrated: 2013/11/5
- Phantom: HAC Test Arch with AMCC; Type: SD HAC P01 BA;
- Measurement SW: DASY52, Version 52.8 (7); SEMCAD X Version 14.6.10 (7164)

Ch384/E Scan - ER3D: 15 mm from Probe Center to the Device/Hearing Aid

Compatibility Test (101x101x1): Interpolated grid: dx=0.5000 mm, dy=0.5000 mm

Device Reference Point: 0, 0, -6.3 mm

Reference Value = 22.91 V/m; Power Drift = -0.04 dB

Applied MIF = 3.26 dB

RF audio interference level = 28.40 dBV/m

Emission category: M4

MIF scaled E-field

Grid 1 M4 27.36 dBV/m	Grid 2 M4 27.87 dBV/m	Grid 3 M4 27.29 dBV/m
Grid 4 M4 27.77 dBV/m	Grid 5 M4 28.33 dBV/m	Grid 6 M4 27.58 dBV/m
Grid 7 M4 28.19 dBV/m	Grid 8 M4 28.4 dBV/m	Grid 9 M4 27.6 dBV/m

Cursor:

Total = 28.40 dBV/m

E Category: M4

Location: 2, 25, 8.7 mm



0 dB = 26.30 V/m = 28.40 dBV/m

#21_HAC_E_CDMA2000 BC0_ 1xRTT, RC1 SO3, 18th Rate_Ch777

Communication System: CDMA2000, RC1, SO3, 1/8th Rate 25 fr.; Frequency: 848.31 MHz; Duty Cycle: 1:17.7419

Medium: Air Medium parameters used: $\sigma = 0$ S/m, $\epsilon_r = 1$; $\rho = 1000$ kg/m³

Ambient Temperature : 23.6 °C

DASY5 Configuration

- Probe: ER3DV6 - SN2358; ConvF(1, 1, 1); Calibrated: 2014/1/30;
- Sensor-Surface: (Fix Surface)
- Electronics: DAE4 Sn1338; Calibrated: 2013/11/5
- Phantom: HAC Test Arch with AMCC; Type: SD HAC P01 BA;
- Measurement SW: DASY52, Version 52.8 (7); SEMCAD X Version 14.6.10 (7164)

Ch777/E Scan - ER3D: 15 mm from Probe Center to the Device/Hearing Aid

Compatibility Test (101x101x1): Interpolated grid: dx=0.5000 mm, dy=0.5000 mm

Device Reference Point: 0, 0, -6.3 mm

Reference Value = 19.75 V/m; Power Drift = 0.03 dB

Applied MIF = 3.26 dB

RF audio interference level = 28.81 dBV/m

Emission category: M4

MIF scaled E-field

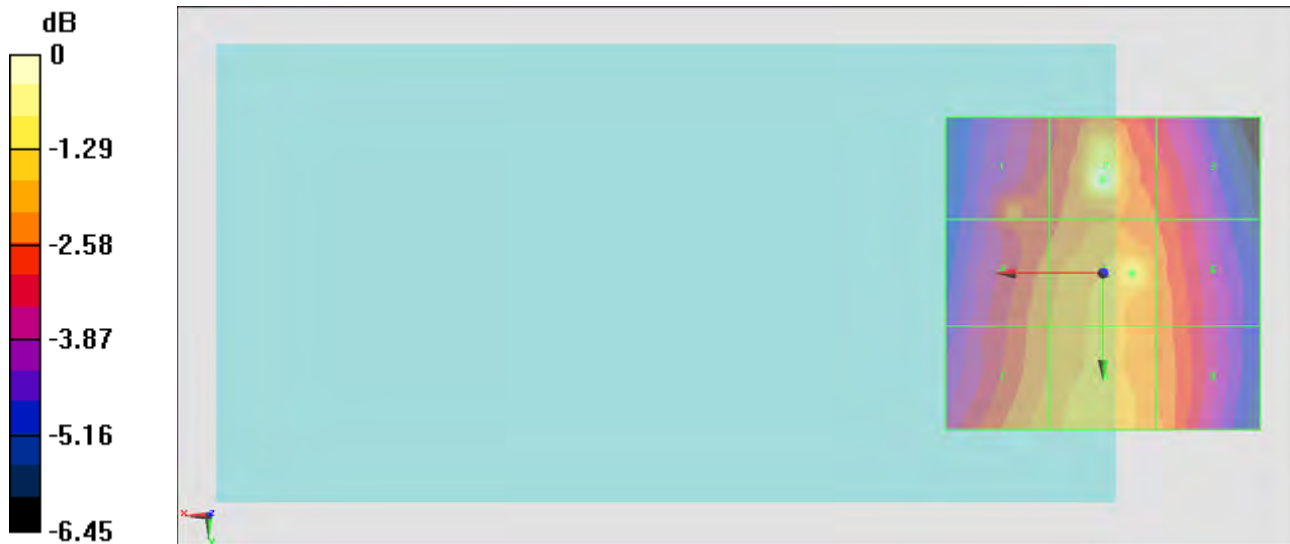
Grid 1 M4 26.39 dBV/m	Grid 2 M4 28.81 dBV/m	Grid 3 M4 26.25 dBV/m
Grid 4 M4 26.68 dBV/m	Grid 5 M4 27.97 dBV/m	Grid 6 M4 26.71 dBV/m
Grid 7 M4 27 dBV/m	Grid 8 M4 27.32 dBV/m	Grid 9 M4 26.76 dBV/m

Cursor:

Total = 28.81 dBV/m

E Category: M4

Location: 0, -15, 8.7 mm



0 dB = 27.58 V/m = 28.81 dBV/m

#22_HAC_E_CDMA2000 BC1_ 1xRTT, RC1 SO3, 18th Rate_Ch25

Communication System: CDMA2000, RC1, SO3, 1/8th Rate 25 fr.; Frequency: 1851.25 MHz; Duty Cycle: 1:17.7419

Medium: Air Medium parameters used: $\sigma = 0$ S/m, $\epsilon_r = 1$; $\rho = 1000$ kg/m³

Ambient Temperature : 23.6 °C

DASY5 Configuration

- Probe: ER3DV6 - SN2358; ConvF(1, 1, 1); Calibrated: 2014/1/30;
- Sensor-Surface: (Fix Surface)
- Electronics: DAE4 Sn1338; Calibrated: 2013/11/5
- Phantom: HAC Test Arch with AMCC; Type: SD HAC P01 BA;
- Measurement SW: DASY52, Version 52.8 (7); SEMCAD X Version 14.6.10 (7164)

Ch25/E Scan - ER3D: 15 mm from Probe Center to the Device/Hearing Aid

Compatibility Test (101x101x1): Interpolated grid: dx=0.5000 mm, dy=0.5000 mm

Device Reference Point: 0, 0, -6.3 mm

Reference Value = 7.712 V/m; Power Drift = -0.20 dB

Applied MIF = 3.26 dB

RF audio interference level = 22.15 dBV/m

Emission category: M4

MIF scaled E-field

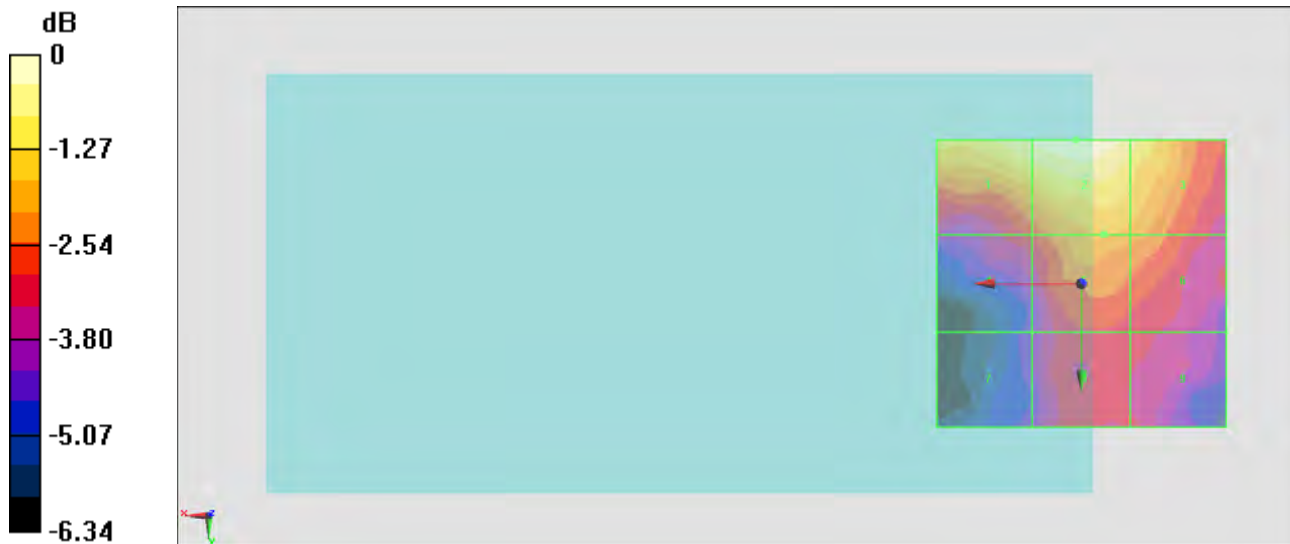
Grid 1 M4 21.79 dBV/m	Grid 2 M4 22.15 dBV/m	Grid 3 M4 21.57 dBV/m
Grid 4 M4 19.33 dBV/m	Grid 5 M4 20.52 dBV/m	Grid 6 M4 20.26 dBV/m
Grid 7 M4 18.01 dBV/m	Grid 8 M4 19.16 dBV/m	Grid 9 M4 19.03 dBV/m

Cursor:

Total = 22.15 dBV/m

E Category: M4

Location: 1, -25, 8.7 mm



0 dB = 12.81 V/m = 22.15 dBV/m

#23_HAC_E_CDMA2000 BC1_ 1xRTT, RC1 SO3, 18th Rate_Ch600

Communication System: CDMA2000, RC1, SO3, 1/8th Rate 25 fr.; Frequency: 1880 MHz; Duty Cycle: 1:17.7419

Medium: Air Medium parameters used: $\sigma = 0$ S/m, $\epsilon_r = 1$; $\rho = 1000$ kg/m³

Ambient Temperature : 23.6 °C

DASY5 Configuration

- Probe: ER3DV6 - SN2358; ConvF(1, 1, 1); Calibrated: 2014/1/30;
- Sensor-Surface: (Fix Surface)
- Electronics: DAE4 Sn1338; Calibrated: 2013/11/5
- Phantom: HAC Test Arch with AMCC; Type: SD HAC P01 BA;
- Measurement SW: DASY52, Version 52.8 (7); SEMCAD X Version 14.6.10 (7164)

Ch600/E Scan - ER3D: 15 mm from Probe Center to the Device/Hearing Aid

Compatibility Test (101x101x1): Interpolated grid: dx=0.5000 mm, dy=0.5000 mm

Device Reference Point: 0, 0, -6.3 mm

Reference Value = 9.789 V/m; Power Drift = -0.33 dB

Applied MIF = 3.26 dB

RF audio interference level = 23.47 dBV/m

Emission category: M4

MIF scaled E-field

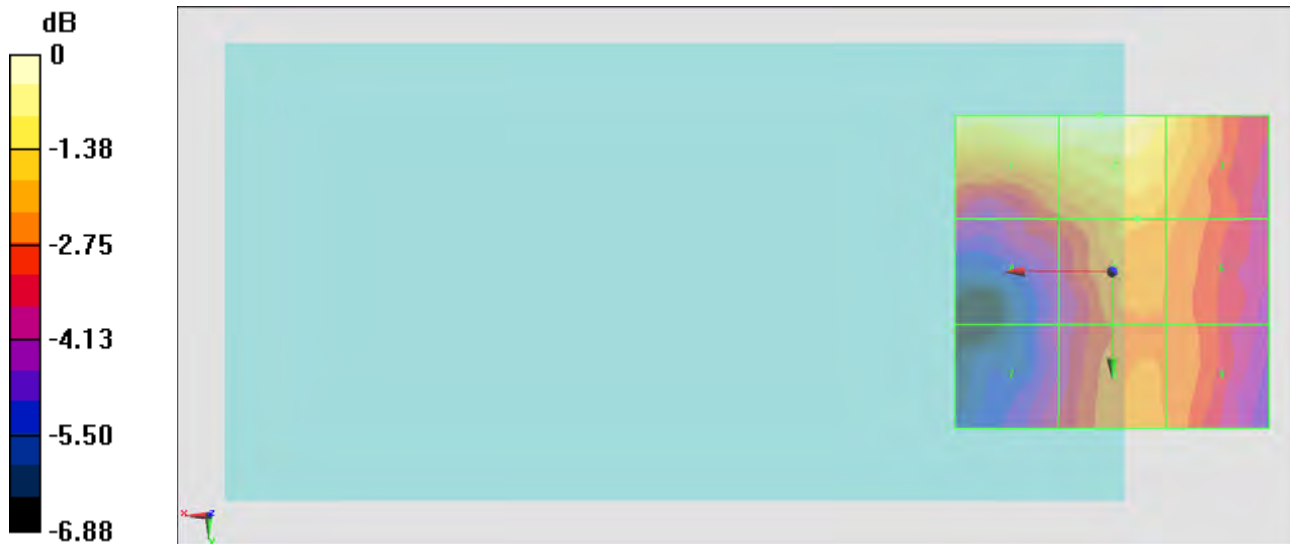
Grid 1 M4 23.29 dBV/m	Grid 2 M4 23.47 dBV/m	Grid 3 M4 22.49 dBV/m
Grid 4 M4 20.64 dBV/m	Grid 5 M4 21.81 dBV/m	Grid 6 M4 21.4 dBV/m
Grid 7 M4 19.93 dBV/m	Grid 8 M4 21.27 dBV/m	Grid 9 M4 21.25 dBV/m

Cursor:

Total = 23.47 dBV/m

E Category: M4

Location: 2, -25, 8.7 mm



#24_HAC_E_CDMA2000 BC1_ 1xRTT, RC1 SO3, 18th Rate_Ch1175

Communication System: CDMA2000, RC1, SO3, 1/8th Rate 25 fr.; Frequency: 1908.75 MHz; Duty Cycle: 1:17.7419

Medium: Air Medium parameters used: $\sigma = 0$ S/m, $\epsilon_r = 1$; $\rho = 1000$ kg/m³

Ambient Temperature : 23.6 °C

DASY5 Configuration

- Probe: ER3DV6 - SN2358; ConvF(1, 1, 1); Calibrated: 2014/1/30;
- Sensor-Surface: (Fix Surface)
- Electronics: DAE4 Sn1338; Calibrated: 2013/11/5
- Phantom: HAC Test Arch with AMCC; Type: SD HAC P01 BA;
- Measurement SW: DASY52, Version 52.8 (7); SEMCAD X Version 14.6.10 (7164)

Ch1175/E Scan - ER3D: 15 mm from Probe Center to the Device/Hearing Aid

Compatibility Test (101x101x1): Interpolated grid: dx=0.5000 mm, dy=0.5000 mm

Device Reference Point: 0, 0, -6.3 mm

Reference Value = 10.09 V/m; Power Drift = -0.25 dB

Applied MIF = 3.26 dB

RF audio interference level = 24.30 dBV/m

Emission category: M4

MIF scaled E-field

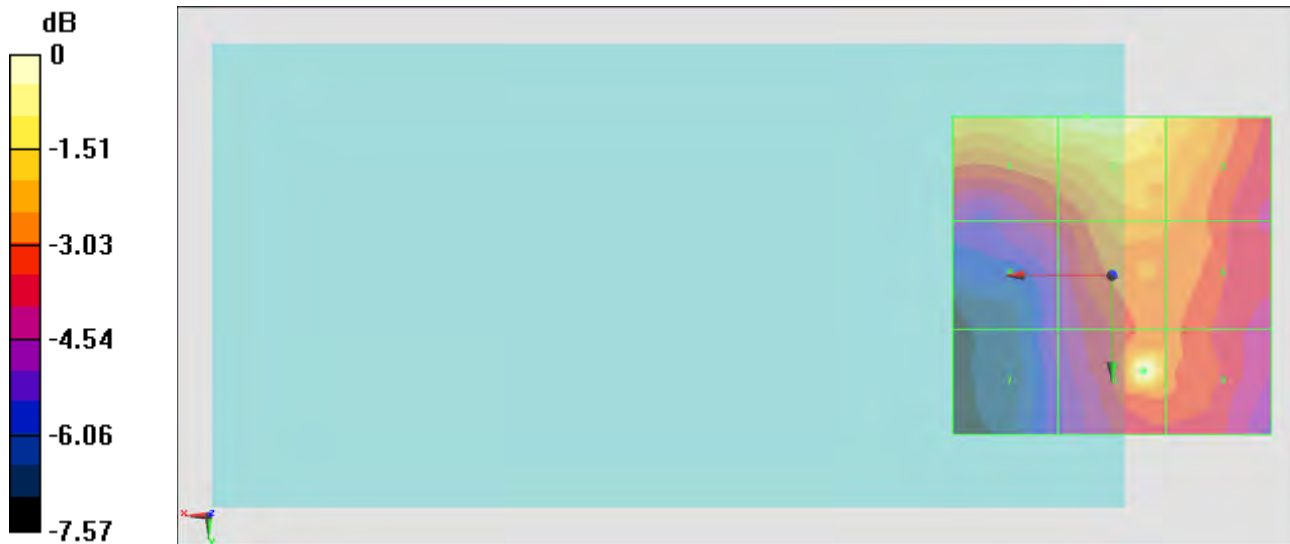
Grid 1 M4 23.59 dBV/m	Grid 2 M4 23.8 dBV/m	Grid 3 M4 22.93 dBV/m
Grid 4 M4 20.64 dBV/m	Grid 5 M4 22.14 dBV/m	Grid 6 M4 21.86 dBV/m
Grid 7 M4 19.57 dBV/m	Grid 8 M4 24.3 dBV/m	Grid 9 M4 21.85 dBV/m

Cursor:

Total = 24.30 dBV/m

E Category: M4

Location: -5, 15, 8.7 mm



0 dB = 16.41 V/m = 24.30 dBV/m