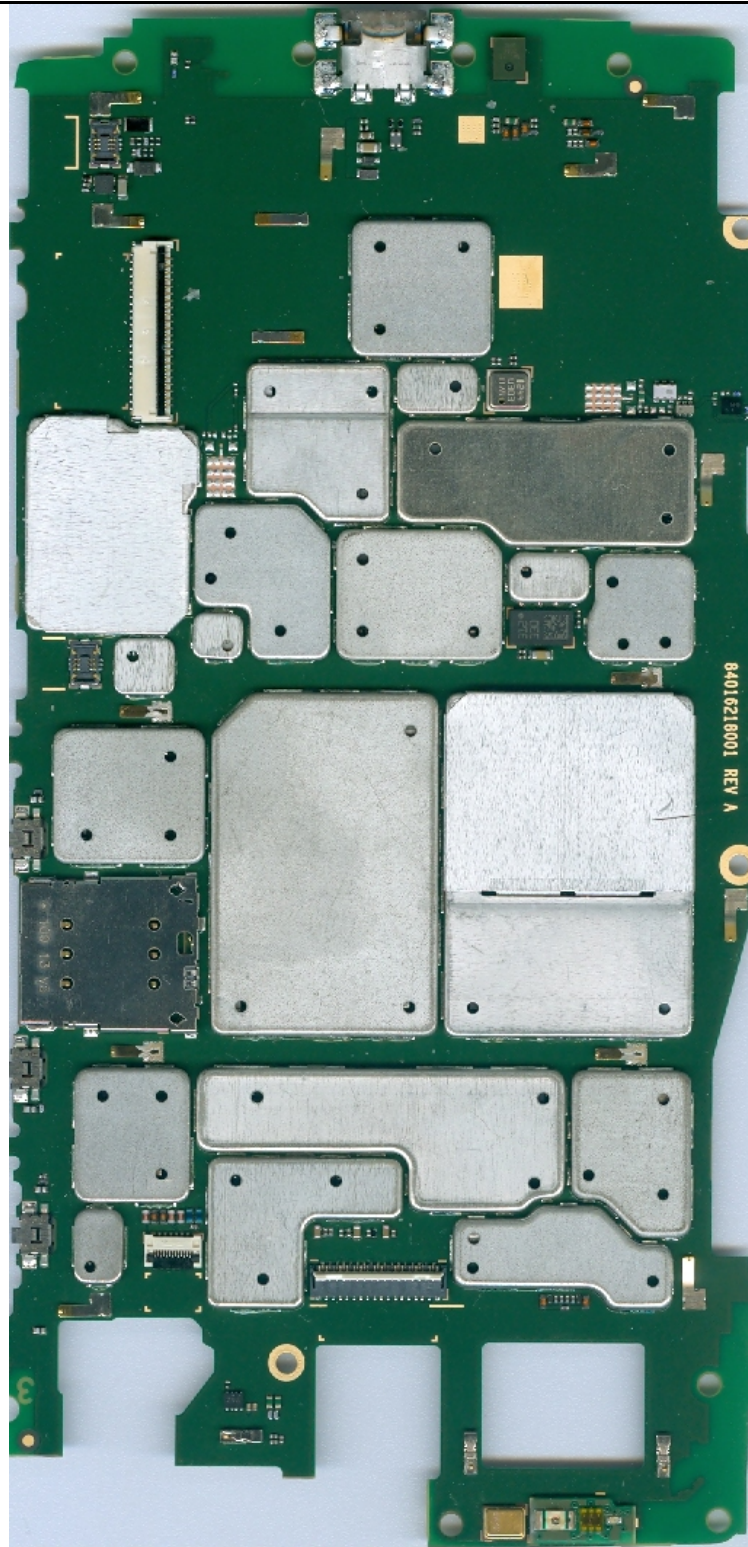


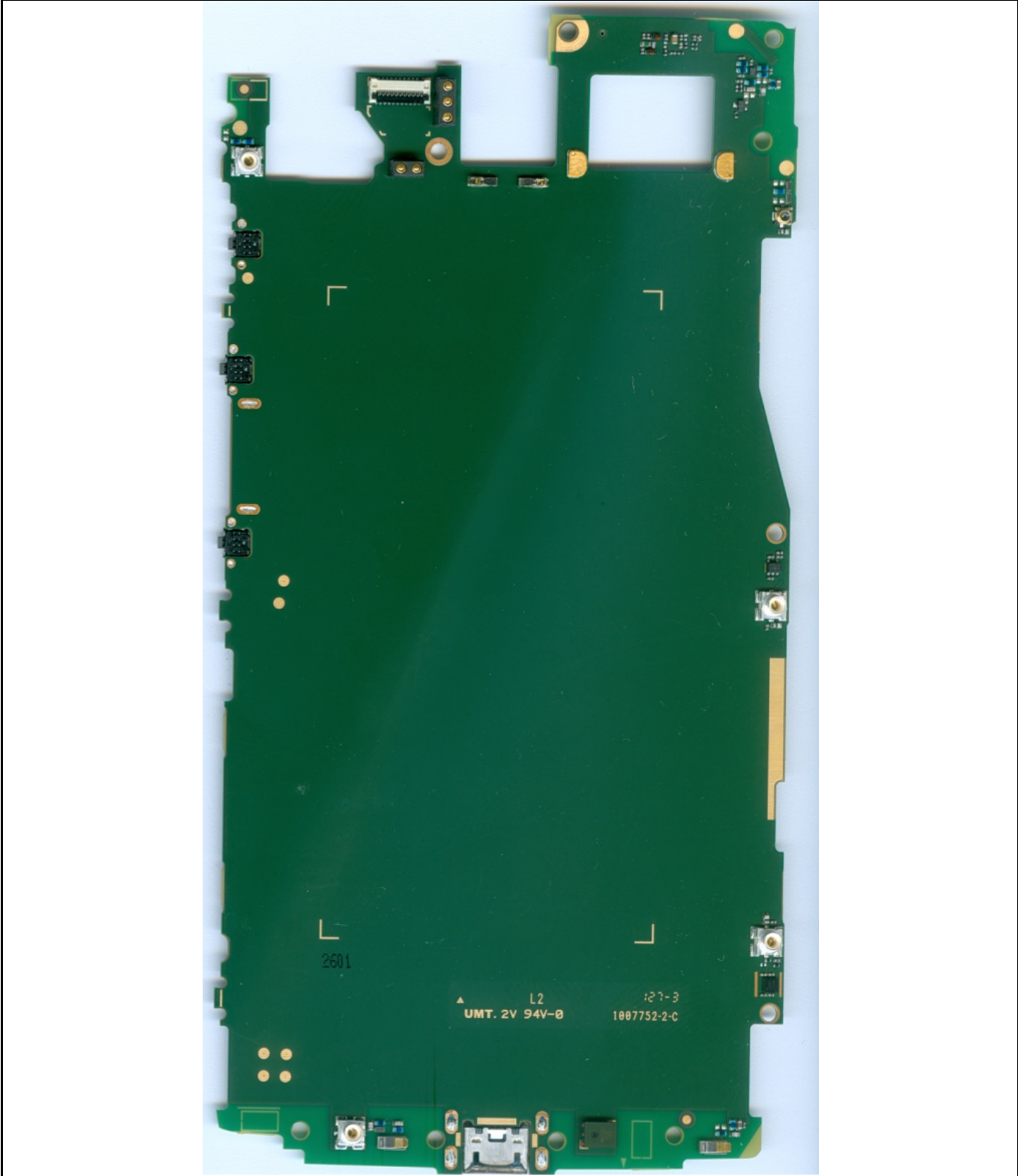
Temporary Confidentiality Requested

Exhibit 9: Internal Photographs -- Pursuant to 47 CFR 2.1033(c)(12)



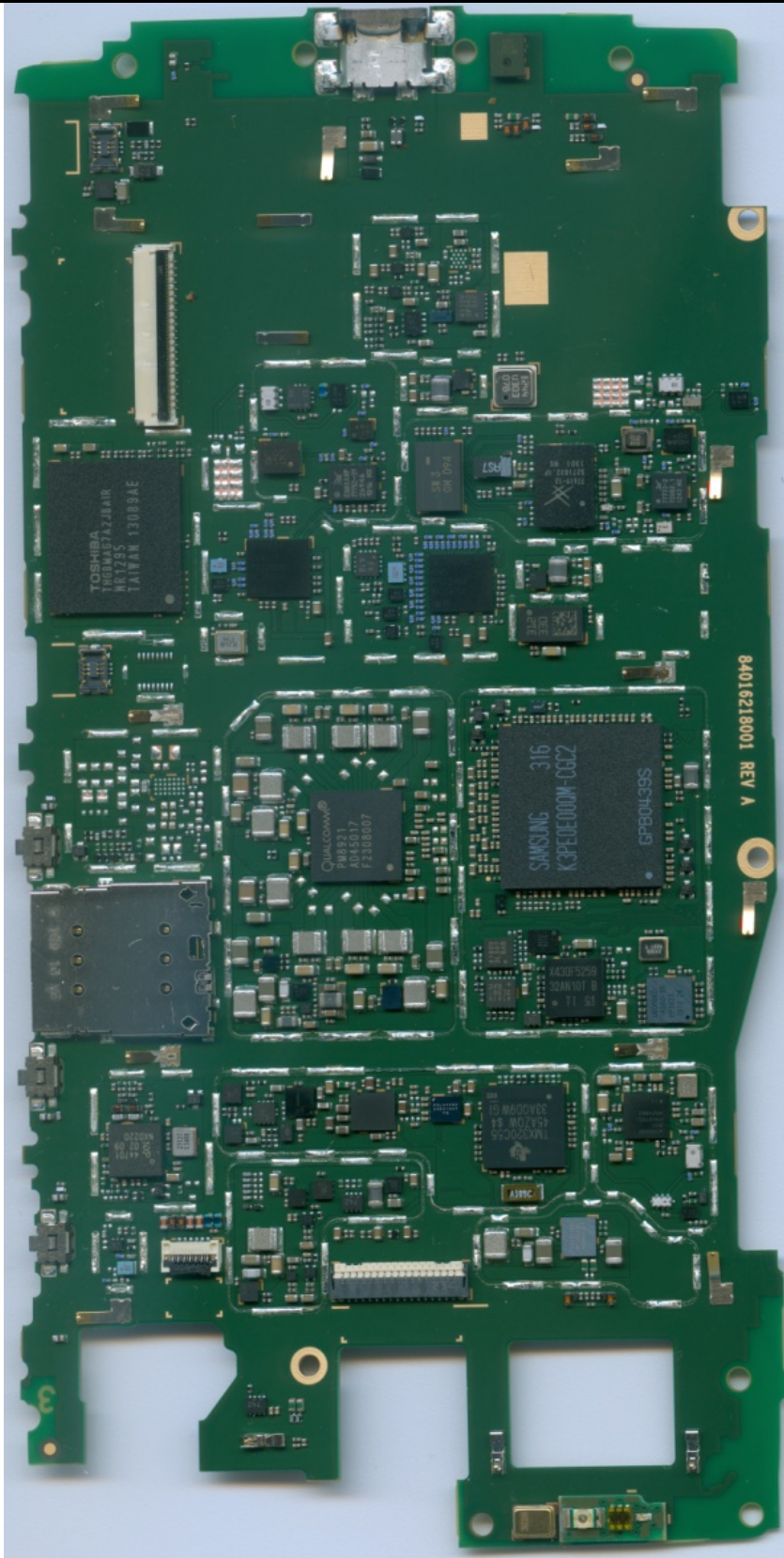
Photograph 9-1: Front side view of the device's PC Board, Shields in place.

Temporary Confidentiality Requested



Photograph 9-2: Back side view of the device’s PC Board, Shields in place.

Temporary Confidentiality Requested



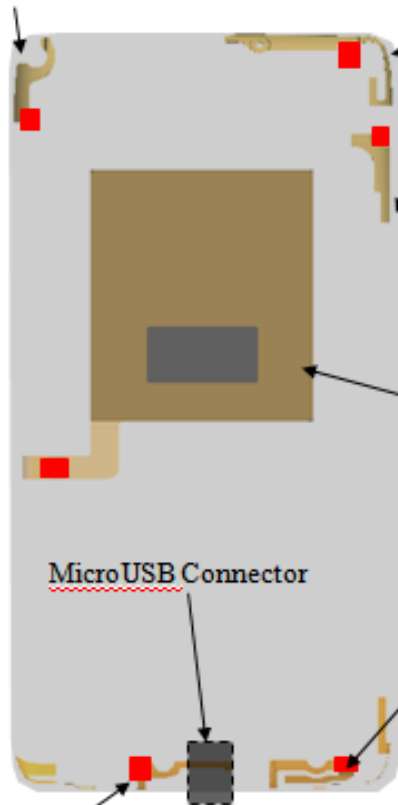
Photograph 9-3: Front side view of the device's PC Board, Shields Removed.

Temporary Confidentiality Requested

**Tx Antennas (Outline) Shown in Gold Shaded Polygons
(View from Back)**

GPS

Size: 6.8 x 15.1 x 2.3



Diversity/LTE MIMO: RX for CDMA BC0, BC1.

WCDMA B5, B2, B1.

LTE B13, B4

Size: 30 x 12.6 x 3.3

BT / Wi-Fi 2.4 & 5 GHz

Size: 7 x 15.9 x 2.7

NFC 13.56 MHz

Size: 40 x 45 x 0.2

60 x 45 x 0.9 (extended battery)

LTE: LTE 13, LTE B4 TX

Size: 21.7 x 16.3 x 1.1

MicroUSB Connector

Antenna to Antenna Distances, Nearest Point (mm)

	Main	Diversity/LTE MIMO	BT/WiFi	GPS
LTE	6.9	105.7	84.8	119.8
Main		120.0	100.1	116.0
Diversity/LTE MIMO			5.2	30.4
BT/WiFi				56.7

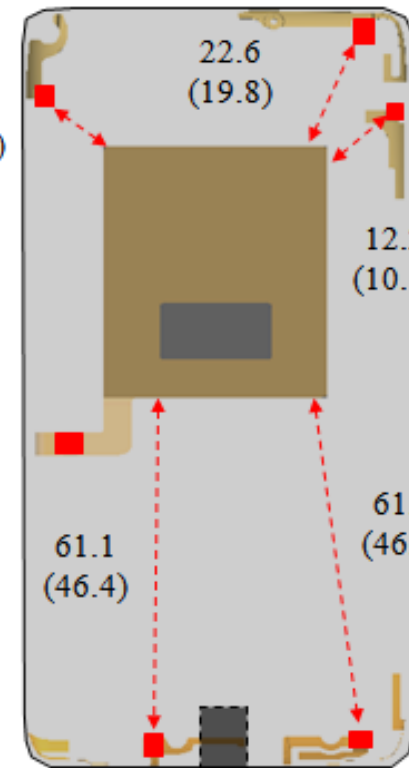
Main: CDMA BC0, BC1.

WCDMA B5, B8, B2, B1. Quad band GSM. LTE B4 Rx

Size: 38.6 x 4.8 x 4.9

(dimensions in parenthesis = extended battery version)

14.7
(11.5)



22.6
(19.8)

12.2
(10.1)

61.1
(46.4)

61.0
(46.3)

Notes:

All dimensions in mm

Size specified along X x Y x Z axes

■ Antenna Feed

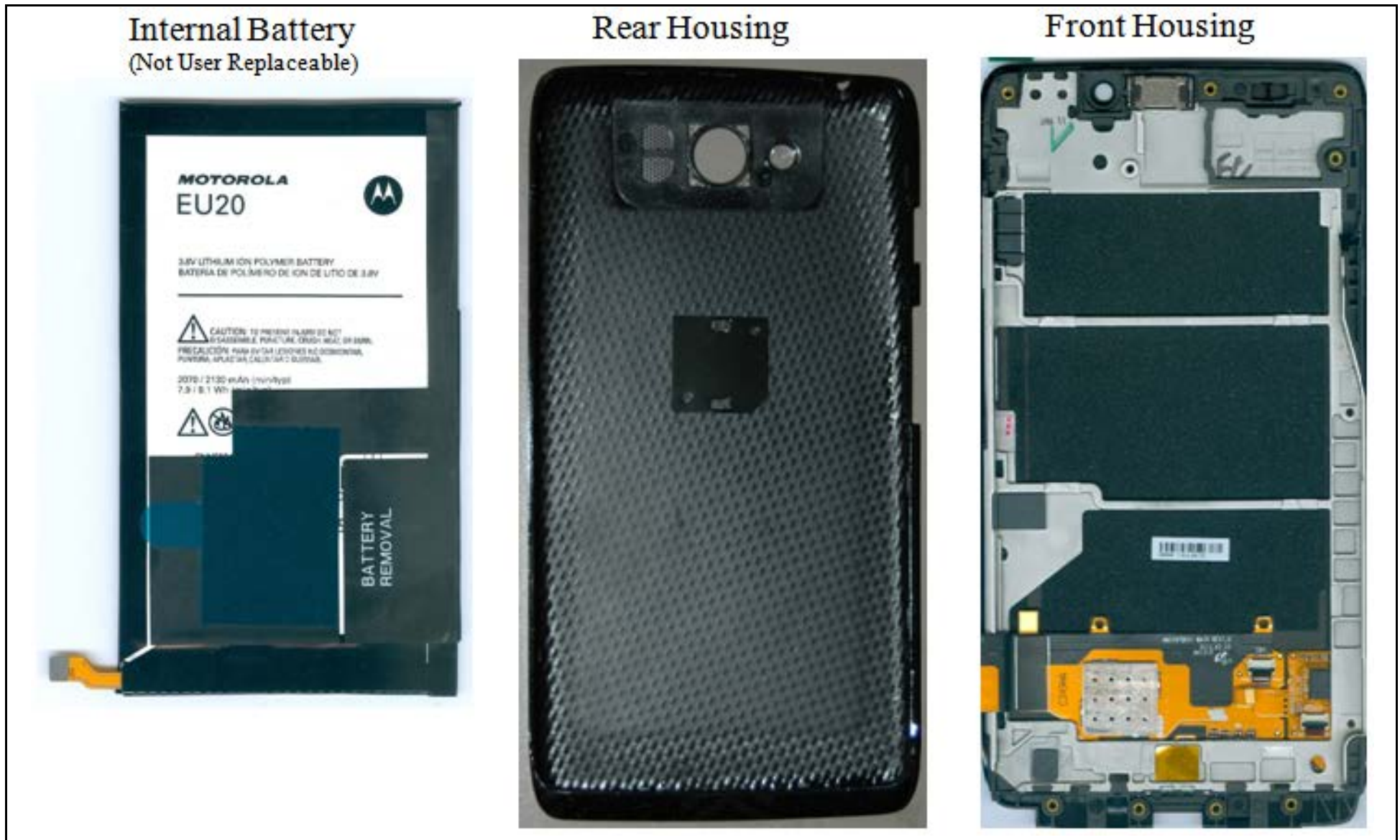
Photograph 9-4: Antenna Locations and Spacings.

Temporary Confidentiality Requested



Photograph 9-5: NFC Antenna Locations.

Temporary Confidentiality Requested



Photograph 9-6: Internal to Housings.