


FCC SAR Test Report

APPLICANT : Motorola Mobility, Inc.
EQUIPMENT : TD-SCDMA/GSM Dual-mode digit mobile phone with BT/Wi-Fi
BRAND NAME : Motorola
MODEL NAME : MT788
TYPE NAME : M0D7B
MARKETING NAME : MOTOLUXE XT MT788
GPPD NUMBER : 3451
FCC ID : IHDT56NY2
STANDARD : FCC 47 CFR Part 2 (2.1093)
ANSI/IEEE C95.1-1992
IEEE 1528-2003
FCC OET Bulletin 65 Supplement C (Edition 01-01)

The product was completely tested on Sep. 16, 2012. We, SPORTON INTERNATIONAL (KUNSHAN) INC., would like to declare that the tested sample has been evaluated in accordance with the procedures and shown the compliance with the applicable technical standards.

The test results in this report apply exclusively to the tested model / sample. Without written approval of SPORTON INTERNATIONAL (KUNSHAN) INC., the test report shall not be reproduced except in full.

Reviewed by:



Jones Tsai / Manager



SPORTON INTERNATIONAL (KUNSHAN) INC.
No. 3-2, PingXiang Road, Kunshan, Jiangsu Province, P.R.C.



Table of Contents

1. Statement of Compliance4
2. Administration Data5
2.1 Testing Laboratory5
2.2 Applicant5
2.3 Manufacturer5
2.4 Application Details5
3. General Information6
3.1 Description of Equipment Under Test (EUT)6
3.2 Product Photos7
3.3 Applied Standard7
3.4 Device Category and SAR Limits7
3.5 Test Conditions7
4. Specific Absorption Rate (SAR)8
4.1 Introduction8
4.2 SAR Definition8
5. SAR Measurement System9
5.1 E-Field Probe10
5.2 Data Acquisition Electronics (DAE)11
5.3 Robot11
5.4 Measurement Server11
5.5 Phantom12
5.6 Device Holder13
5.7 Data Storage and Evaluation14
5.8 Test Equipment List16
6. Tissue Simulating Liquids17
7. SAR Measurement Evaluation18
7.1 Purpose of System Performance check18
7.2 System Setup18
7.3 Validation Results19
8. EUT Testing Position20
8.1 Define two imaginary lines on the handset20
8.2 Cheek Position21
8.3 Tilted Position21
8.4 Body Worn Position22
9. Measurement Procedures23
9.1 Spatial Peak SAR Evaluation23
9.2 Area & Zoom Scan Procedures23
9.3 Volume Scan Procedures24
9.4 SAR Averaged Methods24
9.5 Power Drift Monitoring24
10. SAR Test Configurations25
10.1 Exposure Positions Consideration25
10.2 Conducted RF Output Power (Unit: dBm)27
11. SAR Test Results30
11.1 Test Records for Head SAR Test30
11.2 Test Records for Hotspot SAR Test31
11.3 Test Records for Body-worn SAR Test32
11.4 Simultaneous Multi-band Transmission Analysis33
12. Uncertainty Assessment35
13. References37
Appendix A. Plots of System Performance Check
Appendix B. Plots of SAR Measurement
Appendix C. DASy Calibration Certificate



1. Statement of Compliance

The maximum results of Specific Absorption Rate (SAR) found during testing for **Motorola Mobility, Inc. TD-SCDMA/GSM Dual-mode digit mobile phone with BT/Wi-Fi Motorola MT788 MOTOLUXE XT MT788** are as follows.

<Standalone SAR>

Band	Position	SAR _{1g} (W/kg)
GSM1900	Head	0.414
WLAN 2.4G	Head	0.358
GSM1900	Hotspot (1 cm Gap)	0.984
WLAN 2.4G	Hotspot (1 cm Gap)	0.169
GSM1900	Body-worn (1 cm Gap)	0.984
WLAN 2.4G	Body-worn (1 cm Gap)	0.169

This device is in compliance with Specific Absorption Rate (SAR) for general population/uncontrolled exposure limits (1.6 W/kg) specified in FCC 47 CFR part 2 (2.1093) and ANSI/IEEE C95.1-1992, and had been tested in accordance with the measurement methods and procedures specified in IEEE 1528-2003 and FCC OET Bulletin 65 Supplement C (Edition 01-01).



2. Administration Data

2.1 Testing Laboratory

Test Site	SPORTON INTERNATIONAL (KUNSHAN) INC.
Test Site Location	No. 3-2, PingXiang Road, Kunshan, Jiangsu Province, P.R.C. TEL: +86-0512-5790-0158 FAX: +86-0512-5790-0958

2.2 Applicant

Company Name	Motorola Mobility, Inc.
Address	No. 1, Wang Jing East Road, Chao Yang District, Beijing, 100102, P. R. China

2.3 Manufacturer

Company Name	Huizhou BYD Electronic Co., Ltd.
Address	Xiangshui River, Economic Development Zone, Daya Bay, Huizhou, Guangdong

2.4 Application Details

Date of Start during the Test	Sep. 15, 2012
Date of End during the Test	Sep. 16, 2012

3. General Information

3.1 Description of Equipment Under Test (EUT)

Product Feature & Specification	
EUT	TD-SCDMA/GSM Dual-mode digit mobile phone with BT/Wi-Fi
Brand Name	Motorola
Model Name	MT788
Marketing Name	MOTOLUXE XT MT788
FCC ID	IHDT56NY2
Tx Frequency	GSM1900: 1850.2 MHz ~ 1909.8 MHz WLAN2.4G: 2412 MHz ~ 2462 MHz Bluetooth: 2402 MHz ~ 2480 MHz
Rx Frequency	GSM1900: 1930.2 MHz ~ 1989.8 MHz WLAN2.4G: 2412 MHz ~ 2462 MHz Bluetooth: 2402 MHz ~ 2480 MHz
Maximum Average Output Power to Antenna	GSM1900: 30.51 dBm 802.11b: 16.02 dBm 802.11g: 14.30 dBm 802.11n-HT20 (2.4GHz): 12.53 dBm Bluetooth: 9.15 dBm

Product Feature & Specification	
Antenna Type	WWAN: LDS Antenna WLAN: LDS Antenna Bluetooth: LDS Antenna
HW Version	P1.5
SW Version	IRPMTD_6_02.33.00DDS
Uplink Modulation	GSM: GMSK GPRS: GMSK EDGE: GMSK / 8PSK 802.11b: DSSS (BPSK / QPSK / CCK) 802.11g/n: OFDM (BPSK / QPSK / 16QAM / 64QAM) Bluetooth 3.0 EDR : GFSK, $\pi/4$ -DQPSK, 8-DPSK
Dual Transfer Mode (DTM) Category	Class B – EUT cannot support Packet Switched and Circuit Switched Network simultaneously but can automatically switch between Packet and Circuit Switched Network.
EUT Stage	Identical Prototype
Remark: The above EUT's information was declared by manufacturer. Please refer to the specifications or user's manual for more detailed description.	



3.2 Product Photos

Please refer to Appendix D.

3.3 Applied Standard

The Specific Absorption Rate (SAR) testing specification, method and procedure for this device is in accordance with the following standards:

- FCC 47 CFR Part 2 (2.1093)
- ANSI/IEEE C95.1-1992
- IEEE 1528-2003
- FCC OET Bulletin 65 Supplement C (Edition 01-01)
- FCC KDB 447498 D01 v04
- FCC KDB 648474 D01 v01r05
- FCC KDB 941225 D03 v01
- FCC KDB 941225 D06 v01
- FCC KDB 248227 D01 v01r02

3.4 Device Category and SAR Limits

This device belongs to portable device category because its radiating structure is allowed to be used within 20 centimeters of the body of the user. Limit for General Population/Uncontrolled exposure should be applied for this device, it is 1.6 W/kg as averaged over any 1 gram of tissue.

3.5 Test Conditions

3.5.1 Ambient Condition

Ambient Temperature	20 to 24 °C
Humidity	< 60 %

3.5.2 Test Configuration

The device was controlled by using a base station emulator. Communication between the device and the emulator was established by air link. The distance between the EUT and the antenna of the emulator is larger than 50 cm and the output power radiated from the emulator antenna is at least 30 dB smaller than the output power of EUT. The EUT was set from the emulator to radiate maximum output power during all tests.

For WLAN SAR testing, WLAN engineering testing software installed on the EUT can provide continuous transmitting RF signal.

4. Specific Absorption Rate (SAR)

4.1 Introduction

SAR is related to the rate at which energy is absorbed per unit mass in an object exposed to a radio field. The SAR distribution in a biological body is complicated and is usually carried out by experimental techniques or numerical modeling. The standard recommends limits for two tiers of groups, occupational/controlled and general population/uncontrolled, based on a person's awareness and ability to exercise control over his or her exposure. In general, occupational/controlled exposure limits are higher than the limits for general population/uncontrolled.

4.2 SAR Definition

The SAR definition is the time derivative (rate) of the incremental energy (dW) absorbed by (dissipated in) an incremental mass (dm) contained in a volume element (dv) of a given density (ρ). The equation description is as below:

$$\text{SAR} = \frac{d}{dt} \left(\frac{dW}{dm} \right) = \frac{d}{dt} \left(\frac{dW}{\rho dv} \right)$$

SAR is expressed in units of Watts per kilogram (W/kg)

SAR measurement can be either related to the temperature elevation in tissue by

$$\text{SAR} = c \left(\frac{\delta T}{\delta t} \right)$$

Where: C is the specific heat capacity, δT is the temperature rise and δt is the exposure duration, or related to the electrical field in the tissue by

$$\text{SAR} = \frac{\sigma |E|^2}{\rho}$$

Where: σ is the conductivity of the tissue, ρ is the mass density of the tissue and E is the RMS electrical field strength.

However for evaluating SAR of low power transmitter, electrical field measurement is typically applied.

5. SAR Measurement System

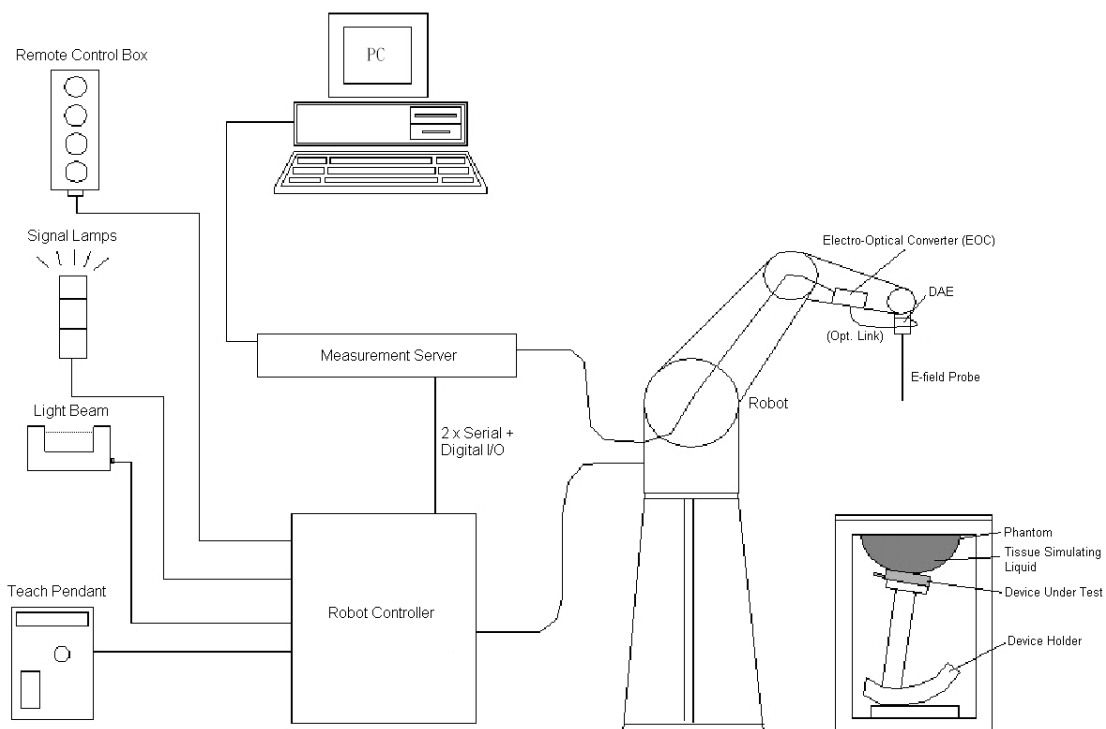


Fig 5.1 SPEAG DASY System Configurations

The DASY system for performance compliance tests is illustrated above graphically. This system consists of the following items:

- A standard high precision 6-axis robot with controller, a teach pendant and software
- A data acquisition electronic (DAE) attached to the robot arm extension
- A dosimetric probe equipped with an optical surface detector system
- The electro-optical converter (EOC) performs the conversion between optical and electrical signals
- A measurement server performs the time critical tasks such as signal filtering, control of the robot operation and fast movement interrupts.
- A probe alignment unit which improves the accuracy of the probe positioning
- A computer operating Windows XP
- DASY software
- Remote control with teach pendant and additional circuitry for robot safety such as warning lamps, etc.
- The SAM twin phantom
- A device holder
- Tissue simulating liquid
- Dipole for evaluating the proper functioning of the system

Component details are described in in the following sub-sections.

5.1 E-Field Probe

The SAR measurement is conducted with the dosimetric probe (manufactured by SPEAG). The probe is specially designed and calibrated for use in liquid with high permittivity. The dosimetric probe has special calibration in liquid at different frequency. This probe has a built in optical surface detection system to prevent from collision with phantom.

5.1.1 E-Field Probe Specification

<EX3DV4 Probe>


Construction	Symmetrical design with triangular core Built-in shielding against static charges PEEK enclosure material (resistant to organic solvents, e.g., DGBE)	
Frequency	10 MHz to 6 GHz; Linearity: ± 0.2 dB	
Directivity	± 0.3 dB in HSL (rotation around probe axis) ± 0.5 dB in tissue material (rotation normal to probe axis)	
Dynamic Range	10 μ W/g to 100 mW/g; Linearity: ± 0.2 dB (noise: typically < 1 μ W/g)	
Dimensions	Overall length: 330 mm (Tip: 20 mm) Tip diameter: 2.5 mm (Body: 12 mm) Typical distance from probe tip to dipole centers: 1 mm	

Fig 5.2 Photo of EX3DV4

5.1.2 E-Field Probe Calibration

Each probe needs to be calibrated according to a dosimetric assessment procedure with accuracy better than $\pm 10\%$. The spherical isotropy shall be evaluated and within ± 0.25 dB. The sensitivity parameters (NormX, NormY, and NormZ), the diode compression parameter (DCP) and the conversion factor (ConvF) of the probe are tested. The calibration data can be referred to appendix C of this report.

5.2 Data Acquisition Electronics (DAE)

The data acquisition electronics (DAE) consists of a highly sensitive electrometer-grade preamplifier with auto-zeroing, a channel and gain-switching multiplexer, a fast 16 bit AD-converter and a command decoder and control logic unit. Transmission to the measurement server is accomplished through an optical downlink for data and status information as well as an optical uplink for commands and the clock. The input impedance of the DAE is 200 MOhm; the inputs are symmetrical and floating. Common mode rejection is above 80 dB.



Fig 5.3 Photo of DAE

5.3 Robot

The SPEAG DASY system uses the high precision robots (DASY5: TX90XL) type from Stäubli SA (France). For the 6-axis controller system, the robot controller version (DASY5: CS8c) from Stäubli is used. The Stäubli robot series have many features that are important for our application:

- High precision (repeatability ± 0.035 mm)
- High reliability (industrial design)
- Jerk-free straight movements
- Low ELF interference (the closed metallic construction shields against motor control fields)



Fig 5.4 Photo of DASY5

5.4 Measurement Server

The measurement server is based on a PC/104 CPU board with CPU (DASY5: 400 MHz, Intel Celeron), chipdisk (DASY5: 128 MB), RAM (DASY5: 128 MB). The necessary circuits for communication with the DAE electronic box, as well as the 16 bit AD converter system for optical detection and digital I/O interface are contained on the DASY I/O board, which is directly connected to the PC/104 bus of the CPU board.


The measurement server performs all the real-time data evaluation for field measurements and surface detection, controls robot movements and handles safety operations.



Fig 5.5 Photo of Server for DASY5

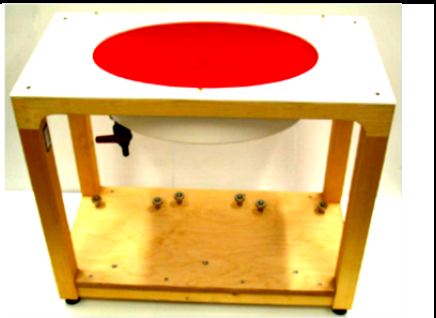
5.5 Phantom

<SAM Twin Phantom>

Shell Thickness	2 ± 0.2 mm; Center ear point: 6 ± 0.2 mm	 <p>Fig 5.6 Photo of SAM Phantom</p>
Filling Volume	Approx. 25 liters	
Dimensions	Length: 1000 mm; Width: 500 mm; Height: adjustable feet	
Measurement Areas	Left Hand, Right Hand, Flat Phantom	

The bottom plate contains three pair of bolts for locking the device holder. The device holder positions are adjusted to the standard measurement positions in the three sections. A white cover is provided to tap the phantom during off-periods to prevent water evaporation and changes in the liquid parameters. On the phantom top, three reference markers are provided to identify the phantom position with respect to the robot.

<ELI4 Phantom>

Shell Thickness	2 ± 0.2 mm (sagging: <1%)	 <p>Fig 5.7 Photo of ELI4 Phantom</p>
Filling Volume	Approx. 30 liters	
Dimensions	Major ellipse axis: 600 mm Minor axis: 400 mm	

The ELI4 phantom is intended for compliance testing of handheld and body-mounted wireless devices in the frequency range of 30 MHz to 6 GHz. ELI4 is fully compatible with standard and all known tissue simulating liquids.

5.6 Device Holder

<Device Holder for SAM Twin Phantom>

The SAR in the phantom is approximately inversely proportional to the square of the distance between the source and the liquid surface. For a source at 5 mm distance, a positioning uncertainty of ± 0.5 mm would produce a SAR uncertainty of ± 20 %. Accurate device positioning is therefore crucial for accurate and repeatable measurements. The positions in which the devices must be measured are defined by the standards.

The DASY device holder is designed to cope with different positions given in the standard. It has two scales for the device rotation (with respect to the body axis) and the device inclination (with respect to the line between the ear reference points). The rotation center for both scales is the ear reference point (EPR). Thus the device needs no repositioning when changing the angles.

The DASY device holder is constructed of low-loss POM material having the following dielectric parameters: relative permittivity $\epsilon = 3$ and loss tangent $\delta = 0.02$. The amount of dielectric material has been reduced in the closest vicinity of the device, since measurements have suggested that the influence of the clamp on the test results could thus be lowered.



Fig 5.8 Device Holder

<Laptop Extension Kit>

The extension is lightweight and made of POM, acrylic glass and foam. It fits easily on the upper part of the mounting device in place of the phone positioned. The extension is fully compatible with the SAM Twin and ELI phantoms.

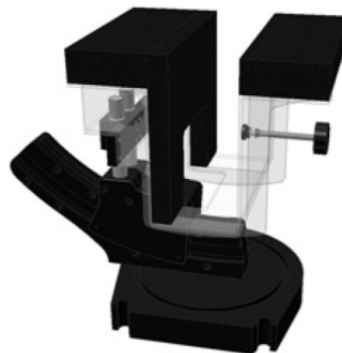


Fig 5.9 Laptop Extension Kit

5.7 Data Storage and Evaluation

5.7.1 Data Storage

The DASY software stores the assessed data from the data acquisition electronics as raw data (in microvolt readings from the probe sensors), together with all the necessary software parameters for the data evaluation (probe calibration data, liquid parameters and device frequency and modulation data) in measurement files. The post-processing software evaluates the desired unit and format for output each time the data is visualized or exported. This allows verification of the complete software setup even after the measurement and allows correction of erroneous parameter settings. For example, if a measurement has been performed with an incorrect crest factor parameter in the device setup, the parameter can be corrected afterwards and the data can be reevaluated.

The measured data can be visualized or exported in different units or formats, depending on the selected probe type (e.g., [V/m], [A/m], [mW/g]). Some of these units are not available in certain situations or give meaningless results, e.g., a SAR-output in a non-lose media, will always be zero. Raw data can also be exported to perform the evaluation with other software packages.

5.7.2 Data Evaluation

The DASY post-processing software (SEMCAD) automatically executes the following procedures to calculate the field units from the microvolt readings at the probe connector. The parameters used in the evaluation are stored in the configuration modules of the software :

Probe parameters :	- Sensitivity	Norm _i , a _{i0} , a _{i1} , a _{i2}
	- Conversion factor	ConvF _i
	- Diode compression point	dcp _i
Device parameters :	- Frequency	f
	- Crest factor	cf
	Media parameters :	- Conductivity
	- Density	ρ

These parameters must be set correctly in the software. They can be found in the component documents or they can be imported into the software from the configuration files issued for the DASY components. In the direct measuring mode of the multi-meter option, the parameters of the actual system setup are used. In the scan visualization and export modes, the parameters stored in the corresponding document files are used.

The first step of the evaluation is a linearization of the filtered input signal to account for the compression characteristics of the detector diode. The compensation depends on the input signal, the diode type and the DC-transmission factor from the diode to the evaluation electronics. If the exciting field is pulsed, the crest factor of the signal must be known to correctly compensate for peak power.

The formula for each channel can be given as :

$$V_i = U_i + U_i^2 \cdot \frac{cf}{dcp_i}$$

with V_i = compensated signal of channel i , ($i = x, y, z$)
 U_i = input signal of channel i , ($i = x, y, z$)
 cf = crest factor of exciting field (DASY parameter)
 dcp_i = diode compression point (DASY parameter)

From the compensated input signals, the primary field data for each channel can be evaluated :

$$\text{E-field Probes : } E_i = \sqrt{\frac{V_i}{\text{Norm}_i \cdot \text{ConvF}}}$$

$$\text{H-field Probes : } H_i = \sqrt{V_i \cdot \frac{a_{i0} + a_{i1}f + a_{i2}f^2}{f}}$$

with V_i = compensated signal of channel i , ($i = x, y, z$)
 Norm_i = sensor sensitivity of channel i , ($i = x, y, z$), $\mu\text{V}/(\text{V/m})^2$ for E-field Probes
 ConvF = sensitivity enhancement in solution
 a_{ij} = sensor sensitivity factors for H-field probes
 f = carrier frequency [GHz]
 E_i = electric field strength of channel i in V/m
 H_i = magnetic field strength of channel i in A/m

The RSS value of the field components gives the total field strength (Hermitian magnitude) :

$$E_{\text{tot}} = \sqrt{E_x^2 + E_y^2 + E_z^2}$$

The primary field data are used to calculate the derived field units.

$$\text{SAR} = E_{\text{tot}}^2 \cdot \frac{\sigma}{\rho \cdot 1000}$$

with SAR = local specific absorption rate in mW/g
 E_{tot} = total field strength in V/m
 σ = conductivity in [mho/m] or [Siemens/m]
 ρ = equivalent tissue density in g/cm^3

Note that the density is set to 1, to account for actual head tissue density rather than the density of the tissue simulating liquid.



5.8 Test Equipment List

Manufacturer	Name of Equipment	Type/Model	Serial Number	Calibration	
				Last Cal.	Due Date
SPEAG	1900MHz System Validation Kit	D1900V2	5d118	Nov. 21, 2011	Nov. 20, 2012
SPEAG	2450MHz System Validation Kit	D2450V2	736	Jul. 25, 2011	Jul. 24, 2013
SPEAG	Data Acquisition Electronics	DAE4	1210	Nov. 18, 2011	Nov. 17, 2012
SPEAG	Dosimetric E-Field Probe	EX3DV4	3857	Jun. 20, 2012	Jun. 19, 2013
SPEAG	SAM Twin Phantom	QD 000 P40 CB	TP-1477	NCR	NCR
SPEAG	SAM Twin Phantom	QD 000 P40 CB	TP-1479	NCR	NCR
SPEAG	Phone Positioner	N/A	N/A	NCR	NCR
Anritsu	Radio communication analyzer	MT8820C	6201074235	Nov. 30, 2011	Nov. 29, 2013
Agilent	Wireless Communication Test Set	E5515C	GB47050646	Aug. 18, 2011	Aug. 17, 2013
Agilent	Wireless Communication Test Set	E5515C	MY48367160	Oct. 26, 2011	Oct. 25, 2013
Agilent	ENA Series Network Analyzer	E5071C	MY46111157	Apr. 13, 2012	Apr. 12, 2013
R&S	Signal Generator	SMR40	100455	Dec. 30, 2011	Dec. 29, 2012
Agilent	Power Meter	E4416A	MY45101555	Aug. 23, 2012	Aug. 22, 2013
Agilent	Power Sensor	E9327A	MY44421198	Aug. 23, 2012	Aug. 22, 2013
R&S	Spectrum Analyzer	FSP30	101399	Jun. 01, 2012	May 31, 2013

Table 5.1 Test Equipment List

Note:

1. The calibration certificate of DASY can be referred to appendix C of this report.
2. Referring to KDB 450824 D02, the dipole calibration interval can be extended to 3 years with justification. The dipoles are also not physically damaged, or repaired during the interval.
3. The justification data of dipole D2450V2, SN: 736 can be found in appendix C. The return loss is < -20dB, within 20% of prior calibration, the impedance is within 5 ohm of prior calibration.

6. Tissue Simulating Liquids

For the measurement of the field distribution inside the SAM phantom with DASY, the phantom must be filled with around 25 liters of homogeneous body tissue simulating liquid. For head SAR testing, the liquid height from the ear reference point (ERP) of the phantom to the liquid top surface is larger than 15 cm, which is shown in Fig. 6.1. For body SAR testing, the liquid height from the center of the flat phantom to the liquid top surface is larger than 15 cm, which is shown in Fig. 6.2.

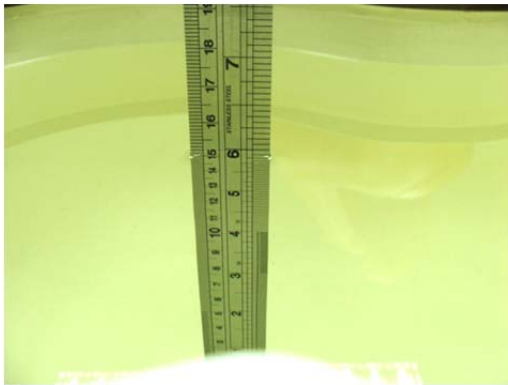


Fig 6.1 Photo of Liquid Height for Head SAR



Fig 6.2 Photo of Liquid Height for Body SAR

The following table gives the recipes for tissue simulating liquid.

Frequency (MHz)	Water (%)	Sugar (%)	Cellulose (%)	Salt (%)	Preventol (%)	DGBE (%)	Conductivity (σ)	Permittivity (ϵ_r)
For Head								
1800, 1900, 2000	55.2	0	0	0.3	0	44.5	1.40	40.0
2450	55.0	0	0	0	0	45.0	1.80	39.2
For Body								
1800, 1900, 2000	70.2	0	0	0.4	0	29.4	1.52	53.3
2450	68.6	0	0	0	0	31.4	1.95	52.7

Table 6.1 Recipes of Tissue Simulating Liquid

The dielectric parameters of the liquids were verified prior to the SAR evaluation using an Agilent 85070D Dielectric Probe Kit and an Agilent Network Analyzer.

The following table shows the measuring results for simulating liquid.

Freq. (MHz)	Liquid Type	Temp. ($^{\circ}$ C)	Conductivity (σ)	Permittivity (ϵ_r)	Conductivity Target (σ)	Permittivity Target (ϵ_r)	Delta (σ) (%)	Delta (ϵ_r) (%)	Limit (%)	Date
1900	Head	21.2	1.448	39.145	1.4	40	3.43	-2.14	± 5	Sep. 15, 2012
1900	Body	21.3	1.531	54.671	1.52	53.3	0.72	2.57	± 5	Sep. 15, 2012
2450	Head	21.5	1.823	37.961	1.8	39.2	1.28	-3.16	± 5	Sep. 16, 2012
2450	Body	21.6	1.972	52.028	1.95	52.7	1.13	-1.28	± 5	Sep. 16, 2012

Table 6.2 Measuring Results for Simulating Liquid

7. SAR Measurement Evaluation

Each DASY system is equipped with one or more system validation kits. These units, together with the predefined measurement procedures within the DASY software, enable the user to conduct the system performance check and system validation. System validation kit includes a dipole, tripod holder to fix it underneath the flat phantom and a corresponding distance holder.

7.1 Purpose of System Performance check

The system performance check verifies that the system operates within its specifications. System and operator errors can be detected and corrected. It is recommended that the system performance check be performed prior to any usage of the system in order to guarantee reproducible results. The system performance check uses normal SAR measurements in a simplified setup with a well characterized source. This setup was selected to give a high sensitivity to all parameters that might fail or vary over time. The system check does not intend to replace the calibration of the components, but indicates situations where the system uncertainty is exceeded due to drift or failure.

7.2 System Setup

In the simplified setup for system evaluation, the EUT is replaced by a calibrated dipole and the power source is replaced by a continuous wave that comes from a signal generator. The calibrated dipole must be placed beneath the flat phantom section of the SAM twin phantom with the correct distance holder. The distance holder should touch the phantom surface with a light pressure at the reference marking and be oriented parallel to the long side of the phantom. The equipment setup is shown below:

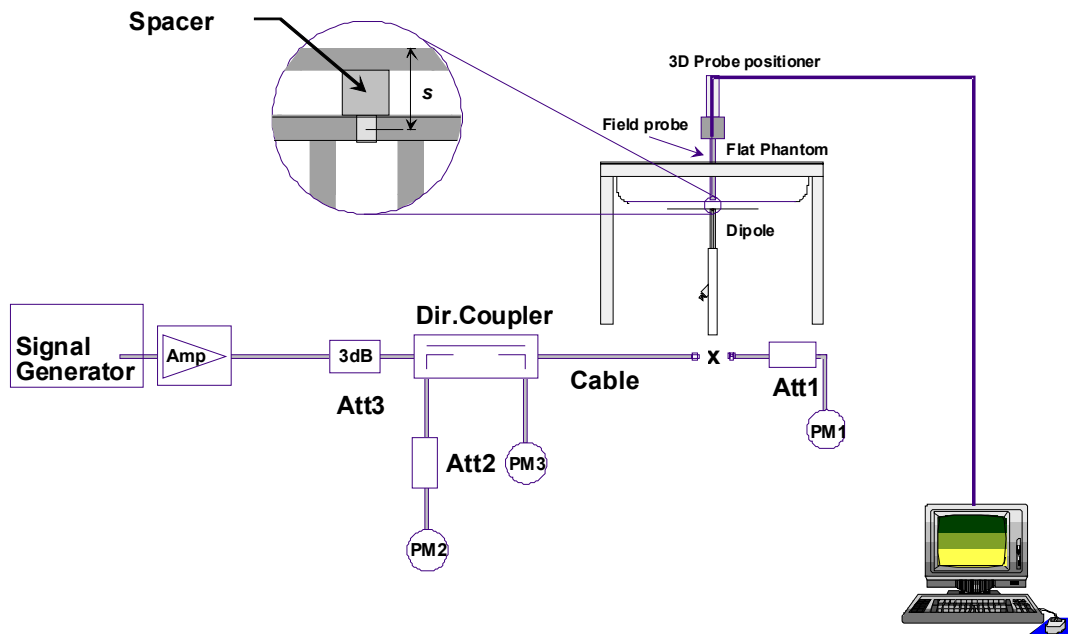


Fig 7.1 System Setup for System Evaluation

1. Signal Generator
2. Amplifier
3. Directional Coupler
4. Power Meter
5. Calibrated Dipole

The output power on dipole port must be calibrated to 24 dBm (250 mW) before dipole is connected.



Fig 7.2 Photo of Dipole Setup

7.3 Validation Results

Comparing to the original SAR value provided by SPEAG, the validation data should be within its specification of 10 %. Table 7.1 shows the target SAR and measured SAR after normalized to 1W input power. The table below indicates the system performance check can meet the variation criterion and the plots can be referred to Appendix A of this report.

Measurement Date	Frequency (MHz)	Liquid Type	Targeted SAR _{1g} (W/kg)	Measured SAR _{1g} (W/kg)	Normalized SAR _{1g} (W/kg)	Deviation (%)
Sep. 15, 2012	1900	Head	40.3	9.97	39.88	-1.04
Sep. 15, 2012	1900	Body	41.8	10.1	40.40	-3.35
Sep. 16, 2012	2450	Head	54.8	13.9	55.60	1.46
Sep. 16, 2012	2450	Body	52.3	13.6	54.40	4.02

Table 7.1 Target and Measurement SAR after Normalized

8. EUT Testing Position

This EUT was tested in ten different positions. They are right cheek, right tilted, left cheek, left tilted, Front of the EUT with phantom 1 cm gap, Back of the EUT with phantom 1 cm gap, Top Side of the EUT with phantom 1 cm gap, Bottom Side of the EUT with phantom 1 cm gap, Right Side of the EUT with phantom 1 cm gap, and Left Side of the EUT with phantom 1 cm gap, as illustrated below:

8.1 Define two imaginary lines on the handset

- The vertical centerline passes through two points on the front side of the handset - the midpoint of the width w_t of the handset at the level of the acoustic output, and the midpoint of the width w_b of the bottom of the handset.
- The horizontal line is perpendicular to the vertical centerline and passes through the center of the acoustic output. The horizontal line is also tangential to the face of the handset at point A.
- The two lines intersect at point A. Note that for many handsets, point A coincides with the center of the acoustic output; however, the acoustic output may be located elsewhere on the horizontal line. Also note that the vertical centerline is not necessarily parallel to the front face of the handset, especially for clamshell handsets, handsets with flip covers, and other irregularly shaped handsets.

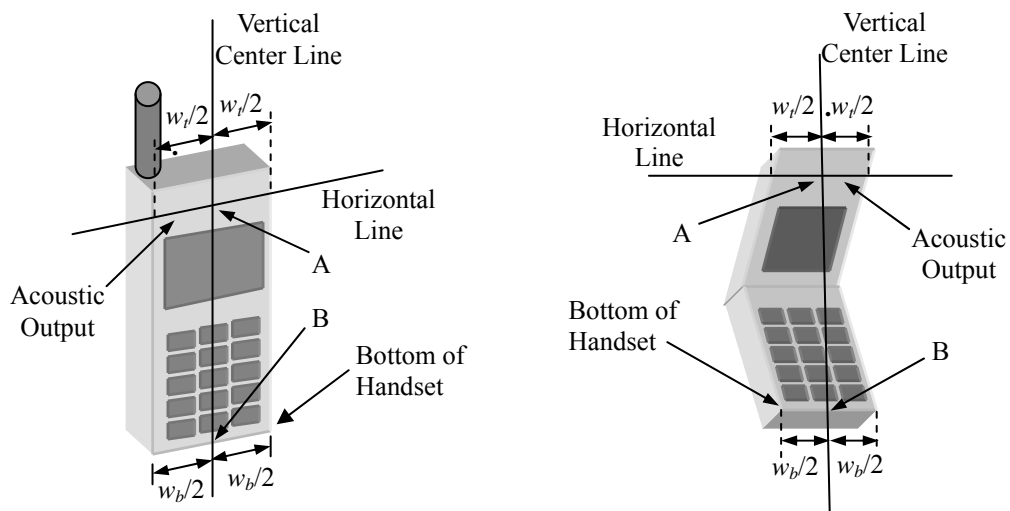


Fig 8.1 Illustration for Handset Vertical and Horizontal Reference Lines

8.2 Cheek Position

- (a) To position the device with the vertical center line of the body of the device and the horizontal line crossing the center piece in a plane parallel to the sagittal plane of the phantom. While maintaining the device in this plane, align the vertical center line with the reference plane containing the three ear and mouth reference point (M: Mouth, RE: Right Ear, and LE: Left Ear) and align the center of the ear piece with the line RE-LE.
- (b) To move the device towards the phantom with the ear piece aligned with the line LE-RE until the phone touched the ear. While maintaining the device in the reference plane and maintaining the phone contact with the ear, move the bottom of the phone until any point on the front side is in contact with the cheek of the phantom or until contact with the ear is lost (see Fig. 9.2).

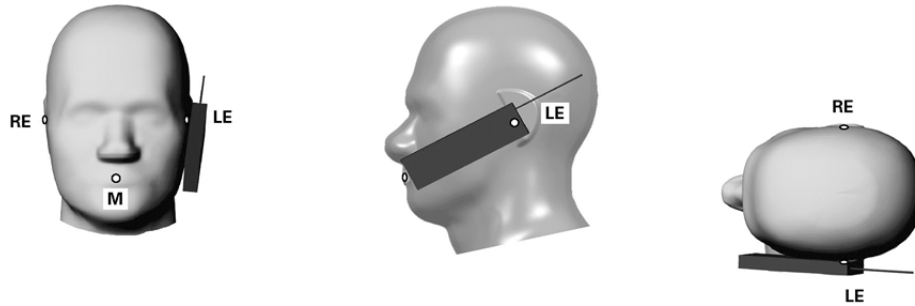


Fig 8.2 Illustration for Cheek Position

8.3 Tilted Position

- (a) To position the device in the “cheek” position described above.
- (b) While maintaining the device the reference plane described above and pivoting against the ear, moves it outward away from the mouth by an angle of 15 degrees or until contact with the ear is lost (see Fig. 9.3).

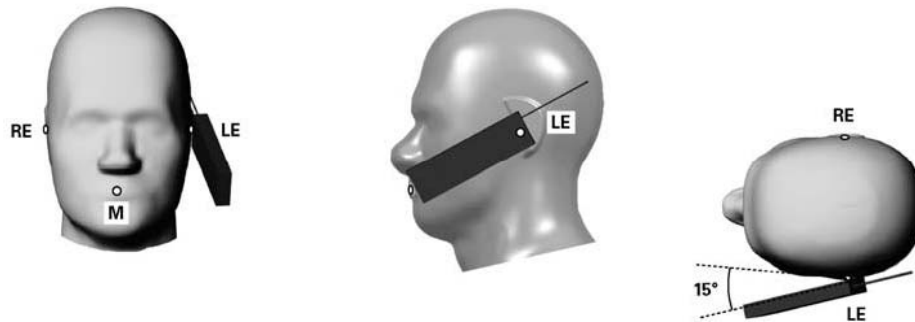


Fig 8.3 Illustration for Tilted Position

8.4 Body Worn Position

- (a) To position the device parallel to the phantom surface with either keypad up or down.
- (b) To adjust the device parallel to the flat phantom.
- (c) To adjust the distance between the device surface and the flat phantom to 1 cm.

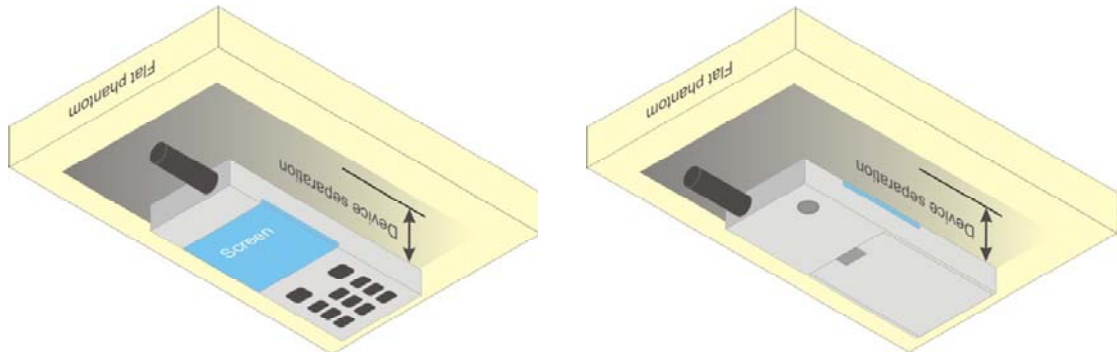


Fig 8.4 Illustration for Body Worn Position

<EUT Setup Photos>

Please refer to Appendix E for the test setup photos.

9. Measurement Procedures

The measurement procedures are as follows:

- (a) Use base station simulator (if applicable) or engineering software to transmit RF power continuously (continuous Tx) in the highest power channel.
- (b) Keep EUT to radiate maximum output power or 100% EUTy factor (if applicable)
- (c) Measure output power through RF cable and power meter.
- (d) Place the EUT in the positions as Appendix E demonstrates.
- (e) Set scan area, grid size and other setting on the DASY software.
- (f) Measure SAR results for the highest power channel on each testing position.
- (g) Find out the largest SAR result on these testing positions of each band
- (h) Measure SAR results for other channels in worst SAR testing position if the SAR of highest power channel is larger than 0.8 W/kg

According to the test standard, the recommended procedure for assessing the peak spatial-average SAR value consists of the following steps:

- (a) Power reference measurement
- (b) Area scan
- (c) Zoom scan
- (d) Power drift measurement

9.1 Spatial Peak SAR Evaluation

The procedure for spatial peak SAR evaluation has been implemented according to the test standard. It can be conducted for 1g and 10g, as well as for user-specific masses. The DASY software includes all numerical procedures necessary to evaluate the spatial peak SAR value.

The base for the evaluation is a "cube" measurement. The measured volume must include the 1g and 10g cubes with the highest averaged SAR values. For that purpose, the center of the measured volume is aligned to the interpolated peak SAR value of a previously performed area scan.

The entire evaluation of the spatial peak values is performed within the post-processing engine (SEMCAD). The system always gives the maximum values for the 1g and 10g cubes. The algorithm to find the cube with highest averaged SAR is divided into the following stages:

- (a) Extraction of the measured data (grid and values) from the Zoom Scan
- (b) Calculation of the SAR value at every measurement point based on all stored data (A/D values and measurement parameters)
- (c) Generation of a high-resolution mesh within the measured volume
- (d) Interpolation of all measured values from the measurement grid to the high-resolution grid
- (e) Extrapolation of the entire 3-D field distribution to the phantom surface over the distance from sensor to surface
- (f) Calculation of the averaged SAR within masses of 1g and 10g

9.2 Area & Zoom Scan Procedures

First Area Scan is used to locate the approximate location(s) of the local peak SAR value(s). The measurement grid within an Area Scan is defined by the grid extent, grid step size and grid offset. Next, in order to determine the EM field distribution in a three-dimensional spatial extension, Zoom Scan is required. The Zoom Scan measures 5x5x7 points with step size 8, 8 and 5 mm for 300 MHz to 3 GHz, and 8x8x8 points with step size 4, 4 and 2.5 mm for 3 GHz to 6 GHz. The Zoom Scan is performed around the highest E-field value to determine the averaged SAR-distribution over 10 g.



9.3 Volume Scan Procedures

The volume scan is used to assess overlapping SAR distributions for antennas transmitting in different frequency bands. It is equivalent to an oversized zoom scan used in standalone measurements. The measurement volume will be used to enclose all the simultaneous transmitting antennas. For antennas transmitting simultaneously in different frequency bands, the volume scan is measured separately in each frequency band. In order to sum correctly to compute the 1g aggregate SAR, the EUT remains in the same test position for all measurements and all volume scans use the same spatial resolution and grid spacing (step-size is 4, 4 and 2.5 mm). When all volume scans are completed, the software, SEMCAD postprocessor can combine and subsequently superpose these measurement data to calculate the multiband SAR.

9.4 SAR Averaged Methods

In DASy, the interpolation and extrapolation are both based on the modified Quadratic Shepard's method. The interpolation scheme combines a least-square fitted function method and a weighted average method which are the two basic types of computational interpolation and approximation.

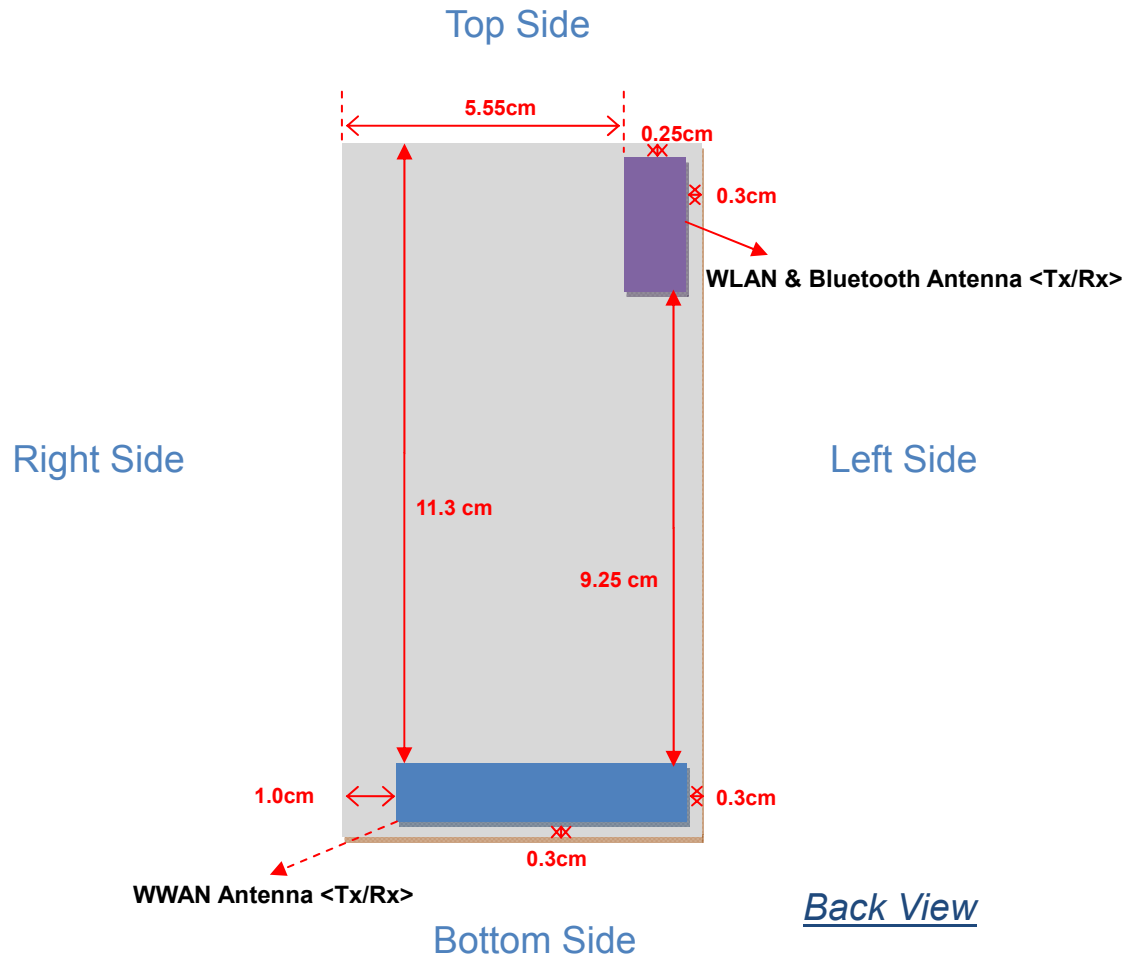
Extrapolation routines are used to obtain SAR values between the lowest measurement points and the inner phantom surface. The extrapolation distance is determined by the surface detection distance and the probe sensor offset. The uncertainty increases with the extrapolation distance. To keep the uncertainty within 1% for the 1 g and 10 g cubes, the extrapolation distance should not be larger than 5 mm.

9.5 Power Drift Monitoring

All SAR testing is under the EUT installed full charged battery and transmit maximum output power. In DASy measurement software, the power reference measurement and power drift measurement procedures are used for monitoring the power drift of EUT during SAR test. Both these procedures measure the field at a specified reference position before and after the SAR testing. The software will calculate the field difference in dB. If the power drift more than 5%, the SAR will be retested.

10. SAR Test Configurations

10.1 Exposure Positions Consideration



Antennas	Wireless Interface
WWAN Main Antenna (Tx / Rx)	GSM1900
WLAN & BT Antenna (Tx / Rx)	WLAN 2.4GHz Bluetooth
GPS Antenna (Rx)	Only Receiving



Sides for SAR tests; Hotspot mode						
Test distance: 10 mm						
Antennas	Back	Front	Top Side	Bottom Side	Right Side	Left Side
WWAN	YES	YES	NO	YES	YES	YES
BT&WLAN	YES	YES	YES	NO	NO	YES

Note:

1. Head/Body-worn/Hotspot mode SAR assessments are required.
2. Referring to KDB 941225 D06, when the overall device length and width are $\geq 9\text{cm} \times 5\text{cm}$, the test distance is 10 mm. SAR must be measured for all sides and surfaces with a transmitting antenna located within 25mm from that surface or edge.
3. For WWAN Main antenna, SAR measurements at Top side is not required since the distance between transmitting antenna and surface or edge $> 25\text{mm}$.
4. For BT&WLAN antenna, SAR measurements Bottom/Right sides are not required since the distance between transmitting antenna and surface or edge $> 25\text{mm}$.



10.2 Conducted RF Output Power (Unit: dBm)

<GSM/GPRS/EDGE>

Burst Average Power			
Band	GSM1900		
Channel	512	661	810
Frequency (MHz)	1850.2	1880.0	1909.8
GSM (1 Uplink)	30.41	30.51	30.47
GPRS 8 (1 Uplink) – CS1	30.40	30.50	30.48
GPRS 10 (2 Uplink) – CS1	27.93	28.01	28.00
GPRS 11 (3 Uplink) – CS1	25.97	26.03	26.02
GPRS 12 (4 Uplink) – CS1	24.78	24.38	24.09
EDGE 8 (GMSK, 1 Uplink) – MCS1	30.40	30.49	30.47
EDGE 10 (GMSK, 2 Uplink) – MCS1	27.94	28.00	27.99
EDGE 11 (GMSK, 3 Uplink) – MCS1	25.95	26.01	26.02
EDGE 12 (GMSK, 4 Uplink) – MCS1	24.16	24.35	24.05
EDGE 8 (8PSK, 1 Uplink) – MCS9	26.30	26.35	26.34
EDGE 10 (8PSK, 2 Uplink) – MCS9	24.77	24.55	24.55
EDGE 11 (8PSK, 3 Uplink) – MCS9	22.26	22.36	22.23
EDGE 12 (8PSK, 4 Uplink) – MCS9	19.84	19.93	19.81



Source-Based Time-Averaged Power			
Band	GSM1900		
Channel	512	661	810
Frequency (MHz)	1850.2	1880.0	1909.8
GSM (1 Uplink)	21.41	21.51	21.47
GPRS 8 (1 Uplink) – CS1	21.40	21.50	21.48
GPRS 10 (2 Uplink) – CS1	21.93	22.01	22.00
GPRS 11 (3 Uplink) – CS1	21.71	21.77	21.76
GPRS 12 (4 Uplink) – CS1	21.78	21.38	21.09
EDGE 8 (GMSK, 1 Uplink) – MCS1	21.40	21.49	21.47
EDGE 10 (GMSK, 2 Uplink) – MCS1	21.94	22.00	21.99
EDGE 11 (GMSK, 3 Uplink) – MCS1	21.69	21.75	21.76
EDGE 12 (GMSK, 4 Uplink) – MCS1	21.16	21.35	21.05
EDGE 8 (8PSK, 1 Uplink) – MCS9	17.30	17.35	17.34
EDGE 10 (8PSK, 2 Uplink) – MCS9	18.77	18.55	18.55
EDGE 11 (8PSK, 3 Uplink) – MCS9	18.00	18.10	17.97
EDGE 12 (8PSK, 4 Uplink) – MCS9	16.84	16.93	16.81

Remark: The source-based time-averaged power is linearly scaled the maximum burst averaged power based on time slots. The calculated method are shown as below:
Source based time averaged power = Maximum burst averaged power (1 Uplink) - 9 dB
Source based time averaged power = Maximum burst averaged power (2 Uplink) - 6 dB
Source based time averaged power = Maximum burst averaged power (3 Uplink) - 4.26 dB
Source based time averaged power = Maximum burst averaged power (4 Uplink) - 3 dB

Note:

1. For Head/Body SAR testing, GSM, GPRS and EDGE should be evaluated, therefore the EUT was set in GPRS 10 for GSM1900 due to its highest source-based time-average power.
2. For Hotspot SAR testing, GPRS and EDGE should be evaluated, therefore the EUT was set in GPRS 10 for GSM1900 due to its highest source-based time-average power.
3. Per KDB 447498, the maximum output power channel is used for SAR testing and for further SAR test reduction.
4. EDGE tests with MCS1 setting, GMSK modulation. Burst average power with MCS9 setting 8 PSK modulation, is provided voluntary for reference.
5. The EUT do not support DTM function.

<WLAN 2.4GHz>

Mode	Channel	Frequency (MHz)	Average power (dBm)			
			Data Rate (bps)			
			1M	2M	5.5M	11M
802.11b	CH 01	2412	15.08	15.01	15.07	15.11
	CH 06	2437	15.60	15.39	15.46	15.48
	CH 11	2462	16.02	15.83	15.79	16.01

Mode	Channel	Frequency (MHz)	Average power (dBm)							
			Data Rate (bps)							
			6M	9M	12M	18M	24M	36M	48M	54M
802.11g	CH 01	2412	13.39	13.44	13.40	13.56	13.48	13.53	13.51	13.60
	CH 06	2437	13.76	13.85	13.72	13.77	13.79	13.93	14.15	13.97
	CH 11	2462	14.30	13.72	14.15	14.18	14.20	14.23	14.24	14.22

Mode	Channel	Frequency (MHz)	Average power (dBm)							
			Data Rate (bps)							
			MCS0	MCS1	MCS2	MCS3	MCS4	MCS5	MCS6	MCS7
802.11n HT20	CH 01	2412	11.72	11.46	11.37	11.24	11.19	11.30	11.27	11.34
	CH 06	2437	12.03	11.95	11.95	11.70	11.68	11.73	11.75	11.73
	CH 11	2462	12.35	12.37	12.28	12.16	12.28	12.53	12.29	12.21

Note:

1. Per KDB 248227, choose the highest output power channel to test SAR and determine further SAR exclusion
2. Per KDB 248227, 11g and 11n-HT20 output power is less than 1/4 dB higher than 11b mode, thus the SAR can be excluded.
3. For each frequency band, testing at higher data rates and higher order modulations is not required when the maximum average output power for each of these configurations is less than 1/4 dB higher than those measured at the lowest data rate.

<Bluetooth>

Mode	Channel	Frequency (MHz)	Average Power (dBm)								
			Package Type								
			DH1	DH3	DH5	2DH1	2DH3	2DH5	3DH1	3DH3	3DH5
Bluetooth	CH 00	2402	9.01	9.10	9.15	6.78	6.87	6.92	7.01	7.03	7.02
	CH 39	2441	9.04	9.10	9.11	6.95	6.84	6.87	7.06	7.00	7.03
	CH 78	2480	8.62	8.69	8.74	6.44	6.65	6.57	6.68	6.66	6.63

Note:

1. Per KDB 447498, Bluetooth SAR is excluded due to highest output power $\leq 60/f$ (GHz) mW, where $60/f$ (GHz) = 24mW = 13.8dBm.

11. SAR Test Results

11.1 Test Records for Head SAR Test

<GSM>

Plot No.	Band	Mode	Test Position	Ch.	Average Power (dBm)	Tune-Up Limit (dBm)	Scaling Factor	SAR _{1g} (W/kg)	Scaled SAR _{1g} (W/kg)	SAR _{10g} (W/kg)
1	GSM1900	GPRS10	Right Cheek	661	28.01	28.5	1.119	0.414	0.463	0.244
2	GSM1900	GPRS10	Right Tilted	661	28.01	28.5	1.119	0.142	0.159	0.077
3	GSM1900	GPRS10	Left Cheek	661	28.01	28.5	1.119	0.360	0.403	0.222
4	GSM1900	GPRS10	Left Tilted	661	28.01	28.5	1.119	0.157	0.176	0.096

Note: Per KDB 447498, if the highest output channel SAR for each exposure position ≤ 0.8 W/kg other channels SAR tests are not necessary.

<WLAN>

Plot No.	Band	Mode	Test Position	Ch.	Average Power (dBm)	Tune-Up Limit (dBm)	Scaling Factor	SAR _{1g} (W/kg)	Scaled SAR _{1g} (W/kg)	SAR _{10g} (W/kg)
5	WLAN2.4G	802.11b	Right Cheek	11	16.02	16.5	1.117	0.358	0.400	0.161
6	WLAN2.4G	802.11b	Right Tilted	11	16.02	16.5	1.117	0.321	0.359	0.147
7	WLAN2.4G	802.11b	Left Cheek	11	16.02	16.5	1.117	0.242	0.270	0.121
8	WLAN2.4G	802.11b	Left Tilted	11	16.02	16.5	1.117	0.289	0.323	0.136

Note:

- Per KDB 248227, if the highest output channel SAR for each exposure position ≤ 0.8 W/kg other channels SAR tests are not necessary.

11.2 Test Records for Hotspot SAR Test

<GSM>

Plot No.	Band	Mode	Test Position	Gap (cm)	Ch.	Average Power (dBm)	Tune-Up Limit (dBm)	Scaling Factor	SAR _{1g} (W/kg)	Scaled SAR _{1g} (W/kg)	SAR _{10g} (W/kg)
9	GSM1900	GPRS10	Front	1	661	28.01	28.5	1.119	0.669	0.749	0.419
10	GSM1900	GPRS10	Back	1	661	28.01	28.5	1.119	0.894	1.001	0.497
11	GSM1900	GPRS10	Back	1	512	27.93	28.5	1.140	0.984	1.122	0.538
12	GSM1900	GPRS10	Back	1	810	28.00	28.5	1.122	0.748	0.839	0.415
16	GSM1900	GPRS10	Left Side	1	661	28.01	28.5	1.119	0.477	0.534	0.264
17	GSM1900	GPRS10	Right Side	1	661	28.01	28.5	1.119	0.094	0.105	0.055
18	GSM1900	GPRS10	Bottom Side	1	661	28.01	28.5	1.119	0.733	0.821	0.389

Note:

1. Per KDB 941225 D06, for EUT dimension ≥ 9cm*5cm, the test distance is 1cm. SAR must be measured for all surfaces and sides with a transmitting antenna located within 2.5cm from that surface or edge.
2. As in (1), SAR for Front/Back /Bottom Side/Left Side/Right Side is necessary.
3. Per KDB 447498 if the highest output channel SAR for each exposure position ≤ 0.8 W/kg other channels SAR tests are not necessary.

<WLAN>

Plot No.	Band	Mode	Test Position	Gap (cm)	Ch.	Average Power (dBm)	Tune-Up Limit (dBm)	Scaling Factor	SAR _{1g} (W/kg)	Scaled SAR _{1g} (W/kg)	SAR _{10g} (W/kg)
19	WLAN2.4G	802.11b	Front	1	11	16.02	16.5	1.117	0.087	0.097	0.050
20	WLAN2.4G	802.11b	Back	1	11	16.02	16.5	1.117	0.097	0.108	0.053
21	WLAN2.4G	802.11b	Left Side	1	11	16.02	16.5	1.117	0.169	0.189	0.079
22	WLAN2.4G	802.11b	Top Side	1	11	16.02	16.5	1.117	0.151	0.169	0.077

Note:

1. Per KDB 941225 D06, for EUT dimension ≥ 9cm*5cm, the test distance is 1cm. SAR must be measured for all surfaces and sides with a transmitting antenna located within 2.5cm from that surface or edge.
2. As in (1), SAR for Front / Back / Top Side / Left Side is necessary.
3. Per KDB 248227, if the highest output channel SAR for each exposure position ≤ 0.8 W/kg other channels SAR tests are not necessary.



11.3 Test Records for Body-worn SAR Test

<GSM>

Plot No.	Band	Mode	Test Position	Gap (cm)	Ch.	Average Power (dBm)	Tune-Up Limit (dBm)	Scaling Factor	Headset	SAR _{1g} (W/kg)	Scaled SAR _{1g} (W/kg)	SAR _{10g} (W/kg)
9	GSM1900	GPRS10	Front	1	661	28.01	28.5	1.119	-	0.669	0.749	0.419
10	GSM1900	GPRS10	Back	1	661	28.01	28.5	1.119	-	0.894	1.001	0.497
11	GSM1900	GPRS10	Back	1	512	27.93	28.5	1.140	-	0.984	1.122	0.538
12	GSM1900	GPRS10	Back	1	810	28.00	28.5	1.122	-	0.748	0.839	0.415
13	GSM1900	GPRS10	Back	1	512	27.93	28.5	1.140	v	0.969	1.105	0.539
14	GSM1900	GPRS10	Back	1	661	28.01	28.5	1.119	v	0.889	0.995	0.492
15	GSM1900	GPRS10	Back	1	810	28.00	28.5	1.122	v	0.754	0.846	0.417

Note:

1. Per KDB 447498, if the highest output channel SAR for each exposure position ≤ 0.8 W/kg other channels SAR tests are not necessary.
2. "V" in the headset column means the earphone is plugged during SAR testing.

<WLAN>

Plot No.	Band	Mode	Test Position	Gap (cm)	Ch.	Average Power (dBm)	Tune-Up Limit (dBm)	Scaling Factor	Headset	SAR _{1g} (W/kg)	Scaled SAR _{1g} (W/kg)	SAR _{10g} (W/kg)
19	WLAN2.4G	802.11b	Front	1	11	16.02	16.5	1.117	-	0.087	0.097	0.050
20	WLAN2.4G	802.11b	Back	1	11	16.02	16.5	1.117	-	0.097	0.108	0.053
23	WLAN2.4G	802.11b	Back	1	11	16.02	16.5	1.117	v	0.100	0.112	0.046

Note:

1. Per KDB 248227, if the highest output channel SAR for each exposure position ≤ 0.8 W/kg other channels SAR tests are not necessary.
2. "V" in the headset column means the earphone is plugged during SAR testing.

11.4 Simultaneous Multi-band Transmission Analysis

No.	Applicable Simultaneous Transmission Combination
1	WWAN + BT
3	WWAN + WLAN 2.4G

Note:

1. WLAN and BT share the same antenna, and cannot transmit simultaneously.
2. Per KDB 648474 D01, Bluetooth (9.15 dBm) output power $\leq 2P_{Ref}$ and the distance to WWAN transmitting antenna $\geq 5\text{cm}$, therefore, Bluetooth stand-alone SAR is not required; the simultaneous transmission SAR for WWAN and Bluetooth is not required, because Bluetooth standalone SAR is not required and the maximum WWAN SAR is 0.984W/kg, thus the SAR summation is less than 1.6 W/kg.
3. Per KDB 648474 D01, the simultaneous transmission SAR for WWAN and WLAN was not required, because the SAR summation (Head: 0.863 W/kg; Body: 1.230 W/kg) is less than 1.6 W/kg.

<Head SAR>

Position	WWAN			WLAN		Max. SAR Summation
	WWAN Band	Plot No	Scaled WWAN SAR (W/kg)	Plot No	Max. WLAN SAR (W/kg)	
Right Cheek	GSM1900	#01	0.463	#05	0.400	0.863
Right Tilted	GSM1900	#02	0.159	#06	0.359	0.518
Left Cheek	GSM1900	#03	0.403	#07	0.270	0.673
Left Tilted	GSM1900	#04	0.176	#08	0.323	0.499

Note:

1. The maximum SAR summation is calculated based on the same configuration and test position.
2. When stand-alone 1-g SAR is not required for a transmitter or antenna, its SAR is considered zero in the 1-g SAR summing process to determine simultaneous transmission SAR evaluation requirements
3. If 1g-SAR scalar summation $< 1.6\text{W/kg}$, simultaneous SAR measurement is not necessary.
4. If 1g-SAR summation $> 1.6\text{W/kg}$, SPLSR calculation is necessary.

<Hotspot SAR>

Position	WWAN			WLAN		Max. SAR Summation
	WWAN Band	Plot No	Scaled WWAN SAR (W/kg)	Plot No	Max. WLAN SAR (W/kg)	
Front	GSM1900	#09	0.749	#19	0.097	0.846
Back	GSM1900	#11	1.122	#20	0.108	1.230
Left Side	GSM1900	#16	0.534	#21	0.189	0.723
Right Side	GSM1900	#17	0.105			0.105
Top Side	GSM1900			#22	0.169	0.169
Bottom Side	GSM1900	#18	0.821			0.821

Note:

1. The maximum SAR summation is calculated based on the same configuration and test position.
2. When stand-alone 1-g SAR is not required for a transmitter or antenna, its SAR is considered zero in the 1-g SAR summing process to determine simultaneous transmission SAR evaluation requirements
3. If 1g-SAR scalar summation $< 1.6\text{W/kg}$, simultaneous SAR measurement is not necessary.
4. If 1g-SAR summation $> 1.6\text{W/kg}$, SPLSR calculation is necessary.



<Body-worn SAR>

Position	WWAN			WLAN		Max. SAR Summation
	WWAN Band	Plot No	Scaled WWAN SAR (W/kg)	Plot No	Max. WLAN SAR (W/kg)	
Front	GSM1900	#09	0.749	#19	0.097	0.846
Back	GSM1900	#11	1.122	#20	0.108	1.230
Back (w/ headset)	GSM1900	#13	1.105	#23	0.112	1.217

Note:

1. The maximum SAR summation is calculated based on the same configuration and test position.
2. When stand-alone 1-g SAR is not required for a transmitter or antenna, its SAR is considered zero in the 1-g SAR summing process to determine simultaneous transmission SAR evaluation requirements
3. If 1g-SAR scalar summation < 1.6W/kg, simultaneous SAR measurement is not necessary.
4. If 1g-SAR summation > 1.6W/kg, SPLSR calculation is necessary.

Test Engineer : Fulu Hu

12. Uncertainty Assessment

The component of uncertainty may generally be categorized according to the methods used to evaluate them. The evaluation of uncertainty by the statistical analysis of a series of observations is termed a Type A evaluation of uncertainty. The evaluation of uncertainty by means other than the statistical analysis of a series of observations is termed a Type B evaluation of uncertainty. Each component of uncertainty, however evaluated, is represented by an estimated standard deviation, termed standard uncertainty, which is determined by the positive square root of the estimated variance.

A Type A evaluation of standard uncertainty may be based on any valid statistical method for treating data. This includes calculating the standard deviation of the mean of a series of independent observations; using the method of least squares to fit a curve to the data in order to estimate the parameter of the curve and their standard deviations; or carrying out an analysis of variance in order to identify and quantify random effects in certain kinds of measurement.

A type B evaluation of standard uncertainty is typically based on scientific judgment using all of the relevant information available. These may include previous measurement data, experience and knowledge of the behavior and properties of relevant materials and instruments, manufacture’s specification, data provided in calibration reports and uncertainties assigned to reference data taken from handbooks. Broadly speaking, the uncertainty is either obtained from an outdoor source or obtained from an assumed distribution, such as the normal distribution, rectangular or triangular distributions indicated in Table 12.1

Uncertainty Distributions	Normal	Rectangular	Triangular	U-Shape
Multi-plying Factor ^(a)	1/k ^(b)	1/√3	1/√6	1/√2

(a) standard uncertainty is determined as the product of the multiplying factor and the estimated range of variations in the measured quantity

(b) κ is the coverage factor

Table 12.1 Standard Uncertainty for Assumed Distribution

The combined standard uncertainty of the measurement result represents the estimated standard deviation of the result. It is obtained by combining the individual standard uncertainties of both Type A and Type B evaluation using the usual “root-sum-squares” (RSS) methods of combining standard deviations by taking the positive square root of the estimated variances.

Expanded uncertainty is a measure of uncertainty that defines an interval about the measurement result within which the measured value is confidently believed to lie. It is obtained by multiplying the combined standard uncertainty by a coverage factor. Typically, the coverage factor ranges from 2 to 3. Using a coverage factor allows the true value of a measured quantity to be specified with a defined probability within the specified uncertainty range. For purpose of this document, a coverage factor two is used, which corresponds to confidence interval of about 95 %. The DASY uncertainty Budget is shown in the following tables.



Error Description	Uncertainty	Probability	Divisor	Ci	Ci	Standard	Standard
	Value (±%)	Distribution		(1g)	(10g)	Uncertainty (1g)	Uncertainty (10g)
Measurement System							
Probe Calibration	6.0	Normal	1	1	1	± 6.0 %	± 6.0 %
Axial Isotropy	4.7	Rectangular	√3	0.7	0.7	± 1.9 %	± 1.9 %
Hemispherical Isotropy	9.6	Rectangular	√3	0.7	0.7	± 3.9 %	± 3.9 %
Boundary Effects	1.0	Rectangular	√3	1	1	± 0.6 %	± 0.6 %
Linearity	4.7	Rectangular	√3	1	1	± 2.7 %	± 2.7 %
System Detection Limits	1.0	Rectangular	√3	1	1	± 0.6 %	± 0.6 %
Readout Electronics	0.3	Normal	1	1	1	± 0.3 %	± 0.3 %
Response Time	0.8	Rectangular	√3	1	1	± 0.5 %	± 0.5 %
Integration Time	2.6	Rectangular	√3	1	1	± 1.5 %	± 1.5 %
RF Ambient Noise	3.0	Rectangular	√3	1	1	± 1.7 %	± 1.7 %
RF Ambient Reflections	3.0	Rectangular	√3	1	1	± 1.7 %	± 1.7 %
Probe Positioner	0.4	Rectangular	√3	1	1	± 0.2 %	± 0.2 %
Probe Positioning	2.9	Rectangular	√3	1	1	± 1.7 %	± 1.7 %
Max. SAR Eval.	1.0	Rectangular	√3	1	1	± 0.6 %	± 0.6 %
Test Sample Related							
Device Positioning	2.9	Normal	1	1	1	± 2.9 %	± 2.9 %
Device Holder	3.6	Normal	1	1	1	± 3.6 %	± 3.6 %
Power Drift	5.0	Rectangular	√3	1	1	± 2.9 %	± 2.9 %
Phantom and Setup							
Phantom Uncertainty	4.0	Rectangular	√3	1	1	± 2.3 %	± 2.3 %
Liquid Conductivity (Target)	5.0	Rectangular	√3	0.64	0.43	± 1.8 %	± 1.2 %
Liquid Conductivity (Meas.)	2.5	Normal	1	0.64	0.43	± 1.6 %	± 1.1 %
Liquid Permittivity (Target)	5.0	Rectangular	√3	0.6	0.49	± 1.7 %	± 1.4 %
Liquid Permittivity (Meas.)	2.5	Normal	1	0.6	0.49	± 1.5 %	± 1.2 %
Combined Standard Uncertainty						± 11.0 %	± 10.8 %
Coverage Factor for 95 %						K=2	
Expanded Uncertainty						± 22.0 %	± 21.5 %

Table 12.2 Uncertainty Budget of DASY for frequency range 300 MHz to 3 GHz



13. References

- [1] FCC 47 CFR Part 2 "Frequency Allocations and Radio Treaty Matters; General Rules and Regulations"
- [2] ANSI/IEEE Std. C95.1-1992, "IEEE Standard for Safety Levels with Respect to Human Exposure to Radio Frequency Electromagnetic Fields, 3 kHz to 300 GHz", September 1992
- [3] IEEE Std. 1528-2003, "Recommended Practice for Determining the Peak Spatial-Average Specific Absorption Rate (SAR) in the Human Head from Wireless Communications Devices: Measurement Techniques", December 2003
- [4] FCC OET Bulletin 65 (Edition 97-01) Supplement C (Edition 01-01), "Evaluating Compliance with FCC Guidelines for Human Exposure to Radiofrequency Electromagnetic Fields", June 2001
- [5] SPEAG DASY System Handbook
- [6] FCC KDB 248227 D01 v01r02, "SAR Measurement Procedures for 802.11 a/b/g Transmitters", May 2007
- [7] FCC KDB 447498 D01 v04, "Mobile and Portable Device RF Exposure Procedures and Equipment Authorization Policies", November 2009
- [8] FCC KDB 648474 D01 v01r05, "SAR Evaluation Considerations for Handsets with Multiple Transmitters and Antennas", September 2008
- [9] FCC KDB 941225 D03 v01, "Recommended SAR Test Reduction Procedures for GSM / GPRS / EDGE", December 2008
- [10] FCC KDB 941225 D06 v01, "SAR Evaluation Procedures for Portable Devices with Wireless Router Capabilities", April 2011



Appendix A. Plots of System Performance Check

The plots are shown as follows.

System Check_Head_1900MHz_120915

DUT: D1900V2-SN:5d118

Communication System: CW; Frequency: 1900 MHz; Duty Cycle: 1:1

Medium: HSL_1900_120915 Medium parameters used: $f = 1900$ MHz; $\sigma = 1.448$ mho/m; $\epsilon_r =$

39.145 ; $\rho = 1000$ kg/m³

Ambient Temperature : 23.1 °C; Liquid Temperature : 21.2 °C

DASY5 Configuration:

- Probe: EX3DV4 - SN3857; ConvF(7.84, 7.84, 7.84); Calibrated: 2012-6-20
- Sensor-Surface: 4mm (Mechanical Surface Detection)
- Electronics: DAE4 Sn1210; Calibrated: 2011-11-18
- Phantom: SAM2; Type: SAM; Serial: TP-1477
- Measurement SW: DASY52, Version 52.8 (2); SEMCAD X Version 14.4.5 (3634)

Pin=250mW/Area Scan (91x91x1): Measurement grid: dx=10mm, dy=10mm

Maximum value of SAR (interpolated) = 11.307 mW/g

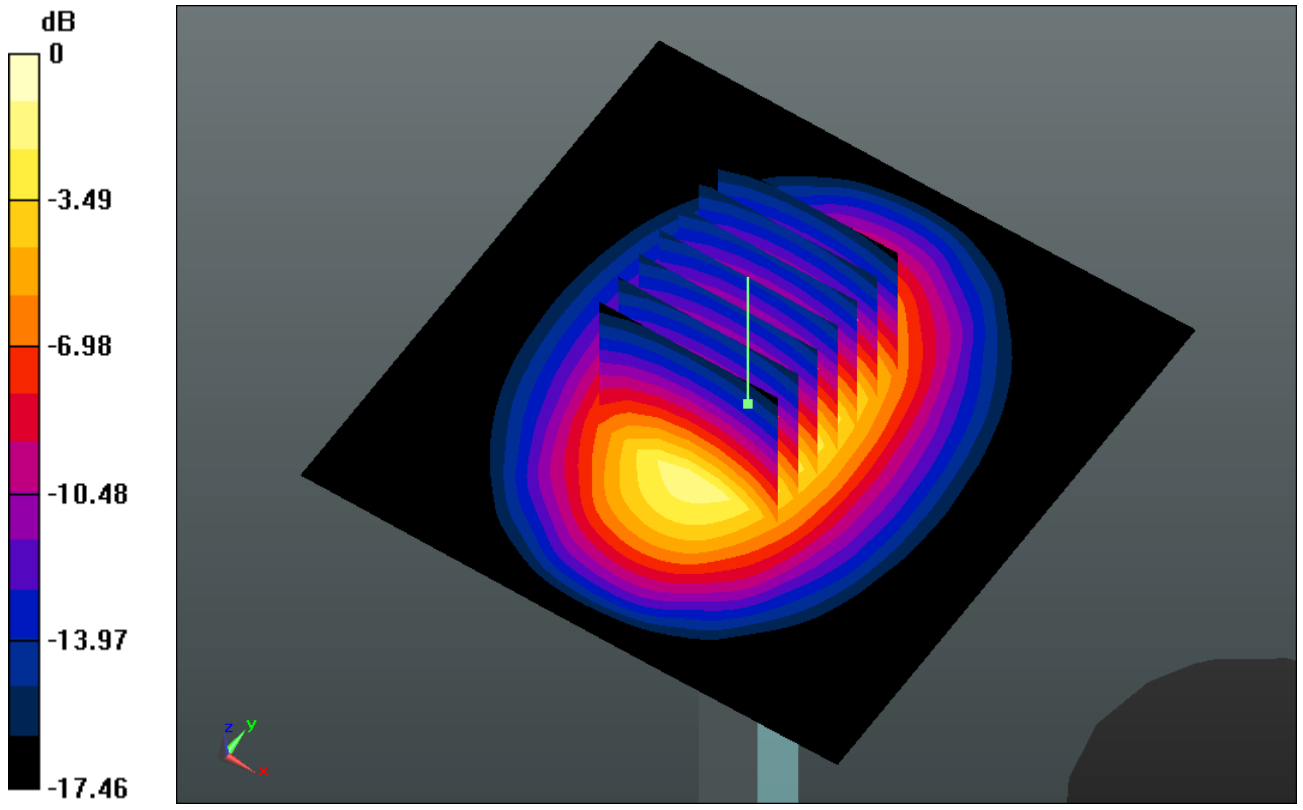
Pin=250mW/Zoom Scan (7x7x7)/Cube 0: Measurement grid: dx=5mm, dy=5mm, dz=5mm

Reference Value = 88.319 V/m; Power Drift = -0.10 dB

Peak SAR (extrapolated) = 18.892 W/kg

SAR(1 g) = 9.97 mW/g; SAR(10 g) = 5.18 mW/g

Maximum value of SAR (measured) = 11.183 mW/g



0 dB = 11.180mW/g

System Check_Body_1900MHz_120915

DUT: D1900V2-SN:5d118

Communication System: CW; Frequency: 1900 MHz; Duty Cycle: 1:1

Medium: MSL_1900_120915 Medium parameters used: $f = 1900$ MHz; $\sigma = 1.531$ mho/m; $\epsilon_r =$

54.671 ; $\rho = 1000$ kg/m³

Ambient Temperature : 23.2 °C; Liquid Temperature : 21.3 °C

DASY5 Configuration:

- Probe: EX3DV4 - SN3857; ConvF(7.35, 7.35, 7.35); Calibrated: 2012-6-20
- Sensor-Surface: 4mm (Mechanical Surface Detection)
- Electronics: DAE4 Sn1210; Calibrated: 2011-11-18
- Phantom: SAM1; Type: SAM; Serial: TP-1479
- Measurement SW: DASY52, Version 52.8 (2); SEMCAD X Version 14.4.5 (3634)

Pin=250mW/Area Scan (61x61x1): Measurement grid: dx=15mm, dy=15mm

Maximum value of SAR (interpolated) = 11.480 mW/g

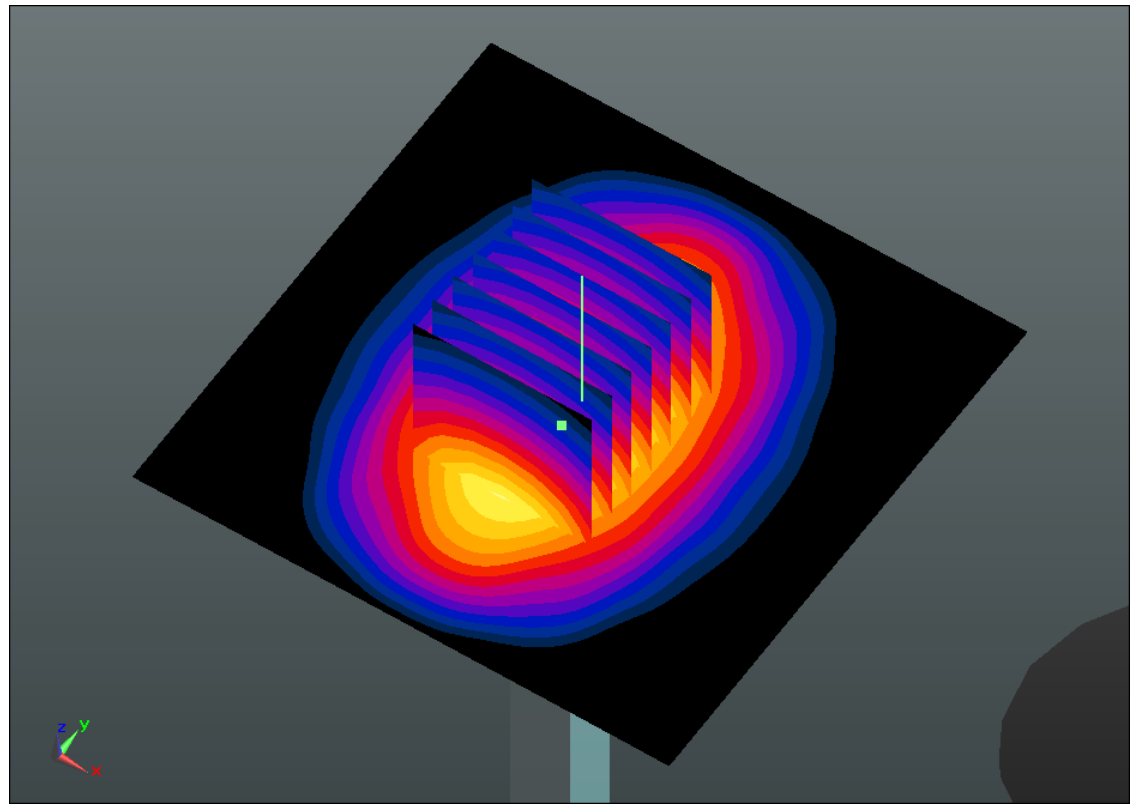
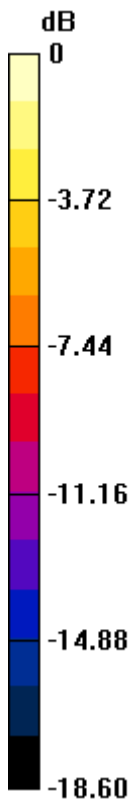
Pin=250mW/Zoom Scan (7x7x7)/Cube 0: Measurement grid: dx=5mm, dy=5mm, dz=5mm

Reference Value = 87.001 V/m; Power Drift = 0.03 dB

Peak SAR (extrapolated) = 18.549 W/kg

SAR(1 g) = 10.1 mW/g; SAR(10 g) = 5.19 mW/g

Maximum value of SAR (measured) = 11.372 mW/g



0 dB = 11.370mW/g

System Check_Head_2450MHz_120916

DUT: D2450V2 - SN:736

Communication System: CW; Frequency: 2450 MHz; Duty Cycle: 1:1

Medium: HSL_2450_120916 Medium parameters used: $f = 2450$ MHz; $\sigma = 1.823$ mho/m; $\epsilon_r =$

37.961 ; $\rho = 1000$ kg/m³

Ambient Temperature : 23.4 °C; Liquid Temperature : 21.5 °C

DASY5 Configuration:

- Probe: EX3DV4 - SN3857; ConvF(6.87, 6.87, 6.87); Calibrated: 2012-6-20
- Sensor-Surface: 4mm (Mechanical Surface Detection)
- Electronics: DAE4 Sn1210; Calibrated: 2011-11-18
- Phantom: SAM2; Type: SAM; Serial: TP-1477
- Measurement SW: DASY52, Version 52.8 (2); SEMCAD X Version 14.4.5 (3634)

Pin=250mW/Area Scan (61x61x1): Measurement grid: dx=15mm, dy=15mm

Maximum value of SAR (interpolated) = 15.714 mW/g

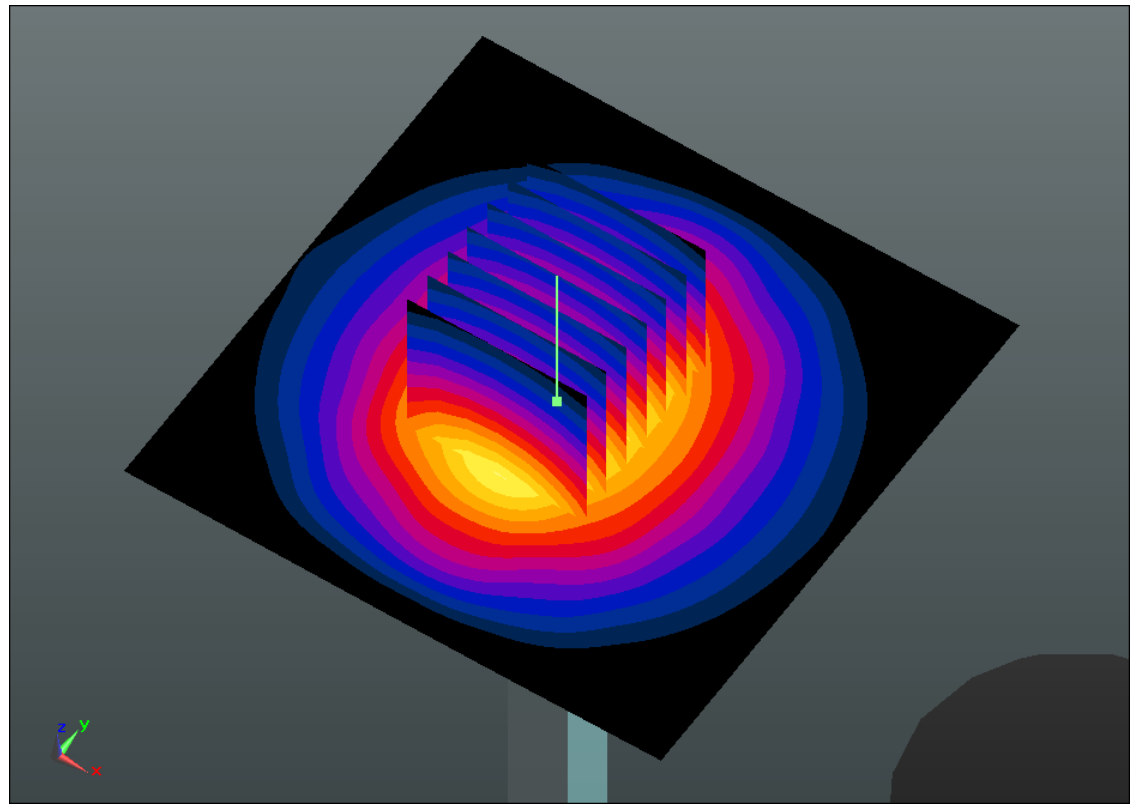
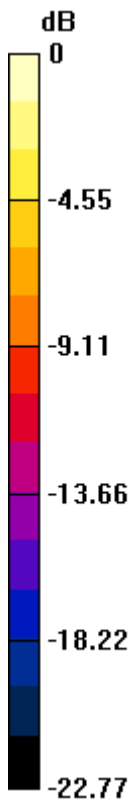
Pin=250mW/Zoom Scan (7x7x7)/Cube 0: Measurement grid: dx=5mm, dy=5mm, dz=5mm

Reference Value = 92.167 V/m; Power Drift = 0.12 dB

Peak SAR (extrapolated) = 30.422 W/kg

SAR(1 g) = 13.9 mW/g; SAR(10 g) = 6.32 mW/g

Maximum value of SAR (measured) = 15.789 mW/g



0 dB = 15.790mW/g

System Check_Body_2450MHz_120916

DUT: D2450V2-SN:736

Communication System: CW; Frequency: 2450 MHz; Duty Cycle: 1:1

Medium: MSL_2450_120916 Medium parameters used: $f = 2450$ MHz; $\sigma = 1.972$ mho/m; $\epsilon_r =$

52.028; $\rho = 1000$ kg/m³

Ambient Temperature : 23.5 °C ; Liquid Temperature : 21.6 °C

DASY5 Configuration:

- Probe: EX3DV4 - SN3857; ConvF(6.94, 6.94, 6.94); Calibrated: 2012-6-20
- Sensor-Surface: 4mm (Mechanical Surface Detection)
- Electronics: DAE4 Sn1210; Calibrated: 2011-11-18
- Phantom: SAM1; Type: SAM; Serial: TP-1479
- Measurement SW: DASY52, Version 52.8 (2); SEMCAD X Version 14.4.5 (3634)

Pin=250mW/Area Scan (61x61x1): Measurement grid: dx=15mm, dy=15mm

Maximum value of SAR (interpolated) = 15.430 mW/g

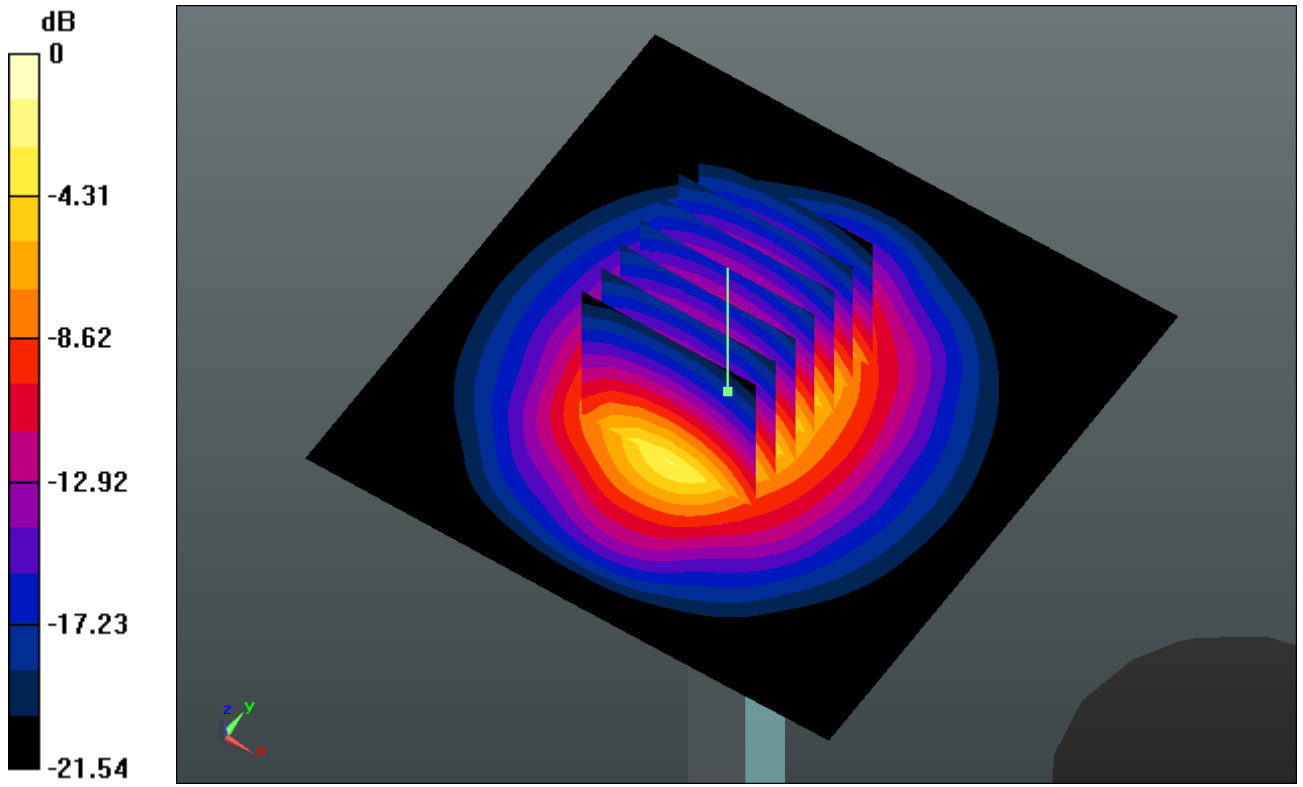
Pin=250mW/Zoom Scan (7x7x7)/Cube 0: Measurement grid: dx=5mm, dy=5mm, dz=5mm

Reference Value = 86.342 V/m; Power Drift = 0.09 dB

Peak SAR (extrapolated) = 28.443 W/kg

SAR(1 g) = 13.6 mW/g; SAR(10 g) = 6.25 mW/g

Maximum value of SAR (measured) = 15.597 mW/g



0 dB = 15.600mW/g



Appendix B. Plots of SAR Measurement

The plots are shown as follows.

#01 GSM1900_GPRS10_Right Cheek_Ch661

DUT: 280827

Communication System: GPRS/EDGE 10; Frequency: 1880 MHz; Duty Cycle: 1:4

Medium: HSL_1900_120915 Medium parameters used: $f = 1880$ MHz; $\sigma = 1.427$ mho/m; $\epsilon_r =$

39.216 ; $\rho = 1000$ kg/m³

Ambient Temperature : 23.1 °C; Liquid Temperature : 21.2 °C

DASY5 Configuration:

- Probe: EX3DV4 - SN3857; ConvF(7.84, 7.84, 7.84); Calibrated: 2012-6-20
- Sensor-Surface: 4mm (Mechanical Surface Detection)
- Electronics: DAE4 Sn1210; Calibrated: 2011-11-18
- Phantom: SAM2; Type: SAM; Serial: TP-1477
- Measurement SW: DASY52, Version 52.8 (2); SEMCAD X Version 14.4.5 (3634)

Ch661/Area Scan (71x111x1): Measurement grid: dx=15mm, dy=15mm

Maximum value of SAR (interpolated) = 0.468 mW/g

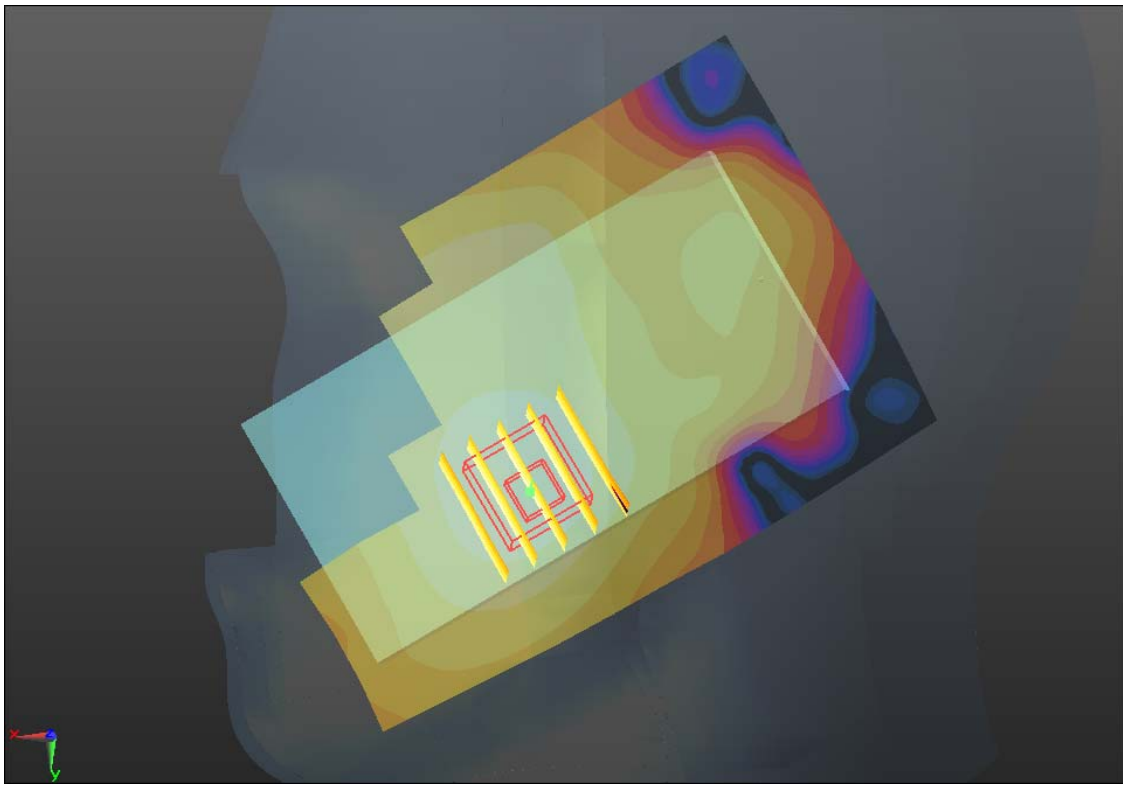
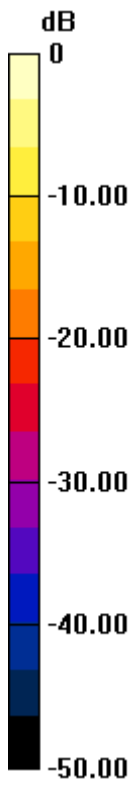
Ch661/Zoom Scan (5x5x7)/Cube 0: Measurement grid: dx=8mm, dy=8mm, dz=5mm

Reference Value = 6.364 V/m; Power Drift = -0.07 dB

Peak SAR (extrapolated) = 0.646 W/kg

SAR(1 g) = 0.414 mW/g; SAR(10 g) = 0.244 mW/g

Maximum value of SAR (measured) = 0.461 mW/g



0 dB = 0.460mW/g

#01 GSM1900_GPRS10_Right Cheek_Ch661_2D

DUT: 280827

Communication System: GPRS/EDGE 10; Frequency: 1880 MHz; Duty Cycle: 1:4
Medium: HSL_1900_120915 Medium parameters used: $f = 1880$ MHz; $\sigma = 1.427$ mho/m; $\epsilon_r = 39.216$; $\rho = 1000$ kg/m³
Ambient Temperature : 23.1 °C ; Liquid Temperature : 21.2 °C

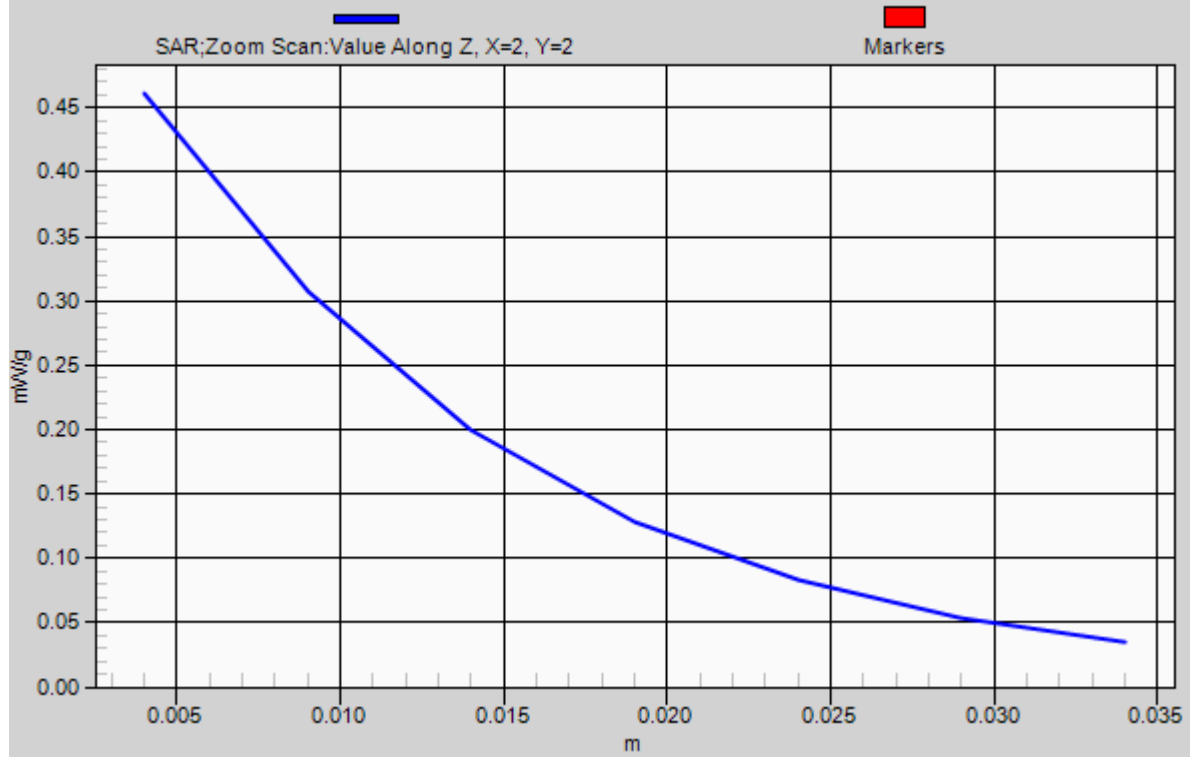
DASY5 Configuration:

- Probe: EX3DV4 - SN3857; ConvF(7.84, 7.84, 7.84); Calibrated: 2012-6-20
- Sensor-Surface: 4mm (Mechanical Surface Detection)
- Electronics: DAE4 Sn1210; Calibrated: 2011-11-18
- Phantom: SAM2; Type: SAM; Serial: TP-1477
- Measurement SW: DASY52, Version 52.8 (2); SEMCAD X Version 14.4.5 (3634)

Ch661/Area Scan (71x111x1): Measurement grid: dx=15mm, dy=15mm
Maximum value of SAR (interpolated) = 0.468 mW/g

Ch661/Zoom Scan (5x5x7)/Cube 0: Measurement grid: dx=8mm, dy=8mm, dz=5mm
Reference Value = 6.364 V/m; Power Drift = -0.07 dB
Peak SAR (extrapolated) = 0.646 W/kg
SAR(1 g) = 0.414 mW/g; SAR(10 g) = 0.244 mW/g
Maximum value of SAR (measured) = 0.461 mW/g

1g/10g Averaged SAR



#02 GSM1900_GPRS10_Right Tilted_Ch661

DUT: 280827

Communication System: GPRS/EDGE 10; Frequency: 1880 MHz; Duty Cycle: 1:4
Medium: HSL_1900_120915 Medium parameters used: $f = 1880$ MHz; $\sigma = 1.427$ mho/m; $\epsilon_r = 39.216$; $\rho = 1000$ kg/m³
Ambient Temperature : 23.1 °C ; Liquid Temperature : 21.2 °C

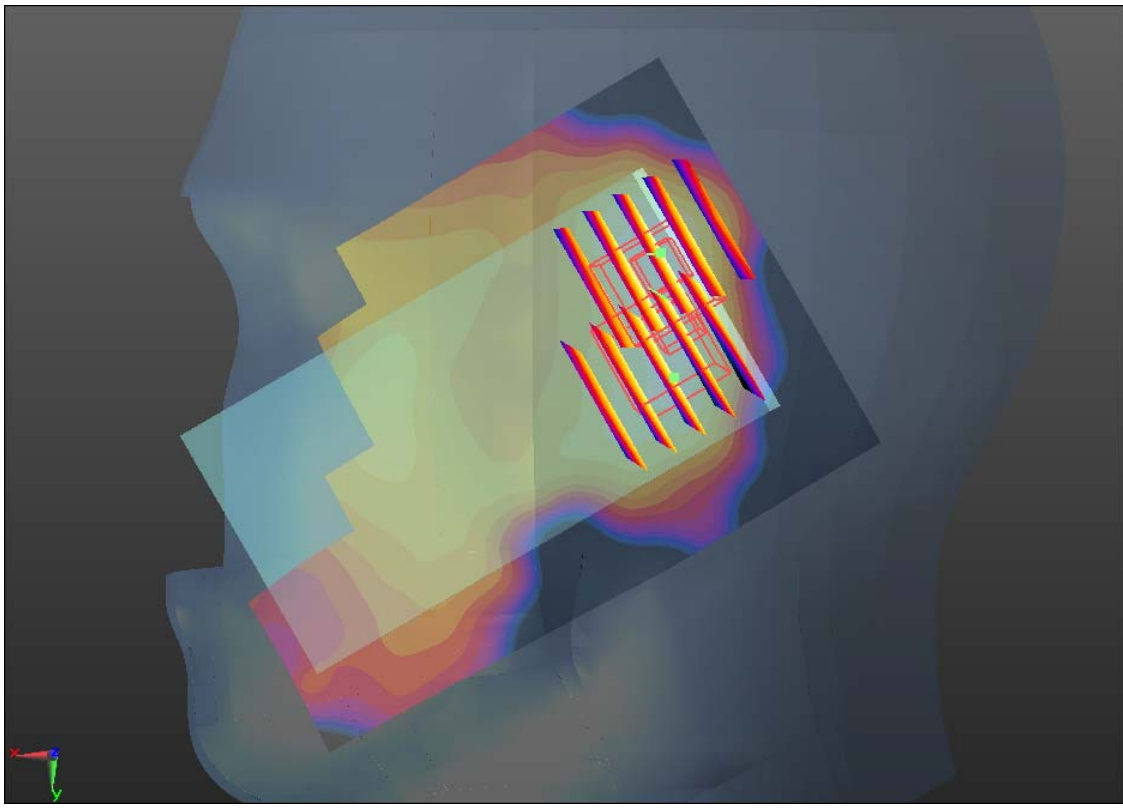
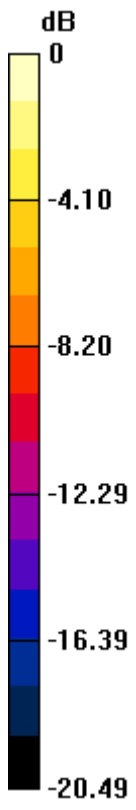
DASY5 Configuration:

- Probe: EX3DV4 - SN3857; ConvF(7.84, 7.84, 7.84); Calibrated: 2012-6-20
- Sensor-Surface: 4mm (Mechanical Surface Detection)
- Electronics: DAE4 Sn1210; Calibrated: 2011-11-18
- Phantom: SAM2; Type: SAM; Serial: TP-1477
- Measurement SW: DASY52, Version 52.8 (2); SEMCAD X Version 14.4.5 (3634)

Ch661/Area Scan (71x111x1): Measurement grid: dx=15mm, dy=15mm
Maximum value of SAR (interpolated) = 0.146 mW/g

Ch661/Zoom Scan (5x5x7)/Cube 0: Measurement grid: dx=8mm, dy=8mm, dz=5mm
Reference Value = 9.929 V/m; Power Drift = 0.03 dB
Peak SAR (extrapolated) = 0.248 W/kg
SAR(1 g) = 0.142 mW/g; SAR(10 g) = 0.077 mW/g
Maximum value of SAR (measured) = 0.161 mW/g

Ch661/Zoom Scan (5x5x7)/Cube 1: Measurement grid: dx=8mm, dy=8mm, dz=5mm
Reference Value = 9.929 V/m; Power Drift = 0.03 dB
Peak SAR (extrapolated) = 0.208 W/kg
SAR(1 g) = 0.117 mW/g; SAR(10 g) = 0.069 mW/g
Maximum value of SAR (measured) = 0.148 mW/g



0 dB = 0.150mW/g

#03 GSM1900_GPRS10_Left Cheek_Ch661

DUT: 280827

Communication System: GPRS/EDGE 10; Frequency: 1880 MHz; Duty Cycle: 1:4
Medium: HSL_1900_120915 Medium parameters used: $f = 1880$ MHz; $\sigma = 1.427$ mho/m; $\epsilon_r = 39.216$; $\rho = 1000$ kg/m³
Ambient Temperature : 23.1 °C ; Liquid Temperature : 21.2 °C

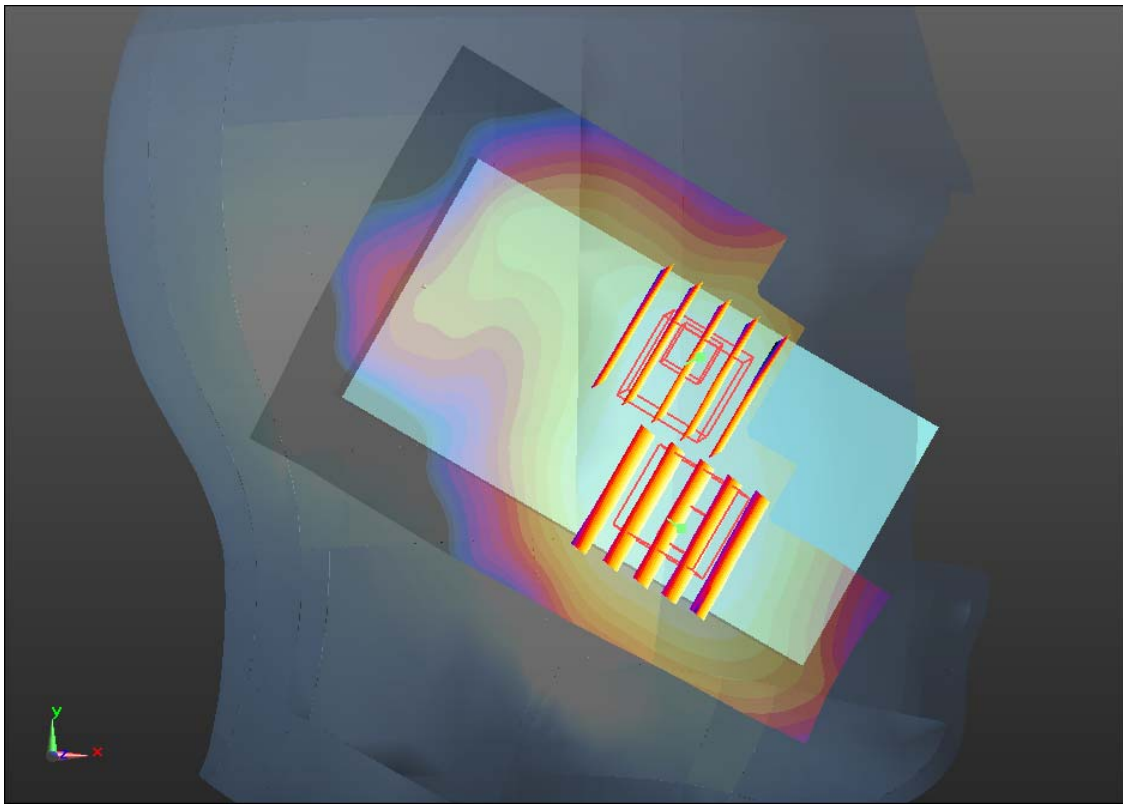
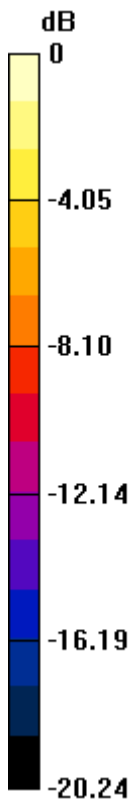
DASY5 Configuration:

- Probe: EX3DV4 - SN3857; ConvF(7.84, 7.84, 7.84); Calibrated: 2012-6-20
- Sensor-Surface: 4mm (Mechanical Surface Detection)
- Electronics: DAE4 Sn1210; Calibrated: 2011-11-18
- Phantom: SAM2; Type: SAM; Serial: TP-1477
- Measurement SW: DASY52, Version 52.8 (2); SEMCAD X Version 14.4.5 (3634)

Ch661/Area Scan (71x111x1): Measurement grid: dx=15mm, dy=15mm
Maximum value of SAR (interpolated) = 0.400 mW/g

Ch661/Zoom Scan (5x5x7)/Cube 0: Measurement grid: dx=8mm, dy=8mm, dz=5mm
Reference Value = 6.659 V/m; Power Drift = 0.05 dB
Peak SAR (extrapolated) = 0.582 W/kg
SAR(1 g) = 0.360 mW/g; SAR(10 g) = 0.222 mW/g
Maximum value of SAR (measured) = 0.392 mW/g

Ch661/Zoom Scan (5x5x7)/Cube 1: Measurement grid: dx=8mm, dy=8mm, dz=5mm
Reference Value = 6.659 V/m; Power Drift = 0.05 dB
Peak SAR (extrapolated) = 0.428 W/kg
SAR(1 g) = 0.288 mW/g; SAR(10 g) = 0.191 mW/g
Maximum value of SAR (measured) = 0.309 mW/g



0 dB = 0.310mW/g

#04 GSM1900_GPRS10_Left Tilted_Ch661

DUT: 280827

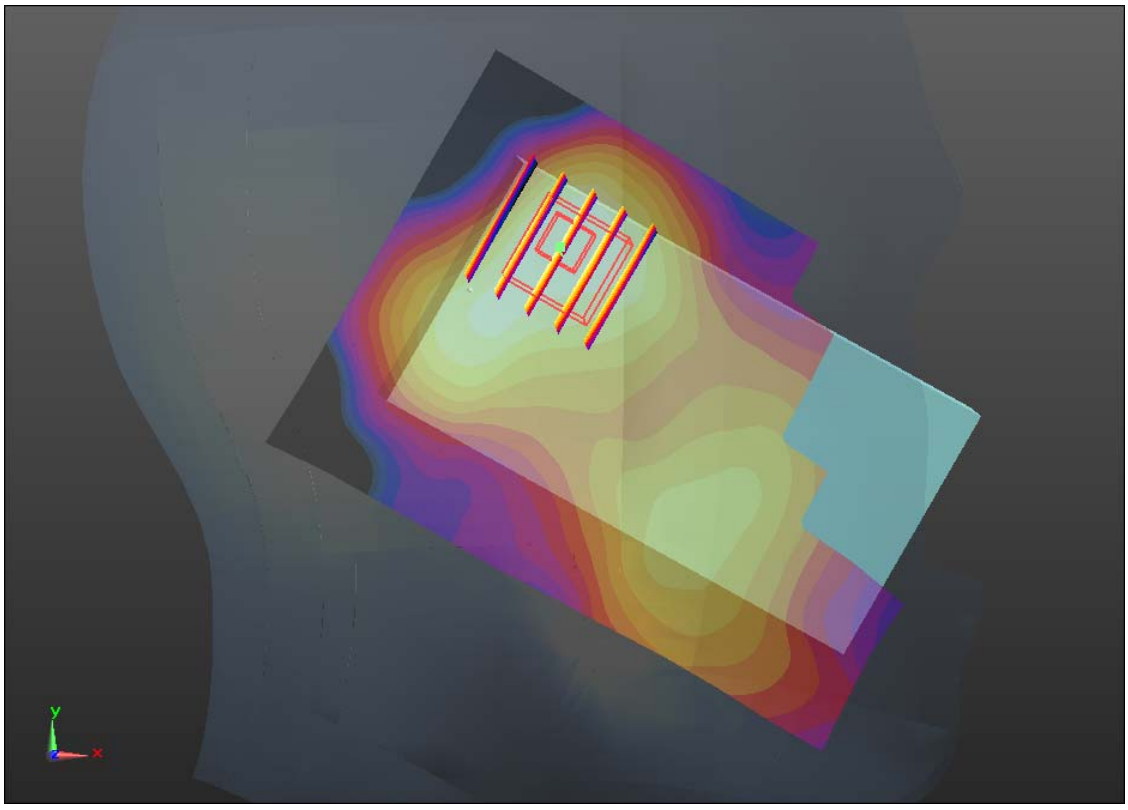
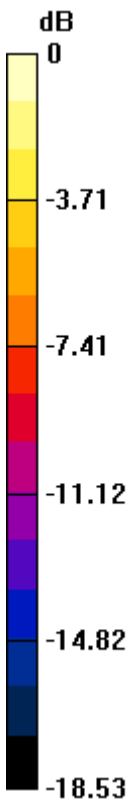
Communication System: GPRS/EDGE 10; Frequency: 1880 MHz; Duty Cycle: 1:4
Medium: HSL_1900_120915 Medium parameters used: $f = 1880$ MHz; $\sigma = 1.427$ mho/m; $\epsilon_r = 39.216$; $\rho = 1000$ kg/m³
Ambient Temperature : 23.1 °C; Liquid Temperature : 21.2 °C

DASY5 Configuration:

- Probe: EX3DV4 - SN3857; ConvF(7.84, 7.84, 7.84); Calibrated: 2012-6-20
- Sensor-Surface: 4mm (Mechanical Surface Detection)
- Electronics: DAE4 Sn1210; Calibrated: 2011-11-18
- Phantom: SAM2; Type: SAM; Serial: TP-1477
- Measurement SW: DASY52, Version 52.8 (2); SEMCAD X Version 14.4.5 (3634)

Ch661/Area Scan (71x111x1): Measurement grid: dx=15mm, dy=15mm
Maximum value of SAR (interpolated) = 0.194 mW/g

Ch661/Zoom Scan (5x5x7)/Cube 0: Measurement grid: dx=8mm, dy=8mm, dz=5mm
Reference Value = 9.981 V/m; Power Drift = 0.08 dB
Peak SAR (extrapolated) = 0.241 W/kg
SAR(1 g) = 0.157 mW/g; SAR(10 g) = 0.096 mW/g
Maximum value of SAR (measured) = 0.170 mW/g



0 dB = 0.170mW/g

#05 802.11b_Right Cheek_Ch11

DUT: 280827

Communication System: WIFI; Frequency: 2462 MHz; Duty Cycle: 1:1

Medium: HSL_2450_120916 Medium parameters used: $f = 2462$ MHz; $\sigma = 1.838$ mho/m; $\epsilon_r =$

37.893 ; $\rho = 1000$ kg/m³

Ambient Temperature : 23.4 °C ; Liquid Temperature : 21.5 °C

DASY5 Configuration:

- Probe: EX3DV4 - SN3857; ConvF(6.87, 6.87, 6.87); Calibrated: 2012-6-20
- Sensor-Surface: 4mm (Mechanical Surface Detection)
- Electronics: DAE4 Sn1210; Calibrated: 2011-11-18
- Phantom: SAM2; Type: SAM; Serial: TP-1477
- Measurement SW: DASY52, Version 52.8 (2); SEMCAD X Version 14.4.5 (3634)

Ch11/Area Scan (71x111x1): Measurement grid: dx=15mm, dy=15mm

Maximum value of SAR (interpolated) = 0.421 mW/g

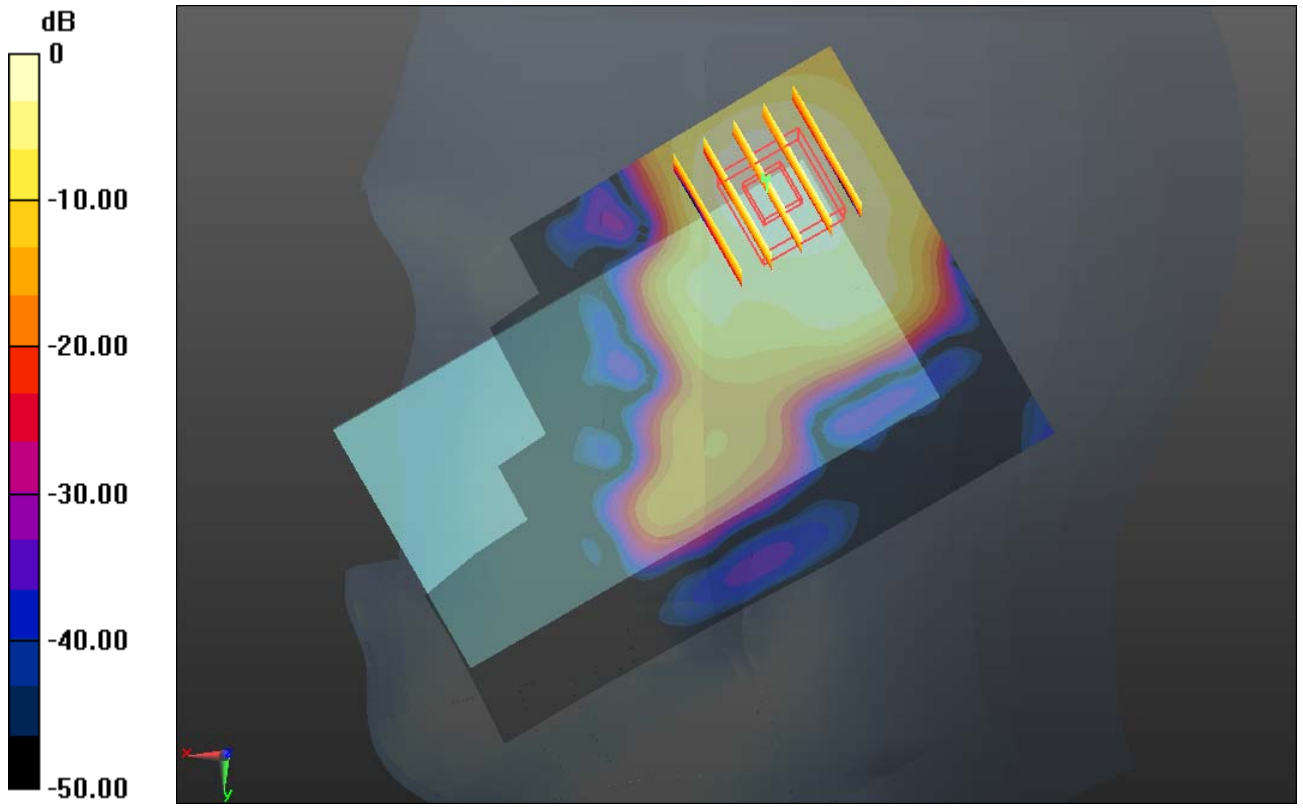
Ch11/Zoom Scan (5x5x7)/Cube 0: Measurement grid: dx=8mm, dy=8mm, dz=5mm

Reference Value = 9.180 V/m; Power Drift = 0.06 dB

Peak SAR (extrapolated) = 0.790 W/kg

SAR(1 g) = 0.358 mW/g; SAR(10 g) = 0.161 mW/g

Maximum value of SAR (measured) = 0.392 mW/g



0 dB = 0.390mW/g

#05 802.11b_Right Cheek_Ch11_2D

DUT: 280827

Communication System: WIFI; Frequency: 2462 MHz; Duty Cycle: 1:1

Medium: HSL_2450_120916 Medium parameters used: $f = 2462$ MHz; $\sigma = 1.838$ mho/m; $\epsilon_r =$

37.893 ; $\rho = 1000$ kg/m³

Ambient Temperature : 23.4 °C ; Liquid Temperature : 21.5 °C

DASY5 Configuration:

- Probe: EX3DV4 - SN3857; ConvF(6.87, 6.87, 6.87); Calibrated: 2012-6-20
- Sensor-Surface: 4mm (Mechanical Surface Detection)
- Electronics: DAE4 Sn1210; Calibrated: 2011-11-18
- Phantom: SAM2; Type: SAM; Serial: TP-1477
- Measurement SW: DASY52, Version 52.8 (2); SEMCAD X Version 14.4.5 (3634)

Ch11/Area Scan (71x111x1): Measurement grid: dx=15mm, dy=15mm

Maximum value of SAR (interpolated) = 0.421 mW/g

Ch11/Zoom Scan (5x5x7)/Cube 0: Measurement grid: dx=8mm, dy=8mm, dz=5mm

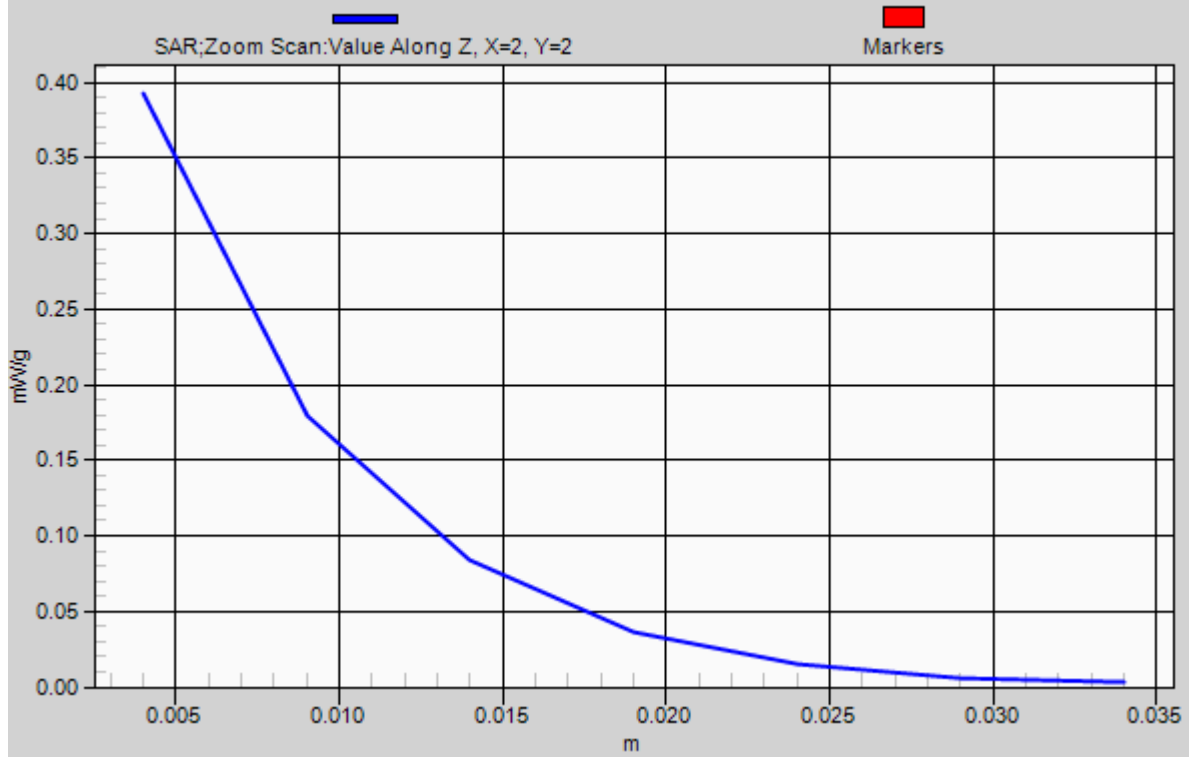
Reference Value = 9.180 V/m; Power Drift = 0.06 dB

Peak SAR (extrapolated) = 0.790 W/kg

SAR(1 g) = 0.358 mW/g; SAR(10 g) = 0.161 mW/g

Maximum value of SAR (measured) = 0.392 mW/g

1g/10g Averaged SAR



#06 802.11b_Right Tilted_Ch11

DUT: 280827

Communication System: WIFI; Frequency: 2462 MHz; Duty Cycle: 1:1

Medium: HSL_2450_120916 Medium parameters used: $f = 2462$ MHz; $\sigma = 1.838$ mho/m; $\epsilon_r = 37.893$; $\rho = 1000$ kg/m³

Ambient Temperature : 23.4 °C; Liquid Temperature : 21.5 °C

DASY5 Configuration:

- Probe: EX3DV4 - SN3857; ConvF(6.87, 6.87, 6.87); Calibrated: 2012-6-20
- Sensor-Surface: 4mm (Mechanical Surface Detection)
- Electronics: DAE4 Sn1210; Calibrated: 2011-11-18
- Phantom: SAM2; Type: SAM; Serial: TP-1477
- Measurement SW: DASY52, Version 52.8 (2); SEMCAD X Version 14.4.5 (3634)

Ch11/Area Scan (71x111x1): Measurement grid: dx=15mm, dy=15mm

Maximum value of SAR (interpolated) = 0.430 mW/g

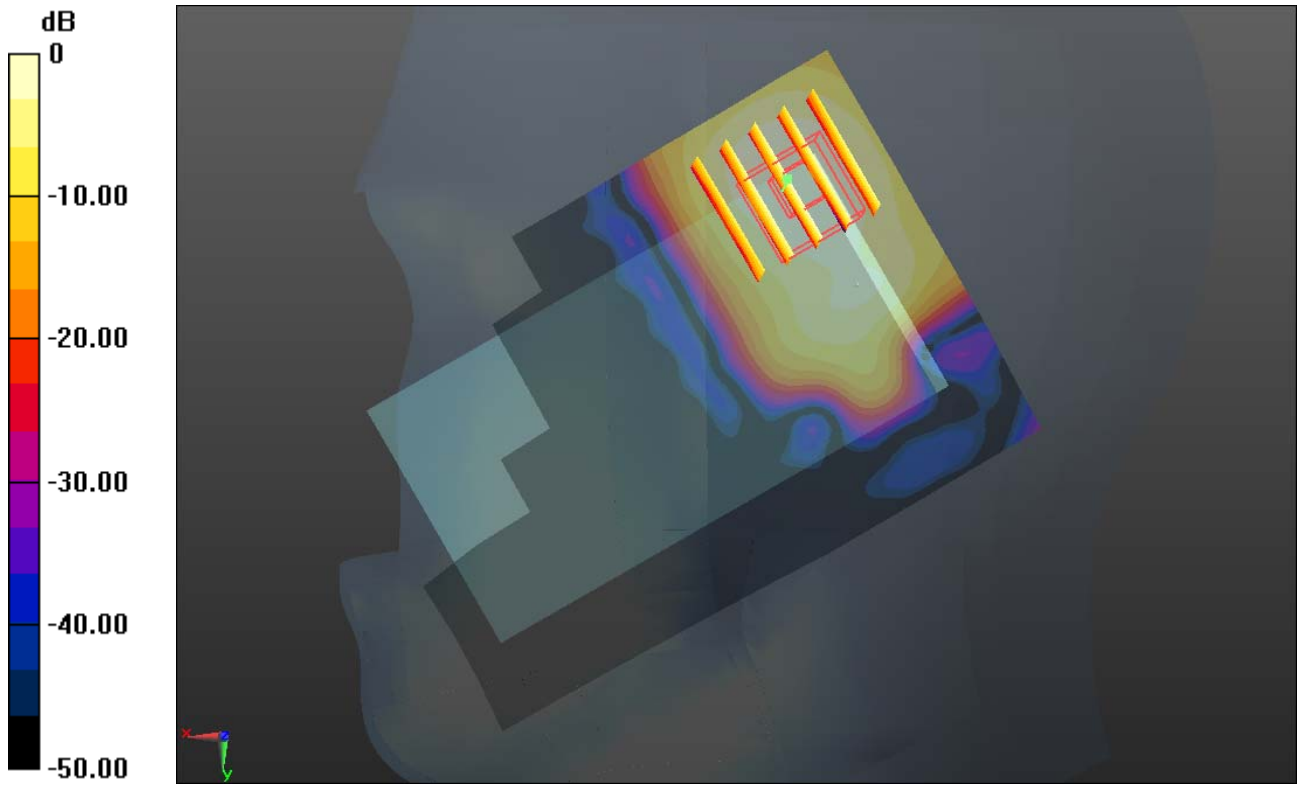
Ch11/Zoom Scan (5x5x7)/Cube 0: Measurement grid: dx=8mm, dy=8mm, dz=5mm

Reference Value = 11.328 V/m; Power Drift = -0.09 dB

Peak SAR (extrapolated) = 0.727 W/kg

SAR(1 g) = 0.321 mW/g; SAR(10 g) = 0.147 mW/g

Maximum value of SAR (measured) = 0.352 mW/g



0 dB = 0.350mW/g

#07 802.11b_Left Cheek_Ch11

DUT: 280827

Communication System: WIFI; Frequency: 2462 MHz; Duty Cycle: 1:1

Medium: HSL_2450_120916 Medium parameters used: $f = 2462$ MHz; $\sigma = 1.838$ mho/m; $\epsilon_r =$

37.893 ; $\rho = 1000$ kg/m³

Ambient Temperature : 23.4 °C ; Liquid Temperature : 21.5 °C

DASY5 Configuration:

- Probe: EX3DV4 - SN3857; ConvF(6.87, 6.87, 6.87); Calibrated: 2012-6-20
- Sensor-Surface: 4mm (Mechanical Surface Detection)
- Electronics: DAE4 Sn1210; Calibrated: 2011-11-18
- Phantom: SAM2; Type: SAM; Serial: TP-1477
- Measurement SW: DASY52, Version 52.8 (2); SEMCAD X Version 14.4.5 (3634)

Ch11/Area Scan (71x111x1): Measurement grid: dx=15mm, dy=15mm

Maximum value of SAR (interpolated) = 0.282 mW/g

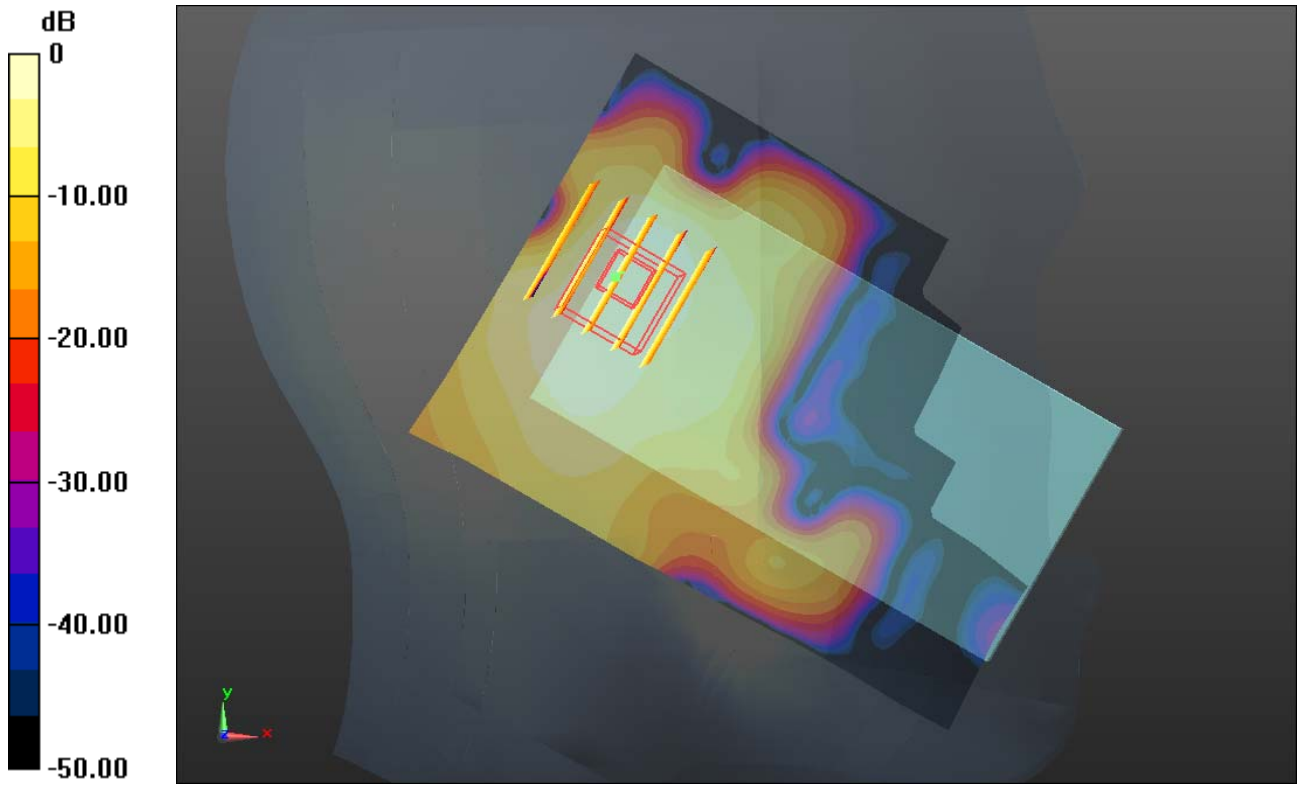
Ch11/Zoom Scan (5x5x7)/Cube 0: Measurement grid: dx=8mm, dy=8mm, dz=5mm

Reference Value = 11.812 V/m; Power Drift = 0.01 dB

Peak SAR (extrapolated) = 0.499 W/kg

SAR(1 g) = 0.242 mW/g; SAR(10 g) = 0.121 mW/g

Maximum value of SAR (measured) = 0.263 mW/g



0 dB = 0.260mW/g

#08 802.11b_Left Tilted_Ch11

DUT: 280827

Communication System: WIFI; Frequency: 2462 MHz; Duty Cycle: 1:1

Medium: HSL_2450_120916 Medium parameters used: $f = 2462$ MHz; $\sigma = 1.838$ mho/m; $\epsilon_r =$

37.893 ; $\rho = 1000$ kg/m³

Ambient Temperature : 23.4 °C; Liquid Temperature : 21.5 °C

DASY5 Configuration:

- Probe: EX3DV4 - SN3857; ConvF(6.87, 6.87, 6.87); Calibrated: 2012-6-20
- Sensor-Surface: 4mm (Mechanical Surface Detection)
- Electronics: DAE4 Sn1210; Calibrated: 2011-11-18
- Phantom: SAM2; Type: SAM; Serial: TP-1477
- Measurement SW: DASY52, Version 52.8 (2); SEMCAD X Version 14.4.5 (3634)

Ch11/Area Scan (71x111x1): Measurement grid: dx=15mm, dy=15mm

Maximum value of SAR (interpolated) = 0.344 mW/g

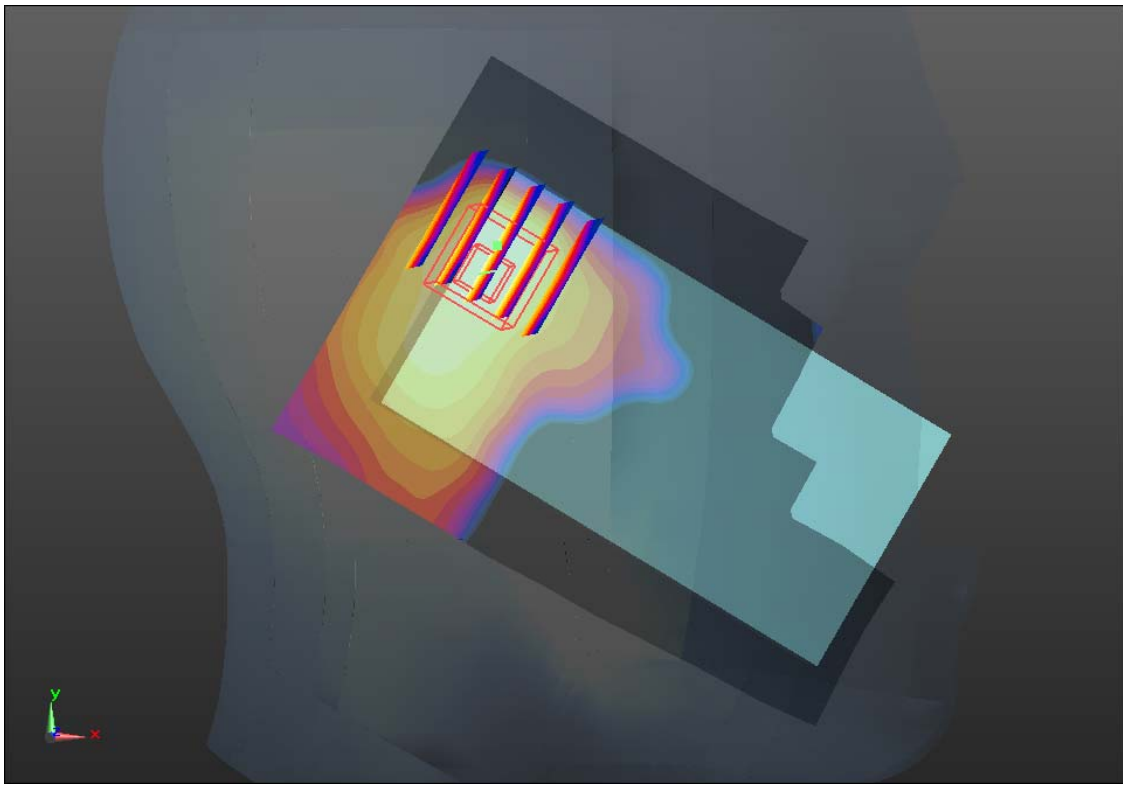
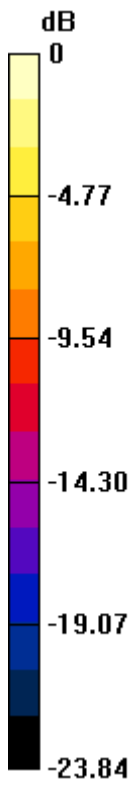
Ch11/Zoom Scan (5x5x7)/Cube 0: Measurement grid: dx=8mm, dy=8mm, dz=5mm

Reference Value = 12.657 V/m; Power Drift = 0.11 dB

Peak SAR (extrapolated) = 0.611 W/kg

SAR(1 g) = 0.289 mW/g; SAR(10 g) = 0.136 mW/g

Maximum value of SAR (measured) = 0.328 mW/g



0 dB = 0.330mW/g

#09 GSM1900_GPRS10_Front_1cm_Ch661

DUT: 280827

Communication System: GPRS/EDGE 10; Frequency: 1880 MHz; Duty Cycle: 1:4

Medium: MSL_1900_120915 Medium parameters used: $f = 1880$ MHz; $\sigma = 1.509$ mho/m; $\epsilon_r =$

54.703 ; $\rho = 1000$ kg/m³

Ambient Temperature : 23.2 °C; Liquid Temperature : 21.3 °C

DASY5 Configuration:

- Probe: EX3DV4 - SN3857; ConvF(7.35, 7.35, 7.35); Calibrated: 2012-6-20
- Sensor-Surface: 4mm (Mechanical Surface Detection)
- Electronics: DAE4 Sn1210; Calibrated: 2011-11-18
- Phantom: SAM1; Type: SAM; Serial: TP-1479
- Measurement SW: DASY52, Version 52.8 (2); SEMCAD X Version 14.4.5 (3634)

Ch661/Area Scan (71x111x1): Measurement grid: dx=15mm, dy=15mm

Maximum value of SAR (interpolated) = 0.738 mW/g

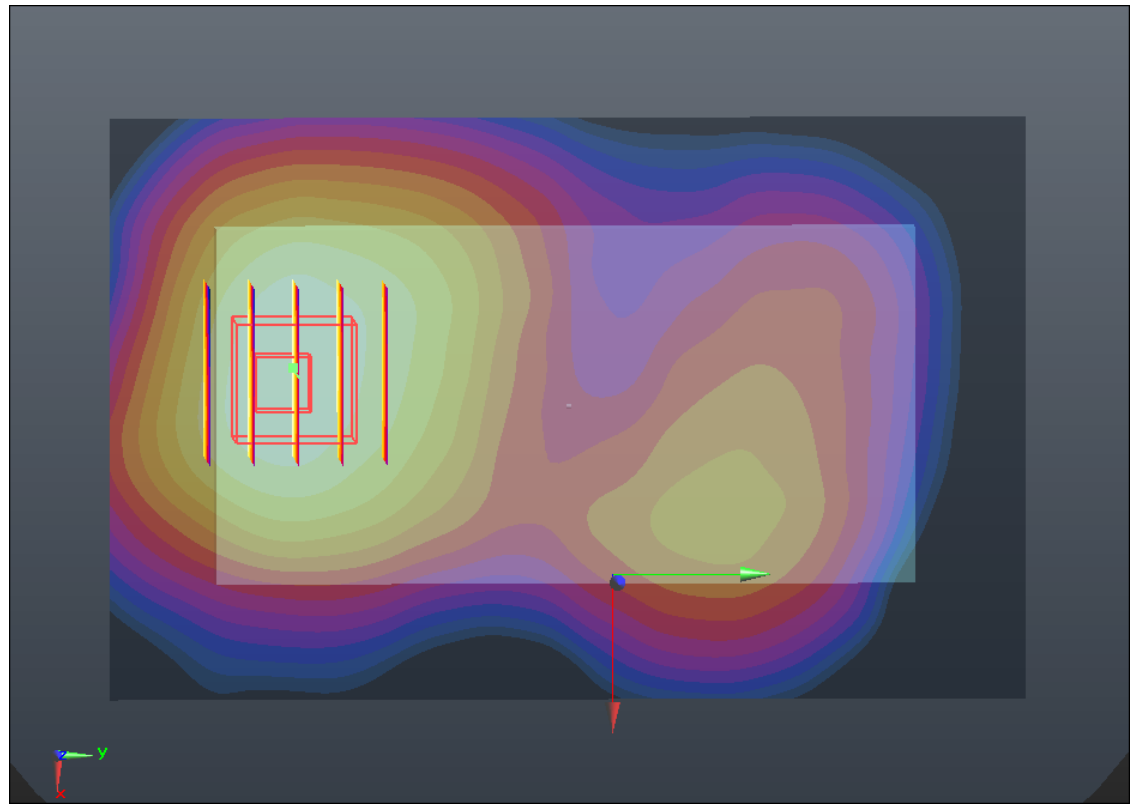
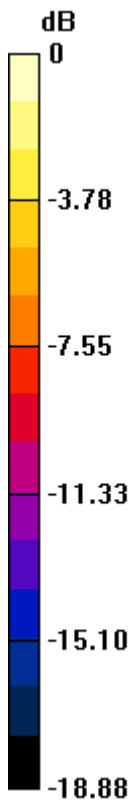
Ch661/Zoom Scan (5x5x7)/Cube 0: Measurement grid: dx=8mm, dy=8mm, dz=5mm

Reference Value = 7.369 V/m; Power Drift = -0.13 dB

Peak SAR (extrapolated) = 1.003 W/kg

SAR(1 g) = 0.669 mW/g; SAR(10 g) = 0.419 mW/g

Maximum value of SAR (measured) = 0.717 mW/g



0 dB = 0.720mW/g

#10 GSM1900_GPRS10_Back_1cm_Ch661

DUT: 280827

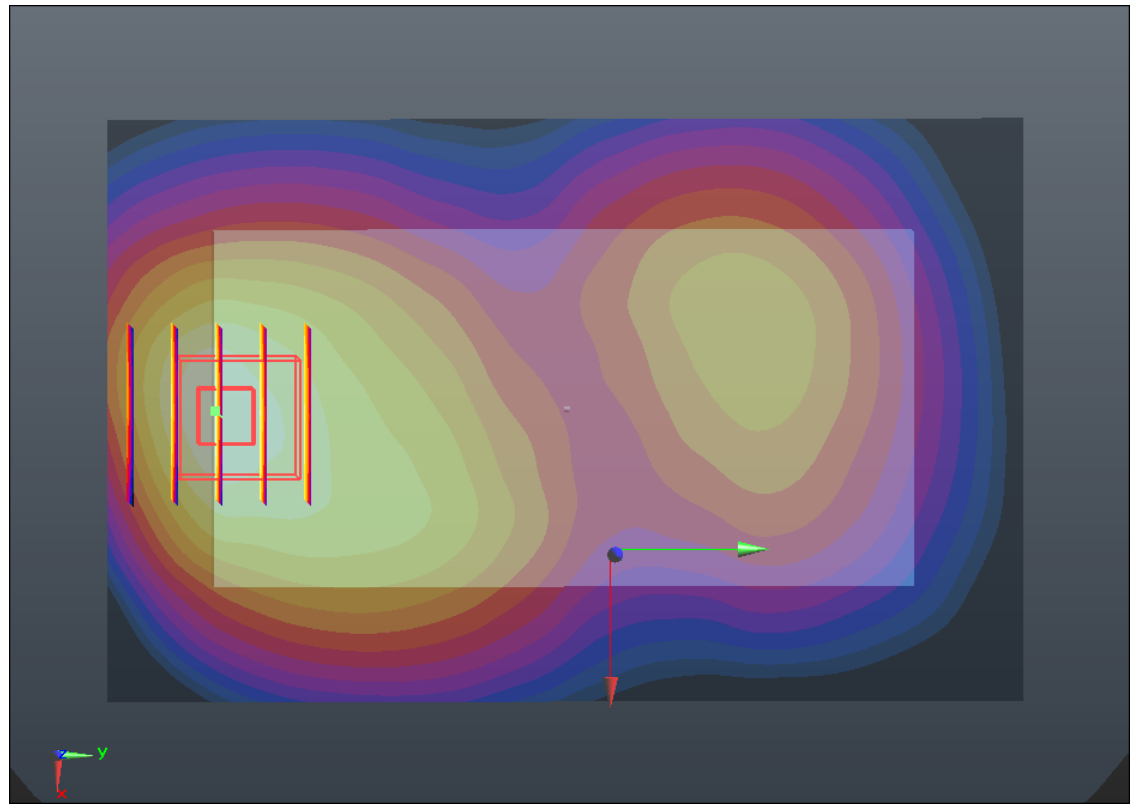
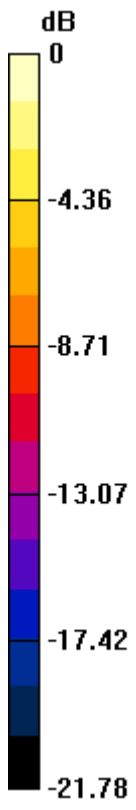
Communication System: GPRS/EDGE 10; Frequency: 1880 MHz; Duty Cycle: 1:4
Medium: MSL_1900_120915 Medium parameters used: $f = 1880$ MHz; $\sigma = 1.509$ mho/m; $\epsilon_r = 54.703$; $\rho = 1000$ kg/m³
Ambient Temperature : 23.2 °C; Liquid Temperature : 21.3 °C

DASY5 Configuration:

- Probe: EX3DV4 - SN3857; ConvF(7.35, 7.35, 7.35); Calibrated: 2012-6-20
- Sensor-Surface: 4mm (Mechanical Surface Detection)
- Electronics: DAE4 Sn1210; Calibrated: 2011-11-18
- Phantom: SAM1; Type: SAM; Serial: TP-1479
- Measurement SW: DASY52, Version 52.8 (2); SEMCAD X Version 14.4.5 (3634)

Ch661/Area Scan (71x111x1): Measurement grid: dx=15mm, dy=15mm
Maximum value of SAR (interpolated) = 1.001 mW/g

Ch661/Zoom Scan (5x5x7)/Cube 0: Measurement grid: dx=8mm, dy=8mm, dz=5mm
Reference Value = 7.892 V/m; Power Drift = -0.07 dB
Peak SAR (extrapolated) = 1.519 W/kg
SAR(1 g) = 0.894 mW/g; SAR(10 g) = 0.497 mW/g
Maximum value of SAR (measured) = 1.008 mW/g



0 dB = 1.010mW/g

#11 GSM1900_GPRS10_Back_1cm_Ch512

DUT: 280827

Communication System: GPRS/EDGE 10; Frequency: 1850.2 MHz; Duty Cycle: 1:4

Medium: MSL_1900_120915 Medium parameters used: $f = 1850.2$ MHz; $\sigma = 1.47$ mho/m; $\epsilon_r =$

54.773 ; $\rho = 1000$ kg/m³

Ambient Temperature : 23.2 °C ; Liquid Temperature : 21.3 °C

DASY5 Configuration:

- Probe: EX3DV4 - SN3857; ConvF(7.35, 7.35, 7.35); Calibrated: 2012-6-20
- Sensor-Surface: 4mm (Mechanical Surface Detection)
- Electronics: DAE4 Sn1210; Calibrated: 2011-11-18
- Phantom: SAM1; Type: SAM; Serial: TP-1479
- Measurement SW: DASY52, Version 52.8 (2); SEMCAD X Version 14.4.5 (3634)

Ch512/Area Scan (71x111x1): Measurement grid: dx=15mm, dy=15mm

Maximum value of SAR (interpolated) = 1.099 mW/g

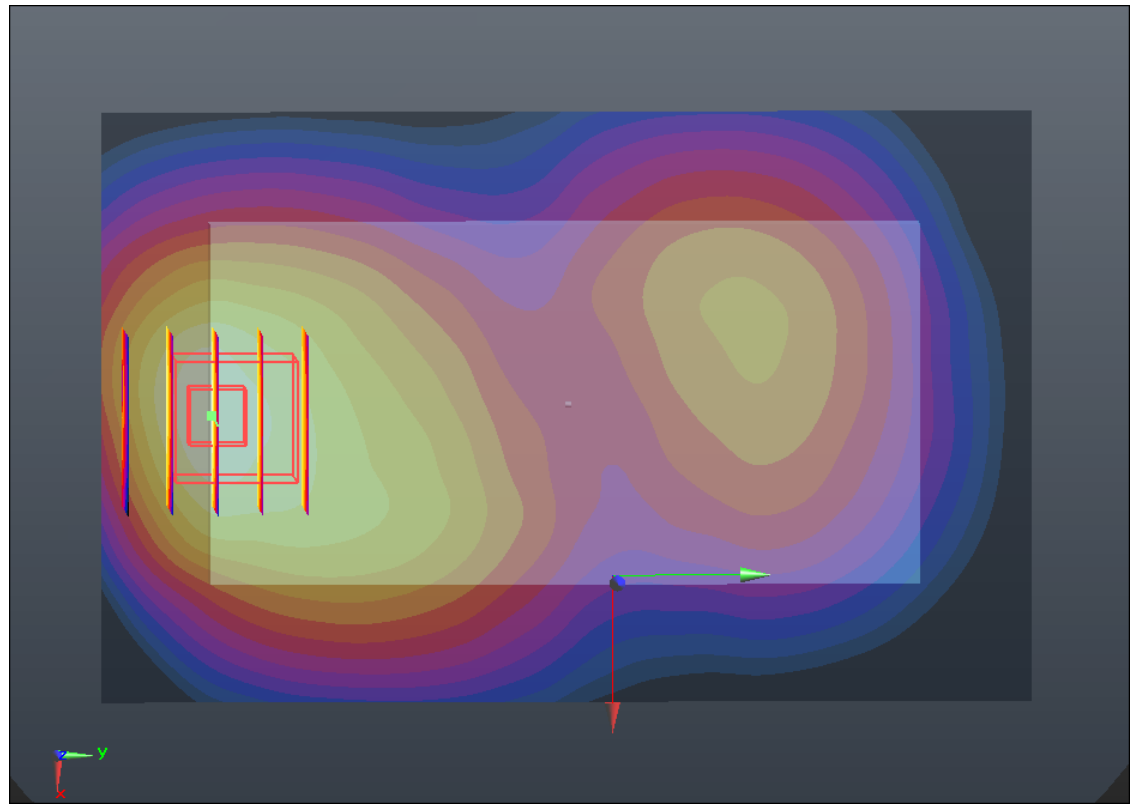
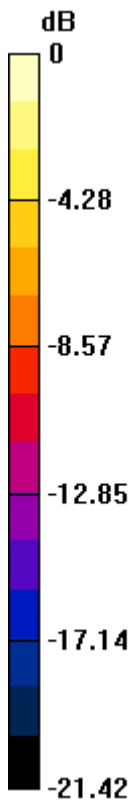
Ch512/Zoom Scan (5x5x7)/Cube 0: Measurement grid: dx=8mm, dy=8mm, dz=5mm

Reference Value = 7.595 V/m; Power Drift = 0.01 dB

Peak SAR (extrapolated) = 1.710 W/kg

SAR(1 g) = 0.984 mW/g; SAR(10 g) = 0.538 mW/g

Maximum value of SAR (measured) = 1.088 mW/g



0 dB = 1.090mW/g

#11 GSM1900_GPRS10_Back_1cm_Ch512_2D

DUT: 280827

Communication System: GPRS/EDGE 10; Frequency: 1850.2 MHz; Duty Cycle: 1:4

Medium: MSL_1900_120915 Medium parameters used: $f = 1850.2$ MHz; $\sigma = 1.47$ mho/m; $\epsilon_r =$

54.773 ; $\rho = 1000$ kg/m³

Ambient Temperature : 23.2 °C ; Liquid Temperature : 21.3 °C

DASY5 Configuration:

- Probe: EX3DV4 - SN3857; ConvF(7.35, 7.35, 7.35); Calibrated: 2012-6-20
- Sensor-Surface: 4mm (Mechanical Surface Detection)
- Electronics: DAE4 Sn1210; Calibrated: 2011-11-18
- Phantom: SAM1; Type: SAM; Serial: TP-1479
- Measurement SW: DASY52, Version 52.8 (2); SEMCAD X Version 14.4.5 (3634)

Ch512/Area Scan (71x111x1): Measurement grid: dx=15mm, dy=15mm

Maximum value of SAR (interpolated) = 1.099 mW/g

Ch512/Zoom Scan (5x5x7)/Cube 0: Measurement grid: dx=8mm, dy=8mm, dz=5mm

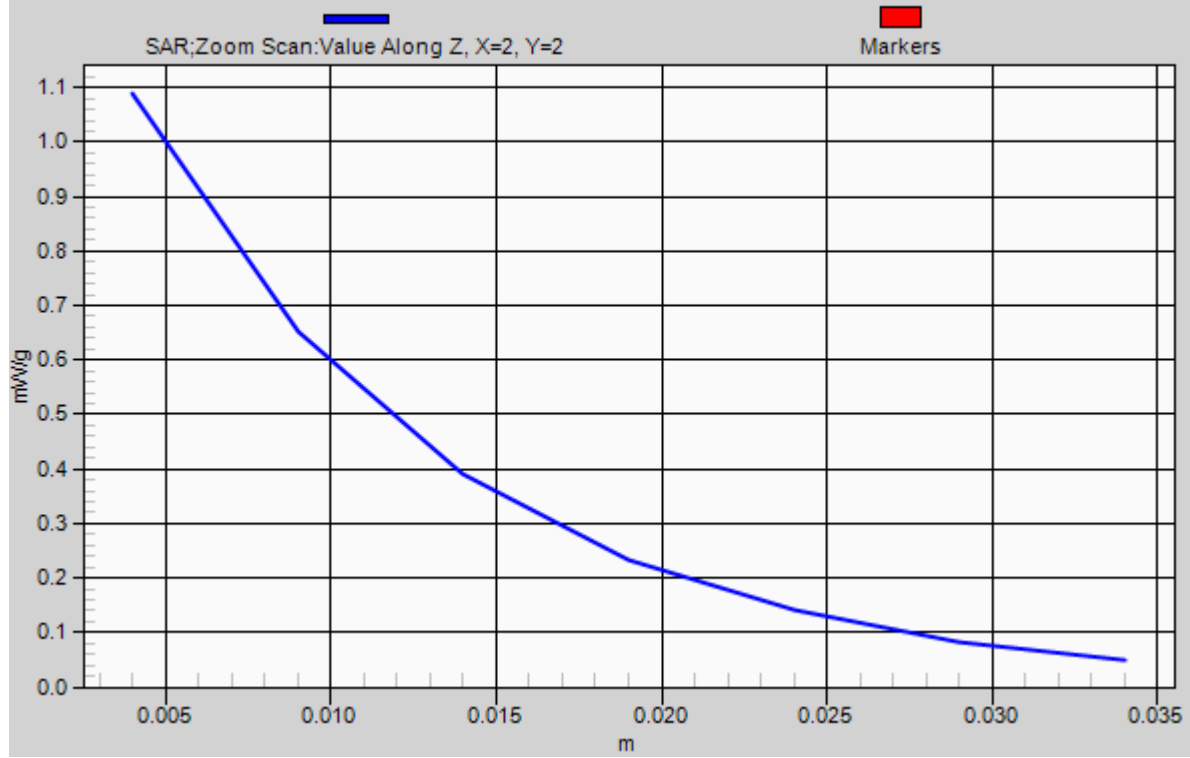
Reference Value = 7.595 V/m; Power Drift = 0.01 dB

Peak SAR (extrapolated) = 1.710 W/kg

SAR(1 g) = 0.984 mW/g; SAR(10 g) = 0.538 mW/g

Maximum value of SAR (measured) = 1.088 mW/g

1g/10g Averaged SAR



#12 GSM1900_GPRS10_Back_1cm_Ch810

DUT: 280827

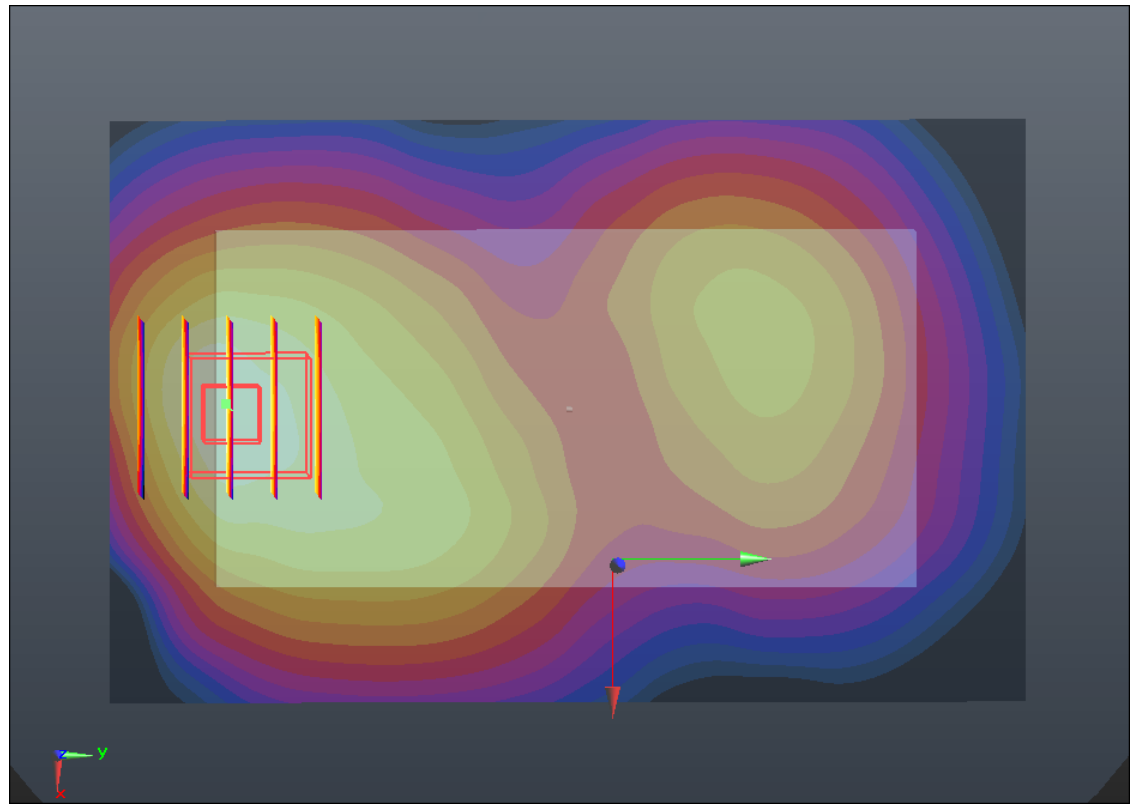
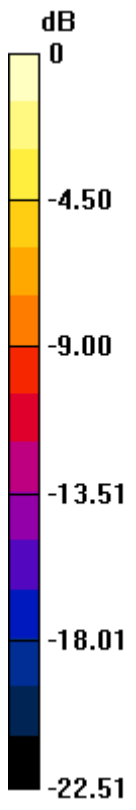
Communication System: GPRS/EDGE 10; Frequency: 1909.8 MHz; Duty Cycle: 1:4
Medium: MSL_1900_120915 Medium parameters used: $f = 1910$ MHz; $\sigma = 1.54$ mho/m; $\epsilon_r = 54.651$; $\rho = 1000$ kg/m³
Ambient Temperature : 23.2 °C; Liquid Temperature : 21.3 °C

DASY5 Configuration:

- Probe: EX3DV4 - SN3857; ConvF(7.35, 7.35, 7.35); Calibrated: 2012-6-20
- Sensor-Surface: 4mm (Mechanical Surface Detection)
- Electronics: DAE4 Sn1210; Calibrated: 2011-11-18
- Phantom: SAM1; Type: SAM; Serial: TP-1479
- Measurement SW: DASY52, Version 52.8 (2); SEMCAD X Version 14.4.5 (3634)

Ch810/Area Scan (71x111x1): Measurement grid: dx=15mm, dy=15mm
Maximum value of SAR (interpolated) = 0.827 mW/g

Ch810/Zoom Scan (5x5x7)/Cube 0: Measurement grid: dx=8mm, dy=8mm, dz=5mm
Reference Value = 7.763 V/m; Power Drift = -0.13 dB
Peak SAR (extrapolated) = 1.288 W/kg
SAR(1 g) = 0.748 mW/g; SAR(10 g) = 0.415 mW/g
Maximum value of SAR (measured) = 0.840 mW/g



0 dB = 0.840mW/g

#13 GSM1900_GPRS10_Back_1cm_Ch512_Headset

DUT: 280827

Communication System: GPRS/EDGE 10; Frequency: 1850.2 MHz; Duty Cycle: 1:4

Medium: MSL_1900_120915 Medium parameters used: $f = 1850.2$ MHz; $\sigma = 1.47$ mho/m; $\epsilon_r =$

54.773 ; $\rho = 1000$ kg/m³

Ambient Temperature : 23.2 °C; Liquid Temperature : 21.3 °C

DASY5 Configuration:

- Probe: EX3DV4 - SN3857; ConvF(7.35, 7.35, 7.35); Calibrated: 2012-6-20
- Sensor-Surface: 4mm (Mechanical Surface Detection)
- Electronics: DAE4 Sn1210; Calibrated: 2011-11-18
- Phantom: SAM1; Type: SAM; Serial: TP-1479
- Measurement SW: DASY52, Version 52.8 (2); SEMCAD X Version 14.4.5 (3634)

Ch512/Area Scan (71x111x1): Measurement grid: dx=15mm, dy=15mm

Maximum value of SAR (interpolated) = 1.099 mW/g

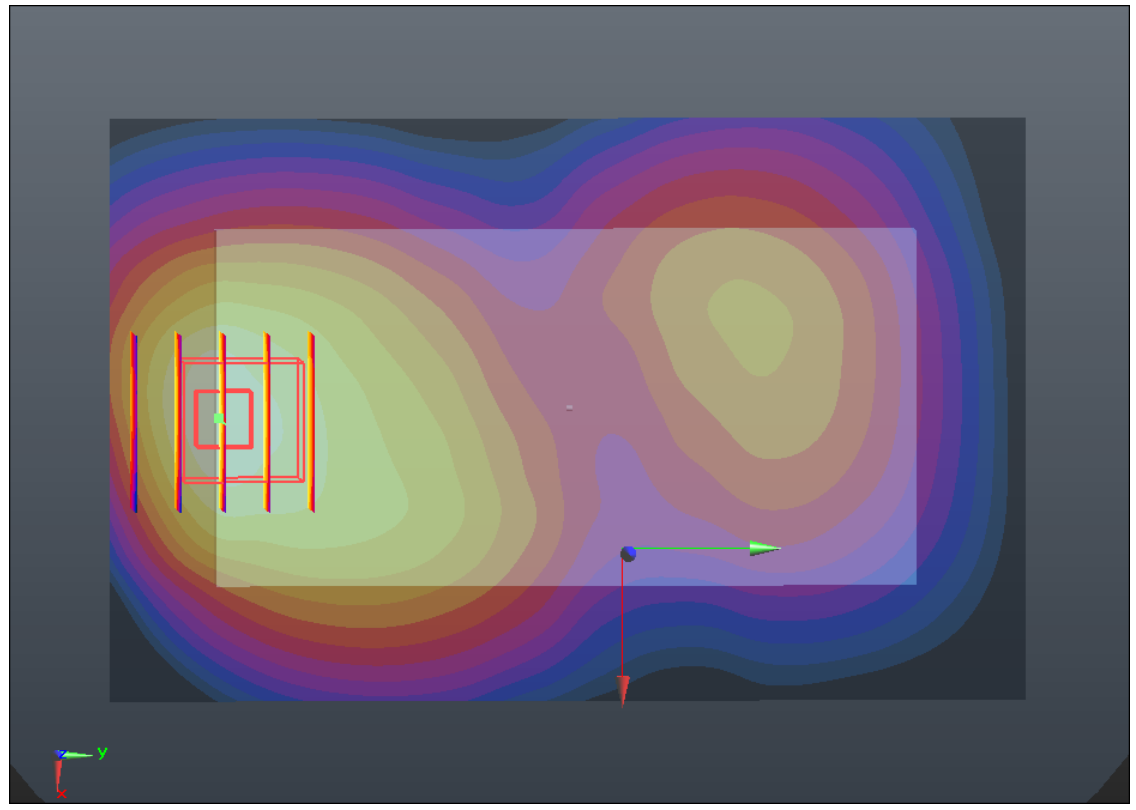
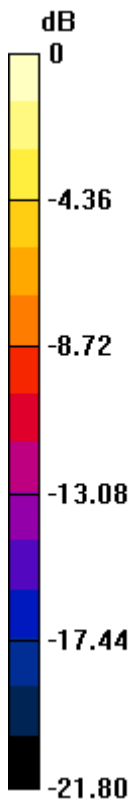
Ch512/Zoom Scan (5x5x7)/Cube 0: Measurement grid: dx=8mm, dy=8mm, dz=5mm

Reference Value = 7.384 V/m; Power Drift = 0.06 dB

Peak SAR (extrapolated) = 1.645 W/kg

SAR(1 g) = 0.969 mW/g; SAR(10 g) = 0.539 mW/g

Maximum value of SAR (measured) = 1.094 mW/g



0 dB = 1.090mW/g

#14 GSM1900_GPRS10_Back_1cm_Ch661_Headset

DUT: 280827

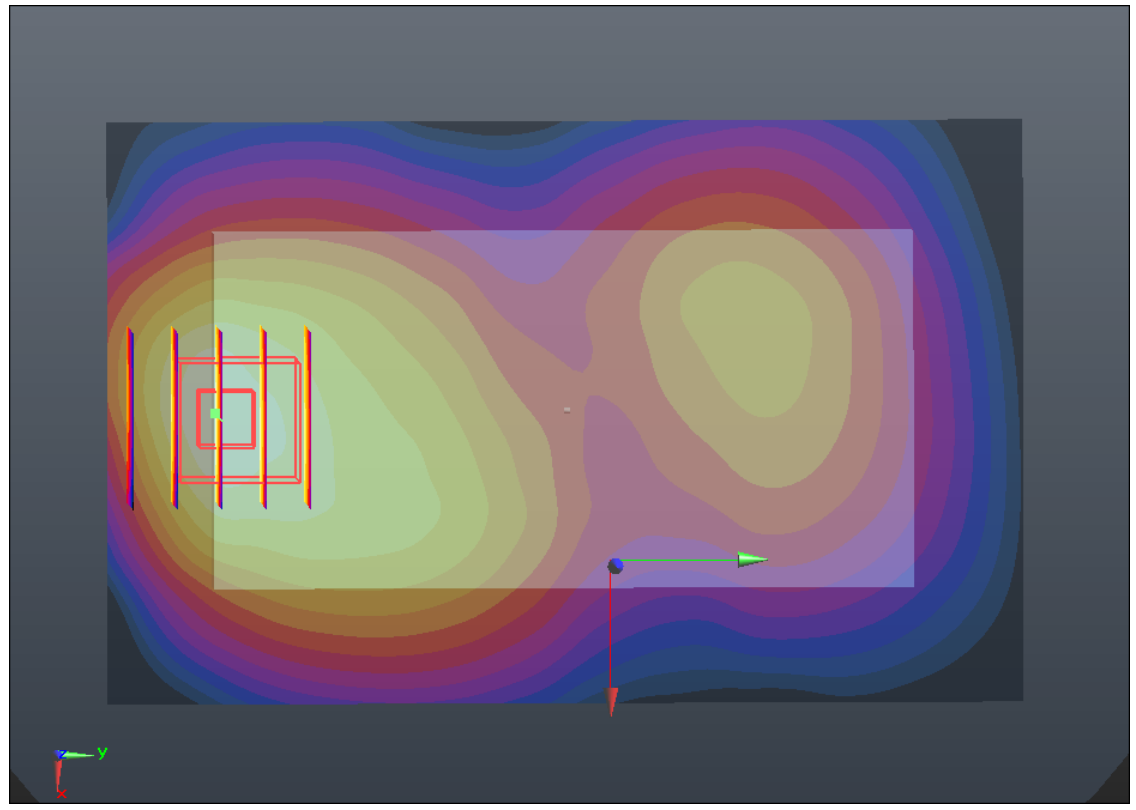
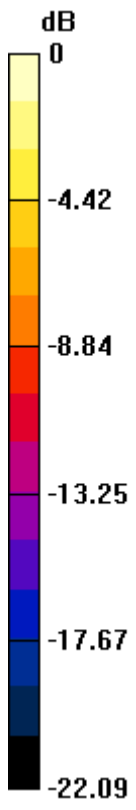
Communication System: GPRS/EDGE 10; Frequency: 1880 MHz; Duty Cycle: 1:4
Medium: MSL_1900_120915 Medium parameters used: $f = 1880$ MHz; $\sigma = 1.509$ mho/m; $\epsilon_r = 54.703$; $\rho = 1000$ kg/m³
Ambient Temperature : 23.2 °C ; Liquid Temperature : 21.3 °C

DASY5 Configuration:

- Probe: EX3DV4 - SN3857; ConvF(7.35, 7.35, 7.35); Calibrated: 2012-6-20
- Sensor-Surface: 4mm (Mechanical Surface Detection)
- Electronics: DAE4 Sn1210; Calibrated: 2011-11-18
- Phantom: SAM1; Type: SAM; Serial: TP-1479
- Measurement SW: DASY52, Version 52.8 (2); SEMCAD X Version 14.4.5 (3634)

Ch661/Area Scan (71x111x1): Measurement grid: dx=15mm, dy=15mm
Maximum value of SAR (interpolated) = 1.010 mW/g

Ch661/Zoom Scan (5x5x7)/Cube 0: Measurement grid: dx=8mm, dy=8mm, dz=5mm
Reference Value = 8.330 V/m; Power Drift = 0.0054 dB
Peak SAR (extrapolated) = 1.527 W/kg
SAR(1 g) = 0.889 mW/g; SAR(10 g) = 0.492 mW/g
Maximum value of SAR (measured) = 1.003 mW/g



0 dB = 1.000mW/g

#15 GSM1900_GPRS10_Back_1cm_Ch810_Headset

DUT: 280827

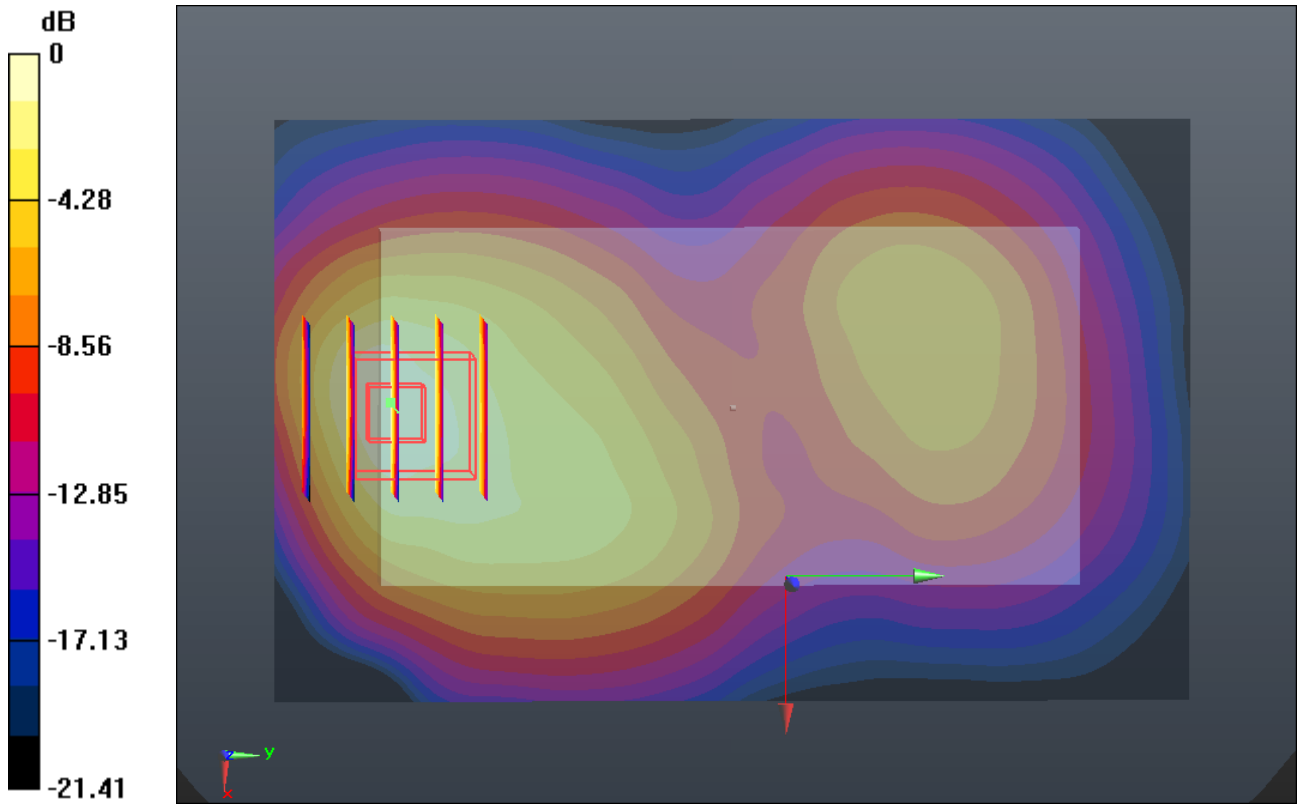
Communication System: GPRS/EDGE 10; Frequency: 1909.8 MHz; Duty Cycle: 1:4
Medium: MSL_1900_120915 Medium parameters used: $f = 1910$ MHz; $\sigma = 1.54$ mho/m; $\epsilon_r = 54.651$; $\rho = 1000$ kg/m³
Ambient Temperature : 23.2 °C; Liquid Temperature : 21.3 °C

DASY5 Configuration:

- Probe: EX3DV4 - SN3857; ConvF(7.35, 7.35, 7.35); Calibrated: 2012-6-20
- Sensor-Surface: 4mm (Mechanical Surface Detection)
- Electronics: DAE4 Sn1210; Calibrated: 2011-11-18
- Phantom: SAM1; Type: SAM; Serial: TP-1479
- Measurement SW: DASY52, Version 52.8 (2); SEMCAD X Version 14.4.5 (3634)

Ch810/Area Scan (71x111x1): Measurement grid: dx=15mm, dy=15mm
Maximum value of SAR (interpolated) = 0.837 mW/g

Ch810/Zoom Scan (5x5x7)/Cube 0: Measurement grid: dx=8mm, dy=8mm, dz=5mm
Reference Value = 8.161 V/m; Power Drift = -0.02 dB
Peak SAR (extrapolated) = 1.292 W/kg
SAR(1 g) = 0.754 mW/g; SAR(10 g) = 0.417 mW/g
Maximum value of SAR (measured) = 0.850 mW/g



0 dB = 0.850mW/g

#16 GSM1900_GPRS10_Left Side_1cm_Ch661

DUT: 280827

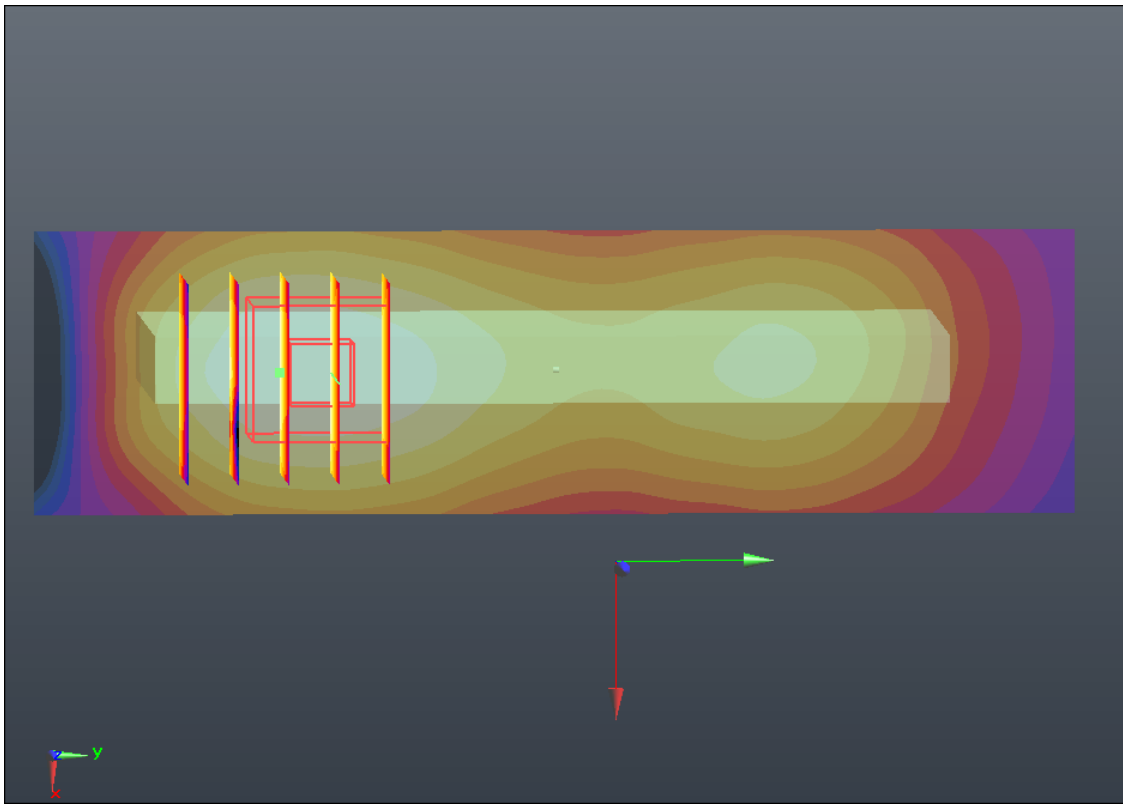
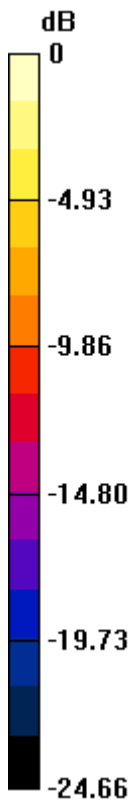
Communication System: GPRS/EDGE 10; Frequency: 1880 MHz; Duty Cycle: 1:4
Medium: MSL_1900_120915 Medium parameters used: $f = 1880$ MHz; $\sigma = 1.509$ mho/m; $\epsilon_r = 54.703$; $\rho = 1000$ kg/m³
Ambient Temperature : 23.2 °C; Liquid Temperature : 21.3 °C

DASY5 Configuration:

- Probe: EX3DV4 - SN3857; ConvF(7.35, 7.35, 7.35); Calibrated: 2012-6-20
- Sensor-Surface: 4mm (Mechanical Surface Detection)
- Electronics: DAE4 Sn1210; Calibrated: 2011-11-18
- Phantom: SAM1; Type: SAM; Serial: TP-1479
- Measurement SW: DASY52, Version 52.8 (2); SEMCAD X Version 14.4.5 (3634)

Ch661/Area Scan (31x111x1): Measurement grid: dx=15mm, dy=15mm
Maximum value of SAR (interpolated) = 0.521 mW/g

Ch661/Zoom Scan (5x5x7)/Cube 0: Measurement grid: dx=8mm, dy=8mm, dz=5mm
Reference Value = 11.477 V/m; Power Drift = 0.10 dB
Peak SAR (extrapolated) = 0.777 W/kg
SAR(1 g) = 0.477 mW/g; SAR(10 g) = 0.264 mW/g
Maximum value of SAR (measured) = 0.511 mW/g



0 dB = 0.510mW/g

#17 GSM1900_GPRS10_Right Side_1cm_Ch661

DUT: 280827

Communication System: GPRS/EDGE 10; Frequency: 1880 MHz; Duty Cycle: 1:4
Medium: MSL_1900_120915 Medium parameters used: $f = 1880$ MHz; $\sigma = 1.509$ mho/m; $\epsilon_r = 54.703$; $\rho = 1000$ kg/m³
Ambient Temperature : 23.2 °C ; Liquid Temperature : 21.3 °C

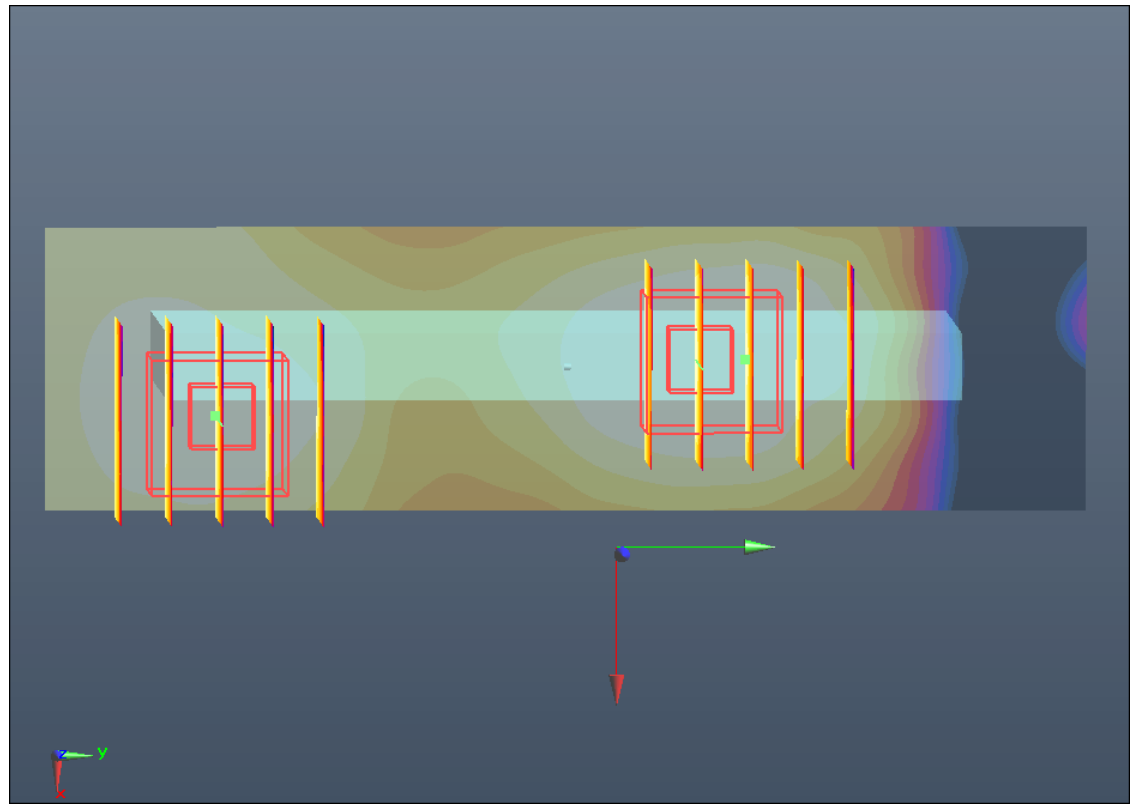
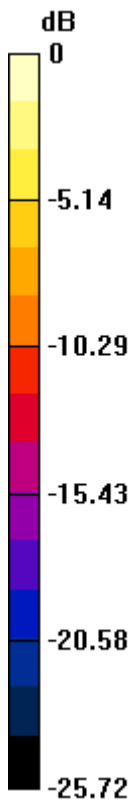
DASY5 Configuration:

- Probe: EX3DV4 - SN3857; ConvF(7.35, 7.35, 7.35); Calibrated: 2012-6-20
- Sensor-Surface: 4mm (Mechanical Surface Detection)
- Electronics: DAE4 Sn1210; Calibrated: 2011-11-18
- Phantom: SAM1; Type: SAM; Serial: TP-1479
- Measurement SW: DASY52, Version 52.8 (2); SEMCAD X Version 14.4.5 (3634)

Ch661/Area Scan (31x111x1): Measurement grid: dx=15mm, dy=15mm
Maximum value of SAR (interpolated) = 0.107 mW/g

Ch661/Zoom Scan (5x5x7)/Cube 0: Measurement grid: dx=8mm, dy=8mm, dz=5mm
Reference Value = 6.170 V/m; Power Drift = 0.09 dB
Peak SAR (extrapolated) = 0.152 W/kg
SAR(1 g) = 0.094 mW/g; SAR(10 g) = 0.055 mW/g
Maximum value of SAR (measured) = 0.105 mW/g

Ch661/Zoom Scan (5x5x7)/Cube 1: Measurement grid: dx=8mm, dy=8mm, dz=5mm
Reference Value = 6.170 V/m; Power Drift = 0.09 dB
Peak SAR (extrapolated) = 0.103 W/kg
SAR(1 g) = 0.068 mW/g; SAR(10 g) = 0.042 mW/g
Maximum value of SAR (measured) = 0.075 mW/g



0 dB = 0.080mW/g

#18 GSM1900_GPRS10_Bottom Side_1cm_Ch661

DUT: 280827

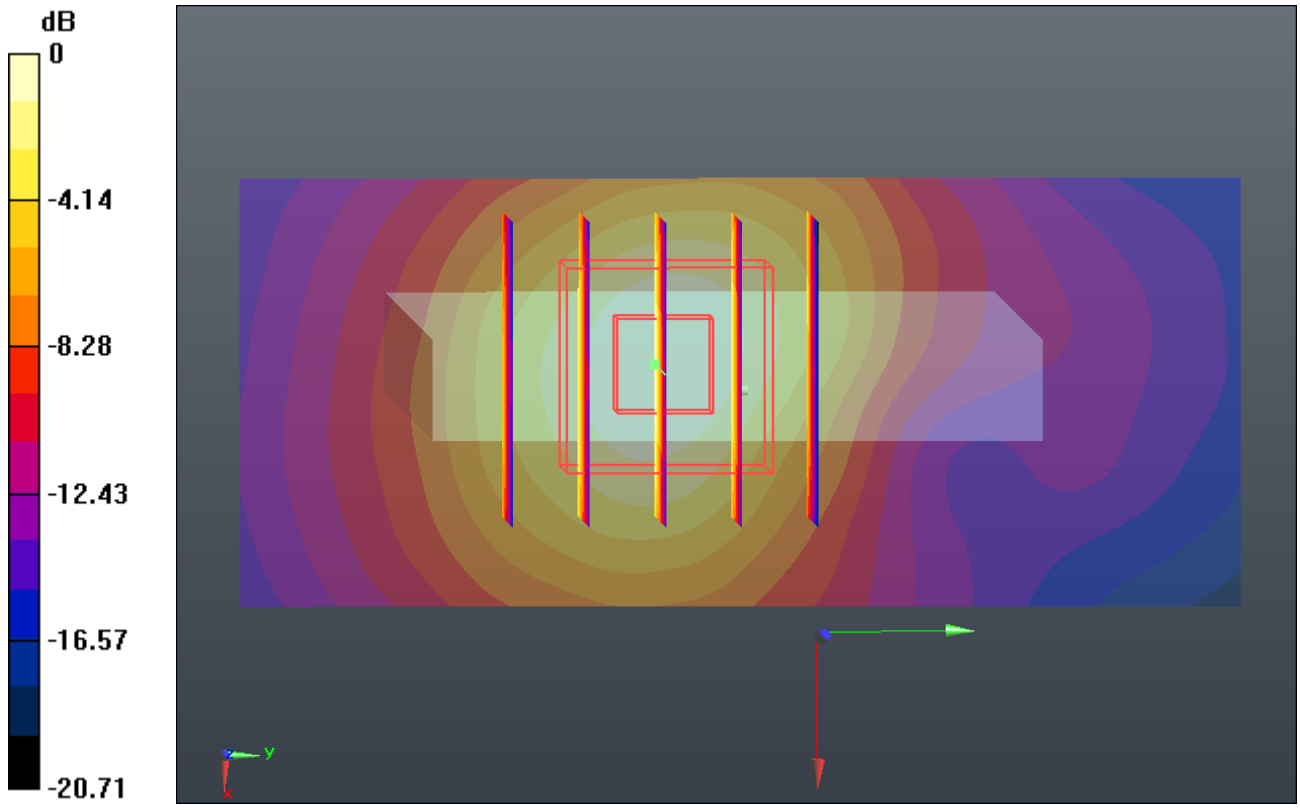
Communication System: GPRS/EDGE 10; Frequency: 1880 MHz; Duty Cycle: 1:4
Medium: MSL_1900_120915 Medium parameters used: $f = 1880$ MHz; $\sigma = 1.509$ mho/m; $\epsilon_r = 54.703$; $\rho = 1000$ kg/m³
Ambient Temperature : 23.2 °C; Liquid Temperature : 21.3 °C

DASY5 Configuration:

- Probe: EX3DV4 - SN3857; ConvF(7.35, 7.35, 7.35); Calibrated: 2012-6-20
- Sensor-Surface: 4mm (Mechanical Surface Detection)
- Electronics: DAE4 Sn1210; Calibrated: 2011-11-18
- Phantom: SAM1; Type: SAM; Serial: TP-1479
- Measurement SW: DASY52, Version 52.8 (2); SEMCAD X Version 14.4.5 (3634)

Ch661/Area Scan (31x71x1): Measurement grid: dx=15mm, dy=15mm
Maximum value of SAR (interpolated) = 0.870 mW/g

Ch661/Zoom Scan (5x5x7)/Cube 0: Measurement grid: dx=8mm, dy=8mm, dz=5mm
Reference Value = 20.188 V/m; Power Drift = 0.0057 dB
Peak SAR (extrapolated) = 1.253 W/kg
SAR(1 g) = 0.733 mW/g; SAR(10 g) = 0.389 mW/g
Maximum value of SAR (measured) = 0.825 mW/g



0 dB = 0.830mW/g

#19 802.11b_Front_1cm_Ch11

DUT: 280827

Communication System: WIFI; Frequency: 2462 MHz; Duty Cycle: 1:1

Medium: MSL_2450_120916 Medium parameters used: $f = 2462$ MHz; $\sigma = 1.989$ mho/m; $\epsilon_r =$

51.996; $\rho = 1000$ kg/m³

Ambient Temperature : 23.5 °C ; Liquid Temperature : 21.6 °C

DASY5 Configuration:

- Probe: EX3DV4 - SN3857; ConvF(6.94, 6.94, 6.94); Calibrated: 2012-6-20
- Sensor-Surface: 4mm (Mechanical Surface Detection)
- Electronics: DAE4 Sn1210; Calibrated: 2011-11-18
- Phantom: SAM1; Type: SAM; Serial: TP-1479
- Measurement SW: DASY52, Version 52.8 (2); SEMCAD X Version 14.4.5 (3634)

Ch11/Area Scan (71x111x1): Measurement grid: dx=15mm, dy=15mm

Maximum value of SAR (interpolated) = 0.107 mW/g

Ch11/Zoom Scan (5x5x7)/Cube 0: Measurement grid: dx=8mm, dy=8mm, dz=5mm

Reference Value = 4.122 V/m; Power Drift = 0.07 dB

Peak SAR (extrapolated) = 0.158 W/kg

SAR(1 g) = 0.087 mW/g; SAR(10 g) = 0.050 mW/g

Maximum value of SAR (measured) = 0.092 mW/g

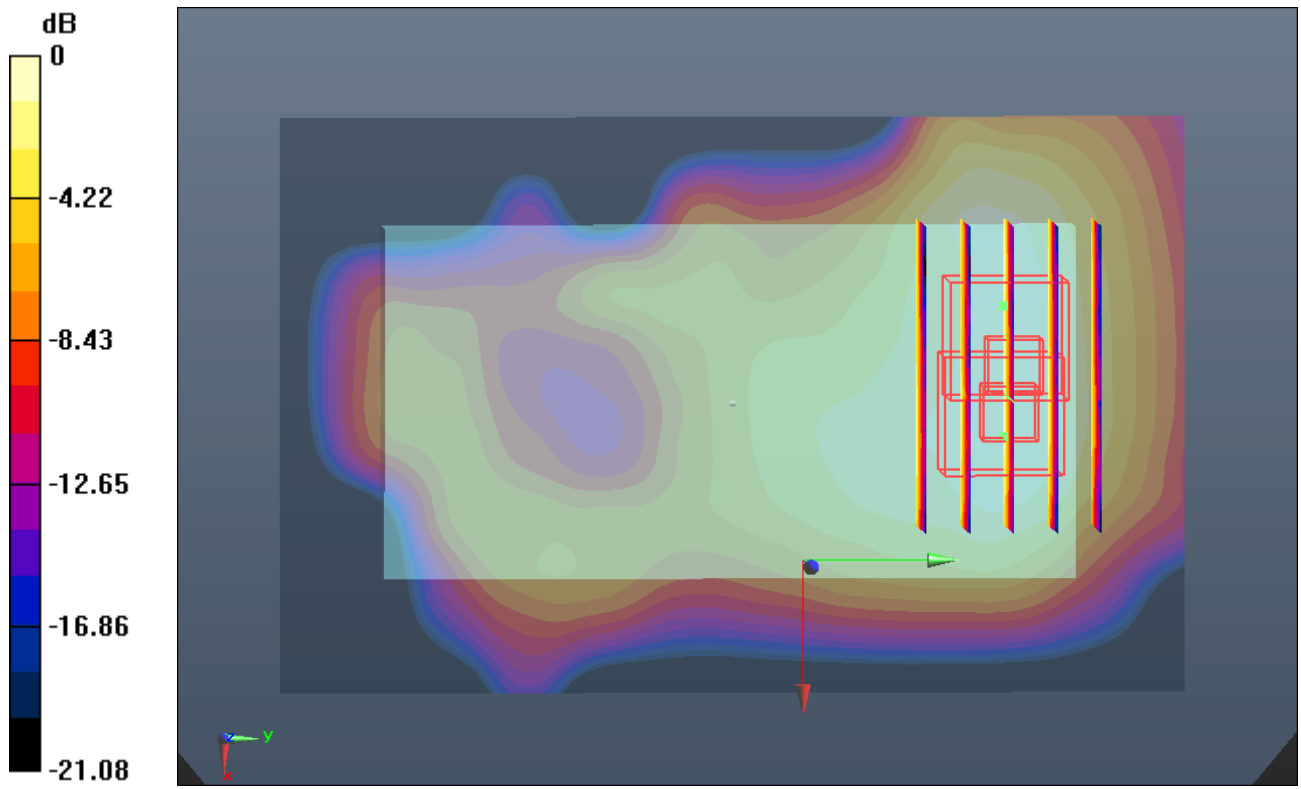
Ch11/Zoom Scan (5x5x7)/Cube 1: Measurement grid: dx=8mm, dy=8mm, dz=5mm

Reference Value = 4.122 V/m; Power Drift = 0.07 dB

Peak SAR (extrapolated) = 0.152 W/kg

SAR(1 g) = 0.083 mW/g; SAR(10 g) = 0.046 mW/g

Maximum value of SAR (measured) = 0.095 mW/g



0 dB = 0.100mW/g

#20 802.11b_Back_1cm_Ch11

DUT: 280827

Communication System: WIFI; Frequency: 2462 MHz; Duty Cycle: 1:1

Medium: MSL_2450_120916 Medium parameters used: $f = 2462$ MHz; $\sigma = 1.989$ mho/m; $\epsilon_r =$

51.996; $\rho = 1000$ kg/m³

Ambient Temperature : 23.5 °C ; Liquid Temperature : 21.6 °C

DASY5 Configuration:

- Probe: EX3DV4 - SN3857; ConvF(6.94, 6.94, 6.94); Calibrated: 2012-6-20
- Sensor-Surface: 4mm (Mechanical Surface Detection)
- Electronics: DAE4 Sn1210; Calibrated: 2011-11-18
- Phantom: SAM1; Type: SAM; Serial: TP-1479
- Measurement SW: DASY52, Version 52.8 (2); SEMCAD X Version 14.4.5 (3634)

Ch11/Area Scan (71x111x1): Measurement grid: dx=15mm, dy=15mm

Maximum value of SAR (interpolated) = 0.115 mW/g

Ch11/Zoom Scan (5x5x7)/Cube 0: Measurement grid: dx=8mm, dy=8mm, dz=5mm

Reference Value = 3.630 V/m; Power Drift = -0.08 dB

Peak SAR (extrapolated) = 0.172 W/kg

SAR(1 g) = 0.097 mW/g; SAR(10 g) = 0.053 mW/g

Maximum value of SAR (measured) = 0.105 mW/g

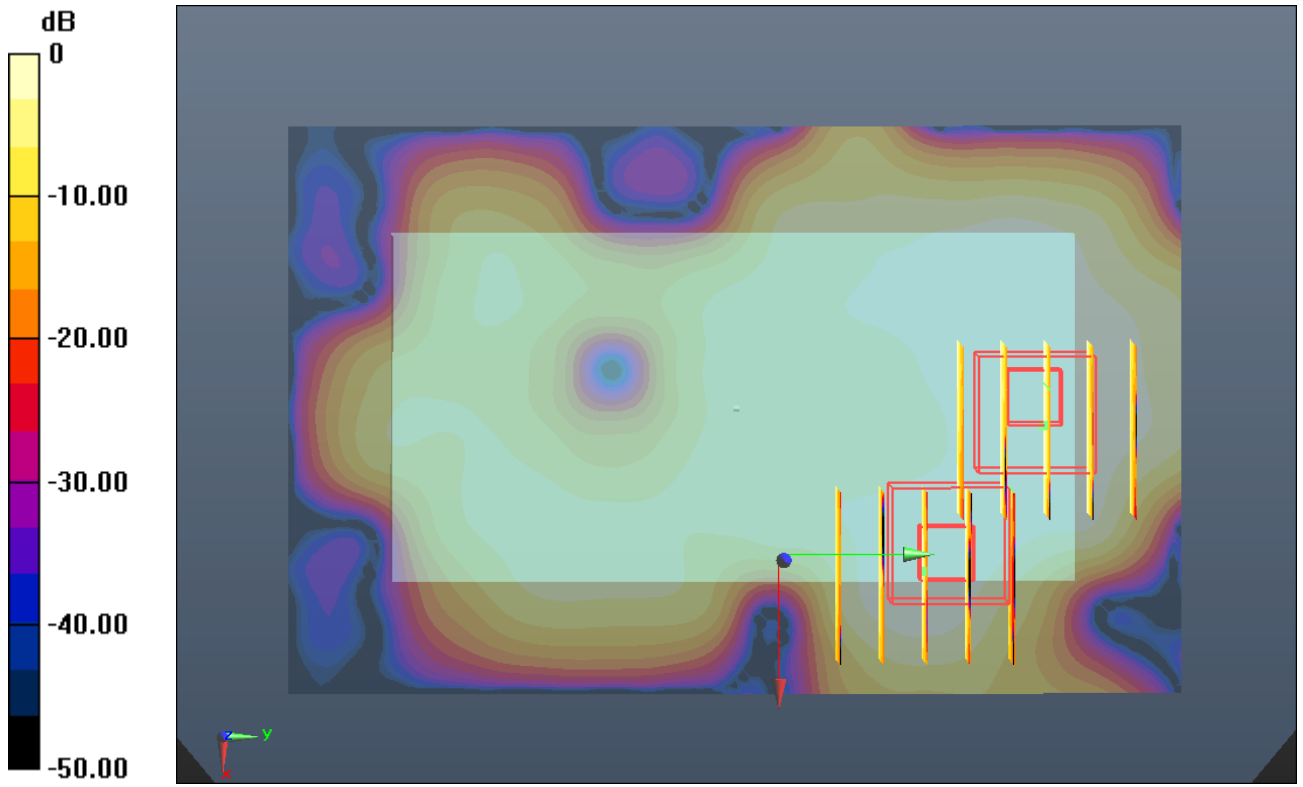
Ch11/Zoom Scan (5x5x7)/Cube 1: Measurement grid: dx=8mm, dy=8mm, dz=5mm

Reference Value = 3.630 V/m; Power Drift = -0.08 dB

Peak SAR (extrapolated) = 0.146 W/kg

SAR(1 g) = 0.075 mW/g; SAR(10 g) = 0.035 mW/g

Maximum value of SAR (measured) = 0.092 mW/g



0 dB = 0.090mW/g

#21 802.11b_Left Side_1cm_Ch11

DUT: 280827

Communication System: WIFI; Frequency: 2462 MHz; Duty Cycle: 1:1

Medium: MSL_2450_120916 Medium parameters used: $f = 2462$ MHz; $\sigma = 1.989$ mho/m; $\epsilon_r =$

51.996; $\rho = 1000$ kg/m³

Ambient Temperature : 23.5 °C ; Liquid Temperature : 21.6 °C

DASY5 Configuration:

- Probe: EX3DV4 - SN3857; ConvF(6.94, 6.94, 6.94); Calibrated: 2012-6-20
- Sensor-Surface: 4mm (Mechanical Surface Detection)
- Electronics: DAE4 Sn1210; Calibrated: 2011-11-18
- Phantom: SAM1; Type: SAM; Serial: TP-1479
- Measurement SW: DASY52, Version 52.8 (2); SEMCAD X Version 14.4.5 (3634)

Ch11/Area Scan (41x111x1): Measurement grid: dx=15mm, dy=15mm

Maximum value of SAR (interpolated) = 0.192 mW/g

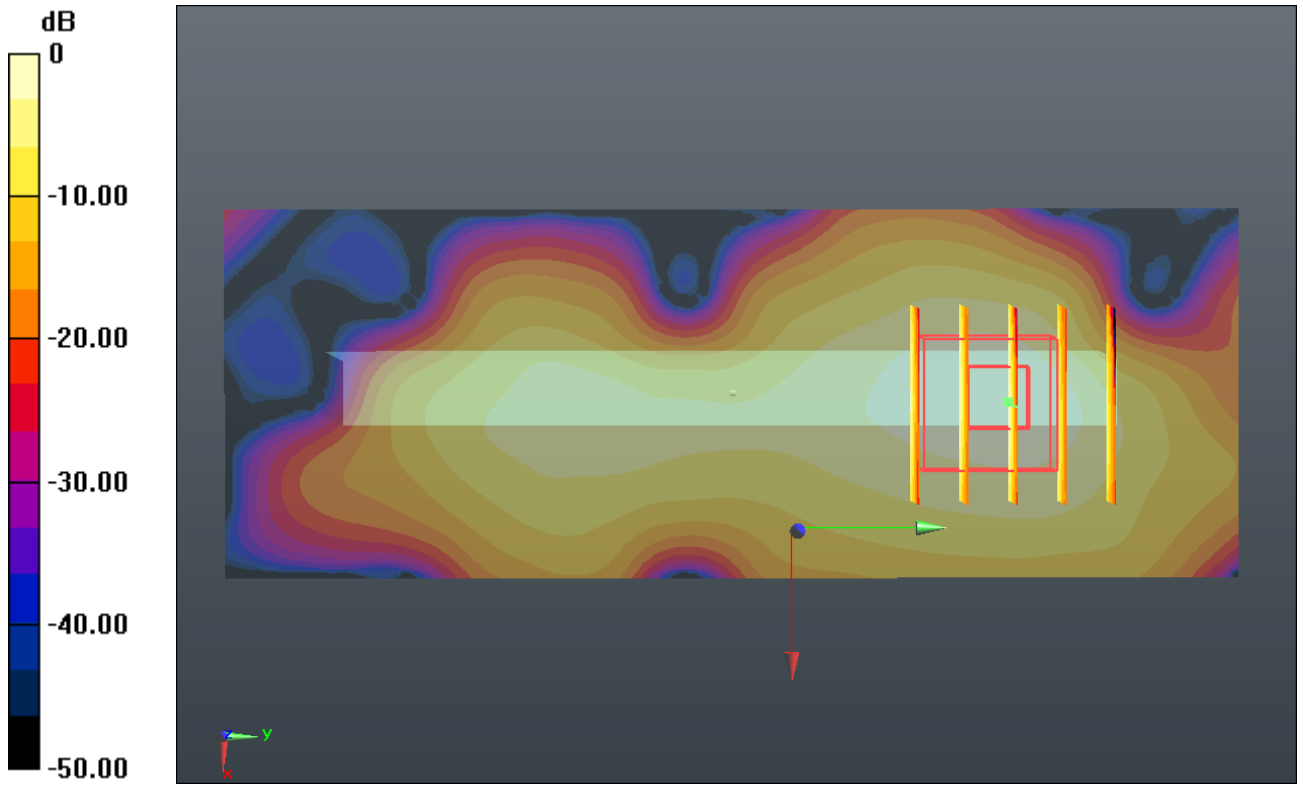
Ch11/Zoom Scan (5x5x7)/Cube 0: Measurement grid: dx=8mm, dy=8mm, dz=5mm

Reference Value = 4.363 V/m; Power Drift = -0.12 dB

Peak SAR (extrapolated) = 0.340 W/kg

SAR(1 g) = 0.169 mW/g; SAR(10 g) = 0.079 mW/g

Maximum value of SAR (measured) = 0.198 mW/g



0 dB = 0.200mW/g

#21 802.11b_Left Side_1cm_Ch11_2D

DUT: 280827

Communication System: WIFI; Frequency: 2462 MHz; Duty Cycle: 1:1

Medium: MSL_2450_120916 Medium parameters used: $f = 2462$ MHz; $\sigma = 1.989$ mho/m; $\epsilon_r =$

51.996; $\rho = 1000$ kg/m³

Ambient Temperature : 23.5 °C ; Liquid Temperature : 21.6 °C

DASY5 Configuration:

- Probe: EX3DV4 - SN3857; ConvF(6.94, 6.94, 6.94); Calibrated: 2012-6-20
- Sensor-Surface: 4mm (Mechanical Surface Detection)
- Electronics: DAE4 Sn1210; Calibrated: 2011-11-18
- Phantom: SAM1; Type: SAM; Serial: TP-1479
- Measurement SW: DASY52, Version 52.8 (2); SEMCAD X Version 14.4.5 (3634)

Ch11/Area Scan (41x111x1): Measurement grid: dx=15mm, dy=15mm

Maximum value of SAR (interpolated) = 0.192 mW/g

Ch11/Zoom Scan (5x5x7)/Cube 0: Measurement grid: dx=8mm, dy=8mm, dz=5mm

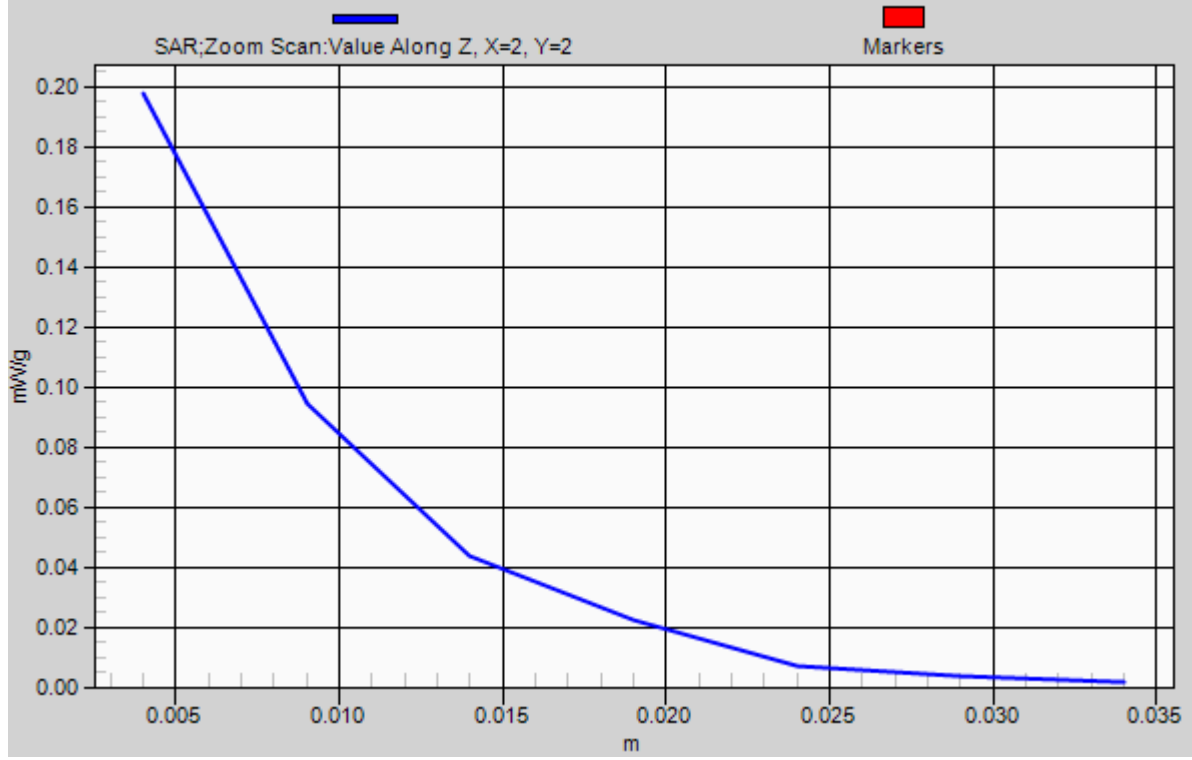
Reference Value = 4.363 V/m; Power Drift = -0.12 dB

Peak SAR (extrapolated) = 0.340 W/kg

SAR(1 g) = 0.169 mW/g; SAR(10 g) = 0.079 mW/g

Maximum value of SAR (measured) = 0.198 mW/g

1g/10g Averaged SAR



#22 802.11b_Top Side_1cm_Ch11

DUT: 280827

Communication System: WIFI; Frequency: 2462 MHz; Duty Cycle: 1:1

Medium: MSL_2450_120916 Medium parameters used: $f = 2462$ MHz; $\sigma = 1.989$ mho/m; $\epsilon_r =$

51.996; $\rho = 1000$ kg/m³

Ambient Temperature : 23.5 °C ; Liquid Temperature : 21.6 °C

DASY5 Configuration:

- Probe: EX3DV4 - SN3857; ConvF(6.94, 6.94, 6.94); Calibrated: 2012-6-20
- Sensor-Surface: 4mm (Mechanical Surface Detection)
- Electronics: DAE4 Sn1210; Calibrated: 2011-11-18
- Phantom: SAM1; Type: SAM; Serial: TP-1479
- Measurement SW: DASY52, Version 52.8 (2); SEMCAD X Version 14.4.5 (3634)

Ch11/Area Scan (41x71x1): Measurement grid: dx=15mm, dy=15mm

Maximum value of SAR (interpolated) = 0.163 mW/g

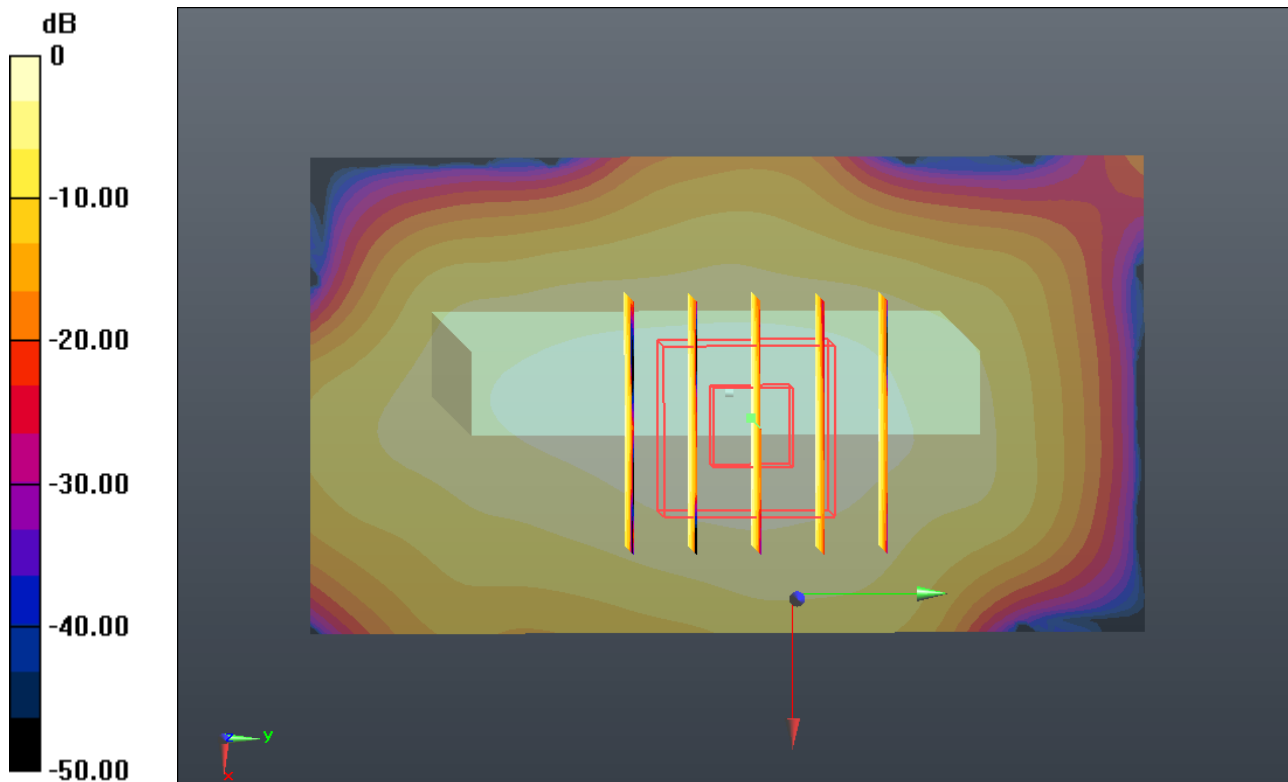
Ch11/Zoom Scan (5x5x7)/Cube 0: Measurement grid: dx=8mm, dy=8mm, dz=5mm

Reference Value = 8.751 V/m; Power Drift = 0.10 dB

Peak SAR (extrapolated) = 0.281 W/kg

SAR(1 g) = 0.151 mW/g; SAR(10 g) = 0.077 mW/g

Maximum value of SAR (measured) = 0.169 mW/g



0 dB = 0.170mW/g

#23 802.11b_Back_1cm_Ch11_Headset

DUT: 280827

Communication System: WIFI; Frequency: 2462 MHz; Duty Cycle: 1:1

Medium: MSL_2450_120916 Medium parameters used: $f = 2462$ MHz; $\sigma = 1.989$ mho/m; $\epsilon_r =$

51.996; $\rho = 1000$ kg/m³

Ambient Temperature : 23.5 °C ; Liquid Temperature : 21.6 °C

DASY5 Configuration:

- Probe: EX3DV4 - SN3857; ConvF(6.94, 6.94, 6.94); Calibrated: 2012-6-20
- Sensor-Surface: 4mm (Mechanical Surface Detection)
- Electronics: DAE4 Sn1210; Calibrated: 2011-11-18
- Phantom: SAM1; Type: SAM; Serial: TP-1479
- Measurement SW: DASY52, Version 52.8 (2); SEMCAD X Version 14.4.5 (3634)

Ch11/Area Scan (71x111x1): Measurement grid: dx=15mm, dy=15mm

Maximum value of SAR (interpolated) = 0.105 mW/g

Ch11/Zoom Scan (5x5x7)/Cube 0: Measurement grid: dx=8mm, dy=8mm, dz=5mm

Reference Value = 3.677 V/m; Power Drift = 0.08 dB

Peak SAR (extrapolated) = 0.205 W/kg

SAR(1 g) = 0.100 mW/g; SAR(10 g) = 0.046 mW/g

Maximum value of SAR (measured) = 0.110 mW/g

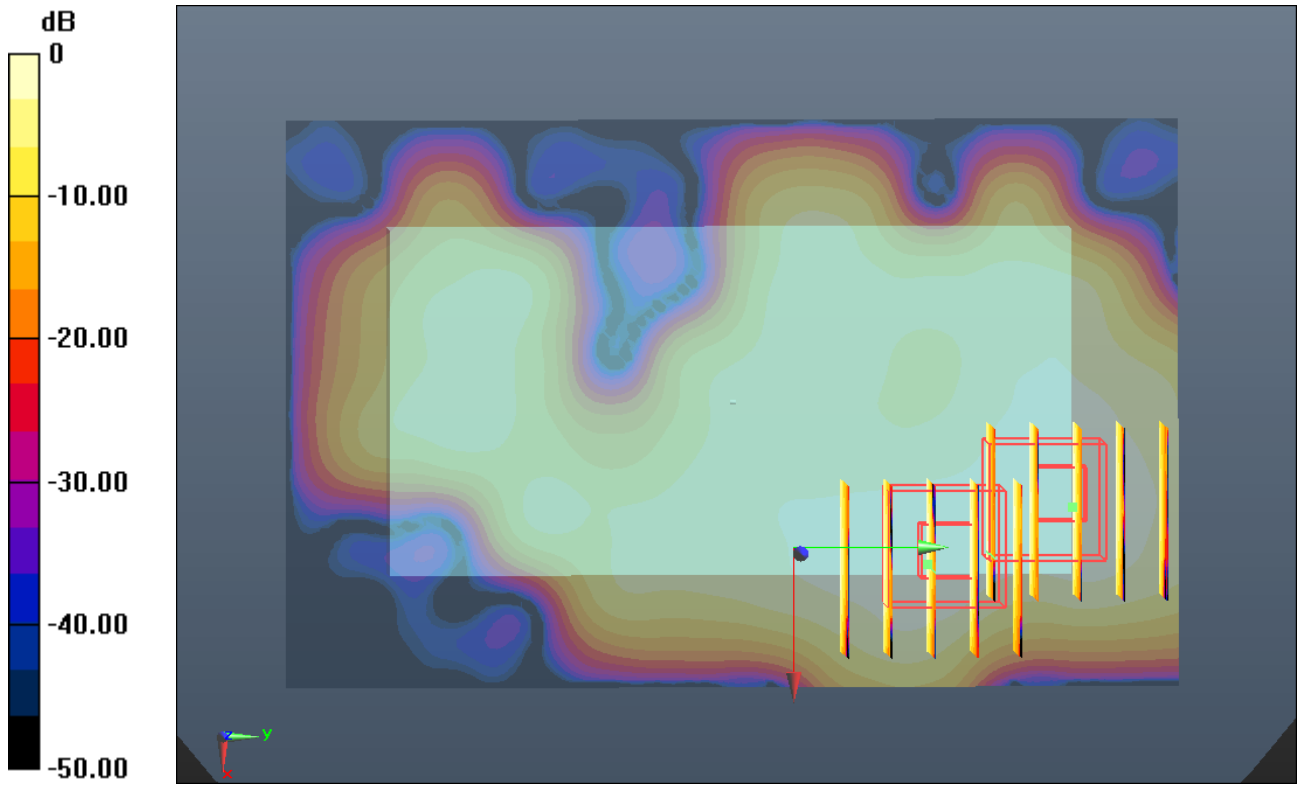
Ch11/Zoom Scan (5x5x7)/Cube 1: Measurement grid: dx=8mm, dy=8mm, dz=5mm

Reference Value = 3.677 V/m; Power Drift = 0.08 dB

Peak SAR (extrapolated) = 0.191 W/kg

SAR(1 g) = 0.084 mW/g; SAR(10 g) = 0.045 mW/g

Maximum value of SAR (measured) = 0.099 mW/g



0 dB = 0.100mW/g