

#01 T-Coil_CDMA2000 BC0_RC1+SO3_Ch1013_Axial (Z)

DUT: 230752

Communication System: CDMA ; Frequency: 824.7 MHz;Duty Cycle: 1:1

Medium: Air Medium parameters used: $\sigma = 0$ mho/m, $\epsilon_r = 1$; $\rho = 1$ kg/m³

Ambient Temperature : 22.6 °C

DASY4 Configuration:

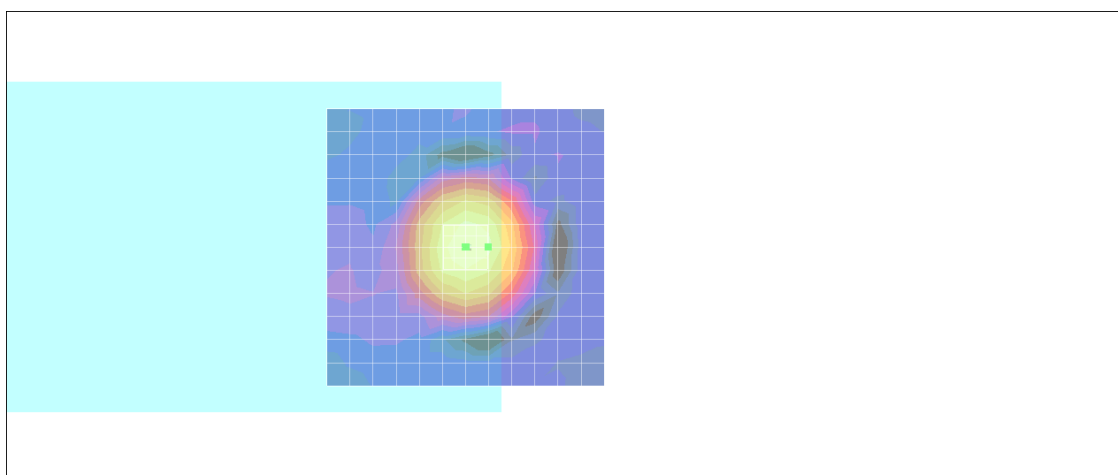
- Probe: AM1DV2 - 1038; ; Calibrated: 2012/1/23
- Sensor-Surface: 0mm (Fix Surface)
- Electronics: DAE4 Sn778; Calibrated: 2011/11/22
- Phantom: HAC Test Arch with AMCC; Type: SD HAC P01 BA;
- Measurement SW: DASY4, V4.7 Build 80; Postprocessing SW: SEMCAD, V1.8 Build 186

Scans/z (axial) fine 2mm 8 x 8/ABM SNR(x,y,z) (5x5x1):

ABM1/ABM2 = 36.4 dB

ABM1 comp = -5.03 dB A/m

Location: -4, 0, 3.7 mm



0 dB = 1.00A/m

Scans/z (axial) wideband at best S/N/ABM Freq Resp(x,y,z,f)

Loc: 0, 0, 3.7 mm Diff: 1.41dB



#01 T-Coil_CDMA2000 BC0_RC1+SO3_Ch1013_Radial 1 (X)

DUT: 230752

Communication System: CDMA ; Frequency: 824.7 MHz;Duty Cycle: 1:1

Medium: Air Medium parameters used: $\sigma = 0$ mho/m, $\epsilon_r = 1$; $\rho = 1$ kg/m³

Ambient Temperature : 22.6 °C

DASY4 Configuration:

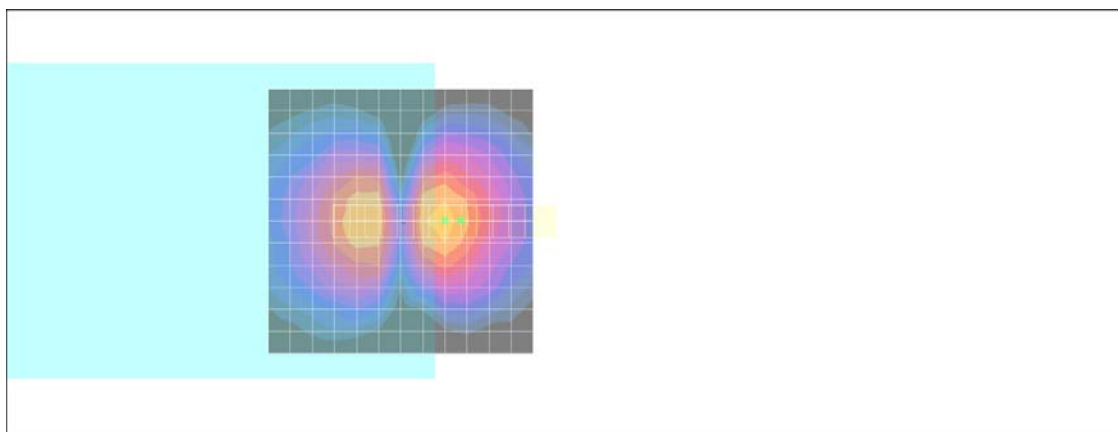
- Probe: AM1DV2 - 1038; ; Calibrated: 2012/1/23
- Sensor-Surface: 0mm (Fix Surface)
- Electronics: DAE4 Sn778; Calibrated: 2011/11/22
- Phantom: HAC Test Arch with AMCC; Type: SD HAC P01 BA;
- Measurement SW: DASY4, V4.7 Build 80; Postprocessing SW: SEMCAD, V1.8 Build 186

Scans/x (longitudinal) fine 3mm 42 x 6/ABM SNR(x,y,z) (15x3x1):

ABM1/ABM2 = 22.7 dB

ABM1 comp = -13.7 dB A/m

Location: -11.3, 0, 3.7 mm



0 dB = 1.00A/m

#01 T-Coil_CDMA2000 BC0_RC1+SO3_Ch1013_Radial 2 (Y)

DUT: 230752

Communication System: CDMA ; Frequency: 824.7 MHz;Duty Cycle: 1:1

Medium: Air Medium parameters used: $\sigma = 0$ mho/m, $\epsilon_r = 1$; $\rho = 1$ kg/m³

Ambient Temperature : 22.6 °C

DASY4 Configuration:

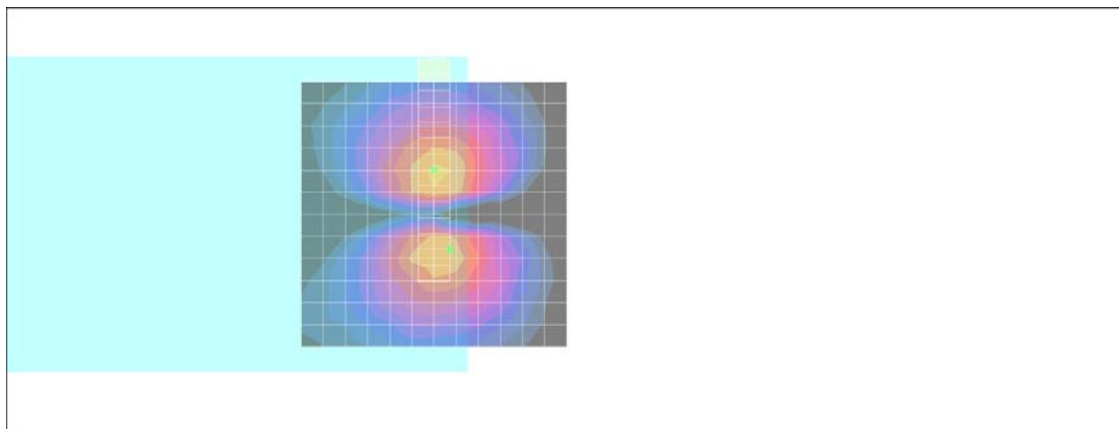
- Probe: AM1DV2 - 1038; ; Calibrated: 2012/1/23
- Sensor-Surface: 0mm (Fix Surface)
- Electronics: DAE4 Sn778; Calibrated: 2011/11/22
- Phantom: HAC Test Arch with AMCC; Type: SD HAC P01 BA;
- Measurement SW: DASY4, V4.7 Build 80; Postprocessing SW: SEMCAD, V1.8 Build 186

Scans/y (transversal) fine 3mm 6 x 42/ABM SNR(x,y,z) (3x15x1):

ABM1/ABM2 = 31.4 dB

ABM1 comp = -12.6 dB A/m

Location: -3, 6.7, 3.7 mm



0 dB = 1.00A/m

#02 T-Coil_CDMA2000 BC0_RC1+SO3_Ch384_Axial (Z)

DUT: 230752

Communication System: CDMA ; Frequency: 836.52 MHz;Duty Cycle: 1:1

Medium: Air Medium parameters used: $\sigma = 0$ mho/m, $\epsilon_r = 1$; $\rho = 1$ kg/m³

Ambient Temperature : 22.6 °C

DASY4 Configuration:

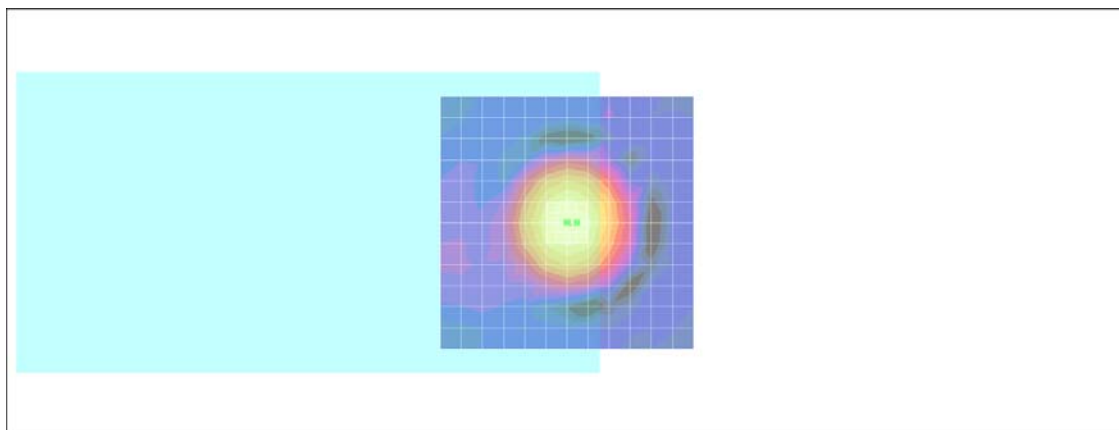
- Probe: AM1DV2 - 1038; ; Calibrated: 2012/1/23
- Sensor-Surface: 0mm (Fix Surface)
- Electronics: DAE4 Sn778; Calibrated: 2011/11/22
- Phantom: HAC Test Arch with AMCC; Type: SD HAC P01 BA;
- Measurement SW: DASY4, V4.7 Build 80; Postprocessing SW: SEMCAD, V1.8 Build 186

Scans/z (axial) fine 2mm 8 x 8/ABM SNR(x,y,z) (5x5x1):

ABM1/ABM2 = 35.5 dB

ABM1 comp = -3.70 dB A/m

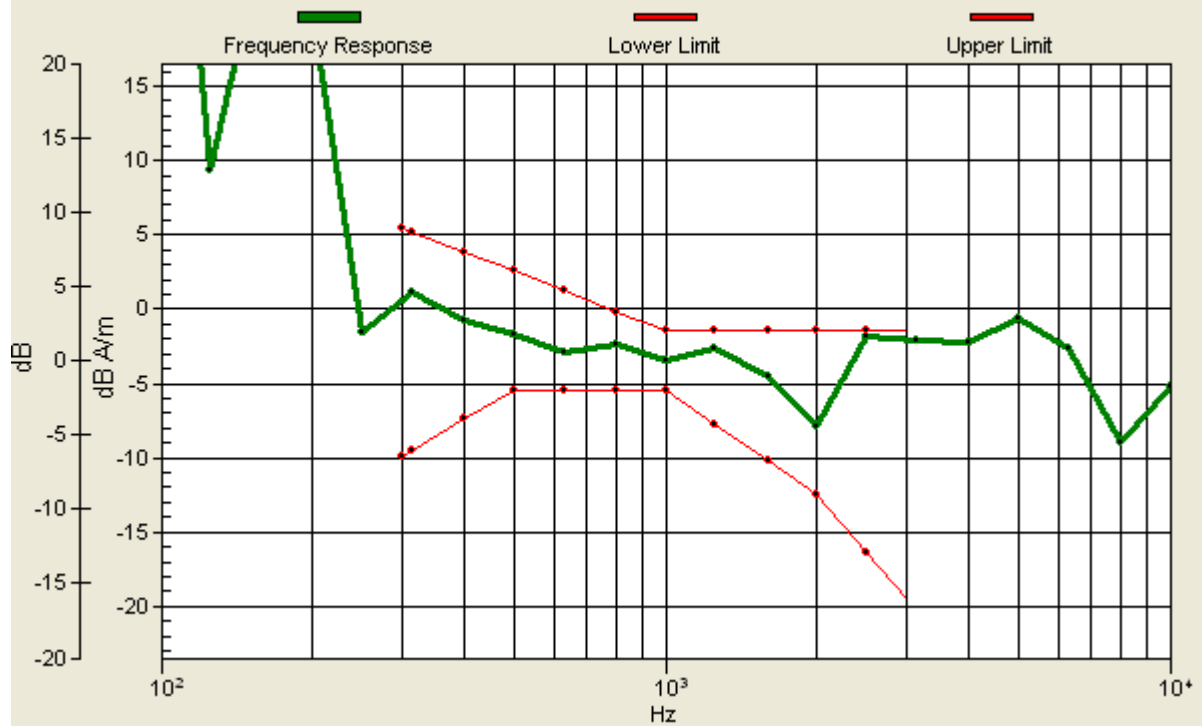
Location: -2, 0, 3.7 mm



0 dB = 1.00A/m

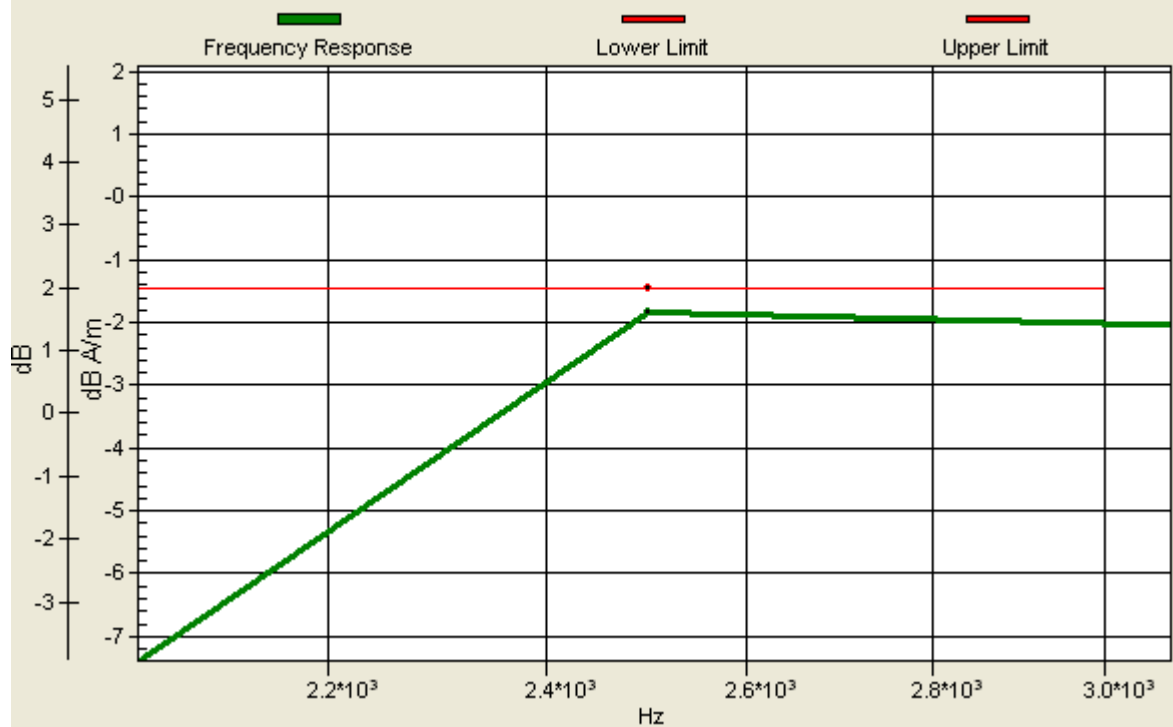
Scans/z (axial) wideband at best S/N/ABM Freq Resp(x,y,z,f)

Loc: 0, 0, 3.7 mm Diff: 0.38dB



Scans/z (axial) wideband at best S/N/ABM Freq Resp(x,y,z,f)

Loc: 0, 0, 3.7 mm Diff: 0.38dB



#02 T-Coil_CDMA2000 BC0_RC1+SO3_Ch384_Radial 1 (X)

DUT: 230752

Communication System: CDMA ; Frequency: 836.52 MHz;Duty Cycle: 1:1

Medium: Air Medium parameters used: $\sigma = 0$ mho/m, $\epsilon_r = 1$; $\rho = 1$ kg/m³

Ambient Temperature : 22.6 °C

DASY4 Configuration:

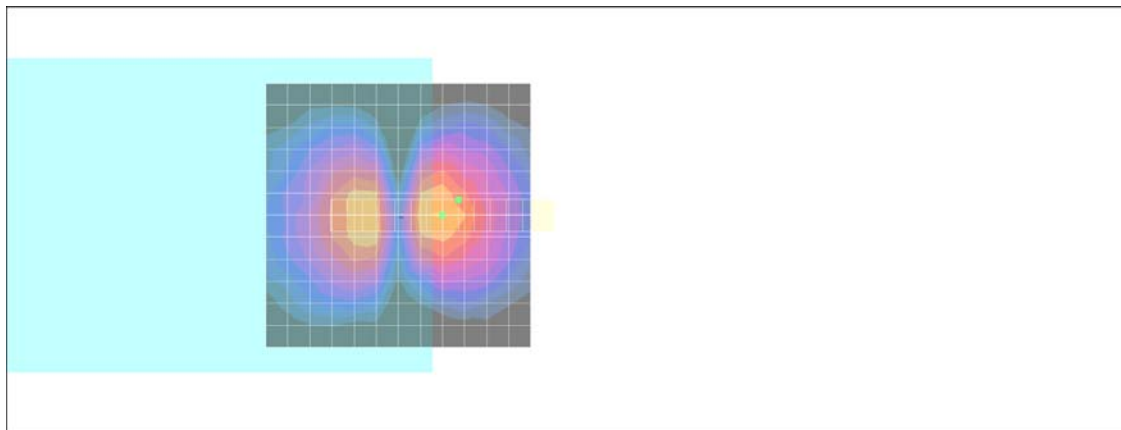
- Probe: AM1DV2 - 1038; ; Calibrated: 2012/1/23
- Sensor-Surface: 0mm (Fix Surface)
- Electronics: DAE4 Sn778; Calibrated: 2011/11/22
- Phantom: HAC Test Arch with AMCC; Type: SD HAC P01 BA;
- Measurement SW: DASY4, V4.7 Build 80; Postprocessing SW: SEMCAD, V1.8 Build 186

Scans/x (longitudinal) fine 3mm 42 x 6/ABM SNR(x,y,z) (15x3x1):

ABM1/ABM2 = 23.0 dB

ABM1 comp = -14.2 dB A/m

Location: -11.3, -3, 3.7 mm



0 dB = 1.00A/m

#02 T-Coil_CDMA2000 BC0_RC1+SO3_Ch384_Radial 2 (Y)

DUT: 230752

Communication System: CDMA ; Frequency: 836.52 MHz;Duty Cycle: 1:1

Medium: Air Medium parameters used: $\sigma = 0$ mho/m, $\epsilon_r = 1$; $\rho = 1$ kg/m³

Ambient Temperature : 22.6 °C

DASY4 Configuration:

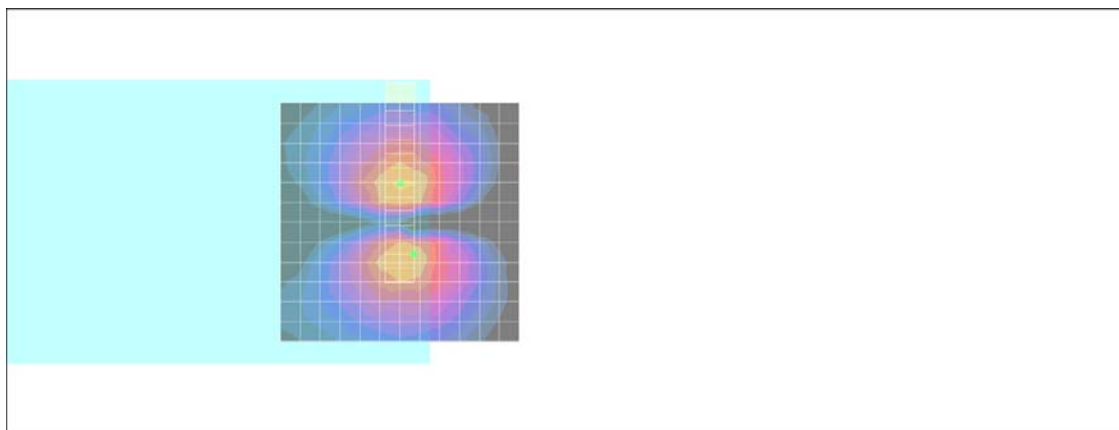
- Probe: AM1DV2 - 1038; ; Calibrated: 2012/1/23
- Sensor-Surface: 0mm (Fix Surface)
- Electronics: DAE4 Sn778; Calibrated: 2011/11/22
- Phantom: HAC Test Arch with AMCC; Type: SD HAC P01 BA;
- Measurement SW: DASY4, V4.7 Build 80; Postprocessing SW: SEMCAD, V1.8 Build 186

Scans/y (transversal) fine 3mm 6 x 42/ABM SNR(x,y,z) (3x15x1):

ABM1/ABM2 = 32.0 dB

ABM1 comp = -12.3 dB A/m

Location: -3, 6.7, 3.7 mm



0 dB = 1.00A/m

#03 T-Coil_CDMA2000 BC0_RC1+SO3_Ch777_Axial (Z)

DUT: 230752

Communication System: CDMA ; Frequency: 848.31 MHz;Duty Cycle: 1:1

Medium: Air Medium parameters used: $\sigma = 0$ mho/m, $\epsilon_r = 1$; $\rho = 1$ kg/m³

Ambient Temperature : 22.6 °C

DASY4 Configuration:

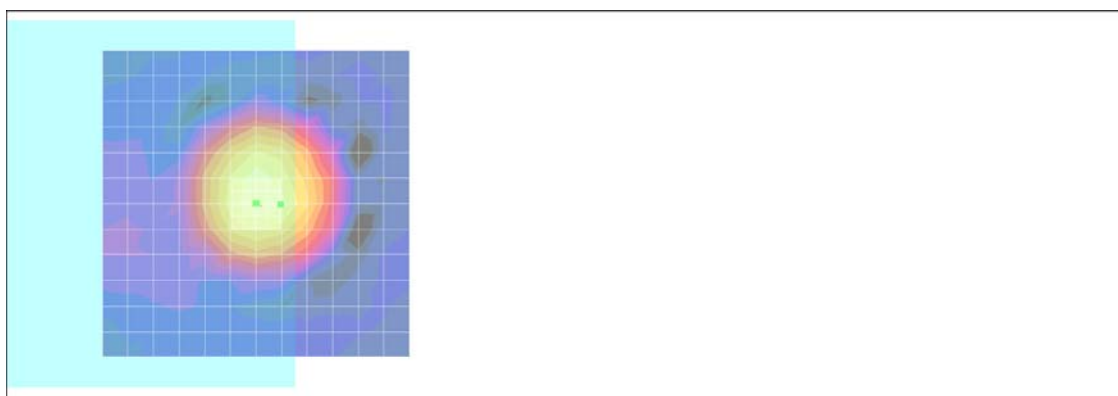
- Probe: AM1DV2 - 1038; ; Calibrated: 2012/1/23
- Sensor-Surface: 0mm (Fix Surface)
- Electronics: DAE4 Sn778; Calibrated: 2011/11/22
- Phantom: HAC Test Arch with AMCC; Type: SD HAC P01 BA;
- Measurement SW: DASY4, V4.7 Build 80; Postprocessing SW: SEMCAD, V1.8 Build 186

Scans/z (axial) fine 2mm 8 x 8/ABM SNR(x,y,z) (5x5x1):

ABM1/ABM2 = 34.8 dB

ABM1 comp = -5.61 dB A/m

Location: -4, 0, 3.7 mm



0 dB = 1.00A/m

Scans/z (axial) wideband at best S/N/ABM Freq Resp(x,y,z,f)

Loc: 0, 0, 3.7 mm Diff: 0.99dB



#03 T-Coil_CDMA2000 BC0_RC1+SO3_Ch777_Radial 1 (X)

DUT: 230752

Communication System: CDMA ; Frequency: 848.31 MHz;Duty Cycle: 1:1

Medium: Air Medium parameters used: $\sigma = 0$ mho/m, $\epsilon_r = 1$; $\rho = 1$ kg/m³

Ambient Temperature : 22.6 °C

DASY4 Configuration:

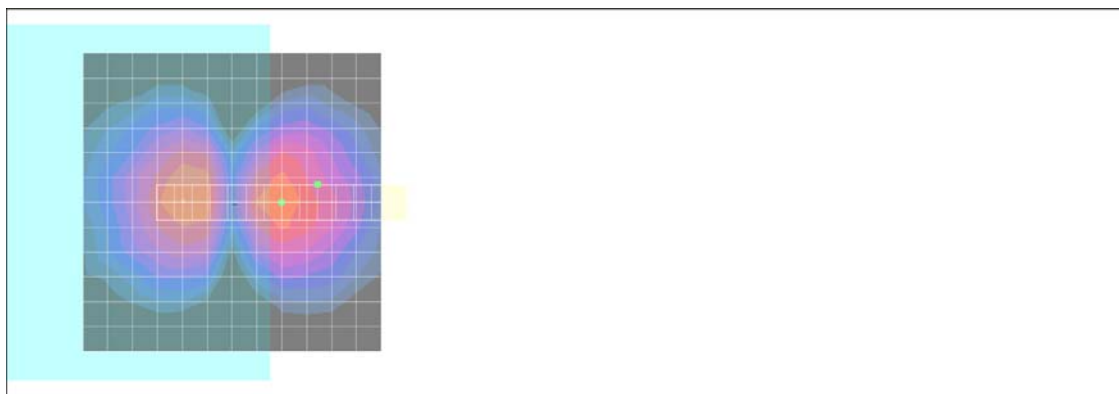
- Probe: AM1DV2 - 1038; ; Calibrated: 2012/1/23
- Sensor-Surface: 0mm (Fix Surface)
- Electronics: DAE4 Sn778; Calibrated: 2011/11/22
- Phantom: HAC Test Arch with AMCC; Type: SD HAC P01 BA;
- Measurement SW: DASY4, V4.7 Build 80; Postprocessing SW: SEMCAD, V1.8 Build 186

Scans/x (longitudinal) fine 3mm 42 x 6/ABM SNR(x,y,z) (15x3x1):

ABM1/ABM2 = 20.7 dB

ABM1 comp = -17.6 dB A/m

Location: -14.3, -3, 3.7 mm



0 dB = 1.00A/m

#03 T-Coil_CDMA2000 BC0_RC1+SO3_Ch777_Radial 2 (Y)

DUT: 230752

Communication System: CDMA ; Frequency: 848.31 MHz;Duty Cycle: 1:1

Medium: Air Medium parameters used: $\sigma = 0$ mho/m, $\epsilon_r = 1$; $\rho = 1$ kg/m³

Ambient Temperature : 22.6 °C

DASY4 Configuration:

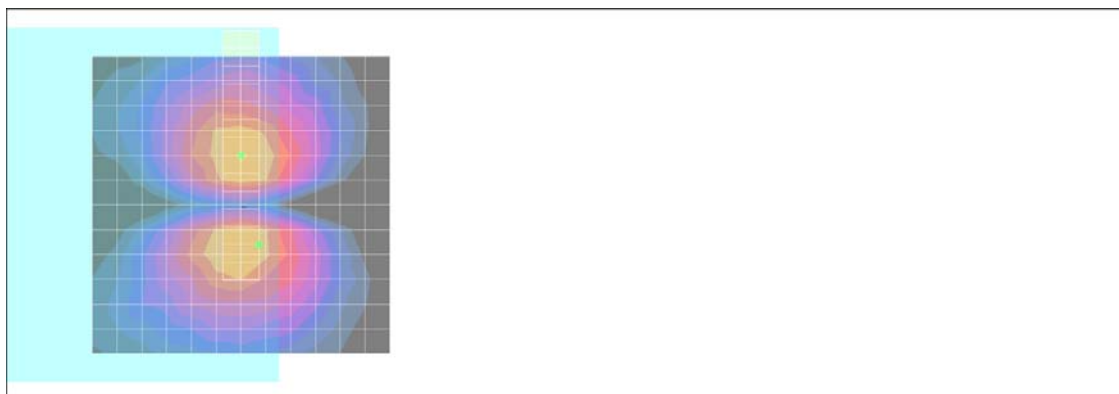
- Probe: AM1DV2 - 1038; ; Calibrated: 2012/1/23
- Sensor-Surface: 0mm (Fix Surface)
- Electronics: DAE4 Sn778; Calibrated: 2011/11/22
- Phantom: HAC Test Arch with AMCC; Type: SD HAC P01 BA;
- Measurement SW: DASY4, V4.7 Build 80; Postprocessing SW: SEMCAD, V1.8 Build 186

Scans/y (transversal) fine 3mm 6 x 42/ABM SNR(x,y,z) (3x15x1):

ABM1/ABM2 = 29.8 dB

ABM1 comp = -12.6 dB A/m

Location: -3, 6.7, 3.7 mm



0 dB = 1.00A/m

#04 T-Coil_CDMA2000 BC1_RC1+SO3_Ch25_Axial (Z)

DUT: 230752

Communication System: CDMA ; Frequency: 1851.25 MHz;Duty Cycle: 1:1

Medium: Air Medium parameters used: $\sigma = 0$ mho/m, $\epsilon_r = 1$; $\rho = 1$ kg/m³

Ambient Temperature : 22.6 °C

DASY4 Configuration:

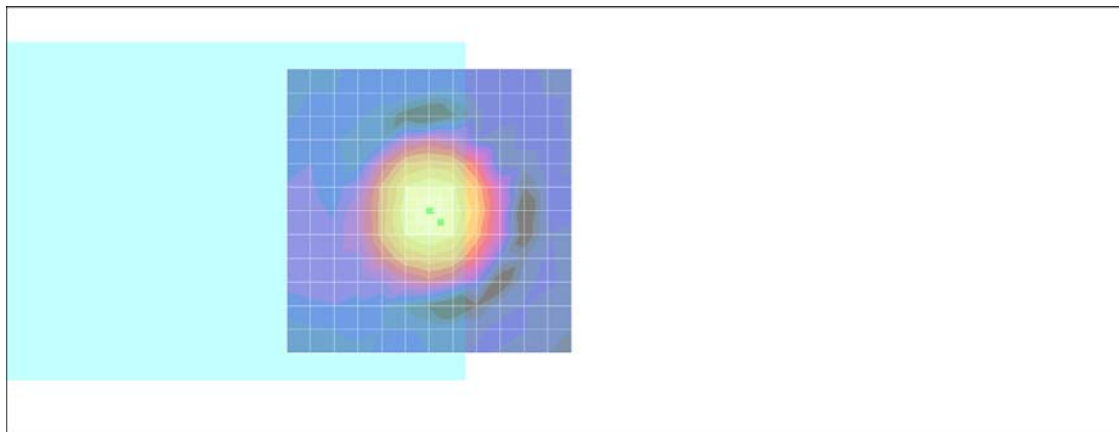
- Probe: AM1DV2 - 1038; ; Calibrated: 2012/1/23
- Sensor-Surface: 0mm (Fix Surface)
- Electronics: DAE4 Sn778; Calibrated: 2011/11/22
- Phantom: HAC Test Arch with AMCC; Type: SD HAC P01 BA;
- Measurement SW: DASY4, V4.7 Build 80; Postprocessing SW: SEMCAD, V1.8 Build 186

Scans/z (axial) fine 2mm 8 x 8/ABM SNR(x,y,z) (5x5x1):

ABM1/ABM2 = 34.0 dB

ABM1 comp = -4.25 dB A/m

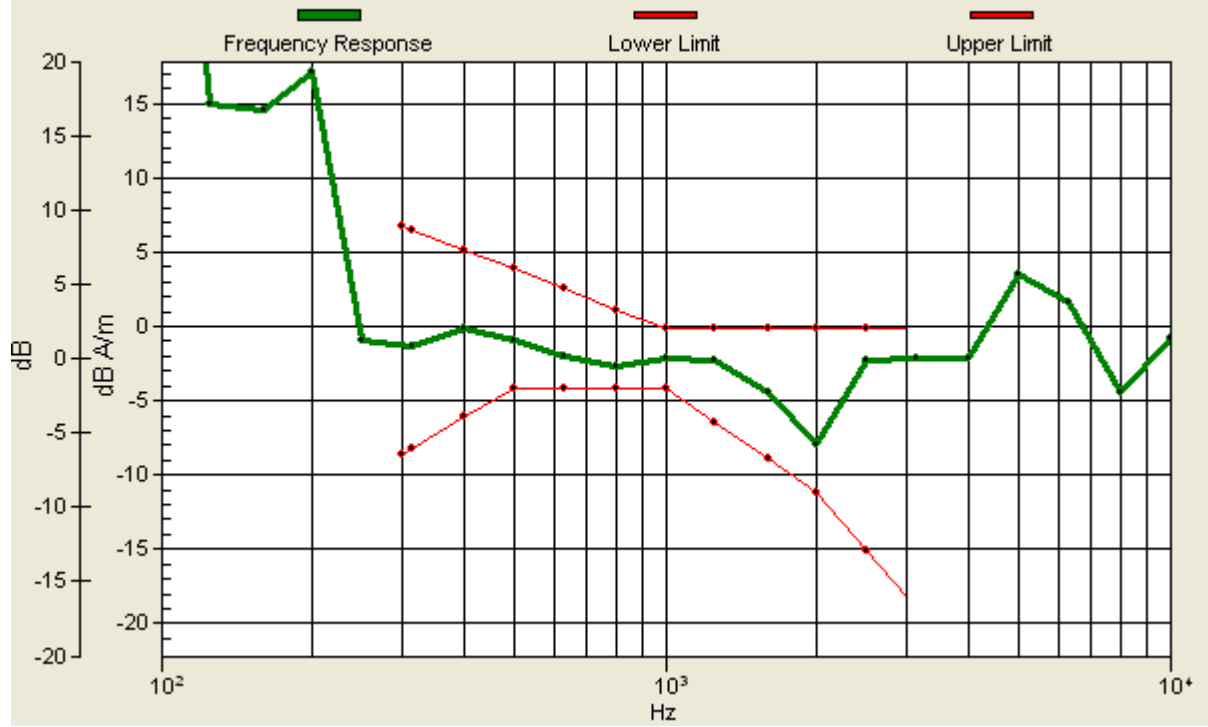
Location: -2, 2, 3.7 mm



0 dB = 1.00A/m

Scans/z (axial) wideband at best S/N/ABM Freq Resp(x,y,z,f)

Loc: 0, 0, 3.7 mm Diff: 1.53dB



#04 T-Coil_CDMA2000 BC1_RC1+SO3_Ch25_Radial 1 (X)

DUT: 230752

Communication System: CDMA ; Frequency: 1851.25 MHz;Duty Cycle: 1:1

Medium: Air Medium parameters used: $\sigma = 0$ mho/m, $\epsilon_r = 1$; $\rho = 1$ kg/m³

Ambient Temperature : 22.6 °C

DASY4 Configuration:

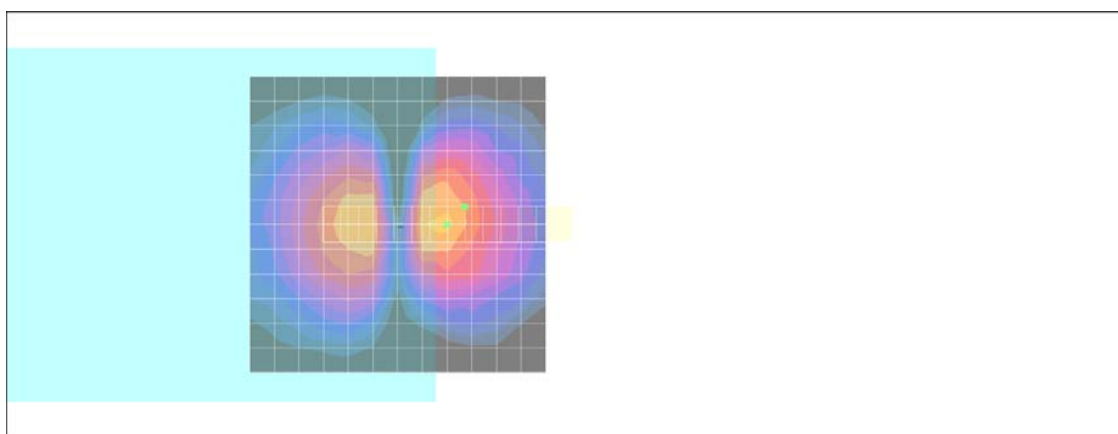
- Probe: AM1DV2 - 1038; ; Calibrated: 2012/1/23
- Sensor-Surface: 0mm (Fix Surface)
- Electronics: DAE4 Sn778; Calibrated: 2011/11/22
- Phantom: HAC Test Arch with AMCC; Type: SD HAC P01 BA;
- Measurement SW: DASY4, V4.7 Build 80; Postprocessing SW: SEMCAD, V1.8 Build 186

Scans/x (longitudinal) fine 3mm 42 x 6/ABM SNR(x,y,z) (15x3x1):

ABM1/ABM2 = 22.3 dB

ABM1 comp = -15.1 dB A/m

Location: -11.3, -3, 3.7 mm



0 dB = 1.00A/m

#04 T-Coil_CDMA2000 BC1_RC1+SO3_Ch25_Radial 2 (Y)

DUT: 230752

Communication System: CDMA ; Frequency: 1851.25 MHz;Duty Cycle: 1:1

Medium: Air Medium parameters used: $\sigma = 0$ mho/m, $\epsilon_r = 1$; $\rho = 1$ kg/m³

Ambient Temperature : 22.6 °C

DASY4 Configuration:

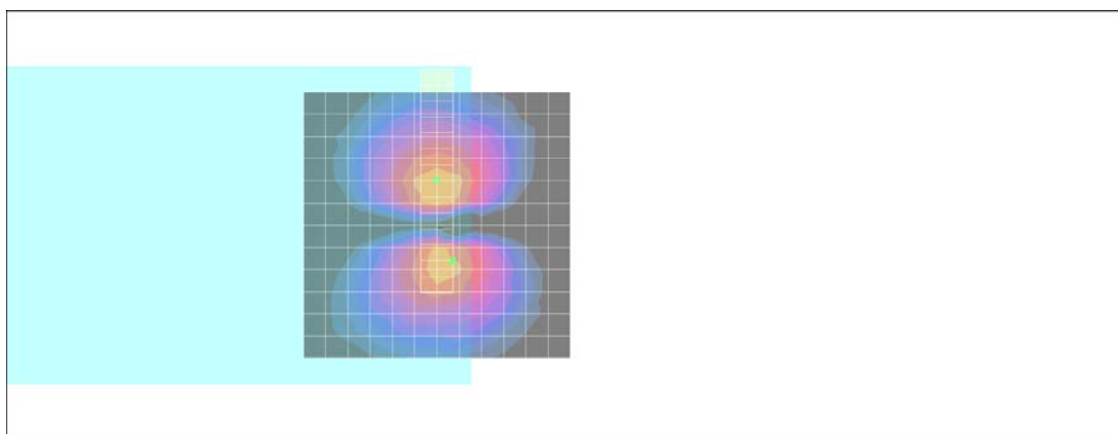
- Probe: AM1DV2 - 1038; ; Calibrated: 2012/1/23
- Sensor-Surface: 0mm (Fix Surface)
- Electronics: DAE4 Sn778; Calibrated: 2011/11/22
- Phantom: HAC Test Arch with AMCC; Type: SD HAC P01 BA;
- Measurement SW: DASY4, V4.7 Build 80; Postprocessing SW: SEMCAD, V1.8 Build 186

Scans/y (transversal) fine 3mm 6 x 42/ABM SNR(x,y,z) (3x15x1):

ABM1/ABM2 = 29.8 dB

ABM1 comp = -12.6 dB A/m

Location: -3, 6.7, 3.7 mm



0 dB = 1.00A/m

#05 T-Coil_CDMA2000 BC1_RC1+SO3_Ch600_Axial (Z)

DUT: 230752

Communication System: CDMA ; Frequency: 1880 MHz;Duty Cycle: 1:1

Medium: Air Medium parameters used: $\sigma = 0$ mho/m, $\epsilon_r = 1$; $\rho = 1$ kg/m³

Ambient Temperature : 22.6 °C

DASY4 Configuration:

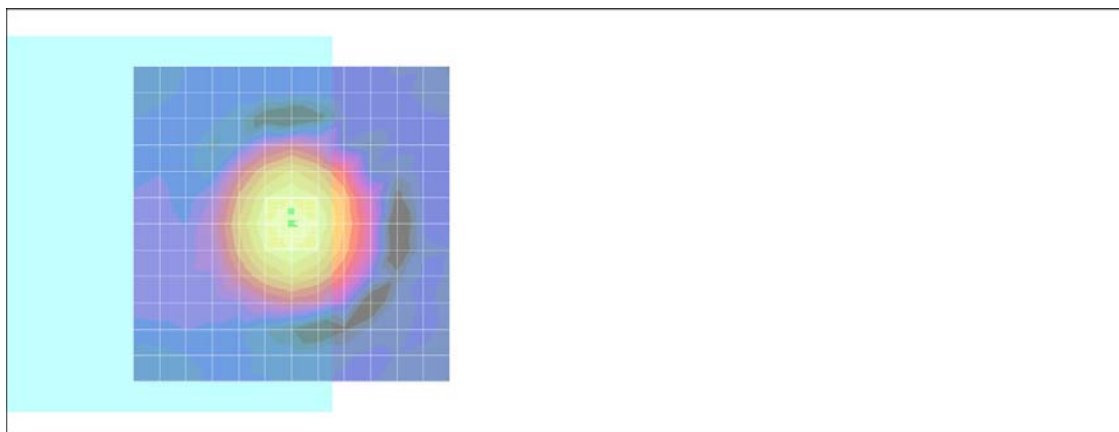
- Probe: AM1DV2 - 1038; ; Calibrated: 2012/1/23
- Sensor-Surface: 0mm (Fix Surface)
- Electronics: DAE4 Sn778; Calibrated: 2011/11/22
- Phantom: HAC Test Arch with AMCC; Type: SD HAC P01 BA;
- Measurement SW: DASY4, V4.7 Build 80; Postprocessing SW: SEMCAD, V1.8 Build 186

Scans/z (axial) fine 2mm 8 x 8/ABM SNR(x,y,z) (5x5x1):

ABM1/ABM2 = 34.6 dB

ABM1 comp = -3.21 dB A/m

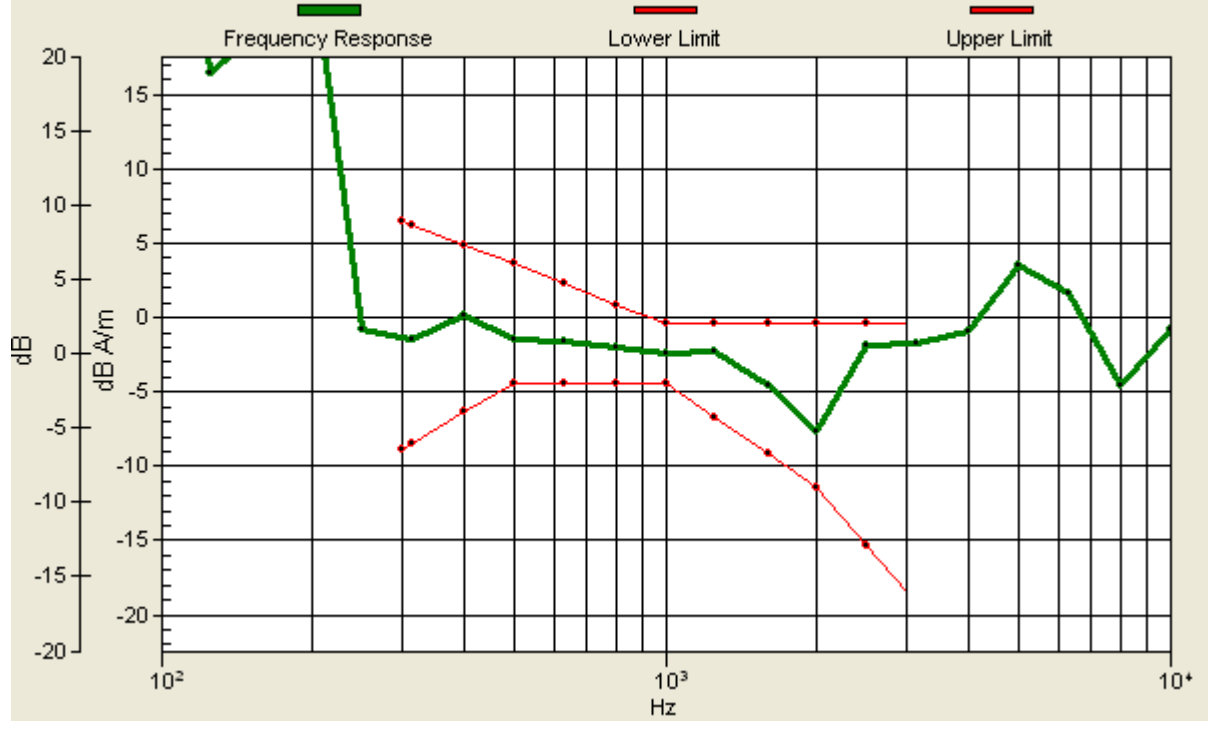
Location: 0, -2, 3.7 mm



0 dB = 1.00A/m

Scans/z (axial) wideband at best S/N/ABM Freq Resp(x,y,z,f)

Loc: 0, 0, 3.7 mm Diff: 1.37dB



#05 T-Coil_CDMA2000 BC1_RC1+SO3_Ch600_Radial 1 (X)

DUT: 230752

Communication System: CDMA ; Frequency: 1880 MHz;Duty Cycle: 1:1

Medium: Air Medium parameters used: $\sigma = 0$ mho/m, $\epsilon_r = 1$; $\rho = 1$ kg/m³

Ambient Temperature : 22.6 °C

DASY4 Configuration:

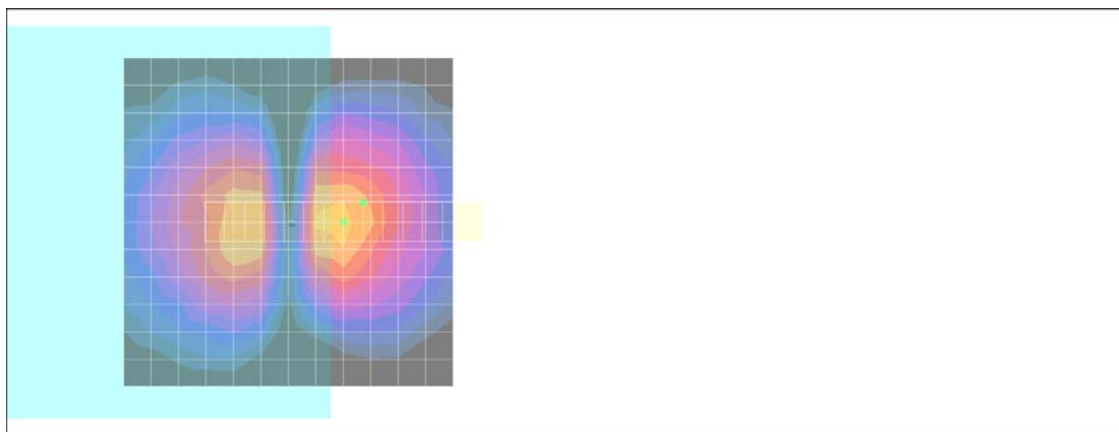
- Probe: AM1DV2 - 1038; ; Calibrated: 2012/1/23
- Sensor-Surface: 0mm (Fix Surface)
- Electronics: DAE4 Sn778; Calibrated: 2011/11/22
- Phantom: HAC Test Arch with AMCC; Type: SD HAC P01 BA;
- Measurement SW: DASY4, V4.7 Build 80; Postprocessing SW: SEMCAD, V1.8 Build 186

Scans/x (longitudinal) fine 3mm 42 x 6/ABM SNR(x,y,z) (15x3x1):

ABM1/ABM2 = 23.2 dB

ABM1 comp = -14.4 dB A/m

Location: -11.3, -3, 3.7 mm



0 dB = 1.00A/m

#05 T-Coil_CDMA2000 BC1_RC1+SO3_Ch600_Radial 2 (Y)

DUT: 230752

Communication System: CDMA ; Frequency: 1880 MHz;Duty Cycle: 1:1

Medium: Air Medium parameters used: $\sigma = 0$ mho/m, $\epsilon_r = 1$; $\rho = 1$ kg/m³

Ambient Temperature : 22.6 °C

DASY4 Configuration:

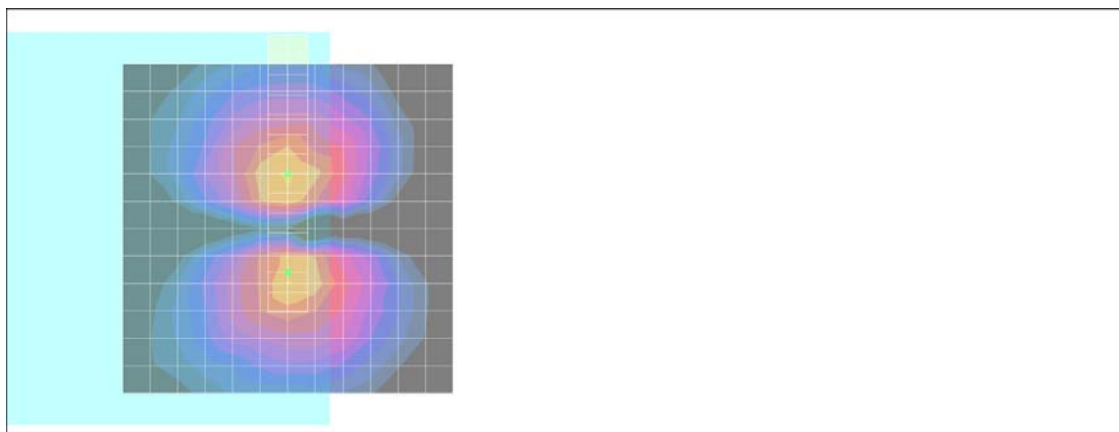
- Probe: AM1DV2 - 1038; ; Calibrated: 2012/1/23
- Sensor-Surface: 0mm (Fix Surface)
- Electronics: DAE4 Sn778; Calibrated: 2011/11/22
- Phantom: HAC Test Arch with AMCC; Type: SD HAC P01 BA;
- Measurement SW: DASY4, V4.7 Build 80; Postprocessing SW: SEMCAD, V1.8 Build 186

Scans/y (transversal) fine 3mm 6 x 42/ABM SNR(x,y,z) (3x15x1):

ABM1/ABM2 = 30.3 dB

ABM1 comp = -12.4 dB A/m

Location: 0, 6.7, 3.7 mm



0 dB = 1.00A/m

#06 T-Coil_CDMA2000 BC1_RC1+SO3_Ch1175_Axial (Z)

DUT: 230752

Communication System: CDMA ; Frequency: 1908.75 MHz;Duty Cycle: 1:1

Medium: Air Medium parameters used: $\sigma = 0$ mho/m, $\epsilon_r = 1$; $\rho = 1$ kg/m³

Ambient Temperature : 22.6 °C

DASY4 Configuration:

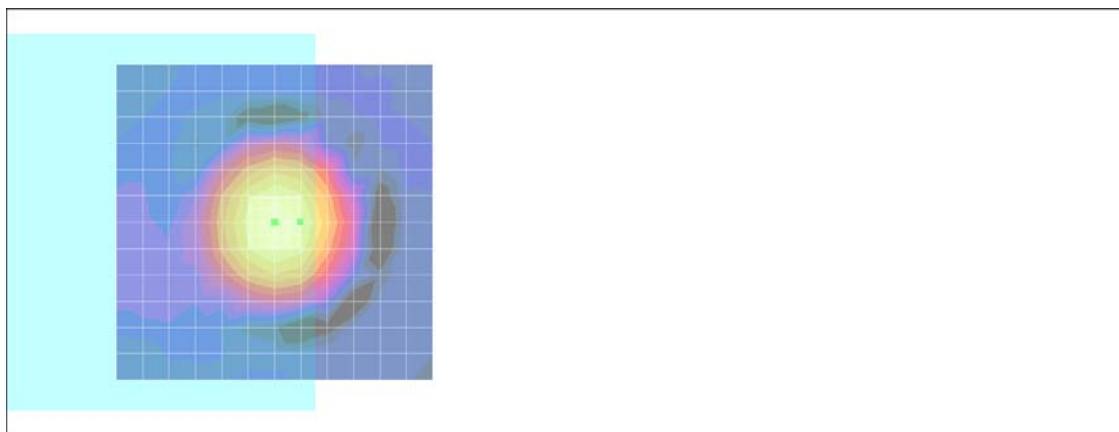
- Probe: AM1DV2 - 1038; ; Calibrated: 2012/1/23
- Sensor-Surface: 0mm (Fix Surface)
- Electronics: DAE4 Sn778; Calibrated: 2011/11/22
- Phantom: HAC Test Arch with AMCC; Type: SD HAC P01 BA;
- Measurement SW: DASY4, V4.7 Build 80; Postprocessing SW: SEMCAD, V1.8 Build 186

Scans/z (axial) fine 2mm 8 x 8/ABM SNR(x,y,z) (5x5x1):

ABM1/ABM2 = 36.2 dB

ABM1 comp = -5.62 dB A/m

Location: -4, 0, 3.7 mm



0 dB = 1.00A/m

Scans/z (axial) wideband at best S/N/ABM Freq Resp(x,y,z,f)

Loc: 0, 0, 3.7 mm Diff: 1.49dB



#06 T-Coil_CDMA2000 BC1_RC1+SO3_Ch1175_Radial 1 (X)

DUT: 230752

Communication System: CDMA ; Frequency: 1908.75 MHz;Duty Cycle: 1:1

Medium: Air Medium parameters used: $\sigma = 0$ mho/m, $\epsilon_r = 1$; $\rho = 1$ kg/m³

Ambient Temperature : 22.6 °C

DASY4 Configuration:

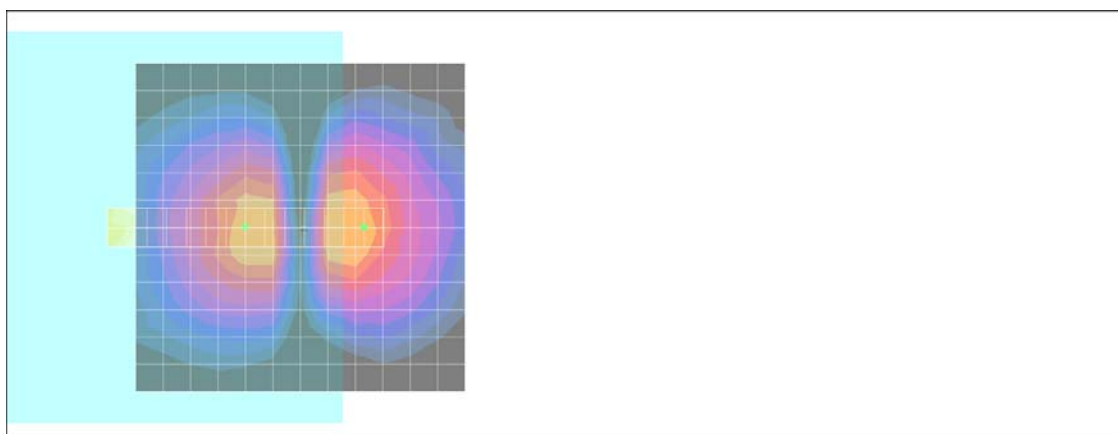
- Probe: AM1DV2 - 1038; ; Calibrated: 2012/1/23
- Sensor-Surface: 0mm (Fix Surface)
- Electronics: DAE4 Sn778; Calibrated: 2011/11/22
- Phantom: HAC Test Arch with AMCC; Type: SD HAC P01 BA;
- Measurement SW: DASY4, V4.7 Build 80; Postprocessing SW: SEMCAD, V1.8 Build 186

Scans/x (longitudinal) fine 3mm 42 x 6/ABM SNR(x,y,z) (15x3x1):

ABM1/ABM2 = 22.5 dB

ABM1 comp = -13.0 dB A/m

Location: -9.7, 0, 3.7 mm



0 dB = 1.00A/m

#06 T-Coil_CDMA2000 BC1_RC1+SO3_Ch1175_Radial 2 (Y)

DUT: 230752

Communication System: CDMA ; Frequency: 1908.75 MHz;Duty Cycle: 1:1

Medium: Air Medium parameters used: $\sigma = 0$ mho/m, $\epsilon_r = 1$; $\rho = 1$ kg/m³

Ambient Temperature : 22.6 °C

DASY4 Configuration:

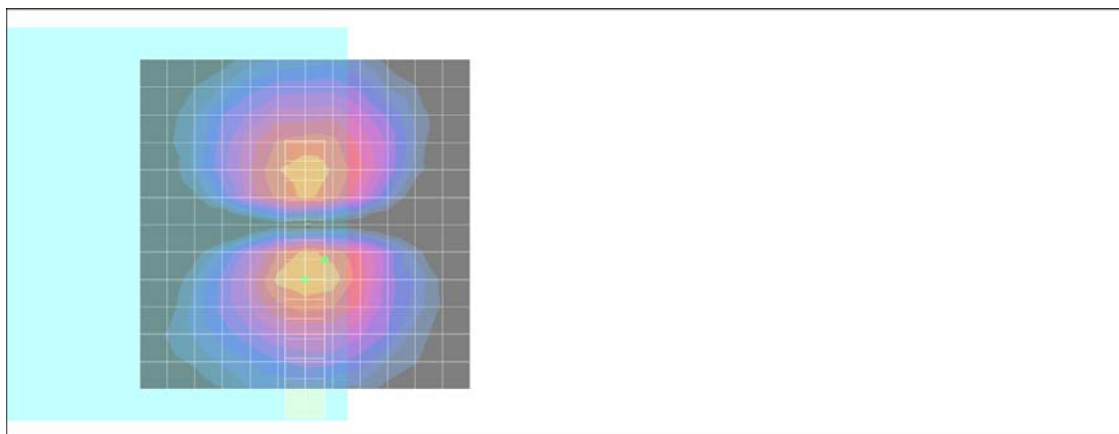
- Probe: AM1DV2 - 1038; ; Calibrated: 2012/1/23
- Sensor-Surface: 0mm (Fix Surface)
- Electronics: DAE4 Sn778; Calibrated: 2011/11/22
- Phantom: HAC Test Arch with AMCC; Type: SD HAC P01 BA;
- Measurement SW: DASY4, V4.7 Build 80; Postprocessing SW: SEMCAD, V1.8 Build 186

Scans/y (transversal) fine 3mm 6 x 42/ABM SNR(x,y,z) (3x15x1):

ABM1/ABM2 = 30.1 dB

ABM1 comp = -12.6 dB A/m

Location: -3, 5.3, 3.7 mm



0 dB = 1.00A/m