

### HAC\_E\_Dipole\_835\_120322

**DUT: CD835V3 S/N:1045**

Communication System: CW; Frequency: 835 MHz; Duty Cycle: 1:1

Medium: Air Medium parameters used:  $\sigma = 0$  mho/m,  $\epsilon_r = 1$ ;  $\rho = 1000$  kg/m<sup>3</sup>

Ambient Temperature : 22.6 °C

DASY4 Configuration:

- Probe: ER3DV6 - SN2358; ConvF(1, 1, 1); Calibrated: 2012/1/26
- Sensor-Surface: (Fix Surface)
- Electronics: DAE4 Sn778; Calibrated: 2011/11/22
- Phantom: HAC Test Arch with AMCC; Type: SD HAC P01 BA
- Measurement SW: DASY4, V4.7 Build 80; Postprocessing SW: SEMCAD, V1.8 Build 186

**E Scan - measurement distance from the probe sensor center to CD835 Dipole = 10mm/Hearing Aid Compatibility Test (41x361x1):** Measurement grid: dx=5mm, dy=5mm

Maximum value of peak Total field = 174.0 V/m

Probe Modulation Factor = 1.00

Reference Value = 126.5 V/m; Power Drift = -0.035 dB

Average value of Total=(174.0+170.6) / 2 = 172.3 V/m

Peak E-field in V/m

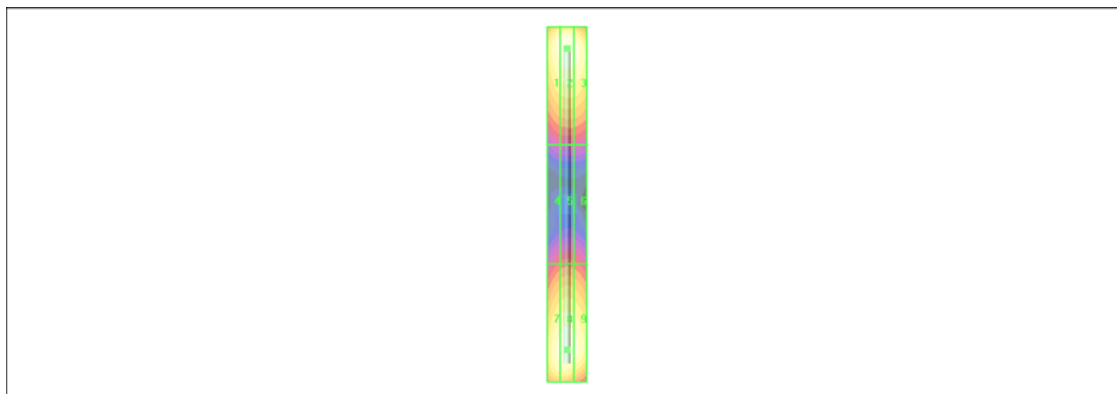
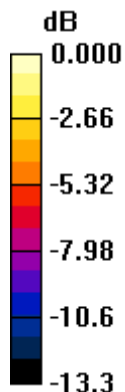
Grid 1 <b>167.9 M4</b>	Grid 2 <b>174.0 M4</b>	Grid 3 <b>169.0 M4</b>
Grid 4 <b>87.7 M4</b>	Grid 5 <b>91.0 M4</b>	Grid 6 <b>89.1 M4</b>
Grid 7 <b>165.4 M4</b>	Grid 8 <b>170.6 M4</b>	Grid 9 <b>165.4 M4</b>

**Cursor:**

Total = 174.0 V/m

E Category: M4

Location: 0, -79, 4.7 mm



0 dB = 174.0V/m

### HAC\_E\_Dipole\_1880\_120322

**DUT: CD1880V3 S/N:1038**

Communication System: CW; Frequency: 1880 MHz; Duty Cycle: 1:1

Medium: Air Medium parameters used:  $\sigma = 0$  mho/m,  $\epsilon_r = 1$ ;  $\rho = 1000$  kg/m<sup>3</sup>

Ambient Temperature : 22.6 °C

DASY4 Configuration:

- Probe: ER3DV6 - SN2358; ConvF(1, 1, 1); Calibrated: 2012/1/26
- Sensor-Surface: (Fix Surface)
- Electronics: DAE4 Sn778; Calibrated: 2011/11/22
- Phantom: HAC Test Arch with AMCC; Type: SD HAC P01 BA;
- Measurement SW: DASY4, V4.7 Build 80; Postprocessing SW: SEMCAD, V1.8 Build 186

### E Scan - measurement distance from the probe sensor center to CD1880 Dipole = 10mm/Hearing Aid Compatibility Test (41x181x1): Measurement grid: dx=5mm, dy=5mm

Maximum value of peak Total field = 142.8 V/m

Probe Modulation Factor = 1.00

Reference Value = 145.2 V/m; Power Drift = -0.027 dB

Average value of Total=(142.8+142.8) / 2 = 142.8 V/m

Peak E-field in V/m

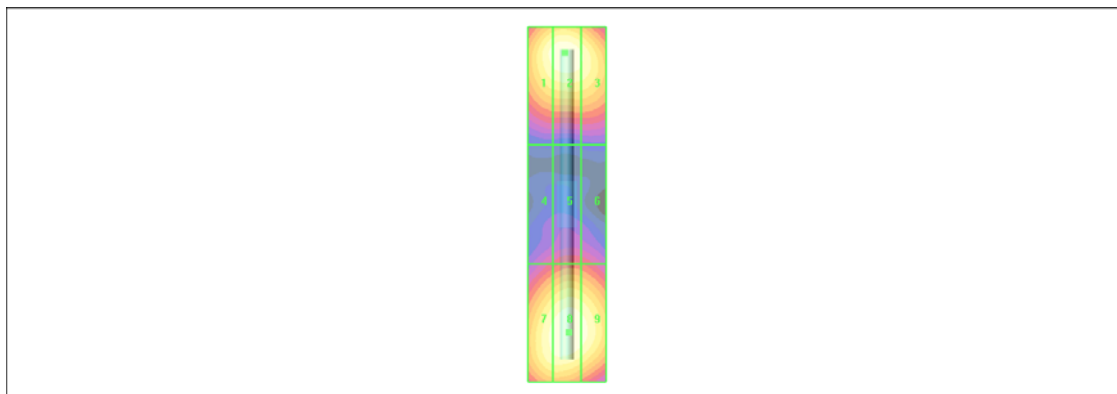
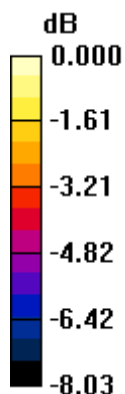
Grid 1 <b>138.7 M2</b>	Grid 2 <b>142.8 M2</b>	Grid 3 <b>135.9 M2</b>
Grid 4 <b>89.3 M3</b>	Grid 5 <b>95.1 M3</b>	Grid 6 <b>93.2 M3</b>
Grid 7 <b>138.0 M2</b>	Grid 8 <b>142.8 M2</b>	Grid 9 <b>139.4 M2</b>

**Cursor:**

Total = 142.8 V/m

E Category: M2

Location: -0.5, 32.5, 4.7 mm



0 dB = 142.8V/m

### HAC\_H\_Dipole\_835\_120322

**DUT: CD835V3 S/N:1045**

Communication System: CW; Frequency: 835 MHz; Duty Cycle: 1:1

Medium: Air Medium parameters used:  $\sigma = 0$  mho/m,  $\epsilon_r = 1$ ;  $\rho = 1$  kg/m<sup>3</sup>

Ambient Temperature : 22.5 °C

DASY4 Configuration:

- Probe: H3DV6 - SN6184; ; Calibrated: 2012/1/26
- Sensor-Surface: (Fix Surface)
- Electronics: DAE4 Sn778; Calibrated: 2011/11/22
- Phantom: HAC Test Arch with AMCC; Type: SD HAC P01 BA;
- Measurement SW: DASY4, V4.7 Build 80; Postprocessing SW: SEMCAD, V1.8 Build 186

**H Scan - measurement distance from the probe sensor center to CD835 Dipole = 10mm/Hearing Aid Compatibility Test (41x361x1):** Measurement grid: dx=5mm, dy=5mm

Probe Modulation Factor = 1.00

Reference Value = 0.491 A/m; Power Drift = -0.006 dB

Maximum value of peak Total field = 0.443 A/m

Peak H-field in A/m

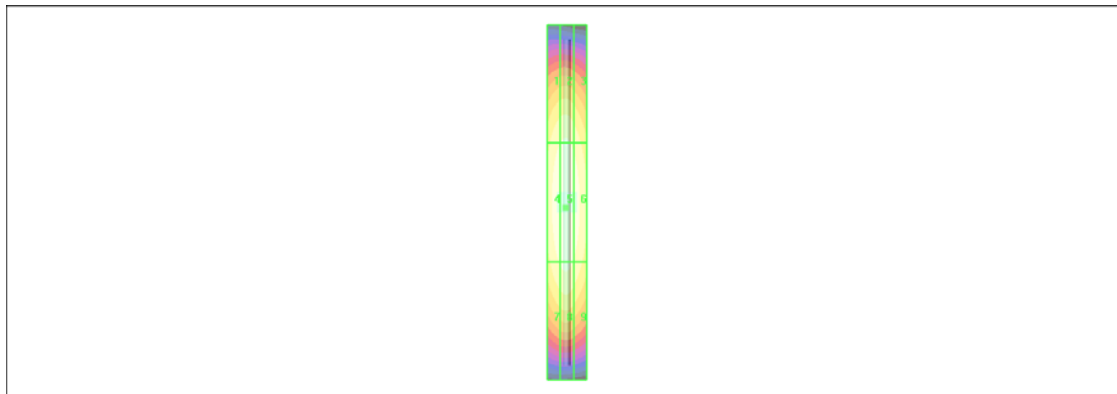
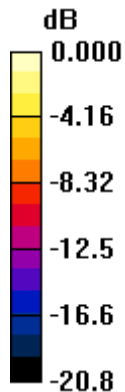
Grid 1 <b>0.377 M4</b>	Grid 2 <b>0.388 M4</b>	Grid 3 <b>0.363 M4</b>
Grid 4 <b>0.429 M4</b>	Grid 5 <b>0.443 M4</b>	Grid 6 <b>0.415 M4</b>
Grid 7 <b>0.384 M4</b>	Grid 8 <b>0.398 M4</b>	Grid 9 <b>0.371 M4</b>

**Cursor:**

Total = 0.443 A/m

H Category: M4

Location: 0.5, 2.5, 5.2 mm



0 dB = 0.443A/m

### HAC\_H\_Dipole\_1880\_120322

**DUT: CD1880V3 S/N:1038**

Communication System: CW; Frequency: 1880 MHz; Duty Cycle: 1:1

Medium: Air Medium parameters used:  $\sigma = 0$  mho/m,  $\epsilon_r = 1$ ;  $\rho = 1$  kg/m<sup>3</sup>

Ambient Temperature : 22.5 °C

DASY4 Configuration:

- Probe: H3DV6 - SN6184; ; Calibrated: 2012/1/26
- Sensor-Surface: (Fix Surface)
- Electronics: DAE4 Sn778; Calibrated: 2011/11/22
- Phantom: HAC Test Arch with AMCC; Type: SD HAC P01 BA;
- Measurement SW: DASY4, V4.7 Build 80; Postprocessing SW: SEMCAD, V1.8 Build 186

**H Scan - measurement distance from the probe sensor center to CD1880 Dipole = 10mm/Hearing Aid Compatibility Test (41x181x1):** Measurement grid: dx=5mm, dy=5mm

Probe Modulation Factor = 1.00

Reference Value = 0.543 A/m; Power Drift = 0.001 dB

Maximum value of peak Total field = 0.491 A/m

Peak H-field in A/m

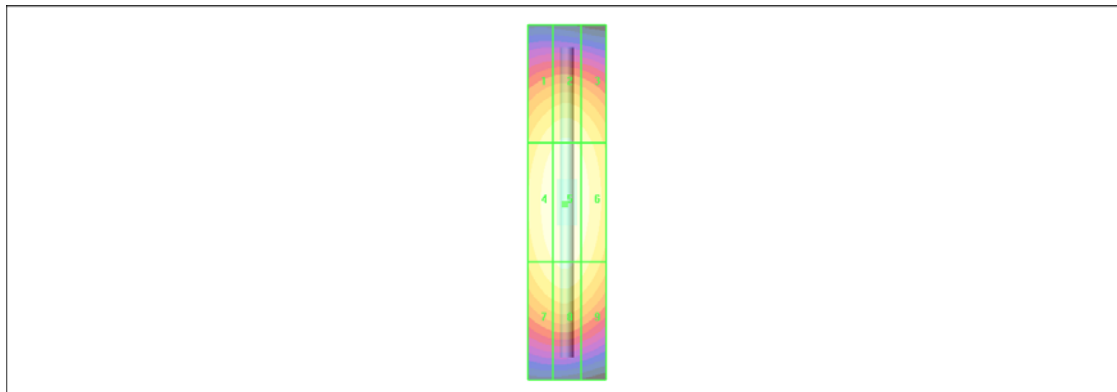
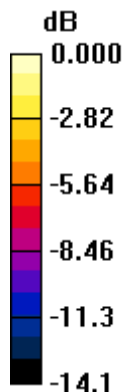
Grid 1 <b>0.435 M2</b>	Grid 2 <b>0.451 M2</b>	Grid 3 <b>0.430 M2</b>
Grid 4 <b>0.475 M2</b>	Grid 5 <b>0.491 M2</b>	Grid 6 <b>0.468 M2</b>
Grid 7 <b>0.439 M2</b>	Grid 8 <b>0.454 M2</b>	Grid 9 <b>0.426 M2</b>

**Cursor:**

Total = 0.491 A/m

H Category: M2

Location: 0.5, 0.5, 5.2 mm



0 dB = 0.491A/m