

#59 802.11b_Left Cheek_Ch1

DUT: 142113-02

Communication System: 802.11b ; Frequency: 2412 MHz;Duty Cycle: 1:1

Medium: HSL_2450_110607 Medium parameters used: $f = 2412$ MHz; $\sigma = 1.81$ mho/m; $\epsilon_r = 39.4$; $\rho = 1000$ kg/m³

Ambient Temperature : 22.6 °C ; Liquid Temperature : 21.6 °C

DASY4 Configuration:

- Probe: ET3DV6 - SN1787; ConvF(4.41, 4.41, 4.41); Calibrated: 2011/5/20
- Sensor-Surface: 4mm (Mechanical Surface Detection)
- Electronics: DAE3 Sn495; Calibrated: 2011/4/28
- Phantom: SAM_Left; Type: SAM; Serial: TP-1150
- Measurement SW: DASY4, V4.7 Build 80; Postprocessing SW: SEMCAD, V1.8 Build 186

Ch1/Area Scan (41x71x1): Measurement grid: dx=20mm, dy=20mm

Maximum value of SAR (interpolated) = 0.139 mW/g

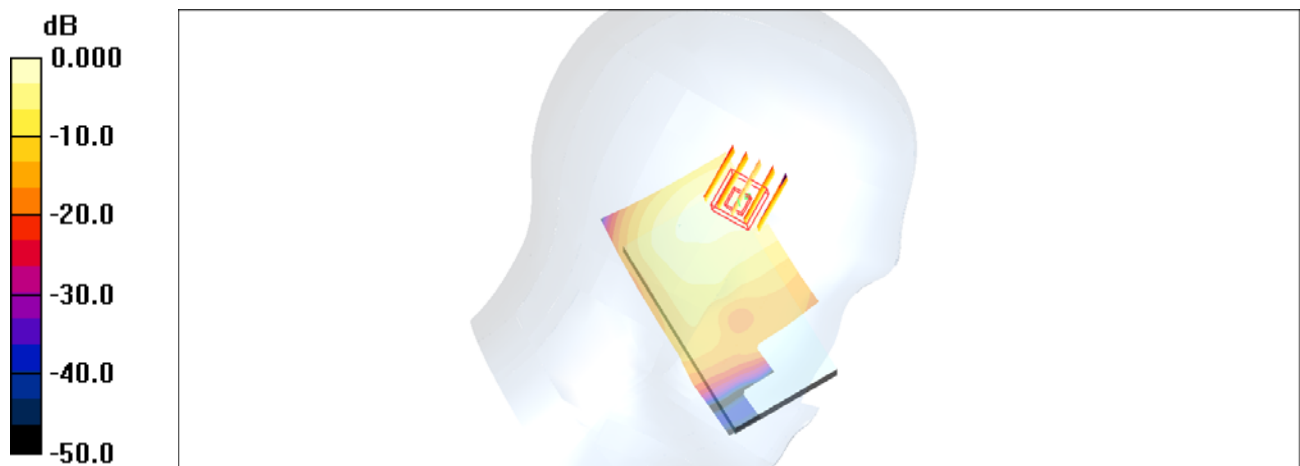
Ch1/Zoom Scan (5x5x7)/Cube 0: Measurement grid: dx=8mm, dy=8mm, dz=5mm

Reference Value = 7.45 V/m; Power Drift = -0.162 dB

Peak SAR (extrapolated) = 0.363 W/kg

SAR(1 g) = 0.157 mW/g; SAR(10 g) = 0.074 mW/g

Maximum value of SAR (measured) = 0.164 mW/g



0 dB = 0.164mW/g

#59 802.11b_Left Cheek_Ch1_2D

DUT: 142113-02

Communication System: 802.11b ; Frequency: 2412 MHz;Duty Cycle: 1:1

Medium: HSL_2450_110607 Medium parameters used: $f = 2412$ MHz; $\sigma = 1.81$ mho/m; $\epsilon_r = 39.4$; $\rho = 1000$ kg/m³

Ambient Temperature : 22.6 °C ; Liquid Temperature : 21.6 °C

DASY4 Configuration:

- Probe: ET3DV6 - SN1787; ConvF(4.41, 4.41, 4.41); Calibrated: 2011/5/20
- Sensor-Surface: 4mm (Mechanical Surface Detection)
- Electronics: DAE3 Sn495; Calibrated: 2011/4/28
- Phantom: SAM_Left; Type: SAM; Serial: TP-1150
- Measurement SW: DASY4, V4.7 Build 80; Postprocessing SW: SEMCAD, V1.8 Build 186

Ch1/Area Scan (41x71x1): Measurement grid: dx=20mm, dy=20mm

Maximum value of SAR (interpolated) = 0.139 mW/g

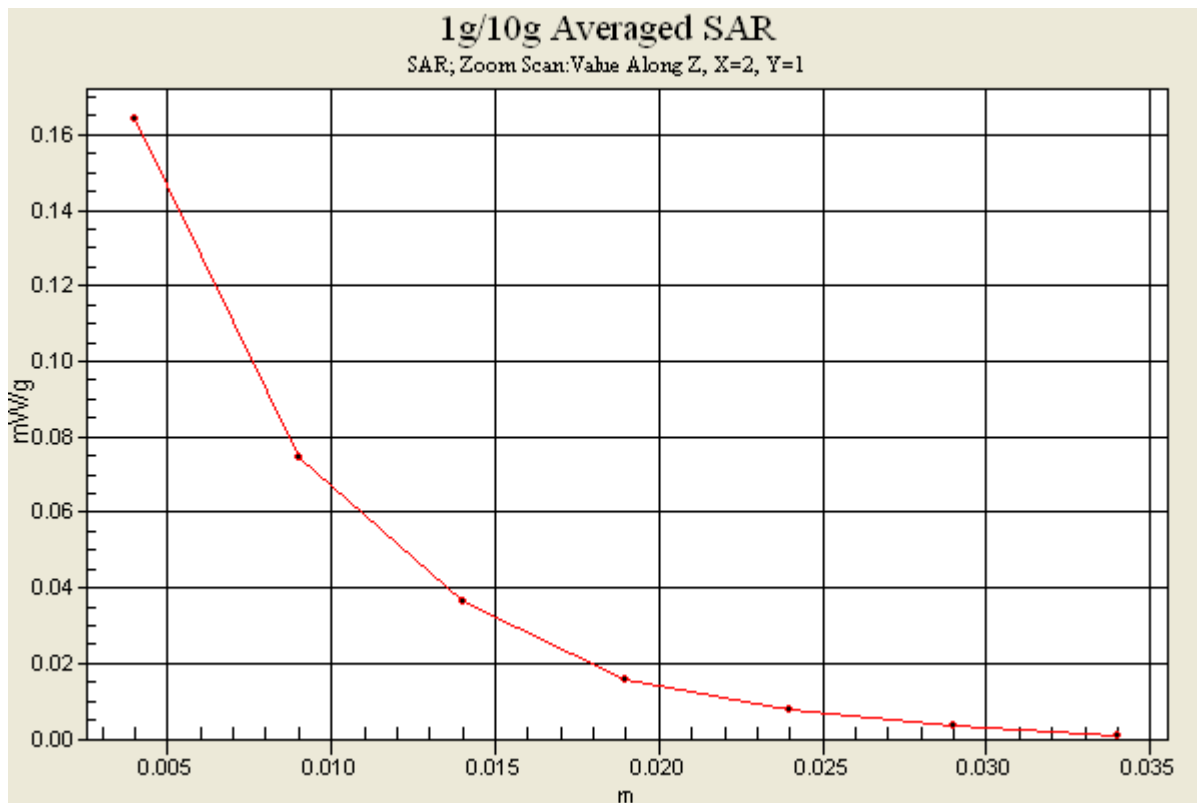
Ch1/Zoom Scan (5x5x7)/Cube 0: Measurement grid: dx=8mm, dy=8mm, dz=5mm

Reference Value = 7.45 V/m; Power Drift = -0.162 dB

Peak SAR (extrapolated) = 0.363 W/kg

SAR(1 g) = 0.157 mW/g; SAR(10 g) = 0.074 mW/g

Maximum value of SAR (measured) = 0.164 mW/g



#63 802.11b_Rear Face_1cm_Ch1

DUT: DominoPlus

Communication System: 802.11b ; Frequency: 2412 MHz; Duty Cycle: 1:1
Medium: MSL_2450_110607 Medium parameters used: $f = 2412$ MHz; $\sigma = 1.96$ mho/m; $\epsilon_r = 53.9$; $\rho = 1000$ kg/m³

Ambient Temperature : 22.6 °C ; Liquid Temperature : 21.6 °C

DASY4 Configuration:

- Probe: ET3DV6 - SN1787; ConvF(3.96, 3.96, 3.96); Calibrated: 2011/5/20
- Sensor-Surface: 4mm (Mechanical Surface Detection)
- Electronics: DAE3 Sn495; Calibrated: 2011/4/28
- Phantom: SAM_Right; Type: SAM; Serial: TP-1303
- Measurement SW: DASY4, V4.7 Build 80; Postprocessing SW: SEMCAD, V1.8 Build 186

Ch1/Area Scan (41x71x1): Measurement grid: dx=20mm, dy=20mm

Maximum value of SAR (interpolated) = 0.301 mW/g

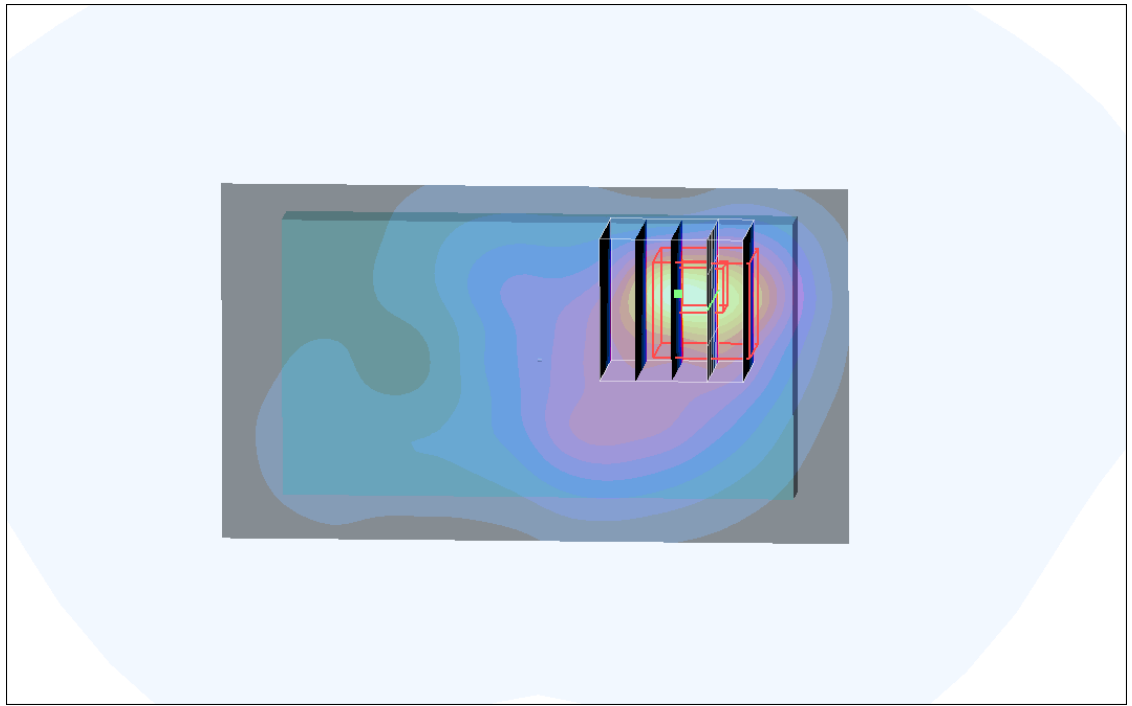
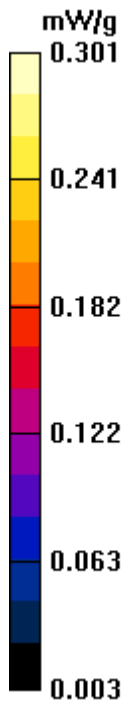
Ch1/Zoom Scan (5x5x7)/Cube 0: Measurement grid: dx=8mm, dy=8mm, dz=5mm

Reference Value = 7.40 V/m; Power Drift = -0.047 dB

Peak SAR (extrapolated) = 0.773 W/kg

SAR(1 g) = 0.287 mW/g; SAR(10 g) = 0.130 mW/g

Maximum value of SAR (measured) = 0.291 mW/g



#63 802.11b_Rear Face_1cm_Ch1_2D

DUT: DominoPlus

Communication System: 802.11b ; Frequency: 2412 MHz; Duty Cycle: 1:1
Medium: MSL_2450_110607 Medium parameters used: $f = 2412$ MHz; $\sigma = 1.96$
mho/m; $\epsilon_r = 53.9$; $\rho = 1000$ kg/m³

Ambient Temperature : 22.6 °C ; Liquid Temperature : 21.6 °C

DASY4 Configuration:

- Probe: ET3DV6 - SN1787; ConvF(3.96, 3.96, 3.96); Calibrated: 2011/5/20
- Sensor-Surface: 4mm (Mechanical Surface Detection)
- Electronics: DAE3 Sn495; Calibrated: 2011/4/28
- Phantom: SAM_Right; Type: SAM; Serial: TP-1303
- Measurement SW: DASY4, V4.7 Build 80; Postprocessing SW: SEMCAD, V1.8 Build 186

Ch1/Area Scan (41x71x1): Measurement grid: dx=20mm, dy=20mm

Maximum value of SAR (interpolated) = 0.301 mW/g

Ch1/Zoom Scan (5x5x7)/Cube 0: Measurement grid: dx=8mm, dy=8mm, dz=5mm

Reference Value = 7.40 V/m; Power Drift = -0.047 dB

Peak SAR (extrapolated) = 0.773 W/kg

SAR(1 g) = 0.287 mW/g; SAR(10 g) = 0.130 mW/g

Maximum value of SAR (measured) = 0.291 mW/g

1g/10g Averaged SAR

SAR, Zoom Scan: Value Along Z, X=2, Y=3

