

**EXTERNAL PHOTOGRAPHS**

**This document contains 19 photographs**



Photograph No.1

G30 -Model F9000AAA- Front View (TOP side)



Photograph No.2

G30 -Model F9000ABA- Front View (TOP side)



Photograph No.3

G30 -Model F9100AAA- Front View (TOP side)

UFL RF Connector



Photograph No.4

G30 -Model F9100ABA- Front View (TOP side)

UFL RF Connector



Photograph No.5

G30- Model F9300AAA- Front View (TOP side)



Photograph No.6

G30- Model F9300ABA- Front View (TOP side)



Photograph No.7

UFL RF Connector

G30 -Model F9400AAA- Front View (TOP side)



Photograph No.8

UFL RF Connector

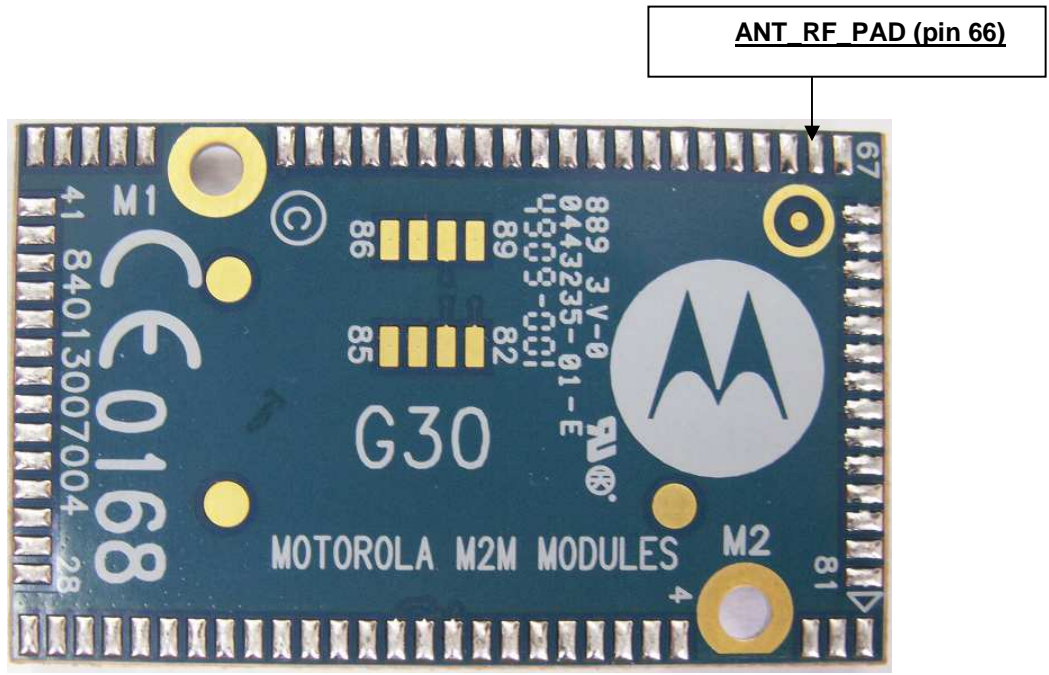
G30 -Model F9400ABA- Front View (TOP side)



**Photograph No.9**

**G30 – Rear View (BOTTOM side) – for models specified below:**

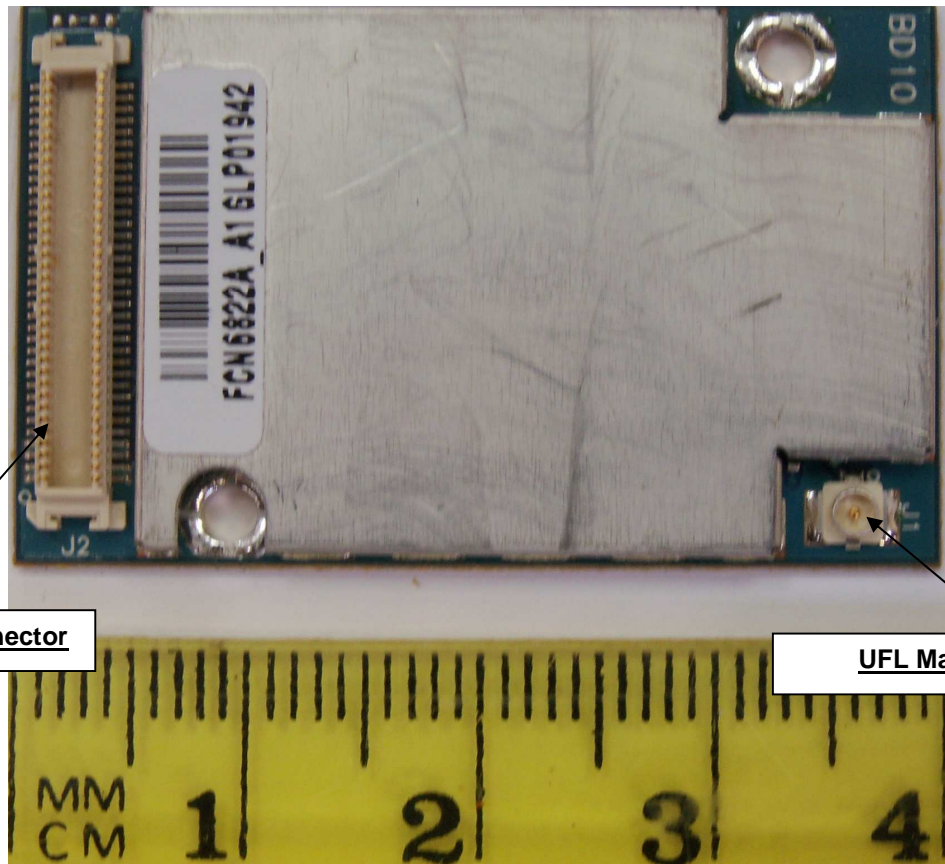
**F9100AAA / F9100ABA**  
**F9400AAA / F9400ABA**



**Photograph No.9a**

**G30 – Rear View (BOTTOM side) with ANT RF PAD output shown – for models specified below:**

**F9000AAA / F9000ABA**  
**F9300AAA / F9300ABA**

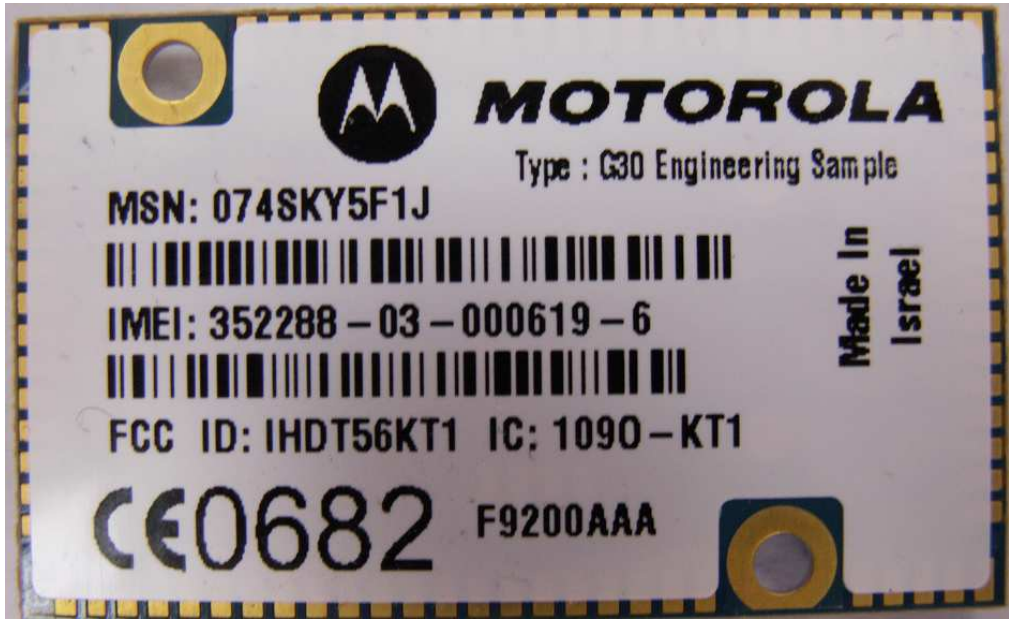


**70 Pins Interface Connector**

**UFL Main RF Connector**

**Photograph No.10**

**G30- Model F9200AAA - Rear View with ruler (TOP side)**



Photograph No.11

G30- Model F9200AAA - Front View (BOTTOM side)



Photograph No.12

G30- Model F9200AAA - Rear View (TOP side)

70 Pins Interface Connector

UFL Main RF Connector



Photograph No.13

G30- Model F9200ABA - Front View (BOTTOM side)



Photograph No.14

G30- Model F9200ABA - Rear View (TOP side)



Photograph No. 15

G30- Model F9500AAA- Front View (BOTTOM side)



Photograph No. 16

G30- Model F9500AAA- Rear View (TOP side)



Photograph No. 17

G30- Model F9500ABA- Front View (BOTTOM side)



Photograph No. 18

G30- Model F9500ABA- Rear View (TOP side)