



MOTOROLA



TESTING CERT # 2518.01

Exhibit 7B: SAR Test Report Photographs

Enterprise Mobility Solutions

EME Test Laboratory
8000 West Sunrise Blvd
Fort Lauderdale, FL. 33322



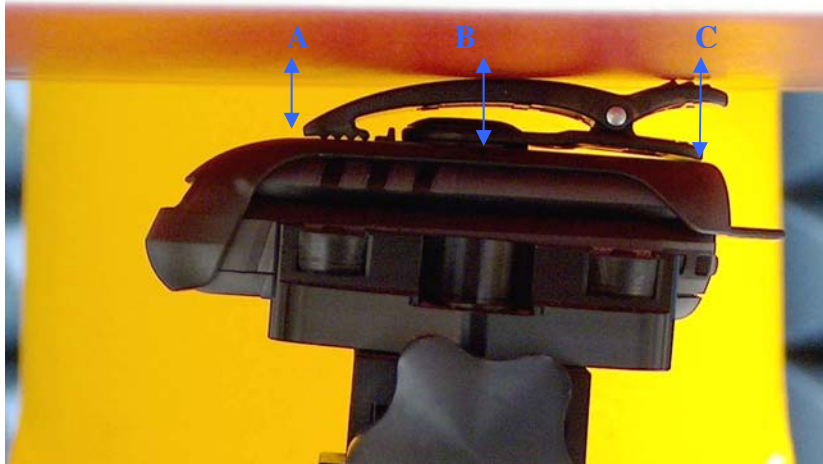
Signature on file
Deanna Zakharia
EMS EME Lab Senior Resource Manager, Laboratory Director

Approval Date: 9/21/09

1.0 Highest SAR Test Position per body location

1.1 Body

DUT w/ offered carry holster NNTN7793A against the phantom using the offered battery SNN5793A, battery cover NTN2543xxxA without any attached data/audio cable accessory.



Distance A – 12 mm
 Distance B – 13 mm
 Distance C – 15 mm

1.2 Face - Front with flip open and at 2.5cm separation

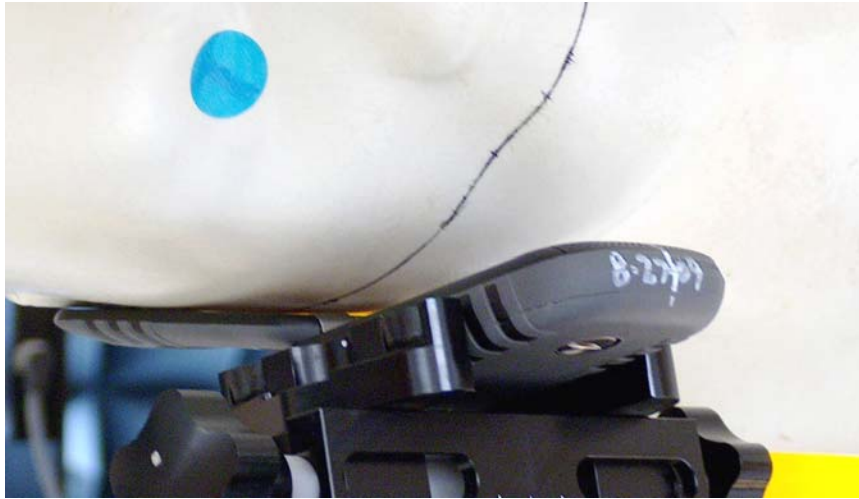
DUT w/ front side separated 2.5cm from phantom using the offered battery SNN5823A and battery cover NTN2543xxxA without any attached audio cable accessory.



Distance A – 25 mm
 Distance C – 25 mm

1.3 Head

DUT in touch position at right ear using the offered battery SNN5793A and battery cover NTN2543xxxA.

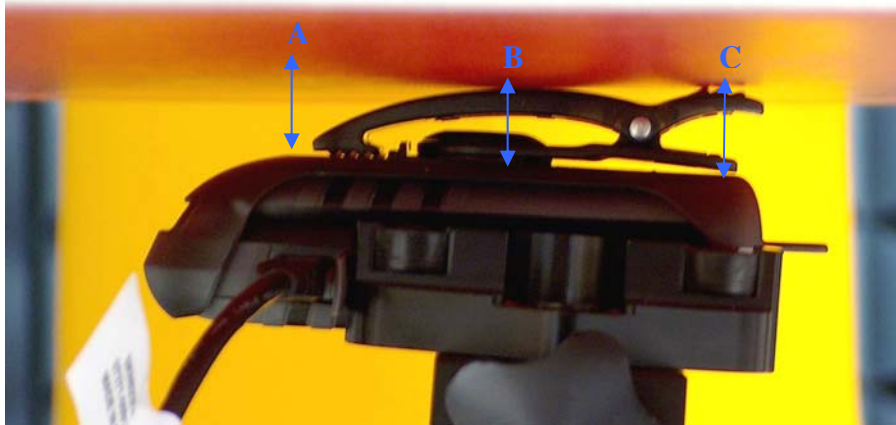


1.4 Hand
Not applicable.

2.0 Other SAR tested positions at the body

2.1 Body worn

DUT w/ offered carry holster NNTN7793A against the phantom using the offered battery SNN5793A, battery cover NTN2543xxxA with data cable SKN6238A. Same position used with audio cables SYN1458A, SYN1472A, NNTN5774C and NNTN5330B attached.



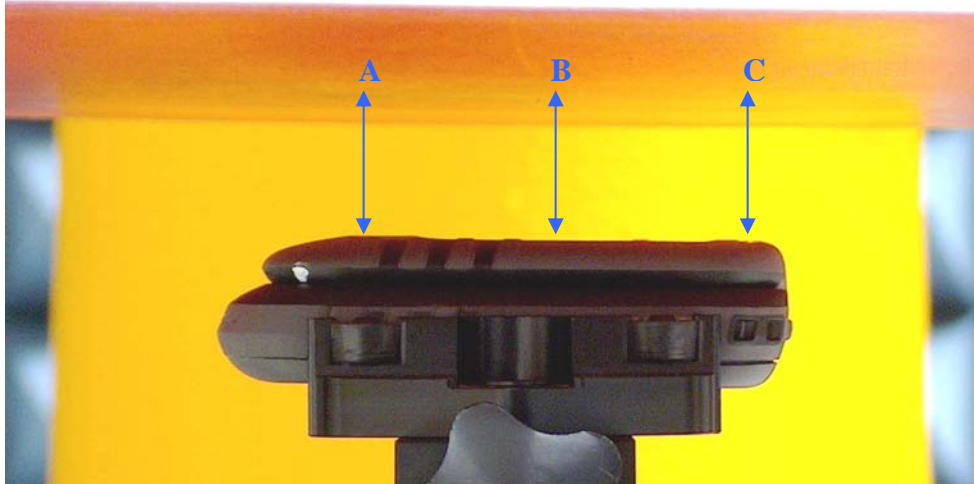
Distance A – 12 mm
Distance B – 13 mm
Distance C – 15 mm

2.2 Front Side against phantom
Not applicable.

2.3 Back side against phantom
Not applicable.

2.4 Front 2.5cm separation

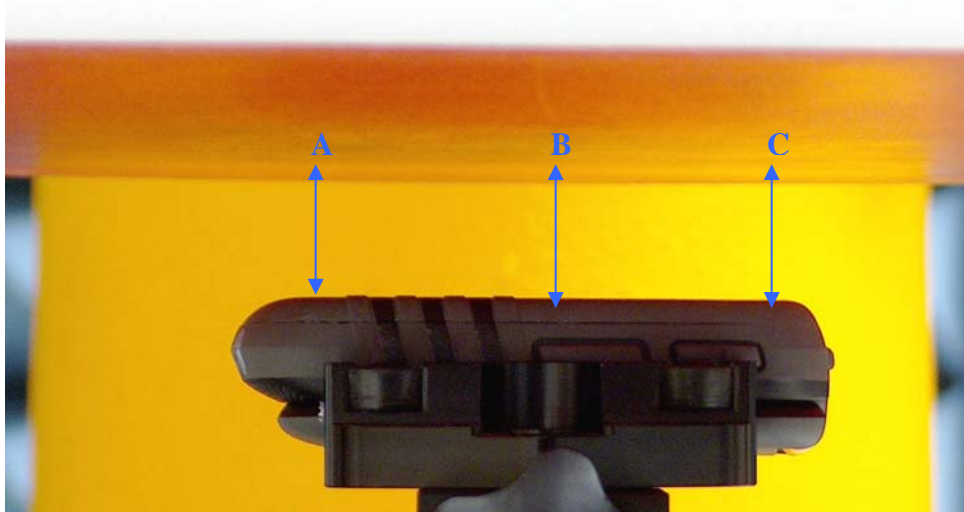
DUT w/ front side separated 2.5cm from phantom using offered battery SNN5793A and battery cover NTN2543xxxA and without any attached data/audio cable accessory. Same position used with audio cable NNTN5330B attached.



Distance A – 25 mm
Distance B – 25 mm
Distance C – 25 mm

2.5 Back 2.5cm separation

DUT w/ back side separated 2.5cm from phantom using offered battery SNN5793A and battery cover NTN2543xxxA and without any attached audio accessory. Same position used with audio cable NNTN5330B attached.

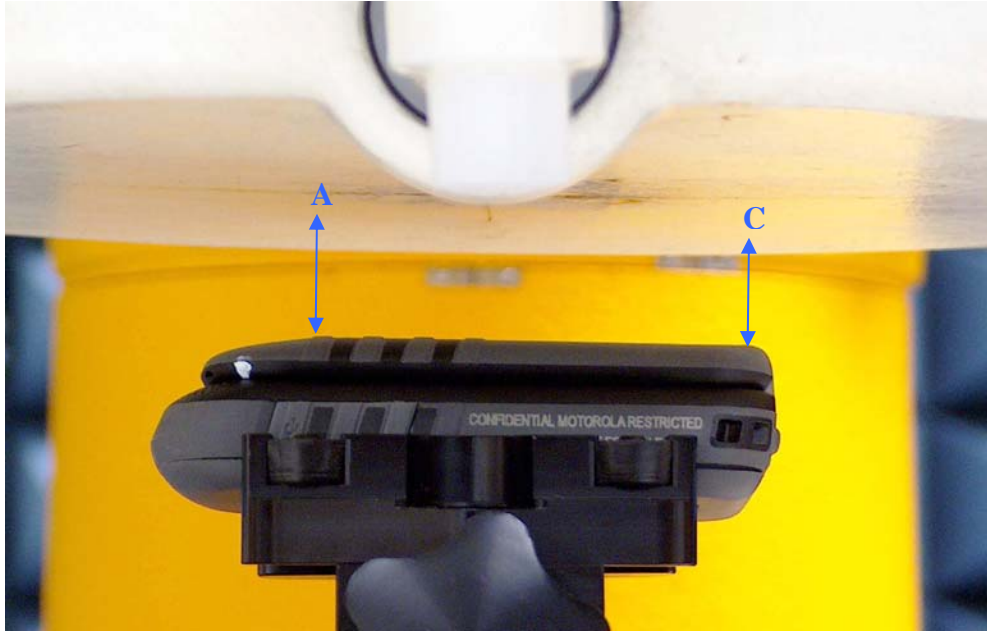


Distance A – 25 mm
Distance B – 25 mm
Distance C – 25 mm

3.0 Other SAR tested position at the face

3.1 Front with flip closed with 2.5cm separation

DUT w/ front side separated 2.5cm from phantom using the offered battery SNN5793A and battery cover NTN2543xxxA without any attached audio accessory.



Distance A – 25 mm
Distance C – 25 mm

3.2 Front with flip open and at 2.5cm separation

Refer to section 1.2.

4.0 Other SAR tested positions at the head

4.1 Left ear touch

DUT in touch position at left ear using the offered battery SNN5793A and battery cover NTN2543xxxA.



4.2 Left ear tilt

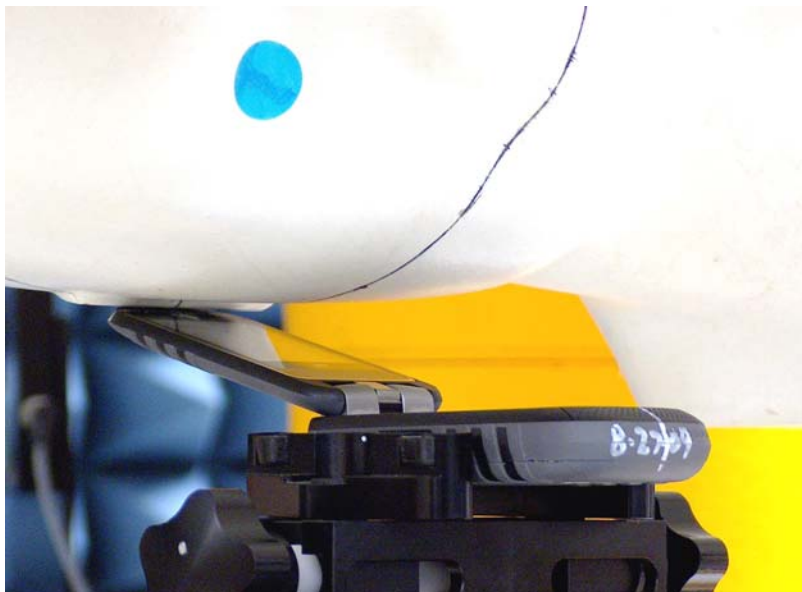
DUT in tilt position at left ear using the offered battery SNN5793A and battery cover NTN2543xxxxA.

**4.3 Right ear touch**

Refer to section 1.3.

4.4 Right ear tilt

DUT in tilt position at right ear using the offered battery SNN5793A and battery cover NTN2543xxxxA.



5.0 Other SAR tested positions at the hand

5.1 Left side
Not applicable.

5.2 Right side
Not applicable.

5.3 Top side
Not applicable.

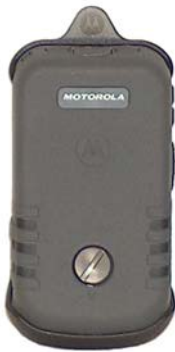
5.4 Bottom side
Not applicable.

5.5 Back side
Not applicable.

6.0 DUT and Accessory Photos

The purpose of these photos is to illustrate the offered body-worn carry accessory(ies). The sample that was used in the following photos represents the product used to obtain the results presented herein.

6.1 Tested body worn photos



**DUT Back View w/
Holster NNTN7793A**



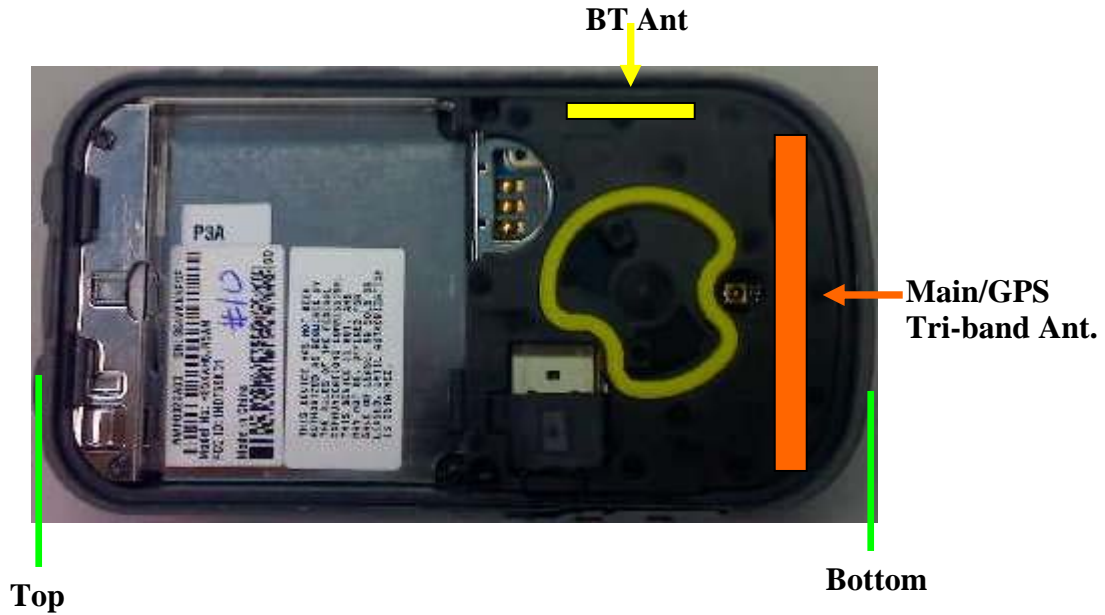
**DUT Side View w/
Holster NNTN7793A**



**DUT Front View w/
Holster NNTN7793A**

7.0 Simultaneous Transmission Considerations – Pursuant to FCC KDB 648474 Practice

7.1 Locations of Antenna



The closest distance between the main antenna and the BT antenna is 6.5 mm

7.1 Operating modes

Device Operating Mode	Remarks
iDEN SMR	Can operate simultaneously with Bluetooth, but <i>not</i> with MOTotalk.
MOTotalk	Can operate simultaneously with Bluetooth, but <i>not</i> with iDEN.
Bluetooth	Can operate simultaneously with MOTotalk or iDEN.

Note: The iDEN, MOTotalk and GPS services share the same antenna, and cannot operate simultaneously

7.2 Simultaneous Transmission Device Exclusion

Per FCC KDB648474 BT testing is not required.

- a) BT max power (10mW) < 12mW (Pref @ 2.45GHz)
- b) Antenna separation distances is less than 2.5cm. (Refer to section 7.0)
- c) SAR at the body (0.86 W/kg) is less than 1.2 W/kg.