



MOTOROLA



TESTING CERT # 2518.01

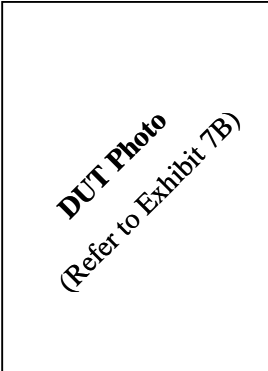
FCC ID: IHDT56KC1

DECLARATION OF COMPLIANCE SAR ASSESSMENT Part 3 of 3

Enterprise Mobility Solutions (EMS)
EME Test Laboratory
 8000 West Sunrise Blvd
 Fort Lauderdale, FL. 33322

Date of Report: 6/11/09
Report Revision: A
Report ID: SAR rpt_i856 Banfi_090611_SR7285

Responsible Engineer: Michael Sailsman (Senior Staff EME Eng.)
Report Author: Michael Sailsman (Senior Staff EME Eng.)
Date/s Tested: 5/4/09-5/15/09
Manufacturer/Location: Penang
Sector/Group/Div.: iDEN Mobile Devices
Date submitted for test: 4/23/09
DUT Description: TDMA: 81:120, 2:6, 1:12, and 1:6; 64 QAM, 16QAM, and QPSK Modulations; 0.60 W Pulse Avg; MOTotalk: 114:120 8FSK; 0.85 W nominal; (GPS and Bluetooth Capable)
Test TX mode(s): Phone: 1:3 ; Dispatch: 1:6; MOTotalk: 114:120; Data: 81:120
Max. Power output: 0.64 W pulsed average (iDEN); 0.891 W (MOTotalk); 0.010 W (Bluetooth)
Nominal Power: 0.60 W pulsed average Conducted Power (iDEN); 0.85 W (MOTotalk); 0.0063 W (Bluetooth)
Tx Frequency Bands: 806-825, 896-902 MHz (iDEN); 902-928 MHz (MOTotalk); 2.402-2.480 GHz (Bluetooth)
Signaling type: TDMA: QPSK, M16-QAM, M64-QAM; FHSS: 8FSK (PTT); BT
Model(s) Tested: H74XAN6JR7AN
Model(s) Certified: H74XAN6JR7AN
Serial Number(s): 364VKF7VZQ
Classification: General Population/Uncontrolled
Rule Part(s): 15, 90



Approved Accessories:

Antenna(s):
 85009255001 (Internal IFA 806-825MHz: ¼ wave antenna, -1.41dBd; 896-902MHz: ¼ wave antenna, -0.64dBd; 902-928MHz: ¼ wave antenna, -0.64dBd); 85009254001 (Internal IFA 2.4-2.48GHz, ¼ wave antenna, -0.84dBd)

Battery(ies):
 SNN5837A (BN70 High performance); NTN2529XXXXA (High performance battery door); SNN5838A (BN10 Maximum capacity); NTN2530XXXXA (Maximum performance battery door)

Body worn accessory(ies):
 NNTN7649A (i856 Holster)

Audio/Data cable accessory(ies):
 SYN1458A (Stereo headset-“Mic” with PTT); SYN1472A (Mono Headset- “Mic” with PTT); SYN2356A (3.5mm Stereo headset-receive only); SKN6238A (USB data cable)

Max. Calc. : 1-g Avg. SAR: 1.16 W/kg (Body); 10-g Avg. SAR: 0.84 W/kg (Body)
Max. Calc. : 1-g Avg. SAR: 0.16 W/kg (Face); 10-g Avg. SAR: 0.11 W/kg (Face)
Max. Calc. : 1-g Avg. SAR: 0.88 W/kg (Head); 10-g Avg. SAR: 0.62 W/kg (Head)

The test results clearly demonstrate compliance with FCC General Population/Uncontrolled RF Exposure limits of 1.6W/kg per the requirements of 47 CFR 2.1093(d).
 The test results clearly demonstrate compliance with ICNIRP (1998) Guidelines for limiting exposure in time-varying electric, magnetic, and electromagnetic fields (up to 300GHz), Health Physics 74, 494-522 RF Exposure limits of 2W/kg averaged over 10grams of contiguous tissue.

Based on the information and the testing results provided herein, the undersigned certifies that when used as stated in the operating instructions supplied, said product complies with the national and international reference standards and guidelines listed in section 2.0 of this report. This report shall not be reproduced without written approval from an officially designated representative of the Motorola EME Laboratory.

I attest to the accuracy of the data and assume full responsibility for the completeness of these measurements. This reporting format is consistent with the suggested guidelines of the TIA TSB-150 December 2004. The results and statements contained in this report pertain only to the device(s) evaluated.

Signature on File
Deanna Zakharia EMS EME Lab Senior Resource Manager,
Laboratory Director
 Approval Date: 6/11/09

Certification Date: 6/11/09
Certification No.: L1090523P

Appendix E
DUT Scans (Shortened Scans and Highest SAR configurations)

Shortened Scan Results

Motorola Government & Public Safety EME Laboratory
Date/Time: 5/11/2009 9:51:24 PM

Robot# / Run#: DASY4-FL-3 / MeC-Ab-090511-05
Phantom# / Tissue Temp.: OVAL1019 / 20.0 (C)
DUT Model# / Serial#: H74XAN6JR7AN / 364VKF7VZQ
Antenna / TX Freq.: Internal / 896.01875 (MHz)
Battery: SNN5837A w/ NTN2529XXXXA
Carry Acc. / Cable Acc.: NNTN7649A / None
Start Power: 0.654 (W)

Comments: Shorten Scan; Slide closed.

Probe: ES3DV3 - SN3185, Calibrated: 11/18/2008, ConvF(5.48, 5.48, 5.48)
Electronics: DAE3 Sn401, Calibrated: 7/18/2008
Duty Cycle: 1:1.5, Medium parameters used: f = 899 MHz; $\sigma = 1.04$ mho/m; $\epsilon_r = 54.5$; $\rho = 1000$ kg/m³

Ab Scan/5x5x7 Zoom Scan (5x5x7)/Cube 0: Measurement grid: dx=7.5mm, dy=7.5mm, dz=5mm
Reference Value = 32.4 V/m; Power Drift = -0.642 dB
Peak SAR (extrapolated) = 1.29 W/kg
SAR(1 g) = 0.994 mW/g; SAR(10 g) = 0.726 mW/g
Maximum value of SAR (measured) = 1.06 mW/g

Ab Scan/Area Scan (41x71x1): Measurement grid: dx=15mm, dy=15mm
Reference Value = 31.6 V/m; Power Drift = -0.0539 dB
Motorola Fast SAR: SAR(1 g) = 1.02 mW/g; SAR(10 g) = 0.711 mW/g
Maximum value of SAR (interpolated) = 1.10 mW/g

Ab Scan/Z-Axis Scan (1x1x17): Measurement grid: dx=20mm, dy=20mm, dz=10mm
Maximum value of SAR (measured) = 0.889 mW/g

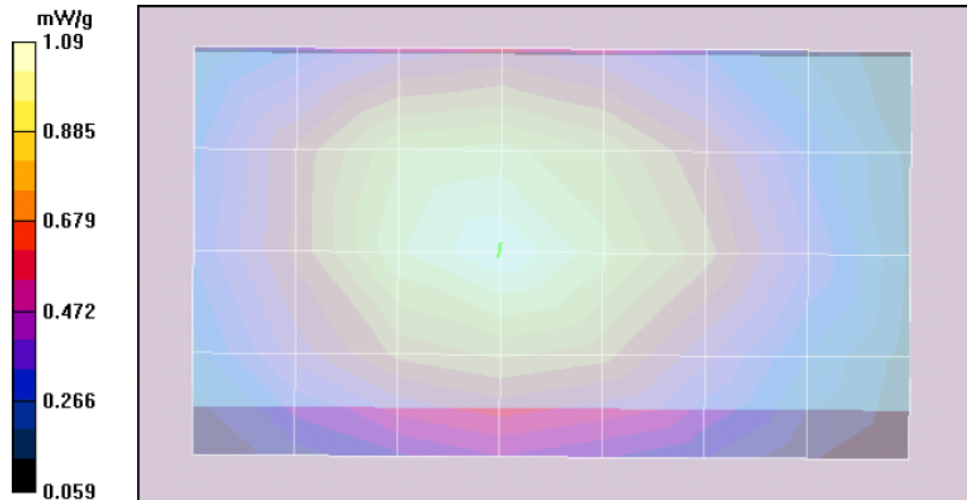
Shortened scan reflect highest SAR producing configuration; Run time 7 minutes.

Representative full scan run time was 14 minutes

“Shortened” scan max calculated SAR using SAR drift: 1-g Avg. = 1.15 mW/g; 10-g Avg. = 0.84 mW/g

Full scan max calculated SAR using SAR drift: 1-g Avg. = 1.11mW/g; 10-g Avg. = 0.78 mW/g

(see part 1 of 2 section 9.0 run # HvH-Ab-090509-08)



Highest SAR Configuration Result per band at the Body

Motorola Government & Public Safety EME Laboratory

Date/Time: 5/9/2009 8:42:32 AM

Robot# / Run#: DASY4-FL-3 / HvH-Ab-090509-08
Phantom# / Tissue Temp.: OVAL1019 / 18.3 (C)
DUT Model# / Serial#: H74XAN6JR7AN / 364VKF7VZQ
Antenna / TX Freq.: Internal / 896.01875 (MHz)
Battery: SNN5837A w/ NTN2529XXXXA
Carry Acc. / Cable Acc.: NNTN7649A / None
Start Power: 0.653 (W)

Comments: Full Scan; Slide closed.

Probe: ES3DV3 - SN3185, Calibrated: 11/18/2008, ConvF(5.48, 5.48, 5.48)

Electronics: DAE3 Sn401, Calibrated: 7/18/2008

Duty Cycle: 1:1.5, Medium parameters used: $f = 899$ MHz; $\sigma = 1.04$ mho/m; $\epsilon_r = 54.7$; $\rho = 1000$ kg/m³

Ab Scan/5x5x7 Zoom Scan (5x5x7)/Cube 0: Measurement grid: dx=7.5mm, dy=7.5mm, dz=5mm

Reference Value = 31.3 V/m; Power Drift = -0.966 dB

Peak SAR (extrapolated) = 1.30 W/kg

SAR(1 g) = 0.890 mW/g; SAR(10 g) = 0.627 mW/g

Warning: Maximum averaged SAR over 10 g is located on the boundary of the measurement cube. This cube might not incorporate the absolute averaged SAR. Please consider a refinement of the Area Scan measurement.

Maximum value of SAR (measured) = 0.973 mW/g

Ab Scan/Area Scan (41x71x1): Measurement grid: dx=15mm, dy=15mm

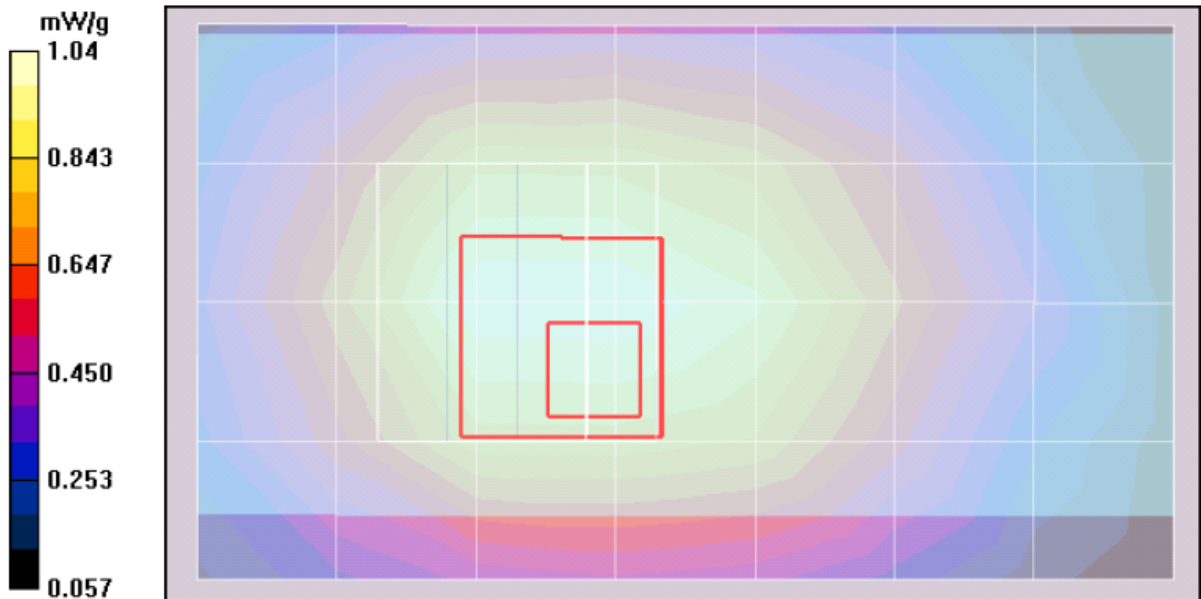
Reference Value = 31.9 V/m; Power Drift = -0.210 dB

Motorola Fast SAR: SAR(1 g) = 1.01 mW/g; SAR(10 g) = 0.706 mW/g

Maximum value of SAR (interpolated) = 1.08 mW/g

Ab Scan/Z-Axis Scan (1x1x17): Measurement grid: dx=20mm, dy=20mm, dz=10mm

Maximum value of SAR (measured) = 0.780 mW/g



Motorola Government & Public Safety EME Laboratory

Date/Time: 5/8/2009 11:56:29 AM

Robot# / Run#: DASY4-FL-3 / HvH-Ab-090508-06
Phantom# / Tissue Temp.: OVAL1019 / 18.9 (C)
DUT Model# / Serial#: H74XAN6JR7AN / 364VKF7VZQ
Antenna / TX Freq.: Internal / 815.5125 (MHz)
Battery: SNN5838A w/ NTN2530XXXA
Carry Acc. / Cable Acc.: NNTN7649A / None
Start Power: 0.647 (W)

Additional SAR scaling was applied per KDB450824 using the tissue sensitivity values provided therein. SAR results were scaled for conditions where the tissue permittivity was measured above the nominal target and for tissue conductivity that was measured below the nominal target.

Therefore;

SAR Calculated: 0.482 mW/g (1g); 0.342 mW/g (10g)

Comments: Full Scan; Slide closed.

Probe: ES3DV3 - SN3185, Calibrated: 11/18/2008, ConvF(5.48, 5.48, 5.48)
Electronics: DAE3 Sn401, Calibrated: 7/18/2008
Duty Cycle: 1:1.5, Medium parameters used: f = 815.5 MHz; sigma = 0.95 mho/m; epsilon_p = 55.9; rho = 1000 kg/m^3

Ab Scan/5x5x7 Zoom Scan (5x5x7)/Cube 0: Measurement grid: dx=7.5mm, dy=7.5mm, dz=5mm

Reference Value = 23.5 V/m; Power Drift = -0.421 dB

Peak SAR (extrapolated) = 0.642 W/kg

SAR(1 g) = 0.474 mW/g; SAR(10 g) = 0.338 mW/g

Warning: Maximum averaged SAR over 10 g is located on the boundary of the measurement cube. This cube might not incorporate the absolute averaged SAR. Please consider a refinement of the Area Scan measurement.

Maximum value of SAR (measured) = 0.531 mW/g

Ab Scan/Area Scan (51x81x1): Measurement grid: dx=15mm, dy=15mm

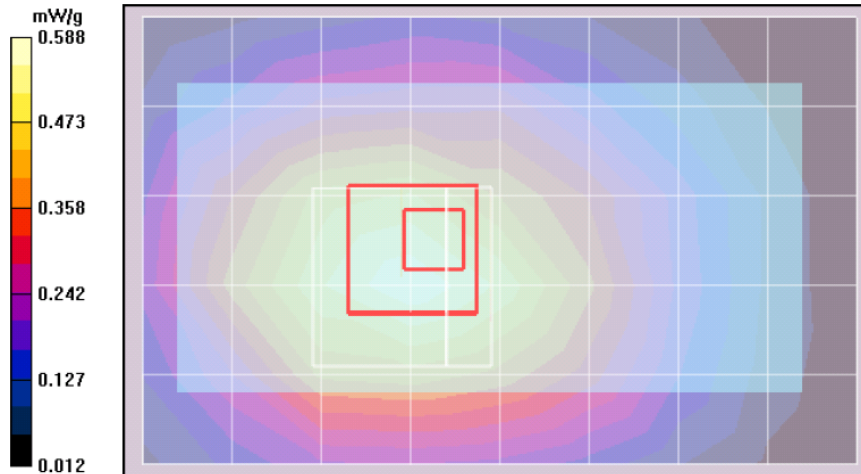
Reference Value = 26.9 V/m; Power Drift = -1.10 dB

Motorola Fast SAR: SAR(1 g) = 0.552 mW/g; SAR(10 g) = 0.385 mW/g

Maximum value of SAR (interpolated) = 0.590 mW/g

Ab Scan/Z-Axis Scan (1x1x17): Measurement grid: dx=20mm, dy=20mm, dz=10mm

Maximum value of SAR (measured) = 0.446 mW/g



Motorola Government & Public Safety EME Laboratory
Date/Time: 5/9/2009 4:48:07 PM

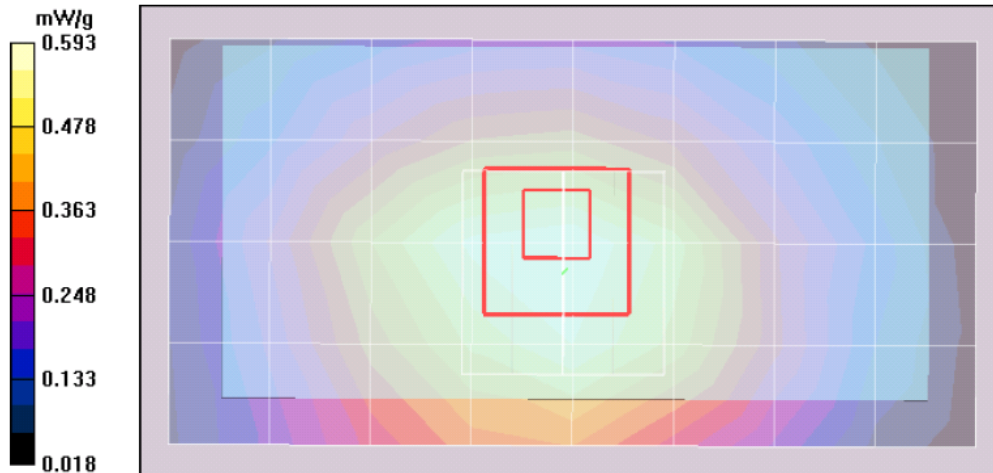
Robot# / Run#: DASY4-FL-3 / MeC-Ab-090509-18
 Phantom# / Tissue Temp.: OVAL1019 / 18.8 (C)
 DUT Model# / Serial#: H74XAN6JR7AN / 364VKF7VZQ
 Antenna / TX Freq.: Internal / 902.5250 (MHz)
 Battery: SNN5838A w/ NTN2530XXXXA
 Carry Acc. / Cable Acc.: NNTN7649A / None
 Start Power: 0.870 (W)

Comments: Full Scan; Slide closed.
 Probe: ES3DV3 - SN3185, Calibrated: 11/18/2008, ConvF(5.48, 5.48, 5.48)
 Electronics: DAE3 Sn401, Calibrated: 7/18/2008
 Duty Cycle: 1:1.05, Medium parameters used: f = 915 MHz; $\sigma = 1.06$ mho/m; $\epsilon_r = 54.6$; $\rho = 1000$ kg/m³

Ab Scan/5x5x7 Zoom Scan (5x5x7)/Cube 0: Measurement grid: dx=7.5mm, dy=7.5mm, dz=5mm
 Reference Value = 21.1 V/m; Power Drift = 0.569 dB
 Peak SAR (extrapolated) = 0.686 W/kg
 SAR(1 g) = 0.501 mW/g; SAR(10 g) = 0.356 mW/g
Warning: Maximum averaged SAR over 10 g is located on the boundary of the measurement cube. This cube might not incorporate the absolute averaged SAR. Please consider a refinement of the Area Scan measurement.
 Maximum value of SAR (measured) = 0.530 mW/g

Ab Scan/Area Scan (41x81x1): Measurement grid: dx=15mm, dy=15mm
 Reference Value = 30.1 V/m; Power Drift = -3.31 dB
Motorola Fast SAR: SAR(1 g) = 0.575 mW/g; SAR(10 g) = 0.400 mW/g
 Maximum value of SAR (interpolated) = 0.614 mW/g

Ab Scan/Z-Axis Scan (1x1x17): Measurement grid: dx=20mm, dy=20mm, dz=10mm
 Maximum value of SAR (measured) = 0.515 mW/g



Motorola Government & Public Safety EME Laboratory
Date/Time: 5/9/2009 10:20:17 PM

Robot# / Run#: DASY4-FL-3 / MeC-Ab-090509-29
Phantom# / Tissue Temp.: DUAL 1003 Side A / 20.3 (C)
DUT Model# / Serial#: H74XAN6JR7AN / 364VKF7VZQ
Antenna / TX Freq.: Internal / 2480.000 (MHz)
Battery: SNN5837A w/ NTN2529XXXXA
Carry Acc. / Cable Acc.: NNTN7649A / None
Start Power: 0.010 (W)

Comments: Full Scan; Bluetooth On, Slide closed.

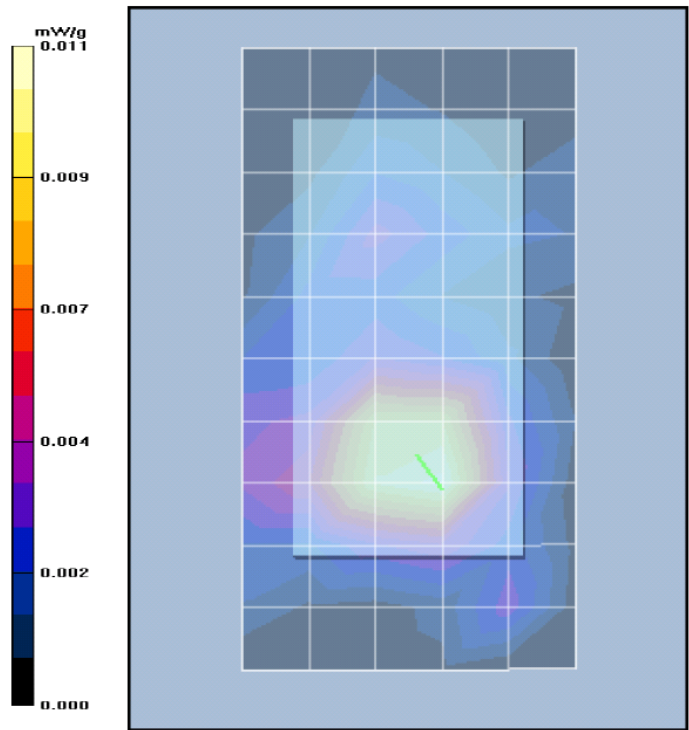
Probe: ES3DV3 - SN3185, Calibrated: 11/18/2008, ConvF(3.86, 3.86, 3.86)
Electronics: DAE3 Sn401, Calibrated: 7/18/2008

Duty Cycle: 1:1, Medium parameters used: f = 2441 MHz; $\sigma = 1.88$ mho/m; $\epsilon_r = 50.2$; $\rho = 1000$ kg/m³

Ab Scan/5x5x7 Zoom Scan (5x5x7)/Cube 0: Measurement grid: dx=7.5mm, dy=7.5mm, dz=5mm
Reference Value = 2.55 V/m; Power Drift = 0.0241 dB
Peak SAR (extrapolated) = 0.018 W/kg
SAR(1 g) = 0.0107 mW/g; SAR(10 g) = 0.00548 mW/g
Maximum value of SAR (measured) = 0.012 mW/g

Ab Scan/Area Scan (51x101x1): Measurement grid: dx=15mm, dy=15mm
Reference Value = 2.53 V/m; Power Drift = -0.0162 dB
Motorola Fast SAR: SAR(1 g) = 0.0118 mW/g; SAR(10 g) = 0.00581 mW/g
Maximum value of SAR (interpolated) = 0.013 mW/g

Ab Scan/Z-Axis Scan (1x1x17): Measurement grid: dx=20mm, dy=20mm, dz=10mm
Maximum value of SAR (measured) = 0.010 mW/g



Highest SAR Configuration Result per band at the Head

Motorola Government & Public Safety EME Laboratory

Date/Time: 5/5/2009 2:40:58 PM

Robot# / Run#: DASY4-FL-3 / HvH-Lear-090505-08
Phantom# / Tissue Temp.: SAMTP1234 / 19.2 (C)
DUT Model# / Serial#: H74XAN6JR7AN / 364VKF7VZQ
Antenna / TX Freq.: Internal / 896.01875 (MHz)
Battery: SNN5837A w/ NTN2529XXXXA
Carry Acc. / Cable Acc.: None / None
Start Power: 0.647 (W)

Comments: Touch, Full Scan; Slide closed.

Probe: ES3DV3 - SN3185, Calibrated: 11/18/2008, ConvF(5.56, 5.56, 5.56)
Electronics: DAE3 Sn401, Calibrated: 7/18/2008

Duty Cycle: 1:3, Medium parameters used: $f = 899$ MHz; $\sigma = 0.94$ mho/m; $\epsilon_r = 41.8$; $\rho = 1000$ kg/m³

Left Ear-Touch position/5x5x7 Zoom Scan (5x5x7)/Cube 0: Measurement grid: dx=7.5mm, dy=7.5mm, dz=5mm

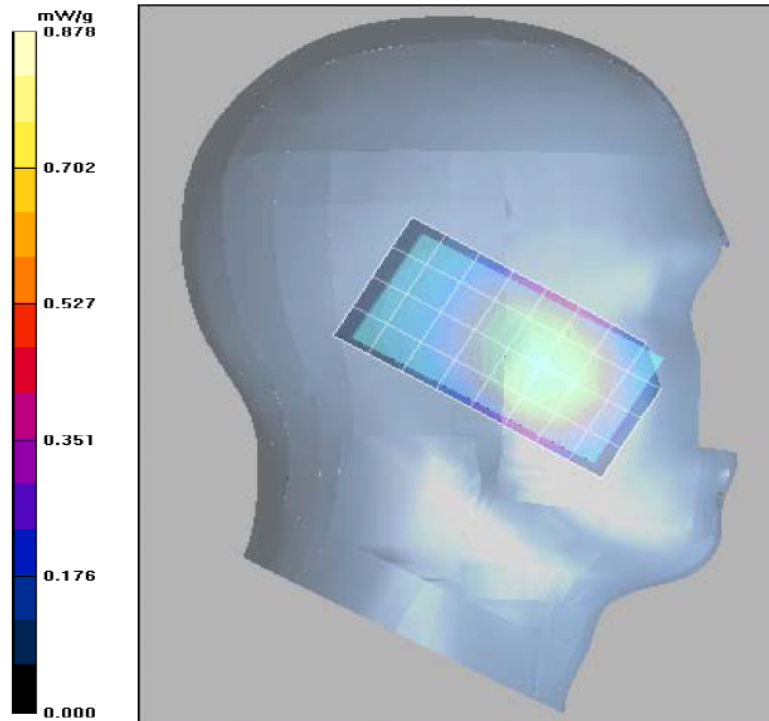
Reference Value = 32.6 V/m; Power Drift = -0.101 dB
Peak SAR (extrapolated) = 1.17 W/kg
SAR(1 g) = 0.856 mW/g; SAR(10 g) = 0.601 mW/g
Maximum value of SAR (measured) = 0.918 mW/g

Left Ear-Touch position/Area Scan (41x81x1): Measurement grid: dx=15mm, dy=15mm

Reference Value = 32.2 V/m; Power Drift = 0.034 dB
Motorola Fast SAR: SAR(1 g) = 0.848 mW/g; SAR(10 g) = 0.589 mW/g
Maximum value of SAR (interpolated) = 0.901 mW/g

Left Ear-Touch position/Z-Axis Scan (1x1x17): Measurement grid: dx=20mm, dy=20mm, dz=10mm

Maximum value of SAR (measured) = 0.899 mW/g



Motorola Government & Public Safety EME Laboratory

Date/Time: 5/15/2009 5:31:24 PM

Robot# / Run#: DASY4-FL-3 / MeC-Lear-090515-02
Phantom# / Tissue Temp.: SAMTP1234 / 20.0 (C)
DUT Model# / Serial#: H74XAN6JR7AN / 364VKF7VZQ
Antenna / TX Freq.: Internal / 824.9875 (MHz)
Battery: SNN5837A w/ NTN2529XXXXA
Carry Acc. / Cable Acc.: None / None
Start Power: 0.637 (W)

Additional SAR scaling was applied per KDB450824 using the tissue sensitivity values provided therein. SAR results were scaled for conditions where the tissue permittivity was measured above the nominal target and for tissue conductivity that was measured below the nominal target.

Therefore;

SAR Calculated: 0.548 mW/g (1g); 0.384 mW/g (10g)

Comments: Touch, Slide Closed; Full Scan.

Probe: ES3DV3 - SN3185, Calibrated: 11/18/2008, ConvF(5.56, 5.56, 5.56)

Electronics: DAE3 Sn401, Calibrated: 7/18/2008

Duty Cycle: 1:3, Medium parameters used: f = 815.5 MHz; sigma = 0.88 mho/m; epsilon_p = 42.4; rho = 1000 kg/m^3

Left Ear-Touch position/5x5x7 Zoom Scan (5x5x7)/Cube 0: Measurement grid: dx=7.5mm, dy=7.5mm, dz=5mm

Reference Value = 21.4 V/m; Power Drift = 0.262 dB

Peak SAR (extrapolated) = 0.721 W/kg

SAR(1 g) = 0.536 mW/g; SAR(10 g) = 0.378 mW/g

Maximum value of SAR (measured) = 0.587 mW/g

Left Ear-Touch position/Area Scan (41x81x1): Measurement grid: dx=15mm, dy=15mm

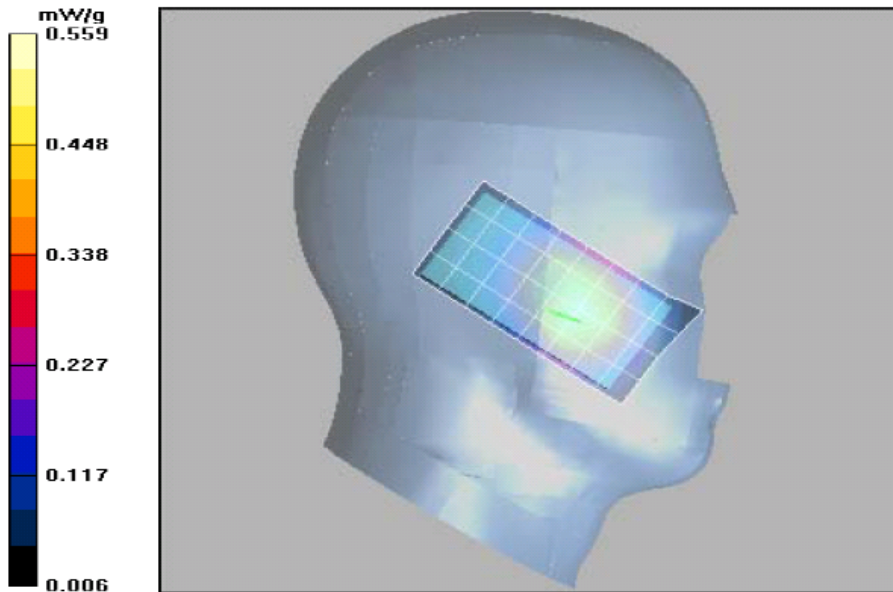
Reference Value = 21.4 V/m; Power Drift = 0.262 dB

Motorola Fast SAR: SAR(1 g) = 0.525 mW/g; SAR(10 g) = 0.363 mW/g

Maximum value of SAR (interpolated) = 0.561 mW/g

Left Ear-Touch position/Z-Axis Scan (1x1x17): Measurement grid: dx=20mm, dy=20mm, dz=10mm

Maximum value of SAR (measured) = 0.552 mW/g



Highest SAR Configuration Result per band at the Face

Motorola Government & Public Safety EME Laboratory

Date/Time: 5/6/2009 12:30:04 PM

Robot# / Run#: DASY4-FL-3 / HvH-Face-090506-07
Phantom# / Tissue Temp.: SAMTP1234 / 19.5 (C)
DUT Model# / Serial#: H74XAN6JR7AN / 364VKF7VZQ
Antenna / TX Freq.: Internal / 806.0125 (MHz)
Battery: SNN5837A w/NTN2529XXXXA
Carry Acc. / Cable Acc.: None / None
Start Power: 0.646 (W)

Additional SAR scaling was applied per KDB450824 using the tissue sensitivity values provided therein. SAR results were scaled for conditions where the tissue permittivity was measured above the nominal target and for tissue conductivity that was measured below the nominal target.

Therefore;

SAR Calculated: 0.178 mW/g (1g); 0.130 mW/g (10g)

Comments: Full Scan, DUT front 2.5 cm.;Slide open.

Probe: ES3DV3 - SN3185, Calibrated: 11/18/2008, ConvF(5.56, 5.56, 5.56)

Electronics: DAE3 Sn401, Calibrated: 7/18/2008

Duty Cycle: 1:6, Medium parameters used: f = 815.5 MHz; sigma = 0.87 mho/m; epsilon_r = 43.5; rho = 1000 kg/m^3

Face Scan/5x5x7 Zoom Scan (5x5x7)/Cube 0: Measurement grid: dx=7.5mm, dy=7.5mm, dz=5mm

Reference Value = 14.5 V/m; Power Drift = -0.0462 dB

Peak SAR (extrapolated) = 0.213 W/kg

SAR(1 g) = 0.170 mW/g; SAR(10 g) = 0.126 mW/g

Warning: Maximum averaged SAR over 10 g is located on the boundary of the measurement cube. This cube might not incorporate the absolute averaged SAR. Please consider a refinement of the Area Scan measurement.

Maximum value of SAR (measured) = 0.187 mW/g

Face Scan/Area Scan (41x101x1): Measurement grid: dx=15mm, dy=15mm

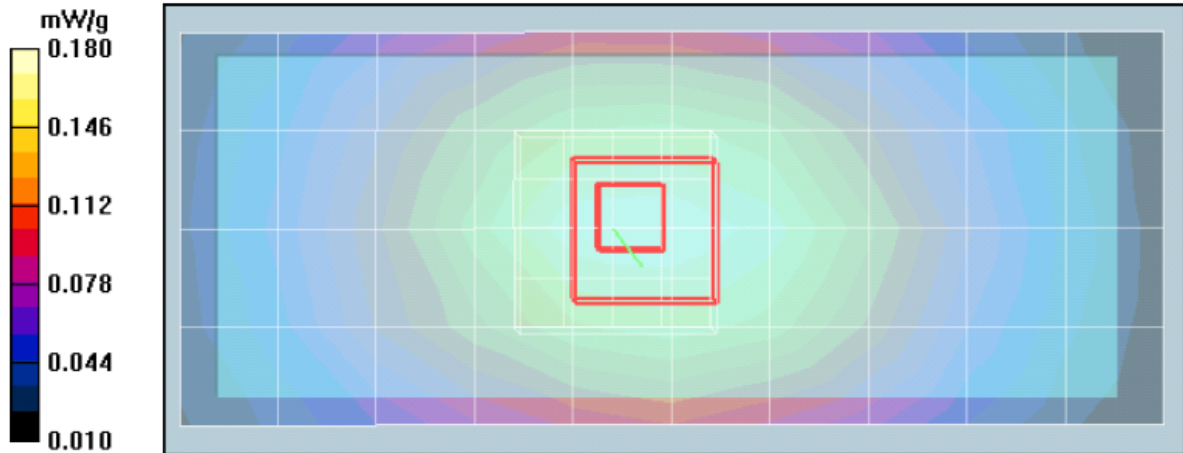
Reference Value = 13.7 V/m; Power Drift = 0.0673 dB

Motorola Fast SAR: SAR(1 g) = 0.172 mW/g; SAR(10 g) = 0.123 mW/g

Maximum value of SAR (interpolated) = 0.182 mW/g

Face Scan/Z-Axis Scan (1x1x17): Measurement grid: dx=20mm, dy=20mm, dz=10mm

Maximum value of SAR (measured) = 0.175 mW/g



Motorola Government & Public Safety EME Laboratory

Date/Time: 5/6/2009 1:08:39 PM

Robot# / Run#: DASY4-FL-3 / HvH-Face-090506-09
Phantom# / Tissue Temp.: SAMTP1234 / 19.5 (C)
DUT Model# / Serial#: H74XAN6JR7AN / 364VKF7VZQ
Antenna / TX Freq.: Internal / 898.99375 (MHz)
Battery: SNN5837A w/ NTN2529XXXXA
Carry Acc. / Cable Acc.: None / None
Start Power: 0.649 (W)

Comments: Full scan; DUT front 2.5cm; slide open.

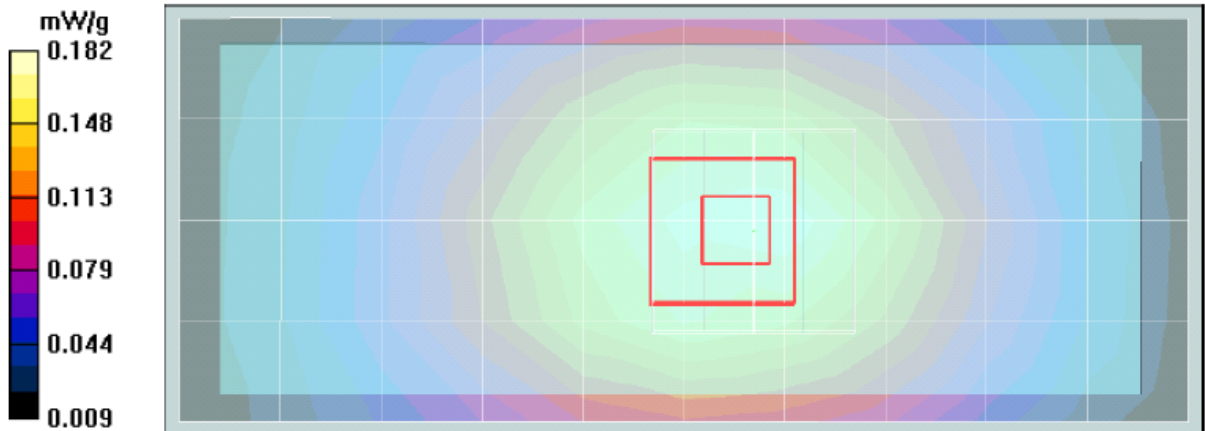
Probe: ES3DV3 - SN3185, Calibrated: 11/18/2008, ConvF(5.56, 5.56, 5.56)
Electronics: DAE3 Sn401, Calibrated: 7/18/2008
Duty Cycle: 1:6, Medium parameters used: $f = 899$ MHz; $\sigma = 0.96$ mho/m; $\epsilon_r = 42.5$; $\rho = 1000$ kg/m³

Face Scan/5x5x7 Zoom Scan (5x5x7)/Cube 0: Measurement grid: dx=7.5mm, dy=7.5mm, dz=5mm
Reference Value = 13.9 V/m; Power Drift = 0.0522 dB
Peak SAR (extrapolated) = 0.231 W/kg
SAR(1 g) = 0.175 mW/g; SAR(10 g) = 0.127 mW/g
Warning: Maximum averaged SAR over 10 g is located on the boundary of the measurement cube. This cube might not incorporate the absolute averaged SAR. Please consider a refinement of the Area Scan measurement.
Maximum value of SAR (measured) = 0.191 mW/g

Face Scan/Area Scan (5x11x1): Measurement grid: dx=15mm, dy=15mm
Maximum value of SAR (measured) = 0.182 mW/g

Face Scan/Area Scan (41x101x1): Measurement grid: dx=15mm, dy=15mm
Reference Value = 13.2 V/m; Power Drift = 0.084 dB
Motorola Fast SAR: SAR(1 g) = 0.174 mW/g; SAR(10 g) = 0.122 mW/g
Maximum value of SAR (interpolated) = 0.185 mW/g

Face Scan/Z-Axis Scan (1x1x17): Measurement grid: dx=20mm, dy=20mm, dz=10mm
Maximum value of SAR (measured) = 0.181 mW/g



Motorola Government & Public Safety EME Laboratory

Date/Time: 5/7/2009 8:56:14 AM

Robot# / Run#: DASY4-FL-3 / HvH-Face-090507-02
Phantom# / Tissue Temp.: SAMTP1234 / 19.8 (C)
DUT Model# / Serial#: H74XAN6JR7AN / 364VKF7VZQ
Antenna / TX Freq.: Internal / 915.5250 (MHz)
Battery: SNN5837A w/ NTN2529XXXXA
Carry Acc. / Cable Acc.: None / None
Start Power: 0.878 (W)

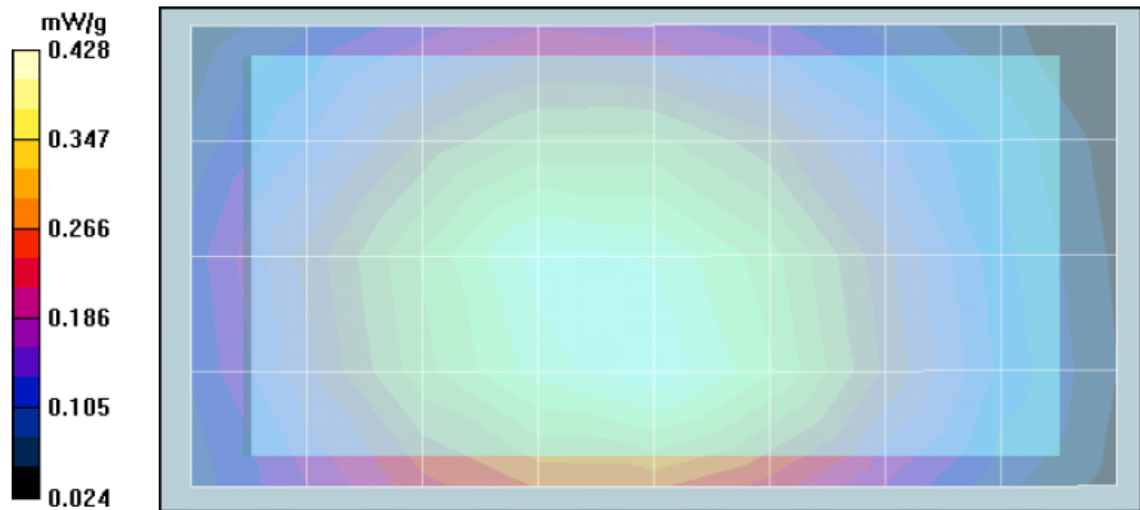
Comments: Full scan; DUT front 2.5cm; slide closed.

Probe: ES3DV3 - SN3185, Calibrated: 11/18/2008, ConvF(5.56, 5.56, 5.56)
Electronics: DAE3 Sn401, Calibrated: 7/18/2008
Duty Cycle: 1:1.05, Medium parameters used: f = 915 MHz; sigma = 1 mho/m; epsilon_p = 42.3; rho = 1000 kg/m^3

Face Scan/5x5x7 Zoom Scan (5x5x7)/Cube 0: Measurement grid: dx=7.5mm, dy=7.5mm, dz=5mm
Reference Value = 18.1 V/m; Power Drift = -0.321 dB
Peak SAR (extrapolated) = 0.386 W/kg
SAR(1 g) = 0.297 mW/g; SAR(10 g) = 0.209 mW/g
Maximum value of SAR (measured) = 0.313 mW/g

Face Scan/Area Scan (41x81x1): Measurement grid: dx=15mm, dy=15mm
Reference Value = 23.3 V/m; Power Drift = -1.96 dB
Motorola Fast SAR: SAR(1 g) = 0.416 mW/g; SAR(10 g) = 0.291 mW/g
Maximum value of SAR (interpolated) = 0.444 mW/g

Face Scan/Z-Axis Scan (1x1x17): Measurement grid: dx=20mm, dy=20mm, dz=10mm
Maximum value of SAR (measured) = 0.292 mW/g



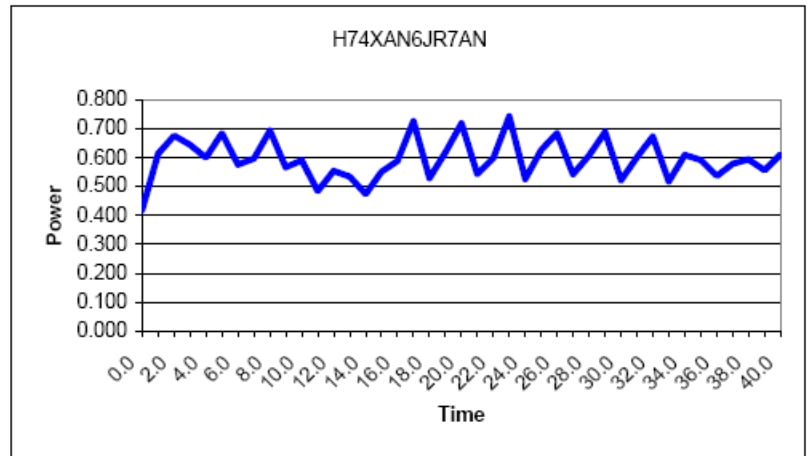
APPENDIX F
DUT Supplementary Data (Power slump)

Model # H74XAN6JR7AN
Serial # 364VKF7VZQ

Battery	SNN5837A	Transmit Mode	81:120
Frequency	896.01875MHz	Audio Accessory	None
Date	5/9/2009		

TX TIME (Minutes)	Measured Power (Watts)
-----------------------------	----------------------------------

0.0	0.420
1.0	0.614
2.0	0.677
3.0	0.645
4.0	0.600
5.0	0.685
6.0	0.577
7.0	0.598
8.0	0.695
9.0	0.568
10.0	0.591
11.0	0.484
12.0	0.554
13.0	0.535
14.0	0.474
15.0	0.551
16.0	0.589
17.0	0.727
18.0	0.530
19.0	0.619
20.0	0.719
21.0	0.544
22.0	0.598
23.0	0.744
24.0	0.526
25.0	0.627
26.0	0.685
27.0	0.543
28.0	0.608
29.0	0.690
30.0	0.523
31.0	0.603
32.0	0.674
33.0	0.519
34.0	0.610
35.0	0.592
36.0	0.537
37.0	0.580
38.0	0.595
39.0	0.557
40.0	0.612



Appendix G
DUT Test Position Photos

Photos available in Exhibit 7B - Temporary Confidentiality Requested

Appendix H
DUT and Body worn Accessory Photos

Photos available in Exhibit 7B - Temporary Confidentiality Requested

Appendix I

DUT Antenna Separation Distances and Offered Accessory Test Status

The following table(s) summarizes the separation distances and test status provided by each of the applicable body-worn accessory(ies):

Antenna Models	Tested?	* Separation distances between DUT and phantom surface (mm)		
		Body Test configuration		Face Test configuration
		with Carry accessories	2.5cm assessment	
85009255001 (Internal IFA)	Yes	10-16	25-25	25-25
85009254001 (Internal IFA)	Yes	10-16	25-25	25-25

Battery Models	Tested?	* Separation distances between DUT and phantom surface (mm)	Comments
SNN5837A	Yes	10-16	Tested with NTN2529XXXXA battery cover.
SNN5838A	Yes	10-16	Tested with NTN2530XXXXA battery cover.

Carry case Models	Tested?	* Separation distances between DUT and phantom surface. (mm)	Comments
NNTN7649A	Yes	10-16	Tested with all the above antennas.

Audio acc. Models	Tested?	Min. Separation distances between DUT and phantom surface. (mm)	Comments
SYN1458A	Yes	NA	PTT feature included
SYN1472A	Yes	NA	PTT feature included
SYN2356A	Yes	NA	No PTT feature. Receive only
SKN6238A	Yes	NA	USB data cable

*Actual distance from the internal antenna to the phantom surface was not quantified.

Therefore, for reproducibility the reference plane of the carry holder in the area of the antenna was used.

The 1st number indicates the minimum separation distance that is measured from the bottom edge of the carry holder base while the second number reflects the separation distance measured from the top edge of the carry holder base.

For 2.5cm assessment the separation distance is taken from the surface of the slider when opened and closed.

Reference Exhibit 7B section 1.1 and 1.2.