

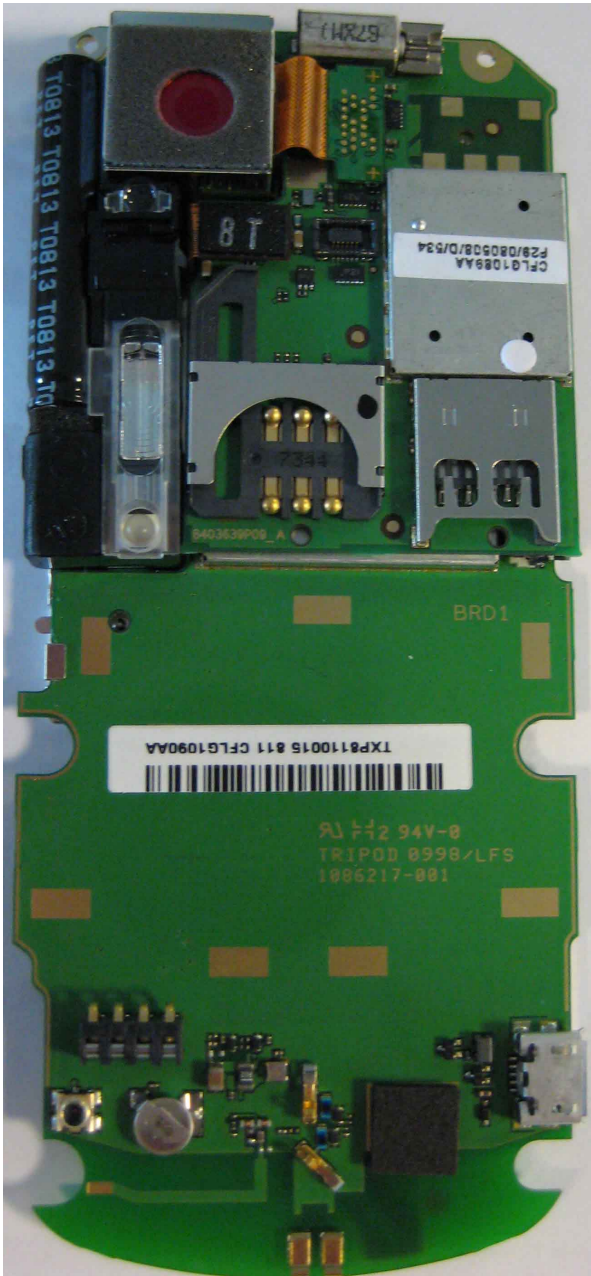
REAR PART AND
SPEAKER PART



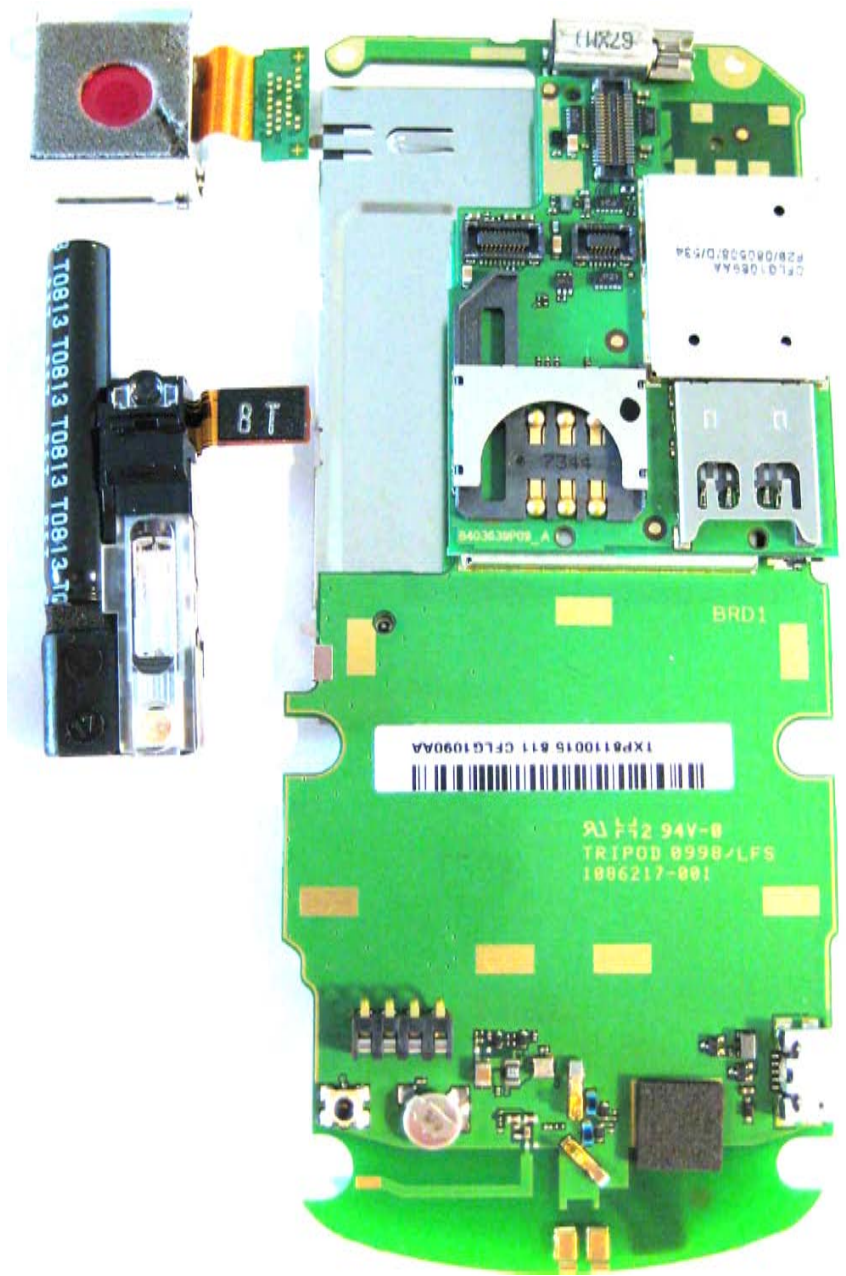
FRONT PART



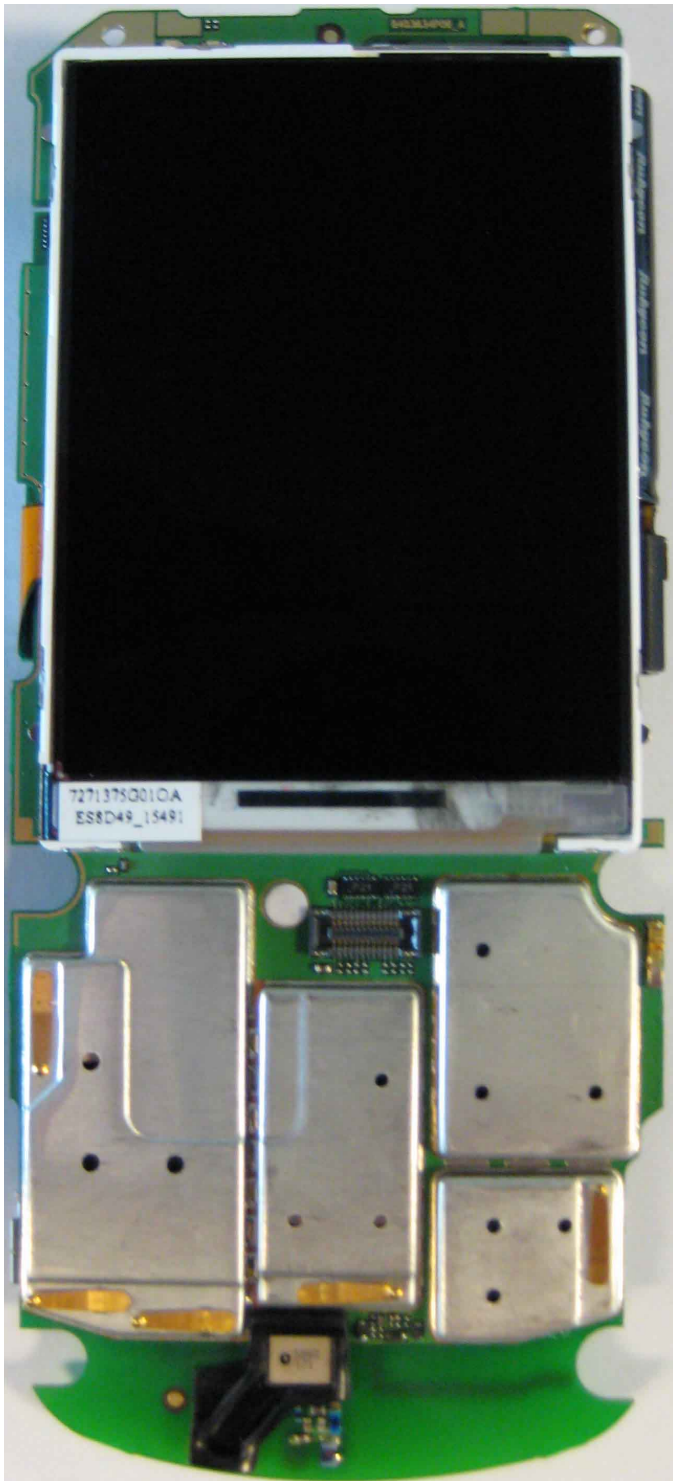
REAR PART REMOVED FROM PHONE



PCB COMPLETE WITH
CAMERA AND FLASH



PCB COMPLETE WITH
CAMERA AND FLASH NOT MOUNTED



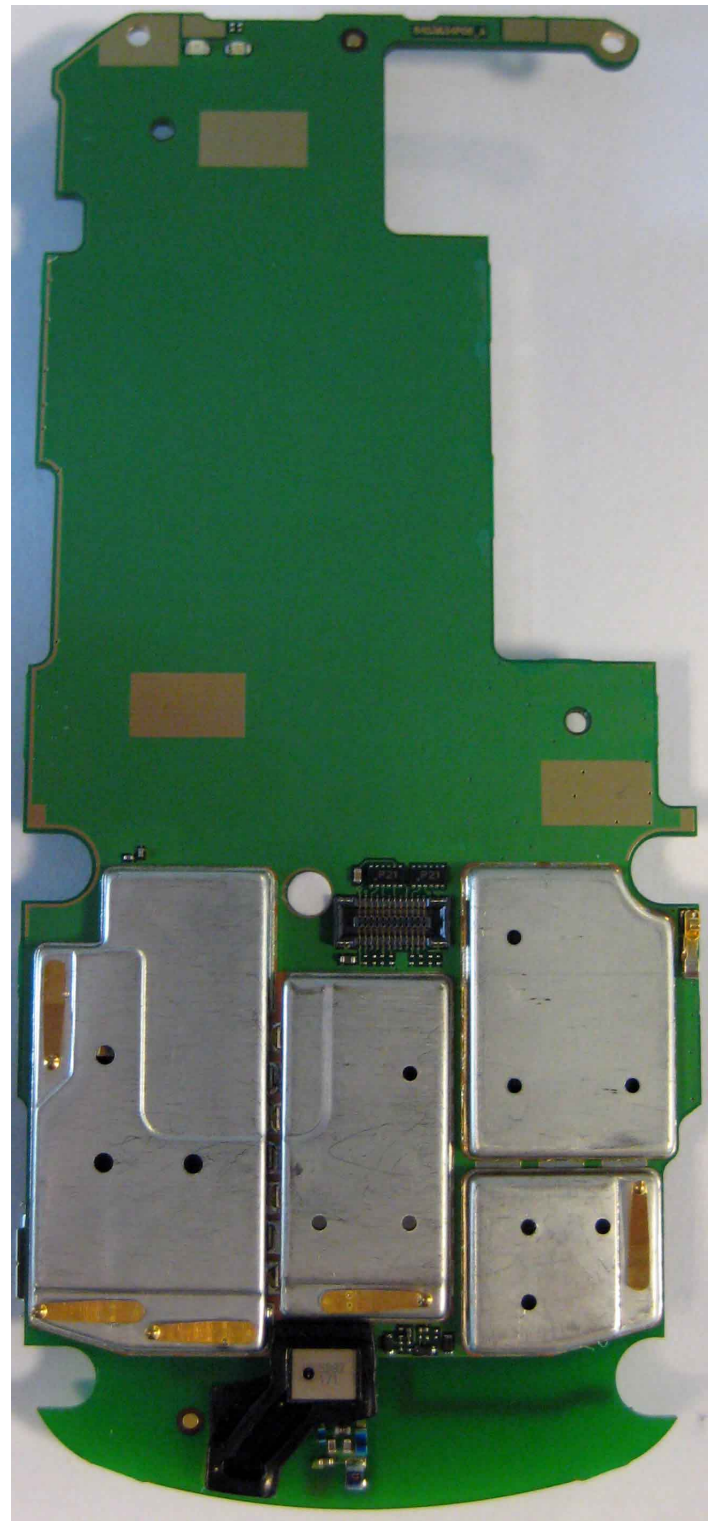
MAIN PCB WITH DISPLAY



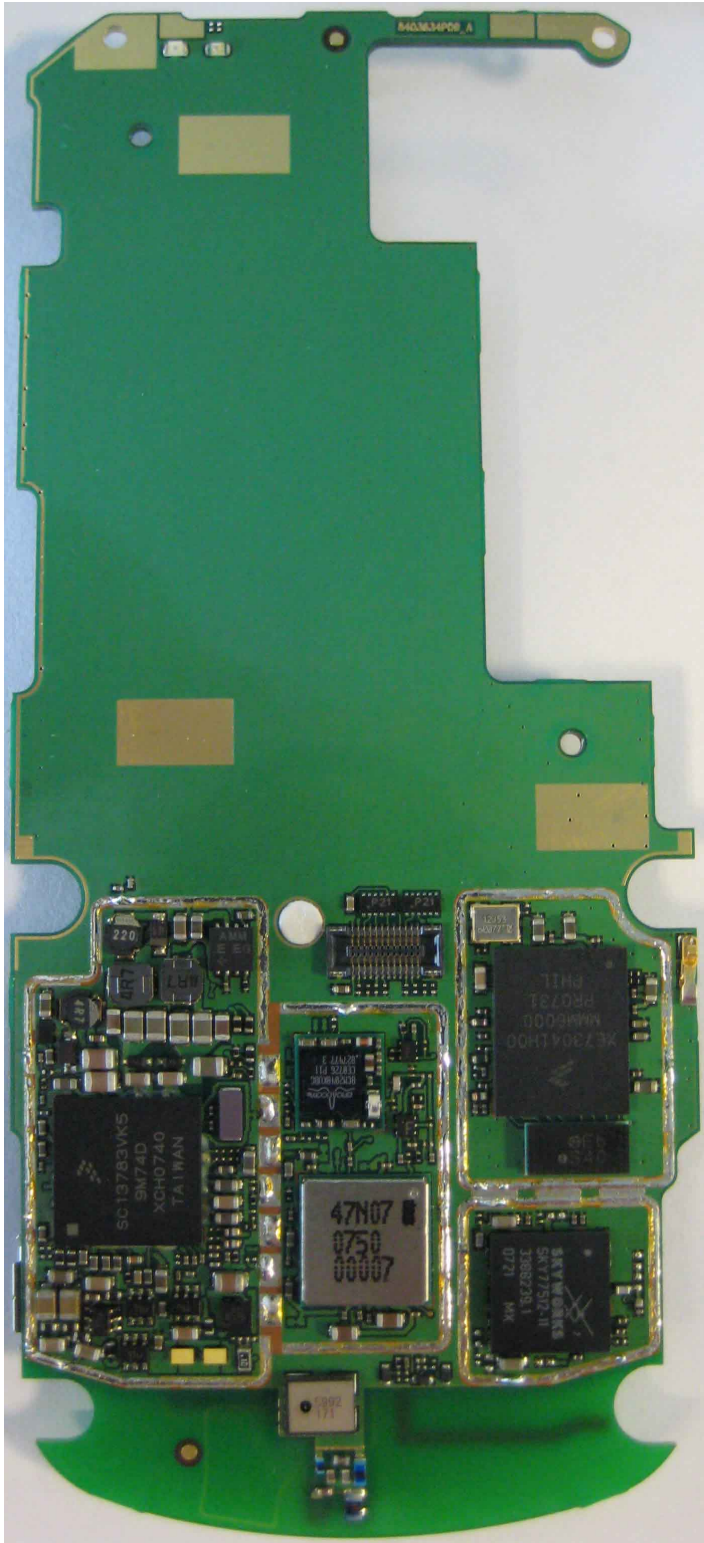
BACK SIDE OF MAIN PCB
WHERE YOU CAN SEE THE BACK
OF THE DISPLAY
DB REMOVED



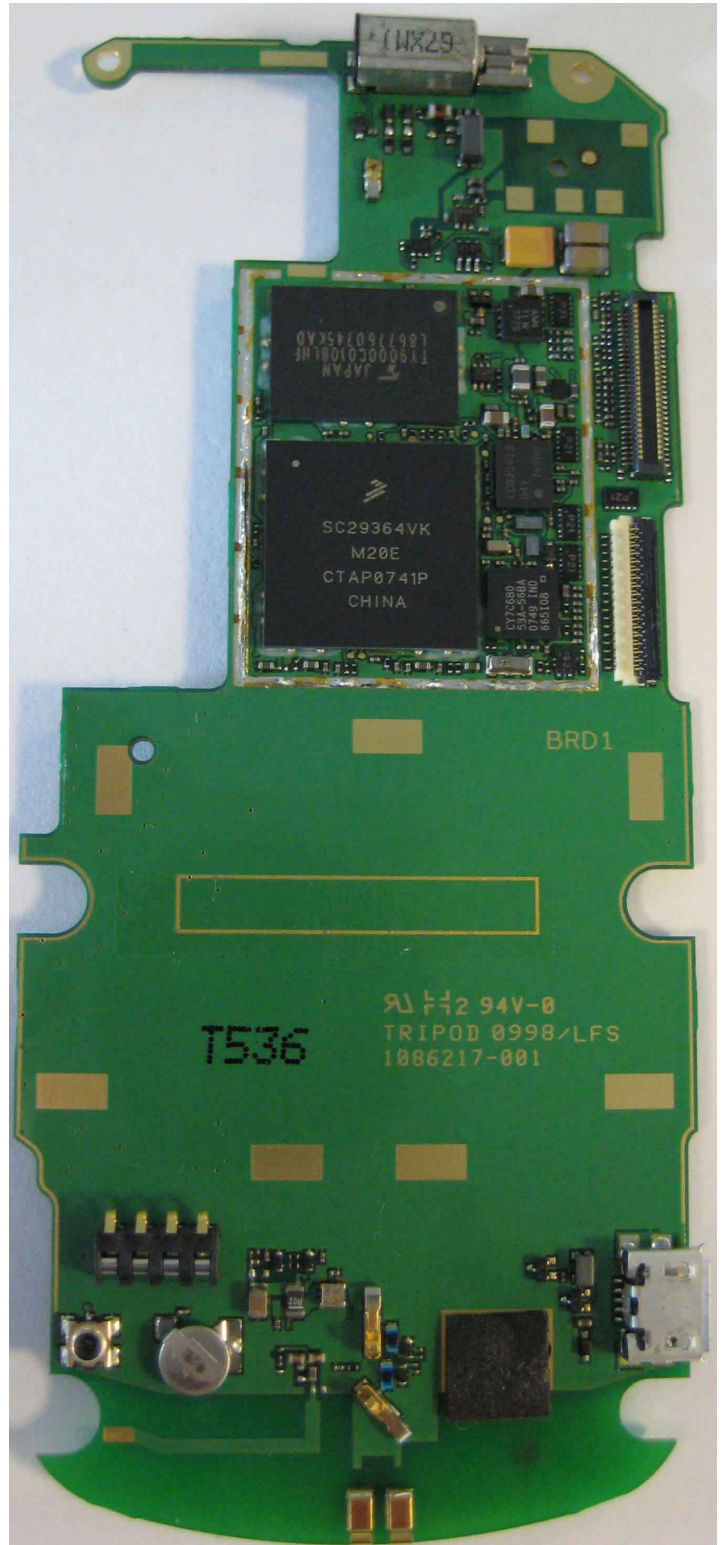
MAIN PCB WITH SHIELD



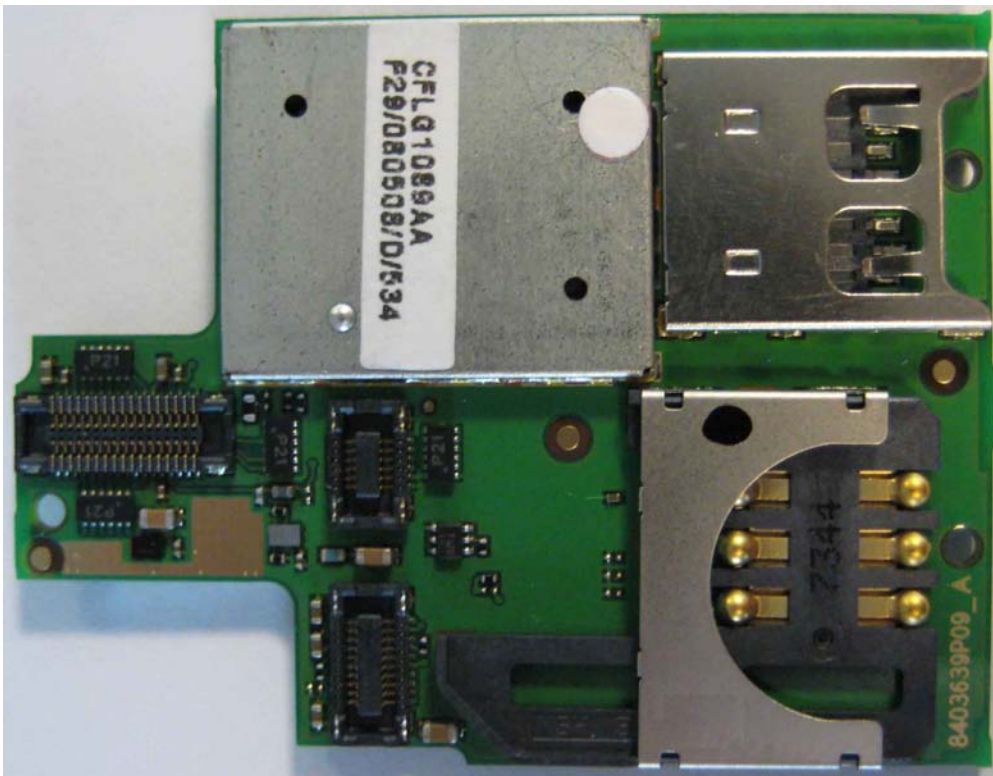
MAIN PCB WITH SHIELDS
OTHER SIDE



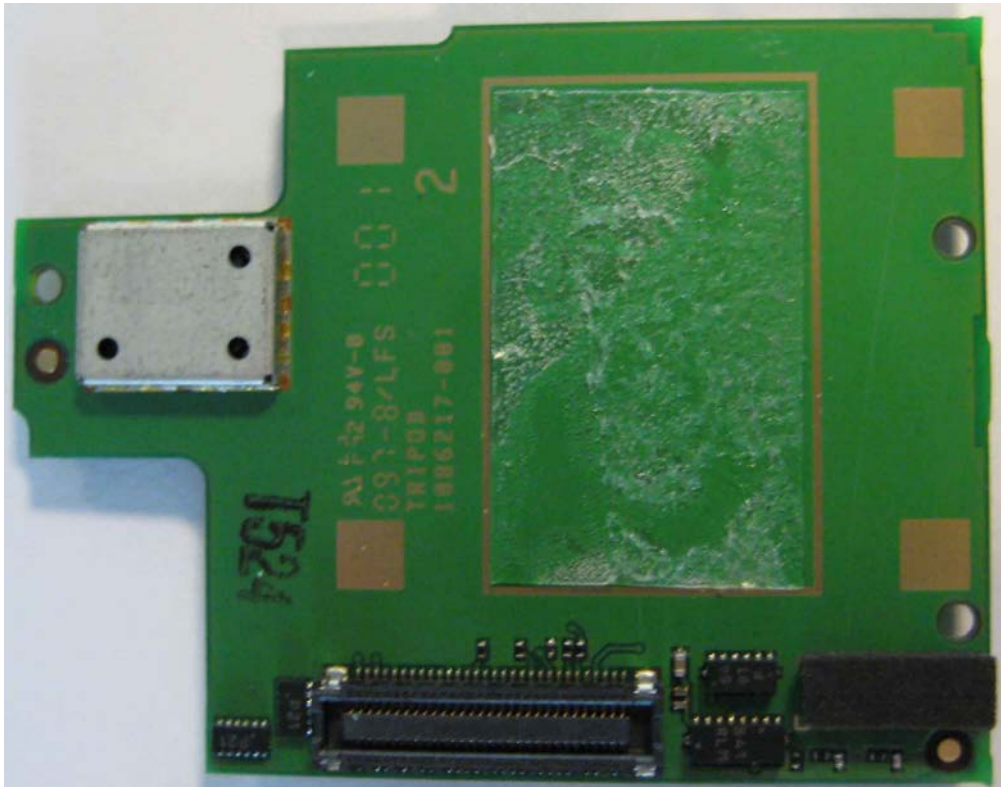
MAIN PCB WITHOUT SHIELDS



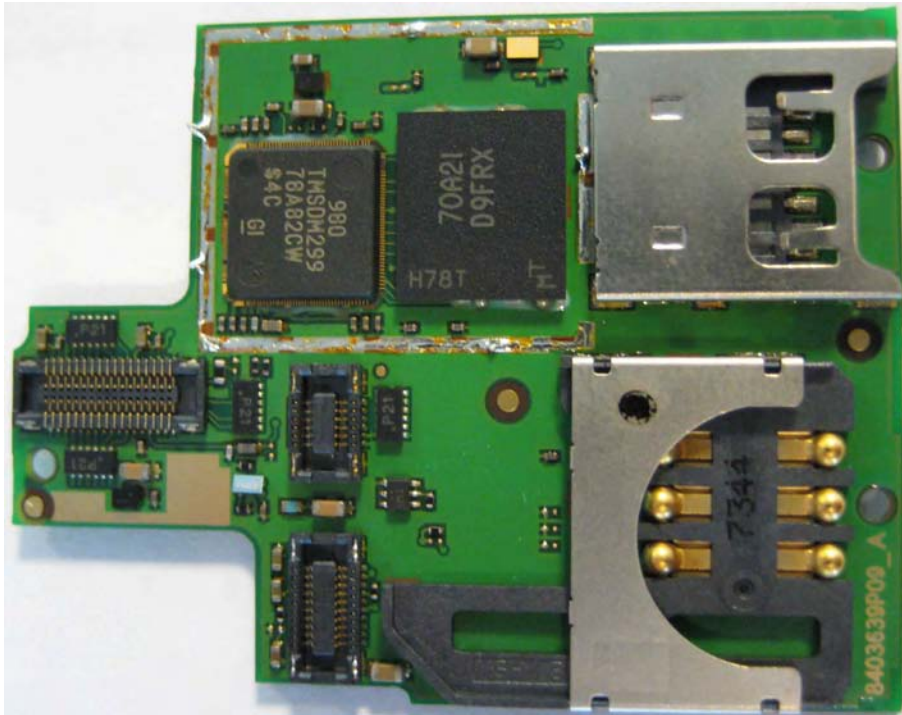
MAIN PCB WITHOUT SHIELD
OTHER SIDE



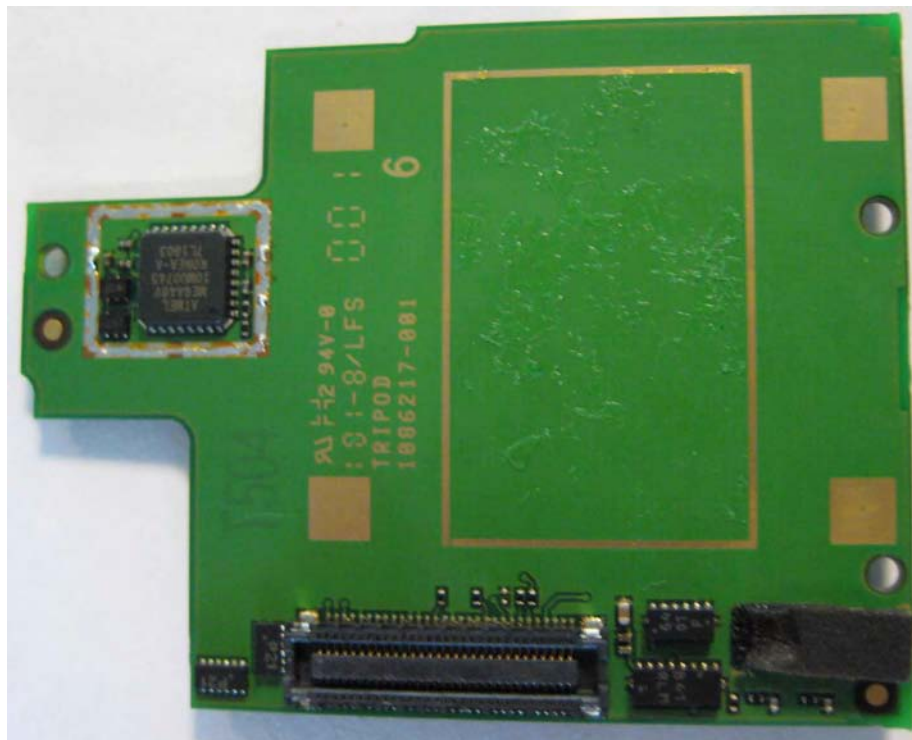
DB WITH SHIELD



DB WITH SHIELD
OTHER SIDE



DB WITHOUT SHIELD



DB WITHOUT SHIELD
OTHER SIDE



DISPLAY