



June 17, 2008

Supplement to SAR Test Report for Motorola portable cellular phone (FCC ID IHDT56JR1)

Prepared by:

Thomas Knipple

Motorola Mobile Devices Product Safety Laboratory

Libertyville, Illinois

Summary of FCC request for additional information

There was a request for additional information regarding Motorola’s SAR Test Report for Motorola portable cellular phone (FCC ID IHDT56JR1). The requested information is addressed below in the same numbering sequence received.

- 6. Please clarify if this device is Release 99, Release 5, Release 6, etc. device for 3G WCDMA. Please update the conducted power table per FCC 3G policy if necessary on Page 6/49 Exhibit 6 (#21832-1) and Page 7 Exhibit 11 (#21830-1) if applicable.
- 9. SAR Report has the wrong FCC ID on the headers after the cover page. Please amend.
- 10. 850 GSM and WCDMA Right Cheek 1 gram measurement appears to be outside of measurable region from the plot provided, which may require jaw/mouth SAR test procedure per “FCC SAR Considerations for Handsets with Multiple Transmitters and Antennas v01r02 #648474, April 2008”. Please address.

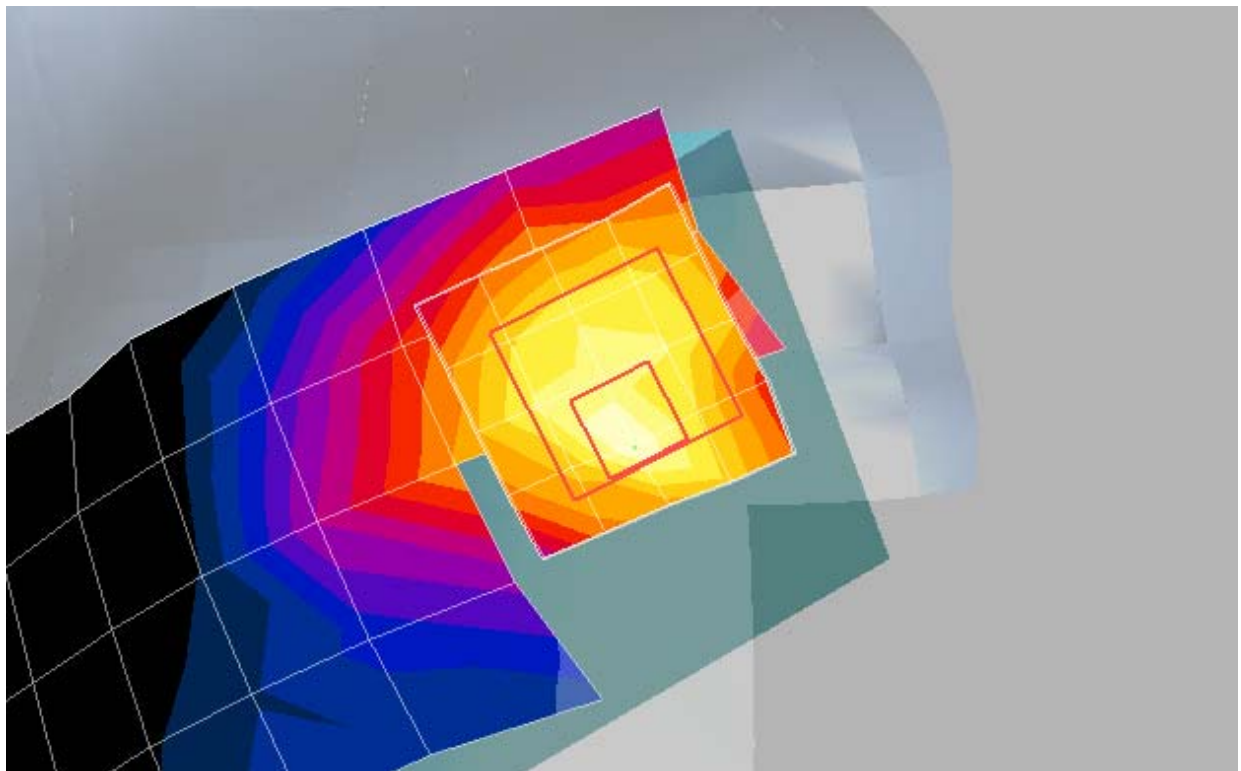
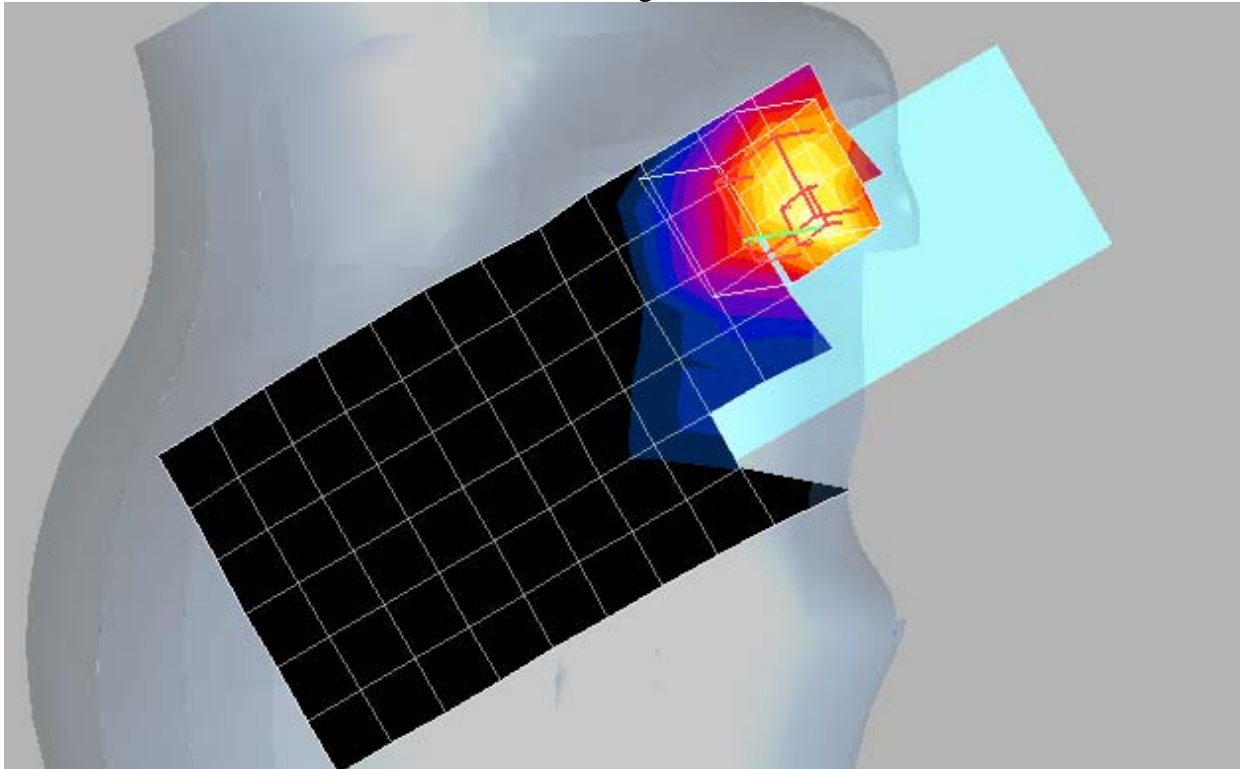
Response:

- 6. The device is Release 5 for 3G WCDMA. The relevant conducted power measurements for a device of this type are given in the table below.

<b>Conducted Power (dBm) for WCDMA – HSDPA (Rel 5) Modes</b>				
<b>Channel</b>	<b>Sub test 1</b>	<b>Sub test 2</b>	<b>Sub test 3</b>	<b>Sub test 4</b>
4132	23.52	23.14	23.11	23.1
4180	23.57	23.16	23..33	23.29
4233	23.61	23.21	23.26	23.27
9262	23.69	23.24	23.28	23.24
9400	23.38	23.13	23.14	23.21
9538	23.26	22.97	23.11	23.12

- 9. The FCC ID typo has been corrected. An updated SAR report is attached with this response.
- 10. The 5x5x7 Zoom Scans, from which the reported SAR values are taken and which are shown in the images following, adequately contained the localized RF hot spot for each test. Per recent FCC/TCB guidance, future reports will include the Zoom Scan image on the included SAR plots.

GSM 850 Right Cheek



WCDMA 850 Right Cheek

