




MOTOROLA

Portable Cellular Phone SAR Test Report

Test Report #: 21661-1
Date of Report: 20-Mar-2008
Date of Test: 27-Feb-2008 ~ 20-Mar-2008
FCC ID #: **IHDT56JM1**
Generic Name: **VE20**
Laboratory: Motorola Mobile Devices Business Product Safety & Compliance Laboratory
 11th Floor, Hibrand Living Hall,
 215, Yanjae-Dong, Seocho-Gu, Seoul, South Korea, 137-130

Report Author: Brian Lee
 RF Engineer


This laboratory is accredited to ISO/IEC 17025-2005 to perform the following tests:

<u>Tests:</u>	<u>Procedures:</u>
Electromagnetic Specific Absorption Rate	IEC 62209-1
	RSS-102
	IEEE 1528 - 2003
	FCC OET Bulletin 65 (including Supplement C)
	Australian Communications Authority Radio
	Communications (Electromagnetic Radiation – Human
	Exposure) Standard 2003
	CENELEC EN 50360 (2001)
	CENELEC EN 50361 (2001)
	ARIB Std. T-56 (2002)

Accreditation:



TESTING CERT #2518-03

On the following products or types of products:

On the following products or types of products: Wireless Communications Devices (Examples): Two Way Radios; Portable Phones (including Cellular, Licensed Non-Broadcast and PCS); Low Frequency Readers; and Pagers

Statement of Compliance:

Motorola declares under its sole responsibility that the portable cellular telephone model to which this declaration relates, is in conformity with the appropriate General Population/Uncontrolled RF exposure standards, recommendations and guidelines (FCC 47 CFR §2.1093) as well as with CENELEC en50360:2001 and ANSI / IEEE C95.1. It also declares that the product was tested in accordance with IEEE 1528 / CENELEC EN62209-1 (2006), as well as other appropriate measurement standards, guidelines and recommended practices. Any deviations from these standards, guidelines and recommended practices are noted below:

(none)

©Motorola, Inc. 2007

This test report shall not be reproduced except in full, without written approval of the laboratory.

The results and statements contained herein relate only to the items tested. The names of individuals involved may be mentioned only in connection with the statements or results from this report.

Motorola encourages all feedback, both positive and negative, on this test report.

Table of Contents

1. Introduction	2
2. Description of the Device Under Test	2
<i>2.1 Antenna description</i>	2
<i>2.2 Device description</i>	2
3. Test Equipment Used	3
<i>3.1 Dosimetric System</i>	3
<i>3.2 Additional Equipment</i>	3
4. Electrical parameters of the tissue simulating liquid	4
5. System Accuracy Verification	5
6. Test Results	6
<i>6.1 Head Adjacent Test Results</i>	7
<i>6.2 Body Worn Test Results</i>	10
References	13
Appendix 1: SAR distribution comparison for system accuracy verification	14
Appendix 2: SAR distribution plots for Phantom Head Adjacent Use	15
Appendix 3: SAR distribution plots for Body Worn Configuration	16
Appendix 4: Probe Calibration Certificate	17
Appendix 5: Measurement Uncertainty Budget	18
Appendix 6: Photographs of the device under test	20
Appendix 7: Dipole Characterization Certificate	21

1. Introduction

The Motorola Mobile Devices Business Product Safety Laboratory has performed measurements of the maximum potential exposure to the user of the portable cellular phone covered by this test report. The Specific Absorption Rate (SAR) of this product was measured. The portable cellular phone was tested in accordance with [1], [4] and [5]. The SAR values measured for the portable cellular phone are below the maximum recommended levels of 1.6 W/kg in a 1g average set in [3] and 2.0W/kg in a 10g average set in [2].

For ANSI / IEEE C95.1 (1g), the final SAR reading for this phone is 1.34 W/kg for head adjacent use and 0.97 W/kg for body worn use. These measurements were performed using a Dasy4™ v4.7 system manufactured by Schmid & Partner Engineering AG (SPEAG), of Zurich Switzerland.

2. Description of the Device Under Test

2.1 Antenna description

Type	Internal Antenna	
Location	Bottom of the Transceiver	
Dimensions	Width	37.85mm
	Length	7.20mm
Configuration	FJA	

2.2 Device description

Serial number	80AB3051				
Mode(s) of Operation	CDMA 800	CDMA 1900	CDMA800 1xEV-DO Rev 0	CDMA1900 1xEV-DO Rev0	Bluetooth
Modulation Mode(s)	QPSK	QPSK	QPSK	QPSK	GMSK
Maximum Output Power Setting	25.00 dBm	25.00 dBm	25.00 dBm	25.00 dBm	4.00 dBm
Duty Cycle	1:1	1:1	1:1	1:1	1:1
Transmitting Frequency Rang(s)	824.70 – 848.31 MHz	1851.25 – 1908.75 MHz	824.70 – 848.31 MHz	1851.25 – 1908.75 MHz	2400.0 - 2483.5 MHz
Production Unit or Identical Prototype (47 CFR §2.908)	Identical Prototype				
Device Category	Portable				
RF Exposure Limits	General Population / Uncontrolled				

3. Test Equipment Used

3.1 Dosimetric System

The Motorola Mobile Devices Business Product Safety & Compliance Laboratory utilizes a Dosimetric Assessment System (Dasy4™ v4.7) manufactured by Schmid & Partner Engineering AG (SPEAG™), of Zurich Switzerland. All the SAR measurements are taken within a shielded enclosure. The overall 10g RSS uncertainty of the measurement system is ±10.8% (K=1) with an expanded uncertainty of ±21.6% (K=2). The overall 1g RSS uncertainty of the measurement system is ±11.1% (K=1) with an expanded uncertainty of ±22.2% (K=2). The measurement uncertainty budget is given in Appendix 6. Per IEEE 1528, this uncertainty budget is applicable to the SAR range of 0.4W/kg to 10W/kg.

The list of calibrated equipment used for the measurements is shown in the following table.

Description	Serial Number	Cal Due Date
DASY4™ DAE V1	SN365	18-Sep-2008
E-Field Probe ETDV6R	SN1391	24-Sep-2008
S.A.M. Phantom used for 800/900MHz	TP-1155	
S.A.M. Phantom used for 1800/1900/2450MHz	TP-1086	
Dipole Validation Kit, DV900V2	280tr	01-May-2008
Dipole Validation Kit, DV1800V2	77	01-May-2008
DASY4™ DAE V1	SN383	24-Aug-2008
E-Field Probe ETDV6R	SN1515	28-Aug-2008
S.A.M. Phantom used for 800/900MHz	TP-1129	
S.A.M. Phantom used for 1700/1800/1900/2450MHz	TP-1134	
Dipole Validation Kit, DV900V2	97	01-May-2008
Dipole Validation Kit, DV1800V2	277tr	01-May-2008
Dipole Validation Kit, D2450V2	767	01-May-2008

3.2 Additional Equipment

Description	Serial Number	Cal Due Date
Signal Generator HP8648C	3847A04630	28-Jan-2009
Power Meter E4419B	US39250623	28-Jan-2009
Power Sensor #1 - 8481A	US37296472	29-Jan-2009
Power Sensor #2 - 8481A	3318A86935	29-Jan-2009
Network Analyzer HP8753ES	US39172714	28-Jan-2009
Dielectric Probe Kit HP85070B	US99360207	
Signal Generator HP8648C	3847A04840	28-Jan-2009
Power Meter E4419B	GB39511085	28-Jan-2009
Power Sensor #1 - 8481A	MY41095450	28-Jan-2009
Power Sensor #2 - 8481A	2702A82671	28-Jan-2009

4. Electrical parameters of the tissue simulating liquid

Prior to conducting SAR measurements, the relative permittivity, ϵ_r , and the conductivity, σ , of the tissue simulating liquids were measured with a HP85070 Dielectric Probe Kit. These values, along with the temperature of the simulated tissue are shown in the table below. The recommended limits for permittivity and conductivity are also shown. A mass density of $\rho=1\text{g/cm}^3$ was entered into the system in all the cases. It can be seen that the measured parameters are within tolerance of the recommended limits specified in [1] and [5].

f (MHz)	Tissue type	Limits / Measured	Dielectric Parameters		
			ϵ_r	σ (S/m)	Temp (°C)
835	Head	Measured, 27-Feb-2008	43.3	0.93	20.1
		Measured, 28-Feb-2008	42.7	0.92	21.1
		Recommended Limits	41.5 ±5%	0.90 ±5%	18-25
	Body	Measured, 27-Feb-2008	55.2	0.98	21.1
		Recommended Limits	55.2 ±5%	0.97 ±5%	18-25
		Measured, 28-Feb-2008	39.3	1.45	20.6
1880	Head	Recommended Limits	40.0 ±5%	1.40 ±5%	18-25
		Measured, 28-Feb-2008	53.5	1.58	20.7
	Body	Recommended Limits	53.3 ±5%	1.52 ±5%	18-25
		Measured, 20-Mar-2008	51.9	2.03	20.9
2450	Body	Recommended Limits	52.7 ±10%	1.95 ±5%	18-25

The list of ingredients and the percent composition used for the tissue simulates are indicated in the table below.

Ingredient	835MHz / 900 MHz	835MHz / 900 MHz	1800MHz / 1900 MHz	1800 MHz / 1900 MHz	2450MHz	2450 MHz
	Head	Body	Head	Body	Head	Body
Sugar	57	44.9	--	--	--	--
DGBE	--	--	47	30.8	--	30
Diacetin	--	--	--	--	51	--
Water	40.45	53.06	52.62	68.8	48.75	70
Salt	1.45	0.94	0.38	0.4	0.15	--
HEC	1	1	--	--	--	--
Bact.	0.1	0.1	--	--	0.1	--

5. System Accuracy Verification

A system accuracy verification of the DASY4™ was performed using the measurement equipment listed in Section 3.1. The daily system accuracy verification occurs within the flat section of the SAM phantom.

A SAR measurement was performed to verify the measured SAR was within ±10% from the target SAR indicated in Appendix 7. These frequencies are within ±10% of the compliance test mid-band frequency as required in [1] and [5]. The test was conducted on the same days as the measurement of the DUT. Recommended limits for permittivity and conductivity, specified in [5], are shown in the table below. The obtained results from the system accuracy verification are also displayed in the table below. SAR values are normalized to 1W forward power delivered to the dipole. It is seen that the system is operating within its specification, as the results are within acceptable tolerance of the reference values. The distributions of SAR compare well with those of the reference measurements (see Appendix 1). The tissue stimulant depth was verified to be 15.0cm ±0.5cm. Z-axis scans showing the SAR penetration are also included in Appendix 1.

f (MHz)	Description	SAR (W/kg), 1gram	Dielectric Parameters		Ambient Temp (°C)	Tissue Temp (°C)
			ϵ_r	σ (S/m)		
900	Measured, 27-Feb-2008	11.70	42.6	0.99	21.7	21.2
	Measured, 28-Feb-2008	11.88	41.9	0.99	21.5	21.0
	Recommended Limits	11.24	41.5 ±5%	0.97 ±5%	18-25	18-25
1800	Measured, 27-Feb-2008	37.95	39.6	1.37	20.2	21.6
	Measured, 28-Feb-2008	38.03	39.2	1.38	20.4	21.1
	Recommended Limits	37.5	40.0 ±5%	1.4 ±5%	18-25	18-25
2450	Measured, 19-Mar-2008	54.50	37.4	1.88	21.3	21.4
	Measured, 20-Mar-2008	53.75	37.2	1.85	21.5	22.1
	Recommended Limits	58.0	39.2 ±10%	1.80 ±5%	18-25	18-25

The following probe conversion factors were used on the E-Field probe(s) used for the system accuracy verification measurements:

Description	Serial Number	f (MHz)	Conversion Factor	Cal Cert pg #
E-Field Probe ET3DV6R	SN1391	900	5.97	8 of 9
		1810	4.96	8 of 9
E-Field Probe ET3DV6R	SN1515	900	6.50	8 of 9
		1810	5.21	8 of 9
		2450	4.64	8 of 9

6. Test Results

The test sample was operated using an actual transmission through a base station simulator. The base station simulator was setup to the proper channel, transmitter power level and transmit mode of operation. The phone was tested in the configurations stipulated in [1], [4] and [5]. The phone was positioned into these configurations using the device holder supplied with the DASY4™ SAR measurement system. The measured dielectric constant of the material used for the device holder is less than 2.9 and the loss tangent is less than 0.02 (± 30%) at 850MHz. The default settings for the “coarse” and “cube” scans were chosen and used for measurements. The grid spacing of the course scan was set to 15cm as shown in the SAR plots included in Appendix 2 and 3. Please refer to the DASY4™ manual for additional information on SAR scanning procedures and algorithms used.

The Cellular Phone model covered by this report has the following battery options:

SNN5813A – 920 mAH Battery

SNN5804A – 920 mAH Battery

The inbox battery is the SNN5813A. This battery was used to do most of the SAR testing. The phone was placed in the SAR measurement system with a fully charged battery. The configuration that resulted in the highest SAR values were tested using the other batteries listed above.

Per the “SAR Measurement Procedures for 3G Devices” released in October, 2007, RC1, RC3 and RC3 (FCH + SCH) CDMA modes, EVDO Rev O were considered. The conducted power measurements (per steps 3, 4 & 10 of section 4.4.5.2 of 3GPP2 C.5.011 / TIA -98-E) for each mode are shown in the table below.

Conducted power (dBm) for CDMA modes						
	Channel	RC1		RC3		RC3 (FCH + SCH)
		SO2	SO55	SO2	SO55	
CDMA 800	1013	25.08	25.10	25.11	25.10	Per Motorola designs, the maximum power, when in a mode that allows supplemental channels, will always be less than the RC3/RC1 maximum conducted power limit.
	384	24.96	24.93	24.92	24.89	
	777	25.06	25.08	25.06	25.05	
CDMA 1900	25	24.86	24.89	24.85	24.86	
	600	24.87	24.85	24.86	24.88	
	1175	25.07	25.11	25.04	25.03	

Conducted power (dBm) for EVDO modes				
	Channel	Rev 0		Rev A
		FTAP 307.2k	RTAP 153.6k	Subtype 2
CDMA 800	1013	24.95	25.05	N/A
	384	24.89	25.01	N/A
	777	24.95	25.10	N/A
CDMA 1900	25	25.18	25.04	N/A
	600	25.18	25.07	N/A
	1175	25.17	25.05	N/A

6.1 Head Adjacent Test Results

The SAR results shown in tables 1 through 6 are maximum SAR values averaged over 1 gram of phantom tissue, to demonstrate compliance to [3] and also over 10 grams of phantom tissue, to demonstrate compliance to the [6]. Also shown are the measured conducted output power levels for the CDMA RC3/SO55 mode, the temperature of the simulated tissue after the test, the measured drift and the extrapolated SAR. The exact method of extrapolation is $New\ SAR = Old\ SAR * 10^{(-drift/10)}$. The SAR reported at the end of the measurement process by the DASY4™ measurement system can be scaled up by the measured drift to determine the SAR at the beginning of the measurement process. This is the most conservative SAR because it corresponds to the average output power at the beginning of the SAR test. This extrapolation has been done because when the DUT is operating properly it may exhibit a slump in radiated power and SAR over time. This is verified by measuring the SAR drift after the test. Note that 800MHz digital mode SAR measurements were performed in accordance with [4].

The left head and right head SAR contour distributions are similar. Because of this similarity, the cheek/touch and 15° tilt test conditions with the highest SAR values in each band are indicated as bold numbers in the following tables and are included in Appendix 2. All other test conditions measured lower SAR values than those included in Appendix 2.

The SAR measurements were performed using the SAM phantoms listed in section 3.1. Since the same phantoms and simulated tissue were used for the system accuracy verification and the device SAR measurements, the Z-axis scans included in Appendix 1 are applicable for verification of simulated tissue depth to be 15.0cm ±0.5cm.

The following probe conversion factors were used on the E-Field probe(s) used for the head adjacent measurements:

Description	Serial Number	f (MHz)	Conversion Factor	Cal Cert pg #
E-Field Probe ET3DV6R	SN1391	900	5.97	8 of 9
		1810	4.96	8 of 9

Left Head Cheek Position								
f (MHz)	Description	Conducted Output Power (dBm)	Temp (°C)	Drift (dB)	10g SAR value		1g SAR value	
					Measured (W/kg)	Extrapolated (W/kg)	Measured (W/kg)	Extrapolated (W/kg)
800MHz	Channel 1013	25.10						
	Channel 384	24.89	20.5	-0.15	0.561	0.58	0.769	0.80
	Channel 777	25.05						
1900MHz	Channel 25	24.86						
	Channel 600	24.88	21.1	0.01	0.471	0.47	0.745	0.75
	Channel 1175	25.03						

Table 1: SAR measurement results at the highest possible output power, measured in a head cheek position against the ICNIRP and ANSI SAR Limit.

Right Head Cheek Position								
f (MHz)	Description	Conducted Output Power (dBm)	Temp (°C)	Drift (dB)	10g SAR value		1g SAR value	
					Measured (W/kg)	Extrapolated (W/kg)	Measured (W/kg)	Extrapolated (W/kg)
800MHz	Channel 1013	25.10	20.3	-0.04	0.499	0.50	0.743	0.75
	Channel 384	24.89	20.3	-0.08	0.677	0.69	1.04	1.06
	Channel 777	25.05	20.2	0.06	0.723	0.72	1.09	1.09
1900MHz	Channel 25	24.86	20.6	0.00	0.707	0.71	1.16	1.16
	Channel 600	24.88	20.6	-0.1	0.791	0.81	1.31	1.34
	Channel 1175	25.03	20.5	0.02	0.794	0.79	1.33	1.33

Table 2: SAR measurement results at the highest possible output power, measured in a head cheek position against the ICNIRP and ANSI SAR Limit.

Highest Head Cheek Position with SNN5804A								
f (MHz)	Description	Conducted Output Power (dBm)	Temp (°C)	Drift (dB)	10g SAR value		1g SAR value	
					Measured (W/kg)	Extrapolated (W/kg)	Measured (W/kg)	Extrapolated (W/kg)
800MHz	Channel 1013	25.10						
	Channel 384	24.89						
	Channel 777	25.05	21.1	-0.06	0.762	0.77	1.15	1.17
1900MHz	Channel 25	24.86						
	Channel 600	24.88	20.5	-0.08	0.732	0.75	1.19	1.21
	Channel 1175	25.03						

Table 3: SAR measurement results at the highest possible output power, measured in a head cheek position against the ICNIRP and ANSI SAR Limit.

Left Head 15° Tilt Position								
f (MHz)	Description	Conducted Output Power (dBm)	Temp (°C)	Drift (dB)	10g SAR value		1g SAR value	
					Measured (W/kg)	Extrapolated (W/kg)	Measured (W/kg)	Extrapolated (W/kg)
800MHz	Channel 1013	25.10						
	Channel 384	24.89	20.4	0.05	0.119	0.12	0.159	0.16
	Channel 777	25.05						
1900MHz	Channel 25	24.86						
	Channel 600	24.88	21.1	-0.01	0.123	0.12	0.214	0.21
	Channel 1175	25.03						

Table 4: SAR measurement results at the highest possible output power, measured in a head 15° Tilt position against the ICNIRP and ANSI SAR Limit.

Right Head 15° Tilt Position								
f (MHz)	Description	Conducted Output Power (dBm)	Temp (°C)	Drift (dB)	10g SAR value		1g SAR value	
					Measured (W/kg)	Extrapolated (W/kg)	Measured (W/kg)	Extrapolated (W/kg)
800MHz	Channel 1013	25.10						
	Channel 384	24.89	20.1	-0.41	0.15	0.16	0.196	0.22
	Channel 777	25.05						
1900MHz	Channel 25	24.86						
	Channel 600	24.88	20.5	-0.01	0.142	0.14	0.237	0.24
	Channel 1175	25.03						

Table 5: SAR measurement results at the highest possible output power, measured in a head 15° Tilt position against the ICNIRP and ANSI SAR Limit.

Highest Head 15° Tilt Position with SNN5804A								
f (MHz)	Description	Conducted Output Power (dBm)	Temp (°C)	Drift (dB)	10g SAR value		1g SAR value	
					Measured (W/kg)	Extrapolated (W/kg)	Measured (W/kg)	Extrapolated (W/kg)
800MHz	Channel 1013	25.10						
	Channel 384	24.89	20.4	-0.07	0.152	0.15	0.199	0.20
	Channel 777	25.05						
1900MHz	Channel 25	24.86						
	Channel 600	24.88	20.5	-0.04	0.149	0.15	0.244	0.25
	Channel 1175	25.03						

Table 6: SAR measurement results at the highest possible output power, measured in a head 15° Tilt position against the ICNIRP and ANSI SAR Limit.

6.2 Body Worn Test Results

The SAR results shown in tables 7 through 12 are maximum SAR values averaged over 1 gram of phantom tissue, to demonstrate compliance to [3] and also over 10 grams of phantom tissue, to demonstrate compliance to the [6]. Also shown are the measured conducted output power levels for the CDMA RC3/SO55 mode, the temperature of the test facility during the test, the temperature of the tissue simulate after the test, the measured drift and the extrapolated SAR. The exact method of extrapolation is $New\ SAR = Old\ SAR * 10^{(-drift/10)}$. The SAR reported at the end of the measurement process by the DASY4™ measurement system can be scaled up by the measured drift to determine the SAR at the beginning of the measurement process. This is the most conservative SAR because it corresponds to the average output power at the beginning of the SAR test. This extrapolation has been done because when the DUT is operating properly it may exhibit a slump in radiated power and SAR over time. This is verified by measuring the SAR drift after the test. Note that 800MHz digital mode SAR measurements were performed in accordance with [4].

The test conditions that produced the highest SAR values in each band are indicated as bold numbers in the following tables and are included in Appendix 3. All other test conditions measured lower SAR values than those included in Appendix 3.

A “flat” phantom was for the body-worn tests. This “flat” phantom is made out of 1” thick natural High Density Polyethylene with a thickness at the bottom equal to 2.0mm. It measures 52.7cm(long) x 26.7cm(wide) x 21.2cm(tall). The measured dielectric constant of the material used is less than 2.3 and the loss tangent is less than 0.0046 all the way up to 2.184GHz.

The tissue stimulant depth was verified to be 15.0cm ±0.5cm. The same device holder described in section 6 was used for positioning the phone. The functional accessories were divided into two categories, the ones with metal components and the ones with non-metal components. For non-metallic component accessories’, testing was performed on the accessory that displayed the closest proximity to the flat phantom. Each metallic component accessory, if any, was checked for uniqueness of metal component so that each is tested with the device. If multiple accessories shared an identical metal component, only the accessory that dictates the closest spacing to the body was tested. In addition to accessory testing, the cellular phone was tested with the front and back of the phone facing the phantom. For voice mode operation, the phone was placed as a distance of 15mm from the phantom. For data mode operation, the phone was placed as a distance of 25mm from the phantom. The cellular phone was tested with a headset connected to the device for all body-worn SAR measurements.

There are no Body-Worn Accessories available for this phone at the time of testing hence the device was tested per the supplement C testing guidelines for devices that do not have body worn accessories. The phone was placed a maximum of 25mm away from a flat phantom per the supplement C standard guidelines to perform SAR measurement.

The following probe conversion factors were used on the E-Field probe(s) used for the body worn measurements:

Description	Serial Number	f (MHz)	Conversion Factor	Cal Cert pg #
E-Field Probe ET3DV6R	SN1391	900	5.75	8 of 9
		1810	4.48	8 of 9
E-Field Probe ET3DV6R	SN1515	900	6.09	8 of 9
		1810	4.73	8 of 9
		2450	4.06	8 of 9

Body-Worn; Front of Phone 15mm from Phantom								
<i>f</i> (MHz)	Description	Conducted Output Power (dBm)	Temp (°C)	Drift (dB)	<i>10g SAR value</i>		<i>1g SAR value</i>	
					Measured (W/kg)	Extrapolated (W/kg)	Measured (W/kg)	Extrapolated (W/kg)
800MHz	Channel 1013	25.10						
	Channel 384	24.89	21.4	-0.01	0.502	0.50	0.709	0.71
	Channel 777	25.05						
1900MHz	Channel 25	24.86						
	Channel 600	24.88	20.7	-0.02	0.34	0.34	0.564	0.57
	Channel 1175	25.03						

Table 7: SAR measurement results at the highest possible output power, measured in a body-worn position against the ICNIRP and ANSI SAR Limit.

Body-Worn; Back of Phone 15mm from Phantom								
<i>f</i> (MHz)	Description	Conducted Output Power (dBm)	Temp (°C)	Drift (dB)	<i>10g SAR value</i>		<i>1g SAR value</i>	
					Measured (W/kg)	Extrapolated (W/kg)	Measured (W/kg)	Extrapolated (W/kg)
800MHz	Channel 1013	25.10	21.2	0.01	0.504	0.50	0.716	0.72
	Channel 384	24.89	21.3	-0.01	0.615	0.62	0.865	0.87
	Channel 777	25.05	21.1	-0.05	0.673	0.68	0.963	0.97
1900MHz	Channel 25	24.86						
	Channel 600	24.88	20.6	-0.04	0.325	0.33	0.538	0.54
	Channel 1175	25.03						

Table 8: SAR measurement results at the highest possible output power, measured in a body-worn position against the ICNIRP and ANSI SAR Limit.

Highest Body-Worn with EVDO RevO FTAP 25mm away from phantom								
<i>f</i> (MHz)	Description	Conducted Output Power (dBm)	Temp (°C)	Drift (dB)	<i>10g SAR value</i>		<i>1g SAR value</i>	
					Measured (W/kg)	Extrapolated (W/kg)	Measured (W/kg)	Extrapolated (W/kg)
1900MHz	Channel 25	24.86						
	Channel 600	24.88	20.8	0.03	0.212	0.21	0.332	0.33
	Channel 1175	25.03						

Table 9: SAR measurement results at the highest possible output power, measured in a body-worn position against the ICNIRP and ANSI SAR Limit.

Highest Body-Worn with SNN5804A								
f (MHz)	Description	Conducted Output Power (dBm)	Temp (°C)	Drift (dB)	10g SAR value		1g SAR value	
					Measured (W/kg)	Extrapolated (W/kg)	Measured (W/kg)	Extrapolated (W/kg)
800MHz	Channel 1013	25.10						
	Channel 384	24.89						
	Channel 777	25.05	20.7	-0.13	0.608	0.63	0.873	0.90
1900MHz	Channel 25	24.86						
	Channel 600	24.88	20.6	-0.07	0.308	0.31	0.508	0.52
	Channel 1175	25.03						

Table 10: SAR measurement results at the highest possible output power, measured in a body-worn position against the ICNIRP and ANSI SAR Limit.

Bluetooth Stand-alone : Highest Body-Worn Position on each band 15mm from Phantom								
f (MHz)	Description	Conducted Output Power (dBm)	Temp (°C)	Drift (dB)	10g SAR value		1g SAR value	
					Measured (W/kg)	Extrapolated (W/kg)	Measured (W/kg)	Extrapolated (W/kg)
2450MHz Back SNN5813A	Channel 0							
	Channel 39		20.9	0.17	0.000317	0.00	0.000698	0.00
	Channel 78							
2450MHz Front SNN5813A	Channel 0							
	Channel 39		21.4	0.04	0.000197	0.00	0.000448	0.00
	Channel 78							

Table 11: SAR measurement results at the highest possible output power, measured in a body-worn position against the ICNIRP and ANSI SAR Limit.

Highest Extrapolated Body-Worn SAR values summation with Bluetooth Stand-alone							
f (MHz)	Description	10g SAR value			1g SAR value		
		Measured (W/kg)	Bluetooth Measurement (W/Kg)	Extrapolated (W/kg)	Measured (W/kg)	Bluetooth Measurement (W/Kg)	Extrapolated (W/kg)
800MHz	Body-Worn: Back of phone 15mm away from phantom with SNN5813A battery	0.68	0.00	0.68	0.97	0.00	0.97
1900MHz	Body-Worn: Front of phone 15mm away from phantom with SNN5813A battery	0.34	0.00	0.34	0.57	0.00	0.57

Table 12: SAR measurement results at the highest possible output power, calculated in a body-worn position against the ICNIRP and ANSI SAR Limit.

References

- [1] CENELEC, en62209-1:2006 “Human Exposure to Radio Frequency Fields From Hand - Held and Body - Mounted Wireless Communication Devices – Human Models, Instrumentation, and Procedures”
- [2] CENELEC, en50360:2001 “Product standard to demonstrate the compliance of mobile phones with the basic restrictions related to human exposure to electromagnetic fields (300MHz – 3GHz)”.
- [3] ANSI / IEEE, C95.1 1999 Edition “IEEE Standard for Safety Levels with Respect to Human Exposure to Radio Frequency Electromagnetic Fields, 3kHz to 300GHz”
- [4] FCC OET Bulletin 65 Supplement C 01-01
- [5] IEEE 1528 2003 Edition “IEEE Recommended Practice for Determining the Peak Spatial-Average Specific Absorption Rate (SAR) in the Human Head from Wireless Communications Devices: Measurement Techniques”
- [6] ICNIRP Guidelines “Guidelines for Limiting Exposure to Time-Varying Electric, Magnetic, and Electromagnetic Fields (up to 300 GHz)”

Appendix 1

SAR distribution comparison for the system accuracy verification

Test Laboratory: Motorola 20080227 900Mhz Good +4.1

Procedure Notes: 900 MHz System Performance Check / Dipole Sn# 077 PM1 Power = 200 mW

Sim.Temp@meas = 21.65C Sim.Temp@SPC = 21.2C Room Temp @ SPC = 21.7C

Communication System: CW - Dipole; Frequency: 900 MHz; Channel Number: 4; Duty Cycle: 1:1

Medium: VALIDATION Only; Medium parameters used: $f = 900$ MHz; $\sigma = 0.99$ mho/m; $\epsilon_r = 42.6$; $\rho = 1000$ kg/m³

DASY4 Configuration:

- Probe: ET3DV6R - SN1391; ConvF(5.97, 5.97, 5.97); Calibrated: 9/24/2007
- Sensor-Surface: 4mm (Mechanical Surface Detection)
- Electronics: DAE3 Sn365; Calibrated: 9/18/2007
- Phantom: PCS-10 Sugar SAM; Type: SAM; Serial: TP-1155;
- Measurement SW: DASY4, V4.7 Build 55; Postprocessing SW: SEMCAD, V1.8 Build 176

Daily SPC Check/Dipole Area Scan (4x9x1): Measurement grid: dx=15mm, dy=15mm

Maximum value of SAR (measured) = 2.33 mW/g

Daily SPC Check/0-Degree, 5x5x7 Cube (5x5x7)/Cube 0: Measurement grid: dx=8mm, dy=8mm, dz=5mm

Reference Value = 52.4 V/m; Power Drift = 0.005 dB

Peak SAR (extrapolated) = 3.59 W/kg

SAR(1 g) = 2.36 mW/g; SAR(10 g) = 1.51 mW/g

Maximum value of SAR (measured) = 2.55 mW/g

Daily SPC Check/90-Degree 5x5x7 Cube (5x5x7)/Cube 0: Measurement grid: dx=8mm, dy=8mm, dz=5mm

Reference Value = 52.4 V/m; Power Drift = 0.005 dB

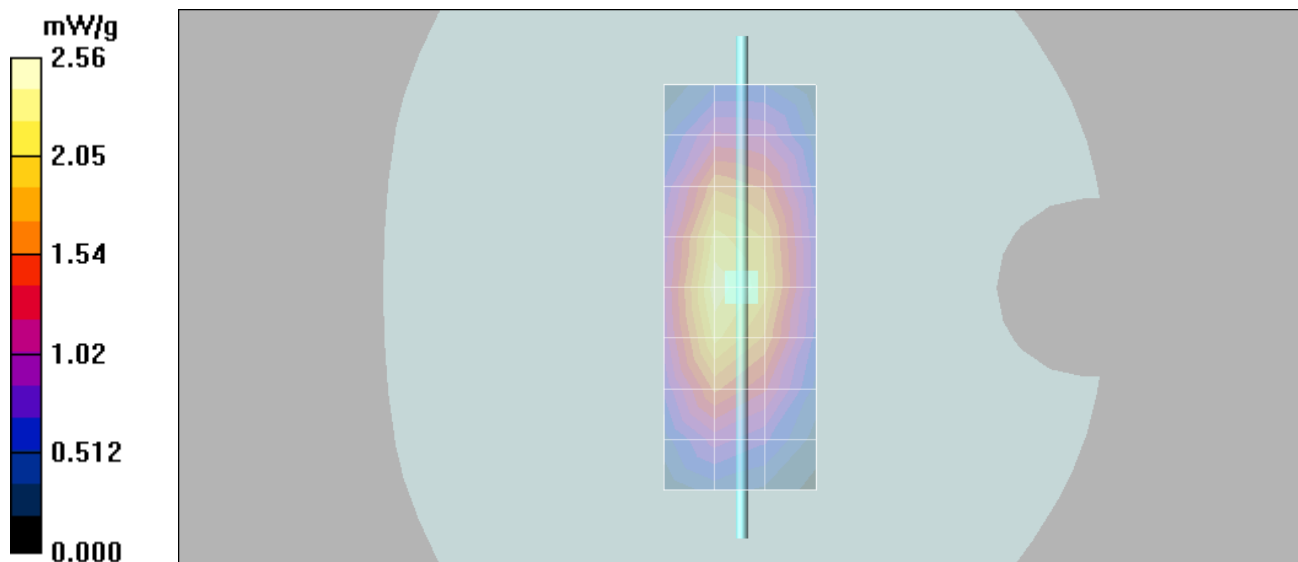
Peak SAR (extrapolated) = 3.51 W/kg

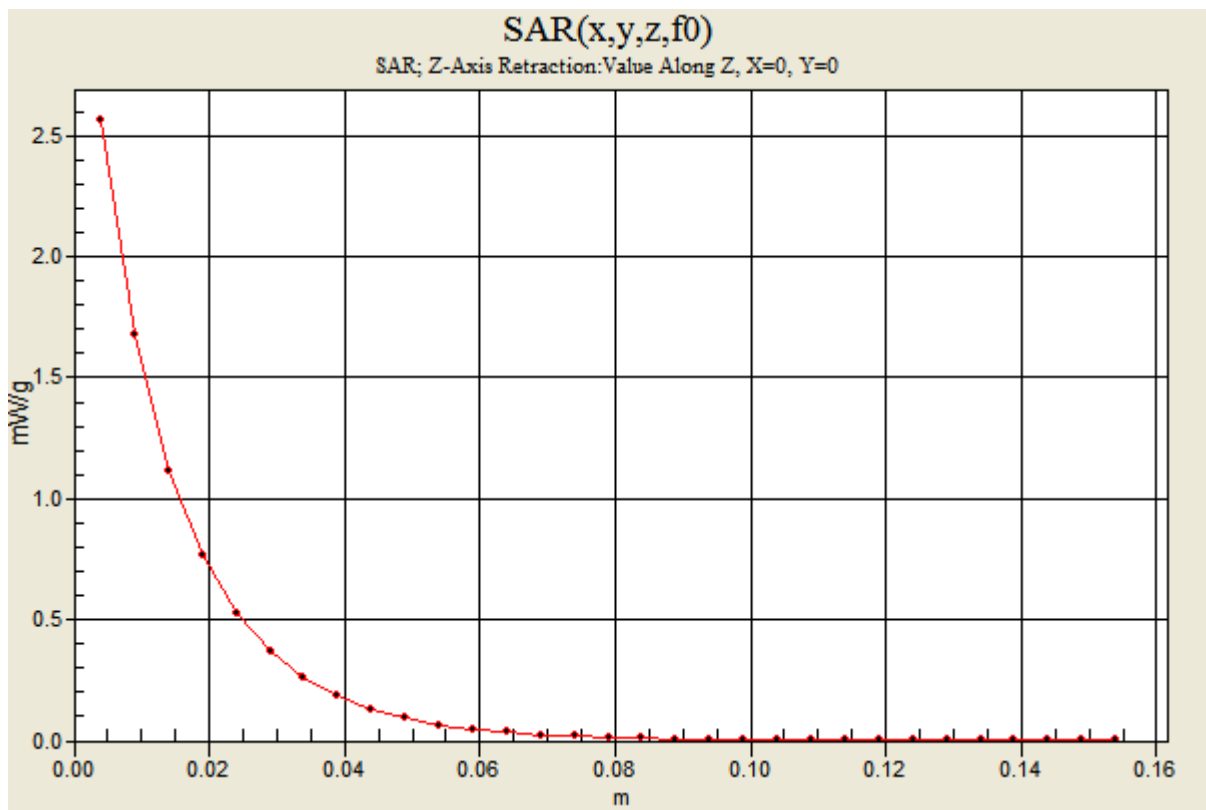
SAR(1 g) = 2.32 mW/g; SAR(10 g) = 1.48 mW/g

Maximum value of SAR (measured) = 2.51 mW/g

Daily SPC Check/Z-Axis Retraction (1x1x31): Measurement grid: dx=20mm, dy=20mm, dz=5mm

Maximum value of SAR (measured) = 2.56 mW/g





Test Laboratory: Motorola 20080228 900Mhz Good +5.6

Procedure Notes: 900 MHz System Performance Check / Dipole Sn# 077 PM1 Power = 200 mW

Sim.Temp@meas = 21.35C Sim.Temp@SPC = 21.0C Room Temp @ SPC = 21.5C

Communication System: CW - Dipole; Frequency: 900 MHz; Channel Number: 4; Duty Cycle: 1:1

Medium: VALIDATION Only; Medium parameters used: $f = 900$ MHz; $\sigma = 0.99$ mho/m; $\epsilon_r = 41.9$; $\rho = 1000$ kg/m³

DASY4 Configuration:

- Probe: ET3DV6R - SN1391; ConvF(5.97, 5.97, 5.97); Calibrated: 9/24/2007
- Sensor-Surface: 4mm (Mechanical Surface Detection)
- Electronics: DAE3 Sn365; Calibrated: 9/18/2007
- Phantom: PCS-10 Sugar SAM; Type: SAM; Serial: TP-1155;
- Measurement SW: DASY4, V4.7 Build 55; Postprocessing SW: SEMCAD, V1.8 Build 176

Daily SPC Check/Dipole Area Scan (4x9x1): Measurement grid: dx=15mm, dy=15mm

Maximum value of SAR (measured) = 2.31 mW/g

Daily SPC Check/0-Degree, 5x5x7 Cube (5x5x7)/Cube 0: Measurement grid: dx=8mm, dy=8mm, dz=5mm

Reference Value = 52.8 V/m; Power Drift = 0.045 dB

Peak SAR (extrapolated) = 3.62 W/kg

SAR(1 g) = 2.38 mW/g; SAR(10 g) = 1.52 mW/g

Maximum value of SAR (measured) = 2.58 mW/g

Daily SPC Check/90-Degree 5x5x7 Cube (5x5x7)/Cube 0: Measurement grid: dx=8mm, dy=8mm, dz=5mm

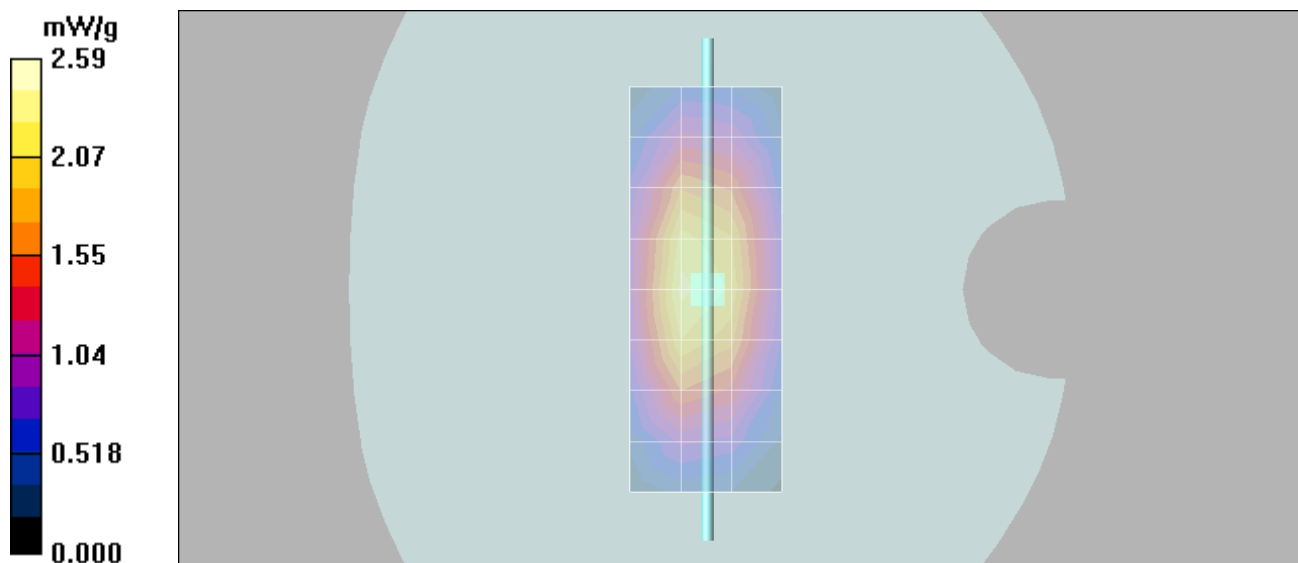
Reference Value = 52.8 V/m; Power Drift = 0.045 dB

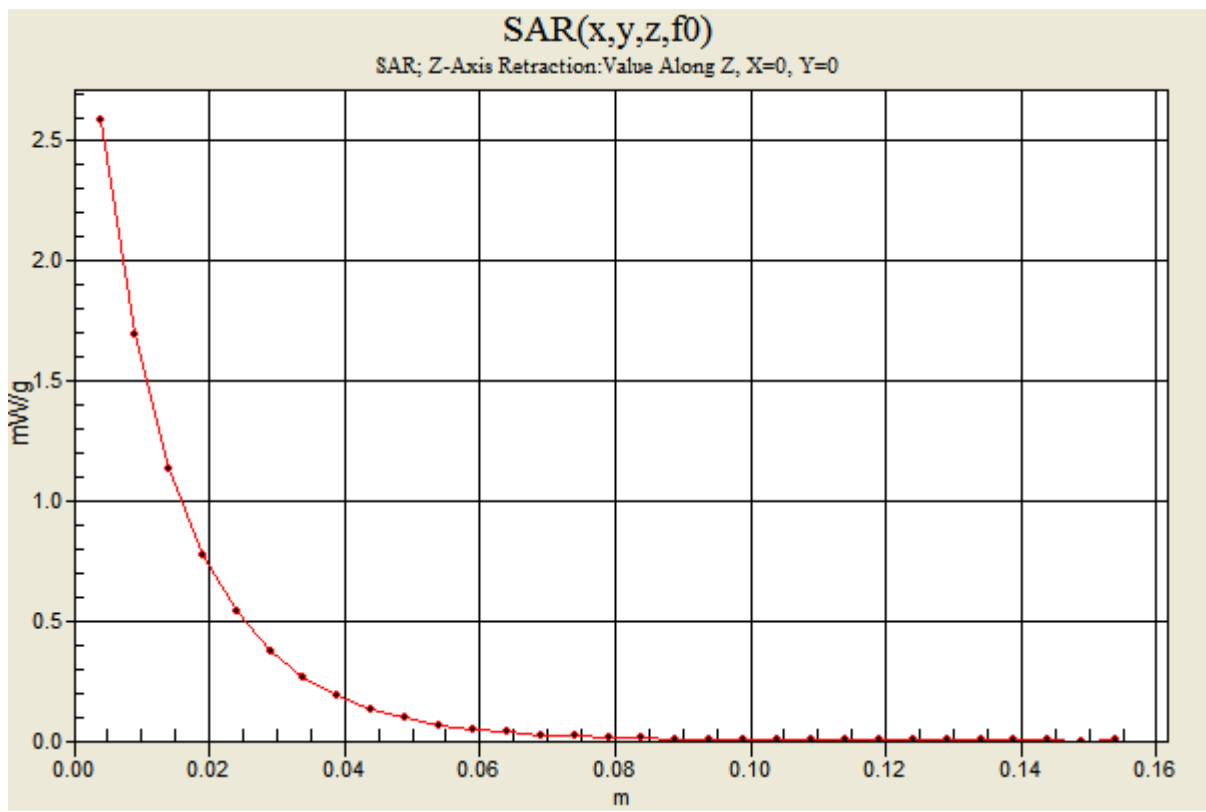
Peak SAR (extrapolated) = 3.60 W/kg

SAR(1 g) = 2.37 mW/g; SAR(10 g) = 1.51 mW/g

Daily SPC Check/Z-Axis Retraction (1x1x31): Measurement grid: dx=20mm, dy=20mm, dz=5mm

Maximum value of SAR (measured) = 2.59 mW/g





Test Laboratory: Motorola 20080227 1800Mhz Good +1.2

Procedure Notes: 1800 MHz System Performance Check / Dipole Sn# 280tr PM1 Power = 200 mW

Sim.Temp@meas = 21.85C Sim.Temp@SPC = 21.6C Room Temp @ SPC = 20.2C

Communication System: CW - Dipole; Frequency: 1800 MHz; Channel Number: 8; Duty Cycle: 1:1

Medium: VALIDATION Only; Medium parameters used: $f = 1800$ MHz; $\sigma = 1.37$ mho/m; $\epsilon_r = 39.6$; $\rho = 1000$ kg/m³

DASY4 Configuration:

- Probe: ET3DV6R - SN1391; ConvF(4.96, 4.96, 4.96); Calibrated: 9/24/2007
- Sensor-Surface: 4mm (Mechanical Surface Detection)
- Electronics: DAE3 Sn365; Calibrated: 9/18/2007
- Phantom: PCS-10 Glycol SAM; Type: SAM; Serial: TP-1086;
- Measurement SW: DASY4, V4.7 Build 55; Postprocessing SW: SEMCAD, V1.8 Build 176

Daily SPC Check/Dipole Area Scan (4x9x1): Measurement grid: dx=15mm, dy=15mm

Maximum value of SAR (measured) = 6.15 mW/g

Daily SPC Check/0-Degree, 5x5x7 Cube (5x5x7)/Cube 0: Measurement grid: dx=8mm, dy=8mm, dz=5mm

Reference Value = 82.6 V/m; Power Drift = 0.012 dB

Peak SAR (extrapolated) = 13.2 W/kg

SAR(1 g) = 7.61 mW/g; SAR(10 g) = 4.05 mW/g

Maximum value of SAR (measured) = 8.56 mW/g

Daily SPC Check/90-Degree 5x5x7 Cube (5x5x7)/Cube 0: Measurement grid: dx=8mm, dy=8mm, dz=5mm

Reference Value = 82.6 V/m; Power Drift = 0.012 dB

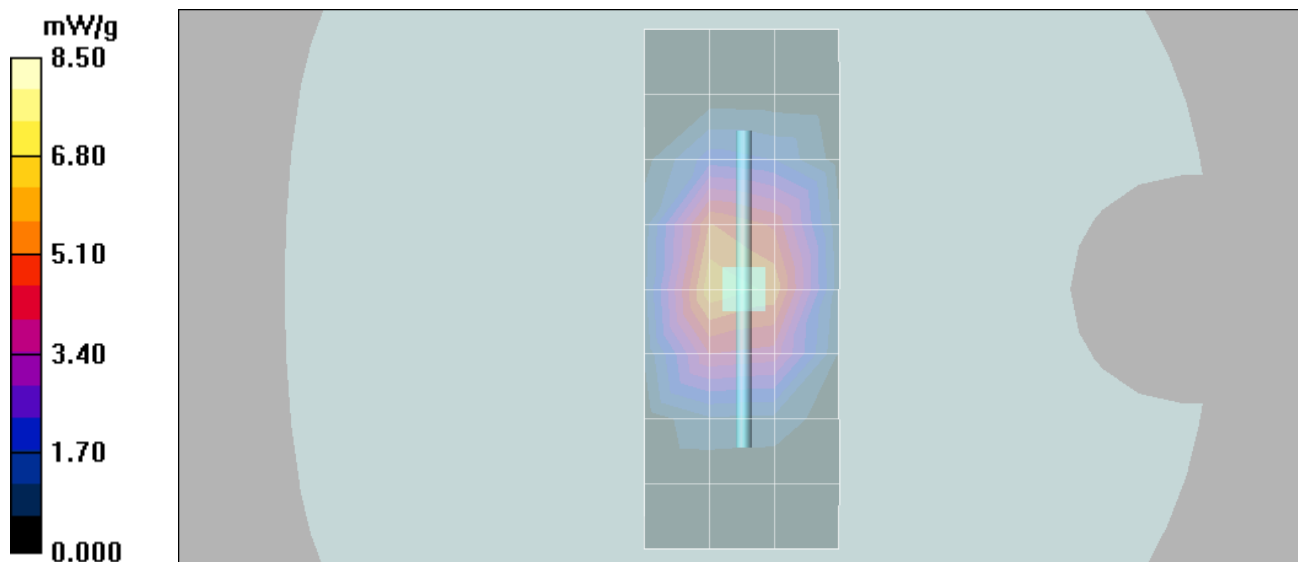
Peak SAR (extrapolated) = 13.1 W/kg

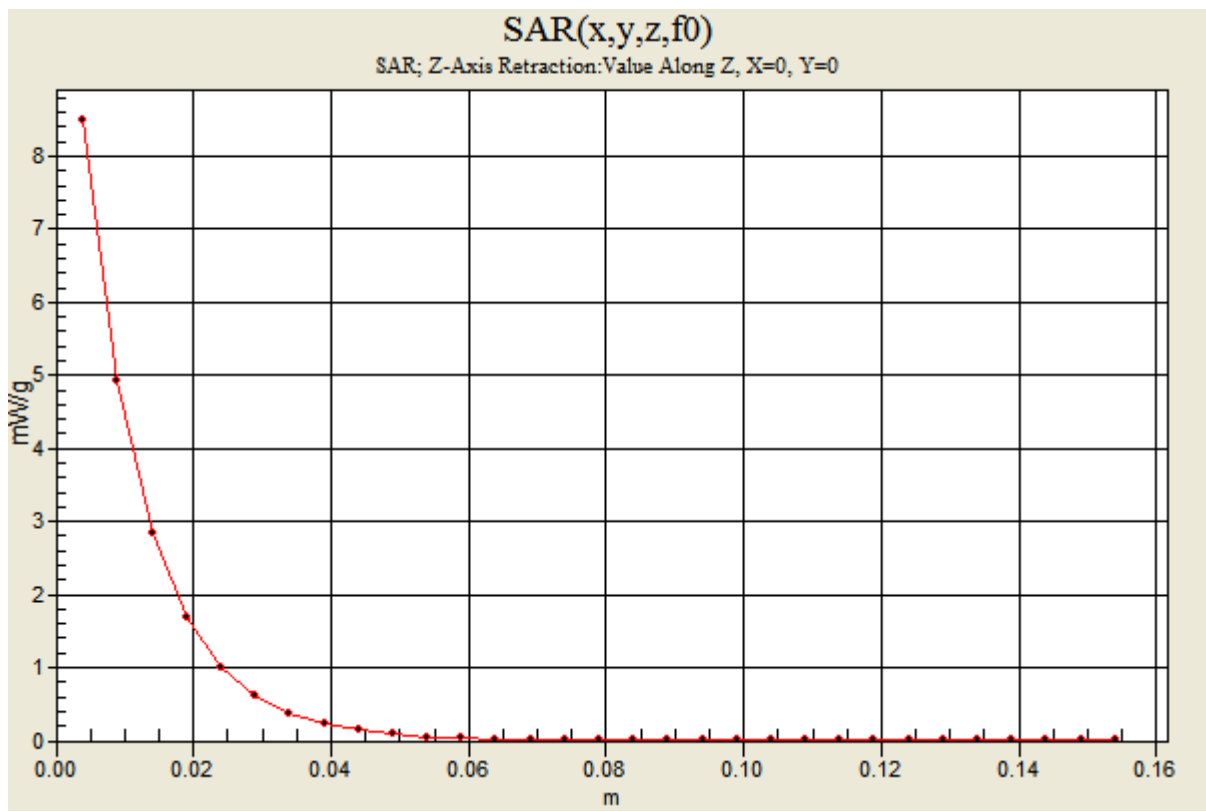
SAR(1 g) = 7.57 mW/g; SAR(10 g) = 3.99 mW/g

Maximum value of SAR (measured) = 8.32 mW/g

Daily SPC Check/Z-Axis Retraction (1x1x31): Measurement grid: dx=20mm, dy=20mm, dz=5mm

Maximum value of SAR (measured) = 8.50 mW/g





Test Laboratory: Motorola 20080228 1800Mhz Good +1.4

Procedure Notes: 1800 MHz System Performance Check / Dipole Sn# 280tr PM1 Power = 200 mW

Sim.Temp@meas = 21.26C Sim.Temp@SPC = 21.1C Room Temp @ SPC = 20.4C

Communication System: CW - Dipole; Frequency: 1800 MHz; Channel Number: 8; Duty Cycle: 1:1

Medium: VALIDATION Only; Medium parameters used: $f = 1800$ MHz; $\sigma = 1.38$ mho/m; $\epsilon_r = 39.2$; $\rho = 1000$ kg/m³

DASY4 Configuration:

- Probe: ET3DV6R - SN1391; ConvF(4.96, 4.96, 4.96); Calibrated: 9/24/2007
- Sensor-Surface: 4mm (Mechanical Surface Detection)
- Electronics: DAE3 Sn365; Calibrated: 9/18/2007
- Phantom: PCS-10 Glycol SAM; Type: SAM; Serial: TP-1086;
- Measurement SW: DASY4, V4.7 Build 55; Postprocessing SW: SEMCAD, V1.8 Build 176

Daily SPC Check/Dipole Area Scan (4x9x1): Measurement grid: dx=15mm, dy=15mm

Maximum value of SAR (measured) = 6.03 mW/g

Daily SPC Check/0-Degree, 5x5x7 Cube (5x5x7)/Cube 0: Measurement grid: dx=8mm, dy=8mm, dz=5mm

Reference Value = 81.7 V/m; Power Drift = 0.034 dB

Peak SAR (extrapolated) = 13.2 W/kg

SAR(1 g) = 7.58 mW/g; SAR(10 g) = 4.01 mW/g

Maximum value of SAR (measured) = 8.47 mW/g

Daily SPC Check/90-Degree 5x5x7 Cube (5x5x7)/Cube 0: Measurement grid: dx=8mm, dy=8mm, dz=5mm

Reference Value = 81.7 V/m; Power Drift = 0.034 dB

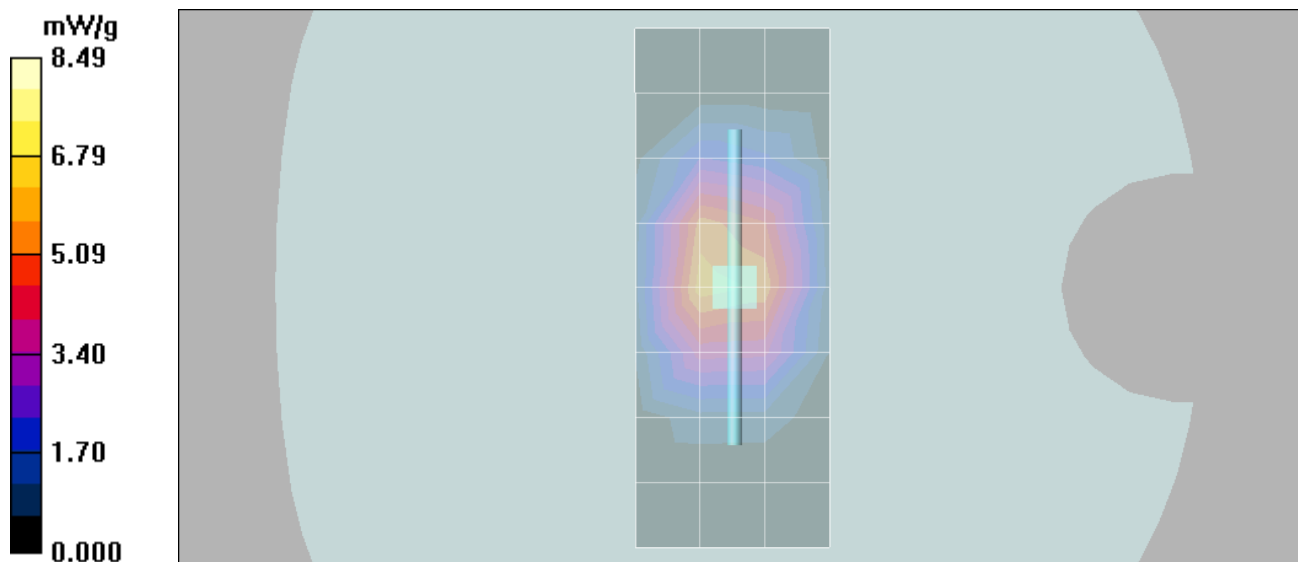
Peak SAR (extrapolated) = 13.3 W/kg

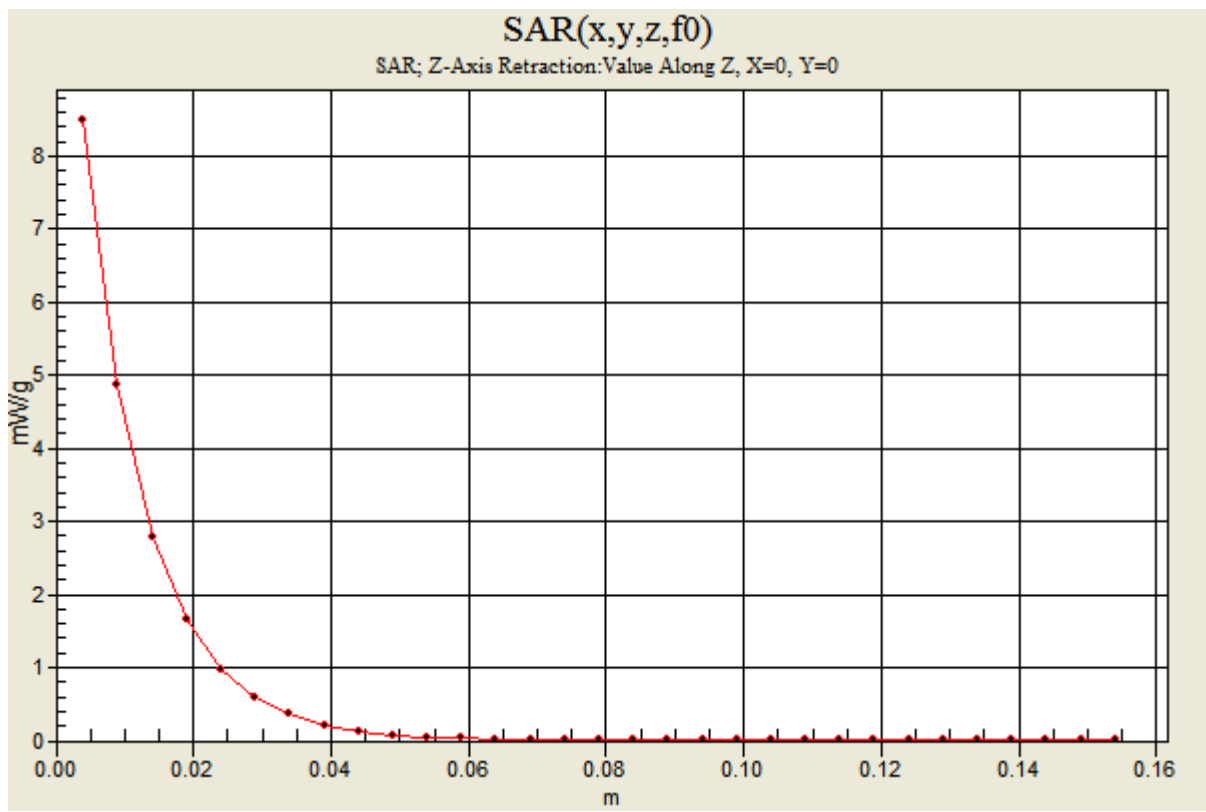
SAR(1 g) = 7.63 mW/g; SAR(10 g) = 4 mW/g

Maximum value of SAR (measured) = 8.26 mW/g

Daily SPC Check/Z-Axis Retraction (1x1x31): Measurement grid: dx=20mm, dy=20mm, dz=5mm

Maximum value of SAR (measured) = 8.49 mW/g





Test Laboratory: Motorola 0319'2008_2450MHz_Good -6.0%

Procedure Notes: 2450 MHz System Performance Check / Dipole Sn# 767 PM1 Power = 200 mW

Sim.Temp@meas = 21.52C Sim.Temp@SPC = 21.4C Room Temp @ SPC = 21.3C

Communication System: CW - Dipole; Frequency: 2450 MHz; Channel Number: 11; Duty Cycle: 1:1

Medium: VALIDATION Only; Medium parameters used: $f = 2450$ MHz; $\sigma = 1.88$ mho/m; $\epsilon_r = 37.4$; $\rho = 1000$ kg/m³

DASY4 Configuration:

- Probe: ET3DV6 - SN1515; ConvF(4.64, 4.64, 4.64); Calibrated: 8/28/2007
- Sensor-Surface: 4mm (Mechanical Surface Detection)
- Electronics: DAE3 Sn383; Calibrated: 8/24/2007
- Phantom: PCS-9 Glycol SAM; Type: SAM; Serial: TP-1134;
- Measurement SW: DASY4, V4.7 Build 55; Postprocessing SW: SEMCAD, V1.8 Build 176

Daily SPC Check/Dipole Area Scan (4x9x1): Measurement grid: dx=15mm, dy=15mm

Maximum value of SAR (measured) = 8.28 mW/g

Daily SPC Check/0-Degree, 5x5x7 Cube (5x5x7)/Cube 0: Measurement grid: dx=8mm, dy=8mm, dz=5mm

Reference Value = 83.1 V/m; Power Drift = -0.044 dB

Peak SAR (extrapolated) = 24.9 W/kg

SAR(1 g) = 10.9 mW/g; SAR(10 g) = 5.01 mW/g

Maximum value of SAR (measured) = 12.0 mW/g

Daily SPC Check/90-Degree 5x5x7 Cube (5x5x7)/Cube 0: Measurement grid: dx=8mm, dy=8mm, dz=5mm

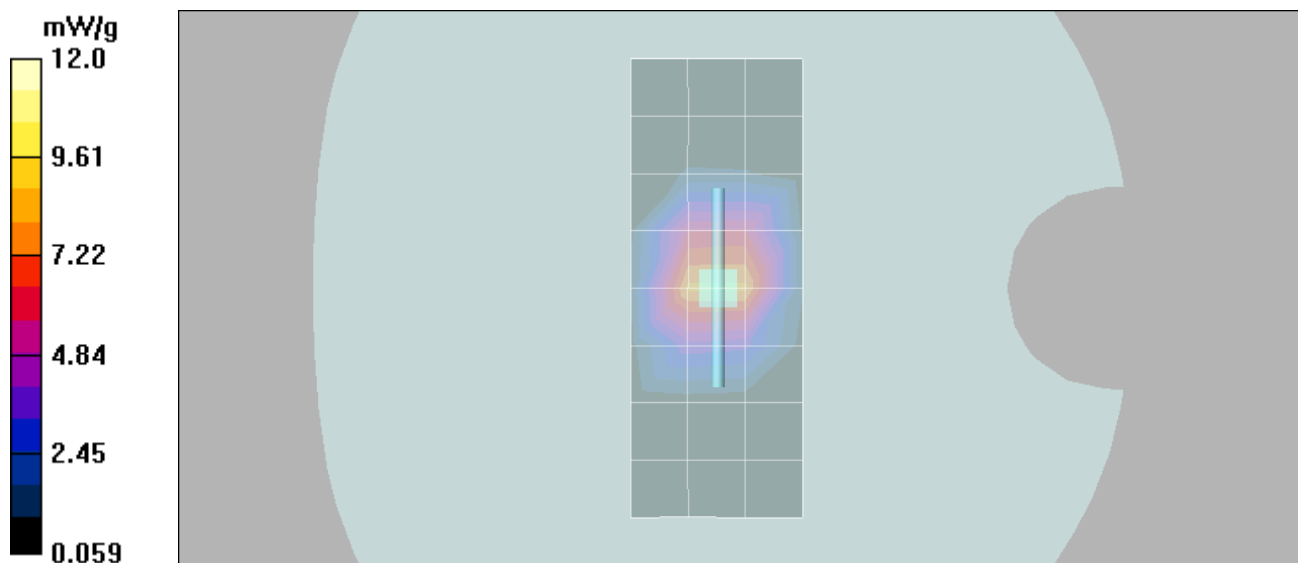
Reference Value = 83.1 V/m; Power Drift = -0.044 dB

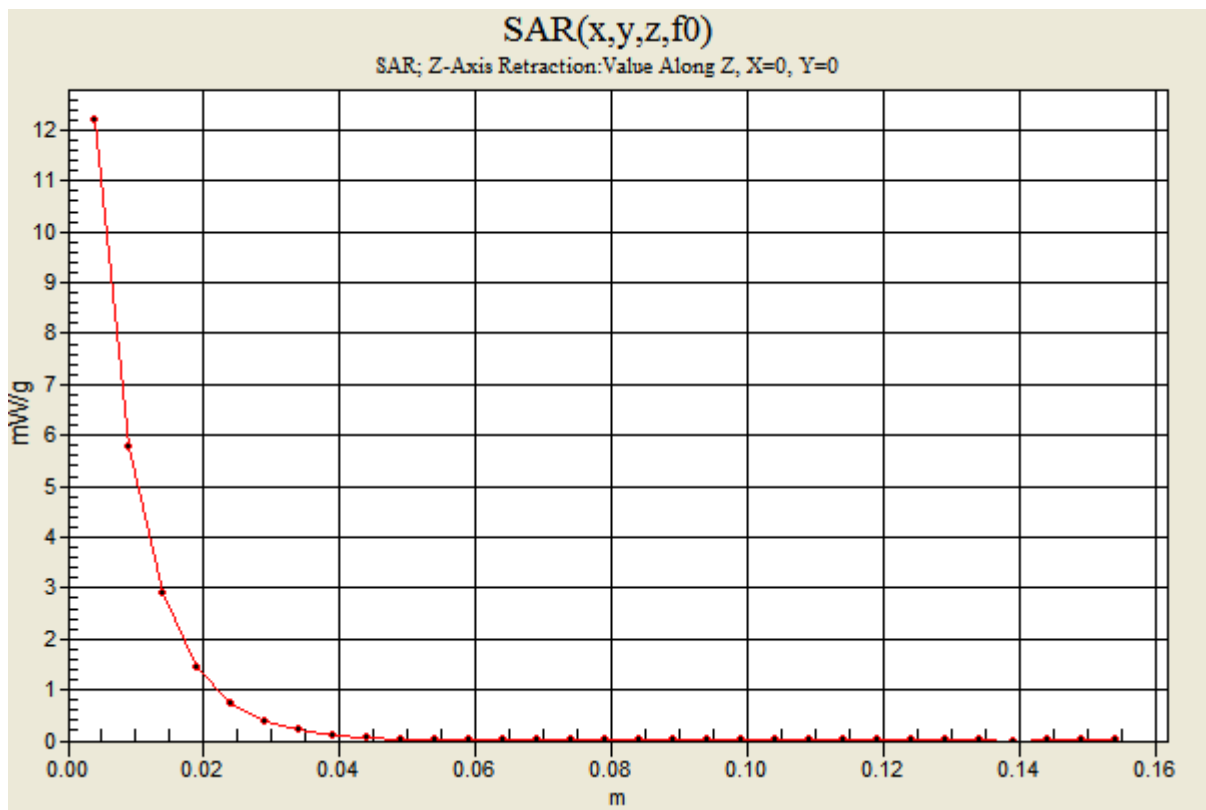
Peak SAR (extrapolated) = 25.0 W/kg

SAR(1 g) = 10.9 mW/g; SAR(10 g) = 5.01 mW/g

Daily SPC Check/Z-Axis Retraction (1x1x31): Measurement grid: dx=20mm, dy=20mm, dz=5mm

Maximum value of SAR (measured) = 12.2 mW/g





Test Laboratory: Motorola 0320'2008_2450MHz_Good -7.3%

Procedure Notes: 2450 MHz System Performance Check / Dipole Sn# 767 PM1 Power = 200 mW

Sim.Temp@meas = 22.32C Sim.Temp@SPC = 22.1C Room Temp @ SPC = 21.5C

Communication System: CW - Dipole; Frequency: 2450 MHz; Channel Number: 11; Duty Cycle: 1:1

Medium: VALIDATION Only; Medium parameters used: $f = 2450$ MHz; $\sigma = 1.85$ mho/m; $\epsilon_r = 37.2$; $\rho = 1000$ kg/m³

DASY4 Configuration:

- Probe: ET3DV6 - SN1515; ConvF(4.64, 4.64, 4.64); Calibrated: 8/28/2007
- Sensor-Surface: 4mm (Mechanical Surface Detection)
- Electronics: DAE3 Sn383; Calibrated: 8/24/2007
- Phantom: PCS-9 Glycol SAM; Type: SAM; Serial: TP-1134;
- Measurement SW: DASY4, V4.7 Build 55; Postprocessing SW: SEMCAD, V1.8 Build 176

Daily SPC Check/Dipole Area Scan (4x9x1): Measurement grid: dx=15mm, dy=15mm

Maximum value of SAR (measured) = 8.19 mW/g

Daily SPC Check/0-Degree, 5x5x7 Cube (5x5x7)/Cube 0: Measurement grid: dx=8mm, dy=8mm, dz=5mm

Reference Value = 83.0 V/m; Power Drift = 0.018 dB

Peak SAR (extrapolated) = 24.9 W/kg

SAR(1 g) = 10.8 mW/g; SAR(10 g) = 4.92 mW/g

Maximum value of SAR (measured) = 12.1 mW/g

Daily SPC Check/90-Degree 5x5x7 Cube (5x5x7)/Cube 0: Measurement grid: dx=8mm, dy=8mm, dz=5mm

Reference Value = 83.0 V/m; Power Drift = 0.018 dB

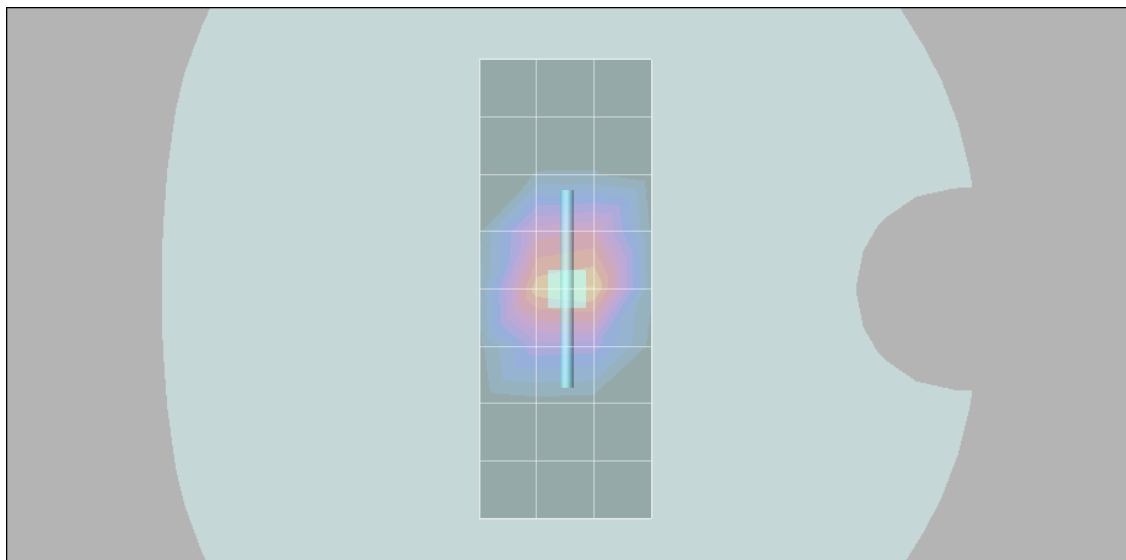
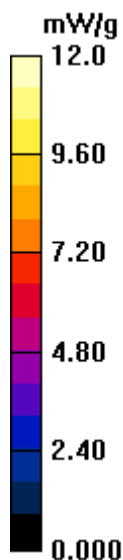
Peak SAR (extrapolated) = 24.0 W/kg

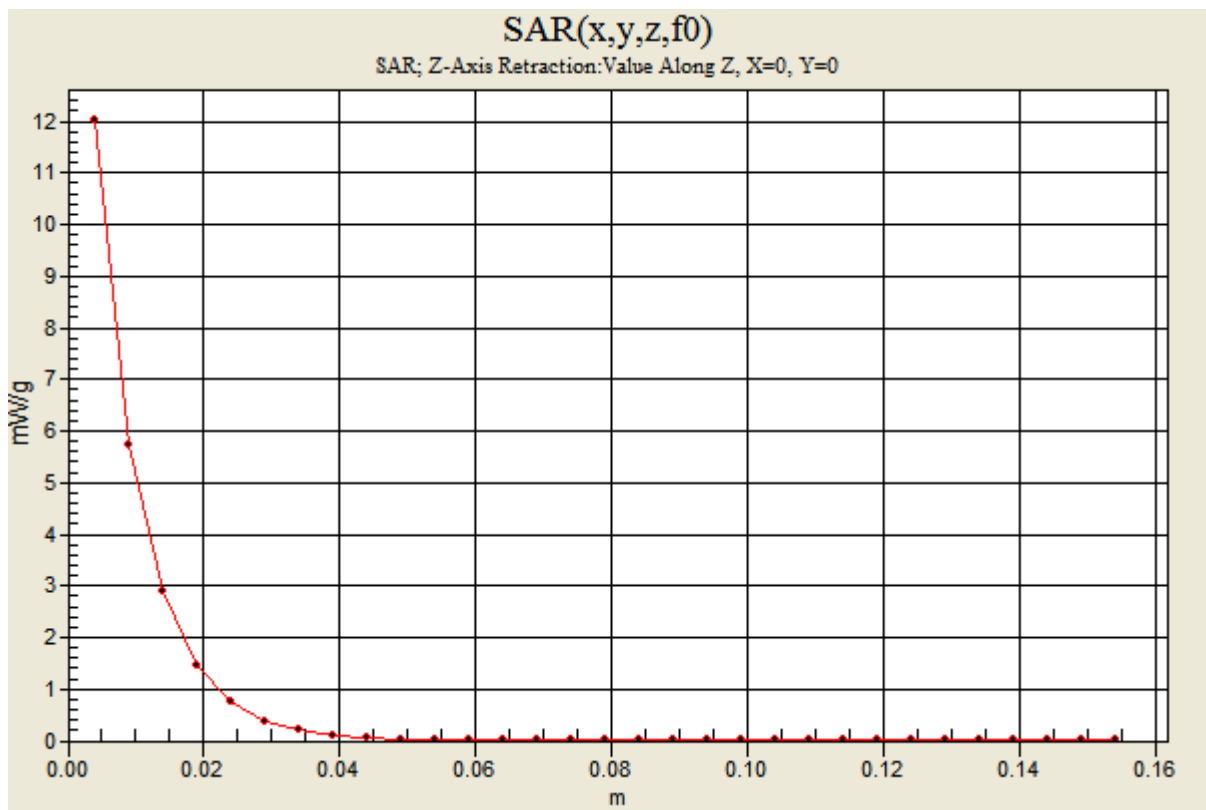
SAR(1 g) = 10.7 mW/g; SAR(10 g) = 4.92 mW/g

Maximum value of SAR (measured) = 11.9 mW/g

Daily SPC Check/Z-Axis Retraction (1x1x31): Measurement grid: dx=20mm, dy=20mm, dz=5mm

Maximum value of SAR (measured) = 12.0 mW/g





Appendix 2

SAR distribution plots for Phantom Head Adjacent Use

Test Laboratory: Motorola CDMA800 Cheek

80AB3051;

Procedure Notes: Pwr Step: All Up Bit (OTA) Antenna Position: Internal

Battery Model #: SNN5804A; DEVICE POSITION (cheek or rotated): Cheek

Communication System: CDMA 835; Frequency: 848.31 MHz; Channel Number: 777; Duty Cycle: 1:1

Medium: Low Freq Head; Medium parameters used: $f = 835$ MHz; $\sigma = 0.92$ mho/m; $\epsilon_r = 42.7$; $\rho = 1000$ kg/m³

DASY4 Configuration:

- Probe: ET3DV6R - SN1391; ConvF(5.97, 5.97, 5.97); Calibrated: 9/24/2007
- Sensor-Surface: 4mm (Mechanical Surface Detection)
- Electronics: DAE3 Sn365; Calibrated: 9/18/2007
- Phantom: PCS10_Sugar SAM (extended range), Rev.1 (25-Mar-05); Type: SAM v4.0; Serial: TP-1155;
- Measurement SW: DASY4, V4.7 Build 55; Postprocessing SW: SEMCAD, V1.8 Build 176

Right Head Template/Area Scan - Normal (15mm) (7x17x1):

Measurement grid: dx=15mm, dy=15mm

Maximum value of SAR (measured) = 1.11 mW/g

Right Head Template/5x5x7 Zoom Scan (<=3GHz) (5x5x7)/Cube 0:

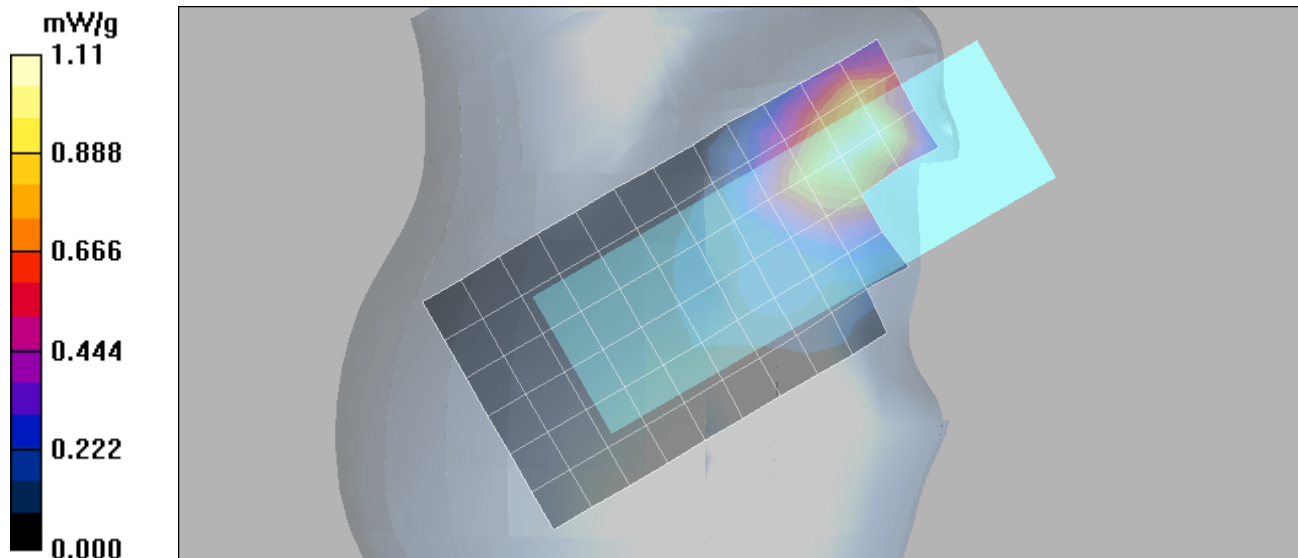
Measurement grid: dx=8mm, dy=8mm, dz=5mm

Reference Value = 37.1 V/m; Power Drift = -0.059 dB

Peak SAR (extrapolated) = 1.65 W/kg

SAR(1 g) = 1.15 mW/g; SAR(10 g) = 0.762 mW/g

Maximum value of SAR (measured) = 1.22 mW/g



Test Laboratory: Motorola CDMA800 Tilt

80AB3051;

Procedure Notes: Pwr Step: All Up Bit (OTA) Antenna Position: Internal

Battery Model #: SNN5813A; DEVICE POSITION (cheek or rotated): Rotated

Communication System: CDMA 835; Frequency: 836.52 MHz; Channel Number: 384; Duty Cycle: 1:1

Medium: Low Freq Head; Medium parameters used: $f = 835$ MHz; $\sigma = 0.93$ mho/m; $\epsilon_r = 43.3$; $\rho = 1000$ kg/m³

DASY4 Configuration:

- Probe: ET3DV6R - SN1391; ConvF(5.97, 5.97, 5.97); Calibrated: 9/24/2007
- Sensor-Surface: 4mm (Mechanical Surface Detection)
- Electronics: DAE3 Sn365; Calibrated: 9/18/2007
- Phantom: PCS10_Sugar SAM (extended range), Rev.1 (25-Mar-05); Type: SAM v4.0; Serial: TP-1155;
- Measurement SW: DASY4, V4.7 Build 55; Postprocessing SW: SEMCAD, V1.8 Build 176

Right Head Template/Area Scan - Normal (15mm) (7x17x1):

Measurement grid: dx=15mm, dy=15mm

Maximum value of SAR (measured) = 0.211 mW/g

Right Head Template/5x5x7 Zoom Scan (<=3GHz) (5x5x7)/Cube 0:

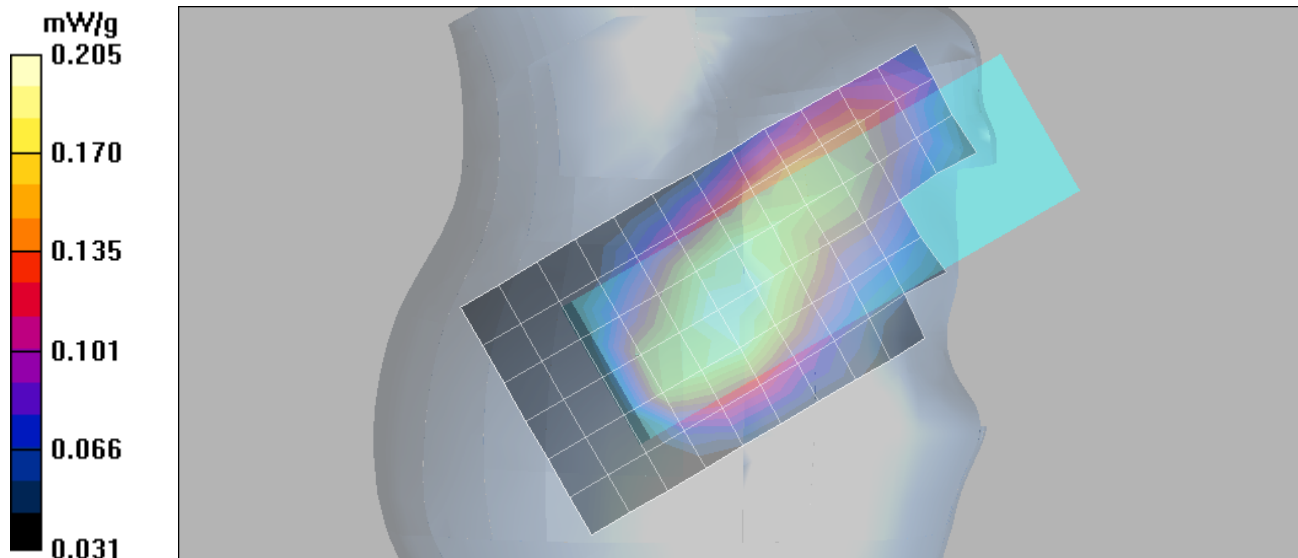
Measurement grid: dx=8mm, dy=8mm, dz=5mm

Reference Value = 15.7 V/m; Power Drift = -0.405 dB

Peak SAR (extrapolated) = 0.247 W/kg

SAR(1 g) = 0.196 mW/g; SAR(10 g) = 0.150 mW/g

Maximum value of SAR (measured) = 0.205 mW/g



Test Laboratory: Motorola CDMA1900 Cheek

80AB3051;

Procedure Notes: Pwr Step: All Up Bit (OTA); Antenna Position: Internal

Battery Model #: SNN5813A; DEVICE POSITION (cheek or rotated): Cheek

Communication System: CDMA 1900; Frequency: 1880 MHz; Channel Number: 600; Duty Cycle: 1:1

Medium: Regular Glycol Head 1750/1880; Medium parameters used: $f = 1880$ MHz; $\sigma = 1.45$ mho/m; $\epsilon_r = 39.3$; $\rho = 1000$ kg/m³

DASY4 Configuration:

- Probe: ET3DV6R - SN1391; ConvF(4.96, 4.96, 4.96); Calibrated: 9/24/2007
- Sensor-Surface: 4mm (Mechanical Surface Detection)
- Electronics: DAE3 Sn365; Calibrated: 9/18/2007
- Phantom: PCS-10 Glycol SAM; Type: SAM; Serial: TP-1086;
- Measurement SW: DASY4, V4.7 Build 55; Postprocessing SW: SEMCAD, V1.8 Build 176

Right Head Template/Area Scan - Normal (15mm) (7x17x1):

Measurement grid: dx=15mm, dy=15mm

Maximum value of SAR (measured) = 1.41 mW/g

Right Head Template/5x5x7 Zoom Scan (<=3GHz) (5x5x7)/Cube 0:

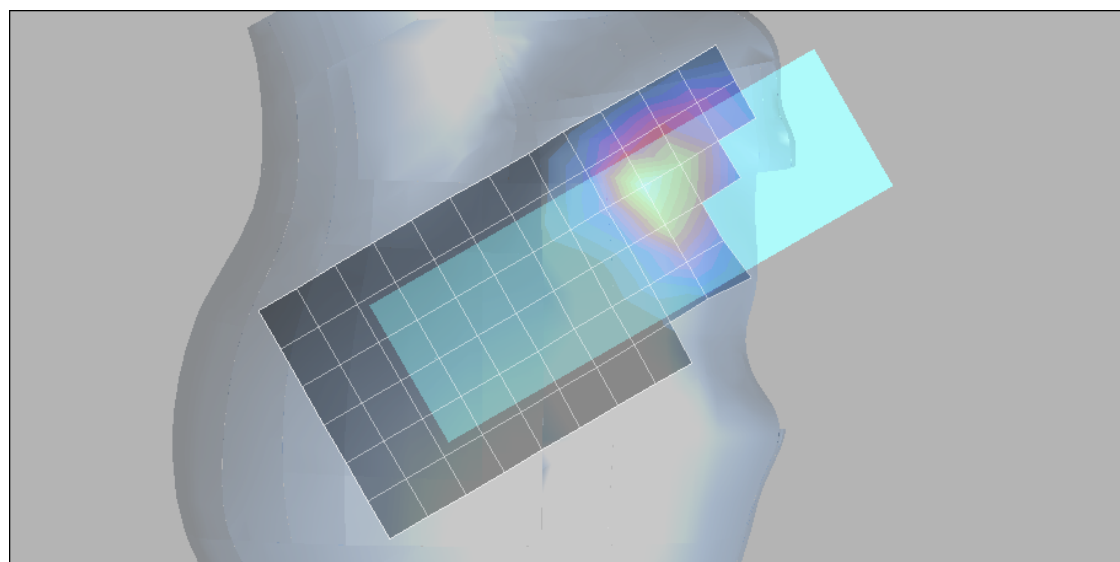
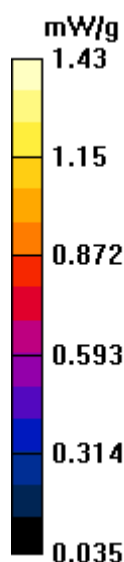
Measurement grid: dx=8mm, dy=8mm, dz=5mm

Reference Value = 33.0 V/m; Power Drift = -0.101 dB

Peak SAR (extrapolated) = 2.01 W/kg

SAR(1 g) = 1.31 mW/g; SAR(10 g) = 0.791 mW/g

Maximum value of SAR (measured) = 1.43 mW/g



Test Laboratory: Motorola CDMA1900 Tilt

80AB3051;

Procedure Notes: Pwr Step: All Up Bit (OTA); Antenna Position: Internal

Battery Model #: SNN5804A DEVICE POSITION (cheek or rotated): Rotated

Communication System: CDMA 1900; Frequency: 1880 MHz; Channel Number: 600; Duty Cycle: 1:1

Medium: Regular Glycol Head 1750/1880; Medium parameters used: $f = 1880$ MHz; $\sigma = 1.45$ mho/m; $\epsilon_r = 39.3$; $\rho = 1000$ kg/m³

DASY4 Configuration:

- Probe: ET3DV6R - SN1391; ConvF(4.96, 4.96, 4.96); Calibrated: 9/24/2007
- Sensor-Surface: 4mm (Mechanical Surface Detection)
- Electronics: DAE3 Sn365; Calibrated: 9/18/2007
- Phantom: PCS-10 Glycol SAM; Type: SAM; Serial: TP-1086;
- Measurement SW: DASY4, V4.7 Build 55; Postprocessing SW: SEMCAD, V1.8 Build 176

Right Head Template/Area Scan - Normal (15mm) (7x17x1):

Measurement grid: dx=15mm, dy=15mm

Maximum value of SAR (measured) = 0.250 mW/g

Right Head Template/5x5x7 Zoom Scan (<=3GHz) (5x5x7)/Cube 0:

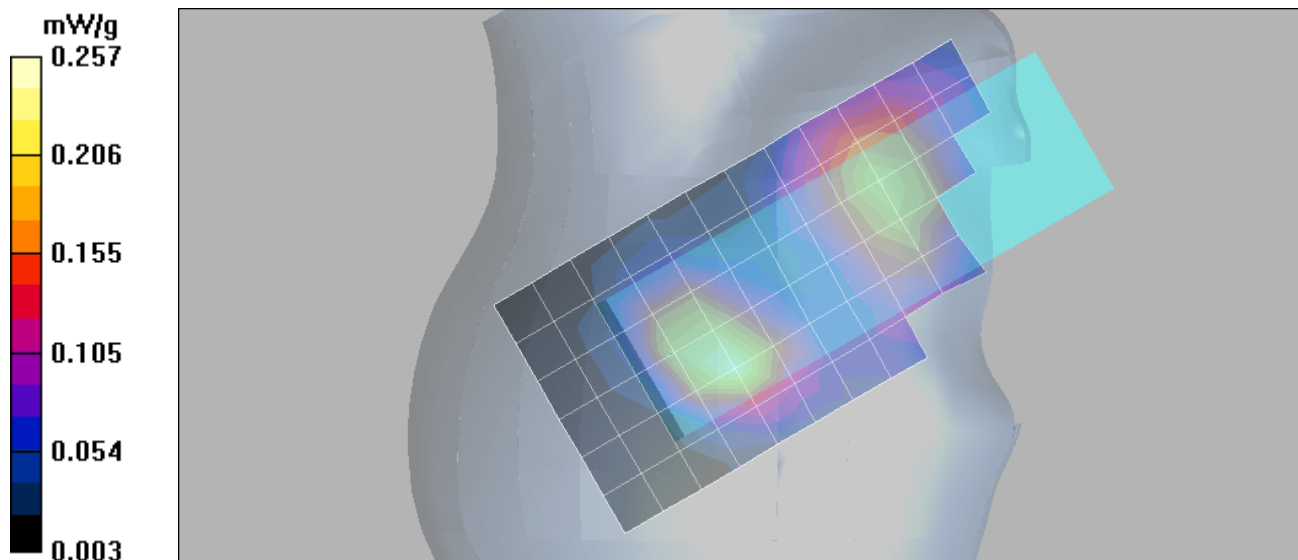
Measurement grid: dx=8mm, dy=8mm, dz=5mm

Reference Value = 14.3 V/m; Power Drift = -0.043 dB

Peak SAR (extrapolated) = 0.397 W/kg

SAR(1 g) = 0.244 mW/g; SAR(10 g) = 0.149 mW/g

Maximum value of SAR (measured) = 0.257 mW/g



Appendix 3

SAR distribution plots for Body Worn Configuration

Test Laboratory: Motorola CDMA800 BodyWorn

80AB3051;

Procedure Notes: Pwr Step: All up Bit(OTA) Antenna Position: Internal

Battery Model #: SNN5813A; Device Position: Back of phone 15mm away from the flat phantom

Communication System: CDMA 835; Frequency: 848.31 MHz; Channel Number: 777; Duty Cycle: 1:1

Medium: Low Freq Body; Medium parameters used: $f = 835$ MHz; $\sigma = 0.98$ mho/m; $\epsilon_r = 55.2$; $\rho = 1000$ kg/m³

DASY4 Configuration:

- Probe: ET3DV6R - SN1391; ConvF(5.75, 5.75, 5.75); Calibrated: 9/24/2007
- Sensor-Surface: 4mm (Mechanical Surface Detection)
- Electronics: DAE3 Sn365; Calibrated: 9/18/2007
- Phantom: PCS-10_Section 1, Amy Twin, Rev2 (23-June-04); Type: Amy Twin Flat; Serial: n/a;
- Measurement SW: DASY4, V4.7 Build 55; Postprocessing SW: SEMCAD, V1.8 Build 176

Amy Twin Phone Template/Area Scan - Normal Body (15mm) (13x7x1):

Measurement grid: dx=15mm, dy=15mm

Maximum value of SAR (measured) = 1.02 mW/g

Amy Twin Phone Template/5x5x7 Zoom Scan (<=3GHz) (5x5x7)/Cube 0:

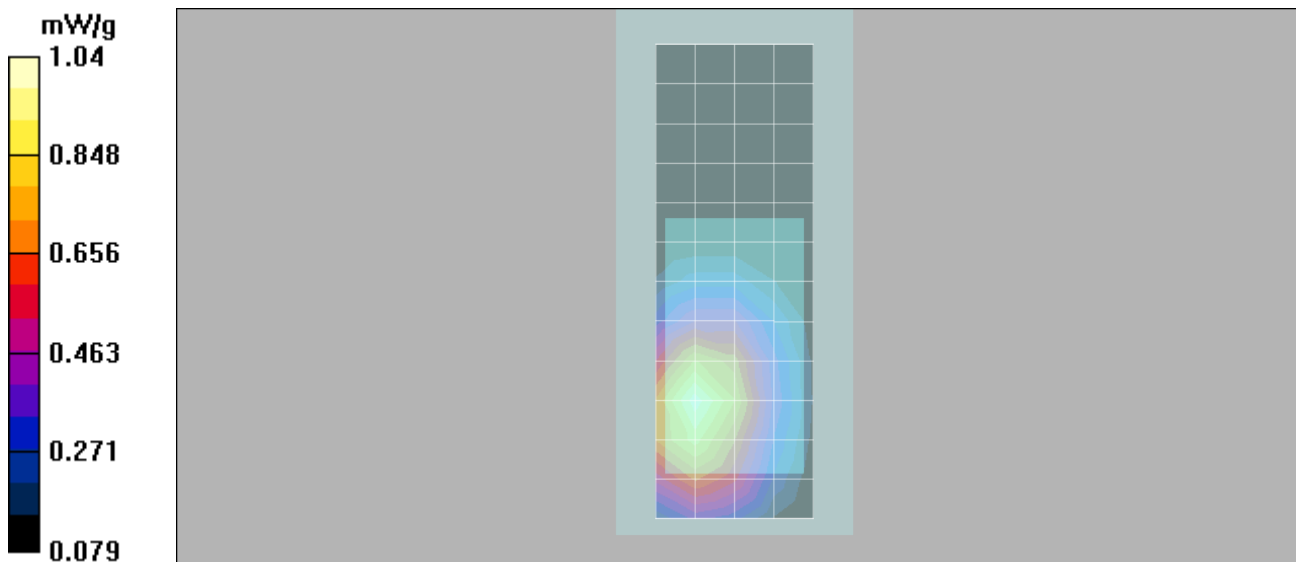
Measurement grid: dx=8mm, dy=8mm, dz=5mm

Reference Value = 28.9 V/m; Power Drift = -0.055 dB

Peak SAR (extrapolated) = 1.28 W/kg

SAR(1 g) = 0.963 mW/g; SAR(10 g) = 0.673 mW/g

Maximum value of SAR (measured) = 1.04 mW/g



Test Laboratory: Motorola CDMA1900 BodyWorn

80AB3051;

Procedure Notes: Pwr Step: All up Bit(OTA) Antenna Position: Internal

Battery Model #: SNN5813A; Device Position: Front of phone 15mm away from the flat phantom

Communication System: CDMA 1900; Frequency: 1880 MHz; Channel Number: 600; Duty Cycle: 1:1

Medium: Regular Glycol Body 1750/1880; Medium parameters used: $f = 1880$ MHz; $\sigma = 1.58$ mho/m; $\epsilon_r = 53.5$; $\rho = 1000$ kg/m³

DASY4 Configuration:

- Probe: ET3DV6R - SN1391; ConvF(4.48, 4.48, 4.48); Calibrated: 9/24/2007
- Sensor-Surface: 4mm (Mechanical Surface Detection)
- Electronics: DAE3 Sn365; Calibrated: 9/18/2007
- Phantom: PCS-10_Section 2, Amy Twin, Rev2 (23-June-04); Type: Amy Twin Flat; Serial: n/a;
- Measurement SW: DASY4, V4.7 Build 55; Postprocessing SW: SEMCAD, V1.8 Build 176

Amy Twin Phone Template/Area Scan - Normal Body (15mm) (13x7x1):

Measurement grid: dx=15mm, dy=15mm

Maximum value of SAR (measured) = 0.576 mW/g

Amy Twin Phone Template/5x5x7 Zoom Scan (<=3GHz) (5x5x7)/Cube 0:

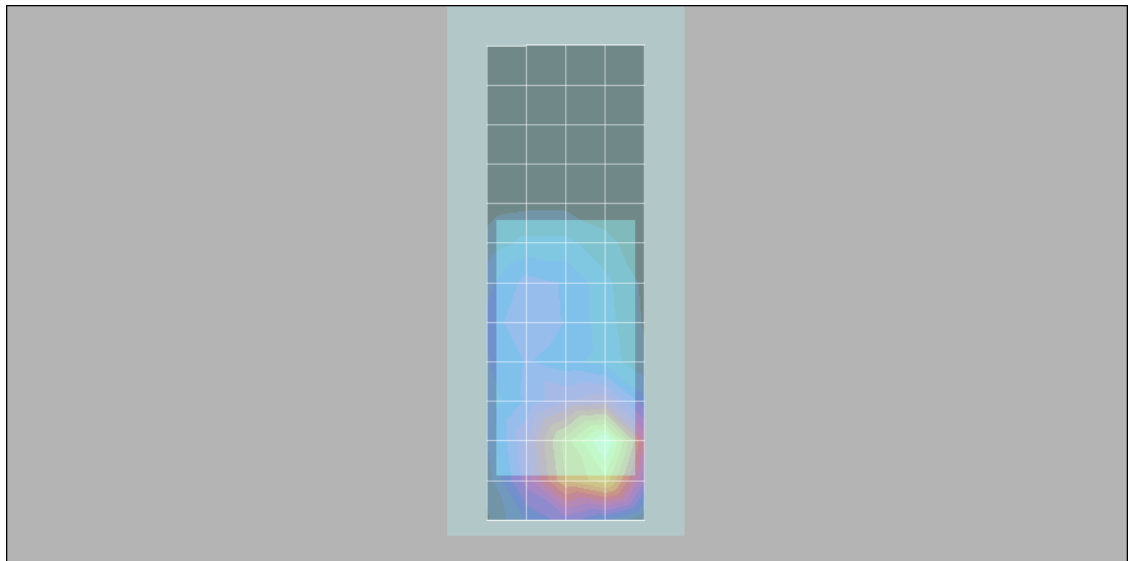
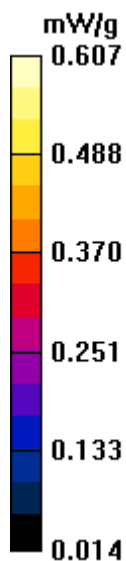
Measurement grid: dx=8mm, dy=8mm, dz=5mm

Reference Value = 17.2 V/m; Power Drift = -0.016 dB

Peak SAR (extrapolated) = 0.892 W/kg

SAR(1 g) = 0.564 mW/g; SAR(10 g) = 0.340 mW/g

Maximum value of SAR (measured) = 0.607 mW/g



Test Laboratory: Motorola Bluetooth 2450

80AB3051;

Procedure Notes: Pwr Step: BT Antenna Position: Internal

Battery Model #:SNN5813A; Device Position: Back of phone 15mm away from the flat phantom

Communication System: Bluetooth; Frequency: 2441 MHz; Channel Number: 39; Duty Cycle: 1:1

Medium: 2450 Glycol Body; Medium parameters used: $f = 2450$ MHz; $\sigma = 2.03$ mho/m; $\epsilon_r = 51.9$; $\rho = 1000$ kg/m³

DASY4 Configuration:

- Probe: ET3DV6 - SN1515; ConvF(4.06, 4.06, 4.06); Calibrated: 8/28/2007
- Sensor-Surface: 4mm (Mechanical Surface Detection)
- Electronics: DAE3 Sn383; Calibrated: 8/24/2007
- Phantom: R#9_Section 2, Amy Twin, Rev2 (23-June-04); Type: Amy Twin Flat; Serial: n/a;
- Measurement SW: DASY4, V4.7 Build 55; Postprocessing SW: SEMCAD, V1.8 Build 176

Amy Twin Phone Template/Area Scan - Normal Body (10mm) (19x10x1):

Measurement grid: dx=10mm, dy=10mm

Maximum value of SAR (measured) = 0.001 mW/g

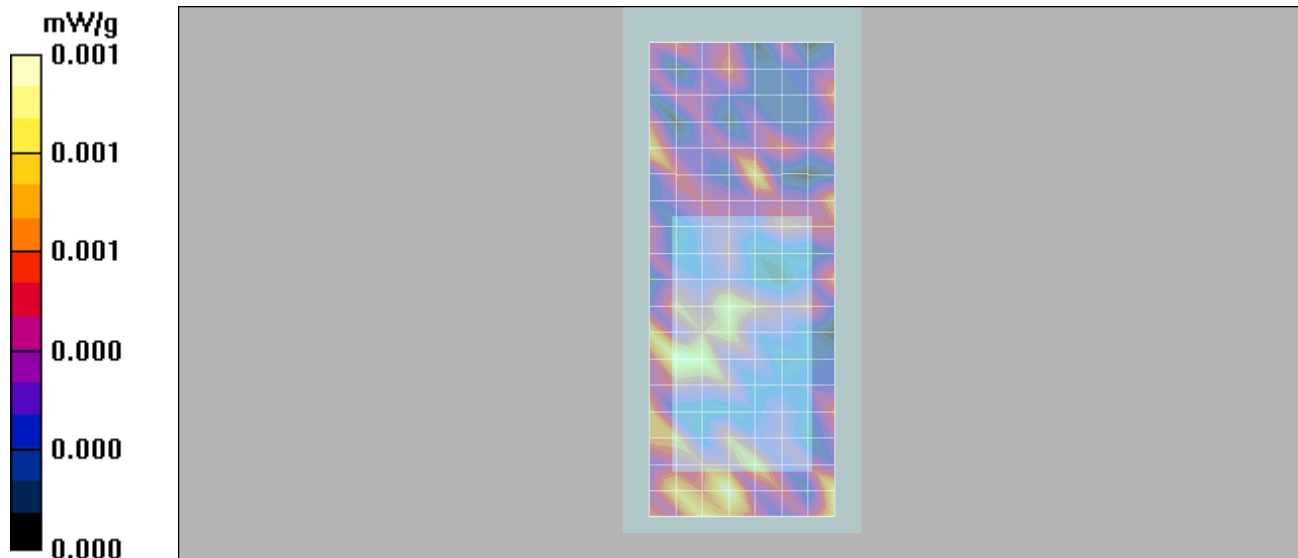
Amy Twin Phone Template/5x5x7 Zoom Scan (<=3GHz) (5x5x7)/Cube 0:

Measurement grid: dx=8mm, dy=8mm, dz=5mm

Reference Value = 0.537 V/m; Power Drift = 0.168 dB

Peak SAR (extrapolated) = 0.003 W/kg

SAR(1 g) = 0.000698 mW/g; SAR(10 g) = 0.000317 mW/g



Appendix 4
Probe Calibration Certificate



Accredited by the Swiss Federal Office of Metrology and Accreditation
The Swiss Accreditation Service is one of the signatories to the EA
Multilateral Agreement for the recognition of calibration certificates

Accreditation No.: **SCS 108**

Client **Motorola Korea**

Certificate No. **ET3-1391_Sep07**

CALIBRATION CERTIFICATE

Object **ET3DV6R - SN 1391**

Calibration procedure(s) **QA-CAL-01-v6
Calibration procedure for dosimetric E-field probes**

Calibration date: **September 24, 2007**

Condition of the calibrated item **In Tolerance**

This calibration certificate documents the traceability to national standards, which realize the physical units of measurements (SI).
The measurements and the uncertainties with confidence probability are given on the following pages and are part of the certificate.

All calibrations have been conducted in the closed laboratory facility: environment temperature $(22 \pm 3)^\circ\text{C}$ and humidity $< 70\%$.

Calibration Equipment used (M&TE critical for calibration)

Primary Standards	ID #	Cal Date (Calibrated by, Certificate No.)	Scheduled Calibration
Power meter E4419B	GB41293874	29-Mar-07 (METAS, No. 217-00670)	Mar-08
Power sensor E4412A	MY41495277	29-Mar-07 (METAS, No. 217-00670)	Mar-08
Power sensor E4412A	MY41498087	29-Mar-07 (METAS, No. 217-00670)	Mar-08
Reference 3 dB Attenuator	SN: S5054 (3c)	8-Aug-07 (METAS, No. 217-00719)	Aug-08
Reference 20 dB Attenuator	SN: S5086 (20b)	29-Mar-07 (METAS, No. 217-00671)	Mar-08
Reference 30 dB Attenuator	SN: S5129 (30b)	8-Aug-07 (METAS, No. 217-00720)	Aug-08
Reference Probe ES3DV2	SN: 3013	4-Jan-07 (SPEAG, No. ES3-3013_Jan07)	Jan-08
DAE4	SN: 654	20-Apr-07 (SPEAG, No. DAE4-654_Apr07)	Apr-08

Secondary Standards	ID #	Check Date (in house)	Scheduled Check
RF generator HP 8648C	US3642U01700	4-Aug-99 (SPEAG, in house check Nov-05)	In house check: Nov-07
Network Analyzer HP 8753E	US37390585	18-Oct-01 (SPEAG, in house check Oct-06)	In house check: Oct-07

	Name	Function	Signature
Calibrated by:	Katja Pokovic	Technical Manager	
Approved by:	Fin Bomholt	R&D Director	

Issued: September 24, 2007

This calibration certificate shall not be reproduced except in full without written approval of the laboratory.



Accredited by the Swiss Federal Office of Metrology and Accreditation
The Swiss Accreditation Service is one of the signatories to the EA
Multilateral Agreement for the recognition of calibration certificates

Accreditation No.: **SCS 108**

Glossary:

TSL	tissue simulating liquid
NORM _{x,y,z}	sensitivity in free space
ConF	sensitivity in TSL / NORM _{x,y,z}
DCP	diode compression point
Polarization φ	φ rotation around probe axis
Polarization ϑ	ϑ rotation around an axis that is in the plane normal to probe axis (at measurement center), i.e., $\vartheta = 0$ is normal to probe axis

Calibration is Performed According to the Following Standards:

- IEEE Std 1528-2003, "IEEE Recommended Practice for Determining the Peak Spatial-Averaged Specific Absorption Rate (SAR) in the Human Head from Wireless Communications Devices: Measurement Techniques", December 2003
- IEC 62209-1, "Procedure to measure the Specific Absorption Rate (SAR) for hand-held devices used in close proximity to the ear (frequency range of 300 MHz to 3 GHz)", February 2005

Methods Applied and Interpretation of Parameters:

- NORM_{x,y,z}**: Assessed for E-field polarization $\vartheta = 0$ ($f \leq 900$ MHz in TEM-cell; $f > 1800$ MHz: R22 waveguide). NORM_{x,y,z} are only intermediate values, i.e., the uncertainties of NORM_{x,y,z} does not effect the E²-field uncertainty inside TSL (see below *ConvF*).
- NORM(f)_{x,y,z}** = NORM_{x,y,z} * *frequency_response* (see Frequency Response Chart). This linearization is implemented in DASY4 software versions later than 4.2. The uncertainty of the frequency response is included in the stated uncertainty of *ConvF*.
- DCP_{x,y,z}**: DCP are numerical linearization parameters assessed based on the data of power sweep (no uncertainty required). DCP does not depend on frequency nor media.
- ConvF and Boundary Effect Parameters**: Assessed in flat phantom using E-field (or Temperature Transfer Standard for $f \leq 800$ MHz) and inside waveguide using analytical field distributions based on power measurements for $f > 800$ MHz. The same setups are used for assessment of the parameters applied for boundary compensation (alpha, depth) of which typical uncertainty values are given. These parameters are used in DASY4 software to improve probe accuracy close to the boundary. The sensitivity in TSL corresponds to NORM_{x,y,z} * *ConvF* whereby the uncertainty corresponds to that given for *ConvF*. A frequency dependent *ConvF* is used in DASY version 4.4 and higher which allows extending the validity from ± 50 MHz to ± 100 MHz.
- Spherical isotropy (3D deviation from isotropy)**: in a field of low gradients realized using a flat phantom exposed by a patch antenna.
- Sensor Offset**: The sensor offset corresponds to the offset of virtual measurement center from the probe tip (on probe axis). No tolerance required.

Probe ET3DV6R

SN:1391

Manufactured:	October 1, 1999
Last calibrated:	November 21, 2006
Recalibrated:	September 24, 2007

Calibrated for DASY Systems

(Note: non-compatible with DASY2 system!)

DASY - Parameters of Probe: ET3DV6R SN:1391

Sensitivity in Free Space ^A			Diode Compression ^B	
NormX	1.81 ± 10.1%	$\mu\text{V}/(\text{V}/\text{m})^2$	DCP X	90 mV
NormY	1.87 ± 10.1%	$\mu\text{V}/(\text{V}/\text{m})^2$	DCP Y	90 mV
NormZ	1.87 ± 10.1%	$\mu\text{V}/(\text{V}/\text{m})^2$	DCP Z	91 mV

Sensitivity in Tissue Simulating Liquid (Conversion Factors)

Please see Page 8.

Boundary Effect

TSL	900 MHz	Typical SAR gradient: 5 % per mm		
	Sensor Center to Phantom Surface Distance		3.7 mm	4.7 mm
	SAR _{be} [%]	Without Correction Algorithm	5.9	2.6
	SAR _{be} [%]	With Correction Algorithm	0.0	0.1
TSL	1810 MHz	Typical SAR gradient: 10 % per mm		
	Sensor Center to Phantom Surface Distance		3.7 mm	4.7 mm
	SAR _{be} [%]	Without Correction Algorithm	14.1	9.2
	SAR _{be} [%]	With Correction Algorithm	0.1	0.2

Sensor Offset

Probe Tip to Sensor Center **2.7 mm**

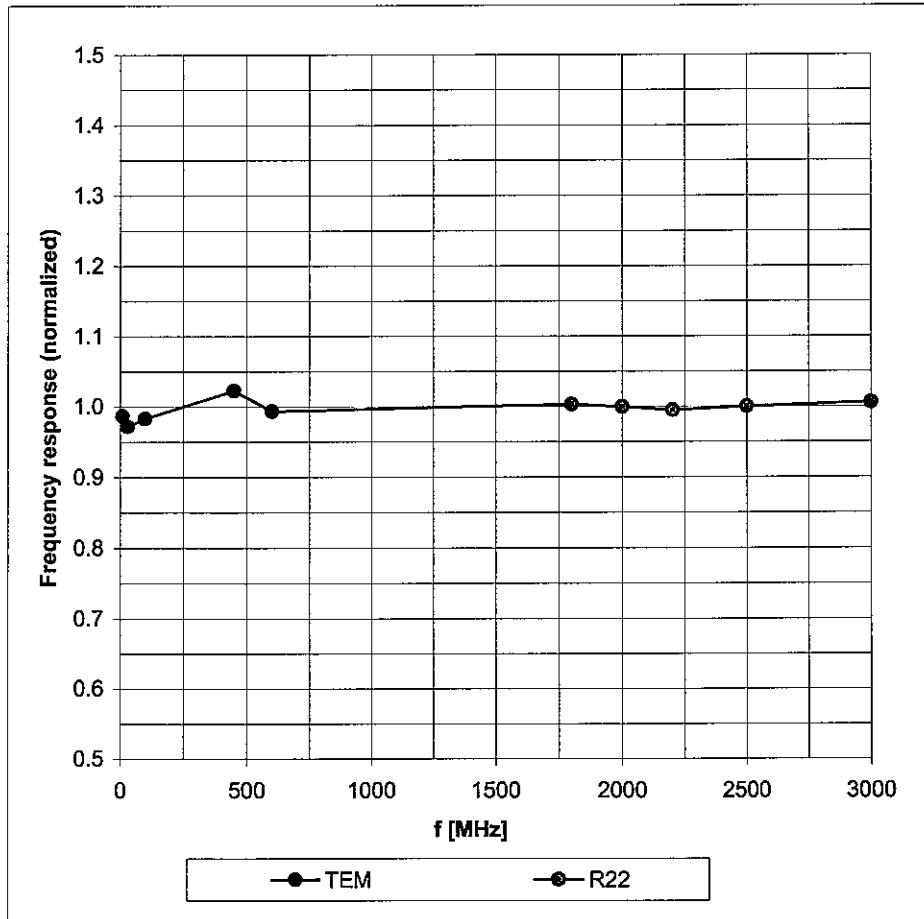
The reported uncertainty of measurement is stated as the standard uncertainty of measurement multiplied by the coverage factor k=2, which for a normal distribution corresponds to a coverage probability of approximately 95%.

^A The uncertainties of NormX,Y,Z do not affect the E²-field uncertainty inside TSL (see Page 8).

^B Numerical linearization parameter: uncertainty not required.

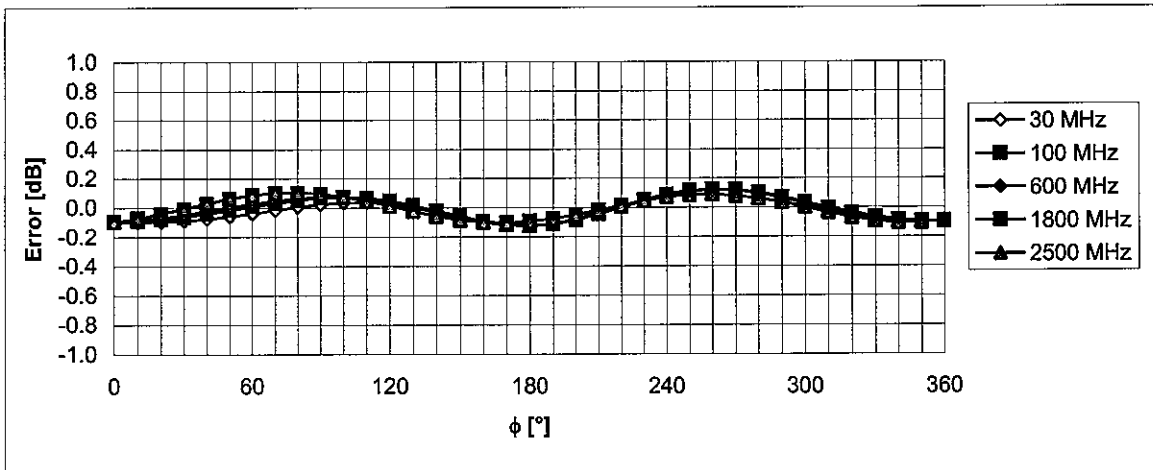
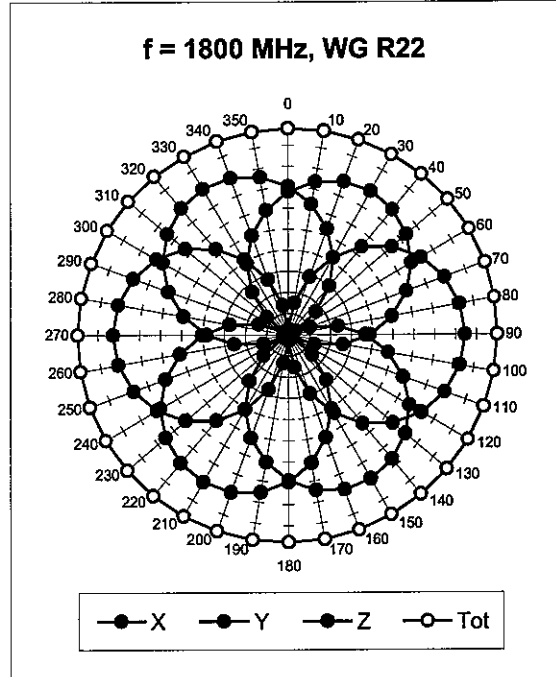
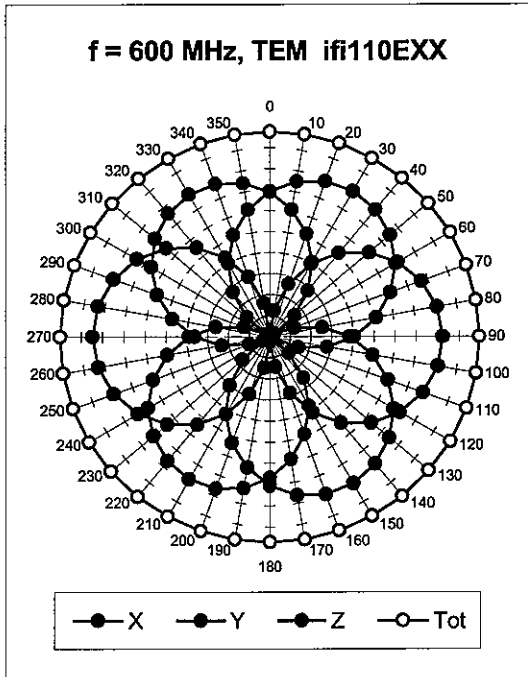
Frequency Response of E-Field

(TEM-Cell:ifi110 EXX, Waveguide: R22)



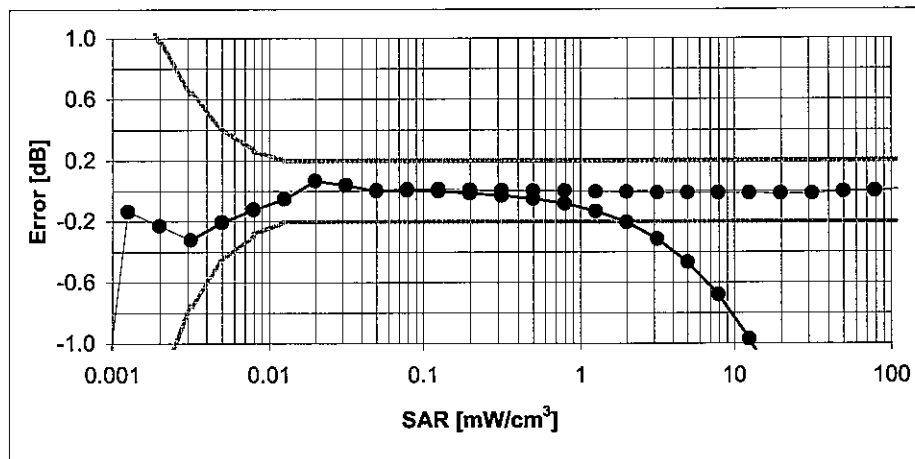
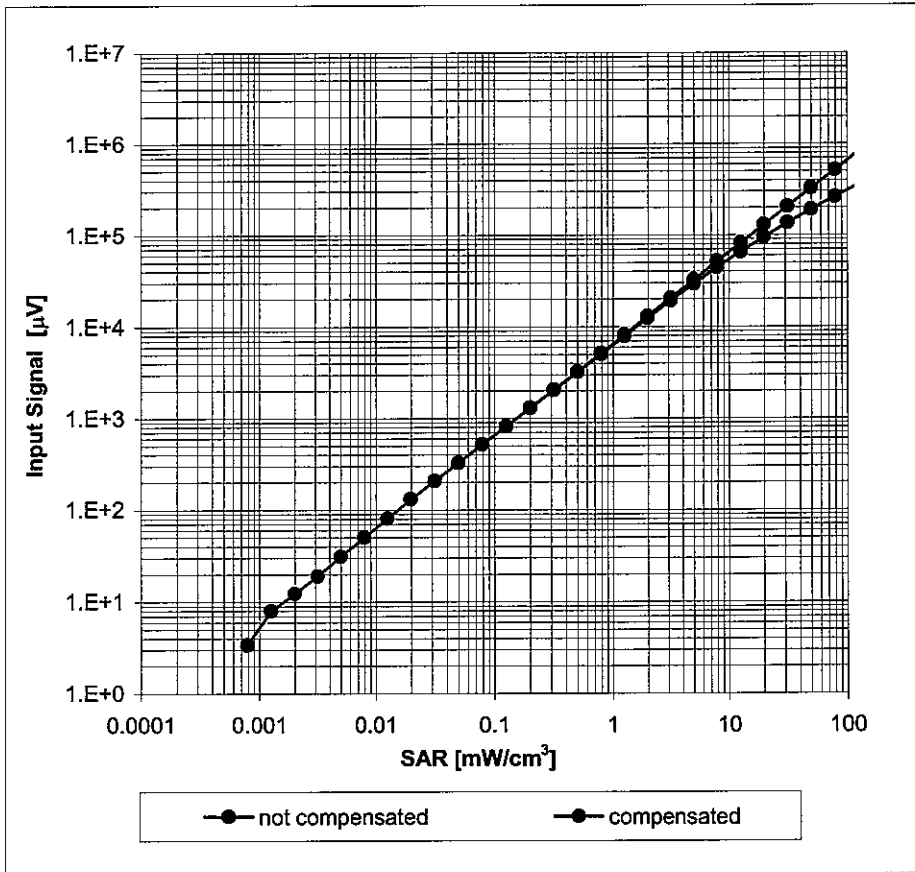
Uncertainty of Frequency Response of E-field: $\pm 6.3\%$ (k=2)

Receiving Pattern (ϕ), $\vartheta = 0^\circ$



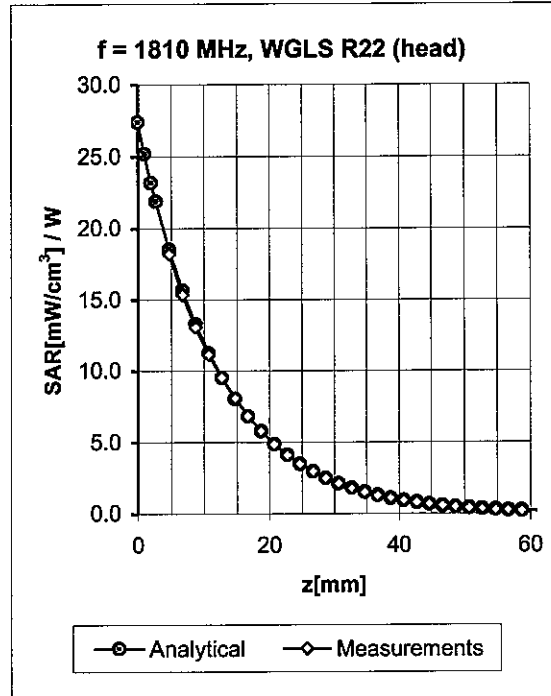
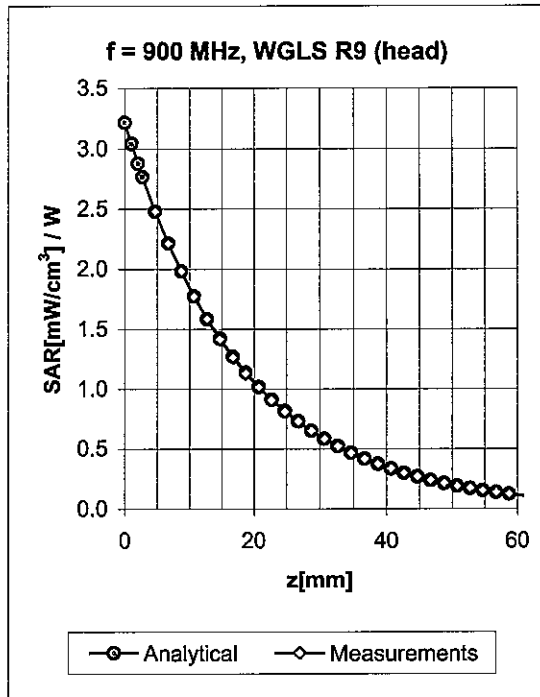
Uncertainty of Axial Isotropy Assessment: $\pm 0.5\%$ (k=2)

Dynamic Range f(SAR_{head}) (Waveguide R22, f = 1800 MHz)



Uncertainty of Linearity Assessment: $\pm 0.6\%$ (k=2)

Conversion Factor Assessment

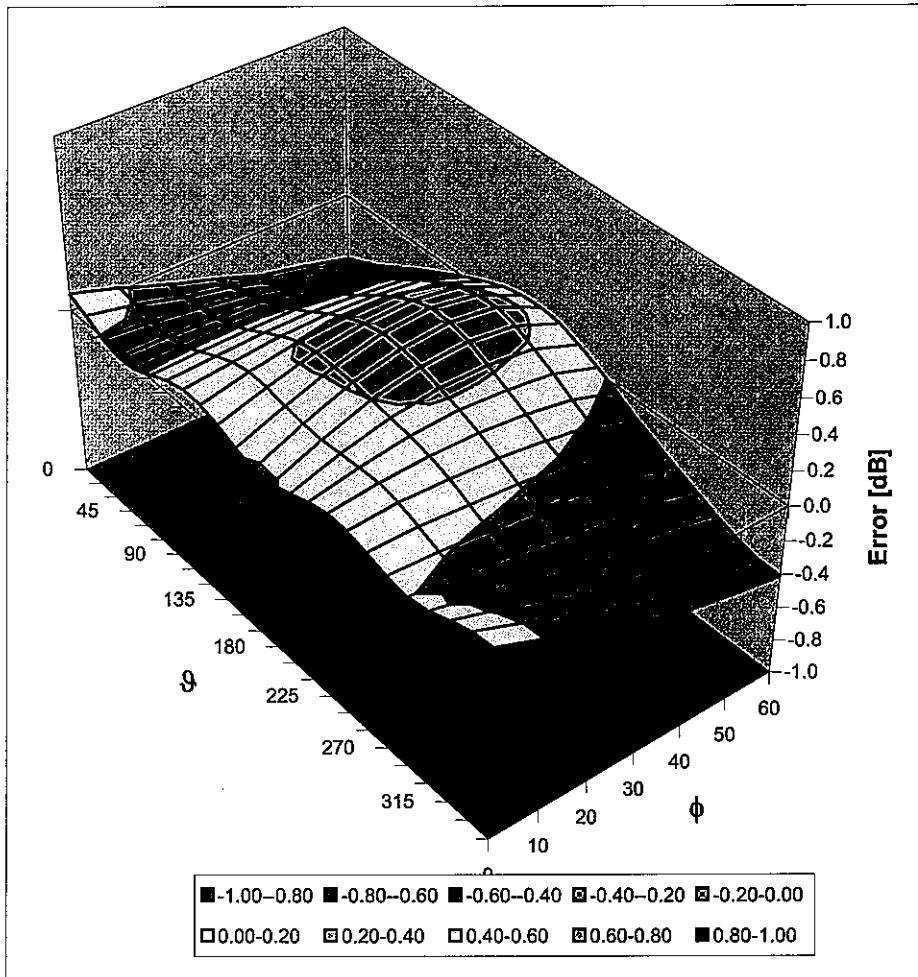


f [MHz]	Validity [MHz] ^c	TSL	Permittivity	Conductivity	Alpha	Depth	ConvF Uncertainty
900	± 50 / ± 100	Head	41.5 ± 5%	0.97 ± 5%	0.33	2.64	5.97 ± 11.0% (k=2)
1810	± 50 / ± 100	Head	40.0 ± 5%	1.40 ± 5%	0.60	2.36	4.96 ± 11.0% (k=2)
1950	± 50 / ± 100	Head	40.0 ± 5%	1.40 ± 5%	0.67	2.31	4.72 ± 11.0% (k=2)
900	± 50 / ± 100	Body	55.0 ± 5%	1.05 ± 5%	0.38	2.61	5.75 ± 11.0% (k=2)
1810	± 50 / ± 100	Body	53.3 ± 5%	1.52 ± 5%	0.70	2.49	4.48 ± 11.0% (k=2)
1950	± 50 / ± 100	Body	53.3 ± 5%	1.52 ± 5%	0.90	2.08	4.30 ± 11.0% (k=2)

^c The validity of ± 100 MHz only applies for DASY v4.4 and higher (see Page 2). The uncertainty is the RSS of the ConvF uncertainty at calibration frequency and the uncertainty for the indicated frequency band.

Deviation from Isotropy in HSL

Error (ϕ, ϑ), $f = 900$ MHz



Uncertainty of Spherical Isotropy Assessment: $\pm 2.6\%$ ($k=2$)



Accredited by the Swiss Federal Office of Metrology and Accreditation
The Swiss Accreditation Service is one of the signatories to the EA
Multilateral Agreement for the recognition of calibration certificates

Accreditation No.: **SCS 108**

Client **Motorola Korea**

Certificate No. **ET3-1515-Aug07**

CALIBRATION CERTIFICATE

Object **ET3DV6 - SN:1515**

Calibration procedure(s) **QA-CAL-01-v6
Calibration procedure for dosimetric E-field probes**

Calibration date: **August 28, 2007**

Condition of the calibrated item **In Tolerance**

This calibration certificate documents the traceability to national standards, which realize the physical units of measurements (SI).
The measurements and the uncertainties with confidence probability are given on the following pages and are part of the certificate.

All calibrations have been conducted in the closed laboratory facility: environment temperature (22 ± 3)°C and humidity < 70%.

Calibration Equipment used (M&TE critical for calibration)

Primary Standards	ID #	Cal Date (Calibrated by, Certificate No.)	Scheduled Calibration
Power meter E4419B	GB41293874	29-Mar-07 (METAS, No. 217-00670)	Mar-08
Power sensor E4412A	MY41495277	29-Mar-07 (METAS, No. 217-00670)	Mar-08
Power sensor E4412A	MY41498087	29-Mar-07 (METAS, No. 217-00670)	Mar-08
Reference 3 dB Attenuator	SN: S5054 (3c)	8-Aug-07 (METAS, No. 217-00719)	Aug-08
Reference 20 dB Attenuator	SN: S5086 (20b)	29-Mar-07 (METAS, No. 217-00671)	Mar-08
Reference 30 dB Attenuator	SN: S5129 (30b)	8-Aug-07 (METAS, No. 217-00720)	Aug-08
Reference Probe ES3DV2	SN: 3013	4-Jan-07 (SPEAG, No. ES3-3013_Jan07)	Jan-08
DAE4	SN: 654	20-Apr-07 (SPEAG, No. DAE4-654_Apr07)	Apr-08
Secondary Standards	ID #	Check Date (in house)	Scheduled Check
RF generator HP 8648C	US3642U01700	4-Aug-99 (SPEAG, in house check Nov-05)	In house check: Nov-07
Network Analyzer HP 8753E	US37390585	18-Oct-01 (SPEAG, in house check Oct-06)	In house check: Oct-07

	Name	Function	Signature
Calibrated by:	Katja Pokovic	Technical Manager	
Approved by:	Niels Kuster	Quality Manager	

Issued: August 28, 2007

This calibration certificate shall not be reproduced except in full without written approval of the laboratory.



Accredited by the Swiss Federal Office of Metrology and Accreditation
The Swiss Accreditation Service is one of the signatories to the EA
Multilateral Agreement for the recognition of calibration certificates

Accreditation No.: **SCS 108**

Glossary:

TSL	tissue simulating liquid
NORM _{x,y,z}	sensitivity in free space
ConvF	sensitivity in TSL / NORM _{x,y,z}
DCP	diode compression point
Polarization ϕ	ϕ rotation around probe axis
Polarization ϑ	ϑ rotation around an axis that is in the plane normal to probe axis (at measurement center), i.e., $\vartheta = 0$ is normal to probe axis

Calibration is Performed According to the Following Standards:

- IEEE Std 1528-2003, "IEEE Recommended Practice for Determining the Peak Spatial-Averaged Specific Absorption Rate (SAR) in the Human Head from Wireless Communications Devices: Measurement Techniques", December 2003
- IEC 62209-1, "Procedure to measure the Specific Absorption Rate (SAR) for hand-held devices used in close proximity to the ear (frequency range of 300 MHz to 3 GHz)", February 2005

Methods Applied and Interpretation of Parameters:

- NORM_{x,y,z}**: Assessed for E-field polarization $\vartheta = 0$ ($f \leq 900$ MHz in TEM-cell; $f > 1800$ MHz: R22 waveguide). NORM_{x,y,z} are only intermediate values, i.e., the uncertainties of NORM_{x,y,z} does not effect the E²-field uncertainty inside TSL (see below *ConvF*).
- NORM(f)_{x,y,z} = NORM_{x,y,z} * frequency_response** (see Frequency Response Chart). This linearization is implemented in DASY4 software versions later than 4.2. The uncertainty of the frequency response is included in the stated uncertainty of *ConvF*.
- DCP_{x,y,z}**: DCP are numerical linearization parameters assessed based on the data of power sweep (no uncertainty required). DCP does not depend on frequency nor media.
- ConvF and Boundary Effect Parameters**: Assessed in flat phantom using E-field (or Temperature Transfer Standard for $f \leq 800$ MHz) and inside waveguide using analytical field distributions based on power measurements for $f > 800$ MHz. The same setups are used for assessment of the parameters applied for boundary compensation (alpha, depth) of which typical uncertainty values are given. These parameters are used in DASY4 software to improve probe accuracy close to the boundary. The sensitivity in TSL corresponds to NORM_{x,y,z} * *ConvF* whereby the uncertainty corresponds to that given for *ConvF*. A frequency dependent *ConvF* is used in DASY version 4.4 and higher which allows extending the validity from ± 50 MHz to ± 100 MHz.
- Spherical isotropy (3D deviation from isotropy)**: in a field of low gradients realized using a flat phantom exposed by a patch antenna.
- Sensor Offset**: The sensor offset corresponds to the offset of virtual measurement center from the probe tip (on probe axis). No tolerance required.

Probe ET3DV6

SN:1515

Manufactured:	February 1, 2000
Last calibrated:	August 24, 2006
Modified:	August 22, 2007
Recalibrated:	August 28, 2007

Calibrated for DASYS Systems

(Note: non-compatible with DASYS2 system!)

DASY - Parameters of Probe: ET3DV6 SN:1515**Sensitivity in Free Space^A**

NormX	1.69 ± 10.1%	$\mu\text{V}/(\text{V}/\text{m})^2$
NormY	1.95 ± 10.1%	$\mu\text{V}/(\text{V}/\text{m})^2$
NormZ	1.65 ± 10.1%	$\mu\text{V}/(\text{V}/\text{m})^2$

Diode Compression^B

DCP X	95 mV
DCP Y	96 mV
DCP Z	91 mV

Sensitivity in Tissue Simulating Liquid (Conversion Factors)

Please see Page 8.

Boundary Effect

TSL 900 MHz Typical SAR gradient: 5 % per mm

Sensor Center to Phantom Surface Distance		3.7 mm	4.7 mm
SAR _{be} [%]	Without Correction Algorithm	6.1	2.9
SAR _{be} [%]	With Correction Algorithm	0.2	0.1

TSL 1810 MHz Typical SAR gradient: 10 % per mm

Sensor Center to Phantom Surface Distance		3.7 mm	4.7 mm
SAR _{be} [%]	Without Correction Algorithm	13.3	9.2
SAR _{be} [%]	With Correction Algorithm	1.0	0.2

Sensor Offset

Probe Tip to Sensor Center **2.7 mm**

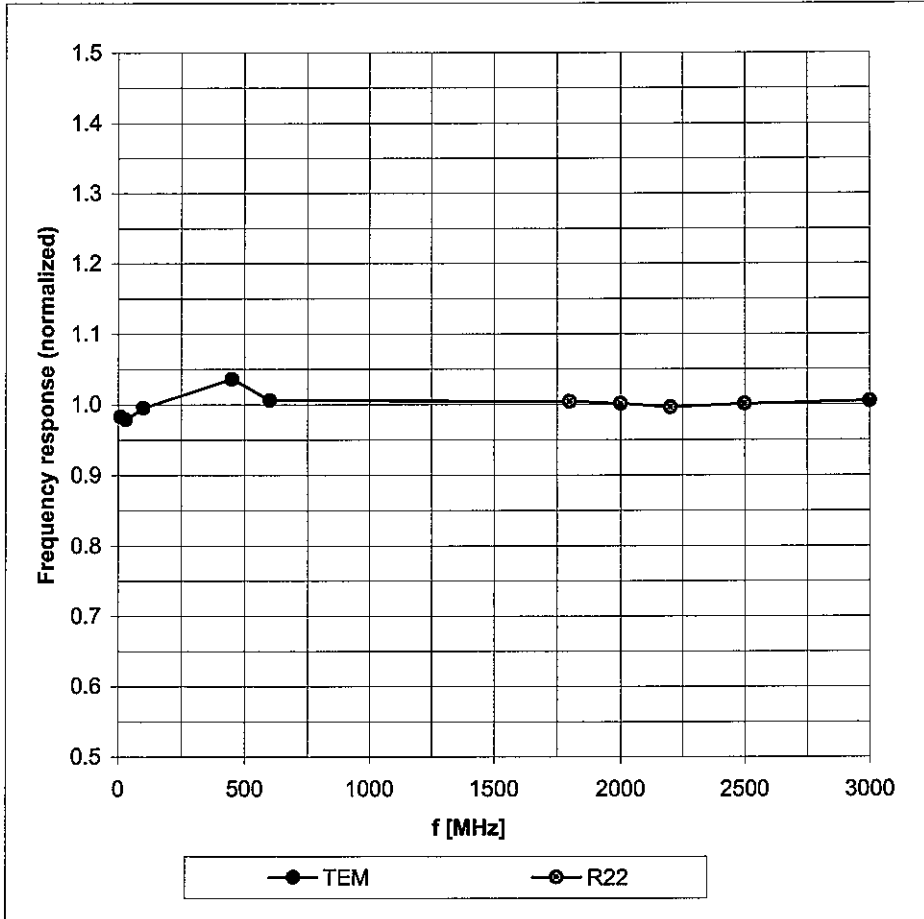
The reported uncertainty of measurement is stated as the standard uncertainty of measurement multiplied by the coverage factor k=2, which for a normal distribution corresponds to a coverage probability of approximately 95%.

^A The uncertainties of NormX,Y,Z do not affect the E²-field uncertainty inside TSL (see Page 8).

^B Numerical linearization parameter: uncertainty not required.

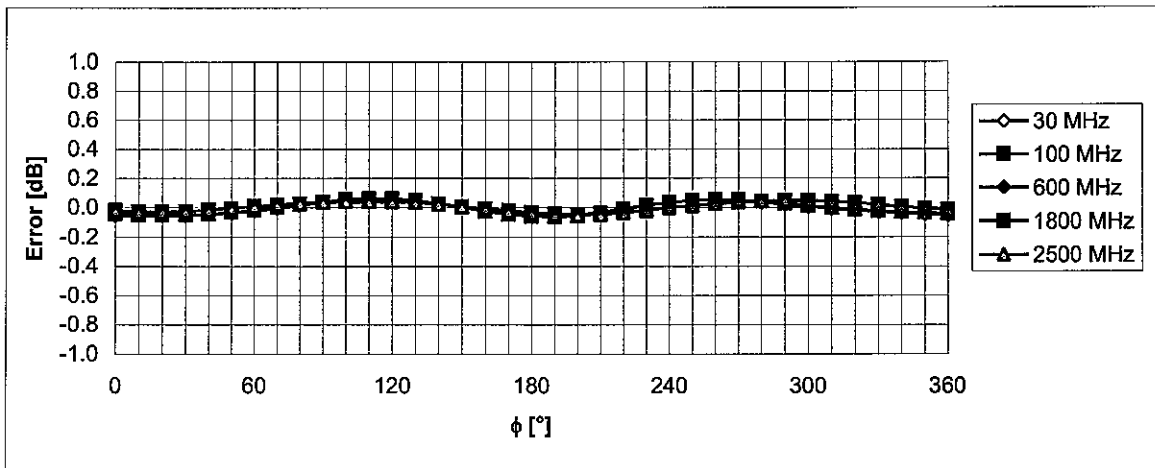
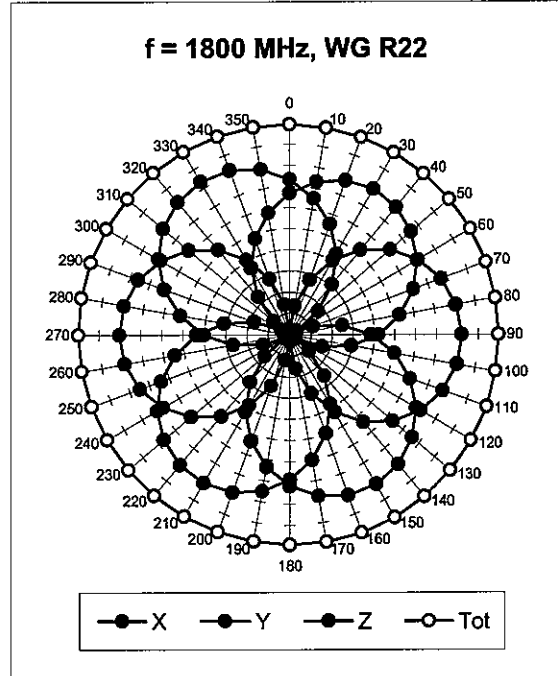
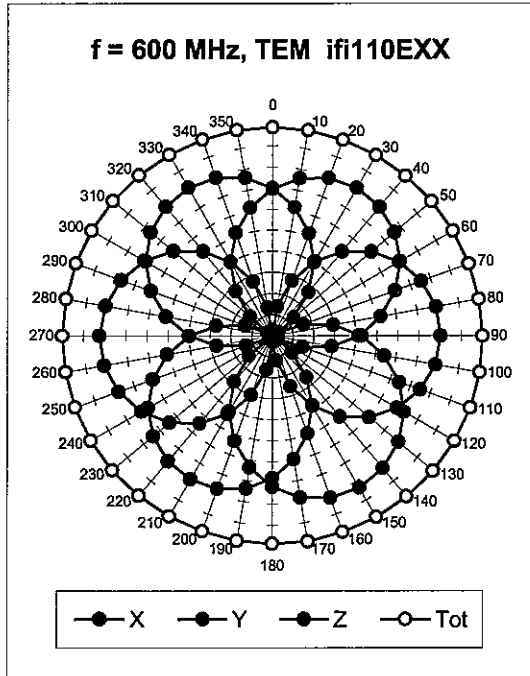
Frequency Response of E-Field

(TEM-Cell: ifi110 EXX, Waveguide: R22)



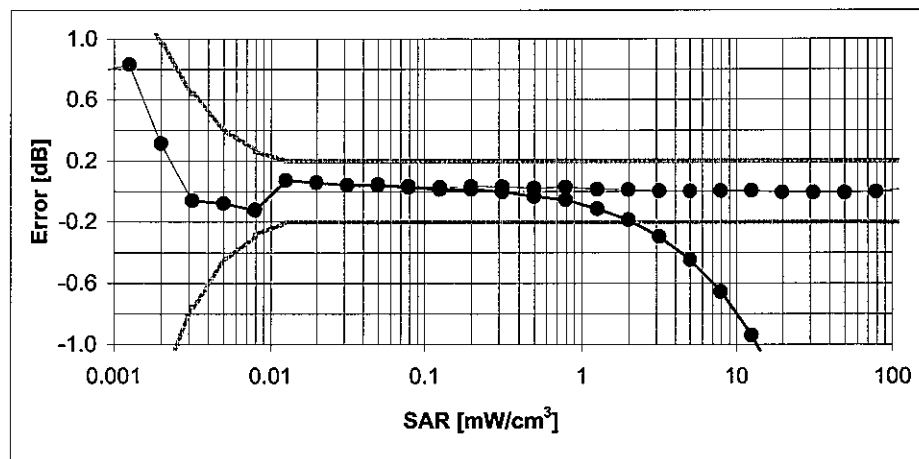
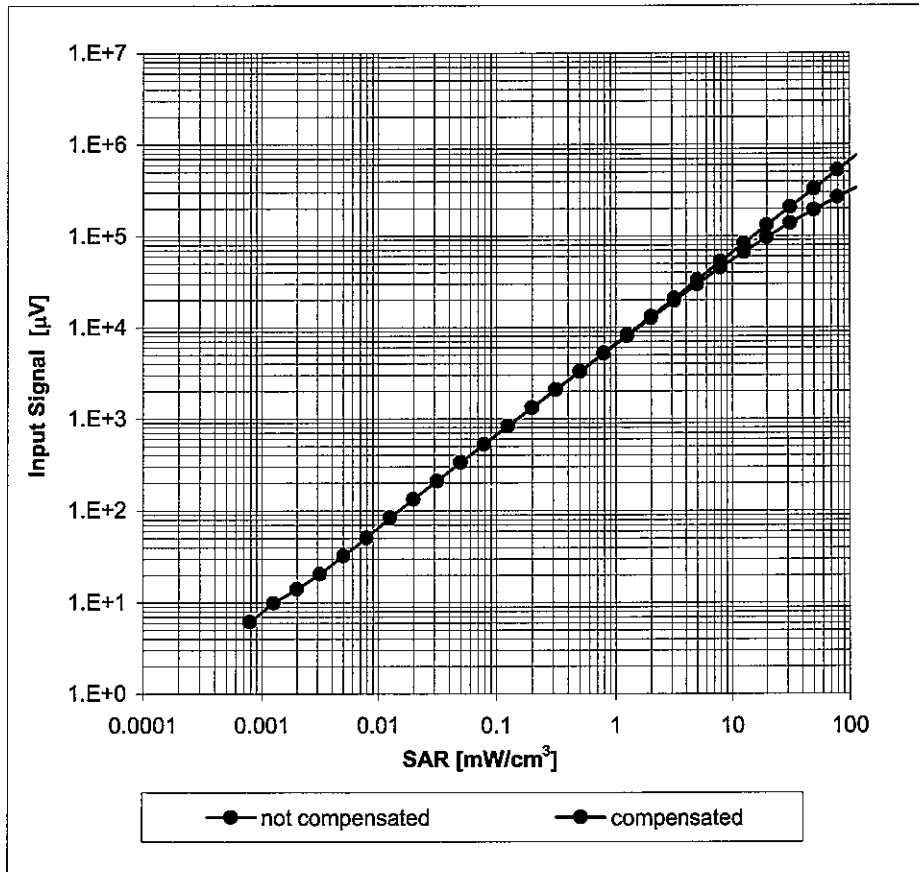
Uncertainty of Frequency Response of E-field: $\pm 6.3\%$ (k=2)

Receiving Pattern (ϕ), $\vartheta = 0^\circ$



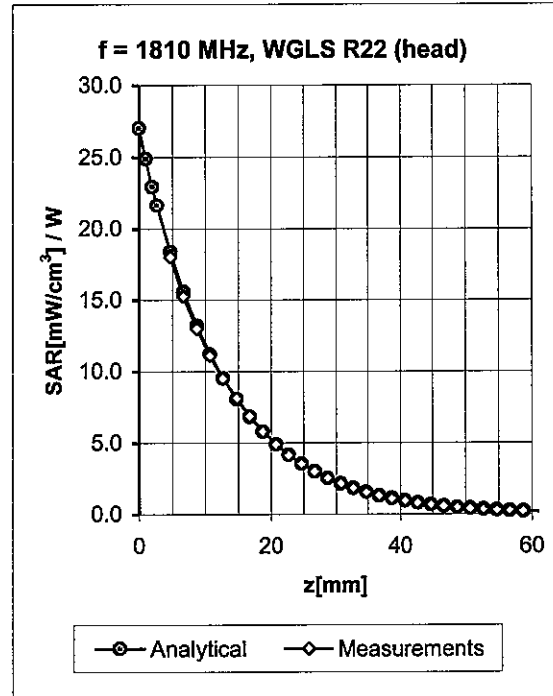
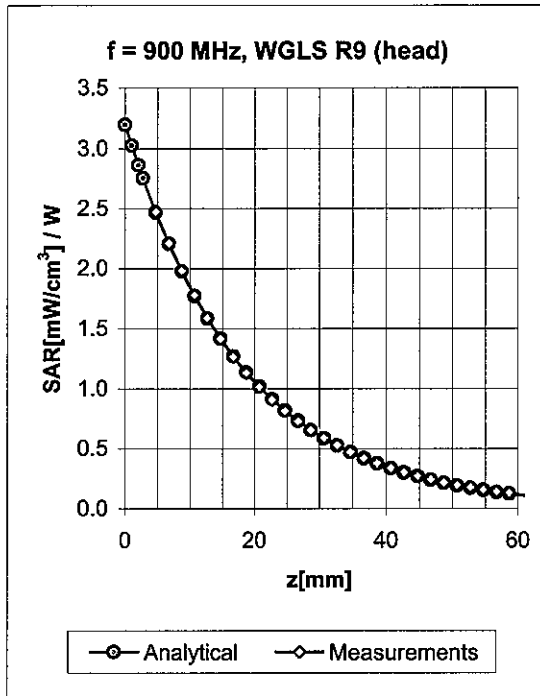
Uncertainty of Axial Isotropy Assessment: $\pm 0.5\%$ ($k=2$)

Dynamic Range $f(\text{SAR}_{\text{head}})$ (Waveguide R22, $f = 1800 \text{ MHz}$)



Uncertainty of Linearity Assessment: $\pm 0.6\%$ ($k=2$)

Conversion Factor Assessment

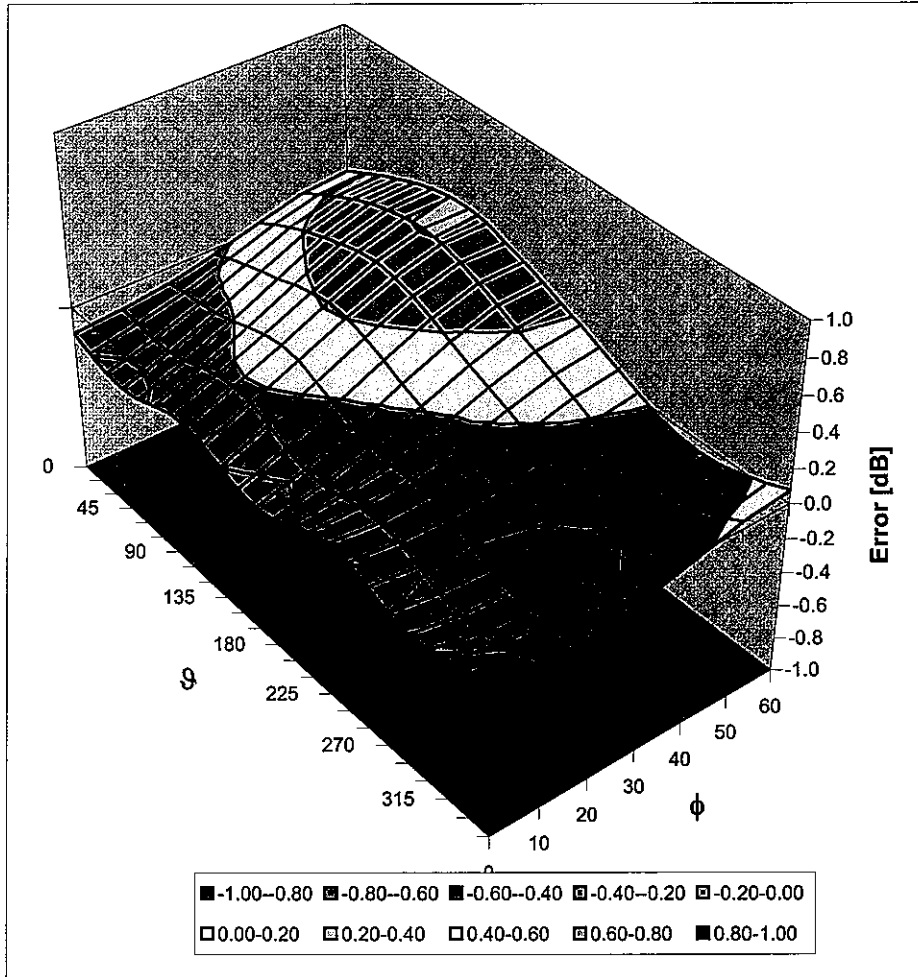


f [MHz]	Validity [MHz] ^c	TSL	Permittivity	Conductivity	Alpha	Depth	ConvF Uncertainty
900	± 50 / ± 100	Head	41.5 ± 5%	0.97 ± 5%	0.31	2.72	6.50 ± 11.0% (k=2)
1810	± 50 / ± 100	Head	40.0 ± 5%	1.40 ± 5%	0.61	2.40	5.21 ± 11.0% (k=2)
1950	± 50 / ± 100	Head	40.0 ± 5%	1.40 ± 5%	0.63	2.47	4.98 ± 11.0% (k=2)
2450	± 50 / ± 100	Head	39.2 ± 5%	1.80 ± 5%	0.70	1.84	4.64 ± 11.8% (k=2)
900	± 50 / ± 100	Body	55.0 ± 5%	1.05 ± 5%	0.34	2.89	6.09 ± 11.0% (k=2)
1810	± 50 / ± 100	Body	53.3 ± 5%	1.52 ± 5%	0.65	2.62	4.73 ± 11.0% (k=2)
1950	± 50 / ± 100	Body	53.3 ± 5%	1.52 ± 5%	0.78	2.28	4.45 ± 11.0% (k=2)
2450	± 50 / ± 100	Body	52.7 ± 5%	1.95 ± 5%	0.66	2.16	4.06 ± 11.8% (k=2)

^c The validity of ± 100 MHz only applies for DASYS v4.4 and higher (see Page 2). The uncertainty is the RSS of the ConvF uncertainty at calibration frequency and the uncertainty for the indicated frequency band.

Deviation from Isotropy in HSL

Error (ϕ, ϑ), $f = 900$ MHz



Uncertainty of Spherical Isotropy Assessment: $\pm 2.6\%$ ($k=2$)

Appendix 5
Measurement Uncertainty Budget

<i>a</i>	<i>b</i>	<i>c</i>	<i>d</i>	<i>e = f(d,k)</i>	<i>f</i>	<i>g</i>	<i>h = c x f / e</i>	<i>i = c x g / e</i>	<i>k</i>
Uncertainty Component	IEEE 1528 section	Tol. (± %)	Prob	Div.	<i>c_i</i>	<i>c_i</i> (10 g)	1 g	10 g	<i>v_i</i>
			Dist		(1 g)	(10 g)	<i>u_i</i> (±%)	<i>u_i</i> (±%)	
Measurement System									
Probe Calibration	E.2.1	5.9	N	1.00	1	1	5.9	5.9	∞
Axial Isotropy	E.2.2	4.7	R	1.73	0.707	0.707	1.9	1.9	∞
Hemispherical Isotropy	E.2.2	9.6	R	1.73	0.707	0.707	3.9	3.9	∞
Boundary Effect	E.2.3	1.0	R	1.73	1	1	0.6	0.6	∞
Linearity	E.2.4	4.7	R	1.73	1	1	2.7	2.7	∞
System Detection Limits	E.2.5	1.0	R	1.73	1	1	0.6	0.6	∞
Readout Electronics	E.2.6	0.3	N	1.00	1	1	0.3	0.3	∞
Response Time	E.2.7	1.1	R	1.73	1	1	0.6	0.6	∞
Integration Time	E.2.8	1.1	R	1.73	1	1	0.6	0.6	∞
RF Ambient Conditions - Noise	E.6.1	3.0	R	1.73	1	1	1.7	1.7	∞
RF Ambient Conditions - Reflections	E.6.1	0.0	R	1.73	1	1	0.0	0.0	∞
Probe Positioner Mech. Tolerance	E.6.2	0.4	R	1.73	1	1	0.2	0.2	∞
Probe Positioning w.r.t Phantom	E.6.3	1.4	R	1.73	1	1	0.8	0.8	∞
Max. SAR Evaluation (ext., int., avg.)	E.5	3.4	R	1.73	1	1	2.0	2.0	∞
Test sample Related									
Test Sample Positioning	E.4.2	3.2	N	1.00	1	1	3.2	3.2	29
Device Holder Uncertainty	E.4.1	4.0	N	1.00	1	1	4.0	4.0	8
SAR drift	6.6.2	5.0	R	1.73	1	1	2.9	2.9	∞
Phantom and Tissue Parameters									
Phantom Uncertainty	E.3.1	4.0	R	1.73	1	1	2.3	2.3	∞
Liquid Conductivity (target)	E.3.2	5.0	R	1.73	0.64	0.43	1.8	1.2	∞
Liquid Conductivity (measurement)	E.3.3	3.3	N	1.00	0.64	0.43	2.1	1.4	∞
Liquid Permittivity (target)	E.3.2	5.0	R	1.73	0.6	0.49	1.7	1.4	∞
Liquid Permittivity (measurement)	E.3.3	1.9	N	1.00	0.6	0.49	1.1	0.9	∞
Combined Standard Uncertainty			RSS				11.1	10.8	411
Expanded Uncertainty (95% CONFIDENCE LEVEL)			<i>k</i> =2				22.2	21.6	

Appendix 6

Photographs of the device under test

Please refer to Exhibit 7B

Appendix 7
Dipole Characterization Certificate

Certification of System Performance Check Targets

Based on WI-0396

-Historical Data-

900MHz	
IEEE/IEC Target:	10.8 (W/kg)
Measurement Uncertainty (k=1):	9.0%
Measurement Period:	10-May-06 to 18-April-07
# of tests performed:	1,562
Grand Average:	11.24 (W/kg)
% Delta (Average - IEEE1528 Target)	4.1%
Is % Delta <= Expanded Measurement Uncertainty (k=2)?	Yes
Accept/Reject <u>Average</u> as new system performance check target?	ACCEPT
Applies to Dipole SN's: 55, 69, 77, 78, 79, 80, 91, 92, 93, 94, 95, 96, 97, 1d034, 1d035	

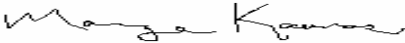
-New System Performance Check Targets- per WI-0396

(based on analysis of historical data)

Frequency	SAR Target (W/kg)	Permittivity	Conductivity (S/m)
900MHz	11.24	41.5 ± 5%	0.97 ± 5%

-Approvals-

Submitted by: Date:

Signed: 

Comments:

Approved by: Date:

Signed: 

Comments:

Certification of System Performance Check Targets

Based on WI-0396

-Historical Data-


1800MHz	
IEEE1528 Target:	38.1 (W/kg)
Measurement Uncertainty (k=1):	9.0%
Measurement Period:	10-May-06 to 18-April-07
# of tests performed:	1314
Grand Average:	37.5 (W/kg)
% Delta (Average - IEEE1528 Target)	-1.6%
Is % Delta <= Expanded Measurement Uncertainty (k=2)?	Yes
Accept/Reject <u>Average</u> as new system performance check target?	ACCEPT
<u>Applies to Dipole SN's:</u> 246tr, 250tr, 251tr, 259tr, 263tr, 271tr, 272tr, 276tr, 277tr, 279tr, 280tr, 281tr, 283tr, 284tr, 2d128, 2d129	

-New System Performance Check Targets- per WI-0396
 (based on analysis of historical data)

Frequency	SAR Target (W/kg)	Permittivity	Conductivity (S/m)
1800MHz	37.5	40.0 ± 5%	1.40 ± 5%

-Approvals-

Submitted by: Date:

Signed: 

Comments:

Approved by: Date:

Signed: 

Comments:

Certification of System Performance Check Targets

Based on WI-0396

-Historical Data-

2450MHz	
IEEE1528 Target:	52.4 (W/kg)
Measurement Uncertainty (k=1):	9.0%
Measurement Period:	10-May-06 to 18-April-07
# of tests performed:	32
Grand Average:	58.0 (W/kg)
% Delta (Average - IEEE1528 Target)	10.6%
Is % Delta <= Expanded Measurement Uncertainty (k=2)?	Yes
Accept/Reject <u>Average</u> as new system performance check target?	ACCEPT
<u>Applies to Dipole SN's:</u> 740, 766, 767, 788, 789	


-New System Performance Check Targets- per WI-0396

(based on analysis of historical data)

Frequency	SAR Target (W/kg)	Permittivity	Conductivity (S/m)
2450MHz	58.0	39.2 ± 5%	1.80 ± 5%

-Approvals-

Submitted by: Date:

Signed: 

Comments:

Approved by: Date:

Signed: 

Comments: