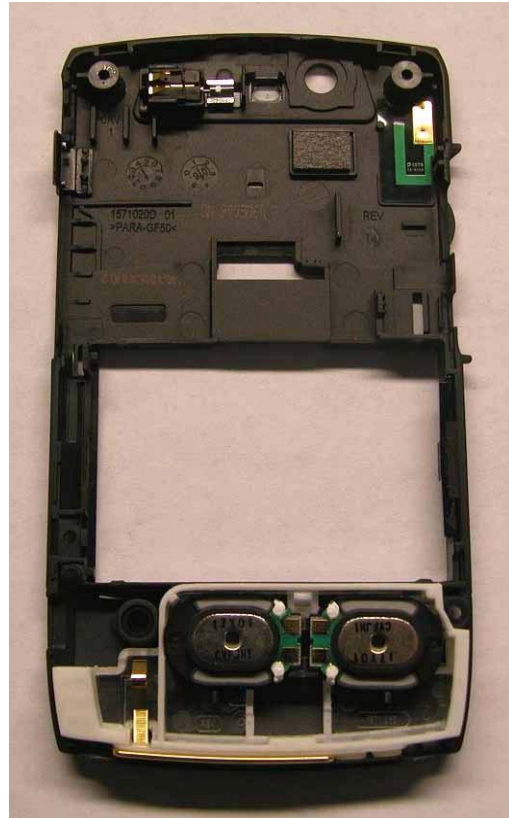




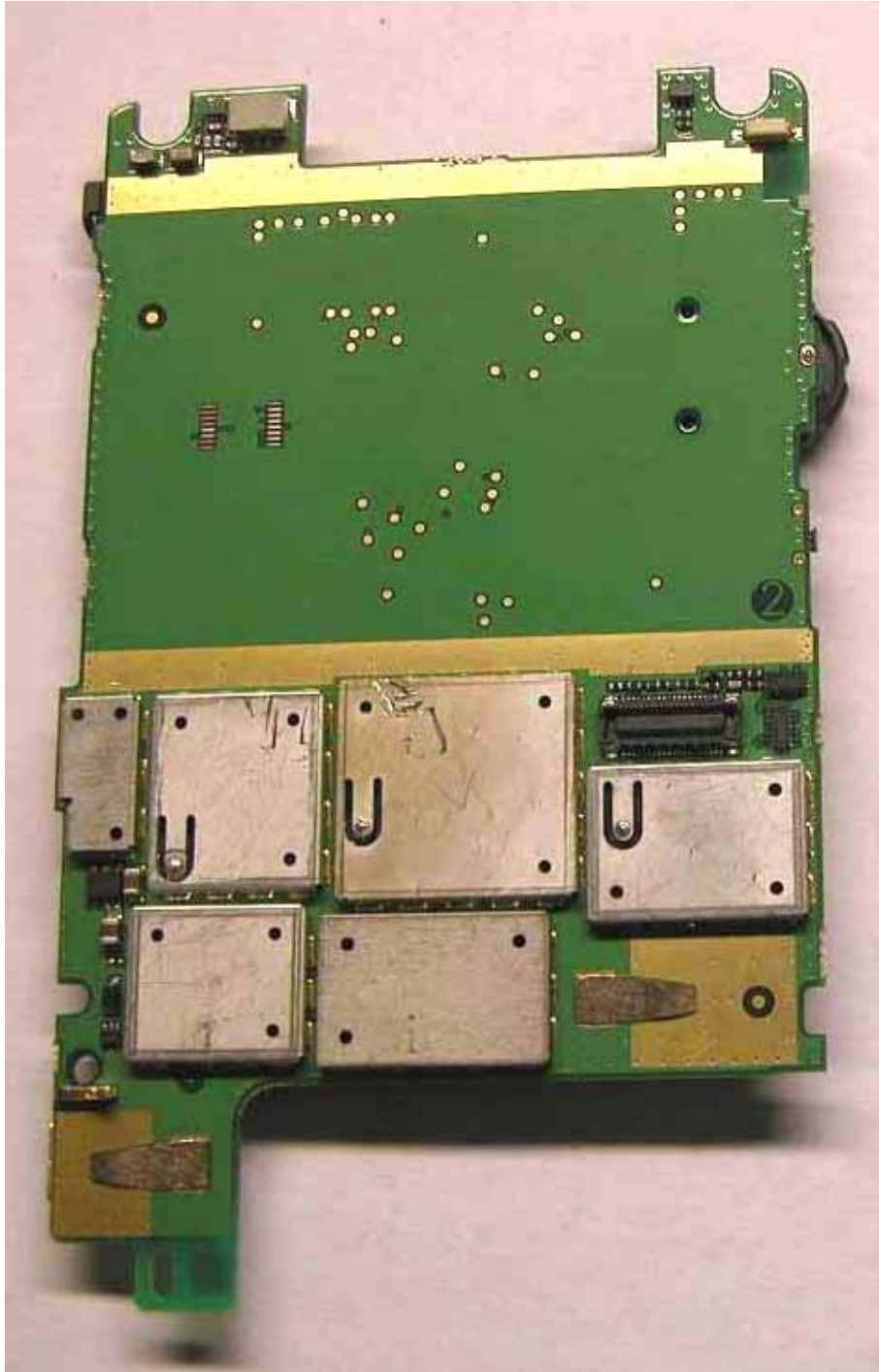
No Back Housing



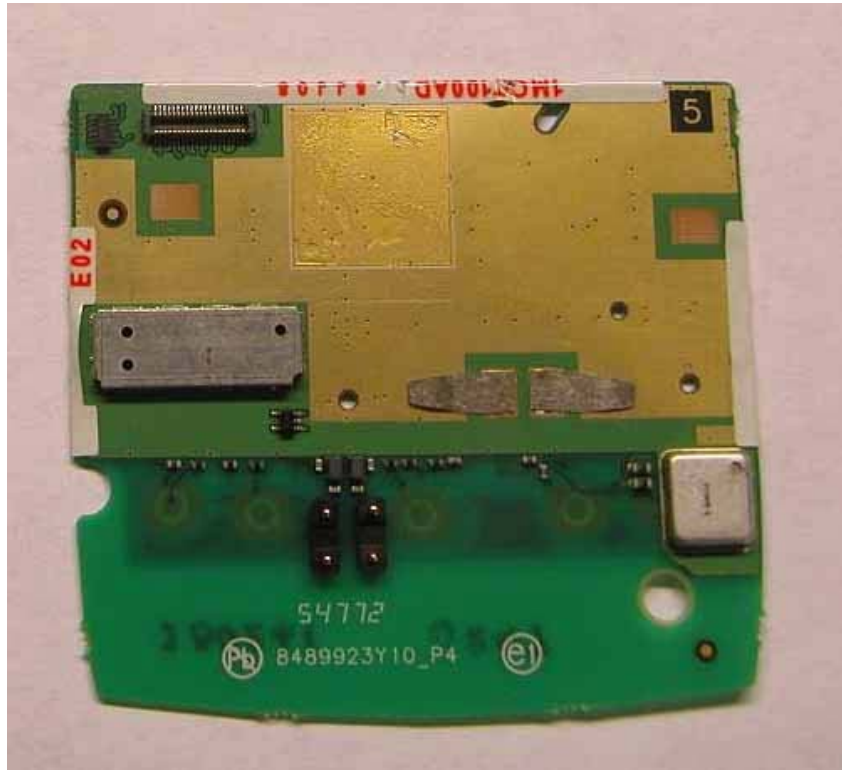
Back Housing



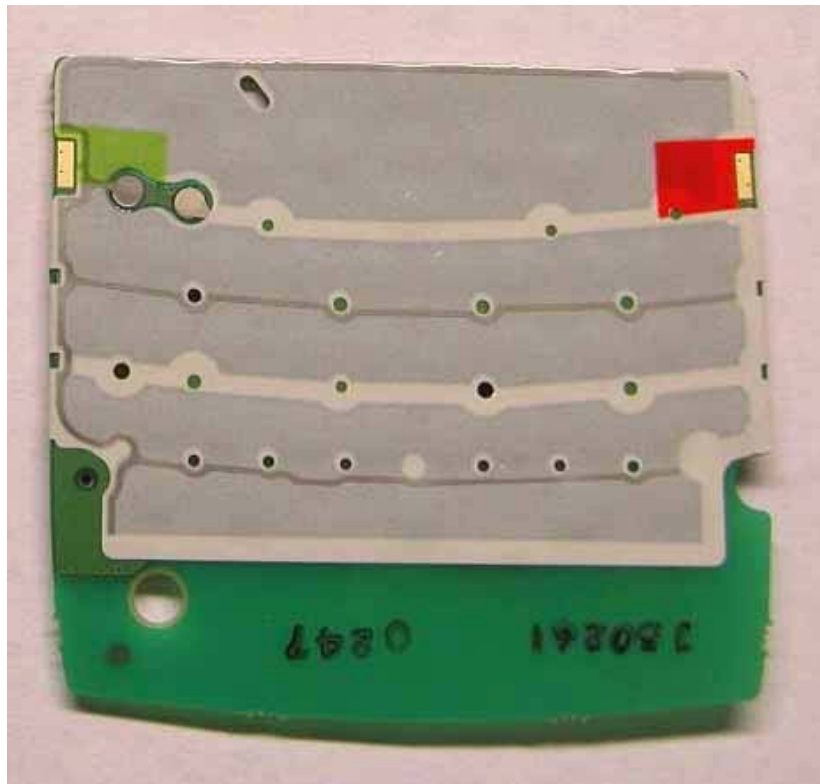
Main PCB (Side 1)



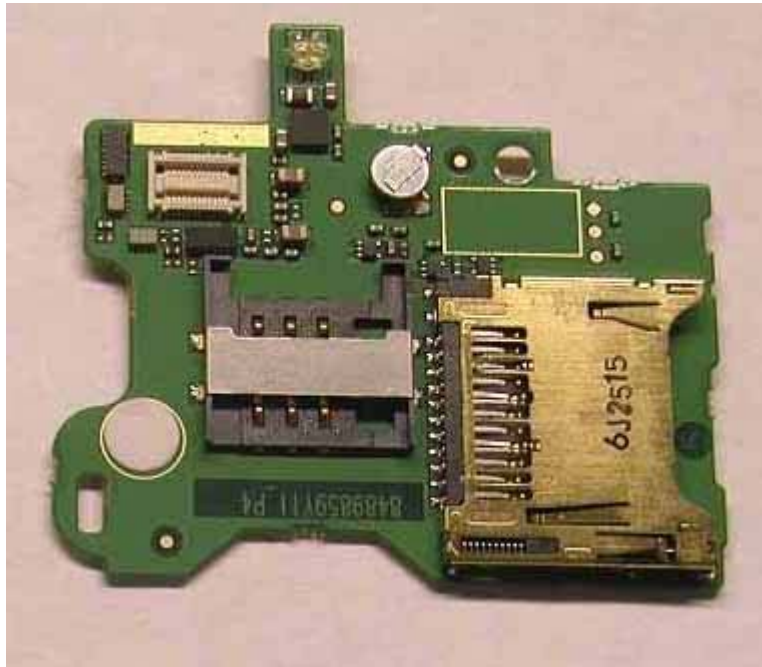
Main PCB (Side 2)



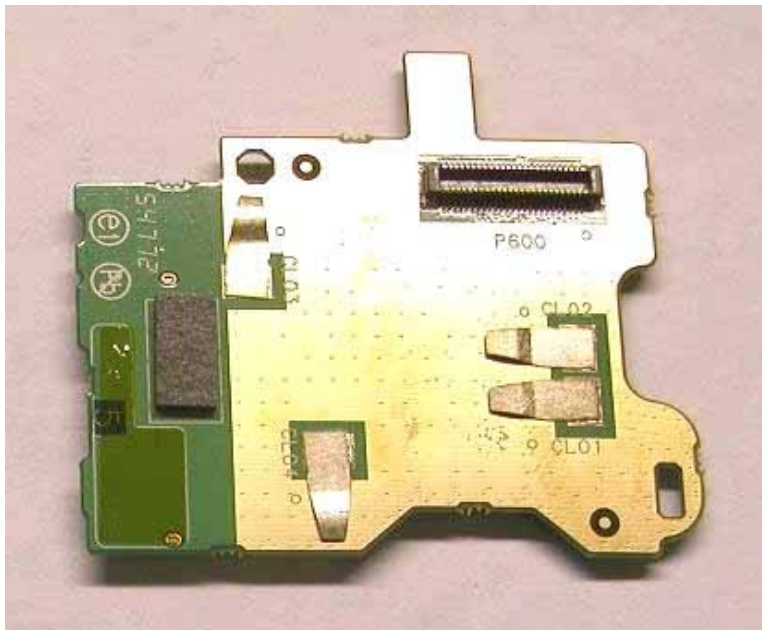
Key Pad PCB (Side 1)



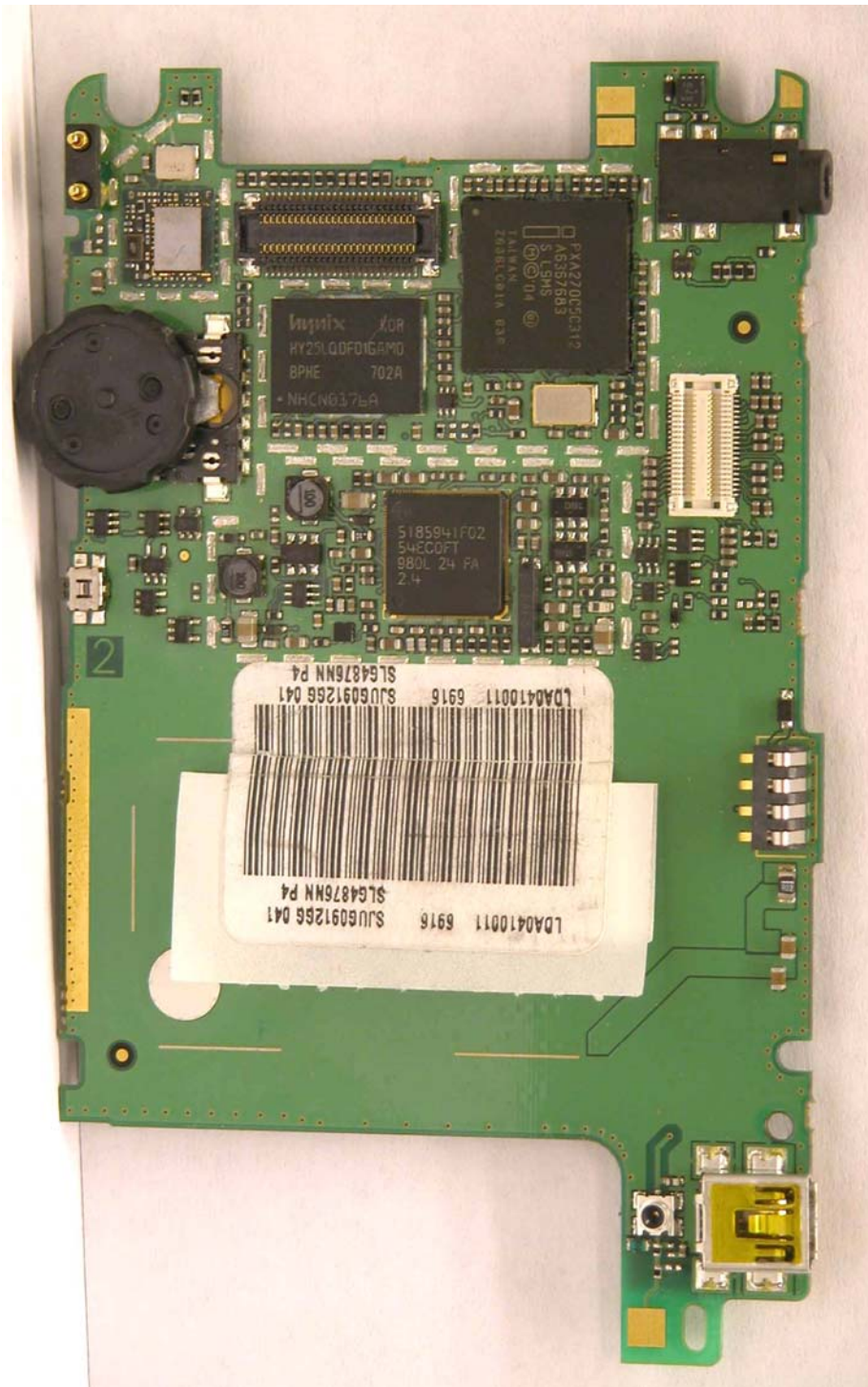
Key Pad PCB (Side 2)



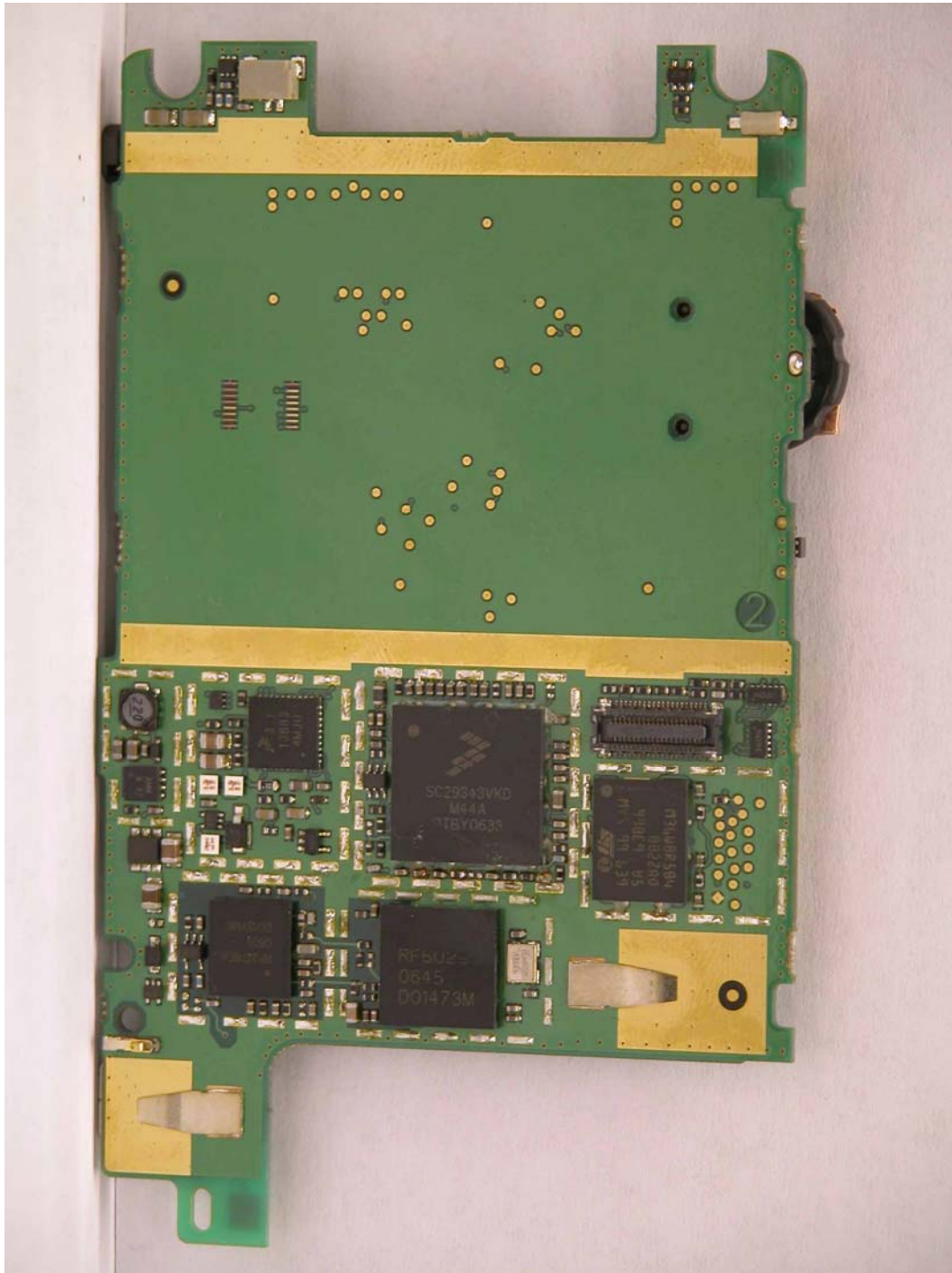
Daughter Board (Side 1)



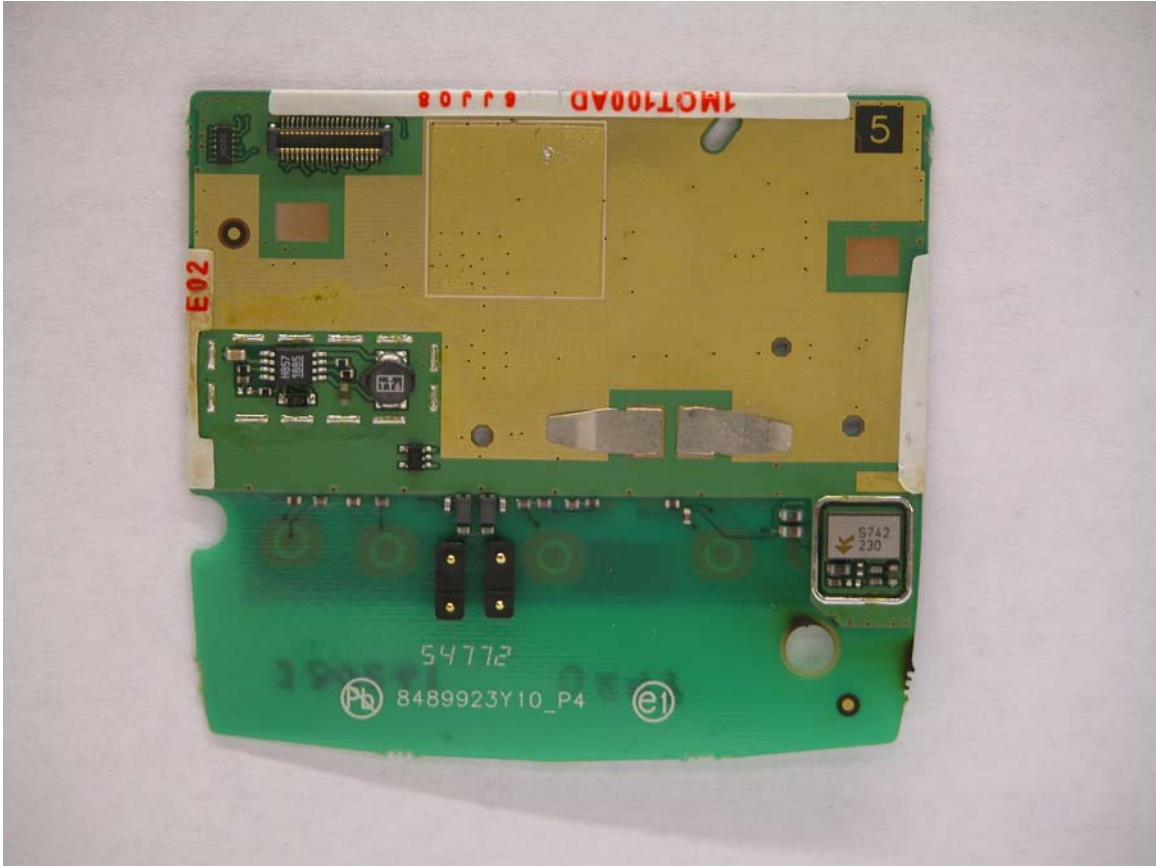
Daughter Board (Side 2)



Main PCB without Shields (Side 1)



Main PCB without Shields (Side 2)



Key Pad PCB without Shields



Main Antenna – Quad Band GSM (850/900/1800/1900 MHz)



Bluetooth Antenna Location