

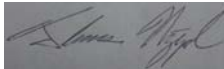


MOTOROLA

Portable Cellular Phone SAR Test Report

Test Report #: 20026-2F
Date of Report: Feb-23-2007
Date of Test: Feb-14-2007 to Feb-22-2007
FCC ID #: **IHDT56HX1**
Generic Name: MQ4-4411K11

Laboratory: Motorola Mobile Devices Business Product Safety & Compliance Laboratory
600 N. US Highway 45
Libertyville, Illinois 60048

Report Author: Thomas Nipple
RF Engineer 

This laboratory is accredited to ISO/IEC 17025-1999 to perform the following tests:

Tests:
Electromagnetic Specific Absorption Rate

Procedures:
IEC 62209-1
RSS-102
IEEE 1528 - 2003
FCC OET Bulletin 65 (including Supplement C)
Australian Communications Authority Radio
Communications (Electromagnetic Radiation – Human
Exposure) Standard 2003
CENELEC EN 50360 (2001)
CENELEC EN 50361 (2001)
ARIB Std. T-56 (2002)

Accreditation:



On the following products or types of products:
Wireless Communications Devices (Examples): Two Way Radios; Portable Phones (including Cellular, Licensed Non-Broadcast and PCS); Low Frequency Readers; and Pagers

A2LA certificate #2518-02

Statement of Compliance:

Motorola declares under its sole responsibility that the portable cellular telephone model to which this declaration relates, is in conformity with the appropriate General Population/Uncontrolled RF exposure standards, recommendations and guidelines (FCC 47 CFR §2.1093) as well as with CENELEC en50360:2001 and ANSI / IEEE C95.1. It also declares that the product was tested in accordance with CENELEC en50361:2001, IEEE 1528, as well as other appropriate measurement standards, guidelines and recommended practices. Any deviations from these standards, guidelines and recommended practices are noted below:

(none)

©Motorola, Inc. 2007

This test report shall not be reproduced except in full, without written approval of the laboratory.

The results and statements contained herein relate only to the items tested. The names of individuals involved may be mentioned only in connection with the statements or results from this report.

Motorola encourages all feedback, both positive and negative, on this test report.

Table of Contents

1. Introduction	2
2. Description of the Device Under Test	2
2.1 Antenna description	2
2.2 Device description	2
3. Test Equipment Used	3
3.1 Dosimetric System	3
3.2 Additional Equipment	3
4. Electrical parameters of the tissue simulating liquid	4
5. System Accuracy Verification	5
6. Test Results	6
6.1 Head Adjacent Test Results	6
6.2 Body Worn Test Results	10
References	14
Appendix 1: SAR distribution comparison for system accuracy verification	15
Appendix 2: SAR distribution plots for Phantom Head Adjacent Use	16
Appendix 3: SAR distribution plots for Body Worn Configuration	17
Appendix 4: Probe Calibration Certificate	18
Appendix 5: Measurement Uncertainty Budget	19
Appendix 6: Photographs of the device under test	21
Appendix 7: Dipole Characterization Certificate	27

1. Introduction

The Motorola Mobile Devices Business Product Safety Laboratory has performed measurements of the maximum potential exposure to the user of the portable cellular phone covered by this test report. The Specific Absorption Rate (SAR) of this product was measured. The portable cellular phone was tested in accordance with [1], [4] and [5]. The SAR values measured for the portable cellular phone are below the maximum recommended levels of 1.6 W/kg in a 1 g average set in [3] and 2.0 W/kg in a 10 g average set in [2].

For ICNIRP (10 g), the final SAR reading for this phone is 1.25 W/kg for head adjacent use and 0.73 W/kg for body worn use. For ANSI / IEEE C95.1 (1 g), the final SAR reading for this phone is 1.32 W/kg for head adjacent use and 0.77 W/kg for body worn use. These measurements were performed using a DASY4™ v4.7 system manufactured by Schmid & Partner Engineering AG (SPEAG), of Zurich Switzerland.

2. Description of the Device Under Test

2.1 Antenna description

Type	Internal	
Location	Bottom of Transceiver	
Dimensions	Width	32.28 mm
	Length	71.31 mm
Configuration	FJA	

2.2 Device description

Serial Number	LDAA380052				
Mode(s) of Operation	GSM 850	GSM 900	GSM 1800	GSM 1900	Bluetooth
Modulation Mode(s)	GMSK	GMSK	GMSK	GMSK	GFSK
Maximum Output Power Setting	33.00 dBm	32.50 dBm	30.00 dBm	30.00 dBm	4.0 dBm
Duty Cycle	1:8	1:8	1:8	1:8	1:1
Transmitting Frequency Range(s)	824.2 - 848.8 MHz	880.2 - 914.8 MHz	1710.2 - 1784.8 MHz	1850.2 - 1909.8 MHz	2400.0 - 2483.5 MHz
Production Unit or Identical Prototype (47 CFR §2.908)	Identical Prototype				
Device Category	Portable				
RF Exposure Limits	General Population / Uncontrolled				

Serial Number	LDAA380052															
Mode(s) of Operation	GPRS 850		GPRS 900		GPRS 1800		GPRS 1900		EDGE 850		EDGE 900		EDGE 1800		EDGE 1900	
Modulation Mode(s)	GMSK		GMSK		GMSK		GMSK		8PSK		8PSK		8PSK		8PSK	
Maximum Output Power Setting	33.00 dBm	30.00 dBm	32.50 dBm	29.50 dBm	30.00 dBm	27.00 dBm	30.00 dBm	27.00 dBm	28.00 dBm	25.00 dBm	28.00 dBm	25.00 dBm	27.00 dBm	24.00 dBm	27.00 dBm	24.00 dBm
Duty Cycle	1:8	2:8	1:8	2:8	1:8	2:8	1:8	2:8	1:8	2:8	1:8	2:8	1:8	2:8	1:8	2:8
Transmitting Frequency Range(s)	824.2 - 848.8 MHz		880.2 - 914.8 MHz		1710.2 - 1784.8 MHz		1850.2 - 1909.8 MHz		824.2 - 848.8 MHz		880.2 - 914.8 MHz		1710.2 - 1784.8 MHz		1850.2 - 1909.8 MHz	
Production Unit or Identical Prototype (47 CFR §2.908)	Identical Prototype															
Device Category	Portable															
RF Exposure Limits	General Population / Uncontrolled															

3. Test Equipment Used

3.1 Dosimetric System

The Motorola Mobile Devices Business Product Safety & Compliance Laboratory utilizes a Dosimetric Assessment System (DASY4™ v4.7) manufactured by Schmid & Partner Engineering AG (SPEAG™), of Zurich Switzerland. All the SAR measurements are taken within a shielded enclosure. The overall 10 g RSS uncertainty of the measurement system is ±10.8% (K=1) with an expanded uncertainty of ±21.6% (K=2). The overall 1 g RSS uncertainty of the measurement system is ±11.1% (K=1) with an expanded uncertainty of ±22.2% (K=2). The measurement uncertainty budget is given in Appendix 6. Per IEEE 1528, this uncertainty budget is applicable to the SAR range of 0.4 W/kg to 10 W/kg.

The list of calibrated equipment used for the measurements is shown in the following table.

Description	Serial Number	Cal Due Date
DASY4™ DAE V1	437	Jul-18-2007
E-Field Probe ET3DV6	1514	Jul-17-2007
Dipole Validation Kit, DV900V2	96	May-22-2007
S.A.M. Phantom used for 800/900 MHz	TP-1131	
Dipole Validation Kit, DV1800V2	272TR	
S.A.M. Phantom used for 1800/1900 MHz	TP-1250	

3.2 Additional Equipment

Description	Serial Number	Cal Due Date
Signal Generator HP8648C	3847A04633	Jul-07-2007
Power Meter E4419B	GB39511087	Jul-05-2007
Power Sensor #1 – E9301A	MY41495336	Jun-28-2007
Power Sensor #2 - E9301A	US39210918	Aug-17-2007
Network Analyzer HP8753ES	US39172529	Sep-26-2007
Dielectric Probe Kit HP85070C	US99360070	

4. Electrical parameters of the tissue simulating liquid

Prior to conducting SAR measurements, the relative permittivity, ϵ_r , and the conductivity, σ , of the tissue simulating liquids were measured with a HP85070 Dielectric Probe Kit. These values, along with the temperature of the simulated tissue are shown in the table below. The recommended limits for permittivity and conductivity are also shown. A mass density of $\rho = 1 \text{ g/cm}^3$ was entered into the system in all the cases. It can be seen that the measured parameters are within tolerance of the recommended limits specified in [1] and [5].

f (MHz)	Tissue type	Limits / Measured	Dielectric Parameters		
			ϵ_r	σ (S/m)	Temp (°C)
835	Head	Measured, Feb-14-2007	41.5	0.91	18.7
		Recommended Limits	41.5 ±5%	0.90 ±5%	18-25
	Body	Measured, Feb-16-2007	54.2	0.98	19.2
		Recommended Limits	55.2 ±5%	0.97 ±5%	18-25
900	Head	Measured, Feb-14-2007	40.7	0.97	19.2
		Recommended Limits	42.3 ±5%	0.99 ±5%	18-25
	Body	Measured, Feb-22-2007	52.4	1.04	18.7
		Recommended Limits	55.0 ±5%	1.05 ±5%	18-25
1750	Head	Measured, Feb-17-2007	39.0	1.30	19.5
		Recommended Limits	40.1 ±5%	1.35 ±5%	18-25
	Body	Measured, Feb-17-2007	53.2	1.45	19.4
		Recommended Limits	53.4 ±5%	1.49 ±5%	18-25
1880	Head	Measured, Feb-18-2007	38.6	1.45	19.5
		Recommended Limits	40.0 ±5%	1.40 ±5%	18-25
	Body	Measured, Feb-18-2007	53.0	1.59	19.6
		Recommended Limits	53.3 ±5%	1.52 ±5%	18-25

The list of ingredients and the percent composition used for the tissue simulates are indicated in the table below.

Ingredient	835 MHz / 900 MHz Head	835 MHz / 900 MHz Body	1800 MHz / 1900 MHz Head	1800 MHz / 1900 MHz Body	2450 MHz Head	2450 MHz Body
Sugar	57	44.9	--	--	--	--
DGBE	--	--	47	30.8	--	30
Diacetin	--	--	--	--	51	--
Water	40.45	53.06	52.62	68.8	48.75	70
Salt	1.45	0.94	0.38	0.4	0.15	--
HEC	1	1	--	--	--	--
Bact.	0.1	0.1	--	--	0.1	--

5. System Accuracy Verification

A system accuracy verification of the DASY4™ was performed using the measurement equipment listed in Section 3.1. The daily system accuracy verification occurs within the flat section of the SAM phantom.

A SAR measurement was performed to verify the measured SAR was within $\pm 10\%$ from the target SAR indicated in Section 8.3.7 Reference SAR Values in [5] or Appendix 7 for the 900 Mhz target reference SAR value. These tests were done at 900 MHz and 1800 MHz. These frequencies are within $\pm 10\%$ of the compliance test mid-band frequency as required in [1] and [5]. The test was conducted on the same days as the measurement of the DUT. Recommended limits for permittivity and conductivity, specified in [5], are shown in the table below. The obtained results from the system accuracy verification are also displayed in the table below. SAR values are normalized to 1 W forward power delivered to the dipole. It is seen that the system is operating within its specification, as the results are within acceptable tolerance of the reference values. The distributions of SAR compare well with those of the reference measurements (see Appendix 1). The tissue stimulant depth was verified to be 15.0 cm \pm 0.5 cm. Z-axis scans showing the SAR penetration are also included in Appendix 1.

f (MHz)	Description	SAR (W/kg), 1 gram	Dielectric Parameters		Ambient Temp (°C)	Tissue Temp (°C)
			ϵ_r	σ (S/m)		
900	Measured, Feb-14-2007	11.5	40.7	0.97	21.0	19.2
	Measured, Feb-16-2007	11.1	40.4	0.97	20.7	19.7
	Measured, Feb-22-2007	11.625	42.3	0.99	20.8	18.5
	Recommended Limits	11.3	41.5 $\pm 5\%$	0.97 $\pm 5\%$	18-25	18-25
1800	Measured, Feb-17-2007	39.075	38.7	1.36	20.8	19.3
	Measured, Feb-18-2007	36.825	39.0	1.35	20.6	19.4
	Recommended Limits	38.1	40.0 $\pm 5\%$	1.4 $\pm 5\%$	18-25	18-25

The following probe conversion factors were used on the E-Field probe(s) used for the system accuracy verification measurements:

Description	Serial Number	f (MHz)	Conversion Factor	Cal Cert pg #
E-Field Probe ET3DV6	1514	900	5.99	8 of 9
		1810	5.05	8 of 9

6. Test Results

The test sample was operated using an actual transmission through a base station simulator. The base station simulator was setup to the proper channel, transmitter power level and transmit mode of operation. The phone was tested in the configurations stipulated in [1], [4] and [5]. The phone was positioned into these configurations using the device holder supplied with the DASY4™ SAR measurement system. The measured dielectric constant of the material used for the device holder is less than 2.9 and the loss tangent is less than 0.02 (± 30%) at 850 MHz. The default settings for the “coarse” and “cube” scans were chosen and used for measurements. The grid spacing of the course scan was set to 15 cm as shown in the SAR plots included in Appendix 2 and 3. Please refer to the DASY manual for additional information on SAR scanning procedures and algorithms used.

The Cellular Phone model covered by this report has the following battery options:

Model SNN5759A - 1640 mAH Battery

Model SNN5782A - 1100 mAH Battery

Model SNN5771A - 850 mAH Battery

The battery with the highest capacity is the Model SNN5759A. This battery was used to do most of the SAR testing. The phone was placed in the SAR measurement system with a fully charged battery. The configuration that resulted in the highest SAR values were tested using the other batteries listed above.

6.1 Head Adjacent Test Results

The SAR results shown in tables 1 through 9 are maximum SAR values averaged over 1 gram of phantom tissue, to demonstrate compliance to [3] and also over 10 grams of phantom tissue, to demonstrate compliance to [6]. Also shown are the measured conducted output power levels, the temperature of the simulated tissue after the test, the measured drift and the extrapolated SAR. The exact method of extrapolation is $New\ SAR = Old\ SAR * 10^{(-drift/10)}$. The SAR reported at the end of the measurement process by the DASY4™ measurement system can be scaled up by the measured drift to determine the SAR at the beginning of the measurement process. This is the most conservative SAR because it corresponds to the average output power at the beginning of the SAR test. This extrapolation has been done because when the DUT is operating properly it may exhibit a slump in radiated power and SAR over time. This is verified by measuring the SAR drift after the test.

The left head and right head SAR contour distributions are similar. Because of this similarity, the cheek/touch and 15° tilt test conditions with the highest SAR values in each band are indicated as bold numbers in the following tables and are included in Appendix 2. All other test conditions measured lower SAR values than those included in Appendix 2.

The SAR measurements were performed using the SAM phantoms listed in section 3.1. Since the same phantoms and simulated tissue were used for the system accuracy verification and the device SAR measurements, the Z-axis scans included in Appendix 1 are applicable for verification of simulated tissue depth to be 15.0 cm ± 0.5 cm.

The following probe conversion factors were used on the E-Field probe(s) used for head-adjacent measurements:

Description	Serial Number	f (MHz)	Conversion Factor	Cal Cert pg #
E-Field Probe ET3DV6	1514	900	5.99	8 of 9
		1810	5.05	8 of 9

Left Head Cheek Position								
<i>f</i> (MHz)	Description	Conducted Output Power (dBm)	Temp (°C)	Drift (dB)	<i>10 g SAR value</i>		<i>1 g SAR value</i>	
					Measured (W/kg)	Extrapolated (W/kg)	Measured (W/kg)	Extrapolated (W/kg)
850 MHz	Channel 128	32.90	19.3	0.090	0.632	0.63	0.922	0.92
	Channel 190	32.91	19.3	0.038	0.637	0.64	0.93	0.93
	Channel 251	32.94	19.3	0.050	0.702	0.70	1.03	1.03
1900 MHz	Channel 512	29.99	19.5	0.040	0.658	0.66	1.12	1.12
	Channel 661	29.92	19.6	0.090	0.594	0.59	1.02	1.02
	Channel 810	29.90	19.5	0.060	0.551	0.55	0.956	0.96

Table 1: SAR measurement results at the highest possible output power, measured in a head cheek position against the ICNIRP and ANSI SAR Limit.

Right Head Cheek Position								
<i>f</i> (MHz)	Description	Conducted Output Power (dBm)	Temp (°C)	Drift (dB)	<i>10 g SAR value</i>		<i>1 g SAR value</i>	
					Measured (W/kg)	Extrapolated (W/kg)	Measured (W/kg)	Extrapolated (W/kg)
850 MHz	Channel 128	32.90	18.3	-0.015	0.637	0.64	0.881	0.88
	Channel 190	32.91	19.3	-0.072	0.663	0.67	0.925	0.94
	Channel 251	32.94	19.0	-0.044	0.712	0.72	0.992	1.00
1900 MHz	Channel 512	29.99						
	Channel 661	29.92	19.5	-0.040	0.337	0.34	0.535	0.54
	Channel 810	29.90						

Table 2: SAR measurement results at the highest possible output power, measured in a head cheek position against the ICNIRP and ANSI SAR Limit.

Left Head Cheek Position with Battery SNN5782A								
<i>f</i> (MHz)	Description	Conducted Output Power (dBm)	Temp (°C)	Drift (dB)	<i>10 g SAR value</i>		<i>1 g SAR value</i>	
					Measured (W/kg)	Extrapolated (W/kg)	Measured (W/kg)	Extrapolated (W/kg)
850 MHz	Channel 128	32.90						
	Channel 190	32.91						
	Channel 251	32.94	18.3	-0.060	0.769	0.78	1.13	1.15
1900 MHz	Channel 512	29.99	19.5	0.030	0.624	0.62	1.07	1.07
	Channel 661	29.92						
	Channel 810	29.90						

Table 3: SAR measurement results at the highest possible output power, measured in a head cheek position against the ICNIRP and ANSI SAR Limit.

Left Head Cheek Position with Battery SNN5771A								
<i>f</i> (MHz)	Description	Conducted Output Power (dBm)	Temp (°C)	Drift (dB)	<i>10 g SAR value</i>		<i>1 g SAR value</i>	
					Measured (W/kg)	Extrapolated (W/kg)	Measured (W/kg)	Extrapolated (W/kg)
850 MHz	Channel 128	32.90						
	Channel 190	32.91						
	Channel 251	32.94	18.6	-0.011	0.754	0.76	1.13	1.13
1900 MHz	Channel 512	29.99	19.5	-0.067	0.653	0.66	1.12	1.14
	Channel 661	29.92						
	Channel 810	29.90						

Table 4: SAR measurement results at the highest possible output power, measured in a head cheek position against the ICNIRP and ANSI SAR Limit.

Left Head 15° Tilt Position								
<i>f</i> (MHz)	Description	Conducted Output Power (dBm)	Temp (°C)	Drift (dB)	<i>10 g SAR value</i>		<i>1 g SAR value</i>	
					Measured (W/kg)	Extrapolated (W/kg)	Measured (W/kg)	Extrapolated (W/kg)
850 MHz	Channel 128	32.90						
	Channel 190	32.91	18.3	0.044	0.345	0.35	0.458	0.46
	Channel 251	32.94						
1900 MHz	Channel 512	29.99						
	Channel 661	29.92	19.6	0.030	0.162	0.16	0.269	0.27
	Channel 810	29.90						

Table 5: SAR measurement results at the highest possible output power, measured in a head 15° Tilt position against the ICNIRP and ANSI SAR Limit.

Right Head 15° Tilt Position								
<i>f</i> (MHz)	Description	Conducted Output Power (dBm)	Temp (°C)	Drift (dB)	<i>10 g SAR value</i>		<i>1 g SAR value</i>	
					Measured (W/kg)	Extrapolated (W/kg)	Measured (W/kg)	Extrapolated (W/kg)
850 MHz	Channel 128	32.90						
	Channel 190	32.91	18.3	-0.026	0.341	0.34	0.446	0.45
	Channel 251	32.94						
1900 MHz	Channel 512	29.99						
	Channel 661	29.92	19.6	0.010	0.166	0.17	0.283	0.28
	Channel 810	29.90						

Table 6: SAR measurement results at the highest possible output power, measured in a head 15° Tilt position against the ICNIRP and ANSI SAR Limit.

<i>Noted Head 15° Tilt Position with Battery SNN5782A</i>								
<i>f</i> (MHz)	Description	Conducted Output Power (dBm)	Temp (°C)	Drift (dB)	<i>10 g SAR value</i>		<i>1 g SAR value</i>	
					Measured (W/kg)	Extrapolated (W/kg)	Measured (W/kg)	Extrapolated (W/kg)
850 MHz <i>Left</i>	Channel 128	32.90						
	Channel 190	32.91	19.1	0.030	0.392	0.39	0.525	0.53
	Channel 251	32.94						
1900 MHz <i>Right</i>	Channel 512	29.99						
	Channel 661	29.92	19.6	-0.074	0.175	0.18	0.299	0.30
	Channel 810	29.90						

Table 7: SAR measurement results at the highest possible output power, measured in a head 15° Tilt position against the ICNIRP and ANSI SAR Limit.

<i>Noted Head 15° Tilt Position with Battery SNN5771A</i>								
<i>f</i> (MHz)	Description	Conducted Output Power (dBm)	Temp (°C)	Drift (dB)	<i>10 g SAR value</i>		<i>1 g SAR value</i>	
					Measured (W/kg)	Extrapolated (W/kg)	Measured (W/kg)	Extrapolated (W/kg)
850 MHz <i>Left</i>	Channel 128	32.90						
	Channel 190	32.91	18.7	-0.043	0.397	0.40	0.532	0.54
	Channel 251	32.94						
1900 MHz <i>Right</i>	Channel 512	29.99						
	Channel 661	29.92	19.5	-0.001	0.174	0.17	0.298	0.30
	Channel 810	29.90						

Table 8: SAR measurement results at the highest possible output power, measured in a head 15° Tilt position against the ICNIRP and ANSI SAR Limit.

<i>Highest Cheek Position with Fitted Pouch FLFRA01B</i>								
<i>f</i> (MHz)	Description	Conducted Output Power (dBm)	Temp (°C)	Drift (dB)	<i>10 g SAR value</i>		<i>1 g SAR value</i>	
					Measured (W/kg)	Extrapolated (W/kg)	Measured (W/kg)	Extrapolated (W/kg)
850 MHz	Channel 128	32.90						
	Channel 190	32.91						
	Channel 251	32.94	18.5	0.048	0.904	0.90	1.32	1.32
1900 MHz	Channel 512	29.99	19.5	0.030	0.601	0.60	1.03	1.03
	Channel 661	29.92						
	Channel 810	29.90						

Table 9: SAR measurement results at the highest possible output power, measured in a head cheek position against the ICNIRP and ANSI SAR Limit.

6.2 Body Worn Test Results

The SAR results shown in tables 10 through 18 are maximum SAR values averaged over 1 gram of phantom tissue, to demonstrate compliance to [3] and also over 10 grams of phantom tissue, to demonstrate compliance to the [6]. Also shown are the measured conducted output power levels, the temperature of the test facility during the test, the temperature of the tissue simulate after the test, the measured drift and the extrapolated SAR. The exact method of extrapolation is $\text{New SAR} = \text{Old SAR} * 10^{(-\text{drift}/10)}$. The SAR reported at the end of the measurement process by the DASY4™ measurement system can be scaled up by the measured drift to determine the SAR at the beginning of the measurement process. This is the most conservative SAR because it corresponds to the average output power at the beginning of the SAR test. This extrapolation has been done because when the DUT is operating properly it may exhibit a slump in radiated power and SAR over time. This is verified by measuring the SAR drift after the test.

The test conditions that produced the highest SAR values in each band are indicated as bold numbers in the following tables and are included in Appendix 3. All other test conditions measured lower SAR values than those included in Appendix 3.

A “flat” phantom was for the body-worn tests. This “flat” phantom is made out of 1” thick natural High Density Polyethylene with a thickness at the bottom equal to 2.0 mm. It measures 52.7 cm(long) x 26.7 cm(wide) x 21.2 cm(tall). The measured dielectric constant of the material used is less than 2.3 and the loss tangent is less than 0.0046 all the way up to 2.184 GHz.

The tissue stimulant depth was verified to be 15.0 cm ± 0.5 cm. The same device holder described in section 6 was used for positioning the phone. The functional accessories were divided into two categories, the ones with metal components and the ones with non-metal components. For non-metallic component accessories, testing was performed on the accessory that displayed the closest proximity to the flat phantom. Each metallic component accessory, if any, was checked for uniqueness of metal component so that each is tested with the device. If multiple accessories shared an identical metal component, only the accessory that dictates the closest spacing to the body was tested. In addition to accessory testing, the cellular phone was tested with the front and back of the phone facing the phantom. For voice mode operation, the phone was placed as a distance of 15 mm from the phantom. For data mode operation, the phone was placed as a distance of 25 mm from the phantom. The cellular phone was tested with a headset connected to the device for all body-worn SAR measurements.

There are three Body-Worn Accessories available for this phone:

A Plastic Holster and Belt Clip: Model SYN1446A

A Leather Pouch with Belt Clip: Model SYN1985A

A Fitted Pouch with Belth Clip: Model FLFRA01B

The plastic holster contains metal components, and was used for SAR measurements. Of the remaining accessories the leather pouch causes closer proximity and does not differ in metal components and was used for the SAR measurements.

The following probe conversion factors were used on the E-Field probe(s) used for body-worn measurements:

Description	Serial Number	f (MHz)	Conversion Factor	Cal Cert pg #
E-Field Probe ET3DV6	1514	900	5.86	8 of 9
		1810	4.53	8 of 9

Body-Worn; Front of Phone 15 mm from Phantom								
<i>f</i> (MHz)	Description	Conducted Output Power (dBm)	Temp (°C)	Drift (dB)	<i>10 g SAR value</i>		<i>1 g SAR value</i>	
					Measured (W/kg)	Extrapolated (W/kg)	Measured (W/kg)	Extrapolated (W/kg)
850 MHz	Channel 128	32.90						
	Channel 190	32.91	18.2	0.020	0.521	0.52	0.73	0.73
	Channel 251	32.94						
1900 MHz	Channel 512	29.99						
	Channel 661	29.92	19.6	-0.164	0.26	0.27	0.422	0.44
	Channel 810	29.90						

Table 10: SAR measurement results at the highest possible output power, measured in a body-worn position against the ICNIRP and ANSI SAR Limit.

Body-Worn; Back of Phone 15 mm from Phantom								
<i>f</i> (MHz)	Description	Conducted Output Power (dBm)	Temp (°C)	Drift (dB)	<i>10 g SAR value</i>		<i>1 g SAR value</i>	
					Measured (W/kg)	Extrapolated (W/kg)	Measured (W/kg)	Extrapolated (W/kg)
850 MHz	Channel 128	32.90						
	Channel 190	32.91	18.2	-0.030	0.415	0.42	0.576	0.58
	Channel 251	32.94						
1900 MHz	Channel 512	29.99						
	Channel 661	29.92	19.6	-0.040	0.202	0.20	0.32	0.32
	Channel 810	29.90						

Table 11: SAR measurement results at the highest possible output power, measured in a body-worn position against the ICNIRP and ANSI SAR Limit.

Body-Worn; Front of Phone 15 mm from Phantom with Bluetooth Enabled								
<i>f</i> (MHz)	Description	Conducted Output Power (dBm)	Temp (°C)	Drift (dB)	<i>10 g SAR value</i>		<i>1 g SAR value</i>	
					Measured (W/kg)	Extrapolated (W/kg)	Measured (W/kg)	Extrapolated (W/kg)
850 MHz	Channel 128	32.90						
	Channel 190	32.91	18.2	-0.020	0.524	0.53	0.727	0.73
	Channel 251	32.94						
1900 MHz	Channel 512	29.99						
	Channel 661	29.92	19.5	-0.030	0.213	0.21	0.346	0.35
	Channel 810	29.90						

Table 12: SAR measurement results at the highest possible output power, measured in a body-worn position against the ICNIRP and ANSI SAR Limit.

Body-Worn; Front of Phone 25 mm from Phantom with GPRS Class 10 Mode Enabled								
<i>f</i> (MHz)	Description	Conducted Output Power (dBm)	Temp (°C)	Drift (dB)	<i>10 g SAR value</i>		<i>1 g SAR value</i>	
					Measured (W/kg)	Extrapolated (W/kg)	Measured (W/kg)	Extrapolated (W/kg)
850 MHz	Channel 128	29.90						
	Channel 190	29.91	18.2	-0.007	0.491	0.49	0.664	0.67
	Channel 251	29.94						
1900 MHz	Channel 512	26.99						
	Channel 661	26.92	19.6	0.040	0.112	0.11	0.207	0.21
	Channel 810	26.90						

Table 13: SAR measurement results at the highest possible output power, measured in a body-worn position against the ICNIRP and ANSI SAR Limit.

Body Worn; Front of Phone 25 mm from Phantom with EDGE Class 10 Mode Enabled								
<i>f</i> (MHz)	Description	Conducted Output Power (dBm)	Temp (°C)	Drift (dB)	<i>10 g SAR value</i>		<i>1 g SAR value</i>	
					Measured (W/kg)	Extrapolated (W/kg)	Measured (W/kg)	Extrapolated (W/kg)
850 MHz	Channel 128	25.01						
	Channel 190	24.98	18.1	-0.043	0.23	0.23	0.31	0.31
	Channel 251	24.97						
1900 MHz	Channel 512	23.89						
	Channel 661	23.92	19.9	-0.002	0.0595	0.06	0.0962	0.10
	Channel 810	23.99						

Table 14: SAR measurement results at the highest possible output power, measured in a body-worn position against the ICNIRP and ANSI SAR Limit.

Body Worn; Front of Phone 15 mm from Phantom with Battery SNN5782A								
<i>f</i> (MHz)	Description	Conducted Output Power (dBm)	Temp (°C)	Drift (dB)	<i>10 g SAR value</i>		<i>1 g SAR value</i>	
					Measured (W/kg)	Extrapolated (W/kg)	Measured (W/kg)	Extrapolated (W/kg)
850 MHz	Channel 128	32.90						
	Channel 190	32.91	19.2	0.058	0.554	0.55	0.77	0.77
	Channel 251	32.94						
1900 MHz	Channel 512	29.99						
	Channel 661	29.92	18.1	-0.003	0.189	0.19	0.303	0.30
	Channel 810	29.90						

Table 15: SAR measurement results at the highest possible output power, measured in a body-worn position against the ICNIRP and ANSI SAR Limit.

Body Worn; Front of Phone 15 mm from Phantom with Battery SNN5771A								
f (MHz)	Description	Conducted Output Power (dBm)	Temp (°C)	Drift (dB)	10 g SAR value		1 g SAR value	
					Measured (W/kg)	Extrapolated (W/kg)	Measured (W/kg)	Extrapolated (W/kg)
850 MHz	Channel 128	32.90						
	Channel 190	32.91	18.3	0.030	0.506	0.51	0.704	0.70
	Channel 251	32.94						
1900 MHz	Channel 512	29.99						
	Channel 661	29.92	18.1	-0.074	0.162	0.16	0.276	0.28
	Channel 810	29.90						

Table 16: SAR measurement results at the highest possible output power, measured in a body-worn position against the ICNIRP and ANSI SAR Limit.

Body Worn; Front of Phone facing Phantom with Plastic Clip SYN1446A and Noted Battery								
f (MHz)	Description	Conducted Output Power (dBm)	Temp (°C)	Drift (dB)	10 g SAR value		1 g SAR value	
					Measured (W/kg)	Extrapolated (W/kg)	Measured (W/kg)	Extrapolated (W/kg)
850 MHz SNN5782A	Channel 128	32.90						
	Channel 190	32.91	19.1	1.34	0.481	0.48	0.673	0.67
	Channel 251	32.94						
1900 MHz SNN5759A	Channel 512	29.99						
	Channel 661	29.92	18.1	0.003	0.189	0.19	0.312	0.31
	Channel 810	29.90						

Table 17: SAR measurement results at the highest possible output power, measured in a body-worn position against the ICNIRP and ANSI SAR Limit.

Body Worn; Front of Phone facing Phantom with Leather Pouch SYN1985A and Noted Battery								
f (MHz)	Description	Conducted Output Power (dBm)	Temp (°C)	Drift (dB)	10 g SAR value		1 g SAR value	
					Measured (W/kg)	Extrapolated (W/kg)	Measured (W/kg)	Extrapolated (W/kg)
850 MHz SNN5782A	Channel 128	32.90						
	Channel 190	32.91	19.1	0.001	0.507	0.51	0.692	0.69
	Channel 251	32.94						
1900 MHz SNN5759A	Channel 512	29.99						
	Channel 661	29.92	18.1	-0.012	0.191	0.19	0.311	0.31
	Channel 810	29.90						

Table 18: SAR measurement results at the highest possible output power, measured in a body-worn position against the ICNIRP and ANSI SAR Limit.

References

- [1] CENELEC, en50361:2001 “Basic standard for the measurement of Specific Absorption Rate related to human exposure to electromagnetic fields from mobile phones (300 MHz – 3 GHz)”
- [2] CENELEC, en50360:2001 “Product standard to demonstrate the compliance of mobile phones with the basic restrictions related to human exposure to electromagnetic fields (300 MHz – 3 GHz)”.
- [3] ANSI / IEEE, C95.1 1999 Edition “IEEE Standard for Safety Levels with Respect to Human Exposure to Radio Frequency Electromagnetic Fields, 3 kHz to 300 GHz”
- [4] FCC OET Bulletin 65 Supplement C 01-01
- [5] IEEE 1528 2003 Edition “IEEE Recommended Practice for Determining the Peak Spatial-Average Specific Absorption Rate (SAR) in the Human Head from Wireless Communications Devices: Measurement Techniques”
- [6] ICNIRP Guidelines “Guidelines for Limiting Exposure to Time-Varying Electric, Magnetic, and Electromagnetic Fields (up to 300 GHz)”

Appendix 1

SAR distribution comparison for the system accuracy verification

Date/Time: 2/14/2007 9:27:59 AM

Test Laboratory: Motorola - 021407 900MHz Good at+1.8%

DUT: Dipole 900 MHz; Type: D900V2; Serial: D900V2 - SN:96

Procedure Notes: 900 MHz System Performance Check; Dipole Sn# 096; Input Power = 200 mW

Sim.Temp@meas = 19.2°C; Sim.Temp@SPC = 19.2°C; Room Temp @ SPC = 21°C

Communication System: CW - Dipole; Frequency: 900 MHz; Duty Cycle: 1:1

Medium: VALIDATION Only

Medium parameters used: $f = 900$ MHz; $\sigma = 0.97$ mho/m; $\epsilon_r = 40.7$; $\rho = 1000$ kg/m³

DASY4 Configuration:

- Probe: ET3DV6 - SN1514; ConvF(5.99, 5.99, 5.99); Calibrated: 7/17/2006
- Sensor-Surface: 4mm (Mechanical Surface Detection)
- Electronics: DAE3 Sn437; Calibrated: 7/18/2006
- Phantom: R4: Sugar Water SAM; Type: SAM; Serial: TP-1131;
- Measurement SW: DASY4, V4.7 Build 44; Postprocessing SW: SEMCAD, V1.8 Build 171

Daily SPC Check/Dipole Area Scan (4x9x1):

Measurement grid: dx=15mm, dy=15mm; Maximum value of SAR (measured) = 2.17 mW/g

Daily SPC Check/0-Degree 5x5x7 Cube (5x5x7)/Cube 0:

Measurement grid: dx=8mm, dy=8mm, dz=5mm

Reference Value = 52.7 V/m; Power Drift = -0.055 dB; Peak SAR (extrapolated) = 3.49 W/kg

SAR(1 g) = 2.3 mW/g; SAR(10 g) = 1.47 mW/g; Maximum value of SAR (measured) = 2.51 mW/g

Daily SPC Check/90-Degree 5x5x7 Cube (5x5x7)/Cube 0:

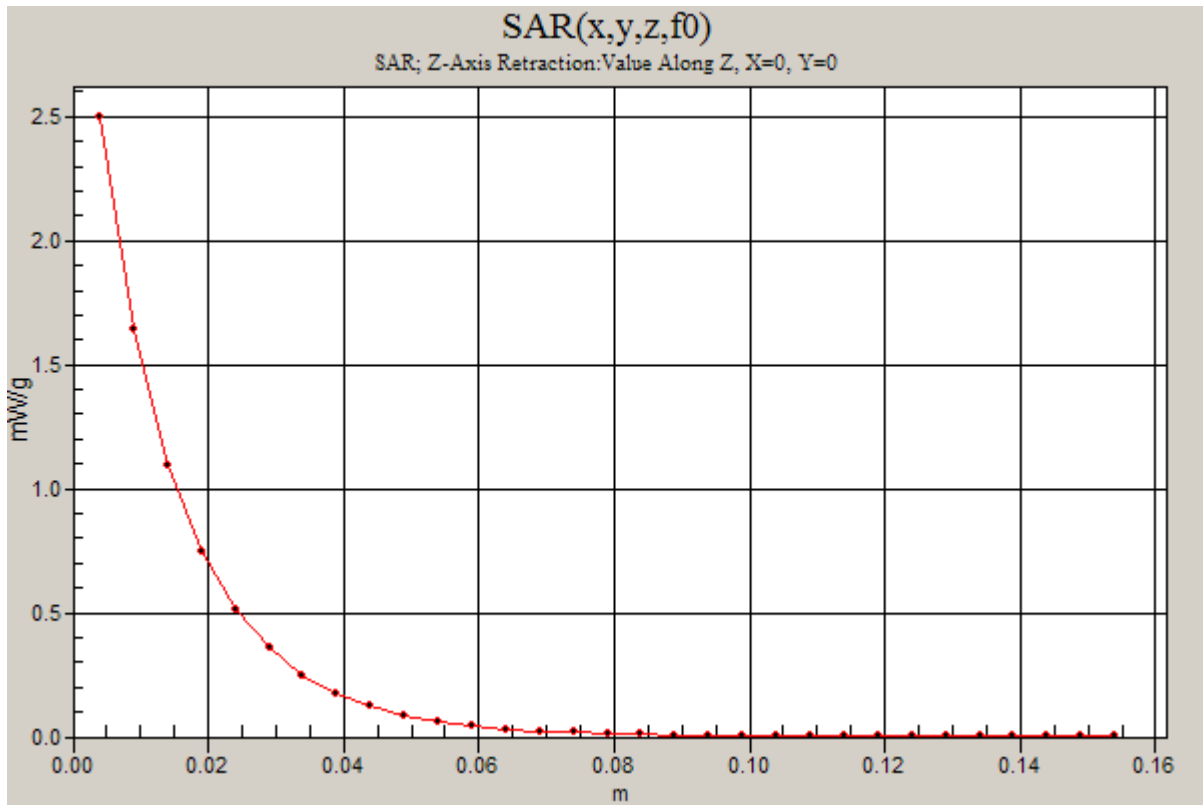
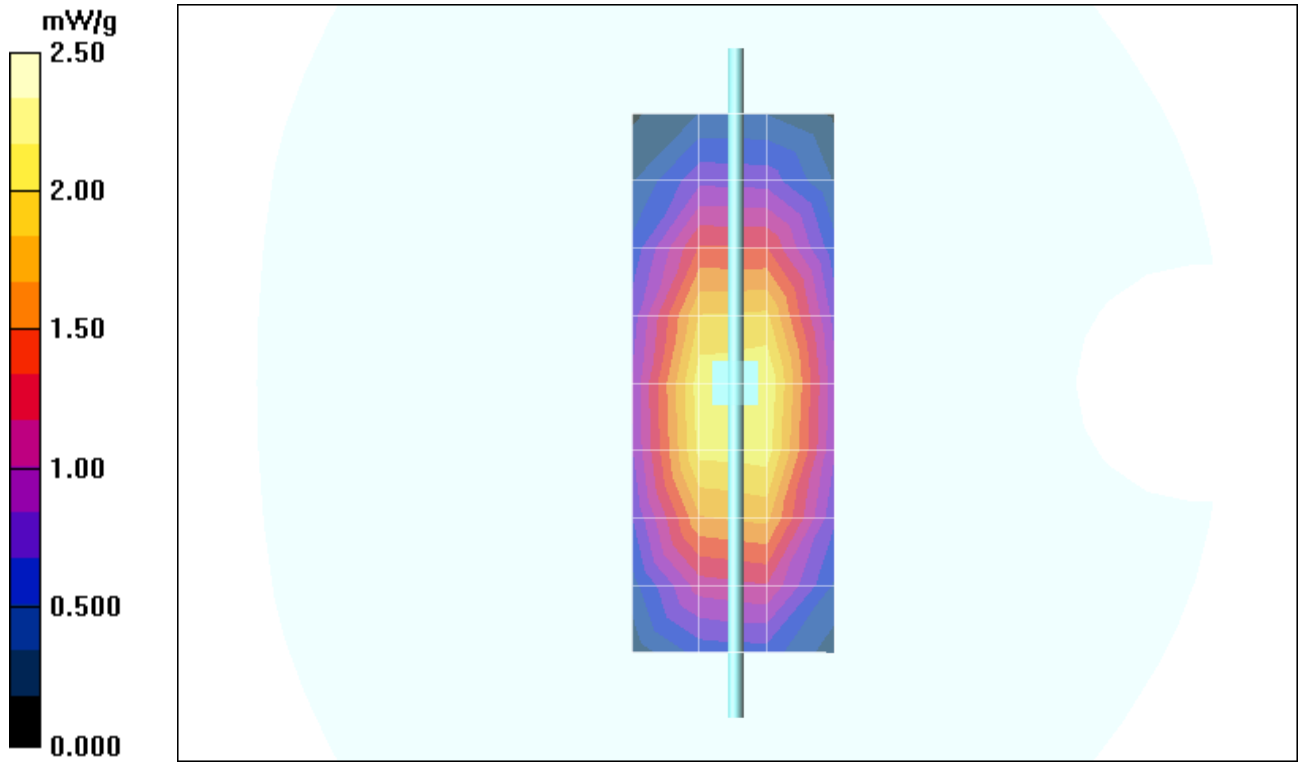
Measurement grid: dx=8mm, dy=8mm, dz=5mm

Reference Value = 52.7 V/m; Power Drift = -0.055 dB; Peak SAR (extrapolated) = 3.50 W/kg

SAR(1 g) = 2.3 mW/g; SAR(10 g) = 1.47 mW/g; Maximum value of SAR (measured) = 2.48 mW/g

Daily SPC Check/Z-Axis Retraction (1x1x31):

Measurement grid: dx=20mm, dy=20mm, dz=5mm; Maximum value of SAR (measured) = 2.50 mW/g



Date/Time: 2/16/2007 8:00:57 AM

Test Laboratory: Motorola - 021607 900MHz Good at -1.8%

DUT: Dipole 900 MHz; Type: D900V2; Serial: D900V2 - SN:96

Procedure Notes: 900 MHz System Performance Check; Dipole Sn# 096; Input Power = 200 mW

Sim.Temp@meas = 19.7°C; Sim.Temp@SPC = 19.7°C; Room Temp @ SPC = 20.7°C

Communication System: CW - Dipole; Frequency: 900 MHz; Duty Cycle: 1:1

Medium: VALIDATION Only

Medium parameters used: $f = 900$ MHz; $\sigma = 0.97$ mho/m; $\epsilon_r = 40.4$; $\rho = 1000$ kg/m³

DASY4 Configuration:

- Probe: ET3DV6 - SN1514; ConvF(5.99, 5.99, 5.99); Calibrated: 7/17/2006
- Sensor-Surface: 4mm (Mechanical Surface Detection)
- Electronics: DAE3 Sn437; Calibrated: 7/18/2006
- Phantom: R4: Sugar Water SAM; Type: SAM; Serial: TP-1131;
- Measurement SW: DASY4, V4.7 Build 44; Postprocessing SW: SEMCAD, V1.8 Build 171

Daily SPC Check/Dipole Area Scan (4x9x1):

Measurement grid: dx=15mm, dy=15mm; Maximum value of SAR (measured) = 2.37 mW/g

Daily SPC Check/0-Degree 5x5x7 Cube (5x5x7)/Cube 0:

Measurement grid: dx=8mm, dy=8mm, dz=5mm

Reference Value = 48.6 V/m; Power Drift = 0.024 dB; Peak SAR (extrapolated) = 3.32 W/kg

SAR(1 g) = 2.2 mW/g; SAR(10 g) = 1.4 mW/g; Maximum value of SAR (measured) = 2.39 mW/g

Daily SPC Check/90-Degree 5x5x7 Cube (5x5x7)/Cube 0:

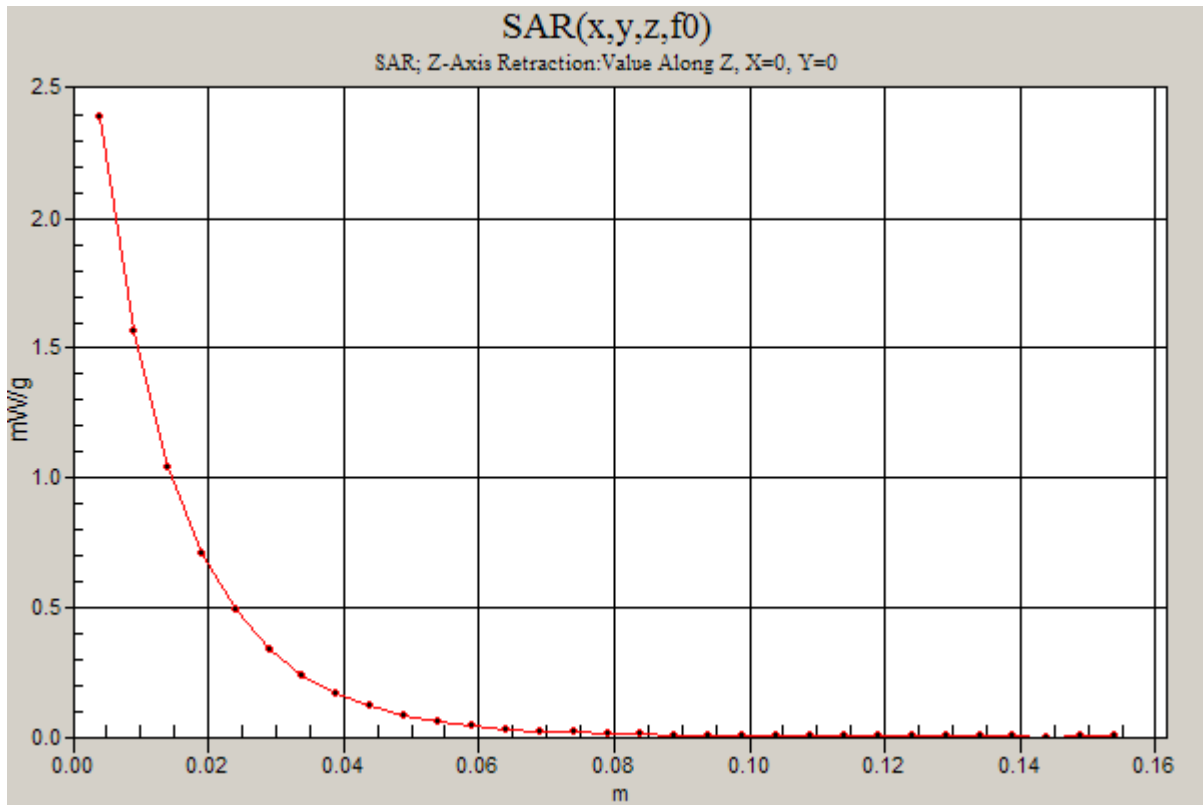
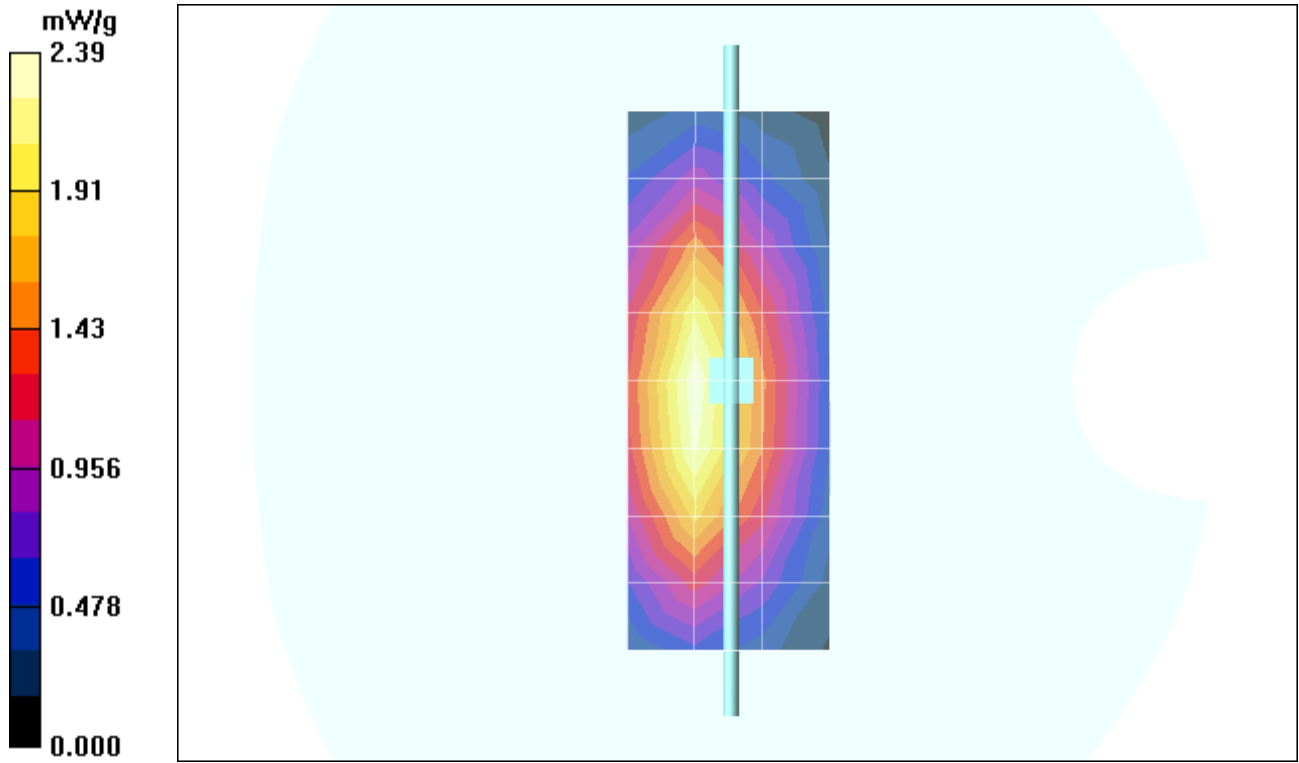
Measurement grid: dx=8mm, dy=8mm, dz=5mm

Reference Value = 48.6 V/m; Power Drift = 0.024 dB; Peak SAR (extrapolated) = 3.39 W/kg

SAR(1 g) = 2.24 mW/g; SAR(10 g) = 1.43 mW/g; Maximum value of SAR (measured) = 2.42 mW/g

Daily SPC Check/Z-Axis Retraction (1x1x31):

Measurement grid: dx=20mm, dy=20mm, dz=5mm



Date/Time: 2/22/2007 8:48:16 AM

Test Laboratory: Motorola - 022207 900MHz Good at+2.9%

DUT: Dipole 900 MHz; Type: D900V2; Serial: D900V2 - SN:96

Procedure Notes: 900 MHz System Performance Check; Dipole Sn# 096; Input Power = 200 mW

Sim.Temp@meas = 18.5°C; Sim.Temp@SPC = 18.5°C; Room Temp @ SPC = 20.8°C

Communication System: CW - Dipole; Frequency: 900 MHz; Duty Cycle: 1:1

Medium: VALIDATION Only

Medium parameters used: $f = 900$ MHz; $\sigma = 0.99$ mho/m; $\epsilon_r = 42.3$; $\rho = 1000$ kg/m³

DASY4 Configuration:

- Probe: ET3DV6 - SN1514; ConvF(5.99, 5.99, 5.99); Calibrated: 7/17/2006
- Sensor-Surface: 4mm (Mechanical Surface Detection)
- Electronics: DAE3 Sn437; Calibrated: 7/18/2006
- Phantom: R4: Sugar Water SAM; Type: SAM; Serial: TP-1131;
- Measurement SW: DASY4, V4.7 Build 44; Postprocessing SW: SEMCAD, V1.8 Build 171

Daily SPC Check/Dipole Area Scan (4x9x1):

Measurement grid: dx=15mm, dy=15mm; Maximum value of SAR (measured) = 2.26 mW/g

Daily SPC Check/0-Degree 5x5x7 Cube (5x5x7)/Cube 0:

Measurement grid: dx=8mm, dy=8mm, dz=5mm

Reference Value = 52.3 V/m; Power Drift = -0.017 dB; Peak SAR (extrapolated) = 3.52 W/kg

SAR(1 g) = 2.32 mW/g; SAR(10 g) = 1.48 mW/g; Maximum value of SAR (measured) = 2.52 mW/g

Daily SPC Check/90-Degree 5x5x7 Cube (5x5x7)/Cube 0:

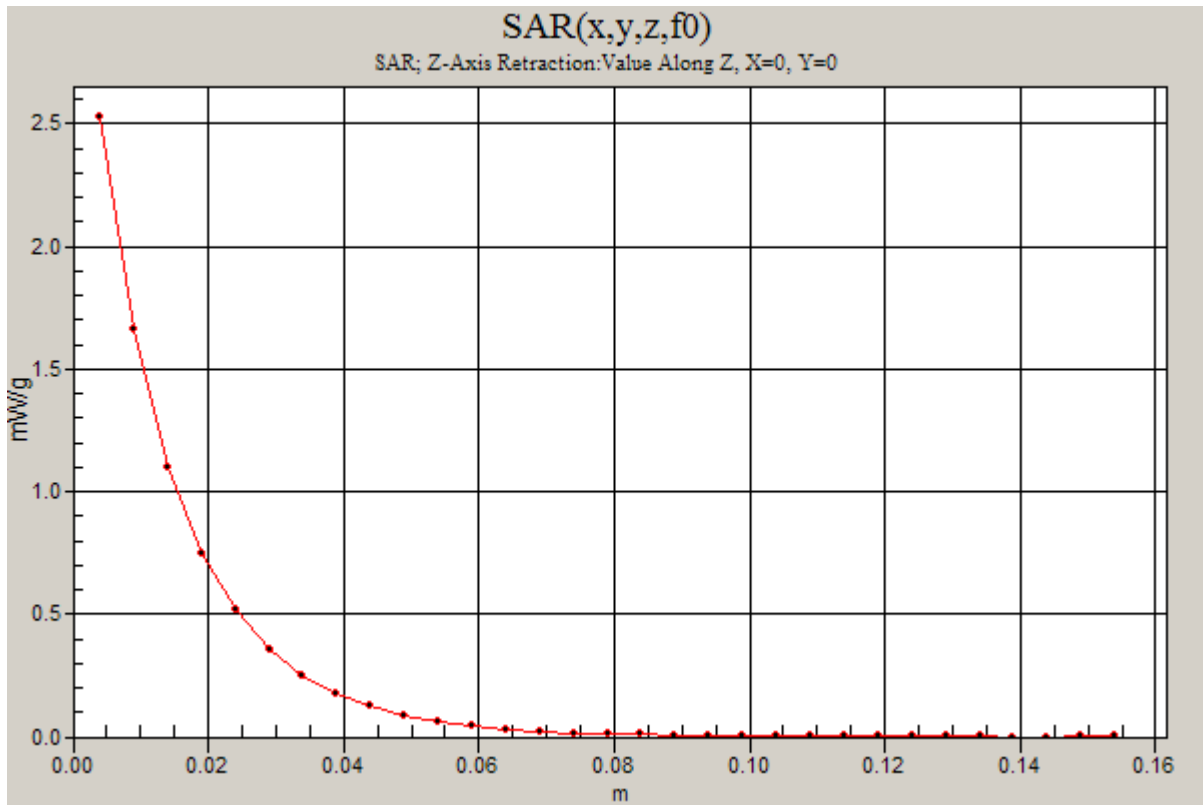
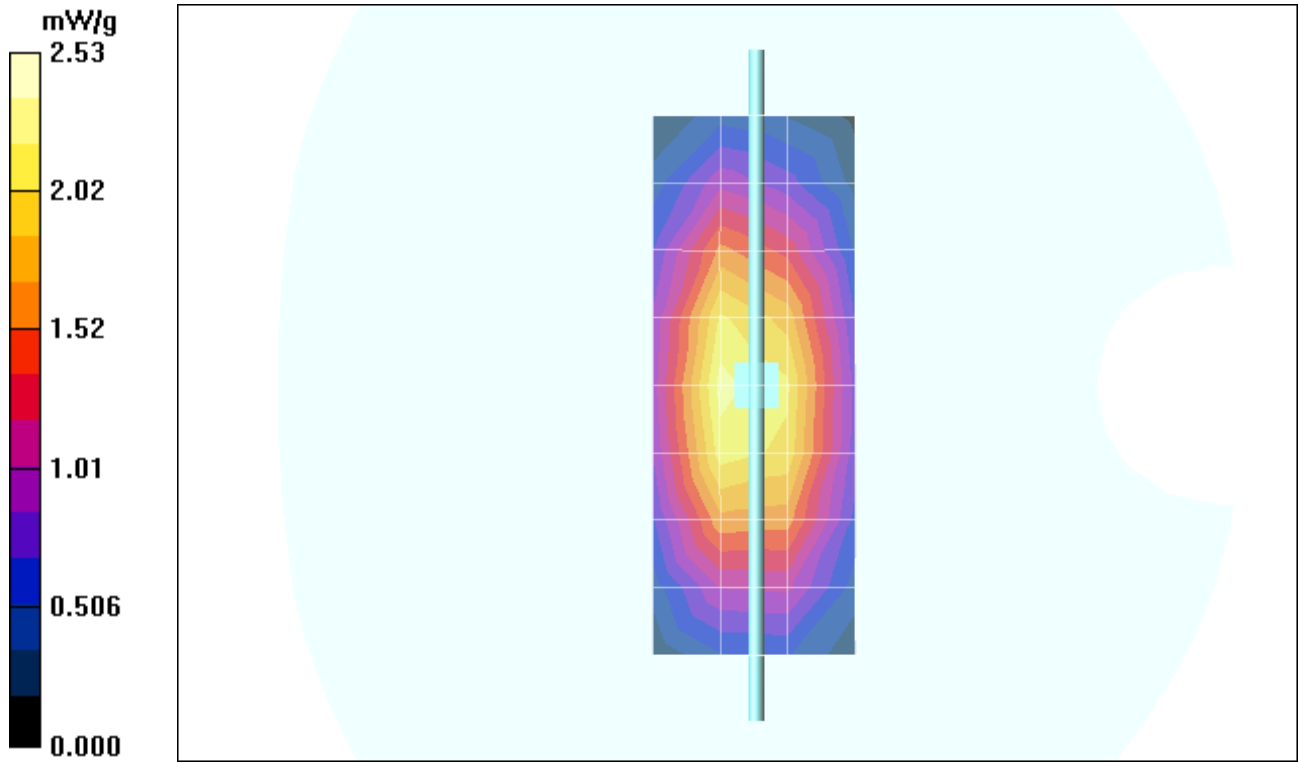
Measurement grid: dx=8mm, dy=8mm, dz=5mm

Reference Value = 52.3 V/m; Power Drift = -0.017 dB; Peak SAR (extrapolated) = 3.52 W/kg

SAR(1 g) = 2.33 mW/g; SAR(10 g) = 1.48 mW/g; Maximum value of SAR (measured) = 2.54 mW/g

Daily SPC Check/Z-Axis Retraction (1x1x31):

Measurement grid: dx=20mm, dy=20mm, dz=5mm; Maximum value of SAR (measured) = 2.53 mW/g



Date/Time: 2/17/2007 6:56:50 AM

Test Laboratory: Motorola - 021707 1800MHz Good at+2.6%

DUT: Dipole 1800 MHz; Type: D1800V2; Serial: D1800V2 - SN:272

Procedure Notes: 1800 MHz System Performance Check; Dipole Sn# 272(TR); Input Power = 200 mW

Sim.Temp@meas = 19.3°C; Sim.Temp@SPC = 19.3°C; Room Temp @ SPC = 20.8°C

Communication System: CW - Dipole; Frequency: 1800 MHz; Duty Cycle: 1:1

Medium: VALIDATION Only

Medium parameters used: $f = 1800$ MHz; $\sigma = 1.36$ mho/m; $\epsilon_r = 38.7$; $\rho = 1000$ kg/m³

DASY4 Configuration:

- Probe: ET3DV6 - SN1514; ConvF(5.05, 5.05, 5.05); Calibrated: 7/17/2006
- Sensor-Surface: 4mm (Mechanical Surface Detection)
- Electronics: DAE3 Sn437; Calibrated: 7/18/2006
- Phantom: R4 : Sect.2, Amy Twin; Type: Amy Twin Flat; Serial: n/a;
- Measurement SW: DASY4, V4.7 Build 44; Postprocessing SW: SEMCAD, V1.8 Build 171

Daily SPC Check/Dipole Area Scan (9x4x1):

Measurement grid: dx=15mm, dy=15mm; Maximum value of SAR (measured) = 8.16 mW/g

Daily SPC Check/0-Degree 5x5x7 Cube (5x5x7)/Cube 0:

Measurement grid: dx=8mm, dy=8mm, dz=5mm

Reference Value = 80.5 V/m; Power Drift = 0.010 dB; Peak SAR (extrapolated) = 13.4 W/kg

SAR(1 g) = 7.79 mW/g; SAR(10 g) = 4.17 mW/g; Maximum value of SAR (measured) = 8.63 mW/g

Daily SPC Check/90-Degree 5x5x7 Cube (5x5x7)/Cube 0:

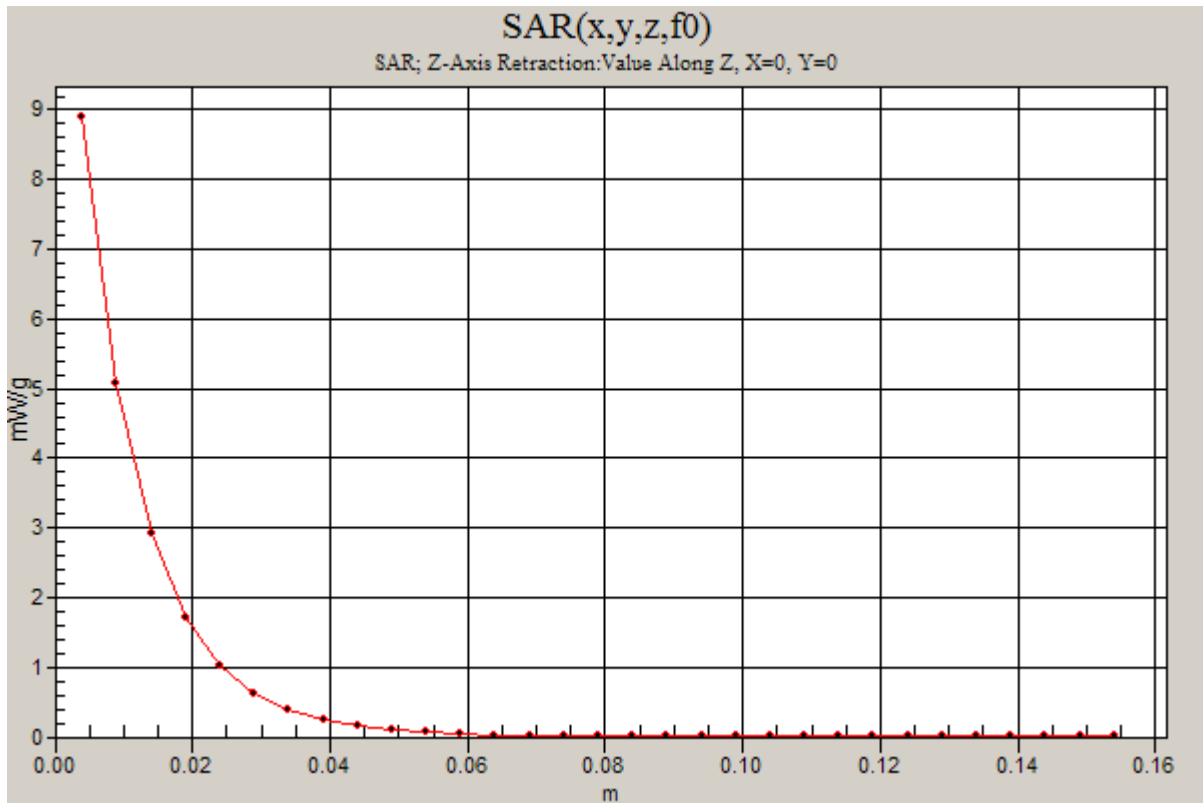
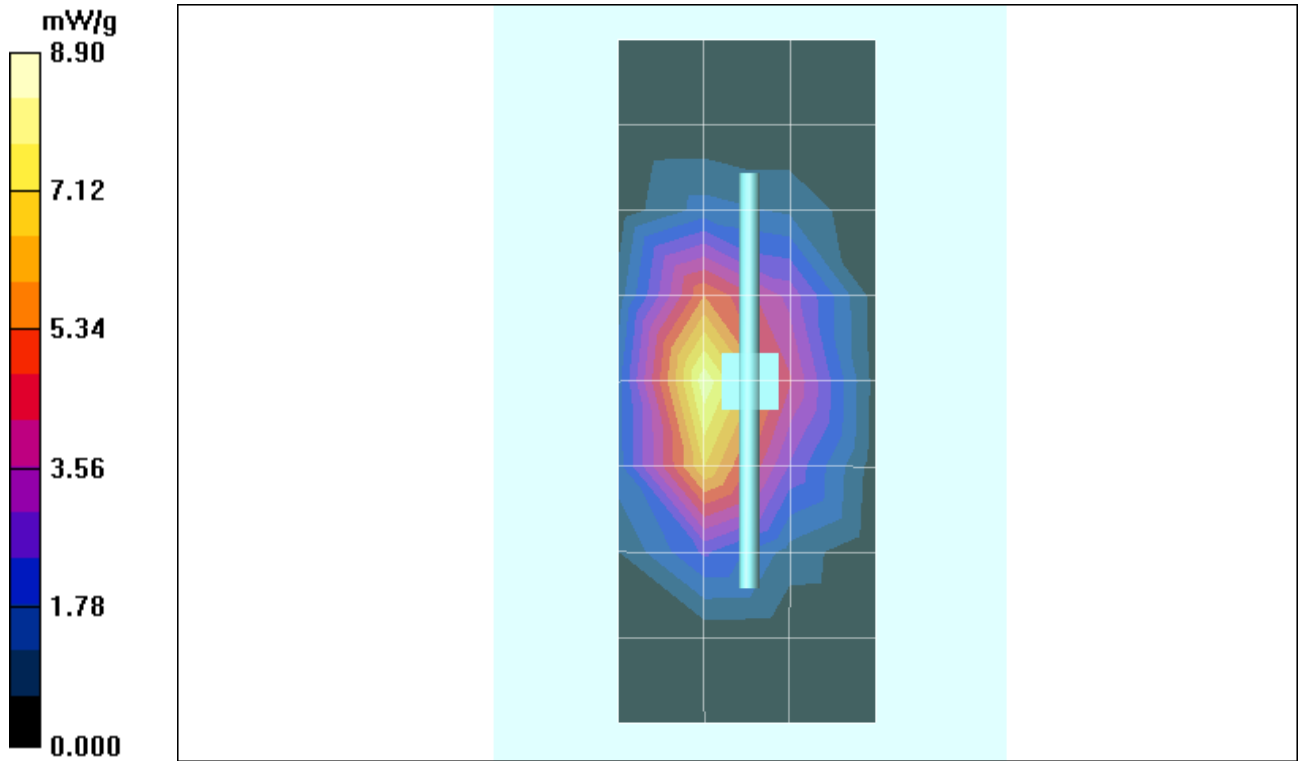
Measurement grid: dx=8mm, dy=8mm, dz=5mm

Reference Value = 80.5 V/m; Power Drift = 0.010 dB; Peak SAR (extrapolated) = 13.6 W/kg

SAR(1 g) = 7.84 mW/g; SAR(10 g) = 4.17 mW/g; Maximum value of SAR (measured) = 8.75 mW/g

Daily SPC Check/Z-Axis Retraction (1x1x31):

Measurement grid: dx=20mm, dy=20mm, dz=5mm; Maximum value of SAR (measured) = 8.90 mW/g



Date/Time: 2/18/2007 4:46:03 PM

Test Laboratory: Motorola - 021807 1800MHz Good at -3.3%

DUT: Dipole 1800 MHz; Type: D1800V2; Serial: D1800V2 - SN:272

Procedure Notes: 1800MHz System Performance Check; Dipole Sn# 272TR; Input Power = 200 mW

Sim.Temp@meas = 19.4°C; Sim.Temp@SPC = 19.4°C; Room Temp @ SPC = 20.6°C

Communication System: CW - Dipole; Frequency: 1800 MHz; Duty Cycle: 1:1

Medium: VALIDATION Only

Medium parameters used: $f = 1800$ MHz; $\sigma = 1.35$ mho/m; $\epsilon_r = 39$; $\rho = 1000$ kg/m³

DASY4 Configuration:

- Probe: ET3DV6 - SN1514; ConvF(5.05, 5.05, 5.05); Calibrated: 7/17/2006
- Sensor-Surface: 4mm (Mechanical Surface Detection)
- Electronics: DAE3 Sn437; Calibrated: 7/18/2006
- Phantom: R4: Glycol SAM; Type: SAM; Serial: TP-1250;
- Measurement SW: DASY4, V4.7 Build 44; Postprocessing SW: SEMCAD, V1.8 Build 171

Daily SPC Check/Dipole Area Scan (4x9x1):

Measurement grid: dx=15mm, dy=15mm; Maximum value of SAR (measured) = 6.21 mW/g

Daily SPC Check/0-Degree 5x5x7 Cube (5x5x7)/Cube 0:

Measurement grid: dx=8mm, dy=8mm, dz=5mm

Reference Value = 81.8 V/m; Power Drift = 0.051 dB; Peak SAR (extrapolated) = 12.6 W/kg

SAR(1 g) = 7.33 mW/g; SAR(10 g) = 3.92 mW/g; Maximum value of SAR (measured) = 8.26 mW/g

Daily SPC Check/90-Degree 5x5x7 Cube (5x5x7)/Cube 0:

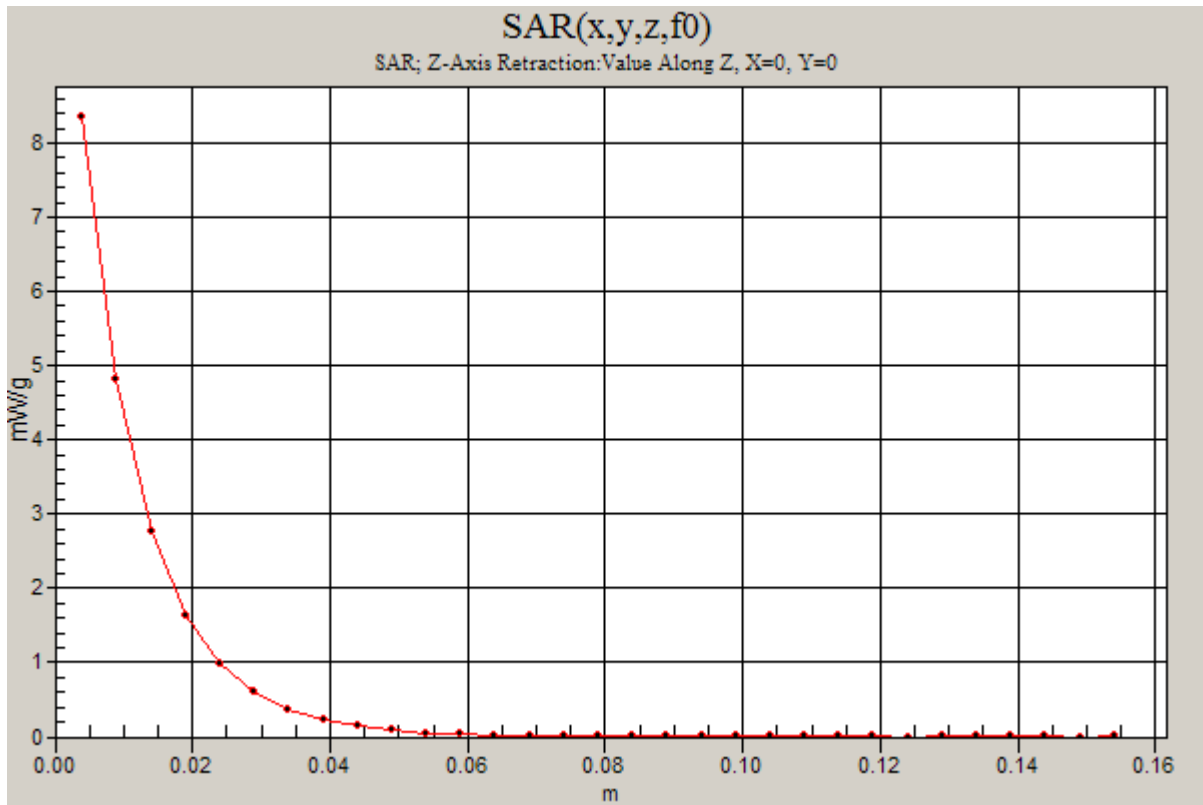
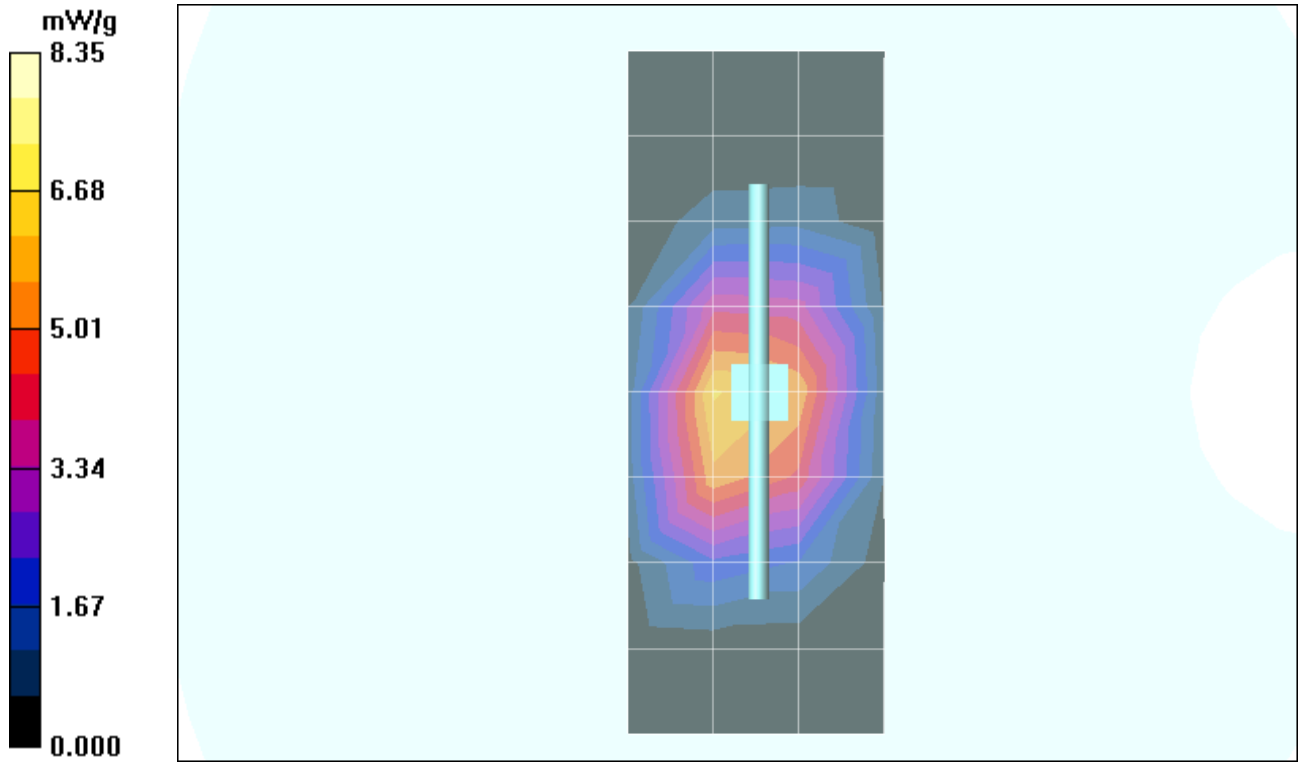
Measurement grid: dx=8mm, dy=8mm, dz=5mm

Reference Value = 81.8 V/m; Power Drift = 0.051 dB; Peak SAR (extrapolated) = 12.8 W/kg

SAR(1 g) = 7.4 mW/g; SAR(10 g) = 3.96 mW/g; Maximum value of SAR (measured) = 8.17 mW/g

Daily SPC Check/Z-Axis Retraction (1x1x31):

Measurement grid: dx=20mm, dy=20mm, dz=5mm; Maximum value of SAR (measured) = 8.35 mW/g



Appendix 2

SAR distribution plots for Phantom Head Adjacent Use

Date/Time: 2/15/2007 1:12:43 AM

Test Laboratory: Motorola - GSM 850 Cheek

Serial: LDAA380052

Procedure Notes: Pwr Step: 5; Antenna Position: Internal; Accessory Model #: Fitted Pouch FLFRA01B
Battery Model #: SNN5782A; DEVICE POSITION (cheek or rotated): Cheek

Communication System: GSM 850; Frequency: 848.8 MHz; Channel Number: 251; Duty Cycle: 1:8

Medium: Low Freq Head

Medium parameters used: $f = 835$ MHz; $\sigma = 0.91$ mho/m; $\epsilon_r = 41.5$; $\rho = 1000$ kg/m³

DASY4 Configuration:

- Probe: ET3DV6 - SN1514; ConvF(5.99, 5.99, 5.99); Calibrated: 7/17/2006
- Sensor-Surface: 4mm (Mechanical Surface Detection)
- Electronics: DAE3 Sn437; Calibrated: 7/18/2006
- Phantom: R4: Sugar Water SAM; Type: SAM; Serial: TP-1131;
- Measurement SW: DASY4, V4.7 Build 44; Postprocessing SW: SEMCAD, V1.8 Build 171

Left Head Template/Area Scan - Normal Extended (15mm) (7x17x1):

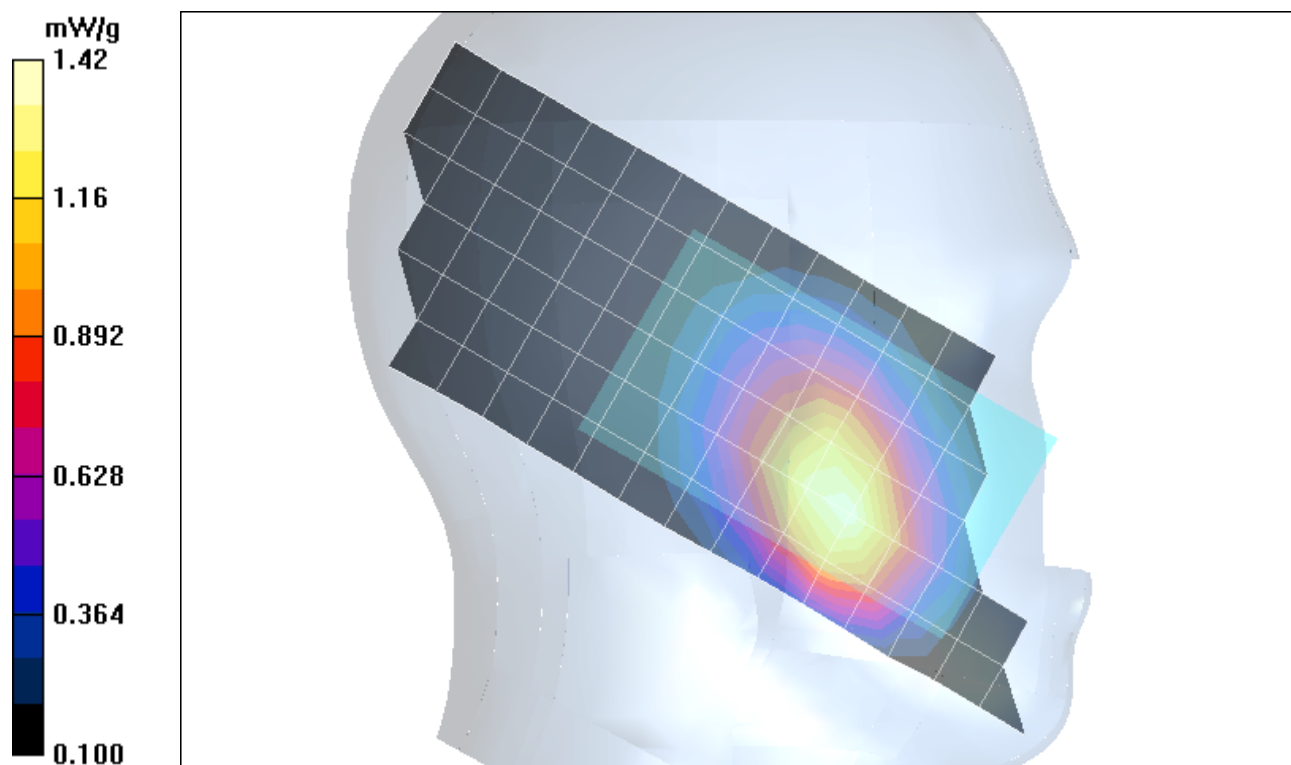
Measurement grid: dx=15mm, dy=15mm; Maximum value of SAR (measured) = 1.41 mW/g

Left Head Template/Zoom Scan (7x7x7)/Cube 0:

Measurement grid: dx=5mm, dy=5mm, dz=5mm

Reference Value = 39.3 V/m; Power Drift = 0.048 dB; Peak SAR (extrapolated) = 1.96 W/kg

SAR(1 g) = 1.32 mW/g; SAR(10 g) = 0.904 mW/g; Maximum value of SAR (measured) = 1.42 mW/g



Date/Time: 2/19/2007 12:31:14 AM

Test Laboratory: Motorola - GSM 1900 Cheek

Serial: LDAA380052

Procedure Notes: Pwr Step: 00; Antenna Position: Internal; Accessory Model #: None

Battery Model #: SNN5771A; DEVICE POSITION (cheek or rotated): CHEEK

Communication System: GSM 1900; Frequency: 1850.2 MHz; Channel Number: 512; Duty Cycle: 1:8

Medium: Backup Regular Glycol Head

Medium parameters used: $f = 1880$ MHz; $\sigma = 1.45$ mho/m; $\epsilon_r = 38.6$; $\rho = 1000$ kg/m³

DASY4 Configuration:

- Probe: ET3DV6 - SN1514; ConvF(5.05, 5.05, 5.05); Calibrated: 7/17/2006
- Sensor-Surface: 4mm (Mechanical Surface Detection)
- Electronics: DAE3 Sn437; Calibrated: 7/18/2006
- Phantom: R4: Glycol SAM; Type: SAM; Serial: TP-1250;
- Measurement SW: DASY4, V4.7 Build 44; Postprocessing SW: SEMCAD, V1.8 Build 171

Left Head Template/Area Scan - Normal (15mm) (7x17x1):

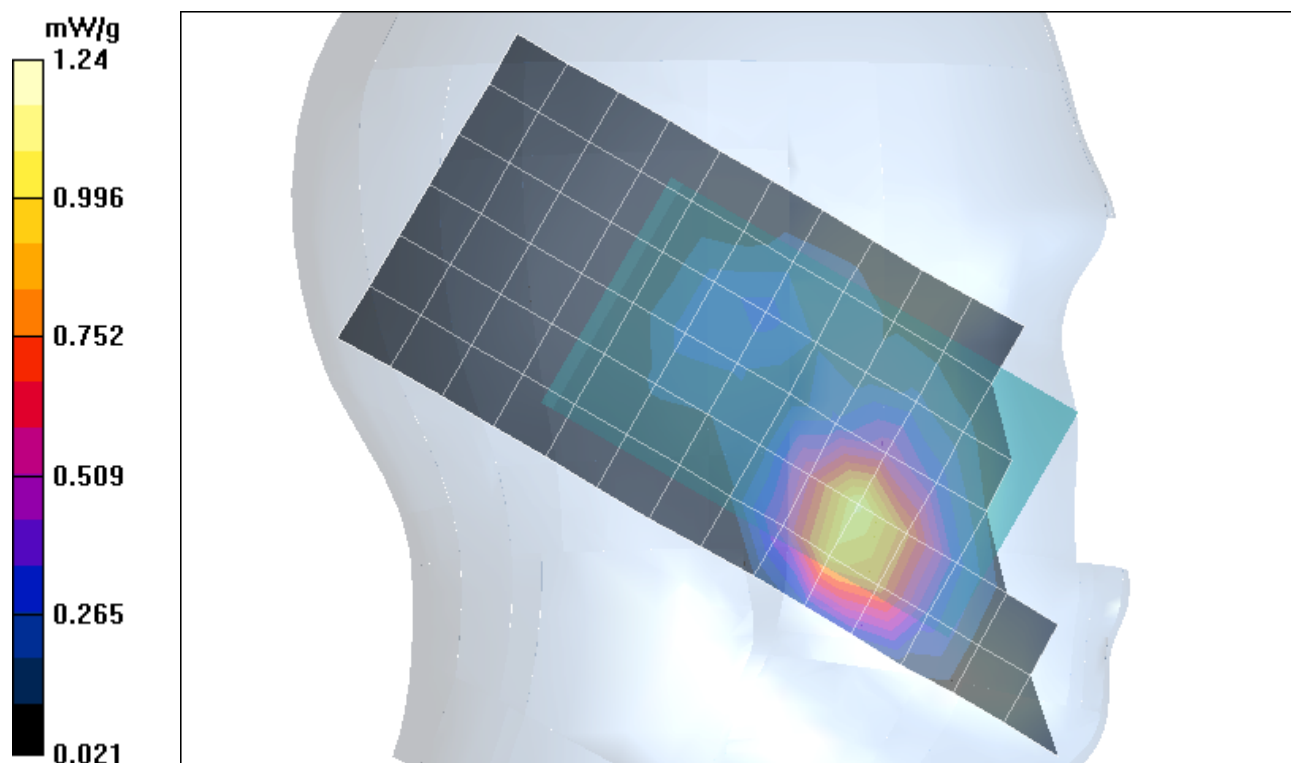
Measurement grid: dx=15mm, dy=15mm; Maximum value of SAR (measured) = 1.10 mW/g

Left Head Template/Zoom Scan (7x7x7)/Cube 0:

Measurement grid: dx=5mm, dy=5mm, dz=5mm

Reference Value = 24.0 V/m; Power Drift = -0.067 dB; Peak SAR (extrapolated) = 1.69 W/kg

SAR(1 g) = 1.12 mW/g; SAR(10 g) = 0.653 mW/g; Maximum value of SAR (measured) = 1.24 mW/g



Date/Time: 2/15/2007 12:29:40 AM

Test Laboratory: Motorola - GSM 850 Tilt

Serial: LDAA380052

Procedure Notes: Pwr Step: 5; Antenna Position: Internal; Accessory Model #: None

Battery Model #: SNN5771A; DEVICE POSITION (check or rotated): Rotated

Communication System: GSM 850; Frequency: 836.6 MHz; Channel Number: 190; Duty Cycle: 1:8

Medium: Low Freq Head

Medium parameters used: $f = 835$ MHz; $\sigma = 0.91$ mho/m; $\epsilon_r = 41.5$; $\rho = 1000$ kg/m³

DASY4 Configuration:

- Probe: ET3DV6 - SN1514; ConvF(5.99, 5.99, 5.99); Calibrated: 7/17/2006
- Sensor-Surface: 4mm (Mechanical Surface Detection)
- Electronics: DAE3 Sn437; Calibrated: 7/18/2006
- Phantom: R4: Sugar Water SAM; Type: SAM; Serial: TP-1131;
- Measurement SW: DASY4, V4.7 Build 44; Postprocessing SW: SEMCAD, V1.8 Build 171

Left Head Template/Area Scan - Normal (15mm) (7x17x1):

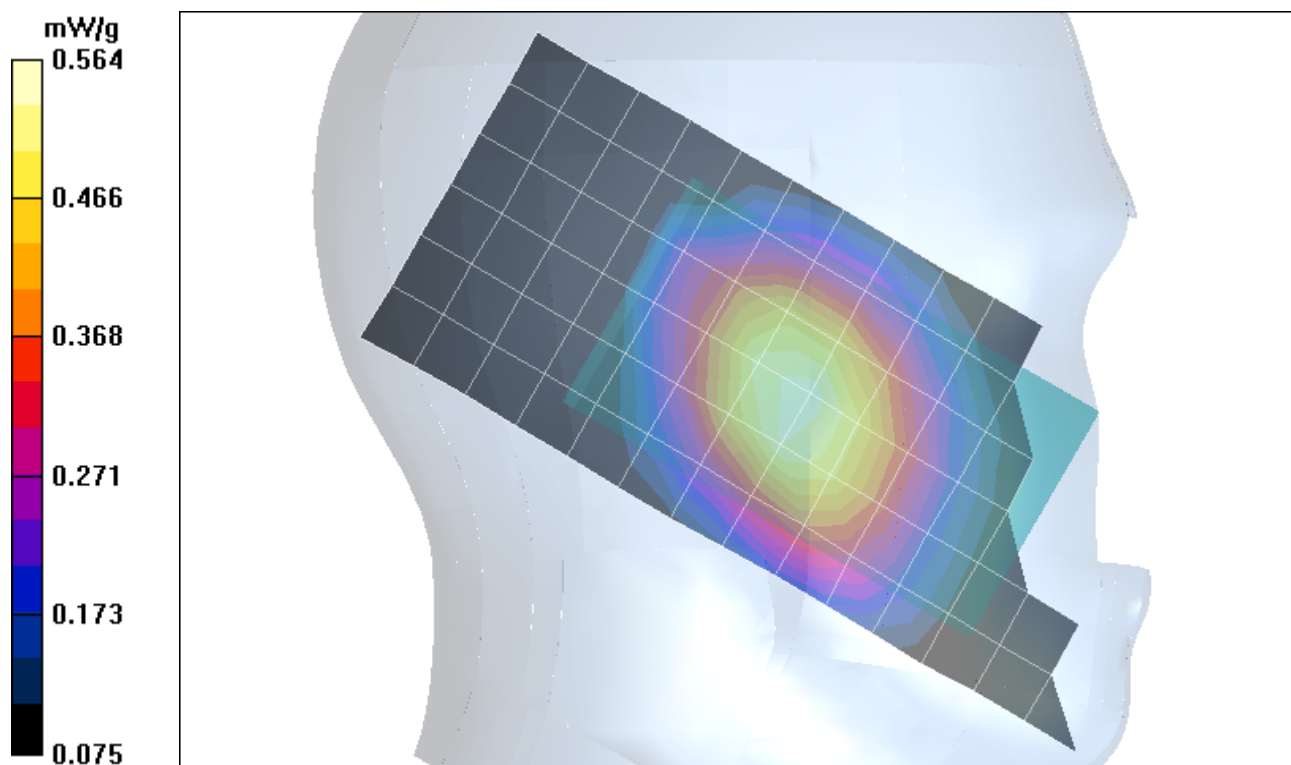
Measurement grid: dx=15mm, dy=15mm; Maximum value of SAR (measured) = 0.554 mW/g

Left Head Template/Zoom Scan (7x7x7)/Cube 0:

Measurement grid: dx=5mm, dy=5mm, dz=5mm

Reference Value = 25.7 V/m; Power Drift = -0.043 dB; Peak SAR (extrapolated) = 0.683 W/kg

SAR(1 g) = 0.532 mW/g; SAR(10 g) = 0.397 mW/g; Maximum value of SAR (measured) = 0.564 mW/g



Date/Time: 2/18/2007 11:41:59 PM

Test Laboratory: Motorola - GSM 1900 Tilt

Serial: LDAA380052

Procedure Notes: Pwr Step: 00; Antenna Position: Internal; Accessory Model #: None

Battery Model #: SNN5782A; DEVICE POSITION (check or rotated): TILTED

Communication System: GSM 1900; Frequency: 1880 MHz; Channel Number: 661; Duty Cycle: 1:8

Medium: Backup Regular Glycol Head

Medium parameters used: $f = 1880$ MHz; $\sigma = 1.45$ mho/m; $\epsilon_r = 38.6$; $\rho = 1000$ kg/m³

DASY4 Configuration:

- Probe: ET3DV6 - SN1514; ConvF(5.05, 5.05, 5.05); Calibrated: 7/17/2006
- Sensor-Surface: 4mm (Mechanical Surface Detection)
- Electronics: DAE3 Sn437; Calibrated: 7/18/2006
- Phantom: R4: Glycol SAM; Type: SAM; Serial: TP-1250;
- Measurement SW: DASY4, V4.7 Build 44; Postprocessing SW: SEMCAD, V1.8 Build 171

Right Head Template/Area Scan - Normal (15mm) (7x17x1):

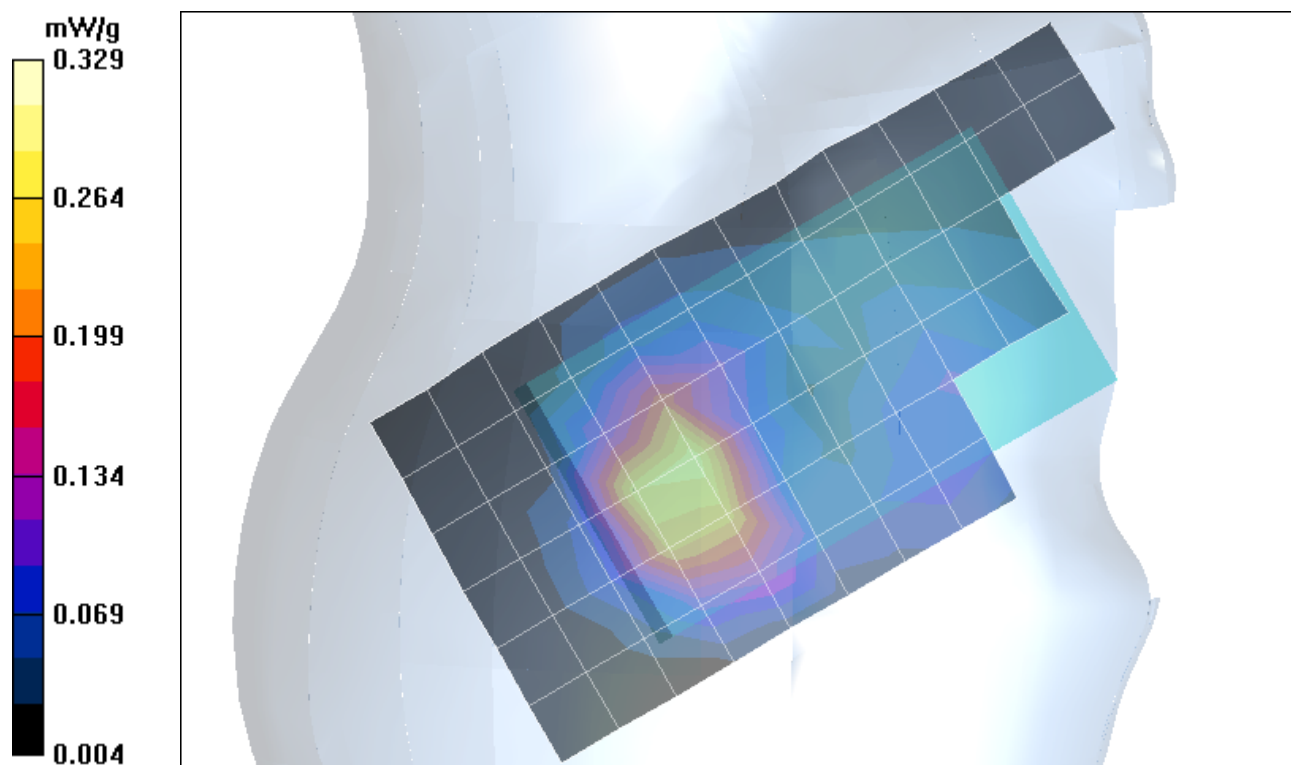
Measurement grid: dx=15mm, dy=15mm; Maximum value of SAR (measured) = 0.280 mW/g

Right Head Template/Zoom Scan (7x7x7)/Cube 0:

Measurement grid: dx=5mm, dy=5mm, dz=5mm

Reference Value = 15.4 V/m; Power Drift = -0.074 dB; Peak SAR (extrapolated) = 0.459 W/kg

SAR(1 g) = 0.299 mW/g; SAR(10 g) = 0.175 mW/g; Maximum value of SAR (measured) = 0.329 mW/g



Appendix 3

SAR distribution plots for Body Worn Configuration

Date/Time: 2/16/2007 5:41:59 PM

Test Laboratory: Motorola - GSM 850 Body

Serial: LDAA380052

Procedure Notes: Pwr Step: 5; Antenna Position: Internal; Battery Model #: SNN5782A

Device Position: Front of Phone 15mm from Flat Phantom

Communication System: GSM 850; Frequency: 836.6 MHz; Channel Number: 190; Duty Cycle: 1:8

Medium: Low Freq Body

Medium parameters used: $f = 835$ MHz; $\sigma = 0.98$ mho/m; $\epsilon_r = 54.2$; $\rho = 1000$ kg/m³

DASY4 Configuration:

- Probe: ET3DV6 - SN1514; ConvF(5.86, 5.86, 5.86); Calibrated: 7/17/2006
- Sensor-Surface: 4mm (Mechanical Surface Detection)
- Electronics: DAE3 Sn437; Calibrated: 7/18/2006
- Phantom: R4 : Sect.1, Amy Twin; Type: Amy Twin Flat; Serial: n/a;
- Measurement SW: DASY4, V4.7 Build 44; Postprocessing SW: SEMCAD, V1.8 Build 171

Amy Twin Phone Template/Area Scan - Full Body (15mm) (18x8x1):

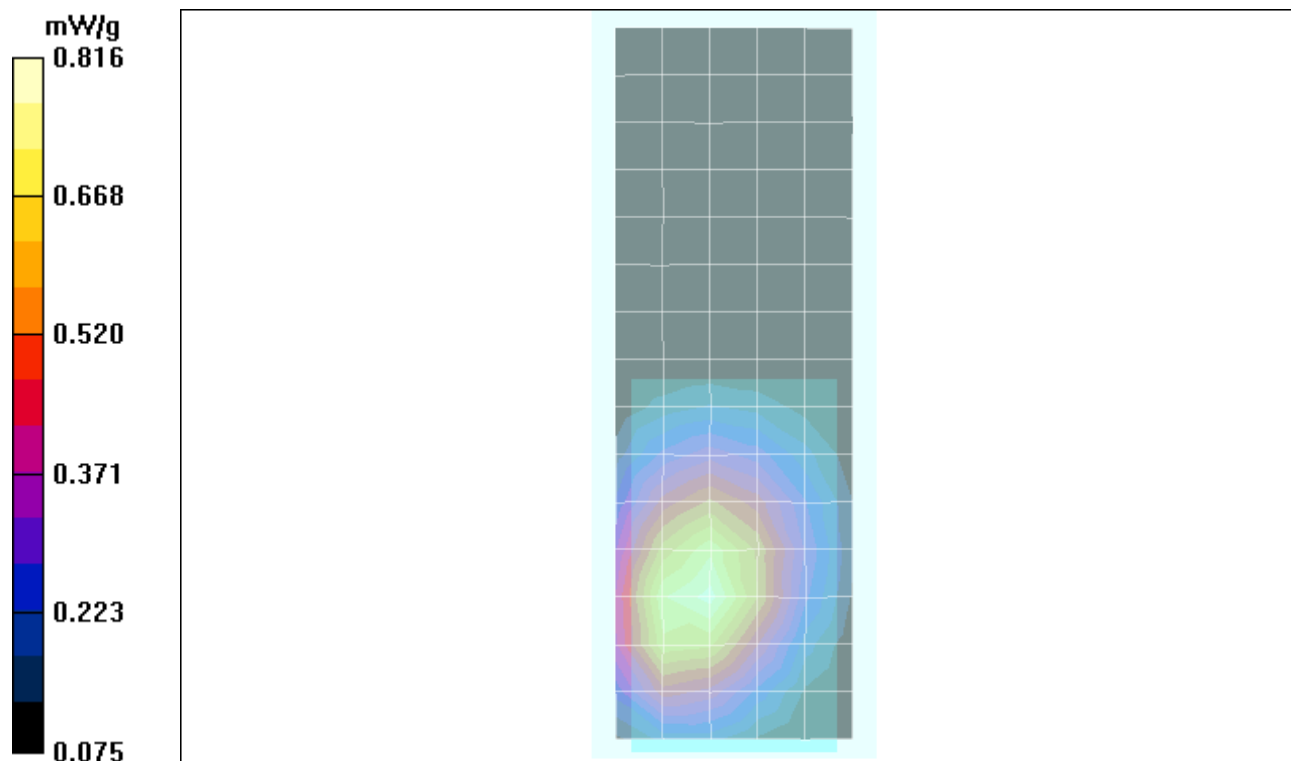
Measurement grid: dx=15mm, dy=15mm; Maximum value of SAR (measured) = 0.790 mW/g

Amy Twin Phone Template/Zoom Scan (7x7x7)/Cube 0:

Measurement grid: dx=5mm, dy=5mm, dz=5mm

Reference Value = 26.2 V/m; Power Drift = 0.058 dB; Peak SAR (extrapolated) = 1.01 W/kg

SAR(1 g) = 0.770 mW/g; SAR(10 g) = 0.554 mW/g; Maximum value of SAR (measured) = 0.816 mW/g



Date/Time: 2/19/2007 2:04:32 AM

Test Laboratory: Motorola - GSM 1900 Body

Serial: LDAA380052

Procedure Notes: Pwr Step: 00; Antenna Position: Internal; Battery Model #: SNN5759A

Device Position: Front of Phone 15mm From Phantom

Communication System: GSM 1900; Frequency: 1880 MHz; Number: 661; Duty Cycle: 1:8

Medium: Regular Glycol Body

Medium parameters used: $f = 1880$ MHz; $\sigma = 1.59$ mho/m; $\epsilon_r = 53$; $\rho = 1000$ kg/m³

DASY4 Configuration:

- Probe: ET3DV6 - SN1514; ConvF(4.53, 4.53, 4.53); Calibrated: 7/17/2006
- Sensor-Surface: 4mm (Mechanical Surface Detection)
- Electronics: DAE3 Sn437; Calibrated: 7/18/2006
- Phantom: R4 : Sect.2, Amy Twin; Type: Amy Twin Flat; Serial: n/a;
- Measurement SW: DASY4, V4.7 Build 44; Postprocessing SW: SEMCAD, V1.8 Build 171

Amy Twin Phone Template/Area Scan - Normal Body (15mm) (13x7x1):

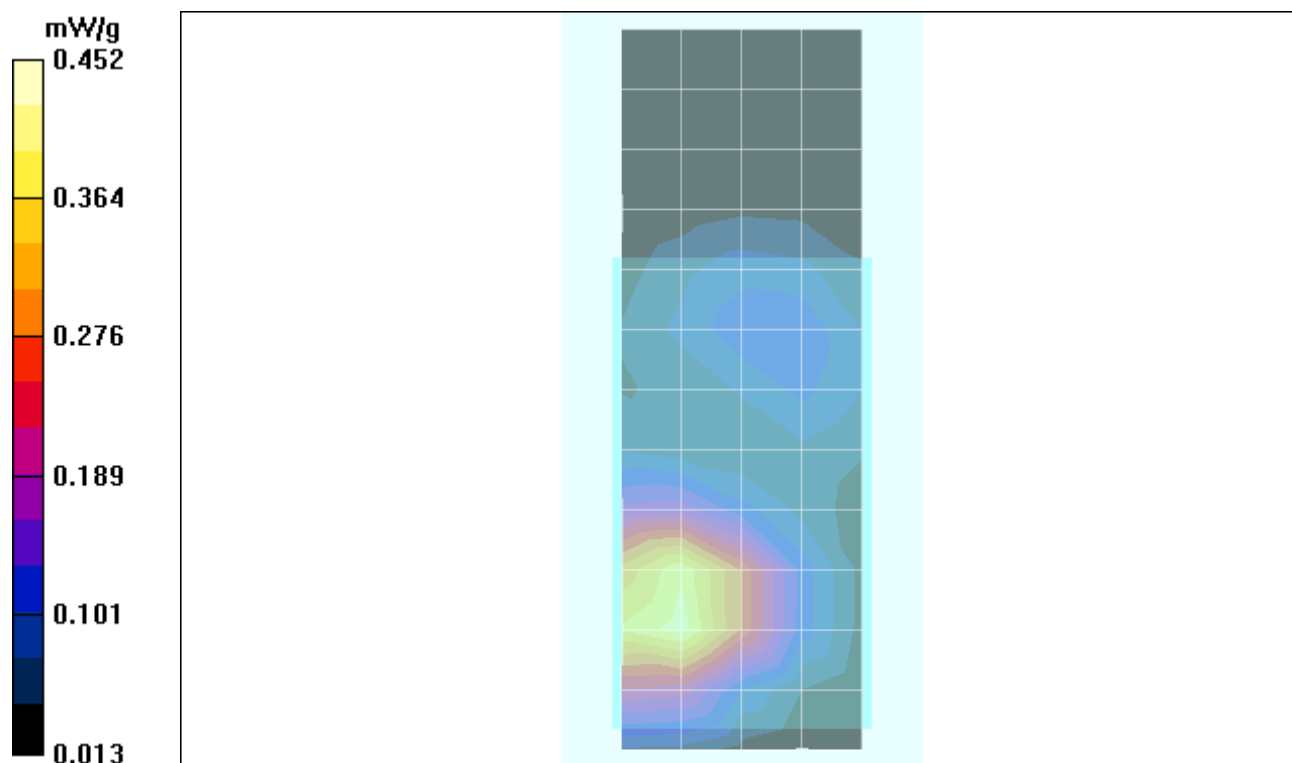
Measurement grid: dx=15mm, dy=15mm; Maximum value of SAR (measured) = 0.409 mW/g

Amy Twin Phone Template/Zoom Scan (7x7x7)/Cube 0:

Measurement grid: dx=5mm, dy=5mm, dz=5mm

Reference Value = 16.5 V/m; Power Drift = -0.164 dB; Peak SAR (extrapolated) = 0.686 W/kg

SAR(1 g) = 0.422 mW/g; SAR(10 g) = 0.260 mW/g; Maximum value of SAR (measured) = 0.452 mW/g



Appendix 4

Probe Calibration Certificate



Accredited by the Swiss Federal Office of Metrology and Accreditation
The Swiss Accreditation Service is one of the signatories to the EA
Multilateral Agreement for the recognition of calibration certificates

Accreditation No.: **SCS 108**

Client **Motorola MDb**

Certificate No: **ET3-1514_Jul06**

CALIBRATION CERTIFICATE

Object **ET3DV6 - SN:1514**

Calibration procedure(s) **QA CAL-01.v5
Calibration procedure for dosimetric E-field probes**

Calibration date: **July 17, 2006**

Condition of the calibrated item **In Tolerance**

This calibration certificate documents the traceability to national standards, which realize the physical units of measurements (SI).
The measurements and the uncertainties with confidence probability are given on the following pages and are part of the certificate.

All calibrations have been conducted in the closed laboratory facility: environment temperature (22 ± 3)°C and humidity < 70%.

Calibration Equipment used (M&TE critical for calibration)

Primary Standards	ID #	Cal Date (Calibrated by, Certificate No.)	Scheduled Calibration
Power meter E4419B	GB41293874	5-Apr-06 (METAS, No. 251-00557)	Apr-07
Power sensor E4412A	MY41495277	5-Apr-06 (METAS, No. 251-00557)	Apr-07
Power sensor E4412A	MY41498087	5-Apr-06 (METAS, No. 251-00557)	Apr-07
Reference 3 dB Attenuator	SN: S5054 (3c)	11-Aug-05 (METAS, No. 251-00499)	Aug-06
Reference 20 dB Attenuator	SN: S5086 (20b)	4-Apr-06 (METAS, No. 251-00558)	Apr-07
Reference 30 dB Attenuator	SN: S5129 (30b)	11-Aug-05 (METAS, No. 251-00500)	Aug-06
Reference Probe ES3DV2	SN: 3013	2-Jan-06 (SPEAG, No. ES3-3013_Jan06)	Jan-07
DAE4	SN: 654	21-Jun-06 (SPEAG, No. DAE4-654_Jun06)	Jun-07

Secondary Standards	ID #	Check Date (in house)	Scheduled Check
RF generator HP 8648C	US3642U01700	4-Aug-99 (SPEAG, in house check Nov-05)	In house check: Nov-07
Network Analyzer HP 8753E	US37390585	18-Oct-01 (SPEAG, in house check Nov-05)	In house check: Nov 06

Calibrated by: **Katja Pokovic** **Technical Manager**

Approved by: **Niels Kuster** **Quality Manager**

Issued: July 17, 2006

This calibration certificate shall not be reproduced except in full without written approval of the laboratory.



Accredited by the Swiss Federal Office of Metrology and Accreditation
The Swiss Accreditation Service is one of the signatories to the EA
Multilateral Agreement for the recognition of calibration certificates

Accreditation No.: **SCS 108**

Glossary:

TSL	tissue simulating liquid
NORM _{x,y,z}	sensitivity in free space
ConF	sensitivity in TSL / NORM _{x,y,z}
DCP	diode compression point
Polarization φ	φ rotation around probe axis
Polarization ϑ	ϑ rotation around an axis that is in the plane normal to probe axis (at measurement center), i.e., $\vartheta = 0$ is normal to probe axis

Calibration is Performed According to the Following Standards:

- IEEE Std 1528-2003, "IEEE Recommended Practice for Determining the Peak Spatial-Averaged Specific Absorption Rate (SAR) in the Human Head from Wireless Communications Devices: Measurement Techniques", December 2003
- CENELEC EN 50361, "Basic standard for the measurement of Specific Absorption Rate related to human exposure to electromagnetic fields from mobile phones (300 MHz - 3 GHz), July 2001

Methods Applied and Interpretation of Parameters:

- NORM_{x,y,z}**: Assessed for E-field polarization $\vartheta = 0$ ($f \leq 900$ MHz in TEM-cell; $f > 1800$ MHz: R22 waveguide). NORM_{x,y,z} are only intermediate values, i.e., the uncertainties of NORM_{x,y,z} does not effect the E^2 -field uncertainty inside TSL (see below *ConvF*).
- NORM(f)_{x,y,z}** = NORM_{x,y,z} * *frequency_response* (see Frequency Response Chart). This linearization is implemented in DASY4 software versions later than 4.2. The uncertainty of the frequency response is included in the stated uncertainty of *ConvF*.
- DCP_{x,y,z}**: DCP are numerical linearization parameters assessed based on the data of power sweep (no uncertainty required). DCP does not depend on frequency nor media.
- ConvF and Boundary Effect Parameters**: Assessed in flat phantom using E-field (or Temperature Transfer Standard for $f \leq 800$ MHz) and inside waveguide using analytical field distributions based on power measurements for $f > 800$ MHz. The same setups are used for assessment of the parameters applied for boundary compensation (alpha, depth) of which typical uncertainty values are given. These parameters are used in DASY4 software to improve probe accuracy close to the boundary. The sensitivity in TSL corresponds to NORM_{x,y,z} * *ConvF* whereby the uncertainty corresponds to that given for *ConvF*. A frequency dependent *ConvF* is used in DASY version 4.4 and higher which allows extending the validity from ± 50 MHz to ± 100 MHz.
- Spherical isotropy (3D deviation from isotropy)**: in a field of low gradients realized using a flat phantom exposed by a patch antenna.
- Sensor Offset**: The sensor offset corresponds to the offset of virtual measurement center from the probe tip (on probe axis). No tolerance required.

Probe ET3DV6

SN:1514

Manufactured:	November 24, 1999
Last calibrated:	July 20, 2005
Recalibrated:	July 17, 2006

Calibrated for DASYS Systems

(Note: non-compatible with DASYS2 system!)

DASY - Parameters of Probe: ET3DV6 SN:1514**Sensitivity in Free Space^A****Diode Compression^B**

NormX	1.74 ± 10.1%	$\mu\text{V}/(\text{V}/\text{m})^2$	DCP X	86 mV
NormY	1.90 ± 10.1%	$\mu\text{V}/(\text{V}/\text{m})^2$	DCP Y	91 mV
NormZ	1.87 ± 10.1%	$\mu\text{V}/(\text{V}/\text{m})^2$	DCP Z	84 mV

Sensitivity in Tissue Simulating Liquid (Conversion Factors)

Please see Page 8.

Boundary Effect

TSL **900 MHz** **Typical SAR gradient: 5 % per mm**

Sensor Center to Phantom Surface Distance		3.7 mm	4.7 mm
SAR _{be} [%]	Without Correction Algorithm	9.7	5.0
SAR _{be} [%]	With Correction Algorithm	0.1	0.3

TSL **1810 MHz** **Typical SAR gradient: 10 % per mm**

Sensor Center to Phantom Surface Distance		3.7 mm	4.7 mm
SAR _{be} [%]	Without Correction Algorithm	11.8	7.0
SAR _{be} [%]	With Correction Algorithm	0.2	0.4

Sensor Offset

Probe Tip to Sensor Center **2.7 mm**

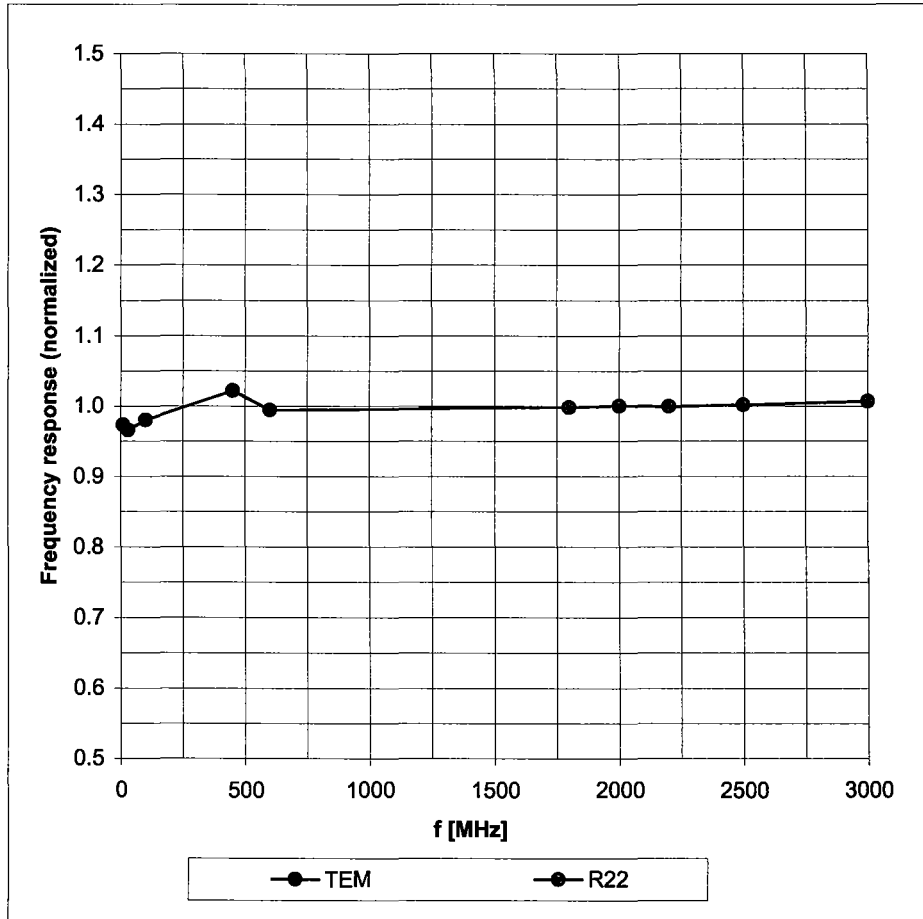
The reported uncertainty of measurement is stated as the standard uncertainty of measurement multiplied by the coverage factor k=2, which for a normal distribution corresponds to a coverage probability of approximately 95%.

^A The uncertainties of NormX,Y,Z do not affect the E²-field uncertainty inside TSL (see Page 8).

^B Numerical linearization parameter: uncertainty not required.

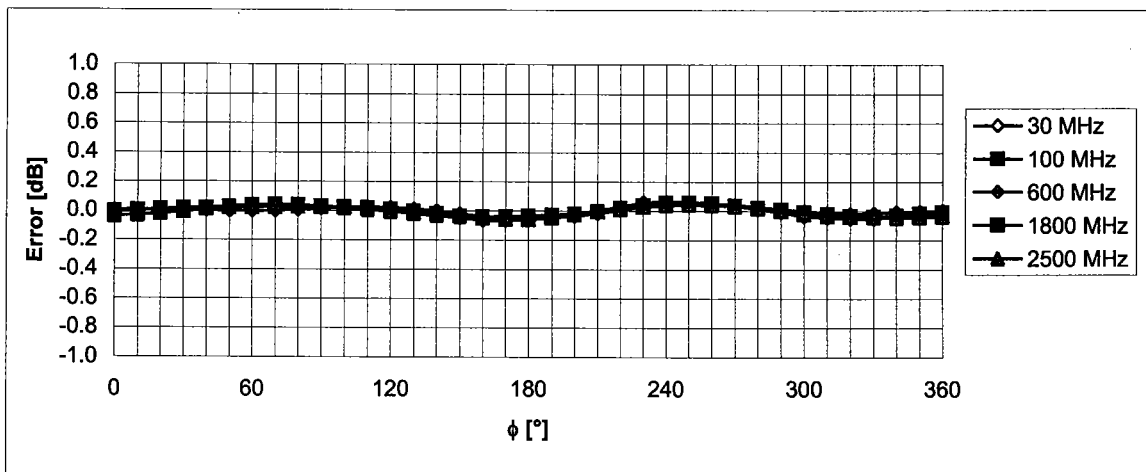
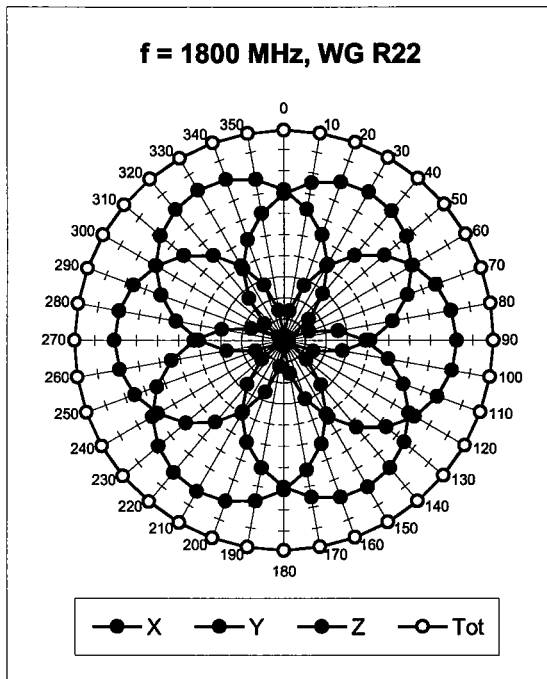
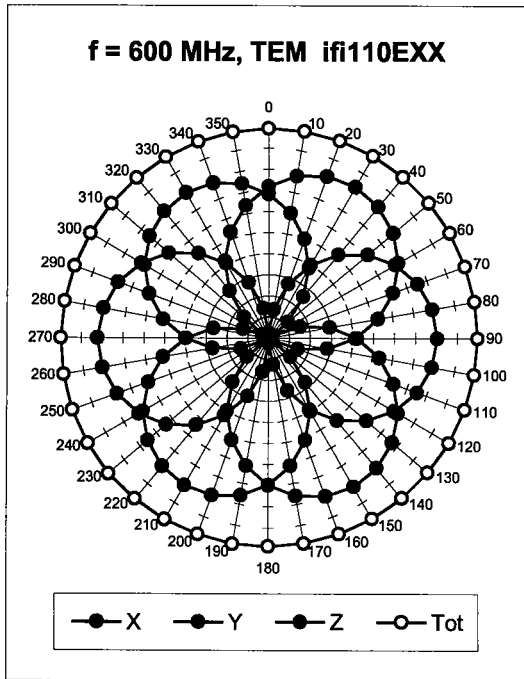
Frequency Response of E-Field

(TEM-Cell:ifi110 EXX, Waveguide: R22)



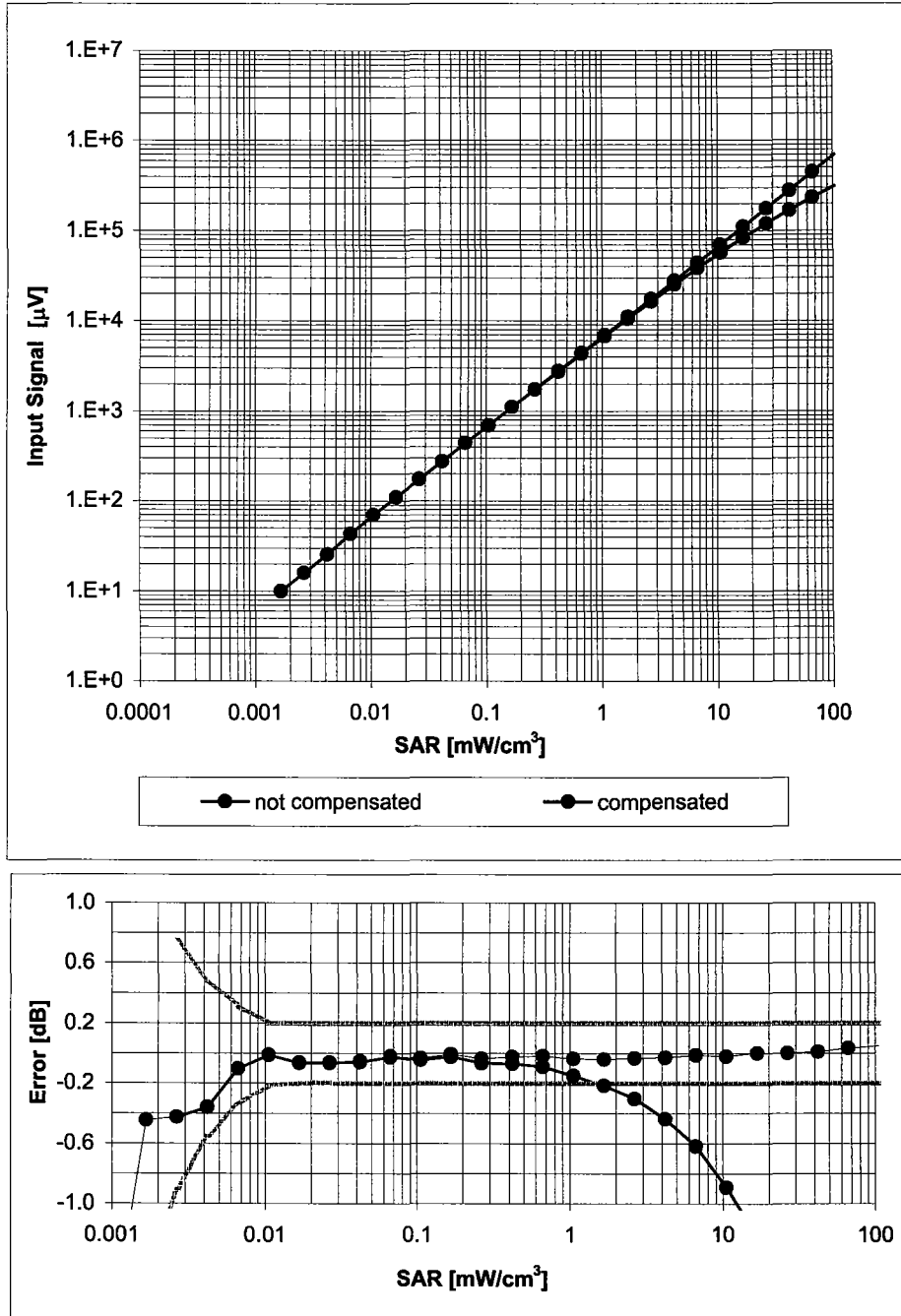
Uncertainty of Frequency Response of E-field: $\pm 6.3\%$ ($k=2$)

Receiving Pattern (ϕ), $\vartheta = 0^\circ$



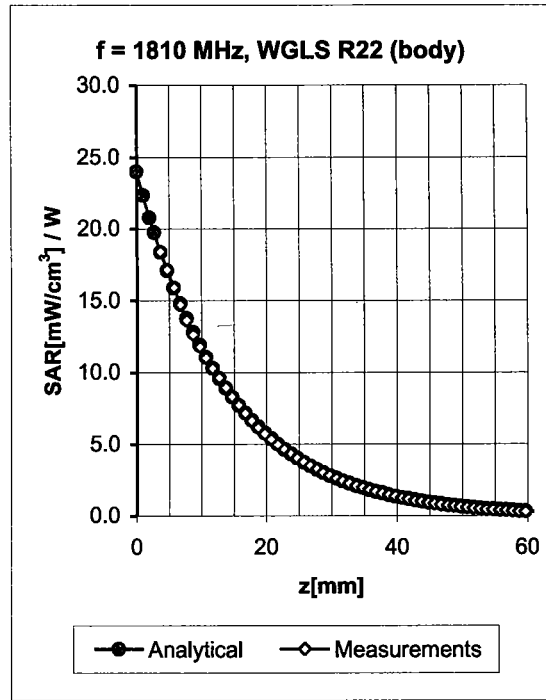
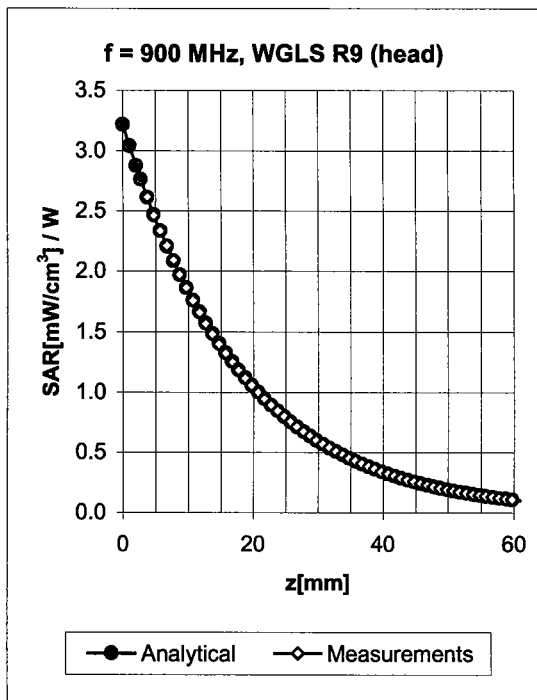
Uncertainty of Axial Isotropy Assessment: $\pm 0.5\%$ ($k=2$)

Dynamic Range f(SAR_{head}) (Waveguide R22, f = 1800 MHz)



Uncertainty of Linearity Assessment: ± 0.6% (k=2)

Conversion Factor Assessment

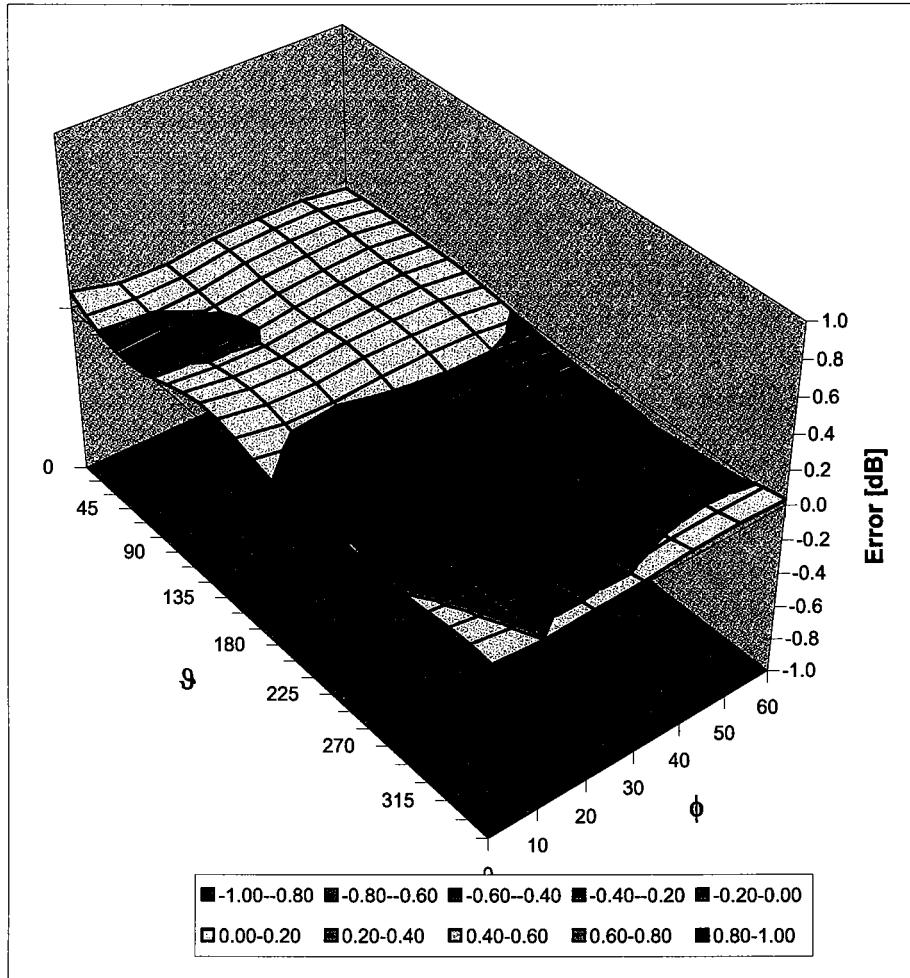


f [MHz]	Validity [MHz] ^c	TSL	Permittivity	Conductivity	Alpha	Depth	ConvF Uncertainty
900	± 50 / ± 100	Head	41.5 ± 5%	0.97 ± 5%	0.67	1.82	5.99 ± 11.0% (k=2)
1810	± 50 / ± 100	Head	40.0 ± 5%	1.40 ± 5%	0.57	2.46	5.05 ± 11.0% (k=2)
1950	± 50 / ± 100	Head	40.0 ± 5%	1.40 ± 5%	0.56	2.49	4.76 ± 11.0% (k=2)
2450	± 50 / ± 100	Head	39.2 ± 5%	1.80 ± 5%	0.65	2.09	4.47 ± 11.8% (k=2)
900	± 50 / ± 100	Body	55.0 ± 5%	1.05 ± 5%	0.64	1.95	5.86 ± 11.0% (k=2)
1810	± 50 / ± 100	Body	53.3 ± 5%	1.52 ± 5%	0.61	2.53	4.53 ± 11.0% (k=2)
1950	± 50 / ± 100	Body	53.3 ± 5%	1.52 ± 5%	0.75	2.16	4.30 ± 11.0% (k=2)
2450	± 50 / ± 100	Body	52.7 ± 5%	1.95 ± 5%	0.62	2.07	4.16 ± 11.8% (k=2)

^c The validity of ± 100 MHz only applies for DASY v4.4 and higher (see Page 2). The uncertainty is the RSS of the ConvF uncertainty at calibration frequency and the uncertainty for the indicated frequency band.

Deviation from Isotropy in HSL

Error (ϕ, ϑ), $f = 900$ MHz



Uncertainty of Spherical Isotropy Assessment: $\pm 2.6\%$ ($k=2$)

Appendix 5

Measurement Uncertainty Budget

<i>a</i>	<i>b</i>	<i>c</i>	<i>d</i>	$e = f(d,k)$	<i>f</i>	<i>g</i>	$h = c \times f / e$	$i = c \times g / e$	<i>k</i>
Uncertainty Component	IEEE 1528 section	Tol. (\pm %)	Prob Dist	Div.	c_i (1 g)	c_i (10 g)	1 g u_i (\pm %)	10 g u_i (\pm %)	v_i
Measurement System									
Probe Calibration	E.2.1	5.9	N	1.00	1	1	5.9	5.9	∞
Axial Isotropy	E.2.2	4.7	R	1.73	0.707	0.707	1.9	1.9	∞
Hemispherical Isotropy	E.2.2	9.6	R	1.73	0.707	0.707	3.9	3.9	∞
Boundary Effect	E.2.3	1.0	R	1.73	1	1	0.6	0.6	∞
Linearity	E.2.4	4.7	R	1.73	1	1	2.7	2.7	∞
System Detection Limits	E.2.5	1.0	R	1.73	1	1	0.6	0.6	∞
Readout Electronics	E.2.6	0.3	N	1.00	1	1	0.3	0.3	∞
Response Time	E.2.7	1.1	R	1.73	1	1	0.6	0.6	∞
Integration Time	E.2.8	1.1	R	1.73	1	1	0.6	0.6	∞
RF Ambient Conditions - Noise	E.6.1	3.0	R	1.73	1	1	1.7	1.7	∞
RF Ambient Conditions - Reflections	E.6.1	0.0	R	1.73	1	1	0.0	0.0	∞
Probe Positioner Mech. Tolerance	E.6.2	0.4	R	1.73	1	1	0.2	0.2	∞
Probe Positioning w.r.t Phantom	E.6.3	1.4	R	1.73	1	1	0.8	0.8	∞
Max. SAR Evaluation (ext., int., avg.)	E.5	3.4	R	1.73	1	1	2.0	2.0	∞
Test sample Related									
Test Sample Positioning	E.4.2	3.2	N	1.00	1	1	3.2	3.2	29
Device Holder Uncertainty	E.4.1	4.0	N	1.00	1	1	4.0	4.0	8
SAR drift	6.6.2	5.0	R	1.73	1	1	2.9	2.9	∞
Phantom and Tissue Parameters									
Phantom Uncertainty	E.3.1	4.0	R	1.73	1	1	2.3	2.3	∞
Liquid Conductivity (target)	E.3.2	5.0	R	1.73	0.64	0.43	1.8	1.2	∞
Liquid Conductivity (measurement)	E.3.3	3.3	N	1.00	0.64	0.43	2.1	1.4	∞
Liquid Permittivity (target)	E.3.2	5.0	R	1.73	0.6	0.49	1.7	1.4	∞
Liquid Permittivity (measurement)	E.3.3	1.9	N	1.00	0.6	0.49	1.1	0.9	∞
Combined Standard Uncertainty			RSS				11.1	10.8	411
Expanded Uncertainty (95% CONFIDENCE LEVEL)			$k=2$				22.2	21.6	

Appendix 6

**Photographs of the device under test
>> PHOTOS WERE MOVED TO FCC EXHIBIT 7 <<<**

Appendix 7

Dipole Characterization Certificate

Certification of System Performance Check Targets

Based on WI-0396

-Historical Data-

900MHz	
IEEE1528 Target:	10.8 (W/kg)
Measurement Uncertainty (k=1):	9.0%
Measurement Period:	3-June-05 to 10-May-06
# of tests performed:	1571
Grand Average:	11.3 (W/kg)
% Delta (Average - IEEE1528 Target)	4.3%
Is % Delta <= Expanded Measurement Uncertainty (k=2)?	Yes
Accept/Reject <u>Average</u> as new system performance check target?	ACCEPT
Applies to Dipole SN's: 55, 69, 77, 78, 79, 80, 91, 92, 93, 94, 95, 96, 97	

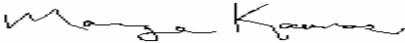
-New System Performance Check Targets- per WI-0396

(based on analysis of historical data)

Frequency	SAR Target (W/kg)	Permittivity	Conductivity (S/m)
900MHz	11.3	41.5 ± 5%	0.97 ± 5%

-Approvals-

Submitted by: Date:

Signed: 

Comments:

Approved by: Date:

Signed: 

Comments: