




MOTOROLA

Portable Cellular Phone SAR Test Report

Test Report #: 20084-1F
Date of Report: March 29, 2007
Date of Test: March 3 – March 21, 2007
FCC ID #: **IHDT56HP1**
Generic Name: **MUQ6-34411A11**
 Motorola Mobile Devices Business Product Safety & Compliance Laboratory
Laboratory: 600 N. US Highway 45
 Libertyville, Illinois 60048

Report Author: Katerina Royzen
 Engineer


This laboratory is accredited to ISO/IEC 17025-1999 to perform the following tests:

Tests:
 Electromagnetic Specific Absorption Rate

Procedures:
 IEC 62209-1
 RSS-102
 IEEE 1528 - 2003
 FCC OET Bulletin 65 (*including Supplement C*)
 Australian Communications Authority Radio
 Communications (Electromagnetic Radiation – Human
 Exposure) Standard 2003
 CENELEC EN 50360 (2001)
 CENELEC EN 50361 (2001)
 ARIB Std. T-56 (2002)

Accreditation:



On the following products or types of products:

On the following products or types of products: Wireless Communications Devices (Examples): Two Way Radios; Portable Phones (including Cellular, Licensed Non-Broadcast and PCS); Low Frequency Readers; and Pagers

A2LA certificate #2518-02

Statement of Compliance:

Motorola declares under its sole responsibility that the portable cellular telephone model to which this declaration relates, is in conformity with the appropriate General Population/Uncontrolled RF exposure standards, recommendations and guidelines (FCC 47 CFR §2.1093) as well as with CENELEC en50360:2001 and ANSI / IEEE C95.1. It also declares that the product was tested in accordance with CENELEC en50361:2001, IEEE 1528, as well as other appropriate measurement standards, guidelines and recommended practices. Any deviations from these standards, guidelines and recommended practices are noted below:

(none)

©Motorola, Inc. 2007

This test report shall not be reproduced except in full, without written approval of the laboratory.

The results and statements contained herein relate only to the items tested. The names of individuals involved may be mentioned only in connection with the statements or results from this report.

Motorola encourages all feedback, both positive and negative, on this test report.

Table of Contents

1. Introduction	2
2. Description of the Device Under Test	2
2.1 Antenna description	2
2.2 Device description	2
3. Test Equipment Used	3
3.1 Dosimetric System	3
3.2 Additional Equipment	3
4. Electrical parameters of the tissue simulating liquid	4
5. System Accuracy Verification	6
6. Test Results	7
6.1 Head Adjacent Test Results	7
6.2 Body Worn Test Results	12
References	16
Appendix 1: SAR distribution comparison for system accuracy verification	17
Appendix 2: SAR distribution plots for Phantom Head Adjacent Use	18
Appendix 3: SAR distribution plots for Body Worn Configuration	19
Appendix 4: Probe Calibration Certificate	20
Appendix 5: Measurement Uncertainty Budget	21
Appendix 6: Photographs of the device under test	23
Appendix 7: Dipole Characterization Certificate	28

1. Introduction

The Motorola Mobile Devices Business Product Safety Laboratory has performed measurements of the maximum potential exposure to the user of the portable cellular phone covered by this test report. The Specific Absorption Rate (SAR) of this product was measured. The portable cellular phone was tested in accordance with [1], [4] and [5]. The SAR values measured for the portable cellular phone are below the maximum recommended levels of 1.6 W/kg in a 1g average set in [3] and 2.0W/kg in a 10g average set in [2].

2. Description of the Device Under Test

2.1 Antenna description

Type	Internal Antenna	
Location	Bottom of the Transceiver	
Dimensions	Length	38 mm
	Width	8 mm
Configuration	FJA	

2.2 Device description

Serial Number	4401021695123													
Mode(s) of Operation	GSM 850	GSM 900	GSM 1800	GSM 1900	UMTS 2100	GPRS 850	GPRS 900	GPRS 1800	GPRS 1900	EDGE 850	EDGE 900	EDGE 1800	EDGE 1900	Blue Tooth
Modulation Mode(s)	GSMK	GSMK	GSMK	GSMK	QPSK	GSMK	GSMK	GSMK	GSMK	8PSK	8PSK	8PSK	8PSK	GFSK
Maximum Output Power Setting	33.0 dBm	33.0 dBm	30.0 dBm	30.0 dBm	24.00 dBm	33.0 dBm	33.0 dBm	30.00 dBm	30.00 dBm	27.5 dBm	27.5 dBm	26.5 dBm	26.5 dBm	4.00 dBm
Duty Cycle	1:8	1:8	1:8	1:8	1:1	4:8	4:8	4:8	4:8	4:8	4:8	4:8	4:8	1:1
Transmitting Frequency Rang(s)	824-849 MHz	880-915 MHz	1710-1785 MHz	1850-1910 MHz	1920-1980 MHz	824-849 MHz	880-915 MHz	1710-1785 MHz	1850-1910 MHz	880-915 MHz	880-915 MHz	1710-1785 MHz	1850-1910 MHz	2400-2484 MHz
Production Unit or Identical Prototype (47 CFR §2.908)	Identical Prototype													
Device Category	Portable													
RF Exposure Limits	General Population / Uncontrolled													

3. Test Equipment Used

3.1 Dosimetric System

The Motorola Mobile Devices Business Product Safety & Compliance Laboratory utilizes a Dosimetric Assessment System (Dasy4™ v4.6) manufactured by Schmid & Partner Engineering AG (SPEAG™), of Zurich Switzerland. All the SAR measurements are taken within a shielded enclosure. The overall 10g RSS uncertainty of the measurement system is ±10.8% (K=1) with an expanded uncertainty of ±21.6% (K=2). The overall 1g RSS uncertainty of the measurement system is ±11.1% (K=1) with an expanded uncertainty of ±22.2% (K=2). The measurement uncertainty budget is given in Appendix 6. Per IEEE 1528, this uncertainty budget is applicable to the SAR range of 0.4W/kg to 10W/kg.

The list of calibrated equipment used for the measurements is shown in the following table.

Description	Serial Number	Cal Due Date
DASY4™ DAE V1	SN 661	9/1/2007
E-Field Probe ES3DV3	SN 3037	11/23/2007
Dipole Validation Kit, DV900V2	91	05/22/2007
S.A.M. Phantom used for 800/900MHz	TP-1005	
Dipole Validation Kit, DV1800V2	259tr	
S.A.M. Phantom used for 1800/1900/2450MHz	TP-1139	
Dipole Validation Kit, DV1900V2	533tr	05/22/2007

3.2 Additional Equipment

Description	Serial Number	Cal Due Date
Signal Generator HP8648C	3847A04832	6/30/2007
Power Meter E4419B	GB39511084	12/27/2007
Power Sensor #1 – E9301A	US39210929	9/7/2007
Power Sensor #2 - E9301A	US39210930	8/17/2007
Network Analyzer HP8753ES	US39172529	9/26/2007
Dielectric Probe Kit HP85070B	US99360070	

4. Electrical parameters of the tissue simulating liquid

Prior to conducting SAR measurements, the relative permittivity, ϵ_r , and the conductivity, σ , of the tissue simulating liquids were measured with a HP85070 Dielectric Probe Kit. These values, along with the temperature of the simulated tissue are shown in the table below. The recommended limits for permittivity and conductivity are also shown. A mass density of $\rho=1\text{g/cm}^3$ was entered into the system in all the cases. It can be seen that the measured parameters are within tolerance of the recommended limits specified in [1] and [5].

f (MHz)	Tissue type	Limits / Measured	Dielectric Parameters		
			ϵ_r	σ (S/m)	Temp (°C)
835	Head	Measured, 3/02/2007	41.3	0.90	19.7
		Measured, 3/12/2007	41.7	0.92	19.7
		Recommended Limits	41.5 ±5%	0.90 ±5%	18-25
	Body	Measured, 3/12/2007	53.0	0.98	19.5
		Recommended Limits	55.2 ±5%	0.97 ±5%	18-25
900	Head	Measured, 3/5/2007	40.9	0.97	19.4
		Measured, 3/13/2007	40.4	0.97	20.1
		Recommended Limits	42.3 ±5%	0.99 ±5%	18-25
	Body	Measured, 3/13/2007	52.4	1.05	19.7
		Recommended Limits	55.0 ±5%	1.05 ±5%	18-25
1750	Head	Measured, 3/06/2007	39.2	1.29	19.3
		Measured, 3/13/2007	39.5	1.30	19.8
		Measured, 3/21/2007	39.0	1.31	19.3
		Recommended Limits	40.1 ±5%	1.35 ±5%	18-25
	Body	Measured, 3/09/2007	51.7	1.43	18.6
		Recommended Limits	53.4 ±5%	1.49 ±5%	18-25
1880	Head	Measured, 3/04/2007	38.3	1.47	19.8
		Measured, 3/10/2007	39.6	1.41	19.6
		Measured, 3/13/2007	38.8	1.43	19.8
		Measured, 3/13/2007	39.3	1.44	19.4
		Recommended Limits	40.0 ±5%	1.40 ±5%	18-25
	Body	Measured, 3/09/2007	51.2	1.59	19.8
		Recommended Limits	53.3 ±5%	1.52 ±5%	18-25
1950	Head	Measured, 3/10/2007	38.8	1.51	20.0
		Measured, 3/11/2007	39.3	1.48	18.6
		Measured, 3/16/2007	38.5	1.51	19.2
		Recommended Limits	39.8 ±5%	1.47 ±5%	18-25
	Body	Measured, 3/15/2007	50.7	1.56	20.0
		Recommended Limits	53.3 ±5%	1.52 ±5%	18-25

The list of ingredients and the percent composition used for the tissue simulates are indicated in the table below.

Ingredient	835MHz / 900 MHz Head	835MHz / 900 MHz Body	1800MHz / 1900 MHz Head	1800 MHz / 1900 MHz Body	2450MHz Head	2450 MHz Body
Sugar	57	44.9	--	--	--	--
DGBE	--	--	47	30.8	--	30
Diacetin	--	--	--	--	51	
Water	40.45	53.06	52.62	68.8	48.75	70
Salt	1.45	0.94	0.38	0.4	0.15	--
HEC	1	1	--	--	--	--
Bact.	0.1	0.1	--	--	0.1	--

5. System Accuracy Verification

A system accuracy verification of the DASY4™ was performed using the measurement equipment listed in Section 3.1. The daily system accuracy verification occurs within the flat section of the SAM phantom.

A SAR measurement was performed to verify the measured SAR was within ±10% from the target SAR indicated in Section 8.3.7 Reference SAR Values in [5] or Appendix 7 for the 900Mhz and/or 1900Mhz target reference SAR value. These tests were done at 900MHz, 1800MHz, 1900Mhz. These frequencies are within ±10% of the compliance test mid-band frequency as required in [1] and [5]. The test was conducted on the same days as the measurement of the DUT. Recommended limits for permittivity and conductivity, specified in [5], are shown in the table below. The obtained results from the system accuracy verification are also displayed in the table below. SAR values are normalized to 1W forward power delivered to the dipole. It is seen that the system is operating within its specification, as the results are within acceptable tolerance of the reference values. The distributions of SAR compare well with those of the reference measurements (see Appendix 1). The tissue stimulant depth was verified to be 15.0cm ±0.5cm. Z-axis scans showing the SAR penetration are also included in Appendix 1.

f (MHz)	Description	SAR (W/kg), 1gram	Dielectric Parameters		Ambient Temp (°C)	Tissue Temp (°C)
			ε _r	σ (S/m)		
900	Measured, 3/2/2007	10.8	40.5	0.96	21.0	20.0
	Measured, 3/5/2007	10.7	40.9	0.97	21.0	20.0
	Measured, 3/12/2007	10.9	41.0	0.98	20.8	20.0
	Measured, 3/13/2007	10.8	40.4	0.97	20.7	19.9
	Recommended Limits	11.3	41.5 ±5%	0.97 ±5%	18-25	18-25
1800	Measured, 3/4/2007	38.6	38.5	1.38	20.7	19.5
	Measured, 3/6/2007	39.4	38.9	1.36	20.3	19.8
	Measured, 3/9/2007	38.9	40.1	1.35	21.1	19.5
	Measured, 3/10/2007	36.7	40.0	1.33	20.9	19.7
	Measured, 3/13/2007	38.7	39.3	1.35	20.7	20.1
	Measured, 3/21/2007	39.9	38.8	1.37	20.2	19.9
	Recommended Limits	38.1	40.0 ±5%	1.4 ±5%	18-25	18-25
1900	Measured, 3/10/2007	43.0	39.0	1.46	21.0	20.0
	Measured, 3/11/2007	41.4	39.5	1.43	20.5	18.6
	Measured, 3/15/2007	42.6	38.6	1.46	20.4	19.7
	Measured, 3/16/2007	41.8	38.8	1.46	20.4	19.6
	Recommended Limits	40.9	40.0 ±5%	1.4 ±5%	18-25	18-25

The following probe conversion factors were used on the E-Field probe(s) used for the system accuracy verification measurements:

Description	Serial Number	f (MHz)	Conversion Factor	Cal Cert pg #
E-Field Probe ES3DV3	SN 3037	900	6.25	8 of 9
		1810	5.17	8 of 9
		1950	4.81	8 of 9

6. Test Results

The test sample was operated using an actual transmission through a base station simulator. The base station simulator was setup to the proper channel, transmitter power level and transmit mode of operation. The phone was tested in the configurations stipulated in [1], [4] and [5]. The phone was positioned into these configurations using the device holder supplied with the DASY4™ SAR measurement system. The measured dielectric constant of the material used for the device holder is less than 2.9 and the loss tangent is less than 0.02 (± 30%) at 850MHz. The default settings for the “coarse” and “cube” scans were chosen and used for measurements. The grid spacing of the course scan was set to 15cm as shown in the SAR plots included in Appendix 2 and 3. Please refer to the DASY manual for additional information on SAR scanning procedures and algorithms used.

The Cellular Phone model covered by this report has the following battery options:

SNN5792A - 1100 mAH Battery

SNN5781B - 880 mAH Battery

SNN5779B - 750 mAH Battery

The battery with the highest capacity is the SNN5792A. This battery was used to do most of the SAR testing. The phone was placed in the SAR measurement system with a fully charged battery. The configuration that resulted in the highest SAR values were tested using the other batteries listed above.

6.1 Head Adjacent Test Results

The SAR results shown in tables 1 through 12 are maximum SAR values averaged over 1 gram of phantom tissue, to demonstrate compliance to [3] and also over 10 grams of phantom tissue, to demonstrate compliance to the [6]. Also shown are the measured conducted output power levels for the CDMA RC3/SO55 mode, the temperature of the simulated tissue after the test, the measured drift and the extrapolated SAR. The exact method of extrapolation is $New\ SAR = Old\ SAR * 10^{(-drift/10)}$. The SAR reported at the end of the measurement process by the DASY4™ measurement system can be scaled up by the measured drift to determine the SAR at the beginning of the measurement process. This is the most conservative SAR because it corresponds to the average output power at the beginning of the SAR test. This extrapolation has been done because when the DUT is operating properly it may exhibit a slump in radiated power and SAR over time. This is verified by measuring the SAR drift after the test.

The left head and right head SAR contour distributions are similar. Because of this similarity, the cheek/touch and 15° tilt test conditions with the highest SAR values in each band are indicated as bold numbers in the following tables and are included in Appendix 2. All other test conditions measured lower SAR values than those included in Appendix 2.

The SAR measurements were performed using the SAM phantoms listed in section 3.1. Since the same phantoms and simulated tissue were used for the system accuracy verification and the device SAR measurements, the Z-axis scans included in Appendix 1 are applicable for verification of simulated tissue depth to be 15.0cm ±0.5cm.

The following probe conversion factors were used on the E-Field probe(s) used for the head adjacent measurements:

Description	Serial Number	f (MHz)	Conversion Factor	Cal Cert pg #
E-Field Probe ES3DV3	SN 3037	900	6.25	8 of 9
		1810	5.17	8 of 9
		1950	4.81	8 of 9

Left Head Cheek Position (Slider Closed)								
f (MHz)	Description	Conducted Output Power (dBm)	Temp (°C)	Drift (dB)	10g SAR value		1g SAR value	
					Measured (W/kg)	Extrapolated (W/kg)	Measured (W/kg)	Extrapolated (W/kg)
GSM 850MHz	Channel 128	32.92						
	Channel 190	32.99	19.1	-0.01	0.473	0.47	0.672	0.67
	Channel 251	32.92						
GSM 1900MHz	Channel 512	30.08	19.1	0.04	0.486	0.49	0.839	0.84
	Channel 661	30.01	19.1	-0.11	0.480	0.49	0.826	0.85
	Channel 810	30.00	19.1	0.05	0.488	0.49	0.858	0.86

Table 1: SAR measurement results at the highest possible output power, measured in a head cheek position against the ICNIRP and ANSI SAR Limit.

Right Head Cheek Position (Slider Closed)								
f (MHz)	Description	Conducted Output Power (dBm)	Temp (°C)	Drift (dB)	10g SAR value		1g SAR value	
					Measured (W/kg)	Extrapolated (W/kg)	Measured (W/kg)	Extrapolated (W/kg)
GSM 850MHz	Channel 128	32.92						
	Channel 190	32.99	19.1	-0.12	0.464	0.48	0.624	0.64
	Channel 251	32.92						
GSM 1900MHz	Channel 512	30.08						
	Channel 661	30.01	19.1	-0.03	0.458	0.46	0.730	0.74
	Channel 810	30.00						

Table 2: SAR measurement results at the highest possible output power, measured in a head cheek position against the ICNIRP and ANSI SAR Limit.

Left Head Cheek Position (Slider Open)								
f (MHz)	Description	Conducted Output Power (dBm)	Temp (°C)	Drift (dB)	10g SAR value		1g SAR value	
					Measured (W/kg)	Extrapolated (W/kg)	Measured (W/kg)	Extrapolated (W/kg)
GSM 850MHz	Channel 128	32.92						
	Channel 190	32.99	19.1	-0.10	0.403	0.41	0.544	0.56
	Channel 251	32.92						
GSM 1900MHz	Channel 512	30.08						
	Channel 661	30.01	19.8	-0.28	0.180	0.19	0.281	0.30
	Channel 810	30.00						

Table 3: SAR measurement results at the highest possible output power, measured in a head cheek position against the ICNIRP and ANSI SAR Limit.

Right Head Cheek Position (Slider Open)								
f (MHz)	Description	Conducted Output Power (dBm)	Temp (°C)	Drift (dB)	10g SAR value		1g SAR value	
					Measured (W/kg)	Extrapolated (W/kg)	Measured (W/kg)	Extrapolated (W/kg)
GSM 850MHz	Channel 128	32.92						
	Channel 190	32.99	19.7	-0.16	0.505	0.52	0.695	0.72
	Channel 251	32.92						
GSM 1900MHz	Channel 512	30.08						
	Channel 661	30.01	19.2	-0.43	0.360	0.40	0.596	0.66
	Channel 810	30.00						

Table 4: SAR measurement results at the highest possible output power, measured in a head cheek position against the ICNIRP and ANSI SAR Limit.

Left Head Tilt Position (Slider Closed)								
f (MHz)	Description	Conducted Output Power (dBm)	Temp (°C)	Drift (dB)	10g SAR value		1g SAR value	
					Measured (W/kg)	Extrapolated (W/kg)	Measured (W/kg)	Extrapolated (W/kg)
GSM 850MHz	Channel 128	32.92						
	Channel 190	32.99	19.1	-0.26	0.296	0.31	0.406	0.43
	Channel 251	32.92						
GSM 1900MHz	Channel 512	30.08						
	Channel 661	30.01	19.2	0.27	0.254	0.25	0.428	0.43
	Channel 810	30.00						

Table 5: SAR measurement results at the highest possible output power, measured in a head cheek position against the ICNIRP and ANSI SAR Limit.

Right Head Tilt Position (Slider Closed)								
f (MHz)	Description	Conducted Output Power (dBm)	Temp (°C)	Drift (dB)	10g SAR value		1g SAR value	
					Measured (W/kg)	Extrapolated (W/kg)	Measured (W/kg)	Extrapolated (W/kg)
GSM 850MHz	Channel 128	32.92						
	Channel 190	32.99	19.7	-0.17	0.315	0.33	0.430	0.45
	Channel 251	32.92						
GSM 1900MHz	Channel 512	30.08						
	Channel 661	30.01	19.4	-0.24	0.249	0.26	0.416	0.44
	Channel 810	30.00						

Table 6: SAR measurement results at the highest possible output power, measured in a head cheek position against the ICNIRP and ANSI SAR Limit.

Left Head Tilt Position (Slider Open)								
f (MHz)	Description	Conducted Output Power (dBm)	Temp (°C)	Drift (dB)	10g SAR value		1g SAR value	
					Measured (W/kg)	Extrapolated (W/kg)	Measured (W/kg)	Extrapolated (W/kg)
GSM 850MHz	Channel 128	32.92						
	Channel 190	32.99	19.1	0.01	0.232	0.23	0.316	0.32
	Channel 251	32.92						
GSM 1900MHz	Channel 512	30.08						
	Channel 661	30.01	19.8	0.11	0.156	0.16	0.263	0.26
	Channel 810	30.00						

Table 7: SAR measurement results at the highest possible output power, measured in a head cheek position against the ICNIRP and ANSI SAR Limit.

Right Head Tilt Position (Slider Open)								
f (MHz)	Description	Conducted Output Power (dBm)	Temp (°C)	Drift (dB)	10g SAR value		1g SAR value	
					Measured (W/kg)	Extrapolated (W/kg)	Measured (W/kg)	Extrapolated (W/kg)
GSM 850MHz	Channel 128	32.92						
	Channel 190	32.99	19.7	-0.16	0.282	0.29	0.382	0.40
	Channel 251	32.92						
GSM 1900MHz	Channel 512	30.08						
	Channel 661	30.01	19.3	0.09	0.145	0.15	0.244	0.24
	Channel 810	30.00						

Table 8: SAR measurement results at the highest possible output power, measured in a head cheek position against the ICNIRP and ANSI SAR Limit.

Highest Head (Slider Closed) with SNN5781B								
f (MHz)	Description	Conducted Output Power (dBm)	Temp (°C)	Drift (dB)	10g SAR value		1g SAR value	
					Measured (W/kg)	Extrapolated (W/kg)	Measured (W/kg)	Extrapolated (W/kg)
GSM 850MHz	Channel 128	32.92						
	Channel 190	32.99	19.1	-0.16	0.489	0.51	0.705	0.73
	Channel 251	32.92						
GSM 1900MHz	Channel 512	30.08						
	Channel 661	30.01						
	Channel 810	30.00	19.8	0.23	0.484	0.48	0.849	0.85

Table 9: SAR measurement results at the highest possible output power, measured in a head cheek position against the ICNIRP and ANSI SAR Limit.

Highest Head (Slider Closed) with SNN5779B								
f (MHz)	Description	Conducted Output Power (dBm)	Temp (°C)	Drift (dB)	10g SAR value		1g SAR value	
					Measured (W/kg)	Extrapolated (W/kg)	Measured (W/kg)	Extrapolated (W/kg)
GSM 850MHz	Channel 128	32.92						
	Channel 190	32.99	19.7	-0.17	0.501	0.52	0.737	0.77
	Channel 251	32.92						
GSM 1900MHz	Channel 512	30.08						
	Channel 661	30.01						
	Channel 810	30.00	19.6	0.08	0.527	0.53	0.914	0.91

Table 10: SAR measurement results at the highest possible output power, measured in a head cheek position against the ICNIRP and ANSI SAR Limit.

Highest Head (Slider Open) with SNN5781B								
f (MHz)	Description	Conducted Output Power (dBm)	Temp (°C)	Drift (dB)	10g SAR value		1g SAR value	
					Measured (W/kg)	Extrapolated (W/kg)	Measured (W/kg)	Extrapolated (W/kg)
GSM 850MHz	Channel 128	32.92						
	Channel 190	32.99	19.1	0.00	0.500	0.50	0.688	0.69
	Channel 251	32.92						
GSM 1900MHz	Channel 512	30.08						
	Channel 661	30.01	19.8	-0.11	0.279	0.29	0.473	0.48
	Channel 810	30.00						

Table 11: SAR measurement results at the highest possible output power, measured in a head cheek position against the ICNIRP and ANSI SAR Limit.

Highest Head (Slider Open) with SNN5779B								
f (MHz)	Description	Conducted Output Power (dBm)	Temp (°C)	Drift (dB)	10g SAR value		1g SAR value	
					Measured (W/kg)	Extrapolated (W/kg)	Measured (W/kg)	Extrapolated (W/kg)
GSM 850MHz	Channel 128	32.92						
	Channel 190	32.99	19.7	-0.09	0.516	0.53	0.708	0.72
	Channel 251	32.92						
GSM 1900MHz	Channel 512	30.08						
	Channel 661	30.01	19.8	-0.20	0.360	0.38	0.585	0.61
	Channel 810	30.00						

Table 12: SAR measurement results at the highest possible output power, measured in a head cheek position against the ICNIRP and ANSI SAR Limit.

6.2 Body Worn Test Results

The SAR results shown in tables 13 through 19 are maximum SAR values averaged over 1 gram of phantom tissue, to demonstrate compliance to [3] and also over 10 grams of phantom tissue, to demonstrate compliance to the [6]. Also shown are the measured conducted output power levels for the CDMA RC3/SO55 mode, the temperature of the test facility during the test, the temperature of the tissue simulate after the test, the measured drift and the extrapolated SAR. The exact method of extrapolation is $New\ SAR = Old\ SAR * 10^{(-drift/10)}$. The SAR reported at the end of the measurement process by the DASY4™ measurement system can be scaled up by the measured drift to determine the SAR at the beginning of the measurement process. This is the most conservative SAR because it corresponds to the average output power at the beginning of the SAR test. This extrapolation has been done because when the DUT is operating properly it may exhibit a slump in radiated power and SAR over time. This is verified by measuring the SAR drift after the test.

The test conditions that produced the highest SAR values in each band are indicated as bold numbers in the following tables and are included in Appendix 3. All other test conditions measured lower SAR values than those included in Appendix 3.

A “flat” phantom was for the body-worn tests. This “flat” phantom is made out of 1” thick natural High Density Polyethylene with a thickness at the bottom equal to 2.0mm. It measures 52.7cm(long) x 26.7cm(wide) x 21.2cm(tall). The measured dielectric constant of the material used is less than 2.3 and the loss tangent is less than 0.0046 all the way up to 2.184GHz.

The tissue stimulant depth was verified to be 15.0cm ±0.5cm. The same device holder described in section 6 was used for positioning the phone. The functional accessories were divided into two categories, the ones with metal components and the ones with non-metal components. For non-metallic component accessories’, testing was performed on the accessory that displayed the closest proximity to the flat phantom. Each metallic component accessory, if any, was checked for uniqueness of metal component so that each is tested with the device. If multiple accessories shared an identical metal component, only the accessory that dictates the closest spacing to the body was tested. In addition to accessory testing, the cellular phone was tested with the front and back of the phone facing the phantom. For voice mode operation, the phone was placed as a distance of 15mm from the phantom. For data mode operation, the phone was placed as a distance of 25mm from the phantom. The cellular phone was tested with a headset connected to the device for all body-worn SAR measurements.

The following probe conversion factors were used on the E-Field probe(s) used for the body worn measurements:

Description	Serial Number	f (MHz)	Conversion Factor	Cal Cert pg #
E-Field Probe ES3DV3	SN 3037	900	6.07	8 of 9
		1810	4.73	8 of 9
		1950	4.58	8 of 9

Body-Worn; Front of Phone 15mm from Phantom								
f (MHz)	Description	Conducted Output Power (dBm)	Temp (°C)	Drift (dB)	10g SAR value		1g SAR value	
					Measured (W/kg)	Extrapolated (W/kg)	Measured (W/kg)	Extrapolated (W/kg)
GSM 850MHz	Channel 128	32.92						
	Channel 190	32.99	19.7	-0.27	0.367	0.39	0.500	0.53
	Channel 251	32.92						
GSM 1900MHz	Channel 512	30.08						
	Channel 661	30.01	19.8	-0.12	0.117	0.12	0.195	0.20
	Channel 810	30.00						

Table 13: SAR measurement results at the highest possible output power, measured in a body-worn position against the ICNIRP and ANSI SAR Limit.

Body-Worn; Back of Phone 15mm from Phantom								
f (MHz)	Description	Conducted Output Power (dBm)	Temp (°C)	Drift (dB)	10g SAR value		1g SAR value	
					Measured (W/kg)	Extrapolated (W/kg)	Measured (W/kg)	Extrapolated (W/kg)
GSM 850MHz	Channel 128	32.92						
	Channel 190	32.99	19.7	-0.05	0.369	0.37	0.511	0.52
	Channel 251	32.92						
GSM 1900MHz	Channel 512	30.08						
	Channel 661	30.01	19.9	-0.04	0.240	0.24	0.404	0.41
	Channel 810	30.00						

Table 14: SAR measurement results at the highest possible output power, measured in a body-worn position against the ICNIRP and ANSI SAR Limit.

Body-Worn; Bluetooth (Highest Body) 15mm from Phantom								
f (MHz)	Description	Conducted Output Power (dBm)	Temp (°C)	Drift (dB)	10g SAR value		1g SAR value	
					Measured (W/kg)	Extrapolated (W/kg)	Measured (W/kg)	Extrapolated (W/kg)
GSM 850MHz	Channel 128	32.92						
	Channel 190	32.99	19.7	-0.19	0.347	0.36	0.473	0.49
	Channel 251	32.92						
GSM 1900MHz	Channel 512	30.08						
	Channel 661	30.01	19.8	-0.02	0.311	0.31	0.521	0.52
	Channel 810	30.00						

Table 15: SAR measurement results at the highest possible output power, measured in a body-worn position against the ICNIRP and ANSI SAR Limit.

Body-Worn; GPRS Class 10 (Highest Body) 25mm from Phantom								
f (MHz)	Description	Conducted Output Power (dBm)	Temp (°C)	Drift (dB)	10g SAR value		1g SAR value	
					Measured (W/kg)	Extrapolated (W/kg)	Measured (W/kg)	Extrapolated (W/kg)
GPRS 850MHz	Channel 128	32.92						
	Channel 190	32.99	19.7	-0.14	0.328	0.34	0.445	0.46
	Channel 251	32.92						
GPRS 1900MHz	Channel 512	30.08						
	Channel 661	30.01	19.8	-0.04	0.153	0.15	0.242	0.24
	Channel 810	30.00						

Table 16: SAR measurement results at the highest possible output power, measured in a body-worn position against the ICNIRP and ANSI SAR Limit.

Body-Worn; Edge Class 10 (Highest Body) 25mm from Phantom								
f (MHz)	Description	Conducted Output Power (dBm)	Temp (°C)	Drift (dB)	10g SAR value		1g SAR value	
					Measured (W/kg)	Extrapolated (W/kg)	Measured (W/kg)	Extrapolated (W/kg)
EDGE 850MHz	Channel 128	27.57						
	Channel 190	27.54	19.7	0.03	0.103	0.10	0.138	0.14
	Channel 251	27.41						
EDGE 1900MHz	Channel 512	26.55						
	Channel 661	26.57	19.8	0.00	0.073	0.07	0.116	0.12
	Channel 810	26.62						

Table 17: SAR measurement results at the highest possible output power, measured in a body-worn position against the ICNIRP and ANSI SAR Limit.

Body-Worn; Highest Body with SNN5781B								
f (MHz)	Description	Conducted Output Power (dBm)	Temp (°C)	Drift (dB)	10g SAR value		1g SAR value	
					Measured (W/kg)	Extrapolated (W/kg)	Measured (W/kg)	Extrapolated (W/kg)
GSM 850MHz	Channel 128	32.92						
	Channel 190	32.99	19.5	-0.26	0.394	0.42	0.543	0.58
	Channel 251	32.92						
GSM 1900MHz	Channel 512	30.08						
	Channel 661	30.01	18.3	-0.10	0.243	0.25	0.405	0.41
	Channel 810	30.00						

Table 18: SAR measurement results at the highest possible output power, measured in a body-worn position against the ICNIRP and ANSI SAR Limit.

Body-Worn; Highest Body with SNN5779B								
<i>f</i> (MHz)	Description	Conducted Output Power (dBm)	Temp (°C)	Drift (dB)	<i>10g SAR value</i>		<i>1g SAR value</i>	
					Measured (W/kg)	Extrapolated (W/kg)	Measured (W/kg)	Extrapolated (W/kg)
GSM 850MHz	Channel 128	32.92						
	Channel 190	32.99	19.9	-0.02	0.379	0.38	0.518	0.52
	Channel 251	32.92						
GSM 1900MHz	Channel 512	30.08						
	Channel 661	30.01	18.3	-0.11	0.275	0.28	0.462	0.47
	Channel 810	30.00						

Table 19: SAR measurement results at the highest possible output power, measured in a body-worn position against the ICNIRP and ANSI SAR Limit.

References

- [1] CENELEC, en50361:2001 “Basic standard for the measurement of Specific Absorption Rate related to human exposure to electromagnetic fields from mobile phones (300MHz – 3GHz)”
- [2] CENELEC, en50360:2001 “Product standard to demonstrate the compliance of mobile phones with the basic restrictions related to human exposure to electromagnetic fields (300MHz – 3GHz)”.
- [3] ANSI / IEEE, C95.1 1999 Edition “IEEE Standard for Safety Levels with Respect to Human Exposure to Radio Frequency Electromagnetic Fields, 3kHz to 300GHz”
- [4] FCC OET Bulletin 65 Supplement C 01-01
- [5] IEEE 1528 2003 Edition “IEEE Recommended Practice for Determining the Peak Spatial-Average Specific Absorption Rate (SAR) in the Human Head from Wireless Communications Devices: Measurement Techniques”
- [6] ICNIRP Guidelines “Guidelines for Limiting Exposure to Time-Varying Electric, Magnetic, and Electromagnetic Fields (up to 300 GHz)”

Appendix 1

SAR distribution comparison for the system accuracy verification

Date/Time: 3/2/2007 9:20:30 AM

Test Laboratory: Motorola

DUT: Dipole 900 MHz; Type: D900V2; Procedure Notes: 900 MHz System Performance Check /
Dipole Sn# 91; PM1 Power = 200 mW
Sim.Temp@ meas = 20.0°C; Sim.Temp@ SPC = 20.0°C; Room Temp@ SPC = 21.0°C

Communication System: CW - Dipole; Frequency: 900 MHz; Duty Cycle: 1:1
Medium: VALIDATION Only; Medium parameters used: $f = 900$ MHz; $\sigma = 0.96$ mho/m; $\epsilon_r = 40.5$; $\rho = 1000$ kg/m³

DASY4 Configuration:

- Probe: ES3DV3 - SN3037; ConvF(6.25, 6.25, 6.25); Calibrated: 11/23/2006
- Sensor-Surface: 4mm (Mechanical Surface Detection)
- Electronics: DAE4 Sn661; Calibrated: 9/1/2006
- Phantom: R1: Sugar SAM; Type: SAM; Serial: TP-1005;
- Measurement SW: DASY4, V4.7 Build 44; Postprocessing SW: SEMCAD, V1.8 Build 171

Daily SPC Check/Dipole Area Scan (4x9x1):

Measurement grid: dx=15mm, dy=15mm
Maximum value of SAR (measured) = 2.15 mW/g

Daily SPC Check/0-Degree 5x5x7 Cube (5x5x7)/Cube 0:

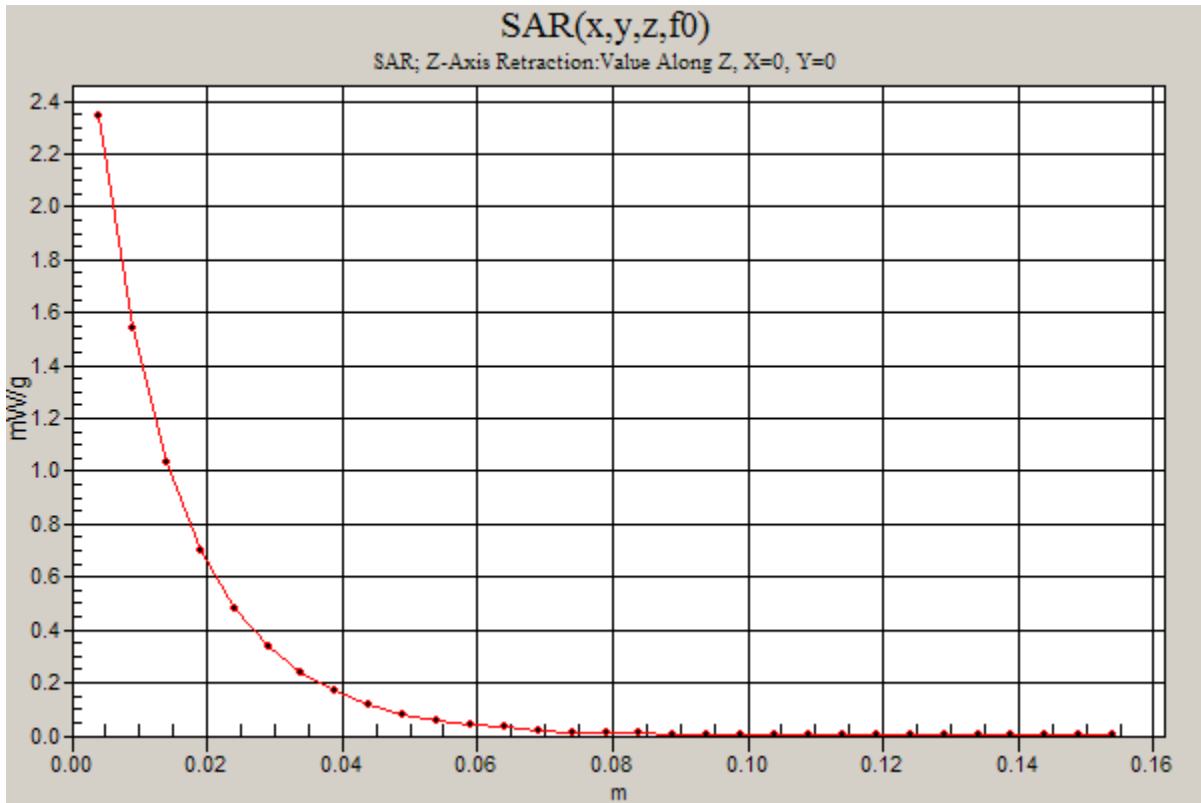
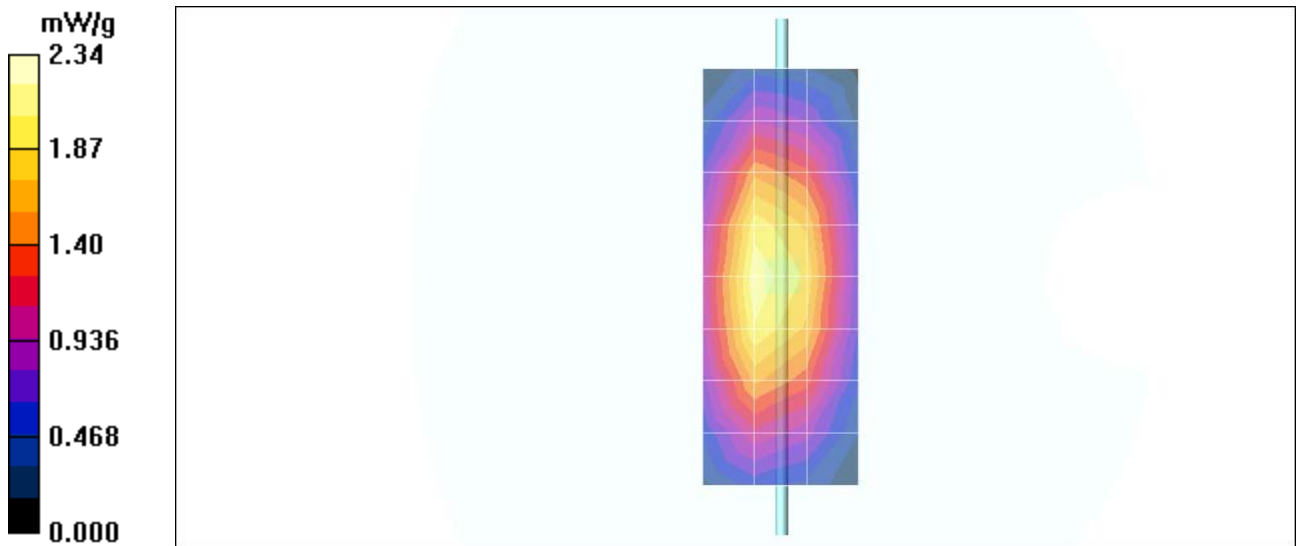
Measurement grid: dx=8mm, dy=8mm, dz=5mm
Reference Value = 49.3 V/m; Power Drift = -0.017 dB
Peak SAR (extrapolated) = 3.26 W/kg
SAR(1 g) = 2.15 mW/g; SAR(10 g) = 1.38 mW/g
Maximum value of SAR (measured) = 2.32 mW/g

Daily SPC Check/90-Degree 5x5x7 Cube (5x5x7)/Cube 0:

Measurement grid: dx=8mm, dy=8mm, dz=5mm
Reference Value = 49.3 V/m; Power Drift = -0.017 dB
Peak SAR (extrapolated) = 3.32 W/kg
SAR(1 g) = 2.18 mW/g; SAR(10 g) = 1.4 mW/g
Maximum value of SAR (measured) = 2.35 mW/g

Daily SPC Check/Z-Axis Retraction (1x1x31):

Measurement grid: dx=20mm, dy=20mm, dz=5mm
Maximum value of SAR (measured) = 2.34 mW/g



Date/Time: 3/5/2007 9:47:24 AM

Test Laboratory: Motorola

DUT: Dipole 900 MHz; Type: D900V2; Procedure Notes: 900 MHz System Performance Check /
Dipole Sn# 91; PM1 Power = 200 mW
Sim.Temp@ meas = 20.0°C; Sim.Temp@ SPC = 20.0°C; Room Temp@ SPC = 21.0°C

Communication System: CW - Dipole; Frequency: 900 MHz; Duty Cycle: 1:1
Medium: VALIDATION Only; Medium parameters used: $f = 900$ MHz; $\sigma = 0.97$ mho/m; $\epsilon_r = 40.9$; $\rho = 1000$ kg/m³

DASY4 Configuration:

- Probe: ES3DV3 - SN3037; ConvF(6.25, 6.25, 6.25); Calibrated: 11/23/2006
- Sensor-Surface: 4mm (Mechanical Surface Detection)
- Electronics: DAE4 Sn661; Calibrated: 9/1/2006
- Phantom: R1: Sugar SAM; Type: SAM; Serial: TP-1005;
- Measurement SW: DASY4, V4.7 Build 44; Postprocessing SW: SEMCAD, V1.8 Build 172

Daily SPC Check/Dipole Area Scan (4x9x1):

Measurement grid: dx=15mm, dy=15mm
Maximum value of SAR (measured) = 2.17 mW/g

Daily SPC Check/0-Degree 5x5x7 Cube (5x5x7)/Cube 0:

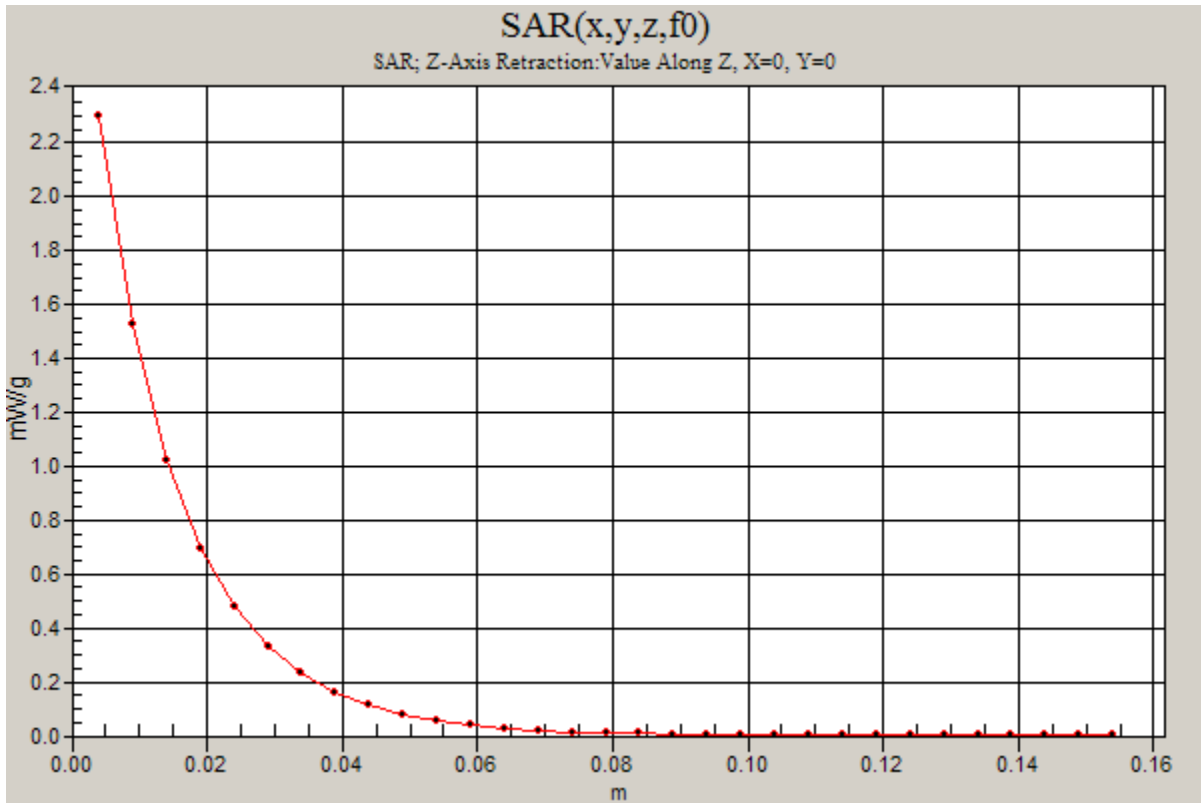
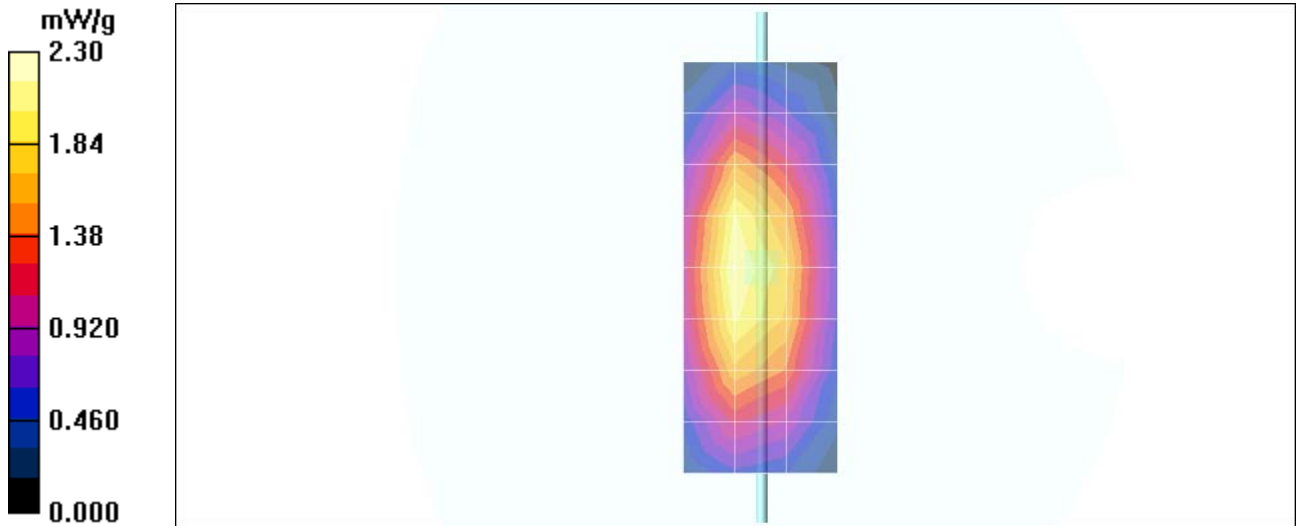
Measurement grid: dx=8mm, dy=8mm, dz=5mm
Reference Value = 49.1 V/m; Power Drift = -0.154 dB
Peak SAR (extrapolated) = 3.20 W/kg
SAR(1 g) = 2.11 mW/g; SAR(10 g) = 1.36 mW/g
Maximum value of SAR (measured) = 2.30 mW/g

Daily SPC Check/90-Degree 5x5x7 Cube (5x5x7)/Cube 0:

Measurement grid: dx=8mm, dy=8mm, dz=5mm
Reference Value = 49.1 V/m; Power Drift = -0.154 dB
Peak SAR (extrapolated) = 3.23 W/kg
SAR(1 g) = 2.15 mW/g; SAR(10 g) = 1.38 mW/g
Maximum value of SAR (measured) = 2.31 mW/g

Daily SPC Check/Z-Axis Retraction (1x1x31):

Measurement grid: dx=20mm, dy=20mm, dz=5mm



Date/Time: 3/12/2007 9:39:23 AM

Test Laboratory: Motorola

DUT: Dipole 900 MHz; Type: D900V2; Procedure Notes: 900 MHz System Performance Check /
Dipole Sn# 91; PM1 Power = 200 mW
Sim.Temp@ meas = 20.0°C; Sim.Temp@ SPC = 20.0°C; Room Temp@ SPC = 20.8°C

Communication System: CW - Dipole; Frequency: 900 MHz; Duty Cycle: 1:1
Medium: VALIDATION Only; Medium parameters used: $f = 900$ MHz; $\sigma = 0.98$ mho/m; $\epsilon_r = 41$; $\rho = 1000$ kg/m³

DASY4 Configuration:

- Probe: ES3DV3 - SN3037; ConvF(6.25, 6.25, 6.25); Calibrated: 11/23/2006
- Sensor-Surface: 4mm (Mechanical Surface Detection)
- Electronics: DAE4 Sn661; Calibrated: 9/1/2006
- Phantom: R1: Sugar SAM; Type: SAM; Serial: TP-1005;
- Measurement SW: DASY4, V4.7 Build 44; Postprocessing SW: SEMCAD, V1.8 Build 171

Daily SPC Check/Dipole Area Scan (4x9x1):

Measurement grid: dx=15mm, dy=15mm
Maximum value of SAR (measured) = 2.21 mW/g

Daily SPC Check/0-Degree 5x5x7 Cube (5x5x7)/Cube 0:

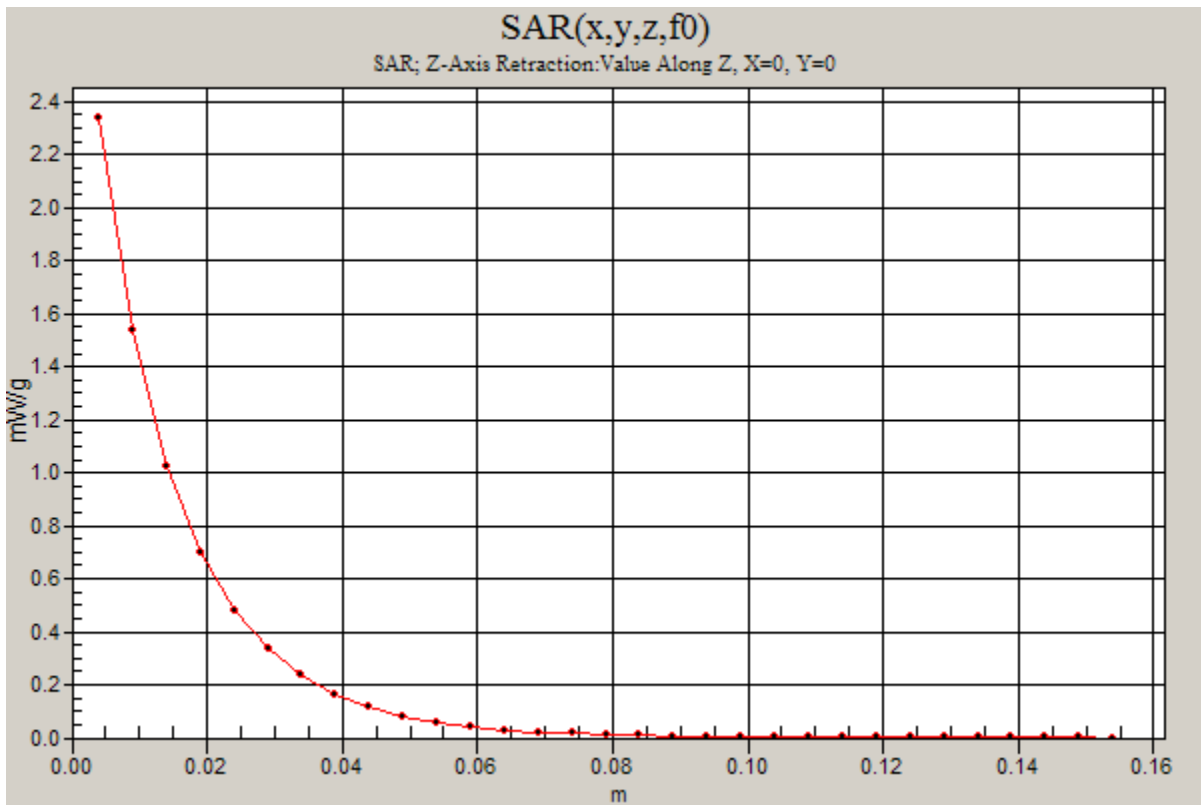
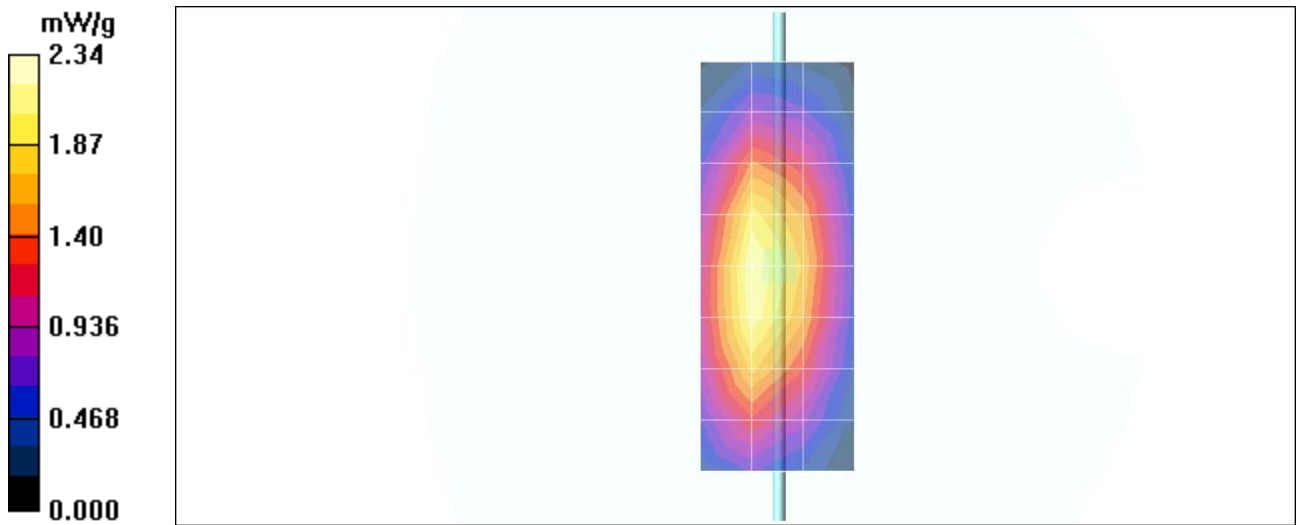
Measurement grid: dx=8mm, dy=8mm, dz=5mm
Reference Value = 48.1 V/m; Power Drift = -0.010 dB
Peak SAR (extrapolated) = 3.24 W/kg
SAR(1 g) = 2.15 mW/g; SAR(10 g) = 1.38 mW/g
Maximum value of SAR (measured) = 2.32 mW/g

Daily SPC Check/90-Degree 5x5x7 Cube (5x5x7)/Cube 0:

Measurement grid: dx=8mm, dy=8mm, dz=5mm
Reference Value = 48.1 V/m; Power Drift = -0.010 dB
Peak SAR (extrapolated) = 3.31 W/kg
SAR(1 g) = 2.19 mW/g; SAR(10 g) = 1.41 mW/g
Maximum value of SAR (measured) = 2.34 mW/g

Daily SPC Check/Z-Axis Retraction (1x1x31):

Measurement grid: dx=20mm, dy=20mm, dz=5mm



Date/Time: 3/13/2007 7:18:39 AM

Test Laboratory: Motorola

DUT: Dipole 900 MHz; Type: D900V2; Procedure Notes: 900 MHz System Performance Check /
Dipole Sn# 91; PM1 Power = 200 mW
Sim.Temp@ meas = 20°C; Sim.Temp@ SPC = 19.9°C; Room Temp@ SPC = 20.7°C

Communication System: CW - Dipole; Frequency: 900 MHz; Duty Cycle: 1:1
Medium: VALIDATION Only; Medium parameters used: $f = 900$ MHz; $\sigma = 0.97$ mho/m; $\epsilon_r = 40.4$; $\rho = 1000$ kg/m³

DASY4 Configuration:

- Probe: ES3DV3 - SN3037; ConvF(6.25, 6.25, 6.25); Calibrated: 11/23/2006
- Sensor-Surface: 4mm (Mechanical Surface Detection)
- Electronics: DAE4 Sn661; Calibrated: 9/1/2006
- Phantom: R1: Sugar SAM; Type: SAM; Serial: TP-1005;
- Measurement SW: DASY4, V4.7 Build 44; Postprocessing SW: SEMCAD, V1.8 Build 172

Daily SPC Check/Dipole Area Scan (4x9x1):

Measurement grid: dx=15mm, dy=15mm
Maximum value of SAR (measured) = 2.13 mW/g

Daily SPC Check/0-Degree 5x5x7 Cube (5x5x7)/Cube 0:

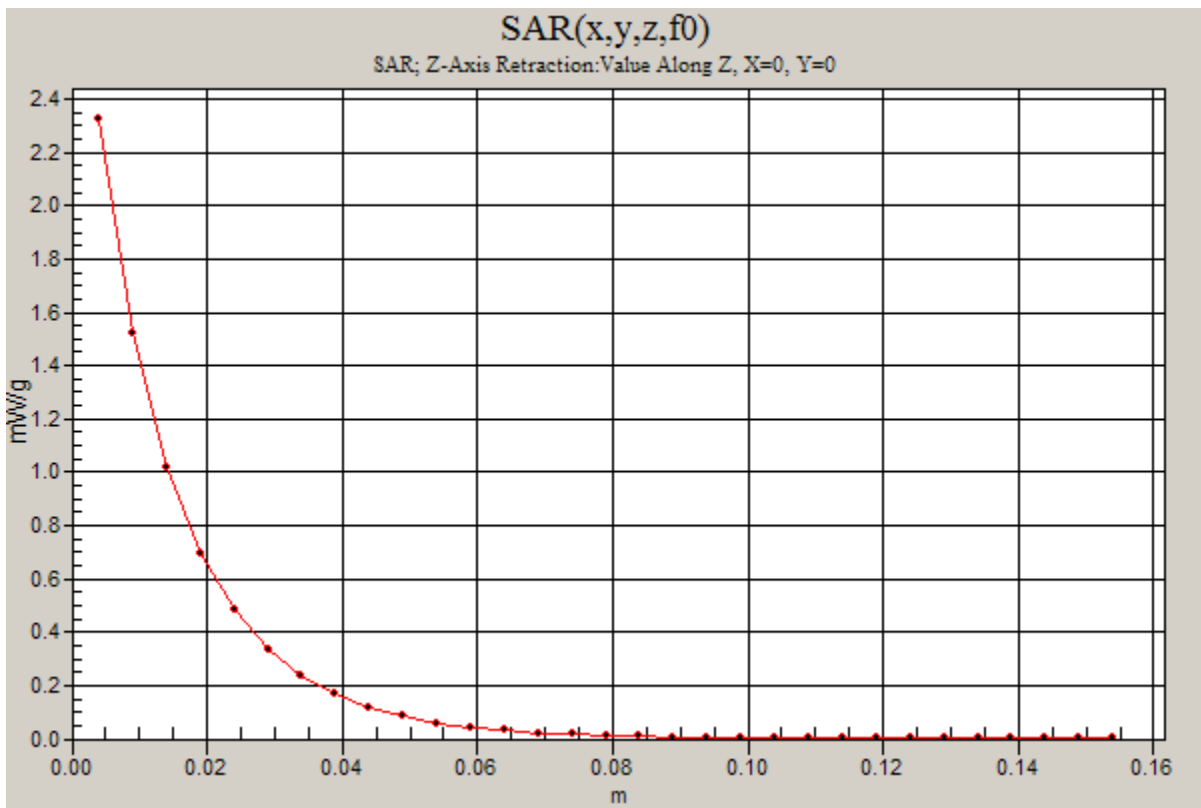
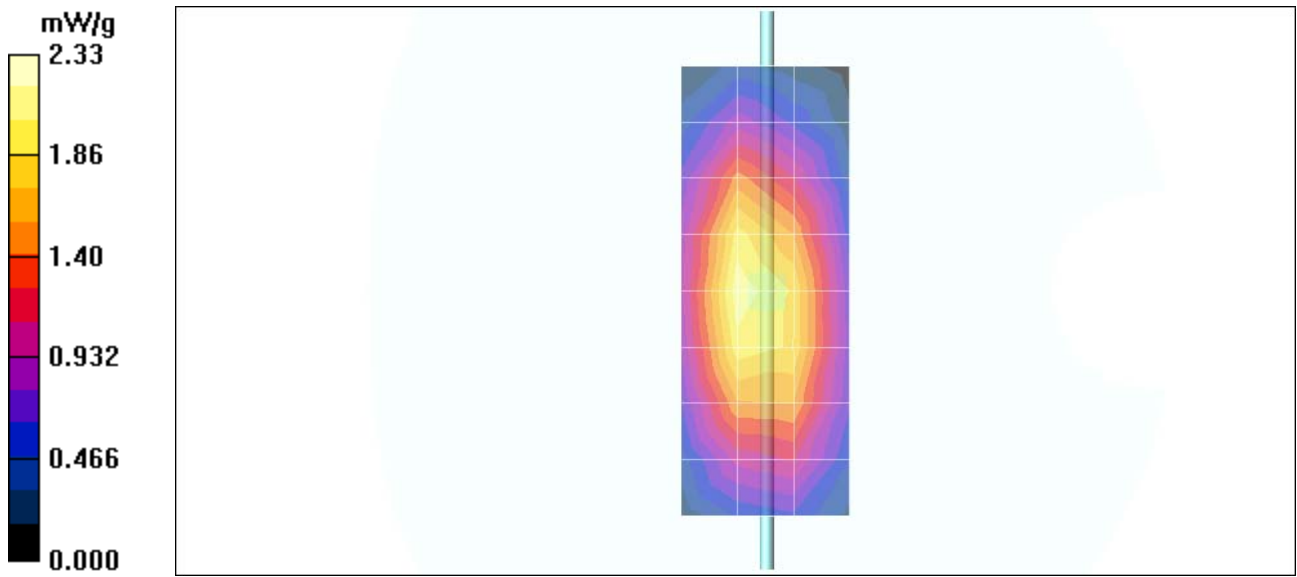
Measurement grid: dx=8mm, dy=8mm, dz=5mm
Reference Value = 49.0 V/m; Power Drift = -0.020 dB
Peak SAR (extrapolated) = 3.23 W/kg
SAR(1 g) = 2.14 mW/g; SAR(10 g) = 1.37 mW/g
Maximum value of SAR (measured) = 2.31 mW/g

Daily SPC Check/90-Degree 5x5x7 Cube (5x5x7)/Cube 0:

Measurement grid: dx=8mm, dy=8mm, dz=5mm
Reference Value = 49.0 V/m; Power Drift = -0.020 dB
Peak SAR (extrapolated) = 3.31 W/kg
SAR(1 g) = 2.18 mW/g; SAR(10 g) = 1.4 mW/g
Maximum value of SAR (measured) = 2.34 mW/g

Daily SPC Check/Z-Axis Retraction (1x1x31):

Measurement grid: dx=20mm, dy=20mm, dz=5mm
Maximum value of SAR (measured) = 2.33 mW/g



Date/Time: 3/4/2007 4:53:46 PM

Test Laboratory: Motorola

DUT: Dipole 1800 MHz; Type: D1800V2; Procedure Notes: 1800 MHz System Performance Check / Dipole Sn# 259tr; PM1 Power = 200 mW;
Sim.Temp@ meas = 19.6°C; Sim.Temp@ SPC = 19.5°C; Room Temp@ SPC = 20.7°C

Communication System: CW - Dipole; Frequency: 1800 MHz; Duty Cycle: 1:1
Medium: VALIDATION Only; Medium parameters used: $f = 1800$ MHz; $\sigma = 1.38$ mho/m; $\epsilon_r = 38.5$; $\rho = 1000$ kg/m³

DASY4 Configuration:

- Probe: ES3DV3 - SN3037; ConvF(5.17, 5.17, 5.17); Calibrated: 11/23/2006
- Sensor-Surface: 4mm (Mechanical Surface Detection)
- Electronics: DAE4 Sn661; Calibrated: 9/1/2006
- Phantom: R1: Glycol SAM; Type: SAM; Serial: TP-1139;
- Measurement SW: DASY4, V4.7 Build 44; Postprocessing SW: SEMCAD, V1.8 Build 171

Daily SPC Check/Dipole Area Scan (4x9x1):

Measurement grid: dx=15mm, dy=15mm
Maximum value of SAR (measured) = 7.23 mW/g

Daily SPC Check/0-Degree 5x5x7 Cube (5x5x7)/Cube 0:

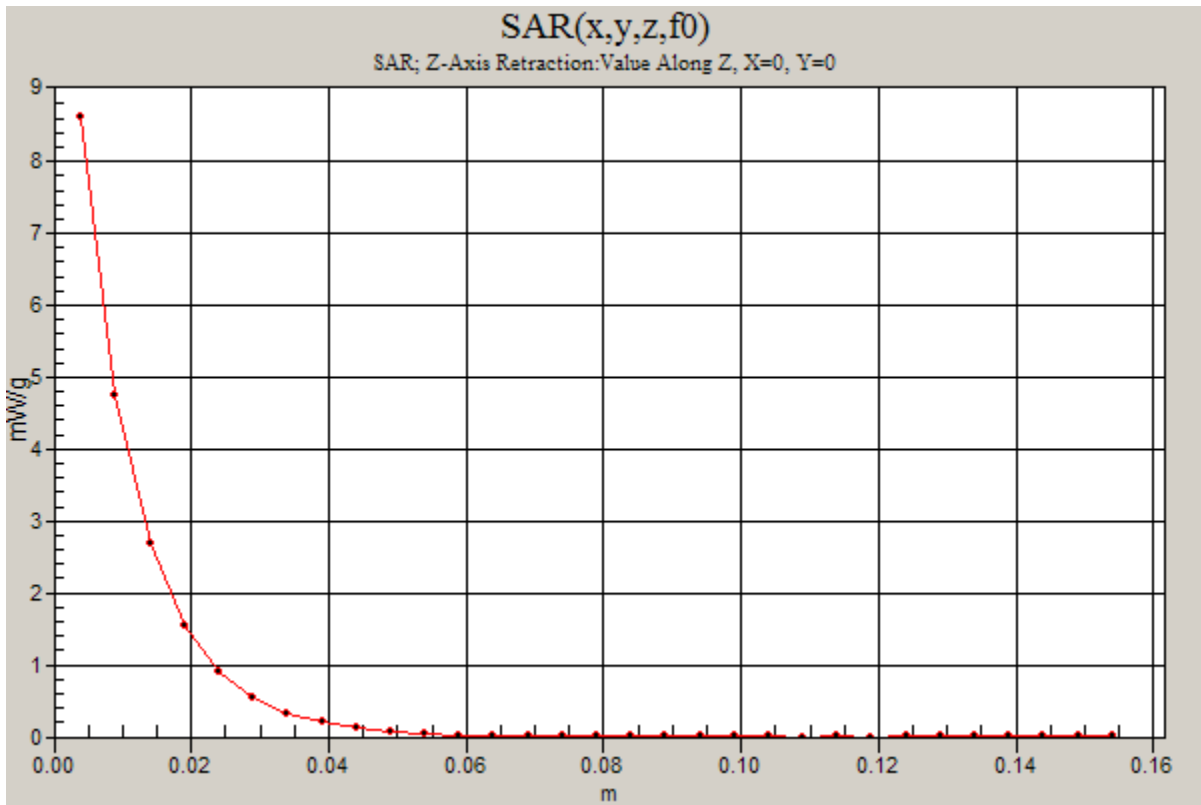
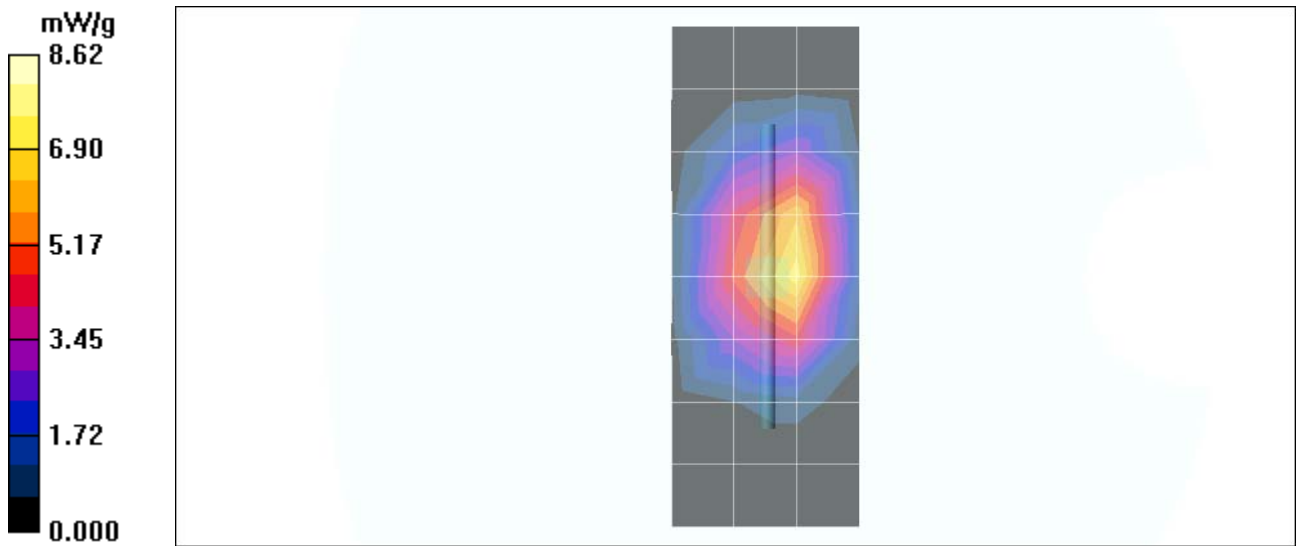
Measurement grid: dx=8mm, dy=8mm, dz=5mm
Reference Value = 78.3 V/m; Power Drift = 0.013 dB
Peak SAR (extrapolated) = 14.0 W/kg
SAR(1 g) = 7.62 mW/g; SAR(10 g) = 4 mW/g
Maximum value of SAR (measured) = 8.50 mW/g

Daily SPC Check/90-Degree 5x5x7 Cube (5x5x7)/Cube 0:

Measurement grid: dx=8mm, dy=8mm, dz=5mm
Reference Value = 78.3 V/m; Power Drift = 0.013 dB
Peak SAR (extrapolated) = 14.5 W/kg
SAR(1 g) = 7.82 mW/g; SAR(10 g) = 4.09 mW/g
Maximum value of SAR (measured) = 8.07 mW/g

Daily SPC Check/Z-Axis Retraction (1x1x31):

Measurement grid: dx=20mm, dy=20mm, dz=5mm
Maximum value of SAR (measured) = 8.62 mW/g



Date/Time: 3/6/2007 6:30:25 AM

Test Laboratory: Motorola

DUT: Dipole 1800 MHz; Type: D1800V2; Procedure Notes: 1800MHz System Performance Check / Dipole Sn# 259tr; PM1 Power = 200 mW
Sim.Temp@ meas = 19.4°C; Sim.Temp@ SPC = 19.8°C; Room Temp@ SPC = 20.3°C

Communication System: CW - Dipole; Frequency: 1800 MHz; Duty Cycle: 1:1
Medium: VALIDATION Only; Medium parameters used: $f = 1800$ MHz; $\sigma = 1.36$ mho/m; $\epsilon_r = 38.9$; $\rho = 1000$ kg/m³

DASY4 Configuration:

- Probe: ES3DV3 - SN3037; ConvF(5.17, 5.17, 5.17); Calibrated: 11/23/2006
- Sensor-Surface: 4mm (Mechanical Surface Detection)
- Electronics: DAE4 Sn661; Calibrated: 9/1/2006
- Phantom: R1: Sect.2, Amy Twin; Type: Amy Twin Flat; Serial: n/a;
- Measurement SW: DASY4, V4.7 Build 44; Postprocessing SW: SEMCAD, V1.8 Build 172

Daily SPC Check/Dipole Area Scan (9x4x1):

Measurement grid: dx=15mm, dy=15mm
Maximum value of SAR (measured) = 7.02 mW/g

Daily SPC Check/0-Degree 5x5x7 Cube (5x5x7)/Cube 0:

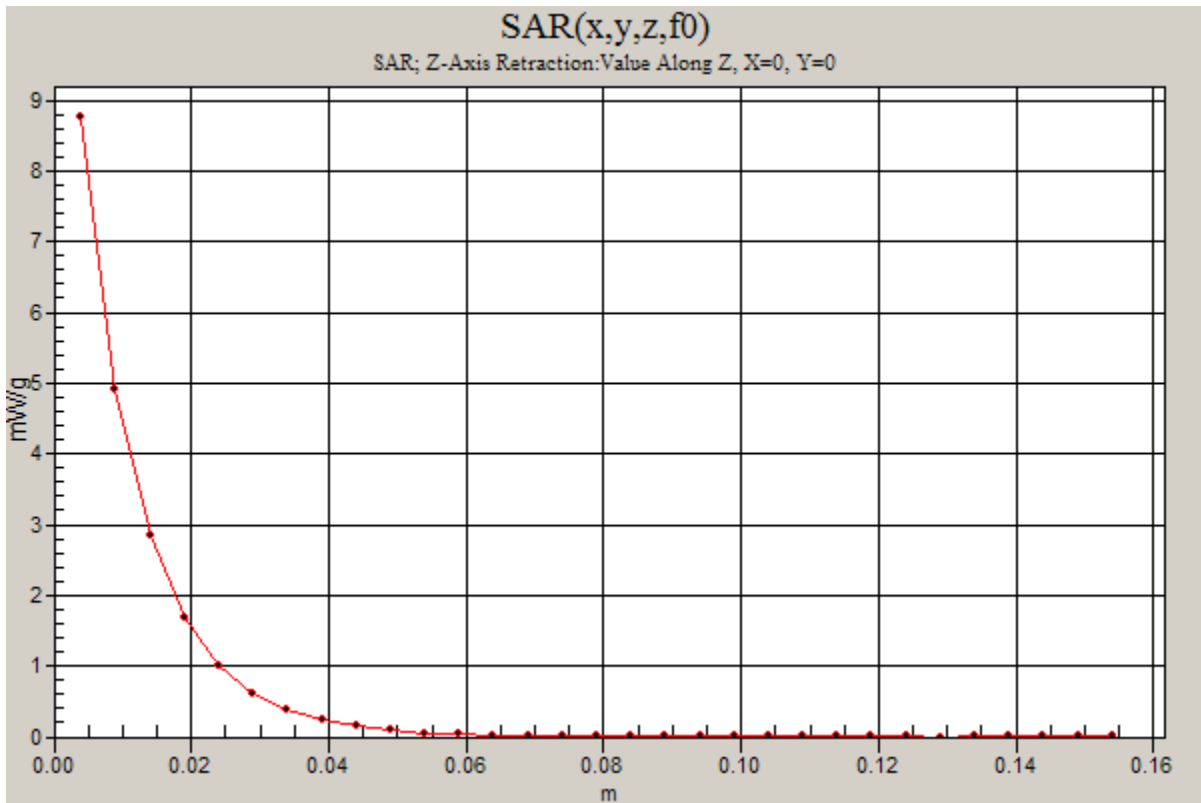
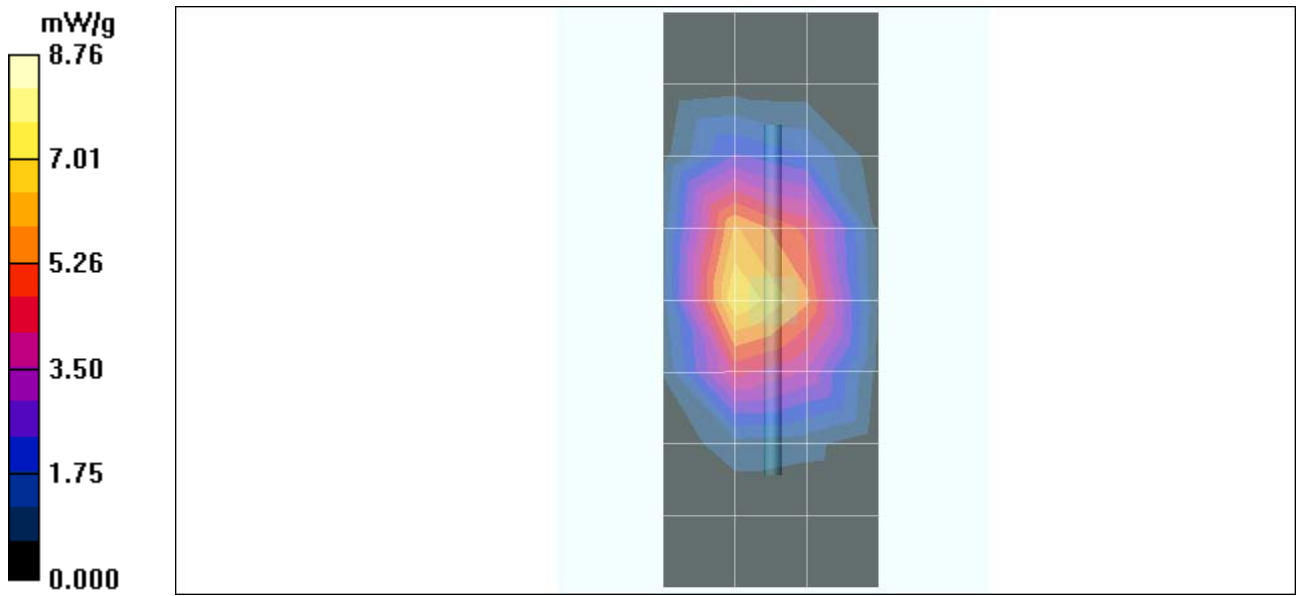
Measurement grid: dx=8mm, dy=8mm, dz=5mm
Reference Value = 79.6 V/m; Power Drift = 0.023 dB
Peak SAR (extrapolated) = 14.2 W/kg
SAR(1 g) = 7.81 mW/g; SAR(10 g) = 4.13 mW/g
Maximum value of SAR (measured) = 8.72 mW/g

Daily SPC Check/90-Degree 5x5x7 Cube (5x5x7)/Cube 0:

Measurement grid: dx=8mm, dy=8mm, dz=5mm
Reference Value = 79.6 V/m; Power Drift = 0.023 dB
Peak SAR (extrapolated) = 14.5 W/kg
SAR(1 g) = 7.95 mW/g; SAR(10 g) = 4.21 mW/g
Maximum value of SAR (measured) = 8.88 mW/g

Daily SPC Check/Z-Axis Retraction (1x1x31):

Measurement grid: dx=20mm, dy=20mm, dz=5mm
Maximum value of SAR (measured) = 8.76 mW/g



Date/Time: 3/9/2007 8:00:09 AM

Test Laboratory: Motorola

DUT: Dipole 1800 MHz; Type: D1800V2; Procedure Notes: 1800MHz System Performance Check / Dipole Sn# 259TR; PM1 Power = 200mW
 Sim.Temp@ meas = 19.8°C; Sim.Temp@ SPC = 19.5°C; Room Temp@ SPC = 21.1°C

Communication System: CW - Dipole; Frequency: 1800 MHz; Duty Cycle: 1:1
 Medium: VALIDATION Only; Medium parameters used: $f = 1800$ MHz; $\sigma = 1.35$ mho/m; $\epsilon_r = 40.1$; $\rho = 1000$ kg/m³

DASY4 Configuration:

- Probe: ES3DV3 - SN3037; ConvF(5.17, 5.17, 5.17); Calibrated: 11/23/2006
- Sensor-Surface: 4mm (Mechanical Surface Detection)
- Electronics: DAE4 Sn661; Calibrated: 9/1/2006
- Phantom: R1: Sect.2, Amy Twin; Type: Amy Twin Flat; Serial: n/a;
- Measurement SW: DASY4, V4.7 Build 44; Postprocessing SW: SEMCAD, V1.8 Build 171

Daily SPC Check/Dipole Area Scan (9x4x1):

Measurement grid: dx=15mm, dy=15mm
 Maximum value of SAR (measured) = 8.28 mW/g

Daily SPC Check/0-Degree 5x5x7 Cube (5x5x7)/Cube 0:

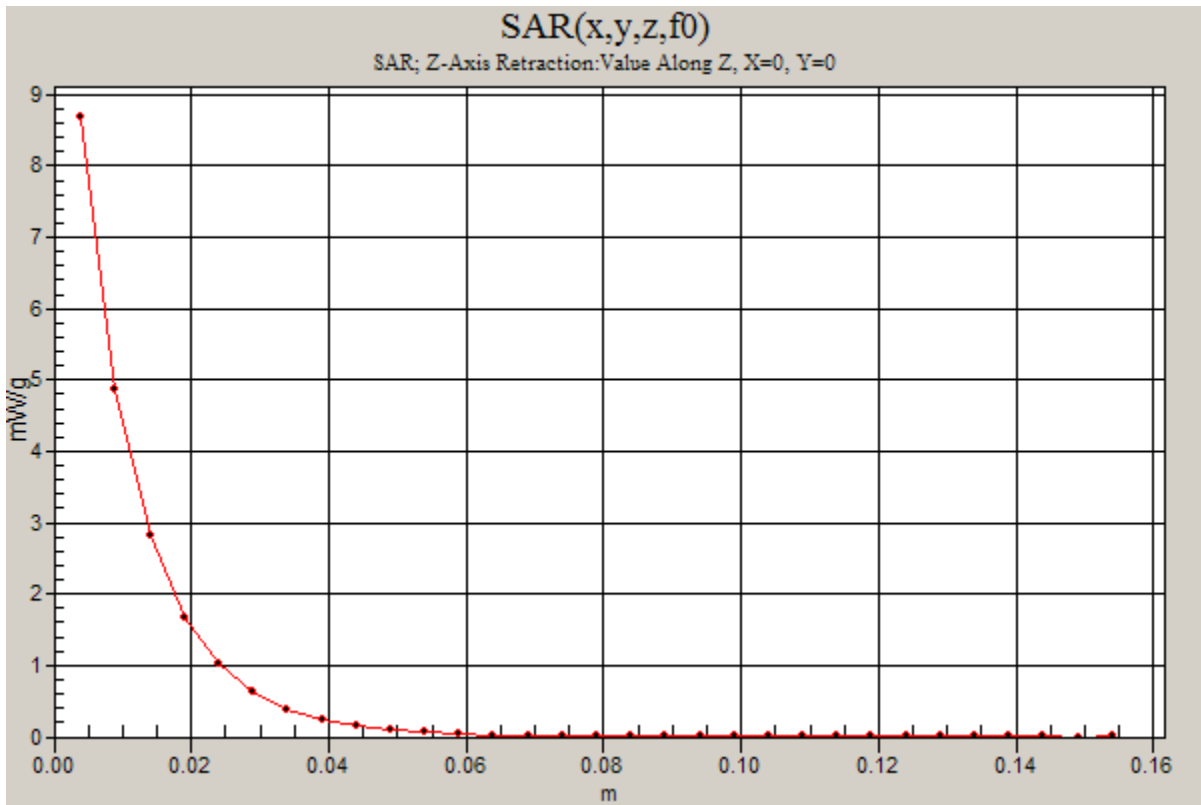
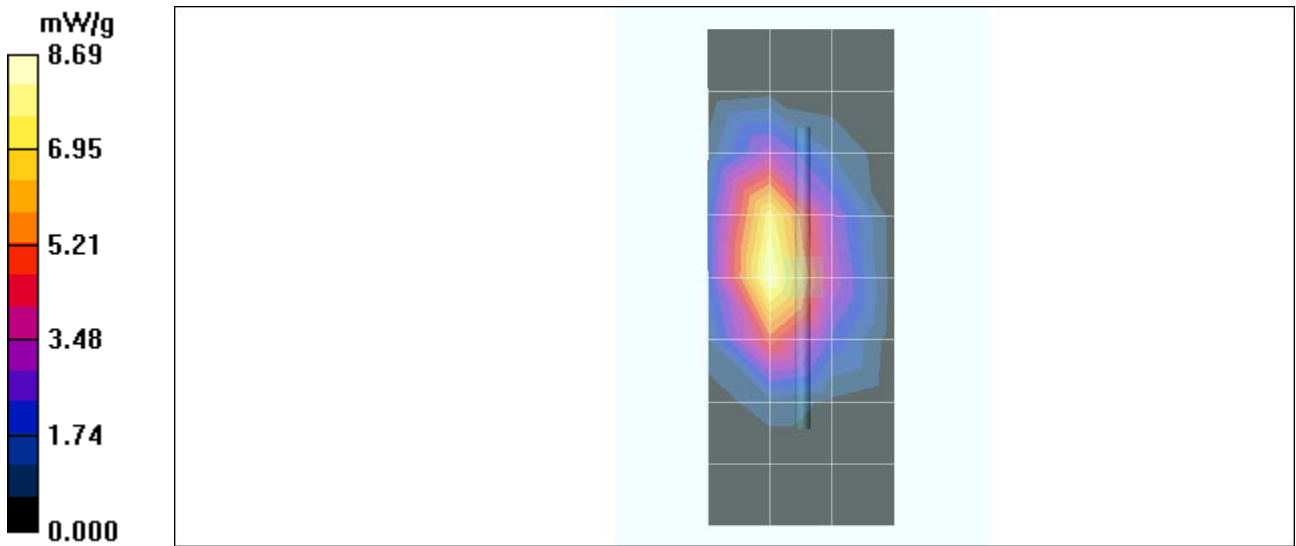
Measurement grid: dx=8mm, dy=8mm, dz=5mm
 Reference Value = 72.5 V/m; Power Drift = 0.041 dB
 Peak SAR (extrapolated) = 14.1 W/kg
SAR(1 g) = 7.73 mW/g; SAR(10 g) = 4.1 mW/g
 Maximum value of SAR (measured) = 8.62 mW/g

Daily SPC Check/90-Degree 5x5x7 Cube (5x5x7)/Cube 0:

Measurement grid: dx=8mm, dy=8mm, dz=5mm
 Reference Value = 72.5 V/m; Power Drift = 0.041 dB
 Peak SAR (extrapolated) = 14.2 W/kg
SAR(1 g) = 7.82 mW/g; SAR(10 g) = 4.16 mW/g
 Maximum value of SAR (measured) = 7.87 mW/g

Daily SPC Check/Z-Axis Retraction (1x1x31):

Measurement grid: dx=20mm, dy=20mm, dz=5mm
 Maximum value of SAR (measured) = 8.69 mW/g



Date/Time: 3/10/2007 6:20:13 PM

Test Laboratory: Motorola

DUT: Dipole 1800 MHz; Type: D1800V2; Procedure Notes: 1800 MHz System Performance Check / Dipole Sn# 259tr; PM1 Power = 200 mW
 Sim.Temp@ meas = 19.6°C; Sim.Temp@ SPC = 19.7°C; Room Temp@ SPC = 20.9°C

Communication System: CW - Dipole; Frequency: 1800 MHz; Duty Cycle: 1:1
 Medium: VALIDATION Only; Medium parameters used: $f = 1800$ MHz; $\sigma = 1.33$ mho/m; $\epsilon_r = 40$; $\rho = 1000$ kg/m³

DASY4 Configuration:

- Probe: ES3DV3 - SN3037; ConvF(5.17, 5.17, 5.17); Calibrated: 11/23/2006
- Sensor-Surface: 4mm (Mechanical Surface Detection)
- Electronics: DAE4 Sn661; Calibrated: 9/1/2006
- Phantom: R1: Glycol SAM; Type: SAM; Serial: TP-1139;
- Measurement SW: DASY4, V4.7 Build 44; Postprocessing SW: SEMCAD, V1.8 Build 171

Daily SPC Check/Dipole Area Scan (4x9x1):

Measurement grid: dx=15mm, dy=15mm
 Maximum value of SAR (measured) = 6.92 mW/g

Daily SPC Check/0-Degree 5x5x7 Cube (5x5x7)/Cube 0:

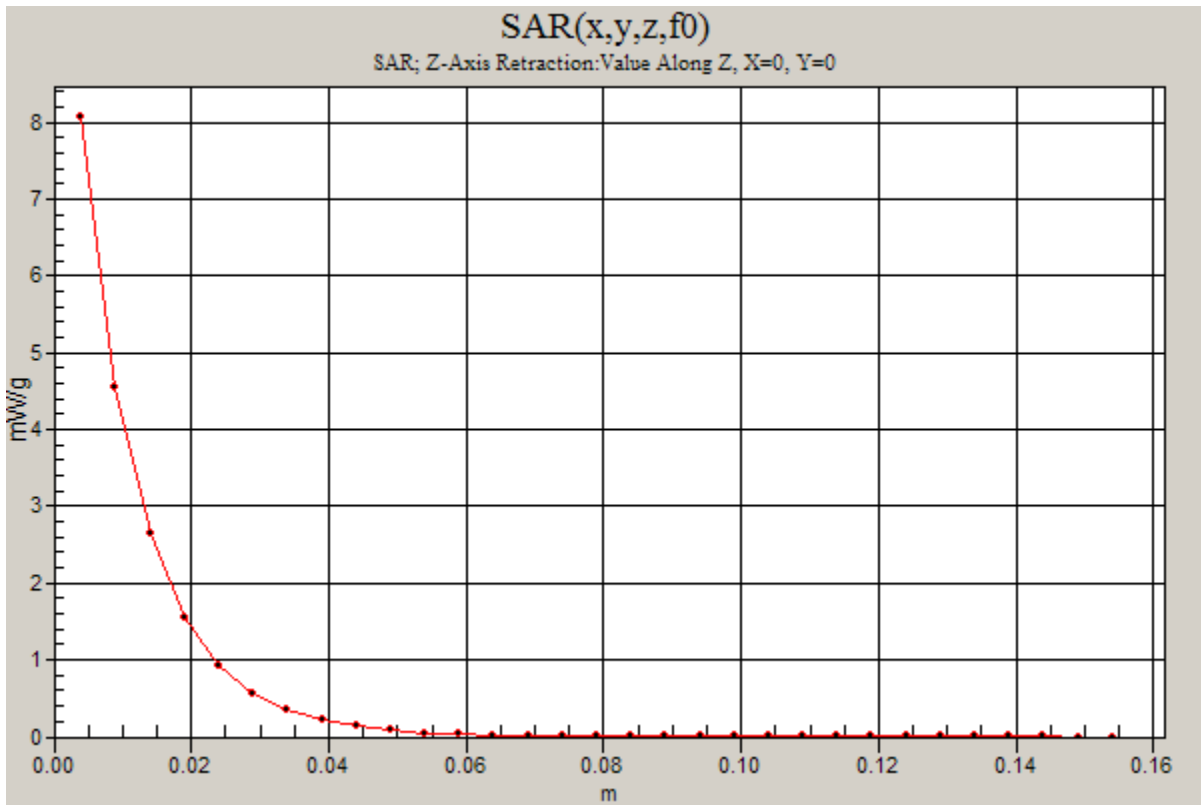
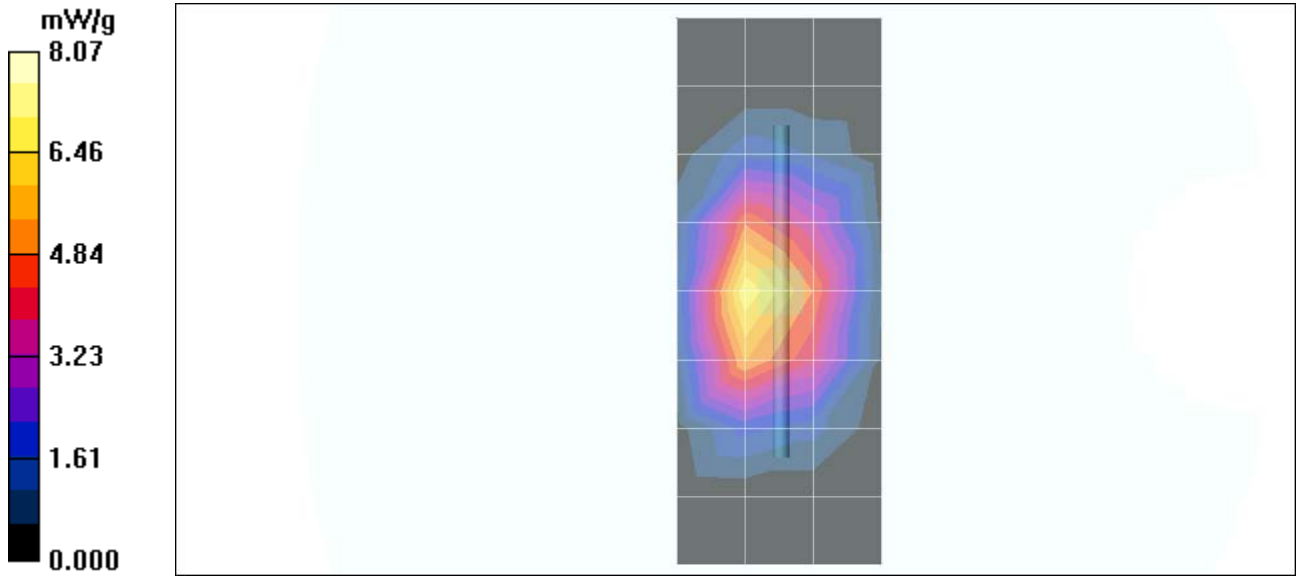
Measurement grid: dx=8mm, dy=8mm, dz=5mm
 Reference Value = 77.8 V/m; Power Drift = -0.019 dB
 Peak SAR (extrapolated) = 13.2 W/kg
SAR(1 g) = 7.29 mW/g; SAR(10 g) = 3.87 mW/g
 Maximum value of SAR (measured) = 8.05 mW/g

Daily SPC Check/90-Degree 5x5x7 Cube (5x5x7)/Cube 0:

Measurement grid: dx=8mm, dy=8mm, dz=5mm
 Reference Value = 77.8 V/m; Power Drift = -0.019 dB
 Peak SAR (extrapolated) = 13.5 W/kg
SAR(1 g) = 7.39 mW/g; SAR(10 g) = 3.92 mW/g
 Maximum value of SAR (measured) = 7.99 mW/g

Daily SPC Check/Z-Axis Retraction (1x1x31):

Measurement grid: dx=20mm, dy=20mm, dz=5mm
 Maximum value of SAR (measured) = 8.07 mW/g



Date/Time: 3/13/2007 6:33:04 AM

Test Laboratory: Motorola

DUT: Dipole 1800 MHz; Type: D1800V2; Procedure Notes: 1800 MHz System Performance Check / Dipole Sn# 259tr; PM1 Power = 200 mW
Sim.Temp@ meas = 19.4°C; Sim.Temp@ SPC = 20.1°C; Room Temp@ SPC = 20.7°C

Communication System: CW - Dipole; Frequency: 1800 MHz; Duty Cycle: 1:1
Medium: VALIDATION Only; Medium parameters used: $f = 1800$ MHz; $\sigma = 1.35$ mho/m; $\epsilon_r = 39.3$; $\rho = 1000$ kg/m³

DASY4 Configuration:

- Probe: ES3DV3 - SN3037; ConvF(5.17, 5.17, 5.17); Calibrated: 11/23/2006
- Sensor-Surface: 4mm (Mechanical Surface Detection)
- Electronics: DAE4 Sn661; Calibrated: 9/1/2006
- Phantom: R1: Sect.2, Amy Twin; Type: Amy Twin Flat; Serial: n/a;
- Measurement SW: DASY4, V4.7 Build 44; Postprocessing SW: SEMCAD, V1.8 Build 171

Daily SPC Check/Dipole Area Scan (9x4x1):

Measurement grid: dx=15mm, dy=15mm
Maximum value of SAR (measured) = 7.88 mW/g

Daily SPC Check/0-Degree 5x5x7 Cube (5x5x7)/Cube 0:

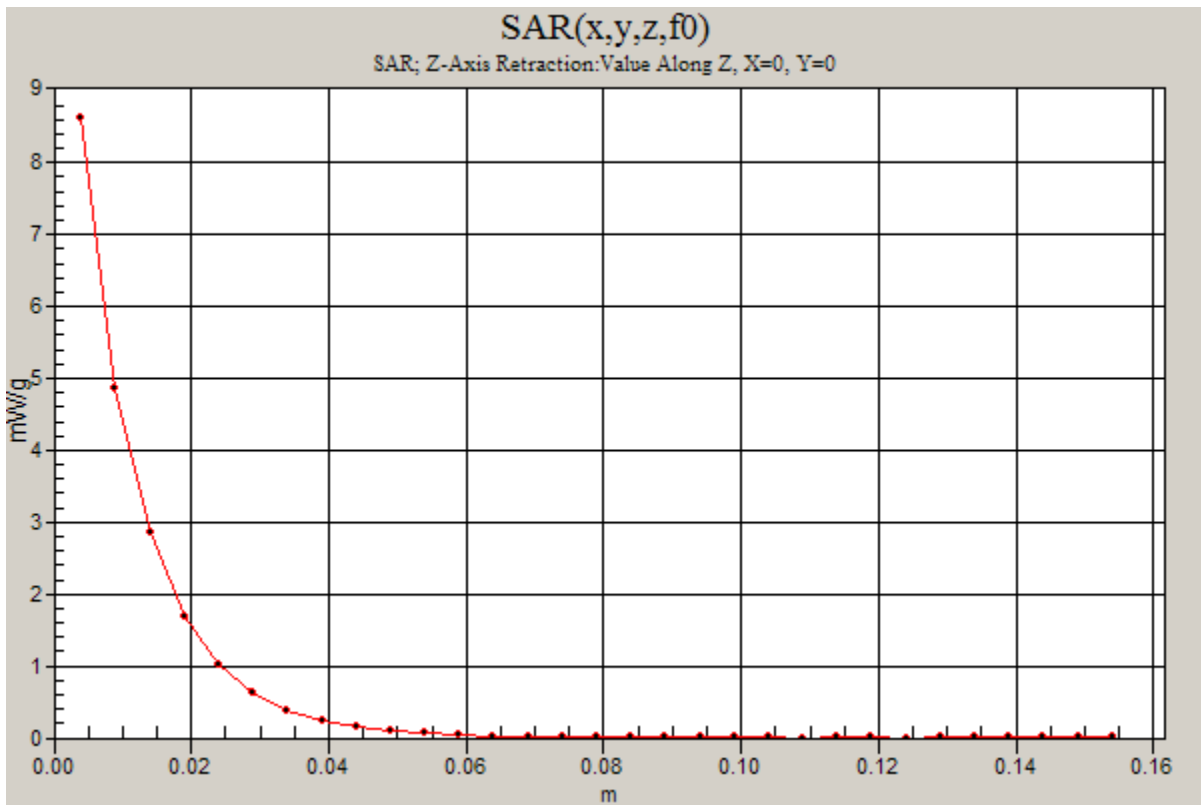
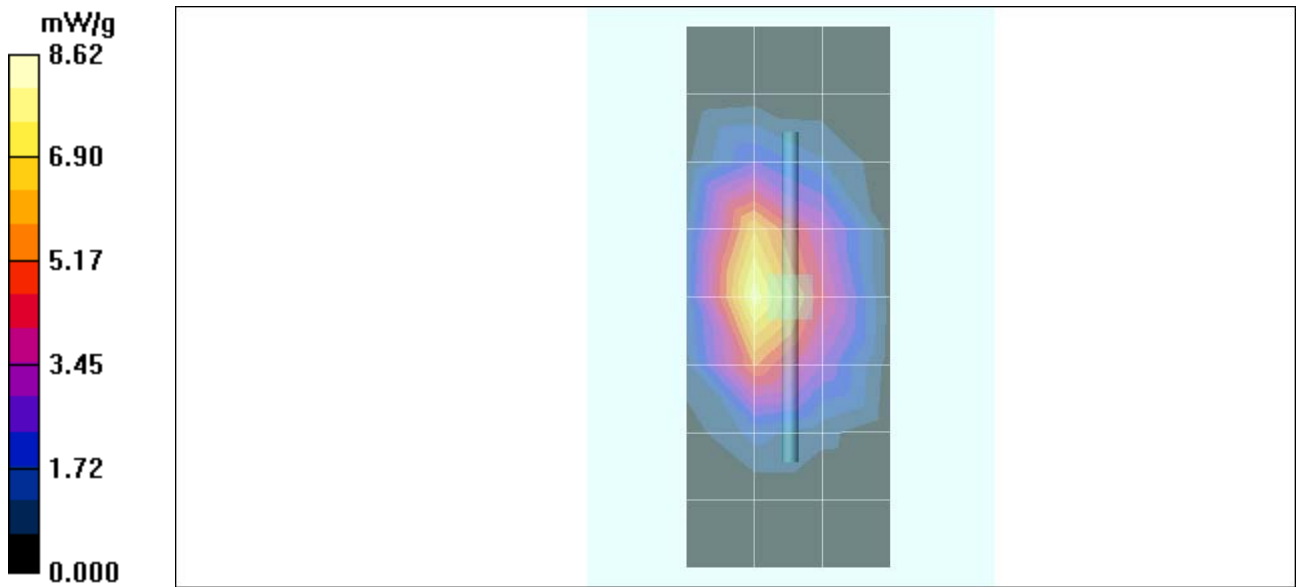
Measurement grid: dx=8mm, dy=8mm, dz=5mm
Reference Value = 76.5 V/m; Power Drift = -0.002 dB
Peak SAR (extrapolated) = 13.8 W/kg
SAR(1 g) = 7.65 mW/g; SAR(10 g) = 4.07 mW/g
Maximum value of SAR (measured) = 8.48 mW/g

Daily SPC Check/90-Degree 5x5x7 Cube (5x5x7)/Cube 0:

Measurement grid: dx=8mm, dy=8mm, dz=5mm
Reference Value = 76.5 V/m; Power Drift = -0.002 dB
Peak SAR (extrapolated) = 14.2 W/kg
SAR(1 g) = 7.84 mW/g; SAR(10 g) = 4.17 mW/g
Maximum value of SAR (measured) = 8.72 mW/g

Daily SPC Check/Z-Axis Retraction (1x1x31):

Measurement grid: dx=20mm, dy=20mm, dz=5mm
Maximum value of SAR (measured) = 8.62 mW/g



Date/Time: 3/21/2007 6:36:15 AM

Test Laboratory: Motorola

DUT: Dipole 1800 MHz; Type: D1800V2; Procedure Notes: 1800 MHz System Performance Check / Dipole Sn# 259tr; PM1 Power = 200 mW
Sim.Temp@ meas = 20.0°C; Sim.Temp@ SPC = 19.9°C; Room Temp@ SPC = 20.2°C

Communication System: CW - Dipole; Frequency: 1800 MHz; Duty Cycle: 1:1
Medium: VALIDATION Only; Medium parameters used: $f = 1800$ MHz; $\sigma = 1.37$ mho/m; $\epsilon_r = 38.8$; $\rho = 1000$ kg/m³

DASY4 Configuration:

- Probe: ES3DV3 - SN3037; ConvF(5.17, 5.17, 5.17); Calibrated: 11/23/2006
- Sensor-Surface: 4mm (Mechanical Surface Detection)
- Electronics: DAE4 Sn661; Calibrated: 9/1/2006
- Phantom: R1: Sect.2, Amy Twin; Type: Amy Twin Flat; Serial: n/a;
- Measurement SW: DASY4, V4.7 Build 53; Postprocessing SW: SEMCAD, V1.8 Build 172

Daily SPC Check/Dipole Area Scan (9x4x1):

Measurement grid: dx=15mm, dy=15mm
Maximum value of SAR (measured) = 7.95 mW/g

Daily SPC Check/0-Degree 5x5x7 Cube (5x5x7)/Cube 0:

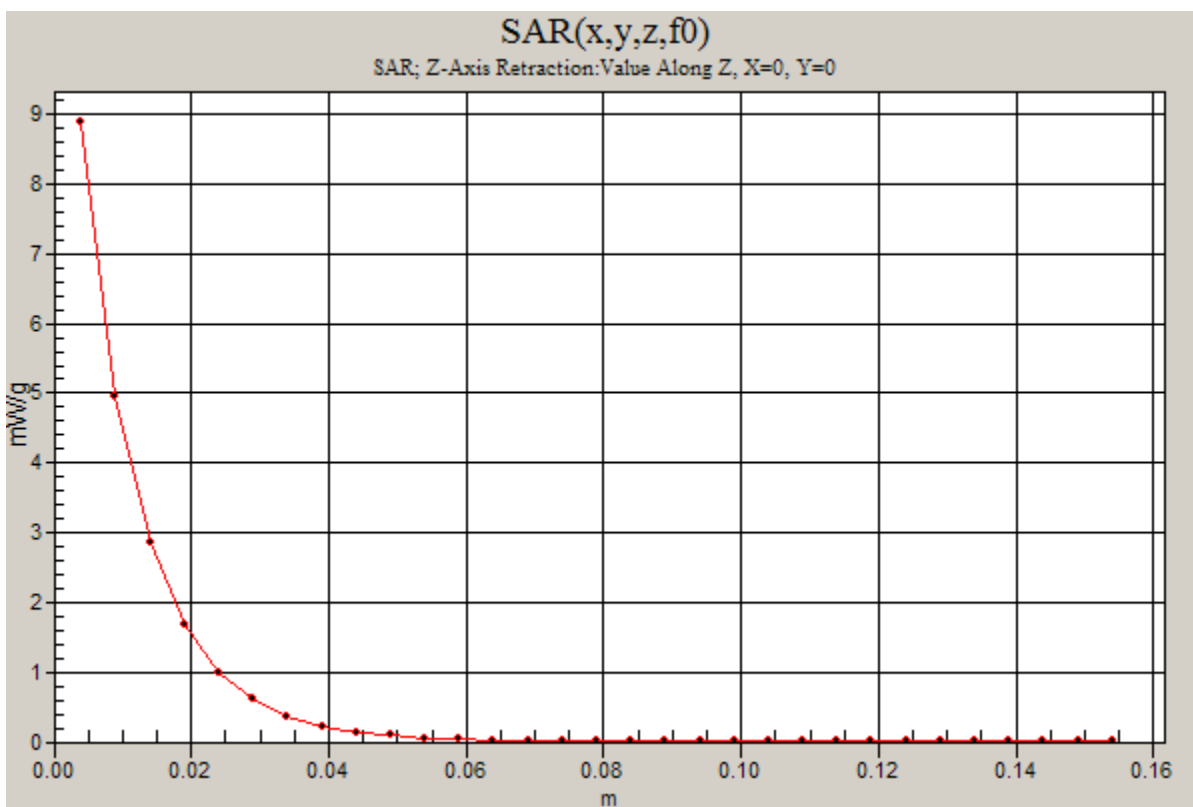
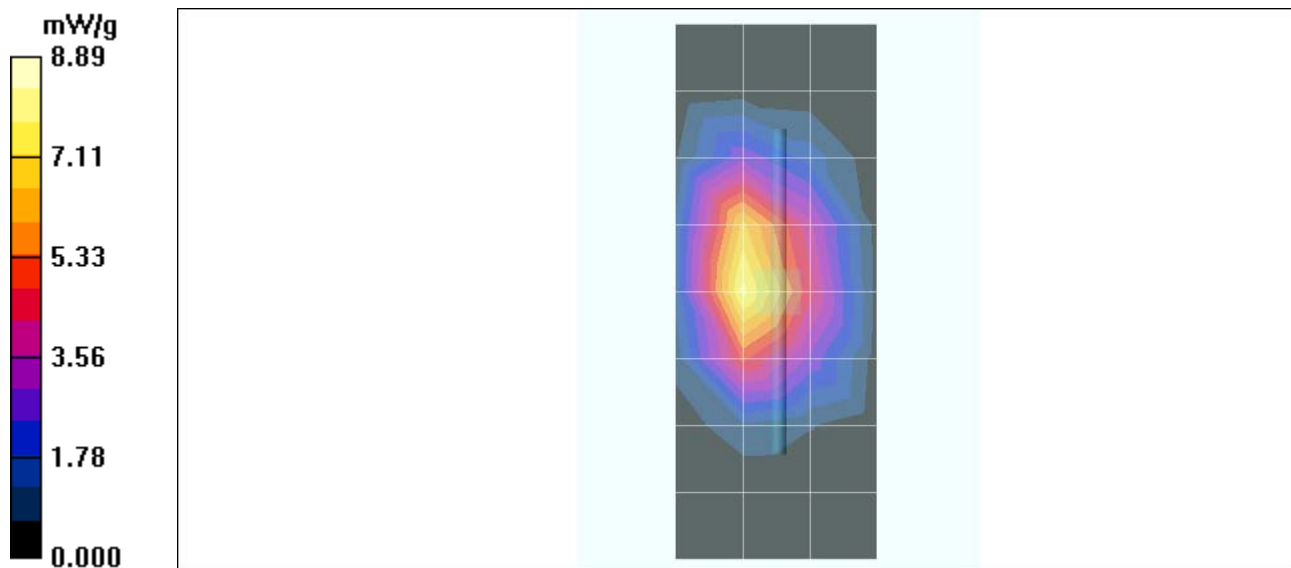
Measurement grid: dx=8mm, dy=8mm, dz=5mm
Reference Value = 77.3 V/m; Power Drift = 0.023 dB
Peak SAR (extrapolated) = 14.4 W/kg
SAR(1 g) = 7.86 mW/g; SAR(10 g) = 4.15 mW/g
Maximum value of SAR (measured) = 8.81 mW/g

Daily SPC Check/90-Degree 5x5x7 Cube (5x5x7)/Cube 0:

Measurement grid: dx=8mm, dy=8mm, dz=5mm
Reference Value = 77.3 V/m; Power Drift = 0.023 dB
Peak SAR (extrapolated) = 14.9 W/kg
SAR(1 g) = 8.1 mW/g; SAR(10 g) = 4.26 mW/g
Maximum value of SAR (measured) = 9.10 mW/g

Daily SPC Check/Z-Axis Retraction (1x1x31):

Measurement grid: dx=20mm, dy=20mm, dz=5mm
Maximum value of SAR (measured) = 8.89 mW/g



Date/Time: 3/10/2007 5:38:45 AM

Test Laboratory: Motorola

DUT: Dipole 1900 MHz; Type: D1900V2; Procedure Notes: 1900MHz System Performance Check / Dipole Sn# 533tr; PM1 Power = 200mW
 Sim.Temp@ meas = 20°C; Sim.Temp@ SPC = 20°C; Room Temp@ SPC = 21°C

Communication System: CW - Dipole; Frequency: 1900 MHz; Duty Cycle: 1:1
 Medium: VALIDATION Only; Medium parameters used: $f = 1900$ MHz; $\sigma = 1.46$ mho/m; $\epsilon_r = 39$; $\rho = 1000$ kg/m³

DASY4 Configuration:

- Probe: ES3DV3 - SN3037; ConvF(5.17, 5.17, 5.17); Calibrated: 11/23/2006
- Sensor-Surface: 4mm (Mechanical Surface Detection)
- Electronics: DAE4 Sn661; Calibrated: 9/1/2006
- Phantom: R1: Glycol SAM; Type: SAM; Serial: TP-1139;
- Measurement SW: DASY4, V4.7 Build 44; Postprocessing SW: SEMCAD, V1.8 Build 172

Daily SPC Check/Dipole Area Scan (4x9x1):

Measurement grid: dx=15mm, dy=15mm
 Maximum value of SAR (measured) = 7.20 mW/g

Daily SPC Check/0-Degree 5x5x7 Cube (5x5x7)/Cube 0:

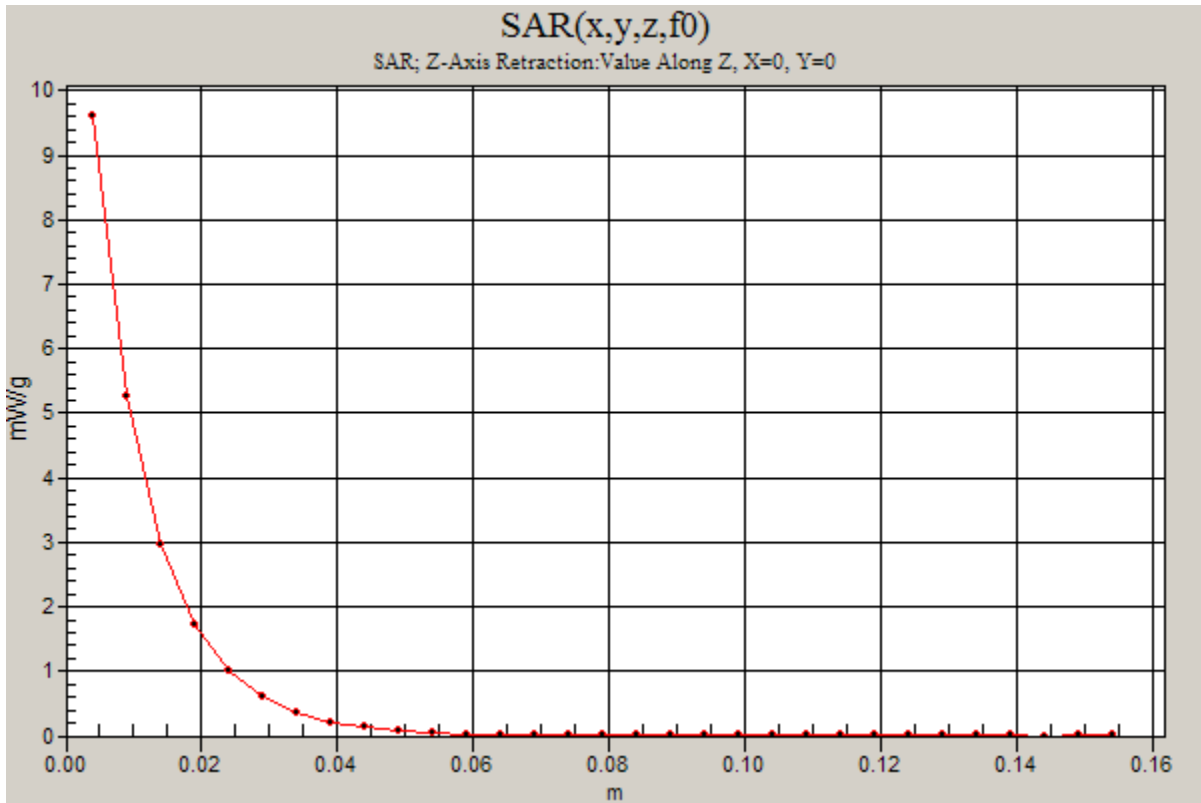
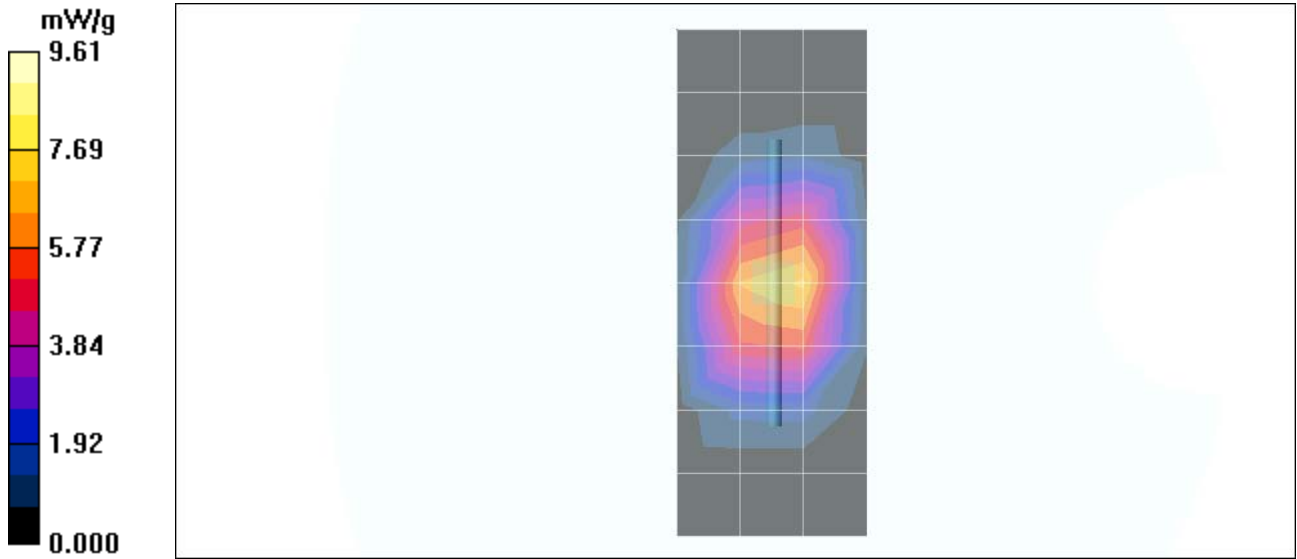
Measurement grid: dx=8mm, dy=8mm, dz=5mm
 Reference Value = 82.2 V/m; Power Drift = 0.014 dB
 Peak SAR (extrapolated) = 15.9 W/kg
SAR(1 g) = 8.54 mW/g; SAR(10 g) = 4.42 mW/g
 Maximum value of SAR (measured) = 9.53 mW/g

Daily SPC Check/90-Degree 5x5x7 Cube (5x5x7)/Cube 0:

Measurement grid: dx=8mm, dy=8mm, dz=5mm
 Reference Value = 82.2 V/m; Power Drift = 0.014 dB
 Peak SAR (extrapolated) = 16.2 W/kg
SAR(1 g) = 8.67 mW/g; SAR(10 g) = 4.48 mW/g
 Maximum value of SAR (measured) = 9.68 mW/g

Daily SPC Check/Z-Axis Retraction (1x1x31):

Measurement grid: dx=20mm, dy=20mm, dz=5mm
 Maximum value of SAR (measured) = 9.61 mW/g



Date/Time: 3/11/2007 8:17:17 AM

Test Laboratory: Motorola

DUT: Dipole 1900 MHz; Type: D1900V2; Procedure Notes: 1900MHz System Performance Check / Dipole Sn# 533tr; PM1 Power = 200mW
 Sim.Temp@ meas = 19.6°C; Sim.Temp@ SPC = 18.6°C; Room Temp@ SPC = 20.5°C

Communication System: CW - Dipole; Frequency: 1900 MHz; Duty Cycle: 1:1
 Medium: VALIDATION Only; Medium parameters used: $f = 1900$ MHz; $\sigma = 1.43$ mho/m; $\epsilon_r = 39.5$; $\rho = 1000$ kg/m³

DASY4 Configuration:

- Probe: ES3DV3 - SN3037; ConvF(5.17, 5.17, 5.17); Calibrated: 11/23/2006
- Sensor-Surface: 4mm (Mechanical Surface Detection)
- Electronics: DAE4 Sn661; Calibrated: 9/1/2006
- Phantom: R1: Glycol SAM; Type: SAM; Serial: TP-1139;
- Measurement SW: DASY4, V4.7 Build 44; Postprocessing SW: SEMCAD, V1.8 Build 172

Daily SPC Check/Dipole Area Scan (4x9x1):

Measurement grid: dx=15mm, dy=15mm
 Maximum value of SAR (measured) = 7.43 mW/g

Daily SPC Check/0-Degree 5x5x7 Cube (5x5x7)/Cube 0:

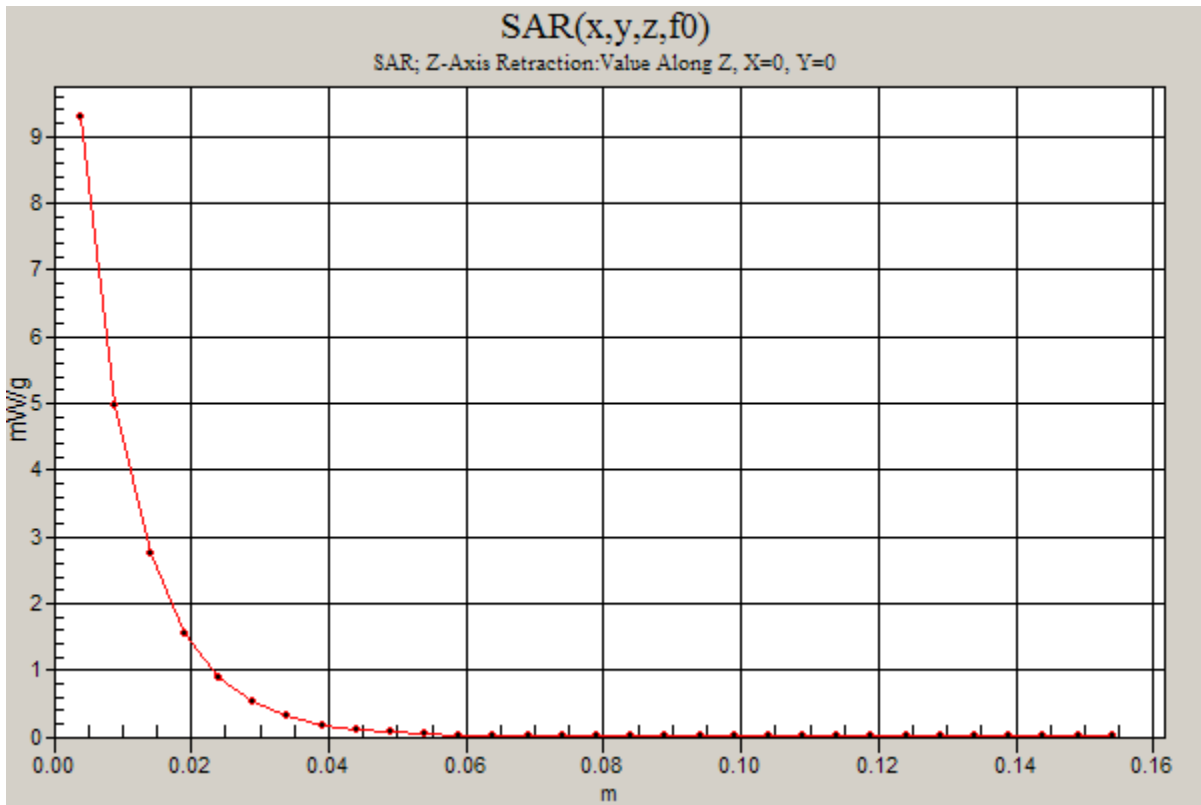
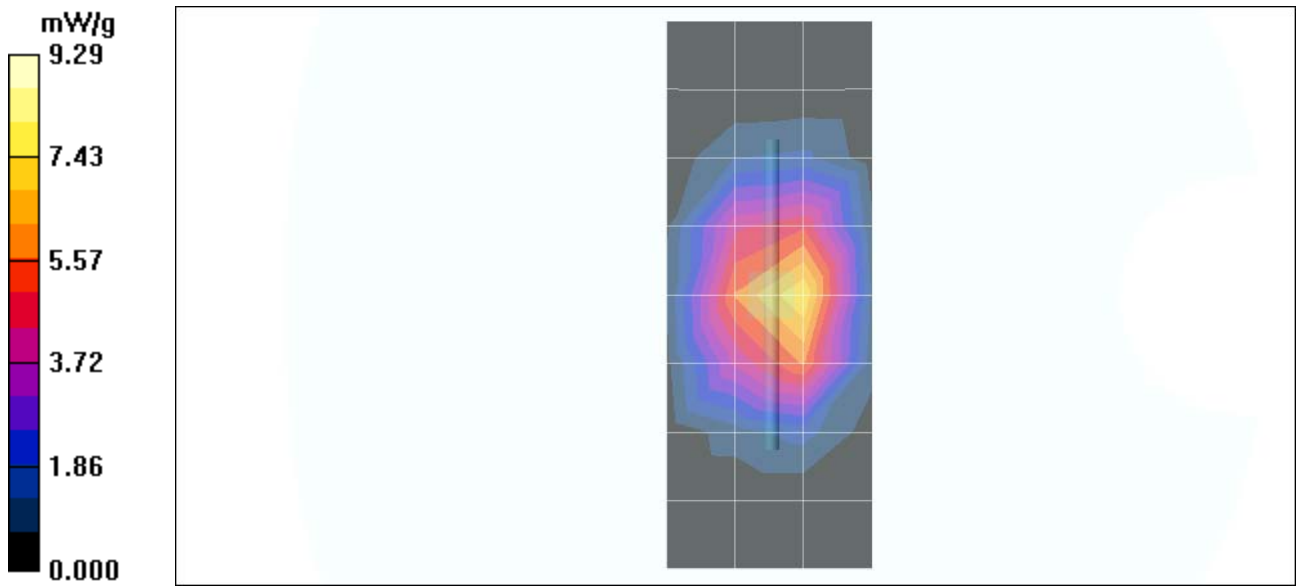
Measurement grid: dx=8mm, dy=8mm, dz=5mm
 Reference Value = 80.6 V/m; Power Drift = 0.047 dB
 Peak SAR (extrapolated) = 15.6 W/kg
SAR(1 g) = 8.2 mW/g; SAR(10 g) = 4.21 mW/g
 Maximum value of SAR (measured) = 9.13 mW/g

Daily SPC Check/90-Degree 5x5x7 Cube (5x5x7)/Cube 0:

Measurement grid: dx=8mm, dy=8mm, dz=5mm
 Reference Value = 80.6 V/m; Power Drift = 0.047 dB
 Peak SAR (extrapolated) = 15.9 W/kg
SAR(1 g) = 8.36 mW/g; SAR(10 g) = 4.28 mW/g
 Maximum value of SAR (measured) = 9.33 mW/g

Daily SPC Check/Z-Axis Retraction (1x1x31):

Measurement grid: dx=20mm, dy=20mm, dz=5mm
 Maximum value of SAR (measured) = 9.29 mW/g



Date/Time: 3/15/2007 7:54:12 AM

Test Laboratory: Motorola

DUT: Dipole 1900 MHz; Type: D1900V2; Procedure Notes: 1900 MHz System Performance Check / Dipole Sn# 533tr; PM1 Power = 200 mW
 Sim.Temp@ meas = 19.8°C; Sim.Temp@ SPC = 19.7°C; Room Temp@ SPC = 20.4°C

Communication System: CW - Dipole; Frequency: 1900 MHz; Duty Cycle: 1:1
 Medium: VALIDATION Only; Medium parameters used: $f = 1900$ MHz; $\sigma = 1.46$ mho/m; $\epsilon_r = 38.6$; $\rho = 1000$ kg/m³

DASY4 Configuration:

- Probe: ES3DV3 - SN3037; ConvF(5.17, 5.17, 5.17); Calibrated: 11/23/2006
- Sensor-Surface: 4mm (Mechanical Surface Detection)
- Electronics: DAE4 Sn661; Calibrated: 9/1/2006
- Phantom: R1: Glycol SAM; Type: SAM; Serial: TP-1139;
- Measurement SW: DASY4, V4.7 Build 44; Postprocessing SW: SEMCAD, V1.8 Build 172

Daily SPC Check/Dipole Area Scan (4x9x1):

Measurement grid: dx=15mm, dy=15mm
 Maximum value of SAR (measured) = 8.52 mW/g

Daily SPC Check/0-Degree 5x5x7 Cube (5x5x7)/Cube 0:

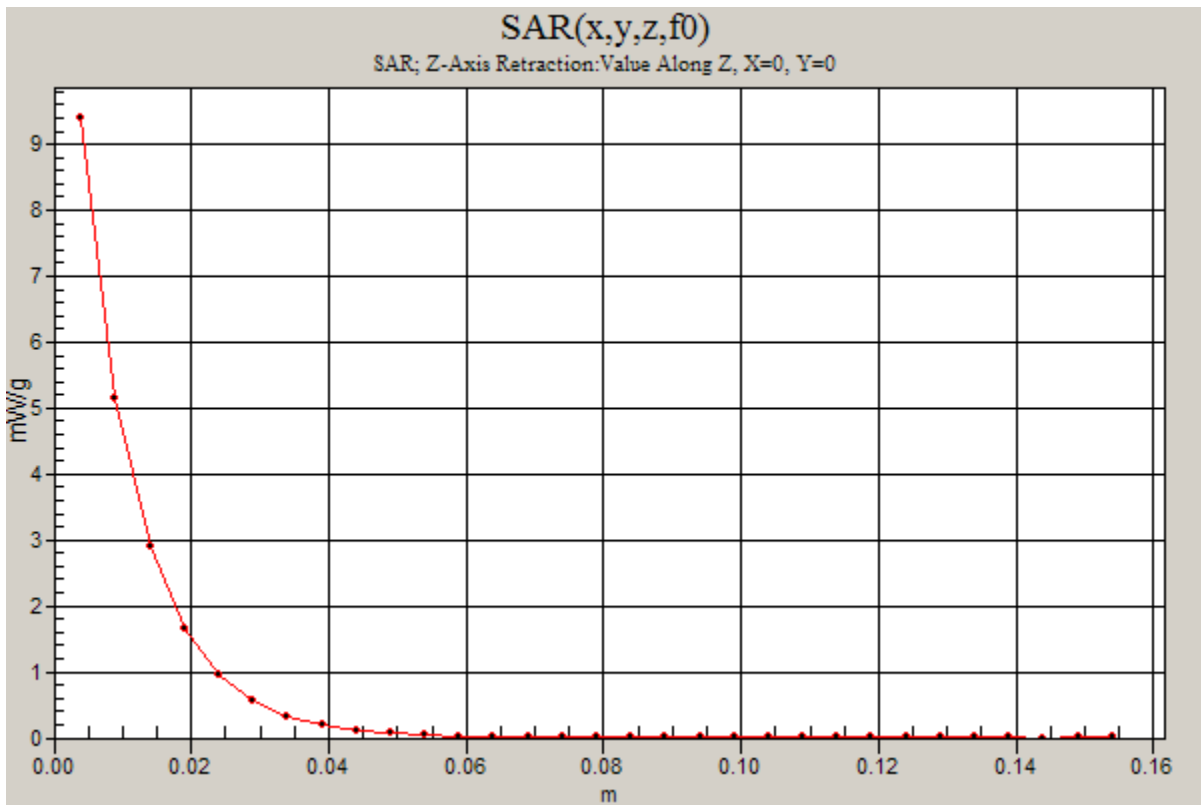
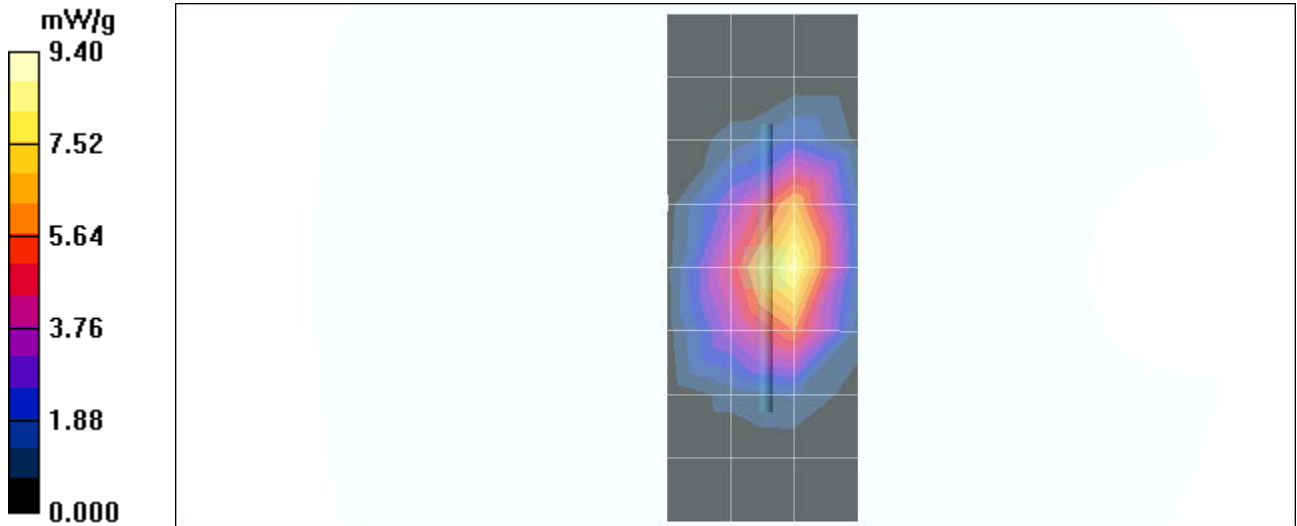
Measurement grid: dx=8mm, dy=8mm, dz=5mm
 Reference Value = 78.7 V/m; Power Drift = 0.037 dB
 Peak SAR (extrapolated) = 15.6 W/kg
SAR(1 g) = 8.36 mW/g; SAR(10 g) = 4.31 mW/g
 Maximum value of SAR (measured) = 9.35 mW/g

Daily SPC Check/90-Degree 5x5x7 Cube (5x5x7)/Cube 0:

Measurement grid: dx=8mm, dy=8mm, dz=5mm
 Reference Value = 78.7 V/m; Power Drift = 0.037 dB
 Peak SAR (extrapolated) = 16.4 W/kg
SAR(1 g) = 8.69 mW/g; SAR(10 g) = 4.46 mW/g
 Maximum value of SAR (measured) = 9.58 mW/g

Daily SPC Check/Z-Axis Retraction (1x1x31):

Measurement grid: dx=20mm, dy=20mm, dz=5mm
 Maximum value of SAR (measured) = 9.40 mW/g



Date/Time: 3/16/2007 5:34:05 PM

Test Laboratory: Motorola

DUT: Dipole 1900 MHz; Type: D1900V2; Procedure Notes: 1900 MHz System Performance Check / Dipole Sn# 533tr; PM1 Power = 200 mW;
Sim.Temp@ meas = 19.2°C; Sim.Temp@ SPC = 19.6°C; Room Temp@ SPC = 20.4°C

Communication System: CW - Dipole; Frequency: 1900 MHz; Duty Cycle: 1:1
Medium: VALIDATION Only; Medium parameters used: $f = 1900$ MHz; $\sigma = 1.46$ mho/m; $\epsilon_r = 38.8$; $\rho = 1000$ kg/m³

DASY4 Configuration:

- Probe: ES3DV3 - SN3037; ConvF(5.17, 5.17, 5.17); Calibrated: 11/23/2006
- Sensor-Surface: 4mm (Mechanical Surface Detection)
- Electronics: DAE4 Sn661; Calibrated: 9/1/2006
- Phantom: R1: Glycol SAM; Type: SAM; Serial: TP-1139;
- Measurement SW: DASY4, V4.7 Build 44; Postprocessing SW: SEMCAD, V1.8 Build 172

Daily SPC Check/Dipole Area Scan (4x9x1):

Measurement grid: dx=15mm, dy=15mm
Maximum value of SAR (measured) = 6.82 mW/g

Daily SPC Check/0-Degree 5x5x7 Cube (5x5x7)/Cube 0:

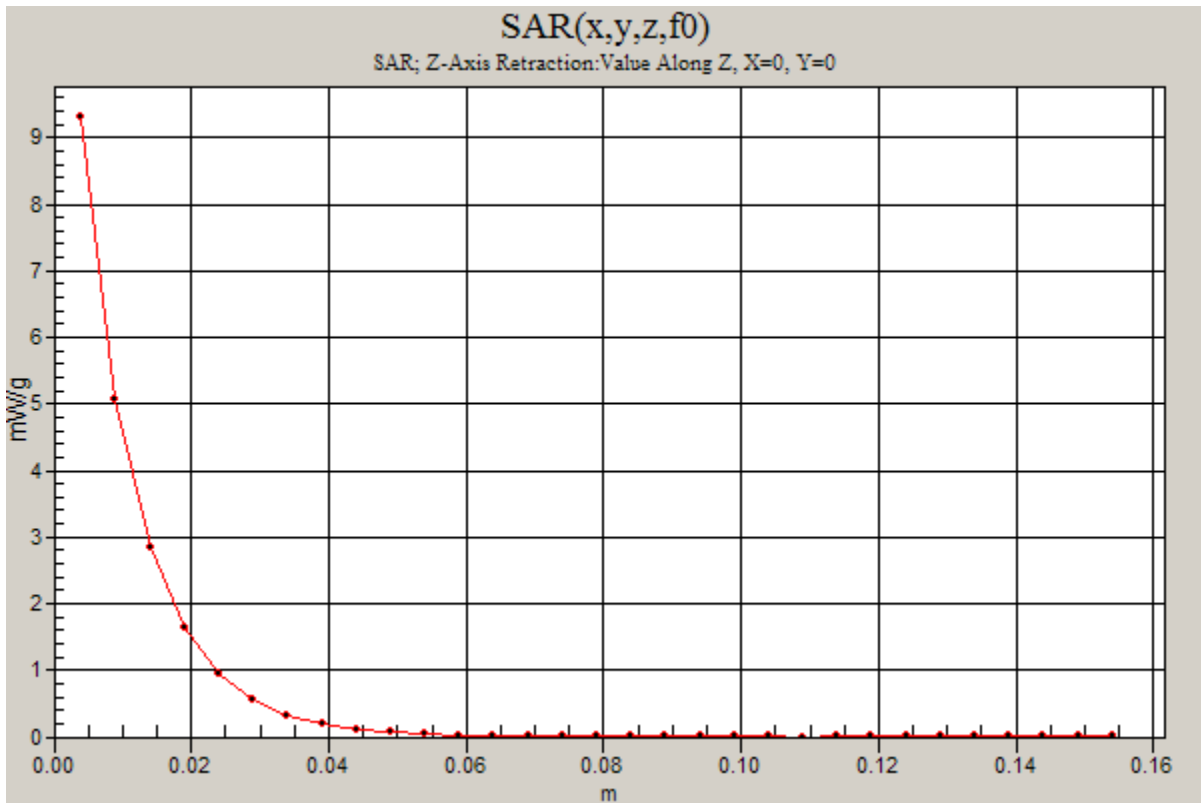
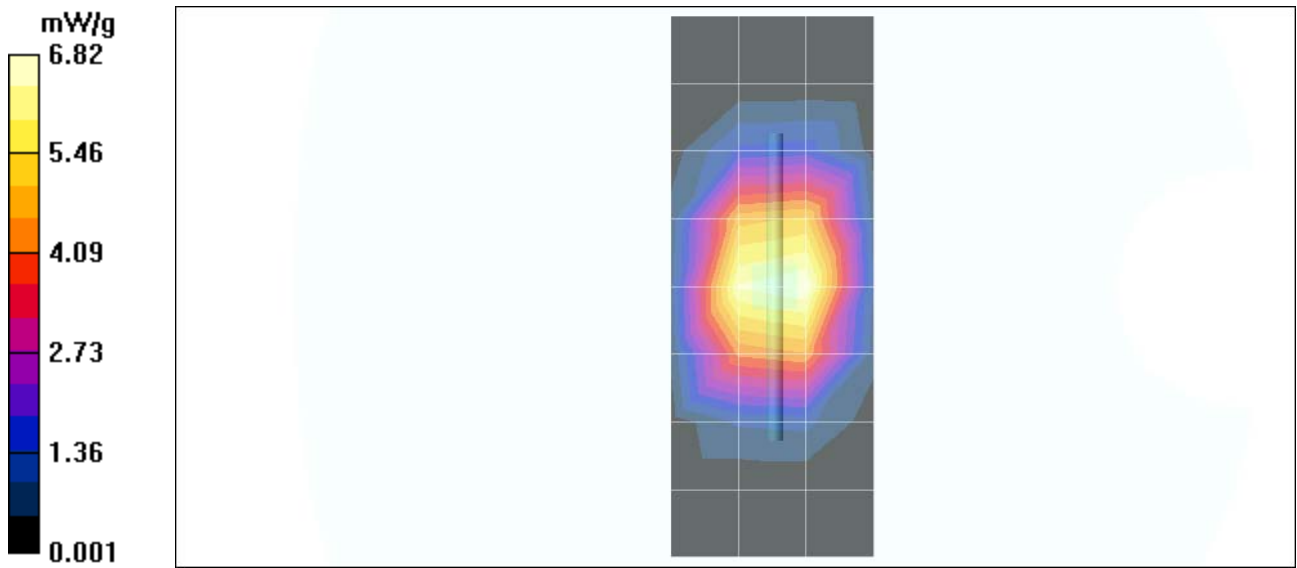
Measurement grid: dx=8mm, dy=8mm, dz=5mm
Reference Value = 81.0 V/m; Power Drift = -0.037 dB
Peak SAR (extrapolated) = 15.5 W/kg
SAR(1 g) = 8.24 mW/g; SAR(10 g) = 4.24 mW/g
Maximum value of SAR (measured) = 9.23 mW/g

Daily SPC Check/90-Degree 5x5x7 Cube (5x5x7)/Cube 0:

Measurement grid: dx=8mm, dy=8mm, dz=5mm
Reference Value = 81.0 V/m; Power Drift = -0.037 dB
Peak SAR (extrapolated) = 15.9 W/kg
SAR(1 g) = 8.46 mW/g; SAR(10 g) = 4.35 mW/g
Maximum value of SAR (measured) = 9.09 mW/g

Daily SPC Check/Z-Axis Retraction (1x1x31):

Measurement grid: dx=20mm, dy=20mm, dz=5mm
Maximum value of SAR (measured) = 9.31 mW/g



Appendix 2

SAR distribution plots for Phantom Head Adjacent Use

Date/Time: 3/12/2007 1:07:14 PM

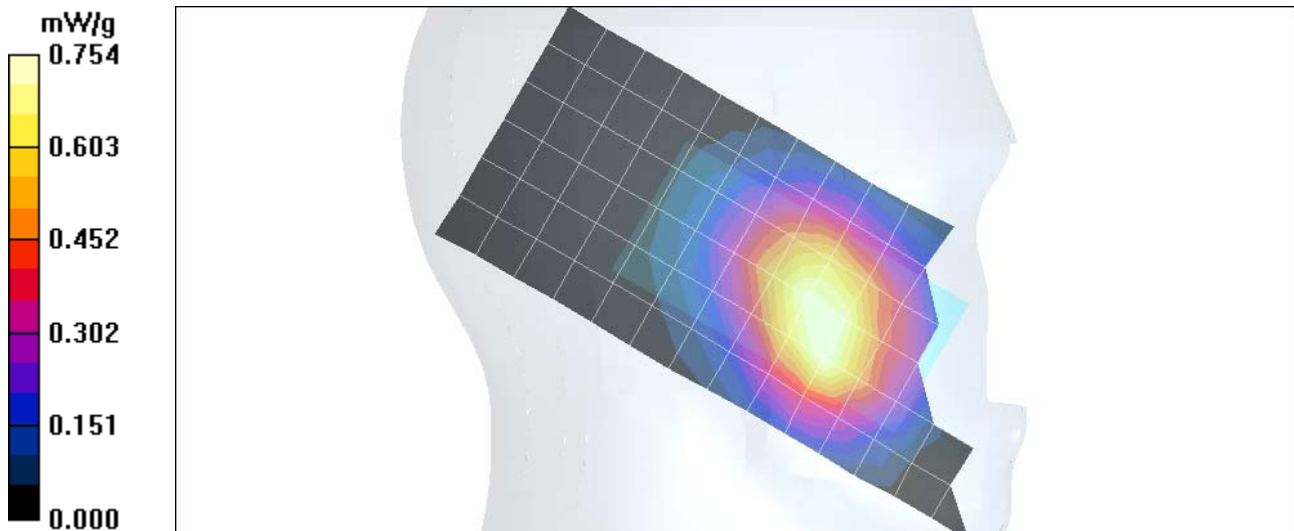
Test Laboratory: Motorola

Serial: 4401021695123; Procedure Notes: Pwr Step: 5; Antenna Position: Internal; Battery Model #: SNN5779B; DEVICE POSITION: Cheek; Communication System: GSM 850; Frequency: 836.6 MHz; Communication System Channel Number: 190; Duty Cycle: 1:8; Medium: Low Freq Head; Medium parameters used: $f = 835 \text{ MHz}$; $\sigma = 0.92 \text{ mho/m}$; $\epsilon_r = 41.7$; $\rho = 1000 \text{ kg/m}^3$; DASY4 Configuration:

- Probe: ES3DV3 - SN3037; ConvF(6.25, 6.25, 6.25); Calibrated: 11/23/2006
- Sensor-Surface: 4mm (Mechanical Surface Detection)
- Electronics: DAE4 Sn661; Calibrated: 9/1/2006
- Phantom: R1: Sugar SAM; Type: SAM; Serial: TP-1005;
- Measurement SW: DASY4, V4.7 Build 44; Postprocessing SW: SEMCAD, V1.8 Build 171

Left Head Template/Area Scan - Normal (15mm) (7x17x1): Measurement grid: $dx=15\text{mm}$, $dy=15\text{mm}$; Maximum value of SAR (measured) = 0.754 mW/g

Left Head Template/Zoom Scan (7x7x7)/Cube 0: Measurement grid: $dx=5\text{mm}$, $dy=5\text{mm}$, $dz=5\text{mm}$; Reference Value = 29.7 V/m; Power Drift = -0.172 dB; Peak SAR (extrapolated) = 1.10 W/kg; **SAR(1 g) = 0.737 mW/g**; **SAR(10 g) = 0.501 mW/g**; Maximum value of SAR (measured) = 0.787 mW/g



Date/Time: 3/10/2007 9:51:47 PM

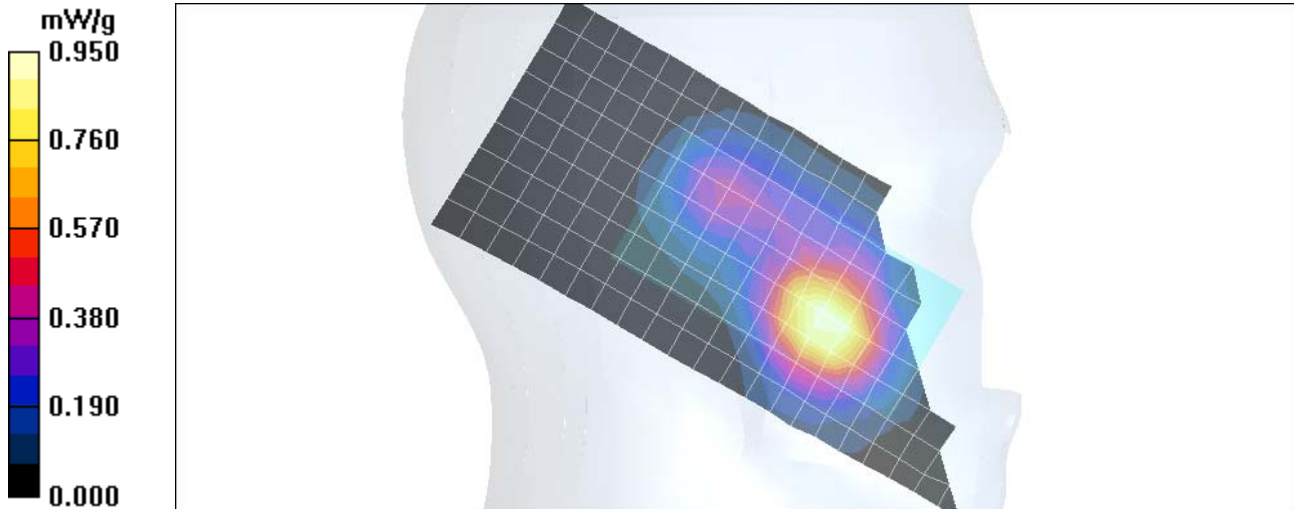
Test Laboratory: Motorola

Serial: 4401021695123; Procedure Notes: Pwr Step: 0; Antenna Position: internal; Battery Model #: SNN5779B; DEVICE POSITION: cheek; Communication System: GSM 1900; Frequency: 1909.8 MHz; Communication System Channel Number: 810; Duty Cycle: 1:8; Medium: Regular Glycol Head; Medium parameters used: $f = 1880$ MHz; $\sigma = 1.41$ mho/m; $\epsilon_r = 39.6$; $\rho = 1000$ kg/m³; DASY4 Configuration:

- Probe: ES3DV3 - SN3037; ConvF(5.17, 5.17, 5.17); Calibrated: 11/23/2006
- Sensor-Surface: 4mm (Mechanical Surface Detection)
- Electronics: DAE4 Sn661; Calibrated: 9/1/2006
- Phantom: R1: Glycol SAM; Type: SAM; Serial: TP-1139;
- Measurement SW: DASY4, V4.7 Build 44; Postprocessing SW: SEMCAD, V1.8 Build 171

Left Head Template/Area Scan - Normal (10mm) (10x25x1): Measurement grid: dx=10mm, dy=10mm; Maximum value of SAR (measured) = 0.950 mW/g

Left Head Template/Zoom Scan (7x7x7)/Cube 0: Measurement grid: dx=5mm, dy=5mm, dz=5mm; Reference Value = 25.2 V/m; Power Drift = 0.078 dB; Peak SAR (extrapolated) = 1.55 W/kg; **SAR(1 g) = 0.914 mW/g; SAR(10 g) = 0.527 mW/g**; Maximum value of SAR (measured) = 1.02 mW/g



Date/Time: 3/12/2007 11:19:59 AM

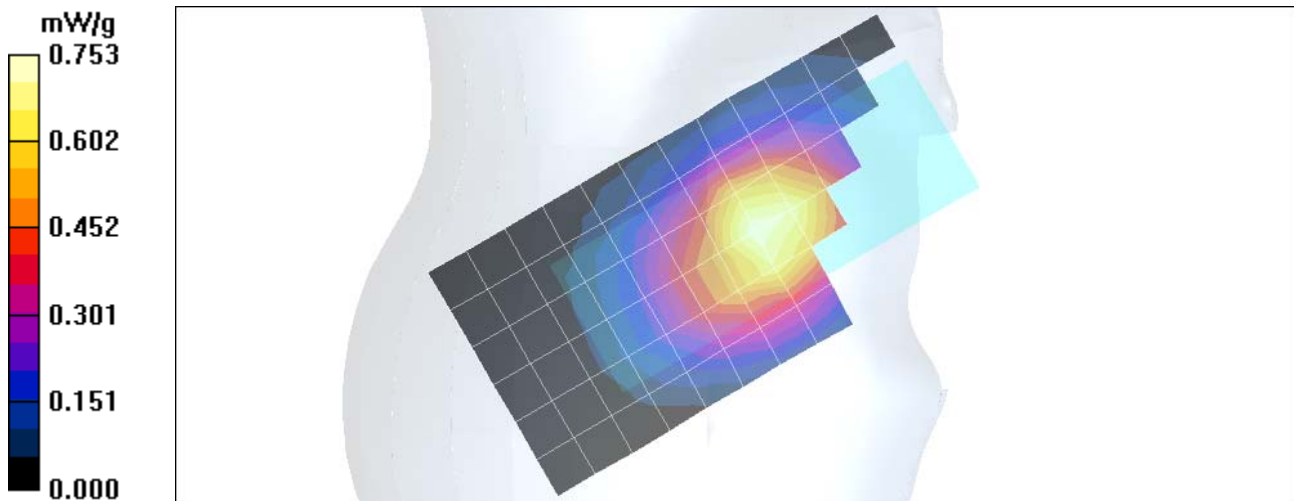
Test Laboratory: Motorola

Serial: 4401021695123; Procedure Notes: Pwr Step: 5; Antenna Position: Internal; Battery Model #: SNN5779B; DEVICE POSITION: Cheek; Communication System: GSM 850; Frequency: 836.6 MHz; Communication System Channel Number: 190; Duty Cycle: 1:8; Medium: Low Freq Head; Medium parameters used: $f = 835 \text{ MHz}$; $\sigma = 0.92 \text{ mho/m}$; $\epsilon_r = 41.7$; $\rho = 1000 \text{ kg/m}^3$; DASY4 Configuration:

- Probe: ES3DV3 - SN3037; ConvF(6.25, 6.25, 6.25); Calibrated: 11/23/2006
- Sensor-Surface: 4mm (Mechanical Surface Detection)
- Electronics: DAE4 Sn661; Calibrated: 9/1/2006
- Phantom: R1: Sugar SAM; Type: SAM; Serial: TP-1005;
- Measurement SW: DASY4, V4.7 Build 44; Postprocessing SW: SEMCAD, V1.8 Build 172

Right Head Template/Area Scan - Normal (15mm) (7x17x1): Measurement grid: $dx=15\text{mm}$, $dy=15\text{mm}$; Maximum value of SAR (measured) = 0.753 mW/g

Right Head Template/Zoom Scan (7x7x7)/Cube 0: Measurement grid: $dx=5\text{mm}$, $dy=5\text{mm}$, $dz=5\text{mm}$; Reference Value = 27.0 V/m; Power Drift = -0.093 dB; Peak SAR (extrapolated) = 0.920 W/kg; **SAR(1 g) = 0.708 mW/g**; **SAR(10 g) = 0.516 mW/g**; Maximum value of SAR (measured) = 0.746 mW/g



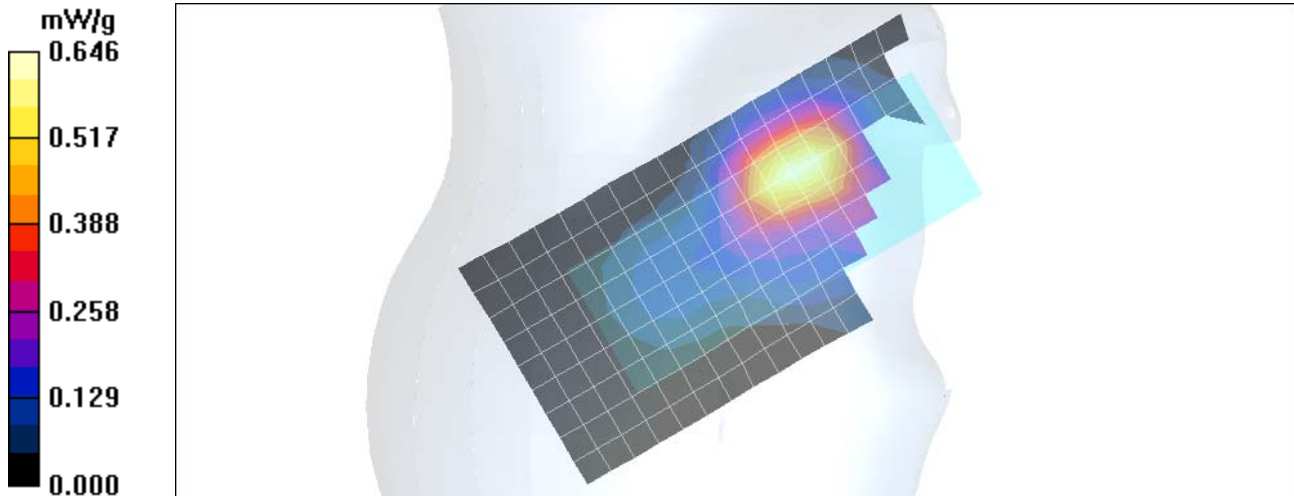
Test Laboratory: Motorola

Serial: 4401021695123; Procedure Notes: Pwr Step: 0; Antenna Position: internal; Battery Model #: SNN5792A; DEVICE POSITION: cheek; Communication System: GSM 1900; Frequency: 1880 MHz; Communication System Channel Number: 661; Duty Cycle: 1:8; Medium: Backup Regular Glycol Head; Medium parameters used: $f = 1880 \text{ MHz}$; $\sigma = 1.47 \text{ mho/m}$; $\epsilon_r = 38.3$; $\rho = 1000 \text{ kg/m}^3$; DASY4 Configuration:

- Probe: ES3DV3 - SN3037; ConvF(5.17, 5.17, 5.17); Calibrated: 11/23/2006
- Sensor-Surface: 4mm (Mechanical Surface Detection)
- Electronics: DAE4 Sn661; Calibrated: 9/1/2006
- Phantom: R1: Glycol SAM; Type: SAM; Serial: TP-1139;
- Measurement SW: DASY4, V4.7 Build 44; Postprocessing SW: SEMCAD, V1.8 Build 171

Right Head Template/Area Scan - Normal (10mm) (10x25x1): Measurement grid: $dx=10\text{mm}$, $dy=10\text{mm}$; Maximum value of SAR (measured) = 0.646 mW/g

Right Head Template/Zoom Scan (7x7x7)/Cube 0: Measurement grid: $dx=5\text{mm}$, $dy=5\text{mm}$, $dz=5\text{mm}$; Reference Value = 20.4 V/m; Power Drift = -0.425 dB; Peak SAR (extrapolated) = 0.930 W/kg; **SAR(1 g) = 0.596 mW/g**; **SAR(10 g) = 0.360 mW/g**; Maximum value of SAR (measured) = 0.650 mW/g



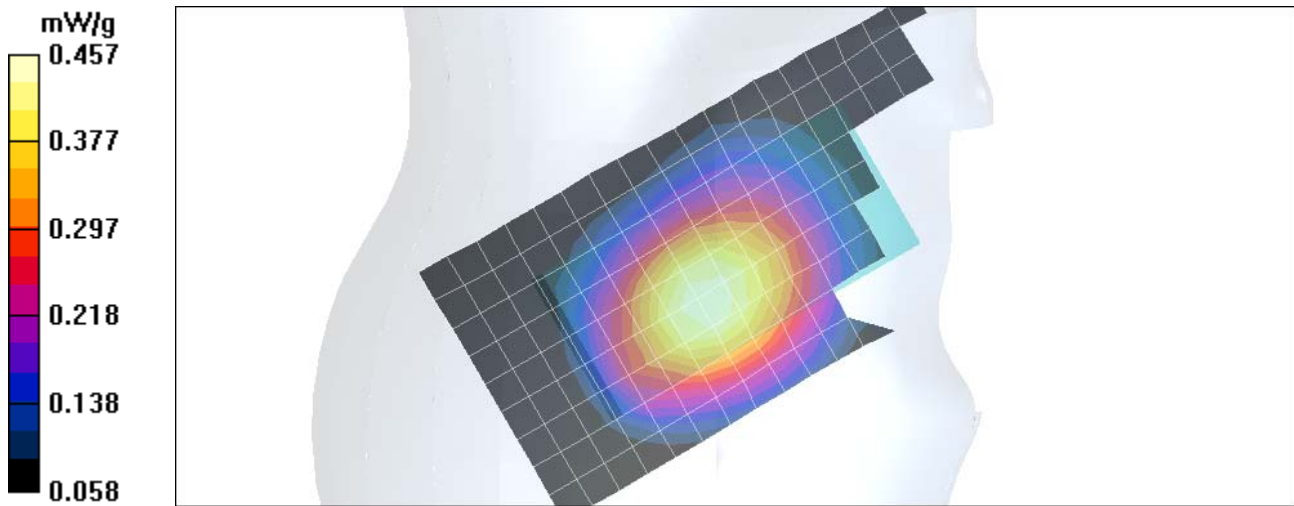
Test Laboratory: Motorola

Serial: 4401021695123; Procedure Notes: Pwr Step: 5; Antenna Position: internal; Battery Model #: SNN5792A; DEVICE POSITION: Tilt; Communication System: GSM 850; Frequency: 836.6 MHz; Communication System Channel Number: 190; Duty Cycle: 1:8; Medium: Low Freq Head; Medium parameters used: $f = 835 \text{ MHz}$; $\sigma = 0.9 \text{ mho/m}$; $\epsilon_r = 41.3$; $\rho = 1000 \text{ kg/m}^3$; DASY4 Configuration:

- Probe: ES3DV3 - SN3037; ConvF(6.25, 6.25, 6.25); Calibrated: 11/23/2006
- Sensor-Surface: 4mm (Mechanical Surface Detection)
- Electronics: DAE4 Sn661; Calibrated: 9/1/2006
- Phantom: R1: Sugar SAM; Type: SAM; Serial: TP-1005;
- Measurement SW: DASY4, V4.7 Build 44; Postprocessing SW: SEMCAD, V1.8 Build 171

Right Head Template/Area Scan - Normal (10mm) (10x25x1): Measurement grid: $dx=10\text{mm}$, $dy=10\text{mm}$; Maximum value of SAR (measured) = 0.462 mW/g

Right Head Template/Zoom Scan (7x7x7)/Cube 0: Measurement grid: $dx=5\text{mm}$, $dy=5\text{mm}$, $dz=5\text{mm}$; Reference Value = 22.9 V/m; Power Drift = -0.165 dB; Peak SAR (extrapolated) = 0.568 W/kg; **SAR(1 g) = 0.430 mW/g**; **SAR(10 g) = 0.315 mW/g**; Maximum value of SAR (measured) = 0.457 mW/g



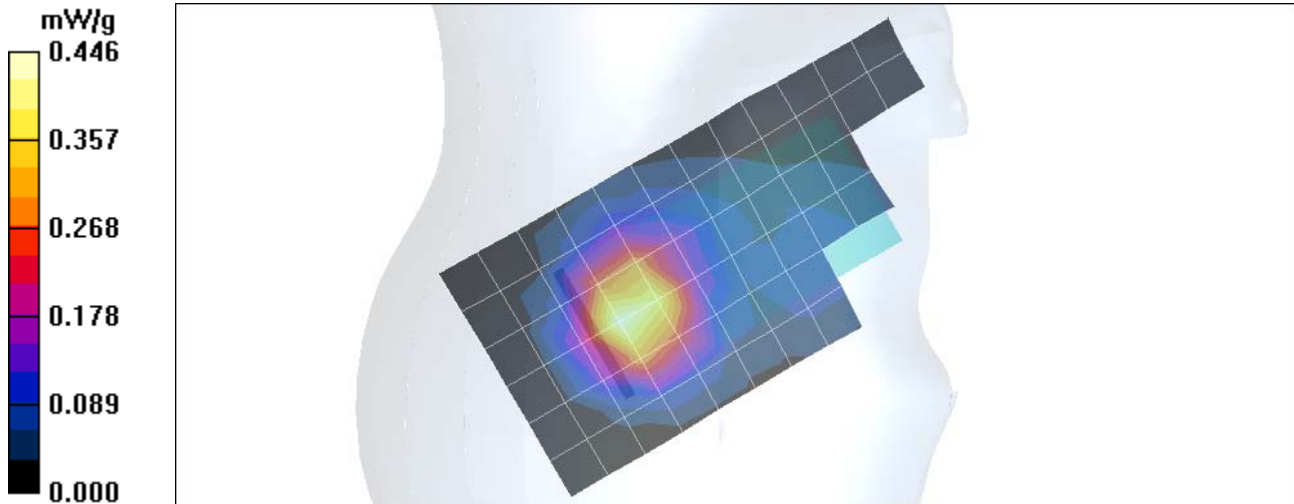
Test Laboratory: Motorola

Serial: 4401021695123; Procedure Notes: Pwr Step: 0; Antenna Position: internal; Battery Model #: SNN5792A; DEVICE POSITION: Tilt; Communication System: GSM 1900; Frequency: 1880 MHz; Communication System Channel Number: 661; Duty Cycle: 1:8; Medium: Backup Regular Glycol Head; Medium parameters used: $f = 1880 \text{ MHz}$; $\sigma = 1.44 \text{ mho/m}$; $\epsilon_r = 39.3$; $\rho = 1000 \text{ kg/m}^3$; DASY4 Configuration:

- Probe: ES3DV3 - SN3037; ConvF(5.17, 5.17, 5.17); Calibrated: 11/23/2006
- Sensor-Surface: 4mm (Mechanical Surface Detection)
- Electronics: DAE4 Sn661; Calibrated: 9/1/2006
- Phantom: R1: Glycol SAM; Type: SAM; Serial: TP-1139;
- Measurement SW: DASY4, V4.7 Build 44; Postprocessing SW: SEMCAD, V1.8 Build 171

Right Head Template/Area Scan - Normal (15mm) (7x17x1): Measurement grid: $dx=15\text{mm}$, $dy=15\text{mm}$; Maximum value of SAR (measured) = 0.446 mW/g

Right Head Template/Zoom Scan (7x7x7)/Cube 0: Measurement grid: $dx=5\text{mm}$, $dy=5\text{mm}$, $dz=5\text{mm}$; Reference Value = 16.8 V/m; Power Drift = -0.235 dB; Peak SAR (extrapolated) = 0.637 W/kg; **SAR(1 g) = 0.416 mW/g**; **SAR(10 g) = 0.249 mW/g**; Maximum value of SAR (measured) = 0.454 mW/g



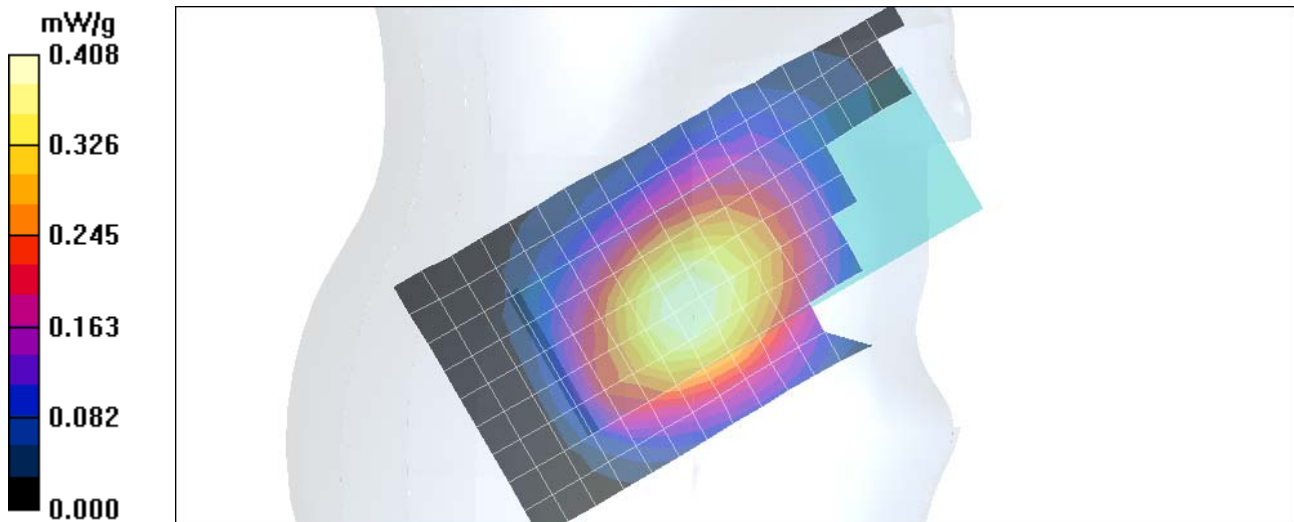
Test Laboratory: Motorola

Serial: 4401021695123; Procedure Notes: Pwr Step: 5; Antenna Position: internal; Battery Model #: SNN5792A; DEVICE POSITION: Tilt; Communication System: GSM 850; Frequency: 836.6 MHz; Communication System Channel Number: 190; Duty Cycle: 1:8; Medium: Low Freq Head; Medium parameters used: $f = 835 \text{ MHz}$; $\sigma = 0.9 \text{ mho/m}$; $\epsilon_r = 41.3$; $\rho = 1000 \text{ kg/m}^3$; DASY4 Configuration:

- Probe: ES3DV3 - SN3037; ConvF(6.25, 6.25, 6.25); Calibrated: 11/23/2006
- Sensor-Surface: 4mm (Mechanical Surface Detection)
- Electronics: DAE4 Sn661; Calibrated: 9/1/2006
- Phantom: R1: Sugar SAM; Type: SAM; Serial: TP-1005;
- Measurement SW: DASY4, V4.7 Build 44; Postprocessing SW: SEMCAD, V1.8 Build 171

Right Head Template/Area Scan - Normal (10mm) (10x25x1): Measurement grid: $dx=10\text{mm}$, $dy=10\text{mm}$; Maximum value of SAR (measured) = 0.408 mW/g

Right Head Template/Zoom Scan (7x7x7)/Cube 0: Measurement grid: $dx=5\text{mm}$, $dy=5\text{mm}$, $dz=5\text{mm}$; Reference Value = 21.3 V/m; Power Drift = -0.164 dB; Peak SAR (extrapolated) = 0.500 W/kg; **SAR(1 g) = 0.382 mW/g**; **SAR(10 g) = 0.282 mW/g**; Maximum value of SAR (measured) = 0.403 mW/g



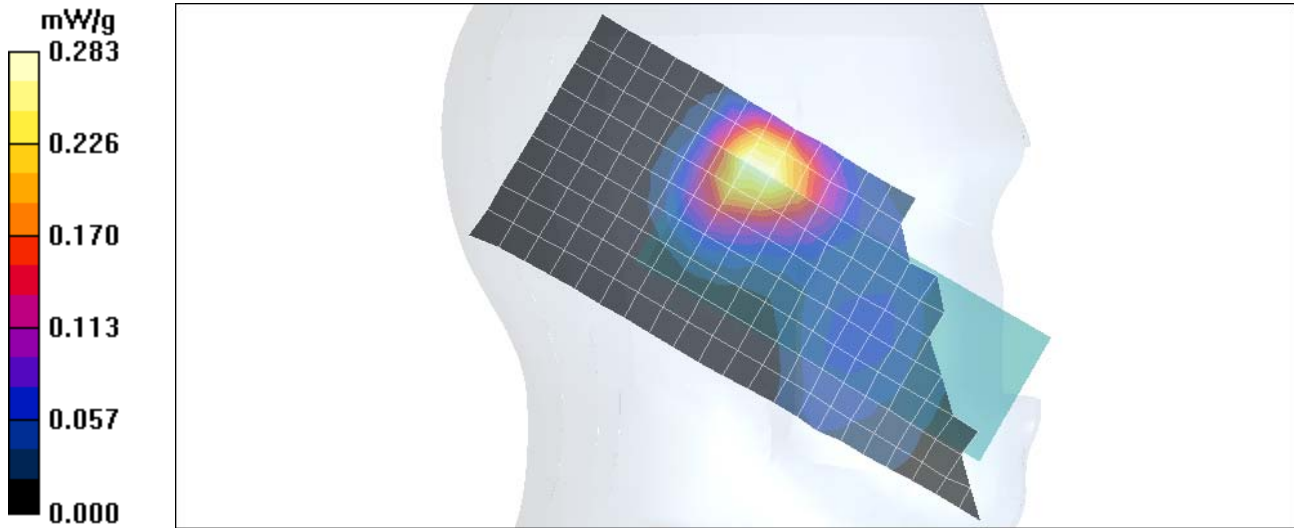
Test Laboratory: Motorola

Serial: 4401021695123; Procedure Notes: Pwr Step: 0; Antenna Position: internal; Battery Model #: SNN5792A; DEVICE POSITION: Tilt; Communication System: GSM 1900; Frequency: 1880 MHz; Communication System Channel Number: 661; Duty Cycle: 1:8; Medium: Regular Glycol Head; Medium parameters used: $f = 1880 \text{ MHz}$; $\sigma = 1.43 \text{ mho/m}$; $\epsilon_r = 38.8$; $\rho = 1000 \text{ kg/m}^3$; DASY4 Configuration:

- Probe: ES3DV3 - SN3037; ConvF(5.17, 5.17, 5.17); Calibrated: 11/23/2006
- Sensor-Surface: 4mm (Mechanical Surface Detection)
- Electronics: DAE4 Sn661; Calibrated: 9/1/2006
- Phantom: R1: Glycol SAM; Type: SAM; Serial: TP-1139;
- Measurement SW: DASY4, V4.7 Build 44; Postprocessing SW: SEMCAD, V1.8 Build 171

Left Head Template/Area Scan - Normal (10mm) (10x25x1): Measurement grid: $dx=10\text{mm}$, $dy=10\text{mm}$; Maximum value of SAR (measured) = 0.283 mW/g

Left Head Template/Zoom Scan (7x7x7)/Cube 0: Measurement grid: $dx=5\text{mm}$, $dy=5\text{mm}$, $dz=5\text{mm}$; Reference Value = 11.7 V/m; Power Drift = 0.113 dB; Peak SAR (extrapolated) = 0.414 W/kg; **SAR(1 g) = 0.263 mW/g**; **SAR(10 g) = 0.156 mW/g**; Maximum value of SAR (measured) = 0.284 mW/g



Appendix 3

SAR distribution plots for Body Worn Configuration

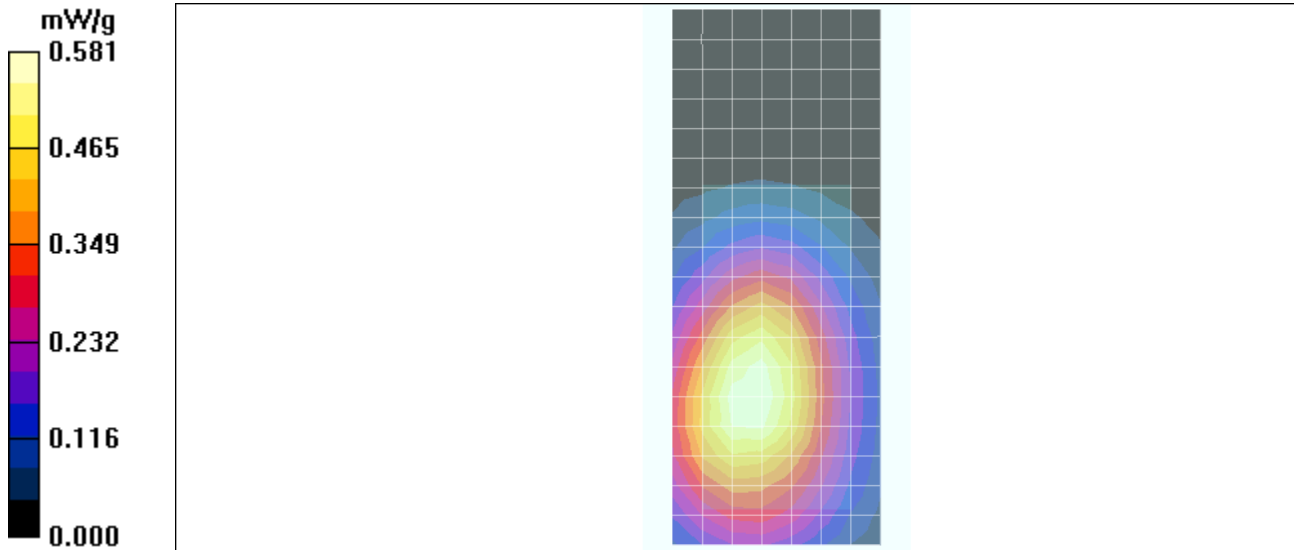
Test Laboratory: Motorola

Serial: 4401021695123; Procedure Notes: Pwr Step: 5; Antenna Position: internal; Battery Model #: SNN5781B; DEVICE POSITION: Front of Phone 15mm away from phantom; Communication System: GSM 850; Frequency: 836.6 MHz; Communication System Channel Number: 190; Duty Cycle: 1:8; Medium: Low Freq Body; Medium parameters used: $f = 835 \text{ MHz}$; $\sigma = 0.98 \text{ mho/m}$; $\epsilon_r = 53$; $\rho = 1000 \text{ kg/m}^3$; DASY4 Configuration:

- Probe: ES3DV3 - SN3037; ConvF(6.07, 6.07, 6.07); Calibrated: 11/23/2006
- Sensor-Surface: 4mm (Mechanical Surface Detection)
- Electronics: DAE4 Sn661; Calibrated: 9/1/2006
- Phantom: R1: Sect.1, Amy Twin; Type: Amy Twin Flat; Serial: n/a;
- Measurement SW: DASY4, V4.7 Build 44; Postprocessing SW: SEMCAD, V1.8 Build 171

Amy Twin Phone Template/Area Scan - Normal Body (10mm) (19x10x1): Measurement grid: dx=10mm, dy=10mm; Maximum value of SAR (measured) = 0.581 mW/g

Amy Twin Phone Template/Zoom Scan (7x7x7)/Cube 0: Measurement grid: dx=5mm, dy=5mm, dz=5mm; Reference Value = 23.3 V/m; Power Drift = -0.256 dB
 Peak SAR (extrapolated) = 0.714 W/kg; **SAR(1 g) = 0.543 mW/g**; **SAR(10 g) = 0.394 mW/g**;
 Maximum value of SAR (measured) = 0.578 mW/g



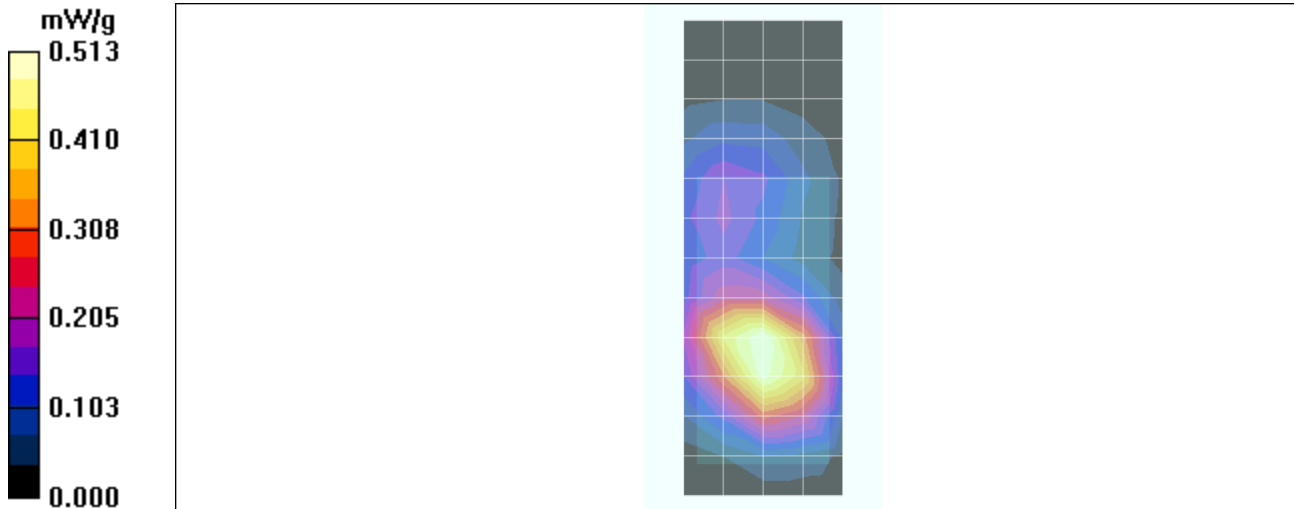
Test Laboratory: Motorola

Serial: 4401021695123; Procedure Notes: Pwr Step: 0; Antenna Position: INTERNAL; Battery Model #: SNN5792A; DEVICE POSITION: Back of Phone 15mm from Phantom with Bluetooth; Communication System: GSM 1900; Frequency: 1880 MHz; Communication System Channel Number: 661; Duty Cycle: 1:8; Medium: Regular Glycol Body; Medium parameters used: $f = 1880$ MHz; $\sigma = 1.59$ mho/m; $\epsilon_r = 51.2$; $\rho = 1000$ kg/m³; DASY4 Configuration:

- Probe: ES3DV3 - SN3037; ConvF(4.73, 4.73, 4.73); Calibrated: 11/23/2006
- Sensor-Surface: 4mm (Mechanical Surface Detection)
- Electronics: DAE4 Sn661; Calibrated: 9/1/2006
- Phantom: R1: Sect.2, Amy Twin; Type: Amy Twin Flat; Serial: n/a;
- Measurement SW: DASY4, V4.7 Build 44; Postprocessing SW: SEMCAD, V1.8 Build 171

Amy Twin Phone Template/Area Scan - Normal Body (15mm) (13x7x1): Measurement grid: dx=15mm, dy=15mm; Maximum value of SAR (measured) = 0.513 mW/g

Amy Twin Phone Template/Zoom Scan (7x7x7)/Cube 0: Measurement grid: dx=5mm, dy=5mm, dz=5mm; Reference Value = 16.9 V/m; Power Drift = -0.018 dB; Peak SAR (extrapolated) = 0.859 W/kg; **SAR(1 g) = 0.521 mW/g; SAR(10 g) = 0.311 mW/g;** Maximum value of SAR (measured) = 0.566 mW/g



Appendix 4

Probe Calibration Certificate

**Calibration Laboratory of
Schmid & Partner
Engineering AG**
Zeughausstrasse 43, 8004 Zurich, Switzerland



S Schweizerischer Kalibrierdienst
C Service suisse d'étalonnage
S Servizio svizzero di taratura
S Swiss Calibration Service

Accredited by the Swiss Federal Office of Metrology and Accreditation
The Swiss Accreditation Service is one of the signatories to the EA
Multilateral Agreement for the recognition of calibration certificates

Accreditation No.: **SCS 108**

Client **Motorola MDb**

Certificate No: **ES3-3037_Nov06**

CALIBRATION CERTIFICATE																																																			
Object	ES3DV3 - SN:3037																																																		
Calibration procedure(s)	QA CAL-01.v5 Calibration procedure for dosimetric E-field probes																																																		
Calibration date:	November 23, 2006																																																		
Condition of the calibrated item	In Tolerance																																																		
<p>This calibration certificate documents the traceability to national standards, which realize the physical units of measurements (SI). The measurements and the uncertainties with confidence probability are given on the following pages and are part of the certificate.</p> <p>All calibrations have been conducted in the closed laboratory facility: environment temperature (22 ± 3)°C and humidity < 70%.</p> <p>Calibration Equipment used (M&TE critical for calibration)</p> <table border="1"> <thead> <tr> <th>Primary Standards</th> <th>ID #</th> <th>Cal Date (Calibrated by, Certificate No.)</th> <th>Scheduled Calibration</th> </tr> </thead> <tbody> <tr> <td>Power meter E4419B</td> <td>GB41293874</td> <td>5-Apr-06 (METAS, No. 251-00557)</td> <td>Apr-07</td> </tr> <tr> <td>Power sensor E4412A</td> <td>MY41495277</td> <td>5-Apr-06 (METAS, No. 251-00557)</td> <td>Apr-07</td> </tr> <tr> <td>Power sensor E4412A</td> <td>MY41498087</td> <td>5-Apr-06 (METAS, No. 251-00557)</td> <td>Apr-07</td> </tr> <tr> <td>Reference 3 dB Attenuator</td> <td>SN: S5054 (3c)</td> <td>10-Aug-06 (METAS, No. 217-00592)</td> <td>Aug-07</td> </tr> <tr> <td>Reference 20 dB Attenuator</td> <td>SN: S5086 (20b)</td> <td>4-Apr-06 (METAS, No. 251-00558)</td> <td>Apr-07</td> </tr> <tr> <td>Reference 30 dB Attenuator</td> <td>SN: S5129 (30b)</td> <td>10-Aug-06 (METAS, No. 217-00593)</td> <td>Aug-07</td> </tr> <tr> <td>Reference Probe ES3DV2</td> <td>SN: 3013</td> <td>2-Jan-06 (SPEAG, No. ES3-3013_Jan06)</td> <td>Jan-07</td> </tr> <tr> <td>DAE4</td> <td>SN: 654</td> <td>21-Jun-06 (SPEAG, No. DAE4-654_Jun06)</td> <td>Jun-07</td> </tr> </tbody> </table> <table border="1"> <thead> <tr> <th>Secondary Standards</th> <th>ID #</th> <th>Check Date (in house)</th> <th>Scheduled Check</th> </tr> </thead> <tbody> <tr> <td>RF generator HP 8648C</td> <td>US3642U01700</td> <td>4-Aug-99 (SPEAG, in house check Nov-05)</td> <td>In house check: Nov-07</td> </tr> <tr> <td>Network Analyzer HP 8753E</td> <td>US37390585</td> <td>18-Oct-01 (SPEAG, in house check Oct-06)</td> <td>In house check: Oct-07</td> </tr> </tbody> </table>				Primary Standards	ID #	Cal Date (Calibrated by, Certificate No.)	Scheduled Calibration	Power meter E4419B	GB41293874	5-Apr-06 (METAS, No. 251-00557)	Apr-07	Power sensor E4412A	MY41495277	5-Apr-06 (METAS, No. 251-00557)	Apr-07	Power sensor E4412A	MY41498087	5-Apr-06 (METAS, No. 251-00557)	Apr-07	Reference 3 dB Attenuator	SN: S5054 (3c)	10-Aug-06 (METAS, No. 217-00592)	Aug-07	Reference 20 dB Attenuator	SN: S5086 (20b)	4-Apr-06 (METAS, No. 251-00558)	Apr-07	Reference 30 dB Attenuator	SN: S5129 (30b)	10-Aug-06 (METAS, No. 217-00593)	Aug-07	Reference Probe ES3DV2	SN: 3013	2-Jan-06 (SPEAG, No. ES3-3013_Jan06)	Jan-07	DAE4	SN: 654	21-Jun-06 (SPEAG, No. DAE4-654_Jun06)	Jun-07	Secondary Standards	ID #	Check Date (in house)	Scheduled Check	RF generator HP 8648C	US3642U01700	4-Aug-99 (SPEAG, in house check Nov-05)	In house check: Nov-07	Network Analyzer HP 8753E	US37390585	18-Oct-01 (SPEAG, in house check Oct-06)	In house check: Oct-07
Primary Standards	ID #	Cal Date (Calibrated by, Certificate No.)	Scheduled Calibration																																																
Power meter E4419B	GB41293874	5-Apr-06 (METAS, No. 251-00557)	Apr-07																																																
Power sensor E4412A	MY41495277	5-Apr-06 (METAS, No. 251-00557)	Apr-07																																																
Power sensor E4412A	MY41498087	5-Apr-06 (METAS, No. 251-00557)	Apr-07																																																
Reference 3 dB Attenuator	SN: S5054 (3c)	10-Aug-06 (METAS, No. 217-00592)	Aug-07																																																
Reference 20 dB Attenuator	SN: S5086 (20b)	4-Apr-06 (METAS, No. 251-00558)	Apr-07																																																
Reference 30 dB Attenuator	SN: S5129 (30b)	10-Aug-06 (METAS, No. 217-00593)	Aug-07																																																
Reference Probe ES3DV2	SN: 3013	2-Jan-06 (SPEAG, No. ES3-3013_Jan06)	Jan-07																																																
DAE4	SN: 654	21-Jun-06 (SPEAG, No. DAE4-654_Jun06)	Jun-07																																																
Secondary Standards	ID #	Check Date (in house)	Scheduled Check																																																
RF generator HP 8648C	US3642U01700	4-Aug-99 (SPEAG, in house check Nov-05)	In house check: Nov-07																																																
Network Analyzer HP 8753E	US37390585	18-Oct-01 (SPEAG, in house check Oct-06)	In house check: Oct-07																																																
Calibrated by:	Name Katja Pokovic	Function Technical Manager	Signature 																																																
Approved by:	Name Niels Kuster	Function Quality Manager	Signature 																																																
			Issued: November 23, 2006																																																
This calibration certificate shall not be reproduced except in full without written approval of the laboratory.																																																			

Certificate No: ES3-3037_Nov06

Page 1 of 9

**Calibration Laboratory of
Schmid & Partner
Engineering AG**
Zeughausstrasse 43, 8004 Zurich, Switzerland



S Schweizerischer Kalibrierdienst
C Service suisse d'étalonnage
S Servizio svizzero di taratura
S Swiss Calibration Service

Accredited by the Swiss Federal Office of Metrology and Accreditation
The Swiss Accreditation Service is one of the signatories to the EA
Multilateral Agreement for the recognition of calibration certificates

Accreditation No.: **SCS 108**

Glossary:

TSL tissue simulating liquid
 NORM_{x,y,z} sensitivity in free space
 ConF sensitivity in TSL / NORM_{x,y,z}
 DCP diode compression point
 Polarization ϕ ϕ rotation around probe axis
 Polarization ϑ ϑ rotation around an axis that is in the plane normal to probe axis (at measurement center), i.e., $\vartheta = 0$ is normal to probe axis

Calibration is Performed According to the Following Standards:

- a) IEEE Std 1528-2003, "IEEE Recommended Practice for Determining the Peak Spatial-Averaged Specific Absorption Rate (SAR) in the Human Head from Wireless Communications Devices: Measurement Techniques", December 2003
- b) CENELEC EN 50361, "Basic standard for the measurement of Specific Absorption Rate related to human exposure to electromagnetic fields from mobile phones (300 MHz - 3 GHz), July 2001

Methods Applied and Interpretation of Parameters:

- *NORM_{x,y,z}*: Assessed for E-field polarization $\vartheta = 0$ ($f \leq 900$ MHz in TEM-cell; $f > 1800$ MHz: R22 waveguide). *NORM_{x,y,z}* are only intermediate values, i.e., the uncertainties of *NORM_{x,y,z}* does not effect the E^2 -field uncertainty inside TSL (see below *ConvF*).
- *NORM(f)_{x,y,z}* = *NORM_{x,y,z}* * *frequency_response* (see Frequency Response Chart). This linearization is implemented in DASY4 software versions later than 4.2. The uncertainty of the frequency response is included in the stated uncertainty of *ConvF*.
- *DCP_{x,y,z}*: DCP are numerical linearization parameters assessed based on the data of power sweep (no uncertainty required). DCP does not depend on frequency nor media.
- *ConvF and Boundary Effect Parameters*: Assessed in flat phantom using E-field (or Temperature Transfer Standard for $f \leq 800$ MHz) and inside waveguide using analytical field distributions based on power measurements for $f > 800$ MHz. The same setups are used for assessment of the parameters applied for boundary compensation (alpha, depth) of which typical uncertainty values are given. These parameters are used in DASY4 software to improve probe accuracy close to the boundary. The sensitivity in TSL corresponds to *NORM_{x,y,z}* * *ConvF* whereby the uncertainty corresponds to that given for *ConvF*. A frequency dependent *ConvF* is used in DASY version 4.4 and higher which allows extending the validity from ± 50 MHz to ± 100 MHz.
- *Spherical isotropy (3D deviation from isotropy)*: in a field of low gradients realized using a flat phantom exposed by a patch antenna.
- *Sensor Offset*: The sensor offset corresponds to the offset of virtual measurement center from the probe tip (on probe axis). No tolerance required.

ES3DV3 SN:3037

November 23, 2006

Probe ES3DV3

SN:3037

Manufactured:	August 21, 2003
Last calibrated:	November 17, 2005
Recalibrated:	November 23, 2006

Calibrated for DASY Systems

(Note: non-compatible with DASY2 system!)

ES3DV3 SN:3037

November 23, 2006

DASY - Parameters of Probe: ES3DV3 SN:3037

Sensitivity in Free Space^A

Diode Compression^B

NormX	1.16 ± 10.1%	$\mu\text{V}/(\text{V}/\text{m})^2$	DCP X	99 mV
NormY	0.82 ± 10.1%	$\mu\text{V}/(\text{V}/\text{m})^2$	DCP Y	101 mV
NormZ	0.96 ± 10.1%	$\mu\text{V}/(\text{V}/\text{m})^2$	DCP Z	98 mV

Sensitivity in Tissue Simulating Liquid (Conversion Factors)

Please see Page 8.

Boundary Effect

TSL 900 MHz Typical SAR gradient: 5 % per mm

Sensor Center to Phantom Surface Distance		3.0 mm	4.0 mm
SAR _{be} [%]	Without Correction Algorithm	5.1	2.3
SAR _{be} [%]	With Correction Algorithm	0.0	0.1

TSL 1810 MHz Typical SAR gradient: 10 % per mm

Sensor Center to Phantom Surface Distance		3.0 mm	4.0 mm
SAR _{be} [%]	Without Correction Algorithm	8.4	5.2
SAR _{be} [%]	With Correction Algorithm	0.0	0.1

Sensor Offset

Probe Tip to Sensor Center 2.0 mm

The reported uncertainty of measurement is stated as the standard uncertainty of measurement multiplied by the coverage factor k=2, which for a normal distribution corresponds to a coverage probability of approximately 95%.

^A The uncertainties of NormX,Y,Z do not affect the E²-field uncertainty inside TSL (see Page 8).

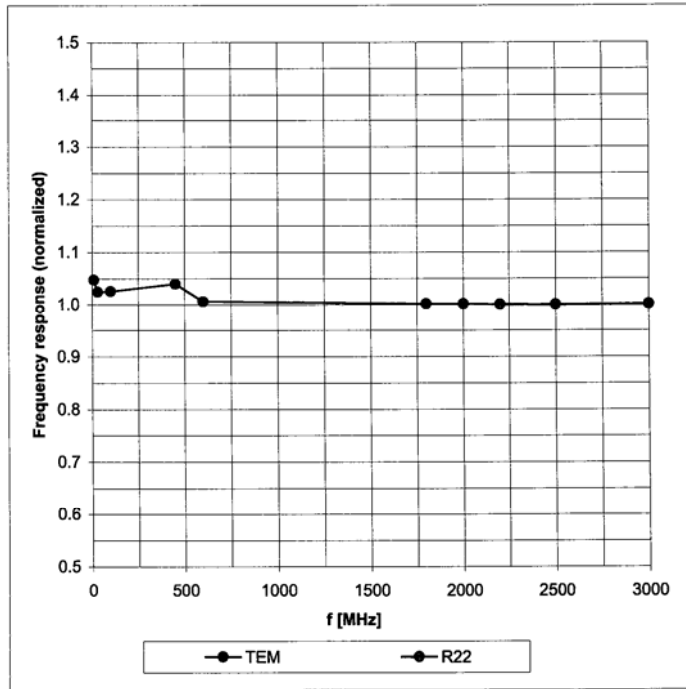
^B Numerical linearization parameter: uncertainty not required.

ES3DV3 SN:3037

November 23, 2006

Frequency Response of E-Field

(TEM-Cell: ifi110 EXX, Waveguide: R22)

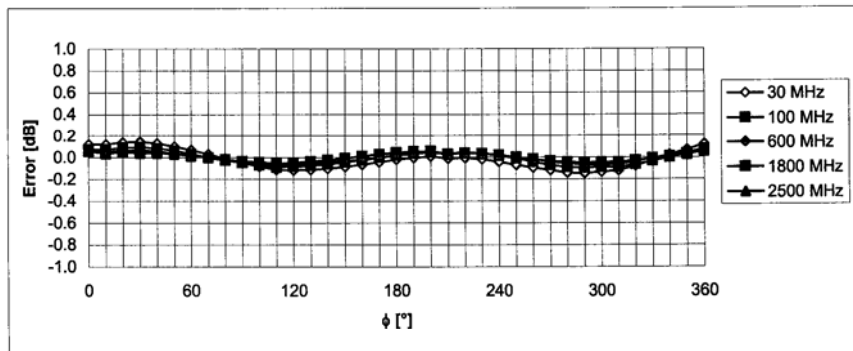
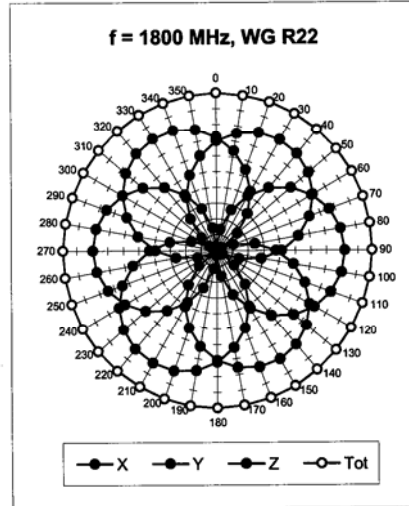
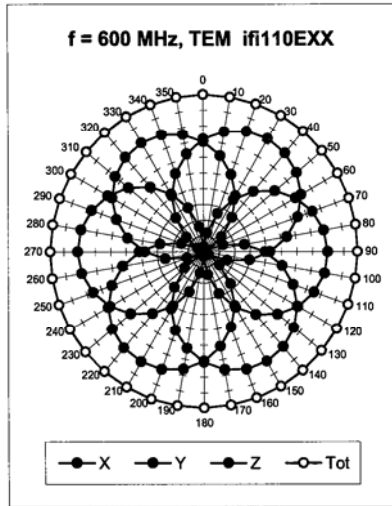


Uncertainty of Frequency Response of E-field: $\pm 6.3\%$ (k=2)

ES3DV3 SN:3037

November 23, 2006

Receiving Pattern (ϕ), $\vartheta = 0^\circ$

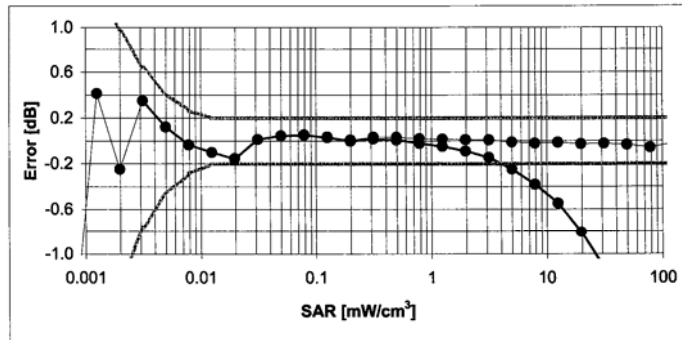
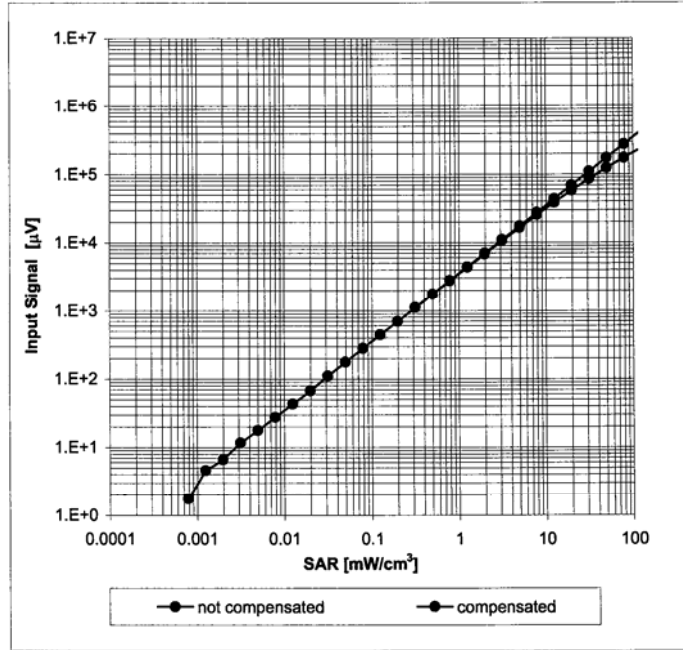


Uncertainty of Axial Isotropy Assessment: $\pm 0.5\%$ ($k=2$)

ES3DV3 SN:3037

November 23, 2006

Dynamic Range $f(SAR_{head})$ (Waveguide R22, $f = 1800$ MHz)

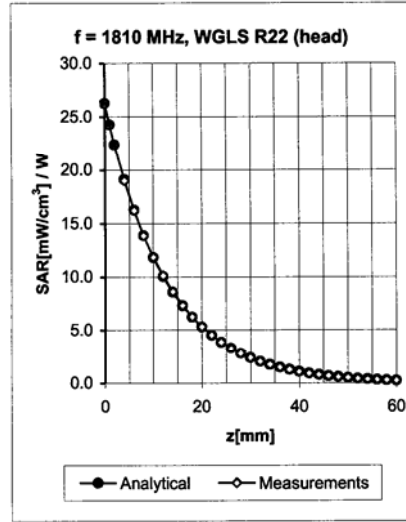
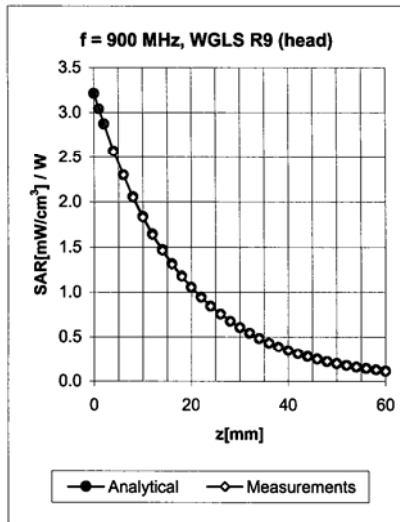


Uncertainty of Linearity Assessment: $\pm 0.6\%$ ($k=2$)

ES3DV3 SN:3037

November 23, 2006

Conversion Factor Assessment



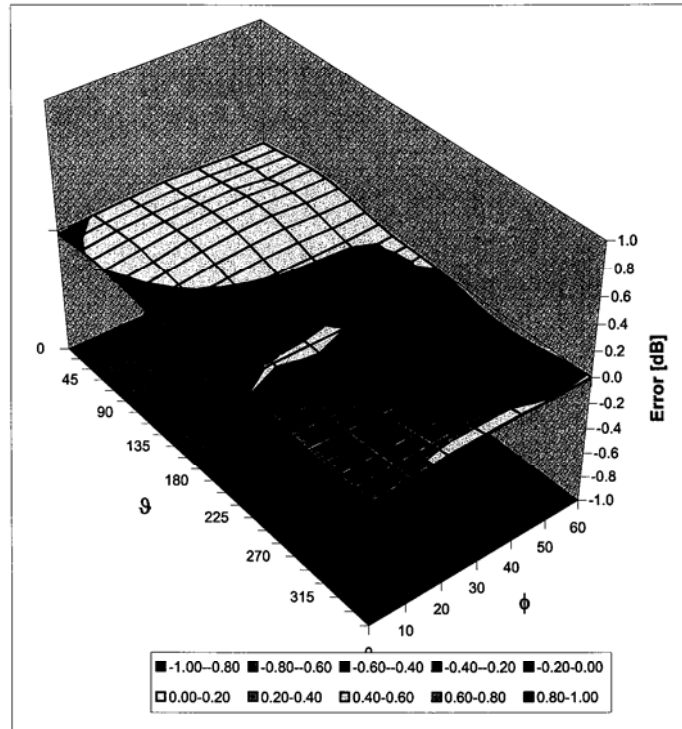
f [MHz]	Validity [MHz] ^c	TSL	Permittivity	Conductivity	Alpha	Depth	ConvF Uncertainty
900	± 50 / ± 100	Head	41.5 ± 5%	0.97 ± 5%	1.00	1.07	6.25 ± 11.0% (k=2)
1810	± 50 / ± 100	Head	40.0 ± 5%	1.40 ± 5%	0.73	1.26	5.17 ± 11.0% (k=2)
1950	± 50 / ± 100	Head	40.0 ± 5%	1.40 ± 5%	0.76	1.23	4.81 ± 11.0% (k=2)
2300	± 50 / ± 100	Head	39.4 ± 5%	1.71 ± 5%	0.62	1.40	4.45 ± 11.8% (k=2)
2450	± 50 / ± 100	Head	39.2 ± 5%	1.80 ± 5%	0.71	1.25	4.39 ± 11.8% (k=2)
2600	± 50 / ± 100	Head	39.0 ± 5%	1.96 ± 5%	0.82	1.09	4.31 ± 11.8% (k=2)
900	± 50 / ± 100	Body	55.0 ± 5%	1.05 ± 5%	1.00	1.11	6.07 ± 11.0% (k=2)
1810	± 50 / ± 100	Body	53.3 ± 5%	1.52 ± 5%	0.70	1.31	4.73 ± 11.0% (k=2)
1950	± 50 / ± 100	Body	53.3 ± 5%	1.52 ± 5%	0.63	1.44	4.58 ± 11.0% (k=2)
2300	± 50 / ± 100	Body	52.8 ± 5%	1.85 ± 5%	0.64	1.37	4.44 ± 11.8% (k=2)
2450	± 50 / ± 100	Body	52.7 ± 5%	1.95 ± 5%	0.45	1.37	4.32 ± 11.8% (k=2)
2600	± 50 / ± 100	Body	52.5 ± 5%	2.16 ± 5%	0.89	1.00	4.21 ± 11.8% (k=2)

^c The validity of ± 100 MHz only applies for DASY v4.4 and higher (see Page 2). The uncertainty is the RSS of the ConvF uncertainty at calibration frequency and the uncertainty for the indicated frequency band.

ES3DV3 SN:3037

November 23, 2006

Deviation from Isotropy in HSL Error (ϕ, θ), $f = 900$ MHz



Uncertainty of Spherical Isotropy Assessment: $\pm 2.6\%$ ($k=2$)

Appendix 5

Measurement Uncertainty Budget

<i>a</i>	<i>b</i>	<i>c</i>	<i>d</i>	$e = f(d,k)$	<i>f</i>	<i>g</i>	$\frac{h = c \times f}{e}$	$\frac{i = c \times g}{e}$	<i>k</i>
Uncertainty Component	IEEE 1528 section	Tol. ($\pm \%$)	Prob Dist	Div.	c_i (1 g)	c_i (10 g)	1 g u_i ($\pm\%$)	10 g u_i ($\pm\%$)	v_i
Measurement System									
Probe Calibration	E.2.1	5.9	N	1.00	1	1	5.9	5.9	∞
Axial Isotropy	E.2.2	4.7	R	1.73	0.707	0.707	1.9	1.9	∞
Hemispherical Isotropy	E.2.2	9.6	R	1.73	0.707	0.707	3.9	3.9	∞
Boundary Effect	E.2.3	1.0	R	1.73	1	1	0.6	0.6	∞
Linearity	E.2.4	4.7	R	1.73	1	1	2.7	2.7	∞
System Detection Limits	E.2.5	1.0	R	1.73	1	1	0.6	0.6	∞
Readout Electronics	E.2.6	0.3	N	1.00	1	1	0.3	0.3	∞
Response Time	E.2.7	1.1	R	1.73	1	1	0.6	0.6	∞
Integration Time	E.2.8	1.1	R	1.73	1	1	0.6	0.6	∞
RF Ambient Conditions - Noise	E.6.1	3.0	R	1.73	1	1	1.7	1.7	∞
RF Ambient Conditions - Reflections	E.6.1	0.0	R	1.73	1	1	0.0	0.0	∞
Probe Positioner Mech. Tolerance	E.6.2	0.4	R	1.73	1	1	0.2	0.2	∞
Probe Positioning w.r.t Phantom	E.6.3	1.4	R	1.73	1	1	0.8	0.8	∞
Max. SAR Evaluation (ext., int., avg.)	E.5	3.4	R	1.73	1	1	2.0	2.0	∞
Test sample Related									
Test Sample Positioning	E.4.2	3.2	N	1.00	1	1	3.2	3.2	29
Device Holder Uncertainty	E.4.1	4.0	N	1.00	1	1	4.0	4.0	8
SAR drift	6.6.2	5.0	R	1.73	1	1	2.9	2.9	∞
Phantom and Tissue Parameters									
Phantom Uncertainty	E.3.1	4.0	R	1.73	1	1	2.3	2.3	∞
Liquid Conductivity (target)	E.3.2	5.0	R	1.73	0.64	0.43	1.8	1.2	∞
Liquid Conductivity (measurement)	E.3.3	3.3	N	1.00	0.64	0.43	2.1	1.4	∞
Liquid Permittivity (target)	E.3.2	5.0	R	1.73	0.6	0.49	1.7	1.4	∞
Liquid Permittivity (measurement)	E.3.3	1.9	N	1.00	0.6	0.49	1.1	0.9	∞
Combined Standard Uncertainty			RSS				11.1	10.8	411
Expanded Uncertainty (95% CONFIDENCE LEVEL)			$k=2$				22.2	21.6	

Appendix 6

**Photographs of the device under test
>>> MOVED TO FCC EXHIBIT 7 <<<**

Appendix 7

Dipole Characterization Certificate

Certification of System Performance Check Targets

Based on WI-0396

-Historical Data-

900MHz	
IEEE1528 Target:	10.8 (W/kg)
Measurement Uncertainty (k=1):	9.0%
Measurement Period:	3-June-05 to 10-May-06
# of tests performed:	1571
Grand Average:	11.3 (W/kg)
% Delta (Average - IEEE1528 Target)	4.3%
Is % Delta <= Expanded Measurement Uncertainty (k=2)?	Yes
Accept/Reject <u>Average</u> as new system performance check target?	ACCEPT
Applies to Dipole SN's: 55, 69, 77, 78, 79, 80, 91, 92, 93, 94, 95, 96, 97	

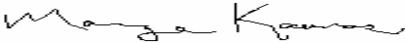
-New System Performance Check Targets- per WI-0396

(based on analysis of historical data)

Frequency	SAR Target (W/kg)	Permittivity	Conductivity (S/m)
900MHz	11.3	41.5 ± 5%	0.97 ± 5%

-Approvals-

Submitted by: Date:

Signed: 

Comments:

Approved by: Date:

Signed: 

Comments:

Certification of System Performance Check Targets

Based on WI-0396

-Historical Data-


1900MHz	
IEEE1528 Target:	39.7 (W/kg)
Measurement Uncertainty (k=1):	9.0%
Measurement Period:	3-June-05 to 10-May-06
# of tests performed:	145
Grand Average:	40.9 (W/kg)
% Delta (Average - IEEE1528 Target)	3.0%
Is % Delta <= Expanded Measurement Uncertainty (k=2)?	Yes
Accept/Reject <u>Average</u> as new system performance check target?	ACCEPT
<u>Applies to Dipole SN's:</u> 513TR, 514TR, 518TR, 519TR, 520TR, 523TR, 524TR, 526TR, 527TR, 528TR, 529TR, 530TR, 533TR	

-New System Performance Check Targets- per WI-0396
 (based on analysis of historical data)

Frequency	SAR Target (W/kg)	Permittivity	Conductivity (S/m)
1900MHz	40.9	40.0 ± 5%	1.40 ± 5%

-Approvals-

Submitted by: Date:

Signed: 

Comments:

Approved by: Date:

Signed: 

Comments: