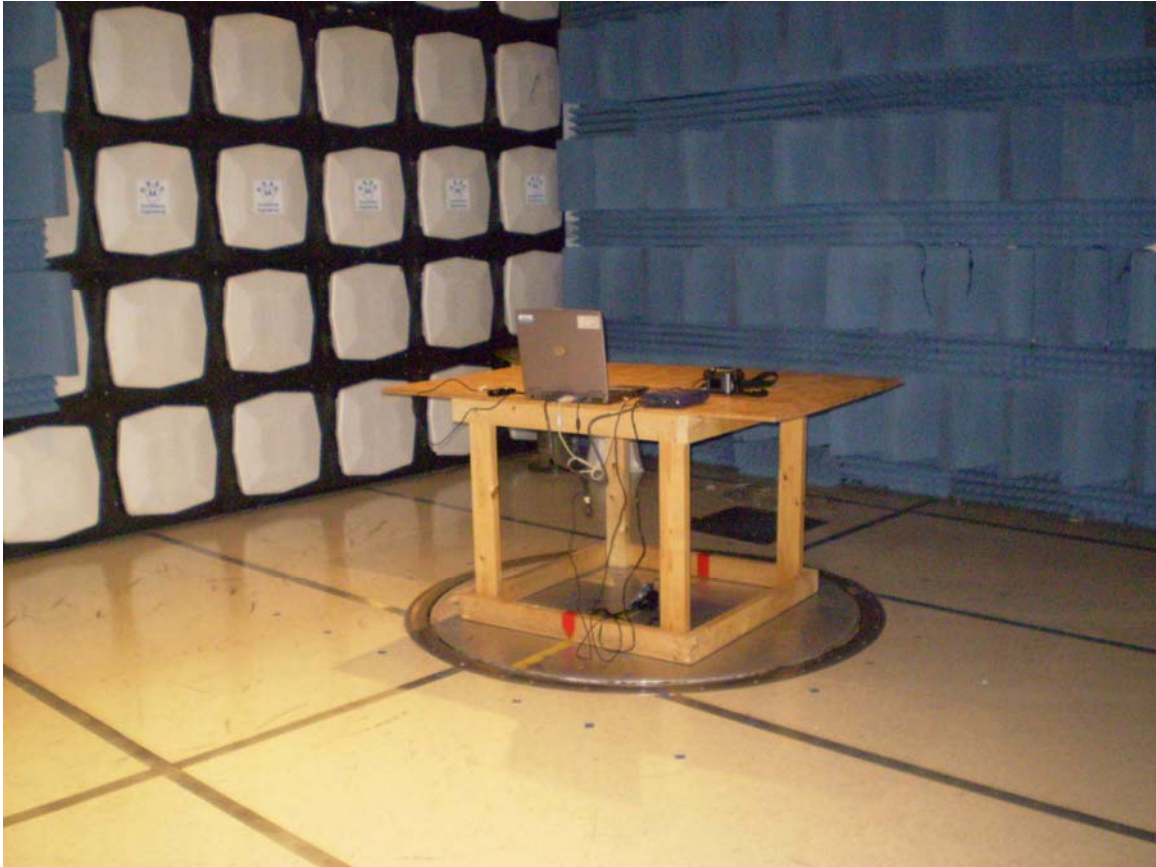


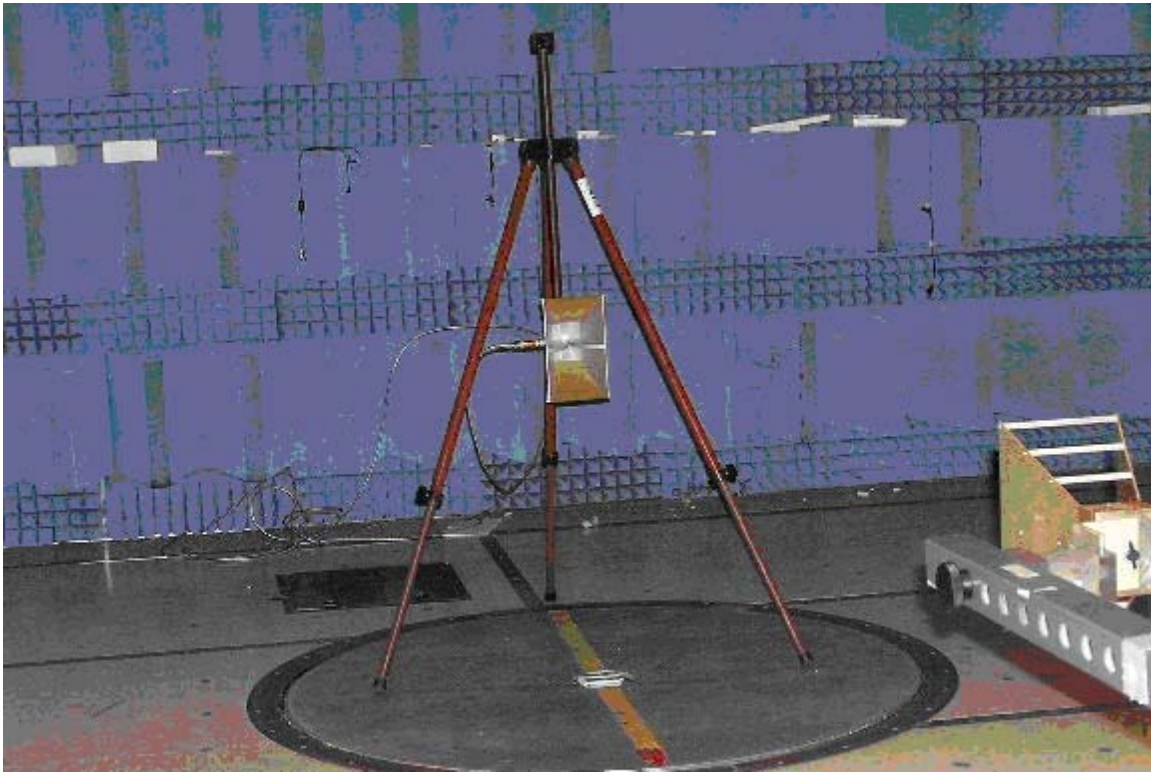
EMC TEST SETUP PHOTOS



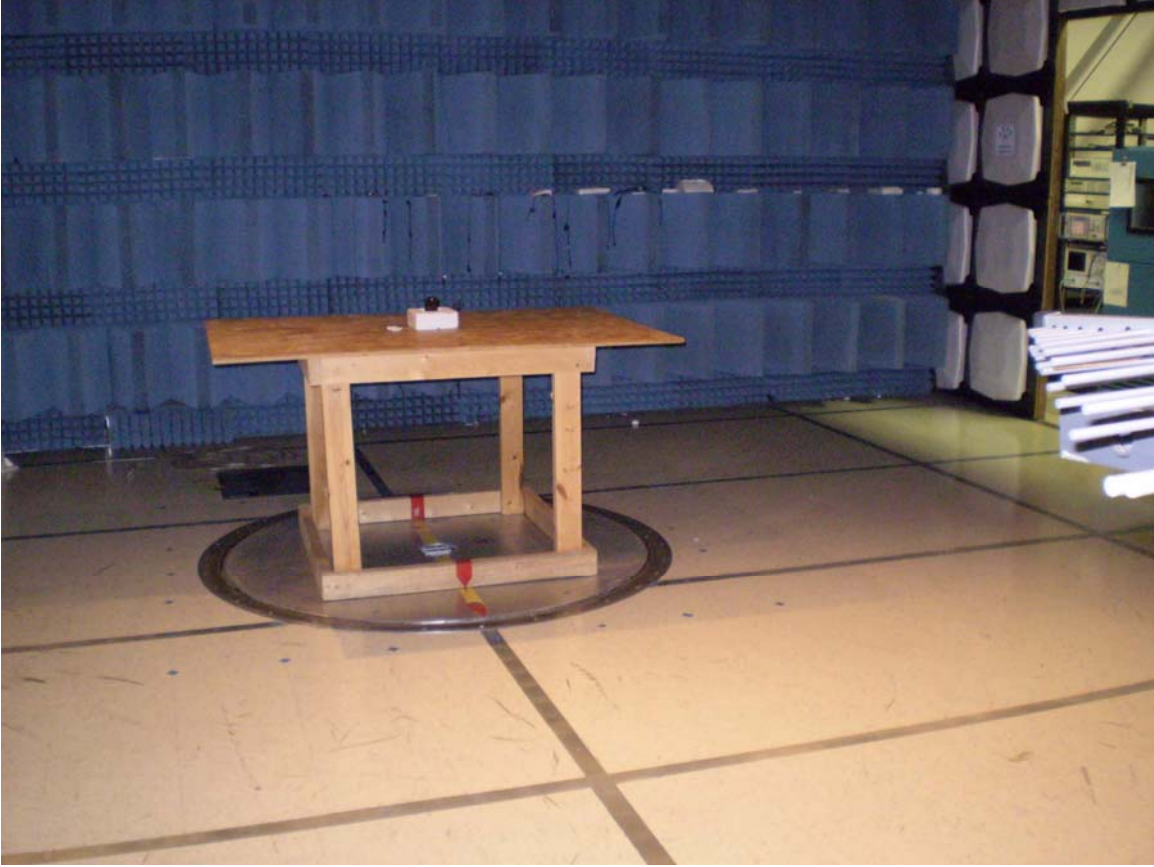
EMC Report #20102-1, AC Line - Part 15



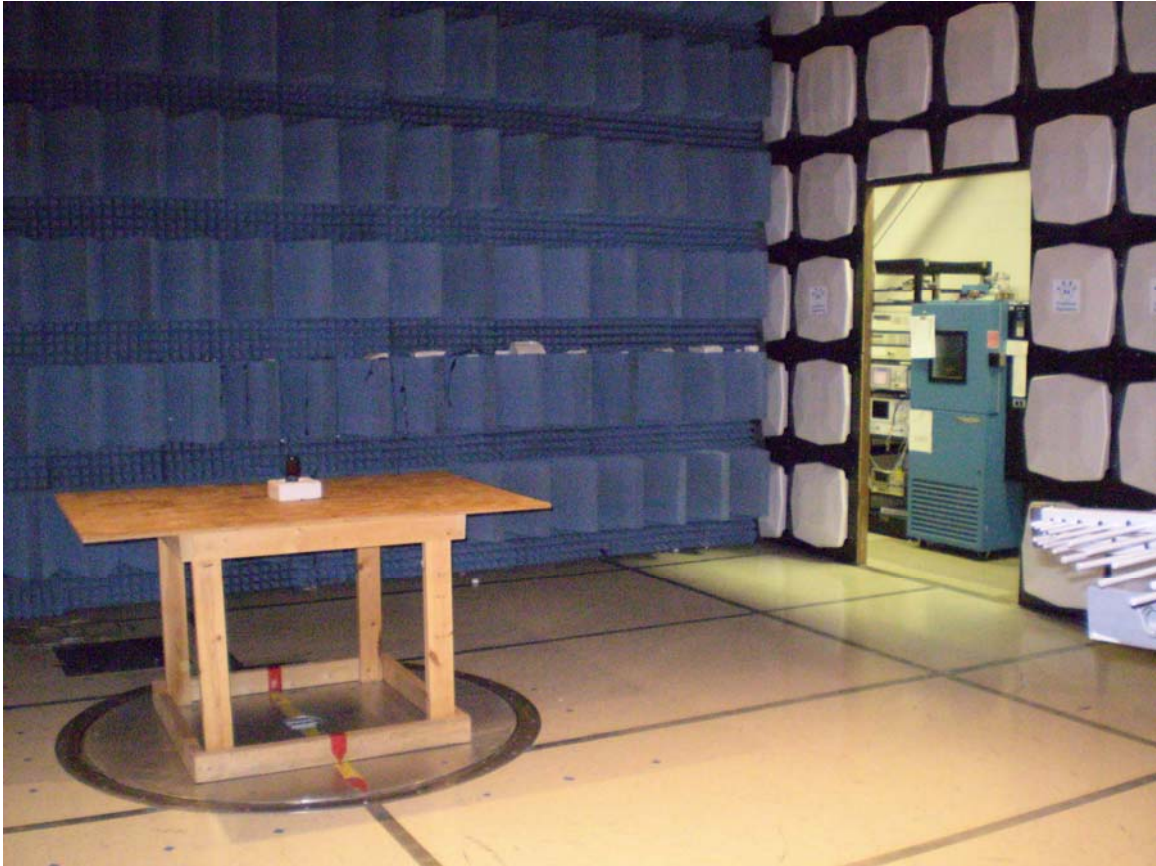
EMC Report #20102-1, Part 15, PC Peripheral



EMC Report #20102-1, Antenna - Substitution



EMC Report #20102-1, Tx Radiated slider down



EMC Report #20102-1, Tx Radiated slider up

Appendix 5

Pictures of Test Setup

>>>> EXTRACTED FROM FCC EXHIBIT 6B1 HAC REPORT<<<<

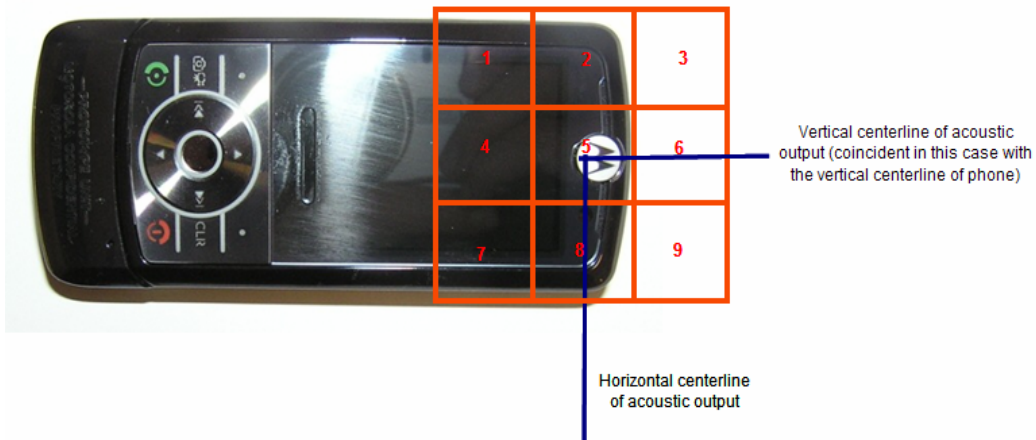


Figure A5-1. Phone Closed - Orientation of Wireless Device and Measurement Plane



Figure A5-2. Phone Open - Orientation of Wireless Device and Measurement Plane

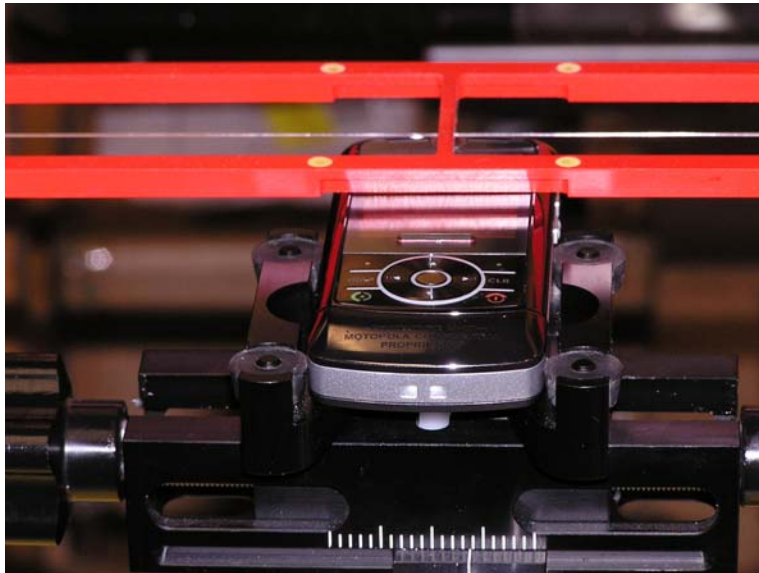


Figure A5-3. Views from the front (slider closed)

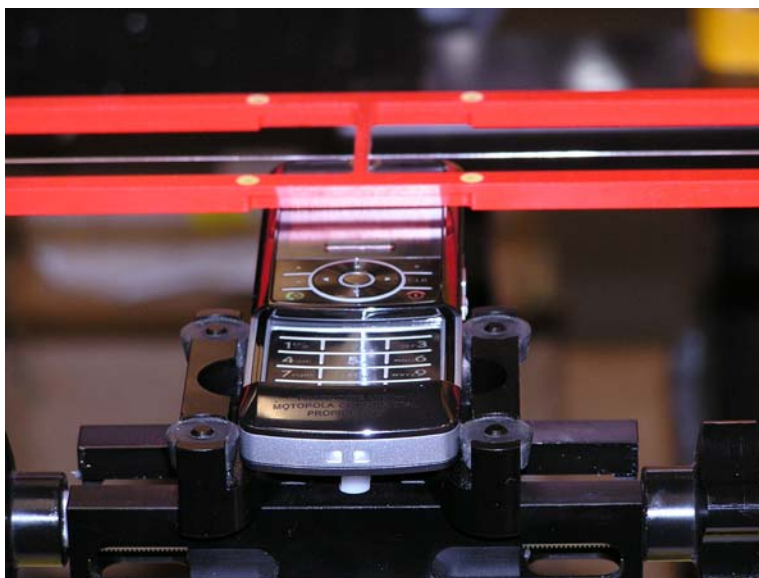


Figure A5-4. Views from the front (slider open)

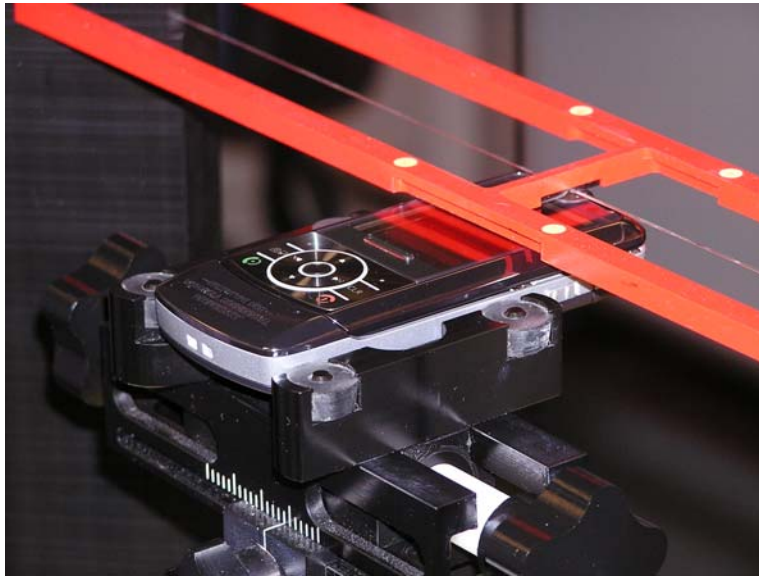


Figure A5-5. Views from the side (slider closed)

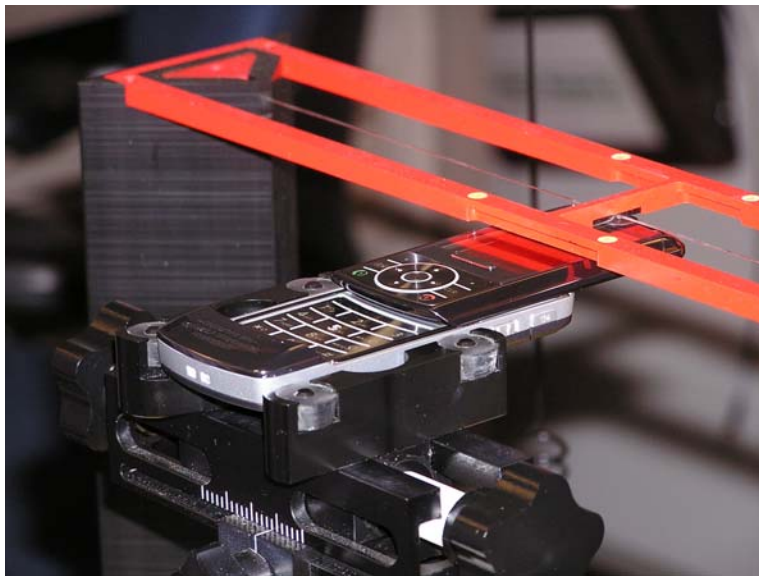


Figure A5-6. Views from the side (slider open)

Appendix 6

**Photographs of the device under test
(EXTRACTED FROM FCC EXHIBIT 11 - SAR REPORT)**



Figure 1: Slider Closed: Front of Phone with Antenna Retracted



Figure 2: Slider Closed: Back of the Phone



Figure 3: Slider Open



Figure 4: SYN1531A pouch (front)



Figure 5: SYN1531A pouch (back)



Figure 6: Cheek Position (slider closed)

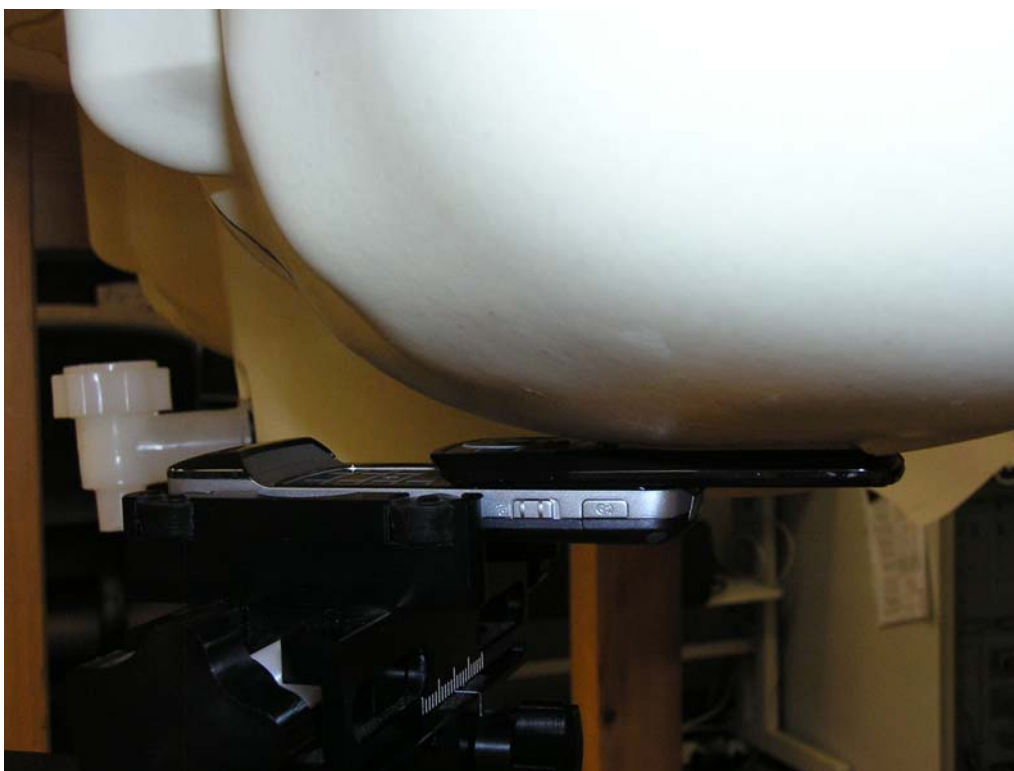


Figure 7: Cheek Position (slider open)



Figure 8: Tilt Position (slider closed)



Figure 9: Tilt Position (slider open)



Figure 10: Bodyworn Back of Phone 15mm from phantom



Figure 11: Bodyworn Back of Phone in SYN1531A pouch