



MOTOROLA

Portable Cellular Phone SAR Test Report

Test Report #: 18922-3F
Date of Report: August 30, 2006
Date of Test: August 3, 2006 – August 17, 2006
FCC ID #: IHDT56GS1
Generic Name: n/a
Laboratory: Motorola Mobile Devices Business Product Safety & Compliance Laboratory
600 N. US Highway 45
Libertyville, Illinois 60048

Report Author: Katerina Royzen
Engineer
Katya Royzen

This laboratory is accredited to ISO/IEC 17025-1999 to perform the following tests:

Tests:
Electromagnetic Specific Absorption Rate

Procedures:
ANSI / IEEE C95.1-1992, 1999
(SAR) IEEE C95.3-1991
IEEE 1528, IEC 62209-1
FCC OET Bulletin 65 (including Supplements A, B, C)
Australian Communications Authority Radio
Communications (Electromagnetic Radiation – Human
Exposure) Standard 2003
CENELEC EN 50361 (2001)
WI-0247
WI-1847

Accreditation:



Simulated Tissue Preparation
RF Power Measurement

On the following products or types of products:

Wireless Communications Devices (Examples): Two Way Radios; Portable Phones (including Cellular, Licensed Non-Broadcast and PCS); Low Frequency Readers; and Pagers

A2LA certificate #1651-01

Statement of Compliance:

Motorola declares under its sole responsibility that the portable cellular telephone model to which this declaration relates, is in conformity with the appropriate General Population/Uncontrolled RF exposure standards, recommendations and guidelines (FCC 47 CFR §2.1093) as well as with CENELEC en50360:2001 and ANSI / IEEE C95.1. It also declares that the product was tested in accordance with CENELEC en50361:2001, IEEE 1528, as well as other appropriate measurement standards, guidelines and recommended practices. Any deviations from these standards, guidelines and recommended practices are noted below:

(none)

©Motorola, Inc. 2006

This test report shall not be reproduced except in full, without written approval of the laboratory.

The results and statements contained herein relate only to the items tested. The names of individuals involved may be mentioned only in connection with the statements or results from this report.

Motorola encourages all feedback, both positive and negative, on this test report.

Table of Contents

1. Introduction	2
2. Description of the Device Under Test	2
2.1 Antenna description	2
2.2 Device description	2
3. Test Equipment Used	3
3.1 Dosimetric System	3
3.2 Additional Equipment	3
4. Electrical parameters of the tissue simulating liquid	4
5. System Accuracy Verification	5
6. Test Results	6
6.1 Head Adjacent Test Results	7
6.2 Body Worn Test Results	14
References	20
Appendix 1: SAR distribution comparison for system accuracy verification	21
Appendix 2: SAR distribution plots for Phantom Head Adjacent Use	22
Appendix 3: SAR distribution plots for Body Worn Configuration	23
Appendix 4: Probe Calibration Certificate	24
Appendix 5: Measurement Uncertainty Budget	25
Appendix 6: Photographs of the device under test	27
Appendix 7: Dipole Characterization Certificate	32

1. Introduction

The Motorola Mobile Devices Business Product Safety Laboratory has performed measurements of the maximum potential exposure to the user of the portable cellular phone covered by this test report. The Specific Absorption Rate (SAR) of this product was measured. The portable cellular phone was tested in accordance with [1], [4] and [5]. The SAR values measured for the portable cellular phone are below the maximum recommended levels of 1.6 W/kg in a 1g average set in [3] and 2.0W/kg in a 10g average set in [2].

For ICNIRP (10g), the final SAR reading for this phone is 1.09 W/kg for head adjacent use and 1.08 W/kg for body worn use. For ANSI / IEEE C95.1 (1g), the final SAR reading for this phone is 1.60 W/kg for head adjacent use and 1.49 W/kg for body worn use. These measurements were performed using a Dasy4™ v4.6 system manufactured by Schmid & Partner Engineering AG (SPEAG), of Zurich Switzerland.

2. Description of the Device Under Test

2.1 Antenna description

Type	External	
Location	Upper Right	
Dimensions	Length	100 mm
	Width	8 mm
Configuration	Extendable Whip	

2.2 Device description

Serial number	1B172464			
Mode(s) of Operation	800 AMPS	800 CDMA	1900 CDMA	Bluetooth
Modulation Mode(s)	FM	QPSK	QPSK	GFSK
Maximum Output Power Setting	27.80 dBm	25.00 dBm	25.00 dBm	4.0 dBm
Duty Cycle	1:1	1:1	1:1	1:1
Transmitting Frequency Rang(s)	824-849MHz	824-849MHz	1851-1909MHz	2400.0-2483.5 MHz
Production Unit or Identical Prototype (47 CFR §2.908)	Identical Prototype			
Device Category	Portable			
RF Exposure Limits	General Population / Uncontrolled			

3. Test Equipment Used

3.1 Dosimetric System

The Motorola Mobile Devices Business Product Safety & Compliance Laboratory utilizes a Dosimetric Assessment System (Dasy4™ v4.6) manufactured by Schmid & Partner Engineering AG (SPEAG™), of Zurich Switzerland. All the SAR measurements are taken within a shielded enclosure. The overall 10g RSS uncertainty of the measurement system is ±10.8% (K=1) with an expanded uncertainty of ±21.6% (K=2). The overall 1g RSS uncertainty of the measurement system is ±11.1% (K=1) with an expanded uncertainty of ±22.2% (K=2). The measurement uncertainty budget is given in Appendix 6. Per IEEE 1528, this uncertainty budget is applicable to the SAR range of 0.4W/kg to 10W/kg.

The list of calibrated equipment used for the measurements is shown in the following table.

Description	Serial Number	Cal Due Date
DASY4™ DAE V1	SN 378	5/22/2007
	SN 316	11/24/2006
E-Field Probe ET3DV6	SN 1513	9/19/2006
	SN 1524	5/30/2007
Dipole Validation Kit, DV900V2	80	5/22/2007
	78	5/22/2007
S.A.M. Phantom used for 800/900MHz	TP-1153	
	TP-1106	
Dipole Validation Kit, DV1800V2	251tr	
S.A.M. Phantom used for 1800/1900/2450MHz	TP-1236	

3.2 Additional Equipment

Description	Serial Number	Cal Due Date
Signal Generator HP8648C	3847A04832	6/30/2007
Power Meter E4419B	GB39511082	2/28/2007
Power Sensor #1 - E9301A	US39211008	6/28/2007
Power Sensor #2 - E9301A	US39211009	6/28/2007
Network Analyzer HP8753ES	US39172529	2/3/2007
Dielectric Probe Kit HP85070C	US99360070	

4. Electrical parameters of the tissue simulating liquid

Prior to conducting SAR measurements, the relative permittivity, ϵ_r , and the conductivity, σ , of the tissue simulating liquids were measured with a HP85070 Dielectric Probe Kit. These values, along with the temperature of the simulated tissue are shown in the table below. The recommended limits for permittivity and conductivity are also shown. A mass density of $\rho=1\text{g/cm}^3$ was entered into the system in all the cases. It can be seen that the measured parameters are within tolerance of the recommended limits specified in [1] and [5].

f (MHz)	Tissue type	Limits / Measured	Dielectric Parameters		
			ϵ_r	σ (S/m)	Temp (°C)
835	Head	Measured, Aug 3, 2006	43.0	0.93	19.9
		Measured, Aug 4, 2006	43.0	0.93	19.8
		Measured, Aug 6, 2006	41.7	0.92	20
		Measured, Aug 10, 2006	42.5	0.92	19.8
		Measured, Aug 11, 2006	42.5	0.92	20
	Recommended Limits	41.5 ±5%	0.90 ±5%	18-25	
	Body	Measured, Aug 11, 2006	53.9	0.98	20.5
		Measured, Aug 13, 2006	53.9	0.98	20.5
Recommended Limits		55.2 ±5%	0.97 ±5%	18-25	
1880	Head	Measured, Aug 7, 2006	39.1	1.45	19.9
		Measured, Aug 12, 2006	39.6	1.44	20
		Measured, Aug 17, 2006	39.1	1.45	20
		Recommended Limits	40.0 ±5%	1.40 ±5%	18-25
	Body	Measured, Aug 12, 2006	51.7	1.56	19.9
		Recommended Limits	53.3 ±5%	1.52 ±5%	18-25

The list of ingredients and the percent composition used for the tissue simulates are indicated in the table below.

Ingredient	835MHz / 900 MHz	835MHz / 900 MHz	1800MHz / 1900 MHz	1800 MHz / 1900 MHz
	Head	Body	Head	Body
Sugar	57	44.9	--	--
DGBE	--	--	47	30.8
Diacetin	--	--	--	--
Water	40.45	53.06	52.62	68.8
Salt	1.45	0.94	0.38	0.4
HEC	1	1	--	--
Bact.	0.1	0.1	--	--

5. System Accuracy Verification

A system accuracy verification of the DASY4™ was performed using the measurement equipment listed in Section 3.1. The daily system accuracy verification occurs within the flat section of the SAM phantom.

A SAR measurement was performed to verify the measured SAR was within $\pm 10\%$ from the target SAR indicated in Section 8.3.7 Reference SAR Values in [5] or Appendix 7 for the 900MHz target reference SAR value. These tests were done at 900MHz, 1800MHz. These frequencies are within $\pm 10\%$ of the compliance test mid-band frequency as required in [1] and [5]. The test was conducted on the same days as the measurement of the DUT. Recommended limits for permittivity and conductivity, specified in [5], are shown in the table below. The obtained results from the system accuracy verification are also displayed in the table below. SAR values are normalized to 1W forward power delivered to the dipole. It is seen that the system is operating within its specification, as the results are within acceptable tolerance of the reference values. The distributions of SAR compare well with those of the reference measurements (see Appendix 1). The tissue stimulant depth was verified to be 15.0cm ± 0.5 cm. Z-axis scans showing the SAR penetration are also included in Appendix 1.

f (MHz)	Description	SAR (W/kg), 1gram	Dielectric Parameters		Ambient Temp (°C)	Tissue Temp (°C)
			ϵ_r	σ (S/m)		
900	Measured, Aug 3, 2006	11.6	42.2	0.99	20.8	20.7
	Measured, Aug 4, 2006	11.6	42.2	0.99	20.7	20.5
	Measured, Aug 6, 2006	11.0	40.9	0.98	20.3	19.2
	Measured, Aug 10, 2006	11.7	41.7	0.99	21.1	20.5
	Measured, Aug 11, 2006	11.6	42.2	0.99	21.1	20.5
	Measured, Aug 12, 2006	11.5	41.0	0.98	20.8	20.5
	Recommended Limits	11.3	41.5 $\pm 5\%$	0.97 $\pm 5\%$	18-25	18-25
1800	Measured, Aug 7, 2006	39.1	40.3	1.38	20.1	19.3
	Measured, Aug 12, 2006	36.5	40	1.35	20.8	20
	Measured, Aug 17, 2006	38.0	39.5	1.36	20.7	19.8
	Recommended Limits	38.1	40.0 $\pm 5\%$	1.4 $\pm 5\%$	18-25	18-25

The following probe conversion factors were used on the E-Field probe(s) used for the system accuracy verification measurements:

Description	Serial Number	f (MHz)	Conversion Factor	Cal Cert pg #
E-Field Probe ET3DV6	SN 1513	900	5.83	8 of 9
		1810	4.76	8 of 9
	SN 1524	900	6.15	8 of 9
		1810	5.16	8 of 9

6. Test Results

The test sample was operated using an actual transmission through a base station simulator. The base station simulator was setup to the proper channel, transmitter power level and transmit mode of operation. The phone was tested in the configurations stipulated in [1], [4] and [5]. The phone was positioned into these configurations using the device holder supplied with the DASY4™ SAR measurement system. The measured dielectric constant of the material used for the device holder is less than 2.9 and the loss tangent is less than 0.02 ($\pm 30\%$) at 850MHz. The default settings for the “coarse” and “cube” scans were chosen and used for measurements. The grid spacing of the course scan was set to 15cm as shown in the SAR plots included in Appendix 2 and 3. Please refer to the DASY manual for additional information on SAR scanning procedures and algorithms used.

The Cellular Phone model covered by this report has the following battery options:

SNN5782A - 1100 mAH Battery

SNN5771A - 850 mAH Battery

The battery with the highest capacity is the SNN5782A. This battery was used to do most of the SAR testing. The phone was placed in the SAR measurement system with a fully charged battery. The configuration that resulted in the highest SAR values were tested using the other batteries listed above.

Per the “Preliminary Guidance for Reviewing Applications for Certifications of 3G Devices” released on May 9, 2006, RC1, RC3 and RC3 (FCH + SCH) CDMA modes were considered. The conducted power measurements (per steps 3, 4 & 10 of section 4.4.5.2 of 3GPP2 C.5.011 / TIA -98-E) show that the portable cellular phone FCC ID IHDT56GJ1 has the same output conducted power for both CDMA modes.

		Conducted power (dBm) for CDMA modes		
		RC1	RC3	RC3 (FCH + SCH)
CDMA 800	Ch 1013	25.10	25.07	Per Motorola designs; the maximum power, when in a mode that allows supplemental channels, will always be less than the RC3 / RC1 maximum conducted power limit.
	Ch 384	25.20	25.14	
	Ch 777	24.98	24.93	
CDMA 1900	Ch 25	24.89	24.92	
	Ch 600	24.94	25.04	
	Ch 1175	24.94	24.95	

6.1 Head Adjacent Test Results

The SAR results shown in tables 1 through 12 are maximum SAR values averaged over 1 gram of phantom tissue, to demonstrate compliance to [3] and also over 10 grams of phantom tissue, to demonstrate compliance to the [6]. Also shown are the measured conducted output powers, the temperature of the simulated tissue after the test, the measured drift and the extrapolated SAR. The exact method of extrapolation is $\text{New SAR} = \text{Old SAR} * 10^{(-\text{drift}/10)}$. The SAR reported at the end of the measurement process by the DASY4™ measurement system can be scaled up by the measured drift to determine the SAR at the beginning of the measurement process. This is the most conservative SAR because it corresponds to the average output power at the beginning of the SAR test. This extrapolation has been done because when the DUT is operating properly it may exhibit a slump in radiated power and SAR over time. This is verified by measuring the SAR drift after the test. Note that 800MHz digital mode SAR measurements were performed in accordance with [4].

The left head and right head SAR contour distributions are similar. Because of this similarity, the cheek/touch and 15° tilt test conditions with the highest SAR values in each band are indicated as bold numbers in the following tables and are included in Appendix 2. All other test conditions measured lower SAR values than those included in Appendix 2.

The SAR measurements were performed using the SAM phantoms listed in section 3.1. Since the same phantoms and simulated tissue were used for the system accuracy verification and the device SAR measurements, the Z-axis scans included in Appendix 1 are applicable for verification of simulated tissue depth to be 15.0cm ±0.5cm.

The following probe conversion factors were used on the E-Field probe(s) used for the head adjacent measurements:

Description	Serial Number	f (MHz)	Conversion Factor	Cal Cert pg #
E-Field Probe ET3DV6	SN 1513	900	5.83	8 of 9
		1810	4.76	8 of 9
	SN 1524	900	6.15	8 of 9
		1810	5.16	8 of 9

Left Head Cheek Position Antenna Retracted								
<i>f</i> (MHz)	Description	Conducted Output Power (dBm)	Temp (°C)	Drift (dB)	<i>10g SAR value</i>		<i>1g SAR value</i>	
					Measured (W/kg)	Extrapolated (W/kg)	Measured (W/kg)	Extrapolated (W/kg)
Analog 800MHz	Channel 991	27.85	20.1	-0.11	0.804	0.82	1.15	1.18
	Channel 384	27.86	20.1	0.11	0.913	0.91	1.31	1.31
	Channel 799	27.87	20.1	0.07	0.859	0.86	1.24	1.24
Digital 800MHz	Channel 1013	25.10	19.9	-0.15	0.928	0.96	1.33	1.38
	Channel 384	25.20	19.8	-0.04	0.788	0.80	1.13	1.14
	Channel 777	24.98	19.8	0.04	0.930	0.93	1.34	1.34
Digital 1900MHz	Channel 25	24.89	20	-0.08	0.607	0.62	1.02	1.04
	Channel 600	24.94	19.7	-0.36	0.557	0.60	0.947	1.03
	Channel 1175	24.94	20	-0.09	0.602	0.61	1.01	1.03

Table 1: SAR measurement results at the highest possible output power, measured in a head cheek position against the ICNIRP and ANSI SAR Limit.

Left Head Cheek Position Antenna Extended								
<i>f</i> (MHz)	Description	Conducted Output Power (dBm)	Temp (°C)	Drift (dB)	<i>10g SAR value</i>		<i>1g SAR value</i>	
					Measured (W/kg)	Extrapolated (W/kg)	Measured (W/kg)	Extrapolated (W/kg)
Analog 800MHz	Channel 991	27.85	20	-0.04	0.842	0.85	1.20	1.21
	Channel 384	27.86	20	0.04	0.918	0.92	1.31	1.31
	Channel 799	27.87	20.1	0.06	0.843	0.84	1.21	1.21
Digital 800MHz	Channel 1013	25.10	20.1	-0.03	0.825	0.83	1.16	1.17
	Channel 384	25.20	20.1	0.06	0.755	0.76	1.07	1.07
	Channel 777	24.98	20	0.04	0.640	0.64	0.908	0.91
Digital 1900MHz	Channel 25	24.89						
	Channel 600	24.94	19.9	-0.12	0.327	0.34	0.583	0.60
	Channel 1175	24.94						

Table 2: SAR measurement results at the highest possible output power, measured in a head cheek position against the ICNIRP and ANSI SAR Limit.

Right Head Cheek Position Antenna Retracted								
<i>f</i> (MHz)	Description	Conducted Output Power (dBm)	Temp (°C)	Drift (dB)	<i>10g SAR value</i>		<i>1g SAR value</i>	
					Measured (W/kg)	Extrapolated (W/kg)	Measured (W/kg)	Extrapolated (W/kg)
Analog 800MHz	Channel 991	27.85	19.9	-0.09	0.958	0.98	1.41	1.44
	Channel 384	27.86	19.9	0.09	1.08	1.08	1.60	1.60
	Channel 799	27.87	19.8	0.07	0.996	1.00	1.48	1.48
Digital 800MHz	Channel 1013	25.10	20.5	-0.17	0.880	0.92	1.29	1.34
	Channel 384	25.20	19.9	-0.06	0.845	0.86	1.25	1.27
	Channel 777	24.98	20.5	-0.19	0.962	1.01	1.42	1.48
Digital 1900MHz	Channel 25	24.89	20.5	-0.17	0.669	0.70	1.23	1.28
	Channel 600	24.94	19.5	-0.19	0.860	0.90	1.52	1.59
	Channel 1175	24.94	19.9	-0.19	0.743	0.78	1.33	1.39

Table 3: SAR measurement results at the highest possible output power, measured in a head cheek position against the ICNIRP and ANSI SAR Limit.

Right Head Cheek Position Antenna Extended								
<i>f</i> (MHz)	Description	Conducted Output Power (dBm)	Temp (°C)	Drift (dB)	<i>10g SAR value</i>		<i>1g SAR value</i>	
					Measured (W/kg)	Extrapolated (W/kg)	Measured (W/kg)	Extrapolated (W/kg)
Analog 800MHz	Channel 991	27.85	19.9	0.02	0.959	0.96	1.40	1.40
	Channel 384	27.86	20	0.08	0.979	0.98	1.44	1.44
	Channel 799	27.87	19.2	-0.09	1.07	1.09	1.56	1.59
Digital 800MHz	Channel 1013	25.10	20.7	-0.08	0.951	0.97	1.40	1.43
	Channel 384	25.20	19.9	-0.03	0.821	0.83	1.21	1.22
	Channel 777	24.98	19.9	0.00	0.725	0.73	1.07	1.07
Digital 1900MHz	Channel 25	24.89	20	-0.10	0.288	0.29	0.498	0.51
	Channel 600	24.94	20.5	0.10	0.457	0.46	0.834	0.83
	Channel 1175	24.94	20	0.05	0.418	0.42	0.761	0.76

Table 4: SAR measurement results at the highest possible output power, measured in a head cheek position against the ICNIRP and ANSI SAR Limit.

Highest Head Cheek Position with SNN5771A Antenna Retracted								
<i>f</i> (MHz)	Description	Conducted Output Power (dBm)	Temp (°C)	Drift (dB)	<i>10g SAR value</i>		<i>1g SAR value</i>	
					Measured (W/kg)	Extrapolated (W/kg)	Measured (W/kg)	Extrapolated (W/kg)
Analog 800MHz	Channel 991	27.85	20.5	-0.19	0.968	1.01	1.42	1.48
	Channel 384	27.86	19.3	0.14	0.948	0.95	1.36	1.36
	Channel 799	27.87	19.3	-0.03	0.828	0.83	1.19	1.20
Digital 800MHz	Channel 1013	25.10						
	Channel 384	25.20						
	Channel 777	24.98	20.5	-0.27	0.975	1.04	1.45	1.54
Digital 1900MHz	Channel 25	24.89						
	Channel 600	24.94	19.5	-0.19	0.808	0.84	1.43	1.49
	Channel 1175	24.94						

Table 5: SAR measurement results at the highest possible output power, measured in a head cheek position against the ICNIRP and ANSI SAR Limit.

Highest Head Cheek Position with SNN5771A Antenna Extended								
<i>f</i> (MHz)	Description	Conducted Output Power (dBm)	Temp (°C)	Drift (dB)	<i>10g SAR value</i>		<i>1g SAR value</i>	
					Measured (W/kg)	Extrapolated (W/kg)	Measured (W/kg)	Extrapolated (W/kg)
Analog 800MHz	Channel 991	27.85						
	Channel 384	27.86						
	Channel 799	27.87	19.3	-0.19	1.01	1.06	1.47	1.54
Digital 800MHz	Channel 1013	25.10	20.5	-0.01	0.937	0.94	1.38	1.38
	Channel 384	25.20						
	Channel 777	24.98						
Digital 1900MHz	Channel 25	24.89						
	Channel 600	24.94	20	0.01	0.486	0.49	0.875	0.88
	Channel 1175	24.94						

Table 6: SAR measurement results at the highest possible output power, measured in a head cheek position against the ICNIRP and ANSI SAR Limit.

Left Head 15° Tilt Position Antenna Retracted								
<i>f</i> (MHz)	Description	Conducted Output Power (dBm)	Temp (°C)	Drift (dB)	<i>10g SAR value</i>		<i>1g SAR value</i>	
					Measured (W/kg)	Extrapolated (W/kg)	Measured (W/kg)	Extrapolated (W/kg)
Analog 800MHz	Channel 991	27.85						
	Channel 384	27.86	20.1	0.13	0.367	0.37	0.483	0.48
	Channel 799	27.87						
Digital 800MHz	Channel 1013	25.10						
	Channel 384	25.20	20.1	-0.02	0.291	0.29	0.383	0.38
	Channel 777	24.98						
Digital 1900MHz	Channel 25	24.89						
	Channel 600	24.94	19.9	-0.04	0.213	0.22	0.352	0.36
	Channel 1175	24.94						

Table 7: SAR measurement results at the highest possible output power, measured in a head cheek position against the ICNIRP and ANSI SAR Limit.

Left Head 15° Tilt Position Antenna Extended								
<i>f</i> (MHz)	Description	Conducted Output Power (dBm)	Temp (°C)	Drift (dB)	<i>10g SAR value</i>		<i>1g SAR value</i>	
					Measured (W/kg)	Extrapolated (W/kg)	Measured (W/kg)	Extrapolated (W/kg)
Analog 800MHz	Channel 991	27.85						
	Channel 384	27.86	20.1	-0.03	0.324	0.33	0.425	0.43
	Channel 799	27.87						
Digital 800MHz	Channel 1013	25.10						
	Channel 384	25.20	20.1	0.03	0.262	0.26	0.343	0.34
	Channel 777	24.98						
Digital 1900MHz	Channel 25	24.89						
	Channel 600	24.94	19.9	0.16	0.153	0.15	0.244	0.24
	Channel 1175	24.94						

Table 8: SAR measurement results at the highest possible output power, measured in a head cheek position against the ICNIRP and ANSI SAR Limit.

Right Head 15° Tilt Position Antenna Retracted								
<i>f</i> (MHz)	Description	Conducted Output Power (dBm)	Temp (°C)	Drift (dB)	<i>10g SAR value</i>		<i>1g SAR value</i>	
					Measured (W/kg)	Extrapolated (W/kg)	Measured (W/kg)	Extrapolated (W/kg)
Analog 800MHz	Channel 991	27.85						
	Channel 384	27.86	19.2	0.03	0.31	0.31	0.40	0.40
	Channel 799	27.87						
Digital 800MHz	Channel 1013	25.10						
	Channel 384	25.20	19.9	0.00	0.29	0.29	0.384	0.38
	Channel 777	24.98						
Digital 1900MHz	Channel 25	24.89						
	Channel 600	24.94	20	0.02	0.609	0.61	0.687	0.69
	Channel 1175	24.94						

Table 9: SAR measurement results at the highest possible output power, measured in a head cheek position against the ICNIRP and ANSI SAR Limit.

Right Head 15° Tilt Position Antenna Extended								
<i>f</i> (MHz)	Description	Conducted Output Power (dBm)	Temp (°C)	Drift (dB)	<i>10g SAR value</i>		<i>1g SAR value</i>	
					Measured (W/kg)	Extrapolated (W/kg)	Measured (W/kg)	Extrapolated (W/kg)
Analog 800MHz	Channel 991	27.85						
	Channel 384	27.86	19.2	0.05	0.269	0.27	0.341	0.34
	Channel 799	27.87						
Digital 800MHz	Channel 1013	25.10						
	Channel 384	25.20	19.9	0.00	0.269	0.27	0.353	0.35
	Channel 777	24.98						
Digital 1900MHz	Channel 25	24.89						
	Channel 600	24.94	20	0.16	0.119	0.12	0.187	0.19
	Channel 1175	24.94						

Table 10: SAR measurement results at the highest possible output power, measured in a head cheek position against the ICNIRP and ANSI SAR Limit.

Highest Head 15° Tilt Position with SNN5771A Antenna Retracted								
<i>f</i> (MHz)	Description	Conducted Output Power (dBm)	Temp (°C)	Drift (dB)	<i>10g SAR value</i>		<i>1g SAR value</i>	
					Measured (W/kg)	Extrapolated (W/kg)	Measured (W/kg)	Extrapolated (W/kg)
Analog 800MHz	Channel 991	27.85						
	Channel 384	27.86	20.5	0.07	0.35	0.35	0.46	0.46
	Channel 799	27.87						
Digital 800MHz	Channel 1013	25.10						
	Channel 384	25.20	20.5	0.04	0.278	0.28	0.364	0.36
	Channel 777	24.98						
Digital 1900MHz	Channel 25	24.89						
	Channel 600	24.94	20	-0.20	0.167	0.17	0.264	0.28
	Channel 1175	24.94						

Table 11: SAR measurement results at the highest possible output power, measured in a head cheek position against the ICNIRP and ANSI SAR Limit.

Highest Head 15° Tilt Position with SNN5771A Antenna Extended								
<i>f</i> (MHz)	Description	Conducted Output Power (dBm)	Temp (°C)	Drift (dB)	<i>10g SAR value</i>		<i>1g SAR value</i>	
					Measured (W/kg)	Extrapolated (W/kg)	Measured (W/kg)	Extrapolated (W/kg)
Analog 800MHz	Channel 991	27.85						
	Channel 384	27.86	20.5	-0.07	0.295	0.30	0.386	0.39
	Channel 799	27.87						
Digital 800MHz	Channel 1013	25.10						
	Channel 384	25.20	20.5	0.07	0.245	0.25	0.315	0.32
	Channel 777	24.98						
Digital 1900MHz	Channel 25	24.89						
	Channel 600	24.94	20	-0.03	0.149	0.15	0.244	0.25
	Channel 1175	24.94						

Table 12: SAR measurement results at the highest possible output power, measured in a head cheek position against the ICNIRP and ANSI SAR Limit.

6.2 Body Worn Test Results

The SAR results shown in tables 13 through 22 are maximum SAR values averaged over 1 gram of phantom tissue, to demonstrate compliance to [3] and also over 10 grams of phantom tissue, to demonstrate compliance to the [6]. Also shown are the measured conducted output powers, the temperature of the test facility during the test, the temperature of the tissue simulate after the test, the measured drift and the extrapolated SAR. The exact method of extrapolation is $\text{New SAR} = \text{Old SAR} * 10^{(-\text{drift}/10)}$. The SAR reported at the end of the measurement process by the DASY4™ measurement system can be scaled up by the measured drift to determine the SAR at the beginning of the measurement process. This is the most conservative SAR because it corresponds to the average output power at the beginning of the SAR test. This extrapolation has been done because when the DUT is operating properly it may exhibit a slump in radiated power and SAR over time. This is verified by measuring the SAR drift after the test. Note that 800MHz digital mode SAR measurements were performed in accordance with [4].

The test conditions that produced the highest SAR values in each band are indicated as bold numbers in the following tables and are included in Appendix 3. All other test conditions measured lower SAR values than those included in Appendix 3.

A “flat” phantom was for the body-worn tests. This “flat” phantom is made out of 1” thick natural High Density Polyethylene with a thickness at the bottom equal to 2.0mm. It measures 52.7cm(long) x 26.7cm(wide) x 21.2cm(tall). The measured dielectric constant of the material used is less than 2.3 and the loss tangent is less than 0.0046 all the way up to 2.184GHz.

The tissue stimulant depth was verified to be 15.0cm ±0.5cm. The same device holder described in section 6 was used for positioning the phone. The functional accessories were divided into two categories, the ones with metal components and the ones with non-metal components. For non-metallic component accessories’, testing was performed on the accessory that displayed the closest proximity to the flat phantom. Each metallic component accessory, if any, was checked for uniqueness of metal component so that each is tested with the device. If multiple accessories shared an identical metal component, only the accessory that dictates the closest spacing to the body was tested. In addition to accessory testing, the cellular phone was tested with the front and back of the phone facing the phantom. For voice mode operation, the phone was placed as a distance of 25mm from the phantom. For data mode operation, the phone was placed as a distance of 25mm from the phantom. The cellular phone was tested with a headset connected to the device for all body-worn SAR measurements.

There is one Body-Worn Accessories available for this phone:
Holster SYN1313B

The following probe conversion factors were used on the E-Field probe(s) used for the body worn measurements:

Description	Serial Number	f (MHz)	Conversion Factor	Cal Cert pg #
E-Field Probe ET3DV6	SN 1513	900	5.66	8 of 9
		1810	4.16	8 of 9
	SN 1524	835	6.00	8 of 9
		1900	4.64	8 of 9

Body-Worn; Front of Phone 25mm from Phantom Antenna Retracted								
<i>f</i> (MHz)	Description	Conducted Output Power (dBm)	Temp (°C)	Drift (dB)	<i>10g SAR value</i>		<i>1g SAR value</i>	
					Measured (W/kg)	Extrapolated (W/kg)	Measured (W/kg)	Extrapolated (W/kg)
Analog 800MHz	Channel 991	27.85						
	Channel 384	27.86	20	-0.03	0.258	0.26	0.35	0.35
	Channel 799	27.87						
Digital 800MHz	Channel 1013	25.10						
	Channel 384	25.20	20.5	-0.03	0.160	0.16	0.217	0.22
	Channel 777	24.98						
Digital 1900MHz	Channel 25	24.89						
	Channel 600	24.94	19.9	0.10	0.166	0.17	0.257	0.26
	Channel 1175	24.94						

Table 13: SAR measurement results at the highest possible output power, measured in a body-worn position against the ICNIRP and ANSI SAR Limit.

Body-Worn; Front of Phone 25mm from Phantom Antenna Extended								
<i>f</i> (MHz)	Description	Conducted Output Power (dBm)	Temp (°C)	Drift (dB)	<i>10g SAR value</i>		<i>1g SAR value</i>	
					Measured (W/kg)	Extrapolated (W/kg)	Measured (W/kg)	Extrapolated (W/kg)
Analog 800MHz	Channel 991	27.85						
	Channel 384	27.86	20.1	0.02	0.479	0.48	0.648	0.65
	Channel 799	27.87						
Digital 800MHz	Channel 1013	25.10						
	Channel 384	25.20	20.5	-0.03	0.257	0.26	0.35	0.35
	Channel 777	24.98						
Digital 1900MHz	Channel 25	24.89						
	Channel 600	24.94	19.9	-0.06	0.167	0.17	0.256	0.26
	Channel 1175	24.94						

Table 14: SAR measurement results at the highest possible output power, measured in a body-worn position against the ICNIRP and ANSI SAR Limit.

Body-Worn; Back of Phone 25mm from Phantom Antenna Retracted								
<i>f</i> (MHz)	Description	Conducted Output Power (dBm)	Temp (°C)	Drift (dB)	<i>10g SAR value</i>		<i>1g SAR value</i>	
					Measured (W/kg)	Extrapolated (W/kg)	Measured (W/kg)	Extrapolated (W/kg)
Analog 800MHz	Channel 991	27.85						
	Channel 384	27.86	20	0.07	0.342	0.34	0.475	0.48
	Channel 799	27.87						
Digital 800MHz	Channel 1013	25.10						
	Channel 384	25.20	20.5	0.03	0.275	0.28	0.385	0.39
	Channel 777	24.98						
Digital 1900MHz	Channel 25	24.89						
	Channel 600	24.94	19.9	-0.15	0.187	0.19	0.293	0.30
	Channel 1175	24.94						

Table 15: SAR measurement results at the highest possible output power, measured in a body-worn position against the ICNIRP and ANSI SAR Limit.

Body-Worn; Back of Phone 25mm from Phantom Antenna Extended								
<i>f</i> (MHz)	Description	Conducted Output Power (dBm)	Temp (°C)	Drift (dB)	<i>10g SAR value</i>		<i>1g SAR value</i>	
					Measured (W/kg)	Extrapolated (W/kg)	Measured (W/kg)	Extrapolated (W/kg)
Analog 800MHz	Channel 991	27.85	20.1	-0.07	0.587	0.60	0.808	0.82
	Channel 384	27.86	20	0.07	0.672	0.67	0.926	0.93
	Channel 799	27.87	20	-0.20	0.494	0.52	0.688	0.72
Digital 800MHz	Channel 1013	25.10						
	Channel 384	25.20	20.5	-0.03	0.430	0.43	0.594	0.60
	Channel 777	24.98						
Digital 1900MHz	Channel 25	24.89						
	Channel 600	24.94	19.9	-0.05	0.295	0.30	0.459	0.46
	Channel 1175	24.94						

Table 16: SAR measurement results at the highest possible output power, measured in a body-worn position against the ICNIRP and ANSI SAR Limit.

Body-Worn with Accessory Retracted								
<i>f</i> (MHz)	Description	Conducted Output Power (dBm)	Temp (°C)	Drift (dB)	<i>10g SAR value</i>		<i>1g SAR value</i>	
					Measured (W/kg)	Extrapolated (W/kg)	Measured (W/kg)	Extrapolated (W/kg)
Analog 800MHz	Channel 991	27.85	20.1	-0.03	0.776	0.78	1.11	1.12
	Channel 384	27.86	20	-0.04	0.781	0.79	1.12	1.13
	Channel 799	27.87	20	-0.09	0.919	0.94	1.32	1.35
Digital 800MHz	Channel 1013	25.10						
	Channel 384	25.20	20.5	0.01	0.46	0.46	0.647	0.65
	Channel 777	24.98						
Digital 1900MHz	Channel 25	24.89						
	Channel 600	24.94	19.9	-0.462	0.35	0.39	0.543	0.60
	Channel 1175	24.94						

Table 17: SAR measurement results at the highest possible output power, measured in a body-worn position against the ICNIRP and ANSI SAR Limit.

Body-Worn with Accessory Extended								
<i>f</i> (MHz)	Description	Conducted Output Power (dBm)	Temp (°C)	Drift (dB)	<i>10g SAR value</i>		<i>1g SAR value</i>	
					Measured (W/kg)	Extrapolated (W/kg)	Measured (W/kg)	Extrapolated (W/kg)
Analog 800MHz	Channel 991	27.85	20.1	0.08	1.03	1.03	1.47	1.47
	Channel 384	27.86	20.7	0.04	1.04	1.04	1.43	1.43
	Channel 799	27.87	20	-0.01	0.862	0.86	1.25	1.25
Digital 800MHz	Channel 1013	25.10	20.5	-0.01	0.604	0.61	0.85	0.85
	Channel 384	25.20	20.5	-0.02	0.706	0.71	0.993	1.00
	Channel 777	24.98	20.5	0.04	0.522	0.52	0.738	0.74
Digital 1900MHz	Channel 25	24.89						
	Channel 600	24.94	19.7	0.20	0.281	0.28	0.436	0.44
	Channel 1175	24.94						

Table 18: SAR measurement results at the highest possible output power, measured in a body-worn position against the ICNIRP and ANSI SAR Limit.

Highest Body-Worn with SNN5771A battery Antenna Retracted								
<i>f</i> (MHz)	Description	Conducted Output Power (dBm)	Temp (°C)	Drift (dB)	<i>10g SAR value</i>		<i>1g SAR value</i>	
					Measured (W/kg)	Extrapolated (W/kg)	Measured (W/kg)	Extrapolated (W/kg)
Analog 800MHz	Channel 991	27.85						
	Channel 384	27.86	20.1	-0.03	0.495	0.50	0.692	0.70
	Channel 799	27.87						
Digital 800MHz	Channel 1013	25.10						
	Channel 384	25.20	20.5	-0.03	0.451	0.45	0.63	0.63
	Channel 777	24.98						
Digital 1900MHz	Channel 25	24.89						
	Channel 600	24.94	19.9	-0.01	0.227	0.23	0.353	0.35
	Channel 1175	24.94						

Table 19: SAR measurement results at the highest possible output power, measured in a body-worn position against the ICNIRP and ANSI SAR Limit.

Highest Body-Worn with SNN5771A battery Antenna Extended								
<i>f</i> (MHz)	Description	Conducted Output Power (dBm)	Temp (°C)	Drift (dB)	<i>10g SAR value</i>		<i>1g SAR value</i>	
					Measured (W/kg)	Extrapolated (W/kg)	Measured (W/kg)	Extrapolated (W/kg)
Analog 800MHz	Channel 991	27.85	20	0.06	0.85	0.85	1.18	1.18
	Channel 384	27.86	20	-0.02	0.979	0.98	1.36	1.37
	Channel 799	27.87	20.1	0.03	0.679	0.68	0.963	0.96
Digital 800MHz	Channel 1013	25.10	20.5	0.03	0.568	0.57	0.791	0.79
	Channel 384	25.20	20.5	0.01	0.673	0.67	0.941	0.94
	Channel 777	24.98	20.5	-0.15	0.509	0.53	0.714	0.74
Digital 1900MHz	Channel 25	24.89						
	Channel 600	24.94	19.9	-0.05	0.243	0.25	0.381	0.39
	Channel 1175	24.94						

Table 20: SAR measurement results at the highest possible output power, measured in a body-worn position against the ICNIRP and ANSI SAR Limit.

Highest Body-Worn with Bluetooth enabled Antenna Retracted								
<i>f</i> (MHz)	Description	Conducted Output Power (dBm)	Temp (°C)	Drift (dB)	<i>10g SAR value</i>		<i>1g SAR value</i>	
					Measured (W/kg)	Extrapolated (W/kg)	Measured (W/kg)	Extrapolated (W/kg)
Analog 800MHz	Channel 991	27.85						
	Channel 384	27.86						
	Channel 799	27.87	20.4	-0.341	0.938	1.01	1.31	1.42
Digital 800MHz	Channel 1013	25.10						
	Channel 384	25.20	20.5	-0.02	0.465	0.47	0.653	0.66
	Channel 777	24.98						
Digital 1900MHz	Channel 25	24.89						
	Channel 600	24.94	19.9	-0.09	0.225	0.23	0.349	0.36
	Channel 1175	24.94						

Table 21: SAR measurement results at the highest possible output power, measured in a body-worn position against the ICNIRP and ANSI SAR Limit.

Highest Body-Worn with Bluetooth enabled Antenna Extended								
<i>f</i> (MHz)	Description	Conducted Output Power (dBm)	Temp (°C)	Drift (dB)	<i>10g SAR value</i>		<i>1g SAR value</i>	
					Measured (W/kg)	Extrapolated (W/kg)	Measured (W/kg)	Extrapolated (W/kg)
Analog 800MHz	Channel 991	27.85	20.4	-0.11	1.05	1.08	1.45	1.49
	Channel 384	27.86						
	Channel 799	27.87						
Digital 800MHz	Channel 1013	25.10						
	Channel 384	25.20	20.5	0.02	0.703	0.70	0.98	0.98
	Channel 777	24.98						
Digital 1900MHz	Channel 25	24.89						
	Channel 600	24.94	19.9	0.05	0.293	0.29	0.465	0.47
	Channel 1175	24.94						

Table 22: SAR measurement results at the highest possible output power, measured in a body-worn position against the ICNIRP and ANSI SAR Limit.

References

- [1] CENELEC, en50361:2001 “Basic standard for the measurement of Specific Absorption Rate related to human exposure to electromagnetic fields from mobile phones (300MHz – 3GHz)”
- [2] CENELEC, en50360:2001 “Product standard to demonstrate the compliance of mobile phones with the basic restrictions related to human exposure to electromagnetic fields (300MHz – 3GHz)”.
- [3] ANSI / IEEE, C95.1 1999 Edition “IEEE Standard for Safety Levels with Respect to Human Exposure to Radio Frequency Electromagnetic Fields, 3kHz to 300GHz”
- [4] FCC OET Bulletin 65 Supplement C 01-01
- [5] IEEE 1528 2003 Edition “IEEE Recommended Practice for Determining the Peak Spatial-Average Specific Absorption Rate (SAR) in the Human Head from Wireless Communications Devices: Measurement Techniques”
- [6] ICNIRP Guidelines “Guidelines for Limiting Exposure to Time-Varying Electric, Magnetic, and Electromagnetic Fields (up to 300 GHz)”

Appendix 1

SAR distribution comparison for the system accuracy verification

Test Laboratory: Motorola

DUT: Dipole 900 MHz; Type: D900V2; Procedure Notes: 900 MHz System Performance Check / Dipole Sn# 80; PM1 Power = 200 mW; Sim.Temp@ meas = 20.7°C; Sim.Temp@ SPC = 20.7°C; Room Temp@ SPC = 20.8°C

Communication System: CW - Dipole; Frequency: 900 MHz; Duty Cycle: 1:1
Medium: VALIDATION Only; Medium parameters used: $f = 900$ MHz; $\sigma = 0.99$ mho/m; $\epsilon_r = 42.2$; $\rho = 1000$ kg/m³

DASY4 Configuration:

- Probe: ET3DV6R - SN1513; ConvF(5.83, 5.83, 5.83); Calibrated: 9/19/2005
- Sensor-Surface: 4mm (Mechanical Surface Detection)
- Electronics: DAE3 Sn378; Calibrated: 5/22/2006
- Phantom: R3: Sugar Water SAM; Type: SAM; Serial: TP-1153;
- Measurement SW: DASY4, V4.7 Build 44; Postprocessing SW: SEMCAD, V1.8 Build 171

Daily SPC Check/Dipole Area Scan (4x9x1): Measurement grid: dx=15mm, dy=15mm
Maximum value of SAR (measured) = 2.25 mW/g

Daily SPC Check/0-Degree 5x5x7 Cube (5x5x7)/Cube 0: Measurement grid: dx=8mm, dy=8mm, dz=5mm

Reference Value = 51.4 V/m; Power Drift = -0.032 dB

Peak SAR (extrapolated) = 3.48 W/kg

SAR(1 g) = 2.27 mW/g; SAR(10 g) = 1.45 mW/g

Maximum value of SAR (measured) = 2.46 mW/g

Daily SPC Check/90-Degree 5x5x7 Cube (5x5x7)/Cube 0: Measurement grid: dx=8mm, dy=8mm, dz=5mm

Reference Value = 51.4 V/m; Power Drift = -0.032 dB

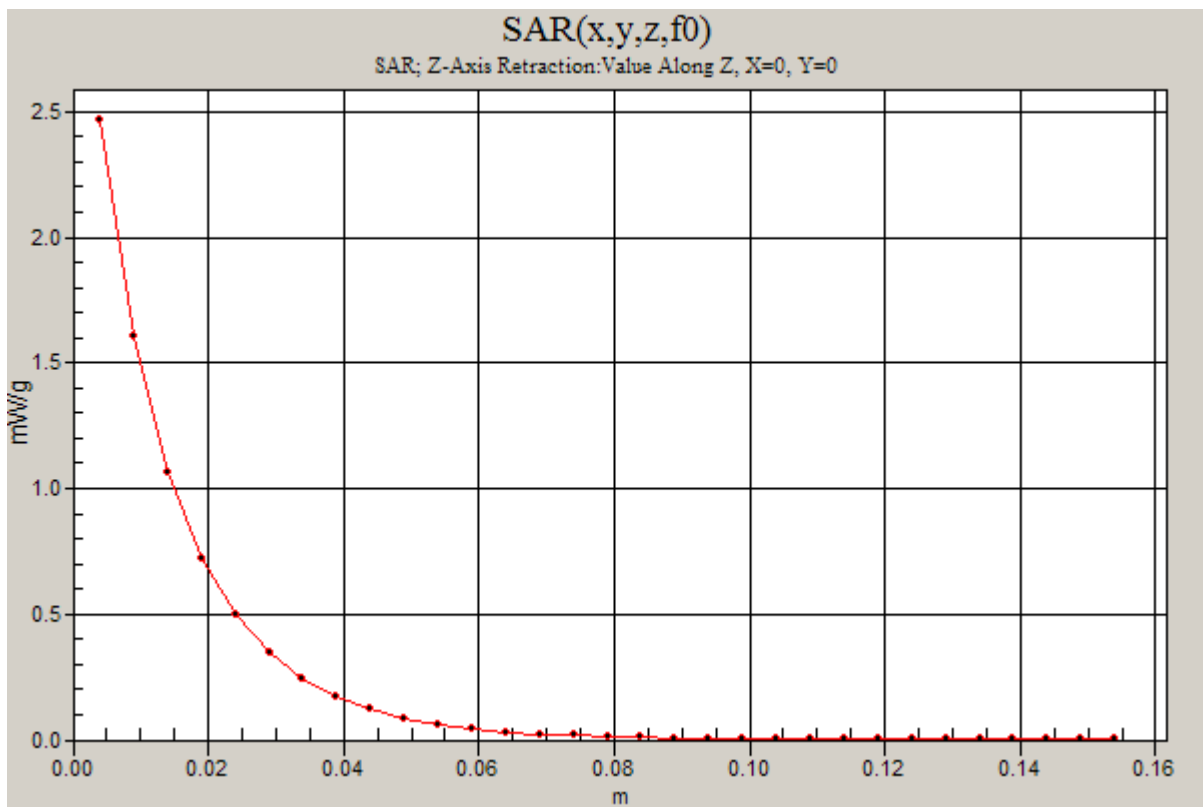
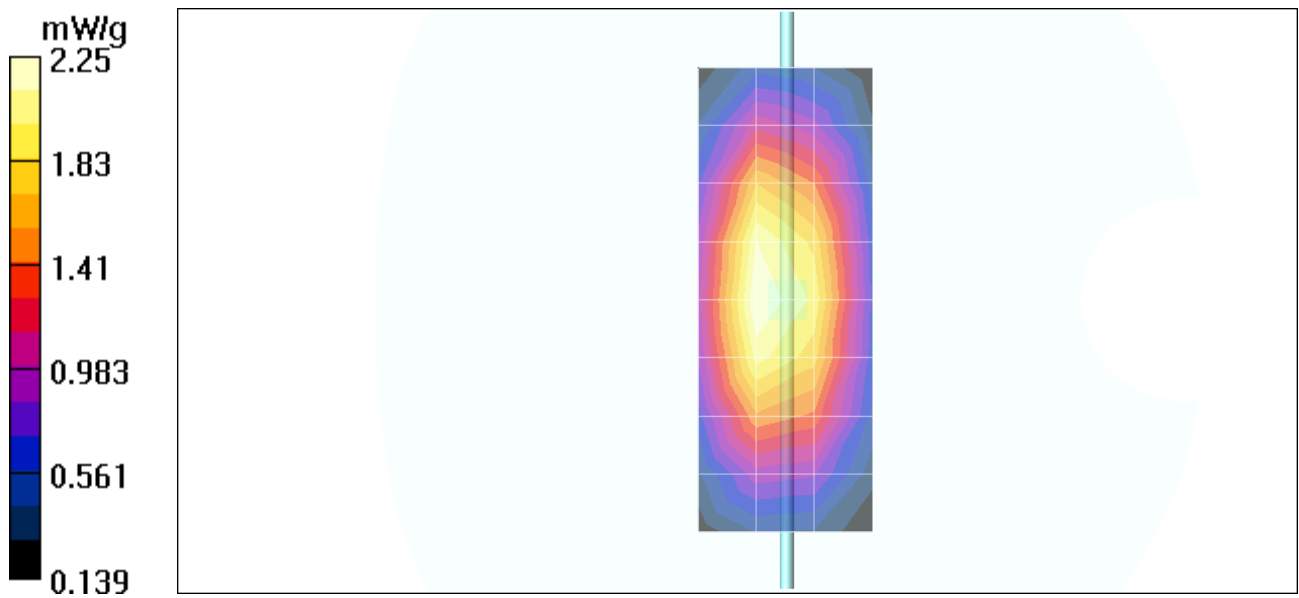
Peak SAR (extrapolated) = 3.62 W/kg

SAR(1 g) = 2.37 mW/g; SAR(10 g) = 1.51 mW/g

Maximum value of SAR (measured) = 2.53 mW/g

Daily SPC Check/Z-Axis Retraction (1x1x31): Measurement grid: dx=20mm, dy=20mm, dz=5mm

Maximum value of SAR (measured) = 2.47 mW/g



Test Laboratory: Motorola

DUT: Dipole 900 MHz; Type: D900V2; Procedure Notes: 900 MHz System Performance Check / Dipole Sn# 80; PM1 Power = 200 mW; Sim.Temp@ meas = 20.5°C; Sim.Temp@ SPC = 20.5°C; Room Temp@ SPC = 20.7°C;

Communication System: CW - Dipole; Frequency: 900 MHz; Duty Cycle: 1:1
Medium: VALIDATION Only; Medium parameters used: $f = 900$ MHz; $\sigma = 0.99$ mho/m; $\epsilon_r = 42.2$; $\rho = 1000$ kg/m³

DASY4 Configuration:

- Probe: ET3DV6R - SN1513; ConvF(5.83, 5.83, 5.83); Calibrated: 9/19/2005
- Sensor-Surface: 4mm (Mechanical Surface Detection)
- Electronics: DAE3 Sn378; Calibrated: 5/22/2006
- Phantom: R3: Sugar Water SAM; Type: SAM; Serial: TP-1153;
- Measurement SW: DASY4, V4.7 Build 44; Postprocessing SW: SEMCAD, V1.8 Build 171

Daily SPC Check/Dipole Area Scan (4x9x1): Measurement grid: dx=15mm, dy=15mm
Maximum value of SAR (measured) = 2.37 mW/g

Daily SPC Check/0-Degree 5x5x7 Cube (5x5x7)/Cube 0: Measurement grid: dx=8mm, dy=8mm, dz=5mm

Reference Value = 51.0 V/m; Power Drift = -0.045 dB

Peak SAR (extrapolated) = 3.49 W/kg

SAR(1 g) = 2.28 mW/g; SAR(10 g) = 1.45 mW/g

Maximum value of SAR (measured) = 2.47 mW/g

Daily SPC Check/90-Degree 5x5x7 Cube (5x5x7)/Cube 0: Measurement grid: dx=8mm, dy=8mm, dz=5mm

Reference Value = 51.0 V/m; Power Drift = -0.045 dB

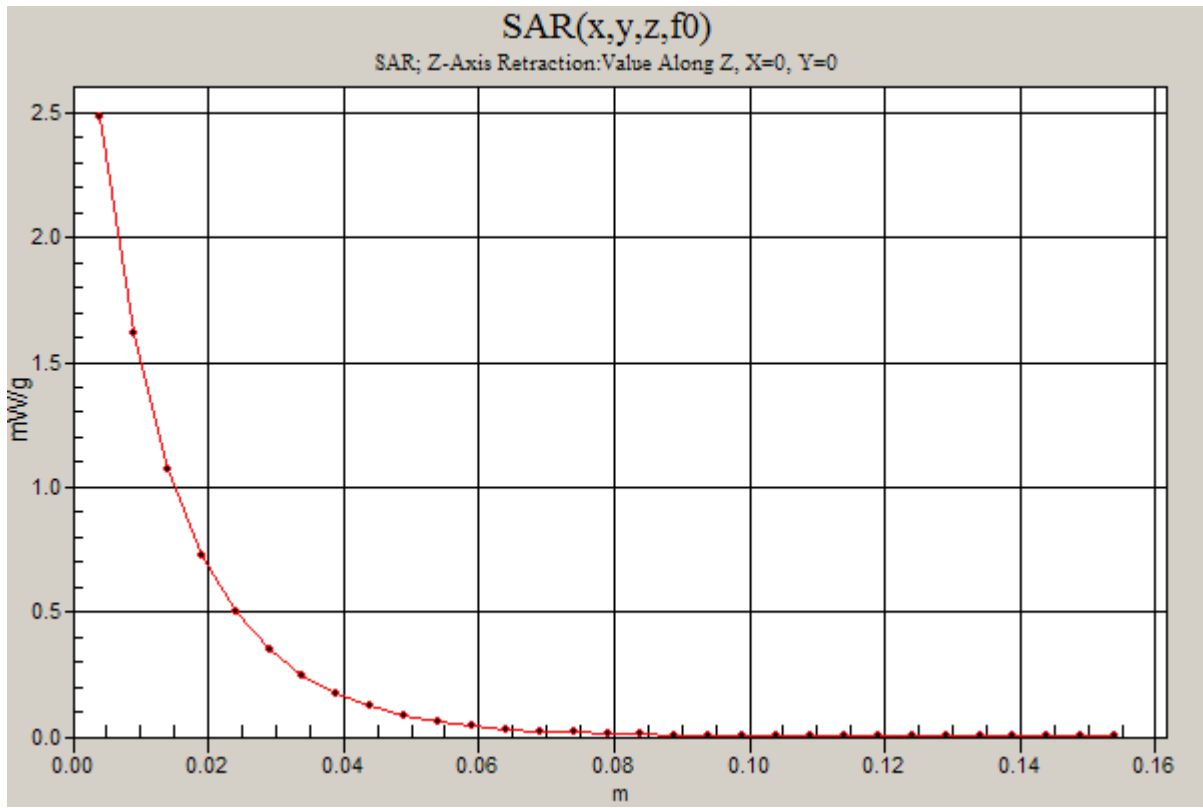
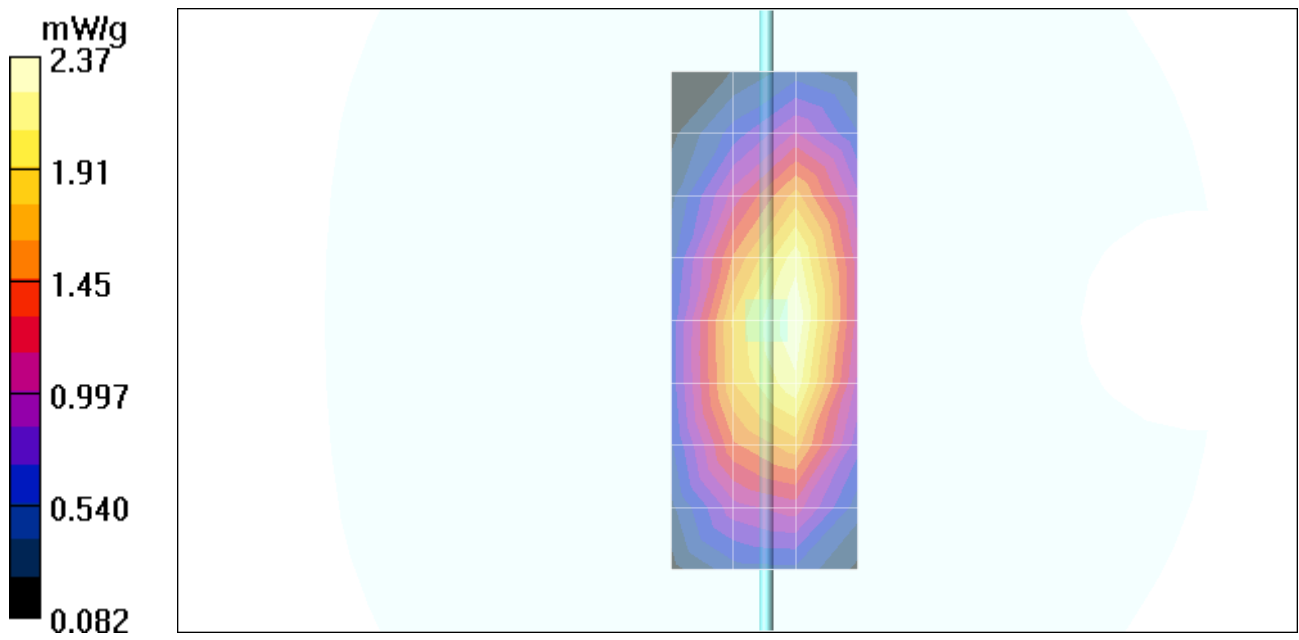
Peak SAR (extrapolated) = 3.61 W/kg

SAR(1 g) = 2.35 mW/g; SAR(10 g) = 1.5 mW/g

Maximum value of SAR (measured) = 2.56 mW/g

Daily SPC Check/Z-Axis Retraction (1x1x31): Measurement grid: dx=20mm, dy=20mm, dz=5mm

Maximum value of SAR (measured) = 2.48 mW/g



Test Laboratory: Motorola

DUT: Dipole 900 MHz; Type: D900V2; Procedure Notes: 900 MHz System Performance Check / Dipole Sn# 78; PM1 Power = 200 mW; Sim.Temp@ meas = 20.2°C; Sim.Temp@ SPC = 19.2°C; Room Temp@ SPC = 20.3°C

Communication System: CW - Dipole; Frequency: 900 MHz; Duty Cycle: 1:1
Medium: VALIDATION Only; Medium parameters used: $f = 900$ MHz; $\sigma = 0.98$ mho/m; $\epsilon_r = 40.9$; $\rho = 1000$ kg/m³

DASY4 Configuration:

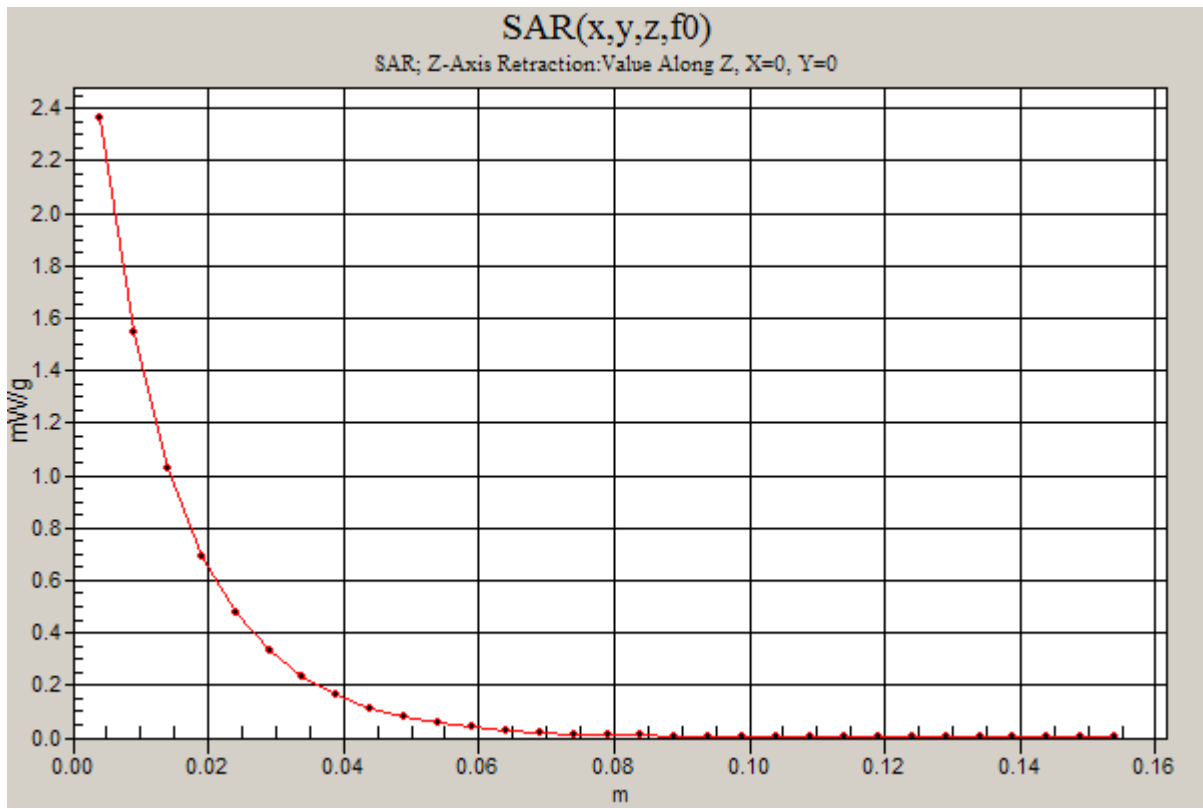
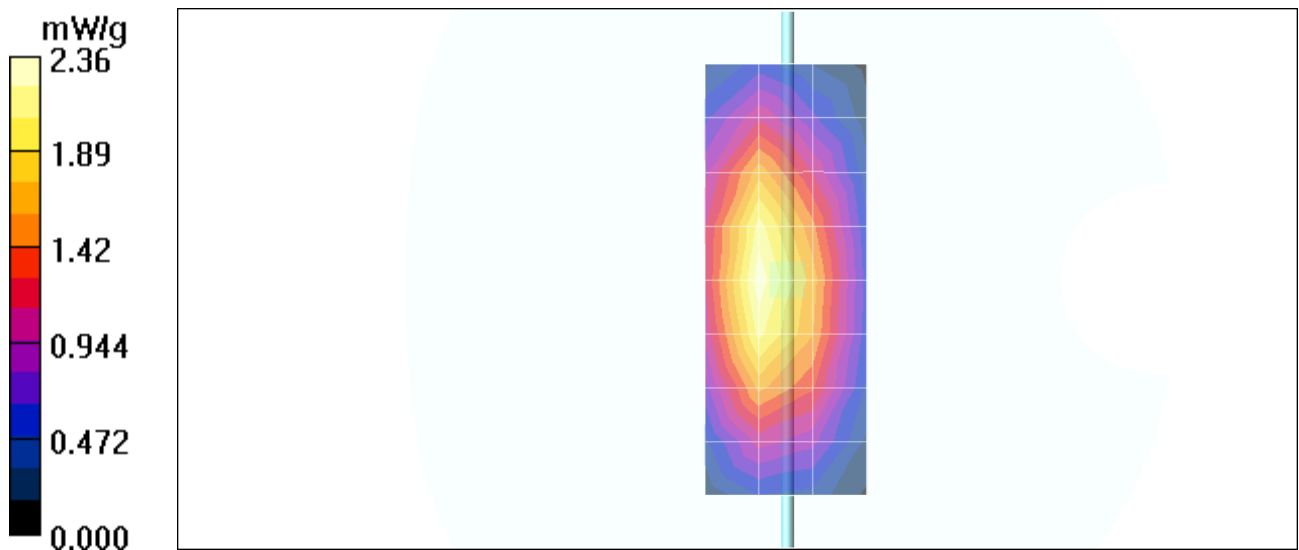
- Probe: ET3DV6 - SN1524; ConvF(6.15, 6.15, 6.15); Calibrated: 5/30/2006
- Sensor-Surface: 4mm (Mechanical Surface Detection)
- Electronics: DAE4 Sn316; Calibrated: 11/24/2005
- Phantom: R2: Sugar SAM; Type: SAM; Serial: TP-1106;
- Measurement SW: DASY4, V4.7 Build 44; Postprocessing SW: SEMCAD, V1.8 Build 171

Daily SPC Check/Dipole Area Scan (4x9x1): Measurement grid: dx=15mm, dy=15mm
Maximum value of SAR (measured) = 2.31 mW/g

Daily SPC Check/0-Degree 5x5x7 Cube (5x5x7)/Cube 0: Measurement grid: dx=8mm, dy=8mm, dz=5mm
Reference Value = 49.5 V/m; Power Drift = 0.005 dB
Peak SAR (extrapolated) = 3.31 W/kg
SAR(1 g) = 2.18 mW/g; SAR(10 g) = 1.39 mW/g
Maximum value of SAR (measured) = 2.37 mW/g

Daily SPC Check/90-Degree 5x5x7 Cube (5x5x7)/Cube 0: Measurement grid: dx=8mm, dy=8mm, dz=5mm
Reference Value = 49.5 V/m; Power Drift = 0.005 dB
Peak SAR (extrapolated) = 3.35 W/kg
SAR(1 g) = 2.21 mW/g; SAR(10 g) = 1.41 mW/g
Maximum value of SAR (measured) = 2.40 mW/g

Daily SPC Check/Z-Axis Retraction (1x1x31): Measurement grid: dx=20mm, dy=20mm, dz=5mm
Maximum value of SAR (measured) = 2.36 mW/g



Test Laboratory: Motorola

DUT: Dipole 1800 MHz; Type: D1800V2; Procedure Notes: 1800 MHz System Performance Check / Dipole Sn# 251TR; PM1 Power = 200 mW; Sim.Temp@ meas = 19.7°C; Sim.Temp@ SPC = 19.3°C; Room Temp@ SPC = 20.1°C

Communication System: CW - Dipole; Frequency: 1800 MHz; Duty Cycle: 1:1
Medium: VALIDATION Only; Medium parameters used: $f = 1800$ MHz; $\sigma = 1.38$ mho/m; $\epsilon_r = 40.3$; $\rho = 1000$ kg/m³

DASY4 Configuration:

- Probe: ET3DV6R - SN1513; ConvF(4.76, 4.76, 4.76); Calibrated: 9/19/2005
- Sensor-Surface: 4mm (Mechanical Surface Detection)
- Electronics: DAE3 Sn378; Calibrated: 5/22/2006
- Phantom: R3: Sect.1, Amy Twin; Type: Amy Twin Flat; Serial: n/a;
- Measurement SW: DASY4, V4.7 Build 44; Postprocessing SW: SEMCAD, V1.8 Build 171

Daily SPC Check/Dipole Area Scan (9x4x1): Measurement grid: dx=15mm, dy=15mm
Maximum value of SAR (measured) = 8.60 mW/g

Daily SPC Check/0-Degree 5x5x7 Cube (5x5x7)/Cube 0: Measurement grid: dx=8mm, dy=8mm, dz=5mm

Reference Value = 66.2 V/m; Power Drift = -0.034 dB

Peak SAR (extrapolated) = 13.3 W/kg

SAR(1 g) = 7.77 mW/g; SAR(10 g) = 4.17 mW/g

Maximum value of SAR (measured) = 8.66 mW/g

Daily SPC Check/90-Degree 5x5x7 Cube (5x5x7)/Cube 0: Measurement grid: dx=8mm, dy=8mm, dz=5mm

Reference Value = 66.2 V/m; Power Drift = -0.034 dB

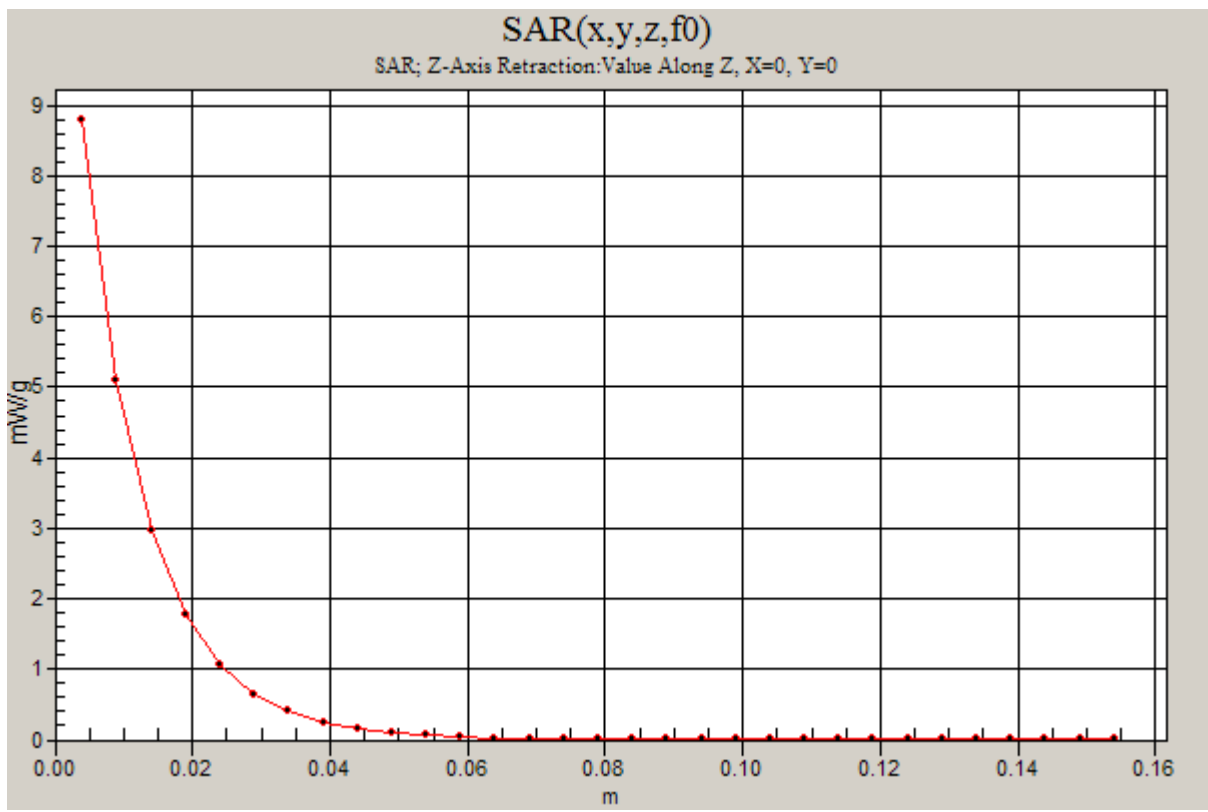
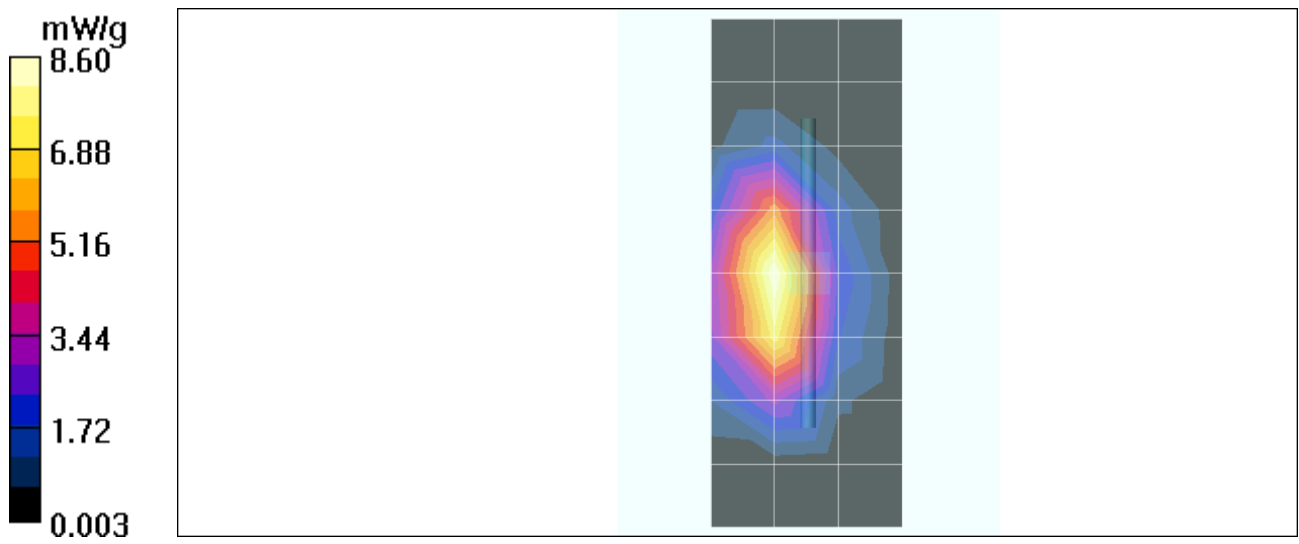
Peak SAR (extrapolated) = 13.6 W/kg

SAR(1 g) = 7.86 mW/g; SAR(10 g) = 4.21 mW/g

Maximum value of SAR (measured) = 8.51 mW/g

Daily SPC Check/Z-Axis Retraction (1x1x31): Measurement grid: dx=20mm, dy=20mm, dz=5mm

Maximum value of SAR (measured) = 8.79 mW/g



Test Laboratory: Motorola

DUT: Dipole 900 MHz; Type: D900V2; Procedure Notes: 900 MHz System Performance Check / Dipole Sn# 080; PM1 Power = 200 mW; Sim.Temp@ meas = 20.5°C; Sim.Temp@ SPC = 20.5°C; Room Temp@ SPC = 21.1°C

Communication System: CW - Dipole; Frequency: 900 MHz; Duty Cycle: 1:1
Medium: VALIDATION Only; Medium parameters used: $f = 900$ MHz; $\sigma = 0.99$ mho/m; $\epsilon_r = 41.7$; $\rho = 1000$ kg/m³

DASY4 Configuration:

- Probe: ET3DV6R - SN1513; ConvF(5.83, 5.83, 5.83); Calibrated: 9/19/2005
- Sensor-Surface: 4mm (Mechanical Surface Detection)
- Electronics: DAE3 Sn378; Calibrated: 5/22/2006
- Phantom: R3: Sugar Water SAM; Type: SAM; Serial: TP-1153;
- Measurement SW: DASY4, V4.7 Build 44; Postprocessing SW: SEMCAD, V1.8 Build 171

Daily SPC Check/Dipole Area Scan (4x9x1): Measurement grid: dx=15mm, dy=15mm
Maximum value of SAR (measured) = 2.22 mW/g

Daily SPC Check/0-Degree 5x5x7 Cube (5x5x7)/Cube 0: Measurement grid: dx=8mm, dy=8mm, dz=5mm

Reference Value = 52.2 V/m; Power Drift = -0.027 dB

Peak SAR (extrapolated) = 3.53 W/kg

SAR(1 g) = 2.3 mW/g; SAR(10 g) = 1.46 mW/g

Maximum value of SAR (measured) = 2.51 mW/g

Daily SPC Check/90-Degree 5x5x7 Cube (5x5x7)/Cube 0: Measurement grid: dx=8mm, dy=8mm, dz=5mm

Reference Value = 52.2 V/m; Power Drift = -0.027 dB

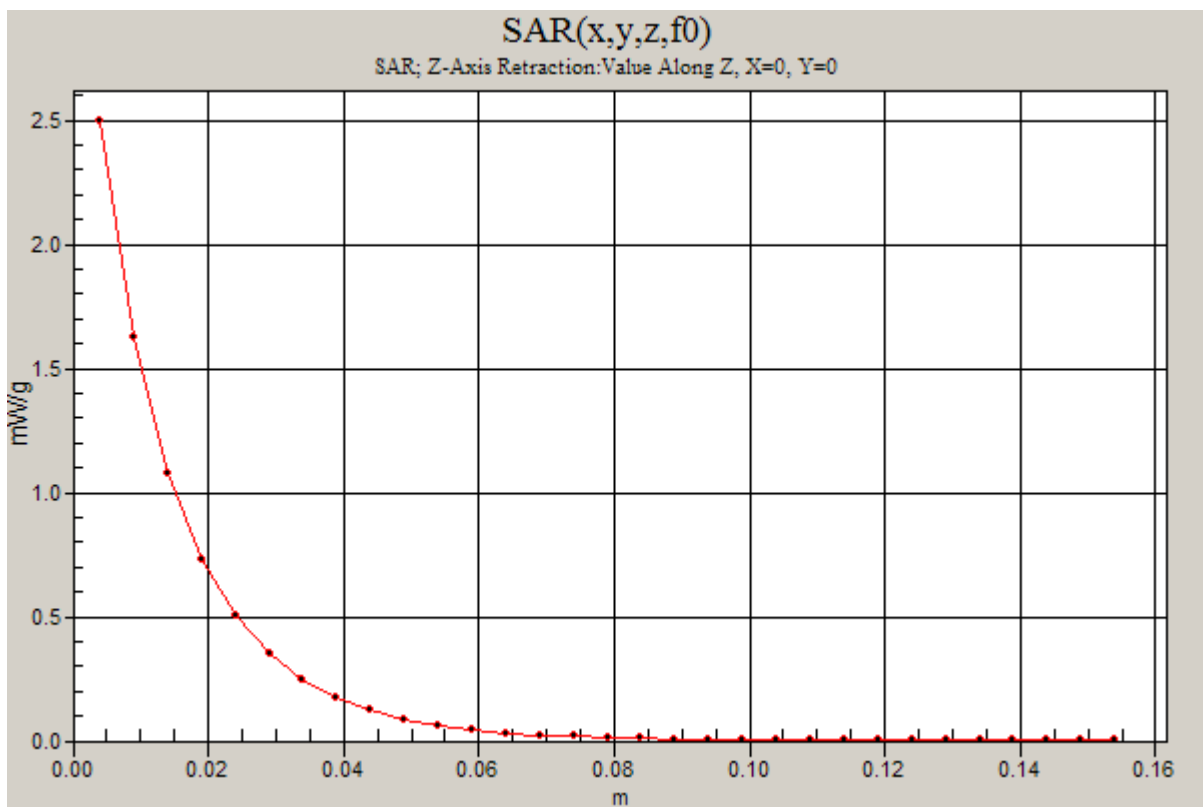
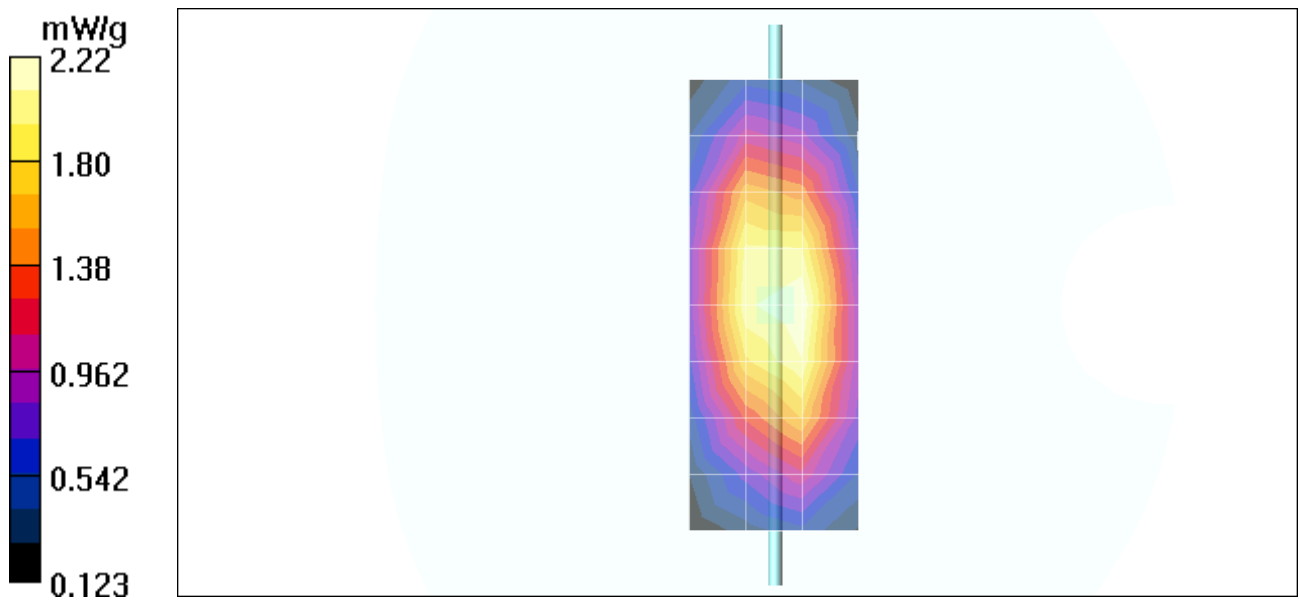
Peak SAR (extrapolated) = 3.67 W/kg

SAR(1 g) = 2.37 mW/g; SAR(10 g) = 1.5 mW/g

Maximum value of SAR (measured) = 2.56 mW/g

Daily SPC Check/Z-Axis Retraction (1x1x31): Measurement grid: dx=20mm, dy=20mm, dz=5mm

Maximum value of SAR (measured) = 2.50 mW/g



Test Laboratory: Motorola

DUT: Dipole 900 MHz; Type: D900V2; Procedure Notes: 900 MHz System Performance Check / Dipole Sn# 080; PM1 Power = 199mW Sim.Temp@ meas = 20.5°C; Sim.Temp@ SPC = 20.5°C; Room Temp@ SPC = 21.1°C

Communication System: CW - Dipole; Frequency: 900 MHz; Duty Cycle: 1:1
Medium: VALIDATION Only; Medium parameters used: $f = 900$ MHz; $\sigma = 0.99$ mho/m; $\epsilon_r = 42.2$; $\rho = 1000$ kg/m³

DASY4 Configuration:

- Probe: ET3DV6R - SN1513; ConvF(5.83, 5.83, 5.83); Calibrated: 9/19/2005
- Sensor-Surface: 4mm (Mechanical Surface Detection)
- Electronics: DAE3 Sn378; Calibrated: 5/22/2006
- Phantom: R3: Sugar Water SAM; Type: SAM; Serial: TP-1153;
- Measurement SW: DASY4, V4.7 Build 44; Postprocessing SW: SEMCAD, V1.8 Build 171

Daily SPC Check/Dipole Area Scan (4x9x1): Measurement grid: dx=15mm, dy=15mm
Maximum value of SAR (measured) = 2.14 mW/g

Daily SPC Check/0-Degree 5x5x7 Cube (5x5x7)/Cube 0: Measurement grid: dx=8mm, dy=8mm, dz=5mm

Reference Value = 51.6 V/m; Power Drift = -0.012 dB

Peak SAR (extrapolated) = 3.46 W/kg

SAR(1 g) = 2.27 mW/g; SAR(10 g) = 1.45 mW/g

Maximum value of SAR (measured) = 2.46 mW/g

Daily SPC Check/90-Degree 5x5x7 Cube (5x5x7)/Cube 0: Measurement grid: dx=8mm, dy=8mm, dz=5mm

Reference Value = 51.6 V/m; Power Drift = -0.012 dB

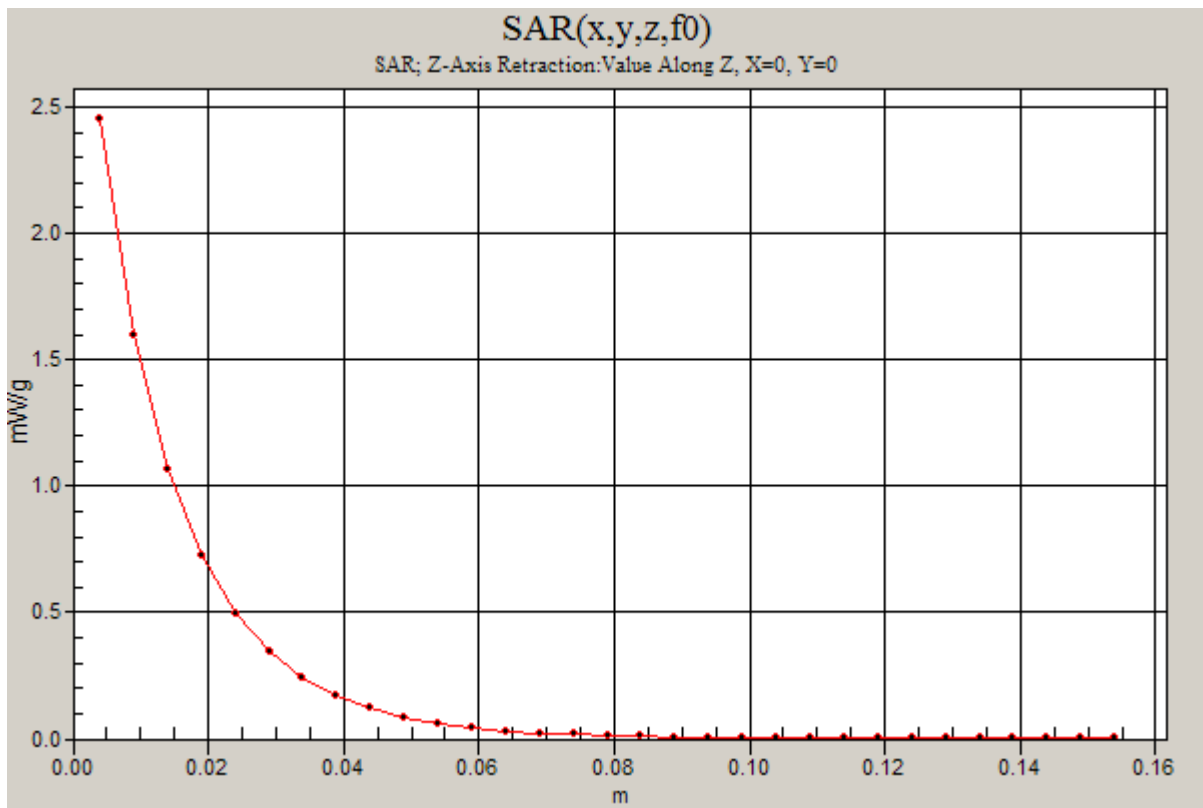
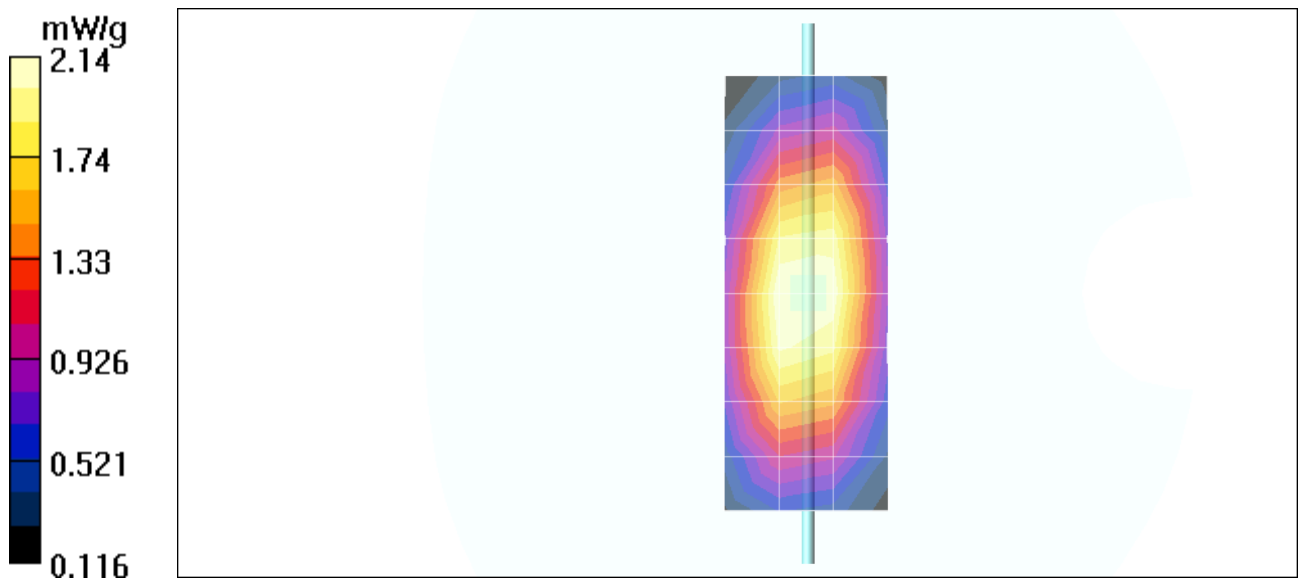
Peak SAR (extrapolated) = 3.61 W/kg

SAR(1 g) = 2.35 mW/g; SAR(10 g) = 1.49 mW/g

Maximum value of SAR (measured) = 2.51 mW/g

Daily SPC Check/Z-Axis Retraction (1x1x31): Measurement grid: dx=20mm, dy=20mm, dz=5mm

Maximum value of SAR (measured) = 2.45 mW/g



Test Laboratory: Motorola

DUT: Dipole 1800 MHz; Type: D1800V2; Procedure Notes: 1800 MHz System Performance Check / Dipole Sn# 251tr; PM1 Power = 200mW; Sim.Temp@ meas = 19.9°C; Sim.Temp@ SPC = 20°C; Room Temp@ SPC = 20.8°C

Communication System: CW - Dipole; Frequency: 1800 MHz; Duty Cycle: 1:1
Medium: VALIDATION Only; Medium parameters used: $f = 1800$ MHz; $\sigma = 1.35$ mho/m; $\epsilon_r = 40$; $\rho = 1000$ kg/m³

DASY4 Configuration:

- Probe: ET3DV6R - SN1513; ConvF(4.76, 4.76, 4.76); Calibrated: 9/19/2005
- Sensor-Surface: 4mm (Mechanical Surface Detection)
- Electronics: DAE3 Sn378; Calibrated: 5/22/2006
- Phantom: R3: Glycol SAM; Type: SAM; Serial: TP-1236;
- Measurement SW: DASY4, V4.7 Build 44; Postprocessing SW: SEMCAD, V1.8 Build 171

Daily SPC Check/Dipole Area Scan (4x9x1): Measurement grid: dx=15mm, dy=15mm
Maximum value of SAR (measured) = 7.27 mW/g

Daily SPC Check/0-Degree 5x5x7 Cube (5x5x7)/Cube 0: Measurement grid: dx=8mm, dy=8mm, dz=5mm

Reference Value = 78.9 V/m; Power Drift = -0.085 dB

Peak SAR (extrapolated) = 12.2 W/kg

SAR(1 g) = 7.16 mW/g; SAR(10 g) = 3.87 mW/g

Maximum value of SAR (measured) = 8.02 mW/g

Daily SPC Check/90-Degree 5x5x7 Cube (5x5x7)/Cube 0: Measurement grid: dx=8mm, dy=8mm, dz=5mm

Reference Value = 78.9 V/m; Power Drift = -0.085 dB

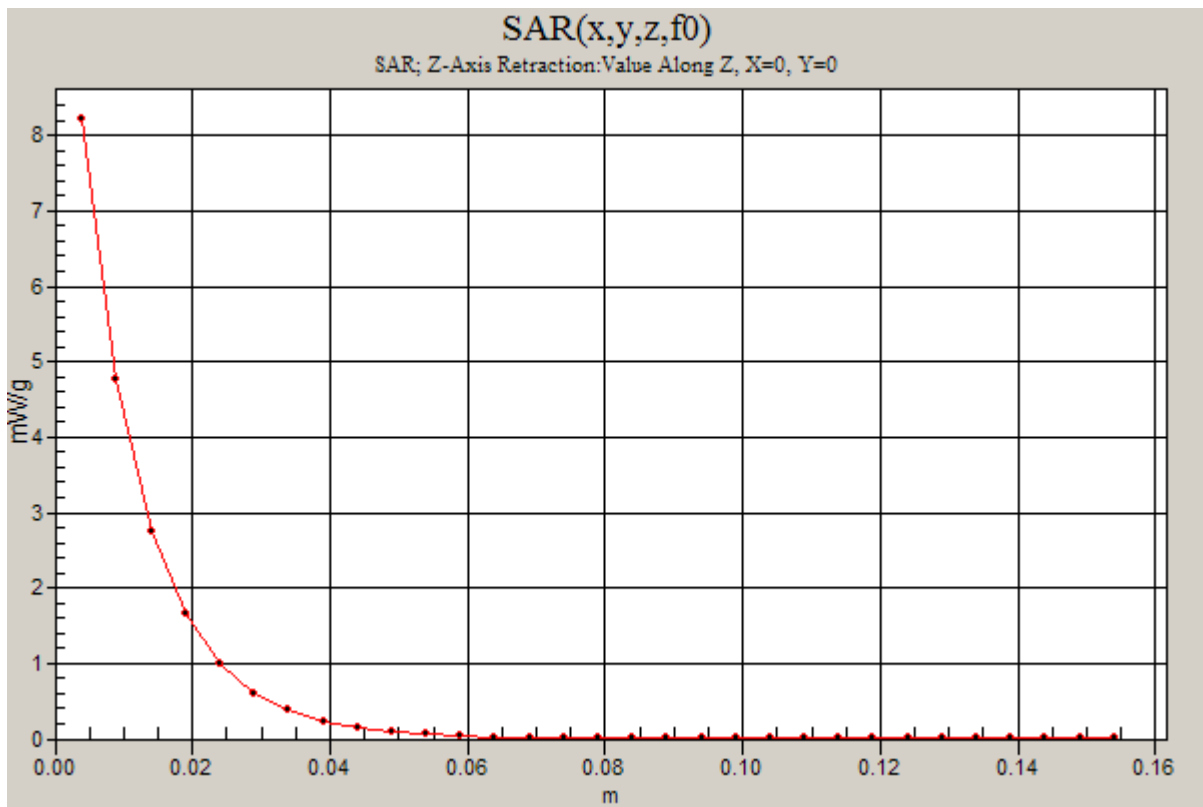
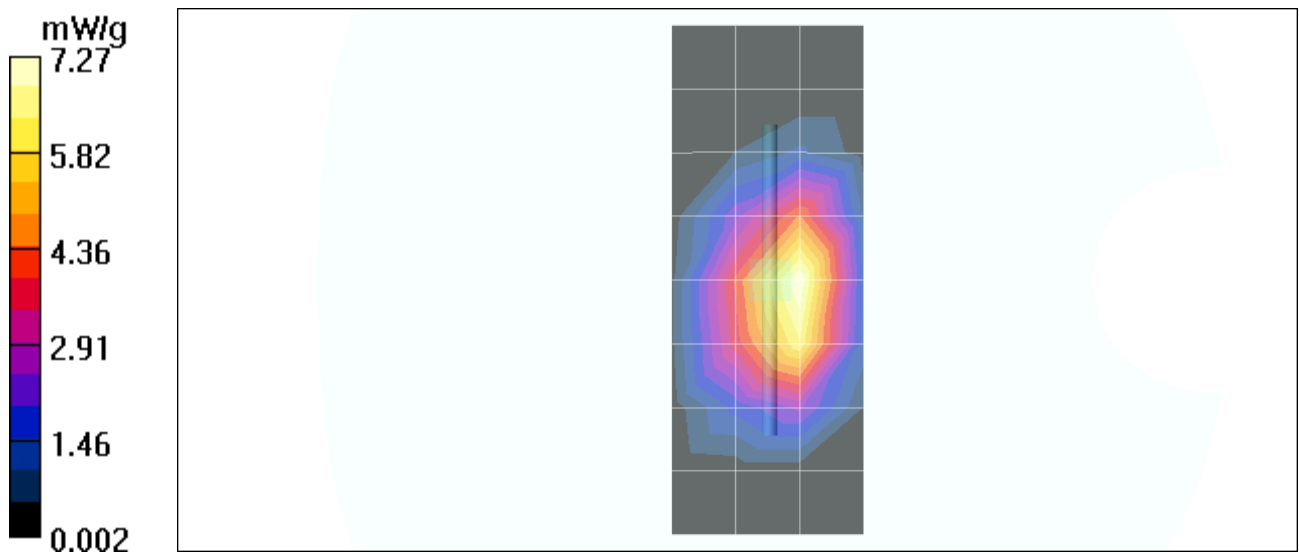
Peak SAR (extrapolated) = 12.7 W/kg

SAR(1 g) = 7.43 mW/g; SAR(10 g) = 3.99 mW/g

Maximum value of SAR (measured) = 8.26 mW/g

Daily SPC Check/Z-Axis Retraction (1x1x31): Measurement grid: dx=20mm, dy=20mm, dz=5mm

Maximum value of SAR (measured) = 8.22 mW/g



Test Laboratory: Motorola

DUT: Dipole 900 MHz; Type: D900V2; Procedure Notes: 900 MHz System Performance Check /
Dipole Sn# 080; PM1 Power =200 mW
Sim.Temp@ meas = 20.5°C; Sim.Temp@ SPC = 20.5°C; Room Temp@ SPC =20.8°C

Communication System: CW - Dipole; Frequency: 900 MHz; Duty Cycle: 1:1
Medium: VALIDATION Only; Medium parameters used: $f = 900$ MHz; $\sigma = 0.98$ mho/m; $\epsilon_r = 41$; $\rho = 1000$ kg/m³

DASY4 Configuration:

- Probe: ET3DV6R - SN1513; ConvF(5.83, 5.83, 5.83); Calibrated: 9/19/2005
- Sensor-Surface: 4mm (Mechanical Surface Detection)
- Electronics: DAE3 Sn378; Calibrated: 5/22/2006
- Phantom: R3: Sugar Water SAM; Type: SAM; Serial: TP-1153;
- Measurement SW: DASY4, V4.7 Build 44; Postprocessing SW: SEMCAD, V1.8 Build 171

Daily SPC Check/Dipole Area Scan (4x9x1):

Measurement grid: dx=15mm, dy=15mm
Maximum value of SAR (measured) = 2.12 mW/g

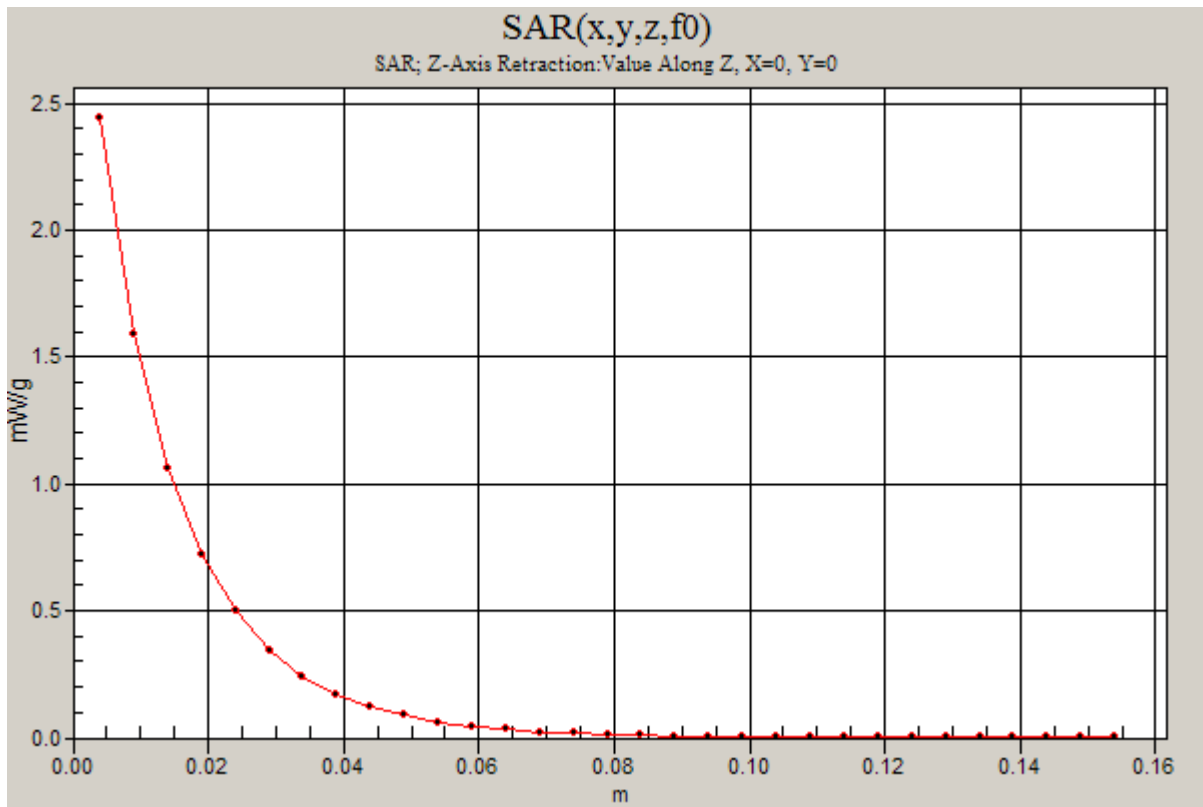
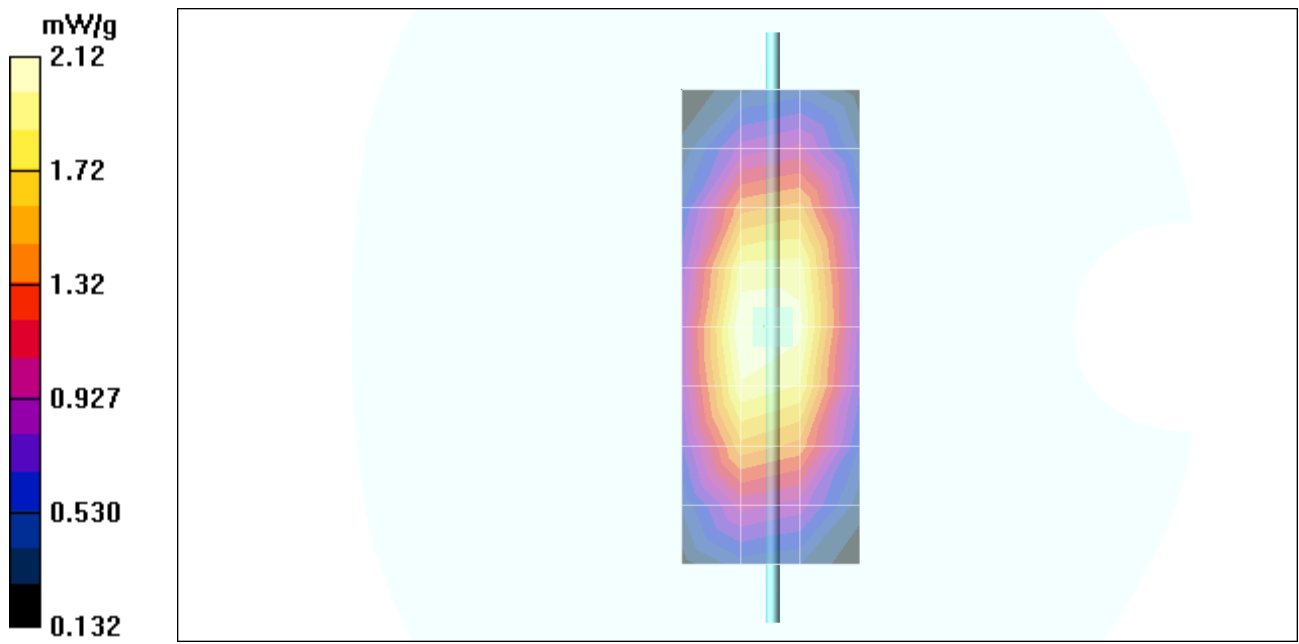
Daily SPC Check/0-Degree 5x5x7 Cube (5x5x7)/Cube 0:

Measurement grid: dx=8mm, dy=8mm, dz=5mm
Reference Value = 51.7 V/m; Power Drift = 0.004 dB
Peak SAR (extrapolated) = 3.43 W/kg
SAR(1 g) = 2.24 mW/g; SAR(10 g) = 1.43 mW/g
Maximum value of SAR (measured) = 2.44 mW/g

Daily SPC Check/90-Degree 5x5x7 Cube (5x5x7)/Cube 0:

Measurement grid: dx=8mm, dy=8mm, dz=5mm
Reference Value = 51.7 V/m; Power Drift = 0.004 dB
Peak SAR (extrapolated) = 3.56 W/kg
SAR(1 g) = 2.34 mW/g; SAR(10 g) = 1.49 mW/g
Maximum value of SAR (measured) = 2.53 mW/g

Daily SPC Check/Z-Axis Retraction (1x1x31): Measurement grid: dx=20mm, dy=20mm, dz=5mm



Test Laboratory: Motorola

DUT: Dipole 1800 MHz; Type: D1800V2; Procedure Notes: 1800 MHz System Performance Check / Dipole Sn# 251tr; PM1 Power = 200 mW; Sim.Temp@ meas = 19.7°C; Sim.Temp@ SPC = 19.8°C; Room Temp@ SPC = 20.7°C

Communication System: CW - Dipole; Frequency: 1800 MHz; Duty Cycle: 1:1
Medium: VALIDATION Only; Medium parameters used: $f = 1800$ MHz; $\sigma = 1.36$ mho/m; $\epsilon_r = 39.5$; $\rho = 1000$ kg/m³

DASY4 Configuration:

- Probe: ET3DV6R - SN1513; ConvF(4.76, 4.76, 4.76); Calibrated: 9/19/2005
- Sensor-Surface: 4mm (Mechanical Surface Detection)
- Electronics: DAE3 Sn378; Calibrated: 5/22/2006
- Phantom: R3: Sect.1, Amy Twin; Type: Amy Twin Flat; Serial: n/a;
- Measurement SW: DASY4, V4.7 Build 44; Postprocessing SW: SEMCAD, V1.8 Build 171

Daily SPC Check/Dipole Area Scan (9x4x1): Measurement grid: dx=15mm, dy=15mm
Maximum value of SAR (measured) = 8.52 mW/g

Daily SPC Check/0-Degree 5x5x7 Cube (5x5x7)/Cube 0: Measurement grid: dx=8mm, dy=8mm, dz=5mm

Reference Value = 72.3 V/m; Power Drift = -0.054 dB

Peak SAR (extrapolated) = 13.0 W/kg

SAR(1 g) = 7.56 mW/g; SAR(10 g) = 4.06 mW/g

Maximum value of SAR (measured) = 8.42 mW/g

Daily SPC Check/90-Degree 5x5x7 Cube (5x5x7)/Cube 0: Measurement grid: dx=8mm, dy=8mm, dz=5mm

Reference Value = 72.3 V/m; Power Drift = -0.054 dB

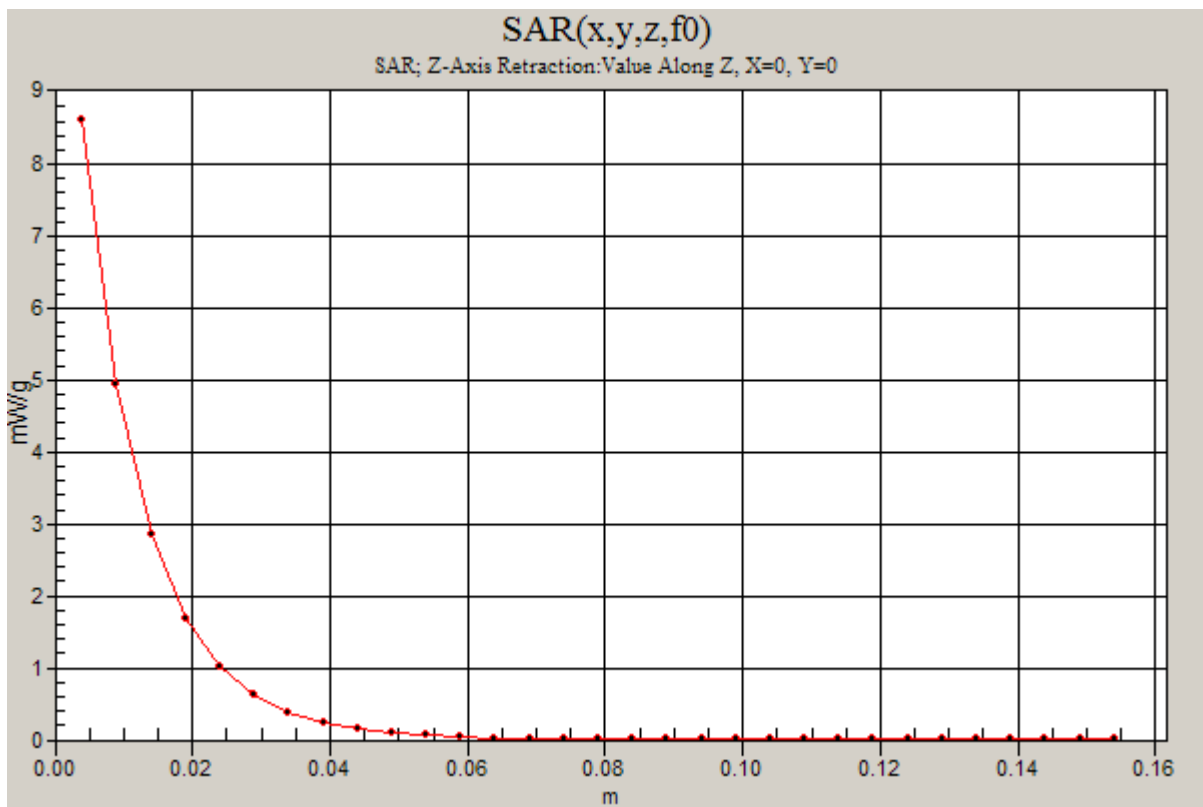
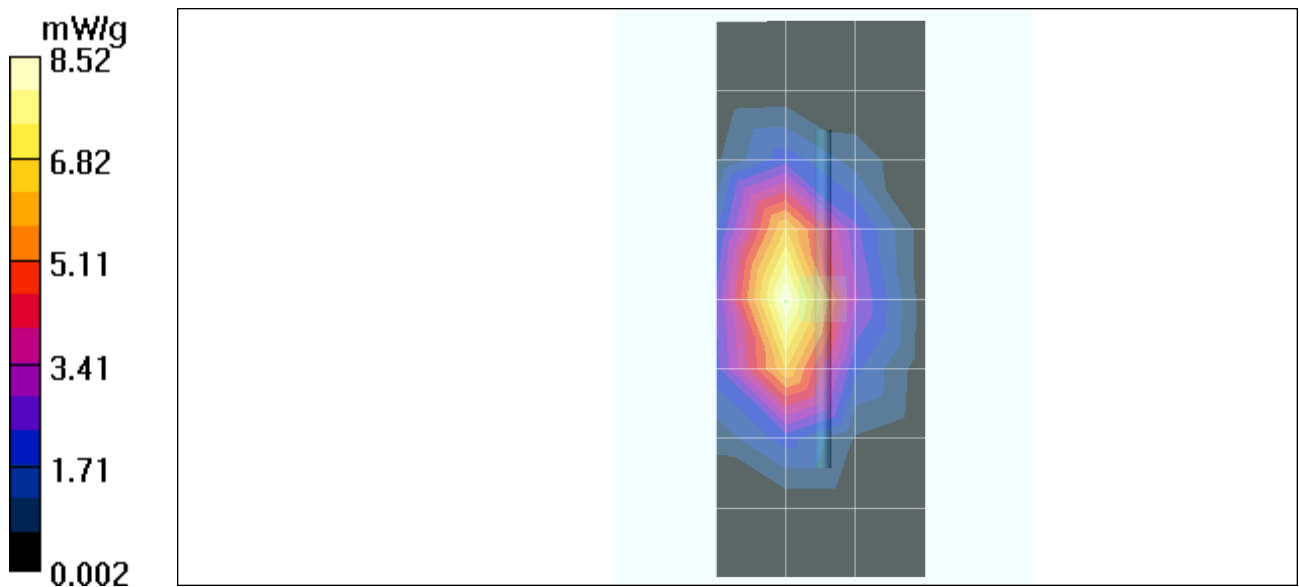
Peak SAR (extrapolated) = 13.1 W/kg

SAR(1 g) = 7.63 mW/g; SAR(10 g) = 4.09 mW/g

Maximum value of SAR (measured) = 8.43 mW/g

Daily SPC Check/Z-Axis Retraction (1x1x31): Measurement grid: dx=20mm, dy=20mm, dz=5mm

Maximum value of SAR (measured) = 8.62 mW/g



Appendix 2

SAR distribution plots for Phantom Head Adjacent Use

Test Laboratory: Motorola

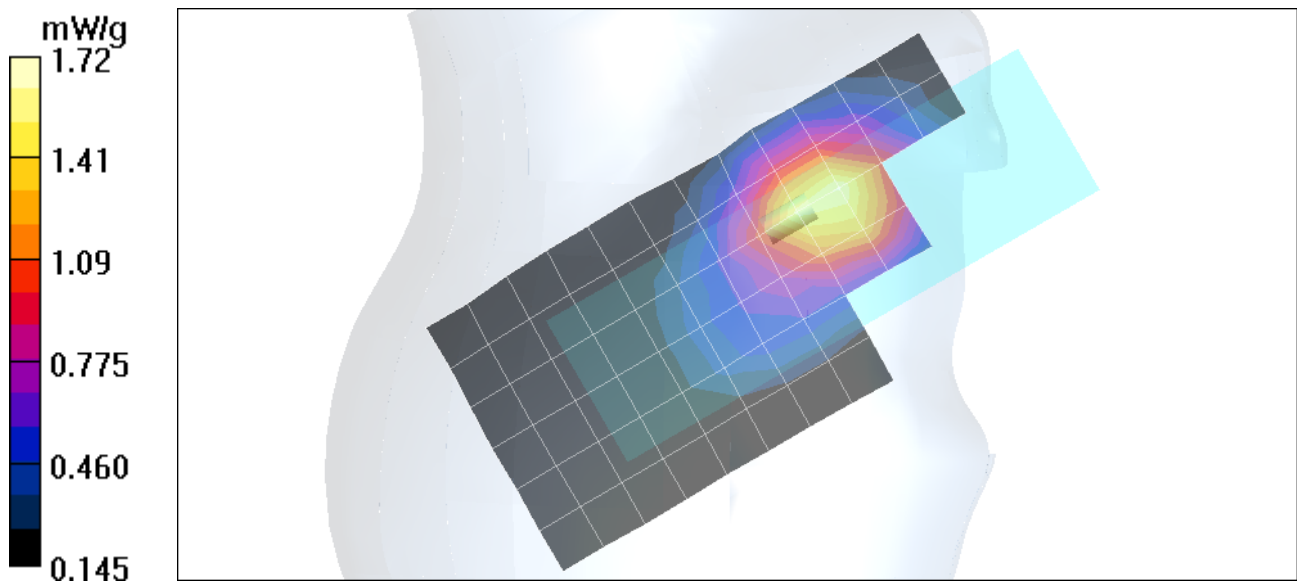
Serial: 1B172464; Procedure Notes: Pwr Step: 2; Antenna Position: ret; Battery Model #: SNN5782A; DEVICE POSITION: cheek; Communication System: AMPS 835; Frequency: 836.52 MHz; Communication System Channel Number: 384; Duty Cycle: 1:1; Medium: Low Freq Head; Medium parameters used: $f = 835 \text{ MHz}$; $\sigma = 0.93 \text{ mho/m}$; $\epsilon_r = 43$; $\rho = 1000 \text{ kg/m}^3$; DASY4 Configuration:

- Probe: ET3DV6R - SN1513; ConvF(5.83, 5.83, 5.83); Calibrated: 9/19/2005
- Sensor-Surface: 4mm (Mechanical Surface Detection)
- Electronics: DAE3 Sn378; Calibrated: 5/22/2006
- Phantom: R3: Sugar Water SAM; Type: SAM; Serial: TP-1153;
- Measurement SW: DASY4, V4.7 Build 44; Postprocessing SW: SEMCAD, V1.8 Build 171

Right Head Template/Area Scan - Normal (15mm) (7x17x1): Measurement grid: dx=15mm, dy=15mm; Maximum value of SAR (measured) = 1.63 mW/g

Right Head Template/Zoom Scan (7x7x7)/Cube 0:

Measurement grid: dx=5mm, dy=5mm, dz=5mm; Reference Value = 43.5 V/m; Power Drift = 0.087 dB; Peak SAR (extrapolated) = 2.27 W/kg; **SAR(1 g) = 1.6 mW/g; SAR(10 g) = 1.08 mW/g;** Maximum value of SAR (measured) = 1.72 mW/g



Test Laboratory: Motorola

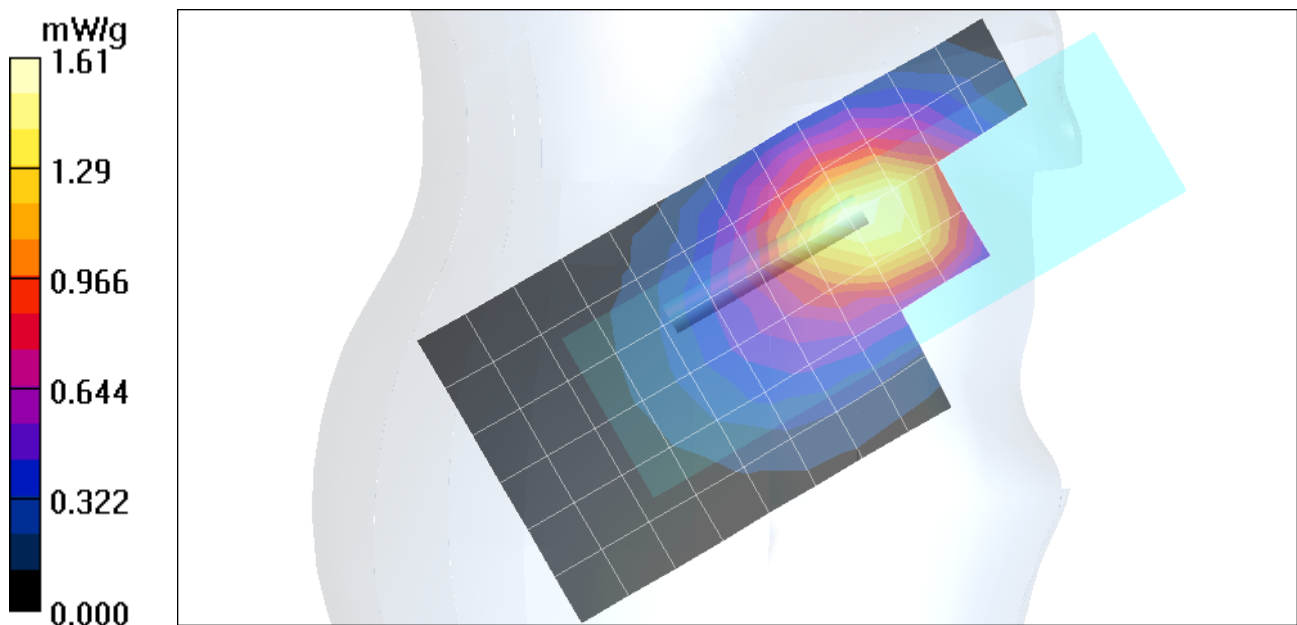
Serial: 1B172464; Procedure Notes: Pwr Step: 2; Antenna Position: extended; Battery Model #: SNN5782A; DEVICE POSITION: cheek; Communication System: AMPS 835; Frequency: 848.97 MHz; Communication System Channel Number: 799; Duty Cycle: 1:1; Medium: Low Freq Head; Medium parameters used: $f = 835$ MHz; $\sigma = 0.92$ mho/m; $\epsilon_r = 41.7$; $\rho = 1000$ kg/m³; DASY4 Configuration:

- Probe: ET3DV6 - SN1524; ConvF(6.15, 6.15, 6.15); Calibrated: 5/30/2006
- Sensor-Surface: 4mm (Mechanical Surface Detection)
- Electronics: DAE4 Sn316; Calibrated: 11/24/2005
- Phantom: R2: Sugar SAM; Type: SAM; Serial: TP-1106;
- Measurement SW: DASY4, V4.7 Build 44; Postprocessing SW: SEMCAD, V1.8 Build 171

Right Head Template/Area Scan - Normal (15mm) (7x17x1): Measurement grid: dx=15mm, dy=15mm; Maximum value of SAR (measured) = 1.61 mW/g

Right Head Template/Zoom Scan (7x7x7)/Cube 0:

Measurement grid: dx=5mm, dy=5mm, dz=5mm; Reference Value = 42.5 V/m; Power Drift = -0.095 dB; Peak SAR (extrapolated) = 2.15 W/kg; **SAR(1 g) = 1.56 mW/g**; **SAR(10 g) = 1.07 mW/g**; Maximum value of SAR (measured) = 1.69 mW/g



Test Laboratory: Motorola

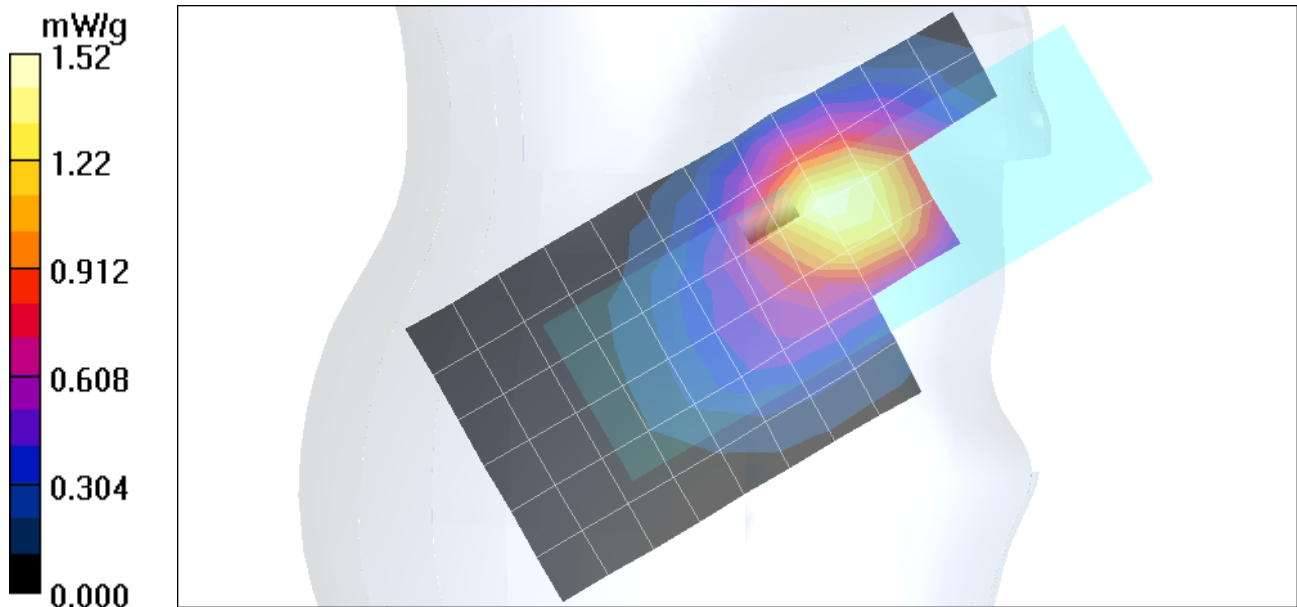
Serial: 1B172464; Procedure Notes: Pwr Step: always up; Antenna Position: RET; Battery: SNN5771A; DEVICE POSITION: CHEEK; Communication System: CDMA 835; Frequency: 848.31 MHz; Communication System Channel Number: 777; Duty Cycle: 1:1; Medium: Low Freq Head; Medium parameters used: $f = 835$ MHz; $\sigma = 0.92$ mho/m; $\epsilon_r = 42.5$; $\rho = 1000$ kg/m³; DASY4 Configuration:

- Probe: ET3DV6R - SN1513; ConvF(5.83, 5.83, 5.83); Calibrated: 9/19/2005
- Sensor-Surface: 4mm (Mechanical Surface Detection)
- Electronics: DAE3 Sn378; Calibrated: 5/22/2006
- Phantom: R3: Sugar Water SAM; Type: SAM; Serial: TP-1153;
- Measurement SW: DASY4, V4.7 Build 44; Postprocessing SW: SEMCAD, V1.8 Build 171

Right Head Template/Area Scan - Normal (15mm) (7x17x1): Measurement grid: dx=15mm, dy=15mm; Maximum value of SAR (measured) = 1.52 mW/g

Right Head Template/Zoom Scan (7x7x7)/Cube 0:

Measurement grid: dx=5mm, dy=5mm, dz=5mm; Reference Value = 41.7 V/m; Power Drift = -0.267 dB; Peak SAR (extrapolated) = 2.04 W/kg; **SAR(1 g) = 1.45 mW/g; SAR(10 g) = 0.975 mW/g;** Maximum value of SAR (measured) = 1.56 mW/g



Test Laboratory: Motorola

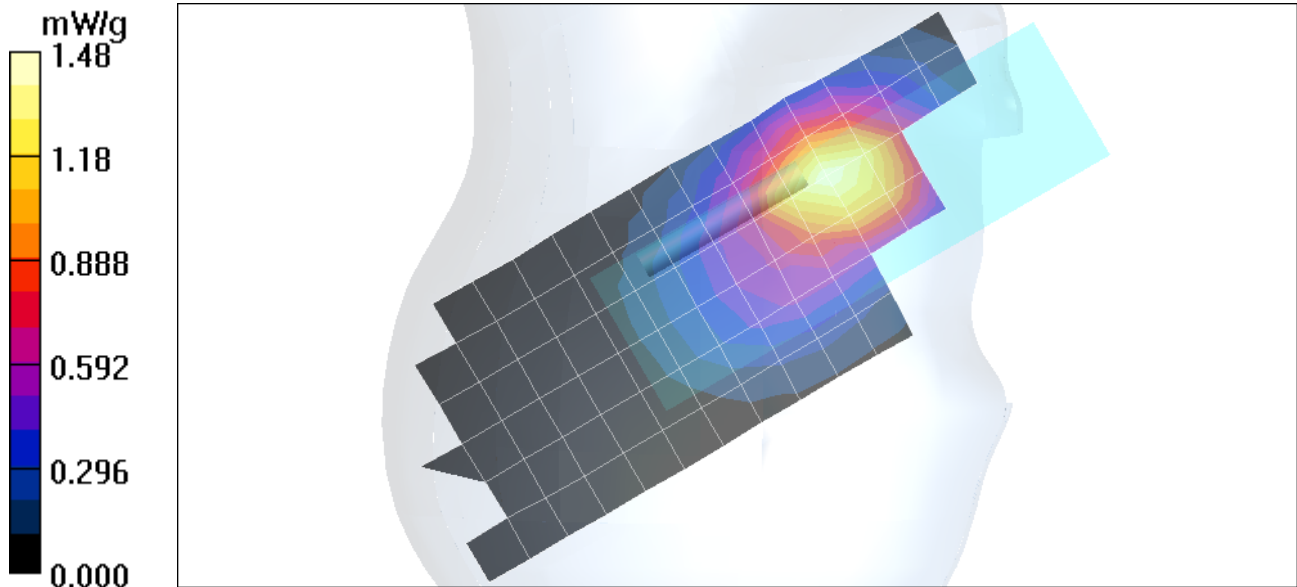
Serial: 1B172464; Procedure Notes: Pwr Step: always up; Antenna Position: EXT; Battery Model #: SNN5782A; DEVICE POSITION: CHEEK; Communication System: CDMA 835; Frequency: 824.7 MHz; Communication System Channel Number: 1013; Duty Cycle: 1:1; Medium: Low Freq Head; Medium parameters used: $f = 835$ MHz; $\sigma = 0.92$ mho/m; $\epsilon_r = 42.5$; $\rho = 1000$ kg/m³; DASY4 Configuration:

- Probe: ET3DV6R - SN1513; ConvF(5.83, 5.83, 5.83); Calibrated: 9/19/2005
- Sensor-Surface: 4mm (Mechanical Surface Detection)
- Electronics: DAE3 Sn378; Calibrated: 5/22/2006
- Phantom: R3: Sugar Water SAM; Type: SAM; Serial: TP-1153;
- Measurement SW: DASY4, V4.7 Build 44; Postprocessing SW: SEMCAD, V1.8 Build 171

Right Head Template/Area Scan - Normal Extended (15mm) (7x17x1): Measurement grid: dx=15mm, dy=15mm; Maximum value of SAR (measured) = 1.48 mW/g

Right Head Template/Zoom Scan (7x7x7)/Cube 0:

Measurement grid: dx=5mm, dy=5mm, dz=5mm; Reference Value = 40.9 V/m; Power Drift = -0.078 dB; Peak SAR (extrapolated) = 2.02 W/kg; **SAR(1 g) = 1.4 mW/g; SAR(10 g) = 0.951 mW/g;** Maximum value of SAR (measured) = 1.52 mW/g



Test Laboratory: Motorola

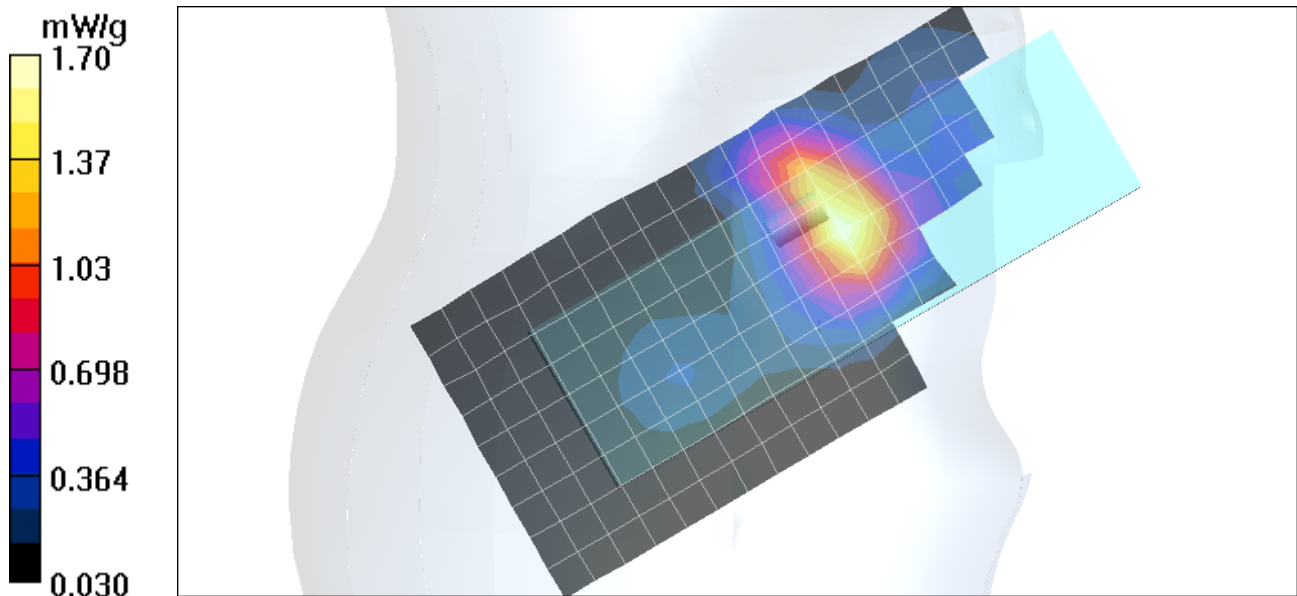
Serial: 1B172464; Procedure Notes: Pwr Step: always up; Antenna Position: ret; Battery Model #: SNN5782A; DEVICE POSITION: cheek; Communication System: CDMA 1900; Frequency: 1880 MHz; Communication System Channel Number: 600; Duty Cycle: 1:1; Medium: Back-Up Glycol Head; Medium parameters used: $f = 1880$ MHz; $\sigma = 1.45$ mho/m; $\epsilon_r = 39.1$; $\rho = 1000$ kg/m³; DASY4 Configuration:

- Probe: ET3DV6R - SN1513; ConvF(4.76, 4.76, 4.76); Calibrated: 9/19/2005
- Sensor-Surface: 4mm (Mechanical Surface Detection)
- Electronics: DAE3 Sn378; Calibrated: 5/22/2006
- Phantom: R3: Glycol SAM; Type: SAM; Serial: TP-1236;
- Measurement SW: DASY4, V4.7 Build 44; Postprocessing SW: SEMCAD, V1.8 Build 171

Right Head Template/Area Scan - Normal (10mm) (10x25x1): Measurement grid: dx=10mm, dy=10mm; Maximum value of SAR (measured) = 1.74 mW/g

Right Head Template/Zoom Scan (7x7x7)/Cube 0:

Measurement grid: dx=5mm, dy=5mm, dz=5mm; Reference Value = 30.7 V/m; Power Drift = -0.190 dB; Peak SAR (extrapolated) = 2.33 W/kg; **SAR(1 g) = 1.52 mW/g; SAR(10 g) = 0.860 mW/g;** Maximum value of SAR (measured) = 1.70 mW/g



Test Laboratory: Motorola

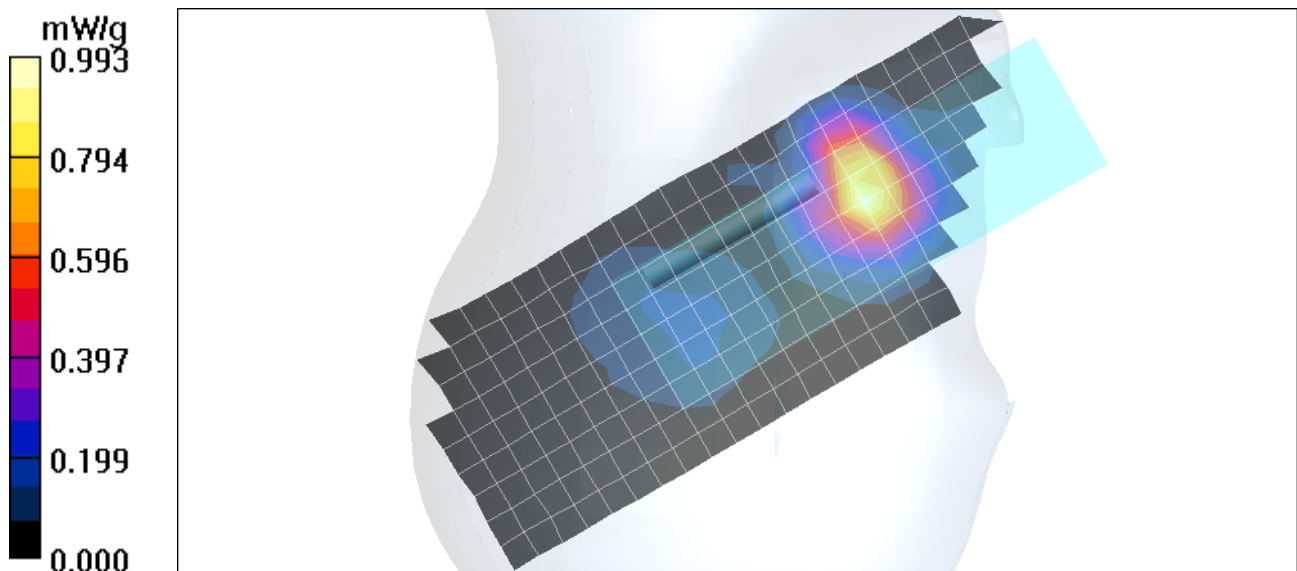
Serial: 1B172464; Procedure Notes: Pwr Step: always up; Antenna Position: EXT; Battery Model #: SNN5771A; DEVICE POSITION: CHEEK; Communication System: CDMA 1900; Frequency: 1880 MHz; Communication System Channel Number: 600; Duty Cycle: 1:1; Medium: Back-Up Glycol Head; Medium parameters used: $f = 1880$ MHz; $\sigma = 1.44$ mho/m; $\epsilon_r = 39.6$; $\rho = 1000$ kg/m³; DASY4 Configuration:

- Probe: ET3DV6R - SN1513; ConvF(4.76, 4.76, 4.76); Calibrated: 9/19/2005
- Sensor-Surface: 4mm (Mechanical Surface Detection)
- Electronics: DAE3 Sn378; Calibrated: 5/22/2006
- Phantom: R#3 Glycol SAM (extended range), Rev.1 (25-Mar-05); Type: SAM v4.0; Serial: TP-1236;
- Measurement SW: DASY4, V4.7 Build 44; Postprocessing SW: SEMCAD, V1.8 Build 171

Right Head Template/Area Scan - Normal Extended (10mm) (10x25x1): Measurement grid: dx=10mm, dy=10mm; Maximum value of SAR (measured) = 0.993 mW/g

Right Head Template/Zoom Scan (7x7x7)/Cube 0:

Measurement grid: dx=5mm, dy=5mm, dz=5mm; Reference Value = 24.7 V/m; Power Drift = 0.008 dB; Peak SAR (extrapolated) = 1.48 W/kg; **SAR(1 g) = 0.875 mW/g; SAR(10 g) = 0.486 mW/g;** Maximum value of SAR (measured) = 1.03 mW/g



Test Laboratory: Motorola

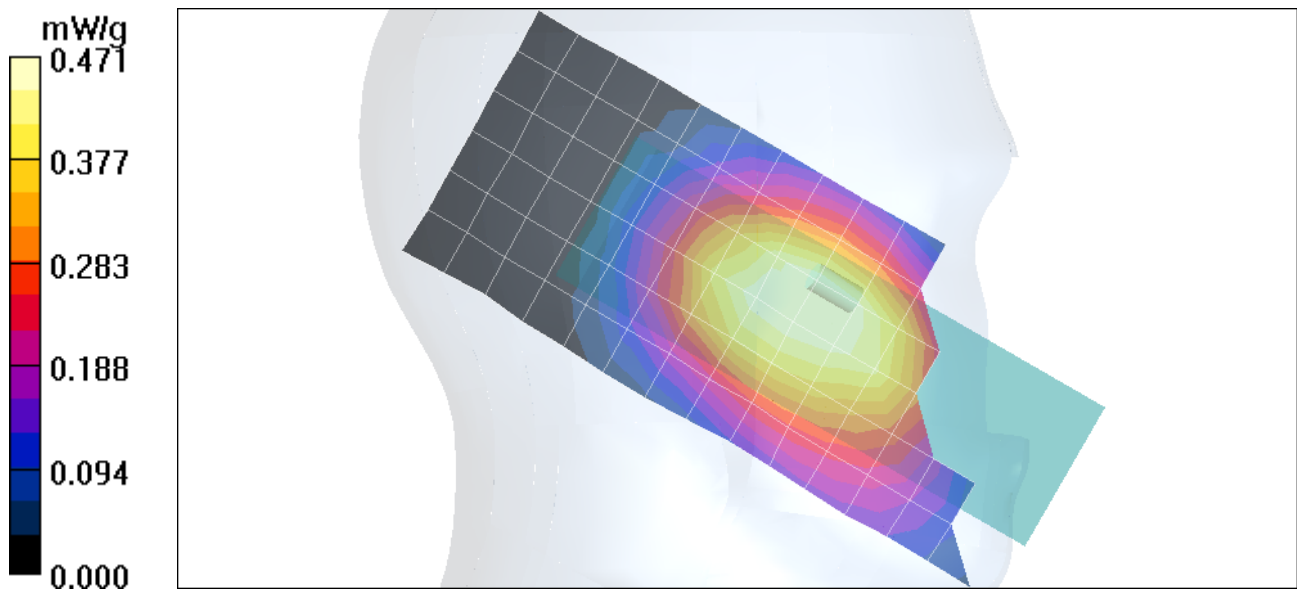
Serial: 1B172464; Procedure Notes: Pwr Step: 2; Antenna Position: ret; Battery Model #: SNN5782A; DEVICE POSITION: tilt; Communication System: AMPS 835; Frequency: 836.52 MHz; Communication System Channel Number: 384; Duty Cycle: 1:1; Medium: Low Freq Head; Medium parameters used: $f = 835$ MHz; $\sigma = 0.93$ mho/m; $\epsilon_r = 43$; $\rho = 1000$ kg/m³; DASY4 Configuration:

- Probe: ET3DV6R - SN1513; ConvF(5.83, 5.83, 5.83); Calibrated: 9/19/2005
- Sensor-Surface: 4mm (Mechanical Surface Detection)
- Electronics: DAE3 Sn378; Calibrated: 5/22/2006
- Phantom: R3: Sugar Water SAM; Type: SAM; Serial: TP-1153;
- Measurement SW: DASY4, V4.7 Build 44; Postprocessing SW: SEMCAD, V1.8 Build 171

Left Head Template/Area Scan - Normal (15mm) (7x17x1): Measurement grid: dx=15mm, dy=15mm; Maximum value of SAR (measured) = 0.471 mW/g

Left Head Template/Zoom Scan (7x7x7)/Cube 0:

Measurement grid: dx=5mm, dy=5mm, dz=5mm; Reference Value = 23.8 V/m; Power Drift = 0.125 dB; Peak SAR (extrapolated) = 0.625 W/kg; **SAR(1 g) = 0.483 mW/g; SAR(10 g) = 0.367 mW/g;** Maximum value of SAR (measured) = 0.507 mW/g



Test Laboratory: Motorola

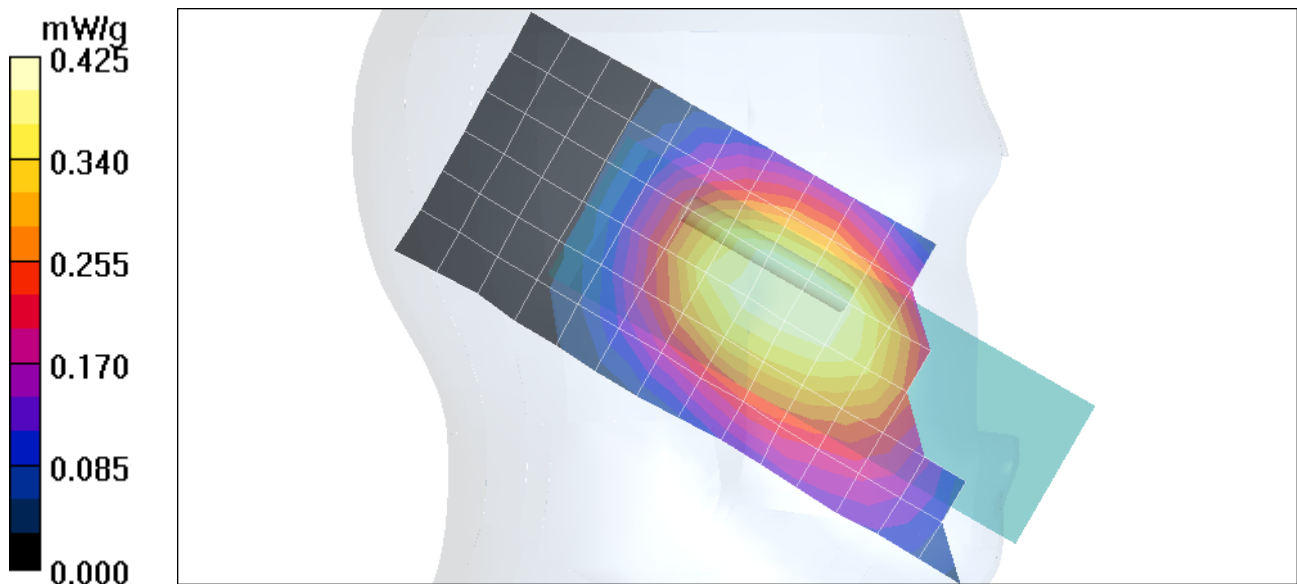
Serial: 1B172464; Procedure Notes: Pwr Step: 2; Antenna Position:ext; Battery Model #: SNN5782A; DEVICE POSITION: tilt; Communication System: AMPS 835; Frequency: 836.52 MHz; Communication System Channel Number: 384; Duty Cycle: 1:1; Medium: Low Freq Head; Medium parameters used: $f = 835$ MHz; $\sigma = 0.93$ mho/m; $\epsilon_r = 43$; $\rho = 1000$ kg/m³ ; DASY4 Configuration:

- Probe: ET3DV6R - SN1513; ConvF(5.83, 5.83, 5.83); Calibrated: 9/19/2005
- Sensor-Surface: 4mm (Mechanical Surface Detection)
- Electronics: DAE3 Sn378; Calibrated: 5/22/2006
- Phantom: R3: Sugar Water SAM; Type: SAM; Serial: TP-1153;
- Measurement SW: DASY4, V4.7 Build 44; Postprocessing SW: SEMCAD, V1.8 Build 171

Left Head Template/Area Scan - Normal (15mm) (7x17x1): Measurement grid: dx=15mm, dy=15mm; Maximum value of SAR (measured) = 0.425 mW/g

Left Head Template/Zoom Scan (7x7x7)/Cube 0:

Measurement grid: dx=5mm, dy=5mm, dz=5mm; Reference Value = 22.6 V/m; Power Drift = -0.030 dB; Peak SAR (extrapolated) = 0.542 W/kg; **SAR(1 g) = 0.425 mW/g; SAR(10 g) = 0.324 mW/g;** Maximum value of SAR (measured) = 0.446 mW/g



Test Laboratory: Motorola

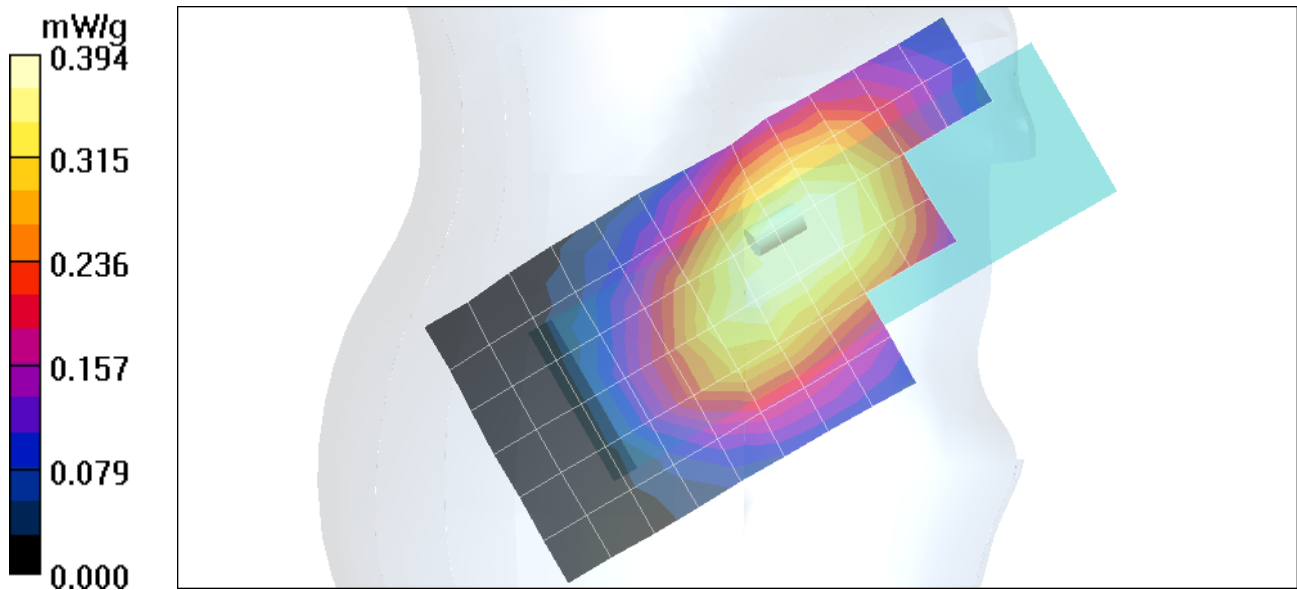
Serial: 1B172464; Procedure Notes: Pwr Step: always up; Antenna Position: ret; Battery Model #: SNN5782A; DEVICE POSITION: tilt; Communication System: CDMA 835; Frequency: 836.52 MHz; Communication System Channel Number: 384; Duty Cycle: 1:1; Medium: Low Freq Head; Medium parameters used: $f = 835 \text{ MHz}$; $\sigma = 0.93 \text{ mho/m}$; $\epsilon_r = 43$; $\rho = 1000 \text{ kg/m}^3$; DASY4 Configuration:

- Probe: ET3DV6R - SN1513; ConvF(5.83, 5.83, 5.83); Calibrated: 9/19/2005
- Sensor-Surface: 4mm (Mechanical Surface Detection)
- Electronics: DAE3 Sn378; Calibrated: 5/22/2006
- Phantom: R3: Sugar Water SAM; Type: SAM; Serial: TP-1153;
- Measurement SW: DASY4, V4.7 Build 44; Postprocessing SW: SEMCAD, V1.8 Build 171

Right Head Template/Area Scan - Normal (15mm) (7x17x1): Measurement grid: $dx=15\text{mm}$, $dy=15\text{mm}$; Maximum value of SAR (measured) = 0.394 mW/g

Right Head Template/Zoom Scan (7x7x7)/Cube 0:

Measurement grid: $dx=5\text{mm}$, $dy=5\text{mm}$, $dz=5\text{mm}$; Reference Value = 21.7 V/m; Power Drift = 0.001 dB; Peak SAR (extrapolated) = 0.505 W/kg; **SAR(1 g) = 0.384 mW/g**; **SAR(10 g) = 0.290 mW/g**; Maximum value of SAR (measured) = 0.403 mW/g



Test Laboratory: Motorola

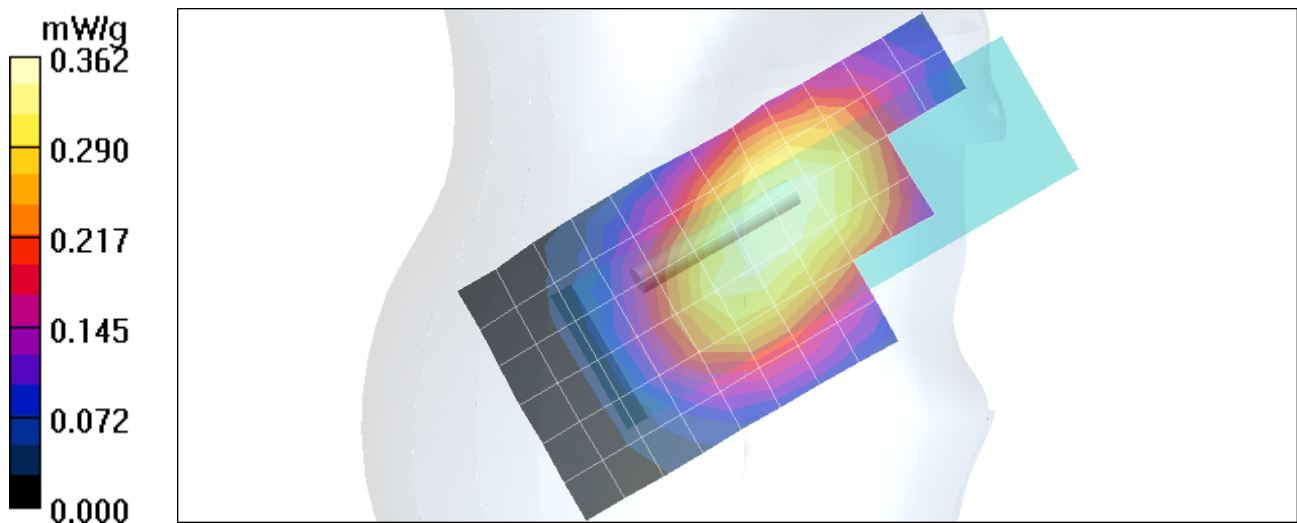
Serial: 1B172464; Procedure Notes: Pwr Step: always up; Antenna Position: ext; Battery Model #: SNN5782A; DEVICE POSITION: tilt; Communication System: CDMA 835; Frequency: 836.52 MHz; Communication System Channel Number: 384; Duty Cycle: 1:1; Medium: Low Freq Head; Medium parameters used: $f = 835$ MHz; $\sigma = 0.93$ mho/m; $\epsilon_r = 43$; $\rho = 1000$ kg/m³; DASY4 Configuration:

- Probe: ET3DV6R - SN1513; ConvF(5.83, 5.83, 5.83); Calibrated: 9/19/2005
- Sensor-Surface: 4mm (Mechanical Surface Detection)
- Electronics: DAE3 Sn378; Calibrated: 5/22/2006
- Phantom: R3: Sugar Water SAM; Type: SAM; Serial: TP-1153;
- Measurement SW: DASY4, V4.7 Build 44; Postprocessing SW: SEMCAD, V1.8 Build 171

Right Head Template/Area Scan - Normal (15mm) (7x17x1): Measurement grid: dx=15mm, dy=15mm; Maximum value of SAR (measured) = 0.362 mW/g

Right Head Template/Zoom Scan (7x7x7)/Cube 0:

Measurement grid: dx=5mm, dy=5mm, dz=5mm; Reference Value = 20.7 V/m; Power Drift = 0.000 dB; Peak SAR (extrapolated) = 0.456 W/kg; **SAR(1 g) = 0.353 mW/g; SAR(10 g) = 0.269 mW/g;** Maximum value of SAR (measured) = 0.378 mW/g



Test Laboratory: Motorola

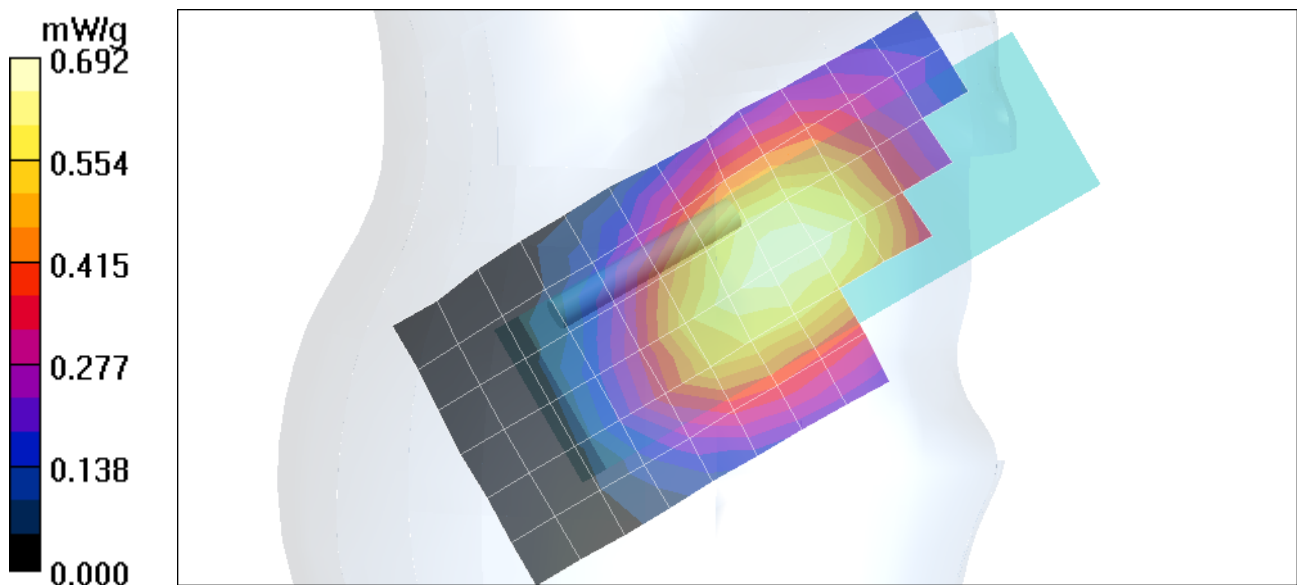
Serial: 1B172464; Procedure Notes: Pwr Step: always up; Antenna Position: ret; Battery Model #: SNN5782A; DEVICE POSITION: tilt; Communication System: CDMA 1900; Frequency: 1880 MHz; Communication System Channel Number: 600; Duty Cycle: 1:1; Medium: Back-Up Glycol Head; Medium parameters used: $f = 1880$ MHz; $\sigma = 1.45$ mho/m; $\epsilon_r = 39.1$; $\rho = 1000$ kg/m³; DASY4 Configuration:

- Probe: ET3DV6R - SN1513; ConvF(4.76, 4.76, 4.76); Calibrated: 9/19/2005
- Sensor-Surface: 4mm (Mechanical Surface Detection)
- Electronics: DAE3 Sn378; Calibrated: 5/22/2006
- Phantom: R3: Glycol SAM; Type: SAM; Serial: TP-1236;
- Measurement SW: DASY4, V4.7 Build 44; Postprocessing SW: SEMCAD, V1.8 Build 171

Right Head Template/Area Scan - Normal (15mm) (7x17x1): Measurement grid: dx=15mm, dy=15mm; Maximum value of SAR (measured) = 0.692 mW/g

Right Head Template/Zoom Scan (7x7x7)/Cube 0:

Measurement grid: dx=5mm, dy=5mm, dz=5mm; Reference Value = 22.8 V/m; Power Drift = 0.022 dB; Peak SAR (extrapolated) = 0.723 W/kg; **SAR(1 g) = 0.687 mW/g; SAR(10 g) = 0.609 mW/g;** Maximum value of SAR (measured) = 0.719 mW/g



Test Laboratory: Motorola

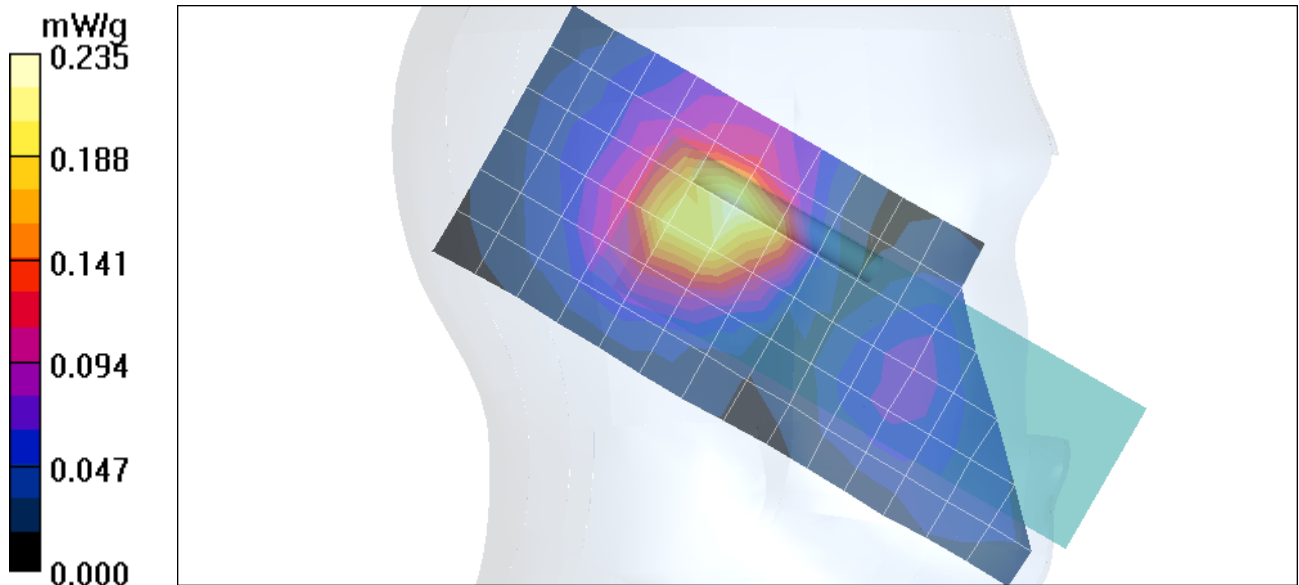
Serial: 1B172464; Procedure Notes: Pwr Step: always up; Antenna Position: EXT; Battery Model #: SNN5771A; DEVICE POSITION: TILT; Communication System: CDMA 1900; Frequency: 1880 MHz; Communication System Channel Number: 600; Duty Cycle: 1:1; Medium: Back-Up Glycol Head; Medium parameters used: $f = 1880$ MHz; $\sigma = 1.44$ mho/m; $\epsilon_r = 39.6$; $\rho = 1000$ kg/m³ ; DASY4 Configuration:

- Probe: ET3DV6R - SN1513; ConvF(4.76, 4.76, 4.76); Calibrated: 9/19/2005
- Sensor-Surface: 4mm (Mechanical Surface Detection)
- Electronics: DAE3 Sn378; Calibrated: 5/22/2006
- Phantom: R#3 Glycol SAM (extended range), Rev.1 (25-Mar-05); Type: SAM v4.0; Serial: TP-1236;
- Measurement SW: DASY4, V4.7 Build 44; Postprocessing SW: SEMCAD, V1.8 Build 171

Left Head Template/Area Scan - Normal (15mm) (7x17x1): Measurement grid: dx=15mm, dy=15mm; Maximum value of SAR (measured) = 0.235 mW/g

Left Head Template/Zoom Scan (7x7x7)/Cube 0:

Measurement grid: dx=5mm, dy=5mm, dz=5mm; Reference Value = 13.6 V/m; Power Drift = -0.035 dB; Peak SAR (extrapolated) = 0.406 W/kg; **SAR(1 g) = 0.244 mW/g; SAR(10 g) = 0.149 mW/g;** Maximum value of SAR (measured) = 0.274 mW/g



Appendix 3

SAR distribution plots for Body Worn Configuration

Test Laboratory: Motorola

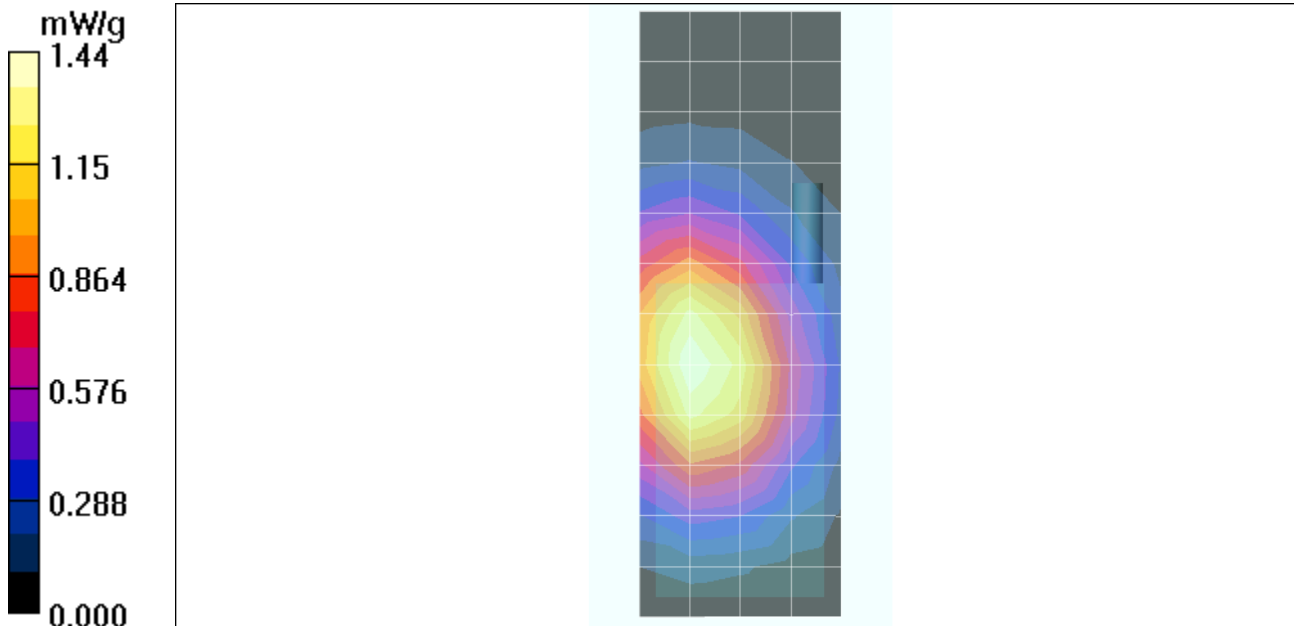
Serial: 1B172464; Procedure Notes: Pwr Step: 2; Antenna Position: RET; Battery Model #: SNN5782A; DEVICE POSITION: Bodyworn with Holster and Bluetooth enabled; Communication System: AMPS 835; Frequency: 848.97 MHz; Communication System Channel Number: 799; Duty Cycle: 1:1; Medium: Low Freq Body; Medium parameters used: $f = 835 \text{ MHz}$; $\sigma = 0.98 \text{ mho/m}$; $\epsilon_r = 53.9$; $\rho = 1000 \text{ kg/m}^3$; DASY4 Configuration:

- Probe: ET3DV6R - SN1513; ConvF(5.66, 5.66, 5.66); Calibrated: 9/19/2005
- Sensor-Surface: 4mm (Mechanical Surface Detection)
- Electronics: DAE3 Sn378; Calibrated: 5/22/2006
- Phantom: R3: Sect.2, Amy Twin; Type: Amy Twin Flat; Serial: n/a;
- Measurement SW: DASY4, V4.7 Build 44; Postprocessing SW: SEMCAD, V1.8 Build 171

Amy Twin Phone Template/Area Scan - Normal Body (15mm) (13x7x1): Measurement grid: $dx=15\text{mm}$, $dy=15\text{mm}$; Maximum value of SAR (measured) = 1.44 mW/g

Amy Twin Phone Template/Zoom Scan (7x7x7)/Cube 0:

Measurement grid: $dx=5\text{mm}$, $dy=5\text{mm}$, $dz=5\text{mm}$; Reference Value = 36.5 V/m; Power Drift = -0.341 dB; Peak SAR (extrapolated) = 1.72 W/kg; **SAR(1 g) = 1.31 mW/g**; **SAR(10 g) = 0.938 mW/g**; Maximum value of SAR (measured) = 1.40 mW/g



Test Laboratory: Motorola

Serial: 1B172464; Procedure Notes: Pwr Step: 2; Antenna Position: EXT; Battery Model #: SNN5782A; DEVICE POSITION: Bodyworn with Holster and Bluetooth enabled; Communication System: AMPS 835; Frequency: 824.04 MHz; Communication System Channel Number: 991; Duty Cycle: 1:1; Medium: Low Freq Body; Medium parameters used: $f = 835 \text{ MHz}$; $\sigma = 0.98 \text{ mho/m}$; $\epsilon_r = 53.9$; $\rho = 1000 \text{ kg/m}^3$; DASY4 Configuration:

- Probe: ET3DV6R - SN1513; ConvF(5.66, 5.66, 5.66); Calibrated: 9/19/2005
- Sensor-Surface: 4mm (Mechanical Surface Detection)
- Electronics: DAE3 Sn378; Calibrated: 5/22/2006
- Phantom: R3: Sect.2, Amy Twin; Type: Amy Twin Flat; Serial: n/a;
- Measurement SW: DASY4, V4.7 Build 44; Postprocessing SW: SEMCAD, V1.8 Build 171

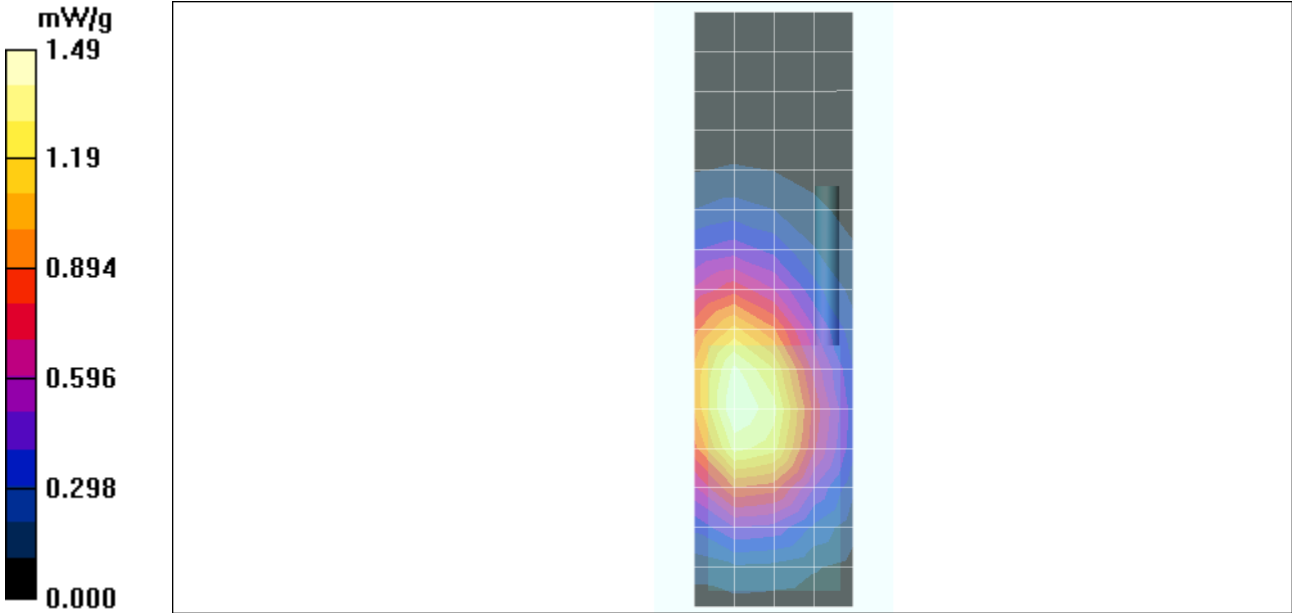
Amy Twin Phone Template/Area Scan - Normal Extended Body (15mm) (16x7x1):

Measurement grid: dx=15mm, dy=15mm; Maximum value of SAR (measured) = 1.49 mW/g

Amy Twin Phone Template/Zoom Scan (7x7x7)/Cube 0:

Measurement grid: dx=5mm, dy=5mm, dz=5mm; Reference Value = 38.2 V/m; Power Drift = -0.110 dB; Peak SAR (extrapolated) = 1.90 W/kg

SAR(1 g) = 1.45 mW/g; SAR(10 g) = 1.05 mW/g; Maximum value of SAR (measured) = 1.56 mW/g



Test Laboratory: Motorola

Serial: 1B172464; Procedure Notes: Pwr Step: always up; Antenna Position: RET; Battery Model #: SNN5782A; DEVICE POSITION: Bodyworn with Holster and bluetooth enabled; Communication System: CDMA 835; Frequency: 836.52 MHz; Communication System Channel Number: 384; Duty Cycle: 1:1; Medium: Low Freq Body; Medium parameters used: $f = 835$ MHz; $\sigma = 0.98$ mho/m; $\epsilon_r = 53.9$; $\rho = 1000$ kg/m³ ; DASY4 Configuration:

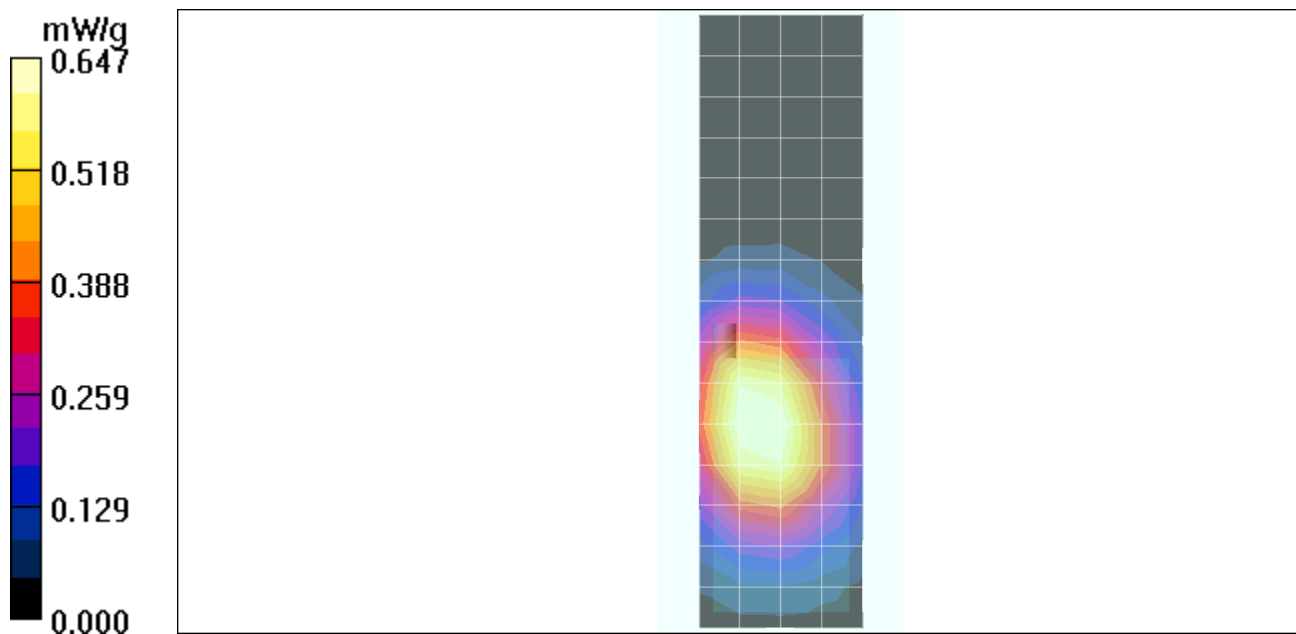
- Probe: ET3DV6R - SN1513; ConvF(5.66, 5.66, 5.66); Calibrated: 9/19/2005
- Sensor-Surface: 4mm (Mechanical Surface Detection)
- Electronics: DAE3 Sn378; Calibrated: 5/22/2006
- Phantom: R3: Sect.2, Amy Twin; Type: Amy Twin Flat; Serial: n/a;
- Measurement SW: DASY4, V4.7 Build 44; Postprocessing SW: SEMCAD, V1.8 Build 171

Amy Twin Phone Template/Area Scan - Normal Extended Body (15mm) (16x7x1):

Measurement grid: dx=15mm, dy=15mm; Maximum value of SAR (measured) = 0.647 mW/g

Amy Twin Phone Template/Zoom Scan (7x7x7)/Cube 0:

Measurement grid: dx=5mm, dy=5mm, dz=5mm; Reference Value = 26.3 V/m; Power Drift = -0.023 dB; Peak SAR (extrapolated) = 0.869 W/kg; **SAR(1 g) = 0.653 mW/g**; **SAR(10 g) = 0.465 mW/g**; Maximum value of SAR (measured) = 0.696 mW/g



Test Laboratory: Motorola

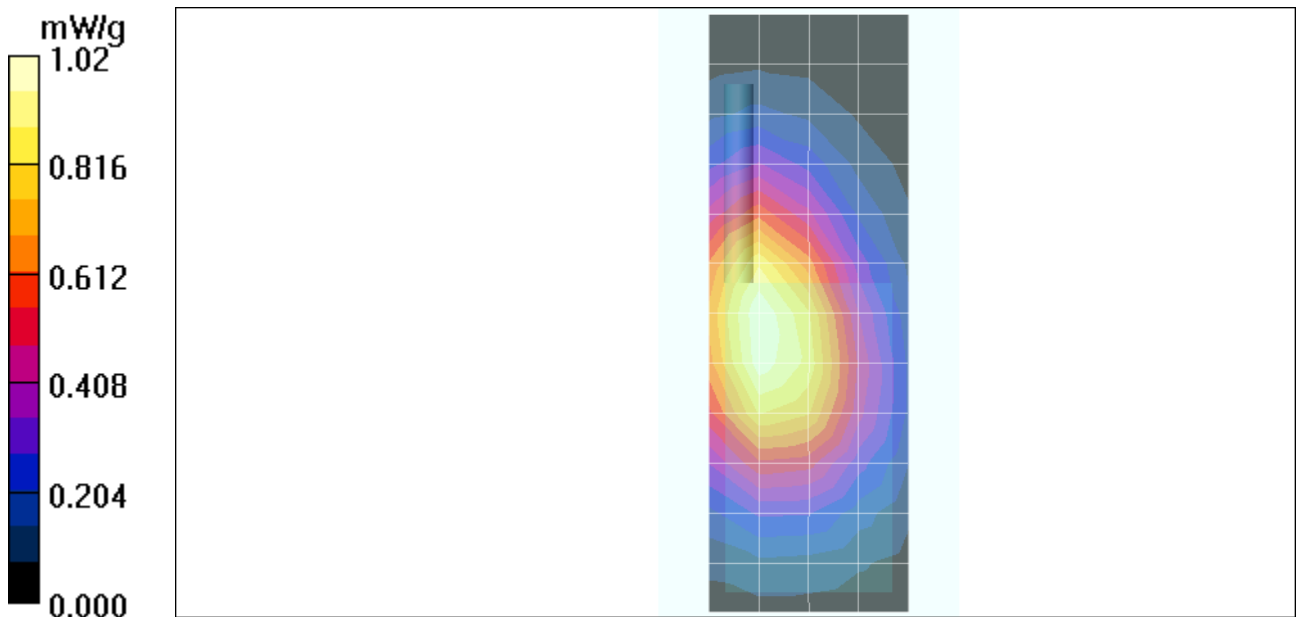
Serial: 1B172464; Procedure Notes: Pwr Step: always up; Antenna Position: ext; Battery Model #: SNN5782A; DEVICE POSITION: Bodyworn with Holster; Communication System: CDMA 835; Frequency: 836.52 MHz; Communication System Channel Number: 384; Duty Cycle: 1:1; Medium: Low Freq Body; Medium parameters used: $f = 835$ MHz; $\sigma = 0.98$ mho/m; $\epsilon_r = 53.9$; $\rho = 1000$ kg/m³; DASY4 Configuration:

- Probe: ET3DV6R - SN1513; ConvF(5.66, 5.66, 5.66); Calibrated: 9/19/2005
- Sensor-Surface: 4mm (Mechanical Surface Detection)
- Electronics: DAE3 Sn378; Calibrated: 5/22/2006
- Phantom: R3: Sect.2, Amy Twin; Type: Amy Twin Flat; Serial: n/a;
- Measurement SW: DASY4, V4.7 Build 44; Postprocessing SW: SEMCAD, V1.8 Build 171

Amy Twin Phone Template/Area Scan - Normal Body (15mm) (13x7x1): Measurement grid: dx=15mm, dy=15mm; Maximum value of SAR (measured) = 1.02 mW/g

Amy Twin Phone Template/Zoom Scan (7x7x7)/Cube 0:

Measurement grid: dx=5mm, dy=5mm, dz=5mm; Reference Value = 29.9 V/m; Power Drift = -0.019 dB; Peak SAR (extrapolated) = 1.33 W/kg; **SAR(1 g) = 0.993 mW/g; SAR(10 g) = 0.706 mW/g;** Maximum value of SAR (measured) = 1.06 mW/g



Test Laboratory: Motorola

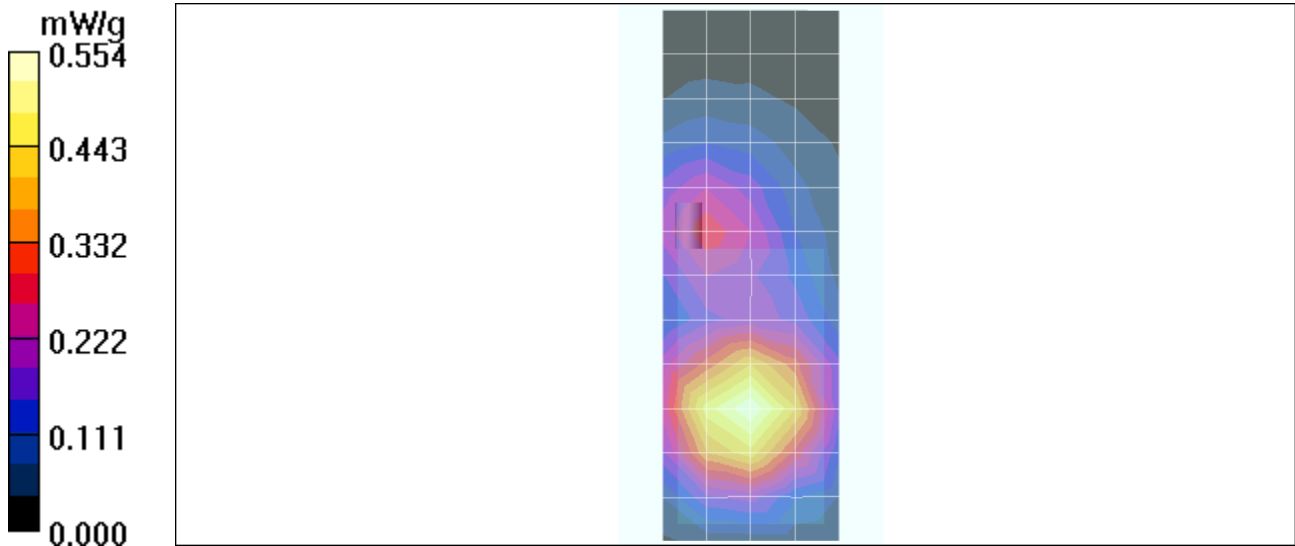
Serial: 1B172464; Procedure Notes: Pwr Step: always up; Antenna Position: RET; Battery Model #: SNN5782A; DEVICE POSITION: Bodyworn with Holster; Communication System: CDMA 1900; Frequency: 1880 MHz; Communication System Channel Number: 600; Duty Cycle: 1:1; Medium: Regular Glycol Body; Medium parameters used: $f = 1880 \text{ MHz}$; $\sigma = 1.56 \text{ mho/m}$; $\epsilon_r = 51.7$; $\rho = 1000 \text{ kg/m}^3$; DASY4 Configuration:

- Probe: ET3DV6R - SN1513; ConvF(4.16, 4.16, 4.16); Calibrated: 9/19/2005
- Sensor-Surface: 4mm (Mechanical Surface Detection)
- Electronics: DAE3 Sn378; Calibrated: 5/22/2006
- Phantom: R3: Sect.1, Amy Twin; Type: Amy Twin Flat; Serial: n/a;
- Measurement SW: DASY4, V4.7 Build 44; Postprocessing SW: SEMCAD, V1.8 Build 171

Amy Twin Phone Template/Area Scan - Normal Body (15mm) (13x7x1): Measurement grid: $dx=15\text{mm}$, $dy=15\text{mm}$; Maximum value of SAR (measured) = 0.554 mW/g

Amy Twin Phone Template/Zoom Scan (7x7x7)/Cube 0:

Measurement grid: $dx=5\text{mm}$, $dy=5\text{mm}$, $dz=5\text{mm}$; Reference Value = 20.3 V/m; Power Drift = -0.462 dB; Peak SAR (extrapolated) = 0.994 W/kg; **SAR(1 g) = 0.543 mW/g**; **SAR(10 g) = 0.350 mW/g**; Maximum value of SAR (measured) = 0.582 mW/g



Test Laboratory: Motorola

Serial: 1B172464; Procedure Notes: Pwr Step: always up; Antenna Position: EXT; Battery Model #: SNN5782A; DEVICE POSITION: Back of the phone 25mm from flat phantom with bluetooth enabled; Communication System: CDMA 1900; Frequency: 1880 MHz; Communication System Channel Number: 600; Duty Cycle: 1:1; Medium: Regular Glycol Body; Medium parameters used: $f = 1880$ MHz; $\sigma = 1.56$ mho/m; $\epsilon_r = 51.7$; $\rho = 1000$ kg/m³ ; DASY4 Configuration:

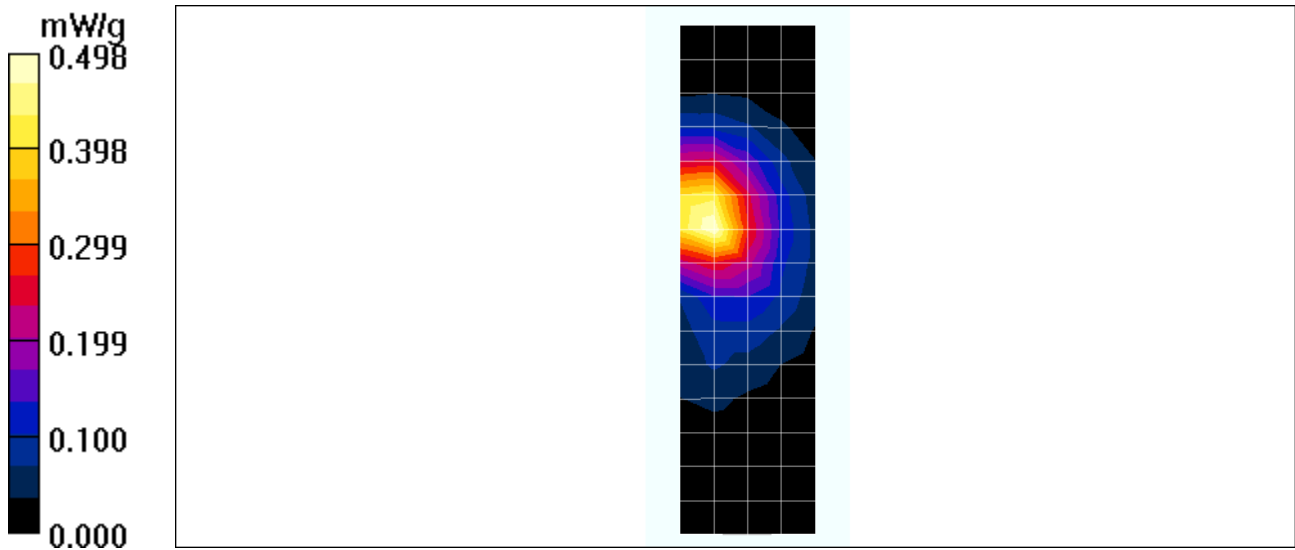
- Probe: ET3DV6R - SN1513; ConvF(4.16, 4.16, 4.16); Calibrated: 9/19/2005
- Sensor-Surface: 4mm (Mechanical Surface Detection)
- Electronics: DAE3 Sn378; Calibrated: 5/22/2006
- Phantom: R3: Sect.1, Amy Twin; Type: Amy Twin Flat; Serial: n/a;
- Measurement SW: DASY4, V4.7 Build 44; Postprocessing SW: SEMCAD, V1.8 Build 171

Amy Twin Phone Template/Area Scan - Normal Extended Body (15mm) (16x7x1):

Measurement grid: dx=15mm, dy=15mm; Maximum value of SAR (measured) = 0.498 mW/g

Amy Twin Phone Template/Zoom Scan (7x7x7)/Cube 0:

Measurement grid: dx=5mm, dy=5mm, dz=5mm; Reference Value = 16.3 V/m; Power Drift = 0.046 dB; Peak SAR (extrapolated) = 0.711 W/kg; **SAR(1 g) = 0.465 mW/g; SAR(10 g) = 0.293 mW/g;** Maximum value of SAR (measured) = 0.508 mW/g



Appendix 4

Probe Calibration Certificate



Accredited by the Swiss Federal Office of Metrology and Accreditation
The Swiss Accreditation Service is one of the signatories to the EA
Multilateral Agreement for the recognition of calibration certificates

Accreditation No.: **SCS 108**

Client **Motorola MDb**

Certificate No: **ET3-1513_Sep05**

CALIBRATION CERTIFICATE

Object **ET3DV6R - SN:1513**

Calibration procedure(s) **QA CAL-01.v5
Calibration procedure for dosimetric E-field probes**

Calibration date: **September 19, 2005**

Condition of the calibrated item **In Tolerance**

This calibration certificate documents the traceability to national standards, which realize the physical units of measurements (SI).
The measurements and the uncertainties with confidence probability are given on the following pages and are part of the certificate.

All calibrations have been conducted in the closed laboratory facility: environment temperature (22 ± 3)°C and humidity < 70%.

Calibration Equipment used (M&TE critical for calibration)

Primary Standards	ID #	Cal Date (Calibrated by, Certificate No.)	Scheduled Calibration
Power meter E4419B	GB41293874	3-May-05 (METAS, No. 251-00466)	May-06
Power sensor E4412A	MY41495277	3-May-05 (METAS, No. 251-00466)	May-06
Power sensor E4412A	MY41498087	3-May-05 (METAS, No. 251-00466)	May-06
Reference 3 dB Attenuator	SN: S5054 (3c)	11-Aug-05 (METAS, No. 251-00499)	Aug-06
Reference 20 dB Attenuator	SN: S5086 (20b)	3-May-05 (METAS, No. 251-00467)	May-06
Reference 30 dB Attenuator	SN: S5129 (30b)	11-Aug-05 (METAS, No. 251-00500)	Aug-06
Reference Probe ES3DV2	SN: 3013	7-Jan-05 (SPEAG, No. ES3-3013_Jan05)	Jan-06
DAE4	SN: 654	29-Nov-04 (SPEAG, No. DAE4-654_Nov04)	Nov-05

Secondary Standards	ID #	Check Date (in house)	Scheduled Check
RF generator HP 8648C	US3642U01700	4-Aug-99 (SPEAG, in house check Dec-03)	In house check: Dec-05
Network Analyzer HP 8753E	US37390585	18-Oct-01 (SPEAG, in house check Nov-04)	In house check: Nov 05

	Name	Function	Signature
Calibrated by:	Nico Vetterli	Laboratory Technician	
Approved by:	Katja Pokovic	Technical Manager	

Issued: September 19, 2005

This calibration certificate shall not be reproduced except in full without written approval of the laboratory.



Accredited by the Swiss Federal Office of Metrology and Accreditation
The Swiss Accreditation Service is one of the signatories to the EA
Multilateral Agreement for the recognition of calibration certificates

Accreditation No.: **SCS 108**

Glossary:

TSL	tissue simulating liquid
NORM _{x,y,z}	sensitivity in free space
ConF	sensitivity in TSL / NORM _{x,y,z}
DCP	diode compression point
Polarization φ	φ rotation around probe axis
Polarization ϑ	ϑ rotation around an axis that is in the plane normal to probe axis (at measurement center), i.e., $\vartheta = 0$ is normal to probe axis

Calibration is Performed According to the Following Standards:

- IEEE Std 1528-2003, "IEEE Recommended Practice for Determining the Peak Spatial-Averaged Specific Absorption Rate (SAR) in the Human Head from Wireless Communications Devices: Measurement Techniques", December 2003
- CENELEC EN 50361, "Basic standard for the measurement of Specific Absorption Rate related to human exposure to electromagnetic fields from mobile phones (300 MHz - 3 GHz), July 2001

Methods Applied and Interpretation of Parameters:

- NORM_{x,y,z}**: Assessed for E-field polarization $\vartheta = 0$ ($f \leq 900$ MHz in TEM-cell; $f > 1800$ MHz: R22 waveguide). NORM_{x,y,z} are only intermediate values, i.e., the uncertainties of NORM_{x,y,z} does not effect the E²-field uncertainty inside TSL (see below *ConvF*).
- NORM(f)_{x,y,z} = NORM_{x,y,z} * frequency_response** (see Frequency Response Chart). This linearization is implemented in DASY4 software versions later than 4.2. The uncertainty of the frequency response is included in the stated uncertainty of *ConvF*.
- DCP_{x,y,z}**: DCP are numerical linearization parameters assessed based on the data of power sweep (no uncertainty required). DCP does not depend on frequency nor media.
- ConvF and Boundary Effect Parameters**: Assessed in flat phantom using E-field (or Temperature Transfer Standard for $f \leq 800$ MHz) and inside waveguide using analytical field distributions based on power measurements for $f > 800$ MHz. The same setups are used for assessment of the parameters applied for boundary compensation (alpha, depth) of which typical uncertainty values are given. These parameters are used in DASY4 software to improve probe accuracy close to the boundary. The sensitivity in TSL corresponds to NORM_{x,y,z} * *ConvF* whereby the uncertainty corresponds to that given for *ConvF*. A frequency dependent *ConvF* is used in DASY version 4.4 and higher which allows extending the validity from ± 50 MHz to ± 100 MHz.
- Spherical isotropy (3D deviation from isotropy)**: in a field of low gradients realized using a flat phantom exposed by a patch antenna.
- Sensor Offset**: The sensor offset corresponds to the offset of virtual measurement center from the probe tip (on probe axis). No tolerance required.

Probe ET3DV6R

SN:1513

Manufactured:	May 3, 2002
Last calibrated:	September 24, 2004
Recalibrated:	September 19, 2005

Calibrated for DASYS Systems

(Note: non-compatible with DASYS2 system!)

DASY - Parameters of Probe: ET3DV6R SN:1513**Sensitivity in Free Space^A**

NormX	2.31 ± 10.1%	$\mu\text{V}/(\text{V}/\text{m})^2$	DCP X	94 mV
NormY	1.98 ± 10.1%	$\mu\text{V}/(\text{V}/\text{m})^2$	DCP Y	94 mV
NormZ	2.11 ± 10.1%	$\mu\text{V}/(\text{V}/\text{m})^2$	DCP Z	94 mV

Diode Compression^B**Sensitivity in Tissue Simulating Liquid (Conversion Factors)**

Please see Page 8.

Boundary Effect

TSL **900 MHz** **Typical SAR gradient: 5 % per mm**

Sensor Center to Phantom Surface Distance		3.7 mm	4.7 mm
SAR _{be} [%]	Without Correction Algorithm	8.7	4.7
SAR _{be} [%]	With Correction Algorithm	0.1	0.2

TSL **1810 MHz** **Typical SAR gradient: 10 % per mm**

Sensor Center to Phantom Surface Distance		3.7 mm	4.7 mm
SAR _{be} [%]	Without Correction Algorithm	13.1	8.7
SAR _{be} [%]	With Correction Algorithm	1.0	0.1

Sensor Offset

Probe Tip to Sensor Center **2.7 mm**

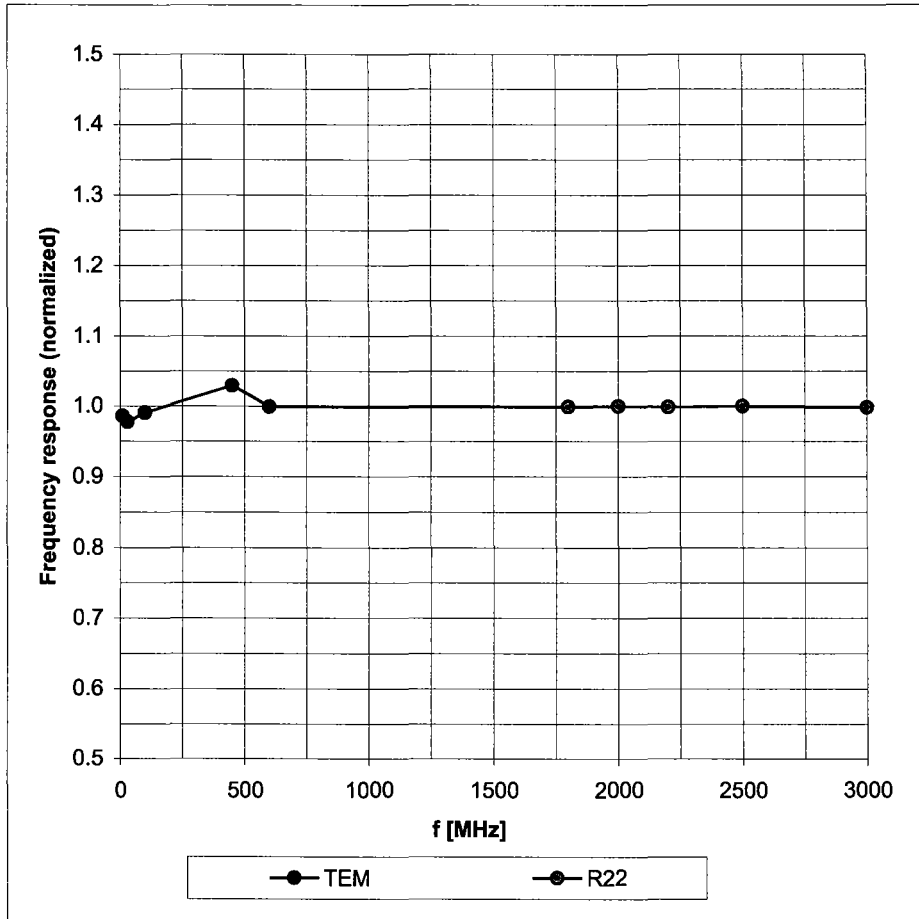
The reported uncertainty of measurement is stated as the standard uncertainty of measurement multiplied by the coverage factor k=2, which for a normal distribution corresponds to a coverage probability of approximately 95%.

^A The uncertainties of NormX,Y,Z do not affect the E²-field uncertainty inside TSL (see Page 8).

^B Numerical linearization parameter: uncertainty not required.

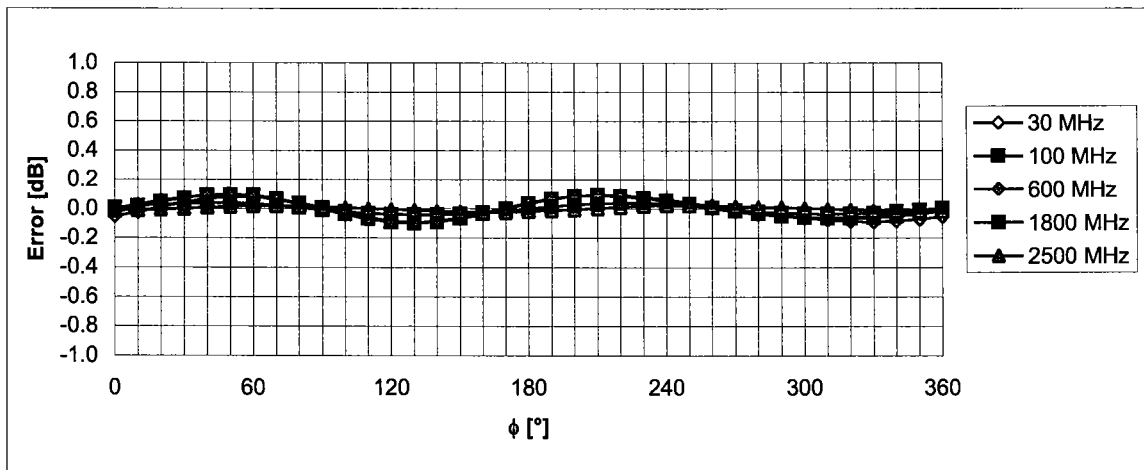
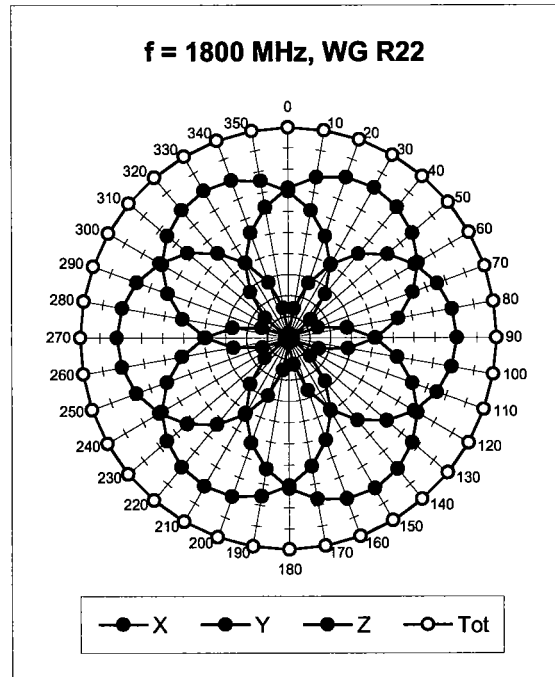
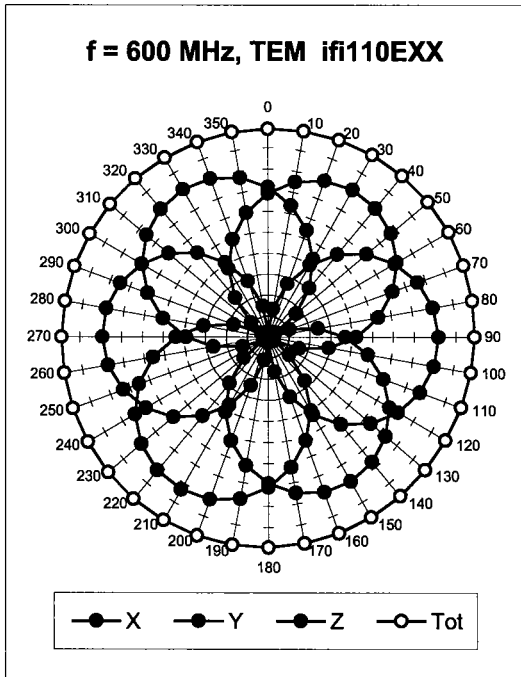
Frequency Response of E-Field

(TEM-Cell:ifi110 EXX, Waveguide: R22)



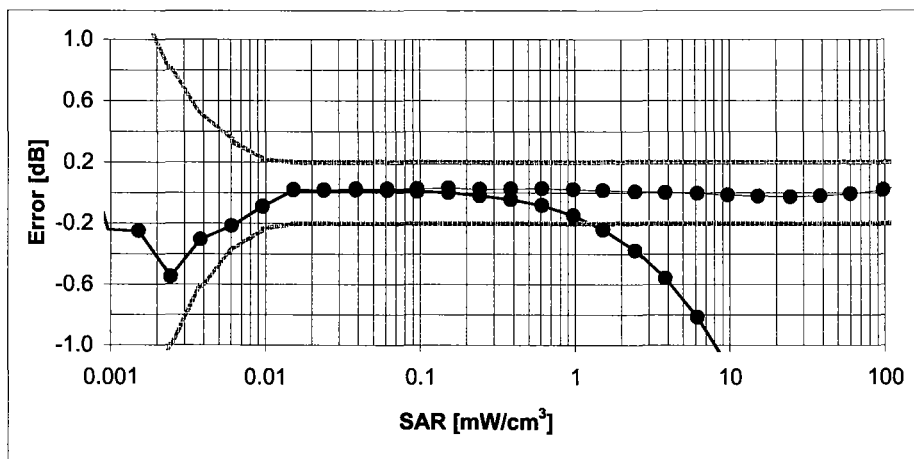
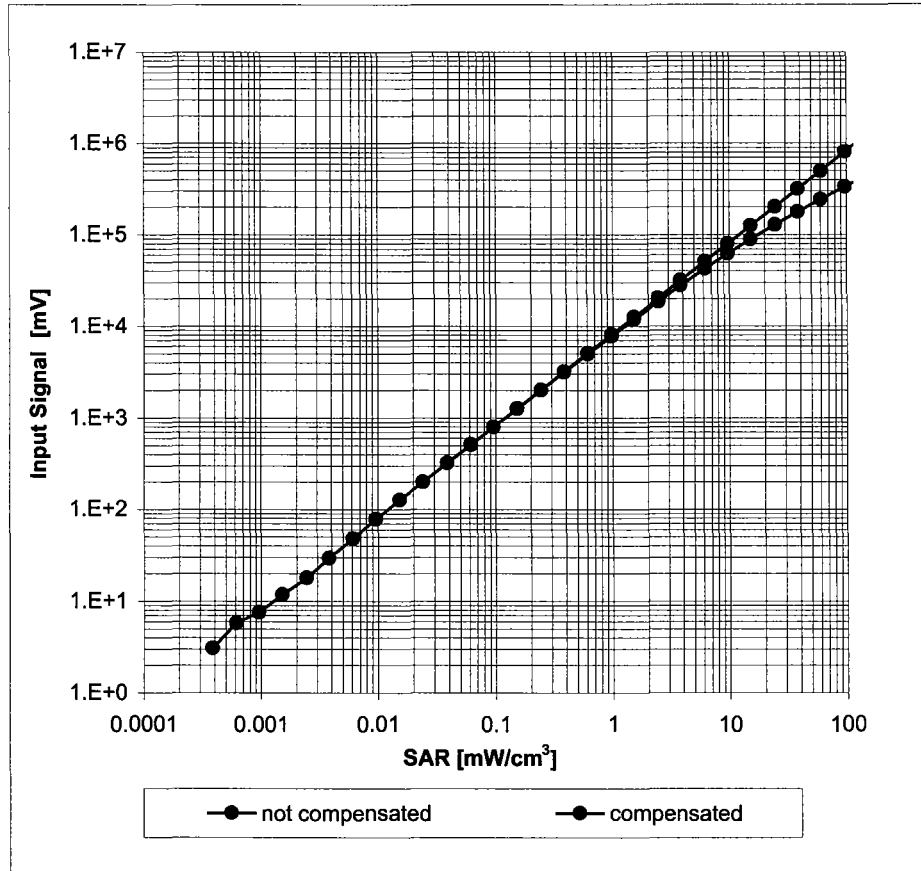
Uncertainty of Frequency Response of E-field: $\pm 6.3\%$ ($k=2$)

Receiving Pattern (ϕ), $\vartheta = 0^\circ$



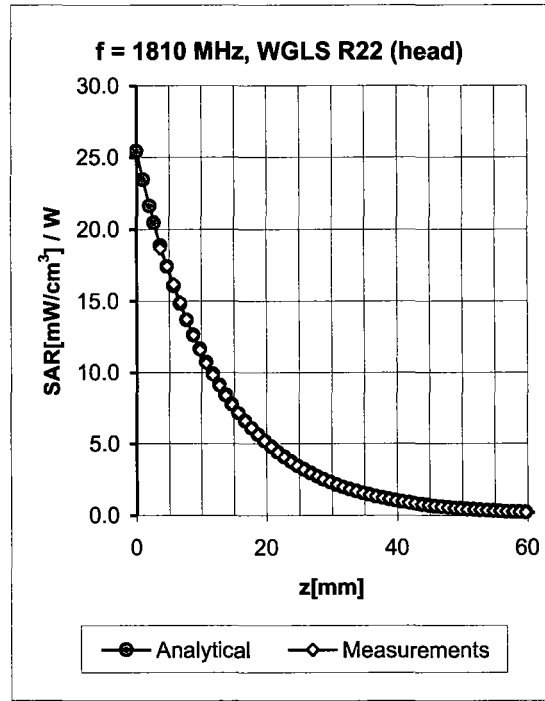
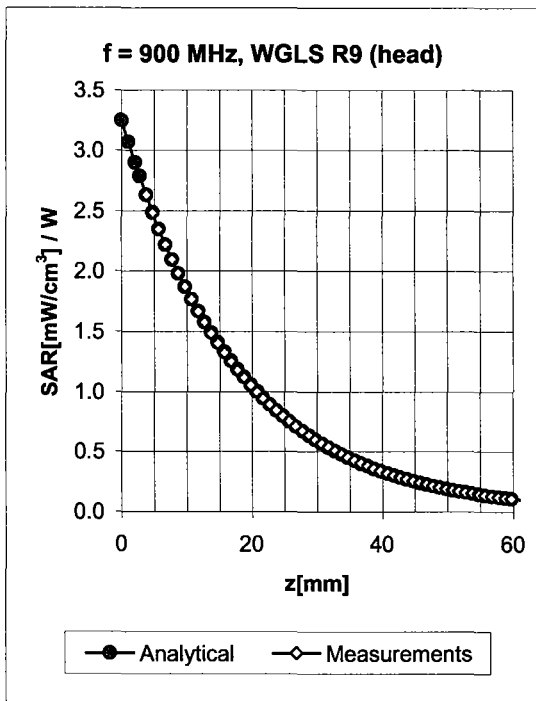
Uncertainty of Axial Isotropy Assessment: $\pm 0.5\%$ ($k=2$)

Dynamic Range $f(\text{SAR}_{\text{head}})$ (Waveguide R22, $f = 1800 \text{ MHz}$)



Uncertainty of Linearity Assessment: $\pm 0.6\%$ ($k=2$)

Conversion Factor Assessment

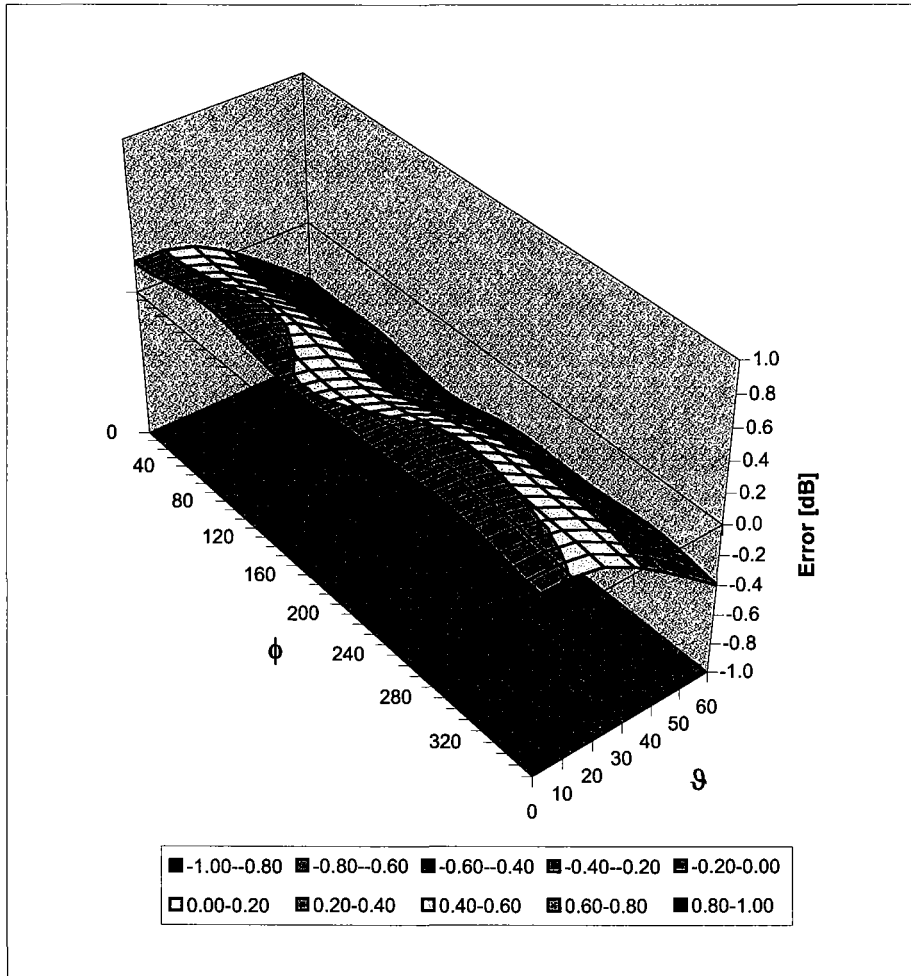


f [MHz]	Validity [MHz] ^c	TSL	Permittivity	Conductivity	Alpha	Depth	ConvF Uncertainty
900	± 50 / ± 100	Head	41.5 ± 5%	0.97 ± 5%	0.57	1.87	5.83 ± 11.0% (k=2)
1810	± 50 / ± 100	Head	40.0 ± 5%	1.40 ± 5%	0.66	2.22	4.76 ± 11.0% (k=2)
1950	± 50 / ± 100	Head	40.0 ± 5%	1.40 ± 5%	0.61	2.40	4.41 ± 11.0% (k=2)
2450	± 50 / ± 100	Head	39.2 ± 5%	1.80 ± 5%	0.77	2.04	4.10 ± 11.8% (k=2)
900	± 50 / ± 100	Body	55.0 ± 5%	1.05 ± 5%	0.53	2.03	5.66 ± 11.0% (k=2)
1810	± 50 / ± 100	Body	53.3 ± 5%	1.52 ± 5%	0.60	2.59	4.16 ± 11.0% (k=2)
1950	± 50 / ± 100	Body	53.3 ± 5%	1.52 ± 5%	0.66	2.37	3.99 ± 11.0% (k=2)
2450	± 50 / ± 100	Body	52.7 ± 5%	1.95 ± 5%	0.92	1.69	3.90 ± 11.8% (k=2)

^c The validity of ± 100 MHz only applies for DASY v4.4 and higher (see Page 2). The uncertainty is the RSS of the ConvF uncertainty at calibration frequency and the uncertainty for the indicated frequency band.

Deviation from Isotropy in HSL

Error (ϕ , ϑ), $f = 900$ MHz



Uncertainty of Spherical Isotropy Assessment: $\pm 2.6\%$ ($k=2$)



Accredited by the Swiss Federal Office of Metrology and Accreditation
The Swiss Accreditation Service is one of the signatories to the EA
Multilateral Agreement for the recognition of calibration certificates

Accreditation No.: **SCS 108**

Client **Motorola MDb**

Certificate No. **ET3-1524_May06**

CALIBRATION CERTIFICATE

Object: **ET3DV6 - SN: 1524**

Calibration procedure(s): **QA CAL-01-v5
Calibration procedure for dosimetric E-field probes**

Calibration date: **May 30, 2006**

Condition of the calibrated item: **In Tolerance**

This calibration certificate documents the traceability to national standards, which realize the physical units of measurements (SI).
The measurements and the uncertainties with confidence probability are given on the following pages and are part of the certificate.

All calibrations have been conducted in the closed laboratory facility: environment temperature (22 ± 3)°C and humidity < 70%.

Calibration Equipment used (M&TE critical for calibration)

Primary Standards	ID #	Cal Date (Calibrated by, Certificate No.)	Scheduled Calibration
Power meter E4419B	GB41293874	5-Apr-06 (METAS, No. 251-00557)	Apr-07
Power sensor E4412A	MY41495277	5-Apr-06 (METAS, No. 251-00557)	Apr-07
Power sensor E4412A	MY41498087	5-Apr-06 (METAS, No. 251-00557)	Apr-07
Reference 3 dB Attenuator	SN: S5054 (3c)	11-Aug-05 (METAS, No. 251-00499)	Aug-06
Reference 20 dB Attenuator	SN: S5086 (20b)	4-Apr-06 (METAS, No. 251-00558)	Apr-07
Reference 30 dB Attenuator	SN: S5129 (30b)	11-Aug-05 (METAS, No. 251-00500)	Aug-06
Reference Probe ES3DV2	SN: 3013	2-Jan-06 (SPEAG, No. ES3-3013_Jan06)	Jan-07
DAE4	SN: 654	2-Feb-06 (SPEAG, No. DAE4-654_Feb06)	Feb-07
Secondary Standards	ID #	Check Date (in house)	Scheduled Check
RF generator HP 8648C	US3642U01700	4-Aug-99 (SPEAG, in house check Nov-05)	In house check: Nov-07
Network Analyzer HP 8753E	US37390585	18-Oct-01 (SPEAG, in house check Nov-05)	In house check: Nov 06

Calibrated by: **Katja Pokovic** (Name), **Technical Manager** (Function), *[Signature]* (Signature)

Approved by: **Niels Kuster** (Name), **Quality Manager** (Function), *[Signature]* (Signature)

Issued: May 31, 2006

This calibration certificate shall not be reproduced except in full without written approval of the laboratory.



Accredited by the Swiss Federal Office of Metrology and Accreditation
The Swiss Accreditation Service is one of the signatories to the EA
Multilateral Agreement for the recognition of calibration certificates

Accreditation No.: **SCS 108**

Glossary:

TSL	tissue simulating liquid
NORM _{x,y,z}	sensitivity in free space
ConF	sensitivity in TSL / NORM _{x,y,z}
DCP	diode compression point
Polarization φ	φ rotation around probe axis
Polarization ϑ	ϑ rotation around an axis that is in the plane normal to probe axis (at measurement center), i.e., $\vartheta = 0$ is normal to probe axis

Calibration is Performed According to the Following Standards:

- IEEE Std 1528-2003, "IEEE Recommended Practice for Determining the Peak Spatial-Averaged Specific Absorption Rate (SAR) in the Human Head from Wireless Communications Devices: Measurement Techniques", December 2003
- CENELEC EN 50361, "Basic standard for the measurement of Specific Absorption Rate related to human exposure to electromagnetic fields from mobile phones (300 MHz - 3 GHz), July 2001

Methods Applied and Interpretation of Parameters:

- NORM_{x,y,z}**: Assessed for E-field polarization $\vartheta = 0$ ($f \leq 900$ MHz in TEM-cell; $f > 1800$ MHz: R22 waveguide). NORM_{x,y,z} are only intermediate values, i.e., the uncertainties of NORM_{x,y,z} does not effect the E^2 -field uncertainty inside TSL (see below *ConvF*).
- NORM(f)_{x,y,z}** = NORM_{x,y,z} * *frequency_response* (see Frequency Response Chart). This linearization is implemented in DASY4 software versions later than 4.2. The uncertainty of the frequency response is included in the stated uncertainty of *ConvF*.
- DCP_{x,y,z}**: DCP are numerical linearization parameters assessed based on the data of power sweep (no uncertainty required). DCP does not depend on frequency nor media.
- ConvF and Boundary Effect Parameters**: Assessed in flat phantom using E-field (or Temperature Transfer Standard for $f \leq 800$ MHz) and inside waveguide using analytical field distributions based on power measurements for $f > 800$ MHz. The same setups are used for assessment of the parameters applied for boundary compensation (alpha, depth) of which typical uncertainty values are given. These parameters are used in DASY4 software to improve probe accuracy close to the boundary. The sensitivity in TSL corresponds to NORM_{x,y,z} * *ConvF* whereby the uncertainty corresponds to that given for *ConvF*. A frequency dependent *ConvF* is used in DASY version 4.4 and higher which allows extending the validity from ± 50 MHz to ± 100 MHz.
- Spherical isotropy (3D deviation from isotropy)**: in a field of low gradients realized using a flat phantom exposed by a patch antenna.
- Sensor Offset**: The sensor offset corresponds to the offset of virtual measurement center from the probe tip (on probe axis). No tolerance required.

Probe ET3DV6

SN:1524

Manufactured:	March 21, 2000
Last calibrated:	May 26, 2005
Recalibrated:	May 30, 2006

Calibrated for DASYS Systems

(Note: non-compatible with DASYS2 system!)

DASY - Parameters of Probe: ET3DV6 SN:1524

Sensitivity in Free Space^A

NormX	1.77 ± 10.1%	$\mu\text{V}/(\text{V}/\text{m})^2$	DCP X	93 mV
NormY	1.75 ± 10.1%	$\mu\text{V}/(\text{V}/\text{m})^2$	DCP Y	93 mV
NormZ	1.67 ± 10.1%	$\mu\text{V}/(\text{V}/\text{m})^2$	DCP Z	93 mV

Diode Compression^B

Sensitivity in Tissue Simulating Liquid (Conversion Factors)

Please see Page 8.

Boundary Effect

TSL **900 MHz** **Typical SAR gradient: 5 % per mm**

Sensor Center to Phantom Surface Distance		3.7 mm	4.7 mm
SAR _{be} [%]	Without Correction Algorithm	8.6	4.4
SAR _{be} [%]	With Correction Algorithm	0.1	0.2

TSL **1810 MHz** **Typical SAR gradient: 10 % per mm**

Sensor Center to Phantom Surface Distance		3.7 mm	4.7 mm
SAR _{be} [%]	Without Correction Algorithm	7.4	4.0
SAR _{be} [%]	With Correction Algorithm	0.2	0.2

Sensor Offset

Probe Tip to Sensor Center **2.7 mm**

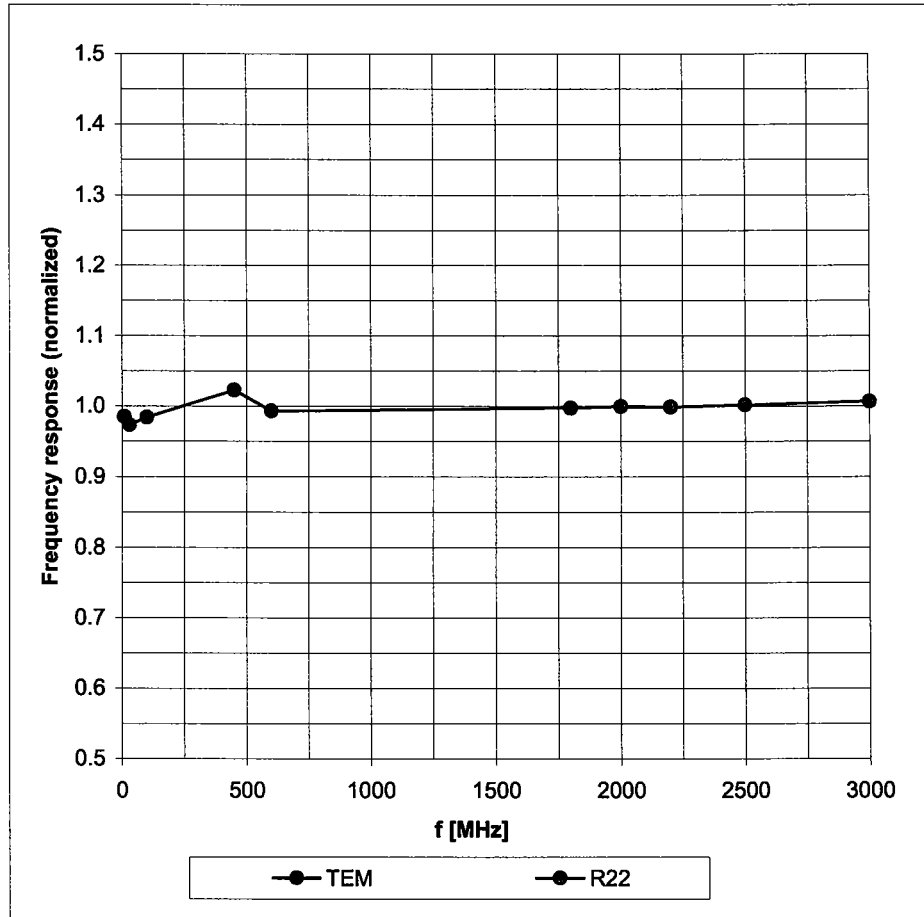
The reported uncertainty of measurement is stated as the standard uncertainty of measurement multiplied by the coverage factor k=2, which for a normal distribution corresponds to a coverage probability of approximately 95%.

^A The uncertainties of NormX,Y,Z do not affect the E²-field uncertainty inside TSL (see Page 8).

^B Numerical linearization parameter: uncertainty not required.

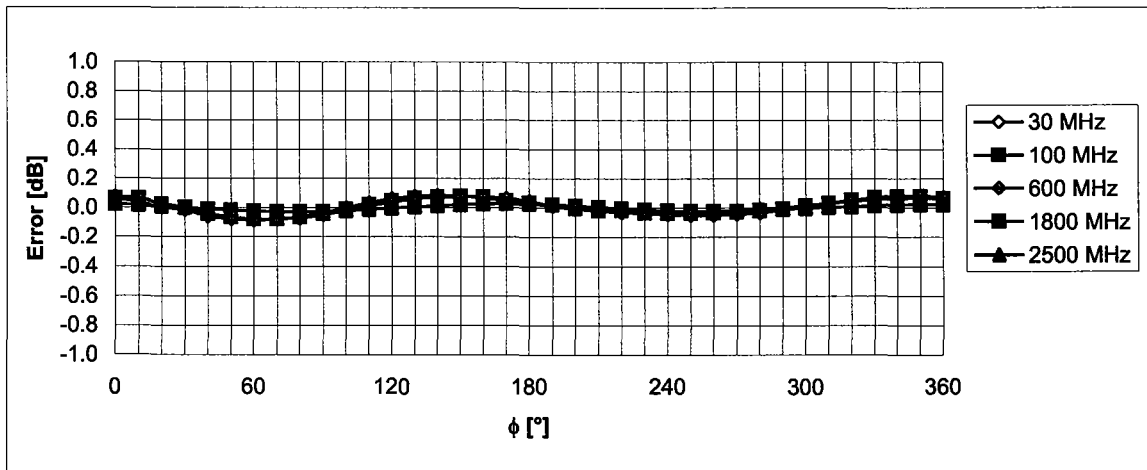
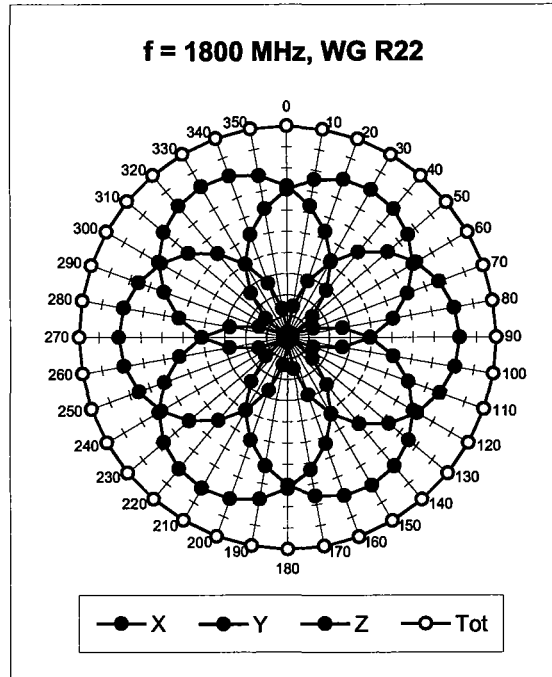
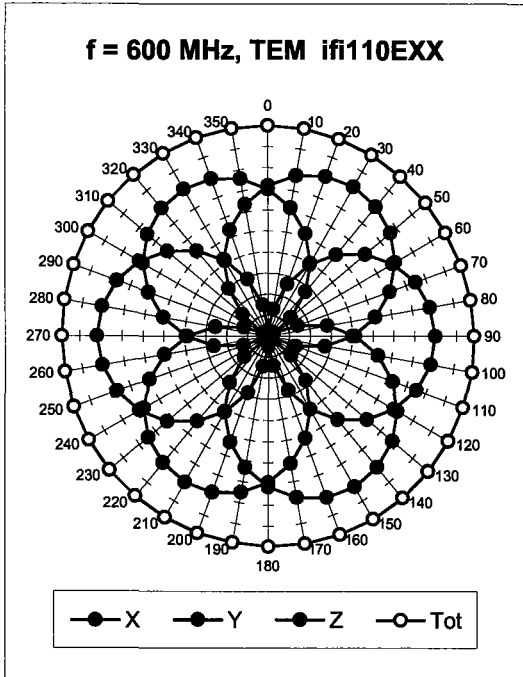
Frequency Response of E-Field

(TEM-Cell:ifi110 EXX, Waveguide: R22)



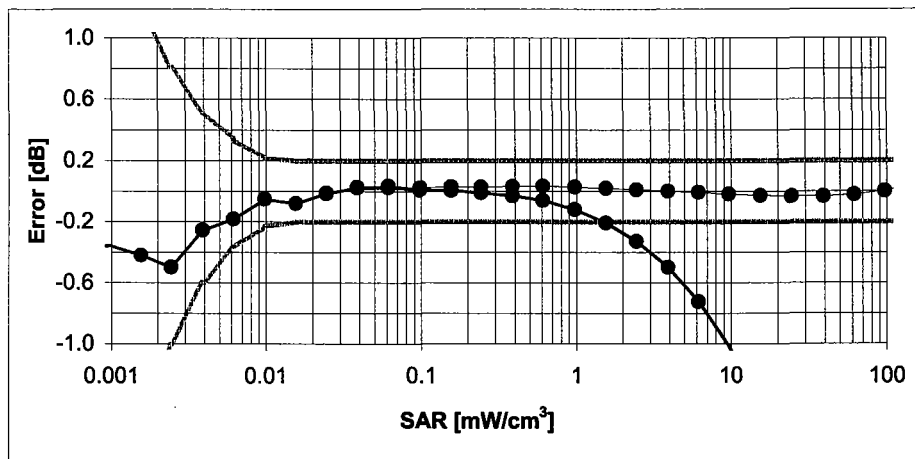
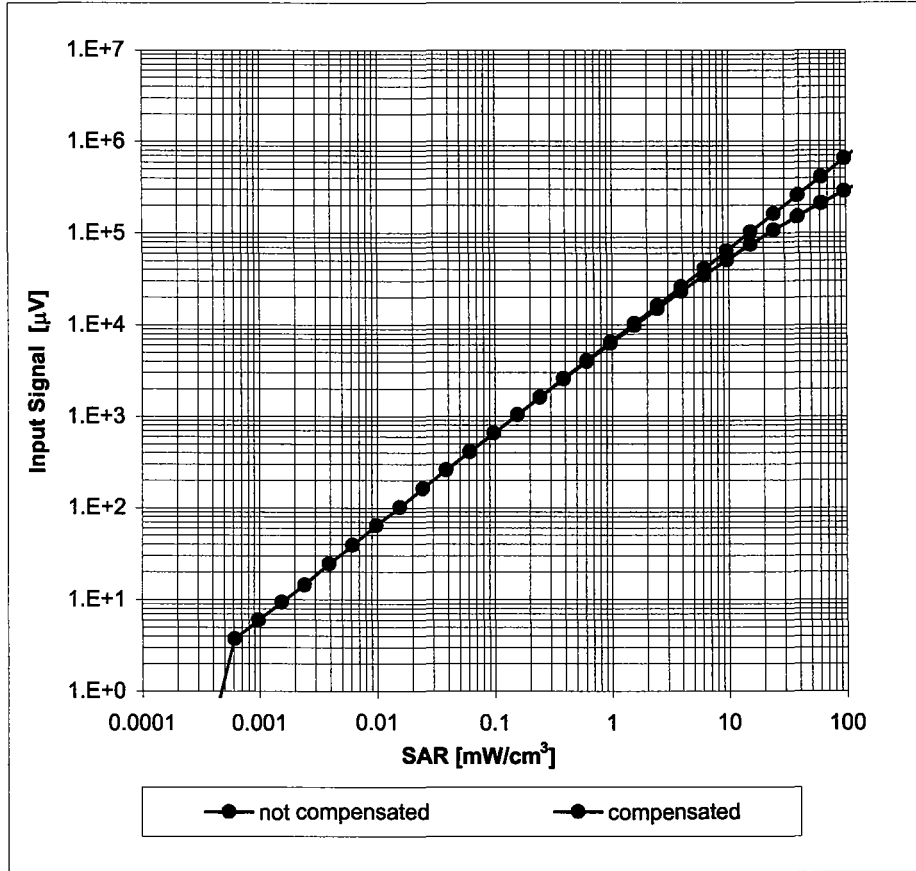
Uncertainty of Frequency Response of E-field: $\pm 6.3\%$ ($k=2$)

Receiving Pattern (ϕ), $\vartheta = 0^\circ$



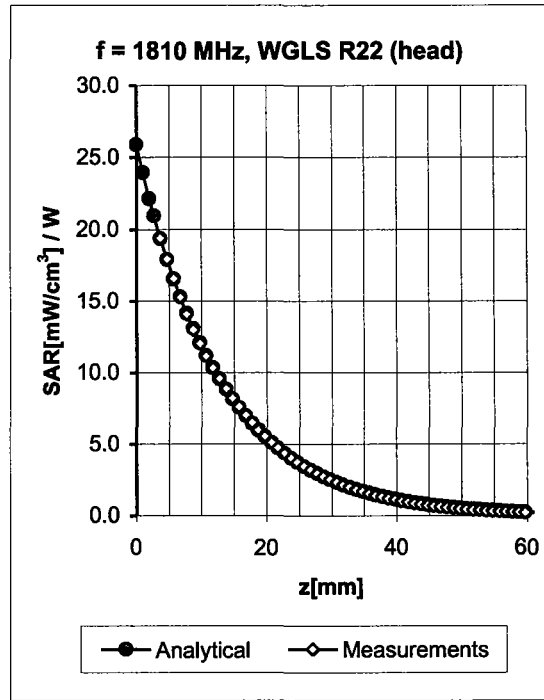
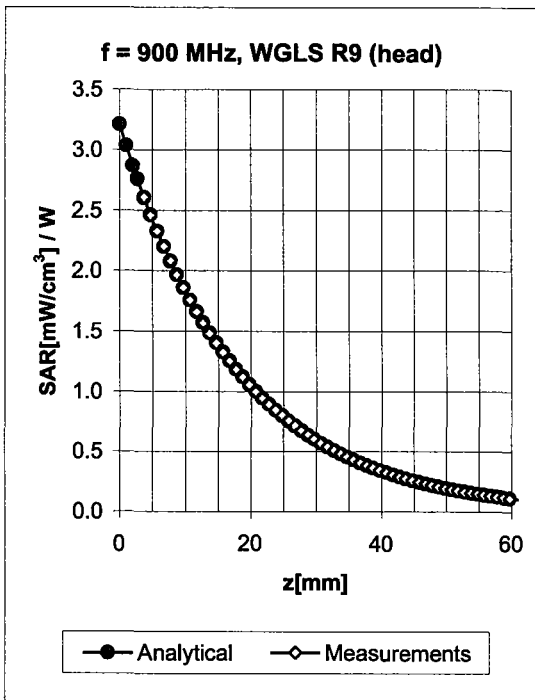
Uncertainty of Axial Isotropy Assessment: $\pm 0.5\%$ ($k=2$)

Dynamic Range $f(\text{SAR}_{\text{head}})$ (Waveguide R22, $f = 1800 \text{ MHz}$)



Uncertainty of Linearity Assessment: $\pm 0.6\%$ ($k=2$)

Conversion Factor Assessment

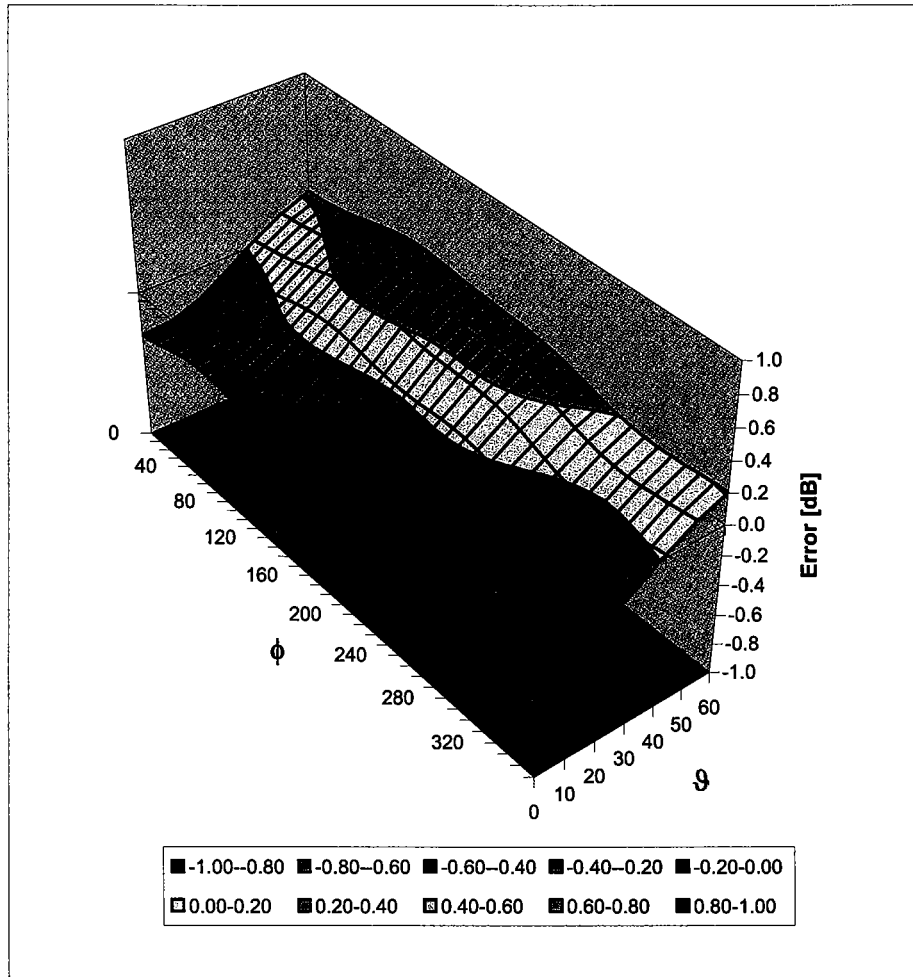


f [MHz]	Validity [MHz] ^c	TSL	Permittivity	Conductivity	Alpha	Depth	ConvF Uncertainty
900	± 50 / ± 100	Head	41.5 ± 5%	0.97 ± 5%	0.67	1.73	6.15 ± 11.0% (k=2)
1810	± 50 / ± 100	Head	40.0 ± 5%	1.40 ± 5%	0.47	2.75	5.16 ± 11.0% (k=2)
1950	± 50 / ± 100	Head	40.0 ± 5%	1.40 ± 5%	0.56	2.56	4.82 ± 11.0% (k=2)
2450	± 50 / ± 100	Head	39.2 ± 5%	1.80 ± 5%	0.64	2.00	4.49 ± 11.8% (k=2)
900	± 50 / ± 100	Body	55.0 ± 5%	1.05 ± 5%	0.55	1.98	6.00 ± 11.0% (k=2)
1810	± 50 / ± 100	Body	53.3 ± 5%	1.52 ± 5%	0.61	2.60	4.64 ± 11.0% (k=2)
1950	± 50 / ± 100	Body	53.3 ± 5%	1.52 ± 5%	0.77	2.21	4.45 ± 11.0% (k=2)
2450	± 50 / ± 100	Body	52.7 ± 5%	1.95 ± 5%	0.57	2.14	4.19 ± 11.8% (k=2)

^c The validity of ± 100 MHz only applies for DASY v4.4 and higher (see Page 2). The uncertainty is the RSS of the ConvF uncertainty at calibration frequency and the uncertainty for the indicated frequency band.

Deviation from Isotropy in HSL

Error (ϕ , ϑ), $f = 900$ MHz



Uncertainty of Spherical Isotropy Assessment: $\pm 2.6\%$ ($k=2$)

Appendix 5

Measurement Uncertainty Budget

<i>a</i>	<i>b</i>	<i>c</i>	<i>d</i>	$e = f(d,k)$	<i>f</i>	<i>g</i>	$h = c \times f / e$	$i = c \times g / e$	<i>k</i>
Uncertainty Component	IEEE 1528 section	Tol. (\pm %)	Prob Dist	Div.	c_i (1 g)	c_i (10 g)	1 g u_i (\pm %)	10 g u_i (\pm %)	v_i
Measurement System									
Probe Calibration	E.2.1	5.9	N	1.00	1	1	5.9	5.9	∞
Axial Isotropy	E.2.2	4.7	R	1.73	0.707	0.707	1.9	1.9	∞
Hemispherical Isotropy	E.2.2	9.6	R	1.73	0.707	0.707	3.9	3.9	∞
Boundary Effect	E.2.3	1.0	R	1.73	1	1	0.6	0.6	∞
Linearity	E.2.4	4.7	R	1.73	1	1	2.7	2.7	∞
System Detection Limits	E.2.5	1.0	R	1.73	1	1	0.6	0.6	∞
Readout Electronics	E.2.6	0.3	N	1.00	1	1	0.3	0.3	∞
Response Time	E.2.7	1.1	R	1.73	1	1	0.6	0.6	∞
Integration Time	E.2.8	1.1	R	1.73	1	1	0.6	0.6	∞
RF Ambient Conditions - Noise	E.6.1	3.0	R	1.73	1	1	1.7	1.7	∞
RF Ambient Conditions - Reflections	E.6.1	0.0	R	1.73	1	1	0.0	0.0	∞
Probe Positioner Mech. Tolerance	E.6.2	0.4	R	1.73	1	1	0.2	0.2	∞
Probe Positioning w.r.t Phantom	E.6.3	1.4	R	1.73	1	1	0.8	0.8	∞
Max. SAR Evaluation (ext., int., avg.)	E.5	3.4	R	1.73	1	1	2.0	2.0	∞
Test sample Related									
Test Sample Positioning	E.4.2	3.2	N	1.00	1	1	3.2	3.2	29
Device Holder Uncertainty	E.4.1	4.0	N	1.00	1	1	4.0	4.0	8
SAR drift	6.6.2	5.0	R	1.73	1	1	2.9	2.9	∞
Phantom and Tissue Parameters									
Phantom Uncertainty	E.3.1	4.0	R	1.73	1	1	2.3	2.3	∞
Liquid Conductivity (target)	E.3.2	5.0	R	1.73	0.64	0.43	1.8	1.2	∞
Liquid Conductivity (measurement)	E.3.3	3.3	N	1.00	0.64	0.43	2.1	1.4	∞
Liquid Permittivity (target)	E.3.2	5.0	R	1.73	0.6	0.49	1.7	1.4	∞
Liquid Permittivity (measurement)	E.3.3	1.9	N	1.00	0.6	0.49	1.1	0.9	∞
Combined Standard Uncertainty			RSS				11.1	10.8	411
Expanded Uncertainty (95% CONFIDENCE LEVEL)			$k=2$				22.2	21.6	

Appendix 6

Photographs of the device under test

[>>MOVED TO FCC EXHIBIT 7B](#)

Appendix 7

Dipole Characterization Certificate

Certification of System Performance Check Targets

Based on WI-0396

-Historical Data-

900MHz	
IEEE1528 Target:	10.8 (W/kg)
Measurement Uncertainty (k=1):	9.0%
Measurement Period:	3-June-05 to 10-May-06
# of tests performed:	1571
Grand Average:	11.3 (W/kg)
% Delta (Average - IEEE1528 Target)	4.3%
Is % Delta <= Expanded Measurement Uncertainty (k=2)?	Yes
Accept/Reject <u>Average</u> as new system performance check target?	ACCEPT
<u>Applies to Dipole SN's:</u> 55, 69, 77, 78, 79, 80, 91, 92, 93, 94, 95, 96, 97	

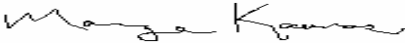
-New System Performance Check Targets- per WI-0396

(based on analysis of historical data)

Frequency	SAR Target (W/kg)	Permittivity	Conductivity (S/m)
900MHz	11.3	41.5 ± 5%	0.97 ± 5%

-Approvals-

Submitted by: Date:

Signed: 

Comments:

Approved by: Date:

Signed: 

Comments: