



MOTOROLA

Exhibit 11: Class II Permissive Change SAR Test Report

Test Report #: 19708-1F
Date of Report: 12/15/2006
Date of Test: 12/11/2006 – 12/13/2006
FCC ID #: **IHDT56GN1**
 Motorola Mobile Devices Business Product Safety & Compliance Laboratory
Laboratory: 600 N. US Highway 45
 Libertyville, Illinois 60048

Report Author: Paul Ma
 RF Engineer

This laboratory is accredited to ISO/IEC 17025-1999 to perform the following tests:

<u>Tests:</u>	<u>Procedures:</u>
Electromagnetic Specific Absorption Rate	ANSI / IEEE C95.1-1992, 1999 (SAR) IEEE C95.3-1991 IEEE 1528, IEC 62209-1 FCC OET Bulletin 65 (<i>including Supplements A, B, C</i>) Australian Communications Authority Radio Communications (Electromagnetic Radiation – Human Exposure) Standard 2003 CENELEC EN 50361 (2001)
Simulated Tissue Preparation	WI-0247
RF Power Measurement	WI-1847, WI-1873

Accreditation:



On the following products or types of products:
Wireless Communications Devices (Examples): Two Way Radios; Portable Phones (including Cellular, Licensed Non-Broadcast and PCS); Low Frequency Readers; and Pagers

A2LA certificate #1651-01

Statement of Compliance:

Motorola declares under its sole responsibility that the portable cellular telephone model to which this declaration relates, is in conformity with the appropriate General Population/Uncontrolled RF exposure standards, recommendations and guidelines (FCC 47 CFR §2.1093) as well as with CENELEC en50360:2001 and ANSI / IEEE C95.1. It also declares that the product was tested in accordance with CENELEC en50361:2001, IEEE 1528, as well as other appropriate measurement standards, guidelines and recommended practices. Any deviations from these standards, guidelines and recommended practices are noted below:

(none)

©Motorola, Inc. 2006

This test report shall not be reproduced except in full, without written approval of the laboratory.

The results and statements contained herein relate only to the items tested. The names of individuals involved may be mentioned only in connection with the statements or results from this report.

Motorola encourages all feedback, both positive and negative, on this test report.

Table of Contents

1. Introduction	2
2. Description of the Device Under Test	2
<i>2.1 Antenna description</i>	2
<i>2.2 Device description</i>	2
3. Test Equipment Used	3
<i>3.1 Dosimetric System</i>	3
<i>3.2 Additional Equipment</i>	3
4. Electrical parameters of the tissue simulating liquid	4
5. System Accuracy Verification	5
6. Test Results	6
<i>6.1 Head Adjacent Test Results</i>	6
<i>6.2 Body Worn Test Results</i>	9
References	10
Appendix 1: SAR distribution comparison for system accuracy verification	11
Appendix 2: SAR distribution plots for Phantom Head Adjacent Use	12
Appendix 3: Probe Calibration Certificate	13
Appendix 4: Measurement Uncertainty Budget	14
Appendix 5: Photographs of the device under test	16
Appendix 6: Dipole Characterization Certificate	20

1. Introduction

The Motorola Mobile Devices Business Product Safety Laboratory has performed measurements of the maximum potential exposure to the user of the portable cellular phone covered by this test report. The Specific Absorption Rate (SAR) of this product was measured. The portable cellular phone was tested in accordance with [1], [4] and [5]. The SAR values measured for the portable cellular phone are below the maximum recommended levels of 1.6 W/kg in a 1g average set in [3] and 2.0W/kg in a 10g average set in [2].

For ANSI / IEEE C95.1 (1g), the final SAR reading for this phone is 0.68 W/kg for head adjacent use. These measurements were performed using a Dasy4™ v4.6 system manufactured by Schmid & Partner Engineering AG (SPEAG), of Zurich Switzerland.

2. Description of the Device Under Test

2.1 Antenna description

Type	Internal	
Location	Bottom of Transceiver	
Dimensions	Length	38 mm
	Width	7.5 mm
Configuration	FJA	

2.2 Device description

Serial Number	004401022950816											
Mode(s) of Operation	UMTS 800	UMTS 1900	GSM 850	GSM 1800	GSM 1900	GPRS Class 10 850	GPRS Class 10 1800	GPRS Class 10 1900	EDGE Class 10 850	EDGE Class 10 1800	EDGE Class 10 1900	Bluetooth
Modulation Mode(s)	QPSK	QPSK	GMSK	GMSK	GMSK	GMSK	GMSK	GMSK	8PSK	8PSK	8PSK	GFSK
Maximum Output Power Setting	24.00 dBm	24.00 dBm	32.50 dBm	29.50 dBm	29.50 dBm	32.50 dBm	29.50 dBm	29.50 dBm	27.50 dBm	26.50 dBm	26.50 dBm	4.0 dBm
Duty Cycle	1:1	1:1	1:8	1:8	1:8	2:8	2:8	2:8	2:8	2:8	2:8	1:1
Transmitting Frequency Range(s)	826.4-846.6 MHz	1852.4-1907.6 MHz	824.2-848.8 MHz	1710.2-1784.8 MHz	1850.2-1909.8 MHz	824.2-848.8 MHz	1710.2-1784.8 MHz	1850.2-1909.8 MHz	824.2-848.8 MHz	1710.2-1784.8 MHz	1850.2-1909.8 MHz	2400.0 - 2483.5 MHz
Production Unit or Identical Prototype (47 CFR §2.908)	Identical Prototype											
Device Category	Portable											
RF Exposure Limits	General Population / Uncontrolled											

3. Test Equipment Used

3.1 Dosimetric System

The Motorola Mobile Devices Business Product Safety & Compliance Laboratory utilizes a Dosimetric Assessment System (Dasy4™ v4.6) manufactured by Schmid & Partner Engineering AG (SPEAG™), of Zurich Switzerland. All the SAR measurements are taken within a shielded enclosure. The overall 10g RSS uncertainty of the measurement system is $\pm 10.8\%$ (K=1) with an expanded uncertainty of $\pm 21.6\%$ (K=2). The overall 1g RSS uncertainty of the measurement system is $\pm 11.1\%$ (K=1) with an expanded uncertainty of $\pm 22.2\%$ (K=2). The measurement uncertainty budget is given in Appendix 6. Per IEEE 1528, this uncertainty budget is applicable to the SAR range of 0.4W/kg to 10W/kg.

The list of calibrated equipment used for the measurements is shown in the following table.

Description	Serial Number	Cal Due Date
DASY4™ DAE3	437	7/18/2007
E-Field Probe ET3DV6	1514	7/17/2007
Dipole Validation Kit, D900V2	96	
S.A.M. Phantom used for 800/900MHz	TP-1131	
Dipole Validation Kit, D1800V2	272TR	
S.A.M. Phantom used for 1800/1900MHz	TP-1250	

3.2 Additional Equipment

Description	Serial Number	Cal Due Date
Signal Generator HP8648C	3847A04633	7/7/2007
Power Meter E4419B	GB39511087	7/5/2007
Power Sensor #1 - E9301A	MY41495336	6/28/2007
Power Sensor #2 - E9301A	US39210918	8/17/2007
Network Analyzer HP8753ES	US39172529	9/26/2007
Dielectric Probe Kit HP85070B	US99360070	

4. Electrical parameters of the tissue simulating liquid

Prior to conducting SAR measurements, the relative permittivity, ϵ_r , and the conductivity, σ , of the tissue simulating liquids were measured with a HP85070 Dielectric Probe Kit. These values, along with the temperature of the simulated tissue are shown in the table below. The recommended limits for permittivity and conductivity are also shown. A mass density of $\rho=1\text{g/cm}^3$ was entered into the system in all the cases. It can be seen that the measured parameters are within tolerance of the recommended limits specified in [1] and [5].

f (MHz)	Tissue type	Limits / Measured	Dielectric Parameters		
			ϵ_r	σ (S/m)	Temp (°C)
835	Head	Measured, 12/11/2006	43.1	0.93	18.9
		Measured, 12/12/2006	43.2	0.93	19.0
		Recommended Limits	41.5 \pm 5%	0.90 \pm 5%	18-25
1880	Head	Measured, 12/12/2006	38.2	1.43	19.1
		Measured, 12/13/2006	38.3	1.44	19.0
		Recommended Limits	40.0 \pm 5%	1.40 \pm 5%	18-25

The list of ingredients and the percent composition used for the tissue simulates are indicated in the table below.

Ingredient	835MHz / 900 MHz Head	835MHz / 900 MHz Body	1800MHz / 1900 MHz Head	1800 MHz / 1900 MHz Body	2450MHz Head	2450 MHz Body
Sugar	57	44.9	--	--	--	--
DGBE	--	--	47	30.8	--	30
Diacetin	--	--	--	--	51	--
Water	40.45	53.06	52.62	68.8	48.75	70
Salt	1.45	0.94	0.38	0.4	0.15	--
HEC	1	1	--	--	--	--
Bact.	0.1	0.1	--	--	0.1	--

5. System Accuracy Verification

A system accuracy verification of the DASY4™ was performed using the measurement equipment listed in Section 3.1. The daily system accuracy verification occurs within the flat section of the SAM phantom.

A SAR measurement was performed to verify the measured SAR was within $\pm 10\%$ from the target SAR indicated in Section 8.3.7 Reference SAR Values in [5] or Appendix 7 for the 900MHz target reference SAR value. These tests were done at 900MHz, 1800MHz. These frequencies are within $\pm 10\%$ of the compliance test mid-band frequency as required in [1] and [5]. The test was conducted on the same days as the measurement of the DUT. Recommended limits for permittivity and conductivity, specified in [5], are shown in the table below. The obtained results from the system accuracy verification are also displayed in the table below. SAR values are normalized to 1W forward power delivered to the dipole. It is seen that the system is operating within its specification, as the results are within acceptable tolerance of the reference values. The distributions of SAR compare well with those of the reference measurements (see Appendix 1). The tissue stimulant depth was verified to be 15.0cm ± 0.5 cm. Z-axis scans showing the SAR penetration are also included in Appendix 1.

f (MHz)	Description	SAR (W/kg), 1gram	Dielectric Parameters		Ambient Temp (°C)	Tissue Temp (°C)
			ϵ_r	σ (S/m)		
900	Measured, 12/11/2006	11.4	42.4	0.99	21.2	19.1
	Measured, 12/12/2006	11.3	42.4	0.99	20.9	19.0
	Recommended Limits	11.3	41.5 $\pm 5\%$	0.97 $\pm 5\%$	18-25	18-25
1800	Measured, 12/12/2006	36.2	38.5	1.34	20.9	19.6
	Measured, 12/13/2006	37.6	38.6	1.35	20.7	19.0
	Recommended Limits	38.1	40.0 $\pm 5\%$	1.4 $\pm 5\%$	18-25	18-25

The following probe conversion factors were used on the E-Field probe(s) used for the system accuracy verification measurements:

Description	Serial Number	f (MHz)	Conversion Factor	Cal Cert pg #
E-Field Probe ET3DV6	SN1514	900	5.99	8 of 9
		1800	5.05	8 of 9

6. Test Results

The test sample was operated using an actual transmission through a base station simulator. The base station simulator was setup to the proper channel, transmitter power level and transmit mode of operation. The phone was tested in the configurations stipulated in [1], [4] and [5]. The phone was positioned into these configurations using the device holder supplied with the DASY4™ SAR measurement system. The measured dielectric constant of the material used for the device holder is less than 2.9 and the loss tangent is less than 0.02 (± 30%) at 850MHz. The default settings for the “coarse” and “cube” scans were chosen and used for measurements. The grid spacing of the course scan was set to 15cm as shown in the SAR plots included in Appendix 2 and 3. Please refer to the DASY manual for additional information on SAR scanning procedures and algorithms used.

The Cellular Phone model covered by this report has the following battery options:
 Model #1 SNN5789B – 900 mAH Battery

This battery was used to do all of the SAR testing. The phone was placed in the SAR measurement system with a fully charged battery.

Per the “Preliminary Guidance for Reviewing Applications for Certifications of 3G Devices” released on May 9, 2006, RC1, RC3 and RC3 (FCH + SCH) CDMA modes were considered. The conducted power measurements (per steps 3, 4 & 10 of section 4.4.5.2 of 3GPP2 C.5.011 / TIA -98-E) for each mode are shown in the table below.

Conducted power (dBm) for WCDMA modes			
	Channel	RMC	AMR
WCDMA 850	4132	24.07	24.06
	4180	24.08	24.03
	4233	24.06	24.07
WCDMA 1900	9262	24.14	24.16
	9400	24.09	24.10
	9538	24.07	24.08

6.1 Head Adjacent Test Results

The SAR results shown in tables 1 through 4 are maximum SAR values averaged over 1 gram of phantom tissue, to demonstrate compliance to [3] and also over 10 grams of phantom tissue, to demonstrate compliance to the [6]. Also shown are the measured conducted output power levels, the temperature of the simulated tissue after the test, the measured drift and the extrapolated SAR. The exact method of extrapolation is $New\ SAR = Old\ SAR * 10^{(-drift/10)}$. The SAR reported at the end of the measurement process by the DASY4™ measurement system can be scaled up by the measured drift to determine the SAR at the beginning of the measurement process. This is the most conservative SAR because it corresponds to the average output power at the beginning of the SAR test. This extrapolation has been done because when the DUT is operating properly it may exhibit a slump in radiated power and SAR over time. This is verified by measuring the SAR drift after the test. Note that 800MHz digital mode SAR measurements were performed in accordance with [4].

The left head and right head SAR contour distributions are similar. Because of this similarity, the cheek/touch and 15° tilt test conditions with the highest SAR values in each band are indicated as bold numbers in the following tables and are included in Appendix 2. All other test conditions measured lower SAR values than those included in Appendix 2.

The SAR measurements were performed using the SAM phantoms listed in section 3.1. Since the same phantoms and simulated tissue were used for the system accuracy verification and the device SAR measurements, the Z-axis scans included in Appendix 1 are applicable for verification of simulated tissue depth to be 15.0cm ±0.5cm.

The following probe conversion factors were used on the E-Field probe(s) used for the head adjacent measurements:

Description	Serial Number	f (MHz)	Conversion Factor	Cal Cert pg #
E-Field Probe ET3DV6	SN1514	900	5.99	8 of 9
		1800	5.05	8 of 9

Left Head Cheek Position with Case VLIZR01								
f (MHz)	Description	Conducted Output Power (dBm)	Temp (°C)	Drift (dB)	10 g SAR value		1 g SAR value	
					Measured (W/kg)	Extrapolated (W/kg)	Measured (W/kg)	Extrapolated (W/kg)
UMTS 800	Channel 4132	23.96						
	Channel 4180	23.95	19.0	0.09	0.38	0.38	0.68	0.68
	Channel 4233	24.00						
GSM 850	Channel 128	32.48						
	Channel 190	32.50	18.9	-0.21	0.31	0.33	0.59	0.61
	Channel 251	32.47						
GSM 1900	Channel 512	29.45						
	Channel 661	29.50	19.0	0.02	0.07	0.07	0.12	0.12
	Channel 810	29.52						
UMTS 1900	Channel 9262	24.06						
	Channel 9400	24.02	19.1	0.38	0.20	0.20	0.35	0.35
	Channel 9538	24.07						

Table 1: SAR measurement results at the highest possible output power, measured in a head cheek position against the ICNIRP and ANSI SAR Limit.

Right Head Cheek Position with Case VLIZR01								
<i>f</i> (MHz)	Description	Conducted Output Power (dBm)	Temp (°C)	Drift (dB)	<i>10 g SAR value</i>		<i>1 g SAR value</i>	
					Measured (W/kg)	Extrapolated (W/kg)	Measured (W/kg)	Extrapolated (W/kg)
UMTS 800	Channel 4132	23.96						
	Channel 4180	23.95	19.0	0.04	0.31	0.31	0.49	0.49
	Channel 4233	24.00						
GSM 850	Channel 128	32.48						
	Channel 190	32.50	19.4	-0.14	0.25	0.26	0.42	0.44
	Channel 251	32.47						
GSM 1900	Channel 512	29.45						
	Channel 661	29.50	19.1	0.19	0.18	0.18	0.29	0.29
	Channel 810	29.52						
UMTS 1900	Channel 9262	24.06						
	Channel 9400	24.02	19.2	-0.02	0.38	0.38	0.63	0.63
	Channel 9538	24.07						

Table 2: SAR measurement results at the highest possible output power, measured in a head cheek position against the ICNIRP and ANSI SAR Limit.

Left Head 15° Tilt Position with Case VLIZR01								
<i>f</i> (MHz)	Description	Conducted Output Power (dBm)	Temp (°C)	Drift (dB)	<i>10 g SAR value</i>		<i>1 g SAR value</i>	
					Measured (W/kg)	Extrapolated (W/kg)	Measured (W/kg)	Extrapolated (W/kg)
UMTS 800	Channel 4132	23.96						
	Channel 4180	23.95	19.0	0.1	0.24	0.24	0.32	0.32
	Channel 4233	24.00						
GSM 850	Channel 128	32.48						
	Channel 190	32.50	19.5	0.08	0.18	0.18	0.23	0.23
	Channel 251	32.47						
GSM 1900	Channel 512	29.45						
	Channel 661	29.50	19.1	-0.06	0.05	0.05	0.08	0.08
	Channel 810	29.52						
UMTS 1900	Channel 9262	24.06						
	Channel 9400	24.02	19.0	0.06	0.12	0.12	0.19	0.19
	Channel 9538	24.07						

Table 3: SAR measurement results at the highest possible output power, measured in a head 15° Tilt position against the ICNIRP and ANSI SAR Limit.

Right Head 15° Tilt Position with Case VLIZR01								
<i>f</i> (MHz)	Description	Conducted Output Power (dBm)	Temp (°C)	Drift (dB)	<i>10 g SAR value</i>		<i>1 g SAR value</i>	
					Measured (W/kg)	Extrapolated (W/kg)	Measured (W/kg)	Extrapolated (W/kg)
UMTS 800	Channel 4132	23.96						
	Channel 4180	23.95	19.0	0.1	0.28	0.28	0.37	0.37
	Channel 4233	24.00						
GSM 850	Channel 128	32.48						
	Channel 190	32.50	18.6	0.05	0.20	0.20	0.26	0.26
	Channel 251	32.47						
GSM 1900	Channel 512	29.45						
	Channel 661	29.50	18.9	0.08	0.04	0.04	0.07	0.07
	Channel 810	29.52						
UMTS 1900	Channel 9262	24.06						
	Channel 9400	24.02	18.9	-0.02	0.09	0.09	0.16	0.16
	Channel 9538	24.07						

Table 4: SAR measurement results at the highest possible output power, measured in a head 15° Tilt position against the ICNIRP and ANSI SAR Limit.

6.2 Body Worn Test Results

VLIZR01 Case holds phone greater than 15 mm away from body. IHDT56GN1 has been tested at 15mm away from body. Thus, bodyworn testing with VLIZR01 case is not required.

References

- [1] CENELEC, en50361:2001 “Basic standard for the measurement of Specific Absorption Rate related to human exposure to electromagnetic fields from mobile phones (300MHz – 3GHz)”
- [2] CENELEC, en50360:2001 “Product standard to demonstrate the compliance of mobile phones with the basic restrictions related to human exposure to electromagnetic fields (300MHz – 3GHz)”.
- [3] ANSI / IEEE, C95.1 1999 Edition “IEEE Standard for Safety Levels with Respect to Human Exposure to Radio Frequency Electromagnetic Fields, 3kHz to 300GHz”
- [4] FCC OET Bulletin 65 Supplement C 01-01
- [5] IEEE 1528 2003 Edition “IEEE Recommended Practice for Determining the Peak Spatial-Average Specific Absorption Rate (SAR) in the Human Head from Wireless Communications Devices: Measurement Techniques”
- [6] ICNIRP Guidelines “Guidelines for Limiting Exposure to Time-Varying Electric, Magnetic, and Electromagnetic Fields (up to 300 GHz)”

Appendix 1

SAR distribution comparison for the system accuracy verification

Test Laboratory: Motorola

121106 900MHz Good at 0.7%

DUT: Dipole 900 MHz; Type: D900V2; Serial: D900V2 - SN:96

Procedure Notes: 900 MHz System Performance Check / Dipole Sn# 96 PM1 Power = 200 mW

Sim.Temp@meas = 20.4C Sim.Temp@SPC = 19.1C Room Temp @ SPC = 21.2C

Communication System: CW - Dipole; Frequency: 900 MHz; Channel Number: 4; Duty Cycle: 1:1

Medium: VALIDATION Only; Medium parameters used: $f = 900$ MHz; $\sigma = 0.99$ mho/m; $\epsilon_r = 42.4$; $\rho = 1000$ kg/m³

DASY4 Configuration:

- Probe: ET3DV6 - SN1514; ConvF(5.99, 5.99, 5.99); Calibrated: 7/17/2006
- Sensor-Surface: 4mm (Mechanical Surface Detection)
- Electronics: DAE3 Sn437; Calibrated: 7/18/2006
- Phantom: R4: Sugar Water SAM; Type: SAM; Serial: TP-1131;
- Measurement SW: DASY4, V4.7 Build 44; Postprocessing SW: SEMCAD, V1.8 Build 160

Daily SPC Check/Dipole Area Scan (4x9x1):

Measurement grid: dx=15mm, dy=15mm

Maximum value of SAR (measured) = 2.19 mW/g

Daily SPC Check/0-Degree 5x5x7 Cube (5x5x7)/Cube 0:

Measurement grid: dx=8mm, dy=8mm, dz=5mm

Reference Value = 52.3 V/m; Power Drift = 0.085 dB

Peak SAR (extrapolated) = 3.49 W/kg

SAR(1 g) = 2.29 mW/g; SAR(10 g) = 1.46 mW/g

Maximum value of SAR (measured) = 2.48 mW/g

Daily SPC Check/90-Degree 5x5x7 Cube (5x5x7)/Cube 0:

Measurement grid: dx=8mm, dy=8mm, dz=5mm

Reference Value = 52.3 V/m; Power Drift = 0.085 dB

Peak SAR (extrapolated) = 3.41 W/kg

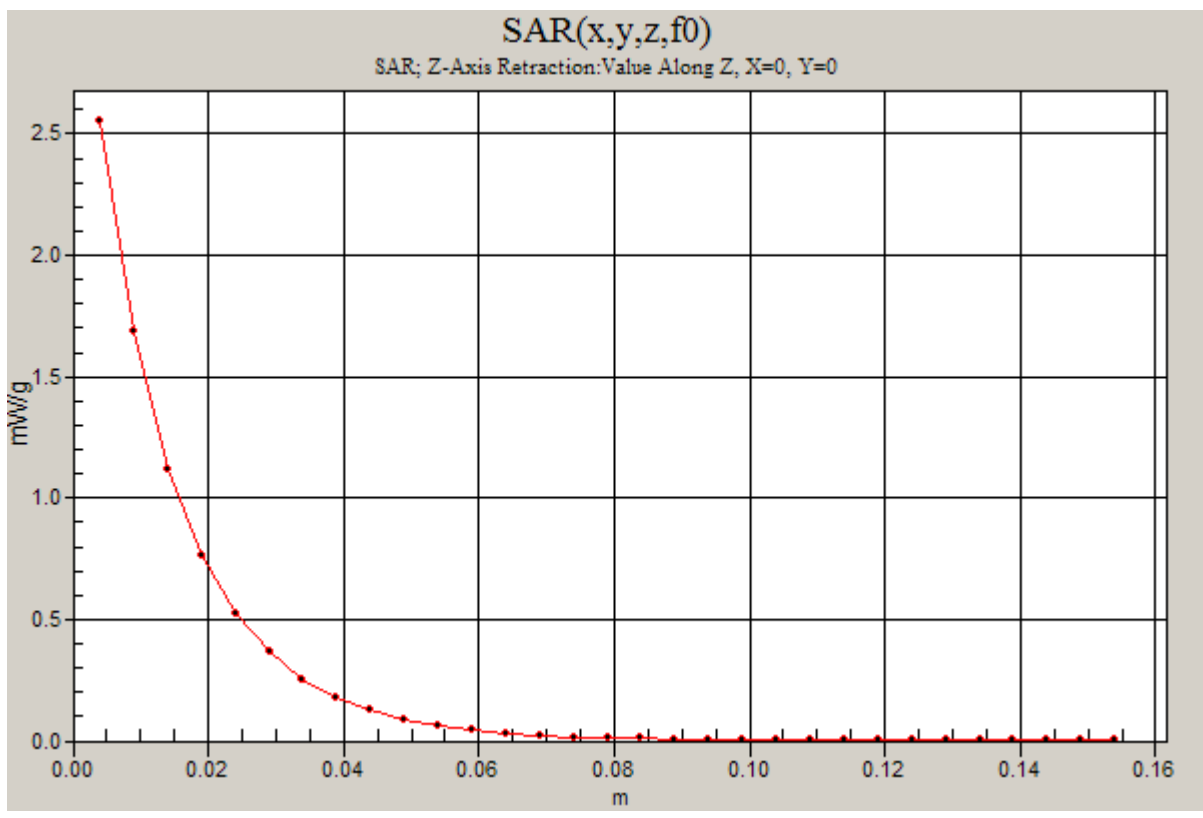
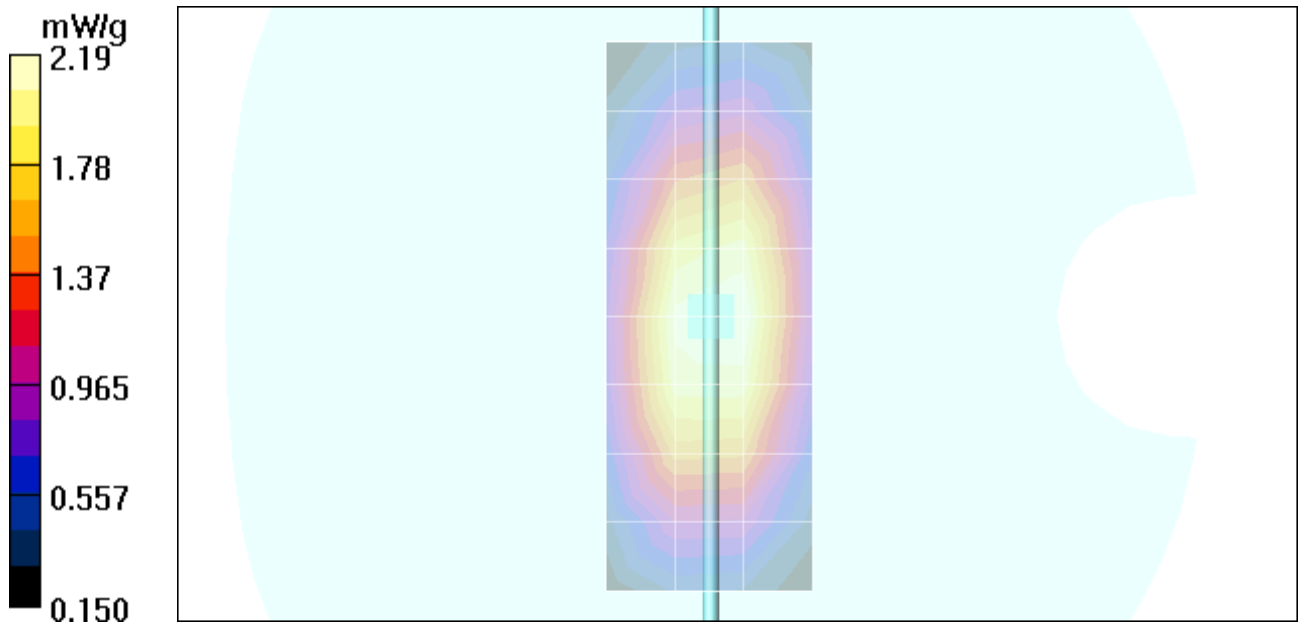
SAR(1 g) = 2.26 mW/g; SAR(10 g) = 1.44 mW/g

Maximum value of SAR (measured) = 2.44 mW/g

Daily SPC Check/Z-Axis Retraction (1x1x31):

Measurement grid: dx=20mm, dy=20mm, dz=5mm

Maximum value of SAR (measured) = 2.55 mW/g



Test Laboratory: Motorola

121206 900MHz Good at -0.2%

DUT: Dipole 900 MHz; Type: D900V2; Serial: D900V2 - SN:96

Procedure Notes: 900 MHz System Performance Check / Dipole Sn# 096 PM1 Power =200mW

Sim.Temp@meas = 19.0*C Sim.Temp@SPC =19.0*C Room Temp @ SPC = 20.9*C

Communication System: CW - Dipole; Frequency: 900 MHz; Channel Number: 4; Duty Cycle: 1:1

Medium: VALIDATION Only; Medium parameters used: $f = 900$ MHz; $\sigma = 0.99$ mho/m; $\epsilon_r = 42.4$; $\rho = 1000$ kg/m³

DASY4 Configuration:

- Probe: ET3DV6 - SN1514; ConvF(5.99, 5.99, 5.99); Calibrated: 7/17/2006
- Sensor-Surface: 4mm (Mechanical Surface Detection)
- Electronics: DAE3 Sn437; Calibrated: 7/18/2006
- Phantom: R4: Sugar Water SAM; Type: SAM; Serial: TP-1131;
- Measurement SW: DASY4, V4.7 Build 44; Postprocessing SW: SEMCAD, V1.8 Build 160

Daily SPC Check/Dipole Area Scan (4x9x1):

Measurement grid: dx=15mm, dy=15mm

Maximum value of SAR (measured) = 2.09 mW/g

Daily SPC Check/0-Degree 5x5x7 Cube (5x5x7)/Cube 0:

Measurement grid: dx=8mm, dy=8mm, dz=5mm

Reference Value = 51.5 V/m; Power Drift = 0.015 dB

Peak SAR (extrapolated) = 3.39 W/kg

SAR(1 g) = 2.26 mW/g; SAR(10 g) = 1.45 mW/g

Maximum value of SAR (measured) = 2.45 mW/g

Daily SPC Check/90-Degree 5x5x7 Cube (5x5x7)/Cube 0:

Measurement grid: dx=8mm, dy=8mm, dz=5mm

Reference Value = 51.5 V/m; Power Drift = 0.015 dB

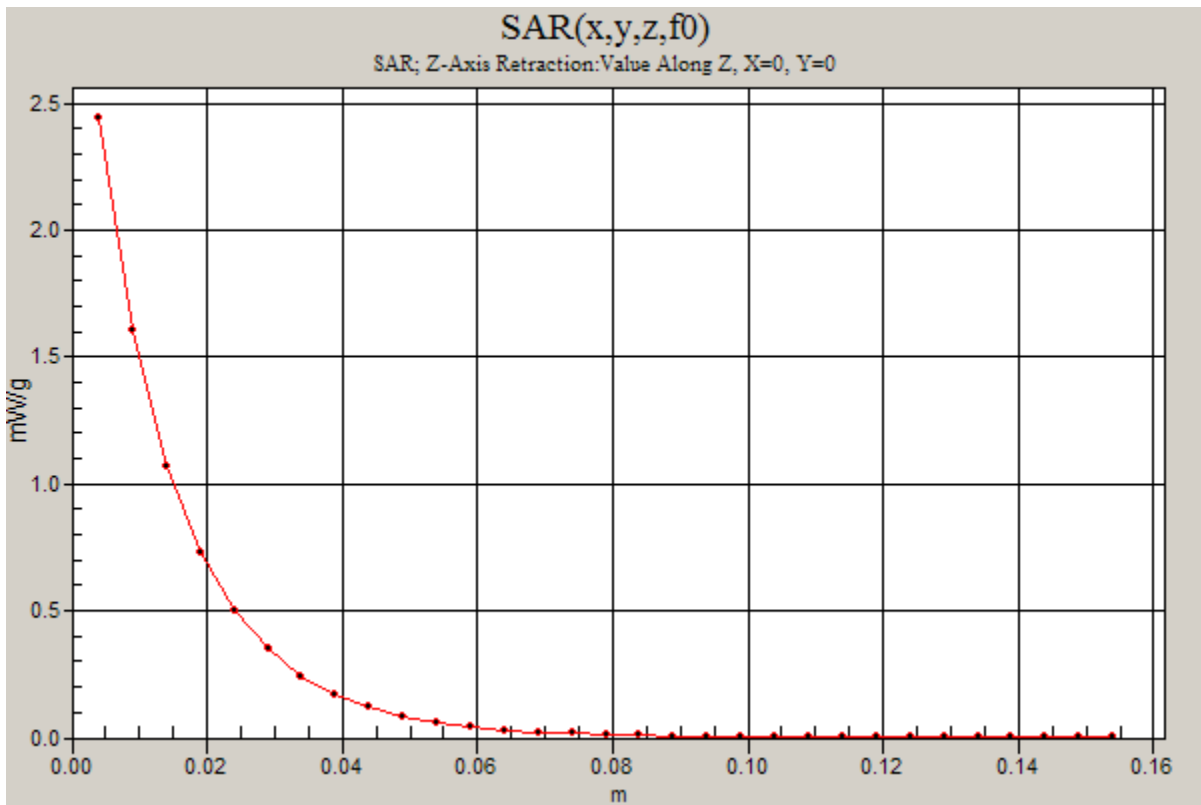
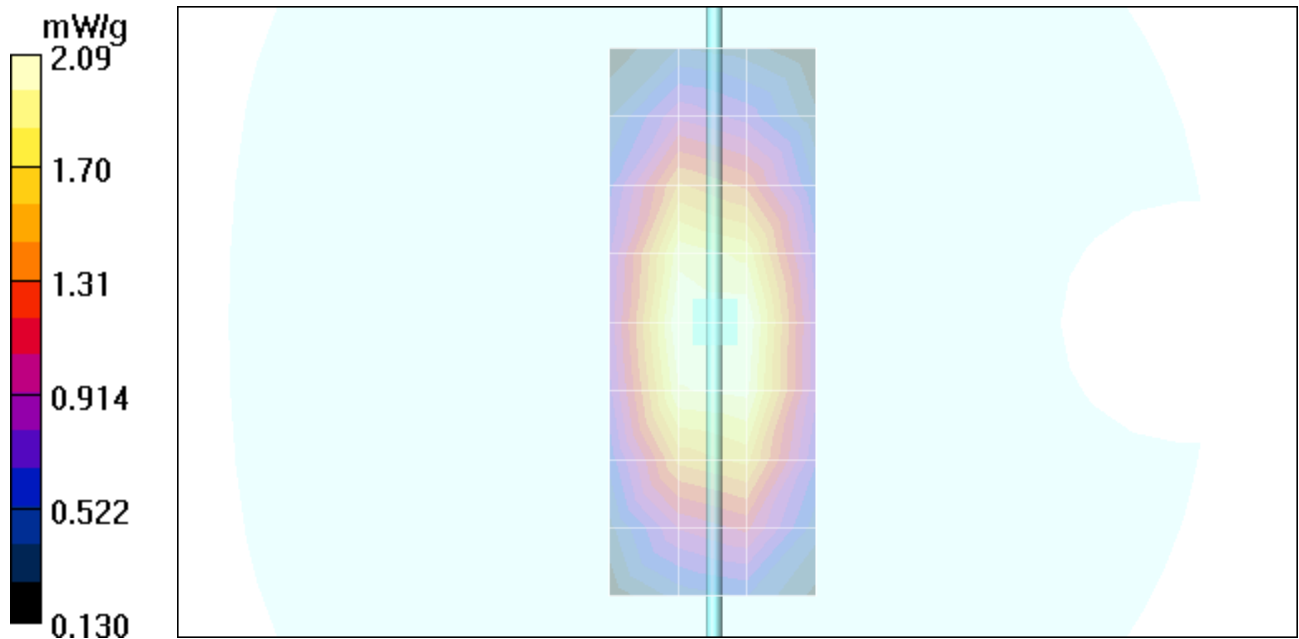
Peak SAR (extrapolated) = 3.39 W/kg

SAR(1 g) = 2.25 mW/g; SAR(10 g) = 1.44 mW/g

Maximum value of SAR (measured) = 2.44 mW/g

Daily SPC Check/Z-Axis Retraction (1x1x31):

Measurement grid: dx=20mm, dy=20mm, dz=5mm



Test Laboratory: Motorola

121206 1800MHz Good at -4.9%

DUT: Dipole 1800 MHz; Type: D1800V2; Serial: D1800V2 - SN:272TR

Procedure Notes: 1800 MHz System Performance Check / Dipole Sn# 272(TR) PM1 Power = 200mW

Sim.Temp@meas = 19.9°C Sim.Temp@SPC = 19.6°C Room Temp @ SPC = 20.9°C

Communication System: CW - Dipole; Frequency: 1800 MHz; Channel Number: 8; Duty Cycle: 1:1

Medium: VALIDATION Only; Medium parameters used: $f = 1800$ MHz; $\sigma = 1.34$ mho/m; $\epsilon_r = 38.5$; $\rho = 1000$ kg/m³

DASY4 Configuration:

- Probe: ET3DV6 - SN1514; ConvF(5.05, 5.05, 5.05); Calibrated: 7/17/2006
- Sensor-Surface: 4mm (Mechanical Surface Detection)
- Electronics: DAE3 Sn437; Calibrated: 7/18/2006
- Phantom: R4 : Sect.2, Amy Twin; Type: Amy Twin Flat; Serial: n/a;
- Measurement SW: DASY4, V4.7 Build 44; Postprocessing SW: SEMCAD, V1.8 Build 160

Daily SPC Check/Dipole Area Scan (9x4x1):

Measurement grid: dx=15mm, dy=15mm

Maximum value of SAR (measured) = 7.23 mW/g

Daily SPC Check/0-Degree 5x5x7 Cube (5x5x7)/Cube 0:

Measurement grid: dx=8mm, dy=8mm, dz=5mm

Reference Value = 80.3 V/m; Power Drift = -0.182 dB

Peak SAR (extrapolated) = 12.4 W/kg

SAR(1 g) = 7.24 mW/g; SAR(10 g) = 3.88 mW/g

Maximum value of SAR (measured) = 8.11 mW/g

Daily SPC Check/90-Degree 5x5x7 Cube (5x5x7)/Cube 0:

Measurement grid: dx=8mm, dy=8mm, dz=5mm

Reference Value = 80.3 V/m; Power Drift = -0.182 dB

Peak SAR (extrapolated) = 12.6 W/kg

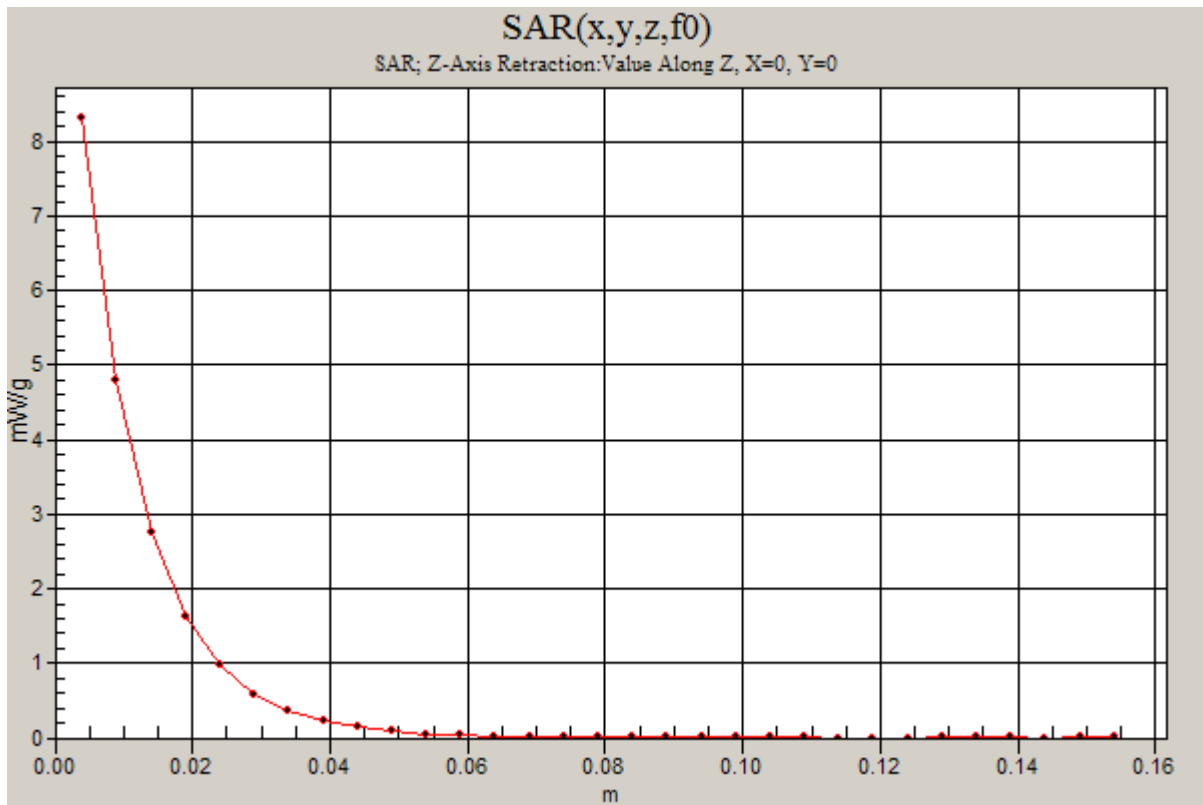
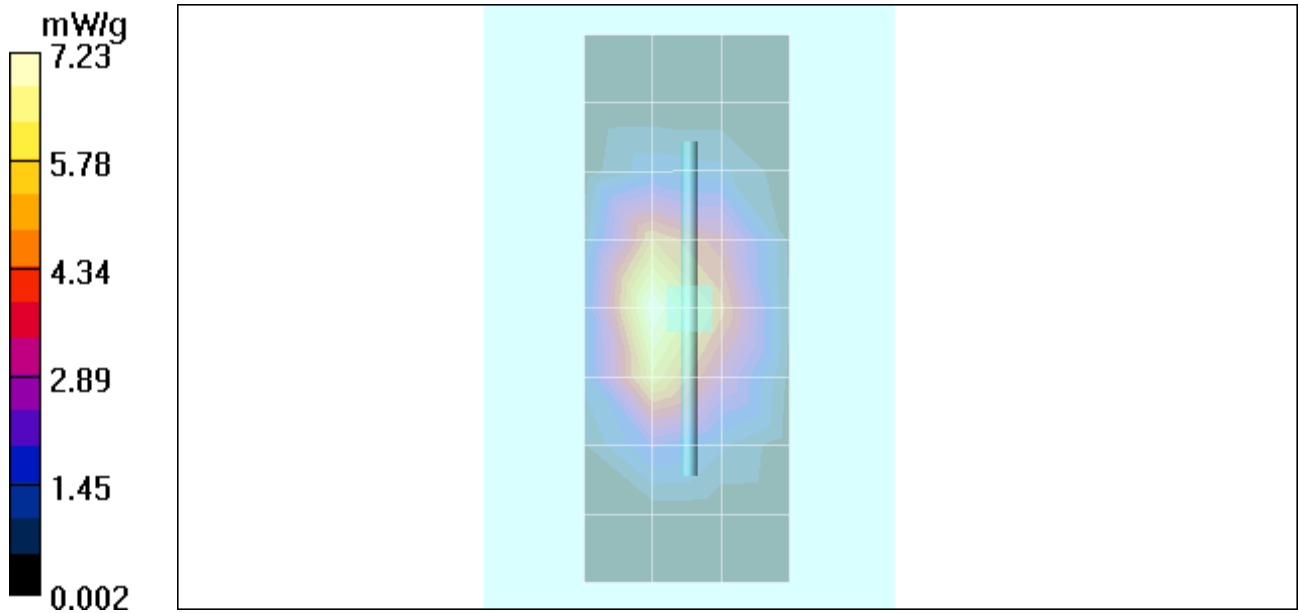
SAR(1 g) = 7.25 mW/g; SAR(10 g) = 3.84 mW/g

Maximum value of SAR (measured) = 7.95 mW/g

Daily SPC Check/Z-Axis Retraction (1x1x31):

Measurement grid: dx=20mm, dy=20mm, dz=5mm

Maximum value of SAR (measured) = 8.32 mW/g



Test Laboratory: Motorola

121306 1800MHz Good at -1.3%

DUT: Dipole 1800 MHz; Type: D1800V2; Serial: D1800V2 - SN:272TR

Procedure Notes: 1800 MHz System Performance Check / Dipole Sn# 272(TR) PM1 Power = 200mW

Sim.Temp@meas = 19.6°C Sim.Temp@SPC = 19.0°C Room Temp @ SPC = 20.7°C

Communication System: CW - Dipole; Frequency: 1800 MHz; Channel Number: 8; Duty Cycle: 1:1

Medium: VALIDATION Only; Medium parameters used: $f = 1800$ MHz; $\sigma = 1.35$ mho/m; $\epsilon_r = 38.6$; $\rho = 1000$ kg/m³

DASY4 Configuration:

- Probe: ET3DV6 - SN1514; ConvF(5.05, 5.05, 5.05); Calibrated: 7/17/2006
- Sensor-Surface: 4mm (Mechanical Surface Detection)
- Electronics: DAE3 Sn437; Calibrated: 7/18/2006
- Phantom: R4 : Sect.2, Amy Twin; Type: Amy Twin Flat; Serial: n/a;
- Measurement SW: DASY4, V4.7 Build 44; Postprocessing SW: SEMCAD, V1.8 Build 160

Daily SPC Check/Dipole Area Scan (9x4x1):

Measurement grid: dx=15mm, dy=15mm

Maximum value of SAR (measured) = 8.36 mW/g

Daily SPC Check/0-Degree 5x5x7 Cube (5x5x7)/Cube 0:

Measurement grid: dx=8mm, dy=8mm, dz=5mm

Reference Value = 75.6 V/m; Power Drift = 0.015 dB

Peak SAR (extrapolated) = 13.2 W/kg

SAR(1 g) = 7.57 mW/g; SAR(10 g) = 4.05 mW/g

Maximum value of SAR (measured) = 8.34 mW/g

Daily SPC Check/90-Degree 5x5x7 Cube (5x5x7)/Cube 0:

Measurement grid: dx=8mm, dy=8mm, dz=5mm

Reference Value = 75.6 V/m; Power Drift = 0.015 dB

Peak SAR (extrapolated) = 13.1 W/kg

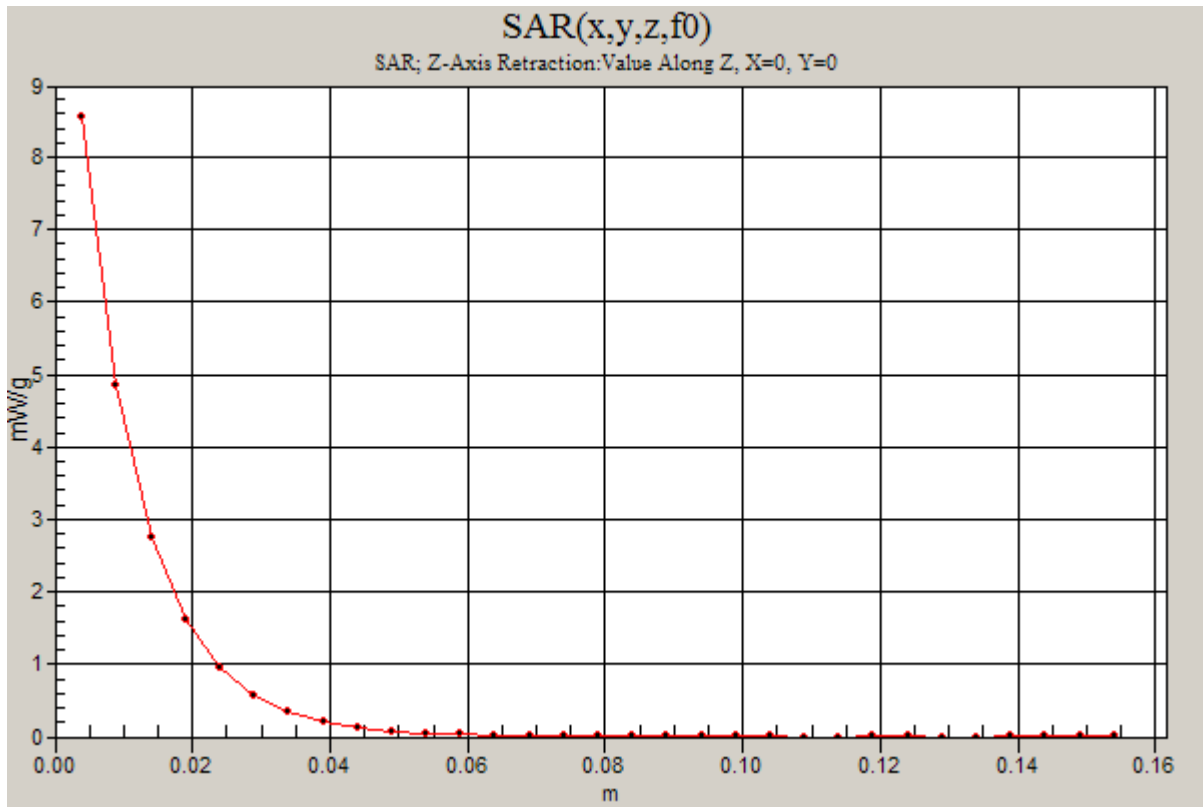
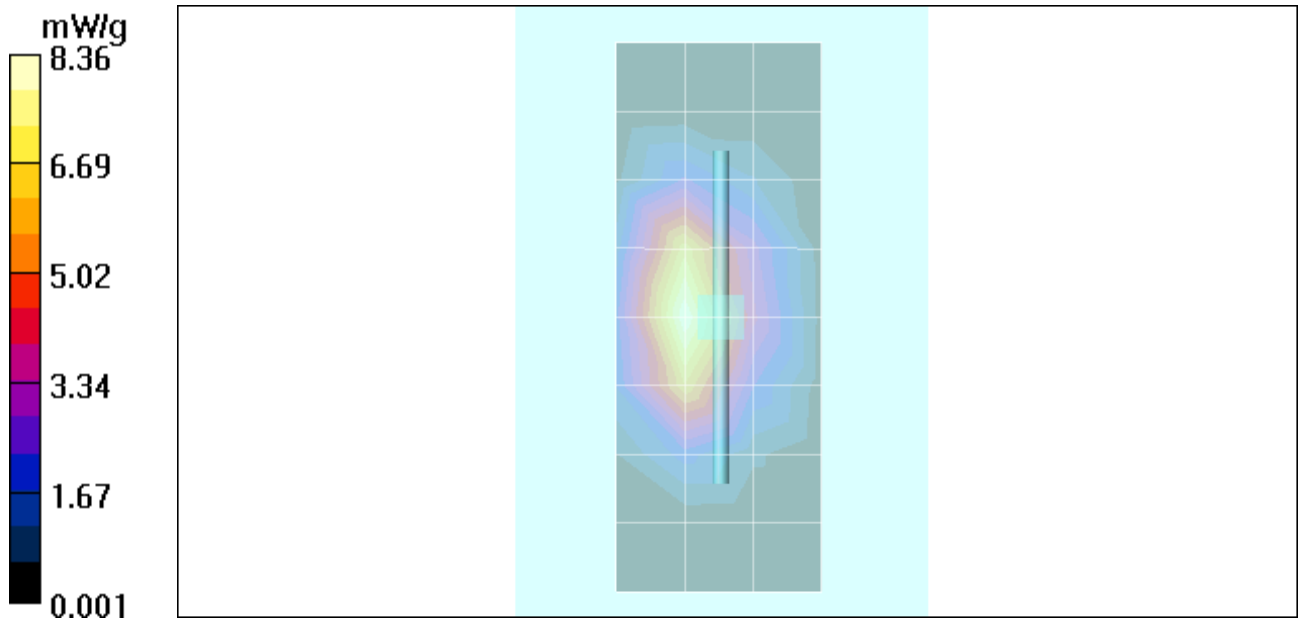
SAR(1 g) = 7.47 mW/g; SAR(10 g) = 4 mW/g

Maximum value of SAR (measured) = 8.20 mW/g

Daily SPC Check/Z-Axis Retraction (1x1x31):

Measurement grid: dx=20mm, dy=20mm, dz=5mm

Maximum value of SAR (measured) = 8.55 mW/g



Appendix 2

SAR distribution plots for Phantom Head Adjacent Use

Test Laboratory: Motorola

1900 LH Tilt

Serial: 004401022950816

Procedure Notes: Pwr Step: 0 Antenna Position: Internal Accessory Model #: VLIZR01**Battery Model #: SNN5789B DEVICE POSITION (cheek or rotated): Rotated**

Communication System: GSM 1900; Frequency: 1880 MHz; Channel Number: 661; Duty Cycle: 1:8

Medium: Regular Glycol Head; Medium parameters used: $f = 1880$ MHz; $\sigma = 1.43$ mho/m; $\epsilon_r = 38.2$; $\rho = 1000$ kg/m³

DASY4 Configuration:

- Probe: ET3DV6 - SN1514; ConvF(5.05, 5.05, 5.05); Calibrated: 7/17/2006
- Sensor-Surface: 4mm (Mechanical Surface Detection)
- Electronics: DAE3 Sn437; Calibrated: 7/18/2006
- Phantom: R4: Glycol SAM; Type: SAM; Serial: TP-1250;
- Measurement SW: DASY4, V4.7 Build 44; Postprocessing SW: SEMCAD, V1.8 Build 160

Left Head Template/Area Scan - Normal (10mm) (10x25x1):

Measurement grid: dx=10mm, dy=10mm

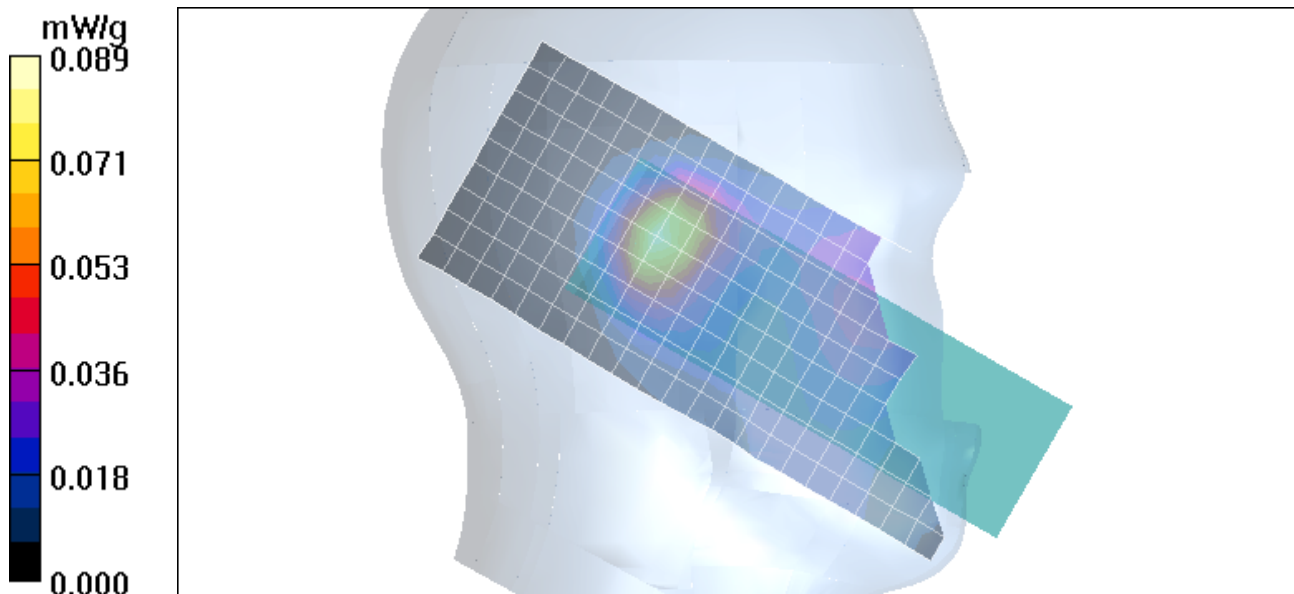
Maximum value of SAR (measured) = 0.089 mW/g

Left Head Template/Zoom Scan (7x7x7)/Cube 0:

Measurement grid: dx=5mm, dy=5mm, dz=5mm

Reference Value = 7.64 V/m; Power Drift = -0.059 dB

Peak SAR (extrapolated) = 0.125 W/kg

SAR(1 g) = 0.080 mW/g; SAR(10 g) = 0.046 mW/g

Test Laboratory: Motorola

850 RH Tilt

Serial: 004401022950816

Procedure Notes: Pwr Step: 5 Antenna Position: Internal**Accessory Model #: VLIZR01 Battery Model #: SNN5789B****DEVICE POSITION (cheek or rotated): Rotated**

Communication System: GSM 850; Frequency: 836.6 MHz; Channel Number: 190; Duty Cycle: 1:8

Medium: Low Freq Head; Medium parameters used: $f = 835$ MHz; $\sigma = 0.93$ mho/m; $\epsilon_r = 43.1$; $\rho = 1000$ kg/m³

DASY4 Configuration:

- Probe: ET3DV6 - SN1514; ConvF(5.99, 5.99, 5.99); Calibrated: 7/17/2006
- Sensor-Surface: 4mm (Mechanical Surface Detection)
- Electronics: DAE3 Sn437; Calibrated: 7/18/2006
- Phantom: R4: Sugar Water SAM; Type: SAM; Serial: TP-1131;
- Measurement SW: DASY4, V4.7 Build 44; Postprocessing SW: SEMCAD, V1.8 Build 160

Right Head Template/Area Scan - Normal (15mm) (7x17x1):

Measurement grid: dx=15mm, dy=15mm

Maximum value of SAR (measured) = 0.261 mW/g

Right Head Template/Zoom Scan (7x7x7)/Cube 0:

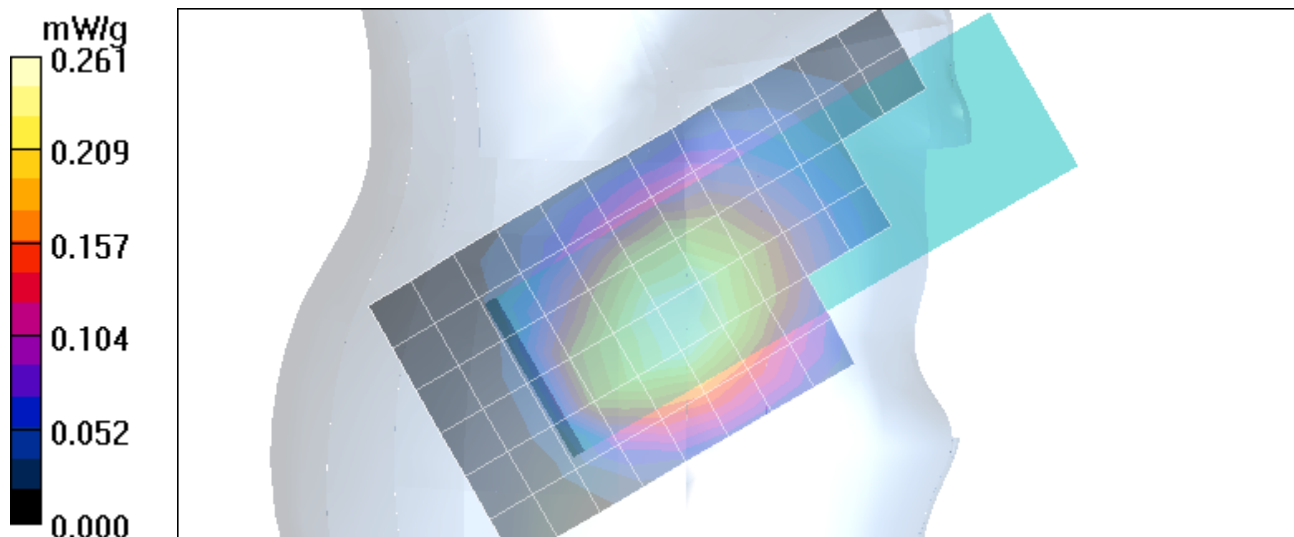
Measurement grid: dx=5mm, dy=5mm, dz=5mm

Reference Value = 17.7 V/m; Power Drift = 0.046 dB

Peak SAR (extrapolated) = 0.330 W/kg

SAR(1 g) = 0.263 mW/g; SAR(10 g) = 0.198 mW/g

Maximum value of SAR (measured) = 0.278 mW/g



Test Laboratory: Motorola

850 LH Cheek

Serial: 004401022950816

**Procedure Notes: Pwr Step: 5 Antenna Position: Internal Accessory Model #: VLIZR01
Battery Model #: SNN5789B DEVICE POSITION (cheek or rotated): Cheek**

Communication System: GSM 850; Frequency: 836.6 MHz; Channel Number: 190; Duty Cycle: 1:8

Medium: Low Freq Head; Medium parameters used: $f = 835$ MHz; $\sigma = 0.93$ mho/m; $\epsilon_r = 43.1$; $\rho = 1000$ kg/m³

DASY4 Configuration:

- Probe: ET3DV6 - SN1514; ConvF(5.99, 5.99, 5.99); Calibrated: 7/17/2006
- Sensor-Surface: 4mm (Mechanical Surface Detection)
- Electronics: DAE3 Sn437; Calibrated: 7/18/2006
- Phantom: R4: Sugar Water SAM; Type: SAM; Serial: TP-1131;
- Measurement SW: DASY4, V4.7 Build 44; Postprocessing SW: SEMCAD, V1.8 Build 160

Left Head Template/Area Scan - Normal (15mm) (7x17x1):

Measurement grid: dx=15mm, dy=15mm

Maximum value of SAR (measured) = 0.617 mW/g

Left Head Template/Zoom Scan (7x7x7)/Cube 0:

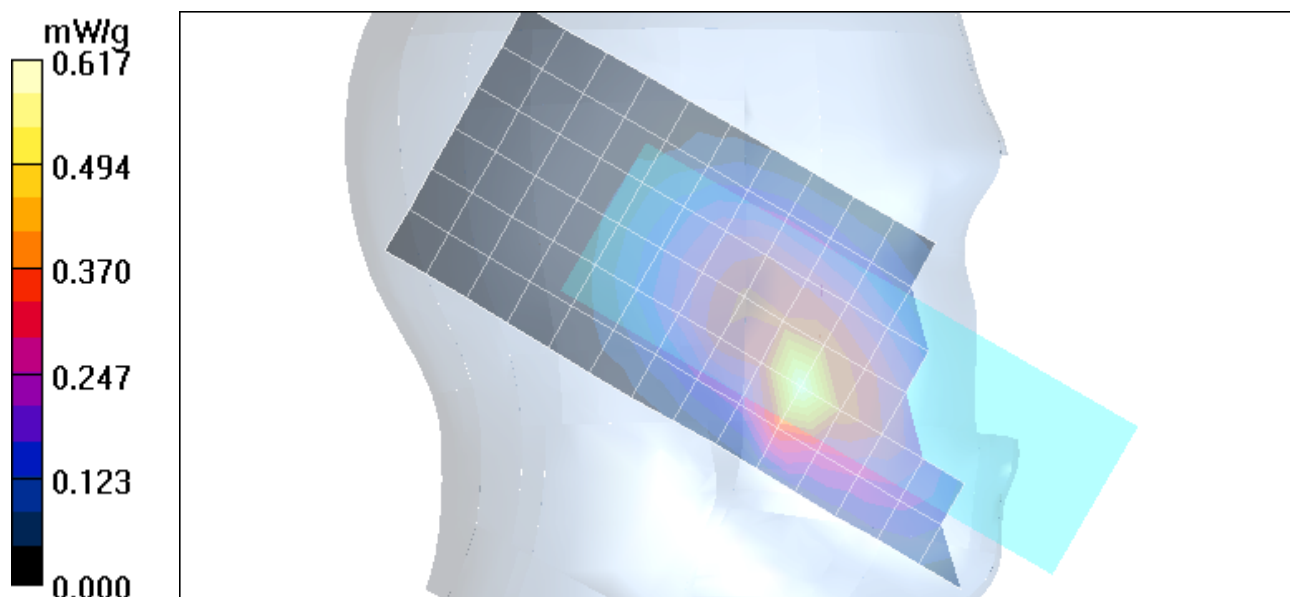
Measurement grid: dx=5mm, dy=5mm, dz=5mm

Reference Value = 22.2 V/m; Power Drift = -0.209 dB

Peak SAR (extrapolated) = 2.15 W/kg

SAR(1 g) = 0.586 mW/g; SAR(10 g) = 0.312 mW/g

Maximum value of SAR (measured) = 0.708 mW/g



Test Laboratory: Motorola

1900 RH Cheek

Serial: 004401022950816

Procedure Notes: Pwr Step: 0 Antenna Position: Internal Accessory Model #: VLIZR01**Battery Model #: SNN5789B DEVICE POSITION (cheek or rotated): Cheek**

Communication System: GSM 1900; Frequency: 1880 MHz; Channel Number: 661; Duty Cycle: 1:8

Medium: Regular Glycol Head; Medium parameters used: $f = 1880$ MHz; $\sigma = 1.43$ mho/m; $\epsilon_r = 38.2$; $\rho = 1000$ kg/m³

DASY4 Configuration:

- Probe: ET3DV6 - SN1514; ConvF(5.05, 5.05, 5.05); Calibrated: 7/17/2006
- Sensor-Surface: 4mm (Mechanical Surface Detection)
- Electronics: DAE3 Sn437; Calibrated: 7/18/2006
- Phantom: R4: Glycol SAM; Type: SAM; Serial: TP-1250;
- Measurement SW: DASY4, V4.7 Build 44; Postprocessing SW: SEMCAD, V1.8 Build 160

Right Head Template/Area Scan - Normal (10mm) (10x25x1):

Measurement grid: dx=10mm, dy=10mm

Maximum value of SAR (measured) = 0.303 mW/g

Right Head Template/Zoom Scan (7x7x7)/Cube 0:

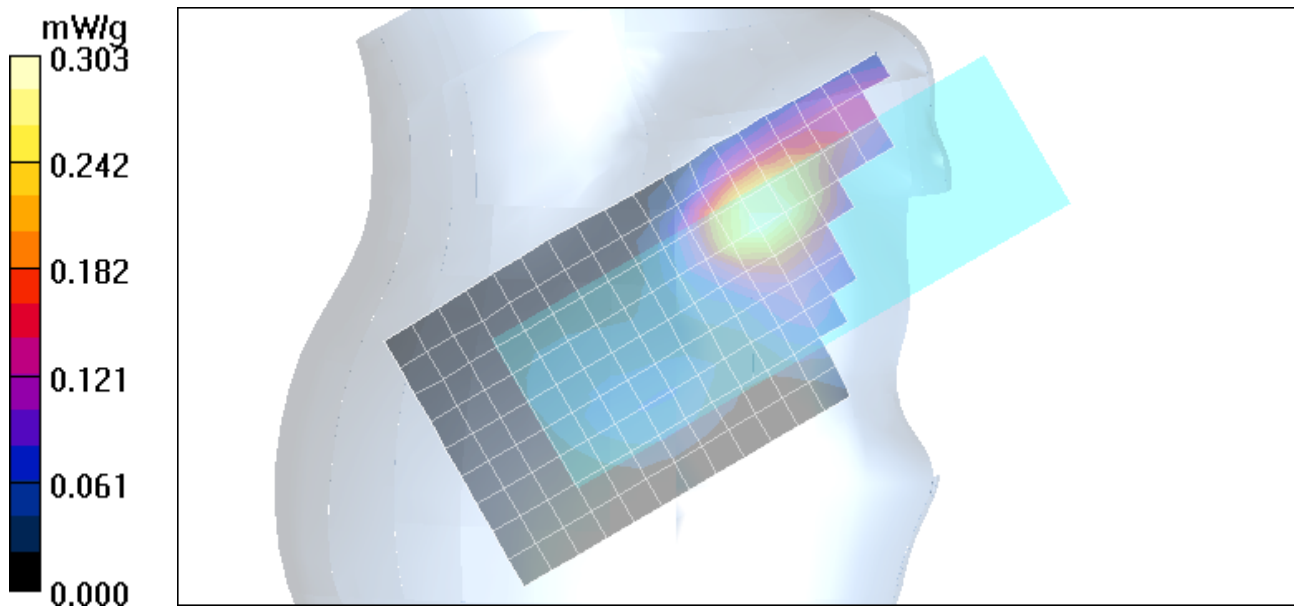
Measurement grid: dx=5mm, dy=5mm, dz=5mm

Reference Value = 13.1 V/m; Power Drift = 0.192 dB

Peak SAR (extrapolated) = 0.476 W/kg

SAR(1 g) = 0.290 mW/g; SAR(10 g) = 0.175 mW/g

Maximum value of SAR (measured) = 0.319 mW/g



Test Laboratory: Motorola

WCDMA 1900 LH Tilt

Serial: 004401022950816

Procedure Notes: Pwr Step: up**Antenna Position: INTERNAL****Accessory Model #: VLIZR01 Case Battery Model #: SNN5789B DEVICE POSITION: TILT**

Communication System: 3G/WCDMA 1900; Frequency: 1880 MHz; Channel Number: 9400; Duty Cycle: 1:1
Medium: Regular Glycol Head; Medium parameters used: $f = 1880$ MHz; $\sigma = 1.44$ mho/m; $\epsilon_r = 38.3$; $\rho = 1000$ kg/m³

DASY4 Configuration:

- Probe: ET3DV6 - SN1514; ConvF(5.05, 5.05, 5.05); Calibrated: 7/17/2006
- Sensor-Surface: 4mm (Mechanical Surface Detection)
- Electronics: DAE3 Sn437; Calibrated: 7/18/2006
- Phantom: R4: Glycol SAM; Type: SAM; Serial: TP-1250;
- Measurement SW: DASY4, V4.7 Build 44; Postprocessing SW: SEMCAD, V1.8 Build 160

Left Head Template/Area Scan - Normal (15mm) (7x17x1):

Measurement grid: dx=15mm, dy=15mm

Maximum value of SAR (measured) = 0.201 mW/g

Left Head Template/Zoom Scan (7x7x7)/Cube 0:

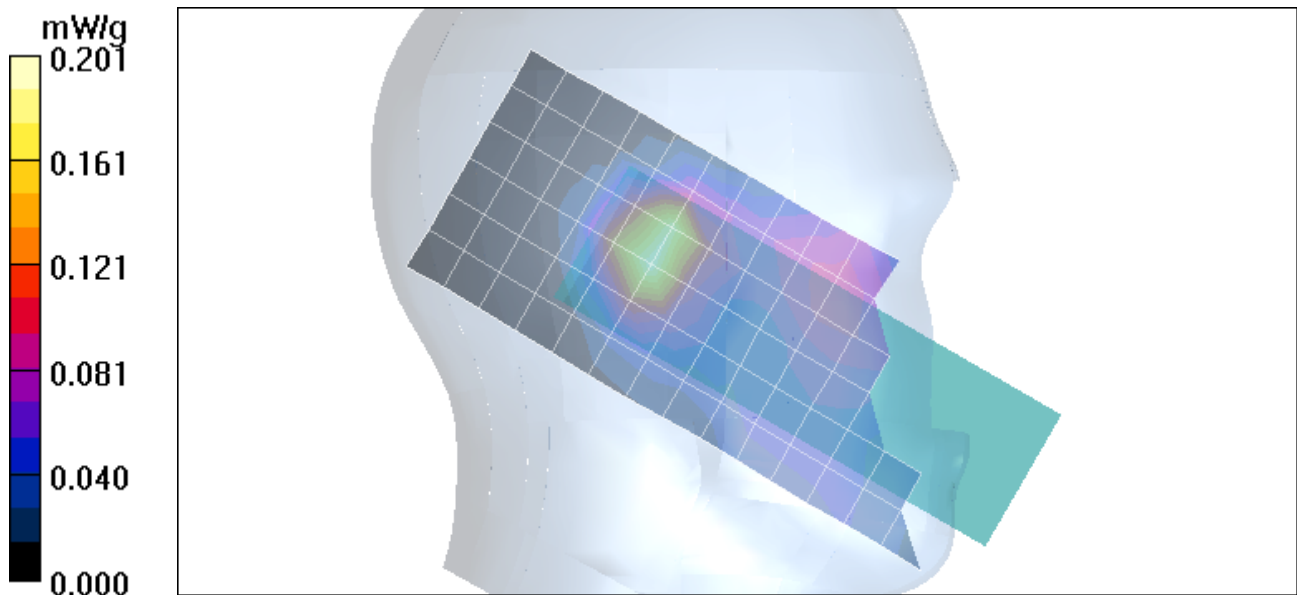
Measurement grid: dx=5mm, dy=5mm, dz=5mm

Reference Value = 11.8 V/m; Power Drift = 0.058 dB

Peak SAR (extrapolated) = 0.295 W/kg

SAR(1 g) = 0.194 mW/g; SAR(10 g) = 0.115 mW/g

Maximum value of SAR (measured) = 0.212 mW/g



Test Laboratory: Motorola

WCDMA 850 RH Tilt

Serial: 004401022950816

Procedure Notes: Pwr Step: up**Antenna Position: INTERNAL****Accessory Model #: VLIZR01 Case****Battery Model #: SNN5789B****DEVICE POSITION: TILT**

Communication System: 3G-WCDMA 850; Frequency: 836 MHz; Channel Number: 4180; Duty Cycle: 1:1
Medium: Low Freq Head; Medium parameters used: $f = 835$ MHz; $\sigma = 0.93$ mho/m; $\epsilon_r = 43.2$; $\rho = 1000$ kg/m³

DASY4 Configuration:

- Probe: ET3DV6 - SN1514; ConvF(5.99, 5.99, 5.99); Calibrated: 7/17/2006
- Sensor-Surface: 4mm (Mechanical Surface Detection)
- Electronics: DAE3 Sn437; Calibrated: 7/18/2006
- Phantom: R4: Sugar Water SAM; Type: SAM; Serial: TP-1131;
- Measurement SW: DASY4, V4.7 Build 44; Postprocessing SW: SEMCAD, V1.8 Build 160

Right Head Template/Area Scan - Normal (15mm) (7x17x1):

Measurement grid: dx=15mm, dy=15mm

Maximum value of SAR (measured) = 0.367 mW/g

Right Head Template/Zoom Scan (7x7x7)/Cube 0:

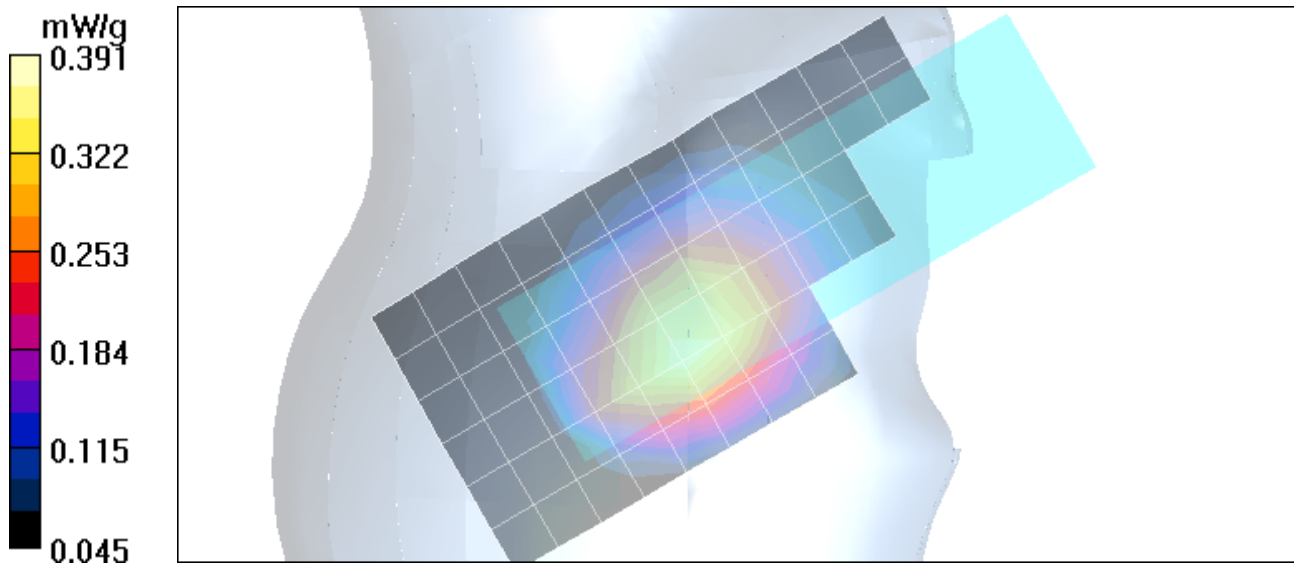
Measurement grid: dx=5mm, dy=5mm, dz=5mm

Reference Value = 20.8 V/m; Power Drift = 0.118 dB

Peak SAR (extrapolated) = 0.468 W/kg

SAR(1 g) = 0.371 mW/g; SAR(10 g) = 0.280 mW/g

Maximum value of SAR (measured) = 0.391 mW/g



Test Laboratory: Motorola

WCDMA850 LH Cheek

Serial: 004401022950816

Procedure Notes: Pwr Step: up**Antenna Position: INTERNAL****Accessory Model #: VLIZR01 Case****Battery Model #: SNN5789B****DEVICE POSITION: Cheek**

Communication System: 3G-WCDMA 850; Frequency: 836 MHz; Channel Number: 4180; Duty Cycle: 1:1
 Medium: Low Freq Head; Medium parameters used: $f = 835$ MHz; $\sigma = 0.93$ mho/m; $\epsilon_r = 43.2$; $\rho = 1000$ kg/m³

DASY4 Configuration:

- Probe: ET3DV6 - SN1514; ConvF(5.99, 5.99, 5.99); Calibrated: 7/17/2006
- Sensor-Surface: 4mm (Mechanical Surface Detection)
- Electronics: DAE3 Sn437; Calibrated: 7/18/2006
- Phantom: R4: Sugar Water SAM; Type: SAM; Serial: TP-1131;
- Measurement SW: DASY4, V4.7 Build 44; Postprocessing SW: SEMCAD, V1.8 Build 160

Left Head Template/Area Scan - Normal (15mm) (7x17x1):

Measurement grid: dx=15mm, dy=15mm

Maximum value of SAR (measured) = 0.580 mW/g

Left Head Template/Zoom Scan (7x7x7)/Cube 0:

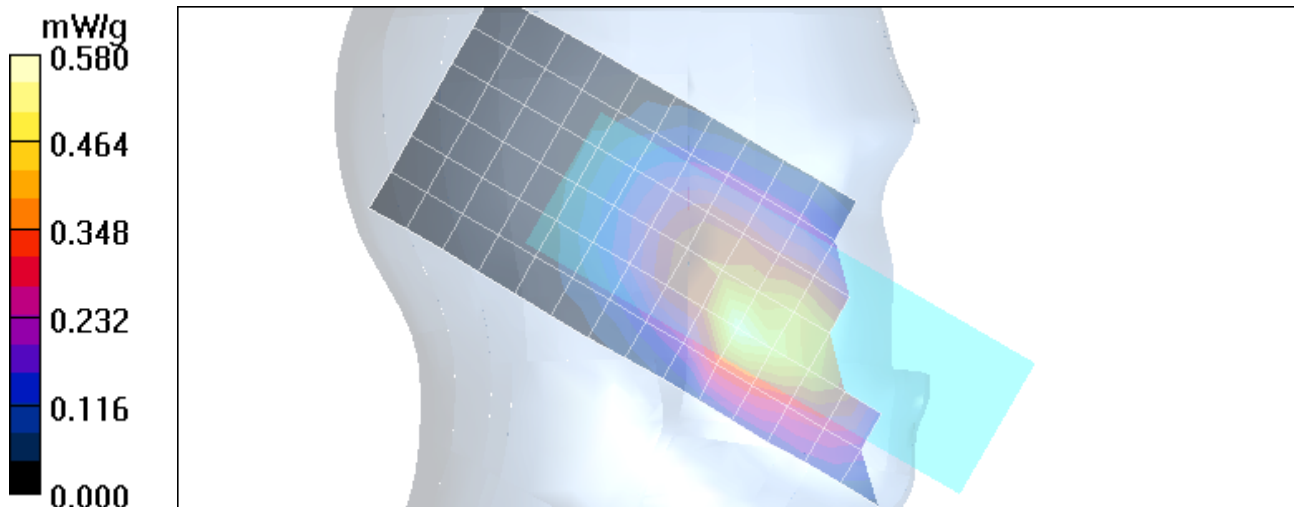
Measurement grid: dx=5mm, dy=5mm, dz=5mm

Reference Value = 24.7 V/m; Power Drift = 0.093 dB

Peak SAR (extrapolated) = 2.07 W/kg

SAR(1 g) = 0.683 mW/g; SAR(10 g) = 0.376 mW/g

Maximum value of SAR (measured) = 0.819 mW/g



Test Laboratory: Motorola

WCDMA 1900 RH Cheek

Serial: 004401022950816

Procedure Notes: Pwr Step: All Up Bits Antenna Position: Internal**Accessory Model #: VLIZR01****Battery Model #: SNN5789B****DEVICE POSITION (cheek or rotated): Cheek**

Communication System: 3G/WCDMA 1900; Frequency: 1880 MHz; Channel Number: 9400; Duty Cycle: 1:1
 Medium: Regular Glycol Head; Medium parameters used: $f = 1880$ MHz; $\sigma = 1.43$ mho/m; $\epsilon_r = 38.2$; $\rho = 1000$ kg/m³

DASY4 Configuration:

- Probe: ET3DV6 - SN1514; ConvF(5.05, 5.05, 5.05); Calibrated: 7/17/2006
- Sensor-Surface: 4mm (Mechanical Surface Detection)
- Electronics: DAE3 Sn437; Calibrated: 7/18/2006
- Phantom: R4: Glycol SAM; Type: SAM; Serial: TP-1250;
- Measurement SW: DASY4, V4.7 Build 44; Postprocessing SW: SEMCAD, V1.8 Build 160

Right Head Template/Area Scan - Normal (10mm) (10x25x1):

Measurement grid: dx=10mm, dy=10mm

Maximum value of SAR (measured) = 0.647 mW/g

Right Head Template/Zoom Scan (7x7x7)/Cube 0:

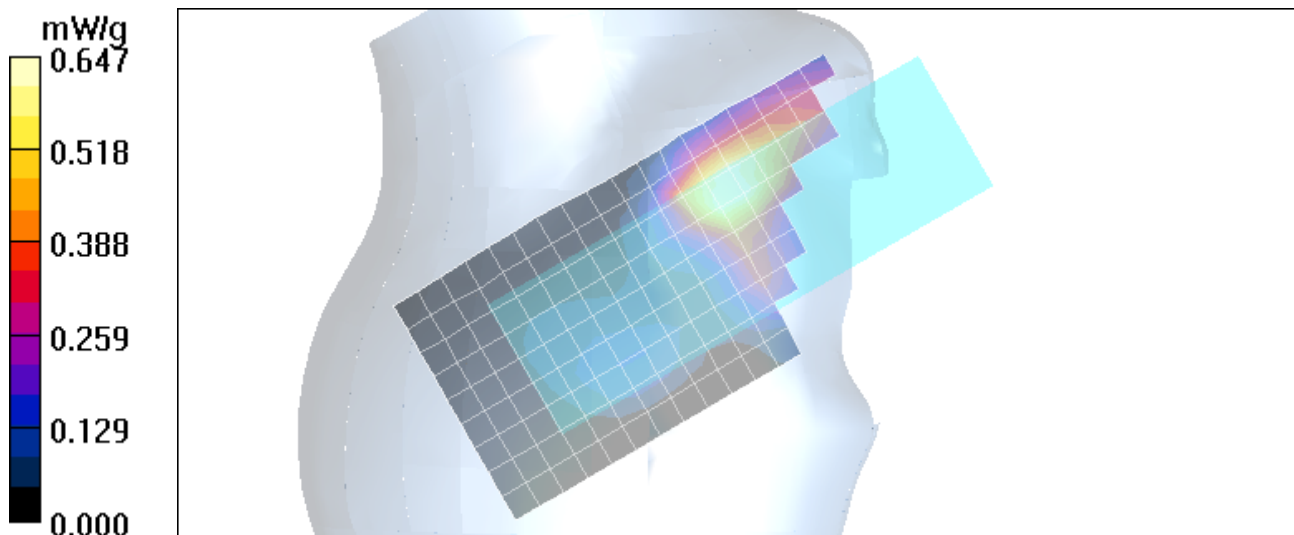
Measurement grid: dx=5mm, dy=5mm, dz=5mm

Reference Value = 19.8 V/m; Power Drift = -0.017 dB

Peak SAR (extrapolated) = 1.03 W/kg

SAR(1 g) = 0.629 mW/g; SAR(10 g) = 0.383 mW/g

Maximum value of SAR (measured) = 0.685 mW/g



Appendix 3

Probe Calibration Certificate



Accredited by the Swiss Federal Office of Metrology and Accreditation
The Swiss Accreditation Service is one of the signatories to the EA
Multilateral Agreement for the recognition of calibration certificates

Accreditation No.: **SCS 108**

Client **Motorola MDb**

Certificate No: **ET3-1514_Jul06**

CALIBRATION CERTIFICATE

Object **ET3DV6 - SN:1514**

Calibration procedure(s) **QA CAL-01.v5
Calibration procedure for dosimetric E-field probes**

Calibration date: **July 17, 2006**

Condition of the calibrated item **In Tolerance**

This calibration certificate documents the traceability to national standards, which realize the physical units of measurements (SI).
The measurements and the uncertainties with confidence probability are given on the following pages and are part of the certificate.

All calibrations have been conducted in the closed laboratory facility: environment temperature (22 ± 3)°C and humidity < 70%.

Calibration Equipment used (M&TE critical for calibration)

Primary Standards	ID #	Cal Date (Calibrated by, Certificate No.)	Scheduled Calibration
Power meter E4419B	GB41293874	5-Apr-06 (METAS, No. 251-00557)	Apr-07
Power sensor E4412A	MY41495277	5-Apr-06 (METAS, No. 251-00557)	Apr-07
Power sensor E4412A	MY41498087	5-Apr-06 (METAS, No. 251-00557)	Apr-07
Reference 3 dB Attenuator	SN: S5054 (3c)	11-Aug-05 (METAS, No. 251-00499)	Aug-06
Reference 20 dB Attenuator	SN: S5086 (20b)	4-Apr-06 (METAS, No. 251-00558)	Apr-07
Reference 30 dB Attenuator	SN: S5129 (30b)	11-Aug-05 (METAS, No. 251-00500)	Aug-06
Reference Probe ES3DV2	SN: 3013	2-Jan-06 (SPEAG, No. ES3-3013_Jan06)	Jan-07
DAE4	SN: 654	21-Jun-06 (SPEAG, No. DAE4-654_Jun06)	Jun-07

Secondary Standards	ID #	Check Date (in house)	Scheduled Check
RF generator HP 8648C	US3642U01700	4-Aug-99 (SPEAG, in house check Nov-05)	In house check: Nov-07
Network Analyzer HP 8753E	US37390585	18-Oct-01 (SPEAG, in house check Nov-05)	In house check: Nov 06

Calibrated by: **Katja Pokovic** **Technical Manager**

Approved by: **Niels Kuster** **Quality Manager**

Issued: July 17, 2006

This calibration certificate shall not be reproduced except in full without written approval of the laboratory.



Accredited by the Swiss Federal Office of Metrology and Accreditation
The Swiss Accreditation Service is one of the signatories to the EA
Multilateral Agreement for the recognition of calibration certificates

Accreditation No.: **SCS 108**

Glossary:

TSL	tissue simulating liquid
NORM _{x,y,z}	sensitivity in free space
ConF	sensitivity in TSL / NORM _{x,y,z}
DCP	diode compression point
Polarization φ	φ rotation around probe axis
Polarization ϑ	ϑ rotation around an axis that is in the plane normal to probe axis (at measurement center), i.e., $\vartheta = 0$ is normal to probe axis

Calibration is Performed According to the Following Standards:

- IEEE Std 1528-2003, "IEEE Recommended Practice for Determining the Peak Spatial-Averaged Specific Absorption Rate (SAR) in the Human Head from Wireless Communications Devices: Measurement Techniques", December 2003
- CENELEC EN 50361, "Basic standard for the measurement of Specific Absorption Rate related to human exposure to electromagnetic fields from mobile phones (300 MHz - 3 GHz), July 2001

Methods Applied and Interpretation of Parameters:

- NORM_{x,y,z}**: Assessed for E-field polarization $\vartheta = 0$ ($f \leq 900$ MHz in TEM-cell; $f > 1800$ MHz: R22 waveguide). NORM_{x,y,z} are only intermediate values, i.e., the uncertainties of NORM_{x,y,z} does not effect the E^2 -field uncertainty inside TSL (see below *ConvF*).
- NORM(f)_{x,y,z}** = NORM_{x,y,z} * *frequency_response* (see Frequency Response Chart). This linearization is implemented in DASY4 software versions later than 4.2. The uncertainty of the frequency response is included in the stated uncertainty of *ConvF*.
- DCP_{x,y,z}**: DCP are numerical linearization parameters assessed based on the data of power sweep (no uncertainty required). DCP does not depend on frequency nor media.
- ConvF and Boundary Effect Parameters**: Assessed in flat phantom using E-field (or Temperature Transfer Standard for $f \leq 800$ MHz) and inside waveguide using analytical field distributions based on power measurements for $f > 800$ MHz. The same setups are used for assessment of the parameters applied for boundary compensation (alpha, depth) of which typical uncertainty values are given. These parameters are used in DASY4 software to improve probe accuracy close to the boundary. The sensitivity in TSL corresponds to NORM_{x,y,z} * *ConvF* whereby the uncertainty corresponds to that given for *ConvF*. A frequency dependent *ConvF* is used in DASY version 4.4 and higher which allows extending the validity from ± 50 MHz to ± 100 MHz.
- Spherical isotropy (3D deviation from isotropy)**: in a field of low gradients realized using a flat phantom exposed by a patch antenna.
- Sensor Offset**: The sensor offset corresponds to the offset of virtual measurement center from the probe tip (on probe axis). No tolerance required.

Probe ET3DV6

SN:1514

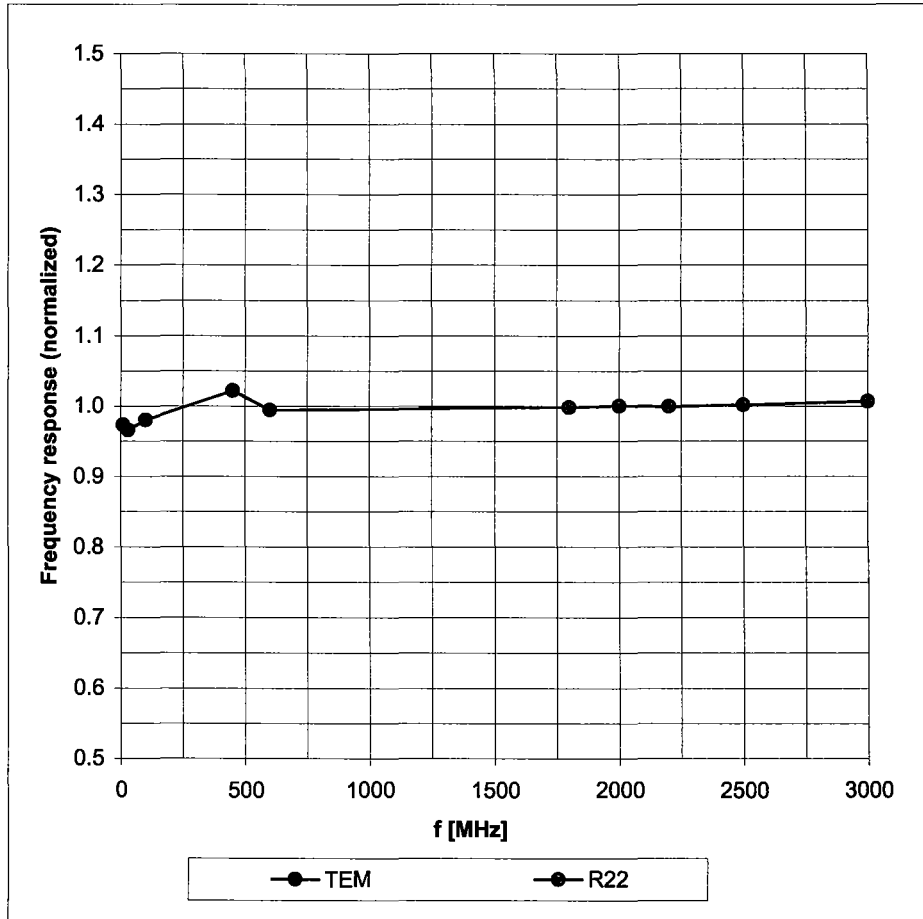
Manufactured:	November 24, 1999
Last calibrated:	July 20, 2005
Recalibrated:	July 17, 2006

Calibrated for DASYS Systems

(Note: non-compatible with DASYS2 system!)

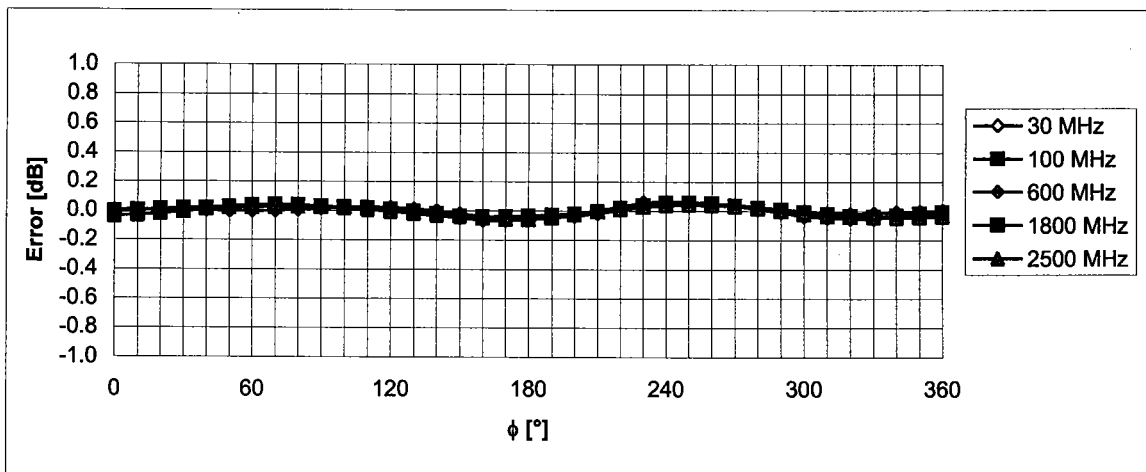
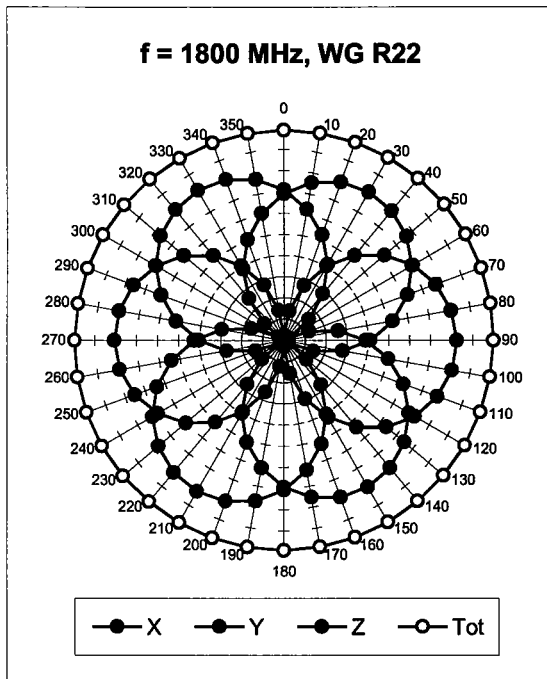
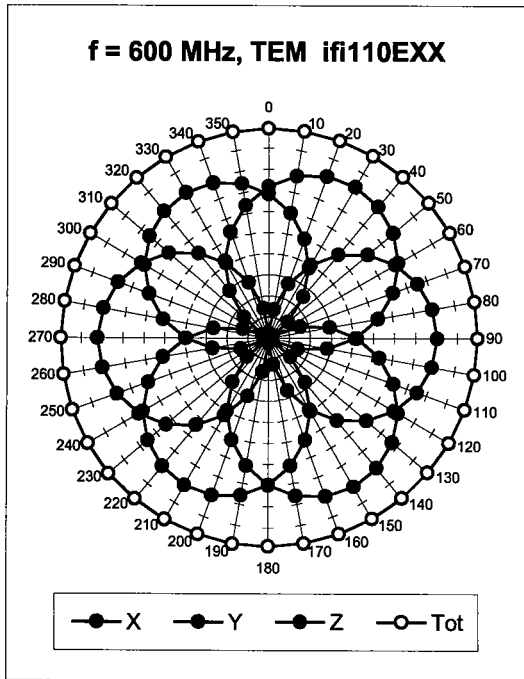
Frequency Response of E-Field

(TEM-Cell:ifi110 EXX, Waveguide: R22)



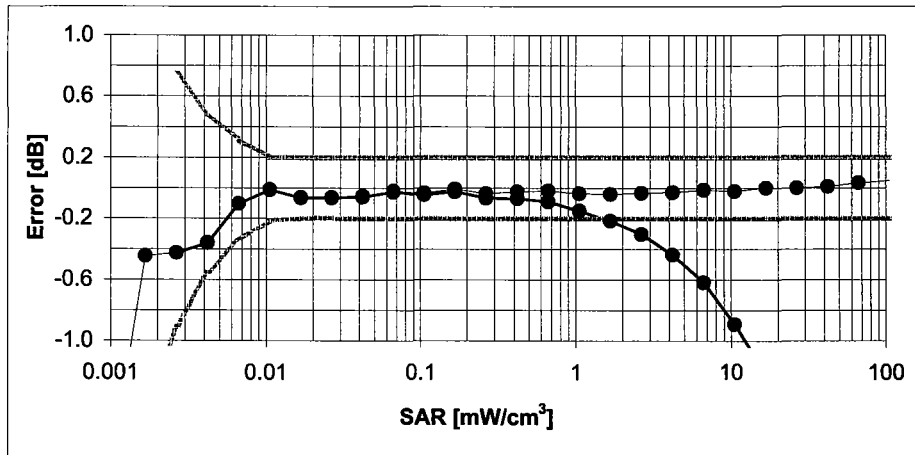
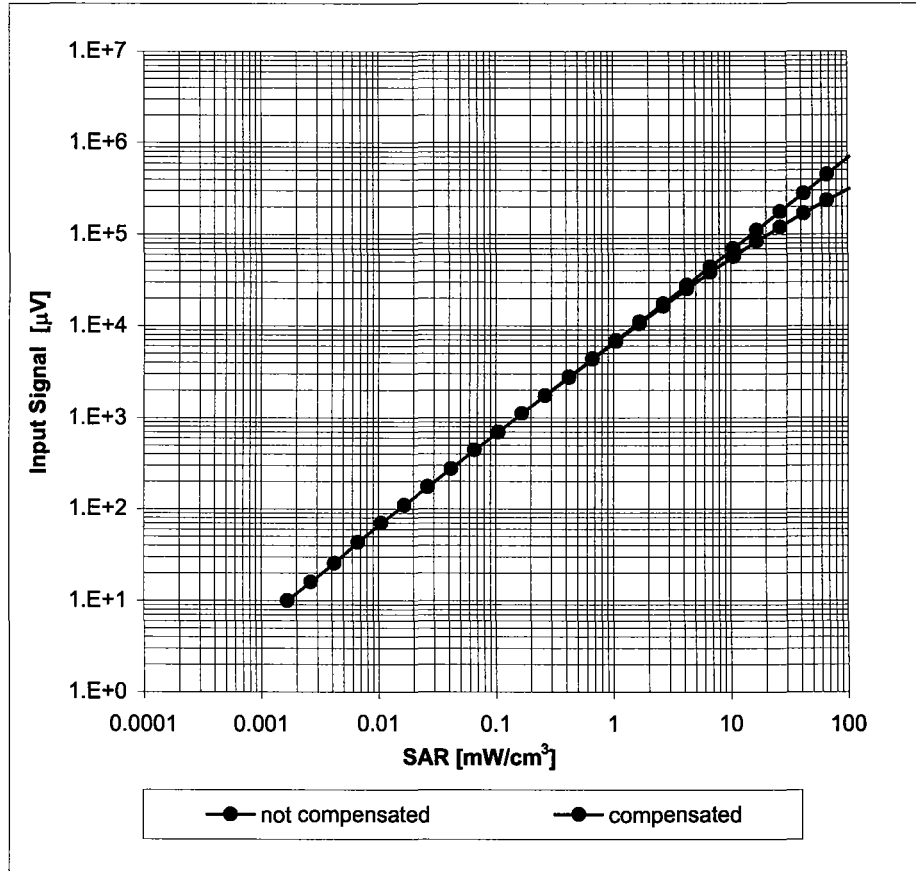
Uncertainty of Frequency Response of E-field: $\pm 6.3\%$ ($k=2$)

Receiving Pattern (ϕ), $\vartheta = 0^\circ$



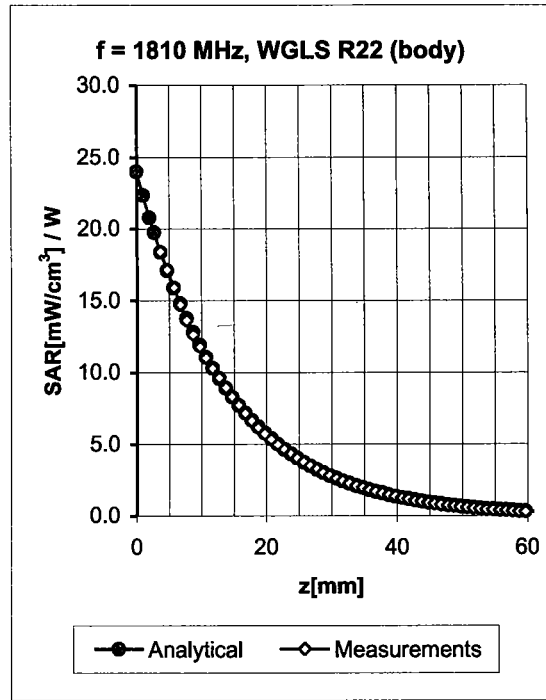
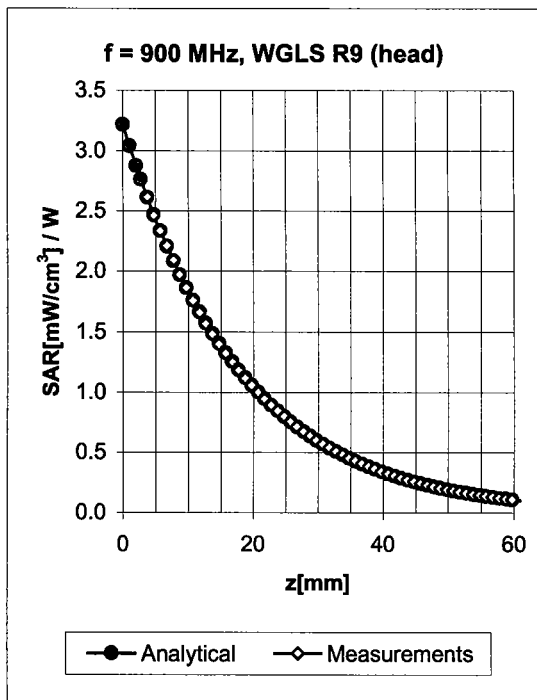
Uncertainty of Axial Isotropy Assessment: $\pm 0.5\%$ ($k=2$)

Dynamic Range f(SAR_{head}) (Waveguide R22, f = 1800 MHz)



Uncertainty of Linearity Assessment: ± 0.6% (k=2)

Conversion Factor Assessment

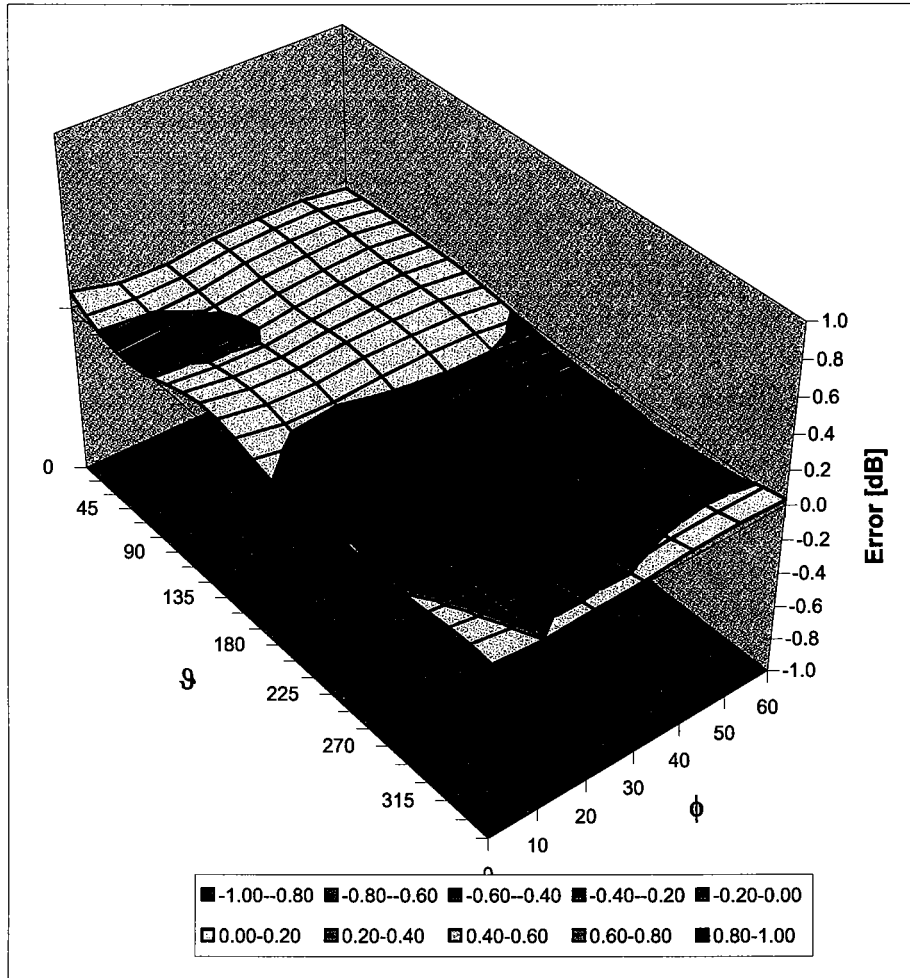


f [MHz]	Validity [MHz] ^c	TSL	Permittivity	Conductivity	Alpha	Depth	ConvF Uncertainty
900	± 50 / ± 100	Head	41.5 ± 5%	0.97 ± 5%	0.67	1.82	5.99 ± 11.0% (k=2)
1810	± 50 / ± 100	Head	40.0 ± 5%	1.40 ± 5%	0.57	2.46	5.05 ± 11.0% (k=2)
1950	± 50 / ± 100	Head	40.0 ± 5%	1.40 ± 5%	0.56	2.49	4.76 ± 11.0% (k=2)
2450	± 50 / ± 100	Head	39.2 ± 5%	1.80 ± 5%	0.65	2.09	4.47 ± 11.8% (k=2)
900	± 50 / ± 100	Body	55.0 ± 5%	1.05 ± 5%	0.64	1.95	5.86 ± 11.0% (k=2)
1810	± 50 / ± 100	Body	53.3 ± 5%	1.52 ± 5%	0.61	2.53	4.53 ± 11.0% (k=2)
1950	± 50 / ± 100	Body	53.3 ± 5%	1.52 ± 5%	0.75	2.16	4.30 ± 11.0% (k=2)
2450	± 50 / ± 100	Body	52.7 ± 5%	1.95 ± 5%	0.62	2.07	4.16 ± 11.8% (k=2)

^c The validity of ± 100 MHz only applies for DASY v4.4 and higher (see Page 2). The uncertainty is the RSS of the ConvF uncertainty at calibration frequency and the uncertainty for the indicated frequency band.

Deviation from Isotropy in HSL

Error (ϕ, ϑ), $f = 900$ MHz



Uncertainty of Spherical Isotropy Assessment: $\pm 2.6\%$ ($k=2$)

Appendix 4

Measurement Uncertainty Budget

<i>a</i>	<i>b</i>	<i>c</i>	<i>d</i>	$e = f(d,k)$	<i>f</i>	<i>g</i>	$h = c \times f / e$	$i = c \times g / e$	<i>k</i>
Uncertainty Component	IEEE 1528 section	Tol. (\pm %)	Prob Dist	Div.	c_i (1 g)	c_i (10 g)	1 g u_i (\pm %)	10 g u_i (\pm %)	v_i
Measurement System									
Probe Calibration	E.2.1	5.9	N	1.00	1	1	5.9	5.9	∞
Axial Isotropy	E.2.2	4.7	R	1.73	0.707	0.707	1.9	1.9	∞
Hemispherical Isotropy	E.2.2	9.6	R	1.73	0.707	0.707	3.9	3.9	∞
Boundary Effect	E.2.3	1.0	R	1.73	1	1	0.6	0.6	∞
Linearity	E.2.4	4.7	R	1.73	1	1	2.7	2.7	∞
System Detection Limits	E.2.5	1.0	R	1.73	1	1	0.6	0.6	∞
Readout Electronics	E.2.6	0.3	N	1.00	1	1	0.3	0.3	∞
Response Time	E.2.7	1.1	R	1.73	1	1	0.6	0.6	∞
Integration Time	E.2.8	1.1	R	1.73	1	1	0.6	0.6	∞
RF Ambient Conditions - Noise	E.6.1	3.0	R	1.73	1	1	1.7	1.7	∞
RF Ambient Conditions - Reflections	E.6.1	0.0	R	1.73	1	1	0.0	0.0	∞
Probe Positioner Mech. Tolerance	E.6.2	0.4	R	1.73	1	1	0.2	0.2	∞
Probe Positioning w.r.t Phantom	E.6.3	1.4	R	1.73	1	1	0.8	0.8	∞
Max. SAR Evaluation (ext., int., avg.)	E.5	3.4	R	1.73	1	1	2.0	2.0	∞
Test sample Related									
Test Sample Positioning	E.4.2	3.2	N	1.00	1	1	3.2	3.2	29
Device Holder Uncertainty	E.4.1	4.0	N	1.00	1	1	4.0	4.0	8
SAR drift	6.6.2	5.0	R	1.73	1	1	2.9	2.9	∞
Phantom and Tissue Parameters									
Phantom Uncertainty	E.3.1	4.0	R	1.73	1	1	2.3	2.3	∞
Liquid Conductivity (target)	E.3.2	5.0	R	1.73	0.64	0.43	1.8	1.2	∞
Liquid Conductivity (measurement)	E.3.3	3.3	N	1.00	0.64	0.43	2.1	1.4	∞
Liquid Permittivity (target)	E.3.2	5.0	R	1.73	0.6	0.49	1.7	1.4	∞
Liquid Permittivity (measurement)	E.3.3	1.9	N	1.00	0.6	0.49	1.1	0.9	∞
Combined Standard Uncertainty			RSS				11.1	10.8	411
Expanded Uncertainty (95% CONFIDENCE LEVEL)			$k=2$				22.2	21.6	

Appendix 5

Photographs of the device under test



Figure 1 – Front View



Figure 2 – Rear View



Figure 3 – Front View, Phone Open



Figure 4 – Side View



Figure 5 – Cheek Touch Position



Figure 6 – 15 degrees Tilt Position

Appendix 6

Dipole Characterization Certificate

Certification of System Performance Check Targets

Based on WI-0396

-Historical Data-

900MHz	
IEEE1528 Target:	10.8 (W/kg)
Measurement Uncertainty (k=1):	9.0%
Measurement Period:	3-June-05 to 10-May-06
# of tests performed:	1571
Grand Average:	11.3 (W/kg)
% Delta (Average - IEEE1528 Target)	4.3%
Is % Delta <= Expanded Measurement Uncertainty (k=2)?	Yes
Accept/Reject <u>Average</u> as new system performance check target?	ACCEPT
<u>Applies to Dipole SN's:</u> 55, 69, 77, 78, 79, 80, 91, 92, 93, 94, 95, 96, 97	


-New System Performance Check Targets- per WI-0396

(based on analysis of historical data)

Frequency	SAR Target (W/kg)	Permittivity	Conductivity (S/m)
900MHz	11.3	41.5 ± 5%	0.97 ± 5%

-Approvals-

Submitted by: Date:

Signed: 

Comments:

Approved by: Date:

Signed: 

Comments: