



This is the rear view of the phone with the battery door and battery removed.



Rear view of phone with main circuit board removed.

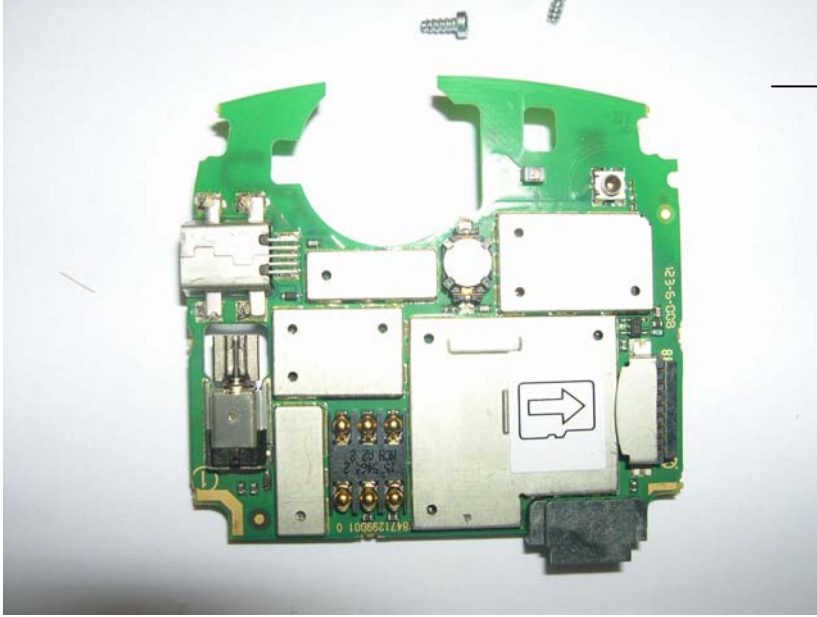
The Antenna wire is barely visible around bottom of housing.



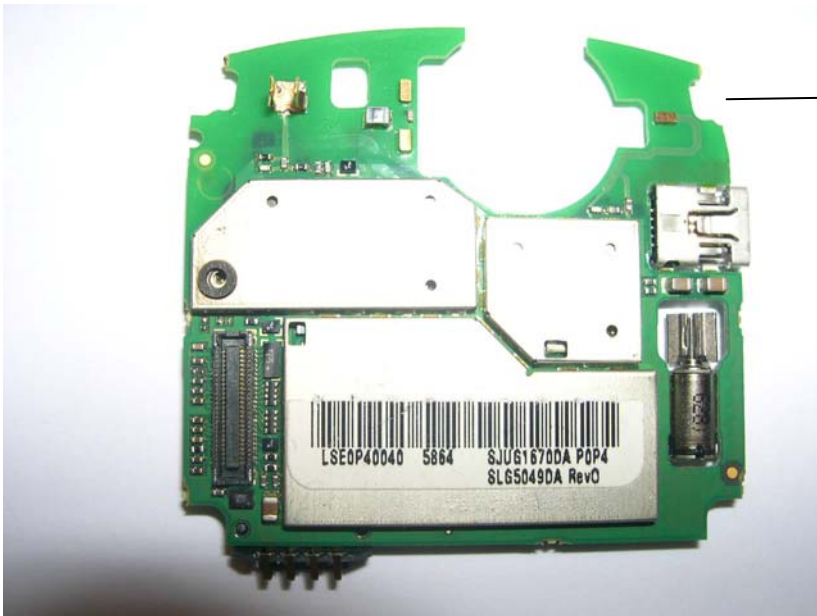
Rear view of phone with exposed main board. Notice the antenna assembly removed separately.



Rear view of phone with main components disassembled. Notice the main circuit board removed from rear housing and the antenna wire (at bottom) separated from its frame also separated from the main PCB.



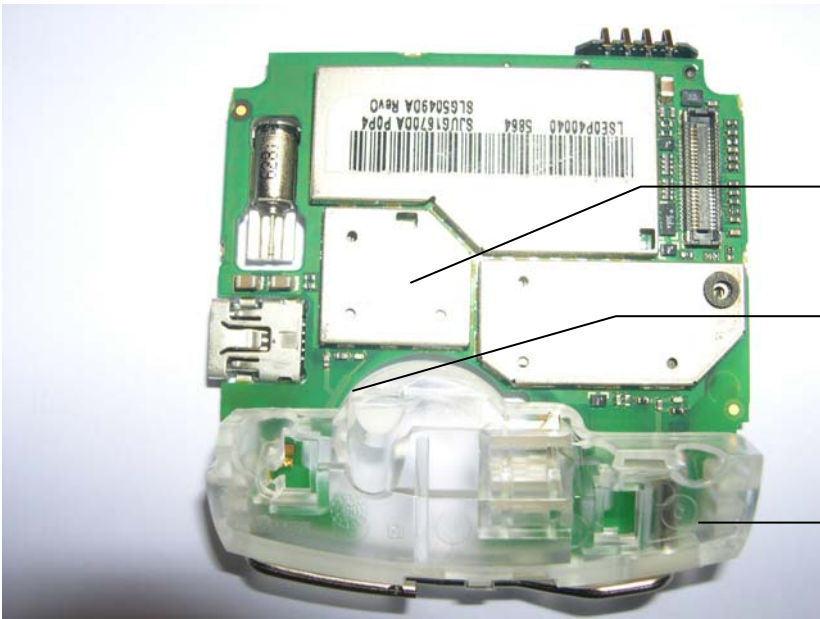
Close up view of main PCB. This is the SIM card side of the board facing the rear side of the phone.



Close up view of main PCB. This is the antenna clip side of the board. Notice the antenna clip located in the upper left corner.



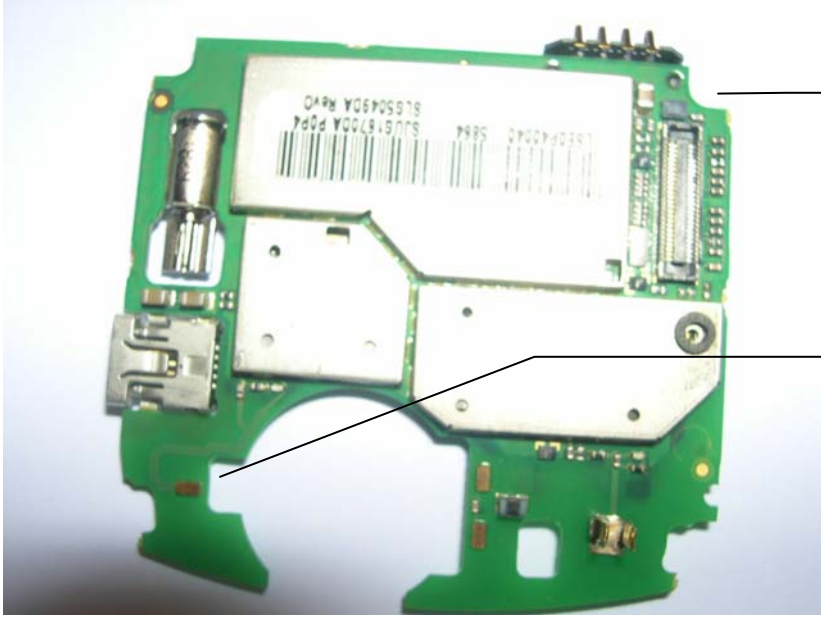
This is a close up view of the antenna. The antenna mates with the antenna clip located on the main PCB.



Class 1 Bluetooth circuitry

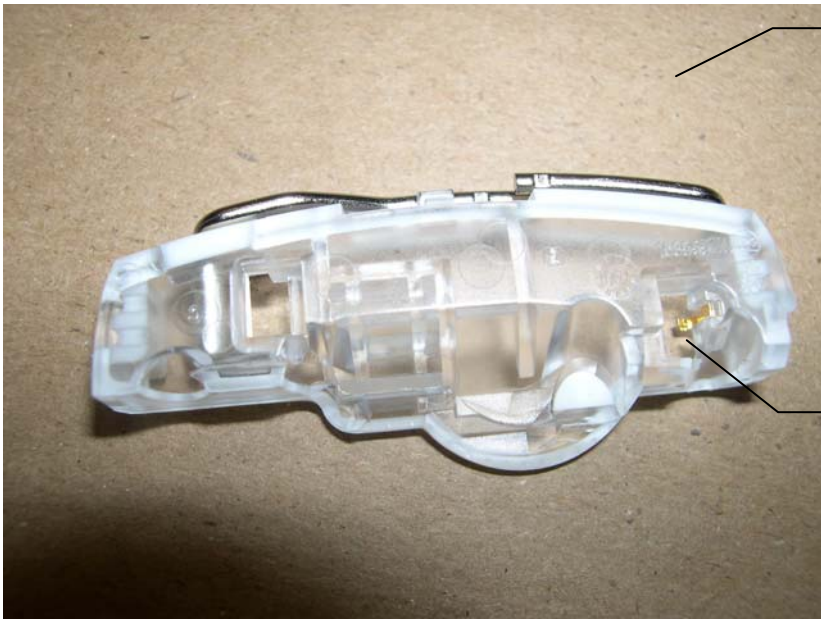
Notice Bluetooth PCB trace leading to antenna

Antenna assembly



Notice antennae assembly is removed from this photo.

This small contact is where the Bluetooth antenna contacts the circuit board.



This is the antenna assembly that holds in place both the main GSM antenna (pictured at top) and the Bluetooth antenna (Copper color)

This is the contact point where the Bluetooth antenna makes contact with the PCB feed point. The small copper piece is the entire Bluetooth antenna.