

EMC Pictures



Figure 1. AC Line Conducted Emissions Measurement Setup

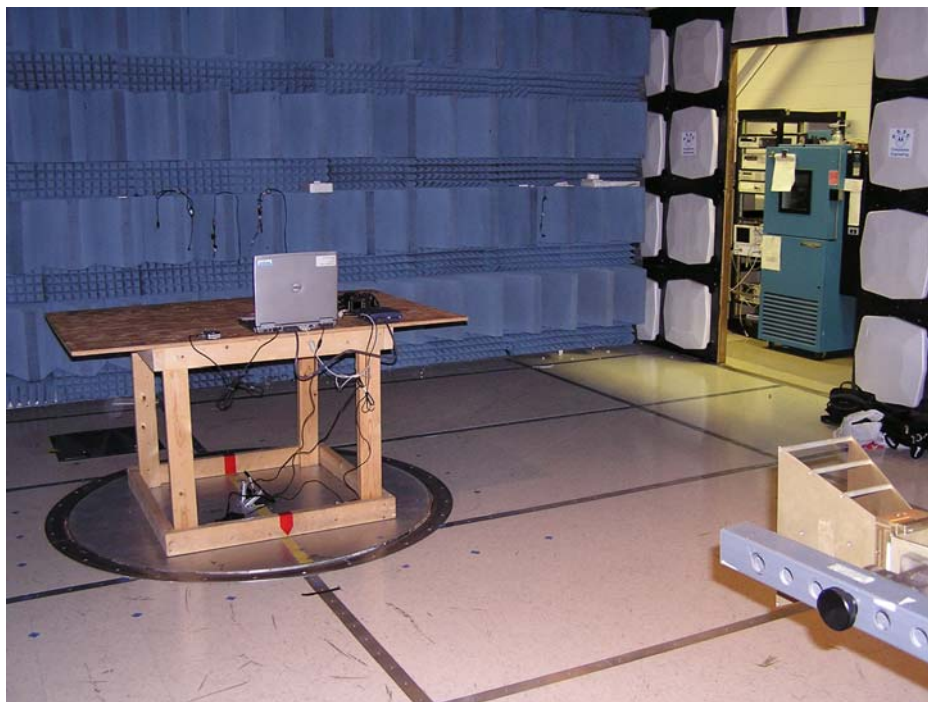


Figure 2. Radiated Emissions Measurement Setup

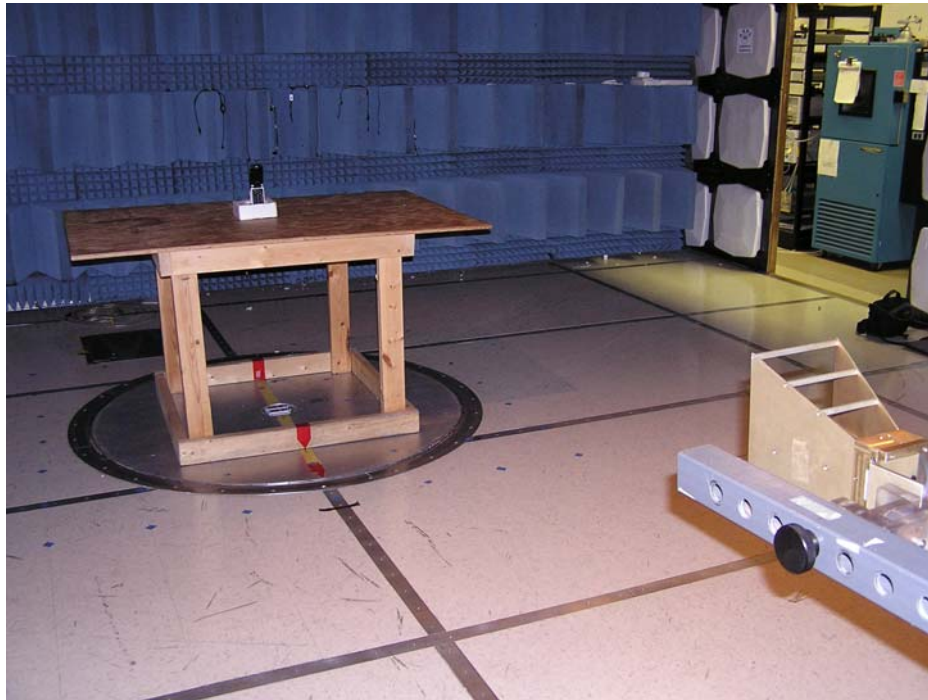


Figure 3. Radiated Emissions Measurement Setup

Appendix 7

**Photographs of the device under test
>> EXTRACTED FROM FCC EXHIBIT 11 <<<**



Figure 1 – Front of Transceiver



Figure 2 – Back of Transceiver



Figure 3 – Front of Transceiver, Flip Open

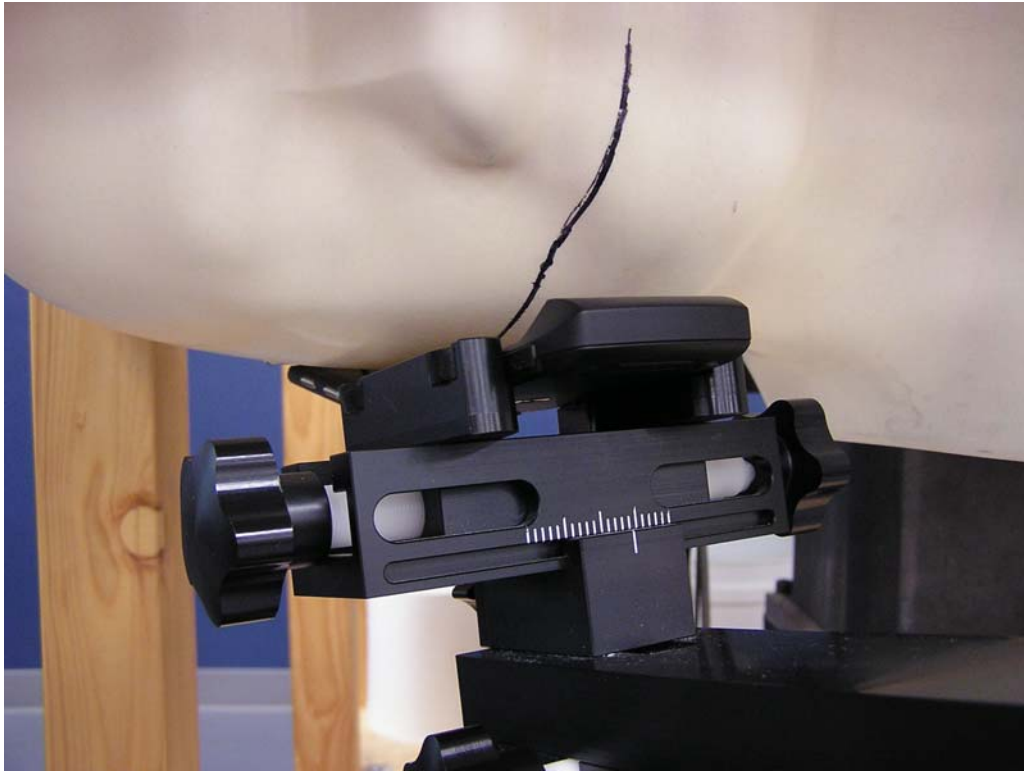


Figure 4 – Transceiver against head, Cheek Touch position

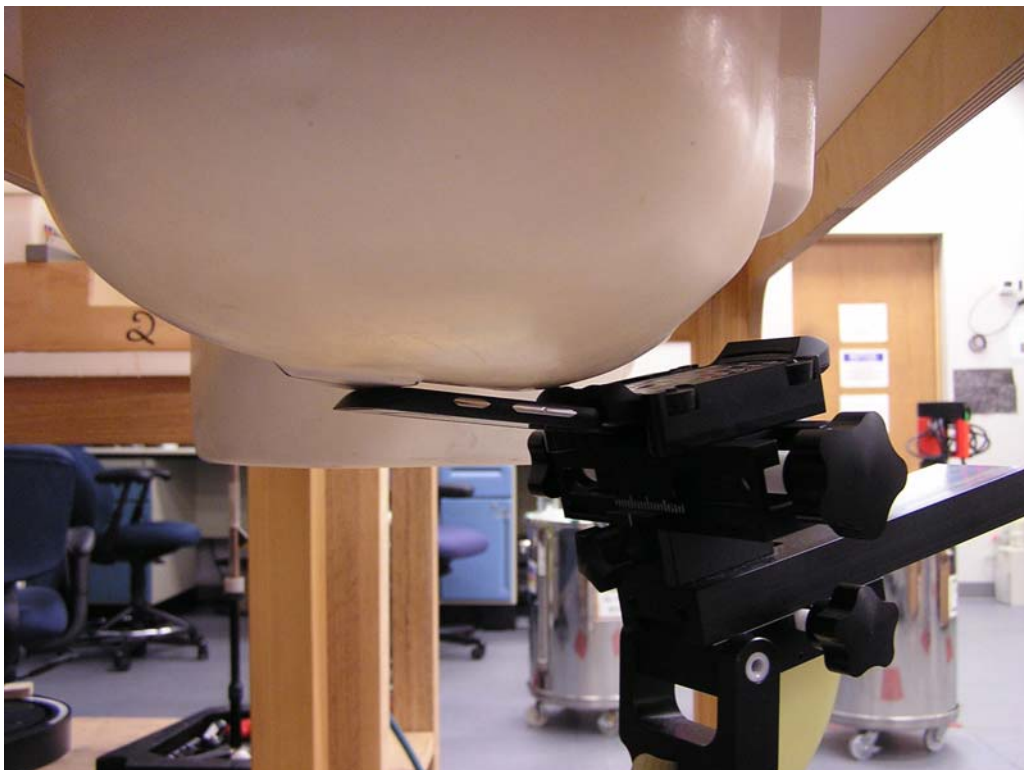


Figure 5 – Transceiver against head, Cheek Touch position

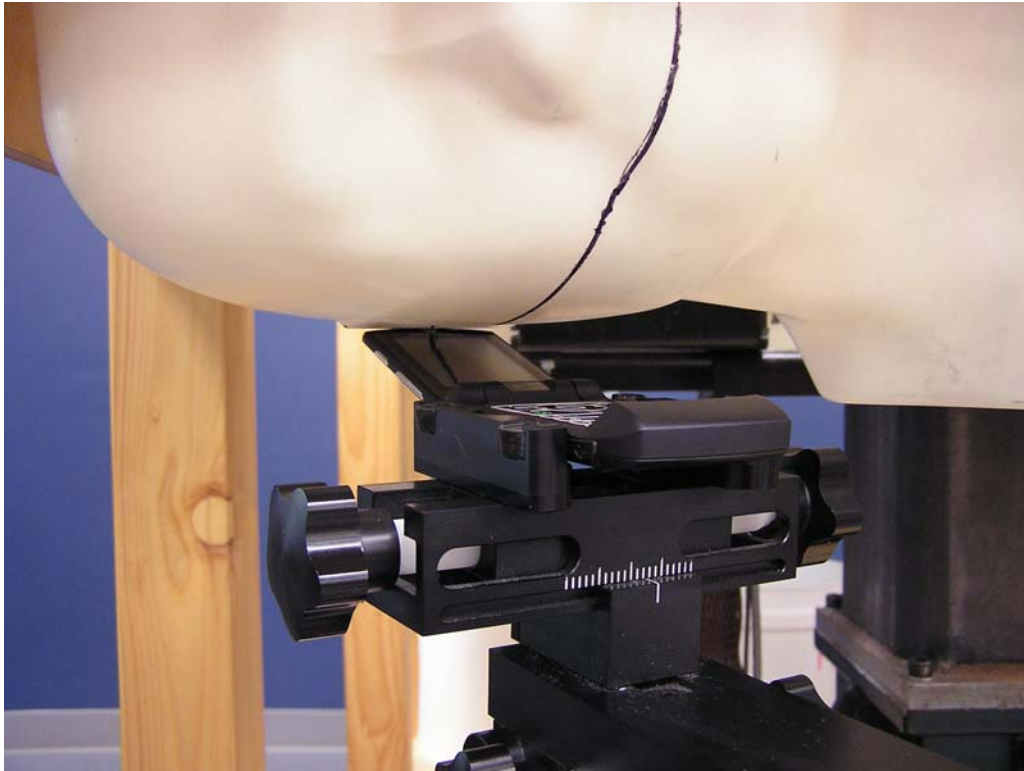


Figure 6 – Transceiver against head, 15° Tilt position

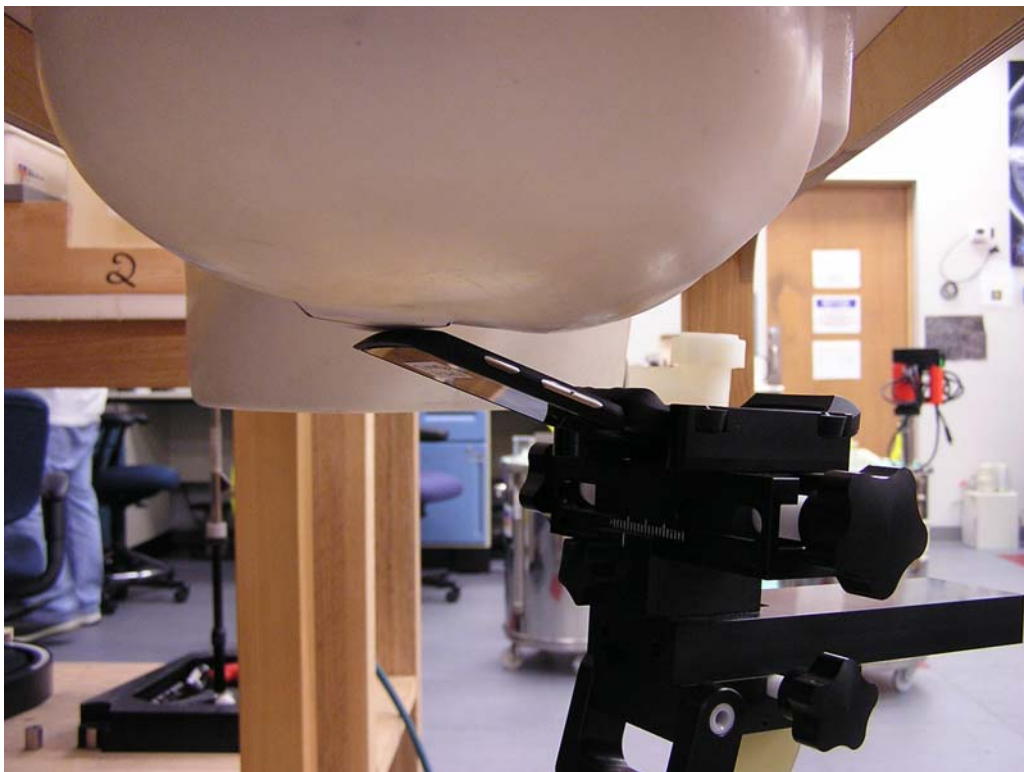


Figure 7 – Transceiver against head, 15° Tilt position



Figure 8 – Transceiver against body, Back of Phone 15 mm from Phantom position