



**MOTOROLA**

**Portable Cellular Phone SAR Test Report**

**Test Report #:** 20153-1F  
**Date of Report:** Feb-20-2007  
**Date of Test:** Sep-13-2006 to Oct-12-2006  
**FCC ID #:** **IHDT56GD2**  
**Generic Name:** **MJT6-33411B11**

**Laboratory:** Motorola Mobile Devices Business Product Safety & Compliance Laboratory  
 600 N. US Highway 45  
 Libertyville, Illinois 60048

**Report Author:** Thomas Nipple  
 RF Engineer

This laboratory is accredited to ISO/IEC 17025-1999 to perform the following tests:

Tests:  
 Electromagnetic Specific Absorption Rate

Procedures:  
 ANSI / IEEE C95.1-1992, 1999  
 (SAR) IEEE C95.3-1991  
 IEEE 1528, IEC 62209-1  
 FCC OET Bulletin 65 (*including Supplements A, B, C*)  
 Australian Communications Authority Radio  
 Communications (Electromagnetic Radiation – Human  
 Exposure) Standard 2003  
 CENELEC EN 50361 (2001)  
 WI-0247  
 WI-1847

**Accreditation:**



Simulated Tissue Preparation  
 RF Power Measurement

On the following products or types of products:

Wireless Communications Devices (Examples): Two Way Radios; Portable Phones (including Cellular, Licensed Non-Broadcast and PCS); Low Frequency Readers; and Pagers

A2LA certificate #1651-01, 2518-02

**Statement of Compliance:**

Motorola declares under its sole responsibility that the portable cellular telephone model to which this declaration relates, is in conformity with the appropriate General Population/Uncontrolled RF exposure standards, recommendations and guidelines (FCC 47 CFR §2.1093) as well as with CENELEC en50360:2001 and ANSI / IEEE C95.1. It also declares that the product was tested in accordance with CENELEC en50361:2001, IEEE 1528, as well as other appropriate measurement standards, guidelines and recommended practices. Any deviations from these standards, guidelines and recommended practices are noted below:

(none)

©Motorola, Inc. 2007

This test report shall not be reproduced except in full, without written approval of the laboratory.

The results and statements contained herein relate only to the items tested. The names of individuals involved may be mentioned only in connection with the statements or results from this report.

Motorola encourages all feedback, both positive and negative, on this test report.

**Table of Contents**

<b>1. Introduction</b>	<b>2</b>
<b>2. Description of the Device Under Test</b>	<b>2</b>
2.1 Antenna description	2
2.2 Device description	2
<b>3. Test Equipment Used</b>	<b>3</b>
3.1 Dosimetric System	3
3.2 Additional Equipment	3
<b>4. Electrical parameters of the tissue simulating liquid</b>	<b>4</b>
<b>5. System Accuracy Verification</b>	<b>5</b>
<b>6. Test Results</b>	<b>6</b>
6.1 Head Adjacent Test Results	6
6.2 Body Worn Test Results	9
6.3 Push to Talk Mode Test Results	12
<b>References</b>	<b>13</b>
<b>Appendix 1: SAR distribution comparison for system accuracy verification</b>	<b>14</b>
<b>Appendix 2: SAR distribution plots for Phantom Head Adjacent Use</b>	<b>15</b>
<b>Appendix 3: SAR distribution plots for Body Worn Configuration</b>	<b>16</b>
<b>Appendix 4: SAR distribution plots for Push-To-Talk Use</b>	<b>17</b>
<b>Appendix 5: Probe Calibration Certificate</b>	<b>18</b>
<b>Appendix 6: Measurement Uncertainty Budget</b>	<b>19</b>
<b>Appendix 7: Photographs of the device under test</b>	<b>21</b>
<b>Appendix 8: Dipole Characterization Certificate</b>	<b>27</b>

**1. Introduction**

The Motorola Mobile Devices Business Product Safety Laboratory has performed measurements of the maximum potential exposure to the user of the portable cellular phone covered by this test report. The Specific Absorption Rate (SAR) of this product was measured. The portable cellular phone was tested in accordance with [1], [4] and [5]. The SAR values measured for the portable cellular phone are below the maximum recommended levels of 1.6 W/kg in a 1 g average set in [3] and 2.0 W/kg in a 10 g average set in [2].

For ANSI / IEEE C95.1 (1g), the final SAR reading for this phone is 0.56 W/kg for head adjacent use, 0.73 W/kg for body worn use, and 0.74 W/kg for face-dispatch use. These measurements were performed using a Dasy4™ v4.7 system manufactured by Schmid & Partner Engineering AG (SPEAG), of Zurich Switzerland.

**2. Description of the Device Under Test**

**2.1 Antenna description**

<b>Type</b>	Internal	
<b>Location</b>	Bottom	
<b>Dimensions</b>	Length	35.11 mm
	Width	7.5 mm
<b>Configuration</b>	FJA	

**2.2 Device description**

<b>Serial Number</b>	<b>LVE04D0014</b>											
<b>Mode(s) of Operation</b>	UMTS 800	UMTS 2100	GSM 900	GSM 1800	GSM 1900	GPRS Class 12 900	GPRS Class 12 1800	GPRS Class 12 1900	EDGE Class 12 900	EDGE Class 12 1800	EDGE Class 12 1900	Bluetooth
<b>Modulation Mode(s)</b>	QPSK	QPSK	GMSK	GMSK	GMSK	GMSK	GMSK	GMSK	8PSK	8PSK	8PSK	GFSK
<b>Maximum Output Power Setting</b>	24.00 dBm	24.00 dBm	33.20 dBm	30.00 dBm	30.00 dBm	33.20 dBm	30.00 dBm	30.00 dBm	27.00 dBm	26.00 dBm	26.00 dBm	4.0 dBm
<b>Duty Cycle</b>	1:1	1:1	1:8	1:8	1:8	4:8	4:8	4:8	4:8	4:8	4:8	1:1
<b>Transmitting Frequency Range(s)</b>	826.4-846.6 MHz	1922.4-1977.6 MHz	880.2-914.8 MHz	1710.2-1784.8 MHz	1850.2-1909.8 MHz	880.2-914.8 MHz	1710.2-1784.8 MHz	1850.2-1909.8 MHz	880.2-914.8 MHz	1710.2-1784.8 MHz	1850.2-1909.8 MHz	2400.0 - 2483.5 MHz
<b>Production Unit or Identical Prototype (47 CFR §2.908)</b>	Identical Prototype											
<b>Device Category</b>	Portable											
<b>RF Exposure Limits</b>	General Population / Uncontrolled											

	Channel	RMC	AMR
WCDMA 850	4132	24.05	24.08
	4180	23.83	23.83
	4233	24.35	24.34

### 3. Test Equipment Used

#### 3.1 Dosimetric System

The Motorola Mobile Devices Business Product Safety & Compliance Laboratory utilizes a Dosimetric Assessment System (Dasy4™ v4.6) manufactured by Schmid & Partner Engineering AG (SPEAG™), of Zurich Switzerland. All the SAR measurements are taken within a shielded enclosure. The overall 10g RSS uncertainty of the measurement system is ±10.8% (K=1) with an expanded uncertainty of ±21.6% (K=2). The overall 1 g RSS uncertainty of the measurement system is ±11.1% (K=1) with an expanded uncertainty of ±22.2% (K=2). The measurement uncertainty budget is given in Appendix 6. Per IEEE 1528, this uncertainty budget is applicable to the SAR range of 0.4 W/kg to 10 W/kg.

The list of calibrated equipment used for the measurements is shown in the following table.

Description	Serial Number	Cal Due Date
DASY4™ DAE3 V1	434	Dec-07-2006
DASY4™ DAE3 V1	437	Jul-18-2007
E-Field Probe ET3DV6	1520	May-03-2007
E-Field Probe ES3DV3	3037	Nov-17-2006
Dipole Validation Kit, DV900V2	91	May-22-2007
Dipole Validation Kit, DV900V2	96	May-22-2007
S.A.M. Phantom used for 800/900 MHz	TP-1131	
S.A.M. Phantom used for 800/900 MHz	TP-1005	
Dipole Validation Kit, DV1800V2	259TR	
Dipole Validation Kit, DV1800V2	272TR	
Dipole Validation Kit, DV1900V2	533TR	May-22-2007
S.A.M. Phantom used for 1800/1900 MHz	TP-1139	
S.A.M. Phantom used for 1800/1900 MHz	TP-1250	

#### 3.2 Additional Equipment

Description	Serial Number	Cal Due Date
Signal Generator HP8648C	3847A04822	Jun-30-2007
Power Meter E4419B	GB39510961	Jul-05-2007
Power Sensor #1 – E9301A	US39211008	Jun-28-2007
Power Sensor #2 - E9301A	US39211009	Jun-28-2007
Power Meter 437B	3125U08032	Aug-10-2007
Power Sensor 8481A	US37296470	Jun-28-2007
Signal Generator HP8648C	3847A04633	Jun-30-2007
Power Meter E4419B	GB39511087	Jul-05-2007
Power Sensor #1 – E9301A	MY41495336	Jun-28-2007
Power Sensor #2 - E9301A	US39210918	Aug-17-2007
Network Analyzer HP8753D	3410A04921	Jun-27-2007
Dielectric Probe Kit HP85070C	US99360070	

**4. Electrical parameters of the tissue simulating liquid**

Prior to conducting SAR measurements, the relative permittivity,  $\epsilon_r$ , and the conductivity,  $\sigma$ , of the tissue simulating liquids were measured with a HP85070 Dielectric Probe Kit. These values, along with the temperature of the simulated tissue are shown in the table below. The recommended limits for permittivity and conductivity are also shown. A mass density of  $\rho = 1 \text{ g/cm}^3$  was entered into the system in all the cases. It can be seen that the measured parameters are within tolerance of the recommended limits specified in [1] and [5].

f (MHz)	Tissue type	Limits / Measured	Dielectric Parameters		
			$\epsilon_r$	$\sigma$ (S/m)	Temp (°C)
835	Head	Measured, Sep-13-2006	41.4	0.91	19.7
		Recommended Limits	41.5 ±5%	0.90 ±5%	18-25
	Body	Measured, Sep-22-2006	54.0	0.98	20.4
		Recommended Limits	55.2 ±5%	0.97 ±5%	18-25
900	Head	Measured, Sep-14-2006	40.7	0.97	20.1
		Measured, Oct-11-2006	40.6	0.96	19.6
		Recommended Limits	42.3 ±5%	0.99 ±5%	18-25
	Body	Measured, Sep-21-2006	52.4	1.04	19.2
Recommended Limits		55.0 ±5%	1.05 ±5%	18-25	
1750	Head	Measured, Sep-15-2006	39.0	1.30	19.8
		Measured, Oct-11-2006	39.0	1.30	19.3
		Recommended Limits	40.1 ±5%	1.35 ±5%	18-25
	Body	Measured, Sep-21-2006	51.4	1.43	19.8
Recommended Limits		53.4 ±5%	1.49 ±5%	18-25	
1880	Head	Measured, Sep-13-2006	39.0	1.45	19.3
		Measured, Oct-11-2006	38.4	1.44	19.4
		Recommended Limits	40.0 ±5%	1.40 ±5%	18-25
	Body	Measured, Sep-14-2006	51.2	1.57	19.1
Recommended Limits		53.3 ±5%	1.52 ±5%	18-25	
1950	Head	Measured, Sep-15-2006	38.0	1.50	19.7
		Recommended Limits	39.8 ±5%	1.47 ±5%	18-25
	Body	Measured, Sep-17-2006	52.2	1.57	19.8
		Recommended Limits	53.3 ±5%	1.52 ±5%	18-25

The list of ingredients and the percent composition used for the tissue simulates are indicated in the table below.

Ingredient	835 MHz / 900 MHz Head	835 MHz / 900 MHz Body	1800 MHz / 1900 MHz Head	1800 MHz / 1900 MHz Body	2450 MHz Head	2450 MHz Body
Sugar	57	44.9	--	--	--	--
DGBE	--	--	47	30.8	--	30
Diacetin	--	--	--	--	51	--
Water	40.45	53.06	52.62	68.8	48.75	70
Salt	1.45	0.94	0.38	0.4	0.15	--
HEC	1	1	--	--	--	--
Bact.	0.1	0.1	--	--	0.1	--

**5. System Accuracy Verification**

A system accuracy verification of the DASY4™ was performed using the measurement equipment listed in Section 3.1. The daily system accuracy verification occurs within the flat section of the SAM phantom.

A SAR measurement was performed to verify the measured SAR was within ±10% from the target SAR indicated in Section 8.3.7 Reference SAR Values in [5] or Appendix 7 for the 900 Mhz and 1900 Mhz target reference SAR value. These tests were done at 900 MHz, 1800 MHz, and 1900 MHz. These frequencies are within ±10% of the compliance test mid-band frequency as required in [1] and [5]. The test was conducted on the same days as the measurement of the DUT. Recommended limits for permittivity and conductivity, specified in [5], are shown in the table below. The obtained results from the system accuracy verification are also displayed in the table below. SAR values are normalized to 1 W forward power delivered to the dipole. It is seen that the system is operating within its specification, as the results are within acceptable tolerance of the reference values. The distributions of SAR compare well with those of the reference measurements (see Appendix 1). The tissue stimulant depth was verified to be 15.0 cm ±0.5 cm. Z-axis scans showing the SAR penetration are also included in Appendix 1.

f (MHz)	Description	SAR (W/kg), 1 gram	Dielectric Parameters		Ambient Temp (°C)	Tissue Temp (°C)
			ε <sub>r</sub>	σ (S/m)		
900	Measured, Sep-13-2006	10.725	40.7	0.97	20.5	19.7
	Measured, Sep-14-2006	10.85	40.7	0.97	20.7	20.1
	Measured, Sep-21-2006	11.00	41.2	0.98	21.0	19.2
	Measured, Sep-22-2006	11.125	42.2	0.99	21.1	20.4
	Measured, Oct-11-2006	10.75	40.6	0.96	21.0	19.6
	Recommended Limits	11.3	41.5 ±5%	0.97 ±5%	18-25	18-25
1800	Measured, Sep-13-2006	38.275	39.4	1.36	20.6	19.3
	Measured, Sep-14-2006	38.025	39.3	1.36	20.7	19.1
	Measured, Sep-15-2006	38.725	39.2	1.36	20.5	19.8
	Measured, Sep-21-2006	38.2	40.0	1.37	20.9	19.8
	Measured, Oct-11-2006	38.37	39.5	1.37	20.9	19.7
	Recommended Limits	38.1	40.0 ±5%	1.4 ±5%	18-25	18-25
1900	Measured, Sep-15-2006	41.275	38.2	1.45	20.8	19.7
	Measured, Sep-17-2006	40.425	38.2	1.47	20.8	19.8
	Recommended Limits	40.9	40.0 ±5%	1.4 ±5%	18-25	18-25

The following probe conversion factors were used on the E-Field probe(s) used for the system accuracy verification measurements:

Description	Serial Number	f (MHz)	Conversion Factor	Cal Cert pg #
E-Field Probe ET3DV6	1520	900	6.39	8 of 9
		1810	5.16	8 of 9
E-Field Probe ES3DV3	3037	900	6.07	8 of 9
		1810	5.01	8 of 9

**6. Test Results**

The test sample was operated using an actual transmission through a base station simulator. The base station simulator was setup to the proper channel, transmitter power level and transmit mode of operation. The phone was tested in the configurations stipulated in [1], [4] and [5]. The phone was positioned into these configurations using the device holder supplied with the DASY4™ SAR measurement system. The measured dielectric constant of the material used for the device holder is less than 2.9 and the loss tangent is less than 0.02 (± 30%) at 850 MHz. The default settings for the “coarse” and “cube” scans were chosen and used for measurements. The grid spacing of the course scan was set to 15 cm as shown in the SAR plots included in Appendix 2 and 3. Please refer to the DASY manual for additional information on SAR scanning procedures and algorithms used.

The Cellular Phone model covered by this report has the following battery options:  
 Model SNN5789B - 900 mAH Battery

This battery was used to do all of the SAR testing. The phone was placed in the SAR measurement system with a fully charged battery.

**6.1 Head Adjacent Test Results**

The SAR results shown in tables 1 through 4 are maximum SAR values averaged over 1 gram of phantom tissue, to demonstrate compliance to [3] and also over 10 grams of phantom tissue, to demonstrate compliance to the [6]. Also shown are the measured conducted output powers, the temperature of the simulated tissue after the test, the measured drift and the extrapolated SAR. The exact method of extrapolation is  $New\ SAR = Old\ SAR * 10^{(-drift/10)}$ . The SAR reported at the end of the measurement process by the DASY4™ measurement system can be scaled up by the measured drift to determine the SAR at the beginning of the measurement process. This is the most conservative SAR because it corresponds to the average output power at the beginning of the SAR test. This extrapolation has been done because when the DUT is operating properly it may exhibit a slump in radiated power and SAR over time. This is verified by measuring the SAR drift after the test. Note that 800MHz digital mode SAR measurements were performed in accordance with [4].

The left head and right head SAR contour distributions are similar. Because of this similarity, the cheek/touch and 15° tilt test conditions with the highest SAR values in each band are indicated as bold numbers in the following tables and are included in Appendix 2. All other test conditions measured lower SAR values than those included in Appendix 2.

The SAR measurements were performed using the SAM phantoms listed in section 3.1. Since the same phantoms and simulated tissue were used for the system accuracy verification and the device SAR measurements, the Z-axis scans included in Appendix 1 are applicable for verification of simulated tissue depth to be 15.0 cm ±0.5 cm.

The following probe conversion factors were used on the E-Field probe(s) used for the head adjacent measurements:

Description	Serial Number	f (MHz)	Conversion Factor	Cal Cert pg #
E-Field Probe ET3DV6	1520	900	6.39	8 of 9
		1810	5.16	8 of 9
		1950	4.77	8 of 9

Left Head Cheek Position								
<i>f</i> (MHz)	Description	Conducted Output Power (dBm)	Temp (°C)	Drift (dB)	<i>10g SAR value</i>		<i>1g SAR value</i>	
					Measured (W/kg)	Extrapolated (W/kg)	Measured (W/kg)	Extrapolated (W/kg)
UMTS 800	Channel 4132	23.89						
	Channel 4180	24.07	19.8	-0.082	0.23	0.23	0.551	0.56
	Channel 4233	23.93						
GSM 1900	Channel 512	30.00						
	Channel 661	30.03	20.0	-0.193	0.0541	0.06	0.106	0.11
	Channel 810	29.98						

**Table 1: SAR measurement results at the highest possible output power, measured in a head cheek position against the ICNIRP and ANSI SAR Limit.**

Right Head Cheek Position								
<i>f</i> (MHz)	Description	Conducted Output Power (dBm)	Temp (°C)	Drift (dB)	<i>10g SAR value</i>		<i>1g SAR value</i>	
					Measured (W/kg)	Extrapolated (W/kg)	Measured (W/kg)	Extrapolated (W/kg)
UMTS 800	Channel 4132	23.89						
	Channel 4180	24.07	19.7	-0.0809	0.165	0.17	0.368	0.37
	Channel 4233	23.93						
GSM 1900	Channel 512	30.00						
	Channel 661	30.03	20.0	-0.217	0.187	0.20	0.333	0.35
	Channel 810	29.98						

**Table 2: SAR measurement results at the highest possible output power, measured in a head cheek position against the ICNIRP and ANSI SAR Limit.**

Left Head 15° Tilt Position								
<i>f</i> (MHz)	Description	Conducted Output Power (dBm)	Temp (°C)	Drift (dB)	<i>10g SAR value</i>		<i>1g SAR value</i>	
					Measured (W/kg)	Extrapolated (W/kg)	Measured (W/kg)	Extrapolated (W/kg)
UMTS 800	Channel 4132	23.89						
	Channel 4180	24.07	19.7	-0.12	0.122	0.13	0.161	0.17
	Channel 4233	23.93						
GSM 1900	Channel 512	30.00						
	Channel 661	30.03	20.0	-0.0308	0.0256	0.03	0.0434	0.04
	Channel 810	29.98						

**Table 3: SAR measurement results at the highest possible output power, measured in a head 15° Tilt position against the ICNIRP and ANSI SAR Limit.**

Right Head 15° Tilt Position								
<i>f</i> (MHz)	Description	Conducted Output Power (dBm)	Temp (°C)	Drift (dB)	<i>10g SAR value</i>		<i>1g SAR value</i>	
					Measured (W/kg)	Extrapolated (W/kg)	Measured (W/kg)	Extrapolated (W/kg)
UMTS 800	Channel 4132	23.89						
	Channel 4180	24.07	19.7	-0.029	0.095	0.10	0.132	0.13
	Channel 4233	23.93						
GSM 1900	Channel 512	30.00						
	Channel 661	30.03	20.0	-0.025	0.032	0.032	0.052	0.052
	Channel 810	29.98						

**Table 4: SAR measurement results at the highest possible output power, measured in a head 15° Tilt position against the ICNIRP and ANSI SAR Limit.**

### 6.2 Body Worn Test Results

The SAR results shown in tables 5 through 9 are maximum SAR values averaged over 1 gram of phantom tissue, to demonstrate compliance to [3] and also over 10 grams of phantom tissue, to demonstrate compliance to the [6]. Also shown are the measured conducted output powers, the temperature of the test facility during the test, the temperature of the tissue simulate after the test, the measured drift and the extrapolated SAR. The exact method of extrapolation is  $New\ SAR = Old\ SAR * 10^{(-drift/10)}$ . The SAR reported at the end of the measurement process by the DASY4™ measurement system can be scaled up by the measured drift to determine the SAR at the beginning of the measurement process. This is the most conservative SAR because it corresponds to the average output power at the beginning of the SAR test. This extrapolation has been done because when the DUT is operating properly it may exhibit a slump in radiated power and SAR over time. This is verified by measuring the SAR drift after the test. Note that 800MHz digital mode SAR measurements were performed in accordance with [4].

The test conditions that produced the highest SAR values in each band are indicated as bold numbers in the following tables and are included in Appendix 3. All other test conditions measured lower SAR values than those included in Appendix 3.

A “flat” phantom was for the body-worn tests. This “flat” phantom is made out of 1” thick natural High Density Polyethylene with a thickness at the bottom equal to 2.0 mm. It measures 52.7 cm(long) x 26.7 cm(wide) x 21.2 cm(tall). The measured dielectric constant of the material used is less than 2.3 and the loss tangent is less than 0.0046 all the way up to 2.184 GHz.

The tissue stimulant depth was verified to be 15.0 cm ±0.5 cm. The same device holder described in section 6 was used for positioning the phone. The functional accessories were divided into two categories, the ones with metal components and the ones with non-metal components. For non-metallic component accessories’, testing was performed on the accessory that displayed the closest proximity to the flat phantom. Each metallic component accessory, if any, was checked for uniqueness of metal component so that each is tested with the device. If multiple accessories shared an identical metal component, only the accessory that dictates the closest spacing to the body was tested. In addition to accessory testing, the cellular phone was tested with the front and back of the phone facing the phantom. For voice mode operation, the phone was placed as a distance of 15 mm from the phantom. For data mode operation, the phone was placed as a distance of 25 mm from the phantom. The cellular phone was tested with a headset connected to the device for all body-worn SAR measurements.

There are no Body-Worn Accessories available for this phone:

The following probe conversion factors were used on the E-Field probe(s) used for the body worn measurements:

Description	Serial Number	f (MHz)	Conversion Factor	Cal Cert pg #
E-Field Probe ET3DV6	1520	900	6.10	8 of 9
		1810	4.73	8 of 9
		1950	4.48	8 of 9
E-Field Probe ES3DV3	3037	900	5.93	8 of 9
		1810	4.65	8 of 9

Body-Worn; Front of Phone 15mm from Phantom								
<i>f</i> (MHz)	Description	Conducted Output Power (dBm)	Temp (°C)	Drift (dB)	<i>10g SAR value</i>		<i>1g SAR value</i>	
					Measured (W/kg)	Extrapolated (W/kg)	Measured (W/kg)	Extrapolated (W/kg)
UMTS 800	Channel 4132	23.89						
	Channel 4180	24.07	19.8	-0.0393	0.251	0.25	0.344	0.35
	Channel 4233	23.93						
GSM 1900	Channel 512	30.00						
	Channel 661	30.03	19.6	0.0151	0.108	0.11	0.181	0.18
	Channel 810	29.98						

Table 5: SAR measurement results at the highest possible output power, measured in a body-worn position against the ICNIRP and ANSI SAR Limit.

Body-Worn; Back of Phone 15mm from Phantom								
<i>f</i> (MHz)	Description	Conducted Output Power (dBm)	Temp (°C)	Drift (dB)	<i>10g SAR value</i>		<i>1g SAR value</i>	
					Measured (W/kg)	Extrapolated (W/kg)	Measured (W/kg)	Extrapolated (W/kg)
UMTS 800	Channel 4132	23.89						
	Channel 4180	24.07	19.9	-0.0381	0.458	0.46	0.688	0.69
	Channel 4233	23.93						
GSM 1900	Channel 512	30.00						
	Channel 661	30.03	19.6	-0.0145	0.147	0.15	0.25	0.25
	Channel 810	29.98						

Table 6: SAR measurement results at the highest possible output power, measured in a body-worn position against the ICNIRP and ANSI SAR Limit.

Body-Worn; Back of Phone 15mm from Phantom with Bluetooth Mode Active								
<i>f</i> (MHz)	Description	Conducted Output Power (dBm)	Temp (°C)	Drift (dB)	<i>10g SAR value</i>		<i>1g SAR value</i>	
					Measured (W/kg)	Extrapolated (W/kg)	Measured (W/kg)	Extrapolated (W/kg)
UMTS 800	Channel 4132	23.89						
	Channel 4180	24.07	19.8	-0.107	0.494	0.51	0.71	0.73
	Channel 4233	23.93						
GSM 1900	Channel 512	30.00						
	Channel 661	30.03	19.6	-0.0303	0.183	0.18	0.308	0.31
	Channel 810	29.98						

Table 7: SAR measurement results at the highest possible output power, measured in a body-worn position against the ICNIRP and ANSI SAR Limit.

Body-Worn; Back of Phone 25mm from Phantom with EDGE Class 12 Mode Active								
<i>f</i> (MHz)	Description	Conducted Output Power (dBm)	Temp (°C)	Drift (dB)	<i>10g SAR value</i>		<i>1g SAR value</i>	
					Measured (W/kg)	Extrapolated (W/kg)	Measured (W/kg)	Extrapolated (W/kg)
GSM 1900	Channel 512	25.87						
	Channel 661	25.81	19.6	0.0157	0.0598	0.06	0.0963	0.10
	Channel 810	26.06						

**Table 8: SAR measurement results at the highest possible output power, measured in a body-worn position against the ICNIRP and ANSI SAR Limit.**

Body-Worn; Back of Phone 25mm from Phantom with GPRS Class 12 Mode Active								
<i>f</i> (MHz)	Description	Conducted Output Power (dBm)	Temp (°C)	Drift (dB)	<i>10g SAR value</i>		<i>1g SAR value</i>	
					Measured (W/kg)	Extrapolated (W/kg)	Measured (W/kg)	Extrapolated (W/kg)
GSM 1900	Channel 512	30.00						
	Channel 661	30.03	19.6	-0.081	0.205	0.21	0.332	0.34
	Channel 810	29.98						

**Table 9: SAR measurement results at the highest possible output power, measured in a body-worn position against the ICNIRP and ANSI SAR Limit.**

**6.3 Push-to-Talk/Dispatch Mode Test Results**

The SAR results shown in table 10 are maximum SAR values averaged over 1 gram of phantom tissue, to demonstrate compliance to [3] and also over 10 grams of phantom tissue, to demonstrate compliance to the [6]. Also shown are the measured conducted output powers, the temperature of the simulated tissue after the test, the measured drift and the extrapolated SAR. The exact method of extrapolation is  $New\ SAR = Old\ SAR * 10^{(-drift/10)}$ . The SAR reported at the end of the measurement process by the DASY4™ measurement system can be scaled up by the measured drift to determine the SAR at the beginning of the measurement process. This is the most conservative SAR because it corresponds to the average output power at the beginning of the SAR test. This extrapolation has been done because when the DUT is operating properly it may exhibit a slump in radiated power and SAR over time. This is verified by measuring the SAR drift after the test.

A full data set output of one test condition per band with the highest SAR values from the DASY™ measurement system is included as appendix 4. The test conditions included are indicated as bold numbers in the following tables. All other test conditions measured lower SAR values than those included.

The SAR measurements were performed using the SAM phantoms listed in section 3.1. Since the same phantoms and simulated tissue were used for the system accuracy verification and the device SAR measurements, the Z-axis scans included in Appendix 1 are applicable for verification of simulated tissue depth to be 15.0 cm ± 0.5 cm.

The test sample was operated in an over the air call in GPRS Class 12 mode in the GSM 900, 1800, and 1900 MHz bands. For the purposes of this test the unit is commanded to the proper channel, transmitter power level and transmit mode of operation. The radio was then placed in the SAR measurement system with a fully charged battery. The radio was placed with the front of the device positioned at 2.5 cm from the flat portion of the SAM phantom, as per Supplement C 01-01 with flip open.

The following probe conversion factors were used on the E-Field probe(s) used for the Push-To-Talk measurements:

Description	Serial Number	f (MHz)	Conversion Factor	Cal Cert pg #
E-Field Probe ES3DV3	3037	900	6.07	8 of 9
		1810	5.01	8 of 9

Push-To-Talk with GPRS Class 12 Mode								
f (MHz)	Description	Conducted Output Power (dBm)	Temp (°C)	Drift (dB)	10g SAR value		1g SAR value	
					Measured (W/kg)	Extrapolated (W/kg)	Measured (W/kg)	Extrapolated (W/kg)
GSM 1900	Channel 512	30.00						
	Channel 661	30.03	19.4	0.08	0.461	0.46	0.735	0.74
	Channel 810	29.98						

**Table 10: SAR measurement results at the highest possible output power, measured in a Push-To-Talk position against the ICNIRP and ANSI SAR Limit.**

## References

- [1] CENELEC, en50361:2001 “Basic standard for the measurement of Specific Absorption Rate related to human exposure to electromagnetic fields from mobile phones (300MHz – 3GHz)”
- [2] CENELEC, en50360:2001 “Product standard to demonstrate the compliance of mobile phones with the basic restrictions related to human exposure to electromagnetic fields (300MHz – 3GHz)”.
- [3] ANSI / IEEE, C95.1 1999 Edition “IEEE Standard for Safety Levels with Respect to Human Exposure to Radio Frequency Electromagnetic Fields, 3kHz to 300GHz”
- [4] FCC OET Bulletin 65 Supplement C 01-01
- [5] IEEE 1528 2003 Edition “IEEE Recommended Practice for Determining the Peak Spatial-Average Specific Absorption Rate (SAR) in the Human Head from Wireless Communications Devices: Measurement Techniques”
- [6] ICNIRP Guidelines “Guidelines for Limiting Exposure to Time-Varying Electric, Magnetic, and Electromagnetic Fields (up to 300 GHz)”

## **Appendix 1**

### **SAR distribution comparison for the system accuracy verification**

Date/Time: 9/13/2006 1:45:20 PM

## Test Laboratory: Motorola - 091306 900MHz Good at -5.1%

**DUT: Dipole 900 MHz; Type: D900V2; Serial: D900V2 - SN: 91**

Procedure Notes: 900 MHz System Performance Check; Dipole Sn: 91; PM1 Power = 200 mW  
Sim.Temp@meas = 19.7°C; Sim.Temp@SPC = 19.7°C; Room Temp @ SPC = 20.5°C

Communication System: CW - Dipole; Frequency: 900 MHz; Channel Number: 4; Duty Cycle: 1:1

Medium: VALIDATION Only

Medium parameters used:  $f = 900$  MHz;  $\sigma = 0.97$  mho/m;  $\epsilon_r = 40.7$ ;  $\rho = 1000$  kg/m<sup>3</sup>

DASY4 Configuration:

- Probe: ET3DV6 - SN1520; ConvF(6.39, 6.39, 6.39); Calibrated: 5/3/2006
- Sensor-Surface: 4mm (Mechanical Surface Detection)
- Electronics: DAE3 Sn434; Calibrated: 12/7/2005
- Phantom: R1: Sugar SAM; Type: SAM; Serial: TP-1005;
- Measurement SW: DASY4, V4.7 Build 44; Postprocessing SW: SEMCAD, V1.8 Build 171

### Daily SPC Check/Dipole Area Scan (4x9x1):

Measurement grid: dx=15mm, dy=15mm; Maximum value of SAR (measured) = 2.28 mW/g

### Daily SPC Check/0-Degree 5x5x7 Cube (5x5x7)/Cube 0:

Measurement grid: dx=8mm, dy=8mm, dz=5mm

Reference Value = 48.5 V/m; Power Drift = -0.029 dB; Peak SAR (extrapolated) = 3.26 W/kg

**SAR(1 g) = 2.17 mW/g; SAR(10 g) = 1.39 mW/g; Maximum value of SAR (measured) = 2.34 mW/g**

### Daily SPC Check/90-Degree 5x5x7 Cube (5x5x7)/Cube 0:

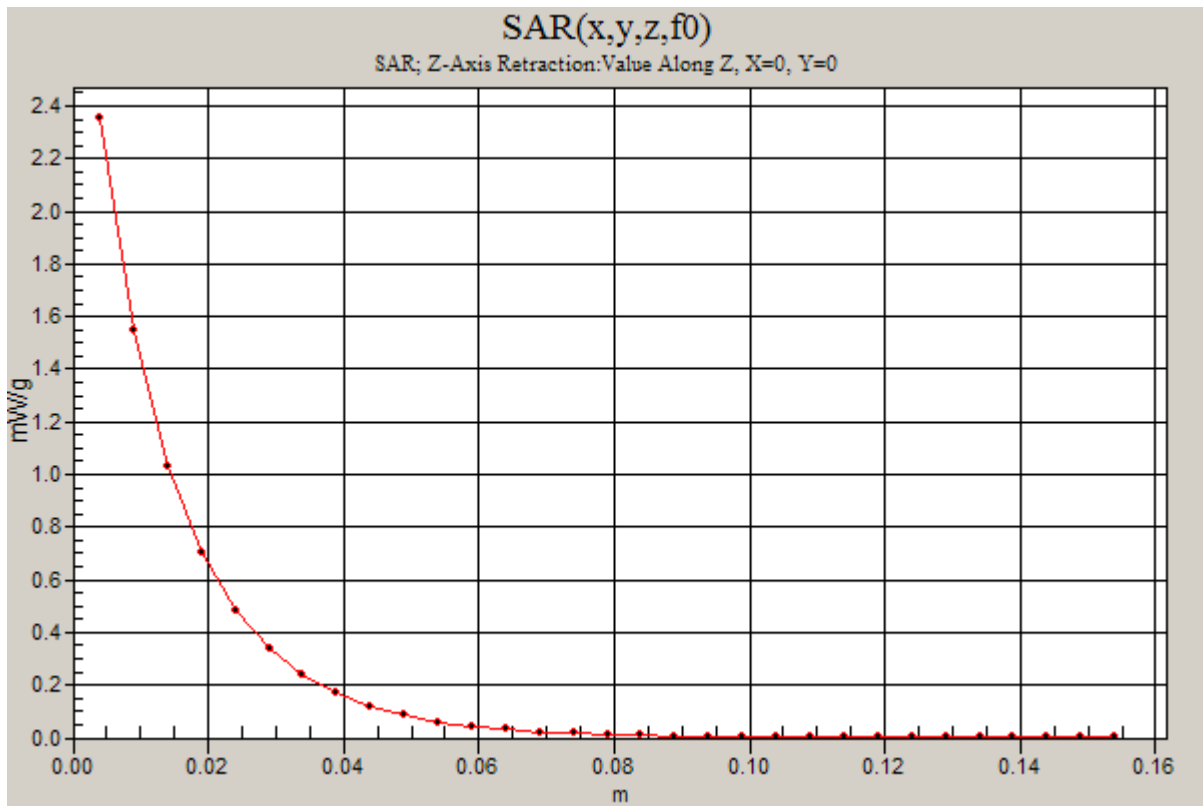
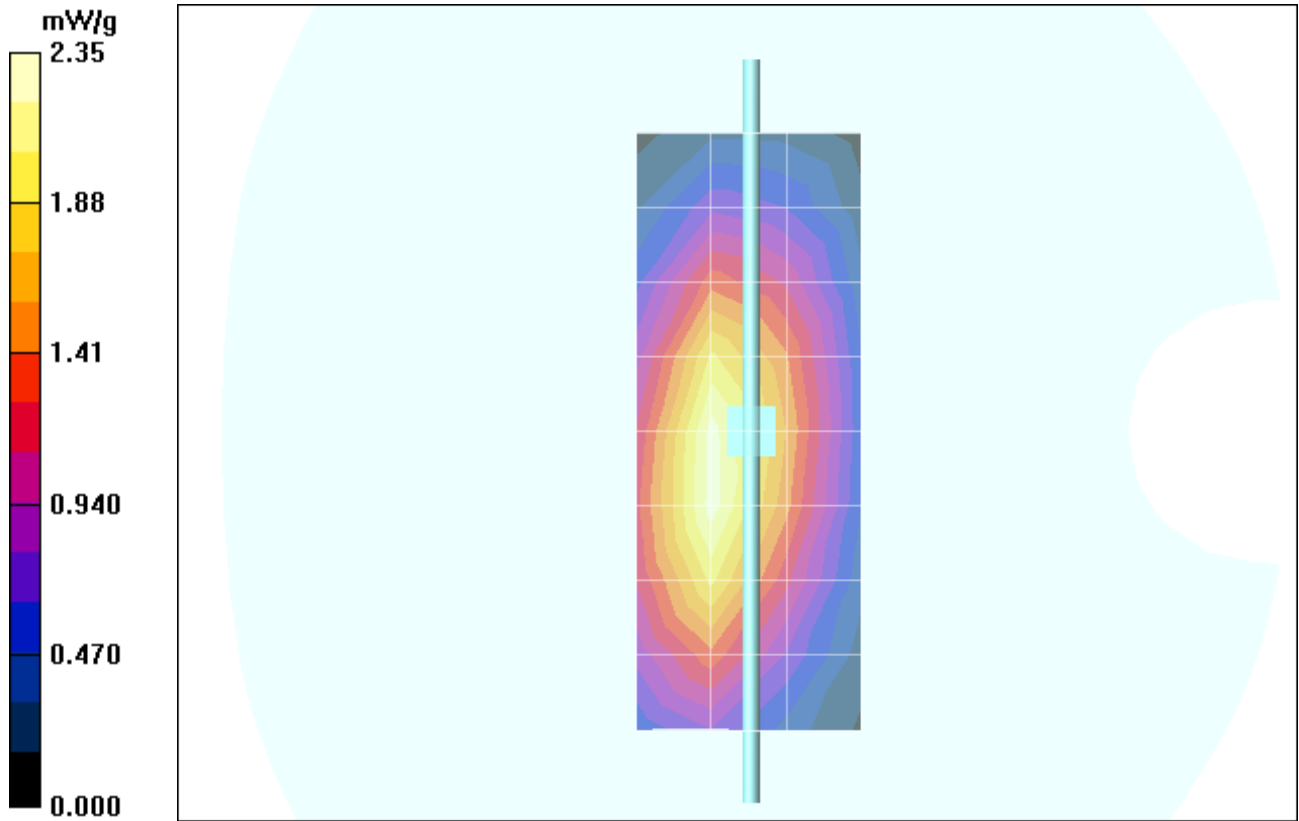
Measurement grid: dx=8mm, dy=8mm, dz=5mm

Reference Value = 48.5 V/m; Power Drift = -0.029 dB; Peak SAR (extrapolated) = 3.20 W/kg

**SAR(1 g) = 2.12 mW/g; SAR(10 g) = 1.36 mW/g; Maximum value of SAR (measured) = 2.30 mW/g**

### Daily SPC Check/Z-Axis Retraction (1x1x31):

Measurement grid: dx=20mm, dy=20mm, dz=5mm; Maximum value of SAR (measured) = 2.35 mW/g



Date/Time: 9/14/2006 7:47:25 AM

## Test Laboratory: Motorola - 091406 900MHz Good at -4.0%

**DUT: Dipole 900 MHz; Type: D900V2; Serial: D900V2 - SN: 91**

Procedure Notes: 900 MHz System Performance Check; Dipole Sn# 091; PM1 Power = 200 mW  
Sim.Temp@meas = 20.1°C; Sim.Temp@SPC = 20.1°C; Room Temp @ SPC = 20.7°C

Communication System: CW - Dipole; Frequency: 900 MHz; Channel Number: 4; Duty Cycle: 1:1

Medium: VALIDATION Only

Medium parameters used:  $f = 900$  MHz;  $\sigma = 0.97$  mho/m;  $\epsilon_r = 40.7$ ;  $\rho = 1000$  kg/m<sup>3</sup>

DASY4 Configuration:

- Probe: ET3DV6 - SN1520; ConvF(6.39, 6.39, 6.39); Calibrated: 5/3/2006
- Sensor-Surface: 4mm (Mechanical Surface Detection)
- Electronics: DAE3 Sn434; Calibrated: 12/7/2005
- Phantom: R1: Sugar SAM; Type: SAM; Serial: TP-1005;
- Measurement SW: DASY4, V4.7 Build 44; Postprocessing SW: SEMCAD, V1.8 Build 171

### Daily SPC Check/Dipole Area Scan (4x9x1):

Measurement grid: dx=15mm, dy=15mm; Maximum value of SAR (measured) = 2.22 mW/g

### Daily SPC Check/0-Degree 5x5x7 Cube (5x5x7)/Cube 0:

Measurement grid: dx=8mm, dy=8mm, dz=5mm

Reference Value = 50.1 V/m; Power Drift = -0.028 dB; Peak SAR (extrapolated) = 3.27 W/kg

**SAR(1 g) = 2.17 mW/g; SAR(10 g) = 1.4 mW/g; Maximum value of SAR (measured) = 2.35 mW/g**

### Daily SPC Check/90-Degree 5x5x7 Cube (5x5x7)/Cube 0:

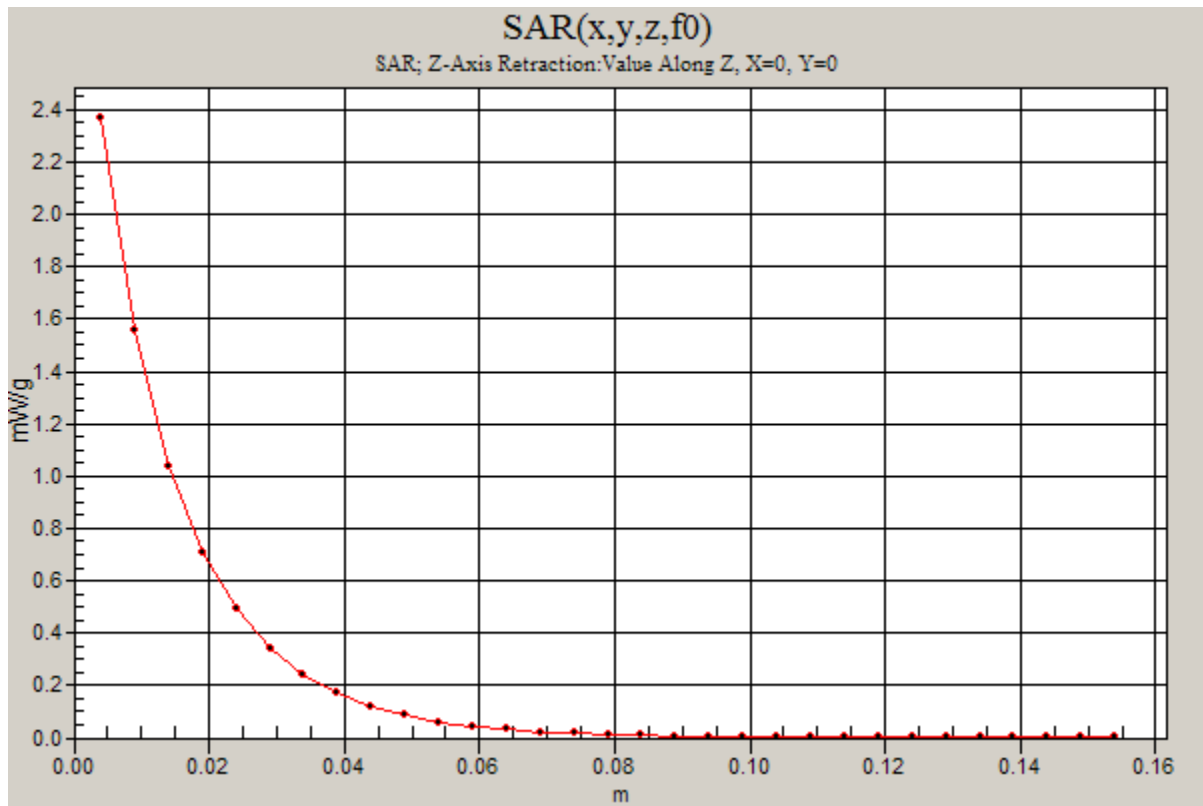
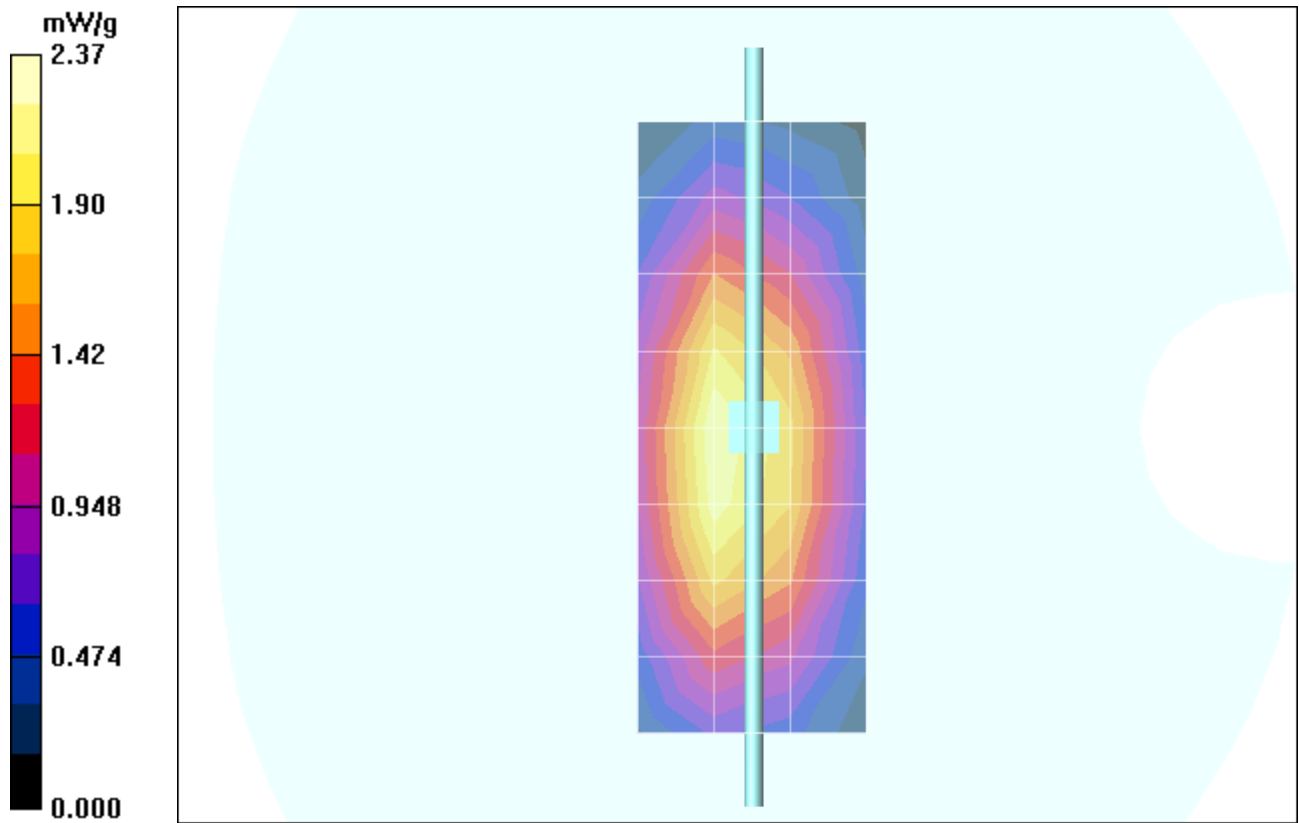
Measurement grid: dx=8mm, dy=8mm, dz=5mm

Reference Value = 50.1 V/m; Power Drift = -0.028 dB; Peak SAR (extrapolated) = 3.27 W/kg

**SAR(1 g) = 2.17 mW/g; SAR(10 g) = 1.39 mW/g; Maximum value of SAR (measured) = 2.34 mW/g**

### Daily SPC Check/Z-Axis Retraction (1x1x31):

Measurement grid: dx=20mm, dy=20mm, dz=5mm; Maximum value of SAR (measured) = 2.37 mW/g



Date/Time: 9/21/2006 9:28:05 AM

## Test Laboratory: Motorola - 092106 900MHz Good at -2.7%

**DUT: Dipole 900 MHz; Type: D900V2; Serial: D900V2 - SN: 96**

Procedure Notes: 900MHz System Performance Check; Dipole Sn# 096; PM1 Power = 200mW  
Sim.Temp@meas = 19.2°C; Sim.Temp@SPC = 19.2°C; Room Temp @ SPC = 21°C

Communication System: CW - Dipole; Frequency: 900 MHz; Channel Number: 4; Duty Cycle: 1:1

Medium: VALIDATION Only

Medium parameters used:  $f = 900$  MHz;  $\sigma = 0.98$  mho/m;  $\epsilon_r = 41.2$ ;  $\rho = 1000$  kg/m<sup>3</sup>

DASY4 Configuration:

- Probe: ES3DV3 - SN3037; ConvF(6.07, 6.07, 6.07); Calibrated: 11/17/2005
- Sensor-Surface: 4mm (Mechanical Surface Detection)
- Electronics: DAE3 Sn437; Calibrated: 7/18/2006
- Phantom: R4: Sugar Water SAM; Type: SAM; Serial: TP-1131;
- Measurement SW: DASY4, V4.7 Build 44; Postprocessing SW: SEMCAD, V1.8 Build 171

### Daily SPC Check/Dipole Area Scan (4x9x1):

Measurement grid: dx=15mm, dy=15mm; Maximum value of SAR (measured) = 2.08 mW/g

### Daily SPC Check/0-Degree 5x5x7 Cube (5x5x7)/Cube 0:

Measurement grid: dx=8mm, dy=8mm, dz=5mm

Reference Value = 50.1 V/m; Power Drift = -0.053 dB; Peak SAR (extrapolated) = 3.23 W/kg

**SAR(1 g) = 2.19 mW/g; SAR(10 g) = 1.41 mW/g; Maximum value of SAR (measured) = 2.37 mW/g**

### Daily SPC Check/90-Degree 5x5x7 Cube (5x5x7)/Cube 0:

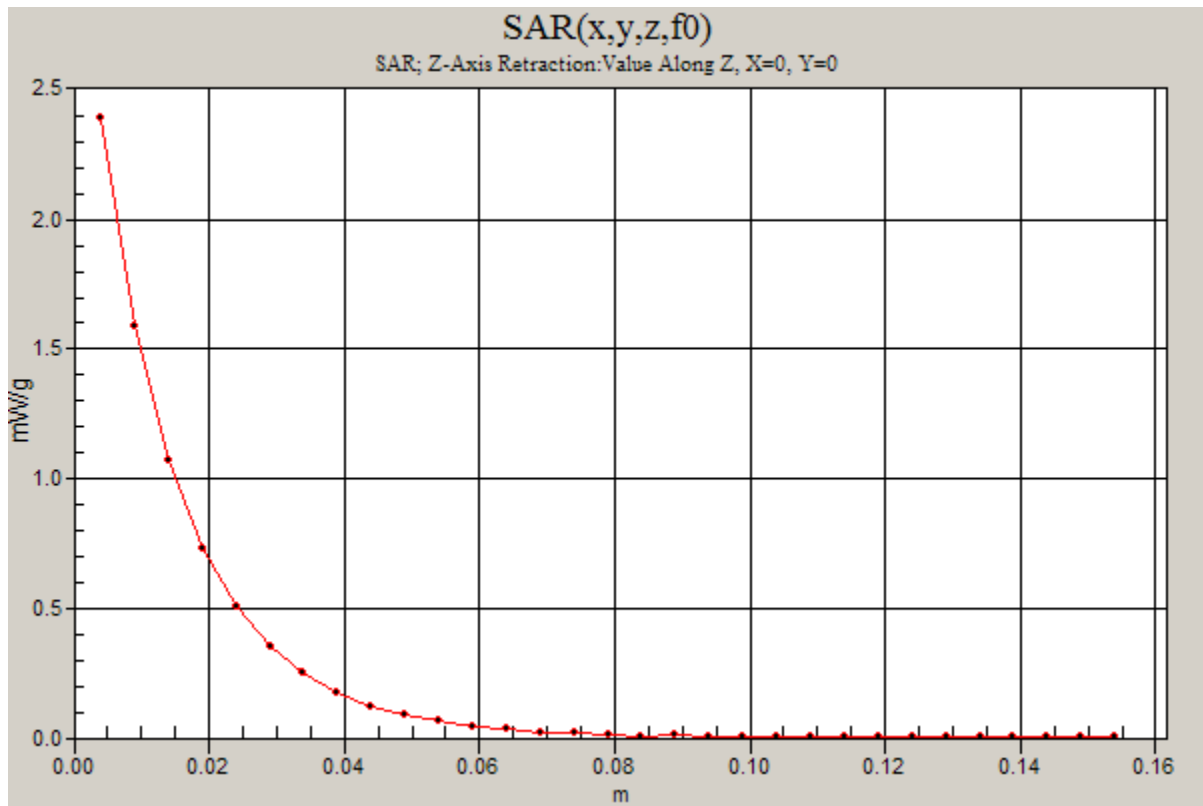
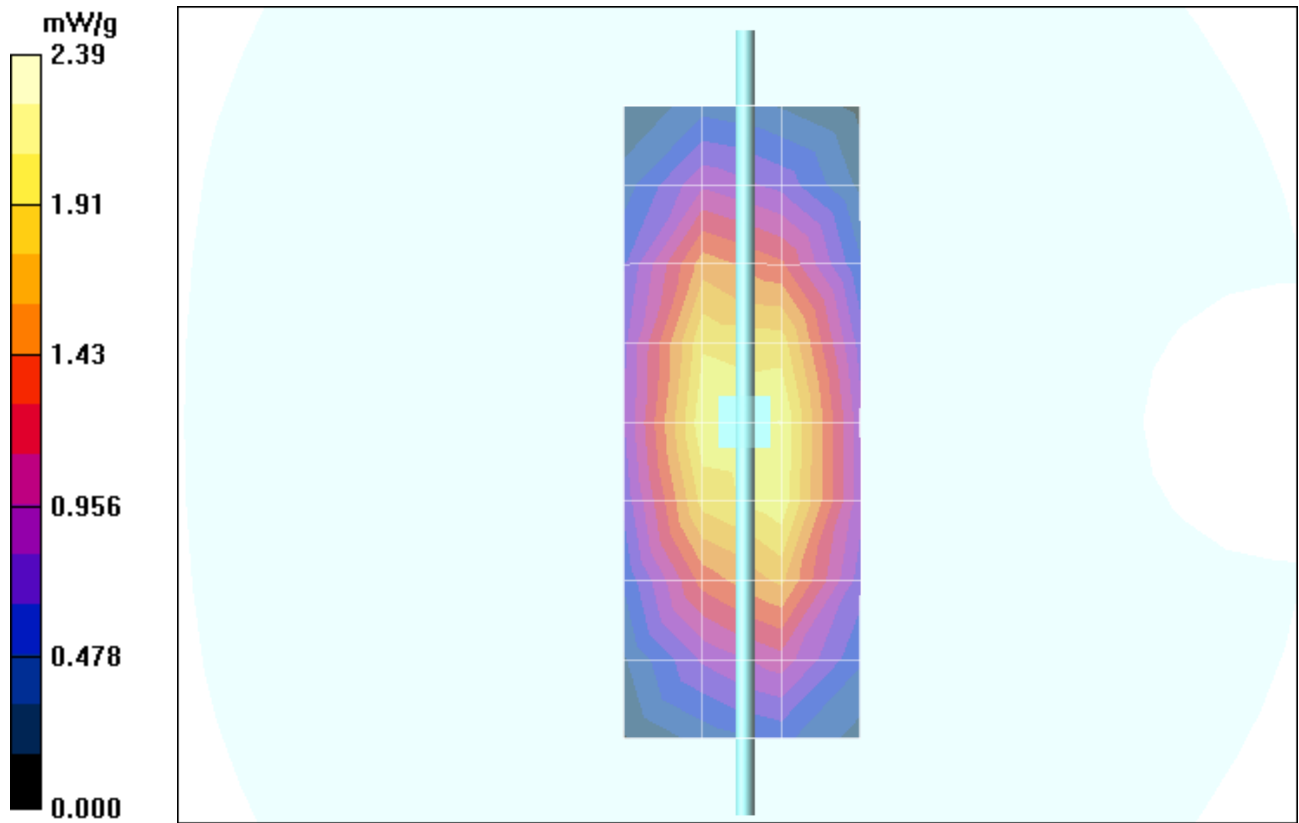
Measurement grid: dx=8mm, dy=8mm, dz=5mm

Reference Value = 50.1 V/m; Power Drift = -0.053 dB; Peak SAR (extrapolated) = 3.24 W/kg

**SAR(1 g) = 2.21 mW/g; SAR(10 g) = 1.44 mW/g; Maximum value of SAR (measured) = 2.38 mW/g**

### Daily SPC Check/Z-Axis Retraction (1x1x31):

Measurement grid: dx=20mm, dy=20mm, dz=5mm; Maximum value of SAR (measured) = 2.39 mW/g



Date/Time: 9/22/2006 8:59:36 AM

## Test Laboratory: Motorola - 092206 900MHz Good at -1.5%

**DUT: Dipole 900 MHz; Type: D900V2; Serial: D900V2 - SN: 91**

Procedure Notes: 900 MHz System Performance Check; Dipole Sn# 091; PM1 Power = 200 mW  
Sim.Temp@meas = 20.4°C; Sim.Temp@SPC = 20.3°C; Room Temp @ SPC = 21.1°C

Communication System: CW - Dipole; Frequency: 900 MHz; Channel Number: 4; Duty Cycle: 1:1

Medium: VALIDATION Only

Medium parameters used:  $f = 900$  MHz;  $\sigma = 0.99$  mho/m;  $\epsilon_r = 42.2$ ;  $\rho = 1000$  kg/m<sup>3</sup>

DASY4 Configuration:

- Probe: ET3DV6 - SN1520; ConvF(6.39, 6.39, 6.39); Calibrated: 5/3/2006
- Sensor-Surface: 4mm (Mechanical Surface Detection)
- Electronics: DAE3 Sn434; Calibrated: 12/7/2005
- Phantom: R1: Sugar SAM; Type: SAM; Serial: TP-1005;
- Measurement SW: DASY4, V4.7 Build 44; Postprocessing SW: SEMCAD, V1.8 Build 171

### Daily SPC Check/Dipole Area Scan (4x9x1):

Measurement grid: dx=15mm, dy=15mm; Maximum value of SAR (measured) = 2.09 mW/g

### Daily SPC Check/0-Degree 5x5x7 Cube (5x5x7)/Cube 0:

Measurement grid: dx=8mm, dy=8mm, dz=5mm

Reference Value = 51.2 V/m; Power Drift = -0.039 dB; Peak SAR (extrapolated) = 3.35 W/kg

**SAR(1 g) = 2.23 mW/g; SAR(10 g) = 1.43 mW/g; Maximum value of SAR (measured) = 2.42 mW/g**

### Daily SPC Check/90-Degree 5x5x7 Cube (5x5x7)/Cube 0:

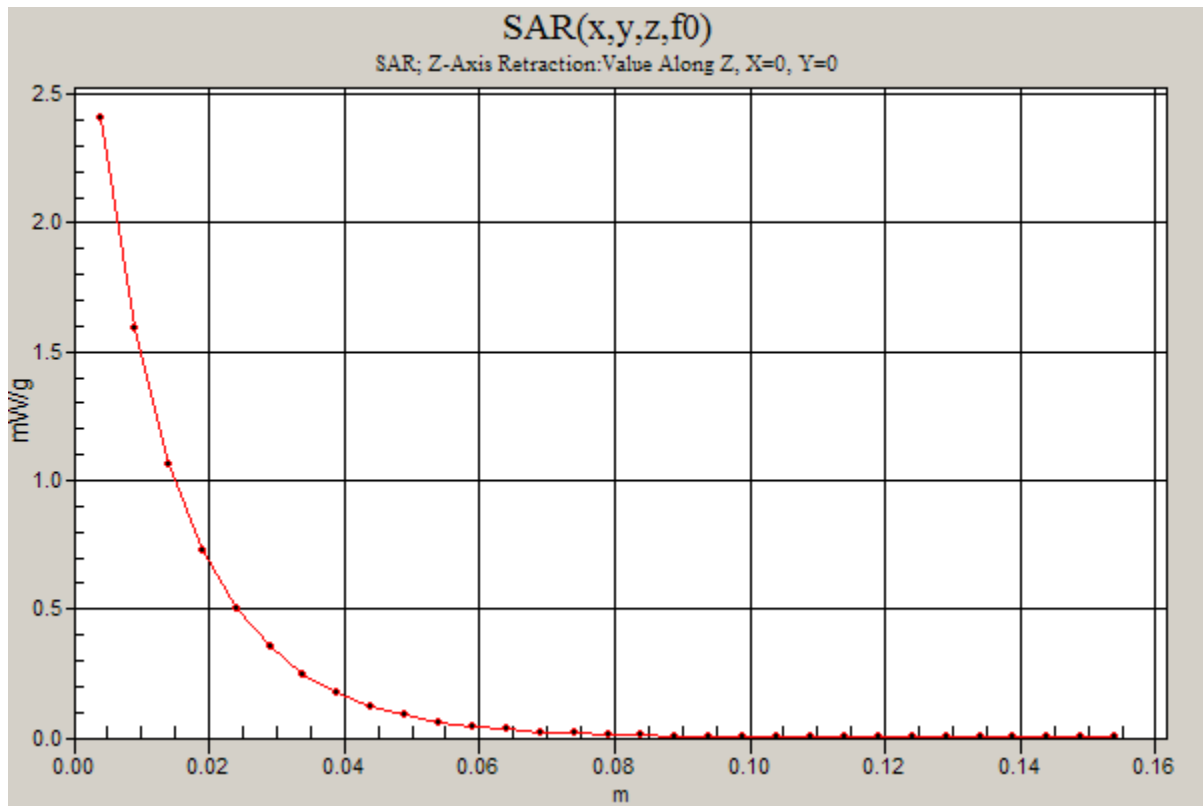
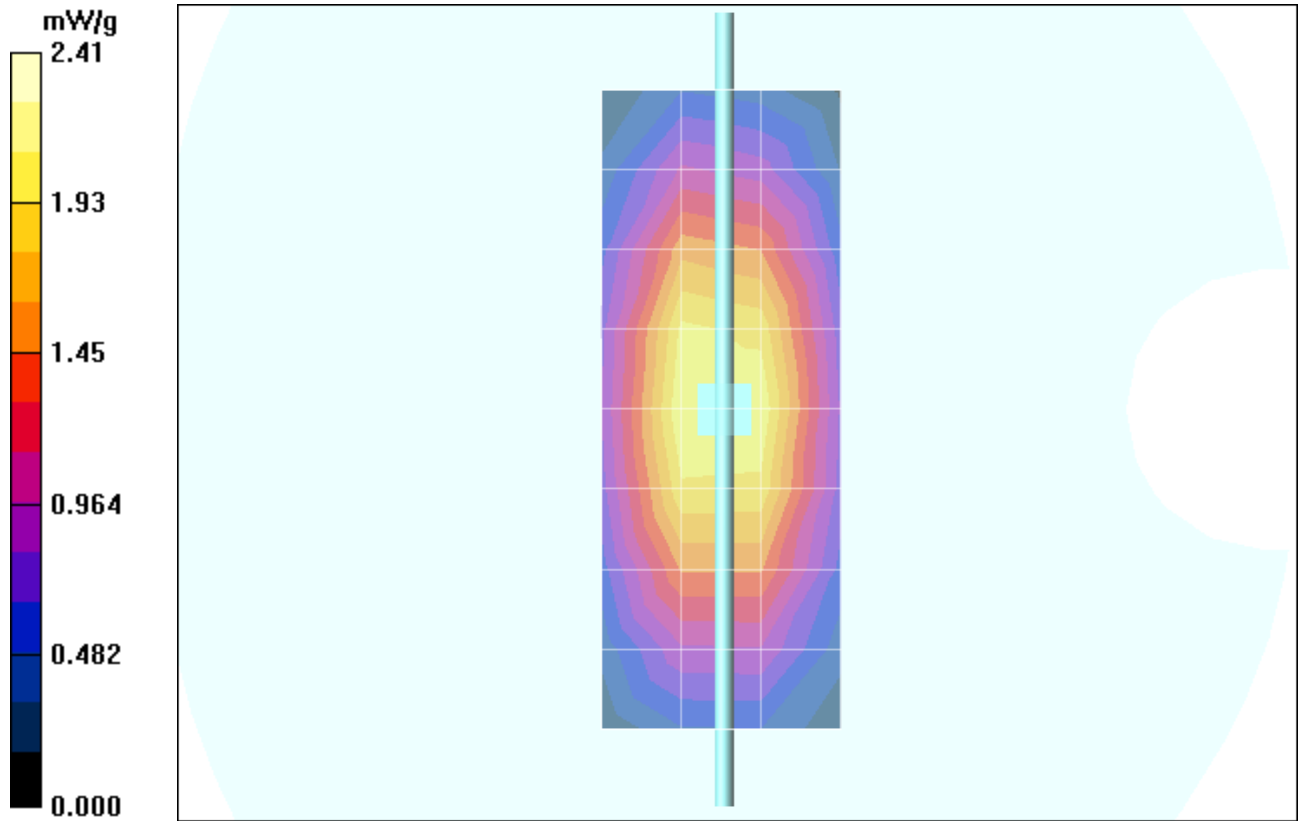
Measurement grid: dx=8mm, dy=8mm, dz=5mm

Reference Value = 51.2 V/m; Power Drift = -0.039 dB; Peak SAR (extrapolated) = 3.34 W/kg

**SAR(1 g) = 2.22 mW/g; SAR(10 g) = 1.43 mW/g; Maximum value of SAR (measured) = 2.38 mW/g**

### Daily SPC Check/Z-Axis Retraction (1x1x31):

Measurement grid: dx=20mm, dy=20mm, dz=5mm; Maximum value of SAR (measured) = 2.41 mW/g



Date/Time: 10/11/2006 8:36:54 AM

**Test Laboratory: Motorola - 101106 900MHz Good at -4.8%****DUT: Dipole 900 MHz; Type: D900V2; Serial: D900V2 - SN:96**Procedure Notes: 900 MHz System Performance Check; Dipole Sn# 096; PM1 Power = 200 mW  
Sim.Temp@meas = 19.6°C; Sim.Temp@SPC = 19.6°C; Room Temp @ SPC = 21°C

Communication System: CW - Dipole; Frequency: 900 MHz; Channel Number: 4; Duty Cycle: 1:1

Medium: VALIDATION Only

Medium parameters used:  $f = 900$  MHz;  $\sigma = 0.96$  mho/m;  $\epsilon_r = 40.6$ ;  $\rho = 1000$  kg/m<sup>3</sup>

DASY4 Configuration:

- Probe: ES3DV3 - SN3037; ConvF(6.07, 6.07, 6.07); Calibrated: 11/17/2005
- Sensor-Surface: 4mm (Mechanical Surface Detection)
- Electronics: DAE3 Sn437; Calibrated: 7/18/2006
- Phantom: R4: Sugar Water SAM; Type: SAM; Serial: TP-1131;
- Measurement SW: DASY4, V4.7 Build 44; Postprocessing SW: SEMCAD, V1.8 Build 171

**Daily SPC Check/Dipole Area Scan (4x9x1):**

Measurement grid: dx=15mm, dy=15mm; Maximum value of SAR (measured) = 2.20 mW/g

**Daily SPC Check/0-Degree 5x5x7 Cube (5x5x7)/Cube 0:**

Measurement grid: dx=8mm, dy=8mm, dz=5mm

Reference Value = 49.4 V/m; Power Drift = -0.008 dB; Peak SAR (extrapolated) = 3.18 W/kg

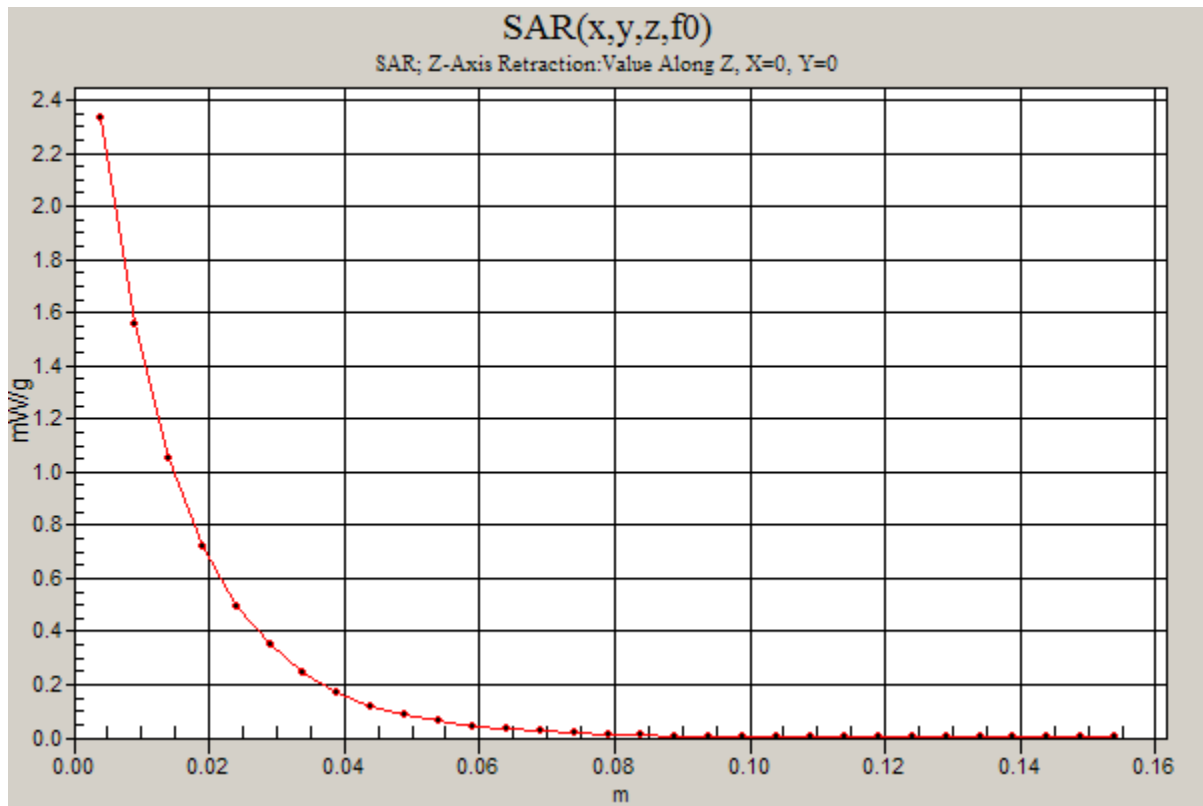
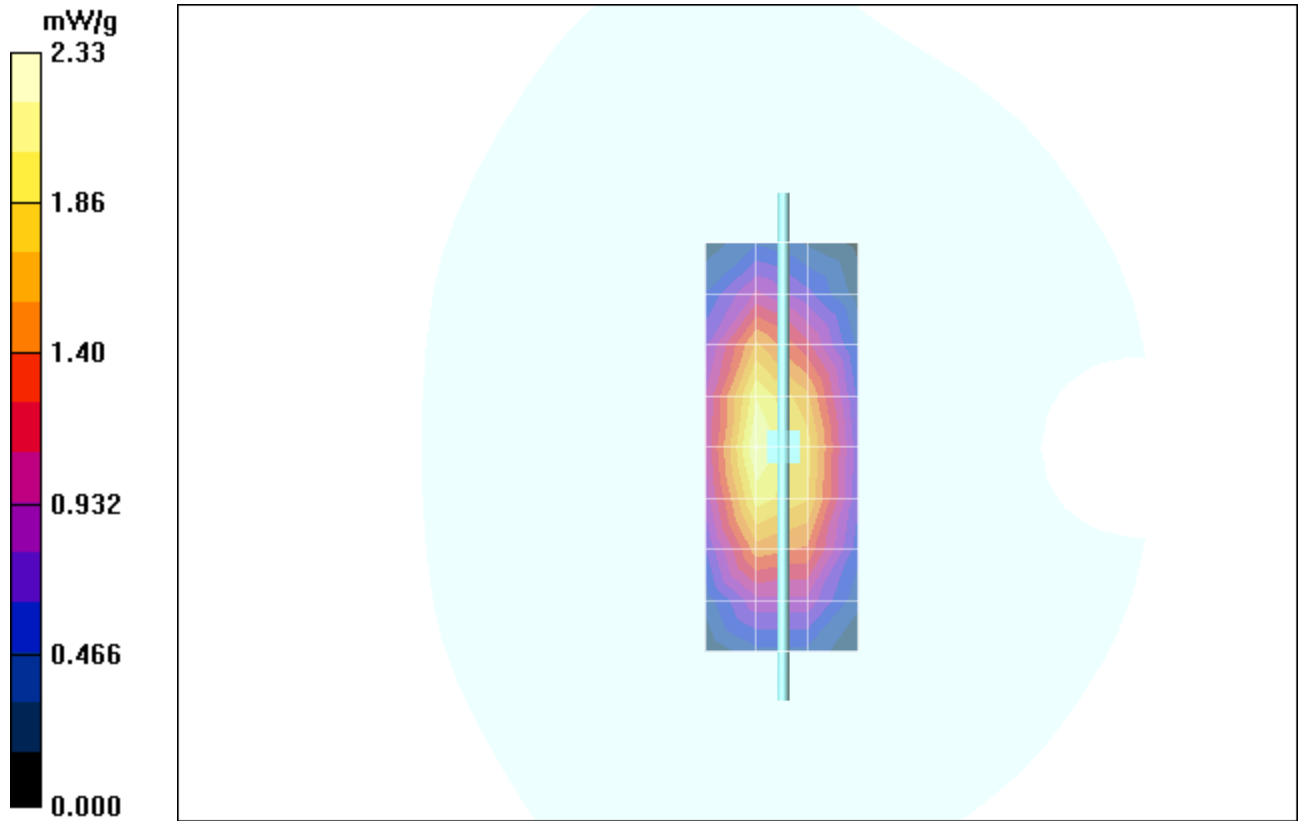
**SAR(1 g) = 2.14 mW/g; SAR(10 g) = 1.38 mW/g; Maximum value of SAR (measured) = 2.33 mW/g****Daily SPC Check/90-Degree 5x5x7 Cube (5x5x7)/Cube 0:**

Measurement grid: dx=8mm, dy=8mm, dz=5mm

Reference Value = 49.4 V/m; Power Drift = -0.008 dB; Peak SAR (extrapolated) = 3.13 W/kg

**SAR(1 g) = 2.14 mW/g; SAR(10 g) = 1.39 mW/g; Maximum value of SAR (measured) = 2.26 mW/g****Daily SPC Check/Z-Axis Retraction (1x1x31):**

Measurement grid: dx=20mm, dy=20mm, dz=5mm



Date/Time: 9/13/2006 1:08:45 PM

## Test Laboratory: Motorola - 091306 1800MHz Good at .5%

**DUT: Dipole 1800 MHz; Type: D1800V2; Serial: D1800V2 - SN: 259TR**

Procedure Notes: 1800MHz System Performance Check; Dipole Sn# 259TR; PM1 Power = 200 mW  
Sim.Temp@meas = 19.3°C; Sim.Temp@SPC = 19.2°C; Room Temp @ SPC = 20.6°C

Communication System: CW - Dipole; Frequency: 1800 MHz; Channel Number: 8; Duty Cycle: 1:1

Medium: VALIDATION Only

Medium parameters used:  $f = 1800$  MHz;  $\sigma = 1.36$  mho/m;  $\epsilon_r = 39.4$ ;  $\rho = 1000$  kg/m<sup>3</sup>

DASY4 Configuration:

- Probe: ET3DV6 - SN1520; ConvF(5.16, 5.16, 5.16); Calibrated: 5/3/2006
- Sensor-Surface: 4mm (Mechanical Surface Detection)
- Electronics: DAE3 Sn434; Calibrated: 12/7/2005
- Phantom: R1: Sect.2, Amy Twin; Type: Amy Twin Flat; Serial: n/a;
- Measurement SW: DASY4, V4.7 Build 44; Postprocessing SW: SEMCAD, V1.8 Build 171

### Daily SPC Check/Dipole Area Scan (9x4x1):

Measurement grid: dx=15mm, dy=15mm; Maximum value of SAR (measured) = 6.47 mW/g

### Daily SPC Check/0-Degree 5x5x7 Cube (5x5x7)/Cube 0:

Measurement grid: dx=8mm, dy=8mm, dz=5mm

Reference Value = 84.0 V/m; Power Drift = -0.060 dB; Peak SAR (extrapolated) = 13.1 W/kg

**SAR(1 g) = 7.71 mW/g; SAR(10 g) = 4.14 mW/g;** Maximum value of SAR (measured) = 8.62 mW/g

### Daily SPC Check/90-Degree 5x5x7 Cube (5x5x7)/Cube 0:

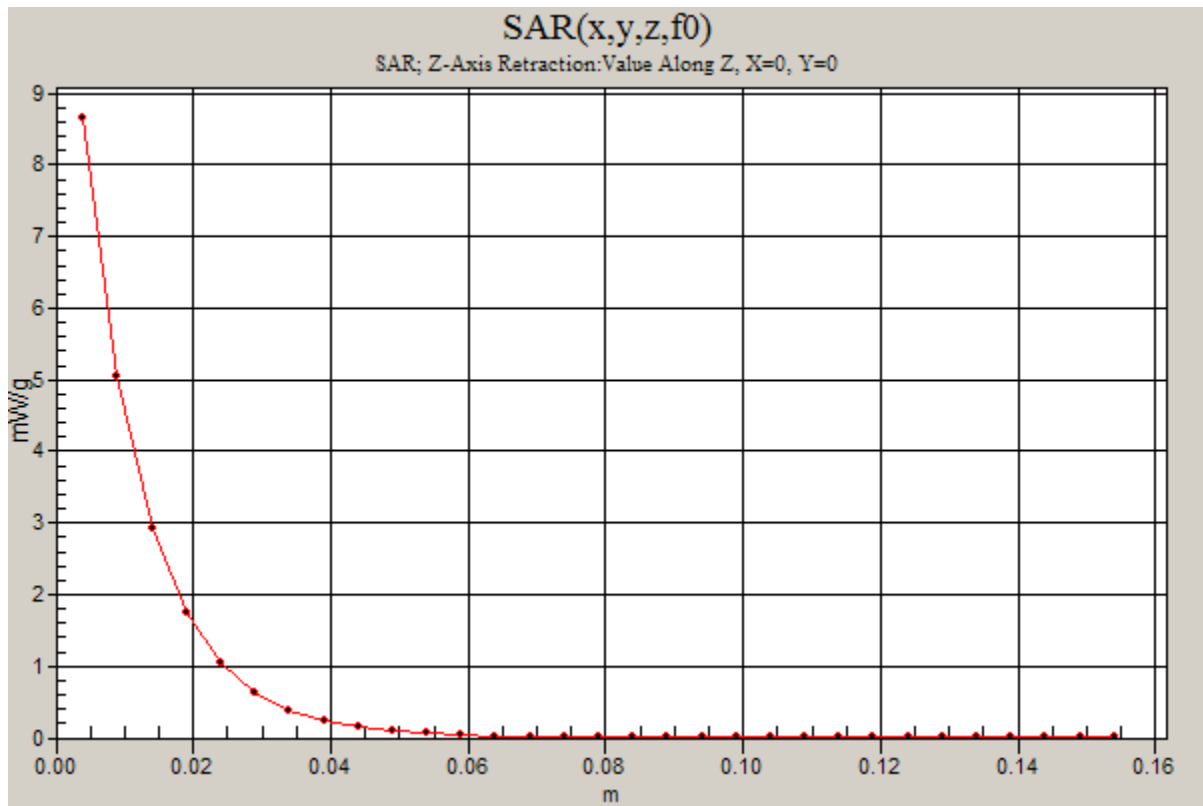
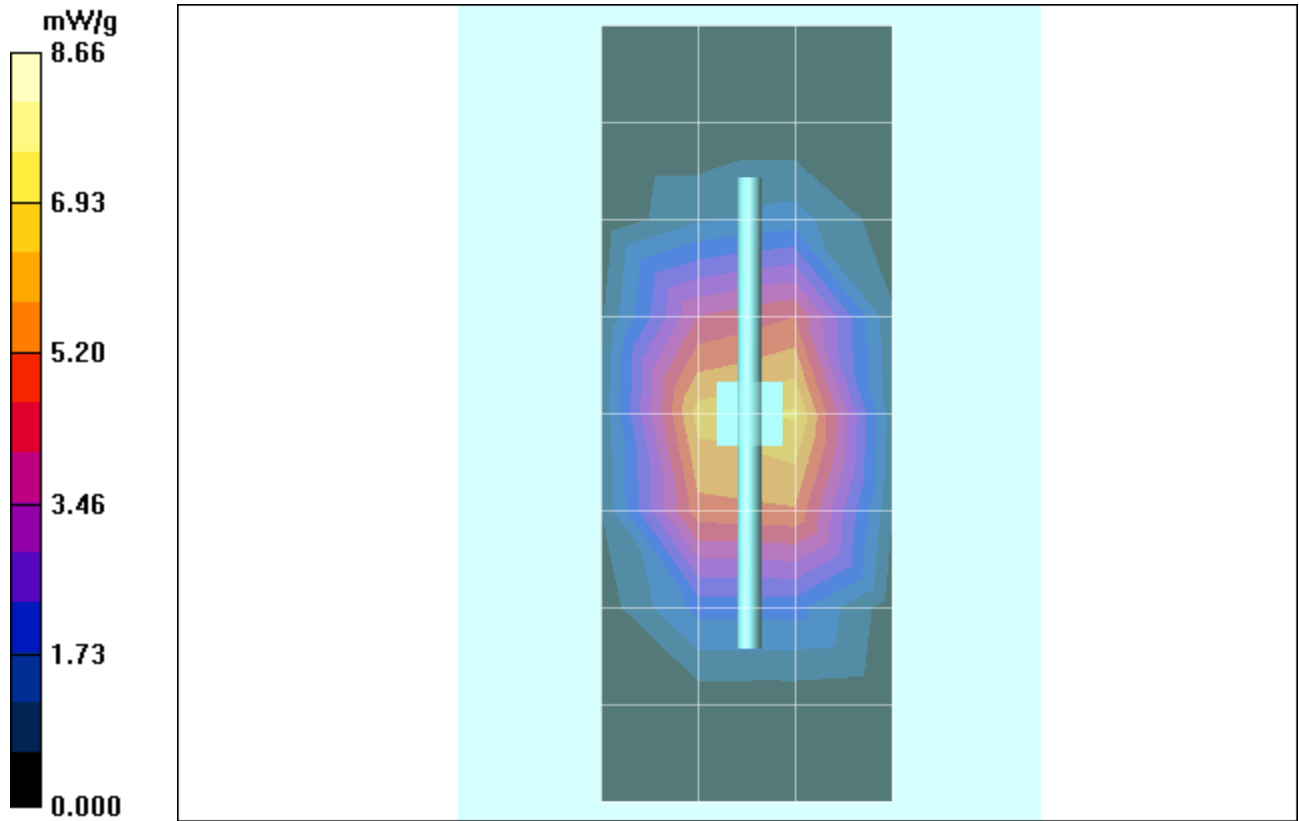
Measurement grid: dx=8mm, dy=8mm, dz=5mm

Reference Value = 84.0 V/m; Power Drift = -0.060 dB; Peak SAR (extrapolated) = 12.9 W/kg

**SAR(1 g) = 7.6 mW/g; SAR(10 g) = 4.08 mW/g;** Maximum value of SAR (measured) = 8.53 mW/g

### Daily SPC Check/Z-Axis Retraction (1x1x31):

Measurement grid: dx=20mm, dy=20mm, dz=5mm; Maximum value of SAR (measured) = 8.66 mW/g



Date/Time: 9/14/2006 7:03:57 AM

## Test Laboratory: Motorola - 091406 1800MHz Good at -0.2%

**DUT: Dipole 1800 MHz; Type: D1800V2; Serial: D1800V2 - SN:259TR**

Procedure Notes: 1880 MHz System Performance Check; Dipole Sn# 259TR; PM1 Power = 200 mW  
Sim.Temp@meas = 19.1°C; Sim.Temp@SPC = 19.7°C; Room Temp @ SPC = 20.7°C

Communication System: CW - Dipole; Frequency: 1800 MHz; Channel Number: 8; Duty Cycle: 1:1

Medium: VALIDATION Only

Medium parameters used:  $f = 1800$  MHz;  $\sigma = 1.36$  mho/m;  $\epsilon_r = 39.3$ ;  $\rho = 1000$  kg/m<sup>3</sup>

DASY4 Configuration:

- Probe: ET3DV6 - SN1520; ConvF(5.16, 5.16, 5.16); Calibrated: 5/3/2006
- Sensor-Surface: 4mm (Mechanical Surface Detection)
- Electronics: DAE3 Sn434; Calibrated: 12/7/2005
- Phantom: R1: Sect.2, Amy Twin; Type: Amy Twin Flat; Serial: n/a;
- Measurement SW: DASY4, V4.7 Build 44; Postprocessing SW: SEMCAD, V1.8 Build 171

### Daily SPC Check/Dipole Area Scan (9x4x1):

Measurement grid: dx=15mm, dy=15mm; Maximum value of SAR (measured) = 6.61 mW/g

### Daily SPC Check/0-Degree 5x5x7 Cube (5x5x7)/Cube 0:

Measurement grid: dx=8mm, dy=8mm, dz=5mm

Reference Value = 83.0 V/m; Power Drift = -0.024 dB; Peak SAR (extrapolated) = 12.8 W/kg

**SAR(1 g) = 7.6 mW/g; SAR(10 g) = 4.1 mW/g; Maximum value of SAR (measured) = 8.51 mW/g**

### Daily SPC Check/90-Degree 5x5x7 Cube (5x5x7)/Cube 0:

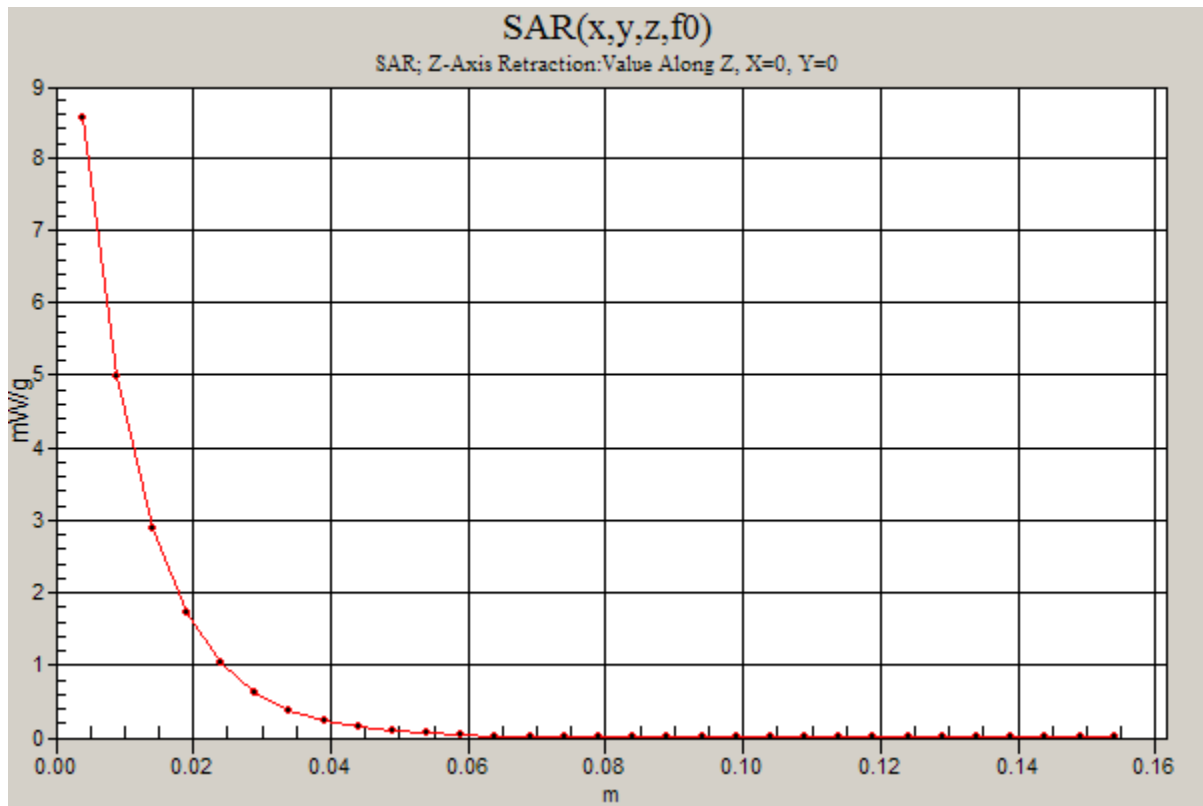
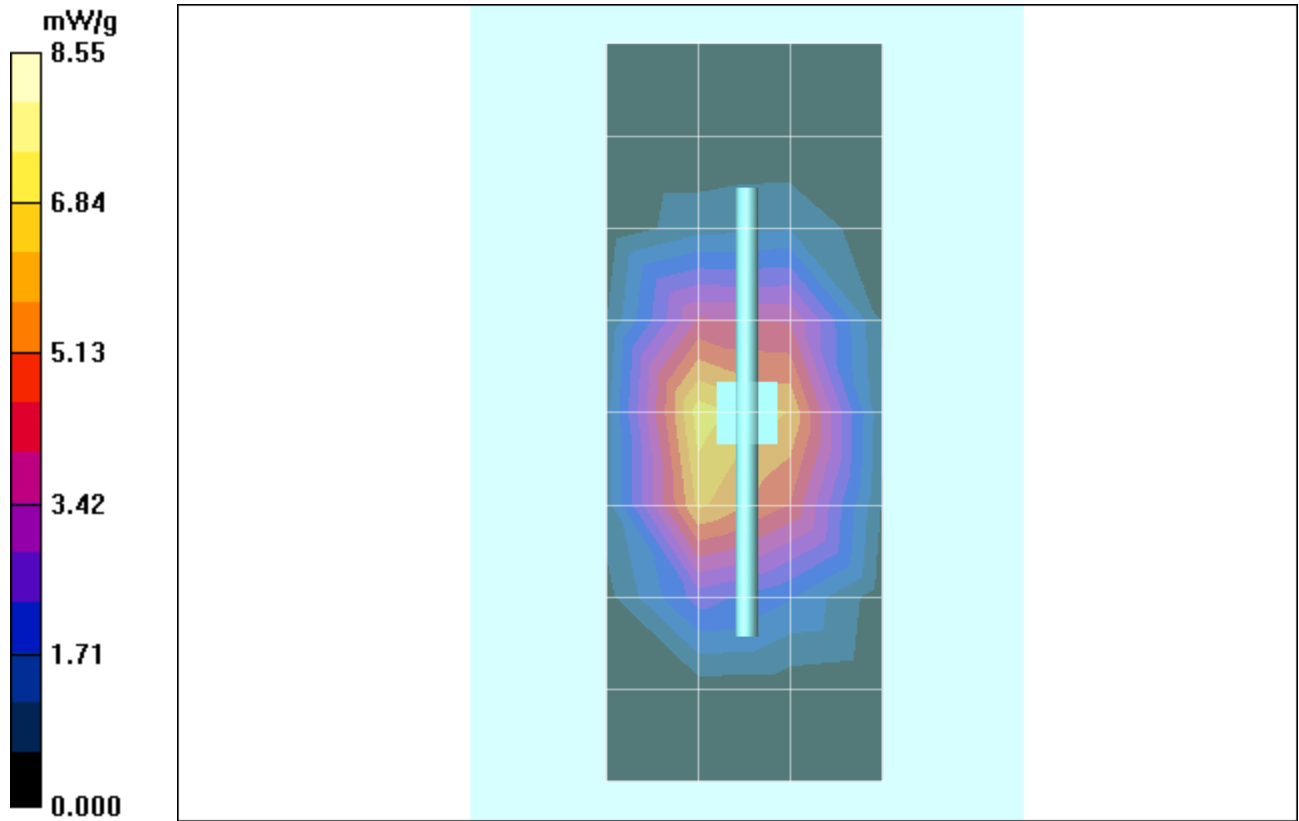
Measurement grid: dx=8mm, dy=8mm, dz=5mm

Reference Value = 83.0 V/m; Power Drift = -0.024 dB; Peak SAR (extrapolated) = 12.9 W/kg

**SAR(1 g) = 7.61 mW/g; SAR(10 g) = 4.11 mW/g; Maximum value of SAR (measured) = 8.36 mW/g**

### Daily SPC Check/Z-Axis Retraction (1x1x31):

Measurement grid: dx=20mm, dy=20mm, dz=5mm; Maximum value of SAR (measured) = 8.55 mW/g



Date/Time: 9/15/2006 6:55:50 AM

## Test Laboratory: Motorola - 091506 1800MHz Good at +1.6%

**DUT: Dipole 1800 MHz; Type: D1800V2; Serial: D1800V2 - SN: 259TR**

Procedure Notes: 1800 MHz System Performance Check; Dipole Sn# 259TR; PM1 Power = 200 mW  
Sim.Temp@meas = 19.8°C; Sim.Temp@SPC = 20.0°C; Room Temp @ SPC = 20.5°C

Communication System: CW - Dipole; Frequency: 1800 MHz; Channel Number: 8; Duty Cycle: 1:1

Medium: VALIDATION Only

Medium parameters used:  $f = 1800$  MHz;  $\sigma = 1.36$  mho/m;  $\epsilon_r = 39.2$ ;  $\rho = 1000$  kg/m<sup>3</sup>

DASY4 Configuration:

- Probe: ET3DV6 - SN1520; ConvF(5.16, 5.16, 5.16); Calibrated: 5/3/2006
- Sensor-Surface: 4mm (Mechanical Surface Detection)
- Electronics: DAE3 Sn434; Calibrated: 12/7/2005
- Phantom: R1: Sect.2, Amy Twin; Type: Amy Twin Flat; Serial: n/a;
- Measurement SW: DASY4, V4.7 Build 44; Postprocessing SW: SEMCAD, V1.8 Build 171

### Daily SPC Check/Dipole Area Scan (9x4x1):

Measurement grid: dx=15mm, dy=15mm; Maximum value of SAR (measured) = 7.66 mW/g

### Daily SPC Check/0-Degree 5x5x7 Cube (5x5x7)/Cube 0:

Measurement grid: dx=8mm, dy=8mm, dz=5mm

Reference Value = 83.0 V/m; Power Drift = -0.038 dB; Peak SAR (extrapolated) = 13.0 W/kg

**SAR(1 g) = 7.81 mW/g; SAR(10 g) = 4.22 mW/g; Maximum value of SAR (measured) = 8.72 mW/g**

### Daily SPC Check/90-Degree 5x5x7 Cube (5x5x7)/Cube 0:

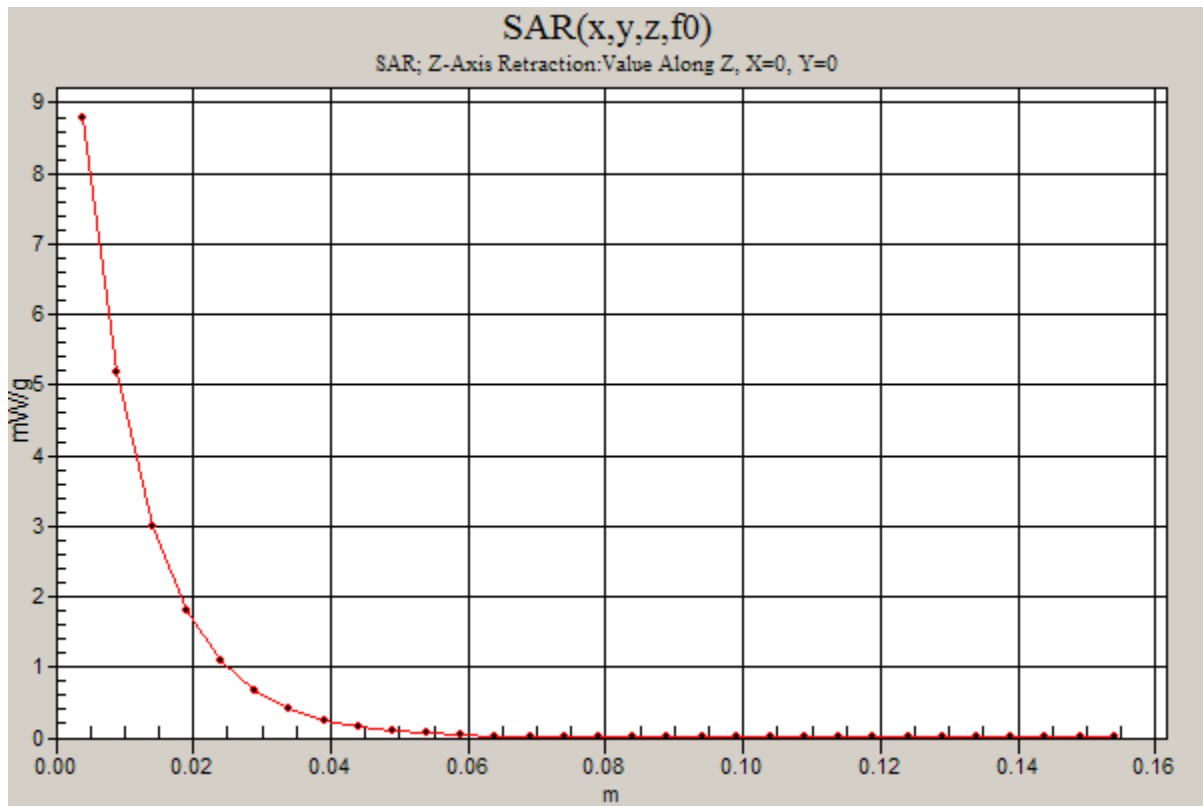
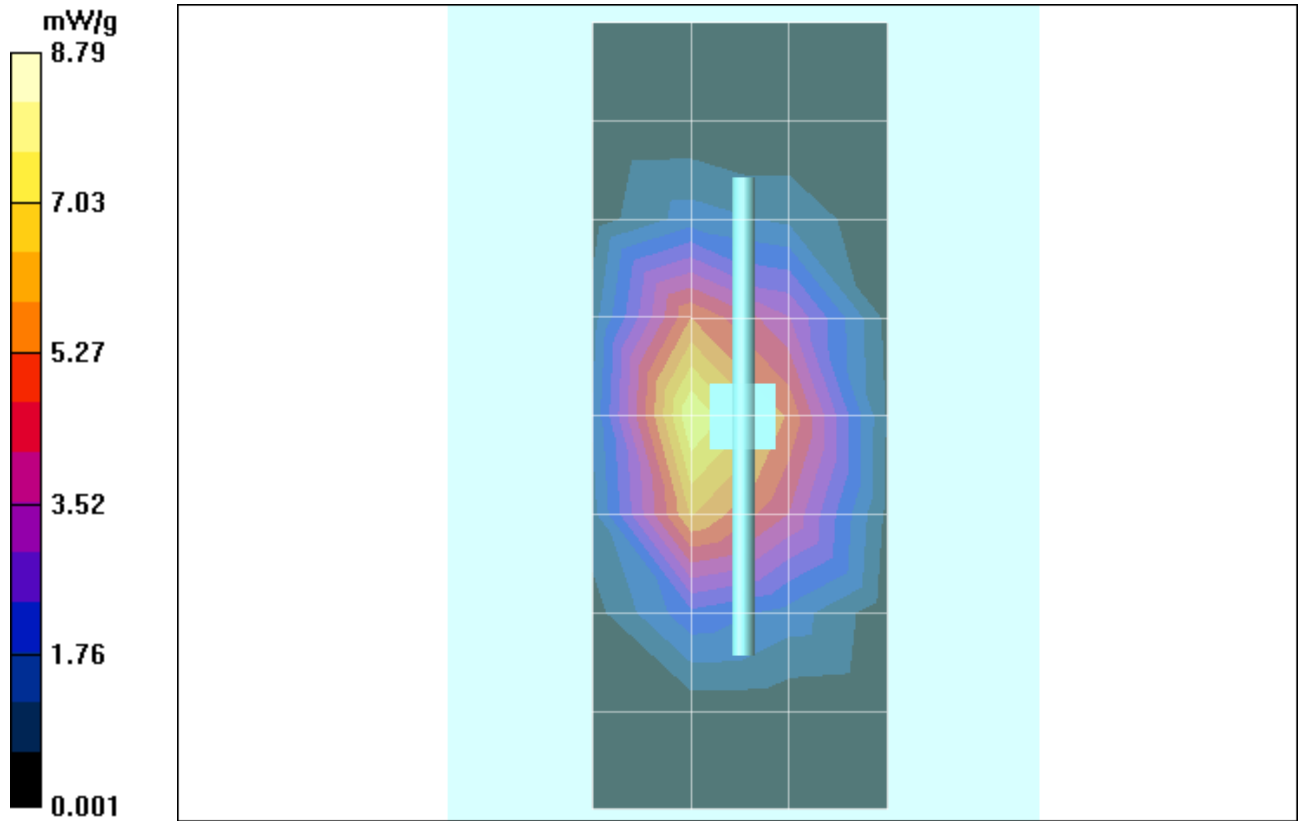
Measurement grid: dx=8mm, dy=8mm, dz=5mm

Reference Value = 83.0 V/m; Power Drift = -0.038 dB; Peak SAR (extrapolated) = 12.9 W/kg

**SAR(1 g) = 7.68 mW/g; SAR(10 g) = 4.14 mW/g; Maximum value of SAR (measured) = 8.59 mW/g**

### Daily SPC Check/Z-Axis Retraction (1x1x31):

Measurement grid: dx=20mm, dy=20mm, dz=5mm; Maximum value of SAR (measured) = 8.79 mW/g



Date/Time: 9/21/2006 8:58:41 AM

## Test Laboratory: Motorola - 092106 1800MHz Good at +0.3%

**DUT: Dipole 1800 MHz; Type: D1800V2; Serial: D1800V2 - SN:272TR**

Procedure Notes: 1800 MHz System Performance Check; Dipole Sn# 272(TR); PM1 Power = 200mW  
Sim.Temp@meas = 19.8°C; Sim.Temp@SPC = 19.8°C; Room Temp @ SPC = 20.9°C;

Communication System: CW - Dipole; Frequency: 1800 MHz; Channel Number: 8; Duty Cycle: 1:1

Medium: VALIDATION Only

Medium parameters used:  $f = 1800$  MHz;  $\sigma = 1.37$  mho/m;  $\epsilon_r = 40$ ;  $\rho = 1000$  kg/m<sup>3</sup>

DASY4 Configuration:

- Probe: ES3DV3 - SN3037; ConvF(5.01, 5.01, 5.01); Calibrated: 11/17/2005
- Sensor-Surface: 4mm (Mechanical Surface Detection)
- Electronics: DAE3 Sn437; Calibrated: 7/18/2006
- Phantom: R4 : Sect.2, Amy Twin; Type: Amy Twin Flat; Serial: n/a;
- Measurement SW: DASY4, V4.7 Build 44; Postprocessing SW: SEMCAD, V1.8 Build 171

### Daily SPC Check/Dipole Area Scan (9x4x1):

Measurement grid: dx=15mm, dy=15mm; Maximum value of SAR (measured) = 7.45 mW/g

### Daily SPC Check/0-Degree 5x5x7 Cube (5x5x7)/Cube 0:

Measurement grid: dx=8mm, dy=8mm, dz=5mm

Reference Value = 79.2 V/m; Power Drift = -0.019 dB; Peak SAR (extrapolated) = 12.9 W/kg

**SAR(1 g) = 7.59 mW/g; SAR(10 g) = 4.08 mW/g; Maximum value of SAR (measured) = 8.46 mW/g**

### Daily SPC Check/90-Degree 5x5x7 Cube (5x5x7)/Cube 0:

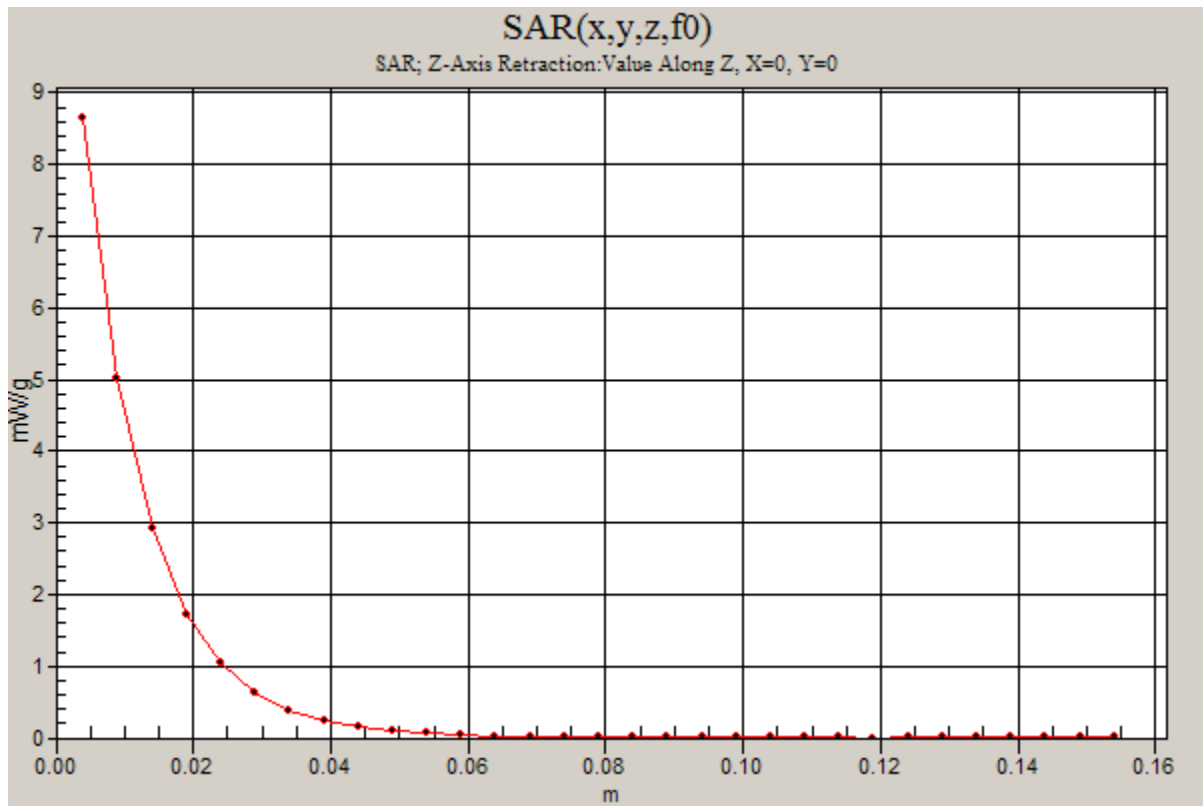
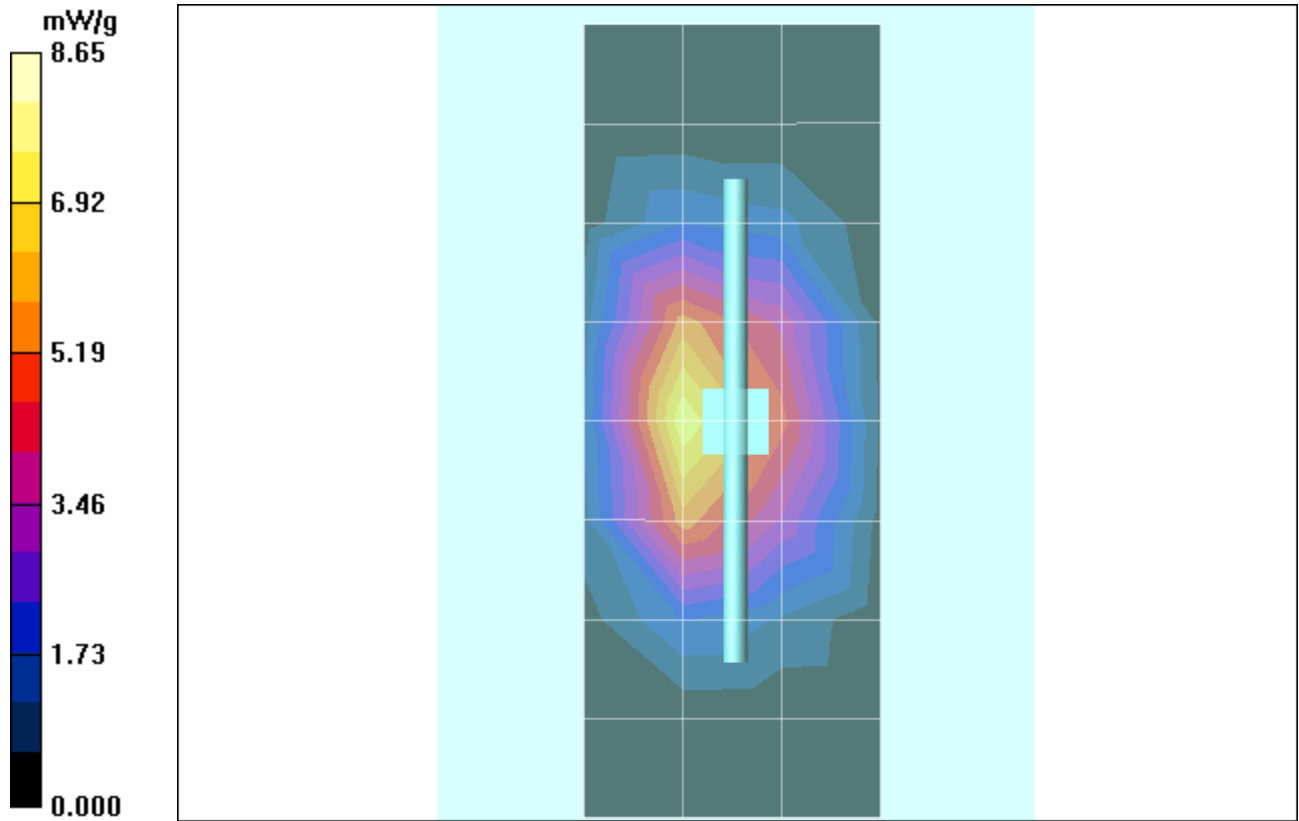
Measurement grid: dx=8mm, dy=8mm, dz=5mm

Reference Value = 79.2 V/m; Power Drift = -0.019 dB; Peak SAR (extrapolated) = 12.9 W/kg

**SAR(1 g) = 7.69 mW/g; SAR(10 g) = 4.14 mW/g; Maximum value of SAR (measured) = 8.73 mW/g**

### Daily SPC Check/Z-Axis Retraction (1x1x31):

Measurement grid: dx=20mm, dy=20mm, dz=5mm; Maximum value of SAR (measured) = 8.65 mW/g



Date/Time: 10/11/2006 8:13:40 AM

**Test Laboratory: Motorola - 101106 1800MHz Good at+2.8%****DUT: Dipole 1800 MHz; Type: D1800V2; Serial: D1800V2 - SN:272**Procedure Notes: 1800 MHz System Performance Check; Dipole Sn# 272(TR); PM1 Power = 200 mW  
Sim.Temp@meas = 19.7°C; Sim.Temp@SPC = 19.3°C; Room Temp @ SPC = 20.9°C

Communication System: CW - Dipole; Frequency: 1800 MHz; Channel Number: 8; Duty Cycle: 1:1

Medium: VALIDATION Only

Medium parameters used:  $f = 1800$  MHz;  $\sigma = 1.37$  mho/m;  $\epsilon_r = 39.5$ ;  $\rho = 1000$  kg/m<sup>3</sup>

DASY4 Configuration:

- Probe: ES3DV3 - SN3037; ConvF(5.01, 5.01, 5.01); Calibrated: 11/17/2005
- Sensor-Surface: 4mm (Mechanical Surface Detection)
- Electronics: DAE3 Sn437; Calibrated: 7/18/2006
- Phantom: R4 : Sect.2, Amy Twin; Type: Amy Twin Flat; Serial: n/a;
- Measurement SW: DASY4, V4.7 Build 44; Postprocessing SW: SEMCAD, V1.8 Build 171

**Daily SPC Check/Dipole Area Scan (9x4x1):**

Measurement grid: dx=15mm, dy=15mm; Maximum value of SAR (measured) = 6.30 mW/g

**Daily SPC Check/0-Degree 5x5x7 Cube (5x5x7)/Cube 0:**

Measurement grid: dx=8mm, dy=8mm, dz=5mm

Reference Value = 81.6 V/m; Power Drift = -0.014 dB; Peak SAR (extrapolated) = 13.4 W/kg

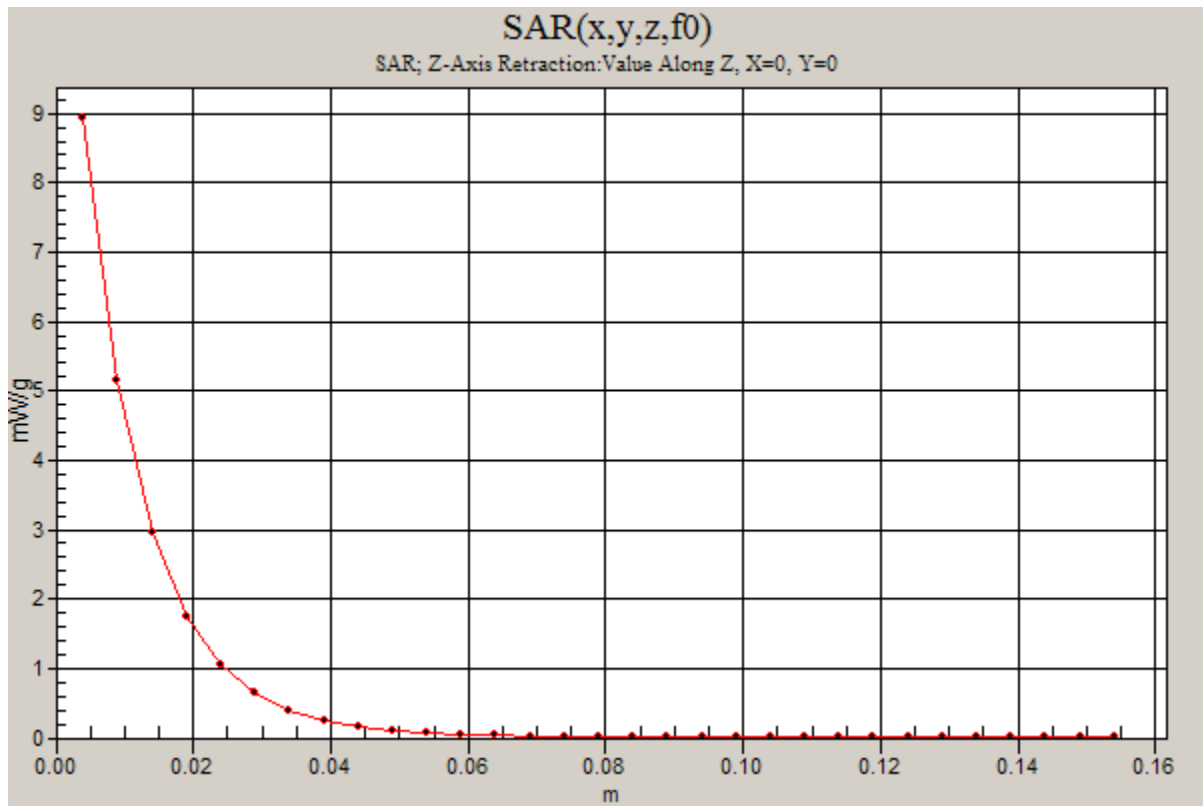
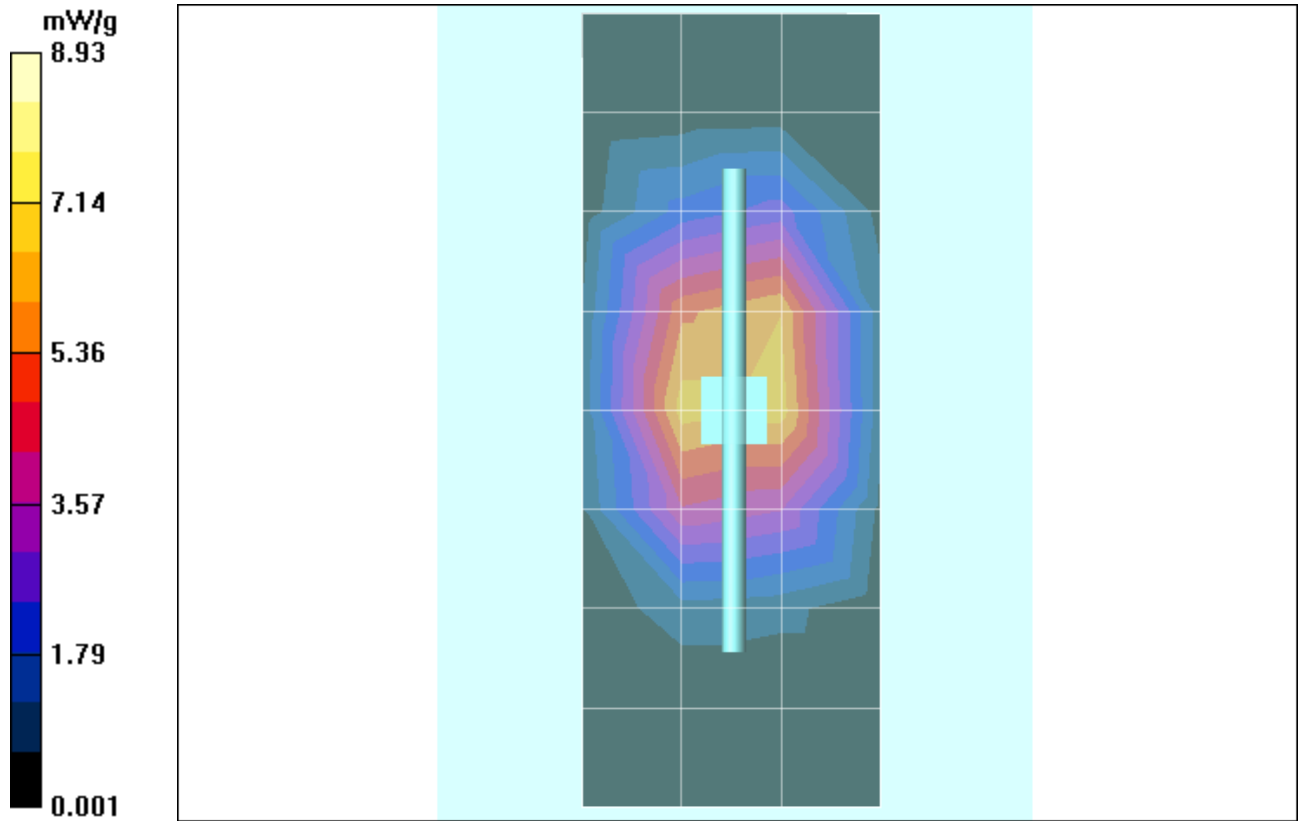
**SAR(1 g) = 7.83 mW/g; SAR(10 g) = 4.22 mW/g; Maximum value of SAR (measured) = 8.76 mW/g****Daily SPC Check/90-Degree 5x5x7 Cube (5x5x7)/Cube 0:**

Measurement grid: dx=8mm, dy=8mm, dz=5mm

Reference Value = 81.6 V/m; Power Drift = -0.014 dB; Peak SAR (extrapolated) = 13.1 W/kg

**SAR(1 g) = 7.84 mW/g; SAR(10 g) = 4.24 mW/g; Maximum value of SAR (measured) = 8.77 mW/g****Daily SPC Check/Z-Axis Retraction (1x1x31):**

Measurement grid: dx=20mm, dy=20mm, dz=5mm; Maximum value of SAR (measured) = 8.93 mW/g



Date/Time: 9/15/2006 10:03:41 PM

## Test Laboratory: Motorola - 091506 1900MHz Good at 0.4% open

**DUT: Dipole 1900 MHz; Type: D1900V2; Serial: D1900V2 - SN: 533tr**

Procedure Notes: 1900MHz System Performance Check; Dipole Sn# 533tr; PM1 Power = 200 mW  
Sim.Temp@meas = 19.7°C; Sim.Temp@SPC = 19.8°C; Room Temp @ SPC = 20.8°C

Communication System: CW - Dipole; Frequency: 1900 MHz; Channel Number: 10; Duty Cycle: 1:1

Medium: VALIDATION Only

Medium parameters used:  $f = 1900$  MHz;  $\sigma = 1.45$  mho/m;  $\epsilon_r = 38.2$ ;  $\rho = 1000$  kg/m<sup>3</sup>

DASY4 Configuration:

- Probe: ET3DV6 - SN1520; ConvF(5.16, 5.16, 5.16); Calibrated: 5/3/2006
- Sensor-Surface: 4mm (Mechanical Surface Detection)
- Electronics: DAE3 Sn434; Calibrated: 12/7/2005
- Phantom: R1: Glycol SAM; Type: SAM; Serial: TP-1139;
- Measurement SW: DASY4, V4.7 Build 44; Postprocessing SW: SEMCAD, V1.8 Build 171

### Daily SPC Check/Dipole Area Scan (4x9x1):

Measurement grid: dx=15mm, dy=15mm; Maximum value of SAR (measured) = 7.48 mW/g

### Daily SPC Check/0-Degree 5x5x7 Cube (5x5x7)/Cube 0:

Measurement grid: dx=8mm, dy=8mm, dz=5mm

Reference Value = 85.1 V/m; Power Drift = -0.039 dB; Peak SAR (extrapolated) = 14.6 W/kg

**SAR(1 g) = 8.33 mW/g; SAR(10 g) = 4.37 mW/g;** Maximum value of SAR (measured) = 9.38 mW/g

### Daily SPC Check/90-Degree 5x5x7 Cube (5x5x7)/Cube 0:

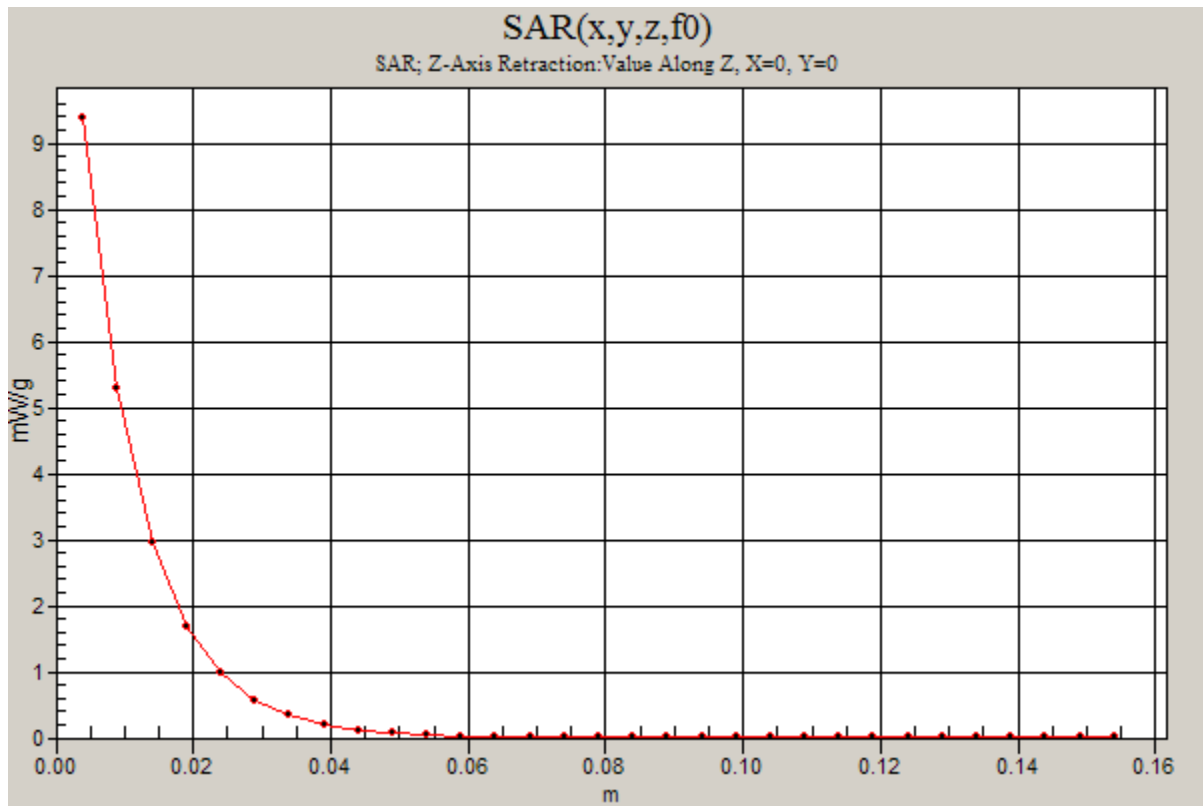
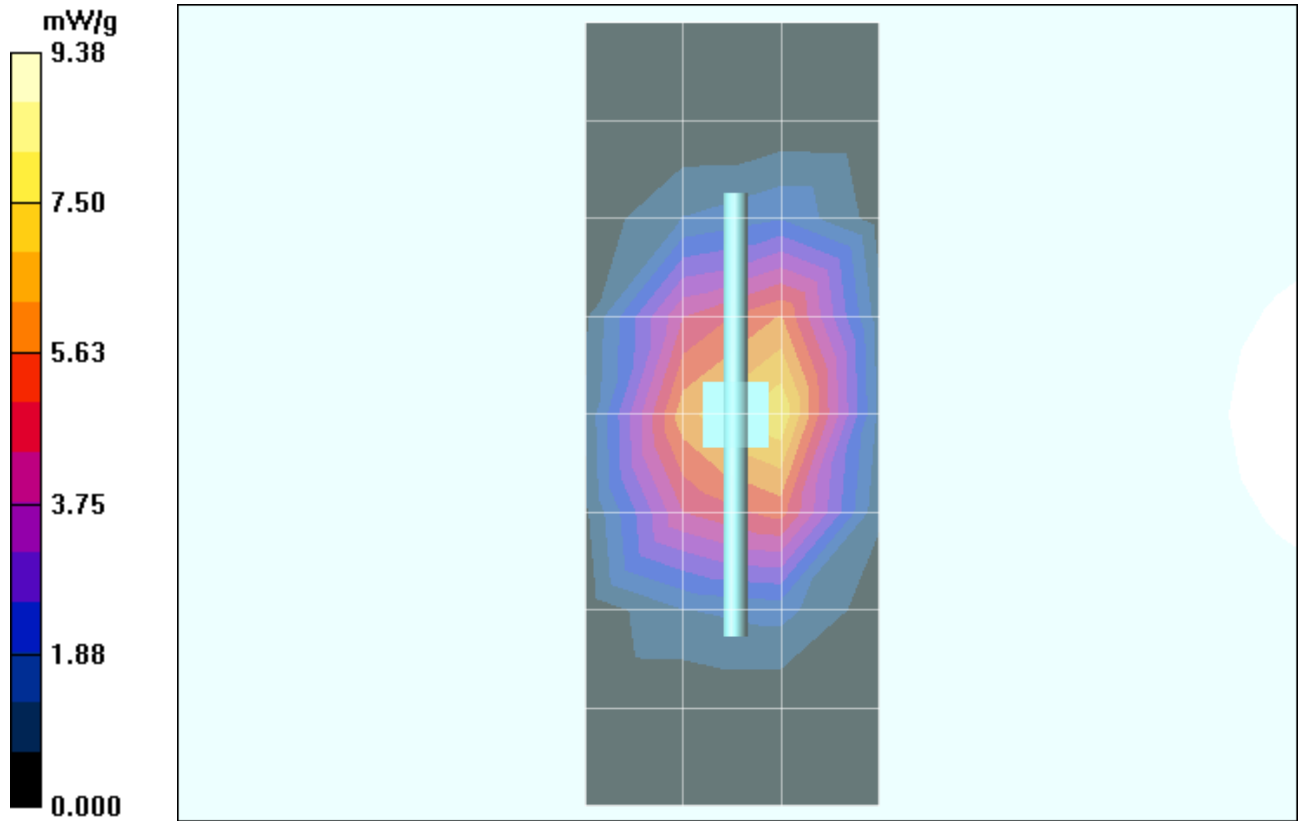
Measurement grid: dx=8mm, dy=8mm, dz=5mm

Reference Value = 85.1 V/m; Power Drift = -0.039 dB; Peak SAR (extrapolated) = 14.4 W/kg

**SAR(1 g) = 8.18 mW/g; SAR(10 g) = 4.29 mW/g;** Maximum value of SAR (measured) = 8.77 mW/g

### Daily SPC Check/Z-Axis Retraction (1x1x31):

Measurement grid: dx=20mm, dy=20mm, dz=5mm



Date/Time: 9/17/2006 4:17:58 AM

## Test Laboratory: Motorola - 091706 1900MHz Good at -1.2%

**DUT: Dipole 1900 MHz; Type: D1900V2; Serial: D1900V2 - SN: 533tr**

Procedure Notes: 1900MHz System Performance Check; Dipole Sn# 533tr; PM1 Power = 200 mW  
Sim.Temp@meas = 19.8°C; Sim.Temp@SPC = 19.8°C; Room Temp @ SPC = 20.8°C

Communication System: CW - Dipole; Frequency: 1900 MHz; Channel Number: 10; Duty Cycle: 1:1

Medium: VALIDATION Only

Medium parameters used:  $f = 1900$  MHz;  $\sigma = 1.47$  mho/m;  $\epsilon_r = 38.2$ ;  $\rho = 1000$  kg/m<sup>3</sup>

DASY4 Configuration:

- Probe: ET3DV6 - SN1520; ConvF(5.16, 5.16, 5.16); Calibrated: 5/3/2006
- Sensor-Surface: 4mm (Mechanical Surface Detection)
- Electronics: DAE3 Sn434; Calibrated: 12/7/2005
- Phantom: R1: Sect.2, Amy Twin; Type: Amy Twin Flat; Serial: n/a;
- Measurement SW: DASY4, V4.7 Build 44; Postprocessing SW: SEMCAD, V1.8 Build 171

### Daily SPC Check/Dipole Area Scan (4x9x1):

Measurement grid: dx=15mm, dy=15mm; Maximum value of SAR (measured) = 8.27 mW/g

### Daily SPC Check/0-Degree 5x5x7 Cube (5x5x7)/Cube 0:

Measurement grid: dx=8mm, dy=8mm, dz=5mm

Reference Value = 76.5 V/m; Power Drift = -0.060 dB; Peak SAR (extrapolated) = 14.4 W/kg

**SAR(1 g) = 8.18 mW/g; SAR(10 g) = 4.28 mW/g; Maximum value of SAR (measured) = 9.20 mW/g**

### Daily SPC Check/90-Degree 5x5x7 Cube (5x5x7)/Cube 0:

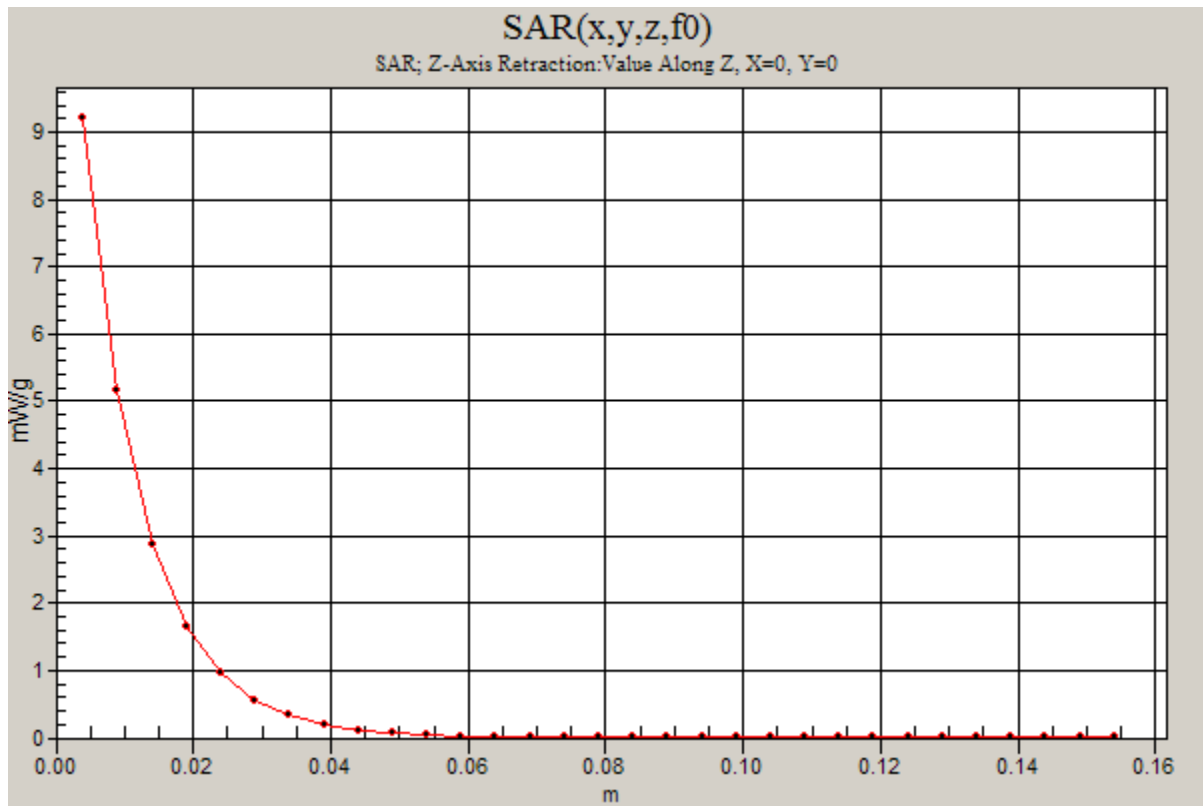
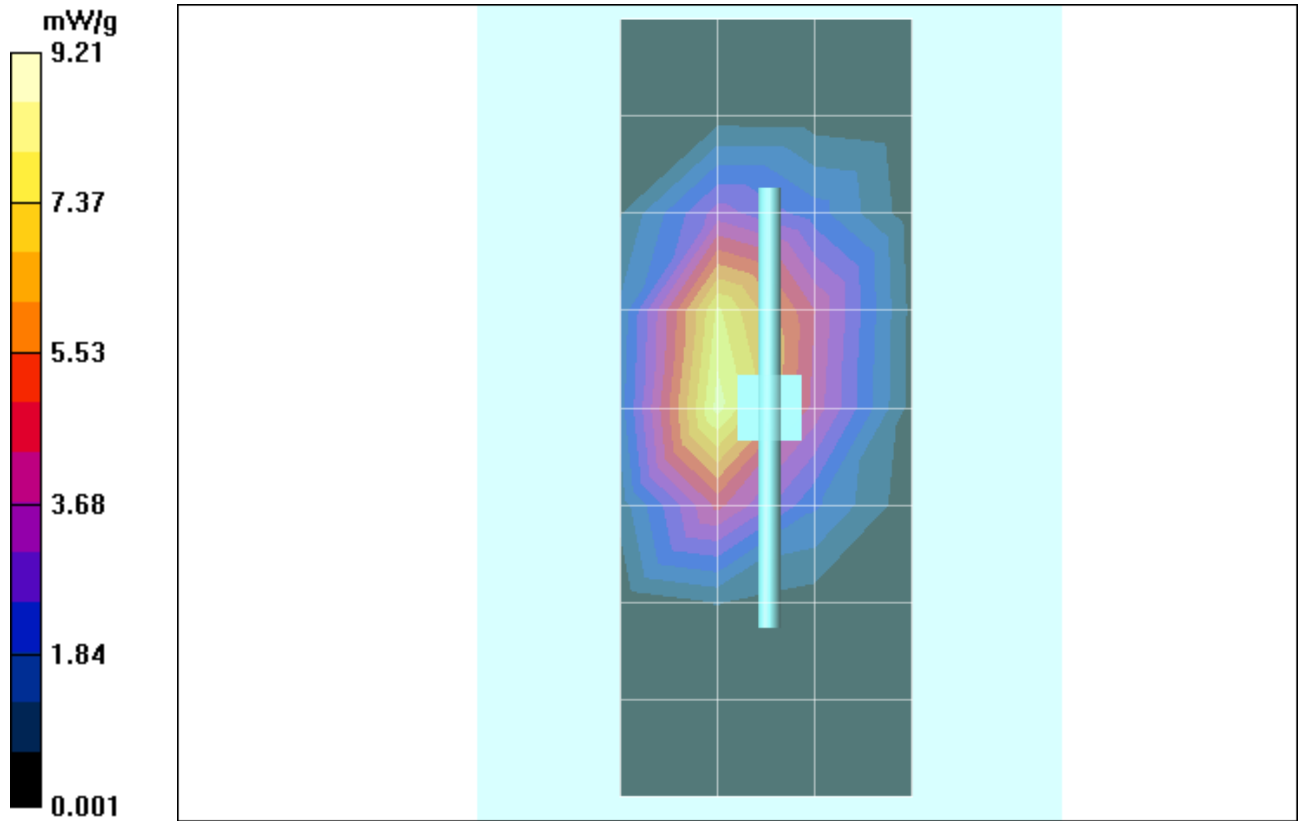
Measurement grid: dx=8mm, dy=8mm, dz=5mm

Reference Value = 76.5 V/m; Power Drift = -0.060 dB; Peak SAR (extrapolated) = 14.1 W/kg

**SAR(1 g) = 7.99 mW/g; SAR(10 g) = 4.2 mW/g; Maximum value of SAR (measured) = 8.92 mW/g**

### Daily SPC Check/Z-Axis Retraction (1x1x31):

Measurement grid: dx=20mm, dy=20mm, dz=5mm; Maximum value of SAR (measured) = 9.21 mW/g



## **Appendix 2**

### **SAR distribution plots for Phantom Head Adjacent Use**

Date/Time: 9/13/2006 11:13:20 PM

## Test Laboratory: Motorola - WCDMA 850 Cheek

Serial: LVE04D0014

Procedure Notes: Pwr Step: All Up; Antenna Position: Internal; Accessory Model #: None

Battery Model #: SNN5789B; DEVICE POSITION (cheek or rotated): Cheek

Communication System: 3G-WCDMA 850; Frequency: 836 MHz; Channel Number: 4180; Duty Cycle: 1:1

Medium: Low Freq Head

Medium parameters used:  $f = 835$  MHz;  $\sigma = 0.91$  mho/m;  $\epsilon_r = 41.4$ ;  $\rho = 1000$  kg/m<sup>3</sup>

DASY4 Configuration:

- Probe: ET3DV6 - SN1520; ConvF(6.39, 6.39, 6.39); Calibrated: 5/3/2006
- Sensor-Surface: 4mm (Mechanical Surface Detection)
- Electronics: DAE3 Sn434; Calibrated: 12/7/2005
- Phantom: R1: Sugar SAM; Type: SAM; Serial: TP-1005;
- Measurement SW: DASY4, V4.7 Build 44; Postprocessing SW: SEMCAD, V1.8 Build 171

### Left Head Template/Area Scan - Normal (15mm) (7x17x1):

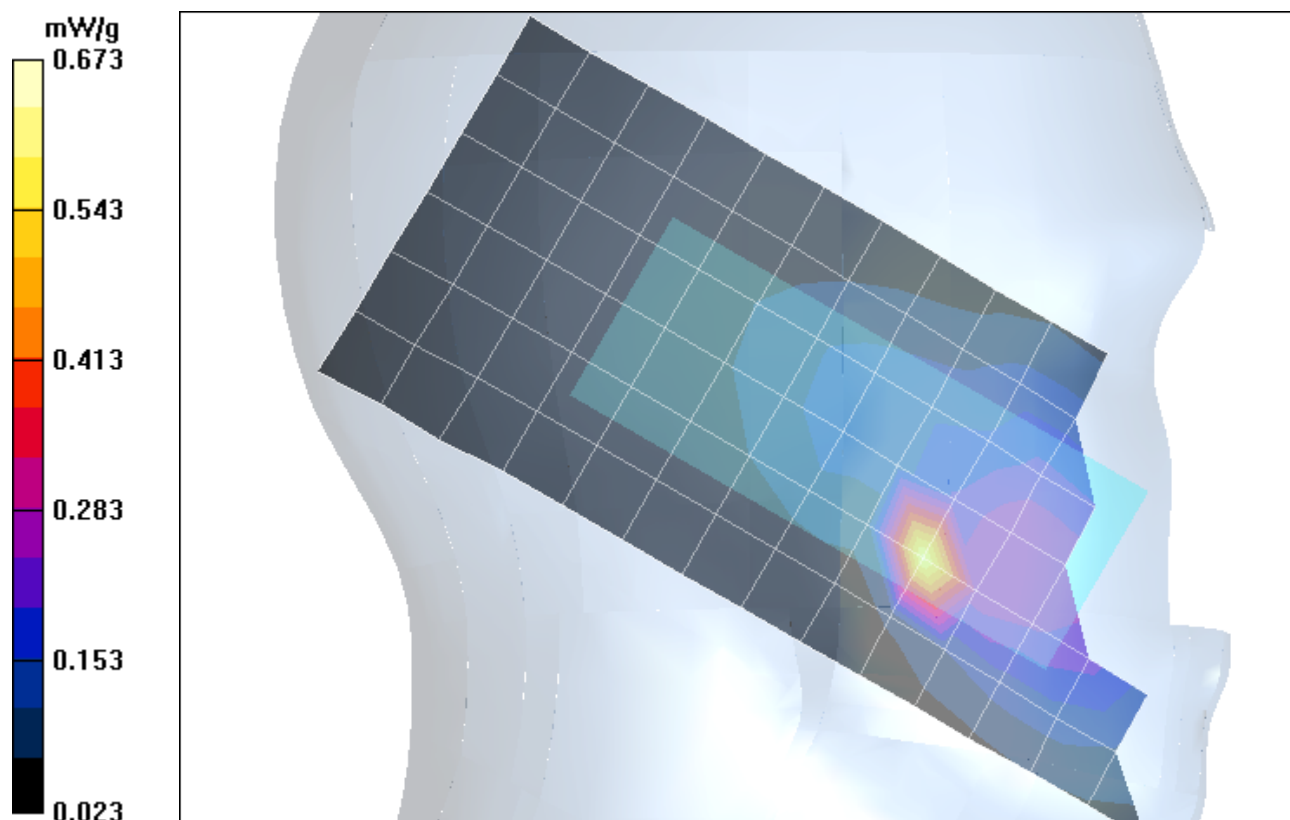
Measurement grid: dx=15mm, dy=15mm; Maximum value of SAR (measured) = 0.605 mW/g

### Left Head Template/Zoom Scan (7x7x7)/Cube 0:

Measurement grid: dx=5mm, dy=5mm, dz=5mm

Reference Value = 20.4 V/m; Power Drift = -0.082 dB; Peak SAR (extrapolated) = 3.62 W/kg

**SAR(1 g) = 0.551 mW/g; SAR(10 g) = 0.230 mW/g; Maximum value of SAR (measured) = 0.673 mW/g**



Date/Time: 9/13/2006 6:45:48 PM

## Test Laboratory: Motorola - GSM 1900 Cheek

Serial: LVE04D0014

Procedure Notes: Pwr Step: 0; Antenna Position: Internal; Accessory Model #: None

Battery Model #: SNN5789B; DEVICE POSITION (cheek or rotated): Cheek

Communication System: GSM 1900; Frequency: 1880 MHz; Channel Number: 661; Duty Cycle: 1:8

Medium: Regular Glycol Head

Medium parameters used:  $f = 1880$  MHz;  $\sigma = 1.45$  mho/m;  $\epsilon_r = 39$ ;  $\rho = 1000$  kg/m<sup>3</sup>

DASY4 Configuration:

- Probe: ET3DV6 - SN1520; ConvF(5.16, 5.16, 5.16); Calibrated: 5/3/2006
- Sensor-Surface: 4mm (Mechanical Surface Detection)
- Electronics: DAE3 Sn434; Calibrated: 12/7/2005
- Phantom: R1: Glycol SAM; Type: SAM; Serial: TP-1139;
- Measurement SW: DASY4, V4.7 Build 44; Postprocessing SW: SEMCAD, V1.8 Build 171

### Right Head Template/Area Scan - Normal (15mm) (7x17x1):

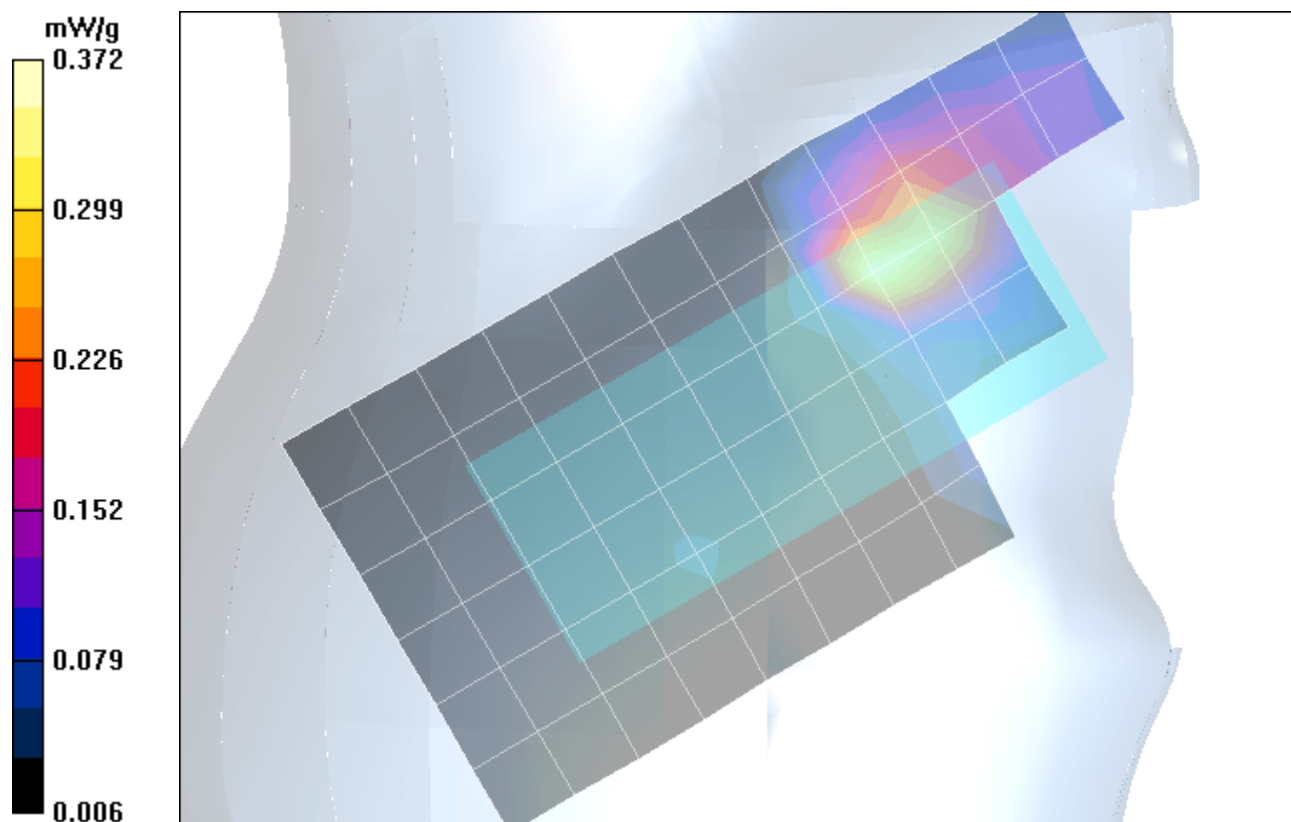
Measurement grid: dx=15mm, dy=15mm; Maximum value of SAR (measured) = 0.354 mW/g

### Right Head Template/Zoom Scan (7x7x7)/Cube 0:

Measurement grid: dx=5mm, dy=5mm, dz=5mm

Reference Value = 14.3 V/m; Power Drift = -0.217 dB; Peak SAR (extrapolated) = 1.04 W/kg

**SAR(1 g) = 0.333 mW/g; SAR(10 g) = 0.187 mW/g; Maximum value of SAR (measured) = 0.372 mW/g**



Date/Time: 9/13/2006 11:36:40 PM

## Test Laboratory: Motorola - WCDMA 850 Tilt

Serial: LVE04D0014

Procedure Notes: Pwr Step: All Up; Antenna Position: Internal; Accessory Model #: None

Battery Model #: SNN5789B; DEVICE POSITION (check or rotated): Rotated

Communication System: 3G-WCDMA 850; Frequency: 836 MHz; Channel Number: 4180; Duty Cycle: 1:1

Medium: Low Freq Head

Medium parameters used:  $f = 835$  MHz;  $\sigma = 0.91$  mho/m;  $\epsilon_r = 41.4$ ;  $\rho = 1000$  kg/m<sup>3</sup>

DASY4 Configuration:

- Probe: ET3DV6 - SN1520; ConvF(6.39, 6.39, 6.39); Calibrated: 5/3/2006
- Sensor-Surface: 4mm (Mechanical Surface Detection)
- Electronics: DAE3 Sn434; Calibrated: 12/7/2005
- Phantom: R1: Sugar SAM; Type: SAM; Serial: TP-1005;
- Measurement SW: DASY4, V4.7 Build 44; Postprocessing SW: SEMCAD, V1.8 Build 171

### Left Head Template/Area Scan - Normal (15mm) (7x17x1):

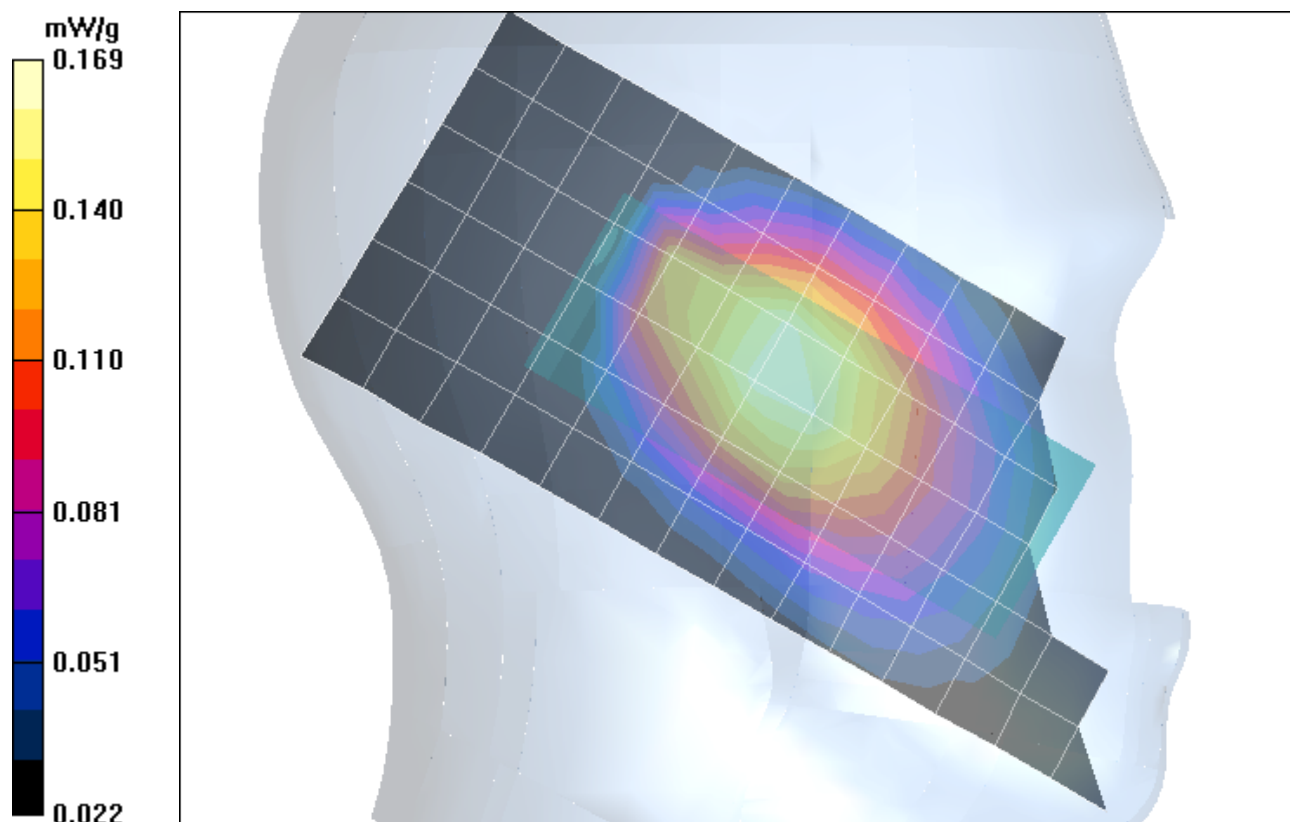
Measurement grid: dx=15mm, dy=15mm; Maximum value of SAR (measured) = 0.164 mW/g

### Left Head Template/Zoom Scan (7x7x7)/Cube 0:

Measurement grid: dx=5mm, dy=5mm, dz=5mm

Reference Value = 13.7 V/m; Power Drift = -0.120 dB; Peak SAR (extrapolated) = 0.203 W/kg

**SAR(1 g) = 0.161 mW/g; SAR(10 g) = 0.122 mW/g; Maximum value of SAR (measured) = 0.169 mW/g**



Date/Time: 9/13/2006 7:20:10 PM

## Test Laboratory: Motorola - GSM 1900 Tilt

Serial: LVE04D0014

Procedure Notes: Pwr Step: 0; Antenna Position: Internal; Accessory Model #: None

Battery Model #: SNN5789B; DEVICE POSITION (check or rotated): Rotated

Communication System: GSM 1900; Frequency: 1880 MHz; Channel Number: 661; Duty Cycle: 1:8

Medium: Regular Glycol Head

Medium parameters used:  $f = 1880$  MHz;  $\sigma = 1.45$  mho/m;  $\epsilon_r = 39$ ;  $\rho = 1000$  kg/m<sup>3</sup>

DASY4 Configuration:

- Probe: ET3DV6 - SN1520; ConvF(5.16, 5.16, 5.16); Calibrated: 5/3/2006
- Sensor-Surface: 4mm (Mechanical Surface Detection)
- Electronics: DAE3 Sn434; Calibrated: 12/7/2005
- Phantom: R1: Glycol SAM; Type: SAM; Serial: TP-1139;
- Measurement SW: DASY4, V4.7 Build 44; Postprocessing SW: SEMCAD, V1.8 Build 171

### Right Head Template/Area Scan - Normal (15mm) (7x17x1):

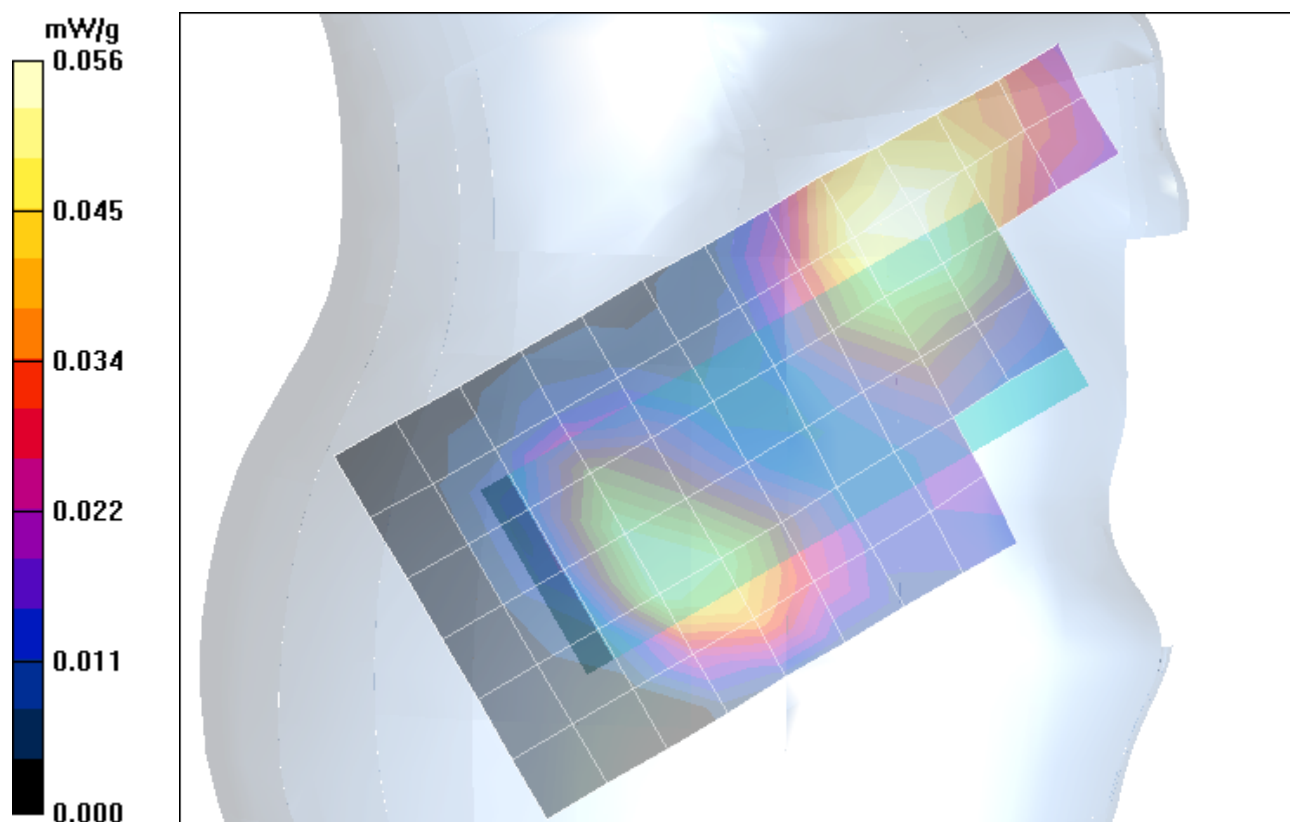
Measurement grid: dx=15mm, dy=15mm; Maximum value of SAR (measured) = 0.055 mW/g

### Right Head Template/Zoom Scan (7x7x7)/Cube 0:

Measurement grid: dx=5mm, dy=5mm, dz=5mm

Reference Value = 6.19 V/m; Power Drift = -0.025 dB; Peak SAR (extrapolated) = 0.083 W/kg

SAR(1 g) = 0.052 mW/g; SAR(10 g) = 0.032 mW/g; Maximum value of SAR (measured) = 0.056 mW/g



### **Appendix 3**

#### **SAR distribution plots for Body Worn Configuration**

Date/Time: 9/22/2006 8:11:35 PM

## Test Laboratory: Motorola - WCDMA 850 Body

**Serial: LVE04D0014**

Procedure Notes: Pwr Step: All Up; Antenna Position: Internal; Battery Model #: SNN5789B

Device Position: Body Worn, Back of Phone 15mm From Phantom with Bluetooth Mode Enabled

Communication System: 3G-WCDMA 850; Frequency: 836 MHz; Channel Number: 4180; Duty Cycle: 1:1

Medium: Low Freq Body

Medium parameters used:  $f = 835$  MHz;  $\sigma = 0.98$  mho/m;  $\epsilon_r = 54$ ;  $\rho = 1000$  kg/m<sup>3</sup>

DASY4 Configuration:

- Probe: ET3DV6 - SN1520; ConvF(6.1, 6.1, 6.1); Calibrated: 5/3/2006
- Sensor-Surface: 4mm (Mechanical Surface Detection)
- Electronics: DAE3 Sn434; Calibrated: 12/7/2005
- Phantom: R1: Sect.1, Amy Twin; Type: Amy Twin Flat; Serial: n/a;
- Measurement SW: DASY4, V4.7 Build 44; Postprocessing SW: SEMCAD, V1.8 Build 171

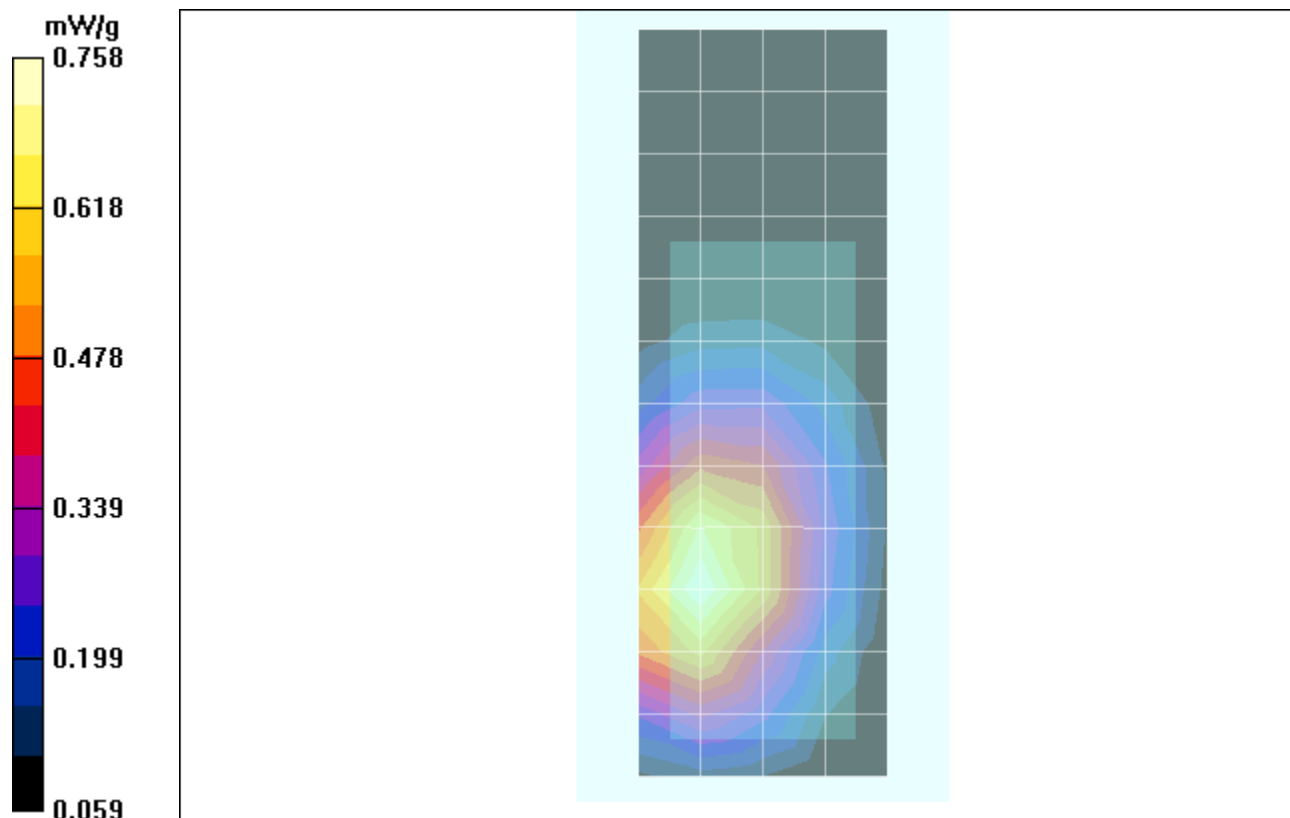
### Amy Twin Phone Template/Area Scan - Normal Body (15mm) (13x7x1):

Measurement grid: dx=15mm, dy=15mm; Maximum value of SAR (measured) = 0.760 mW/g

### Amy Twin Phone Template/Zoom Scan (7x7x7)/Cube 0:

Measurement grid: dx=5mm, dy=5mm, dz=5mm

Reference Value = 24.1 V/m; Power Drift = -0.107 dB; Peak SAR (extrapolated) = 0.960 W/kg

**SAR(1 g) = 0.710 mW/g; SAR(10 g) = 0.494 mW/g; Maximum value of SAR (measured) = 0.758 mW/g**

Date/Time: 9/14/2006 4:08:46 PM

## Test Laboratory: Motorola - GSM 1900 Body

Serial: LVE04D0014

Procedure Notes: Pwr Step: 00; Antenna Position: Internal; Battery Model #: SNN5789B

Device Position: Body Worn, Back Of Phone 25mm From Phantom

Communication System: GPRS 1900 Cls. 12; Frequency: 1880 MHz; Channel Number: 661; Duty Cycle: 1:2

Medium: Regular Glycol Body

Medium parameters used:  $f = 1880$  MHz;  $\sigma = 1.57$  mho/m;  $\epsilon_r = 51.2$ ;  $\rho = 1000$  kg/m<sup>3</sup>

DASY4 Configuration:

- Probe: ET3DV6 - SN1520; ConvF(4.73, 4.73, 4.73); Calibrated: 5/3/2006
- Sensor-Surface: 4mm (Mechanical Surface Detection)
- Electronics: DAE3 Sn434; Calibrated: 12/7/2005
- Phantom: R1: Sect.2, Amy Twin; Type: Amy Twin Flat; Serial: n/a;
- Measurement SW: DASY4, V4.7 Build 44; Postprocessing SW: SEMCAD, V1.8 Build 171

### Amy Twin Phone Template/Area Scan - Normal Body (15mm) (13x7x1):

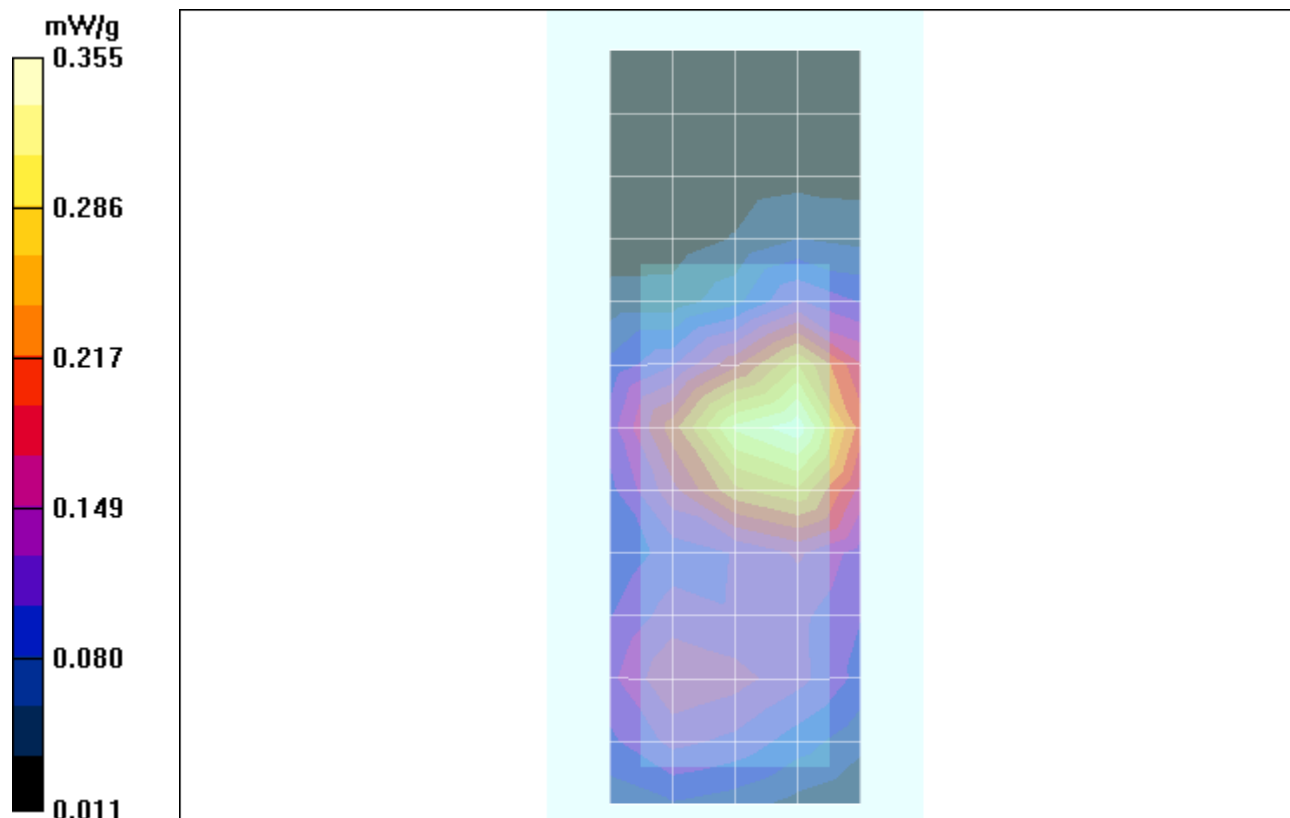
Measurement grid: dx=15mm, dy=15mm; Maximum value of SAR (measured) = 0.348 mW/g

### Amy Twin Phone Template/Zoom Scan (7x7x7)/Cube 0:

Measurement grid: dx=5mm, dy=5mm, dz=5mm

Reference Value = 14.8 V/m; Power Drift = -0.081 dB; Peak SAR (extrapolated) = 0.525 W/kg

**SAR(1 g) = 0.332 mW/g; SAR(10 g) = 0.205 mW/g; Maximum value of SAR (measured) = 0.355 mW/g**



**Appendix 4**

**SAR distribution plots for Push-To-Talk Use**

Date/Time: 10/11/2006 9:52:17 PM

## Test Laboratory: Motorola - GSM 1900 PTT

Serial: LVE04D0014

Procedure Notes: Pwr Step: 0; Antenna Position: Internal; Battery Model #: SNN5789B

Device Position: Front of Phone 25mm from Flat Phantom

Communication System: GPRS 1900 Cls. 12; Frequency: 1880 MHz; Channel Number: 661; Duty Cycle: 1:2

Medium: Back-Up Glycol Head

Medium parameters used:  $f = 1880$  MHz;  $\sigma = 1.44$  mho/m;  $\epsilon_r = 38.4$ ;  $\rho = 1000$  kg/m<sup>3</sup>

DASY4 Configuration:

- Probe: ES3DV3 - SN3037; ConvF(5.01, 5.01, 5.01); Calibrated: 11/17/2005
- Sensor-Surface: 4mm (Mechanical Surface Detection)
- Electronics: DAE3 Sn437; Calibrated: 7/18/2006
- Phantom: R4: Glycol SAM; Type: SAM; Serial: TP-1250;
- Measurement SW: DASY4, V4.7 Build 44; Postprocessing SW: SEMCAD, V1.8 Build 171

### SAM Phone Against Flat Section/Area Scan - Full Body (15mm) (21x15x1):

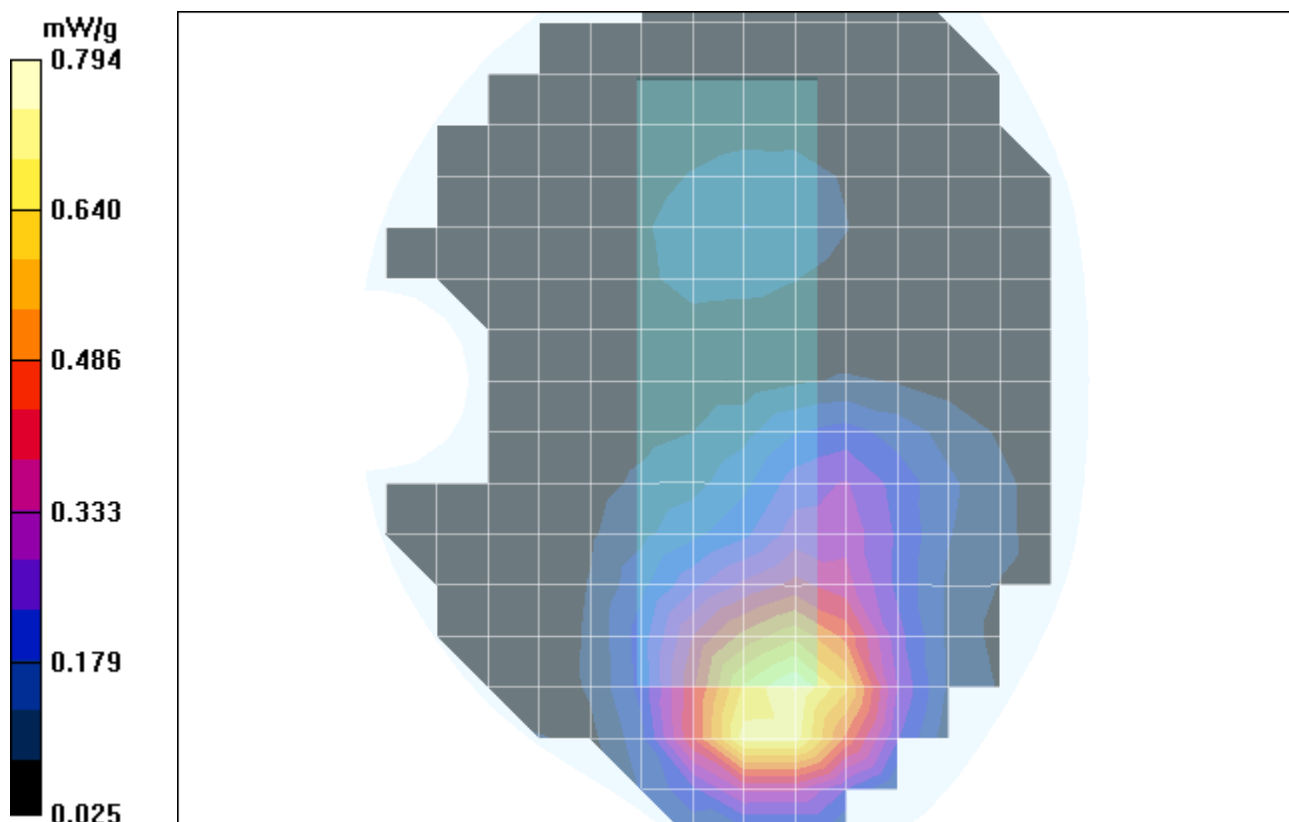
Measurement grid: dx=15mm, dy=15mm; Maximum value of SAR (measured) = 0.747 mW/g

### SAM Phone Against Flat Section/Zoom Scan (7x7x7)/Cube 0:

Measurement grid: dx=5mm, dy=5mm, dz=5mm

Reference Value = 19.5 V/m; Power Drift = 0.080 dB; Peak SAR (extrapolated) = 1.10 W/kg

**SAR(1 g) = 0.735 mW/g; SAR(10 g) = 0.461 mW/g; Maximum value of SAR (measured) = 0.794 mW/g**



**Appendix 5**

**Probe Calibration Certificate**



Accredited by the Swiss Federal Office of Metrology and Accreditation  
The Swiss Accreditation Service is one of the signatories to the EA  
Multilateral Agreement for the recognition of calibration certificates

Accreditation No.: **SCS 108**

Client **Motorola MDb**

Certificate No. **ET3-1520 May06**

## CALIBRATION CERTIFICATE

Object **ET3DV6 - SN: 1520**

Calibration procedure(s) **QA CAL-01 v5  
Calibration procedure for dosimetric E-field probes**

Calibration date: **May 3, 2006**

Condition of the calibrated item **In Tolerance**

This calibration certificate documents the traceability to national standards, which realize the physical units of measurements (SI).  
The measurements and the uncertainties with confidence probability are given on the following pages and are part of the certificate.

All calibrations have been conducted in the closed laboratory facility: environment temperature (22 ± 3)°C and humidity < 70%.

Calibration Equipment used (M&TE critical for calibration)

Primary Standards	ID #	Cal Date (Calibrated by, Certificate No.)	Scheduled Calibration
Power meter E4419B	GB41293874	5-Apr-06 (METAS, No. 251-00557)	Apr-07
Power sensor E4412A	MY41495277	5-Apr-06 (METAS, No. 251-00557)	Apr-07
Power sensor E4412A	MY41498087	5-Apr-06 (METAS, No. 251-00557)	Apr-07
Reference 3 dB Attenuator	SN: S5054 (3c)	11-Aug-05 (METAS, No. 251-00499)	Aug-06
Reference 20 dB Attenuator	SN: S5086 (20b)	4-Apr-06 (METAS, No. 251-00558)	Apr-07
Reference 30 dB Attenuator	SN: S5129 (30b)	11-Aug-05 (METAS, No. 251-00500)	Aug-06
Reference Probe ES3DV2	SN: 3013	2-Jan-06 (SPEAG, No. ES3-3013_Jan06)	Jan-07
DAE4	SN: 654	2-Feb-06 (SPEAG, No. DAE4-654_Feb06)	Feb-07

Secondary Standards	ID #	Check Date (in house)	Scheduled Check
RF generator HP 8648C	US3642U01700	4-Aug-99 (SPEAG, in house check Nov-05)	In house check: Nov-07
Network Analyzer HP 8753E	US37390585	18-Oct-01 (SPEAG, in house check Nov-05)	In house check: Nov 06

	Name	Function	Signature
Calibrated by:	Katja Pokovic	Technical Manager	
Approved by:	Niels Kuster	Quality Manager	

Issued: May 3, 2006

This calibration certificate shall not be reproduced except in full without written approval of the laboratory.



Accredited by the Swiss Federal Office of Metrology and Accreditation  
The Swiss Accreditation Service is one of the signatories to the EA  
Multilateral Agreement for the recognition of calibration certificates

Accreditation No.: **SCS 108**

### Glossary:

TSL	tissue simulating liquid
NORM <sub>x,y,z</sub>	sensitivity in free space
ConF	sensitivity in TSL / NORM <sub>x,y,z</sub>
DCP	diode compression point
Polarization $\varphi$	$\varphi$ rotation around probe axis
Polarization $\vartheta$	$\vartheta$ rotation around an axis that is in the plane normal to probe axis (at measurement center), i.e., $\vartheta = 0$ is normal to probe axis

### Calibration is Performed According to the Following Standards:

- IEEE Std 1528-2003, "IEEE Recommended Practice for Determining the Peak Spatial-Averaged Specific Absorption Rate (SAR) in the Human Head from Wireless Communications Devices: Measurement Techniques", December 2003
- CENELEC EN 50361, "Basic standard for the measurement of Specific Absorption Rate related to human exposure to electromagnetic fields from mobile phones (300 MHz - 3 GHz), July 2001

### Methods Applied and Interpretation of Parameters:

- NORM<sub>x,y,z</sub>**: Assessed for E-field polarization  $\vartheta = 0$  ( $f \leq 900$  MHz in TEM-cell;  $f > 1800$  MHz: R22 waveguide). NORM<sub>x,y,z</sub> are only intermediate values, i.e., the uncertainties of NORM<sub>x,y,z</sub> does not effect the E<sup>2</sup>-field uncertainty inside TSL (see below *ConvF*).
- NORM(f)<sub>x,y,z</sub>** = NORM<sub>x,y,z</sub> \* *frequency\_response* (see Frequency Response Chart). This linearization is implemented in DASY4 software versions later than 4.2. The uncertainty of the frequency response is included in the stated uncertainty of *ConvF*.
- DCP<sub>x,y,z</sub>**: DCP are numerical linearization parameters assessed based on the data of power sweep (no uncertainty required). DCP does not depend on frequency nor media.
- ConvF and Boundary Effect Parameters**: Assessed in flat phantom using E-field (or Temperature Transfer Standard for  $f \leq 800$  MHz) and inside waveguide using analytical field distributions based on power measurements for  $f > 800$  MHz. The same setups are used for assessment of the parameters applied for boundary compensation (alpha, depth) of which typical uncertainty values are given. These parameters are used in DASY4 software to improve probe accuracy close to the boundary. The sensitivity in TSL corresponds to NORM<sub>x,y,z</sub> \* *ConvF* whereby the uncertainty corresponds to that given for *ConvF*. A frequency dependent *ConvF* is used in DASY version 4.4 and higher which allows extending the validity from  $\pm 50$  MHz to  $\pm 100$  MHz.
- Spherical isotropy (3D deviation from isotropy)**: in a field of low gradients realized using a flat phantom exposed by a patch antenna.
- Sensor Offset**: The sensor offset corresponds to the offset of virtual measurement center from the probe tip (on probe axis). No tolerance required.

# Probe ET3DV6

## SN:1520

Manufactured:	February 1, 2000
Last calibrated:	April 22, 2005
Modified:	April 25, 2006
Recalibrated:	May 3, 2006

Calibrated for DASY Systems

(Note: non-compatible with DASY2 system!)

**DASY - Parameters of Probe: ET3DV6 SN:1520****Sensitivity in Free Space<sup>A</sup>****Diode Compression<sup>B</sup>**

NormX	1.89 ± 10.1%	$\mu\text{V}/(\text{V}/\text{m})^2$	DCP X	95 mV
NormY	1.70 ± 10.1%	$\mu\text{V}/(\text{V}/\text{m})^2$	DCP Y	95 mV
NormZ	1.91 ± 10.1%	$\mu\text{V}/(\text{V}/\text{m})^2$	DCP Z	95 mV

**Sensitivity in Tissue Simulating Liquid (Conversion Factors)**

Please see Page 8.

**Boundary Effect****TSL                    900 MHz    Typical SAR gradient: 5 % per mm**

Sensor Center to Phantom Surface Distance		<b>3.7 mm</b>	<b>4.7 mm</b>
SAR <sub>be</sub> [%]	Without Correction Algorithm	8.2	4.3
SAR <sub>be</sub> [%]	With Correction Algorithm	0.1	0.2

**TSL                    1810 MHz    Typical SAR gradient: 10 % per mm**

Sensor Center to Phantom Surface Distance		<b>3.7 mm</b>	<b>4.7 mm</b>
SAR <sub>be</sub> [%]	Without Correction Algorithm	7.2	4.0
SAR <sub>be</sub> [%]	With Correction Algorithm	0.1	0.2

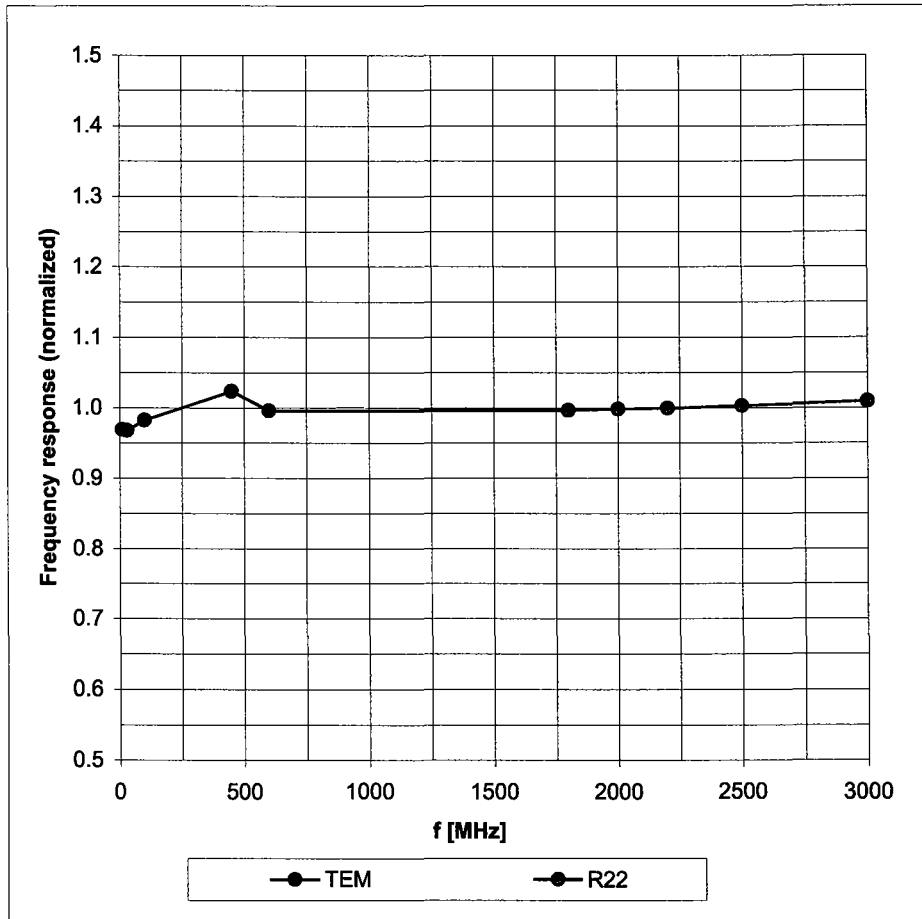
**Sensor Offset**Probe Tip to Sensor Center                    **2.7 mm**

**The reported uncertainty of measurement is stated as the standard uncertainty of measurement multiplied by the coverage factor k=2, which for a normal distribution corresponds to a coverage probability of approximately 95%.**

<sup>A</sup> The uncertainties of NormX,Y,Z do not affect the E<sup>2</sup>-field uncertainty inside TSL (see Page 8).<sup>B</sup> Numerical linearization parameter: uncertainty not required.

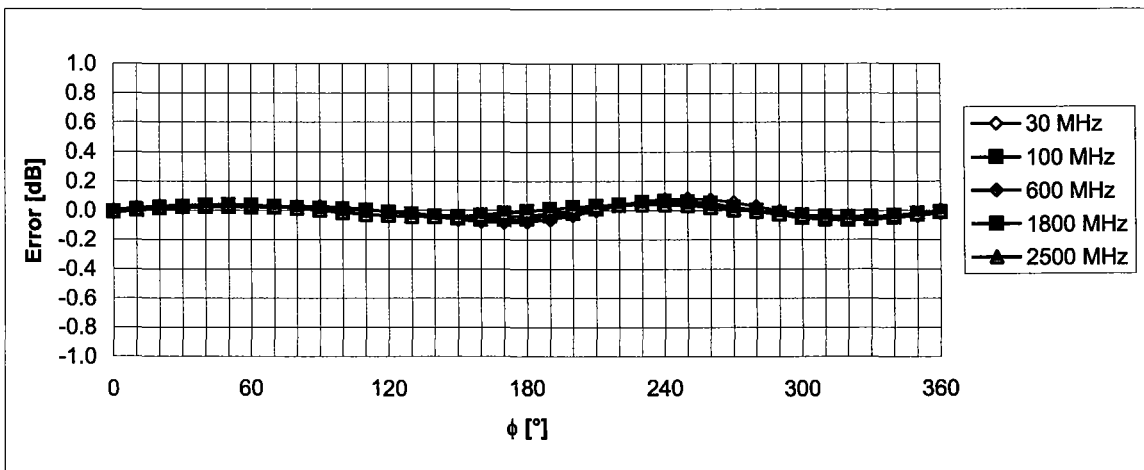
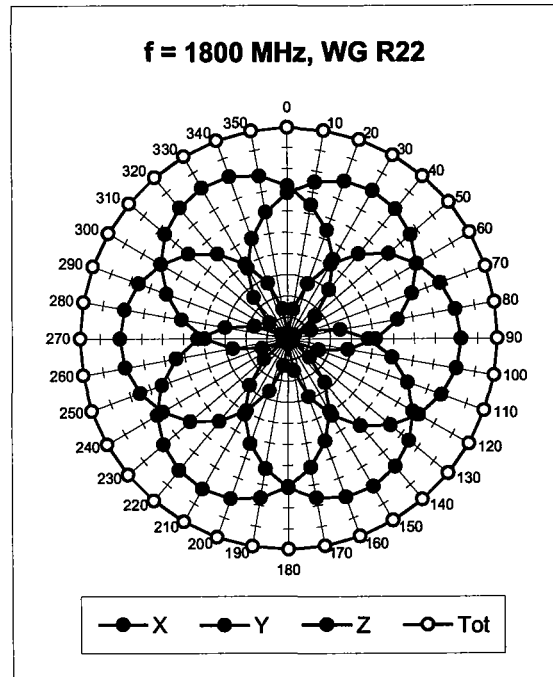
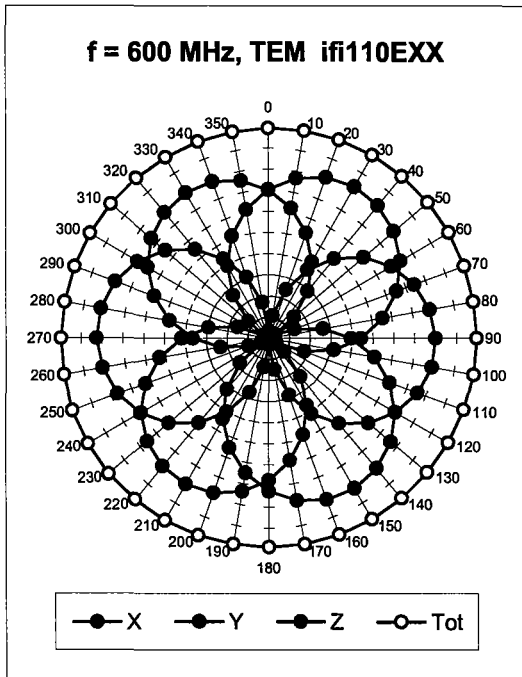
# Frequency Response of E-Field

(TEM-Cell:ifi110 EXX, Waveguide: R22)



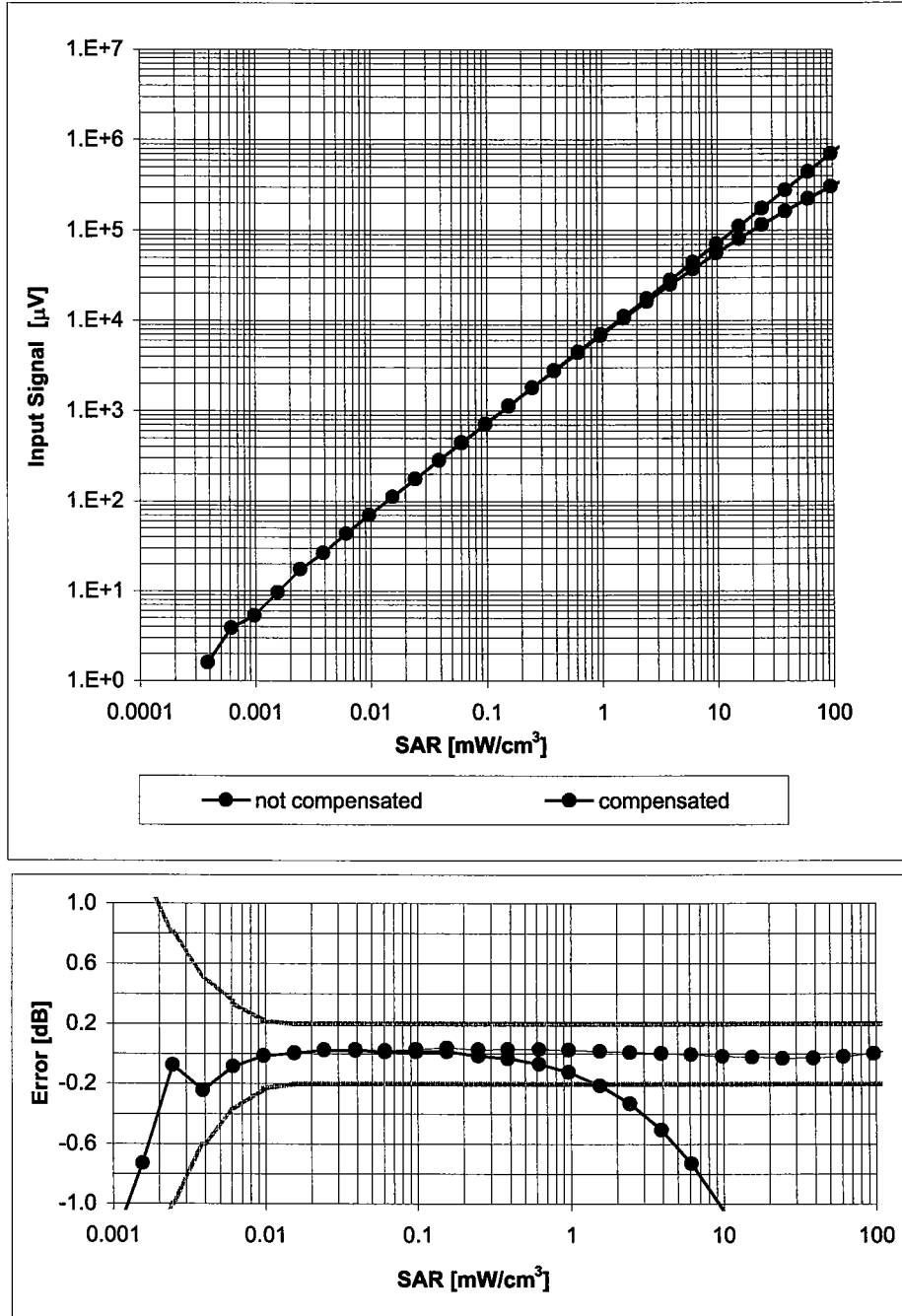
Uncertainty of Frequency Response of E-field:  $\pm 6.3\%$  (k=2)

### Receiving Pattern ( $\phi$ ), $\vartheta = 0^\circ$



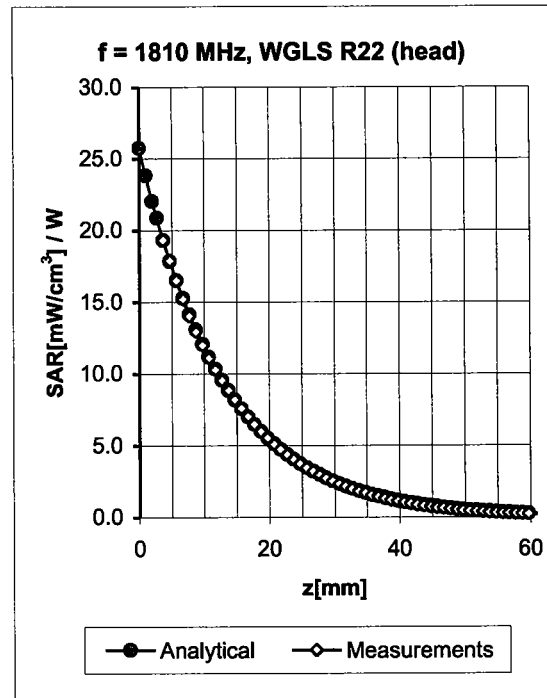
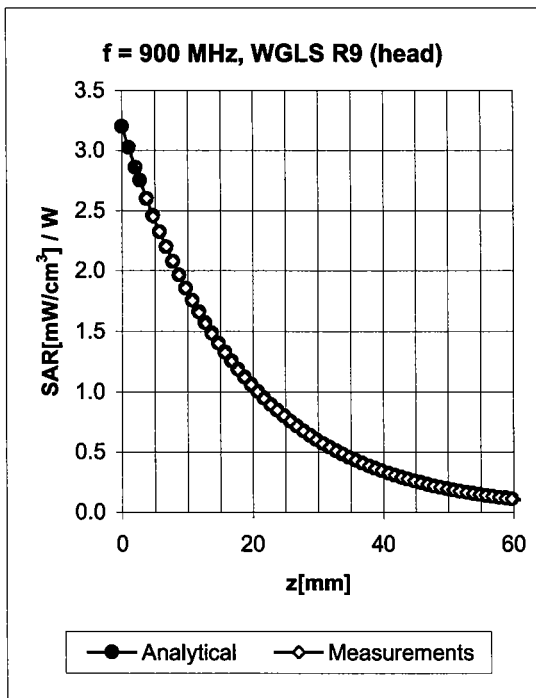
Uncertainty of Axial Isotropy Assessment:  $\pm 0.5\%$  ( $k=2$ )

## Dynamic Range f(SAR<sub>head</sub>) (Waveguide R22, f = 1800 MHz)



**Uncertainty of Linearity Assessment: ± 0.6% (k=2)**

## Conversion Factor Assessment

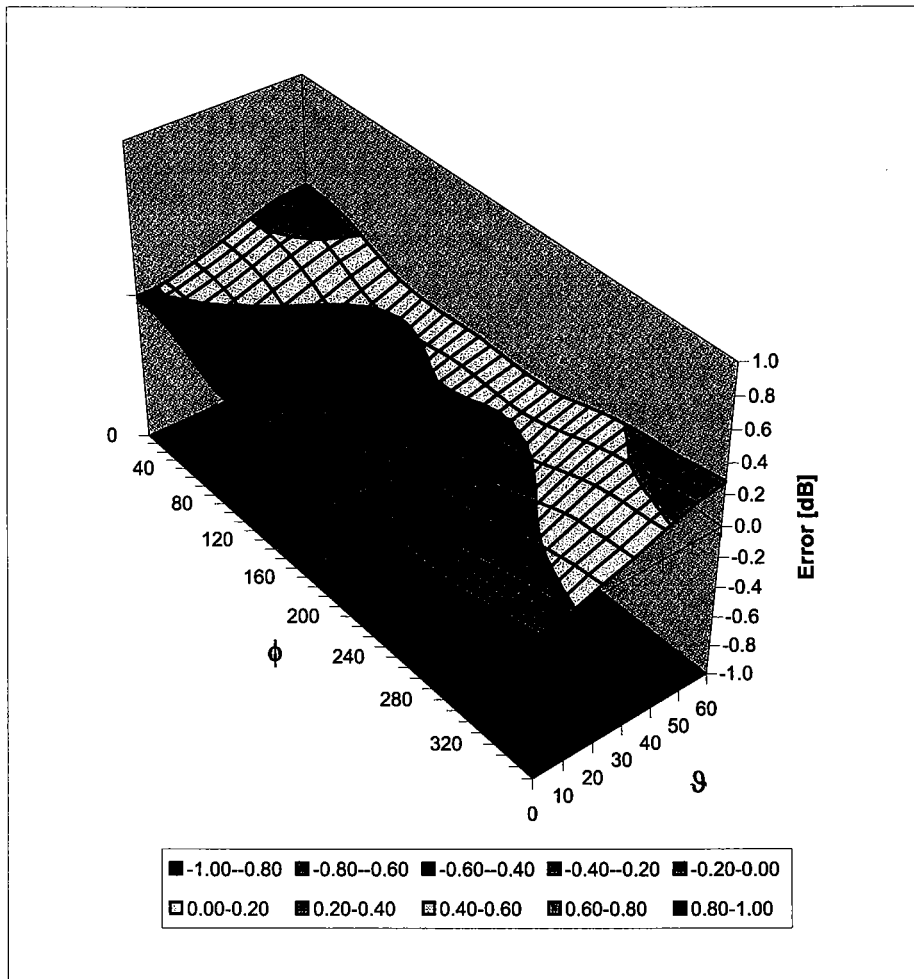


f [MHz]	Validity [MHz] <sup>c</sup>	TSL	Permittivity	Conductivity	Alpha	Depth	ConvF Uncertainty
900	± 50 / ± 100	Head	41.5 ± 5%	0.97 ± 5%	0.57	1.82	6.39 ± 11.0% (k=2)
1810	± 50 / ± 100	Head	40.0 ± 5%	1.40 ± 5%	0.53	2.49	5.16 ± 11.0% (k=2)
1950	± 50 / ± 100	Head	40.0 ± 5%	1.40 ± 5%	0.54	2.61	4.77 ± 11.0% (k=2)
2450	± 50 / ± 100	Head	39.2 ± 5%	1.80 ± 5%	0.58	2.01	4.54 ± 11.8% (k=2)
900	± 50 / ± 100	Body	55.0 ± 5%	1.05 ± 5%	0.51	2.05	6.10 ± 11.0% (k=2)
1810	± 50 / ± 100	Body	53.3 ± 5%	1.52 ± 5%	0.59	2.66	4.73 ± 11.0% (k=2)
1950	± 50 / ± 100	Body	53.3 ± 5%	1.52 ± 5%	0.79	2.13	4.48 ± 11.0% (k=2)
2450	± 50 / ± 100	Body	52.7 ± 5%	1.95 ± 5%	0.69	1.86	4.14 ± 11.8% (k=2)

<sup>c</sup> The validity of ± 100 MHz only applies for DASY v4.4 and higher (see Page 2). The uncertainty is the RSS of the ConvF uncertainty at calibration frequency and the uncertainty for the indicated frequency band.

# Deviation from Isotropy in HSL

Error ( $\phi$ ,  $\theta$ ),  $f = 900$  MHz



**Uncertainty of Spherical Isotropy Assessment:  $\pm 2.6\%$  ( $k=2$ )**



Accredited by the Swiss Federal Office of Metrology and Accreditation  
The Swiss Accreditation Service is one of the signatories to the EA  
Multilateral Agreement for the recognition of calibration certificates

Accreditation No.: **SCS 108**

Client **Motorola MDb**

Certificate No: **ES3-3037\_Nov05**

## CALIBRATION CERTIFICATE

Object **ES3DV3 - SN:3037**

Calibration procedure(s) **QA CAL-01.v5  
Calibration procedure for dosimetric E-field probes**

Calibration date: **November 17, 2005**

Condition of the calibrated item **In Tolerance**

This calibration certificate documents the traceability to national standards, which realize the physical units of measurements (SI).  
The measurements and the uncertainties with confidence probability are given on the following pages and are part of the certificate.

All calibrations have been conducted in the closed laboratory facility: environment temperature (22 ± 3)°C and humidity < 70%.

Calibration Equipment used (M&TE critical for calibration)

Primary Standards	ID #	Cal Date (Calibrated by, Certificate No.)	Scheduled Calibration
Power meter E4419B	GB41293874	3-May-05 (METAS, No. 251-00466)	May-06
Power sensor E4412A	MY41495277	3-May-05 (METAS, No. 251-00466)	May-06
Power sensor E4412A	MY41498087	3-May-05 (METAS, No. 251-00466)	May-06
Reference 3 dB Attenuator	SN: S5054 (3c)	11-Aug-05 (METAS, No. 251-00499)	Aug-06
Reference 20 dB Attenuator	SN: S5086 (20b)	3-May-05 (METAS, No. 251-00467)	May-06
Reference 30 dB Attenuator	SN: S5129 (30b)	11-Aug-05 (METAS, No. 251-00500)	Aug-06
Reference Probe ES3DV2	SN: 3013	7-Jan-05 (SPEAG, No. ES3-3013_Jan05)	Jan-06
DAE4	SN: 654	27-Oct-05 (SPEAG, No. DAE4-654_Oct05)	Oct-06
Secondary Standards	ID #	Check Date (in house)	Scheduled Check
RF generator HP 8648C	US3642U01700	4-Aug-99 (SPEAG, in house check Dec-03)	In house check: Dec-05
Network Analyzer HP 8753E	US37390585	18-Oct-01 (SPEAG, in house check Nov-04)	In house check: Nov 05

Calibrated by: **Name** Nico Vetterli **Function** Laboratory Technician **Signature**

Approved by: **Name** Katja Pokovic **Function** Technical Manager **Signature**

Issued: November 17, 2005

This calibration certificate shall not be reproduced except in full without written approval of the laboratory.



Accredited by the Swiss Federal Office of Metrology and Accreditation  
The Swiss Accreditation Service is one of the signatories to the EA  
Multilateral Agreement for the recognition of calibration certificates

Accreditation No.: **SCS 108**

### Glossary:

TSL	tissue simulating liquid
NORM <sub>x,y,z</sub>	sensitivity in free space
ConF	sensitivity in TSL / NORM <sub>x,y,z</sub>
DCP	diode compression point
Polarization $\phi$	$\phi$ rotation around probe axis
Polarization $\vartheta$	$\vartheta$ rotation around an axis that is in the plane normal to probe axis (at measurement center), i.e., $\vartheta = 0$ is normal to probe axis

### Calibration is Performed According to the Following Standards:

- IEEE Std 1528-2003, "IEEE Recommended Practice for Determining the Peak Spatial-Averaged Specific Absorption Rate (SAR) in the Human Head from Wireless Communications Devices: Measurement Techniques", December 2003
- CENELEC EN 50361, "Basic standard for the measurement of Specific Absorption Rate related to human exposure to electromagnetic fields from mobile phones (300 MHz - 3 GHz), July 2001

### Methods Applied and Interpretation of Parameters:

- NORM<sub>x,y,z</sub>**: Assessed for E-field polarization  $\vartheta = 0$  ( $f \leq 900$  MHz in TEM-cell;  $f > 1800$  MHz: R22 waveguide). NORM<sub>x,y,z</sub> are only intermediate values, i.e., the uncertainties of NORM<sub>x,y,z</sub> does not effect the E<sup>2</sup>-field uncertainty inside TSL (see below *ConvF*).
- NORM(f)<sub>x,y,z</sub> = NORM<sub>x,y,z</sub> \* frequency\_response** (see Frequency Response Chart). This linearization is implemented in DASY4 software versions later than 4.2. The uncertainty of the frequency response is included in the stated uncertainty of *ConvF*.
- DCP<sub>x,y,z</sub>**: DCP are numerical linearization parameters assessed based on the data of power sweep (no uncertainty required). DCP does not depend on frequency nor media.
- ConvF and Boundary Effect Parameters**: Assessed in flat phantom using E-field (or Temperature Transfer Standard for  $f \leq 800$  MHz) and inside waveguide using analytical field distributions based on power measurements for  $f > 800$  MHz. The same setups are used for assessment of the parameters applied for boundary compensation (alpha, depth) of which typical uncertainty values are given. These parameters are used in DASY4 software to improve probe accuracy close to the boundary. The sensitivity in TSL corresponds to **NORM<sub>x,y,z</sub> \* ConvF** whereby the uncertainty corresponds to that given for *ConvF*. A frequency dependent *ConvF* is used in DASY version 4.4 and higher which allows extending the validity from  $\pm 50$  MHz to  $\pm 100$  MHz.
- Spherical isotropy (3D deviation from isotropy)**: in a field of low gradients realized using a flat phantom exposed by a patch antenna.
- Sensor Offset**: The sensor offset corresponds to the offset of virtual measurement center from the probe tip (on probe axis). No tolerance required.

# Probe ES3DV3

## SN:3037

Manufactured:	August 21, 2003
Last calibrated:	November 25, 2005
Recalibrated:	November 17, 2005

Calibrated for DASY Systems

(Note: non-compatible with DASY2 system!)

## DASY - Parameters of Probe: ES3DV3 SN:3037

### Sensitivity in Free Space<sup>A</sup>

NormX	<b>1.15</b> ± 10.1%	$\mu\text{V}/(\text{V}/\text{m})^2$
NormY	<b>0.84</b> ± 10.1%	$\mu\text{V}/(\text{V}/\text{m})^2$
NormZ	<b>0.95</b> ± 10.1%	$\mu\text{V}/(\text{V}/\text{m})^2$

### Diode Compression<sup>B</sup>

DCP X	<b>97</b> mV
DCP Y	<b>97</b> mV
DCP Z	<b>97</b> mV

### Sensitivity in Tissue Simulating Liquid (Conversion Factors)

Please see Page 8.

### Boundary Effect

**TSL**                      **900 MHz**      **Typical SAR gradient: 5 % per mm**

Sensor Center to Phantom Surface Distance		<b>3.0 mm</b>	<b>4.0 mm</b>
SAR <sub>be</sub> [%]	Without Correction Algorithm	5.1	2.3
SAR <sub>be</sub> [%]	With Correction Algorithm	0.0	0.1

**TSL**                      **1810 MHz**      **Typical SAR gradient: 10 % per mm**

Sensor Center to Phantom Surface Distance		<b>3.0 mm</b>	<b>4.0 mm</b>
SAR <sub>be</sub> [%]	Without Correction Algorithm	8.4	5.2
SAR <sub>be</sub> [%]	With Correction Algorithm	0.0	0.1

### Sensor Offset

Probe Tip to Sensor Center                      **2.0 mm**

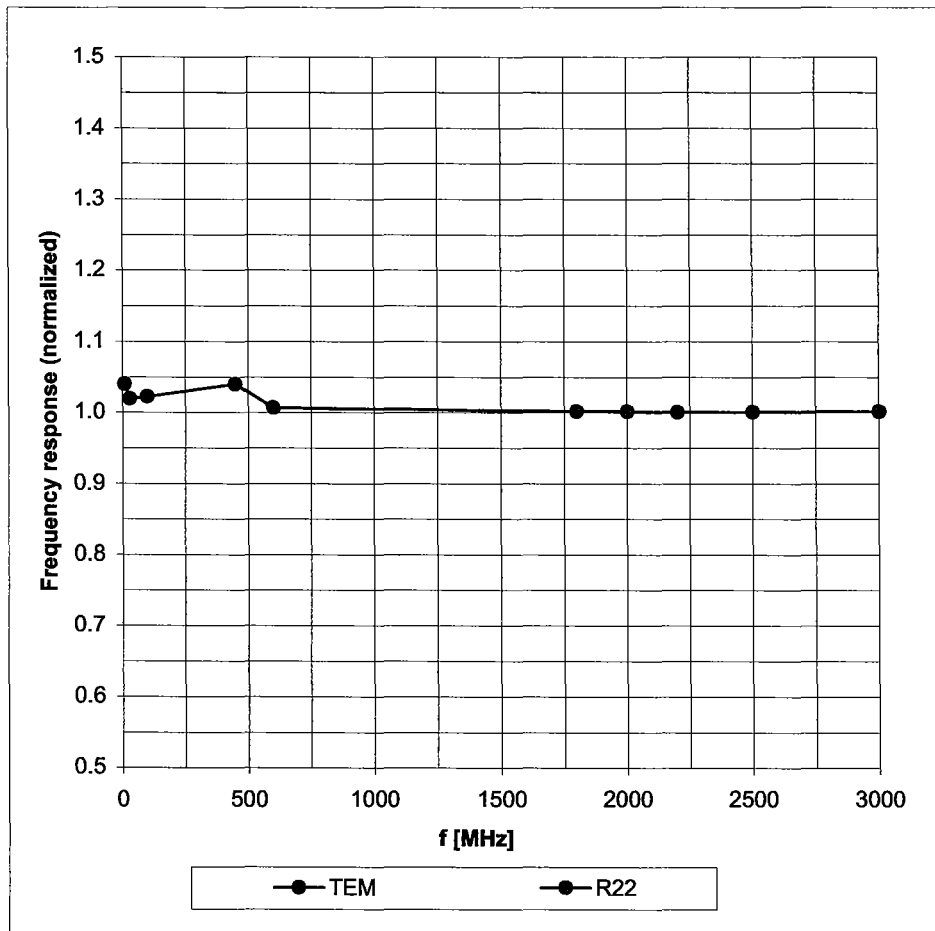
**The reported uncertainty of measurement is stated as the standard uncertainty of measurement multiplied by the coverage factor k=2, which for a normal distribution corresponds to a coverage probability of approximately 95%.**

<sup>A</sup> The uncertainties of NormX,Y,Z do not affect the E<sup>2</sup>-field uncertainty inside TSL (see Page 8).

<sup>B</sup> Numerical linearization parameter: uncertainty not required.

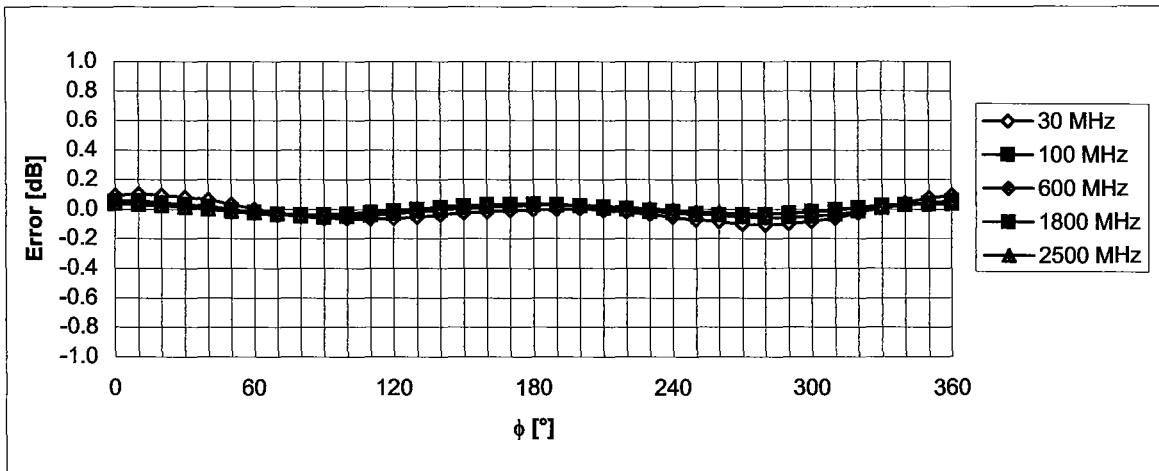
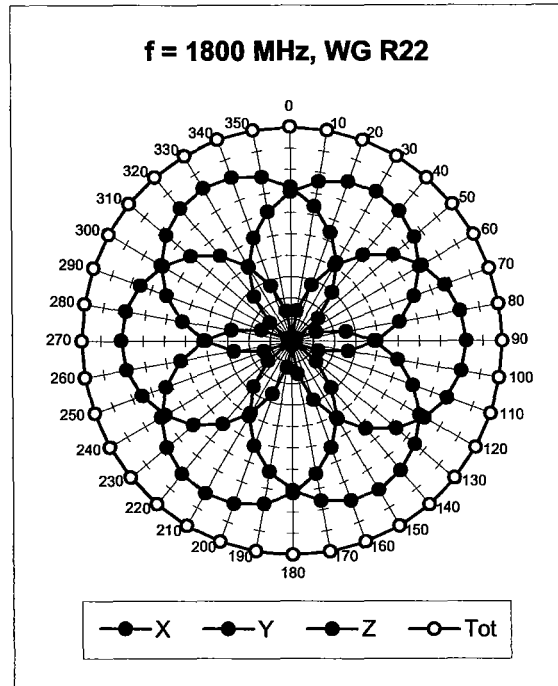
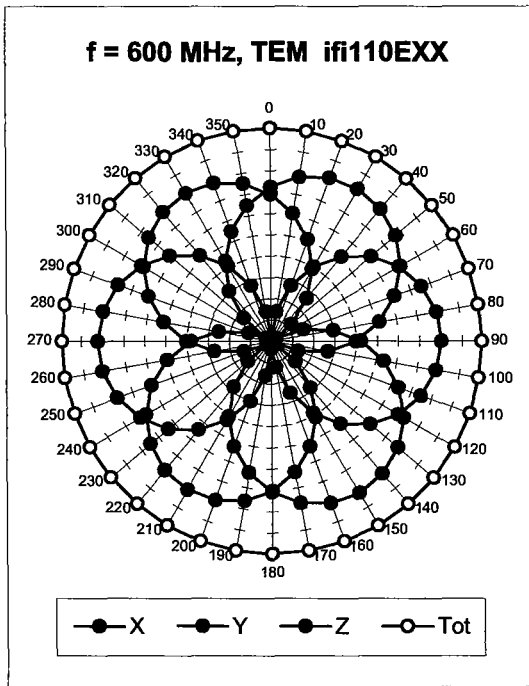
# Frequency Response of E-Field

(TEM-Cell:ifi110 EXX, Waveguide: R22)



Uncertainty of Frequency Response of E-field:  $\pm 6.3\%$  ( $k=2$ )

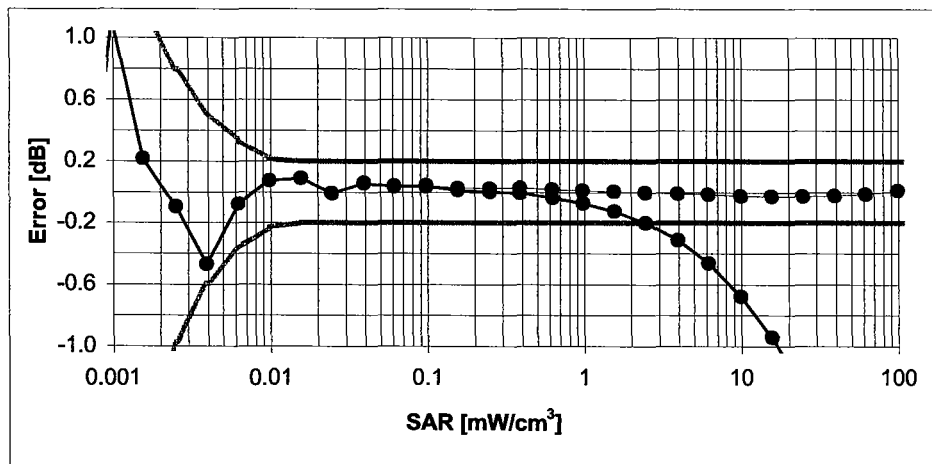
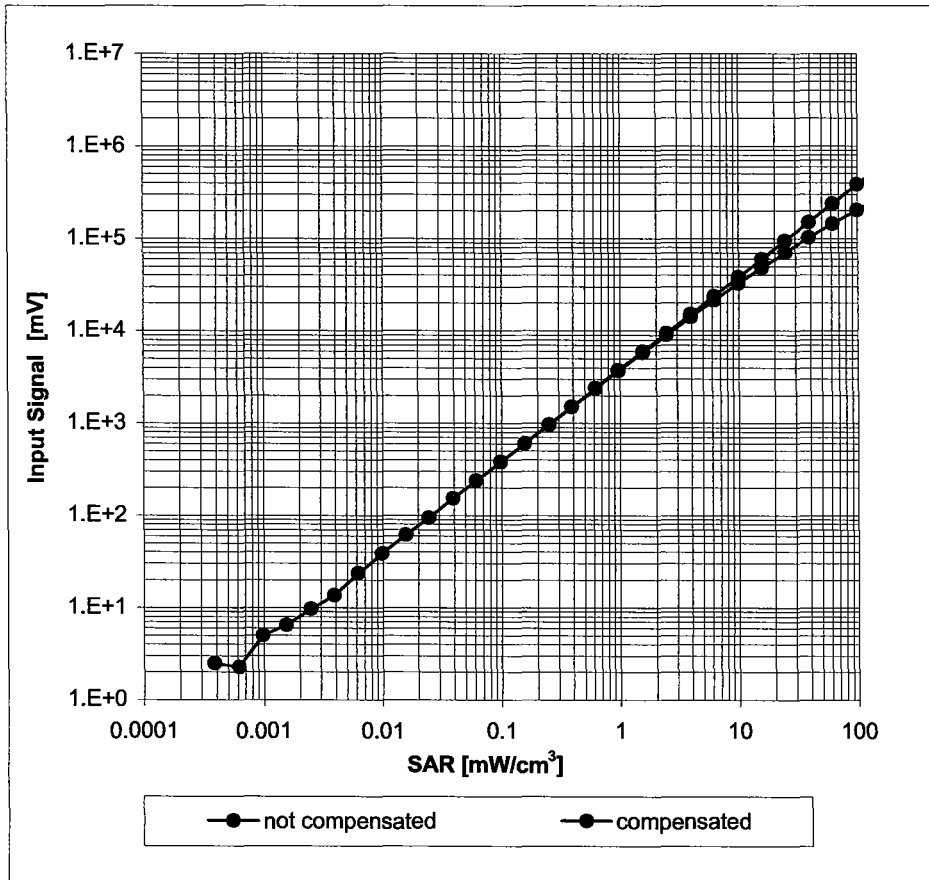
### Receiving Pattern ( $\phi$ ), $\vartheta = 0^\circ$



**Uncertainty of Axial Isotropy Assessment:  $\pm 0.5\%$  (k=2)**

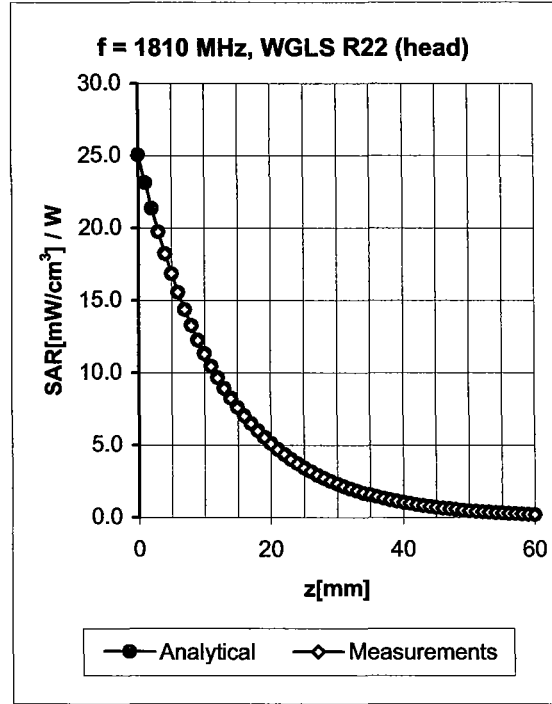
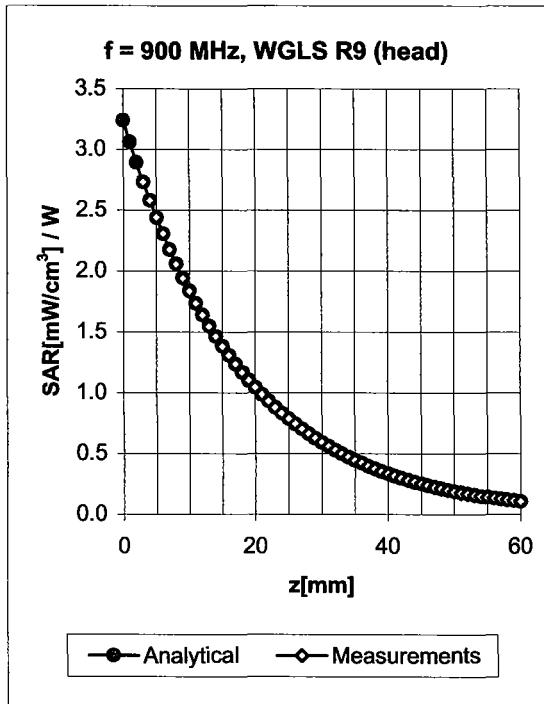
# Dynamic Range $f(\text{SAR}_{\text{head}})$

(Waveguide R22,  $f = 1800 \text{ MHz}$ )



Uncertainty of Linearity Assessment:  $\pm 0.6\%$  ( $k=2$ )

## Conversion Factor Assessment

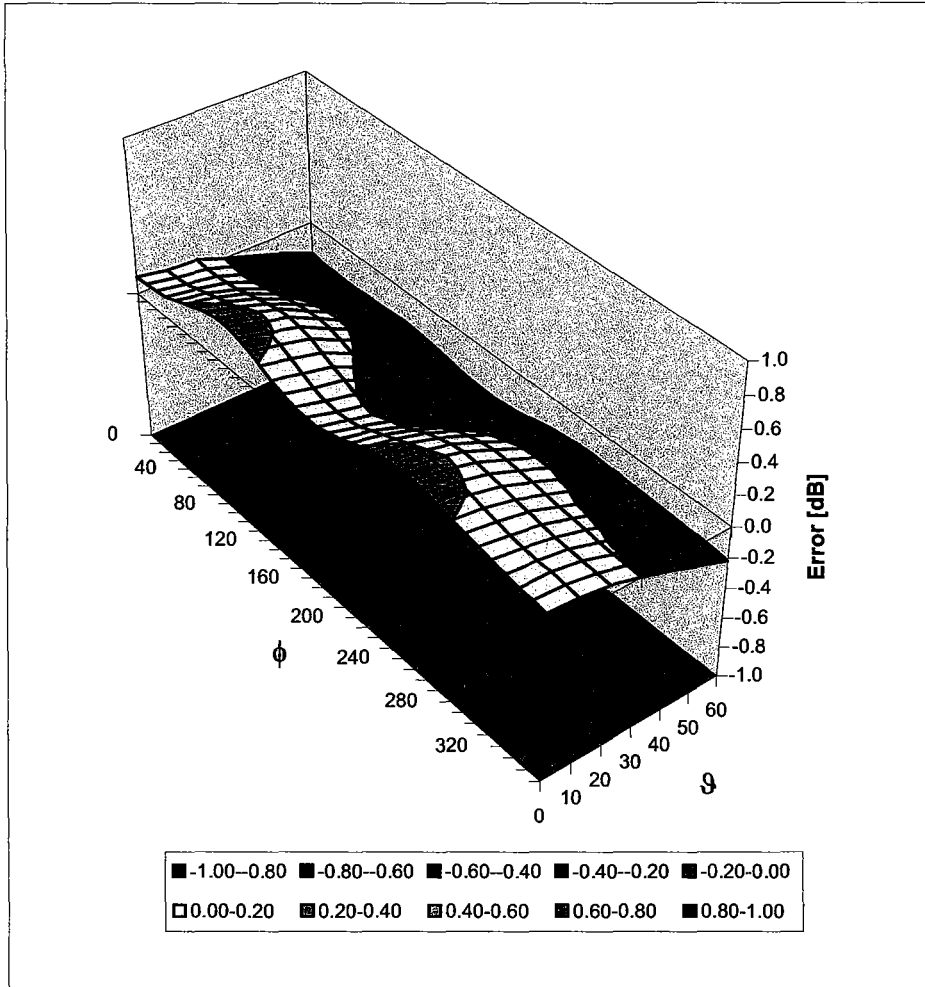


f [MHz]	Validity [MHz] <sup>c</sup>	TSL	Permittivity	Conductivity	Alpha	Depth	ConvF Uncertainty
900	± 50 / ± 100	Head	41.5 ± 5%	0.97 ± 5%	0.44	1.35	6.07 ± 11.0% (k=2)
1810	± 50 / ± 100	Head	40.0 ± 5%	1.40 ± 5%	0.27	2.38	5.01 ± 11.0% (k=2)
1950	± 50 / ± 100	Head	40.0 ± 5%	1.40 ± 5%	0.28	2.21	4.66 ± 11.0% (k=2)
2450	± 50 / ± 100	Head	39.2 ± 5%	1.80 ± 5%	0.48	1.52	4.31 ± 11.8% (k=2)
900	± 50 / ± 100	Body	55.0 ± 5%	1.05 ± 5%	0.52	1.27	5.93 ± 11.0% (k=2)
1810	± 50 / ± 100	Body	53.3 ± 5%	1.52 ± 5%	0.27	2.51	4.65 ± 11.0% (k=2)
1950	± 50 / ± 100	Body	53.3 ± 5%	1.52 ± 5%	0.33	2.04	4.44 ± 11.0% (k=2)
2450	± 50 / ± 100	Body	52.7 ± 5%	1.95 ± 5%	0.49	1.53	4.30 ± 11.8% (k=2)

<sup>c</sup> The validity of ± 100 MHz only applies for DASY v4.4 and higher (see Page 2). The uncertainty is the RSS of the ConvF uncertainty at calibration frequency and the uncertainty for the indicated frequency band.

# Deviation from Isotropy in HSL

Error ( $\phi, \vartheta$ ),  $f = 900$  MHz



Uncertainty of Spherical Isotropy Assessment:  $\pm 2.6\%$  ( $k=2$ )

**Appendix 6**

**Measurement Uncertainty Budget**

<i>a</i>	<i>b</i>	<i>c</i>	<i>d</i>	$e = f(d,k)$	<i>f</i>	<i>g</i>	$h = c \times f / e$	$i = c \times g / e$	<i>k</i>
<b>Uncertainty Component</b>	IEEE 1528 section	Tol. ( $\pm$ %)	Prob Dist	Div.	$c_i$ (1 g)	$c_i$ (10 g)	1 g $u_i$ ( $\pm$ %)	10 g $u_i$ ( $\pm$ %)	$v_i$
<b>Measurement System</b>									
Probe Calibration	E.2.1	5.9	N	1.00	1	1	5.9	5.9	$\infty$
Axial Isotropy	E.2.2	4.7	R	1.73	0.707	0.707	1.9	1.9	$\infty$
Hemispherical Isotropy	E.2.2	9.6	R	1.73	0.707	0.707	3.9	3.9	$\infty$
Boundary Effect	E.2.3	1.0	R	1.73	1	1	0.6	0.6	$\infty$
Linearity	E.2.4	4.7	R	1.73	1	1	2.7	2.7	$\infty$
System Detection Limits	E.2.5	1.0	R	1.73	1	1	0.6	0.6	$\infty$
Readout Electronics	E.2.6	0.3	N	1.00	1	1	0.3	0.3	$\infty$
Response Time	E.2.7	1.1	R	1.73	1	1	0.6	0.6	$\infty$
Integration Time	E.2.8	1.1	R	1.73	1	1	0.6	0.6	$\infty$
RF Ambient Conditions - Noise	E.6.1	3.0	R	1.73	1	1	1.7	1.7	$\infty$
RF Ambient Conditions - Reflections	E.6.1	0.0	R	1.73	1	1	0.0	0.0	$\infty$
Probe Positioner Mech. Tolerance	E.6.2	0.4	R	1.73	1	1	0.2	0.2	$\infty$
Probe Positioning w.r.t Phantom	E.6.3	1.4	R	1.73	1	1	0.8	0.8	$\infty$
Max. SAR Evaluation (ext., int., avg.)	E.5	3.4	R	1.73	1	1	2.0	2.0	$\infty$
<b>Test sample Related</b>									
Test Sample Positioning	E.4.2	3.2	N	1.00	1	1	3.2	3.2	29
Device Holder Uncertainty	E.4.1	4.0	N	1.00	1	1	4.0	4.0	8
SAR drift	6.6.2	5.0	R	1.73	1	1	2.9	2.9	$\infty$
<b>Phantom and Tissue Parameters</b>									
Phantom Uncertainty	E.3.1	4.0	R	1.73	1	1	2.3	2.3	$\infty$
Liquid Conductivity (target)	E.3.2	5.0	R	1.73	0.64	0.43	1.8	1.2	$\infty$
Liquid Conductivity (measurement)	E.3.3	3.3	N	1.00	0.64	0.43	2.1	1.4	$\infty$
Liquid Permittivity (target)	E.3.2	5.0	R	1.73	0.6	0.49	1.7	1.4	$\infty$
Liquid Permittivity (measurement)	E.3.3	1.9	N	1.00	0.6	0.49	1.1	0.9	$\infty$
<b>Combined Standard Uncertainty</b>			RSS				11.1	10.8	411
<b>Expanded Uncertainty (95% CONFIDENCE LEVEL)</b>			$k=2$				22.2	21.6	

**Appendix 7**

**Photographs of the device under test**

**>>NOTE: MOVED TO FCC EXHIBIT 7<<**

**Appendix 8**

**Dipole Characterization Certificate**

# Certification of System Performance Check Targets

Based on WI-0396

-Historical Data-

900MHz	
IEEE1528 Target:	10.8 (W/kg)
Measurement Uncertainty (k=1):	9.0%
Measurement Period:	3-June-05 to 10-May-06
# of tests performed:	1571
Grand Average:	11.3 (W/kg)
% Delta (Average - IEEE1528 Target)	4.3%
Is % Delta <= Expanded Measurement Uncertainty (k=2)?	Yes
Accept/Reject <u>Average</u> as new system performance check target?	ACCEPT
<u>Applies to Dipole SN's:</u> 55, 69, 77, 78, 79, 80, 91, 92, 93, 94, 95, 96, 97	

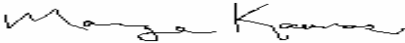
-New System Performance Check Targets- per WI-0396

(based on analysis of historical data)

Frequency	SAR Target (W/kg)	Permittivity	Conductivity (S/m)
900MHz	11.3	41.5 ± 5%	0.97 ± 5%

-Approvals-

Submitted by:  Date:

Signed: 

Comments:

Approved by:  Date:

Signed: 

Comments:

# Certification of System Performance Check Targets

Based on WI-0396

-Historical Data-


<b>1900MHz</b>	
IEEE1528 Target:	39.7 (W/kg)
Measurement Uncertainty (k=1):	9.0%
Measurement Period:	3-June-05 to 10-May-06
# of tests performed:	145
Grand Average:	40.9 (W/kg)
% Delta <small>(Average - IEEE1528 Target)</small>	3.0%
Is % Delta <= Expanded Measurement Uncertainty (k=2)?	<b>Yes</b>
Accept/Reject <u>Average</u> as new system performance check target?	<b>ACCEPT</b>
<u>Applies to Dipole SN's:</u> 513TR, 514TR, 518TR, 519TR, 520TR, 523TR, 524TR, 526TR, 527TR, 528TR, 529TR, 530TR, 533TR	

-New System Performance Check Targets- per WI-0396  
(based on analysis of historical data)

Frequency	SAR Target (W/kg)	Permittivity	Conductivity (S/m)
<b>1900MHz</b>	<b>40.9</b>	40.0 ± 5%	1.40 ± 5%

-Approvals-

Submitted by:  Date:

Signed: 

Comments:

Approved by:  Date:

Signed: 

Comments: