



MOTOROLA

Exhibit 11: SAR Test Report IHDT56FX1

Date of test: 20-Sept-2005 through 06-Oct-2005
Date of Report: 26-Oct-2006

Laboratory: Motorola Mobile Devices Business Product Safety & Compliance Laboratory
600 N. US Highway 45
Room: MW113
Libertyville, Illinois 60048

Test Responsible: Albert Patapack
Senior Staff Engineer

Accreditation: This laboratory is accredited to ISO/IEC 17025-1999 to perform the following tests:



<u>Tests:</u>	<u>Procedures:</u>
Electromagnetic Specific Absorption Rate	ANSI/IEEE C95.1-1992, 1999 (SAR) IEEE C95.3-1991 IEEE 1528, IEC 62209-1 FCC OET Bulletin 65 (<i>including Supplements A, B, C</i>) Australian Communications Authority Radio Communications (Electromagnetic Radiation – Human Exposure) Standard 1999 CENELEC EN 50361 (2001)
Simulated Tissue Preparation	APP-0247
RF Power Measurement	DOI-0876, 0900, 0902, 0904, 0915

On the following products or types of products:
Wireless Communications Devices (Examples): Two Way Radios; Portable Phones (including Cellular, Licensed Non-Broadcast and PCS); Low Frequency Readers; and Pagers

A2LA certificate #1651-01

Statement of Compliance: Motorola declares under its sole responsibility that portable cellular telephone FCC ID IHDT56FX1 to which this declaration relates, is in conformity with the appropriate General Population/Uncontrolled RF exposure standards, recommendations and guidelines (FCC 47 CFR §2.1093). It also declares that the product was tested in accordance with the appropriate measurement standards, guidelines and recommended practices. Any deviations from these standards, guidelines and recommended practices are noted below:

(none)

©Motorola, Inc. 2005
This test report shall not be reproduced except in full, without written approval of the laboratory.

The results and statements contained herein relate only to the items tested. The names of individuals involved may be mentioned only in connection with the statements or results from this report.

Motorola encourages all feedback, both positive and negative, on this test report.

Table of Contents

1. INTRODUCTION3

2. DESCRIPTION OF THE DEVICE UNDER TEST.....3

2.1 Antenna description3

2.2 Device description.....3

3. TEST EQUIPMENT USED.....4

3.1 Dosimetric System4

3.2 Additional Equipment.....4

4. ELECTRICAL PARAMETERS OF THE TISSUE SIMULATING LIQUID5

5. SYSTEM ACCURACY VERIFICATION.....6

6. TEST RESULTS.....7

6.1 Head Adjacent Test Results.....7

6.2 Body Worn Test Results10

APPENDIX 1: SAR DISTRIBUTION COMPARISON FOR SYSTEM ACCURACY VERIFICATION12

APPENDIX 2: SAR DISTRIBUTION PLOTS FOR PHANTOM HEAD ADJACENT USE13

APPENDIX 3: SAR DISTRIBUTION PLOTS FOR BODY WORN CONFIGURATION14

APPENDIX 4: PROBE CALIBRATION CERTIFICATE15

APPENDIX 5: MEASUREMENT UNCERTAINTY BUDGET.....16

APPENDIX 6: PHOTOGRAPHS OF DEVICE UNDER TEST.....19

1 Introduction

The Motorola Mobile Devices Business Product Safety Laboratory has performed measurements of the maximum potential exposure to the user of portable cellular phone (FCC ID IHDT56FX1). The Specific Absorption Rate (SAR) of this product was measured. The portable cellular phone was tested in accordance with FCC OET Bulletin 65 Supplement C 01-01.

2 Description of the Device Under Test

2.1 Antenna description

Type	External	
Location	Upper Right	
Dimensions	Length	98mm
	Width	3mm
Configuration	Extendable Whip	

2.2 Device description

FCC ID Number	IHDT56FX1		
Serial number	3347E318		
Mode(s) of Operation	800 AMPS	800 CDMA	1900 CDMA
Modulation Mode(s)	FM	QPSK	QPSK
Maximum Output Power Setting	27.8dBm	25.00dBm	25.00dBm
Duty Cycle	1:1	1:1	1:1
Transmitting Frequency Rang(s)	824.04-848.97 MHz	824.70-848.31 MHz	1851-1909MHz
Production Unit or Identical Prototype (47 CFR §2.908)	Identical Prototype		
Device Category	Portable		
RF Exposure Limits	General Population / Uncontrolled		

3 Test Equipment Used

3.1 Dosimetric System

The Motorola Mobile Devices Business Product Safety & Compliance Laboratory utilizes a Dosimetric Assessment System (Dasy4™ v4.5) manufactured by Schmid & Partner Engineering AG (SPEAG™), of Zurich Switzerland. All the SAR measurements are taken within a shielded enclosure. The overall RSS uncertainty of the measurement system is ±11.1% (K=1) with an expanded uncertainty of ±22.2% (K=2). The measurement uncertainty budget is given in Appendix 6. Per IEEE 1528, this uncertainty budget is applicable to the SAR range of 0.4 W/kg to 10 W/kg. The list of calibrated equipment used for the measurements is shown below.

Description	Serial Number	Cal Due Date
DASY4 DAE4 V1	656	17-Jun-2006
E-Field Probe ET3DV6	1502	19-July-2006
Dipole Validation Kit, D900V2	097	
S.A.M. Phantom used for 800MHz	TP-1129	
Dipole Validation Kit, D1800V2	277tr	
S.A.M. Phantom used for 1900MHz	TP-1134	

3.2 Additional Equipment

Description	Serial Number	Cal Due Date
Signal Generator HP8648C	3847A04840	26-Feb-2006
	3847A04630	02-Mar-2006
Power Meter E4419B	US39211012	31-May-2006
	GB43310686	02-Mar-2006
Power Sensor #1 - 9301A	US39211012	31-May-2006
Power Sensor #1 - 8481A	MY41095452	09-Mar-2006
Power Sensor #2 - 8481A	2702A82671	17-Dec-2005
	MY41095450	09-Mar-2006
Network Analyzer HP8753ES	US39172714	04-Mar-2006
Dielectric Probe Kit HP85070C	US99360207	

4 Electrical parameters of the tissue simulating liquid

Prior to conducting SAR measurements, the relative permittivity, ϵ_r , and the conductivity, σ , of the tissue simulating liquids were measured with the HP85070 Dielectric Probe Kit. These values, along with the temperature of the tissue simulate are shown in the table below. The recommended limits for maximum permittivity and minimum conductivity are also shown. These come from the Federal Communication Commission, OET Bulletin 65 Supplement C 01-01. It is seen that the measured parameters are satisfactory for compliance testing.

f (MHz)	Tissue type	Limits / Measured	Dielectric Parameters		
			ϵ_r	σ (S/m)	Temp (°C)
835	Head	Measured, 20-Sept-2005	41.8	0.89	21.7
		Measured, 21-Sept-2005	42.5	0.91	22.1
		Measured, 22-Sept-2005	42.2	0.91	21.5
		Recommended Limits	41.5 ±5%	0.90 ±5%	18-25
	Body	Measured, 30-Sept-2005	54.6	0.99	20.9
		Recommended Limits	55.2 ±5%	0.97 ±5%	18-25
1880	Head	Measured, 05-Oct-2005	39.0	1.46	21.4
		Measured, 05-Oct-2005	38.7	1.45	21.0
		Measured, 06-Oct-2005	38.8	1.44	21.3
		Recommended Limits	40.0 ±5%	1.40 ±5%	18-25
	Body	Measured, 06-Oct-2005	51.6	1.56	20.5
		Recommended Limits	53.3 ±5%	1.52 ±5%	18-25

The list of ingredients and the percent composition used for the tissue simulates are indicated in the table below.

Ingredient	800MHz	800MHz	1900MHz	1900MHz
	Head	Body	Head	Body
Sugar	57.0	44.9	--	--
DGBE	--	--	47.0	30.80
Water	40.45	53.06	52.8	68.91
Salt	1.45	0.94	0.2	0.29
HEC	1.0	1.0	--	--
Bact.	0.1	0.1	--	--

5 System Accuracy Verification

A system accuracy verification of the DASY4 v4.5 was performed using the measurement equipment listed in Section 3.1. The daily system accuracy verification occurs within center section of the SAM phantom.

A SAR measurement was performed to see if the measured SAR was within +/- 10% from the target SAR indicated in Section 8.3.7 Reference SAR Values in IEEE 1528. These tests were done at 900MHz and 1800MHz. These frequencies are within 100MHz of the mid-band frequency of the test device. This is within the allowable window given in Supplement C 01-01 *Appendix D System Verification* section item #5. The test was conducted on the same days as the measurement of the DUT. Recommended limits for maximum permittivity, minimum conductivity are shown in the table below. These come from the Federal Communication Commission, OET Bulletin 65 Supplement C 01-01. The obtained results from the system accuracy verification are displayed in the table below. The distributions of SAR compare well with those of the reference measurements (see Appendix 1). The tissue stimulant depth was verified to be 15.0cm ±0.5cm. Z-axis scans showing the SAR penetration are also included in Appendix 1. SAR values are normalized to 1W forward power delivered to the dipole.

f (MHz)	Description	SAR (W/kg), 1gram	Dielectric Parameters		Ambient Temp (°C)	Tissue Temp (°C)
			ϵ_r	σ (S/m)		
900	Measured, 20-Sept-2005	11.75	41.1	0.95	22.0	22.1
	Measured, 21-Sept-2005	11.83	41.8	0.97	22.0	22.0
	Measured, 22-Sept-2005	11.73	41.5	0.97	22.0	22.1
	Measured, 30-Sept-2005	11.23	41.4	0.97	22.0	21.6
	Recommended Limits	10.8	41.5 ±5%	0.97 ±5%	18-25	18-25
1800	Measured, 04-Oct-2005	36.61	39.3	1.38	21.0	20.9
	Measured, 05-Oct-2005	36.11	39.0	1.37	22.0	20.9
	Measured, 06-Oct-2005	34.85	39.1	1.35	22.0	21.8
	Recommended Limits	38.1	40.0 ±5%	1.4 ±5%	18-25	18-25

The following probe conversion factors were used on the E-Field probe(s) used for the system accuracy verification measurements:

Description	Serial Number	f (MHz)	Conversion Factor	Cal Cert pg #
E-Field Probe ET3DV6	1502	900	6.23	8 of 9
		1810	5.26	8 of 9

6 Test Results

The test sample was operated in a test mode that allows control of the transmitter without the need to place actual phone calls. For the purposes of this test the unit is commanded to test mode and manually set to the proper channel, transmitter power level and transmit mode of operation. The phone was tested in the configurations stipulated in OET Bulletin 65 Supplement C 01-01. Motorola also followed the requirements in Supplement. C / Appendix D: SAR Measurement Procedures, section titled “*Devices Operating Next To A Person’s Ear* “. These directions state “The device should be tested on the left and right side of the head phantom in the “Cheek/Touch” and “Ear/Tilt” positions. When applicable, each configuration should be tested with the antenna in its fully extended and fully retracted positions. These test configurations should be tested at the high, middle and low frequency channels of each operating mode; for example, AMPS, CDMA, and TDMA. If the SAR measured at the middle channel for each test configuration (left, right, Cheek/Touch, Tile/Ear, extended and retracted) is at least 2.0 dB lower than the SAR limit, testing at the high and low channels is optional for such test configuration(s).”

The DASY4 v4.5 SAR measurement system specified in section 3.1 was utilized within the intended operations as set by the SPEAG™ setup. The phone was positioned into the measurement configurations using the positioner supplied with the DASY4 v4.5 SAR measurement system. The measured dielectric constant of the material used for the positioner is less than 2.9 and the loss tangent is less than 0.02 (± 30%) at 850MHz. The default settings for the “coarse” and “cube” scans were chosen and use for measurements. The grid spacing of the course scan was set to 15cm as shown in the SAR plots included in appendix 2 and 3. Please refer to the DASY manual for additional information on SAR scanning procedures and algorithms used.

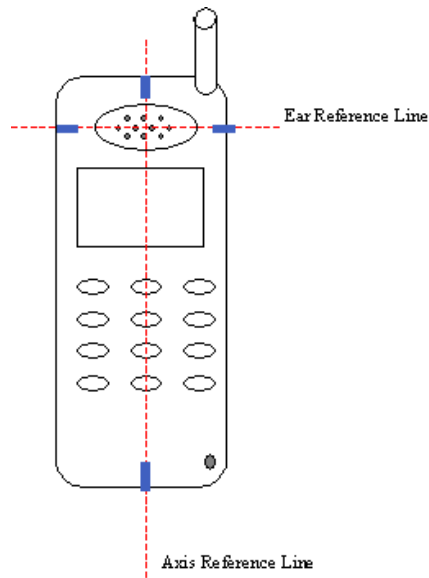
The Cellular Phone (FCC ID IHDT56FX1) has the SNN5744A as the only available battery option. This battery was used to do all of the SAR testing. The phone was placed in the SAR measurement system with a fully charged battery.

6.1 Head Adjacent Test Results

To aid in positioning repeatability, the ear reference line of the device and the axis reference line of the device have been physically added using a non-metallic marker.

- Per Figure 1, the "Ear Reference Line" is centered vertically through the center of the listening area (as defined by the speaker holes in the housing).
- The "Axis Reference Line" bisects the front surface of the device at its top and bottom edges.
- The intersection of these two lines defines the location of the "Ear Reference Point".

The lines drawn on the device extended to the outside edges, as shown in blue in the figure below, & wrap around the sides of the device.



The SAR results shown in tables 1 through 4 are maximum SAR values averaged over 1 gram of phantom tissue. Also shown are the measured conducted output powers, the temperature of the test facility during the test, the temperature of the tissue simulate after the test, the measured drift and the extrapolated SAR. The exact method of extrapolation is $New\ SAR = Old\ SAR * 10^{(-drift/10)}$. The SAR reported at the end of the measurement process by the DASY™ measurement system can be scaled up by the measured drift to determine the SAR at the beginning of the measurement process. This is the most conservative SAR because it corresponds to the average output power at the beginning of the SAR test. This extrapolation has been done because when the DUT is operating properly it may exhibit a slump in radiated power and SAR over time. This is verified by measuring the SAR drift after the test.

The left head and right head SAR contour distributions are similar. Because of this similarity, the cheek/touch and 15° tilt test conditions with the highest SAR values in each band are indicated as bold numbers in the following tables and are included in Appendix 2. All other test conditions measured lower SAR values than those included in Appendix 2.

The SAR measurements were performed using the SAM phantoms listed in section 3.1. Since the same phantoms and tissue simulate are used for the system accuracy verification as the device SAR measurements, the Z-axis scans included in within Appendix 1 are applicable for verification of tissue simulate depth to be 15.0cm ±0.5cm. Note that 800MHz digital mode SAR measurements were performed in accordance with Supplement C.

The following probe conversion factors were used on the E-Field probe(s) used for the head adjacent measurements:

Description	Serial Number	f (MHz)	Conversion Factor	Cal Cert pg #
E-Field Probe ET3DV6	1502	900	6.23	8 of 9
		1810	5.26	8 of 9

f (MHz)	Description	Conducted Output Power (dBm)	Left Head (Cheek / Touch Position)							
			Ant Extended				Ant Retracted			
			Measured (W/kg)	Drift (dB)	Extrapolated (W/kg)	Simulate Temp (°C)	Measured (W/kg)	Drift (dB)	Extrapolated (W/kg)	Simulate Temp (°C)
Analog 800MHz	Channel 991	27.84	0.84	-0.13	0.87	21.5	0.763	-0.18	0.80	21.7
	Channel 384	27.87	1.15	0.356	1.15	21.7	1.06	0.03	1.06	21.7
	Channel 799	27.68	1.29	-0.09	1.32	21.6	1.19	-0.30	1.28	21.5
Digital 800MHz	Channel 1013	24.82	1.22	0.13	1.22	21.7	1.17	0.04	1.17	21.6
	Channel 384	25.06	1.36	0.38	1.36	21.6	1.18	0.31	1.18	21.6
	Channel 777	24.99	1.25	-0.33	1.35	21.6	1.10	-0.20	1.15	21.7
Digital 1900MHz	Channel 25	24.97					1.01	0.09	1.01	20.8
	Channel 600	24.91	0.756	0.04	0.76	20.7	0.972	-0.31	1.04	21.1
	Channel 1175	25.04					1.17	0.07	1.17	20.8

Table 1: SAR measurement results for the portable cellular telephone FCC ID IHDT56FX1 at highest possible output power. Measured against the left head in the Cheek/Touch Position.

f (MHz)	Description	Conducted Output Power (dBm)	Right Head (Cheek / Touch Position)							
			Ant Extended				Ant Retracted			
			Measured (W/kg)	Drift (dB)	Extrapolated (W/kg)	Simulate Temp (°C)	Measured (W/kg)	Drift (dB)	Extrapolated (W/kg)	Simulate Temp (°C)
Analog 800MHz	Channel 991	27.84	0.924	0.01	0.92	21.4	0.811	-0.15	0.84	21.4
	Channel 384	27.87	1.16	0.01	1.16	21.5	1.08	0.34	1.08	21.5
	Channel 799	27.68	1.34	0.02	1.34	21.4	1.24	-0.12	1.27	21.4
Digital 800MHz	Channel 1013	24.82	1.35	0.15	1.35	21.7	1.15	-0.09	1.17	21.6
	Channel 384	25.06	1.37	0.41	1.37	22.1	1.22	0.37	1.22	21.6
	Channel 777	24.99	1.28	-0.31	1.37	21.6	1.12	-0.22	1.18	21.6
Digital 1900MHz	Channel 25	24.97	1.46	0.00	1.46	20.8	1.22	0.02	1.22	20.9
	Channel 600	24.91	0.947	0.06	0.95	20.9	1.23	-0.13	1.27	20.9
	Channel 1175	25.04	1.52	0.025	1.53	21.3	1.37	-0.041	1.38	21.0

Table 2: SAR measurement results for the portable cellular telephone FCC ID IHDT56FX1 at highest possible output power. Measured against the right head in the Cheek/Touch Position.

f (MHz)	Description	Conducted Output Power (dBm)	Left Head (15° Tilt Position)							
			Ant Extended				Ant Retracted			
			Measured (W/kg)	Drift (dB)	Extrapolated (W/kg)	Simulate Temp (°C)	Measured (W/kg)	Drift (dB)	Extrapolated (W/kg)	Simulate Temp (°C)
Analog 800MHz	Channel 991	27.84								
	Channel 384	27.87	0.319	0.28	0.32	21.5	0.273	-0.04	0.28	21.5
	Channel 799	27.68								
Digital 800MHz	Channel 1013	24.82								
	Channel 384	25.06	0.374	0.43	0.37	21.7	0.325	0.37	0.33	21.7
	Channel 777	24.99								
Digital 1900MHz	Channel 25	24.97								
	Channel 600	24.91	0.580	-0.032	0.59	20.7	0.412	-0.07	0.42	20.8
	Channel 1175	25.04								

Table 3: SAR measurement results for the portable cellular telephone FCC ID IHDT56FX1 at highest possible output power. Measured against the left head in the 15° Tilt Position.

f (MHz)	Description	Conducted Output Power (dBm)	Right Head (15° Tilt Position)							
			Ant Extended				Ant Retracted			
			Measured (W/kg)	Drift (dB)	Extrapolated (W/kg)	Simulate Temp (°C)	Measured (W/kg)	Drift (dB)	Extrapolated (W/kg)	Simulate Temp (°C)
Analog 800MHz	Channel 991	27.84								
	Channel 384	27.87	0.318	-0.06	0.32	21.5	0.277	0.14	0.28	21.5
	Channel 799	27.68								
Digital 800MHz	Channel 1013	24.82								
	Channel 384	25.06	0.353	0.30	0.35	21.6	0.304	0.34	0.30	21.6
	Channel 777	24.99								
Digital 1900MHz	Channel 25	24.97								
	Channel 600	24.91	0.573	0.02	0.57	21.0	0.412	-0.06	0.42	21.0
	Channel 1175	25.04								

Table 4: SAR measurement results for the portable cellular telephone FCC ID IHDT56FX1 at highest possible output power. Measured against the right head in the 15° Tilt Position.

6.2 Body Worn Test Results

The SAR results shown in tables 5 and 6 are the maximum SAR values averaged over 1 gram of phantom tissue. Also shown are the measured conducted output powers, the temperature of the test facility during the test, the temperature of the tissue simulate after the test, the measured drift and the extrapolated SAR. The exact method of extrapolation is $New\ SAR = Old\ SAR * 10^{(-drift/10)}$. The SAR reported at the end of the measurement process by the DASY™ measurement system can be scaled up by the measured drift to determine the SAR at the beginning of the measurement process. This is the most conservative SAR because it corresponds to the average output power at the beginning of the SAR test. This extrapolation has been done because when the DUT is operating properly it may exhibit a slump in radiated power and SAR over time. This is verified by measuring the SAR drift after the test. Note that 800MHz digital mode SAR measurements were performed in accordance with OET Bulletin 65 Supplement C 01-01.

The test conditions that produced the highest SAR values in each band are indicated as bold numbers in the following tables and are included in Appendix 3. All other test conditions measured lower SAR values than those included in Appendix 3.

A “flat” phantom was for the body-worn tests. This “flat” phantom is made out of 1” thick natural High Density Polyethylene with a thickness at the bottom equal to 2.0mm. It measures 52.7cm(long) x 26.7cm(wide) x 21.2cm(tall). The measured dielectric constant of the material used is less than 2.3 and the loss tangent is less than 0.0046 all the way up to 2.184GHz.

The tissue stimulant depth was verified to be 15.0cm ±0.5cm. The same device holder described in section 6 was used for positioning the phone. There are no Body-Worn Accessories available for this phone at the time of testing hence the device was tested per the supplement C testing guidelines for devices that do not have body worn accessories. The phone was placed a maximum of 25mm away from a flat phantom per the supplement C standard guidelines to perform SAR measurement. The cellular phone was tested with a headset connected to the device for all body-worn SAR measurements.

The following probe conversion factors were used on the E-Field probe(s) used for the body worn measurements:

Description	Serial Number	f (MHz)	Conversion Factor	Cal Cert pg #
E-Field Probe ET3DV6	1502	900	6.13	8 of 9
		1810	4.58	8 of 9

f (MHz)	Description	Conducted Output Power (dBm)	Body Worn; Front of the phone 15mm from phantom							
			Ant Extended				Ant Retracted			
			Measured (W/kg)	Drift (dB)	Extrapolated (W/kg)	Simulate Temp (°C)	Measured (W/kg)	Drift (dB)	Extrapolated (W/kg)	Simulate Temp (°C)
Analog 800MHz	Channel 991	27.84								
	Channel 384	27.87	0.258	0.00	0.26	21.0	0.22	0.20	0.22	21.0
	Channel 799	27.68								
Digital 800MHz	Channel 1013	24.82								
	Channel 384	25.06	0.281	0.44	0.28	20.9	0.268	0.22	0.27	21.0
	Channel 777	24.99								
Digital 1900MHz	Channel 25	24.97								
	Channel 600	24.91	0.231	-0.01	0.23	21.2	0.0862	-0.01	0.09	21.2
	Channel 1175	25.04								

Table 5: SAR measurement results for the portable cellular telephone FCC ID IHDT56FX1at highest possible output power. Measured against the body.

f (MHz)	Description	Conducted Output Power (dBm)	Body Worn; Back of the phone 15mm from phantom							
			Ant Extended				Ant Retracted			
			Measured (W/kg)	Drift (dB)	Extrapolated (W/kg)	Simulate Temp (°C)	Measured (W/kg)	Drift (dB)	Extrapolated (W/kg)	Simulate Temp (°C)
Analog 800MHz	Channel 991	27.84								
	Channel 384	27.87	0.526	-0.02	0.53	20.9	0.477	0.113	0.48	20.9
	Channel 799	27.68								
Digital 800MHz	Channel 1013	24.82								
	Channel 384	25.06	0.60	0.38	0.60	21.0	0.558	0.08	0.56	21.1
	Channel 777	24.99								
Digital 1900MHz	Channel 25	24.97								
	Channel 600	24.91	0.793	0.07	0.79	21.1	0.248	0.06	0.25	21.1
	Channel 1175	25.04								

Table 6: SAR measurement results for the portable cellular telephone FCC ID IHDT56FX1at highest possible output power. Measured against the body.

Appendix 1

SAR distribution comparison for the system accuracy verification

Date/Time: 9/20/2005 8:02:20 AM

Test Laboratory: Motorola 092005_900MHz_Good +4.0%**DUT: Dipole 900 MHz; Type: D900V2; Serial: D900V2 - SN:097;**

Procedure Notes: 900 MHz System Performance Check / Dipole Sn# 097 PM1 Power = 200 mW

Sim.Temp@meas = 22.06C Sim.Temp@SPC = 22.1C Room Temp @ SPC = 22C

Communication System: CW - Dipole; Frequency: 900 MHz; Channel Number: 4; Duty Cycle: 1:1

Medium: VALIDATION Only; Medium parameters used: $f = 900 \text{ MHz}$; $\sigma = 0.95 \text{ mho/m}$; $\epsilon_r = 41.1$; $\rho = 1000 \text{ kg/m}^3$

DASY4 Configuration:

- Probe: ET3DV6 - SN1502; ConvF(6.23, 6.23, 6.23); Calibrated: 7/19/2005
- Sensor-Surface: 4mm (Mechanical Surface Detection)
- Electronics: DAE4 Sn656; Calibrated: 6/17/2005
- Phantom: PCS9 Sugar Water SAM; Type: SAM; Serial: TP-1129;
- Measurement SW: DASY4, V4.5 Build 19; Postprocessing SW: SEMCAD, V1.8 Build 159

Daily SPC Check/Dipole Area Scan (4x9x1):

Measurement grid: dx=15mm, dy=15mm Maximum value of SAR (measured) = 2.21 mW/g

Daily SPC Check/0-Degree 5x5x7 Cube (5x5x7)/Cube 0:

Measurement grid: dx=8mm, dy=8mm, dz=5mm

Reference Value = 53.6 V/m; Power Drift = 0.075 dB Peak SAR (extrapolated) = 3.45 W/kg

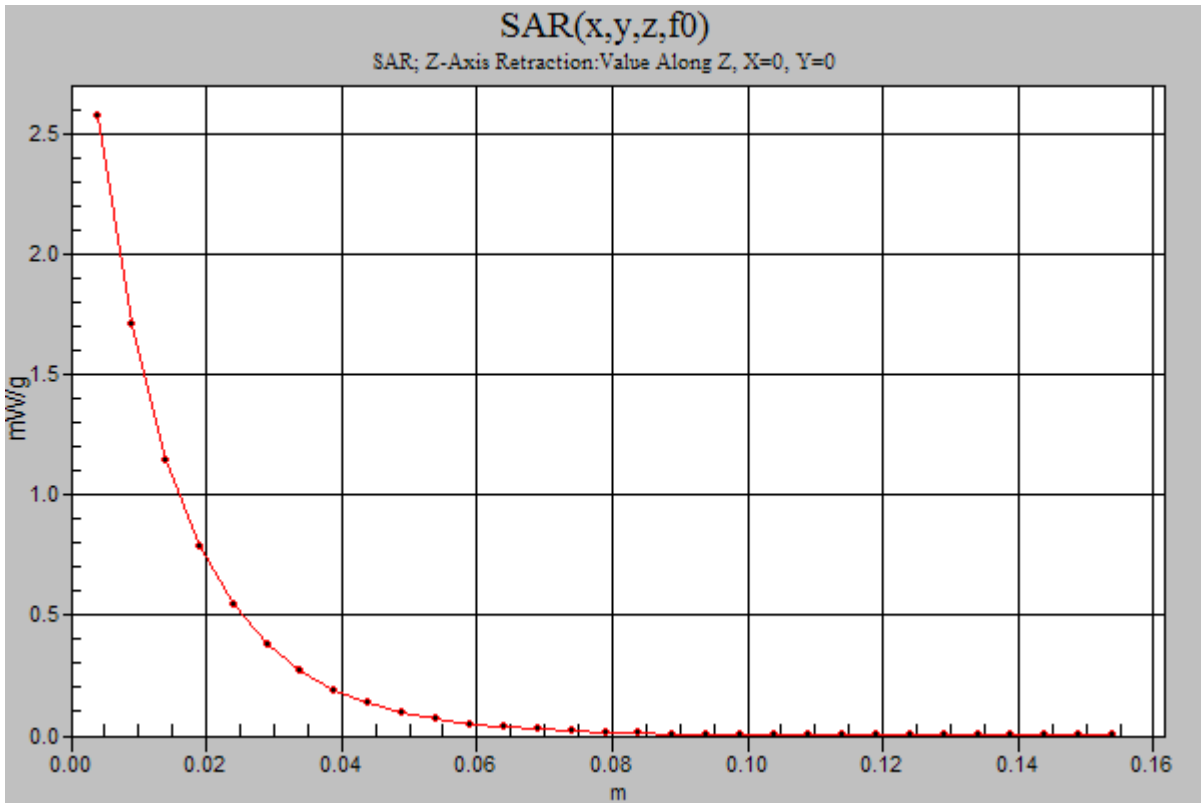
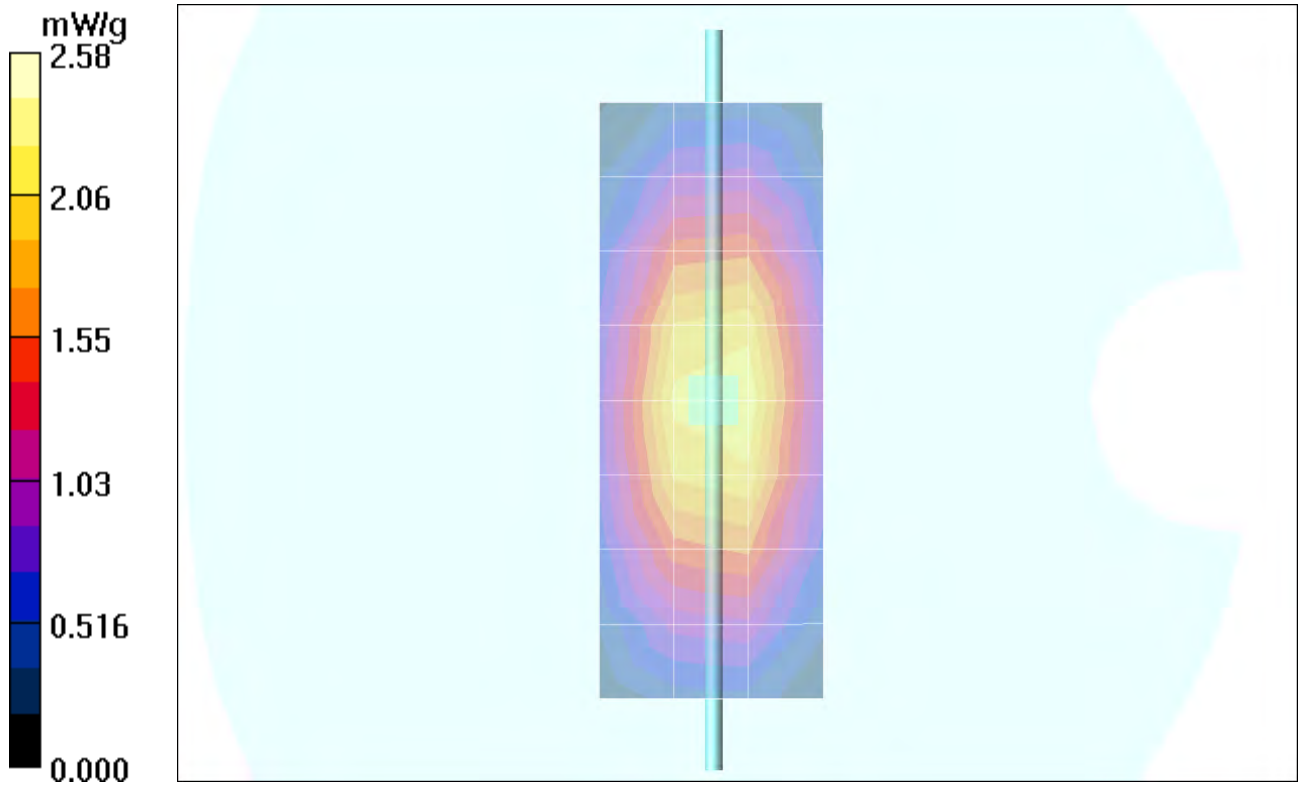
SAR(1 g) = 2.32 mW/g; SAR(10 g) = 1.49 mW/g Maximum value of SAR (measured) = 2.52 mW/g**Daily SPC Check/90-Degree 5x5x7 Cube (5x5x7)/Cube 0:**

Measurement grid: dx=8mm, dy=8mm, dz=5mm

Reference Value = 53.6 V/m; Power Drift = 0.075 dB Peak SAR (extrapolated) = 3.50 W/kg

SAR(1 g) = 2.38 mW/g; SAR(10 g) = 1.53 mW/g Maximum value of SAR (measured) = 2.55 mW/g**Daily SPC Check/Z-Axis Retraction (1x1x31):**

Measurement grid: dx=20mm, dy=20mm, dz=5mm Maximum value of SAR (measured) = 2.58 mW/g



Date/Time: 9/21/2005 8:06:41 AM

Test Laboratory: Motorola 092105_900MHz_Good +4.6%**DUT: Dipole 900 MHz; Type: D900V2; Serial: D900V2 - SN:097;**

Procedure Notes: 900 MHz System Performance Check / Dipole Sn# 097 PM1 Power = 200 mW

Sim.Temp@meas = 22.1C Sim.Temp@SPC = 22C Room Temp @ SPC = 22C

Communication System: CW - Dipole; Frequency: 900 MHz; Channel Number: 4; Duty Cycle: 1:1

Medium: VALIDATION Only; Medium parameters used: $f = 900$ MHz; $\sigma = 0.97$ mho/m; $\epsilon_r = 41.8$; $\rho = 1000$ kg/m³

DASY4 Configuration:

- Probe: ET3DV6 - SN1502; ConvF(6.23, 6.23, 6.23); Calibrated: 7/19/2005
- Sensor-Surface: 4mm (Mechanical Surface Detection)
- Electronics: DAE4 Sn656; Calibrated: 6/17/2005
- Phantom: PCS9 Sugar Water SAM; Type: SAM; Serial: TP-1129;
- Measurement SW: DASY4, V4.5 Build 19; Postprocessing SW: SEMCAD, V1.8 Build 159

Daily SPC Check/Dipole Area Scan (4x9x1):

Measurement grid: dx=15mm, dy=15mm Maximum value of SAR (measured) = 2.22 mW/g

Daily SPC Check/0-Degree 5x5x7 Cube (5x5x7)/Cube 0:

Measurement grid: dx=8mm, dy=8mm, dz=5mm

Reference Value = 53.2 V/m; Power Drift = 0.059 dB Peak SAR (extrapolated) = 3.44 W/kg

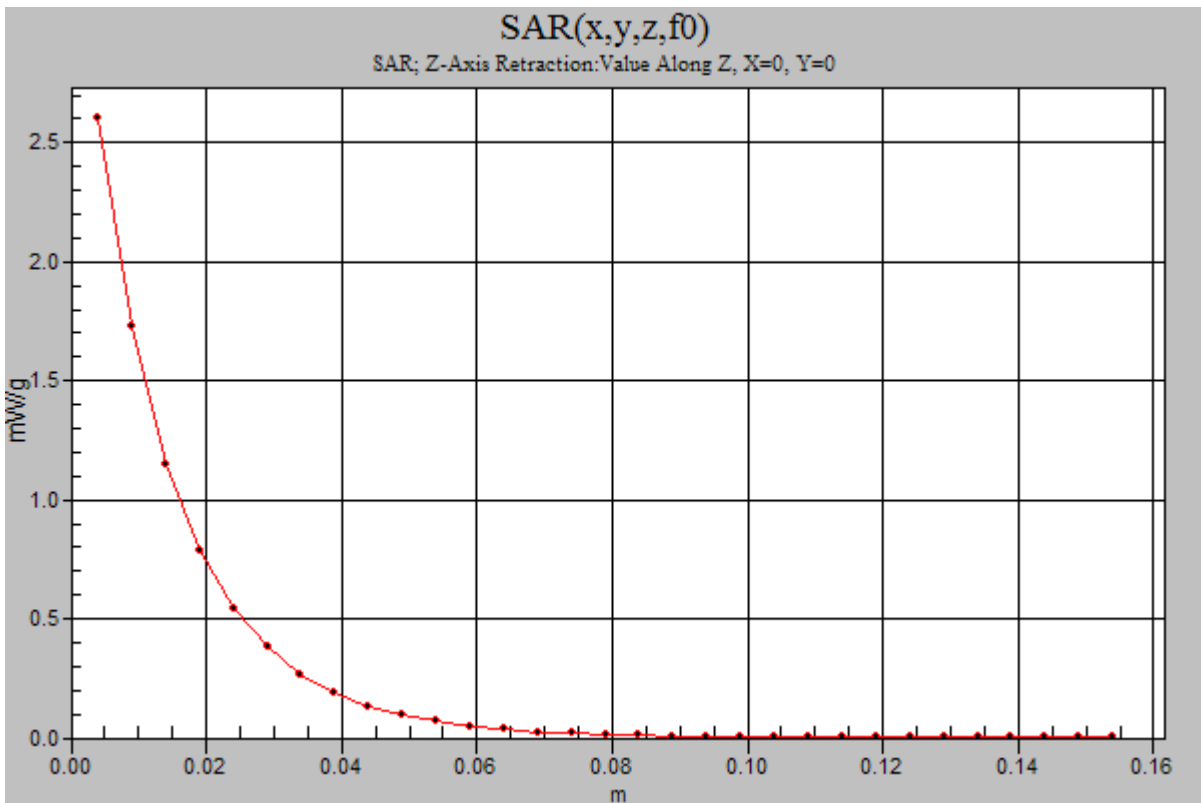
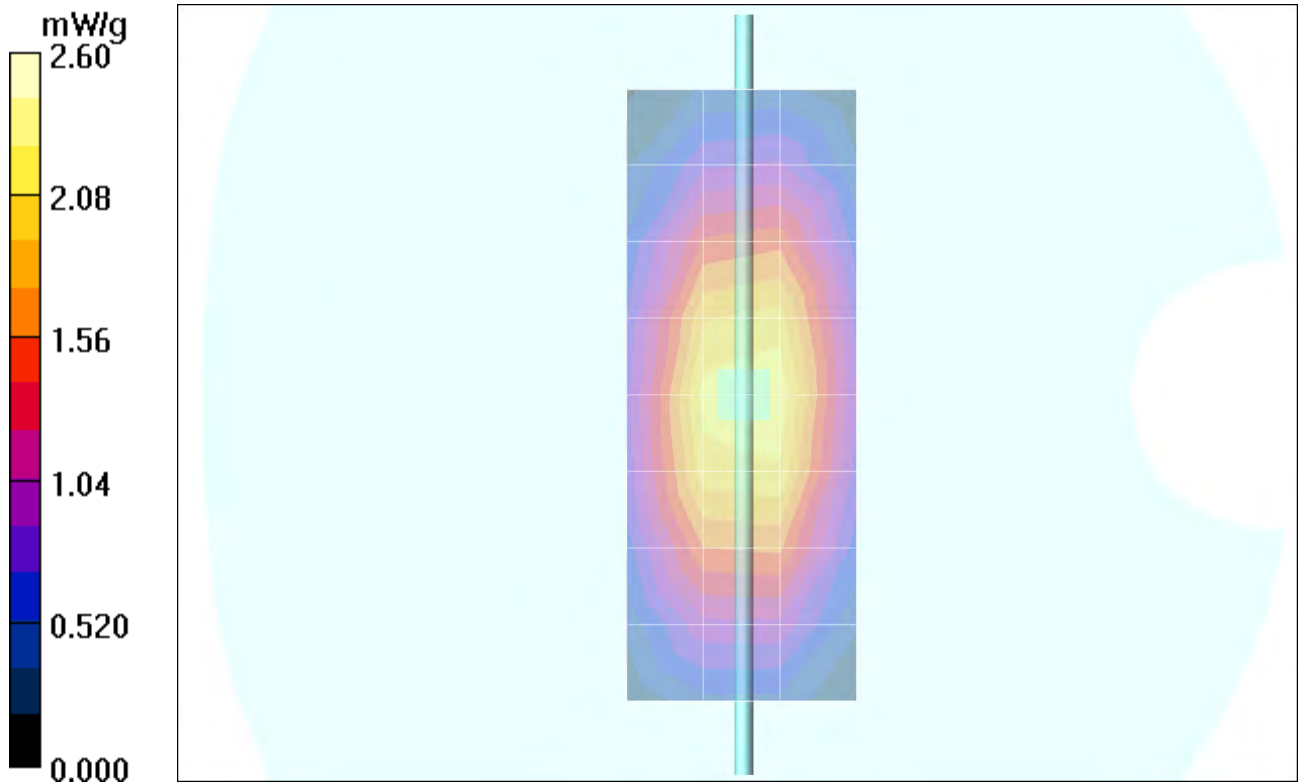
SAR(1 g) = 2.33 mW/g; SAR(10 g) = 1.5 mW/g Maximum value of SAR (measured) = 2.53 mW/g**Daily SPC Check/90-Degree 5x5x7 Cube (5x5x7)/Cube 0:**

Measurement grid: dx=8mm, dy=8mm, dz=5mm

Reference Value = 53.2 V/m; Power Drift = 0.059 dB Peak SAR (extrapolated) = 3.55 W/kg

SAR(1 g) = 2.4 mW/g; SAR(10 g) = 1.54 mW/g Maximum value of SAR (measured) = 2.60 mW/g**Daily SPC Check/Z-Axis Retraction (1x1x31):**

Measurement grid: dx=20mm, dy=20mm, dz=5mm



Date/Time: 9/22/2005 8:10:44 AM

Test Laboratory: Motorola 092205_900MHz_Good +3.8%**DUT: Dipole 900 MHz; Type: D900V2; Serial: D900V2 - SN:097;**

Procedure Notes: 900 MHz System Performance Check / Dipole Sn# 097 PM1 Power = 199 mW

Sim.Temp@meas = 22.1C Sim.Temp@SPC = 22.1C Room Temp @ SPC = 22C

Communication System: CW - Dipole; Frequency: 900 MHz; Channel Number: 4; Duty Cycle: 1:1

Medium: VALIDATION Only; Medium parameters used: $f = 900$ MHz; $\sigma = 0.97$ mho/m; $\epsilon_r = 41.5$; $\rho = 1000$ kg/m³

DASY4 Configuration:

- Probe: ET3DV6 - SN1502; ConvF(6.23, 6.23, 6.23); Calibrated: 7/19/2005
- Sensor-Surface: 4mm (Mechanical Surface Detection)
- Electronics: DAE4 Sn656; Calibrated: 6/17/2005
- Phantom: PCS9 Sugar Water SAM; Type: SAM; Serial: TP-1129;
- Measurement SW: DASY4, V4.5 Build 19; Postprocessing SW: SEMCAD, V1.8 Build 159

Daily SPC Check/Dipole Area Scan (4x9x1):

Measurement grid: dx=15mm, dy=15mm Maximum value of SAR (measured) = 2.18 mW/g

Daily SPC Check/0-Degree 5x5x7 Cube (5x5x7)/Cube 0:

Measurement grid: dx=8mm, dy=8mm, dz=5mm

Reference Value = 53.0 V/m; Power Drift = 0.061 dB Peak SAR (extrapolated) = 3.42 W/kg

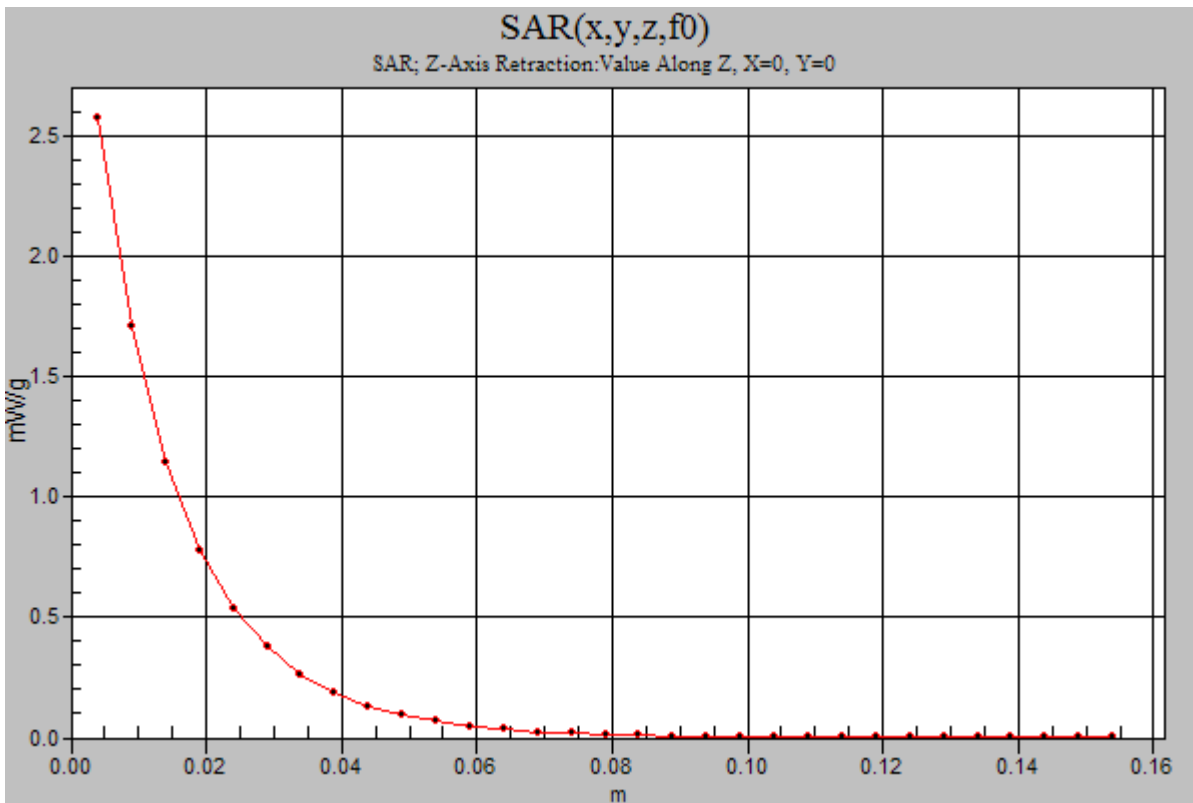
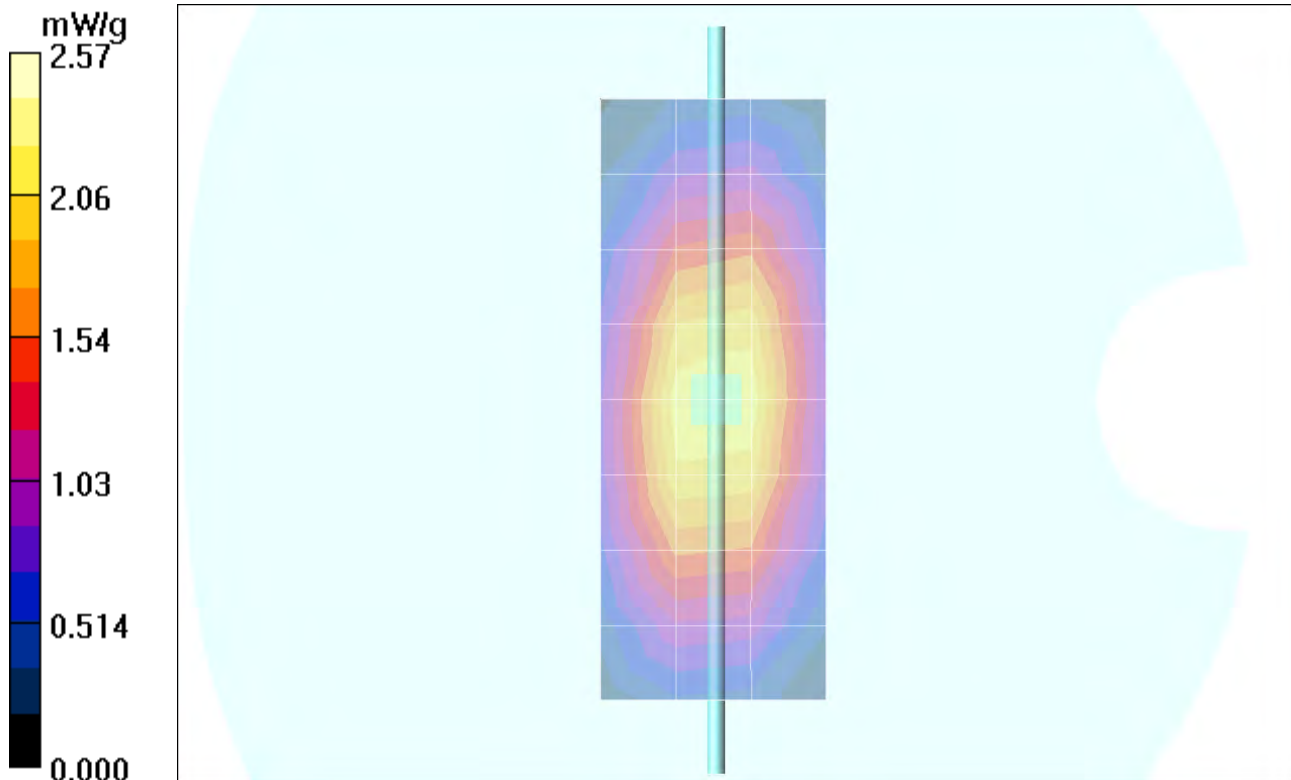
SAR(1 g) = 2.31 mW/g; SAR(10 g) = 1.48 mW/g Maximum value of SAR (measured) = 2.51 mW/g**Daily SPC Check/90-Degree 5x5x7 Cube (5x5x7)/Cube 0:**

Measurement grid: dx=8mm, dy=8mm, dz=5mm

Reference Value = 53.0 V/m; Power Drift = 0.061 dB Peak SAR (extrapolated) = 3.47 W/kg

SAR(1 g) = 2.36 mW/g; SAR(10 g) = 1.53 mW/g Maximum value of SAR (measured) = 2.55 mW/g**Daily SPC Check/Z-Axis Retraction (1x1x31):**

Measurement grid: dx=20mm, dy=20mm, dz=5mm Maximum value of SAR (measured) = 2.57 mW/g



Date/Time: 9/30/2005 8:12:02 AM

Test Laboratory: Motorola 093005_900MHz_Good -0.7%**DUT: Dipole 900 MHz; Type: D900V2; Serial: D900V2 - SN:097;**

Procedure Notes: 900 MHz System Performance Check / Dipole Sn# 097 PM1 Power = 200 mW

Sim.Temp@meas = 21.58C Sim.Temp@SPC = 21.6C Room Temp @ SPC = 22C

Communication System: CW - Dipole; Frequency: 900 MHz; Channel Number: 4; Duty Cycle: 1:1

Medium: VALIDATION Only; Medium parameters used: $f = 900 \text{ MHz}$; $\sigma = 0.97 \text{ mho/m}$; $\epsilon_r = 41.4$; $\rho = 1000 \text{ kg/m}^3$

DASY4 Configuration:

- Probe: ET3DV6 - SN1502; ConvF(6.23, 6.23, 6.23); Calibrated: 7/19/2005
- Sensor-Surface: 4mm (Mechanical Surface Detection)
- Electronics: DAE4 Sn656; Calibrated: 6/17/2005
- Phantom: PCS9 Sugar Water SAM; Type: SAM; Serial: TP-1129;
- Measurement SW: DASY4, V4.5 Build 19; Postprocessing SW: SEMCAD, V1.8 Build 159

Daily SPC Check/Dipole Area Scan (4x9x1):

Measurement grid: dx=15mm, dy=15mm Maximum value of SAR (measured) = 2.10 mW/g

Daily SPC Check/0-Degree 5x5x7 Cube (5x5x7)/Cube 0:

Measurement grid: dx=8mm, dy=8mm, dz=5mm

Reference Value = 52.3 V/m; Power Drift = -0.027 dB Peak SAR (extrapolated) = 3.31 W/kg

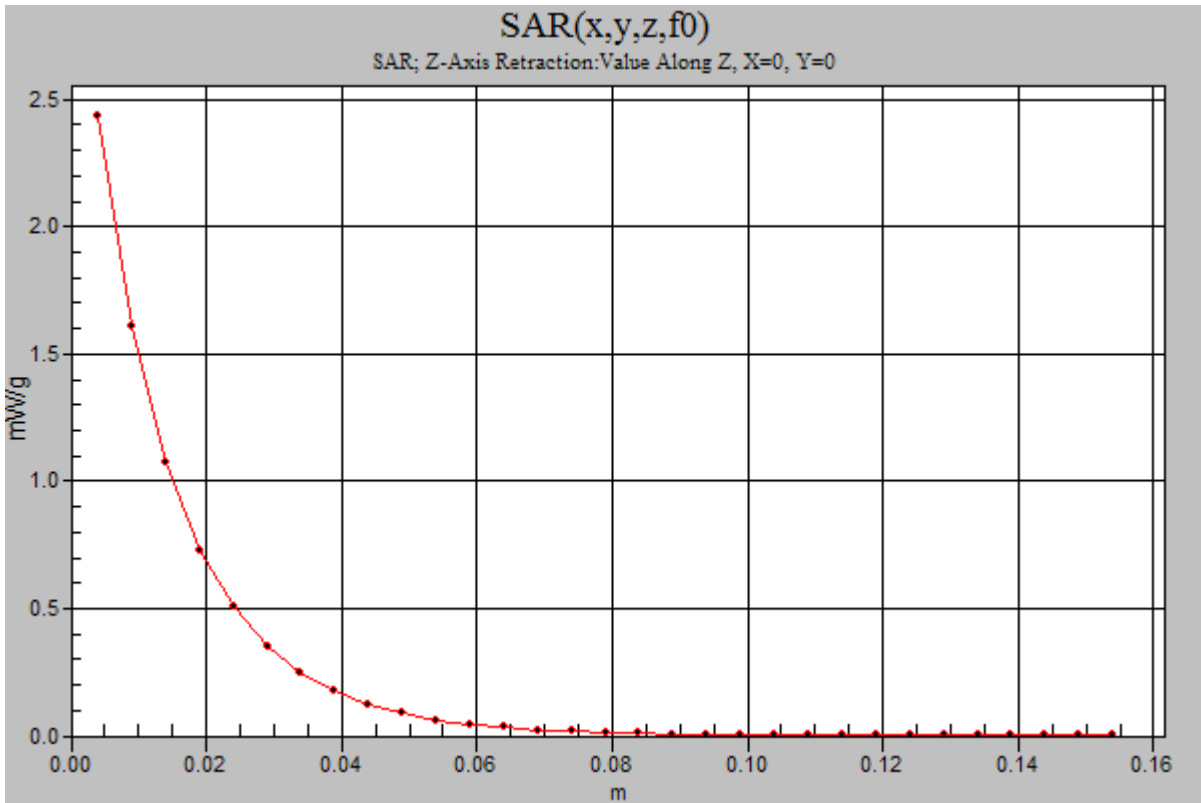
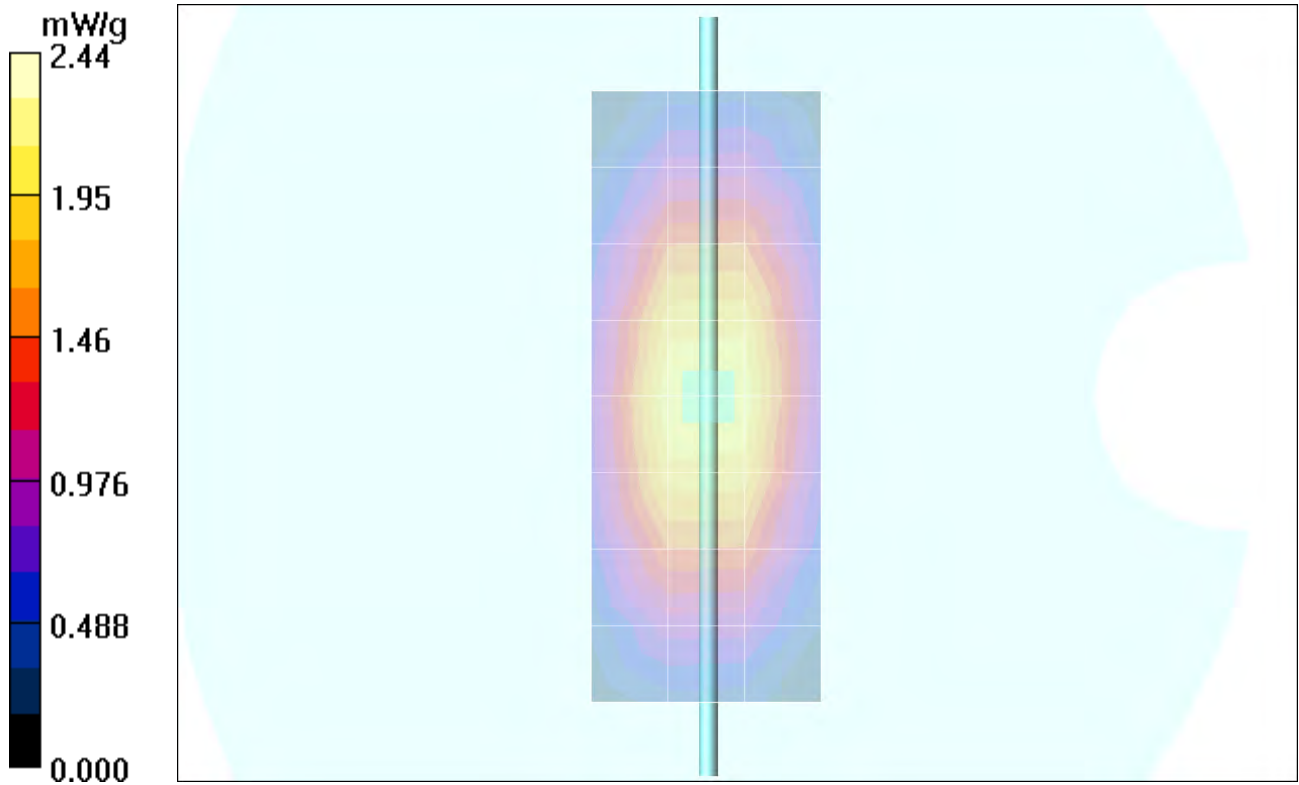
SAR(1 g) = 2.23 mW/g; SAR(10 g) = 1.43 mW/g Maximum value of SAR (measured) = 2.43 mW/g**Daily SPC Check/90-Degree 5x5x7 Cube (5x5x7)/Cube 0:**

Measurement grid: dx=8mm, dy=8mm, dz=5mm

Reference Value = 52.3 V/m; Power Drift = -0.027 dB Peak SAR (extrapolated) = 3.33 W/kg

SAR(1 g) = 2.26 mW/g; SAR(10 g) = 1.45 mW/g Maximum value of SAR (measured) = 2.44 mW/g**Daily SPC Check/Z-Axis Retraction (1x1x31):**

Measurement grid: dx=20mm, dy=20mm, dz=5mm



Date/Time: 10/4/2005 3:45:46 PM

Test Laboratory: Motorola 100405_1800MHz_Good -3.9%**DUT: Dipole 1800 MHz; Type: D1800V2; Serial: D1800V2 - SN:277tr;**

Procedure Notes: 1800 MHz System Performance Check / Dipole Sn# 277tr PM1 Power = 199mW

Sim.Temp@meas = 20.9C Sim.Temp@SPC = 20.9C Room Temp @ SPC = 21C

Communication System: CW - Dipole; Frequency: 1800 MHz; Channel Number: 8; Duty Cycle: 1:1

Medium: VALIDATION Only; Medium parameters used: $f = 1800$ MHz; $\sigma = 1.38$ mho/m; $\epsilon_r = 39.3$; $\rho = 1000$ kg/m³

DASY4 Configuration:

- Probe: ET3DV6 - SN1502; ConvF(5.26, 5.26, 5.26); Calibrated: 7/19/2005
- Sensor-Surface: 4mm (Mechanical Surface Detection)
- Electronics: DAE4 Sn656; Calibrated: 6/17/2005
- Phantom: PCS9 Glycol SAM; Type: SAM; Serial: TP-1134;
- Measurement SW: DASY4, V4.5 Build 19; Postprocessing SW: SEMCAD, V1.8 Build 159

Daily SPC Check/Dipole Area Scan (4x9x1):

Measurement grid: dx=15mm, dy=15mm Maximum value of SAR (measured) = 5.99 mW/g

Daily SPC Check/0-Degree 5x5x7 Cube (5x5x7)/Cube 0:

Measurement grid: dx=8mm, dy=8mm, dz=5mm

Reference Value = 81.3 V/m; Power Drift = 0.133 dB Peak SAR (extrapolated) = 12.2 W/kg

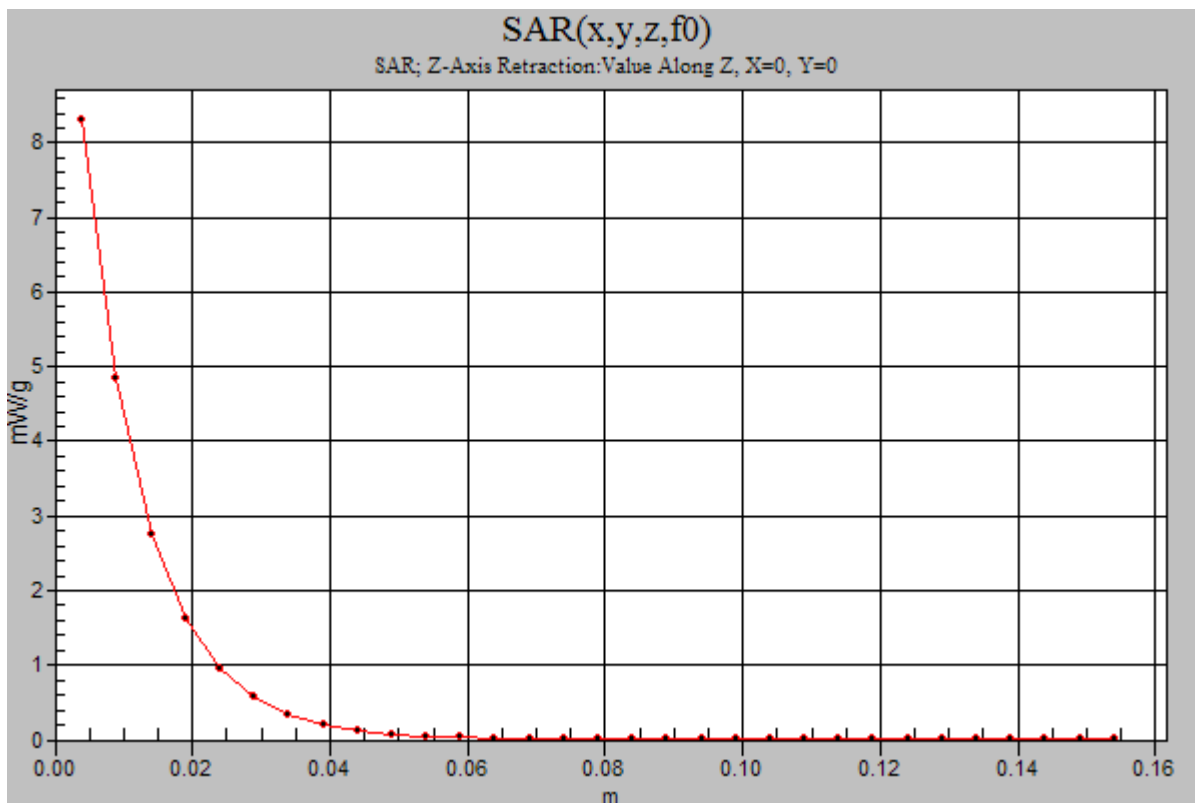
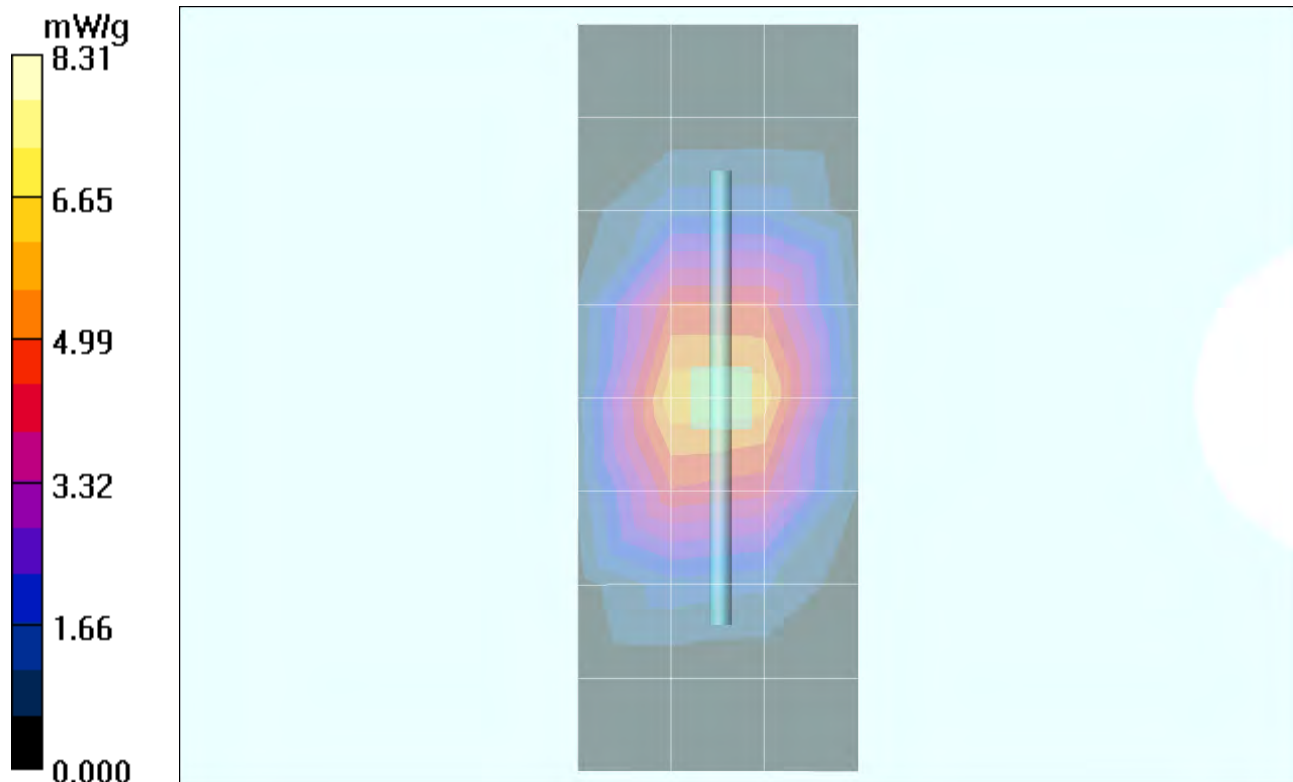
SAR(1 g) = 7.26 mW/g; SAR(10 g) = 3.9 mW/g Maximum value of SAR (measured) = 8.18 mW/g**Daily SPC Check/90-Degree 5x5x7 Cube (5x5x7)/Cube 0:**

Measurement grid: dx=8mm, dy=8mm, dz=5mm

Reference Value = 81.3 V/m; Power Drift = 0.133 dB Peak SAR (extrapolated) = 12.2 W/kg

SAR(1 g) = 7.31 mW/g; SAR(10 g) = 3.94 mW/g Maximum value of SAR (measured) = 8.25 mW/g**Daily SPC Check/Z-Axis Retraction (1x1x31):**

Measurement grid: dx=20mm, dy=20mm, dz=5mm Maximum value of SAR (measured) = 8.31 mW/g



Date/Time: 10/5/2005 2:03:14 PM

Test Laboratory: Motorola 100505_1800MHz_Good -5.2%**DUT: Dipole 1800 MHz; Type: D1800V2; Serial: D1800V2 - SN:277tr;**

Procedure Notes: 1800 MHz System Performance Check / Dipole Sn# 277tr PM1 Power = 198 mW

Sim.Temp@meas = 21.57C Sim.Temp@SPC = 20.9C Room Temp @ SPC = 22C

Communication System: CW - Dipole; Frequency: 1800 MHz; Channel Number: 8; Duty Cycle: 1:1

Medium: VALIDATION Only; Medium parameters used: $f = 1800$ MHz; $\sigma = 1.37$ mho/m; $\epsilon_r = 39$; $\rho = 1000$ kg/m³

DASY4 Configuration:

- Probe: ET3DV6 - SN1502; ConvF(5.26, 5.26, 5.26); Calibrated: 7/19/2005
- Sensor-Surface: 4mm (Mechanical Surface Detection)
- Electronics: DAE4 Sn656; Calibrated: 6/17/2005
- Phantom: PCS9 Glycol SAM; Type: SAM; Serial: TP-1134;
- Measurement SW: DASY4, V4.5 Build 19; Postprocessing SW: SEMCAD, V1.8 Build 159

Daily SPC Check/Dipole Area Scan (4x9x1):

Measurement grid: dx=15mm, dy=15mm Maximum value of SAR (measured) = 6.08 mW/g

Daily SPC Check/0-Degree 5x5x7 Cube (5x5x7)/Cube 0:

Measurement grid: dx=8mm, dy=8mm, dz=5mm

Reference Value = 81.5 V/m; Power Drift = 0.047 dB Peak SAR (extrapolated) = 11.9 W/kg

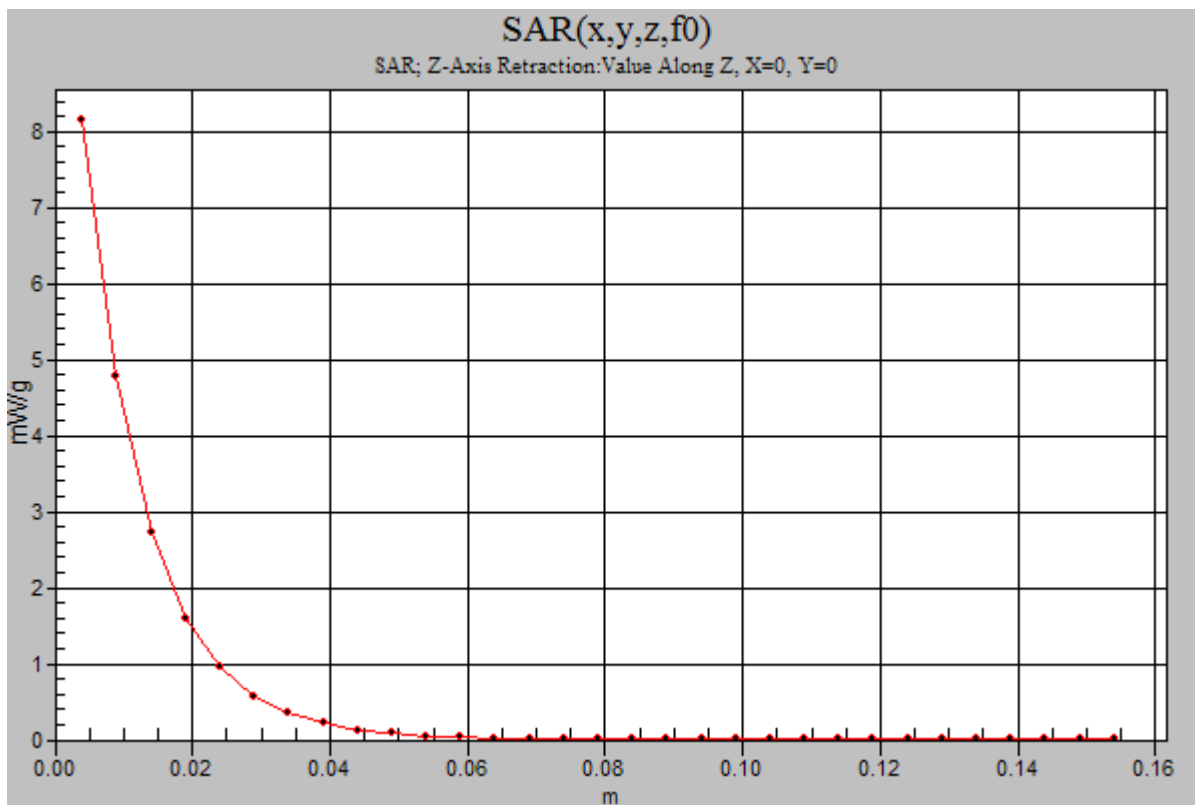
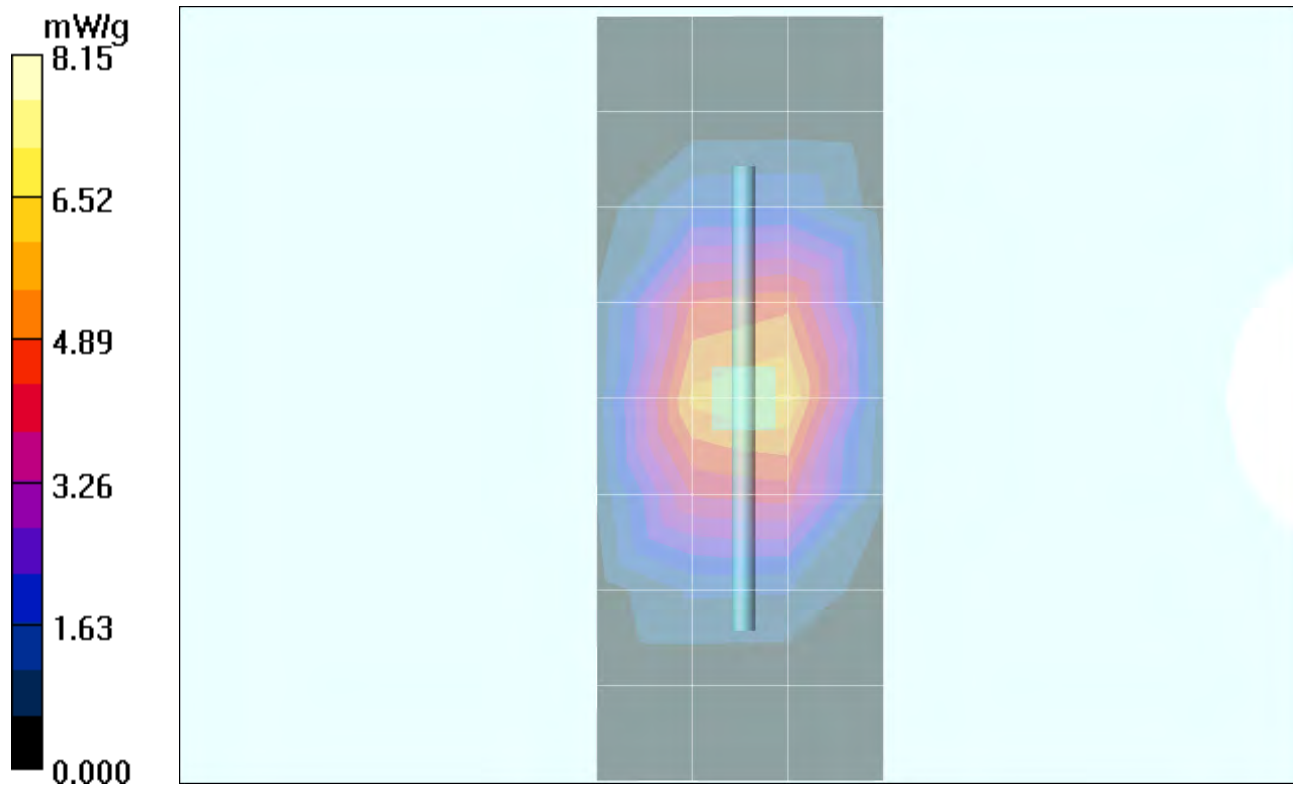
SAR(1 g) = 7.13 mW/g; SAR(10 g) = 3.83 mW/g Maximum value of SAR (measured) = 8.07 mW/g**Daily SPC Check/90-Degree 5x5x7 Cube (5x5x7)/Cube 0:**

Measurement grid: dx=8mm, dy=8mm, dz=5mm

Reference Value = 81.5 V/m; Power Drift = 0.047 dB Peak SAR (extrapolated) = 11.9 W/kg

SAR(1 g) = 7.17 mW/g; SAR(10 g) = 3.88 mW/g Maximum value of SAR (measured) = 8.05 mW/g**Daily SPC Check/Z-Axis Retraction (1x1x31):**

Measurement grid: dx=20mm, dy=20mm, dz=5mm Maximum value of SAR (measured) = 8.15 mW/g



Date/Time: 10/6/2005 1:23:10 PM

Test Laboratory: Motorola 100605_1800MHz_Good -8.5%**DUT: Dipole 1800 MHz; Type: D1800V2; Serial: D1800V2 - SN:277tr;**

Procedure Notes: 1800 MHz System Performance Check / Dipole Sn# 277tr PM1 Power = 198 mW

Sim.Temp@meas = 21.7C Sim.Temp@SPC = 21.8C Room Temp @ SPC = 22C

Communication System: CW - Dipole; Frequency: 1800 MHz; Channel Number: 8; Duty Cycle: 1:1

Medium: VALIDATION Only; Medium parameters used: $f = 1800$ MHz; $\sigma = 1.35$ mho/m; $\epsilon_r = 39.1$; $\rho = 1000$ kg/m³

DASY4 Configuration:

- Probe: ET3DV6 - SN1502; ConvF(5.26, 5.26, 5.26); Calibrated: 7/19/2005
- Sensor-Surface: 4mm (Mechanical Surface Detection)
- Electronics: DAE4 Sn656; Calibrated: 6/17/2005
- Phantom: PCS9 Glycol SAM; Type: SAM; Serial: TP-1134;
- Measurement SW: DASY4, V4.5 Build 19; Postprocessing SW: SEMCAD, V1.8 Build 159

Daily SPC Check/Dipole Area Scan (4x9x1):

Measurement grid: dx=15mm, dy=15mm Maximum value of SAR (measured) = 5.92 mW/g

Daily SPC Check/0-Degree 5x5x7 Cube (5x5x7)/Cube 0:

Measurement grid: dx=8mm, dy=8mm, dz=5mm

Reference Value = 81.1 V/m; Power Drift = -0.005 dB Peak SAR (extrapolated) = 11.3 W/kg

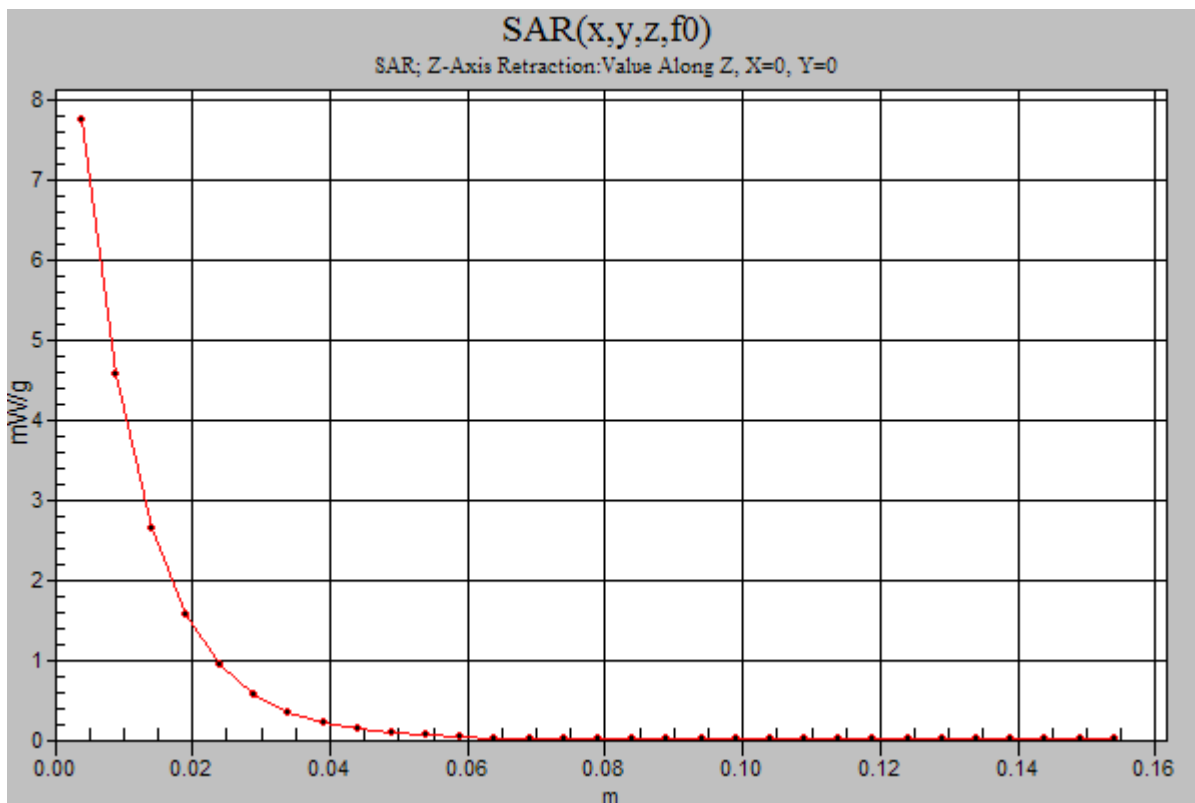
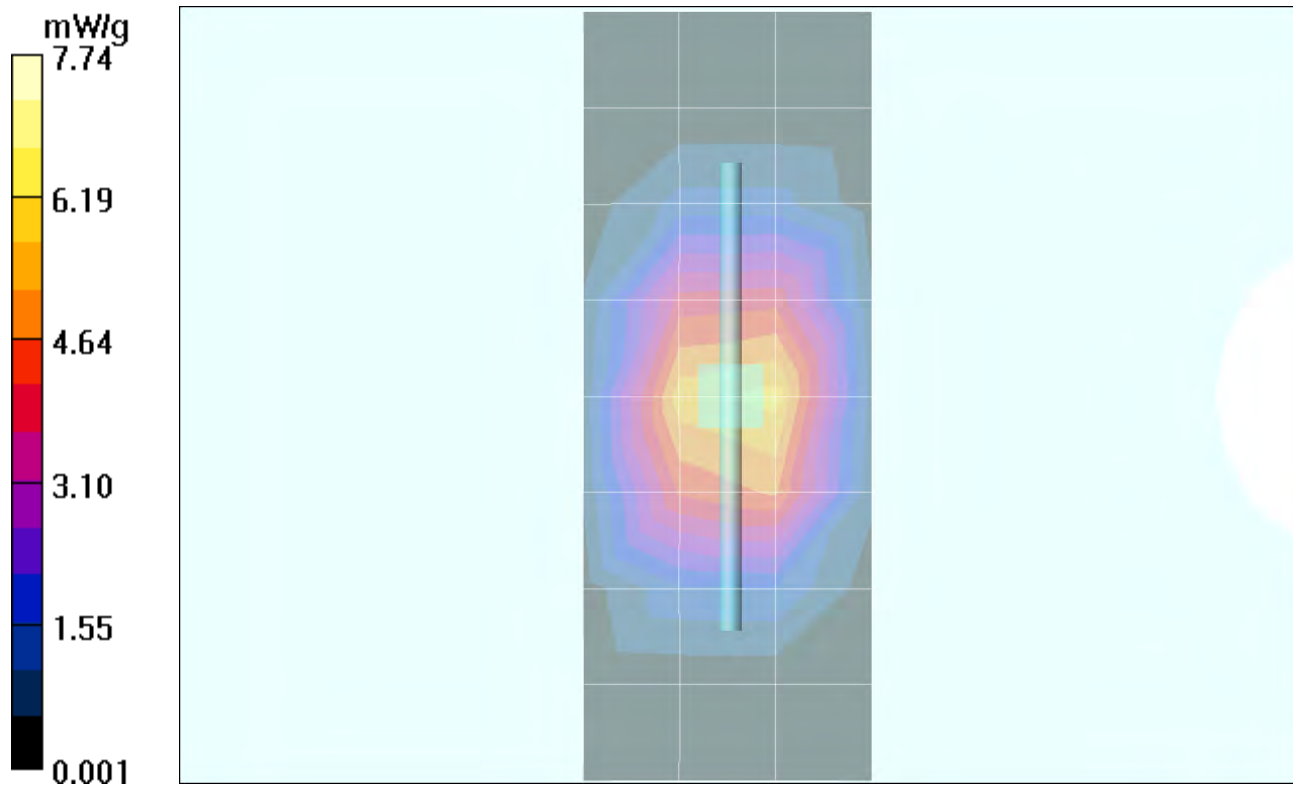
SAR(1 g) = 6.88 mW/g; SAR(10 g) = 3.73 mW/g Maximum value of SAR (measured) = 7.63 mW/g**Daily SPC Check/90-Degree 5x5x7 Cube (5x5x7)/Cube 0:**

Measurement grid: dx=8mm, dy=8mm, dz=5mm

Reference Value = 81.1 V/m; Power Drift = -0.005 dB Peak SAR (extrapolated) = 11.4 W/kg

SAR(1 g) = 6.92 mW/g; SAR(10 g) = 3.76 mW/g Maximum value of SAR (measured) = 7.64 mW/g**Daily SPC Check/Z-Axis Retraction (1x1x31):**

Measurement grid: dx=20mm, dy=20mm, dz=5mm Maximum value of SAR (measured) = 7.74 mW/g



Appendix 2

SAR distribution plots for Phantom Head Adjacent Use

Date/Time: 9/21/2005 10:51:35 AM

Test Laboratory: Motorola 800 CDMA cheek extended

Serial: 3347E318

Procedure Notes: Pwr Step: AlwaysUp(OTA) Antenna Position: Ext. Accessory Model #: N/A

Battery Model #: SNN5744A DEVICE POSITION (cheek or rotated): Cheek

Communication System: CDMA 835; Frequency: 836.52 MHz; Channel Number: 384; Duty Cycle:1:1

Medium: Low Freq Head; Medium parameters used: $f = 835$ MHz; $\sigma = 0.91$ mho/m; $\epsilon_r = 42.5$; $\rho = 1000$ kg/m³

DASY4 Configuration:

- Probe: ET3DV6 - SN1502; ConvF(6.23, 6.23, 6.23); Calibrated: 7/19/2005
- Sensor-Surface: 4mm (Mechanical Surface Detection)
- Electronics: DAE4 Sn656; Calibrated: 6/17/2005
- Phantom: PCS9 Sugar Water SAM; Type: SAM; Serial: TP-1129;
- Measurement SW: DASY4, V4.5 Build 19; Postprocessing SW: SEMCAD, V1.8 Build 159

Right Head Template/Area Scan - Normal (15mm) (7x17x1):

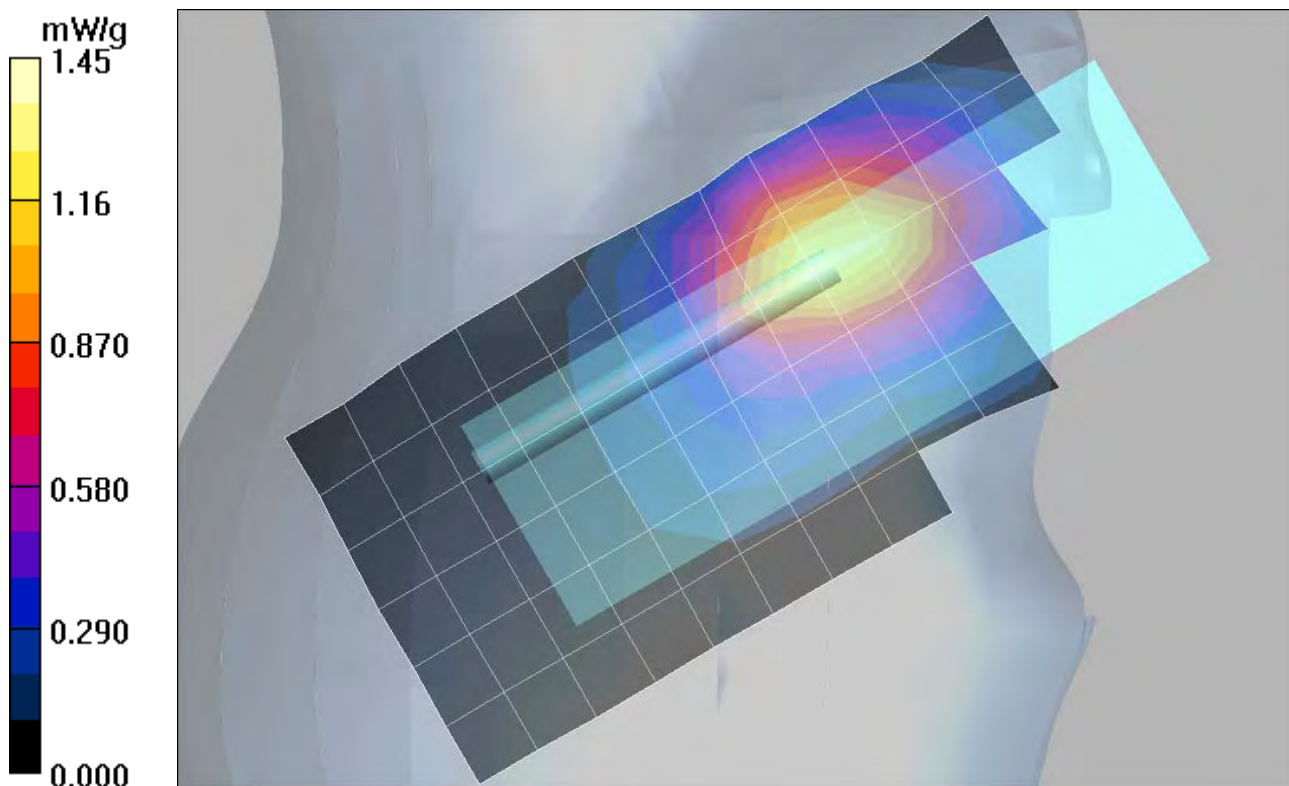
Measurement grid: dx=15mm, dy=15mm Maximum value of SAR (measured) = 1.33 mW/g

Right Head Template/Zoom Scan (7x7x7)/Cube 0:

Measurement grid: dx=5mm, dy=5mm, dz=5mm

Reference Value = 37.0 V/m; Power Drift = 0.410 dB Peak SAR (extrapolated) = 1.93 W/kg

SAR(1 g) = 1.37 mW/g; SAR(10 g) = 0.922 mW/g Maximum value of SAR (measured) = 1.50 mW/g



Date/Time: 9/21/2005 11:16:45 AM

Test Laboratory: Motorola 800 CDMA cheek retracted

Serial: 3347E318

Procedure Notes: Pwr Step: AlwaysUp(OTA) Antenna Position: Ret. Accessory Model #: N/A

Battery Model #: SNN5744A DEVICE POSITION (cheek or rotated): Cheek

Communication System: CDMA 835; Frequency: 836.52 MHz; Channel Number: 384; Duty Cycle:1:1

Medium: Low Freq Head; Medium parameters used: $f = 835$ MHz; $\sigma = 0.91$ mho/m; $\epsilon_r = 42.5$; $\rho = 1000$ kg/m³

DASY4 Configuration:

- Probe: ET3DV6 - SN1502; ConvF(6.23, 6.23, 6.23); Calibrated: 7/19/2005
- Sensor-Surface: 4mm (Mechanical Surface Detection)
- Electronics: DAE4 Sn656; Calibrated: 6/17/2005
- Phantom: PCS9 Sugar Water SAM; Type: SAM; Serial: TP-1129;
- Measurement SW: DASY4, V4.5 Build 19; Postprocessing SW: SEMCAD, V1.8 Build 159

Right Head Template/Area Scan - Normal (15mm) (7x17x1):

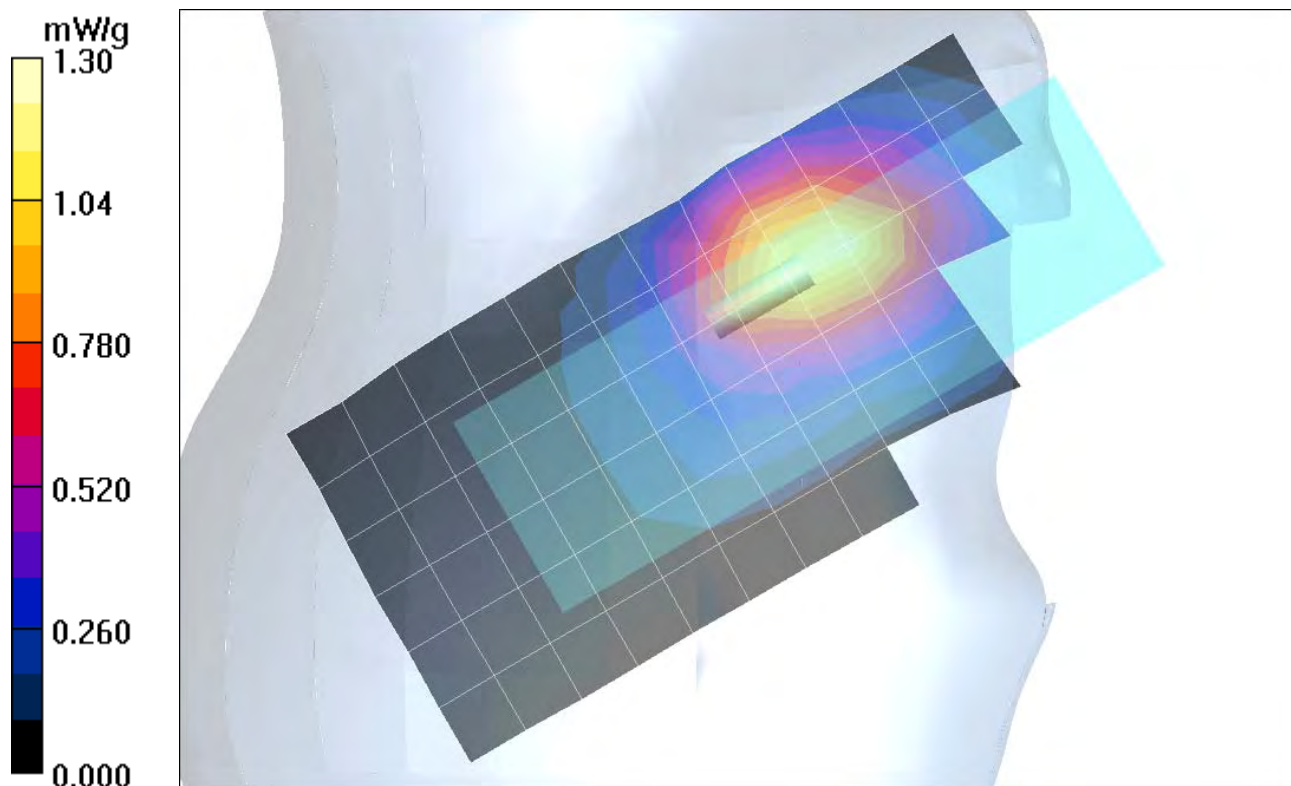
Measurement grid: dx=15mm, dy=15mm Maximum value of SAR (measured) = 1.22 mW/g

Right Head Template/Zoom Scan (7x7x7)/Cube 0:

Measurement grid: dx=5mm, dy=5mm, dz=5mm

Reference Value = 35.3 V/m; Power Drift = 0.371 dB Peak SAR (extrapolated) = 1.73 W/kg

SAR(1 g) = 1.22 mW/g; SAR(10 g) = 0.825 mW/g Maximum value of SAR (measured) = 1.36 mW/g



Date/Time: 9/20/2005 3:11:45 PM

Test Laboratory: Motorola 800 CDMA tilt extended

Serial: 3347E318

Procedure Notes: Pwr Step: AlwaysUp(OTA) Antenna Position: Ext. Accessory Model #: N/A

Battery Model #: SNN5744A DEVICE POSITION (cheek or rotated): Cheek

Communication System: CDMA 835; Frequency: 836.52 MHz; Channel Number: 384; Duty Cycle: 1:1

Medium: Low Freq Head; Medium parameters used: $f = 835$ MHz; $\sigma = 0.89$ mho/m; $\epsilon_r = 41.8$; $\rho = 1000$ kg/m³

DASY4 Configuration:

- Probe: ET3DV6 - SN1502; ConvF(6.23, 6.23, 6.23); Calibrated: 7/19/2005
- Sensor-Surface: 4mm (Mechanical Surface Detection)
- Electronics: DAE4 Sn656; Calibrated: 6/17/2005
- Phantom: PCS9 Sugar Water SAM; Type: SAM; Serial: TP-1129;
- Measurement SW: DASY4, V4.5 Build 19; Postprocessing SW: SEMCAD, V1.8 Build 159

Left Head Template/Area Scan - Normal (15mm) (7x17x1):

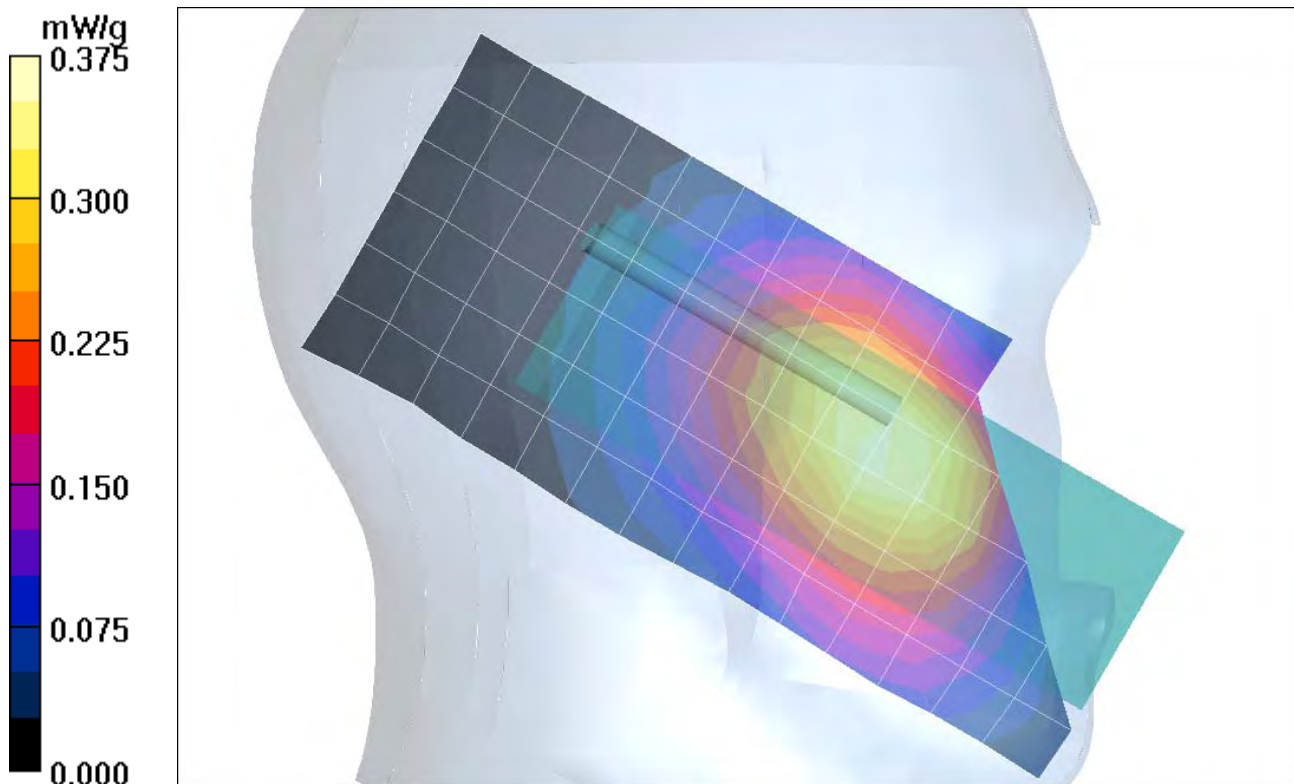
Measurement grid: dx=15mm, dy=15mm Maximum value of SAR (measured) = 0.359 mW/g

Left Head Template/Zoom Scan (7x7x7)/Cube 0:

Measurement grid: dx=5mm, dy=5mm, dz=5mm

Reference Value = 20.4 V/m; **Power Drift = 0.434 dB** Peak SAR (extrapolated) = 0.489 W/kg

SAR(1 g) = 0.374 mW/g; SAR(10 g) = 0.277 mW/g Maximum value of SAR (measured) = 0.395 mW/g



Date/Time: 9/20/2005 2:30:37 PM

Test Laboratory: Motorola 800 CDMA tilt retracted

Serial: 3347E318

Procedure Notes: Pwr Step: AlwaysUp(OTA) Antenna Position: Ret. Accessory Model #: N/A

Battery Model #: SNN5744A DEVICE POSITION (cheek or rotated): Cheek

Communication System: CDMA 835; Frequency: 836.52 MHz; Channel Number: 384; Duty Cycle: 1:1

Medium: Low Freq Head; Medium parameters used: $f = 835$ MHz; $\sigma = 0.89$ mho/m; $\epsilon_r = 41.8$; $\rho = 1000$ kg/m³

DASY4 Configuration:

- Probe: ET3DV6 - SN1502; ConvF(6.23, 6.23, 6.23); Calibrated: 7/19/2005
- Sensor-Surface: 4mm (Mechanical Surface Detection)
- Electronics: DAE4 Sn656; Calibrated: 6/17/2005
- Phantom: PCS9 Sugar Water SAM; Type: SAM; Serial: TP-1129;
- Measurement SW: DASY4, V4.5 Build 19; Postprocessing SW: SEMCAD, V1.8 Build 159

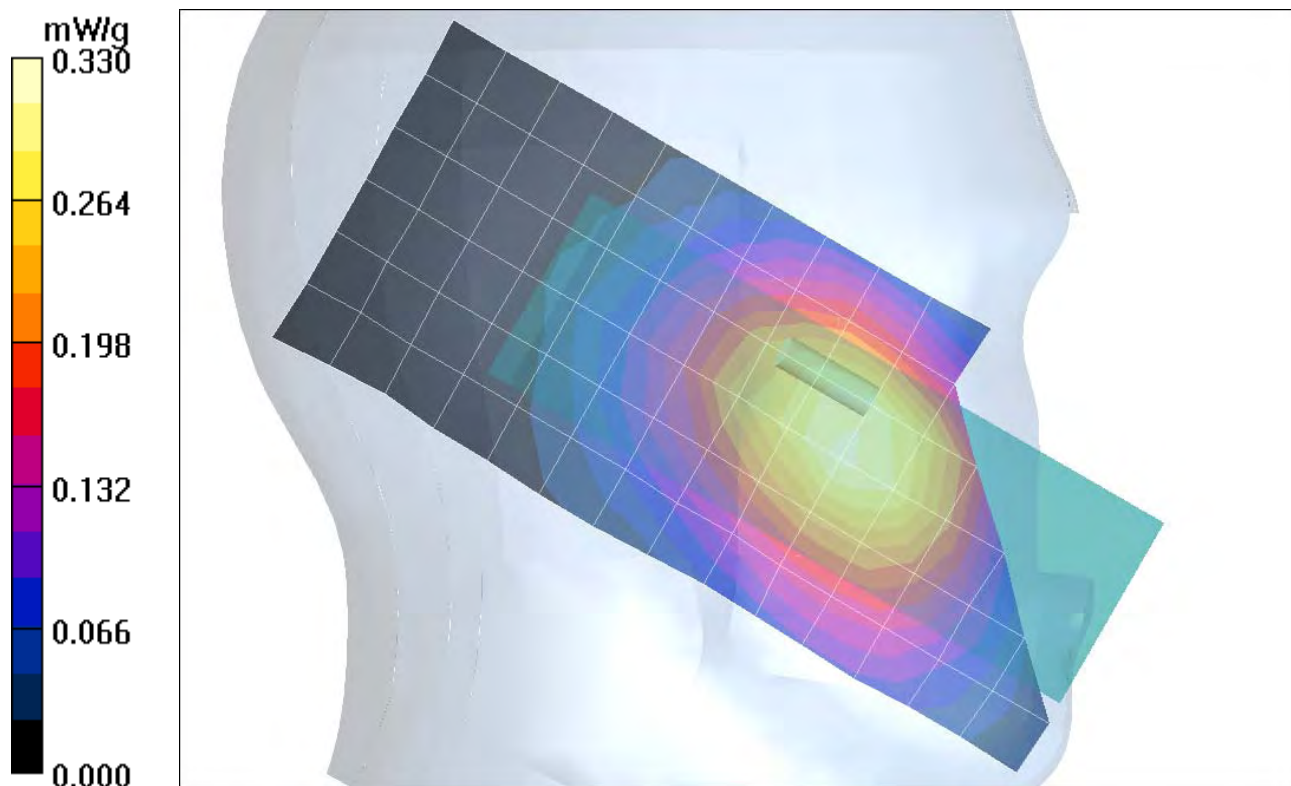
Left Head Template/Area Scan - Normal (15mm) (7x17x1):

Measurement grid: dx=15mm, dy=15mm Maximum value of SAR (measured) = 0.318 mW/g

Left Head Template/Zoom Scan (7x7x7)/Cube 0:

Measurement grid: dx=5mm, dy=5mm, dz=5mm

Reference Value = 19.2 V/m; Power Drift = 0.367 dB Peak SAR (extrapolated) = 0.412 W/kg

SAR(1 g) = 0.325 mW/g; SAR(10 g) = 0.242 mW/g Maximum value of SAR (measured) = 0.345 mW/g

Date/Time: 10/6/2005 2:12:26 PM

Test Laboratory: Motorola 1900 CDMA cheek extended

Serial: 3347E318

Procedure Notes: Pwr Step: Always up(OTA) Antenna Position: Ext Accessory Model #: N/A

Battery Model #: SNN5744A DEVICE POSITION (cheek or rotated): Cheek

Communication System: CDMA 1900; Frequency: 1908.75 MHz; Channel Number: 1175; Duty Cycle: 1:1

Medium: Regular Glycol Head; Medium parameters used: $f = 1880$ MHz; $\sigma = 1.44$ mho/m; $\epsilon_r = 38.8$; $\rho = 1000$ kg/m³

DASY4 Configuration:

- Probe: ET3DV6 - SN1502; ConvF(5.26, 5.26, 5.26); Calibrated: 7/19/2005
- Sensor-Surface: 4mm (Mechanical Surface Detection)
- Electronics: DAE4 Sn656; Calibrated: 6/17/2005
- Phantom: PCS9 Glycol SAM; Type: SAM; Serial: TP-1134;
- Measurement SW: DASY4, V4.5 Build 19; Postprocessing SW: SEMCAD, V1.8 Build 159

Right Head Template/Area Scan - Normal (15mm) (7x17x1):

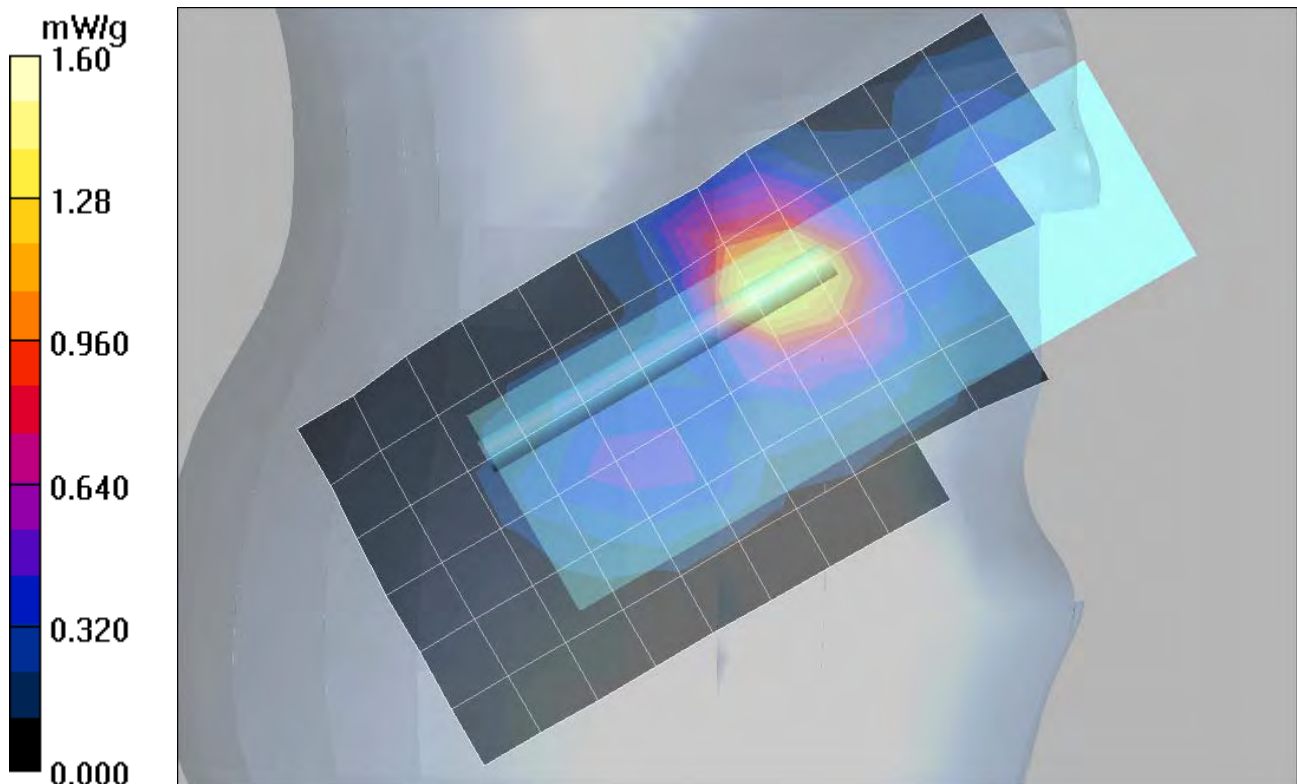
Measurement grid: dx=15mm, dy=15mm Maximum value of SAR (measured) = 1.49 mW/g

Right Head Template/Zoom Scan (7x7x7)/Cube 0:

Measurement grid: dx=5mm, dy=5mm, dz=5mm

Reference Value = 35.7 V/m; Power Drift = 0.025 dB Peak SAR (extrapolated) = 2.50 W/kg

SAR(1 g) = 1.52 mW/g; SAR(10 g) = 0.819 mW/g Maximum value of SAR (measured) = 1.72 mW/g



Date/Time: 10/5/2005 3:24:21 PM

Test Laboratory: Motorola 1900 CDMA cheek retracted

Serial: 3347E318

Procedure Notes: Pwr Step: Always up(OTA) Antenna Position: Ret Accessory Model #: N/A

Battery Model #: SNN5744A DEVICE POSITION (cheek or rotated): Cheek

Communication System: CDMA 1900; Frequency: 1908.75 MHz; Channel Number: 1175; Duty Cycle:1:1

Medium: Regular Glycol Head; Medium parameters used: $f=1880$ MHz; $\sigma=1.45$ mho/m; $\epsilon_r=38.7$; $\rho=1000$ kg/m³

DASY4 Configuration:

- Probe: ET3DV6 - SN1502; ConvF(5.26, 5.26, 5.26); Calibrated: 7/19/2005
- Sensor-Surface: 4mm (Mechanical Surface Detection)
- Electronics: DAE4 Sn656; Calibrated: 6/17/2005
- Phantom: PCS9 Glycol SAM; Type: SAM; Serial: TP-1134;
- Measurement SW: DASY4, V4.5 Build 19; Postprocessing SW: SEMCAD, V1.8 Build 159

Right Head Template/Area Scan - Normal (15mm) (7x17x1):

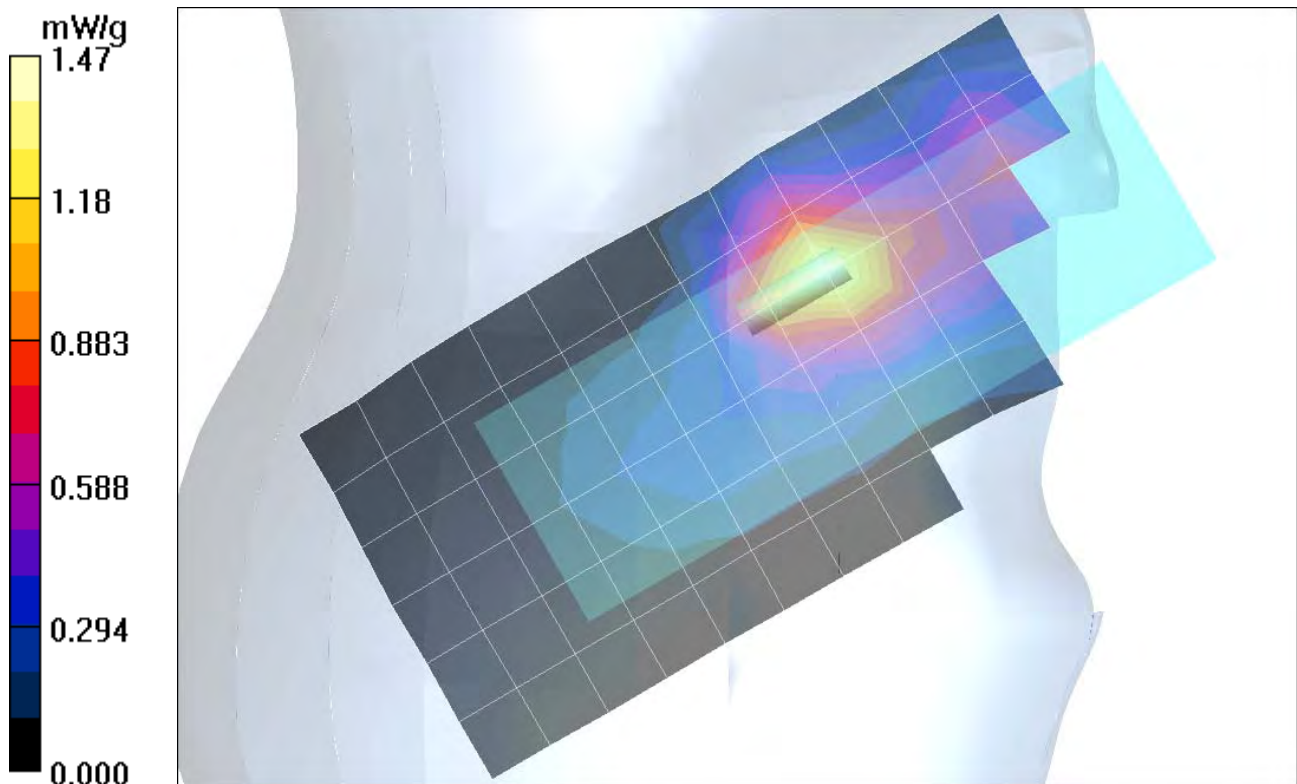
Measurement grid: $dx=15$ mm, $dy=15$ mm Maximum value of SAR (measured) = 1.47 mW/g

Right Head Template/Zoom Scan (7x7x7)/Cube 0:

Measurement grid: $dx=5$ mm, $dy=5$ mm, $dz=5$ mm

Reference Value = 34.0 V/m; Power Drift = -0.041 dB Peak SAR (extrapolated) = 2.24 W/kg

SAR(1 g) = 1.37 mW/g; SAR(10 g) = 0.753 mW/g Maximum value of SAR (measured) = 1.51 mW/g



Date/Time: 10/5/2005 12:54:42 PM

Test Laboratory: Motorola 1900 CDMA tilt extended

Serial: 3347E318

Procedure Notes: Pwr Step: Always up(OTA) Antenna Position: Ext Accessory Model #: N/A

Battery Model #: SNN5744A DEVICE POSITION (cheek or rotated): Rotated

Communication System: CDMA 1900; Frequency: 1880 MHz; Channel Number: 600; Duty Cycle: 1:1

Medium: Regular Glycol Head; Medium parameters used: $f=1880$ MHz; $\sigma=1.46$ mho/m; $\epsilon_r=39$; $\rho=1000$ kg/m³

DASY4 Configuration:

- Probe: ET3DV6 - SN1502; ConvF(5.26, 5.26, 5.26); Calibrated: 7/19/2005
- Sensor-Surface: 4mm (Mechanical Surface Detection)
- Electronics: DAE4 Sn656; Calibrated: 6/17/2005
- Phantom: PCS9 Glycol SAM; Type: SAM; Serial: TP-1134;
- Measurement SW: DASY4, V4.5 Build 19; Postprocessing SW: SEMCAD, V1.8 Build 159

Left Head Template/Area Scan - Normal (15mm) (7x17x1):

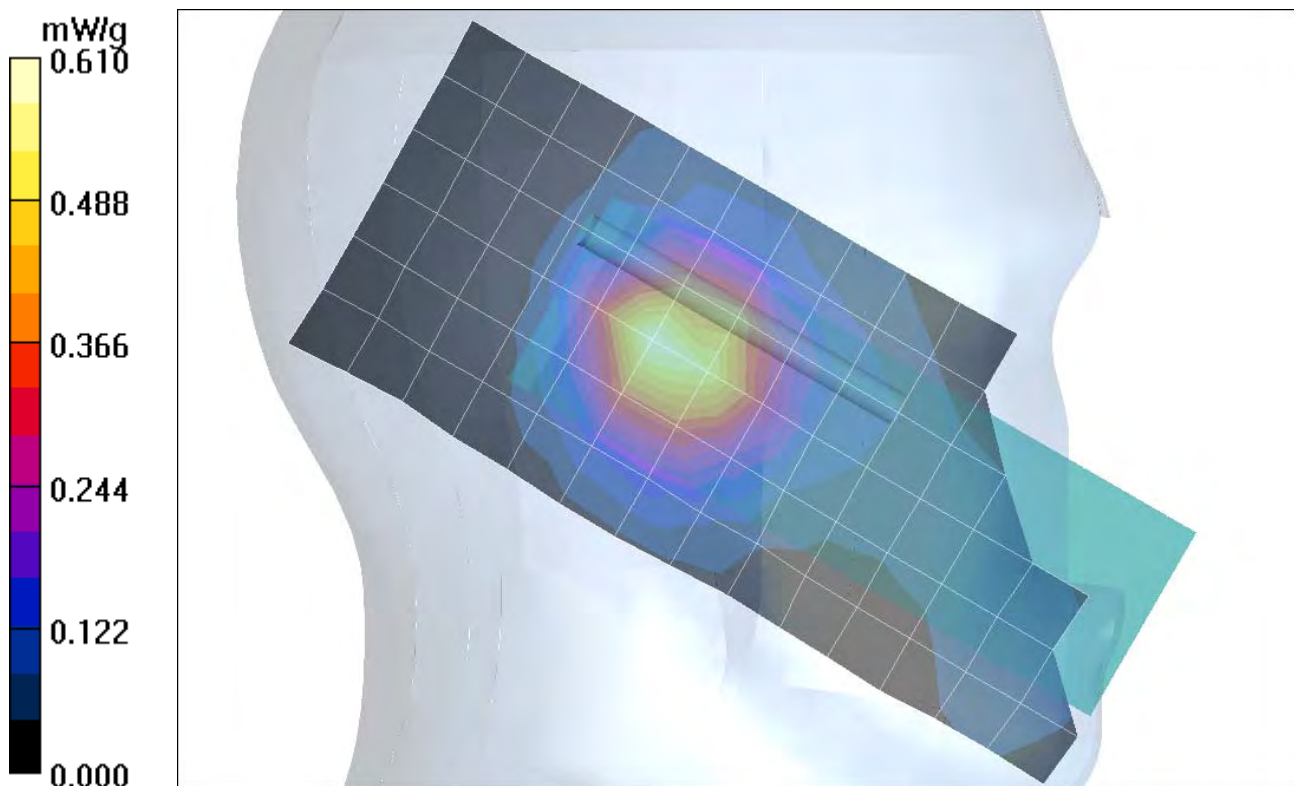
Measurement grid: dx=15mm, dy=15mm Maximum value of SAR (measured) = 0.610 mW/g

Left Head Template/Zoom Scan (7x7x7)/Cube 0:

Measurement grid: dx=5mm, dy=5mm, dz=5mm

Reference Value = 20.4 V/m; Power Drift = -0.032 dB Peak SAR (extrapolated) = 0.821 W/kg

SAR(1 g) = 0.580 mW/g; SAR(10 g) = 0.361 mW/g Maximum value of SAR (measured) = 0.628 mW/g



Date/Time: 10/5/2005 11:42:45 AM

Test Laboratory: Motorola 1900 CDMA tilt retracted

Serial: 3347E318

Procedure Notes: Pwr Step: Always up(OTA) Antenna Position: Ret Accessory Model #: N/A

Battery Model #: SNN5744A DEVICE POSITION (cheek or rotated): Rotated

Communication System: CDMA 1900; Frequency: 1880 MHz; Channel Number: 600; Duty Cycle: 1:1

Medium: Regular Glycol Head; Medium parameters used: $f = 1880$ MHz; $\sigma = 1.46$ mho/m; $\epsilon_r = 39$; $\rho = 1000$ kg/m³

DASY4 Configuration:

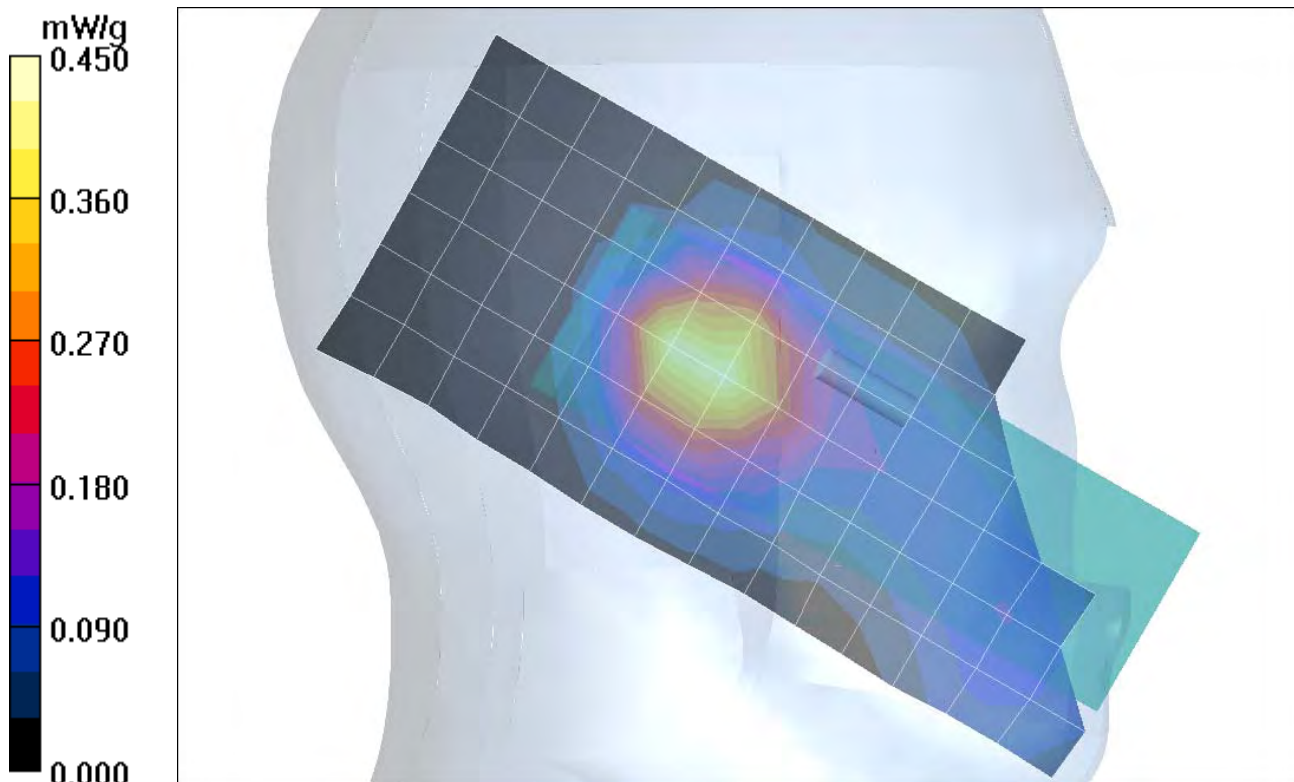
- Probe: ET3DV6 - SN1502; ConvF(5.26, 5.26, 5.26); Calibrated: 7/19/2005
- Sensor-Surface: 4mm (Mechanical Surface Detection)
- Electronics: DAE4 Sn656; Calibrated: 6/17/2005
- Phantom: PCS9 Glycol SAM; Type: SAM; Serial: TP-1134;
- Measurement SW: DASY4, V4.5 Build 19; Postprocessing SW: SEMCAD, V1.8 Build 159

Left Head Template/Area Scan - Normal (15mm) (7x17x1):

Measurement grid: dx=15mm, dy=15mm Maximum value of SAR (measured) = 0.428 mW/g

Left Head Template/Zoom Scan (7x7x7)/Cube 0:

Measurement grid: dx=5mm, dy=5mm, dz=5mm

Reference Value = 17.5 V/m; **Power Drift = -0.068 dB** Peak SAR (extrapolated) = 0.585 W/kg**SAR(1 g) = 0.412 mW/g; SAR(10 g) = 0.259 mW/g** Maximum value of SAR (measured) = 0.450 mW/g

Date/Time: 9/22/2005 4:28:55 PM

Test Laboratory: Motorola AMPS cheek extended

Serial: 3347E318;

Procedure Notes: Pwr Step: 02(OTA) Antenna Position: Ext Accessory Model #: N/A

Battery Model #: SNN5744A DEVICE POSITION (cheek or rotated): Cheek

Communication System: AMPS 835; Frequency: 848.97 MHz; Channel Number: 799; Duty Cycle:1:1

Medium: Low Freq Head; Medium parameters used: $f = 835$ MHz; $\sigma = 0.91$ mho/m; $\epsilon_r = 42.2$; $\rho = 1000$ kg/m³

DASY4 Configuration:

- Probe: ET3DV6 - SN1502; ConvF(6.23, 6.23, 6.23); Calibrated: 7/19/2005
- Sensor-Surface: 4mm (Mechanical Surface Detection)
- Electronics: DAE4 Sn656; Calibrated: 6/17/2005
- Phantom: PCS9 Sugar Water SAM; Type: SAM; Serial: TP-1129;
- Measurement SW: DASY4, V4.5 Build 19; Postprocessing SW: SEMCAD, V1.8 Build 159

Right Head Template/Area Scan - Normal (15mm) (7x17x1):

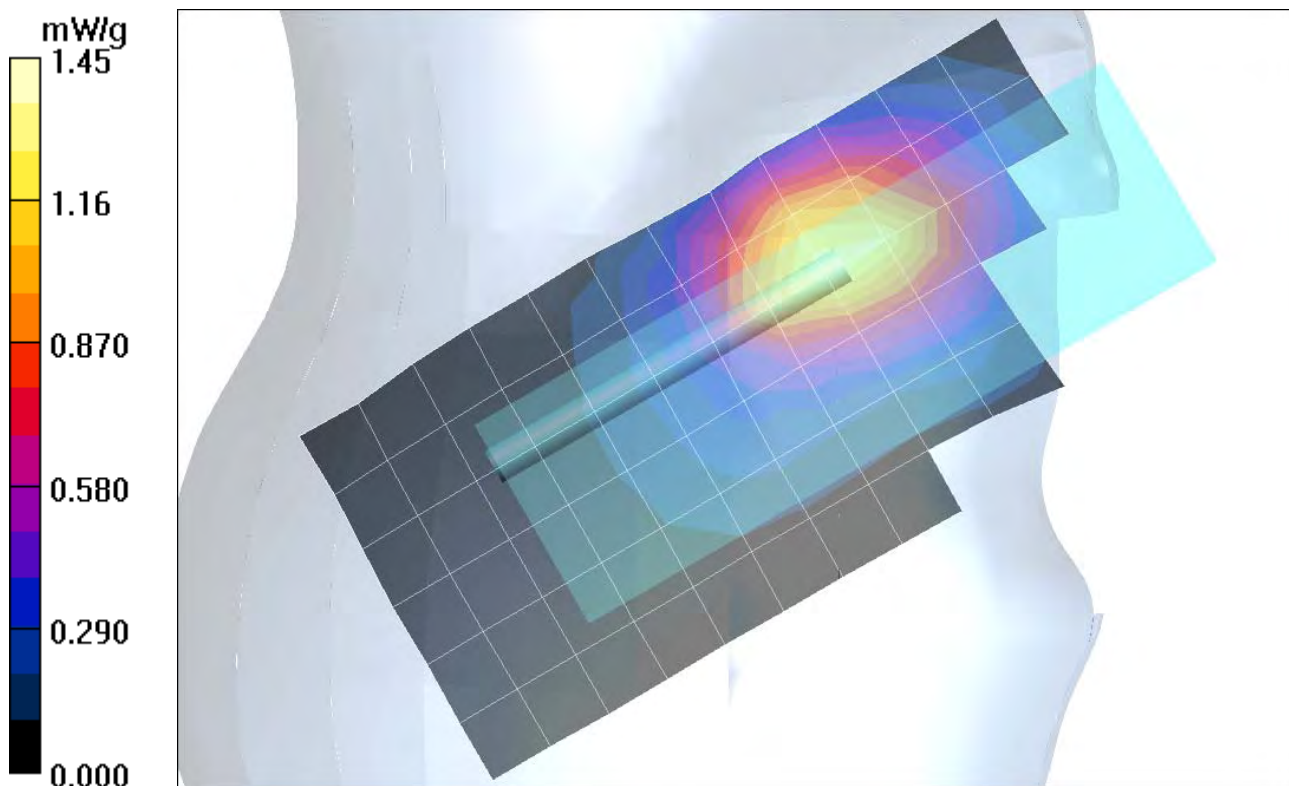
Measurement grid: dx=15mm, dy=15mm Maximum value of SAR (measured) = 1.35 mW/g

Right Head Template/Zoom Scan (7x7x7)/Cube 0:

Measurement grid: dx=5mm, dy=5mm, dz=5mm

Reference Value = 37.2 V/m; Power Drift = 0.020 dB Peak SAR (extrapolated) = 1.85 W/kg

SAR(1 g) = 1.34 mW/g; SAR(10 g) = 0.902 mW/g Maximum value of SAR (measured) = 1.43 mW/g



Date/Time: 9/22/2005 10:17:11 AM

Test Laboratory: Motorola AMPS cheek retracted

Serial: 3347E318

Procedure Notes: Pwr Step: 02(OTA) Antenna Position: Ret. Accessory Model #: N/A

Battery Model #: SNN5744A DEVICE POSITION (cheek or rotated): Cheek

Communication System: AMPS 835; Frequency: 848.97 MHz; Channel Number: 799; Duty Cycle: 1:1

Medium: Low Freq Head; Medium parameters used: $f = 835$ MHz; $\sigma = 0.91$ mho/m; $\epsilon_r = 42.2$; $\rho = 1000$ kg/m³

DASY4 Configuration:

- Probe: ET3DV6 - SN1502; ConvF(6.23, 6.23, 6.23); Calibrated: 7/19/2005
- Sensor-Surface: 4mm (Mechanical Surface Detection)
- Electronics: DAE4 Sn656; Calibrated: 6/17/2005
- Phantom: PCS9 Sugar Water SAM; Type: SAM; Serial: TP-1129;
- Measurement SW: DASY4, V4.5 Build 19; Postprocessing SW: SEMCAD, V1.8 Build 159

Left Head Template/Area Scan - Normal (15mm) (7x17x1):

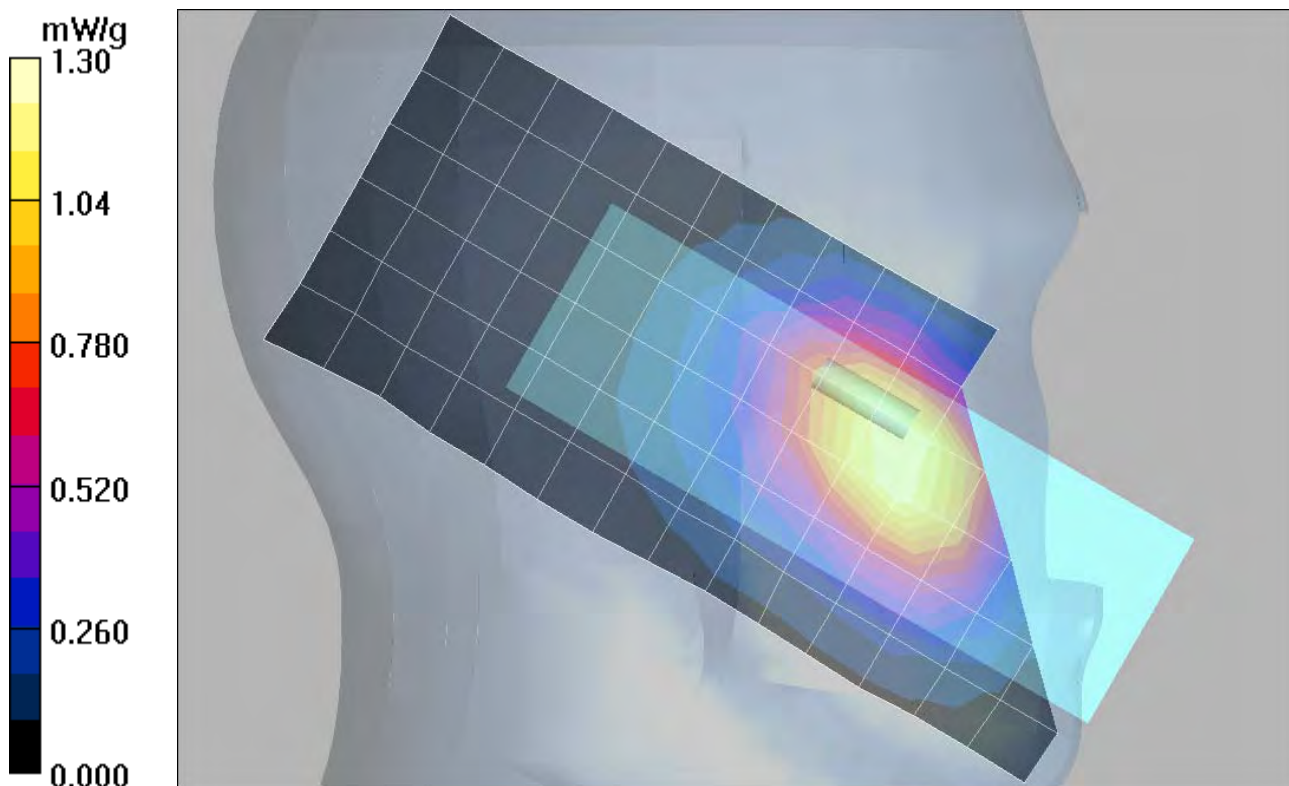
Measurement grid: dx=15mm, dy=15mm Maximum value of SAR (measured) = 1.20 mW/g

Left Head Template/Zoom Scan (7x7x7)/Cube 0:

Measurement grid: dx=5mm, dy=5mm, dz=5mm

Reference Value = 39.6 V/m; Power Drift = -0.304 dB Peak SAR (extrapolated) = 1.63 W/kg

SAR(1 g) = 1.19 mW/g; SAR(10 g) = 0.813 mW/g Maximum value of SAR (measured) = 1.28 mW/g



Date/Time: 9/22/2005 12:51:48 PM

Test Laboratory: Motorola AMPS tilt extended

Serial: 3347E318 Procedure Notes: Pwr Step: 02(OTA) Antenna Position: Ext Accessory Model #: N/A
 Battery Model #: SNN5744A DEVICE POSITION (cheek or rotated): Rotated
 Communication System: AMPS 835; Frequency: 836.52 MHz; Channel Number: 384; Duty Cycle: 1:1
 Medium: Low Freq Head; Medium parameters used: $f = 835 \text{ MHz}$; $\sigma = 0.91 \text{ mho/m}$; $\epsilon_r = 42.2$; $\rho = 1000 \text{ kg/m}^3$

DASY4 Configuration:

- Probe: ET3DV6 - SN1502; ConvF(6.23, 6.23, 6.23); Calibrated: 7/19/2005
- Sensor-Surface: 4mm (Mechanical Surface Detection)
- Electronics: DAE4 Sn656; Calibrated: 6/17/2005
- Phantom: PCS9 Sugar Water SAM; Type: SAM; Serial: TP-1129;
- Measurement SW: DASY4, V4.5 Build 19; Postprocessing SW: SEMCAD, V1.8 Build 159

Left Head Template/Area Scan - Normal (15mm) (7x17x1):

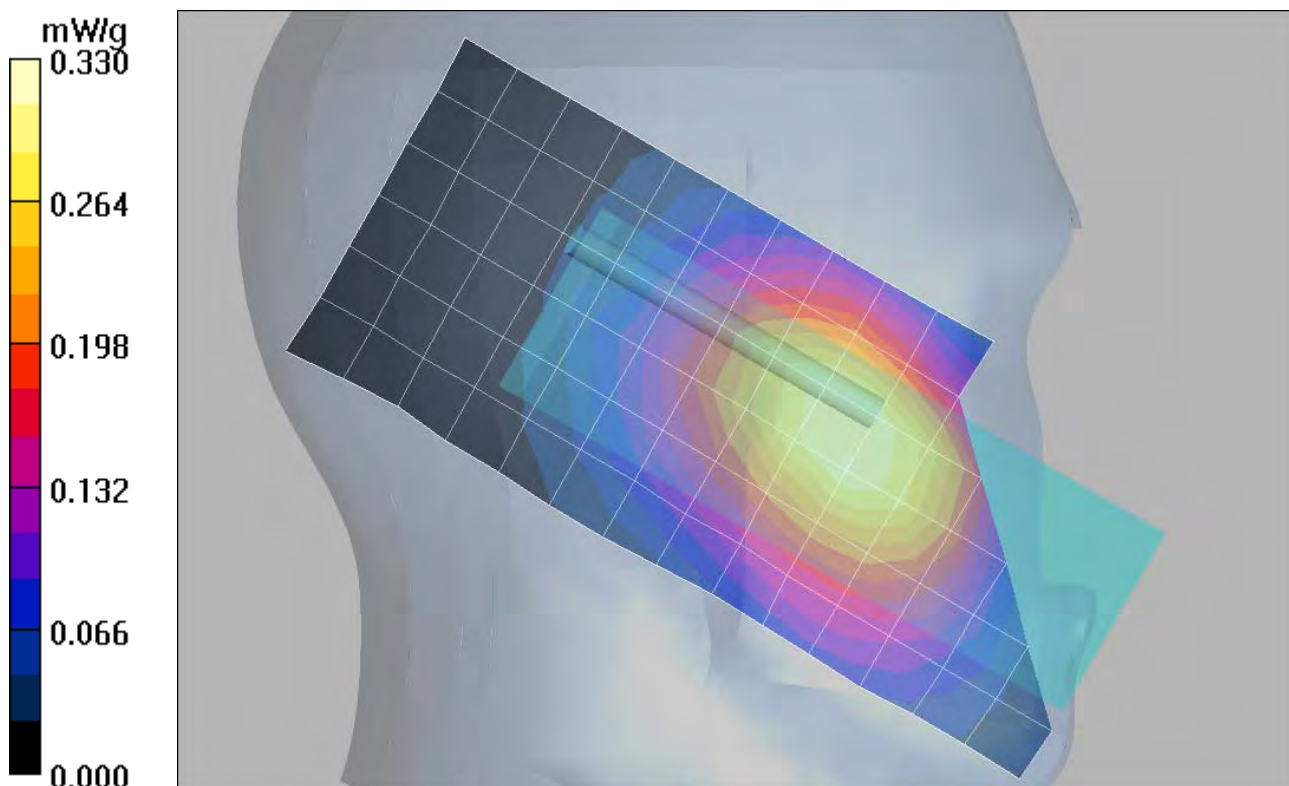
Measurement grid: $dx=15\text{mm}$, $dy=15\text{mm}$ Maximum value of SAR (measured) = 0.309 mW/g

Left Head Template/Zoom Scan (7x7x7)/Cube 0:

Measurement grid: $dx=5\text{mm}$, $dy=5\text{mm}$, $dz=5\text{mm}$

Reference Value = 19.1 V/m; Power Drift = 0.283 dB Peak SAR (extrapolated) = 0.407 W/kg

SAR(1 g) = 0.319 mW/g; SAR(10 g) = 0.237 mW/g Maximum value of SAR (measured) = 0.340 mW/g



Date/Time: 9/22/2005 4:57:22 PM

Test Laboratory: Motorola AMPS tilt retracted

Serial: 3347E318

Procedure Notes: Pwr Step: 02(OTA) Antenna Position: Ret Accessory Model #: N/A

Battery Model #: SNN5744A DEVICE POSITION (cheek or rotated): Rotated

Communication System: AMPS 835; Frequency: 836.52 MHz; Channel Number: 384; Duty Cycle: 1:1

Medium: Low Freq Head; Medium parameters used: $f = 835$ MHz; $\sigma = 0.91$ mho/m; $\epsilon_r = 42.2$; $\rho = 1000$ kg/m³

DASY4 Configuration:

- Probe: ET3DV6 - SN1502; ConvF(6.23, 6.23, 6.23); Calibrated: 7/19/2005
- Sensor-Surface: 4mm (Mechanical Surface Detection)
- Electronics: DAE4 Sn656; Calibrated: 6/17/2005
- Phantom: PCS9 Sugar Water SAM; Type: SAM; Serial: TP-1129;
- Measurement SW: DASY4, V4.5 Build 19; Postprocessing SW: SEMCAD, V1.8 Build 159

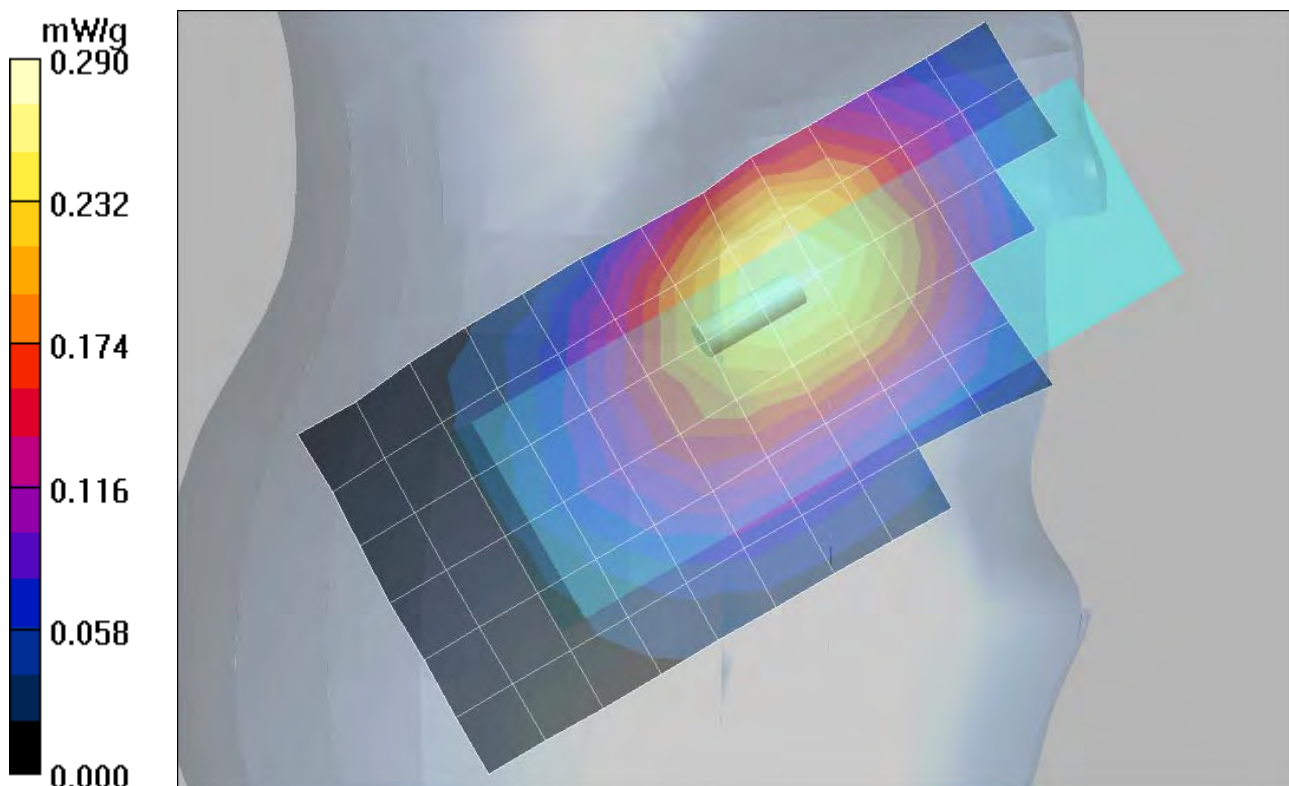
Right Head Template/Area Scan - Normal (15mm) (7x17x1):

Measurement grid: dx=15mm, dy=15mm Maximum value of SAR (measured) = 0.277 mW/g

Right Head Template/Zoom Scan (7x7x7)/Cube 0:

Measurement grid: dx=5mm, dy=5mm, dz=5mm

Reference Value = 18.0 V/m; Power Drift = 0.136 dB Peak SAR (extrapolated) = 0.348 W/kg

SAR(1 g) = 0.277 mW/g; SAR(10 g) = 0.208 mW/g Maximum value of SAR (measured) = 0.293 mW/g

Appendix 3

SAR distribution plots for Body Worn Configuration

Date/Time: 9/30/2005 4:54:06 PM

Test Laboratory: Motorola 800 CDMA body worn extended

Serial: 3347E318

Procedure Notes: Pwr Step: Always up(OTA) Antenna Position: Ext

Battery Model #: SNN5744A Accessory Model # = 15mm Back

Communication System: CDMA 835; Frequency: 836.52MHz; Channel Number: 384; Duty Cycle: 1:1

Medium: Low Freq Body; Medium parameters used: $f = 835$ MHz; $\sigma = 0.99$ mho/m; $\epsilon_r = 54.6$; $\rho = 1000$ kg/m³

DASY4 Configuration:

- Probe: ET3DV6 - SN1502; ConvF(6.13, 6.13, 6.13); Calibrated: 7/19/2005
- Sensor-Surface: 4mm (Mechanical Surface Detection)
- Electronics: DAE4 Sn656; Calibrated: 6/17/2005
- Phantom: R9: Section 1, Amy Twin, Rev2 (23-June-04); Type: Amy Twin Flat; Serial: n/a;
- Measurement SW: DASY4, V4.6 Build 19; Postprocessing SW: SEMCAD, V1.8 Build 159

Amy Twin Phone Template/Area Scan - Normal Body (10mm) (19x10x1):

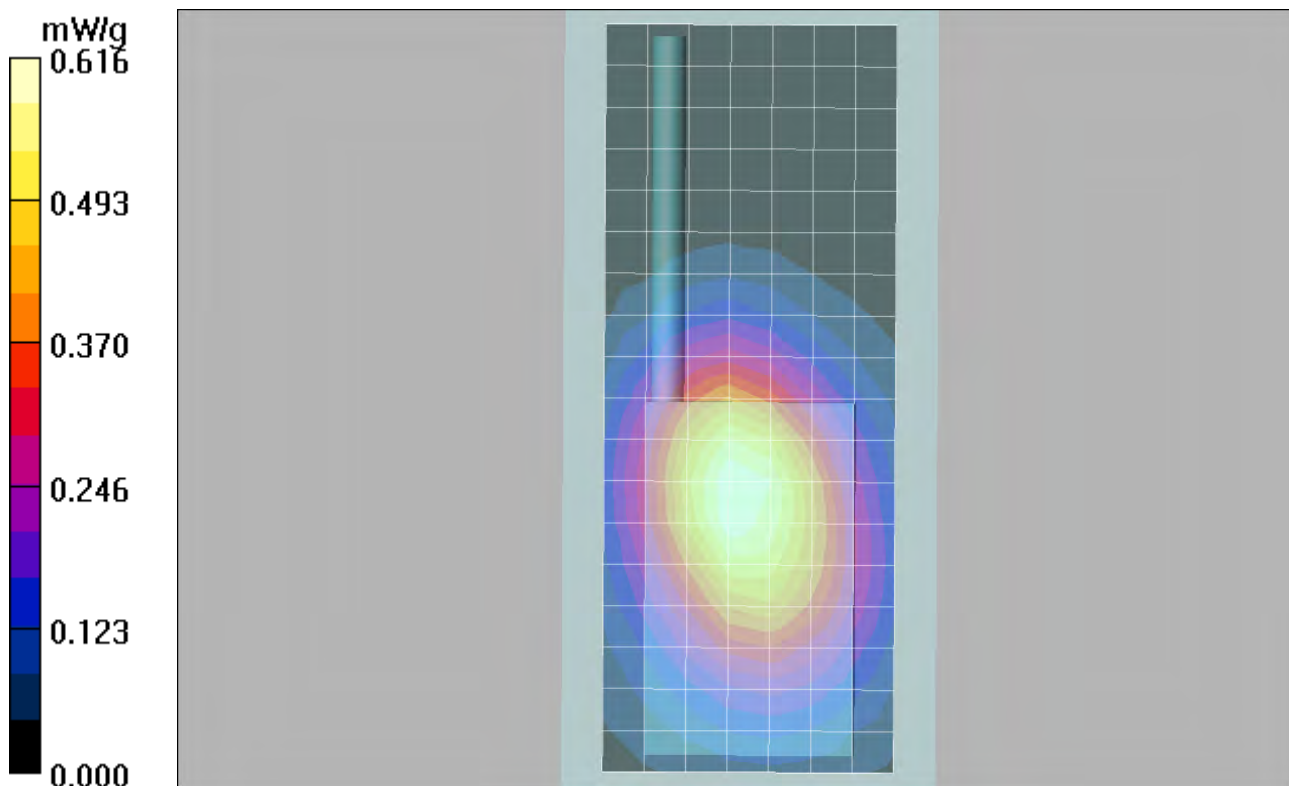
Measurement grid: dx=10mm, dy=10mm Maximum value of SAR (measured) = 0.616 mW/g

Amy Twin Phone Template/Zoom Scan (7x7x7)/Cube 0:

Measurement grid: dx=5mm, dy=5mm, dz=5mm

Reference Value = 25.2 V/m; **Power Drift = 0.378 dB** Peak SAR (extrapolated) = 0.818 W/kg

SAR(1 g) = 0.600 mW/g; SAR(10 g) = 0.418 mW/g Maximum value of SAR (measured) = 0.641 mW/g



Date/Time: 9/30/2005 4:19:38 PM

Test Laboratory: Motorola 800 CDMA body worn retracted

Serial: 3347E318

Procedure Notes: Pwr Step: Always up(OTA) Antenna Position: Ret

Battery Model #: SNN5744A Accessory Model # = 15mm Back

Communication System: CDMA 835; Frequency: 836.52MHz; Channel Number: 384; Duty Cycle: 1:1

Medium: Low Freq Body; Medium parameters used: $f = 835 \text{ MHz}$; $\sigma = 0.99 \text{ mho/m}$; $\epsilon_r = 54.6$; $\rho = 1000 \text{ kg/m}^3$

DASY4 Configuration:

- Probe: ET3DV6 - SN1502; ConvF(6.13, 6.13, 6.13); Calibrated: 7/19/2005
- Sensor-Surface: 4mm (Mechanical Surface Detection)
- Electronics: DAE4 Sn656; Calibrated: 6/17/2005
- Phantom: R9: Section 1, Amy Twin, Rev2 (23-June-04); Type: Amy Twin Flat; Serial: n/a;
- Measurement SW: DASY4, V4.5 Build 19; Postprocessing SW: SEMCAD, V1.8 Build 159

Amy Twin Phone Template/Area Scan - Normal Body (15mm) (13x7x1):

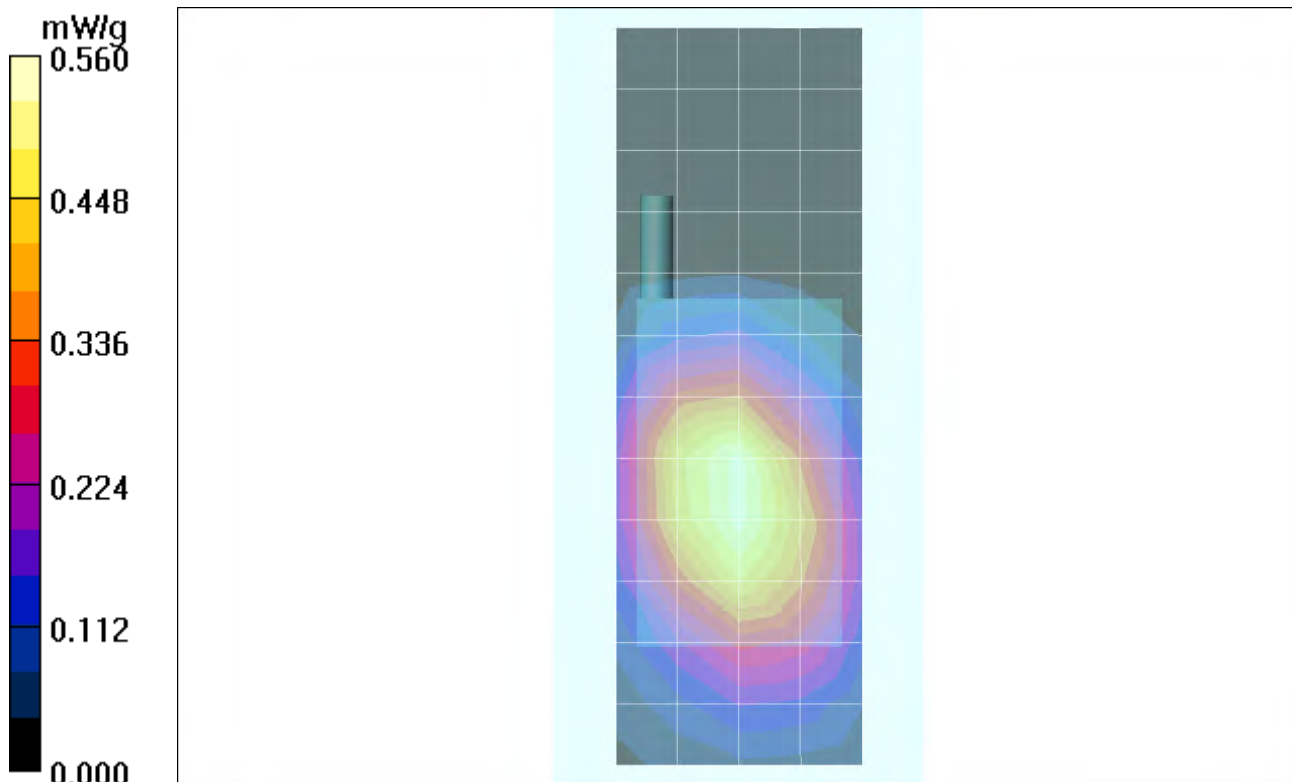
Measurement grid: $dx=15\text{mm}$, $dy=15\text{mm}$ Maximum value of SAR (measured) = 0.540 mW/g

Amy Twin Phone Template/Zoom Scan - to correct max out (7x7x7)/Cube 0:

Measurement grid: $dx=5\text{mm}$, $dy=5\text{mm}$, $dz=5\text{mm}$

Reference Value = 25.2 V/m; **Power Drift = 0.084 dB** Peak SAR (extrapolated) = 0.768 W/kg

SAR(1 g) = 0.558 mW/g; SAR(10 g) = 0.386 mW/g Maximum value of SAR (measured) = 0.595 mW/g



Date/Time: 10/6/2005 3:50:02 PM

Test Laboratory: Motorola 1900 CDMA body worn extended

Serial: 3347E318 Procedure Notes: Pwr Step: Always up(OTA) Antenna Position: Ext

Battery Model #: SNN5744A Accessory Model # = 15mm Back

Communication System: CDMA 1900; Frequency: 1880 MHz; Channel Number: 600; Duty Cycle: 1:1

Medium: Regular Glycol Body; Medium parameters used: $f = 1880$ MHz; $\sigma = 1.56$ mho/m; $\epsilon_r = 51.6$; $\rho = 1000$ kg/m³

DASY4 Configuration:

- Probe: ET3DV6 - SN1502; ConvF(4.58, 4.58, 4.58); Calibrated: 7/19/2005
- Sensor-Surface: 4mm (Mechanical Surface Detection)
- Electronics: DAE4 Sn656; Calibrated: 6/17/2005
- Phantom: R9: Section 2, Amy Twin, Rev2 (23-June-04); Type: Amy Twin Flat; Serial: n/a;
- Measurement SW: DASY4, V4.6 Build 19; Postprocessing SW: SEMCAD, V1.8 Build 159

Amy Twin Phone Template/Area Scan - Normal Body (15mm) (13x7x1):

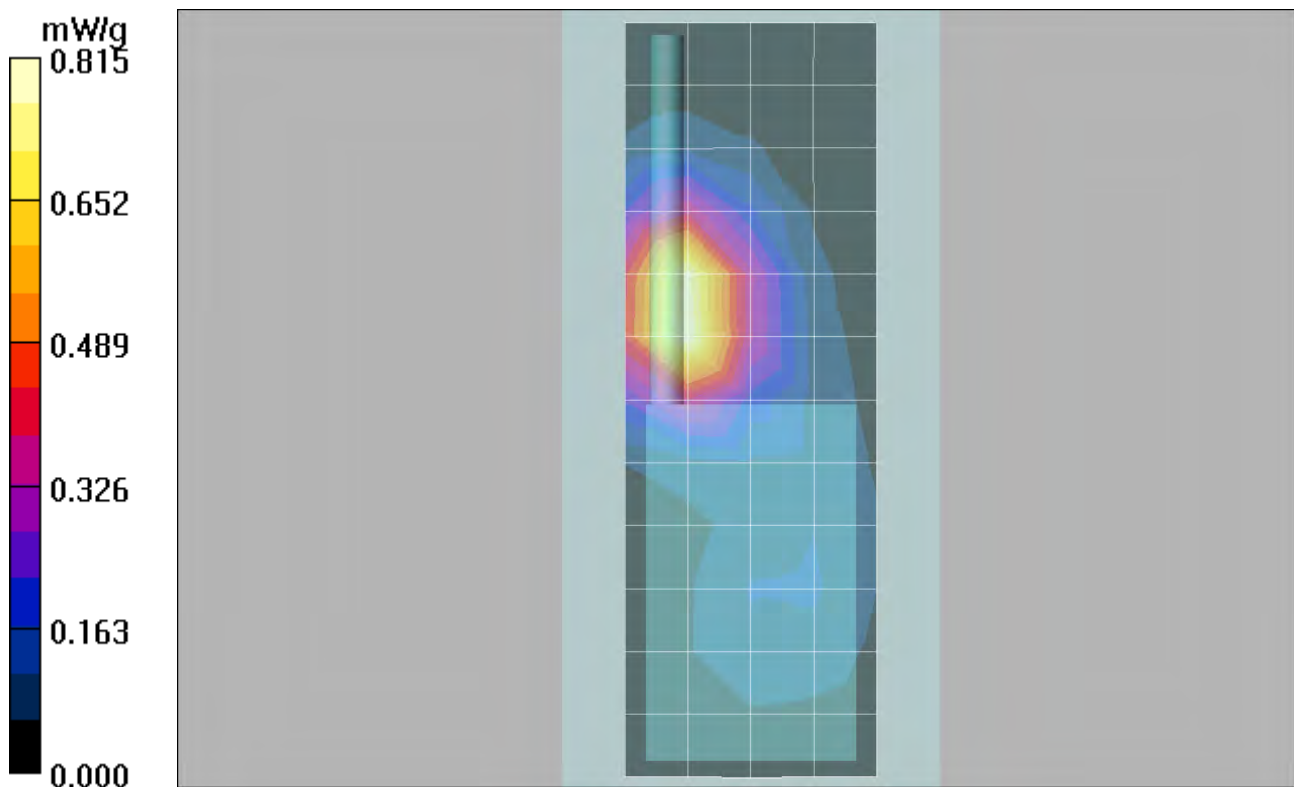
Measurement grid: dx=15mm, dy=15mm Maximum value of SAR (measured) = 0.815 mW/g

Amy Twin Phone Template/Zoom Scan (7x7x7)/Cube 0:

Measurement grid: dx=5mm, dy=5mm, dz=5mm

Reference Value = 16.7 V/m; Power Drift = 0.069 dB Peak SAR (extrapolated) = 1.28 W/kg

SAR(1 g) = 0.793 mW/g; SAR(10 g) = 0.461 mW/g Maximum value of SAR (measured) = 0.871 mW/g



Date/Time: 10/6/2005 3:29:42 PM

Test Laboratory: Motorola 1900 CDMA body worn retracted

Serial: 3347E318

Procedure Notes: Pwr Step: Always up(OTA) Antenna Position: Ret

Battery Model #: SNN5744A Accessory Model # = 15mm Back

Communication System: CDMA 1900; Frequency: 1880 MHz; Channel Number: 600; Duty Cycle: 1:1

Medium: Regular Glycol Body; Medium parameters used: $f = 1880 \text{ MHz}$; $\sigma = 1.56 \text{ mho/m}$; $\epsilon_r = 51.6$; $\rho = 1000 \text{ kg/m}^3$

DASY4 Configuration:

- Probe: ET3DV6 - SN1502; ConvF(4.58, 4.58, 4.58); Calibrated: 7/19/2005
- Sensor-Surface: 4mm (Mechanical Surface Detection)
- Electronics: DAE4 Sn656; Calibrated: 6/17/2005
- Phantom: R9: Section 2, Amy Twin, Rev2 (23-June-04); Type: Amy Twin Flat; Serial: n/a;
- Measurement SW: DASY4, V4.5 Build 19; Postprocessing SW: SEMCAD, V1.8 Build 159

Amy Twin Phone Template/Area Scan - Normal Body (15mm) (13x7x1):

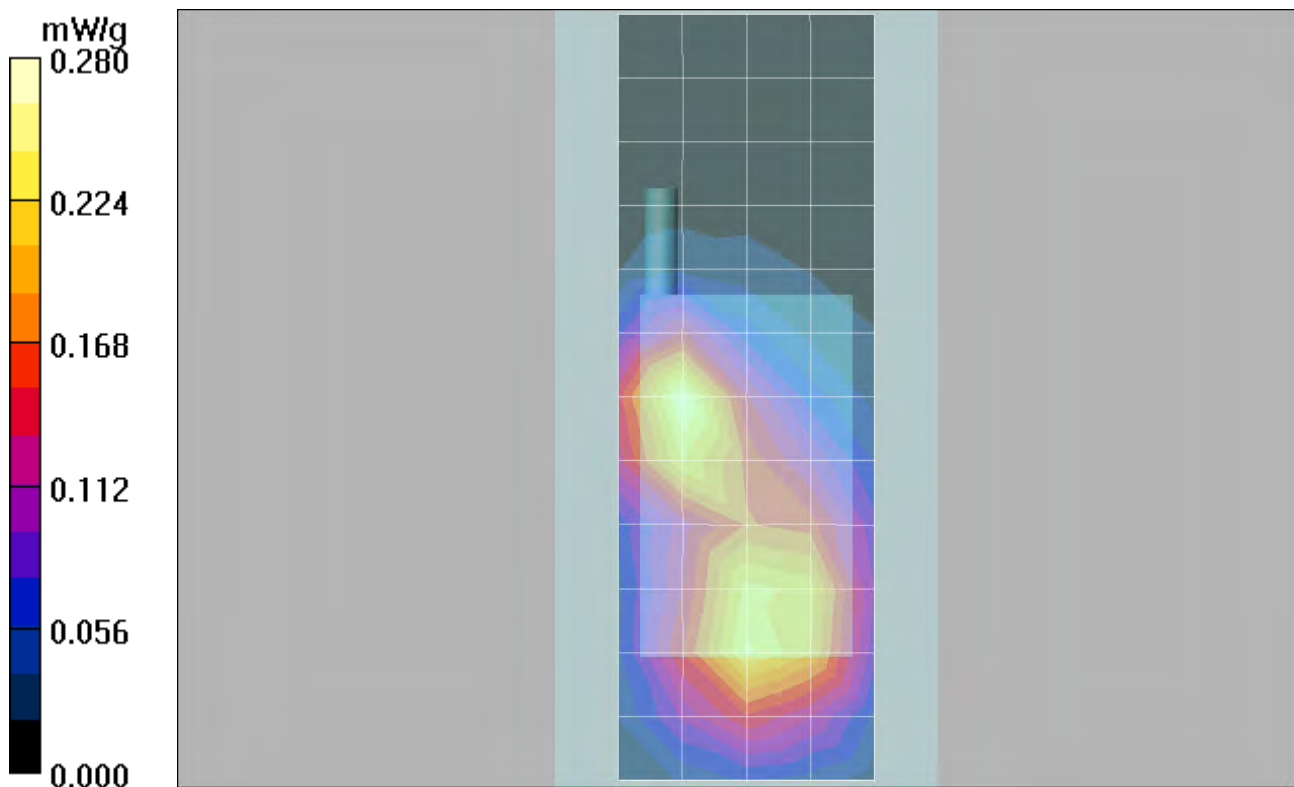
Measurement grid: $dx=15\text{mm}$, $dy=15\text{mm}$ Maximum value of SAR (measured) = 0.266 mW/g

Amy Twin Phone Template/Zoom Scan (7x7x7)/Cube 0:

Measurement grid: $dx=5\text{mm}$, $dy=5\text{mm}$, $dz=5\text{mm}$

Reference Value = 13.6 V/m; Power Drift = 0.063 dB Peak SAR (extrapolated) = 0.395 W/kg

SAR(1 g) = 0.248 mW/g; SAR(10 g) = 0.143 mW/g Maximum value of SAR (measured) = 0.268 mW/g



Date/Time: 9/30/2005 1:20:39 PM

Test Laboratory: Motorola AMPS body worn extended

Serial: 3347E318

Procedure Notes: Pwr Step: 02(OTA) Antenna Position: Ext

Battery Model #: SNN5744A Accessory Model # = 15mm Back

Communication System: AMPS 835; Frequency: 836.52 MHz; Channel Number: 384; Duty Cycle: 1:1

Medium: Low Freq Body; Medium parameters used: $f = 835$ MHz; $\sigma = 0.99$ mho/m; $\epsilon_r = 54.6$; $\rho = 1000$ kg/m³

DASY4 Configuration:

- Probe: ET3DV6 - SN1502; ConvF(6.13, 6.13, 6.13); Calibrated: 7/19/2005
- Sensor-Surface: 4mm (Mechanical Surface Detection)
- Electronics: DAE4 Sn656; Calibrated: 6/17/2005
- Phantom: R9: Section 1, Amy Twin, Rev2 (23-June-04); Type: Amy Twin Flat; Serial: n/a;
- Measurement SW: DASY4, V4.6 Build 19; Postprocessing SW: SEMCAD, V1.8 Build 159

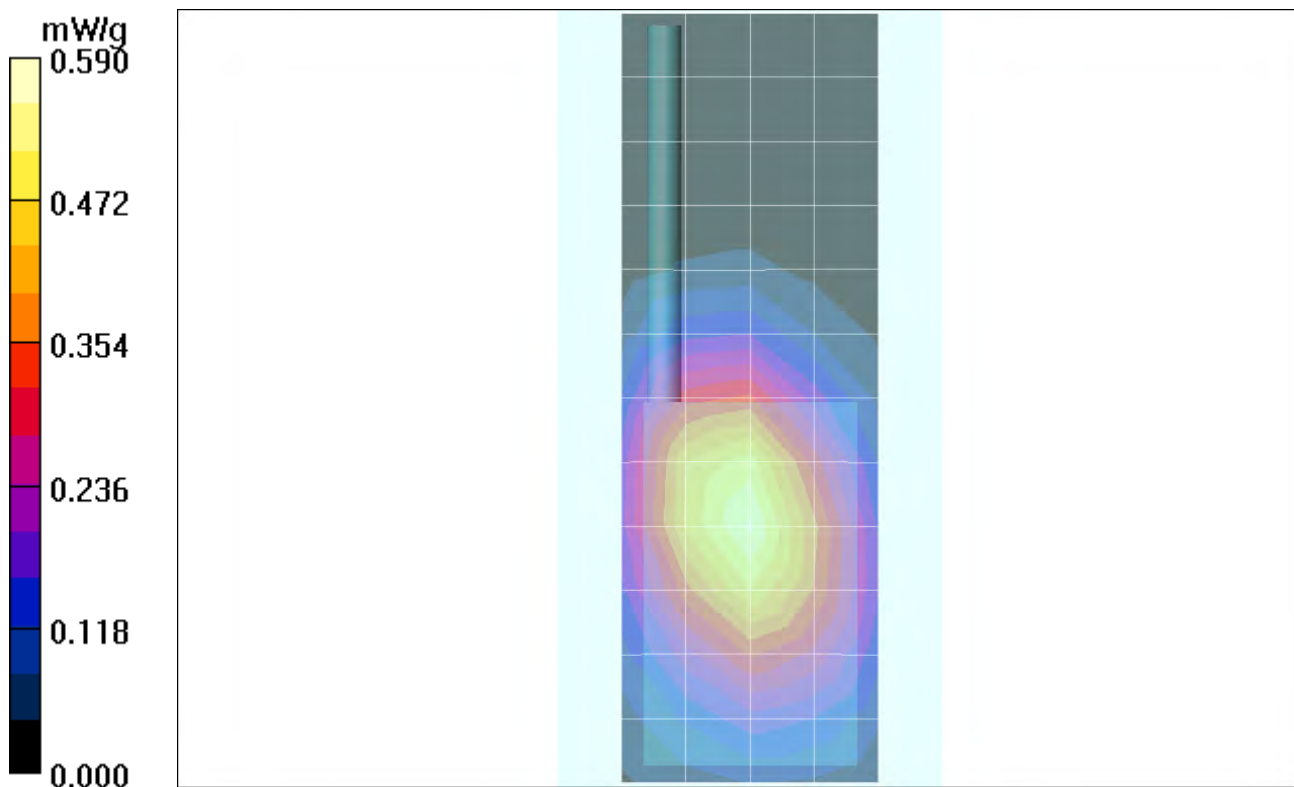
Amy Twin Phone Template/Area Scan - Normal Body (15mm) (13x7x1):

Measurement grid: dx=15mm, dy=15mm Maximum value of SAR (measured) = 0.559 mW/g

Amy Twin Phone Template/Zoom Scan (7x7x7)/Cube 0:

Measurement grid: dx=5mm, dy=5mm, dz=5mm

Reference Value = 25.0 V/m; Power Drift = -0.015 dB Peak SAR (extrapolated) = 0.704 W/kg

SAR(1 g) = 0.526 mW/g; SAR(10 g) = 0.367 mW/g

Date/Time: 9/30/2005 1:00:01 PM

Test Laboratory: Motorola AMPS body worn retracted

Serial: 3347E318

Procedure Notes: Pwr Step: 02(OTA) Antenna Position: Ret

Battery Model #: SNN5744A Accessory Model # = 15mm Back

Communication System: AMPS 835; Frequency: 836.52 MHz; Channel Number: 384; Duty Cycle: 1:1

Medium: Low Freq Body; Medium parameters used: $f = 835 \text{ MHz}$; $\sigma = 0.99 \text{ mho/m}$; $\epsilon_r = 54.6$; $\rho = 1000 \text{ kg/m}^3$

DASY4 Configuration:

- Probe: ET3DV6 - SN1502; ConvF(6.13, 6.13, 6.13); Calibrated: 7/19/2005
- Sensor-Surface: 4mm (Mechanical Surface Detection)
- Electronics: DAE4 Sn656; Calibrated: 6/17/2005
- Phantom: R9: Section 1, Amy Twin, Rev2 (23-June-04); Type: Amy Twin Flat; Serial: n/a;
- Measurement SW: DASY4, V4.5 Build 19; Postprocessing SW: SEMCAD, V1.8 Build 159

Amy Twin Phone Template/Area Scan - Normal Body (15mm) (13x7x1):

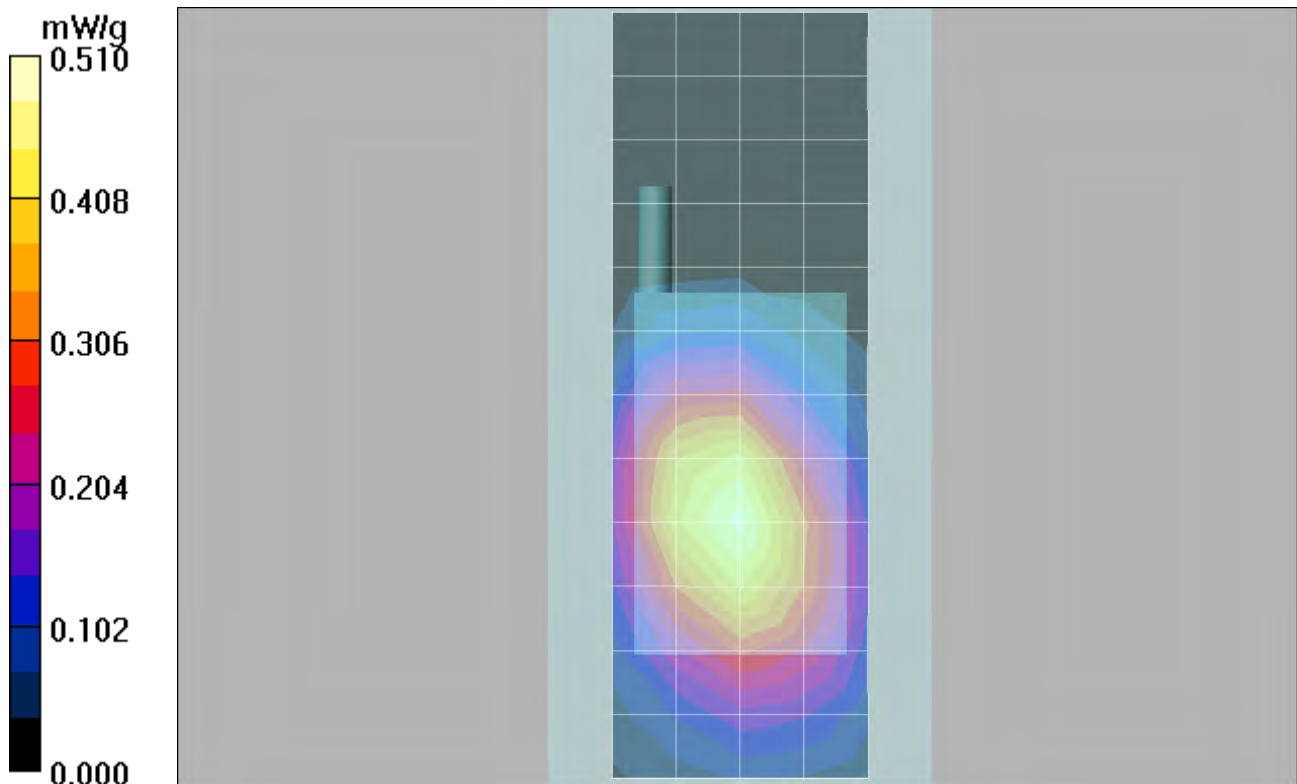
Measurement grid: $dx=15\text{mm}$, $dy=15\text{mm}$ Maximum value of SAR (measured) = 0.491 mW/g

Amy Twin Phone Template/Zoom Scan (7x7x7)/Cube 0:

Measurement grid: $dx=5\text{mm}$, $dy=5\text{mm}$, $dz=5\text{mm}$

Reference Value = 23.2 V/m; **Power Drift = 0.113 dB** Peak SAR (extrapolated) = 0.652 W/kg

SAR(1 g) = 0.477 mW/g; SAR(10 g) = 0.331 mW/g Maximum value of SAR (measured) = 0.509 mW/g



Appendix 4
Probe Calibration Certificate



Accredited by the Swiss Federal Office of Metrology and Accreditation
The Swiss Accreditation Service is one of the signatories to the EA
Multilateral Agreement for the recognition of calibration certificates

Accreditation No.: **SCS 108**

Client **Motorola MDb**

Certificate No: **ET3-1502_Jul05**

CALIBRATION CERTIFICATE

Object **ET3DV6 - SN:1502**

Calibration procedure(s) **QA CAL-01.v5
Calibration procedure for dosimetric E-field probes**

Calibration date: **July 19, 2005**

Condition of the calibrated item **In Tolerance**

This calibration certificate documents the traceability to national standards, which realize the physical units of measurements (SI).
The measurements and the uncertainties with confidence probability are given on the following pages and are part of the certificate.

All calibrations have been conducted in the closed laboratory facility: environment temperature (22 ± 3)°C and humidity < 70%.

Calibration Equipment used (M&TE critical for calibration)

Primary Standards	ID #	Cal Date (Calibrated by, Certificate No.)	Scheduled Calibration
Power meter E4419B	GB41293874	3-May-05 (METAS, No. 251-00466)	May-06
Power sensor E4412A	MY41495277	3-May-05 (METAS, No. 251-00466)	May-06
Power sensor E4412A	MY41498087	3-May-05 (METAS, No. 251-00466)	May-06
Reference 3 dB Attenuator	SN: S5054 (3c)	10-Aug-04 (METAS, No. 251-00403)	Aug-05
Reference 20 dB Attenuator	SN: S5086 (20b)	3-May-05 (METAS, No. 251-00467)	May-06
Reference 30 dB Attenuator	SN: S5129 (30b)	10-Aug-04 (METAS, No. 251-00404)	Aug-05
Reference Probe ES3DV2	SN: 3013	7-Jan-05 (SPEAG, No. ES3-3013_Jan05)	Jan-06
DAE4	SN: 907	21-Jun-05 (SPEAG, No. DAE4-907_Jun05)	Jun-06
Secondary Standards	ID #	Check Date (in house)	Scheduled Check
RF generator HP 8648C	US3642U01700	4-Aug-99 (SPEAG, in house check Dec-03)	In house check: Dec-05
Network Analyzer HP 8753E	US37390585	18-Oct-01 (SPEAG, in house check Nov-04)	In house check: Nov 05

	Name	Function	Signature
Calibrated by:	Nico Vetterli	Laboratory Technician	
Approved by:	Katja Pokovic	Technical Manager	

Issued: July 19, 2005

This calibration certificate shall not be reproduced except in full without written approval of the laboratory.



Accredited by the Swiss Federal Office of Metrology and Accreditation
The Swiss Accreditation Service is one of the signatories to the EA
Multilateral Agreement for the recognition of calibration certificates

Accreditation No.: **SCS 108**

Glossary:

TSL	tissue simulating liquid
NORM _{x,y,z}	sensitivity in free space
ConF	sensitivity in TSL / NORM _{x,y,z}
DCP	diode compression point
Polarization φ	φ rotation around probe axis
Polarization ϑ	ϑ rotation around an axis that is in the plane normal to probe axis (at measurement center), i.e., $\vartheta = 0$ is normal to probe axis

Calibration is Performed According to the Following Standards:

- IEEE Std 1528-2003, "IEEE Recommended Practice for Determining the Peak Spatial-Averaged Specific Absorption Rate (SAR) in the Human Head from Wireless Communications Devices: Measurement Techniques", December 2003
- CENELEC EN 50361, "Basic standard for the measurement of Specific Absorption Rate related to human exposure to electromagnetic fields from mobile phones (300 MHz - 3 GHz), July 2001

Methods Applied and Interpretation of Parameters:

- NORM_{x,y,z}**: Assessed for E-field polarization $\vartheta = 0$ ($f \leq 900$ MHz in TEM-cell; $f > 1800$ MHz: R22 waveguide). NORM_{x,y,z} are only intermediate values, i.e., the uncertainties of NORM_{x,y,z} does not effect the E^2 -field uncertainty inside TSL (see below *ConvF*).
- NORM(f)_{x,y,z}** = NORM_{x,y,z} * *frequency_response* (see Frequency Response Chart). This linearization is implemented in DASY4 software versions later than 4.2. The uncertainty of the frequency response is included in the stated uncertainty of *ConvF*.
- DCP_{x,y,z}**: DCP are numerical linearization parameters assessed based on the data of power sweep (no uncertainty required). DCP does not depend on frequency nor media.
- ConvF and Boundary Effect Parameters**: Assessed in flat phantom using E-field (or Temperature Transfer Standard for $f \leq 800$ MHz) and inside waveguide using analytical field distributions based on power measurements for $f > 800$ MHz. The same setups are used for assessment of the parameters applied for boundary compensation (alpha, depth) of which typical uncertainty values are given. These parameters are used in DASY4 software to improve probe accuracy close to the boundary. The sensitivity in TSL corresponds to NORM_{x,y,z} * *ConvF* whereby the uncertainty corresponds to that given for *ConvF*. A frequency dependent *ConvF* is used in DASY version 4.4 and higher which allows extending the validity from ± 50 MHz to ± 100 MHz.
- Spherical isotropy (3D deviation from isotropy)**: in a field of low gradients realized using a flat phantom exposed by a patch antenna.
- Sensor Offset**: The sensor offset corresponds to the offset of virtual measurement center from the probe tip (on probe axis). No tolerance required.

Probe ET3DV6

SN:1502

Manufactured:	October 24, 1999
Last calibrated:	July 16, 2004
Recalibrated:	July 19, 2005

Calibrated for DASY Systems

(Note: non-compatible with DASY2 system!)

DASY - Parameters of Probe: ET3DV6 SN:1502Sensitivity in Free Space^ADiode Compression^B

NormX	1.75 ± 10.1%	$\mu\text{V}/(\text{V}/\text{m})^2$	DCP X	92 mV
NormY	1.90 ± 10.1%	$\mu\text{V}/(\text{V}/\text{m})^2$	DCP Y	92 mV
NormZ	1.83 ± 10.1%	$\mu\text{V}/(\text{V}/\text{m})^2$	DCP Z	92 mV

Sensitivity in Tissue Simulating Liquid (Conversion Factors)

Please see Page 8.

Boundary Effect

TSL 900 MHz Typical SAR gradient: 5 % per mm

Sensor Center to Phantom Surface Distance		3.7 mm	4.7 mm
SAR _{be} [%]	Without Correction Algorithm	9.7	5.1
SAR _{be} [%]	With Correction Algorithm	0.1	0.3

TSL 1810 MHz Typical SAR gradient: 10 % per mm

Sensor Center to Phantom Surface Distance		3.7 mm	4.7 mm
SAR _{be} [%]	Without Correction Algorithm	14.4	9.6
SAR _{be} [%]	With Correction Algorithm	0.9	0.1

Sensor Offset

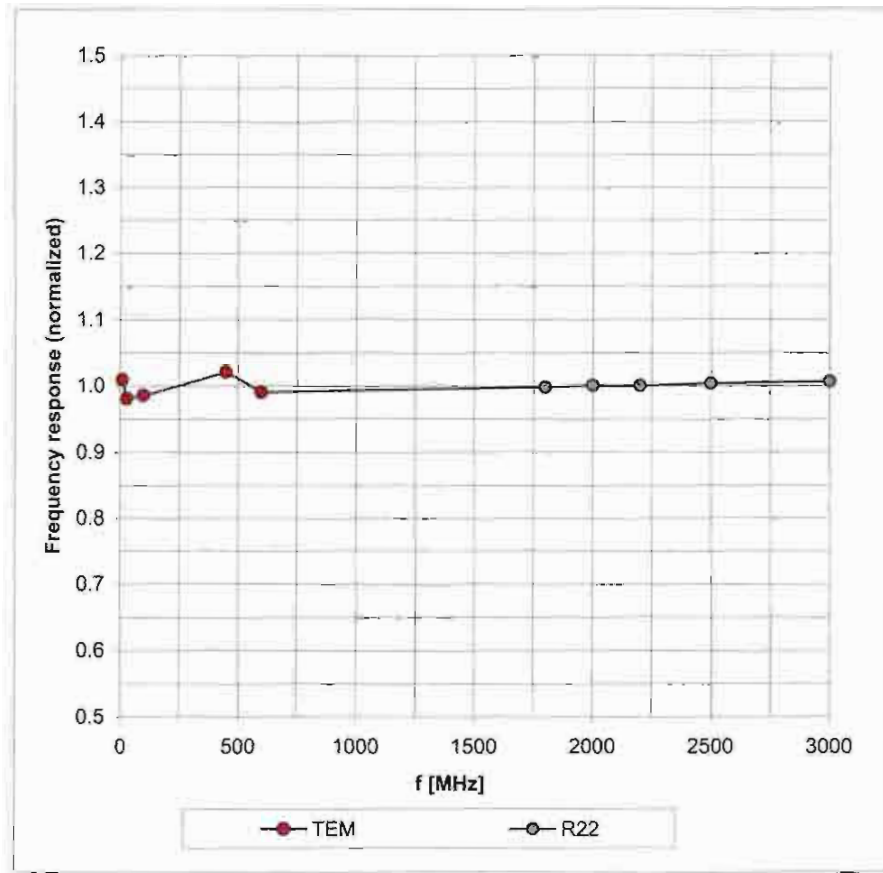
Probe Tip to Sensor Center 2.7 mm

The reported uncertainty of measurement is stated as the standard uncertainty of measurement multiplied by the coverage factor k=2, which for a normal distribution corresponds to a coverage probability of approximately 95%.

^A The uncertainties of NormX,Y,Z do not affect the E²-field uncertainty inside TSL (see Page 8).^B Numerical linearization parameter: uncertainty not required.

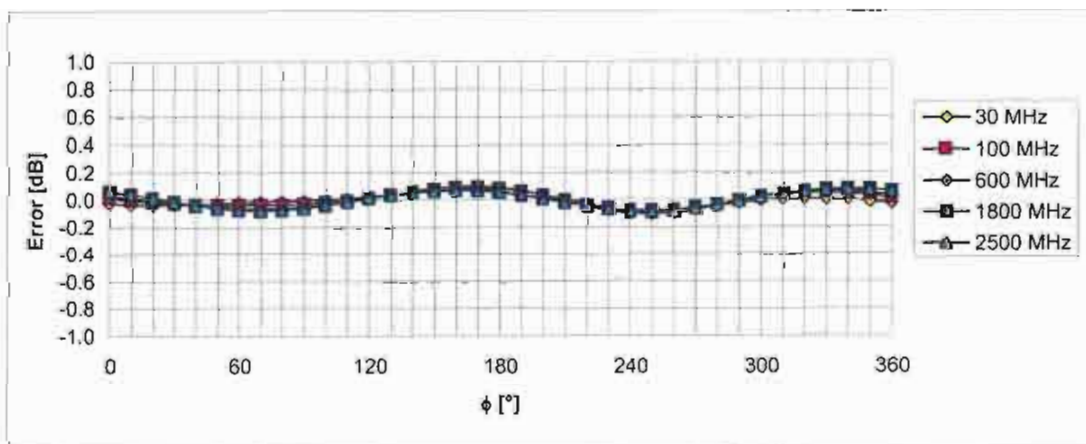
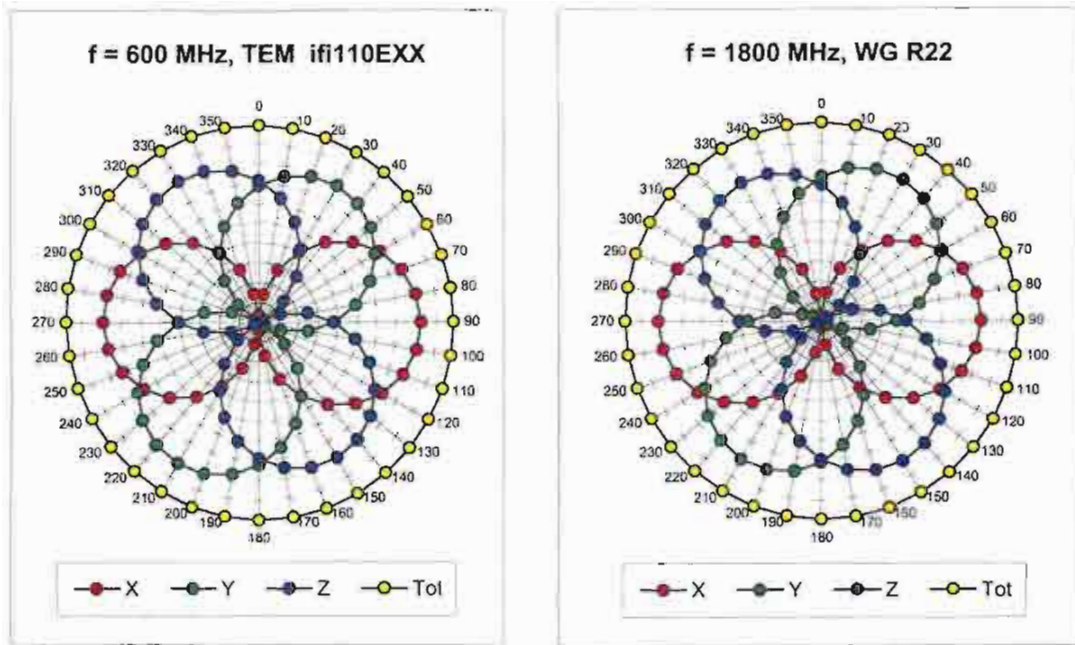
Frequency Response of E-Field

(TEM-Cell:ifi110 EXX, Waveguide: R22)



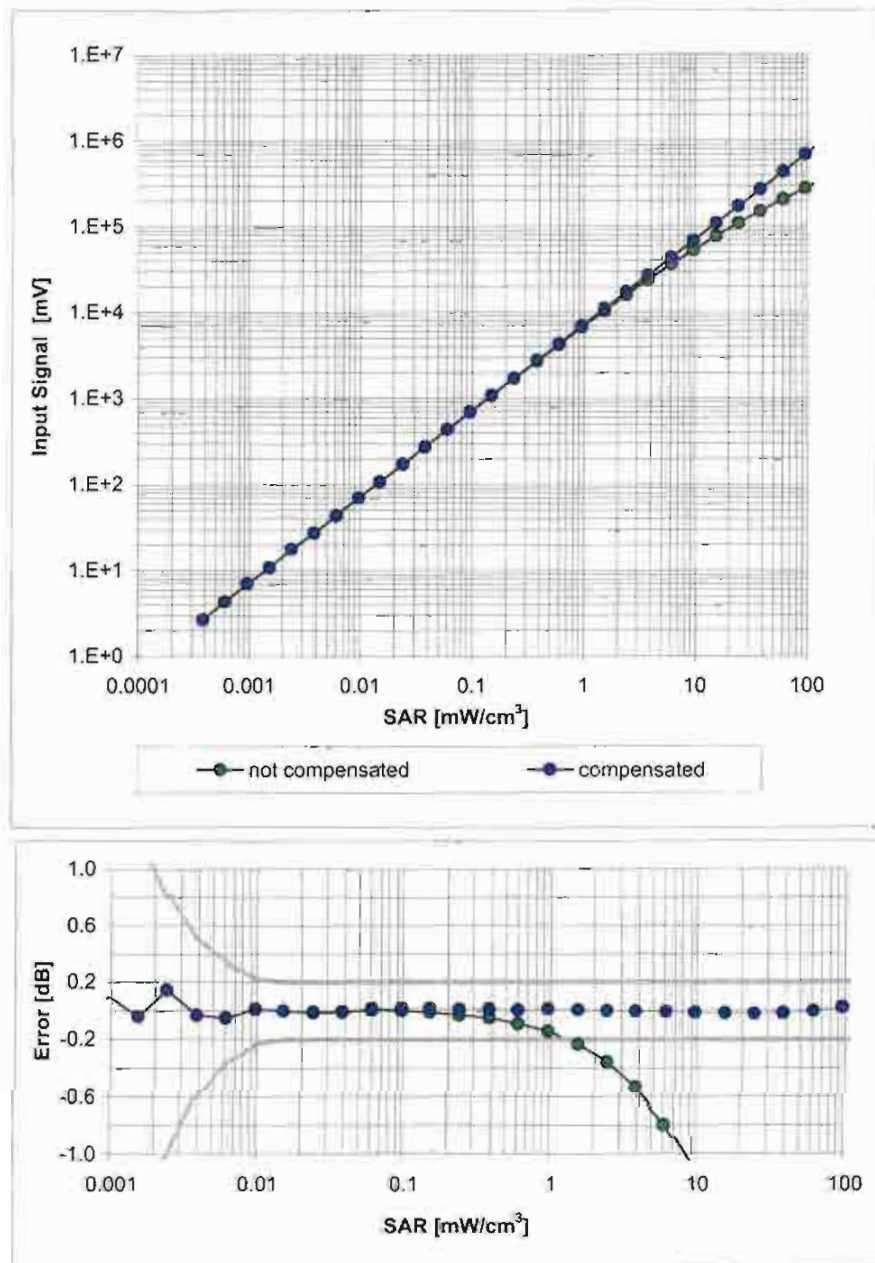
Uncertainty of Frequency Response of E-field: $\pm 6.3\%$ (k=2)

Receiving Pattern (ϕ), $\theta = 0^\circ$



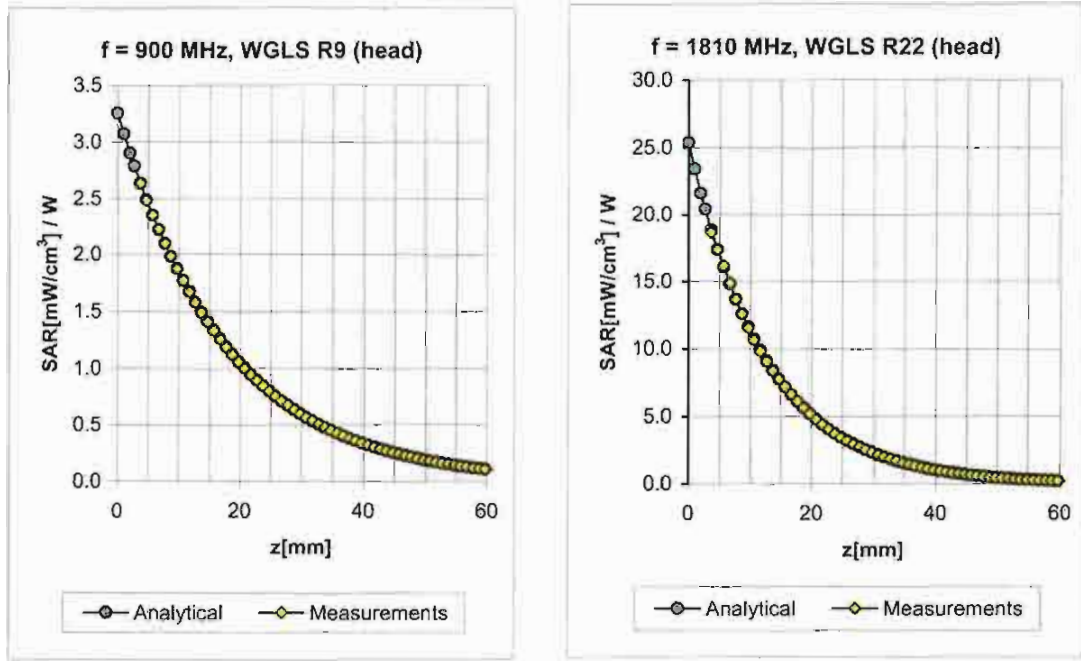
Uncertainty of Axial Isotropy Assessment: $\pm 0.5\%$ (k=2)

Dynamic Range $f(\text{SAR}_{\text{head}})$ (Waveguide R22, $f = 1800 \text{ MHz}$)



Uncertainty of Linearity Assessment: $\pm 0.6\%$ ($k=2$)

Conversion Factor Assessment

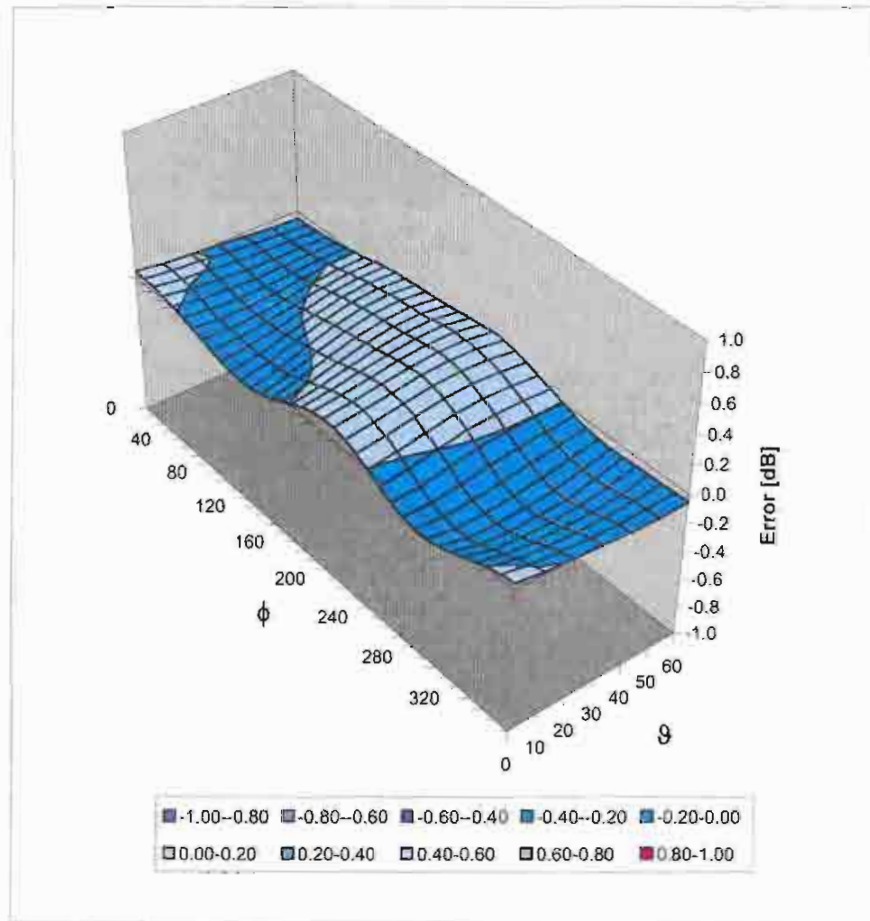


f [MHz]	Validity [MHz] ^c	TSL	Permittivity	Conductivity	Alpha	Depth	ConvF Uncertainty
900	± 50 / ± 100	Head	41.5 ± 5%	0.97 ± 5%	0.66	1.84	6.23 ± 11.0% (k=2)
1810	± 50 / ± 100	Head	40.0 ± 5%	1.40 ± 5%	0.68	2.28	5.26 ± 11.0% (k=2)
1950	± 50 / ± 100	Head	40.0 ± 5%	1.40 ± 5%	0.68	2.34	4.83 ± 11.0% (k=2)
900	± 50 / ± 100	Body	55.0 ± 5%	1.05 ± 5%	0.62	1.98	6.13 ± 11.0% (k=2)
1810	± 50 / ± 100	Body	53.3 ± 5%	1.52 ± 5%	0.67	2.52	4.58 ± 11.0% (k=2)
1950	± 50 / ± 100	Body	53.3 ± 5%	1.52 ± 5%	0.70	2.37	4.37 ± 11.0% (k=2)

^c The validity of ± 100 MHz only applies for DASY v4.4 and higher (see Page 2). The uncertainty is the RSS of the ConvF uncertainty at calibration frequency and the uncertainty for the indicated frequency band.

Deviation from Isotropy in HSL

Error (ϕ, ϑ), $f = 900$ MHz



Uncertainty of Spherical Isotropy Assessment: $\pm 2.6\%$ ($k=2$)

Appendix 5
Measurement Uncertainty Budget

Uncertainty Budget for Device Under Test: 30 – 3000 MHz

<i>a</i>	<i>b</i>	<i>c</i>	<i>d</i>	<i>e = f(d,k)</i>	<i>f</i>	<i>g</i>	<i>h = c x f / e</i>	<i>i = c x g / e</i>	<i>k</i>
Uncertainty Component	IEEE 1528 section	Tol. (± %)	Prob Dist	Div.	<i>c_i</i> (1 g)	<i>c_i</i> (10 g)	1 g <i>u_i</i> (±%)	10 g <i>u_i</i> (±%)	<i>v_i</i>
Measurement System									
Probe Calibration	E.2.1	5.9	N	1.00	1	1	5.9	5.9	∞
Axial Isotropy	E.2.2	4.7	R	1.73	0.707	0.707	1.9	1.9	∞
Hemispherical Isotropy	E.2.2	9.6	R	1.73	0.707	0.707	3.9	3.9	∞
Boundary Effect	E.2.3	1.0	R	1.73	1	1	0.6	0.6	∞
Linearity	E.2.4	4.7	R	1.73	1	1	2.7	2.7	∞
System Detection Limits	E.2.5	1.0	R	1.73	1	1	0.6	0.6	∞
Readout Electronics	E.2.6	0.3	N	1.00	1	1	0.3	0.3	∞
Response Time	E.2.7	1.1	R	1.73	1	1	0.6	0.6	∞
Integration Time	E.2.8	1.1	R	1.73	1	1	0.6	0.6	∞
RF Ambient Conditions - Noise	E.6.1	3.0	R	1.73	1	1	1.7	1.7	∞
RF Ambient Conditions - Reflections	E.6.1	0.0	R	1.73	1	1	0.0	0.0	∞
Probe Positioner Mech. Tolerance	E.6.2	0.4	R	1.73	1	1	0.2	0.2	∞
Probe Positioning w.r.t Phantom	E.6.3	1.4	R	1.73	1	1	0.8	0.8	∞
Max. SAR Evaluation (ext., int., avg.)	E.5	3.4	R	1.73	1	1	2.0	2.0	∞
Test sample Related									
Test Sample Positioning	E.4.2	3.2	N	1.00	1	1	3.2	3.2	29
Device Holder Uncertainty	E.4.1	4.0	N	1.00	1	1	4.0	4.0	8
SAR drift	6.6.2	5.0	R	1.73	1	1	2.9	2.9	∞
Phantom and Tissue Parameters									
Phantom Uncertainty	E.3.1	4.0	R	1.73	1	1	2.3	2.3	∞
Liquid Conductivity (target)	E.3.2	5.0	R	1.73	0.64	0.43	1.8	1.2	∞
Liquid Conductivity (measurement)	E.3.3	3.3	N	1.00	0.64	0.43	2.1	1.4	∞
Liquid Permittivity (target)	E.3.2	5.0	R	1.73	0.6	0.49	1.7	1.4	∞
Liquid Permittivity (measurement)	E.3.3	1.9	N	1.00	0.6	0.49	1.1	0.9	∞
Combined Standard Uncertainty			RSS				11.1	10.8	411
Expanded Uncertainty (95% CONFIDENCE LEVEL)			<i>k</i> =2				22.2	21.6	

Uncertainty Budget for System Check: 30 – 3000 MHz

<i>a</i>	<i>b</i>	<i>c</i>	<i>d</i>	<i>e = f(d,k)</i>	<i>f</i>	<i>g</i>	<i>h = c x f / e</i>	<i>i = c x g / e</i>	<i>k</i>
Uncertainty Component	IEEE 1528 section	Tol. (± %)	Prob. Dist.	Div.	<i>c_i</i> (1 g)	<i>c_i</i> (10 g)	1 g <i>u_i</i> (±%)	10 g <i>u_i</i> (±%)	<i>v_i</i>
Measurement System									
Probe Calibration	E.2.1	5.9	N	1.00	1	1	5.9	5.9	∞
Axial Isotropy	E.2.2	4.7	R	1.73	1	1	2.7	2.7	∞
Spherical Isotropy	E.2.2	9.6	R	1.73	0	0	0.0	0.0	∞
Boundary Effect	E.2.3	1.0	R	1.73	1	1	0.6	0.6	∞
Linearity	E.2.4	4.7	R	1.73	1	1	2.7	2.7	∞
System Detection Limits	E.2.5	1.0	R	1.73	1	1	0.6	0.6	∞
Readout Electronics	E.2.6	0.3	N	1.00	1	1	0.3	0.3	∞
Response Time	E.2.7	1.1	R	1.73	1	1	0.6	0.6	∞
Integration Time	E.2.8	0.0	R	1.73	1	1	0.0	0.0	∞
RF Ambient Conditions - Noise	E.6.1	3.0	R	1.73	1	1	1.7	1.7	∞
RF Ambient Conditions - Reflections	E.6.1	0.0	R	1.73	1	1	0.0	0.0	∞
Probe Positioner Mechanical Tolerance	E.6.2	0.4	R	1.73	1	1	0.2	0.2	∞
Probe Positioning w.r.t. Phantom	E.6.3	1.4	R	1.73	1	1	0.8	0.8	∞
Max. SAR Evaluation (ext., int., avg.)	E.5	3.4	R	1.73	1	1	2.0	2.0	∞
Dipole									
Dipole Axis to Liquid Distance	⁸ , E.4.2	2.0	R	1.73	1	1	1.2	1.2	∞
Input Power and SAR Drift Measurement	⁸ , 6.6.2	5.0	R	1.73	1	1	2.9	2.9	∞
Phantom and Tissue Parameters									
Phantom Uncertainty	E.3.1	4.0	R	1.73	1	1	2.3	2.3	∞
Liquid Conductivity (target)	E.3.2	5.0	R	1.73	0.64	0.43	1.8	1.2	∞
Liquid Conductivity (measurement)	E.3.3	3.3	R	1.73	0.64	0.43	1.2	0.8	∞
Liquid Permittivity (target)	E.3.2	5.0	R	1.73	0.6	0.49	1.7	1.4	∞
Liquid Permittivity (measurement)	E.3.3	1.9	R	1.73	0.6	0.49	0.6	0.5	∞
Combined Standard Uncertainty			RSS				9.0	8.8	9999 9
Expanded Uncertainty (95% CONFIDENCE LEVEL)			<i>k</i> =2				17.7	17.3	

Appendix 6

Photographs of the device under test



Figure 1. Front of Phone; antenna retracted



Figure 2. Front of Phone; antenna extended



Figure 3. Back of Phone; antenna retracted



Figure 4. Back of Phone; antenna extended



Figure 5. Phone Open



Figure 6. Back of Phone; flip open with antenna extended



Figure 7. Phone Against the Flat Phantom; antenna retracted



Figure 8. Phone Against the Flat Phantom; antenna extended



Figure 9. Phone Against the Head Phantom (Front view, Cheek Touch)



Figure 10. Phone Against the Head Phantom (front view, 15°Tilt)



Figure 11. Phone Against the Head Phantom (rear view, Cheek Touch, antenna retracted)



Figure 12. Phone Against the Head Phantom (rear view, Cheek Touch, antenna extended)



Figure 13. Phone Against the Head Phantom (rear view, 15°Tilt, antenna retracted)



Figure 14. Phone Against the Head Phantom (rear view, 15°Tilt, antenna extended)