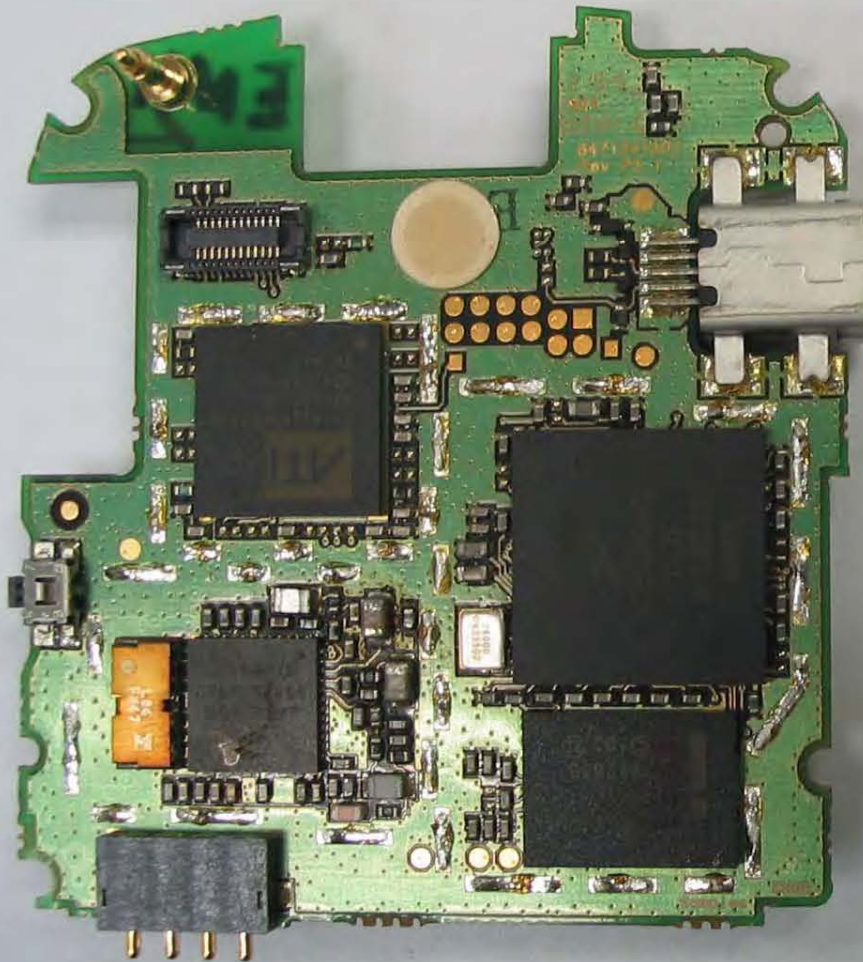


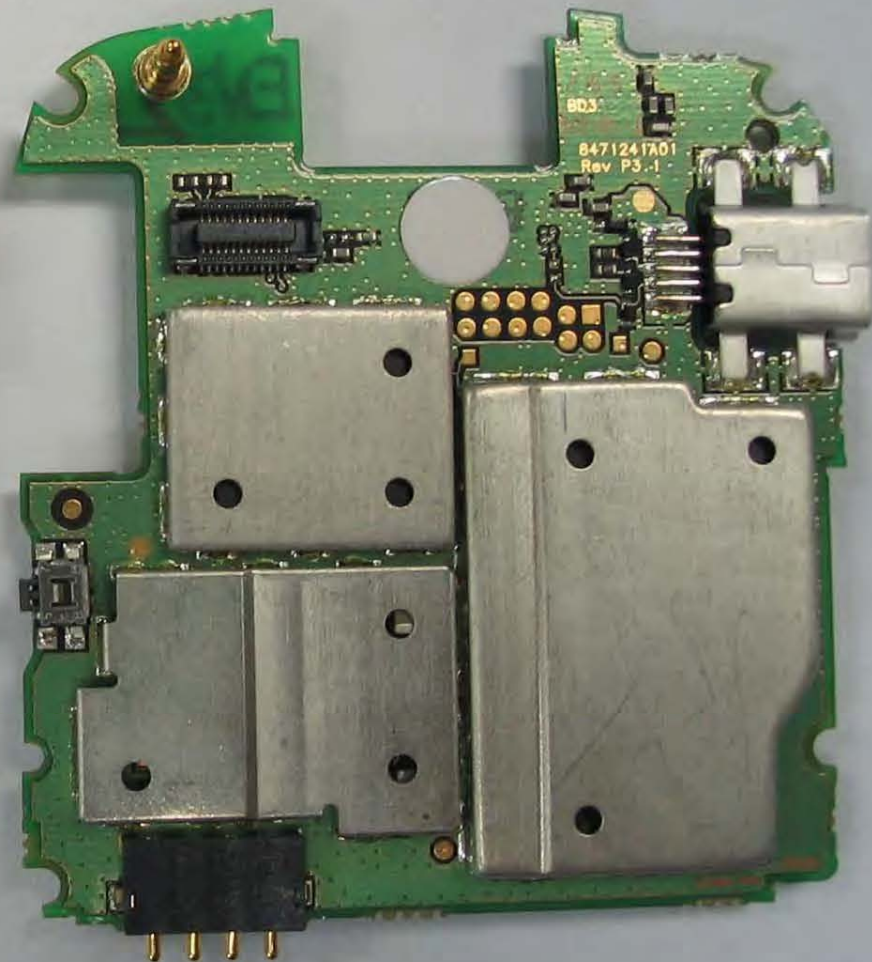
Front View With Shields Removed



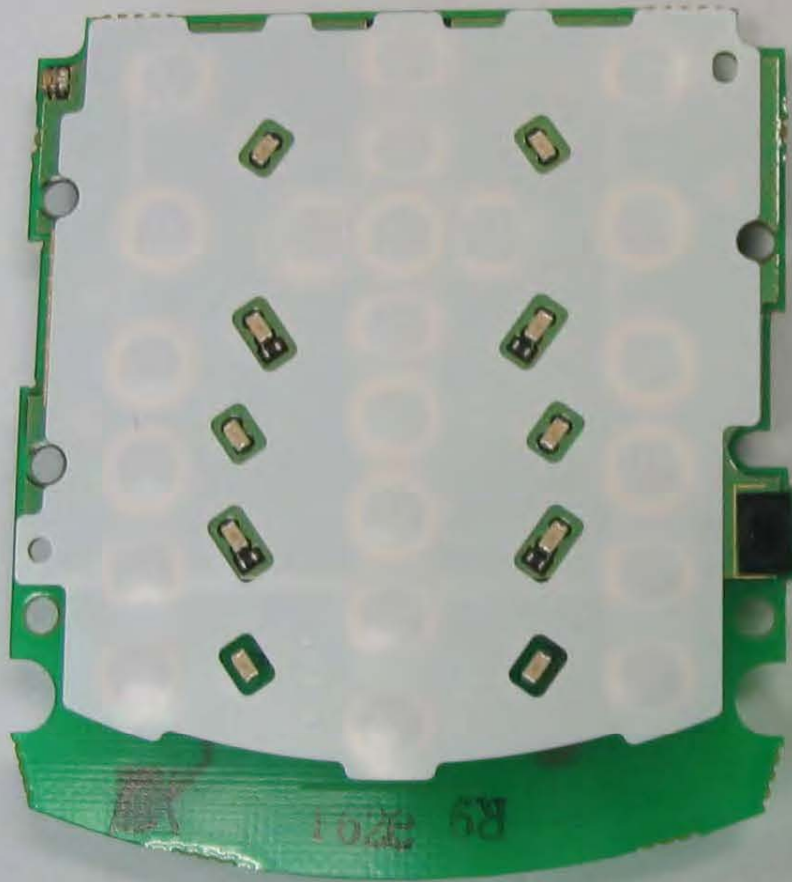
Main PCBA (Front View)



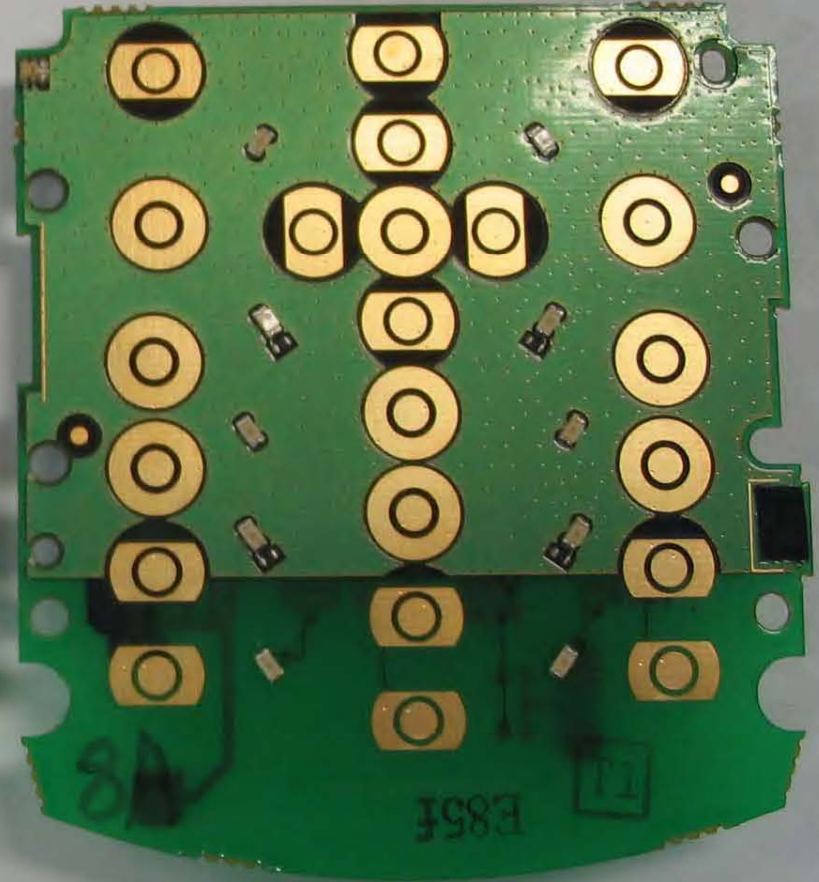
Rear View With Shields Removed



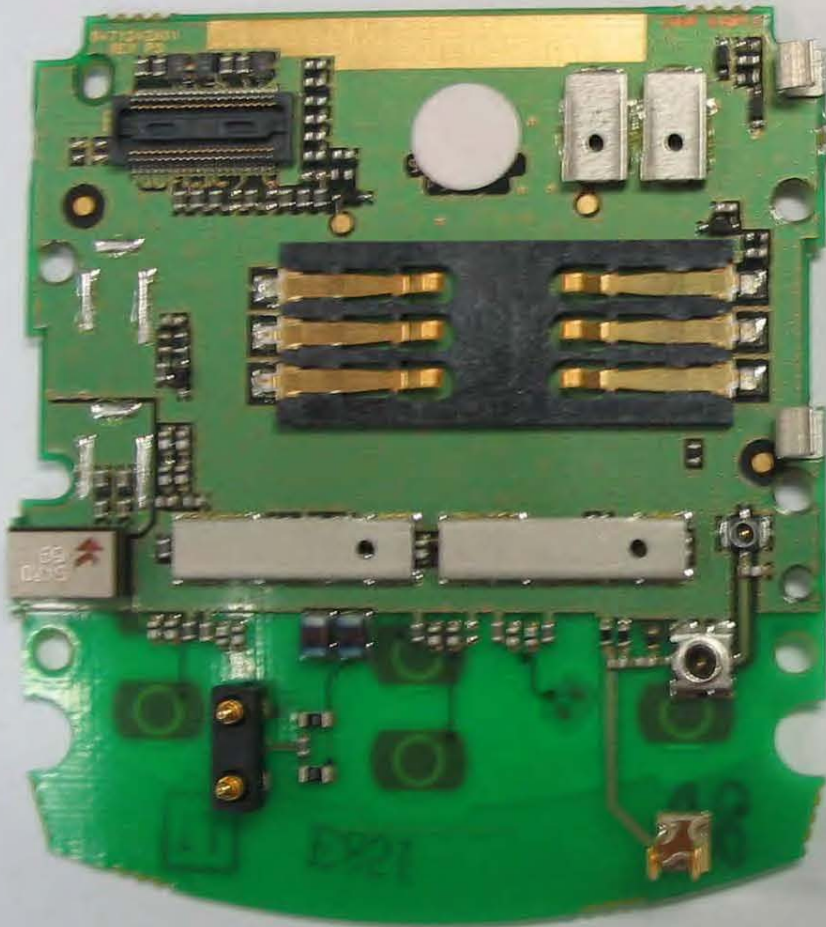
Main PCBA (Rear View)



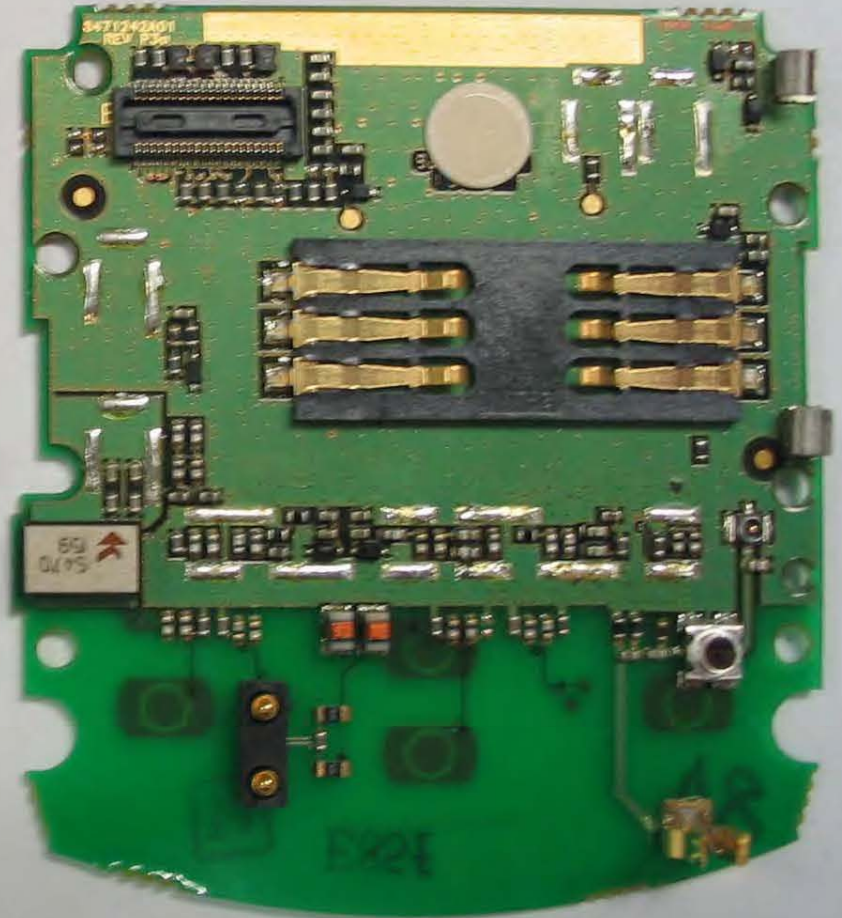
Keypad PCBA (Front View)



Front View With Mylar Removed



Keypad PCBA (Rear View)



Rear View With Shields Removed



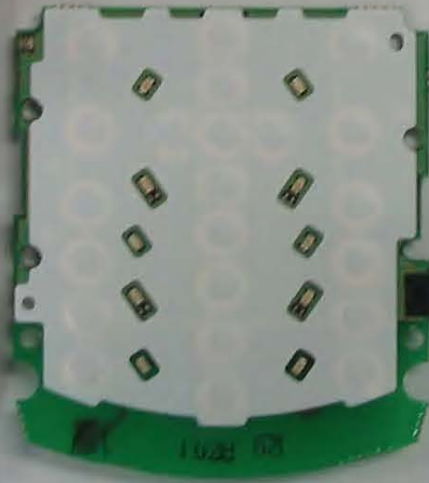
Display
Module



Coaxial
Cable



Chassis
(Front View)



Keypad
PCBA



Keypad



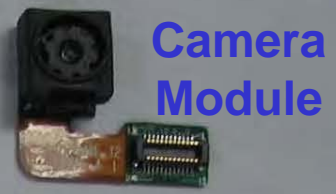
Front Housing



Chassis
(Rear View)



Main
PCBA



Camera
Module



PCB
Cover



Antenna



Antenna Cover