



**MOTOROLA**

## HAC Test Report for T-coil IHDT56FT1

**Date of test:** June 26, 2006 & June 27, 2006  
**Date of Report:** July 18, 2006

**Laboratory:** Motorola Mobile Devices Business Product Safety & Compliance Laboratory  
600 N. US Highway 45  
Room: MW113  
Libertyville, Illinois 60048

**Test Responsible:** Katerina Royzen  
Engineer

**Statement of Compliance:** Motorola declares under its sole responsibility that portable cellular telephone FCC IHDT56FT1 to which this declaration relates, complies with recommendations and guidelines FCC 47 CFR §20.19. The measurements were performed to ensure compliance to the ANSI C63.19-2006. It also declares that the product was tested in accordance with the appropriate measurement standards, guidelines and recommended practices. Any deviations from these standards, guidelines and recommended practices are noted below:

(none)

**Results Summary:** T Category = T4

©Motorola, Inc. 2006

This test report shall not be reproduced except in full, without written approval of the laboratory.

The results and statements contained herein relate only to the items tested. The names of individuals involved may be mentioned only in connection with the statements or results from this report.

Motorola encourages all feedback, both positive and negative, on this test report.

**Table of Contents**

**1. INTRODUCTION .....3**

**2. DESCRIPTION OF THE DEVICE UNDER TEST.....3**

**3. TEST EQUIPMENT USED.....4**

**4. SIGNAL VERIFICATION.....7**

**5. TEST RESULTS.....8**

**5.1 T-coil SNR Results .....8**

**5.2 T-coil Environment Results.....12**

**5.3 T-Rating Results.....15**

**APPENDIX 1: CONTOUR PLOTS.....16**

**APPENDIX 2: AMBIENT NOISE SPECTRUM PLOTS .....17**

**APPENDIX 3: DETAILS ON THE MEASUREMENT SYSTEMS.....20**

**APPENDIX 4: PICTURES OF TEST SETUP .....27**

**APPENDIX 5: MOTOROLA UNCERTAINTY BUDGET .....30**

**APPENDIX 6: AUDIO MAGNETIC PROBE CERTIFICATE .....32**

**APPENDIX 7: AMCC CERTIFICATE (HELMHOLZ COIL).....33**

**APPENDIX 8: HAC DISTRIBUTION PLOTS FOR E-FIELD AND H-FIELD .....34**

**1. Introduction**

The Motorola Mobile Devices Business Product Safety Laboratory has performed Hearing Aid Compatibility (HAC) measurements for the portable cellular phone (FCC ID IHDT56FT1). The portable cellular phone was tested in accordance with ANSI PC63.19-2006 standard. The test results presented herein clearly demonstrate compliance FCC 47 CFR § 20.19. This report demonstrates compliance for T-coil performance only and not for near field emissions.

**2. Description of the Device Under Test**

**Table 1: Information for the Device Under Test**

<b>FCC ID Number</b>	<b>IHDT56FT1</b>		
<b>Serial number</b>	1B1FFA40		
<b>Mode(s) of Operation</b>	800 CDMA	1900 CDMA	BlueTooth
<b>Modulation Mode(s)</b>	QPSK	QPSK	GFSK
<b>Maximum Output Power Setting</b>	25.0 dBm	25.0 dBm	4.00dBm
<b>Duty Cycle</b>	1:1	1:1	1:1
<b>Transmitting Frequency Range(s)</b>	824-849MHz	1851-1909MHz	2400-2483.5MHz
<b>Production Unit or Identical Prototype (47 CFR §2..908)</b>	Identical Prototype		
<b>Device Category</b>	Portable		

Note: No Bluetooth profile exists in this phone that will allow a Bluetooth link while in a cellular call that passes audio to the earpiece. If the user had Bluetooth enabled and a link established, they could not be listening to the phone through the earpiece.

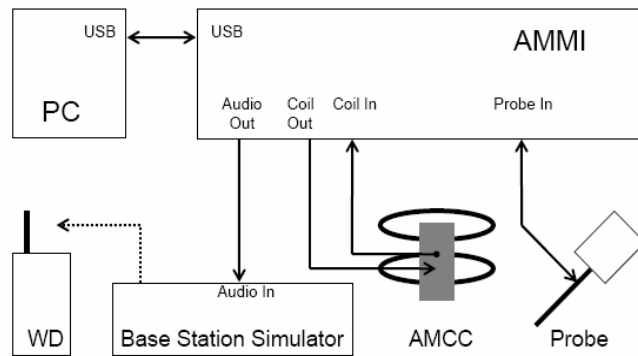
**3. Test Equipment Used**

The Motorola Mobile Devices Business Product Safety & Compliance Laboratory utilizes a Dosimetric Assessment System (Dasy4™ v4.7) manufactured by Schmid & Partner Engineering AG (SPEAG™) of Zurich, Switzerland. All T-coil measurements are taken within a shielded enclosure. The measurement uncertainty budget is given in Appendix 4. The list of calibrated equipment used for the measurements is shown in Table 2.

**Table 2: Test Equipment**

	<b>Description</b>	<b>Serial Number</b>	<b>Cal Due Date</b>
<b>Dosimetric System Equipment</b>	DAE3	437	Nov/28/2006
	Audio Magnetic 1D Field Probe AM1DV2	1003	
	AMMI SE UMS 010 AA	1005	
	AMCC SD HAC P02 AB	1005	
	Test Arch SD HAC D01 BA	1036	
<b>Additional Test Equipment</b>	Rohde & Schwarz CMU 200	108475	Feb/06/2007
	Brüel & Kjør Frequency Analyzer 2144	2102787	Mar/06/2007

**Figure 1: T-coil setup and cabling (pictures from DASY manual)**



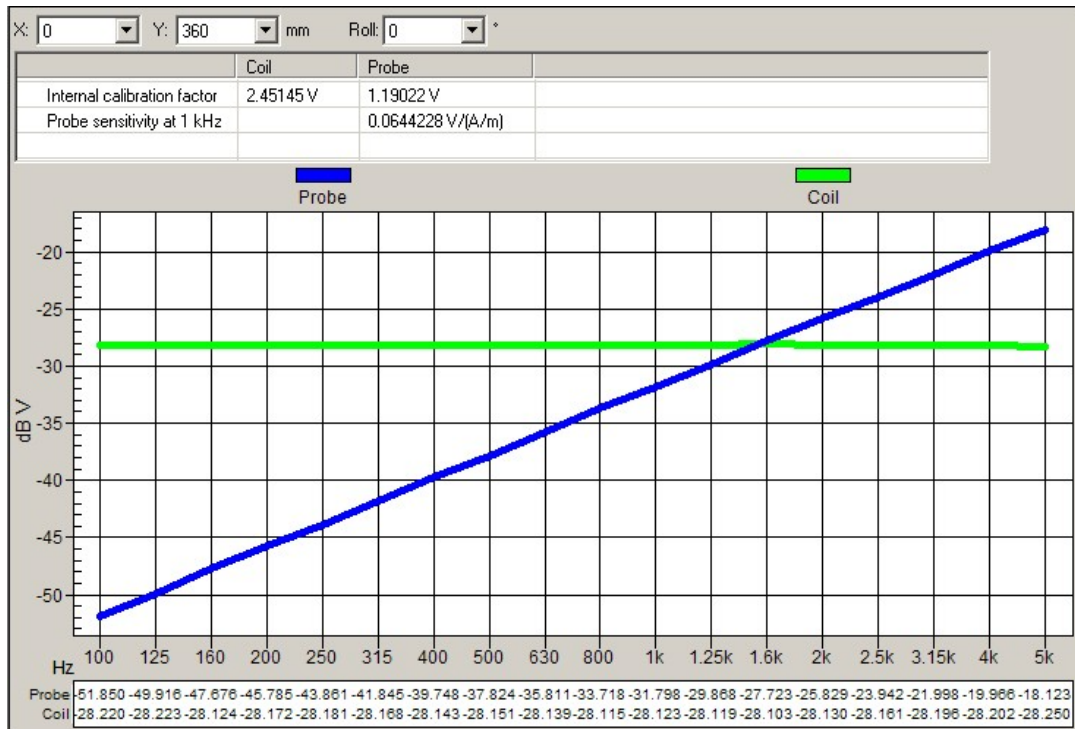
AMMI (Audio Magnetic Measurement Instrument) is a desktop unit containing a sampling unit, a waveform generator for test, calibration signals and a USB interface. Front connectors include: Audio Out - predefined or user definable audio signals for injection into the WD; Probe In - the probe signal is evaluated by AMMI; Coil Out - test and calibration signal to the AMCC; Coil In - monitor signal from the AMCC.

Audio Magnetic Probe (AM1DV2) is an active probe with a single sensor. The same probe coil is used to measure three orthogonal field components (axial, radial 1, radial 2). The probe is rotated to properly orient the coil for each field component. Probe's frequency response, linearity and other characteristics are given in the certificate in Appendix 5.

AMCC (Audio Magnetic Calibration Coil) is a Helmholtz coil for calibration of the AM1D probe. The two horizontal coils create a homogeneous magnetic field in the z direction. Refer to Appendix 6 for more details on AMCC coil.

The probe is calibrated in AMCC coil. The frequency response and sensitivity are measured and stored. Sensitivity includes both probe sensitivity and pre-amplifier sensitivity.

**Graph 1: Frequency Response measured in AMCC**



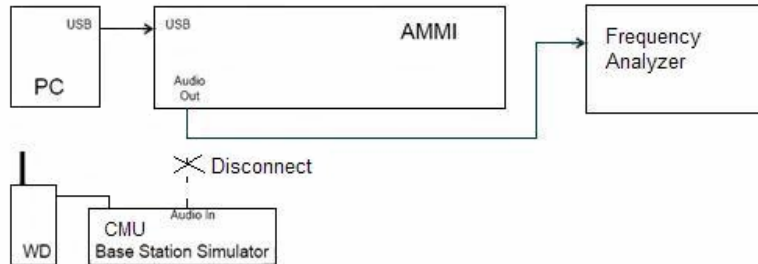
Sensitivity measured in AMCC: 0.0644228 V / (A/m)

The sensitivity is for 1 kHz sine signal. The sensitivity includes both probe sensitivity and pre-amplifier sensitivity. It is the total calibration, and there are no additional probe calibration factors. The voltage into the Helmholtz coil is across the shunt resistor.

**4. Signal Verification**

An Input Level is measured to verify that it is within +/-0.2dB from the Reference Input Level in section 6.3.2.1 of ANSI PC63.19-2006.

**Figure 2: Signal Verification Setup**



“Audio Out” of the AMMI is connected to the Bruel & Kjaar 2144 analyzer. On the analyzer, the “Input User Ref” is set to the “0dBm0 Input Reference” value to account for CMU’s inherent offset values (refer to Note 1 at the bottom of this page). A signal from AMMI is initiated by running the appropriate DASY template. The template includes both broadband and narrowband signals. The signal is captured on the analyzer. The value from the analyzer is compared to the target given in 6.3.2.1 of ANSI PC63.19-2006. If it is not within +/-0.2dB, the gain settings in the DASY template are adjusted. For more information on daily signal verification, refer to Appendix 3-6.

Signal Verification has been conducted on the same days as DUT measurements. The obtained results are displayed in Table 3.

**Table 3: Measured Input Level**

Modulation	Measured date	Signal	Measured Input Level (dBm0)	Reference Input Level from ANSI PC63.19 (dBm0)
CDMA	June 26, 2006	Narrowband	-17.9	-18
		Broadband	-18.0	
	June 27, 2006	Narrowband	-17.9	
		Broadband	-18.0	

**Note 1:**

Each CMU has a slightly different “0dBm0 Input Reference” value that must be measured. When the CMU box is replaced or externally re-calibrated, an internal calibration procedure must be completed in each transmission mode. On the CMU 200 (SN 108475), the 0dBm0 Input Reference value is 0.74 V for CDMA. For more information on “0dBm0 Input Reference” measurements, refer to Appendix 3-5.

## 5. Test Results

### 5.1 T-coil SNR Results

The DASY4 v4.7 measurement system specified in section 3.1 was utilized within the intended operations as set by the SPEAG™ setup. The Test Arch provided by SPEAG is used to position the DUT. This phone has one configuration for the ear use – flip open. This configuration is tested at the middle frequency channel of each applicable frequency band. All tests are done via conducted setup with CMU 200. The volume on the phone is adjusted to maximum.

Per 6.2.2 of the standard, the frequency near the center of the frequency band should be used. Therefore for T-coil testing, the center channel, which corresponds to the center frequency of the frequency band, was used.

The Cellular Phone model covered by this report has the following battery options:

- Battery #1 – SNN5777A is 710 mAH Battery
- Battery #2 – SNN5788A is 1400 mAH Battery

The sequence of the measurement is listed in steps below.

- a) Geometry & signal check
- b) Background noise measurement. The background noise is measured at the center of the listening area.
- c) Coarse resolution axial scan (narrowband signal, 1sec measurement times, 50x50mm grid with 5.55mm spacing). Only ABM1 is measured in order to find the location of the T-coil source.
- d) Fine resolution axial, radial-transverse, & radial-longitudinal scans, positioned appropriately based on optimal ABM1 of coarse resolution axial scan (narrowband signal, 1sec measurement times, variable grid size with 2mm spacing). Both ABM1 and ABM2 are measured in order to find the location of the SNR point.
- e) ABM1 & ABM2 point measurements in axial, radial-transverse, & radial-longitudinal coil orientations, positioned appropriately based on optimal signal quality of fine resolution scans (narrowband signal, 2sec measurement times). SNR is calculated for each coil orientation.
- f) Frequency Response point measurement in axial coil orientation, positioned appropriately based on optimal signal quality of fine resolution axial scan (broadband signal, 12sec measurement time)

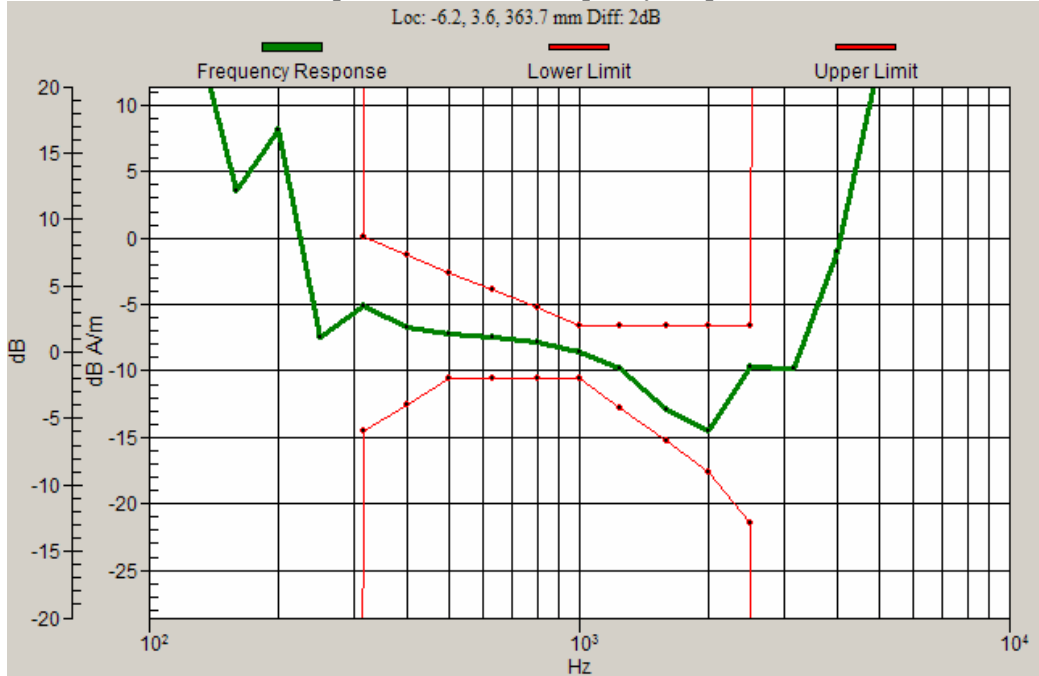
The ABM1, SNR and T-coil Rating results are shown in Table 4. Also shown are the measured conducted output power, location of the measured point, noise and ABM2. The delta between Ambient Noise measurement and ABM2 measurement should be greater than 10 dB. However, in cases where ABM2 is very low, it is suitable for the delta to be less than 10 dB. For the three probe positions, contour plots for the lowest SNR, indicated in **bold numbers**, are given in Appendix 1. For the three probe positions, noise spectrum plots for the highest ambient noise, indicated with **bold numbers**, are given in Appendix 2. These noise spectrum plots are half band integrated with an A-weight filter applied.

T-coil SNR Limits for AWF=0		
ABM 1	Greater or equal to -13 dB A/m (axial) Greater or equal to -18 dB A/m (radial)	
SNR	T3	Greater than 0 dB
	T4	Greater than 10 dB

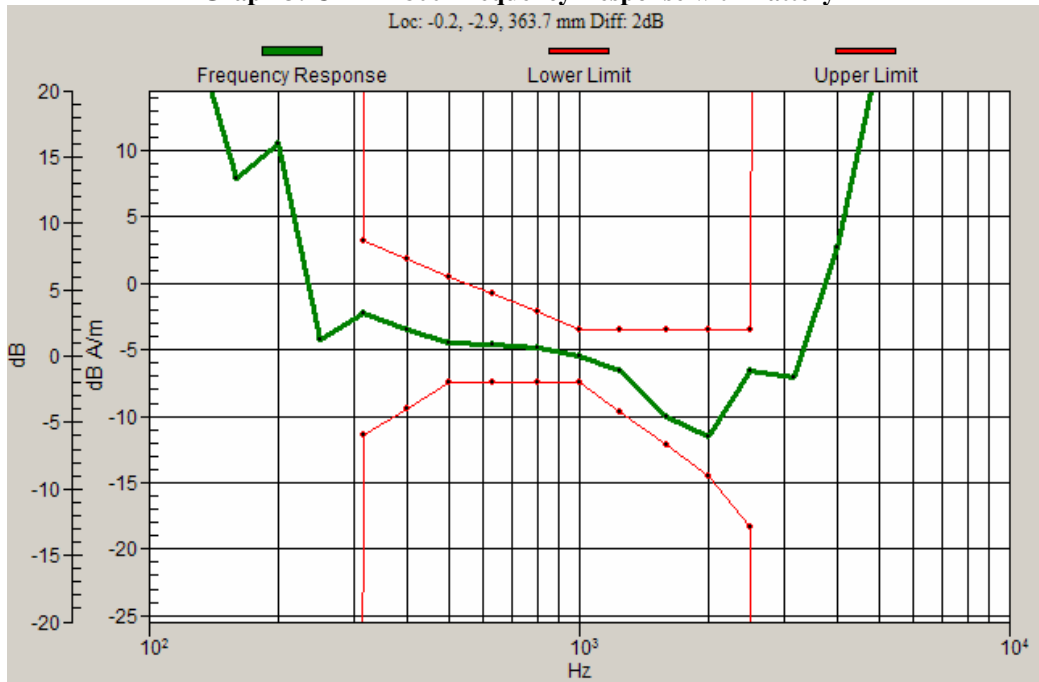
**Table 4: T-coil SNR measurement results for the portable cellular telephone at highest possible output power**

Probe Position	Frequency Band (MHz)	Channel	Conducted Output Power (dBm)	Measured Point Location (x mm, y mm)	Ambient Noise (dB A/m)	ABM2 (dB A/m)	ABM2 – Ambient Noise (dB)	ABM1 (dB A/m)	SNR (dB)	T-coil SNR Rating
Axial	CDMA 800	384	24.86	-6.2, 3.6	-58.86	-48.86	10.0	-8.582	<b>40.28</b>	T4
		w/ Battery 2		-0.2, -2.9	<b>-58.59</b>	-48.10	10.49	-5.472	42.63	T4
	CDMA 1900	600	24.92	-6.2, 1.1	-58.74	-52.03	6.71	-7.028	45.00	T4
		w/ Battery 2		-6.2, 0.3	-58.91	-49.42	9.49	-6.62	42.80	T4
Radial 1	CDMA 800	384	24.86	3.8, -2.4	-58.29	-49.09	9.2	-13.36	35.73	T4
		w/ Battery 2		5.8, -0.9	<b>-58.18</b>	-46.01	12.17	-12.76	<b>33.25</b>	T4
	CDMA 1900	600	24.92	3.8, 1.1	-58.21	-53.93	4.28	-13.24	40.69	T4
		w/ Battery 2		7.8, -3.7	-58.33	-55.08	3.25	-13.72	41.36	T4
Radial 2	CDMA 800	384	24.86	-0.2, -6.4	-58.57	-54.92	3.65	-13.09	41.83	T4
		w/ Battery 2		-2.2, -6.9	<b>-58.46</b>	-51.68	6.78	-13.55	<b>38.13</b>	T4
	CDMA 1900	600	24.92	-2.2, -4.9	-58.86	-56.31	2.55	-13.54	42.77	T4
		w/ Battery 2		-0.2, 6.3	-58.95	-52.47	6.48	-10.69	41.78	T4

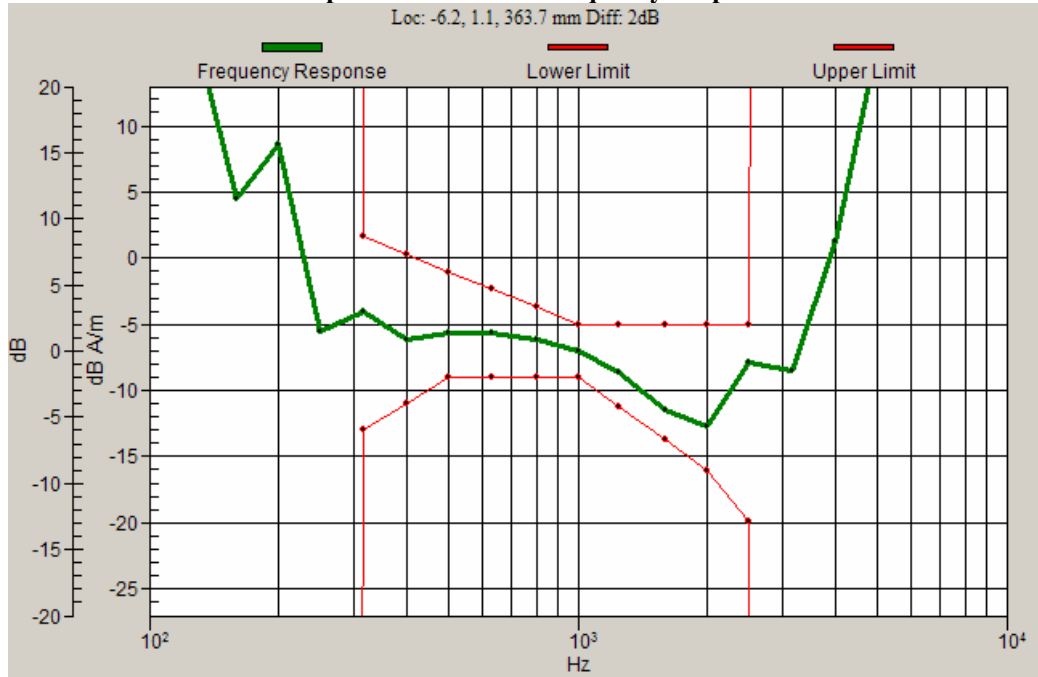
**Graph 2: CDMA 800 Frequency Response**



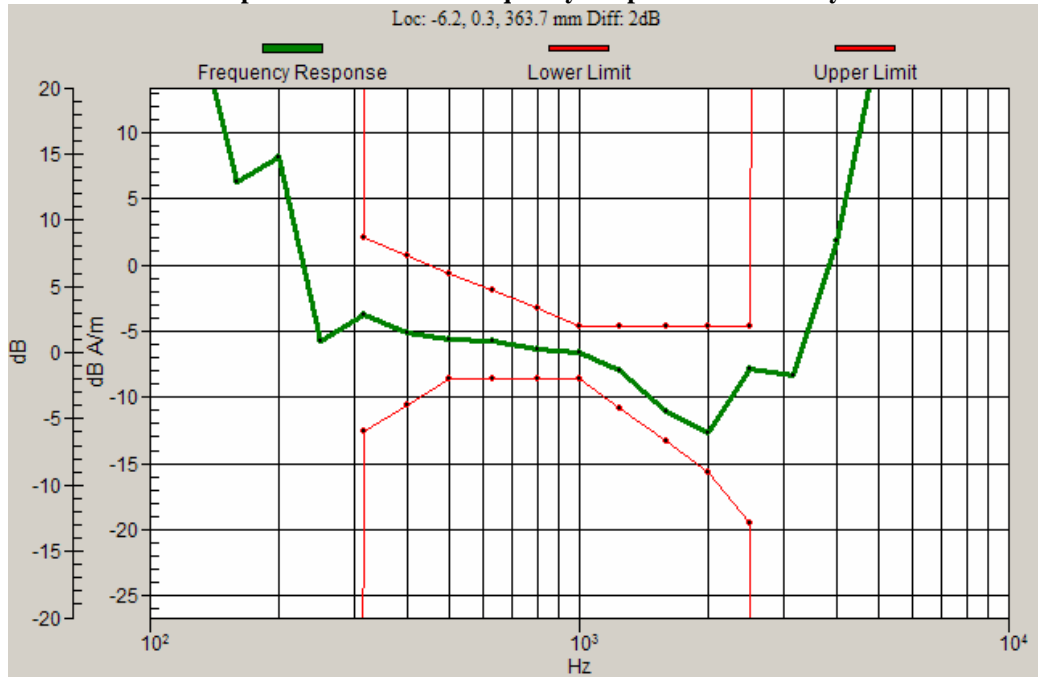
**Graph 3: CDMA 800 Frequency Response with Battery 2**



**Graph 4: CDMA 1900 Frequency Response**



**Graph 5: CDMA 1900 Frequency Response with Battery 2**



**5.2 T-coil Environment Results**

T-coil Environment is determined by analysis of both E-Field scan and H-Field scans in the area of the T-coil location. The T-coil location is the earpiece speaker area. The 5cm x 5cm measurement grid is centered on the acoustic output of the device. The probe is raised 10mm from the highest point of the phone’s contour to the nearest point of the probe element. The phone was tested in all normal configurations for the ear use. When applicable, each configuration is tested with the antenna in its fully extended and fully retracted positions. These configurations are tested at the high, middle and low frequency channels of each applicable frequency band. For more information on the near field measurements, refer to “HAC Test Report for Near Field Emissions IHDT56FT1” from July 18, 2006.

The measurements for section 5.2 are performed on 1B1FFA40 unit.

Conducted Output Power Measured on 1B1FFA40 unit		
CDMA 800	Ch 1013	24.95 dBm
	Ch 384	24.86 dBm
	Ch 777	24.95 dBm
CDMA 1900	Ch 25	24.86 dBm
	Ch 600	24.92 dBm
	Ch 1175	24.92 dBm

The worst-case test conditions are indicated with **bold numbers** in the tables and are detailed in Appendix 8: HAC distribution plots for E-Field and H-Field.

**Table 5: T-coil Environment measurement results for the portable cellular telephone at highest possible output power.**

**E-Field (full rate)**

Frequency Band (MHz)	Antenna position	Channel Setting	Measured PMF	Drift (dB)	Excluded Cells	Peak Field (V/m)	Rating
CDMA 800MHz	Fixed	1013	1.11	0.01	6,9	106.3	M4
		384		<b>0.03</b>	<b>3,6</b>	<b>126.0</b>	<b>M4</b>
		777		0.03	6,9	109.5	M4
		384 w/ Battery 2		-0.02	3,6	121.5	M4
CDMA 1900MHz	Fixed	25	1.13	0.08	2,3	41.7	M4
		600		-0.01	2,3	48.9	M4
		1175		0.01	2,3	48.7	M4
		1175 w/ Battery 2		-0.14	2,3	46.7	M4

**E-Field (1/8 rate)**

Frequency Band (MHz)	Antenna position	Channel Setting	Measured PMF	Drift (dB)	Excluded Cells	Peak Field (V/m)	Rating
CDMA 800MHz	Fixed	1013	2.97	0.01	6,9	104.4	M4
		384		0.03	6,9	121.4	M4
		777		0.01	3,6	107.3	M4
		384 w/ Battery 2		0.02	6,9	119.4	M4
CDMA 1900MHz	Fixed	25	3.09	0.01	2,3	43.8	M4
		600		0.05	2,3	49.9	M4
		1175		<b>0.22</b>	<b>2,3</b>	<b>51.3</b>	<b>M4</b>
		1175 w/ Battery 2		-0.08	2,3	48.0	M4

**H-Field (full rate)**

Frequency Band (MHz)	Antenna position	Channel Setting	Measured PMF	Drift (dB)	Excluded Cells	Peak Field (A/m)	Rating
CDMA 800MHz	Fixed	1013	1.07	0.04	1,4,7	0.128	M4
		384		-0.02	1,4,7	0.156	M4
		777		0.03	1,4,7	0.139	M4
		384 w/ Battery 2		0.02	1,4,7	0.157	M4
CDMA 1900MHz	Fixed	25	1.01	-0.12	1,4,7	0.091	M4
		600		0.04	1,4,7	0.111	M4
		1175		<b>0.01</b>	<b>1,4,7</b>	<b>0.124</b>	<b>M4</b>
		1175 w/ Battery 2		-0.1	1,4,7	0.118	M4

**H-Field (full rate)**

Frequency Band (MHz)	Antenna position	Channel Setting	Measured PMF	Drift (dB)	Excluded Cells	Peak Field (A/m)	Rating
CDMA 800MHz	Fixed	1013	2.79	-0.15	1,4,7	0.133	M4
		384		<b>-0.3</b>	<b>1,4,7</b>	<b>0.160</b>	<b>M4</b>
		777		-0.21	1,4,7	0.142	M4
		384 w/ battery 2		-0.02	1,4,7	0.147	M4
CDMA 1900MHz	Fixed	25	2.31	0	1,4,7	0.079	M4
		600		-0.02	1,4,7	0.097	M4
		1175		0.19	1,4,7	0.106	M4
		1175 w/ battery 2		0.12	1,4,7	0.102	M4

**5.3 T-Rating Results**

Both T-coil SNR (Table 4) and T-coil Environment (Table 5) determine the T-rating. Table 6 summarizes the T-coil SNR rating and the T-coil Environment rating. For each probe position and frequency band, the T-rating is determined from lower of T-coil SNR and T-coil Environment.

**Table 6: T-Rating results**

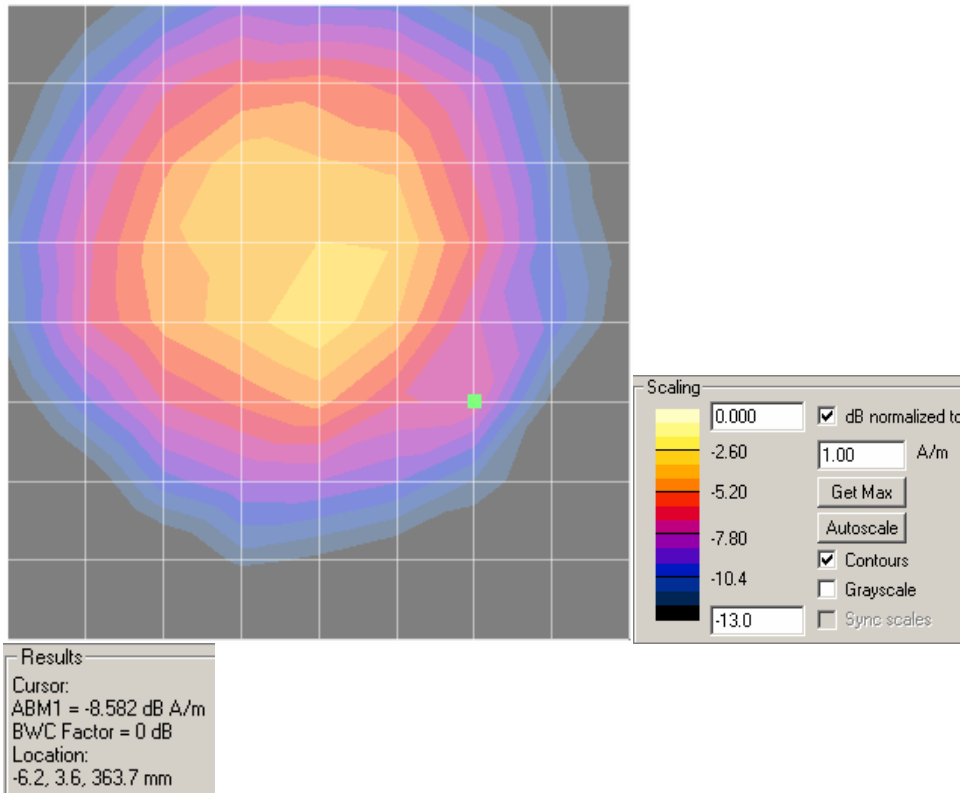
Probe Position	Frequency Band (MHz)	ABM1	Frequency Response	T-coil SNR Rating (from section 5.1)	T-coil Env Rating (from section 5.2)	T-rating
Axial	CDMA 800	pass	pass	T4	T4	T4
	CDMA 1900	pass	pass	T4	T4	T4
Radial 1	CDMA 800	pass		T4	T4	T4
	CDMA 1900	pass		T4	T4	T4
Radial 2	CDMA 800	pass		T4	T4	T4
	CDMA 1900	pass		T4	T4	T4

The final T-rating for the portable cellular phone (FCC ID IHDT56FT1) is the lowest T-rating from Table 6 (last column). This rating is the lowest category across probe positions and frequency bands.

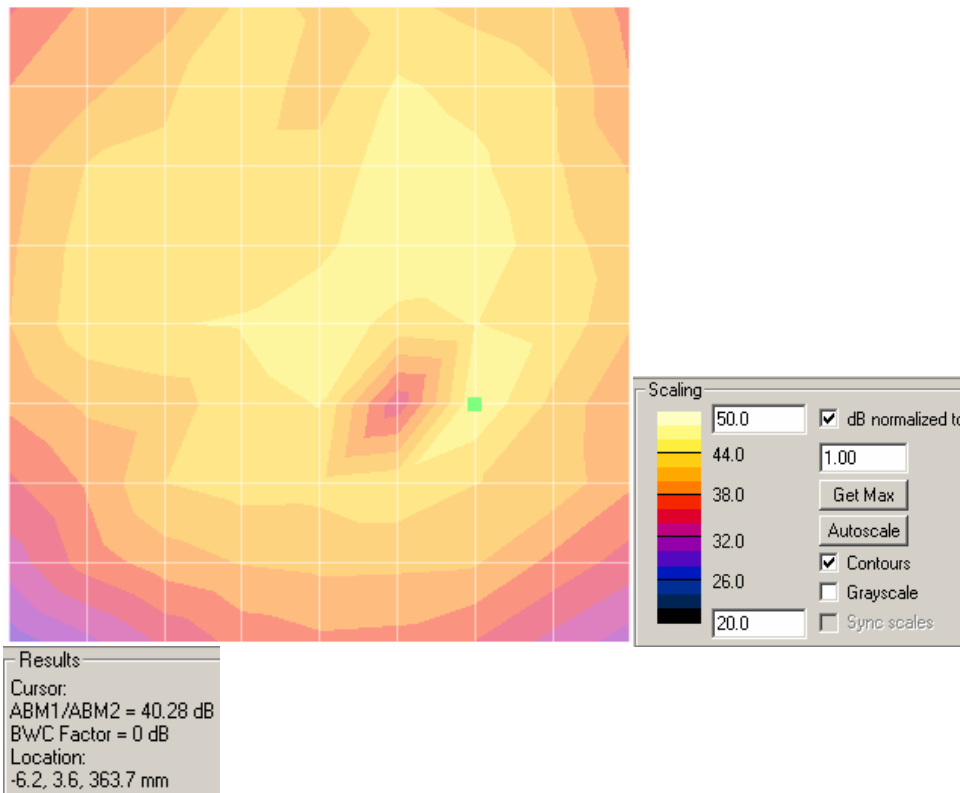
T-rating for DUT (lowest rating from Table 6, last column)	T4
--	----

**Appendix 1**  
**Contour Plots**

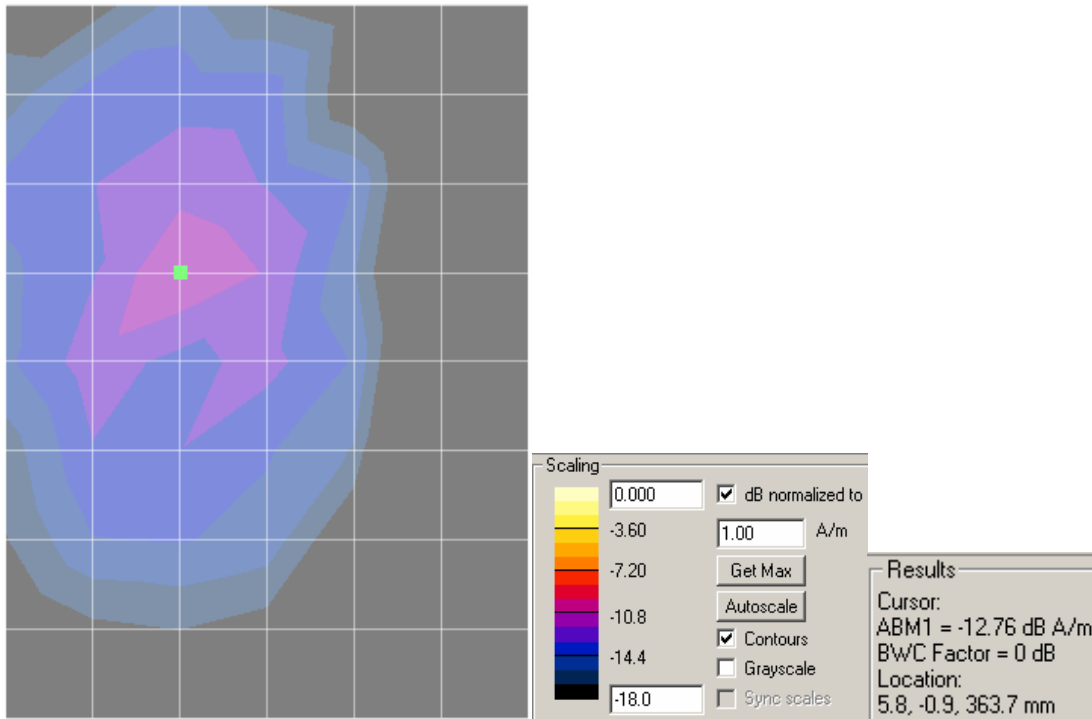
Axial – ABM1



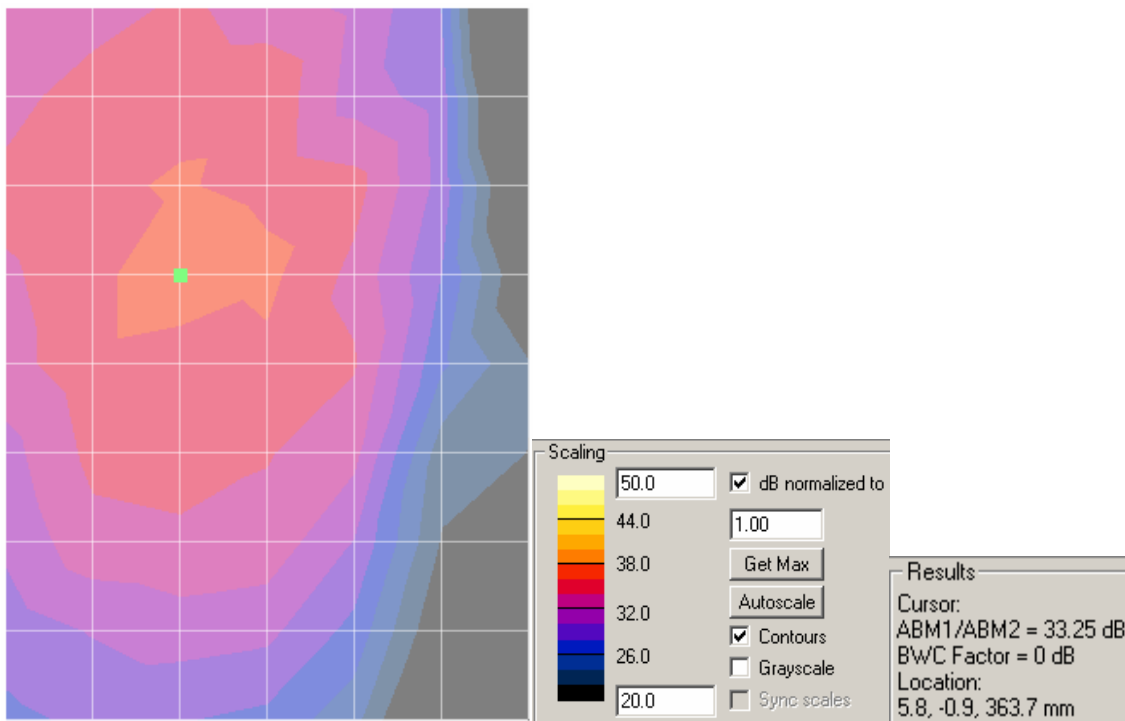
Axial - SNR



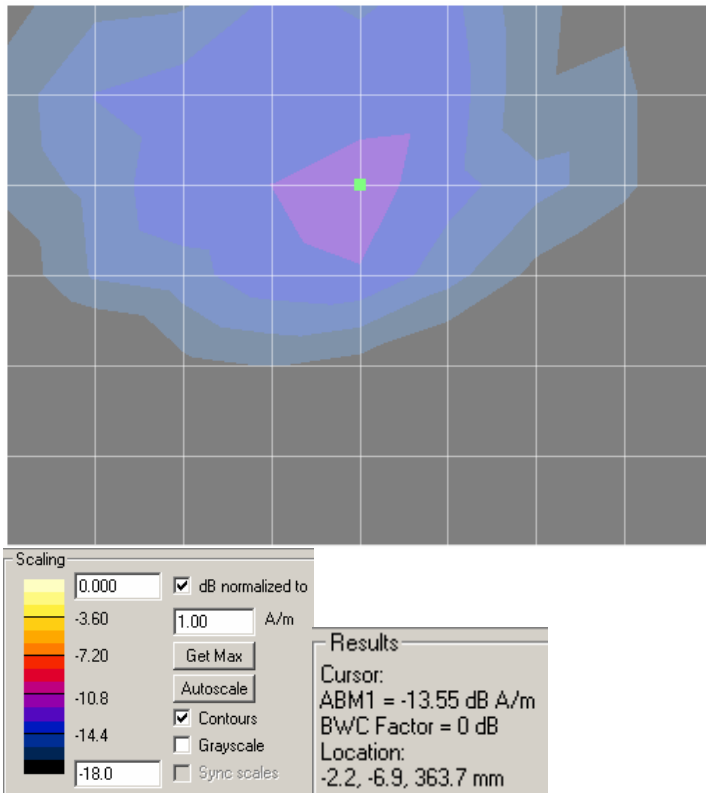
Radial 1 - ABM1



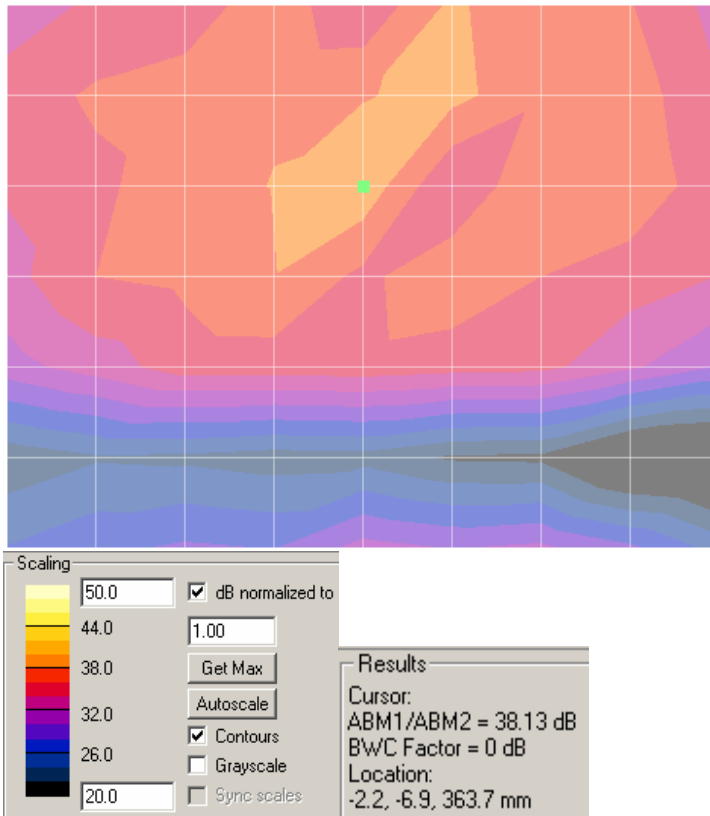
Radial 1 - SNR



Radial 2 - ABM1



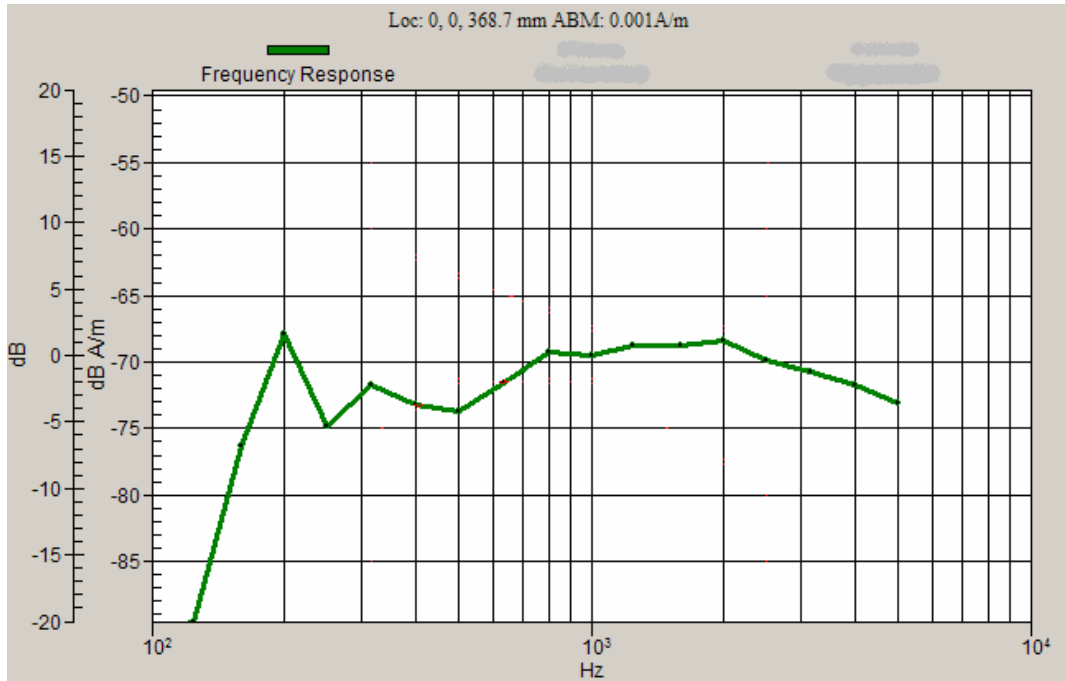
Radial 2 - SNR



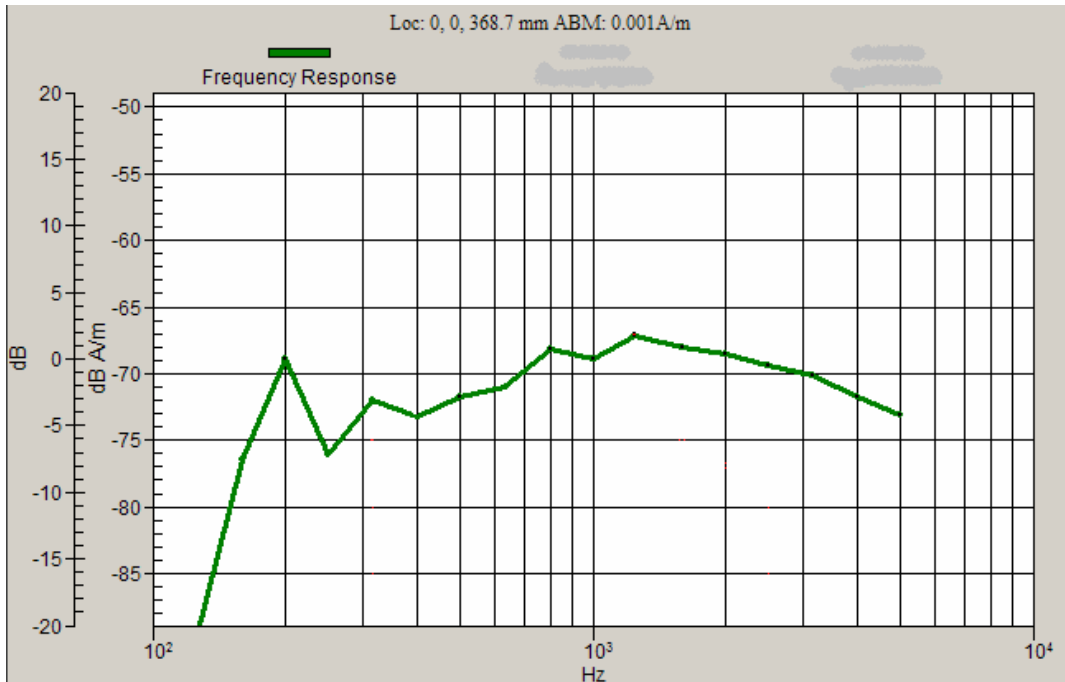
**Appendix 2**

**Ambient Noise Spectrum Plots**

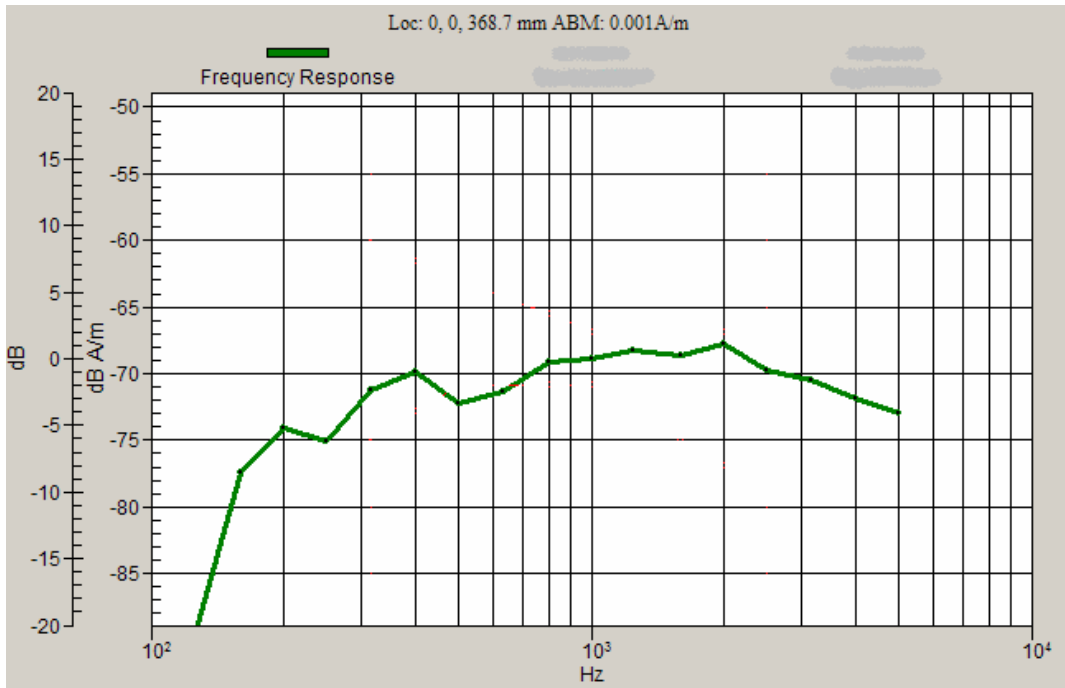
**Graph A2-1. Axial Position Ambient Noise Spectrum Plot**



**Graph A2-2. Radial 1 Position Ambient Noise Spectrum Plot**



**Graph A2-3. Radial 2 Position Ambient Noise Spectrum Plot**



**Appendix 3**

**Details on the Measurement Systems**

**3-1) Details on ABM2 measurements by the system**

**(Description provided by Schmid & Partner Engineering, AG):**

The processing applies a convolution in the time-domain. This filtering is composed of integrator (straight-forward), Half-Band filter (first-order filter) and A-weighting. The convolved data stream is then integrated over the desired period and represented and stored numerically in DASY4 as the ABM Noise (= ABM2).

During the validation process of our system, the functionality of this process has been verified by debugging the filters step-by-step progressive and comparing the results also with a Rohde & Schwarz UPL Analyzer. The intermediate steps are not accessible in the final software code operated by the end user. In addition, the following verification has been made, using a single frequency (sine) signal: At the reference frequency of 1 kHz, the signal is equivalent to ABM1. ABM1 is visible from the calibration job, inclusive its frequency slope from 100Hz to 5kHz. This function (conversion of the coil voltage to the field) is the same integration function.

The verification of the probe linearity and the linearity of the integrator has been determined and documented in the certificate 880-SP AM1 001 A, inclusive the integrator, over the required frequency range (exceeding 5 kHz). The additional frequency slope of the Half-Band filter and the A-weighting have also been tested by changing the applied frequency over the full range. The attenuation was verified for each third-octave-band and up to > 10 kHz. In addition, the correct processing of multiple sine-wave signals was verified.

The convolutions work over the full frequency range available in the analog path, only limited by AC-coupling at the low end and anti-aliasing filter at the high frequency end. White noise signal without band limitation has not been used for filter measurements. Pink noise, decreasing with frequency, resulting in a frequency independent response of the third-octave filter bank was used to optically verify the correct filtering function. Precision measurements were however made with pure sine signals.

Frequency components beyond the visible range of 5 kHz are contained in the ABM2 figure.

**(Measurements made by Motorola):**

Comparison of 1kHz narrowband signal driven externally into TMFS coil

ABM1 @ 1kHz	ABM2 @ 1kHz	difference
-25.122	-25.124	0.002 dB

Frequency dependent ABM1 - ABM2 with broadband noise and narrowband tones driven externally into TMFS coil

Frequency	dB difference ABM1-ABM2 broadband signal	dB difference ABM1-ABM2 single frequency signals	ideal value for ABM1-ABM2	variance from ideal broadband	variance from ideal single frequencies
200		22.062	22.35		0.288
250			17.89		
315			14.03		
400		10.371	10.39		0.019
500	6.852		7.18	0.328	
630	4.228		4.36	0.132	
800	1.587	1.881	1.88	0.293	-0.001
1000	0.013	0.013	0	-0.013	-0.013
1250	-1.473		-1.46	0.013	
1600	-2.72		-2.58	0.14	
2000	-3.535	-3.235	-3.24	0.295	-0.005
2500	-3.736		-3.67	0.068	
3150	-3.837		-3.79	0.047	
4000	-3.733	-3.744	-3.75	-0.017	-0.006
5000	-3.283	-3.336	-3.34	-0.057	-0.004
<b>maximum variation from ideal:</b>				<b>0.328 dB</b>	

**3-2) Details on the compliancy of the frequency and linearity response****(Description provided by Schmid & Partner Engineering, AG):**

See also probe certificate of conformity in Appendix 5, titled 880-SP AM1 001 A-A

See also coil certificate of conformity in Appendix 6, titled 880-SD HAC P02A-A

Frequency response has been tested to be within +/- 0.5 dB of ideal differentiator from 100 Hz to 10 kHz. The test was made with the real integrator and deducting the ideal integrator values. Reference signal was the Helmholtz calibration coil current which is equivalent to the field. The coil is qualified according to certificate 880-SD HAC P02 A-A.

The test data up to 5 kHz are visible directly in the calibration job result (coil current / shunt voltage, and probe voltage). Separate measurements were made for a very wide frequency range, including higher frequencies. For the third-octave bands up to 5 kHz do not exceed 0.05 dB and decay by < 0.2 dB to 5 kHz and by < 0.5 dB to 10 kHz, as required.

Linearity has also been tested and is stated in the certificate. Deviation was not measurable from 5 dB below limitation to 26 dB above noise level. For lower levels, the deviation increased to 0.1 dB at 16 dB above noise level, which corresponds to the theoretical value of 0.11 dB expected at that noise suppression level.

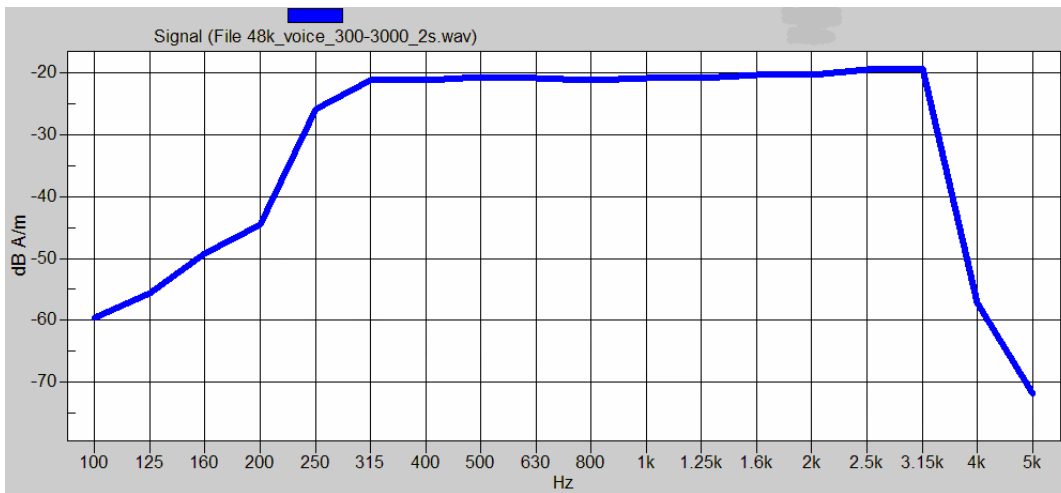
Significant noise contribution beyond 10 kHz will be attenuated by the convoluting A-filter as explained in answer #2. Such interferences contribute also to ABM2 represented as numerical value from the integration.

**3-3) Details on Measurements by the systems**

Details regarding timing and averaging of the reported final measured points are as follows:

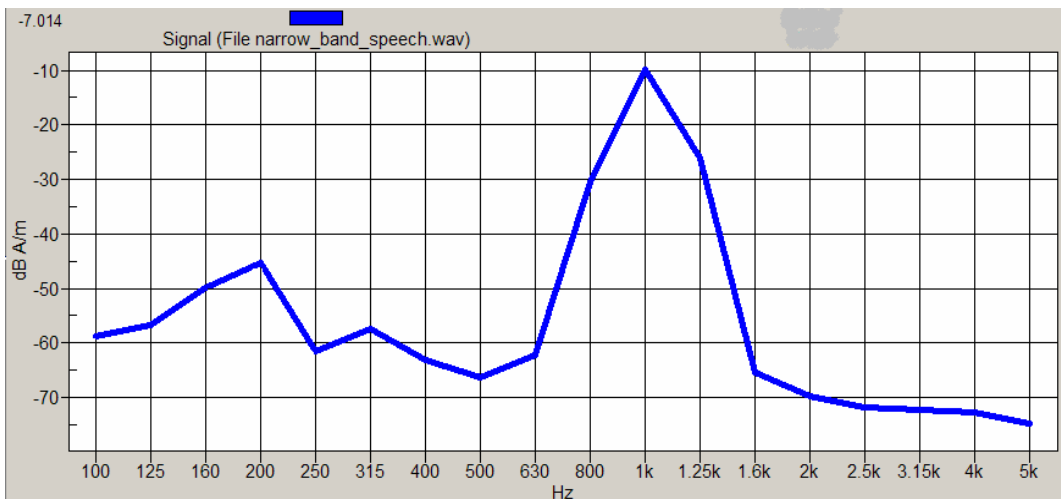
	Narrowband Signal	Broadband Signal
Signal Length (sec):	1	2
Total Data Acquisition Time per Location (sec):	2	12
	Averaging is over 2 signal repetitions	Averaging is over 6 signal repetitions

The broadband signal utilized is shown in the following plot:



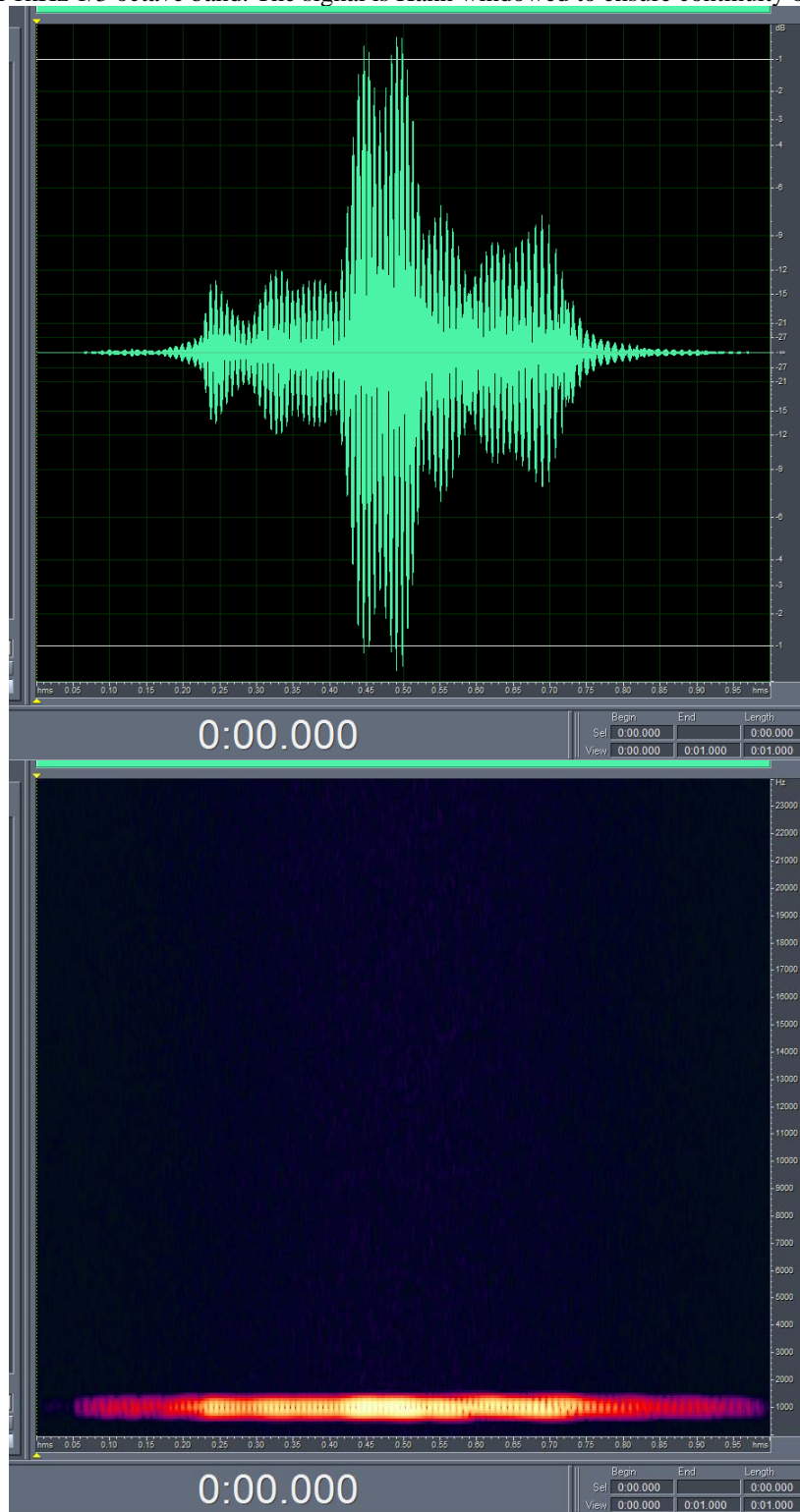
Mathematical processing is not required because the preferred method (as described in IEEE ANSI C63.19-2006 section 6.3) is utilized. The broadband audio signal is used only for assessment of frequency response. The DASY4 system corrects for the spectral response after measurement since it knows the spectrum of the input signal. However, please note that for the signal that we use, the spectrum is flat when measured in 1/3 octave bands, covering the range up to 3kHz.

The narrowband signal utilized is shown in the following plot:

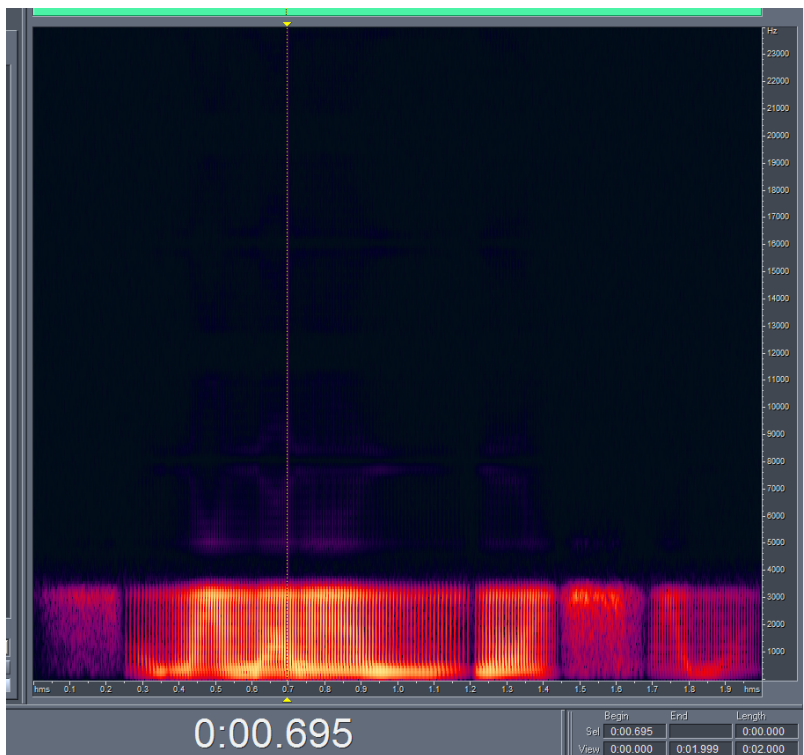
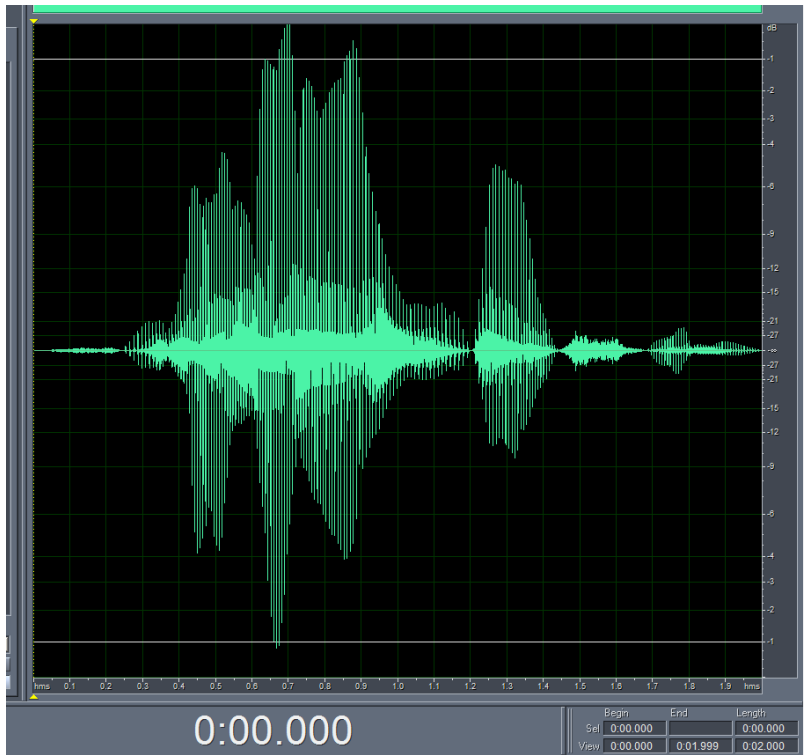


**3-4) Details of the source audio signals for all aspects of the test**

Here is the temporal response of the narrow band signal. The signal is one second of the standard P.50 speech band limited to the ANSI 1kHz 1/3 octave band. The signal is Hann windowed to ensure continuity of the signal.



Here is the temporal response of the 300Hz-3kHz broadband signal. The signal is a 2 second segment of the standard P.50 speech that is equalized flat (for ANSI 1/3 octaves) over the 300Hz to 3kHz range. The signal is Hann windowed to ensure continuity of the signal.



**3-5) Details of the CMU-200 “0dBm0 Input Reference value”****Measure “Ref Input Level”**

- a) Connect the Bruel & Kjaar 2144 (B&K 2144) analyzer to the AMMI.
- b) Set the Input User Reference of the B&K 2144 analyzer equal to 1.
- c) Generate a 1 kHz Sine Signal.
- d) Capture a signal on the B&K 2144 analyzer.
- e) Read the level from the B&K 2144 analyzer and record the value as the "Ref Input Level (from B&K 2144)"

**Measure Value “X”**

- f) Attach the B&K 2144 analyzer to the CMU.
- g) Connect a phone which operates in the desired modulation to the CMU. Establish a call to the CMU.
- h) Read the level from the B&K 2144 analyzer and record the value as the "Value X".

**Measure Value “M”**

- i) Connect the CMU to the AMMI.
- j) Generate a 1 kHz Sine Signal.
- k) Read the level from the B&K 2144 analyzer and record the output value as "Value M".

Calculate the resulting Input Correction Factor & the 0dBm0 Input Reference

**Relevant Equations:**

Measured values from above: Ref Input Level, X, M

Input Correction Factor = Ref Input Level + X – M

0dBm0 Input Reference =  $10^{(\text{Input Corr Factor}/20)}$  \* CMU-200 manual ref value

**3-6) Details of the Daily Verification of Input Reference Levels**

- a) Connect the cable from the AMMI to the Bruel & Kjaar 2144 analyzer.
- b) On the analyzer, set Input User Ref = "0dBm0 Input Reference value".
- c) Generate narrowband or broadband signal.
- d) On the B&K analyzer, capture the signal. Compare the Value from the analyzer with the Reference Input Level from ANSI PC63.19 (dBm0). If it is not within +/-0.1dB, the gain settings in the DASY software may need adjustment.

**Appendix 4**

**Pictures of Test Setup**



Figure A4-1. Phone Closed

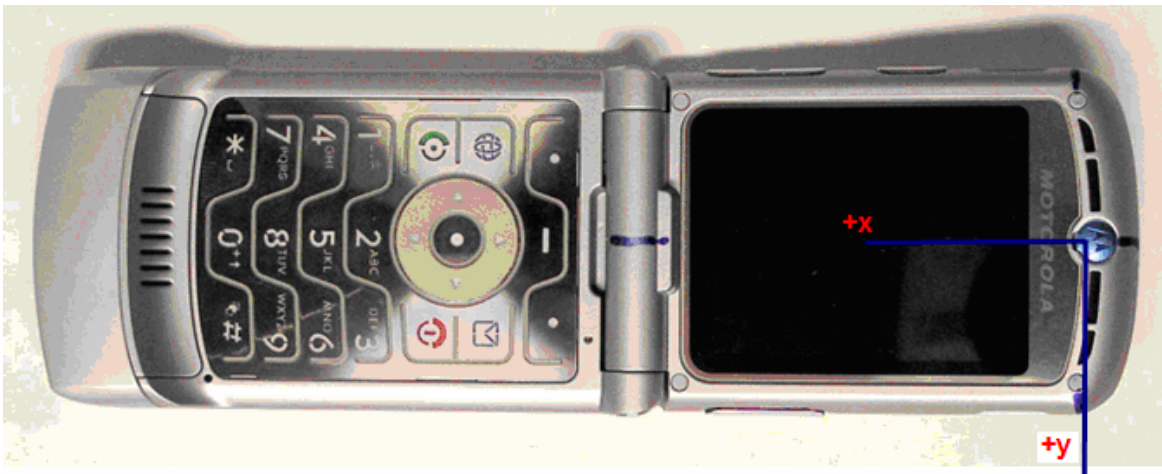
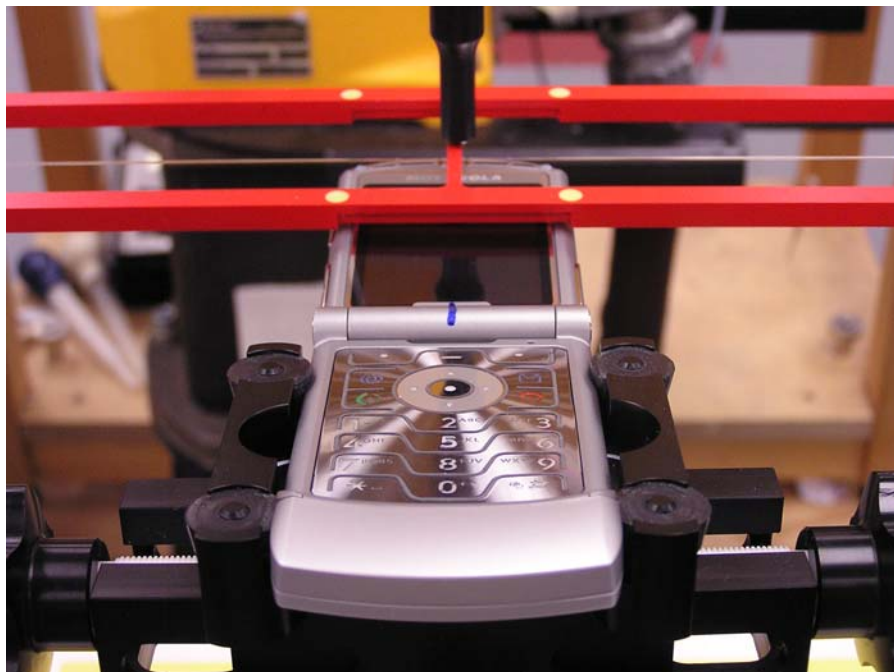


Figure A4-2. Phone Open – Coordinate Axis for T-coil Measured Point Location

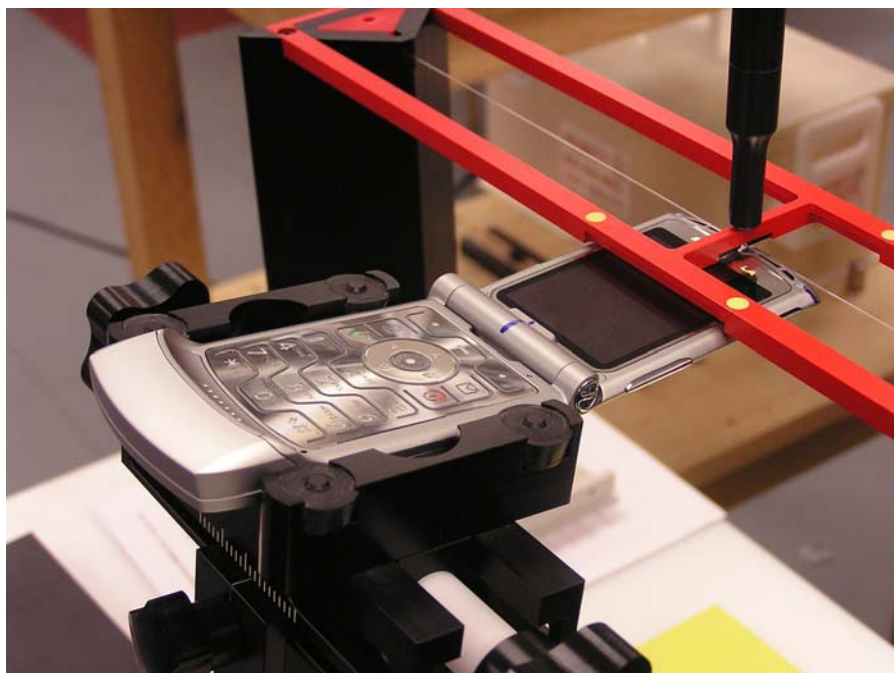
- Axial at (-6.2, 3.6)
- Radial 1 at (5.8, -0.9)
- Radial 2 at (-2.2, -6.9)



Figure A4-3. Phone Open – 5cm x 5cm grid for Near Field Measurements and T-coil Measured Point locations



**Figure A2-4. View from the front**



**Figure A2-5. View from the side**

**Appendix 5**

**Motorola Uncertainty Budget**

**Table A5-1: Draft T-Coil Uncertainty Budget, provided by SPEAG 7-June-06**

Error Description	Uncertainty value [%]	Prob. Dist.	Div.	c ABM1	c ABM2	Std. Unc. ABM1	Std. Unc. ABM2
<b>PROBE SENSITIVITY</b>							
Reference level	3.0	N	1.0	1	1	3.0	3.0
AMCC geometry	0.4	R	1.7	1	1	0.2	0.2
AMCC current	0.6	R	1.7	1	1	0.4	0.4
Probe positioning during calibration	1.0	R	1.7	1	1	0.6	0.6
Noise contribution	0.7	R	1.7	0.014	1	0.0	0.4
Frequency slope	5.9	R	1.7	0.1	1.0	0.3	3.5
<b>PROBE SYSTEM</b>							
Repeatability / Drift	1.0	R	1.7	1	1	0.6	0.6
Linearity / Dynamic range	0.6	R	1.7	1	1	0.4	0.4
Acoustic noise	1.0	R	1.7	0.1	1	0.1	0.6
Probe angle	2.3	R	1.7	1	1	1.4	1.4
Spectral processing	0.9	R	1.7	1	1	0.5	0.5
Integration time	0.6	N	1.0	1	5	0.6	3.0
Field disturbance	0.2	R	1.7	1	1	0.1	0.1
<b>TEST SIGNAL</b>							
Reference signal spectral response	0.6	R	1.7	0	1	0.0	0.4
<b>POSITIONING</b>							
Probe positioning	1.9	R	1.7	1	1	1.1	1.1
Phantom thickness	0.9	R	1.7	1	1	0.5	0.5
DUT positioning	1.9	R	1.7	1	1	1.1	1.1
<b>EXTERNAL CONTRIBUTIONS</b>							
RF interference	0.0	R	1.7	1	1	0.0	0.0
Test signal variation	2.0	R	1.7	1	1	1.2	1.2
<b>COMBINED UNCERTAINTY</b>							
Combined Std. uncertainty (ABM field)						4.1	6.2
Expanded Std. uncertainty [%]						8.2	12.3

**Appendix 6**

**Audio Magnetic Probe Certificate**

**Certificate of conformity**

Item	Audio Magnetic 1D Field Probe AM1DV2
Type No	SP AM1 001 A
Series No	1001 fr.
Manufacturer / Origin	Schmid & Partner Engineering AG Zurich, Switzerland

**Description of the item**

The Audio Magnetic Field Probe AM1DV2 is a fully RF shielded magnetic field probe for the frequency range from 100 Hz to 20 kHz. The signal from the pickup coil is amplified in a symmetric 40dB low noise amplifier and fed to a 3 pin connector at the side. Power is supplied via the same and monitored via the LED near the connector. The single sensor in the probe is arranged in a tilt angle allowing measurement of 3 orthogonal field components by rotating the probe around its axis.

**Handling of the item**

The probe is manufactured and designed for operation in air and shall not be exposed to humidity or liquids. In order to keep the performance and alignment, the probe must not be disassembled. The full performance can only be achieved using the SPEAG provided accessories and following the corresponding manual.

**Tests**

Test	Requirement	Details	Units tested
Sensor angle	Probe configuration data for alignment with field	see corresponding probe certificate	all
Dimensions	according to corresponding probe certificate	verified at delivery / light beam alignment prior to measurement usage	all / in setup by user
Frequency response	within +/- 0.5 dB of ideal differentiator from 100 Hz to 10 kHz	Coil current of AMCC measured with R&S UPL, probe including amplifier and AMMI ADC input	First article
Dynamic range	max. + 21 dB A/m @ 1 kHz Noise level typ. -70 dB A/m @ 1 kHz ABM2 typ. -60 dB A/m	with AMMI	Samples / all
Linearity	within < 0.1 dB from 5 dB below limitation to 16 dB above noise level	tested between +15 dB A/m @ 1 kHz, to -70 dB A/m @ 10 kHz	Samples
Sensitivity	typ. -24 dBV / A/m @ 1 kHz at probe output	verified at delivery / calibrated in setup prior to measurement usage	all / in setup by user
RF shielding	immunity to AM modulated RF signal	1 kHz 80 % AM	all

**Standards**

[1] ANSI PC63.19-2006 Draft 3.12

**Conformity**

Based on the tests above, we certify that this item is in compliance with the requirements of [1].

Date 22.5.2006

Stamp / Signature

**s p e a g**  
Schmid & Partner Engineering AG  
Zeughausstrasse 43, 8004 Zurich, Switzerland  
Phone +41 1 245 9700, Fax +41 1 245 9779  
info@speag.com, http://www.speag.com

**Certificate of test and configuration**

Item	Audio Magnetic 1D Field Probe <b>AM1DV2</b>
Type No	SP AM1 001 A
Series No	<b>1003</b>
Manufacturer / Origin	Schmid & Partner Engineering AG Zurich, Switzerland

**Description of the item**

The Audio Magnetic Field Probe is a fully shielded magnetic field probe for the frequency range from 100 Hz to 20 kHz. The pickup coil is compliant with the dimensional requirements of [1]. The probe includes a symmetric 40dB low noise amplifier for the signal available at the shielded 3 pin connector at the side. Power is supplied via the same connector (phantom power supply) and monitored via the LED near the connector. The 7 pin connector at the end of the probe does not carry any signals, but determines the angle of the sensor when mounted on the DAE. The probe supports mechanical detection of the surface. The single sensor in the probe is arranged in a tilt angle allowing measurement of 3 orthogonal field components when rotating the probe by 120° around its axis. It is aligned with the perpendicular component of the field, if the probe axis is tilted 35.3° above the measurement plane, using the connector rotation below.

The probe is fully RF shielded when operated with the matching signal cable (shielded) and allows measurement of audio magnetic fields in the close vicinity of RF emitting wireless devices according to [1] without additional shielding.

**Handling of the item**

The probe is manufactured from stainless steel. In order to maintain the performance and calibration of the probe, it must not be opened. The probe is designed for operation in air and shall not be exposed to humidity or liquids. For proper operation of the surface detection and emergency stop functions in the DASY4 system, the probe must be operated with the special probe cup provided (larger diameter).

**Functional test**

The probe configuration data were evaluated after a functional test including amplification, dynamic range and RF immunity.

**DASY4 configuration data for the probe**

Configuration item	Condition	Configuration Data	Dimension
Overall length	mounted on DAE in DASY4 system	<b>296</b>	mm
Tip diameter	at the cylindrical part	6	mm
Sensor offset	center of sensor, from tip	3	
Connector rotation	Evaluated in homogeneous 1 kHz magnetic field generated with AMCC Helmholtz Calibration Coil	<b>92</b>	°

**Standards**

[1] ANSI PC63.19-2006 Draft 3.12

**Date**

22.2.2006

**Signature**


**Appendix 7**

**AMCC Certificate (Helmholz Coil)**

**Certificate of conformity**

Item	Audio Magnetic Calibration Coil AMCC
Type No	SD HAC P02 A
Series No	1001 ff.
Manufacturer / Origin	Schmid & Partner Engineering AG Zurich, Switzerland

**Description of the item**

The Audio Magnetic Calibration coil (AMCC) is a Helmholtz Coil designed according to standard [1], section D.9 for calibration of the AM1D probe. Two horizontal coils are positioned above a non-metallic base plate and generate a homogeneous magnetic field in the z direction (normal to it).

**Configuration**

The AMCC consists of two parallel coils of 20 turns with radius 143 mm connected in parallel in a distance of 143 mm. With this design, a current of 10 mA produces a field of 1 A/m. The DC input resistance at the input BNC socket is adjusted by a series resistor to a DC resistance of approximately 50 Ohm. The voltage required to produce a field of 1 A/m is consequently approx. 500 mV.

The current through the coil is monitored via a shunt resistor of 10 Ohm +/- 1%. The voltage is available on a BNO socket with 100 mV corresponding to 1 A/m.

**Handling of the item**

The coil shall be positioned in a non-metallic environment to avoid distortion of the magnetic field.

**Tests**

Test	Requirement	Details	Units tested
Number of turns	N = 20 per coil	Resistance measurement	all
Orientation of coils	parallel coils with same direction of windings	Magnetic field variation in the AMCC axis	all
Coil radius	r = 143 mm	mechanical dimension	First article
Coil distance	d = 143 mm distance between coil centers	mechanical dimension	First article
Input resistance	51.7 +/- 2 Ohm	DC resistance at BNC input connector	all
Shunt resistance	R = 10.0 Ohm +/- 1 %	DC resistance at BNO output connector	all
Shunt sensitivity	Hc = 1 A/m per 100 mV according to formula $Hc = (U / R) * N / r / (1.25^{*1.5})$	Field measurement compared with Narda ELT400 + BN2300/90.10	First article

**Standards**

[1] ANSI PC63.19-2006 Draft 3.12

**Conformity**

Based on the tests above, we certify that this item is in compliance with the requirements of [1].

Date

22.5.2006

Stamp / Signature

**s p e a g**

Schmid & Partner Engineering AG  
 Zeughausstrasse 43, 8004 Zurich, Switzerland  
 Phone +41 1 245 9700, Fax +41 1 245 9779  
 info@speag.com, http://www.speag.com

**Appendix 8**

**HAC Distribution plots for E-Field and H-Field**

# Test Laboratory: Motorola

**Serial: 1B1FFA40;** Procedure Notes: Pwr Step: always up; Antenna Position: INTERNAL; Battery Model #: SNN5777A; Vocoder Rate: FULL RATE;

Communication System: CDMA 835; Frequency: 836.52 MHz; Communication System Channel Number: 384; Duty Cycle: 1:1

Medium: Air; Medium parameters used:  $\sigma = 0$  mho/m,  $\epsilon_r = 1$ ;  $\rho = 0$  kg/m<sup>3</sup>

DASY4 Configuration:

- Probe: ER3DV6R - SN2247; ConvF(1, 1, 1); Calibrated: 4/28/2006
- Sensor-Surface: (Fix Surface)
- Electronics: DAE4 Sn650; Calibrated: 8/26/2005
- Phantom: HAC Test Arch with Coil; Type: SD HAC P01 BA; Serial: 100x;
- Measurement SW: DASY4, V4.7 Build 21; Postprocessing SW: SEMCAD, V1.8 Build 160

## E Scan - ER sensor tip 10mm above WD Ref/Hearing Aid Compatibility Test

**(101x101x1):** Measurement grid: dx=5mm, dy=5mm

Maximum value of peak Total field = 126.0 V/m

Probe Modulation Factor = 1.11

Reference Value = 118.1 V/m; Power Drift = 0.030 dB

**Hearing Aid Near-Field Category: M4 (AWF 0 dB)**

Peak E-field in V/m

Grid 1	Grid 2	Grid 3
<b>103.4</b>	<b>121.7</b>	<b>118.7</b>
Grid 4	Grid 5	Grid 6
<b>102.7</b>	<b>126.0</b>	<b>124.1</b>
Grid 7	Grid 8	Grid 9
<b>100.1</b>	<b>120.9</b>	<b>118.6</b>



# Test Laboratory: Motorola

**Serial: 1B1FFA40;** Procedure Notes: Pwr Step: always up; Antenna Position: INTERNAL; Battery Model #: SNN5777A; Vocoder Rate: 1/8TH RATE; Communication System: CDMA 1900, 8th Vocoder; Frequency: 1908.75 MHz; Communication System Channel Number: 1175; Duty Cycle: 1:8; Medium: Air; Medium parameters used:  $\sigma = 0$  mho/m,  $\epsilon_r = 1$ ;  $\rho = 0$  kg/m<sup>3</sup> ; DASY4 Configuration:

- Probe: ER3DV6R - SN2247; ConvF(1, 1, 1); Calibrated: 4/28/2006
- Sensor-Surface: (Fix Surface)
- Electronics: DAE4 Sn650; Calibrated: 8/26/2005
- Phantom: HAC Test Arch with Coil; Type: SD HAC P01 BA; Serial: 100x;
- Measurement SW: DASY4, V4.7 Build 21; Postprocessing SW: SEMCAD, V1.8 Build 160

## E Scan - ER sensor tip 10mm above WD Ref/Hearing Aid Compatibility Test

**(101x101x1):** Measurement grid: dx=5mm, dy=5mm

Maximum value of peak Total field = 51.3 V/m

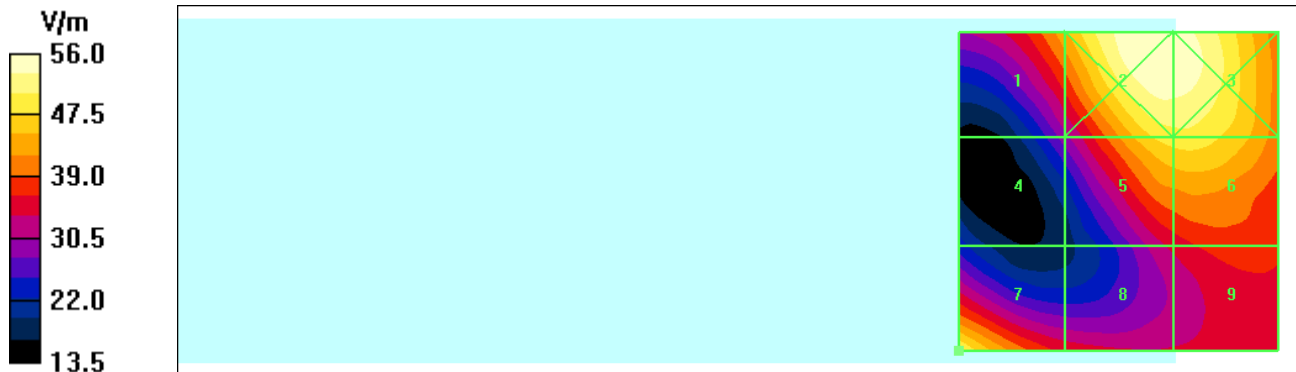
Probe Modulation Factor = 3.09

Reference Value = 11.3 V/m; Power Drift = 0.219 dB

**Hearing Aid Near-Field Category: M4 (AWF 0 dB)**

Peak E-field in V/m

Grid 1	Grid 2	Grid 3
<b>44.0</b>	<b>56.0</b>	<b>55.5</b>
Grid 4	Grid 5	Grid 6
<b>29.5</b>	<b>49.0</b>	<b>49.3</b>
Grid 7	Grid 8	Grid 9
<b>51.3</b>	<b>35.8</b>	<b>37.6</b>



# Test Laboratory: Motorola

**Serial: 1B1FFA40;** Procedure Notes: Pwr Step: always up; Antenna Position: internal; Battery Model #: SNN5777A; Vocoder Rate: 1/8; Communication System: CDMA 835, 1/8 Vocoder (HAC); Frequency: 836.52 MHz; Communication System Channel Number: 384; Duty Cycle: 1:8; Medium: Air; Medium parameters used:  $\sigma = 0$  mho/m,  $\epsilon_r = 1$ ;  $\rho = 0$  kg/m<sup>3</sup>; DASY4 Configuration:

- Probe: H3DV6 - SN6074; ; Calibrated: 4/27/2006
- Sensor-Surface: (Fix Surface)
- Electronics: DAE4 Sn639; Calibrated: 11/15/2005
- Phantom: HAC Test Arch with Coil; Type: SD HAC P01 BA; Serial: 100x;
- Measurement SW: DASY4, V4.7 Build 21; Postprocessing SW: SEMCAD, V1.8 Build 160

## H Scan - H3DV6 sensor tip 10mm above WD Ref/Hearing Aid Compatibility Test

**(101x101x1):** Measurement grid: dx=5mm, dy=5mm

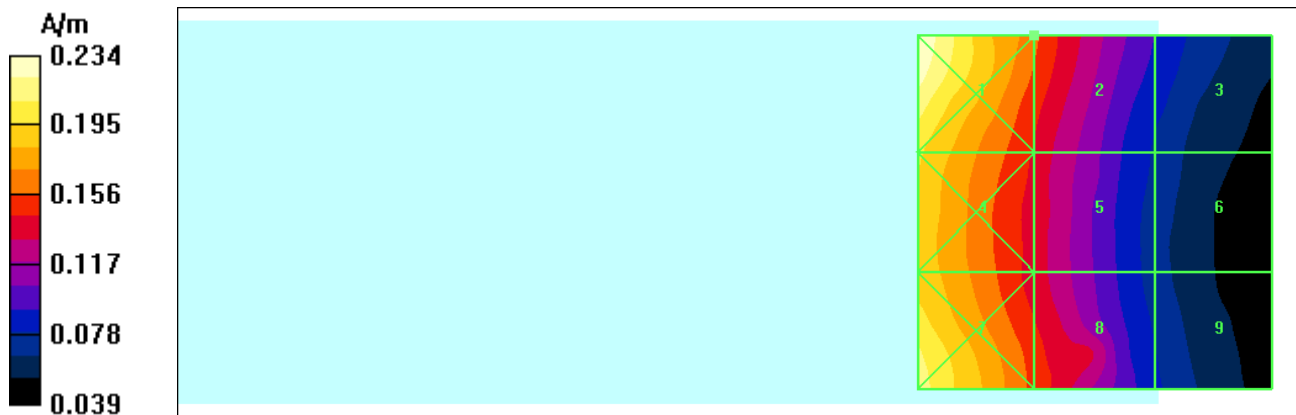
Maximum value of peak Total field = 0.160 A/m

Probe Modulation Factor = 2.79; Reference Value = 0.039 A/m; Power Drift = -0.304 dB

### Hearing Aid Near-Field Category: M4 (AWF 0 dB)

Peak H-field in A/m

Grid 1	Grid 2	Grid 3
<b>0.234</b>	<b>0.160</b>	<b>0.091</b>
Grid 4	Grid 5	Grid 6
<b>0.198</b>	<b>0.142</b>	<b>0.077</b>
Grid 7	Grid 8	Grid 9
<b>0.215</b>	<b>0.152</b>	<b>0.082</b>



# Test Laboratory: Motorola

**Serial: 1B1FFA40;** Procedure Notes: Pwr Step: ALWAYS UP; Antenna Position: INTERNAL; Battery Model #: SNN5777A; Vocoder Rate: FULL RATE; Communication System: CDMA 1900; Frequency: 1908.75 MHz; Communication System Channel Number: 1175; Duty Cycle: 1:1; Medium: Air; Medium parameters used:  $\sigma = 0$  mho/m,  $\epsilon_r = 1$ ;  $\rho = 0$  kg/m<sup>3</sup>

DASY4 Configuration:

- Probe: H3DV6 - SN6074; ; Calibrated: 4/27/2006
- Sensor-Surface: (Fix Surface)
- Electronics: DAE4 Sn639; Calibrated: 11/15/2005
- Phantom: HAC Test Arch with Coil; Type: SD HAC P01 BA; Serial: 100x;
- Measurement SW: DASY4, V4.7 Build 21; Postprocessing SW: SEMCAD, V1.8 Build 160

## H Scan - H3DV6 sensor tip 10mm above WD Ref/Hearing Aid Compatibility Test

**(101x101x1):** Measurement grid: dx=5mm, dy=5mm

Maximum value of peak Total field = 0.124 A/m

Probe Modulation Factor = 1.01

Reference Value = 0.102 A/m; Power Drift = 0.014 dB

**Hearing Aid Near-Field Category: M4 (AWF 0 dB)**

Peak H-field in A/m

Grid 1	Grid 2	Grid 3
<b>0.134</b>	<b>0.104</b>	<b>0.086</b>
Grid 4	Grid 5	Grid 6
<b>0.105</b>	<b>0.110</b>	<b>0.110</b>
Grid 7	Grid 8	Grid 9
<b>0.126</b>	<b>0.124</b>	<b>0.114</b>

