



MOTOROLA

Exhibit 11: SAR Test Report IHDT56FJ1

Date of test: 08/04/2005 through 08/08/2005
Date of Report: 08/15/2005

Laboratory: Motorola Mobile Devices Business Product Safety & Compliance Laboratory
 600 N. US Highway 45
 Room: MW113
 Libertyville, Illinois 60048

Test Responsible: Albert Patapack
 Senior Staff Engineer

Accreditation: This laboratory is accredited to ISO/IEC 17025-1999 to perform the following tests:



<u>Tests:</u>	<u>Procedures:</u>
Electromagnetic Specific Absorption Rate	ANSI/IEEE C95.1-1992, 1999 (SAR) IEEE C95.3-1991 IEEE 1528, IEC 62209-1 FCC OET Bulletin 65 (including Supplements A, B, C) Australian Communications Authority Radio Communications (Electromagnetic Radiation – Human Exposure) Standard 1999 CENELEC EN 50361 (2001)
Simulated Tissue Preparation	APP-0247
RF Power Measurement	DOI-0876, 0900, 0902, 0904, 0915

On the following products or types of products:
 Wireless Communications Devices (Examples): Two Way Radios; Portable Phones (including Cellular, Licensed Non-Broadcast and PCS); Low Frequency Readers; and Pagers

A2LA certificate #1651-01

Statement of Compliance: Motorola declares under its sole responsibility that portable cellular telephone FCC ID IHDT56FJ1 to which this declaration relates, is in conformity with the appropriate General Population/Uncontrolled RF exposure standards, recommendations and guidelines (FCC 47 CFR §2.1093). It also declares that the product was tested in accordance with the appropriate measurement standards, guidelines and recommended practices. Any deviations from these standards, guidelines and recommended practices are noted below:

(none)

©Motorola, Inc. 2005
 This test report shall not be reproduced except in full, without written approval of the laboratory.

The results and statements contained herein relate only to the items tested. The names of individuals involved may be mentioned only in connection with the statements or results from this report.

Motorola encourages all feedback, both positive and negative, on this test report.

Table of Contents

1. INTRODUCTION3

2. DESCRIPTION OF THE DEVICE UNDER TEST.....3

2.1 Antenna description3

2.2 Device description.....3

3. TEST EQUIPMENT USED.....4

3.1 Dosimetric System4

3.2 Additional Equipment.....4

4. ELECTRICAL PARAMETERS OF THE TISSUE SIMULATING LIQUID4

5. SYSTEM ACCURACY VERIFICATION.....5

6. TEST RESULTS.....6

6.1 Head Adjacent Test Results.....6

6.2 Body Worn Test Results9

APPENDIX 1: SAR DISTRIBUTION COMPARISON FOR SYSTEM ACCURACY VERIFICATION11

APPENDIX 2: SAR DISTRIBUTION PLOTS FOR PHANTOM HEAD ADJACENT USE12

APPENDIX 3: SAR DISTRIBUTION PLOTS FOR BODY WORN CONFIGURATION13

APPENDIX 4: PROBE CALIBRATION CERTIFICATE14

APPENDIX 5: MEASUREMENT UNCERTAINTY BUDGET.....15

APPENDIX 6: PHOTOGRAPHS OF DEVICE UNDER TEST.....18

APPENDIX 7: DIPOLE CHARACTERIZATION CERTIFICATE24

1 Introduction

The Motorola Mobile Devices Business Product Safety Laboratory has performed measurements of the maximum potential exposure to the user of portable cellular phone (FCC ID IHDT56FJ1). The Specific Absorption Rate (SAR) of this product was measured. The portable cellular phone was tested in accordance with FCC OET Bulletin 65 Supplement C 01-01.

2 Description of the Device Under Test

2.1 Antenna description

Type	Internal Antenna	
Location	Bottom of Transceiver Housing	
Dimensions	Length	37.6mm
	Width	7.7mm
Configuration	FJA	

2.2 Device description

FCC ID Number	IHDT56FJ1								
Serial number	004400013925993								
Mode(s) of Operation	GSM 850	GSM 900	GSM 1800	GSM 1900	GPRS 850	GPRS 900	GPRS 1800	GPRS 1900	Blue Tooth
Modulation Mode(s)	GSM	GSM	GSM	GSM	GSM	GSM	GSM	GSM	Blue Tooth
Maximum Output Power Setting	33.00 dBm	33.00 dBm	30.00 dBm	30.00 dBm	33.00 dBm	33.00 dBm	30.00 dBm	30.00 dBm	4.00 dBm
Duty Cycle	1:8	1:8	1:8	1:8	2:8	2:8	2:8	2:8	1:1
Transmitting Frequency Rang(s)	824.2-848.8 MHz	880.2-914.8 MHz	1710.2-1784.8 MHz	1850.20 – 1909.80 MHz	824.2-848.8 MHz	880.2-914.8 MHz	1710.2-1784.8 MHz	1850.20 – 1909.80 MHz	2400 - 2483.5 MHz
Production Unit or Identical Prototype (47 CFR §2.908)	Identical Prototype								
Device Category	Portable								
RF Exposure Limits	General Population / Uncontrolled								

3 Test Equipment Used

3.1 Dosimetric System

The Motorola Mobile Devices Business Product Safety & Compliance Laboratory utilizes a Dosimetric Assessment System (Dasy4™ v4.5) manufactured by Schmid & Partner Engineering AG (SPEAG™), of Zurich Switzerland. All the SAR measurements are taken within a shielded enclosure. The overall RSS uncertainty of the measurement system is ±11.1% (K=1) with an expanded uncertainty of ±22.2% (K=2). The measurement uncertainty budget is given in Appendix 6. Per IEEE 1528, this uncertainty budget is applicable to the SAR range of 0.4 W/kg to 10 W/kg. The list of calibrated equipment used for the measurements is shown below.

Description	Serial Number	Cal Due Date
DASY4 DAE4 V1	434	03/16/2006
E-Field Probe ET3DV6	1397	04/22/2006
Dipole Validation Kit, D900V2	80	06/02/2006
S.A.M. Phantom used for 800MHz	TP-1153	
Dipole Validation Kit, D1800V2	251tr	
S.A.M. Phantom used for 1900MHz	TP-1159	

3.2 Additional Equipment

Description	Serial Number	Cal Due Date
Signal Generator HP8648C	3847A04844	10/25/2005
Power Meter E4419B	GB39511087	12/16/2005
Power Sensor #1 – E9301A	US39210931	09/16/2005
Power Sensor #2 - E9301A	US39210932	09/16/2005
Network Analyzer HP8753ES	US39172529	2/21/2006
Dielectric Probe Kit HP85070B	US99360070	N/A

4 Electrical parameters of the tissue simulating liquid

Prior to conducting SAR measurements, the relative permittivity, ϵ_r , and the conductivity, σ , of the tissue simulating liquids were measured with the HP85070 Dielectric Probe Kit. These values, along with the temperature of the tissue simulate are shown in the table below. The recommended limits for maximum permittivity and minimum conductivity are also shown. These come from the Federal Communication Commission, OET Bulletin 65 Supplement C 01-01. It is seen that the measured parameters are satisfactory for compliance testing.

f (MHz)	Tissue type	Limits / Measured	Dielectric Parameters		
			ϵ_r	σ (S/m)	Temp (°C)
835	Head	Measured, 08/04/2005	41.6	0.9	20.0
		Measured, 08/07/2005	41.6	0.9	19.8
		Recommended Limits	41.5 ±5%	0.90 ±5%	18-25
	Body	Measured, 08/07/2005	53.9	0.97	20.3
		Recommended Limits	55.2 ±5%	0.97 ±5%	18-25
		Measured, 08/08/2005	38.2	1.45	19.9
1880	Head	Recommended Limits	40.0 ±5%	1.40 ±5%	18-25
		Measured, 08/08/2005	52.0	1.59	20.1
	Body	Recommended Limits	53.3 ±5%	1.52 ±5%	18-25
		Measured, 08/08/2005	52.0	1.59	20.1

The list of ingredients and the percent composition used for the tissue simulates are indicated in the table below.

Ingredient	800MHz	800MHz	1900MHz	1900MHz
	Head	Body	Head	Body
Sugar	57.0	44.9	--	--
DGBE	--	--	47.0	30.80
Water	40.45	53.06	52.8	68.91
Salt	1.45	0.94	0.2	0.29
HEC	1.0	1.0	--	--
Bact.	0.1	0.1	--	--

5 System Accuracy Verification

A system accuracy verification of the DASY4 v4.5 was performed using the measurement equipment listed in Section 3.1. The daily system accuracy verification occurs within center section of the SAM phantom.

A SAR measurement was performed to see if the measured SAR was within +/- 10% from the target SAR indicated in Section 8.3.7 Reference SAR Values in IEEE 1528. These tests were done at 900MHz and/or 1800MHz. These frequencies are within 100MHz of the mid-band frequency of the test device. This is within the allowable window given in Supplement C 01-01 Appendix D System Verification section item #5. The test was conducted on the same days as the measurement of the DUT. Recommended limits for maximum permittivity, minimum conductivity are shown in the table below. These come from the Federal Communication Commission, OET Bulletin 65 Supplement C 01-01. The obtained results from the system accuracy verification are displayed in the table below. The distributions of SAR compare well with those of the reference measurements (see Appendix 1). The tissue stimulant depth was verified to be 15.0cm ±0.5cm. Z-axis scans showing the SAR penetration are also included in Appendix 1. SAR values are normalized to 1W forward power delivered to the dipole.

f (MHz)	Description	SAR (W/kg), 1gram	Dielectric Parameters		Ambient Temp (°C)	Tissue Temp (°C)
			ε _r	σ (S/m)		
900	Measured, 08/04/2005	11.18	40.9	0.96	21.0	20.7
	Measured, 08/07/2005	11.23	40.8	0.96	22.0	20.2
	Recommended Limits	10.8	41.5 ±5%	0.97 ±5%	18-25	18-25
1800	Measured, 08/08/2005	39.43	38.5	1.38	22.0	19.8
	Recommended Limits	38.1	40.0 ±5%	1.4 ±5%	18-25	18-25

The following probe conversion factors were used on the E-Field probe(s) used for the system accuracy verification measurements:

Description	Serial Number	f (MHz)	Conversion Factor	Cal Cert pg #
E-Field Probe ET3DV6	SN1397	900	6.10	7 of 8
		1800	5.09	7 of 8

6 Test Results

The test sample was operated in a test mode that allows control of the transmitter without the need to place actual phone calls. For the purposes of this test the unit is commanded to test mode and manually set to the proper channel, transmitter power level and transmit mode of operation. The phone was tested in the configurations stipulated in OET Bulletin 65 Supplement C 01-01. Motorola also followed the requirements in Supplement. C / Appendix D: SAR Measurement Procedures, section titled "*Devices Operating Next To A Person's Ear*". These directions state "The device should be tested on the left and right side of the head phantom in the "Cheek/Touch" and "Ear/Tilt" positions. When applicable, each configuration should be tested with the antenna in its fully extended and fully retracted positions. These test configurations should be tested at the high, middle and low frequency channels of each operating mode; for example, AMPS, CDMA, and TDMA. If the SAR measured at the middle channel for each test configuration (left, right, Cheek/Touch, Tile/Ear, extended and retracted) is at least 2.0 dB lower than the SAR limit, testing at the high and low channels is optional for such test configuration(s)."

The DASY4 v4.5 SAR measurement system specified in section 3.1 was utilized within the intended operations as set by the SPEAG™ setup. The phone was positioned into the measurement configurations using the positioner supplied with the DASY4 v4.5 SAR measurement system. The measured dielectric constant of the material used for the positioner is less than 2.9 and the loss tangent is less than 0.02 ($\pm 30\%$) at 850MHz. The default settings for the "coarse" and "cube" scans were chosen and use for measurements. The grid spacing of the course scan was set to 15cm as shown in the SAR plots included in appendix 2 and 3. Please refer to the DASY manual for additional information on SAR scanning procedures and algorithms used.

The Cellular Phone (FCC ID IHDT56FJ1) has the following battery options:

Model #SNN5696B - 710mAH Battery

Model #SNN5696B (RevB) - 710mAH Battery

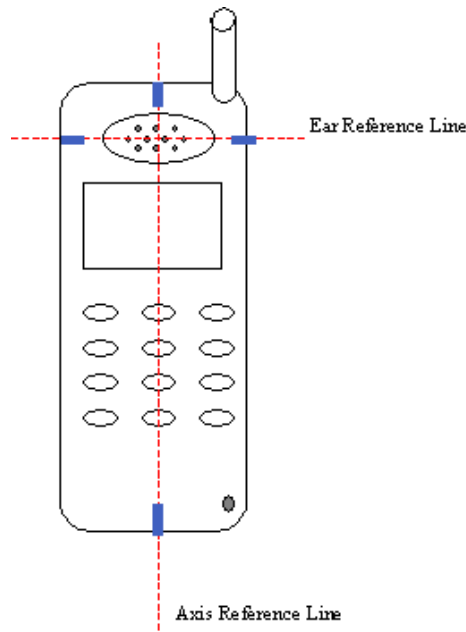
Both batteries have the same capacity. Model #SNN5696B was used to do most of the SAR testing. The phone was placed in the SAR measurement system with a fully charged battery. The configuration that resulted in the highest SAR values were tested using the other battery listed above.

6.1 Head Adjacent Test Results

To aid in positioning repeatability, the ear reference line of the device and the axis reference line of the device have been physically added using a non-metallic marker.

- Per Figure 1, the "Ear Reference Line" is centered vertically through the center of the listening area (as defined by the speaker holes in the housing).
- The "Axis Reference Line" bisects the front surface of the device at its top and bottom edges.
- The intersection of these two lines defines the location of the "Ear Reference Point".

The lines drawn on the device extended to the outside edges, as shown in blue in the figure below, & wrap around the sides of the device.



The SAR results shown in tables 1 through 3 are maximum SAR values averaged over 1 gram of phantom tissue. Also shown are the measured conducted output powers, the temperature of the test facility during the test, the temperature of the tissue simulate after the test, the measured drift and the extrapolated SAR. The exact method of extrapolation is $New\ SAR = Old\ SAR * 10^{(-drift/10)}$. The SAR reported at the end of the measurement process by the DASY™ measurement system can be scaled up by the measured drift to determine the SAR at the beginning of the measurement process. This is the most conservative SAR because it corresponds to the average output power at the beginning of the SAR test. This extrapolation has been done because when the DUT is operating properly it may exhibit a slump in radiated power and SAR over time. This is verified by measuring the SAR drift after the test. The test conditions indicated as bold numbers in the following table are included in Appendix 2

The SAR measurements were performed using the SAM phantoms listed in section 3.1. Since same phantoms and tissue simulate are used for the system accuracy verification as the device SAR measurements, the Z-axis scans included in within Appendix 1 are applicable for verification of tissue simulate depth to be 15.0cm ±0.5cm. All other test conditions measured lower SAR values than those included in Appendix 2.

The following probe conversion factors were used on the E-Field probe(s) used for the head adjacent measurements:

Description	Serial Number	f (MHz)	Conversion Factor	Cal Cert pg #
E-Field Probe ET3DV6	SN1397	900	6.10	7 of 8
		1800	5.09	7 of 8

f (MHz)	Description	Conducted Output Power (dBm)	Cheek / Touch Position							
			Left Head				Right Head			
			Measured (W/kg)	Drift (dB)	Extrapolated (W/kg)	Simulate Temp (°C)	Measured (W/kg)	Drift (dB)	Extrapolated (W/kg)	Simulate Temp (°C)
GSM 850MHz	Channel 128	33.00								
	Channel 190	33.00	0.577	-0.14	0.60	20.6	0.654	0.01	0.65	20.0
	Channel 251	33.00								
GSM 1900MHz	Channel 512	30.00								
	Channel 661	30.00	0.17	0.035	0.17	20.2	0.312	-0.11	0.32	20.0
	Channel 810	30.00								

Table 1: SAR measurement results for the portable cellular telephone FCC ID IHDT56FJ1 at highest possible output power. Measured against the head in the Cheek/Touch Position.

f (MHz)	Description	Conducted Output Power (dBm)	15° Tilt Position							
			Left Head				Right Head			
			Measured (W/kg)	Drift (dB)	Extrapolated (W/kg)	Simulate Temp (°C)	Measured (W/kg)	Drift (dB)	Extrapolated (W/kg)	Simulate Temp (°C)
GSM 850MHz	Channel 128	33.00								
	Channel 190	33.00	0.221	-0.07	0.22	20.6	0.212	0.01	0.21	20.0
	Channel 251	33.00								
GSM 1900MHz	Channel 512	30.00								
	Channel 661	30.00	0.167	0.12	0.17	20.2	0.135	0.02	0.14	20.0
	Channel 810	30.00								

Table 2: SAR measurement results for the portable cellular telephone FCC ID IHDT56FJ1 at highest possible output power. Measured against the head in the 15° Tilt Position.

f (MHz)	Description	Conducted Output Power (dBm)	Cheek / Touch Position with SNN5696B(RevB)							
			Left Head				Right Head			
			Measured (W/kg)	Drift (dB)	Extrapolated (W/kg)	Simulate Temp (°C)	Measured (W/kg)	Drift (dB)	Extrapolated (W/kg)	Simulate Temp (°C)
GSM 850MHz	Channel 128	33.00								
	Channel 190	33.00					0.606	-0.02	0.61	20.0
	Channel 251	33.00								
GSM 1900MHz	Channel 512	30.00								
	Channel 661	30.00					0.29	-0.06	0.29	20.0
	Channel 810	30.00								

Table 3: SAR measurement results for the portable cellular telephone FCC ID IHDT56FJ1 at highest possible output power. Measured against the left head in the Cheek/Touch Position.

6.2 Body Worn Test Results

The SAR results shown in tables 4 through 7 are the maximum SAR values averaged over 1 gram of phantom tissue. Also shown are the measured conducted output powers, the temperature of the test facility during the test, the temperature of the tissue simulate after the test, the measured drift and the extrapolated SAR. The exact method of extrapolation is $New\ SAR = Old\ SAR * 10^{(-drift/10)}$. The SAR reported at the end of the measurement process by the DASY™ measurement system can be scaled up by the measured drift to determine the SAR at the beginning of the measurement process. This is the most conservative SAR because it corresponds to the average output power at the beginning of the SAR test. This extrapolation has been done because when the DUT is operating properly it may exhibit a slump in radiated power and SAR over time. This is verified by measuring the SAR drift after the test. The test conditions indicated as bold numbers in the following table are included in Appendix 3. All other test conditions measured lower SAR values than those included in Appendix 3.

A “flat” phantom was for the body-worn tests. This “flat” phantom is made out of 1” thick natural High Density Polyethylene with a thickness at the bottom equal to 2.0mm. It measures 52.7cm(long) x 26.7cm(wide) x 21.2cm(tall). The measured dielectric constant of the material used is less than 2.3 and the loss tangent is less than 0.0046 all the way up to 2.184GHz.

The tissue stimulant depth was verified to be 15.0cm ±0.5cm. The same device holder described in section 6 was used for positioning the phone. The functional accessories were divided into two categories, the ones with metal components and the ones with non-metal components. For non-metallic component accessories’, testing was performed on the accessory that displayed the closest proximity to the flat phantom. Each metallic component accessory, if any, was checked for uniqueness of metal component so that each is tested with the device. If multiple accessories shared an identical metal component, only the accessory that dictates the closest spacing to the body was tested. The cellular phone was tested with a headset connected to the device for all body-worn SAR measurements.

There is one Body-Worn Accessory available for this phone:

A Leather Pouch: Model #SYN1335A

This pouch was used for the body worn SAR measurements. In addition, body worn testing was performed with the front and the back of the phone place 15mm from the phantom.

The following probe conversion factors were used on the E-Field probe(s) used for the body worn measurements:

Description	Serial Number	f (MHz)	Conversion Factor	Cal Cert pg #
E-Field Probe ET3DV6	SN1397	900	5.92	7 of 8
		1800	4.52	7 of 8

f (MHz)	Description	Conducted Output Power (dBm)	Body Worn							
			Front 15mm from phantom				Back 15mm from phantom			
			Measured (W/kg)	Drift (dB)	Extrapolated (W/kg)	Simulate Temp (°C)	Measured (W/kg)	Drift (dB)	Extrapolated (W/kg)	Simulate Temp (°C)
GSM 850MHz	Channel 128	33.00								
	Channel 190	33.00	0.221	-0.30	0.24	20.7	0.501	-0.18	0.52	20.7
	Channel 251	33.00								
GSM 1900MHz	Channel 512	30.00								
	Channel 661	30.00	0.105	0.05	0.11	20.0	0.131	-0.04	0.13	20.0
	Channel 810	30.00								

Table 4: SAR measurement results for the portable cellular telephone FCC ID IHDT56FJ1 at highest possible output power. Measured against the body.

f (MHz)	Description	Conducted Output Power (dBm)	Body Worn							
			Back 15mm from phantom with Bluetooth				SYN1335A with Bluetooth			
			Measured (W/kg)	Drift (dB)	Extrapolated (W/kg)	Simulate Temp (°C)	Measured (W/kg)	Drift (dB)	Extrapolated (W/kg)	Simulate Temp (°C)
GSM 850MHz	Channel 128	33.00								
	Channel 190	33.00	0.532	-0.12	0.55	20.7	0.466	-0.12	0.48	20.6
	Channel 251	33.00								
GSM 1900MHz	Channel 512	30.00								
	Channel 661	30.00	0.145	0.01	0.15	20.0	0.12	0.02	0.12	20.0
	Channel 810	30.00								

Table 5: SAR measurement results for the portable cellular telephone FCC ID IHDT56FJ1 at highest possible output power. Measured against the body.

f (MHz)	Description	Conducted Output Power (dBm)	GPRS Body Worn							
			Front 25mm from phantom				Back 25mm from phantom			
			Measured (W/kg)	Drift (dB)	Extrapolated (W/kg)	Simulate Temp (°C)	Measured (W/kg)	Drift (dB)	Extrapolated (W/kg)	Simulate Temp (°C)
GSM 850MHz	Channel 128	33.00								
	Channel 190	33.00	0.252	-0.35	0.27	20.6	0.447	-0.22	0.47	20.6
	Channel 251	33.00								
GSM 1900MHz	Channel 512	30.00								
	Channel 661	30.00	0.0883	-0.06	0.09	20.1	0.0991	-0.02	0.10	20.1
	Channel 810	30.00								

Table 6: SAR measurement results for the portable cellular telephone FCC ID IHDT56FJ1 at highest possible output power. Measured against the body.

f (MHz)	Description	Conducted Output Power (dBm)	Body Worn with SNN5696B(RevB)			
			Back 15mm from phantom with Bluetooth			
			Measured (W/kg)	Drift (dB)	Extrapolated (W/kg)	Simulate Temp (°C)
GSM 850MHz	Channel 128	33.00				
	Channel 190	33.00	0.637	-0.09	0.65	20.6
	Channel 251	33.00				
GSM 1900MHz	Channel 512	30.00				
	Channel 661	30.00	0.138	0.01	0.14	20.0
	Channel 810	30.00				

Table 7: SAR measurement results for the portable cellular telephone FCC ID IHDT56FJ1 at highest possible output power. Measured against the body.

Appendix 1

SAR distribution comparison for the system accuracy verification

Date/Time: 8/4/2005 7:36:28AM

Test Laboratory: Motorola 080405 900MHz GOOD-1.1%**DUT: Dipole 900 MHz; Type: D900V2; Serial: D900V2 - SN:080**

Procedure Notes: 900 MHz System Performance Check / Dipole Sn# 80 PM1 Power = 200 mW

Sim.Temp@meas = 20.9C Sim.Temp@SPC = 20.7C Room Temp @ SPC = 21C

Communication System: CW - Dipole; Frequency: 900 MHz; Channel Number: 4; Duty Cycle: 1:1
Medium: VALIDATION Only; Medium parameters used: $\sigma = 0.96$ mho/m, $\epsilon_r = 40.9$; $\rho = 1000$ kg/m³

DASY4 Configuration:

- Probe: ET3DV6R - SN1397; ConvF(6.38, 6.38, 6.38); Calibrated: 4/22/2005
- Sensor-Surface: 4mm (Mechanical Surface Detection)
- Electronics: DAE3 Sn434; Calibrated: 3/16/2005
- Phantom: R3: Sugar Water SAM; Type: SAM; Serial: TP-1153;
- Measurement SW: DASY4, V4.5 Build 19; Postprocessing SW: SEMCAD, V1.8 Build 147

Daily SPC Check/Dipole Area Scan (4x9x1):

Measurement grid: dx=15mm, dy=15mm Maximum value of SAR (measured) = 2.16 mW/g

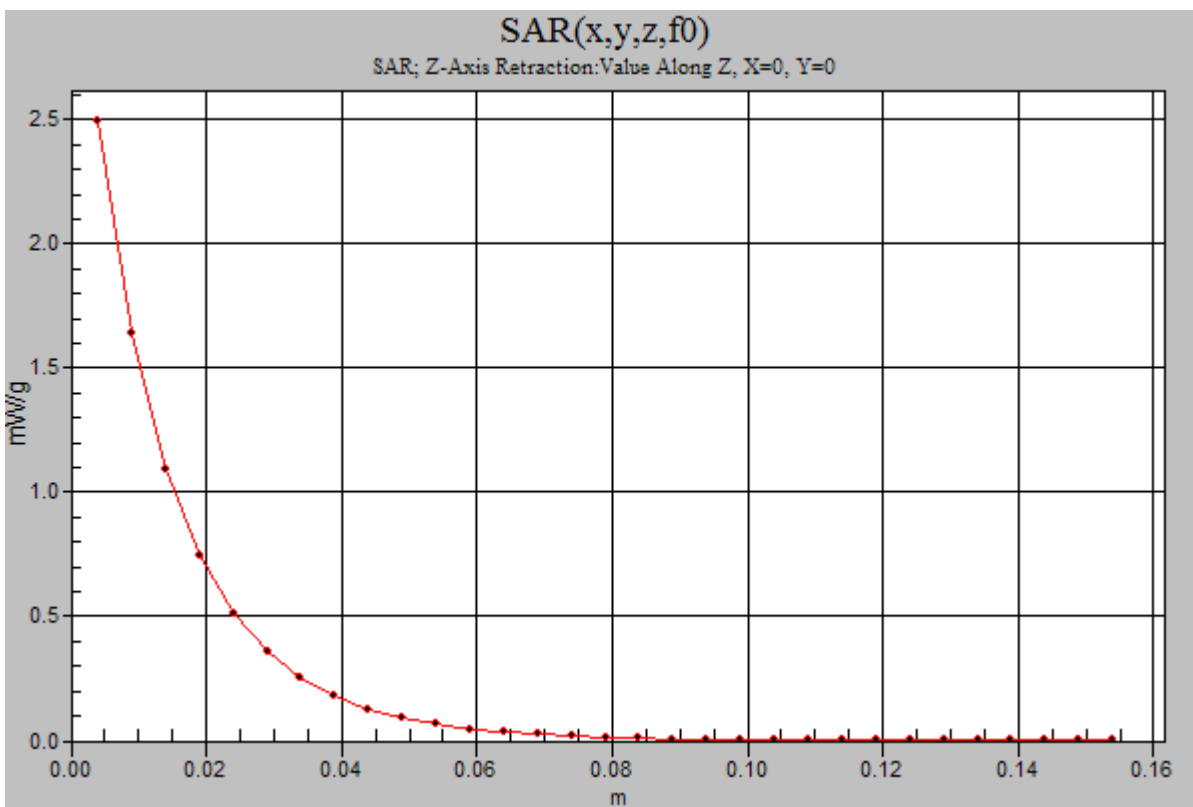
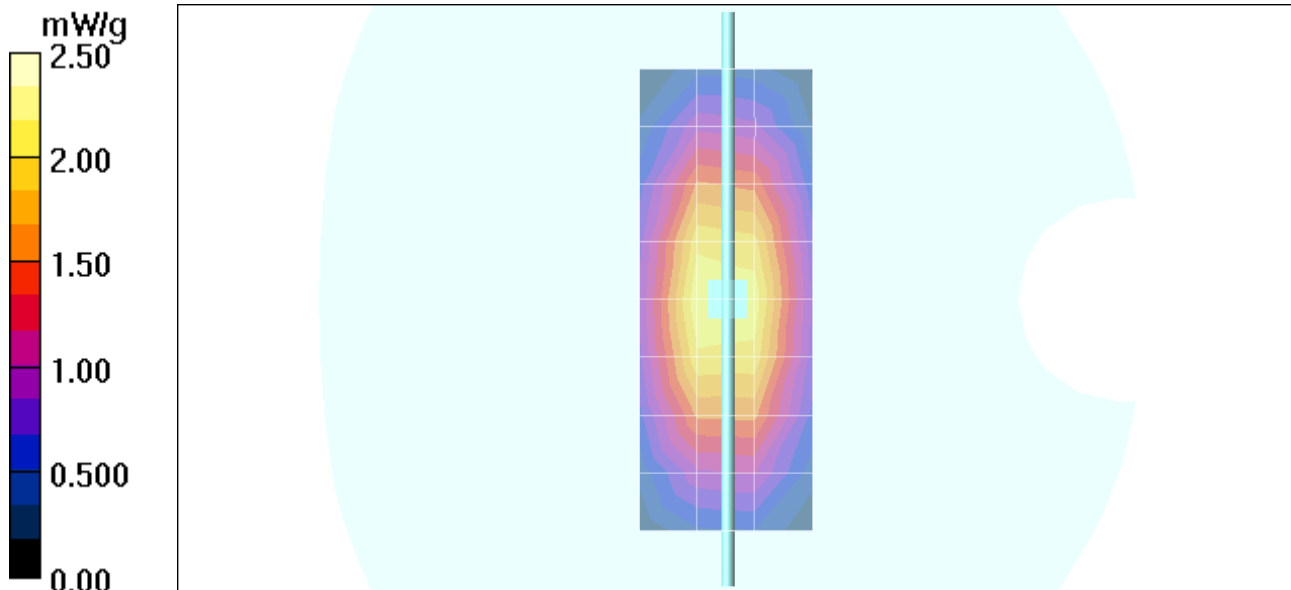
Daily SPC Check/0-Degree 5x5x7 Cube (5x5x7)/Cube 0:

Measurement grid: dx=8mm, dy=8mm, dz=5mm

Reference Value = 52.6 V/m; **Power Drift = -0.016 dB** Peak SAR (extrapolated) = 3.43 W/kg**SAR(1 g) = 2.29 mW/g; SAR(10 g) = 1.47 mW/g** Maximum value of SAR (measured) = 2.50 mW/g**Daily SPC Check/90-Degree 5x5x7 Cube (5x5x7)/Cube 0:**

Measurement grid: dx=8mm, dy=8mm, dz=5mm

Reference Value = 52.6 V/m; **Power Drift = -0.016 dB** Peak SAR (extrapolated) = 3.25 W/kg**SAR(1 g) = 2.18 mW/g; SAR(10 g) = 1.4 mW/g** Maximum value of SAR (measured) = 2.34 mW/g**Daily SPC Check/Z-Axis Retraction (1x1x31):** Measurement grid: dx=20mm, dy=20mm, dz=5mm



Date/Time: 8/7/2005 6:27:50AM

Test Laboratory: Motorola 080705 900MHz GOOD-0.7%**DUT: Dipole 900 MHz; Type: D900V2; Serial: D900V2 - SN:080**

Procedure Notes: 900 MHz System Performance Check / Dipole Sn# 80 PM1 Power = 200mW PM2

Sim.Temp@meas = 20.2C Sim.Temp@SPC = 20.2C Room Temp @ SPC = 22C

Communication System: CW - Dipole; Frequency: 900 MHz; Channel Number: 4; Duty Cycle: 1:1
Medium: VALIDATION Only; Medium parameters used: $\sigma = 0.96$ mho/m, $\epsilon_r = 40.8$; $\rho = 1000$ kg/m³

DASY4 Configuration:

- Probe: ET3DV6R - SN1397; ConvF(6.38, 6.38, 6.38); Calibrated: 4/22/2005
- Sensor-Surface: 4mm (Mechanical Surface Detection)
- Electronics: DAE3 Sn434; Calibrated: 3/16/2005
- Phantom: R3: Sugar Water SAM; Type: SAM; Serial: TP-1153;
- Measurement SW: DASY4, V4.5 Build 19; Postprocessing SW: SEMCAD, V1.8 Build 147

Daily SPC Check/Dipole Area Scan (4x9x1):

Measurement grid: dx=15mm, dy=15mm Maximum value of SAR (measured) = 2.35 mW/g

Daily SPC Check/0-Degree 5x5x7 Cube (5x5x7)/Cube 0:

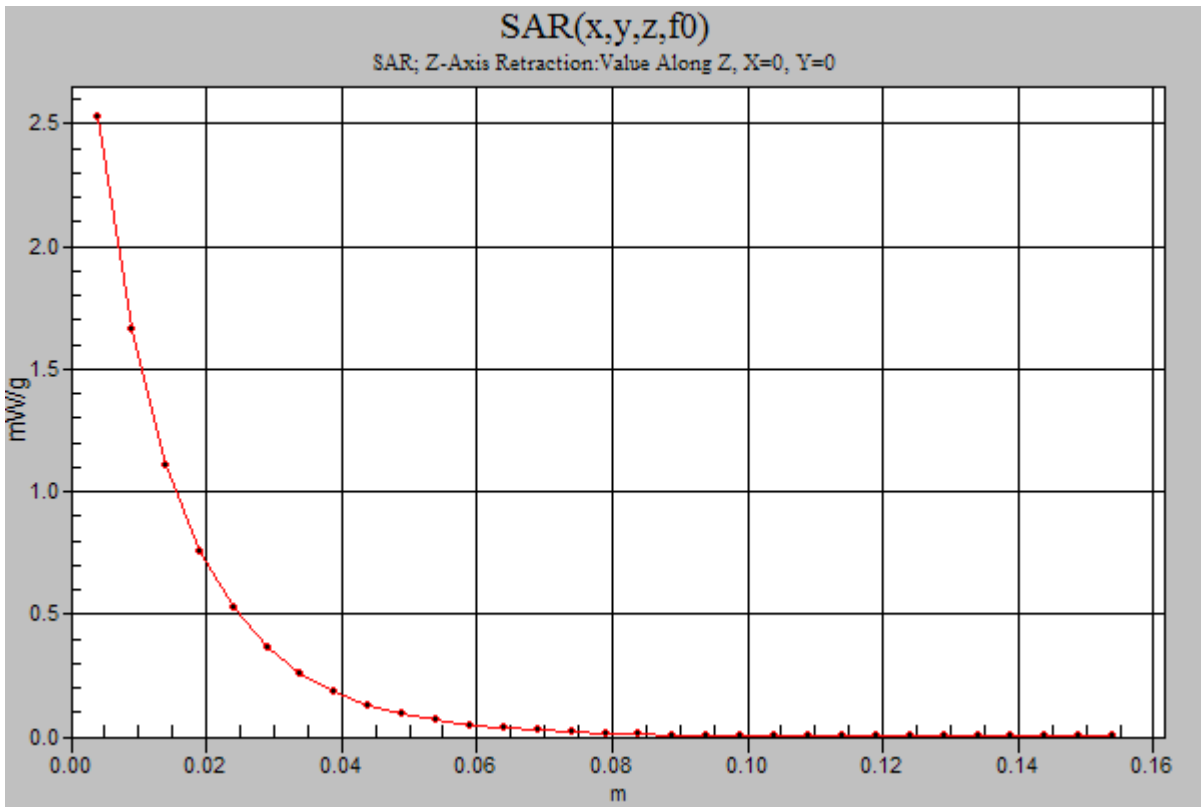
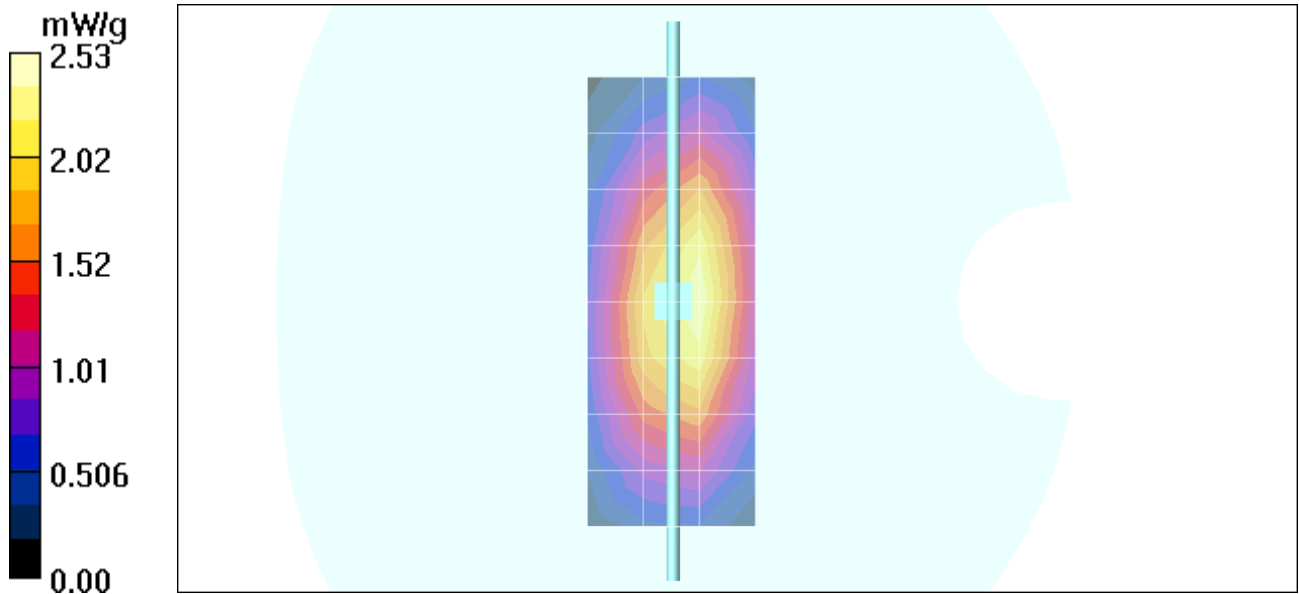
Measurement grid: dx=8mm, dy=8mm, dz=5mm

Reference Value = 52.8 V/m; **Power Drift = -0.071 dB** Peak SAR (extrapolated) = 3.44 W/kg**SAR(1 g) = 2.31 mW/g; SAR(10 g) = 1.48 mW/g** Maximum value of SAR (measured) = 2.50 mW/g**Daily SPC Check/90-Degree 5x5x7 Cube (5x5x7)/Cube 0:**

Measurement grid: dx=8mm, dy=8mm, dz=5mm

Reference Value = 52.8 V/m; **Power Drift = -0.071 dB** Peak SAR (extrapolated) = 3.27 W/kg**SAR(1 g) = 2.18 mW/g; SAR(10 g) = 1.4 mW/g** Maximum value of SAR (measured) = 2.36 mW/g**Daily SPC Check/Z-Axis Retraction (1x1x31):**

Measurement grid: dx=20mm, dy=20mm, dz=5mm Maximum value of SAR (measured) = 2.53 mW/g



Date/Time: 8/8/2005 6:40:34AM

Test Laboratory: Motorola 080805 1800MHz GOOD 3.5%**DUT: Dipole 1800 MHz; Type: D1800V2; Serial: D1800V2 - SN:251tr**

Procedure Notes: 1800 MHz System Performance Check / Dipole Sn# 251tr PM1 Power = 200 mW

Sim.Temp@meas = 20.0C Sim.Temp@SPC = 19.8C Room Temp @ SPC = 22C

Communication System: CW - Dipole; Frequency: 1800 MHz; Channel Number: 8; Duty Cycle: 1:1

Medium: VALIDATION Only; Medium parameters used: $\sigma = 1.38$ mho/m, $\epsilon_r = 38.5$; $\rho = 1000$ kg/m³

DASY4 Configuration:

- Probe: ET3DV6R - SN1397 ConvF(5.17, 5.17, 5.17); Calibrated: 4/22/2005
- Sensor-Surface: 4mm (Mechanical Surface Detection)
- Electronics: DAE3 Sn434; Calibrated: 3/16/2005
- Phantom: R3: Sect.1, Amy Twin; Type: Amy Twin Flat; Serial: n/a;
- Measurement SW: DASY4, V4.5 Build 19; Postprocessing SW: SEMCAD, V1.8 Build 147

Daily SPC Check/Dipole Area Scan (9x4x1):

Measurement grid: dx=15mm, dy=15mm Maximum value of SAR (measured) = 8.23 mW/g

Daily SPC Check/0-Degree 5x5x7 Cube (5x5x7)/Cube 0:

Measurement grid: dx=8mm, dy=8mm, dz=5mm

Reference Value = 81.5 V/m; Power Drift = 0.00 dB Peak SAR (extrapolated) = 13.8 W/kg

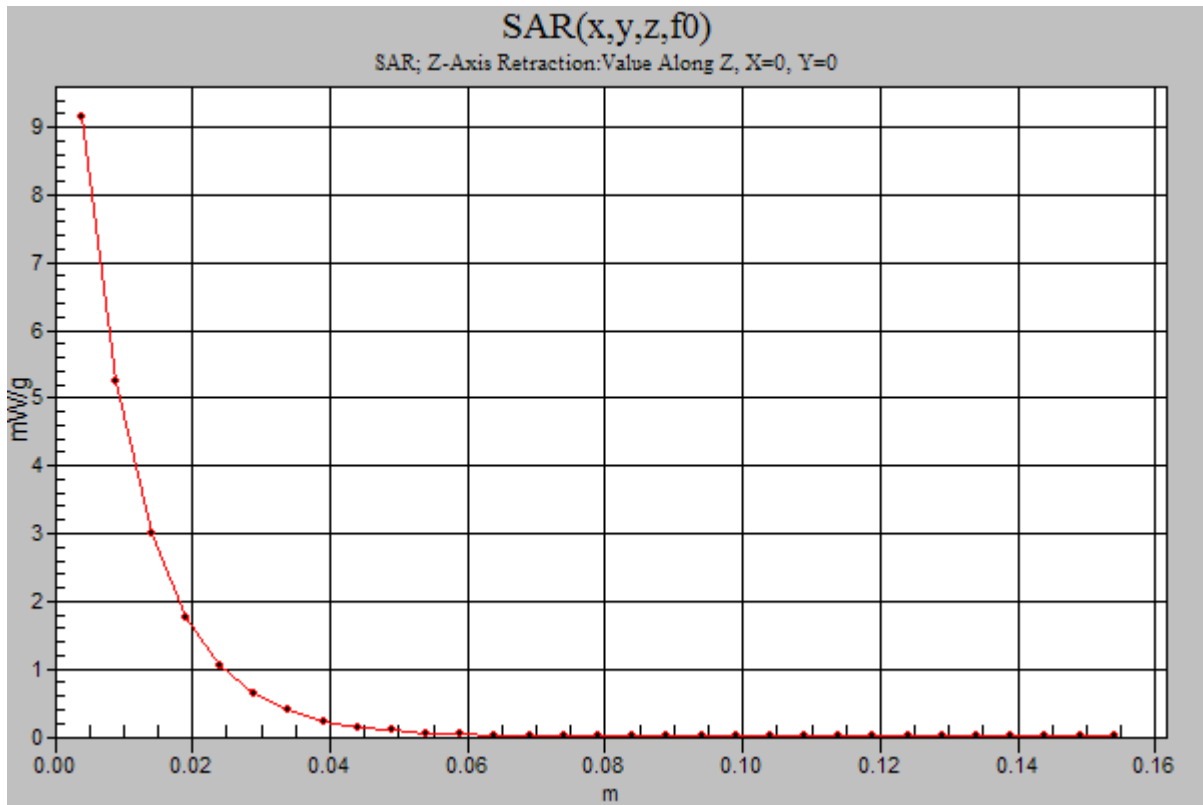
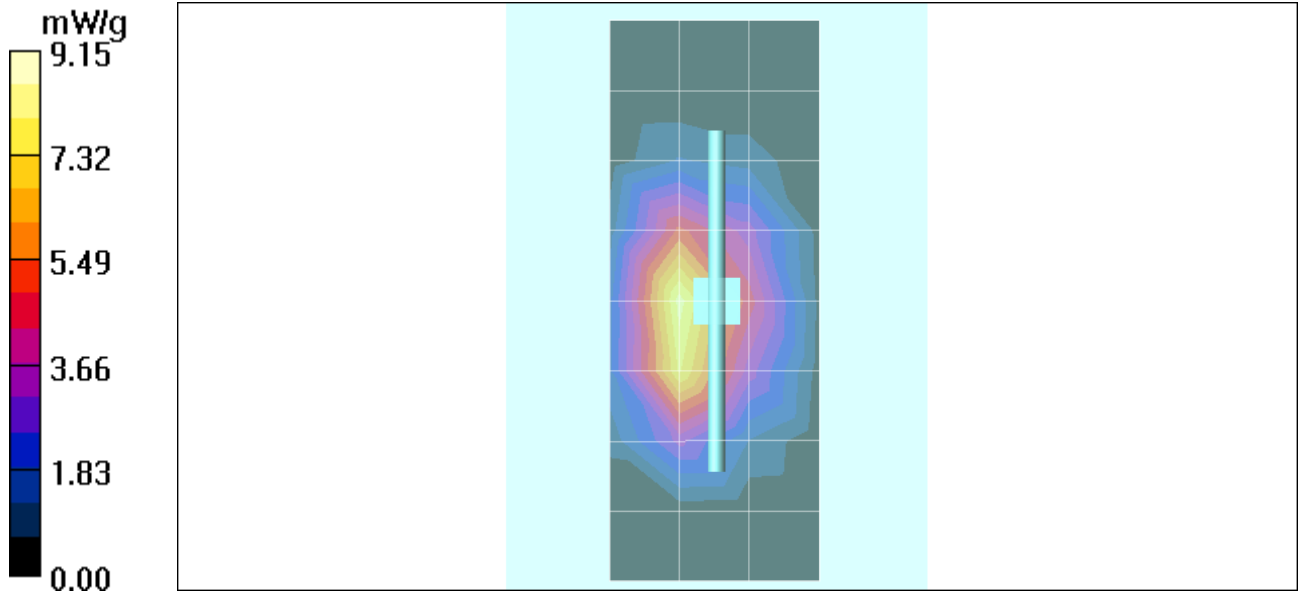
SAR(1 g) = 8.1 mW/g; SAR(10 g) = 4.34 mW/g Maximum value of SAR (measured) = 9.07 mW/g**Daily SPC Check/90-Degree 5x5x7 Cube (5x5x7)/Cube 0:**

Measurement grid: dx=8mm, dy=8mm, dz=5mm

Reference Value = 81.5 V/m; Power Drift = 0.00 dB Peak SAR (extrapolated) = 13.2 W/kg

SAR(1 g) = 7.67 mW/g; SAR(10 g) = 4.08 mW/g Maximum value of SAR (measured) = 8.50 mW/g**Daily SPC Check/Z-Axis Retraction (1x1x31):**

Measurement grid: dx=20mm, dy=20mm, dz=5mm Maximum value of SAR (measured) = 9.15 mW/g



Appendix 2

SAR distribution plots for Phantom Head Adjacent Use

Date/Time: 8/4/2005 3:14:52PM

Test Laboratory: Motorola 850 LH Cheek ch190

Serial: -25993

Procedure Notes: Pwr Step: 5 Antenna Position: Internal Accessory Model #: ???

Battery Model #: SNN5696B DEVICE POSITION (cheek or rotated): Cheek

Communication System: GSM 850; Frequency: 836.6 MHz; Channel Number: 190; Duty Cycle: 1:8

Medium: Low Freq Head; Medium parameters used: $\sigma = 0.9$ mho/m, $\epsilon_r = 41.6$; $\rho = 1000$ kg/m³

DASY4 Configuration:

- Probe: ET3DV6R - SN1397; ConvF(6.38, 6.38, 6.38); Calibrated: 4/22/2005
- Sensor-Surface: 4mm (Mechanical Surface Detection)
- Electronics: DAE3 Sn434; Calibrated: 3/16/2005
- Phantom: R3: Sugar Water SAM; Type: SAM; Serial: TP-1153;
- Measurement SW: DASY4, V4.5 Build 19; Postprocessing SW: SEMCAD, V1.8 Build 147

Left Head Template/Area Scan - Normal (15mm) (7x17x1):

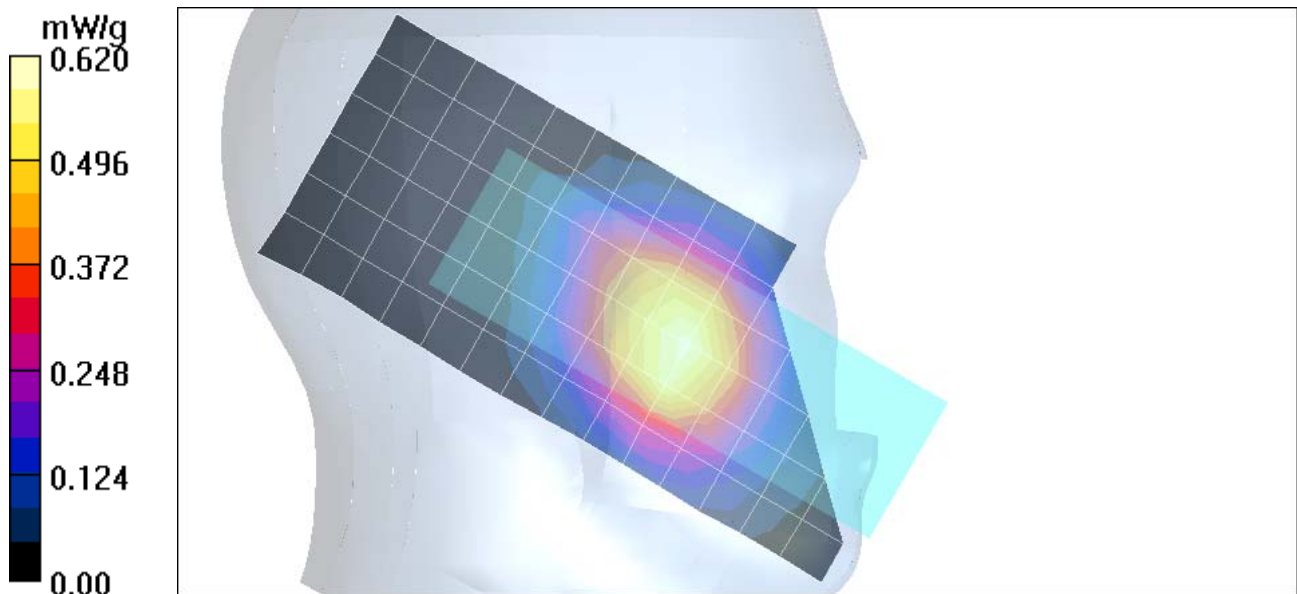
Measurement grid: dx=15mm, dy=15mm Maximum value of SAR (measured) = 0.603 mW/g

Left Head Template/Zoom Scan (7x7x7)/Cube 0:

Measurement grid: dx=5mm, dy=5mm, dz=5mm

Reference Value = 25.6 V/m; **Power Drift = -0.135 dB** Peak SAR (extrapolated) = 0.731 W/kg

SAR(1 g) = 0.577 mW/g; SAR(10 g) = 0.420 mW/g Maximum value of SAR (measured) = 0.601 mW/g



Date/Time: 8/4/2005 3:42:54PM

Test Laboratory: Motorola 850 LH Tilt ch190

Serial: -25993

Procedure Notes: Pwr Step: 5 Antenna Position: Internal Accessory Model #: ???

Battery Model #: SNN5696B DEVICE POSITION (cheek or rotated): Rotated

Communication System: GSM 850; Frequency: 836.6 MHz; Channel Number: 190; Duty Cycle: 1:8

Medium: Low Freq Head; Medium parameters used: $\sigma = 0.9$ mho/m, $\epsilon_r = 41.6$; $\rho = 1000$ kg/m³

DASY4 Configuration:

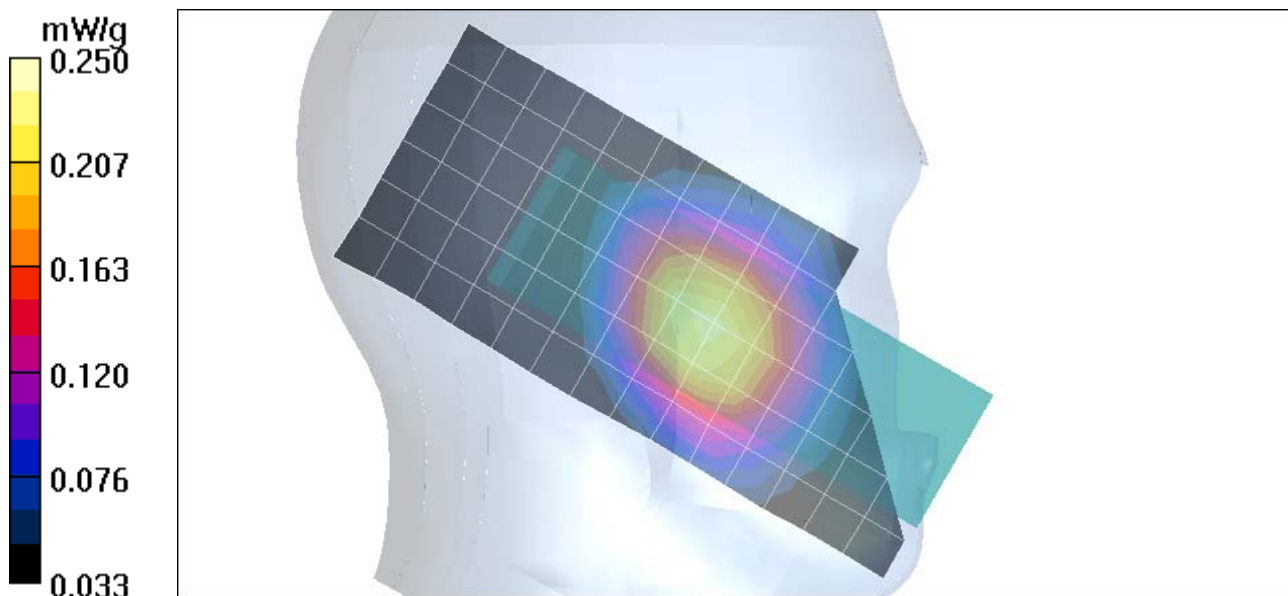
- Probe: ET3DV6R - SN1397; ConvF(6.38, 6.38, 6.38); Calibrated: 4/22/2005
- Sensor-Surface: 4mm (Mechanical Surface Detection)
- Electronics: DAE3 Sn434; Calibrated: 3/16/2005
- Phantom: R3: Sugar Water SAM; Type: SAM; Serial: TP-1153;
- Measurement SW: DASY4, V4.5 Build 19; Postprocessing SW: SEMCAD, V1.8 Build 147

Left Head Template/Area Scan - Normal (15mm) (7x17x1):

Measurement grid: dx=15mm, dy=15mm Maximum value of SAR (measured) = 0.229 mW/g

Left Head Template/Zoom Scan (7x7x7)/Cube 0:

Measurement grid: dx=5mm, dy=5mm, dz=5mm

Reference Value = 16.2 V/m; **Power Drift = -0.069 dB** Peak SAR (extrapolated) = 0.264 W/kg**SAR(1 g) = 0.221 mW/g; SAR(10 g) = 0.169 mW/g** Maximum value of SAR (measured) = 0.230 mW/g

Date/Time: 8/7/2005 3:05:37PM

Test Laboratory: Motorola 850 RH Cheek ch190

Serial: 4400013925993

Procedure Notes: Pwr Step: 05 Antenna Position: Int Accessory Model #: n/a

Battery Model #: SNN5696B DEVICE POSITION (cheek or rotated): Cheek

Communication System: GSM 850; Frequency: 836.6 MHz; Channel Number: 190; Duty Cycle: 1:8

Medium: Low Freq Head; Medium parameters used: $\sigma = 0.9$ mho/m, $\epsilon_r = 41.6$; $\rho = 1000$ kg/m³

DASY4 Configuration:

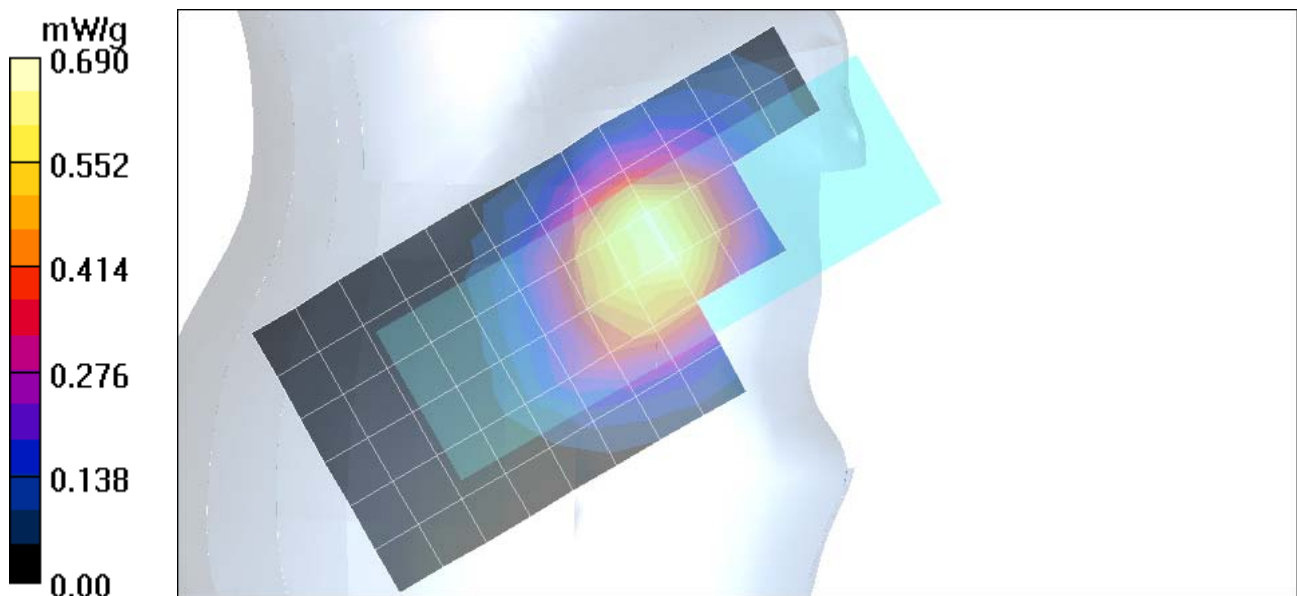
- Probe: ET3DV6R - SN1397; ConvF(6.38, 6.38, 6.38); Calibrated: 4/22/2005
- Sensor-Surface: 4mm (Mechanical Surface Detection)
- Electronics: DAE3 Sn434; Calibrated: 3/16/2005
- Phantom: R3: Sugar Water SAM; Type: SAM; Serial: TP-1153;
- Measurement SW: DASY4, V4.5 Build 19; Postprocessing SW: SEMCAD, V1.8 Build 147

Right Head Template/Area Scan - Normal (15mm) (7x17x1):

Measurement grid: dx=15mm, dy=15mm Maximum value of SAR (measured) = 0.657 mW/g

Right Head Template/Zoom Scan (7x7x7)/Cube 0:

Measurement grid: dx=5mm, dy=5mm, dz=5mm

Reference Value = 28.7 V/m; **Power Drift = 0.014 dB** Peak SAR (extrapolated) = 0.913 W/kg**SAR(1 g) = 0.654 mW/g; SAR(10 g) = 0.469 mW/g** Maximum value of SAR (measured) = 0.688 mW/g

Date/Time: 8/7/2005 3:30:29PM

Test Laboratory: Motorola 850 RH Tilt ch190

Serial: 4400013925993

Procedure Notes: Pwr Step: 05 Antenna Position: Int Accessory Model #: n/a

Battery Model #: SNN5696B DEVICE POSITION (cheek or rotated): Rotated

Communication System: GSM 850; Frequency: 836.6 MHz; Channel Number: 190; Duty Cycle: 1:8

Medium: Low Freq Head; Medium parameters used: $\sigma = 0.9$ mho/m, $\epsilon_r = 41.6$; $\rho = 1000$ kg/m³

DASY4 Configuration:

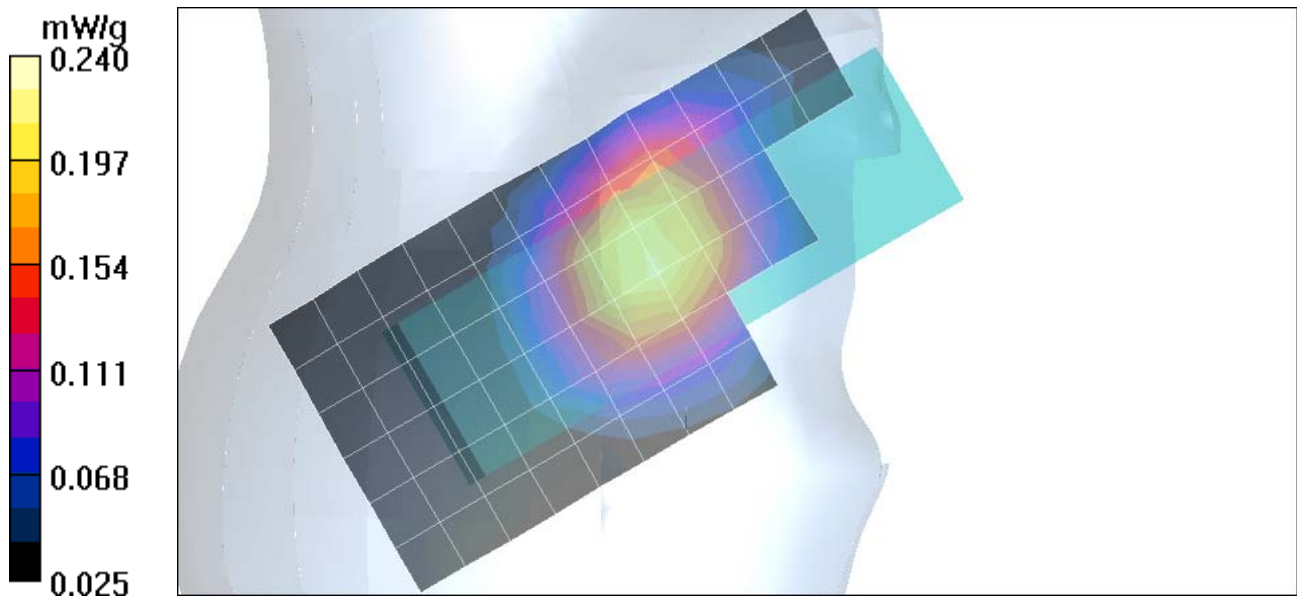
- Probe: ET3DV6R - SN1397; ConvF(6.38, 6.38, 6.38); Calibrated: 4/22/2005
- Sensor-Surface: 4mm (Mechanical Surface Detection)
- Electronics: DAE3 Sn434; Calibrated: 3/16/2005
- Phantom: R3: Sugar Water SAM; Type: SAM; Serial: TP-1153;
- Measurement SW: DASY4, V4.5 Build 19; Postprocessing SW: SEMCAD, V1.8 Build 147

Right Head Template/Area Scan - Normal (15mm) (7x17x1):

Measurement grid: dx=15mm, dy=15mm Maximum value of SAR (measured) = 0.217 mW/g

Right Head Template/Zoom Scan (7x7x7)/Cube 0:

Measurement grid: dx=5mm, dy=5mm, dz=5mm

Reference Value = 15.7 V/m; **Power Drift = 0.01 dB** Peak SAR (extrapolated) = 0.259 W/kg**SAR(1 g) = 0.212 mW/g; SAR(10 g) = 0.161 mW/g** Maximum value of SAR (measured) = 0.222 mW/g

Date/Time: 8/7/2005 3:56:50PM

Test Laboratory: Motorola 850 RH Cheek ch190 with SNN5696B(RevB)**Serial: 4400013925993**

Procedure Notes: Pwr Step: 05 Antenna Position: Int Accessory Model #: n/a

Battery Model #: SNN5696B(RevB) DEVICE POSITION (cheek or rotated): Cheek

Communication System: GSM 850; Frequency: 836.6 MHz; Channel Number: 190; Duty Cycle: 1:8

Medium: Low Freq Head; Medium parameters used: $\sigma = 0.9$ mho/m, $\epsilon_r = 41.6$; $\rho = 1000$ kg/m³

DASY4 Configuration:

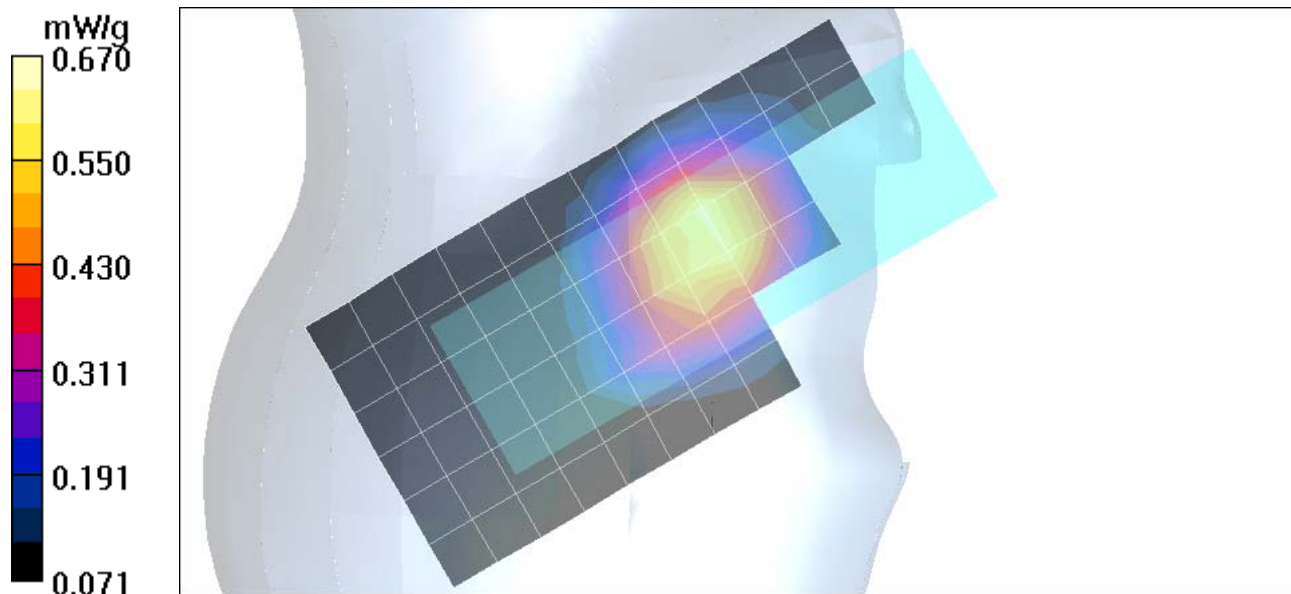
- Probe: ET3DV6R - SN1397; ConvF(6.38, 6.38, 6.38); Calibrated: 4/22/2005
- Sensor-Surface: 4mm (Mechanical Surface Detection)
- Electronics: DAE3 Sn434; Calibrated: 3/16/2005
- Phantom: R3: Sugar Water SAM; Type: SAM; Serial: TP-1153;
- Measurement SW: DASY4, V4.5 Build 19; Postprocessing SW: SEMCAD, V1.8 Build 147

Right Head Template/Area Scan - Normal (15mm) (7x17x1):

Measurement grid: dx=15mm, dy=15mm Maximum value of SAR (measured) = 0.608 mW/g

Right Head Template/Zoom Scan (7x7x7)/Cube 0:

Measurement grid: dx=5mm, dy=5mm, dz=5mm

Reference Value = 27.7 V/m; **Power Drift = -0.017 dB** Peak SAR (extrapolated) = 0.823 W/kg**SAR(1 g) = 0.606 mW/g; SAR(10 g) = 0.440 mW/g** Maximum value of SAR (measured) = 0.643 mW/g

Date/Time: 8/8/2005 11:26:00AM

Test Laboratory: Motorola 1900 LH Cheek ch661

Serial: -25993

Procedure Notes: Pwr Step: 00 (OTA) Antenna Position: INTERNAL Accessory Model #: N/A

Battery Model #: SNN5696B DEVICE POSITION: CHEEK

Communication System: GSM 1900; Frequency: 1880 MHz; Channel Number: 661; Duty Cycle: 1:8

Medium: Regular Glycol Head; Medium parameters used: $\sigma = 1.45$ mho/m, $\epsilon_r = 38.2$; $\rho = 1000$ kg/m³

DASY4 Configuration:

- Probe: ET3DV6R - SN1397; ConvF(5.17, 5.17, 5.17); Calibrated: 4/22/2005
- Sensor-Surface: 4mm (Mechanical Surface Detection)
- Electronics: DAE3 Sn434; Calibrated: 3/16/2005
- Phantom: R3: Glycol SAM; Type: SAM; Serial: TP-1159;
- Measurement SW: DASY4, V4.5 Build 19; Postprocessing SW: SEMCAD, V1.8 Build 147

Left Head Template/Area Scan - Normal (15mm) (7x17x1):

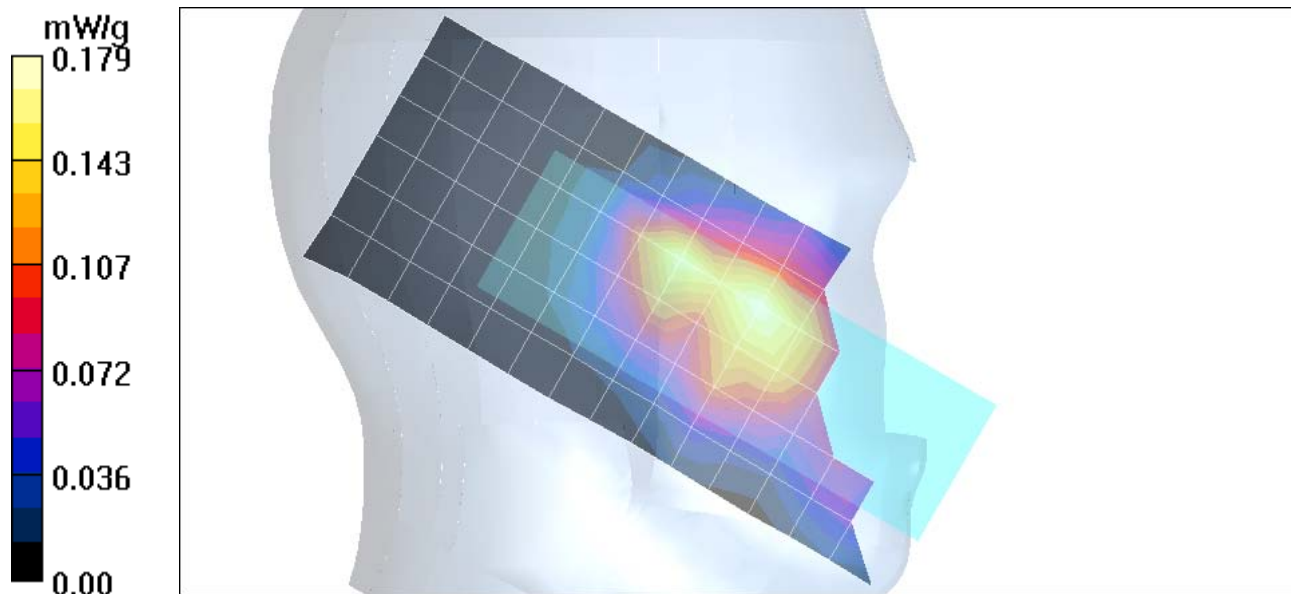
Measurement grid: dx=15mm, dy=15mm Maximum value of SAR (measured) = 0.178 mW/g

Left Head Template/Zoom Scan - to correct max outside (7x7x7)/Cube 0:

Measurement grid: dx=5mm, dy=5mm, dz=5mm

Reference Value = 11.4 V/m; **Power Drift = 0.035 dB** Peak SAR (extrapolated) = 0.249 W/kg

SAR(1 g) = 0.170 mW/g; SAR(10 g) = 0.108 mW/g Maximum value of SAR (measured) = 0.179 mW/g



Date/Time: 8/8/2005 12:56:28PM

Test Laboratory: Motorola 1900 LH Tilt ch661

Serial: -25993

Procedure Notes: Pwr Step: 00 (OTA) Antenna Position: INTERNAL Accessory Model #: N/A

Battery Model #: SNN5696B DEVICE POSITION: TILTED

Communication System: GSM 1900; Frequency: 1880 MHz; Channel Number: 661; Duty Cycle: 1:8

Medium: Regular Glycol Head; Medium parameters used: $\sigma = 1.45$ mho/m, $\epsilon_r = 38.2$; $\rho = 1000$ kg/m³

DASY4 Configuration:

- Probe: ET3DV6R - SN1397; ConvF(5.17, 5.17, 5.17); Calibrated: 4/22/2005
- Sensor-Surface: 4mm (Mechanical Surface Detection)
- Electronics: DAE3 Sn434; Calibrated: 3/16/2005
- Phantom: R3: Glycol SAM; Type: SAM; Serial: TP-1159;
- Measurement SW: DASY4, V4.5 Build 19; Postprocessing SW: SEMCAD, V1.8 Build 147

Left Head Template/Area Scan - Normal (15mm) (7x17x1):

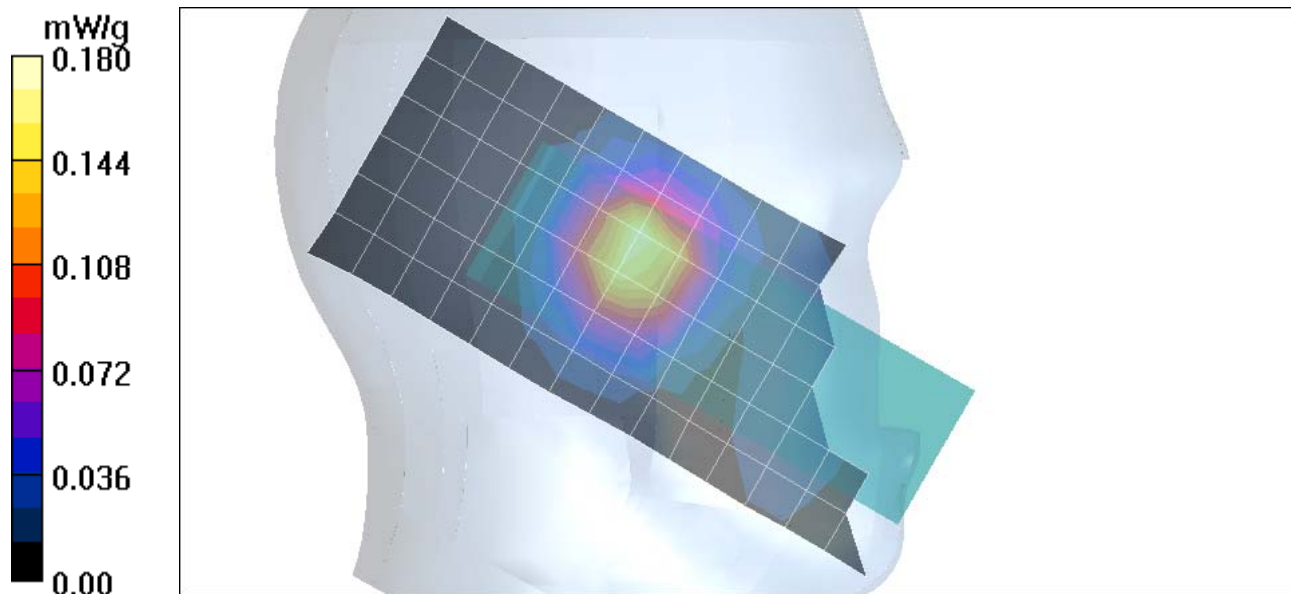
Measurement grid: dx=15mm, dy=15mm Maximum value of SAR (measured) = 0.169 mW/g

Left Head Template/Zoom Scan (7x7x7)/Cube 0:

Measurement grid: dx=5mm, dy=5mm, dz=5mm

Reference Value = 11.1 V/m; **Power Drift = 0.120 dB** Peak SAR (extrapolated) = 0.235 W/kg

SAR(1 g) = 0.167 mW/g; SAR(10 g) = 0.105 mW/g Maximum value of SAR (measured) = 0.180 mW/g



Date/Time: 8/8/2005 5:42:20PM

Test Laboratory: Motorola 1900 RH Cheek ch661

Serial: -25993

Procedure Notes: Pwr Step: 00 (OTA) Antenna Position: INTERNAL Accessory Model #: N/A

Battery Model #: SNN5696B DEVICE POSITION: CHEEK

Communication System: GSM 1900; Frequency: 1880 MHz; Channel Number: 661; Duty Cycle: 1:8

Medium: Regular Glycol Head; Medium parameters used: $\sigma = 1.45$ mho/m, $\epsilon_r = 38.2$; $\rho = 1000$ kg/m³

DASY4 Configuration:

- Probe: ET3DV6R - SN1397; ConvF(5.17, 5.17, 5.17); Calibrated: 4/22/2005
- Sensor-Surface: 4mm (Mechanical Surface Detection)
- Electronics: DAE3 Sn434; Calibrated: 3/16/2005
- Phantom: R3: Glycol SAM; Type: SAM; Serial: TP-1159;
- Measurement SW: DASY4, V4.5 Build 19; Postprocessing SW: SEMCAD, V1.8 Build 147

Right Head Template/Area Scan - Normal (15mm) (7x17x1):

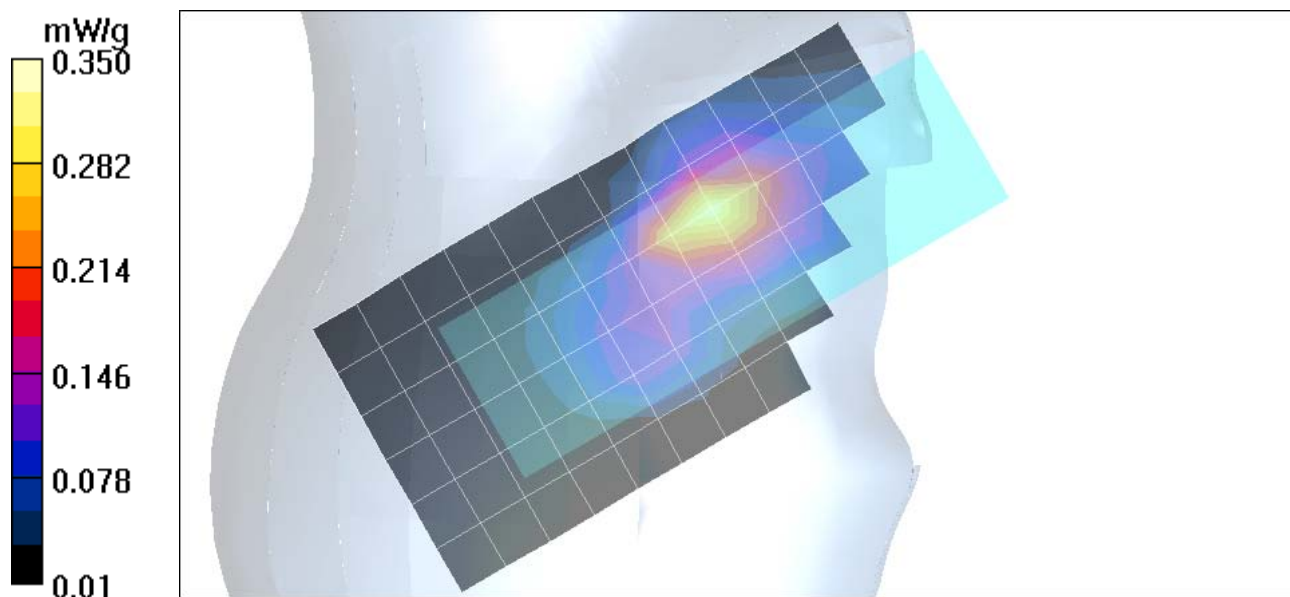
Measurement grid: dx=15mm, dy=15mm Maximum value of SAR (measured) = 0.328 mW/g

Right Head Template/Zoom Scan (7x7x7)/Cube 0:

Measurement grid: dx=5mm, dy=5mm, dz=5mm

Reference Value = 15.7 V/m; **Power Drift = -0.114 dB** Peak SAR (extrapolated) = 0.524 W/kg

SAR(1 g) = 0.312 mW/g; SAR(10 g) = 0.176 mW/g Maximum value of SAR (measured) = 0.350 mW/g



Date/Time: 8/8/2005 6:21:28PM

Test Laboratory: Motorola 1900 RH Tilt ch661

Serial: -25993

Procedure Notes: Pwr Step: 00 (OTA) Antenna Position: INTERNAL Accessory Model #: N/A
Battery Model #: SNN5696B DEVICE POSITION: rotated
Communication System: GSM 1900; Frequency: 1880 MHz; Channel Number: 661; Duty Cycle: 1:8
Medium: Regular Glycol Head; Medium parameters used: $\sigma = 1.45$ mho/m, $\epsilon_r = 38.2$; $\rho = 1000$ kg/m³

DASY4 Configuration:

- Probe: ET3DV6R - SN1397; ConvF(5.17, 5.17, 5.17); Calibrated: 4/22/2005
- Sensor-Surface: 4mm (Mechanical Surface Detection)
- Electronics: DAE3 Sn434; Calibrated: 3/16/2005
- Phantom: R3: Glycol SAM; Type: SAM; Serial: TP-1159;
- Measurement SW: DASY4, V4.5 Build 19; Postprocessing SW: SEMCAD, V1.8 Build 147

Right Head Template/Area Scan - Normal (15mm) (7x17x1):

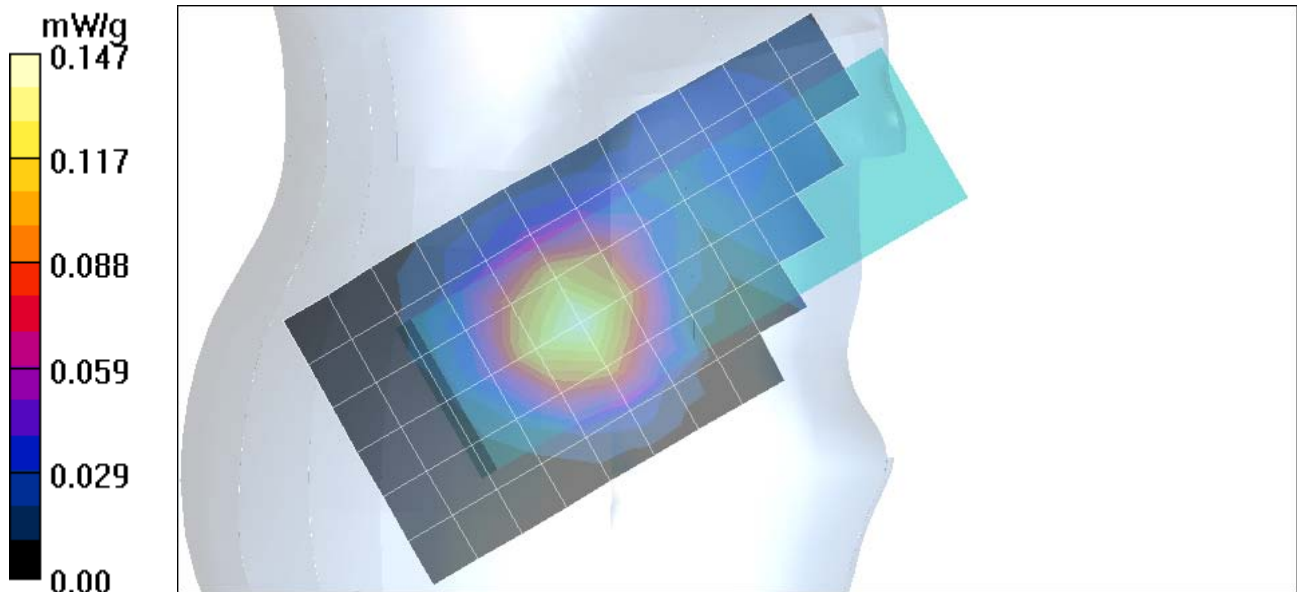
Measurement grid: dx=15mm, dy=15mm Maximum value of SAR (measured) = 0.147 mW/g

Right Head Template/Zoom Scan (7x7x7)/Cube 0:

Measurement grid: dx=5mm, dy=5mm, dz=5mm

Reference Value = 10.1 V/m; **Power Drift = 0.025 dB** Peak SAR (extrapolated) = 0.188 W/kg

SAR(1 g) = 0.135 mW/g; SAR(10 g) = 0.087 mW/g Maximum value of SAR (measured) = 0.145 mW/g



Date/Time: 8/8/2005 6:46:55PM

Test Laboratory: Motorola 1900 RH Cheek ch661 with SNN5696B(RevB)**Serial: -25993**

Procedure Notes: Pwr Step: 00 (OTA) Antenna Position: INTERNAL Accessory Model #: N/A

Battery Model #: SNN5696B (RevB) DEVICE POSITION: CHEEK

Communication System: GSM 1900; Frequency: 1880 MHz; Channel Number: 661; Duty Cycle: 1:8

Medium: Regular Glycol Head; Medium parameters used: $\sigma = 1.45$ mho/m, $\epsilon_r = 38.2$; $\rho = 1000$ kg/m³**DASY4 Configuration:**

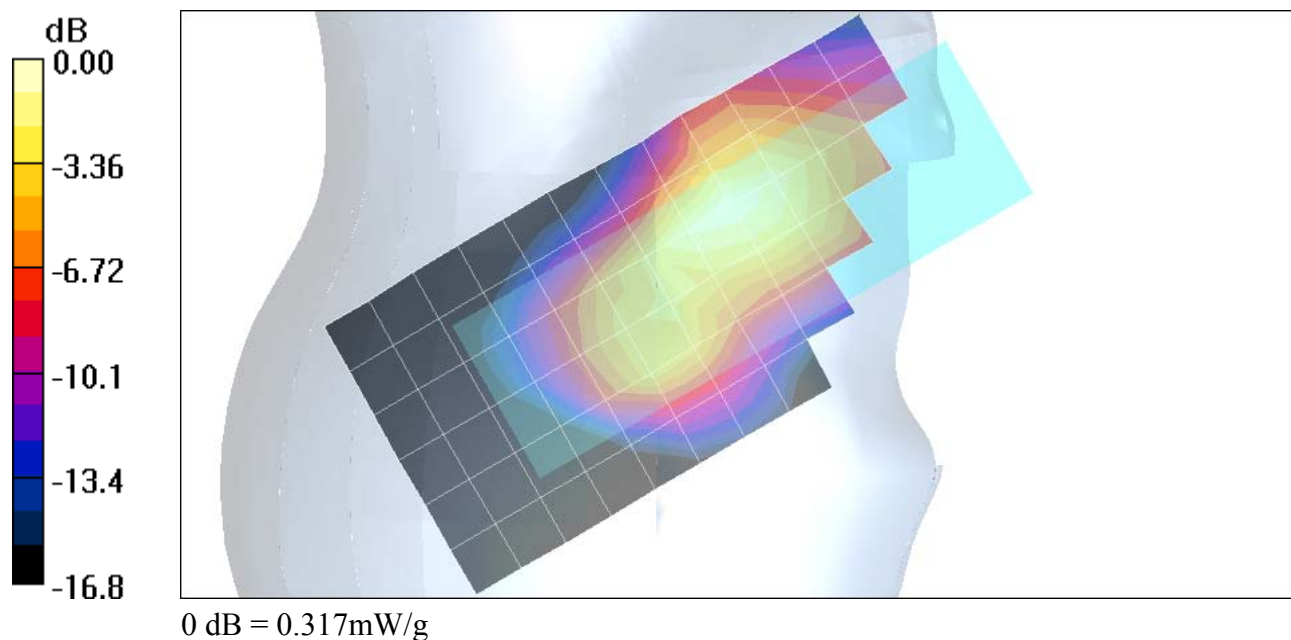
- Probe: ET3DV6R - SN1397; ConvF(5.17, 5.17, 5.17); Calibrated: 4/22/2005
- Sensor-Surface: 4mm (Mechanical Surface Detection)
- Electronics: DAE3 Sn434; Calibrated: 3/16/2005
- Phantom: R3: Glycol SAM; Type: SAM; Serial: TP-1159;
- Measurement SW: DASY4, V4.5 Build 19; Postprocessing SW: SEMCAD, V1.8 Build 147

Right Head Template/Area Scan - Normal (15mm) (7x17x1):

Measurement grid: dx=15mm, dy=15mm Maximum value of SAR (measured) = 0.314 mW/g

Right Head Template/Zoom Scan (7x7x7)/Cube 0:

Measurement grid: dx=5mm, dy=5mm, dz=5mm

Reference Value = 14.9 V/m; **Power Drift = -0.058 dB** Peak SAR (extrapolated) = 0.484 W/kg**SAR(1 g) = 0.290 mW/g; SAR(10 g) = 0.165 mW/g** Maximum value of SAR (measured) = 0.317 mW/g

Appendix 3

SAR distribution plots for Body Worn Configuration

Date/Time: 8/7/2005 4:38:17PM

Test Laboratory: Motorola 850 BW front 15mm

Serial: 4400013925993

Procedure Notes: Pwr Step: 05 Antenna Position: Int Battery Model #: SNN5696B

Accessory Model #: Front of phone 15mm away from phantom

Communication System: GSM 850; Frequency: 836.6 MHz; Channel Number: 190; Duty Cycle: 1:8

Medium: Low Freq Body; Medium parameters used: $\sigma = 0.97$ mho/m, $\epsilon_r = 53.9$; $\rho = 1000$ kg/m³

DASY4 Configuration:

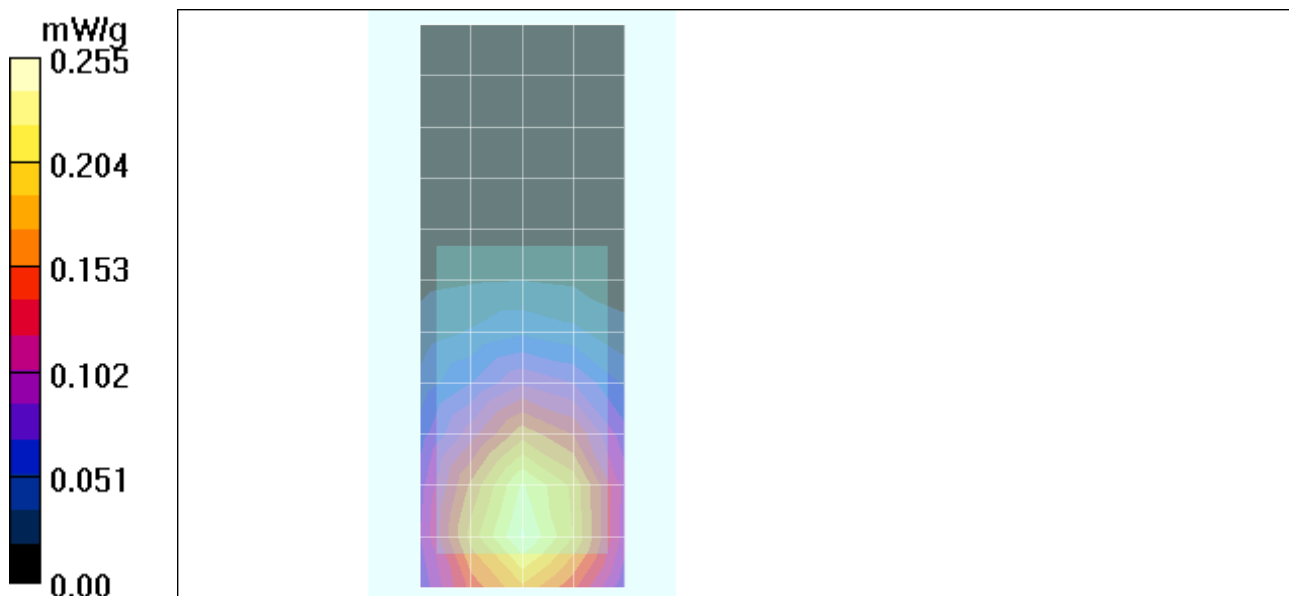
- Probe: ET3DV6R - SN1397; ConvF(6.22, 6.22, 6.22); Calibrated: 4/22/2005
- Sensor-Surface: 4mm (Mechanical Surface Detection)
- Electronics: DAE3 Sn434; Calibrated: 3/16/2005
- Phantom: R3: Sect.2, Amy Twin; Type: Amy Twin Flat; Serial: n/a;
- Measurement SW: DASY4, V4.5 Build 19; Postprocessing SW: SEMCAD, V1.8 Build 147

Amy Twin Phone Template/Area Scan - Normal Body (15mm) (13x7x1):

Measurement grid: dx=15mm, dy=15mm Maximum value of SAR (measured) = 0.241 mW/g

Amy Twin Phone Template/Zoom Scan (7x7x7)/Cube 0:

Measurement grid: dx=5mm, dy=5mm, dz=5mm

Reference Value = 16.6 V/m; **Power Drift = -0.301 dB** Peak SAR (extrapolated) = 0.288 W/kg**SAR(1 g) = 0.221 mW/g; SAR(10 g) = 0.156 mW/g** Maximum value of SAR (measured) = 0.235 mW/g

Date/Time: 8/7/2005 4:59:52PM

Test Laboratory: Motorola 850 BW back 15mm

Serial: 4400013925993

Procedure Notes: Pwr Step: 05 Antenna Position: Int Battery Model #: SNN5696B

Accessory Model #: Back of phone 15mm away from phantom

Communication System: GSM 850; Frequency: 836.6 MHz; Channel Number: 190; Duty Cycle: 1:8

Medium: Low Freq Body; Medium parameters used: $\sigma = 0.97$ mho/m, $\epsilon_r = 53.9$; $\rho = 1000$ kg/m³

DASY4 Configuration:

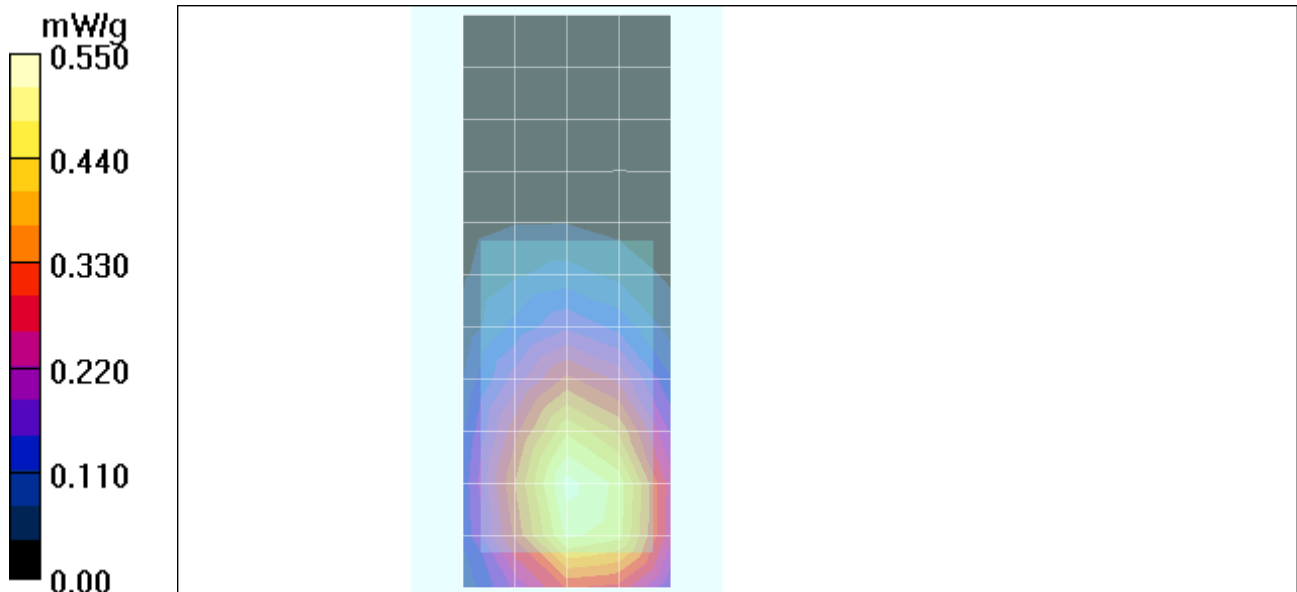
- Probe: ET3DV6R - SN1397; ConvF(6.22, 6.22, 6.22); Calibrated: 4/22/2005
- Sensor-Surface: 4mm (Mechanical Surface Detection)
- Electronics: DAE3 Sn434; Calibrated: 3/16/2005
- Phantom: R3: Sect.2, Amy Twin; Type: Amy Twin Flat; Serial: n/a;
- Measurement SW: DASY4, V4.5 Build 19; Postprocessing SW: SEMCAD, V1.8 Build 147

Amy Twin Phone Template/Area Scan - Normal Body (15mm) (13x7x1):

Measurement grid: dx=15mm, dy=15mm Maximum value of SAR (measured) = 0.529 mW/g

Amy Twin Phone Template/Zoom Scan (7x7x7)/Cube 0:

Measurement grid: dx=5mm, dy=5mm, dz=5mm

Reference Value = 24.1 V/m; **Power Drift = -0.178 dB** Peak SAR (extrapolated) = 0.654 W/kg**SAR(1 g) = 0.501 mW/g; SAR(10 g) = 0.354 mW/g** Maximum value of SAR (measured) = 0.536 mW/g

Date/Time: 8/7/2005 5:20:44PM

Test Laboratory: Motorola 850 BW back 15mm with Bluetooth

Serial: 4400013925993

Procedure Notes: Pwr Step: 05 Antenna Position: Int Battery Model #: SNN5696B

Accessory Model #: Back of phone 15mm away from phantom BLUETOOTH

Communication System: GSM 850; Frequency: 836.6 MHz; Channel Number: 190; Duty Cycle: 1:8

Medium: Low Freq Body; Medium parameters used: $\sigma = 0.97$ mho/m, $\epsilon_r = 53.9$; $\rho = 1000$ kg/m³

DASY4 Configuration:

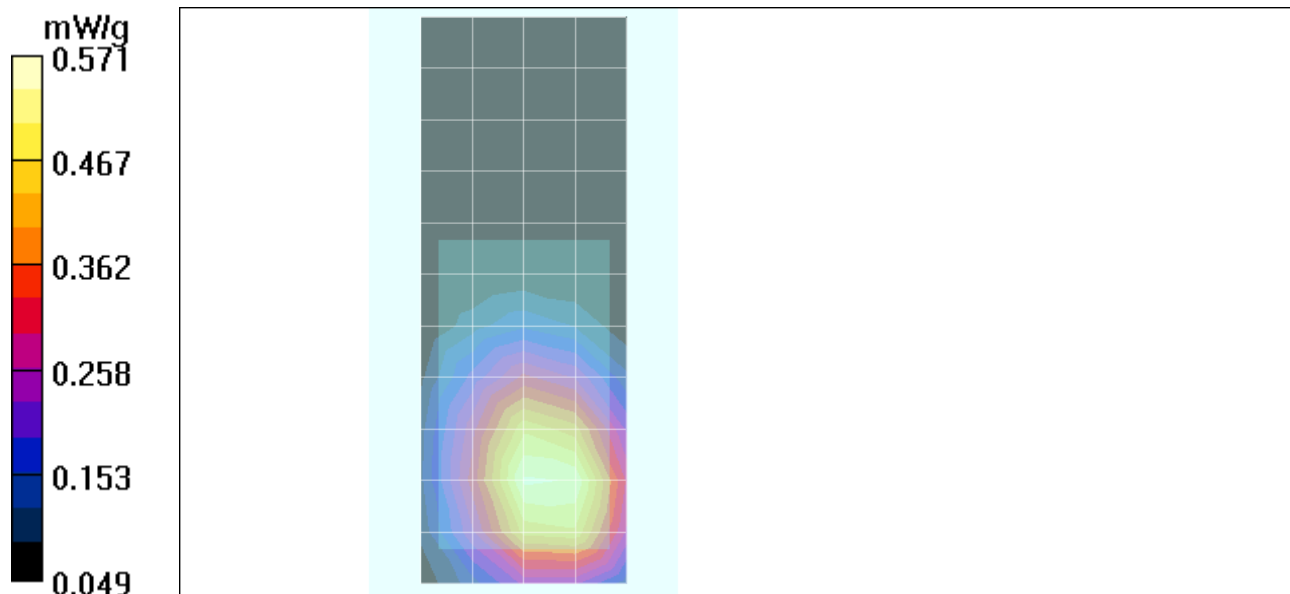
- Probe: ET3DV6R - SN1397; ConvF(6.22, 6.22, 6.22); Calibrated: 4/22/2005
- Sensor-Surface: 4mm (Mechanical Surface Detection)
- Electronics: DAE3 Sn434; Calibrated: 3/16/2005
- Phantom: R3: Sect.2, Amy Twin; Type: Amy Twin Flat; Serial: n/a;
- Measurement SW: DASY4, V4.5 Build 19; Postprocessing SW: SEMCAD, V1.8 Build 147

Amy Twin Phone Template/Area Scan - Normal Body (15mm) (13x7x1):

Measurement grid: dx=15mm, dy=15mm Maximum value of SAR (measured) = 0.543 mW/g

Amy Twin Phone Template/Zoom Scan (7x7x7)/Cube 0:

Measurement grid: dx=5mm, dy=5mm, dz=5mm

Reference Value = 23.5 V/m; **Power Drift = -0.122 dB** Peak SAR (extrapolated) = 0.698 W/kg**SAR(1 g) = 0.532 mW/g; SAR(10 g) = 0.373 mW/g** Maximum value of SAR (measured) = 0.571 mW/g

Date/Time: 8/7/2005 5:43:36PM

Test Laboratory: Motorola 850 BW ch190 SYN1335A with Bluetooth

Serial: 4400013925993

Procedure Notes: Pwr Step: 05 Antenna Position: Int Battery Model #: SNN5696B

Accessory Model #: Back of phone BLUETOOTH with SYN1335A Pouch

Communication System: GSM 850; Frequency: 836.6 MHz; Channel Number: 190; Duty Cycle: 1:8

Medium: Low Freq Body; Medium parameters used: $\sigma = 0.97$ mho/m, $\epsilon_r = 53.9$; $\rho = 1000$ kg/m³

DASY4 Configuration:

- Probe: ET3DV6R - SN1397; ConvF(6.22, 6.22, 6.22); Calibrated: 4/22/2005
- Sensor-Surface: 4mm (Mechanical Surface Detection)
- Electronics: DAE3 Sn434; Calibrated: 3/16/2005
- Phantom: R3: Sect.2, Amy Twin; Type: Amy Twin Flat; Serial: n/a;
- Measurement SW: DASY4, V4.5 Build 19; Postprocessing SW: SEMCAD, V1.8 Build 147

Amy Twin Phone Template/Area Scan - Normal Body (15mm) (13x7x1):

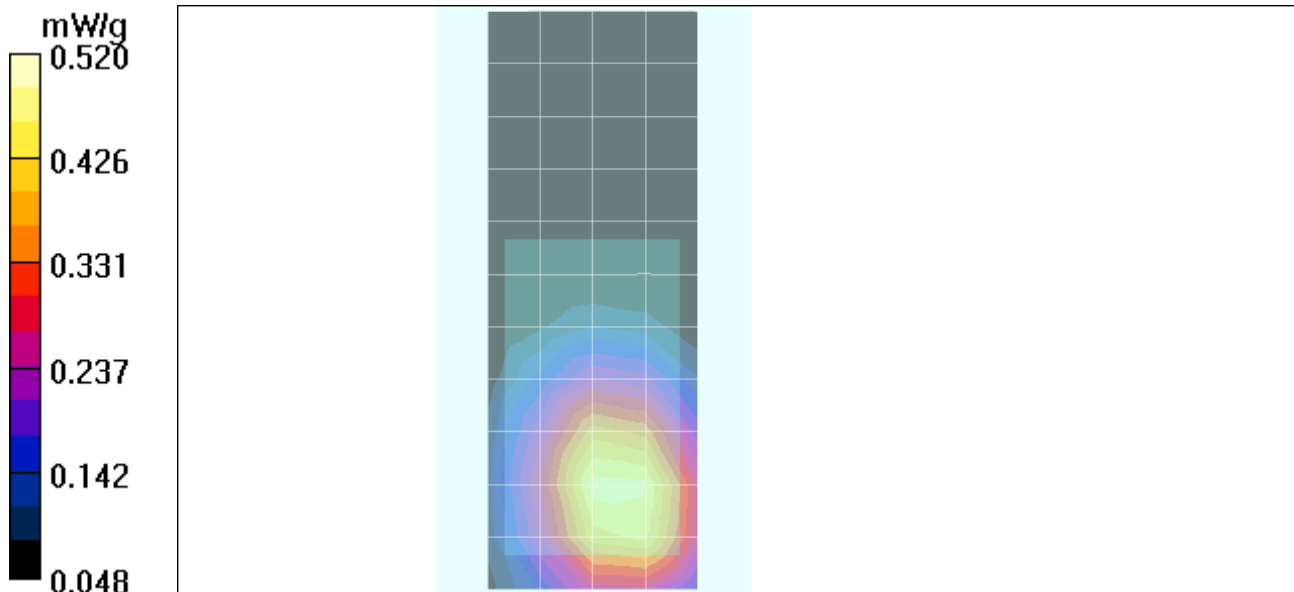
Measurement grid: dx=15mm, dy=15mm Maximum value of SAR (measured) = 0.473 mW/g

Amy Twin Phone Template/Zoom Scan (7x7x7)/Cube 0:

Measurement grid: dx=5mm, dy=5mm, dz=5mm

Reference Value = 22.4 V/m; **Power Drift = -0.118 dB** Peak SAR (extrapolated) = 0.596 W/kg

SAR(1 g) = 0.466 mW/g; SAR(10 g) = 0.330 mW/g Maximum value of SAR (measured) = 0.495 mW/g



Date/Time: 8/7/2005 6:58:52PM

Test Laboratory: Motorola 850 BW ch190 back 15mm with Bluetooth & SNN5696B(RevB)**Serial: 4400013925993**

Procedure Notes: Pwr Step: 05 Antenna Position: Int Battery Model #: SNN5696B(RevB)

Accessory Model #: Back of phone 15mm away from phantom BLUETOOTH

Communication System: GSM 850; Frequency: 836.6 MHz; Channel Number: 190; Duty Cycle: 1:8

Medium: Low Freq Body; Medium parameters used: $\sigma = 0.97$ mho/m, $\epsilon_r = 53.9$; $\rho = 1000$ kg/m³

DASY4 Configuration:

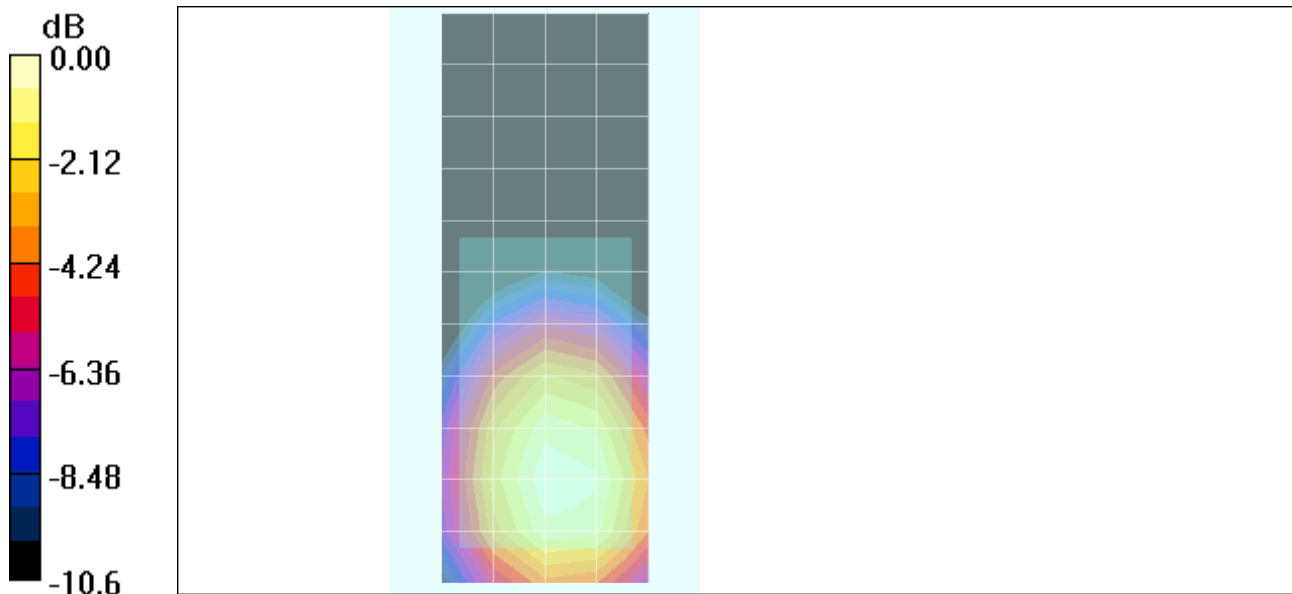
- Probe: ET3DV6R - SN1397; ConvF(6.22, 6.22, 6.22); Calibrated: 4/22/2005
- Sensor-Surface: 4mm (Mechanical Surface Detection)
- Electronics: DAE3 Sn434; Calibrated: 3/16/2005
- Phantom: R3: Sect.2, Amy Twin; Type: Amy Twin Flat; Serial: n/a;
- Measurement SW: DASY4, V4.5 Build 19; Postprocessing SW: SEMCAD, V1.8 Build 147

Amy Twin Phone Template/Area Scan - Normal Body (15mm) (13x7x1):

Measurement grid: dx=15mm, dy=15mm Maximum value of SAR (measured) = 0.659 mW/g

Amy Twin Phone Template/Zoom Scan (7x7x7)/Cube 0:

Measurement grid: dx=5mm, dy=5mm, dz=5mm

Reference Value = 26.1 V/m; **Power Drift = -0.087 dB** Peak SAR (extrapolated) = 0.837 W/kg**SAR(1 g) = 0.637 mW/g; SAR(10 g) = 0.447 mW/g** Maximum value of SAR (measured) = 0.683 mW/g

0 dB = 0.683mW/g

Date/Time: 8/7/2005 6:11:51PM

Test Laboratory: Motorola 850 GPRS BW ch190 front 25mm**Serial: 4400013925993**

Procedure Notes: Pwr Step: 05 Antenna Position: Int Battery Model #: SNN5696B

Accessory Model #: Front of phone 25mm away from phantom

Communication System: GPRS 850-CL10; Frequency: 836.6 MHz; Channel Number: 190; Duty Cycle: 1:4

Medium: Low Freq Body; Medium parameters used: $\sigma = 0.97$ mho/m, $\epsilon_r = 53.9$; $\rho = 1000$ kg/m³

DASY4 Configuration:

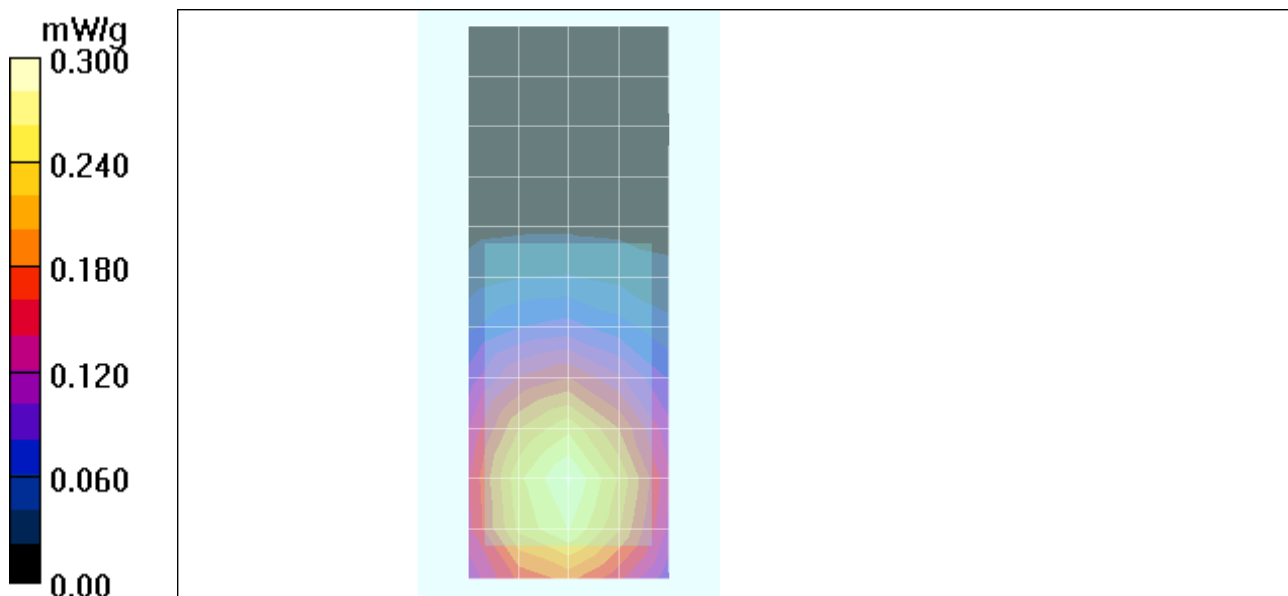
- Probe: ET3DV6R - SN1397; ConvF(6.22, 6.22, 6.22); Calibrated: 4/22/2005
- Sensor-Surface: 4mm (Mechanical Surface Detection)
- Electronics: DAE3 Sn434; Calibrated: 3/16/2005
- Phantom: R3: Sect.2, Amy Twin; Type: Amy Twin Flat; Serial: n/a;
- Measurement SW: DASY4, V4.5 Build 19; Postprocessing SW: SEMCAD, V1.8 Build 147

Amy Twin Phone Template/Area Scan - Normal Body (15mm) (13x7x1):

Measurement grid: dx=15mm, dy=15mm Maximum value of SAR (measured) = 0.283 mW/g

Amy Twin Phone Template/Zoom Scan (7x7x7)/Cube 0:

Measurement grid: dx=5mm, dy=5mm, dz=5mm

Reference Value = 17.7 V/m; **Power Drift = -0.345 dB** Peak SAR (extrapolated) = 0.327 W/kg**SAR(1 g) = 0.252 mW/g; SAR(10 g) = 0.184 mW/g** Maximum value of SAR (measured) = 0.266 mW/g

Date/Time: 8/7/2005 6:33:06PM

Test Laboratory: Motorola 850 GPRS BW ch190 back 25mm

Serial: 4400013925993

Procedure Notes: Pwr Step: 05 Antenna Position: Int Battery Model #: SNN5696B

Accessory Model #: Back of phone 25mm away from phantom

Communication System: GPRS 850-CL10; Frequency: 836.6 MHz; Channel Number: 190; Duty Cycle: 1:4

Medium: Low Freq Body; Medium parameters used: $\sigma = 0.97$ mho/m, $\epsilon_r = 53.9$; $\rho = 1000$ kg/m³

DASY4 Configuration:

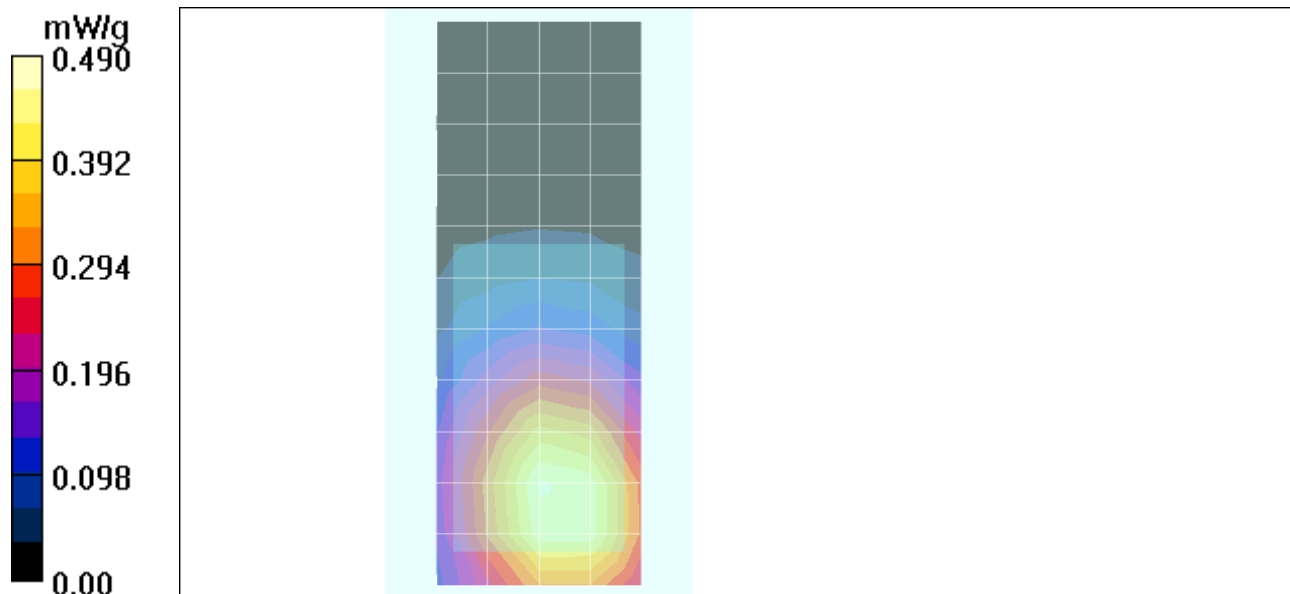
- Probe: ET3DV6R - SN1397; ConvF(6.22, 6.22, 6.22); Calibrated: 4/22/2005
- Sensor-Surface: 4mm (Mechanical Surface Detection)
- Electronics: DAE3 Sn434; Calibrated: 3/16/2005
- Phantom: R3: Sect.2, Amy Twin; Type: Amy Twin Flat; Serial: n/a;
- Measurement SW: DASY4, V4.5 Build 19; Postprocessing SW: SEMCAD, V1.8 Build 147

Amy Twin Phone Template/Area Scan - Normal Body (15mm) (13x7x1):

Measurement grid: dx=15mm, dy=15mm Maximum value of SAR (measured) = 0.462 mW/g

Amy Twin Phone Template/Zoom Scan (7x7x7)/Cube 0:

Measurement grid: dx=5mm, dy=5mm, dz=5mm

Reference Value = 22.8 V/m; **Power Drift = -0.223 dB** Peak SAR (extrapolated) = 0.564 W/kg**SAR(1 g) = 0.447 mW/g; SAR(10 g) = 0.326 mW/g** Maximum value of SAR (measured) = 0.474 mW/g

Date/Time: 8/8/2005 7:22:57PM

Test Laboratory: Motorola 1900 BW ch661 front 15mm

Serial: -25993

Procedure Notes: Pwr Step: 00 Antenna Position: Int Battery Model #: SNN5696B

Accessory Model #: Front of phone 15mm away from phantom

Communication System: GSM 1900; Frequency: 1880 MHz; Channel Number: 661; Duty Cycle: 1:8

Medium: Regular Glycol Body; Medium parameters used: $\sigma = 1.59$ mho/m, $\epsilon_r = 52$; $\rho = 1000$ kg/m³

DASY4 Configuration:

- Probe: ET3DV6R - SN1397; ConvF(4.77, 4.77, 4.77); Calibrated: 4/22/2005
- Sensor-Surface: 4mm (Mechanical Surface Detection)
- Electronics: DAE3 Sn434; Calibrated: 3/16/2005
- Phantom: R3: Sect.1, Amy Twin; Type: Amy Twin Flat; Serial: n/a;
- Measurement SW: DASY4, V4.5 Build 19; Postprocessing SW: SEMCAD, V1.8 Build 147

Amy Twin Phone Template/Area Scan - Normal Body (15mm) (13x7x1):

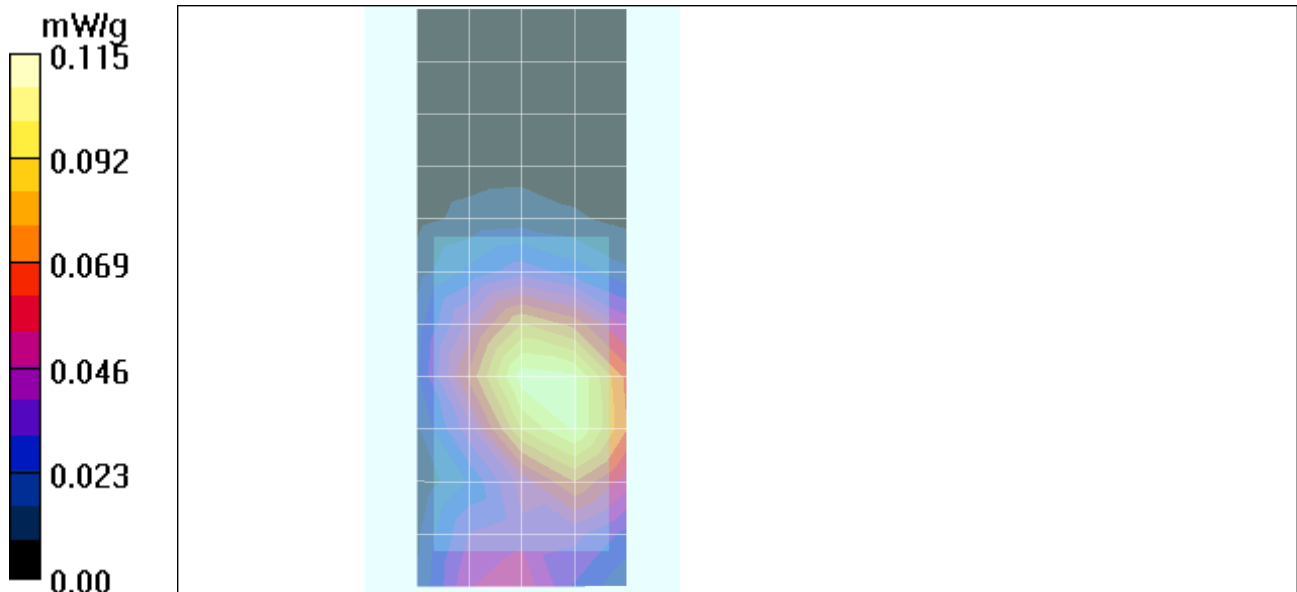
Measurement grid: dx=15mm, dy=15mm Maximum value of SAR (measured) = 0.104 mW/g

Amy Twin Phone Template/Zoom Scan (7x7x7)/Cube 0:

Measurement grid: dx=5mm, dy=5mm, dz=5mm

Reference Value = 8.34 V/m; **Power Drift = 0.053 dB** Peak SAR (extrapolated) = 0.151 W/kg

SAR(1 g) = 0.105 mW/g; SAR(10 g) = 0.069 mW/g Maximum value of SAR (measured) = 0.112 mW/g



Date/Time: 8/8/2005 8:55:24PM

Test Laboratory: Motorola 1900 BW ch661 back 15mm

Serial: -25993

Procedure Notes: Pwr Step: 00 Antenna Position: Int Battery Model #: SNN5696B

Accessory Model #: Back of phone 15mm away from phantom

Communication System: GSM 1900; Frequency: 1880 MHz; Channel Number: 661; Duty Cycle: 1:8

Medium: Regular Glycol Body; Medium parameters used: $\sigma = 1.59$ mho/m, $\epsilon_r = 52$; $\rho = 1000$ kg/m³

DASY4 Configuration:

- Probe: ET3DV6R - SN1397; ConvF(4.77, 4.77, 4.77); Calibrated: 4/22/2005
- Sensor-Surface: 4mm (Mechanical Surface Detection)
- Electronics: DAE3 Sn434; Calibrated: 3/16/2005
- Phantom: R3: Sect.1, Amy Twin; Type: Amy Twin Flat; Serial: n/a;
- Measurement SW: DASY4, V4.5 Build 19; Postprocessing SW: SEMCAD, V1.8 Build 147

Amy Twin Phone Template/Area Scan - Normal Body (15mm) (13x7x1):

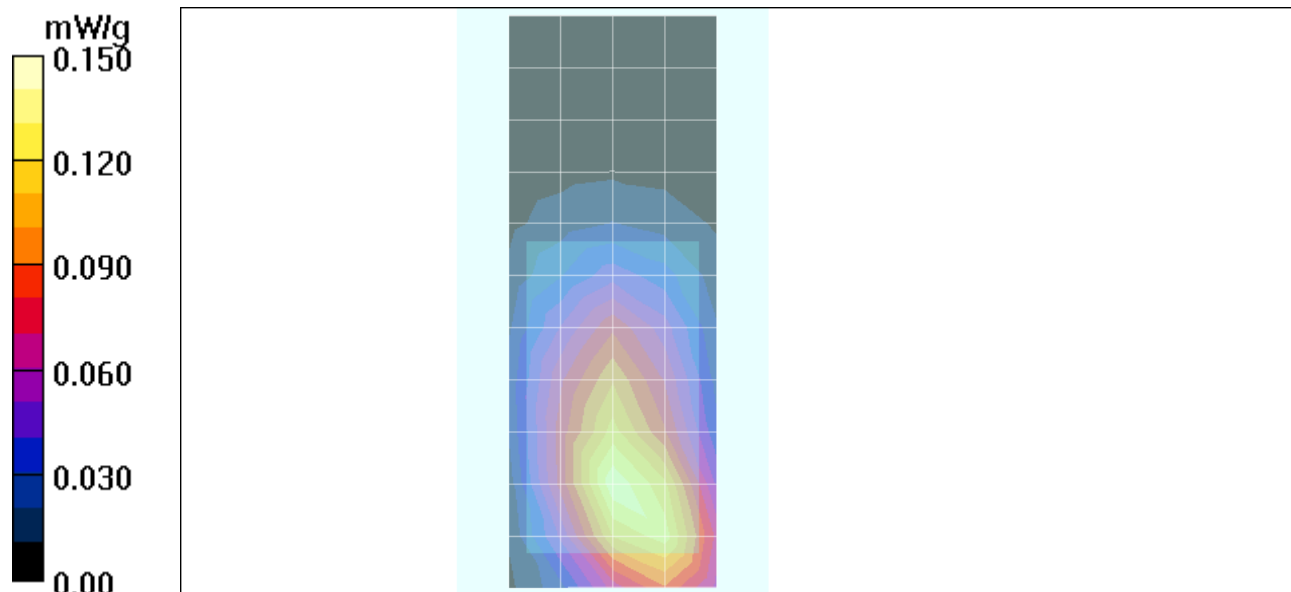
Measurement grid: dx=15mm, dy=15mm Maximum value of SAR (measured) = 0.139 mW/g

Amy Twin Phone Template/Zoom Scan (7x7x7)/Cube 0:

Measurement grid: dx=5mm, dy=5mm, dz=5mm

Reference Value = 9.48 V/m; **Power Drift = -0.043 dB** Peak SAR (extrapolated) = 0.205 W/kg

SAR(1 g) = 0.131 mW/g; SAR(10 g) = 0.082 mW/g Maximum value of SAR (measured) = 0.142 mW/g



Date/Time: 8/8/2005 9:53:27PM

Test Laboratory: Motorola 1900 BW ch661 SYN1335A with Bluetooth

Serial: -25993

Procedure Notes: Pwr Step: 00 Antenna Position: Int Battery Model #: SNN5696B

Accessory Model #: Back of phone, bluetooth w SYN1335A case

Communication System: GSM 1900; Frequency: 1880 MHz; Channel Number: 661; Duty Cycle: 1:8

Medium: Regular Glycol Body; Medium parameters used: $\sigma = 1.59$ mho/m, $\epsilon_r = 52$; $\rho = 1000$ kg/m³

DASY4 Configuration:

- Probe: ET3DV6R - SN1397; ConvF(4.77, 4.77, 4.77); Calibrated: 4/22/2005
- Sensor-Surface: 4mm (Mechanical Surface Detection)
- Electronics: DAE3 Sn434; Calibrated: 3/16/2005
- Phantom: R3: Sect.1, Amy Twin; Type: Amy Twin Flat; Serial: n/a;
- Measurement SW: DASY4, V4.5 Build 19; Postprocessing SW: SEMCAD, V1.8 Build 147

Amy Twin Phone Template/Area Scan - Normal Body (15mm) (13x7x1):

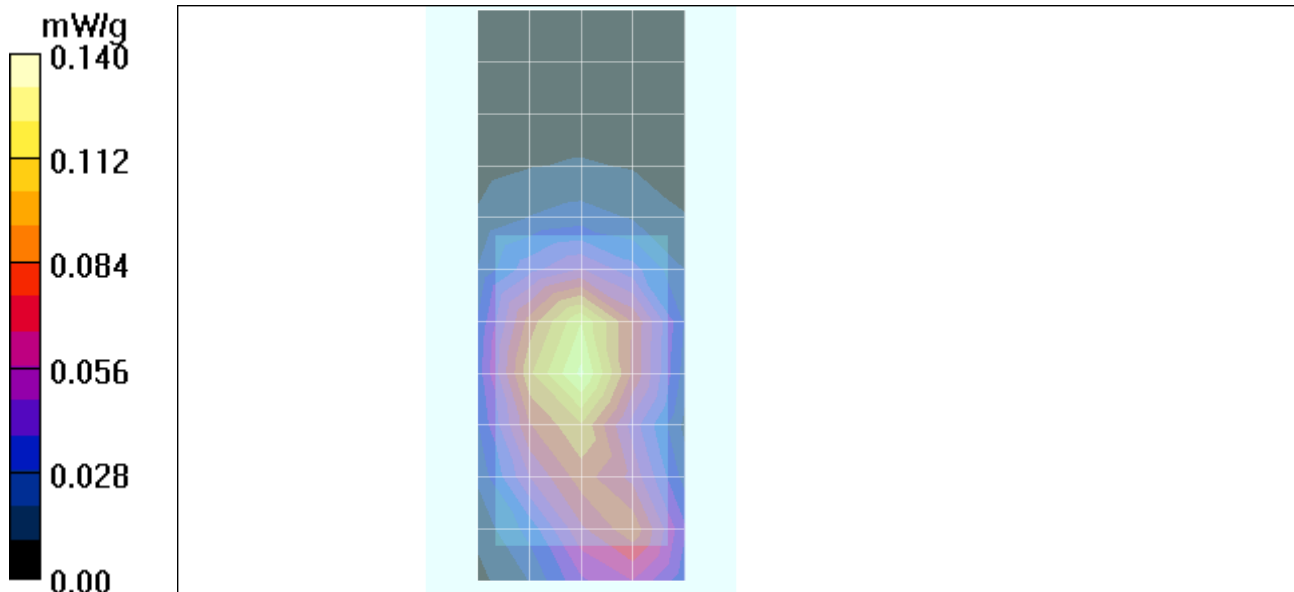
Measurement grid: dx=15mm, dy=15mm Maximum value of SAR (measured) = 0.124 mW/g

Amy Twin Phone Template/Zoom Scan (7x7x7)/Cube 0:

Measurement grid: dx=5mm, dy=5mm, dz=5mm

Reference Value = 8.66 V/m; **Power Drift = 0.019 dB** Peak SAR (extrapolated) = 0.183 W/kg

SAR(1 g) = 0.120 mW/g; SAR(10 g) = 0.076 mW/g Maximum value of SAR (measured) = 0.130 mW/g



Date/Time: 8/8/2005 9:21:59PM

Test Laboratory: Motorola 1900 BW ch661 back 15mm with Bluetooth

Serial: -25993

Procedure Notes: Pwr Step: 00 Antenna Position: Int Battery Model #: SNN5696B

Accessory Model #: Back of phone 15mm away from phantom bluetooth

Communication System: GSM 1900; Frequency: 1880 MHz; Channel Number: 661; Duty Cycle: 1:8

Medium: Regular Glycol Body; Medium parameters used: $\sigma = 1.59$ mho/m, $\epsilon_r = 52$; $\rho = 1000$ kg/m³

DASY4 Configuration:

- Probe: ET3DV6R - SN1397; ConvF(4.77, 4.77, 4.77); Calibrated: 4/22/2005
- Sensor-Surface: 4mm (Mechanical Surface Detection)
- Electronics: DAE3 Sn434; Calibrated: 3/16/2005
- Phantom: R3: Sect.1, Amy Twin; Type: Amy Twin Flat; Serial: n/a;
- Measurement SW: DASY4, V4.5 Build 19; Postprocessing SW: SEMCAD, V1.8 Build 147

Amy Twin Phone Template/Area Scan - Normal Body (15mm) (13x7x1):

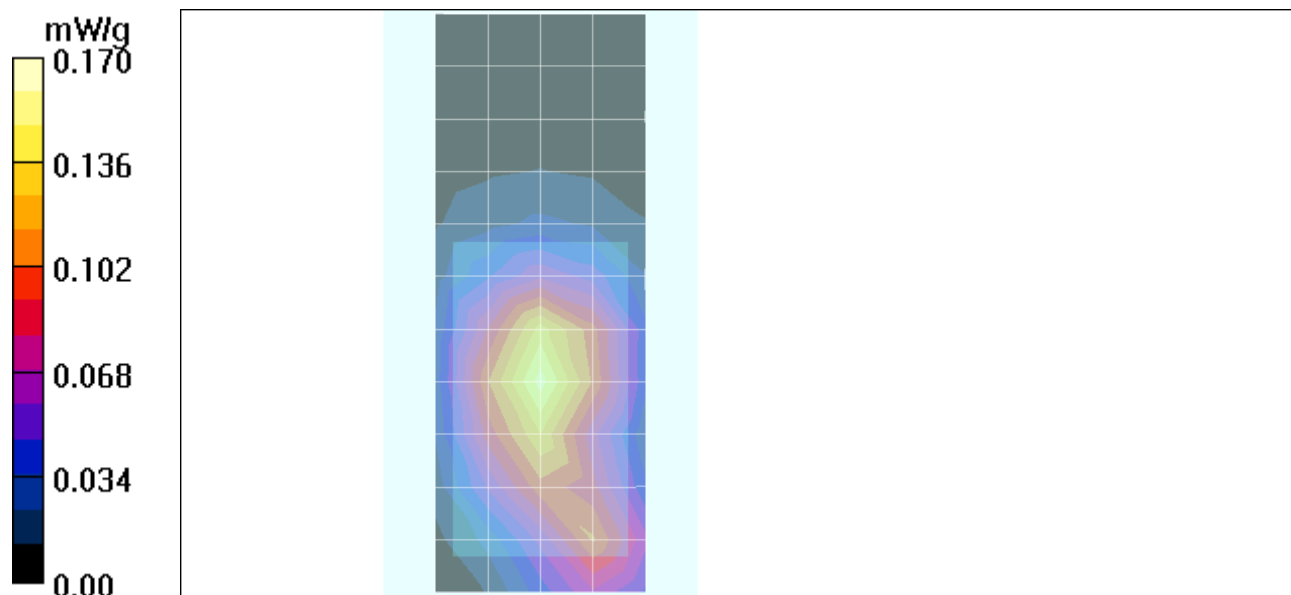
Measurement grid: dx=15mm, dy=15mm Maximum value of SAR (measured) = 0.153 mW/g

Amy Twin Phone Template/Zoom Scan (7x7x7)/Cube 0:

Measurement grid: dx=5mm, dy=5mm, dz=5mm

Reference Value = 10.0 V/m; **Power Drift = 0.01 dB** Peak SAR (extrapolated) = 0.217 W/kg**SAR(1 g) = 0.145 mW/g; SAR(10 g) = 0.093 mW/g**

Maximum value of SAR (measured) = 0.156 mW/g



Date/Time: 8/8/2005 11:01:07PM

Test Laboratory: Motorola 1900 BW ch661 back 15mm with Bluetooth & SNN5696B(RevB)

Serial: -25993

Procedure Notes: Pwr Step: 00 Antenna Position: Int Battery Model #: SNN5696B(RevB)

Accessory Model #: Back of phone 15mm away from phantom bluetooth

Communication System: GSM 1900; Frequency: 1880 MHz Channel Number: 661; Duty Cycle: 1:8

Medium: Regular Glycol Body; Medium parameters used: $\sigma = 1.59$ mho/m, $\epsilon_r = 52$; $\rho = 1000$ kg/m³

DASY4 Configuration:

- Probe: ET3DV6R - SN1397; ConvF(4.77, 4.77, 4.77); Calibrated: 4/22/2005
- Sensor-Surface: 4mm (Mechanical Surface Detection)
- Electronics: DAE3 Sn434; Calibrated: 3/16/2005
- Phantom: R3: Sect.1, Amy Twin; Type: Amy Twin Flat; Serial: n/a;
- Measurement SW: DASY4, V4.5 Build 19; Postprocessing SW: SEMCAD, V1.8 Build 147

Amy Twin Phone Template/Area Scan - Normal Body (15mm) (13x7x1):

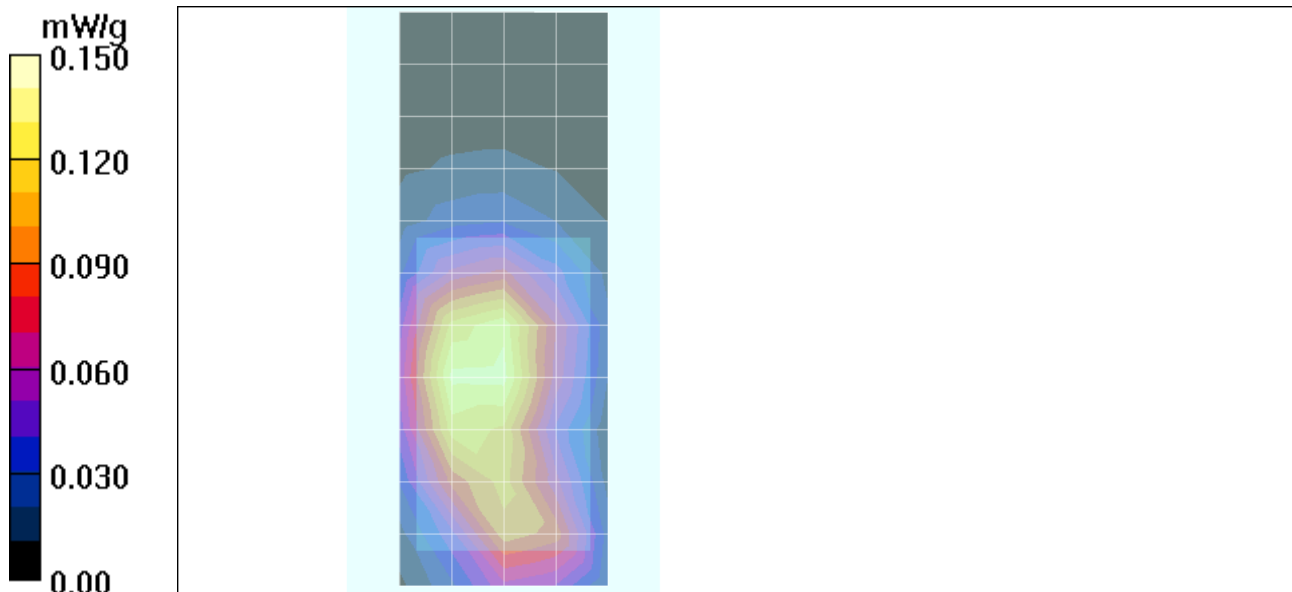
Measurement grid: dx=15mm, dy=15mm Maximum value of SAR (measured) = 0.134 mW/g

Amy Twin Phone Template/Zoom Scan (7x7x7)/Cube 0:

Measurement grid: dx=5mm, dy=5mm, dz=5mm

Reference Value = 9.12 V/m; **Power Drift = 0.014 dB** Peak SAR (extrapolated) = 0.207 W/kg

SAR(1 g) = 0.138 mW/g; SAR(10 g) = 0.089 mW/g Maximum value of SAR (measured) = 0.149 mW/g



Date/Time: 8/8/2005 10:38:01PM

Test Laboratory: Motorola 1900 GPRS BW ch661 back 25mm

Serial: -25993

Procedure Notes: Pwr Step: 00 Antenna Position: Int Battery Model #: SNN5696B

Accessory Model #: Back of phone 25mm away from phantom

Communication System: GPRS 1900-CL10; Frequency: 1880 MHz; Channel Number: 661; Duty Cycle: 1:4

Medium: Regular Glycol Body; Medium parameters used: $\sigma = 1.59$ mho/m, $\epsilon_r = 52$; $\rho = 1000$ kg/m³

DASY4 Configuration:

- Probe: ET3DV6R - SN1397; ConvF(4.77, 4.77, 4.77); Calibrated: 4/22/2005
- Sensor-Surface: 4mm (Mechanical Surface Detection)
- Electronics: DAE3 Sn434; Calibrated: 3/16/2005
- Phantom: R3: Sect.1, Amy Twin; Type: Amy Twin Flat; Serial: n/a;
- Measurement SW: DASY4, V4.5 Build 19; Postprocessing SW: SEMCAD, V1.8 Build 147

Amy Twin Phone Template/Area Scan - Normal Body (15mm) (13x7x1):

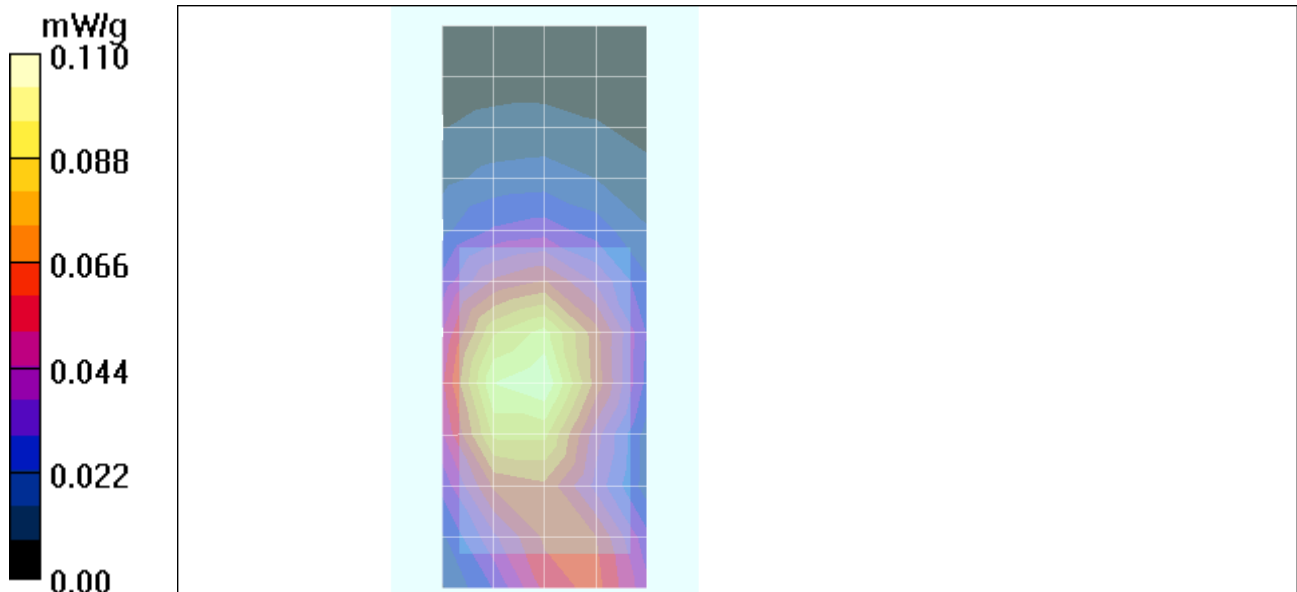
Measurement grid: dx=15mm, dy=15mm Maximum value of SAR (measured) = 0.102 mW/g

Amy Twin Phone Template/Zoom Scan (7x7x7)/Cube 0:

Measurement grid: dx=5mm, dy=5mm, dz=5mm

Reference Value = 8.10 V/m; **Power Drift = -0.017 dB** Peak SAR (extrapolated) = 0.146 W/kg

SAR(1 g) = 0.099 mW/g; SAR(10 g) = 0.064 mW/g Maximum value of SAR (measured) = 0.107 mW/g



Date/Time: 8/8/2005 10:17:02PM

Test Laboratory: Motorola 1900 GPRS BW ch661 front 25mm

Serial: -25993

Procedure Notes: Pwr Step: 00 Antenna Position: Int Battery Model #: SNN5696B

Accessory Model #: Front of phone 25mm away from phantom

Communication System: GPRS 1900-CL10; Frequency: 1880 MHz; Channel Number: 661; Duty Cycle: 1:4

Medium: Regular Glycol Body; Medium parameters used: $\sigma = 1.59$ mho/m, $\epsilon_r = 52$; $\rho = 1000$ kg/m³

DASY4 Configuration:

- Probe: ET3DV6R - SN1397; ConvF(4.77, 4.77, 4.77); Calibrated: 4/22/2005
- Sensor-Surface: 4mm (Mechanical Surface Detection)
- Electronics: DAE3 Sn434; Calibrated: 3/16/2005
- Phantom: R3: Sect.1, Amy Twin; Type: Amy Twin Flat; Serial: n/a;
- Measurement SW: DASY4, V4.5 Build 19; Postprocessing SW: SEMCAD, V1.8 Build 147

Amy Twin Phone Template/Area Scan - Normal Body (15mm) (13x7x1):

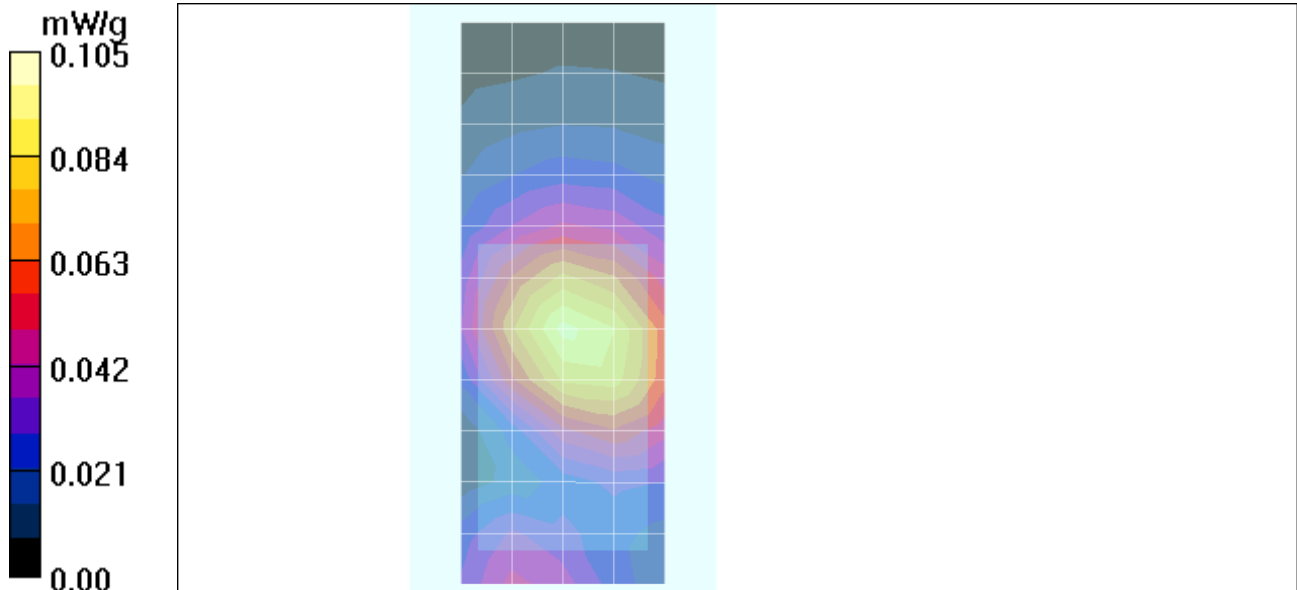
Measurement grid: dx=15mm, dy=15mm Maximum value of SAR (measured) = 0.094 mW/g

Amy Twin Phone Template/Zoom Scan (7x7x7)/Cube 0:

Measurement grid: dx=5mm, dy=5mm, dz=5mm

Reference Value = 8.11 V/m; **Power Drift = -0.062 dB** Peak SAR (extrapolated) = 0.124 W/kg

SAR(1 g) = 0.088 mW/g; SAR(10 g) = 0.058 mW/g



Appendix 4
Probe Calibration Certificate



Accredited by the Swiss Federal Office of Metrology and Accreditation
The Swiss Accreditation Service is one of the signatories to the EA
Multilateral Agreement for the recognition of calibration certificates

Accreditation No.: **SCS 108**

Client **Motorola MDb**

Certificate No. **ET3-1397_Apr05**

CALIBRATION CERTIFICATE

Object **ET3DV6R SN:1397**

Calibration procedure(s) **QA-CAL-01 v5
Calibration procedure for dosimetric E-field probes**

Calibration date: **April 22, 2005**

Condition of the calibrated item **In Tolerance**

This calibration certificate documents the traceability to national standards, which realize the physical units of measurements (SI).
The measurements and the uncertainties with confidence probability are given on the following pages and are part of the certificate.

All calibrations have been conducted in the closed laboratory facility: environment temperature $(22 \pm 3)^\circ\text{C}$ and humidity $< 70\%$.

Calibration Equipment used (M&TE critical for calibration)

Primary Standards	ID #	Cal Date (Calibrated by, Certificate No.)	Scheduled Calibration
Power meter E4419B	GB41293874	5-May-04 (METAS, No. 251-00388)	May-05
Power sensor E4412A	MY41495277	5-May-04 (METAS, No. 251-00388)	May-05
Reference 3 dB Attenuator	SN: S5054 (3c)	10-Aug-04 (METAS, No. 251-00403)	Aug-05
Reference 20 dB Attenuator	SN: S5086 (20b)	3-May-04 (METAS, No. 251-00389)	May-05
Reference 30 dB Attenuator	SN: S5129 (30b)	10-Aug-04 (METAS, No. 251-00404)	Aug-05
Reference Probe ES3DV2	SN: 3013	7-Jan-05 (SPEAG, No. ES3-3013_Jan05)	Jan-06
DAE4	SN: 617	19-Jan-05 (SPEAG, No. DAE4-617_Jan05)	Jan-06
Secondary Standards	ID #	Check Date (in house)	Scheduled Check
Power sensor HP 8481A	MY41092180	18-Sep-02 (SPEAG, in house check Oct-03)	In house check: Oct 05
RF generator HP 8648C	US3642U01700	4-Aug-99 (SPEAG, in house check Dec-03)	In house check: Dec-05
Network Analyzer HP 8753E	US37390585	18-Oct-01 (SPEAG, in house check Nov-04)	In house check: Nov 05

	Name	Function	Signature
Calibrated by:	Nico Vetterli	Laboratory Technician	
Approved by:	Katja Pokovic	Technical Manager	

Issued: April 25, 2005

This calibration certificate shall not be reproduced except in full without written approval of the laboratory.



Accredited by the Swiss Federal Office of Metrology and Accreditation
The Swiss Accreditation Service is one of the signatories to the EA
Multilateral Agreement for the recognition of calibration certificates

Accreditation No.: **SCS 108**

Glossary:

TSL	tissue simulating liquid
NORM _{x,y,z}	sensitivity in free space
ConF	sensitivity in TSL / NORM _{x,y,z}
DCP	diode compression point
Polarization ϕ	ϕ rotation around probe axis
Polarization ϑ	ϑ rotation around an axis that is in the plane normal to probe axis (at measurement center), i.e., $\vartheta = 0$ is normal to probe axis

Calibration is Performed According to the Following Standards:

- IEEE Std 1528-2003, "IEEE Recommended Practice for Determining the Peak Spatial-Averaged Specific Absorption Rate (SAR) in the Human Head from Wireless Communications Devices: Measurement Techniques", December 2003
- CENELEC EN 50361, "Basic standard for the measurement of Specific Absorption Rate related to human exposure to electromagnetic fields from mobile phones (300 MHz - 3 GHz), July 2001

Methods Applied and Interpretation of Parameters:

- NORM_{x,y,z}**: Assessed for E-field polarization $\vartheta = 0$ ($f \leq 900$ MHz in TEM-cell; $f > 1800$ MHz: R22 waveguide). NORM_{x,y,z} are only intermediate values, i.e., the uncertainties of NORM_{x,y,z} does not effect the E^2 -field uncertainty inside TSL (see below *ConvF*).
- NORM(f)_{x,y,z}** = NORM_{x,y,z} * *frequency_response* (see Frequency Response Chart). This linearization is implemented in DASY4 software versions later than 4.2. The uncertainty of the frequency response is included in the stated uncertainty of *ConvF*.
- DCP_{x,y,z}**: DCP are numerical linearization parameters assessed based on the data of power sweep (no uncertainty required). DCP does not depend on frequency nor media.
- ConvF and Boundary Effect Parameters**: Assessed in flat phantom using E-field (or Temperature Transfer Standard for $f \leq 800$ MHz) and inside waveguide using analytical field distributions based on power measurements for $f > 800$ MHz. The same setups are used for assessment of the parameters applied for boundary compensation (alpha, depth) of which typical uncertainty values are given. These parameters are used in DASY4 software to improve probe accuracy close to the boundary. The sensitivity in TSL corresponds to NORM_{x,y,z} * *ConvF* whereby the uncertainty corresponds to that given for *ConvF*. A frequency dependent *ConvF* is used in DASY version 4.4 and higher which allows extending the validity from ± 50 MHz to ± 100 MHz.
- Spherical isotropy (3D deviation from isotropy)**: in a field of low gradients realized using a flat phantom exposed by a patch antenna.
- Sensor Offset**: The sensor offset corresponds to the offset of virtual measurement center from the probe tip (on probe axis). No tolerance required.

Probe ET3DV6R

SN:1397

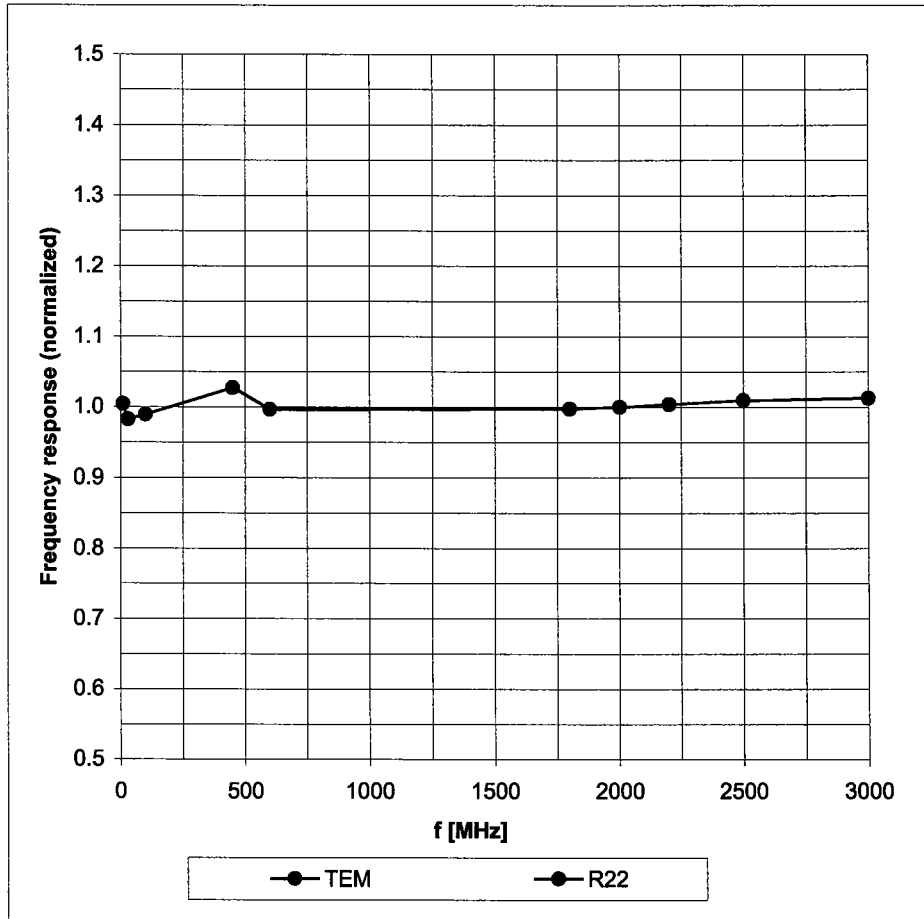
Manufactured:	October 24, 1999
Last calibrated:	May 21, 2004
Recalibrated:	April 22, 2005

Calibrated for DASY Systems

(Note: non-compatible with DASY2 system!)

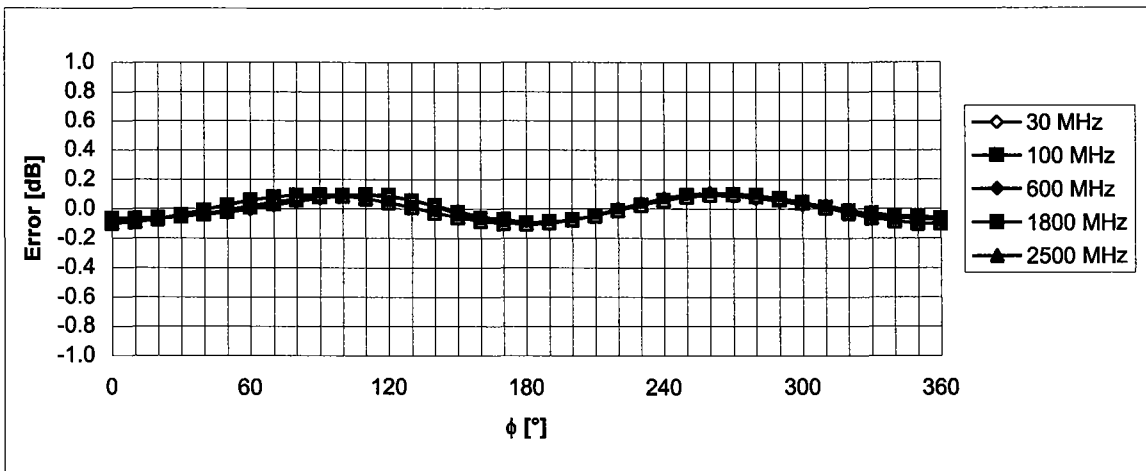
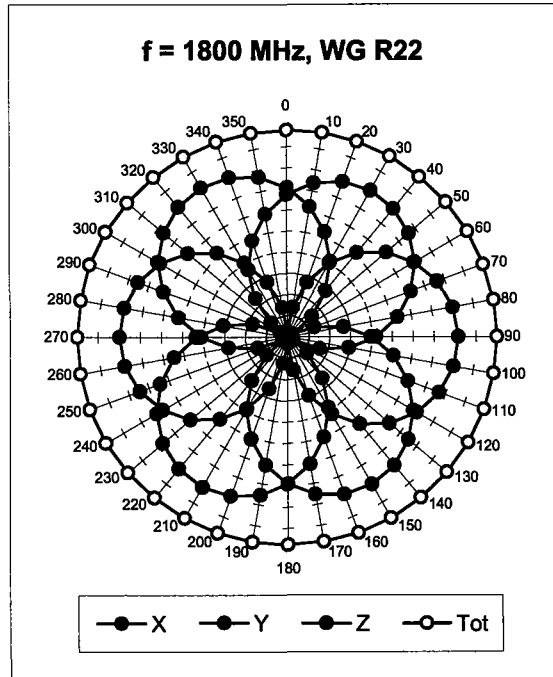
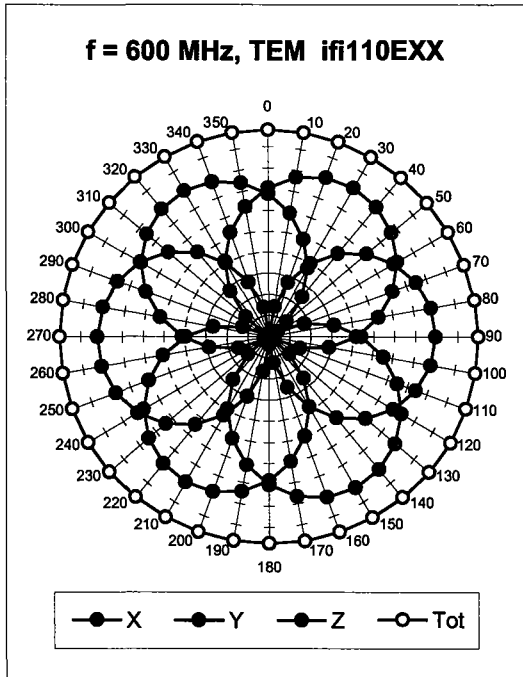
Frequency Response of E-Field

(TEM-Cell:ifi110 EXX, Waveguide: R22)



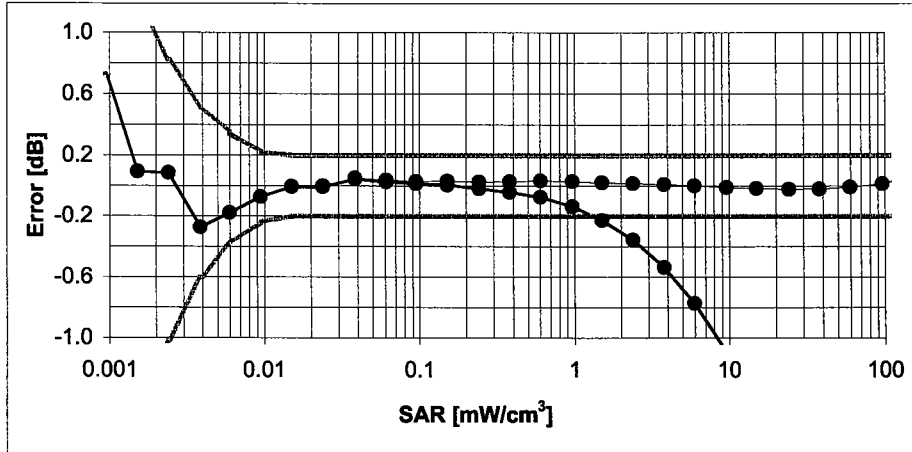
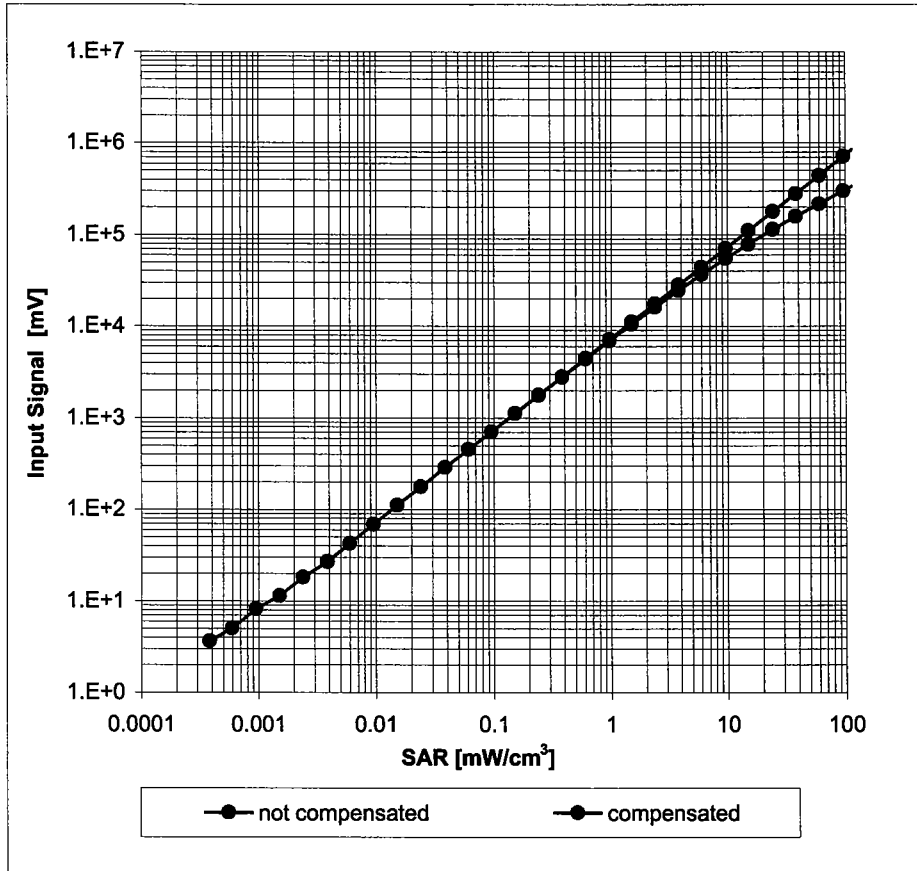
Uncertainty of Frequency Response of E-field: $\pm 6.3\%$ ($k=2$)

Receiving Pattern (ϕ), $\vartheta = 0^\circ$



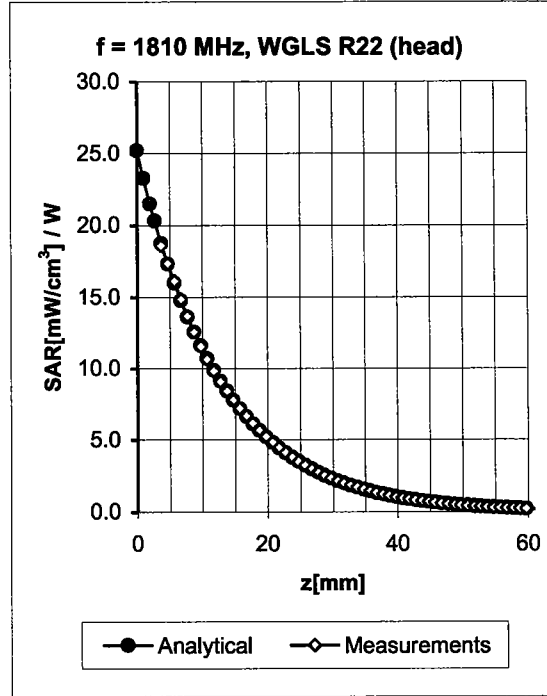
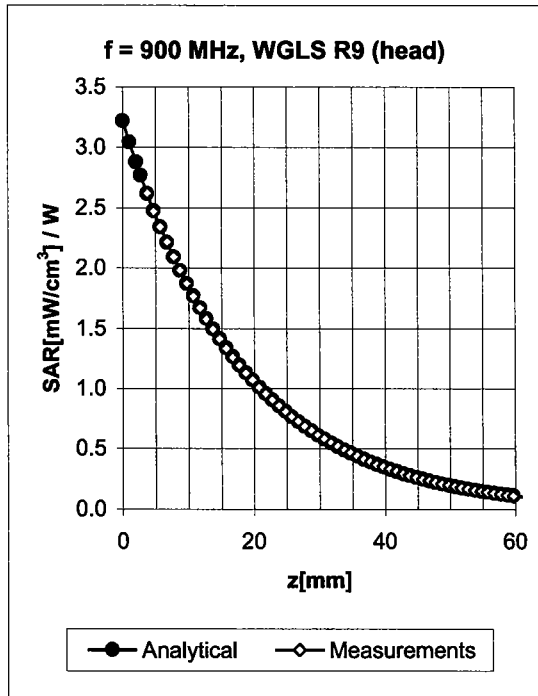
Uncertainty of Axial Isotropy Assessment: $\pm 0.5\%$ ($k=2$)

Dynamic Range $f(\text{SAR}_{\text{head}})$ (Waveguide R22, $f = 1800 \text{ MHz}$)



Uncertainty of Linearity Assessment: $\pm 0.6\%$ ($k=2$)

Conversion Factor Assessment

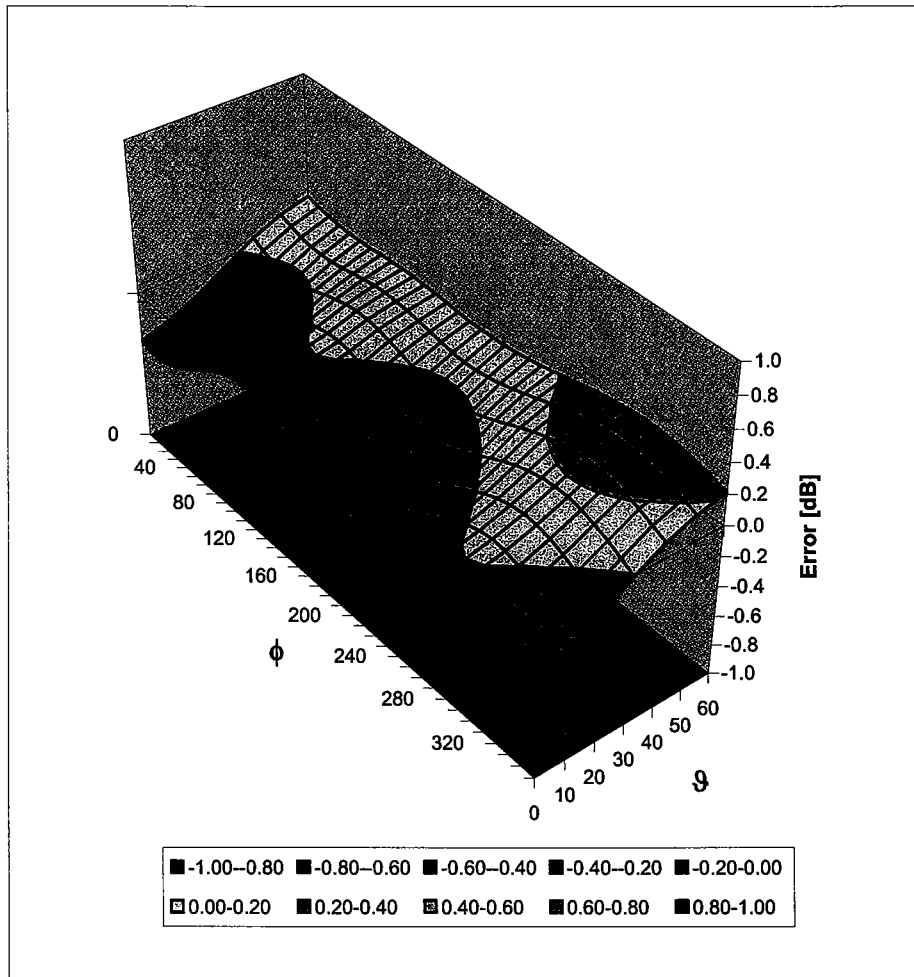


f [MHz]	Validity [MHz] ^c	TSL	Permittivity	Conductivity	Alpha	Depth	ConvF Uncertainty
900	± 50 / ± 100	Head	41.5 ± 5%	0.97 ± 5%	0.71	1.73	6.38 ± 11.0% (k=2)
1810	± 50 / ± 100	Head	40.0 ± 5%	1.40 ± 5%	0.60	2.37	5.17 ± 11.0% (k=2)
1950	± 50 / ± 100	Head	40.0 ± 5%	1.40 ± 5%	0.59	2.49	4.90 ± 11.0% (k=2)
900	± 50 / ± 100	Body	55.0 ± 5%	1.05 ± 5%	0.58	2.00	6.22 ± 11.0% (k=2)
1810	± 50 / ± 100	Body	53.3 ± 5%	1.52 ± 5%	0.57	2.75	4.77 ± 11.0% (k=2)
1950	± 50 / ± 100	Body	53.3 ± 5%	1.52 ± 5%	0.60	2.53	4.44 ± 11.0% (k=2)

^c The validity of ± 100 MHz only applies for DASY v4.4 and higher (see Page 2). The uncertainty is the RSS of the ConvF uncertainty at calibration frequency and the uncertainty for the indicated frequency band.

Deviation from Isotropy in HSL

Error (ϕ, ϑ), $f = 900$ MHz



Uncertainty of Spherical Isotropy Assessment: $\pm 2.6\%$ ($k=2$)

Appendix 5
Measurement Uncertainty Budget

Uncertainty Budget for Device Under Test: 30 – 3000 MHz

<i>a</i>	<i>b</i>	<i>c</i>	<i>d</i>	<i>e = f(d,k)</i>	<i>f</i>	<i>g</i>	<i>h = c x f / e</i>	<i>i = c x g / e</i>	<i>k</i>
Uncertainty Component	IEEE 1528 section	Tol. (± %)	Prob Dist	Div.	<i>c_i</i> (1 g)	<i>c_i</i> (10 g)	1 g <i>u_i</i> (±%)	10 g <i>u_i</i> (±%)	<i>v_i</i>
Measurement System									
Probe Calibration	E.2.1	5.9	N	1.00	1	1	5.9	5.9	∞
Axial Isotropy	E.2.2	4.7	R	1.73	0.707	0.707	1.9	1.9	∞
Hemispherical Isotropy	E.2.2	9.6	R	1.73	0.707	0.707	3.9	3.9	∞
Boundary Effect	E.2.3	1.0	R	1.73	1	1	0.6	0.6	∞
Linearity	E.2.4	4.7	R	1.73	1	1	2.7	2.7	∞
System Detection Limits	E.2.5	1.0	R	1.73	1	1	0.6	0.6	∞
Readout Electronics	E.2.6	0.3	N	1.00	1	1	0.3	0.3	∞
Response Time	E.2.7	1.1	R	1.73	1	1	0.6	0.6	∞
Integration Time	E.2.8	1.1	R	1.73	1	1	0.6	0.6	∞
RF Ambient Conditions - Noise	E.6.1	3.0	R	1.73	1	1	1.7	1.7	∞
RF Ambient Conditions - Reflections	E.6.1	0.0	R	1.73	1	1	0.0	0.0	∞
Probe Positioner Mech. Tolerance	E.6.2	0.4	R	1.73	1	1	0.2	0.2	∞
Probe Positioning w.r.t Phantom	E.6.3	1.4	R	1.73	1	1	0.8	0.8	∞
Max. SAR Evaluation (ext., int., avg.)	E.5	3.4	R	1.73	1	1	2.0	2.0	∞
Test sample Related									
Test Sample Positioning	E.4.2	3.2	N	1.00	1	1	3.2	3.2	29
Device Holder Uncertainty	E.4.1	4.0	N	1.00	1	1	4.0	4.0	8
SAR drift	6.6.2	5.0	R	1.73	1	1	2.9	2.9	∞
Phantom and Tissue Parameters									
Phantom Uncertainty	E.3.1	4.0	R	1.73	1	1	2.3	2.3	∞
Liquid Conductivity (target)	E.3.2	5.0	R	1.73	0.64	0.43	1.8	1.2	∞
Liquid Conductivity (measurement)	E.3.3	3.3	N	1.00	0.64	0.43	2.1	1.4	∞
Liquid Permittivity (target)	E.3.2	5.0	R	1.73	0.6	0.49	1.7	1.4	∞
Liquid Permittivity (measurement)	E.3.3	1.9	N	1.00	0.6	0.49	1.1	0.9	∞
Combined Standard Uncertainty			RSS				11.1	10.8	411
Expanded Uncertainty (95% CONFIDENCE LEVEL)			<i>k=2</i>				22.2	21.6	

Uncertainty Budget for System Check: 30 – 3000 MHz

<i>a</i>	<i>b</i>	<i>c</i>	<i>d</i>	<i>e = f(d,k)</i>	<i>f</i>	<i>g</i>	<i>h = c x f / e</i>	<i>i = c x g / e</i>	<i>k</i>
Uncertainty Component	IEEE 1528 section	Tol. (± %)	Prob. Dist.	Div.	<i>c_i</i> (1 g)	<i>c_i</i> (10 g)	1 g <i>u_i</i> (±%)	10 g <i>u_i</i> (±%)	<i>v_i</i>
Measurement System									
Probe Calibration	E.2.1	5.9	N	1.00	1	1	5.9	5.9	∞
Axial Isotropy	E.2.2	4.7	R	1.73	1	1	2.7	2.7	∞
Spherical Isotropy	E.2.2	9.6	R	1.73	0	0	0.0	0.0	∞
Boundary Effect	E.2.3	1.0	R	1.73	1	1	0.6	0.6	∞
Linearity	E.2.4	4.7	R	1.73	1	1	2.7	2.7	∞
System Detection Limits	E.2.5	1.0	R	1.73	1	1	0.6	0.6	∞
Readout Electronics	E.2.6	0.3	N	1.00	1	1	0.3	0.3	∞
Response Time	E.2.7	1.1	R	1.73	1	1	0.6	0.6	∞
Integration Time	E.2.8	0.0	R	1.73	1	1	0.0	0.0	∞
RF Ambient Conditions - Noise	E.6.1	3.0	R	1.73	1	1	1.7	1.7	∞
RF Ambient Conditions - Reflections	E.6.1	0.0	R	1.73	1	1	0.0	0.0	∞
Probe Positioner Mechanical Tolerance	E.6.2	0.4	R	1.73	1	1	0.2	0.2	∞
Probe Positioning w.r.t. Phantom	E.6.3	1.4	R	1.73	1	1	0.8	0.8	∞
Max. SAR Evaluation (ext., int., avg.)	E.5	3.4	R	1.73	1	1	2.0	2.0	∞
Dipole									
Dipole Axis to Liquid Distance	⁸ , E.4.2	2.0	R	1.73	1	1	1.2	1.2	∞
Input Power and SAR Drift Measurement	⁸ , 6.6.2	5.0	R	1.73	1	1	2.9	2.9	∞
Phantom and Tissue Parameters									
Phantom Uncertainty	E.3.1	4.0	R	1.73	1	1	2.3	2.3	∞
Liquid Conductivity (target)	E.3.2	5.0	R	1.73	0.64	0.43	1.8	1.2	∞
Liquid Conductivity (measurement)	E.3.3	3.3	R	1.73	0.64	0.43	1.2	0.8	∞
Liquid Permittivity (target)	E.3.2	5.0	R	1.73	0.6	0.49	1.7	1.4	∞
Liquid Permittivity (measurement)	E.3.3	1.9	R	1.73	0.6	0.49	0.6	0.5	∞
Combined Standard Uncertainty			RSS				9.0	8.8	9999 9
Expanded Uncertainty (95% CONFIDENCE LEVEL)			<i>k</i> =2				17.7	17.3	

Appendix 6

Photographs of the device under test



Figure 1. Front of Phone



Figure 2. Back of Phone



Figure 3. Phone open



Figure 4. Body Worn



Figure 5. SYN1335A front



Figure 6. SYN1335A side

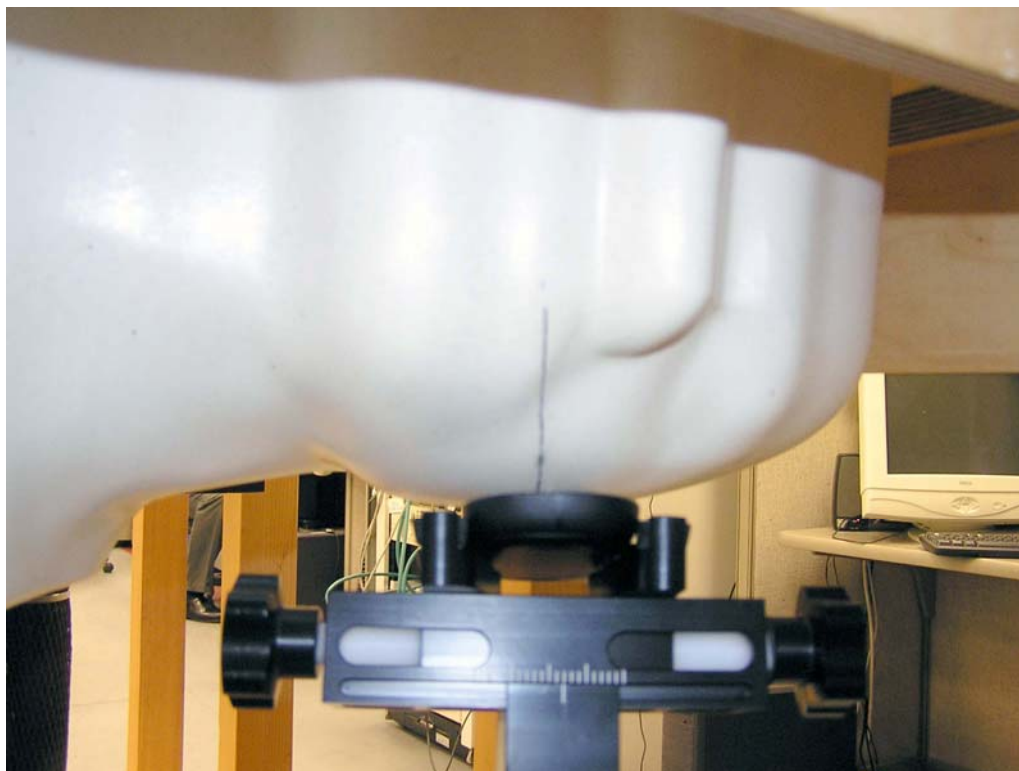


Figure 7. Cheek/Touch Position, front view



Figure 8. Cheek/Touch Position, rear view



Figure 9. Tilt Position, front view



Figure 10. Tilt Position, rear view

Appendix 7

Dipole Characterization Certificate

Certification of System Performance Check Targets

Based on APP-0396

-Historical Data-


900MHz	
IEEE1528 Target:	10.8 (W/kg)
Measurement Uncertainty (k=1):	9.0%
Measurement Period:	9-Nov-04 to 2-June-05
# of tests performed:	813
Grand Average:	11.3 (W/kg)
% Delta (Average - IEEE1528 Target)	4.4%
Is % Delta <= Expanded Measurement Uncertainty (k=2)?	Yes
Accept/Reject <u>Average</u> as new system performance check target?	ACCEPT
Historic data included the following 900MHz Dipoles:	
69, 77	
79, 80	
91, 94	
96, 97	

-New System Performance Check Targets- per APP-0396
(based on analysis of historical data)

Frequency	SAR Target (W/kg)	Permittivity	Conductivity (S/m)
900MHz	11.3	41.5 ± 5%	0.97 ± 5%

-Approvals-

Submitted by: Date:

Signed: 

Comments:

Approved by: Date:

Signed: 

Comments: