



Exhibit 11: SAR Test Report IDHT56FG1

Date of test: 7/3/2005 to 7/26/2005
Date of Report: 8/3/2005

Laboratory: Motorola Personal Communications Sector Product Safety & Compliance Laboratory
 600 N. US Highway 45
 Room: MW113
 Libertyville, Illinois 60048

Test Responsible: Paul Ma
 RF Engineer

Accreditation: This laboratory is accredited to ISO/IEC 17025-1999 to perform the following tests:



<p><u>Tests:</u> Electromagnetic Specific Absorption Rate</p> <p>Simulated Tissue Preparation RF Power Measurement</p>	<p><u>Procedures:</u> ANSI/IEEE C95.1-1992, 1999 (SAR) IEEE C95.3-1991 IEEE 1528, IEC 62209-1 FCC OET Bulletin 65 (<i>including Supplements A, B, C</i>) Australian Communications Authority Radio Communications (Electromagnetic Radiation – Human Exposure) Standard 1999 CENELEC EN 50361 (2001) APP-0247 DOI-0876, 0900, 0902, 0904, 0915</p>
--	--

On the following products or types of products:
 Wireless Communications Devices (Examples): Two Way Radios; Portable Phones (including Cellular, Licensed Non-Broadcast and PCS); Low Frequency Readers; and Pagers

A2LA certificate #1651-01

Statement of Compliance: Motorola declares under its sole responsibility that portable cellular telephone FCC ID IHDT56FG1 to which this declaration relates, is in conformity with the appropriate General Population/Uncontrolled RF exposure standards, recommendations and guidelines (FCC 47 CFR §2.1093). It also declares that the product was tested in accordance with the appropriate measurement standards, guidelines and recommended practices. Any deviations from these standards, guidelines and recommended practices are noted below:

(none)

©Motorola, Inc. 2005
 This test report shall not be reproduced except in full, without written approval of the laboratory.

The results and statements contained herein relate only to the items tested. The names of individuals involved may be mentioned only in connection with the statements or results from this report.

Motorola encourages all feedback, both positive and negative, on this test report.

Table of Contents

1. INTRODUCTION3

2. DESCRIPTION OF THE DEVICE UNDER TEST.....3

2.1 Antenna description3

2.2 Device description.....3

3. TEST EQUIPMENT USED.....4

3.1 Dosimetric System4

3.2 Additional Equipment.....4

4. ELECTRICAL PARAMETERS OF THE TISSUE SIMULATING LIQUID5

5. SYSTEM ACCURACY VERIFICATION.....5

6. TEST RESULTS.....6

6.1 Head Adjacent Test Results.....7

6.2 Body Worn Test Results9

APPENDIX 1: SAR DISTRIBUTION COMPARISON FOR SYSTEM ACCURACY VERIFICATION11

APPENDIX 2: SAR DISTRIBUTION PLOTS FOR PHANTOM HEAD ADJACENT USE12

APPENDIX 3: SAR DISTRIBUTION PLOTS FOR BODY WORN CONFIGURATION13

APPENDIX 4: PROBE CALIBRATION CERTIFICATE14

APPENDIX 5: MEASUREMENT UNCERTAINTY BUDGET.....15

APPENDIX 6: PHOTOGRAPHS OF DEVICE UNDER TEST.....18

1 Introduction

The Motorola Personal Communications Sector Product Safety Laboratory has performed measurements of the maximum potential exposure to the user of portable cellular phone (FCC ID IHDT56FG1). The Specific Absorption Rate (SAR) of this product was measured. The portable cellular phone was tested in accordance with FCC OET Bulletin 65 Supplement C 01-01.

2 Description of the Device Under Test

2.1 Antenna description

Type	External	
Location	Upper Right Corner	
Dimensions	Length	20mm
	Width	10mm
Configuration	Helix	

2.2 Device description

FCC ID Number	IHDT56FG1											
Serial number(s)	1											
Mode(s) of Operation	GSM 850	GSM 900	GSM 1800	GSM 1900	GPRS 850	GPRS 900	GPRS 1800	GPRS 1900	EDGE 850	EDGE 900	EDGE 1800	EDGE 1900
Modulation Mode(s)	GMSK	GMSK	GMSK	GMSK	GMSK	GMSK	GMSK	GMSK	8PSK	8PSK	8PSK	8PSK
Maximum Output Power Setting	32.10 dBm	32.30 dBm	30.00 dBm	30.00 dBm	32.10 dBm	32.30 dBm	30.00 dBm	30.00 dBm	29.00 dBm	29.00 dBm	28.00 dBm	28.00 dBm
Duty Cycle	1:8	1:8	1:8	1:8	2:8	2:8	2:8	2:8	2:8	2:8	2:8	2:8
Transmitting Frequency Rang(s)	824.2-848.8 MHz	880.2-914.8 MHz	1710.2-1784.8 MHz	1850.2 – 1909.8 Mhz	824.2-848.8 MHz	880.2-914.8 MHz	1710.2-1784.8 MHz	1850.2 – 1909.8 MHz	824.2-848.8 MHz	880.2-914.8 MHz	1710.2-1784.8 MHz	1850.2 – 1909.8 MHz
Production Unit or Identical Prototype (47 CFR §2.908)	Identical Prototype											
Device Category	Portable											
RF Exposure Limits	General Population / Uncontrolled											

3 Test Equipment Used

3.1 Dosimetric System

The Motorola Personal Communications Sector Product Safety & Compliance Laboratory utilizes a Dosimetric Assessment System (Dasy4™ v4.5) manufactured by Schmid & Partner Engineering AG (SPEAG™), of Zurich Switzerland. All the SAR measurements are taken within a shielded enclosure. The overall RSS uncertainty of the measurement system is ±11.1% (K=1) with an expanded uncertainty of ±22.2% (K=2). The measurement uncertainty budget is given in Appendix 6. Per IEEE 1528, this uncertainty budget is applicable to the SAR range of 0.4 W/kg to 10 W/kg. The list of calibrated equipment used for the measurements is shown below.

Description	Serial Number	Cal Due Date
DASY4 DAE4	376	01/13/2006
DASY4 DAE3	434	3/16/2006
E-Field Probe ES3DV3	3037	11/25/2005
Dipole Validation Kit, D900V2	80	
S.A.M. Phantom used for 800MHz	TP-1153	
Dipole Validation Kit, D1800V2	251tr	
S.A.M. Phantom used for 1900MHz	TP-1159	
S.A.M. Phantom used for 1900MHz	TP-1250	

3.2 Additional Equipment

Description	Serial Number	Cal Due Date
Signal Generator HP8648C	3847A04844	10/25/2005
Power Meter E4419B	GB39511087	01/25/2006
Power Sensor #1 – 8481A	US39210931	09/16/2005
Power Sensor #2 - 8481A	US39210932	09/16/2005
Network Analyzer HP8753ES	US39171846	09/03/2005
Dielectric Probe Kit HP85070C	US99360070	NA

4 Electrical parameters of the tissue simulating liquid

Prior to conducting SAR measurements, the relative permittivity, ϵ_r , and the conductivity, σ , of the tissue simulating liquids were measured with the HP85070 Dielectric Probe Kit. These values, along with the temperature of the tissue simulate are shown in the table below. The recommended limits for maximum permittivity and minimum conductivity are also shown. These come from the Federal Communication Commission, OET Bulletin 65 Supplement C 01-01. It is seen that the measured parameters are satisfactory for compliance testing.

f (MHz)	Tissue type	Limits / Measured	Dielectric Parameters		
			ϵ_r	σ (S/m)	Temp (°C)
850	Head	Measured, 7/3/2005	42.9	0.9	20.0
		Recommended Limits	41.5 ±5%	0.90 ±5%	18-25
	Body	Measured, 7/4/2005	53.8	0.96	20.0
		Recommended Limits	55.2 ±5%	0.97 ±5%	18-25
1900	Head	Measured, 7/4/2005	39.7	1.45	19.8
		Measured, 7/5/2005	39.9	1.45	19.8
		Measured, 7/26/2005	38.2	1.43	20.0
		Recommended Limits	40.0 ±5%	1.40 ±5%	18-25
	Body	Measured, 7/6/2005	51.4	1.58	19.9
		Recommended Limits	53.3 ±5%	1.52 ±5%	18-25

The list of ingredients and the percent composition used for the tissue simulates are indicated in the table below.

Ingredient	800MHz Head	800MHz Body	1900MHz Head	1900MHz Body
Sugar	57.0	44.9	--	--
DGBE	--	--	47.0	30.80
Water	40.45	53.06	52.8	68.91
Salt	1.45	0.94	0.2	0.29
HEC	1.0	1.0	--	--
Bact.	0.1	0.1	--	--

5 System Accuracy Verification

A system accuracy verification of the DASY4 v4.5 was performed using the measurement equipment listed in Section 3.1. The daily system accuracy verification occurs within center section of the SAM phantom.

A SAR measurement was performed to see if the measured SAR was within +/- 10% from the target SAR indicated in Section 8.3.7 Reference SAR Values in IEEE 1528. These tests were done at 900MHz and/or 1800MHz. These frequencies are within 100MHz of the mid-band frequency of the test device. This is within the allowable window given in Supplement C 01-01 Appendix D System Verification section item #5. The test was conducted on the same days as the measurement of the DUT. Recommended limits for maximum permittivity, minimum conductivity are shown in the table below. These come from the Federal Communication Commission, OET Bulletin 65 Supplement C 01-01. The obtained results from the system accuracy verification are displayed in the table below. The distributions of SAR compare well with those of the reference measurements (see Appendix 1). The tissue stimulant depth was verified to be 15.0cm ±0.5cm. Z-axis scans showing the SAR penetration are also included in Appendix 1. SAR values are normalized to 1W forward power delivered to the dipole.

f (MHz)	Description	SAR (W/kg), 1gram	Dielectric Parameters		Ambient Temp (°C)	Tissue Temp (°C)
			ϵ_r	σ (S/m)		
900	Measured, 7/3/2005	11.15	42.3	0.98	21.0	20.5
	Recommended Limits	10.8	41.5 ±5%	0.97 ±5%	18-25	18-25
1800	Measured, 7/4/2005	38.6	38.5	1.38	20.0	20.0
	Measured, 7/5/2005	38.7	38.9	1.38	21.0	19.8
	Measured, 7/6/2005	38.7	39.0	1.38	20.0	19.8
	Measured, 7/26/2005	36.5	38.6	1.34	20.0	20.1
	Recommended Limits	38.1	40.0 ±5%	1.4 ±5%	18-25	18-25

The following probe conversion factors were used on the E-Field probe(s) used for the system accuracy verification measurements:

Description	Serial Number	f (MHz)	Conversion Factor	Cal Cert pg #
E-Field Probe ES3DV3	3037	900	6.11	8 of 9
		1810	5.16	8 of 9

6 Test Results

The test sample was operated in a test mode that allows control of the transmitter without the need to place actual phone calls. For the purposes of this test the unit is commanded to test mode and manually set to the proper channel, transmitter power level and transmit mode of operation. The phone was tested in the configurations stipulated in OET Bulletin 65 Supplement C 01-01. Motorola also followed the requirements in Supplement. C / Appendix D: SAR Measurement Procedures, section titled “*Devices Operating Next To A Person’s Ear* “. These directions state “The device should be tested on the left and right side of the head phantom in the “Cheek/Touch” and “Ear/Tilt” positions. When applicable, each configuration should be tested with the antenna in its fully extended and fully retracted positions. These test configurations should be tested at the high, middle and low frequency channels of each operating mode; for example, AMPS, CDMA, and TDMA. If the SAR measured at the middle channel for each test configuration (left, right, Cheek/Touch, Tile/Ear, extended and retracted) is at least 2.0 dB lower than the SAR limit, testing at the high and low channels is optional for such test configuration(s).”

The DASY4 v4.5 SAR measurement system specified in section 3.1 was utilized within the intended operations as set by the SPEAG™ setup. The phone was positioned into the measurement configurations using the positioner supplied with the DASY4 v4.5 SAR measurement system. The measured dielectric constant of the material used for the positioner is less than 2.9 and the loss tangent is less than 0.02 (± 30%) at 850MHz. The default settings for the “coarse” and “cube” scans were chosen and use for measurements. The grid spacing of the course scan was set to 15cm as shown in the SAR plots included in appendix 2 and 3. Please refer to the DASY manual for additional information on SAR scanning procedures and algorithms used.

The Cellular Phone (FCC ID IHDT56FG1) has the following battery options:

- SNN5744A 1000mAH Battery
- SNN5766A 810mAH Battery

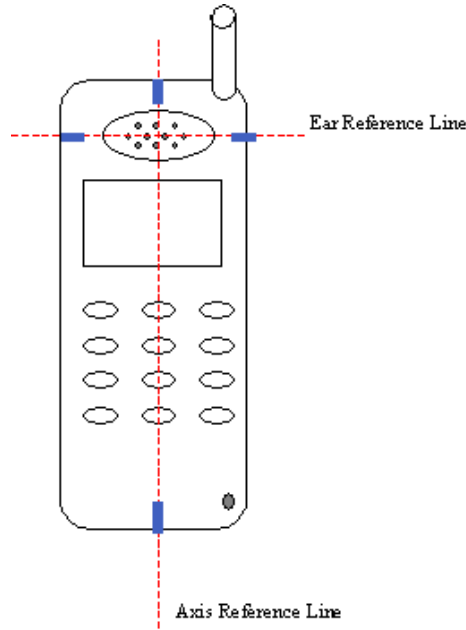
The battery with the highest capacity is the SNN5744A. This battery was used to do most of the SAR testing. The phone was placed in the SAR measurement system with a fully charged battery. The configuration that resulted in the highest SAR values were tested using the other battery listed above.

6.1 Head Adjacent Test Results

To aid in positioning repeatability, the ear reference line of the device and the axis reference line of the device have been physically added using a non-metallic marker.

- Per Figure 1, the "Ear Reference Line" is centered vertically through the center of the listening area (as defined by the speaker holes in the housing).
- The "Axis Reference Line" bisects the front surface of the device at its top and bottom edges.
- The intersection of these two lines defines the location of the "Ear Reference Point".

The lines drawn on the device extended to the outside edges, as shown in blue in the figure below, & wrap around the sides of the device.



The SAR results shown in tables 1 through 3 are maximum SAR values averaged over 1 gram of phantom tissue. Also shown are the measured conducted output powers, the temperature of the test facility during the test, the temperature of the tissue simulate after the test, the measured drift and the extrapolated SAR. The exact method of extrapolation is $\text{New SAR} = \text{Old SAR} * 10^{(-\text{drift}/10)}$. The SAR reported at the end of the measurement process by the DASY™ measurement system can be scaled up by the measured drift to determine the SAR at the beginning of the measurement process. This is the most conservative SAR because it corresponds to the average output power at the beginning of the SAR test. This extrapolation has been done because when the DUT is operating properly it may exhibit a slump in radiated power and SAR over time. This is verified by measuring the SAR drift after the test. The test conditions indicated as bold numbers in the following table are included in Appendix 2

The SAR measurements were performed using the SAM phantoms listed in section 3.1. Since same phantoms and tissue simulate are used for the system accuracy verification as the device SAR measurements, the Z-axis scans included in within Appendix 1 are applicable for verification of tissue simulate depth to be 15.0cm ±0.5cm. All other test conditions measured lower SAR values than those included in Appendix 2.

The following probe conversion factors were used on the E-Field probe(s) used for the head adjacent measurements:

Description	Serial Number	f (MHz)	Conversion Factor	Cal Cert pg #
E-Field Probe ES3DV3	3037	900	6.11	8 of 9
		1810	5.16	8 of 9

f (MHz)	Description	Conducted Output Power (dBm)	Cheek / Touch Position							
			Left Head				Right Head			
			Measured (W/kg)	Drift (dB)	Extrapolated (W/kg)	Simulate Temp (°C)	Measured (W/kg)	Drift (dB)	Extrapolated (W/kg)	Simulate Temp (°C)
Digital 850MHz	Channel 128	32.10	1.15	-0.1	1.18	20	1.22	0	1.22	20
	Channel 190	32.10	1.16	-0.13	1.19	20	1.25	-0.02	1.26	20
	Channel 251	32.10	1.23	-0.01	1.23	20	1.28	0.02	1.28	20
Digital 1900MHz	Channel 512	30.00	0.928	-0.06	0.94	19.8	0.958	-0.04	0.97	19.8
	Channel 661	30.00	0.965	-0.16	1.00	19.8	0.975	0.016	0.98	19.8
	Channel 810	30.00	1.04	-0.06	1.06	19.8	0.973	0.068	0.97	19.8

Table 1: SAR measurement results for the portable cellular telephone FCC ID IHDT56FG1 at highest possible output power. Measured against the left and right head in the Cheek/Touch Position.

f (MHz)	Description	Conducted Output Power (dBm)	15° Tilt Position							
			Left Head				Right Head			
			Measured (W/kg)	Drift (dB)	Extrapolated (W/kg)	Simulate Temp (°C)	Measured (W/kg)	Drift (dB)	Extrapolated (W/kg)	Simulate Temp (°C)
Digital 850MHz	Channel 128	32.10								
	Channel 190	32.10	0.313	0.02	0.31	20	0.308	0.01	0.31	20
	Channel 251	32.10								
Digital 1900MHz	Channel 512	30.00								
	Channel 661	30.00	0.296	0.05	0.30	19.8	0.29	-0.16	0.30	19.8
	Channel 810	30.00								

Table 2: SAR measurement results for the portable cellular telephone FCC ID IHDT56FG1 at highest possible output power. Measured against the left and right head in the 15° Tilt Position

f (MHz)	Description	Conducted Output Power (dBm)	Cheek / Touch Position using SNN5766A Battery							
			Left Head				Right Head			
			Measured (W/kg)	Drift (dB)	Extrapolated (W/kg)	Simulate Temp (°C)	Measured (W/kg)	Drift (dB)	Extrapolated (W/kg)	Simulate Temp (°C)
Digital 850MHz	Channel 128	32.10					1.15	0.02	1.15	20
	Channel 190	32.10					1.18	-0.01	1.18	20
	Channel 251	32.10					1.21	0.03	1.21	20
Digital 1900MHz	Channel 512	30.00	0.952	-0.08	0.97	20				
	Channel 661	30.00	1	-0.04	1.01	20				
	Channel 810	30.00	1.05	0.11	1.05	20				

Table 3: SAR measurement results for the portable cellular telephone FCC ID IHDT56FG1 at highest possible output power. Measured against the left and right head in the Cheek/Touch Position.

6.2 Body Worn Test Results

The SAR results shown in tables 4 through 7 are the maximum SAR values averaged over 1 gram of phantom tissue. Also shown are the measured conducted output powers, the temperature of the test facility during the test, the temperature of the tissue simulate after the test, the measured drift and the extrapolated SAR. The exact method of extrapolation is $\text{New SAR} = \text{Old SAR} * 10^{(-\text{drift}/10)}$. The SAR reported at the end of the measurement process by the DASY™ measurement system can be scaled up by the measured drift to determine the SAR at the beginning of the measurement process. This is the most conservative SAR because it corresponds to the average output power at the beginning of the SAR test. This extrapolation has been done because when the DUT is operating properly it may exhibit a slump in radiated power and SAR over time. This is verified by measuring the SAR drift after the test. The test conditions indicated as bold numbers in the following table are included in Appendix 3. All other test conditions measured lower SAR values than those included in Appendix 3.

A “flat” phantom was for the body-worn tests. This “flat” phantom is made out of 1” thick natural High Density Polyethylene with a thickness at the bottom equal to 2.0mm. It measures 52.7cm(long) x 26.7cm(wide) x 21.2cm(tall). The measured dielectric constant of the material used is less than 2.3 and the loss tangent is less than 0.0046 all the way up to 2.184GHz.

The tissue stimulant depth was verified to be 15.0cm ±0.5cm. The same device holder described in section 6 was used for positioning the phone. There are no Body-Worn Accessories available for this phone at the time of testing hence the device was tested per the supplement C testing guidelines for devices that do not have body worn accessories. The phone was placed a maximum of 1 inch away from a flat phantom per the supplement C standard guidelines to perform SAR measurement. The cellular phone was tested with a headset connected to the device for all body-worn SAR measurements

The following probe conversion factors were used on the E-Field probe(s) used for the body worn measurements:

Description	Serial Number	f (MHz)	Conversion Factor	Cal Cert pg #
E-Field Probe ES3DV3	3037	900	6.00	8 of 9
		1810	4.71	8 of 9

f (MHz)	Description	Conducted Output Power (dBm)	Body Worn							
			Front of phone 15 mm away from phantom				Back of phone 15 mm away from phantom			
			Measured (W/kg)	Drift (dB)	Extrapolated (W/kg)	Simulate Temp (°C)	Measured (W/kg)	Drift (dB)	Extrapolated (W/kg)	Simulate Temp (°C)
Digital 850MHz	Channel 128	32.10								
	Channel 190	32.10	0.192	-0.04	0.19	20	0.486	0.01	0.49	20
	Channel 251	32.10								
Digital 1900MHz	Channel 512	30.00								
	Channel 661	30.00	0.108	-0.01	0.11	19.9	0.262	-0.08	0.27	19.9
	Channel 810	30.00								

Table 4: SAR measurement results for the portable cellular telephone FCC ID IHDT56FG1 at highest possible output power. Measured against the body.

f (MHz)	Description	Conducted Output Power (dBm)	Body Worn						
			Back of phone 25 mm away from phantom (GPRS Class 10)						
			Measured (W/kg)	Drift (dB)	Extrapolated (W/kg)	Simulate Temp (°C)			
Digital 850MHz	Channel 128	32.10							
	Channel 190	32.10	0.579	-0.07	0.59	20			
	Channel 251	32.10							
Digital 1900MHz	Channel 512	30.00							
	Channel 661	30.00	0.243	-0.01	0.24	19.9			
	Channel 810	30.00							

Table 5: SAR measurement results for the portable cellular telephone FCC ID IHDT56FG1 at highest possible output power. Measured against the body.

f (MHz)	Description	Conducted Output Power (dBm)	Body Worn							
			Back of phone 25 mm away from phantom (GPRS Class 10) using SNN5766A Battery				Back of phone 15 mm away from phantom Using SNN5766A Battery			
			Measured (W/kg)	Drift (dB)	Extrapolated (W/kg)	Simulate Temp (°C)	Measured (W/kg)	Drift (dB)	Extrapolated (W/kg)	Simulate Temp (°C)
Digital 850MHz	Channel 128	32.10								
	Channel 190	32.10	0.66	-0.02	0.67	20				
	Channel 251	32.10								
Digital 1900MHz	Channel 512	30.00								
	Channel 661	30.00					0.239	0.01	0.24	19.9
	Channel 810	30.00								

Table 6: SAR measurement results for the portable cellular telephone FCC ID IHDT56FG1 at highest possible output power. Measured against the body.

f (MHz)	Description	Conducted Output Power (dBm)	Body Worn			
			Back of phone 25 mm away from phantom (EDGE Class 6)			
			Measured (W/kg)	Drift (dB)	Extrapolated (W/kg)	Simulate Temp (°C)
Digital 850MHz	Channel 128					
	Channel 190	29.09	0.307	-0.08	0.31	20.0
	Channel 251					
Digital 1900MHz	Channel 512					
	Channel 661	28.09	0.114	-0.05	0.12	19.9
	Channel 810					

Table 7: SAR measurement results for the portable cellular telephone FCC ID IHDT56FG1 at highest possible output power. Measured against the body.

Appendix 1

SAR distribution comparison for the system accuracy verification

Test Laboratory: Motorola

070605 1800 MHz GOOD +1.6%

DUT: Dipole 1800 MHz; Type: D1800V2; Serial: D1800V2 - SN:251tr

Procedure Notes: 1800 MHz System Performance Check / Dipole Sn# 251TR PM1 Power = 200 mW

Sim.Temp@meas = 19.8C Sim.Temp@SPC = 19.8C Room Temp @ SPC = 20C

Communication System: CW - Dipole; Frequency: 1800 MHz; Channel Number: 8; Duty Cycle: 1:1

Medium: VALIDATION Only; Medium parameters used: $\sigma = 1.38$ mho/m, $\epsilon_r = 39$; $\rho = 1000$ kg/m³

DASY4 Configuration:

- Probe: ES3DV3 - SN3037; ConvF(5.16, 5.16, 5.16); Calibrated: 11/25/2004
- Sensor-Surface: 4mm (Mechanical Surface Detection)
- Electronics: DAE4 Sn376; Calibrated: 1/13/2005
- Phantom: R3: Sect.1, Amy Twin; Type: Amy Twin Flat; Serial: n/a;
- Measurement SW: DASY4, V4.5 Build 19; Postprocessing SW: SEMCAD, V1.8 Build 147

Daily SPC Check/Dipole Area Scan (9x4x1):

Measurement grid: dx=15mm, dy=15mm

Maximum value of SAR (measured) = 8.67 mW/g

Daily SPC Check/0-Degree 5x5x7 Cube (5x5x7)/Cube 0:

Measurement grid: dx=8mm, dy=8mm, dz=5mm

Reference Value = 67.9 V/m; Power Drift = -0.097 dB

Peak SAR (extrapolated) = 13.8 W/kg

SAR(1 g) = 7.7 mW/g; SAR(10 g) = 4.05 mW/g

Maximum value of SAR (measured) = 8.60 mW/g

Daily SPC Check/90-Degree 5x5x7 Cube (5x5x7)/Cube 0:

Measurement grid: dx=8mm, dy=8mm, dz=5mm

Reference Value = 67.9 V/m; Power Drift = -0.097 dB

Peak SAR (extrapolated) = 13.9 W/kg

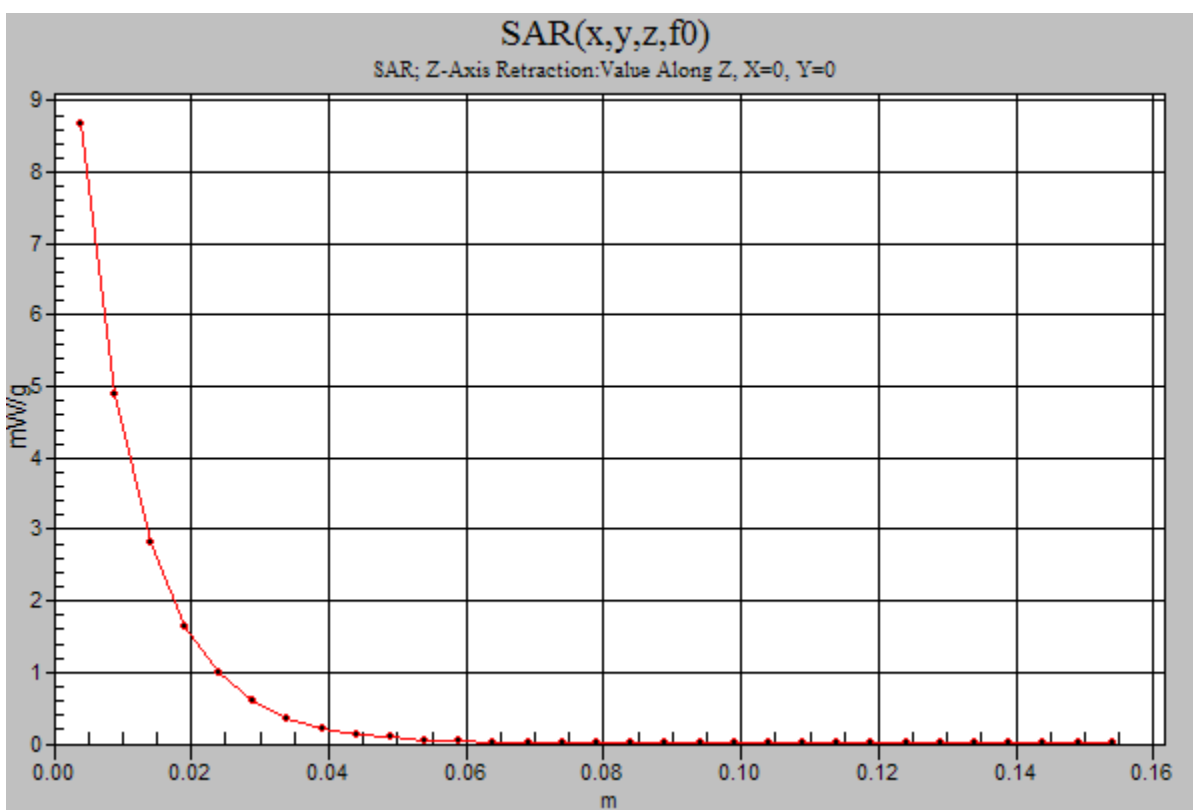
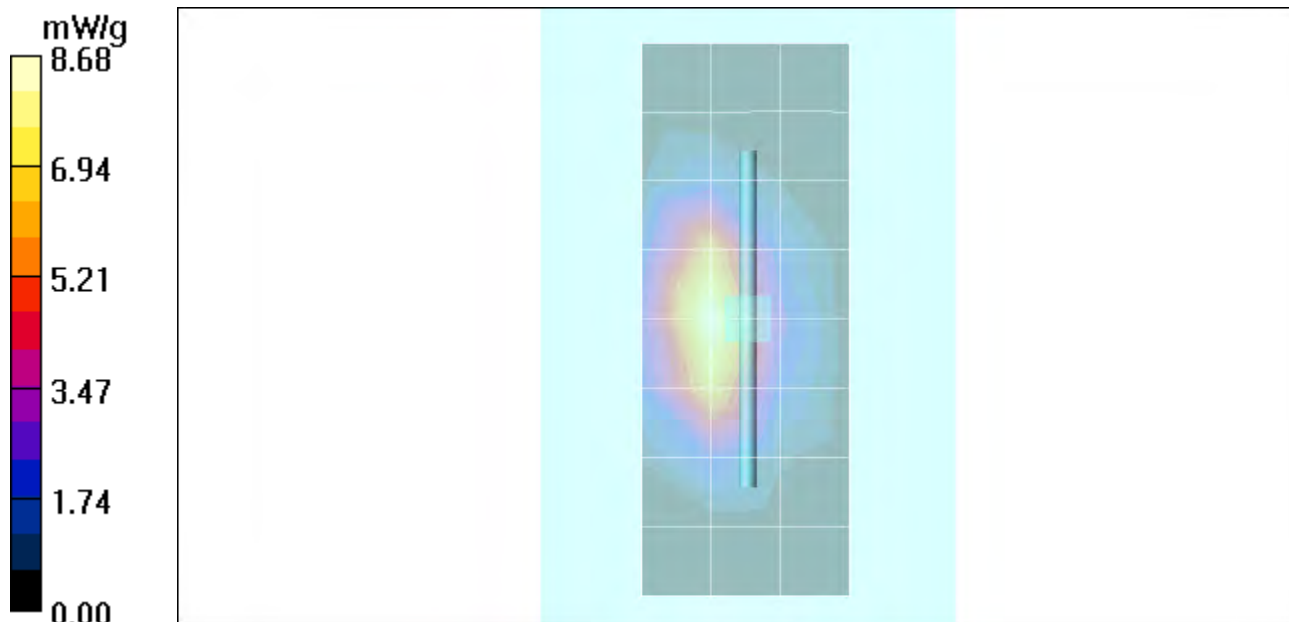
SAR(1 g) = 7.78 mW/g; SAR(10 g) = 4.09 mW/g

Maximum value of SAR (measured) = 8.69 mW/g

Daily SPC Check/Z-Axis Retraction (1x1x31):

Measurement grid: dx=20mm, dy=20mm, dz=5mm

Maximum value of SAR (measured) = 8.68 mW/g



Test Laboratory: Motorola

070505 1800 MHz GOOD +1.6%

DUT: Dipole 1800 MHz; Type: D1800V2; Serial: D1800V2 - SN:251tr

Procedure Notes: 1800 MHz System Performance Check / Dipole Sn# 251TR PM1 Power = 200 mW
Sim.Temp@meas = 19.8C Sim.Temp@SPC = 19.8C Room Temp @ SPC = 21C

Communication System: CW - Dipole; Frequency: 1800 MHz; Channel Number: 8; Duty Cycle: 1:1
Medium: VALIDATION Only; Medium parameters used: $\sigma = 1.38$ mho/m, $\epsilon_r = 38.9$; $\rho = 1000$ kg/m³

DASY4 Configuration:

- Probe: ES3DV3 - SN3037; ConvF(5.16, 5.16, 5.16); Calibrated: 11/25/2004
- Sensor-Surface: 4mm (Mechanical Surface Detection)
- Electronics: DAE4 Sn376; Calibrated: 1/13/2005
- Phantom: R3: Sect.1, Amy Twin; Type: Amy Twin Flat; Serial: n/a;
- Measurement SW: DASY4, V4.5 Build 19; Postprocessing SW: SEMCAD, V1.8 Build 147

Daily SPC Check/Dipole Area Scan (9x4x1):

Measurement grid: dx=15mm, dy=15mm
Maximum value of SAR (measured) = 7.23 mW/g

Daily SPC Check/0-Degree 5x5x7 Cube (5x5x7)/Cube 0:

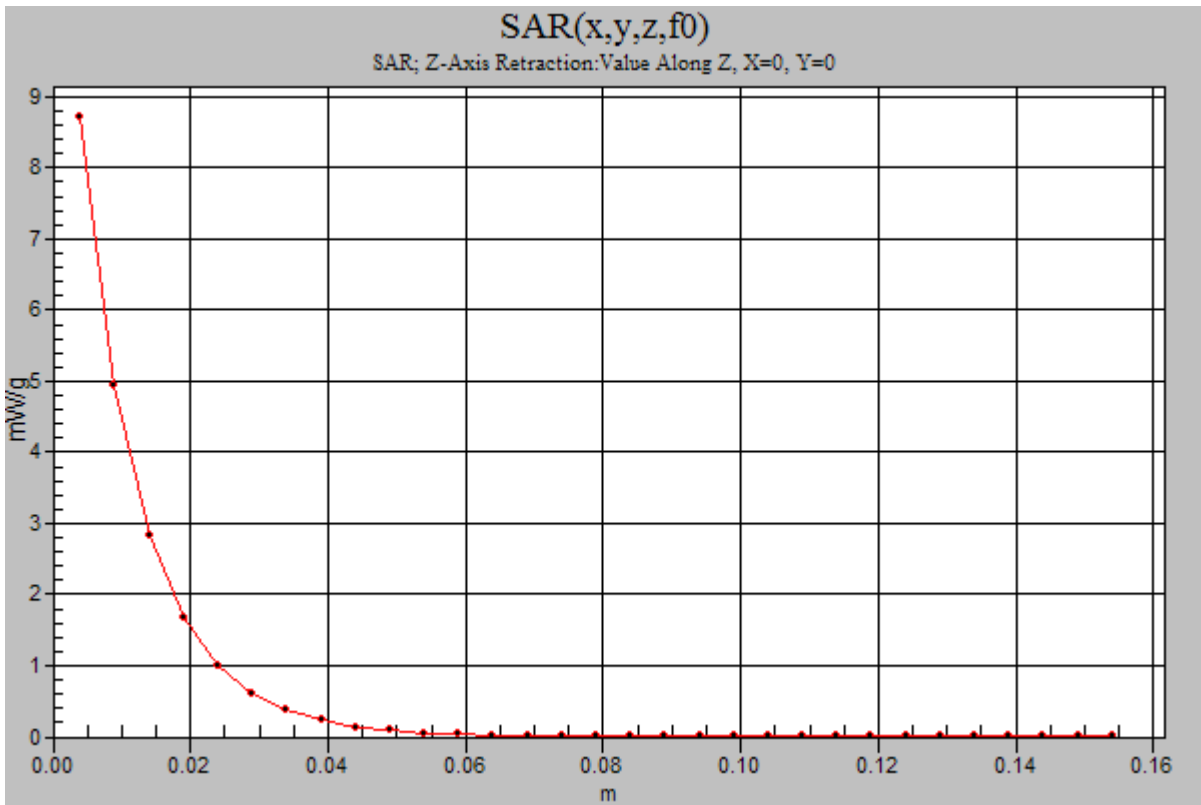
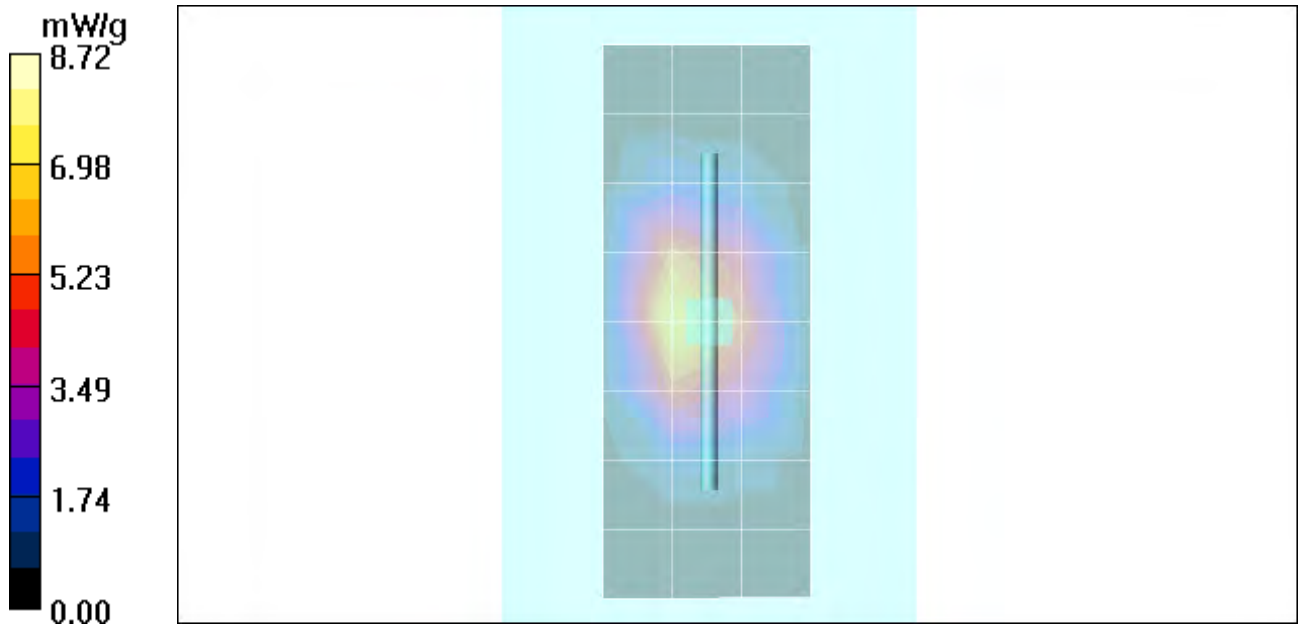
Measurement grid: dx=8mm, dy=8mm, dz=5mm
Reference Value = 80.5 V/m; Power Drift = -0.00 dB
Peak SAR (extrapolated) = 13.6 W/kg
SAR(1 g) = 7.7 mW/g; SAR(10 g) = 4.09 mW/g
Maximum value of SAR (measured) = 8.60 mW/g

Daily SPC Check/90-Degree 5x5x7 Cube (5x5x7)/Cube 0:

Measurement grid: dx=8mm, dy=8mm, dz=5mm
Reference Value = 80.5 V/m; Power Drift = -0.00 dB
Peak SAR (extrapolated) = 13.7 W/kg
SAR(1 g) = 7.78 mW/g; SAR(10 g) = 4.12 mW/g
Maximum value of SAR (measured) = 8.56 mW/g

Daily SPC Check/Z-Axis Retraction (1x1x31):

Measurement grid: dx=20mm, dy=20mm, dz=5mm
Maximum value of SAR (measured) = 8.72 mW/g



Test Laboratory: Motorola

070405 1800 MHz GOOD +1.2%

DUT: Dipole 1800 MHz; Type: D1800V2; Serial: D1800V2 - SN:251tr

Procedure Notes: 1800 MHz System Performance Check / Dipole Sn# 251tr PM1 Power = 200mW

Sim.Temp@meas = 20.2°C Sim.Temp@SPC = 20°C Room Temp @ SPC = 20°C

Communication System: CW - Dipole; Frequency: 1800 MHz; Channel Number: 8; Duty Cycle: 1:1
Medium: VALIDATION Only; Medium parameters used: $\sigma = 1.38$ mho/m, $\epsilon_r = 38.5$; $\rho = 1000$ kg/m³

DASY4 Configuration:

- Probe: ES3DV3 - SN3037; ConvF(5.16, 5.16, 5.16); Calibrated: 11/25/2004
- Sensor-Surface: 4mm (Mechanical Surface Detection)
- Electronics: DAE4 Sn376; Calibrated: 1/13/2005
- Phantom: R3: Sect.1, Amy Twin; Type: Amy Twin Flat; Serial: n/a;
- Measurement SW: DASY4, V4.5 Build 19; Postprocessing SW: SEMCAD, V1.8 Build 147

Daily SPC Check/Dipole Area Scan (9x4x1):

Measurement grid: dx=15mm, dy=15mm

Maximum value of SAR (measured) = 8.34 mW/g

Daily SPC Check/0-Degree 5x5x7 Cube (5x5x7)/Cube 0:

Measurement grid: dx=8mm, dy=8mm, dz=5mm

Reference Value = 73.9 V/m; Power Drift = -0.012 dB

Peak SAR (extrapolated) = 13.8 W/kg

SAR(1 g) = 7.7 mW/g; SAR(10 g) = 4.07 mW/g

Maximum value of SAR (measured) = 8.52 mW/g

Daily SPC Check/90-Degree 5x5x7 Cube (5x5x7)/Cube 0:

Measurement grid: dx=8mm, dy=8mm, dz=5mm

Reference Value = 73.9 V/m; Power Drift = -0.012 dB

Peak SAR (extrapolated) = 13.9 W/kg

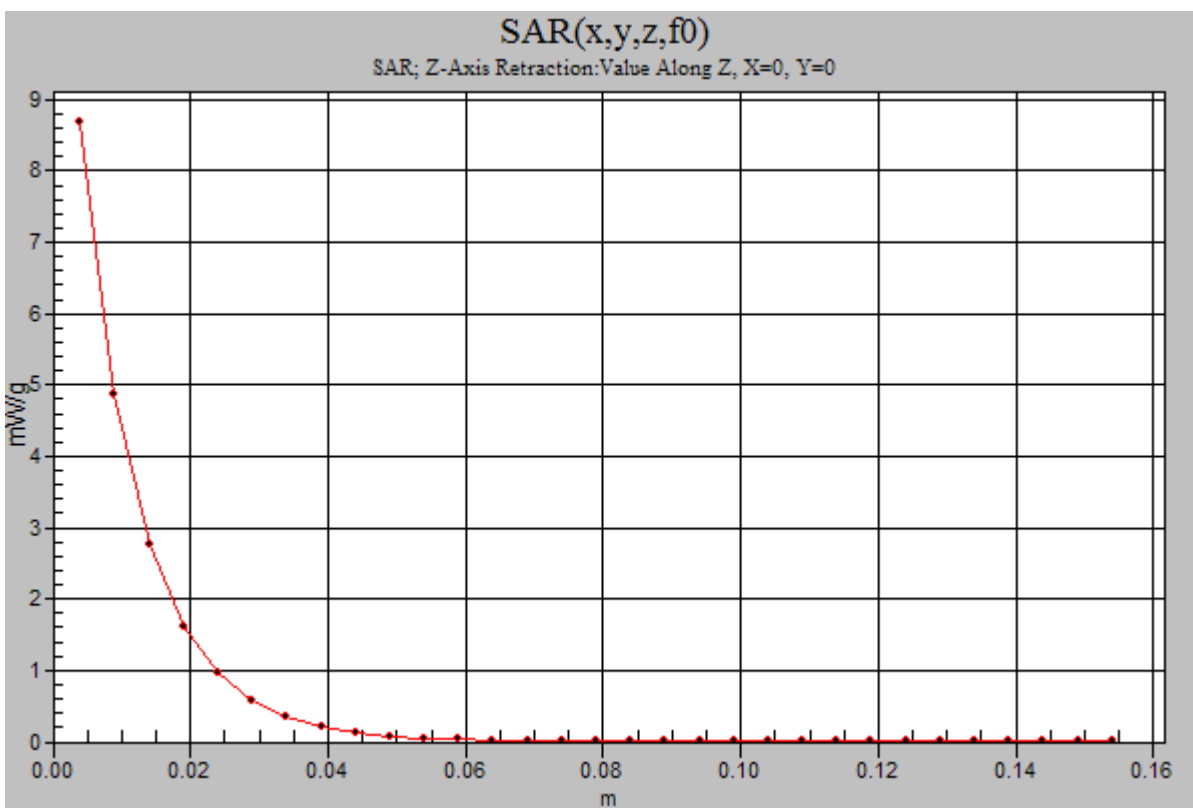
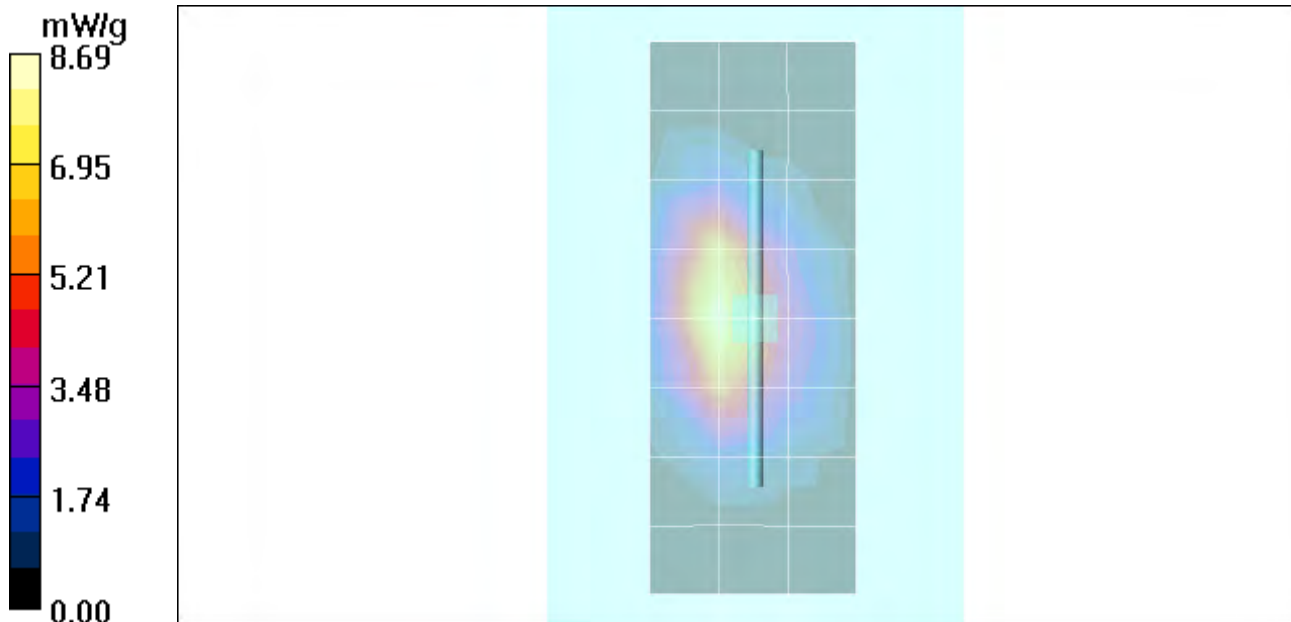
SAR(1 g) = 7.73 mW/g; SAR(10 g) = 4.09 mW/g

Maximum value of SAR (measured) = 8.57 mW/g

Daily SPC Check/Z-Axis Retraction (1x1x31):

Measurement grid: dx=20mm, dy=20mm, dz=5mm

Maximum value of SAR (measured) = 8.69 mW/g



Test Laboratory: Motorola

070305 900Mhz GOOD -1.3%

DUT: Dipole 900 MHz; Type: D900V2; Serial: D900V2 - SN:080

Procedure Notes: 900MHz System Performance Check / Dipole Sn# 80

PM1 Power = 200 mW Sim.Temp@meas = 20 Sim.Temp@SPC = 20.5 Room Temp @ SPC = 21

Communication System: CW - Dipole; Frequency: 900 MHz; Channel Number: 4; Duty Cycle: 1:1
Medium: VALIDATION Only; Medium parameters used: $\sigma = 0.98$ mho/m, $\epsilon_r = 42.3$; $\rho = 1000$ kg/m³

DASY4 Configuration:

- Probe: ES3DV3 - SN3037; ConvF(6.11, 6.11, 6.11); Calibrated: 11/25/2004
- Sensor-Surface: 4mm (Mechanical Surface Detection)
- Electronics: DAE4 Sn376; Calibrated: 1/13/2005
- Phantom: R3: Sugar Water SAM; Type: SAM; Serial: TP-1153;
- Measurement SW: DASY4, V4.5 Build 19; Postprocessing SW: SEMCAD, V1.8 Build 147

Daily SPC Check/Dipole Area Scan (4x9x1):

Measurement grid: dx=15mm, dy=15mm

Maximum value of SAR (measured) = 2.34 mW/g

Daily SPC Check/0-Degree 5x5x7 Cube (5x5x7)/Cube 0:

Measurement grid: dx=8mm, dy=8mm, dz=5mm

Reference Value = 48.3 V/m; Power Drift = 0.035 dB

Peak SAR (extrapolated) = 3.37 W/kg

SAR(1 g) = 2.22 mW/g; SAR(10 g) = 1.42 mW/g

Maximum value of SAR (measured) = 2.41 mW/g

Daily SPC Check/90-Degree 5x5x7 Cube (5x5x7)/Cube 0:

Measurement grid: dx=8mm, dy=8mm, dz=5mm

Reference Value = 48.3 V/m; Power Drift = 0.035 dB

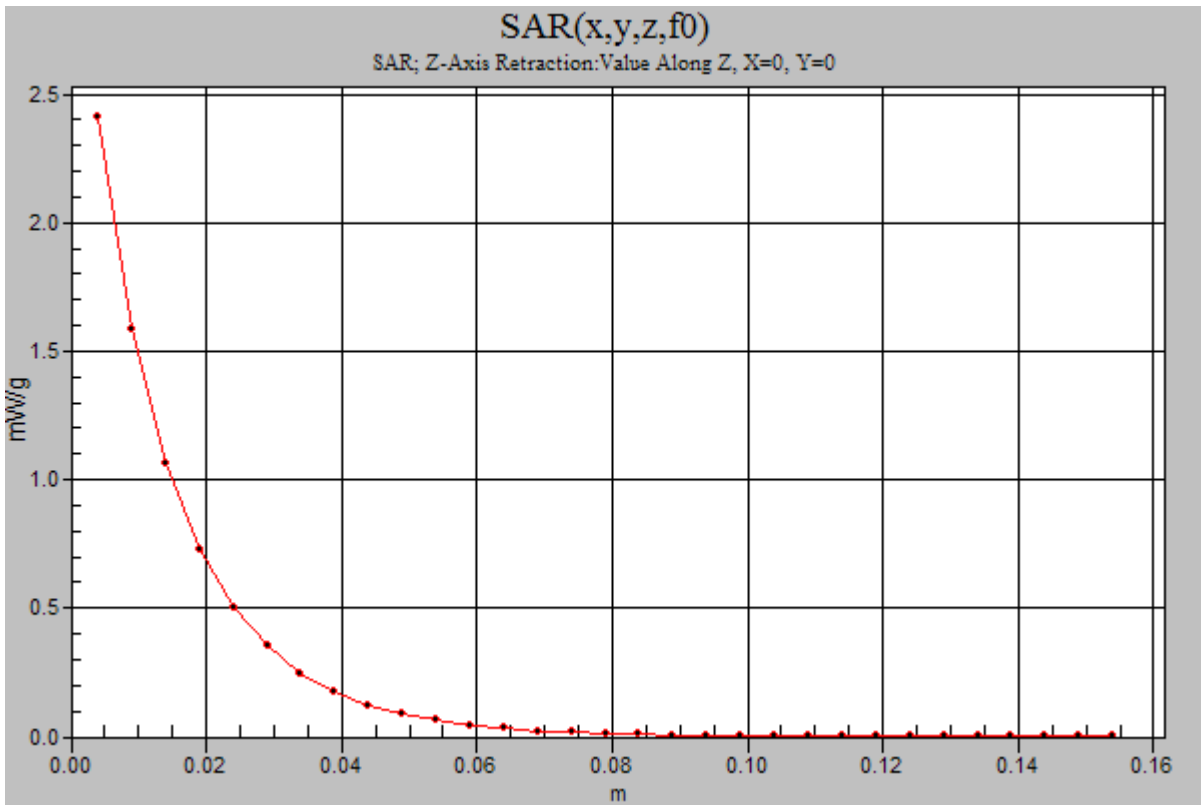
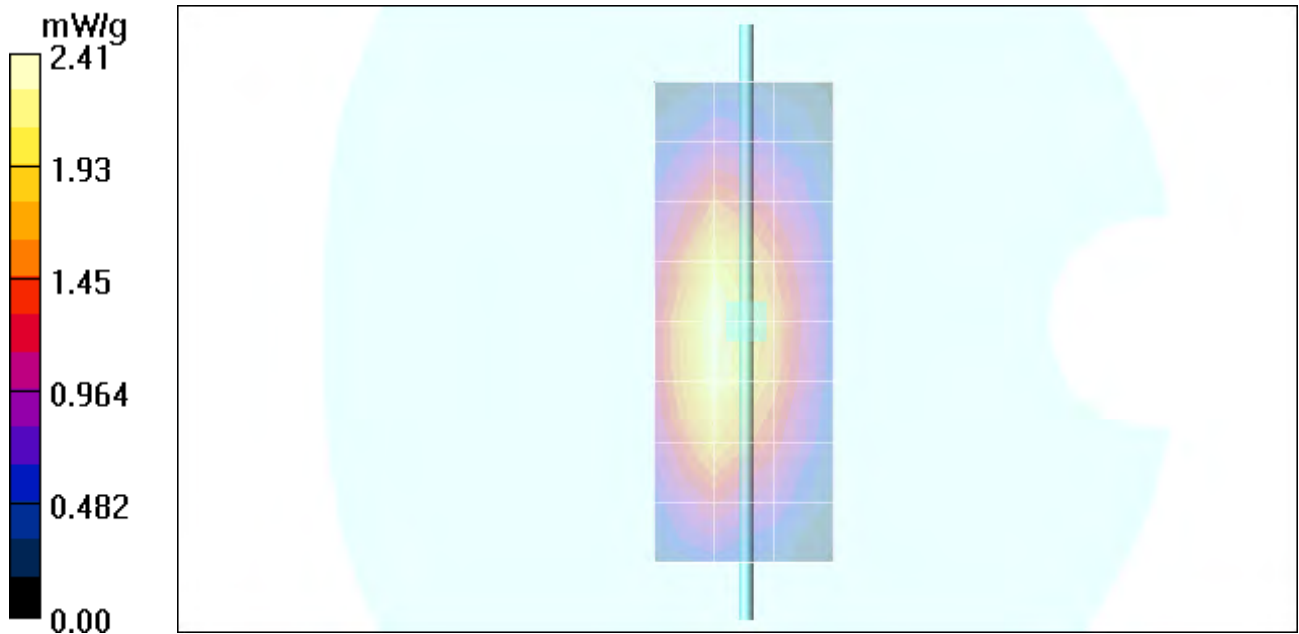
Peak SAR (extrapolated) = 3.39 W/kg

SAR(1 g) = 2.24 mW/g; SAR(10 g) = 1.43 mW/g

Maximum value of SAR (measured) = 2.42 mW/g

Daily SPC Check/Z-Axis Retraction (1x1x31):

Measurement grid: dx=20mm, dy=20mm, dz=5mm



Test Laboratory: Motorola

072605 1800Mhz GOOD-4.3%

DUT: Dipole 1800 MHz; Type: D1800V2; Serial: D1800V2 - SN:251tr

Procedure Notes: 1800 MHz System Performance Check / Dipole Sn# 251tr PM1 Power = 200 mW

Sim.Temp@meas = 20.0°C Sim.Temp@SPC = 20.1°C Room Temp @ SPC = 20°C

Communication System: CW - Dipole; Frequency: 1800 MHz; Channel Number: 8; Duty Cycle: 1:1
Medium: VALIDATION Only; Medium parameters used: $\sigma = 1.34$ mho/m, $\epsilon_r = 38.6$; $\rho = 1000$ kg/m³

DASY4 Configuration:

- Probe: ES3DV3 - SN3037; ConvF(5.16, 5.16, 5.16); Calibrated: 11/25/2004
- Sensor-Surface: 4mm (Mechanical Surface Detection)
- Electronics: DAE3 Sn434; Calibrated: 3/16/2005
- Phantom: R3: Sect.1, Amy Twin; Type: Amy Twin Flat; Serial: n/a;
- Measurement SW: DASY4, V4.5 Build 19; Postprocessing SW: SEMCAD, V1.8 Build 147

Daily SPC Check/Dipole Area Scan (9x4x1):

Measurement grid: dx=15mm, dy=15mm

Maximum value of SAR (measured) = 6.88 mW/g

Daily SPC Check/0-Degree 5x5x7 Cube (5x5x7)/Cube 0:

Measurement grid: dx=8mm, dy=8mm, dz=5mm

Reference Value = 78.4 V/m; Power Drift = -0.016 dB

Peak SAR (extrapolated) = 12.8 W/kg

SAR(1 g) = 7.33 mW/g; SAR(10 g) = 3.94 mW/g

Maximum value of SAR (measured) = 8.19 mW/g

Daily SPC Check/90-Degree 5x5x7 Cube (5x5x7)/Cube 0:

Measurement grid: dx=8mm, dy=8mm, dz=5mm

Reference Value = 78.4 V/m; Power Drift = -0.016 dB

Peak SAR (extrapolated) = 12.8 W/kg

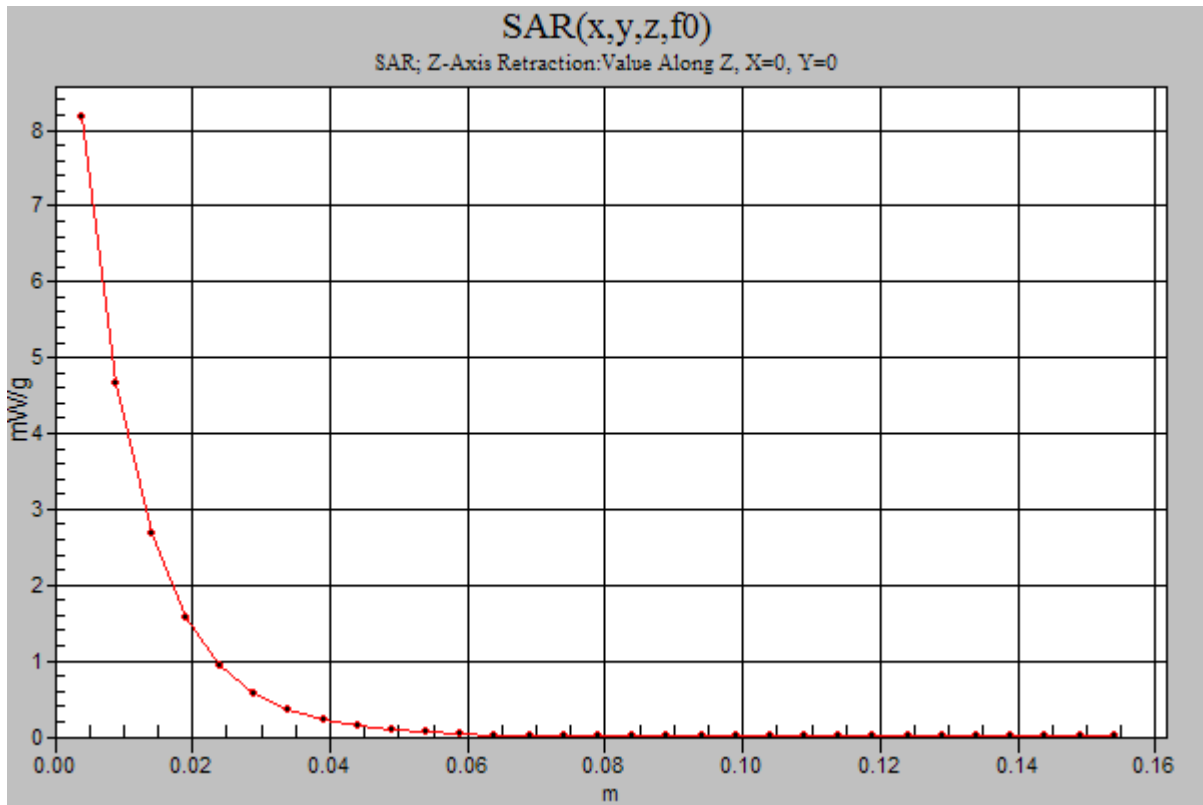
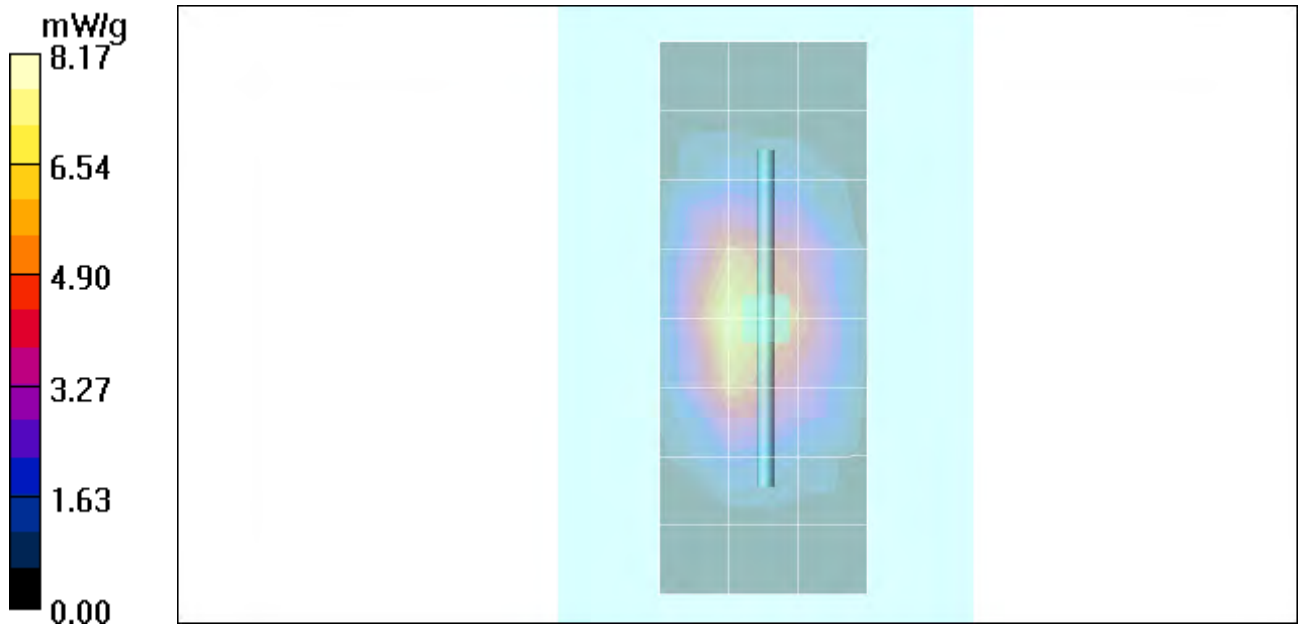
SAR(1 g) = 7.25 mW/g; SAR(10 g) = 3.89 mW/g

Maximum value of SAR (measured) = 8.02 mW/g

Daily SPC Check/Z-Axis Retraction (1x1x31):

Measurement grid: dx=20mm, dy=20mm, dz=5mm

Maximum value of SAR (measured) = 8.17 mW/g



Appendix 2

SAR distribution plots for Phantom Head Adjacent Use

Test Laboratory: Motorola

1900 RH Cheek ch661

Serial: 1

Procedure Notes: Pwr Step: 0 ota Antenna Position: FIXED**Battery Model #: SNN744A DEVICE POSITION: CHEEK**

Communication System: GSM 1900; Frequency: 1880 MHz; Channel Number: 661; Duty Cycle: 1:8
Medium: Regular Glycol Head; Medium parameters used: $\sigma = 1.45$ mho/m, $\epsilon_r = 39.9$; $\rho = 1000$ kg/m³

DASY4 Configuration:

- Probe: ES3DV3 - SN3037; ConvF(5.16, 5.16, 5.16); Calibrated: 11/25/2004
- Sensor-Surface: 4mm (Mechanical Surface Detection)
- Electronics: DAE4 Sn376; Calibrated: 1/13/2005
- Phantom: R3: Glycol SAM; Type: SAM; Serial: TP-1159;
- Measurement SW: DASY4, V4.5 Build 19; Postprocessing SW: SEMCAD, V1.8 Build 147

Right Head Template/Area Scan - Normal (15mm) (7x17x1):

Measurement grid: dx=15mm, dy=15mm

Maximum value of SAR (measured) = 1.04 mW/g

Right Head Template/Zoom Scan (7x7x7)/Cube 0:

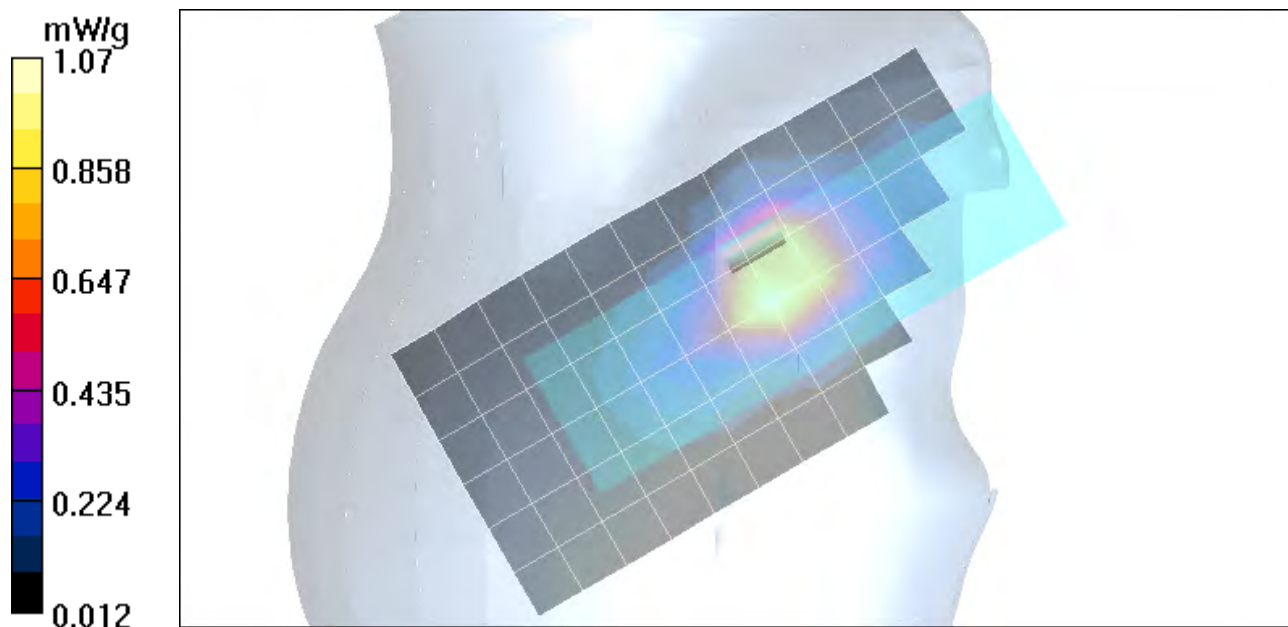
Measurement grid: dx=5mm, dy=5mm, dz=5mm

Reference Value = 26.7 V/m; Power Drift = 0.016 dB

Peak SAR (extrapolated) = 1.65 W/kg

SAR(1 g) = 0.975 mW/g; SAR(10 g) = 0.549 mW/g

Maximum value of SAR (measured) = 1.07 mW/g



Test Laboratory: Motorola

1900 LH Tilt ch661

Serial: 1

Procedure Notes: Pwr Step: 0 ota Antenna Position: FIXED**Battery Model #: SNN5744A DEVICE POSITION: ROTATED 15***

Communication System: GSM 1900; Frequency: 1880 MHz; Channel Number: 661; Duty Cycle: 1:8
Medium: Regular Glycol Head; Medium parameters used: $\sigma = 1.45$ mho/m, $\epsilon_r = 39.7$; $\rho = 1000$ kg/m³

DASY4 Configuration:

- Probe: ES3DV3 - SN3037; ConvF(5.16, 5.16, 5.16); Calibrated: 11/25/2004
- Sensor-Surface: 4mm (Mechanical Surface Detection)
- Electronics: DAE4 Sn376; Calibrated: 1/13/2005
- Phantom: R3: Glycol SAM; Type: SAM; Serial: TP-1159;
- Measurement SW: DASY4, V4.5 Build 19; Postprocessing SW: SEMCAD, V1.8 Build 147

Left Head Template/Zoom Scan (7x7x7)/Cube 0:

Measurement grid: dx=5mm, dy=5mm, dz=5mm

Reference Value = 14.8 V/m; Power Drift = 0.054 dB

Peak SAR (extrapolated) = 0.447 W/kg

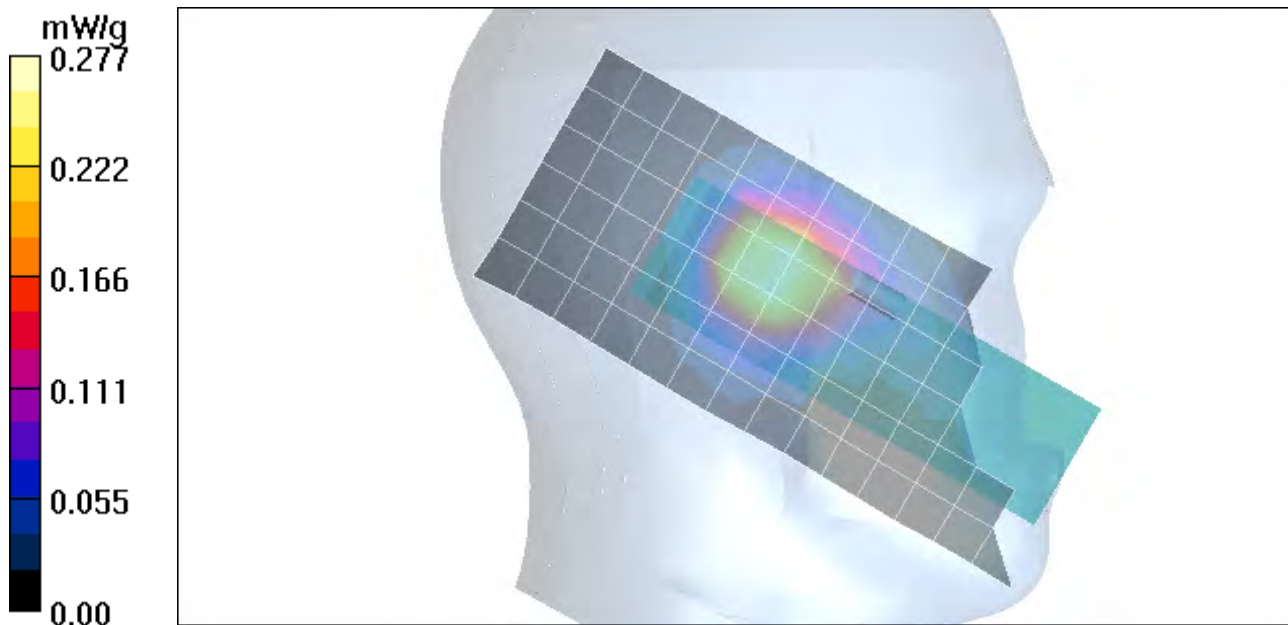
SAR(1 g) = 0.296 mW/g; SAR(10 g) = 0.182 mW/g

Maximum value of SAR (measured) = 0.322 mW/g

Left Head Template/Area Scan - Normal (15mm) (7x17x1):

Measurement grid: dx=15mm, dy=15mm

Maximum value of SAR (measured) = 0.277 mW/g



Test Laboratory: Motorola

1900 LH Cheek ch810

Serial: 1

Procedure Notes: Pwr Step: 0 ota Antenna Position: FIXED**Battery Model #: SNN5744A DEVICE POSITION: CHEEK**

Communication System: GSM 1900; Frequency: 1909.8 MHz; Channel Number: 810; Duty Cycle: 1:8
Medium: Regular Glycol Head; Medium parameters used: $\sigma = 1.45$ mho/m, $\epsilon_r = 39.7$; $\rho = 1000$ kg/m³

DASY4 Configuration:

- Probe: ES3DV3 - SN3037; ConvF(5.16, 5.16, 5.16); Calibrated: 11/25/2004
- Sensor-Surface: 4mm (Mechanical Surface Detection)
- Electronics: DAE4 Sn376; Calibrated: 1/13/2005
- Phantom: R3: Glycol SAM; Type: SAM; Serial: TP-1159;
- Measurement SW: DASY4, V4.5 Build 19; Postprocessing SW: SEMCAD, V1.8 Build 147

Left Head Template/Area Scan - Normal (15mm) (7x17x1):

Measurement grid: dx=15mm, dy=15mm

Maximum value of SAR (measured) = 0.906 mW/g

Left Head Template/Zoom Scan (7x7x7)/Cube 0:

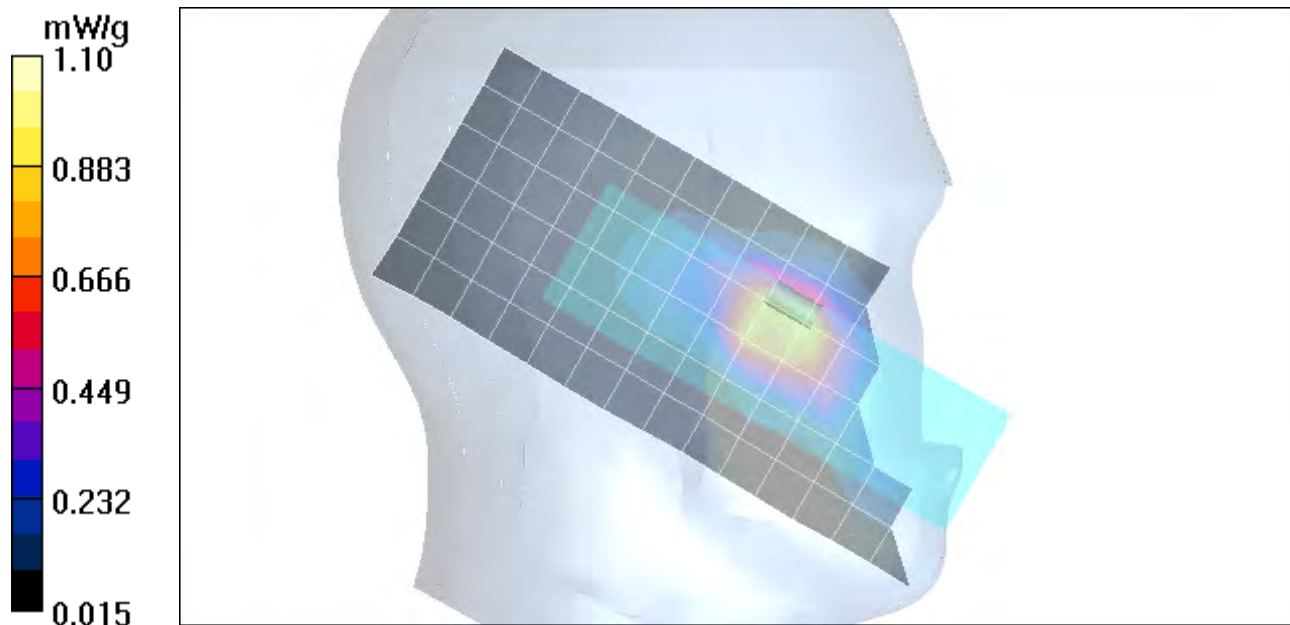
Measurement grid: dx=5mm, dy=5mm, dz=5mm

Reference Value = 27.8 V/m; Power Drift = -0.062 dB

Peak SAR (extrapolated) = 1.78 W/kg

SAR(1 g) = 1.04 mW/g; SAR(10 g) = 0.572 mW/g

Maximum value of SAR (measured) = 1.10 mW/g



Date/Time: 7/26/2005 11:56:26 AM

Test Laboratory: Motorola

1900 LH Cheek ch810 batt SNN5766A

Serial: 1

Procedure Notes: Pwr Step: 0 ota Antenna Position: FIXED**Battery Model #: SNN5766A DEVICE POSITION: CHEEK**

Communication System: GSM 1900; Frequency: 1909.8 MHz; Channel Number: 810; Duty Cycle: 1:8
Medium: Regular Glycol Head; Medium parameters used: $\sigma = 1.43$ mho/m, $\epsilon_r = 38.2$; $\rho = 1000$ kg/m³

DASY4 Configuration:

- Probe: ET3DV6 - SN1520; ConvF(5.08, 5.08, 5.08); Calibrated: 4/22/2005
- Sensor-Surface: 4mm (Mechanical Surface Detection)
- Electronics: DAE3 Sn365; Calibrated: 9/22/2004
- Phantom: R4: Glycol SAM; Type: SAM; Serial: TP-1250;
- Measurement SW: DASY4, V4.5 Build 19; Postprocessing SW: SEMCAD, V1.8 Build 147

Left Head Template/Area Scan - Normal (15mm) (7x17x1):

Measurement grid: dx=15mm, dy=15mm

Maximum value of SAR (measured) = 0.856 mW/g

Left Head Template/Zoom Scan (7x7x7)/Cube 0:

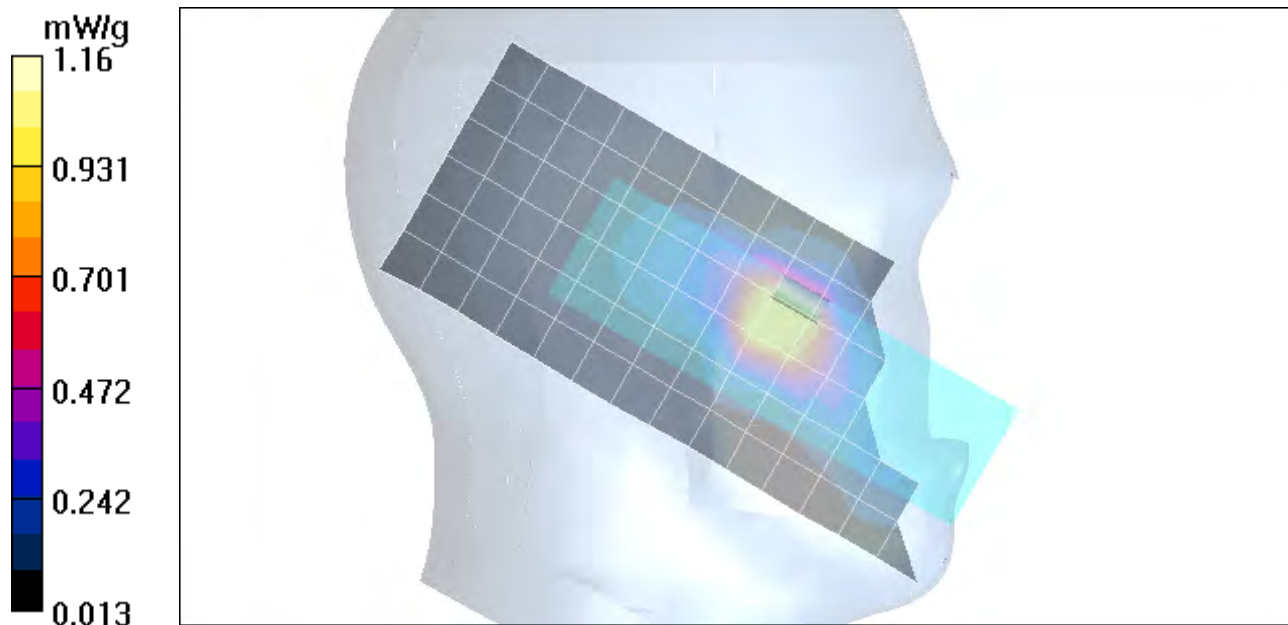
Measurement grid: dx=5mm, dy=5mm, dz=5mm

Reference Value = 29.7 V/m; Power Drift = 0.110 dB

Peak SAR (extrapolated) = 1.81 W/kg

SAR(1 g) = 1.05 mW/g; SAR(10 g) = 0.571 mW/g

Maximum value of SAR (measured) = 1.16 mW/g



Test Laboratory: Motorola

850 RH Tilt ch190

Serial: 1

Procedure Notes: Pwr Step: 5 Antenna Position: int**Battery Model #: snn5744a DEVICE POSITION tilt**

Communication System: GSM 850; Frequency: 836.6 MHz; Channel Number: 190; Duty Cycle: 1:8
Medium: Low Freq Head; Medium parameters used: $\sigma = 0.9$ mho/m, $\epsilon_r = 42.9$; $\rho = 1000$ kg/m³

DASY4 Configuration:

- Probe: ES3DV3 - SN3037; ConvF(6.11, 6.11, 6.11); Calibrated: 11/25/2004
- Sensor-Surface: 4mm (Mechanical Surface Detection)
- Electronics: DAE4 Sn376; Calibrated: 1/13/2005
- Phantom: R3: Sugar Water SAM; Type: SAM; Serial: TP-1153;
- Measurement SW: DASY4, V4.5 Build 19; Postprocessing SW: SEMCAD, V1.8 Build 147

Right Head Template/Area Scan - Normal (15mm) (7x17x1):

Measurement grid: dx=15mm, dy=15mm

Maximum value of SAR (measured) = 0.318 mW/g

Right Head Template/Zoom Scan (7x7x7)/Cube 0:

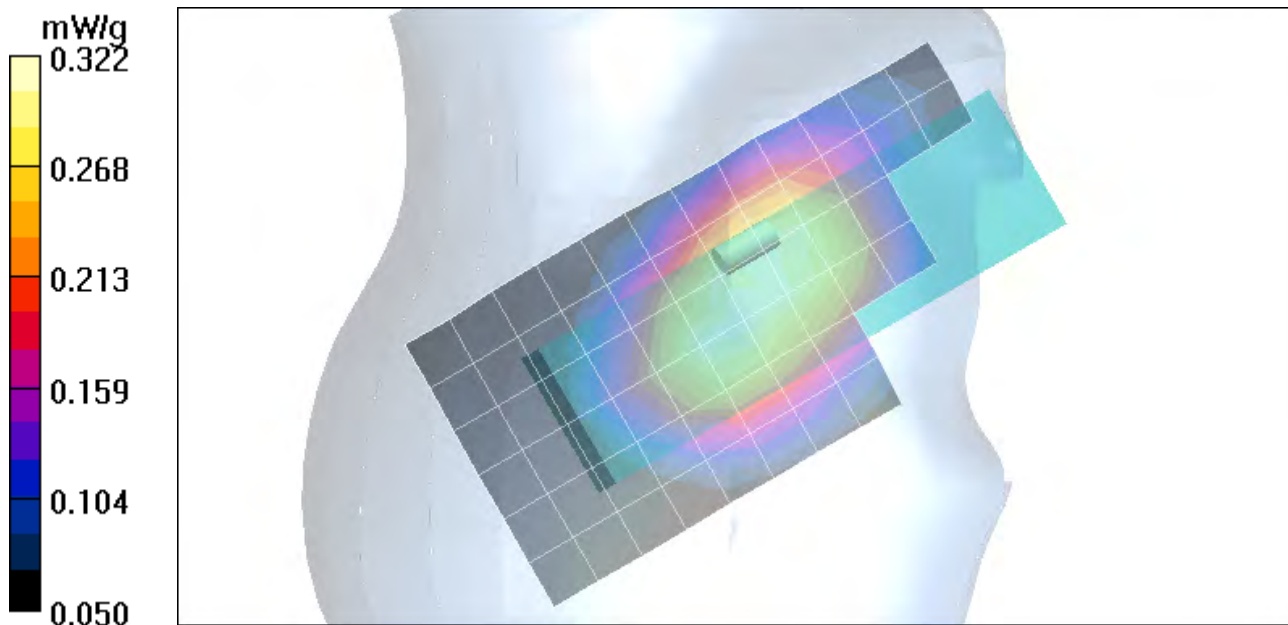
Measurement grid: dx=5mm, dy=5mm, dz=5mm

Reference Value = 19.0 V/m; Power Drift = 0.01 dB

Peak SAR (extrapolated) = 0.390 W/kg

SAR(1 g) = 0.308 mW/g; SAR(10 g) = 0.238 mW/g

Maximum value of SAR (measured) = 0.322 mW/g



Test Laboratory: Motorola

850 RH Cheek ch251

Serial: 1

Procedure Notes: Pwr Step: 5 Antenna Position: int**Battery Model #: snn5744a DEVICE POSITION cheek**

Communication System: GSM 850; Frequency: 848.8 MHz; Channel Number: 251; Duty Cycle: 1:8
Medium: Low Freq Head; Medium parameters used: $\sigma = 0.9$ mho/m, $\epsilon_r = 42.9$; $\rho = 1000$ kg/m³

DASY4 Configuration:

- Probe: ES3DV3 - SN3037; ConvF(6.11, 6.11, 6.11); Calibrated: 11/25/2004
- Sensor-Surface: 4mm (Mechanical Surface Detection)
- Electronics: DAE4 Sn376; Calibrated: 1/13/2005
- Phantom: R3: Sugar Water SAM; Type: SAM; Serial: TP-1153;
- Measurement SW: DASY4, V4.5 Build 19; Postprocessing SW: SEMCAD, V1.8 Build 147

Right Head Template/Area Scan - Normal (15mm) (7x17x1):

Measurement grid: dx=15mm, dy=15mm

Maximum value of SAR (measured) = 1.28 mW/g

Right Head Template/Zoom Scan (7x7x7)/Cube 0:

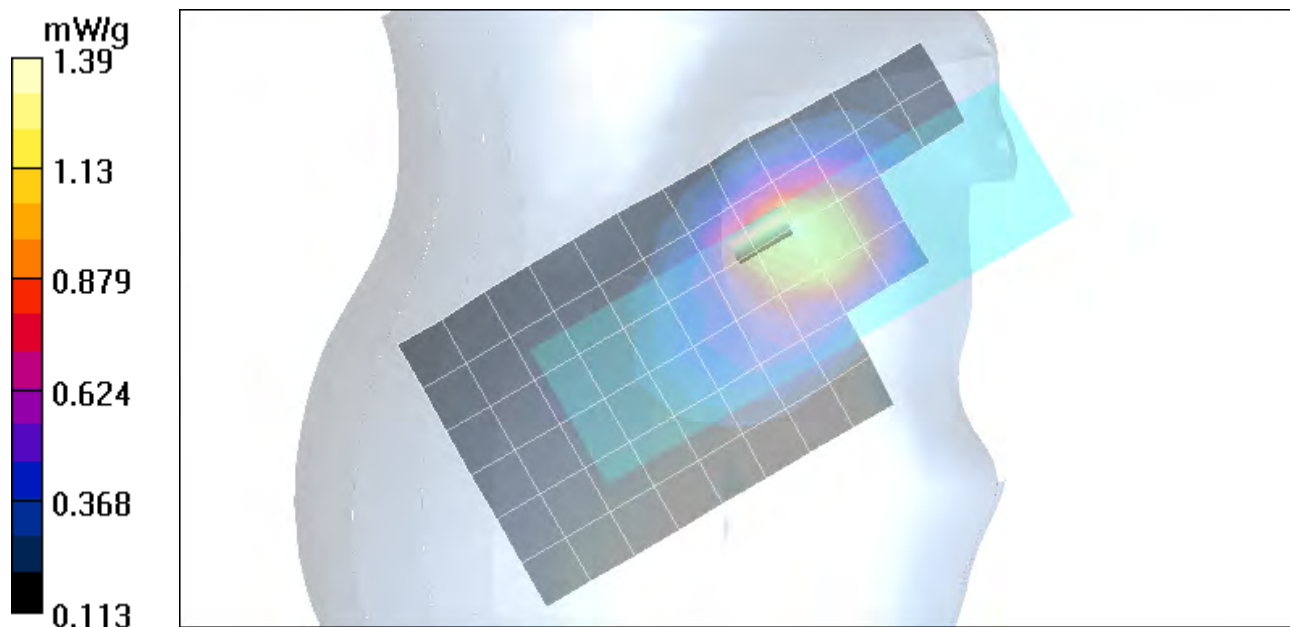
Measurement grid: dx=5mm, dy=5mm, dz=5mm

Reference Value = 39.3 V/m; Power Drift = 0.020 dB

Peak SAR (extrapolated) = 1.92 W/kg

SAR(1 g) = 1.28 mW/g; SAR(10 g) = 0.830 mW/g

Maximum value of SAR (measured) = 1.39 mW/g



Date/Time: 7/3/2005 11:59:08 PM

Test Laboratory: Motorola

850 RH Cheek ch251 batt SNN5766A

Serial: 1

Procedure Notes: Pwr Step: 5 Antenna Position: int**Battery Model #: snn5766a DEVICE POSITION cheek**

Communication System: GSM 850; Frequency: 848.8 MHz; Channel Number: 251; Duty Cycle: 1:8
Medium: Low Freq Head; Medium parameters used: $\sigma = 0.9$ mho/m, $\epsilon_r = 42.9$; $\rho = 1000$ kg/m³

DASY4 Configuration:

- Probe: ES3DV3 - SN3037; ConvF(6.11, 6.11, 6.11); Calibrated: 11/25/2004
- Sensor-Surface: 4mm (Mechanical Surface Detection)
- Electronics: DAE4 Sn376; Calibrated: 1/13/2005
- Phantom: R3: Sugar Water SAM; Type: SAM; Serial: TP-1153;
- Measurement SW: DASY4, V4.5 Build 19; Postprocessing SW: SEMCAD, V1.8 Build 147

Right Head Template/Zoom Scan (7x7x7)/Cube 0:

Measurement grid: dx=5mm, dy=5mm, dz=5mm

Reference Value = 38.0 V/m; Power Drift = 0.034 dB

Peak SAR (extrapolated) = 1.82 W/kg

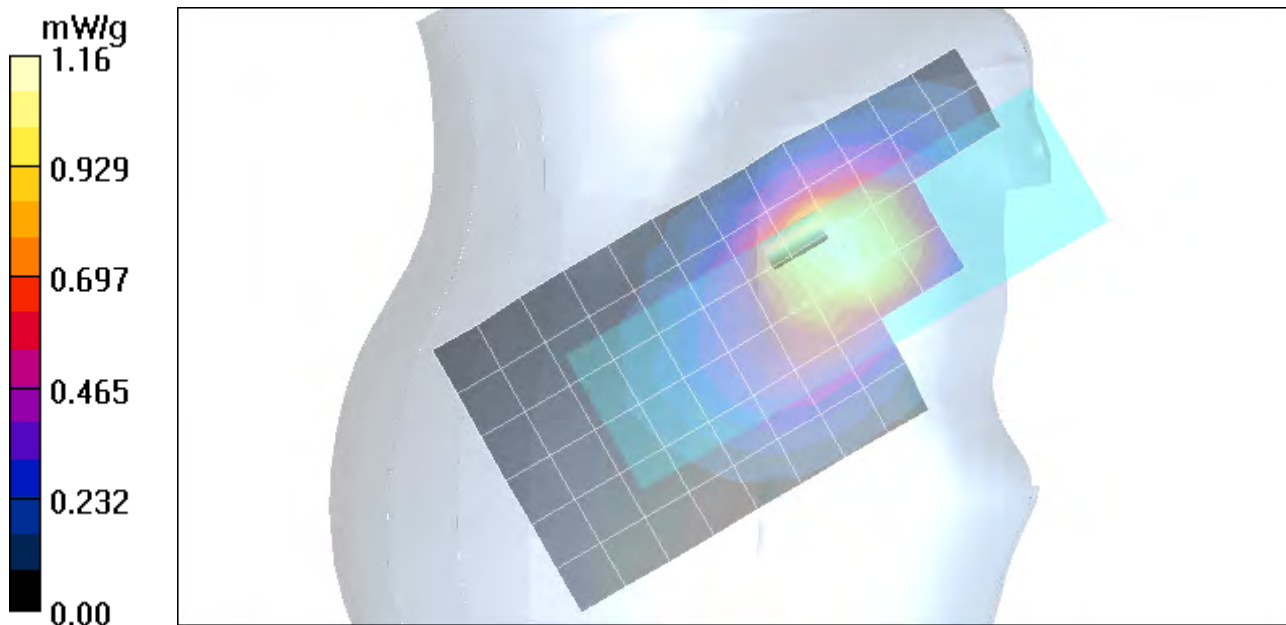
SAR(1 g) = 1.21 mW/g; SAR(10 g) = 0.792 mW/g

Maximum value of SAR (measured) = 1.32 mW/g

Right Head Template/Area Scan - Normal (15mm) (7x17x1):

Measurement grid: dx=15mm, dy=15mm

Maximum value of SAR (measured) = 1.16 mW/g



Test Laboratory: Motorola

850 LH Tilt ch190

Serial: 1

Procedure Notes: Pwr Step: 5 Antenna Position: int**Battery Model #: snn5744a DEVICE POSITION tilt**

Communication System: GSM 850; Frequency: 836.6 MHz; Channel Number: 190; Duty Cycle: 1:8
 Medium: Low Freq Head; Medium parameters used: $\sigma = 0.9$ mho/m, $\epsilon_r = 42.9$; $\rho = 1000$ kg/m³

DASY4 Configuration:

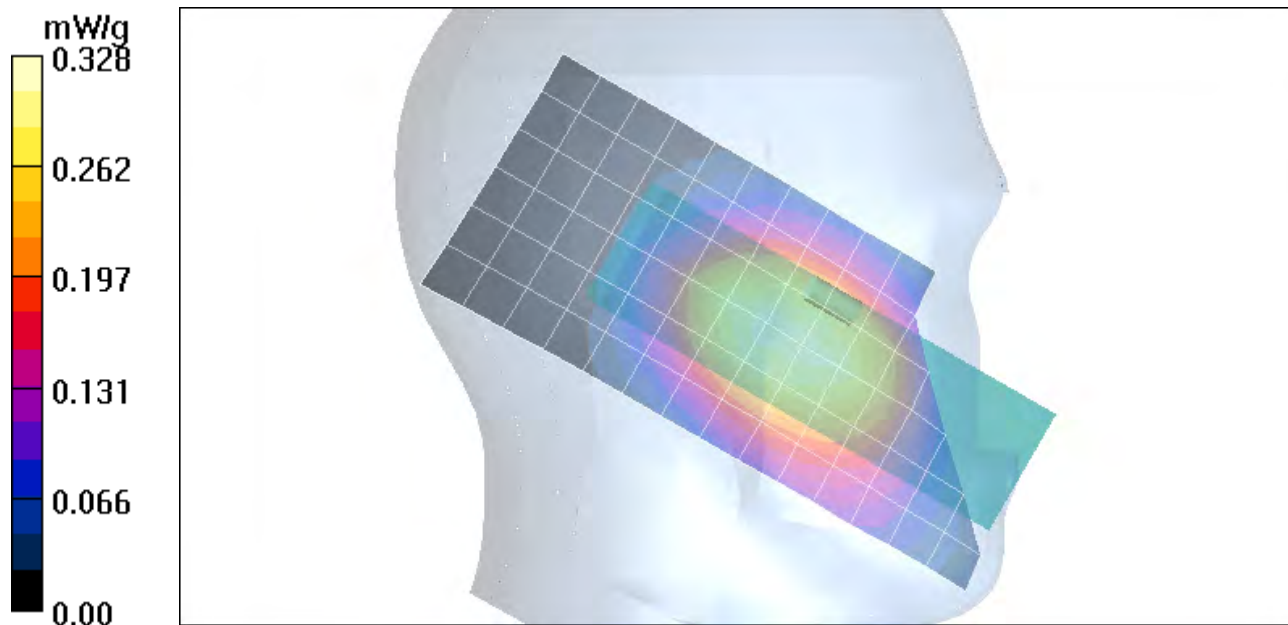
- Probe: ES3DV3 - SN3037; ConvF(6.11, 6.11, 6.11); Calibrated: 11/25/2004
- Sensor-Surface: 4mm (Mechanical Surface Detection)
- Electronics: DAE4 Sn376; Calibrated: 1/13/2005
- Phantom: R3: Sugar Water SAM; Type: SAM; Serial: TP-1153;
- Measurement SW: DASY4, V4.5 Build 19; Postprocessing SW: SEMCAD, V1.8 Build 147

Left Head Template/Zoom Scan (7x7x7)/Cube 0:

Measurement grid: dx=5mm, dy=5mm, dz=5mm
 Reference Value = 18.7 V/m; Power Drift = 0.017 dB
 Peak SAR (extrapolated) = 0.391 W/kg
SAR(1 g) = 0.313 mW/g; SAR(10 g) = 0.241 mW/g
 Maximum value of SAR (measured) = 0.324 mW/g

Left Head Template/Area Scan - Normal (15mm) (7x17x1):

Measurement grid: dx=15mm, dy=15mm
 Maximum value of SAR (measured) = 0.328 mW/g



Test Laboratory: Motorola

850 LH Cheek ch251

Serial: 1

Procedure Notes: Pwr Step: 5 Antenna Position: int**Battery Model #: snn5744a DEVICE POSITION cheek**

Communication System: GSM 850; Frequency: 848.8 MHz; Channel Number: 251; Duty Cycle: 1:8
Medium: Low Freq Head; Medium parameters used: $\sigma = 0.9$ mho/m, $\epsilon_r = 42.9$; $\rho = 1000$ kg/m³

DASY4 Configuration:

- Probe: ES3DV3 - SN3037; ConvF(6.11, 6.11, 6.11); Calibrated: 11/25/2004
- Sensor-Surface: 4mm (Mechanical Surface Detection)
- Electronics: DAE4 Sn376; Calibrated: 1/13/2005
- Phantom: R3: Sugar Water SAM; Type: SAM; Serial: TP-1153;
- Measurement SW: DASY4, V4.5 Build 19; Postprocessing SW: SEMCAD, V1.8 Build 147

Left Head Template/Area Scan - Normal (15mm) (7x17x1):

Measurement grid: dx=15mm, dy=15mm

Maximum value of SAR (measured) = 1.25 mW/g

Left Head Template/Zoom Scan (7x7x7)/Cube 0:

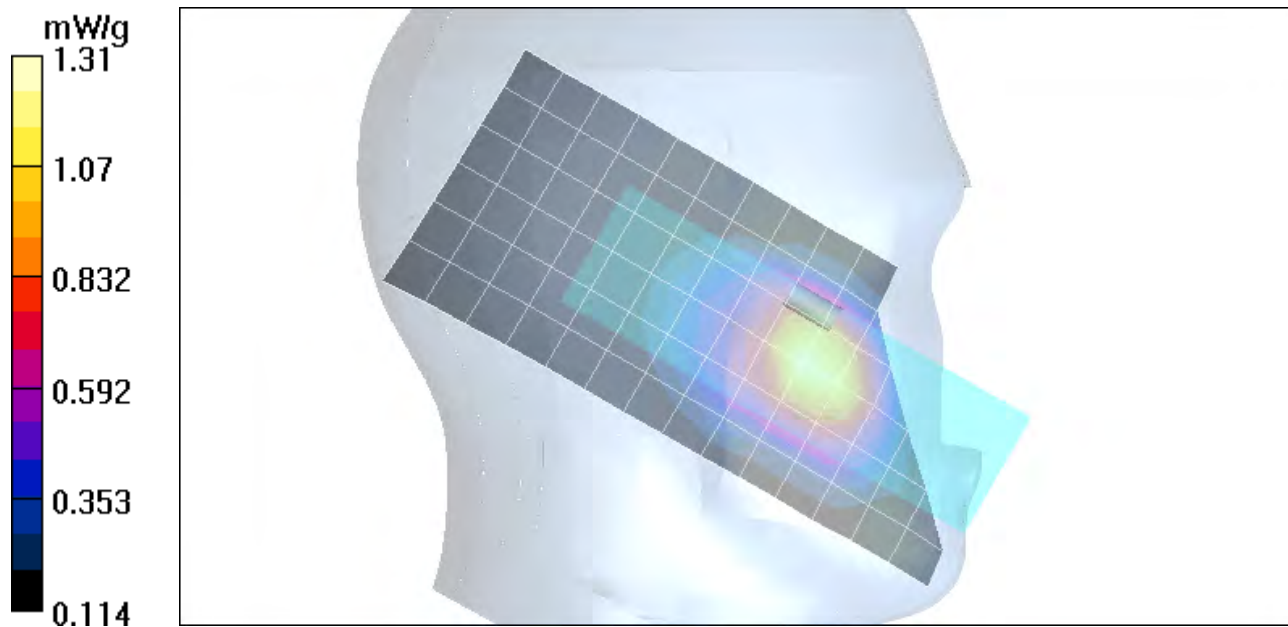
Measurement grid: dx=5mm, dy=5mm, dz=5mm

Reference Value = 35.2 V/m; Power Drift = -0.01 dB

Peak SAR (extrapolated) = 1.79 W/kg

SAR(1 g) = 1.23 mW/g; SAR(10 g) = 0.819 mW/g

Maximum value of SAR (measured) = 1.31 mW/g



Test Laboratory: Motorola

1900 RH Tilt ch661

Serial: 1

Procedure Notes: Pwr Step: 0 ota Antenna Position: FIXED**Battery Model #: SNN5744A DEVICE POSITION: ROTATED 15***

Communication System: GSM 1900; Frequency: 1880 MHz; Channel Number: 661; Duty Cycle: 1:8
Medium: Regular Glycol Head; Medium parameters used: $\sigma = 1.45$ mho/m, $\epsilon_r = 39.9$; $\rho = 1000$ kg/m³

DASY4 Configuration:

- Probe: ES3DV3 - SN3037; ConvF(5.16, 5.16, 5.16); Calibrated: 11/25/2004
- Sensor-Surface: 4mm (Mechanical Surface Detection)
- Electronics: DAE4 Sn376; Calibrated: 1/13/2005
- Phantom: R3: Glycol SAM; Type: SAM; Serial: TP-1159;
- Measurement SW: DASY4, V4.5 Build 19; Postprocessing SW: SEMCAD, V1.8 Build 147

Right Head Template/Area Scan - Normal (10mm) (10x25x1):

Measurement grid: dx=10mm, dy=10mm

Maximum value of SAR (measured) = 0.310 mW/g

Right Head Template/Zoom Scan (7x7x7)/Cube 0:

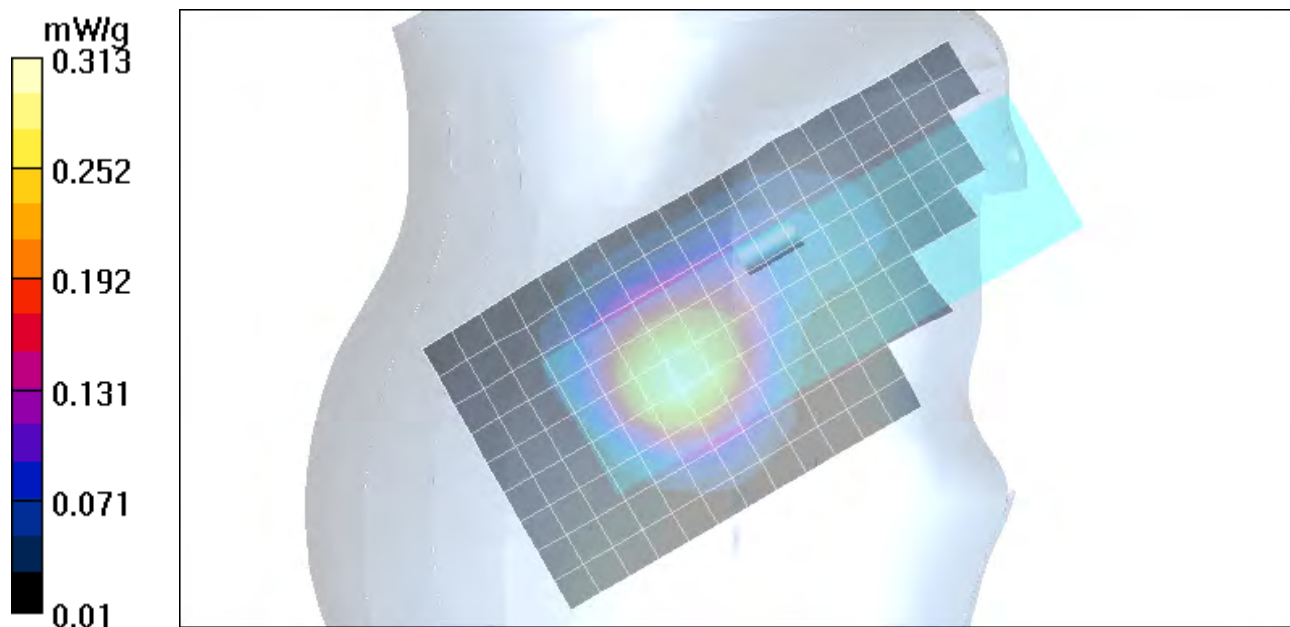
Measurement grid: dx=5mm, dy=5mm, dz=5mm

Reference Value = 13.4 V/m; Power Drift = -0.163 dB

Peak SAR (extrapolated) = 0.419 W/kg

SAR(1 g) = 0.290 mW/g; SAR(10 g) = 0.182 mW/g

Maximum value of SAR (measured) = 0.313 mW/g



Appendix 3

SAR distribution plots for Body Worn Configuration

Test Laboratory: Motorola

1900 BW Front ch661

Serial: 1

**Procedure Notes: Pwr Step: 0 ota Antenna Position: FIXED Battery Model # SNN5744A
Accessory Model # = FRONT OF PHONE 15mm FROM PHANTOM**

Communication System: GSM 1900; Frequency: 1880 MHz; Channel Number: 661; Duty Cycle: 1:8
Medium: Regular Glycol Body; Medium parameters used: $\sigma = 1.58$ mho/m, $\epsilon_r = 51.4$; $\rho = 1000$ kg/m³

DASY4 Configuration:

- Probe: ES3DV3 - SN3037; ConvF(4.71, 4.71, 4.71); Calibrated: 11/25/2004
- Sensor-Surface: 4mm (Mechanical Surface Detection)
- Electronics: DAE4 Sn376; Calibrated: 1/13/2005
- Phantom: R3: Sect.1, Amy Twin; Type: Amy Twin Flat; Serial: n/a;
- Measurement SW: DASY4, V4.5 Build 19; Postprocessing SW: SEMCAD, V1.8 Build 147

Amy Twin Phone Template/Area Scan - Normal Body (10mm) (19x10x1):

Measurement grid: dx=10mm, dy=10mm

Maximum value of SAR (measured) = 0.115 mW/g

Amy Twin Phone Template/Zoom Scan (7x7x7)/Cube 0:

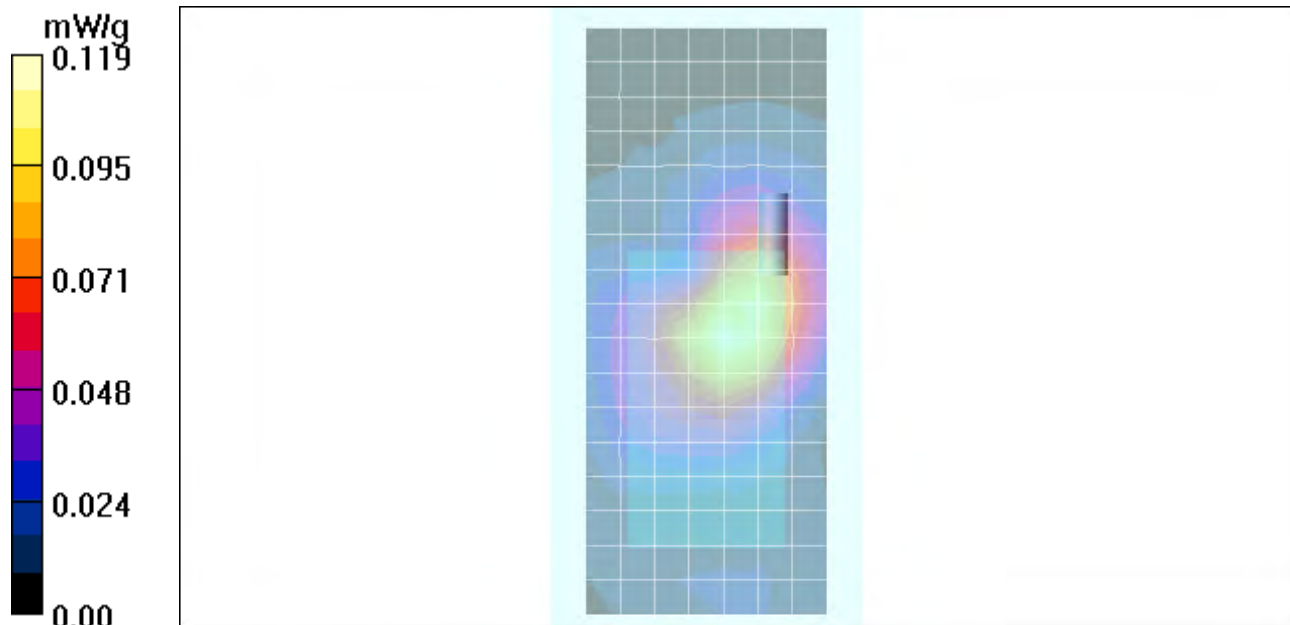
Measurement grid: dx=5mm, dy=5mm, dz=5mm

Reference Value = 8.15 V/m; Power Drift = -0.012 dB

Peak SAR (extrapolated) = 0.163 W/kg

SAR(1 g) = 0.108 mW/g; SAR(10 g) = 0.065 mW/g

Maximum value of SAR (measured) = 0.119 mW/g



Test Laboratory: Motorola

1900 BW Edge back 25mm ch661

Serial: 1

Procedure Notes: Pwr Step: 2 ota Antenna Position: FIXED**Battery Model # SNN5744A Accessory Model # = BACK OF PHONE 25mm FROM PHANTOM**

Communication System: EDGE 1900 - Class 6; Frequency: 1880 MHz; Channel Number: 661; Duty Cycle: 1:4
Medium: Regular Glycol Body; Medium parameters used: $\sigma = 1.58$ mho/m, $\epsilon_r = 51.4$; $\rho = 1000$ kg/m³

DASY4 Configuration:

- Probe: ES3DV3 - SN3037; ConvF(4.71, 4.71, 4.71); Calibrated: 11/25/2004
- Sensor-Surface: 4mm (Mechanical Surface Detection)
- Electronics: DAE4 Sn376; Calibrated: 1/13/2005
- Phantom: R3: Sect.1, Amy Twin; Type: Amy Twin Flat; Serial: n/a;
- Measurement SW: DASY4, V4.5 Build 19; Postprocessing SW: SEMCAD, V1.8 Build 147

Amy Twin Phone Template/Area Scan - Normal Body (10mm) (19x10x1):

Measurement grid: dx=10mm, dy=10mm

Maximum value of SAR (measured) = 0.118 mW/g

Amy Twin Phone Template/Zoom Scan (7x7x7)/Cube 0:

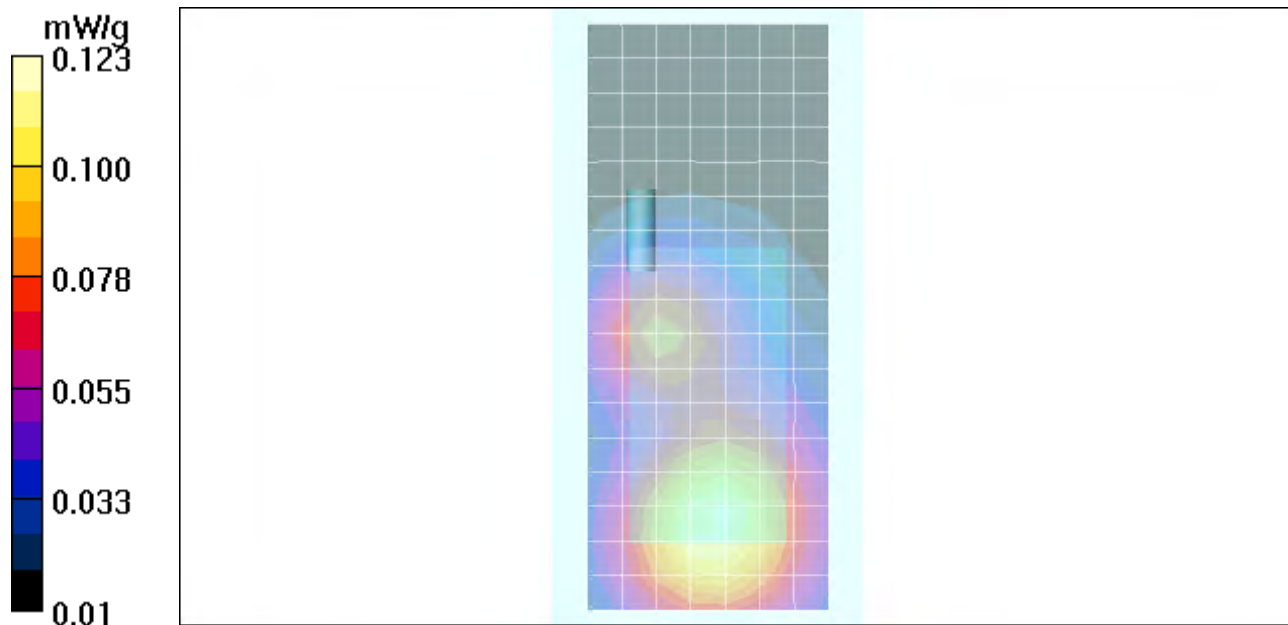
Measurement grid: dx=5mm, dy=5mm, dz=5mm

Reference Value = 9.18 V/m; Power Drift = -0.049 dB

Peak SAR (extrapolated) = 0.161 W/kg

SAR(1 g) = 0.114 mW/g; SAR(10 g) = 0.075 mW/g

Maximum value of SAR (measured) = 0.123 mW/g



Test Laboratory: Motorola

1900 BW Back ch661

Serial: 1

Procedure Notes: Pwr Step: 0 ota Antenna Position: FIXED Battery Model # SNN5744A**Accessory Model # = BACK OF PHONE 15mm FROM PHANTOM**

Communication System: GSM 1900; Frequency: 1880 MHz; Channel Number: 661; Duty Cycle: 1:8
 Medium: Regular Glycol Body; Medium parameters used: $\sigma = 1.58$ mho/m, $\epsilon_r = 51.4$; $\rho = 1000$ kg/m³

DASY4 Configuration:

- Probe: ES3DV3 - SN3037; ConvF(4.71, 4.71, 4.71); Calibrated: 11/25/2004
- Sensor-Surface: 4mm (Mechanical Surface Detection)
- Electronics: DAE4 Sn376; Calibrated: 1/13/2005
- Phantom: R3: Sect.1, Amy Twin; Type: Amy Twin Flat; Serial: n/a;
- Measurement SW: DASY4, V4.5 Build 19; Postprocessing SW: SEMCAD, V1.8 Build 147

Amy Twin Phone Template/Area Scan - Normal Body (10mm) (19x10x1):

Measurement grid: dx=10mm, dy=10mm

Maximum value of SAR (measured) = 0.276 mW/g

Amy Twin Phone Template/Zoom Scan (7x7x7)/Cube 0:

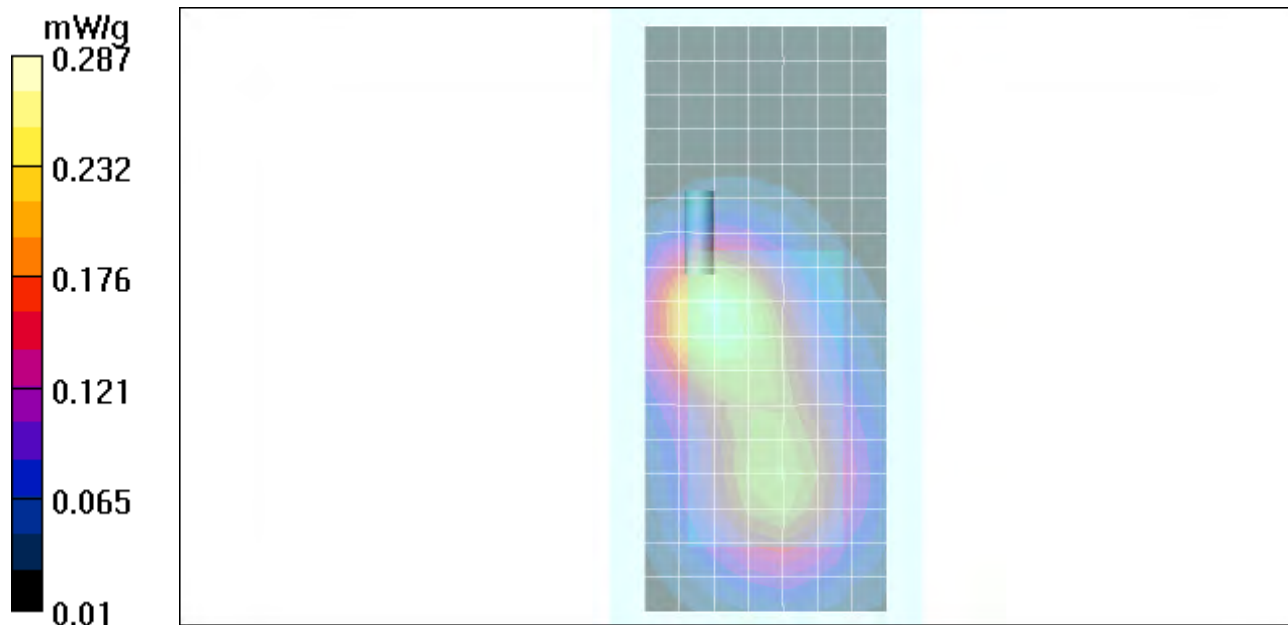
Measurement grid: dx=5mm, dy=5mm, dz=5mm

Reference Value = 12.0 V/m; Power Drift = -0.075 dB

Peak SAR (extrapolated) = 0.408 W/kg

SAR(1 g) = 0.262 mW/g; SAR(10 g) = 0.159 mW/g

Maximum value of SAR (measured) = 0.287 mW/g



Test Laboratory: Motorola 1900 BW back 15mm batt SNN5766A ch661

Serial: 1

Procedure Notes: Pwr Step: 0 ota Antenna Position: FIXED**Battery Model # SNN5766A Accessory Model # = BACK OF PHONE 15mm FROM PHANTOM**

Communication System: GSM 1900; Frequency: 1880 MHz; Channel Number: 661; Duty Cycle: 1:8
Medium: Regular Glycol Body; Medium parameters used: $\sigma = 1.58$ mho/m, $\epsilon_r = 51.4$; $\rho = 1000$ kg/m³

DASY4 Configuration:

- Probe: ES3DV3 - SN3037; ConvF(4.71, 4.71, 4.71); Calibrated: 11/25/2004
- Sensor-Surface: 4mm (Mechanical Surface Detection)
- Electronics: DAE4 Sn376; Calibrated: 1/13/2005
- Phantom: R3: Sect.1, Amy Twin; Type: Amy Twin Flat; Serial: n/a;
- Measurement SW: DASY4, V4.5 Build 19; Postprocessing SW: SEMCAD, V1.8 Build 147

Amy Twin Phone Template/Area Scan - Normal Body (10mm) (19x10x1):

Measurement grid: dx=10mm, dy=10mm

Maximum value of SAR (measured) = 0.249 mW/g

Amy Twin Phone Template/Zoom Scan (7x7x7)/Cube 0:

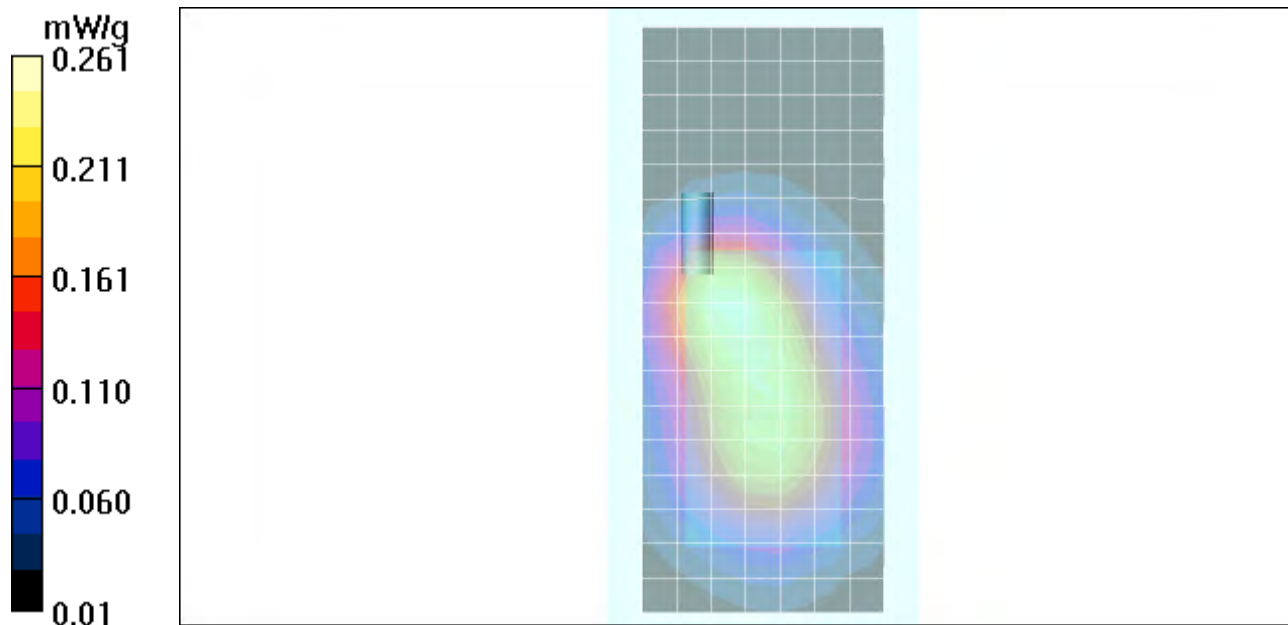
Measurement grid: dx=5mm, dy=5mm, dz=5mm

Reference Value = 12.5 V/m; Power Drift = 0.010 dB

Peak SAR (extrapolated) = 0.367 W/kg

SAR(1 g) = 0.239 mW/g; SAR(10 g) = 0.150 mW/g

Maximum value of SAR (measured) = 0.261 mW/g



Date/Time: 7/4/2005 1:14:19 AM

Test Laboratory: Motorola

850 BW GPRS 25mm Back ch190

Serial: 1

Procedure Notes: Pwr Step: 5/5 Antenna Position: internal**Battery Model #: snn5744a Accessory Model # = Back GPRS Class10 25 mm Away from Phantom**

Communication System: GPRS 850 - Class 10; Frequency: 836.6 MHz; Channel Number: 190; Duty Cycle: 1:4
 Medium: Low Freq Body; Medium parameters used: $\sigma = 0.96$ mho/m, $\epsilon_r = 53.8$; $\rho = 1000$ kg/m³

DASY4 Configuration:

- Probe: ES3DV3 - SN3037; ConvF(6, 6, 6); Calibrated: 11/25/2004
- Sensor-Surface: 4mm (Mechanical Surface Detection)
- Electronics: DAE4 Sn376; Calibrated: 1/13/2005
- Phantom: R3: Sect.2, Amy Twin; Type: Amy Twin Flat; Serial: n/a;
- Measurement SW: DASY4, V4.5 Build 19; Postprocessing SW: SEMCAD, V1.8 Build 147

Amy Twin Phone Template/Area Scan - Normal Body (15mm) (13x7x1):

Measurement grid: dx=15mm, dy=15mm

Maximum value of SAR (measured) = 0.596 mW/g

Amy Twin Phone Template/Zoom Scan (7x7x7)/Cube 0:

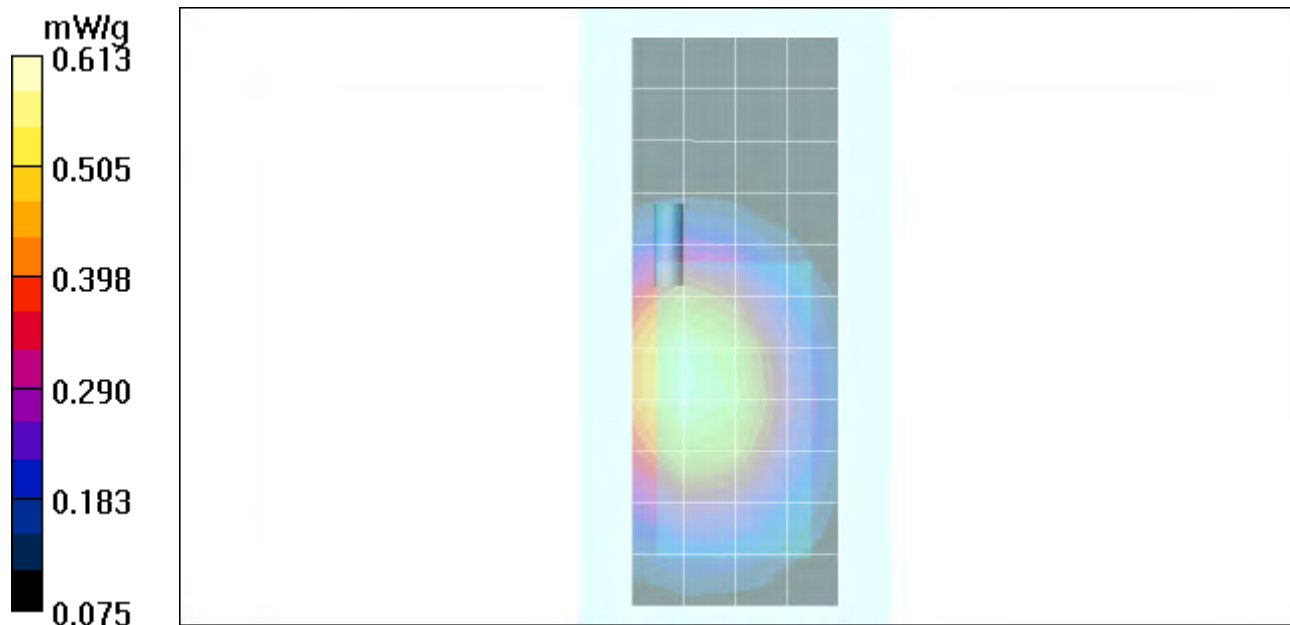
Measurement grid: dx=5mm, dy=5mm, dz=5mm

Reference Value = 22.9 V/m; Power Drift = -0.067 dB

Peak SAR (extrapolated) = 0.810 W/kg

SAR(1 g) = 0.579 mW/g; SAR(10 g) = 0.419 mW/g

Maximum value of SAR (measured) = 0.613 mW/g



Date/Time: 7/4/2005 1:38:09 AM

Test Laboratory: Motorola 850 BW GPRS back 25mm batt SNN5766A ch190

Serial: 1

Procedure Notes: Pwr Step: 5/5 Antenna Position: internal**Battery Model #: snn5766a Accessory Model # = Back GPRS Class10 25 mm Away from Phantom**

Communication System: GPRS 850 - Class 10; Frequency: 836.6 MHz; Channel Number: 190; Duty Cycle: 1:4
Medium: Low Freq Body; Medium parameters used: $\sigma = 0.96$ mho/m, $\epsilon_r = 53.8$; $\rho = 1000$ kg/m³

DASY4 Configuration:

- Probe: ES3DV3 - SN3037; ConvF(6, 6, 6); Calibrated: 11/25/2004
- Sensor-Surface: 4mm (Mechanical Surface Detection)
- Electronics: DAE4 Sn376; Calibrated: 1/13/2005
- Phantom: R3: Sect.2, Amy Twin; Type: Amy Twin Flat; Serial: n/a;
- Measurement SW: DASY4, V4.5 Build 19; Postprocessing SW: SEMCAD, V1.8 Build 147

Amy Twin Phone Template/Area Scan - Normal Body (15mm) (13x7x1):

Measurement grid: dx=15mm, dy=15mm

Maximum value of SAR (measured) = 0.708 mW/g

Amy Twin Phone Template/Zoom Scan (7x7x7)/Cube 0:

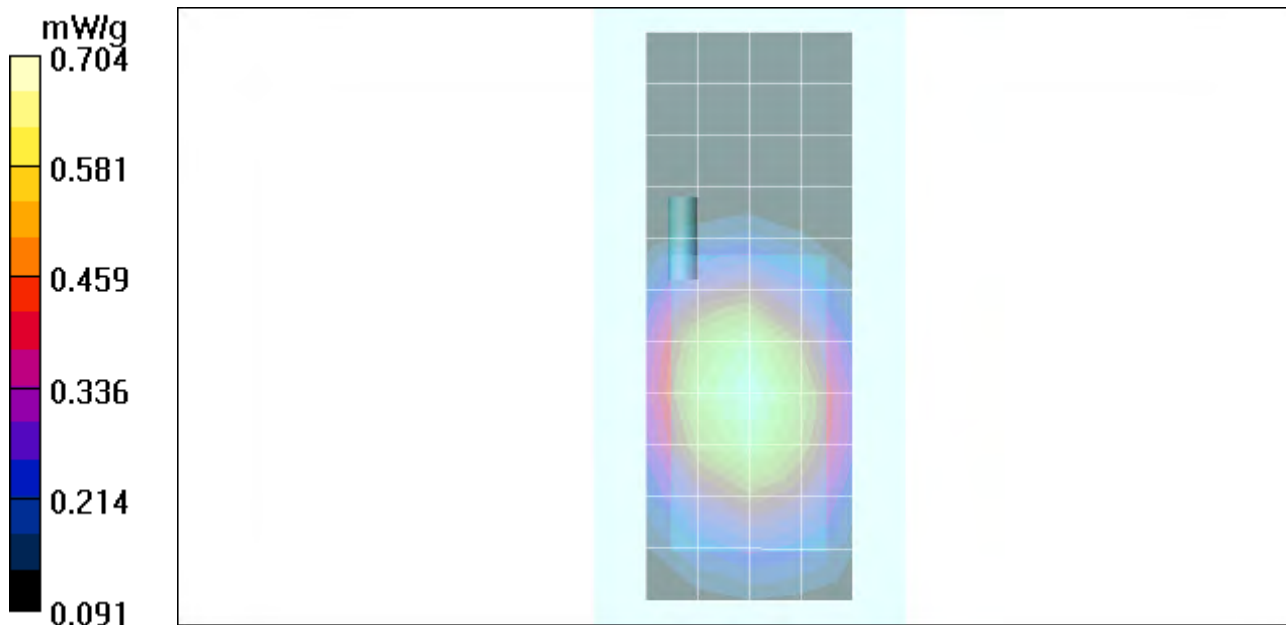
Measurement grid: dx=5mm, dy=5mm, dz=5mm

Reference Value = 26.7 V/m; Power Drift = -0.024 dB

Peak SAR (extrapolated) = 0.893 W/kg

SAR(1 g) = 0.666 mW/g; SAR(10 g) = 0.481 mW/g

Maximum value of SAR (measured) = 0.704 mW/g



Test Laboratory: Motorola

850 BW front ch190

Serial: 1

Procedure Notes: Pwr Step: 5 Antenna Position: int Battery Model #: snn5744a**DEVICE POSITION cheek Accessory Model # = Bodyworn Front of Phone 15mm Away from Phantom**

Communication System: GSM 850; Frequency: 836.6 MHz; Channel Number: 190; Duty Cycle: 1:8
Medium: Low Freq Body; Medium parameters used: $\sigma = 0.96$ mho/m, $\epsilon_r = 53.8$; $\rho = 1000$ kg/m³

DASY4 Configuration:

- Probe: ES3DV3 - SN3037; ConvF(6, 6, 6); Calibrated: 11/25/2004
- Sensor-Surface: 4mm (Mechanical Surface Detection)
- Electronics: DAE4 Sn376; Calibrated: 1/13/2005
- Phantom: R3: Sect.2, Amy Twin; Type: Amy Twin Flat; Serial: n/a;
- Measurement SW: DASY4, V4.5 Build 19; Postprocessing SW: SEMCAD, V1.8 Build 147

Amy Twin Phone Template/Area Scan - Normal Body (15mm) (13x7x1):

Measurement grid: dx=15mm, dy=15mm

Maximum value of SAR (measured) = 0.205 mW/g

Amy Twin Phone Template/Zoom Scan (7x7x7)/Cube 0:

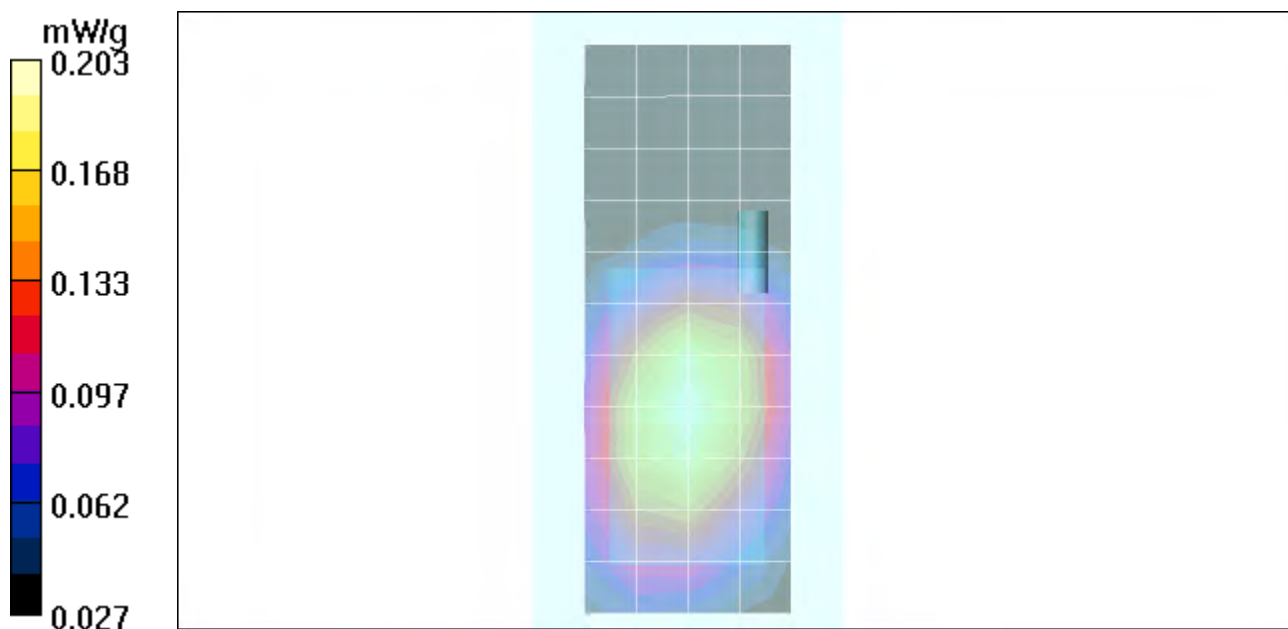
Measurement grid: dx=5mm, dy=5mm, dz=5mm

Reference Value = 14.5 V/m; Power Drift = -0.038 dB

Peak SAR (extrapolated) = 0.250 W/kg

SAR(1 g) = 0.192 mW/g; SAR(10 g) = 0.140 mW/g

Maximum value of SAR (measured) = 0.203 mW/g



Date/Time: 7/4/2005 3:51:39 AM

Test Laboratory: Motorola

850 BW EDGE back 25mm ch190

Serial: 1

Procedure Notes: Pwr Step: burst1and2=8 ota Antenna Position: FIXED**Battery Model # SNN5744A Accessory Model # = back 25mm**

Communication System: EDGE 850 - Class 6; Frequency: 836.6 MHz; Channel Number: 190; Duty Cycle: 1:4
 Medium: Low Freq Body; Medium parameters used: $\sigma = 0.96$ mho/m, $\epsilon_r = 53.8$; $\rho = 1000$ kg/m³

DASY4 Configuration:

- Probe: ES3DV3 - SN3037; ConvF(6, 6, 6); Calibrated: 11/25/2004
- Sensor-Surface: 4mm (Mechanical Surface Detection)
- Electronics: DAE4 Sn376; Calibrated: 1/13/2005
- Phantom: R3: Sect.2, Amy Twin; Type: Amy Twin Flat; Serial: n/a;
- Measurement SW: DASY4, V4.5 Build 19; Postprocessing SW: SEMCAD, V1.8 Build 147

Amy Twin Phone Template/Area Scan - Normal Body (15mm) (13x7x1):

Measurement grid: dx=15mm, dy=15mm

Maximum value of SAR (measured) = 0.311 mW/g

Amy Twin Phone Template/Zoom Scan (7x7x7)/Cube 0:

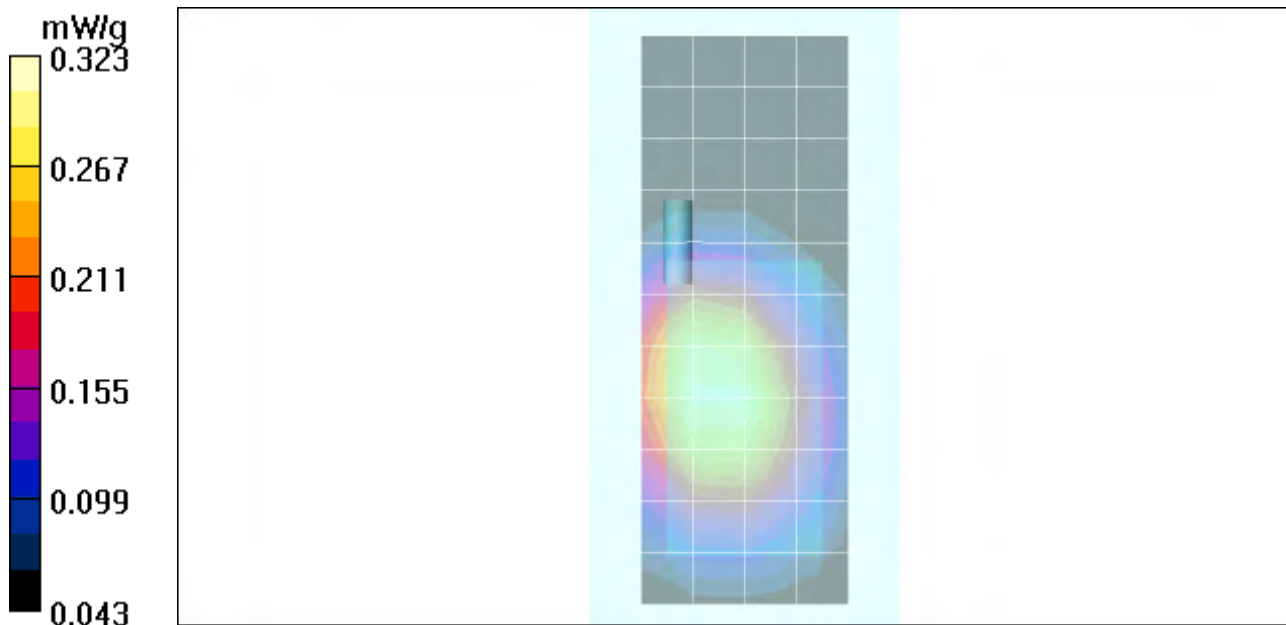
Measurement grid: dx=5mm, dy=5mm, dz=5mm

Reference Value = 17.6 V/m; Power Drift = -0.077 dB

Peak SAR (extrapolated) = 0.400 W/kg

SAR(1 g) = 0.307 mW/g; SAR(10 g) = 0.224 mW/g

Maximum value of SAR (measured) = 0.323 mW/g



Test Laboratory: Motorola

850 BW Back ch190

Serial: 1

Procedure Notes: Pwr Step: 5 Antenna Position: int Battery Model #: snn5744a**DEVICE POSITION cheek Accessory Model # = Bodyworn Back of Phone 15mm Away from Phantom**

Communication System: GSM 850; Frequency: 836.6 MHz; Channel Number: 190; Duty Cycle: 1:8
 Medium: Low Freq Body; Medium parameters used: $\sigma = 0.96$ mho/m, $\epsilon_r = 53.8$; $\rho = 1000$ kg/m³

DASY4 Configuration:

- Probe: ES3DV3 - SN3037; ConvF(6, 6, 6); Calibrated: 11/25/2004
- Sensor-Surface: 4mm (Mechanical Surface Detection)
- Electronics: DAE4 Sn376; Calibrated: 1/13/2005
- Phantom: R3: Sect.2, Amy Twin; Type: Amy Twin Flat; Serial: n/a;
- Measurement SW: DASY4, V4.5 Build 19; Postprocessing SW: SEMCAD, V1.8 Build 147

Amy Twin Phone Template/Area Scan - Normal Body (15mm) (13x7x1):

Measurement grid: dx=15mm, dy=15mm

Maximum value of SAR (measured) = 0.505 mW/g

Amy Twin Phone Template/Zoom Scan (7x7x7)/Cube 0:

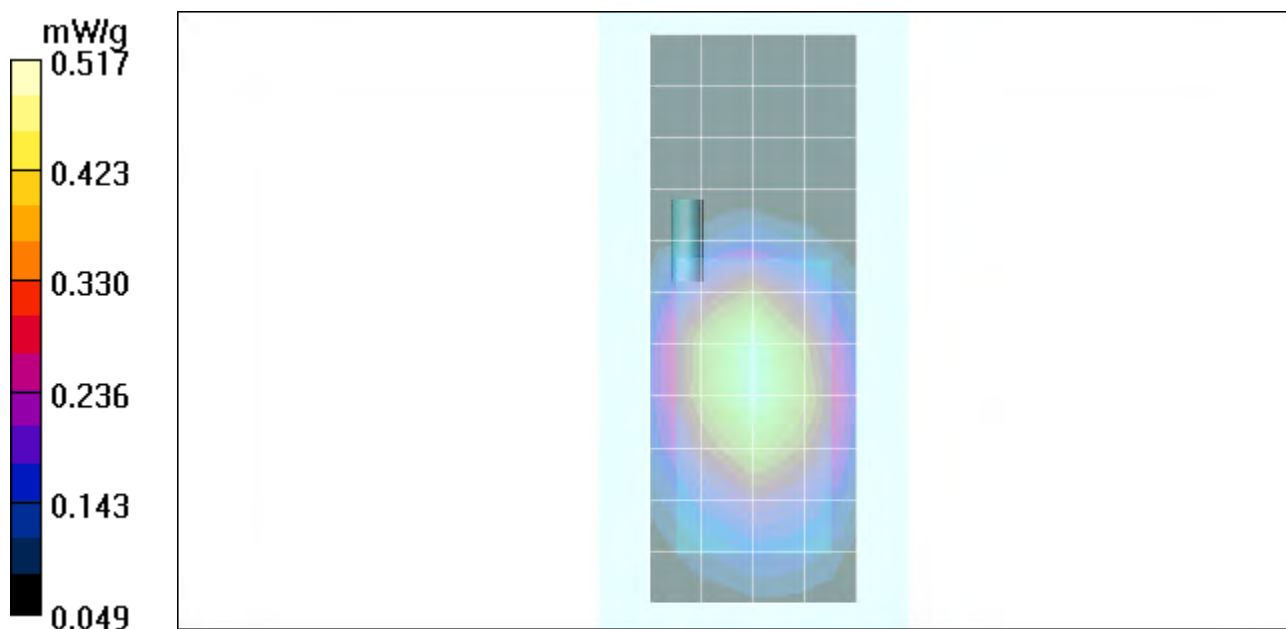
Measurement grid: dx=5mm, dy=5mm, dz=5mm

Reference Value = 22.1 V/m; Power Drift = 0.01 dB

Peak SAR (extrapolated) = 0.657 W/kg

SAR(1 g) = 0.486 mW/g; SAR(10 g) = 0.342 mW/g

Maximum value of SAR (measured) = 0.517 mW/g



Date/Time: 7/6/2005 6:59:22 PM

Test Laboratory: Motorola

1900 BW GPRS back 25mm ch661

Serial: 1

Procedure Notes: Pwr Step: 0 ota Antenna Position: FIXED**Battery Model # SNN5744A Accessory Model # = BACK OF PHONE 25mm FROM PHANTOM**

Communication System: GPRS 1900 - Class 10; Frequency: 1880 MHz; Channel Number: 661; Duty Cycle: 1:4
 Medium: Regular Glycol Body; Medium parameters used: $\sigma = 1.58$ mho/m, $\epsilon_r = 51.4$; $\rho = 1000$ kg/m³

DASY4 Configuration:

- Probe: ES3DV3 - SN3037; ConvF(4.71, 4.71, 4.71); Calibrated: 11/25/2004
- Sensor-Surface: 4mm (Mechanical Surface Detection)
- Electronics: DAE4 Sn376; Calibrated: 1/13/2005
- Phantom: R3: Sect.1, Amy Twin; Type: Amy Twin Flat; Serial: n/a;
- Measurement SW: DASY4, V4.5 Build 19; Postprocessing SW: SEMCAD, V1.8 Build 147

Amy Twin Phone Template/Area Scan - Normal Body (10mm) (19x10x1):

Measurement grid: dx=10mm, dy=10mm

Maximum value of SAR (measured) = 0.260 mW/g

Amy Twin Phone Template/Zoom Scan (7x7x7)/Cube 0:

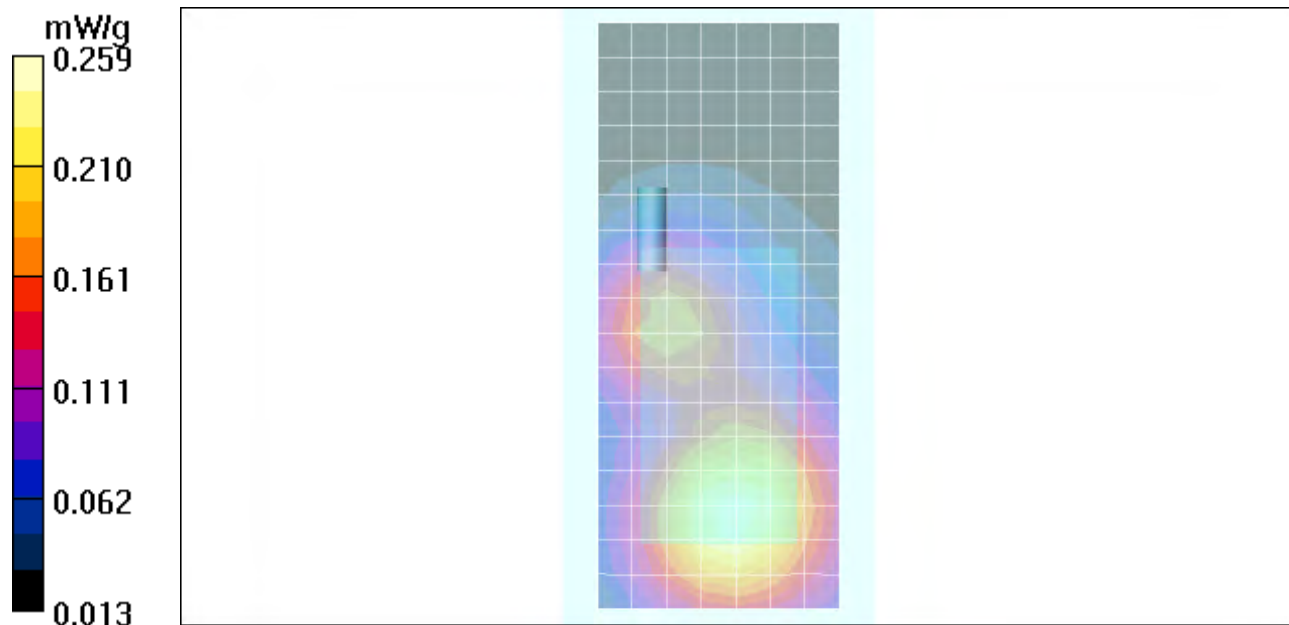
Measurement grid: dx=5mm, dy=5mm, dz=5mm

Reference Value = 13.2 V/m; Power Drift = -0.01 dB

Peak SAR (extrapolated) = 0.341 W/kg

SAR(1 g) = 0.243 mW/g; SAR(10 g) = 0.160 mW/g

Maximum value of SAR (measured) = 0.259 mW/g



Appendix 4
Probe Calibration Certificate



Accredited by the Swiss Federal Office of Metrology and Accreditation
The Swiss Accreditation Service is one of the signatories to the EA
Multilateral Agreement for the recognition of calibration certificates

Accreditation No.: **SCS 108**

Client **Motorola PCS**

Certificate No. **ES3-3037_Nov04**

CALIBRATION CERTIFICATE

Object **ES3DV3 - SN 3037**

Calibration procedure(s) **QA CAL-01 v5
Calibration procedure for dosimetric E-field probes**

Calibration date: **November 25, 2004**

Condition of the calibrated item **In Tolerance**

This calibration certificate documents the traceability to national standards, which realize the physical units of measurements (SI).
The measurements and the uncertainties with confidence probability are given on the following pages and are part of the certificate.

All calibrations have been conducted in the closed laboratory facility: environment temperature (22 ± 3)°C and humidity < 70%.

Calibration Equipment used (M&TE critical for calibration)

Primary Standards	ID #	Cal Date (Calibrated by, Certificate No.)	Scheduled Calibration
Power meter E4419B	GB41293874	5-May-04 (METAS, No. 251-00388)	May-05
Power sensor E4412A	MY41495277	5-May-04 (METAS, No. 251-00388)	May-05
Reference 3 dB Attenuator	SN: S5054 (3c)	10-Aug-04 (METAS, No. 251-00403)	Aug-05
Reference 20 dB Attenuator	SN: S5086 (20b)	3-May-04 (METAS, No. 251-00389)	May-05
Reference 30 dB Attenuator	SN: S5129 (30b)	10-Aug-04 (METAS, No. 251-00404)	Aug-05
Reference Probe ES3DV2	SN: 3013	8-Jan-04 (SPEAG, No. ES3-3013_Jan04)	Jan-05
DAE4	SN: 617	29-Sep-04 (SPEAG, No. DAE4-617_Sep04)	Sep-05
Secondary Standards	ID #	Check Date (in house)	Scheduled Check
Power sensor HP 8481A	MY41092180	18-Sep-02 (SPEAG, in house check Oct-03)	In house check: Oct 05
RF generator HP 8648C	US3642U01700	4-Aug-99 (SPEAG, in house check Dec-03)	In house check: Dec-05
Network Analyzer HP 8753E	US37390585	18-Oct-01 (SPEAG, in house check Nov-03)	In house check: Nov 04

Calibrated by: **Nico Vetterli** Laboratory Technician *Nico Vetterli*

Approved by: **Katja Pokovic** Technical Manager *Katja Pokovic*

Issued: November 26, 2004

This calibration certificate shall not be reproduced except in full without written approval of the laboratory.



Accredited by the Swiss Federal Office of Metrology and Accreditation
The Swiss Accreditation Service is one of the signatories to the EA
Multilateral Agreement for the recognition of calibration certificates

Accreditation No.: **SCS 108**

Glossary:

TSL	tissue simulating liquid
NORM _{x,y,z}	sensitivity in free space
ConF	sensitivity in TSL / NORM _{x,y,z}
DCP	diode compression point
Polarization ϕ	ϕ rotation around probe axis
Polarization ϑ	ϑ rotation around an axis that is in the plane normal to probe axis (at measurement center), i.e., $\vartheta = 0$ is normal to probe axis

Calibration is Performed According to the Following Standards:

- IEEE Std 1528-2003, "IEEE Recommended Practice for Determining the Peak Spatial-Averaged Specific Absorption Rate (SAR) in the Human Head from Wireless Communications Devices: Measurement Techniques", December 2003
- CENELEC EN 50361, "Basic standard for the measurement of Specific Absorption Rate related to human exposure to electromagnetic fields from mobile phones (300 MHz - 3 GHz), July 2001

Methods Applied and Interpretation of Parameters:

- NORM_{x,y,z}**: Assessed for E-field polarization $\vartheta = 0$ ($f \leq 900$ MHz in TEM-cell; $f > 1800$ MHz: R22 waveguide). NORM_{x,y,z} are only intermediate values, i.e., the uncertainties of NORM_{x,y,z} does not effect the E^2 -field uncertainty inside TSL (see below *ConvF*).
- NORM(f)_{x,y,z}** = NORM_{x,y,z} * *frequency_response* (see Frequency Response Chart). This linearization is implemented in DASY4 software versions later than 4.2. The uncertainty of the frequency response is included in the stated uncertainty of *ConvF*.
- DCP_{x,y,z}**: DCP are numerical linearization parameters assessed based on the data of power sweep (no uncertainty required). DCP does not depend on frequency nor media.
- ConvF and Boundary Effect Parameters**: Assessed in flat phantom using E-field (or Temperature Transfer Standard for $f \leq 800$ MHz) and inside waveguide using analytical field distributions based on power measurements for $f > 800$ MHz. The same setups are used for assessment of the parameters applied for boundary compensation (alpha, depth) of which typical uncertainty values are given. These parameters are used in DASY4 software to improve probe accuracy close to the boundary. The sensitivity in TSL corresponds to NORM_{x,y,z} * *ConvF* whereby the uncertainty corresponds to that given for *ConvF*. A frequency dependent *ConvF* is used in DASY version 4.4 and higher which allows extending the validity from ± 50 MHz to ± 100 MHz.
- Spherical isotropy (3D deviation from isotropy)**: in a field of low gradients realized using a flat phantom exposed by a patch antenna.
- Sensor Offset**: The sensor offset corresponds to the offset of virtual measurement center from the probe tip (on probe axis). No tolerance required.

Probe ES3DV3

SN:3037

Manufactured:	August 21, 2003
Last calibrated:	October 10, 2003
Recalibrated:	November 25, 2004

Calibrated for DASY Systems

(Note: non-compatible with DASY2 system!)

DASY - Parameters of Probe: ES3DV3 SN:3037**Sensitivity in Free Space^A****Diode Compression^B**

NormX	1.15 ± 10.1%	$\mu\text{V}/(\text{V}/\text{m})^2$	DCP X	99 mV
NormY	0.84 ± 10.1%	$\mu\text{V}/(\text{V}/\text{m})^2$	DCP Y	99 mV
NormZ	0.94 ± 10.1%	$\mu\text{V}/(\text{V}/\text{m})^2$	DCP Z	99 mV

Sensitivity in Tissue Simulating Liquid (Conversion Factors)

Please see Page 8.

Boundary Effect

TSL **900 MHz** **Typical SAR gradient: 5 % per mm**

Sensor Center to Phantom Surface Distance		3.0 mm	4.0 mm
SAR _{be} [%]	Without Correction Algorithm	5.8	2.5
SAR _{be} [%]	With Correction Algorithm	0.0	0.1

TSL **1810 MHz** **Typical SAR gradient: 10 % per mm**

Sensor Center to Phantom Surface Distance		3.0 mm	4.0 mm
SAR _{be} [%]	Without Correction Algorithm	7.7	4.5
SAR _{be} [%]	With Correction Algorithm	0.1	0.3

Sensor Offset

Probe Tip to Sensor Center **2.0 mm**

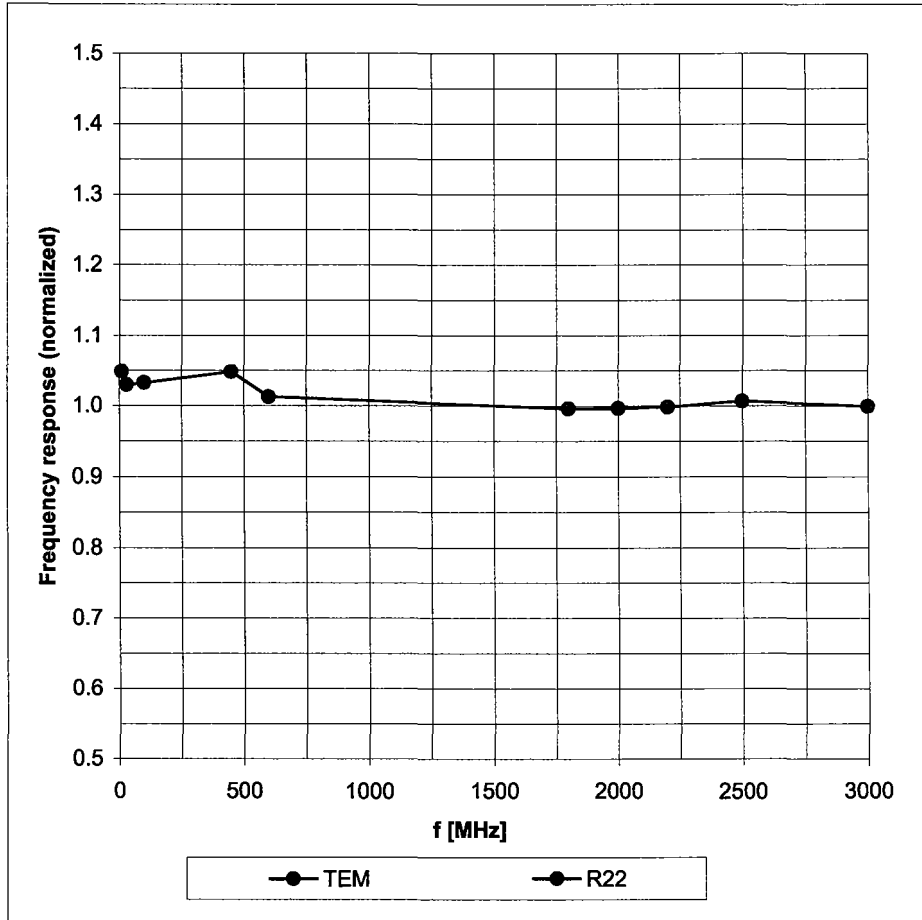
The reported uncertainty of measurement is stated as the standard uncertainty of measurement multiplied by the coverage factor k=2, which for a normal distribution corresponds to a coverage probability of approximately 95%.

^A The uncertainties of NormX,Y,Z do not affect the E²-field uncertainty inside TSL (see Page 8).

^B Numerical linearization parameter: uncertainty not required.

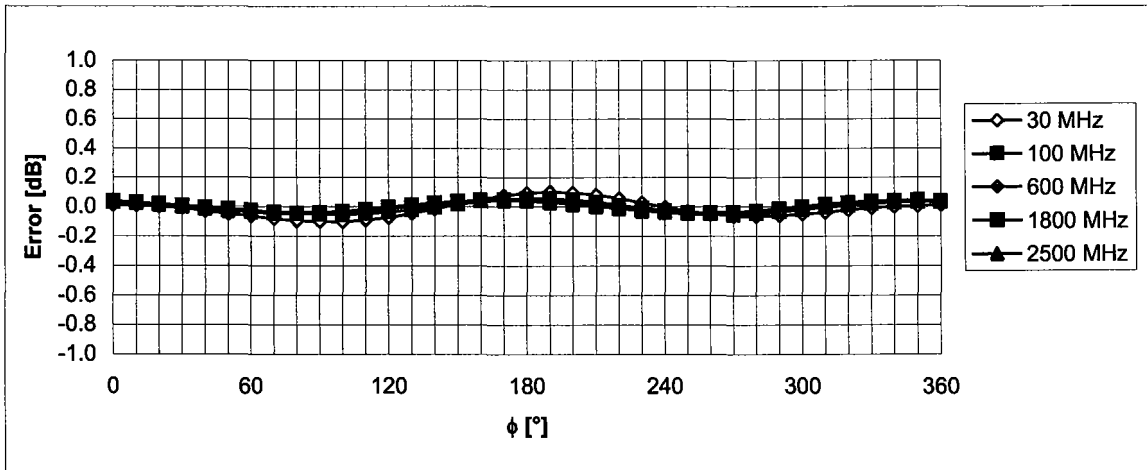
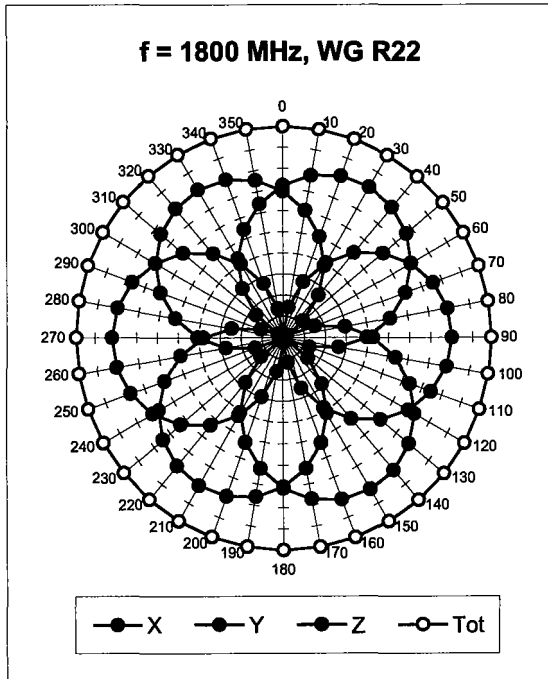
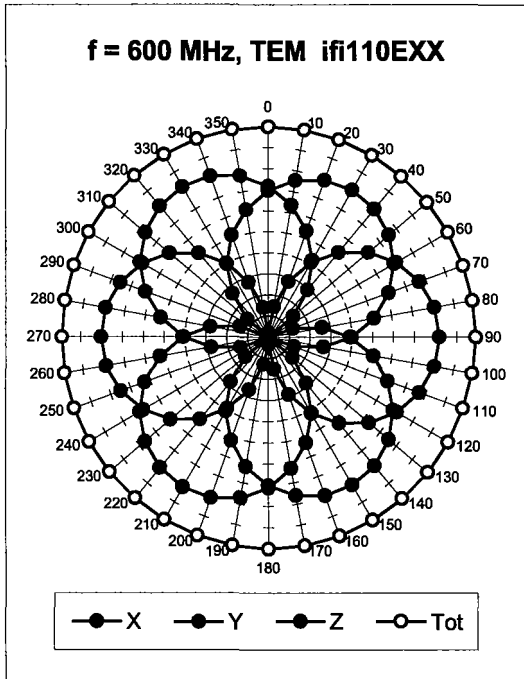
Frequency Response of E-Field

(TEM-Cell:ifi110 EXX, Waveguide: R22)



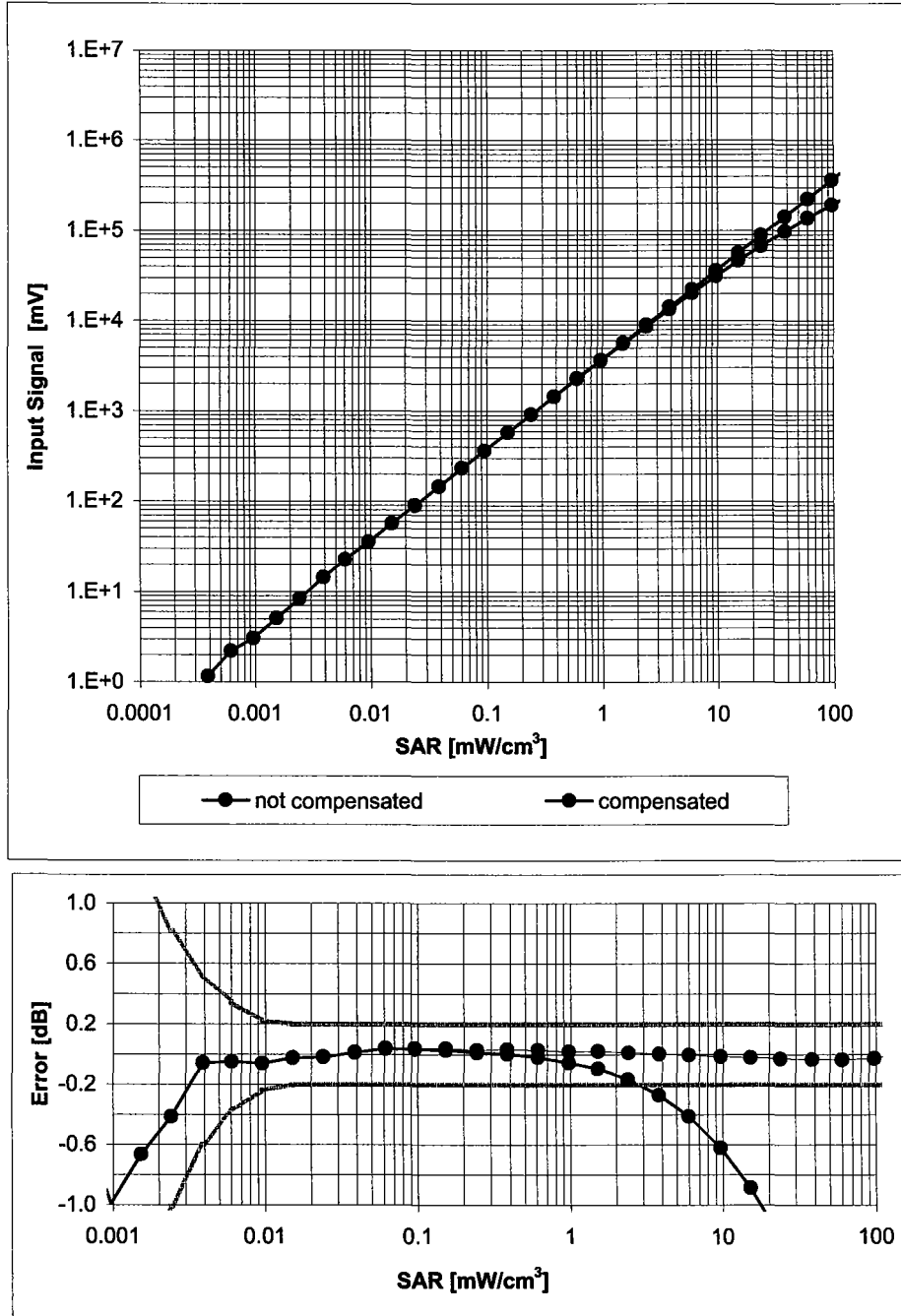
Uncertainty of Frequency Response of E-field: $\pm 6.3\%$ ($k=2$)

Receiving Pattern (ϕ), $\vartheta = 0^\circ$



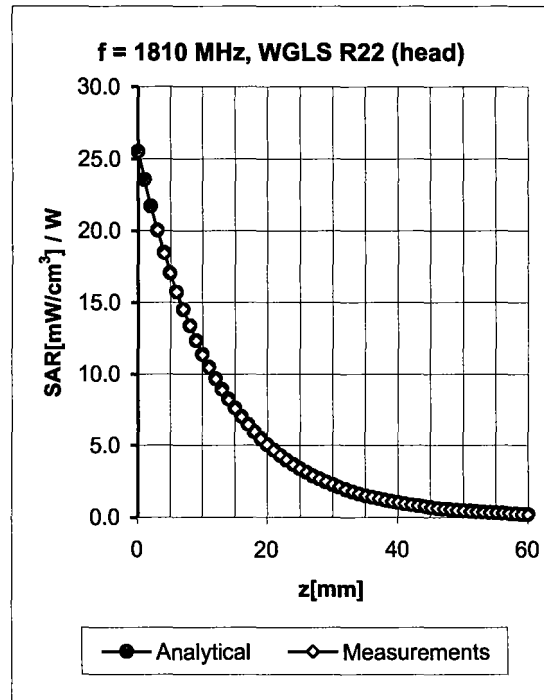
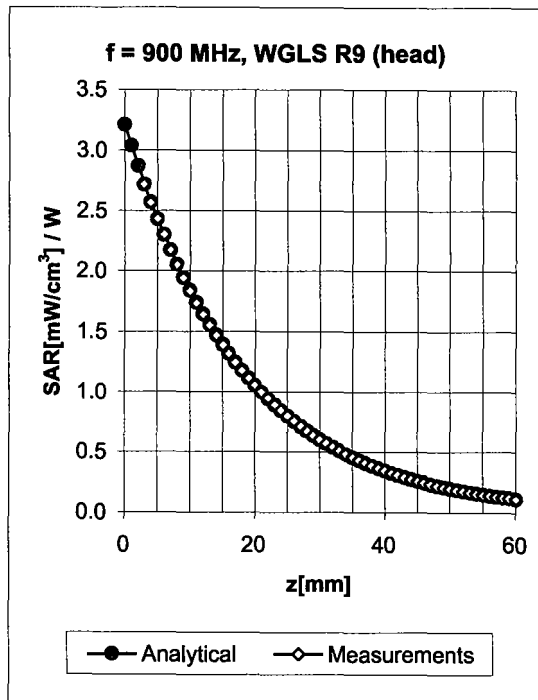
Uncertainty of Axial Isotropy Assessment: $\pm 0.5\%$ ($k=2$)

Dynamic Range $f(\text{SAR}_{\text{head}})$ (Waveguide R22, $f = 1800 \text{ MHz}$)



Uncertainty of Linearity Assessment: $\pm 0.6\%$ ($k=2$)

Conversion Factor Assessment

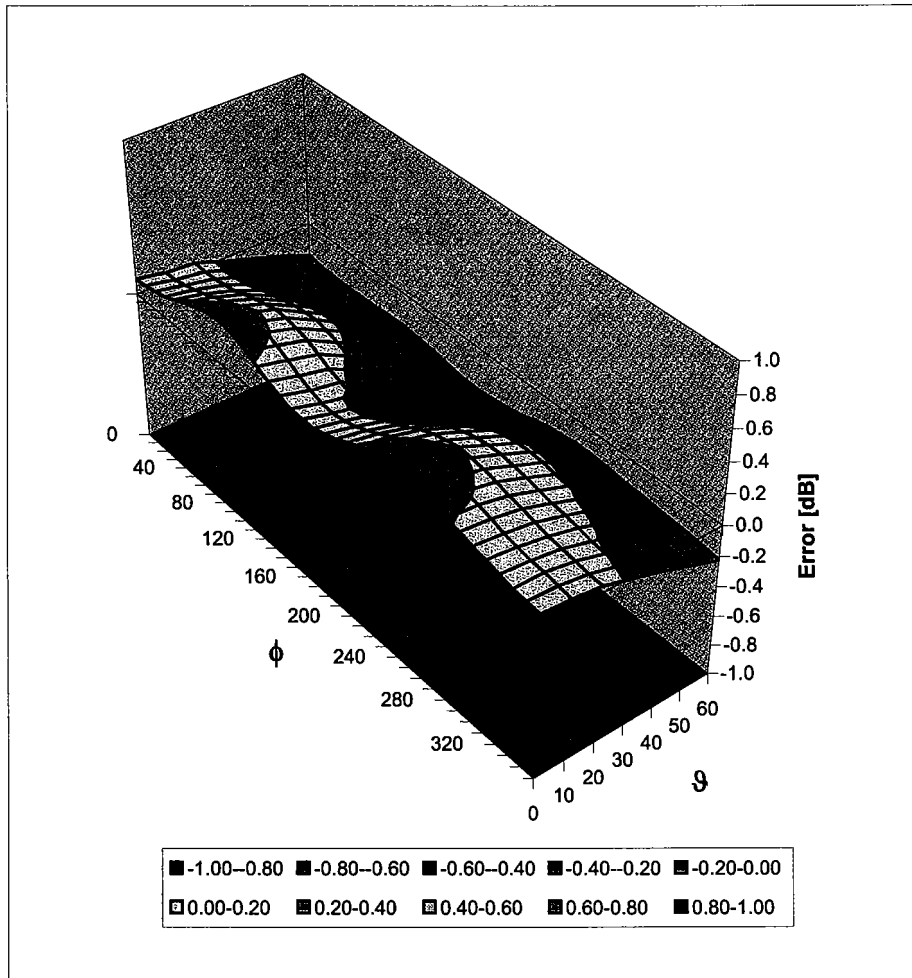


f [MHz]	Validity [MHz] ^c	TSL	Permittivity	Conductivity	Alpha	Depth	ConvF Uncertainty
900	± 50 / ± 100	Head	41.5 ± 5%	0.97 ± 5%	0.56	1.29	6.11 ± 11.0% (k=2)
1810	± 50 / ± 100	Head	40.0 ± 5%	1.40 ± 5%	0.25	2.34	5.16 ± 11.0% (k=2)
1950	± 50 / ± 100	Head	40.0 ± 5%	1.40 ± 5%	0.28	2.26	4.77 ± 11.0% (k=2)
900	± 50 / ± 100	Body	55.0 ± 5%	1.05 ± 5%	0.66	1.23	6.00 ± 11.0% (k=2)
1810	± 50 / ± 100	Body	53.3 ± 5%	1.52 ± 5%	0.23	3.26	4.71 ± 11.0% (k=2)
1950	± 50 / ± 100	Body	53.3 ± 5%	1.52 ± 5%	0.32	2.16	4.56 ± 11.0% (k=2)

^c The validity of ± 100 MHz only applies for DASY v4.4 and higher (see Page 2). The uncertainty is the RSS of the ConvF uncertainty at calibration frequency and the uncertainty for the indicated frequency band.

Deviation from Isotropy in HSL

Error (ϕ , θ), $f = 900$ MHz



Uncertainty of Spherical Isotropy Assessment: $\pm 2.6\%$ ($k=2$)

Appendix 5
Measurement Uncertainty Budget

Uncertainty Budget for Device Under Test: 30 – 3000 MHz

<i>a</i>	<i>b</i>	<i>c</i>	<i>d</i>	<i>e = f(d,k)</i>	<i>f</i>	<i>g</i>	<i>h = c x f / e</i>	<i>i = c x g / e</i>	<i>k</i>
Uncertainty Component	IEEE 1528 section	Tol. (± %)	Prob Dist	Div.	<i>c_i</i> (1 g)	<i>c_i</i> (10 g)	1 g <i>u_i</i> (±%)	10 g <i>u_i</i> (±%)	<i>v_i</i>
Measurement System									
Probe Calibration	E.2.1	5.9	N	1.00	1	1	5.9	5.9	∞
Axial Isotropy	E.2.2	4.7	R	1.73	0.707	0.707	1.9	1.9	∞
Hemispherical Isotropy	E.2.2	9.6	R	1.73	0.707	0.707	3.9	3.9	∞
Boundary Effect	E.2.3	1.0	R	1.73	1	1	0.6	0.6	∞
Linearity	E.2.4	4.7	R	1.73	1	1	2.7	2.7	∞
System Detection Limits	E.2.5	1.0	R	1.73	1	1	0.6	0.6	∞
Readout Electronics	E.2.6	0.3	N	1.00	1	1	0.3	0.3	∞
Response Time	E.2.7	1.1	R	1.73	1	1	0.6	0.6	∞
Integration Time	E.2.8	1.1	R	1.73	1	1	0.6	0.6	∞
RF Ambient Conditions - Noise	E.6.1	3.0	R	1.73	1	1	1.7	1.7	∞
RF Ambient Conditions - Reflections	E.6.1	0.0	R	1.73	1	1	0.0	0.0	∞
Probe Positioner Mech. Tolerance	E.6.2	0.4	R	1.73	1	1	0.2	0.2	∞
Probe Positioning w.r.t Phantom	E.6.3	1.4	R	1.73	1	1	0.8	0.8	∞
Max. SAR Evaluation (ext., int., avg.)	E.5	3.4	R	1.73	1	1	2.0	2.0	∞
Test sample Related									
Test Sample Positioning	E.4.2	3.2	N	1.00	1	1	3.2	3.2	29
Device Holder Uncertainty	E.4.1	4.0	N	1.00	1	1	4.0	4.0	8
SAR drift	6.6.2	5.0	R	1.73	1	1	2.9	2.9	∞
Phantom and Tissue Parameters									
Phantom Uncertainty	E.3.1	4.0	R	1.73	1	1	2.3	2.3	∞
Liquid Conductivity (target)	E.3.2	5.0	R	1.73	0.64	0.43	1.8	1.2	∞
Liquid Conductivity (measurement)	E.3.3	3.3	N	1.00	0.64	0.43	2.1	1.4	∞
Liquid Permittivity (target)	E.3.2	5.0	R	1.73	0.6	0.49	1.7	1.4	∞
Liquid Permittivity (measurement)	E.3.3	1.9	N	1.00	0.6	0.49	1.1	0.9	∞
Combined Standard Uncertainty			RSS				11.1	10.8	411
Expanded Uncertainty (95% CONFIDENCE LEVEL)			<i>k=2</i>				22.2	21.6	

Uncertainty Budget for System Check: 30 – 3000 MHz

<i>a</i>	<i>b</i>	<i>c</i>	<i>d</i>	<i>e = f(d,k)</i>	<i>f</i>	<i>g</i>	<i>h = c x f / e</i>	<i>i = c x g / e</i>	<i>k</i>
Uncertainty Component	IEEE 1528 section	Tol. (± %)	Prob. Dist.	Div.	<i>c_i</i> (1 g)	<i>c_i</i> (10 g)	1 g <i>u_i</i> (±%)	10 g <i>u_i</i> (±%)	<i>v_i</i>
Measurement System									
Probe Calibration	E.2.1	5.9	N	1.00	1	1	5.9	5.9	∞
Axial Isotropy	E.2.2	4.7	R	1.73	1	1	2.7	2.7	∞
Spherical Isotropy	E.2.2	9.6	R	1.73	0	0	0.0	0.0	∞
Boundary Effect	E.2.3	1.0	R	1.73	1	1	0.6	0.6	∞
Linearity	E.2.4	4.7	R	1.73	1	1	2.7	2.7	∞
System Detection Limits	E.2.5	1.0	R	1.73	1	1	0.6	0.6	∞
Readout Electronics	E.2.6	0.3	N	1.00	1	1	0.3	0.3	∞
Response Time	E.2.7	1.1	R	1.73	1	1	0.6	0.6	∞
Integration Time	E.2.8	0.0	R	1.73	1	1	0.0	0.0	∞
RF Ambient Conditions - Noise	E.6.1	3.0	R	1.73	1	1	1.7	1.7	∞
RF Ambient Conditions - Reflections	E.6.1	0.0	R	1.73	1	1	0.0	0.0	∞
Probe Positioner Mechanical Tolerance	E.6.2	0.4	R	1.73	1	1	0.2	0.2	∞
Probe Positioning w.r.t. Phantom	E.6.3	1.4	R	1.73	1	1	0.8	0.8	∞
Max. SAR Evaluation (ext., int., avg.)	E.5	3.4	R	1.73	1	1	2.0	2.0	∞
Dipole									
Dipole Axis to Liquid Distance	^{8,} E.4.2	2.0	R	1.73	1	1	1.2	1.2	∞
Input Power and SAR Drift Measurement	^{8,} 6.6.2	5.0	R	1.73	1	1	2.9	2.9	∞
Phantom and Tissue Parameters									
Phantom Uncertainty	E.3.1	4.0	R	1.73	1	1	2.3	2.3	∞
Liquid Conductivity (target)	E.3.2	5.0	R	1.73	0.64	0.43	1.8	1.2	∞
Liquid Conductivity (measurement)	E.3.3	3.3	R	1.73	0.64	0.43	1.2	0.8	∞
Liquid Permittivity (target)	E.3.2	5.0	R	1.73	0.6	0.49	1.7	1.4	∞
Liquid Permittivity (measurement)	E.3.3	1.9	R	1.73	0.6	0.49	0.6	0.5	∞
Combined Standard Uncertainty			RSS				9.0	8.8	9999 9
Expanded Uncertainty			<i>k</i> =2				17.7	17.3	

Appendix 6

Photographs of the device under test



Figure 1. Front of Phone



Figure 2. Back of Phone



Figure 3. Phone Open



Figure 4. Phone Against the Flat Phantom

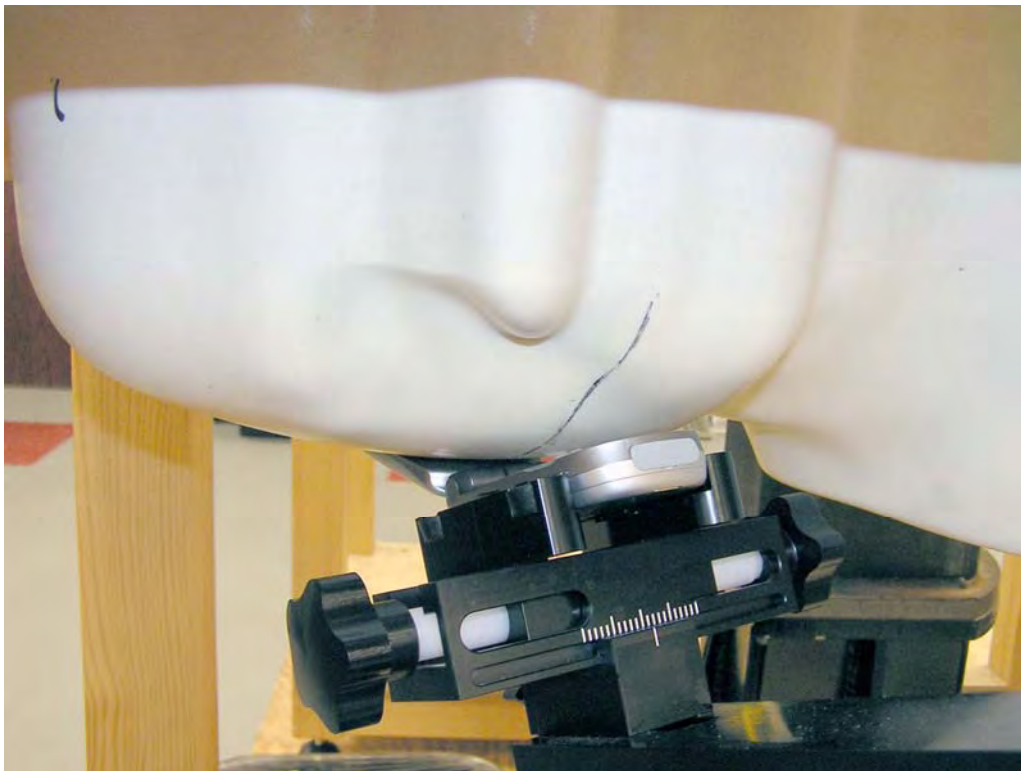


Figure 5. Phone Against the Head Phantom (Front View - Cheek Touch)



Figure 6. Phone Against the Head Phantom (Back View – Cheek Touch)



Figure 7. Phone Against the Head Phantom (Front View – 15°Tilt)



Figure 8. Phone Against the Head Phantom (Back View – 15°Tilt)