



MOTOROLA

Exhibit 11: SAR Test Report - IHDT56FF1

Date of Test: Dec-13-2005 to Dec-20-2005
Date of Report: Dec-29-2005

Laboratory: Motorola Mobile Devices Business Product Safety & Compliance Laboratory
 600 N. US Highway 45
 Room: MW113
 Libertyville, Illinois 60048

Test Responsible: Thomas Nipple
 RF Engineer

Accreditation: This laboratory is accredited to ISO/IEC 17025-1999 to perform the following tests:



<p><u>Tests:</u> Electromagnetic Specific Absorption Rate</p> <p>Simulated Tissue Preparation RF Power Measurement</p>	<p><u>Procedures:</u> ANSI/IEEE C95.1-1992, 1999 (SAR) IEEE C95.3-1991 IEEE 1528, IEC 62209-1 FCC OET Bulletin 65 (<i>including Supplements A,B,C</i>) Australian Communications Authority Radio Communications (Electromagnetic Radiation – Human Exposure) Standard 1999 CENELEC EN 50361 (2001) APP-0247 DOI-0876, 0900, 0902, 0904, 0915</p>
--	--

On the following products or types of products:
 Wireless Communications Devices (Examples): Two Way Radios; Portable Phones (including Cellular, Licensed Non-Broadcast and PCS); Low Frequency Readers; and Pagers

A2LA certificate #1651-01

Statement of Compliance: Motorola declares under its sole responsibility that portable cellular telephone FCC ID IHDT56FF1 to which this declaration relates, is in conformity with the appropriate General Population/Uncontrolled RF exposure standards, recommendations and guidelines (FCC 47 CFR §2.1093). It also declares that the product was tested in accordance with the appropriate measurement standards, guidelines and recommended practices. Any deviations from these standards, guidelines and recommended practices are noted below:

(none)

©Motorola, Inc. 2005
 This test report shall not be reproduced except in full, without written approval of the laboratory.

The results and statements contained herein relate only to the items tested. The names of individuals involved may be mentioned only in connection with the statements or results from this report.

Motorola encourages all feedback, both positive and negative, on this test report.

Table of Contents

1. INTRODUCTION3

2. DESCRIPTION OF THE DEVICE UNDER TEST.....3

2.1 Antenna description3

2.2 Device description.....3

3. TEST EQUIPMENT USED.....4

3.1 Dosimetric System4

3.2 Additional Equipment.....4

4. ELECTRICAL PARAMETERS OF THE TISSUE SIMULATING LIQUID5

5. SYSTEM ACCURACY VERIFICATION.....6

6. TEST RESULTS.....7

6.1 Head Adjacent Test Results.....8

6.2 Body Worn Test Results10

6.3 Push to Talk Mode Test Results12

APPENDIX 1: SAR DISTRIBUTION COMPARISON FOR SYSTEM ACCURACY VERIFICATION13

APPENDIX 2: SAR DISTRIBUTION PLOTS FOR PHANTOM HEAD ADJACENT USE14

APPENDIX 3: SAR DISTRIBUTION PLOTS FOR BODY WORN CONFIGURATION15

APPENDIX 4: SAR DISTRIBUTION PLOTS FOR PUSH-TO-TALK CONFIGURATION16

APPENDIX 5: PROBE CALIBRATION CERTIFICATE17

APPENDIX 6: MEASUREMENT UNCERTAINTY BUDGET.....18

APPENDIX 7: PHOTOGRAPHS OF DEVICE UNDER TEST.....21

APPENDIX 8: DIPOLE CHARACTERIZATION CERTIFICATE26

1 Introduction

The Motorola Mobile Devices Business Product Safety Laboratory has performed measurements of the maximum potential exposure to the user of portable cellular phone (FCC ID IHDT56FF1). The Specific Absorption Rate (SAR) of this product was measured. The portable cellular phone was tested in accordance with FCC OET Bulletin 65 Supplement C 01-01.

2 Description of the Device Under Test

2.1 Antenna description

Type	FJA Antenna	
Location	Bottom of Bottom Flip	
Dimensions	Length	94 mm
	Width	0.5 mm
Configuration	Fixed Internal Antenna	

2.2 Device description

FCC ID Number	IHDT56FF1									
Serial number	TA20005QRC									
Mode(s) of Operation	GSM 850	GSM 1800	GSM 1900	GPRS 850	GPRS 1800	GPRS 1900	EDGE 850	EDGE 1800	EDGE 1900	Bluetooth
Modulation Mode(s)	GMSK	GMSK	GMSK	GMSK	GMSK	GMSK	8PSK	8PSK	8PSK	GMSK
Maximum Output Power Setting	33.00 dBm	30.00 dBm	30.00 dBm	33.00 dBm	30.00 dBm	30.00 dBm	29.00 dBm	28.00 dBm	28.00 dBm	4.00 dBm
Duty Cycle	1:8	1:8	1:8	2:8	2:8	2:8	2:8	2:8	2:8	1:1
Transmitting Frequency Rang(s)	824.2-848.8 MHz	1710.2-1784.8 MHz	1850.2-1909.8 MHz	824.2-848.8 MHz	1710.2-1784.8 MHz	1850.2-1909.8 MHz	824.2-848.8 MHz	1710.2-1784.8 MHz	1850.2-1909.8 MHz	2400 - 2483.5 MHz
Production Unit or Identical Prototype (47 CFR §2.908)	Production Unit									
Device Category	Portable									
RF Exposure Limits	General Population / Uncontrolled									

3 Test Equipment Used

3.1 Dosimetric System

The Motorola Mobile Devices Business Product Safety & Compliance Laboratory utilizes a Dosimetric Assessment System (Dasy4™ v4.5) manufactured by Schmid & Partner Engineering AG (SPEAG™), of Zurich Switzerland. All the SAR measurements are taken within a shielded enclosure. The overall RSS uncertainty of the measurement system is ±11.1% (K=1) with an expanded uncertainty of ±22.2% (K=2). The measurement uncertainty budget is given in Appendix 6. Per IEEE 1528, this uncertainty budget is applicable to the SAR range of 0.4 W/kg to 10 W/kg. The list of calibrated equipment used for the measurements is shown below.

Description	Serial Number	Cal Due Date
DASY4 DAE4	639	Nov-15-2006
DASY4 DAE3	440	Feb-21-2006
E-Field Probe ET3DV6R	1397	Apr-22-2006
DASY4 DAE4	376	Sep-05-2006
E-Field Probe ET3DV6	1520	Apr-22-2006
Dipole Validation Kit, D900V2	096	Jun-02-2006
Dipole Validation Kit, D900V2	080	Jun-02-2006
S.A.M. Phantom used for 800MHz	TP-1153	
S.A.M. Phantom used for 800MHz	TP-1131	
Dipole Validation Kit, D1800V2	251tr	
S.A.M. Phantom used for 1800MHz	TP-1159	

3.2 Additional Equipment

Description	Serial Number	Cal Due Date
Signal Generator HP8648C	3847A04845	Aug-22-2006
Power Meter E4419B	US39250622	Aug-19-2006
Power Sensor #1 – E9301A	US39211013	Sep-21-2006
Power Sensor #2 - 8481A	US37296474	Nov-2-2006
Signal Generator HP8648C	3847A04632	Sep-20-2006
Power Meter E4419B	GB39511084	Aug-19-2006
Power Sensor #1 – E9301A	US39210934	Sep-21-2006
Power Sensor #2 - 8482A	3318A26036	Aug-28-2006
Network Analyzer HP8753ES	US39172529	Feb-02-2006
Dielectric Probe Kit HP85070C	US99360070	

4 Electrical parameters of the tissue simulating liquid

Prior to conducting SAR measurements, the relative permittivity, ϵ_r , and the conductivity, σ , of the tissue simulating liquids were measured with the HP85070 Dielectric Probe Kit. These values, along with the temperature of the tissue simulate are shown in the table below. The recommended limits for maximum permittivity and minimum conductivity are also shown. These come from the Federal Communication Commission, OET Bulletin 65 Supplement C 01-01. It is seen that the measured parameters are satisfactory for compliance testing.

f (MHz)	Tissue type	Limits / Measured	Dielectric Parameters		
			ϵ_r	σ (S/m)	Temp (°C)
835	Head	Measured, Dec-13-2005	41.8	0.91	20.3
		Measured, Dec-15-2005	41.2	0.90	21.1
		Recommended Limits	41.5 ±5%	0.90 ±5%	18-25
	Body	Measured, Dec-16-2005	54.2	0.99	21.1
		Recommended Limits	55.2 ±5%	0.97 ±5%	18-25
1880	Head	Measured, Dec-15-2005	38.2	1.44	21.1
		Measured, Dec-17-2005	39.0	1.44	20.7
		Measured, Dec-20-2005	38.7	1.43	20.3
		Recommended Limits	40.0 ±5%	1.40 ±5%	18-25
	Body	Measured, Dec-18-2005	50.7	1.59	20.7
		Recommended Limits	53.3 ±5%	1.52 ±5%	18-25

The list of ingredients and the percent composition used for the tissue simulates are indicated in the table below.

Ingredient	800MHz Head	800MHz Body	1900MHz Head	1900MHz Body
Sugar	57.0	44.9	--	--
DGBE	--	--	47.0	30.80
Water	40.45	53.06	52.8	68.91
Salt	1.45	0.94	0.2	0.29
HEC	1.0	1.0	--	--
Bact.	0.1	0.1	--	--

5 System Accuracy Verification

A system accuracy verification of the DASY4 v4.6 was performed using the measurement equipment listed in Section 3.1. The daily system accuracy verification occurs within center section of the SAM phantom.

A SAR measurement was performed to see if the measured SAR was within +/- 10% from the target SAR indicated in Section 8.3.7 Reference SAR Values in IEEE 1528, or Appendix 7 for the 900MHz target reference SAR value. These tests were done at 900MHz and 1800MHz. These frequencies are within 100MHz of the mid-band frequency of the test device. This is within the allowable window given in Supplement C 01-01 Appendix D System Verification section item #5. The test was conducted on the same days as the measurement of the DUT. Recommended limits for maximum permittivity, minimum conductivity are shown in the table below. These come from the Federal Communication Commission, OET Bulletin 65 Supplement C 01-01. The obtained results from the system accuracy verification are displayed in the table below. The distributions of SAR compare well with those of the reference measurements (see Appendix 1). The tissue stimulant depth was verified to be 15.0cm ±0.5cm. Z-axis scans showing the SAR penetration are also included in Appendix 1. SAR values are normalized to 1W forward power delivered to the dipole.

f (MHz)	Description	SAR (W/kg), 1gram	Dielectric Parameters		Ambient Temp (°C)	Tissue Temp (°C)
			ϵ_r	σ (S/m)		
900	Measured, Dec-13-2005	11.275	41.0	0.97	22.0	20.3
	Measured, Dec-15-2005	10.9	40.4	0.96	22.0	21.1
	Recommended Limits	11.3	41.5 ±5%	0.97 ±5%	18-25	18-25
1800	Measured, Dec-14-2005	36.25	40.1	1.35	22.0	20.3
	Measured, Dec-17-2005	36.925	39.4	1.36	23.0	20.7
	Measured, Dec-20-2005	36.875	39.1	1.35	23.0	20.3
	Recommended Limits	38.1	40.0 ±5%	1.4 ±5%	18-25	18-25

The following probe conversion factors were used on the E-Field probe(s) used for the system accuracy verification measurements:

Description	Serial Number	f (MHz)	Conversion Factor	Cal Cert pg #
E-Field Probe ET3DV6	1520	900	6.32	8 of 9
		1810	5.08	8 of 9
E-Field Probe ET3DV6R	1397	900	6.38	8 of 9
		1810	5.17	8 of 9

6 Test Results

The test sample was operated in a test mode that allows control of the transmitter without the need to place actual phone calls. For the purposes of this test the unit is commanded to test mode and manually set to the proper channel, transmitter power level and transmit mode of operation. The phone was tested in the configurations stipulated in OET Bulletin 65 Supplement C 01-01. Motorola also followed the requirements in Supplement. C / Appendix D: SAR Measurement Procedures, section titled "*Devices Operating Next To A Person's Ear*". These directions state "The device should be tested on the left and right side of the head phantom in the "Cheek/Touch" and "Ear/Tilt" positions. When applicable, each configuration should be tested with the antenna in its fully extended and fully retracted positions. These test configurations should be tested at the high, middle and low frequency channels of each operating mode; for example, AMPS, CDMA, and TDMA. If the SAR measured at the middle channel for each test configuration (left, right, Cheek/Touch, Tile/Ear, extended and retracted) is at least 2.0 dB lower than the SAR limit, testing at the high and low channels is optional for such test configuration(s)."

The DASY4 v4.6 SAR measurement system specified in section 3.1 was utilized within the intended operations as set by the SPEAG™ setup. The phone was positioned into the measurement configurations using the positioner supplied with the DASY4 v4.6 SAR measurement system. The measured dielectric constant of the material used for the positioner is less than 2.9 and the loss tangent is less than 0.02 ($\pm 30\%$) at 850MHz. The default settings for the "coarse" and "cube" scans were chosen and use for measurements. The grid spacing of the course scan was set to 15cm as shown in the SAR plots included in appendix 2 and 3. Please refer to the DASY manual for additional information on SAR scanning procedures and algorithms used.

The Cellular Phone (FCC ID IHDT56FF1) has the following battery options:

SNN5767A - 1010 mAH Battery

SNN5766A - 810 mAH Battery

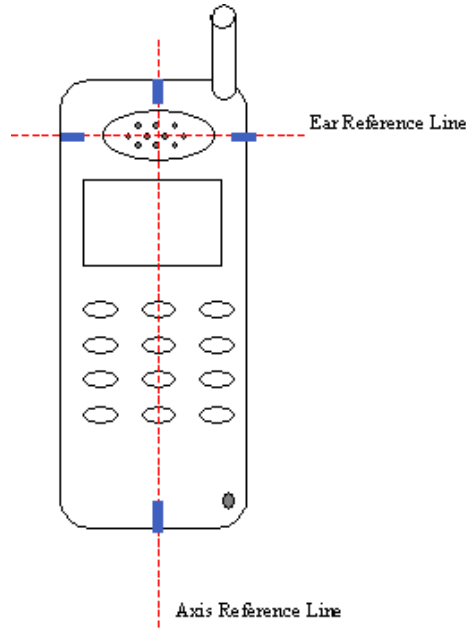
The battery with the highest capacity is the SNN5767A. This battery was used to do all of the SAR testing. The phone was placed in the SAR measurement system with a fully charged battery. The configuration that resulted in the highest SAR values were tested using the other batteries listed above.

6.1 Head Adjacent Test Results

To aid in positioning repeatability, the ear reference line of the device and the axis reference line of the device have been physically added using a non-metallic marker.

- Per Figure 1, the "Ear Reference Line" is centered vertically through the center of the listening area (as defined by the speaker holes in the housing).
- The "Axis Reference Line" bisects the front surface of the device at its top and bottom edges.
- The intersection of these two lines defines the location of the "Ear Reference Point".

The lines drawn on the device extended to the outside edges, as shown in blue in the figure below, & wrap around the sides of the device.



The SAR results shown in tables 1 through 3 are maximum SAR values averaged over 1 gram of phantom tissue. Also shown are the measured conducted output powers, the temperature of the test facility during the test, the temperature of the tissue simulate after the test, the measured drift and the extrapolated SAR. The exact method of extrapolation is $New\ SAR = Old\ SAR * 10^{(-drift/10)}$. The SAR reported at the end of the measurement process by the DASY™ measurement system can be scaled up by the measured drift to determine the SAR at the beginning of the measurement process. This is the most conservative SAR because it corresponds to the average output power at the beginning of the SAR test. This extrapolation has been done because when the DUT is operating properly it may exhibit a slump in radiated power and SAR over time. This is verified by measuring the SAR drift after the test.

The left head and right head SAR contour distributions are similar. Because of this similarity, the cheek/touch and 15° tilt test conditions with the highest SAR values in each band are indicated as bold numbers in the following tables and are included in Appendix 2. All other test conditions measured lower SAR values than those included in Appendix 2.

The SAR measurements were performed using the SAM phantoms listed in section 3.1. Since the same phantoms and tissue simulate are used for the system accuracy verification as the device SAR measurements, the Z-axis scans included in within Appendix 1 are applicable for verification of tissue simulate depth to be 15.0cm ±0.5cm.

The following probe conversion factors were used on the E-Field probe(s) used for the head adjacent measurements:

Description	Serial Number	f (MHz)	Conversion Factor	Cal Cert pg #
E-Field Probe ET3DV6	1520	900	6.32	8 of 9
		1810	5.08	8 of 9
E-Field Probe ET3DV6R	1397	900	6.38	8 of 9
		1810	5.17	8 of 9

f (MHz)	Description	Conducted Output Power (dBm)	Head (Cheek / Touch Position)							
			Left Head				Right Head			
			Measured (W/kg)	Drift (dB)	Extrapolated (W/kg)	Simulate Temp (°C)	Measured (W/kg)	Drift (dB)	Extrapolated (W/kg)	Simulate Temp (°C)
GSM 850 Mhz	Channel 128	33.00					0.717	-0.01	0.72	21.5
	Channel 190	33.00	0.522	-0.31	0.53	19.6	0.907	0.205	0.91	19.2
	Channel 251	33.01					1.49	-0.04	1.50	21.5
GSM 1900 Mhz	Channel 512	30.00								
	Channel 661	30.00	0.378	-0.02	0.38	20.3	0.431	-0.02	0.43	20.3
	Channel 810	30.00								

Table 1: SAR measurement results for the portable cellular telephone FCC ID IHDT56FF1 at highest possible output power. Measured against the Head in the Cheek/Touch Position.

f (MHz)	Description	Conducted Output Power (dBm)	Head (15° Tilt Position)							
			Left Head				Right Head			
			Measured (W/kg)	Drift (dB)	Extrapolated (W/kg)	Simulate Temp (°C)	Measured (W/kg)	Drift (dB)	Extrapolated (W/kg)	Simulate Temp (°C)
GSM 850 Mhz	Channel 128	33.00								
	Channel 190	33.00	0.122	-0.06	0.12	21.5	0.141	-1.45	0.15	19.1
	Channel 251	33.01								
GSM 1900 Mhz	Channel 512	30.00								
	Channel 661	30.00	0.102	0.069	0.10	20.3	0.0848	0.178	0.08	20.3
	Channel 810	30.00								

Table 2: SAR measurement results for the portable cellular telephone FCC ID IHDT56FF1 at highest possible output power. Measured against the Head in the 15° Tilt Position.

f (MHz)	Description	Conducted Output Power (dBm)	Head (with Battery SNN5766A)			
			Right Head, Cheek/Touch			
			Measured (W/kg)	Drift (dB)	Extrapolated (W/kg)	Simulate Temp (°C)
GSM 850 Mhz	Channel 128	33.00	0.95	0.09	0.95	21.5
	Channel 190	33.00	1.22	0.08	1.22	21.5
	Channel 251	33.01	1.51	0.001	1.51	21.5
GSM 1900 Mhz	Channel 512	30.00				
	Channel 661	30.00	0.442	-0.08	0.45	20.7
	Channel 810	30.00				

Table 3: SAR measurement results for the portable cellular telephone FCC ID IHDT56FF1 at highest possible output power. Measured against the Head in the Cheek/Touch Position.

6.2 Body Worn Test Results

The SAR results shown in tables 4 through 6 are the maximum SAR values averaged over 1 gram of phantom tissue. Also shown are the measured conducted output powers, the temperature of the test facility during the test, the temperature of the tissue simulate after the test, the measured drift and the extrapolated SAR. The exact method of extrapolation is $New\ SAR = Old\ SAR * 10^{(-drift/10)}$. The SAR reported at the end of the measurement process by the DASY™ measurement system can be scaled up by the measured drift to determine the SAR at the beginning of the measurement process. This is the most conservative SAR because it corresponds to the average output power at the beginning of the SAR test. This extrapolation has been done because when the DUT is operating properly it may exhibit a slump in radiated power and SAR over time. This is verified by measuring the SAR drift after the test. Note that 800MHz digital mode SAR measurements were performed in accordance with OET Bulletin 65 Supplement C 01-01.

The test conditions that produced the highest SAR values in each band are indicated as bold numbers in the following tables and are included in Appendix 3. All other test conditions measured lower SAR values than those included in Appendix 3.

A “flat” phantom was for the body-worn tests. This “flat” phantom is made out of 1” thick natural High Density Polyethylene with a thickness at the bottom equal to 2.0mm. It measures 52.7cm(long) x 26.7cm(wide) x 21.2cm(tall). The measured dielectric constant of the material used is less than 2.3 and the loss tangent is less than 0.0046 all the way up to 2.184GHz.

The tissue stimulant depth was verified to be 15.0cm ±0.5cm. The same device holder described in section 6 was used for positioning the phone. Any functional accessories were divided into two categories, the ones with metal components and the ones with non-metal components. For non-metallic component accessories’, testing was performed on the accessory that displayed the closest proximity to the flat phantom. Each metallic component accessory, if any, was checked for uniqueness of metal component so that each is tested with the device. If multiple accessories shared an identical metal component, only the accessory that dictates the closest spacing to the body was tested. The cellular phone was tested with a headset connected to the device for all body-worn SAR measurements.

There are no Body-Worn Accessories available for this phone.

The following probe conversion factors were used on the E-Field probe(s) used for the body worn measurements:

Description	Serial Number	f (MHz)	Conversion Factor	Cal Cert pg #
E-Field Probe ET3DV6R	1397	900	6.22	8 of 9
		1810	4.77	8 of 9

f (MHz)	Description	Conducted Output Power (dBm)	Body Worn								
			Front of Phone 15mm from Phantom				Back of Phone 15mm from Phantom				
			Measured (W/kg)	Drift (dB)	Extrapolated (W/kg)	Simulate Temp (°C)	Measured (W/kg)	Drift (dB)	Extrapolated (W/kg)	Simulate Temp (°C)	
GSM 850 Mhz	Channel 128	33.00									
	Channel 190	33.00	0.19	0.03	0.19	20.9	0.428	-0.04	0.43	20.9	
	Channel 251	33.01									
GSM 1900 Mhz	Channel 512	30.00									
	Channel 661	30.00	0.183	-0.053	0.19	21.0	0.357	-0.016	0.36	21.0	
	Channel 810	30.00									

Table 4: SAR measurement results for the portable cellular telephone FCC ID IHDT56FF1 at highest possible output power. Measured against the body.

f (MHz)	Description	Conducted Output Power (dBm)	Body Worn								
			GPRS Class 10 Enabled, Back of Phone 25mm from Phantom				EDGE Class 6 Enabled, Back of Phone 25mm from Phantom				
			Measured (W/kg)	Drift (dB)	Extrapolated (W/kg)	Simulate Temp (°C)	Measured (W/kg)	Drift (dB)	Extrapolated (W/kg)	Simulate Temp (°C)	
GSM 850 Mhz	Channel 128	33.00									
	Channel 190	33.00	0.0474	-0.04	0.05	20.9	0.464	-0.03	0.05	20.8	
	Channel 251	33.01									
GSM 1900 Mhz	Channel 512	30.00									
	Channel 661	30.00	0.305	-0.07	0.31	21.0	0.0954	-0.051	0.10	21.0	
	Channel 810	30.00									

Table 5: SAR measurement results for the portable cellular telephone FCC ID IHDT56FF1 at highest possible output power. Measured against the body with GPRS Class 10 or EDGE Class 6 modes enabled.

f (MHz)	Description	Conducted Output Power (dBm)	Body Worn, Bluetooth Mode Enabled								
			Back of Phone 15mm from Phantom				Back of Phone 15mm from Phantom, With Battery SNN5766A				
			Measured (W/kg)	Drift (dB)	Extrapolated (W/kg)	Simulate Temp (°C)	Measured (W/kg)	Drift (dB)	Extrapolated (W/kg)	Simulate Temp (°C)	
GSM 850 Mhz	Channel 128	33.00									
	Channel 190	33.00	0.461	-0.04	0.47	20.9	0.487	-0.04	0.49	20.9	
	Channel 251	33.01									
GSM 1900 Mhz	Channel 512	30.00									
	Channel 661	30.00	0.421	-0.039	0.42	21.0	0.442	-0.084	0.45	21.0	
	Channel 810	30.00									

Table 6: SAR measurement results for the portable cellular telephone FCC ID IHDT56FF1 at highest possible output power. Measured against the body with Bluetooth mode enabled.

6.3 Push-to-Talk/Dispatch Mode Test Results

The SAR results shown in table 7 are maximum SAR values averaged over 1 gram of phantom tissue for the Push-to-Talk/Dispatch Mode SAR measurements. Also shown are the measured conducted output powers.

The test sample was operated in an over the air call in GPRS Class 10 and EDGE Class 6 modes in the 850 and 1900 MHz bands. For the purposes of this test the unit is commanded to the proper channel, transmitter power level and transmit mode of operation. The radio was then placed in the SAR measurement system with a fully charged battery. The radio was placed with the front of the device positioned at 2.5 cm from a flat phantom, as per Supplement C 01-01 with flip open.

A full data set output of two test conditions with the highest SAR values from the Dasy™ measurement system is included as appendix 4. The test conditions included are indicated as bold numbers in the following table. All other test conditions measured lower SAR values than those included.

f (MHz)	Description	Conducted Output Power (dBm)	Push-To-Talk Mode							
			GPRS Class 10 Enabled, Flip Open, Front of Phone 25mm Away from Phantom				EDGE Class 6 Enabled, Flip Open, Front of Phone 25mm Away from Phantom			
			Measured (W/kg)	Drift (dB)	Extrapolated (W/kg)	Simulate Temp (°C)	Measured (W/kg)	Drift (dB)	Extrapolated (W/kg)	Simulate Temp (°C)
GSM 850 Mhz	Channel 128	33.00								
	Channel 190	33.00	0.585	-0.005	0.59	21.5	0.153	0.004	0.15	21.5
	Channel 251	33.01								
GSM 1900 Mhz	Channel 512	30.00								
	Channel 661	30.00	0.219	-1.77	0.23	19.2	0.0704	-0.007	0.07	19.4
	Channel 810	30.00								

Table 7: SAR measurement results for the portable cellular telephone FCC ID IHDT56FF1, against the flat of a SAM Phantom in PTT Mode.

Appendix 1

SAR distribution comparison for the system accuracy verification

Date/Time: 12/13/2005 11:33:08 AM

Test Laboratory: Motorola - 121305 900 MHz GOOD -0.2%

DUT: Dipole 900 MHz; Type: D900V2; Serial: D900V2 - SN: 96

Procedure Notes: 900 MHz System Performance Check; Dipole Sn# 96; PM1 Power = 200mW
Sim.Temp@meas = 20.3 C; Sim.Temp@SPC = 19.1 C; Room Temp @ SPC = 22 C

Communication System: CW - Dipole; Frequency: 900 MHz; Channel Number: 4; Duty Cycle: 1:1

Medium: Low Freq Head

Medium parameters used: $f = 900$ MHz; $\sigma = 0.97$ mho/m; $\epsilon_r = 41$; $\rho = 1000$ kg/m³

DASY4 Configuration:

- Probe: ET3DV6 - SN1520; ConvF(6.32, 6.32, 6.32); Calibrated: 4/22/2005
- Sensor-Surface: 4mm (Mechanical Surface Detection)
- Electronics: DAE4 Sn376; Calibrated: 9/5/2005
- Phantom: R4: Sugar Water SAM; Type: SAM; Serial: TP-1131;
- Measurement SW: DASY4, V4.6 Build 23; Postprocessing SW: SEMCAD, V1.8 Build 160

Daily SPC Check/Dipole Area Scan (4x9x1):

Measurement grid: dx=15mm, dy=15mm; Maximum value of SAR (measured) = 2.28 mW/g

Daily SPC Check/0-Degree 5x5x7 Cube (5x5x7)/Cube 0:

Measurement grid: dx=8mm, dy=8mm, dz=5mm

Reference Value = 51.7 V/m; Power Drift = -0.044 dB; Peak SAR (extrapolated) = 3.37 W/kg

SAR(1 g) = 2.26 mW/g; SAR(10 g) = 1.45 mW/g; Maximum value of SAR (measured) = 2.46 mW/g

Daily SPC Check/90-Degree 5x5x7 Cube (5x5x7)/Cube 0:

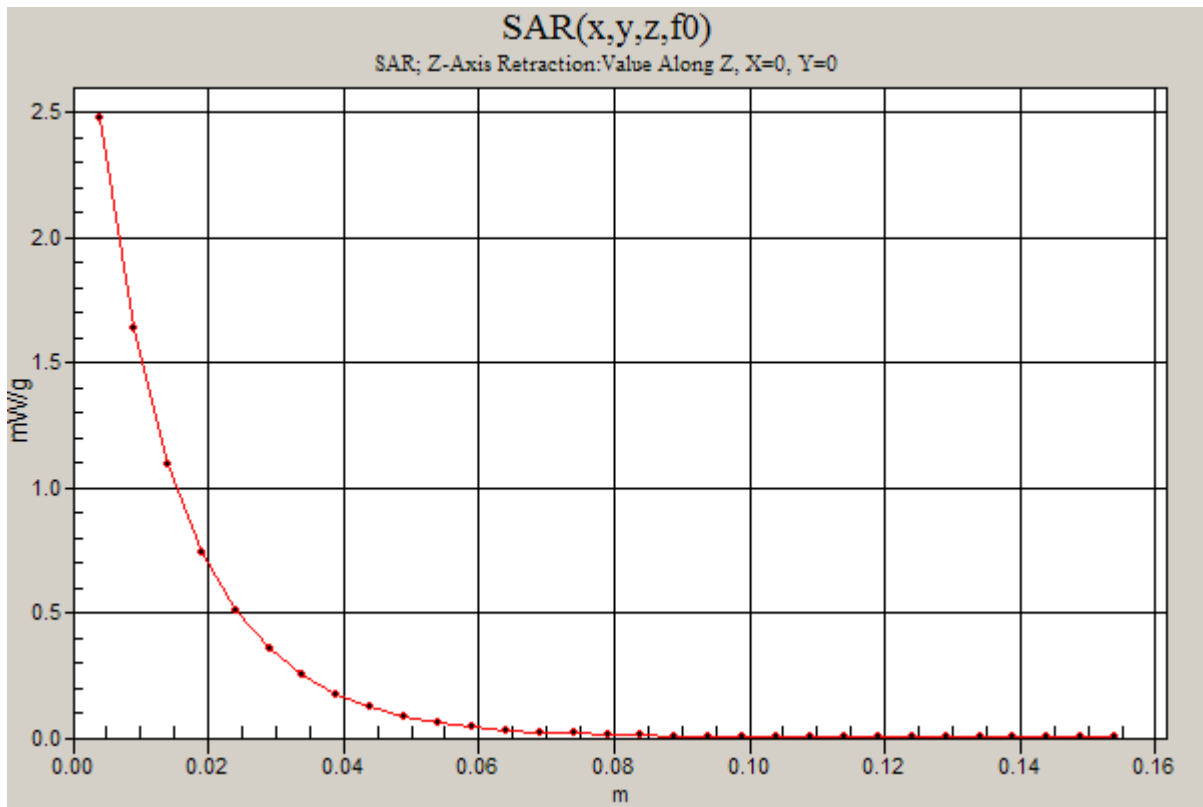
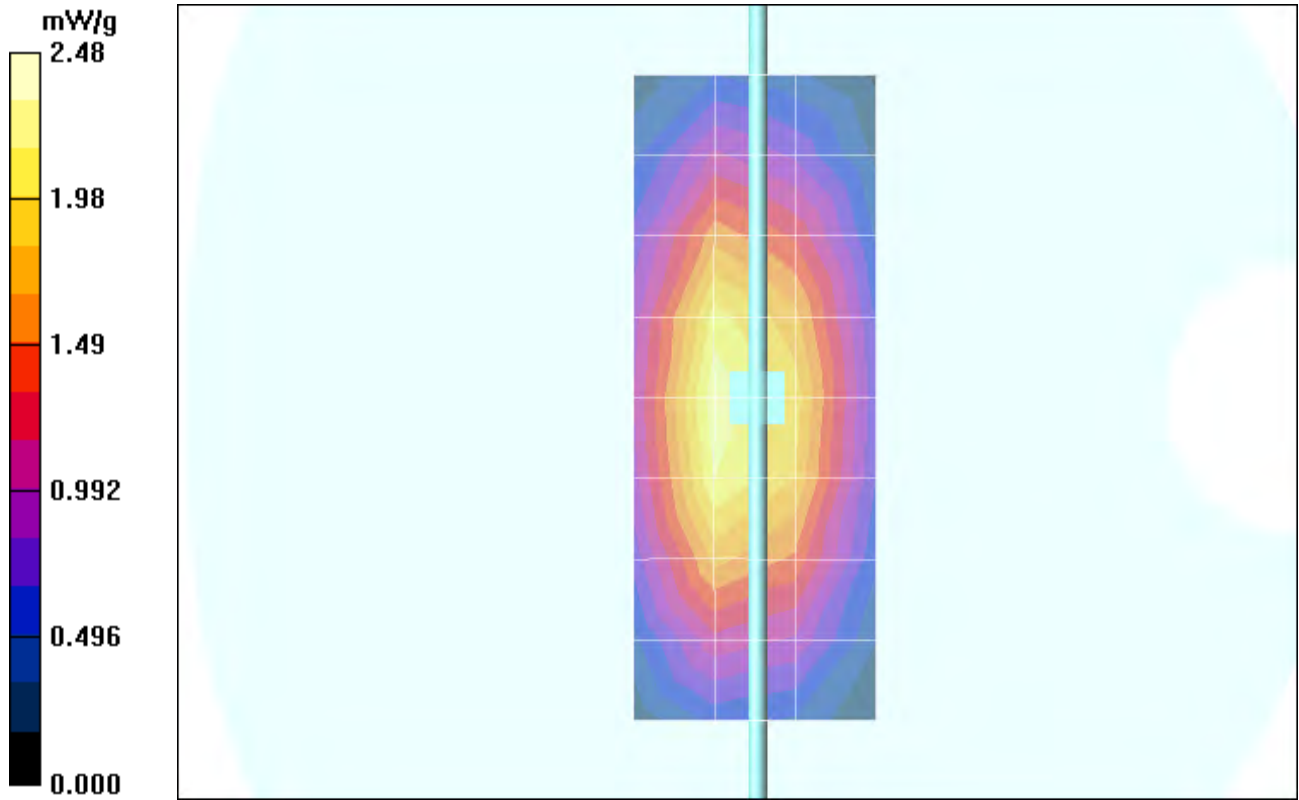
Measurement grid: dx=8mm, dy=8mm, dz=5mm

Reference Value = 51.7 V/m; Power Drift = -0.044 dB; Peak SAR (extrapolated) = 3.35 W/kg

SAR(1 g) = 2.25 mW/g; SAR(10 g) = 1.44 mW/g; Maximum value of SAR (measured) = 2.37 mW/g

Daily SPC Check/Z-Axis Retraction (1x1x31):

Measurement grid: dx=20mm, dy=20mm, dz=5mm; Maximum value of SAR (measured) = 2.48 mW/g



Date/Time: 12/14/2005 6:55:44 AM

Test Laboratory: Motorola - 121405 1800Mhz GOOD-4.9%

DUT: Dipole 1800 MHz; Type: D1800V2; Serial: D1800V2 - SN:251tr

Procedure Notes: 1800 MHz System Performance Check; Dipole Sn# 251tr; PM1 Power = 200 mW
Sim.Temp@meas = 20.3 C; Sim.Temp@SPC = 20.4 C; Room Temp @ SPC = 22 C

Communication System: CW - Dipole; Frequency: 1800 MHz; Channel Number: 8; Duty Cycle: 1:1

Medium: VALIDATION Only

Medium parameters used: $f = 1800$ MHz; $\sigma = 1.35$ mho/m; $\epsilon_r = 40.1$; $\rho = 1000$ kg/m³

DASY4 Configuration:

- Probe: ET3DV6R - SN1397; ConvF(5.17, 5.17, 5.17); Calibrated: 4/22/2005
- Sensor-Surface: 4mm (Mechanical Surface Detection)
- Electronics: DAE3 Sn440; Calibrated: 2/21/2005
- Phantom: R3: Sect.1, Amy Twin; Type: Amy Twin Flat; Serial: n/a;
- Measurement SW: DASY4, V4.6 Build 23; Postprocessing SW: SEMCAD, V1.8 Build 160

Daily SPC Check/Dipole Area Scan (9x4x1):

Measurement grid: dx=15mm, dy=15mm; Maximum value of SAR (measured) = 7.60 mW/g

Daily SPC Check/0-Degree 5x5x7 Cube (5x5x7)/Cube 0:

Measurement grid: dx=8mm, dy=8mm, dz=5mm

Reference Value = 75.1 V/m; Power Drift = -0.008 dB; Peak SAR (extrapolated) = 12.5 W/kg

SAR(1 g) = 7.42 mW/g; SAR(10 g) = 4 mW/g; Maximum value of SAR (measured) = 8.34 mW/g

Daily SPC Check/90-Degree 5x5x7 Cube (5x5x7)/Cube 0:

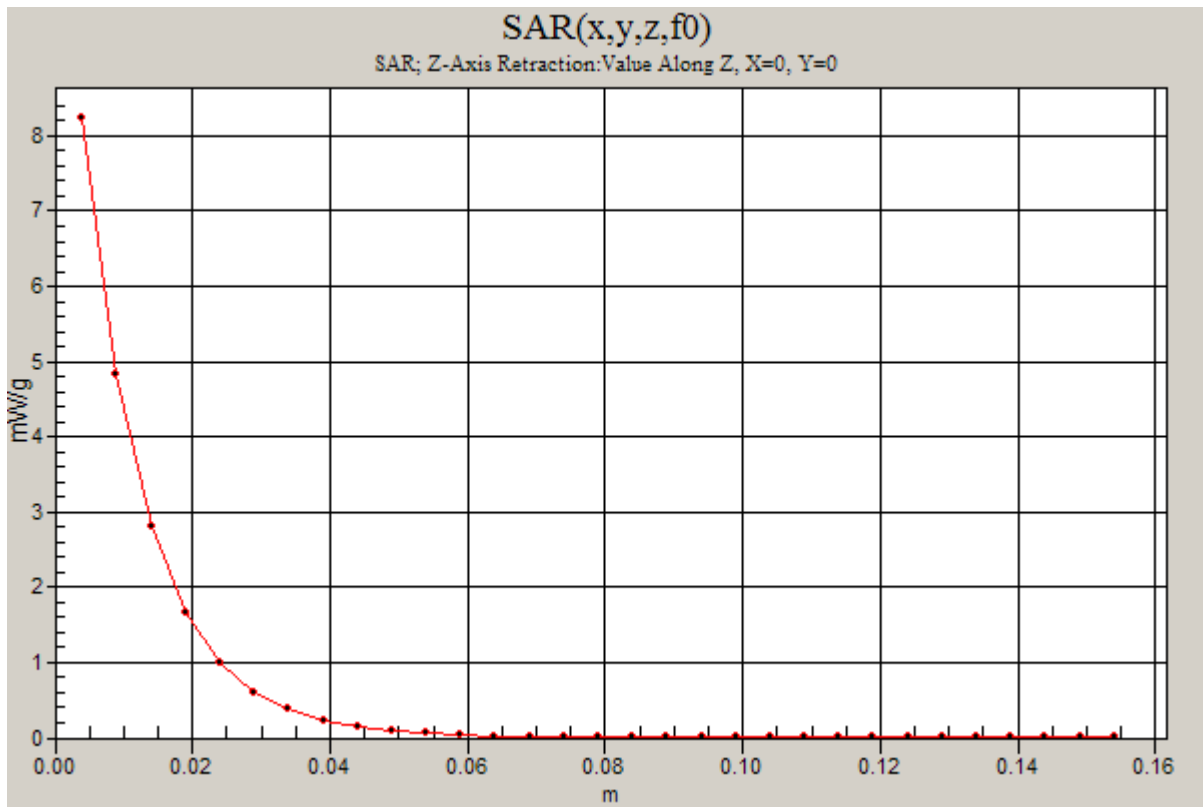
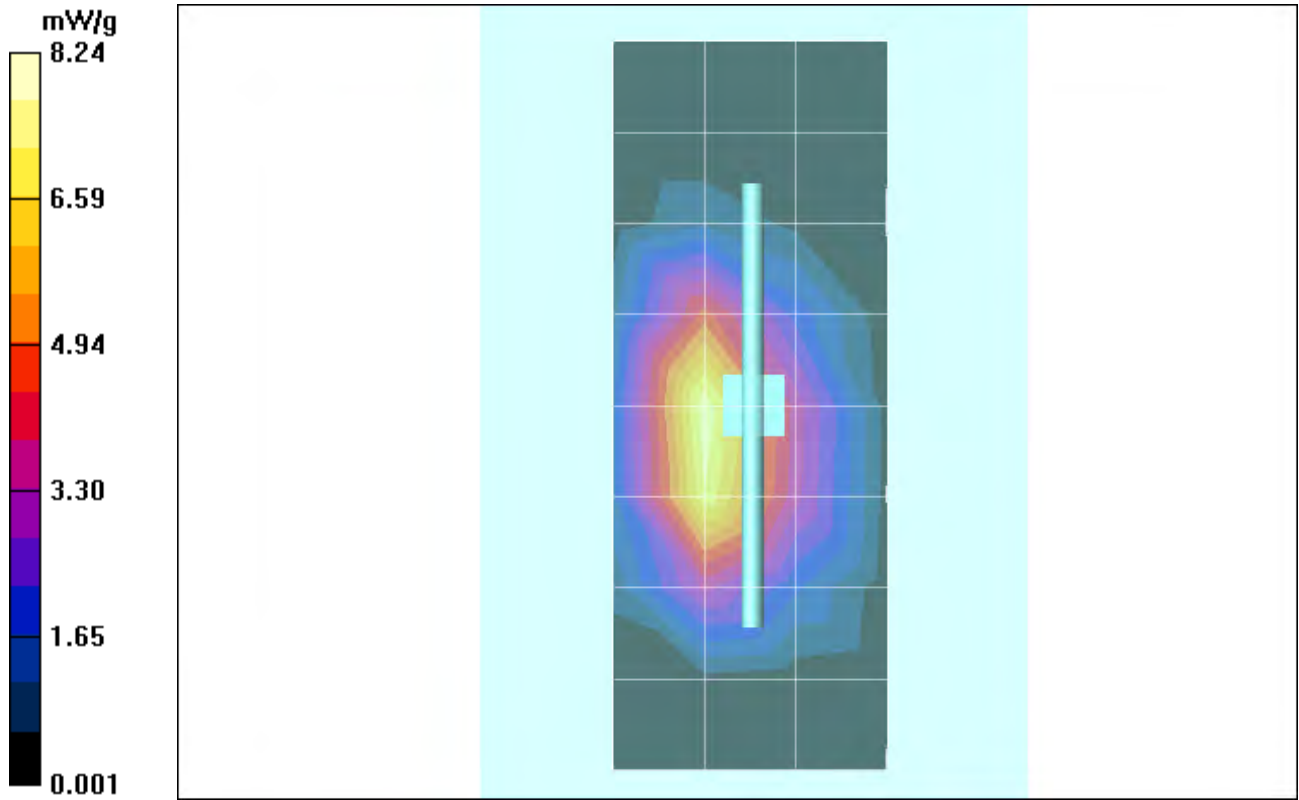
Measurement grid: dx=8mm, dy=8mm, dz=5mm

Reference Value = 75.1 V/m; Power Drift = -0.008 dB; Peak SAR (extrapolated) = 12.0 W/kg

SAR(1 g) = 7.08 mW/g; SAR(10 g) = 3.82 mW/g; Maximum value of SAR (measured) = 7.89 mW/g

Daily SPC Check/Z-Axis Retraction (1x1x31):

Measurement grid: dx=20mm, dy=20mm, dz=5mm; Maximum value of SAR (measured) = 8.24 mW/g



Date/Time: 12/15/2005 8:12:32 AM

Test Laboratory: Motorola - 121505 900Mhz GOOD-3.5%

DUT: Dipole 900 MHz; Type: D900V2; Serial: D900V2 - SN:080

Procedure Notes: 900 MHz System Performance Check; Dipole Sn# 80; PM1 Power = 200 mW
Sim.Temp@meas = 21.1 C; Sim.Temp@SPC = 21.1 C; Room Temp @ SPC = 22 C

Communication System: CW - Dipole; Frequency: 900 MHz; Channel Number: 4; Duty Cycle: 1:1

Medium: VALIDATION Only

Medium parameters used: $f = 900$ MHz; $\sigma = 0.96$ mho/m; $\epsilon_r = 40.4$; $\rho = 1000$ kg/m³

DASY4 Configuration:

- Probe: ET3DV6R - SN1397; ConvF(6.38, 6.38, 6.38); Calibrated: 4/22/2005
- Sensor-Surface: 4mm (Mechanical Surface Detection)
- Electronics: DAE3 Sn440; Calibrated: 2/21/2005
- Phantom: R3: Sugar Water SAM; Type: SAM; Serial: TP-1153;
- Measurement SW: DASY4, V4.6 Build 23; Postprocessing SW: SEMCAD, V1.8 Build 160

Daily SPC Check/Dipole Area Scan (4x9x1):

Measurement grid: dx=15mm, dy=15mm; Maximum value of SAR (measured) = 2.16 mW/g

Daily SPC Check/0-Degree 5x5x7 Cube (5x5x7)/Cube 0:

Measurement grid: dx=8mm, dy=8mm, dz=5mm

Reference Value = 52.0 V/m; Power Drift = -0.126 dB; Peak SAR (extrapolated) = 3.26 W/kg

SAR(1 g) = 2.19 mW/g; SAR(10 g) = 1.4 mW/g; Maximum value of SAR (measured) = 2.35 mW/g

Daily SPC Check/90-Degree 5x5x7 Cube (5x5x7)/Cube 0:

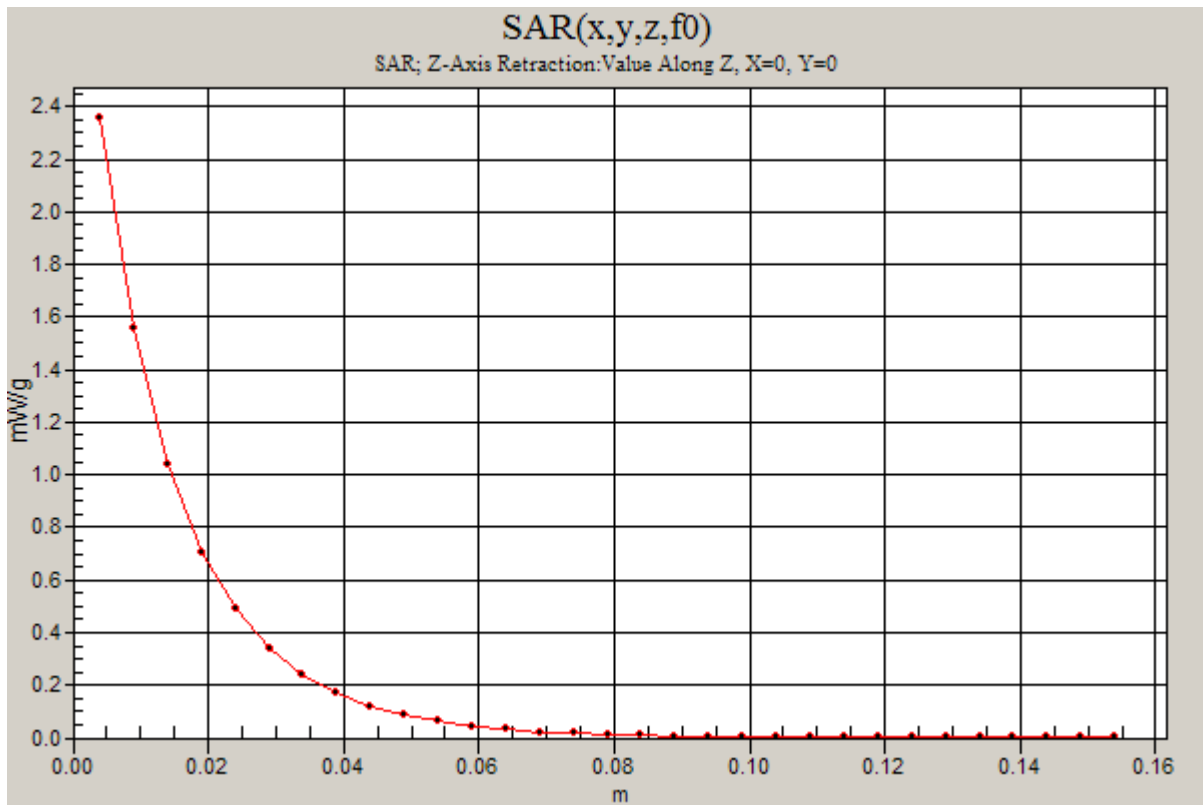
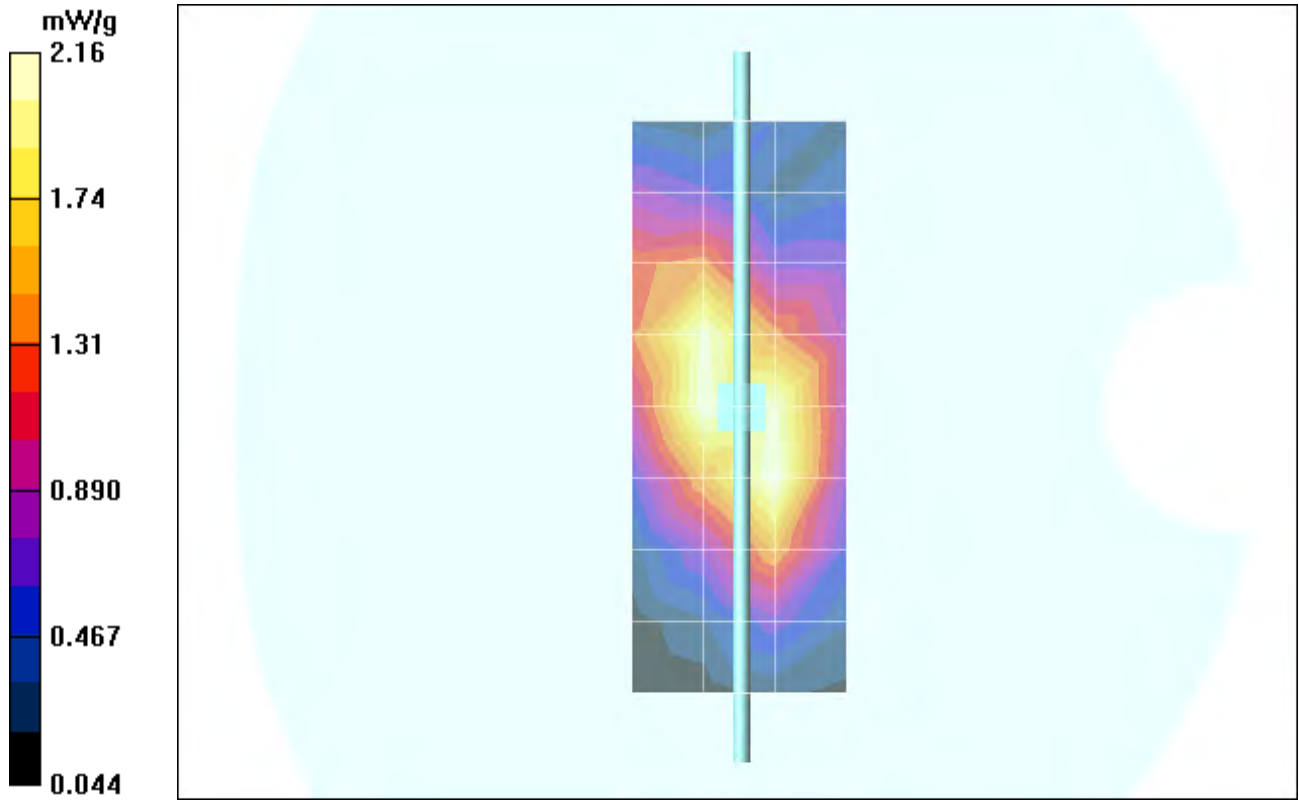
Measurement grid: dx=8mm, dy=8mm, dz=5mm

Reference Value = 52.0 V/m; Power Drift = -0.126 dB; Peak SAR (extrapolated) = 3.25 W/kg

SAR(1 g) = 2.17 mW/g; SAR(10 g) = 1.4 mW/g

Daily SPC Check/Z-Axis Retraction (1x1x31):

Measurement grid: dx=20mm, dy=20mm, dz=5mm; Maximum value of SAR (measured) = 2.36 mW/g



Date/Time: 12/17/2005 11:04:10 PM

Test Laboratory: Motorola - 121705 1800Mhz GOOD-3.1%

DUT: Dipole 1800 MHz; Type: D1800V2; Serial: D1800V2 - SN:251tr

Procedure Notes: 1800 MHz System Performance Check; Dipole Sn# 251tr; PM1 Power = 200 mW
Sim.Temp@meas = 20.7 C; Sim.Temp@SPC = 20.7 C; Room Temp @ SPC = 23 C

Communication System: CW - Dipole; Frequency: 1800 MHz; Channel Number: 8; Duty Cycle: 1:1

Medium: VALIDATION Only

Medium parameters used: $f = 1800$ MHz; $\sigma = 1.36$ mho/m; $\epsilon_r = 39.4$; $\rho = 1000$ kg/m³

DASY4 Configuration:

- Probe: ET3DV6R - SN1397; ConvF(5.17, 5.17, 5.17); Calibrated: 4/22/2005
- Sensor-Surface: 4mm (Mechanical Surface Detection)
- Electronics: DAE3 Sn440; Calibrated: 2/21/2005
- Phantom: R3: Glycol SAM; Type: SAM; Serial: TP-1159;
- Measurement SW: DASY4, V4.6 Build 23; Postprocessing SW: SEMCAD, V1.8 Build 160

Daily SPC Check/Dipole Area Scan (4x9x1):

Measurement grid: dx=15mm, dy=15mm; Maximum value of SAR (measured) = 6.27 mW/g

Daily SPC Check/0-Degree 5x5x7 Cube (5x5x7)/Cube 0:

Measurement grid: dx=8mm, dy=8mm, dz=5mm

Reference Value = 83.9 V/m; Power Drift = -0.018 dB; Peak SAR (extrapolated) = 12.6 W/kg

SAR(1 g) = 7.55 mW/g; SAR(10 g) = 4.09 mW/g; Maximum value of SAR (measured) = 8.51 mW/g

Daily SPC Check/90-Degree 5x5x7 Cube (5x5x7)/Cube 0:

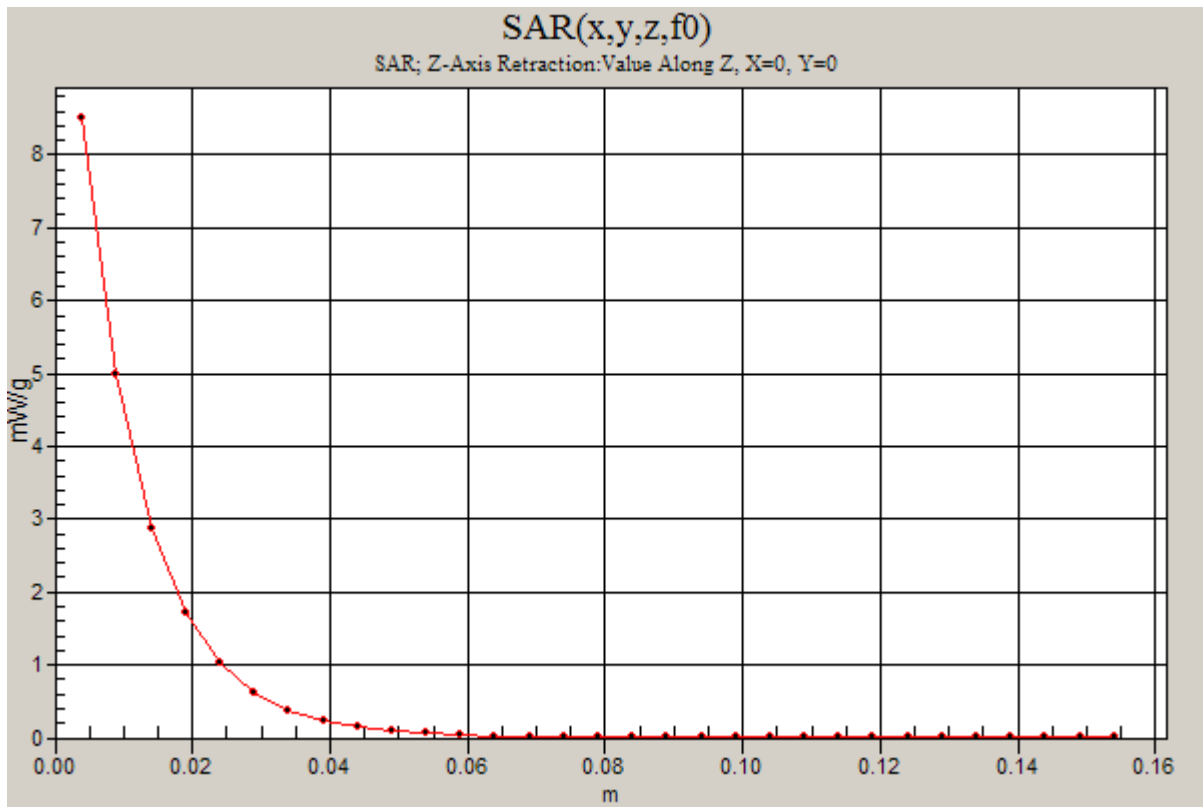
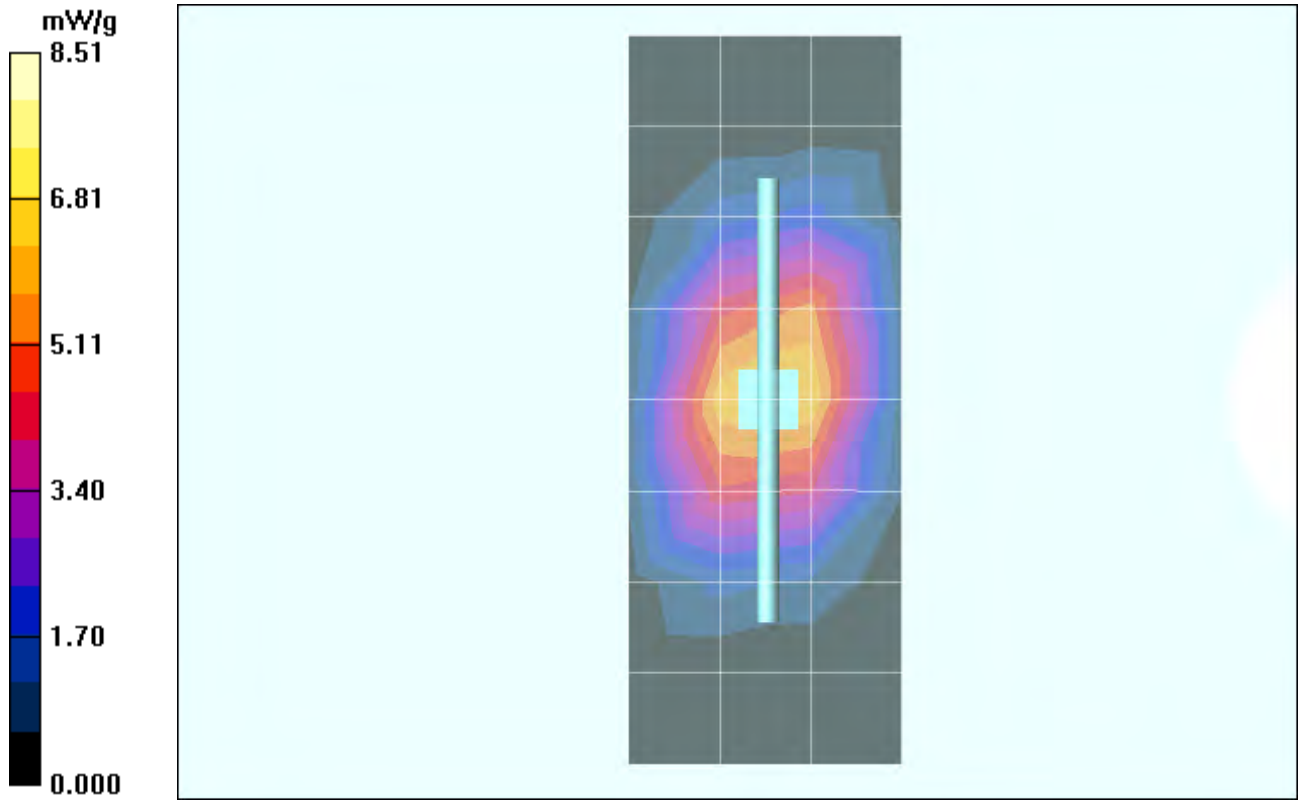
Measurement grid: dx=8mm, dy=8mm, dz=5mm

Reference Value = 83.9 V/m; Power Drift = -0.018 dB; Peak SAR (extrapolated) = 12.1 W/kg

SAR(1 g) = 7.22 mW/g; SAR(10 g) = 3.9 mW/g; Maximum value of SAR (measured) = 8.10 mW/g

Daily SPC Check/Z-Axis Retraction (1x1x31):

Measurement grid: dx=20mm, dy=20mm, dz=5mm



Date/Time: 12/20/2005 12:23:33 PM

Test Laboratory: Motorola - 122005 1800 Mhz GOOD -3.2%

DUT: Dipole 1800 MHz; Type: D1800V2; Serial: D1800V2 - SN: 251tr

Procedure Notes: 1800 MHz System Performance Check; Dipole Sn# 251tr; PM1 Power = 200 mW
Sim.Temp@meas = 20.3 C; Sim.Temp@SPC = 20.1 C; Room Temp @ SPC = 23 C

Communication System: CW - Dipole; Frequency: 1800 MHz; Channel Number: 8; Duty Cycle: 1:1

Medium: VALIDATION Only

Medium parameters used: $f = 1800$ MHz; $\sigma = 1.35$ mho/m; $\epsilon_r = 39.1$; $\rho = 1000$ kg/m³

DASY4 Configuration:

- Probe: ET3DV6R - SN1397; ConvF(5.17, 5.17, 5.17); Calibrated: 4/22/2005
- Sensor-Surface: 4mm (Mechanical Surface Detection)
- Electronics: DAE4 Sn639; Calibrated: 11/15/2005
- Phantom: R3: Sect.1, Amy Twin; Type: Amy Twin Flat; Serial: n/a;
- Measurement SW: DASY4, V4.6 Build 23; Postprocessing SW: SEMCAD, V1.8 Build 160

Daily SPC Check/Dipole Area Scan (9x4x1):

Measurement grid: dx=15mm, dy=15mm; Maximum value of SAR (measured) = 7.28 mW/g

Daily SPC Check/0-Degree 5x5x7 Cube (5x5x7)/Cube 0:

Measurement grid: dx=8mm, dy=8mm, dz=5mm

Reference Value = 79.1 V/m; Power Drift = -0.044 dB; Peak SAR (extrapolated) = 12.4 W/kg

SAR(1 g) = 7.3 mW/g; SAR(10 g) = 3.92 mW/g; Maximum value of SAR (measured) = 8.17 mW/g

Daily SPC Check/90-Degree 5x5x7 Cube (5x5x7)/Cube 0:

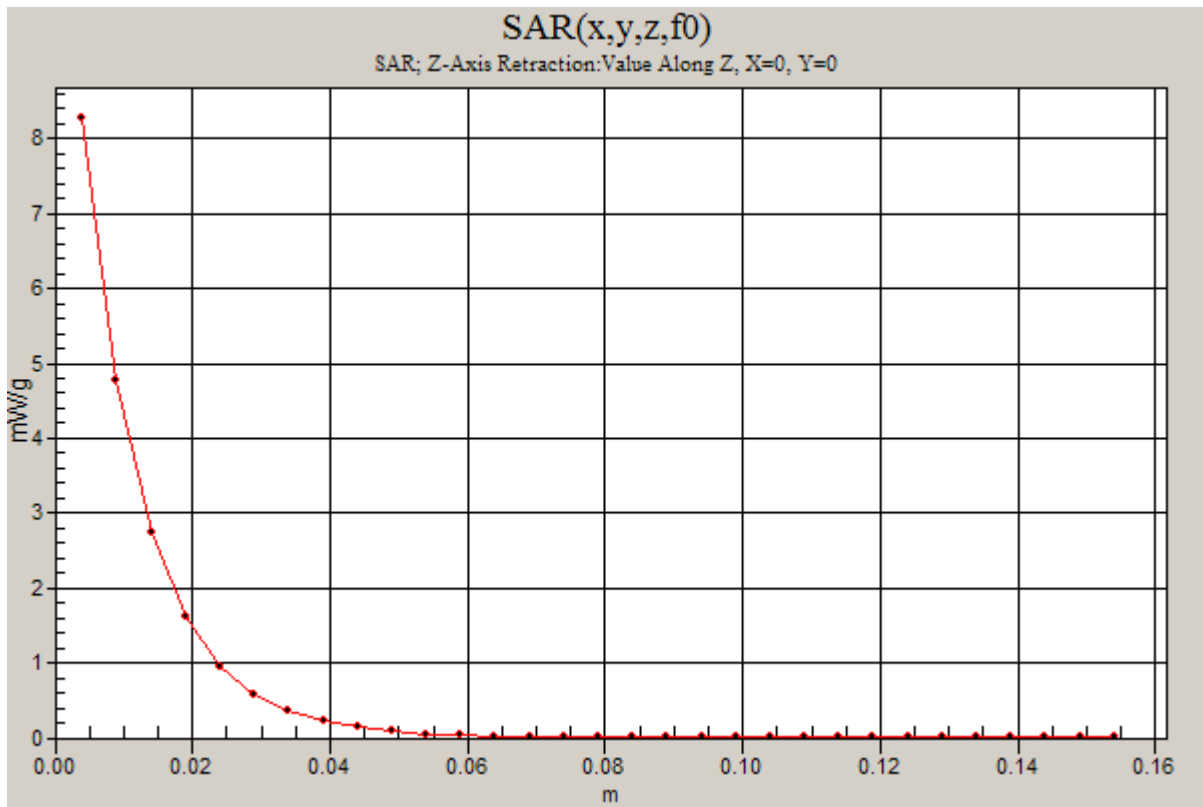
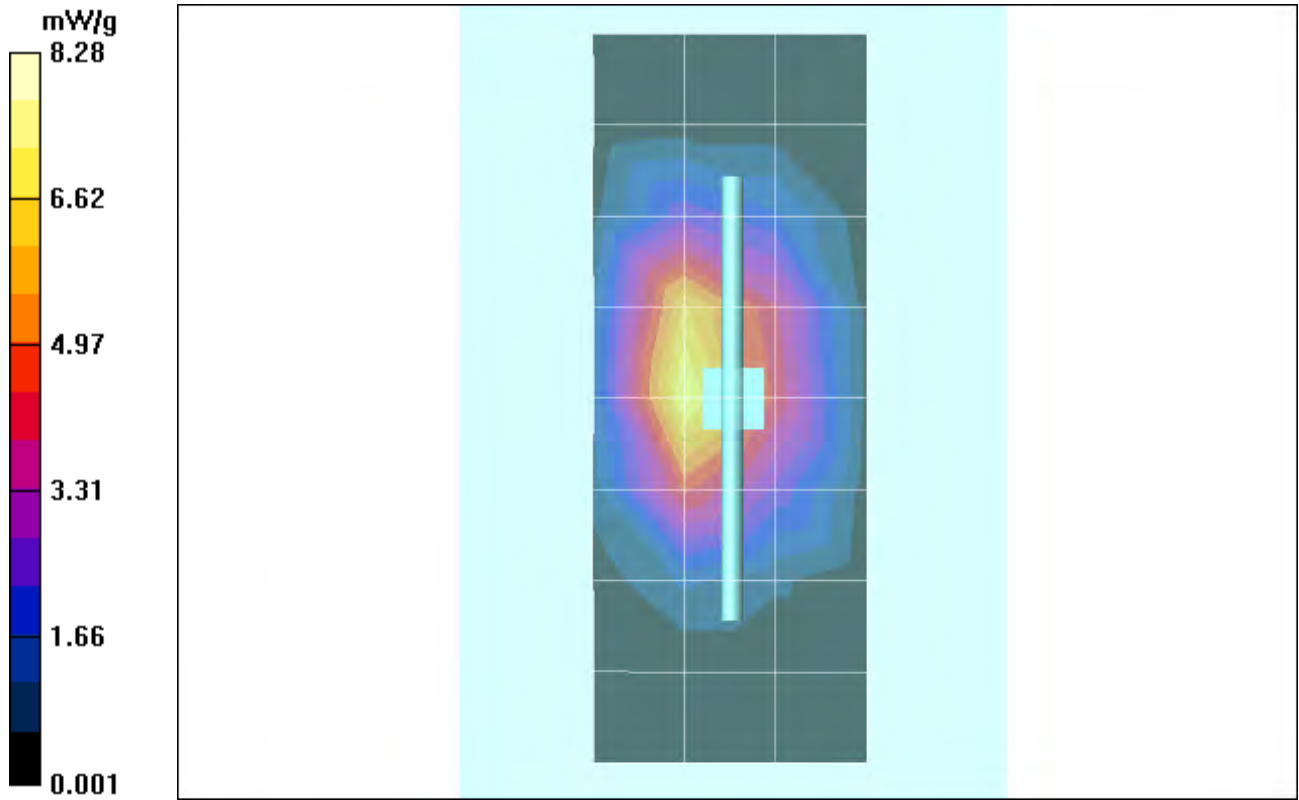
Measurement grid: dx=8mm, dy=8mm, dz=5mm

Reference Value = 79.1 V/m; Power Drift = -0.044 dB; Peak SAR (extrapolated) = 12.5 W/kg

SAR(1 g) = 7.45 mW/g; SAR(10 g) = 4.03 mW/g; Maximum value of SAR (measured) = 8.27 mW/g

Daily SPC Check/Z-Axis Retraction (1x1x31):

Measurement grid: dx=20mm, dy=20mm, dz=5mm; Maximum value of SAR (measured) = 8.28 mW/g



Appendix 2

SAR distribution plots for Phantom Head Adjacent Use

Date/Time: 12/15/2005 4:09:06 PM

Test Laboratory: Motorola - 850 Cheek

Serial: TA20005QRC

Procedure Notes: Pwr Step: 5; Antenna Position: Internal; Accessory Model #: N/A

Battery Model #: SNN5766A; DEVICE POSITION (cheek or rotated): Cheek

Communication System: GSM 850; Frequency: 848.8 MHz; Channel Number: 251; Duty Cycle: 1:8

Medium: Low Freq Head

Medium parameters used: $f = 835$ MHz; $\sigma = 0.9$ mho/m; $\epsilon_r = 41.2$; $\rho = 1000$ kg/m³

DASY4 Configuration:

- Probe: ET3DV6R - SN1397; ConvF(6.38, 6.38, 6.38); Calibrated: 4/22/2005
- Sensor-Surface: 4mm (Mechanical Surface Detection)
- Electronics: DAE3 Sn440; Calibrated: 2/21/2005
- Phantom: R3: Sugar Water SAM; Type: SAM; Serial: TP-1153;
- Measurement SW: DASY4, V4.6 Build 23; Postprocessing SW: SEMCAD, V1.8 Build 160

Right Head Template/Area Scan - Normal (15mm) (7x17x1):

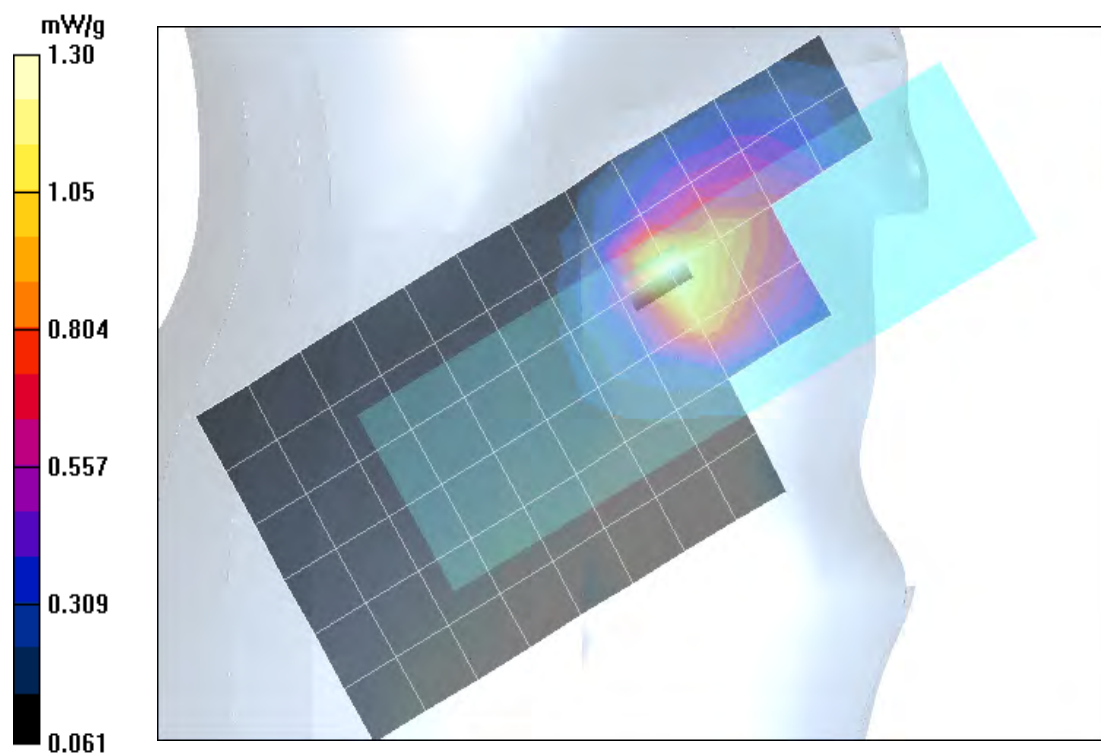
Measurement grid: dx=15mm, dy=15mm; Maximum value of SAR (measured) = 1.30 mW/g

Right Head Template/Zoom Scan (7x7x7)/Cube 0:

Measurement grid: dx=5mm, dy=5mm, dz=5mm

Reference Value = 44.9 V/m; Power Drift = 0.001 dB; Peak SAR (extrapolated) = 5.01 W/kg

SAR(1 g) = 1.51 mW/g; SAR(10 g) = 0.745 mW/g; Maximum value of SAR (measured) = 1.68 mW/g



Date/Time: 12/13/2005 1:53:03 PM

Test Laboratory: Motorola - 850 Tilted

Serial: TA20005QRC

Procedure Notes: Pwr Step: 5; Antenna Position: internal; Accessory Model #: n/a

Battery Model #: SNN5767A; DEVICE POSITION (check or rotated): tilted

Communication System: GSM 850; Frequency: 836.6 MHz; Channel Number: 190; Duty Cycle: 1:8

Medium: Low Freq Head

Medium parameters used: $f = 835$ MHz; $\sigma = 0.91$ mho/m; $\epsilon_r = 41.8$; $\rho = 1000$ kg/m³

DASY4 Configuration:

- Probe: ET3DV6 - SN1520; ConvF(6.32, 6.32, 6.32); Calibrated: 4/22/2005
- Sensor-Surface: 4mm (Mechanical Surface Detection)
- Electronics: DAE4 Sn376; Calibrated: 9/5/2005
- Phantom: R4: Sugar Water SAM; Type: SAM; Serial: TP-1131;
- Measurement SW: DASY4, V4.6 Build 23; Postprocessing SW: SEMCAD, V1.8 Build 160

Right Head Template/Area Scan - Normal (15mm) (7x17x1):

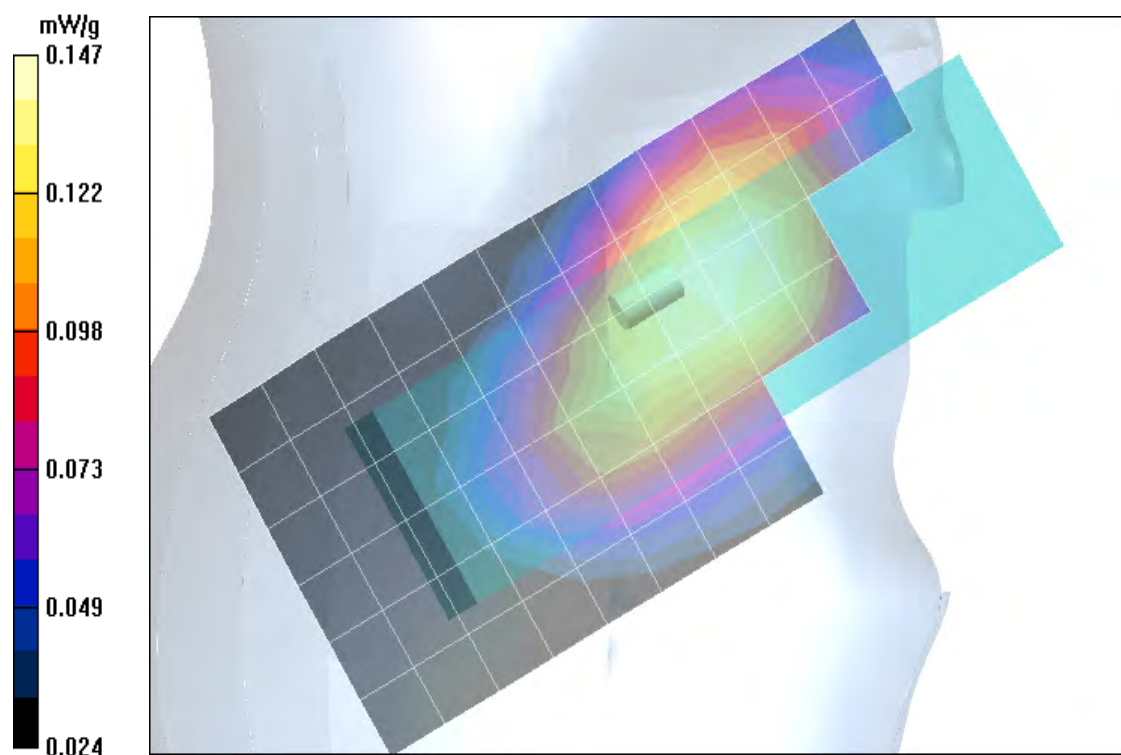
Measurement grid: dx=15mm, dy=15mm; Maximum value of SAR (measured) = 0.146 mW/g

Right Head Template/Zoom Scan (7x7x7)/Cube 0:

Measurement grid: dx=5mm, dy=5mm, dz=5mm

Reference Value = 13.3 V/m; Power Drift = -0.145 dB; Peak SAR (extrapolated) = 0.177 W/kg

SAR(1 g) = 0.141 mW/g; SAR(10 g) = 0.108 mW/g; Maximum value of SAR (measured) = 0.147 mW/g



Date/Time: 12/17/2005 11:38:49 PM

Test Laboratory: Motorola - 1900 Cheek

Serial: TA20005QRC

Procedure Notes: Pwr Step: 0; Antenna Position: internal; Accessory Model #: N/A

Battery Model #: snn5766a; DEVICE POSITION (cheek or rotated): Cheek

Communication System: GSM 1900; Frequency: 1880 MHz; Channel Number: 661; Duty Cycle: 1:8

Medium: Regular Glycol Head

Medium parameters used: $f = 1880$ MHz; $\sigma = 1.44$ mho/m; $\epsilon_r = 39$; $\rho = 1000$ kg/m³

DASY4 Configuration:

- Probe: ET3DV6R - SN1397; ConvF(5.17, 5.17, 5.17); Calibrated: 4/22/2005
- Sensor-Surface: 4mm (Mechanical Surface Detection)
- Electronics: DAE3 Sn440; Calibrated: 2/21/2005
- Phantom: R3: Glycol SAM; Type: SAM; Serial: TP-1159;
- Measurement SW: DASY4, V4.6 Build 23; Postprocessing SW: SEMCAD, V1.8 Build 160

Right Head Template/Area Scan - Normal (15mm) (7x17x1):

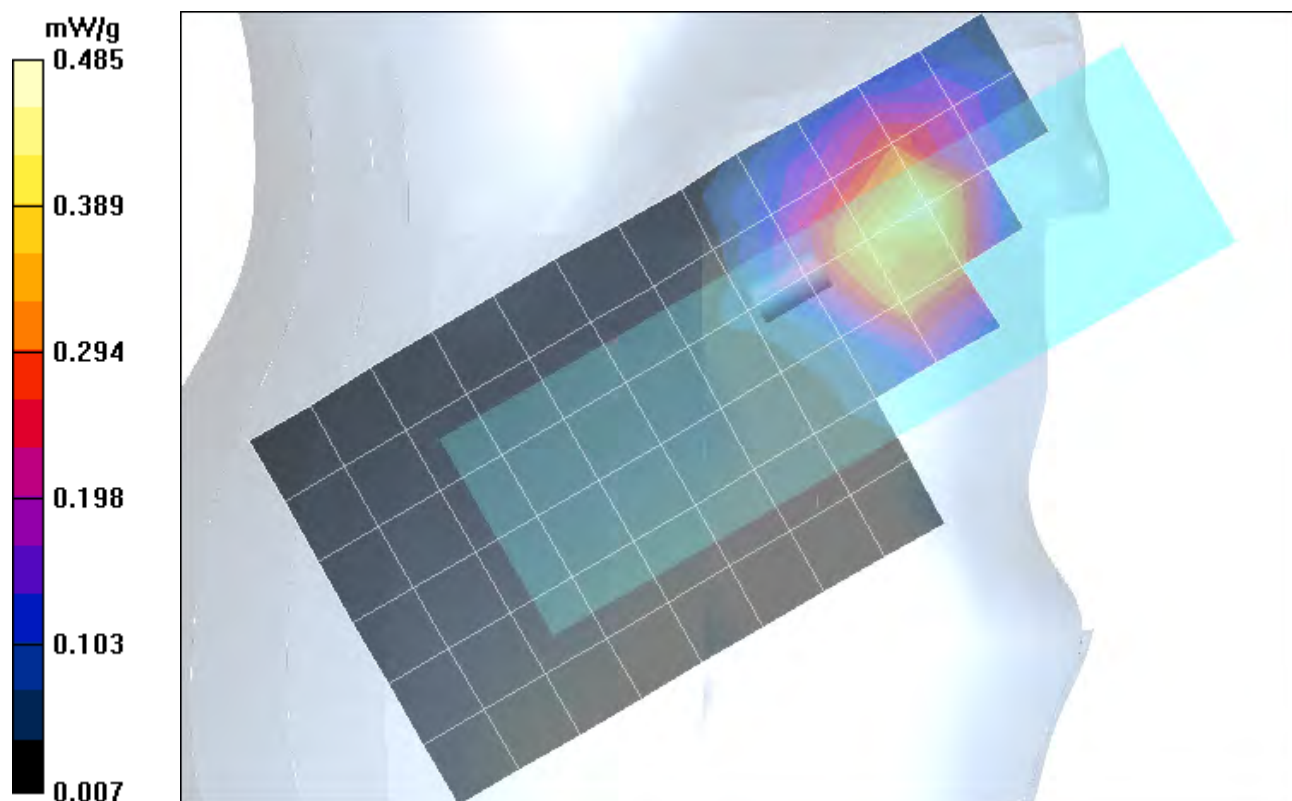
Measurement grid: dx=15mm, dy=15mm; Maximum value of SAR (measured) = 0.456 mW/g

Right Head Template/Zoom Scan (7x7x7)/Cube 0:

Measurement grid: dx=5mm, dy=5mm, dz=5mm

Reference Value = 17.6 V/m; Power Drift = -0.080 dB; Peak SAR (extrapolated) = 0.639 W/kg

SAR(1 g) = 0.442 mW/g; SAR(10 g) = 0.277 mW/g; Maximum value of SAR (measured) = 0.485 mW/g



Date/Time: 12/15/2005 12:14:30 AM

Test Laboratory: Motorola - 1900 Tilted

Serial: TA20005QRC

Procedure Notes: Pwr Step: 0; Antenna Position: Internal; Accessory Model #: N/A

Battery Model #: SNN5767A; DEVICE POSITION (cheek or rotated): TILT

Communication System: GSM 1900; Frequency: 1880 MHz; Channel Number: 661; Duty Cycle: 1:8

Medium: Regular Glycol Head

Medium parameters used: $f = 1880$ MHz; $\sigma = 1.44$ mho/m; $\epsilon_r = 38.2$; $\rho = 1000$ kg/m³

DASY4 Configuration:

- Probe: ET3DV6R - SN1397; ConvF(5.17, 5.17, 5.17); Calibrated: 4/22/2005
- Sensor-Surface: 4mm (Mechanical Surface Detection)
- Electronics: DAE3 Sn440; Calibrated: 2/21/2005
- Phantom: R3: Glycol SAM; Type: SAM; Serial: TP-1159;
- Measurement SW: DASY4, V4.6 Build 23; Postprocessing SW: SEMCAD, V1.8 Build 160

Left Head Template/Area Scan - Normal (15mm) (7x17x1):

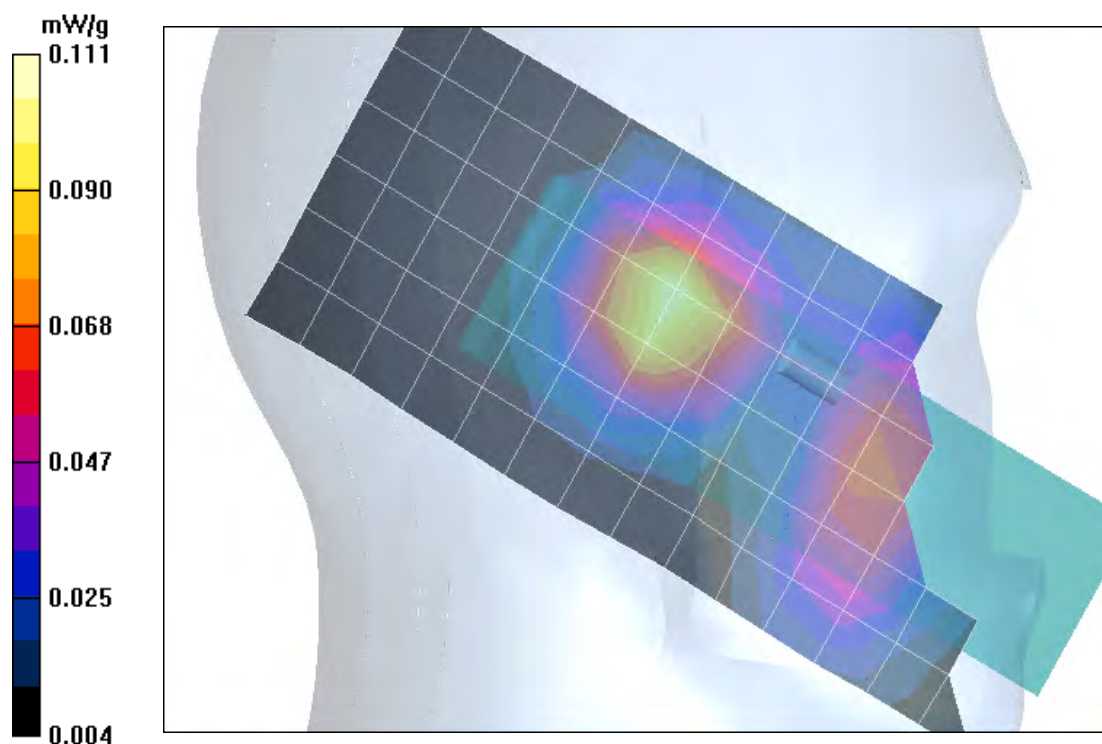
Measurement grid: dx=15mm, dy=15mm; Maximum value of SAR (measured) = 0.106 mW/g

Left Head Template/Zoom Scan (7x7x7)/Cube 0:

Measurement grid: dx=5mm, dy=5mm, dz=5mm

Reference Value = 9.11 V/m; Power Drift = 0.069 dB; Peak SAR (extrapolated) = 0.145 W/kg

SAR(1 g) = 0.102 mW/g; SAR(10 g) = 0.063 mW/g; Maximum value of SAR (measured) = 0.111 mW/g



Appendix 3

SAR distribution plots for Body Worn Configuration

Date/Time: 12/16/2005 2:09:58 AM

Test Laboratory: Motorola - 850 Body

Serial: TA20005QRC

Procedure Notes: Pwr Step: 05; Antenna Position: INTERNAL; Battery Model #: SNN5766A

DEVICE POSITION: BACK OF PHONE 15MM FROM PHANTOM WITH BLUETOOTH

Communication System: GSM 850; Frequency: 836.6 MHz; Channel Number: 190; Duty Cycle: 1:8

Medium: Low Freq Body

Medium parameters used: $f = 835$ MHz; $\sigma = 0.99$ mho/m; $\epsilon_r = 54.2$; $\rho = 1000$ kg/m³

DASY4 Configuration:

- Probe: ET3DV6R - SN1397; ConvF(6.22, 6.22, 6.22); Calibrated: 4/22/2005
- Sensor-Surface: 4mm (Mechanical Surface Detection)
- Electronics: DAE3 Sn440; Calibrated: 2/21/2005
- Phantom: R3: Sect.2, Amy Twin; Type: Amy Twin Flat; Serial: n/a;
- Measurement SW: DASY4, V4.6 Build 23; Postprocessing SW: SEMCAD, V1.8 Build 160

Amy Twin Phone Template/Area Scan - Normal Body (15mm) (13x7x1):

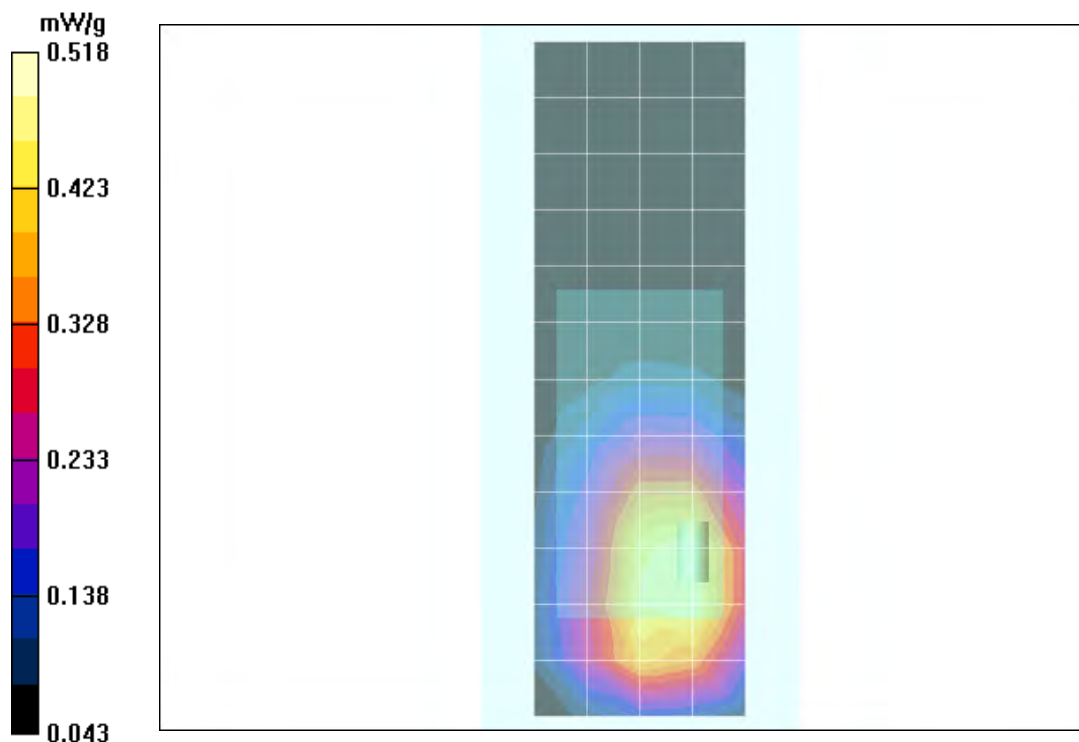
Measurement grid: dx=15mm, dy=15mm; Maximum value of SAR (measured) = 0.489 mW/g

Amy Twin Phone Template/Zoom Scan (7x7x7)/Cube 0:

Measurement grid: dx=5mm, dy=5mm, dz=5mm

Reference Value = 22.5 V/m; Power Drift = -0.044 dB; Peak SAR (extrapolated) = 0.637 W/kg

SAR(1 g) = 0.487 mW/g; SAR(10 g) = 0.346 mW/g; Maximum value of SAR (measured) = 0.518 mW/g



Date/Time: 12/18/2005 3:27:06 AM

Test Laboratory: Motorola - 1900 Body

Serial: TA20005QRC

Procedure Notes: Pwr Step: 0; Antenna Position: internal; Battery Model #: snn5766a

DEVICE POSITION: BLUETOOTH BODY WORN, BACK 15MM AWAY FROM PHANTOM

Communication System: GSM 1900; Frequency: 1880 MHz; Channel Number: 661; Duty Cycle: 1:8

Medium: Regular Glycol Body

Medium parameters used: $f = 1880$ MHz; $\sigma = 1.59$ mho/m; $\epsilon_r = 50.7$; $\rho = 1000$ kg/m³

DASY4 Configuration:

- Probe: ET3DV6R - SN1397; ConvF(4.77, 4.77, 4.77); Calibrated: 4/22/2005
- Sensor-Surface: 4mm (Mechanical Surface Detection)
- Electronics: DAE3 Sn440; Calibrated: 2/21/2005
- Phantom: R3: Sect.1, Amy Twin; Type: Amy Twin Flat; Serial: n/a;
- Measurement SW: DASY4, V4.6 Build 23; Postprocessing SW: SEMCAD, V1.8 Build 160

Amy Twin Phone Template/Area Scan - Normal Body (15mm) (13x7x1):

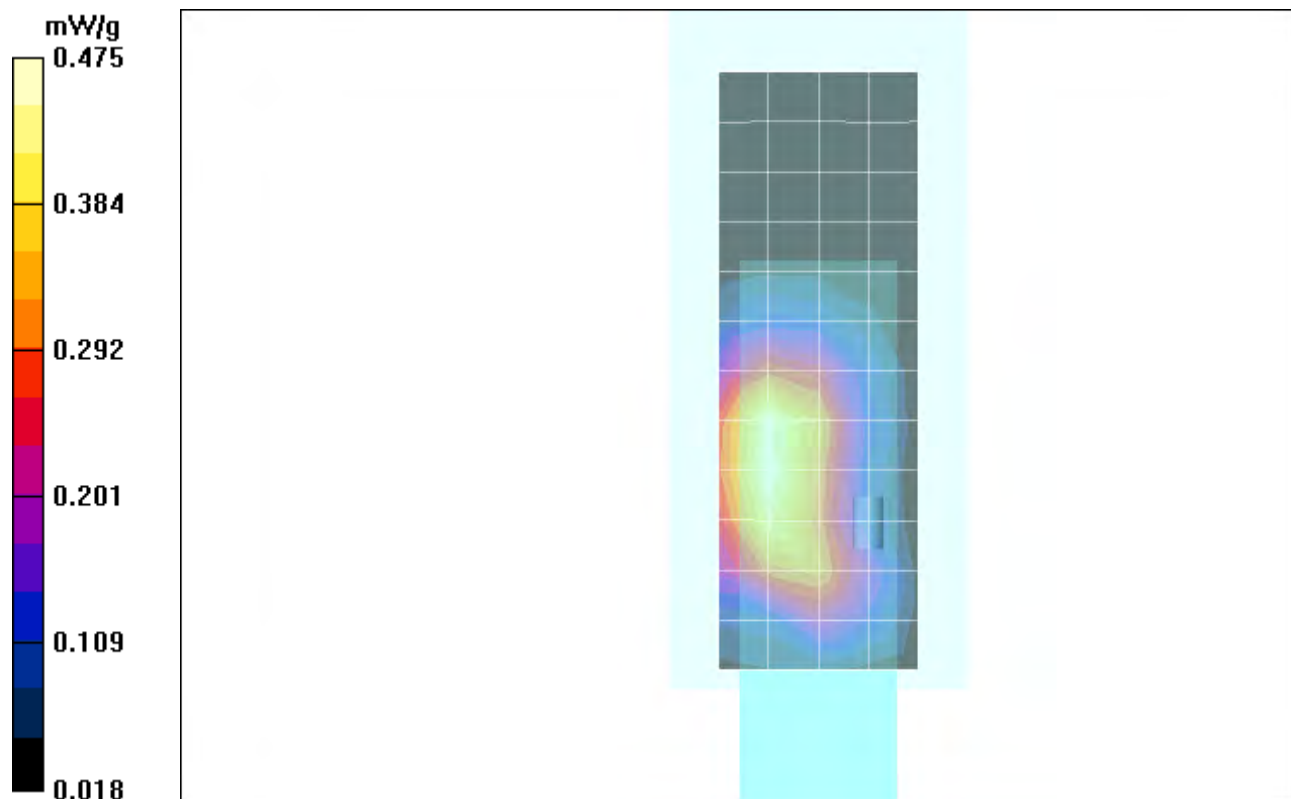
Measurement grid: dx=15mm, dy=15mm; Maximum value of SAR (measured) = 0.470 mW/g

Amy Twin Phone Template/Zoom Scan (7x7x7)/Cube 0:

Measurement grid: dx=5mm, dy=5mm, dz=5mm

Reference Value = 15.6 V/m; Power Drift = -0.084 dB; Peak SAR (extrapolated) = 0.671 W/kg

SAR(1 g) = 0.442 mW/g; SAR(10 g) = 0.284 mW/g; Maximum value of SAR (measured) = 0.475 mW/g



Appendix 4

SAR distribution plots for Push-To-Talk Configuration

Date/Time: 12/15/2005 2:12:41 PM

Test Laboratory: Motorola - 850 PTT GPRS

Serial: TA20005QRC

Procedure Notes: Pwr Step: 5; Antenna Position: Internal; Battery Model #: SNN5767A

DEVICE POSITION: Front of Phone 25mm from Phantom

Communication System: GPRS 850 - Class 10; Frequency: 836.6 MHz;

Channel Number: 190; Duty Cycle: 1:4

Medium: Low Freq Head

Medium parameters used: $f = 835$ MHz; $\sigma = 0.9$ mho/m; $\epsilon_r = 41.2$; $\rho = 1000$ kg/m³

DASY4 Configuration:

- Probe: ET3DV6R - SN1397; ConvF(6.38, 6.38, 6.38); Calibrated: 4/22/2005
- Sensor-Surface: 4mm (Mechanical Surface Detection)
- Electronics: DAE3 Sn440; Calibrated: 2/21/2005
- Phantom: R3: Sugar Water SAM; Type: SAM; Serial: TP-1153;
- Measurement SW: DASY4, V4.6 Build 23; Postprocessing SW: SEMCAD, V1.8 Build 160

SAM Phone Against Flat Section/Area Scan - Normal Body (15mm) (13x7x1):

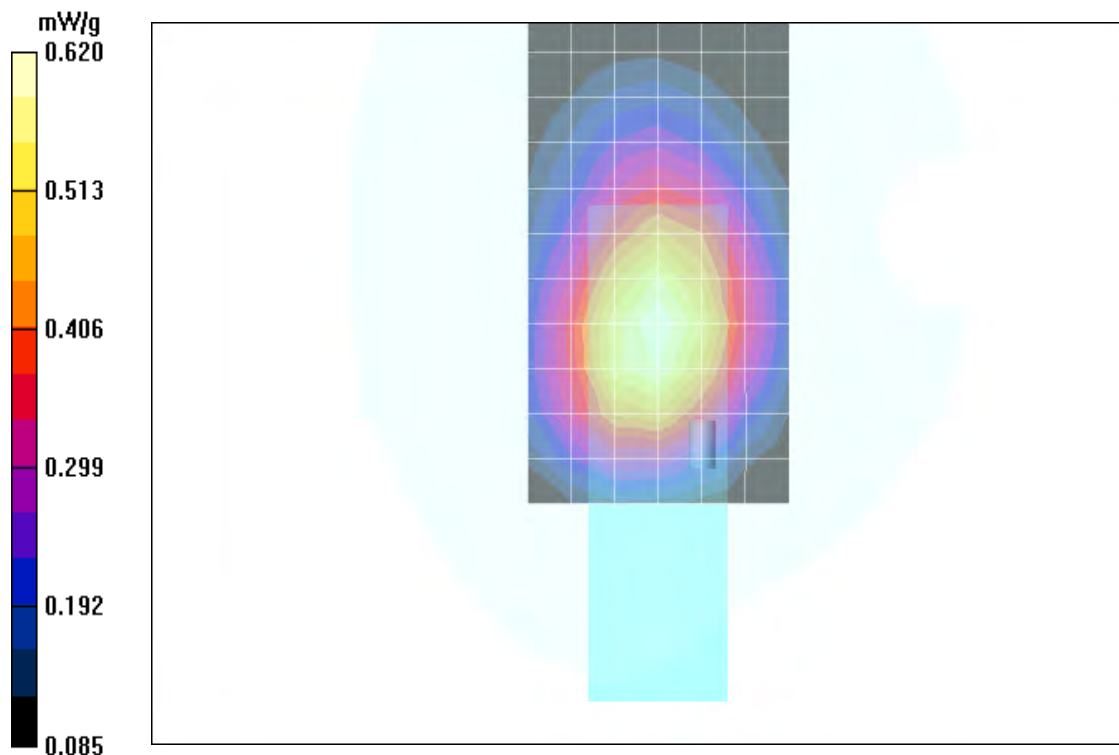
Measurement grid: dx=15mm, dy=15mm; Maximum value of SAR (measured) = 0.622 mW/g

SAM Phone Against Flat Section/Zoom Scan (7x7x7)/Cube 0:

Measurement grid: dx=5mm, dy=5mm, dz=5mm

Reference Value = 26.5 V/m; Power Drift = -0.005 dB; Peak SAR (extrapolated) = 0.769 W/kg

SAR(1 g) = 0.585 mW/g; SAR(10 g) = 0.425 mW/g; Maximum value of SAR (measured) = 0.620 mW/g



Date/Time: 12/15/2005 2:43:13 PM

Test Laboratory: Motorola - 850 PTT EDGE

Serial: TA20005QRC

Procedure Notes: Pwr Step: 8; Antenna Position: Internal; Battery Model #: SNN5767A

DEVICE POSITION: Front of Phone 25mm from Phantom

Communication System: EDGE 850 - Class 6; Frequency: 836.6 MHz;

Channel Number: 190; Duty Cycle: 1:4

Medium: Low Freq Head

Medium parameters used: $f = 835$ MHz; $\sigma = 0.9$ mho/m; $\epsilon_r = 41.2$; $\rho = 1000$ kg/m³

DASY4 Configuration:

- Probe: ET3DV6R - SN1397; ConvF(6.38, 6.38, 6.38); Calibrated: 4/22/2005
- Sensor-Surface: 4mm (Mechanical Surface Detection)
- Electronics: DAE3 Sn440; Calibrated: 2/21/2005
- Phantom: R3: Sugar Water SAM; Type: SAM; Serial: TP-1153;
- Measurement SW: DASY4, V4.6 Build 23; Postprocessing SW: SEMCAD, V1.8 Build 160

SAM Phone Against Flat Section/Area Scan - Normal Body (15mm) (13x7x1):

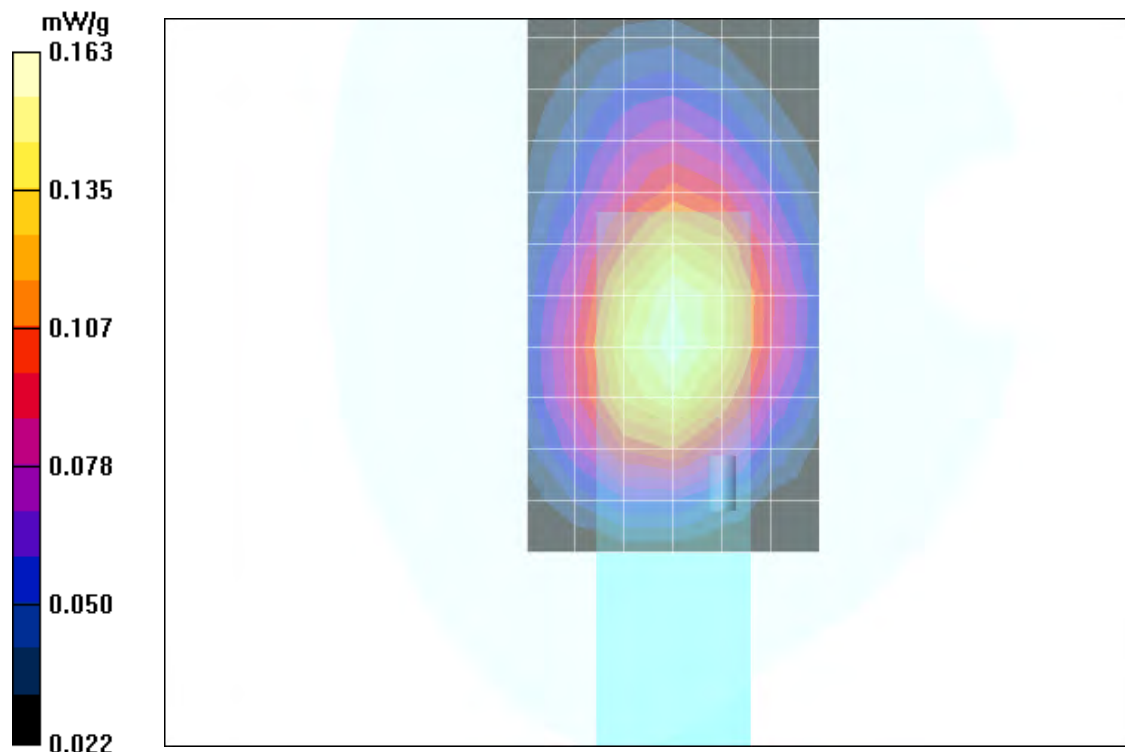
Measurement grid: dx=15mm, dy=15mm; Maximum value of SAR (measured) = 0.161 mW/g

SAM Phone Against Flat Section/Zoom Scan (7x7x7)/Cube 0:

Measurement grid: dx=5mm, dy=5mm, dz=5mm

Reference Value = 13.6 V/m; Power Drift = 0.004 dB; Peak SAR (extrapolated) = 0.199 W/kg

SAR(1 g) = 0.153 mW/g; SAR(10 g) = 0.112 mW/g; Maximum value of SAR (measured) = 0.163 mW/g



Date/Time: 12/20/2005 2:31:12 PM

Test Laboratory: Motorola - 1900 PTT GPRS

Serial: TA20005QRC

Procedure Notes: Pwr Step: 0; Antenna Position: internal; Battery Model #: SNN5767A

DEVICE POSITION: FRONT OF PHONE 25MM AWAY FROM PHANTOM

Communication System: GPRS 1900 - Class 10; Frequency: 1880 MHz;

Channel Number: 661; Duty Cycle: 1:4

Medium: Regular Glycol Head

Medium parameters used: $f = 1880$ MHz; $\sigma = 1.43$ mho/m; $\epsilon_r = 38.7$; $\rho = 1000$ kg/m³

DASY4 Configuration:

- Probe: ET3DV6R - SN1397; ConvF(5.17, 5.17, 5.17); Calibrated: 4/22/2005
- Sensor-Surface: 4mm (Mechanical Surface Detection)
- Electronics: DAE4 Sn639; Calibrated: 11/15/2005
- Phantom: R3: Glycol SAM; Type: SAM; Serial: TP-1159;
- Measurement SW: DASY4, V4.6 Build 23; Postprocessing SW: SEMCAD, V1.8 Build 160

SAM Phone Against Flat Section/Area Scan - Normal Body (15mm) (13x7x1):

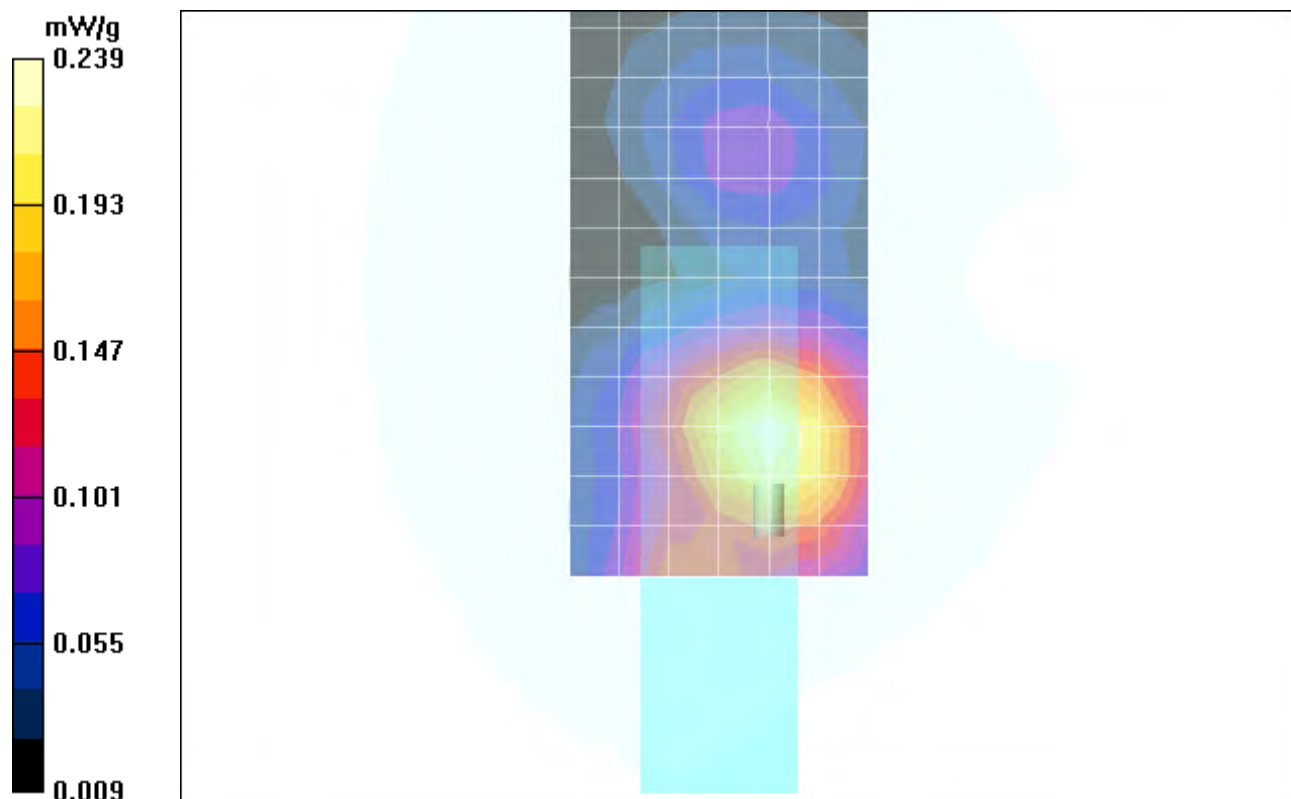
Measurement grid: dx=15mm, dy=15mm; Maximum value of SAR (measured) = 0.238 mW/g

SAM Phone Against Flat Section/Zoom Scan (7x7x7)/Cube 0:

Measurement grid: dx=5mm, dy=5mm, dz=5mm

Reference Value = 12.4 V/m; Power Drift = -0.177 dB; Peak SAR (extrapolated) = 0.322 W/kg

SAR(1 g) = 0.219 mW/g; SAR(10 g) = 0.141 mW/g; Maximum value of SAR (measured) = 0.239 mW/g



Date/Time: 12/20/2005 3:17:17 PM

Test Laboratory: Motorola - 1900 PTT EDGE

Serial: TA20005QRC

Procedure Notes: Pwr Step: 2; Antenna Position: internal; Battery Model #: SNN5767A

DEVICE POSITION: FRONT OF PHONE 25MM AWAY FROM PHANTOM

Communication System: EDGE 1900 - Class 6; Frequency: 1880 MHz;

Channel Number: 661; Duty Cycle: 1:4

Medium: Regular Glycol Head

Medium parameters used: $f = 1880$ MHz; $\sigma = 1.43$ mho/m; $\epsilon_r = 38.7$; $\rho = 1000$ kg/m³

DASY4 Configuration:

- Probe: ET3DV6R - SN1397; ConvF(5.17, 5.17, 5.17); Calibrated: 4/22/2005
- Sensor-Surface: 4mm (Mechanical Surface Detection)
- Electronics: DAE4 Sn639; Calibrated: 11/15/2005
- Phantom: R3: Glycol SAM; Type: SAM; Serial: TP-1159;
- Measurement SW: DASY4, V4.6 Build 23; Postprocessing SW: SEMCAD, V1.8 Build 160

SAM Phone Against Flat Section/Area Scan - Normal Body (15mm) (13x7x1):

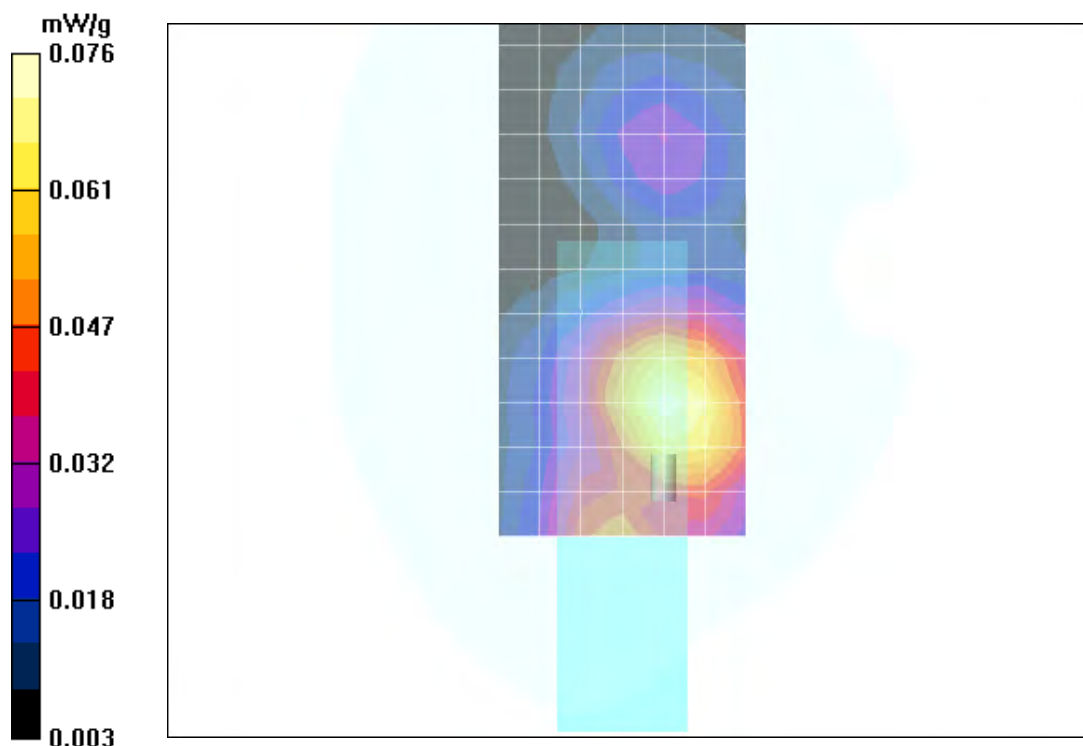
Measurement grid: dx=15mm, dy=15mm; Maximum value of SAR (measured) = 0.075 mW/g

SAM Phone Against Flat Section/Zoom Scan (7x7x7)/Cube 0:

Measurement grid: dx=5mm, dy=5mm, dz=5mm

Reference Value = 7.34 V/m; Power Drift = -0.007 dB; Peak SAR (extrapolated) = 0.107 W/kg

SAR(1 g) = 0.071 mW/g; SAR(10 g) = 0.045 mW/g; Maximum value of SAR (measured) = 0.076 mW/g



Appendix 5
Probe Calibration Certificate



Accredited by the Swiss Federal Office of Metrology and Accreditation
The Swiss Accreditation Service is one of the signatories to the EA
Multilateral Agreement for the recognition of calibration certificates

Accreditation No.: **SCS 108**

Client **Motorola MDb**

Certificate No. **ET3-1397_Apr05**

CALIBRATION CERTIFICATE

Object **ET3DV6R - SN: 1397**

Calibration procedure(s) **QA.CAL-01 v5
Calibration procedure for dosimetric E-field probes**

Calibration date: **April 22, 2005**

Condition of the calibrated item **In Tolerance**

This calibration certificate documents the traceability to national standards, which realize the physical units of measurements (SI).
The measurements and the uncertainties with confidence probability are given on the following pages and are part of the certificate.

All calibrations have been conducted in the closed laboratory facility: environment temperature $(22 \pm 3)^\circ\text{C}$ and humidity $< 70\%$.

Calibration Equipment used (M&TE critical for calibration)

Primary Standards	ID #	Cal Date (Calibrated by, Certificate No.)	Scheduled Calibration
Power meter E4419B	GB41293874	5-May-04 (METAS, No. 251-00388)	May-05
Power sensor E4412A	MY41495277	5-May-04 (METAS, No. 251-00388)	May-05
Reference 3 dB Attenuator	SN: S5054 (3c)	10-Aug-04 (METAS, No. 251-00403)	Aug-05
Reference 20 dB Attenuator	SN: S5086 (20b)	3-May-04 (METAS, No. 251-00389)	May-05
Reference 30 dB Attenuator	SN: S5129 (30b)	10-Aug-04 (METAS, No. 251-00404)	Aug-05
Reference Probe ES3DV2	SN: 3013	7-Jan-05 (SPEAG, No. ES3-3013_Jan05)	Jan-06
DAE4	SN: 617	19-Jan-05 (SPEAG, No. DAE4-617_Jan05)	Jan-06
Secondary Standards	ID #	Check Date (in house)	Scheduled Check
Power sensor HP 8481A	MY41092180	18-Sep-02 (SPEAG, in house check Oct-03)	In house check: Oct 05
RF generator HP 8648C	US3642U01700	4-Aug-99 (SPEAG, in house check Dec-03)	In house check: Dec-05
Network Analyzer HP 8753E	US37390585	18-Oct-01 (SPEAG, in house check Nov-04)	In house check: Nov 05

	Name	Function	Signature
Calibrated by:	Nico Vetterli	Laboratory Technician	
Approved by:	Katja Pokovic	Technical Manager	

Issued: April 25, 2005

This calibration certificate shall not be reproduced except in full without written approval of the laboratory.



Accredited by the Swiss Federal Office of Metrology and Accreditation
The Swiss Accreditation Service is one of the signatories to the EA
Multilateral Agreement for the recognition of calibration certificates

Accreditation No.: **SCS 108**

Glossary:

TSL	tissue simulating liquid
NORM _{x,y,z}	sensitivity in free space
ConF	sensitivity in TSL / NORM _{x,y,z}
DCP	diode compression point
Polarization ϕ	ϕ rotation around probe axis
Polarization ϑ	ϑ rotation around an axis that is in the plane normal to probe axis (at measurement center), i.e., $\vartheta = 0$ is normal to probe axis

Calibration is Performed According to the Following Standards:

- IEEE Std 1528-2003, "IEEE Recommended Practice for Determining the Peak Spatial-Averaged Specific Absorption Rate (SAR) in the Human Head from Wireless Communications Devices: Measurement Techniques", December 2003
- CENELEC EN 50361, "Basic standard for the measurement of Specific Absorption Rate related to human exposure to electromagnetic fields from mobile phones (300 MHz - 3 GHz), July 2001

Methods Applied and Interpretation of Parameters:

- NORM_{x,y,z}**: Assessed for E-field polarization $\vartheta = 0$ ($f \leq 900$ MHz in TEM-cell; $f > 1800$ MHz: R22 waveguide). NORM_{x,y,z} are only intermediate values, i.e., the uncertainties of NORM_{x,y,z} does not effect the E²-field uncertainty inside TSL (see below *ConvF*).
- NORM(f)_{x,y,z}** = NORM_{x,y,z} * *frequency_response* (see Frequency Response Chart). This linearization is implemented in DASY4 software versions later than 4.2. The uncertainty of the frequency response is included in the stated uncertainty of *ConvF*.
- DCP_{x,y,z}**: DCP are numerical linearization parameters assessed based on the data of power sweep (no uncertainty required). DCP does not depend on frequency nor media.
- ConvF and Boundary Effect Parameters**: Assessed in flat phantom using E-field (or Temperature Transfer Standard for $f \leq 800$ MHz) and inside waveguide using analytical field distributions based on power measurements for $f > 800$ MHz. The same setups are used for assessment of the parameters applied for boundary compensation (alpha, depth) of which typical uncertainty values are given. These parameters are used in DASY4 software to improve probe accuracy close to the boundary. The sensitivity in TSL corresponds to NORM_{x,y,z} * *ConvF* whereby the uncertainty corresponds to that given for *ConvF*. A frequency dependent *ConvF* is used in DASY version 4.4 and higher which allows extending the validity from ± 50 MHz to ± 100 MHz.
- Spherical isotropy (3D deviation from isotropy)**: in a field of low gradients realized using a flat phantom exposed by a patch antenna.
- Sensor Offset**: The sensor offset corresponds to the offset of virtual measurement center from the probe tip (on probe axis). No tolerance required.

Probe ET3DV6R

SN:1397

Manufactured:	October 24, 1999
Last calibrated:	May 21, 2004
Recalibrated:	April 22, 2005

Calibrated for DASY Systems

(Note: non-compatible with DASY2 system!)

DASY - Parameters of Probe: ET3DV6R SN:1397**Sensitivity in Free Space^A****Diode Compression^B**

NormX	1.81 ± 10.1%	$\mu\text{V}/(\text{V}/\text{m})^2$	DCP X	95 mV
NormY	1.69 ± 10.1%	$\mu\text{V}/(\text{V}/\text{m})^2$	DCP Y	95 mV
NormZ	1.95 ± 10.1%	$\mu\text{V}/(\text{V}/\text{m})^2$	DCP Z	95 mV

Sensitivity in Tissue Simulating Liquid (Conversion Factors)

Please see Page 8.

Boundary Effect

TSL **900 MHz** **Typical SAR gradient: 5 % per mm**

Sensor Center to Phantom Surface Distance		3.7 mm	4.7 mm
SAR _{be} [%]	Without Correction Algorithm	9.2	4.7
SAR _{be} [%]	With Correction Algorithm	0.1	0.2

TSL **1810 MHz** **Typical SAR gradient: 10 % per mm**

Sensor Center to Phantom Surface Distance		3.7 mm	4.7 mm
SAR _{be} [%]	Without Correction Algorithm	13.5	9.1
SAR _{be} [%]	With Correction Algorithm	0.8	0.1

Sensor Offset

Probe Tip to Sensor Center **2.7 mm**

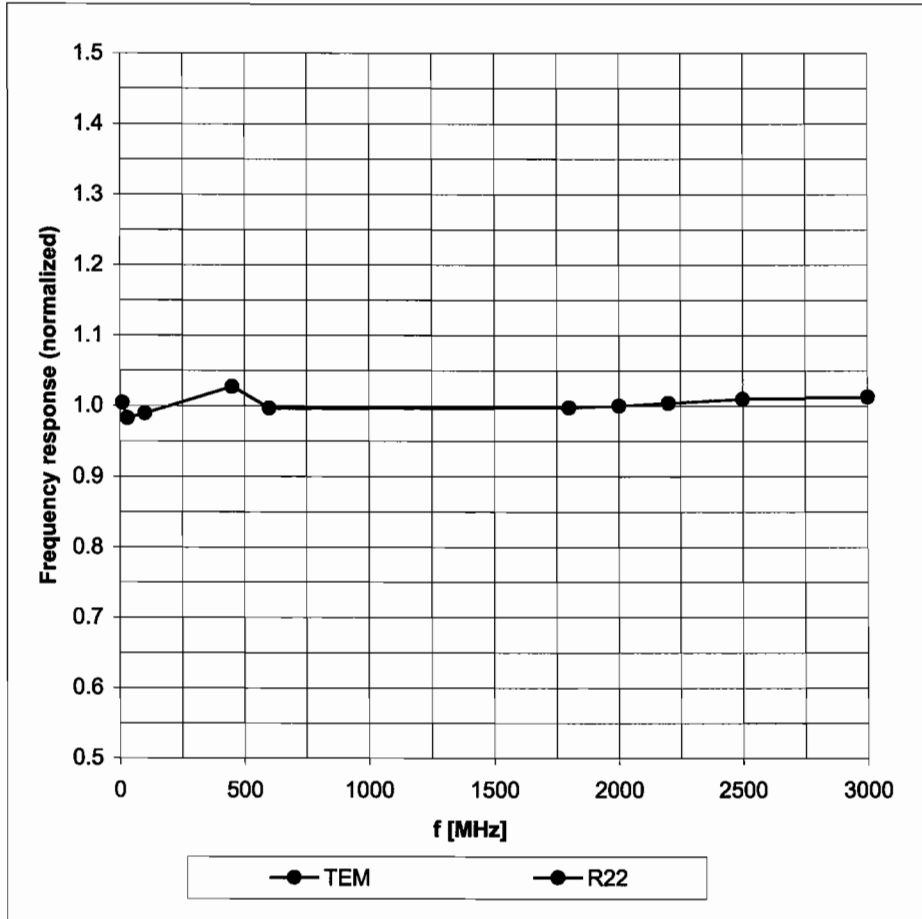
The reported uncertainty of measurement is stated as the standard uncertainty of measurement multiplied by the coverage factor k=2, which for a normal distribution corresponds to a coverage probability of approximately 95%.

^A The uncertainties of NormX,Y,Z do not affect the E²-field uncertainty inside TSL (see Page 8).

^B Numerical linearization parameter: uncertainty not required.

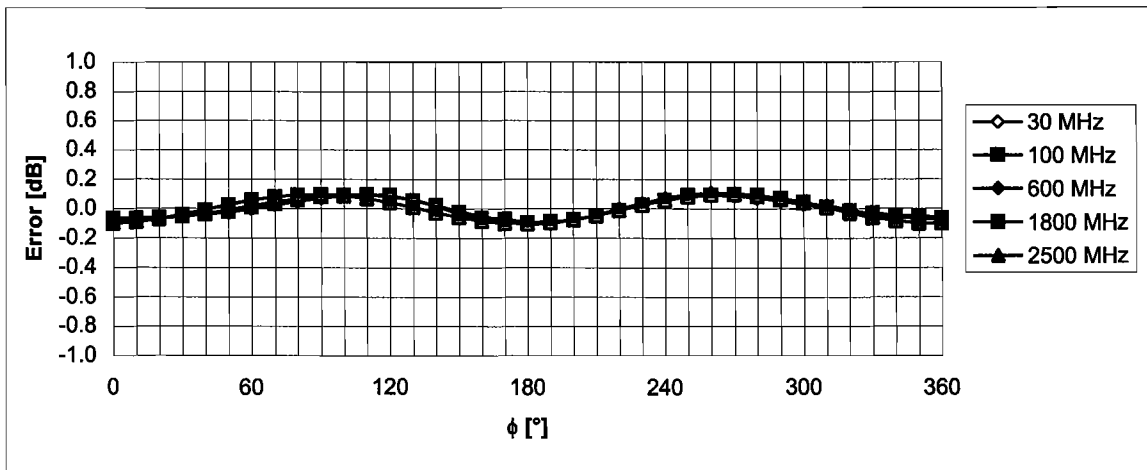
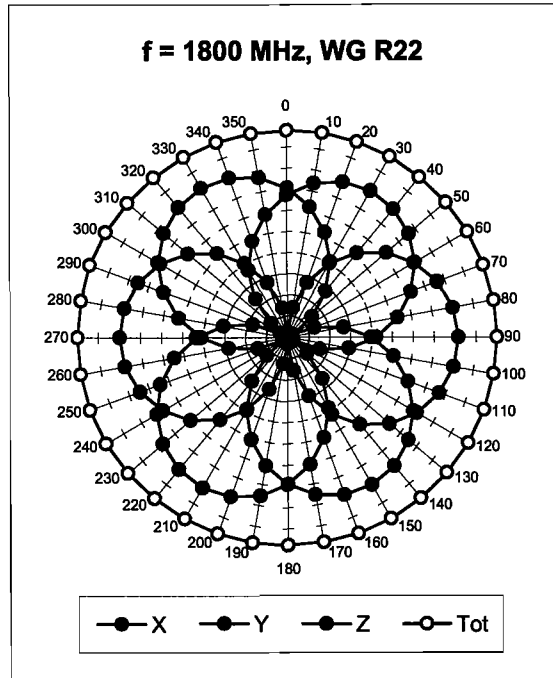
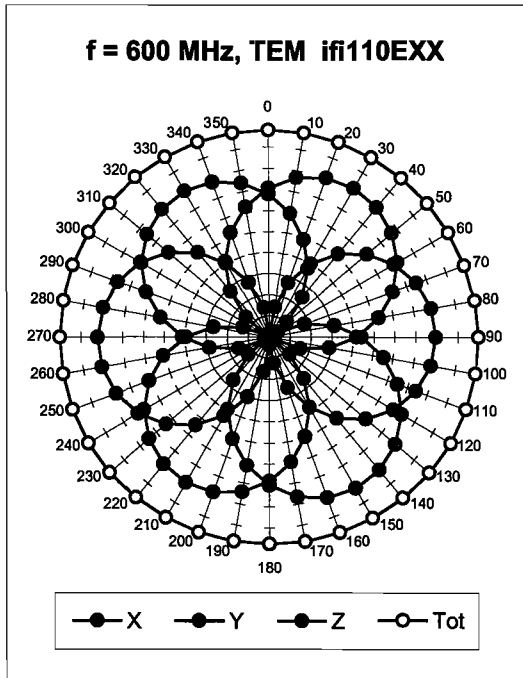
Frequency Response of E-Field

(TEM-Cell:ifi110 EXX, Waveguide: R22)



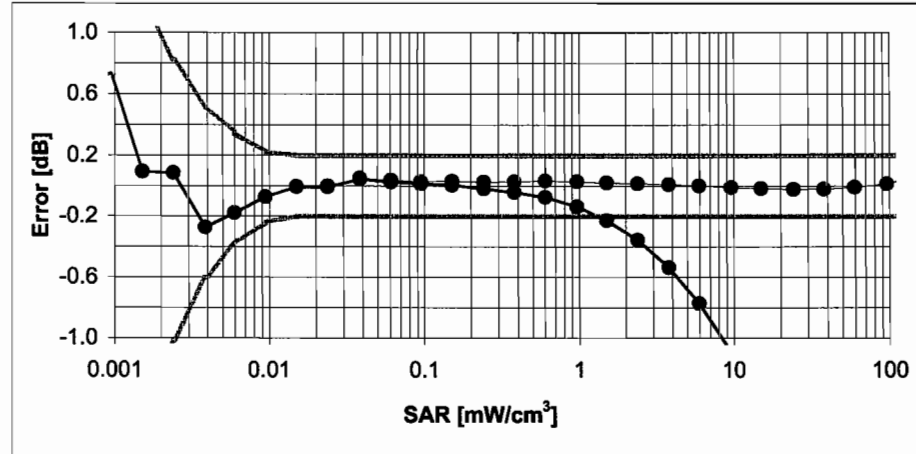
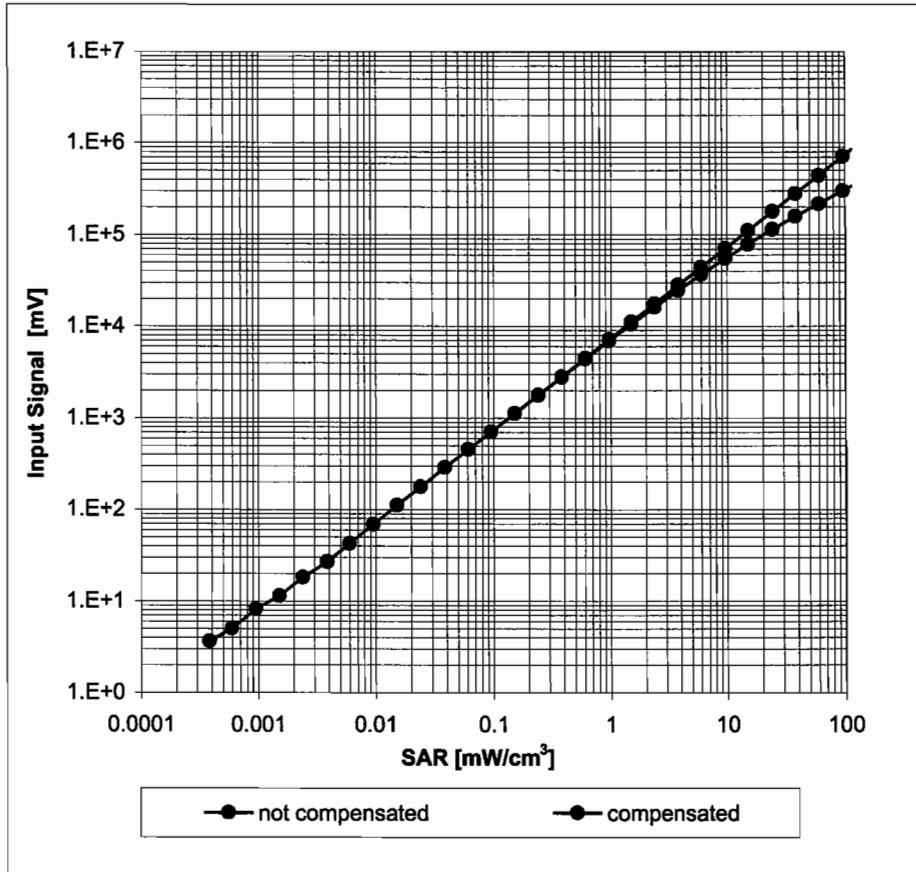
Uncertainty of Frequency Response of E-field: $\pm 6.3\%$ ($k=2$)

Receiving Pattern (ϕ), $\vartheta = 0^\circ$



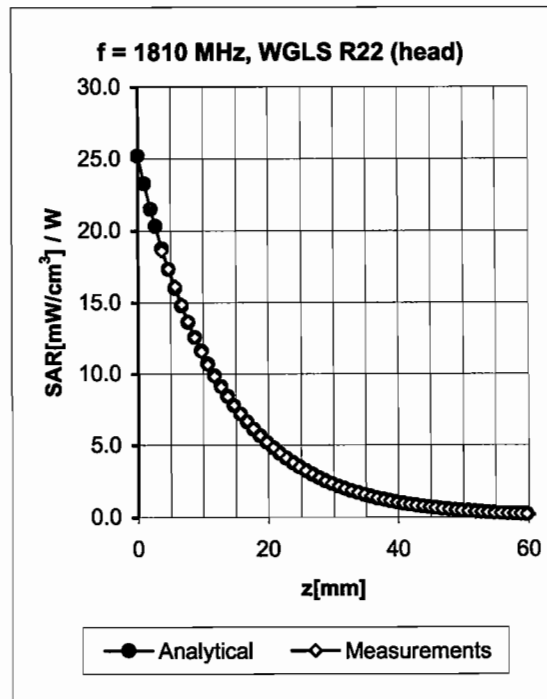
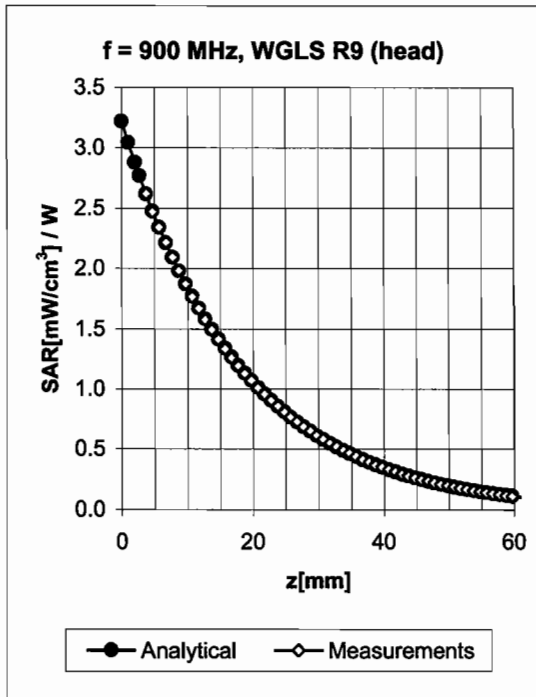
Uncertainty of Axial Isotropy Assessment: $\pm 0.5\%$ ($k=2$)

Dynamic Range $f(\text{SAR}_{\text{head}})$ (Waveguide R22, $f = 1800 \text{ MHz}$)



Uncertainty of Linearity Assessment: $\pm 0.6\%$ ($k=2$)

Conversion Factor Assessment

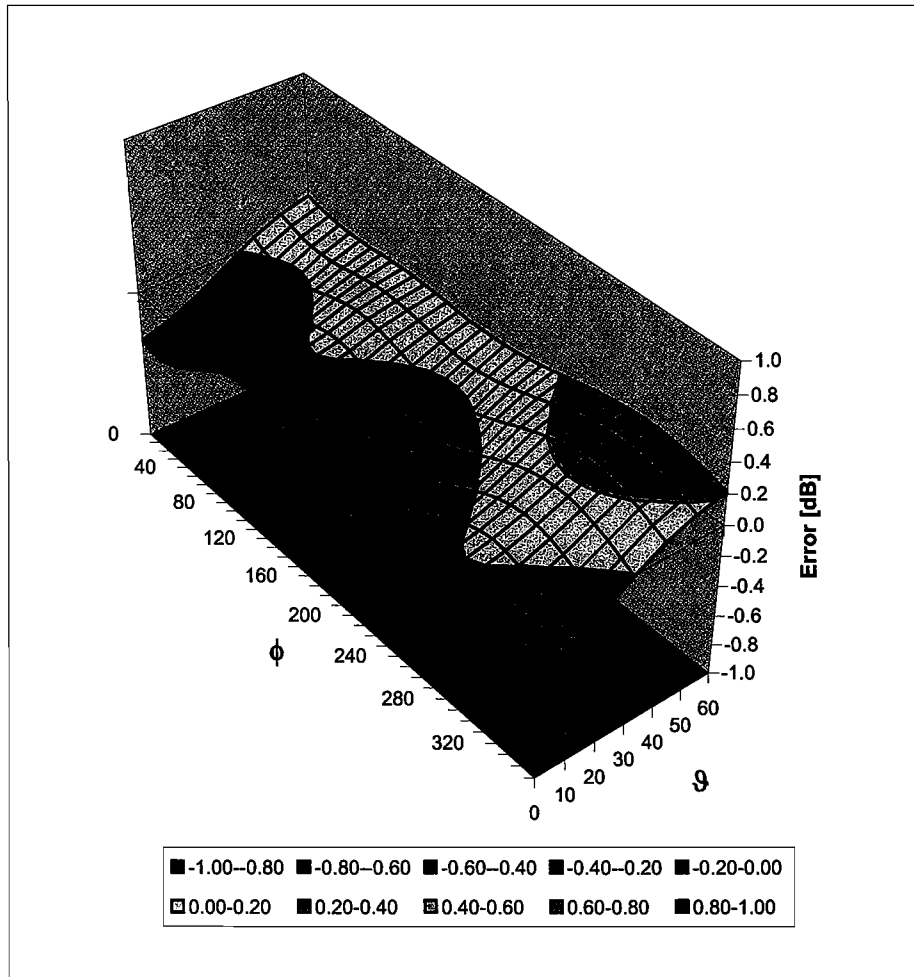


f [MHz]	Validity [MHz] ^c	TSL	Permittivity	Conductivity	Alpha	Depth	ConvF Uncertainty
900	± 50 / ± 100	Head	41.5 ± 5%	0.97 ± 5%	0.71	1.73	6.38 ± 11.0% (k=2)
1810	± 50 / ± 100	Head	40.0 ± 5%	1.40 ± 5%	0.60	2.37	5.17 ± 11.0% (k=2)
1950	± 50 / ± 100	Head	40.0 ± 5%	1.40 ± 5%	0.59	2.49	4.90 ± 11.0% (k=2)
900	± 50 / ± 100	Body	55.0 ± 5%	1.05 ± 5%	0.58	2.00	6.22 ± 11.0% (k=2)
1810	± 50 / ± 100	Body	53.3 ± 5%	1.52 ± 5%	0.57	2.75	4.77 ± 11.0% (k=2)
1950	± 50 / ± 100	Body	53.3 ± 5%	1.52 ± 5%	0.60	2.53	4.44 ± 11.0% (k=2)

^c The validity of ± 100 MHz only applies for DASY v4.4 and higher (see Page 2). The uncertainty is the RSS of the ConvF uncertainty at calibration frequency and the uncertainty for the indicated frequency band.

Deviation from Isotropy in HSL

Error (ϕ , ϑ), $f = 900$ MHz



Uncertainty of Spherical Isotropy Assessment: $\pm 2.6\%$ ($k=2$)



Accredited by the Swiss Federal Office of Metrology and Accreditation
**The Swiss Accreditation Service is one of the signatories to the EA
Multilateral Agreement for the recognition of calibration certificates**

Accreditation No.: SCS 108

Client **Motorola MD6**

Certificate No. **ET3-1520_Apr05**

CALIBRATION CERTIFICATE

Object **ET3DV6 - SN:1520**

Calibration procedure(s) **QA CAL-01 v5
Calibration procedure for dosimetric E-field probes**

Calibration date: **April 22, 2005**

Condition of the calibrated item **In Tolerance**

This calibration certificate documents the traceability to national standards, which realize the physical units of measurements (SI).
The measurements and the uncertainties with confidence probability are given on the following pages and are part of the certificate.

All calibrations have been conducted in the closed laboratory facility: environment temperature $(22 \pm 3)^\circ\text{C}$ and humidity $< 70\%$.

Calibration Equipment used (M&TE critical for calibration)

Primary Standards	ID #	Cal Date (Calibrated by, Certificate No.)	Scheduled Calibration
Power meter E4419B	GB41293874	5-May-04 (METAS, No. 251-00388)	May-05
Power sensor E4412A	MY41495277	5-May-04 (METAS, No. 251-00388)	May-05
Reference 3 dB Attenuator	SN: S5054 (3c)	10-Aug-04 (METAS, No. 251-00403)	Aug-05
Reference 20 dB Attenuator	SN: S5086 (20b)	3-May-04 (METAS, No. 251-00389)	May-05
Reference 30 dB Attenuator	SN: S5129 (30b)	10-Aug-04 (METAS, No. 251-00404)	Aug-05
Reference Probe ES3DV2	SN: 3013	7-Jan-05 (SPEAG, No. ES3-3013_Jan05)	Jan-06
DAE4	SN: 617	19-Jan-05 (SPEAG, No. DAE4-617_Jan05)	Jan-06
Secondary Standards	ID #	Check Date (in house)	Scheduled Check
Power sensor HP 8481A	MY41092180	18-Sep-02 (SPEAG, in house check Oct-03)	In house check: Oct 05
RF generator HP 8648C	US3642U01700	4-Aug-99 (SPEAG, in house check Dec-03)	In house check: Dec-05
Network Analyzer HP 8753E	US37390585	18-Oct-01 (SPEAG, in house check Nov-04)	In house check: Nov 05

	Name	Function	Signature
Calibrated by:	Nico Vetterli	Laboratory Technician	
Approved by:	Katja Rokovic	Technical Manager	

Issued: April 25, 2005

This calibration certificate shall not be reproduced except in full without written approval of the laboratory.



Accredited by the Swiss Federal Office of Metrology and Accreditation
The Swiss Accreditation Service is one of the signatories to the EA
Multilateral Agreement for the recognition of calibration certificates

Accreditation No.: **SCS 108**

Glossary:

TSL	tissue simulating liquid
NORM _{x,y,z}	sensitivity in free space
ConF	sensitivity in TSL / NORM _{x,y,z}
DCP	diode compression point
Polarization φ	φ rotation around probe axis
Polarization ϑ	ϑ rotation around an axis that is in the plane normal to probe axis (at measurement center), i.e., $\vartheta = 0$ is normal to probe axis

Calibration is Performed According to the Following Standards:

- IEEE Std 1528-2003, "IEEE Recommended Practice for Determining the Peak Spatial-Averaged Specific Absorption Rate (SAR) in the Human Head from Wireless Communications Devices: Measurement Techniques", December 2003
- CENELEC EN 50361, "Basic standard for the measurement of Specific Absorption Rate related to human exposure to electromagnetic fields from mobile phones (300 MHz - 3 GHz), July 2001

Methods Applied and Interpretation of Parameters:

- NORM_{x,y,z}**: Assessed for E-field polarization $\vartheta = 0$ ($f \leq 900$ MHz in TEM-cell; $f > 1800$ MHz: R22 waveguide). NORM_{x,y,z} are only intermediate values, i.e., the uncertainties of NORM_{x,y,z} does not effect the E²-field uncertainty inside TSL (see below *ConvF*).
- NORM(f)_{x,y,z}** = NORM_{x,y,z} * *frequency_response* (see Frequency Response Chart). This linearization is implemented in DASY4 software versions later than 4.2. The uncertainty of the frequency response is included in the stated uncertainty of *ConvF*.
- DCP_{x,y,z}**: DCP are numerical linearization parameters assessed based on the data of power sweep (no uncertainty required). DCP does not depend on frequency nor media.
- ConvF and Boundary Effect Parameters**: Assessed in flat phantom using E-field (or Temperature Transfer Standard for $f \leq 800$ MHz) and inside waveguide using analytical field distributions based on power measurements for $f > 800$ MHz. The same setups are used for assessment of the parameters applied for boundary compensation (alpha, depth) of which typical uncertainty values are given. These parameters are used in DASY4 software to improve probe accuracy close to the boundary. The sensitivity in TSL corresponds to NORM_{x,y,z} * *ConvF* whereby the uncertainty corresponds to that given for *ConvF*. A frequency dependent *ConvF* is used in DASY version 4.4 and higher which allows extending the validity from ± 50 MHz to ± 100 MHz.
- Spherical isotropy (3D deviation from isotropy)**: in a field of low gradients realized using a flat phantom exposed by a patch antenna.
- Sensor Offset**: The sensor offset corresponds to the offset of virtual measurement center from the probe tip (on probe axis). No tolerance required.

Probe ET3DV6

SN:1520

Manufactured:	February 1, 2000
Last calibrated:	May 27, 2004
Recalibrated:	April 22, 2005

Calibrated for DASY Systems

(Note: non-compatible with DASY2 system!)

DASY - Parameters of Probe: ET3DV6 SN:1520**Sensitivity in Free Space^A****Diode Compression^B**

NormX	1.89 ± 10.1%	$\mu\text{V}/(\text{V}/\text{m})^2$	DCP X	95 mV
NormY	1.70 ± 10.1%	$\mu\text{V}/(\text{V}/\text{m})^2$	DCP Y	95 mV
NormZ	1.89 ± 10.1%	$\mu\text{V}/(\text{V}/\text{m})^2$	DCP Z	95 mV

Sensitivity in Tissue Simulating Liquid (Conversion Factors)

Please see Page 8.

Boundary Effect

TSL **900 MHz** **Typical SAR gradient: 5 % per mm**

Sensor Center to Phantom Surface Distance		3.7 mm	4.7 mm
SAR _{be} [%]	Without Correction Algorithm	9.2	4.8
SAR _{be} [%]	With Correction Algorithm	0.1	0.2

TSL **1810 MHz** **Typical SAR gradient: 10 % per mm**

Sensor Center to Phantom Surface Distance		3.7 mm	4.7 mm
SAR _{be} [%]	Without Correction Algorithm	13.7	9.2
SAR _{be} [%]	With Correction Algorithm	0.7	0.0

Sensor Offset

Probe Tip to Sensor Center **2.7 mm**

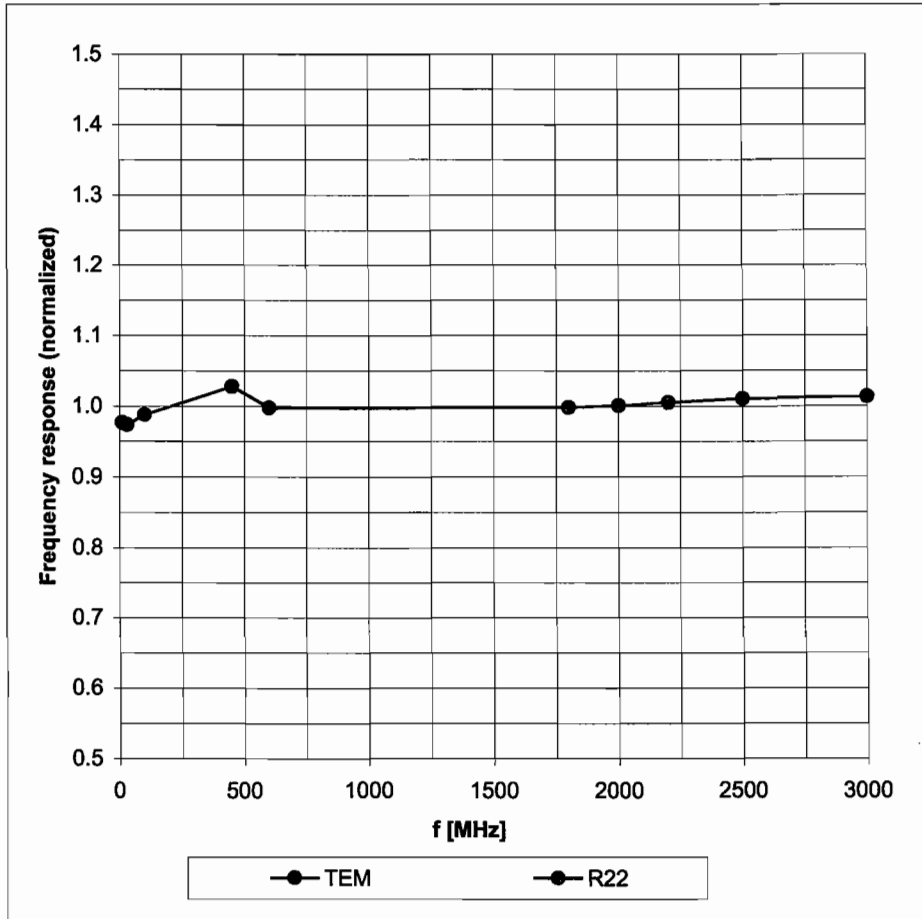
The reported uncertainty of measurement is stated as the standard uncertainty of measurement multiplied by the coverage factor k=2, which for a normal distribution corresponds to a coverage probability of approximately 95%.

^A The uncertainties of NormX,Y,Z do not affect the E²-field uncertainty inside TSL (see Page 8).

^B Numerical linearization parameter: uncertainty not required.

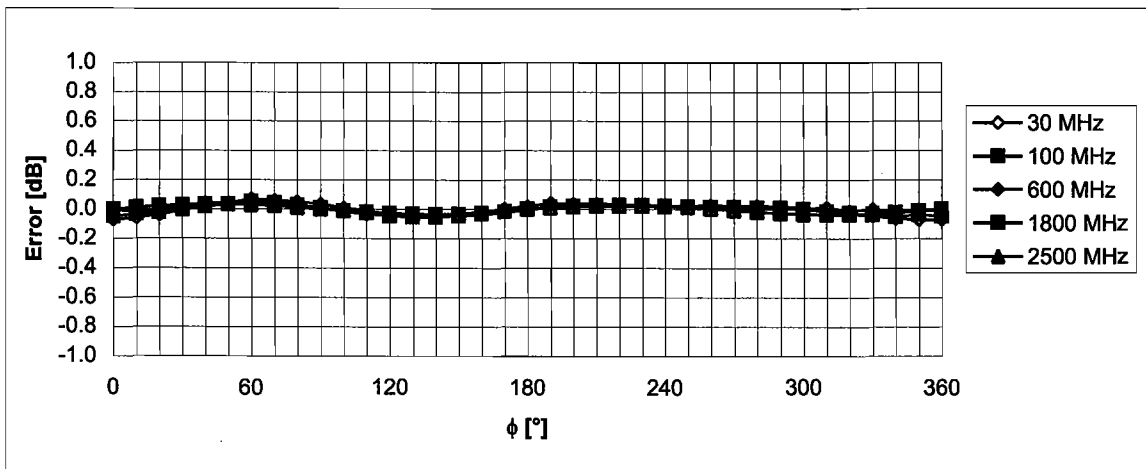
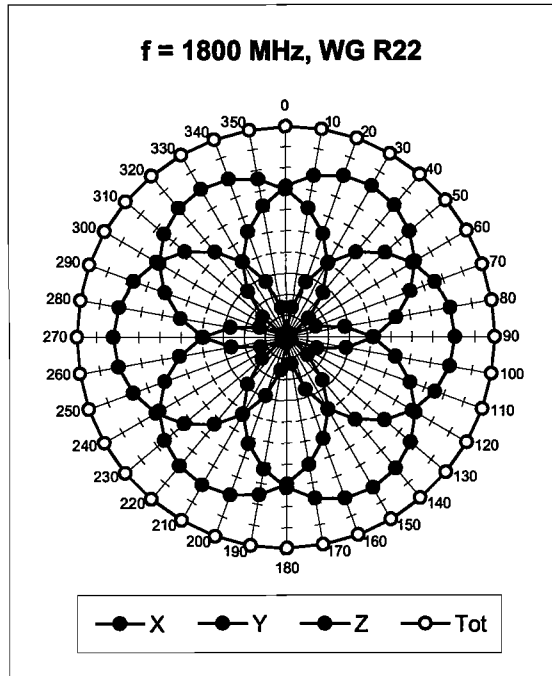
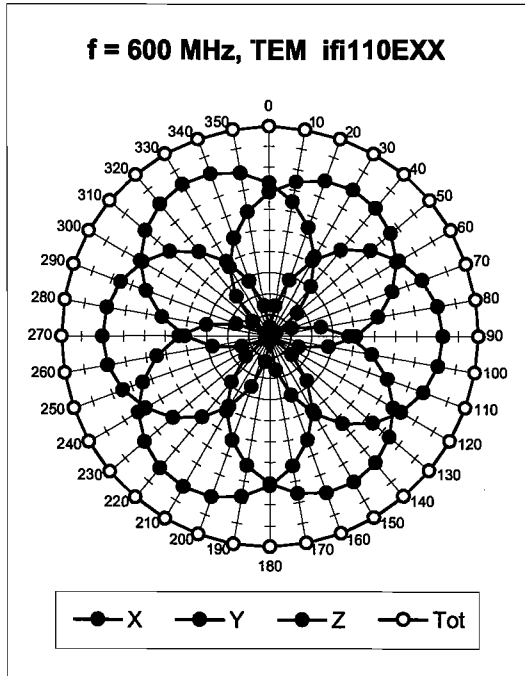
Frequency Response of E-Field

(TEM-Cell:ifi110 EXX, Waveguide: R22)



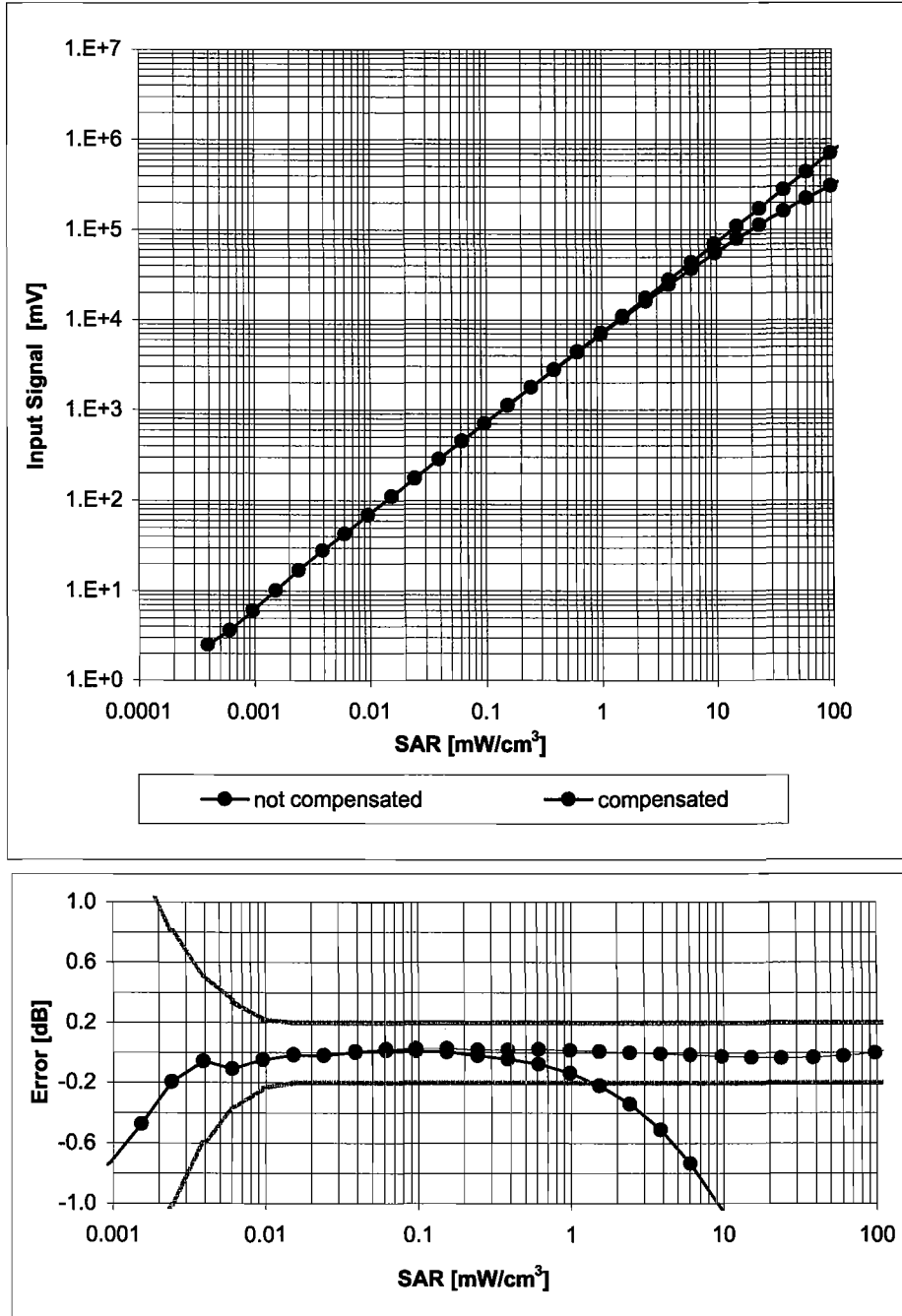
Uncertainty of Frequency Response of E-field: $\pm 6.3\%$ (k=2)

Receiving Pattern (ϕ), $\vartheta = 0^\circ$



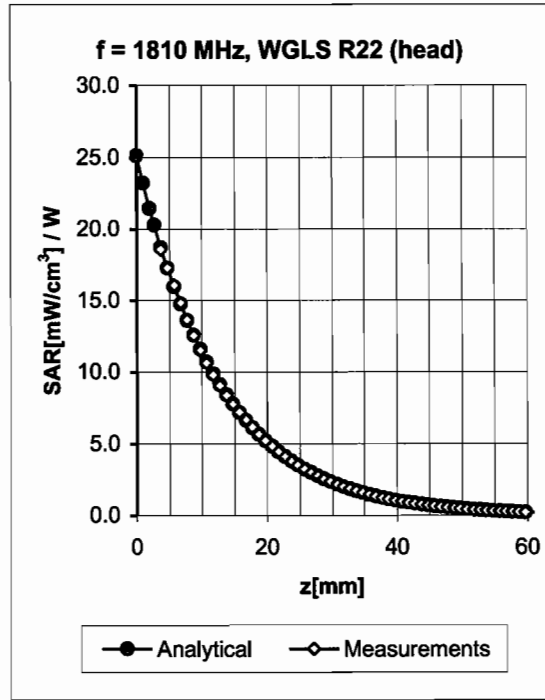
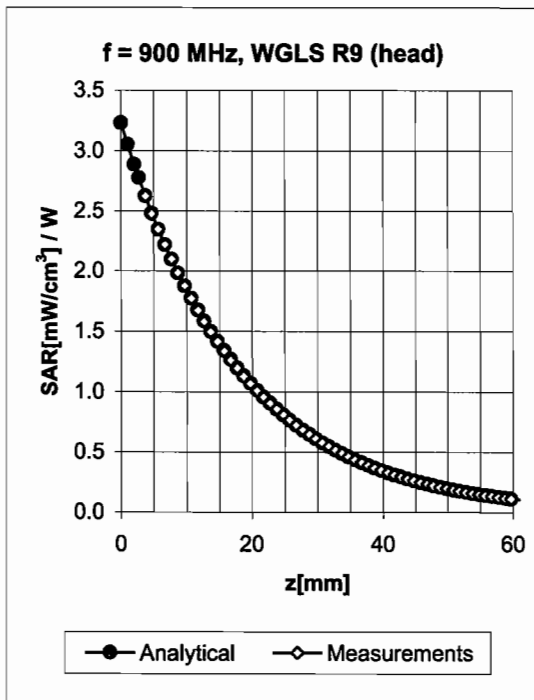
Uncertainty of Axial Isotropy Assessment: $\pm 0.5\%$ ($k=2$)

Dynamic Range $f(\text{SAR}_{\text{head}})$ (Waveguide R22, $f = 1800 \text{ MHz}$)



Uncertainty of Linearity Assessment: $\pm 0.6\%$ ($k=2$)

Conversion Factor Assessment

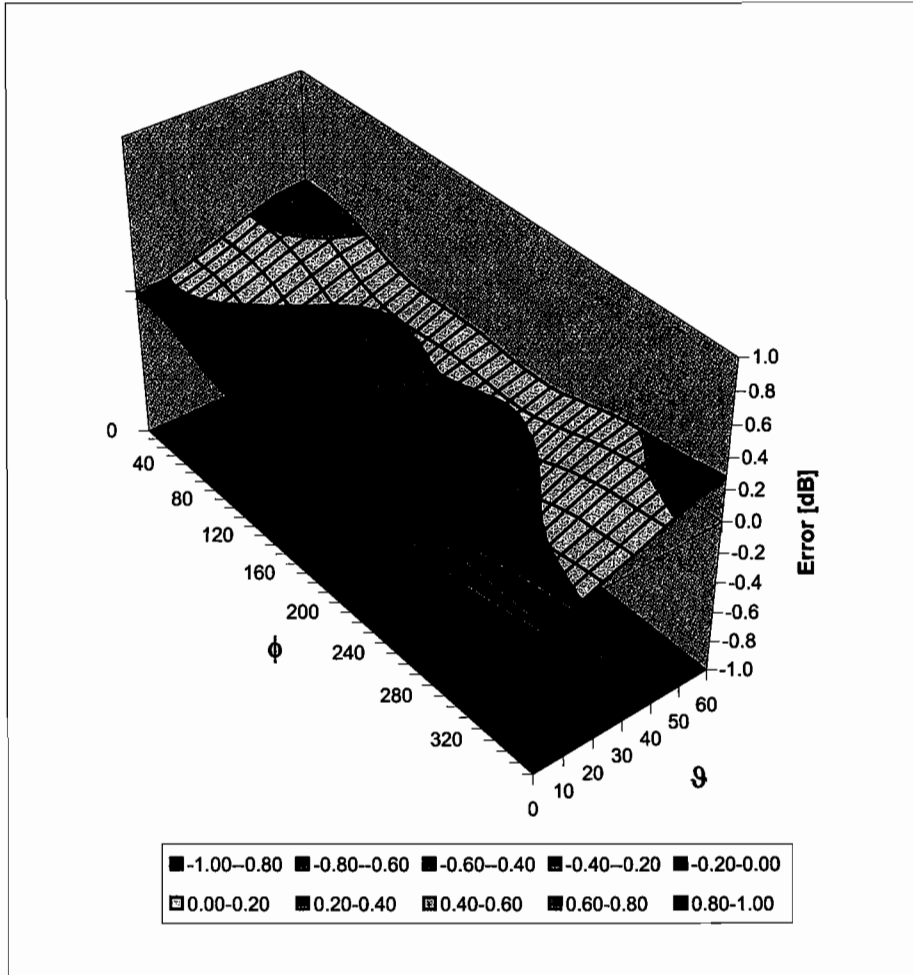


f [MHz]	Validity [MHz] ^c	TSL	Permittivity	Conductivity	Alpha	Depth	ConvF Uncertainty
900	± 50 / ± 100	Head	41.5 ± 5%	0.97 ± 5%	0.68	1.77	6.32 ± 11.0% (k=2)
1810	± 50 / ± 100	Head	40.0 ± 5%	1.40 ± 5%	0.58	2.44	5.08 ± 11.0% (k=2)
1950	± 50 / ± 100	Head	40.0 ± 5%	1.40 ± 5%	0.55	2.58	4.84 ± 11.0% (k=2)
2450	± 50 / ± 100	Head	39.2 ± 5%	1.80 ± 5%	0.65	2.24	4.51 ± 11.8% (k=2)
900	± 50 / ± 100	Body	55.0 ± 5%	1.05 ± 5%	0.54	2.04	6.12 ± 11.0% (k=2)
1810	± 50 / ± 100	Body	53.3 ± 5%	1.52 ± 5%	0.53	2.91	4.67 ± 11.0% (k=2)
1950	± 50 / ± 100	Body	53.3 ± 5%	1.52 ± 5%	0.59	2.56	4.36 ± 11.0% (k=2)
2450	± 50 / ± 100	Body	52.7 ± 5%	1.95 ± 5%	0.66	2.04	4.27 ± 11.8% (k=2)

^c The validity of ± 100 MHz only applies for DASY v4.4 and higher (see Page 2). The uncertainty is the RSS of the ConvF uncertainty at calibration frequency and the uncertainty for the indicated frequency band.

Deviation from Isotropy in HSL

Error (ϕ, ϑ), $f = 900$ MHz



Uncertainty of Spherical Isotropy Assessment: $\pm 2.6\%$ ($k=2$)

Appendix 6
Measurement Uncertainty Budget

Uncertainty Budget for Device Under Test: 30 – 3000 MHz

<i>a</i>	<i>b</i>	<i>c</i>	<i>d</i>	<i>e = f(d,k)</i>	<i>f</i>	<i>g</i>	<i>h = c x f / e</i>	<i>i = c x g / e</i>	<i>k</i>
Uncertainty Component	IEEE 1528 section	Tol. (± %)	Prob Dist	Div.	<i>c_i</i> (1 g)	<i>c_i</i> (10 g)	1 g <i>u_i</i> (±%)	10 g <i>u_i</i> (±%)	<i>v_i</i>
Measurement System									
Probe Calibration	E.2.1	5.9	N	1.00	1	1	5.9	5.9	∞
Axial Isotropy	E.2.2	4.7	R	1.73	0.707	0.707	1.9	1.9	∞
Hemispherical Isotropy	E.2.2	9.6	R	1.73	0.707	0.707	3.9	3.9	∞
Boundary Effect	E.2.3	1.0	R	1.73	1	1	0.6	0.6	∞
Linearity	E.2.4	4.7	R	1.73	1	1	2.7	2.7	∞
System Detection Limits	E.2.5	1.0	R	1.73	1	1	0.6	0.6	∞
Readout Electronics	E.2.6	0.3	N	1.00	1	1	0.3	0.3	∞
Response Time	E.2.7	1.1	R	1.73	1	1	0.6	0.6	∞
Integration Time	E.2.8	1.1	R	1.73	1	1	0.6	0.6	∞
RF Ambient Conditions - Noise	E.6.1	3.0	R	1.73	1	1	1.7	1.7	∞
RF Ambient Conditions - Reflections	E.6.1	0.0	R	1.73	1	1	0.0	0.0	∞
Probe Positioner Mech. Tolerance	E.6.2	0.4	R	1.73	1	1	0.2	0.2	∞
Probe Positioning w.r.t Phantom	E.6.3	1.4	R	1.73	1	1	0.8	0.8	∞
Max. SAR Evaluation (ext., int., avg.)	E.5	3.4	R	1.73	1	1	2.0	2.0	∞
Test sample Related									
Test Sample Positioning	E.4.2	3.2	N	1.00	1	1	3.2	3.2	29
Device Holder Uncertainty	E.4.1	4.0	N	1.00	1	1	4.0	4.0	8
SAR drift	6.6.2	5.0	R	1.73	1	1	2.9	2.9	∞
Phantom and Tissue Parameters									
Phantom Uncertainty	E.3.1	4.0	R	1.73	1	1	2.3	2.3	∞
Liquid Conductivity (target)	E.3.2	5.0	R	1.73	0.64	0.43	1.8	1.2	∞
Liquid Conductivity (measurement)	E.3.3	3.3	N	1.00	0.64	0.43	2.1	1.4	∞
Liquid Permittivity (target)	E.3.2	5.0	R	1.73	0.6	0.49	1.7	1.4	∞
Liquid Permittivity (measurement)	E.3.3	1.9	N	1.00	0.6	0.49	1.1	0.9	∞
Combined Standard Uncertainty							11.1	10.8	411
Expanded Uncertainty (95% CONFIDENCE LEVEL)							22.2	21.6	

Uncertainty Budget for System Check: 30 – 3000 MHz

<i>a</i>	<i>b</i>	<i>c</i>	<i>d</i>	<i>e = f(d,k)</i>	<i>f</i>	<i>g</i>	<i>h = c x f / e</i>	<i>i = c x g / e</i>	<i>k</i>
Uncertainty Component	IEEE 1528 section	Tol. (± %)	Prob. Dist.	Div.	<i>c_i</i> (1 g)	<i>c_i</i> (10 g)	1 g <i>u_i</i> (±%)	10 g <i>u_i</i> (±%)	<i>v_i</i>
Measurement System									
Probe Calibration	E.2.1	5.9	N	1.00	1	1	5.9	5.9	∞
Axial Isotropy	E.2.2	4.7	R	1.73	1	1	2.7	2.7	∞
Spherical Isotropy	E.2.2	9.6	R	1.73	0	0	0.0	0.0	∞
Boundary Effect	E.2.3	1.0	R	1.73	1	1	0.6	0.6	∞
Linearity	E.2.4	4.7	R	1.73	1	1	2.7	2.7	∞
System Detection Limits	E.2.5	1.0	R	1.73	1	1	0.6	0.6	∞
Readout Electronics	E.2.6	0.3	N	1.00	1	1	0.3	0.3	∞
Response Time	E.2.7	1.1	R	1.73	1	1	0.6	0.6	∞
Integration Time	E.2.8	0.0	R	1.73	1	1	0.0	0.0	∞
RF Ambient Conditions - Noise	E.6.1	3.0	R	1.73	1	1	1.7	1.7	∞
RF Ambient Conditions - Reflections	E.6.1	0.0	R	1.73	1	1	0.0	0.0	∞
Probe Positioner Mechanical Tolerance	E.6.2	0.4	R	1.73	1	1	0.2	0.2	∞
Probe Positioning w.r.t. Phantom	E.6.3	1.4	R	1.73	1	1	0.8	0.8	∞
Max. SAR Evaluation (ext., int., avg.)	E.5	3.4	R	1.73	1	1	2.0	2.0	∞
Dipole									
Dipole Axis to Liquid Distance	8, E.4.2	2.0	R	1.73	1	1	1.2	1.2	∞
Input Power and SAR Drift Measurement	8, 6.6.2	5.0	R	1.73	1	1	2.9	2.9	∞
Phantom and Tissue Parameters									
Phantom Uncertainty	E.3.1	4.0	R	1.73	1	1	2.3	2.3	∞
Liquid Conductivity (target)	E.3.2	5.0	R	1.73	0.64	0.43	1.8	1.2	∞
Liquid Conductivity (measurement)	E.3.3	3.3	R	1.73	0.64	0.43	1.2	0.8	∞
Liquid Permittivity (target)	E.3.2	5.0	R	1.73	0.6	0.49	1.7	1.4	∞
Liquid Permittivity (measurement)	E.3.3	1.9	R	1.73	0.6	0.49	0.6	0.5	∞
Combined Standard Uncertainty							9.0	8.8	99999
Expanded Uncertainty (95% CONFIDENCE LEVEL)							17.7	17.3	

Appendix 7

Photographs of the device under test



Figure 1 – Front of Transceiver



Figure 2 – Back of Transceiver



Figure 3 – Front of Transceiver, Flip Open



Figure 4 – Transceiver against head, Cheek Touch Position



Figure 5 – Transceiver against head, 15° Tilt position



Figure 6 – Transceiver against body, Back of Phone 15mm from Phantom position

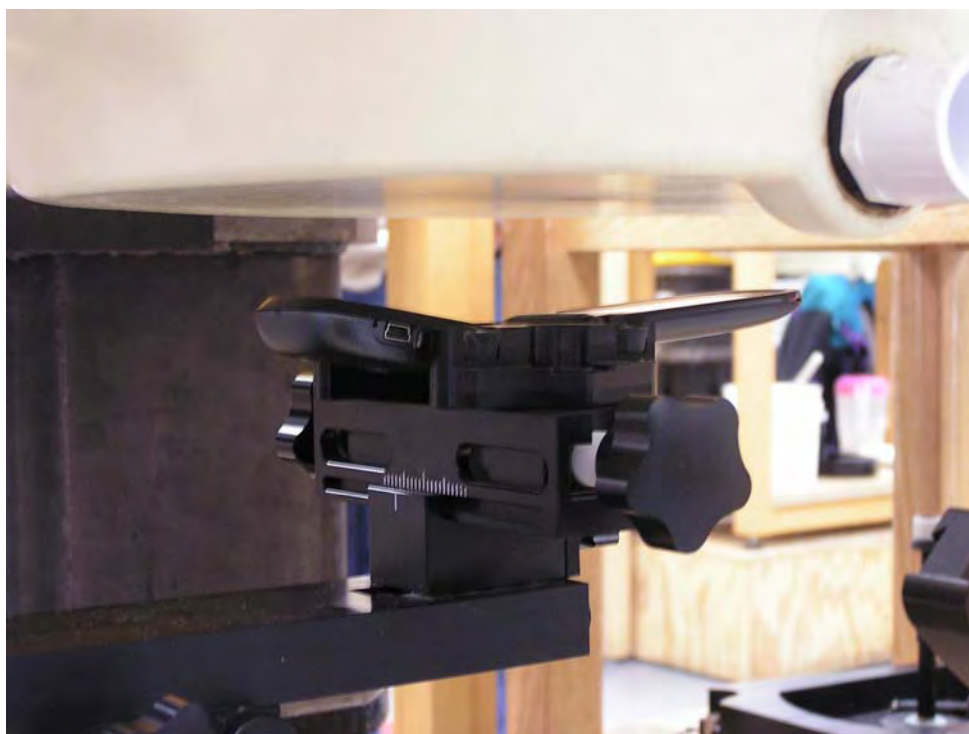


Figure 7 – Transceiver in PTT Mode, Flip Open, Front of Phone 25mm from Flat of SAM Phantom position

Appendix 8
Dipole Characterization Certificate

Certification of System Performance Check Targets

Based on APP-0396

-Historical Data-

900MHz	
IEEE1528 Target:	10.8 (W/kg)
Measurement Uncertainty (k=1):	9.0%
Measurement Period:	9-Nov-04 to 2-June-05
# of tests performed:	813
Grand Average:	11.3 (W/kg)
% Delta (Average - IEEE1528 Target)	4.4%
Is % Delta <= Expanded Measurement Uncertainty (k=2)?	Yes
Accept/Reject <u>Average</u> as new system performance check target?	ACCEPT
Historic data included the following 900MHz Dipoles:	
69, 77	
79, 80	
91, 94	
96, 97	


-New System Performance Check Targets- per APP-0396

(based on analysis of historical data)

Frequency	SAR Target (W/kg)	Permittivity	Conductivity (S/m)
900MHz	11.3	41.5 ± 5%	0.97 ± 5%


-Approvals-

Submitted by: Date:

Signed: 

Comments:

Approved by: Date:

Signed: 

Comments: