



Exhibit 11: SAR Test Report IHDT56EA1

**Date of test:** May 3, 2005 – May 10, 2005  
**Date of Report:** May 20, 2005

**Laboratory:** Motorola Personal Communications Sector Product Safety & Compliance Laboratory  
 600 N. US Highway 45  
 Room: MW113  
 Libertyville, Illinois 60048

**Test Responsible:** Katerina Royzen  
 Engineer

**Accreditation:** This laboratory is accredited to ISO/IEC 17025-1999 to perform the following tests:



<p><u>Tests:</u>                  Electromagnetic Specific Absorption Rate</p> <p>Simulated Tissue Preparation                  RF Power Measurement</p>	<p><u>Procedures:</u>                  ANSI/IEEE C95.1-1992, 1999                  (SAR) IEEE C95.3-1991                  IEEE 1528, IEC 62209-1                  FCC OET Bulletin 65 (<i>including Supplements A, B, C</i>)                  Australian Communications Authority Radio                  Communications (Electromagnetic Radiation – Human                  Exposure) Standard 1999                  CENELEC EN 50361 (2001)                  APP-0247                  DOI-0876, 0900, 0902, 0904, 0915</p>
--	--

On the following products or types of products:  
 Wireless Communications Devices (Examples): Two Way Radios; Portable Phones (including Cellular, Licensed Non-Broadcast and PCS); Low Frequency Readers; and Pagers

A2LA certificate #1651-01

**Statement of Compliance:** Motorola declares under its sole responsibility that portable cellular telephone FCC ID IHDT56EA1 to which this declaration relates, is in conformity with the appropriate General Population/Uncontrolled RF exposure standards, recommendations and guidelines (FCC 47 CFR §2.1093). It also declares that the product was tested in accordance with the appropriate measurement standards, guidelines and recommended practices. Any deviations from these standards, guidelines and recommended practices are noted below:

(none)

©Motorola, Inc. 2005  
 This test report shall not be reproduced except in full, without written approval of the laboratory.

The results and statements contained herein relate only to the items tested. The names of individuals involved may be mentioned only in connection with the statements or results from this report.

Motorola encourages all feedback, both positive and negative, on this test report.

**Table of Contents**

**1. INTRODUCTION .....3**

**2. DESCRIPTION OF THE DEVICE UNDER TEST.....3**

**2.1 Antenna description .....3**

**2.2 Device description.....3**

**3. TEST EQUIPMENT USED.....3**

**3.1 Dosimetric System .....3**

**3.2 Additional Equipment.....4**

**4. ELECTRICAL PARAMETERS OF THE TISSUE SIMULATING LIQUID .....4**

**5. SYSTEM ACCURACY VERIFICATION.....5**

**6. TEST RESULTS.....6**

**6.1 Head Adjacent Test Results.....7**

**6.2 Body Worn Test Results .....9**

**APPENDIX 1: SAR DISTRIBUTION COMPARISON FOR SYSTEM ACCURACY VERIFICATION .....12**

**APPENDIX 2: SAR DISTRIBUTION PLOTS FOR PHANTOM HEAD ADJACENT USE .....13**

**APPENDIX 3: SAR DISTRIBUTION PLOTS FOR BODY WORN CONFIGURATION .....14**

**APPENDIX 4: PROBE CALIBRATION CERTIFICATE .....15**

**APPENDIX 5: MEASUREMENT UNCERTAINTY BUDGET.....16**

**APPENDIX 6: PHOTOGRAPHS OF DEVICE UNDER TEST.....19**

### 1 Introduction

The Motorola Personal Communications Sector Product Safety Laboratory has performed measurements of the maximum potential exposure to the user of portable cellular phone (FCC ID IHDT56EA1). The Specific Absorption Rate (SAR) of this product was measured. The portable cellular phone was tested in accordance with FCC OET Bulletin 65 Supplement C 01-01.

### 2 Description of the Device Under Test

#### 2.1 Antenna description

<b>Type</b>	External	
<b>Location</b>	Upper Right Corner	
<b>Dimensions</b>	Length	22mm
	Width	10mm
<b>Configuration</b>	Helix	

#### 2.2 Device description

<b>FCC ID Number</b>	<b>IHDT56EA1</b>													
<b>Serial number</b>	<b>G00S570056</b>													
<b>Mode(s) of Operation</b>	GSM 850	GSM 900	GSM 1800	GSM 1900	GPRS 850	GPRS 900	GPRS 1800	GPRS 1900	EDGE 850	EDGE 900	EDGE 1800	EDGE 1900	Blue Tooth	
<b>Modulation Mode(s)</b>	GSM	GSM	GSM	GSM	GSM	GSM	GSM	GSM	EDGE	EDGE	EDGE	EDGE	Blue Tooth	
<b>Maximum Output Power Setting</b>	32.50 dBm	32.50 dBm	29.70 dBm	29.70 dBm	32.50 dBm	32.50 dBm	29.70 dBm	29.70 dBm	28.00 dBm	28.00 dBm	27.00 dBm	27.00 dBm	4.00 dBm	
<b>Duty Cycle</b>	1:8	1:8	1:8	1:8	2:8	2:8	2:8	2:8	2:8	2:8	2:8	2:8	1:1	
<b>Transmitting Frequency Rang(s)</b>	824.2-848.8 MHz	880.2-914.8 MHz	1710.2-1784.8 MHz	1850.20 – 1909.80 MHz	824.2-848.8 MHz	880.2-914.8 MHz	1710.2-1784.8 MHz	1850.20 – 1909.80 MHz	824.2-848.8 MHz	880.2-914.8 MHz	1710.2-1784.8 MHz	1850.20 – 1909.80 MHz	2400 - 2483.5 MHz	
<b>Production Unit or Identical Prototype (47 CFR §2.908)</b>	Identical Prototype													
<b>Device Category</b>	Portable													
<b>RF Exposure Limits</b>	General Population / Uncontrolled													

### 3 Test Equipment Used

#### 3.1 Dosimetric System

The Motorola Personal Communications Sector Product Safety & Compliance Laboratory utilizes a Dosimetric Assessment System (Dasy4™ v4.4) manufactured by Schmid & Partner Engineering AG (SPEAG™), of Zurich Switzerland. All the SAR measurements are taken within a shielded enclosure. The overall RSS uncertainty of the

measurement system is  $\pm 11.7\%$  (K=1) with an expanded uncertainty of  $\pm 23.0\%$  (K=2). The measurement uncertainty budget is given in Appendix 6. Per IEEE 1528, this uncertainty budget is applicable to the SAR range of 0.4 W/kg to 10 W/kg. The list of calibrated equipment used for the measurements is shown below.

Description	Serial Number	Cal Due Date
DASY3 DAE V1	SN 316	1/13/2006
E-Field Probe ET3DV6	SN 1398	2/24/2006
Dipole Validation Kit, D900V2	SN 91	
S.A.M. Phantom used for 800MHz	TP-1005	
Dipole Validation Kit, D1800V2	SN 259tr	
S.A.M. Phantom used for 1900MHz	TP-1154	

### 3.2 Additional Equipment

Description	Serial Number	Cal Due Date
Signal Generator HP8648C	3847A04832	9/3/2005
Power Meter E4419B	GB39511088	12/16/2005
Power Sensor #1 - E9301A	US39210915	9/16/2005
Power Sensor #2 - E9301A	US39210916	9/16/2005
Network Analyzer HP8753ES	US39171846	9/3/2005
Dielectric Probe Kit HP85070C	US99360070	N/A

## 4 Electrical parameters of the tissue simulating liquid

Prior to conducting SAR measurements, the relative permittivity,  $\epsilon_r$ , and the conductivity,  $\sigma$ , of the tissue simulating liquids were measured with the HP85070C Dielectric Probe Kit. These values, along with the temperature of the tissue simulate are shown in the table below. The recommended limits for maximum permittivity and minimum conductivity are also shown. These come from the Federal Communication Commission, OET Bulletin 65 Supplement C 01-01. It is seen that the measured parameters are satisfactory for compliance testing.

f (MHz)	Tissue type	Limits / Measured	Dielectric Parameters		
			$\epsilon_r$	$\sigma$ (S/m)	Temp (°C)
835	Head	Measured, 5/03/2005	41.3	0.91	19.8
		Measured, 5/04/2005	41.7	0.91	19.9
		Recommended Limits	41.5 $\pm$ 5%	0.90 $\pm$ 5%	18-25
	Body	Measured, 5/05/2005	53.2	0.97	19.8
		Recommended Limits	55.2 $\pm$ 5%	0.97 $\pm$ 5%	18-25
1880	Head	Measured, 5/04/2005	39.5	1.44	20
		Measured, 5/10/2005	39.1	1.45	19.6
		Recommended Limits	40.0 $\pm$ 5%	1.40 $\pm$ 5%	18-25
	Body	Measured, 5/05/2005	52.0	1.58	20.4
		Recommended Limits	53.3 $\pm$ 5%	1.52 $\pm$ 5%	18-25

The list of ingredients and the percent composition used for the tissue simulates are indicated in the table below.

Ingredient	800MHz Head	800MHz Body	1900MHz Head	1900MHz Body
Sugar	57.0	44.9	--	--
DGBE	--	--	47.0	30.80
Water	40.45	53.06	52.8	68.91
Salt	1.45	0.94	0.2	0.29
HEC	1.0	1.0	--	--
Bact.	0.1	0.1	--	--

## 5 System Accuracy Verification

A system accuracy verification of the DASY4.4 was performed using the measurement equipment listed in Section 3.1. The daily system accuracy verification occurs within center section of the SAM phantom.

A SAR measurement was performed to see if the measured SAR was within +/- 10% from the target SAR indicated in Section 8.3.7 Reference SAR Values in IEEE 1528. These tests were done at 900MHz and/or 1800MHz. These frequencies are within 100MHz of the mid-band frequency of the test device. This is within the allowable window given in Supplement C 01-01 Appendix D System Verification section item #5. The test was conducted on the same days as the measurement of the DUT. Recommended limits for maximum permittivity, minimum conductivity are shown in the table below. These come from the Federal Communication Commission, OET Bulletin 65 Supplement C 01-01. The obtained results from the system accuracy verification are displayed in the table below. The distributions of SAR compare well with those of the reference measurements (see Appendix 1). The tissue stimulant depth was verified to be 15.0cm ±0.5cm. Z-axis scans showing the SAR penetration are also included in Appendix 1. SAR values are normalized to 1W forward power delivered to the dipole.

f (MHz)	Description	SAR (W/kg), 1gram	Dielectric Parameters		Ambient Temp (°C)	Tissue Temp (°C)
			$\epsilon_r$	$\sigma$ (S/m)		
900	Measured, 5/03/2005	10.98	40.6	0.97	20	19.4
	Measured, 5/04/2005	11.08	40.5	0.97	21	19
	Measured, 5/05/2005	10.8	40.3	0.96	21	19.4
	Recommended Limits	10.8	41.5 ±5%	0.97 ±5%	18-25	18-25
1800	Measured, 5/04/2005	37.35	38.9	1.34	21	19.5
	Measured, 5/05/2005	38.88	39.8	1.34	21	19.5
	Measured, 5/10/2005	38.68	39.3	1.35	22	19.8
	Recommended Limits	38.1	40.0 ±5%	1.4 ±5%	18-25	18-25

The following probe conversion factors were used on the E-Field probe(s) used for the system accuracy verification measurements:

Description	Serial Number	f (MHz)	Conversion Factor	Cal Cert pg #
E-Field Probe ET3DV6	SN 1398	900	6.42	8 of 9
		1810	5.12	8 of 9

**6 Test Results**

The test sample was operated in a test mode that allows control of the transmitter without the need to place actual phone calls. For the purposes of this test the unit is commanded to test mode and manually set to the proper channel, transmitter power level and transmit mode of operation. The phone was tested in the configurations stipulated in OET Bulletin 65 Supplement C 01-01. Motorola also followed the requirements in Supplement. C / Appendix D: SAR Measurement Procedures, section titled "*Devices Operating Next To A Person's Ear*". These directions state "The device should be tested on the left and right side of the head phantom in the "Cheek/Touch" and "Ear/Tilt" positions. When applicable, each configuration should be tested with the antenna in its fully extended and fully retracted positions. These test configurations should be tested at the high, middle and low frequency channels of each operating mode; for example, AMPS, CDMA, and TDMA. If the SAR measured at the middle channel for each test configuration (left, right, Cheek/Touch, Tile/Ear, extended and retracted) is at least 2.0 dB lower than the SAR limit, testing at the high and low channels is optional for such test configuration(s)."

The DASY v4.4 SAR measurement system specified in section 3.1 was utilized within the intended operations as set by the SPEAG™ setup. The phone was positioned into the measurement configurations using the positioner supplied with the DASY v4.4 SAR measurement system. The measured dielectric constant of the material used for the positioner is less than 2.9 and the loss tangent is less than 0.02 ( $\pm 30\%$ ) at 850MHz. The default settings for the "coarse" and "cube" scans were chosen and use for measurements. The grid spacing of the course scan was set to 15cm as shown in the SAR plots included in appendix 2 and 3. Please refer to the DASY manual for additional information on SAR scanning procedures and algorithms used.

The Cellular Phone (FCC ID IHDT56EA1) has the following battery options:

Model #1 – SNN5685A 950mAH Battery

Model #2 – SNN5683A 780mAH Battery

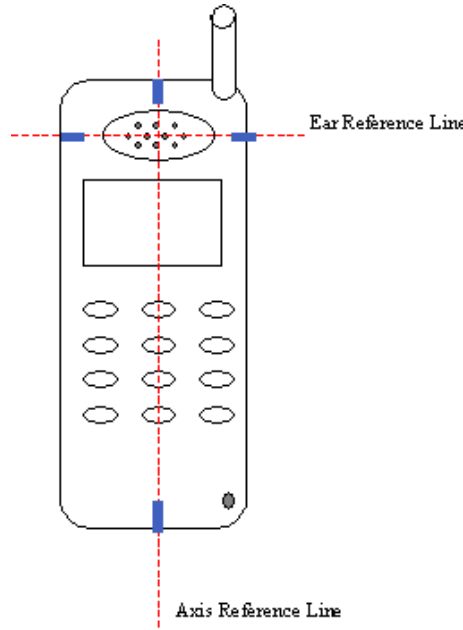
The battery with the highest capacity is the SNN5685A. This battery was used to do most of the SAR testing. The phone was placed in the SAR measurement system with a fully charged battery. The configuration that resulted in the highest SAR values were tested using the other batteries listed above.

### 6.1 Head Adjacent Test Results

To aid in positioning repeatability, the ear reference line of the device and the axis reference line of the device have been physically added using a non-metallic marker.

- Per Figure 1, the "Ear Reference Line" is centered vertically through the center of the listening area (as defined by the speaker holes in the housing).
- The "Axis Reference Line" bisects the front surface of the device at its top and bottom edges.
- The intersection of these two lines defines the location of the "Ear Reference Point".

The lines drawn on the device extended to the outside edges, as shown in blue in the figure below, & wrap around the sides of the device.



The SAR results shown in tables 1 through 4 are maximum SAR values averaged over 1 gram of phantom tissue. Also shown are the measured conducted output powers, the temperature of the test facility during the test, the temperature of the tissue simulate after the test, the measured drift and the extrapolated SAR. The exact method of extrapolation is  $\text{New SAR} = \text{Old SAR} * 10^{(-\text{drift}/10)}$ . The SAR reported at the end of the measurement process by the DASY™ measurement system can be scaled up by the measured drift to determine the SAR at the beginning of the measurement process. This is the most conservative SAR because it corresponds to the average output power at the beginning of the SAR test. This extrapolation has been done because when the DUT is operating properly it may exhibit a slump in radiated power and SAR over time. This is verified by measuring the SAR drift after the test. The test conditions indicated as bold numbers in the following table are included in Appendix 2

The SAR measurements were performed using the SAM phantoms listed in section 3.1. Since same phantoms and tissue simulate are used for the system accuracy verification as the device SAR measurements, the Z-axis scans included in within Appendix 1 are applicable for verification of tissue simulate depth to be 15.0cm ±0.5cm. All other test conditions measured lower SAR values than those included in Appendix 2.

Note that, since the 850MHz head adjacent SAR values were less than or equal to that previously reported, the values included in tables 1, 2 and 3 are for reference only. This data has been included to show that the head adjacent SAR values did not significantly increase from that previously reported. As such, no SAR distribution plots for phantom head adjacent use have been included in Appendix 2 of this document. The SAR distribution plots for phantom head adjacent use that were included in Appendix 2 of the original filing report should still be considered to apply.

The following probe conversion factors were used on the E-Field probe(s) used for the head adjacent measurements:

Description	Serial Number	f (MHz)	Conversion Factor	Cal Cert pg #
E-Field Probe ET3DV6	SN 1398	900	6.42	8 of 9
		1810	5.12	8 of 9

f (MHz)	Description	Conducted Output Power (dBm)	Cheek / Touch Position							
			Left Head				Right Head			
			Measured (W/kg)	Drift (dB)	Extrapolated (W/kg)	Simulate Temp (°C)	Measured (W/kg)	Drift (dB)	Extrapolated (W/kg)	Simulate Temp (°C)
Digital 800MHz	Channel 128	32.48	0.783	-0.132	0.81	19.8	0.93	-0.09	0.95	19.4
	Channel 190	32.47	0.895	-0.173	0.93	19.8	1.07	-0.11	1.10	19.6
	Channel 251	32.49	1.05	-0.05	1.06	19.5	1.23	-0.07	1.25	19.5
Digital 1900MHz	Channel 512	29.69	0.922	0.02	0.92	19.4	0.947	-0.05	0.96	19.4
	Channel 661	29.69	<b>1.02</b>	<b>0.084</b>	<b>1.02</b>	<b>19.4</b>	<b>1.08</b>	<b>-0.060</b>	<b>1.10</b>	<b>19.4</b>
	Channel 810	29.70	0.936	0	0.94	19.5	1.07	-0.07	1.09	19.4

**Table 1: SAR measurement results for the portable cellular telephone FCC ID IHDT56EA1 at highest possible output power. Measured against the head in the Cheek/Touch Position.**

f (MHz)	Description	Conducted Output Power (dBm)	15° Tilt Position							
			Left Head				Right Head			
			Measured (W/kg)	Drift (dB)	Extrapolated (W/kg)	Simulate Temp (°C)	Measured (W/kg)	Drift (dB)	Extrapolated (W/kg)	Simulate Temp (°C)
Digital 800MHz	Channel 128	32.48								
	Channel 190	32.47	0.305	0.08	0.31	19.8	0.32	-0.02	0.32	19.3
	Channel 251	32.49								
Digital 1900MHz	Channel 512	29.69								
	Channel 661	29.69	<b>0.394</b>	<b>-0.035</b>	<b>0.40</b>	<b>19.6</b>	<b>0.368</b>	<b>0.024</b>	<b>0.37</b>	<b>19.4</b>
	Channel 810	29.70								

**Table 2: SAR measurement results for the portable cellular telephone FCC ID IHDT56EA1 at highest possible output power. Measured against the head in the 15° Tilt Position.**

f (MHz)	Description	Conducted Output Power (dBm)	Cheek / Touch Position			
			Highest Head (Right Head) with SNN5683A			
			Measured (W/kg)	Drift (dB)	Extrapolated (W/kg)	Simulate Temp (°C)
Digital 800MHz	Channel 128	32.48	0.921	-0.05	0.93	19.2
	Channel 190	32.47	1.09	-0.14	1.13	19.4
	Channel 251	32.49	1.19	0	1.19	19.3
Digital 1900MHz	Channel 512	29.69	0.957	-0.19	1.00	20
	Channel 661	29.69	1.08	-0.24	1.14	20
	Channel 810	29.70	<b>1.13</b>	<b>-0.186</b>	<b>1.18</b>	<b>19.9</b>

**Table 3: SAR measurement results for the portable cellular telephone FCC ID IHDT56EA1 at highest possible output power. Measured against the head in the Cheek/Touch Position.**

f (MHz)	Description	Conducted Output Power (dBm)	PPT							
			GPRS Class 10				Edge Class 6			
			Measured (W/kg)	Drift (dB)	Extrapolated (W/kg)	Simulate Temp (°C)	Measured (W/kg)	Drift (dB)	Extrapolated (W/kg)	Simulate Temp (°C)
Digital 800MHz	Channel 128	32.48								
	Channel 190	32.47	<b>0.378</b>	<b>-0.179</b>	<b>0.39</b>	<b>19.9</b>	<b>0.071</b>	<b>0.062</b>	<b>0.07</b>	<b>19.8</b>
	Channel 251	32.49								
Digital 1900MHz	Channel 512	29.69								
	Channel 661	29.69	<b>0.143</b>	<b>0.018</b>	<b>0.14</b>	<b>19.9</b>	<b>0.084</b>	<b>-0.069</b>	<b>0.09</b>	<b>19.7</b>
	Channel 810	29.70								

**Table 4: SAR measurement results for the portable cellular telephone FCC ID IHDT56EA1 at highest possible output power. Measured against the flat phantom in PTT Mode**

### 6.2 Body Worn Test Results

The SAR results shown in table 5 are the maximum SAR values averaged over 1 gram of phantom tissue. Also shown are the measured conducted output powers, the temperature of the test facility during the test, the temperature of the tissue simulate after the test, the measured drift and the extrapolated SAR. The exact method of extrapolation is  $New\ SAR = Old\ SAR * 10^{(-drift/10)}$ . The SAR reported at the end of the measurement process by the DASY™ measurement system can be scaled up by the measured drift to determine the SAR at the beginning of the measurement process. This is the most conservative SAR because it corresponds to the average output power at the beginning of the SAR test. This extrapolation has been done because when the DUT is operating properly it may exhibit a slump in radiated power and SAR over time. This is verified by measuring the SAR drift after the test. The test conditions indicated as bold numbers in the following table are included in Appendix 3. All other test conditions measured lower SAR values than those included in Appendix 3.

A “flat” phantom was for the body-worn tests. This “flat” phantom is made out of 1” thick natural High Density Polyethylene with a thickness at the bottom equal to 2.0mm. It measures 52.7cm(long) x 26.7cm(wide) x 21.2cm(tall). The measured dielectric constant of the material used is less than 2.3 and the loss tangent is less than 0.0046 all the way up to 2.184GHz.

The tissue stimulant depth was verified to be 15.0cm ±0.5cm. The same device holder described in section 6 was used for positioning the phone. The functional accessories were divided into two categories, the ones with metal components and the ones with non-metal components. For non-metallic component accessories’, testing was performed on the accessory that displayed the closest proximity to the flat phantom. Each metallic component accessory, if any, was checked for uniqueness of metal component so that each is tested with the device. If multiple accessories shared an identical metal component, only the accessory that dictates the closest spacing to the body was tested. The cellular phone was tested with a headset connected to the device for all body-worn SAR measurements.

The following probe conversion factors were used on the E-Field probe(s) used for the body worn measurements:

Description	Serial Number	f (MHz)	Conversion Factor	Cal Cert pg #
E-Field Probe ET3DV6	SN 1398	900	6.04	8 of 9
		1810	4.65	8 of 9

f (MHz)	Description	Conducted Output Power (dBm)	Body Worn							
			Front of Phone 15mm Below Phantom				Back of Phone 15mm Below Phantom			
			Measured (W/kg)	Drift (dB)	Extrapolated (W/kg)	Simulate Temp (°C)	Measured (W/kg)	Drift (dB)	Extrapolated (W/kg)	Simulate Temp (°C)
Digital 800MHz	Channel 128	32.48								
	Channel 190	32.47	<b>0.153</b>	<b>0.069</b>	<b>0.15</b>	<b>19.1</b>	<b>0.381</b>	<b>-0.053</b>	<b>0.39</b>	<b>19.1</b>
	Channel 251	32.49								
Digital 1900MHz	Channel 512	29.69								
	Channel 661	29.69	<b>0.148</b>	<b>-0.051</b>	<b>0.15</b>	<b>20.4</b>	<b>0.254</b>	<b>0.029</b>	<b>0.25</b>	<b>20.2</b>
	Channel 810	29.70								

**Table 5: SAR measurement results for the portable cellular telephone FCC ID IHDT56EA1 at highest possible output power. Measured against the body.**

f (MHz)	Description	Conducted Output Power (dBm)	Body Worn							
			Bluetooth Back of Phone 15mm Below Phantom				Bluetooth Back of Phone 15mm Below Phantom (SNN5683A battery)			
			Measured (W/kg)	Drift (dB)	Extrapolated (W/kg)	Simulate Temp (°C)	Measured (W/kg)	Drift (dB)	Extrapolated (W/kg)	Simulate Temp (°C)
Digital 800MHz	Channel 128	32.48								
	Channel 190	32.47	<b>0.486</b>	<b>-0.082</b>	<b>0.50</b>	<b>19.1</b>	<b>0.579</b>	<b>-0.073</b>	<b>0.59</b>	<b>19.7</b>
	Channel 251	32.49								
Digital 1900MHz	Channel 512	29.69								
	Channel 661	29.69	<b>0.290</b>	<b>-0.101</b>	<b>0.30</b>	<b>19.7</b>	<b>0.368</b>	<b>-0.077</b>	<b>0.37</b>	<b>19.4</b>
	Channel 810	29.70								

**Table 6: SAR measurement results for the portable cellular telephone FCC ID IHDT56EA1 at highest possible output power. Measured against the body.**

f (MHz)	Description	Conducted Output Power (dBm)	Body Worn			
			EDGE Class 6 Back of phone 25mm below Phantom			
			Measured (W/kg)	Drift (dB)	Extrapolated (W/kg)	Simulate Temp (°C)
Digital 800MHz	Channel 128	27.99				
	Channel 190	27.98	<b>0.080</b>	<b>0.025</b>	<b>0.08</b>	<b>19.5</b>
	Channel 251	27.97				
Digital 1900MHz	Channel 512	26.99				
	Channel 661	26.98	<b>0.106</b>	<b>-0.108</b>	<b>0.11</b>	<b>19.4</b>
	Channel 810	26.99				

**Table 7: SAR measurement results for the portable cellular telephone FCC ID IHDT56EA1 at highest possible output power. Measured against the body.**

f (MHz)	Description	Conducted Output Power (dBm)	Body Worn			
			GPRS Class 10			
			Back of phone 25mm below Phantom			
			Measured (W/kg)	Drift (dB)	Extrapolated (W/kg)	Simulate Temp (°C)
Digital 800MHz	Channel 128	32.48				
	Channel 190	32.47	<b>0.398</b>	<b>-0.173</b>	<b>0.41</b>	<b>19.8</b>
	Channel 251	32.49				
Digital 1900MHz	Channel 512	29.69				
	Channel 661	29.69	<b>0.193</b>	<b>-0.104</b>	<b>0.20</b>	<b>19.6</b>
	Channel 810	29.70				

**Table 8: SAR measurement results for the portable cellular telephone FCC ID IHDT56EA1 at highest possible output power. Measured against the body.**

**Appendix 1**

**SAR distribution comparison for the system accuracy verification**

# Test Laboratory: Motorola

## 050305 900MHZ Good 1.6%

### DUT: Dipole 900 MHz; Type: D900V2

Procedure Notes: 900MHz System Performance Check / Dipole Sn# 091; PM1 Power = 200mW  
Sim.Temp@ meas = 19.4°C; Sim.Temp@ SPC = 19.4°C; Room Temp@ SPC = 20°C

Communication System: CW - Dipole; Frequency: 900 MHz; Duty Cycle: 1:1

Medium: VALIDATION Only; Medium parameters used:  $\sigma = 0.97$  mho/m,  $\epsilon_r = 40.6$ ;  $\rho = 1000$  kg/m<sup>3</sup>

### DASY4 Configuration:

- Probe: ET3DV6 - SN1398; ConvF(6.42, 6.42, 6.42); Calibrated: 2/24/2005
- Sensor-Surface: 4mm (Mechanical Surface Detection)
- Electronics: DAE4 Sn316; Calibrated: 1/13/2005
- Phantom: R1: Sugar SAM; Type: SAM; Serial: TP-1005;
- Measurement SW: DASY4, V4.5 Build 19; Postprocessing SW: SEMCAD, V1.8 Build 147

### Daily SPC Check/Dipole Area Scan (4x9x1):

Measurement grid: dx=15mm, dy=15mm; Maximum value of SAR (measured) = 2.28 mW/g

### Daily SPC Check/0-Degree 5x5x7 Cube (5x5x7)/Cube 0:

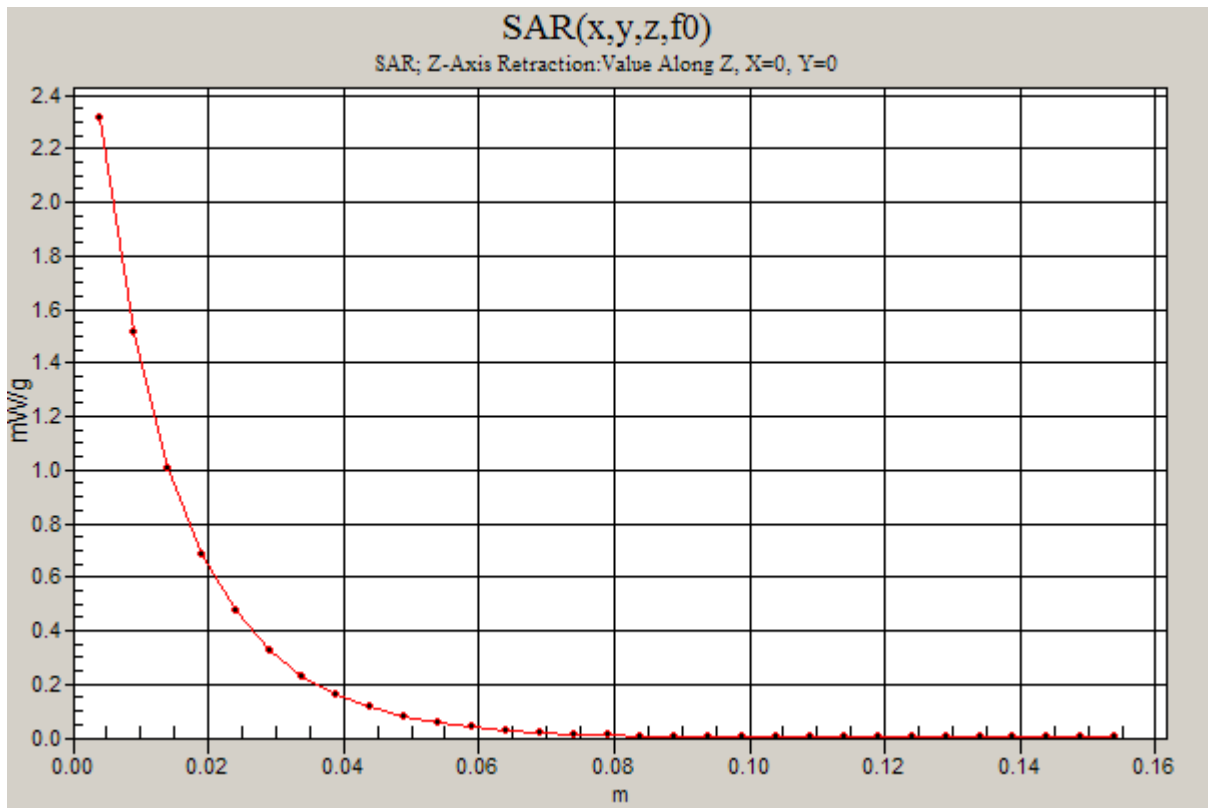
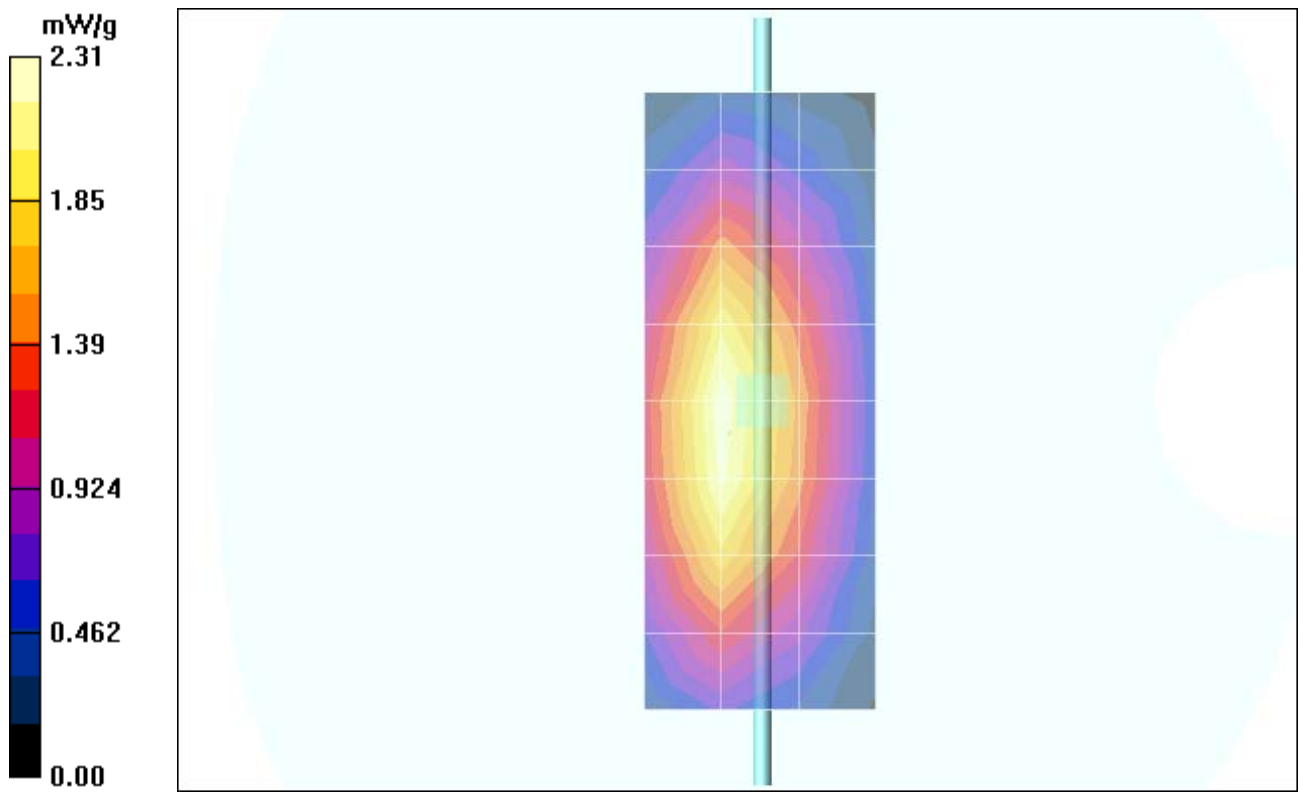
Measurement grid: dx=8mm,dy=8mm,dz=5mm; Reference Value = 47.7 V/m; **Power Drift = 0.172 dB**  
Peak SAR (extrapolated) = 3.29 W/kg; **SAR(1 g) = 2.15 mW/g; SAR(10 g) = 1.37 mW/g**  
Maximum value of SAR (measured) = 2.33 mW/g

### Daily SPC Check/90-Degree 5x5x7 Cube (5x5x7)/Cube 0:

Measurement grid: dx=8mm,dy=8mm,dz=5mm; Reference Value = 47.7 V/m; **Power Drift = 0.172 dB**  
Peak SAR (extrapolated) = 3.40 W/kg; **SAR(1 g) = 2.24 mW/g; SAR(10 g) = 1.43 mW/g**  
Maximum value of SAR (measured) = 2.41 mW/g

### Daily SPC Check/Z-Axis Retraction (1x1x31):

Measurement grid: dx=20mm, dy=20mm, dz=5mm;  
Maximum value of SAR (measured) = 2.31 mW/g



# Test Laboratory: Motorola

## 050405 900MHz Good 2.5%

### DUT: Dipole 900 MHz; Type: D900V2

Procedure Notes: 900MHz System Performance Check / Dipole Sn# 91; PM1 Power = 200mW  
Sim.Temp@ meas = 19.4°C; Sim.Temp@ SPC = 19.0°C; Room Temp@ SPC = 21°C

Communication System: CW - Dipole; Frequency: 900 MHz; Duty Cycle: 1:1

Medium: VALIDATION Only; Medium parameters used:  $\sigma = 0.97$  mho/m,  $\epsilon_r = 40.5$ ;  $\rho = 1000$  kg/m<sup>3</sup>

### DASY4 Configuration:

- Probe: ET3DV6 - SN1398; ConvF(6.42, 6.42, 6.42); Calibrated: 2/24/2005
- Sensor-Surface: 4mm (Mechanical Surface Detection)
- Electronics: DAE4 Sn316; Calibrated: 1/13/2005
- Phantom: R1: Sugar SAM; Type: SAM; Serial: TP-1005;
- Measurement SW: DASY4, V4.5 Build 19; Postprocessing SW: SEMCAD, V1.8 Build 147

### Daily SPC Check/Dipole Area Scan (4x9x1):

Measurement grid: dx=15mm, dy=15mm; Maximum value of SAR (measured) = 2.29 mW/g

### Daily SPC Check/0-Degree 5x5x7 Cube (5x5x7)/Cube 0:

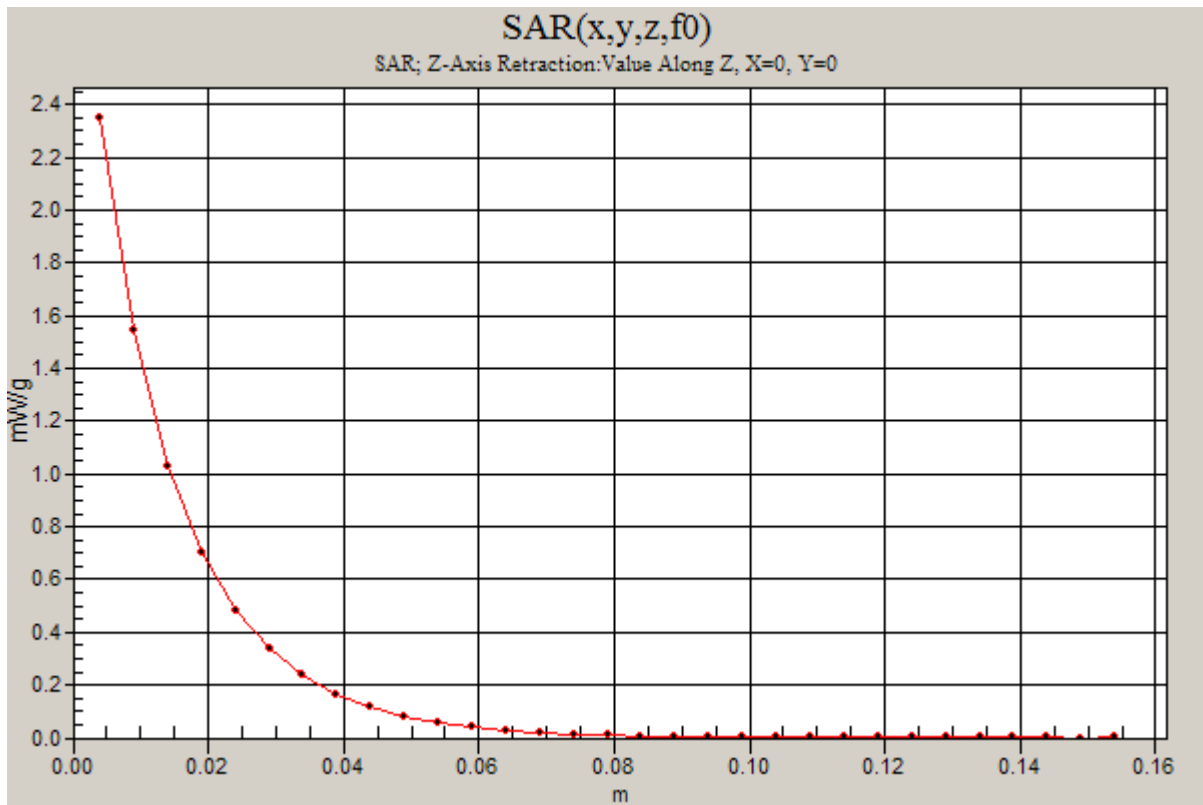
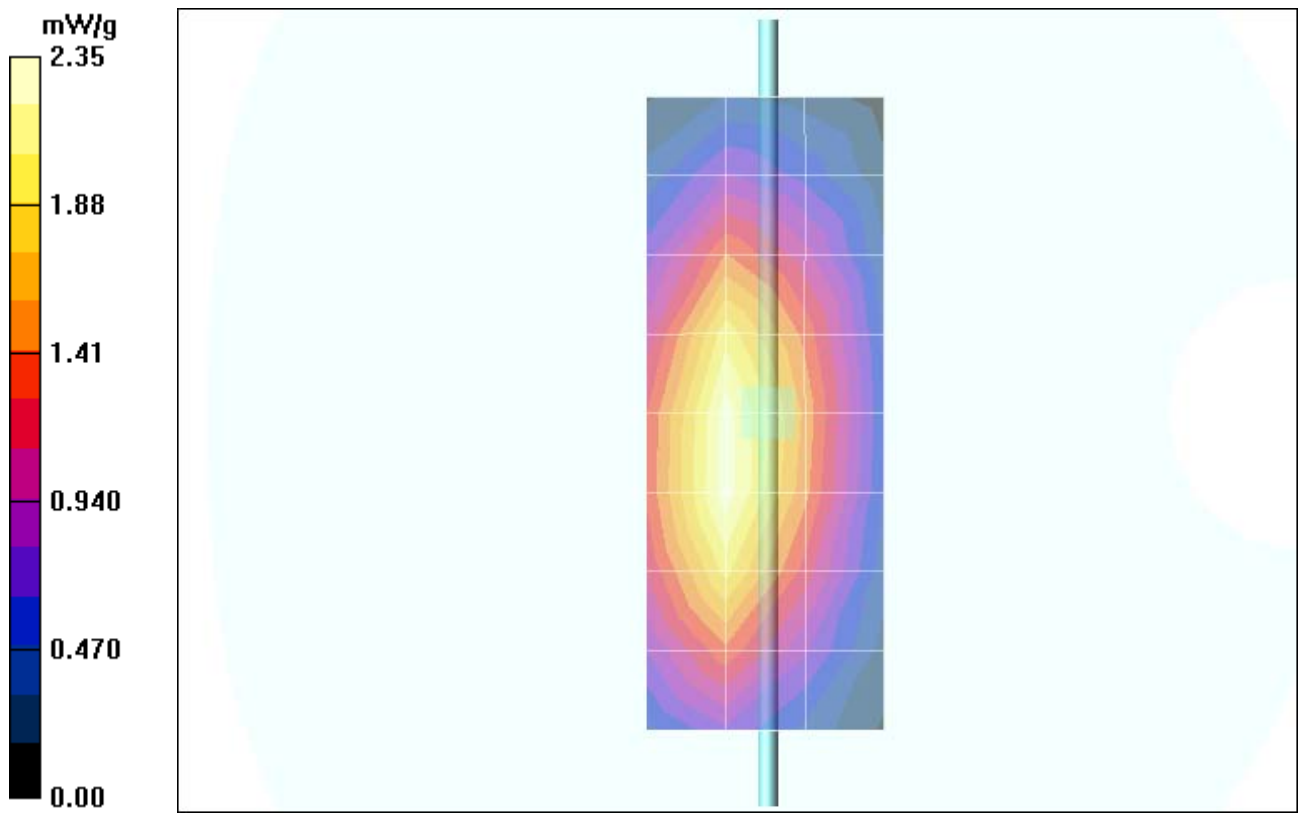
Measurement grid: dx=8mm, dy=8mm, dz=5mm; Reference Value = 48.3 V/m; Power Drift = -0.00 dB  
Peak SAR (extrapolated) = 3.30 W/kg; **SAR(1 g) = 2.18 mW/g; SAR(10 g) = 1.39 mW/g**  
Maximum value of SAR (measured) = 2.34 mW/g

### Daily SPC Check/90-Degree 5x5x7 Cube (5x5x7)/Cube 0:

Measurement grid: dx=8mm, dy=8mm, dz=5mm; Reference Value = 48.3 V/m; Power Drift = 0.00 dB  
Peak SAR (extrapolated) = 3.40 W/kg; **SAR(1 g) = 2.25 mW/g; SAR(10 g) = 1.44 mW/g**  
Maximum value of SAR (measured) = 2.44 mW/g

### Daily SPC Check/Z-Axis Retraction (1x1x31):

Measurement grid: dx=20mm, dy=20mm, dz=5mm  
Maximum value of SAR (measured) = 2.35 mW/g



## Test Laboratory: Motorola

**050505 900MHz Good 0%**

**DUT: Dipole 900 MHz; Type: D900V2**

Procedure Notes: 900 MHz System Performance Check / Dipole Sn# 91; PM1 Power = 200mW  
Sim.Temp@ meas = 19.6°C; Sim.Temp@ SPC = 19.4°C; Room Temp@ SPC = 21°C

Communication System: CW - Dipole; Frequency: 900 MHz; Duty Cycle: 1:1

Medium: VALIDATION Only; Medium parameters used:  $\sigma = 0.96$  mho/m,  $\epsilon_r = 40.3$ ;  $\rho = 1000$  kg/m<sup>3</sup>

DASY4 Configuration:

- Probe: ET3DV6 - SN1398; ConvF(6.42, 6.42, 6.42); Calibrated: 2/24/2005
- Sensor-Surface: 4mm (Mechanical Surface Detection)
- Electronics: DAE4 Sn316; Calibrated: 1/13/2005
- Phantom: R1: Sugar SAM; Type: SAM; Serial: TP-1005;
- Measurement SW: DASY4, V4.5 Build 19; Postprocessing SW: SEMCAD, V1.8 Build 147

**Daily SPC Check/Dipole Area Scan (4x9x1):**

Measurement grid: dx=15mm, dy=15mm; Maximum value of SAR (measured) = 2.24 mW/g

**Daily SPC Check/0-Degree 5x5x7 Cube (5x5x7)/Cube 0:**

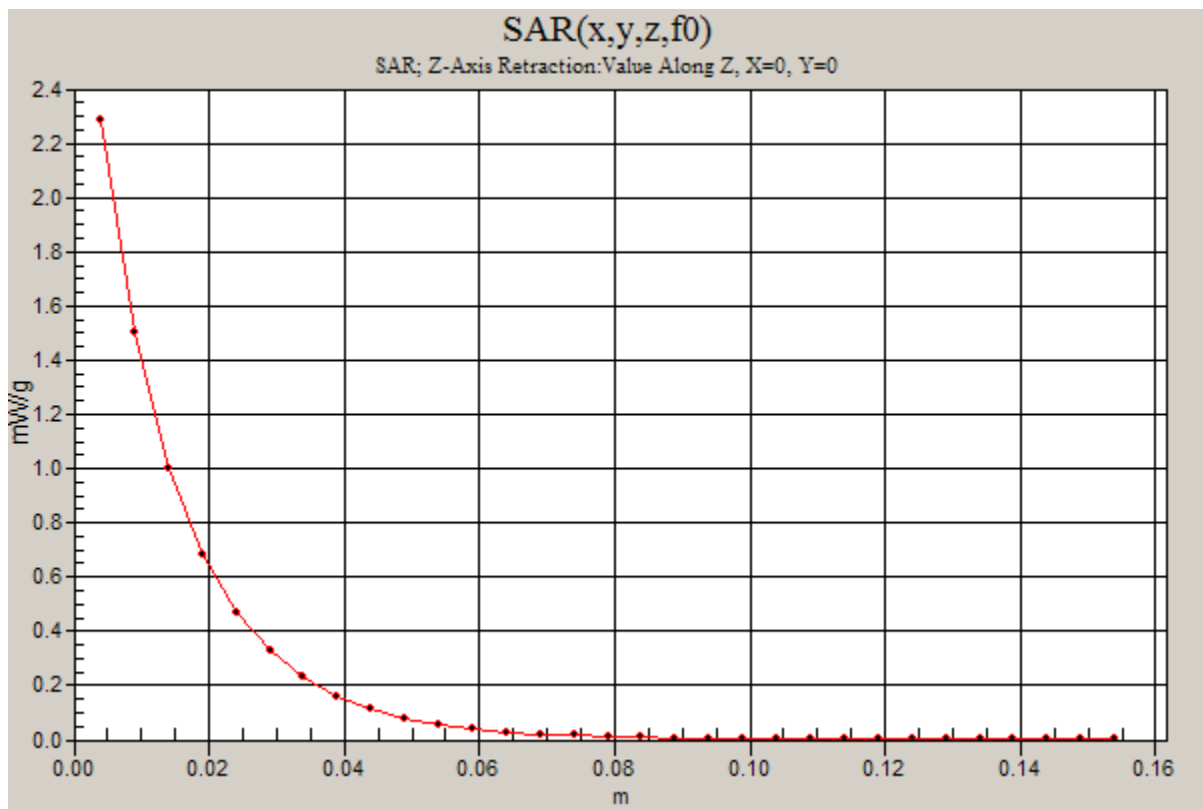
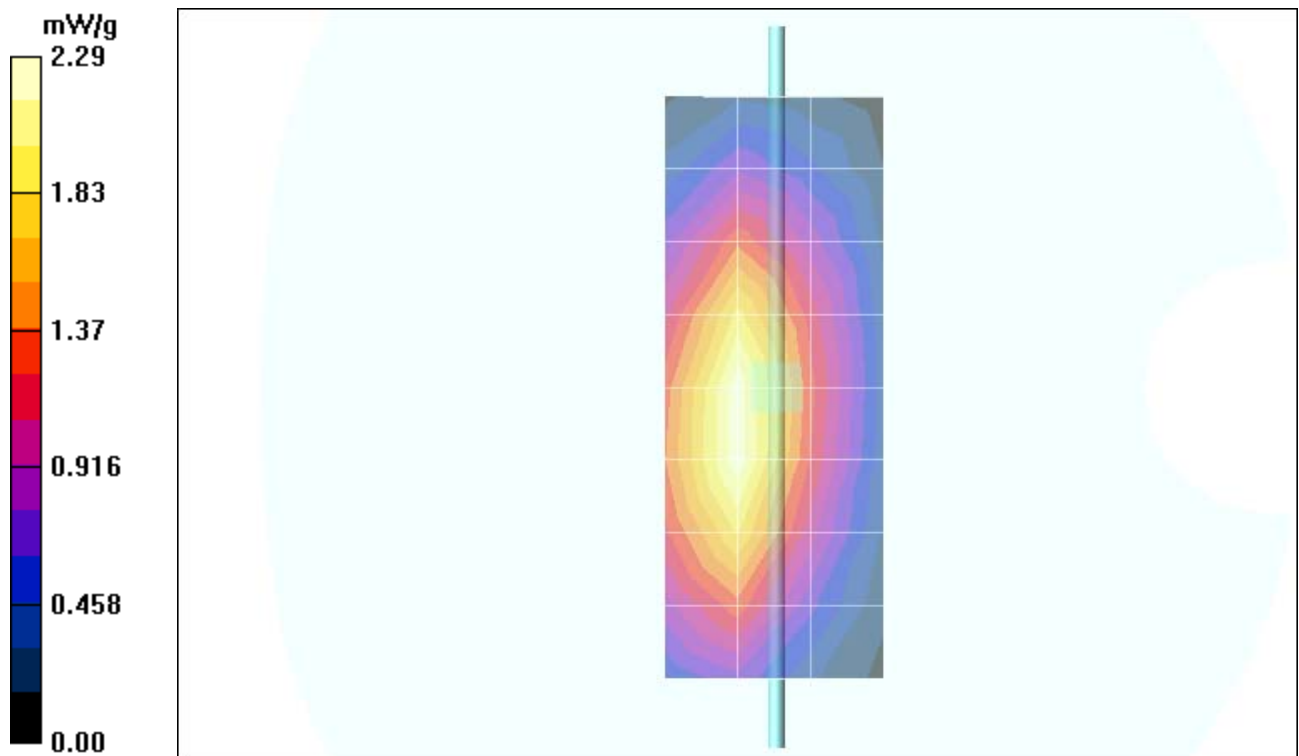
Measurement grid: dx=8mm, dy=8mm, dz=5mm; Reference Value = 45.9 V/m; Power Drift = 0.186 dB  
Peak SAR (extrapolated) = 3.22 W/kg; **SAR(1 g) = 2.12 mW/g; SAR(10 g) = 1.35 mW/g**  
Maximum value of SAR (measured) = 2.29 mW/g

**Daily SPC Check/90-Degree 5x5x7 Cube (5x5x7)/Cube 0:**

Measurement grid: dx=8mm, dy=8mm, dz=5mm; Reference Value = 45.9 V/m; Power Drift = 0.186 dB  
Peak SAR (extrapolated) = 3.33 W/kg; **SAR(1 g) = 2.2 mW/g; SAR(10 g) = 1.4 mW/g**  
Maximum value of SAR (measured) = 2.38 mW/g

**Daily SPC Check/Z-Axis Retraction (1x1x31):**

Measurement grid: dx=20mm, dy=20mm, dz=5mm



## Test Laboratory: Motorola

**050405 1800 MHZ good -2.0%**

**DUT: Dipole 1800 MHz; Type: D1800V2**

Procedure Notes: 1800 MHz System Performance Check / Dipole Sn# 259tr; PM1 Power = 200mW  
Sim.Temp@ meas = 19.8°C; Sim.Temp@ SPC = 19.5°C; Room Temp@ SPC = 21°C

Communication System: CW - Dipole; Frequency: 1800 MHz; Duty Cycle: 1:1

Medium: VALIDATION Only; Medium parameters used:  $\sigma = 1.34$  mho/m,  $\epsilon_r = 38.9$ ;  $\rho = 1000$  kg/m<sup>3</sup>

DASY4 Configuration:

- Probe: ET3DV6 - SN1398; ConvF(5.12, 5.12, 5.12); Calibrated: 2/24/2005
- Sensor-Surface: 4mm (Mechanical Surface Detection)
- Electronics: DAE4 Sn316; Calibrated: 1/13/2005
- Phantom: R1: Glycol SAM; Type: SAM; Serial: TP-1154;
- Measurement SW: DASY4, V4.5 Build 19; Postprocessing SW: SEMCAD, V1.8 Build 147

### **Daily SPC Check/Dipole Area Scan (4x9x1):**

Measurement grid: dx=15mm, dy=15mm; Maximum value of SAR (measured) = 7.39 mW/g

### **Daily SPC Check/0-Degree 5x5x7 Cube (5x5x7)/Cube 0:**

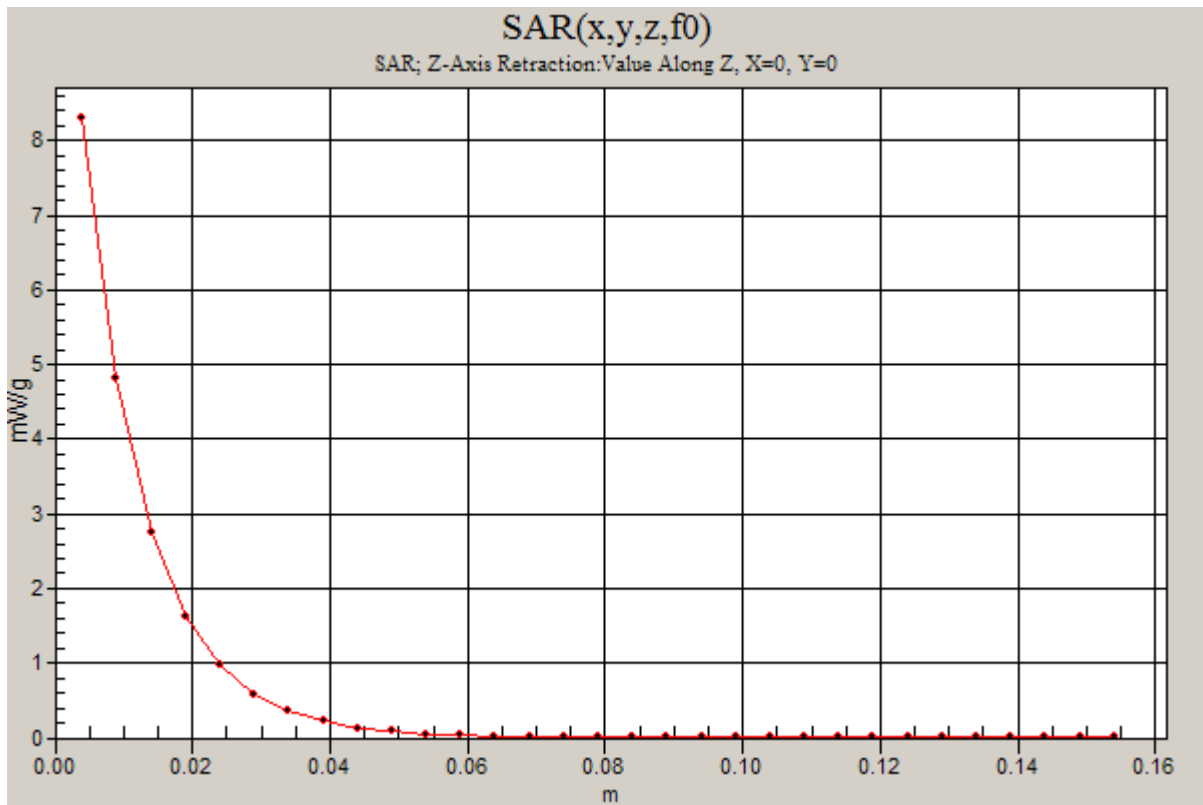
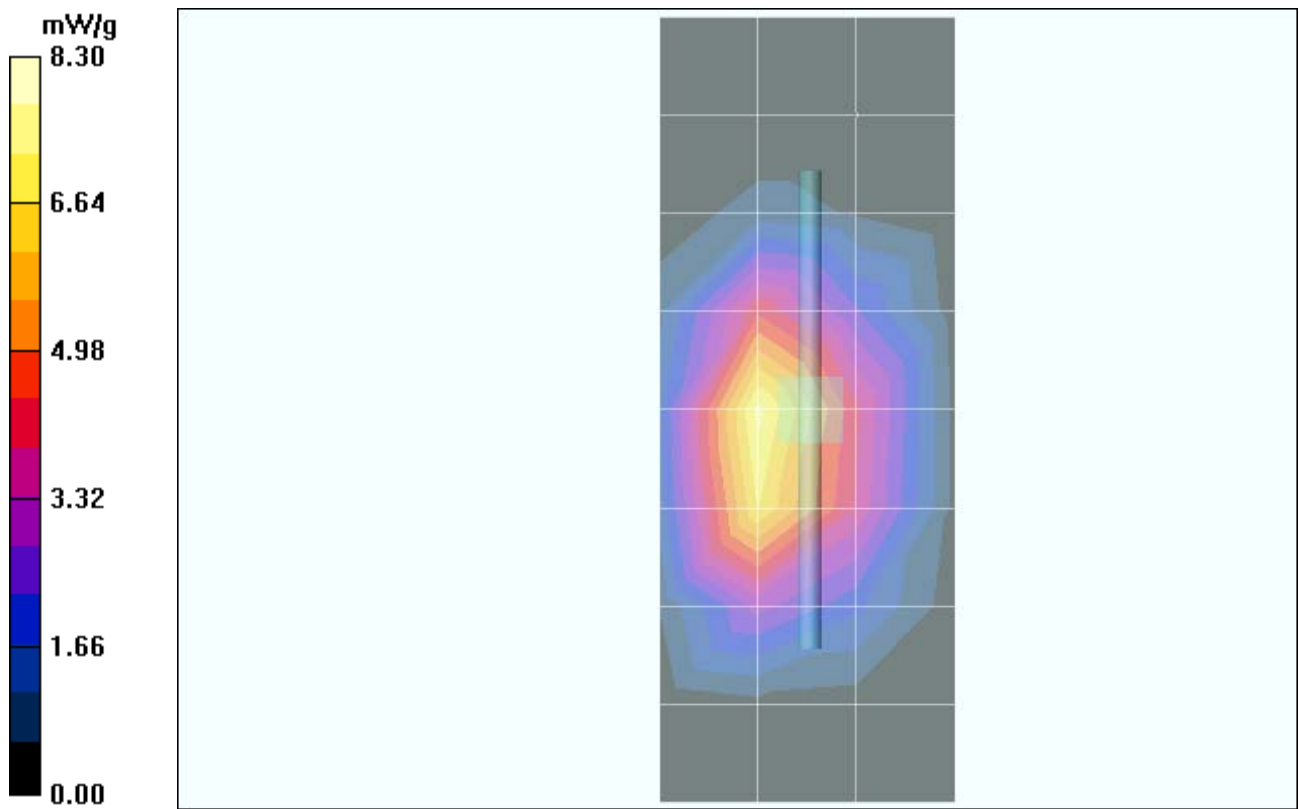
Measurement grid: dx=8mm, dy=8mm, dz=5mm; Reference Value = 77.7 V/m; Power Drift = 0.162 dB  
Peak SAR (extrapolated) = 12.3 W/kg; **SAR(1 g) = 7.29 mW/g; SAR(10 g) = 3.92 mW/g**  
Maximum value of SAR (measured) = 8.21 mW/g

### **Daily SPC Check/90-Degree 5x5x7 Cube (5x5x7)/Cube 0:**

Measurement grid: dx=8mm, dy=8mm, dz=5mm; Reference Value = 77.7 V/m; Power Drift = 0.163 dB  
Peak SAR (extrapolated) = 12.9 W/kg; **SAR(1 g) = 7.65 mW/g; SAR(10 g) = 4.12 mW/g**  
Maximum value of SAR (measured) = 8.59 mW/g

### **Daily SPC Check/Z-Axis Retraction (1x1x31):**

Measurement grid: dx=20mm, dy=20mm, dz=5mm  
Maximum value of SAR (measured) = 8.30 mW/g



## Test Laboratory: Motorola

### 050505 1800 MHZ Good 2.0%

#### DUT: Dipole 1800 MHz; Type: D1800V2

Procedure Notes: 1800 MHz System Performance Check / Dipole Sn# 259tr; PM1 Power = 200mW  
Sim.Temp@ meas = 19.9°C; Sim.Temp@ SPC = 19.5°C; Room Temp@ SPC = 21°C

Communication System: CW - Dipole; Frequency: 1800 MHz; Duty Cycle: 1:1

Medium: VALIDATION Only; Medium parameters used:  $\sigma = 1.34$  mho/m,  $\epsilon_r = 39.8$ ;  $\rho = 1000$  kg/m<sup>3</sup>

#### DASY4 Configuration:

- Probe: ET3DV6 - SN1398; ConvF(5.12, 5.12, 5.12); Calibrated: 2/24/2005
- Sensor-Surface: 4mm (Mechanical Surface Detection)
- Electronics: DAE4 Sn316; Calibrated: 1/13/2005
- Phantom: R1: Sect.2, Amy Twin; Type: Amy Twin Flat; Serial: n/a;
- Measurement SW: DASY4, V4.5 Build 19; Postprocessing SW: SEMCAD, V1.8 Build 147

#### Daily SPC Check/Dipole Area Scan (9x4x1):

Measurement grid: dx=15mm, dy=15mm; Maximum value of SAR (measured) = 6.63 mW/g

#### Daily SPC Check/0-Degree 5x5x7 Cube (5x5x7)/Cube 0:

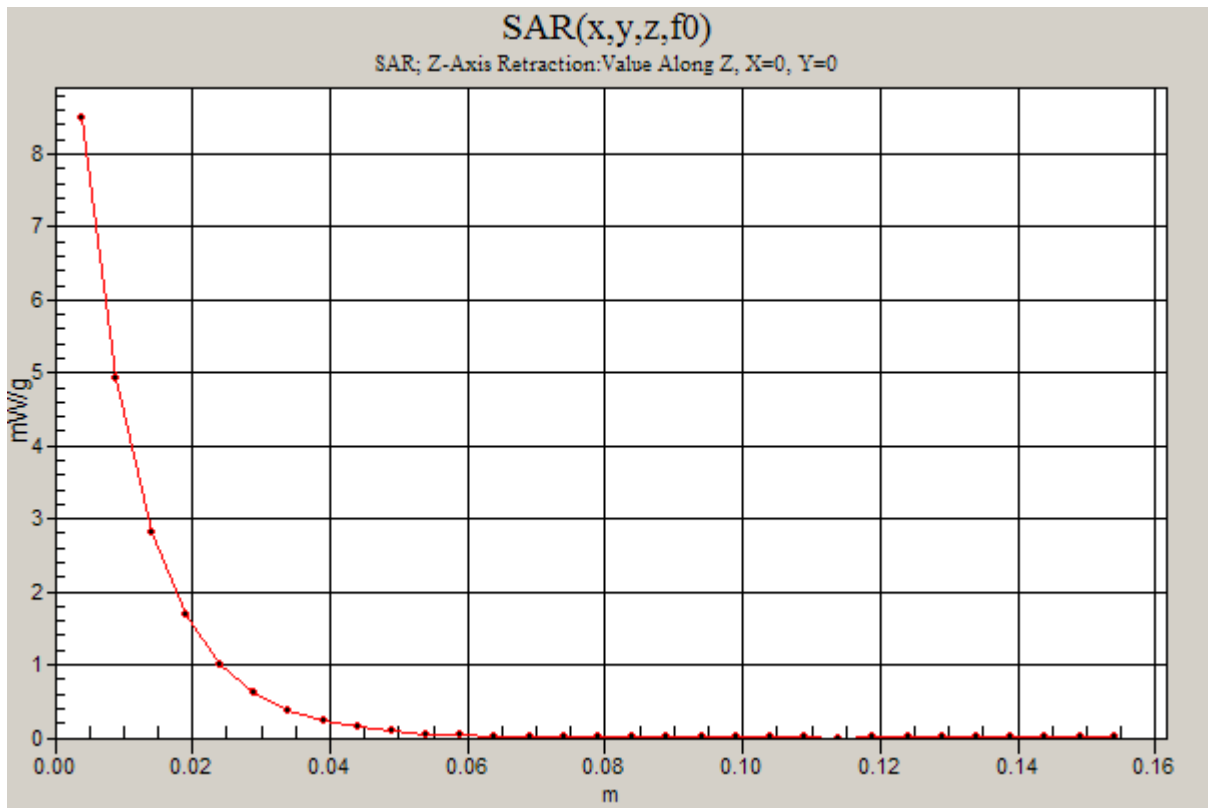
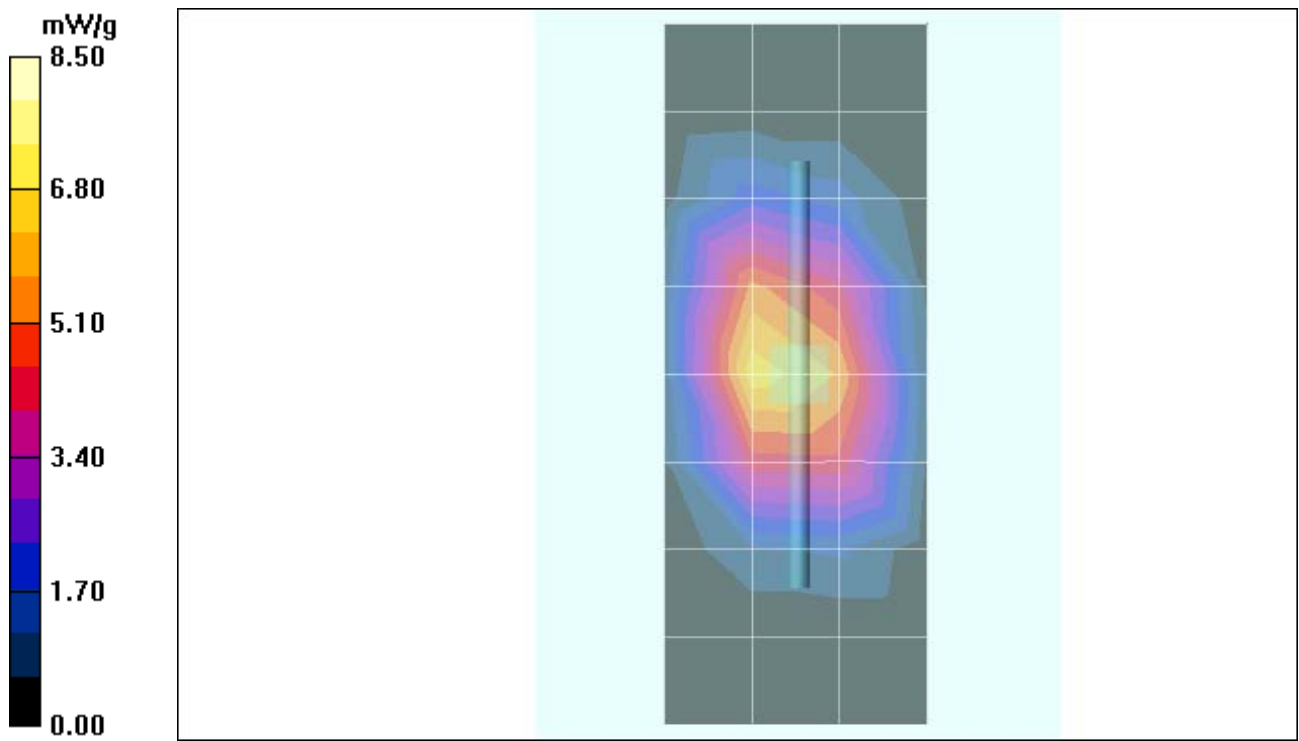
Measurement grid: dx=8mm, dy=8mm, dz=5mm; Reference Value = 83.6 V/m; Power Drift = 0.010 dB  
Peak SAR (extrapolated) = 12.8 W/kg; **SAR(1 g) = 7.56 mW/g; SAR(10 g) = 4.04 mW/g**  
Maximum value of SAR (measured) = 8.43 mW/g

#### Daily SPC Check/90-Degree 5x5x7 Cube (5x5x7)/Cube 0:

Measurement grid: dx=8mm, dy=8mm, dz=5mm; Reference Value = 83.6 V/m; Power Drift = 0.010 dB  
Peak SAR (extrapolated) = 13.7 W/kg; **SAR(1 g) = 7.99 mW/g; SAR(10 g) = 4.26 mW/g**  
Maximum value of SAR (measured) = 8.74 mW/g

#### Daily SPC Check/Z-Axis Retraction (1x1x31):

Measurement grid: dx=20mm, dy=20mm, dz=5mm  
Maximum value of SAR (measured) = 8.50 mW/g



# Test Laboratory: Motorola

## 051005 1800 MHZ GOOD 1.5%

### DUT: Dipole 1800 MHz; Type: D1800V2

Procedure Notes: 1800 MHz System Performance Check / Dipole Sn# 259tr; PM1 Power = 200mW  
Sim.Temp@ meas = 20.5°C; Sim.Temp@ SPC = 19.8°C; Room Temp@ SPC = 22°C

Communication System: CW - Dipole; Frequency: 1800 MHz; Duty Cycle: 1:1

Medium: VALIDATION Only; Medium parameters used:  $\sigma = 1.35$  mho/m,  $\epsilon_r = 39.3$ ;  $\rho = 1000$  kg/m<sup>3</sup>

### DASY4 Configuration:

- Probe: ET3DV6 - SN1398; ConvF(5.12, 5.12, 5.12); Calibrated: 2/24/2005
- Sensor-Surface: 4mm (Mechanical Surface Detection)
- Electronics: DAE4 Sn316; Calibrated: 1/13/2005
- Phantom: R1: Sect.2, Amy Twin; Type: Amy Twin Flat; Serial: n/a;
- Measurement SW: DASY4, V4.5 Build 19; Postprocessing SW: SEMCAD, V1.8 Build 147

### Daily SPC Check/Dipole Area Scan (9x4x1):

Measurement grid: dx=15mm, dy=15mm; Maximum value of SAR (measured) = 6.63 mW/g

### Daily SPC Check/0-Degree 5x5x7 Cube (5x5x7)/Cube 0:

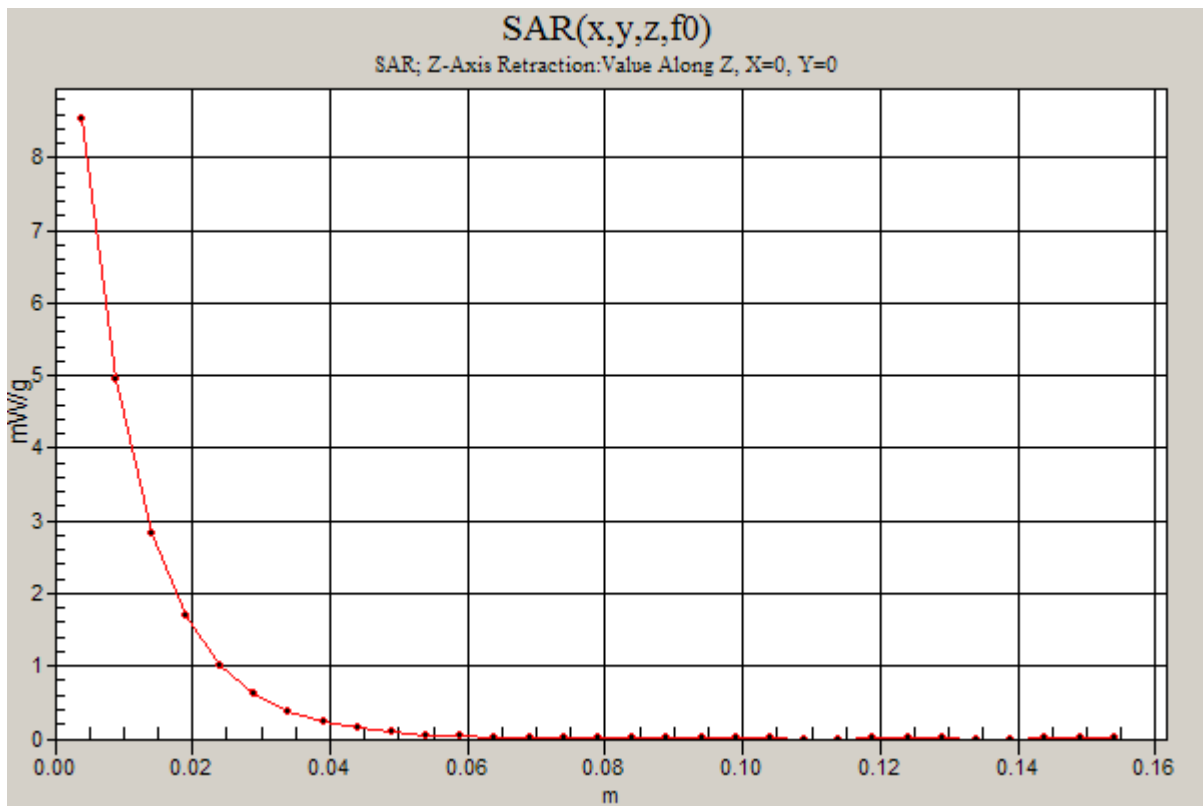
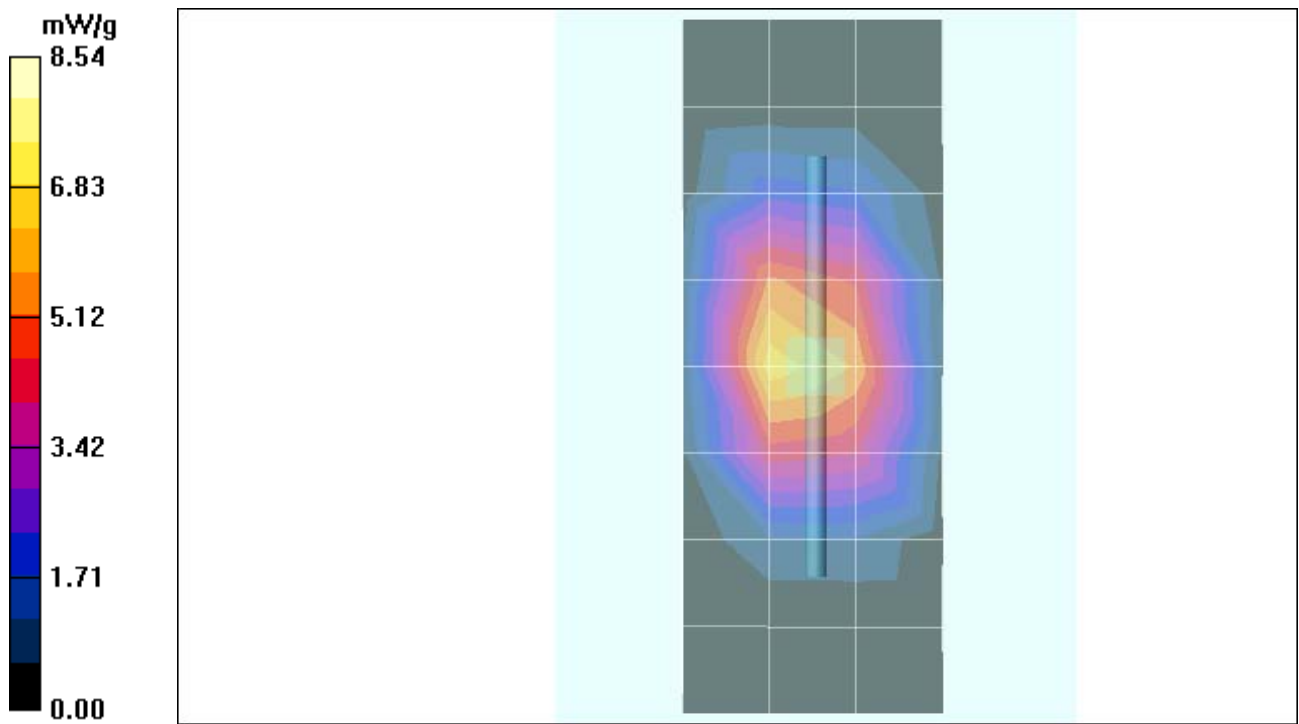
Measurement grid: dx=8mm,dy=8mm,dz=5mm; Reference Value = 84.3 V/m; Power Drift = -0.067 dB  
Peak SAR (extrapolated) = 12.8 W/kg; **SAR(1 g) = 7.57 mW/g; SAR(10 g) = 4.05 mW/g**  
Maximum value of SAR (measured) = 8.48 mW/g

### Daily SPC Check/90-Degree 5x5x7 Cube (5x5x7)/Cube 0:

Measurement grid: dx=8mm,dy=8mm,dz=5mm; Reference Value = 84.3 V/m; Power Drift = -0.067 dB  
Peak SAR (extrapolated) = 13.4 W/kg; **SAR(1 g) = 7.9 mW/g; SAR(10 g) = 4.23 mW/g**  
Maximum value of SAR (measured) = 8.87 mW/g

### Daily SPC Check/Z-Axis Retraction (1x1x31):

Measurement grid: dx=20mm, dy=20mm, dz=5mm  
Maximum value of SAR (measured) = 8.54 mW/g



## **Appendix 2**

### **SAR distribution plots for Phantom Head Adjacent Use**

Note that, since the 850MHz head adjacent SAR values were less than or equal to that previously reported, the values included in tables 1, 2 and 3 are for reference only. This data has been included to show that the head adjacent SAR values did not significantly increase from that previously reported. As such, no SAR distribution plots for phantom head adjacent use have been included in Appendix 2 of this document. The SAR distribution plots for phantom head adjacent use that were included in Appendix 2 of the original filing report should still be considered to apply.

# Test Laboratory: Motorola

**Serial: G00S570056**

Procedure Notes: Ch# 661 / Pwr Step: 0; Antenna Position: fixed; Accessory Model #: none; Battery Model #: SNN5685A; DEVICE POSITION: cheek

Communication System: GSM 1900; Frequency: 1880 MHz; Duty Cycle: 1:8

Medium: Regular Glycol Head; Medium parameters used:  $\sigma = 1.45$  mho/m,  $\epsilon_r = 39.1$ ;  $\rho = 1000$  kg/m<sup>3</sup>

DASY4 Configuration:

- Probe: ET3DV6 - SN1398; ConvF(5.12, 5.12, 5.12); Calibrated: 2/24/2005
- Sensor-Surface: 4mm (Mechanical Surface Detection)
- Electronics: DAE4 Sn316; Calibrated: 1/13/2005
- Phantom: R1: Glycol SAM; Type: SAM; Serial: TP-1154;
- Measurement SW: DASY4, V4.5 Build 19; Postprocessing SW: SEMCAD, V1.8 Build 147

## Left Head Template/Area Scan - Normal (15mm) (7x17x1):

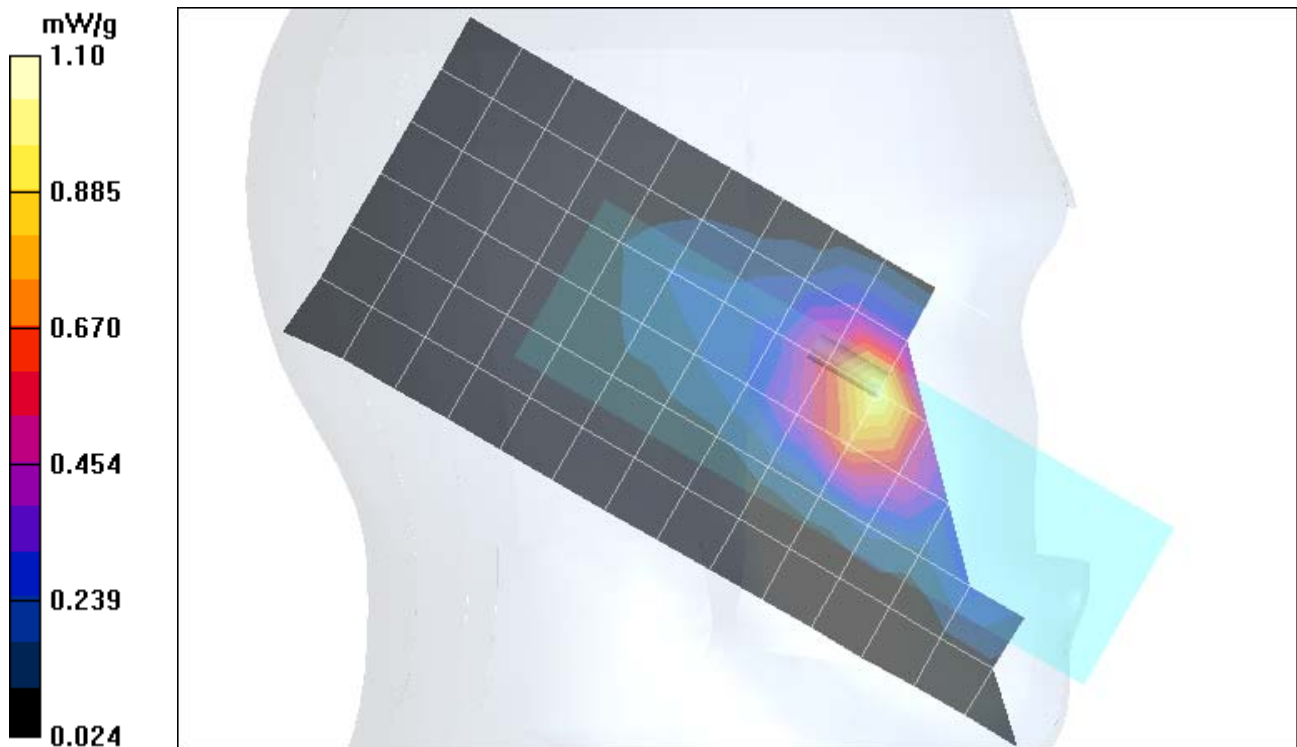
Measurement grid: dx=15mm, dy=15mm; Maximum value of SAR (measured) = 1.01 mW/g

## Left Head Template/Zoom Scan (7x7x7)/Cube 0:

Measurement grid: dx=5mm, dy=5mm, dz=5mm; Reference Value = 25.6 V/m; **Power Drift = 0.084 dB**

Peak SAR (extrapolated) = 1.73 W/kg; **SAR(1 g) = 1.02 mW/g; SAR(10 g) = 0.560 mW/g**

Maximum value of SAR (measured) = 1.10 mW/g



# Test Laboratory: Motorola

**Serial: G00S570056**

Procedure Notes: Ch#661 / Pwr Step: 0; Antenna Position: fixed; Accessory Model #: none; Battery Model #: SNN5685A; DEVICE POSITION: cheek

Communication System: GSM 1900; Frequency: 1880 MHz; Duty Cycle: 1:8

Medium: Regular Glycol Head; Medium parameters used:  $\sigma = 1.45$  mho/m,  $\epsilon_r = 39.1$ ;  $\rho = 1000$  kg/m<sup>3</sup>

DASY4 Configuration:

- Probe: ET3DV6 - SN1398; ConvF(5.12, 5.12, 5.12); Calibrated: 2/24/2005
- Sensor-Surface: 4mm (Mechanical Surface Detection)
- Electronics: DAE4 Sn316; Calibrated: 1/13/2005
- Phantom: R1: Glycol SAM; Type: SAM; Serial: TP-1154;
- Measurement SW: DASY4, V4.5 Build 19; Postprocessing SW: SEMCAD, V1.8 Build 147

## Right Head Template/Area Scan - Normal (15mm) (7x17x1):

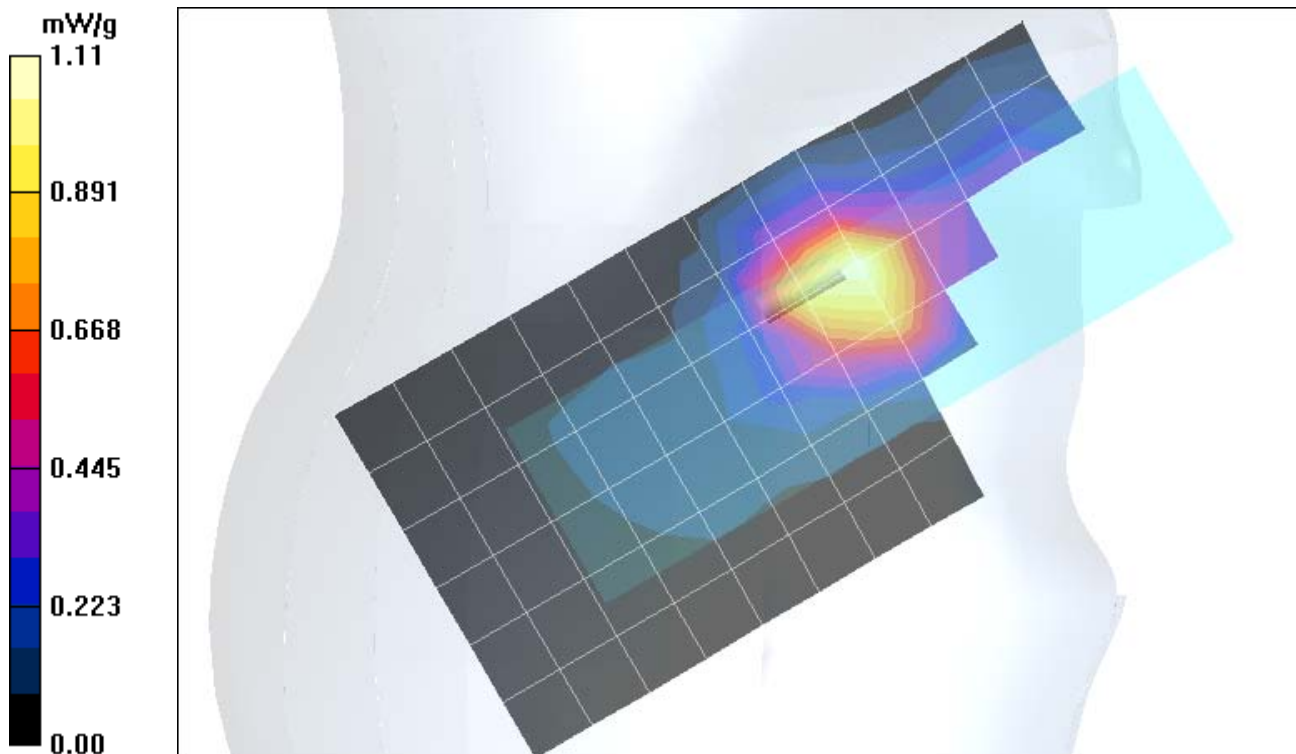
Measurement grid: dx=15mm, dy=15mm; Maximum value of SAR (measured) = 1.11 mW/g

## Right Head Template/Zoom Scan (7x7x7)/Cube 0:

Measurement grid: dx=5mm, dy=5mm, dz=5mm; Reference Value = 30.1 V/m; **Power Drift = -0.060 dB**

Peak SAR (extrapolated) = 1.73 W/kg; **SAR(1 g) = 1.08 mW/g; SAR(10 g) = 0.613 mW/g**

Maximum value of SAR (measured) = 1.17 mW/g



# Test Laboratory: Motorola

**Serial: G00S570056**

Procedure Notes: Ch# 661 / Pwr Step: 0 OTA; Antenna Position: FIXED; Accessory Model #: NONE; Battery Model #: SNN5685A; DEVICE POSITION: TILTED

Communication System: GSM 1900; Frequency: 1880 MHz; Duty Cycle: 1:8

Medium: Regular Glycol Head; Medium parameters used:  $\sigma = 1.45$  mho/m,  $\epsilon_r = 39.1$ ;  $\rho = 1000$  kg/m<sup>3</sup>

DASY4 Configuration:

- Probe: ET3DV6 - SN1398; ConvF(5.12, 5.12, 5.12); Calibrated: 2/24/2005
- Sensor-Surface: 4mm (Mechanical Surface Detection)
- Electronics: DAE4 Sn316; Calibrated: 1/13/2005
- Phantom: R1: Glycol SAM; Type: SAM; Serial: TP-1154;
- Measurement SW: DASY4, V4.5 Build 19; Postprocessing SW: SEMCAD, V1.8 Build 147

## Left Head Template/Area Scan - Normal (15mm) (7x17x1):

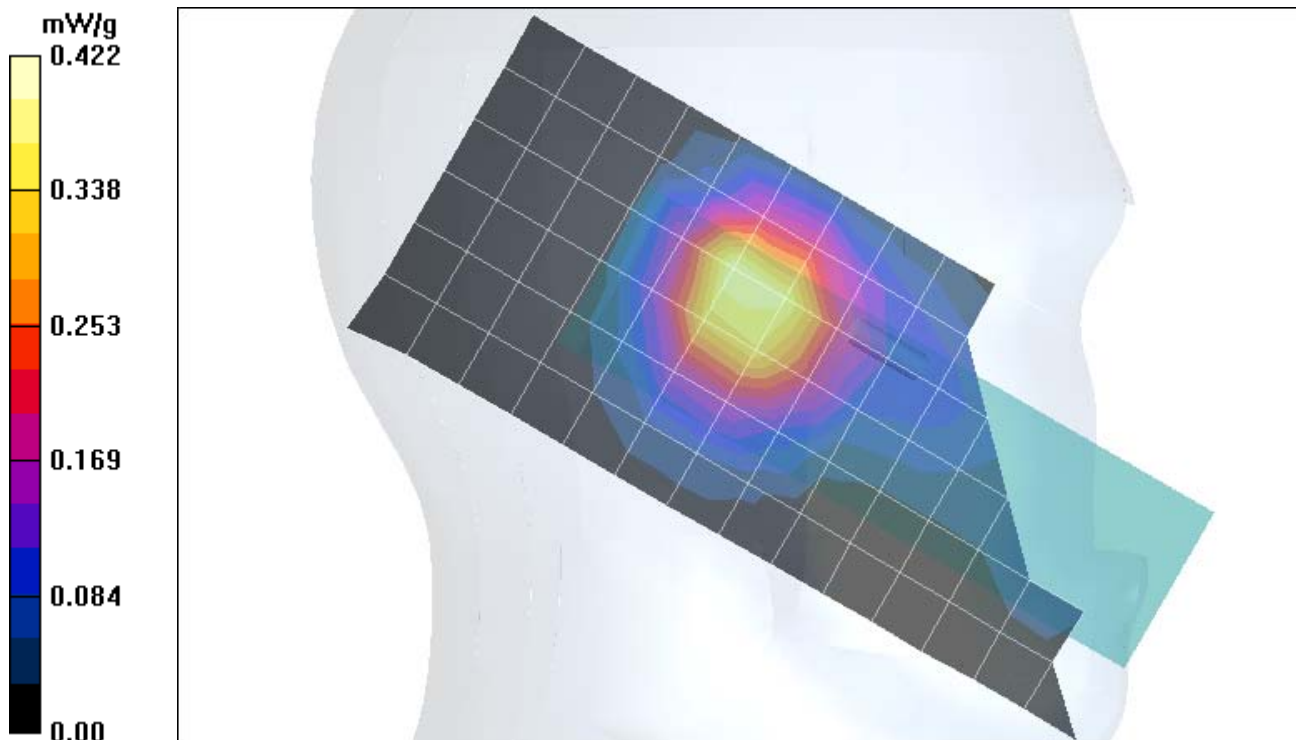
Measurement grid: dx=15mm, dy=15mm; Maximum value of SAR (measured) = 0.395 mW/g

## Left Head Template/Zoom Scan (7x7x7)/Cube 0:

Measurement grid: dx=5mm, dy=5mm, dz=5mm; Reference Value = 17.8 V/m; **Power Drift = -0.035 dB**

Peak SAR (extrapolated) = 0.585 W/kg; **SAR(1 g) = 0.394 mW/g; SAR(10 g) = 0.246 mW/g**

Maximum value of SAR (measured) = 0.422 mW/g



# Test Laboratory: Motorola

**Serial: G00S570056**

Procedure Notes: Ch#661/ Pwr Step: 0; Antenna Position: fixed; Accessory Model #: none; Battery Model #: SNN5685A; DEVICE POSITION: tilt

Communication System: GSM 1900; Frequency: 1880 MHz; Duty Cycle: 1:8

Medium: Regular Glycol Head; Medium parameters used:  $\sigma = 1.45$  mho/m,  $\epsilon_r = 39.1$ ;  $\rho = 1000$  kg/m<sup>3</sup>

DASY4 Configuration:

- Probe: ET3DV6 - SN1398; ConvF(5.12, 5.12, 5.12); Calibrated: 2/24/2005
- Sensor-Surface: 4mm (Mechanical Surface Detection)
- Electronics: DAE4 Sn316; Calibrated: 1/13/2005
- Phantom: R1: Glycol SAM; Type: SAM; Serial: TP-1154;
- Measurement SW: DASY4, V4.5 Build 19; Postprocessing SW: SEMCAD, V1.8 Build 147

## Right Head Template/Area Scan - Normal (15mm) (7x17x1):

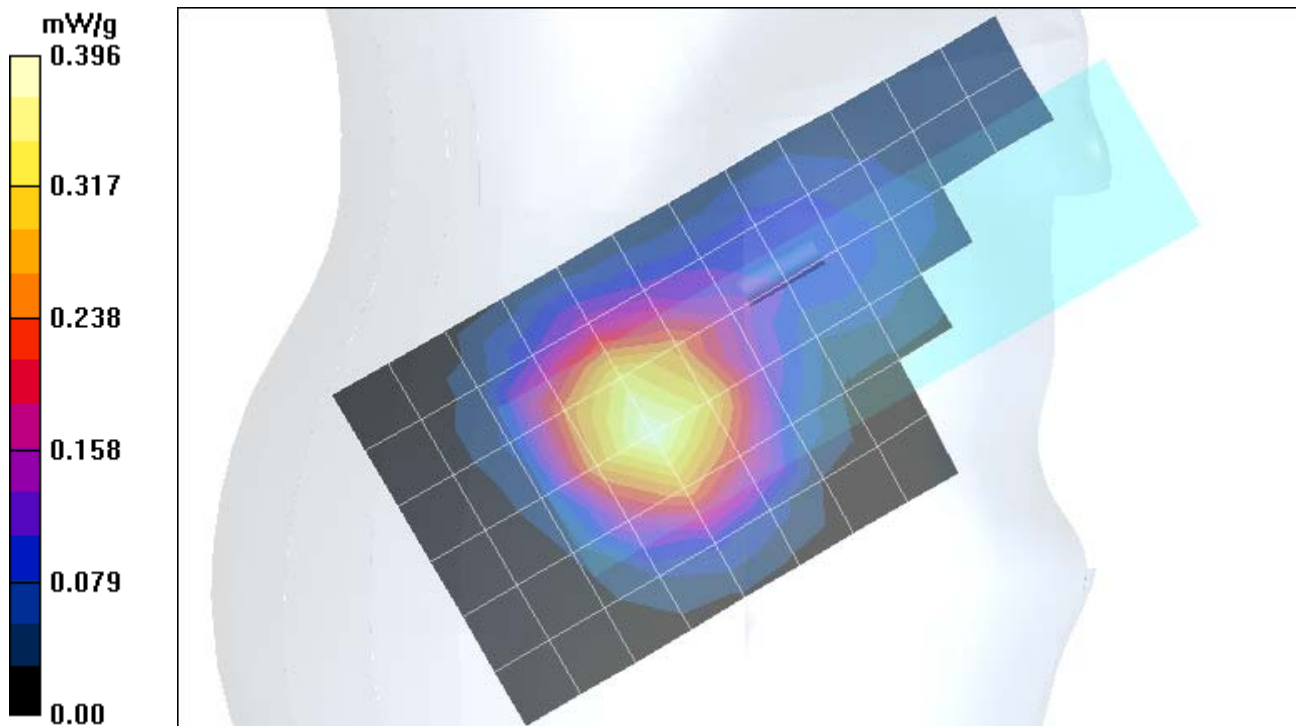
Measurement grid: dx=15mm, dy=15mm; Maximum value of SAR (measured) = 0.396 mW/g

## Right Head Template/Zoom Scan (7x7x7)/Cube 0:

Measurement grid: dx=5mm, dy=5mm, dz=5mm; Reference Value = 16.6 V/m; **Power Drift = 0.024 dB**

Peak SAR (extrapolated) = 0.524 W/kg; **SAR(1 g) = 0.368 mW/g; SAR(10 g) = 0.234 mW/g**

Maximum value of SAR (measured) = 0.397 mW/g



# Test Laboratory: Motorola

**Serial: G00S570056**

Procedure Notes: Ch# 810 / Pwr Step: 0 OTA; Antenna Position: FIXED; Accessory Model #: NONE; Battery Model #: SNN5683A; DEVICE POSITION: CHEEK

Communication System: GSM 1900; Frequency: 1909.8 MHz; Duty Cycle: 1:8

Medium: Back-Up Glycol Head; Medium parameters used:  $\sigma = 1.44$  mho/m,  $\epsilon_r = 39.5$ ;  $\rho = 1000$  kg/m<sup>3</sup>

DASY4 Configuration:

- Probe: ET3DV6 - SN1398; ConvF(5.12, 5.12, 5.12); Calibrated: 2/24/2005
- Sensor-Surface: 4mm (Mechanical Surface Detection)
- Electronics: DAE4 Sn316; Calibrated: 1/13/2005
- Phantom: R1: Glycol SAM; Type: SAM; Serial: TP-1154;
- Measurement SW: DASY4, V4.5 Build 19; Postprocessing SW: SEMCAD, V1.8 Build 147

## Right Head Template/Area Scan - Normal (15mm) (7x17x1):

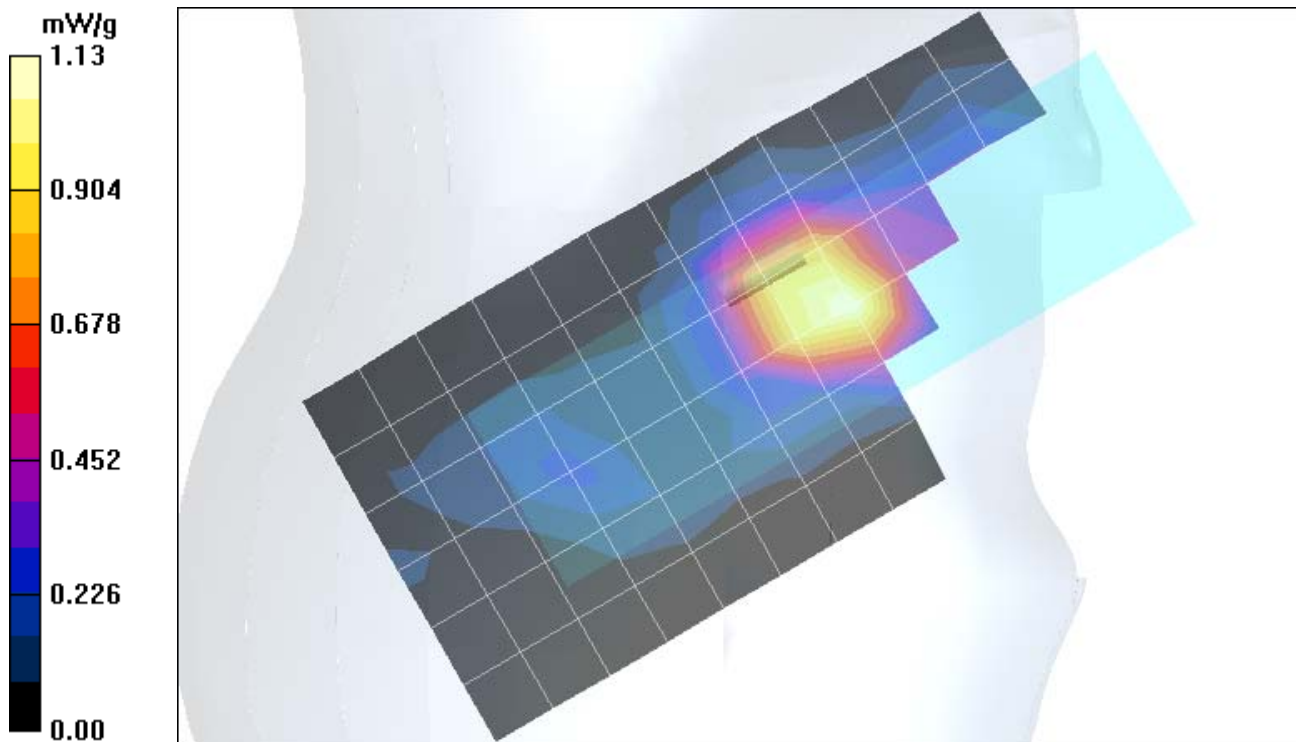
Measurement grid: dx=15mm, dy=15mm; Maximum value of SAR (measured) = 1.13 mW/g

## Right Head Template/Zoom Scan (7x7x7)/Cube 0:

Measurement grid: dx=5mm, dy=5mm, dz=5mm; Reference Value = 29.8 V/m; **Power Drift = -0.186 dB**

Peak SAR (extrapolated) = 1.83 W/kg; **SAR(1 g) = 1.13 mW/g; SAR(10 g) = 0.642 mW/g**

Maximum value of SAR (measured) = 1.23 mW/g



# Test Laboratory: Motorola

**Serial: G00S570056**

Procedure Notes: Ch# 661 / Pwr Step: 0 OTA (GPRS); Antenna Position: FIXED Battery Model #: SNN5685A; Accessory Model #: none; DEVICE POSITION: Open Phone 25mm Away from Flat Phantom (PTT GPRS)

Communication System: GPRS 1900 - Class 10; Frequency: 1880 MHz; Channel Number: 661; Duty Cycle: 1:4

Medium: Back-Up Glycol Head; Medium parameters used:  $\sigma = 1.44$  mho/m,  $\epsilon_r = 39.5$ ;  $\rho = 1000$  kg/m<sup>3</sup>

DASY4 Configuration:

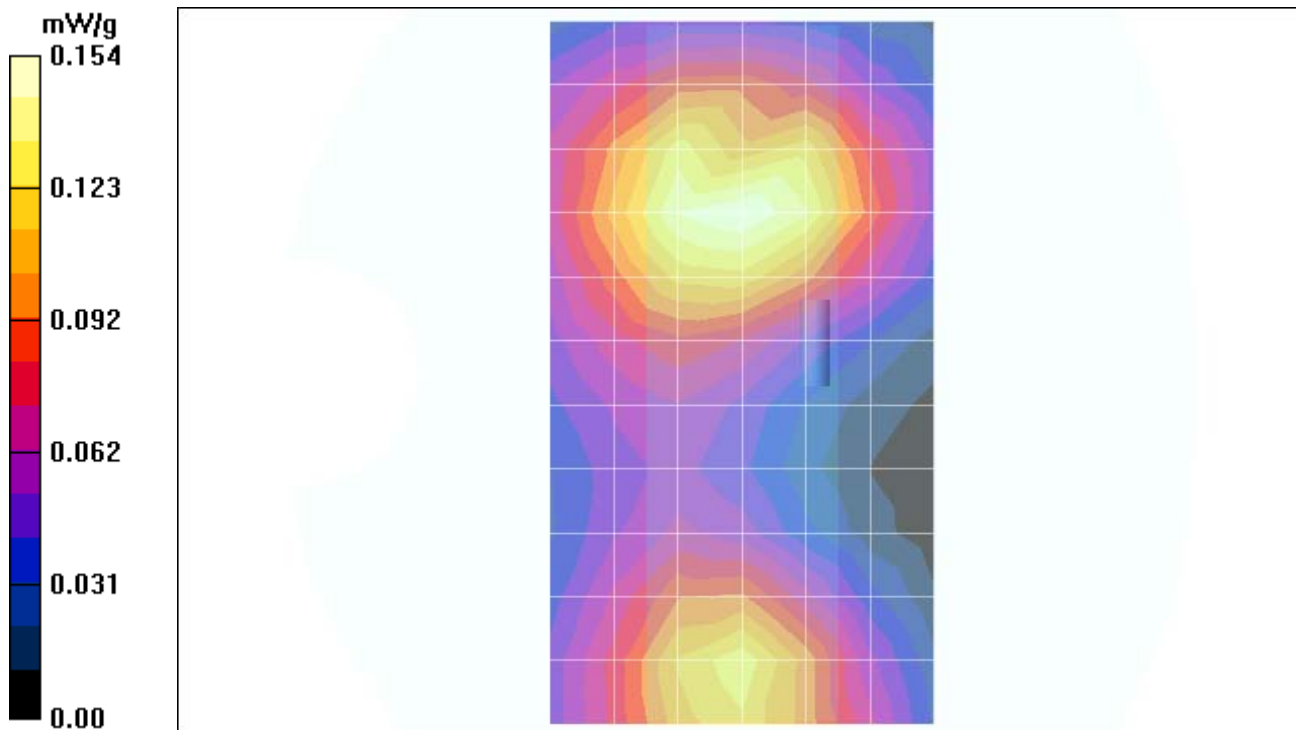
- Probe: ET3DV6 - SN1398; ConvF(5.12, 5.12, 5.12); Calibrated: 2/24/2005
- Sensor-Surface: 4mm (Mechanical Surface Detection)
- Electronics: DAE4 Sn316; Calibrated: 1/13/2005
- Phantom: R1: Glycol SAM; Type: SAM; Serial: TP-1154;
- Measurement SW: DASY4, V4.5 Build 19; Postprocessing SW: SEMCAD, V1.8 Build 147

## **SAM Phone Against Flat Section/Area Scan - Normal Body (15mm) (12x7x1):**

Measurement grid: dx=15mm, dy=15mm; Maximum value of SAR (measured) = 0.154 mW/g

## **SAM Phone Against Flat Section/Zoom Scan (7x7x7)/Cube 0:**

Measurement grid: dx=5mm,dy=5mm,dz=5mm; Reference Value = 10.8 V/m; **Power Drift = 0.018 dB**  
Peak SAR (extrapolated) = 0.222 W/kg; **SAR(1 g) = 0.143 mW/g; SAR(10 g) = 0.092 mW/g**  
Maximum value of SAR (measured) = 0.153 mW/g



# Test Laboratory: Motorola

**Serial: G00S570056**

Procedure Notes: Ch# 661 / Pwr Step: 2 OTA (EDGE); Antenna Position: FIXED; Battery Model #: SNN5685A; Accessory Model #: none; DEVICE POSITION: Open Phone 25mm Away from Flat Phantom (PTT EDGE)

Communication System: EDGE 1900 - Class 6; Frequency: 1880 MHz; Channel Number: 661; Duty Cycle: 1:4

Medium: Back-Up Glycol Head; Medium parameters used:  $\sigma = 1.44$  mho/m,  $\epsilon_r = 39.5$ ;  $\rho = 1000$  kg/m<sup>3</sup>

DASY4 Configuration:

- Probe: ET3DV6 - SN1398; ConvF(5.12, 5.12, 5.12); Calibrated: 2/24/2005
- Sensor-Surface: 4mm (Mechanical Surface Detection)
- Electronics: DAE4 Sn316; Calibrated: 1/13/2005
- Phantom: R1: Glycol SAM; Type: SAM; Serial: TP-1154;
- Measurement SW: DASY4, V4.5 Build 19; Postprocessing SW: SEMCAD, V1.8 Build 147

## SAM Phone Against Flat Section/Area Scan - Normal Body (15mm) (12x7x1):

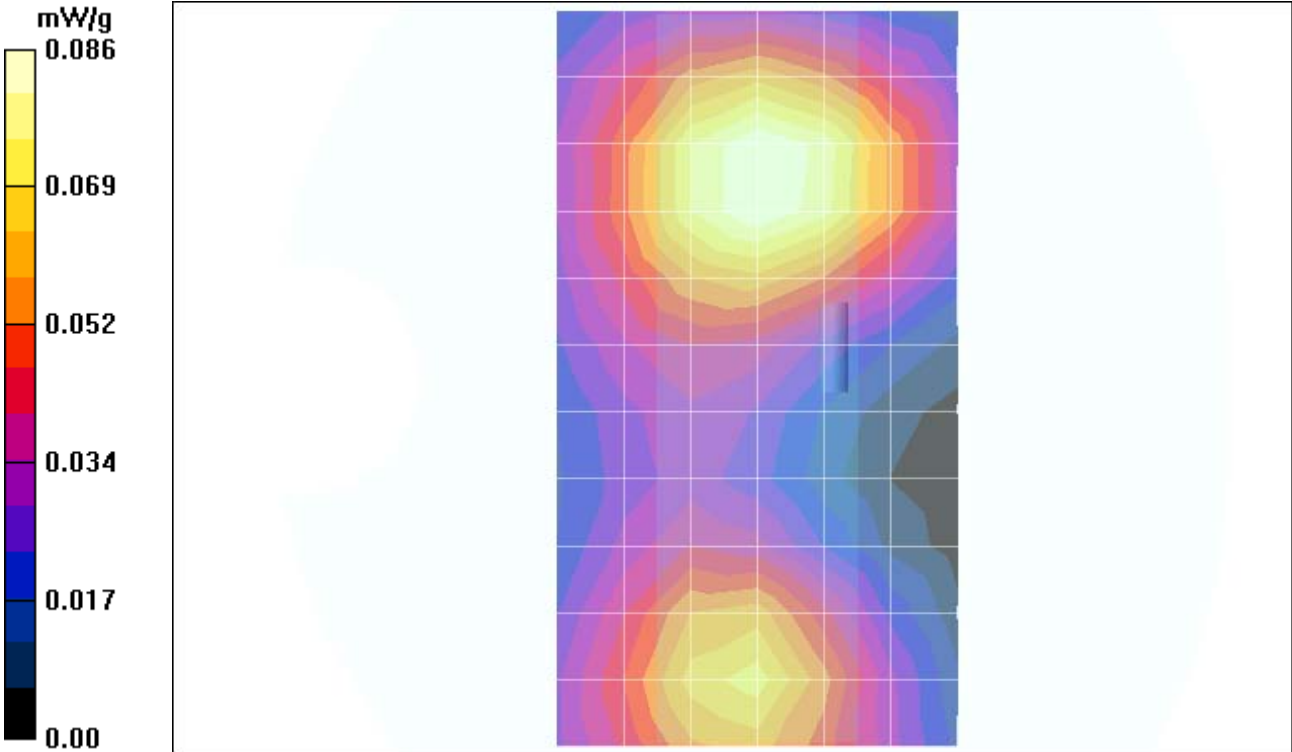
Measurement grid: dx=15mm, dy=15mm; Maximum value of SAR (measured) = 0.086 mW/g

## SAM Phone Against Flat Section/Zoom Scan (7x7x7)/Cube 0:

Measurement grid: dx=5mm, dy=5mm, dz=5mm; Reference Value = 8.38 V/m; **Power Drift = -0.069 dB**

Peak SAR (extrapolated) = 0.127 W/kg; **SAR(1 g) = 0.084 mW/g; SAR(10 g) = 0.054 mW/g**

Maximum value of SAR (measured) = 0.090 mW/g



# Test Laboratory: Motorola

**Serial: G00S570056**

Procedure Notes: Ch# 190 / Pwr Step: 5 OTA (GPRS); Antenna Position: FIXED; Battery Model #: SNN5685A; Accessory Model #: none; DEVICE POSITION: Open Phone 25mm Away from Phantom (PTT GPRS)

Communication System: GPRS 850 - Class 10; Frequency: 836.6 MHz; Channel Number: 190; Duty Cycle: 1:4

Medium: Low Freq Head; Medium parameters used:  $\sigma = 0.91$  mho/m,  $\epsilon_r = 41.7$ ;  $\rho = 1000$  kg/m<sup>3</sup>

DASY4 Configuration:

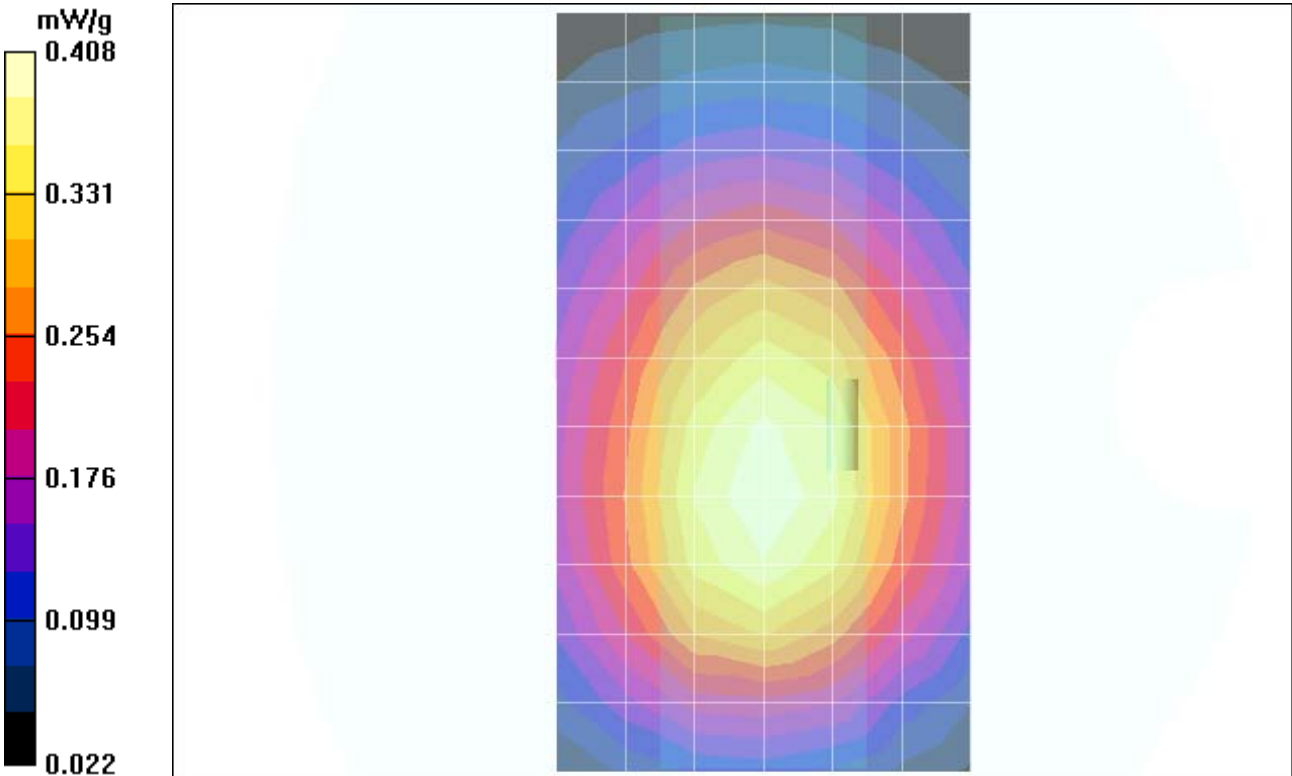
- Probe: ET3DV6 - SN1398; ConvF(6.42, 6.42, 6.42); Calibrated: 2/24/2005
- Sensor-Surface: 4mm (Mechanical Surface Detection)
- Electronics: DAE4 Sn316; Calibrated: 1/13/2005
- Phantom: R1: Sugar SAM; Type: SAM; Serial: TP-1005;
- Measurement SW: DASY4, V4.5 Build 19; Postprocessing SW: SEMCAD, V1.8 Build 147

## SAM Phone Against Flat Section/Area Scan - Normal Body (15mm) (12x7x1):

Measurement grid: dx=15mm, dy=15mm; Maximum value of SAR (measured) = 0.408 mW/g

## SAM Phone Against Flat Section/Zoom Scan (7x7x7)/Cube 0:

Measurement grid: dx=5mm,dy=5mm,dz=5mm; Reference Value = 21.9 V/m; **Power Drift = -0.179 dB**  
Peak SAR (extrapolated) = 0.505 W/kg; **SAR(1 g) = 0.378 mW/g; SAR(10 g) = 0.276 mW/g**  
Maximum value of SAR (measured) = 0.403 mW/g



# Test Laboratory: Motorola

**Serial: G00S570056**

Procedure Notes: Ch# 190 / Pwr Step: 8 OTA (EDGE); Antenna Position: FIXED; Battery Model #: SNN5685A; Accessory Model #: none; DEVICE POSITION: Open Phone 25mm Away from Phantom (PTT EDGE)

Communication System: EDGE 850 - Class 6; Frequency: 836.6 MHz; Channel Number: 190; Duty Cycle: 1:4

Medium: Low Freq Head; Medium parameters used:  $\sigma = 0.91$  mho/m,  $\epsilon_r = 41.7$ ;  $\rho = 1000$  kg/m<sup>3</sup>

DASY4 Configuration:

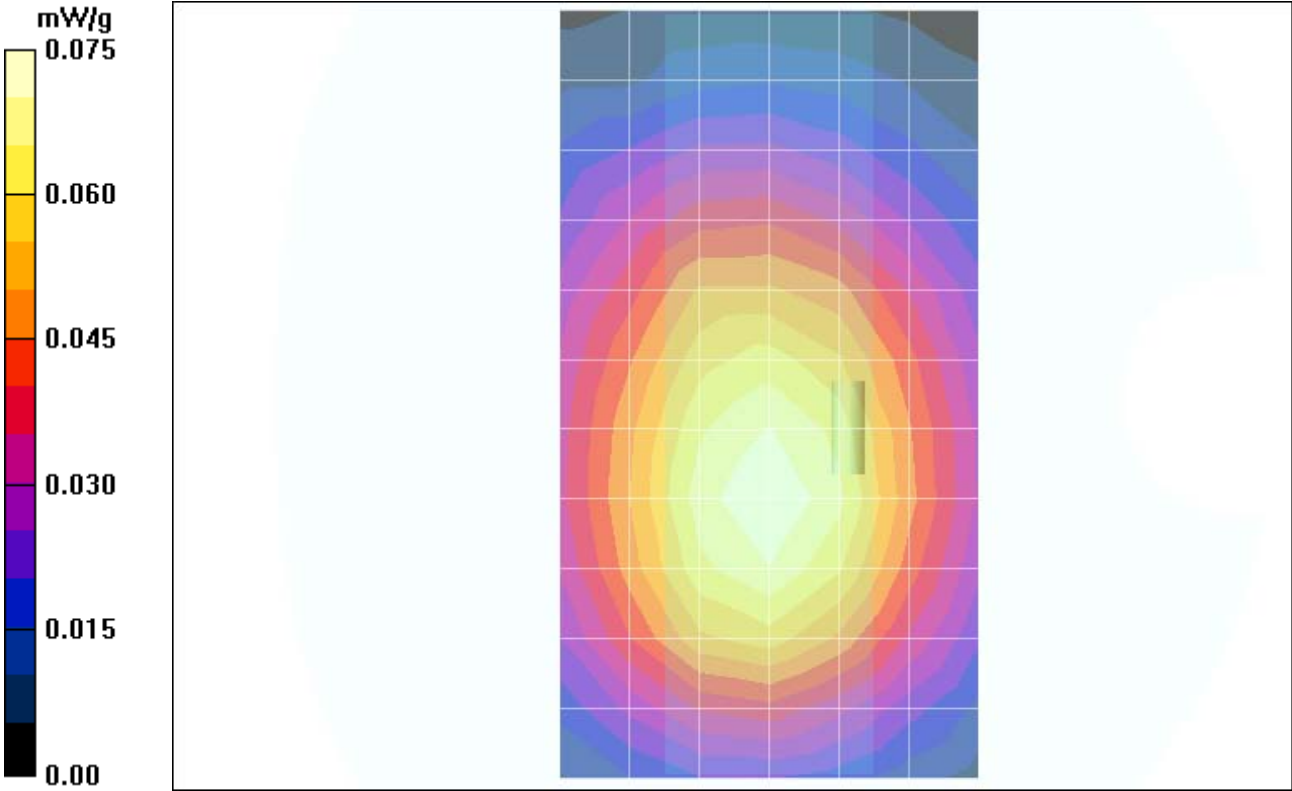
- Probe: ET3DV6 - SN1398; ConvF(6.42, 6.42, 6.42); Calibrated: 2/24/2005
- Sensor-Surface: 4mm (Mechanical Surface Detection)
- Electronics: DAE4 Sn316; Calibrated: 1/13/2005
- Phantom: R1: Sugar SAM; Type: SAM; Serial: TP-1005;
- Measurement SW: DASY4, V4.5 Build 19; Postprocessing SW: SEMCAD, V1.8 Build 147

## SAM Phone Against Flat Section/Area Scan - Normal Body (15mm) (12x7x1):

Measurement grid: dx=15mm, dy=15mm; Maximum value of SAR (measured) = 0.075 mW/g

## SAM Phone Against Flat Section/Zoom Scan (7x7x7)/Cube 0:

Measurement grid: dx=5mm, dy=5mm, dz=5mm; Reference Value = 9.25 V/m; **Power Drift = 0.062 dB**  
Peak SAR (extrapolated) = 0.097 W/kg; **SAR(1 g) = 0.071 mW/g; SAR(10 g) = 0.051 mW/g**



**Appendix 3**

**SAR distribution plots for Body Worn Configuration**

# Test Laboratory: Motorola

**Serial: G00S570056**

Procedure Notes: Ch# 190 / Pwr Step: 05; Antenna Position: FIXED; Battery Model #: SNN5685A; Accessory Model #: none; DEVICE POSITION: Front of phone 15mm from flat phantom

Communication System: GSM 850; Frequency: 836.6 MHz; Channel Number: 190; Duty Cycle: 1:8  
Medium: Low Freq Body; Medium parameters used:  $\sigma = 0.97$  mho/m,  $\epsilon_r = 53.2$ ;  $\rho = 1000$  kg/m<sup>3</sup>

DASY4 Configuration:

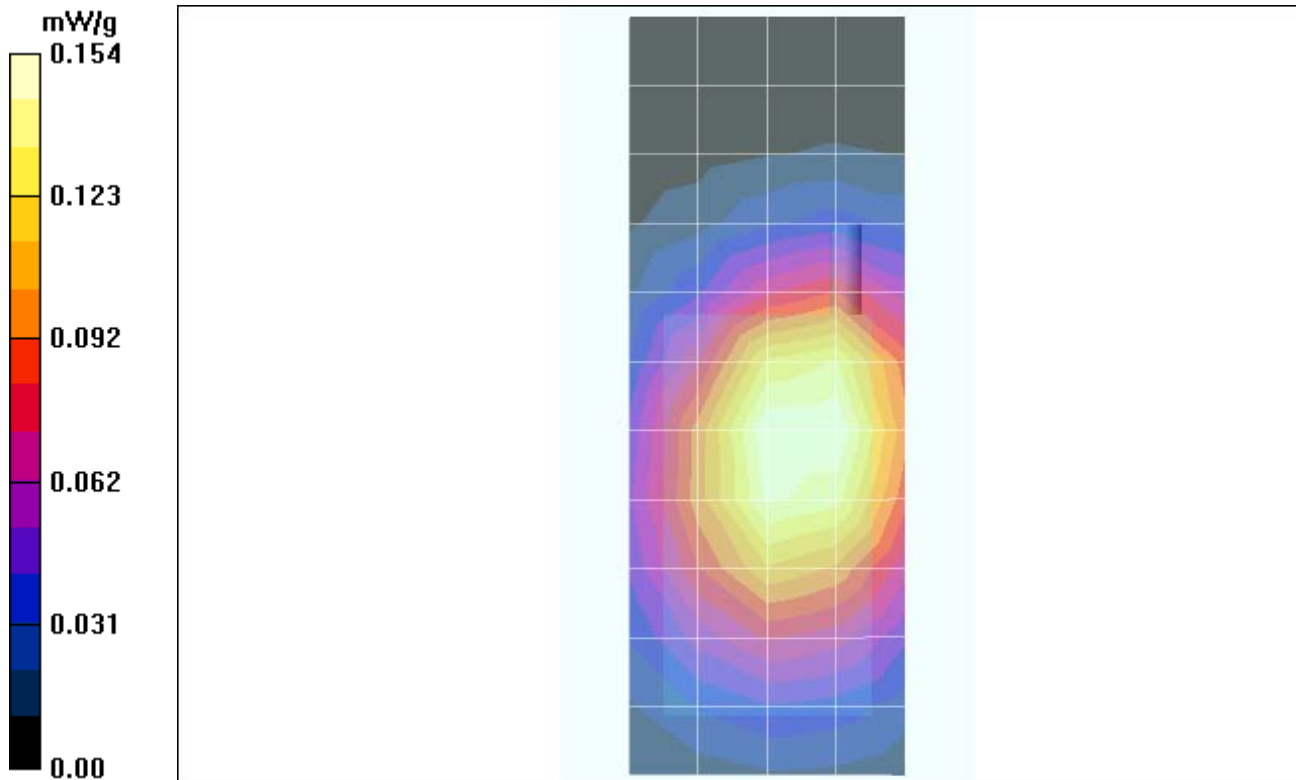
- Probe: ET3DV6 - SN1398; ConvF(6.04, 6.04, 6.04); Calibrated: 2/24/2005
- Sensor-Surface: 4mm (Mechanical Surface Detection)
- Electronics: DAE4 Sn316; Calibrated: 1/13/2005
- Phantom: R1: Sect.1, Amy Twin; Type: Amy Twin Flat; Serial: n/a;
- Measurement SW: DASY4, V4.5 Build 19; Postprocessing SW: SEMCAD, V1.8 Build 147

## Amy Twin Phone Template/Area Scan - Normal Body (15mm) (13x7x1):

Measurement grid: dx=15mm, dy=15mm; Maximum value of SAR (measured) = 0.154 mW/g

## Amy Twin Phone Template/Zoom Scan (7x7x7)/Cube 0:

Measurement grid: dx=5mm,dy=5mm,dz=5mm; Reference Value = 12.9 V/m; **Power Drift = 0.069 dB**  
Peak SAR (extrapolated) = 0.196 W/kg; **SAR(1 g) = 0.153 mW/g; SAR(10 g) = 0.111 mW/g**  
Maximum value of SAR (measured) = 0.163 mW/g



# Test Laboratory: Motorola

**Serial: G00S570056**

Procedure Notes: Ch# 190 / Pwr Step: 05; Antenna Position: FIXED; Battery Model #: SNN5685A; Accessory Model #: none; DEVICE POSITION: Back of phone 15mm from flat phantom

Communication System: GSM 850; Frequency: 836.6 MHz; Channel Number: 190; Duty Cycle: 1:8  
Medium: Low Freq Body; Medium parameters used:  $\sigma = 0.97$  mho/m,  $\epsilon_r = 53.2$ ;  $\rho = 1000$  kg/m<sup>3</sup>

DASY4 Configuration:

- Probe: ET3DV6 - SN1398; ConvF(6.04, 6.04, 6.04); Calibrated: 2/24/2005
- Sensor-Surface: 4mm (Mechanical Surface Detection)
- Electronics: DAE4 Sn316; Calibrated: 1/13/2005
- Phantom: R1: Sect.1, Amy Twin; Type: Amy Twin Flat; Serial: n/a;
- Measurement SW: DASY4, V4.5 Build 19; Postprocessing SW: SEMCAD, V1.8 Build 147

## Amy Twin Phone Template/Area Scan - Normal Body (15mm) (13x7x1):

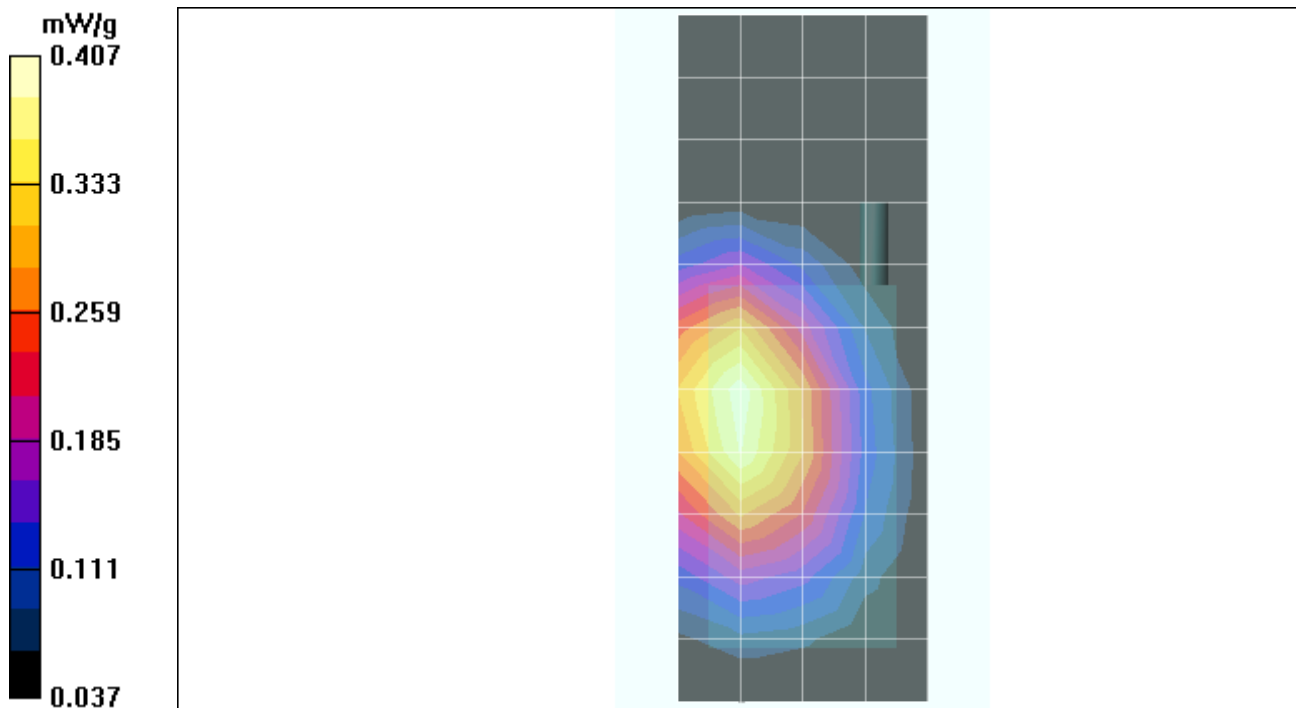
Measurement grid: dx=15mm, dy=15mm; Maximum value of SAR (measured) = 0.399 mW/g

## Amy Twin Phone Template/Zoom Scan (7x7x7)/Cube 0:

Measurement grid: dx=5mm, dy=5mm, dz=5mm; Reference Value = 18.4 V/m; **Power Drift = -0.053 dB**

Peak SAR (extrapolated) = 0.499 W/kg; **SAR(1 g) = 0.381 mW/g; SAR(10 g) = 0.269 mW/g**

Maximum value of SAR (measured) = 0.407 mW/g



# Test Laboratory: Motorola

**Serial: G00S570056**

Procedure Notes: Ch# 190 / Pwr Step: 05; Antenna Position: FIXED; Battery Model #: SNN5685A; Accessory Model #: none; DEVICE POSITION: Back of Phone 15mm from flat phantom (BLUETOOTH)

Communication System: GSM 850; Frequency: 836.6 MHz; Channel Number: 190; Duty Cycle: 1:8  
Medium: Low Freq Body; Medium parameters used:  $\sigma = 0.97$  mho/m,  $\epsilon_r = 53.2$ ;  $\rho = 1000$  kg/m<sup>3</sup>

DASY4 Configuration:

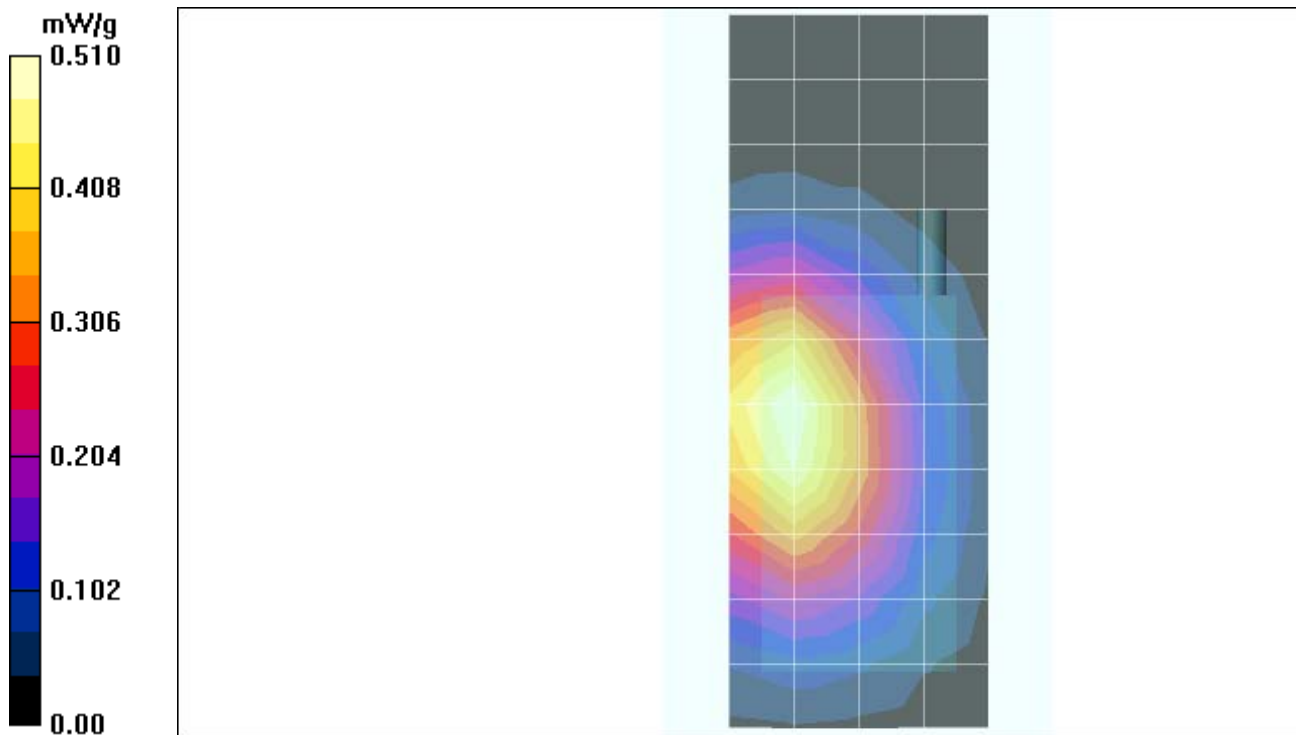
- Probe: ET3DV6 - SN1398; ConvF(6.04, 6.04, 6.04); Calibrated: 2/24/2005
- Sensor-Surface: 4mm (Mechanical Surface Detection)
- Electronics: DAE4 Sn316; Calibrated: 1/13/2005
- Phantom: R1: Sect.1, Amy Twin; Type: Amy Twin Flat; Serial: n/a;
- Measurement SW: DASY4, V4.5 Build 19; Postprocessing SW: SEMCAD, V1.8 Build 147

## Amy Twin Phone Template/Area Scan - Normal Body (15mm) (13x7x1):

Measurement grid: dx=15mm, dy=15mm; Maximum value of SAR (measured) = 0.510 mW/g

## Amy Twin Phone Template/Zoom Scan (7x7x7)/Cube 0:

Measurement grid: dx=5mm,dy=5mm,dz=5mm; Reference Value = 21.5 V/m; **Power Drift = -0.082 dB**  
Peak SAR (extrapolated) = 0.636 W/kg; **SAR(1 g) = 0.486 mW/g; SAR(10 g) = 0.344 mW/g**  
Maximum value of SAR (measured) = 0.518 mW/g



# Test Laboratory: Motorola

**Serial: G00S570056**

Procedure Notes: Ch# 190 / Pwr Step: 5 OTA (BLUETOOTH); Antenna Position: FIXED; Battery Model #: SNN5683A; Accessory Model #: none; DEVICE POSITION: Back of Phone 15mm Away from Flat Phantom

Communication System: GSM 850; Frequency: 836.6 MHz; Channel Number: 190; Duty Cycle: 1:8  
Medium: Low Freq Body; Medium parameters used:  $\sigma = 0.97$  mho/m,  $\epsilon_r = 53.2$ ;  $\rho = 1000$  kg/m<sup>3</sup>

DASY4 Configuration:

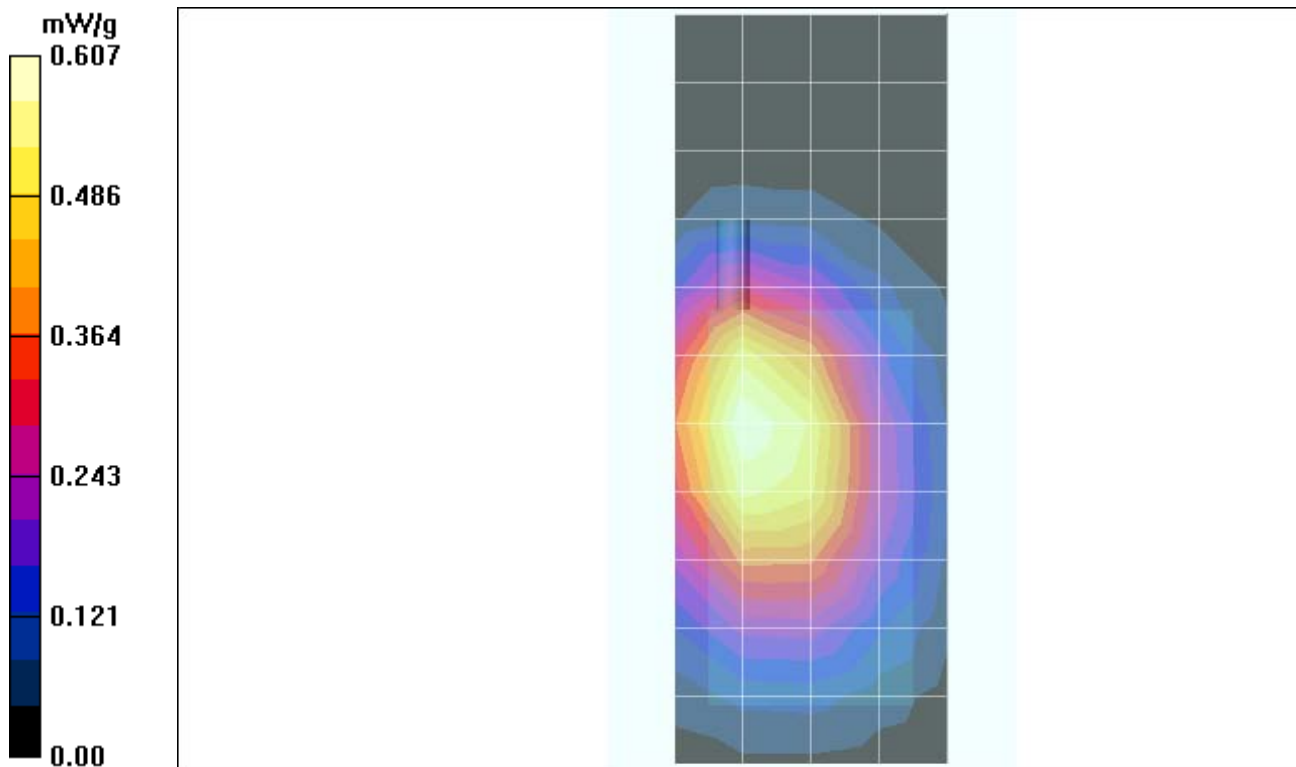
- Probe: ET3DV6 - SN1398; ConvF(6.04, 6.04, 6.04); Calibrated: 2/24/2005
- Sensor-Surface: 4mm (Mechanical Surface Detection)
- Electronics: DAE4 Sn316; Calibrated: 1/13/2005
- Phantom: R1: Sect.1, Amy Twin; Type: Amy Twin Flat; Serial: n/a;
- Measurement SW: DASY4, V4.5 Build 19; Postprocessing SW: SEMCAD, V1.8 Build 147

## Amy Twin Phone Template/Area Scan - Normal Body (15mm) (13x7x1):

Measurement grid: dx=15mm, dy=15mm; Maximum value of SAR (measured) = 0.607 mW/g

## Amy Twin Phone Template/Zoom Scan (7x7x7)/Cube 0:

Measurement grid: dx=5mm,dy=5mm,dz=5mm; Reference Value = 23.5 V/m; **Power Drift = -0.073 dB**  
Peak SAR (extrapolated) = 0.769 W/kg; **SAR(1 g) = 0.579 mW/g; SAR(10 g) = 0.405 mW/g**  
Maximum value of SAR (measured) = 0.621 mW/g



# Test Laboratory: Motorola

## Serial: G00S570056

Procedure Notes: Ch# 190 / Pwr Step: 8 OTA (EDGE); Antenna Position: FIXED; Battery Model #: SNN5685A; Accessory Model #: none; DEVICE POSITION: Back of Phone 25mm Away from Flat Phantom

Communication System: EDGE 850 - Class 6; Frequency: 836.6 MHz; Channel Number: 190; Duty Cycle: 1:4

Medium: Low Freq Body; Medium parameters used:  $\sigma = 0.97$  mho/m,  $\epsilon_r = 53.2$ ;  $\rho = 1000$  kg/m<sup>3</sup>

### DASY4 Configuration:

- Probe: ET3DV6 - SN1398; ConvF(6.04, 6.04, 6.04); Calibrated: 2/24/2005
- Sensor-Surface: 4mm (Mechanical Surface Detection)
- Electronics: DAE4 Sn316; Calibrated: 1/13/2005
- Phantom: R1: Sect.1, Amy Twin; Type: Amy Twin Flat; Serial: n/a;
- Measurement SW: DASY4, V4.5 Build 19; Postprocessing SW: SEMCAD, V1.8 Build 147

### Amy Twin Phone Template/Area Scan - Normal Body (15mm) (13x7x1):

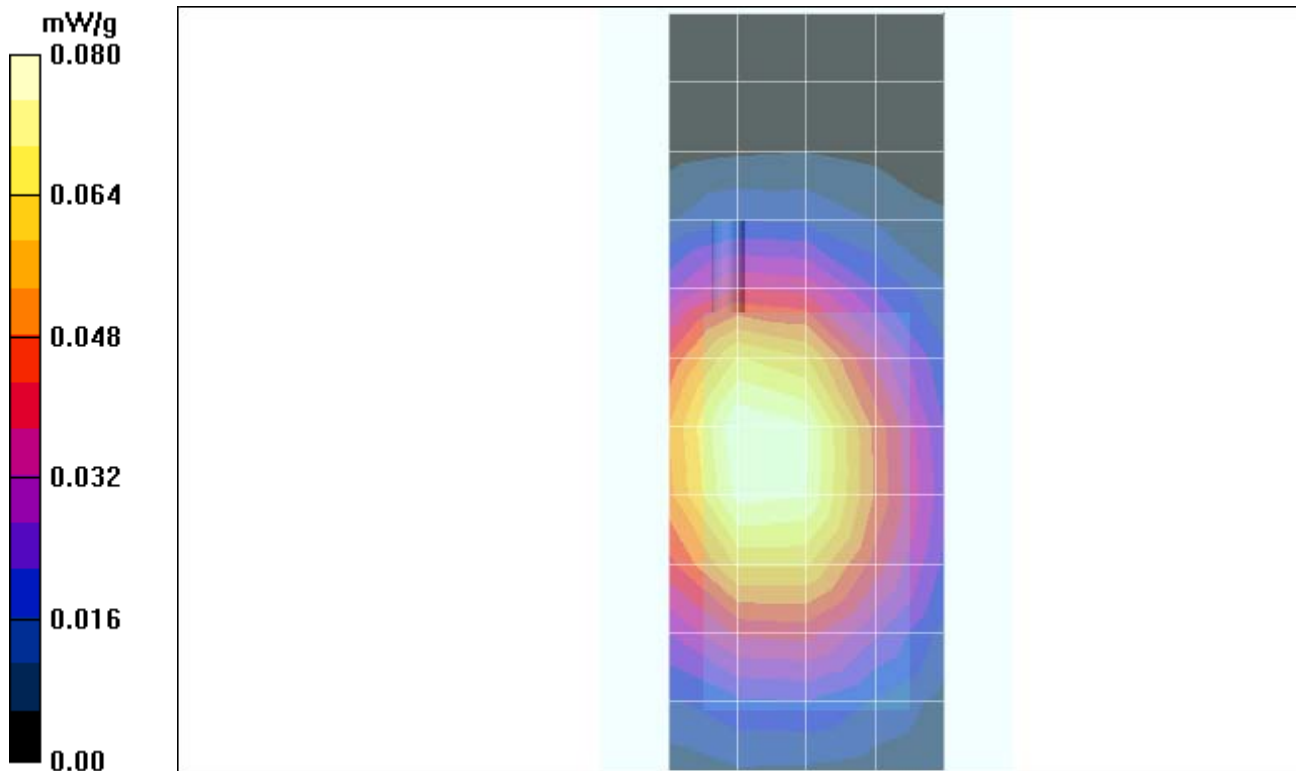
Measurement grid: dx=15mm, dy=15mm; Maximum value of SAR (measured) = 0.080 mW/g

### Amy Twin Phone Template/Zoom Scan (7x7x7)/Cube 0:

Measurement grid: dx=5mm,dy=5mm,dz=5mm; Reference Value = 8.98 V/m; Power Drift = 0.025 dB

Peak SAR (extrapolated) = 0.103 W/kg; SAR(1 g) = 0.080 mW/g; SAR(10 g) = 0.058 mW/g

Maximum value of SAR (measured) = 0.087 mW/g



# Test Laboratory: Motorola

## Serial: G00S570056

Procedure Notes: Ch# 190 / Pwr Step: 5 OTA (GPRS); Antenna Position: FIXED; Battery Model #: SNN5685A; Accessory Model #: none; DEVICE POSITION: Back of Phone 25mm away from flat Phantom

Communication System: GPRS 850 - Class 10; Frequency: 836.6 MHz; Channel Number: 190; Duty Cycle: 1:4

Medium: Low Freq Body; Medium parameters used:  $\sigma = 0.97$  mho/m,  $\epsilon_r = 53.2$ ;  $\rho = 1000$  kg/m<sup>3</sup>

### DASY4 Configuration:

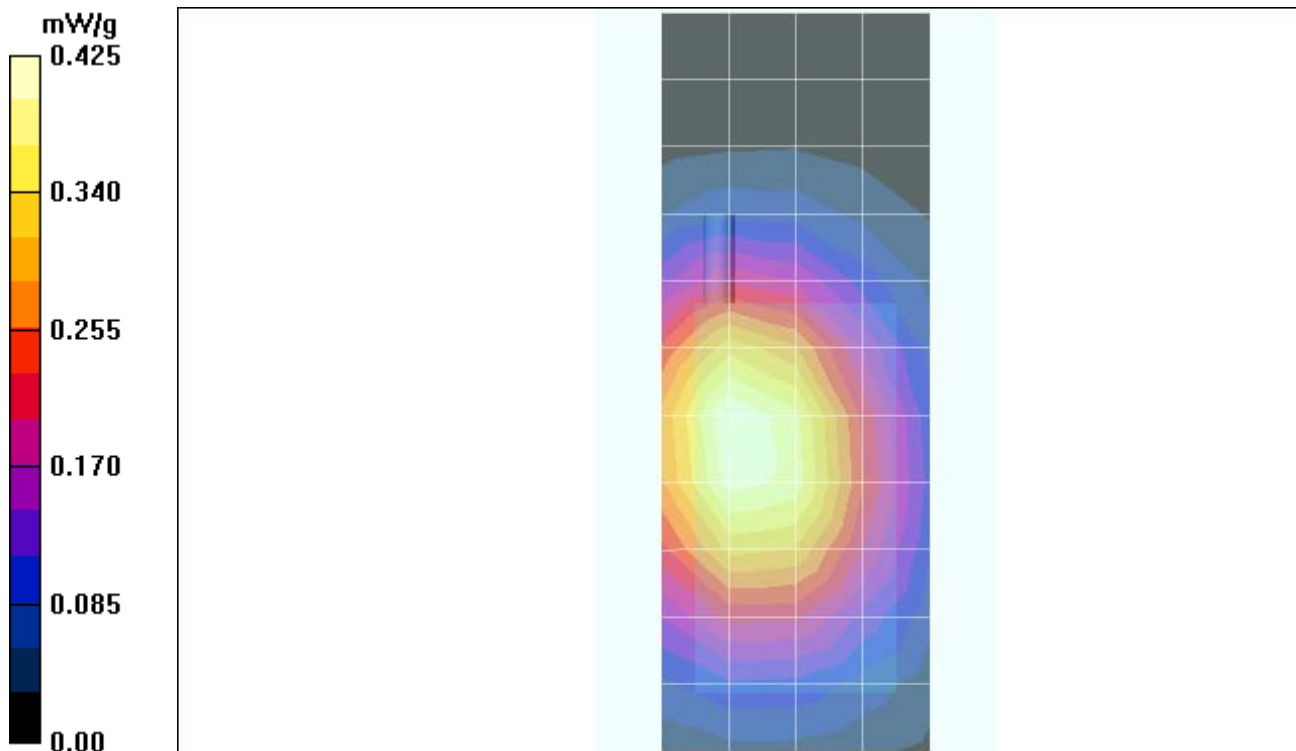
- Probe: ET3DV6 - SN1398; ConvF(6.04, 6.04, 6.04); Calibrated: 2/24/2005
- Sensor-Surface: 4mm (Mechanical Surface Detection)
- Electronics: DAE4 Sn316; Calibrated: 1/13/2005
- Phantom: R1: Sect.1, Amy Twin; Type: Amy Twin Flat; Serial: n/a;
- Measurement SW: DASY4, V4.5 Build 19; Postprocessing SW: SEMCAD, V1.8 Build 147

## Amy Twin Phone Template/Area Scan - Normal Body (15mm) (13x7x1):

Measurement grid: dx=15mm, dy=15mm; Maximum value of SAR (measured) = 0.425 mW/g

## Amy Twin Phone Template/Zoom Scan (7x7x7)/Cube 0:

Measurement grid: dx=5mm, dy=5mm, dz=5mm; Reference Value = 20.2 V/m; **Power Drift = -0.173 dB**  
Peak SAR (extrapolated) = 0.521 W/kg; **SAR(1 g) = 0.398 mW/g; SAR(10 g) = 0.287 mW/g**  
Maximum value of SAR (measured) = 0.434 mW/g



# Test Laboratory: Motorola

**Serial: G00S570056**

Procedure Notes: Ch# 661 / Pwr Step: 0 OTA; Antenna Position: FIXED; Battery Model #: SNN5685A; Accessory Model # = none; DEVICE POSITION: Front of Phone 15mm Away from Flat Phantom

Communication System: GSM 1900; Frequency: 1880 MHz; Duty Cycle: 1:8

Medium: Regular Glycol Body; Medium parameters used:  $\sigma = 1.58$  mho/m,  $\epsilon_r = 52$ ;  $\rho = 1000$  kg/m<sup>3</sup>

DASY4 Configuration:

- Probe: ET3DV6 - SN1398; ConvF(4.65, 4.65, 4.65); Calibrated: 2/24/2005
- Sensor-Surface: 4mm (Mechanical Surface Detection)
- Electronics: DAE4 Sn316; Calibrated: 1/13/2005
- Phantom: R1: Sect.2, Amy Twin; Type: Amy Twin Flat; Serial: n/a;
- Measurement SW: DASY4, V4.5 Build 19; Postprocessing SW: SEMCAD, V1.8 Build 147

## Amy Twin Phone Template/Area Scan - Normal Body (15mm) (13x7x1):

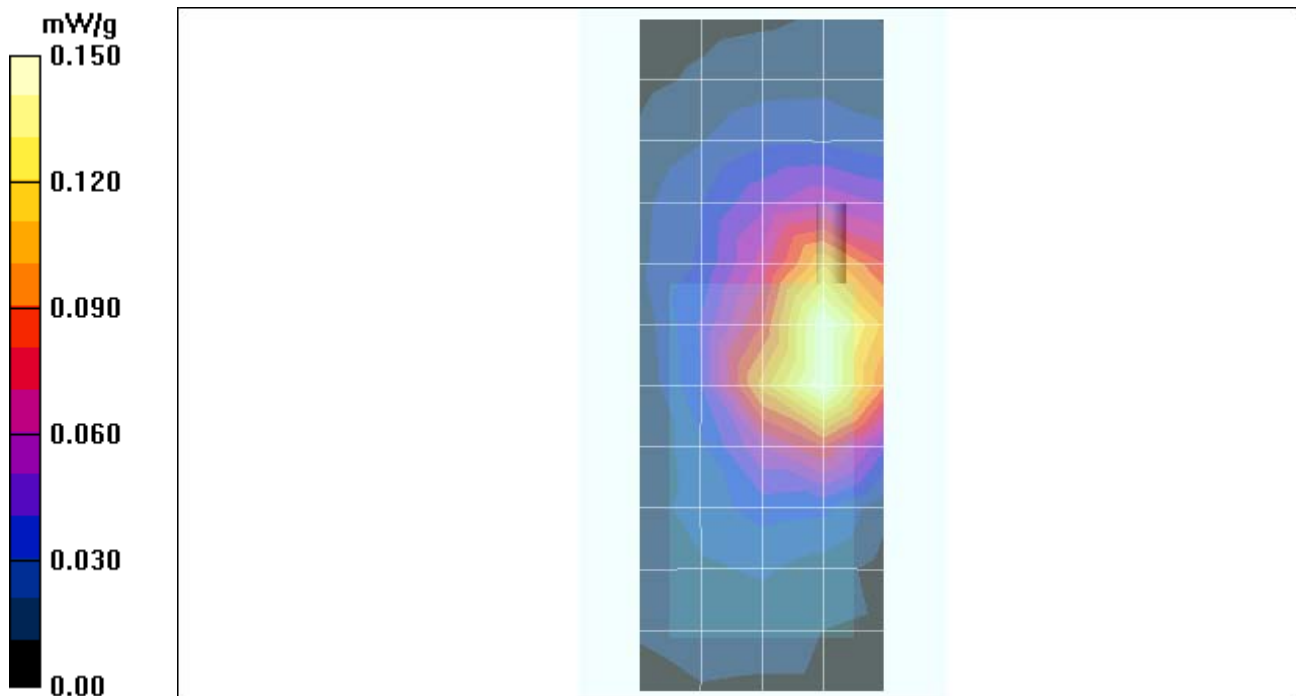
Measurement grid: dx=15mm, dy=15mm; Maximum value of SAR (measured) = 0.150 mW/g

## Amy Twin Phone Template/Zoom Scan (7x7x7)/Cube 0:

Measurement grid: dx=5mm, dy=5mm, dz=5mm; Reference Value = 8.87 V/m; **Power Drift = -0.051 dB**

Peak SAR (extrapolated) = 0.243 W/kg; **SAR(1 g) = 0.148 mW/g; SAR(10 g) = 0.089 mW/g**

Maximum value of SAR (measured) = 0.162 mW/g



# Test Laboratory: Motorola

**Serial: G00S570056**

Procedure Notes: Ch# 661 / Pwr Step: 0 OTA; Antenna Position: FIXED; Battery Model #: SNN5685A; Accessory Model # = none; DEVICE POSITION: Back of Phone 15mm Away from Flat Phantom

Communication System: GSM 1900; Frequency: 1880 MHz; Duty Cycle: 1:8

Medium: Regular Glycol Body; Medium parameters used:  $\sigma = 1.58$  mho/m,  $\epsilon_r = 52$ ;  $\rho = 1000$  kg/m<sup>3</sup>

DASY4 Configuration:

- Probe: ET3DV6 - SN1398; ConvF(4.65, 4.65, 4.65); Calibrated: 2/24/2005
- Sensor-Surface: 4mm (Mechanical Surface Detection)
- Electronics: DAE4 Sn316; Calibrated: 1/13/2005
- Phantom: R1: Sect.2, Amy Twin; Type: Amy Twin Flat; Serial: n/a;
- Measurement SW: DASY4, V4.5 Build 19; Postprocessing SW: SEMCAD, V1.8 Build 147

## Amy Twin Phone Template/Area Scan - Normal Body (15mm) (13x7x1):

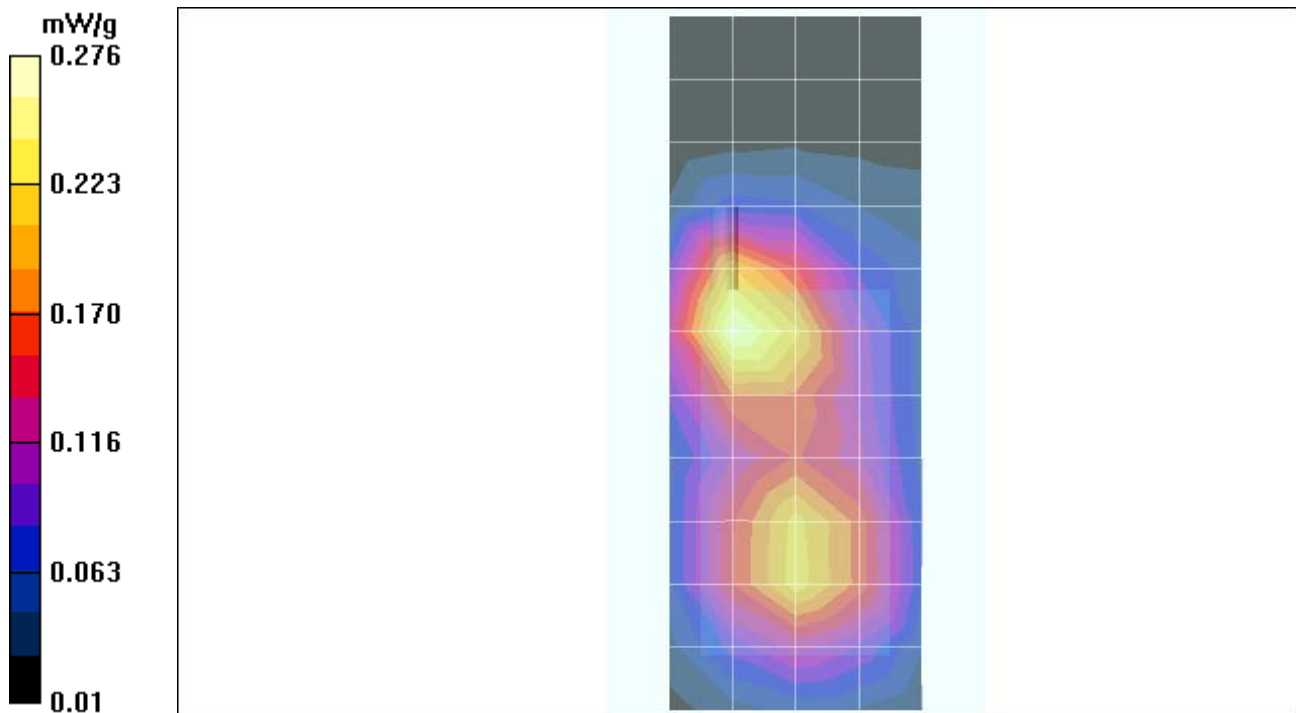
Measurement grid: dx=15mm, dy=15mm; Maximum value of SAR (measured) = 0.266 mW/g

## Amy Twin Phone Template/Zoom Scan (7x7x7)/Cube 0:

Measurement grid: dx=5mm, dy=5mm, dz=5mm; Reference Value = 11.9 V/m; **Power Drift = 0.029 dB**

Peak SAR (extrapolated) = 0.396 W/kg; **SAR(1 g) = 0.254 mW/g; SAR(10 g) = 0.153 mW/g**

Maximum value of SAR (measured) = 0.276 mW/g



# Test Laboratory: Motorola

**Serial: G00S570056**

Procedure Notes: Ch# 661 / Pwr Step: 0 OTA (BLUETOOTH); Antenna Position: FIXED; Battery Model #: SNN5685A; Accessory Model # = none; DEVICE POSITION: Back of Phone 15mm Away from Flat Phantom

Communication System: GSM 1900; Frequency: 1880 MHz; Duty Cycle: 1:8

Medium: Regular Glycol Body; Medium parameters used:  $\sigma = 1.58$  mho/m,  $\epsilon_r = 52$ ;  $\rho = 1000$  kg/m<sup>3</sup>

DASY4 Configuration:

- Probe: ET3DV6 - SN1398; ConvF(4.65, 4.65, 4.65); Calibrated: 2/24/2005
- Sensor-Surface: 4mm (Mechanical Surface Detection)
- Electronics: DAE4 Sn316; Calibrated: 1/13/2005
- Phantom: R1: Sect.2, Amy Twin; Type: Amy Twin Flat; Serial: n/a;
- Measurement SW: DASY4, V4.5 Build 19; Postprocessing SW: SEMCAD, V1.8 Build 147

## Amy Twin Phone Template/Area Scan - Normal Body (15mm) (13x7x1):

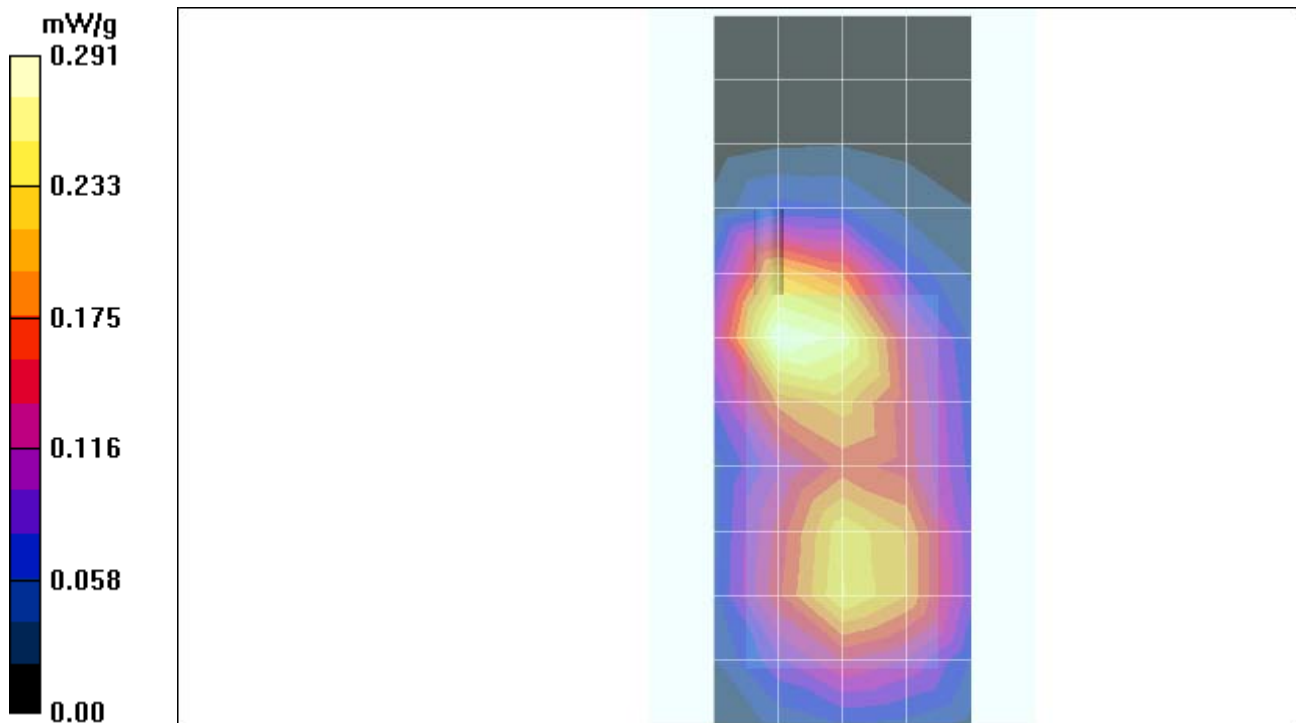
Measurement grid: dx=15mm, dy=15mm; Maximum value of SAR (measured) = 0.291 mW/g

## Amy Twin Phone Template/Zoom Scan (7x7x7)/Cube 0:

Measurement grid: dx=5mm, dy=5mm, dz=5mm; Reference Value = 13.0 V/m; **Power Drift = -0.101 dB**

Peak SAR (extrapolated) = 0.457 W/kg; **SAR(1 g) = 0.290 mW/g; SAR(10 g) = 0.174 mW/g**

Maximum value of SAR (measured) = 0.316 mW/g



# Test Laboratory: Motorola

## Serial: G00S570056

Procedure Notes: Ch# 661 / Pwr Step: 0 OTA (BLUETOOTH); Antenna Position: FIXED; Battery Model #: SNN5683A; Accessory Model #: none; DEVICE POSITION: Back of Phone 15mm Away from Flat Phantom

Communication System: GSM 1900; Frequency: 1880 MHz; Channel Number: 661; Duty Cycle: 1:8  
Medium: Regular Glycol Body; Medium parameters used:  $\sigma = 1.58$  mho/m,  $\epsilon_r = 52$ ;  $\rho = 1000$  kg/m<sup>3</sup>

### DASY4 Configuration:

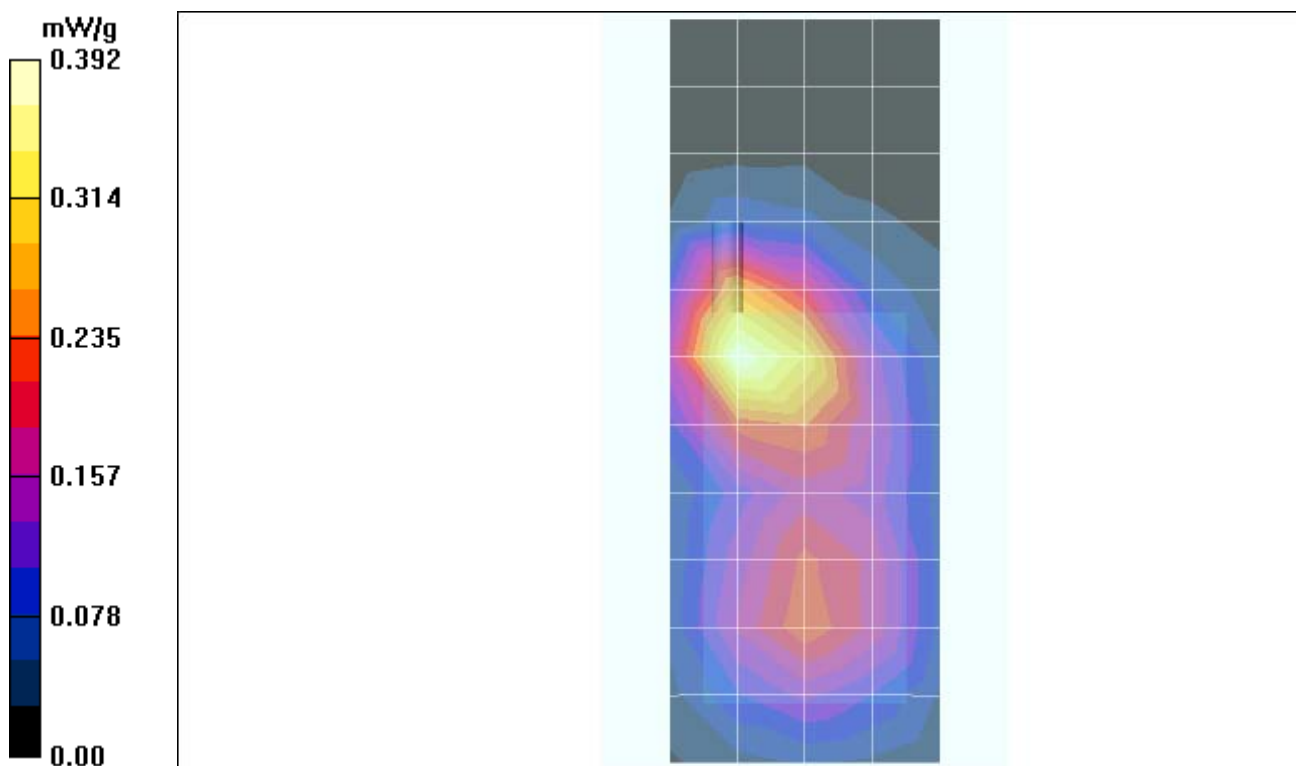
- Probe: ET3DV6 - SN1398; ConvF(4.65, 4.65, 4.65); Calibrated: 2/24/2005
- Sensor-Surface: 4mm (Mechanical Surface Detection)
- Electronics: DAE4 Sn316; Calibrated: 1/13/2005
- Phantom: R1: Sect.2, Amy Twin; Type: Amy Twin Flat; Serial: n/a;
- Measurement SW: DASY4, V4.5 Build 19; Postprocessing SW: SEMCAD, V1.8 Build 147

### Amy Twin Phone Template/Area Scan - Normal Body (15mm) (13x7x1):

Measurement grid: dx=15mm, dy=15mm; Maximum value of SAR (measured) = 0.392 mW/g

### Amy Twin Phone Template/Zoom Scan (7x7x7)/Cube 0:

Measurement grid: dx=5mm,dy=5mm,dz=5mm; Reference Value = 14.2 V/m; **Power Drift = -0.077 dB**  
Peak SAR (extrapolated) = 0.591 W/kg; **SAR(1 g) = 0.368 mW/g; SAR(10 g) = 0.217 mW/g**  
Maximum value of SAR (measured) = 0.405 mW/g



# Test Laboratory: Motorola

**Serial: G00S570056**

Procedure Notes: Ch# 661 / Pwr Step: 2 OTA (EDGE); Antenna Position: FIXED; Battery Model #: SNN5685A; Accessory Model # = none; DEVICE POSITION: Back of Phone 25mm Away from Flat Phantom

Communication System: EDGE 1900 - Class 6; Frequency: 1880 MHz; Duty Cycle: 1:4

Medium: Regular Glycol Body; Medium parameters used:  $\sigma = 1.58$  mho/m,  $\epsilon_r = 52$ ;  $\rho = 1000$  kg/m<sup>3</sup>

DASY4 Configuration:

- Probe: ET3DV6 - SN1398; ConvF(4.65, 4.65, 4.65); Calibrated: 2/24/2005
- Sensor-Surface: 4mm (Mechanical Surface Detection)
- Electronics: DAE4 Sn316; Calibrated: 1/13/2005
- Phantom: R1: Sect.2, Amy Twin; Type: Amy Twin Flat; Serial: n/a;
- Measurement SW: DASY4, V4.5 Build 19; Postprocessing SW: SEMCAD, V1.8 Build 147

## Amy Twin Phone Template/Area Scan - Normal Body (15mm) (13x7x1):

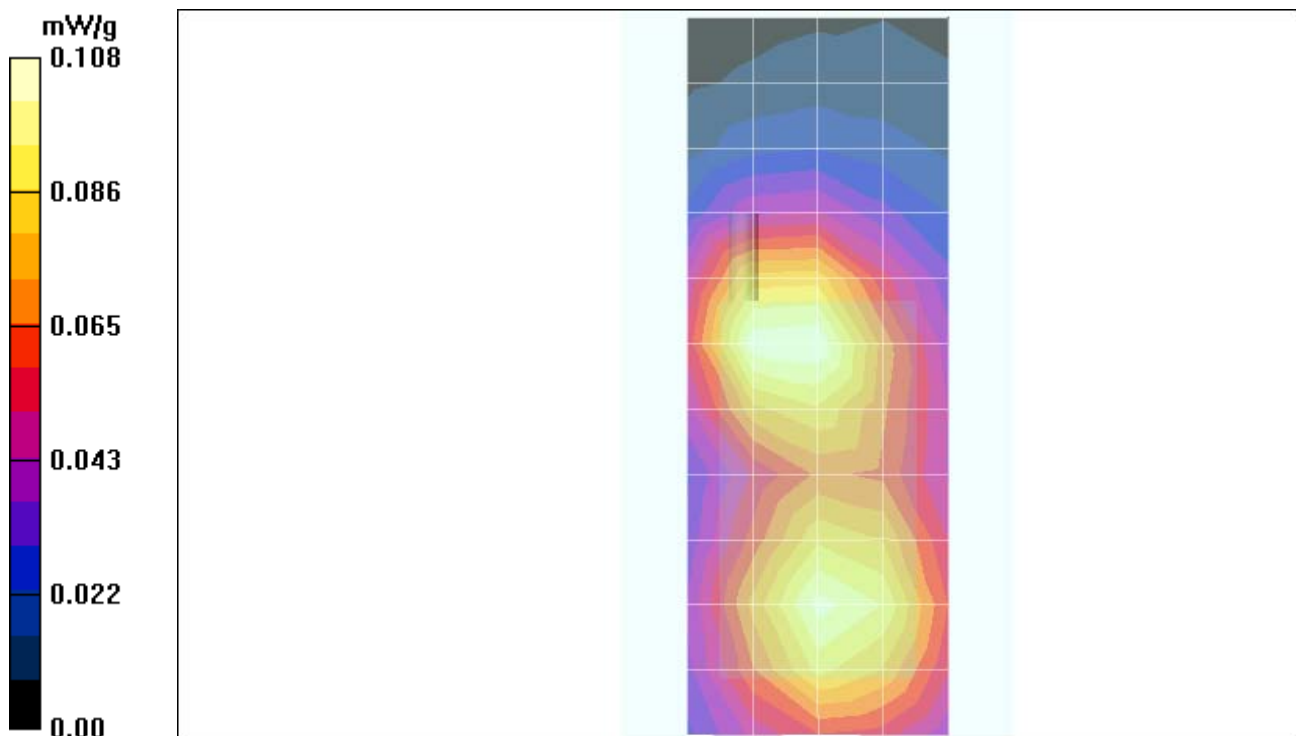
Measurement grid: dx=15mm, dy=15mm; Maximum value of SAR (measured) = 0.108 mW/g

## Amy Twin Phone Template/Zoom Scan (7x7x7)/Cube 0:

Measurement grid: dx=5mm, dy=5mm, dz=5mm; Reference Value = 8.42 V/m; **Power Drift = -0.108 dB**

Peak SAR (extrapolated) = 0.160 W/kg; **SAR(1 g) = 0.106 mW/g; SAR(10 g) = 0.067 mW/g**

Maximum value of SAR (measured) = 0.115 mW/g



# Test Laboratory: Motorola

**Serial: G00S570056**

Procedure Notes: Ch# 661 / Pwr Step: 0 OTA (GPRS); Antenna Position: FIXED; Battery Model #: SNN5685A; Accessory Model # = none; DEVICE POSITION: Back of Phone 25mm Away from Flat Phantom

Communication System: GPRS 1900 - Class 10; Frequency: 1880 MHz; Duty Cycle: 1:4

Medium: Regular Glycol Body; Medium parameters used:  $\sigma = 1.58$  mho/m,  $\epsilon_r = 52$ ;  $\rho = 1000$  kg/m<sup>3</sup>

DASY4 Configuration:

- Probe: ET3DV6 - SN1398; ConvF(4.65, 4.65, 4.65); Calibrated: 2/24/2005
- Sensor-Surface: 4mm (Mechanical Surface Detection)
- Electronics: DAE4 Sn316; Calibrated: 1/13/2005
- Phantom: R1: Sect.2, Amy Twin; Type: Amy Twin Flat; Serial: n/a;
- Measurement SW: DASY4, V4.5 Build 19; Postprocessing SW: SEMCAD, V1.8 Build 147

## Amy Twin Phone Template/Area Scan - Normal Body (15mm) (13x7x1):

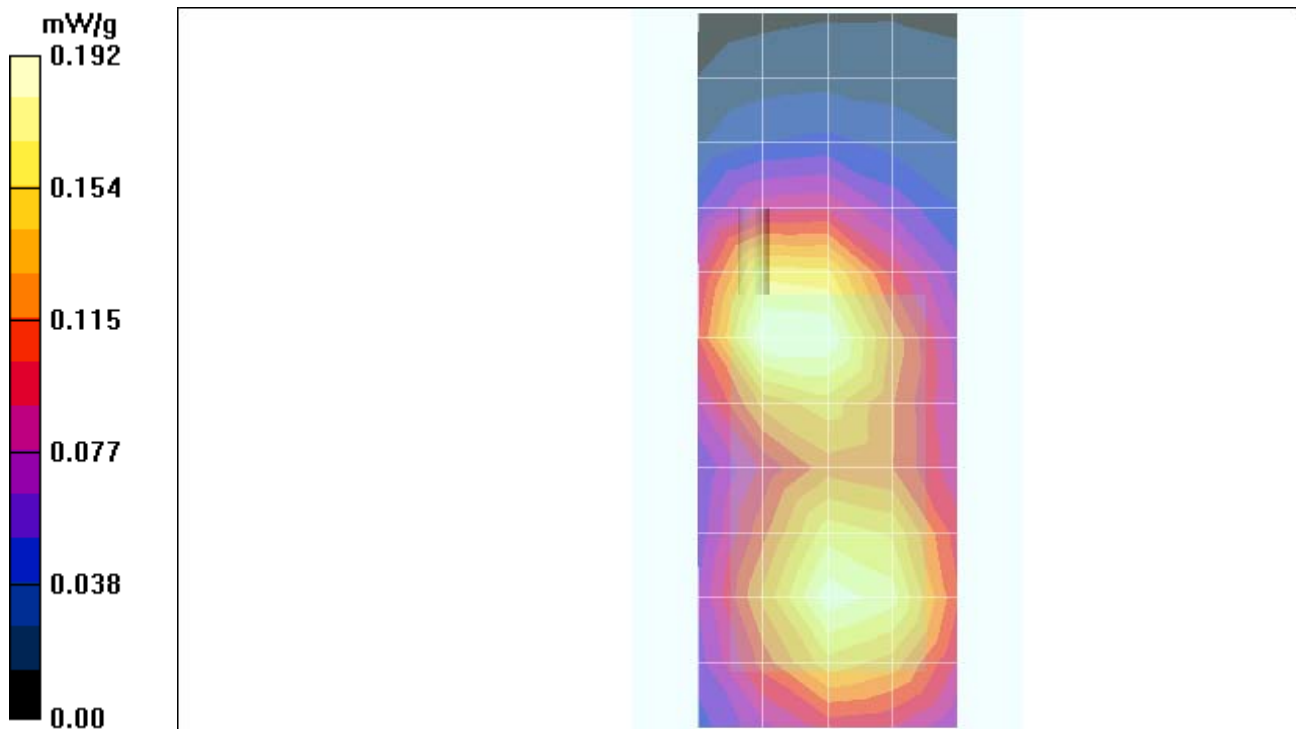
Measurement grid: dx=15mm, dy=15mm; Maximum value of SAR (measured) = 0.192 mW/g

## Amy Twin Phone Template/Zoom Scan (7x7x7)/Cube 0:

Measurement grid: dx=5mm, dy=5mm, dz=5mm; Reference Value = 11.1 V/m; **Power Drift = -0.104 dB**

Peak SAR (extrapolated) = 0.293 W/kg; **SAR(1 g) = 0.193 mW/g; SAR(10 g) = 0.122 mW/g**

Maximum value of SAR (measured) = 0.209 mW/g



**Appendix 4**  
**Probe Calibration Certificate**



Accredited by the Swiss Federal Office of Metrology and Accreditation  
**The Swiss Accreditation Service is one of the signatories to the EA  
Multilateral Agreement for the recognition of calibration certificates**

**Accreditation No.: SCS 108**

Client **Motorola Korea**

Certificate No. **ET3-1398\_Feb05**

## CALIBRATION CERTIFICATE

Object **ET3DV6 - SN 1398**

Calibration procedure(s) **QA CAL-01 v5  
Calibration procedure for dosimetric E-field probes**

Calibration date: **February 24, 2005**

Condition of the calibrated item **In Tolerance**

This calibration certificate documents the traceability to national standards, which realize the physical units of measurements (SI).  
The measurements and the uncertainties with confidence probability are given on the following pages and are part of the certificate.

All calibrations have been conducted in the closed laboratory facility: environment temperature (22 ± 3)°C and humidity < 70%.

Calibration Equipment used (M&TE critical for calibration)

Primary Standards	ID #	Cal Date (Calibrated by, Certificate No.)	Scheduled Calibration
Power meter E4419B	GB41293874	5-May-04 (METAS, No. 251-00388)	May-05
Power sensor E4412A	MY41495277	5-May-04 (METAS, No. 251-00388)	May-05
Reference 3 dB Attenuator	SN: S5054 (3c)	10-Aug-04 (METAS, No. 251-00403)	Aug-05
Reference 20 dB Attenuator	SN: S5086 (20b)	3-May-04 (METAS, No. 251-00389)	May-05
Reference 30 dB Attenuator	SN: S5129 (30b)	10-Aug-04 (METAS, No. 251-00404)	Aug-05
Reference Probe ES3DV2	SN: 3013	7-Jan-05 (SPEAG, No. ES3-3013_Jan05)	Jan-06
DAE4	SN: 617	19-Jan-05 (SPEAG, No. DAE4-617_Jan05)	Jan-06

Secondary Standards	ID #	Check Date (in house)	Scheduled Check
Power sensor HP 8481A	MY41092180	18-Sep-02 (SPEAG, in house check Oct-03)	In house check: Oct 05
RF generator HP 8648C	US3642U01700	4-Aug-99 (SPEAG, in house check Dec-03)	In house check: Dec-05
Network Analyzer HP 8753E	US37390585	18-Oct-01 (SPEAG, in house check Nov-04)	In house check: Nov 05

	Name	Function	Signature
Calibrated by:	Nico Venter	Laboratory Technician	

Approved by:	Kalig Pokovic	Technical Manager	
--------------	---------------	-------------------	--

Issued: February 25, 2005

This calibration certificate shall not be reproduced except in full without written approval of the laboratory.



Accredited by the Swiss Federal Office of Metrology and Accreditation  
The Swiss Accreditation Service is one of the signatories to the EA  
Multilateral Agreement for the recognition of calibration certificates

Accreditation No.: **SCS 108**

### Glossary:

TSL	tissue simulating liquid
NORM <sub>x,y,z</sub>	sensitivity in free space
ConF	sensitivity in TSL / NORM <sub>x,y,z</sub>
DCP	diode compression point
Polarization $\phi$	$\phi$ rotation around probe axis
Polarization $\vartheta$	$\vartheta$ rotation around an axis that is in the plane normal to probe axis (at measurement center), i.e., $\vartheta = 0$ is normal to probe axis

### Calibration is Performed According to the Following Standards:

- IEEE Std 1528-2003, "IEEE Recommended Practice for Determining the Peak Spatial-Averaged Specific Absorption Rate (SAR) in the Human Head from Wireless Communications Devices: Measurement Techniques", December 2003
- CENELEC EN 50361, "Basic standard for the measurement of Specific Absorption Rate related to human exposure to electromagnetic fields from mobile phones (300 MHz - 3 GHz), July 2001

### Methods Applied and Interpretation of Parameters:

- NORM<sub>x,y,z</sub>**: Assessed for E-field polarization  $\vartheta = 0$  ( $f \leq 900$  MHz in TEM-cell;  $f > 1800$  MHz: R22 waveguide). NORM<sub>x,y,z</sub> are only intermediate values, i.e., the uncertainties of NORM<sub>x,y,z</sub> does not effect the E<sup>2</sup>-field uncertainty inside TSL (see below *ConvF*).
- NORM(f)<sub>x,y,z</sub>** = NORM<sub>x,y,z</sub> \* *frequency\_response* (see Frequency Response Chart). This linearization is implemented in DASY4 software versions later than 4.2. The uncertainty of the frequency response is included in the stated uncertainty of *ConvF*.
- DCP<sub>x,y,z</sub>**: DCP are numerical linearization parameters assessed based on the data of power sweep (no uncertainty required). DCP does not depend on frequency nor media.
- ConvF and Boundary Effect Parameters**: Assessed in flat phantom using E-field (or Temperature Transfer Standard for  $f \leq 800$  MHz) and inside waveguide using analytical field distributions based on power measurements for  $f > 800$  MHz. The same setups are used for assessment of the parameters applied for boundary compensation (alpha, depth) of which typical uncertainty values are given. These parameters are used in DASY4 software to improve probe accuracy close to the boundary. The sensitivity in TSL corresponds to NORM<sub>x,y,z</sub> \* *ConvF* whereby the uncertainty corresponds to that given for *ConvF*. A frequency dependent *ConvF* is used in DASY version 4.4 and higher which allows extending the validity from  $\pm 50$  MHz to  $\pm 100$  MHz.
- Spherical isotropy (3D deviation from isotropy)**: in a field of low gradients realized using a flat phantom exposed by a patch antenna.
- Sensor Offset**: The sensor offset corresponds to the offset of virtual measurement center from the probe tip (on probe axis). No tolerance required.

# Probe ET3DV6

## SN:1398

Manufactured:	October 24, 1999
Last calibrated:	February 16, 2004
Recalibrated:	February 24, 2005

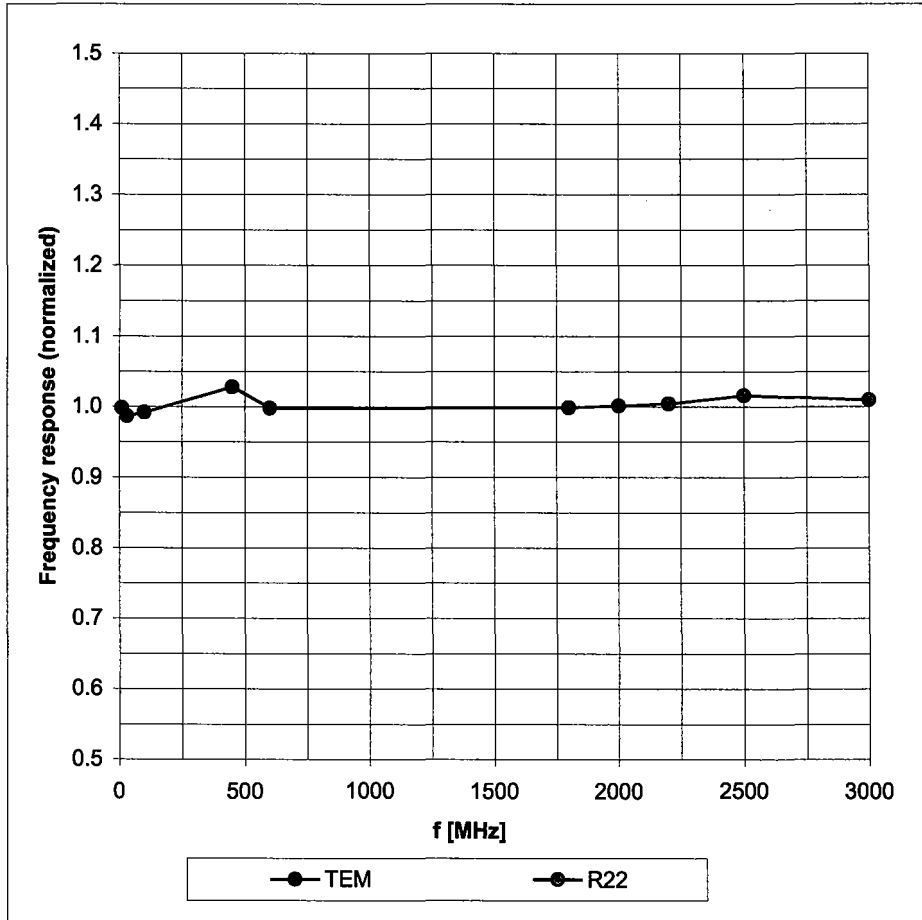
Calibrated for DASY Systems

(Note: non-compatible with DASY2 system!)



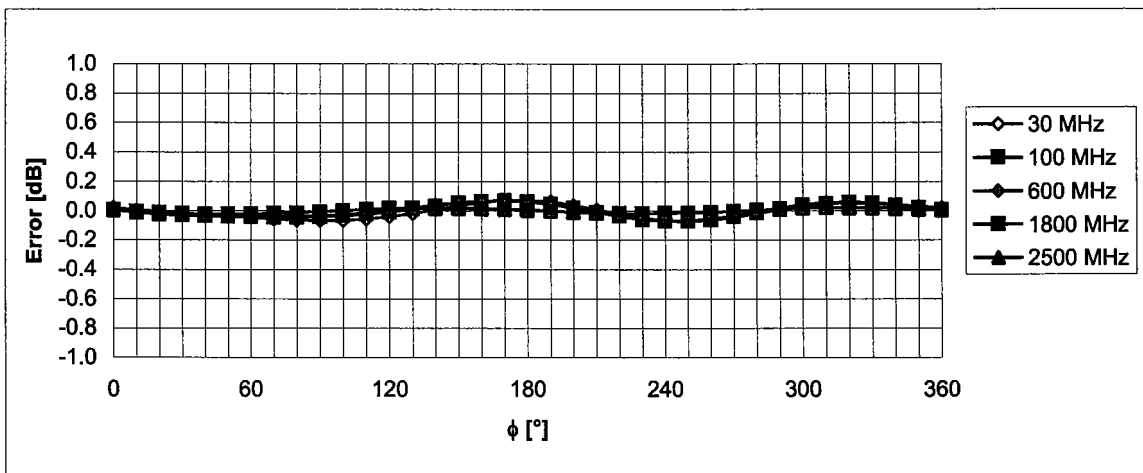
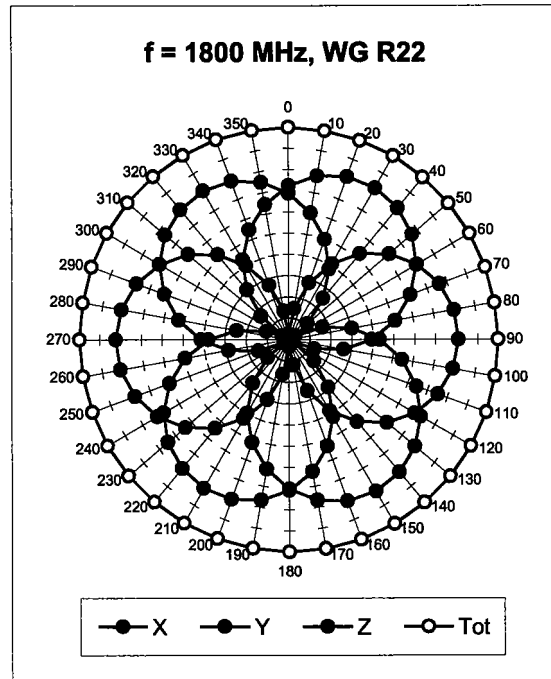
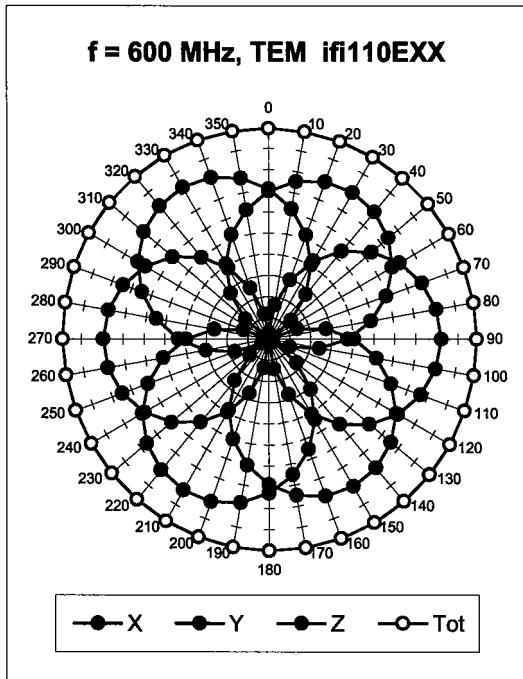
# Frequency Response of E-Field

(TEM-Cell:ifi110 EXX, Waveguide: R22)



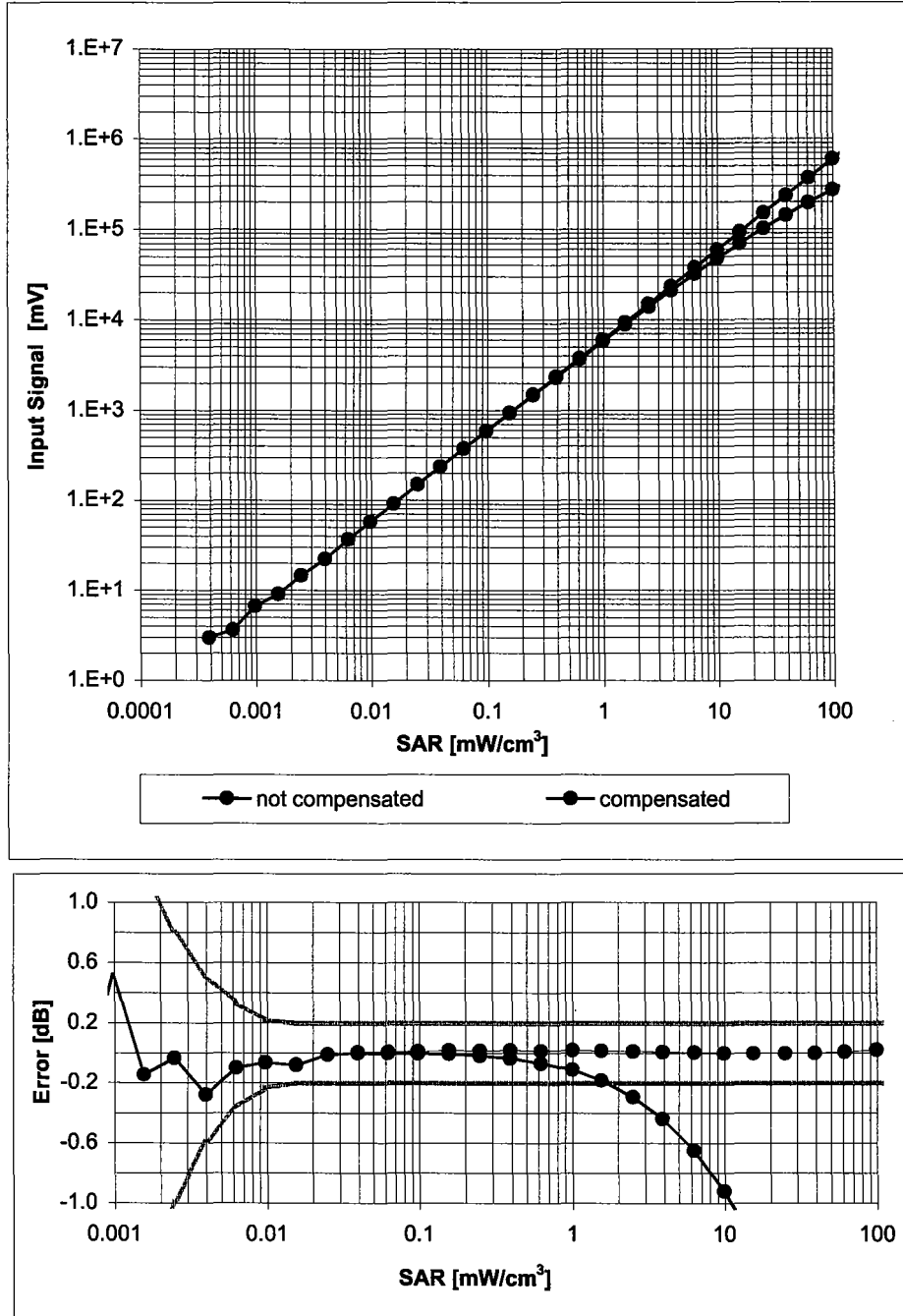
Uncertainty of Frequency Response of E-field:  $\pm 6.3\%$  ( $k=2$ )

### Receiving Pattern ( $\phi$ ), $\vartheta = 0^\circ$



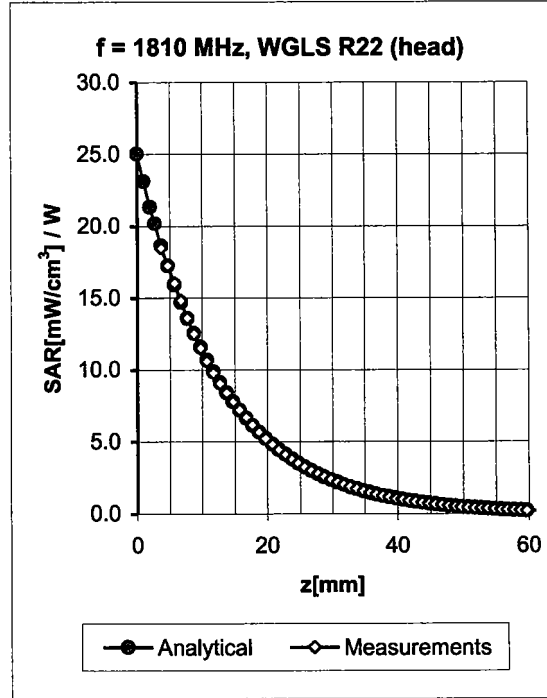
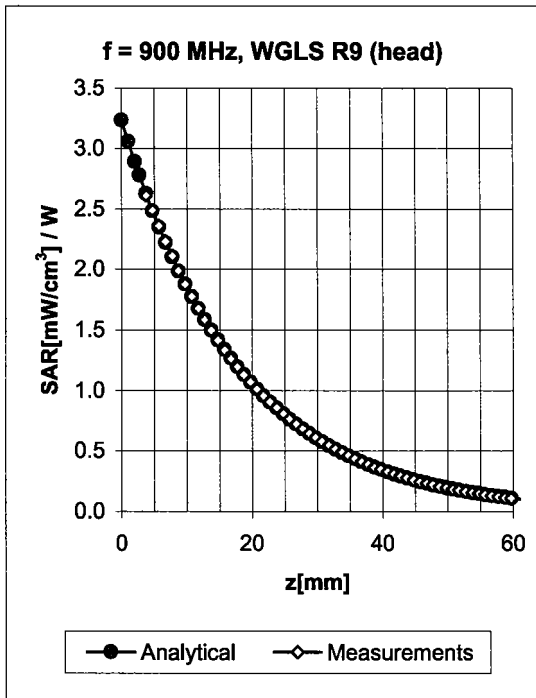
**Uncertainty of Axial Isotropy Assessment:  $\pm 0.5\%$  ( $k=2$ )**

### Dynamic Range $f(SAR_{head})$ (Waveguide R22, $f = 1800$ MHz)



Uncertainty of Linearity Assessment:  $\pm 0.6\%$  ( $k=2$ )

## Conversion Factor Assessment

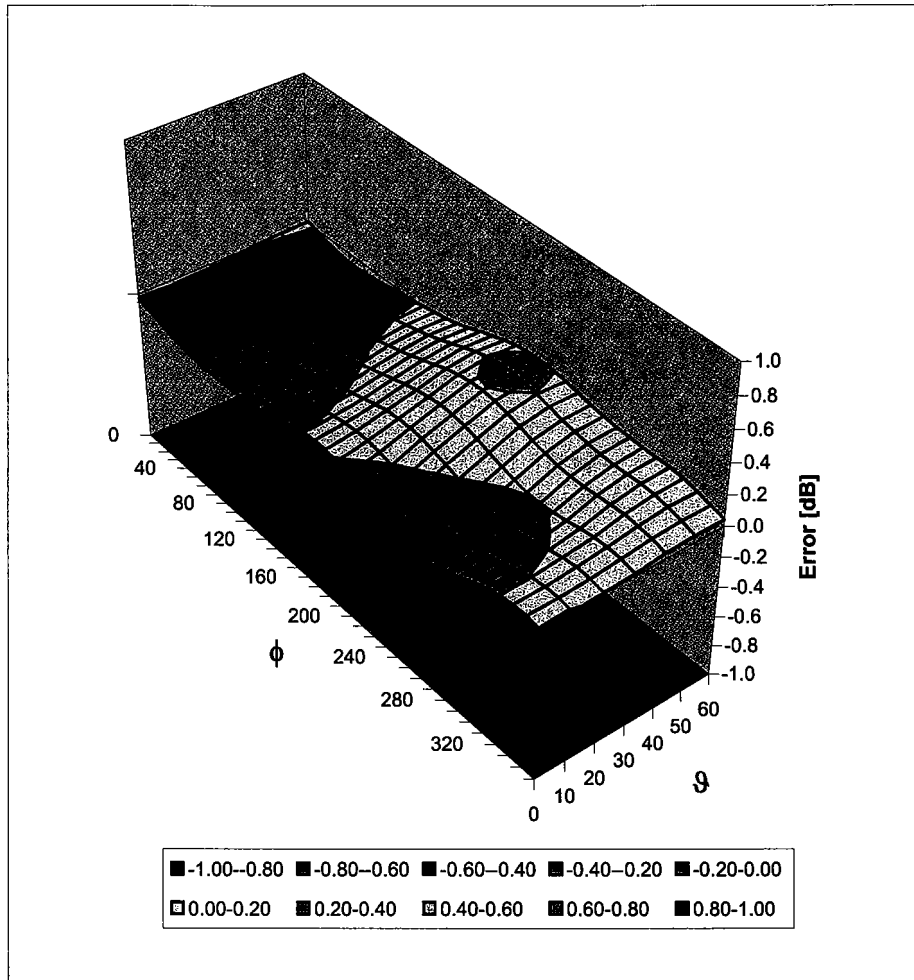


f [MHz]	Validity [MHz] <sup>c</sup>	TSL	Permittivity	Conductivity	Alpha	Depth	ConvF Uncertainty
900	± 50 / ± 100	Head	41.5 ± 5%	0.97 ± 5%	1.29	1.35	6.42 ± 11.0% (k=2)
1810	± 50 / ± 100	Head	40.0 ± 5%	1.40 ± 5%	0.61	2.36	5.12 ± 11.0% (k=2)
1950	± 50 / ± 100	Head	40.0 ± 5%	1.40 ± 5%	0.59	2.50	4.87 ± 11.0% (k=2)
2450	± 50 / ± 100	Head	39.2 ± 5%	1.80 ± 5%	0.74	2.11	4.50 ± 11.8% (k=2)
900	± 50 / ± 100	Body	55.0 ± 5%	1.05 ± 5%	1.16	1.50	6.04 ± 11.0% (k=2)
1810	± 50 / ± 100	Body	53.3 ± 5%	1.52 ± 5%	0.60	2.67	4.65 ± 11.0% (k=2)
1950	± 50 / ± 100	Body	53.3 ± 5%	1.52 ± 5%	0.67	2.36	4.43 ± 11.0% (k=2)
2450	± 50 / ± 100	Body	52.7 ± 5%	1.95 ± 5%	0.89	1.79	4.26 ± 11.8% (k=2)

<sup>c</sup> The validity of ± 100 MHz only applies for DASY v4.4 and higher (see Page 2). The uncertainty is the RSS of the ConvF uncertainty at calibration frequency and the uncertainty for the indicated frequency band.

# Deviation from Isotropy in HSL

Error ( $\phi$ ,  $\theta$ ),  $f = 900$  MHz



Uncertainty of Spherical Isotropy Assessment:  $\pm 2.6\%$  ( $k=2$ )

**Appendix 5**  
**Measurement Uncertainty Budget**

<b>Uncertainty Budget for Device Under Test</b>									
<i>a</i>	<i>b</i>	<i>c</i>	<i>d</i>	<i>e = f(d,k)</i>	<i>f</i>	<i>g</i>	<i>h = c x f / e</i>	<i>i = c x g / e</i>	<i>k</i>
<b>Uncertainty Component</b>	Sec.	Tol. (± %)	Prob. Dist.	Div.	<i>c<sub>i</sub></i> (1 g)	<i>c<sub>i</sub></i> (10 g)	1 g <i>u<sub>i</sub></i> (±%)	10 g <i>u<sub>i</sub></i> (±%)	<i>v<sub>i</sub></i>
<b>Measurement System</b>									
Probe Calibration	E.2.1	9.5	N	2.00	1	1	4.8	4.8	∞
Axial Isotropy	E.2.2	4.7	R	1.73	0.707	0.707	1.9	1.9	∞
Spherical Isotropy	E.2.2	9.6	R	1.73	0.707	0.707	3.9	3.9	∞
Boundary Effect	E.2.3	5.8	R	1.73	1	1	3.3	3.3	∞
Linearity	E.2.4	4.7	R	1.73	1	1	2.7	2.7	∞
System Detection Limits	E.2.5	1.0	R	1.73	1	1	0.6	0.6	∞
Readout Electronics	E.2.6	1.0	N	1.00	1	1	1.0	1.0	∞
Response Time	E.2.7	0.8	R	1.73	1	1	0.5	0.5	∞
Integration Time	E.2.8	1.3	R	1.73	1	1	0.8	0.8	∞
RF Ambient Conditions	E.6.1	3.0	R	1.73	1	1	1.7	1.7	∞
Probe Positioner Mechanical Tolerance	E.6.2	0.3	R	1.73	1	1	0.2	0.2	∞
Probe Positioning with respect to Phantom Shell	E.6.3	1.1	R	1.73	1	1	0.6	0.6	∞
Extrapolation, interpolation and Integration Algorithms for Max. SAR Evaluation	E.5	3.9	R	1.73	1	1	2.3	2.3	∞
<b>Test sample Related</b>									
Test Sample Positioning	E.4.2	3.6	N	1.00	1	1	3.6	3.6	29
Device Holder Uncertainty	E.4.1	2.8	N	1.00	1	1	2.8	2.8	8
Output Power Variation - SAR drift measurement	6.6.2	5.0	R	1.73	1	1	2.9	2.9	∞
<b>Phantom and Tissue Parameters</b>									
Phantom Uncertainty (shape and thickness tolerances)	E.3.1	4.0	R	1.73	1	1	2.3	2.3	∞
Liquid Conductivity - deviation from target values	E.3.2	5.0	R	1.73	0.64	0.43	1.8	1.2	∞
Liquid Conductivity - measurement uncertainty	E.3.3	10.0	R	1.73	0.64	0.43	3.7	2.5	∞
Liquid Permittivity - deviation from target values	E.3.2	10.0	R	1.73	0.6	0.49	3.5	2.8	∞
Liquid Permittivity - measurement uncertainty	E.3.3	5.0	R	1.73	0.6	0.49	1.7	1.4	∞
<b>Combined Standard Uncertainty</b>			RSS				11.72	11.09	1363
<b>Expanded Uncertainty (95% CONFIDENCE LEVEL)</b>			<i>k</i> =2				22.98	21.75	

**Uncertainty Budget for System Performance Check (dipole & flat phantom)**

<i>a</i>	<i>b</i>	<i>c</i>	<i>d</i>	$e = f(d,k)$	<i>f</i>	<i>g</i>	$h = c \times f / e$	$i = c \times g / e$	<i>k</i>
<b>Uncertainty Component</b>	Sec.	Tol. (± %)	Prob. Dist.	Div.	<i>c<sub>i</sub></i> (1 g)	<i>c<sub>i</sub></i> (10 g)	1 g <i>u<sub>i</sub></i> (±%)	10 g <i>u<sub>i</sub></i> (±%)	<i>v<sub>i</sub></i>
<b>Measurement System</b>									
Probe Calibration	E.2.1	9.5	N	2.00	1	1	4.8	4.8	∞
Axial Isotropy	E.2.2	4.7	R	1.73	1	1	2.7	2.7	∞
Spherical Isotropy	E.2.2	9.6	R	1.73	0	0	0.0	0.0	∞
Boundary Effect	E.2.3	5.8	R	1.73	1	1	3.3	3.3	∞
Linearity	E.2.4	4.7	R	1.73	1	1	2.7	2.7	∞
System Detection Limits	E.2.5	1.0	R	1.73	1	1	0.6	0.6	∞
Readout Electronics	E.2.6	1.0	N	1.00	1	1	1.0	1.0	∞
Response Time	E.2.7	0.0	R	1.73	1	1	0.0	0.0	∞
Integration Time	E.2.8	0.0	R	1.73	1	1	0.0	0.0	∞
RF Ambient Conditions	E.6.1	3.0	R	1.73	1	1	1.7	1.7	∞
Probe Positioner Mechanical Tolerance	E.6.2	0.3	R	1.73	1	1	0.2	0.2	∞
Probe Positioning with respect to Phantom Shell	E.6.3	1.1	R	1.73	1	1	0.6	0.6	∞
Extrapolation, interpolation and Integration Algorithms for Max. SAR Evaluation	E.5	3.9	R	1.73	1	1	2.3	2.3	∞
<b>Dipole</b>									
Dipole Axis to Liquid Distance	8, E.4.2	1.0	R	1.73	1	1	0.6	0.6	∞
Input Power and SAR Drift Measurement	8, 6.6.2	4.7	R	1.73	1	1	2.7	2.7	∞
<b>Phantom and Tissue Parameters</b>									
Phantom Uncertainty (shape and thickness tolerances)	E.3.1	4.0	R	1.73	1	1	2.3	2.3	∞
Liquid Conductivity - deviation from target values	E.3.2	5.0	R	1.73	0.64	0.43	1.8	1.2	∞
Liquid Conductivity - measurement uncertainty	E.3.3	10.0	R	1.73	0.64	0.43	3.7	2.5	∞
Liquid Permittivity - deviation from target values	E.3.2	10.0	R	1.73	0.6	0.49	3.5	2.8	∞
Liquid Permittivity - measurement uncertainty	E.3.3	5.0	R	1.73	0.6	0.49	1.7	1.4	∞
<b>Combined Standard Uncertainty</b>			RSS				10.16	9.43	99999
<b>Expanded Uncertainty (95% CONFIDENCE LEVEL)</b>			<i>k</i> =2				19.92	18.48	

**Appendix 6**

**Photographs of the device under test**



Figure 1. Front of Phone



Figure 2. Phone Open



**Figure 3. Back of Phone**



**Figure 4. Phone Against the Head Phantom (Cheek Touch)**



**Figure 5. Phone Against the Head Phantom (15°Tilt)**



**Figure 6. Phone Against the Flat Phantom (PTT position)**



**Figure 7. Phone Against the Flat Phantom (Body)**