



Exhibit 11: Class II Permissive Change SAR Test Report IHDT56DH1

Date of test: 11 - 17 Feb, 2004
Date of Report: 22 March, 2004

Laboratory: Motorola Personal Communications Sector Product Safety & Compliance Laboratory
 600 N. US Highway 45
 Room: MW113
 Libertyville, Illinois 60048

Test Responsible: Steven Hauswirth
 Principal Staff Engineer

Accreditation: This laboratory is accredited to ISO/IEC 17025-1999 to perform the following tests:



<p><u>Tests:</u> Electromagnetic Specific Absorption Rate</p> <p>Simulated Tissue Preparation RF Power Measurement</p>	<p><u>Procedures:</u> ANSI/IEEE C95.1-1992, 1999 (SAR) IEEE C95.3-1991 IEEE P1528 (<i>DRAFT</i>) FCC OET Bulletin 65 (<i>including Supplements A, B, C</i>) Australian Communications Authority Radio Communications (Electromagnetic Radiation – Human Exposure) Standard 1999 CENELEC EN 50361 (2001) APP-0247 DOI-0876, 0900, 0902, 0904, 0915</p>
--	---

On the following products or types of products:
 Wireless Communications Devices (Examples): Two Way Radios; Portable Phones (including Cellular, Licensed Non-Broadcast and PCS); Low Frequency Readers; and Pagers

A2LA certificate #1651-01

Statement of Compliance: Motorola declares under its sole responsibility that portable cellular telephone FCC ID IHDT56DH1 to which this declaration relates, is in conformity with the appropriate General Population/Uncontrolled RF exposure standards, recommendations and guidelines (FCC 47 CFR §2.1093). It also declares that the product was tested in accordance with the appropriate measurement standards, guidelines and recommended practices. Any deviations from these standards, guidelines and recommended practices are noted below:

(none)

©Motorola, Inc. 2004

This test report shall not be reproduced except in full, without written approval of the laboratory.

The results and statements contained herein relate only to the items tested. The names of individuals involved may be mentioned only in connection with the statements or results from this report.

Motorola encourages all feedback, both positive and negative, on this test report.

Table of Contents

1. INTRODUCTION..... 3

3.1 Dosimetric System3

3.2 Additional Equipment.....4

4. ELECTRICAL PARAMETERS OF THE TISSUE SIMULATING LIQUID 4

5. SYSTEM ACCURACY VERIFICATION..... 4

6. TEST RESULTS 5

6.1 Body Worn Test Results6

APPENDIX 1: SAR DISTRIBUTION COMPARISON FOR SYSTEM ACCURACY VERIFICATION 8

APPENDIX 2: SAR DISTRIBUTION PLOTS FOR BODY WORN CONFIGURATION..... 9

APPENDIX 3: PROBE CALIBRATION CERTIFICATE 11

APPENDIX 4: DIPOLE CHARACTERIZATION CERTIFICATE..... 12

APPENDIX 5: MEASUREMENT UNCERTAINTY BUDGET..... 13

APPENDIX 6: PHOTOGRAPHS OF DEVICE UNDER TEST WITH NEW ACESSORY 16

1. Introduction

The Motorola Personal Communications Sector Product Safety Laboratory has performed measurements of the maximum potential exposure to the user of portable cellular phone (FCC ID IHDT56DH1). The Specific Absorption Rate (SAR) of this product was measured. The portable cellular phone was tested in accordance with FCC OET Bulletin 65 Supplement C 01-01.

2. Description of Device Under Test

Antenna description

Type	External	
Location	Upper Right	
Dimensions	Length	84 mm
	Width	5 mm
Configuration	Helix	

Device description

FCC ID Number	IHDT56DH1		
Serial number	333A0001 & 333A0056		
Mode(s) of Operation	AMPS800	CDMA800	CDMA1900
Modulation Mode(s)	AMPS	CDMA	CDMA
Maximum Output Power Setting	27.20 dBm	24.50 dBm	24.50 dBm
Duty Cycle	1:1	1:1	1:1
Transmitting Frequency Rang(s)	824-849MHz	824-849MHz	1851-1909MHz
Production Unit or Identical Prototype (47 CFR §2.908)	Identical Prototype		
Device Category	Portable		
RF Exposure Limits	General Population / Uncontrolled		

3. Test Equipment Used

3.1 Dosimetric System

The Motorola Personal Communications Sector Product Safety & Compliance Laboratory utilizes a Dosimetric Assessment System (Dasy3™ v3.1d) manufactured by Schmid & Partner Engineering AG (SPEAG™), of Zurich Switzerland. All the SAR measurements are taken within a shielded enclosure. The overall RSS uncertainty of the measurement system is ±11.7% (K=1) with an expanded uncertainty of ±23.0% (K=2). The measurement uncertainty budget is given in Appendix 6. Per IEEE 1528, this uncertainty budget is applicable to the SAR range of 0.4 W/kg to 10 W/kg. The list of calibrated equipment used for the measurements is shown below.

Description	Serial Number	Cal Due Date
DASY3 DAE V1	SN365	9-Oct-04
E-Field Probe ET3DV6	SN1390	16-Apr-04
Dipole Validation Kit, D900V2	SN093TR	24-Jun-04
Dipole Validation Kit, D1800V2	SN279TR	24-Jun-04

3.2 Additional Equipment

Description	Serial Number	Cal Due Date
Signal Generator HP8648C	3847A04845	11/05/04
Power Meter E4419B	US39250622	01/08/05
Power Sensor #1 - E9301A	US39210918	08/05/04
Power Sensor #2 - E9301A	US39210917	08/05/04
Network Analyzer HP8753ES	US39171846	06/03/04
Dielectric Probe Kit HP85070B	US99360074	N/A

4. Electrical parameters of the tissue simulating liquid

Prior to conducting SAR measurements, the relative permittivity, ϵ_r , and the conductivity, σ , of the tissue simulating liquids were measured with the HP85070 Dielectric Probe Kit. These values, along with the temperature of the tissue simulate are shown in the table below. The recommended limits for maximum permittivity and minimum conductivity are also shown. These come from the Federal Communication Commission, OET Bulletin 65 Supplement C 01-01. It is seen that the measured parameters are satisfactory for compliance testing.

f (MHz)	Tissue type	Limits / Measured	Dielectric Parameters		
			ϵ_r	σ (S/m)	Temp (°C)
835	Body	Measured, 11-Feb-04	54.4	0.98	20.7
		Measured, 13-Feb-04	54.1	0.98	21.3
		Measured, 17-Feb-04	54.9	0.98	21.0
		Recommended Limits	55.2 ±5%	0.97 ±5%	18-25
1880	Body	Measured, 11-Feb-04	52.9	1.56	21.0
		Measured, 13-Feb-04	52.7	1.55	21.1
		Recommended Limits	53.3 ±5%	1.52 ±5%	18-25

The list of ingredients and the percent composition used for the tissue simulates are indicated in the table below.

Ingredient	800MHz Head	800MHz Body	1900MHz Head	1900MHz Body
Sugar	57.0	44.9	--	30.80
DGBE	--	--	47.0	--
Water	40.45	53.06	52.8	68.91
Salt	1.45	0.94	0.2	0.29
HEC	1.0	1.0	--	--
Bact.	0.1	0.1	--	--

5. System Accuracy Verification

A system accuracy verification of the DASY3 was performed using the measurement equipment listed in Section 3.1. The daily system accuracy verification occurs within center section of the SAM phantom.

A SAR measurement was performed to see if the measured SAR was within +/- 10% from the target SAR indicated on the dipole certification sheet. These tests were done at 900MHz and/or 1800MHz. These frequencies are within 100MHz of the mid-band frequency of the test device. This is within the allowable window given in Supplement C

01-01 Appendix D System Verification section item #5. The test was conducted on the same days as the measurement of the DUT. Recommended limits for maximum permittivity, minimum conductivity are shown in the table below. These come from the Federal Communication Commission, OET Bulletin 65 Supplement C 01-01. The obtained results from the system accuracy verification are displayed in the table below. The distributions of SAR compare well with those of the reference measurements (see Appendix 1). The tissue stimulant depth was verified to be 15.0cm ±0.5cm. Z-axis scans showing the SAR penetration are also included in Appendix 1. SAR values are normalized to 1W forward power delivered to the dipole.

f (MHz)	Description	SAR (W/kg), 1gram	Dielectric Parameters		Ambient Temp (°C)	Tissue Temp (°C)
			ϵ_r	σ (S/m)		
900	Measured, 11-Feb-04	11.8	41.4	0.98	21	21.7
	Measured, 13-Feb-04	11.6	42.2	0.98	21	21.2
	Measured, 17-Feb-04	11.4	41.5	0.98	22	22.2
	Recommended Limits	11.6	41.5 ±5%	0.97 ±5%	18-25	18-25
1800	Measured, 11-Feb-04	40.2	38.7	1.35	21	21.5
	Measured, 13-Feb-04	40.8	39.0	1.35	22	21.7
	Recommended Limits	39.7	40.0 ±5%	1.4 ±5%	18-25	18-25

The following probe conversion factors were used on the E-Field probe(s) used for the system accuracy verification measurements:

Description	Serial Number	f (MHz)	Conversion Factor	Cal Cert pg #
E-Field Probe ET3DV6	SN1390	900	6.9	7 of 10
		1800	5.4	7 of 10

6. Test Results

The test sample was operated in a test mode that allows control of the transmitter without the need to place actual phone calls. For the purposes of this test the unit is commanded to test mode and manually set to the proper channel, transmitter power level and transmit mode of operation. The phone was tested in the configurations stipulated in OET Bulletin 65 Supplement C 01-01. Motorola also followed the requirements in Supplement. C / Appendix D: SAR Measurement Procedures, section titled “Devices Operating Next To A Person’s Ear “. These directions state “The device should be tested on the left and right side of the head phantom in the “Cheek/Touch” and “Ear/Tilt” positions. When applicable, each configuration should be tested with the antenna in its fully extended and fully retracted positions. These test configurations should be tested at the high, middle and low frequency channels of each operating mode; for example, AMPS, CDMA, and TDMA. If the SAR measured at the middle channel for each test configuration (left, right, Cheek/Touch, Tile/Ear, extended and retracted) is at least 2.0 dB lower than the SAR limit, testing at the high and low channels is optional for such test configuration(s).“

The DASY v3.1d SAR measurement system specified in section 3.1 was utilized within the intended operations as set by the SPEAG™ setup. The phone was positioned into the measurement configurations using the positioner supplied with the DASY 3.1d SAR measurement system. The measured dielectric constant of the material used for the positioner is less than 2.9 and the loss tangent is less than 0.02 (± 30%) at 850MHz. The default settings for the “coarse” and “cube” scans were chosen and use for measurements. The grid spacing of the course scan was set to 15cm as shown in the SAR plots included in appendix 2 and 3. Please refer to the DASY manual for additional information on SAR scanning procedures and algorithms used.

The Cellular Phone (FCC ID IHDT56DH1) has the SNN5725A as the only available battery option. This battery was used to do all of the SAR testing. The phone was placed in the SAR measurement system with a fully charged battery.

6.1 Body Worn Test Results

The SAR results shown in table 5 are the maximum SAR values averaged over 1 gram of phantom tissue. Also shown are the measured conducted output powers, the temperature of the test facility during the test, the temperature of the tissue simulate after the test, the measured drift and the extrapolated SAR. The exact method of extrapolation is $New\ SAR = Old\ SAR * 10^{(-drift/10)}$. The SAR reported at the end of the measurement process by the DASYS™ measurement system can be scaled up by the measured drift to determine the SAR at the beginning of the measurement process. This is the most conservative SAR because it corresponds to the average output power at the beginning of the SAR test. This extrapolation has been done because when the DUT is operating properly it may exhibit a slump in radiated power and SAR over time. This is verified by measuring the SAR drift after the test. The test conditions indicated as bold numbers in the following table are included in Appendix 3. Note that 800MHz digital mode SAR measurements were performed in accordance with OET Bulletin 65 Supplement C 01-01. All other test conditions measured lower SAR values than those included in Appendix 3.

A “flat” phantom was for the body-worn tests. This “flat” phantom is made out of 1” thick natural High Density Polyethylene with a thickness at the bottom equal to 2.0mm. It measures 52.7cm(long) x 26.7cm(wide) x 21.2cm(tall). The measured dielectric constant of the material used is less than 2.3 and the loss tangent is less than 0.0046 all the way up to 2.184GHz.

The tissue stimulant depth was verified to be 15.0cm ±0.5cm. The same device holder described in section 6 was used for positioning the phone. The functional accessories were divided into two categories, the ones with metal components and the ones with non-metal components. For non-metallic component accessories’, testing was performed on the accessory that displayed the closest proximity to the flat phantom. Each metallic component accessory, if any, was checked for uniqueness of metal component so that each is tested with the device. If multiple accessories shared an identical metal component, only the accessory that dictates the closest spacing to the body was tested. The cellular phone was tested with a headset connected to the device for all body-worn SAR measurements.

There are one new Body-Worn Accessories available for this phone that utilizes two belt clips:
 A Leather Case: Model # EL81001 with Belt Clip Model # SYN8631A
 A Leather Case: Model # EL81001 with Belt Clip Model # SYN8763A

The following probe conversion factors were used on the E-Field probe(s) used for the body worn measurements:

Description	Serial Number	f (MHz)	Conversion Factor	Cal Cert pg #
E-Field Probe ET3DV6	SN1390	835	6.7	8 of 10
		1900	5.1	8 of 10

f (MHz)	Description	Conducted Output Power (dBm)	Leather Case: Model # EL81001 with Belt Clip Model # SYN8763A							
			Ant Extended				Ant Retracted			
			Measured (W/kg)	Drift (dB)	Extrapolated (W/kg)	Simulate Temp (°C)	Measured (W/kg)	Drift (dB)	Extrapolated (W/kg)	Simulate Temp (°C)
Analog 800MHz	Channel 991	27.15								
	Channel 384	27.20	0.558	-0.09	0.57	20.7	0.443	-0.06	0.45	20.8
	Channel 799	27.20								
Digital 1900MHz	Channel 25	24.52								
	Channel 600	24.50	0.571	-0.06	0.58	21.0	0.584	-0.13	0.60	21.1
	Channel 1175	24.50								

Table 1: SAR measurement results for the portable cellular telephone FCC ID IHDT56DH1 at highest possible output power. Measured against the body.

f (MHz)	Description	Conducted Output Power (dBm)	Leather Case: Model # EL81001 with Belt Clip Model # SYN8631A							
			Ant Extended				Ant Retracted			
			Measured (W/kg)	Drift (dB)	Extrapolated (W/kg)	Simulate Temp (°C)	Measured (W/kg)	Drift (dB)	Extrapolated (W/kg)	Simulate Temp (°C)
Analog 800MHz	Channel 991	27.15								
	Channel 384	27.20	0.258	0.06	0.26	20.3	0.228	-0.12	0.23	21.4
	Channel 799	27.20								
Digital 1900MHz	Channel 25	24.52					1.11	-0.11	1.14	21.3
	Channel 600	24.50	0.542	-0.14	0.56	20.8	1.01	-0.06	1.02	20.8
	Channel 1175	24.50					0.813	-0.05	0.82	21.2

Table 2: SAR measurement results for the portable cellular telephone FCC ID IHDT56DH1 at highest possible output power. Measured against the body.

Appendix 1

SAR distribution comparison for the system accuracy verification

Dipole 900 MHz

900 MHz System Performance Check / Dipole Sn# 093

PM1 Power = 200mW PM2 Power = 205mW Refl.Pwr PM3 = -21.35dB

Val Rack Info = Rack#6_B Tester Initials = Hwang Acceptable Temp Range is 18-25°C

Room Temp at time of measurement = 21°C Simulant Temp at time of measurement = 21.7°C

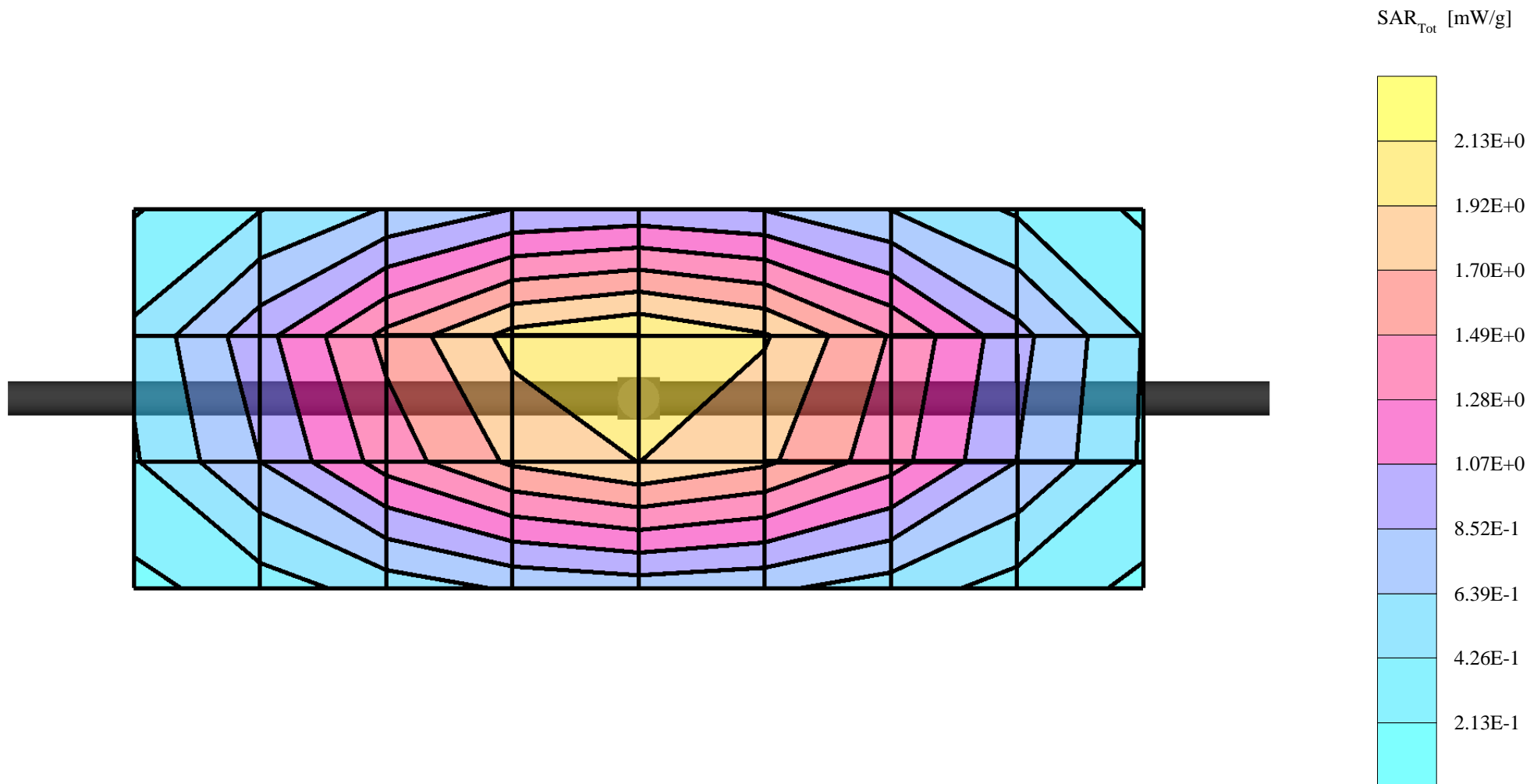
R8 Sugar TP-1168 SAM Expanded (Rev. 2)-9Jan03; Flat

Probe: ET3DV6 - SN1390 - Validation.2; ConvF(6.90,6.90,6.90); Crest factor: 1.0; 900 MHz VALIDATION: $\sigma = 0.98$ mho/m $\epsilon_r = 41.4$ $\rho = 1.00$ g/cm³

Cubes (2): Peak: 3.74 mW/g ± 0.09 dB, SAR (1g): 2.36 mW/g ± 0.09 dB, SAR (10g): 1.48 mW/g ± 0.09 dB, (Worst-case extrapolation)

Penetration depth: 11.5 (10.7, 12.6) [mm]

Powerdrift: 0.03 dB



Dipole 900 MHz

900 MHz System Performance Check / Dipole Sn# 093

PM1 Power = 200mW PM2 Power = 205mW Refl.Pwr PM3 = -21.35dB

Val Rack Info = Rack#6_B Tester Initials = Hwang Acceptable Temp Range is 18-25°C

Room Temp at time of measurement = 21°C Simulant Temp at time of measurement = 21.7°C

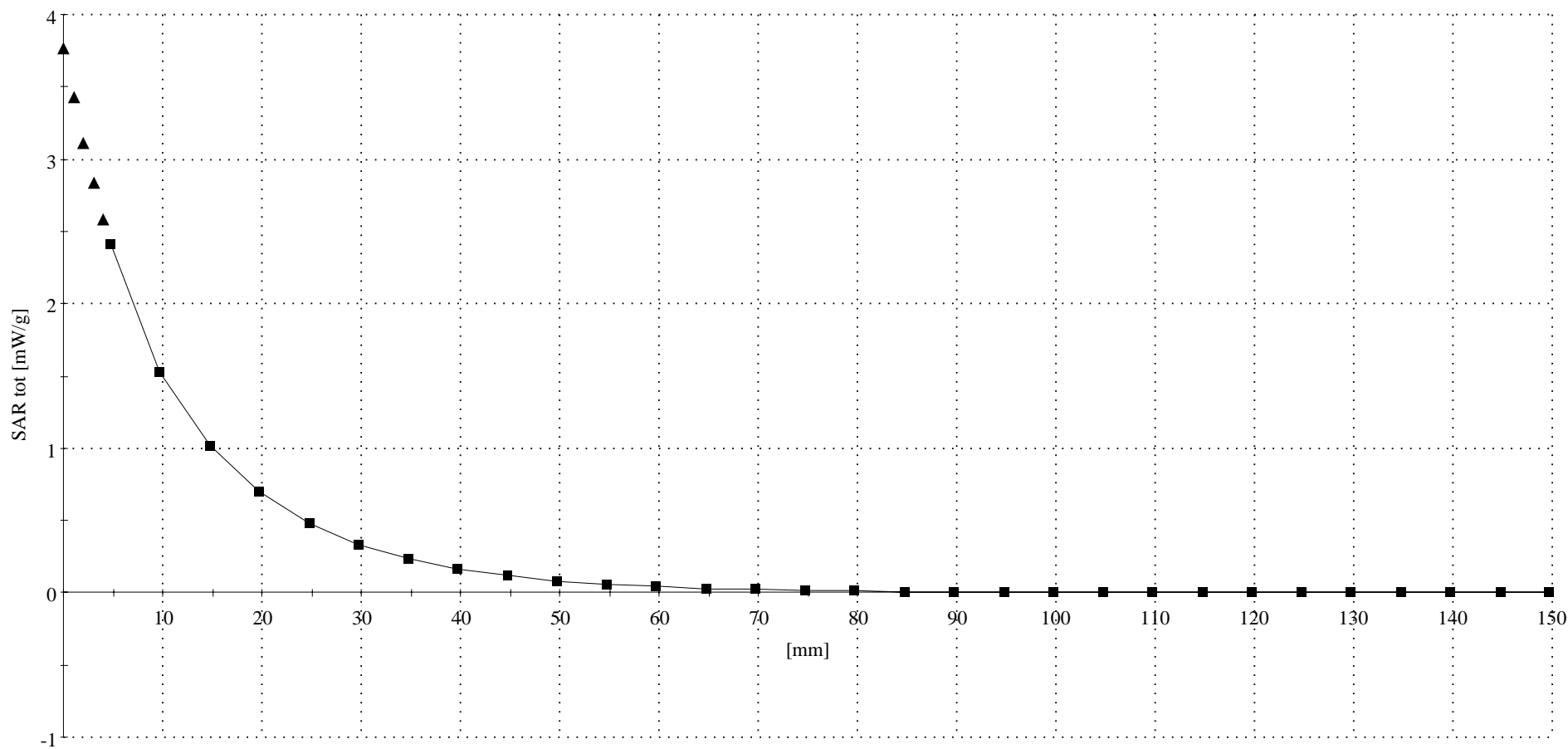
R8 Sugar TP-1168 SAM Expanded (Rev. 2)-9Jan03 Phantom; Section; Position: ; Frequency: 900 MHz

Probe: ET3DV6 - SN1390 - Validation.2; ConvF(6.90,6.90,6.90); Crest factor: 1.0; 900 MHz VALIDATION: $\sigma = 0.98$ mho/m $\epsilon_r = 41.4$ $\rho = 1.00$ g/cm³

: , , ()

Z-Axis: Dx = 0.0, Dy = 0.0, Dz = 5.0

Penetration depth: 11.5 (10.7, 12.6) [mm]



Dipole 1800 MHz

1800 MHz System Performance Check / Dipole Sn# 279tr

PM1 Power = 200mW Refl.Pwr PM3= -23.90dB

Room Temp at time of measurement = 21°C Simulant Temp at time of measurement = 21.5°C

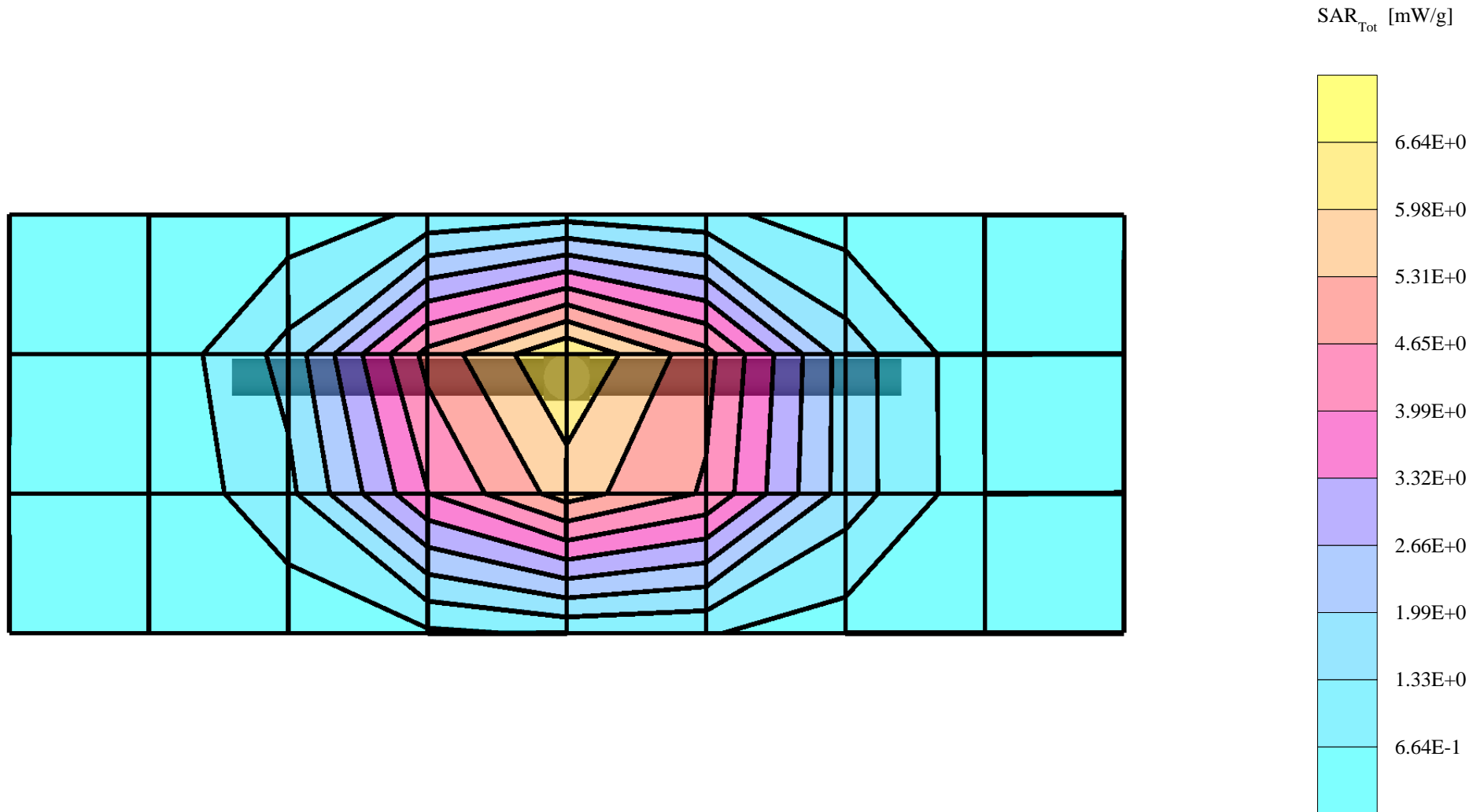
R8 Glycol TP-1138 SAM Expanded (Rev. 2)-9Jan03; Flat

Probe: ET3DV6 - SN1390 - Validation.2; ConvF(5.40,5.40,5.40); Crest factor: 1.0; 1800 MHz VALIDATION: $\sigma = 1.35$ mho/m $\epsilon_r = 38.7$ $\rho = 1.00$ g/cm³

Cubes (2): Peak: 14.7 mW/g ± 0.09 dB, SAR (1g): 8.03 mW/g ± 0.07 dB, SAR (10g): 4.25 mW/g ± 0.06 dB, (Worst-case extrapolation)

Penetration depth: 8.5 (8.1, 9.3) [mm]

Powerdrift: -0.00 dB



Dipole 1800 MHz

1800 MHz System Performance Check / Dipole Sn# 279tr

PM1 Power = 200mW Refl.Pwr PM3= -23.90dB

Room Temp at time of measurement = 21°C Simulant Temp at time of measurement = 21.5°C

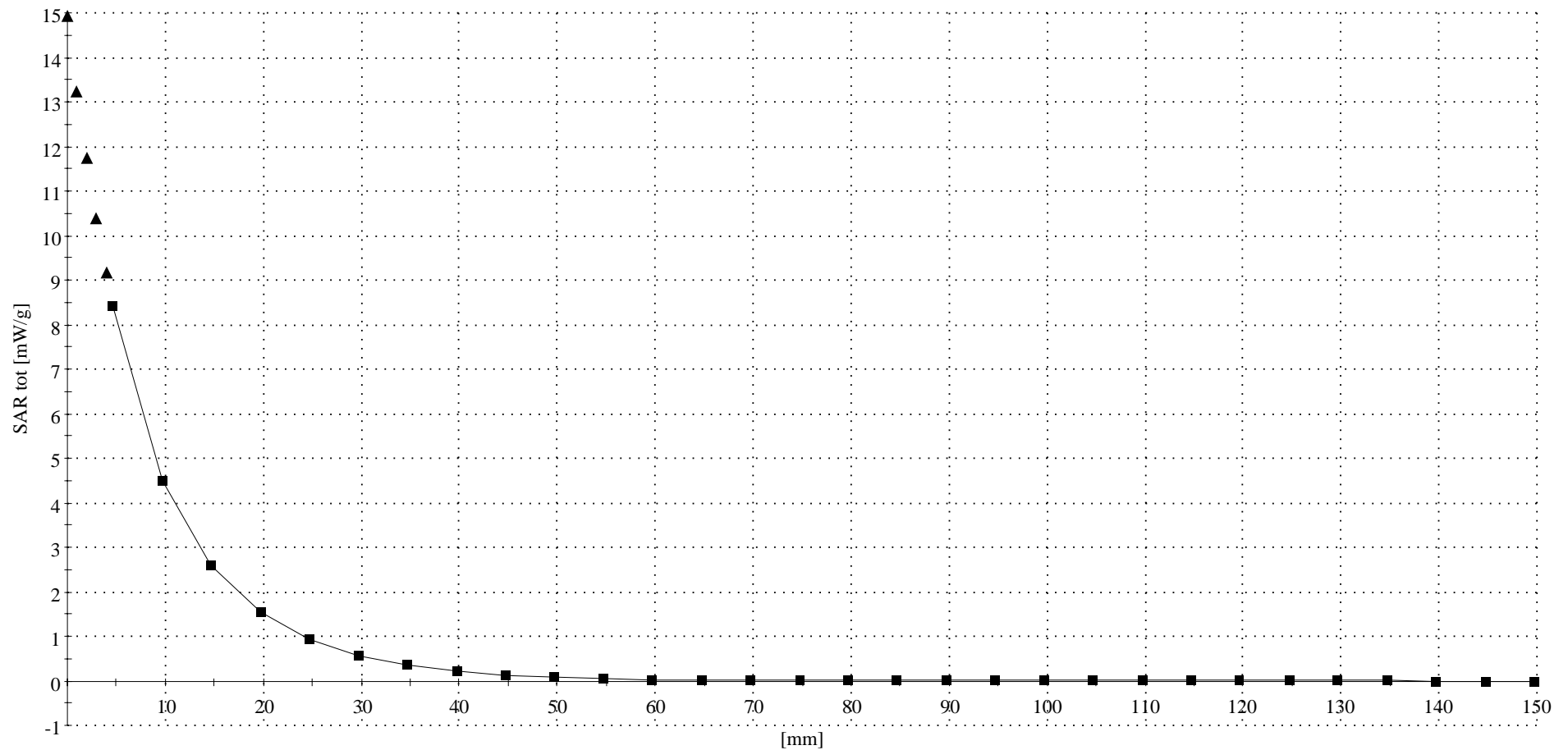
R8 Glycol TP-1138 SAM Expanded (Rev. 2)-9Jan03 Phantom; Section; Position: ; Frequency: 1800 MHz

Probe: ET3DV6 - SN1390 - Validation.2; ConvF(5.40,5.40,5.40); Crest factor: 1.0; 1800 MHz VALIDATION: $\sigma = 1.35$ mho/m $\epsilon_r = 38.7$ $\rho = 1.00$ g/cm³

: , ()

Z-Axis: Dx = 0.0, Dy = 0.0, Dz = 5.0

Penetration depth: 8.4 (8.0, 9.2) [mm]



Dipole 900 MHz

900 MHz System Performance Check / Dipole Sn# 093

PM1 Power = 200mW Refl.Pwr PM3= -20.93dB

Room Temp at time of measurement = 22°C Simulant Temp at time of measurement = 22.2°C

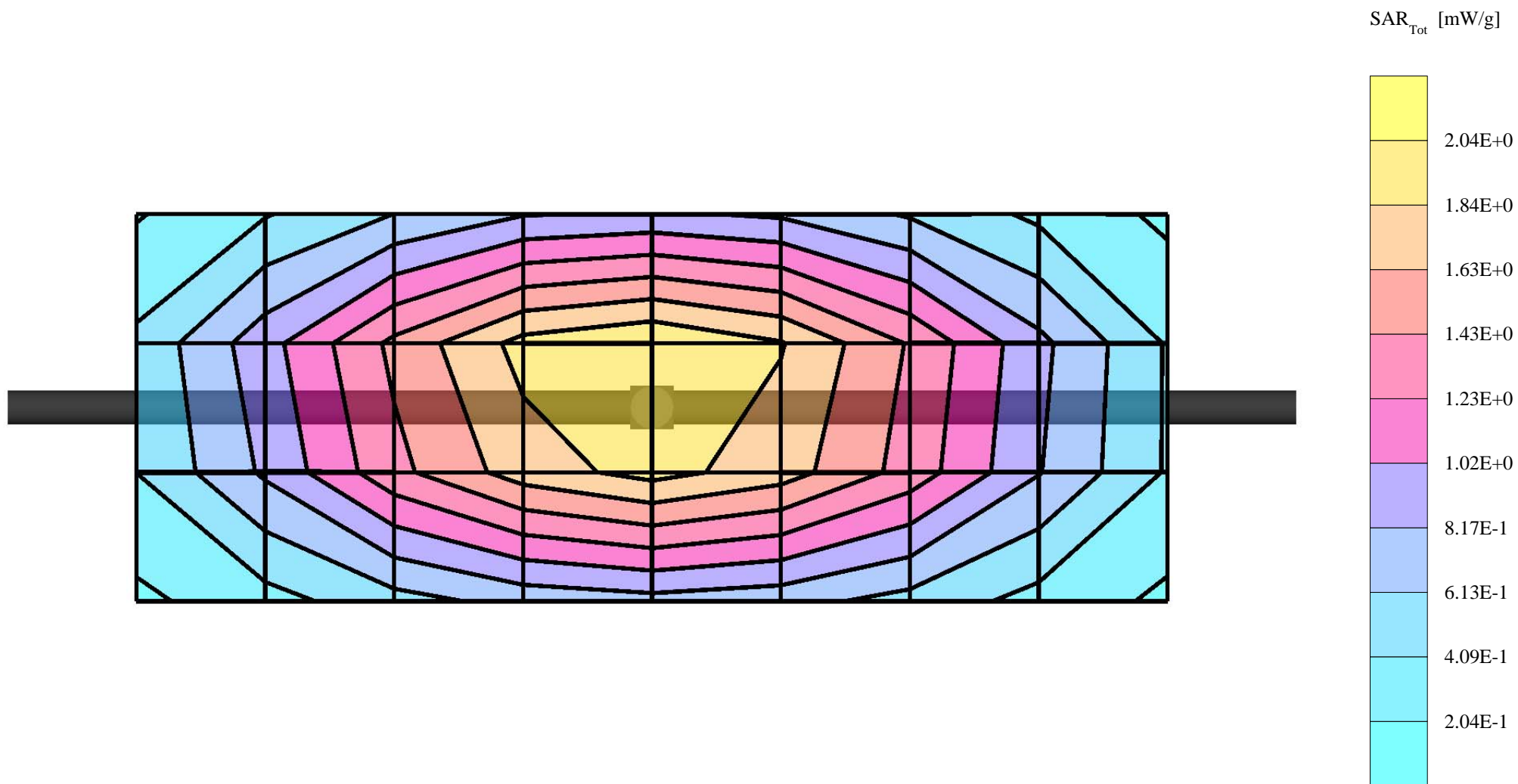
R8 Sugar TP-1168 SAM Expanded (Rev. 2)-9Jan03; Flat

Probe: ET3DV6 - SN1390 - Validation.2; ConvF(6.90,6.90,6.90); Crest factor: 1.0; 900 MHz VALIDATION: $\sigma = 0.98$ mho/m $\epsilon_r = 41.5$ $\rho = 1.00$ g/cm³

Cubes (2): Peak: 3.61 mW/g ± 0.06 dB, SAR (1g): 2.28 mW/g ± 0.06 dB, SAR (10g): 1.44 mW/g ± 0.06 dB, (Worst-case extrapolation)

Penetration depth: 11.5 (10.7, 12.6) [mm]

Powerdrift: -0.01 dB



Dipole 900 MHz

900 MHz System Performance Check / Dipole Sn# 093

PM1 Power = 200mW Refl.Pwr PM3= -20.93dB

Room Temp at time of measurement = 22°C Simulant Temp at time of measurement = 22.2°C

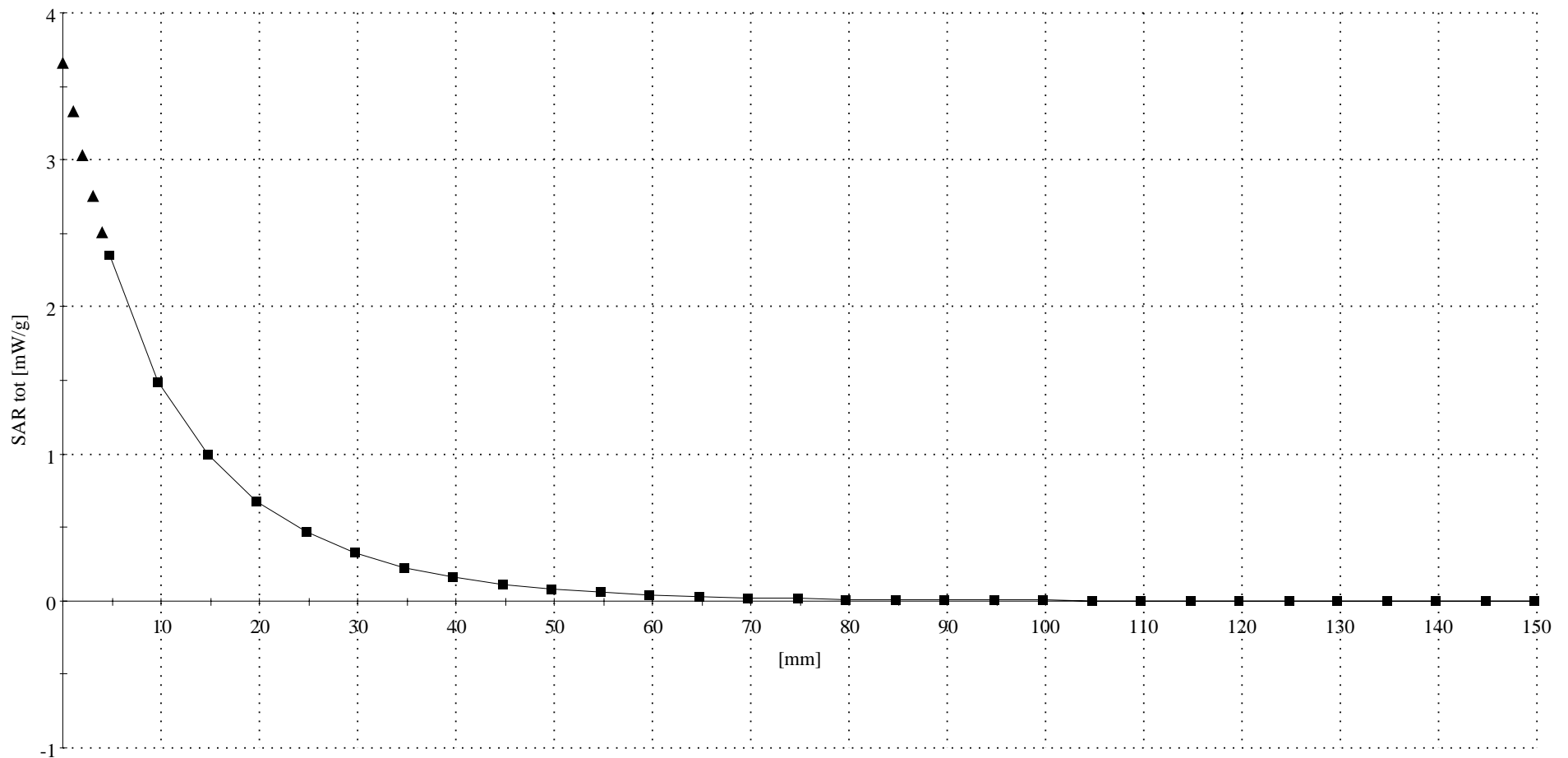
R8 Sugar TP-1168 SAM Expanded (Rev. 2)-9Jan03 Phantom; Section; Position: ; Frequency: 900 MHz

Probe: ET3DV6 - SN1390 - Validation.2; ConvF(6.90,6.90,6.90); Crest factor: 1.0; 900 MHz VALIDATION: $\sigma = 0.98$ mho/m $\epsilon_r = 41.5$ $\rho = 1.00$ g/cm³

: , ()

Z-Axis: Dx = 0.0, Dy = 0.0, Dz = 5.0

Penetration depth: 11.5 (10.7, 12.6) [mm]



Dipole 1800 MHz

1800 MHz System Performance Check / Dipole Sn# 279tr

PM1 Power = 200mW Refl.Pwr PM3= -24.60dB

Room Temp at time of measurement = 22°C Simulant Temp at time of measurement = 21.67°C

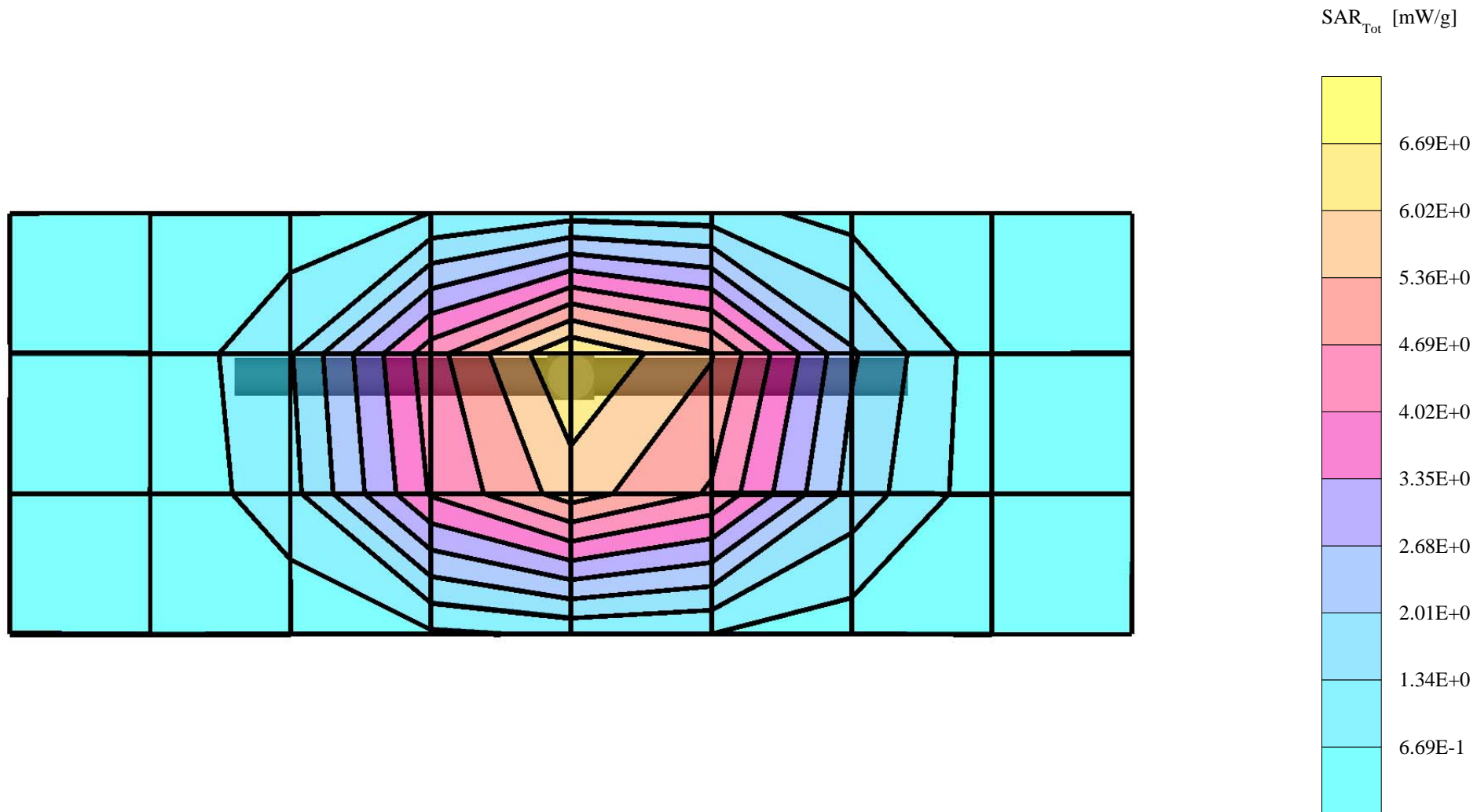
R8 Glycol TP-1138 SAM Expanded (Rev. 2)-9Jan03; Flat

Probe: ET3DV6 - SN1390 - Validation.2; ConvF(5.40,5.40,5.40); Crest factor: 1.0; 1800 MHz VALIDATION: $\sigma = 1.35$ mho/m $\epsilon_r = 39.0$ $\rho = 1.00$ g/cm³

Cubes (2): Peak: 14.9 mW/g ± 0.09 dB, SAR (1g): 8.15 mW/g ± 0.08 dB, SAR (10g): 4.32 mW/g ± 0.06 dB, (Worst-case extrapolation)

Penetration depth: 8.5 (8.1, 9.2) [mm]

Powerdrift: 0.03 dB



Dipole 1800 MHz

1800 MHz System Performance Check / Dipole Sn# 279tr

PM1 Power = 200mW Refl.Pwr PM3= -24.60dB

Room Temp at time of measurement = 22°C Simulant Temp at time of measurement = 21.67°C

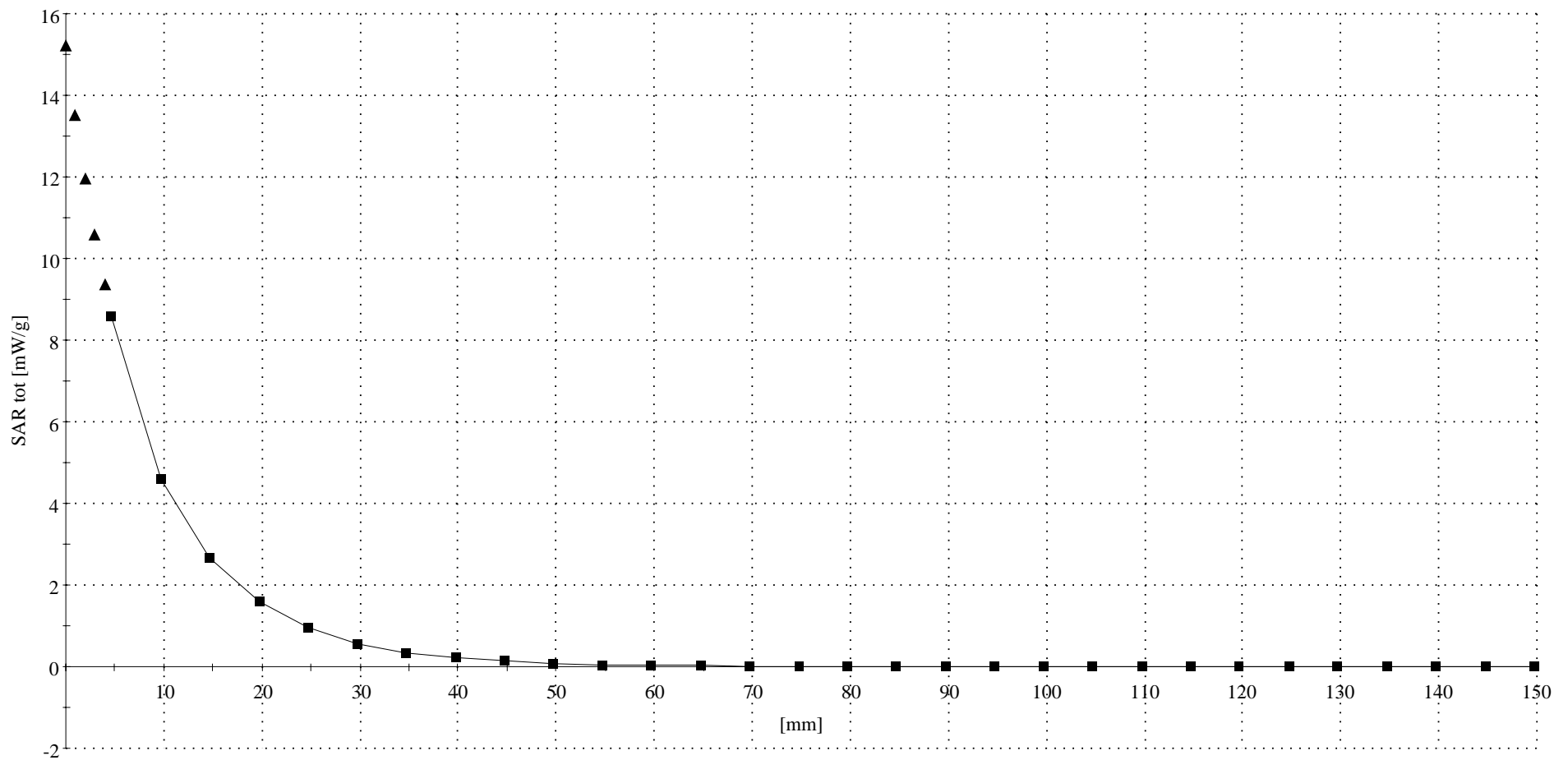
R8 Glycol TP-1138 SAM Expanded (Rev. 2)-9Jan03 Phantom; Section; Position: ; Frequency: 1800 MHz

Probe: ET3DV6 - SN1390 - Validation.2; ConvF(5.40,5.40,5.40); Crest factor: 1.0; 1800 MHz VALIDATION: $\sigma = 1.35$ mho/m $\epsilon_r = 39.0$ $\rho = 1.00$ g/cm³

: , ()

Z-Axis: Dx = 0.0, Dy = 0.0, Dz = 5.0

Penetration depth: 8.4 (8.0, 9.1) [mm]



Dipole 900 MHz

900 MHz System Performance Check / Dipole Sn# 093

PM1 Power = 200mW Refl.Pwr PM3= -20.94dB

Room Temp at time of measurement = 21°C Simulant Temp at time of measurement = 21.2°C

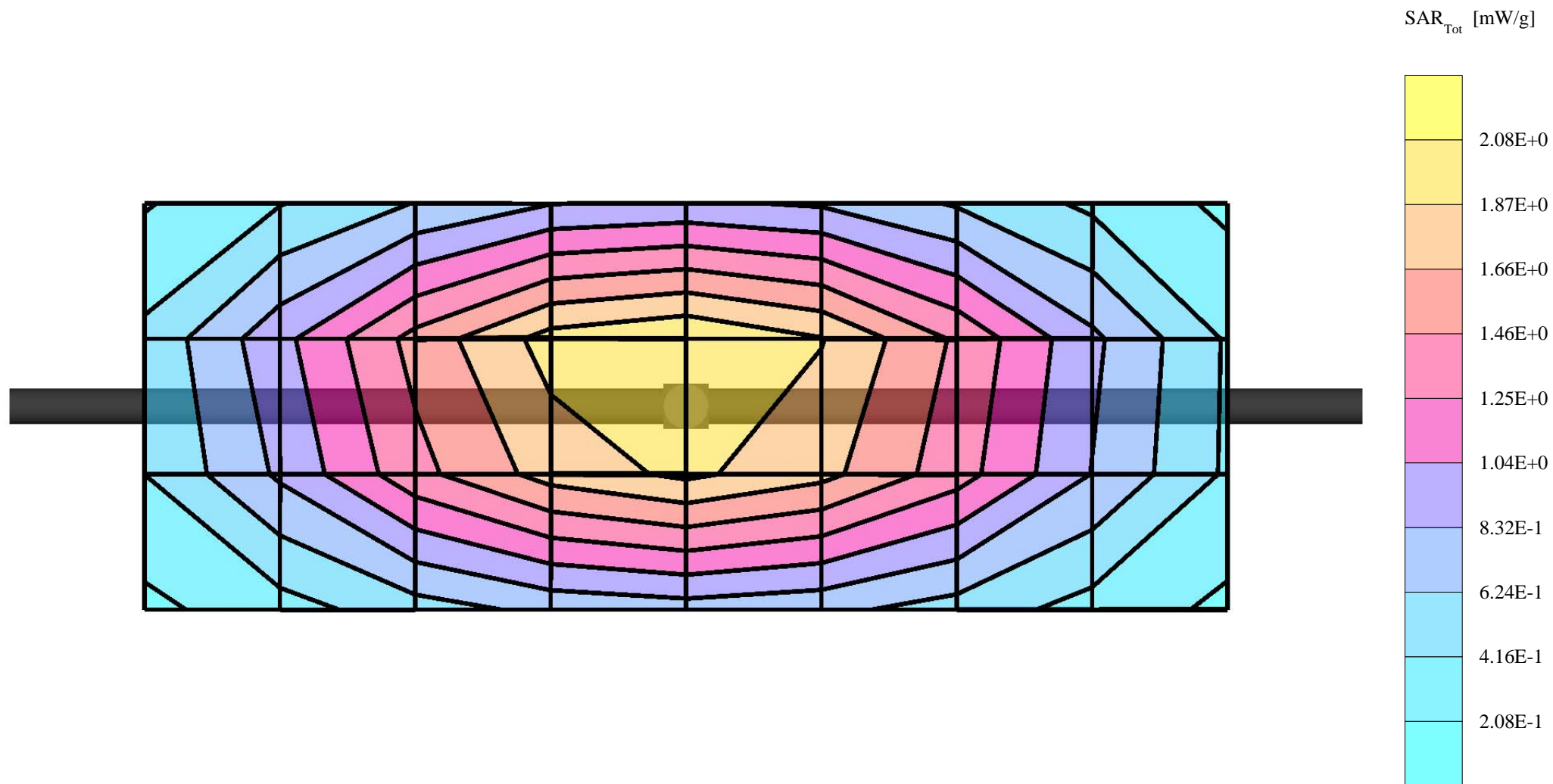
R8 Sugar TP-1168 SAM Expanded (Rev. 2)-9Jan03; Flat

Probe: ET3DV6 - SN1390 - Validation.2; ConvF(6.90,6.90,6.90); Crest factor: 1.0; 900 MHz VALIDATION: $\sigma = 0.98$ mho/m $\epsilon_r = 42.2$ $\rho = 1.00$ g/cm³

Cubes (2): Peak: 3.69 mW/g ± 0.07 dB, SAR (1g): 2.32 mW/g ± 0.07 dB, SAR (10g): 1.46 mW/g ± 0.07 dB, (Worst-case extrapolation)

Penetration depth: 11.4 (10.6, 12.6) [mm]

Powerdrift: 0.00 dB



Dipole 900 MHz

900 MHz System Performance Check / Dipole Sn# 093

PM1 Power = 200mW Refl.Pwr PM3= -20.94dB

Room Temp at time of measurement = 21°C Simulant Temp at time of measurement = 21.2°C

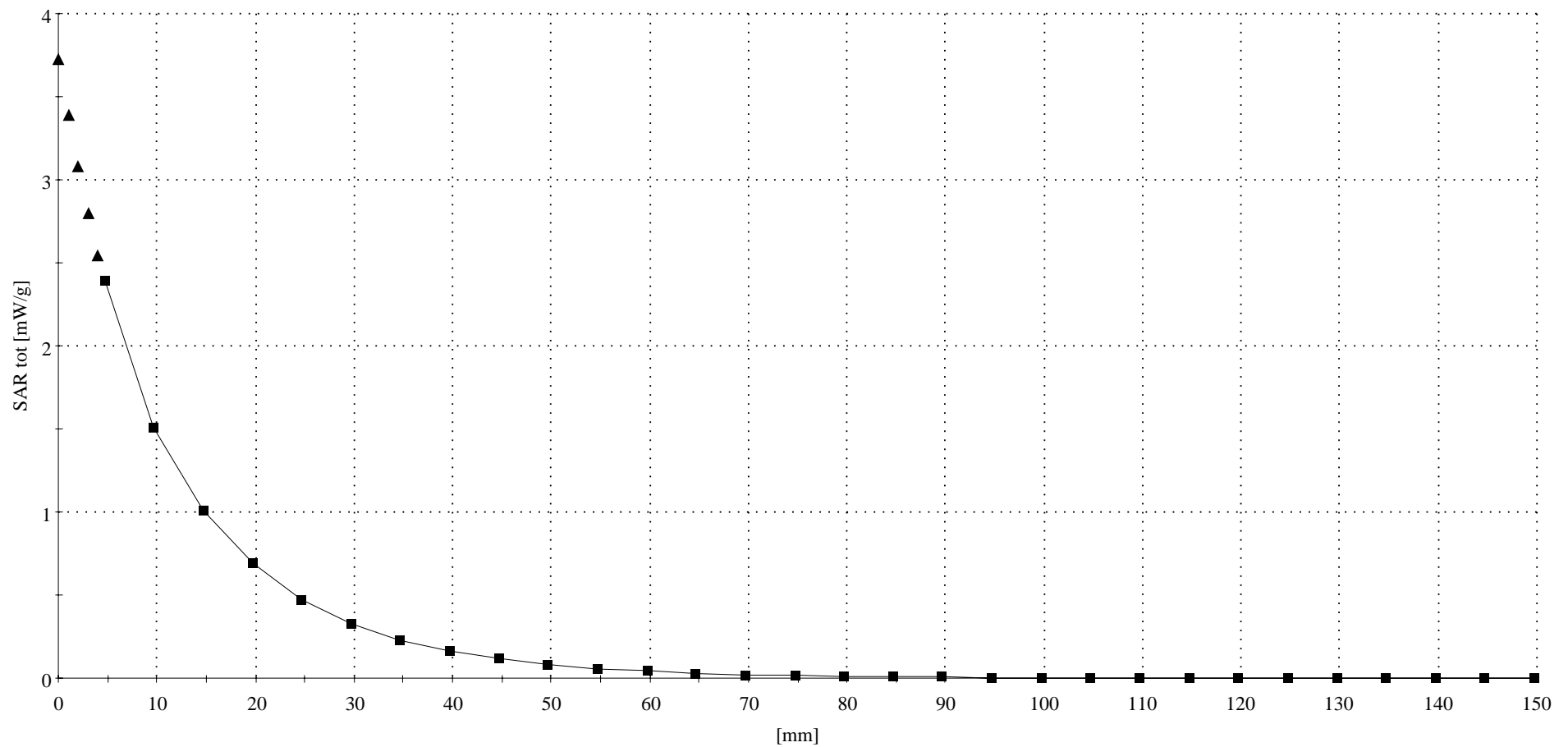
R8 Sugar TP-1168 SAM Expanded (Rev. 2)-9Jan03 Phantom; Section; Position: ; Frequency: 900 MHz

Probe: ET3DV6 - SN1390 - Validation.2; ConvF(6.90,6.90,6.90); Crest factor: 1.0; 900 MHz VALIDATION: $\sigma = 0.98$ mho/m $\epsilon_r = 42.2$ $\rho = 1.00$ g/cm³

: , ()

Z-Axis: Dx = 0.0, Dy = 0.0, Dz = 5.0

Penetration depth: 11.5 (10.7, 12.6) [mm]



Appendix 2

SAR distribution plots for Body Worn Configuration

s/n: 333A0056

Ch# 384 / Pwr Step: 02(OTA)

Antenna Position: Ret

Type of Modulation: AMPS800

Battery Model #: SNN5725A

Leather Case: Model # EL81001 with Belt Clip Model # SYN8763A

Amy Twin Phantom Rev.4 (22Aug02) Phantom; section 1 Section; Position: (0°,0°); Frequency: 837 MHz

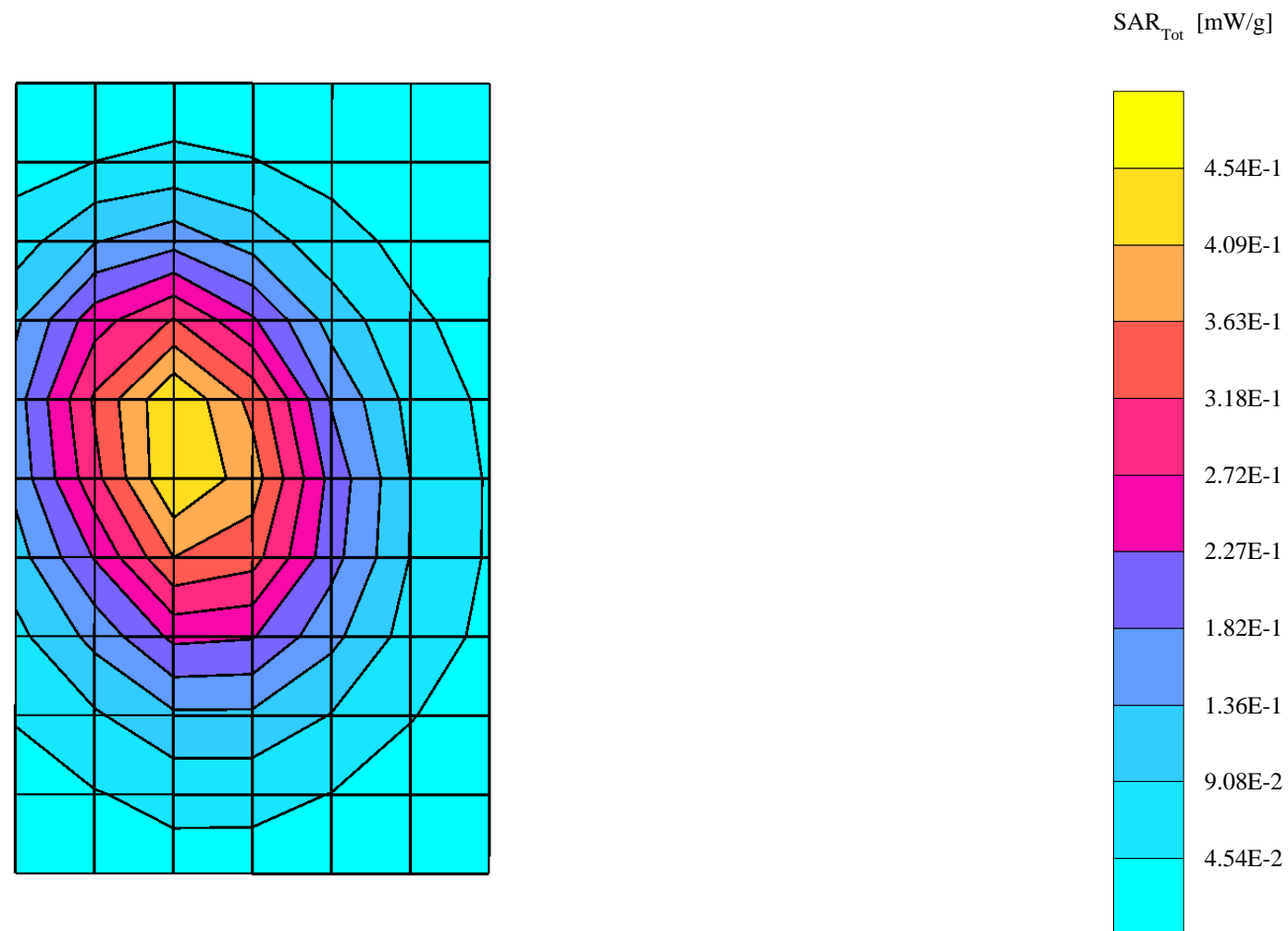
Probe: ET3DV6 - SN1390 - FCC Body; ConvF(6.70,6.70,6.70); Crest factor: 1.0; 835 MHz Head & Body: $\sigma = 0.98$ mho/m $\epsilon_r = 54.4$ $\rho = 1.00$ g/cm³

Cube 7x7x7: SAR (1g): 0.443 mW/g, SAR (10g): 0.309 mW/g, (Worst-case extrapolation)

Coarse: Dx = 15.0, Dy = 15.0, Dz = 10.0

Penetration depth: 15.5 (14.6, 16.5) [mm]

Powerdrift: -0.06 dB



s/n: 333A0056

Ch# 384 / Pwr Step: 02(OTA)

Antenna Position:Ext

Type of Modulation: AMPS800

Battery Model #: SNN5725A

Leather Case: Model # EL81001 with Belt Clip Model # SYN8763A

Amy Twin Phantom Rev.4 (22Aug02) Phantom; section 1 Section; Position: (0°,0°); Frequency: 837 MHz

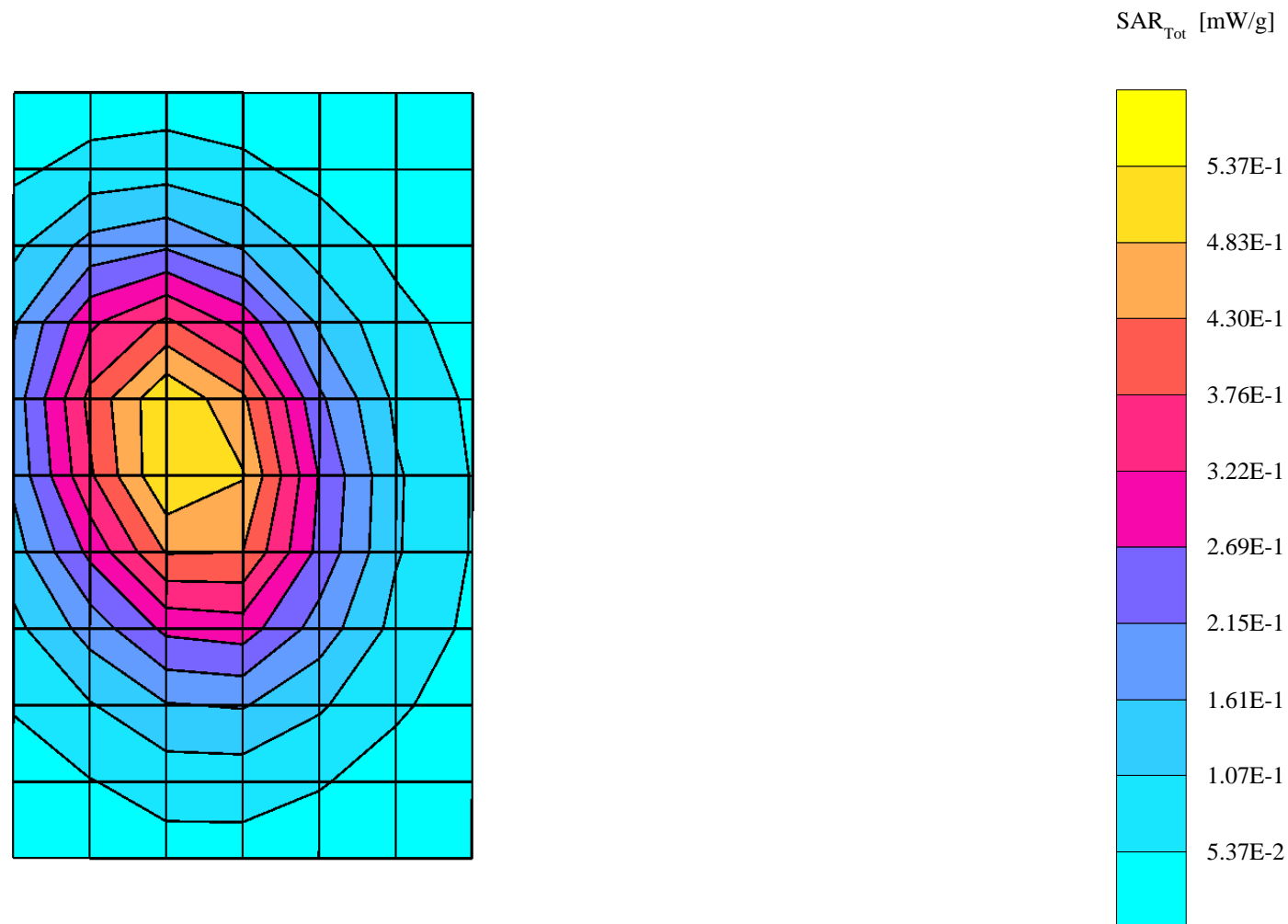
Probe: ET3DV6 - SN1390 - FCC Body; ConvF(6.70,6.70,6.70); Crest factor: 1.0; 835 MHz Head & Body: $\sigma = 0.98$ mho/m $\epsilon_r = 54.4$ $\rho = 1.00$ g/cm³

Cube 7x7x7: SAR (1g): 0.558 mW/g, SAR (10g): 0.389 mW/g, (Worst-case extrapolation)

Coarse: Dx = 15.0, Dy = 15.0, Dz = 10.0

Penetration depth: 15.6 (14.6, 16.6) [mm]

Powerdrift: -0.09 dB



s/n: 333A0001

Ch# 600 / Pwr Step: AlwaysUp(OTA)

Antenna Position:Ret

Type of Modulation: CDMA1900

Battery Model #: SNN5725A

Leather Case: Model # EL81001 with Belt Clip Model # SYN8763A

Amy Twin Phantom Rev.4 (22Aug02) Phantom; section 2 Section; Position: (0°,0°); Frequency: 1880 MHz

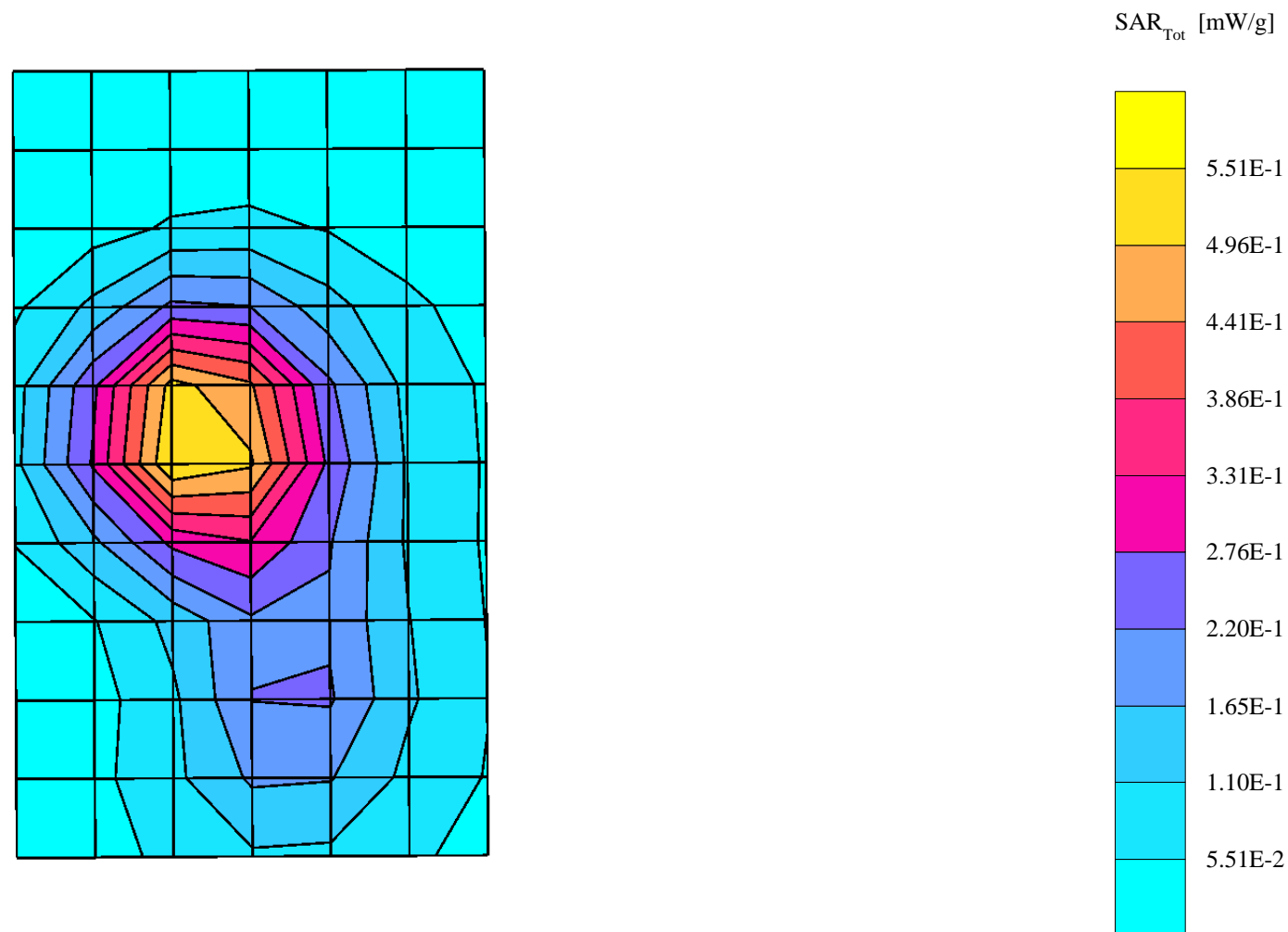
Probe: ET3DV6 - SN1390 - FCC Body; ConvF(5.10,5.10,5.10); Crest factor: 1.0; 1880 MHz Head & Body: $\sigma = 1.56$ mho/m $\epsilon_r = 52.9$ $\rho = 1.00$ g/cm³

Cube 7x7x7: SAR (1g): 0.584 mW/g, SAR (10g): 0.349 mW/g, (Worst-case extrapolation)

Coarse: Dx = 15.0, Dy = 15.0, Dz = 10.0

Penetration depth: 9.9 (8.9, 11.3) [mm]

Powerdrift: -0.13 dB



s/n: 333A0001

Ch# 600 / Pwr Step: AlwaysUp(OTA)

Antenna Position:Ext

Type of Modulation: CDMA1900

Battery Model #: SNN5725A

Leather Case: Model # EL81001 with Belt Clip Model # SYN8763A

Amy Twin Phantom Rev.4 (22Aug02) Phantom; section 2 Section; Position: (0°,0°); Frequency: 1880 MHz

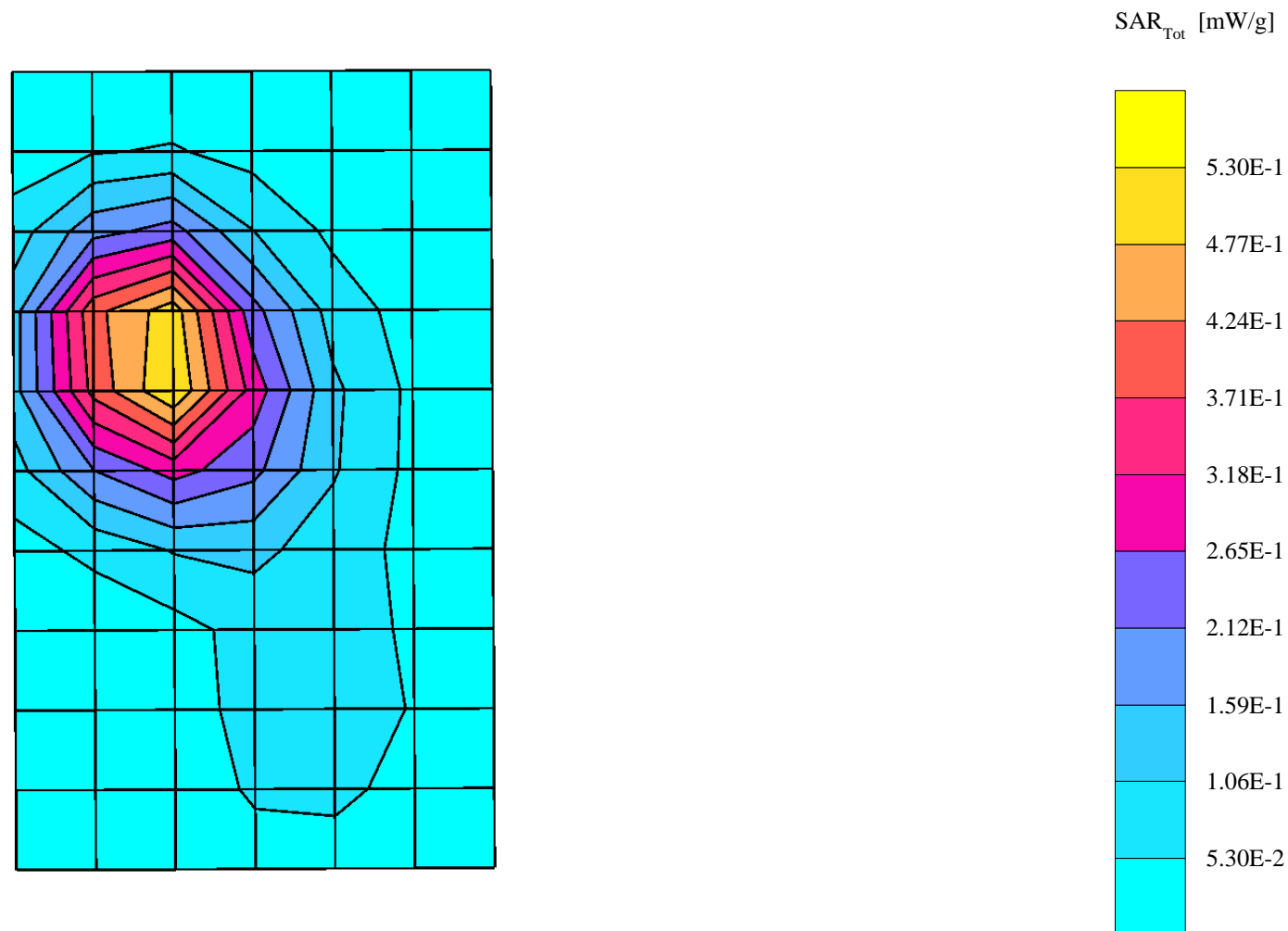
Probe: ET3DV6 - SN1390 - FCC Body; ConvF(5.10,5.10,5.10); Crest factor: 1.0; 1880 MHz Head & Body: $\sigma = 1.56$ mho/m $\epsilon_r = 52.9$ $\rho = 1.00$ g/cm³

Cube 7x7x7: SAR (1g): 0.571 mW/g, SAR (10g): 0.333 mW/g, (Worst-case extrapolation)

Coarse: Dx = 15.0, Dy = 15.0, Dz = 10.0

Penetration depth: 10.0 (8.8, 11.8) [mm]

Powerdrift: -0.06 dB



s/n: 333A0056

Ch# 384 / Pwr Step: 02(OTA)

Antenna Position: Ret

Type of Modulation: AMPS800

Battery Model #: SNN5725A

Leather Case: Model # EL81001 with Belt Clip Model # SYN8631A

Amy Twin Phantom Rev.4 (22Aug02) Phantom; section 1 Section; Position: (0°,0°); Frequency: 837 MHz

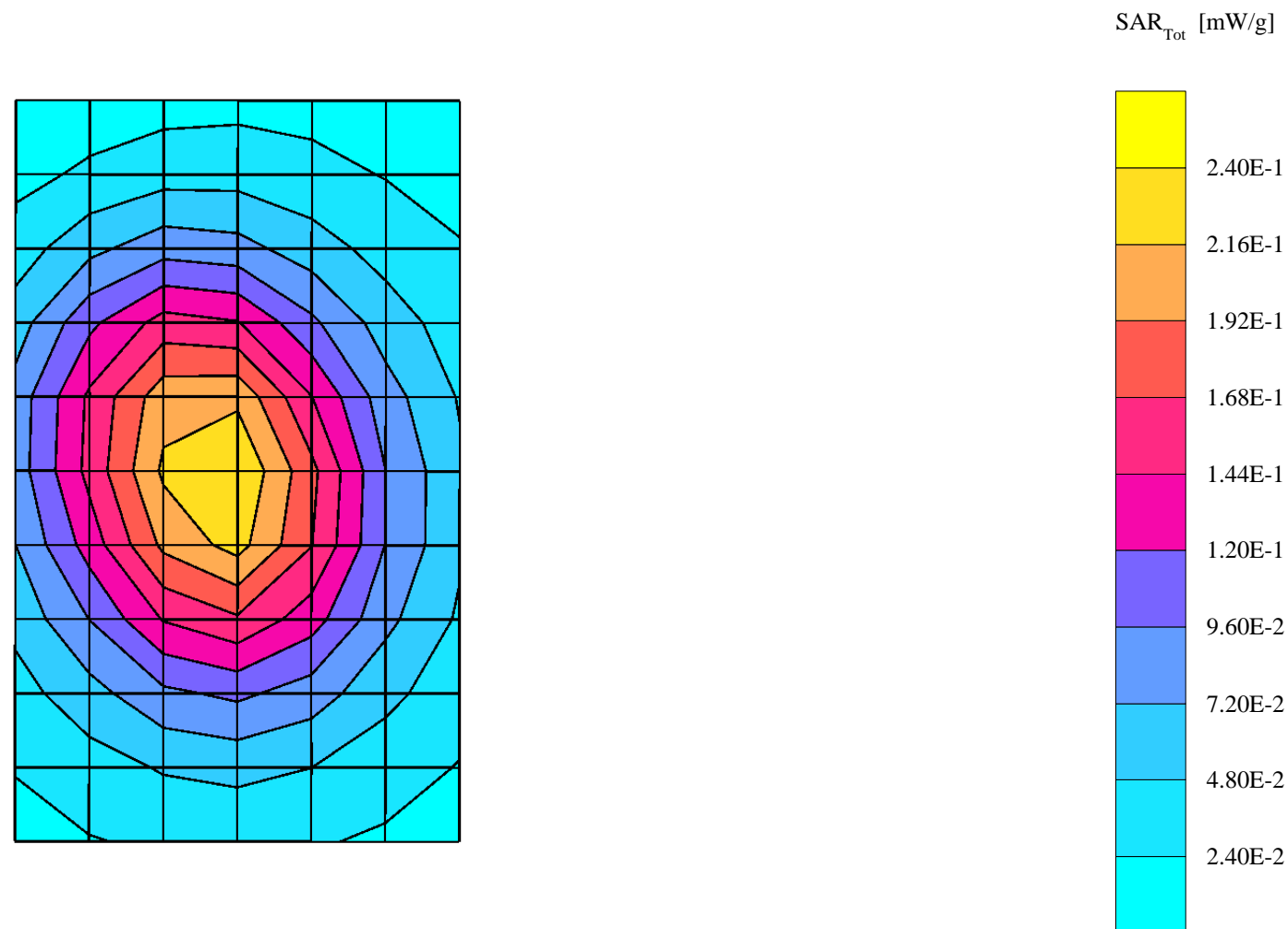
Probe: ET3DV6 - SN1390 - FCC Body; ConvF(6.70,6.70,6.70); Crest factor: 1.0; 835 MHz Head & Body: $\sigma = 0.98$ mho/m $\epsilon_r = 54.1$ $\rho = 1.00$ g/cm³

Cube 7x7x7: SAR (1g): 0.228 mW/g, SAR (10g): 0.167 mW/g, (Worst-case extrapolation)

Coarse: Dx = 15.0, Dy = 15.0, Dz = 10.0

Penetration depth: 17.4 (16.2, 18.7) [mm]

Powerdrift: -0.12 dB



s/n: 333A0056

Ch# 384 / Pwr Step: 02(OTA)

Type of Modulation: AMPS800

Leather Case: Model # EL81001 with Belt Clip Model # SYN8631A

Amy Twin Phantom Rev.4 (22Aug02) Phantom; section 1 Section; Position: (0°,0°); Frequency: 837 MHz

Probe: ET3DV6 - SN1390 - FCC Body; ConvF(6.70,6.70,6.70); Crest factor: 1.0; 835 MHz Head & Body: $\sigma = 0.98$ mho/m $\epsilon_r = 54.9$ $\rho = 1.00$ g/cm³

Cube 7x7x7: SAR (1g): 0.258 mW/g, SAR (10g): 0.184 mW/g, (Worst-case extrapolation)

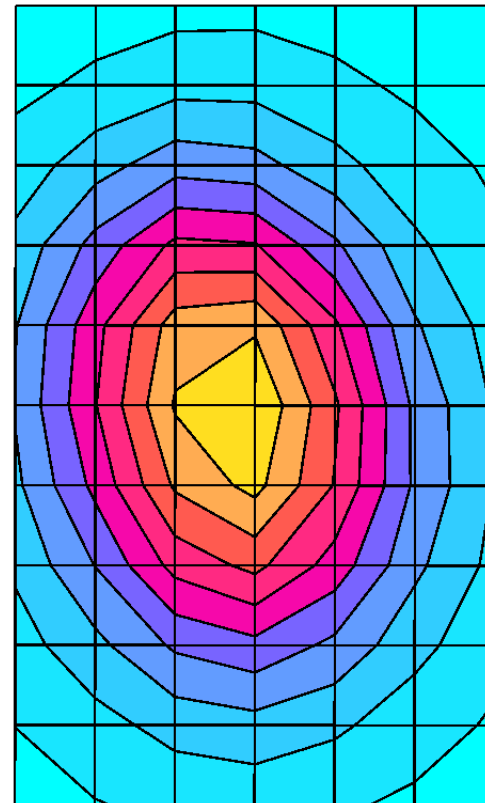
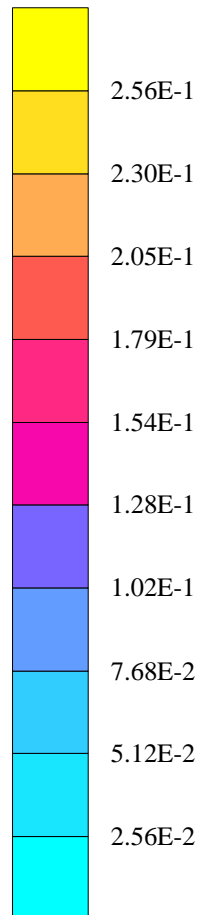
Coarse: Dx = 15.0, Dy = 15.0, Dz = 10.0

Penetration depth: 17.3 (15.9, 18.7) [mm]

Powerdrift: 0.06 dB

Antenna Position: Ext

Battery Model #: SNN5725A

SAR_{Tot} [mW/g]

s/n: 333A0001

Ch# 25 / Pwr Step: AlwaysUp(OTA)

Antenna Position:Ret

Type of Modulation: CDMA1900

Battery Model #: SNN5725A

Leather Case: Model # EL81001 with Belt Clip Model # SYN8631A

Amy Twin Phantom Rev.4 (22Aug02) Phantom; section 2 Section; Position: (0°,0°); Frequency: 1851 MHz

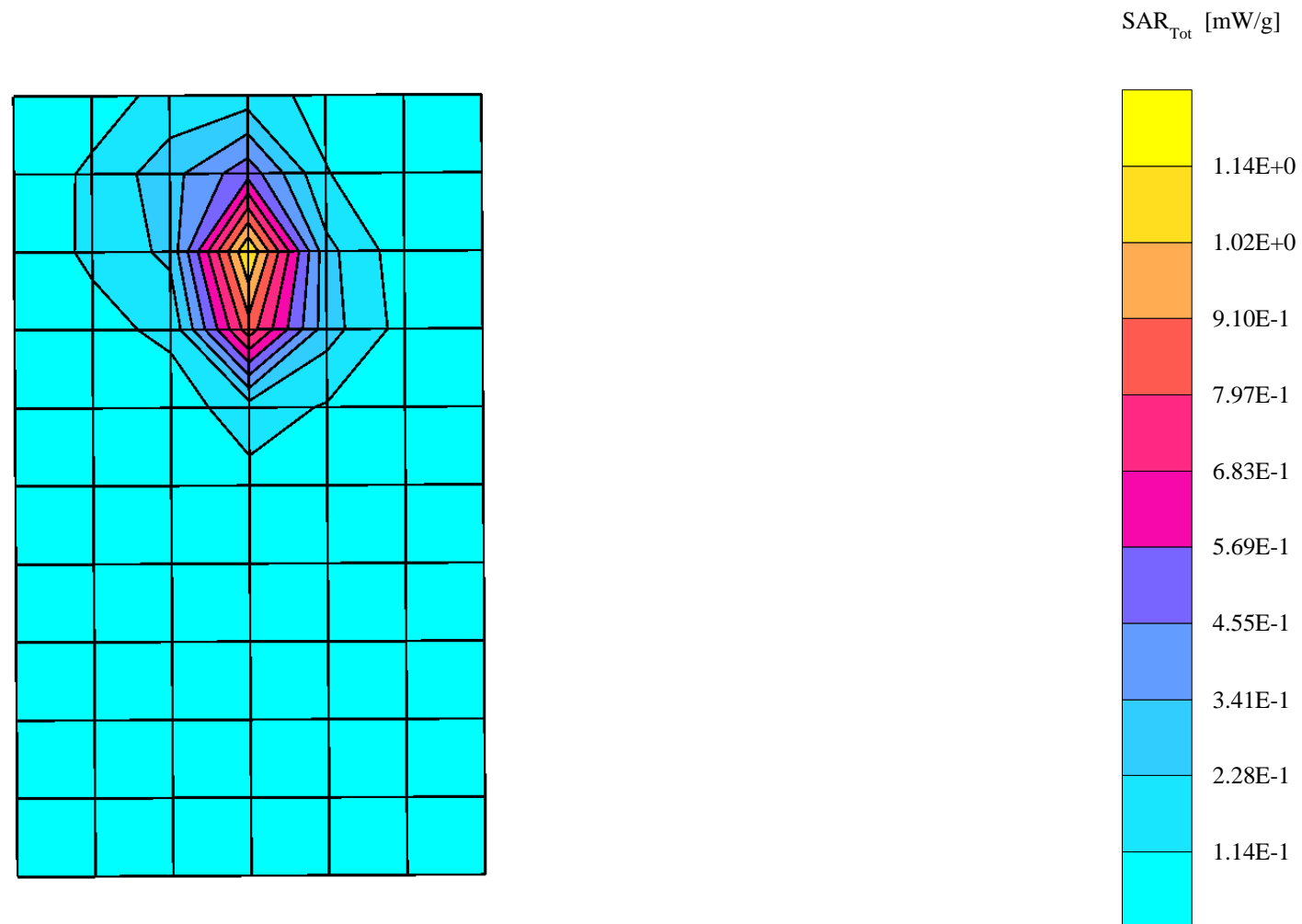
Probe: ET3DV6 - SN1390 - FCC Body; ConvF(5.10,5.10,5.10); Crest factor: 1.0; 1880 MHz Head & Body: $\sigma = 1.55$ mho/m $\epsilon_r = 52.7$ $\rho = 1.00$ g/cm³

Cube 7x7x7: SAR (1g): 1.11 mW/g, SAR (10g): 0.541 mW/g, (Worst-case extrapolation)

Coarse: Dx = 15.0, Dy = 15.0, Dz = 10.0

Penetration depth: 8.7 (8.3, 9.6) [mm]

Powerdrift: -0.11 dB



s/n: 333A0001

Ch# 600 / Pwr Step: AlwaysUp(OTA)

Antenna Position:Ext

Type of Modulation: CDMA1900

Battery Model #: SNN5725A

Leather Case: Model # EL81001 with Belt Clip Model # SYN8631A

Amy Twin Phantom Rev.4 (22Aug02) Phantom; section 2 Section; Position: (0°,0°); Frequency: 1880 MHz

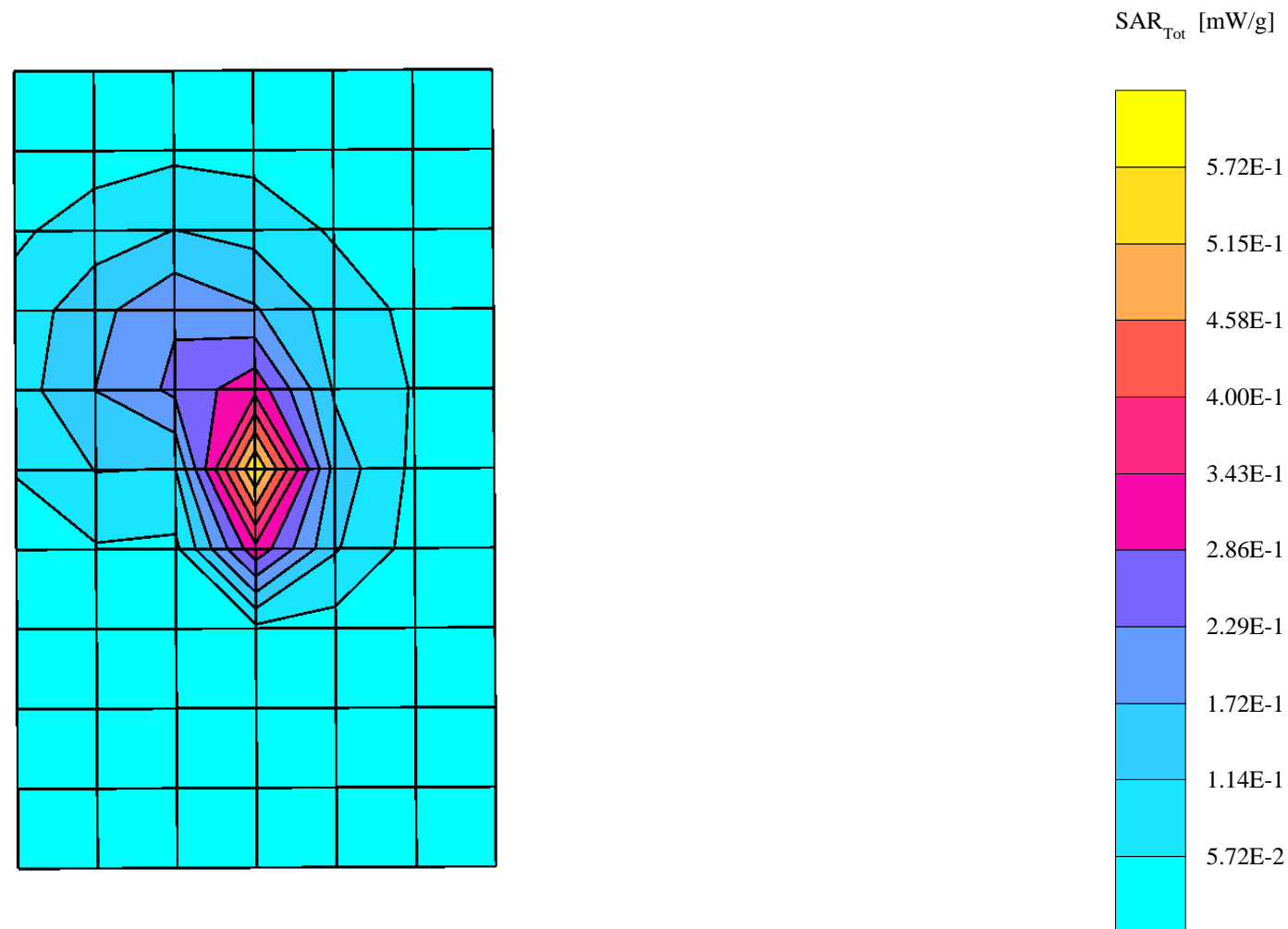
Probe: ET3DV6 - SN1390 - FCC Body; ConvF(5.10,5.10,5.10); Crest factor: 1.0; 1880 MHz Head & Body: $\sigma = 1.56$ mho/m $\epsilon_r = 52.9$ $\rho = 1.00$ g/cm³

Cube 7x7x7: SAR (1g): 0.542 mW/g, SAR (10g): 0.264 mW/g, (Worst-case extrapolation)

Coarse: Dx = 15.0, Dy = 15.0, Dz = 10.0

Penetration depth: 9.1 (8.5, 10.1) [mm]

Powerdrift: -0.14 dB



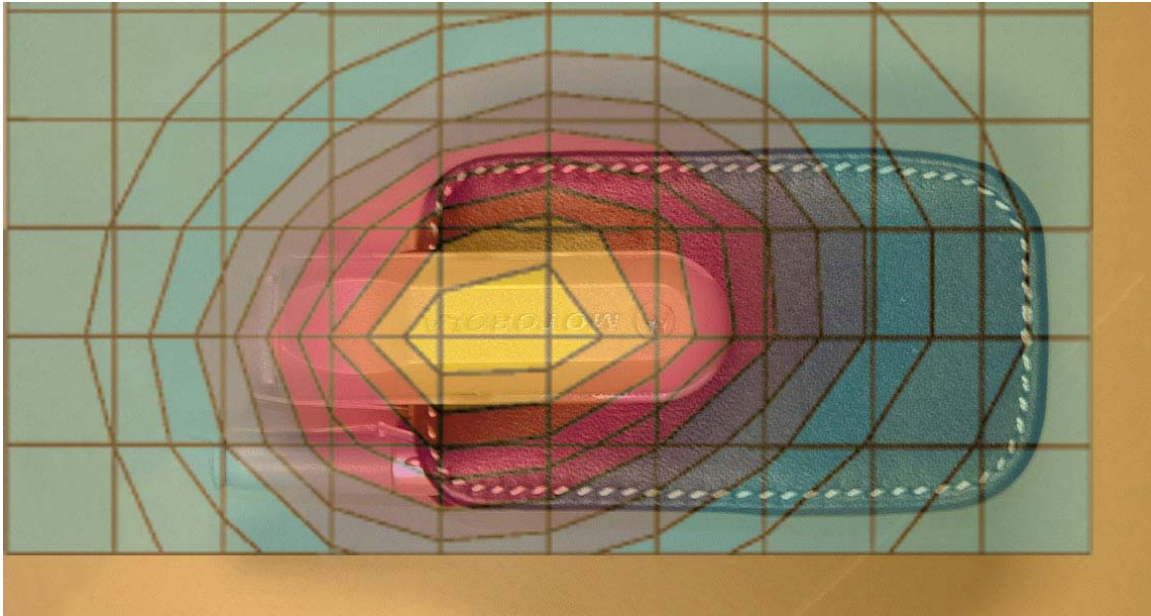


Figure 1. Typical 800 MHz Body-Worn Contour Overlaid on Phone with Antenna Retracted

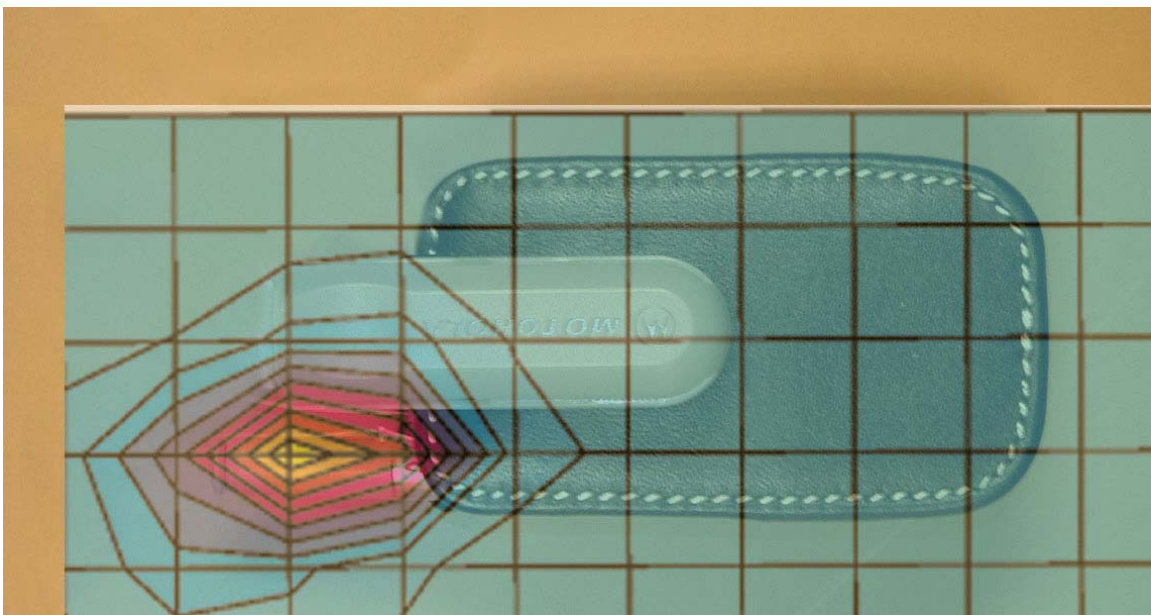


Figure 2. Typical 1900 MHz Body-Worn Contour Overlaid on Phone with Antenna Retracted

Appendix 3
Probe Calibration Certificate

Client **Motorola MRO**

CALIBRATION CERTIFICATE

Object(s) **ET3DV6 - SN: 1390**

Calibration procedure(s) **QA CAL-01.v2**
Calibration procedure for dosimetric E-field probes

Calibration date: **April 16, 2003**


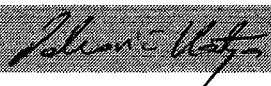
Condition of the calibrated item **In Tolerance (according to the specific calibration document)**

This calibration statement documents traceability of M&TE used in the calibration procedures and conformity of the procedures with the ISO/IEC 17025 international standard.

All calibrations have been conducted in the closed laboratory facility: environment temperature 22 +/- 2 degrees Celsius and humidity < 75%.

Calibration Equipment used (M&TE critical for calibration)

Model Type	ID #	Cal Date	Scheduled Calibration
RF generator HP 8684C	US3642U01700	4-Aug-99 (in house check Aug-02)	In house check: Aug-05
Power sensor E4412A	MY41495277	2-Apr-03	Apr-04
Power sensor HP 8481A	MY41092180	18-Sep-02	Sep-03
Power meter EPM E4419B	GB41293874	13-Sep-02	Sep-03
Network Analyzer HP 8753E	US38432426	3-May-00	In house check: May 03
Fluke Process Calibrator Type 702	SN: 6295803	3-Sep-01	Sep-03

	Name	Function	Signature
Calibrated by:	Nico Vetterli	Technician	
Approved by:	Katja Pokovic	Laboratory Director	

Date issued: April 16, 2003

This calibration certificate is issued as an intermediate solution until the accreditation process (based on ISO/IEC 17025 International Standard) for Calibration Laboratory of Schmid & Partner Engineering AG is completed.

Zeughausstrasse 43, 8004 Zurich, Switzerland
Phone +41 1 245 9700, Fax +41 1 245 9779
info@speag.com, <http://www.speag.com>

Probe ET3DV6

SN:1390

Manufactured:	October 1, 1999
Last calibration:	May 8, 2002
Recalibrated:	April 16, 2003

Calibrated for DASY Systems

(Note: non-compatible with DASY2 system!)

DASY - Parameters of Probe: ET3DV6 SN:1390

Sensitivity in Free Space

NormX	1.84 $\mu\text{V}/(\text{V}/\text{m})^2$
NormY	1.68 $\mu\text{V}/(\text{V}/\text{m})^2$
NormZ	1.85 $\mu\text{V}/(\text{V}/\text{m})^2$

Diode Compression

DCP X	93	mV
DCP Y	93	mV
DCP Z	93	mV

Sensitivity in Tissue Simulating Liquid

Head **900 MHz** $\epsilon_r = 41.5 \pm 5\%$ $\sigma = 0.97 \pm 5\%$ mho/m

Valid for f=800-1000 MHz with Head Tissue Simulating Liquid according to IEEE P1528-200X

ConvF X	6.9 $\pm 9.5\%$ (k=2)	Boundary effect:
ConvF Y	6.9 $\pm 9.5\%$ (k=2)	Alpha 0.37
ConvF Z	6.9 $\pm 9.5\%$ (k=2)	Depth 2.46

Head **1800 MHz** $\epsilon_r = 40.0 \pm 5\%$ $\sigma = 1.40 \pm 5\%$ mho/m

Valid for f=1710-1910 MHz with Head Tissue Simulating Liquid according to IEEE P1528-200X

ConvF X	5.4 $\pm 9.5\%$ (k=2)	Boundary effect:
ConvF Y	5.4 $\pm 9.5\%$ (k=2)	Alpha 0.51
ConvF Z	5.4 $\pm 9.5\%$ (k=2)	Depth 2.45

Boundary Effect

Head **900 MHz** **Typical SAR gradient: 5 % per mm**

Probe Tip to Boundary		1 mm	2 mm
SAR _{be} [%] Without Correction Algorithm		9.2	5.2
SAR _{be} [%] With Correction Algorithm		0.3	0.5

Head **1800 MHz** **Typical SAR gradient: 10 % per mm**

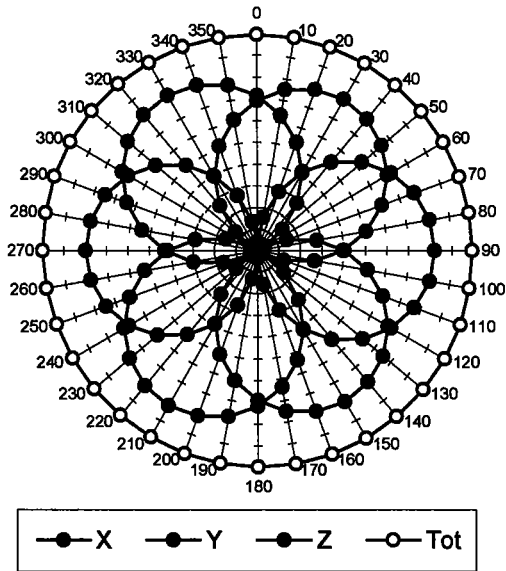
Probe Tip to Boundary		1 mm	2 mm
SAR _{be} [%] Without Correction Algorithm		12.5	8.4
SAR _{be} [%] With Correction Algorithm		0.2	0.2

Sensor Offset

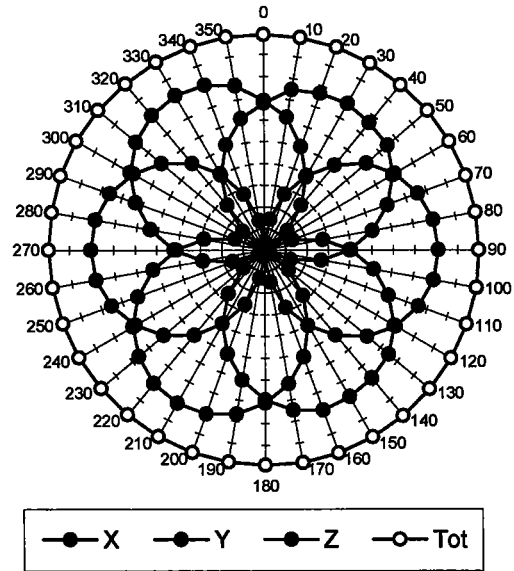
Probe Tip to Sensor Center	2.7	mm
Optical Surface Detection	1.5 \pm 0.2	mm

Receiving Pattern (ϕ , $\theta = 0^\circ$)

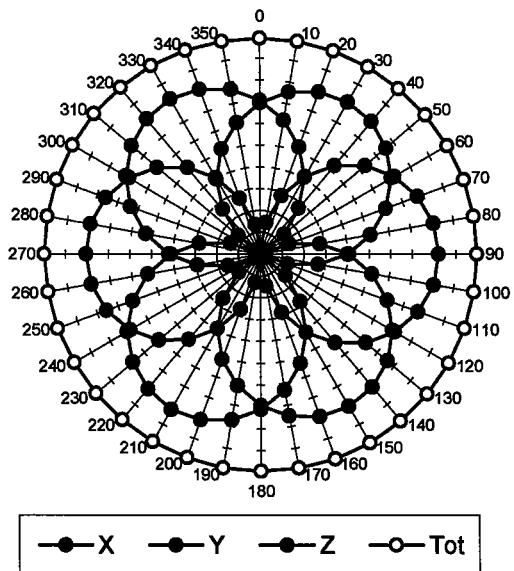
f = 30 MHz, TEM cell ifi110



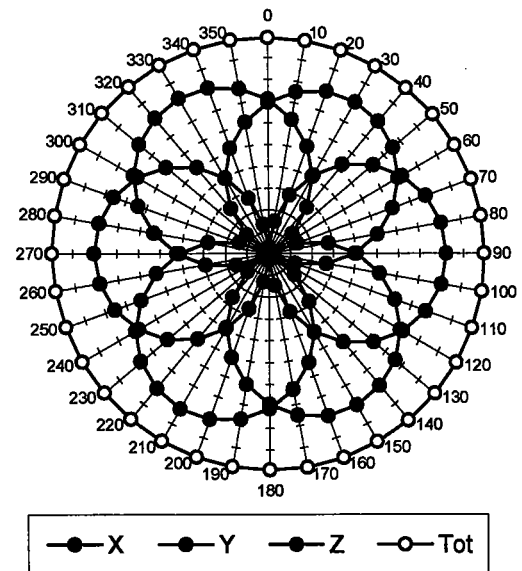
f = 100 MHz, TEM cell ifi110

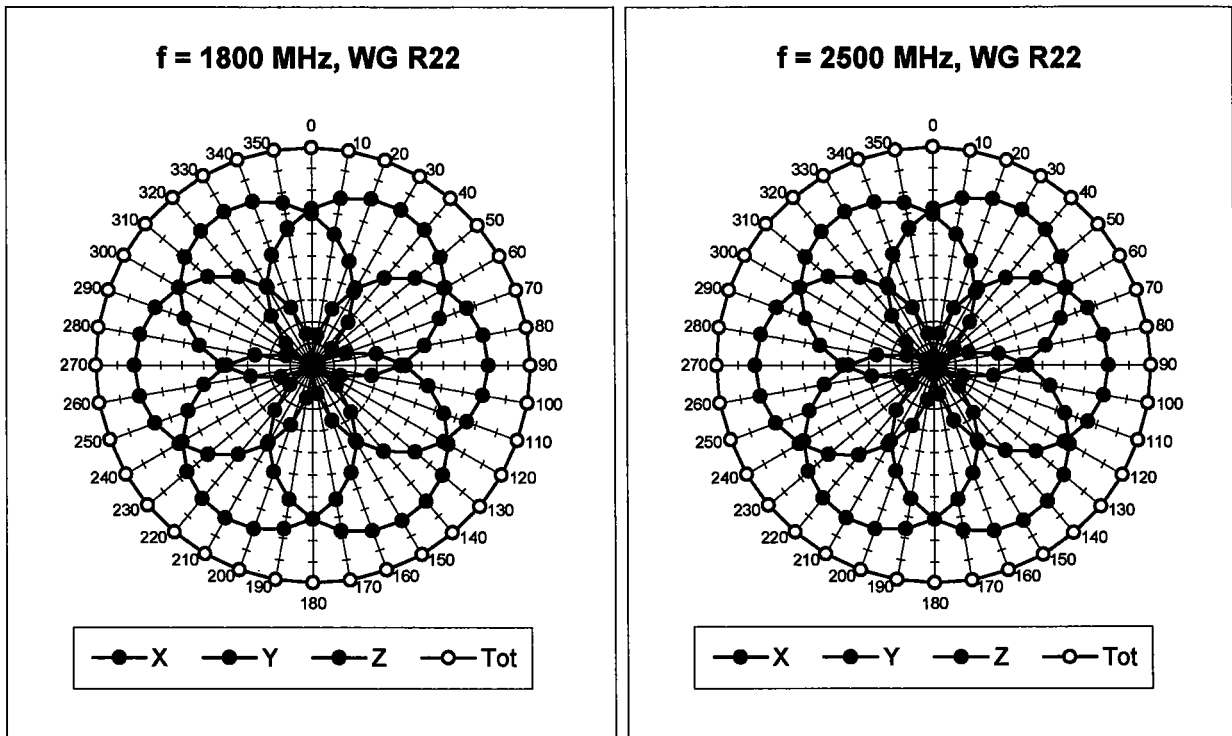


f = 300 MHz, TEM cell ifi110

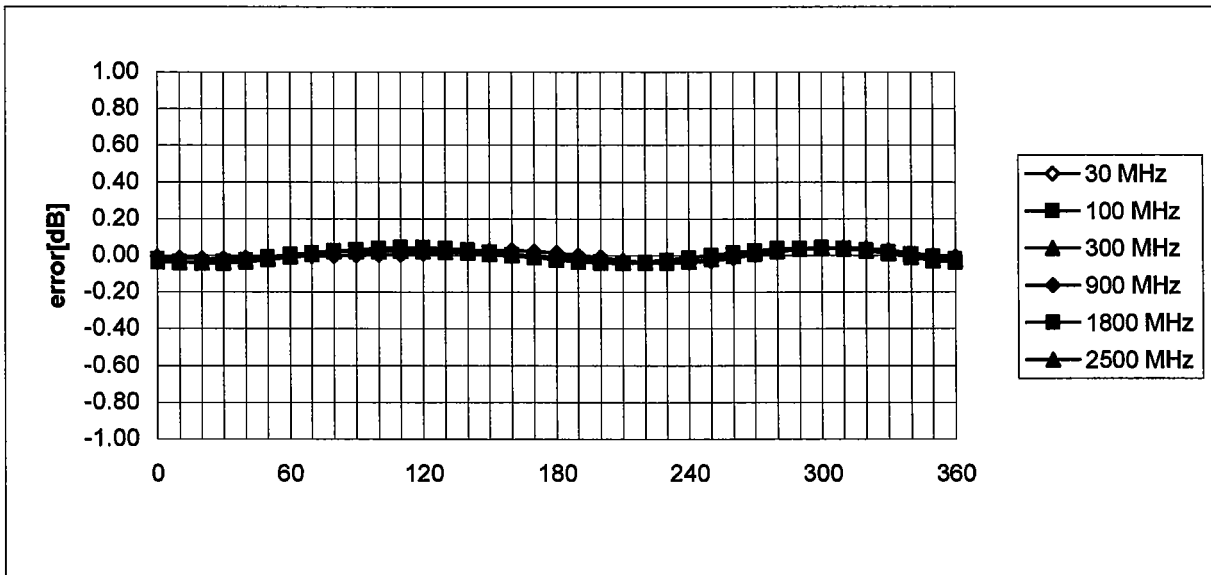


f = 900 MHz, TEM cell ifi110



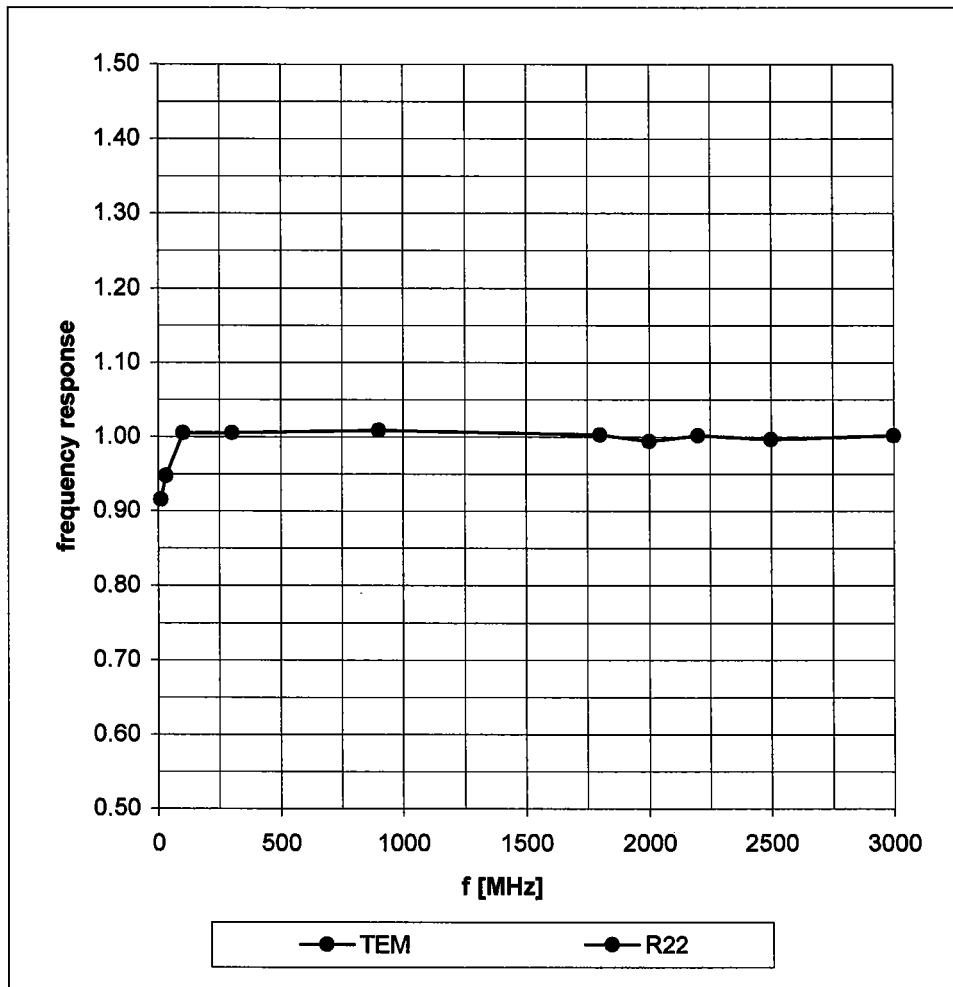


Isotropy Error (ϕ), $\theta = 0^\circ$

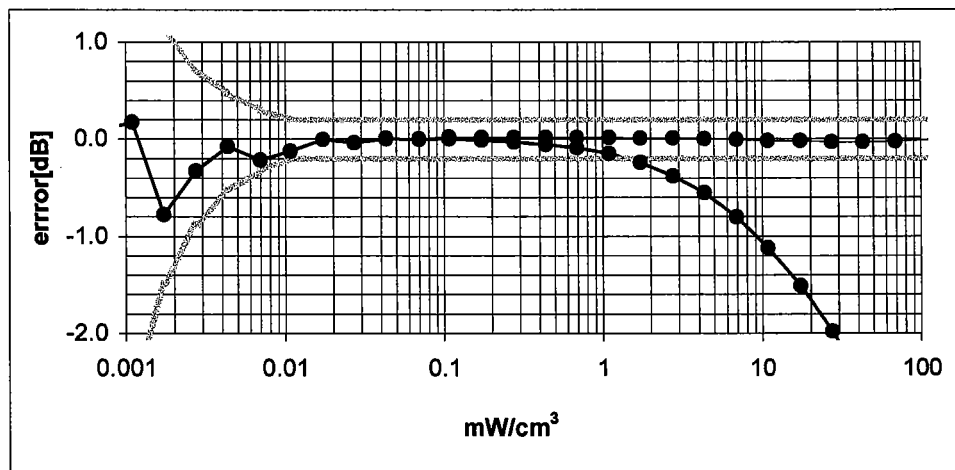
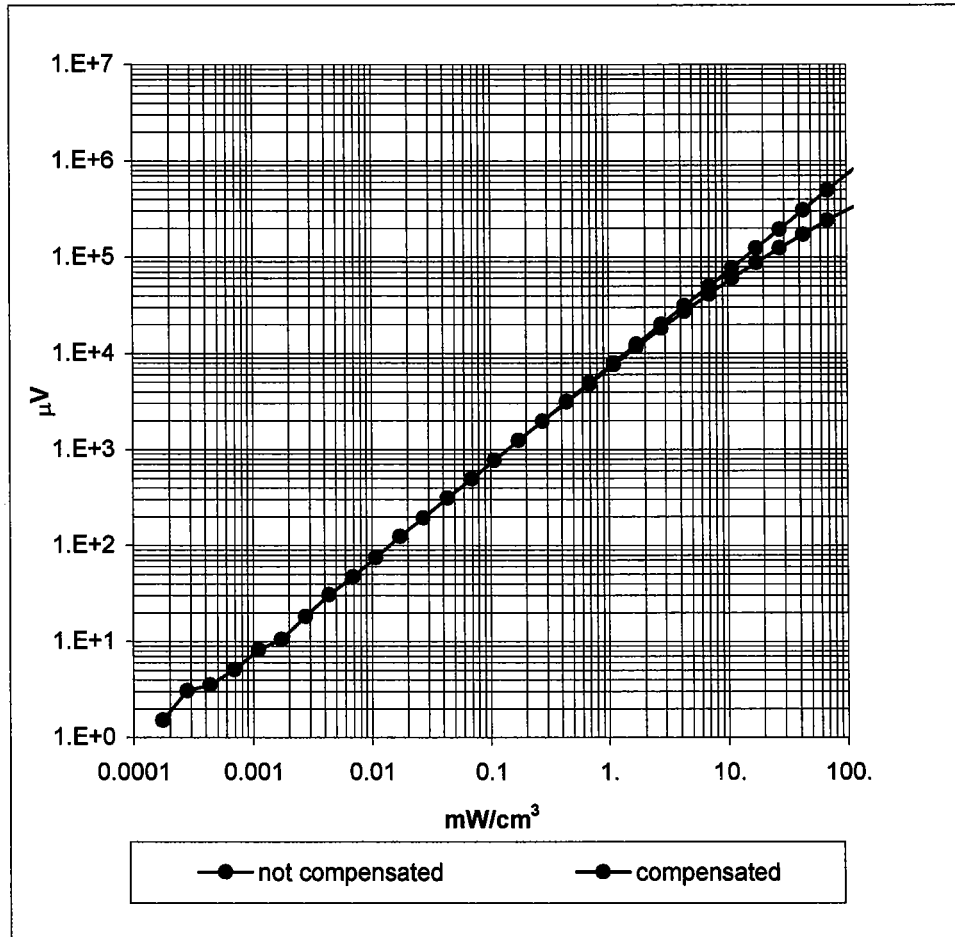


Frequency Response of E-Field

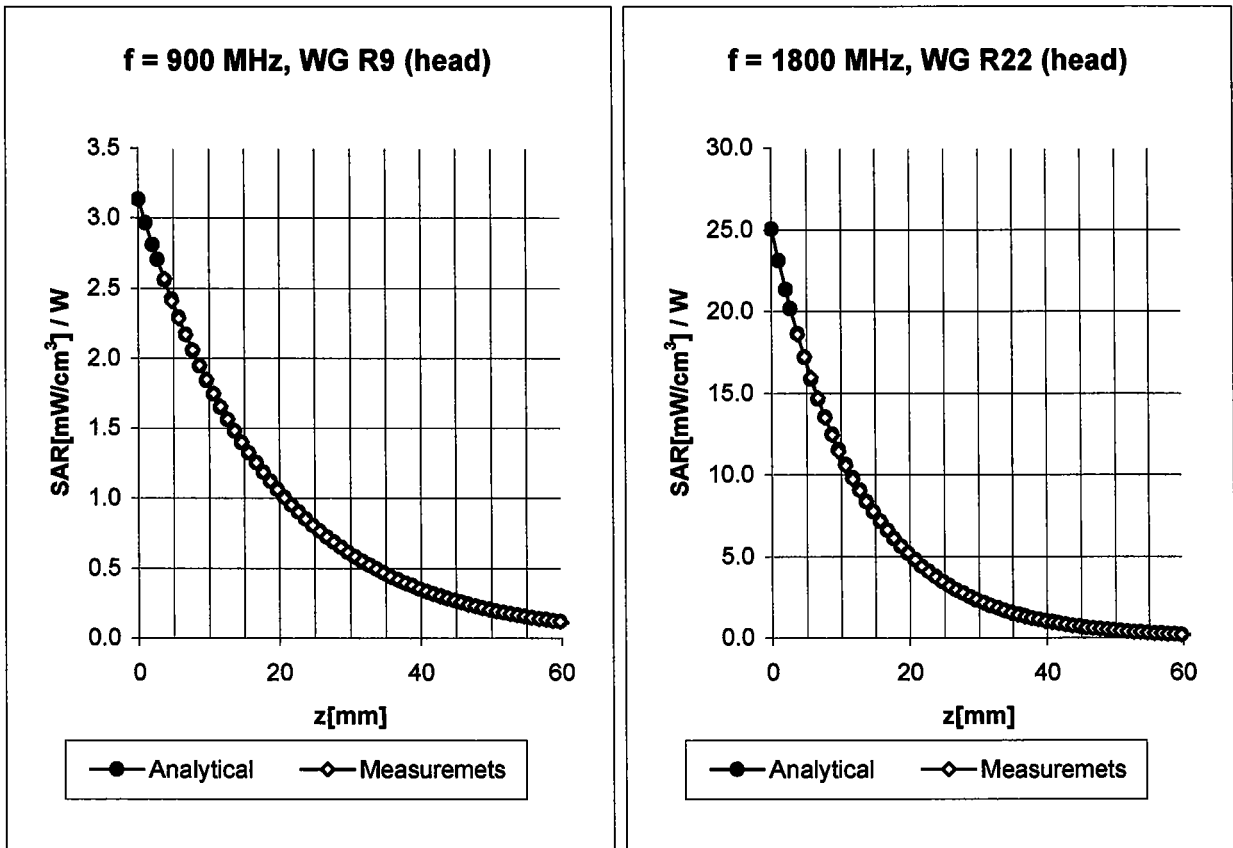
(TEM-Cell:ifi110, Waveguide R22)



Dynamic Range f(SAR_{brain}) (Waveguide R22)



Conversion Factor Assessment



Head 900 MHz $\epsilon_r = 41.5 \pm 5\%$ $\sigma = 0.97 \pm 5\%$ mho/m

Valid for $f=800\text{-}1000$ MHz with Head Tissue Simulating Liquid according to IEEE P1528-200X

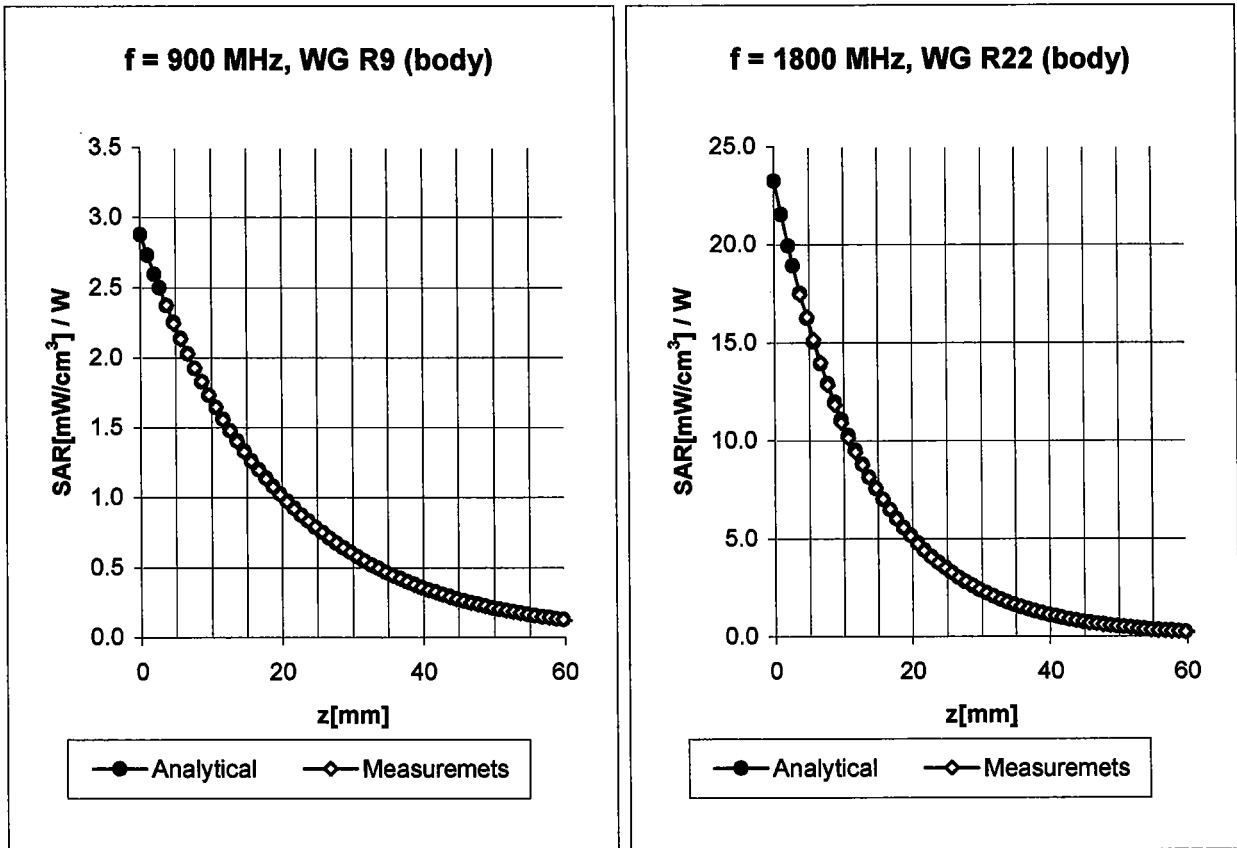
ConvF X	6.9 $\pm 9.5\%$ ($k=2$)	Boundary effect:
ConvF Y	6.9 $\pm 9.5\%$ ($k=2$)	Alpha 0.37
ConvF Z	6.9 $\pm 9.5\%$ ($k=2$)	Depth 2.46

Head 1800 MHz $\epsilon_r = 40.0 \pm 5\%$ $\sigma = 1.40 \pm 5\%$ mho/m

Valid for $f=1710\text{-}1910$ MHz with Head Tissue Simulating Liquid according to IEEE P1528-200X

ConvF X	5.4 $\pm 9.5\%$ ($k=2$)	Boundary effect:
ConvF Y	5.4 $\pm 9.5\%$ ($k=2$)	Alpha 0.51
ConvF Z	5.4 $\pm 9.5\%$ ($k=2$)	Depth 2.45

Conversion Factor Assessment



Body **900 MHz** $\epsilon_r = 55.0 \pm 5\%$ $\sigma = 1.05 \pm 5\% \text{ mho/m}$

Valid for $f=800\text{-}1000 \text{ MHz}$ with Body Tissue Simulating Liquid according to OET 65 Suppl. C

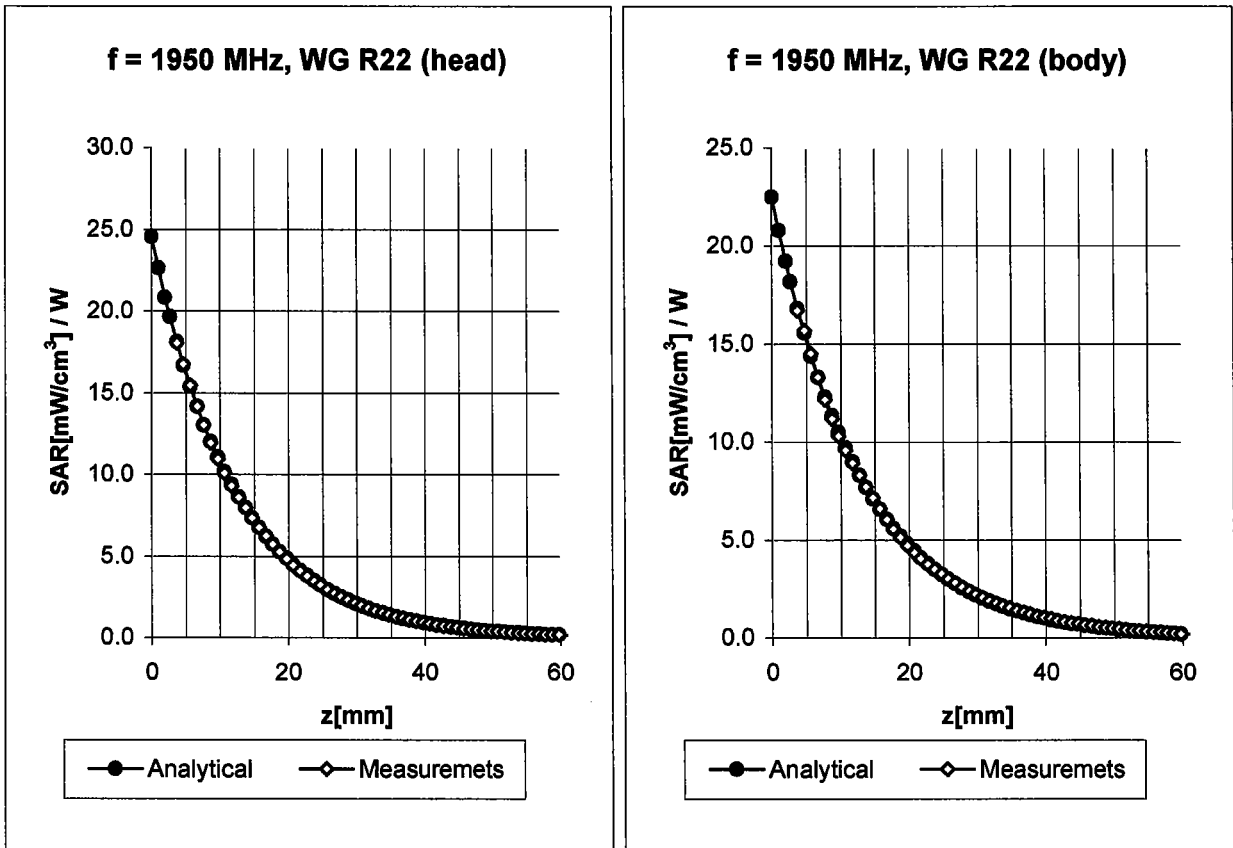
ConvF X	6.7 $\pm 9.5\%$ (k=2)	Boundary effect:
ConvF Y	6.7 $\pm 9.5\%$ (k=2)	Alpha 0.41
ConvF Z	6.7 $\pm 9.5\%$ (k=2)	Depth 2.33

Body **1800 MHz** $\epsilon_r = 53.3 \pm 5\%$ $\sigma = 1.52 \pm 5\% \text{ mho/m}$

Valid for $f=1710\text{-}1910 \text{ MHz}$ with Body Tissue Simulating Liquid according to OET 65 Suppl. C

ConvF X	5.1 $\pm 9.5\%$ (k=2)	Boundary effect:
ConvF Y	5.1 $\pm 9.5\%$ (k=2)	Alpha 0.54
ConvF Z	5.1 $\pm 9.5\%$ (k=2)	Depth 2.67

Conversion Factor Assessment

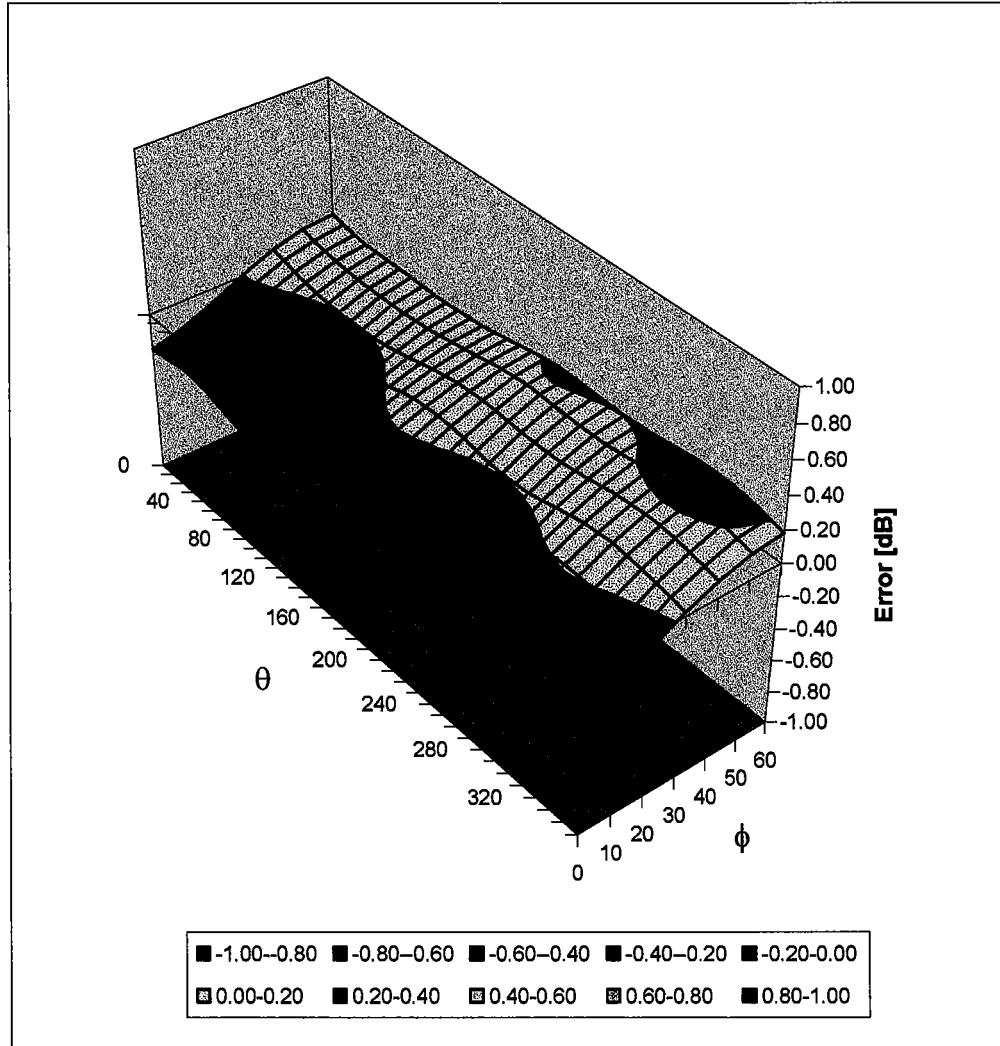


Head	1950	MHz	$\epsilon_r = 40.0 \pm 5\%$	$\sigma = 1.40 \pm 5\%$ mho/m
	ConvF X	5.1	$\pm 8.9\%$ (k=2)	Boundary effect:
	ConvF Y	5.1	$\pm 8.9\%$ (k=2)	Alpha 0.49
	ConvF Z	5.1	$\pm 8.9\%$ (k=2)	Depth 2.70

Body	1950	MHz	$\epsilon_r = 53.3 \pm 5\%$	$\sigma = 1.52 \pm 5\%$ mho/m
	ConvF X	4.7	$\pm 8.9\%$ (k=2)	Boundary effect:
	ConvF Y	4.7	$\pm 8.9\%$ (k=2)	Alpha 0.68
	ConvF Z	4.7	$\pm 8.9\%$ (k=2)	Depth 2.33

Deviation from Isotropy in HSL

Error ($\theta\phi$), $f = 900$ MHz



Appendix 4
Dipole Characterization Certificate

Certification of System Performance Check Targets

Based on APP-0396

-Historical Data-

	835MHz	900MHz	1800MHz	1900MHz	
P1528 Target: Advanced Extrapolation	9.5	10.8	38.1	39.7	(W/kg)
Measurement Uncertainty (k=1):	10.2%	10.2%	10.2%	10.2%	
Measurement Period:	November '02 - June '03	November '02 - June '03	November '02 - June '03	November '02 - June '03	
# of tests performed:	169	728	868	26	
Grand Average: Worst Case Extrapolation	10.1	11.6	39.7	42.0	(W/kg)
% Delta (Average - P1528 Target)	6.5%	7.7%	4.2%	5.9%	
Is % Delta <= Measurement Uncertainty?	Yes	Yes	Yes	Yes	
Accept/Reject Average as new system performance check target?	ACCEPT	ACCEPT	ACCEPT	ACCEPT	
	Applicable 835MHz Dipole Serial Numbers:	Applicable 900MHz Dipole Serial Numbers:	Applicable 1800MHz Dipole Serial Numbers:	Applicable 1900MHz Dipole Serial Numbers:	
	420(TR), 421(TR)	77, 78	246(TR), 250(TR)	514(TR), 518(TR)	
	422(TR), 423(TR)	79, 80	251(TR), 258(TR)	519(TR), 520(TR)	
	424(TR), 425(TR)	91, 92	259(TR), 262(TR)	523(TR), 524(TR)	
	431(TR), 432(TR)	93, 94	263(TR), 271(TR)	526(TR), 527(TR)	
	433(TR), 434(TR)	95, 96	272(TR), 273(TR)	528(TR), 529(TR)	
	436(TR)	97	276(TR), 277(TR)	530(TR), 533(TR)	
			279(TR), 280(TR)		
			281(TR), 282(TR)		
			283(TR), 284(TR)		

-New System Performance Check Targets- per APP-0396

(based on analysis of historical data)

Frequency	SAR Target (W/kg)	Permittivity	Conductivity (S/m)
835MHz	10.1	41.5 ± 5%	0.90 ± 5%
900MHz	11.6	41.5 ± 5%	0.97 ± 5%
1800MHz	39.7	40.0 ± 5%	1.40 ± 5%
1900MHz	42.0	40.0 ± 5%	1.40 ± 5%

-Approvals-

Submitted by: Date:

Signed: *Marge Kaunas*

Comments:

Approved by: Date:

Signed: *Antonio Faraone*

Comments:

Appendix 5
Measurement Uncertainty Budget

Uncertainty Budget for Device Under Test									
<i>a</i>	<i>b</i>	<i>c</i>	<i>d</i>	<i>e = f(d,k)</i>	<i>f</i>	<i>g</i>	<i>h = c x f / e</i>	<i>i = c x g / e</i>	<i>k</i>
Uncertainty Component	Sec.	Tol. (± %)	Prob. Dist.	Div.	<i>c_i</i> (1 g)	<i>c_i</i> (10 g)	1 g <i>u_i</i> (±%)	10 g <i>u_i</i> (±%)	<i>v_i</i>
Measurement System									
Probe Calibration	E.2.1	9.5	N	2.00	1	1	4.8	4.8	∞
Axial Isotropy	E.2.2	4.7	R	1.73	0.707	0.707	1.9	1.9	∞
Spherical Isotropy	E.2.2	9.6	R	1.73	0.707	0.707	3.9	3.9	∞
Boundary Effect	E.2.3	5.8	R	1.73	1	1	3.3	3.3	∞
Linearity	E.2.4	4.7	R	1.73	1	1	2.7	2.7	∞
System Detection Limits	E.2.5	1.0	R	1.73	1	1	0.6	0.6	∞
Readout Electronics	E.2.6	1.0	N	1.00	1	1	1.0	1.0	∞
Response Time	E.2.7	0.8	R	1.73	1	1	0.5	0.5	∞
Integration Time	E.2.8	1.3	R	1.73	1	1	0.8	0.8	∞
RF Ambient Conditions	E.6.1	3.0	R	1.73	1	1	1.7	1.7	∞
Probe Positioner Mechanical Tolerance	E.6.2	0.3	R	1.73	1	1	0.2	0.2	∞
Probe Positioning with respect to Phantom Shell	E.6.3	1.1	R	1.73	1	1	0.6	0.6	∞
Extrapolation, interpolation and Integration Algorithms for Max. SAR Evaluation	E.5	3.9	R	1.73	1	1	2.3	2.3	∞
Test sample Related									
Test Sample Positioning	E.4.2	3.6	N	1.00	1	1	3.6	3.6	29
Device Holder Uncertainty	E.4.1	2.8	N	1.00	1	1	2.8	2.8	8
Output Power Variation - SAR drift measurement	6.6.2	5.0	R	1.73	1	1	2.9	2.9	∞
Phantom and Tissue Parameters									
Phantom Uncertainty (shape and thickness tolerances)	E.3.1	4.0	R	1.73	1	1	2.3	2.3	∞
Liquid Conductivity - deviation from target values	E.3.2	5.0	R	1.73	0.64	0.43	1.8	1.2	∞
Liquid Conductivity - measurement uncertainty	E.3.3	10.0	R	1.73	0.64	0.43	3.7	2.5	∞
Liquid Permittivity - deviation from target values	E.3.2	10.0	R	1.73	0.6	0.49	3.5	2.8	∞
Liquid Permittivity - measurement uncertainty	E.3.3	5.0	R	1.73	0.6	0.49	1.7	1.4	∞
Combined Standard Uncertainty			RSS				11.72	11.09	1363
Expanded Uncertainty (95% CONFIDENCE LEVEL)			<i>k</i> =2				22.98	21.75	

Uncertainty Budget for System Performance Check (dipole & flat phantom)

<i>a</i>	<i>b</i>	<i>c</i>	<i>d</i>	<i>e = f(d,k)</i>	<i>f</i>	<i>g</i>	<i>h = c x f / e</i>	<i>i = c x g / e</i>	<i>k</i>
Uncertainty Component	Sec.	Tol. (± %)	Prob. Dist.	Div.	<i>c_i</i> (1 g)	<i>c_i</i> (10 g)	1 g <i>u_i</i> (±%)	10 g <i>u_i</i> (±%)	<i>v_i</i>
Measurement System									
Probe Calibration	E.2.1	9.5	N	2.00	1	1	4.8	4.8	∞
Axial Isotropy	E.2.2	4.7	R	1.73	1	1	2.7	2.7	∞
Spherical Isotropy	E.2.2	9.6	R	1.73	0	0	0.0	0.0	∞
Boundary Effect	E.2.3	5.8	R	1.73	1	1	3.3	3.3	∞
Linearity	E.2.4	4.7	R	1.73	1	1	2.7	2.7	∞
System Detection Limits	E.2.5	1.0	R	1.73	1	1	0.6	0.6	∞
Readout Electronics	E.2.6	1.0	N	1.00	1	1	1.0	1.0	∞
Response Time	E.2.7	0.0	R	1.73	1	1	0.0	0.0	∞
Integration Time	E.2.8	0.0	R	1.73	1	1	0.0	0.0	∞
RF Ambient Conditions	E.6.1	3.0	R	1.73	1	1	1.7	1.7	∞
Probe Positioner Mechanical Tolerance	E.6.2	0.3	R	1.73	1	1	0.2	0.2	∞
Probe Positioning with respect to Phantom Shell	E.6.3	1.1	R	1.73	1	1	0.6	0.6	∞
Extrapolation, interpolation and Integration Algorithms for Max. SAR Evaluation	E.5	3.9	R	1.73	1	1	2.3	2.3	∞
Dipole									
Dipole Axis to Liquid Distance	8, E.4.2	1.0	R	1.73	1	1	0.6	0.6	∞
Input Power and SAR Drift Measurement	8, 6.6.2	4.7	R	1.73	1	1	2.7	2.7	∞
Phantom and Tissue Parameters									
Phantom Uncertainty (shape and thickness tolerances)	E.3.1	4.0	R	1.73	1	1	2.3	2.3	∞
Liquid Conductivity - deviation from target values	E.3.2	5.0	R	1.73	0.64	0.43	1.8	1.2	∞
Liquid Conductivity - measurement uncertainty	E.3.3	10.0	R	1.73	0.64	0.43	3.7	2.5	∞
Liquid Permittivity - deviation from target values	E.3.2	10.0	R	1.73	0.6	0.49	3.5	2.8	∞
Liquid Permittivity - measurement uncertainty	E.3.3	5.0	R	1.73	0.6	0.49	1.7	1.4	∞
Combined Standard Uncertainty			RSS				10.16	9.43	99999
Expanded Uncertainty (95% CONFIDENCE LEVEL)			<i>k</i> =2				19.92	18.48	

Appendix 6

Photographs of the device under test







