



Exhibit 11: SAR Test Report IHDT56DC1 Class II

**Date of test:** 11/24/2003-11/30-2003  
**Date of Report:** 12/02/2003

**Laboratory:** Motorola Personal Communications Sector Product Safety & Compliance Laboratory  
 600 N. US Highway 45  
 Room: MW113  
 Libertyville, Illinois 60048

**Test Responsible:** Firass Badaruzzaman  
 Senior RF Engineer

**Accreditation:** This laboratory is accredited to ISO/IEC 17025-1999 to perform the following tests:



<p><u>Tests:</u>                  Electromagnetic Specific Absorption Rate</p> <p>Simulated Tissue Preparation                  RF Power Measurement</p>	<p><u>Procedures:</u>                  ANSI/IEEE C95.1-1992, 1999                  (SAR) IEEE C95.3-1991                  IEEE P1528 (<i>DRAFT</i>)                  FCC OET Bulletin 65 (<i>including Supplements A, B, C</i>)                  Australian Communications Authority Radio                  Communications (Electromagnetic Radiation – Human                  Exposure) Standard 1999                  CENELEC EN 50361 (2001)                  APP-0247                  DOI-0876, 0900, 0902, 0904, 0915</p>
--	---

On the following products or types of products:  
 Wireless Communications Devices (Examples): Two Way Radios; Portable Phones (including Cellular, Licensed Non-Broadcast and PCS); Low Frequency Readers; and Pagers

A2LA certificate #1651-01

**Statement of Compliance:** Motorola declares under its sole responsibility that portable cellular telephone FCC ID IHDT56DC1 to which this declaration relates, is in conformity with the appropriate General Population/Uncontrolled RF exposure standards, recommendations and guidelines (FCC 47 CFR §2.1093). It also declares that the product was tested in accordance with the appropriate measurement standards, guidelines and recommended practices. Any deviations from these standards, guidelines and recommended practices are noted below:

(none)

©Motorola, Inc. 2003  
 This test report shall not be reproduced except in full, without written approval of the laboratory.

The results and statements contained herein relate only to the items tested. The names of individuals involved may be mentioned only in connection with the statements or results from this report.

Motorola encourages all feedback, both positive and negative, on this test report.

**Table of Contents**

**1. INTRODUCTION..... 3**

**2. DESCRIPTION OF THE DEVICE UNDER TEST ..... 3**

**2.1 Antenna description. ....3**

**2.2 Device description.....3**

**3. TEST EQUIPMENT USED..... 3**

**3.1 Dosimetric System .....3**

**3.2 Additional Equipment.....4**

**4. ELECTRICAL PARAMETERS OF THE TISSUE SIMULATING LIQUID ..... 4**

**5. SYSTEM ACCURACY VERIFICATION..... 5**

**6. TEST RESULTS ..... 5**

**6.1 Head Adjacent Test Results.....6**

**6.2 Body Worn Test Results .....8**

**APPENDIX 1: SAR DISTRIBUTION COMPARISON FOR SYSTEM ACCURACY VERIFICATION .... 10**

**APPENDIX 2: SAR DISTRIBUTION PLOTS FOR PHANTOM HEAD ADJACENT USE ..... 11**

**APPENDIX 3: SAR DISTRIBUTION PLOTS FOR BODY WORN CONFIGURATION..... 14**

**APPENDIX 4: PROBE CALIBRATION CERTIFICATE ..... 16**

**APPENDIX 5: DIPOLE CHARACTERIZATION CERTIFICATE..... 17**

**APPENDIX 6: MEASUREMENT UNCERTAINTY BUDGET..... 18**

**APPENDIX 7: PHOTOGRAPHS OF DEVICE UNDER TEST ..... 21**

**1. Introduction**

The Motorola Personal Communications Sector Product Safety Laboratory has performed measurements of the maximum potential exposure to the user of portable cellular phone (FCC ID IHDT56DC1). The Specific Absorption Rate (SAR) of this product was measured. The portable cellular phone was tested in accordance with FCC OET Bulletin 65 Supplement C 01-01.

**2. Description of the Device Under Test**

**a. Antenna description**

<b>Type</b>	Helix	
<b>Location</b>	Right Side	
<b>Dimensions</b>	Length	25 mm
	Width	6 mm
<b>Configuration</b>	Stubby	

**b. Device description**

<b>FCC ID Number</b>	IHDT56DC1		
<b>Serial number</b>	3D6D33E6 & 3D66D32A		
<b>Mode(s) of Operation</b>	800 AMPS	800 CDMA	1900 PCS
<b>Modulation Mode(s)</b>	AMPS	CDMA	PCS
<b>Maximum Output Power Setting</b>	27.80 dBm	25.00 dBm	25.00 dBm
<b>Duty Cycle</b>	1:1	1:1	1:1
<b>Transmitting Frequency Rang(s)</b>	824.04 – 848.97 MHz	824.70 – 848.31 MHz	1851.25 – 1908.75 MHz
<b>Production Unit or Identical Prototype (47 CFR §2.908)</b>	Identical Prototype		
<b>Device Category</b>	Portable		
<b>RF Exposure Limits</b>	General Population / Uncontrolled		

**3. Test Equipment Used**

**3.1 Dosimetric System**

The Motorola Personal Communications Sector Product Safety & Compliance Laboratory utilizes a Dosimetric Assessment System (Dasy3™ v3.1d) manufactured by Schmid & Partner Engineering AG (SPEAG™), of Zurich Switzerland. All the SAR measurements are taken within a shielded enclosure. The overall RSS uncertainty of the measurement system is ±11.7% (K=1) with an expanded uncertainty of ±23.0% (K=2). The measurement uncertainty budget is given in Appendix 6. Per IEEE 1528, this uncertainty budget is applicable to the SAR range of 0.4 W/kg to 10 W/kg. The list of calibrated equipment used for the measurements is shown below.

<b>Description</b>	<b>Serial Number</b>	<b>Cal Due Date</b>
DASY3 DAE V1	SN437	18-Mar-04
E-Field Probe ET3DV6	SN1501	16-Mar-04
Dipole Validation Kit, D900V2	SN79	24-Jun-04
S.A.M. Phantom used for 800MHz	TP-1132	
Dipole Validation Kit, D1800V2	SN246tr	24-Jun-04
S.A.M. Phantom used for 1900MHz	TP-1160	

### 3.2 Additional Equipment

Description	Serial Number	Cal Due Date
Signal Generator HP8648C	3847A04632	10/10/2004
Power Meter E4419B	GB39511090	2/6/2004
Power Sensor #1 - 8481A	US39210931	8/5/2004
Power Sensor #2 - 8481A	US39211007	2/6/2004
Network Analyzer HP8753ES	US39172529	6/18/2004
Dielectric Probe Kit HP85070B	US33020235	

### 4. Electrical parameters of the tissue simulating liquid

Prior to conducting SAR measurements, the relative permittivity,  $\epsilon_r$ , and the conductivity,  $\sigma$ , of the tissue simulating liquids were measured with the HP85070 Dielectric Probe Kit. These values, along with the temperature of the tissue simulate are shown in the table below. The recommended limits for maximum permittivity and minimum conductivity are also shown. These come from the Federal Communication Commission, OET Bulletin 65 Supplement C 01-01. It is seen that the measured parameters are satisfactory for compliance testing.

f (MHz)	Tissue type	Limits / Measured	Dielectric Parameters		
			$\epsilon_r$	$\sigma$ (S/m)	Temp (°C)
835	Head	Measured, 11/26/2003	42.7	0.92	18.3-19
		Recommended Limits	41.5 ±5%	0.90 ±5%	18-25
		Measured, 11/27/2003	42.7	0.92	18.3-19
		Recommended Limits	41.5 ±5%	0.90 ±5%	18-25
		Measured, 11/28/2003	42.4	0.92	18.3-19
		Recommended Limits	41.5 ±5%	0.90 ±5%	18-25
	Body	Measured, 11/28/2003	54.1	0.97	18.3-19
		Recommended Limits	55.2 ±5%	0.97 ±5%	18-25
1880	Head	Measured, 11/29/2003	38.5	1.46	18.3-19
		Recommended Limits	40.0 ±5%	1.40 ±5%	18-25
	Body	Measured, 11/29/2003	51.8	1.59	18.3-19
		Recommended Limits	53.3 ±5%	1.52 ±5%	18-25

The list of ingredients and the percent composition used for the tissue simulates are indicated in the table below.

Ingredient	800MHz Head	800MHz Body	1900MHz Head	1900MHz Body
Sugar	57.0	44.9	--	30.80
DGBE	--	--	47.0	--
Water	40.45	53.06	52.8	68.91
Salt	1.45	0.94	0.2	0.29
HEC	1.0	1.0	--	--
Bact.	0.1	0.1	--	--

### 5. System Accuracy Verification

A system accuracy verification of the DASY3 was performed using the measurement equipment listed in Section 3.1. The daily system accuracy verification occurs within center section of the SAM phantom.

A SAR measurement was performed to see if the measured SAR was within +/- 10% from the target SAR indicated on the dipole certification sheet. These tests were done at 900MHz and/or 1800MHz. These frequencies are within 100MHz of the mid-band frequency of the test device. This is within the allowable window given in Supplement C 01-01 *Appendix D System Verification* section item #5. The test was conducted on the same days as the measurement of the DUT. Recommended limits for maximum permittivity, minimum conductivity are shown in the table below. These come from the Federal Communication Commission, OET Bulletin 65 Supplement C 01-01. The obtained results from the system accuracy verification are displayed in the table below. The distributions of SAR compare well with those of the reference measurements (see Appendix 1). The tissue stimulant depth was verified to be 15.0cm ±0.5cm. Z-axis scans showing the SAR penetration are also included in Appendix 1. SAR values are normalized to 1W forward power delivered to the dipole.

f (MHz)	Description	SAR (W/kg), 1gram	Dielectric Parameters		Ambient Temp (°C)	Tissue Temp (°C)
			$\epsilon_r$	$\sigma$ (S/m)		
900	Measured, 11/26/2003	11.31	41.90	0.98	20	19.8
	Recommended Limits	11.60	41.5 ±5%	0.97 ±5%	18-25	18-25
	Measured, 11/28/2003	11.27	42.00	0.98	19	19.2
	Recommended Limits	11.60	41.5 ±5%	0.97 ±5%	18-25	18-25
1800	Measured, 11/29/2003	38.90	38.80	1.38	19	18.9
	Recommended Limits	39.70	40.0 ±5%	1.4 ±5%	18-25	18-25

The following probe conversion factors were used on the E-Field probe(s) used for the system accuracy verification measurements:

Description	Serial Number	f (MHz)	Conversion Factor	Cal Cert pg #
E-Field Probe ET3DV6	SN1501	900	6.4	2 of 10
		1800	5.0	2 of 10

### 6. Test Results

The test sample was operated in a test mode that allows control of the transmitter without the need to place actual phone calls. For the purposes of this test the unit is commanded to test mode and manually set to the proper channel, transmitter power level and transmit mode of operation. The phone was tested in the configurations stipulated in OET Bulletin 65 Supplement C 01-01. Motorola also followed the requirements in Supplement. C / Appendix D: SAR Measurement Procedures, section titled “*Devices Operating Next To A Person’s Ear* “. These directions state “The device should be tested on the left and right side of the head phantom in the “Cheek/Touch” and “Ear/Tilt” positions. When applicable, each configuration should be tested with the antenna in its fully extended and fully retracted positions. These test configurations should be tested at the high, middle and low frequency channels of each operating mode; for example, AMPS, CDMA, and TDMA. If the SAR measured at the middle channel for each test configuration (left, right, Cheek/Touch, Tile/Ear, extended and retracted) is at least 2.0 dB lower than the SAR limit, testing at the high and low channels is optional for such test configuration(s).”

The DASY v3.1d SAR measurement system specified in section 3.1 was utilized within the intended operations as set by the SPEAG™ setup. The phone was positioned into the measurement configurations using the positioner supplied with the DASY 3.1d SAR measurement system. The measured dielectric constant of the material used for

the positioner is less than 2.9 and the loss tangent is less than 0.02 ( $\pm 30\%$ ) at 850MHz. The default settings for the “coarse” and “cube” scans were chosen and use for measurements. The grid spacing of the course scan was set to 15cm as shown in the SAR plots included in appendix 2 and 3. Please refer to the DASY manual for additional information on SAR scanning procedures and algorithms used.

The Cellular Phone (FCC ID IHDT56DC1) has the following battery options:

SNN5722A - 650 mAH Battery

SNN5723A - 850 mAH Battery

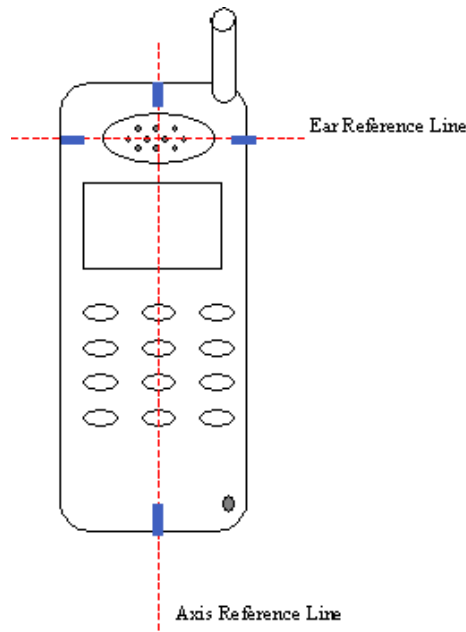
The SNN5722A battery was used to do all of the SAR testing. The SNN5723A battery was verified to show no change to SAR. The phone was placed in the SAR measurement system with a fully charged battery.

### 6.1 Head Adjacent Test Results

To aid in positioning repeatability, the ear reference line of the device and the axis reference line of the device have been physically added using a non-metallic marker.

- Per Figure 1, the "Ear Reference Line" is centered vertically through the center of the listening area (as defined by the speaker holes in the housing).
- The "Axis Reference Line" bisects the front surface of the device at its top and bottom edges.
- The intersection of these two lines defines the location of the "Ear Reference Point".

The lines drawn on the device extended to the outside edges, as shown in blue in the figure below, & wrap around the sides of the device.



The SAR results shown in tables 1 through 4 are maximum SAR values averaged over 1 gram of phantom tissue. Also shown are the measured conducted output powers, the temperature of the test facility during the test, the temperature of the tissue simulate after the test, the measured drift and the extrapolated SAR. The exact method of extrapolation is  $\text{New SAR} = \text{Old SAR} * 10^{(-\text{drift}/10)}$ . The SAR reported at the end of the measurement process by the DASY™ measurement system can be scaled up by the measured drift to determine the SAR at the beginning of the measurement process. This is the most conservative SAR because it corresponds to the average output power at the beginning of the SAR test. This extrapolation has been done because when the DUT is operating properly it may exhibit a slump in radiated power and SAR over time. This is verified by measuring the SAR drift after the test. The test conditions indicated as bold numbers in the following table are included in Appendix 2

The SAR measurements were performed using the SAM phantoms listed in section 3.1. Since same phantoms and tissue simulate are used for the system accuracy verification as the device SAR measurements, the Z-axis scans included in within Appendix 1 are applicable for verification of tissue simulate depth to be 15.0cm ±0.5cm. All other test conditions measured lower SAR values than those included in Appendix 2. Note that 800MHz digital mode SAR measurements were performed in accordance with Supplement C.

Note: The Push-to-talk / dispatch mode has been turned off via software for this particular version of the radio hence no data has been taken in the push-to-talk mode.

The following probe conversion factors were used on the E-Field probe(s) used for the head adjacent measurements:

Description	Serial Number	f (MHz)	Conversion Factor	Cal Cert pg #
E-Field Probe ET3DV6	SN1501	835	6.4	2 of 10
		1900	5.0	2 of 10

f (MHz)	Description	Conducted Output Power (dBm)	(Cheek / Touch Position)							
			Left Head				Right Head			
			Measured (W/kg)	Drift (dB)	Extrapolated (W/kg)	Simulate Temp (°C)	Measured (W/kg)	Drift (dB)	Extrapolated (W/kg)	Simulate Temp (°C)
Analog 800MHz	Channel 991	27.70	1.15	-0.16	1.19	18.9	1.30	-0.48	1.45	19
	Channel 384	27.76	0.966	0.09	0.97	19.1	1.10	-0.01	1.10	19
	Channel 799	27.82	0.808	0.04	0.81	19	0.831	0.18	0.83	19
Digital 800MHz	Channel 1013	25.04	1.13	-0.11	1.16	19	1.23	-0.18	1.28	19
	Channel 384	25.05	0.981	-0.21	1.03	18.4	1.12	-0.06	1.14	19
	Channel 779	24.90	0.805	0.01	0.81	19	0.953	-0.08	0.97	19
Digital 1900MHz	Channel 2	24.95								
	Channel 1001	25.04	0.439	-0.51	0.49	19	0.474	-0.66	0.55	19
	Channel 1998	24.93								

**Table 1: SAR measurement results for the portable cellular telephone FCC ID IHDT56DC1 at highest possible output power. Measured against the left head in the Cheek/Touch Position.**

f (MHz)	Description	Conducted Output Power (dBm)	(15° Tilt Position)							
			Left Head				Right Head			
			Measured (W/kg)	Drift (dB)	Extrapolated (W/kg)	Simulate Temp (°C)	Measured (W/kg)	Drift (dB)	Extrapolated (W/kg)	Simulate Temp (°C)
Analog 800MHz	Channel 991	27.70								
	Channel 384	27.76	0.19	-0.08	0.19	18.6	0.207	-0.04	0.21	18.6
	Channel 799	27.82								
Digital 800MHz	Channel 1013	25.04								
	Channel 384	25.05	0.206	0.03	0.21	19	0.212	0.01	0.21	19
	Channel 779	24.90								
Digital 1900MHz	Channel 2	24.95								
	Channel 1001	25.04	0.129	-0.12	0.13	19	0.106	-0.27	0.11	19
	Channel 1998	24.93								

**Table 2: SAR measurement results for the portable cellular telephone FCC ID IHDT56DC1 at highest possible output power. Measured against the right head in the Cheek/Touch Position.**

## 6.2 Body Worn Test Results

The SAR results shown in table 5 are the maximum SAR values averaged over 1 gram of phantom tissue. Also shown are the measured conducted output powers, the temperature of the test facility during the test, the temperature of the tissue simulate after the test, the measured drift and the extrapolated SAR. The exact method of extrapolation is  $New\ SAR = Old\ SAR * 10^{(-drift/10)}$ . The SAR reported at the end of the measurement process by the DASY™ measurement system can be scaled up by the measured drift to determine the SAR at the beginning of the measurement process. This is the most conservative SAR because it corresponds to the average output power at the beginning of the SAR test. This extrapolation has been done because when the DUT is operating properly it may exhibit a slump in radiated power and SAR over time. This is verified by measuring the SAR drift after the test. The test conditions indicated as bold numbers in the following table are included in Appendix 3. Note that 800MHz digital mode SAR measurements were performed in accordance with OET Bulletin 65 Supplement C 01-01. All other test conditions measured lower SAR values than those included in Appendix 3.

A “flat” phantom was for the body-worn tests. This “flat” phantom is made out of 1” thick natural High Density Polyethylene with a thickness at the bottom equal to 2.0mm. It measures 52.7cm(long) x 26.7cm(wide) x 21.2cm(tall). The measured dielectric constant of the material used is less than 2.3 and the loss tangent is less than 0.0046 all the way up to 2.184GHz.

The tissue stimulant depth was verified to be 15.0cm ±0.5cm. The same device holder described in section 6 was used for positioning the phone. The functional accessories were divided into two categories, the ones with metal components and the ones with non-metal components. For non-metallic component accessories’, testing was performed on the accessory that displayed the closest proximity to the flat phantom. Each metallic component accessory, if any, was checked for uniqueness of metal component so that each is tested with the device. If multiple accessories shared an identical metal component, only the accessory that dictates the closest spacing to the body was tested. The cellular phone was tested with a headset connected to the device for all body-worn SAR measurements.

There is one Body-Worn Accessories available for this phone:

A Plastic Holster with Clip: SYN0375A

The plastic holster SYN0375A is a rotating Holster/Belt Clip, the antenna is at the closest proximity to the flat phantom when the belt clip along with the phone is rotated +90° (clockwise direction).

The following probe conversion factors were used on the E-Field probe(s) used for the body worn measurements:

Description	Serial Number	f (MHz)	Conversion Factor	Cal Cert pg #
E-Field Probe ET3DV6	SN102	835	6.1	8 of 10
		1900	4.6	8 of 10

f (MHz)	Description	Conducted Output Power (dBm)	Body Worn			
			Measured (W/kg)	Drift (dB)	Extrapolated (W/kg)	Simulate Temp (°C)
Analog 800MHz	Channel 991	27.70				
	Channel 384	27.76	0.362	-0.15	0.37	19
	Channel 799	27.82				
Digital 800MHz	Channel 1013	25.04				
	Channel 384	25.05	0.379	-0.09	0.39	19
	Channel 779	24.90				
Digital 1900MHz	Channel 2	24.95				
	Channel 1001	25.04	0.624	-0.23	0.66	19.1
	Channel 1998	24.93				

**Table 3: SAR measurement results for the portable cellular telephone FCC ID IHDT56DC1at highest possible output power. Measured against the head with plastic holster with clip**

## **Appendix 1**

### **SAR distribution comparison for the system accuracy verification**

## Dipole 900 MHz

900 MHz System Performance Check / Dipole Sn# 079 / Forward Power = 251mW / Acceptable Temp Range is 18-25°C Room Temp at time of measurement = 20 C Simulant Temp at time of measurement = 19.8 C

R5 TP-1132 Sugar SAM Expanded (Rev. 2)-9Jan03 Phantom; Flat Section; Position: (90°,90°); Frequency: 900 MHz

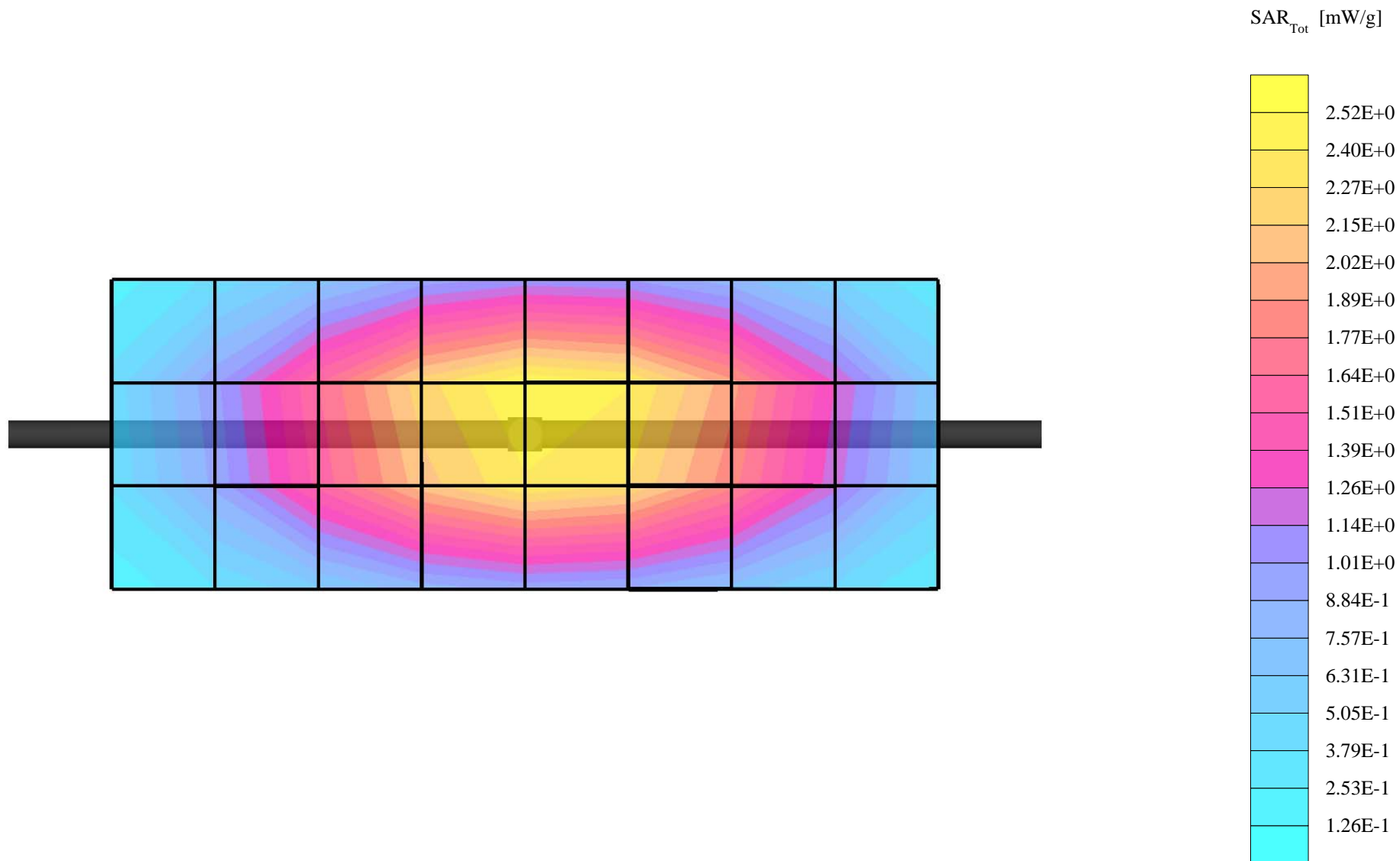
Probe: ET3DV6R - SN1501 - VALIDATION; ConvF(6.40,6.40,6.40); Crest factor: 1.0; 900 MHz VALIDATION:  $\sigma = 0.98$  mho/m  $\epsilon_r = 41.9$   $\rho = 1.00$  g/cm<sup>3</sup>

Cubes (2): Peak: 4.49 mW/g  $\pm$  0.09 dB, SAR (1g): 2.84 mW/g  $\pm$  0.09 dB, SAR (10g): 1.80 mW/g  $\pm$  0.09 dB, (Worst-case extrapolation)

Coarse: Dx = 15.0, Dy = 15.0, Dz = 10.0

Penetration depth: 11.5 (10.8, 12.6) [mm]

Powerdrift: -0.03 dB



## Dipole 900 MHz

900 MHz System Performance Check / Dipole Sn# 079 / Forward Power = 251mW / Acceptable Temp Range is 18-25°C Room Temp at time of measurement = 19.0°C. Simulant Temp at time of measurement = 19.2°C

R5 TP-1132 Sugar SAM Expanded (Rev. 2)-9Jan03 Phantom; Flat Section; Position: (90°,90°); Frequency: 900 MHz

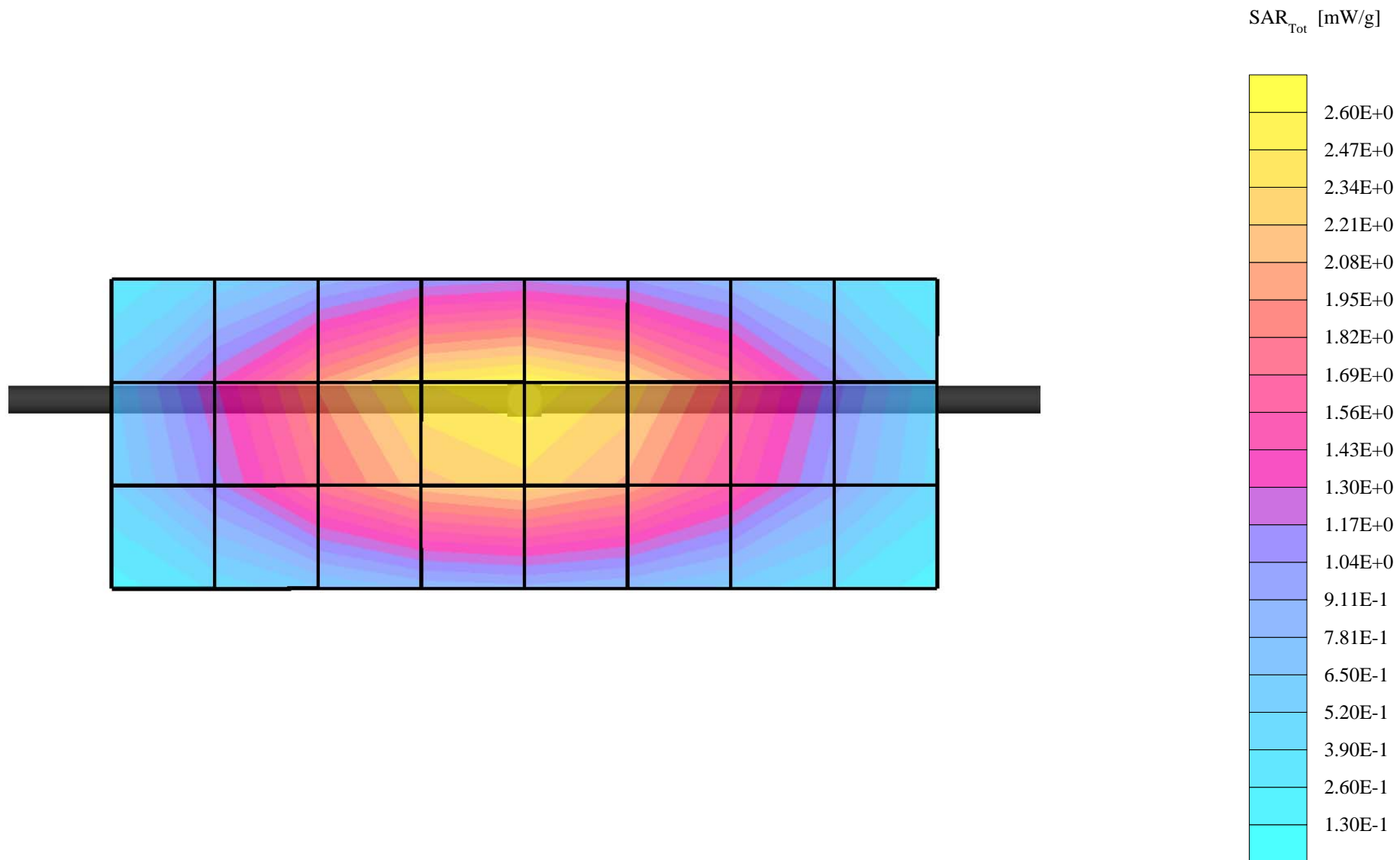
Probe: ET3DV6R - SN1501 - VALIDATION; ConvF(6.40,6.40,6.40); Crest factor: 1.0; 900 MHz VALIDATION:  $\sigma = 0.98$  mho/m  $\epsilon_r = 42.0$   $\rho = 1.00$  g/cm<sup>3</sup>

Cubes (2): Peak: 4.47 mW/g  $\pm$  0.07 dB, SAR (1g): 2.83 mW/g  $\pm$  0.09 dB, SAR (10g): 1.79 mW/g  $\pm$  0.10 dB, (Worst-case extrapolation)

Coarse: Dx = 15.0, Dy = 15.0, Dz = 10.0

Penetration depth: 11.5 (10.8, 12.6) [mm]

Powerdrift: -0.04 dB



## Dipole 1800 MHz

1800 MHz System Performance Check / Dipole Sn# 246TR / Forward Power = 246mW / Acceptable Temp Range is 18-25°C Room Temp at time of measurement = 19.0°C. Simulant Temp at time of measurement = 18.9°C

R5: TP-1160 GLYCOL SAM Expanded (Rev. 2)-9Jan03 Phantom; Flat Section; Position: (90°,90°); Frequency: 1800 MHz

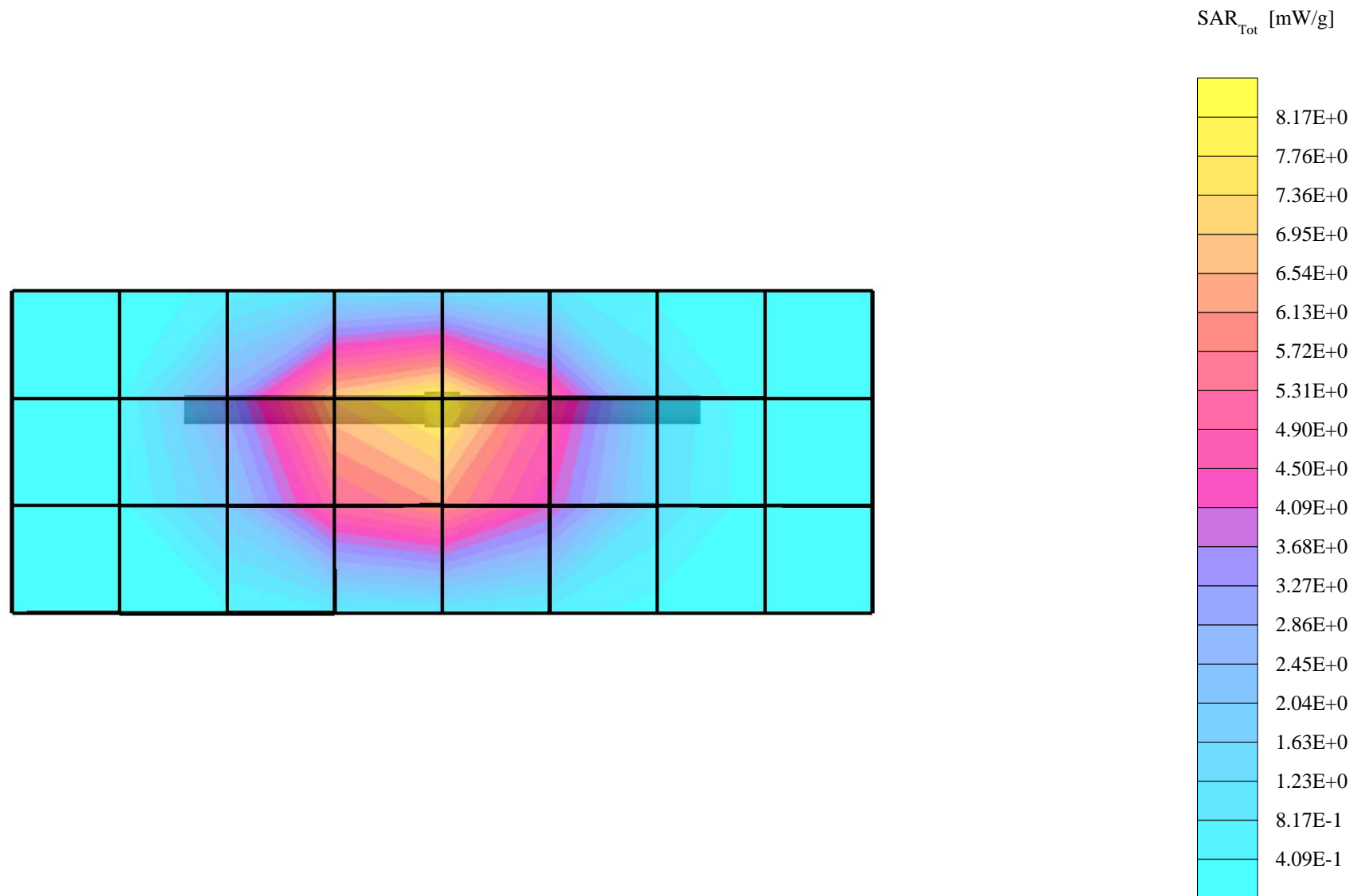
Probe: ET3DV6R - SN1501 - VALIDATION; ConvF(5.00,5.00,5.00); Crest factor: 1.0; 1800 MHz VALIDATION:  $\sigma = 1.38$  mho/m  $\epsilon_r = 38.8$   $\rho = 1.00$  g/cm<sup>3</sup>

Cubes (2): Peak: 17.2 mW/g  $\pm$  0.07 dB, SAR (1g): 9.57 mW/g  $\pm$  0.09 dB, SAR (10g): 5.11 mW/g  $\pm$  0.10 dB, (Worst-case extrapolation)

Coarse: Dx = 15.0, Dy = 15.0, Dz = 10.0

Penetration depth: 8.5 (8.2, 9.3) [mm]

Powerdrift: 0.04 dB

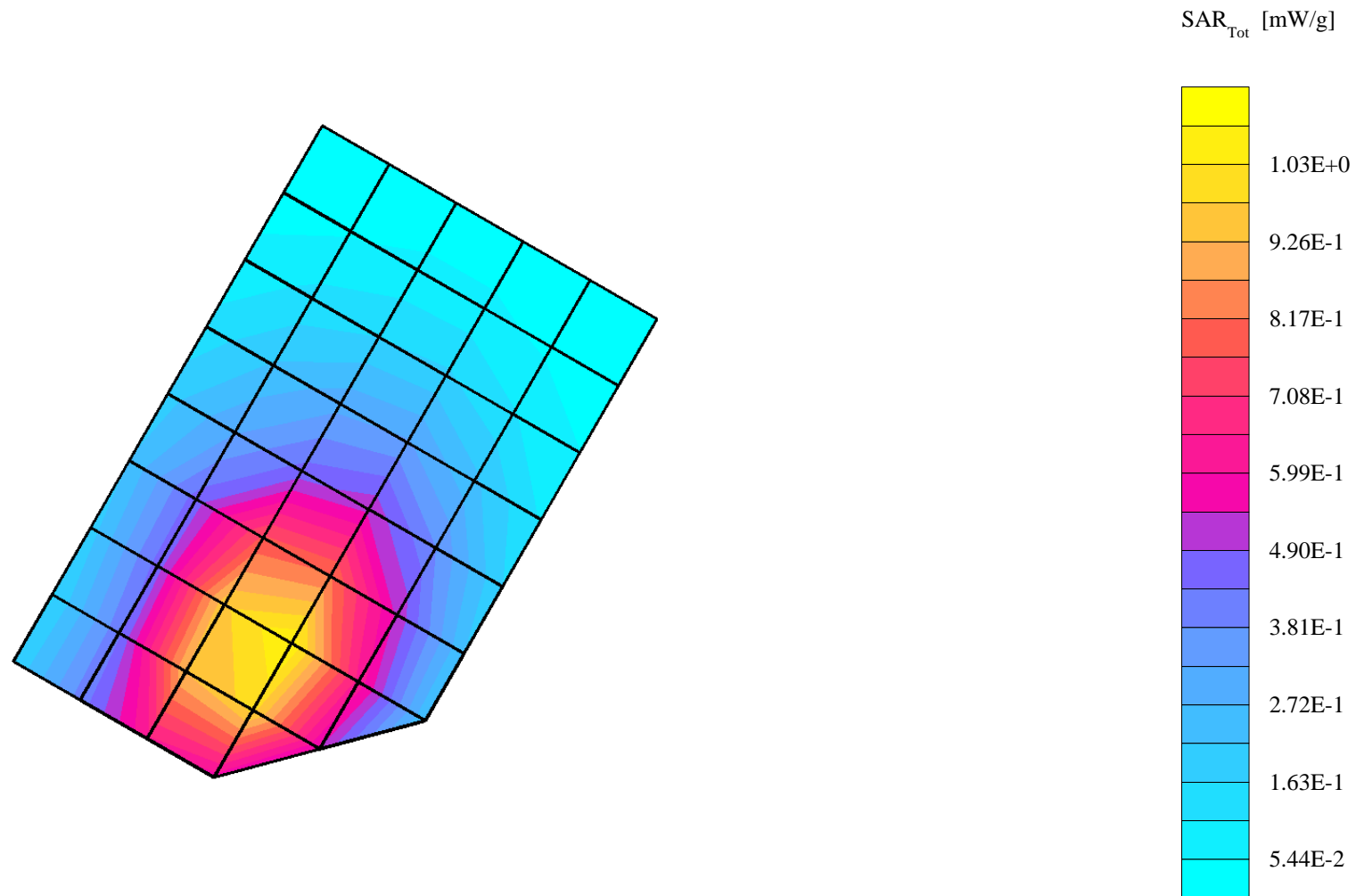


## Appendix 2

### SAR distribution plots for Phantom Head Adjacent Use

## sn# 3D66D32A

Ch# 991 Pwr Step: 2 (OTA) / Antenna Position: FIXED / Battery Model #: SNN5722A / DEVICE POSITION: CHEEK  
R5 TP-1132 Sugar SAM Expanded (Rev. 2)-9Jan03 Phantom; Left Hand Section; Position: (90°,180°); Frequency: 824 MHz  
Probe: ET3DV6R - SN1501 - IEEE Head; ConvF(6.40,6.40,6.40); Crest factor: 1.0; 835 MHz Head & Body:  $\sigma = 0.92$  mho/m  $\epsilon_r = 42.7$   $\rho = 1.00$  g/cm<sup>3</sup>  
Cube 7x7x7: Peak: 1.74 mW/g, SAR (1g): 1.15 mW/g, SAR (10g): 0.772 mW/g, (Worst-case extrapolation)  
Coarse: Dx = 15.0, Dy = 15.0, Dz = 15.0  
Penetration depth: 14.5 (12.7, 16.6) [mm]  
Powerdrift: -0.16 dB



**SN# 3D66D32A**

Ch# 991 Pwr Step: 2 (OTA) / Antenna Position: FIXED/ Battery Model #: SNN5722A / DEVICE POSITION: CHEEK

R5 TP-1132 Sugar SAM Expanded (Rev. 2)-9Jan03 Phantom; Right Hand Section; Position: (90°,180°); Frequency: 824 MHz

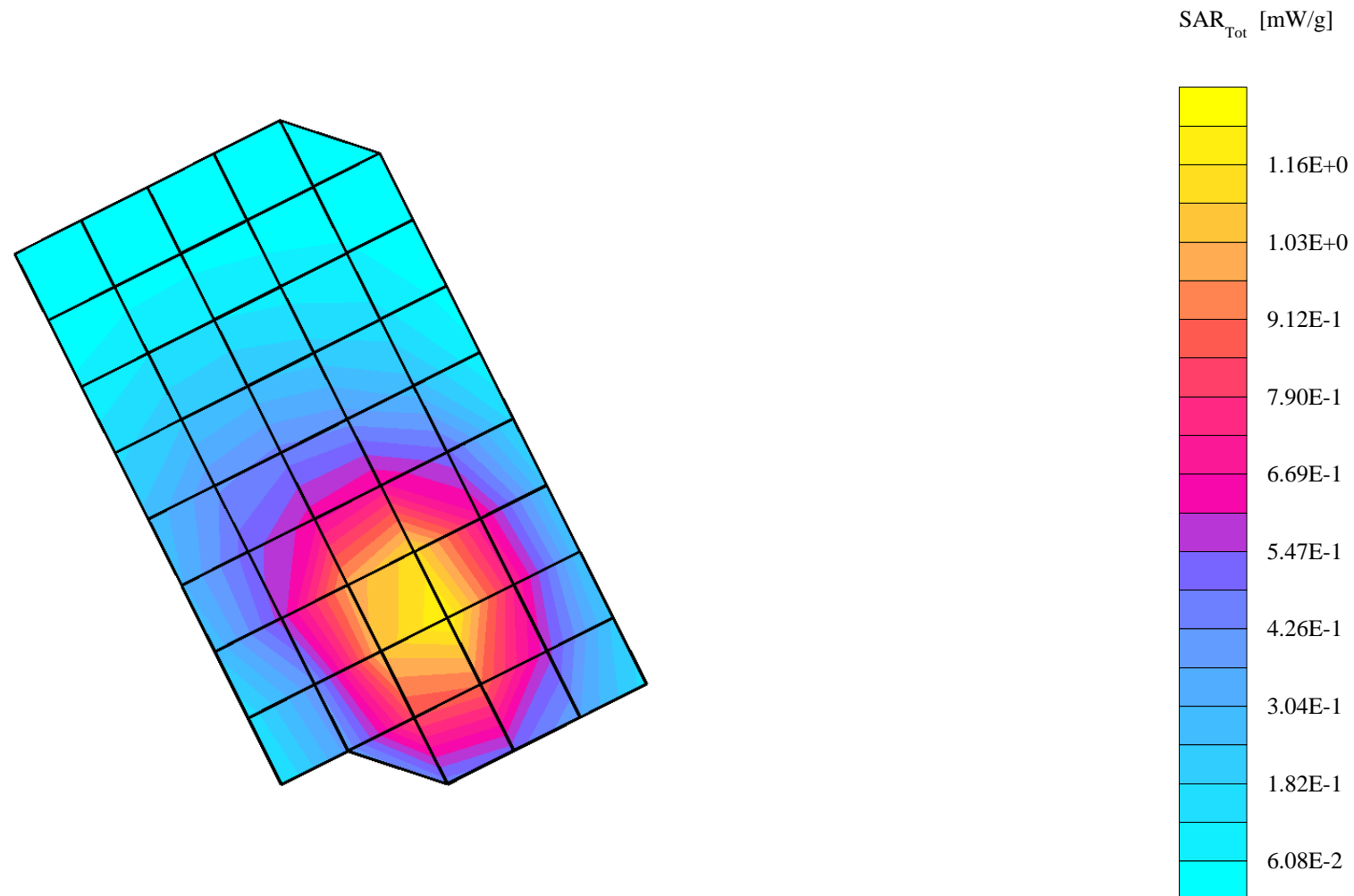
Probe: ET3DV6R - SN1501 - IEEE Head; ConvF(6.40,6.40,6.40); Crest factor: 1.0; 835 MHz Head & Body:  $\sigma = 0.92$  mho/m  $\epsilon_r = 42.4$   $\rho = 1.00$  g/cm<sup>3</sup>

Cube 7x7x7: Peak: 1.99 mW/g, SAR (1g): 1.30 mW/g, SAR (10g): 0.870 mW/g, (Worst-case extrapolation)

Coarse: Dx = 15.0, Dy = 15.0, Dz = 15.0

Penetration depth: 14.3 (13.2, 15.7) [mm]

Powerdrift: -0.48 dB



**SN# 3D66D32A**

Ch# 384 / Pwr Step: 2 OTA / Antenna Position: FIXED/ Battery Model #: SNN5722A / DEVICE POSITION (cheek or rotated): TILTED

R5 TP-1132 Sugar SAM Expanded (Rev. 2)-9Jan03 Phantom; Left Hand Section; Position: (90°,180°); Frequency: 837 MHz

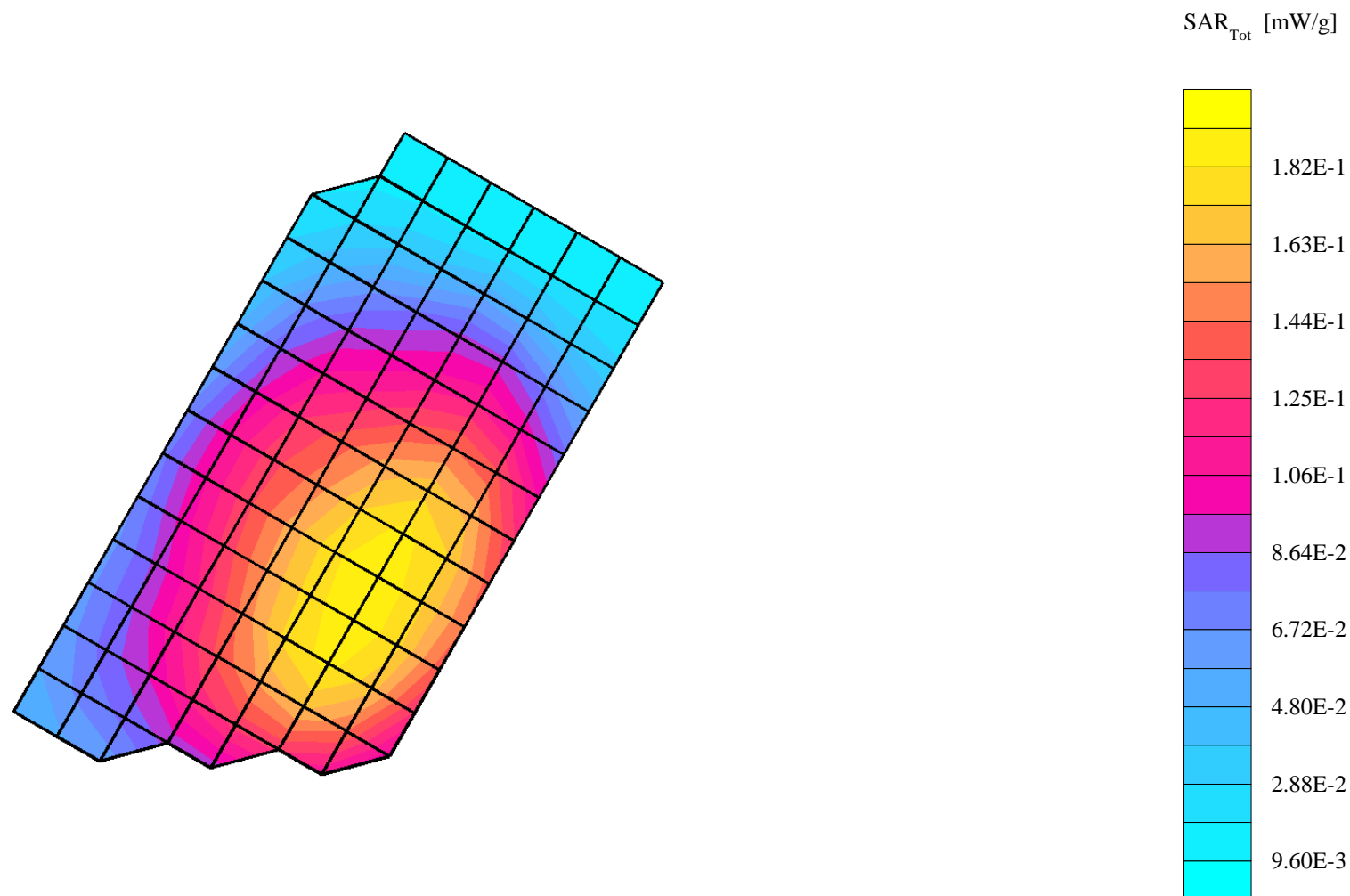
Probe: ET3DV6R - SN1501 - IEEE Head; ConvF(6.40,6.40,6.40); Crest factor: 1.0; 835 MHz Head & Body:  $\sigma = 0.92$  mho/m  $\epsilon_r = 42.7$   $\rho = 1.00$  g/cm<sup>3</sup>

Cube 7x7x7: Peak: 0.257 mW/g, SAR (1g): 0.190 mW/g, SAR (10g): 0.141 mW/g, (Worst-case extrapolation)

Coarse: Dx = 10.0, Dy = 10.0, Dz = 10.0

Penetration depth: 18.2 (16.9, 19.7) [mm]

Powerdrift: -0.08 dB



**SN# 3D66D32A**

Ch# 384 Pwr Step: 2 (OTA) / Antenna Position: FIXED/ Battery Model #: SNN5722A / DEVICE POSITION: TILT

R5 TP-1132 Sugar SAM Expanded (Rev. 2)-9Jan03 Phantom; Right Hand Section; Position: (90°,180°); Frequency: 837 MHz

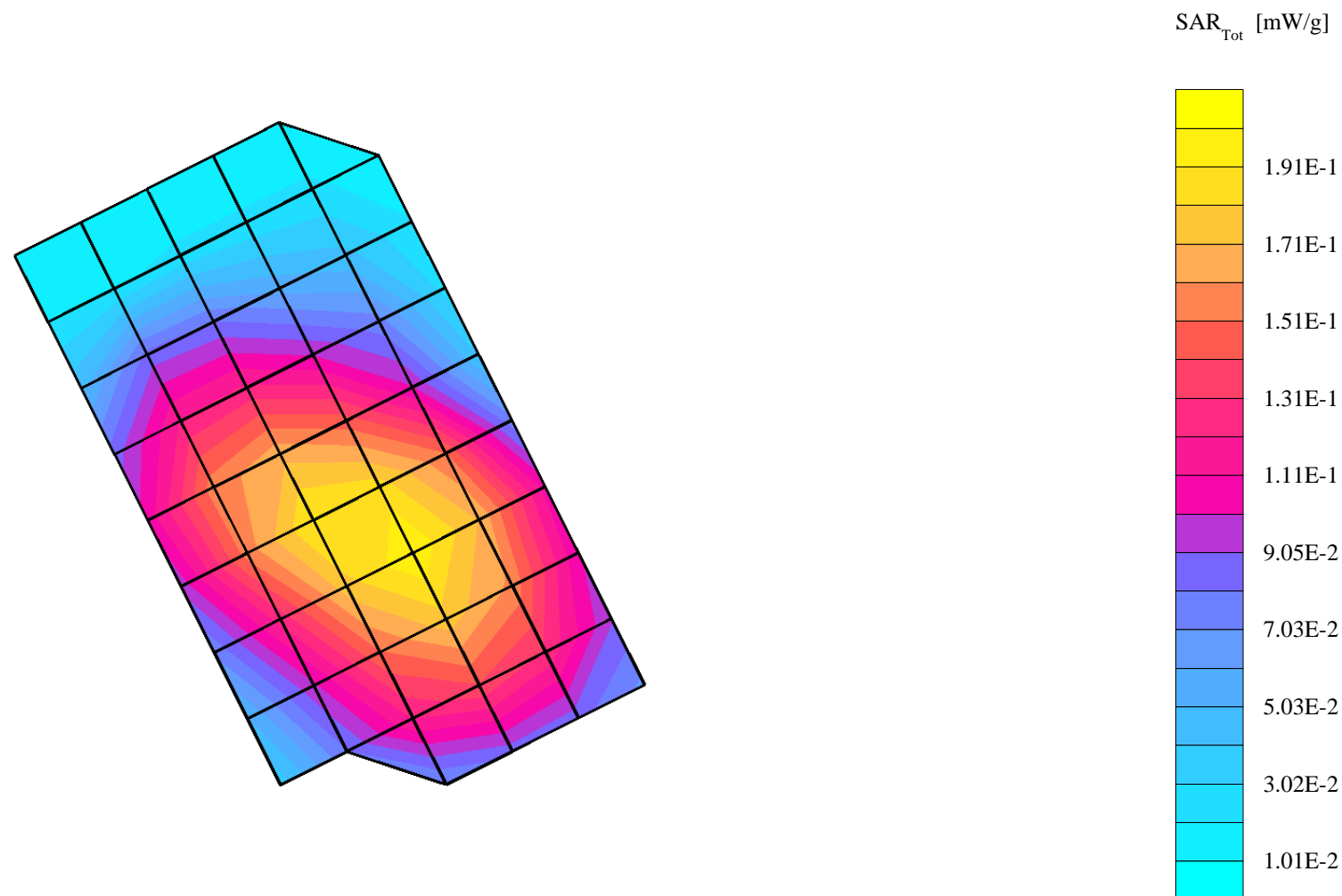
Probe: ET3DV6R - SN1501 - IEEE Head; ConvF(6.40,6.40,6.40); Crest factor: 1.0; 835 MHz Head & Body:  $\sigma = 0.92$  mho/m  $\epsilon_r = 42.4$   $\rho = 1.00$  g/cm<sup>3</sup>

Cube 7x7x7: Peak: 0.277 mW/g, SAR (1g): 0.207 mW/g, SAR (10g): 0.154 mW/g, (Worst-case extrapolation)

Coarse: Dx = 15.0, Dy = 15.0, Dz = 15.0

Penetration depth: 19.3 (18.0, 20.7) [mm]

Powerdrift: -0.04 dB



**SN# 3D66D32A**

Ch# 1013 Pwr Step: always up / Antenna Position: FIXED/ Battery Model #: SNN5722A / DEVICE POSITION: CHEEK

R5 TP-1132 Sugar SAM Expanded (Rev. 2)-9Jan03 Phantom; Right Hand Section; Position: (90°,180°); Frequency: 825 MHz

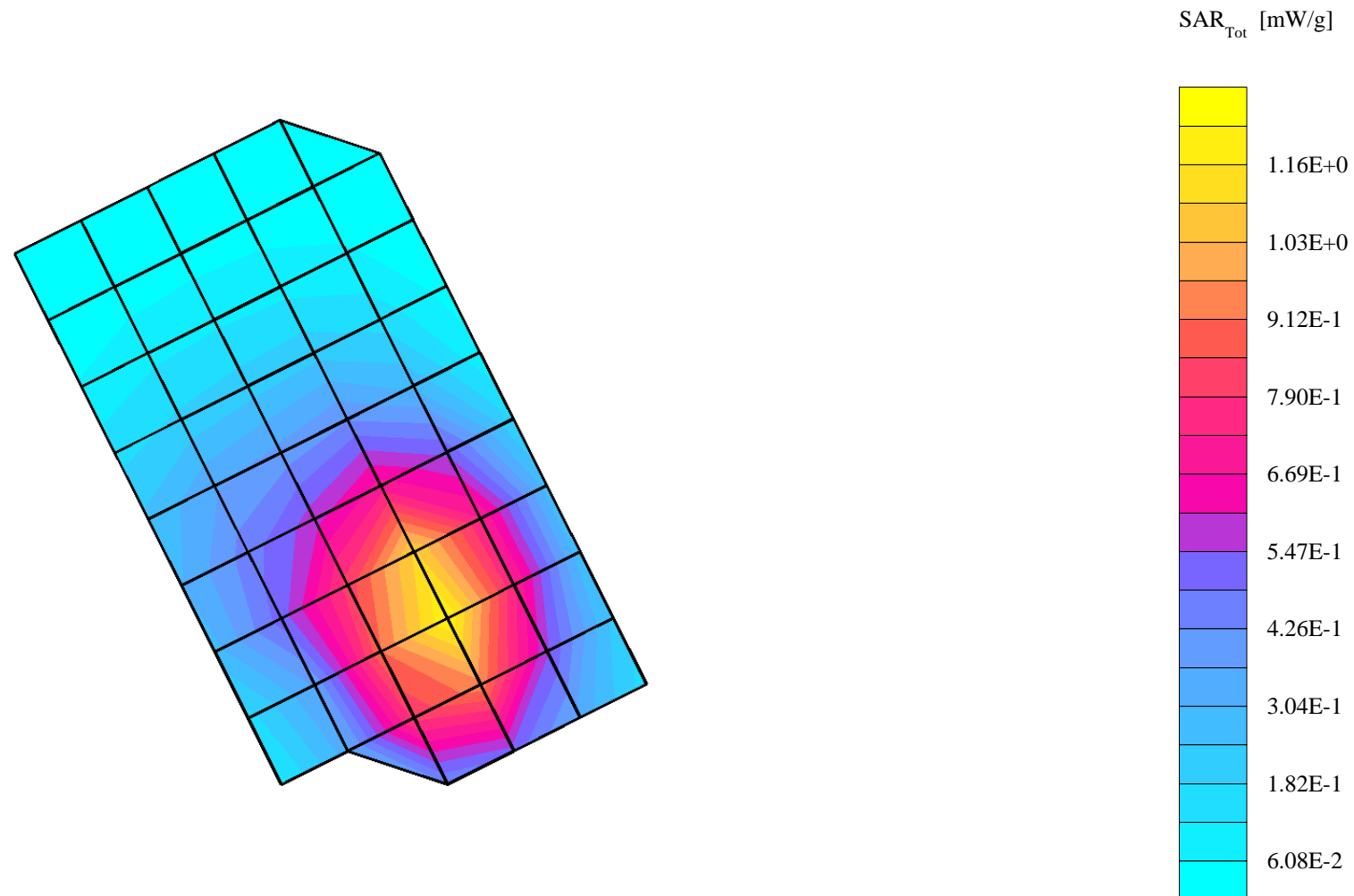
Probe: ET3DV6R - SN1501 - IEEE Head; ConvF(6.40,6.40,6.40); Crest factor: 1.0; 835 MHz Head & Body:  $\sigma = 0.92$  mho/m  $\epsilon_r = 42.4$   $\rho = 1.00$  g/cm<sup>3</sup>

Cube 7x7x7: Peak: 1.88 mW/g, SAR (1g): 1.23 mW/g, SAR (10g): 0.816 mW/g, (Worst-case extrapolation)

Coarse: Dx = 15.0, Dy = 15.0, Dz = 15.0

Penetration depth: 13.9 (12.6, 15.4) [mm]

Powerdrift: -0.18 dB



**SN# 3D66D32A**

Ch# 1013 Pwr Step: always up / Antenna Position: FIXED / Battery Model #: SNN5722A / DEVICE POSITION: CHEEK

R5 TP-1132 Sugar SAM Expanded (Rev. 2)-9Jan03 Phantom; Left Hand Section; Position: (90°,180°); Frequency: 825 MHz

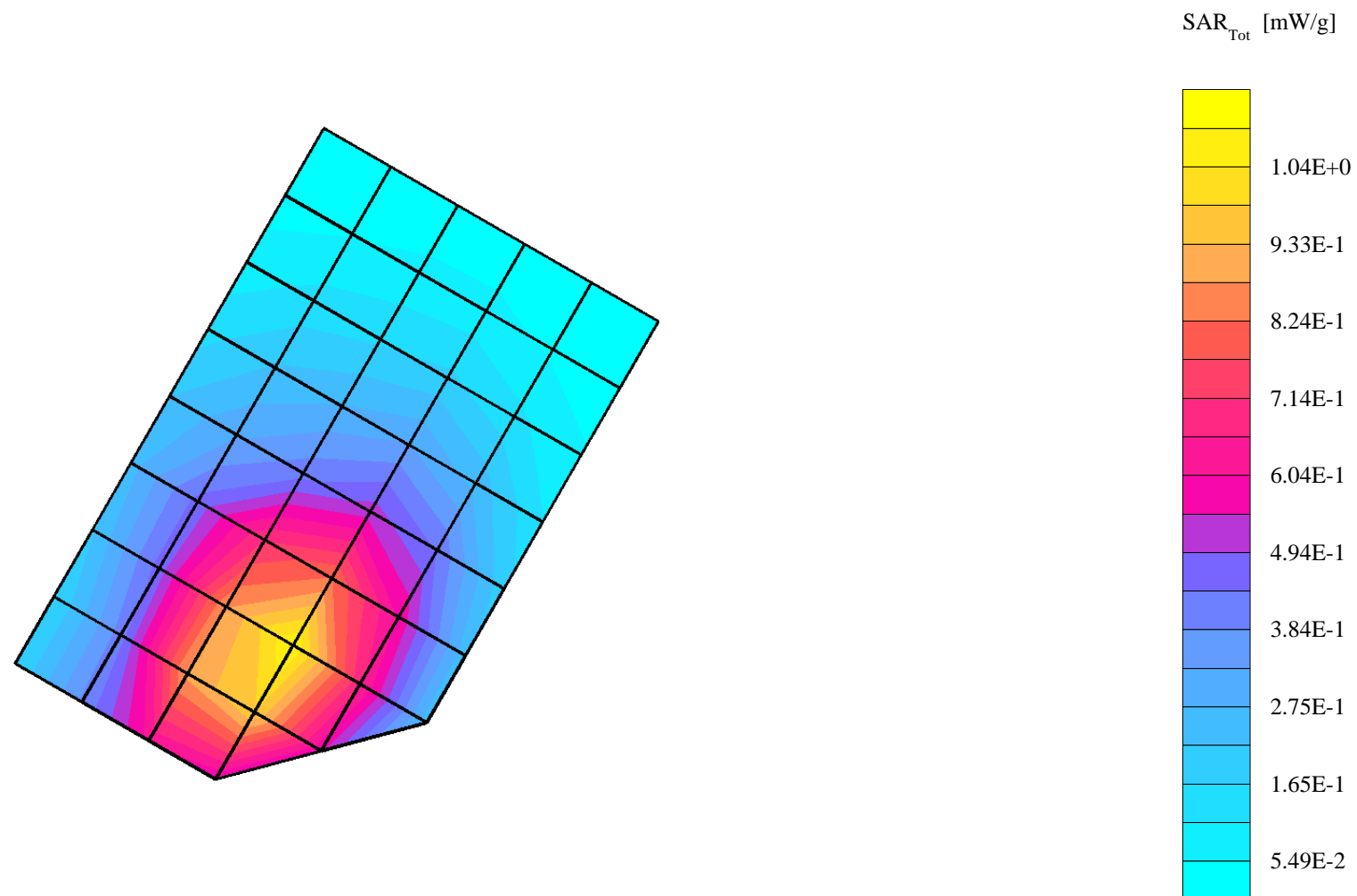
Probe: ET3DV6R - SN1501 - IEEE Head; ConvF(6.40,6.40,6.40); Crest factor: 1.0; 835 MHz Head & Body:  $\sigma = 0.92$  mho/m  $\epsilon_r = 42.7$   $\rho = 1.00$  g/cm<sup>3</sup>

Cube 7x7x7: Peak: 1.75 mW/g, SAR (1g): 1.13 mW/g, SAR (10g): 0.749 mW/g, (Worst-case extrapolation)

Coarse: Dx = 15.0, Dy = 15.0, Dz = 15.0

Penetration depth: 14.2 (12.3, 16.6) [mm]

Powerdrift: -0.11 dB



**SN# 3D66D32A**

Ch# 384 Pwr Step: always up / Antenna Position: FIXED / Battery Model #: SNN5722A / DEVICE POSITION:TILT

R5 TP-1132 Sugar SAM Expanded (Rev. 2)-9Jan03 Phantom; Left Hand Section; Position: (90°,180°); Frequency: 837 MHz

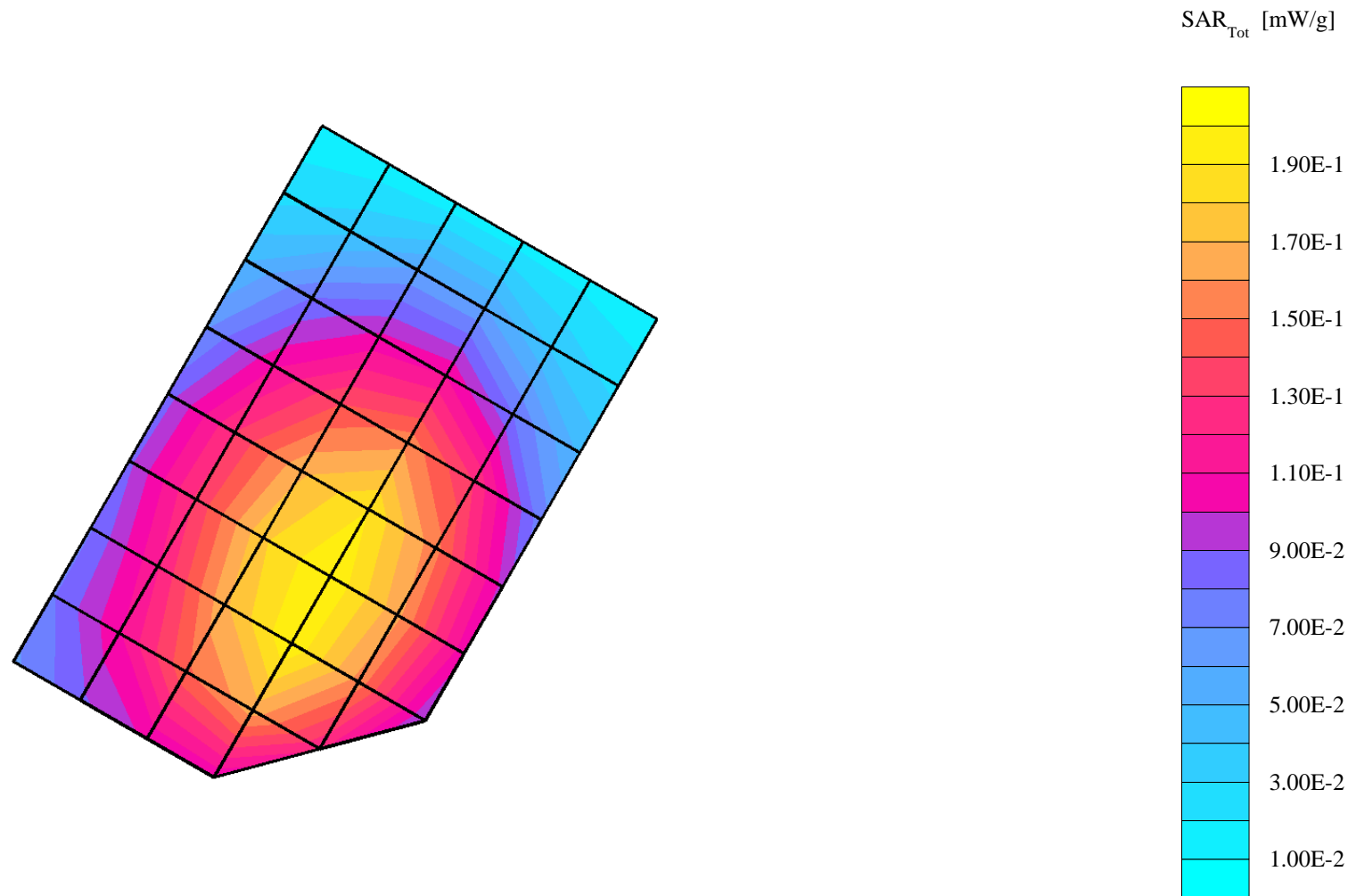
Probe: ET3DV6R - SN1501 - IEEE Head; ConvF(6.40,6.40,6.40); Crest factor: 1.0; 835 MHz Head & Body:  $\sigma = 0.92$  mho/m  $\epsilon_r = 42.7$   $\rho = 1.00$  g/cm<sup>3</sup>

Cube 7x7x7: Peak: 0.283 mW/g, SAR (1g): 0.206 mW/g, SAR (10g): 0.153 mW/g, (Worst-case extrapolation)

Coarse: Dx = 15.0, Dy = 15.0, Dz = 15.0

Penetration depth: 18.1 (16.5, 19.8) [mm]

Powerdrift: 0.03 dB



**SN# 3D66D32A**

Ch# 384 Pwr Step: always up / Antenna Position: FIXED / Battery Model #: SNN5722A / DEVICE POSITION: TILT

R5 TP-1132 Sugar SAM Expanded (Rev. 2)-9Jan03 Phantom; Right Hand Section; Position: (90°,180°); Frequency: 837 MHz

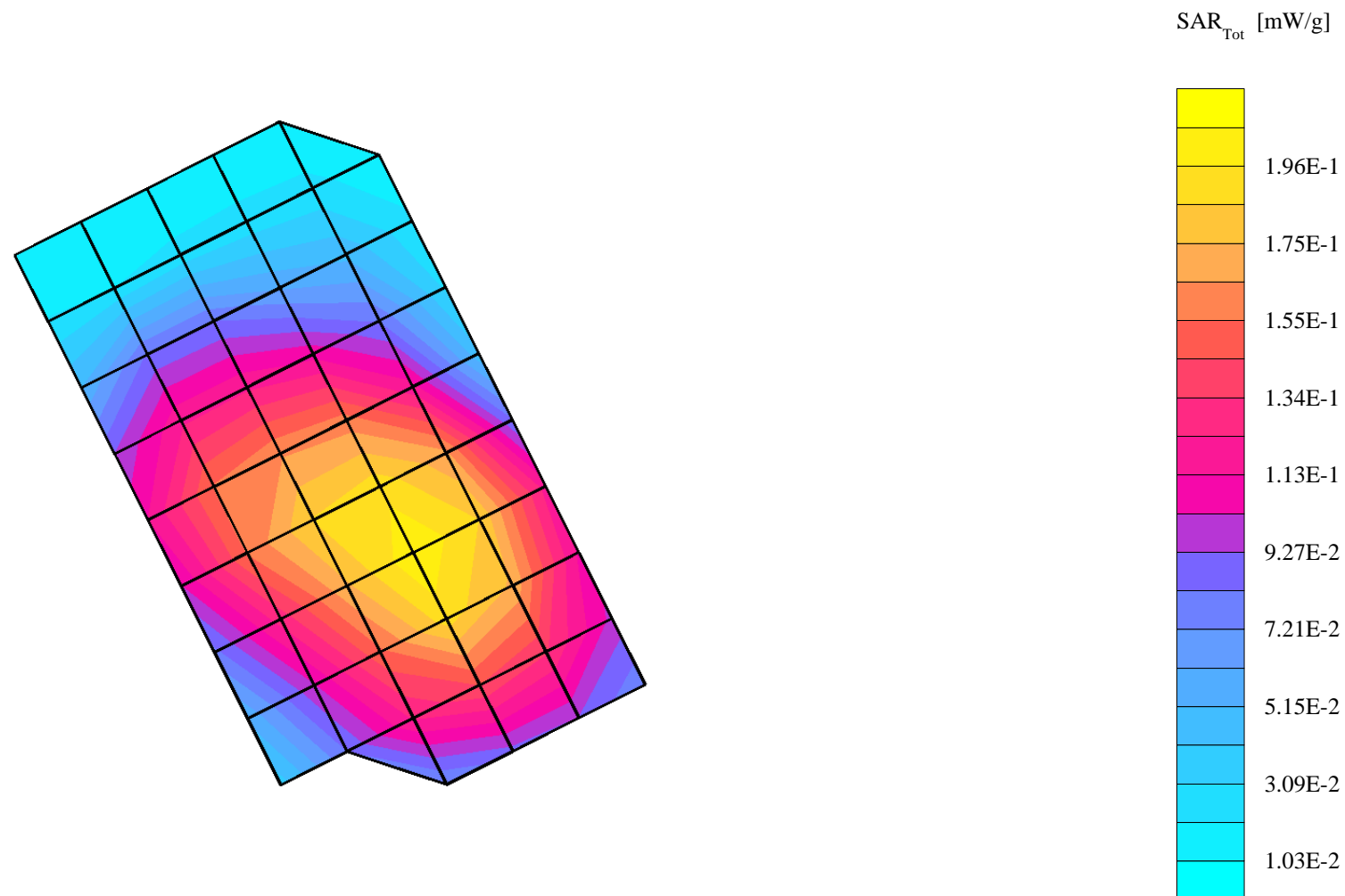
Probe: ET3DV6R - SN1501 - IEEE Head; ConvF(6.40,6.40,6.40); Crest factor: 1.0; 835 MHz Head & Body:  $\sigma = 0.92$  mho/m  $\epsilon_r = 42.4$   $\rho = 1.00$  g/cm<sup>3</sup>

Cube 7x7x7: Peak: 0.282 mW/g, SAR (1g): 0.212 mW/g, SAR (10g): 0.158 mW/g, (Worst-case extrapolation)

Coarse: Dx = 15.0, Dy = 15.0, Dz = 15.0

Penetration depth: 19.3 (17.9, 20.7) [mm]

Powerdrift: 0.01 dB



**SN# 3D6D33E6**

Ch# 600 Pwr Step: always up / Antenna Position: FIXED / Battery Model #: SNN5722A / DEVICE POSITION: CHEEK

R5: TP-1160 GLYCOL SAM Expanded (Rev. 2)-9Jan03 Phantom; Left Hand Section; Position: (90°,180°); Frequency: 1880 MHz

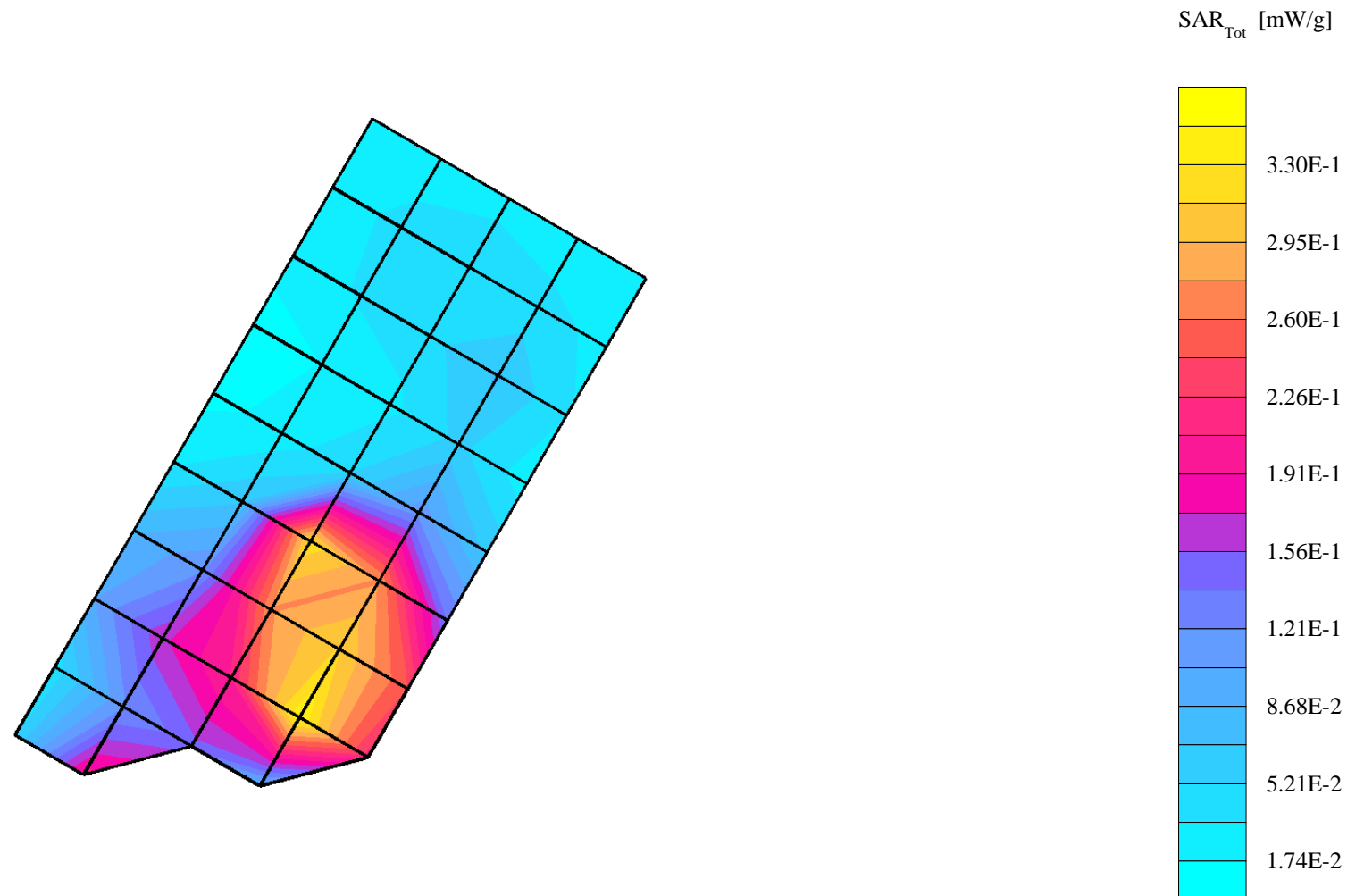
Probe: ET3DV6R - SN1501 - IEEE Head; ConvF(5.00,5.00,5.00); Crest factor: 1.0; 1880 MHz Head & Body:  $\sigma = 1.46$  mho/m  $\epsilon_r = 38.5$   $\rho = 1.00$  g/cm<sup>3</sup>

Cube 7x7x7: Peak: 0.744 mW/g, SAR (1g): 0.439 mW/g, SAR (10g): 0.234 mW/g, (Worst-case extrapolation)

Coarse: Dx = 15.0, Dy = 15.0, Dz = 15.0

Penetration depth: 11.6 (11.6, 11.6) [mm]

Powerdrift: -0.30 dB



**SN# 3D6D33E6**

Ch# 600 Pwr Step: ALL UP BITS

Type of Modulation: 1900 CDMA

DEVICE POSITION: CHEEK

Accessory Model #: none

R5: TP-1160 GLYCOL SAM Expanded (Rev. 2)-9Jan03 Phantom; Right Hand Section; Position: (90°,90°); Frequency: 1880 MHz

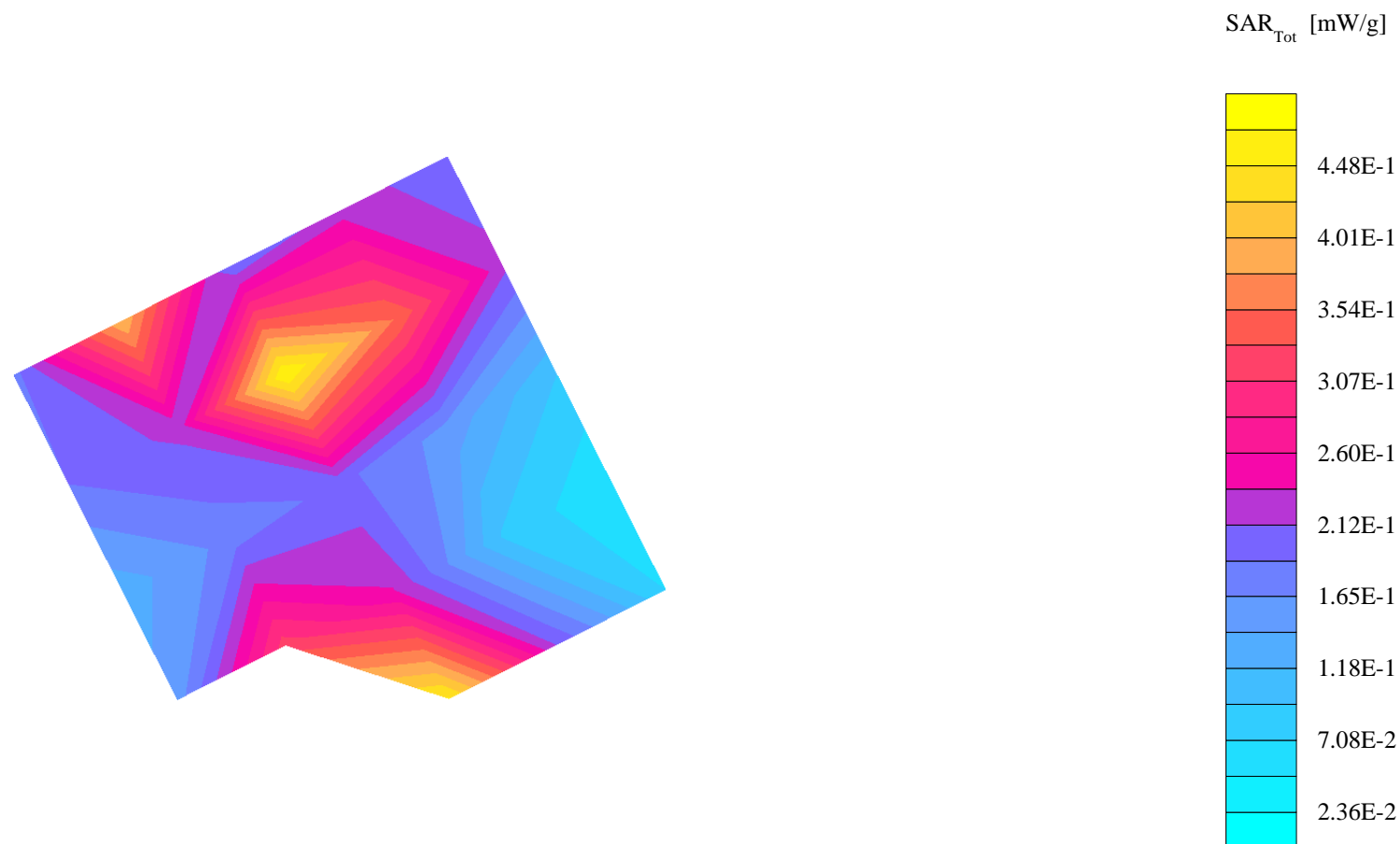
Probe: ET3DV6R - SN1501 - IEEE Head; ConvF(5.00,5.00,5.00); Crest factor: 1.0; 1880 MHz Head & Body:  $\sigma = 1.46$  mho/m  $\epsilon_r = 38.5$   $\rho = 1.00$  g/cm<sup>3</sup>

Cube 7x7x7: Peak: 0.949 mW/g, SAR (1g): 0.474 mW/g, SAR (10g): 0.237 mW/g, (Worst-case extrapolation)

Coarse: Dx = 15.0, Dy = 15.0, Dz = 15.0 (Shorter course scan since hot spot is to close to the phantom boundary)

Penetration depth: 8.8 (8.7, 9.0) [mm]

Powerdrift: -0.66 dB



**SN# 3D6D33E6**

Ch# 600 Pwr Step: ALL UP BITS / Antenna Position: FIXED / Battery Model #: SNN5722A / DEVICE POSITION: TILT

R5: TP-1160 GLYCOL SAM Expanded (Rev. 2)-9Jan03 Phantom; Left Hand Section; Position: (90°,180°); Frequency: 1880 MHz

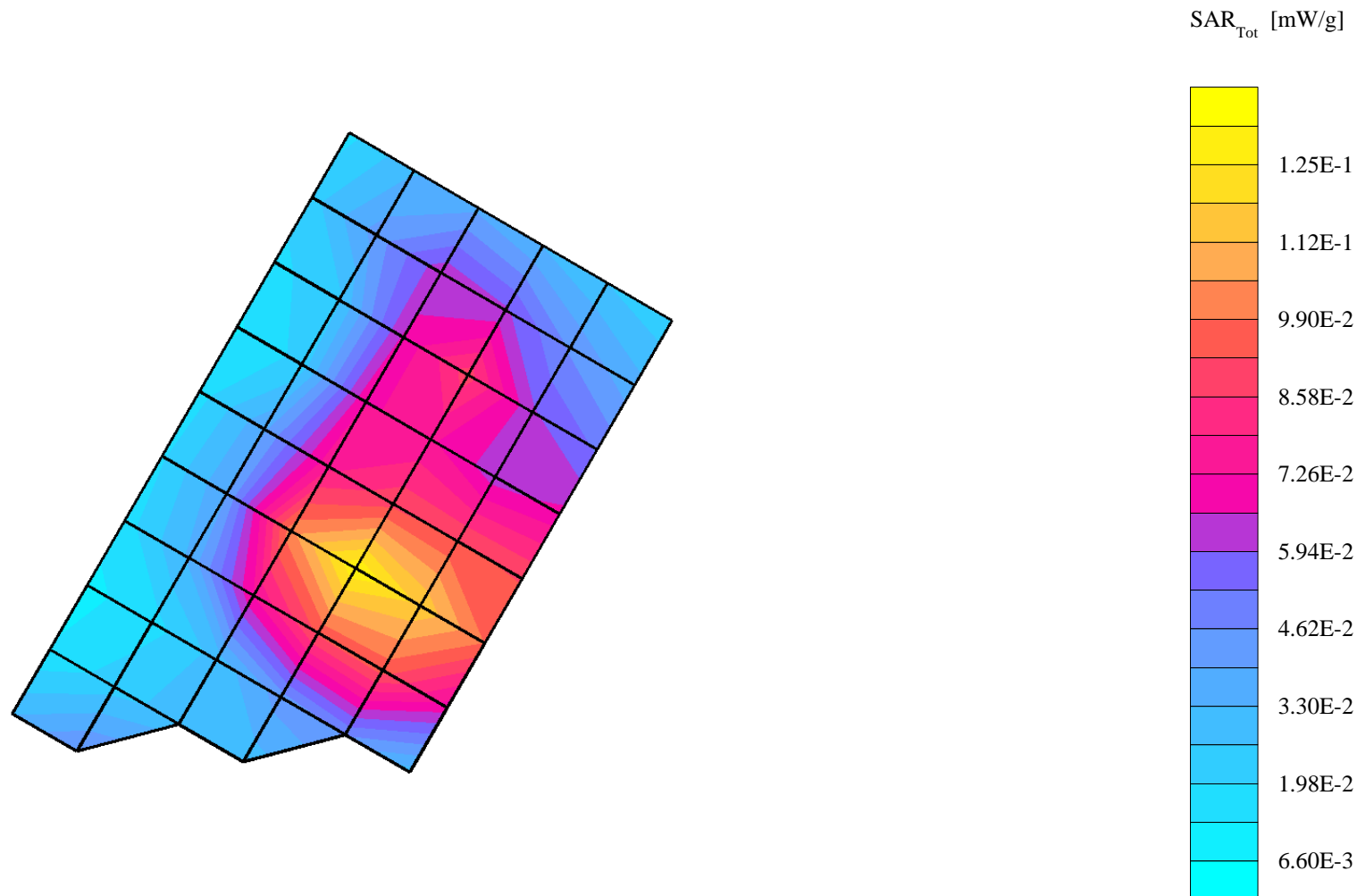
Probe: ET3DV6R - SN1501 - IEEE Head; ConvF(5.00,5.00,5.00); Crest factor: 1.0; 1880 MHz Head & Body:  $\sigma = 1.46$  mho/m  $\epsilon_r = 38.5$   $\rho = 1.00$  g/cm<sup>3</sup>

Cube 7x7x7: Peak: 0.207 mW/g, SAR (1g): 0.129 mW/g, SAR (10g): 0.0819 mW/g, (Worst-case extrapolation)

Coarse: Dx = 15.0, Dy = 15.0, Dz = 15.0

Penetration depth: 11.8 (10.6, 13.3) [mm]

Powerdrift: -0.12 dB



**SN# 3D6D33E6**

Ch# 600 Pwr Step: always up / Antenna Position: FIXED / Battery Model #: SNN5722A / DEVICE POSITION: TILT

R5: TP-1160 GLYCOL SAM Expanded (Rev. 2)-9Jan03 Phantom; Right Hand Section; Position: (90°,180°); Frequency: 1880 MHz

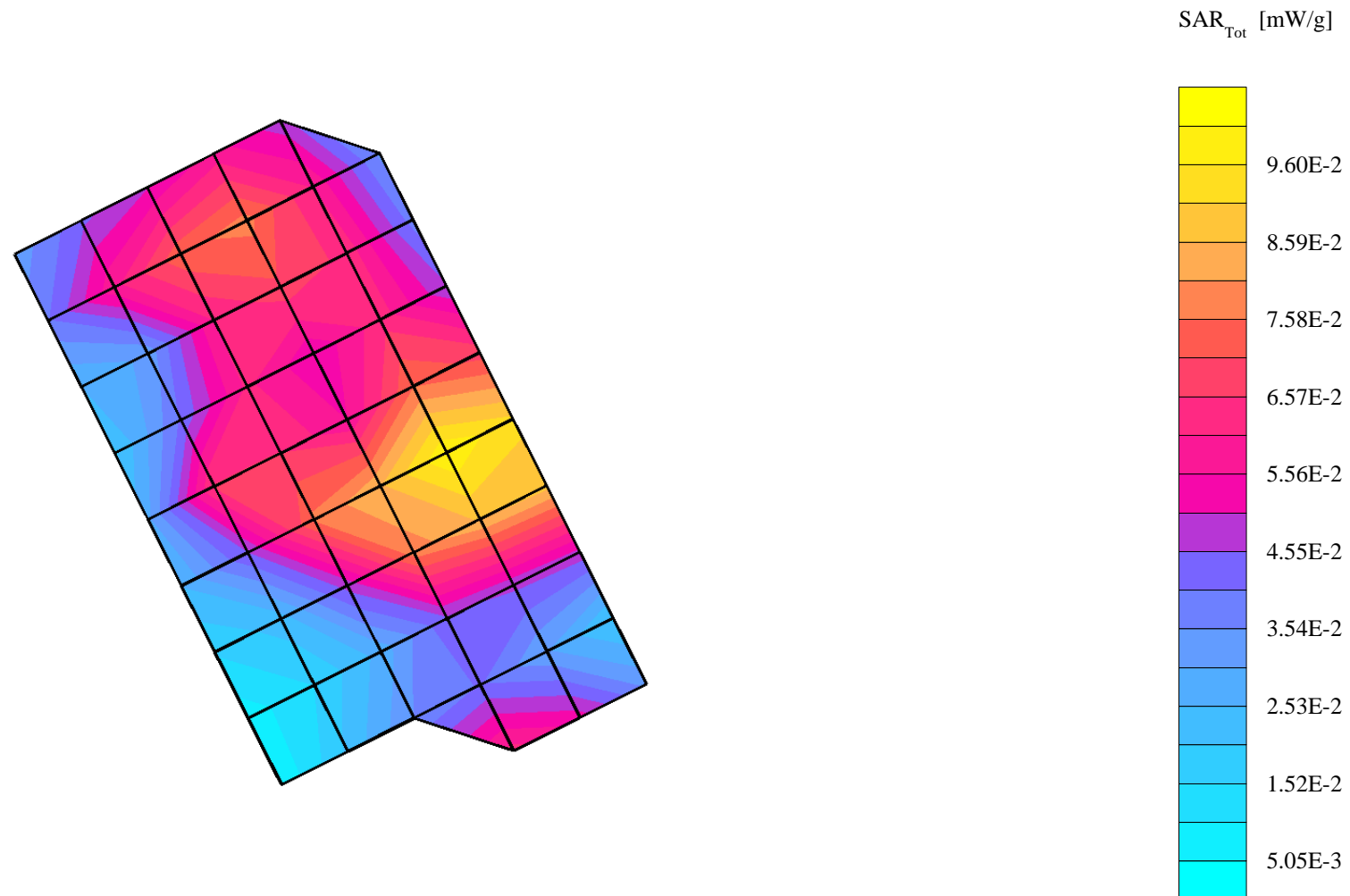
Probe: ET3DV6R - SN1501 - IEEE Head; ConvF(5.00,5.00,5.00); Crest factor: 1.0; 1880 MHz Head & Body:  $\sigma = 1.46$  mho/m  $\epsilon_r = 38.5$   $\rho = 1.00$  g/cm<sup>3</sup>

Cube 7x7x7: Peak: 0.180 mW/g, SAR (1g): 0.106 mW/g, SAR (10g): 0.0655 mW/g, (Worst-case extrapolation)

Coarse: Dx = 15.0, Dy = 15.0, Dz = 15.0

Penetration depth: 10.7 (9.8, 12.1) [mm]

Powerdrift: -0.27 dB



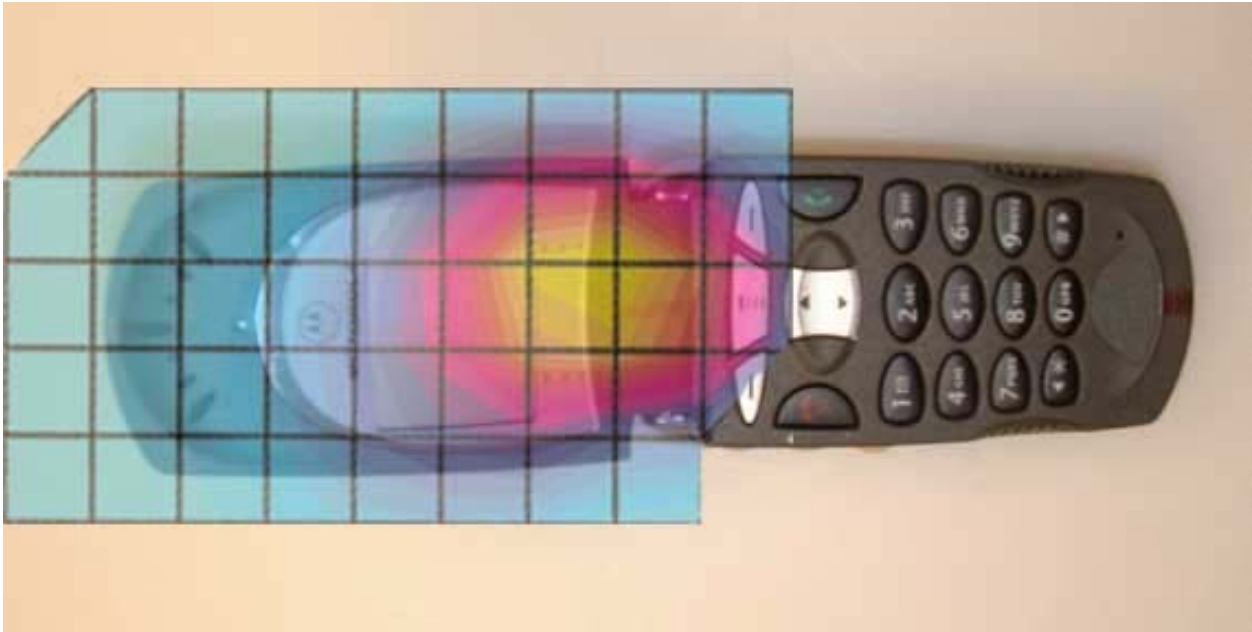


Figure 1. Typical 800MHz Right Head Adjacent Contour Overlaid on Phone with Antenna Fixed (Cheek Touch)

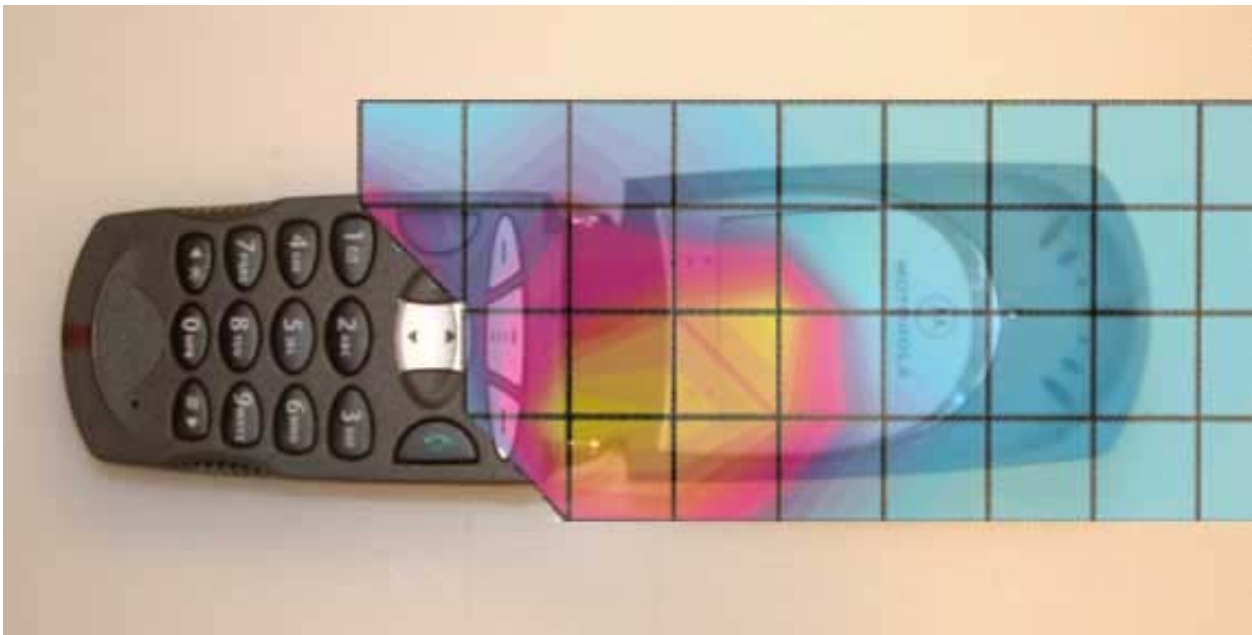


Figure 2. Typical 1900MHz Left Head Adjacent Contour Overlaid on Phone with Antenna Fixed (Cheek Touch)

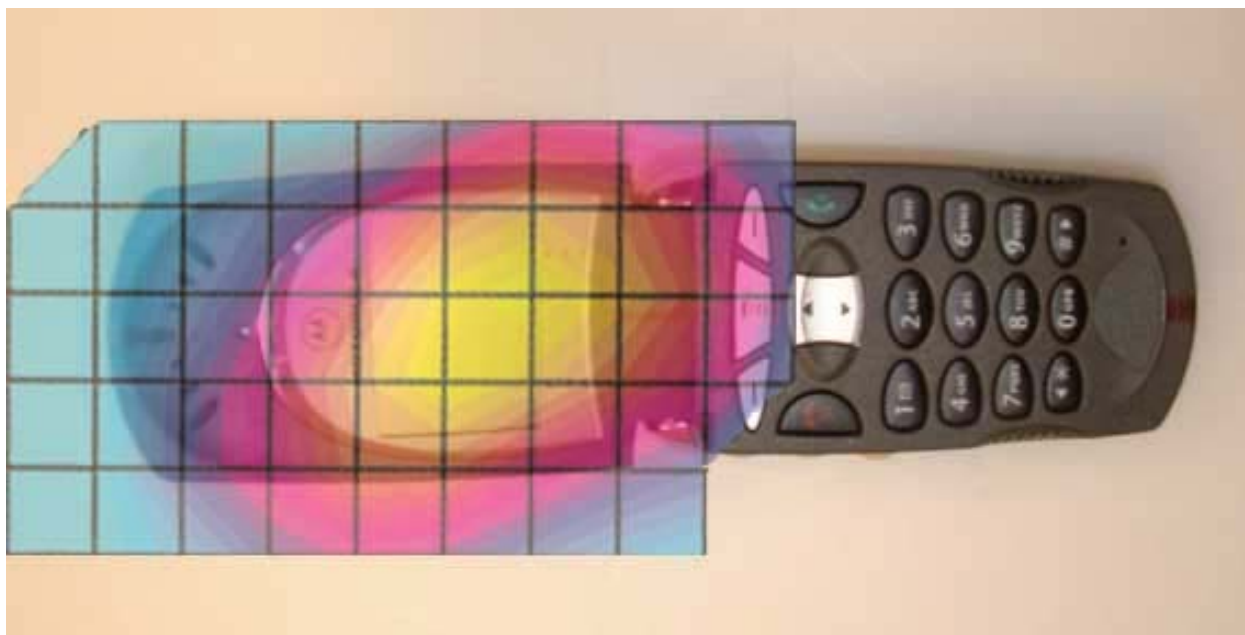


Figure 3. Typical 800MHz Right Head Adjacent Contour Overlaid on Phone with Antenna Fixed (15 ° Tilt)

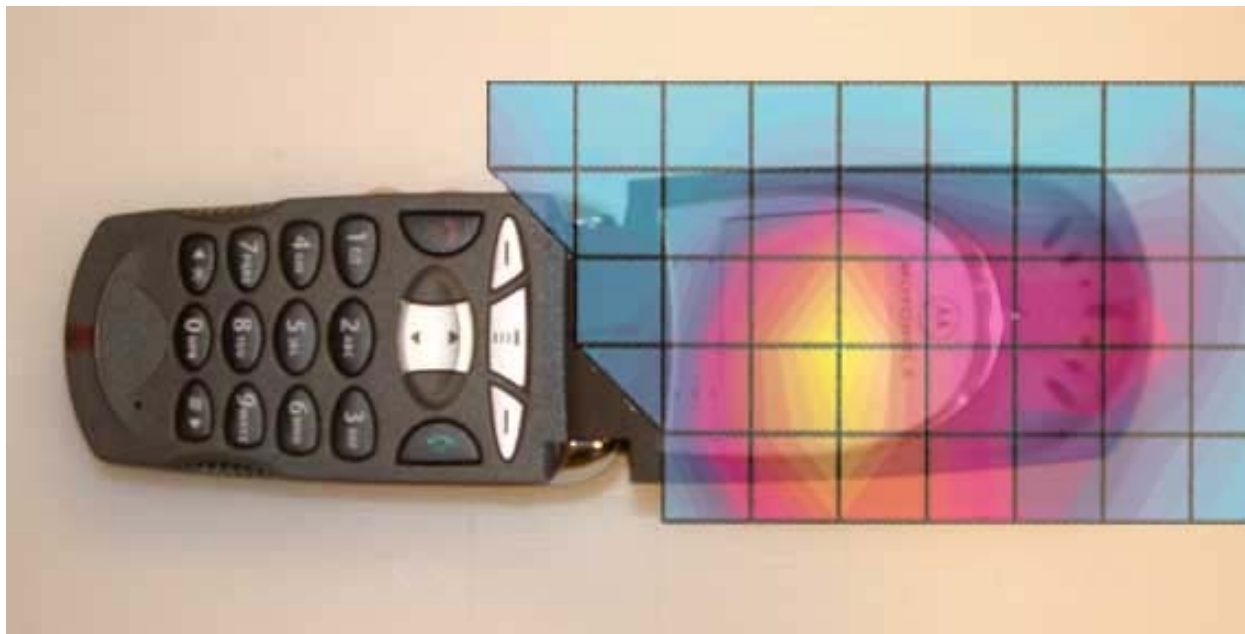


Figure 4. Typical 1900MHz Left Head Adjacent Contour Overlaid on Phone with Antenna Fixed (15 ° Tilt)

### **Appendix 3**

#### **SAR distribution plots for Body Worn Configuration**

**SN# 3D66D32A**

Ch# 384 Pwr Step: 2 (OTA) / Antenna Position: FIXED / Battery Model #: SNN5722A / Accessory Model # = rotating holster (SYN0375A) +90\*

R5 Amy Twin Phantom Rev.4 (22Aug02) Phantom; section 1 Section; Position: (0°,0°); Frequency: 837 MHz

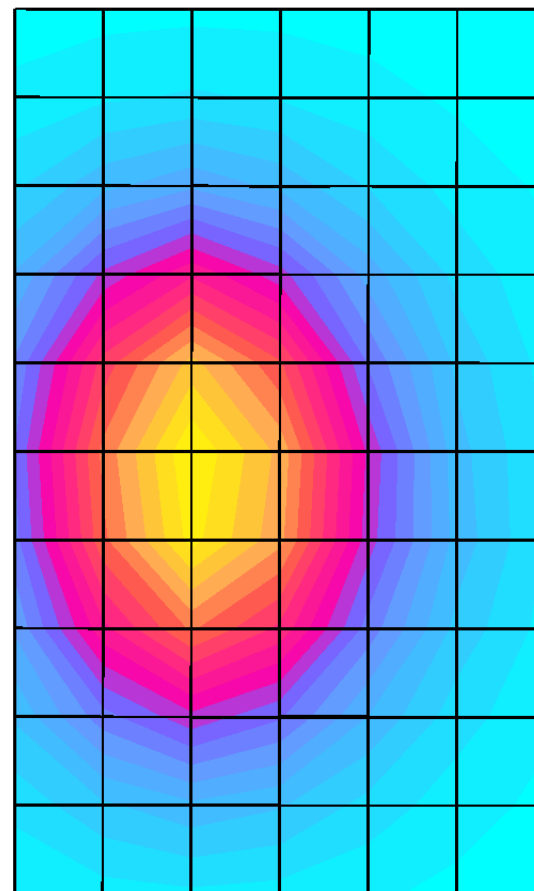
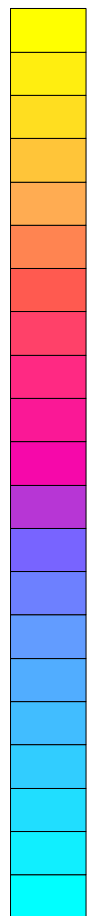
Probe: ET3DV6R - SN1501 - FCC Body; ConvF(6.10,6.10,6.10); Crest factor: 1.0; 835 MHz Head & Body:  $\sigma = 0.97$  mho/m  $\epsilon_r = 54.1$   $\rho = 1.00$  g/cm<sup>3</sup>

Cube 7x7x7: Peak: 0.525 mW/g, SAR (1g): 0.362 mW/g, SAR (10g): 0.260 mW/g, (Worst-case extrapolation)

Coarse: Dx = 15.0, Dy = 15.0, Dz = 10.0

Penetration depth: 16.4 (15.0, 17.9) [mm]

Powerdrift: -0.12 dB

SAR<sub>Tot</sub> [mW/g]

3.46E-1

3.09E-1

2.73E-1

2.37E-1

2.00E-1

1.64E-1

1.27E-1

9.10E-2

5.46E-2

1.82E-2

**SN# 3D66D32A**

Ch# 384 Pwr Step: always up / Antenna Position: FIXED / Battery Model #: SNN5722A / Accessory Model # = rotating holster (SYN0375A) +90\*

R5 Amy Twin Phantom Rev.4 (22Aug02) Phantom; section 1 Section; Position: (0°,0°); Frequency: 837 MHz

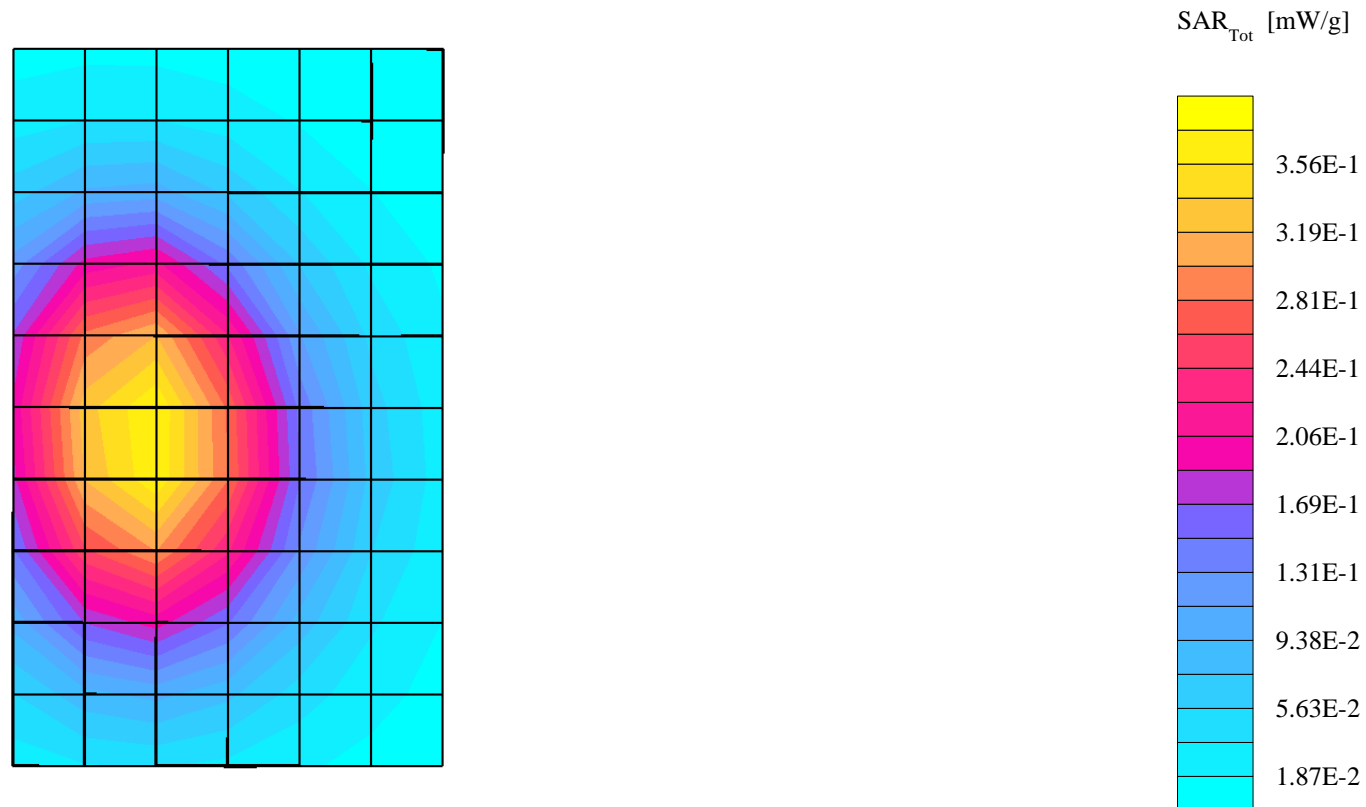
Probe: ET3DV6R - SN1501 - FCC Body; ConvF(6.10,6.10,6.10); Crest factor: 1.0; 835 MHz Head & Body:  $\sigma = 0.97$  mho/m  $\epsilon_r = 54.1$   $\rho = 1.00$  g/cm<sup>3</sup>

Cube 7x7x7: Peak: 0.526 mW/g, SAR (1g): 0.379 mW/g, SAR (10g): 0.271 mW/g, (Worst-case extrapolation)

Coarse: Dx = 15.0, Dy = 15.0, Dz = 10.0

Penetration depth: 16.5 (15.5, 17.5) [mm]

Powerdrift: -0.09 dB



**SN# 3D6D33E6**

Ch# 600 / Pwr Step: ALWAYS UP / Antenna Position: FIXED / Battery Model #: SNN5722A / Accessory Model #: SYN0375A ROTATING HOLSTER

R5 Amy Twin Phantom Rev.4 (22Aug02) Phantom; section 2 Section; Position: (0°,0°); Frequency: 1880 MHz

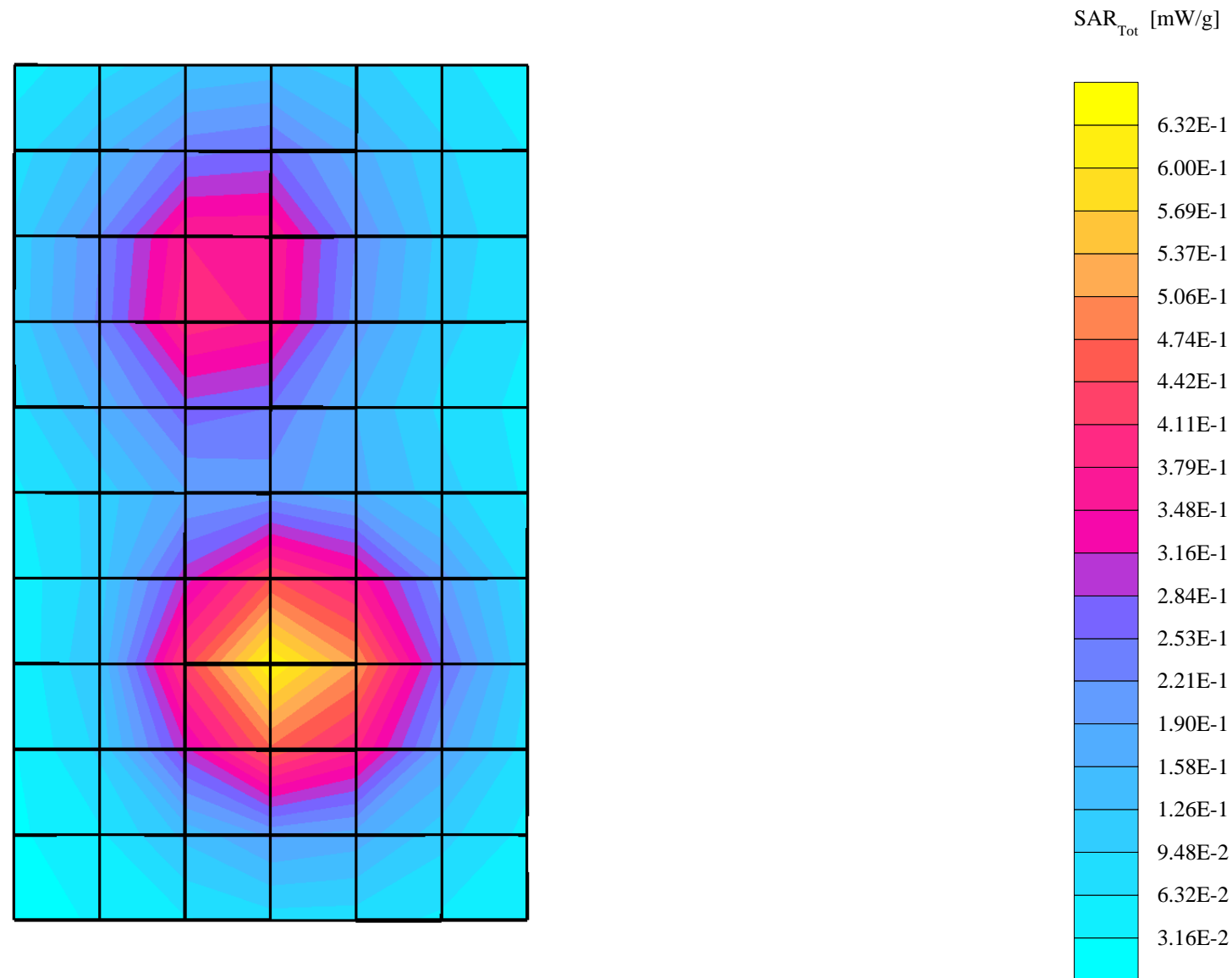
Probe: ET3DV6R - SN1501 - FCC Body; ConvF(4.60,4.60,4.60); Crest factor: 1.0; 1880 MHz Head & Body:  $\sigma = 1.59$  mho/m  $\epsilon_r = 51.8$   $\rho = 1.00$  g/cm<sup>3</sup>

Cube 7x7x7: Peak: 1.04 mW/g, SAR (1g): 0.624 mW/g, SAR (10g): 0.383 mW/g, (Worst-case extrapolation)

Coarse: Dx = 15.0, Dy = 15.0, Dz = 10.0

Penetration depth: 11.1 (9.8, 12.7) [mm]

Powerdrift: -0.23 dB



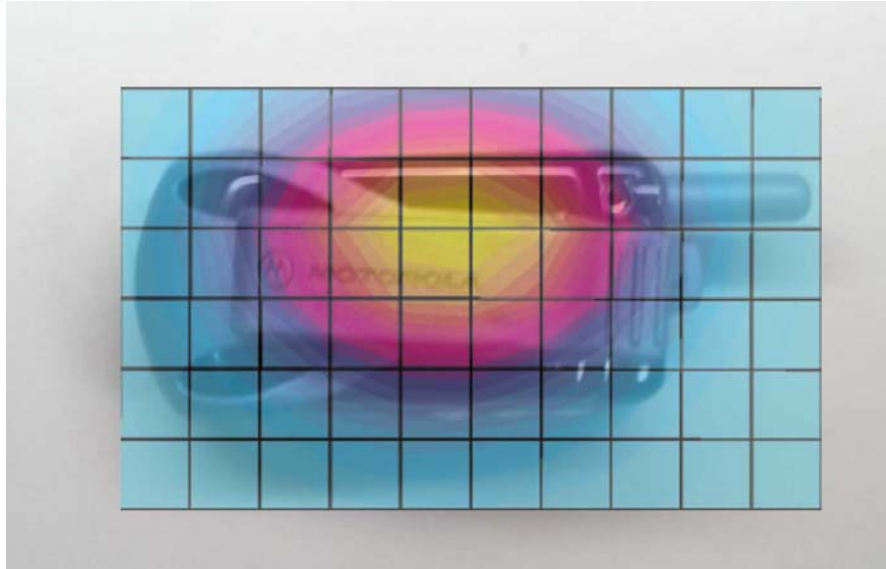


Figure 5. Typical 800 MHz Body-Worn Contour Overlaid on Phone with Antenna Fixed

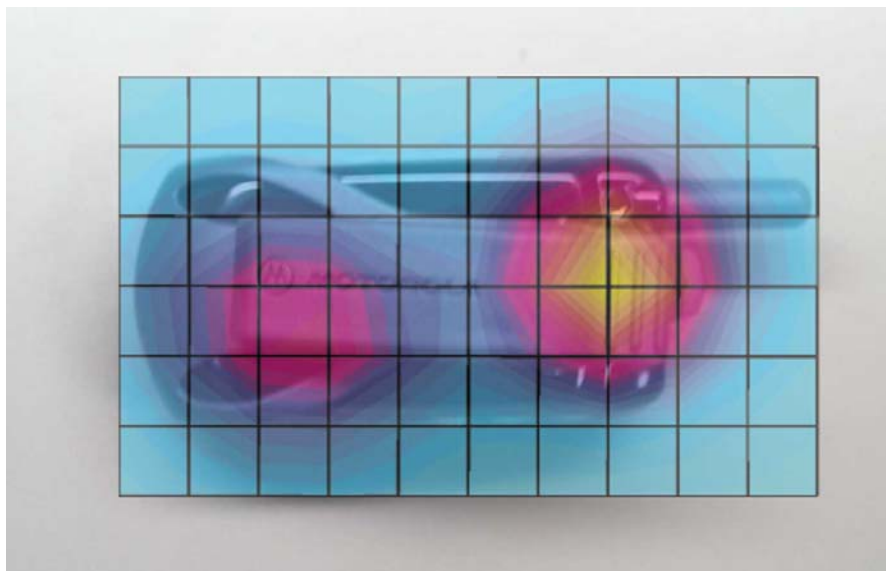


Figure 6. Typical 1900 MHz Body-Worn Contour Overlaid on Phone with Antenna Fixed

**Appendix 4**  
**Probe Calibration Certificate**

**Client**                      **Motorola MRO**

**CALIBRATION CERTIFICATE**

**Object(s)**                      **ET3DV6R - SN 1501**

**Calibration procedure(s)**                      **QA CAL-01.v2  
 Calibration procedure for dosimetric E-field probes**

**Calibration date:**                      **April 16, 2003**



**Condition of the calibrated item**                      **In Tolerance (according to the specific calibration document)**

This calibration statement documents traceability of M&TE used in the calibration procedures and conformity of the procedures with the ISO/IEC 17025 international standard.

All calibrations have been conducted in the closed laboratory facility: environment temperature 22 +/- 2 degrees Celsius and humidity < 75%.

**Calibration Equipment used (M&TE critical for calibration)**

Model Type	ID #	Cal Date	Scheduled Calibration
RF generator HP 8684C	US3642U01700	4-Aug-99 (in house check Aug-02)	In house check: Aug-05
Power sensor E4412A	MY41495277	2-Apr-03	Apr-04
Power sensor HP 8481A	MY41092180	18-Sep-02	Sep-03
Power meter EPM E4419B	GB41293874	13-Sep-02	Sep-03
Network Analyzer HP 8753E	US38432426	3-May-00	In house check: May 03
Fluke Process Calibrator Type 702	SN: 6295803	3-Sep-01	Sep-03

	Name	Function	Signature
Calibrated by:	Nico Vetterli	Technician	
Approved by:	Katja Pokovic	Laboratory Director	

Date issued: April 16, 2003

This calibration certificate is issued as an intermediate solution until the accreditation process (based on ISO/IEC 17025 International Standard) for Calibration Laboratory of Schmid & Partner Engineering AG is completed.

**DASY - Parameters of Probe: ET3DV6R SN:1501****Sensitivity in Free Space****Diode Compression**

NormX	<b>2.08</b> $\mu\text{V}/(\text{V}/\text{m})^2$	DCP X	<b>96</b>	mV
NormY	<b>2.09</b> $\mu\text{V}/(\text{V}/\text{m})^2$	DCP Y	<b>96</b>	mV
NormZ	<b>2.14</b> $\mu\text{V}/(\text{V}/\text{m})^2$	DCP Z	<b>96</b>	mV

**Sensitivity in Tissue Simulating Liquid**

**Head**                      **900 MHz**                       $\epsilon_r = 41.5 \pm 5\%$                        $\sigma = 0.97 \pm 5\%$  mho/m

Valid for f=800-1000 MHz with Head Tissue Simulating Liquid according to IEEE P1528-200X

ConvF X	<b>6.4</b> $\pm 9.5\%$ (k=2)	Boundary effect:	
ConvF Y	<b>6.4</b> $\pm 9.5\%$ (k=2)	Alpha	<b>0.39</b>
ConvF Z	<b>6.4</b> $\pm 9.5\%$ (k=2)	Depth	<b>2.31</b>

**Head**                      **1800 MHz**                       $\epsilon_r = 40.0 \pm 5\%$                        $\sigma = 1.40 \pm 5\%$  mho/m

Valid for f=1710-1910 MHz with Head Tissue Simulating Liquid according to IEEE P1528-200X

ConvF X	<b>5.0</b> $\pm 9.5\%$ (k=2)	Boundary effect:	
ConvF Y	<b>5.0</b> $\pm 9.5\%$ (k=2)	Alpha	<b>0.49</b>
ConvF Z	<b>5.0</b> $\pm 9.5\%$ (k=2)	Depth	<b>2.55</b>

**Boundary Effect**

**Head**                      **900 MHz**                      **Typical SAR gradient: 5 % per mm**

Probe Tip to Boundary		<b>1 mm</b>	<b>2 mm</b>
SAR <sub>be</sub> [%] Without Correction Algorithm		<b>8.9</b>	<b>4.9</b>
SAR <sub>be</sub> [%] With Correction Algorithm		<b>0.3</b>	<b>0.5</b>

**Head**                      **1800 MHz**                      **Typical SAR gradient: 10 % per mm**

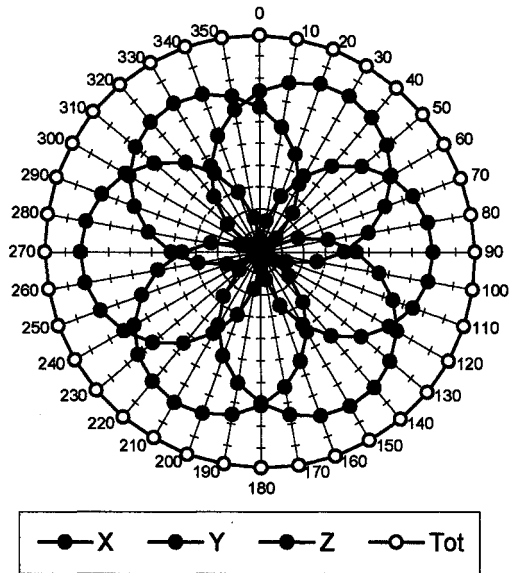
Probe Tip to Boundary		<b>1 mm</b>	<b>2 mm</b>
SAR <sub>be</sub> [%] Without Correction Algorithm		<b>12.8</b>	<b>8.6</b>
SAR <sub>be</sub> [%] With Correction Algorithm		<b>0.2</b>	<b>0.2</b>

**Sensor Offset**

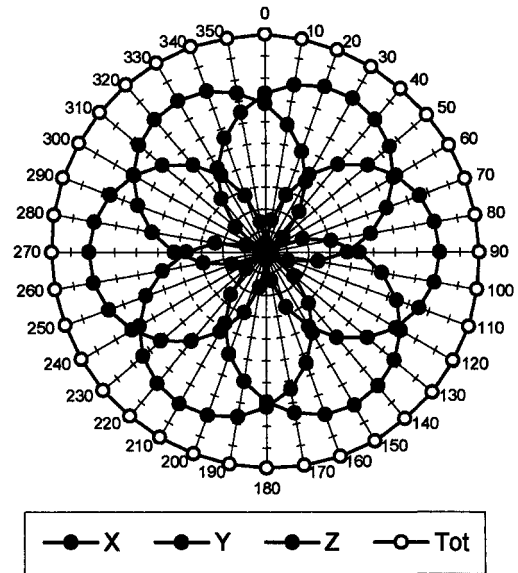
Probe Tip to Sensor Center	<b>2.7</b>	mm
----------------------------	------------	----

### Receiving Pattern ( $\phi$ , $\theta = 0^\circ$ )

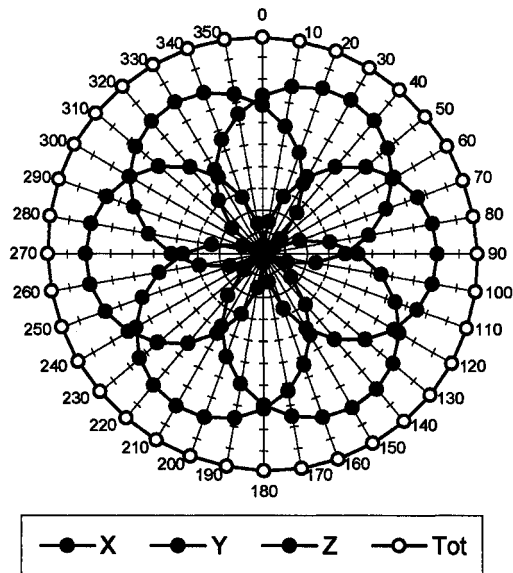
**f = 30 MHz, TEM cell ifi110**



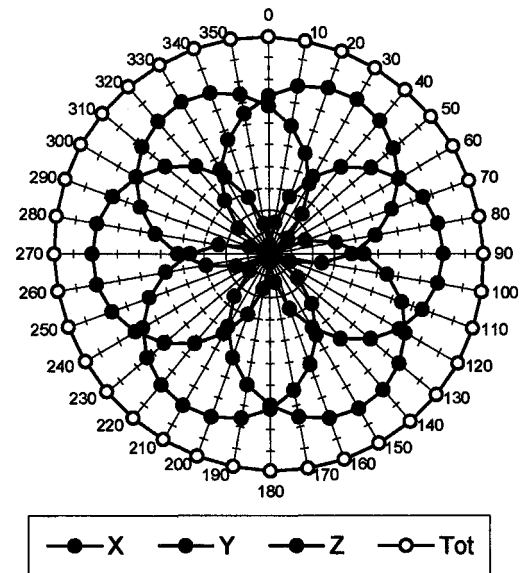
**f = 100 MHz, TEM cell ifi110**

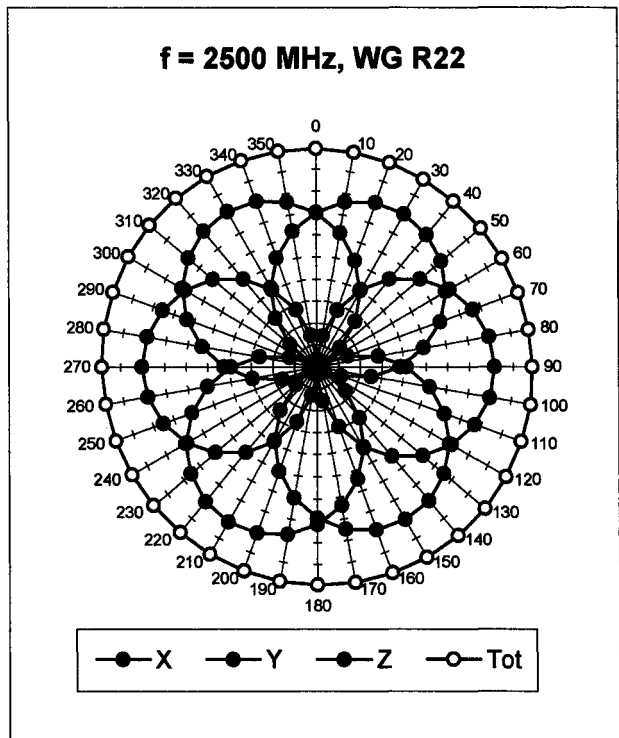
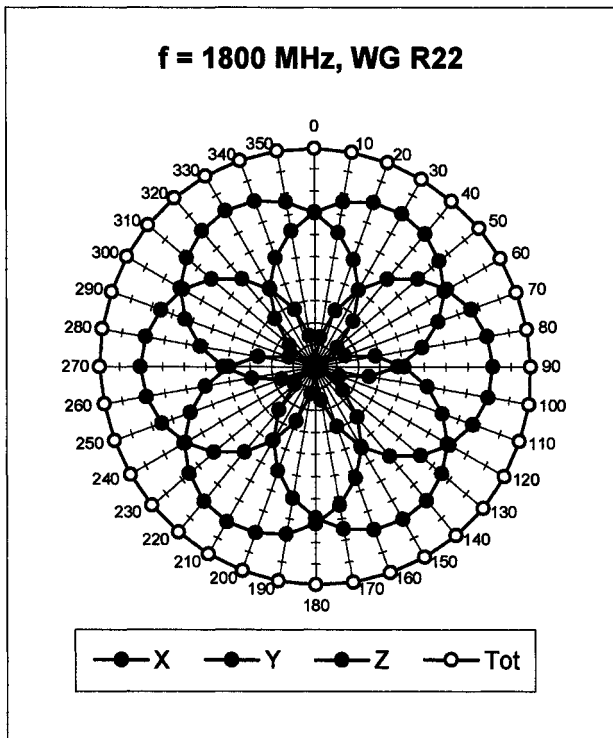


**f = 300 MHz, TEM cell ifi110**

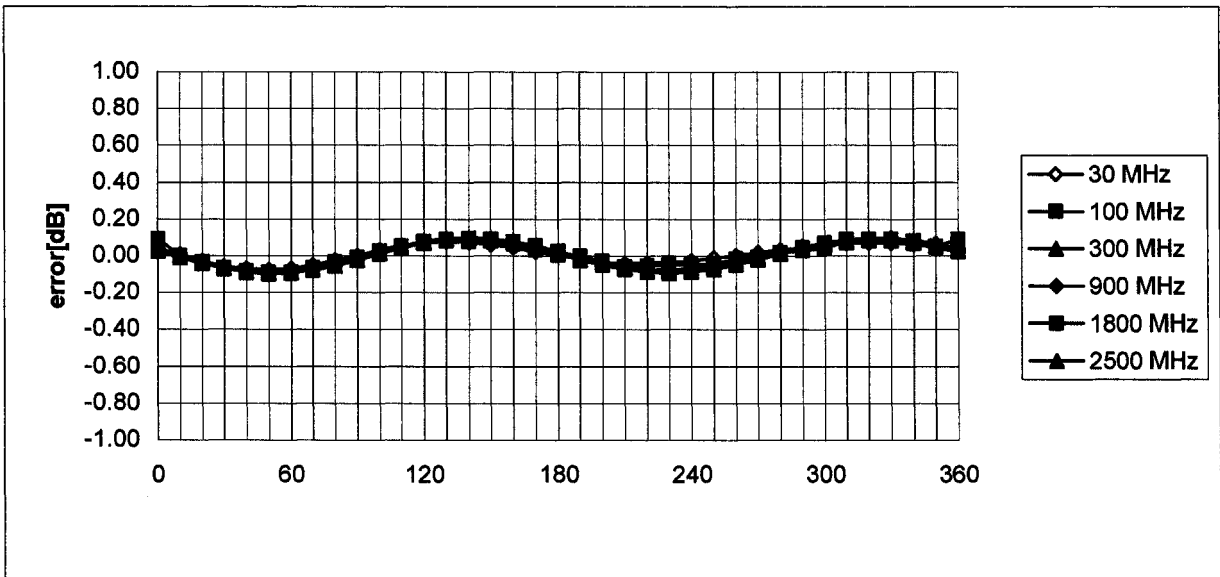


**f = 900 MHz, TEM cell ifi110**



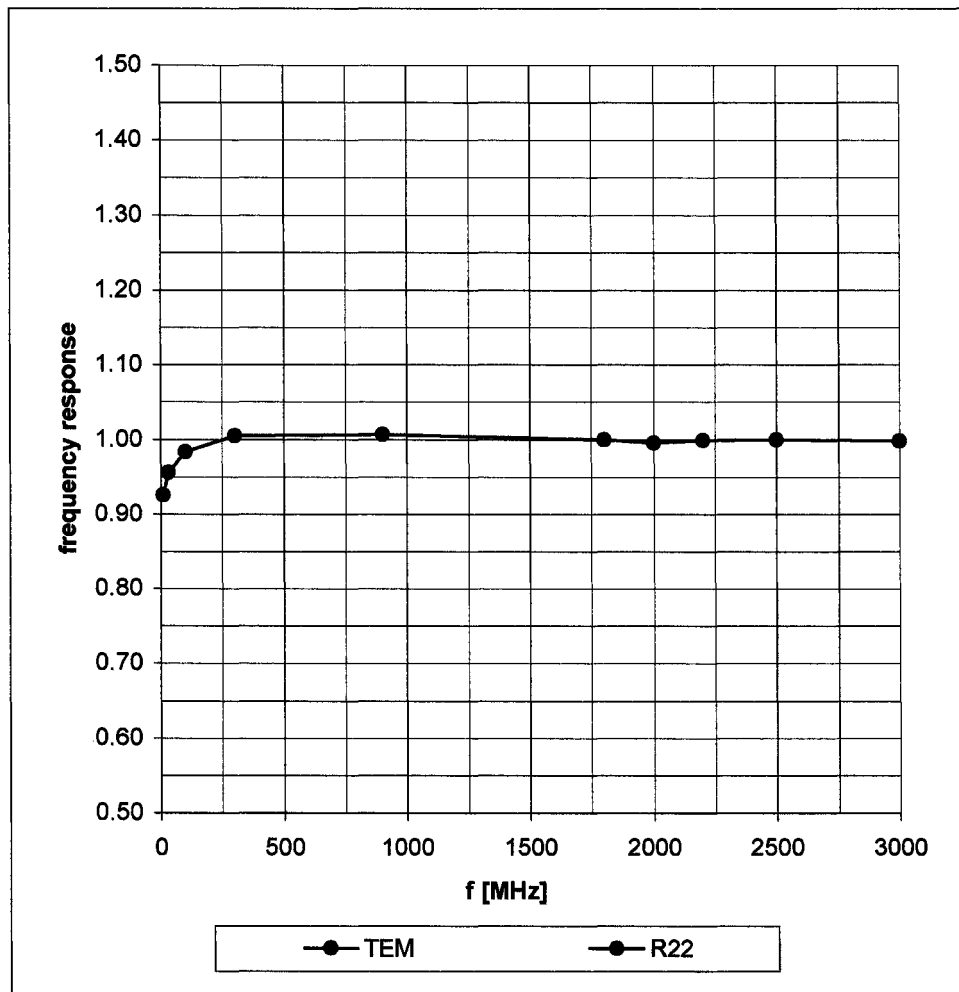


### Isotropy Error ( $\phi$ ), $\theta = 0^\circ$

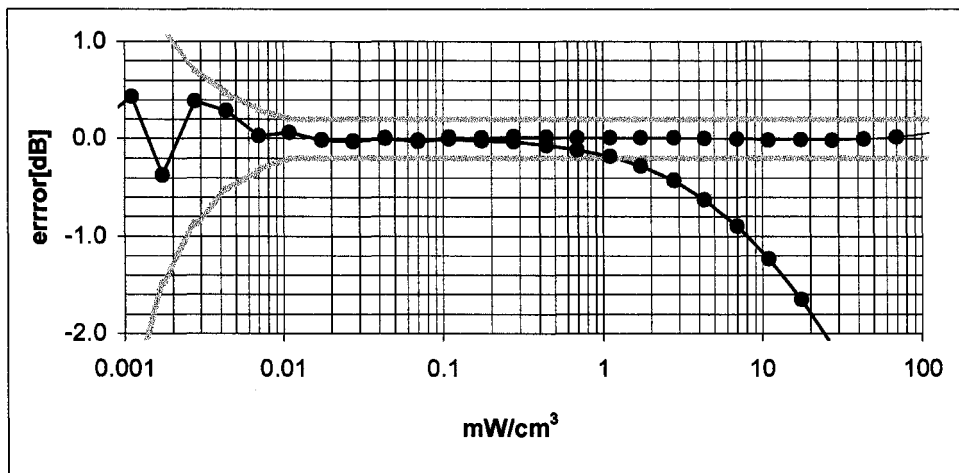
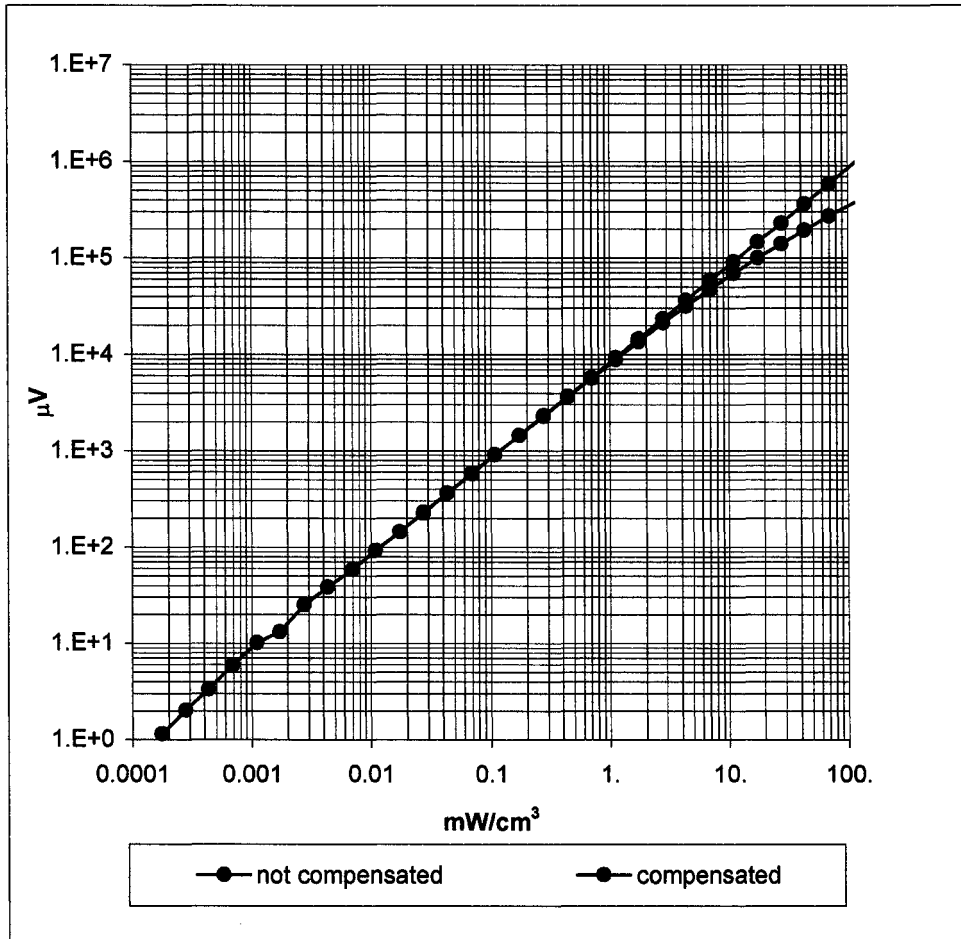


# Frequency Response of E-Field

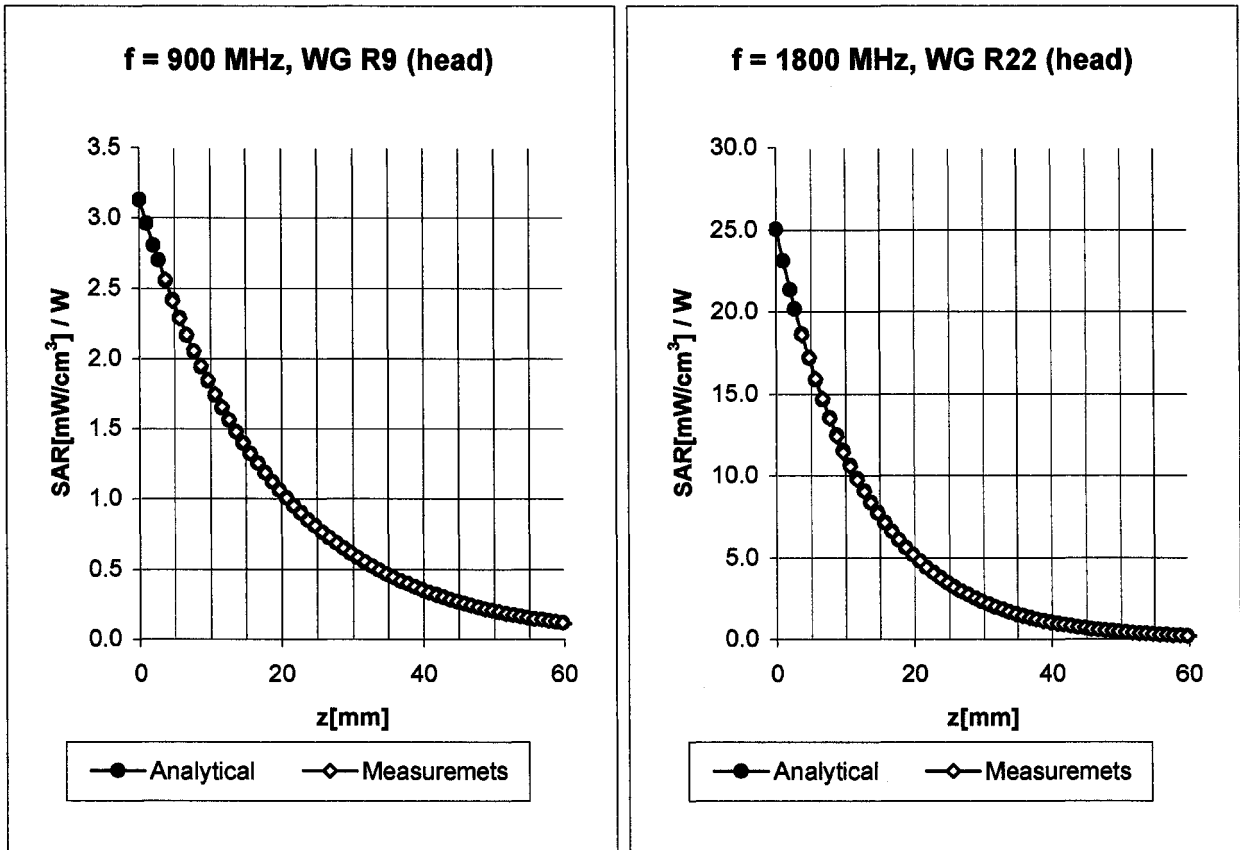
( TEM-Cell:ifi110, Waveguide R22)



### Dynamic Range f(SAR<sub>brain</sub>) ( Waveguide R22 )



## Conversion Factor Assessment



**Head                      900 MHz                       $\epsilon_r = 41.5 \pm 5\%$                        $\sigma = 0.97 \pm 5\%$  mho/m**

**Valid for f=800-1000 MHz with Head Tissue Simulating Liquid according to IEEE P1528-200X**

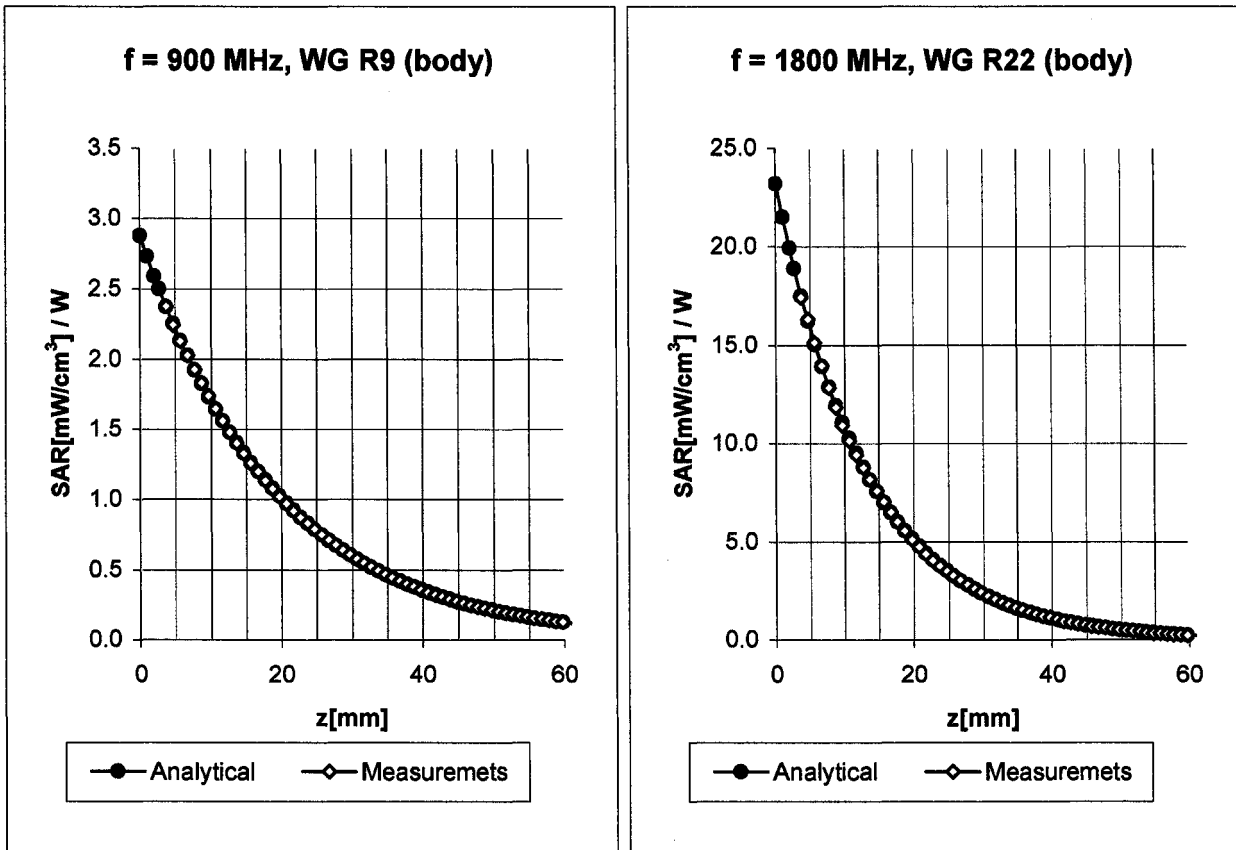
ConvF X	<b>6.4</b> $\pm$ 9.5% (k=2)	Boundary effect:
ConvF Y	<b>6.4</b> $\pm$ 9.5% (k=2)	Alpha <b>0.39</b>
ConvF Z	<b>6.4</b> $\pm$ 9.5% (k=2)	Depth <b>2.31</b>

**Head                      1800 MHz                       $\epsilon_r = 40.0 \pm 5\%$                        $\sigma = 1.40 \pm 5\%$  mho/m**

**Valid for f=1710-1910 MHz with Head Tissue Simulating Liquid according to IEEE P1528-200X**

ConvF X	<b>5.0</b> $\pm$ 9.5% (k=2)	Boundary effect:
ConvF Y	<b>5.0</b> $\pm$ 9.5% (k=2)	Alpha <b>0.49</b>
ConvF Z	<b>5.0</b> $\pm$ 9.5% (k=2)	Depth <b>2.55</b>

## Conversion Factor Assessment



**Body**                      **900 MHz**                       $\epsilon_r = 55.0 \pm 5\%$                        $\sigma = 1.05 \pm 5\% \text{ mho/m}$

Valid for f=800-1000 MHz with Body Tissue Simulating Liquid according to OET 65 Suppl. C

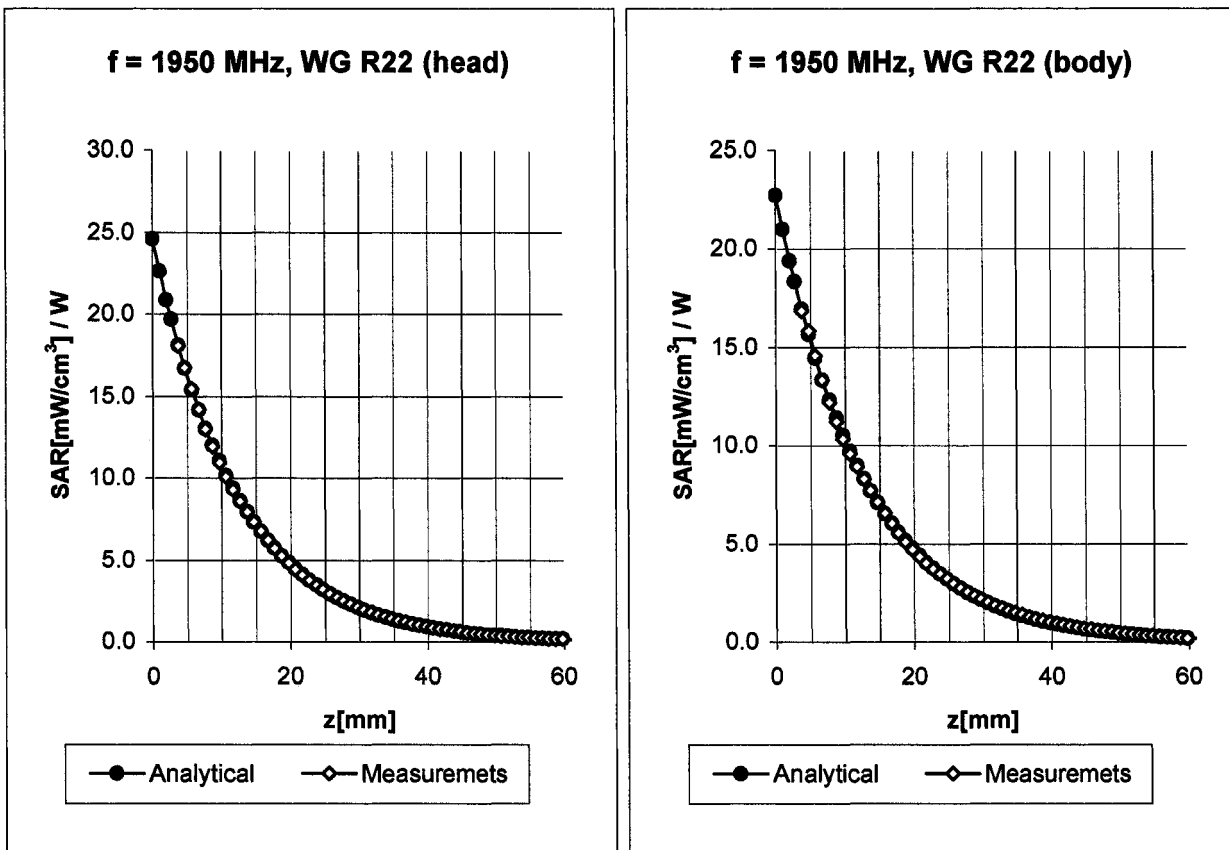
ConvF X	<b>6.1</b> $\pm 9.5\%$ (k=2)	Boundary effect:
ConvF Y	<b>6.1</b> $\pm 9.5\%$ (k=2)	Alpha <b>0.40</b>
ConvF Z	<b>6.1</b> $\pm 9.5\%$ (k=2)	Depth <b>2.37</b>

**Body**                      **1800 MHz**                       $\epsilon_r = 53.3 \pm 5\%$                        $\sigma = 1.52 \pm 5\% \text{ mho/m}$

Valid for f=1710-1910 MHz with Body Tissue Simulating Liquid according to OET 65 Suppl. C

ConvF X	<b>4.6</b> $\pm 9.5\%$ (k=2)	Boundary effect:
ConvF Y	<b>4.6</b> $\pm 9.5\%$ (k=2)	Alpha <b>0.55</b>
ConvF Z	<b>4.6</b> $\pm 9.5\%$ (k=2)	Depth <b>2.59</b>

## Conversion Factor Assessment

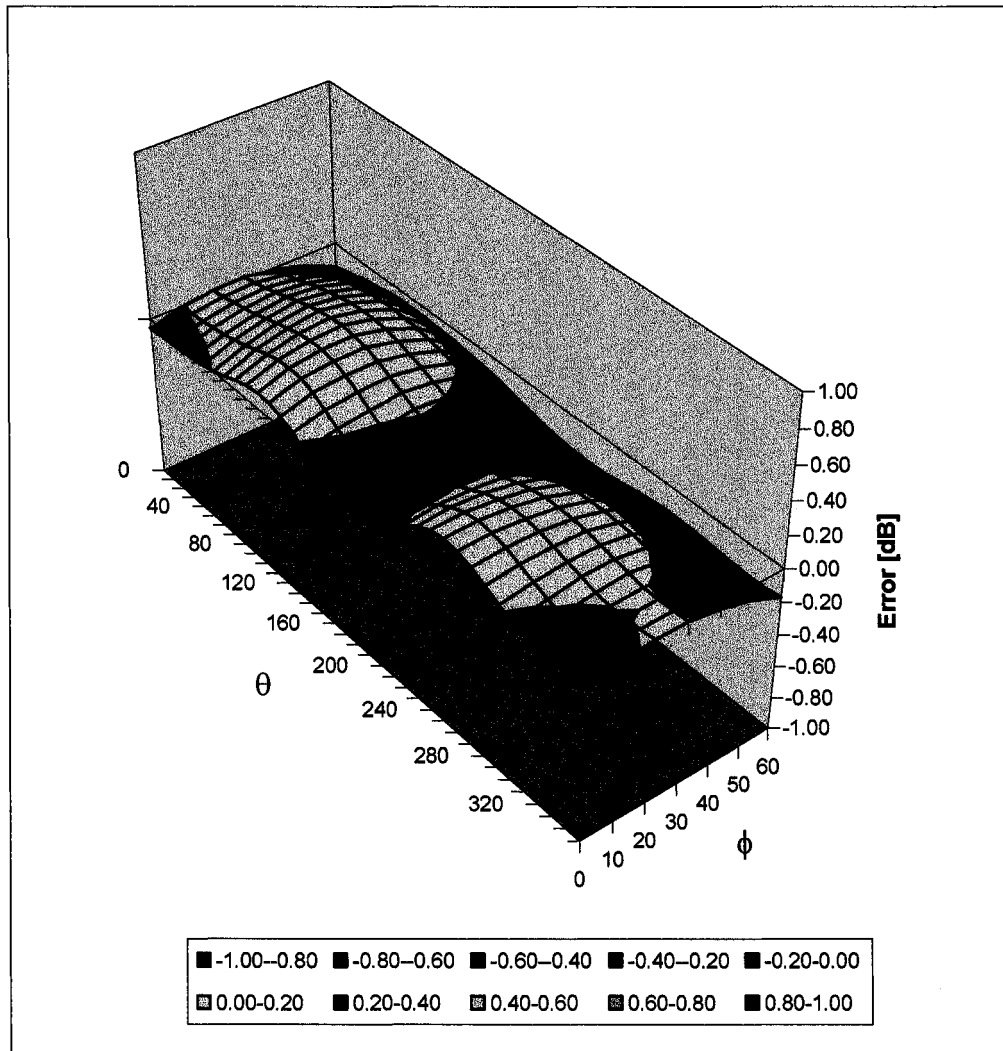


<b>Head</b>	<b>1950</b>	<b>MHz</b>	$\epsilon_r = 40.0 \pm 5\%$	$\sigma = 1.40 \pm 5\% \text{ mho/m}$
	ConvF X		<b>4.7</b> $\pm 8.9\%$ (k=2)	Boundary effect:
	ConvF Y		<b>4.7</b> $\pm 8.9\%$ (k=2)	Alpha <b>0.53</b>
	ConvF Z		<b>4.7</b> $\pm 8.9\%$ (k=2)	Depth <b>2.53</b>

<b>Body</b>	<b>1950</b>	<b>MHz</b>	$\epsilon_r = 53.3 \pm 5\%$	$\sigma = 1.52 \pm 5\% \text{ mho/m}$
	ConvF X		<b>4.2</b> $\pm 8.9\%$ (k=2)	Boundary effect:
	ConvF Y		<b>4.2</b> $\pm 8.9\%$ (k=2)	Alpha <b>0.70</b>
	ConvF Z		<b>4.2</b> $\pm 8.9\%$ (k=2)	Depth <b>2.26</b>

# Deviation from Isotropy in HSL

Error ( $\theta\phi$ ),  $f = 900$  MHz



**Appendix 5**  
**Dipole Characterization Certificate**

# Certification of System Performance Check Targets

Based on APP-0396

-Historical Data-

	835MHz	900MHz	1800MHz	1900MHz	
<b>P1528 Target:</b> Advanced Extrapolation	9.5	10.8	38.1	39.7	(W/kg)
<b>Measurement Uncertainty (k=1):</b>	10.2%	10.2%	10.2%	10.2%	
<b>Measurement Period:</b>	November '02 - June '03	November '02 - June '03	November '02 - June '03	November '02 - June '03	
<b># of tests performed:</b>	169	728	868	26	
<b>Grand Average:</b> Worst Case Extrapolation	10.1	11.6	39.7	42.0	(W/kg)
<b>% Delta</b> (Average - P1528 Target)	6.5%	7.7%	4.2%	5.9%	
<b>Is % Delta &lt;= Measurement Uncertainty?</b>	Yes	Yes	Yes	Yes	
<b>Accept/Reject Average as new system performance check target?</b>	<b>ACCEPT</b>	<b>ACCEPT</b>	<b>ACCEPT</b>	<b>ACCEPT</b>	
	<b>Applicable 835MHz Dipole Serial Numbers:</b>	<b>Applicable 900MHz Dipole Serial Numbers:</b>	<b>Applicable 1800MHz Dipole Serial Numbers:</b>	<b>Applicable 1900MHz Dipole Serial Numbers:</b>	
	420(TR), 421(TR)	77, 78	246(TR), 250(TR)	514(TR), 518(TR)	
	422(TR), 423(TR)	79, 80	251(TR), 258(TR)	519(TR), 520(TR)	
	424(TR), 425(TR)	91, 92	259(TR), 262(TR)	523(TR), 524(TR)	
	431(TR), 432(TR)	93, 94	263(TR), 271(TR)	526(TR), 527(TR)	
	433(TR), 434(TR)	95, 96	272(TR), 273(TR)	528(TR), 529(TR)	
	436(TR)	97	276(TR), 277(TR)	530(TR), 533(TR)	
			279(TR), 280(TR)		
			281(TR), 282(TR)		
			283(TR), 284(TR)		

-New System Performance Check Targets- per APP-0396

(based on analysis of historical data)

Frequency	SAR Target (W/kg)	Permittivity	Conductivity (S/m)
<b>835MHz</b>	<b>10.1</b>	41.5 ± 5%	0.90 ± 5%
<b>900MHz</b>	<b>11.6</b>	41.5 ± 5%	0.97 ± 5%
<b>1800MHz</b>	<b>39.7</b>	40.0 ± 5%	1.40 ± 5%
<b>1900MHz</b>	<b>42.0</b>	40.0 ± 5%	1.40 ± 5%

-Approvals-

Submitted by:  Date:

Signed: *Marge Kaunas*

Comments:

Approved by:  Date:

Signed: *Antonio Faraone*

Comments:

**Appendix 6**  
**Measurement Uncertainty Budget**

<b>Uncertainty Budget for Device Under Test</b>									
<i>a</i>	<i>b</i>	<i>c</i>	<i>d</i>	<i>e = f(d,k)</i>	<i>f</i>	<i>g</i>	<i>h = c x f / e</i>	<i>i = c x g / e</i>	<i>k</i>
<b>Uncertainty Component</b>	Sec.	Tol. (± %)	Prob. Dist.	Div.	<i>c<sub>i</sub></i> (1 g)	<i>c<sub>i</sub></i> (10 g)	1 g <i>u<sub>i</sub></i> (±%)	10 g <i>u<sub>i</sub></i> (±%)	<i>v<sub>i</sub></i>
<b>Measurement System</b>									
Probe Calibration	E.2.1	9.5	N	2.00	1	1	4.8	4.8	∞
Axial Isotropy	E.2.2	4.7	R	1.73	0.707	0.707	1.9	1.9	∞
Spherical Isotropy	E.2.2	9.6	R	1.73	0.707	0.707	3.9	3.9	∞
Boundary Effect	E.2.3	5.8	R	1.73	1	1	3.3	3.3	∞
Linearity	E.2.4	4.7	R	1.73	1	1	2.7	2.7	∞
System Detection Limits	E.2.5	1.0	R	1.73	1	1	0.6	0.6	∞
Readout Electronics	E.2.6	1.0	N	1.00	1	1	1.0	1.0	∞
Response Time	E.2.7	0.8	R	1.73	1	1	0.5	0.5	∞
Integration Time	E.2.8	1.3	R	1.73	1	1	0.8	0.8	∞
RF Ambient Conditions	E.6.1	3.0	R	1.73	1	1	1.7	1.7	∞
Probe Positioner Mechanical Tolerance	E.6.2	0.3	R	1.73	1	1	0.2	0.2	∞
Probe Positioning with respect to Phantom Shell	E.6.3	1.1	R	1.73	1	1	0.6	0.6	∞
Extrapolation, interpolation and Integration Algorithms for Max. SAR Evaluation	E.5	3.9	R	1.73	1	1	2.3	2.3	∞
<b>Test sample Related</b>									
Test Sample Positioning	E.4.2	3.6	N	1.00	1	1	3.6	3.6	29
Device Holder Uncertainty	E.4.1	2.8	N	1.00	1	1	2.8	2.8	8
Output Power Variation - SAR drift measurement	6.6.2	5.0	R	1.73	1	1	2.9	2.9	∞
<b>Phantom and Tissue Parameters</b>									
Phantom Uncertainty (shape and thickness tolerances)	E.3.1	4.0	R	1.73	1	1	2.3	2.3	∞
Liquid Conductivity - deviation from target values	E.3.2	5.0	R	1.73	0.64	0.43	1.8	1.2	∞
Liquid Conductivity - measurement uncertainty	E.3.3	10.0	R	1.73	0.64	0.43	3.7	2.5	∞
Liquid Permittivity - deviation from target values	E.3.2	10.0	R	1.73	0.6	0.49	3.5	2.8	∞
Liquid Permittivity - measurement uncertainty	E.3.3	5.0	R	1.73	0.6	0.49	1.7	1.4	∞
<b>Combined Standard Uncertainty</b>			RSS				11.72	11.09	1363
<b>Expanded Uncertainty (95% CONFIDENCE LEVEL)</b>			<i>k</i> =2				22.98	21.75	

**Uncertainty Budget for System Performance Check (dipole & flat phantom)**

<i>a</i>	<i>b</i>	<i>c</i>	<i>d</i>	<i>e = f(d,k )</i>	<i>f</i>	<i>g</i>	<i>h = c x f / e</i>	<i>i = c x g / e</i>	<i>k</i>
<b>Uncertainty Component</b>	Sec.	Tol. (± %)	Prob. Dist.	Div.	<i>c<sub>i</sub></i> (1 g)	<i>c<sub>i</sub></i> (10 g)	1 g <i>u<sub>i</sub></i> (±%)	10 g <i>u<sub>i</sub></i> (±%)	<i>v<sub>i</sub></i>
<b>Measurement System</b>									
Probe Calibration	E.2.1	9.5	N	2.00	1	1	4.8	4.8	∞
Axial Isotropy	E.2.2	4.7	R	1.73	1	1	2.7	2.7	∞
Spherical Isotropy	E.2.2	9.6	R	1.73	0	0	0.0	0.0	∞
Boundary Effect	E.2.3	5.8	R	1.73	1	1	3.3	3.3	∞
Linearity	E.2.4	4.7	R	1.73	1	1	2.7	2.7	∞
System Detection Limits	E.2.5	1.0	R	1.73	1	1	0.6	0.6	∞
Readout Electronics	E.2.6	1.0	N	1.00	1	1	1.0	1.0	∞
Response Time	E.2.7	0.0	R	1.73	1	1	0.0	0.0	∞
Integration Time	E.2.8	0.0	R	1.73	1	1	0.0	0.0	∞
RF Ambient Conditions	E.6.1	3.0	R	1.73	1	1	1.7	1.7	∞
Probe Positioner Mechanical Tolerance	E.6.2	0.3	R	1.73	1	1	0.2	0.2	∞
Probe Positioning with respect to Phantom Shell	E.6.3	1.1	R	1.73	1	1	0.6	0.6	∞
Extrapolation, interpolation and Integration Algorithms for Max. SAR Evaluation	E.5	3.9	R	1.73	1	1	2.3	2.3	∞
<b>Dipole</b>									
Dipole Axis to Liquid Distance	8, E.4.2	1.0	R	1.73	1	1	0.6	0.6	∞
Input Power and SAR Drift Measurement	8, 6.6.2	4.7	R	1.73	1	1	2.7	2.7	∞
<b>Phantom and Tissue Parameters</b>									
Phantom Uncertainty (shape and thickness tolerances)	E.3.1	4.0	R	1.73	1	1	2.3	2.3	∞
Liquid Conductivity - deviation from target values	E.3.2	5.0	R	1.73	0.64	0.43	1.8	1.2	∞
Liquid Conductivity - measurement uncertainty	E.3.3	10.0	R	1.73	0.64	0.43	3.7	2.5	∞
Liquid Permittivity - deviation from target values	E.3.2	10.0	R	1.73	0.6	0.49	3.5	2.8	∞
Liquid Permittivity - measurement uncertainty	E.3.3	5.0	R	1.73	0.6	0.49	1.7	1.4	∞
<b>Combined Standard Uncertainty</b>			RSS				10.16	9.43	99999
<b>Expanded Uncertainty (95% CONFIDENCE LEVEL)</b>			<i>k=2</i>				19.92	18.48	

## **Appendix 7**

### **Photographs of the device under test**



Figure 7. Front of Phone (Flip Closed)



Figure 8. Front of phone (Flip Open)



Figure 9. Back of phone



Figure 10. Side of phone



Figure 11. Phone in a rotating holster against a flat phantom

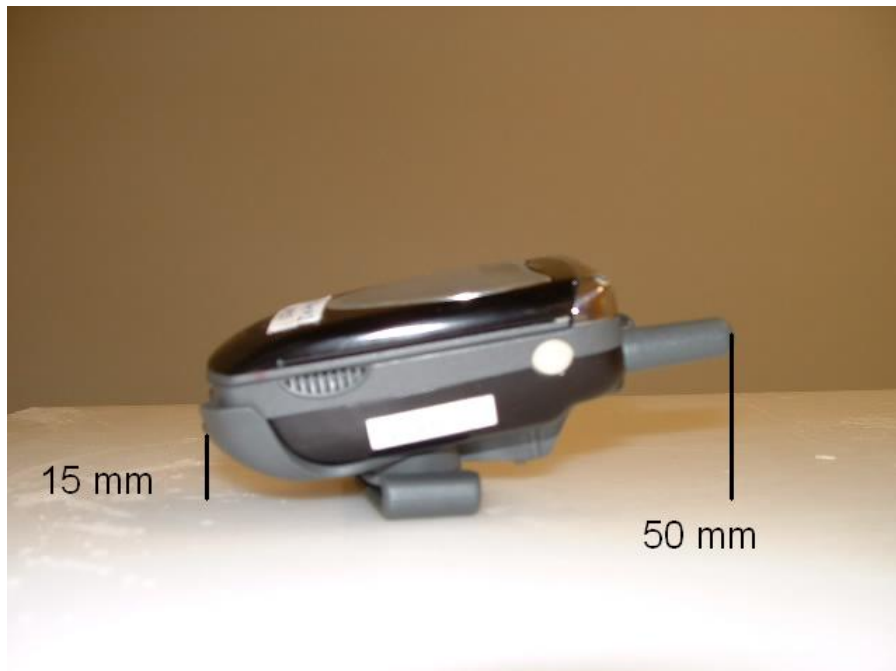


Figure 12. Separation distance from the antenna and the base of the phone to flat surface

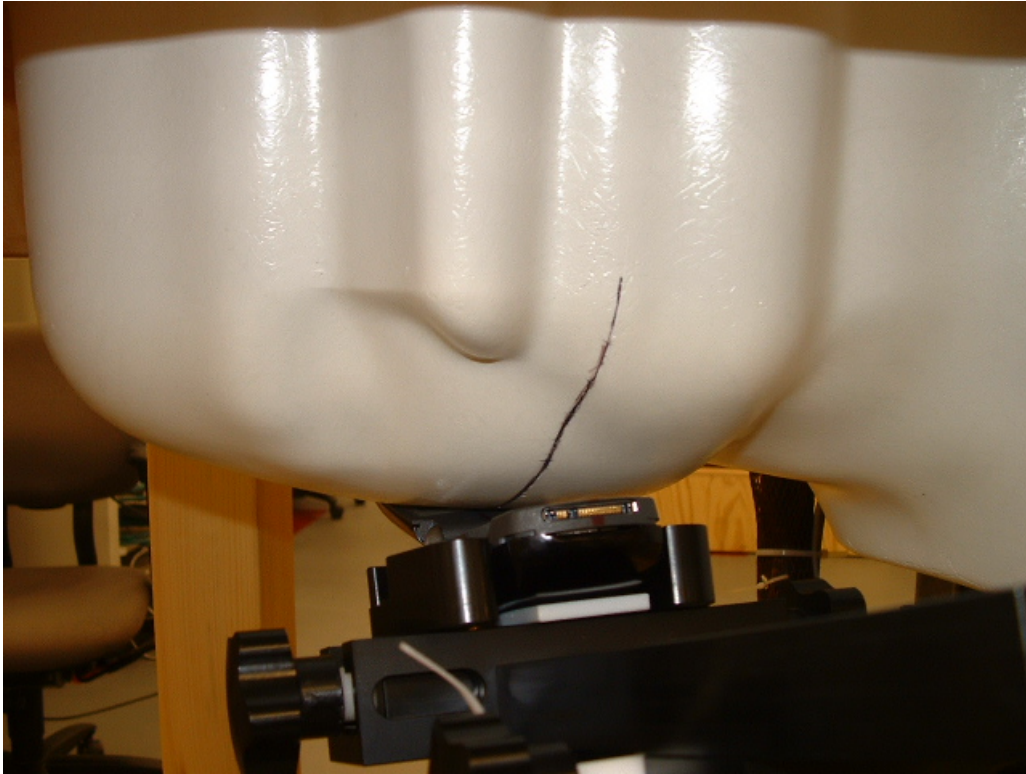


Figure 13. Phone against the head (Cheek touch)

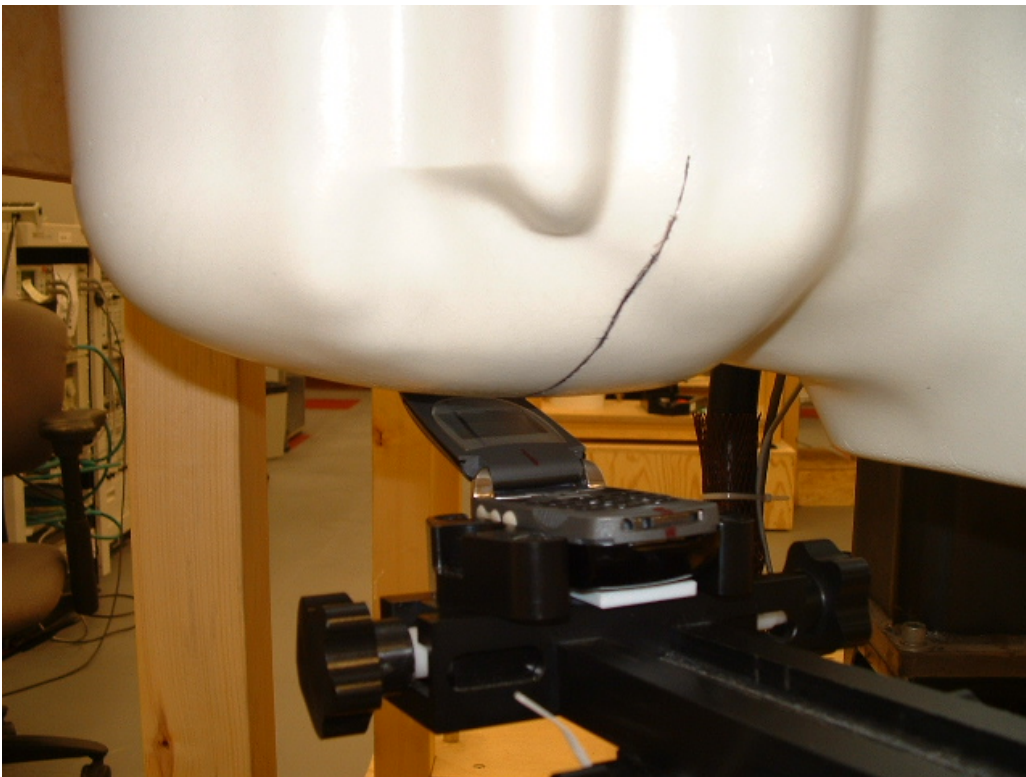


Figure 14. Phone against the head (Tilt position)