



MOTOROLA

October 23, 2003

Supplement to SAR Test Report for Motorola portable cellular phone (FCC ID IHDT6CN2)

Prepared by:

Steven Hauswirth

Motorola Personal Communications Sector Product Safety Laboratory

Libertyville, Illinois

Summary of FCC request for additional information

There was a request for additional information regarding Motorola's SAR Test Report for Motorola portable cellular phone (FCC ID IHDT6CN2). The requested information is addressed below in the same numbering sequence received.

1. Please provide the left hand SAR data plots (both touch and tilt).

RESPONSE: Please see attached plots in appendix 1.

2. Please provide a photo of the new battery.

RESPONSE: A Picture of the new battery is shown below.



3. Please verify that the Bluetooth transceiver embedded in the phone was active during SAR tests.

RESPONSE: The embedded Bluetooth transceiver was active during the SAR tests.

Appendix 1:

Additional SAR Plots

s/n: L9505M0017

Ch# 661 / Pwr Step: 0

Type of Modulation: GSM

Antenna Position: Fixed

Battery Model #: SNN5694A

DEVICE POSITION (cheek or rotated): Cheek

R# 2 TP-1235 GLYCOL SAM Expanded (Rev. 2)-9Jan03 Phantom; Left Hand Section; Position: (90°,180°); Frequency: 1880 MHz

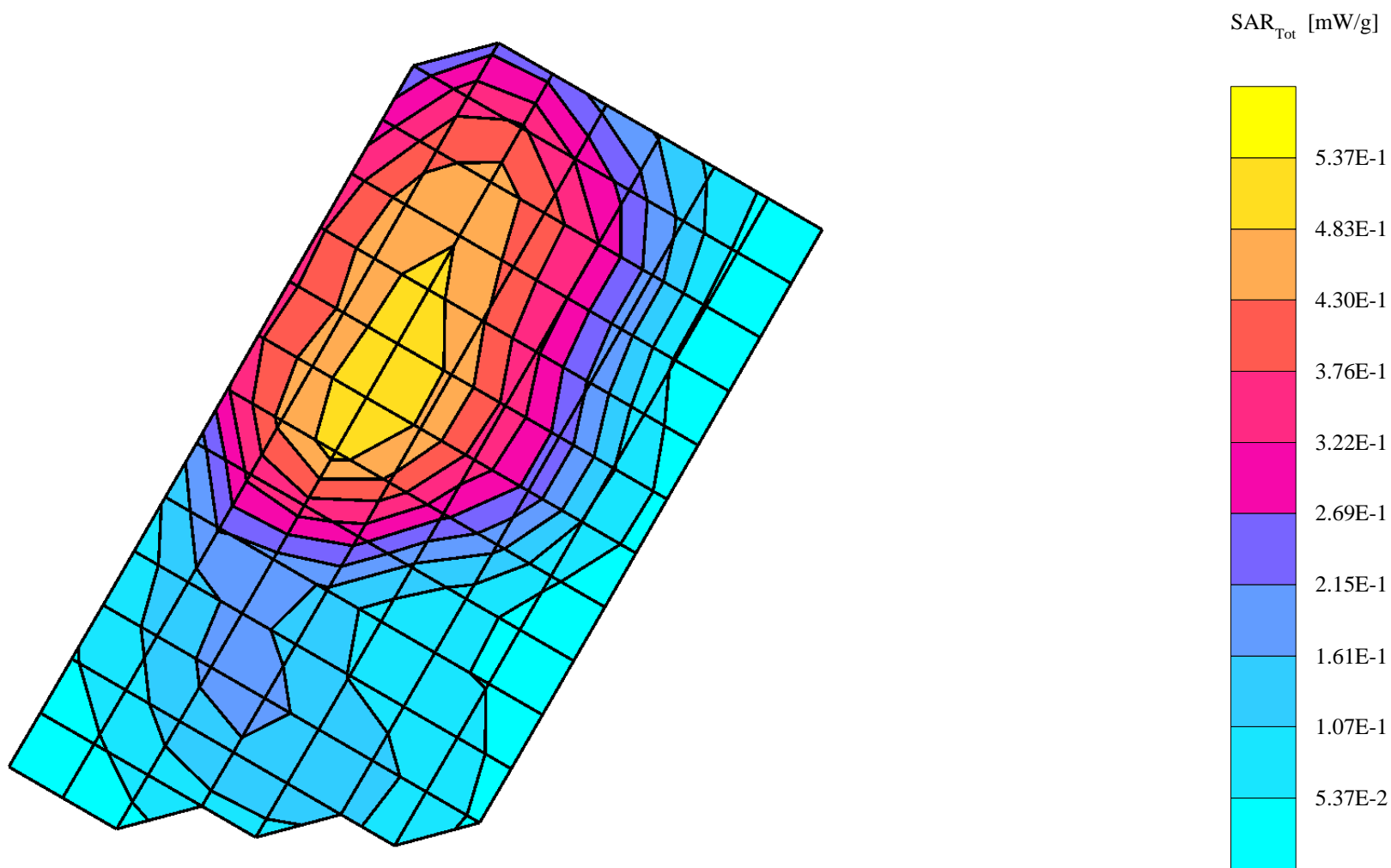
Probe: ET3DV6 - SN1522 - IEEE Head; ConvF(3.40,3.40,3.40); Crest factor: 8.0; 1880 MHz Head & Body: $\sigma = 1.45$ mho/m $\epsilon_r = 38.7$ $\rho = 1.00$ g/cm³

Cube 7x7x7: SAR (1g): 0.535 mW/g, SAR (10g): 0.328 mW/g, (Worst-case extrapolation)

Coarse: Dx = 10.0, Dy = 10.0, Dz = 10.0

Penetration depth: 9.9 (9.3, 10.8) [mm]

Powerdrift: -0.11 dB



s/n: L9505M0017

Ch# 661 / Pwr Step: 0

Type of Modulation: GSM

DEVICE POSITION (cheek or rotated): rotated

Antenna Position: Fixed

Battery Model #: SNN5694A

R# 2 TP-1235 GLYCOL SAM Expanded (Rev. 2)-9Jan03 Phantom; Left Hand Section; Position: (90°,180°); Frequency: 1880 MHz

Probe: ET3DV6 - SN1522 - IEEE Head; ConvF(3.40,3.40,3.40); Crest factor: 8.0; 1880 MHz Head & Body: $\sigma = 1.45$ mho/m $\epsilon_r = 38.7$ $\rho = 1.00$ g/cm³

Cube 7x7x7: SAR (1g): 0.511 mW/g, SAR (10g): 0.318 mW/g, (Worst-case extrapolation)

Coarse: Dx = 15.0, Dy = 15.0, Dz = 15.0

Penetration depth: 10.3 (9.6, 11.1) [mm]

Powerdrift: -0.08 dB

