



Exhibit 11: SAR Test Report IHDT56BJ3 (Class II)

Date of test: 04/11/2003 – 04/18/2003
Date of Report: 04/25/2003

Laboratory: Motorola Personal Communications Sector Product Safety & Compliance Laboratory
 600 N. US Highway 45
 Room: MW113
 Libertyville, Illinois 60048

Test Responsible: Firass Badaruzzaman
 Senior RF Engineer

Accreditation: This laboratory is accredited to ISO/IEC 17025-1999 to perform the following tests:



<p><u>Tests:</u> Electromagnetic Specific Absorption Rate</p> <p>Simulated Tissue Preparation RF Power Measurement</p>	<p><u>Procedures:</u> ANSI/IEEE C95.1-1992, 1999 (SAR) IEEE C95.3-1991 IEEE P1528 (<i>DRAFT</i>) FCC OET Bulletin 65 (<i>including Supplements A, B, C</i>) Australian Communications Authority Radio Communications (Electromagnetic Radiation – Human Exposure) Standard 1999 CENELEC EN 50361 (2001) APP-0247 DOI-0876, 0900, 0902, 0904, 0915</p>
--	---

On the following products or types of products:
 Wireless Communications Devices (Examples): Two Way Radios; Portable Phones (including Cellular, Licensed Non-Broadcast and PCS); Low Frequency Readers; and Pagers

A2LA certificate #1651-01

Statement of Compliance: Motorola declares under its sole responsibility that portable cellular telephone FCC ID IHDT56BJ3 to which this declaration relates, is in conformity with the appropriate General Population/Uncontrolled RF exposure standards, recommendations and guidelines (FCC 47 CFR §2.1093). It also declares that the product was tested in accordance with the appropriate measurement standards, guidelines and recommended practices. Any deviations from these standards, guidelines and recommended practices are noted below:

(none)

©Motorola, Inc. 2003

This test report shall not be reproduced except in full, without written approval of the laboratory.

The results and statements contained herein relate only to the items tested. The names of individuals involved may be mentioned only in connection with the statements or results from this report.

Motorola encourages all feedback, both positive and negative, on this test report.

Table of Contents

1) Introduction	3
2) Description of the Device Under Test	3
Antenna description	3
Device description	3
3) Test Equipment	3
3.1 Dosimetric system	3
3.2 Additional equipment used	4
4) Electrical parameters of the tissue simulating liquid	4
5) System Accuracy Verification	5
6) Test Results	7
6.1 Head Adjacent Test Results	7
6.2 Body-Worn Test Results	10

References:

Appendix 1: SAR distribution comparison for the system accuracy verification	13
Appendix 2: SAR distribution plots for Phantom Head Adjacent Use	14
Appendix 3: SAR distribution plots for Body Worn Configuration	17
Appendix 4. Probe Calibration Certificate	19
Appendix 5. Dipole Characterization Certificate	20
Appendix 6: Measurement Uncertainty Budget	21
Appendix 7. Photographs of the device under test	24

1. Introduction

The Motorola Personal Communications Sector Product Safety Laboratory has performed measurements of the maximum potential exposure to the user of portable cellular phone (FCC ID IHDT56BJ3). The Specific Absorption Rate (SAR) of this product was measured. The portable cellular phone was tested in accordance with FCC OET Bulletin 65 Supplement C 01-01.

2. Description of the Device Under Test

Antenna description

Type	Stub	
Location	Right Side	
Dimensions	Length	25 mm
	Width	5 mm
Configuration	Helix	

Device description

FCC ID Number	IHDT56BJ3		
Serial number	3D328B56 / 3D328B0C		
Mode(s) of Operation	800 AMPS	800 CDMA	1900 CDMA
Modulation Mode(s)	AMPS	CDMA	CDMA
Maximum Output Power Setting	27.80 dBm	25.00 dBm	25.00 dBm
Duty Cycle	1:1	1:1	1:1
Transmitting Frequency Rang(s)	824-849MHz	824-849MHz	1851-1909MHz
Production Unit or Identical Prototype (47 CFR §2.908)	Identical Prototype		
Device Category	Portable		
RF Exposure Limits	General Population / Uncontrolled		

3. Test Equipment Used

3.1 Dosimetric System

The Motorola Personal Communications Sector Product Safety & Compliance Laboratory utilizes a Dosimetric Assessment System (Dasy3™ v3.1d) manufactured by Schmid & Partner Engineering AG (SPEAG™), of Zurich Switzerland. The overall RSS uncertainty of the measurement system is ±11.7% (K=1) with an expanded uncertainty of ±23.0% (K=2). The measurement uncertainty budget is given in Appendix 6. Per IEEE 1528, this uncertainty budget is applicable to the SAR range of 0.4 W/kg to 10 W/kg. The list of calibrated equipment used for the measurements is shown below.

Description	Serial Number	Cal Due Date
DASY3 DAE V1	SN367	8/26/2003
	SN434	2/19/2004
E-Field Probe ET3DV6	SN1514	7/25/2003
	SN1515	
Dipole Validation Kit, D900V2	SN79	10/15/2004
	SN78	8/23/2003
S.A.M. Phantom used for 800MHz	TP-1132	
	TP-1106	
Dipole Validation Kit, D1800V2	SN258TR	9/24/2004
S.A.M. Phantom used for 1900MHz	TP-1133	

3.2 Additional Equipment

Description	Serial Number	Cal Due Date
Signal Generator HP8648C	3847A04632	10/10/2004
Power Meter E4419B	GB39511090	02/06/2004
Power Sensor #1 - 8481A	US39211007	02/06/2004
Power Sensor #2 - 8481A	US39210931	02/23/2004
Network Analyzer HP8753ES	US39172529	6/18/2003
Dielectric Probe Kit HP85070B	US33020235	

Description	Serial Number	Cal Due Date
Signal Generator HP8648C	3847A04845	11/05/2004
Power Meter E4419B	GB39511088	01/18/2004
Power Sensor #1 - 8481A	US39210918	02/11/2004
Power Sensor #2 - 8481A	US39211006	02/14/2004
Network Analyzer HP8753ES	US39172529	6/18/2003
Dielectric Probe Kit HP85070B	US33020235	

4. Electrical parameters of the tissue simulating liquid

Prior to conducting SAR measurements, the relative permittivity, ϵ_r , and the conductivity, σ , of the tissue simulating liquids were measured with the HP85070 Dielectric Probe Kit. These values, along with the temperature of the tissue simulate are shown in the table below. The recommended limits for maximum permittivity and minimum conductivity are also shown. These come from the Federal Communication Commission, OET Bulletin 65 Supplement C 01-01. It is seen that the measured parameters are satisfactory for compliance testing.

<i>f</i> (MHz)	Tissue type	Limits / Measured	Dielectric Parameters			
			ϵ_r	σ (S/m)	Temp (°C)	
835	Head	Measured, 04/12/2003	42.10	0.92	20.80-21.90	
		Recommended Limits	41.50	0.90	20-25	
		Measured, 04/15/2003	42.00	0.91	20.80-21.90	
		Recommended Limits	41.50	0.90	20-25	
		Measured, 04/15/2003	42.70	0.92	20.80-21.90	
		Recommended Limits	41.50	0.90	20-25	
		Measured, 04/16/2003	42.00	0.91	20.80-21.90	
		Recommended Limits	41.50	0.90	20-25	
	Body	Measured, 04/15/2003	55.80	0.98	20.80-21.90	
		Recommended Limits	55.20	0.97	20-25	
		Measured, 04/15/2003	54.50	0.97	20.80-21.90	
		Recommended Limits	55.20	0.97	20-25	
	1880	Head	Measured, 04/15/2003	39.00	1.45	20.80-21.90
			Recommended Limits	40.00	1.40	20-25
Measured, 04/16/2003			38.70	1.47	20.80-21.90	
Recommended Limits			40.00	1.40	20-25	
Measured, 04/16/2003			38.90	1.45	20.80-21.90	
Recommended Limits			40.00	1.40	20-25	
Body		Measured, 04/15/2003	52.60	1.59	20.80-21.90	
		Recommended Limits	53.30	1.52	20-25	

The list of ingredients and the percent composition used for the tissue simulates are indicated in the table below.

Ingredient	800MHz Head	800MHz Body	1900MHz Head	1900MHz Body
Sugar	57.0	44.9	--	30.80
DGBE	--	--	47.0	--
Water	40.45	53.06	52.8	68.91
Salt	1.45	0.94	0.2	0.29
HEC	1.0	1.0	--	--
Bact.	0.1	0.1	--	--

5. System Accuracy Verification

A system accuracy verification of the DASY3 was performed using the measurement equipment listed in Section 3.1. The daily system accuracy verification occurs within center section of the SAM phantom.

A SAR measurement was performed to see if the measured SAR was within +/- 10% from the target SAR indicated on the dipole certification sheet. These tests were done at 900MHz and/or 1800MHz. These frequencies are within 100MHz of the mid-band frequency of the test device. This is within the allowable window given in Supplement C 01-01 *Appendix D System Verification* section item #5. The test was conducted on the same days as the measurement of the DUT. Recommended limits for maximum permittivity, minimum conductivity are shown in the table below. These come from the Federal Communication Commission, OET Bulletin 65 Supplement C 01-01. The obtained results from the system accuracy verification are displayed in the table below. The distributions of SAR compare well with those of the reference measurements (see Appendix 1). The tissue stimulant depth was verified to be 15.0cm ±0.5cm. Z-axis scans showing the SAR penetration are also included in Appendix 1. SAR values are normalized to 1W forward power delivered to the dipole.

f (MHz)	Description	SAR (W/kg), 1gram	Dielectric Parameters		Ambient Temp (°C)	Tissue Temp (°C)
			ε _r	σ (S/m)		
900	Measured, 04/15/2003	11.47	41.90	0.98	22	22
	Recommended Limits	11.30	40.30	0.95	N/A	N/A
	Measured, 04/15/2003	11.34	41.20	0.97	22	20.8
	Recommended Limits	11.40	40.30	0.95	N/A	N/A
	Measured, 04/16/2003	11.56	40.90	0.97	21	20.7
	Recommended Limits	11.40	40.30	0.95	N/A	N/A
1800	Measured, 04/14/2003	38.12	39.40	1.37	21	21.3
	Recommended Limits	38.60	40.30	1.36	N/A	N/A
	Measured, 04/15/2003	38.50	39.00	1.38	22	21
	Recommended Limits	38.60	40.30	1.36	N/A	N/A
	Measured, 04/16/2003	38.32	39.30	1.37	21	21
	Recommended Limits	38.60	40.30	1.36	N/A	N/A

The following probe conversion factors were used on the E-Field probe(s) used for the system accuracy verification measurements:

Description	Serial Number	f (MHz)	Conversion Factor	Cal Cert pg #
E-Field Probe ETDV6	SN1515	900	6.5	2 of 8
	SN1514	900	6.2	2 of 8
		1800	5.2	2 of 8

6. Test Results

The test sample was operated in a test mode that allows control of the transmitter without the need to place actual phone calls. For the purposes of this test the unit is commanded to test mode and manually set to the proper channel, transmitter power level and transmit mode of operation. The phone was tested in the configurations stipulated in OET Bulletin 65 Supplement C 01-01. Motorola also followed the requirements in Supplement. C / Appendix D: SAR Measurement Procedures, section titled “*Devices Operating Next To A Person’s Ear* “. These directions state “The device should be tested on the left and right side of the head phantom in the “Cheek/Touch” and “Ear/Tilt” positions. When applicable, each configuration should be tested with the antenna in its fully extended and fully retracted positions. These test configurations should be tested at the high, middle and low frequency channels of each operating mode; for example, AMPS, CDMA, and TDMA. If the SAR measured at the middle channel for each test configuration (left, right, Cheek/Touch, Tile/Ear, extended and retracted) is at least 2.0 dB lower than the SAR limit, testing at the high and low channels is optional for such test configuration(s).“

The DASY v3.1d SAR measurement system specified in section 3.1 was utilized within the intended operations as set by the SPEAG™ setup. The phone was positioned into the measurement configurations using the positioner supplied with the DASY 3.1d SAR measurement system. The measured dielectric constant of the material used for the positioner is less than 2.9 and the loss tangent is less than 0.02 (± 30%) at 850MHz. The default settings for the “coarse” and “cube” scans were chosen and use for measurements. The grid spacing of the course scan was set to 15cm as shown in the SAR plots included in appendix 2 and 3. Please refer to the DASY manual for additional information on SAR scanning procedures and algorithms used.

The Cellular Phone (FCC ID IHDT56BJ3) has the following battery options:

Model # – SNN5571A 1000 mAh

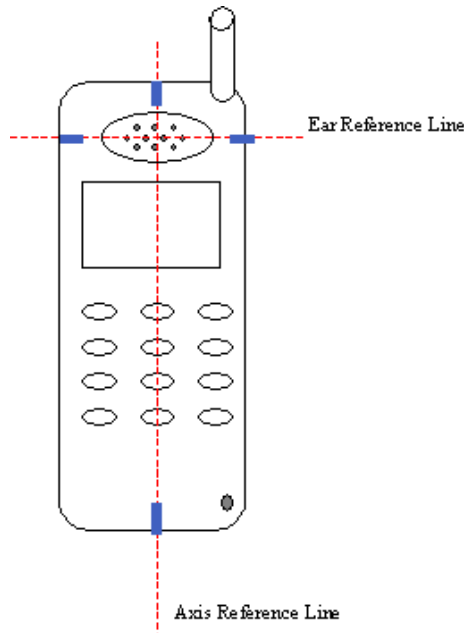
This battery was used to do all of the SAR testing. The phone was placed in the SAR measurement system with a fully charged battery

6.1 Head Adjacent Test Results

To aid in positioning repeatability, the ear reference line of the device and the axis reference line of the device have been physically added using a non-metallic marker.

- Per Figure 1, the "Ear Reference Line" is centered vertically through the center of the listening area (as defined by the speaker holes in the housing).
- The "Axis Reference Line" bisects the front surface of the device at its top and bottom edges.
- The intersection of these two lines defines the location of the "Ear Reference Point".

The lines drawn on the device extended to the outside edges, as shown in blue in the figure below, & wrap around the sides of the device.



The SAR results shown in tables 1 through 4 are maximum SAR values averaged over 1 gram of phantom tissue. Also shown are the measured conducted output powers, the temperature of the test facility during the test, the temperature of the tissue simulate after the test, the measured drift and the extrapolated SAR. The exact method of extrapolation is $\text{New SAR} = \text{Old SAR} * 10^{(-\text{drift}/10)}$. The SAR reported at the end of the measurement process by the DASY™ measurement system can be scaled up by the measured drift to determine the SAR at the beginning of the measurement process. This is the most conservative SAR because it corresponds to the average output power at the beginning of the SAR test. This extrapolation has been done because when the DUT is operating properly it may exhibit a slump in radiated power and SAR over time. This is verified by measuring the SAR drift after the test. The test conditions indicated as bold numbers in the following table are included in Appendix 2

The SAR measurements were performed using the SAM phantoms listed in section 3.1. Since same phantoms and tissue simulate are used for the system accuracy verification as the device SAR measurements, the Z-axis scans included in within Appendix 1 are applicable for verification of tissue simulate depth to be 15.0cm ±0.5cm. All other test conditions measured lower SAR values than those included in Appendix 2. Note that 800MHz digital mode SAR measurements were performed in accordance with Supplement C.

The following probe conversion factors were used on the E-Field probe(s) used for the head adjacent measurements:

Description	Serial Number	f (MHz)	Conversion Factor	Cal Cert pg #
E-Field Probe ETDV6	SN1515	900	6.5	2 of 8
		900	6.2	2 of 8
	SN1514	1800	5.2	2 of 8

f (MHz)	Description	Conducted Output Power (dBm)	Left Head (Cheek / Touch Position)				
			Antenna Fixed				
			Measured (W/kg)	Drift (dB)	Extrapolated (W/kg)	Amb. Temp (°C)	Simulate Temp (°C)
Analog 800MHz	Channel 991	27.96	1.03	-0.30	1.10	20.80	20.60
	Channel 384	27.89	1.04	-0.01	1.04	20.80	20.70
	Channel 799	27.81	1.18	0.00	1.18	20.80	20.60
CDMA 800 MHz	Channel 1013	24.99	1.00	-0.05	1.01	20.80	21.00
	Channel 384	25.14	1.18	0.06	1.18	20.80	20.70
	Channel 777	25.02	1.39	0.13	1.39	20.80	21.00
Digital 1900MHz	Channel 25	25.05	1.13	-0.10	1.16	21.30	20.60
	Channel 600	25.14	1.21	0.07	1.21	21.30	20.60
	Channel 1175	25.00	1.11	0.03	1.11	21.30	20.70

Table 1: SAR measurement results for the portable cellular telephone FCC ID IHDT56BJ3 at highest possible output power. Measured against the left head in the Cheek/Touch Position.

f (MHz)	Description	Conducted Output Power (dBm)	Right Head (Cheek / Touch Position)				
			Antenna Fixed				
			Measured (W/kg)	Drift (dB)	Extrapolated (W/kg)	Amb. Temp (°C)	Simulate Temp (°C)
Analog 800MHz	Channel 991	27.96	0.908	-0.12	0.93	20.80	20.60
	Channel 384	27.89	0.925	-0.04	0.93	20.80	20.60
	Channel 799	27.81	1.06	0.01	1.06	20.80	20.60
CDMA 800 MHz	Channel 1013	24.99	0.938	-0.08	0.96	20.80	20.80
	Channel 384	25.14	1.10	0.09	1.10	20.80	20.80
	Channel 777	25.02	1.26	-0.11	1.29	20.80	20.80
Digital 1900MHz	Channel 25	25.05	1.10	0.03	1.10	21.00	20.00
	Channel 600	25.14	1.17	0.01	1.17	21.00	20.20
	Channel 1175	25.00	1.05	-0.10	1.07	21.00	20.20

Table 2: SAR measurement results for the portable cellular telephone FCC ID IHDT56BJ3 at highest possible output power. Measured against the right head in the Cheek/Touch Position.

f (MHz)	Description	Conducted Output Power (dBm)	Left Head (15° Tilt Position)				
			Antenna Fixed				
			Measured (W/kg)	Drift (dB)	Extrapolated (W/kg)	Amb. Temp (°C)	Simulate Temp (°C)
Analog 800MHz	Channel 991	27.96					
	Channel 384	27.89	0.637	0.17	0.64	20.80	20.60
	Channel 799	27.81					
CDMA 800 MHz	Channel 1013	24.99					
	Channel 384	25.14	0.743	-0.11	0.76	20.80	20.70
	Channel 777	25.02					
Digital 1900MHz	Channel 25	25.05	1.23	0.18	1.23	21.30	20.70
	Channel 600	25.14	1.27	0.00	1.27	21.30	20.70
	Channel 1175	25.00	1.06	-0.50	1.19	21.30	20.70

Table 3: SAR measurement results for the portable cellular telephone FCC ID IHDT56BJ3 at highest possible output power. Measured against the left head in the 15° Tilt Position.

f (MHz)	Description	Conducted Output Power (dBm)	Right Head (15° Tilt Position)				
			Antenna Fixed				
			Measured (W/kg)	Drift (dB)	Extrapolated (W/kg)	Amb. Temp (°C)	Simulate Temp (°C)
Analog 800MHz	Channel 991	27.96					
	Channel 384	27.89	0.554	-0.20	0.58	20.80	20.50
	Channel 799	27.81					
CDMA 800 MHz	Channel 1013	24.99					
	Channel 384	25.14	0.65	0.14	0.65	20.80	20.80
	Channel 777	25.02					
Digital 1900MHz	Channel 25	25.05	1.27	0.08	1.27	21.00	20.00
	Channel 600	25.14	1.27	-0.03	1.28	21.00	20.00
	Channel 1175	25.00	1.10	-0.33	1.19	21.00	20.00

Table 4: SAR measurement results for the portable cellular telephone FCC ID IHDT56BJ3 at highest possible output power. Measured against the right head in the 15° Tilt Position.

6.2 Body-Worn Test Results

The SAR results shown in table 5 are the maximum SAR values averaged over 1 gram of phantom tissue. Also shown are the measured conducted output powers, the temperature of the test facility during the test, the temperature of the tissue simulate after the test, the measured drift and the extrapolated SAR. The exact method of extrapolation is $New\ SAR = Old\ SAR * 10^{(-drift/10)}$. The SAR reported at the end of the measurement process by the DASY™ measurement system can be scaled up by the measured drift to determine the SAR at the beginning of the measurement process. This is the most conservative SAR because it corresponds to the average output power at the beginning of the SAR test. This extrapolation has been done because when the DUT is operating properly it may exhibit a slump in radiated power and SAR over time. This is verified by measuring the SAR drift after the test. The test conditions indicated as bold numbers in the following table are included in Appendix 3. Note that 800MHz digital mode SAR measurements were performed in accordance with OET Bulletin 65 Supplement C 01-01. All other test conditions measured lower SAR values than those included in Appendix 3.

A “flat” phantom was for the body-worn tests. This “flat” phantom is made out of 1” thick natural High Density Polyethylene with a thickness at the bottom equal to 2.0mm. It measures 52.7cm(long) x 26.7cm(wide) x 21.2cm(tall). The measured dielectric constant of the material used is less than 2.3 and the loss tangent is less than 0.0046 all the way up to 2.184GHz.

The tissue stimulant depth was verified to be 15.0cm ±0.5cm. The same device holder described in section 6 was used for positioning the phone. The functional accessories were divided into two categories, the ones with metal components and the ones with non-metal components. For non-metallic component accessories, testing was performed on the accessory that displayed the closest proximity to the flat phantom. Each metallic component accessory, if any, was checked for uniqueness of metal component so that each is tested with the device. If multiple accessories shared an identical metal component, only the accessory that dictates the closest spacing to the body was tested. The cellular phone was tested with a headset connected to the device for all body-worn SAR measurements.

The following Body-Worn Accessories are available for this phone:

- A Leather Pouch with: SYN9170A
- A Universal Belt Clip: SYN8763
- Wishbone Belt Clip: SYN8631A
- Phone Clip: SHN7175A
- Rubber Boot: SYN8916A

The SAR measurements for the above mentioned accessories are done against the body and against the head if applicable.

The following probe conversion factors were used on the E-Field probe(s) used for the body worn measurements:

Description	Serial Number	f (MHz)	Conversion Factor	Cal Cert
				pg #
E-Field Probe ETDV6	SN1515	900	6.4	2 of 2
	SN1514	900	6	2 of 2
		1800	4.6	2 of 2

f (MHz)	Description	Conducted Output Power (dBm)	Body Worn (Belt Clip SHN7175A)				
			Antenna Fixed				
			Measured (W/kg)	Drift (dB)	Extrapolated (W/kg)	Amb. Temp (°C)	Simulate Temp (°C)
Analog 800MHz	Channel 991	27.96					
	Channel 384	27.89	0.456	0.07	0.46	20.80	21.20
	Channel 799	27.81					
CDMA 800 MHz	Channel 1013	24.99					
	Channel 384	25.14	0.528	-0.19	0.55	21.90	21.50
	Channel 777	25.02					

Table 5: SAR measurement results for the portable cellular telephone FCC ID IHDT56BJ3 at highest possible output power. Measured against the body.

f (MHz)	Description	Conducted Output Power (dBm)	Body Worn (Leather pouch with universal belt clip)				
			Antenna Fixed				
			Measured (W/kg)	Drift (dB)	Extrapolated (W/kg)	Amb. Temp (°C)	Simulate Temp (°C)
Digital 1900MHz	Channel 25	25.05					
	Channel 600	25.14	0.528	-0.02	0.53	21.20	20.60
	Channel 1175	25.00					

Table 6: SAR measurement results for the portable cellular telephone FCC ID IHDT56BJ3 at highest possible output power. Measured against the body.

f (MHz)	Description	Conducted Output Power (dBm)	Highest side head with rubber boot				
			Antenna Fixed				
			Measured (W/kg)	Drift (dB)	Extrapolated (W/kg)	Amb. Temp (°C)	Simulate Temp (°C)
Analog 800MHz	Channel 991	27.96	1.07	-0.18	1.12	20.80	20.40
	Channel 384	27.89	1.06	0.00	1.06	20.80	20.40
	Channel 799	27.81	1.23	0.08	1.23	20.80	20.40
CDMA 800 MHz	Channel 1013	24.99	0.998	-0.23	1.05	22.00	21.40
	Channel 384	25.14	1.08	-0.08	1.10	22.00	21.30
	Channel 777	25.02	1.29	0.07	1.29	22.00	21.30
Digital 1900MHz	Channel 25	25.05	1.06	-0.13	1.09	21.00	20.00
	Channel 600	25.14	1.10	-0.15	1.14	21.00	20.00
	Channel 1175	25.00	0.985	-0.26	1.05	21.00	20.00

Table 7: SAR measurement results for the portable cellular telephone FCC ID IHDT56BJ3 at highest possible output power. Measured against the highest side head with rubber boot.

f (MHz)	Description	Conducted Output Power (dBm)	Highest side head with leather pouch				
			Antenna Fixed				
			Measured (W/kg)	Drift (dB)	Extrapolated (W/kg)	Amb. Temp (°C)	Simulate Temp (°C)
Analog 800MHz	Channel 991	27.96	1.03	-0.16	1.07	20.80	20.40
	Channel 384	27.89	1.03	-0.01	1.03	20.80	20.40
	Channel 799	27.81	1.20	0.15	1.20	20.80	20.40
CDMA 800 MHz	Channel 1013	24.99	0.976	-0.34	1.06	22.00	21.30
	Channel 384	25.14	1.05	-0.14	1.08	22.00	21.30
	Channel 777	25.02	1.31	0.09	1.31	22.00	21.20
Digital 1900MHz	Channel 25	25.05	1.06	-0.02	1.06	21.00	20.10
	Channel 600	25.14	1.08	-0.08	1.10	21.00	20.10
	Channel 1175	25.00	0.916	-0.18	0.95	21.00	20.10

Table 7: SAR measurement results for the portable cellular telephone FCC ID IHDT56BJ3 at highest possible output power. Measured against the highest side head with leather pouch

Appendix 1

SAR distribution comparison for the system accuracy verification

Dipole 900 MHz

900 MHz System Performance Check / Dipole Sn# 079 / Forward Power = 252mW / Acceptable Temp Range is 18-25°C / Room Temp at time of measurement = 21C Simulant Temp at time of measurement = 20.8C

R5 TP-1132 Sugar SAM Expanded (Rev. 2)-9Jan03 Phantom; Flat Section; Position: (90°,90°); Frequency: 900 MHz

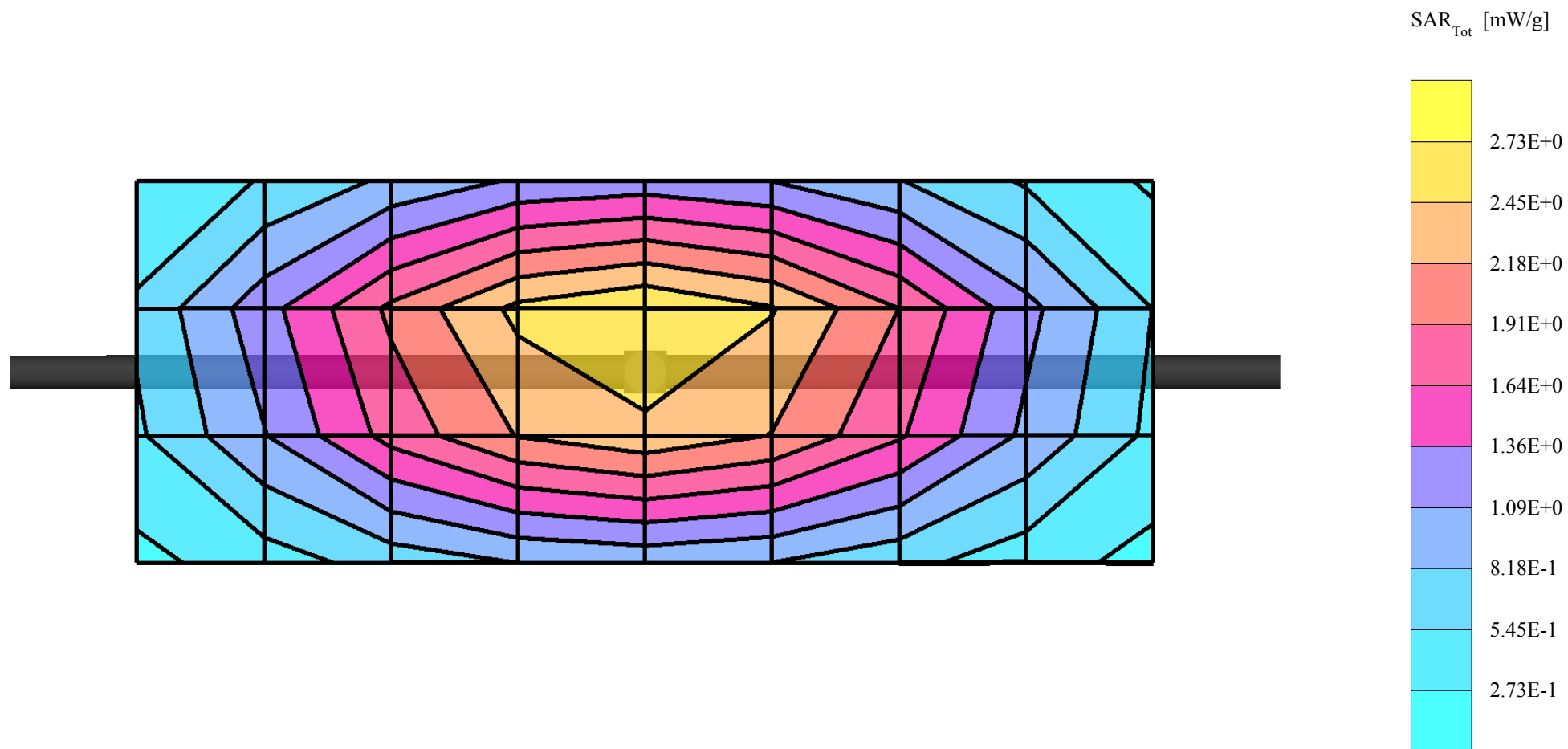
Probe: ET3DV6 - SN1514 - VALIDATION; ConvF(6.20,6.20,6.20); Crest factor: 1.0; 900 MHz VALIDATION: $\sigma = 0.98$ mho/m $\epsilon_r = 41.3$ $\rho = 1.00$ g/cm³

Cubes (2): SAR (1g): 2.90 mW/g ± 0.00 dB, SAR (10g): 1.84 mW/g ± 0.00 dB, (Worst-case extrapolation)

Coarse: Dx = 15.0, Dy = 15.0, Dz = 10.0

Penetration depth: 11.5 (10.7, 12.6) [mm]

Powerdrift: -0.04 dB



Dipole 1800 MHz

1800 MHz System Performance Check / Dipole Sn# 258TR / Forward Power = 250mW / Acceptable Temp Range is 18-25°C Room Temp at time of measurement = 21C Simulant Temp at time of measurement = 21.3C

R5 TP-1133 Glycol SAM Expanded (Rev. 2)-9Jan03 Phantom; Flat Section; Position: (90°,90°); Frequency: 1800 MHz

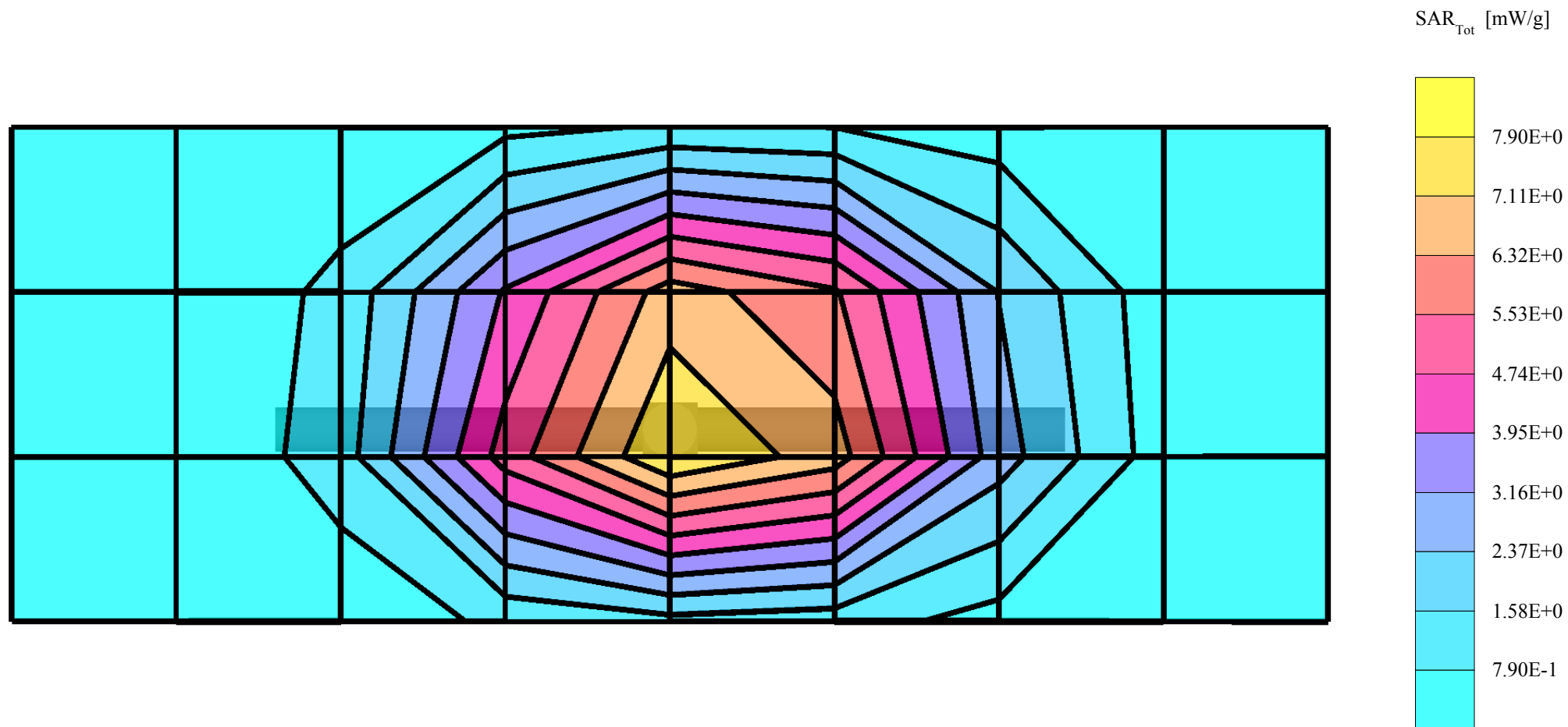
Probe: ET3DV6 - SN1514 - VALIDATION; ConvF(5.20,5.20,5.20); Crest factor: 1.0; 1800 MHz VALIDATION: $\sigma = 1.37$ mho/m $\epsilon_r = 39.4$ $\rho = 1.00$ g/cm³

Cubes (2): SAR (1g): 9.53 mW/g \pm 0.00 dB, SAR (10g): 5.03 mW/g \pm 0.03 dB, (Worst-case extrapolation)

Coarse: Dx = 15.0, Dy = 15.0, Dz = 10.0

Penetration depth: 8.5 (8.1, 9.4) [mm]

Powerdrift: 0.03 dB



Dipole 1800 MHz

1800 MHz System Performance Check / Dipole Sn# 258TR / Forward Power = 248mW / Acceptable Temp Range is 18-25°C Room Temp at time of measurement = 22C Simulant Temp at time of measurement = 21.0C

R5 TP-1133 Glycol SAM Expanded (Rev. 2)-9Jan03 Phantom; Flat Section; Position: (90°,90°); Frequency: 1800 MHz

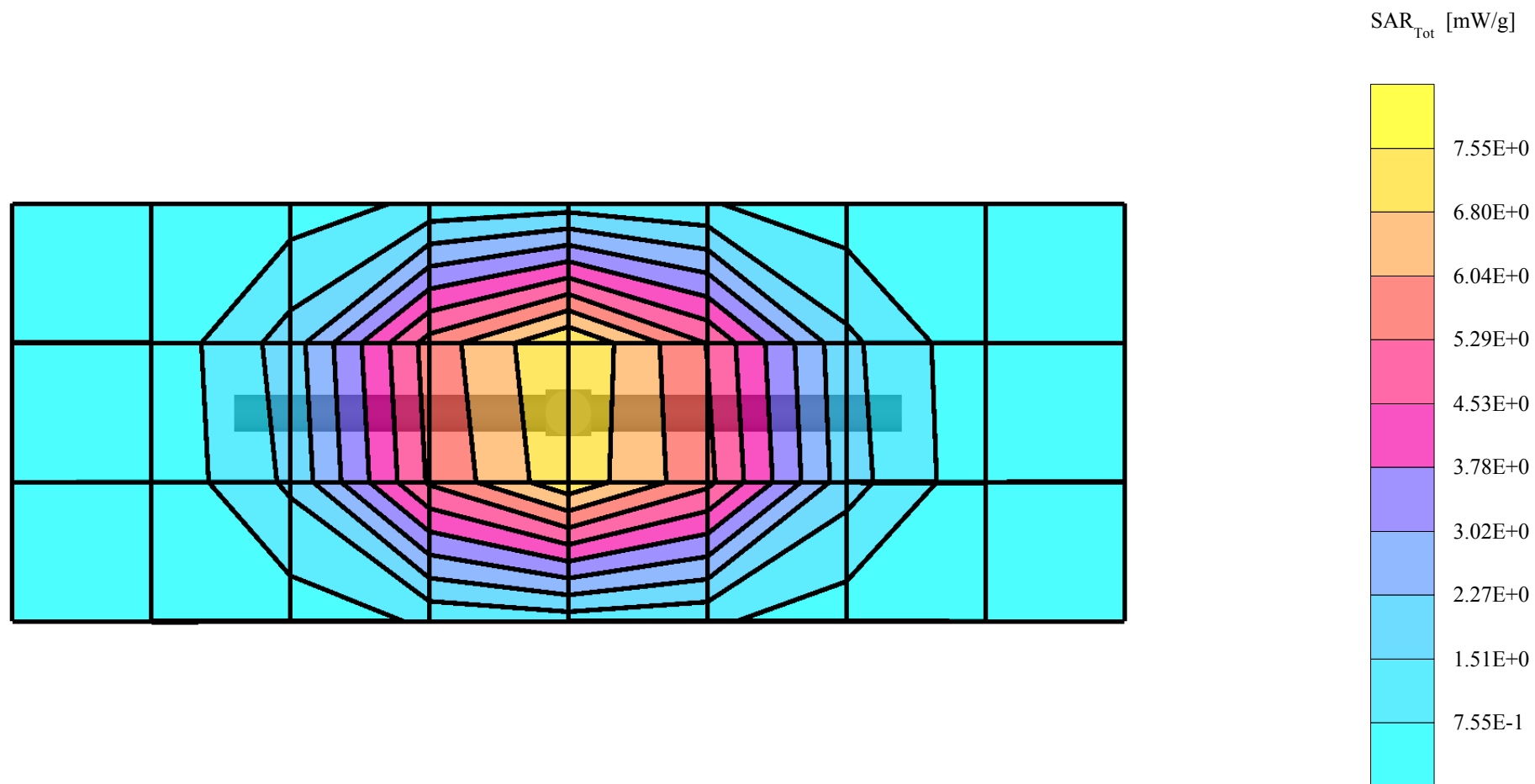
Probe: ET3DV6 - SN1514 - VALIDATION; ConvF(5.20,5.20,5.20); Crest factor: 1.0; 1800 MHz VALIDATION: $\sigma = 1.38$ mho/m $\epsilon_r = 39.0$ $\rho = 1.00$ g/cm³

Cubes (2): SAR (1g): 9.55 mW/g \pm 0.00 dB, SAR (10g): 5.02 mW/g \pm 0.00 dB, (Worst-case extrapolation)

Coarse: Dx = 15.0, Dy = 15.0, Dz = 10.0

Penetration depth: 8.3 (8.0, 9.1) [mm]

Powerdrift: 0.01 dB



Dipole 900 MHz

900 MHz System Performance Check / Dipole Sn# 079 / Forward Power = 253mW / Acceptable Temp Range is 18-25°C Room Temp at time of measurement = 22C Simulant Temp at time of measurement = 20.8C

R5 TP-1132 Sugar SAM Expanded (Rev. 2)-9Jan03 Phantom; Flat Section; Position: (90°,90°); Frequency: 900 MHz

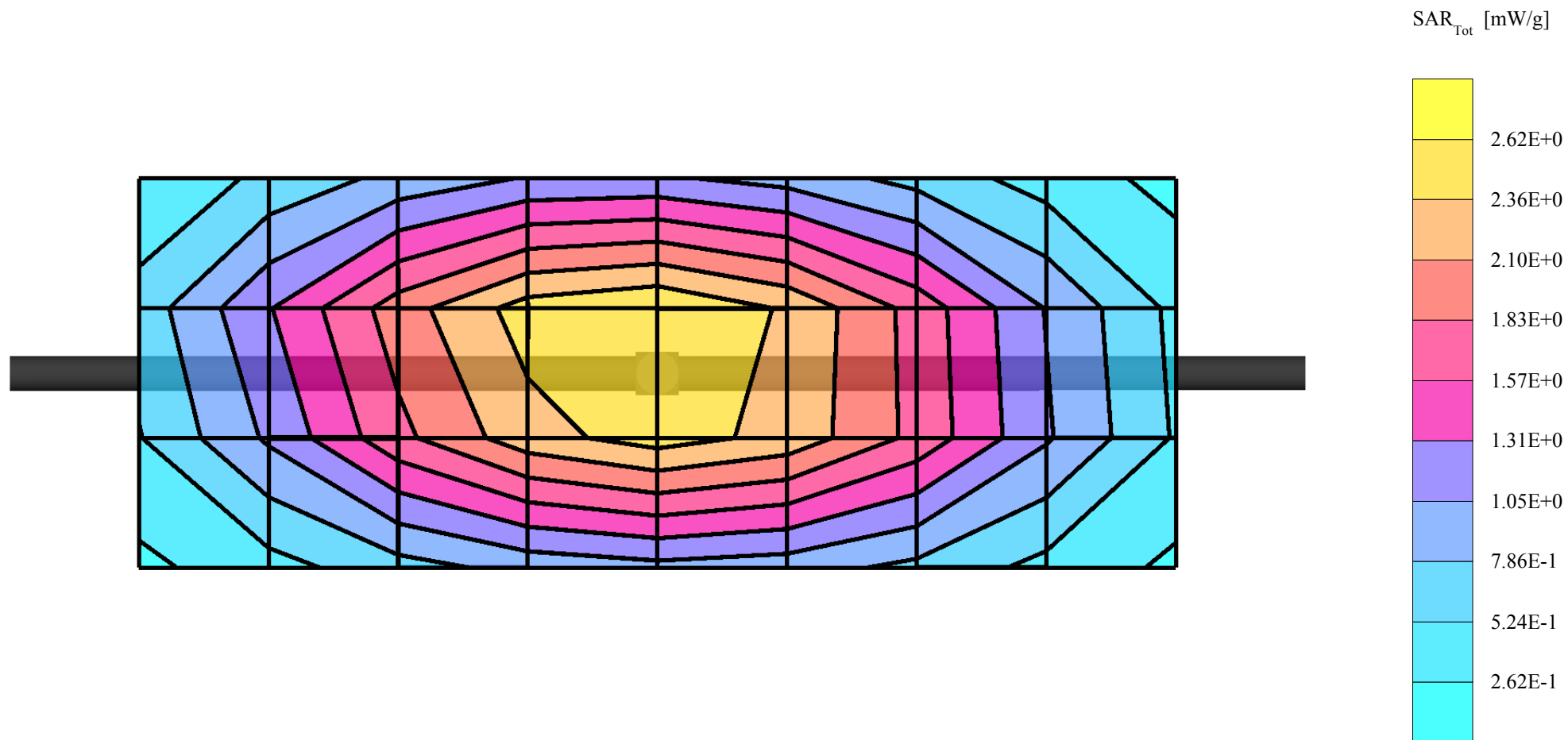
Probe: ET3DV6 - SN1514 - VALIDATION; ConvF(6.20,6.20,6.20); Crest factor: 1.0; 900 MHz VALIDATION: $\sigma = 0.97$ mho/m $\epsilon_r = 41.2$ $\rho = 1.00$ g/cm³

Cubes (2): SAR (1g): 2.87 mW/g \pm 0.02 dB, SAR (10g): 1.81 mW/g \pm 0.02 dB, (Worst-case extrapolation)

Coarse: Dx = 15.0, Dy = 15.0, Dz = 10.0

Penetration depth: 11.5 (10.7, 12.6) [mm]

Powerdrift: 0.02 dB



Dipole 900 MHz

900 MHz System Performance Check / Dipole Sn# 78 / Forward Power = 251mW / Acceptable Temp Range is 18-25°C Room Temp at time of measurement = 22C. Simulant Temp at time of measurement = 22.0C

R# 2 TP-1106 SUGAR SAM Expanded (Rev. 2)-9Jan03 Phantom; Flat Section; Position: (90°,90°); Frequency: 900 MHz

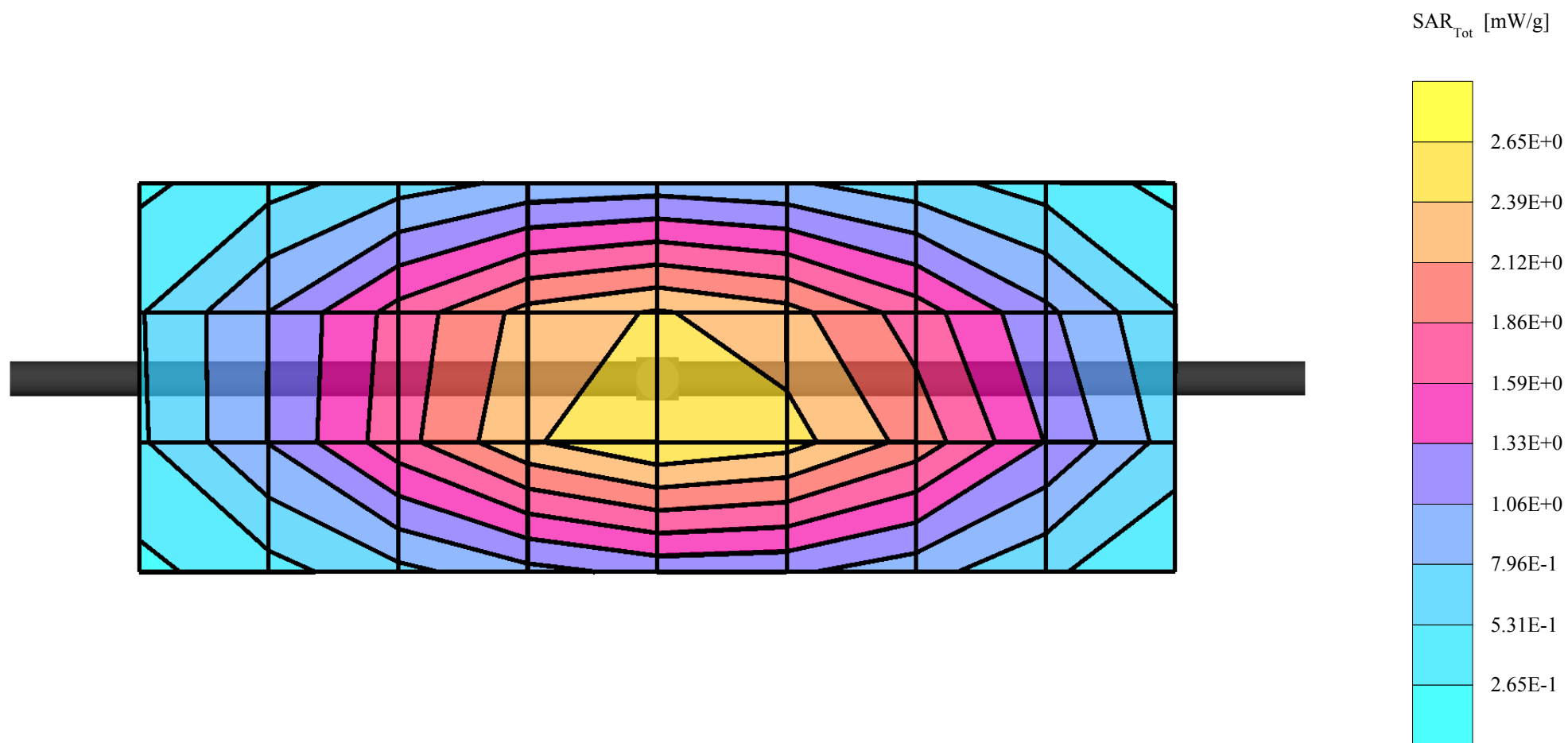
Probe: ET3DV6 - SN1515 - Validation(2); ConvF(6.50,6.50,6.50); Crest factor: 1.0; 900 MHz VALIDATION: $\sigma = 0.98$ mho/m $\epsilon_r = 41.9$ $\rho = 1.00$ g/cm³

Cubes (2): SAR (1g): 2.88 mW/g ± 0.00 dB, SAR (10g): 1.81 mW/g ± 0.00 dB, (Worst-case extrapolation)

Coarse: Dx = 15.0, Dy = 15.0, Dz = 10.0

Penetration depth: 11.4 (10.6, 12.5) [mm]

Powerdrift: -0.04 dB



Dipole 900 MHz

900 MHz System Performance Check / Dipole Sn# 079 / Forward Power = 250mW / Acceptable Temp Range is 18-25°C Room Temp at time of measurement = 21C Simulant Temp at time of measurement = 20.7C

R5 TP-1132 Sugar SAM Expanded (Rev. 2)-9Jan03 Phantom; Flat Section; Position: (90°,90°); Frequency: 900 MHz

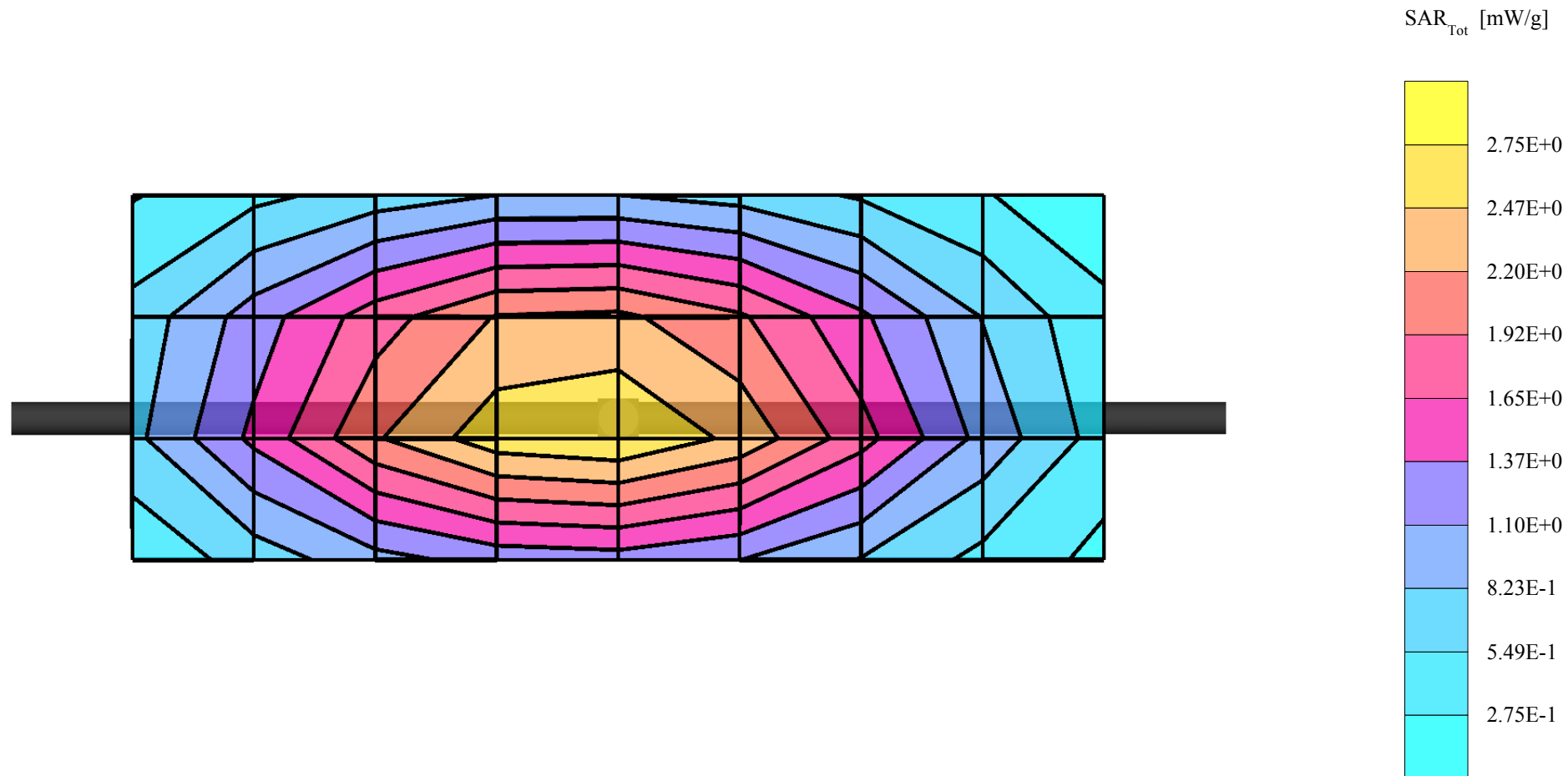
Probe: ET3DV6 - SN1514 - VALIDATION; ConvF(6.20,6.20,6.20); Crest factor: 1.0; 900 MHz VALIDATION: $\sigma = 0.97$ mho/m $\epsilon_r = 40.9$ $\rho = 1.00$ g/cm³

Cubes (2): SAR (1g): 2.89 mW/g ± 0.01 dB, SAR (10g): 1.82 mW/g ± 0.01 dB, (Worst-case extrapolation)

Coarse: Dx = 15.0, Dy = 15.0, Dz = 10.0

Penetration depth: 11.5 (10.7, 12.6) [mm]

Powerdrift: -0.03 dB



Dipole 1800 MHz

1800 MHz System Performance Check / Dipole Sn# 258TR / Forward Power = 250 mW / Acceptable Temp Range is 18-25°C Room Temp at time of measurement = 21C Simulant Temp at time of measurement = 21.0C

R5 TP-1133 Glycol SAM Expanded (Rev. 2)-9Jan03 Phantom; Flat Section; Position: (90°,90°); Frequency: 1800 MHz

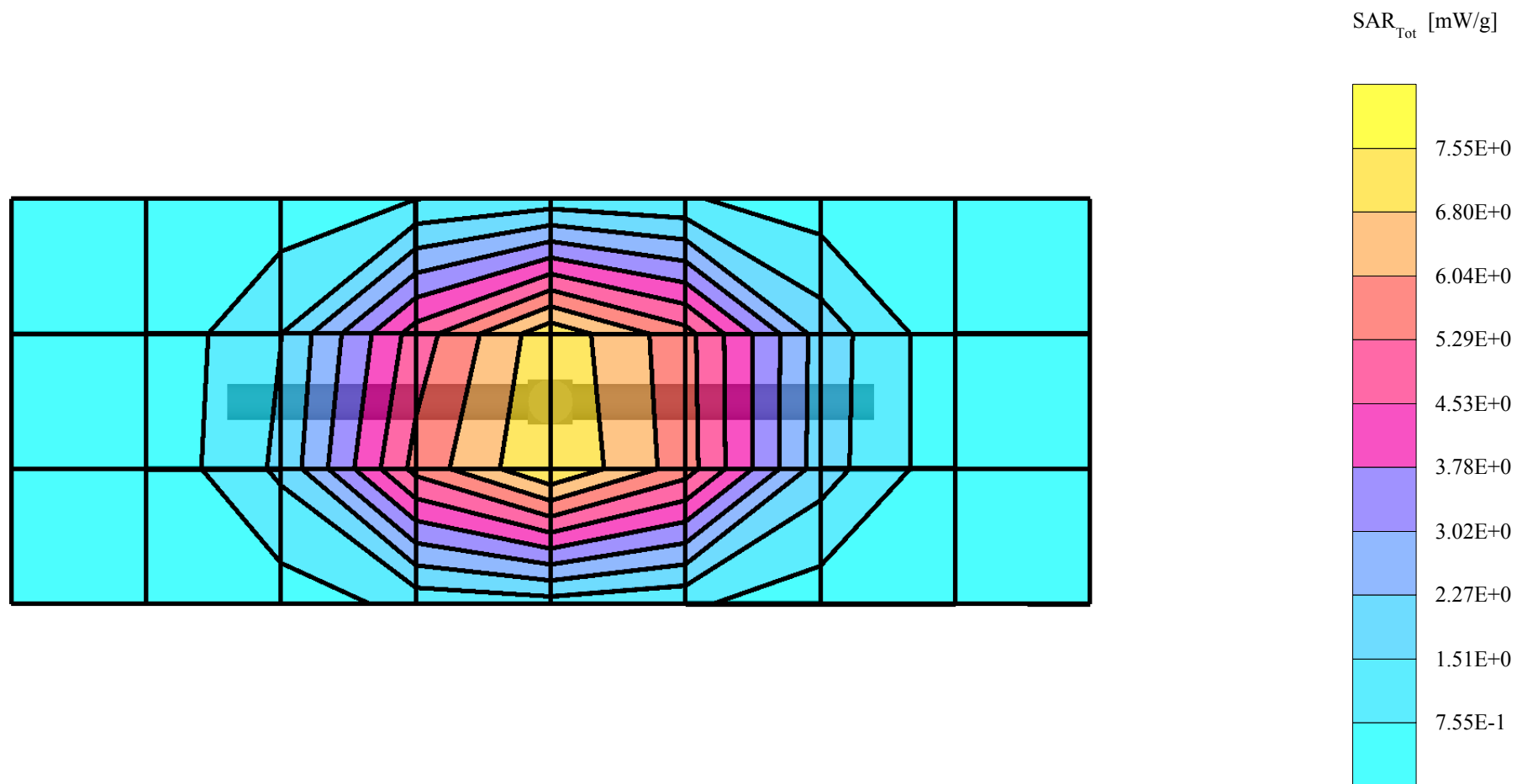
Probe: ET3DV6 - SN1514 - VALIDATION; ConvF(5.20,5.20,5.20); Crest factor: 1.0; 1800 MHz VALIDATION: $\sigma = 1.37$ mho/m $\epsilon_r = 39.3$ $\rho = 1.00$ g/cm³

Cubes (2): SAR (1g): 9.58 mW/g \pm 0.00 dB, SAR (10g): 5.03 mW/g \pm 0.01 dB, (Worst-case extrapolation)

Coarse: Dx = 15.0, Dy = 15.0, Dz = 10.0

Penetration depth: 8.4 (8.0, 9.3) [mm]

Powerdrift: 0.01 dB



Dipole 900 MHz

900 MHz System Performance Check / Dipole Sn# 079 / Forward Power = 252mW / Acceptable Temp Range is 18-25°C / Room Temp at time of measurement = 21C Simulant Temp at time of measurement = 20.8C

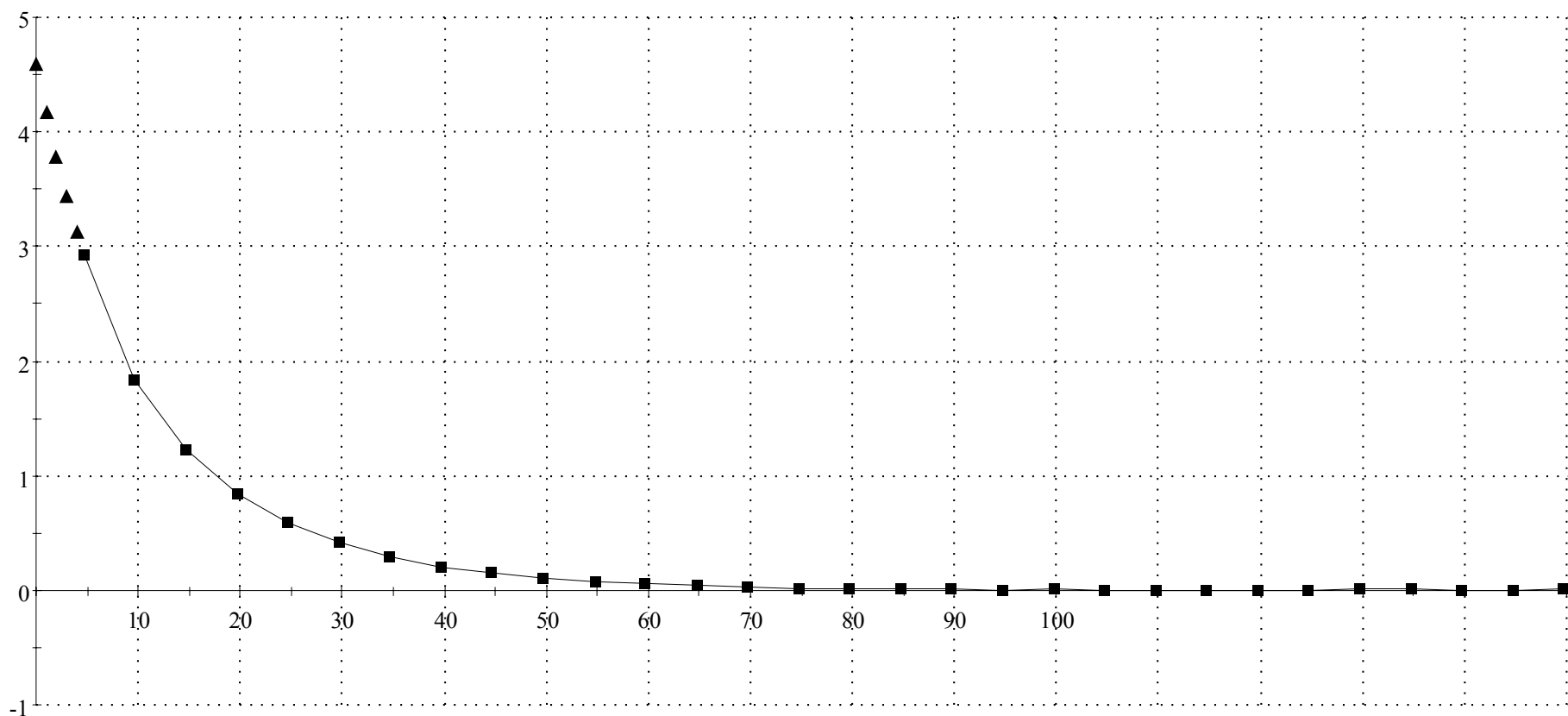
R5 TP-1132 Sugar SAM Expanded (Rev. 2)-9Jan03 Phantom; Section; Position: ; Frequency: 900 MHz

Probe: ET3DV6 - SN1514 - VALIDATION; ConvF(6.20,6.20,6.20); Crest factor: 1.0; 900 MHz VALIDATION: $\sigma = 0.98$ mho/m $\epsilon_r = 41.3$ $\rho = 1.00$ g/cm³

; , 0)

Z-Axis: Dx = 0.0, Dy = 0.0, Dz = 5.0

Penetration depth: 11.4 (10.5, 12.7) [mm]



Dipole 1800 MHz

1800 MHz System Performance Check / Dipole Sn# 258TR / Forward Power = 250mW / Acceptable Temp Range is 18-25°C Room Temp at time of measurement = 21C Simulant Temp at time of measurement = 21.3C

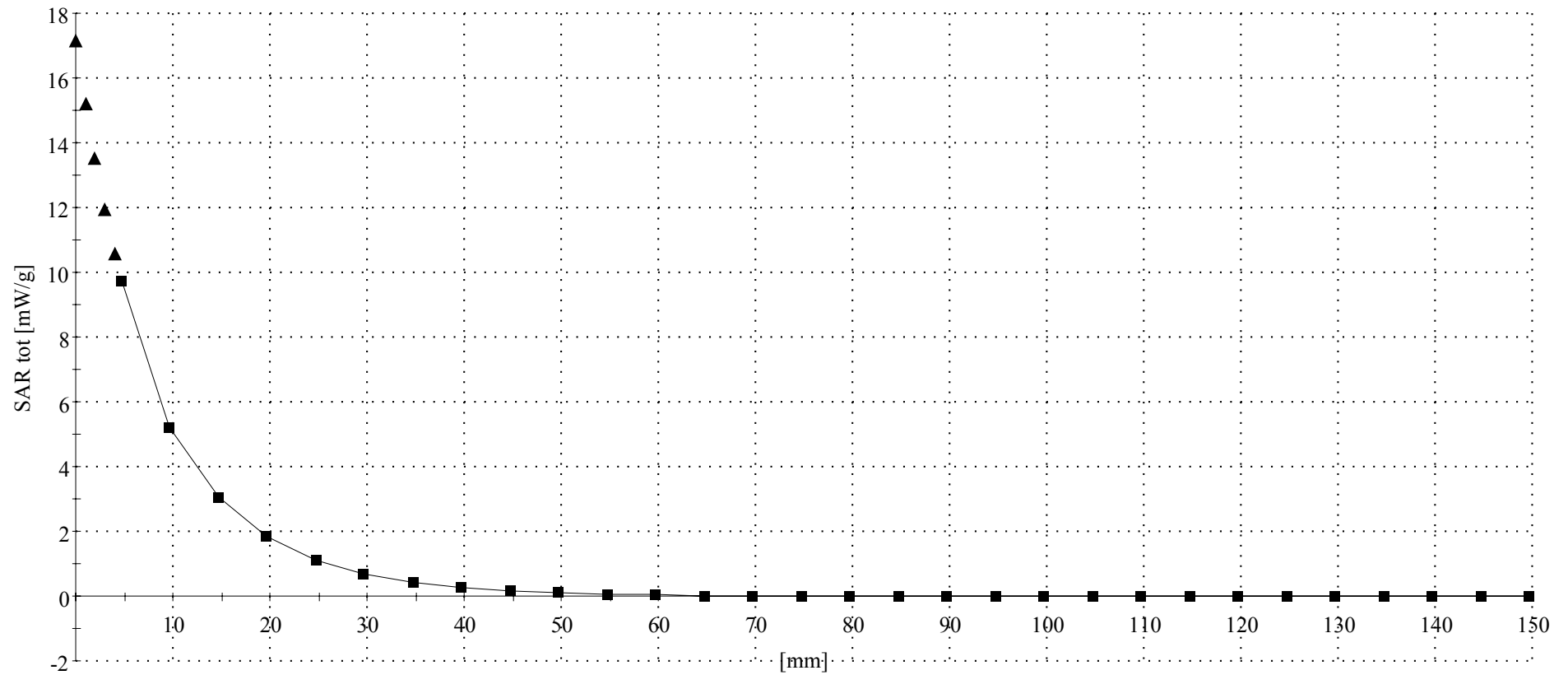
R5 TP-1133 Glycol SAM Expanded (Rev. 2)-9Jan03 Phantom; Section; Position: ; Frequency: 1800 MHz

Probe: ET3DV6 - SN1514 - VALIDATION; ConvF(5.20,5.20,5.20); Crest factor: 1.0; 1800 MHz VALIDATION: $\sigma = 1.37$ mho/m $\epsilon_r = 39.4$ $\rho = 1.00$ g/cm³

; , 0)

Z-Axis: Dx = 0.0, Dy = 0.0, Dz = 5.0

Penetration depth: 8.5 (8.1, 9.3) [mm]



Dipole 1800 MHz

1800 MHz System Performance Check / Dipole Sn# 258TR / Forward Power = 248mW / Acceptable Temp Range is 18-25°C Room Temp at time of measurement = 22C Simulant Temp at time of measurement = 21.0C

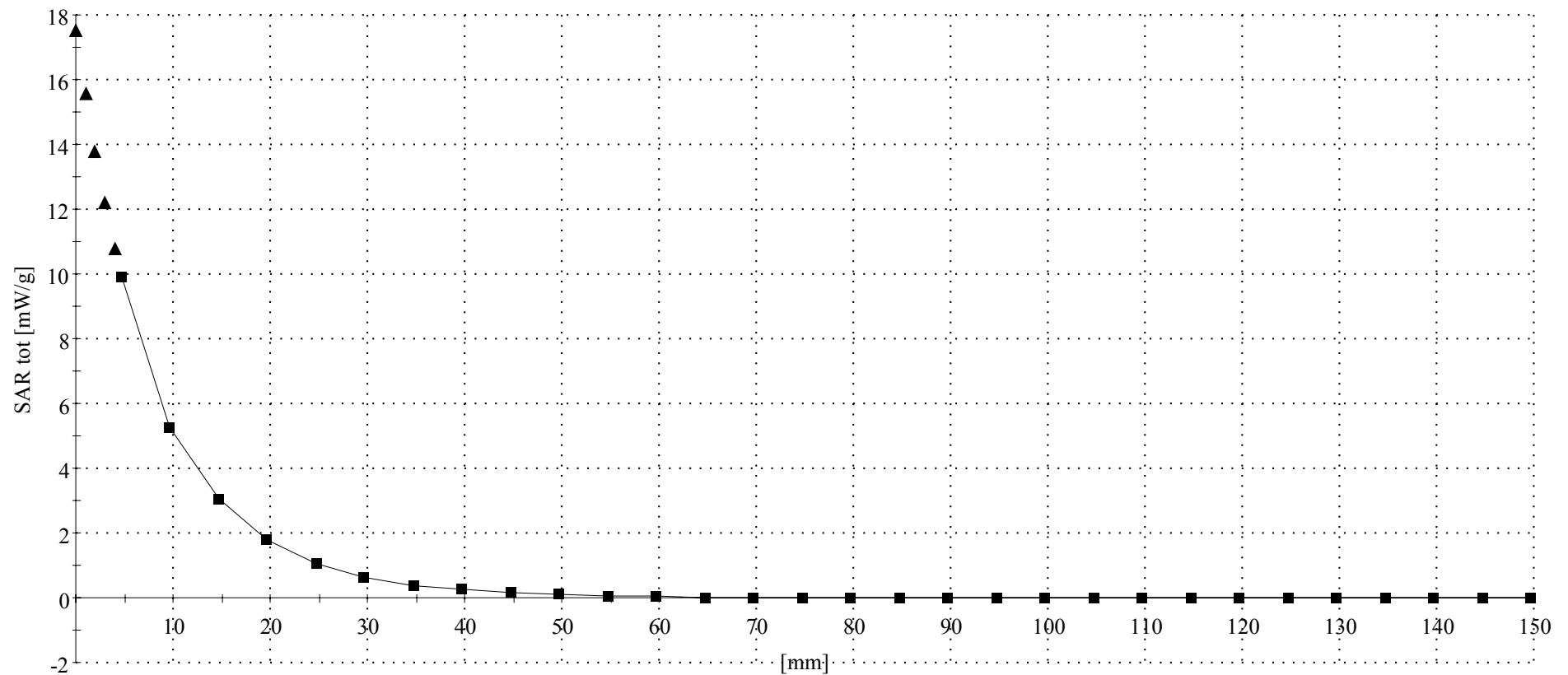
R5 TP-1133 Glycol SAM Expanded (Rev. 2)-9Jan03 Phantom; Section; Position: ; Frequency: 1800 MHz

Probe: ET3DV6 - SN1514 - VALIDATION; ConvF(5.20,5.20,5.20); Crest factor: 1.0; 1800 MHz VALIDATION: $\sigma = 1.38$ mho/m $\epsilon_r = 39.0$ $\rho = 1.00$ g/cm³

; , 0)

Z-Axis: Dx = 0.0, Dy = 0.0, Dz = 5.0

Penetration depth: 8.3 (8.0, 9.1) [mm]



Dipole 900 MHz

900 MHz System Performance Check / Dipole Sn# 079 / Forward Power = 253mW / Acceptable Temp Range is 18-25°C Room Temp at time of measurement = 22C Simulant Temp at time of measurement = 20.8C

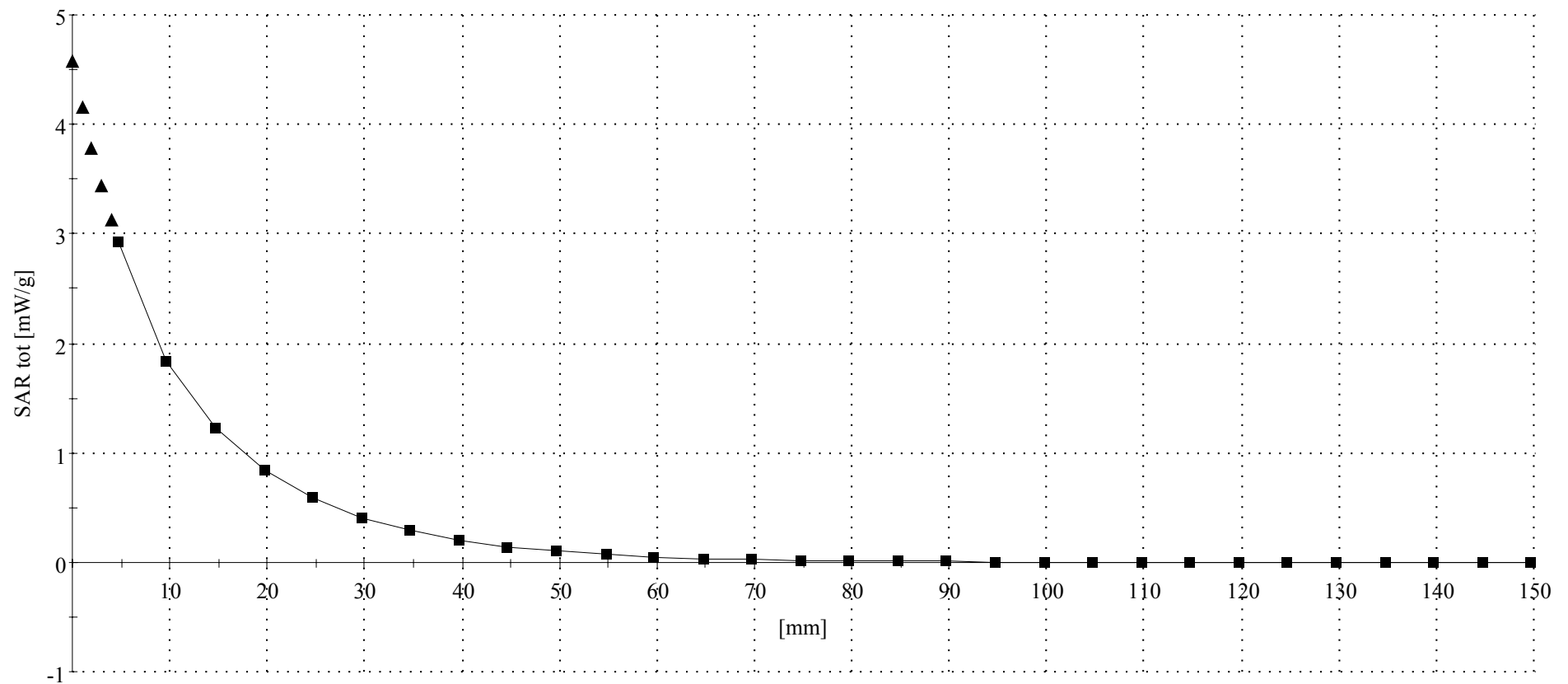
R5 TP-1132 Sugar SAM Expanded (Rev. 2)-9Jan03 Phantom; Section; Position: ; Frequency: 900 MHz

Probe: ET3DV6 - SN1514 - VALIDATION; ConvF(6.20,6.20,6.20); Crest factor: 1.0; 900 MHz VALIDATION: $\sigma = 0.97$ mho/m $\epsilon_r = 41.2$ $\rho = 1.00$ g/cm³

; , 0)

Z-Axis: Dx = 0.0, Dy = 0.0, Dz = 5.0

Penetration depth: 11.4 (10.6, 12.6) [mm]



Dipole 900 MHz

900 MHz System Performance Check / Dipole Sn# 78 / Forward Power = 251mW / Acceptable Temp Range is 18-25°C Room Temp at time of measurement = 22C. Simulant Temp at time of measurement = 22.0C

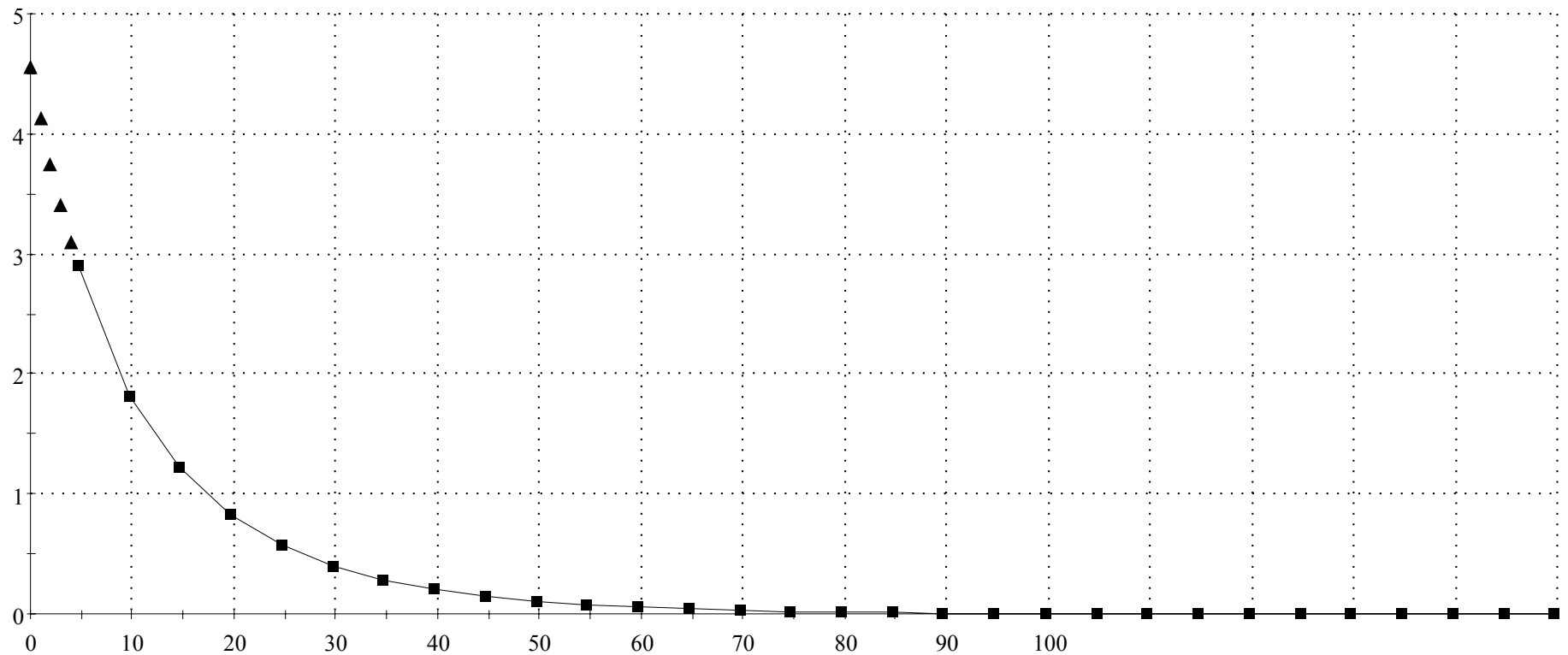
R# 2 TP-1106 SUGAR SAM Expanded (Rev. 2)-9Jan03 Phantom; Section; Position: ; Frequency: 900 MHz

Probe: ET3DV6 - SN1515 - Validation(2); ConvF(6.50,6.50,6.50); Crest factor: 1.0; 900 MHz VALIDATION: $\sigma = 0.98$ mho/m $\epsilon_r = 41.9$ $\rho = 1.00$ g/cm³

; , 0

Z-Axis: Dx = 0.0, Dy = 0.0, Dz = 5.0

Penetration depth: 11.4 (10.5, 12.6) [mm]



Dipole 900 MHz

900 MHz System Performance Check / Dipole Sn# 079 / Forward Power = 250mW / Acceptable Temp Range is 18-25°C Room Temp at time of measurement = 21C Simulant Temp at time of measurement = 20.7C

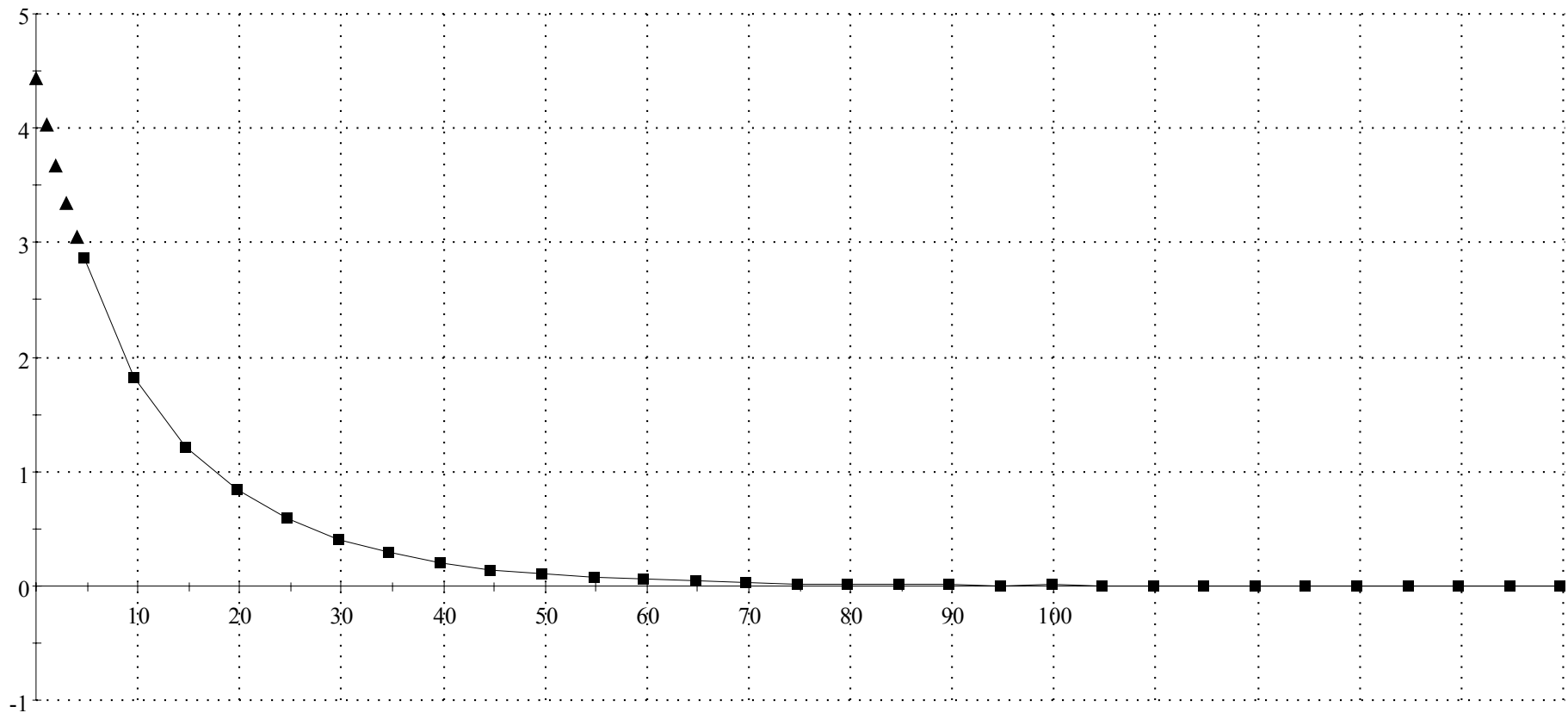
R5 TP-1132 Sugar SAM Expanded (Rev. 2)-9Jan03 Phantom; Section; Position: ; Frequency: 900 MHz

Probe: ET3DV6 - SN1514 - VALIDATION; ConvF(6.20,6.20,6.20); Crest factor: 1.0; 900 MHz VALIDATION: $\sigma = 0.97$ mho/m $\epsilon_r = 40.9$ $\rho = 1.00$ g/cm³

; , 0)

Z-Axis: Dx = 0.0, Dy = 0.0, Dz = 5.0

Penetration depth: 11.6 (10.9, 12.6) [mm]



Dipole 1800 MHz

1800 MHz System Performance Check / Dipole Sn# 258TR / Forward Power = 250 mW / Acceptable Temp Range is 18-25°C Room Temp at time of measurement = 21C Simulant Temp at time of measurement = 21.0C

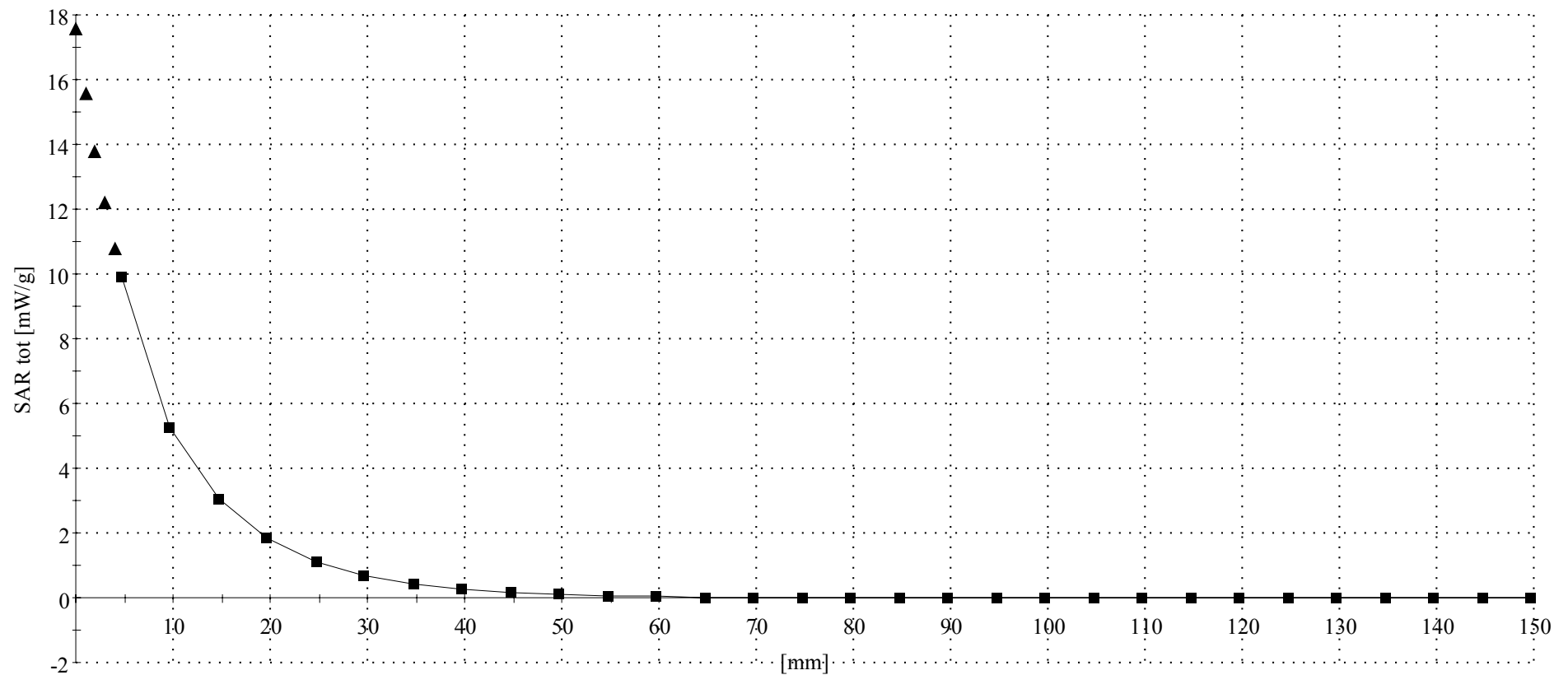
R5 TP-1133 Glycol SAM Expanded (Rev. 2)-9Jan03 Phantom; Section; Position: ; Frequency: 1800 MHz

Probe: ET3DV6 - SN1514 - VALIDATION; ConvF(5.20,5.20,5.20); Crest factor: 1.0; 1800 MHz VALIDATION: $\sigma = 1.37$ mho/m $\epsilon_r = 39.3$ $\rho = 1.00$ g/cm³

; , 0)

Z-Axis: Dx = 0.0, Dy = 0.0, Dz = 5.0

Penetration depth: 8.4 (8.0, 9.2) [mm]

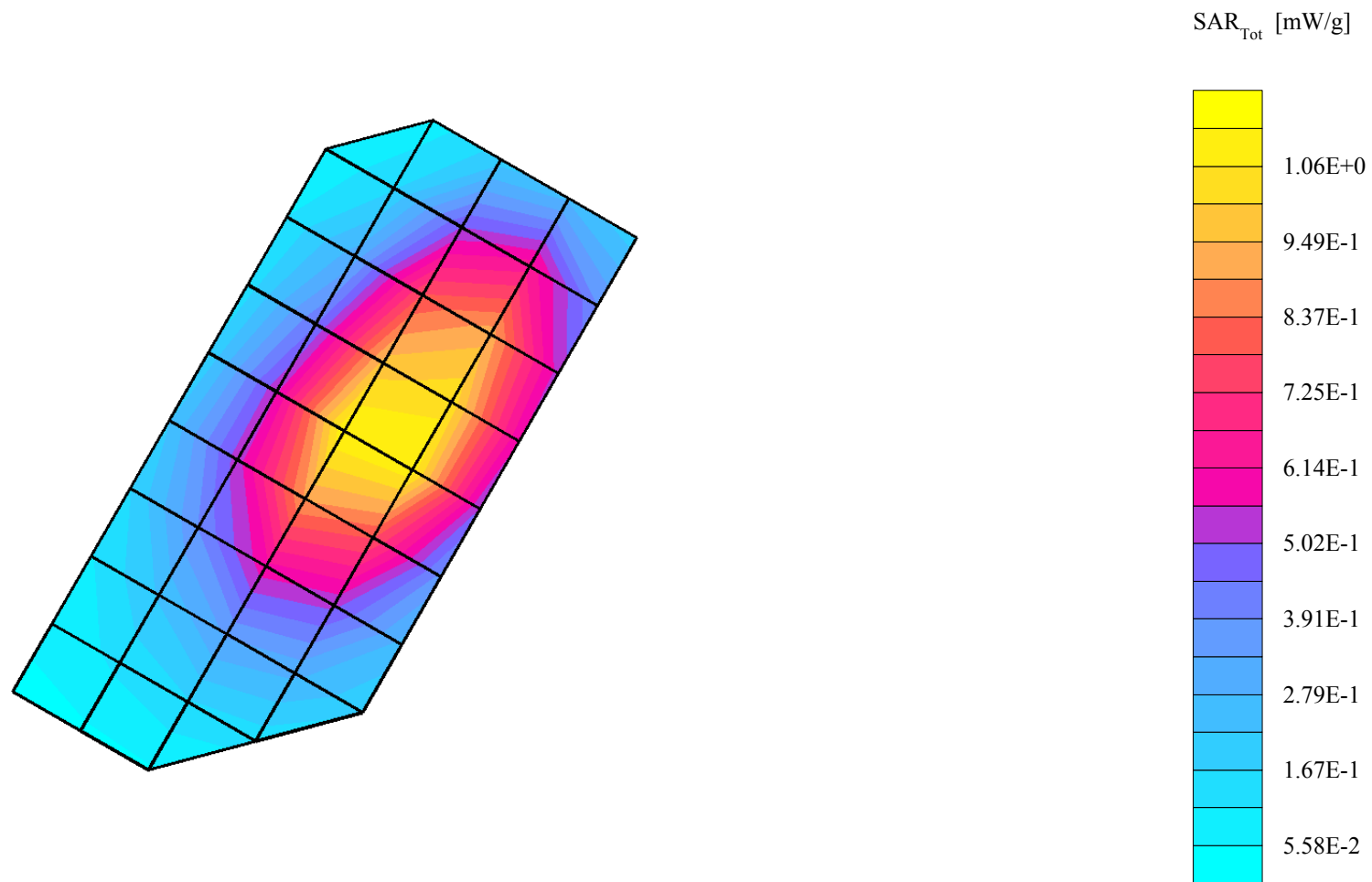


Appendix 2

SAR distribution plots for Phantom Head Adjacent Use

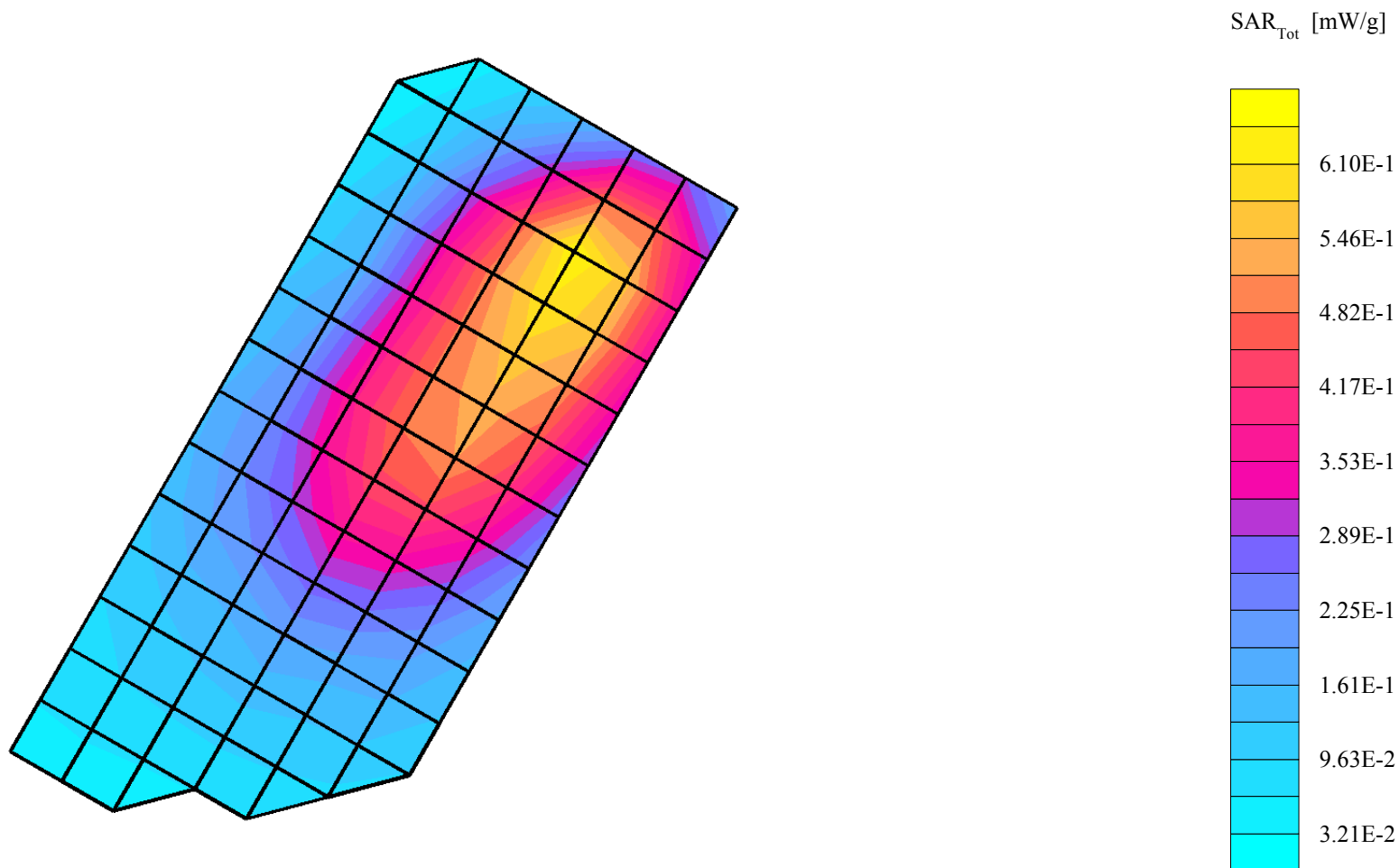
SN# 3D328B0C

Ch# 799 / Pwr Step: 02 (OTA) / Antenna Position: FIXED / Battery Model #: SNN5571A / DEVICE POSITION: Cheek touch
R5 TP-1132 Sugar SAM Expanded (Rev. 2)-9Jan03 Phantom; Left Hand Section; Position: (90°,180°); Frequency: 849 MHz
Probe: ET3DV6 - SN1514 - IEEE Head; ConvF(6.20,6.20,6.20); Crest factor: 1.0; 835 MHz Head & Body: $\sigma = 0.91$ mho/m $\epsilon_r = 42.0$ $\rho = 1.00$ g/cm³
Cube 7x7x7: SAR (1g): 1.18 mW/g, SAR (10g): 0.808 mW/g, (Worst-case extrapolation)
Coarse: Dx = 15.0, Dy = 15.0, Dz = 15.0
Penetration depth: 15.6 (15.0, 16.2) [mm]
Powerdrift: -0.07 dB



SN# 3D328B0C

Ch# 384 / Pwr Step: 02 (OTA) / Antenna Position: FIXED / Battery Model #: SNN5571A / DEVICE POSITION: Cheek touch
R5 TP-1132 Sugar SAM Expanded (Rev. 2)-9Jan03 Phantom; Left Hand Section; Position: (90°,180°); Frequency: 837 MHz
Probe: ET3DV6 - SN1514 - IEEE Head; ConvF(6.20,6.20,6.20); Crest factor: 1.0; 835 MHz Head & Body: $\sigma = 0.91$ mho/m $\epsilon_r = 42.0$ $\rho = 1.00$ g/cm³
Cube 7x7x7: SAR (1g): 0.637 mW/g, SAR (10g): 0.411 mW/g, (Worst-case extrapolation)
Coarse: Dx = 10.0, Dy = 10.0, Dz = 10.0
Penetration depth: 12.0 (11.4, 12.8) [mm]
Powerdrift: 0.17 dB



SN# 3D328B56

Ch# 777 / Pwr Step: 02 (OTA) / Antenna Position: FIXED / Battery Model #: SNN5571A / DEVICE POSITION: Cheek touch

R5 TP-1132 Sugar SAM Expanded (Rev. 2)-9Jan03 Phantom; Left Hand Section; Position: (90°,180°); Frequency: 848 MHz

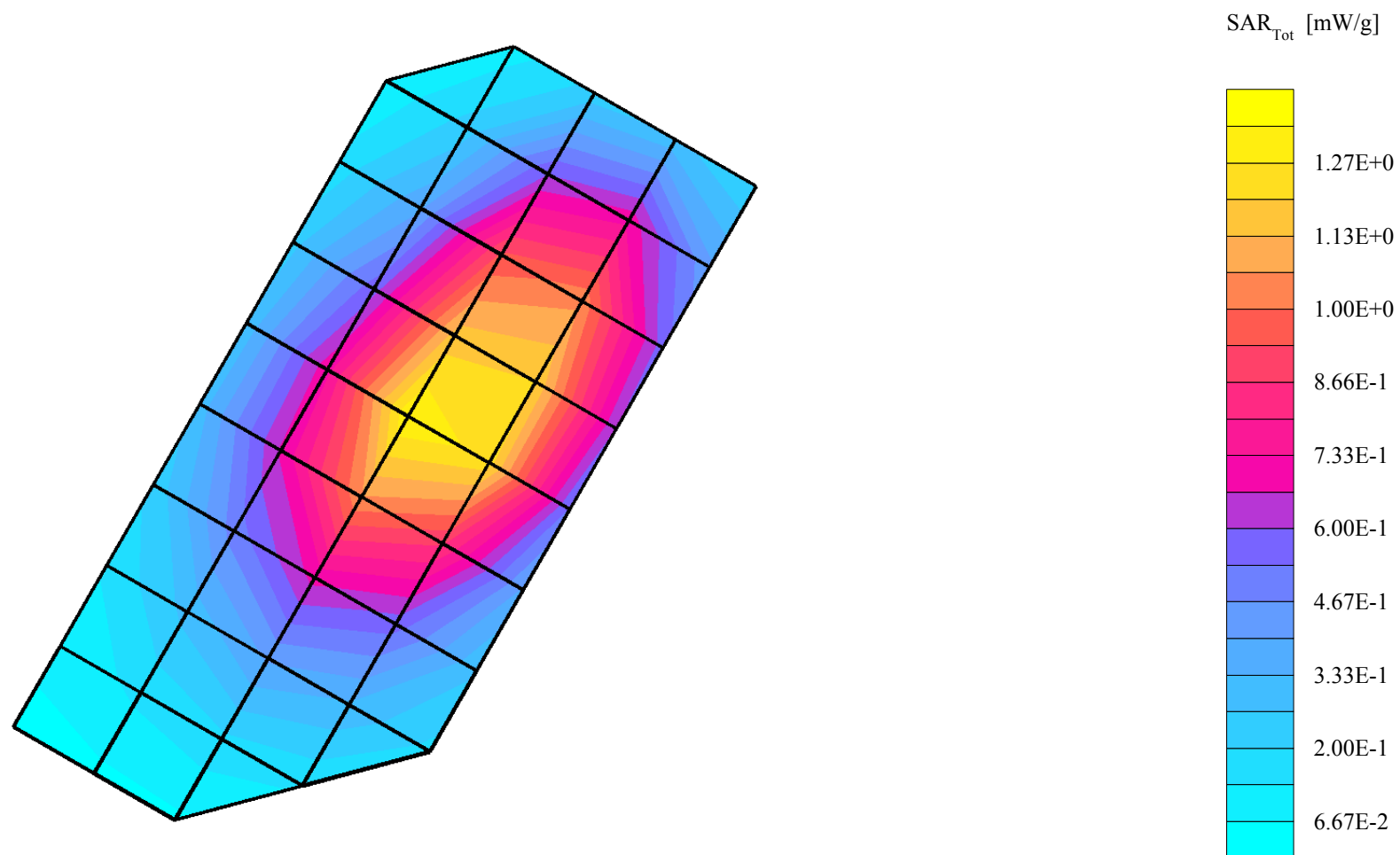
Probe: ET3DV6 - SN1514 - IEEE Head; ConvF(6.20,6.20,6.20); Crest factor: 1.0; 835 MHz Head & Body: $\sigma = 0.92$ mho/m $\epsilon_r = 42.1$ $\rho = 1.00$ g/cm³

Cube 7x7x7: SAR (1g): 1.39 mW/g, SAR (10g): 0.955 mW/g, (Worst-case extrapolation)

Coarse: Dx = 15.0, Dy = 15.0, Dz = 15.0

Penetration depth: 15.4 (14.5, 16.3) [mm]

Powerdrift: 0.13 dB



SN# 3D328B56

Ch# 384 / Pwr Step: 02 (OTA) / Antenna Position: FIXED / Battery Model #: SNN5571A / DEVICE POSITION: tilt

R5 TP-1132 Sugar SAM Expanded (Rev. 2)-9Jan03 Phantom; Left Hand Section; Position: (90°,180°); Frequency: 836 MHz

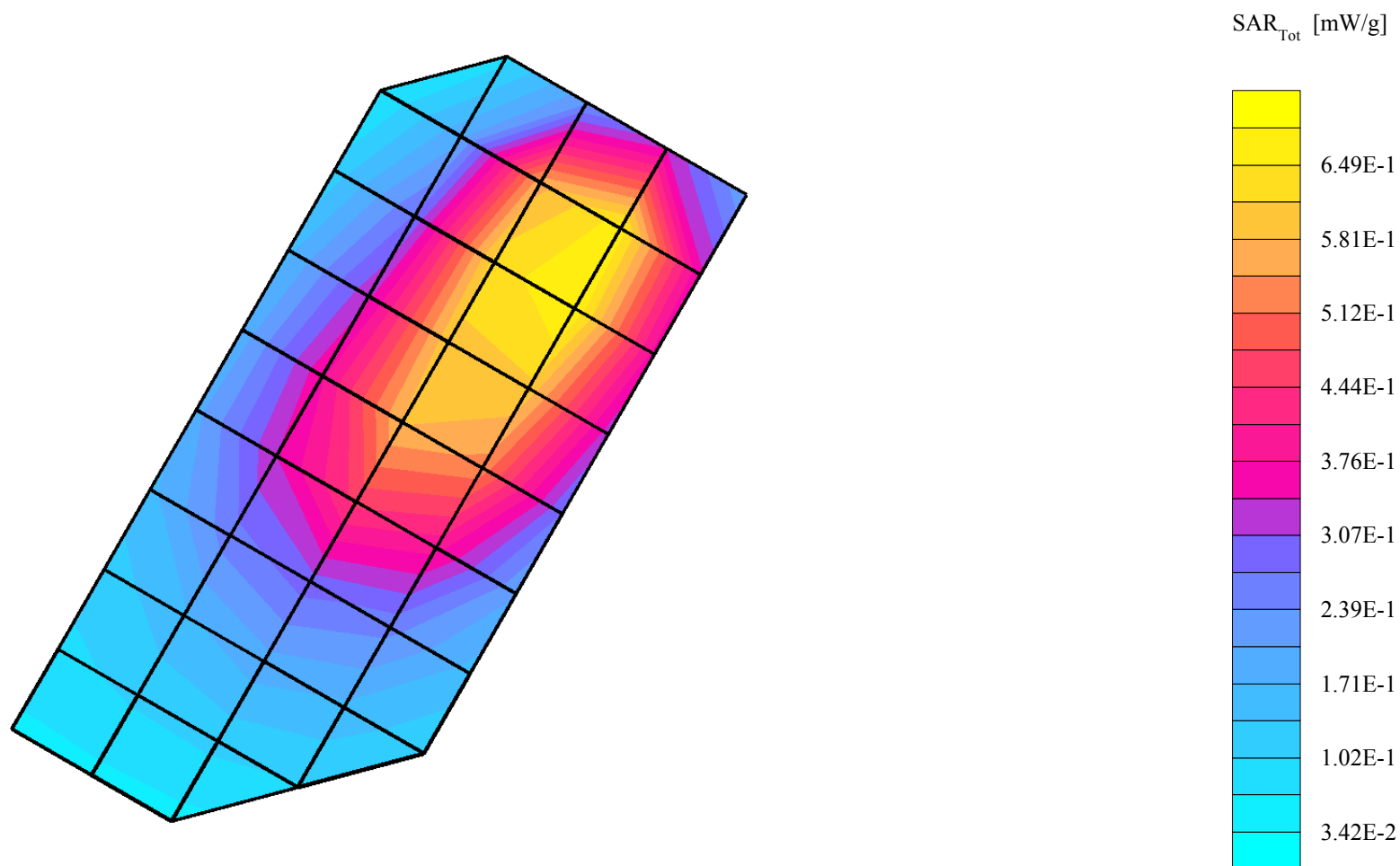
Probe: ET3DV6 - SN1514 - IEEE Head; ConvF(6.20,6.20,6.20); Crest factor: 1.0; 835 MHz Head & Body: $\sigma = 0.92$ mho/m $\epsilon_r = 42.1$ $\rho = 1.00$ g/cm³

Cube 7x7x7: SAR (1g): 0.743 mW/g, SAR (10g): 0.484 mW/g, (Worst-case extrapolation)

Coarse: Dx = 15.0, Dy = 15.0, Dz = 15.0

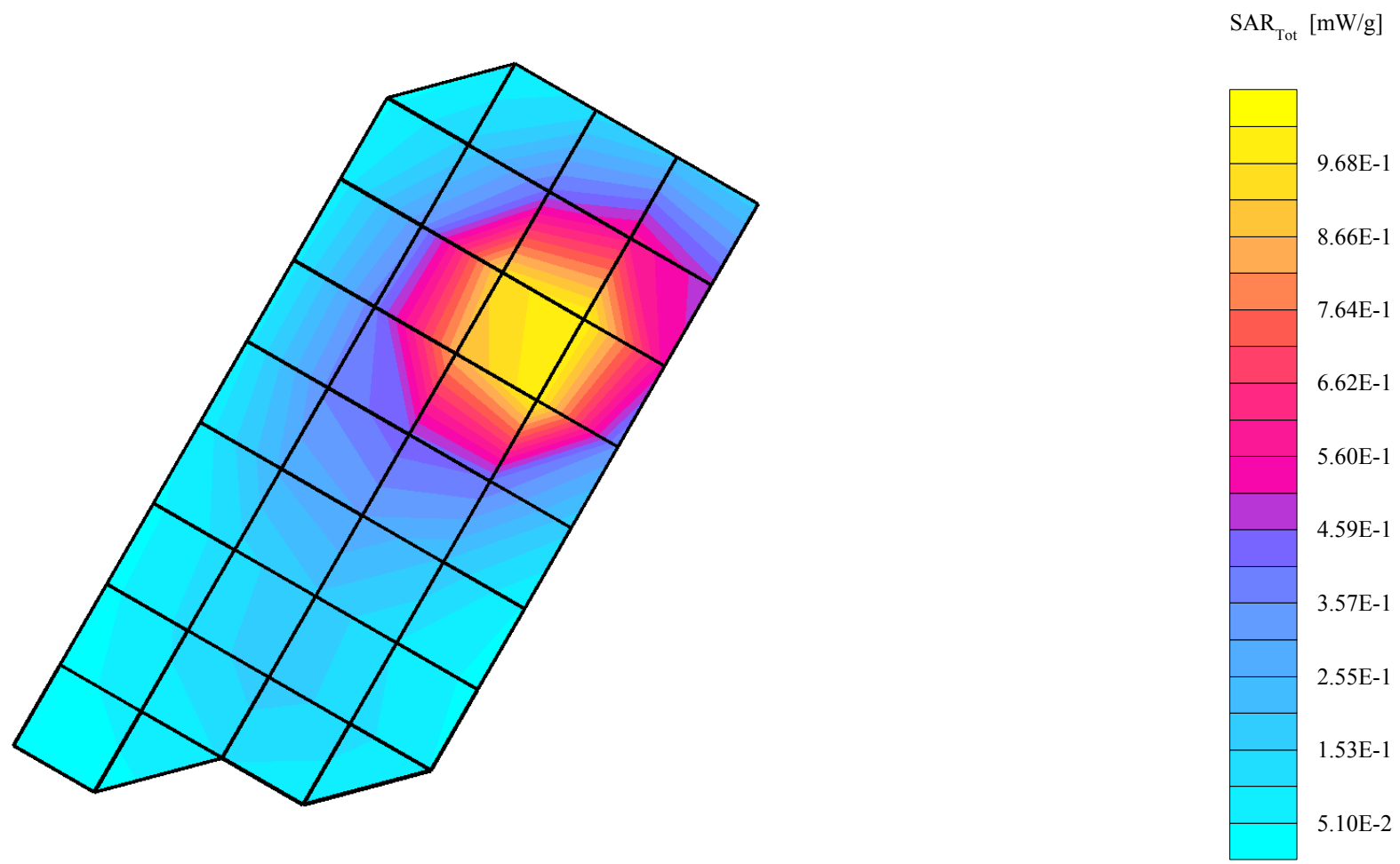
Penetration depth: 12.6 (12.1, 13.2) [mm]

Powerdrift: -0.11 dB



SN# 3D328B0C

Ch# 600 / Pwr Step: Always UP / Antenna Position: FIXED/ Battery Model #: SNN5571A / DEVICE POSITION: Cheek touch
R5 TP-1133 Glycol SAM Expanded (Rev. 2)-9Jan03 Phantom; Left Hand Section; Position: (90°,180°); Frequency: 1880 MHz
Probe: ET3DV6 - SN1514 - IEEE Head; ConvF(5.20,5.20,5.20); Crest factor: 1.0; 1880 MHz Head & Body: $\sigma = 1.45$ mho/m $\epsilon_r = 38.9$ $\rho = 1.00$ g/cm³
Cube 7x7x7: SAR (1g): 1.21 mW/g, SAR (10g): 0.688 mW/g, (Worst-case extrapolation)
Coarse: Dx = 15.0, Dy = 15.0, Dz = 15.0
Penetration depth: 10.2 (9.8, 10.7) [mm]
Powerdrift: 0.07 dB



SN# 3D328B0C

Ch# 600 / Pwr Step: Always UP / Antenna Position: FIXED/ Battery Model #: SNN5571A / DEVICE POSITION: 15 deg TILT

R5 TP-1133 Glycol SAM Expanded (Rev. 2)-9Jan03 Phantom; Right Hand Section; Position: (90°,180°); Frequency: 1880 MHz

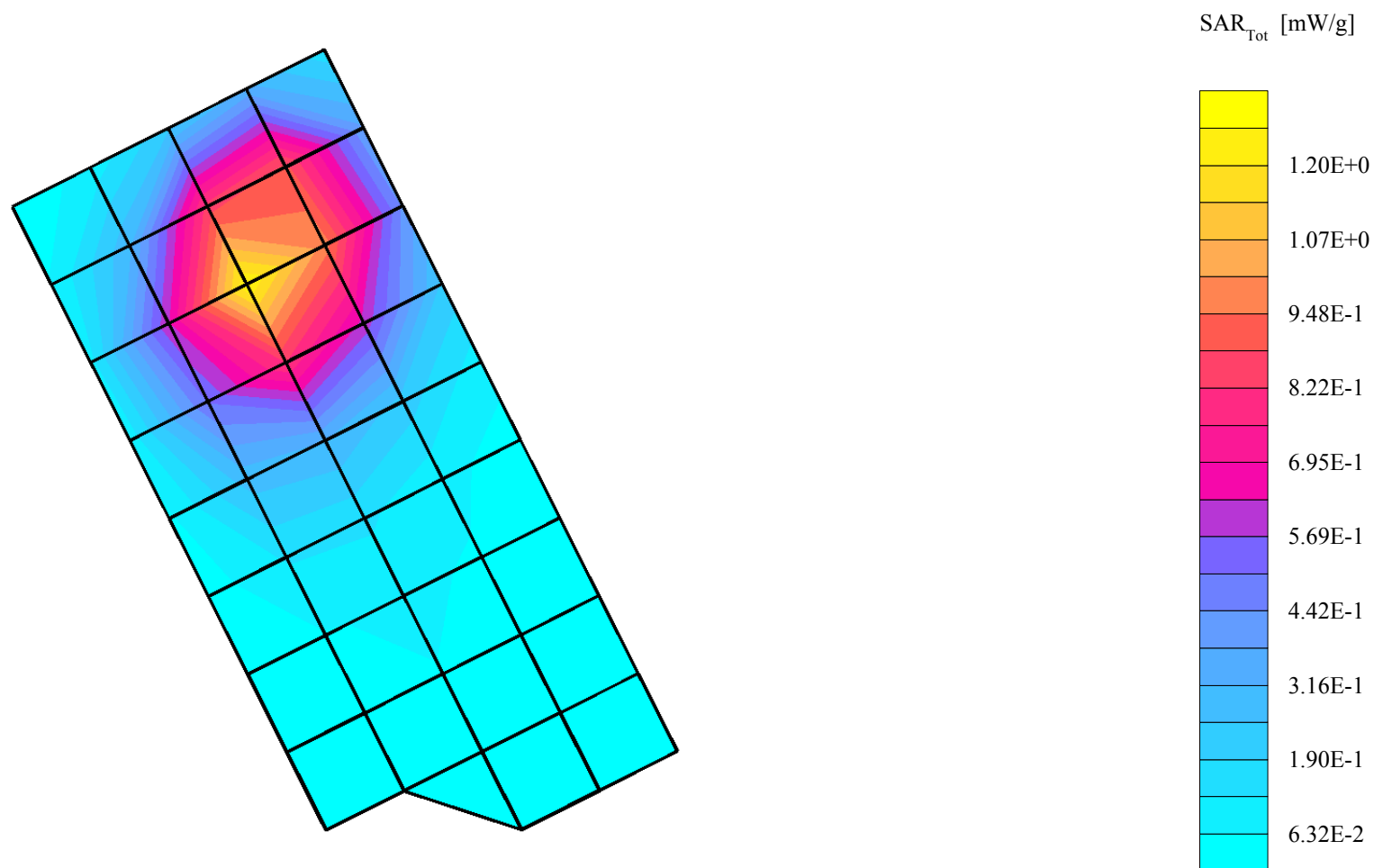
Probe: ET3DV6 - SN1514 - IEEE Head; ConvF(5.20,5.20,5.20); Crest factor: 1.0; 1880 MHz Head & Body: $\sigma = 1.47$ mho/m $\epsilon_r = 38.7$ $\rho = 1.00$ g/cm³

Cube 7x7x7: SAR (1g): 1.27 mW/g, SAR (10g): 0.733 mW/g, (Worst-case extrapolation)

Coarse: Dx = 15.0, Dy = 15.0, Dz = 15.0

Penetration depth: 9.8 (9.6, 10.1) [mm]

Powerdrift: -0.03 dB



SN# 3D328B56

Ch# 777/ Pwr Step: OTA / Antenna Position: FIXED / Battery Model #: SNN5571A / DEVICE POSITION (cheek or rotated): CHEEK / Accessory Model #: RUBBER BOOT (TANG)
SYN8916A

R# 2 TP-1106 SUGAR SAM Expanded (Rev. 2)-9Jan03 Phantom; Left Hand Section; Position: (90°,180°); Frequency: 848 MHz

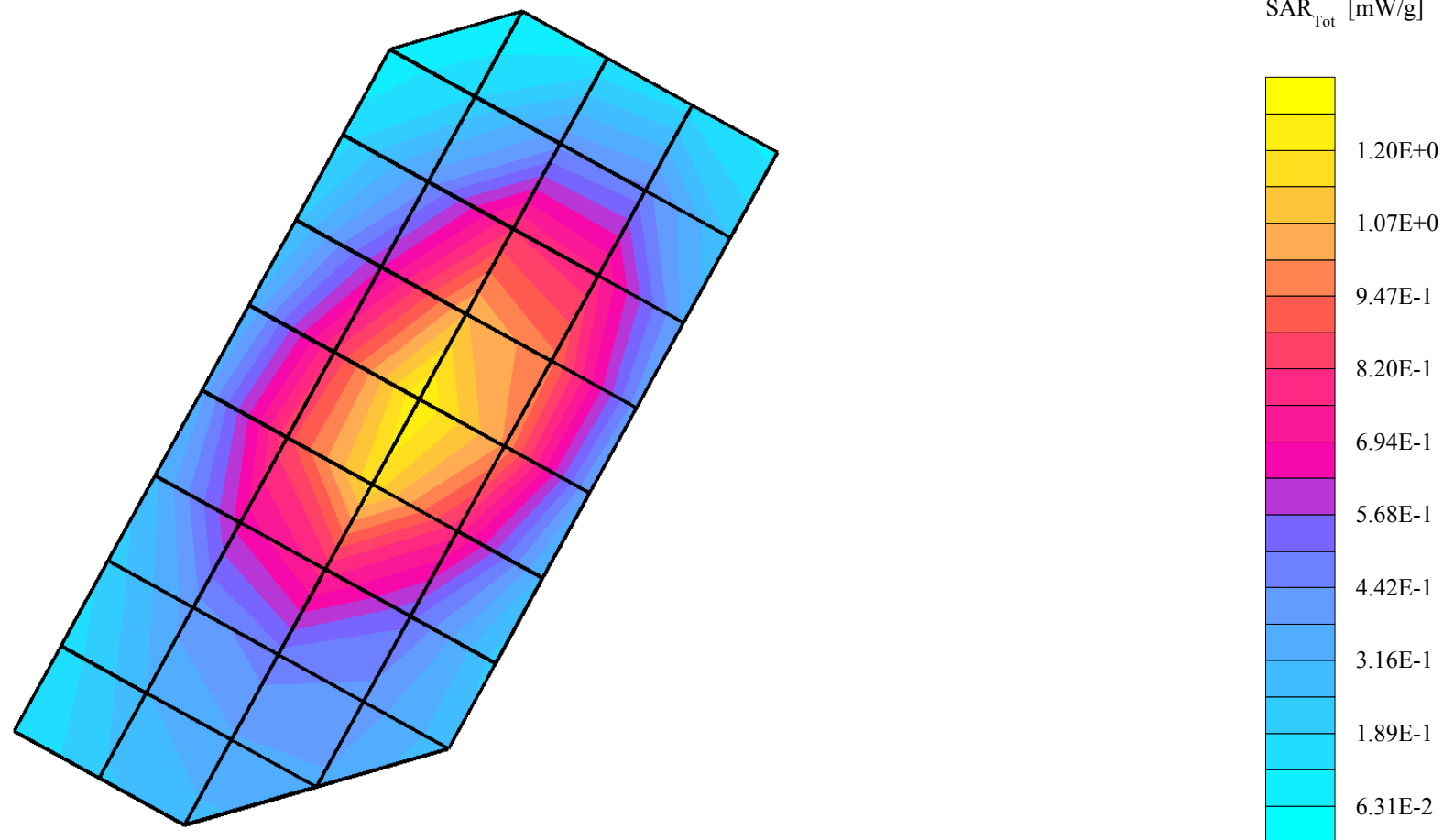
Probe: ET3DV6 - SN1515 - IEEE Head; ConvF(6.50,6.50,6.50); Crest factor: 1.0; 835 MHz Head & Body: $\sigma = 0.92$ mho/m $\epsilon_r = 42.7$ $\rho = 1.00$ g/cm³

Cube 7x7x7: SAR (1g): 1.29 mW/g, SAR (10g): 0.888 mW/g, (Worst-case extrapolation)

Coarse: Dx = 15.0, Dy = 15.0, Dz = 15.0

Penetration depth: 15.6 (14.7, 16.4) [mm]

Powerdrift: 0.07 dB



SN# 3D328B0C

Ch# 799 / Pwr Step: 02 (OTA) / Antenna Position: FIXED / Battery Model #: SNN5571A / DEVICE POSITION: Cheek touch / Accessory Model #: Rubber Boot (Tang) SYN8916A
R5 TP-1132 Sugar SAM Expanded (Rev. 2)-9Jan03 Phantom; Left Hand Section; Position: (90°,180°); Frequency: 849 MHz

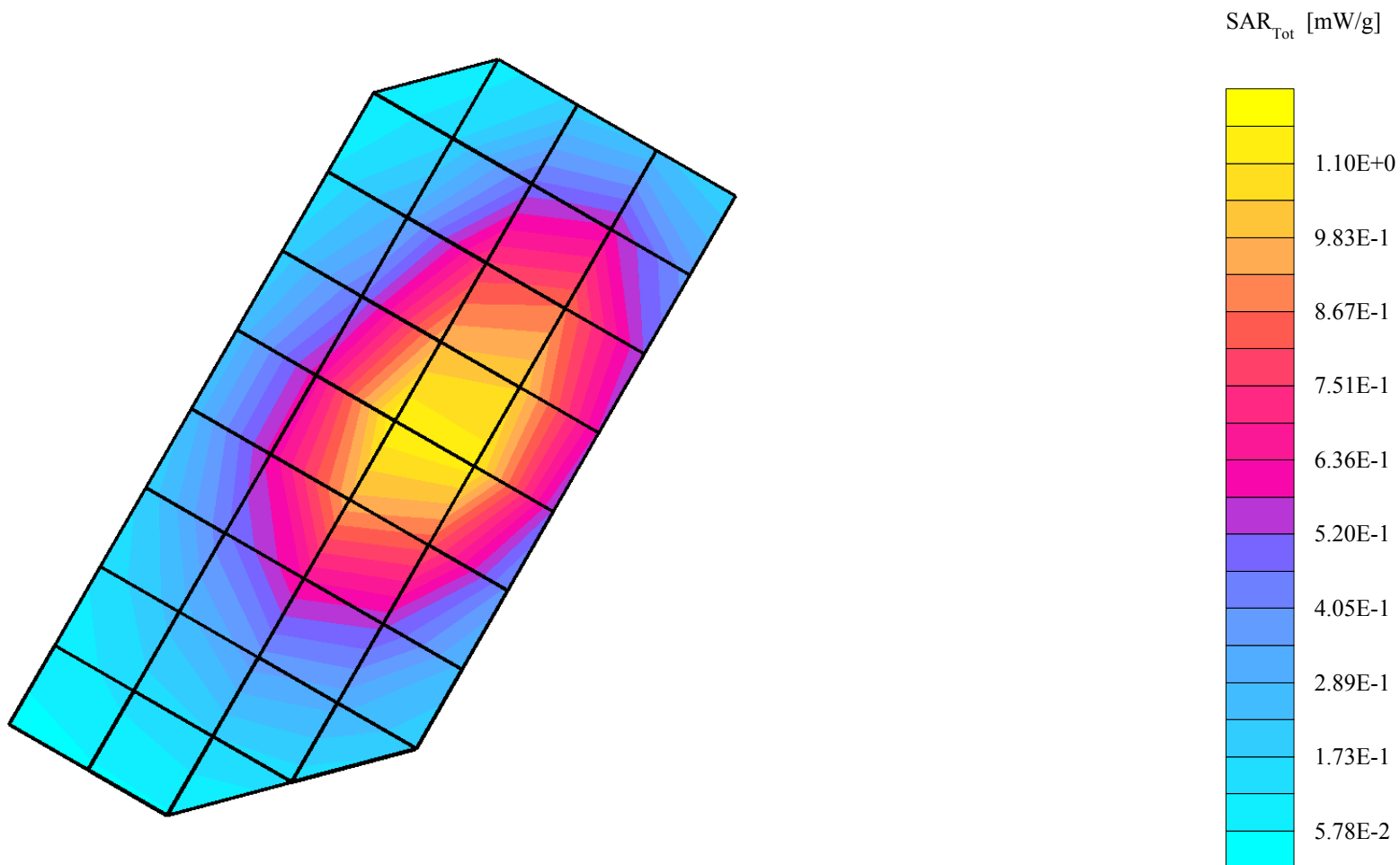
Probe: ET3DV6 - SN1514 - IEEE Head; ConvF(6.20,6.20,6.20); Crest factor: 1.0; 835 MHz Head & Body: $\sigma = 0.91$ mho/m $\epsilon_r = 42.0$ $\rho = 1.00$ g/cm³

Cube 7x7x7: SAR (1g): 1.23 mW/g, SAR (10g): 0.841 mW/g, (Worst-case extrapolation)

Coarse: Dx = 15.0, Dy = 15.0, Dz = 15.0

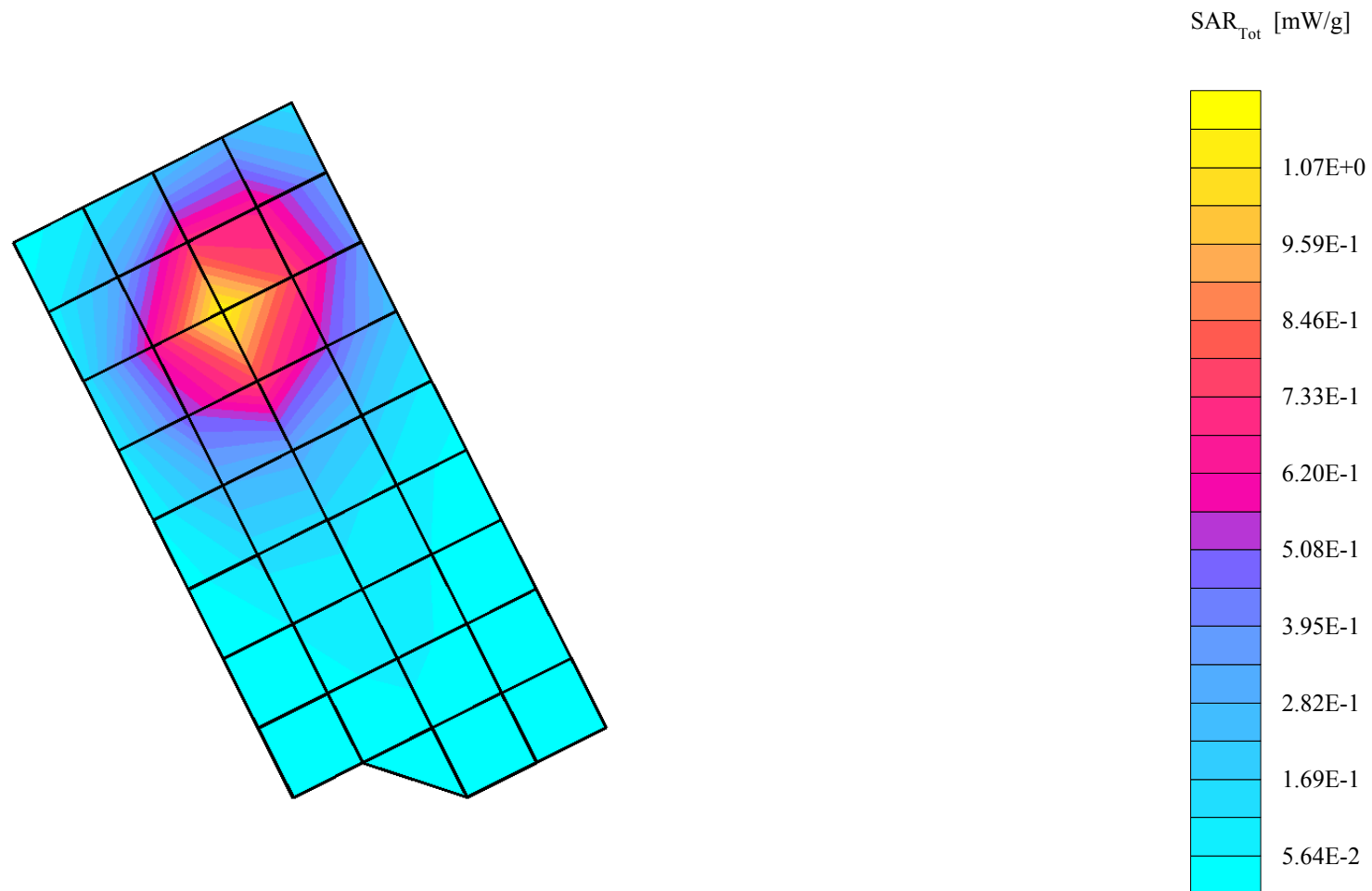
Penetration depth: 15.3 (13.9, 16.7) [mm]

Powerdrift: 0.08 dB



SN# 3D328B0C

Ch# 600 / Pwr Step: Always UP / Antenna Position: FIXED/ Battery Model #: SNN5571A / DEVICE POSITION: 15 deg TILT Accessory Model #: Rubber Boot (Tang) SYN8916A
R5 TP-1133 Glycol SAM Expanded (Rev. 2)-9Jan03 Phantom; Right Hand Section; Position: (90°,180°); Frequency: 1880 MHz
Probe: ET3DV6 - SN1514 - IEEE Head; ConvF(5.20,5.20,5.20); Crest factor: 1.0; 1880 MHz Head & Body: $\sigma = 1.45$ mho/m $\epsilon_r = 39.0$ $\rho = 1.00$ g/cm³
Cube 7x7x7: SAR (1g): 1.10 mW/g, SAR (10g): 0.640 mW/g, (Worst-case extrapolation)
Coarse: Dx = 15.0, Dy = 15.0, Dz = 15.0
Penetration depth: 10.3 (10.1, 10.6) [mm]
Powerdrift: -0.15 dB



SN# 3D328B0C

Ch# 799 / Pwr Step: 02 (OTA) / Antenna Position: FIXED / Battery Model #: SNN5571A / DEVICE POSITION: Cheek touch / Accessory Model #: Leather Pouch (SYN9170A)
R5 TP-1132 Sugar SAM Expanded (Rev. 2)-9Jan03 Phantom; Left Hand Section; Position: (90°,180°); Frequency: 849 MHz

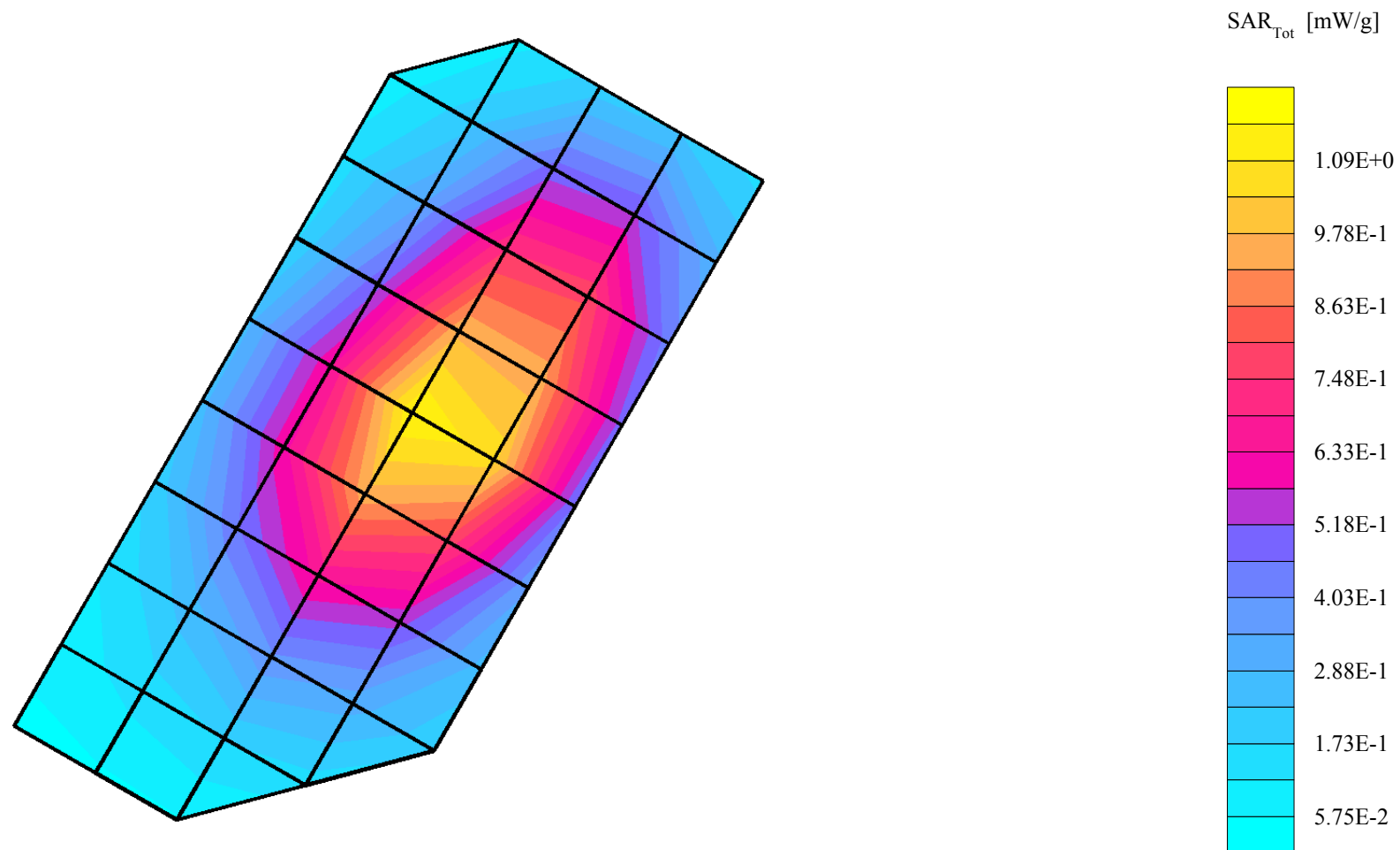
Probe: ET3DV6 - SN1514 - IEEE Head; ConvF(6.20,6.20,6.20); Crest factor: 1.0; 835 MHz Head & Body: $\sigma = 0.91$ mho/m $\epsilon_r = 42.0$ $\rho = 1.00$ g/cm³

Cube 7x7x7: SAR (1g): 1.20 mW/g, SAR (10g): 0.822 mW/g, (Worst-case extrapolation)

Coarse: Dx = 15.0, Dy = 15.0, Dz = 15.0

Penetration depth: 15.1 (14.1, 16.2) [mm]

Powerdrift: 0.15 dB



SN# 3D328B56

Ch# 777/ Pwr Step: OTA / Antenna Position: FIXED / Battery Model #: SNN5571A / DEVICE POSITION (cheek or rotated): CHEEK / Accessory Model #: LEATHER POUCH SYN9170A
R# 2 TP-1106 SUGAR SAM Expanded (Rev. 2)-9Jan03 Phantom; Left Hand Section; Position: (90°,180°); Frequency: 848 MHz

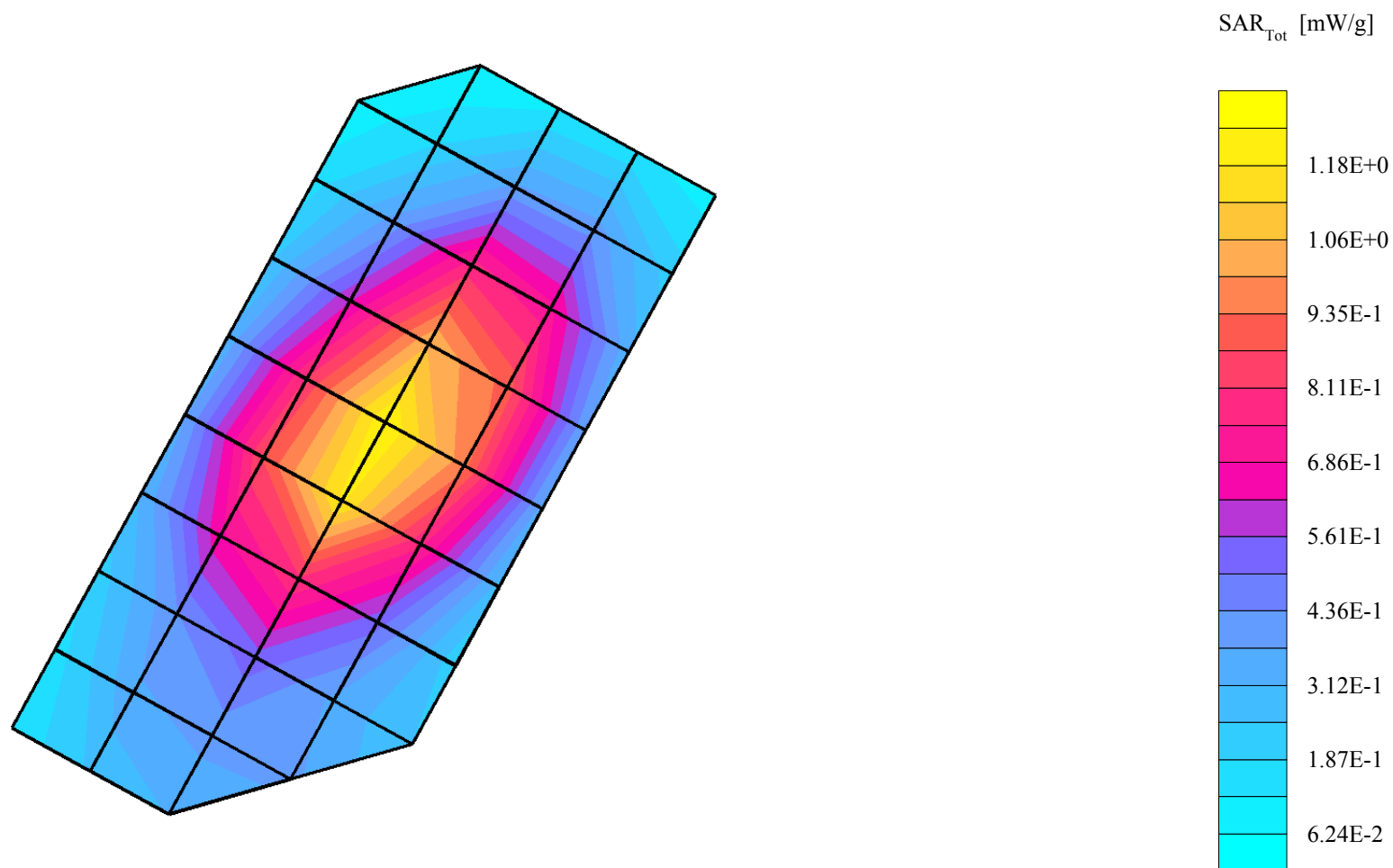
Probe: ET3DV6 - SN1515 - IEEE Head; ConvF(6.50,6.50,6.50); Crest factor: 1.0; 835 MHz Head & Body: $\sigma = 0.92$ mho/m $\epsilon_r = 42.7$ $\rho = 1.00$ g/cm³

Cube 7x7x7: SAR (1g): 1.31 mW/g, SAR (10g): 0.890 mW/g, (Worst-case extrapolation)

Coarse: Dx = 15.0, Dy = 15.0, Dz = 15.0

Penetration depth: 15.5 (14.6, 16.5) [mm]

Powerdrift: 0.09 dB



SN# 3D328B0C

Ch# 600 / Pwr Step: Always UP / Antenna Position: FIXED/ Battery Model #: SNN5571A / DEVICE POSITION: 15 deg TILT / Accessory Model #: Leather Pouch (SYN9178A)
R5 TP-1133 Glycol SAM Expanded (Rev. 2)-9Jan03 Phantom; Right Hand Section; Position: (90°,180°); Frequency: 1880 MHz

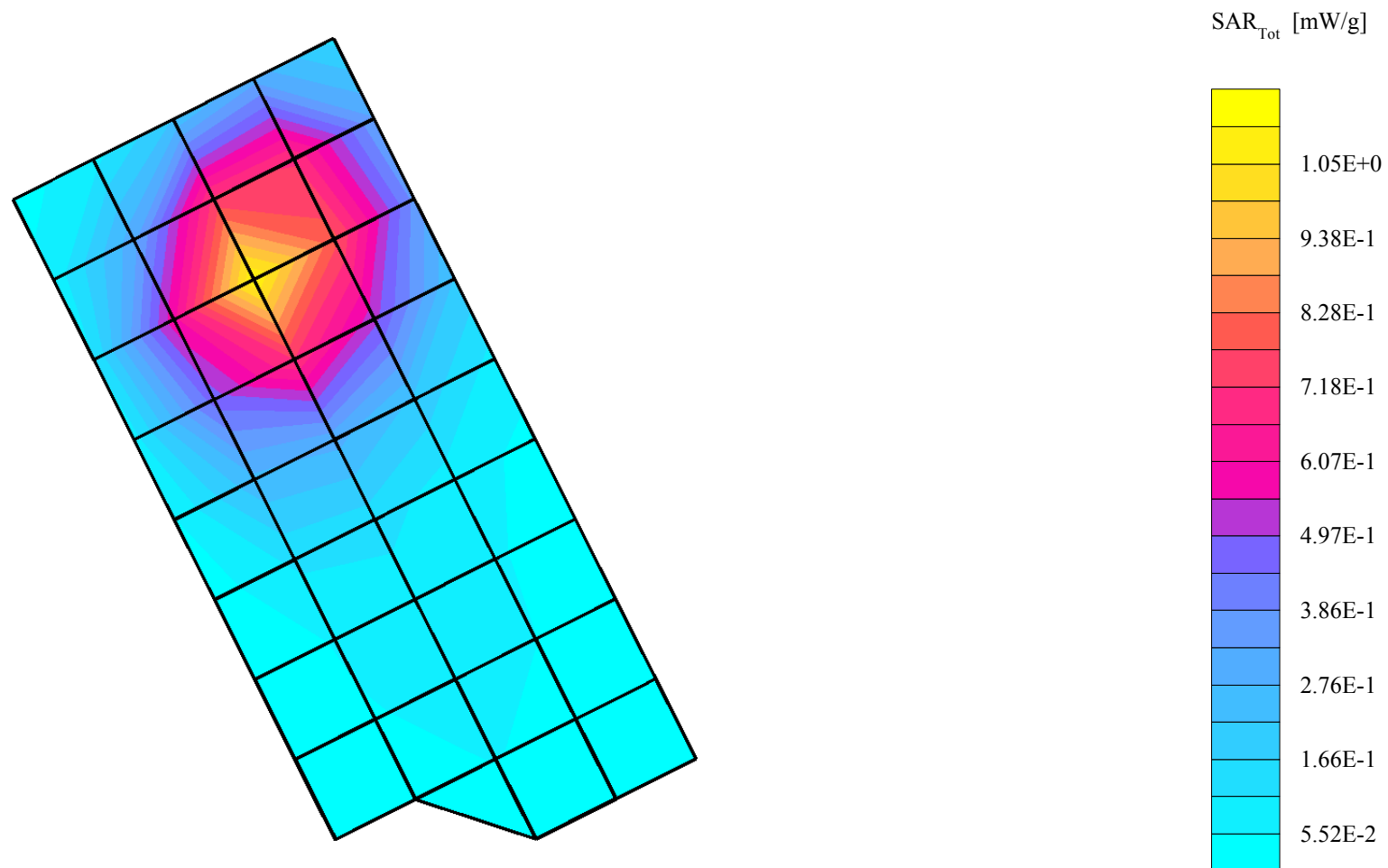
Probe: ET3DV6 - SN1514 - IEEE Head; ConvF(5.20,5.20,5.20); Crest factor: 1.0; 1880 MHz Head & Body: $\sigma = 1.45$ mho/m $\epsilon_r = 39.0$ $\rho = 1.00$ g/cm³

Cube 7x7x7: SAR (1g): 1.08 mW/g, SAR (10g): 0.629 mW/g, (Worst-case extrapolation)

Coarse: Dx = 15.0, Dy = 15.0, Dz = 15.0

Penetration depth: 10.4 (10.3, 10.7) [mm]

Powerdrift: -0.08 dB



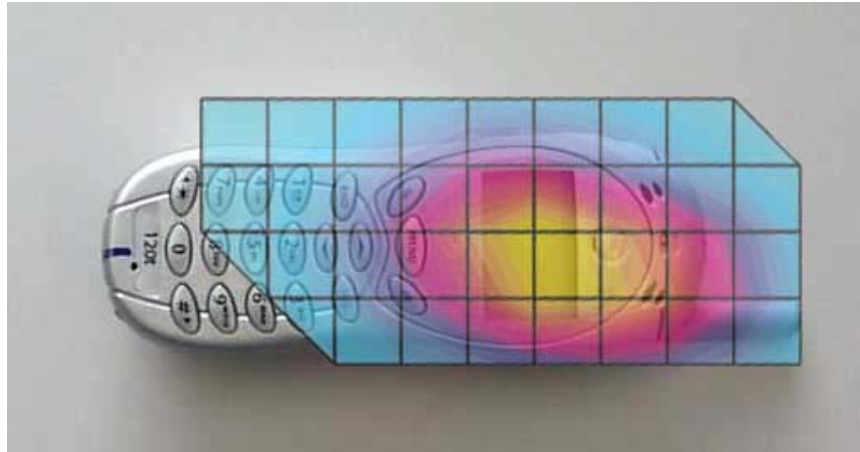


Figure 1. Typical 800MHz Left Head Adjacent Contour Overlaid on Phone with Antenna Fixed (Cheek Touch)

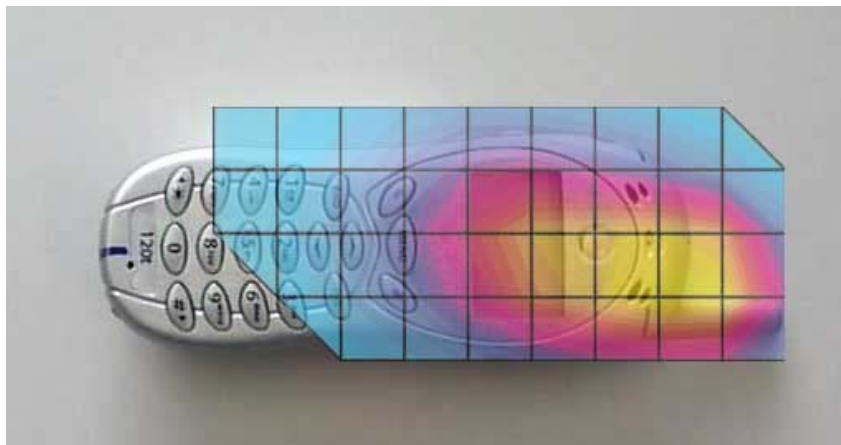


Figure 2. Typical 800MHz Left Head Adjacent Contour Overlaid on Phone with Antenna Fixed (15° Tilt)

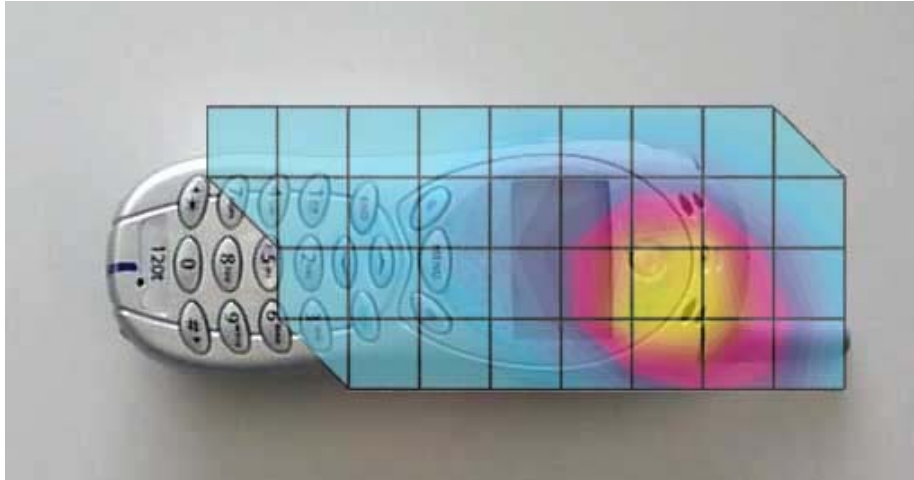


Figure 3. Typical 1900MHz Right Head Adjacent Contour Overlaid on Phone with Antenna Fixed (Cheek Touch)

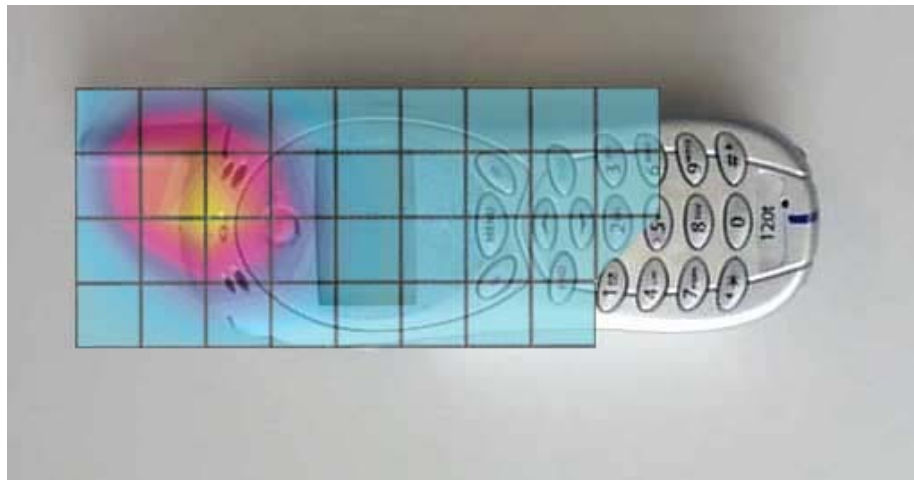


Figure 4. Typical 800MHz Left Head Adjacent Contour Overlaid on Phone with Antenna Fixed (15 ° Tilt)

Appendix 3

SAR distribution plots for Body Worn Configuration

SN# 3D328B0C

Ch# 384 / Pwr Step: 02 (OTA) / Antenna Position: Fixed / Battery Model #: SNN5571A / Accessory Model # = Belt Clip SHN7175A

R5 Amy Twin Phantom Rev.4 (22Aug02) Phantom; section 1 Section; Position: (0°,0°); Frequency: 837 MHz

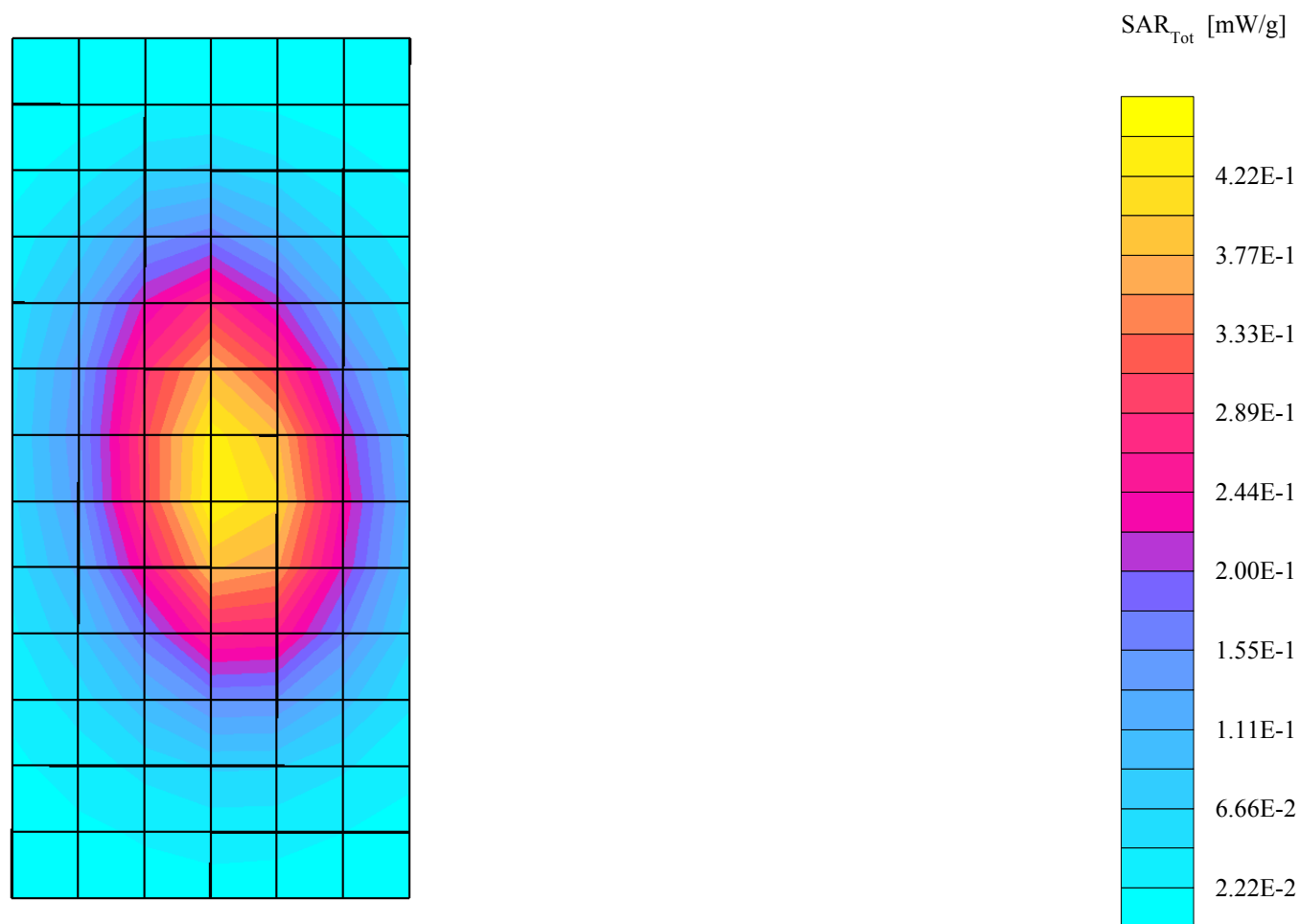
Probe: ET3DV6 - SN1514 - FCC Body; ConvF(6.00,6.00,6.00); Crest factor: 1.0; 835 MHz Head & Body: $\sigma = 0.97$ mho/m $\epsilon_r = 54.5$ $\rho = 1.00$ g/cm³

Cube 7x7x7: SAR (1g): 0.456 mW/g, SAR (10g): 0.326 mW/g, (Worst-case extrapolation)

Coarse: Dx = 15.0, Dy = 15.0, Dz = 10.0

Penetration depth: 16.4 (14.5, 18.5) [mm]

Powerdrift: 0.07 dB



SN# 3D328B56

Ch# 384 / Pwr Step: OTA / Antenna Position: FIXED / Battery Model #: SNN5571A / Accessory Model #: BELT CLIP SHY7175A

R2 Amy Twin Phantom Rev.3 Phantom; section 2 Section; Position: (0°,0°); Frequency: 837 MHz

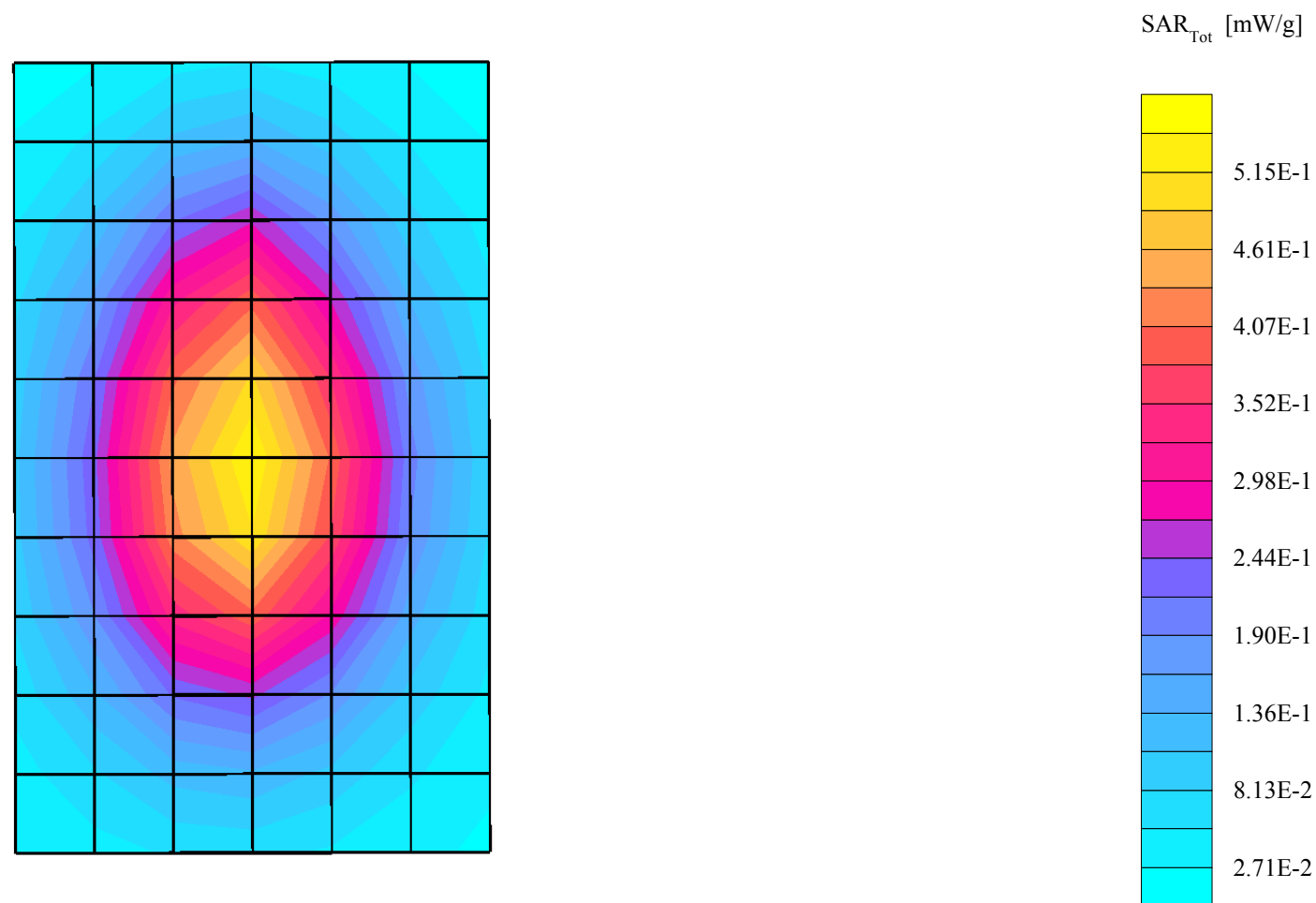
Probe: ET3DV6 - SN1515 - FCC Body; ConvF(6.40,6.40,6.40); Crest factor: 1.0; 835 MHz Head & Body: $\sigma = 0.98$ mho/m $\epsilon_r = 55.8$ $\rho = 1.00$ g/cm³

Cube 7x7x7: SAR (1g): 0.528 mW/g, SAR (10g): 0.378 mW/g, (Worst-case extrapolation)

Coarse: Dx = 15.0, Dy = 15.0, Dz = 10.0

Penetration depth: 16.5 (15.2, 18.0) [mm]

Powerdrift: -0.19 dB



SN# 3D328B0C

Ch# 600 / Pwr Step: Always UP / Antenna Position: FIXED/ Battery Model #: SNN5571A / Accessory Model #: Leather Pouch (SYN9178A) with Universal Clip (SYN8763A)

R5 Amy Twin Phantom Rev.4 (22Aug02) Phantom; section 2 Section; Position: (0°,0°); Frequency: 1880 MHz

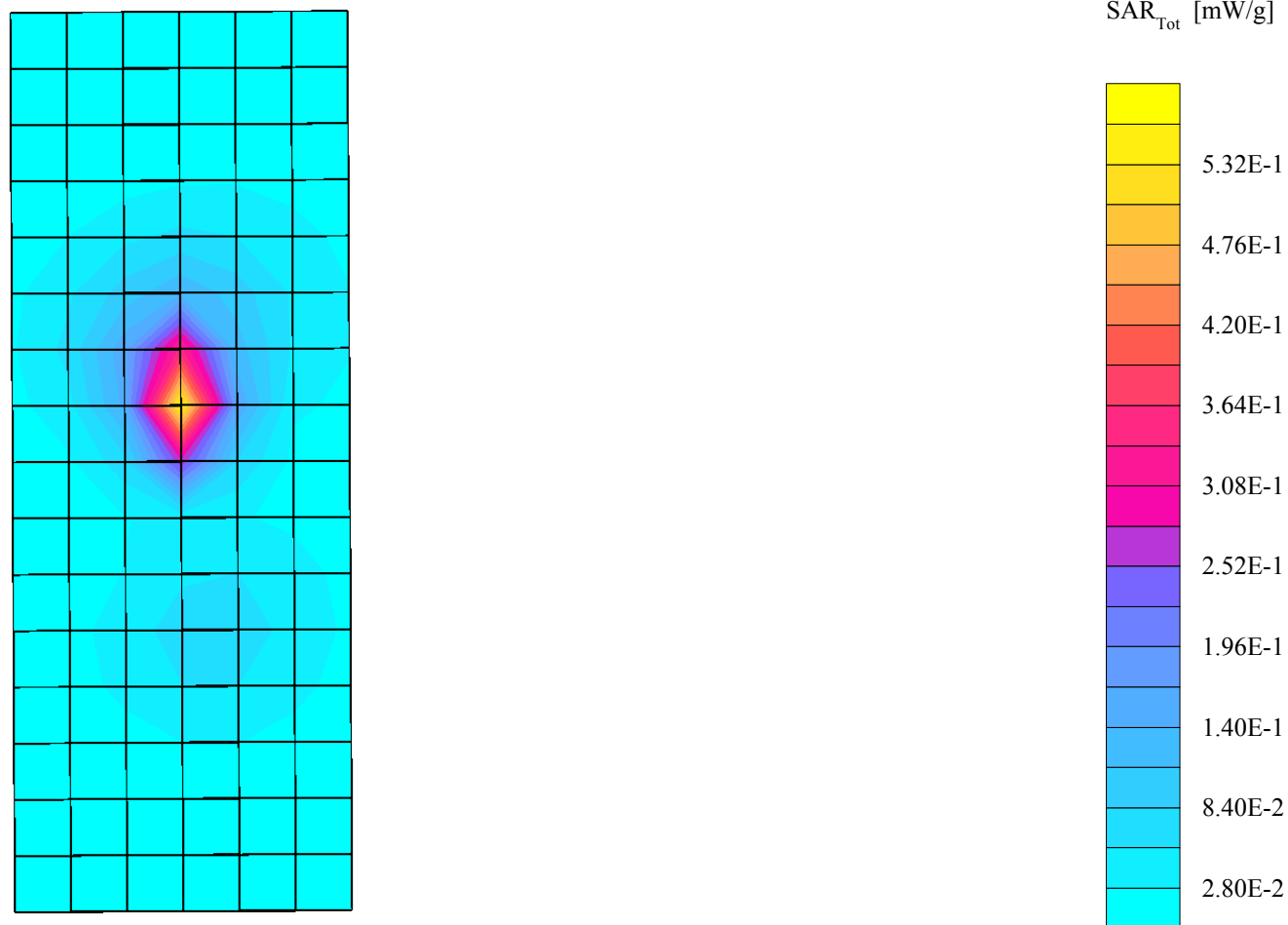
Probe: ET3DV6 - SN1514 - FCC Body; ConvF(4.60,4.60,4.60); Crest factor: 1.0; 1880 MHz Head & Body: $\sigma = 1.59$ mho/m $\epsilon_r = 52.6$ $\rho = 1.00$ g/cm³

Cube 7x7x7: SAR (1g): 0.528 mW/g, SAR (10g): 0.263 mW/g, (Worst-case extrapolation)

Coarse: Dx = 15.0, Dy = 15.0, Dz = 10.0

Penetration depth: 8.3 (7.9, 9.2) [mm]

Powerdrift: -0.02 dB



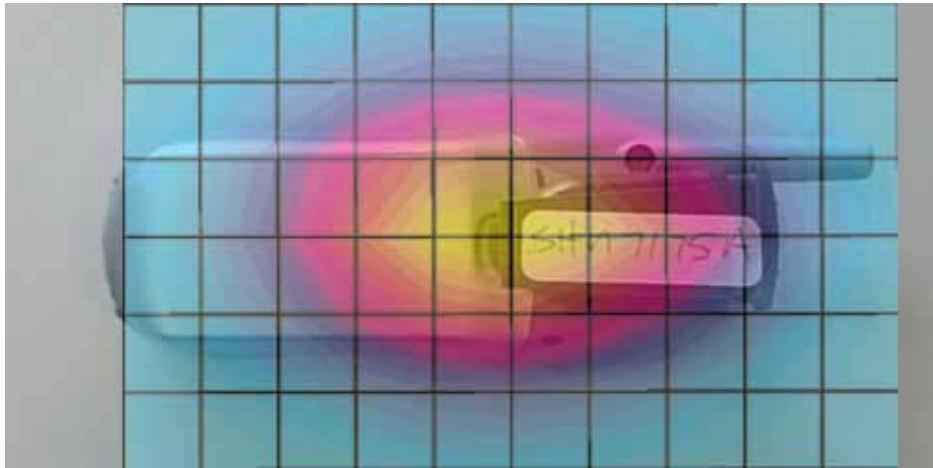


Figure 5. Typical 800 MHz Body-Worn Contour Overlaid on Phone with Antenna Fixed

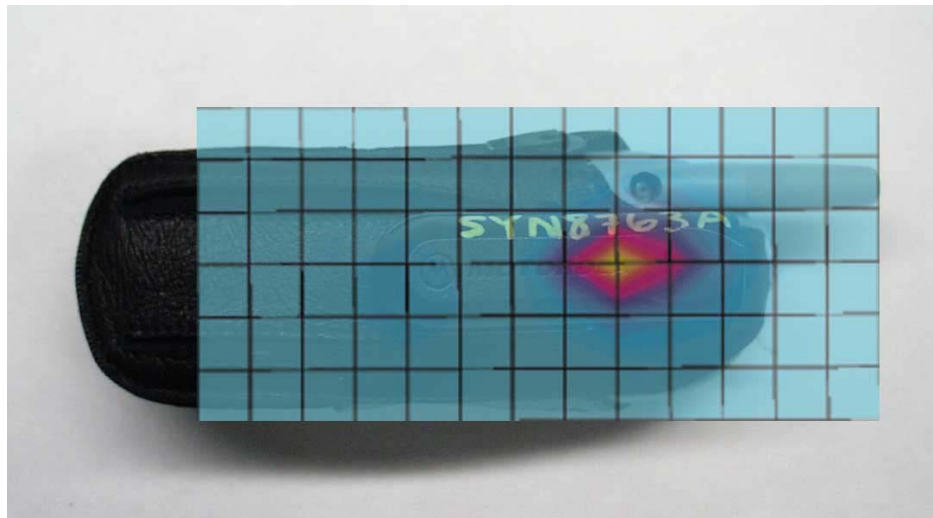


Figure 6. Typical 1900 MHz Body-Worn Contour Overlaid on Phone with Antenna Fixed

Appendix 4

Probe Calibration Certificate (Please see attachment)

Appendix 5

Dipole Characterization Certificate (Please see attachment)

Appendix 6
Measurement Uncertainty Budget

Uncertainty Budget for Device Under Test									
<i>a</i>	<i>b</i>	<i>c</i>	<i>d</i>	<i>e = f(d,k)</i>	<i>f</i>	<i>g</i>	<i>h = c x f / e</i>	<i>i = c x g / e</i>	<i>k</i>
Uncertainty Component	Sec.	Tol. (± %)	Prob. Dist.	Div.	<i>c_i</i> (1 g)	<i>c_i</i> (10 g)	1 g <i>u_i</i> (±%)	10 g <i>u_i</i> (±%)	<i>v_i</i>
Measurement System									
Probe Calibration	E.2.1	9.5	N	2.00	1	1	4.8	4.8	∞
Axial Isotropy	E.2.2	4.7	R	1.73	0.707	0.707	1.9	1.9	∞
Spherical Isotropy	E.2.2	9.6	R	1.73	0.707	0.707	3.9	3.9	∞
Boundary Effect	E.2.3	5.8	R	1.73	1	1	3.3	3.3	∞
Linearity	E.2.4	4.7	R	1.73	1	1	2.7	2.7	∞
System Detection Limits	E.2.5	1.0	R	1.73	1	1	0.6	0.6	∞
Readout Electronics	E.2.6	1.0	N	1.00	1	1	1.0	1.0	∞
Response Time	E.2.7	0.8	R	1.73	1	1	0.5	0.5	∞
Integration Time	E.2.8	1.3	R	1.73	1	1	0.8	0.8	∞
RF Ambient Conditions	E.6.1	3.0	R	1.73	1	1	1.7	1.7	∞
Probe Positioner Mechanical Tolerance	E.6.2	0.3	R	1.73	1	1	0.2	0.2	∞
Probe Positioning with respect to Phantom Shell	E.6.3	1.1	R	1.73	1	1	0.6	0.6	∞
Extrapolation, interpolation and Integration Algorithms for Max SAR Evaluation	E.5	3.9	R	1.73	1	1	2.3	2.3	∞
Test sample Related									
Test Sample Positioning	E.4.2	3.6	N	1.00	1	1	3.6	3.6	29
Device Holder Uncertainty	E.4.1	2.8	N	1.00	1	1	2.8	2.8	8
Output Power Variation - SAR drift measurement	6.6.2	5.0	R	1.73	1	1	2.9	2.9	∞
Phantom and Tissue Parameters									
Phantom Uncertainty (shape and thickness tolerances)	E.3.1	4.0	R	1.73	1	1	2.3	2.3	∞
Liquid Conductivity - deviation from target values	E.3.2	5.0	R	1.73	0.64	0.43	1.8	1.2	∞
Liquid Conductivity - measurement uncertainty	E.3.3	10.0	R	1.73	0.64	0.43	3.7	2.5	∞
Liquid Permittivity - deviation from target values	E.3.2	10.0	R	1.73	0.6	0.49	3.5	2.8	∞
Liquid Permittivity - measurement uncertainty	E.3.3	5.0	R	1.73	0.6	0.49	1.7	1.4	∞
Combined Standard Uncertainty			RSS				11.72	11.09	1363
Expanded Uncertainty (95% CONFIDENCE LEVEL)			<i>k</i> =2				22.98	21.75	

Uncertainty Budget for System Performance Check (dipole & flat phantom)

<i>a</i>	<i>b</i>	<i>c</i>	<i>d</i>	<i>e = f(d,k)</i>	<i>f</i>	<i>g</i>	<i>h = c x f / e</i>	<i>i = c x g / e</i>	<i>k</i>
Uncertainty Component	Sec.	Tol. (± %)	Prob. Dist.	Div.	<i>c_i</i> (1 g)	<i>c_i</i> (10 g)	1 g <i>u_i</i> (±%)	10 g <i>u_i</i> (±%)	<i>v_i</i>
Measurement System									
Probe Calibration	E.2.1	9.5	N	2.00	1	1	4.8	4.8	∞
Axial Isotropy	E.2.2	4.7	R	1.73	1	1	2.7	2.7	∞
Spherical Isotropy	E.2.2	9.6	R	1.73	0	0	0.0	0.0	∞
Boundary Effect	E.2.3	5.8	R	1.73	1	1	3.3	3.3	∞
Linearity	E.2.4	4.7	R	1.73	1	1	2.7	2.7	∞
System Detection Limits	E.2.5	1.0	R	1.73	1	1	0.6	0.6	∞
Readout Electronics	E.2.6	1.0	N	1.00	1	1	1.0	1.0	∞
Response Time	E.2.7	0.0	R	1.73	1	1	0.0	0.0	∞
Integration Time	E.2.8	0.0	R	1.73	1	1	0.0	0.0	∞
RF Ambient Conditions	E.6.1	3.0	R	1.73	1	1	1.7	1.7	∞
Probe Positioner Mechanical Tolerance	E.6.2	0.3	R	1.73	1	1	0.2	0.2	∞
Probe Positioning with respect to Phantom Shell	E.6.3	1.1	R	1.73	1	1	0.6	0.6	∞
Extrapolation, interpolation and Integration Algorithms for Max. SAR Evaluation	E.5	3.9	R	1.73	1	1	2.3	2.3	∞
Dipole									
Dipole Axis to Liquid Distance	8, E.4.2	1.0	R	1.73	1	1	0.6	0.6	∞
Input Power and SAR Drift Measurement	8, 6.6.2	4.7	R	1.73	1	1	2.7	2.7	∞
Phantom and Tissue Parameters									
Phantom Uncertainty (shape and thickness tolerances)	E.3.1	4.0	R	1.73	1	1	2.3	2.3	∞
Liquid Conductivity - deviation from target values	E.3.2	5.0	R	1.73	0.64	0.43	1.8	1.2	∞
Liquid Conductivity - measurement uncertainty	E.3.3	10.0	R	1.73	0.64	0.43	3.7	2.5	∞
Liquid Permittivity - deviation from target values	E.3.2	10.0	R	1.73	0.6	0.49	3.5	2.8	∞
Liquid Permittivity - measurement uncertainty	E.3.3	5.0	R	1.73	0.6	0.49	1.7	1.4	∞
Combined Standard Uncertainty			RSS				10.16	9.43	99999
Expanded Uncertainty (95% CONFIDENCE LEVEL)			<i>k</i> =2				19.92	18.48	

Appendix 7

Photographs of the device under test



Figure 7. Front of the Phone (Antenna Fixed)



Figure 8. Front of the Phone with rubber boot (Antenna Fixed)



Figure 9. Distance of the Antenna (Fixed) to the Base of the Flat Phantom



Figure 10. Separation Distance Provided from Plastic Belt Clip



Figure 11. Phone with Belt Clip Placed under a Flat Phantom with Headset (Antenna Fixed)

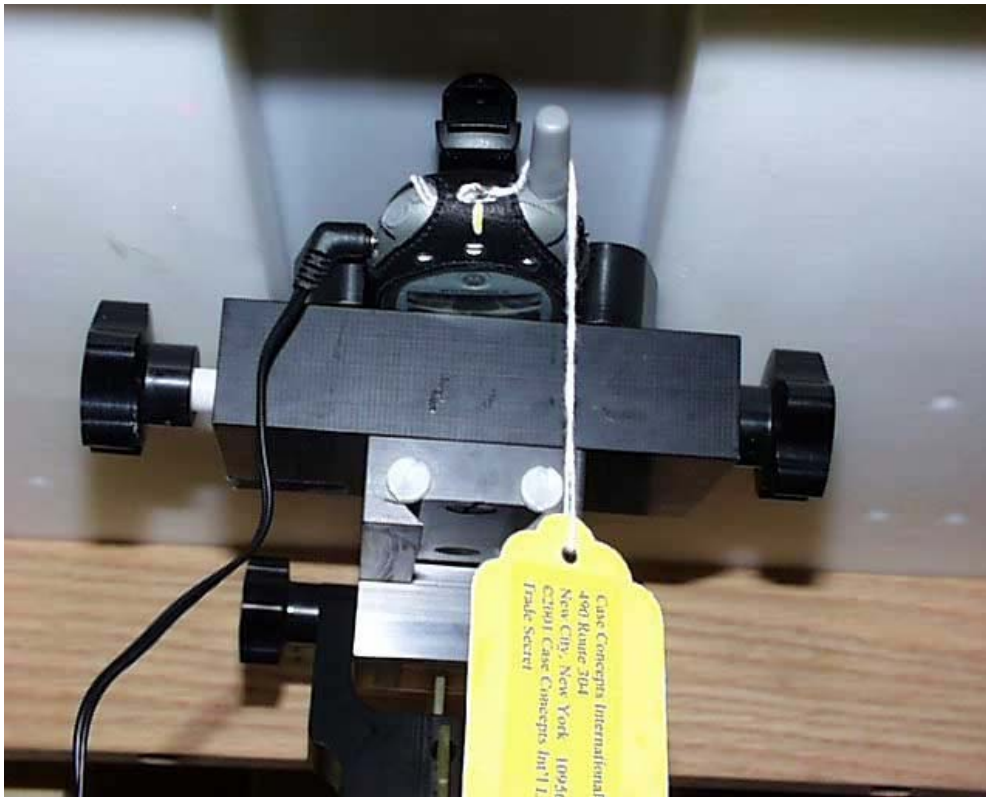


Figure 13. Phone with leather pouch and Belt Clip Placed under a Flat Phantom with Headset (Antenna Fixed)



Figure 14. Top of Phone Seen in Cheek Touch Testing Configuration

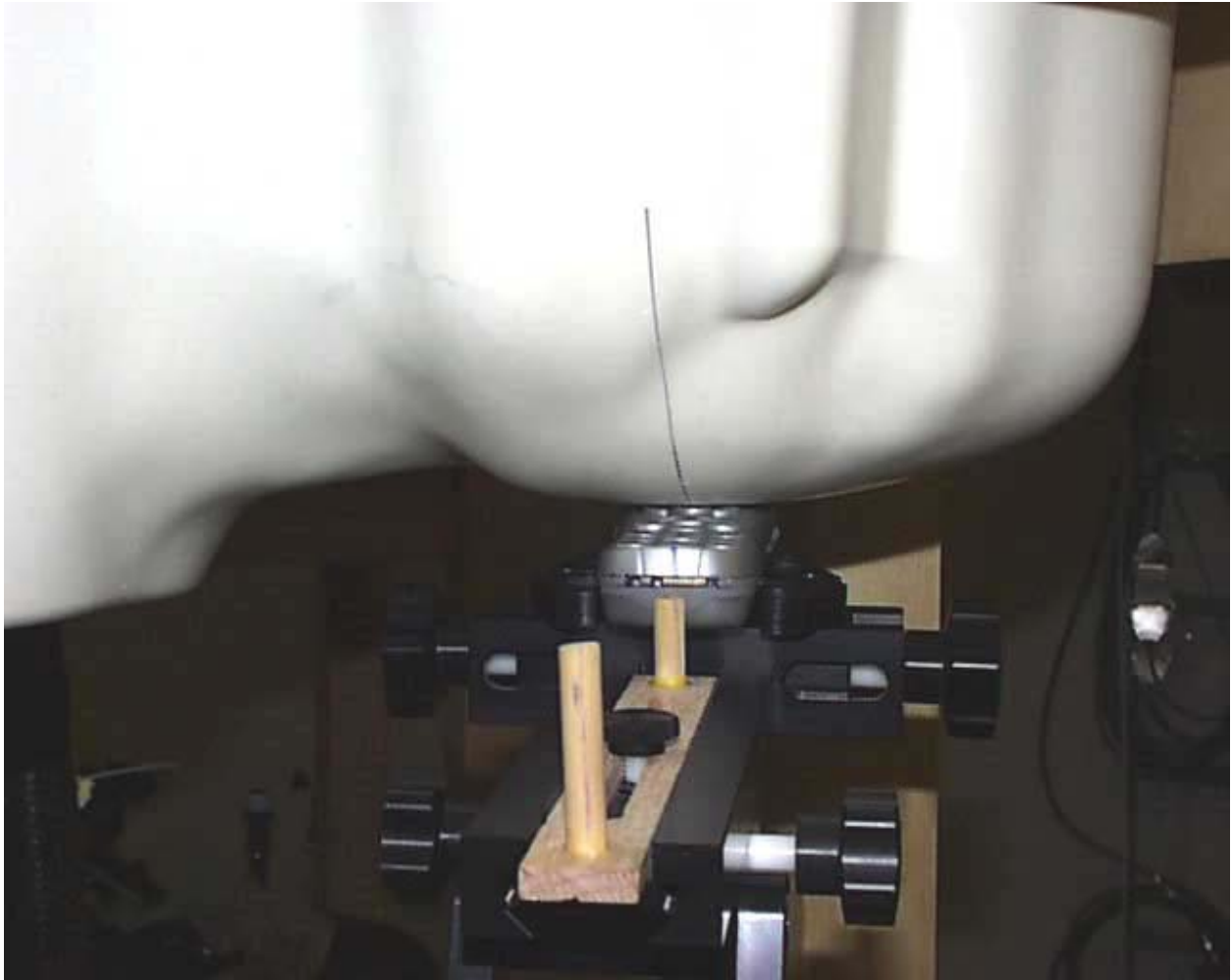


Figure 15. Bottom of Phone Seen in Cheek Touch Testing Configuration

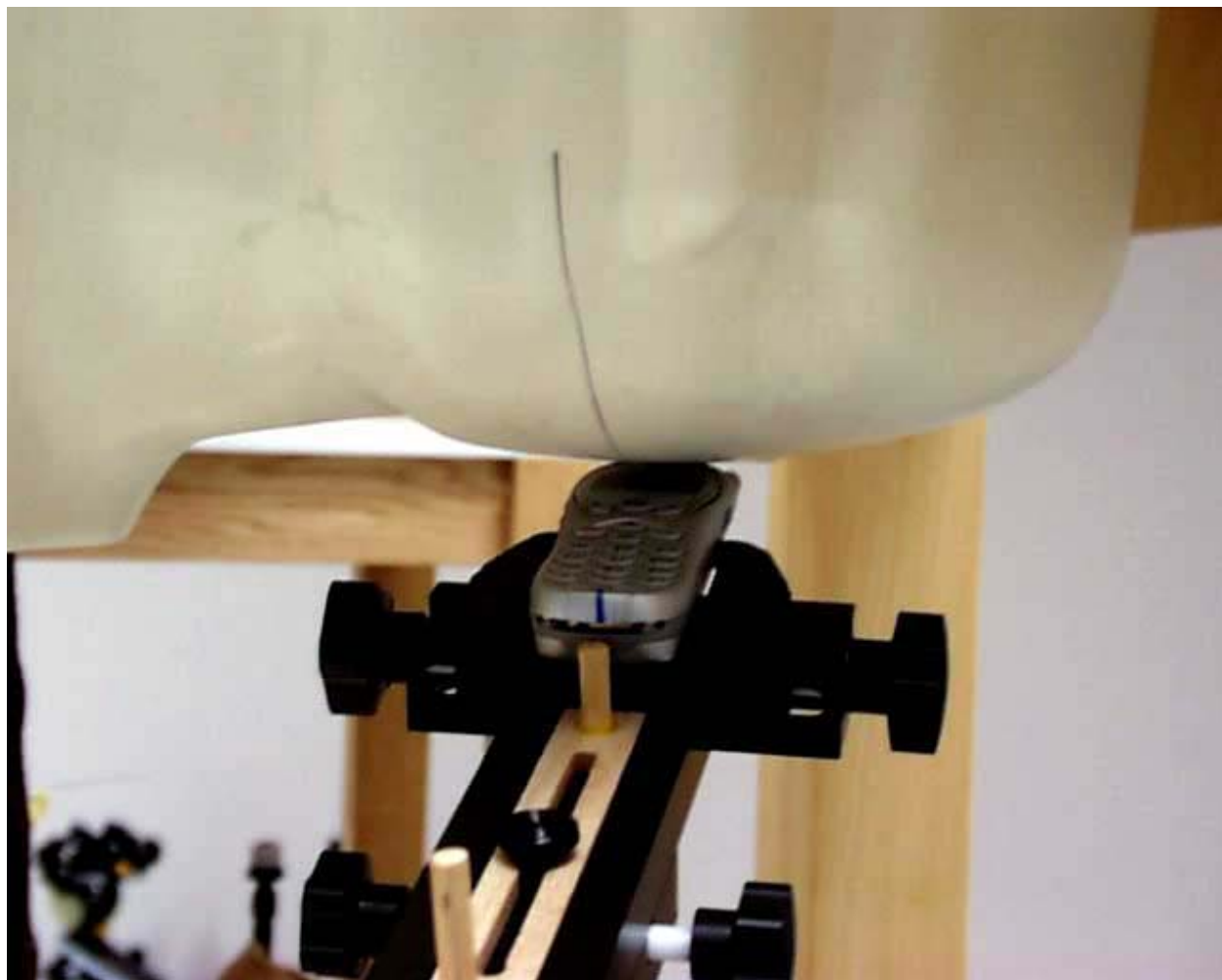


Figure 16. Bottom of Phone Seen in 15 Degree Tilt Testing Configuration



Figure 17. Top of Phone Seen in 15 Degree Tilt Testing Configuration