

System Check_835MHz

DUT:D835V2-SN:4d162

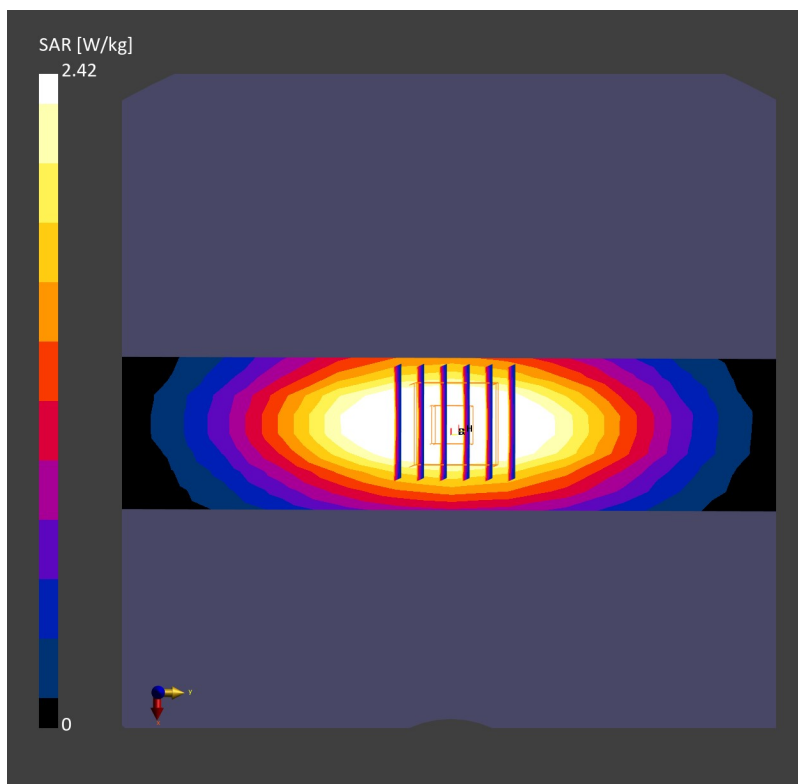
Communication System: CW; Frequency: 835.0 MHz; Duty Cycle: 1:1
Medium: Head Medium parameters used: $f = 835.0$ MHz; $\sigma = 0.914$ S/m; $\epsilon_r = 43.4$
Ambient Temperature: 23.7°C; Liquid Temperature: 22.8°C

DASY6 Configuration:

- Probe: EX3DV4 - SN3819; ConvF(9.4, 8.38, 8.87); Calibrated: 2024/8/22
- Sensor-Surface: 1.4 mm
- Electronics: DAE4 Sn1386; Calibrated: 2024/8/30
- Phantom: Twin-SAM V5.0 (30deg probe tilt); Serial: 1670; Section: Flat
- Measurement Software: cDASY6 V16.4.0.5005
- UID: CW, 0--

Area Scan (40.0 mm x 210.0 mm): Measurement Grid: 5.0 mm x 15.0 mm
SAR (1g) = 2.62 W/kg; SAR (10g) = 1.73 W/kg;

Zoom Scan (30.0 mm x 30.0 mm x 30.0 mm): Measurement Grid: 6.0 mm x 6.0 mm x 1.5 mm
Power Drift = 0.00 dB
SAR (1g) = 2.42 W/kg; SAR (10g) = 1.58 W/kg
Smallest distance from peaks to all points 3 dB below = 17.2 mm
Ratio of SAR at M2 to SAR at M1 = 88.6 %



System Check_1900MHz

DUT:D1900V2-SN:5d182

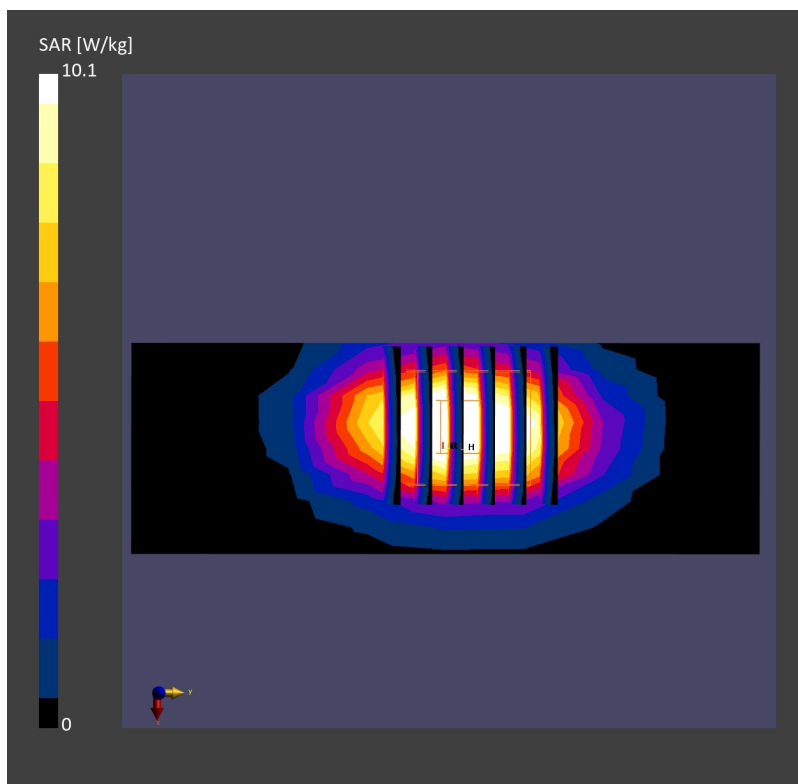
Communication System: CW; Frequency: 1900.0 MHz; Duty Cycle: 1:1
Medium: Head Medium parameters used: $f=1900.0$ MHz; $\sigma=1.44$ S/m; $\epsilon_r=41.7$
Ambient Temperature: 23.5°C; Liquid Temperature: 22.6°C

DASY6 Configuration:

- Probe: EX3DV4 - SN3819; ConvF(7.95, 7.09, 7.51); Calibrated: 2024/8/22
- Sensor-Surface: 1.4 mm
- Electronics: DAE4 Sn1386; Calibrated: 2024/8/30
- Phantom: Twin-SAM V5.0 (30deg probe tilt); Serial: 1670; Section: Flat
- Measurement Software: cDASY6 V16.4.0.5005
- UID: CW, 0--

Area Scan (40.0 mm x 120.0 mm): Measurement Grid: 5.0 mm x 15.0 mm
SAR (1g)= 10.3 W/kg; SAR (10g) = 5.38 W/kg;

Zoom Scan (30.0 mm x 30.0 mm x 30.0 mm): Measurement Grid: 6.0 mm x 6.0 mm x 1.5 mm
Power Drift = 0.01 dB
SAR (1g) = 10.1 W/kg; SAR (10g) = 5.32 W/kg
Smallest distance from peaks to all points 3 dB below = 9.6 mm
Ratio of SAR at M2 to SAR at M1 = 84.9 %



Date: 2025/8/13

System Check_2600MHz

DUT:D2600V2-SN:1070

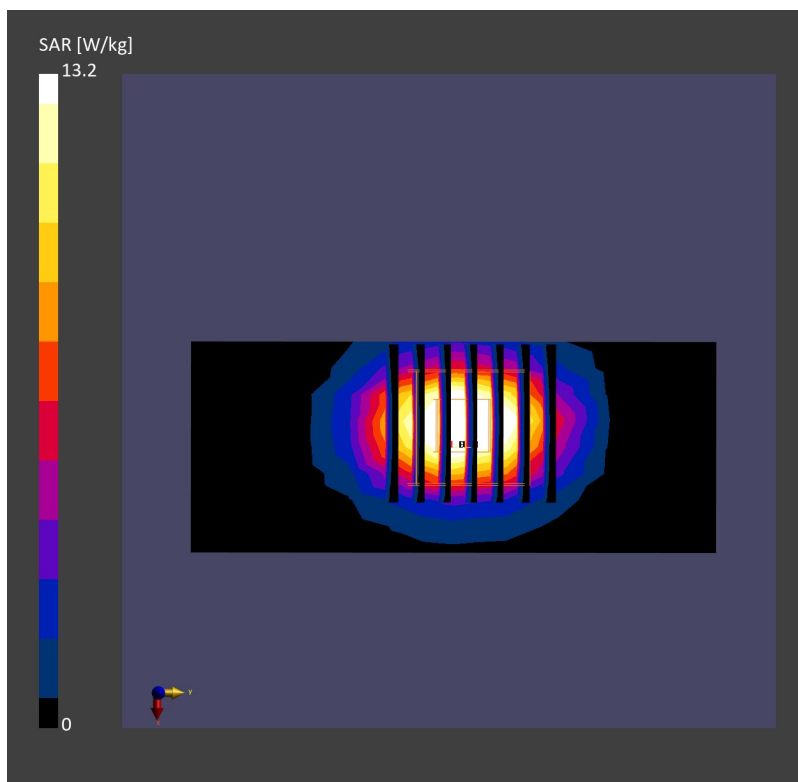
Communication System: CW; Frequency: 2600.0 MHz; Duty Cycle: 1:1
Medium: Head Medium parameters used: $f=2600.0$ MHz; $\sigma=1.94$ S/m; $\epsilon_r=40.7$
Ambient Temperature: 23.6°C; Liquid Temperature: 22.5°C

DASY6 Configuration:

- Probe: EX3DV4 - SN3819; ConvF(7.68, 6.85, 7.26); Calibrated: 2024/8/22
- Sensor-Surface: 1.4 mm
- Electronics: DAE4 Sn1386; Calibrated: 2024/8/30
- Phantom: Twin-SAM V5.0 (30deg probe tilt); Serial: 1670; Section: Flat
- Measurement Software: cDASY6 V16.4.0.5005
- UID: CW, 0--

Area Scan (40.0 mm x 100.0 mm): Measurement Grid: 5.0 mm x 10.0 mm
SAR (1g)= 12.8 W/kg; SAR (10g) = 5.82 W/kg;

Zoom Scan (30.0 mm x 30.0 mm x 30.0 mm): Measurement Grid: 5.0 mm x 5.0 mm x 1.5 mm
Power Drift = 0.01 dB
SAR (1g) = 13.2 W/kg; SAR (10g) = 5.94 W/kg
Smallest distance from peaks to all points 3 dB below = 8.6 mm
Ratio of SAR at M2 to SAR at M1 = 81.6 %



System Check_3500MHz

DUT:D3500V2-SN:1037

Communication System: CW; Frequency: 3500.0 MHz; Duty Cycle: 1:1
Medium: Head Medium parameters used: $f=3500.0$ MHz; $\sigma=2.78$ S/m; $\epsilon_r=39.2$
Ambient Temperature: 23.3°C; Liquid Temperature: 22.4°C

DASY6 Configuration:

- Probe: EX3DV4 - SN3819; ConvF(6.91, 6.16, 6.52); Calibrated: 2024/8/22
- Sensor-Surface: 1.4 mm
- Electronics: DAE4 Sn1386; Calibrated: 2024/8/30
- Phantom: Twin-SAM V5.0 (30deg probe tilt); Serial: 1670; Section: Flat
- Measurement Software: cDASY6 V16.4.0.5005
- UID: CW, 0--

Area Scan (40.0 mm x 100.0 mm): Measurement Grid: 5.0 mm x 10.0 mm
SAR (1g)= 6.32 W/kg; SAR (10g) = 2.43 W/kg;

Zoom Scan (28.0 mm x 28.0 mm x 28.0 mm): Measurement Grid: 5.0 mm x 5.0 mm x 1.4 mm
Power Drift = 0.01 dB
SAR (1g) = 6.22 W/kg; SAR (10g) = 2.40 W/kg
Smallest distance from peaks to all points 3 dB below = 8.3 mm
Ratio of SAR at M2 to SAR at M1 = 78.2 %

