

Test Laboratory: Sporton International Inc. SAR/HAC Testing Lab

Date: 2025/8/10

119_LTE Band 48_20M_QPSK_1_0_Back_0mm_Ch55340

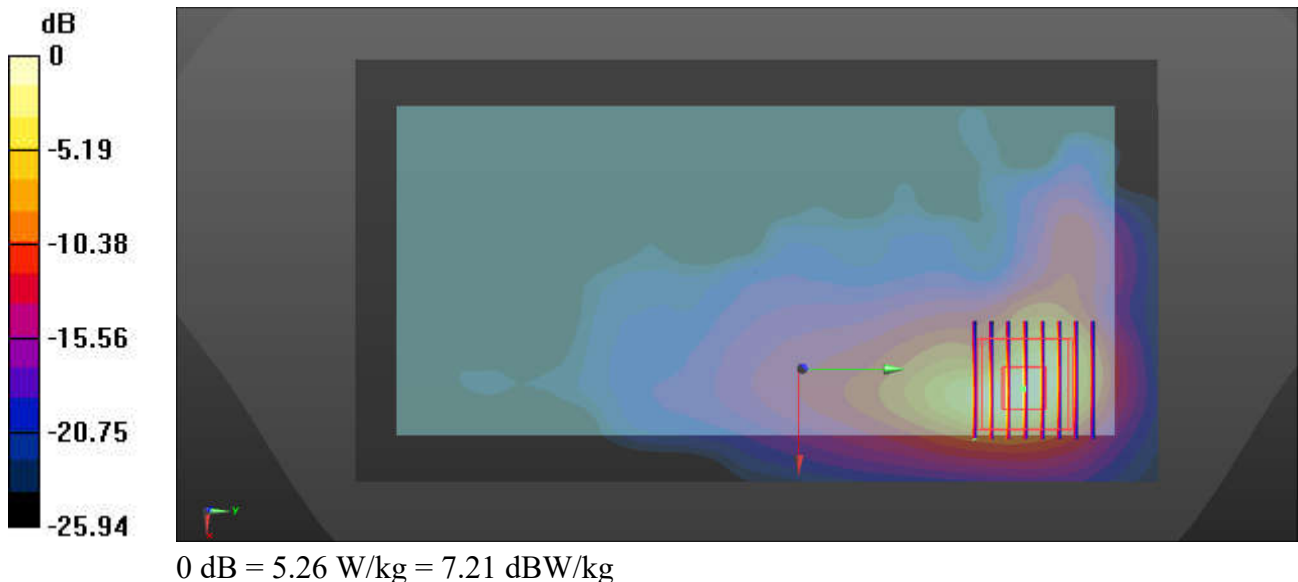
Communication System: UID 0, LTE-TDD (0); Frequency: 3560 MHz; Duty Cycle: 1:1.59
 Medium: HSL_3500_250810 Medium parameters used: $f = 3560$ MHz; $\sigma = 3.026$ S/m; $\epsilon_r = 37.66$; $\rho = 1000$ kg/m³
 Ambient Temperature : 23.2 °C; Liquid Temperature : 22.7 °C

DASY5 Configuration:

- Probe: EX3DV4 - SN3857; ConvF(6.95, 6.28, 6.81) @ 3560 MHz; Calibrated: 2025/2/19
- Sensor-Surface: 1.4mm (Mechanical Surface Detection)
- Electronics: DAE4 Sn1279; Calibrated: 2024/8/20
- Phantom: Twin-SAM V5.0 (30deg probe tilt); Type: QD 000 P40 CD; Serial: 1842
- Measurement SW: DASY52, Version 52.10 (4); SEMCAD X Version 14.6.14 (7501)

Area Scan (101x191x1): Interpolated grid: dx=1.000 mm, dy=1.000 mm
 Maximum value of SAR (interpolated) = 4.95 W/kg

Zoom Scan (8x8x7)/Cube 0: Measurement grid: dx=4mm, dy=4mm, dz=1.4mm
 Reference Value = 5.076 V/m; Power Drift = -0.01 dB
 Peak SAR (extrapolated) = 7.11 W/kg
SAR(1 g) = 2.5 W/kg; SAR(10 g) = 0.880 W/kg
 Smallest distance from peaks to all points 3 dB below = 4.9 mm
 Ratio of SAR at M2 to SAR at M1 = 75.5%
 Maximum value of SAR (measured) = 5.26 W/kg



Test Laboratory: Sporton International Inc. SAR/HAC Testing Lab

Date: 2025/8/10

120_FR1 n48_100M_QPSK_1_1_Back_0mm_Ch641666

Communication System: UID 0, 5G NR (0); Frequency: 3624.99 MHz; Duty Cycle: 1:1
 Medium: HSL_3700_250810 Medium parameters used: $f = 3625$ MHz; $\sigma = 3.091$ S/m; $\epsilon_r = 37.608$; $\rho = 1000$ kg/m³

Ambient Temperature : 23.4 °C; Liquid Temperature : 22.7 °C

DASY5 Configuration:

- Probe: EX3DV4 - SN3857; ConvF(6.92, 6.26, 6.79) @ 3624.99 MHz; Calibrated: 2025/2/19
- Sensor-Surface: 1.4mm (Mechanical Surface Detection)
- Electronics: DAE4 Sn1279; Calibrated: 2024/8/20
- Phantom: Twin-SAM V5.0 (30deg probe tilt); Type: QD 000 P40 CD; Serial: 1842
- Measurement SW: DASY52, Version 52.10 (4); SEMCAD X Version 14.6.14 (7501)

Area Scan (101x191x1): Interpolated grid: dx=1.000 mm, dy=1.000 mm

Maximum value of SAR (interpolated) = 11.2 W/kg

Zoom Scan (9x9x7)/Cube 0: Measurement grid: dx=4mm, dy=4mm, dz=1.4mm

Reference Value = 0.7480 V/m; Power Drift = -0.09 dB

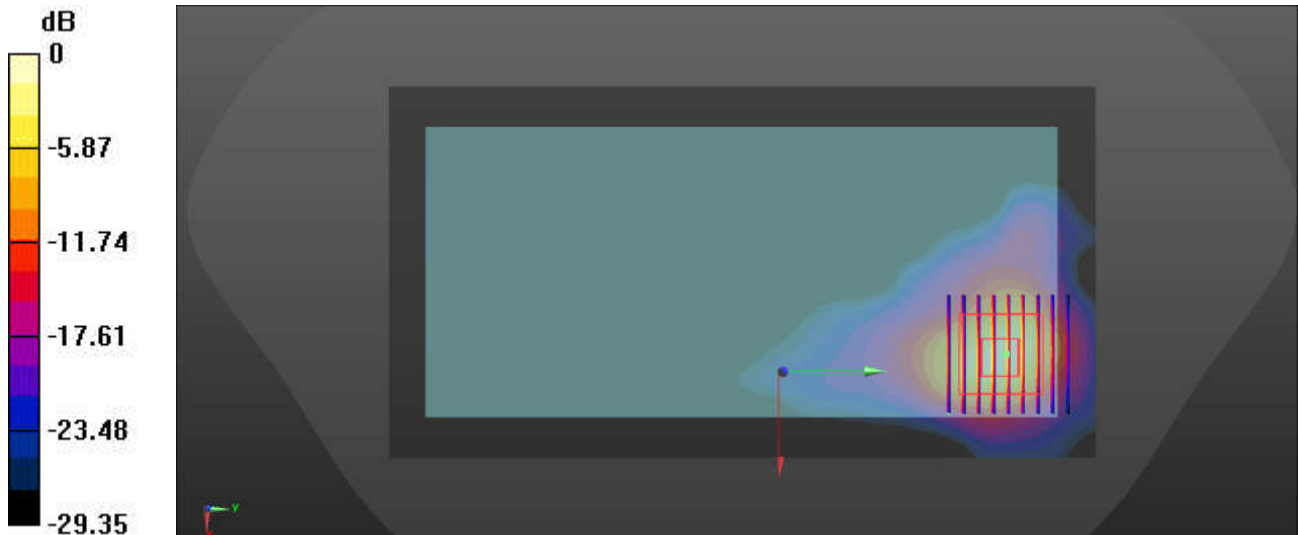
Peak SAR (extrapolated) = 19.1 W/kg

SAR(1 g) = 5.65 W/kg; SAR(10 g) = 1.77 W/kg

Smallest distance from peaks to all points 3 dB below = 4.8 mm

Ratio of SAR at M2 to SAR at M1 = 72.6%

Maximum value of SAR (measured) = 12.0 W/kg



0 dB = 12.0 W/kg = 10.79 dBW/kg

Test Laboratory: Sporton International Inc. SAR/HAC Testing Lab

Date: 2025/8/10

121_FR1 n77_HPUE_100M_QPSK_135_69_Left Side_0mm_Ch633334

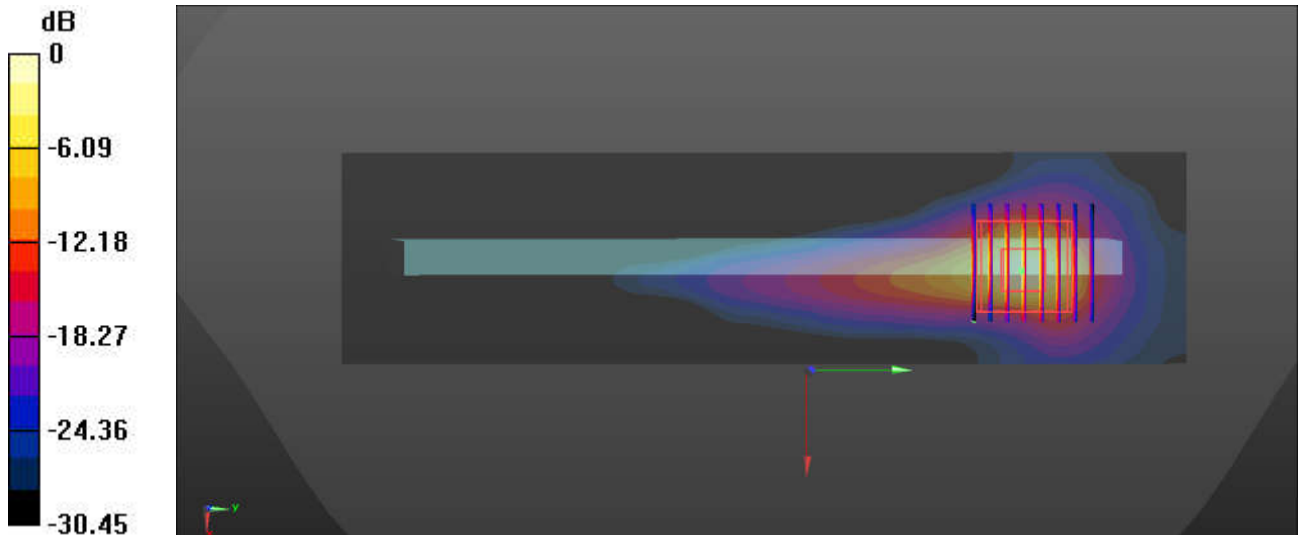
Communication System: UID 0, 5G NR (0); Frequency: 3500.01 MHz; Duty Cycle: 1:1
 Medium: HSL_3500_250810 Medium parameters used: $f = 3500.01$ MHz; $\sigma = 2.948$ S/m; $\epsilon_r = 37.821$; $\rho = 1000$ kg/m³
 Ambient Temperature : 23.2 °C; Liquid Temperature : 22.7 °C

DASY5 Configuration:

- Probe: EX3DV4 - SN3857; ConvF(6.95, 6.28, 6.81) @ 3500.01 MHz; Calibrated: 2025/2/19
- Sensor-Surface: 1.4mm (Mechanical Surface Detection)
- Electronics: DAE4 Sn1279; Calibrated: 2024/8/20
- Phantom: Twin-SAM V5.0 (30deg probe tilt); Type: QD 000 P40 CD; Serial: 1842
- Measurement SW: DASY52, Version 52.10 (4); SEMCAD X Version 14.6.14 (7501)

Area Scan (51x201x1): Interpolated grid: dx=1.000 mm, dy=1.000 mm
 Maximum value of SAR (interpolated) = 15.4 W/kg

Zoom Scan (8x8x7)/Cube 0: Measurement grid: dx=4mm, dy=4mm, dz=1.4mm
 Reference Value = 5.991 V/m; Power Drift = -0.19 dB
 Peak SAR (extrapolated) = 25.8 W/kg
SAR(1 g) = 6.06 W/kg; SAR(10 g) = 1.62 W/kg
 Smallest distance from peaks to all points 3 dB below = 4.3 mm
 Ratio of SAR at M2 to SAR at M1 = 72.1%
 Maximum value of SAR (measured) = 14.3 W/kg



0 dB = 14.3 W/kg = 11.55 dBW/kg

Test Laboratory: Sporton International Inc. SAR/HAC Testing Lab

Date: 2025/8/8

122_WLAN2.4GHz_802.11b 1Mbps_Top Side_0mm_Ch6

Communication System: UID 0, WLAN2.4GHz (0); Frequency: 2437 MHz; Duty Cycle: 1:1.018
 Medium: HSL_2450_250808 Medium parameters used: $f = 2437$ MHz; $\sigma = 1.759$ S/m; $\epsilon_r = 39.126$; $\rho = 1000$ kg/m³

Ambient Temperature : 23.3 °C; Liquid Temperature : 22.7 °C

DASY5 Configuration:

- Probe: EX3DV4 - SN3857; ConvF(7.21, 6.52, 7.07) @ 2437 MHz; Calibrated: 2025/2/19
- Sensor-Surface: 1.4mm (Mechanical Surface Detection)
- Electronics: DAE4 Sn1279; Calibrated: 2024/8/20
- Phantom: Twin-SAM V5.0 (30deg probe tilt); Type: QD 000 P40 CD; Serial: 1842
- Measurement SW: DASY52, Version 52.10 (4); SEMCAD X Version 14.6.14 (7501)

Area Scan (51x101x1): Interpolated grid: dx=1.200 mm, dy=1.200 mm

Maximum value of SAR (interpolated) = 13.8 W/kg

Zoom Scan (7x7x7)/Cube 0: Measurement grid: dx=5mm, dy=5mm, dz=5mm

Reference Value = 15.39 V/m; Power Drift = 0.04 dB

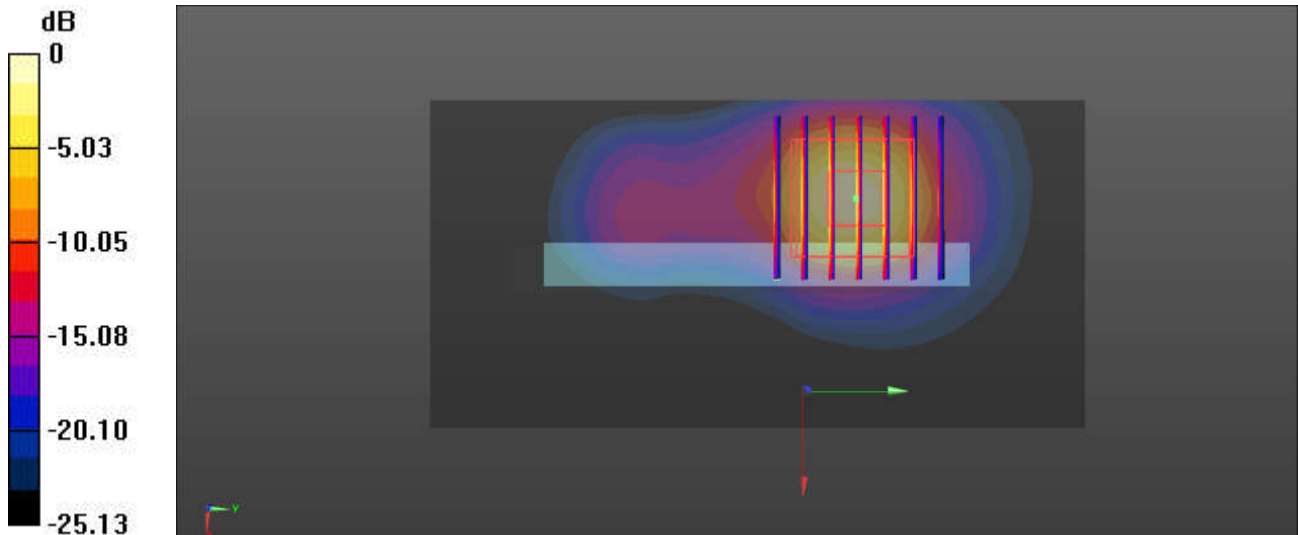
Peak SAR (extrapolated) = 17.7 W/kg

SAR(1 g) = 6.96 W/kg; SAR(10 g) = 2.44 W/kg

Smallest distance from peaks to all points 3 dB below = 5.4 mm

Ratio of SAR at M2 to SAR at M1 = 43.2%

Maximum value of SAR (measured) = 13.4 W/kg



0 dB = 13.4 W/kg = 11.27 dBW/kg

Test Laboratory: Sporton International Inc. SAR/HAC Testing Lab

Date: 2025/8/11

123_WLAN5GHz_802.11n-HT40 MCS0_Right Side_0mm_Ch46

Communication System: UID 0, WLAN5GHz (0); Frequency: 5230 MHz; Duty Cycle: 1:1.056
 Medium: HSL_5250_250810 Medium parameters used: $f = 5230$ MHz; $\sigma = 4.684$ S/m; $\epsilon_r = 36.403$; $\rho = 1000$ kg/m³

Ambient Temperature : 23.1 °C; Liquid Temperature : 22.6 °C

DASY5 Configuration:

- Probe: EX3DV4 - SN3857; ConvF(5.51, 4.98, 5.4) @ 5230 MHz; Calibrated: 2025/2/19
- Sensor-Surface: 1.4mm (Mechanical Surface Detection)
- Electronics: DAE4 Sn1279; Calibrated: 2024/8/20
- Phantom: Twin-SAM V5.0 (30deg probe tilt); Type: QD 000 P40 CD; Serial: 1842
- Measurement SW: DASY52, Version 52.10 (4); SEMCAD X Version 14.6.14 (7501)

Area Scan (51x201x1): Interpolated grid: dx=1.000 mm, dy=1.000 mm

Maximum value of SAR (interpolated) = 13.6 W/kg

Zoom Scan (8x8x7)/Cube 0: Measurement grid: dx=4mm, dy=4mm, dz=1.4mm

Reference Value = 0.7990 V/m; Power Drift = 0.01 dB

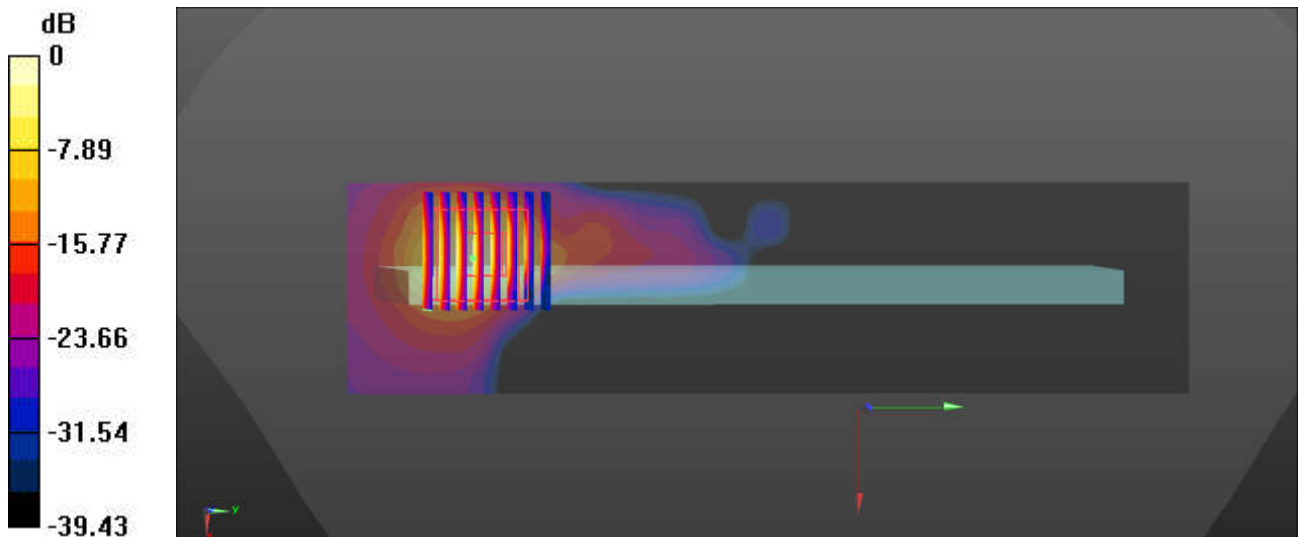
Peak SAR (extrapolated) = 37.8 W/kg

SAR(1 g) = 6.47 W/kg; SAR(10 g) = 1.49 W/kg

Smallest distance from peaks to all points 3 dB below = 4.2 mm

Ratio of SAR at M2 to SAR at M1 = 58.3%

Maximum value of SAR (measured) = 17.5 W/kg



0 dB = 17.5 W/kg = 12.43 dBW/kg

Test Laboratory: Sporton International Inc. SAR/HAC Testing Lab

Date: 2025/8/11

126_WLAN5GHz_802.11n-HT40 MCS0_Right Side_0mm_Ch54

Communication System: UID 0, WLAN5GHz (0); Frequency: 5270 MHz; Duty Cycle: 1:1.056
 Medium: HSL_5250_250810 Medium parameters used: $f = 5270$ MHz; $\sigma = 4.69$ S/m; $\epsilon_r = 36.304$; $\rho = 1000$ kg/m³

Ambient Temperature : 23.1 °C; Liquid Temperature : 22.6 °C

DASY5 Configuration:

- Probe: EX3DV4 - SN3857; ConvF(5.51, 4.98, 5.4) @ 5270 MHz; Calibrated: 2025/2/19
- Sensor-Surface: 1.4mm (Mechanical Surface Detection)
- Electronics: DAE4 Sn1279; Calibrated: 2024/8/20
- Phantom: Twin-SAM V5.0 (30deg probe tilt); Type: QD 000 P40 CD; Serial: 1842
- Measurement SW: DASY52, Version 52.10 (4); SEMCAD X Version 14.6.14 (7501)

Area Scan (51x201x1): Interpolated grid: dx=1.000 mm, dy=1.000 mm

Maximum value of SAR (interpolated) = 12.2 W/kg

Zoom Scan (7x7x7)/Cube 0: Measurement grid: dx=4mm, dy=4mm, dz=1.4mm

Reference Value = 1.630 V/m; Power Drift = -0.10 dB

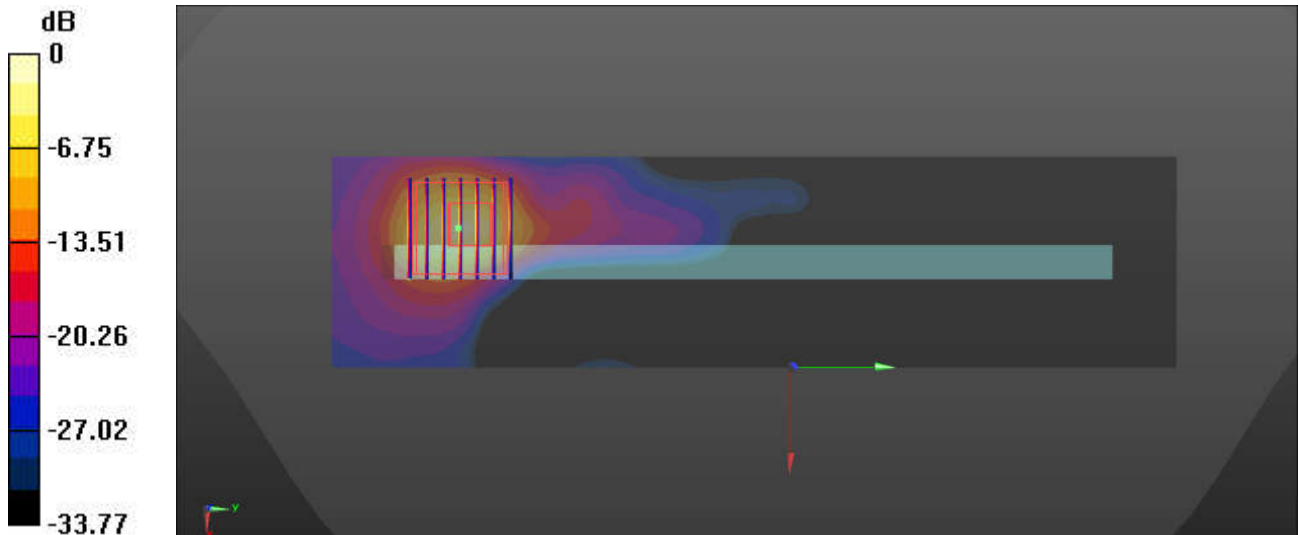
Peak SAR (extrapolated) = 35.1 W/kg

SAR(1 g) = 6 W/kg; SAR(10 g) = 1.32 W/kg

Smallest distance from peaks to all points 3 dB below = 5 mm

Ratio of SAR at M2 to SAR at M1 = 58.7%

Maximum value of SAR (measured) = 17.7 W/kg



0 dB = 17.7 W/kg = 12.48 dBW/kg

Test Laboratory: Sporton International Inc. SAR/HAC Testing Lab

Date: 2025/8/12

124_WLAN5GHz_802.11n-HT40 MCS0_Right Side_0mm_Ch142

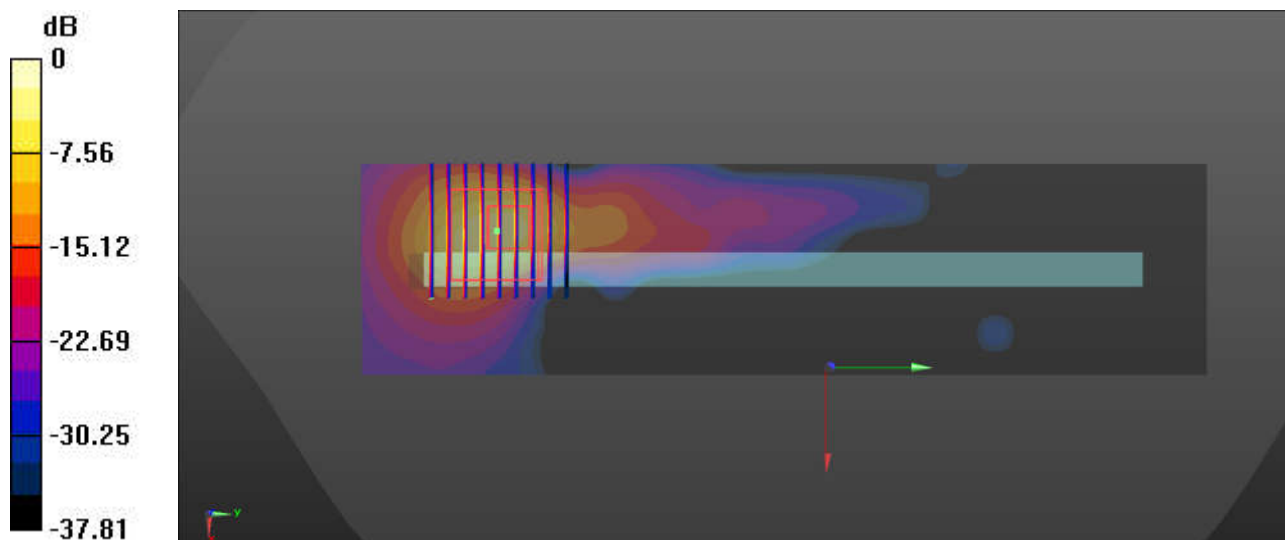
Communication System: UID 0, WLAN5GHz (0); Frequency: 5710 MHz; Duty Cycle: 1:1.056
 Medium: HSL_5750_250812 Medium parameters used: $f = 5710$ MHz; $\sigma = 5.09$ S/m; $\epsilon_r = 35.719$; $\rho = 1000$ kg/m³
 Ambient Temperature : 23.4 °C; Liquid Temperature : 22.8 °C

DASY5 Configuration:

- Probe: EX3DV4 - SN3857; ConvF(5.43, 4.91, 5.32) @ 5710 MHz; Calibrated: 2025/2/19
- Sensor-Surface: 1.4mm (Mechanical Surface Detection)
- Electronics: DAE4 Sn1279; Calibrated: 2024/8/20
- Phantom: Twin-SAM V5.0 (30deg probe tilt); Type: QD 000 P40 CD; Serial: 1842
- Measurement SW: DASY52, Version 52.10 (4); SEMCAD X Version 14.6.14 (7501)

Area Scan (51x201x1): Interpolated grid: dx=1.000 mm, dy=1.000 mm
 Maximum value of SAR (interpolated) = 13.0 W/kg

Zoom Scan (9x9x7)/Cube 0: Measurement grid: dx=4mm, dy=4mm, dz=1.4mm
 Reference Value = 1.735 V/m; Power Drift = 0.09 dB
 Peak SAR (extrapolated) = 53.1 W/kg
SAR(1 g) = 7.27 W/kg; SAR(10 g) = 1.24 W/kg
 Smallest distance from peaks to all points 3 dB below = 4.2 mm
 Ratio of SAR at M2 to SAR at M1 = 55.2%
 Maximum value of SAR (measured) = 24.6 W/kg



0 dB = 24.6 W/kg = 13.91 dBW/kg

Test Laboratory: Sporton International Inc. SAR/HAC Testing Lab

Date: 2025/8/12

125_WLAN5GHz_802.11n-HT40 MCS0_Right Side_0mm_Ch151

Communication System: UID 0, WLAN5GHz (0); Frequency: 5755 MHz; Duty Cycle: 1:1.056
 Medium: HSL_5750_250812 Medium parameters used: $f = 5755$ MHz; $\sigma = 5.207$ S/m; $\epsilon_r = 35.681$; $\rho = 1000$ kg/m³

Ambient Temperature : 23.4 °C; Liquid Temperature : 22.8 °C

DASY5 Configuration:

- Probe: EX3DV4 - SN3857; ConvF(5.43, 4.91, 5.32) @ 5755 MHz; Calibrated: 2025/2/19
- Sensor-Surface: 1.4mm (Mechanical Surface Detection)
- Electronics: DAE4 Sn1279; Calibrated: 2024/8/20
- Phantom: Twin-SAM V5.0 (30deg probe tilt); Type: QD 000 P40 CD; Serial: 1842
- Measurement SW: DASY52, Version 52.10 (4); SEMCAD X Version 14.6.14 (7501)

Area Scan (51x201x1): Interpolated grid: dx=1.000 mm, dy=1.000 mm

Maximum value of SAR (interpolated) = 14.3 W/kg

Zoom Scan (9x9x7)/Cube 0: Measurement grid: dx=4mm, dy=4mm, dz=1.4mm

Reference Value = 2.078 V/m; Power Drift = -0.07 dB

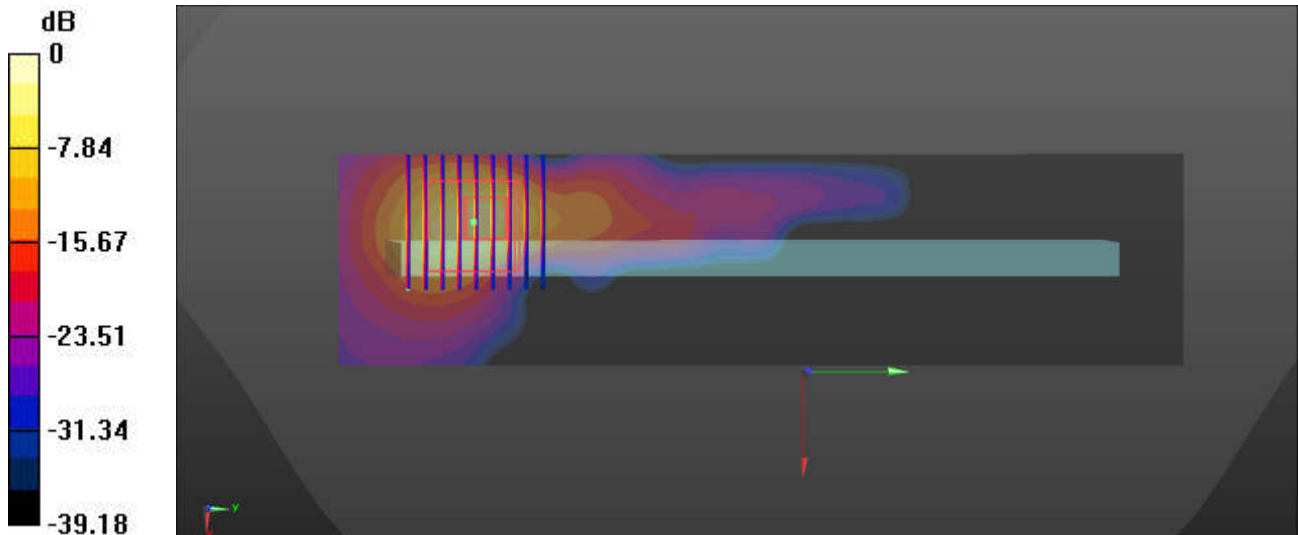
Peak SAR (extrapolated) = 62.8 W/kg

SAR(1 g) = 8.22 W/kg; SAR(10 g) = 1.43 W/kg

Smallest distance from peaks to all points 3 dB below = 4.2 mm

Ratio of SAR at M2 to SAR at M1 = 54.5%

Maximum value of SAR (measured) = 28.4 W/kg



0 dB = 28.4 W/kg = 14.53 dBW/kg