

Test Laboratory: Sporton International Inc. SAR/HAC Testing Lab

Date: 2025/8/1

**System Check\_Head\_750MHz****DUT: D750V3 - 1087**

Communication System: UID 0, CW (0); Frequency: 750 MHz; Duty Cycle: 1:1

Medium: HSL\_750\_250801 Medium parameters used:  $f = 750$  MHz;  $\sigma = 0.887$  S/m;  $\epsilon_r = 42.851$ ;  $\rho = 1000$  kg/m<sup>3</sup>

Ambient Temperature : 23.3 °C; Liquid Temperature : 22.8 °C

## DASY5 Configuration:

- Probe: EX3DV4 - SN3857; ConvF(9.35, 8.46, 9.17) @ 750 MHz; Calibrated: 2025/2/19
- Sensor-Surface: 1.4mm (Mechanical Surface Detection)
- Electronics: DAE4 Sn1279; Calibrated: 2024/8/20
- Phantom: Twin-SAM V5.0 (30deg probe tilt); Type: QD 000 P40 CD; Serial: 1842
- Measurement SW: DASY52, Version 52.10 (4); SEMCAD X Version 14.6.14 (7501)

**Pin=50mW/Area Scan (61x61x1):** Interpolated grid: dx=1.500 mm, dy=1.500 mm

Maximum value of SAR (interpolated) = 0.482 W/kg

**Pin=50mW/Zoom Scan (5x5x7)/Cube 0:** Measurement grid: dx=8mm, dy=8mm, dz=5mm

Reference Value = 23.96 V/m; Power Drift = 0.02 dB

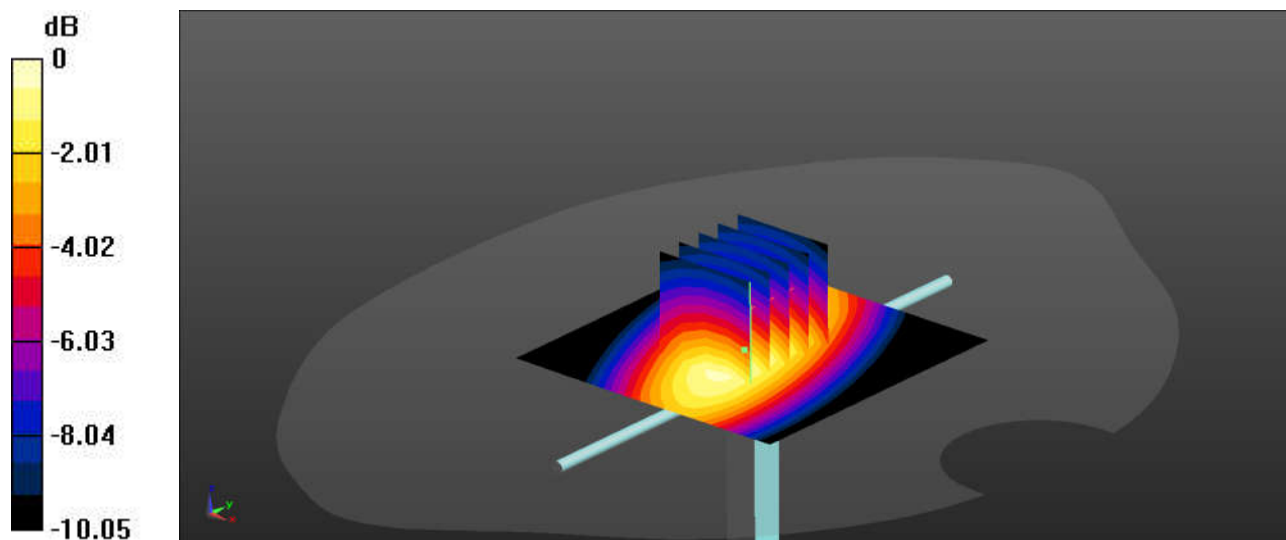
Peak SAR (extrapolated) = 0.609 W/kg

**SAR(1 g) = 0.418 W/kg; SAR(10 g) = 0.280 W/kg**

Smallest distance from peaks to all points 3 dB below = 17.2 mm

Ratio of SAR at M2 to SAR at M1 = 68.7%

Maximum value of SAR (measured) = 0.486 W/kg



0 dB = 0.486 W/kg = -3.13 dBW/kg

Test Laboratory: Sporton International Inc. SAR/HAC Testing Lab

Date: 2025/8/2

**System Check\_Head\_835MHz****DUT: D835V2-4d298**

Communication System: UID 0, CW (0); Frequency: 835 MHz; Duty Cycle: 1:1

Medium: HSL\_835\_250802 Medium parameters used:  $f = 835$  MHz;  $\sigma = 0.923$  S/m;  $\epsilon_r = 42.535$ ;  $\rho = 1000$  kg/m<sup>3</sup>

Ambient Temperature : 23.2 °C; Liquid Temperature : 22.7 °C

**DASY5 Configuration:**

- Probe: EX3DV4 - SN3857; ConvF(9.16, 8.28, 8.98) @ 835 MHz; Calibrated: 2025/2/19
- Sensor-Surface: 1.4mm (Mechanical Surface Detection)
- Electronics: DAE4 Sn1279; Calibrated: 2024/8/20
- Phantom: Twin-SAM V5.0 (30deg probe tilt); Type: QD 000 P40 CD; Serial: 1842
- Measurement SW: DASY52, Version 52.10 (4); SEMCAD X Version 14.6.14 (7501)

**Pin=50mW/Area Scan (61x61x1):** Interpolated grid: dx=1.500 mm, dy=1.500 mm  
 Maximum value of SAR (interpolated) = 0.557 W/kg

**Pin=50mW/Zoom Scan (5x5x7)/Cube 0:** Measurement grid: dx=8mm, dy=8mm, dz=5mm

Reference Value = 22.62 V/m; Power Drift = 0.07 dB

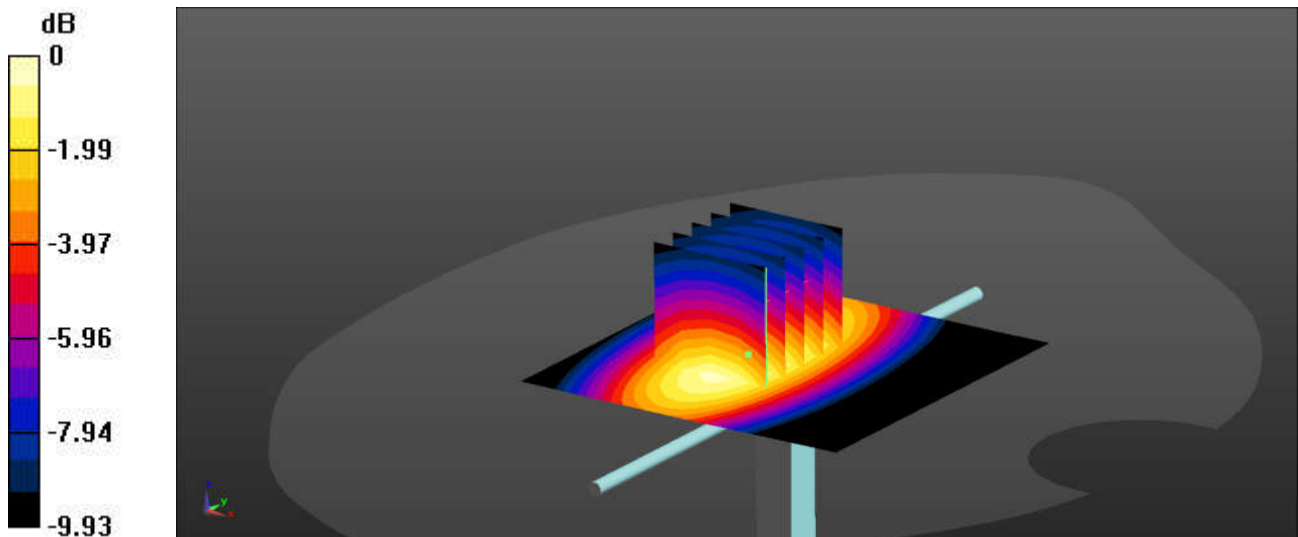
Peak SAR (extrapolated) = 0.702 W/kg

**SAR(1 g) = 0.481 W/kg; SAR(10 g) = 0.321 W/kg**

Smallest distance from peaks to all points 3 dB below = 18.2 mm

Ratio of SAR at M2 to SAR at M1 = 68.8%

Maximum value of SAR (measured) = 0.557 W/kg



0 dB = 0.557 W/kg = -2.54 dBW/kg

Test Laboratory: Sporton International Inc. SAR/HAC Testing Lab

Date: 2025/8/4

**System Check\_Head\_1750MHz****DUT: D1750V2 - 1090**

Communication System: UID 0, CW (0); Frequency: 1750 MHz; Duty Cycle: 1:1

Medium: HSL\_1750\_250804 Medium parameters used:  $f = 1750$  MHz;  $\sigma = 1.371$  S/m;  $\epsilon_r = 40.746$ ;  $\rho = 1000$  kg/m<sup>3</sup>

Ambient Temperature : 23.4 °C; Liquid Temperature : 22.8 °C

**DASY5 Configuration:**

- Probe: EX3DV4 - SN3857; ConvF(7.92, 7.17, 7.77) @ 1750 MHz; Calibrated: 2025/2/19
- Sensor-Surface: 1.4mm (Mechanical Surface Detection)
- Electronics: DAE4 Sn1279; Calibrated: 2024/8/20
- Phantom: Twin-SAM V5.0 (30deg probe tilt); Type: QD 000 P40 CD; Serial: 1842
- Measurement SW: DASY52, Version 52.10 (4); SEMCAD X Version 14.6.14 (7501)

**Pin=50mW/Area Scan (61x61x1):** Interpolated grid: dx=1.500 mm, dy=1.500 mm

Maximum value of SAR (interpolated) = 2.39 W/kg

**Pin=50mW/Zoom Scan (5x5x7)/Cube 0:** Measurement grid: dx=8mm, dy=8mm, dz=5mm

Reference Value = 32.37 V/m; Power Drift = 0.08 dB

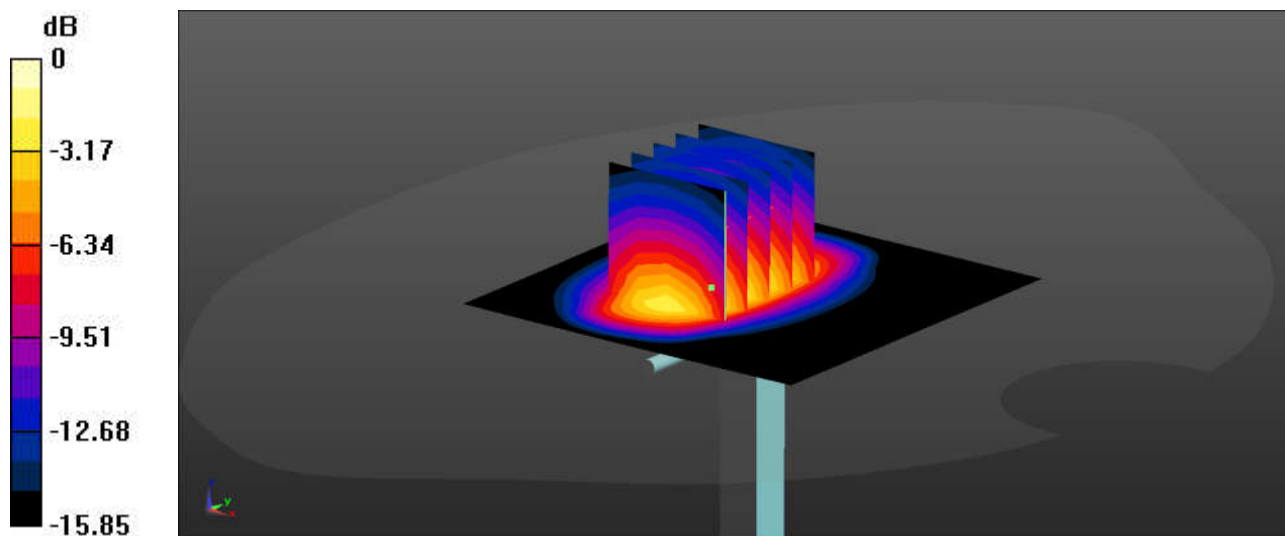
Peak SAR (extrapolated) = 3.21 W/kg

**SAR(1 g) = 1.89 W/kg; SAR(10 g) = 1.03 W/kg**

Smallest distance from peaks to all points 3 dB below = 11.2 mm

Ratio of SAR at M2 to SAR at M1 = 59.2%

Maximum value of SAR (measured) = 2.36 W/kg



0 dB = 2.36 W/kg = 3.73 dBW/kg

Test Laboratory: Sporton International Inc. SAR/HAC Testing Lab

Date: 2025/8/5

**System Check\_Head\_1900MHz****DUT: D1900V2 - 5d182**

Communication System: UID 0, CW (0); Frequency: 1900 MHz; Duty Cycle: 1:1  
 Medium: HSL\_1900\_250805 Medium parameters used:  $f = 1900$  MHz;  $\sigma = 1.453$  S/m;  $\epsilon_r = 39.141$ ;  $\rho = 1000$  kg/m<sup>3</sup>

Ambient Temperature : 23.4 °C; Liquid Temperature : 22.6 °C

**DASY5 Configuration:**

- Probe: EX3DV4 - SN3857; ConvF(7.78, 7.03, 7.63) @ 1900 MHz; Calibrated: 2025/2/19
- Sensor-Surface: 1.4mm (Mechanical Surface Detection)
- Electronics: DAE4 Sn1279; Calibrated: 2024/8/20
- Phantom: Twin-SAM V5.0 (30deg probe tilt); Type: QD 000 P40 CD; Serial: 1842
- Measurement SW: DASY52, Version 52.10 (4); SEMCAD X Version 14.6.14 (7501)

**Pin=50mW/Area Scan (61x61x1):** Interpolated grid: dx=1.500 mm, dy=1.500 mm  
 Maximum value of SAR (interpolated) = 2.52 W/kg

**Pin=50mW/Zoom Scan (5x5x7)/Cube 0:** Measurement grid: dx=8mm, dy=8mm, dz=5mm  
 Reference Value = 30.31 V/m; Power Drift = 0.07 dB

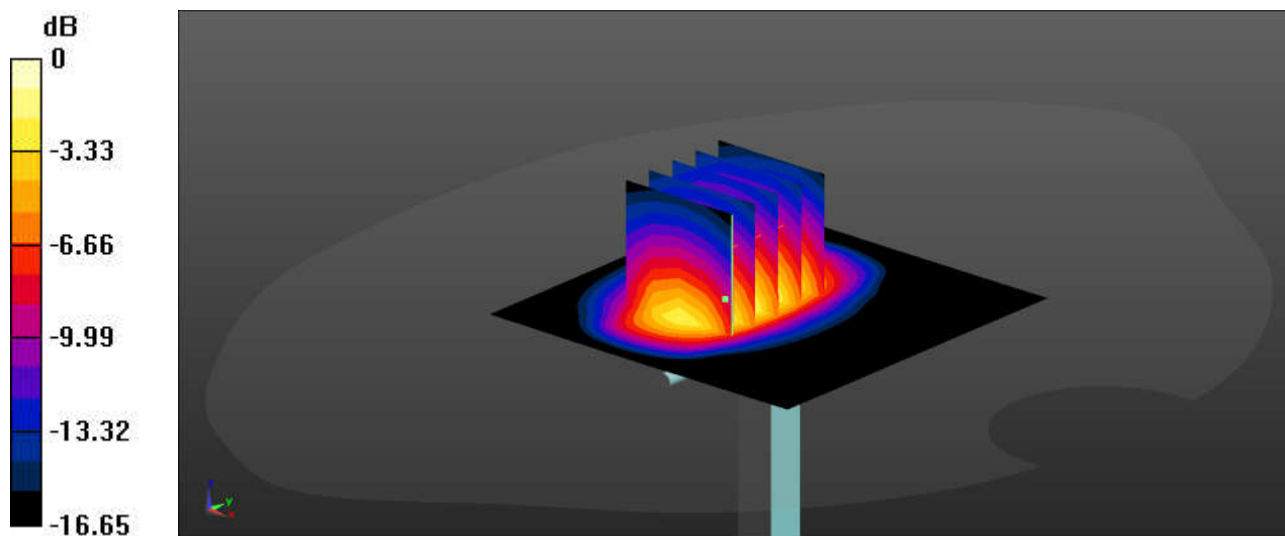
Peak SAR (extrapolated) = 3.38 W/kg

**SAR(1 g) = 1.94 W/kg; SAR(10 g) = 1.05 W/kg**

Smallest distance from peaks to all points 3 dB below = 11.2 mm

Ratio of SAR at M2 to SAR at M1 = 56.6%

Maximum value of SAR (measured) = 2.41 W/kg



0 dB = 2.41 W/kg = 3.82 dBW/kg

Test Laboratory: Sporton International Inc. SAR/HAC Testing Lab

Date: 2025/8/7

**System Check\_Head\_2300MHz****DUT: D2300V2-1055**

Communication System: UID 0, CW (0); Frequency: 2300 MHz; Duty Cycle: 1:1  
 Medium: HSL\_2300\_250807 Medium parameters used:  $f = 2300$  MHz;  $\sigma = 1.617$  S/m;  $\epsilon_r = 39.557$ ;  $\rho = 1000$  kg/m<sup>3</sup>

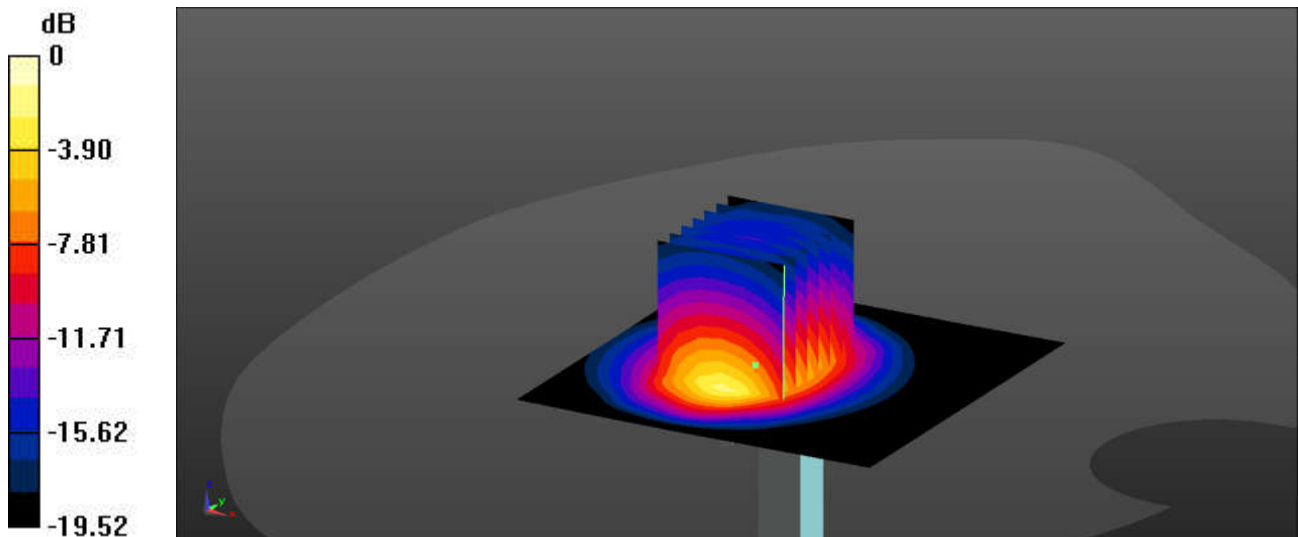
Ambient Temperature : 23.4 °C; Liquid Temperature : 22.7 °C

**DASY5 Configuration:**

- Probe: EX3DV4 - SN3857; ConvF(7.37, 6.66, 7.23) @ 2300 MHz; Calibrated: 2025/2/19
- Sensor-Surface: 1.4mm (Mechanical Surface Detection)
- Electronics: DAE4 Sn1279; Calibrated: 2024/8/20
- Phantom: Twin-SAM V5.0 (30deg probe tilt); Type: QD 000 P40 CD; Serial: 1842
- Measurement SW: DASY52, Version 52.10 (4); SEMCAD X Version 14.6.14 (7501)

**Pin=50mW/Area Scan (71x71x1):** Interpolated grid: dx=1.200 mm, dy=1.200 mm  
 Maximum value of SAR (interpolated) = 3.88 W/kg

**Pin=50mW/Zoom Scan (7x7x7)/Cube 0:** Measurement grid: dx=5mm, dy=5mm, dz=5mm  
 Reference Value = 33.26 V/m; Power Drift = 0.12 dB  
 Peak SAR (extrapolated) = 4.45 W/kg  
**SAR(1 g) = 2.41 W/kg; SAR(10 g) = 1.19 W/kg**  
 Smallest distance from peaks to all points 3 dB below = 9 mm  
 Ratio of SAR at M2 to SAR at M1 = 54.9%  
 Maximum value of SAR (measured) = 3.79 W/kg



0 dB = 3.79 W/kg = 5.79 dBW/kg

Test Laboratory: Sporton International Inc. SAR/HAC Testing Lab

Date: 2025/8/8

**System Check\_Head\_2450MHz****DUT: D2450V2-1095**

Communication System: UID 0, CW (0); Frequency: 2450 MHz; Duty Cycle: 1:1  
 Medium: HSL\_2450\_250808 Medium parameters used:  $f = 2450$  MHz;  $\sigma = 1.762$  S/m;  $\epsilon_r = 39.339$ ;  $\rho = 1000$  kg/m<sup>3</sup>

Ambient Temperature : 23.3 °C; Liquid Temperature : 22.7 °C

**DASY5 Configuration:**

- Probe: EX3DV4 - SN3857; ConvF(7.21, 6.52, 7.07) @ 2450 MHz; Calibrated: 2025/2/19
- Sensor-Surface: 1.4mm (Mechanical Surface Detection)
- Electronics: DAE4 Sn1279; Calibrated: 2024/8/20
- Phantom: Twin-SAM V5.0 (30deg probe tilt); Type: QD 000 P40 CD; Serial: 1842
- Measurement SW: DASY52, Version 52.10 (4); SEMCAD X Version 14.6.14 (7501)

**Pin=50mW/Area Scan (71x71x1):** Interpolated grid: dx=1.200 mm, dy=1.200 mm  
 Maximum value of SAR (interpolated) = 3.63 W/kg

**Pin=50mW/Zoom Scan (7x7x7)/Cube 0:** Measurement grid: dx=5mm, dy=5mm, dz=5mm

Reference Value = 31.36 V/m; Power Drift = 0.04 dB

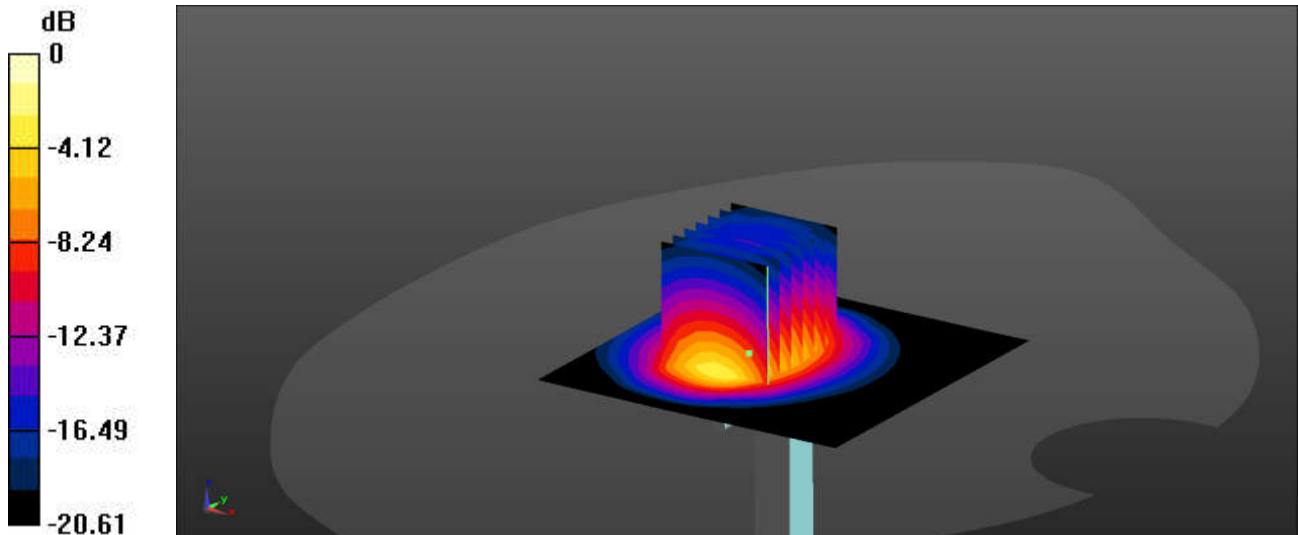
Peak SAR (extrapolated) = 5.25 W/kg

**SAR(1 g) = 2.68 W/kg; SAR(10 g) = 1.27 W/kg**

Smallest distance from peaks to all points 3 dB below = 9 mm

Ratio of SAR at M2 to SAR at M1 = 52.4%

Maximum value of SAR (measured) = 3.52 W/kg



0 dB = 3.52 W/kg = 5.47 dBW/kg

Test Laboratory: Sporton International Inc. SAR/HAC Testing Lab

Date: 2025/8/9

**System Check\_Head\_2600MHz****DUT: D2600V2-1112**

Communication System: UID 0, CW (0); Frequency: 2600 MHz; Duty Cycle: 1:1  
 Medium: HSL\_2600\_250809 Medium parameters used:  $f = 2600$  MHz;  $\sigma = 1.899$  S/m;  $\epsilon_r = 38.869$ ;  $\rho = 1000$  kg/m<sup>3</sup>

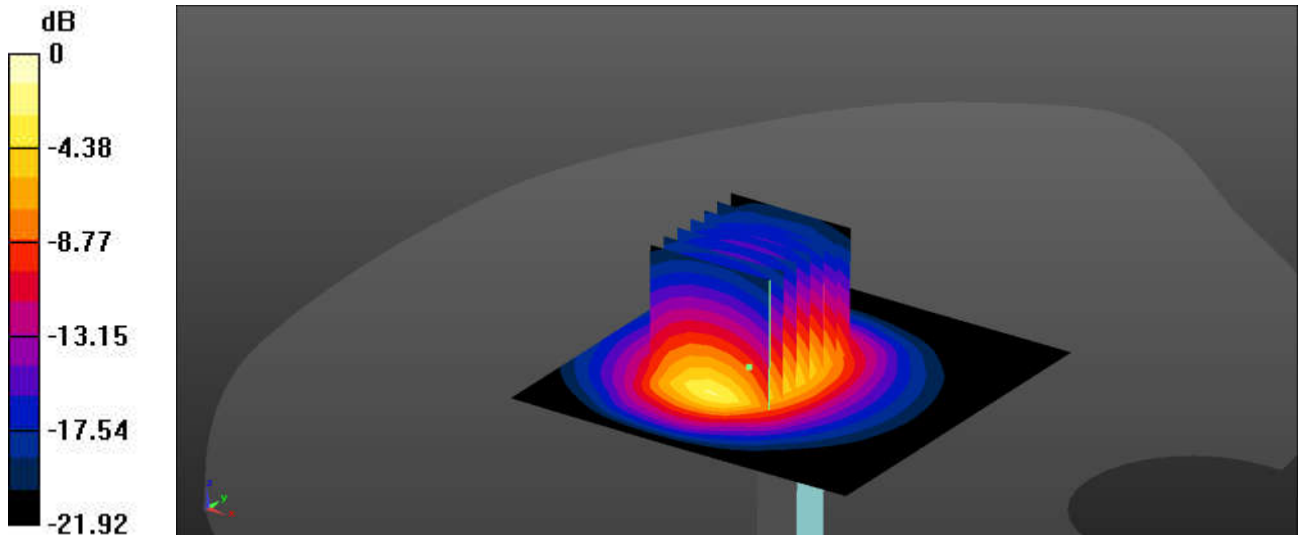
Ambient Temperature : 23.4 °C; Liquid Temperature : 22.9 °C

**DASY5 Configuration:**

- Probe: EX3DV4 - SN3857; ConvF(7.08, 6.41, 6.95) @ 2600 MHz; Calibrated: 2025/2/19
- Sensor-Surface: 1.4mm (Mechanical Surface Detection)
- Electronics: DAE4 Sn1279; Calibrated: 2024/8/20
- Phantom: Twin-SAM V5.0 (30deg probe tilt); Type: QD 000 P40 CD; Serial: 1842
- Measurement SW: DASY52, Version 52.10 (4); SEMCAD X Version 14.6.14 (7501)

**Pin=50mW/Area Scan (71x71x1):** Interpolated grid: dx=1.200 mm, dy=1.200 mm  
 Maximum value of SAR (interpolated) = 3.75 W/kg

**Pin=50mW/Zoom Scan (7x7x7)/Cube 0:** Measurement grid: dx=5mm, dy=5mm, dz=5mm  
 Reference Value = 31.99 V/m; Power Drift = 0.08 dB  
 Peak SAR (extrapolated) = 5.57 W/kg  
**SAR(1 g) = 2.77 W/kg; SAR(10 g) = 1.28 W/kg**  
 Smallest distance from peaks to all points 3 dB below = 9 mm  
 Ratio of SAR at M2 to SAR at M1 = 51%  
 Maximum value of SAR (measured) = 3.66 W/kg



0 dB = 3.66 W/kg = 5.63 dBW/kg

Test Laboratory: Sporton International Inc. SAR/HAC Testing Lab

Date: 2025/8/10

**System Check\_Head\_3500MHz****DUT: D3500V2-1037**

Communication System: UID 0, CW (0); Frequency: 3500 MHz; Duty Cycle: 1:1

Medium: HSL\_3500\_250810 Medium parameters used:  $f = 3500$  MHz;  $\sigma = 2.95$  S/m;  $\epsilon_r = 37.821$ ;  $\rho = 1000$  kg/m<sup>3</sup>

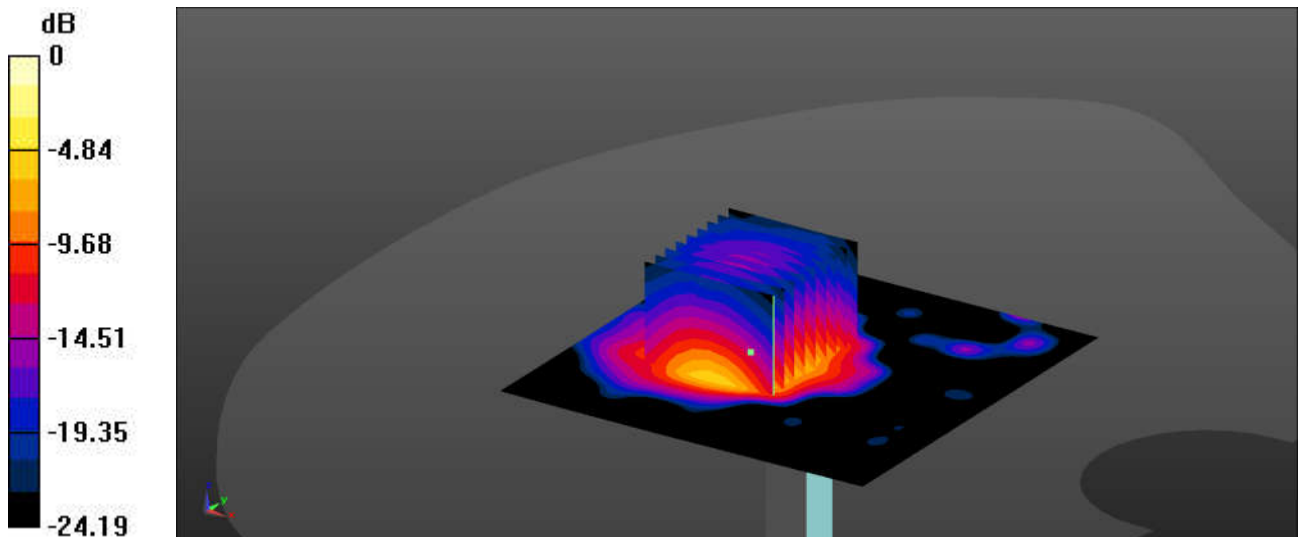
Ambient Temperature : 23.2 °C; Liquid Temperature : 22.7 °C

## DASY5 Configuration:

- Probe: EX3DV4 - SN3857; ConvF(6.95, 6.28, 6.81) @ 3500 MHz; Calibrated: 2025/2/19
- Sensor-Surface: 1.4mm (Mechanical Surface Detection)
- Electronics: DAE4 Sn1279; Calibrated: 2024/8/20
- Phantom: Twin-SAM V5.0 (30deg probe tilt); Type: QD 000 P40 CD; Serial: 1842
- Measurement SW: DASY52, Version 52.10 (4); SEMCAD X Version 14.6.14 (7501)

**Pin=50mW/Area Scan (91x91x1):** Interpolated grid: dx=1.000 mm, dy=1.000 mm  
 Maximum value of SAR (interpolated) = 6.38 W/kg

**Pin=50mW/Zoom Scan (9x9x7)/Cube 0:** Measurement grid: dx=4mm, dy=4mm, dz=1.4mm  
 Reference Value = 26.91 V/m; Power Drift = -0.05 dB  
 Peak SAR (extrapolated) = 8.34 W/kg  
**SAR(1 g) = 3.49 W/kg; SAR(10 g) = 1.31 W/kg**  
 Smallest distance from peaks to all points 3 dB below = 7.6 mm  
 Ratio of SAR at M2 to SAR at M1 = 78.8%  
 Maximum value of SAR (measured) = 6.43 W/kg



0 dB = 6.43 W/kg = 8.08 dBW/kg

Test Laboratory: Sporton International Inc. SAR/HAC Testing Lab

Date: 2025/8/10

**System Check\_Head\_3700MHz****DUT: D3700V2-1008**

Communication System: UID 0, CW (0); Frequency: 3700 MHz; Duty Cycle: 1:1  
 Medium: HSL\_3700\_250810 Medium parameters used:  $f = 3700$  MHz;  $\sigma = 3.164$  S/m;  $\epsilon_r = 37.534$ ;  $\rho = 1000$  kg/m<sup>3</sup>

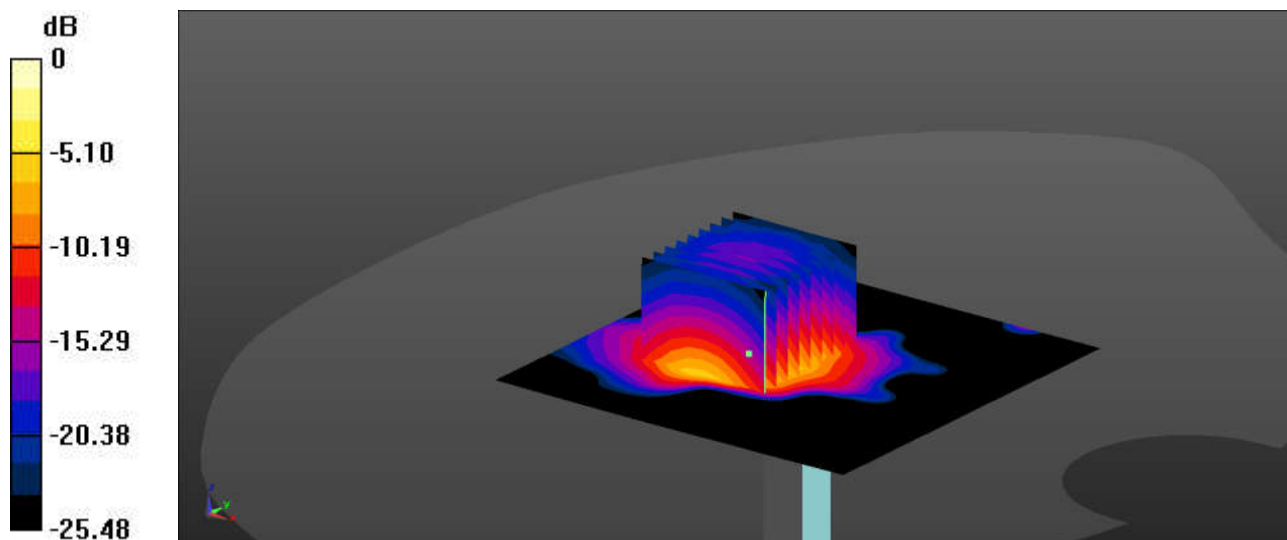
Ambient Temperature : 23.4 °C; Liquid Temperature : 22.7 °C

**DASY5 Configuration:**

- Probe: EX3DV4 - SN3857; ConvF(6.92, 6.26, 6.79) @ 3700 MHz; Calibrated: 2025/2/19
- Sensor-Surface: 1.4mm (Mechanical Surface Detection)
- Electronics: DAE4 Sn1279; Calibrated: 2024/8/20
- Phantom: Twin-SAM V5.0 (30deg probe tilt); Type: QD 000 P40 CD; Serial: 1842
- Measurement SW: DASY52, Version 52.10 (4); SEMCAD X Version 14.6.14 (7501)

**Pin=50mW/Area Scan (91x91x1):** Interpolated grid: dx=1.000 mm, dy=1.000 mm  
 Maximum value of SAR (interpolated) = 7.24 W/kg

**Pin=50mW/Zoom Scan (9x9x7)/Cube 0:** Measurement grid: dx=4mm, dy=4mm, dz=1.4mm  
 Reference Value = 27.09 V/m; Power Drift = 0.03 dB  
 Peak SAR (extrapolated) = 9.47 W/kg  
**SAR(1 g) = 3.56 W/kg; SAR(10 g) = 1.34 W/kg**  
 Smallest distance from peaks to all points 3 dB below = 8 mm  
 Ratio of SAR at M2 to SAR at M1 = 77.2%  
 Maximum value of SAR (measured) = 7.21 W/kg



0 dB = 7.21 W/kg = 8.58 dBW/kg

Test Laboratory: Sporton International Inc. SAR/HAC Testing Lab

Date: 2025/8/11

**System Check\_Head\_3900MHz****DUT: D3900V2-1048**

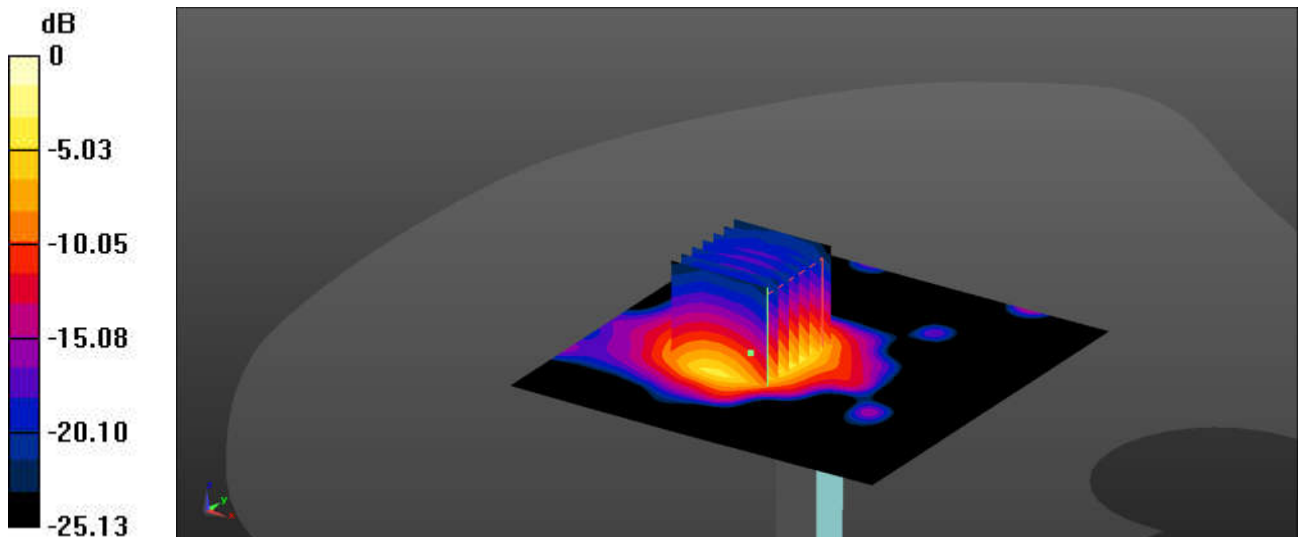
Communication System: UID 0, CW (0); Frequency: 3900 MHz; Duty Cycle: 1:1  
 Medium: HSL\_3900\_250811 Medium parameters used:  $f = 3900$  MHz;  $\sigma = 3.4$  S/m;  $\epsilon_r = 37.299$ ;  $\rho = 1000$  kg/m<sup>3</sup>  
 Ambient Temperature : 23.1 °C; Liquid Temperature : 22.7 °C

**DASY5 Configuration:**

- Probe: EX3DV4 - SN3857; ConvF(6.91, 6.25, 6.77) @ 3900 MHz; Calibrated: 2025/2/19
- Sensor-Surface: 1.4mm (Mechanical Surface Detection)
- Electronics: DAE4 Sn1279; Calibrated: 2024/8/20
- Phantom: Twin-SAM V5.0 (30deg probe tilt); Type: QD 000 P40 CD; Serial: 1842
- Measurement SW: DASY52, Version 52.10 (4); SEMCAD X Version 14.6.14 (7501)

**Pin=50mW/Area Scan (91x91x1):** Interpolated grid: dx=1.000 mm, dy=1.000 mm  
 Maximum value of SAR (interpolated) = 7.40 W/kg

**Pin=50mW/Zoom Scan (7x7x7)/Cube 0:** Measurement grid: dx=4mm, dy=4mm, dz=1.4mm  
 Reference Value = 24.53 V/m; Power Drift = 0.02 dB  
 Peak SAR (extrapolated) = 10.1 W/kg  
**SAR(1 g) = 3.79 W/kg; SAR(10 g) = 1.27 W/kg**  
 Smallest distance from peaks to all points 3 dB below = 8 mm  
 Ratio of SAR at M2 to SAR at M1 = 75.3%  
 Maximum value of SAR (measured) = 7.59 W/kg



0 dB = 7.59 W/kg = 8.80 dBW/kg

Test Laboratory: Sporton International Inc. SAR/HAC Testing Lab

Date: 2025/8/11

**System Check\_Head\_5250MHz****DUT: D5GHzV2-1113**

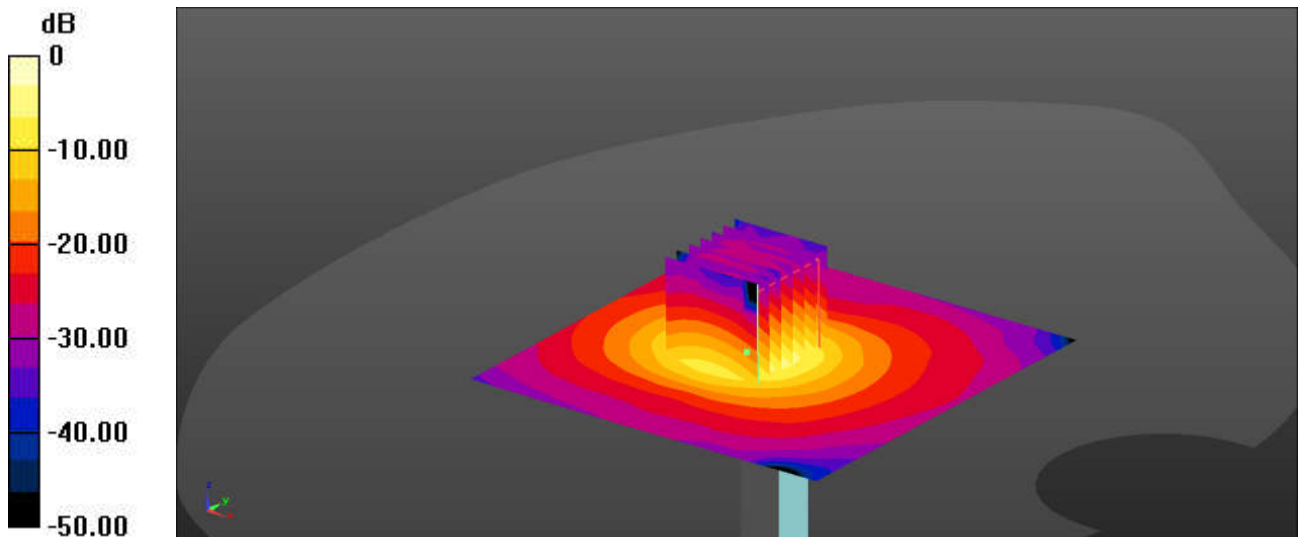
Communication System: UID 0, CW (0); Frequency: 5250 MHz; Duty Cycle: 1:1  
 Medium: HSL\_5250\_250811 Medium parameters used:  $f = 5250$  MHz;  $\sigma = 4.697$  S/m;  $\epsilon_r = 36.228$ ;  $\rho = 1000$  kg/m<sup>3</sup>  
 Ambient Temperature : 23.1 °C; Liquid Temperature : 22.6 °C

**DASY5 Configuration:**

- Probe: EX3DV4 - SN3857; ConvF(5.51, 4.98, 5.4) @ 5250 MHz; Calibrated: 2025/2/19
- Sensor-Surface: 1.4mm (Mechanical Surface Detection)
- Electronics: DAE4 Sn1279; Calibrated: 2024/8/20
- Phantom: Twin-SAM V5.0 (30deg probe tilt); Type: QD 000 P40 CD; Serial: 1842
- Measurement SW: DASY52, Version 52.10 (4); SEMCAD X Version 14.6.14 (7501)

**Pin=50mW/Area Scan (91x91x1):** Interpolated grid: dx=1.000 mm, dy=1.000 mm  
 Maximum value of SAR (interpolated) = 9.68 W/kg

**Pin=50mW/Zoom Scan (7x7x7)/Cube 0:** Measurement grid: dx=4mm, dy=4mm, dz=1.4mm  
 Reference Value = 36.57 V/m; Power Drift = 0.05 dB  
 Peak SAR (extrapolated) = 17.0 W/kg  
**SAR(1 g) = 4.08 W/kg; SAR(10 g) = 1.17 W/kg**  
 Smallest distance from peaks to all points 3 dB below = 7.2 mm  
 Ratio of SAR at M2 to SAR at M1 = 64%  
 Maximum value of SAR (measured) = 10.4 W/kg



0 dB = 10.4 W/kg = 10.17 dBW/kg

Test Laboratory: Sporton International Inc. SAR/HAC Testing Lab

Date: 2025/8/12

**System Check\_Head\_5600MHz****DUT: D5GHzV2-1113**

Communication System: UID 0, CW (0); Frequency: 5600 MHz; Duty Cycle: 1:1  
 Medium: HSL\_5600\_250812 Medium parameters used:  $f = 5600$  MHz;  $\sigma = 5.038$  S/m;  $\epsilon_r = 35.693$ ;  $\rho = 1000$  kg/m<sup>3</sup>

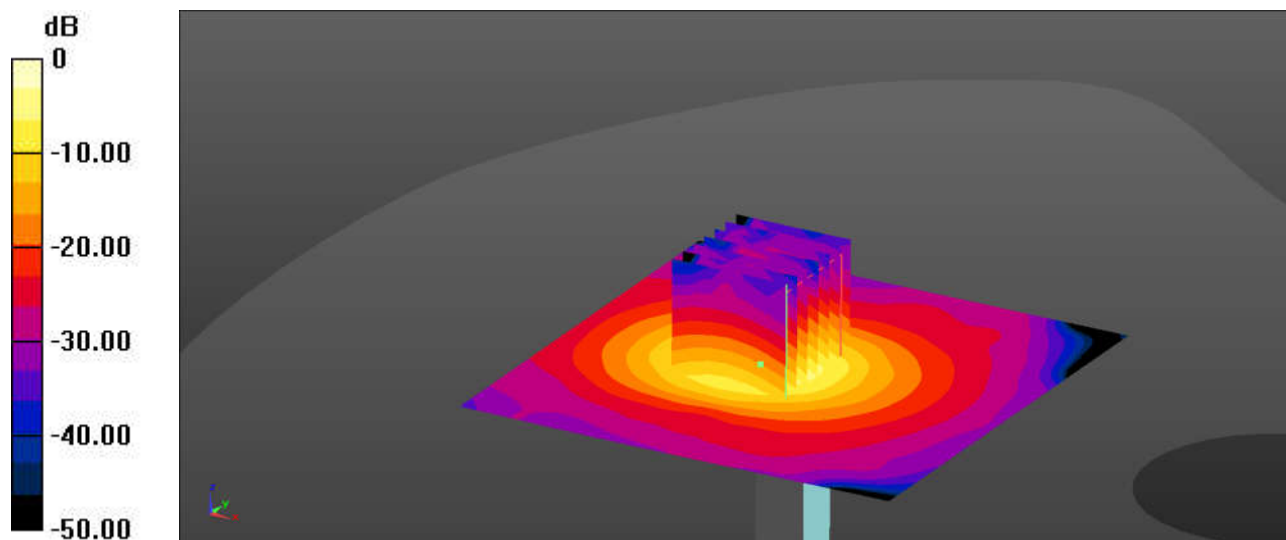
Ambient Temperature : 23.3 °C; Liquid Temperature : 22.7 °C

**DASY5 Configuration:**

- Probe: EX3DV4 - SN3857; ConvF(5.38, 4.86, 5.27) @ 5600 MHz; Calibrated: 2025/2/19
- Sensor-Surface: 1.4mm (Mechanical Surface Detection)
- Electronics: DAE4 Sn1279; Calibrated: 2024/8/20
- Phantom: Twin-SAM V5.0 (30deg probe tilt); Type: QD 000 P40 CD; Serial: 1842
- Measurement SW: DASY52, Version 52.10 (4); SEMCAD X Version 14.6.14 (7501)

**Pin=50mW/Area Scan (91x91x1):** Interpolated grid: dx=1.000 mm, dy=1.000 mm  
 Maximum value of SAR (interpolated) = 10.9 W/kg

**Pin=50mW/Zoom Scan (7x7x7)/Cube 0:** Measurement grid: dx=4mm, dy=4mm, dz=1.4mm  
 Reference Value = 36.39 V/m; Power Drift = 0.02 dB  
 Peak SAR (extrapolated) = 19.9 W/kg  
**SAR(1 g) = 4.34 W/kg; SAR(10 g) = 1.22 W/kg**  
 Smallest distance from peaks to all points 3 dB below = 7.2 mm  
 Ratio of SAR at M2 to SAR at M1 = 61.2%  
 Maximum value of SAR (measured) = 11.4 W/kg



0 dB = 11.4 W/kg = 10.57 dBW/kg

Test Laboratory: Sporton International Inc. SAR/HAC Testing Lab

Date: 2025/8/12

**System Check\_Head\_5750MHz****DUT: D5GHzV2-1113**

Communication System: UID 0, CW (0); Frequency: 5750 MHz;Duty Cycle: 1:1

Medium: HSL\_5750\_250812 Medium parameters used:  $f = 5750$  MHz;  $\sigma = 5.221$  S/m;  $\epsilon_r = 35.738$ ;  $\rho = 1000$  kg/m<sup>3</sup>

Ambient Temperature : 23.4 °C; Liquid Temperature : 22.8 °C

## DASY5 Configuration:

- Probe: EX3DV4 - SN3857; ConvF(5.43, 4.91, 5.32) @ 5750 MHz; Calibrated: 2025/2/19
- Sensor-Surface: 1.4mm (Mechanical Surface Detection)
- Electronics: DAE4 Sn1279; Calibrated: 2024/8/20
- Phantom: Twin-SAM V5.0 (30deg probe tilt); Type: QD 000 P40 CD; Serial: 1842
- Measurement SW: DASY52, Version 52.10 (4); SEMCAD X Version 14.6.14 (7501)

**Pin=50mW/Area Scan (91x91x1):** Interpolated grid: dx=1.000 mm, dy=1.000 mm

Maximum value of SAR (interpolated) = 8.86 W/kg

**Pin=50mW/Zoom Scan (7x7x7)/Cube 0:** Measurement grid: dx=4mm, dy=4mm, dz=1.4mm

Reference Value = 25.82 V/m; Power Drift = 0.07 dB

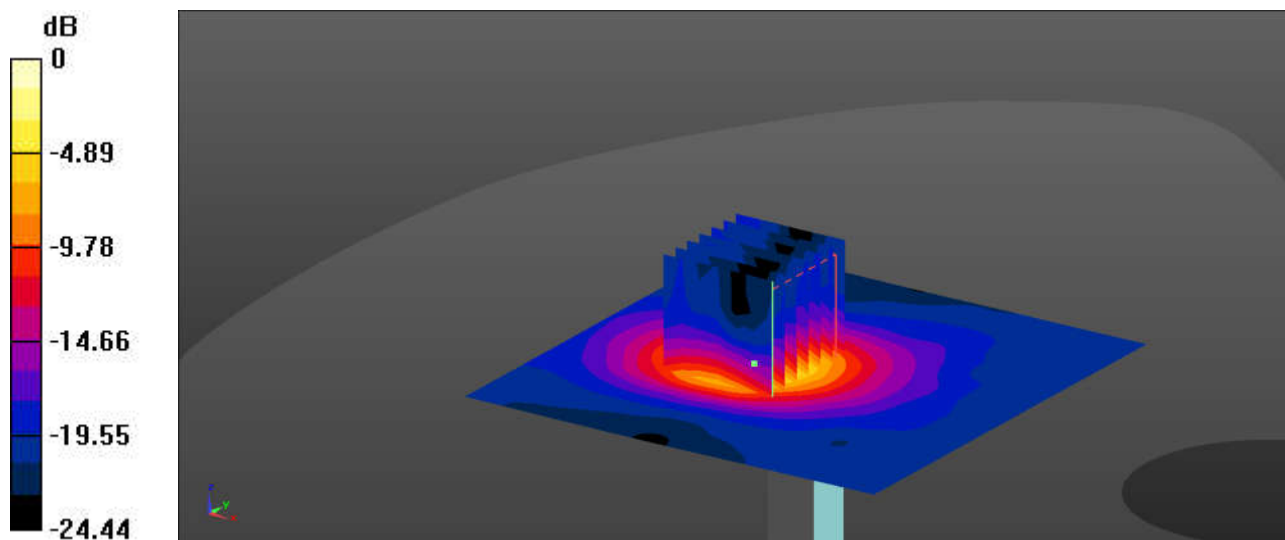
Peak SAR (extrapolated) = 18.2 W/kg

**SAR(1 g) = 3.65 W/kg; SAR(10 g) = 1.08 W/kg**

Smallest distance from peaks to all points 3 dB below = 7.2 mm

Ratio of SAR at M2 to SAR at M1 = 58.9%

Maximum value of SAR (measured) = 9.64 W/kg



0 dB = 9.64 W/kg = 9.84 dBW/kg