

Test Laboratory: Sporton International Inc. SAR/HAC Testing Lab

Date: 2024/9/24

90_FR1 n41_HPUE_100M_QPSK_1RB_1Offset_Back_5mm_Ch518598

Communication System: UID 0, 5G NR (0); Frequency: 2592.99 MHz; Duty Cycle: 1:1
 Medium: HSL_2600 Medium parameters used: $f = 2592.99$ MHz; $\sigma = 2.031$ S/m; $\epsilon_r = 40.328$; $\rho = 1000$ kg/m³
 Ambient Temperature : 23.3 °C; Liquid Temperature : 22.7 °C

DASY5 Configuration:

- Probe: EX3DV4 - SN3857; ConvF(7.36, 6.7, 7.41); Calibrated: 2024/1/22
- Sensor-Surface: 1.4mm (Mechanical Surface Detection)
- Electronics: DAE4 Sn1303; Calibrated: 2023/11/20
- Phantom: Twin-SAM V5.0 (30deg probe tilt); Type: QD 000 P40 CD; Serial: 1842
- Measurement SW: DASY52, Version 52.10 (4); SEMCAD X Version 14.6.14 (7501)

Area Scan (101x161x1): Interpolated grid: $dx=1.200$ mm, $dy=1.200$ mm
 Maximum value of SAR (interpolated) = 1.51 W/kg

Zoom Scan (7x7x7)/Cube 0: Measurement grid: $dx=5$ mm, $dy=5$ mm, $dz=5$ mm

Reference Value = 7.672 V/m; Power Drift = -0.06 dB

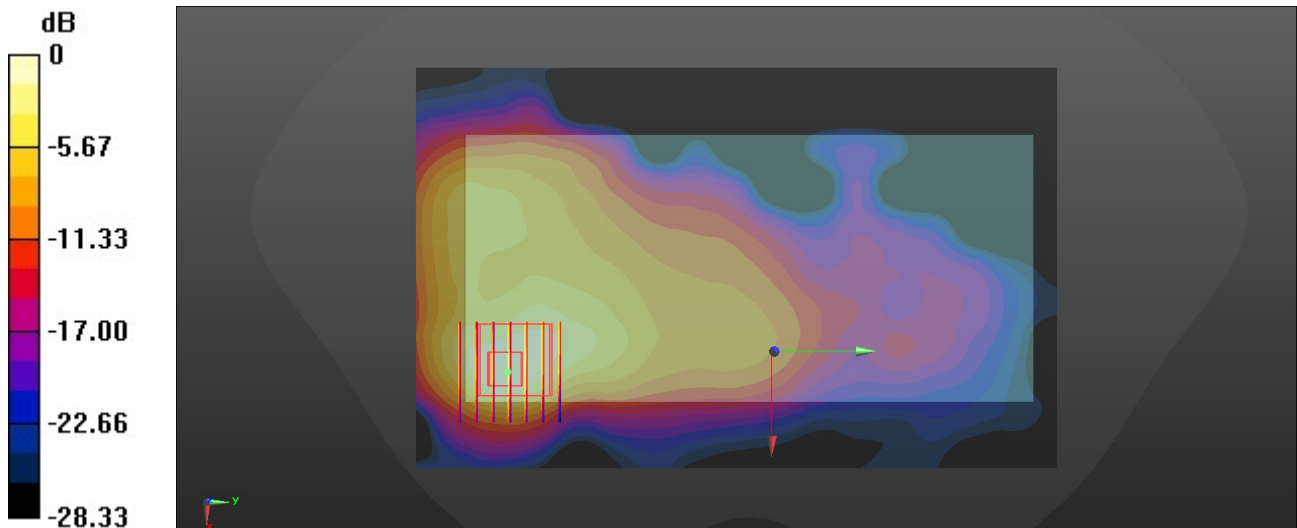
Peak SAR (extrapolated) = 2.02 W/kg

SAR(1 g) = 0.957 W/kg; SAR(10 g) = 0.446 W/kg

Smallest distance from peaks to all points 3 dB below = 8 mm

Ratio of SAR at M2 to SAR at M1 = 50.6%

Maximum value of SAR (measured) = 1.28 W/kg



0 dB = 1.28 W/kg = 1.07 dBW/kg

Test Laboratory: Sporton International Inc. SAR/HAC Testing Lab

Date: 2024/9/25

91_LTE Band 48_20M_QPSK_1RB_0Offset_Back_5mm_Ch55340

Communication System: UID 0, LTE-TDD (0); Frequency: 3560 MHz; Duty Cycle: 1:1.59
 Medium: HSL_3500 Medium parameters used: $f = 3560$ MHz; $\sigma = 2.86$ S/m; $\epsilon_r = 38.612$; $\rho = 1000$ kg/m³

Ambient Temperature : 23.4 °C; Liquid Temperature : 22.8 °C

DASY5 Configuration:

- Probe: EX3DV4 - SN3857; ConvF(7.08, 6.34, 6.93); Calibrated: 2024/1/22
- Sensor-Surface: 1.4mm (Mechanical Surface Detection)
- Electronics: DAE4 Sn1303; Calibrated: 2023/11/20
- Phantom: Twin-SAM V5.0 (30deg probe tilt); Type: QD 000 P40 CD; Serial: 1842
- Measurement SW: DASY52, Version 52.10 (4); SEMCAD X Version 14.6.14 (7501)

Area Scan (121x101x1): Interpolated grid: dx=1.000 mm, dy=1.000 mm
 Maximum value of SAR (interpolated) = 1.25 W/kg

Zoom Scan (10x10x7)/Cube 0: Measurement grid: dx=4mm, dy=4mm, dz=1.4mm

Reference Value = 4.750 V/m; Power Drift = -0.02 dB

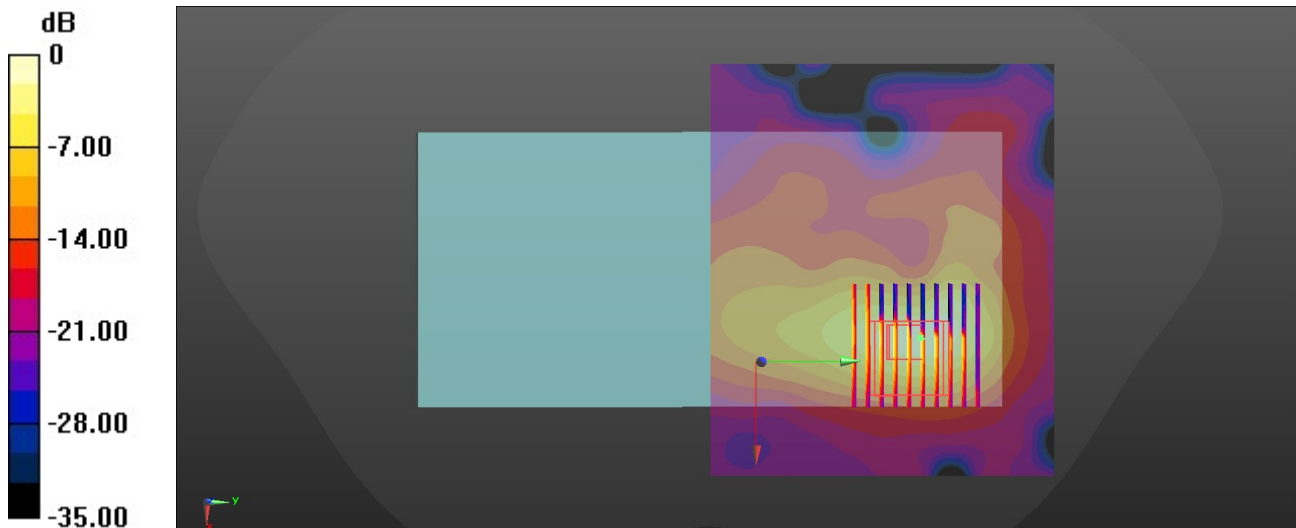
Peak SAR (extrapolated) = 2.82 W/kg

SAR(1 g) = 0.602 W/kg; SAR(10 g) = 0.186 W/kg

Smallest distance from peaks to all points 3 dB below = 4.6 mm

Ratio of SAR at M2 to SAR at M1 = 77.6%

Maximum value of SAR (measured) = 1.25 W/kg



0 dB = 1.25 W/kg = 0.97 dBW/kg

Test Laboratory: Sporton International Inc. SAR/HAC Testing Lab

Date: 2024/9/26

92_FR1 n48_100M_QPSK_135RB_69Offset_Back_5mm_Ch641666

Communication System: UID 0, 5G NR (0); Frequency: 3624.99 MHz; Duty Cycle: 1:1
 Medium: HSL_3700 Medium parameters used: $f = 3624.99$ MHz; $\sigma = 2.918$ S/m; $\epsilon_r = 38.512$; $\rho = 1000$ kg/m³
 Ambient Temperature : 23.2 °C; Liquid Temperature : 22.7 °C

DASY5 Configuration:

- Probe: EX3DV4 - SN3857; ConvF(7.06, 6.33, 6.89); Calibrated: 2024/1/22
- Sensor-Surface: 1.4mm (Mechanical Surface Detection)
- Electronics: DAE4 Sn1303; Calibrated: 2023/11/20
- Phantom: Twin-SAM V5.0 (30deg probe tilt); Type: QD 000 P40 CD; Serial: 1842
- Measurement SW: DASY52, Version 52.10 (4); SEMCAD X Version 14.6.14 (7501)

Area Scan (121x201x1): Interpolated grid: dx=1.000 mm, dy=1.000 mm
 Maximum value of SAR (interpolated) = 1.12 W/kg

Zoom Scan (10x9x7)/Cube 0: Measurement grid: dx=4mm, dy=4mm, dz=1.4mm

Reference Value = 4.316 V/m; Power Drift = -0.12 dB

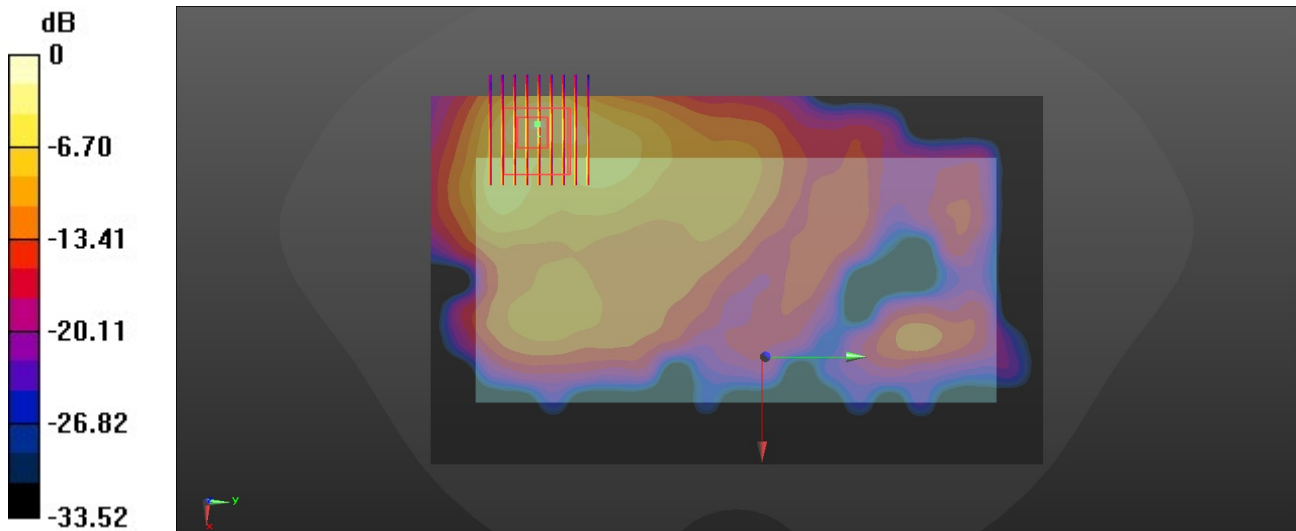
Peak SAR (extrapolated) = 2.59 W/kg

SAR(1 g) = 0.922 W/kg; SAR(10 g) = 0.312 W/kg

Smallest distance from peaks to all points 3 dB below = 4.2 mm

Ratio of SAR at M2 to SAR at M1 = 74.8%

Maximum value of SAR (measured) = 1.83 W/kg



Test Laboratory: Sporton International Inc. SAR/HAC Testing Lab

Date: 2024/9/25

93_FR1 n77 HPUE_100M_QPSK_1RB_1Offset_Back_20mm_Ch633334

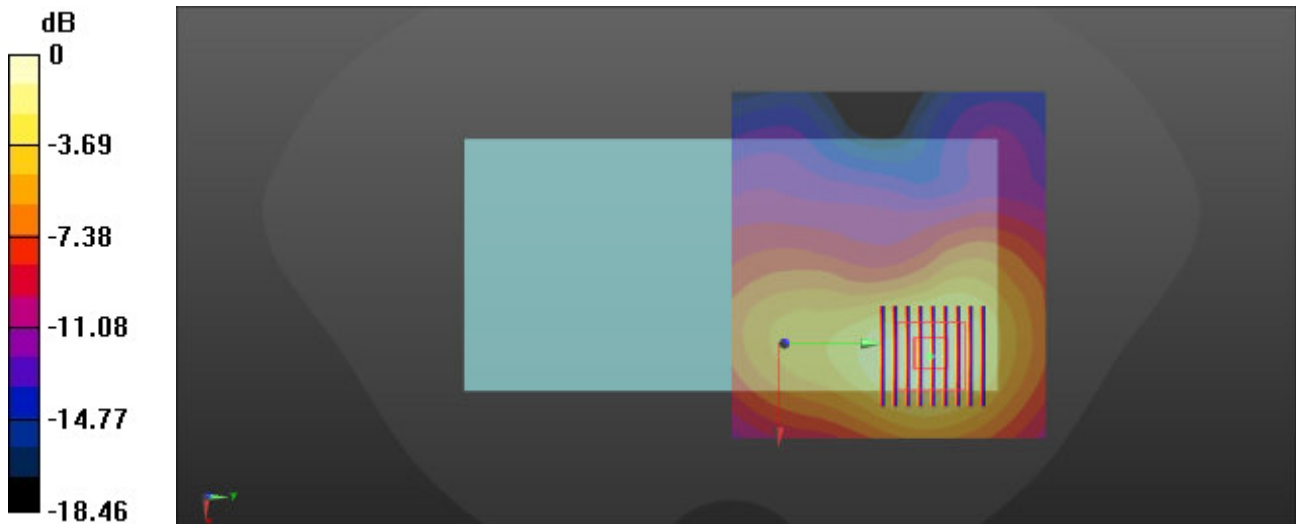
Communication System: UID 0, 5G NR (0); Frequency: 3500.01 MHz; Duty Cycle: 1:1
 Medium: HSL_3500 Medium parameters used: $f = 3500.01$ MHz; $\sigma = 2.81$ S/m; $\epsilon_r = 38.711$; $\rho = 1000$ kg/m³
 Ambient Temperature : 23.4 °C; Liquid Temperature : 22.8 °C

DASY5 Configuration:

- Probe: EX3DV4 - SN3857; ConvF(7.08, 6.34, 6.93); Calibrated: 2024/1/22
- Sensor-Surface: 1.4mm (Mechanical Surface Detection)
- Electronics: DAE4 Sn1303; Calibrated: 2023/11/20
- Phantom: Twin-SAM V5.0 (30deg probe tilt); Type: QD 000 P40 CD; Serial: 1842
- Measurement SW: DASY52, Version 52.10 (4); SEMCAD X Version 14.6.14 (7501)

Area Scan (111x101x1): Interpolated grid: dx=1.000 mm, dy=1.000 mm
 Maximum value of SAR (interpolated) = 1.96 W/kg

Zoom Scan (9x9x7)/Cube 0: Measurement grid: dx=4mm, dy=4mm, dz=1.4mm
 Reference Value = 10.64 V/m; Power Drift = -0.08 dB
 Peak SAR (extrapolated) = 2.26 W/kg
SAR(1 g) = 1.07 W/kg; SAR(10 g) = 0.529 W/kg
 Smallest distance from peaks to all points 3 dB below = 14 mm
 Ratio of SAR at M2 to SAR at M1 = 79.3%
 Maximum value of SAR (measured) = 1.78 W/kg



0 dB = 1.78 W/kg = 2.50 dBW/kg

Test Laboratory: Sporton International Inc. SAR/HAC Testing Lab

Date: 2024/9/29

94_WLAN2.4GHz_802.11b 1Mbps_Back_5mm_Ch1

Communication System: UID 0, WLAN2.4GHz (0); Frequency: 2412 MHz; Duty Cycle: 1:1.018
 Medium: HSL_2450 Medium parameters used: $f = 2412$ MHz; $\sigma = 1.725$ S/m; $\epsilon_r = 39.456$; $\rho = 1000$ kg/m³

Ambient Temperature : 23.3 °C; Liquid Temperature : 22.8 °C

DASY5 Configuration:

- Probe: EX3DV4 - SN3857; ConvF(7.44, 6.79, 7.48); Calibrated: 2024/1/22
- Sensor-Surface: 1.4mm (Mechanical Surface Detection)
- Electronics: DAE4 Sn1303; Calibrated: 2023/11/20
- Phantom: Twin-SAM V5.0 (30deg probe tilt); Type: QD 000 P40 CD; Serial: 1842
- Measurement SW: DASY52, Version 52.10 (4); SEMCAD X Version 14.6.14 (7501)

Area Scan (91x171x1): Interpolated grid: dx=1.200 mm, dy=1.200 mm
 Maximum value of SAR (interpolated) = 1.33 W/kg

Zoom Scan (7x7x7)/Cube 0: Measurement grid: dx=5mm, dy=5mm, dz=5mm

Reference Value = 9.933 V/m; Power Drift = -0.01 dB

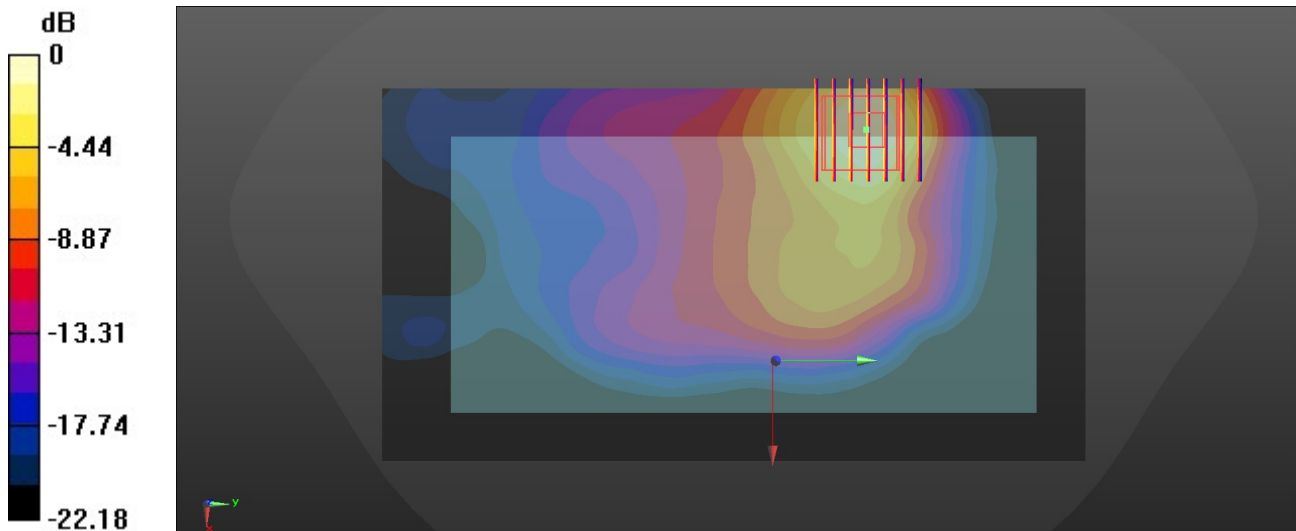
Peak SAR (extrapolated) = 1.53 W/kg

SAR(1 g) = 0.824 W/kg; SAR(10 g) = 0.433 W/kg

Smallest distance from peaks to all points 3 dB below = 9.2 mm

Ratio of SAR at M2 to SAR at M1 = 51.4%

Maximum value of SAR (measured) = 1.22 W/kg



0 dB = 1.22 W/kg = 0.86 dBW/kg

Test Laboratory: Sporton International Inc. SAR/HAC Testing Lab

Date: 2024/9/29

95_Bluetooth_1Mbps_Back_5mm_Ch0

Communication System: UID 0, Bluetooth (0); Frequency: 2402 MHz; Duty Cycle: 1:1.302
 Medium: HSL_2450 Medium parameters used: $f = 2402$ MHz; $\sigma = 1.723$ S/m; $\epsilon_r = 39.503$; $\rho = 1000$ kg/m³

Ambient Temperature : 23.3 °C; Liquid Temperature : 22.8 °C

DASY5 Configuration:

- Probe: EX3DV4 - SN3857; ConvF(7.44, 6.79, 7.48); Calibrated: 2024/1/22
- Sensor-Surface: 1.4mm (Mechanical Surface Detection)
- Electronics: DAE4 Sn1303; Calibrated: 2023/11/20
- Phantom: Twin-SAM V5.0 (30deg probe tilt); Type: QD 000 P40 CD; Serial: 1842
- Measurement SW: DASY52, Version 52.10 (4); SEMCAD X Version 14.6.14 (7501)

Area Scan (91x171x1): Interpolated grid: dx=1.200 mm, dy=1.200 mm
 Maximum value of SAR (interpolated) = 0.235 W/kg

Zoom Scan (8x8x7)/Cube 0: Measurement grid: dx=5mm, dy=5mm, dz=5mm

Reference Value = 2.378 V/m; Power Drift = 0.06 dB

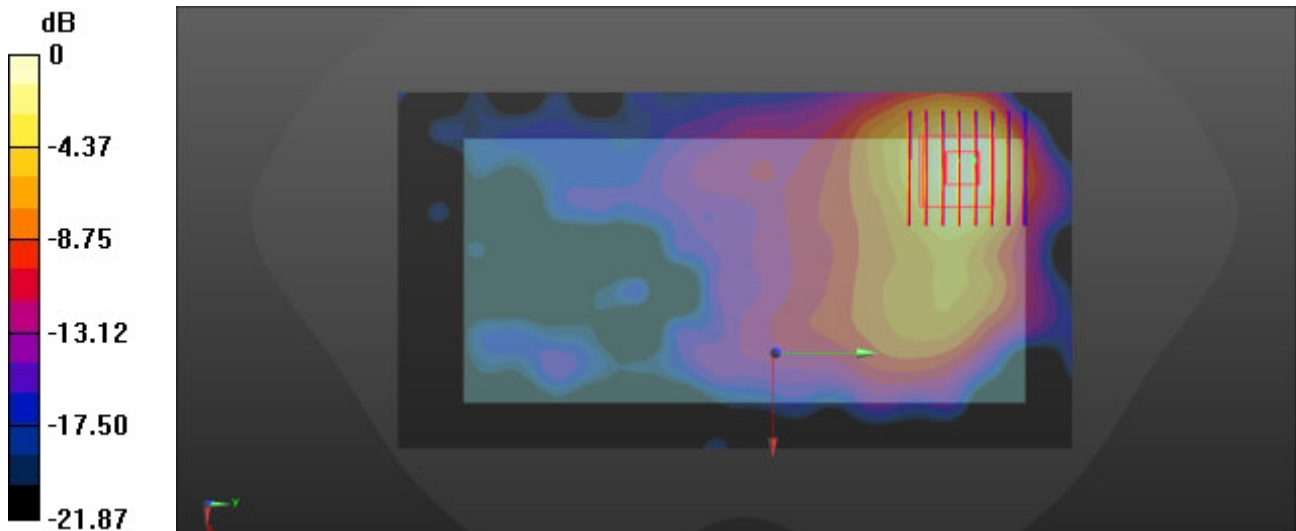
Peak SAR (extrapolated) = 0.250 W/kg

SAR(1 g) = 0.129 W/kg; SAR(10 g) = 0.074 W/kg

Smallest distance from peaks to all points 3 dB below = 11.4 mm

Ratio of SAR at M2 to SAR at M1 = 52.2%

Maximum value of SAR (measured) = 0.211 W/kg



0 dB = 0.211 W/kg = -6.76 dBW/kg

Test Laboratory: Sporton International Inc. SAR/HAC Testing Lab

Date: 2024/10/1

96_WLAN5GHz_802.11ac-VHT80 MCS0_Back_5mm_Ch58

Communication System: UID 0, WLAN5GHz (0); Frequency: 5290 MHz; Duty Cycle: 1:1
 Medium: HSL_5000 Medium parameters used: $f = 5290$ MHz; $\sigma = 4.624$ S/m; $\epsilon_r = 35.646$; $\rho = 1000$ kg/m³

Ambient Temperature : 23.3 °C; Liquid Temperature : 22.5 °C

DASY5 Configuration:

- Probe: EX3DV4 - SN3857; ConvF(5.34, 4.76, 5.24); Calibrated: 2024/1/22
- Sensor-Surface: 1.4mm (Mechanical Surface Detection)
- Electronics: DAE4 Sn1303; Calibrated: 2023/11/20
- Phantom: Twin-SAM V5.0 (30deg probe tilt); Type: QD 000 P40 CD; Serial: 1842
- Measurement SW: DASY52, Version 52.10 (4); SEMCAD X Version 14.6.14 (7501)

Area Scan (111x101x1): Interpolated grid: dx=1.000 mm, dy=1.000 mm
 Maximum value of SAR (interpolated) = 1.46 W/kg

Zoom Scan (8x8x7)/Cube 0: Measurement grid: dx=4mm, dy=4mm, dz=1.4mm

Reference Value = 0.2050 V/m; Power Drift = -0.01 dB

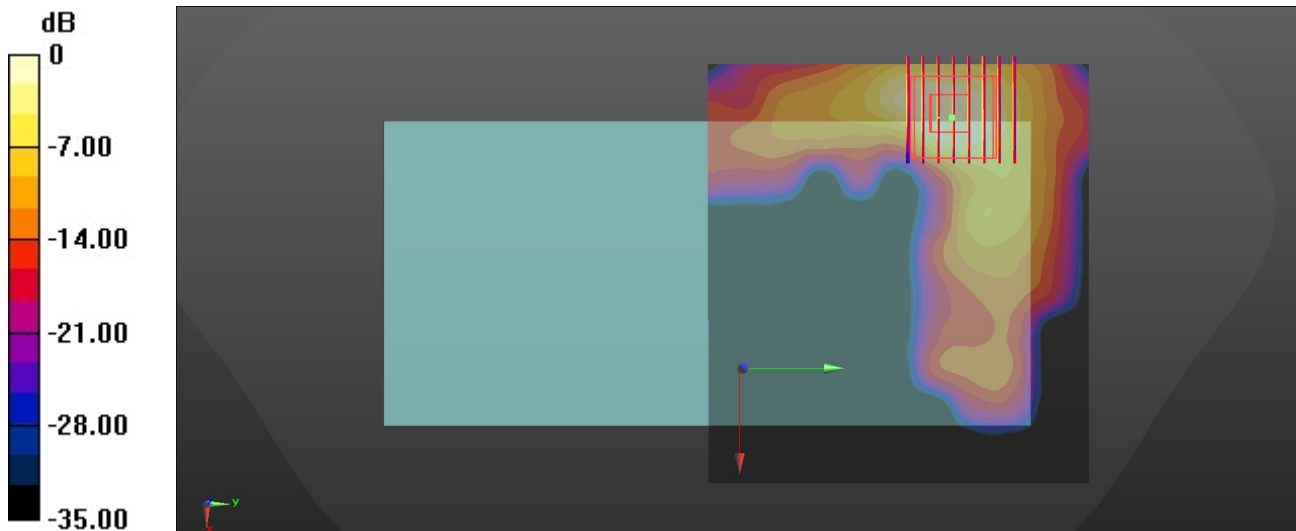
Peak SAR (extrapolated) = 2.01 W/kg

SAR(1 g) = 0.511 W/kg; SAR(10 g) = 0.185 W/kg

Smallest distance from peaks to all points 3 dB below = 6.9 mm

Ratio of SAR at M2 to SAR at M1 = 62.5%

Maximum value of SAR (measured) = 1.19 W/kg



0 dB = 1.19 W/kg = 0.76 dBW/kg

Test Laboratory: Sporton International Inc. SAR/HAC Testing Lab

Date: 2024/10/4

97_WLAN5GHz_802.11ac-VHT80 MCS0_Back_5mm_Ch106

Communication System: UID 0, WLAN5GHz (0); Frequency: 5530 MHz; Duty Cycle: 1:1
 Medium: HSL_5000 Medium parameters used: $f = 5530$ MHz; $\sigma = 4.875$ S/m; $\epsilon_r = 35.24$; $\rho = 1000$ kg/m³

Ambient Temperature : 23.3 °C; Liquid Temperature : 22.7 °C

DASY5 Configuration:

- Probe: EX3DV4 - SN3857; ConvF(4.9, 4.3, 4.75); Calibrated: 2024/1/22
- Sensor-Surface: 1.4mm (Mechanical Surface Detection)
- Electronics: DAE4 Sn1303; Calibrated: 2023/11/20
- Phantom: Twin-SAM V5.0 (30deg probe tilt); Type: QD 000 P40 CD; Serial: 1842
- Measurement SW: DASY52, Version 52.10 (4); SEMCAD X Version 14.6.14 (7501)

Area Scan (111x101x1): Interpolated grid: dx=1.000 mm, dy=1.000 mm
 Maximum value of SAR (interpolated) = 1.89 W/kg

Zoom Scan (9x9x7)/Cube 0: Measurement grid: dx=4mm, dy=4mm, dz=1.4mm

Reference Value = 1.693 V/m; Power Drift = -0.03 dB

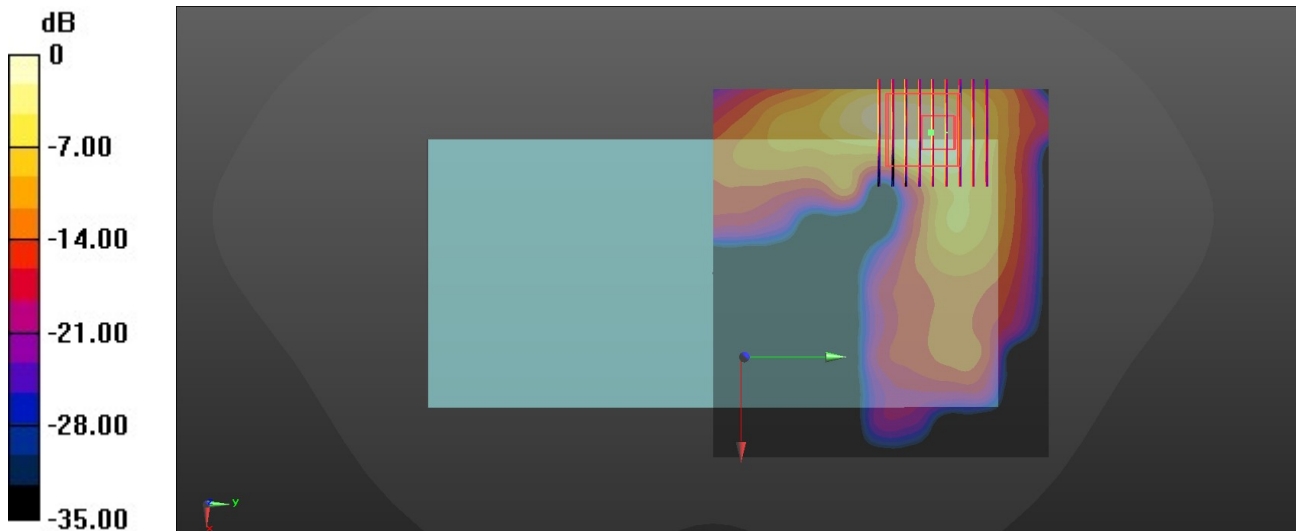
Peak SAR (extrapolated) = 2.97 W/kg

SAR(1 g) = 0.732 W/kg; SAR(10 g) = 0.263 W/kg

Smallest distance from peaks to all points 3 dB below = 5.8 mm

Ratio of SAR at M2 to SAR at M1 = 64.6%

Maximum value of SAR (measured) = 1.70 W/kg



0 dB = 1.70 W/kg = 2.30 dBW/kg

Test Laboratory: Sporton International Inc. SAR/HAC Testing Lab

Date: 2024/10/7

98_WLAN5GHz_802.11ac-VHT80 MCS0_Back_5mm_Ch155

Communication System: UID 0, WLAN5GHz (0); Frequency: 5775 MHz;Duty Cycle: 1:1
 Medium: HSL_5000 Medium parameters used: $f = 5775$ MHz; $\sigma = 5.132$ S/m; $\epsilon_r = 34.826$; $\rho = 1000$ kg/m³

Ambient Temperature : 23.3 °C; Liquid Temperature : 22.6 °C

DASY5 Configuration:

- Probe: EX3DV4 - SN3857; ConvF(5.19, 4.53, 5.01); Calibrated: 2024/1/22
- Sensor-Surface: 1.4mm (Mechanical Surface Detection)
- Electronics: DAE4 Sn1303; Calibrated: 2023/11/20
- Phantom: Twin-SAM V5.0 (30deg probe tilt); Type: QD 000 P40 CD; Serial: 1842
- Measurement SW: DASY52, Version 52.10 (4); SEMCAD X Version 14.6.14 (7501)

Area Scan (121x201x1): Interpolated grid: dx=1.000 mm, dy=1.000 mm

Maximum value of SAR (interpolated) = 1.68 W/kg

Zoom Scan (9x9x7)/Cube 0: Measurement grid: dx=4mm, dy=4mm, dz=1.4mm

Reference Value = 1.678 V/m; Power Drift = 0.04 dB

Peak SAR (extrapolated) = 2.97 W/kg

SAR(1 g) = 0.685 W/kg; SAR(10 g) = 0.216 W/kg

Smallest distance from peaks to all points 3 dB below = 7.5 mm

Ratio of SAR at M2 to SAR at M1 = 62.1%

Maximum value of SAR (measured) = 1.73 W/kg

Zoom Scan (9x9x7)/Cube 1: Measurement grid: dx=4mm, dy=4mm, dz=1.4mm

Reference Value = 1.678 V/m; Power Drift = 0.04 dB

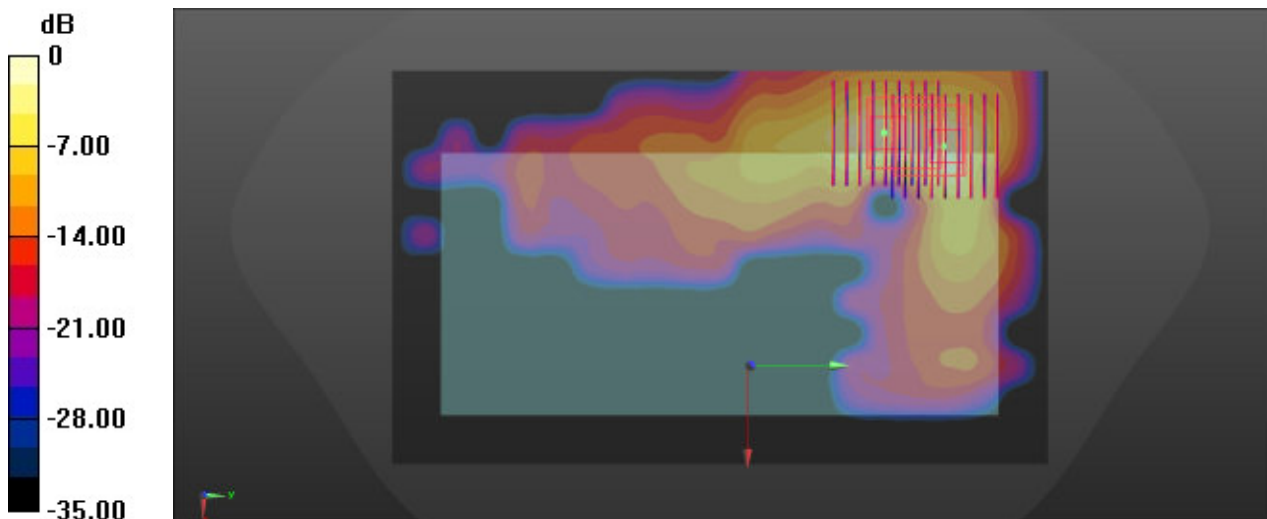
Peak SAR (extrapolated) = 2.76 W/kg

SAR(1 g) = 0.612 W/kg; SAR(10 g) = 0.197 W/kg

Smallest distance from peaks to all points 3 dB below = 6.2 mm

Ratio of SAR at M2 to SAR at M1 = 62.2%

Maximum value of SAR (measured) = 1.58 W/kg



0 dB = 1.58 W/kg = 1.99 dBW/kg

Test Laboratory: Sporton International Inc. SAR/HAC Testing Lab

Date: 2024/9/19

99_LTE Band 12_10M_QPSK_1RB_0Offset_Bottom Side_0mm_Ch23095

Communication System: UID 0, LTE-FDD (0); Frequency: 707.5 MHz; Duty Cycle: 1:1
 Medium: HSL_750 Medium parameters used: $f = 707.5$ MHz; $\sigma = 0.863$ S/m; $\epsilon_r = 42.573$; $\rho = 1000$ kg/m³

Ambient Temperature : 23.3 °C; Liquid Temperature : 22.8 °C

DASY5 Configuration:

- Probe: EX3DV4 - SN3857; ConvF(9.21, 8.75, 9.15); Calibrated: 2024/1/22
- Sensor-Surface: 1.4mm (Mechanical Surface Detection)
- Electronics: DAE4 Sn1303; Calibrated: 2023/11/20
- Phantom: Twin-SAM V5.0 (30deg probe tilt); Type: QD 000 P40 CD; Serial: 1842
- Measurement SW: DASY52, Version 52.10 (4); SEMCAD X Version 14.6.14 (7501)

Area Scan (81x131x1): Interpolated grid: dx=1.500 mm, dy=1.500 mm
 Maximum value of SAR (interpolated) = 4.60 W/kg

Zoom Scan (5x5x7)/Cube 0: Measurement grid: dx=8mm, dy=8mm, dz=5mm

Reference Value = 12.52 V/m; Power Drift = 0.05 dB

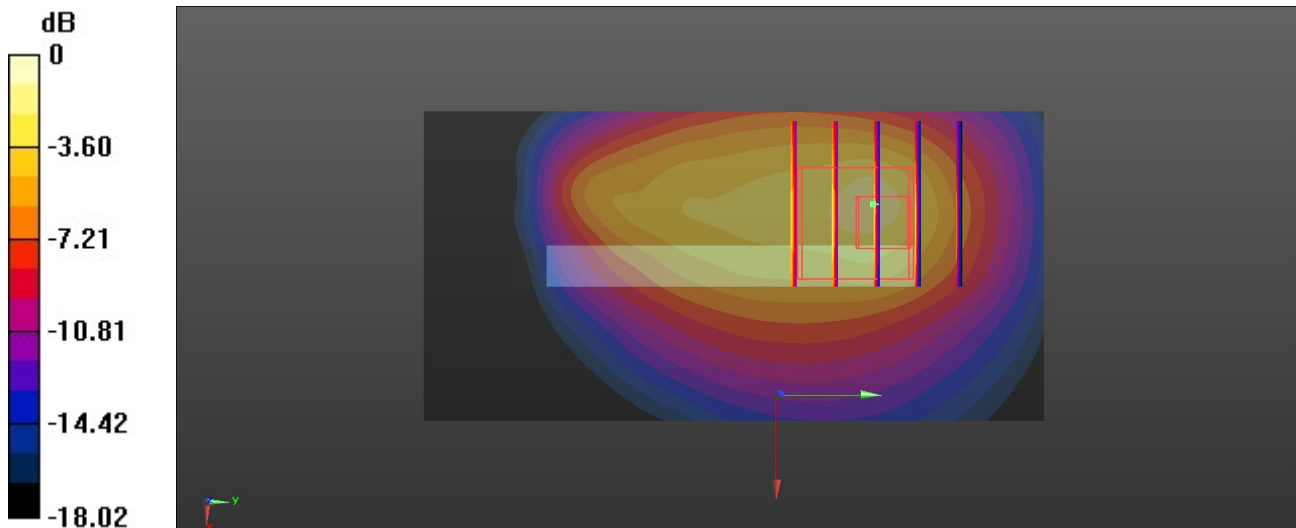
Peak SAR (extrapolated) = 9.65 W/kg

SAR(1 g) = 3.31 W/kg; SAR(10 g) = 1.59 W/kg

Smallest distance from peaks to all points 3 dB below = 8.5 mm

Ratio of SAR at M2 to SAR at M1 = 33.5%

Maximum value of SAR (measured) = 4.99 W/kg



0 dB = 4.99 W/kg = 6.98 dBW/kg

Test Laboratory: Sporton International Inc. SAR/HAC Testing Lab

Date: 2024/9/19

100_LTE Band 13_10M_QPSK_1RB_0Offset_Bottom Side_0mm_Ch23230

Communication System: UID 0, LTE-FDD (0); Frequency: 782 MHz; Duty Cycle: 1:1
 Medium: HSL_750 Medium parameters used: $f = 782$ MHz; $\sigma = 0.895$ S/m; $\epsilon_r = 42.453$; $\rho = 1000$ kg/m³

Ambient Temperature : 23.3 °C; Liquid Temperature : 22.8 °C

DASY5 Configuration:

- Probe: EX3DV4 - SN3857; ConvF(9.21, 8.75, 9.15); Calibrated: 2024/1/22
- Sensor-Surface: 1.4mm (Mechanical Surface Detection)
- Electronics: DAE4 Sn1303; Calibrated: 2023/11/20
- Phantom: Twin-SAM V5.0 (30deg probe tilt); Type: QD 000 P40 CD; Serial: 1842
- Measurement SW: DASY52, Version 52.10 (4); SEMCAD X Version 14.6.14 (7501)

Area Scan (41x81x1): Interpolated grid: dx=1.500 mm, dy=1.500 mm

Maximum value of SAR (interpolated) = 6.09 W/kg

Zoom Scan (5x5x7)/Cube 0: Measurement grid: dx=8mm, dy=8mm, dz=5mm

Reference Value = 29.87 V/m; Power Drift = 0.09 dB

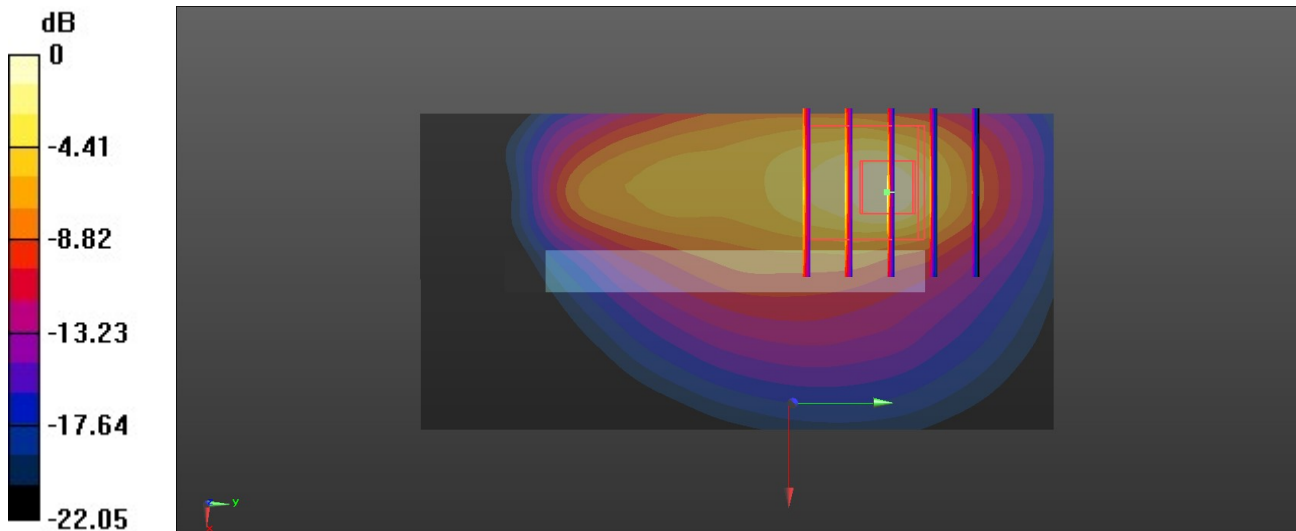
Peak SAR (extrapolated) = 11.3 W/kg

SAR(1 g) = 3.26 W/kg; SAR(10 g) = 1.25 W/kg

Smallest distance from peaks to all points 3 dB below = 8.8 mm

Ratio of SAR at M2 to SAR at M1 = 33.5%

Maximum value of SAR (measured) = 5.75 W/kg



0 dB = 5.75 W/kg = 7.60 dBW/kg

Test Laboratory: Sporton International Inc. SAR/HAC Testing Lab

Date: 2024/9/19

101_LTE Band 14_10M_QPSK_1RB_0Offset_Bottom Side_0mm_Ch23330

Communication System: UID 0, LTE-FDD (0); Frequency: 793 MHz; Duty Cycle: 1:1
 Medium: HSL_750 Medium parameters used: $f = 793$ MHz; $\sigma = 0.895$ S/m; $\epsilon_r = 42.415$; $\rho = 1000$ kg/m³

Ambient Temperature : 23.3 °C; Liquid Temperature : 22.8 °C

DASY5 Configuration:

- Probe: EX3DV4 - SN3857; ConvF(9.21, 8.75, 9.15); Calibrated: 2024/1/22
- Sensor-Surface: 1.4mm (Mechanical Surface Detection)
- Electronics: DAE4 Sn1303; Calibrated: 2023/11/20
- Phantom: Twin-SAM V5.0 (30deg probe tilt); Type: QD 000 P40 CD; Serial: 1842
- Measurement SW: DASY52, Version 52.10 (4); SEMCAD X Version 14.6.14 (7501))

Area Scan (41x81x1): Interpolated grid: dx=1.500 mm, dy=1.500 mm
 Maximum value of SAR (interpolated) = 3.15 W/kg

Zoom Scan (5x5x7)/Cube 0: Measurement grid: dx=8mm, dy=8mm, dz=5mm

Reference Value = 41.81 V/m; Power Drift = 0.07 dB

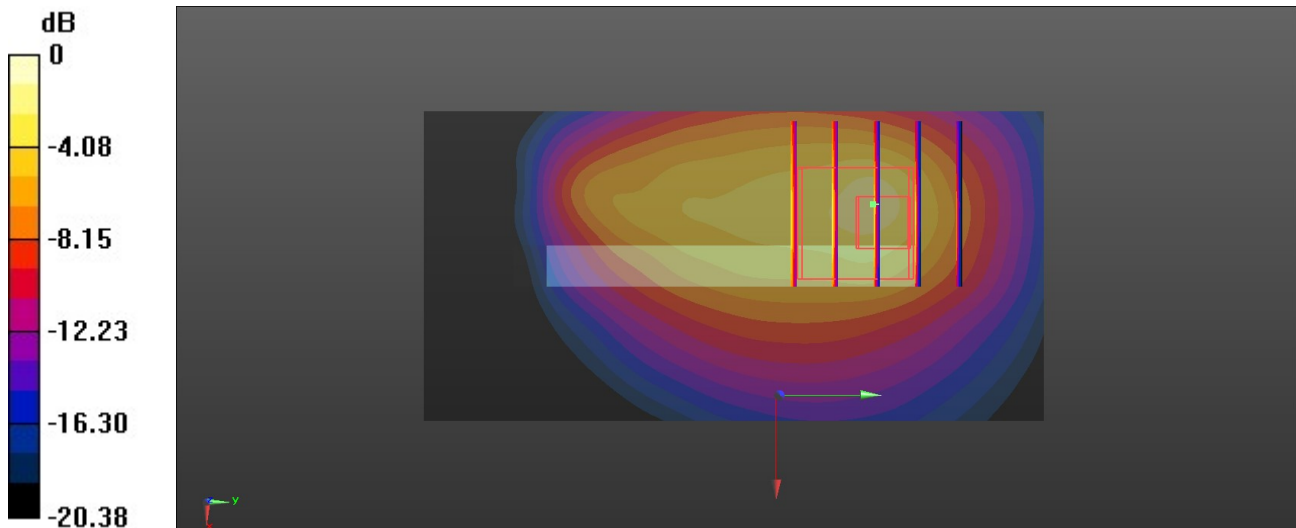
Peak SAR (extrapolated) = 12.7 W/kg

SAR(1 g) = 3.71 W/kg; SAR(10 g) = 1.5 W/kg

Smallest distance from peaks to all points 3 dB below = 8.6 mm

Ratio of SAR at M2 to SAR at M1 = 37.3%

Maximum value of SAR (measured) = 4.83 W/kg



0 dB = 4.83 W/kg = 6.84 dBW/kg

Test Laboratory: Sporton International Inc. SAR/HAC Testing Lab

Date: 2024/9/20

102_GSM850_GPRS (4 Tx slots)_Back_0mm_Ch128

Communication System: UID 0, GSM850 (0); Frequency: 824.2 MHz; Duty Cycle: 1:2.08

Medium: HSL_835 Medium parameters used: $f = 825$ MHz; $\sigma = 0.904$ S/m; $\epsilon_r = 42.027$; $\rho = 1000$ kg/m³

Ambient Temperature : 23.3 °C; Liquid Temperature : 22.6 °C

DASY5 Configuration:

- Probe: EX3DV4 - SN3857; ConvF(9.29, 8.23, 9.75); Calibrated: 2024/1/22
- Sensor-Surface: 1.4mm (Mechanical Surface Detection)
- Electronics: DAE4 Sn1303; Calibrated: 2023/11/20
- Phantom: Twin-SAM V5.0 (30deg probe tilt); Type: QD 000 P40 CD; Serial: 1842
- Measurement SW: DASY52, Version 52.10 (4); SEMCAD X Version 14.6.14 (7501)

Area Scan (81x81x1): Interpolated grid: dx=1.500 mm, dy=1.500 mm

Maximum value of SAR (interpolated) = 4.23 W/kg

Zoom Scan (6x5x7)/Cube 0: Measurement grid: dx=8mm, dy=8mm, dz=5mm

Reference Value = 11.95 V/m; Power Drift = 0.06 dB

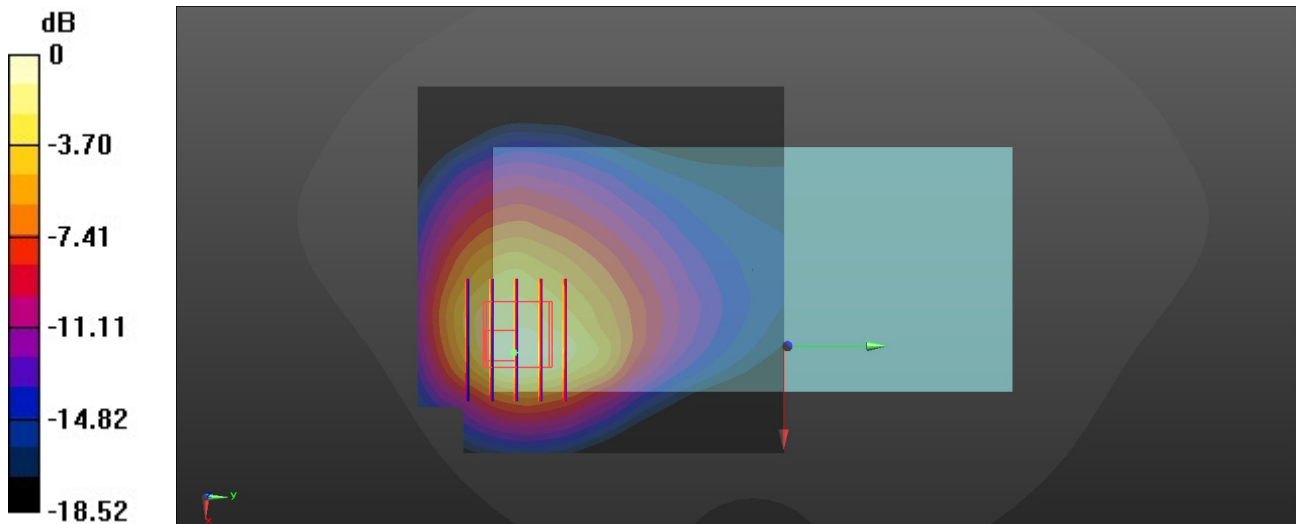
Peak SAR (extrapolated) = 8.30 W/kg

SAR(1 g) = 3.62 W/kg; SAR(10 g) = 1.88 W/kg

Smallest distance from peaks to all points 3 dB below = 8.2 mm

Ratio of SAR at M2 to SAR at M1 = 41.3%

Maximum value of SAR (measured) = 4.06 W/kg



0 dB = 4.06 W/kg = 6.09 dBW/kg

Test Laboratory: Sporton International Inc. SAR/HAC Testing Lab

Date: 2024/9/20

103_WCDMA V_RMC 12.2Kbps_Back_0mm_Ch4182

Communication System: UID 0, WCDMA (0); Frequency: 836.4 MHz; Duty Cycle: 1:1
 Medium: HSL_835 Medium parameters used: $f = 836.4$ MHz; $\sigma = 0.913$ S/m; $\epsilon_r = 41.946$; $\rho = 1000$ kg/m³

Ambient Temperature : 23.3 °C; Liquid Temperature : 22.6 °C

DASY5 Configuration:

- Probe: EX3DV4 - SN3857; ConvF(9.29, 8.23, 9.75); Calibrated: 2024/1/22
- Sensor-Surface: 1.4mm (Mechanical Surface Detection)
- Electronics: DAE4 Sn1303; Calibrated: 2023/11/20
- Phantom: Twin-SAM V5.0 (30deg probe tilt); Type: QD 000 P40 CD; Serial: 1842
- Measurement SW: DASY52, Version 52.10 (4); SEMCAD X Version 14.6.14 (7501)

Area Scan (81x141x1): Interpolated grid: dx=1.500 mm, dy=1.500 mm
 Maximum value of SAR (interpolated) = 3.62 W/kg

Zoom Scan (6x6x7)/Cube 0: Measurement grid: dx=8mm, dy=8mm, dz=5mm

Reference Value = 11.20 V/m; Power Drift = 0.04 dB

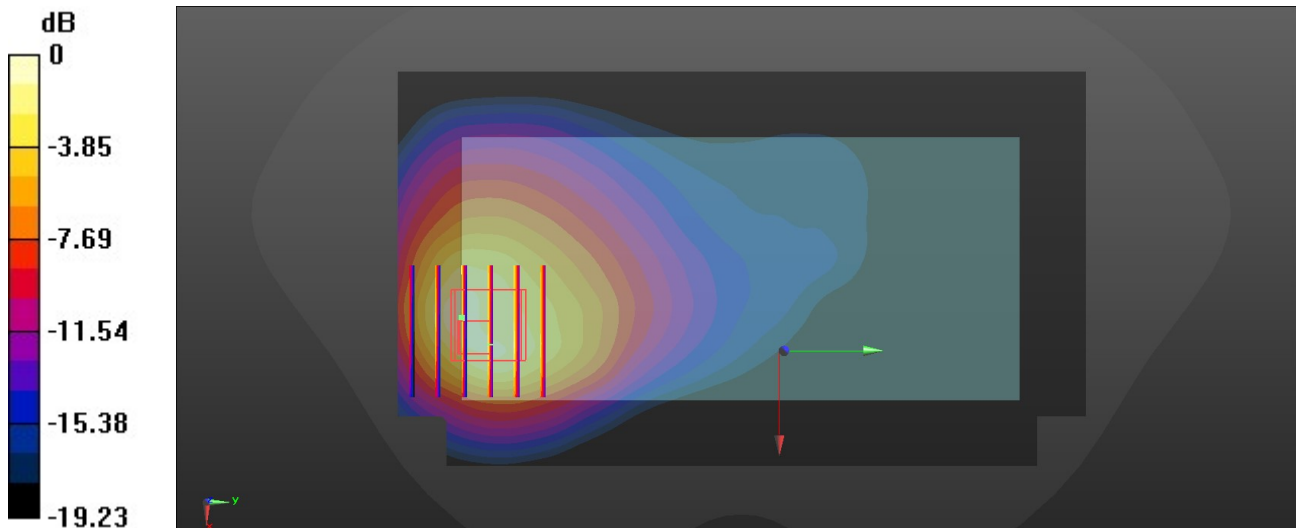
Peak SAR (extrapolated) = 7.75 W/kg

SAR(1 g) = 2.88 W/kg; SAR(10 g) = 1.5 W/kg

Smallest distance from peaks to all points 3 dB below = 8.5 mm

Ratio of SAR at M2 to SAR at M1 = 42.6%

Maximum value of SAR (measured) = 3.81 W/kg



0 dB = 3.81 W/kg = 5.81 dBW/kg

Test Laboratory: Sporton International Inc. SAR/HAC Testing Lab

Date: 2024/9/20

104_LTE Band 26_15M_QPSK_1RB_0Offset_Bottom Side_0mm_Ch26865

Communication System: UID 0, LTE-FDD (0); Frequency: 831.5 MHz; Duty Cycle: 1:1
 Medium: HSL_835 Medium parameters used: $f = 831.5$ MHz; $\sigma = 0.909$ S/m; $\epsilon_r = 41.97$; $\rho = 1000$ kg/m³

Ambient Temperature : 23.3 °C; Liquid Temperature : 22.6 °C

DASY5 Configuration:

- Probe: EX3DV4 - SN3857; ConvF(9.29, 8.23, 9.75); Calibrated: 2024/1/22
- Sensor-Surface: 1.4mm (Mechanical Surface Detection)
- Electronics: DAE4 Sn1303; Calibrated: 2023/11/20
- Phantom: Twin-SAM V5.0 (30deg probe tilt); Type: QD 000 P40 CD; Serial: 1842
- Measurement SW: DASY52, Version 52.10 (4); SEMCAD X Version 14.6.14 (7501)

Area Scan (41x81x1): Interpolated grid: dx=1.500 mm, dy=1.500 mm
 Maximum value of SAR (interpolated) = 3.31 W/kg

Zoom Scan (5x5x7)/Cube 0: Measurement grid: dx=8mm, dy=8mm, dz=5mm

Reference Value = 46.03 V/m; Power Drift = 0.07 dB

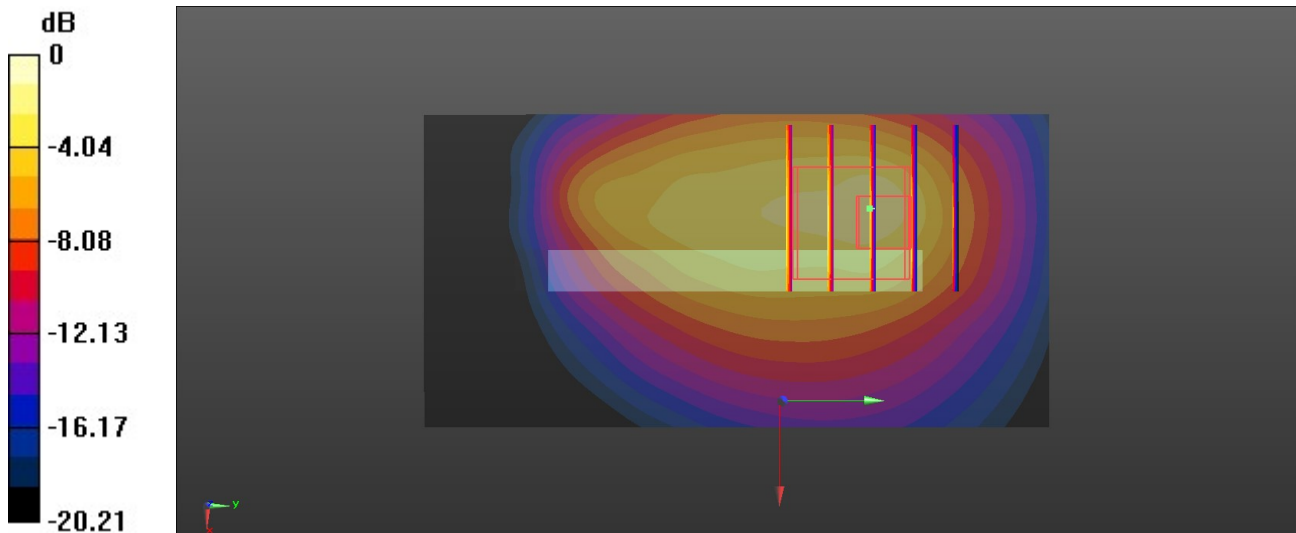
Peak SAR (extrapolated) = 13.3 W/kg

SAR(1 g) = 3.83 W/kg; SAR(10 g) = 1.61 W/kg

Smallest distance from peaks to all points 3 dB below = 8.6 mm

Ratio of SAR at M2 to SAR at M1 = 40.3%

Maximum value of SAR (measured) = 4.74 W/kg



0 dB = 4.74 W/kg = 6.76 dBW/kg

Test Laboratory: Sporton International Inc. SAR/HAC Testing Lab

Date: 2024/9/21

105_WCDMA IV_RMC 12.2Kbp_Bottom Side_0mm_Ch1513

Communication System: UID 0, WCDMA (0); Frequency: 1752.6 MHz; Duty Cycle: 1:1
 Medium: HSL_1750 Medium parameters used: $f = 1752.6$ MHz; $\sigma = 1.32$ S/m; $\epsilon_r = 40.22$; $\rho = 1000$ kg/m³

Ambient Temperature : 23.1 °C; Liquid Temperature : 22.7 °C

DASY5 Configuration:

- Probe: EX3DV4 - SN3857; ConvF(7.78, 7.1, 7.9); Calibrated: 2024/1/22
- Sensor-Surface: 1.4mm (Mechanical Surface Detection)
- Electronics: DAE4 Sn1303; Calibrated: 2023/11/20
- Phantom: Twin-SAM V5.0 (30deg probe tilt); Type: QD 000 P40 CD; Serial: 1842
- Measurement SW: DASY52, Version 52.10 (4); SEMCAD X Version 14.6.14 (7501)

Area Scan (41x81x1): Interpolated grid: dx=1.500 mm, dy=1.500 mm
 Maximum value of SAR (interpolated) = 8.86 W/kg

Zoom Scan (6x7x7)/Cube 0: Measurement grid: dx=8mm, dy=8mm, dz=5mm

Reference Value = 34.25 V/m; Power Drift = 0.05 dB

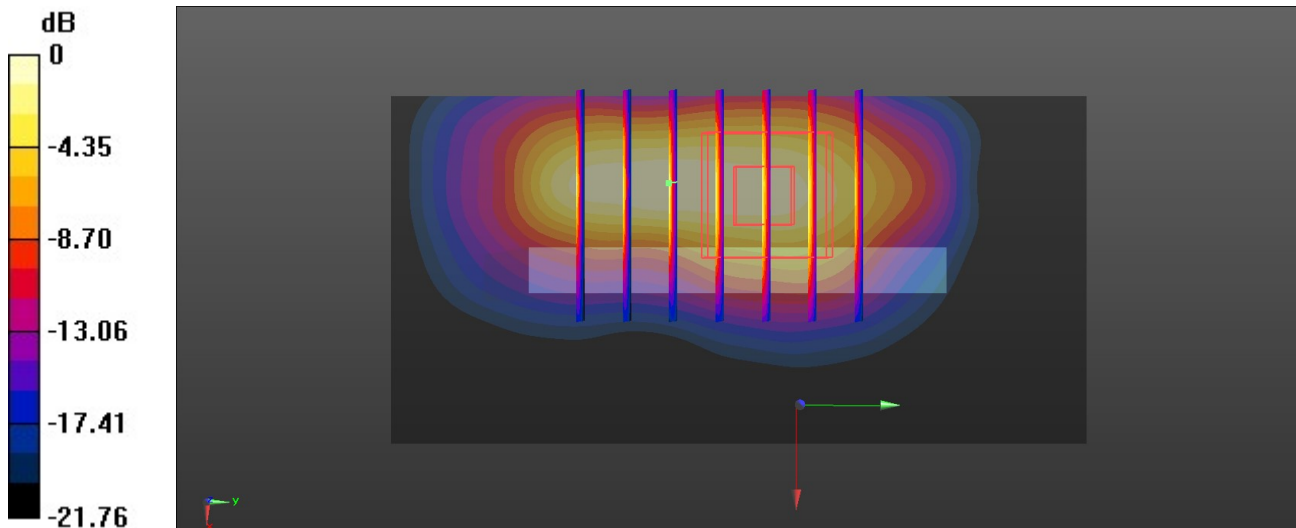
Peak SAR (extrapolated) = 11.2 W/kg

SAR(1 g) = 5.15 W/kg; SAR(10 g) = 2.44 W/kg

Smallest distance from peaks to all points 3 dB below = 8.5 mm

Ratio of SAR at M2 to SAR at M1 = 32.4%

Maximum value of SAR (measured) = 8.66 W/kg



0 dB = 8.66 W/kg = 9.38 dBW/kg

Test Laboratory: Sporton International Inc. SAR/HAC Testing Lab

Date: 2024/9/21

106_LTE Band 66_20M_QPSK_1RB_0Offset_Bottom Side_0mm_Ch132572

Communication System: UID 0, LTE-FDD (0); Frequency: 1770 MHz; Duty Cycle: 1:1
 Medium: HSL_1750 Medium parameters used: $f = 1770$ MHz; $\sigma = 1.341$ S/m; $\epsilon_r = 40.253$; $\rho = 1000$ kg/m³

Ambient Temperature : 23.1 °C; Liquid Temperature : 22.7 °C

DASY5 Configuration:

- Probe: EX3DV4 - SN3857; ConvF(7.78, 7.1, 7.9); Calibrated: 2024/1/22
- Sensor-Surface: 1.4mm (Mechanical Surface Detection)
- Electronics: DAE4 Sn1303; Calibrated: 2023/11/20
- Phantom: Twin-SAM V5.0 (30deg probe tilt); Type: QD 000 P40 CD; Serial: 1842
- Measurement SW: DASY52, Version 52.10 (4); SEMCAD X Version 14.6.14 (7501)

Area Scan (41x81x1): Interpolated grid: dx=1.500 mm, dy=1.500 mm
 Maximum value of SAR (interpolated) = 8.01 W/kg

Zoom Scan (6x7x7)/Cube 0: Measurement grid: dx=8mm, dy=8mm, dz=5mm

Reference Value = 36.34 V/m; Power Drift = 0.02 dB

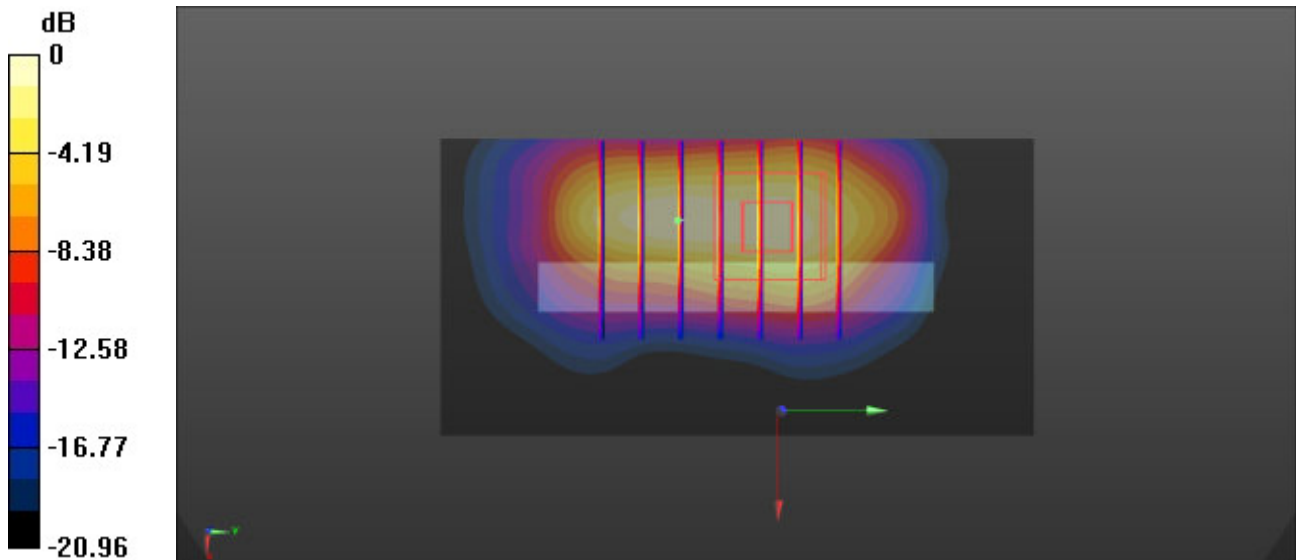
Peak SAR (extrapolated) = 13.2 W/kg

SAR(1 g) = 5.61 W/kg; SAR(10 g) = 2.51 W/kg

Smallest distance from peaks to all points 3 dB below = 8.4 mm

Ratio of SAR at M2 to SAR at M1 = 57.3%

Maximum value of SAR (measured) = 7.98 W/kg



0 dB = 7.98 W/kg = 9.02 dBW/kg

Test Laboratory: Sporton International Inc. SAR/HAC Testing Lab

Date: 2024/9/21

107_FR1 n70_15M_QPSK_36RB_22Offset_Bottom Side_0mm_Ch340500

Communication System: UID 0, 5G NR (0); Frequency: 1702.5 MHz; Duty Cycle: 1:1
 Medium: HSL_1750 Medium parameters used: $f = 1702.5$ MHz; $\sigma = 1.292$ S/m; $\epsilon_r = 40.497$; $\rho = 1000$ kg/m³
 Ambient Temperature : 23.1 °C; Liquid Temperature : 22.7 °C

DASY5 Configuration:

- Probe: EX3DV4 - SN3857; ConvF(7.78, 7.1, 7.9); Calibrated: 2024/1/22
- Sensor-Surface: 1.4mm (Mechanical Surface Detection)
- Electronics: DAE4 Sn1303; Calibrated: 2023/11/20
- Phantom: Twin-SAM V5.0 (30deg probe tilt); Type: QD 000 P40 CD; Serial: 1842
- Measurement SW: DASY52, Version 52.10 (4); SEMCAD X Version 14.6.14 (7501)

Area Scan (41x81x1): Interpolated grid: dx=1.500 mm, dy=1.500 mm
 Maximum value of SAR (interpolated) = 5.97 W/kg

Zoom Scan (5x5x7)/Cube 0: Measurement grid: dx=8mm, dy=8mm, dz=5mm

Reference Value = 14.50 V/m; Power Drift = 0.14 dB

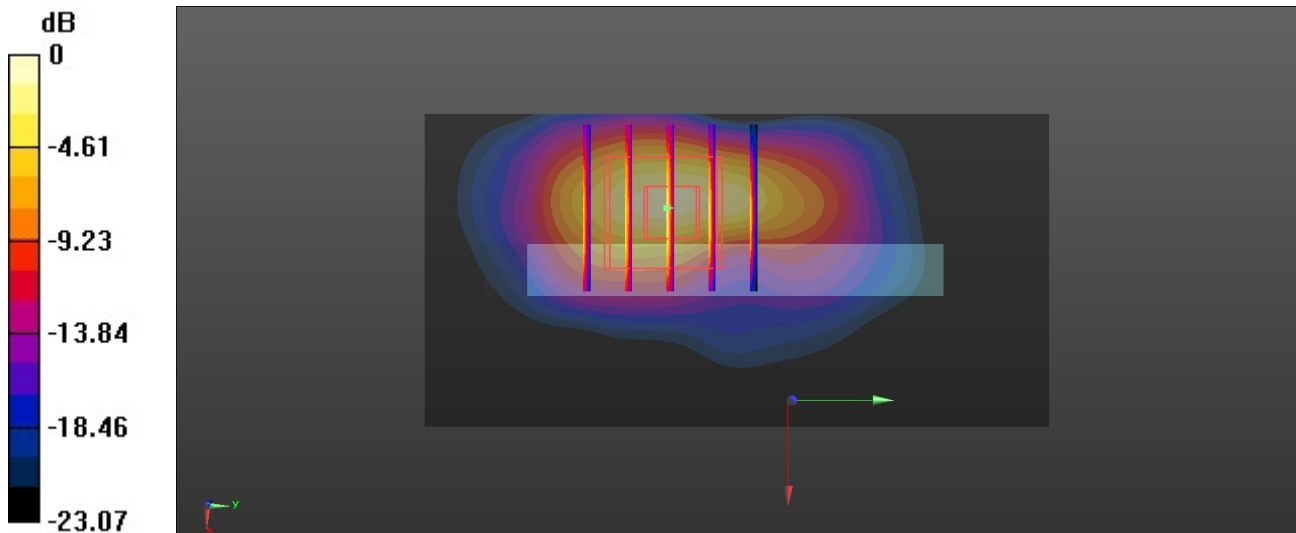
Peak SAR (extrapolated) = 10.6 W/kg

SAR(1 g) = 4.91 W/kg; SAR(10 g) = 2.07 W/kg

Smallest distance from peaks to all points 3 dB below = 8.4 mm

Ratio of SAR at M2 to SAR at M1 = 47.3%

Maximum value of SAR (measured) = 7.21 W/kg



0 dB = 7.21 W/kg = 8.58 dBW/kg

Test Laboratory: Sporton International Inc. SAR/HAC Testing Lab

Date: 2024/9/21

108_FR1 n66_40M_QPSK_108RB_54Offset_Bottom Side_0mm_Ch349000

Communication System: UID 0, 5G NR (0); Frequency: 1745 MHz; Duty Cycle: 1:1

Medium: HSL_1750 Medium parameters used: $f = 1745$ MHz; $\sigma = 1.311$ S/m; $\epsilon_r = 40.237$; $\rho = 1000$ kg/m³

Ambient Temperature : 23.1 °C; Liquid Temperature : 22.7 °C

DASY5 Configuration:

- Probe: EX3DV4 - SN3857; ConvF(7.78, 7.1, 7.9); Calibrated: 2024/1/22
- Sensor-Surface: 1.4mm (Mechanical Surface Detection)
- Electronics: DAE4 Sn1303; Calibrated: 2023/11/20
- Phantom: Twin-SAM V5.0 (30deg probe tilt); Type: QD 000 P40 CD; Serial: 1842
- Measurement SW: DASY52, Version 52.10 (4); SEMCAD X Version 14.6.14 (7501)

Area Scan (41x81x1): Interpolated grid: dx=1.500 mm, dy=1.500 mm

Maximum value of SAR (interpolated) = 6.74 W/kg

Zoom Scan (5x5x7)/Cube 0: Measurement grid: dx=8mm, dy=8mm, dz=5mm

Reference Value = 41.36 V/m; Power Drift = 0.04 dB

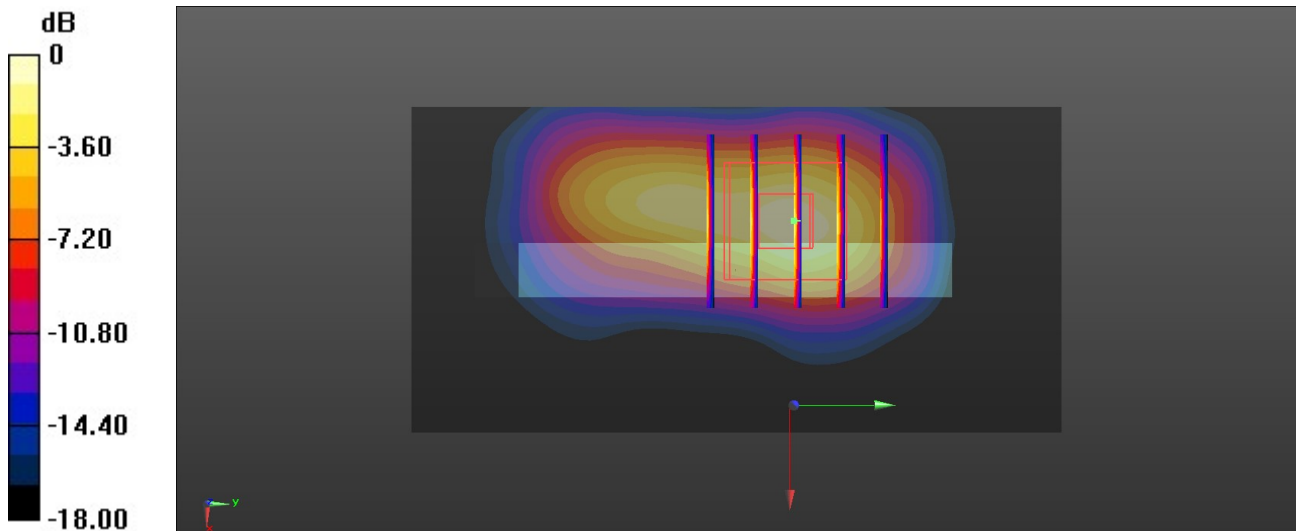
Peak SAR (extrapolated) = 10.0 W/kg

SAR(1 g) = 5.16 W/kg; SAR(10 g) = 2.46 W/kg

Smallest distance from peaks to all points 3 dB below = 8.5 mm

Ratio of SAR at M2 to SAR at M1 = 53.4%

Maximum value of SAR (measured) = 7.09 W/kg



0 dB = 7.09 W/kg = 8.51 dBW/kg

Test Laboratory: Sporton International Inc. SAR/HAC Testing Lab

Date: 2024/9/22

109_GSM1900_GPRS (4 Tx slots)_Bottom Side_0mm_Ch810

Communication System: UID 0, PCS (0); Frequency: 1909.8 MHz; Duty Cycle: 1:2.08
 Medium: HSL_1900 Medium parameters used: $f = 1910$ MHz; $\sigma = 1.406$ S/m; $\epsilon_r = 40.165$; $\rho = 1000$ kg/m³

Ambient Temperature : 23.3 °C; Liquid Temperature : 22.7 °C

DASY5 Configuration:

- Probe: EX3DV4 - SN3857; ConvF(7.93, 7.26, 8.03); Calibrated: 2024/1/22
- Sensor-Surface: 1.4mm (Mechanical Surface Detection)
- Electronics: DAE4 Sn1303; Calibrated: 2023/11/20
- Phantom: Twin-SAM V5.0 (30deg probe tilt); Type: QD 000 P40 CD; Serial: 1842
- Measurement SW: DASY52, Version 52.10 (4); SEMCAD X Version 14.6.14 (7501)

Area Scan (41x81x1): Interpolated grid: dx=1.500 mm, dy=1.500 mm

Maximum value of SAR (interpolated) = 5.19 W/kg

Zoom Scan (5x5x7)/Cube 0: Measurement grid: dx=8mm, dy=8mm, dz=5mm

Reference Value = 29.72 V/m; Power Drift = 0.04 dB

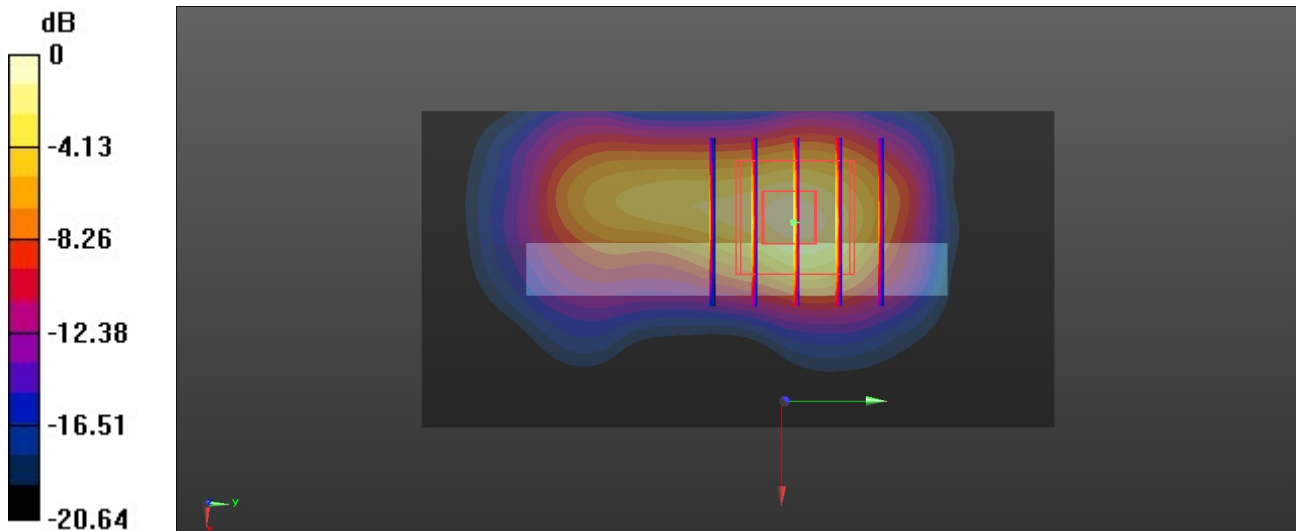
Peak SAR (extrapolated) = 8.16 W/kg

SAR(1 g) = 4.21 W/kg; SAR(10 g) = 1.91 W/kg

Smallest distance from peaks to all points 3 dB below = 8.5 mm

Ratio of SAR at M2 to SAR at M1 = 53.1%

Maximum value of SAR (measured) = 5.84 W/kg



0 dB = 5.84 W/kg = 7.66 dBW/kg

Test Laboratory: Sporton International Inc. SAR/HAC Testing Lab

Date: 2024/9/22

110_WCDMA II_RMC 12.2Kbp_Bottom Side_0mm_Ch9538

Communication System: UID 0, WCDMA (0); Frequency: 1907.6 MHz; Duty Cycle: 1:1
 Medium: HSL_1900 Medium parameters used: $f = 1907.6$ MHz; $\sigma = 1.406$ S/m; $\epsilon_r = 40.179$; $\rho = 1000$ kg/m³
 Ambient Temperature : 23.3 °C; Liquid Temperature : 22.7 °C

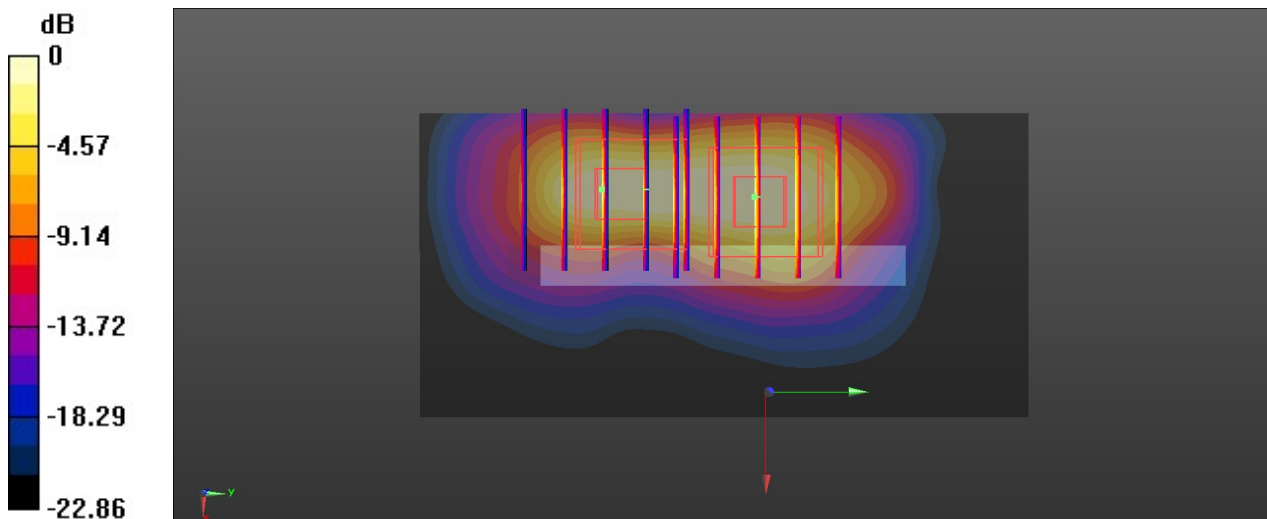
DASY5 Configuration:

- Probe: EX3DV4 - SN3857; ConvF(7.93, 7.26, 8.03); Calibrated: 2024/1/22
- Sensor-Surface: 1.4mm (Mechanical Surface Detection)
- Electronics: DAE4 Sn1303; Calibrated: 2023/11/20
- Phantom: Twin-SAM V5.0 (30deg probe tilt); Type: QD 000 P40 CD; Serial: 1842
- Measurement SW: DASY52, Version 52.10 (4); SEMCAD X Version 14.6.14 (7501)

Area Scan (41x81x1): Interpolated grid: dx=1.500 mm, dy=1.500 mm
 Maximum value of SAR (interpolated) = 8.48 W/kg

Zoom Scan (5x5x7)/Cube 0: Measurement grid: dx=8mm, dy=8mm, dz=5mm
 Reference Value = 28.67 V/m; Power Drift = 0.14 dB
 Peak SAR (extrapolated) = 11.3 W/kg
SAR(1 g) = 5.56 W/kg; SAR(10 g) = 2.49 W/kg
 Smallest distance from peaks to all points 3 dB below = 9.4 mm
 Ratio of SAR at M2 to SAR at M1 = 50.9%
 Maximum value of SAR (measured) = 9.82 W/kg

Zoom Scan (5x5x7)/Cube 1: Measurement grid: dx=8mm, dy=8mm, dz=5mm
 Reference Value = 28.67 V/m; Power Drift = 0.14 dB
 Peak SAR (extrapolated) = 9.91 W/kg
SAR(1 g) = 3.36 W/kg; SAR(10 g) = 1.32 W/kg
 Smallest distance from peaks to all points 3 dB below = 8.8 mm
 Ratio of SAR at M2 to SAR at M1 = 30.8%
 Maximum value of SAR (measured) = 7.63 W/kg



0 dB = 7.63 W/kg = 8.83 dBW/kg

Test Laboratory: Sporton International Inc. SAR/HAC Testing Lab

Date: 2024/9/22

111_LTE Band 25_20M_QPSK_1RB_0Offset_Bottom Side_0mm_Ch26590

Communication System: UID 0, LTE-FDD (0); Frequency: 1905 MHz; Duty Cycle: 1:1
 Medium: HSL_1900 Medium parameters used: $f = 1905$ MHz; $\sigma = 1.406$ S/m; $\epsilon_r = 40.194$; $\rho = 1000$ kg/m³

Ambient Temperature : 23.3 °C; Liquid Temperature : 22.7 °C

DASY5 Configuration:

- Probe: EX3DV4 - SN3857; ConvF(7.93, 7.26, 8.03); Calibrated: 2024/1/22
- Sensor-Surface: 1.4mm (Mechanical Surface Detection)
- Electronics: DAE4 Sn1303; Calibrated: 2023/11/20
- Phantom: Twin-SAM V5.0 (30deg probe tilt); Type: QD 000 P40 CD; Serial: 1842
- Measurement SW: DASY52, Version 52.10 (4); SEMCAD X Version 14.6.14 (7501)

Area Scan (41x81x1): Interpolated grid: dx=1.500 mm, dy=1.500 mm

Maximum value of SAR (interpolated) = 7.91 W/kg

Zoom Scan (5x5x7)/Cube 0: Measurement grid: dx=8mm, dy=8mm, dz=5mm

Reference Value = 47.75 V/m; Power Drift = 0.03 dB

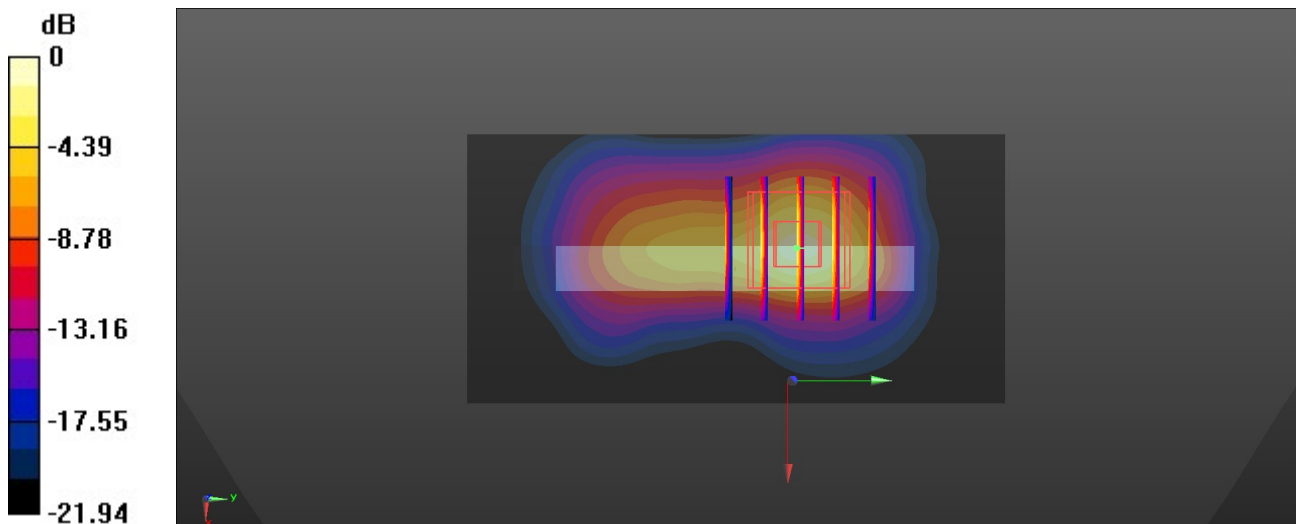
Peak SAR (extrapolated) = 11.6 W/kg

SAR(1 g) = 5.65 W/kg; SAR(10 g) = 2.52 W/kg

Smallest distance from peaks to all points 3 dB below = 8.6 mm

Ratio of SAR at M2 to SAR at M1 = 50.2%

Maximum value of SAR (measured) = 9.75 W/kg



0 dB = 9.75 W/kg = 9.89 dBW/kg

Test Laboratory: Sporton International Inc. SAR/HAC Testing Lab

Date: 2024/9/22

112_FR1 n25_40M_QPSK_108RB_54Offset_Top Side_0mm_Ch376500

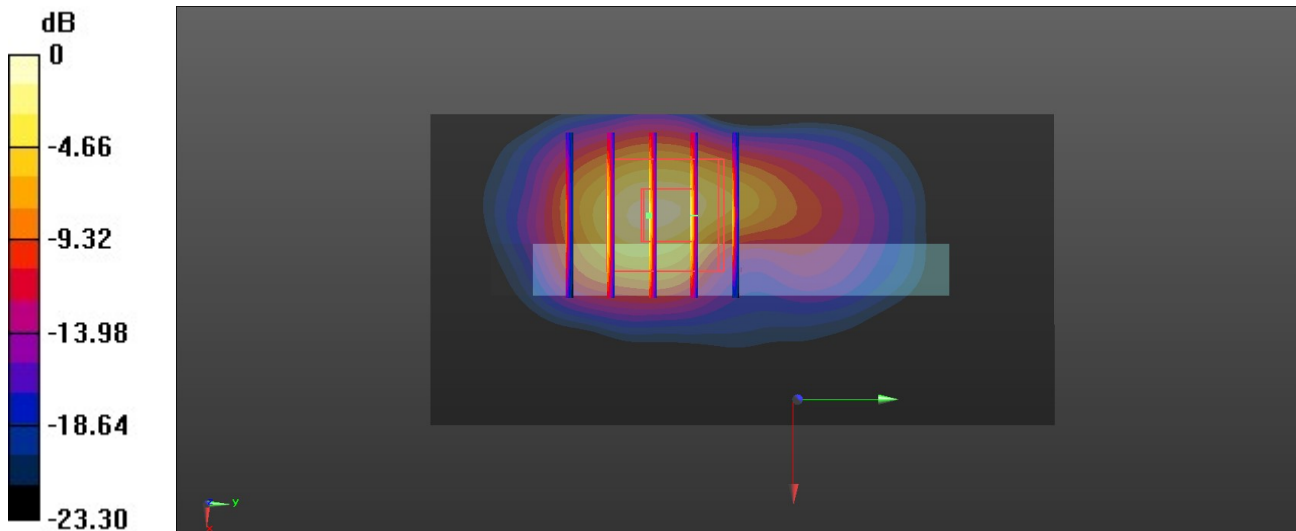
Communication System: UID 0, 5G NR (0); Frequency: 1882.5 MHz; Duty Cycle: 1:1
 Medium: HSL_1900 Medium parameters used: $f = 1882.5$ MHz; $\sigma = 1.407$ S/m; $\epsilon_r = 40.178$; $\rho = 1000$ kg/m³
 Ambient Temperature : 23.3 °C; Liquid Temperature : 22.7 °C

DASY5 Configuration:

- Probe: EX3DV4 - SN3857; ConvF(7.93, 7.26, 8.03); Calibrated: 2024/1/22
- Sensor-Surface: 1.4mm (Mechanical Surface Detection)
- Electronics: DAE4 Sn1303; Calibrated: 2023/11/20
- Phantom: Twin-SAM V5.0 (30deg probe tilt); Type: QD 000 P40 CD; Serial: 1842
- Measurement SW: DASY52, Version 52.10 (4); SEMCAD X Version 14.6.14 (7501)

Area Scan (41x81x1): Interpolated grid: dx=1.500 mm, dy=1.500 mm
 Maximum value of SAR (interpolated) = 6.13 W/kg

Zoom Scan (5x5x7)/Cube 0: Measurement grid: dx=8mm, dy=8mm, dz=5mm
 Reference Value = 13.05 V/m; Power Drift = 0.06 dB
 Peak SAR (extrapolated) = 11.8 W/kg
SAR(1 g) = 4.81 W/kg; SAR(10 g) = 1.98 W/kg
 Smallest distance from peaks to all points 3 dB below = 8.8 mm
 Ratio of SAR at M2 to SAR at M1 = 42.2%
 Maximum value of SAR (measured) = 7.59 W/kg



0 dB = 7.59 W/kg = 8.80 dBW/kg

Test Laboratory: Sporton International Inc. SAR/HAC Testing Lab

Date: 2024/9/23

113_LTE Band 30_10M_QPSK_1RB_0Offset_Bottom Side_0mm_Ch27710

Communication System: UID 0, LTE-FDD (0); Frequency: 2310 MHz; Duty Cycle: 1:1
 Medium: HSL_2300 Medium parameters used: $f = 2310$ MHz; $\sigma = 1.651$ S/m; $\epsilon_r = 39.634$; $\rho = 1000$ kg/m³

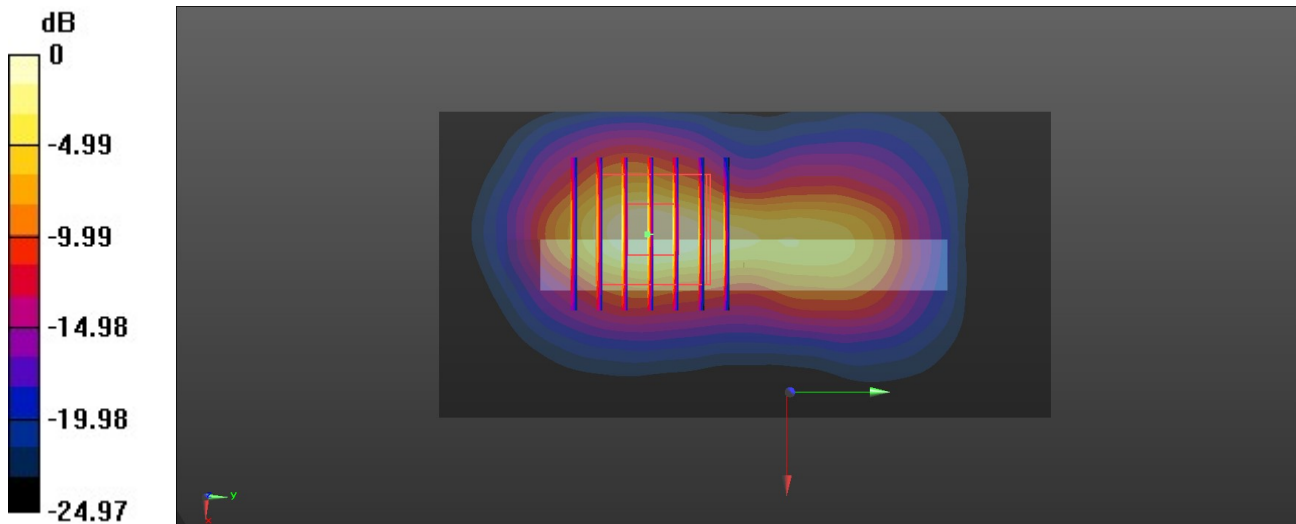
Ambient Temperature : 23.3 °C; Liquid Temperature : 22.6 °C

DASY5 Configuration:

- Probe: EX3DV4 - SN3857; ConvF(7.77, 7.09, 7.82); Calibrated: 2024/1/22
- Sensor-Surface: 1.4mm (Mechanical Surface Detection)
- Electronics: DAE4 Sn1303; Calibrated: 2023/11/20
- Phantom: Twin-SAM V5.0 (30deg probe tilt); Type: QD 000 P40 CD; Serial: 1842
- Measurement SW: DASY52, Version 52.10 (4); SEMCAD X Version 14.6.14 (7501)

Area Scan (51x101x1): Interpolated grid: dx=1.200 mm, dy=1.200 mm
 Maximum value of SAR (interpolated) = 7.98 W/kg

Zoom Scan (7x7x7)/Cube 0: Measurement grid: dx=5mm, dy=5mm, dz=5mm
 Reference Value = 37.82 V/m; Power Drift = 0.01 dB
 Peak SAR (extrapolated) = 13.1 W/kg
SAR(1 g) = 6.88 W/kg; SAR(10 g) = 2.54 W/kg
 Smallest distance from peaks to all points 3 dB below = 6 mm
 Ratio of SAR at M2 to SAR at M1 = 43.2%
 Maximum value of SAR (measured) = 7.12 W/kg



0 dB = 7.12 W/kg = 8.52 dBW/kg

Test Laboratory: Sporton International Inc. SAR/HAC Testing Lab

Date: 2024/9/23

114_FR1 n30_10M_QPSK_25RB_14Offset_Bottom Side_0mm_Ch462000

Communication System: UID 0, 5G NR (0); Frequency: 2310 MHz; Duty Cycle: 1:1

Medium: HSL_2300 Medium parameters used: $f = 2310$ MHz; $\sigma = 1.651$ S/m; $\epsilon_r = 39.634$; $\rho = 1000$ kg/m³

Ambient Temperature : 23.3 °C; Liquid Temperature : 22.6 °C

DASY5 Configuration:

- Probe: EX3DV4 - SN3857; ConvF(7.77, 7.09, 7.82); Calibrated: 2024/1/22
- Sensor-Surface: 1.4mm (Mechanical Surface Detection)
- Electronics: DAE4 Sn1303; Calibrated: 2023/11/20
- Phantom: Twin-SAM V5.0 (30deg probe tilt); Type: QD 000 P40 CD; Serial: 1842
- Measurement SW: DASY52, Version 52.10 (4); SEMCAD X Version 14.6.14 (7501)

Area Scan (51x101x1): Interpolated grid: dx=1.200 mm, dy=1.200 mm

Maximum value of SAR (interpolated) = 9.14 W/kg

Zoom Scan (7x7x7)/Cube 0: Measurement grid: dx=5mm, dy=5mm, dz=5mm

Reference Value = 55.73 V/m; Power Drift = -0.05 dB

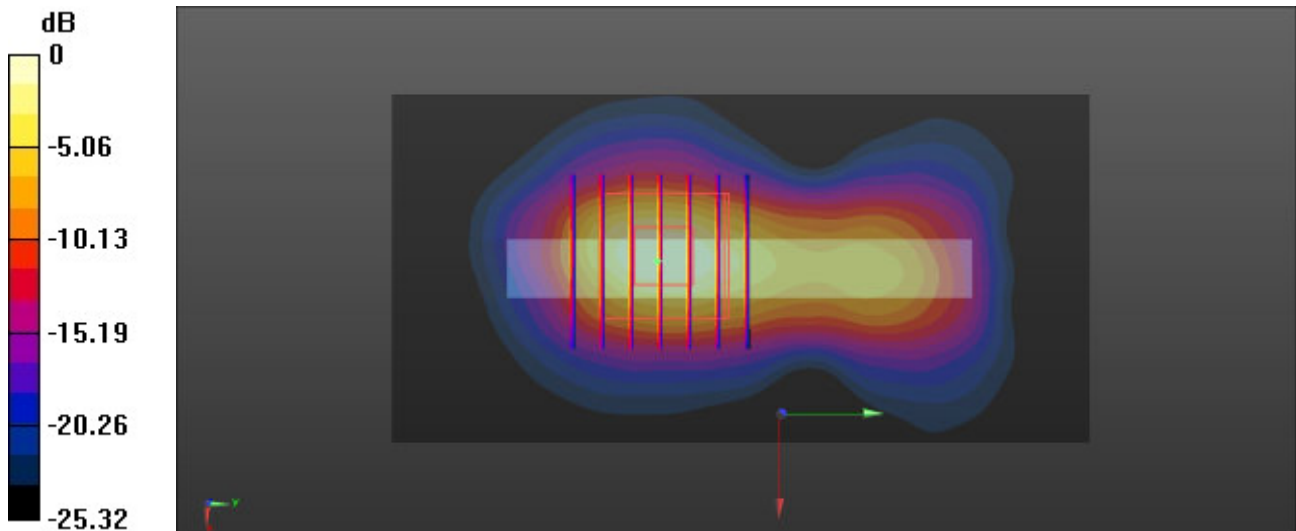
Peak SAR (extrapolated) = 15.6 W/kg

SAR(1 g) = 6.18 W/kg; SAR(10 g) = 2.32 W/kg

Smallest distance from peaks to all points 3 dB below = 6 mm

Ratio of SAR at M2 to SAR at M1 = 44.9%

Maximum value of SAR (measured) = 8.98 W/kg



0 dB = 8.98 W/kg = 9.53 dBW/kg

Test Laboratory: Sporton International Inc. SAR/HAC Testing Lab

Date: 2024/9/24

115_LTE Band 7_20M_QPSK_1RB_0Offset_Bottom Side_0mm_Ch21100

Communication System: UID 0, LTE-FDD (0); Frequency: 2535 MHz; Duty Cycle: 1:1
 Medium: HSL_2600 Medium parameters used: $f = 2535$ MHz; $\sigma = 1.953$ S/m; $\epsilon_r = 40.358$; $\rho = 1000$ kg/m³

Ambient Temperature : 23.3 °C; Liquid Temperature : 22.7 °C

DASY5 Configuration:

- Probe: EX3DV4 - SN3857; ConvF(7.36, 6.7, 7.41); Calibrated: 2024/1/22
- Sensor-Surface: 1.4mm (Mechanical Surface Detection)
- Electronics: DAE4 Sn1303; Calibrated: 2023/11/20
- Phantom: Twin-SAM V5.0 (30deg probe tilt); Type: QD 000 P40 CD; Serial: 1842
- Measurement SW: DASY52, Version 52.10 (4); SEMCAD X Version 14.6.14 (7501)

Area Scan (51x101x1): Interpolated grid: dx=1.200 mm, dy=1.200 mm
 Maximum value of SAR (interpolated) = 12.1 W/kg

Zoom Scan (7x7x7)/Cube 0: Measurement grid: dx=5mm, dy=5mm, dz=5mm

Reference Value = 9.220 V/m; Power Drift = 0.01 dB

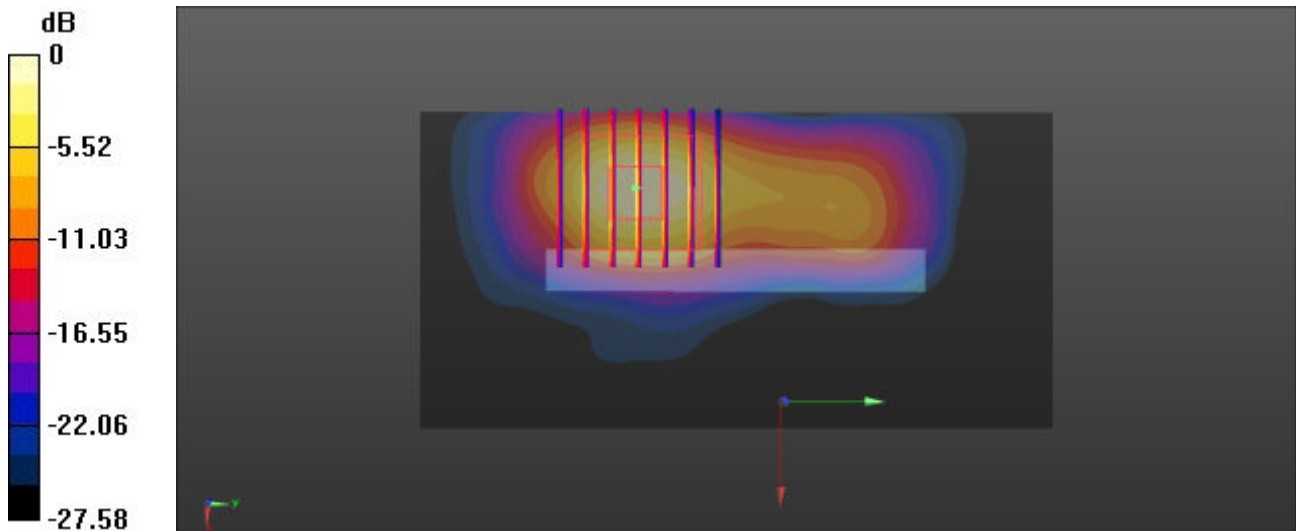
Peak SAR (extrapolated) = 14.6 W/kg

SAR(1 g) = 5.85 W/kg; SAR(10 g) = 2.33 W/kg

Smallest distance from peaks to all points 3 dB below = 6 mm

Ratio of SAR at M2 to SAR at M1 = 43.2%

Maximum value of SAR (measured) = 11.1 W/kg



0 dB = 11.1 W/kg = 10.45 dBW/kg

Test Laboratory: Sporton International Inc. SAR/HAC Testing Lab

Date: 2024/9/24

116_LTE Band 41_HPUE_20M_QPSK_1RB_0Offset_Bottom Side_0mm_Ch40620

Communication System: UID 0, LTE-HPUE (0); Frequency: 2593 MHz; Duty Cycle: 1:2.33
 Medium: HSL_2600 Medium parameters used: $f = 2593$ MHz; $\sigma = 2.031$ S/m; $\epsilon_r = 40.328$; $\rho = 1000$ kg/m³

Ambient Temperature : 23.3 °C; Liquid Temperature : 22.7 °C

DASY5 Configuration:

- Probe: EX3DV4 - SN3857; ConvF(7.36, 6.7, 7.41); Calibrated: 2024/1/22
- Sensor-Surface: 1.4mm (Mechanical Surface Detection)
- Electronics: DAE4 Sn1303; Calibrated: 2023/11/20
- Phantom: Twin-SAM V5.0 (30deg probe tilt); Type: QD 000 P40 CD; Serial: 1842
- Measurement SW: DASY52, Version 52.10 (4); SEMCAD X Version 14.6.14 (7501)

Area Scan (51x91x1): Interpolated grid: dx=1.200 mm, dy=1.200 mm
 Maximum value of SAR (interpolated) = 10.4 W/kg

Zoom Scan (7x7x7)/Cube 0: Measurement grid: dx=5mm, dy=5mm, dz=5mm

Reference Value = 9.860 V/m; Power Drift = 0.09 dB

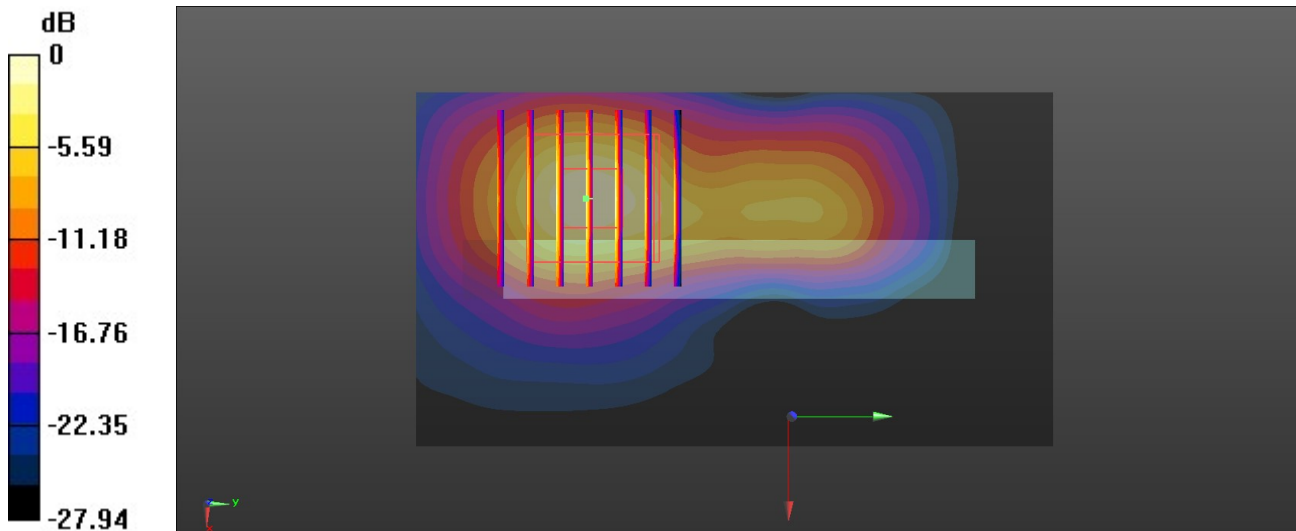
Peak SAR (extrapolated) = 18.0 W/kg

SAR(1 g) = 7.08 W/kg; SAR(10 g) = 2.54 W/kg

Smallest distance from peaks to all points 3 dB below = 7 mm

Ratio of SAR at M2 to SAR at M1 = 44%

Maximum value of SAR (measured) = 10.4 W/kg



0 dB = 10.4 W/kg = 10.17 dBW/kg

Test Laboratory: Sporton International Inc. SAR/HAC Testing Lab

Date: 2024/9/24

117_FR1 n7_50M_QPSK_135RB_68Offset_Bottom Side_0mm_Ch507000

Communication System: UID 0, 5G NR (0); Frequency: 2535 MHz; Duty Cycle: 1:1

Medium: HSL_2600 Medium parameters used: $f = 2535$ MHz; $\sigma = 1.953$ S/m; $\epsilon_r = 40.358$; $\rho = 1000$ kg/m³

Ambient Temperature : 23.3 °C; Liquid Temperature : 22.7 °C

DASY5 Configuration:

- Probe: EX3DV4 - SN3857; ConvF(7.36, 6.7, 7.41); Calibrated: 2024/1/22
- Sensor-Surface: 1.4mm (Mechanical Surface Detection)
- Electronics: DAE4 Sn1303; Calibrated: 2023/11/20
- Phantom: Twin-SAM V5.0 (30deg probe tilt); Type: QD 000 P40 CD; Serial: 1842
- Measurement SW: DASY52, Version 52.10 (4); SEMCAD X Version 14.6.14 (7501)

Area Scan (51x81x1): Interpolated grid: dx=1.200 mm, dy=1.200 mm

Maximum value of SAR (interpolated) = 9.59 W/kg

Zoom Scan (7x7x7)/Cube 0: Measurement grid: dx=5mm, dy=5mm, dz=5mm

Reference Value = 24.12 V/m; Power Drift = 0.03 dB

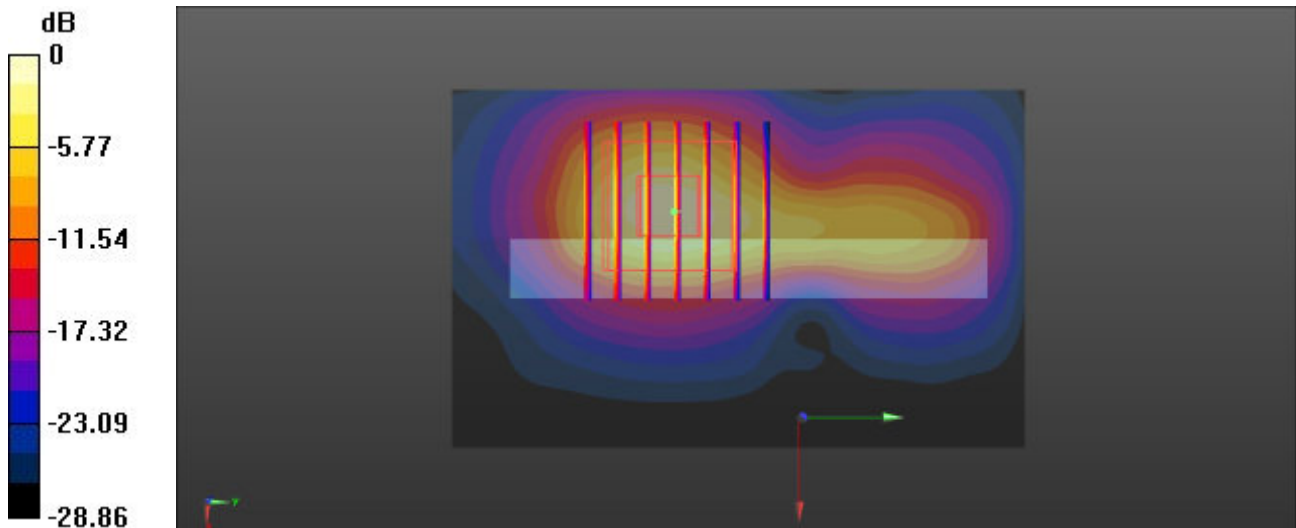
Peak SAR (extrapolated) = 18.3 W/kg

SAR(1 g) = 6.98 W/kg; SAR(10 g) = 2.5 W/kg

Smallest distance from peaks to all points 3 dB below = 6 mm

Ratio of SAR at M2 to SAR at M1 = 42.7%

Maximum value of SAR (measured) = 10.4 W/kg



0 dB = 10.4 W/kg = 10.17 dBW/kg

Test Laboratory: Sporton International Inc. SAR/HAC Testing Lab

Date: 2024/9/24

118_FR1 n41_100M_QPSK_1RB_1Offset_Bottom Side_0mm_Ch518598

Communication System: UID 0, 5G NR (0); Frequency: 2592.99 MHz; Duty Cycle: 1:1
 Medium: HSL_2600 Medium parameters used: $f = 2592.99$ MHz; $\sigma = 2.031$ S/m; $\epsilon_r = 40.328$; $\rho = 1000$ kg/m³
 Ambient Temperature : 23.3 °C; Liquid Temperature : 22.7 °C

DASY5 Configuration:

- Probe: EX3DV4 - SN3857; ConvF(7.36, 6.7, 7.41); Calibrated: 2024/1/22
- Sensor-Surface: 1.4mm (Mechanical Surface Detection)
- Electronics: DAE4 Sn1303; Calibrated: 2023/11/20
- Phantom: Twin-SAM V5.0 (30deg probe tilt); Type: QD 000 P40 CD; Serial: 1842
- Measurement SW: DASY52, Version 52.10 (4); SEMCAD X Version 14.6.14 (7501)

Area Scan (51x101x1): Interpolated grid: dx=1.200 mm, dy=1.200 mm
 Maximum value of SAR (interpolated) = 8.72 W/kg

Zoom Scan (7x7x7)/Cube 0: Measurement grid: dx=5mm, dy=5mm, dz=5mm

Reference Value = 12.18 V/m; Power Drift = 0.02 dB

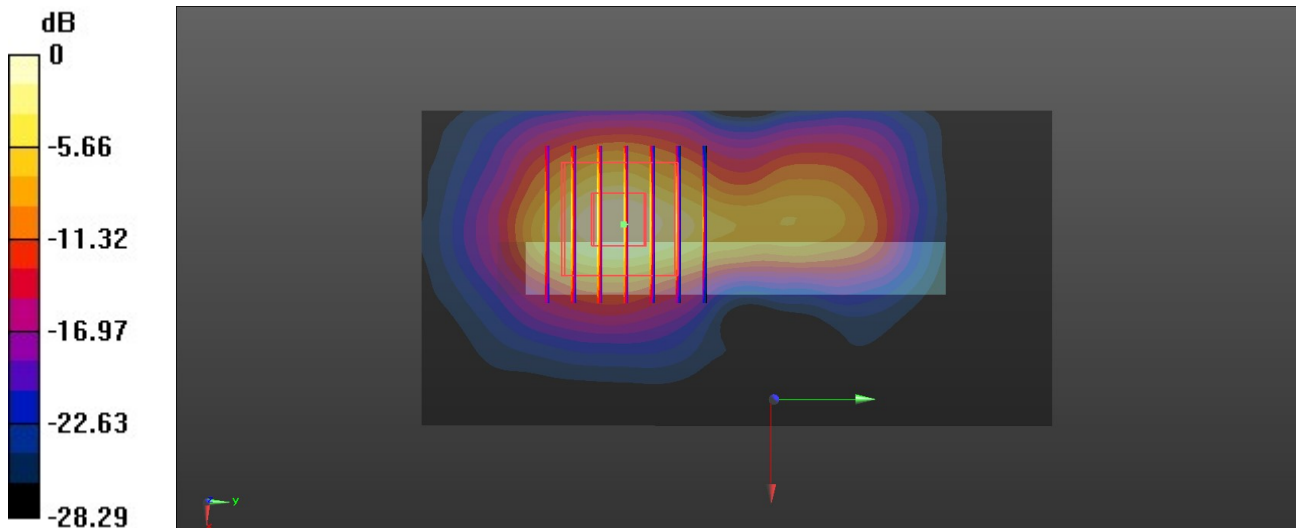
Peak SAR (extrapolated) = 15.5 W/kg

SAR(1 g) = 6.16 W/kg; SAR(10 g) = 2.53 W/kg

Smallest distance from peaks to all points 3 dB below = 6.3 mm

Ratio of SAR at M2 to SAR at M1 = 44.4%

Maximum value of SAR (measured) = 8.93 W/kg



0 dB = 8.93 W/kg = 9.51 dBW/kg

Test Laboratory: Sporton International Inc. SAR/HAC Testing Lab

Date: 2024/9/25

119_LTE Band 48_20M_QPSK_1RB_0Offset_Back_0mm_Ch55340

Communication System: UID 0, LTE-TDD (0); Frequency: 3560 MHz; Duty Cycle: 1:1.59
 Medium: HSL_3500 Medium parameters used: $f = 3560$ MHz; $\sigma = 2.86$ S/m; $\epsilon_r = 38.612$; $\rho = 1000$ kg/m³

Ambient Temperature : 23.4 °C; Liquid Temperature : 22.5 °C

DASY5 Configuration:

- Probe: EX3DV4 - SN3857; ConvF(7.08, 6.34, 6.93); Calibrated: 2024/1/22
- Sensor-Surface: 1.4mm (Mechanical Surface Detection)
- Electronics: DAE4 Sn1303; Calibrated: 2023/11/20
- Phantom: Twin-SAM V5.0 (30deg probe tilt); Type: QD 000 P40 CD; Serial: 1842
- Measurement SW: DASY52, Version 52.10 (4); SEMCAD X Version 14.6.14 (7501)

Area Scan (121x101x1): Interpolated grid: dx=1.000 mm, dy=1.000 mm
 Maximum value of SAR (interpolated) = 13.6 W/kg

Zoom Scan (7x7x7)/Cube 0: Measurement grid: dx=4mm, dy=4mm, dz=1.4mm

Reference Value = 1.855 V/m; Power Drift = -0.07 dB

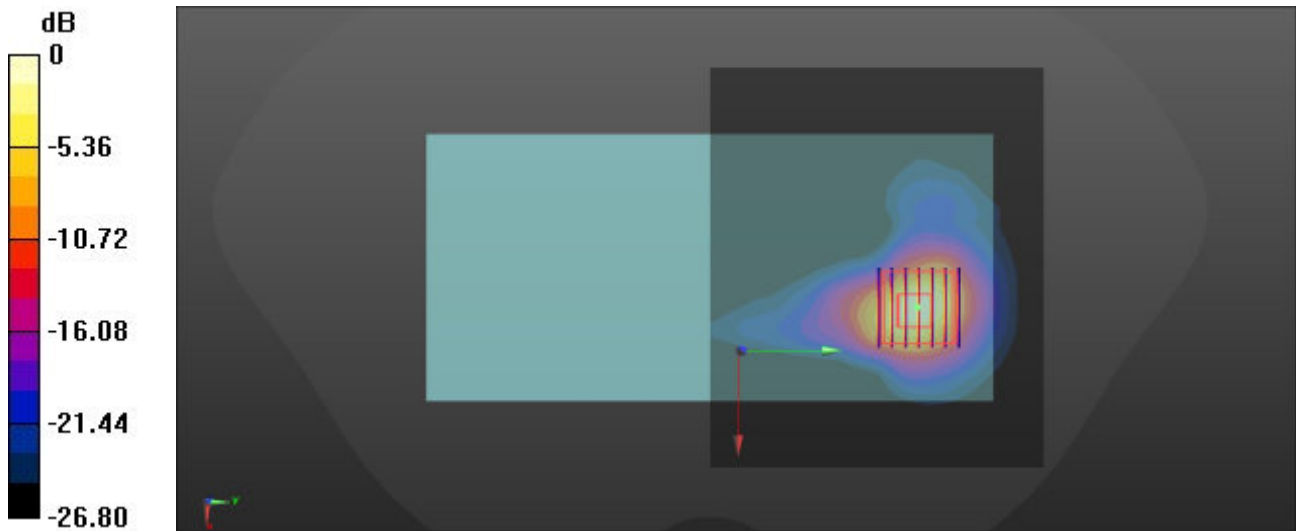
Peak SAR (extrapolated) = 19.6 W/kg

SAR(1 g) = 6.24 W/kg; SAR(10 g) = 1.89 W/kg

Smallest distance from peaks to all points 3 dB below = 4.3 mm

Ratio of SAR at M2 to SAR at M1 = 73.6%

Maximum value of SAR (measured) = 13.9 W/kg



0 dB = 13.9 W/kg = 11.43 dBW/kg

Test Laboratory: Sporton International Inc. SAR/HAC Testing Lab

Date: 2024/9/26

120_FR1 n48_100M_QPSK_135RB_69Offset_Right Side_0mm_Ch641666

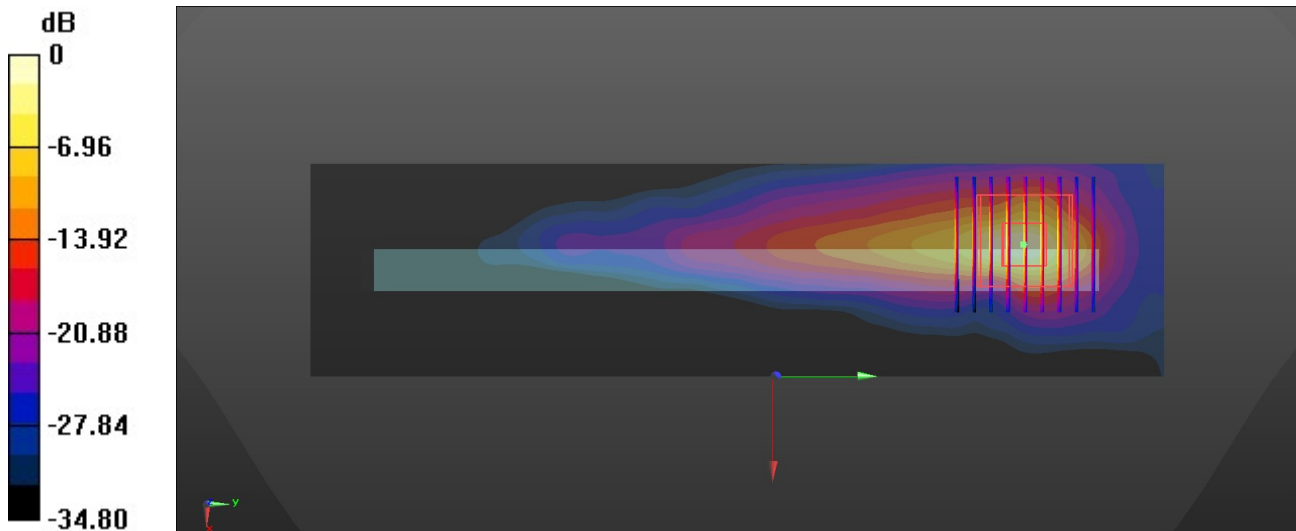
Communication System: UID 0, 5G NR (0); Frequency: 3624.99 MHz; Duty Cycle: 1:1
 Medium: HSL_3700 Medium parameters used: $f = 3624.99$ MHz; $\sigma = 2.918$ S/m; $\epsilon_r = 38.512$; $\rho = 1000$ kg/m³
 Ambient Temperature : 23.2 °C; Liquid Temperature : 22.7 °C

DASY5 Configuration:

- Probe: EX3DV4 - SN3857; ConvF(7.06, 6.33, 6.89); Calibrated: 2024/1/22
- Sensor-Surface: 1.4mm (Mechanical Surface Detection)
- Electronics: DAE4 Sn1303; Calibrated: 2023/11/20
- Phantom: Twin-SAM V5.0 (30deg probe tilt); Type: QD 000 P40 CD; Serial: 1842
- Measurement SW: DASY52, Version 52.10 (4); SEMCAD X Version 14.6.14 (7501)

Area Scan (51x201x1): Interpolated grid: dx=1.000 mm, dy=1.000 mm
 Maximum value of SAR (interpolated) = 23.4 W/kg

Zoom Scan (9x9x7)/Cube 0: Measurement grid: dx=4mm, dy=4mm, dz=1.4mm
 Reference Value = 7.421 V/m; Power Drift = 0.06 dB
 Peak SAR (extrapolated) = 49.9 W/kg
SAR(1 g) = 8.82 W/kg; SAR(10 g) = 2.39 W/kg
 Smallest distance from peaks to all points 3 dB below = 4.3 mm
 Ratio of SAR at M2 to SAR at M1 = 63.3%
 Maximum value of SAR (measured) = 24.8 W/kg



0 dB = 24.8 W/kg = 13.94 dBW/kg

Test Laboratory: Sporton International Inc. SAR/HAC Testing Lab

Date: 2024/9/27

121_FR1 n77_100M_QPSK_135RB_69Offset_Right Side_0mm_Ch656000

Communication System: UID 0, 5G NR (0); Frequency: 3840 MHz; Duty Cycle: 1:1

Medium: HSL_3900 Medium parameters used: $f = 3840$ MHz; $\sigma = 3.109$ S/m; $\epsilon_r = 38.142$; $\rho = 1000$ kg/m³

Ambient Temperature : 23.2 °C; Liquid Temperature : 22.8 °C

DASY5 Configuration:

- Probe: EX3DV4 - SN3857; ConvF(7.38, 6.56, 7.19); Calibrated: 2024/1/22
- Sensor-Surface: 1.4mm (Mechanical Surface Detection)
- Electronics: DAE4 Sn1303; Calibrated: 2023/11/20
- Phantom: Twin-SAM V5.0 (30deg probe tilt); Type: QD 000 P40 CD; Serial: 1842
- Measurement SW: DASY52, Version 52.10 (4); SEMCAD X Version 14.6.14 (7501)

Area Scan (51x201x1): Interpolated grid: dx=1.000 mm, dy=1.000 mm

Maximum value of SAR (interpolated) = 22.8 W/kg

Zoom Scan (9x9x7)/Cube 0: Measurement grid: dx=4mm, dy=4mm, dz=1.4mm

Reference Value = 6.073 V/m; Power Drift = 0.06 dB

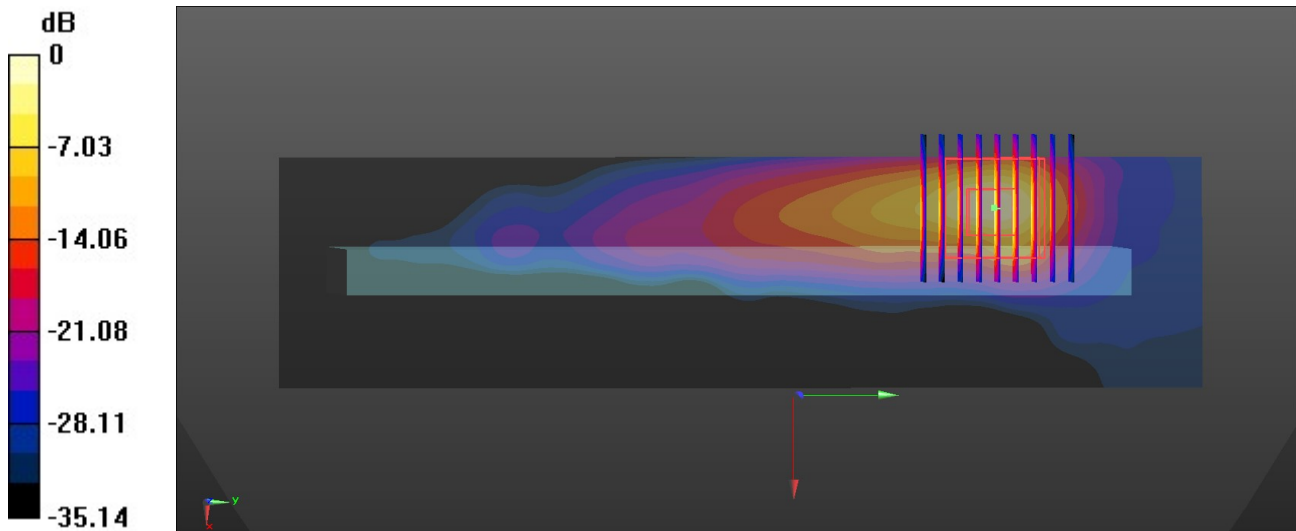
Peak SAR (extrapolated) = 51.2 W/kg

SAR(1 g) = 10.1 W/kg; SAR(10 g) = 2.5 W/kg

Smallest distance from peaks to all points 3 dB below = 4.5 mm

Ratio of SAR at M2 to SAR at M1 = 67.9%

Maximum value of SAR (measured) = 26.1 W/kg



0 dB = 26.1 W/kg = 14.17 dBW/kg

Test Laboratory: Sporton International Inc. SAR/HAC Testing Lab

Date: 2024/9/29

122_WLAN2.4GHz_802.11b 1Mbps_Top Side_0mm_Ch6

Communication System: UID 0, WLAN2.4GHz (0); Frequency: 2437 MHz; Duty Cycle: 1:1.018
 Medium: HSL_2450 Medium parameters used: $f = 2437$ MHz; $\sigma = 1.731$ S/m; $\epsilon_r = 39.34$; $\rho = 1000$ kg/m³

Ambient Temperature : 23.3 °C; Liquid Temperature : 22.8 °C

DASY5 Configuration:

- Probe: EX3DV4 - SN3857; ConvF(7.44, 6.79, 7.48); Calibrated: 2024/1/22
- Sensor-Surface: 1.4mm (Mechanical Surface Detection)
- Electronics: DAE4 Sn1303; Calibrated: 2023/11/20
- Phantom: Twin-SAM V5.0 (30deg probe tilt); Type: QD 000 P40 CD; Serial: 1842
- Measurement SW: DASY52, Version 52.10 (4); SEMCAD X Version 14.6.14 (7501)

Area Scan (51x101x1): Interpolated grid: dx=1.200 mm, dy=1.200 mm
 Maximum value of SAR (interpolated) = 16.1 W/kg

Zoom Scan (7x7x7)/Cube 0: Measurement grid: dx=5mm, dy=5mm, dz=5mm

Reference Value = 24.90 V/m; Power Drift = 0.09 dB

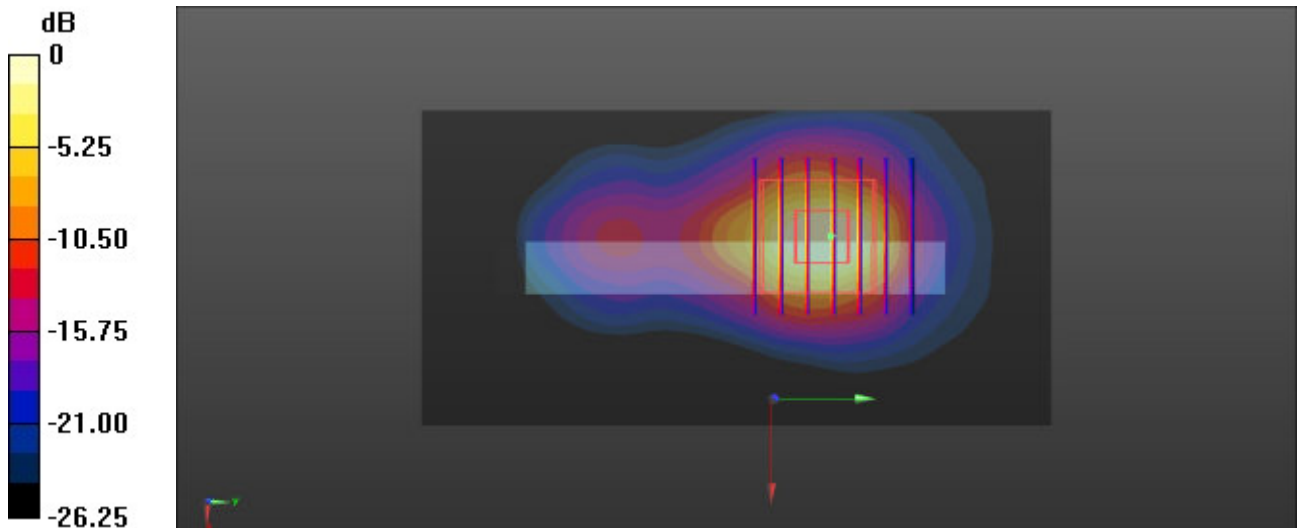
Peak SAR (extrapolated) = 18.0 W/kg

SAR(1 g) = 7.05 W/kg; SAR(10 g) = 2.53 W/kg

Smallest distance from peaks to all points 3 dB below = 6 mm

Ratio of SAR at M2 to SAR at M1 = 41.7%

Maximum value of SAR (measured) = 13.8 W/kg



0 dB = 13.8 W/kg = 11.40 dBW/kg

Test Laboratory: Sporton International Inc. SAR/HAC Testing Lab

Date: 2024/10/1

123_WLAN5GHz_802.11n-HT40 MCS0_Right Side_0mm_Ch46

Communication System: UID 0, WLAN5GHz (0); Frequency: 5230 MHz; Duty Cycle: 1:1.056
 Medium: HSL_5000 Medium parameters used: $f = 5230$ MHz; $\sigma = 4.561$ S/m; $\epsilon_r = 35.747$; $\rho = 1000$ kg/m³

Ambient Temperature : 23.3 °C; Liquid Temperature : 22.5 °C

DASY5 Configuration:

- Probe: EX3DV4 - SN3857; ConvF(5.34, 4.76, 5.24); Calibrated: 2024/1/22
- Sensor-Surface: 1.4mm (Mechanical Surface Detection)
- Electronics: DAE4 Sn1303; Calibrated: 2023/11/20
- Phantom: Twin-SAM V5.0 (30deg probe tilt); Type: QD 000 P40 CD; Serial: 1842
- Measurement SW: DASY52, Version 52.10 (4); SEMCAD X Version 14.6.14 (7501)

Area Scan (51x171x1): Interpolated grid: dx=1.200 mm, dy=1.200 mm
 Maximum value of SAR (interpolated) = 10.7 W/kg

Zoom Scan (8x8x7)/Cube 0: Measurement grid: dx=4mm, dy=4mm, dz=1.4mm

Reference Value = 1.278 V/m; Power Drift = 0.05 dB

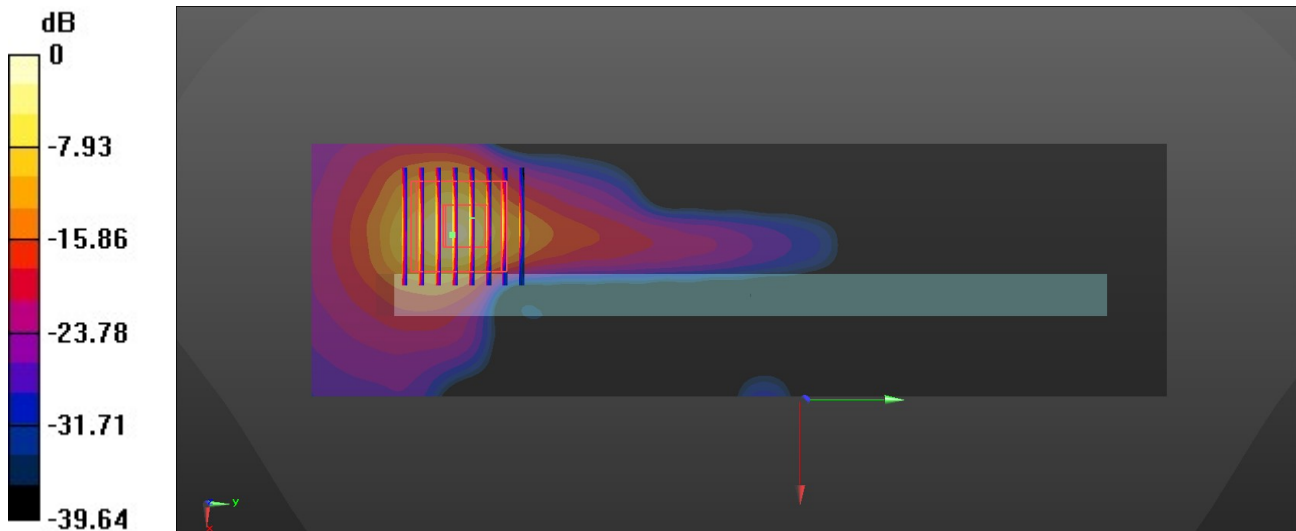
Peak SAR (extrapolated) = 35.6 W/kg

SAR(1 g) = 6.28 W/kg; SAR(10 g) = 1.51 W/kg

Smallest distance from peaks to all points 3 dB below = 4.2 mm

Ratio of SAR at M2 to SAR at M1 = 66.3%

Maximum value of SAR (measured) = 16.3 W/kg



0 dB = 16.3 W/kg = 12.12 dBW/kg

Test Laboratory: Sporton International Inc. SAR/HAC Testing Lab

Date: 2024/10/1

124_WLAN5GHz_802.11n-HT40 MCS0_Right Side_0mm_Ch54

Communication System: UID 0, WLAN5GHz (0); Frequency: 5270 MHz; Duty Cycle: 1:1.056
 Medium: HSL_5000 Medium parameters used: $f = 5270$ MHz; $\sigma = 4.624$ S/m; $\epsilon_r = 35.646$; $\rho = 1000$ kg/m³

Ambient Temperature : 23.3 °C; Liquid Temperature : 22.5 °C

DASY5 Configuration:

- Probe: EX3DV4 - SN3857; ConvF(5.34, 4.76, 5.24); Calibrated: 2024/1/22
- Sensor-Surface: 1.4mm (Mechanical Surface Detection)
- Electronics: DAE4 Sn1303; Calibrated: 2023/11/20
- Phantom: Twin-SAM V5.0 (30deg probe tilt); Type: QD 000 P40 CD; Serial: 1842
- Measurement SW: DASY52, Version 52.10 (4); SEMCAD X Version 14.6.14 (7501)

Area Scan (51x171x1): Interpolated grid: dx=1.200 mm, dy=1.200 mm
 Maximum value of SAR (interpolated) = 9.79 W/kg

Zoom Scan (8x8x7)/Cube 0: Measurement grid: dx=4mm, dy=4mm, dz=1.4mm

Reference Value = 0.2920 V/m; Power Drift = 0.08 dB

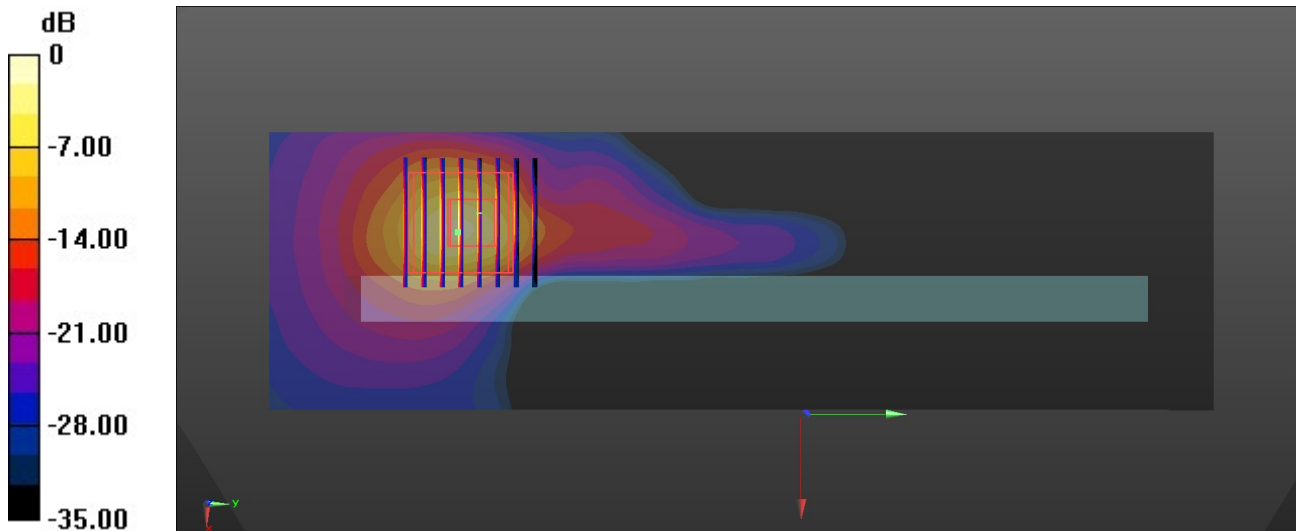
Peak SAR (extrapolated) = 30.5 W/kg

SAR(1 g) = 5.39 W/kg; SAR(10 g) = 1.33 W/kg

Smallest distance from peaks to all points 3 dB below = 4.5 mm

Ratio of SAR at M2 to SAR at M1 = 64.6%

Maximum value of SAR (measured) = 14.5 W/kg



0 dB = 14.5 W/kg = 11.61 dBW/kg

Test Laboratory: Sporton International Inc. SAR/HAC Testing Lab

Date: 2024/10/7

125_WLAN5GHz_802.11n-HT40 MCS0_Right Side_0mm_Ch142

Communication System: UID 0, WLAN5GHz (0); Frequency: 5710 MHz; Duty Cycle: 1:1.056
 Medium: HSL_5000 Medium parameters used: $f = 5710$ MHz; $\sigma = 5.071$ S/m; $\epsilon_r = 34.922$; $\rho = 1000$ kg/m³

Ambient Temperature : 23.3 °C; Liquid Temperature : 22.6 °C

DASY5 Configuration:

- Probe: EX3DV4 - SN3857; ConvF(5.19, 4.53, 5.01); Calibrated: 2024/1/22
- Sensor-Surface: 1.4mm (Mechanical Surface Detection)
- Electronics: DAE4 Sn1303; Calibrated: 2023/11/20
- Phantom: Twin-SAM V5.0 (30deg probe tilt); Type: QD 000 P40 CD; Serial: 1842
- Measurement SW: DASY52, Version 52.10 (4); SEMCAD X Version 14.6.14 (7501)

Area Scan (41x171x1): Interpolated grid: dx=1.200 mm, dy=1.200 mm
 Maximum value of SAR (interpolated) = 9.82 W/kg

Zoom Scan (9x9x7)/Cube 0: Measurement grid: dx=4mm, dy=4mm, dz=1.4mm

Reference Value = 6.794 V/m; Power Drift = 0.03 dB

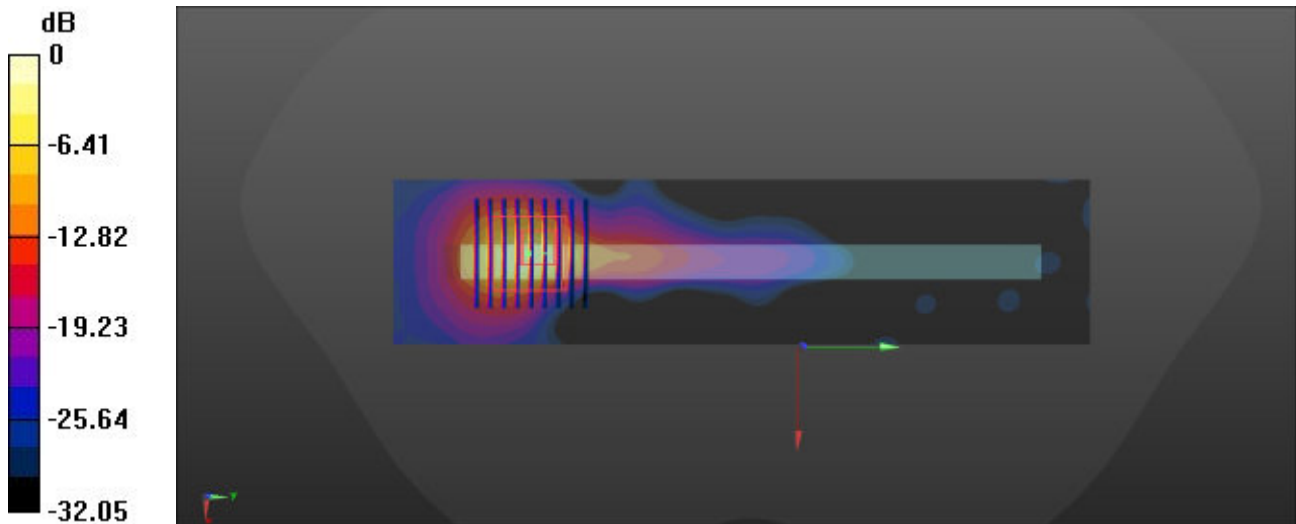
Peak SAR (extrapolated) = 35.7 W/kg

SAR(1 g) = 5.2 W/kg; SAR(10 g) = 1.32 W/kg

Smallest distance from peaks to all points 3 dB below = 4 mm

Ratio of SAR at M2 to SAR at M1 = 55.2%

Maximum value of SAR (measured) = 16.1 W/kg



0 dB = 16.1 W/kg = 12.07 dBW/kg

Test Laboratory: Sporton International Inc. SAR/HAC Testing Lab

Date: 2024/10/7

126_WLAN5GHz_802.11n-HT40 MCS0_Right Side_0mm_Ch151

Communication System: UID 0, WLAN5GHz (0); Frequency: 5755 MHz; Duty Cycle: 1:1.056
 Medium: HSL_5000 Medium parameters used: $f = 5755$ MHz; $\sigma = 5.112$ S/m; $\epsilon_r = 34.86$; $\rho = 1000$ kg/m³

Ambient Temperature : 23.3 °C; Liquid Temperature : 22.6 °C

DASY5 Configuration:

- Probe: EX3DV4 - SN3857; ConvF(5.19, 4.53, 5.01); Calibrated: 2024/1/22
- Sensor-Surface: 1.4mm (Mechanical Surface Detection)
- Electronics: DAE4 Sn1303; Calibrated: 2023/11/20
- Phantom: Twin-SAM V5.0 (30deg probe tilt); Type: QD 000 P40 CD; Serial: 1842
- Measurement SW: DASY52, Version 52.10 (4); SEMCAD X Version 14.6.14 (7501)

Area Scan (41x171x1): Interpolated grid: dx=1.200 mm, dy=1.200 mm
 Maximum value of SAR (interpolated) = 15.2 W/kg

Zoom Scan (9x9x7)/Cube 0: Measurement grid: dx=4mm, dy=4mm, dz=1.4mm

Reference Value = 8.370 V/m; Power Drift = 0.03 dB

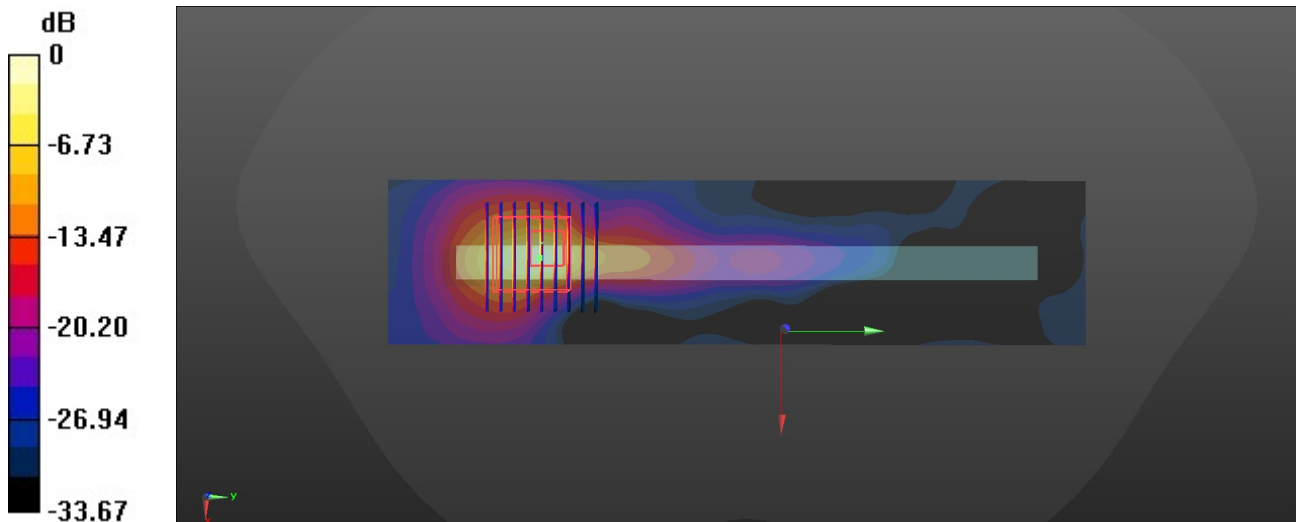
Peak SAR (extrapolated) = 55.0 W/kg

SAR(1 g) = 6.96 W/kg; SAR(10 g) = 1.58 W/kg

Smallest distance from peaks to all points 3 dB below = 4 mm

Ratio of SAR at M2 to SAR at M1 = 63.8%

Maximum value of SAR (measured) = 19.6 W/kg



0 dB = 19.6 W/kg = 12.92 dBW/kg