

**Appendix
for
DC_66A_n41A
(2496-2690)
Other PA**

Catalogue

1.	EFFECTIVE ISOTROPIC RADIATED POWER	3
1.1.	TEST RESULTS @ ANT1 (ANTENNA GAIN=-4.00DBI).....	3
2.	PEAK-TO-AVERAGE RATIO	7
2.1.	TEST RESULTS	7
2.2.	TEST PLOTS FOR SCS=30KHZ.....	7
3.	MODULATION CHARACTERISTICS	8
3.1.	TEST PLOTS FOR SCS=30KHZ.....	8
4.	99% OCCUPIED BANDWIDTH & 26DB EMISSION BANDWIDTH	10
4.1.	TEST RESULTS	10
4.2.	TEST PLOTS FOR SCS=30KHZ.....	12
5.	CONDUCTED BAND EDGES	26
5.1.	TEST PLOTS FOR SCS=30KHZ.....	26
6.	CONDUCTED SPURIOUS EMISSION	45
6.1.	TEST PLOTS FOR SCS=30KHZ.....	45
7.	FREQUENCY STABILITY	57
7.1.	TEST RESULTS	57

1. Effective Isotropic Radiated Power

1.1. Test Results @ Ant1 (Antenna Gain=-4.00dBi)

SCS	Bandwidth	Channel	Modulation	Conducted Result (dBm)			Max EIRP (dBm)	Limit (dBm)	Verdict
				Inner_1RB_Left	Inner_1RB_Right	Inner_Full			
30KHz	10MHz	LCH	DFT-Pi2BPSK	23.26	23.32	23.28	19.32	33.00	Pass
30KHz	10MHz	LCH	DFT-QPSK	23.18	23.23	23.32	19.32	33.00	Pass
30KHz	10MHz	LCH	DFT-16QAM	22.63	22.69	22.88	18.88	33.00	Pass
30KHz	10MHz	LCH	DFT-64QAM	21.38	21.48	21.42	17.48	33.00	Pass
30KHz	10MHz	LCH	DFT-256QAM	19.38	19.45	19.43	15.45	33.00	Pass
30KHz	10MHz	LCH	CP-QPSK	22.24	22.31	22.48	18.48	33.00	Pass
30KHz	10MHz	MCH	DFT-Pi2BPSK	22.88	22.86	22.89	18.89	33.00	Pass
30KHz	10MHz	MCH	DFT-QPSK	22.91	22.82	22.88	18.91	33.00	Pass
30KHz	10MHz	MCH	DFT-16QAM	22.66	22.64	22.90	18.90	33.00	Pass
30KHz	10MHz	MCH	DFT-64QAM	21.30	21.36	21.44	17.44	33.00	Pass
30KHz	10MHz	MCH	DFT-256QAM	19.36	19.26	19.45	15.45	33.00	Pass
30KHz	10MHz	MCH	CP-QPSK	22.21	22.17	22.31	18.31	33.00	Pass
30KHz	10MHz	HCH	DFT-Pi2BPSK	23.12	22.97	23.85	19.85	33.00	Pass
30KHz	10MHz	HCH	DFT-QPSK	23.80	22.97	23.06	19.80	33.00	Pass
30KHz	10MHz	HCH	DFT-16QAM	22.77	22.63	22.95	18.95	33.00	Pass
30KHz	10MHz	HCH	DFT-64QAM	21.49	21.36	21.40	17.49	33.00	Pass
30KHz	10MHz	HCH	DFT-256QAM	19.37	19.36	19.42	15.42	33.00	Pass
30KHz	10MHz	HCH	CP-QPSK	22.27	22.19	22.40	18.40	33.00	Pass
30KHz	15MHz	LCH	DFT-Pi2BPSK	22.72	23.08	23.54	19.54	33.00	Pass
30KHz	15MHz	LCH	DFT-QPSK	22.91	23.00	23.55	19.55	33.00	Pass
30KHz	15MHz	LCH	DFT-16QAM	22.65	22.78	22.95	18.95	33.00	Pass
30KHz	15MHz	LCH	DFT-64QAM	21.40	21.45	21.42	17.45	33.00	Pass
30KHz	15MHz	LCH	DFT-256QAM	19.44	19.44	19.45	15.45	33.00	Pass
30KHz	15MHz	LCH	CP-QPSK	22.28	22.39	22.47	18.47	33.00	Pass
30KHz	15MHz	MCH	DFT-Pi2BPSK	23.43	23.46	23.13	19.46	33.00	Pass
30KHz	15MHz	MCH	DFT-QPSK	23.39	23.38	23.18	19.39	33.00	Pass
30KHz	15MHz	MCH	DFT-16QAM	22.46	22.46	22.94	18.94	33.00	Pass
30KHz	15MHz	MCH	DFT-64QAM	21.30	21.34	21.47	17.47	33.00	Pass
30KHz	15MHz	MCH	DFT-256QAM	19.34	19.34	19.47	15.47	33.00	Pass
30KHz	15MHz	MCH	CP-QPSK	22.18	22.11	22.37	18.37	33.00	Pass
30KHz	15MHz	HCH	DFT-Pi2BPSK	23.05	23.53	23.32	19.53	33.00	Pass
30KHz	15MHz	HCH	DFT-QPSK	23.64	23.49	23.26	19.64	33.00	Pass
30KHz	15MHz	HCH	DFT-16QAM	22.68	22.50	22.95	18.95	33.00	Pass
30KHz	15MHz	HCH	DFT-64QAM	21.48	21.28	21.44	17.48	33.00	Pass
30KHz	15MHz	HCH	DFT-256QAM	19.46	19.37	19.42	15.46	33.00	Pass
30KHz	15MHz	HCH	CP-QPSK	22.27	22.10	22.43	18.43	33.00	Pass
30KHz	20MHz	LCH	DFT-Pi2BPSK	23.54	23.43	22.68	19.54	33.00	Pass
30KHz	20MHz	LCH	DFT-QPSK	23.37	23.34	22.76	19.37	33.00	Pass
30KHz	20MHz	LCH	DFT-16QAM	22.65	22.66	22.92	18.92	33.00	Pass
30KHz	20MHz	LCH	DFT-64QAM	21.45	21.44	21.46	17.46	33.00	Pass
30KHz	20MHz	LCH	DFT-256QAM	19.43	19.43	19.41	15.43	33.00	Pass
30KHz	20MHz	LCH	CP-QPSK	22.28	22.29	22.48	18.48	33.00	Pass
30KHz	20MHz	MCH	DFT-Pi2BPSK	23.66	23.29	23.39	19.66	33.00	Pass
30KHz	20MHz	MCH	DFT-QPSK	23.22	23.22	23.41	19.41	33.00	Pass
30KHz	20MHz	MCH	DFT-16QAM	22.47	22.55	22.88	18.88	33.00	Pass
30KHz	20MHz	MCH	DFT-64QAM	21.29	21.31	21.47	17.47	33.00	Pass
30KHz	20MHz	MCH	DFT-256QAM	19.22	19.25	19.46	15.46	33.00	Pass
30KHz	20MHz	MCH	CP-QPSK	22.12	22.17	22.42	18.42	33.00	Pass
30KHz	20MHz	HCH	DFT-Pi2BPSK	23.42	23.41	23.56	19.56	33.00	Pass
30KHz	20MHz	HCH	DFT-QPSK	23.36	23.31	23.55	19.55	33.00	Pass
30KHz	20MHz	HCH	DFT-16QAM	22.56	22.54	22.93	18.93	33.00	Pass
30KHz	20MHz	HCH	DFT-64QAM	21.39	21.24	21.41	17.41	33.00	Pass
30KHz	20MHz	HCH	DFT-256QAM	19.32	19.32	19.45	15.45	33.00	Pass
30KHz	20MHz	HCH	CP-QPSK	22.20	22.18	22.41	18.41	33.00	Pass
30KHz	25MHz	LCH	DFT-Pi2BPSK	23.30	23.17	23.49	19.49	33.00	Pass
30KHz	25MHz	LCH	DFT-QPSK	23.24	23.07	23.56	19.56	33.00	Pass
30KHz	25MHz	LCH	DFT-16QAM	22.66	22.54	22.95	18.95	33.00	Pass
30KHz	25MHz	LCH	DFT-64QAM	21.47	21.39	21.49	17.49	33.00	Pass
30KHz	25MHz	LCH	DFT-256QAM	19.45	19.38	19.47	15.47	33.00	Pass

30KHz	25MHz	LCH	CP-QPSK	22.27	22.23	22.48	18.48	33.00	Pass
30KHz	25MHz	MCH	DFT-Pi2BPSK	23.63	23.11	23.35	19.63	33.00	Pass
30KHz	25MHz	MCH	DFT-QPSK	22.93	22.97	23.34	19.34	33.00	Pass
30KHz	25MHz	MCH	DFT-16QAM	22.47	22.37	22.88	18.88	33.00	Pass
30KHz	25MHz	MCH	DFT-64QAM	21.21	21.25	21.49	17.49	33.00	Pass
30KHz	25MHz	MCH	DFT-256QAM	19.24	19.23	19.40	15.40	33.00	Pass
30KHz	25MHz	MCH	CP-QPSK	22.09	22.07	22.39	18.39	33.00	Pass
30KHz	25MHz	HCH	DFT-Pi2BPSK	23.32	23.44	23.74	19.74	33.00	Pass
30KHz	25MHz	HCH	DFT-QPSK	23.26	23.40	23.80	19.80	33.00	Pass
30KHz	25MHz	HCH	DFT-16QAM	22.48	22.48	22.98	18.98	33.00	Pass
30KHz	25MHz	HCH	DFT-64QAM	21.31	21.34	21.42	17.42	33.00	Pass
30KHz	25MHz	HCH	DFT-256QAM	19.31	19.35	19.47	15.47	33.00	Pass
30KHz	25MHz	HCH	CP-QPSK	22.08	22.12	22.43	18.43	33.00	Pass
30KHz	30MHz	LCH	DFT-Pi2BPSK	23.21	22.90	22.91	19.21	33.00	Pass
30KHz	30MHz	LCH	DFT-QPSK	23.14	22.89	22.85	19.14	33.00	Pass
30KHz	30MHz	LCH	DFT-16QAM	22.70	22.58	22.96	18.96	33.00	Pass
30KHz	30MHz	LCH	DFT-64QAM	21.50	21.36	21.49	17.50	33.00	Pass
30KHz	30MHz	LCH	DFT-256QAM	19.43	19.39	19.50	15.50	33.00	Pass
30KHz	30MHz	LCH	CP-QPSK	22.34	22.26	22.47	18.47	33.00	Pass
30KHz	30MHz	MCH	DFT-Pi2BPSK	22.76	22.87	22.68	18.87	33.00	Pass
30KHz	30MHz	MCH	DFT-QPSK	22.81	22.87	23.58	19.58	33.00	Pass
30KHz	30MHz	MCH	DFT-16QAM	22.53	22.48	22.95	18.95	33.00	Pass
30KHz	30MHz	MCH	DFT-64QAM	21.33	21.26	21.44	17.44	33.00	Pass
30KHz	30MHz	MCH	DFT-256QAM	19.32	19.29	19.41	15.41	33.00	Pass
30KHz	30MHz	MCH	CP-QPSK	22.16	22.14	22.42	18.42	33.00	Pass
30KHz	30MHz	HCH	DFT-Pi2BPSK	23.09	23.32	22.90	19.32	33.00	Pass
30KHz	30MHz	HCH	DFT-QPSK	22.99	23.27	22.93	19.27	33.00	Pass
30KHz	30MHz	HCH	DFT-16QAM	22.39	22.53	22.86	18.86	33.00	Pass
30KHz	30MHz	HCH	DFT-64QAM	21.15	21.35	21.50	17.50	33.00	Pass
30KHz	30MHz	HCH	DFT-256QAM	19.23	19.34	19.48	15.48	33.00	Pass
30KHz	30MHz	HCH	CP-QPSK	22.07	22.17	22.50	18.50	33.00	Pass
30KHz	35MHz	LCH	DFT-Pi2BPSK	23.25	22.83	23.53	19.53	33.00	Pass
30KHz	35MHz	LCH	DFT-QPSK	22.97	22.81	23.52	19.52	33.00	Pass
30KHz	35MHz	LCH	DFT-16QAM	22.61	22.46	22.86	18.86	33.00	Pass
30KHz	35MHz	LCH	DFT-64QAM	21.48	21.31	21.43	17.48	33.00	Pass
30KHz	35MHz	LCH	DFT-256QAM	19.35	19.31	19.45	15.45	33.00	Pass
30KHz	35MHz	LCH	CP-QPSK	22.23	22.20	22.43	18.43	33.00	Pass
30KHz	35MHz	MCH	DFT-Pi2BPSK	23.61	22.80	23.42	19.61	33.00	Pass
30KHz	35MHz	MCH	DFT-QPSK	23.60	22.79	23.32	19.60	33.00	Pass
30KHz	35MHz	MCH	DFT-16QAM	22.51	22.45	22.95	18.95	33.00	Pass
30KHz	35MHz	MCH	DFT-64QAM	21.17	21.32	21.41	17.41	33.00	Pass
30KHz	35MHz	MCH	DFT-256QAM	19.25	19.33	19.39	15.39	33.00	Pass
30KHz	35MHz	MCH	CP-QPSK	22.18	22.12	22.29	18.29	33.00	Pass
30KHz	35MHz	HCH	DFT-Pi2BPSK	23.63	23.13	23.64	19.64	33.00	Pass
30KHz	35MHz	HCH	DFT-QPSK	23.52	23.06	23.74	19.74	33.00	Pass
30KHz	35MHz	HCH	DFT-16QAM	22.37	22.59	22.91	18.91	33.00	Pass
30KHz	35MHz	HCH	DFT-64QAM	21.16	21.43	21.47	17.47	33.00	Pass
30KHz	35MHz	HCH	DFT-256QAM	19.15	19.42	19.49	15.49	33.00	Pass
30KHz	35MHz	HCH	CP-QPSK	21.96	22.20	22.46	18.46	33.00	Pass
30KHz	40MHz	LCH	DFT-Pi2BPSK	22.98	22.74	23.04	19.04	33.00	Pass
30KHz	40MHz	LCH	DFT-QPSK	22.94	22.70	23.03	19.03	33.00	Pass
30KHz	40MHz	LCH	DFT-16QAM	22.70	22.45	22.94	18.94	33.00	Pass
30KHz	40MHz	LCH	DFT-64QAM	21.39	21.19	21.45	17.45	33.00	Pass
30KHz	40MHz	LCH	DFT-256QAM	19.46	19.18	19.50	15.50	33.00	Pass
30KHz	40MHz	LCH	CP-QPSK	22.24	22.05	22.42	18.42	33.00	Pass
30KHz	40MHz	MCH	DFT-Pi2BPSK	23.62	22.74	22.92	19.62	33.00	Pass
30KHz	40MHz	MCH	DFT-QPSK	23.54	23.61	22.91	19.61	33.00	Pass
30KHz	40MHz	MCH	DFT-16QAM	22.57	22.57	22.88	18.88	33.00	Pass
30KHz	40MHz	MCH	DFT-64QAM	21.15	21.27	21.44	17.44	33.00	Pass
30KHz	40MHz	MCH	DFT-256QAM	19.30	19.30	19.43	15.43	33.00	Pass
30KHz	40MHz	MCH	CP-QPSK	22.11	22.08	22.40	18.40	33.00	Pass
30KHz	40MHz	HCH	DFT-Pi2BPSK	23.58	22.97	23.02	19.58	33.00	Pass
30KHz	40MHz	HCH	DFT-QPSK	23.45	22.89	23.01	19.45	33.00	Pass

30KHz	40MHz	HCH	DFT-16QAM	22.19	22.60	22.99	18.99	33.00	Pass
30KHz	40MHz	HCH	DFT-64QAM	20.96	21.41	21.46	17.46	33.00	Pass
30KHz	40MHz	HCH	DFT-256QAM	19.06	19.40	19.43	15.43	33.00	Pass
30KHz	40MHz	HCH	CP-QPSK	21.88	22.21	22.47	18.47	33.00	Pass
30KHz	45MHz	LCH	DFT-Pi2BPSK	23.69	23.38	23.08	19.69	33.00	Pass
30KHz	45MHz	LCH	DFT-QPSK	23.55	23.30	23.04	19.55	33.00	Pass
30KHz	45MHz	LCH	DFT-16QAM	22.59	22.30	22.98	18.98	33.00	Pass
30KHz	45MHz	LCH	DFT-64QAM	21.39	21.10	21.45	17.45	33.00	Pass
30KHz	45MHz	LCH	DFT-256QAM	19.39	19.05	19.49	15.49	33.00	Pass
30KHz	45MHz	LCH	CP-QPSK	22.20	21.91	22.39	18.39	33.00	Pass
30KHz	45MHz	MCH	DFT-Pi2BPSK	23.60	22.72	23.11	19.60	33.00	Pass
30KHz	45MHz	MCH	DFT-QPSK	23.52	23.62	22.98	19.62	33.00	Pass
30KHz	45MHz	MCH	DFT-16QAM	22.43	22.46	22.87	18.87	33.00	Pass
30KHz	45MHz	MCH	DFT-64QAM	21.15	21.11	21.41	17.41	33.00	Pass
30KHz	45MHz	MCH	DFT-256QAM	19.22	19.23	19.42	15.42	33.00	Pass
30KHz	45MHz	MCH	CP-QPSK	22.12	22.04	22.35	18.35	33.00	Pass
30KHz	45MHz	HCH	DFT-Pi2BPSK	23.43	22.97	23.26	19.43	33.00	Pass
30KHz	45MHz	HCH	DFT-QPSK	23.44	22.90	23.31	19.44	33.00	Pass
30KHz	45MHz	HCH	DFT-16QAM	22.20	22.72	22.94	18.94	33.00	Pass
30KHz	45MHz	HCH	DFT-64QAM	20.85	21.41	21.36	17.41	33.00	Pass
30KHz	45MHz	HCH	DFT-256QAM	18.97	19.44	19.48	15.48	33.00	Pass
30KHz	45MHz	HCH	CP-QPSK	21.77	22.23	22.43	18.43	33.00	Pass
30KHz	50MHz	LCH	DFT-Pi2BPSK	23.44	23.14	23.45	19.45	33.00	Pass
30KHz	50MHz	LCH	DFT-QPSK	23.37	23.08	23.50	19.50	33.00	Pass
30KHz	50MHz	LCH	DFT-16QAM	22.53	22.30	22.89	18.89	33.00	Pass
30KHz	50MHz	LCH	DFT-64QAM	21.20	21.06	21.43	17.43	33.00	Pass
30KHz	50MHz	LCH	DFT-256QAM	19.35	19.07	19.43	15.43	33.00	Pass
30KHz	50MHz	LCH	CP-QPSK	22.22	21.94	22.34	18.34	33.00	Pass
30KHz	50MHz	MCH	DFT-Pi2BPSK	23.22	23.17	23.52	19.52	33.00	Pass
30KHz	50MHz	MCH	DFT-QPSK	23.58	23.60	23.51	19.60	33.00	Pass
30KHz	50MHz	MCH	DFT-16QAM	22.42	22.39	22.86	18.86	33.00	Pass
30KHz	50MHz	MCH	DFT-64QAM	21.10	21.03	21.43	17.43	33.00	Pass
30KHz	50MHz	MCH	DFT-256QAM	19.24	19.18	19.43	15.43	33.00	Pass
30KHz	50MHz	MCH	CP-QPSK	22.05	21.98	22.34	18.34	33.00	Pass
30KHz	50MHz	HCH	DFT-Pi2BPSK	23.33	23.71	22.75	19.71	33.00	Pass
30KHz	50MHz	HCH	DFT-QPSK	23.23	23.57	22.79	19.57	33.00	Pass
30KHz	50MHz	HCH	DFT-16QAM	22.11	22.62	22.86	18.86	33.00	Pass
30KHz	50MHz	HCH	DFT-64QAM	20.72	21.32	21.44	17.44	33.00	Pass
30KHz	50MHz	HCH	DFT-256QAM	18.80	19.35	19.47	15.47	33.00	Pass
30KHz	50MHz	HCH	CP-QPSK	21.68	22.19	22.35	18.35	33.00	Pass
30KHz	60MHz	LCH	DFT-Pi2BPSK	23.84	23.07	23.17	19.84	33.00	Pass
30KHz	60MHz	LCH	DFT-QPSK	23.68	23.57	23.18	19.68	33.00	Pass
30KHz	60MHz	LCH	DFT-16QAM	22.49	22.39	22.82	18.82	33.00	Pass
30KHz	60MHz	LCH	DFT-64QAM	21.24	21.17	21.30	17.30	33.00	Pass
30KHz	60MHz	LCH	DFT-256QAM	19.28	19.22	19.32	15.32	33.00	Pass
30KHz	60MHz	LCH	CP-QPSK	22.08	22.01	22.27	18.27	33.00	Pass
30KHz	60MHz	MCH	DFT-Pi2BPSK	23.60	23.20	23.43	19.60	33.00	Pass
30KHz	60MHz	MCH	DFT-QPSK	23.58	23.59	23.49	19.59	33.00	Pass
30KHz	60MHz	MCH	DFT-16QAM	22.36	22.36	22.86	18.86	33.00	Pass
30KHz	60MHz	MCH	DFT-64QAM	21.02	21.03	21.37	17.37	33.00	Pass
30KHz	60MHz	MCH	DFT-256QAM	19.18	19.17	19.35	15.35	33.00	Pass
30KHz	60MHz	MCH	CP-QPSK	22.03	22.04	22.35	18.35	33.00	Pass
30KHz	60MHz	HCH	DFT-Pi2BPSK	23.23	23.59	23.46	19.59	33.00	Pass
30KHz	60MHz	HCH	DFT-QPSK	23.20	23.50	23.50	19.50	33.00	Pass
30KHz	60MHz	HCH	DFT-16QAM	22.03	22.63	22.86	18.86	33.00	Pass
30KHz	60MHz	HCH	DFT-64QAM	20.78	21.37	21.39	17.39	33.00	Pass
30KHz	60MHz	HCH	DFT-256QAM	18.78	19.42	19.41	15.42	33.00	Pass
30KHz	60MHz	HCH	CP-QPSK	21.61	22.18	22.32	18.32	33.00	Pass
30KHz	70MHz	LCH	DFT-Pi2BPSK	23.35	23.13	23.61	19.61	33.00	Pass
30KHz	70MHz	LCH	DFT-QPSK	23.84	23.10	22.77	19.84	33.00	Pass
30KHz	70MHz	LCH	DFT-16QAM	22.53	22.50	22.81	18.81	33.00	Pass
30KHz	70MHz	LCH	DFT-64QAM	21.33	21.28	21.31	17.33	33.00	Pass
30KHz	70MHz	LCH	DFT-256QAM	19.39	19.35	19.33	15.39	33.00	Pass

30KHz	70MHz	LCH	CP-QPSK	22.14	22.19	22.22	18.22	33.00	Pass
30KHz	70MHz	MCH	DFT-Pi2BPSK	23.68	23.03	22.84	19.68	33.00	Pass
30KHz	70MHz	MCH	DFT-QPSK	23.67	23.64	22.82	19.67	33.00	Pass
30KHz	70MHz	MCH	DFT-16QAM	22.59	22.48	22.91	18.91	33.00	Pass
30KHz	70MHz	MCH	DFT-64QAM	21.26	21.19	21.41	17.41	33.00	Pass
30KHz	70MHz	MCH	DFT-256QAM	19.31	19.27	19.41	15.41	33.00	Pass
30KHz	70MHz	MCH	CP-QPSK	22.12	22.09	22.38	18.38	33.00	Pass
30KHz	70MHz	HCH	DFT-Pi2BPSK	23.37	23.58	23.74	19.74	33.00	Pass
30KHz	70MHz	HCH	DFT-QPSK	23.32	23.49	23.70	19.70	33.00	Pass
30KHz	70MHz	HCH	DFT-16QAM	22.06	22.75	22.77	18.77	33.00	Pass
30KHz	70MHz	HCH	DFT-64QAM	20.79	21.46	21.26	17.46	33.00	Pass
30KHz	70MHz	HCH	DFT-256QAM	18.86	19.49	19.33	15.49	33.00	Pass
30KHz	70MHz	HCH	CP-QPSK	21.70	22.36	22.25	18.36	33.00	Pass
30KHz	80MHz	LCH	DFT-Pi2BPSK	23.69	23.08	23.16	19.69	33.00	Pass
30KHz	80MHz	LCH	DFT-QPSK	23.88	23.09	23.67	19.88	33.00	Pass
30KHz	80MHz	LCH	DFT-16QAM	22.68	22.66	22.91	18.91	33.00	Pass
30KHz	80MHz	LCH	DFT-64QAM	21.41	21.35	21.38	17.41	33.00	Pass
30KHz	80MHz	LCH	DFT-256QAM	19.44	19.42	19.39	15.44	33.00	Pass
30KHz	80MHz	LCH	CP-QPSK	22.26	22.24	22.33	18.33	33.00	Pass
30KHz	80MHz	MCH	DFT-Pi2BPSK	23.70	23.17	23.56	19.70	33.00	Pass
30KHz	80MHz	MCH	DFT-QPSK	23.66	23.20	23.48	19.66	33.00	Pass
30KHz	80MHz	MCH	DFT-16QAM	22.45	22.51	22.91	18.91	33.00	Pass
30KHz	80MHz	MCH	DFT-64QAM	21.25	21.26	21.37	17.37	33.00	Pass
30KHz	80MHz	MCH	DFT-256QAM	19.28	19.27	19.44	15.44	33.00	Pass
30KHz	80MHz	MCH	CP-QPSK	22.11	22.06	22.33	18.33	33.00	Pass
30KHz	80MHz	HCH	DFT-Pi2BPSK	23.45	23.57	23.46	19.57	33.00	Pass
30KHz	80MHz	HCH	DFT-QPSK	23.37	23.51	23.65	19.65	33.00	Pass
30KHz	80MHz	HCH	DFT-16QAM	22.19	22.80	22.73	18.80	33.00	Pass
30KHz	80MHz	HCH	DFT-64QAM	20.88	21.48	21.28	17.48	33.00	Pass
30KHz	80MHz	HCH	DFT-256QAM	18.91	19.46	19.29	15.46	33.00	Pass
30KHz	80MHz	HCH	CP-QPSK	21.77	22.30	22.19	18.30	33.00	Pass
30KHz	90MHz	LCH	DFT-Pi2BPSK	23.86	23.06	23.76	19.86	33.00	Pass
30KHz	90MHz	LCH	DFT-QPSK	23.51	23.07	22.95	19.51	33.00	Pass
30KHz	90MHz	LCH	DFT-16QAM	22.68	22.58	22.95	18.95	33.00	Pass
30KHz	90MHz	LCH	DFT-64QAM	21.44	21.41	21.45	17.45	33.00	Pass
30KHz	90MHz	LCH	DFT-256QAM	19.49	19.44	19.48	15.49	33.00	Pass
30KHz	90MHz	LCH	CP-QPSK	22.30	22.21	22.37	18.37	33.00	Pass
30KHz	90MHz	MCH	DFT-Pi2BPSK	23.64	22.97	22.92	19.64	33.00	Pass
30KHz	90MHz	MCH	DFT-QPSK	23.53	22.95	22.91	19.53	33.00	Pass
30KHz	90MHz	MCH	DFT-16QAM	22.45	22.54	22.93	18.93	33.00	Pass
30KHz	90MHz	MCH	DFT-64QAM	21.13	21.28	21.39	17.39	33.00	Pass
30KHz	90MHz	MCH	DFT-256QAM	19.19	19.29	19.42	15.42	33.00	Pass
30KHz	90MHz	MCH	CP-QPSK	22.04	22.14	22.30	18.30	33.00	Pass
30KHz	90MHz	HCH	DFT-Pi2BPSK	23.45	23.21	23.62	19.62	33.00	Pass
30KHz	90MHz	HCH	DFT-QPSK	23.51	23.20	23.64	19.64	33.00	Pass
30KHz	90MHz	HCH	DFT-16QAM	22.23	22.77	22.70	18.77	33.00	Pass
30KHz	90MHz	HCH	DFT-64QAM	20.82	21.43	21.19	17.43	33.00	Pass
30KHz	90MHz	HCH	DFT-256QAM	18.92	19.47	19.21	15.47	33.00	Pass
30KHz	90MHz	HCH	CP-QPSK	21.74	22.29	22.15	18.29	33.00	Pass
30KHz	100MHz	LCH	DFT-Pi2BPSK	23.89	22.92	23.69	19.89	33.00	Pass
30KHz	100MHz	LCH	DFT-QPSK	23.52	22.90	23.66	19.66	33.00	Pass
30KHz	100MHz	LCH	DFT-16QAM	22.66	22.63	22.89	18.89	33.00	Pass
30KHz	100MHz	LCH	DFT-64QAM	21.39	21.39	21.42	17.42	33.00	Pass
30KHz	100MHz	LCH	DFT-256QAM	19.40	19.40	19.44	15.44	33.00	Pass
30KHz	100MHz	LCH	CP-QPSK	22.22	22.21	22.36	18.36	33.00	Pass
30KHz	100MHz	MCH	DFT-Pi2BPSK	23.55	23.00	23.29	19.55	33.00	Pass
30KHz	100MHz	MCH	DFT-QPSK	23.50	22.95	23.33	19.50	33.00	Pass
30KHz	100MHz	MCH	DFT-16QAM	22.31	22.51	22.89	18.89	33.00	Pass
30KHz	100MHz	MCH	DFT-64QAM	21.05	21.33	21.38	17.38	33.00	Pass
30KHz	100MHz	MCH	DFT-256QAM	19.14	19.35	19.39	15.39	33.00	Pass
30KHz	100MHz	MCH	CP-QPSK	21.92	22.14	22.33	18.33	33.00	Pass
30KHz	100MHz	HCH	DFT-Pi2BPSK	23.56	23.16	23.58	19.58	33.00	Pass
30KHz	100MHz	HCH	DFT-QPSK	23.54	23.16	23.61	19.61	33.00	Pass

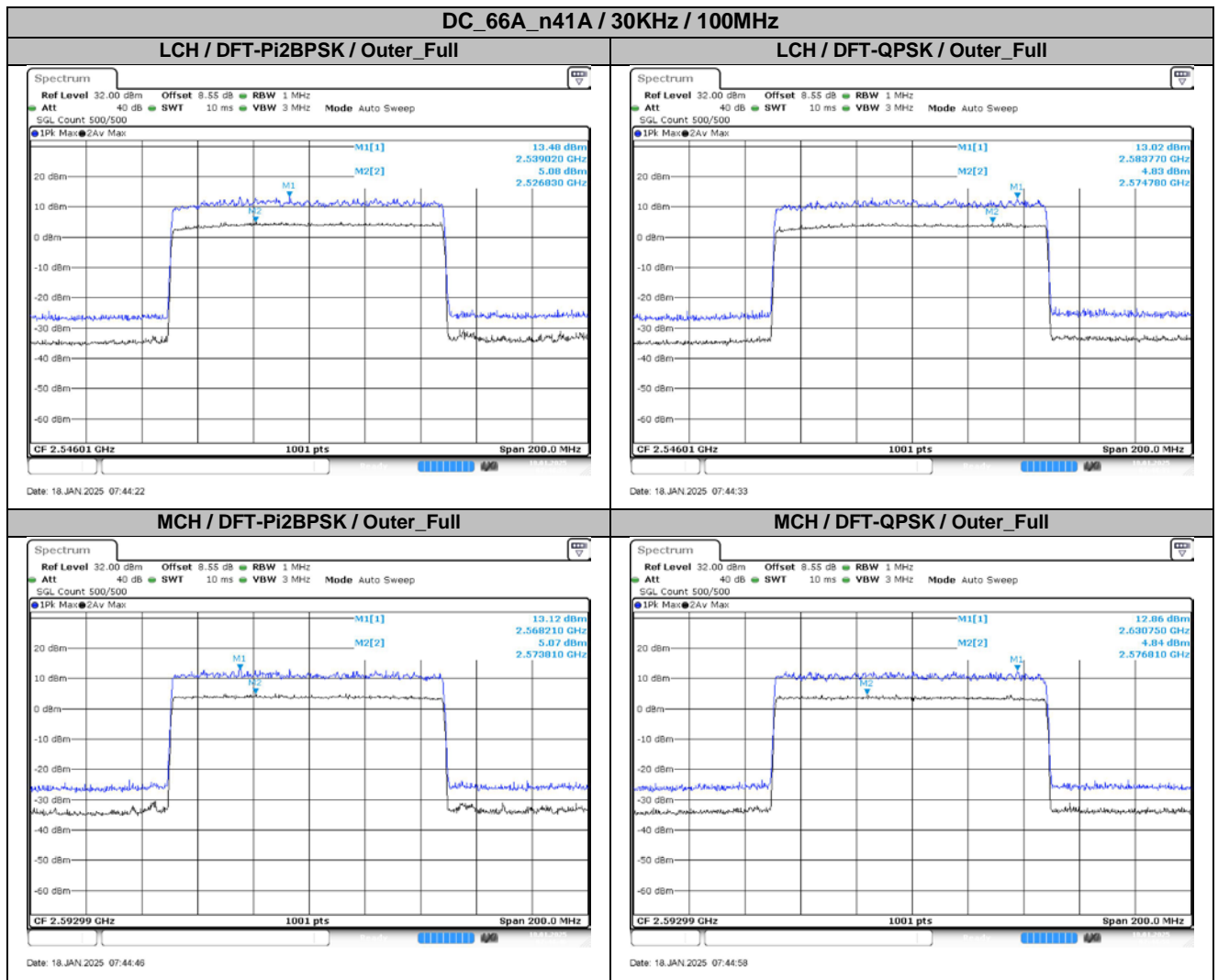
30KHz	100MHz	HCH	DFT-16QAM	22.31	22.75	22.60	18.75	33.00	Pass
30KHz	100MHz	HCH	DFT-64QAM	20.92	21.48	21.04	17.48	33.00	Pass
30KHz	100MHz	HCH	DFT-256QAM	19.02	19.47	19.14	15.47	33.00	Pass
30KHz	100MHz	HCH	CP-QPSK	21.83	22.26	22.06	18.26	33.00	Pass

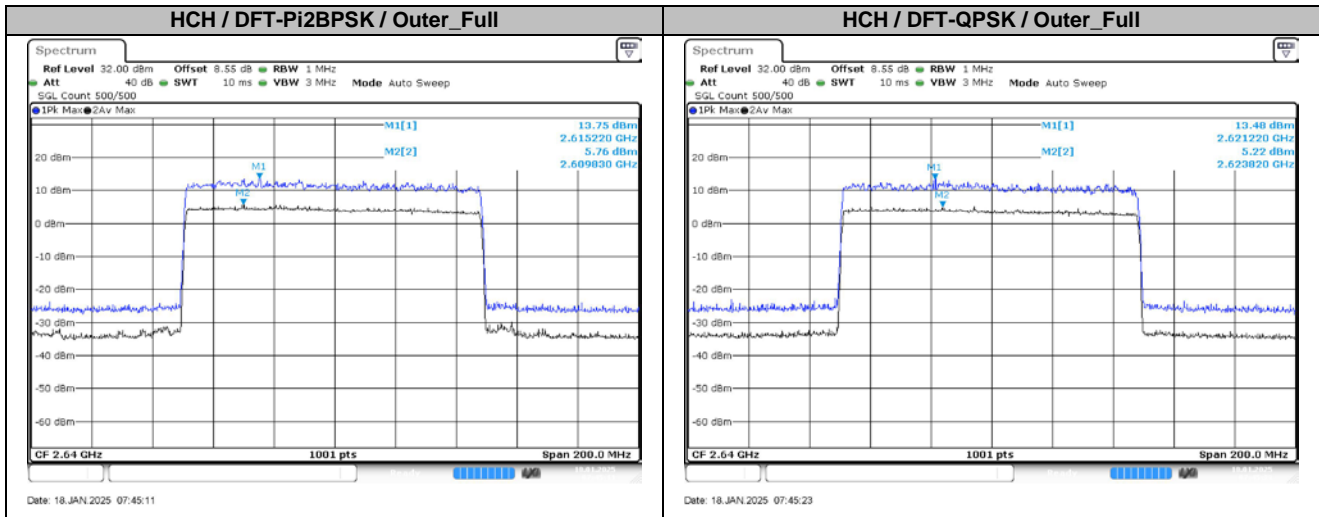
2. Peak-to-Average Ratio

2.1. Test Results

SCS	Bandwidth	Channel	RB	Result (dB)		Limit (dB)	Verdict
				DFT-Pi2BPSK	DFT-QPSK		
30KHz	100MHz	LCH	Outer_Full	8.40	8.18	13.00	Pass
30KHz	100MHz	MCH	Outer_Full	8.05	8.02	13.00	Pass
30KHz	100MHz	HCH	Outer_Full	7.99	8.26	13.00	Pass

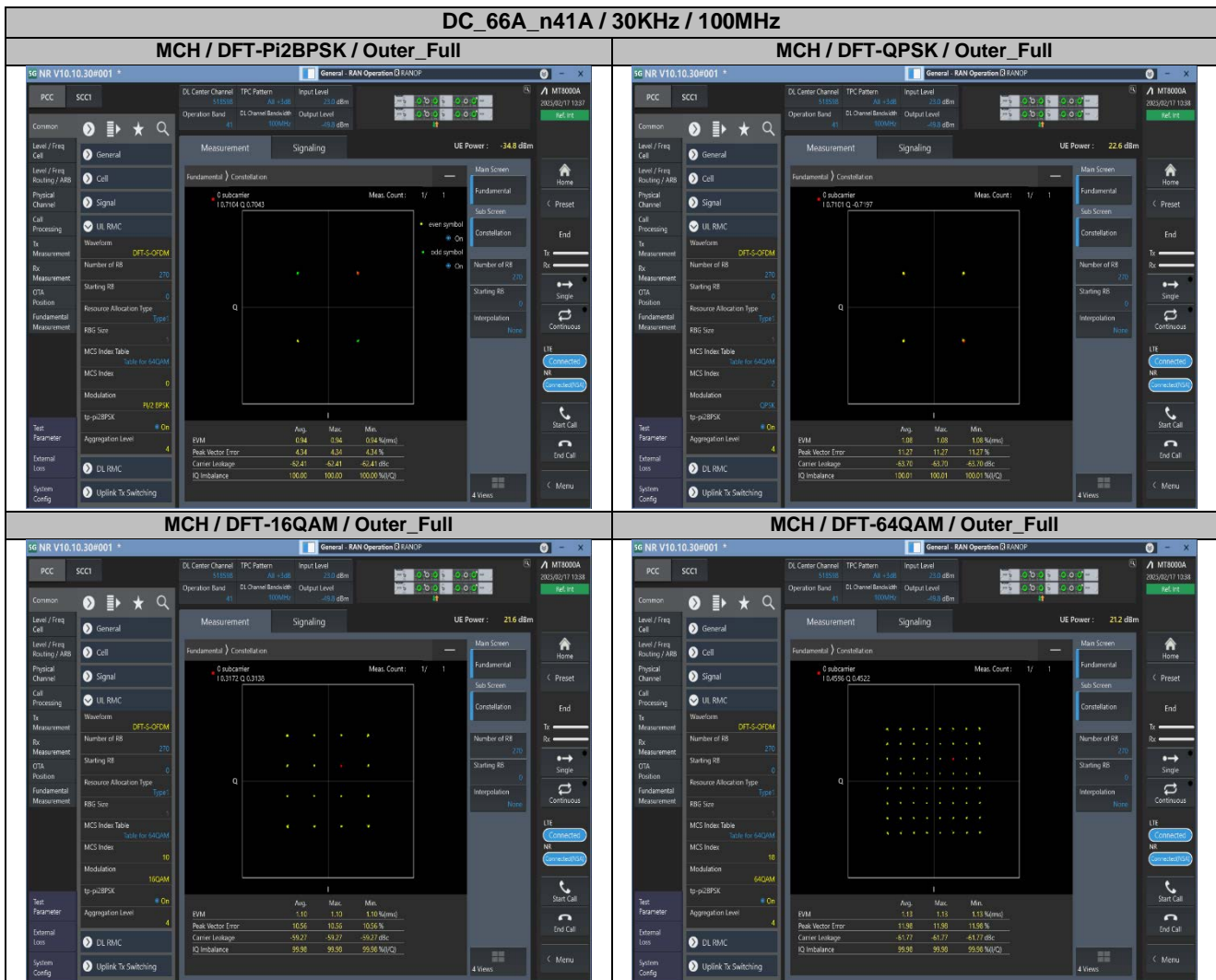
2.2. Test Plots for SCS=30KHz

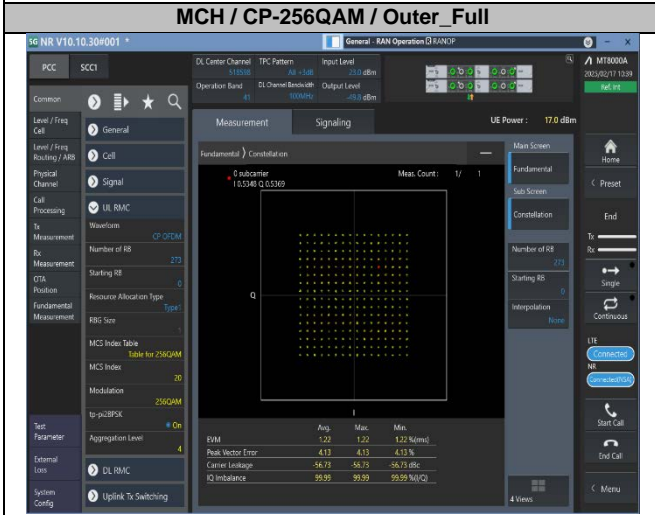
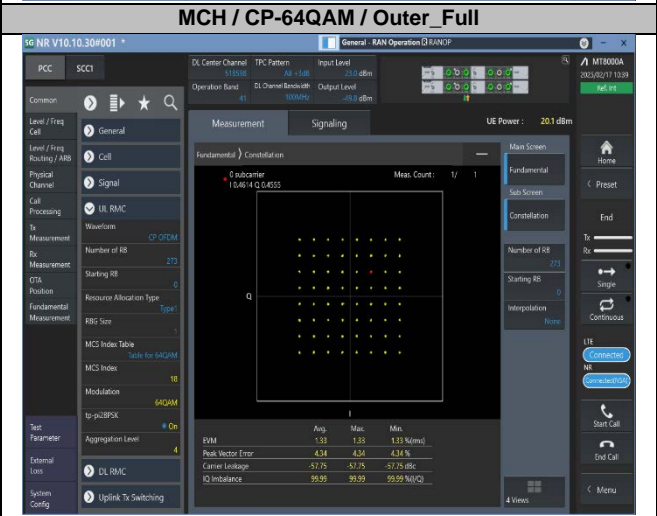
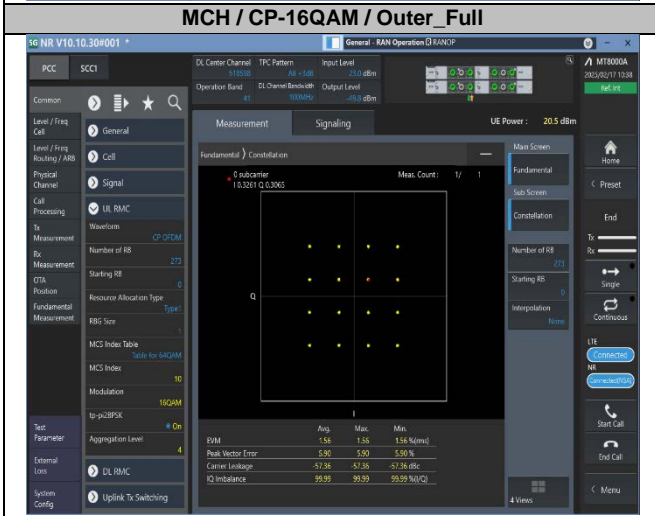
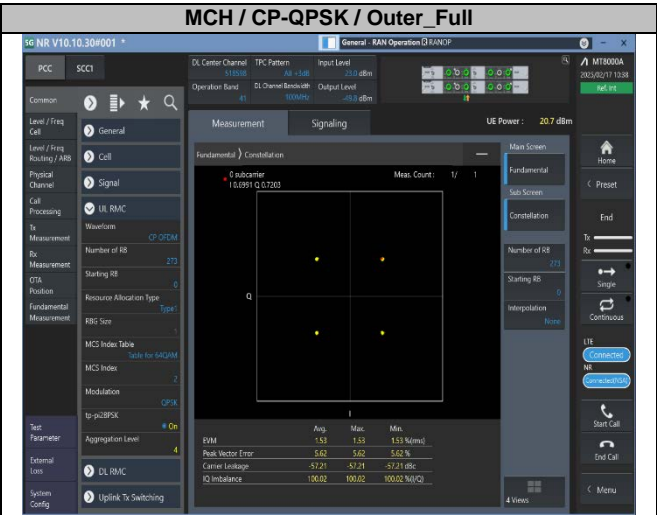
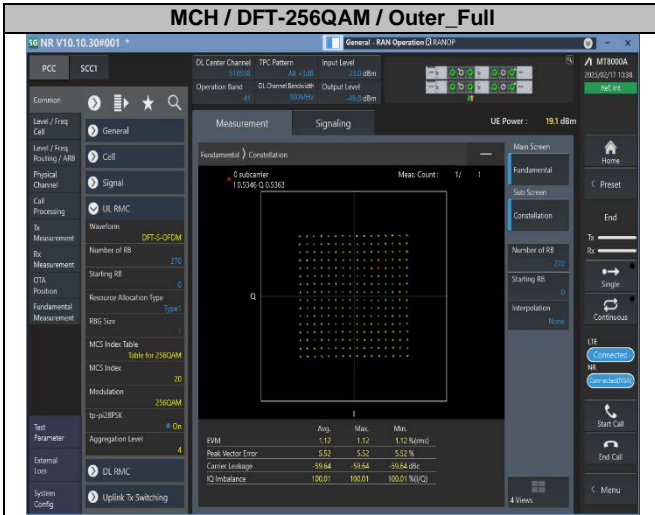




3. Modulation Characteristics

3.1. Test Plots for SCS=30KHz





Intentionally Blank

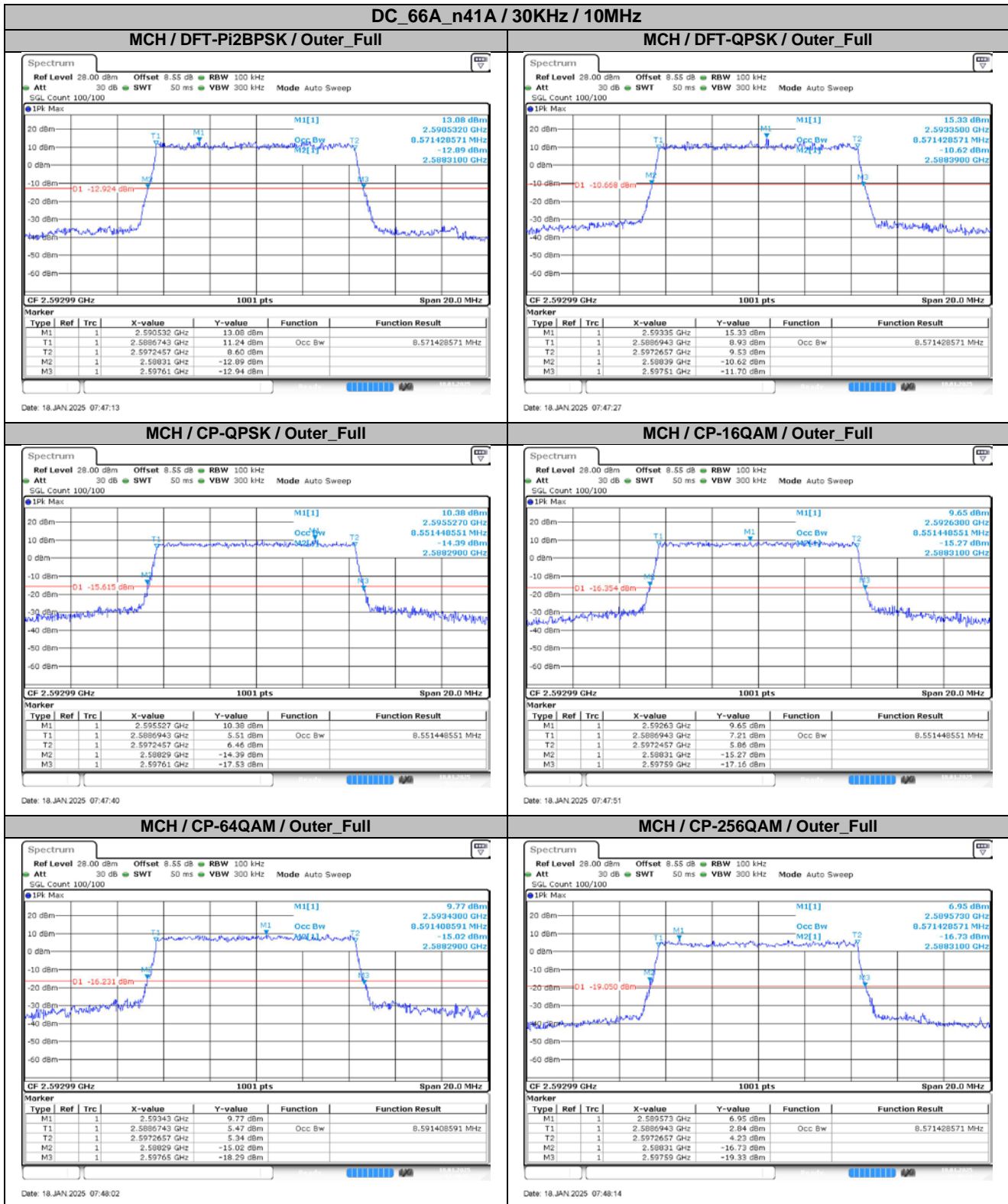
4. 99% Occupied Bandwidth & 26dB Emission Bandwidth

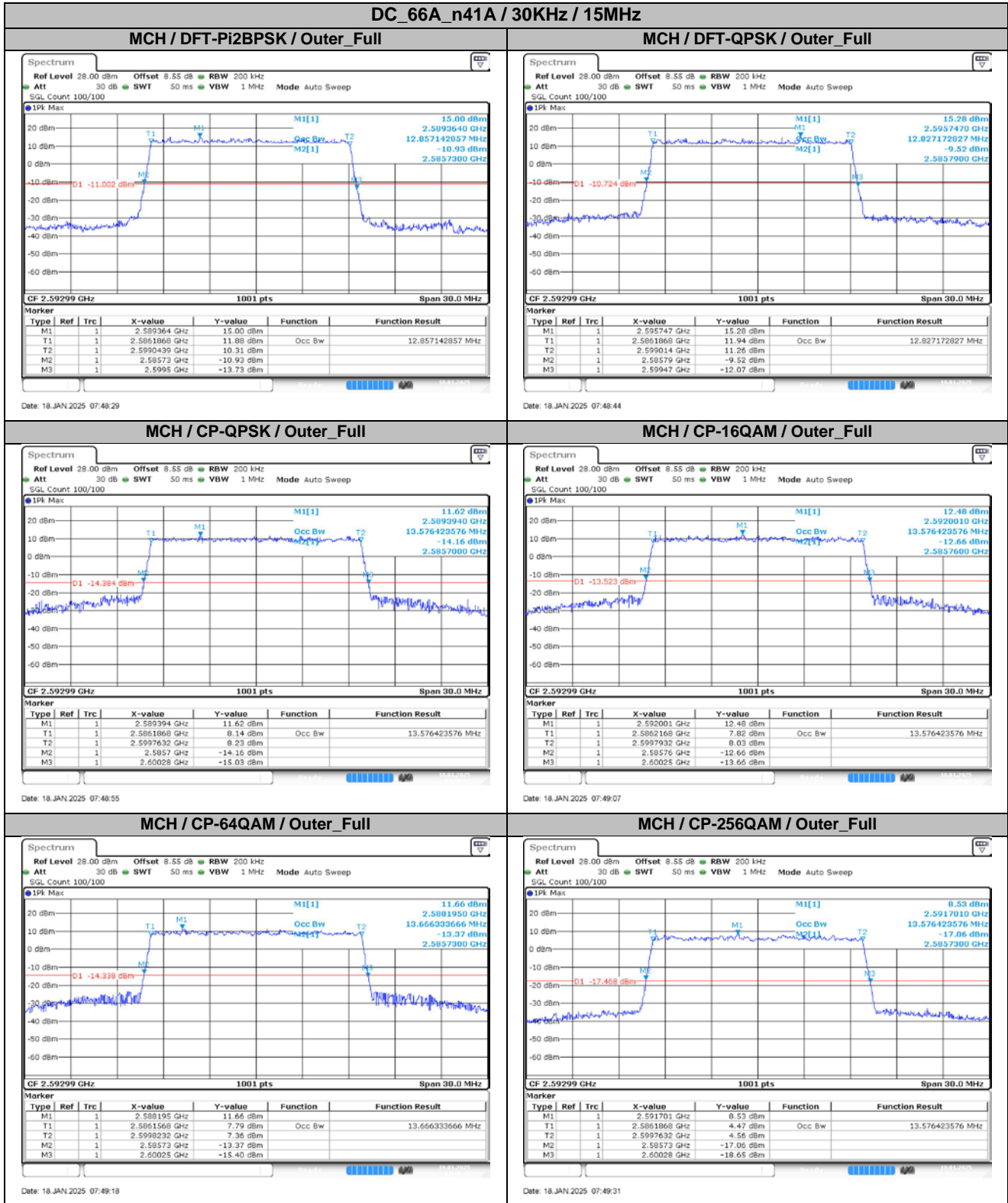
4.1. Test Results

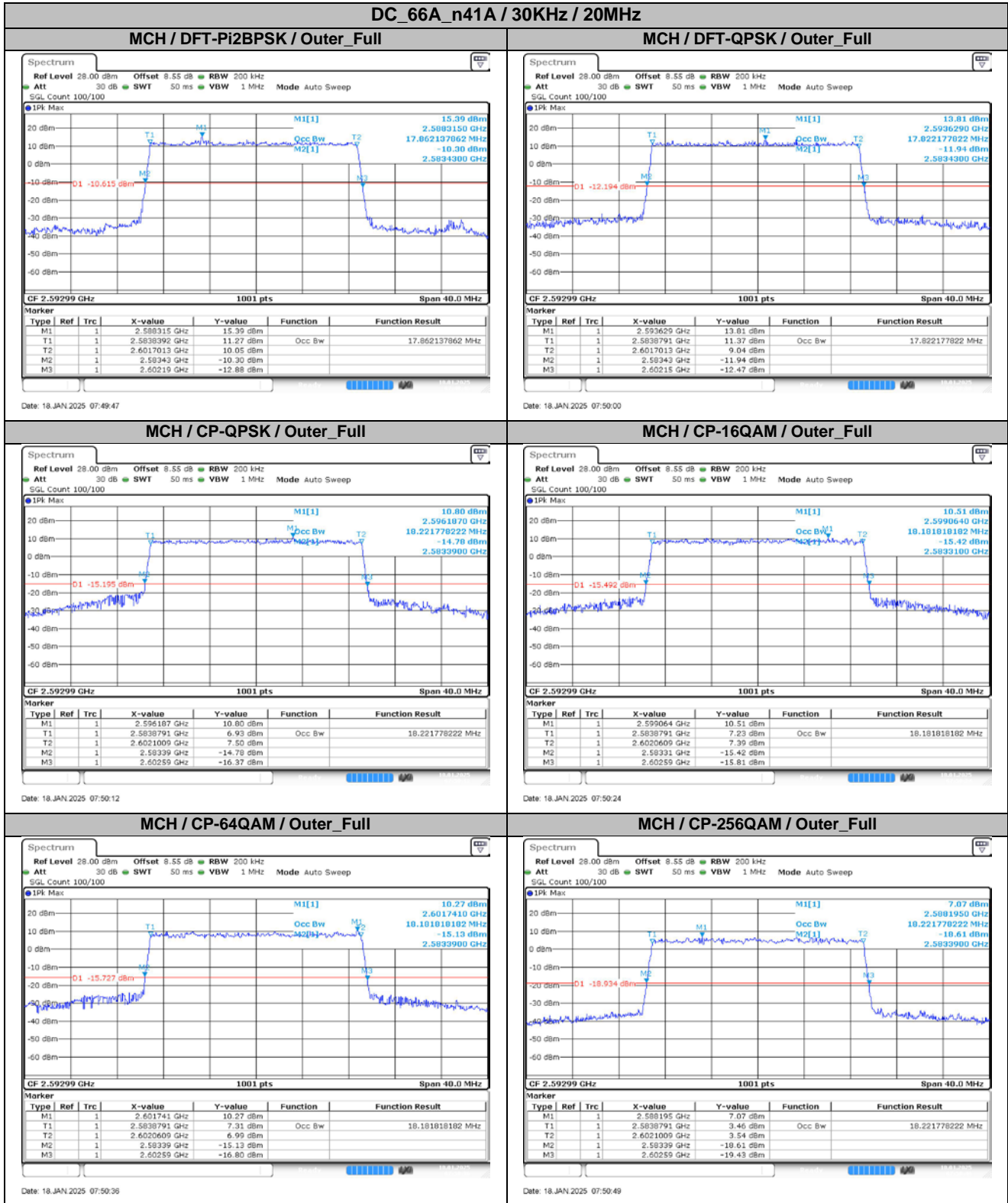
SCS	Bandwidth	Modulation	RB	99% Occupied Bandwidth (MHz)	26dB Emission Bandwidth (MHz)	Verdict
30KHz	10MHz	DFT-Pi2BPSK	Outer_Full	8.57	9.30	Pass
30KHz	10MHz	DFT-QPSK	Outer_Full	8.57	9.12	Pass
30KHz	10MHz	CP-QPSK	Outer_Full	8.55	9.32	Pass
30KHz	10MHz	CP-16QAM	Outer_Full	8.55	9.28	Pass
30KHz	10MHz	CP-64QAM	Outer_Full	8.59	9.36	Pass
30KHz	10MHz	CP-256QAM	Outer_Full	8.57	9.28	Pass
30KHz	15MHz	DFT-Pi2BPSK	Outer_Full	12.86	13.77	Pass
30KHz	15MHz	DFT-QPSK	Outer_Full	12.83	13.68	Pass
30KHz	15MHz	CP-QPSK	Outer_Full	13.58	14.58	Pass
30KHz	15MHz	CP-16QAM	Outer_Full	13.58	14.49	Pass
30KHz	15MHz	CP-64QAM	Outer_Full	13.67	14.52	Pass
30KHz	15MHz	CP-256QAM	Outer_Full	13.58	14.55	Pass
30KHz	20MHz	DFT-Pi2BPSK	Outer_Full	17.86	18.76	Pass
30KHz	20MHz	DFT-QPSK	Outer_Full	17.82	18.72	Pass
30KHz	20MHz	CP-QPSK	Outer_Full	18.22	19.20	Pass
30KHz	20MHz	CP-16QAM	Outer_Full	18.18	19.28	Pass
30KHz	20MHz	CP-64QAM	Outer_Full	18.18	19.20	Pass
30KHz	20MHz	CP-256QAM	Outer_Full	18.22	19.20	Pass
30KHz	25MHz	DFT-Pi2BPSK	Outer_Full	22.83	24.00	Pass
30KHz	25MHz	DFT-QPSK	Outer_Full	22.83	24.00	Pass
30KHz	25MHz	CP-QPSK	Outer_Full	23.18	24.45	Pass
30KHz	25MHz	CP-16QAM	Outer_Full	23.23	24.55	Pass
30KHz	25MHz	CP-64QAM	Outer_Full	23.23	24.40	Pass
30KHz	25MHz	CP-256QAM	Outer_Full	23.23	24.45	Pass
30KHz	30MHz	DFT-Pi2BPSK	Outer_Full	26.79	28.32	Pass
30KHz	30MHz	DFT-QPSK	Outer_Full	26.85	28.32	Pass
30KHz	30MHz	CP-QPSK	Outer_Full	27.75	29.34	Pass
30KHz	30MHz	CP-16QAM	Outer_Full	27.87	29.40	Pass
30KHz	30MHz	CP-64QAM	Outer_Full	27.75	29.34	Pass
30KHz	30MHz	CP-256QAM	Outer_Full	27.87	29.34	Pass
30KHz	35MHz	DFT-Pi2BPSK	Outer_Full	32.17	33.95	Pass
30KHz	35MHz	DFT-QPSK	Outer_Full	32.24	33.88	Pass
30KHz	35MHz	CP-QPSK	Outer_Full	32.87	34.65	Pass
30KHz	35MHz	CP-16QAM	Outer_Full	32.87	34.86	Pass
30KHz	35MHz	CP-64QAM	Outer_Full	32.87	34.79	Pass
30KHz	35MHz	CP-256QAM	Outer_Full	32.87	34.72	Pass
30KHz	40MHz	DFT-Pi2BPSK	Outer_Full	35.80	37.60	Pass
30KHz	40MHz	DFT-QPSK	Outer_Full	35.72	37.52	Pass
30KHz	40MHz	CP-QPSK	Outer_Full	37.80	39.60	Pass
30KHz	40MHz	CP-16QAM	Outer_Full	37.80	39.76	Pass
30KHz	40MHz	CP-64QAM	Outer_Full	37.80	39.60	Pass
30KHz	40MHz	CP-256QAM	Outer_Full	37.72	39.76	Pass
30KHz	45MHz	DFT-Pi2BPSK	Outer_Full	38.57	40.50	Pass
30KHz	45MHz	DFT-QPSK	Outer_Full	38.57	40.50	Pass
30KHz	45MHz	CP-QPSK	Outer_Full	42.44	44.55	Pass
30KHz	45MHz	CP-16QAM	Outer_Full	42.53	44.46	Pass
30KHz	45MHz	CP-64QAM	Outer_Full	42.44	44.37	Pass
30KHz	45MHz	CP-256QAM	Outer_Full	42.35	44.37	Pass
30KHz	50MHz	DFT-Pi2BPSK	Outer_Full	45.75	47.40	Pass
30KHz	50MHz	DFT-QPSK	Outer_Full	45.65	47.70	Pass
30KHz	50MHz	CP-QPSK	Outer_Full	47.45	49.60	Pass
30KHz	50MHz	CP-16QAM	Outer_Full	47.45	49.40	Pass
30KHz	50MHz	CP-64QAM	Outer_Full	47.45	49.60	Pass
30KHz	50MHz	CP-256QAM	Outer_Full	47.35	49.40	Pass
30KHz	60MHz	DFT-Pi2BPSK	Outer_Full	58.02	60.60	Pass
30KHz	60MHz	DFT-QPSK	Outer_Full	57.90	60.60	Pass
30KHz	60MHz	CP-QPSK	Outer_Full	57.78	60.60	Pass
30KHz	60MHz	CP-16QAM	Outer_Full	57.90	60.60	Pass

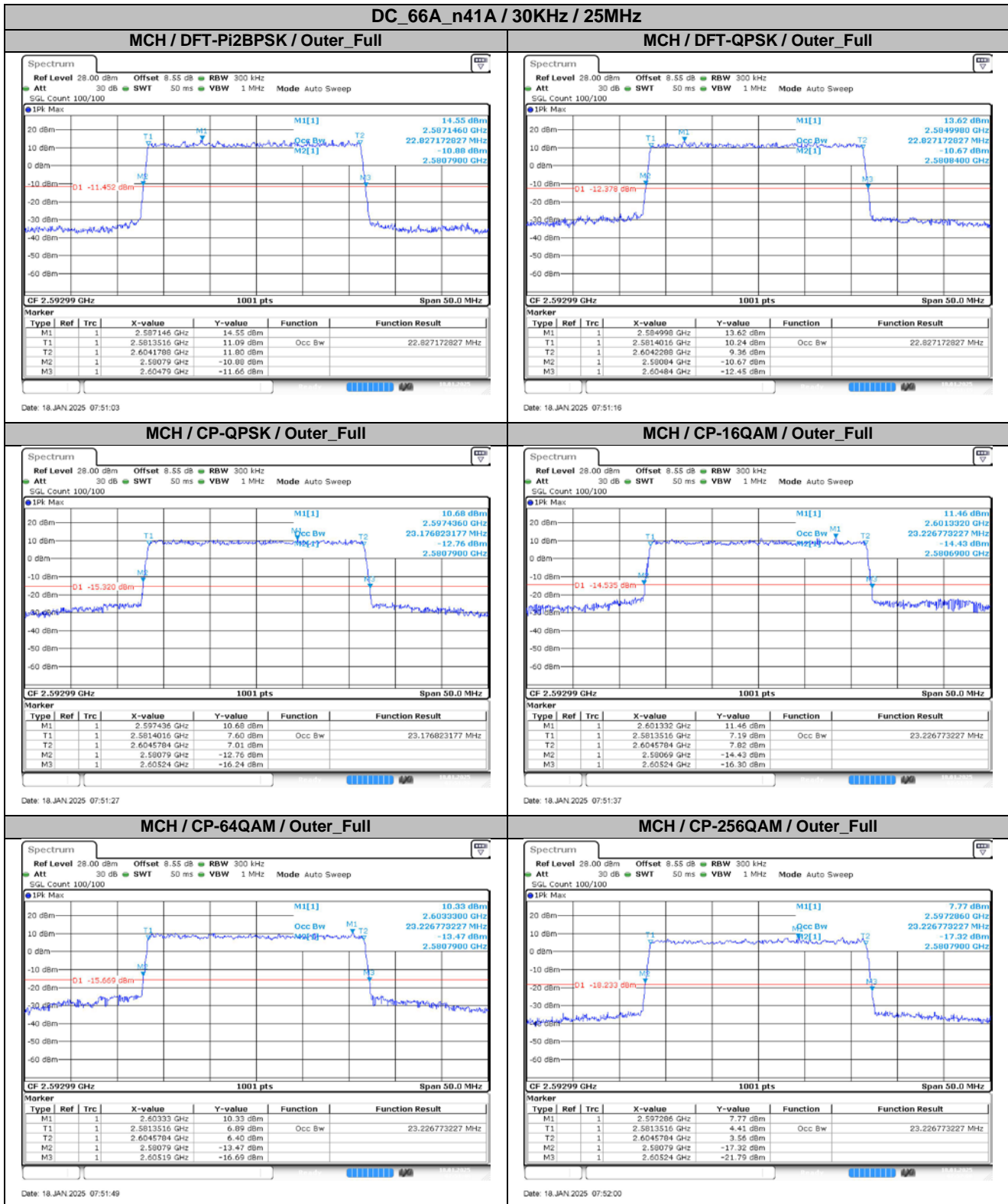
30KHz	60MHz	CP-64QAM	Outer_Full	58.02	60.60	Pass
30KHz	60MHz	CP-256QAM	Outer_Full	57.90	60.60	Pass
30KHz	70MHz	DFT-Pi2BPSK	Outer_Full	64.34	67.20	Pass
30KHz	70MHz	DFT-QPSK	Outer_Full	64.20	67.20	Pass
30KHz	70MHz	CP-QPSK	Outer_Full	67.55	70.42	Pass
30KHz	70MHz	CP-16QAM	Outer_Full	67.41	70.42	Pass
30KHz	70MHz	CP-64QAM	Outer_Full	67.41	70.42	Pass
30KHz	70MHz	CP-256QAM	Outer_Full	67.41	70.42	Pass
30KHz	80MHz	DFT-Pi2BPSK	Outer_Full	76.88	80.16	Pass
30KHz	80MHz	DFT-QPSK	Outer_Full	77.04	80.16	Pass
30KHz	80MHz	CP-QPSK	Outer_Full	77.36	80.48	Pass
30KHz	80MHz	CP-16QAM	Outer_Full	77.36	80.48	Pass
30KHz	80MHz	CP-64QAM	Outer_Full	77.36	80.48	Pass
30KHz	80MHz	CP-256QAM	Outer_Full	77.36	80.48	Pass
30KHz	90MHz	DFT-Pi2BPSK	Outer_Full	86.67	89.82	Pass
30KHz	90MHz	DFT-QPSK	Outer_Full	86.67	90.18	Pass
30KHz	90MHz	CP-QPSK	Outer_Full	87.39	90.72	Pass
30KHz	90MHz	CP-16QAM	Outer_Full	87.39	90.54	Pass
30KHz	90MHz	CP-64QAM	Outer_Full	87.39	90.72	Pass
30KHz	90MHz	CP-256QAM	Outer_Full	87.39	90.54	Pass
30KHz	100MHz	DFT-Pi2BPSK	Outer_Full	96.30	99.80	Pass
30KHz	100MHz	DFT-QPSK	Outer_Full	96.30	99.80	Pass
30KHz	100MHz	CP-QPSK	Outer_Full	97.30	100.80	Pass
30KHz	100MHz	CP-16QAM	Outer_Full	97.30	100.80	Pass
30KHz	100MHz	CP-64QAM	Outer_Full	97.30	100.60	Pass
30KHz	100MHz	CP-256QAM	Outer_Full	97.30	100.60	Pass

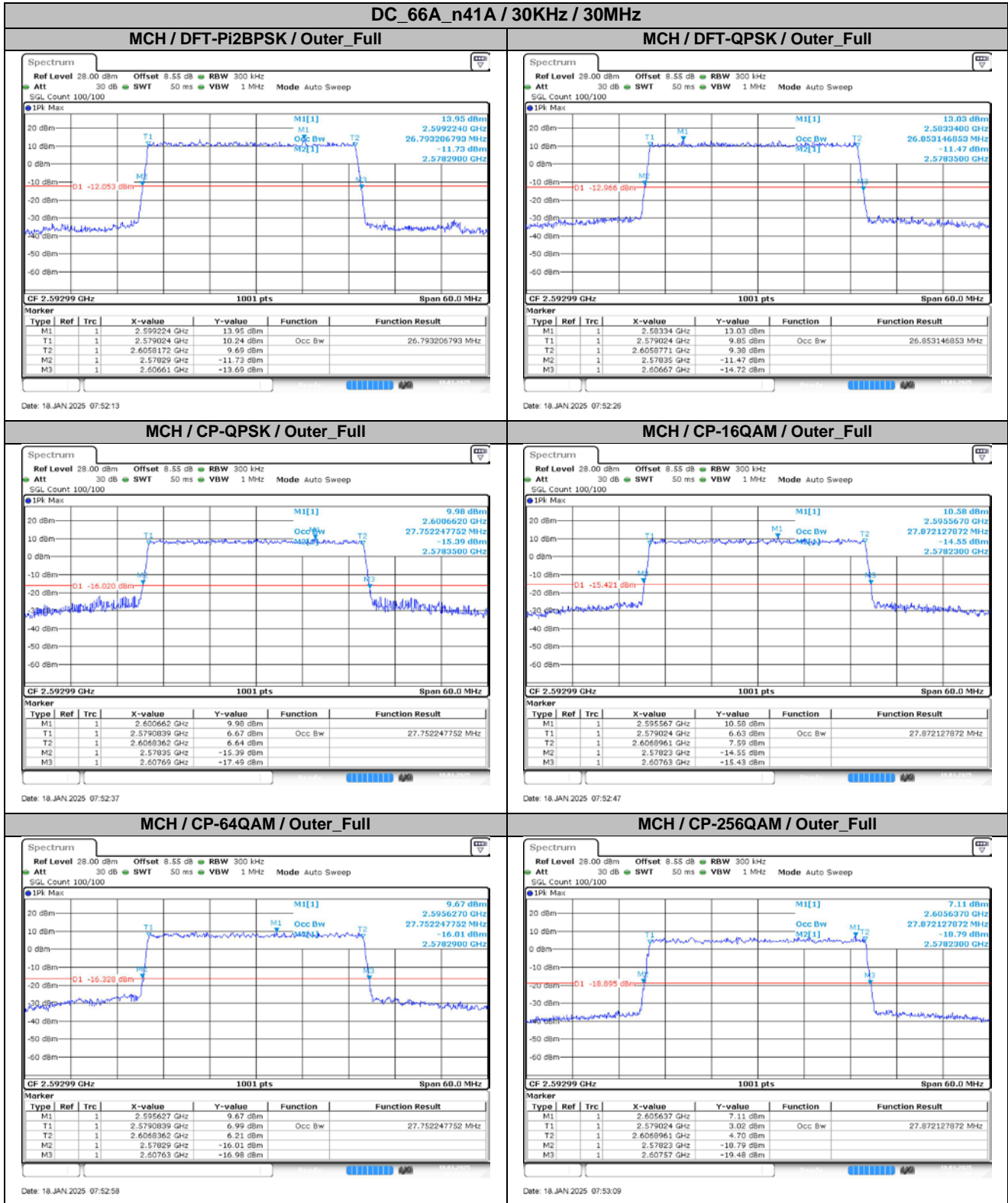
4.2. Test Plots for SCS=30KHz

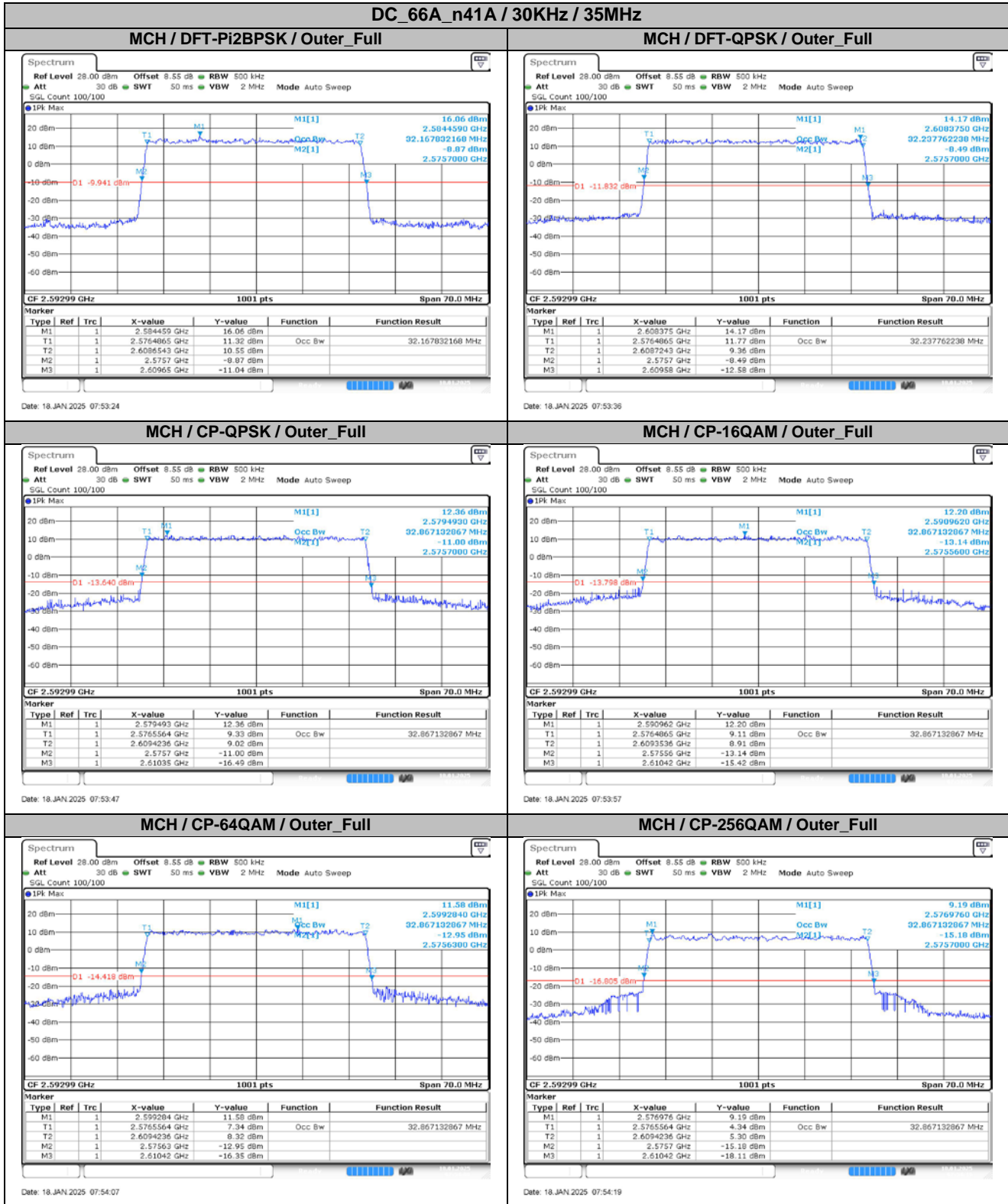


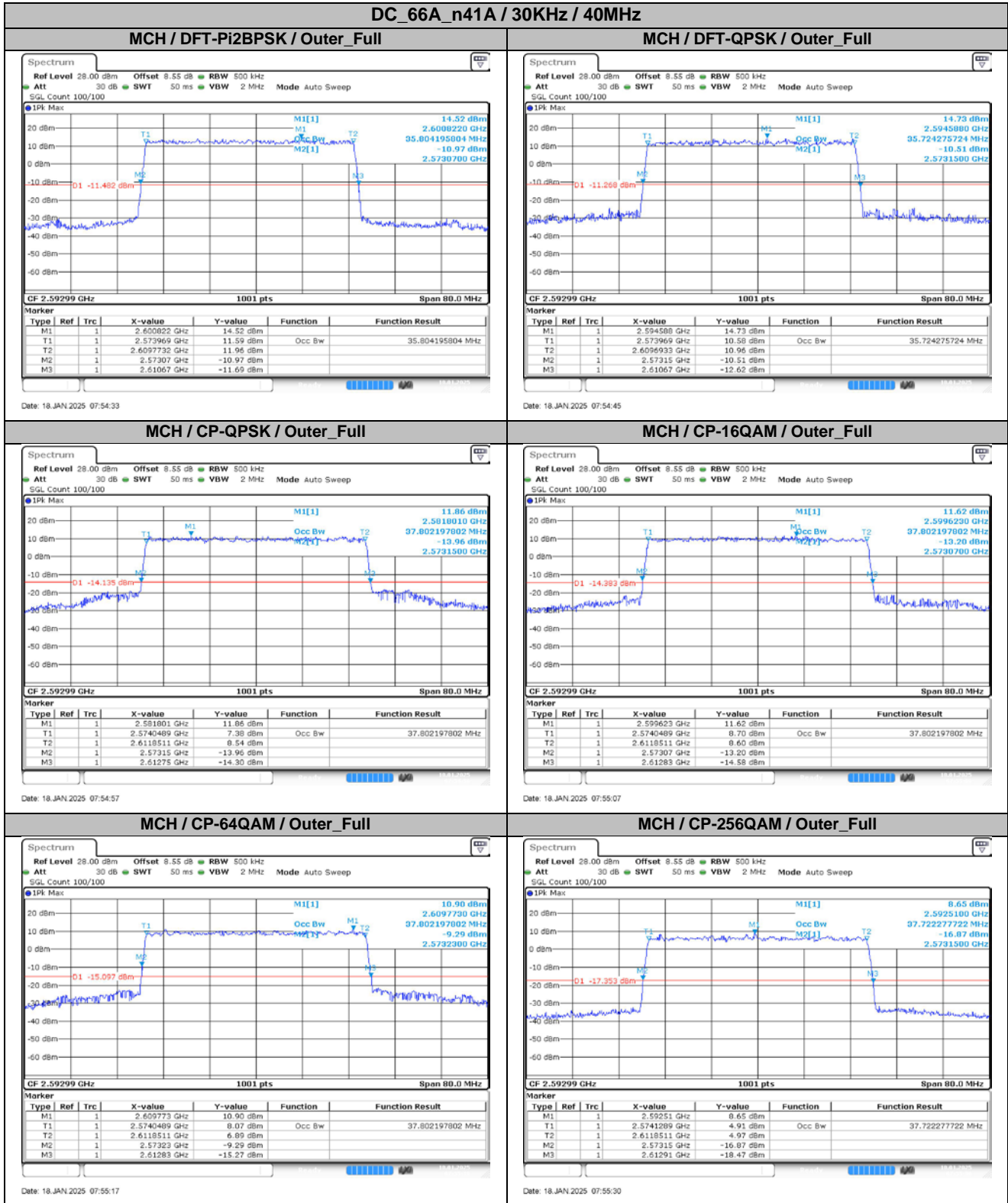


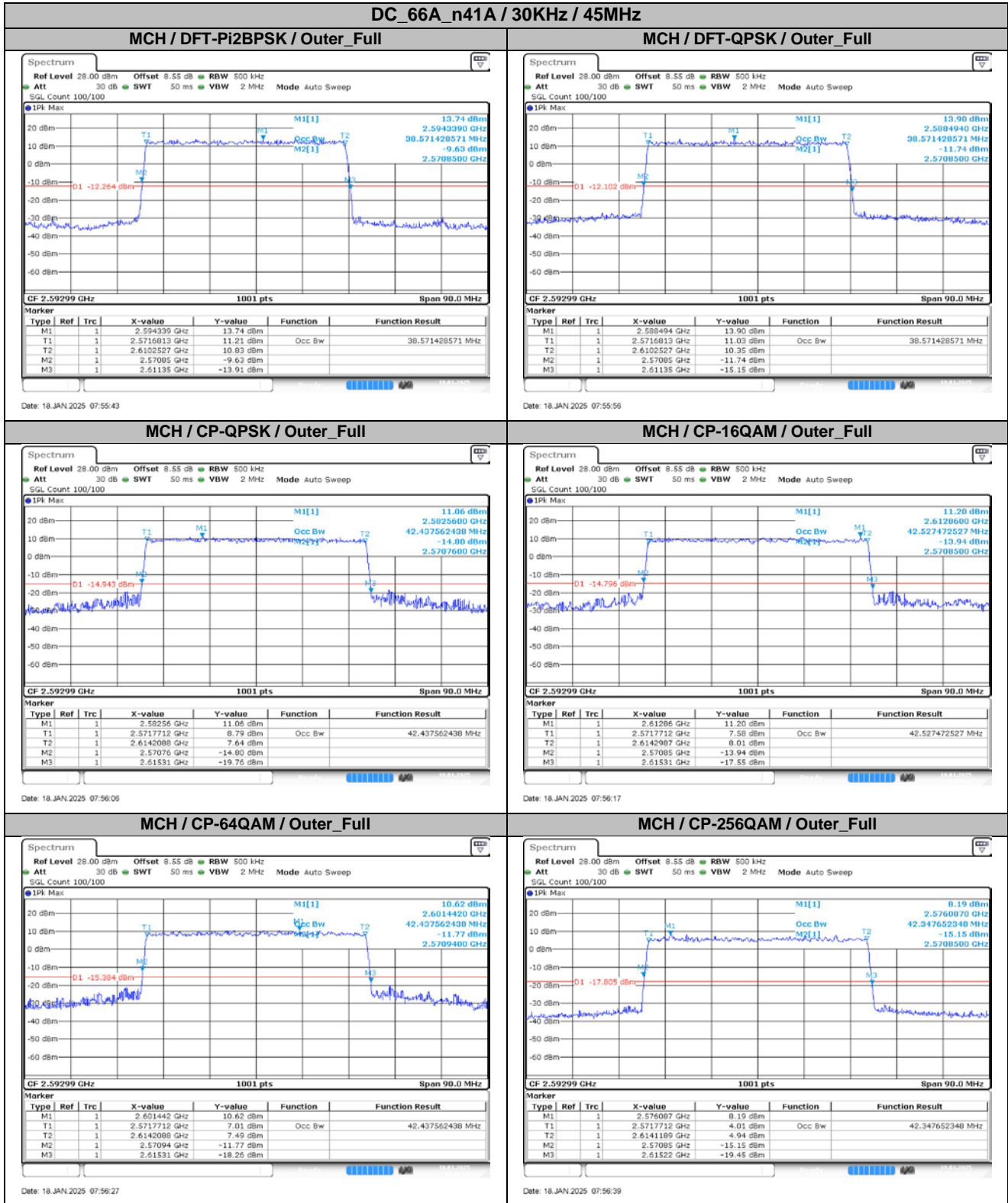






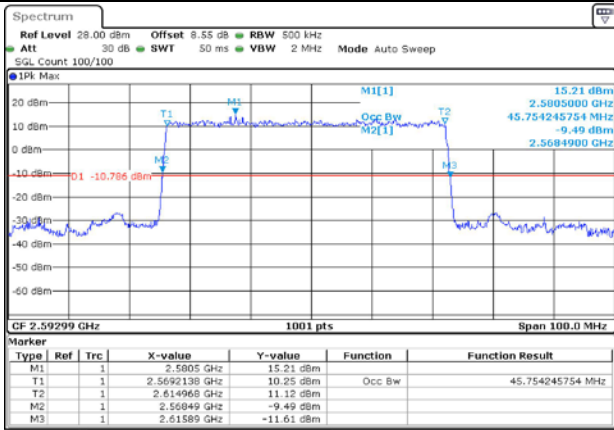






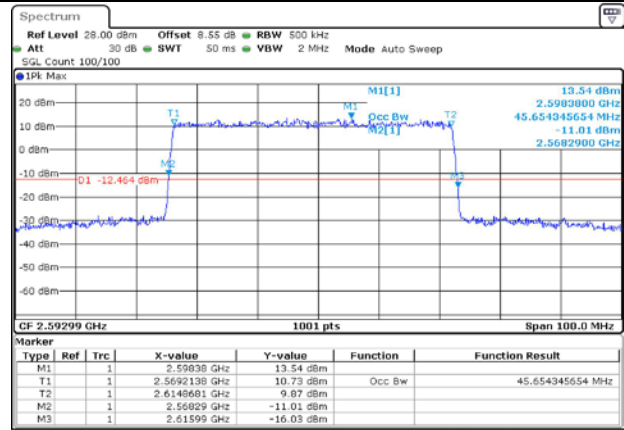
DC_66A_n41A / 30KHz / 50MHz

MCH / DFT-Pi2BPSK / Outer_Full



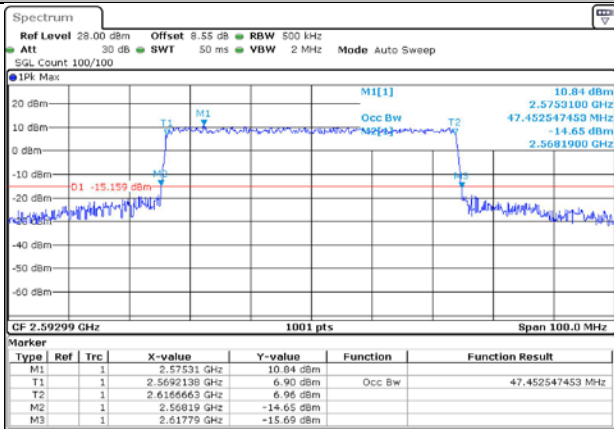
Date: 18.JAN.2025 07:56:52

MCH / DFT-QPSK / Outer_Full



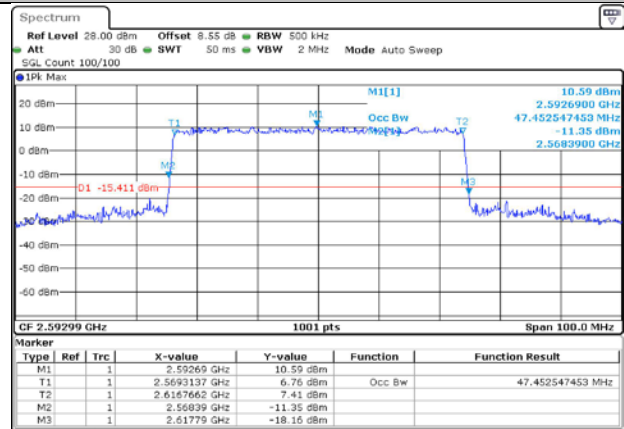
Date: 18.JAN.2025 07:57:05

MCH / CP-QPSK / Outer_Full



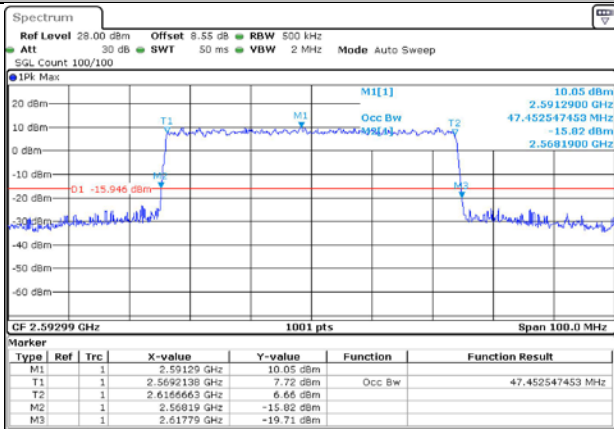
Date: 18.JAN.2025 07:57:15

MCH / CP-16QAM / Outer_Full



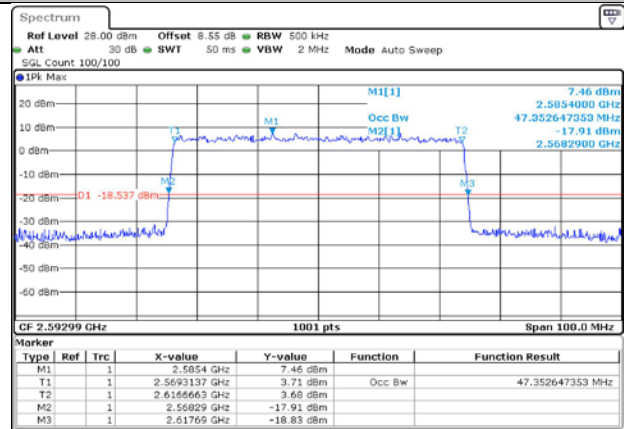
Date: 18.JAN.2025 07:57:26

MCH / CP-64QAM / Outer_Full



Date: 18.JAN.2025 07:57:36

MCH / CP-256QAM / Outer_Full



Date: 18.JAN.2025 07:57:47

