

**Appendix
for
DC_66A_n38A
(2570-2620)
Other PA**

Catalogue

1.	EFFECTIVE ISOTROPIC RADIATED POWER	3
1.1.	TEST RESULTS @ ANT1 (ANTENNA GAIN=-3.00DBI).....	3
2.	PEAK-TO-AVERAGE RATIO	5
2.1.	TEST RESULTS	5
2.2.	TEST PLOTS FOR SCS=30KHZ.....	5
3.	MODULATION CHARACTERISTICS	6
3.1.	TEST PLOTS FOR SCS=30KHZ.....	6
4.	99% OCCUPIED BANDWIDTH & 26DB EMISSION BANDWIDTH	8
4.1.	TEST RESULTS	8
4.2.	TEST PLOTS FOR SCS=30KHZ.....	9
5.	CONDUCTED BAND EDGES	15
5.1.	TEST PLOTS FOR SCS=30KHZ.....	15
6.	CONDUCTED SPURIOUS EMISSION	23
6.1.	TEST PLOTS FOR SCS=30KHZ.....	23
7.	FREQUENCY STABILITY	29
7.1.	TEST RESULTS	29

1. Effective Isotropic Radiated Power

1.1. Test Results @ Ant1 (Antenna Gain=-3.00dBi)

SCS	Bandwidth	Channel	Modulation	Conducted Result (dBm)			Max EIRP (dBm)	Limit (dBm)	Verdict
				Inner_1RB_Left	Inner_1RB_Right	Inner_Full			
30KHz	10MHz	LCH	DFT-Pi2BPSK	23.59	23.01	23.60	20.60	33.00	Pass
30KHz	10MHz	LCH	DFT-QPSK	23.53	23.60	22.86	20.60	33.00	Pass
30KHz	10MHz	LCH	DFT-16QAM	22.59	22.52	22.84	19.84	33.00	Pass
30KHz	10MHz	LCH	DFT-64QAM	21.20	21.21	21.48	18.48	33.00	Pass
30KHz	10MHz	LCH	DFT-256QAM	19.19	19.22	19.44	16.44	33.00	Pass
30KHz	10MHz	LCH	CP-QPSK	22.13	22.07	22.19	19.19	33.00	Pass
30KHz	10MHz	MCH	DFT-Pi2BPSK	22.92	22.86	23.69	20.69	33.00	Pass
30KHz	10MHz	MCH	DFT-QPSK	22.88	22.85	22.72	19.88	33.00	Pass
30KHz	10MHz	MCH	DFT-16QAM	22.63	22.59	22.96	19.96	33.00	Pass
30KHz	10MHz	MCH	DFT-64QAM	21.35	21.35	21.49	18.49	33.00	Pass
30KHz	10MHz	MCH	DFT-256QAM	19.35	19.28	19.47	16.47	33.00	Pass
30KHz	10MHz	MCH	CP-QPSK	21.21	22.18	22.29	19.29	33.00	Pass
30KHz	10MHz	HCH	DFT-Pi2BPSK	23.50	23.42	23.59	20.59	33.00	Pass
30KHz	10MHz	HCH	DFT-QPSK	23.49	23.43	23.35	20.49	33.00	Pass
30KHz	10MHz	HCH	DFT-16QAM	22.46	22.39	22.68	19.68	33.00	Pass
30KHz	10MHz	HCH	DFT-64QAM	21.08	21.10	21.27	18.27	33.00	Pass
30KHz	10MHz	HCH	DFT-256QAM	19.14	19.13	19.24	16.24	33.00	Pass
30KHz	10MHz	HCH	CP-QPSK	22.01	22.00	22.15	19.15	33.00	Pass
30KHz	15MHz	LCH	DFT-Pi2BPSK	23.61	23.25	22.92	20.61	33.00	Pass
30KHz	15MHz	LCH	DFT-QPSK	23.16	23.21	22.95	20.21	33.00	Pass
30KHz	15MHz	LCH	DFT-16QAM	22.50	22.47	22.84	19.84	33.00	Pass
30KHz	15MHz	LCH	DFT-64QAM	21.15	21.31	21.35	18.35	33.00	Pass
30KHz	15MHz	LCH	DFT-256QAM	19.24	19.31	19.32	16.32	33.00	Pass
30KHz	15MHz	LCH	CP-QPSK	22.15	22.12	22.25	19.25	33.00	Pass
30KHz	15MHz	MCH	DFT-Pi2BPSK	23.68	23.61	22.87	20.68	33.00	Pass
30KHz	15MHz	MCH	DFT-QPSK	23.24	23.20	23.05	20.24	33.00	Pass
30KHz	15MHz	MCH	DFT-16QAM	22.50	22.48	22.94	19.94	33.00	Pass
30KHz	15MHz	MCH	DFT-64QAM	21.34	21.30	21.47	18.47	33.00	Pass
30KHz	15MHz	MCH	DFT-256QAM	19.30	19.27	19.45	16.45	33.00	Pass
30KHz	15MHz	MCH	CP-QPSK	22.17	22.14	22.37	19.37	33.00	Pass
30KHz	15MHz	HCH	DFT-Pi2BPSK	23.59	23.51	23.62	20.62	33.00	Pass
30KHz	15MHz	HCH	DFT-QPSK	23.54	23.40	22.86	20.54	33.00	Pass
30KHz	15MHz	HCH	DFT-16QAM	22.37	22.33	22.74	19.74	33.00	Pass
30KHz	15MHz	HCH	DFT-64QAM	21.01	21.01	21.26	18.26	33.00	Pass
30KHz	15MHz	HCH	DFT-256QAM	19.20	19.13	19.27	16.27	33.00	Pass
30KHz	15MHz	HCH	CP-QPSK	22.02	21.90	22.08	19.08	33.00	Pass
30KHz	20MHz	LCH	DFT-Pi2BPSK	23.67	23.17	23.17	20.67	33.00	Pass
30KHz	20MHz	LCH	DFT-QPSK	23.00	23.09	23.12	20.12	33.00	Pass
30KHz	20MHz	LCH	DFT-16QAM	22.53	22.57	22.85	19.85	33.00	Pass
30KHz	20MHz	LCH	DFT-64QAM	21.22	21.31	21.37	18.37	33.00	Pass
30KHz	20MHz	LCH	DFT-256QAM	19.25	19.36	19.33	16.36	33.00	Pass
30KHz	20MHz	LCH	CP-QPSK	22.12	22.24	22.38	19.38	33.00	Pass
30KHz	20MHz	MCH	DFT-Pi2BPSK	23.63	22.89	22.97	20.63	33.00	Pass
30KHz	20MHz	MCH	DFT-QPSK	22.77	23.61	23.09	20.61	33.00	Pass
30KHz	20MHz	MCH	DFT-16QAM	22.55	22.47	22.93	19.93	33.00	Pass
30KHz	20MHz	MCH	DFT-64QAM	21.33	21.25	21.45	18.45	33.00	Pass
30KHz	20MHz	MCH	DFT-256QAM	19.33	19.28	19.47	16.47	33.00	Pass
30KHz	20MHz	MCH	CP-QPSK	22.16	22.06	22.41	19.41	33.00	Pass
30KHz	20MHz	HCH	DFT-Pi2BPSK	22.85	22.71	23.70	20.70	33.00	Pass
30KHz	20MHz	HCH	DFT-QPSK	22.83	23.46	23.67	20.67	33.00	Pass
30KHz	20MHz	HCH	DFT-16QAM	22.41	22.31	22.74	19.74	33.00	Pass
30KHz	20MHz	HCH	DFT-64QAM	21.15	21.06	21.27	18.27	33.00	Pass
30KHz	20MHz	HCH	DFT-256QAM	19.25	19.18	19.21	16.25	33.00	Pass
30KHz	20MHz	HCH	CP-QPSK	22.13	22.05	22.25	19.25	33.00	Pass
30KHz	25MHz	LCH	DFT-Pi2BPSK	23.58	22.97	23.10	20.58	33.00	Pass
30KHz	25MHz	LCH	DFT-QPSK	23.51	22.88	23.04	20.51	33.00	Pass
30KHz	25MHz	LCH	DFT-16QAM	22.45	22.58	22.86	19.86	33.00	Pass
30KHz	25MHz	LCH	DFT-64QAM	21.16	21.35	21.43	18.43	33.00	Pass
30KHz	25MHz	LCH	DFT-256QAM	19.26	19.37	19.39	16.39	33.00	Pass

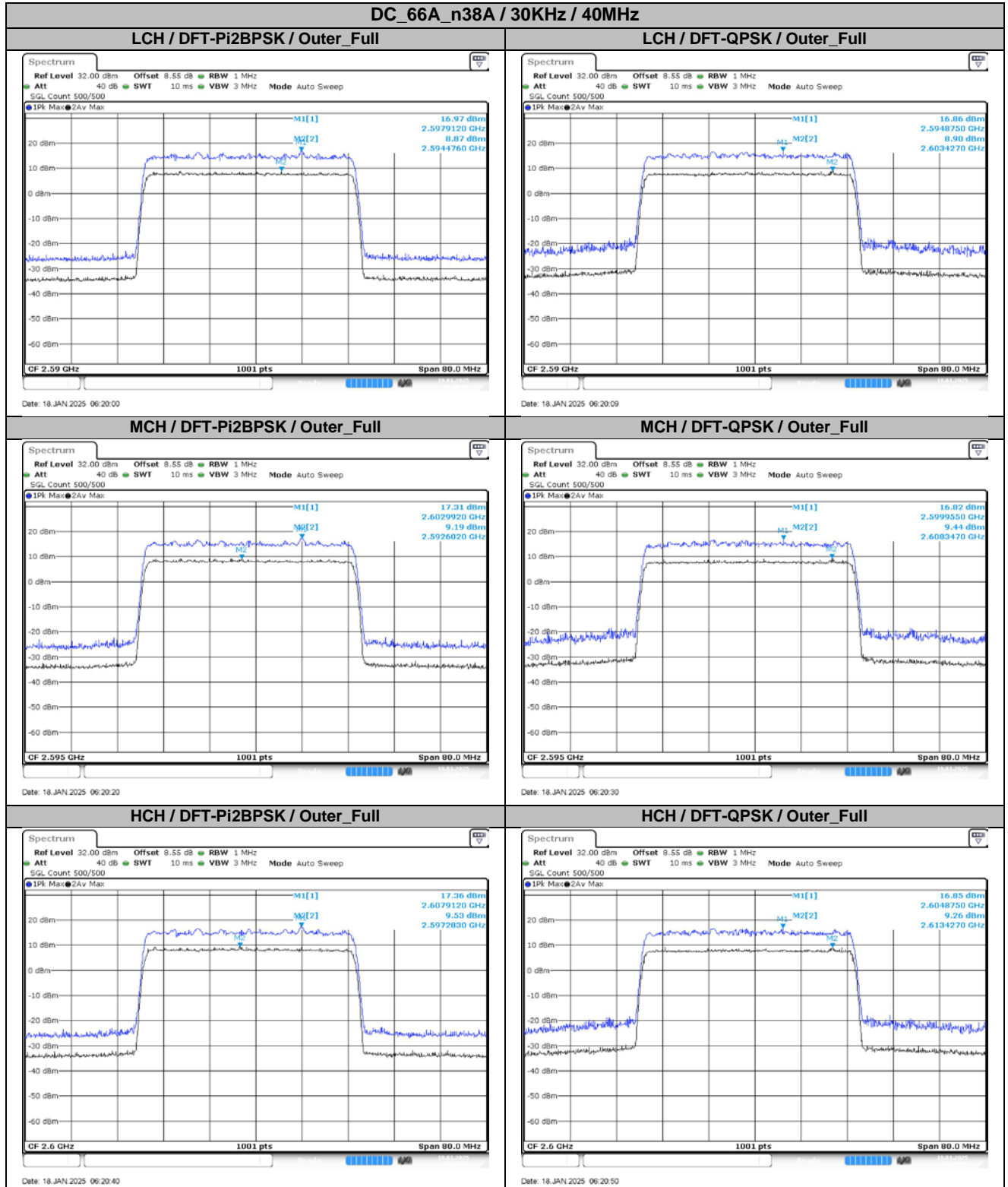
30KHz	25MHz	LCH	CP-QPSK	22.09	22.23	22.36	19.36	33.00	Pass
30KHz	25MHz	MCH	DFT-Pi2BPSK	23.66	22.75	23.04	20.66	33.00	Pass
30KHz	25MHz	MCH	DFT-QPSK	23.57	23.51	23.08	20.57	33.00	Pass
30KHz	25MHz	MCH	DFT-16QAM	22.43	22.38	22.90	19.90	33.00	Pass
30KHz	25MHz	MCH	DFT-64QAM	21.19	21.18	21.46	18.46	33.00	Pass
30KHz	25MHz	MCH	DFT-256QAM	19.26	19.23	19.43	16.43	33.00	Pass
30KHz	25MHz	MCH	CP-QPSK	22.11	22.06	22.38	19.38	33.00	Pass
30KHz	25MHz	HCH	DFT-Pi2BPSK	23.65	23.53	23.74	20.74	33.00	Pass
30KHz	25MHz	HCH	DFT-QPSK	23.53	23.42	23.11	20.53	33.00	Pass
30KHz	25MHz	HCH	DFT-16QAM	22.49	22.35	22.75	19.75	33.00	Pass
30KHz	25MHz	HCH	DFT-64QAM	21.15	21.06	21.33	18.33	33.00	Pass
30KHz	25MHz	HCH	DFT-256QAM	19.27	19.13	19.31	16.31	33.00	Pass
30KHz	25MHz	HCH	CP-QPSK	22.15	21.94	22.27	19.27	33.00	Pass
30KHz	30MHz	LCH	DFT-Pi2BPSK	23.58	22.88	23.38	20.58	33.00	Pass
30KHz	30MHz	LCH	DFT-QPSK	23.58	22.87	23.72	20.72	33.00	Pass
30KHz	30MHz	LCH	DFT-16QAM	22.56	22.69	22.91	19.91	33.00	Pass
30KHz	30MHz	LCH	DFT-64QAM	21.25	21.36	21.39	18.39	33.00	Pass
30KHz	30MHz	LCH	DFT-256QAM	19.30	19.37	19.31	16.37	33.00	Pass
30KHz	30MHz	LCH	CP-QPSK	22.14	22.21	22.38	19.38	33.00	Pass
30KHz	30MHz	MCH	DFT-Pi2BPSK	23.63	23.63	23.54	20.63	33.00	Pass
30KHz	30MHz	MCH	DFT-QPSK	23.58	23.57	23.75	20.75	33.00	Pass
30KHz	30MHz	MCH	DFT-16QAM	22.47	22.44	22.97	19.97	33.00	Pass
30KHz	30MHz	MCH	DFT-64QAM	21.20	21.16	21.42	18.42	33.00	Pass
30KHz	30MHz	MCH	DFT-256QAM	19.30	19.29	19.36	16.36	33.00	Pass
30KHz	30MHz	MCH	CP-QPSK	22.06	22.06	22.40	19.40	33.00	Pass
30KHz	30MHz	HCH	DFT-Pi2BPSK	23.71	23.61	23.71	20.71	33.00	Pass
30KHz	30MHz	HCH	DFT-QPSK	23.69	23.53	23.72	20.72	33.00	Pass
30KHz	30MHz	HCH	DFT-16QAM	22.49	22.34	22.81	19.81	33.00	Pass
30KHz	30MHz	HCH	DFT-64QAM	21.33	21.02	21.29	18.33	33.00	Pass
30KHz	30MHz	HCH	DFT-256QAM	19.31	19.12	19.28	16.31	33.00	Pass
30KHz	30MHz	HCH	CP-QPSK	22.17	21.97	22.31	19.31	33.00	Pass
30KHz	40MHz	LCH	DFT-Pi2BPSK	23.69	23.46	23.71	20.71	33.00	Pass
30KHz	40MHz	LCH	DFT-QPSK	23.58	23.61	23.58	20.61	33.00	Pass
30KHz	40MHz	LCH	DFT-16QAM	22.49	22.47	22.91	19.91	33.00	Pass
30KHz	40MHz	LCH	DFT-64QAM	21.23	21.26	21.47	18.47	33.00	Pass
30KHz	40MHz	LCH	DFT-256QAM	19.26	19.30	19.45	16.45	33.00	Pass
30KHz	40MHz	LCH	CP-QPSK	22.10	22.11	22.35	19.35	33.00	Pass
30KHz	40MHz	MCH	DFT-Pi2BPSK	23.58	23.60	23.62	20.62	33.00	Pass
30KHz	40MHz	MCH	DFT-QPSK	23.55	23.55	23.62	20.62	33.00	Pass
30KHz	40MHz	MCH	DFT-16QAM	22.49	22.44	22.91	19.91	33.00	Pass
30KHz	40MHz	MCH	DFT-64QAM	21.02	21.05	21.44	18.44	33.00	Pass
30KHz	40MHz	MCH	DFT-256QAM	19.17	19.18	19.36	16.36	33.00	Pass
30KHz	40MHz	MCH	CP-QPSK	22.02	22.04	22.38	19.38	33.00	Pass
30KHz	40MHz	HCH	DFT-Pi2BPSK	23.57	23.57	23.72	20.72	33.00	Pass
30KHz	40MHz	HCH	DFT-QPSK	23.51	23.54	23.53	20.54	33.00	Pass
30KHz	40MHz	HCH	DFT-16QAM	22.36	22.39	22.83	19.83	33.00	Pass
30KHz	40MHz	HCH	DFT-64QAM	21.11	21.10	21.37	18.37	33.00	Pass
30KHz	40MHz	HCH	DFT-256QAM	19.19	19.16	19.32	16.32	33.00	Pass
30KHz	40MHz	HCH	CP-QPSK	22.06	22.06	22.27	19.27	33.00	Pass

2. Peak-to-Average Ratio

2.1. Test Results

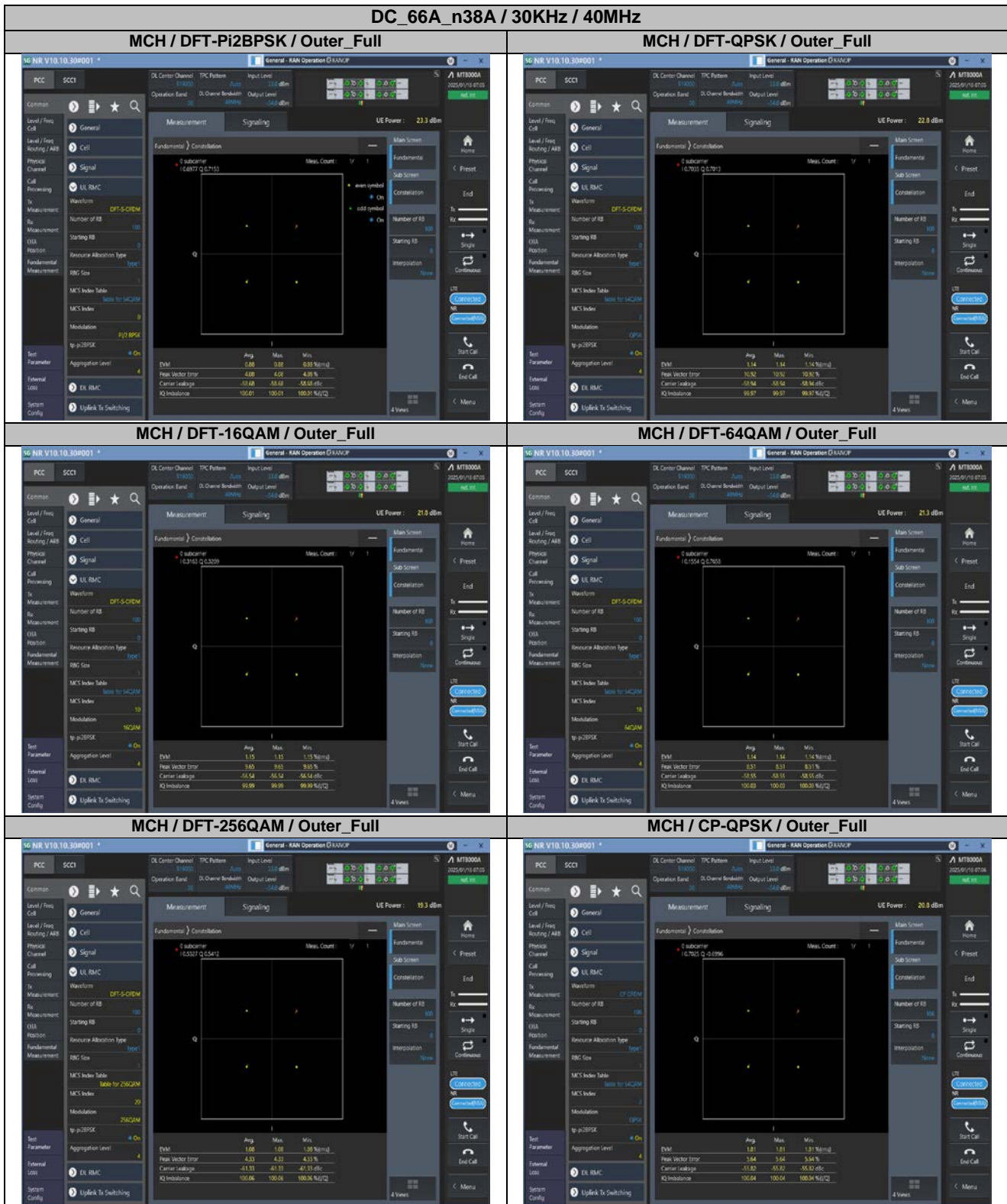
SCS	Bandwidth	Channel	RB	Result (dB)		Limit (dB)	Verdict
				DFT-Pi2BPSK	DFT-QPSK		
30KHz	40MHz	LCH	Outer_Full	8.10	7.96	13.00	Pass
30KHz	40MHz	MCH	Outer_Full	8.12	7.37	13.00	Pass
30KHz	40MHz	HCH	Outer_Full	7.83	7.59	13.00	Pass

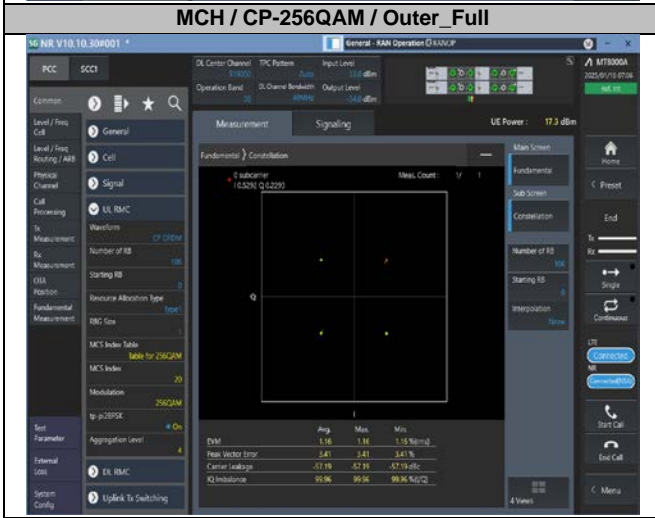
2.2. Test Plots for SCS=30KHz



3. Modulation Characteristics

3.1. Test Plots for SCS=30KHz





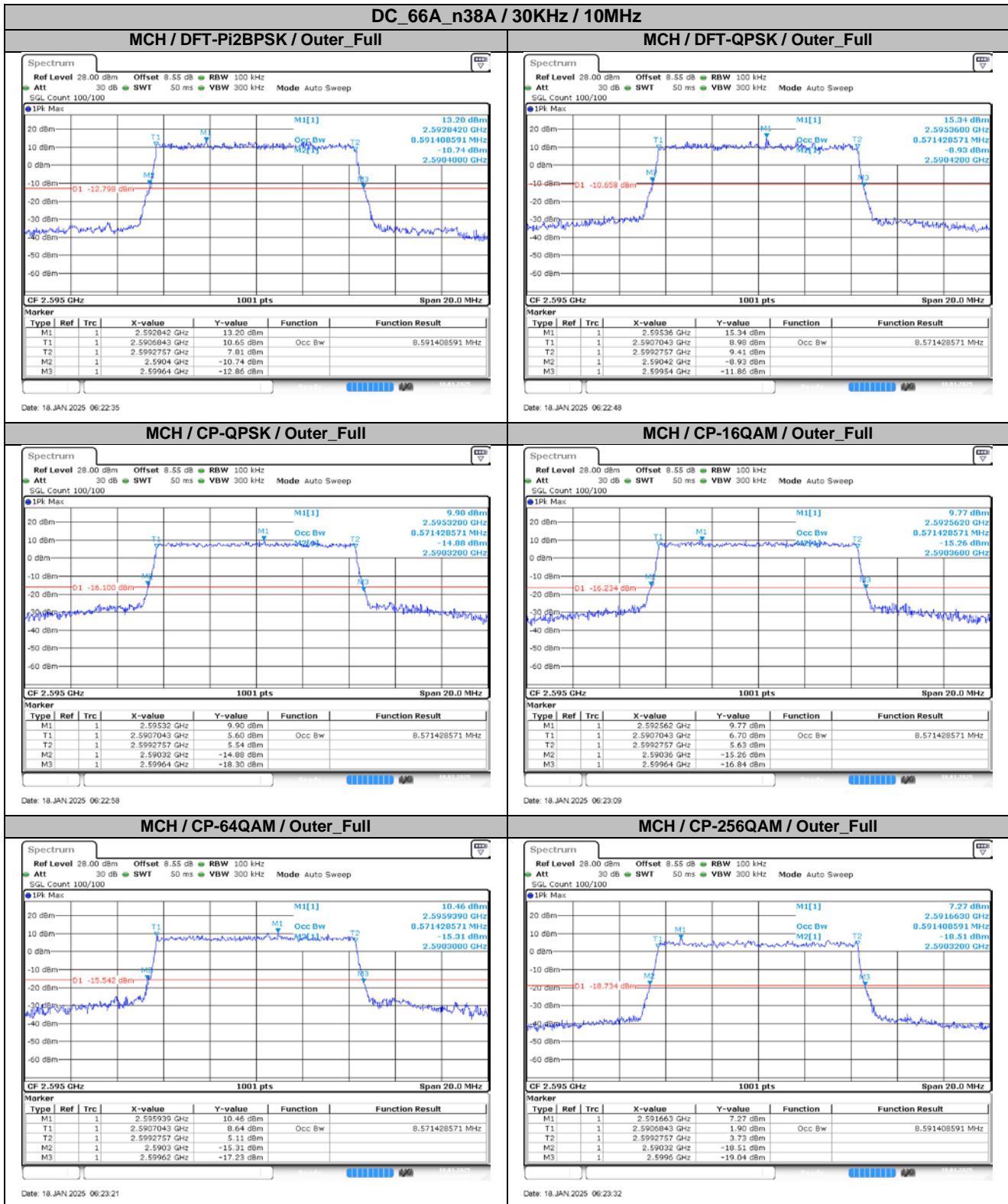
Intentionally Blank

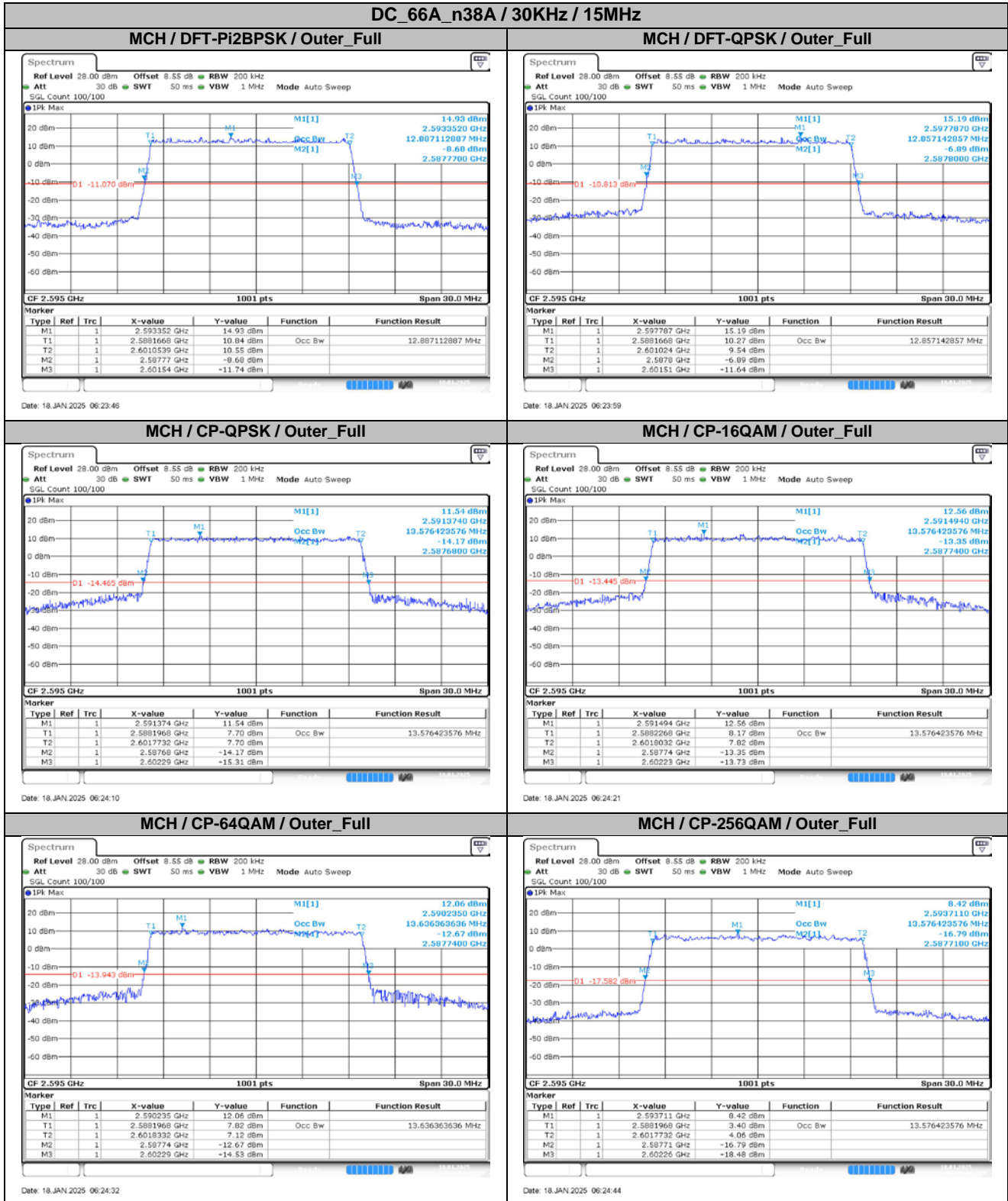
4. 99% Occupied Bandwidth & 26dB Emission Bandwidth

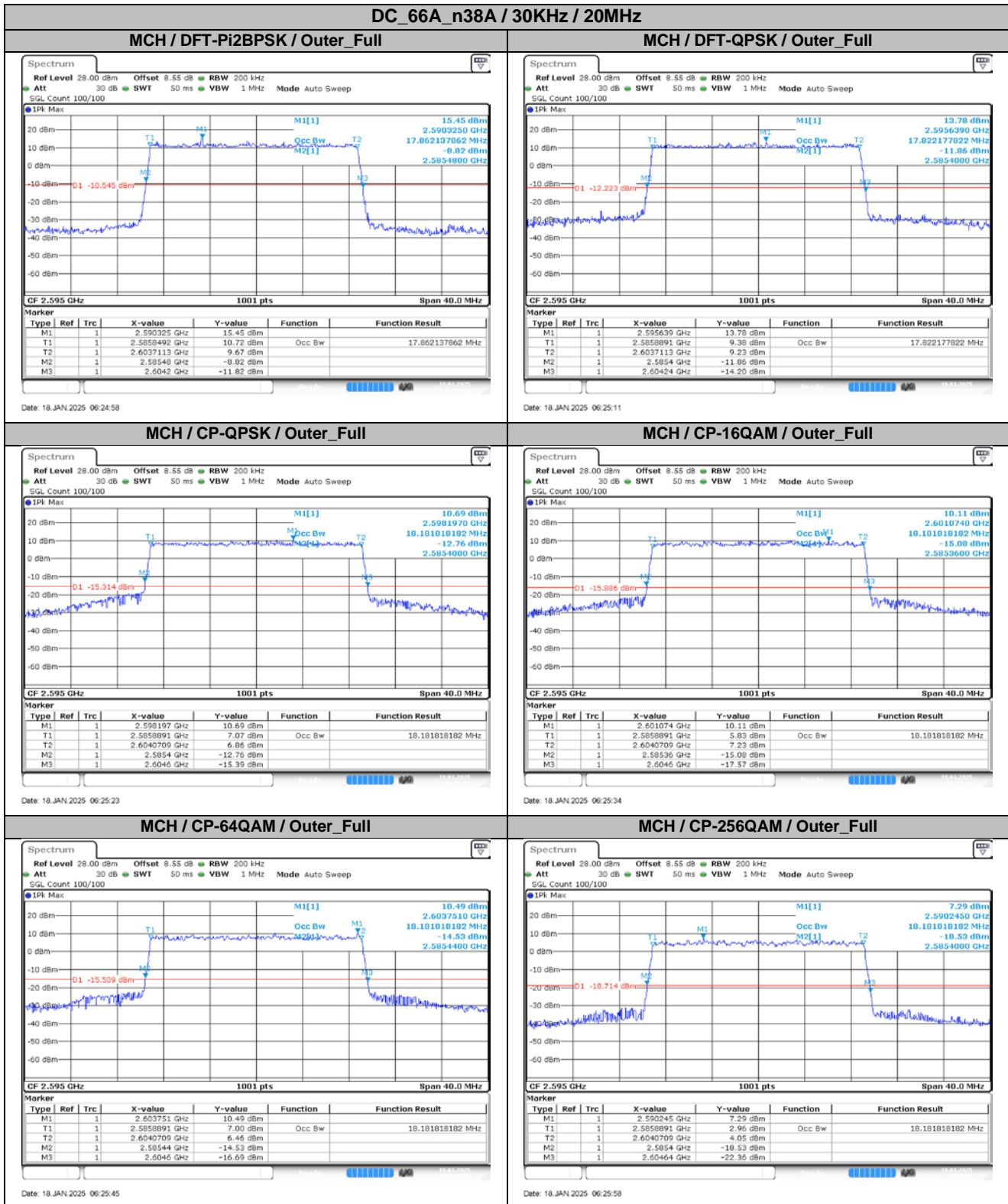
4.1. Test Results

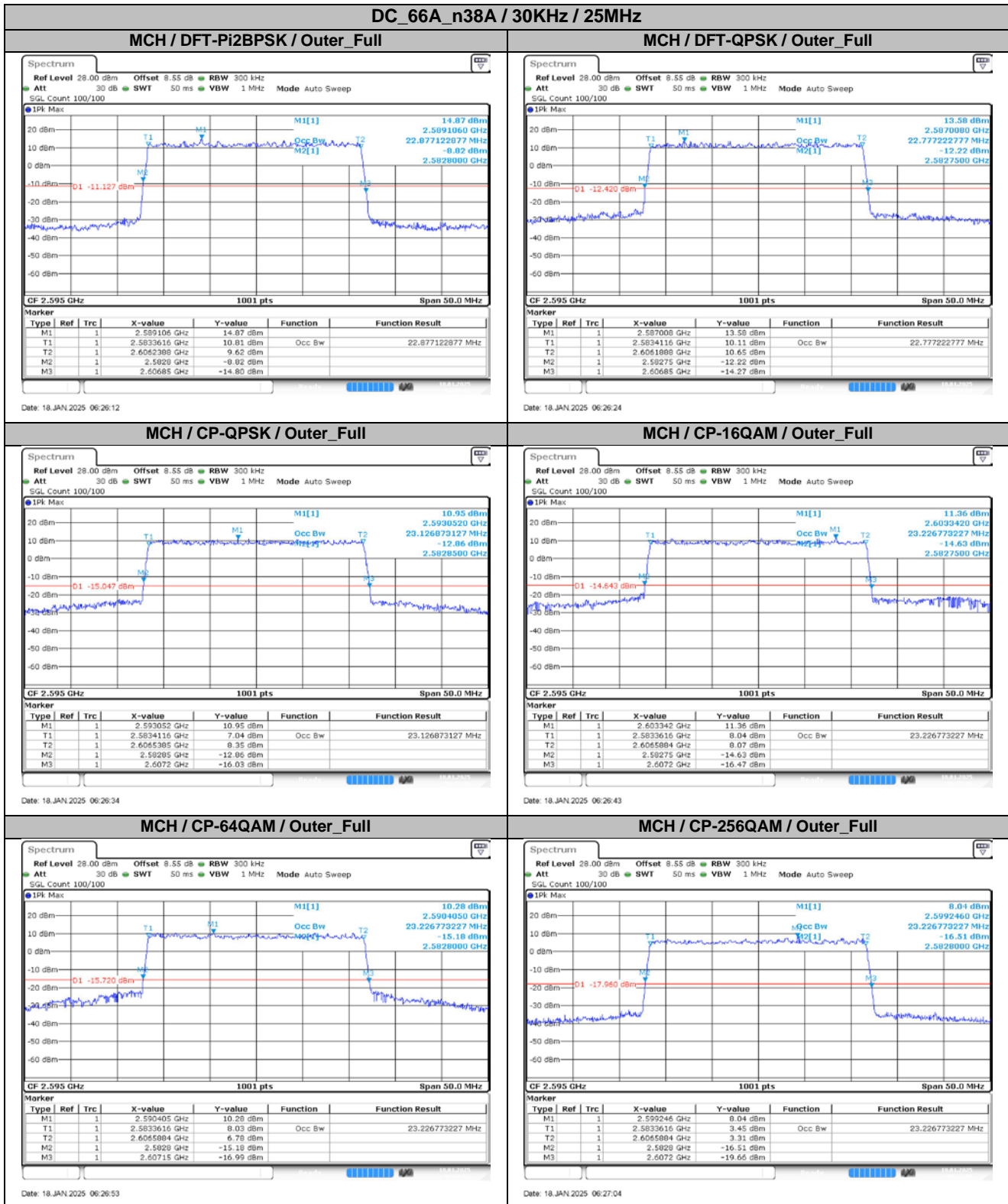
SCS	Bandwidth	Modulation	RB	99% Occupied Bandwidth (MHz)	26dB Emission Bandwidth (MHz)	Verdict
30KHz	10MHz	DFT-Pi2BPSK	Outer_Full	8.59	9.24	Pass
30KHz	10MHz	DFT-QPSK	Outer_Full	8.57	9.12	Pass
30KHz	10MHz	CP-QPSK	Outer_Full	8.57	9.32	Pass
30KHz	10MHz	CP-16QAM	Outer_Full	8.57	9.28	Pass
30KHz	10MHz	CP-64QAM	Outer_Full	8.57	9.32	Pass
30KHz	10MHz	CP-256QAM	Outer_Full	8.59	9.28	Pass
30KHz	15MHz	DFT-Pi2BPSK	Outer_Full	12.89	13.77	Pass
30KHz	15MHz	DFT-QPSK	Outer_Full	12.86	13.71	Pass
30KHz	15MHz	CP-QPSK	Outer_Full	13.58	14.61	Pass
30KHz	15MHz	CP-16QAM	Outer_Full	13.58	14.49	Pass
30KHz	15MHz	CP-64QAM	Outer_Full	13.64	14.55	Pass
30KHz	15MHz	CP-256QAM	Outer_Full	13.58	14.55	Pass
30KHz	20MHz	DFT-Pi2BPSK	Outer_Full	17.86	18.72	Pass
30KHz	20MHz	DFT-QPSK	Outer_Full	17.82	18.84	Pass
30KHz	20MHz	CP-QPSK	Outer_Full	18.18	19.20	Pass
30KHz	20MHz	CP-16QAM	Outer_Full	18.18	19.24	Pass
30KHz	20MHz	CP-64QAM	Outer_Full	18.18	19.16	Pass
30KHz	20MHz	CP-256QAM	Outer_Full	18.18	19.24	Pass
30KHz	25MHz	DFT-Pi2BPSK	Outer_Full	22.88	24.05	Pass
30KHz	25MHz	DFT-QPSK	Outer_Full	22.78	24.10	Pass
30KHz	25MHz	CP-QPSK	Outer_Full	23.13	24.35	Pass
30KHz	25MHz	CP-16QAM	Outer_Full	23.23	24.45	Pass
30KHz	25MHz	CP-64QAM	Outer_Full	23.23	24.35	Pass
30KHz	25MHz	CP-256QAM	Outer_Full	23.23	24.40	Pass
30KHz	30MHz	DFT-Pi2BPSK	Outer_Full	26.79	28.26	Pass
30KHz	30MHz	DFT-QPSK	Outer_Full	26.85	28.32	Pass
30KHz	30MHz	CP-QPSK	Outer_Full	27.81	29.40	Pass
30KHz	30MHz	CP-16QAM	Outer_Full	27.87	29.34	Pass
30KHz	30MHz	CP-64QAM	Outer_Full	27.75	29.28	Pass
30KHz	30MHz	CP-256QAM	Outer_Full	27.87	29.34	Pass
30KHz	40MHz	DFT-Pi2BPSK	Outer_Full	35.80	37.68	Pass
30KHz	40MHz	DFT-QPSK	Outer_Full	35.80	37.68	Pass
30KHz	40MHz	CP-QPSK	Outer_Full	37.80	39.68	Pass
30KHz	40MHz	CP-16QAM	Outer_Full	37.88	39.76	Pass
30KHz	40MHz	CP-64QAM	Outer_Full	37.80	39.76	Pass
30KHz	40MHz	CP-256QAM	Outer_Full	37.72	39.76	Pass

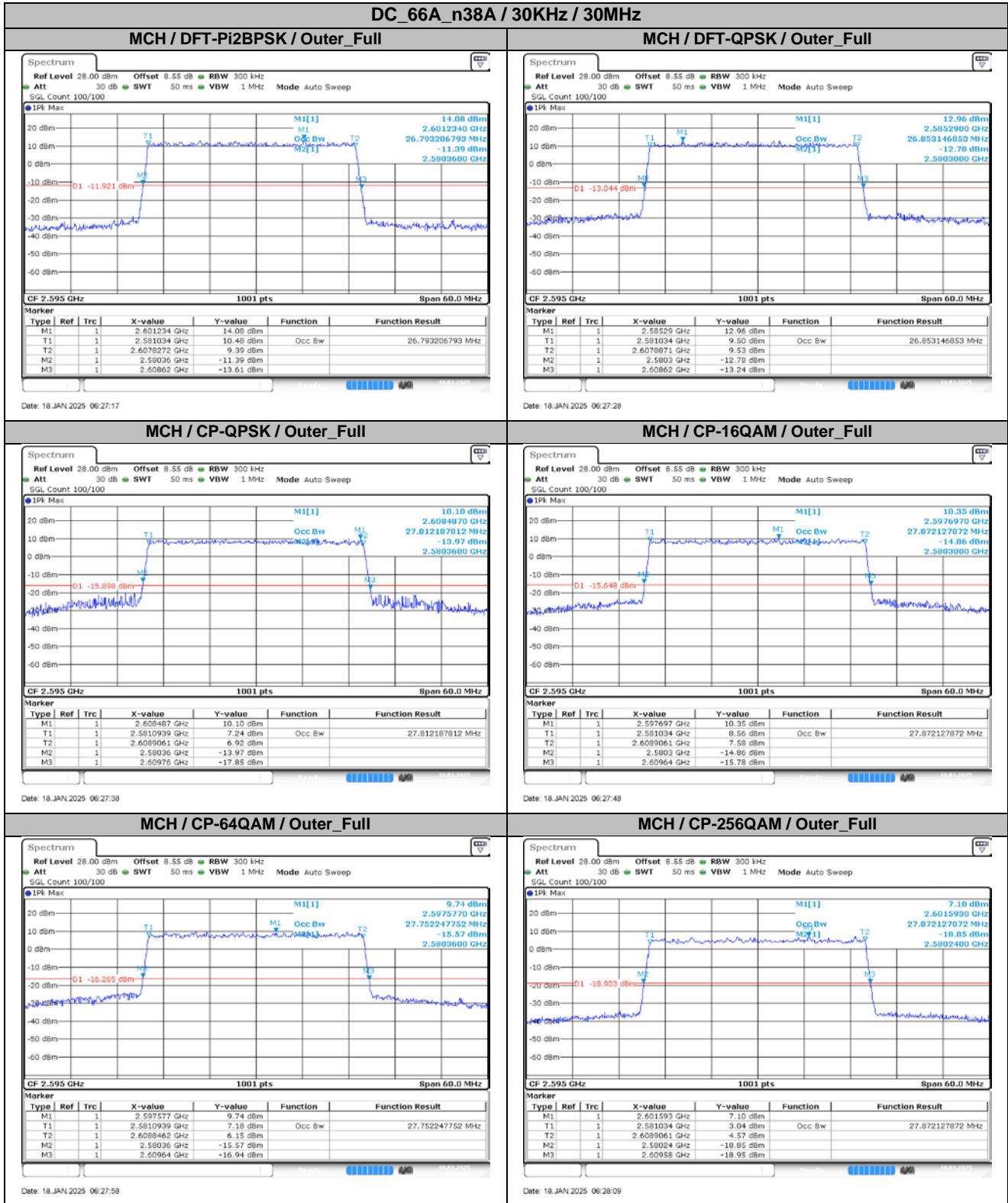
4.2. Test Plots for SCS=30KHz

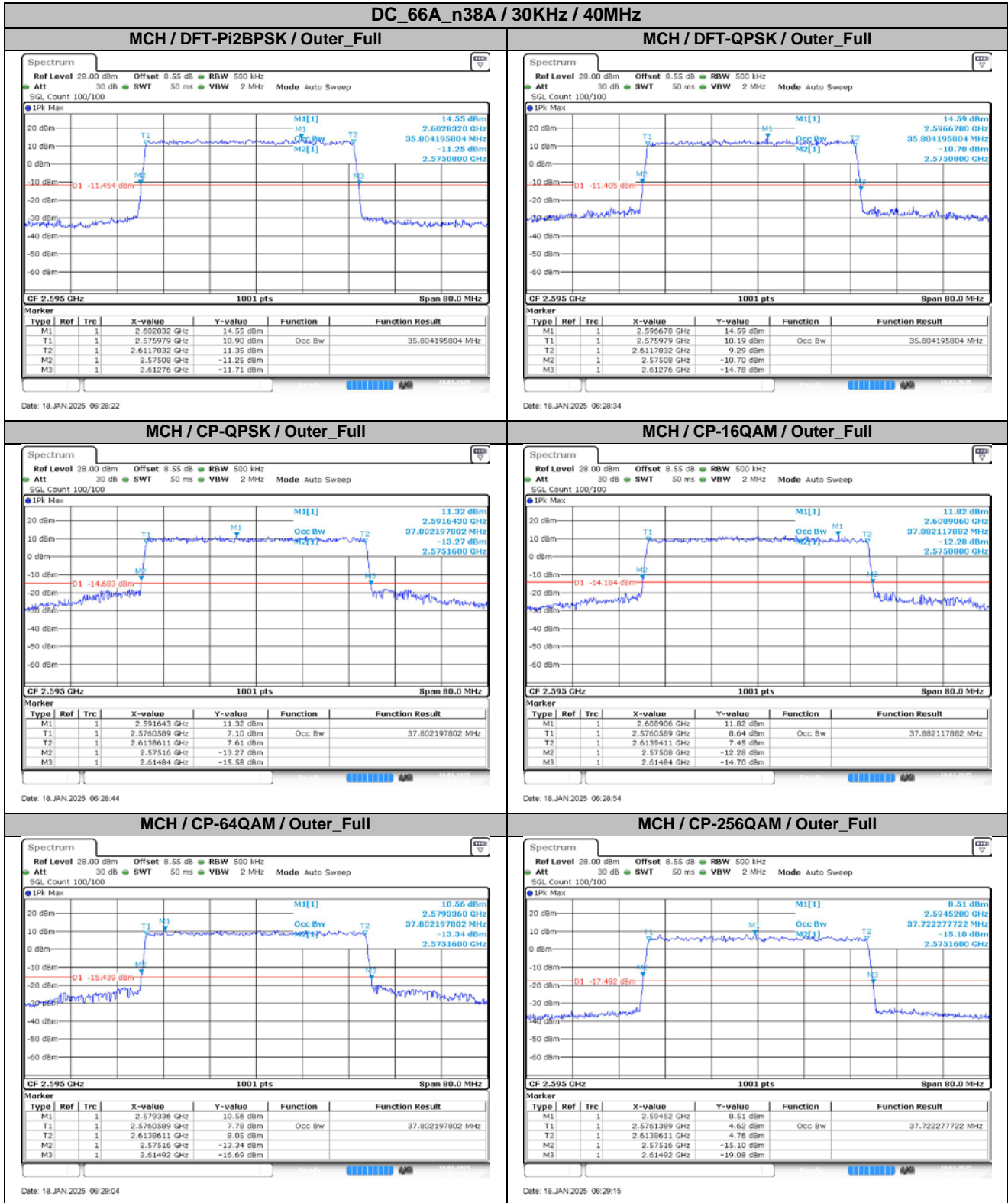












5. Conducted Band Edges

5.1. Test Plots for SCS=30KHz

