

**Appendix
for
n41A
(2496-2690)**

Catalogue

1.	EFFECTIVE ISOTROPIC RADIATED POWER	3
1.1.	TEST RESULTS @ ANT2 (ANTENNA GAIN=-3.00DBI).....	3
2.	PEAK-TO-AVERAGE RATIO	7
2.1.	TEST RESULTS	7
2.2.	TEST PLOTS FOR SCS=30KHZ.....	7
3.	MODULATION CHARACTERISTICS	8
3.1.	TEST PLOTS FOR SCS=30KHZ.....	8
4.	99% OCCUPIED BANDWIDTH & 26DB EMISSION BANDWIDTH	10
4.1.	TEST RESULTS	10
4.2.	TEST PLOTS FOR SCS=30KHZ.....	12
5.	CONDUCTED BAND EDGES	26
5.1.	TEST PLOTS FOR SCS=30KHZ.....	26
6.	CONDUCTED SPURIOUS EMISSION	45
6.1.	TEST PLOTS FOR SCS=30KHZ.....	45
7.	FREQUENCY STABILITY	57
7.1.	TEST RESULTS	57

1. Effective Isotropic Radiated Power

1.1. Test Results @ Ant2 (Antenna Gain=-3.00dBi)

SCS	Bandwidth	Channel	Modulation	Conducted Result (dBm)			Max EIRP (dBm)	Limit (dBm)	Verdict
				Inner_1RB_Left	Inner_1RB_Right	Inner_Full			
30KHz	10MHz	LCH	DFT-Pi2BPSK	23.17	23.11	22.97	20.17	33.00	Pass
30KHz	10MHz	LCH	DFT-QPSK	23.15	23.17	23.10	20.17	33.00	Pass
30KHz	10MHz	LCH	DFT-16QAM	22.80	22.83	22.85	19.85	33.00	Pass
30KHz	10MHz	LCH	DFT-64QAM	21.42	21.41	21.42	18.42	33.00	Pass
30KHz	10MHz	LCH	DFT-256QAM	19.44	19.41	19.44	16.44	33.00	Pass
30KHz	10MHz	LCH	CP-QPSK	22.39	22.49	22.42	19.49	33.00	Pass
30KHz	10MHz	MCH	DFT-Pi2BPSK	22.79	22.78	23.05	20.05	33.00	Pass
30KHz	10MHz	MCH	DFT-QPSK	22.81	22.80	23.03	20.03	33.00	Pass
30KHz	10MHz	MCH	DFT-16QAM	22.67	22.66	22.88	19.88	33.00	Pass
30KHz	10MHz	MCH	DFT-64QAM	21.25	21.27	21.46	18.46	33.00	Pass
30KHz	10MHz	MCH	DFT-256QAM	19.23	19.21	19.45	16.45	33.00	Pass
30KHz	10MHz	MCH	CP-QPSK	22.30	22.29	22.25	19.30	33.00	Pass
30KHz	10MHz	HCH	DFT-Pi2BPSK	23.21	23.12	23.14	20.21	33.00	Pass
30KHz	10MHz	HCH	DFT-QPSK	23.23	23.14	23.10	20.23	33.00	Pass
30KHz	10MHz	HCH	DFT-16QAM	22.91	22.84	22.95	19.95	33.00	Pass
30KHz	10MHz	HCH	DFT-64QAM	21.44	21.49	21.46	18.49	33.00	Pass
30KHz	10MHz	HCH	DFT-256QAM	19.43	19.48	19.42	16.48	33.00	Pass
30KHz	10MHz	HCH	CP-QPSK	22.41	22.42	22.38	19.42	33.00	Pass
30KHz	15MHz	LCH	DFT-Pi2BPSK	22.81	22.83	23.33	20.33	33.00	Pass
30KHz	15MHz	LCH	DFT-QPSK	22.65	22.70	23.35	20.35	33.00	Pass
30KHz	15MHz	LCH	DFT-16QAM	22.82	22.79	22.89	19.89	33.00	Pass
30KHz	15MHz	LCH	DFT-64QAM	21.49	21.41	21.40	18.49	33.00	Pass
30KHz	15MHz	LCH	DFT-256QAM	19.41	19.42	19.44	16.44	33.00	Pass
30KHz	15MHz	LCH	CP-QPSK	22.43	22.45	22.44	19.45	33.00	Pass
30KHz	15MHz	MCH	DFT-Pi2BPSK	23.35	23.37	22.93	20.37	33.00	Pass
30KHz	15MHz	MCH	DFT-QPSK	23.34	23.42	23.01	20.42	33.00	Pass
30KHz	15MHz	MCH	DFT-16QAM	22.61	22.54	22.81	19.81	33.00	Pass
30KHz	15MHz	MCH	DFT-64QAM	21.24	21.24	21.41	18.41	33.00	Pass
30KHz	15MHz	MCH	DFT-256QAM	19.25	19.23	19.39	16.39	33.00	Pass
30KHz	15MHz	MCH	CP-QPSK	22.29	22.29	22.19	19.29	33.00	Pass
30KHz	15MHz	HCH	DFT-Pi2BPSK	22.77	23.68	23.36	20.68	33.00	Pass
30KHz	15MHz	HCH	DFT-QPSK	23.07	23.55	23.38	20.55	33.00	Pass
30KHz	15MHz	HCH	DFT-16QAM	22.82	22.76	22.86	19.86	33.00	Pass
30KHz	15MHz	HCH	DFT-64QAM	21.42	21.45	21.42	18.45	33.00	Pass
30KHz	15MHz	HCH	DFT-256QAM	19.42	19.46	19.41	16.46	33.00	Pass
30KHz	15MHz	HCH	CP-QPSK	22.43	22.48	22.44	19.48	33.00	Pass
30KHz	20MHz	LCH	DFT-Pi2BPSK	23.49	23.35	23.40	20.49	33.00	Pass
30KHz	20MHz	LCH	DFT-QPSK	23.32	23.22	23.45	20.45	33.00	Pass
30KHz	20MHz	LCH	DFT-16QAM	22.87	22.71	22.90	19.90	33.00	Pass
30KHz	20MHz	LCH	DFT-64QAM	21.48	21.42	21.47	18.48	33.00	Pass
30KHz	20MHz	LCH	DFT-256QAM	19.44	19.46	19.38	16.46	33.00	Pass
30KHz	20MHz	LCH	CP-QPSK	22.47	22.45	22.43	19.47	33.00	Pass
30KHz	20MHz	MCH	DFT-Pi2BPSK	23.16	23.24	23.35	20.35	33.00	Pass
30KHz	20MHz	MCH	DFT-QPSK	23.13	23.18	23.24	20.24	33.00	Pass
30KHz	20MHz	MCH	DFT-16QAM	22.62	22.58	22.76	19.76	33.00	Pass
30KHz	20MHz	MCH	DFT-64QAM	21.23	21.25	21.40	18.40	33.00	Pass
30KHz	20MHz	MCH	DFT-256QAM	19.26	19.25	19.35	16.35	33.00	Pass
30KHz	20MHz	MCH	CP-QPSK	22.15	22.21	22.29	19.29	33.00	Pass
30KHz	20MHz	HCH	DFT-Pi2BPSK	23.39	23.34	23.41	20.41	33.00	Pass
30KHz	20MHz	HCH	DFT-QPSK	23.28	23.29	23.50	20.50	33.00	Pass
30KHz	20MHz	HCH	DFT-16QAM	22.73	22.79	22.87	19.87	33.00	Pass
30KHz	20MHz	HCH	DFT-64QAM	21.49	21.40	21.47	18.49	33.00	Pass
30KHz	20MHz	HCH	DFT-256QAM	19.41	19.45	19.44	16.45	33.00	Pass
30KHz	20MHz	HCH	CP-QPSK	22.40	22.46	22.41	19.46	33.00	Pass
30KHz	25MHz	LCH	DFT-Pi2BPSK	23.39	23.03	23.33	20.39	33.00	Pass
30KHz	25MHz	LCH	DFT-QPSK	23.00	22.84	23.33	20.33	33.00	Pass
30KHz	25MHz	LCH	DFT-16QAM	22.71	22.53	22.82	19.82	33.00	Pass
30KHz	25MHz	LCH	DFT-64QAM	21.48	21.29	21.42	18.48	33.00	Pass
30KHz	25MHz	LCH	DFT-256QAM	19.48	19.36	19.41	16.48	33.00	Pass

30KHz	25MHz	LCH	CP-QPSK	22.30	22.31	22.33	19.33	33.00	Pass
30KHz	25MHz	MCH	DFT-Pi2BPSK	22.86	22.89	23.15	20.15	33.00	Pass
30KHz	25MHz	MCH	DFT-QPSK	22.83	22.79	23.10	20.10	33.00	Pass
30KHz	25MHz	MCH	DFT-16QAM	22.46	22.41	22.81	19.81	33.00	Pass
30KHz	25MHz	MCH	DFT-64QAM	21.10	21.17	21.40	18.40	33.00	Pass
30KHz	25MHz	MCH	DFT-256QAM	19.18	19.22	19.38	16.38	33.00	Pass
30KHz	25MHz	MCH	CP-QPSK	22.22	22.21	22.39	19.39	33.00	Pass
30KHz	25MHz	HCH	DFT-Pi2BPSK	23.27	23.32	23.47	20.47	33.00	Pass
30KHz	25MHz	HCH	DFT-QPSK	23.32	23.35	23.50	20.50	33.00	Pass
30KHz	25MHz	HCH	DFT-16QAM	22.69	22.74	22.80	19.80	33.00	Pass
30KHz	25MHz	HCH	DFT-64QAM	21.48	21.43	21.34	18.48	33.00	Pass
30KHz	25MHz	HCH	DFT-256QAM	19.37	19.46	19.38	16.46	33.00	Pass
30KHz	25MHz	HCH	CP-QPSK	22.29	22.26	22.44	19.44	33.00	Pass
30KHz	30MHz	LCH	DFT-Pi2BPSK	23.18	23.04	22.95	20.18	33.00	Pass
30KHz	30MHz	LCH	DFT-QPSK	23.13	22.95	22.76	20.13	33.00	Pass
30KHz	30MHz	LCH	DFT-16QAM	22.74	22.57	22.87	19.87	33.00	Pass
30KHz	30MHz	LCH	DFT-64QAM	21.36	21.37	21.32	18.37	33.00	Pass
30KHz	30MHz	LCH	DFT-256QAM	19.39	19.38	19.35	16.39	33.00	Pass
30KHz	30MHz	LCH	CP-QPSK	22.35	22.19	22.40	19.40	33.00	Pass
30KHz	30MHz	MCH	DFT-Pi2BPSK	22.73	22.75	23.32	20.32	33.00	Pass
30KHz	30MHz	MCH	DFT-QPSK	23.49	22.69	23.39	20.49	33.00	Pass
30KHz	30MHz	MCH	DFT-16QAM	22.59	22.46	22.85	19.85	33.00	Pass
30KHz	30MHz	MCH	DFT-64QAM	21.15	21.28	21.31	18.31	33.00	Pass
30KHz	30MHz	MCH	DFT-256QAM	19.19	19.20	19.29	16.29	33.00	Pass
30KHz	30MHz	MCH	CP-QPSK	22.28	22.30	22.31	19.31	33.00	Pass
30KHz	30MHz	HCH	DFT-Pi2BPSK	23.03	23.15	23.00	20.15	33.00	Pass
30KHz	30MHz	HCH	DFT-QPSK	23.03	23.08	22.85	20.08	33.00	Pass
30KHz	30MHz	HCH	DFT-16QAM	22.65	22.74	22.80	19.80	33.00	Pass
30KHz	30MHz	HCH	DFT-64QAM	21.36	21.44	21.35	18.44	33.00	Pass
30KHz	30MHz	HCH	DFT-256QAM	19.39	19.48	19.32	16.48	33.00	Pass
30KHz	30MHz	HCH	CP-QPSK	22.35	22.37	22.37	19.37	33.00	Pass
30KHz	35MHz	LCH	DFT-Pi2BPSK	22.98	22.81	23.52	20.52	33.00	Pass
30KHz	35MHz	LCH	DFT-QPSK	22.92	22.73	23.52	20.52	33.00	Pass
30KHz	35MHz	LCH	DFT-16QAM	22.77	22.64	22.80	19.80	33.00	Pass
30KHz	35MHz	LCH	DFT-64QAM	21.30	21.37	21.38	18.38	33.00	Pass
30KHz	35MHz	LCH	DFT-256QAM	19.49	19.36	19.37	16.49	33.00	Pass
30KHz	35MHz	LCH	CP-QPSK	22.35	22.27	22.47	19.47	33.00	Pass
30KHz	35MHz	MCH	DFT-Pi2BPSK	23.51	23.50	23.18	20.51	33.00	Pass
30KHz	35MHz	MCH	DFT-QPSK	23.48	23.50	23.11	20.50	33.00	Pass
30KHz	35MHz	MCH	DFT-16QAM	22.51	22.49	22.89	19.89	33.00	Pass
30KHz	35MHz	MCH	DFT-64QAM	21.15	21.23	21.34	18.34	33.00	Pass
30KHz	35MHz	MCH	DFT-256QAM	19.23	19.24	19.31	16.31	33.00	Pass
30KHz	35MHz	MCH	CP-QPSK	22.17	22.14	22.26	19.26	33.00	Pass
30KHz	35MHz	HCH	DFT-Pi2BPSK	22.77	22.95	23.55	20.55	33.00	Pass
30KHz	35MHz	HCH	DFT-QPSK	22.73	22.96	23.56	20.56	33.00	Pass
30KHz	35MHz	HCH	DFT-16QAM	22.57	22.83	22.87	19.87	33.00	Pass
30KHz	35MHz	HCH	DFT-64QAM	21.16	21.48	21.35	18.48	33.00	Pass
30KHz	35MHz	HCH	DFT-256QAM	19.21	19.49	19.35	16.49	33.00	Pass
30KHz	35MHz	HCH	CP-QPSK	22.09	22.35	22.49	19.49	33.00	Pass
30KHz	40MHz	LCH	DFT-Pi2BPSK	23.74	23.54	22.76	20.74	33.00	Pass
30KHz	40MHz	LCH	DFT-QPSK	23.66	23.45	22.78	20.66	33.00	Pass
30KHz	40MHz	LCH	DFT-16QAM	22.79	22.55	22.98	19.98	33.00	Pass
30KHz	40MHz	LCH	DFT-64QAM	21.30	21.22	21.48	18.48	33.00	Pass
30KHz	40MHz	LCH	DFT-256QAM	19.46	19.23	19.48	16.48	33.00	Pass
30KHz	40MHz	LCH	CP-QPSK	22.49	22.28	22.38	19.49	33.00	Pass
30KHz	40MHz	MCH	DFT-Pi2BPSK	23.33	23.39	23.45	20.45	33.00	Pass
30KHz	40MHz	MCH	DFT-QPSK	23.28	23.32	23.46	20.46	33.00	Pass
30KHz	40MHz	MCH	DFT-16QAM	22.57	22.54	22.90	19.90	33.00	Pass
30KHz	40MHz	MCH	DFT-64QAM	21.02	21.02	21.32	18.32	33.00	Pass
30KHz	40MHz	MCH	DFT-256QAM	19.19	19.18	19.32	16.32	33.00	Pass
30KHz	40MHz	MCH	CP-QPSK	22.20	22.24	22.32	19.32	33.00	Pass
30KHz	40MHz	HCH	DFT-Pi2BPSK	23.41	22.79	22.91	20.41	33.00	Pass
30KHz	40MHz	HCH	DFT-QPSK	23.64	23.05	22.83	20.64	33.00	Pass

30KHz	40MHz	HCH	DFT-16QAM	22.48	22.86	22.89	19.89	33.00	Pass
30KHz	40MHz	HCH	DFT-64QAM	21.13	21.48	21.36	18.48	33.00	Pass
30KHz	40MHz	HCH	DFT-256QAM	19.16	19.33	19.38	16.38	33.00	Pass
30KHz	40MHz	HCH	CP-QPSK	22.05	22.44	22.37	19.44	33.00	Pass
30KHz	45MHz	LCH	DFT-Pi2BPSK	23.68	23.45	23.10	20.68	33.00	Pass
30KHz	45MHz	LCH	DFT-QPSK	23.59	23.44	23.08	20.59	33.00	Pass
30KHz	45MHz	LCH	DFT-16QAM	22.70	22.40	22.80	19.80	33.00	Pass
30KHz	45MHz	LCH	DFT-64QAM	21.47	21.18	21.34	18.47	33.00	Pass
30KHz	45MHz	LCH	DFT-256QAM	19.46	19.16	19.48	16.48	33.00	Pass
30KHz	45MHz	LCH	CP-QPSK	22.45	22.17	22.40	19.45	33.00	Pass
30KHz	45MHz	MCH	DFT-Pi2BPSK	23.36	23.35	22.83	20.36	33.00	Pass
30KHz	45MHz	MCH	DFT-QPSK	23.67	23.36	22.80	20.67	33.00	Pass
30KHz	45MHz	MCH	DFT-16QAM	22.54	22.55	22.90	19.90	33.00	Pass
30KHz	45MHz	MCH	DFT-64QAM	21.13	21.19	21.39	18.39	33.00	Pass
30KHz	45MHz	MCH	DFT-256QAM	19.23	19.21	19.36	16.36	33.00	Pass
30KHz	45MHz	MCH	CP-QPSK	22.21	22.18	22.25	19.25	33.00	Pass
30KHz	45MHz	HCH	DFT-Pi2BPSK	23.36	22.80	23.23	20.36	33.00	Pass
30KHz	45MHz	HCH	DFT-QPSK	23.62	23.76	23.20	20.76	33.00	Pass
30KHz	45MHz	HCH	DFT-16QAM	22.40	22.88	22.89	19.89	33.00	Pass
30KHz	45MHz	HCH	DFT-64QAM	20.97	21.36	21.39	18.39	33.00	Pass
30KHz	45MHz	HCH	DFT-256QAM	19.07	19.33	19.35	16.35	33.00	Pass
30KHz	45MHz	HCH	CP-QPSK	21.94	22.35	22.49	19.49	33.00	Pass
30KHz	50MHz	LCH	DFT-Pi2BPSK	23.44	23.23	23.58	20.58	33.00	Pass
30KHz	50MHz	LCH	DFT-QPSK	23.22	23.01	23.42	20.42	33.00	Pass
30KHz	50MHz	LCH	DFT-16QAM	22.70	22.43	22.87	19.87	33.00	Pass
30KHz	50MHz	LCH	DFT-64QAM	21.41	21.14	21.48	18.48	33.00	Pass
30KHz	50MHz	LCH	DFT-256QAM	19.40	19.14	19.42	16.42	33.00	Pass
30KHz	50MHz	LCH	CP-QPSK	22.28	22.03	22.30	19.30	33.00	Pass
30KHz	50MHz	MCH	DFT-Pi2BPSK	23.11	23.20	23.39	20.39	33.00	Pass
30KHz	50MHz	MCH	DFT-QPSK	23.70	23.10	23.39	20.70	33.00	Pass
30KHz	50MHz	MCH	DFT-16QAM	22.53	22.62	22.83	19.83	33.00	Pass
30KHz	50MHz	MCH	DFT-64QAM	21.24	21.11	21.36	18.36	33.00	Pass
30KHz	50MHz	MCH	DFT-256QAM	19.24	19.17	19.35	16.35	33.00	Pass
30KHz	50MHz	MCH	CP-QPSK	22.12	22.22	22.26	19.26	33.00	Pass
30KHz	50MHz	HCH	DFT-Pi2BPSK	23.04	23.59	23.65	20.65	33.00	Pass
30KHz	50MHz	HCH	DFT-QPSK	23.51	23.58	22.71	20.58	33.00	Pass
30KHz	50MHz	HCH	DFT-16QAM	22.29	22.83	22.95	19.95	33.00	Pass
30KHz	50MHz	HCH	DFT-64QAM	20.85	21.45	21.49	18.49	33.00	Pass
30KHz	50MHz	HCH	DFT-256QAM	18.92	19.47	19.32	16.47	33.00	Pass
30KHz	50MHz	HCH	CP-QPSK	21.84	22.49	22.43	19.49	33.00	Pass
30KHz	60MHz	LCH	DFT-Pi2BPSK	23.26	23.17	23.30	20.30	33.00	Pass
30KHz	60MHz	LCH	DFT-QPSK	23.78	23.17	23.25	20.78	33.00	Pass
30KHz	60MHz	LCH	DFT-16QAM	22.60	22.55	22.92	19.92	33.00	Pass
30KHz	60MHz	LCH	DFT-64QAM	21.28	21.17	21.36	18.36	33.00	Pass
30KHz	60MHz	LCH	DFT-256QAM	19.35	19.21	19.34	16.35	33.00	Pass
30KHz	60MHz	LCH	CP-QPSK	22.36	22.19	22.27	19.36	33.00	Pass
30KHz	60MHz	MCH	DFT-Pi2BPSK	23.76	22.97	23.12	20.76	33.00	Pass
30KHz	60MHz	MCH	DFT-QPSK	23.73	22.98	23.11	20.73	33.00	Pass
30KHz	60MHz	MCH	DFT-16QAM	22.58	22.65	22.88	19.88	33.00	Pass
30KHz	60MHz	MCH	DFT-64QAM	21.14	21.14	21.39	18.39	33.00	Pass
30KHz	60MHz	MCH	DFT-256QAM	19.22	19.18	19.36	16.36	33.00	Pass
30KHz	60MHz	MCH	CP-QPSK	22.22	22.21	22.26	19.26	33.00	Pass
30KHz	60MHz	HCH	DFT-Pi2BPSK	23.50	23.46	23.46	20.50	33.00	Pass
30KHz	60MHz	HCH	DFT-QPSK	23.46	23.48	23.40	20.48	33.00	Pass
30KHz	60MHz	HCH	DFT-16QAM	22.32	22.74	22.85	19.85	33.00	Pass
30KHz	60MHz	HCH	DFT-64QAM	20.81	21.30	21.48	18.48	33.00	Pass
30KHz	60MHz	HCH	DFT-256QAM	18.85	19.34	19.44	16.44	33.00	Pass
30KHz	60MHz	HCH	CP-QPSK	21.83	22.37	22.47	19.47	33.00	Pass
30KHz	70MHz	LCH	DFT-Pi2BPSK	23.11	22.97	23.47	20.47	33.00	Pass
30KHz	70MHz	LCH	DFT-QPSK	23.04	22.96	23.51	20.51	33.00	Pass
30KHz	70MHz	LCH	DFT-16QAM	22.69	22.66	22.76	19.76	33.00	Pass
30KHz	70MHz	LCH	DFT-64QAM	21.43	21.35	21.37	18.43	33.00	Pass
30KHz	70MHz	LCH	DFT-256QAM	19.46	19.38	19.39	16.46	33.00	Pass

30KHz	70MHz	LCH	CP-QPSK	22.24	22.28	22.31	19.31	33.00	Pass
30KHz	70MHz	MCH	DFT-Pi2BPSK	23.79	22.95	23.52	20.79	33.00	Pass
30KHz	70MHz	MCH	DFT-QPSK	23.81	22.98	23.56	20.81	33.00	Pass
30KHz	70MHz	MCH	DFT-16QAM	22.61	22.62	22.85	19.85	33.00	Pass
30KHz	70MHz	MCH	DFT-64QAM	21.22	21.37	21.43	18.43	33.00	Pass
30KHz	70MHz	MCH	DFT-256QAM	19.34	19.33	19.41	16.41	33.00	Pass
30KHz	70MHz	MCH	CP-QPSK	22.30	22.39	22.40	19.40	33.00	Pass
30KHz	70MHz	HCH	DFT-Pi2BPSK	23.41	23.34	23.61	20.61	33.00	Pass
30KHz	70MHz	HCH	DFT-QPSK	23.44	23.27	23.62	20.62	33.00	Pass
30KHz	70MHz	HCH	DFT-16QAM	22.34	22.89	22.92	19.92	33.00	Pass
30KHz	70MHz	HCH	DFT-64QAM	20.94	21.45	21.44	18.45	33.00	Pass
30KHz	70MHz	HCH	DFT-256QAM	18.94	19.36	19.46	16.46	33.00	Pass
30KHz	70MHz	HCH	CP-QPSK	21.92	22.39	22.44	19.44	33.00	Pass
30KHz	80MHz	LCH	DFT-Pi2BPSK	23.33	22.80	23.16	20.33	33.00	Pass
30KHz	80MHz	LCH	DFT-QPSK	23.17	22.78	23.15	20.17	33.00	Pass
30KHz	80MHz	LCH	DFT-16QAM	22.76	22.66	22.83	19.83	33.00	Pass
30KHz	80MHz	LCH	DFT-64QAM	21.43	21.36	21.40	18.43	33.00	Pass
30KHz	80MHz	LCH	DFT-256QAM	19.34	19.36	19.41	16.41	33.00	Pass
30KHz	80MHz	LCH	CP-QPSK	22.25	22.26	22.36	19.36	33.00	Pass
30KHz	80MHz	MCH	DFT-Pi2BPSK	23.73	22.85	23.14	20.73	33.00	Pass
30KHz	80MHz	MCH	DFT-QPSK	23.74	22.85	23.12	20.74	33.00	Pass
30KHz	80MHz	MCH	DFT-16QAM	22.60	22.75	22.85	19.85	33.00	Pass
30KHz	80MHz	MCH	DFT-64QAM	21.25	21.38	21.42	18.42	33.00	Pass
30KHz	80MHz	MCH	DFT-256QAM	19.34	19.43	19.40	16.43	33.00	Pass
30KHz	80MHz	MCH	CP-QPSK	22.29	22.40	22.32	19.40	33.00	Pass
30KHz	80MHz	HCH	DFT-Pi2BPSK	23.47	23.37	23.29	20.47	33.00	Pass
30KHz	80MHz	HCH	DFT-QPSK	23.49	23.36	23.40	20.49	33.00	Pass
30KHz	80MHz	HCH	DFT-16QAM	22.35	22.94	22.84	19.94	33.00	Pass
30KHz	80MHz	HCH	DFT-64QAM	20.95	21.39	21.41	18.41	33.00	Pass
30KHz	80MHz	HCH	DFT-256QAM	18.99	19.41	19.46	16.46	33.00	Pass
30KHz	80MHz	HCH	CP-QPSK	21.89	22.45	22.35	19.45	33.00	Pass
30KHz	90MHz	LCH	DFT-Pi2BPSK	23.11	22.82	23.63	20.63	33.00	Pass
30KHz	90MHz	LCH	DFT-QPSK	23.57	22.87	22.79	20.57	33.00	Pass
30KHz	90MHz	LCH	DFT-16QAM	22.91	22.66	22.95	19.95	33.00	Pass
30KHz	90MHz	LCH	DFT-64QAM	21.45	21.33	21.49	18.49	33.00	Pass
30KHz	90MHz	LCH	DFT-256QAM	19.38	19.40	19.49	16.49	33.00	Pass
30KHz	90MHz	LCH	CP-QPSK	22.39	22.37	22.41	19.41	33.00	Pass
30KHz	90MHz	MCH	DFT-Pi2BPSK	23.70	23.10	23.32	20.70	33.00	Pass
30KHz	90MHz	MCH	DFT-QPSK	23.69	22.70	23.35	20.69	33.00	Pass
30KHz	90MHz	MCH	DFT-16QAM	22.46	22.68	22.85	19.85	33.00	Pass
30KHz	90MHz	MCH	DFT-64QAM	21.15	21.47	21.44	18.47	33.00	Pass
30KHz	90MHz	MCH	DFT-256QAM	19.21	19.40	19.41	16.41	33.00	Pass
30KHz	90MHz	MCH	CP-QPSK	22.12	22.28	22.34	19.34	33.00	Pass
30KHz	90MHz	HCH	DFT-Pi2BPSK	23.51	23.36	22.81	20.51	33.00	Pass
30KHz	90MHz	HCH	DFT-QPSK	23.46	23.30	22.72	20.46	33.00	Pass
30KHz	90MHz	HCH	DFT-16QAM	22.35	22.97	22.78	19.97	33.00	Pass
30KHz	90MHz	HCH	DFT-64QAM	20.88	21.38	21.32	18.38	33.00	Pass
30KHz	90MHz	HCH	DFT-256QAM	18.98	19.37	19.37	16.37	33.00	Pass
30KHz	90MHz	HCH	CP-QPSK	21.99	22.49	22.34	19.49	33.00	Pass
30KHz	100MHz	LCH	DFT-Pi2BPSK	23.83	22.75	23.02	20.83	33.00	Pass
30KHz	100MHz	LCH	DFT-QPSK	23.58	22.61	23.01	20.58	33.00	Pass
30KHz	100MHz	LCH	DFT-16QAM	22.84	22.76	22.84	19.84	33.00	Pass
30KHz	100MHz	LCH	DFT-64QAM	21.37	21.38	21.49	18.49	33.00	Pass
30KHz	100MHz	LCH	DFT-256QAM	19.48	19.38	19.47	16.48	33.00	Pass
30KHz	100MHz	LCH	CP-QPSK	22.47	22.47	22.43	19.47	33.00	Pass
30KHz	100MHz	MCH	DFT-Pi2BPSK	23.61	22.73	23.79	20.79	33.00	Pass
30KHz	100MHz	MCH	DFT-QPSK	23.61	22.71	22.87	20.61	33.00	Pass
30KHz	100MHz	MCH	DFT-16QAM	22.45	22.73	22.83	19.83	33.00	Pass
30KHz	100MHz	MCH	DFT-64QAM	21.07	21.44	21.37	18.44	33.00	Pass
30KHz	100MHz	MCH	DFT-256QAM	19.16	19.48	19.43	16.48	33.00	Pass
30KHz	100MHz	MCH	CP-QPSK	22.15	22.39	22.33	19.39	33.00	Pass
30KHz	100MHz	HCH	DFT-Pi2BPSK	23.50	23.19	23.65	20.65	33.00	Pass
30KHz	100MHz	HCH	DFT-QPSK	23.54	23.17	23.67	20.67	33.00	Pass

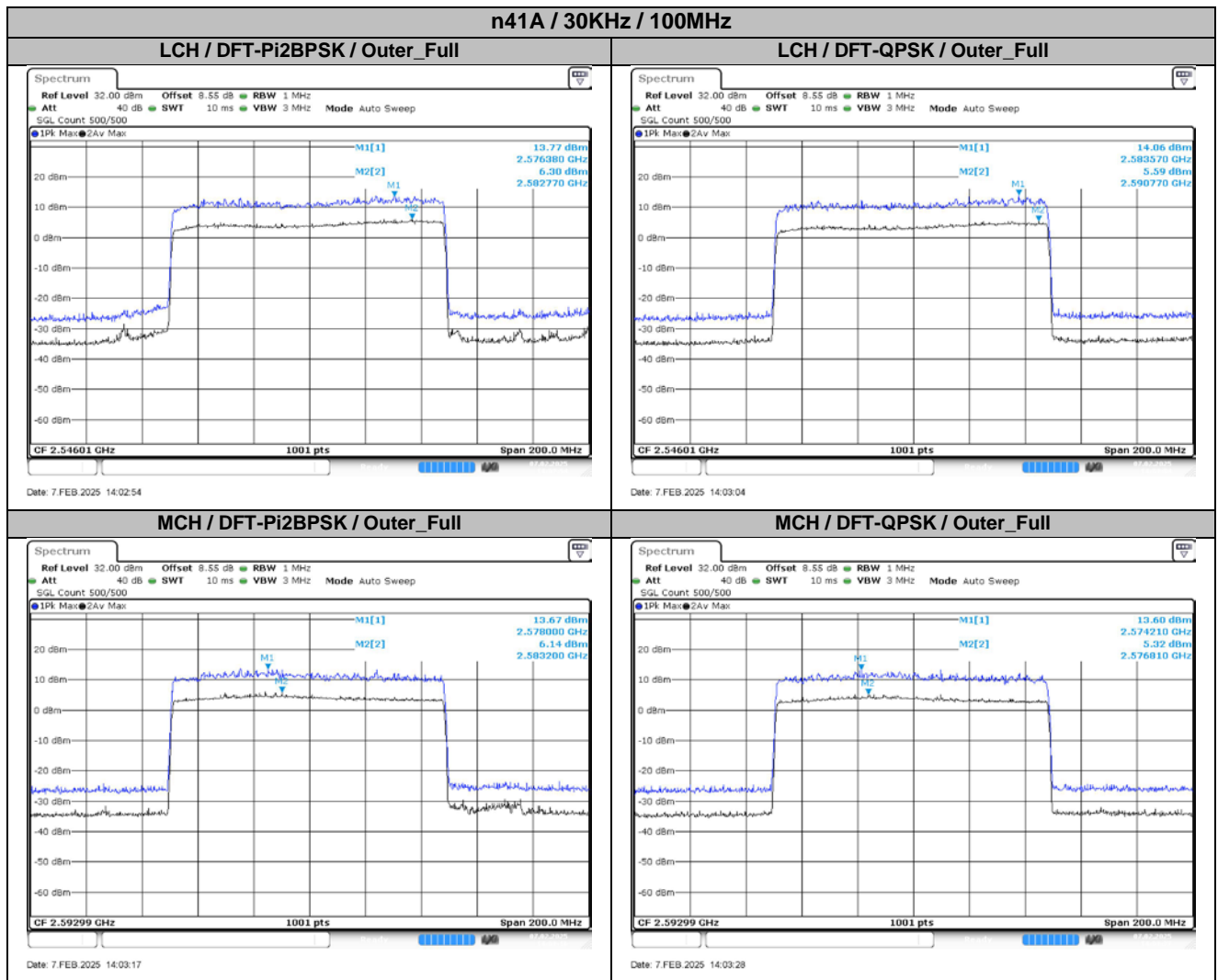
30KHz	100MHz	HCH	DFT-16QAM	22.47	22.88	22.70	19.88	33.00	Pass
30KHz	100MHz	HCH	DFT-64QAM	20.99	21.42	21.30	18.42	33.00	Pass
30KHz	100MHz	HCH	DFT-256QAM	19.11	19.38	19.33	16.38	33.00	Pass
30KHz	100MHz	HCH	CP-QPSK	21.93	22.40	22.28	19.40	33.00	Pass

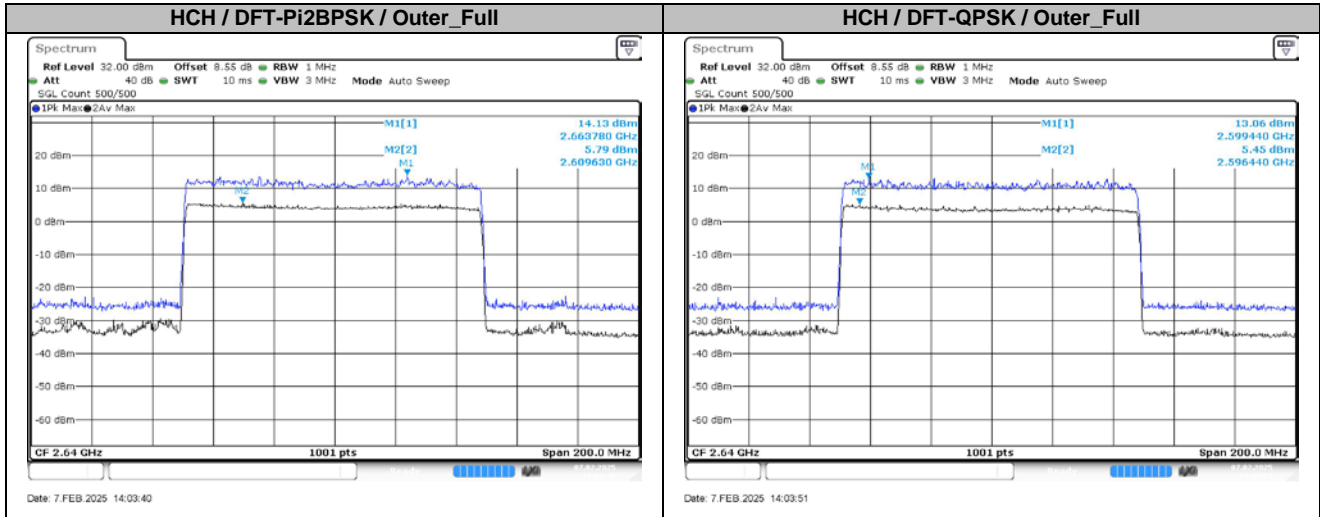
2. Peak-to-Average Ratio

2.1. Test Results

SCS	Bandwidth	Channel	RB	Result (dB)		Limit (dB)	Verdict
				DFT-Pi2BPSK	DFT-QPSK		
30KHz	100MHz	LCH	Outer_Full	7.48	8.47	13.00	Pass
30KHz	100MHz	MCH	Outer_Full	7.53	8.28	13.00	Pass
30KHz	100MHz	HCH	Outer_Full	8.35	7.61	13.00	Pass

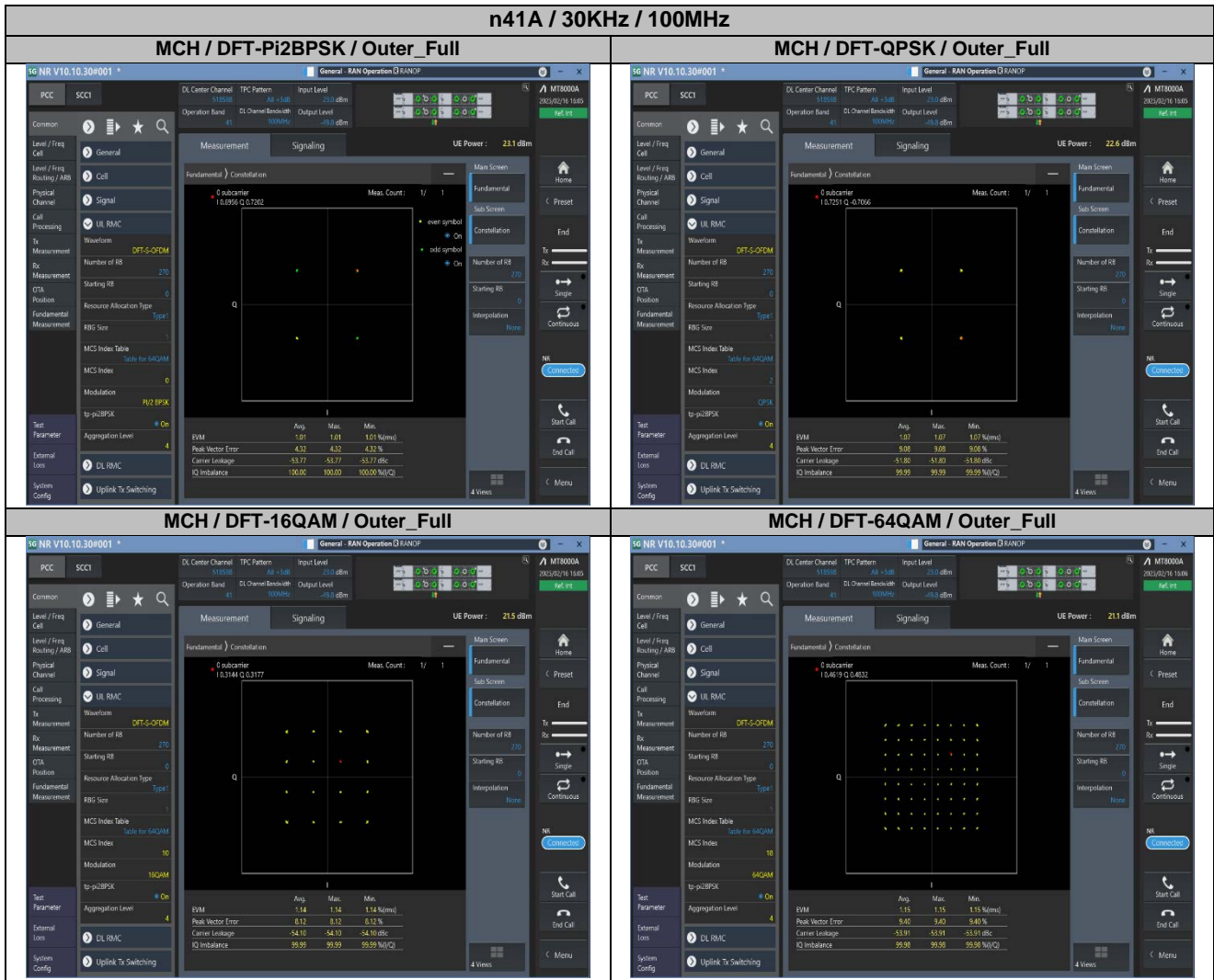
2.2. Test Plots for SCS=30KHz

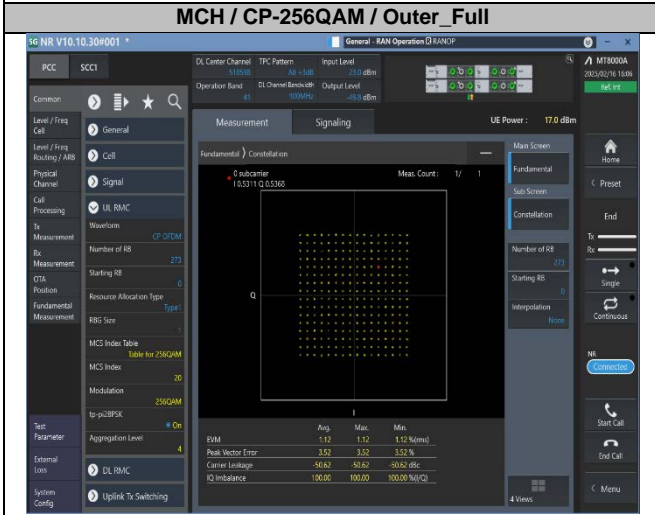
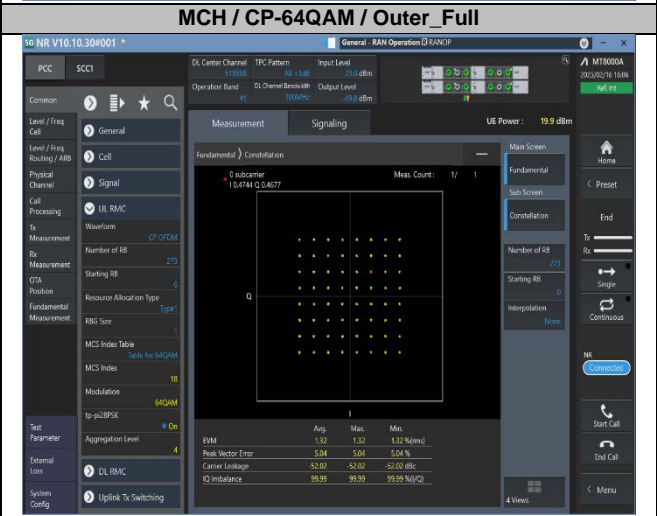
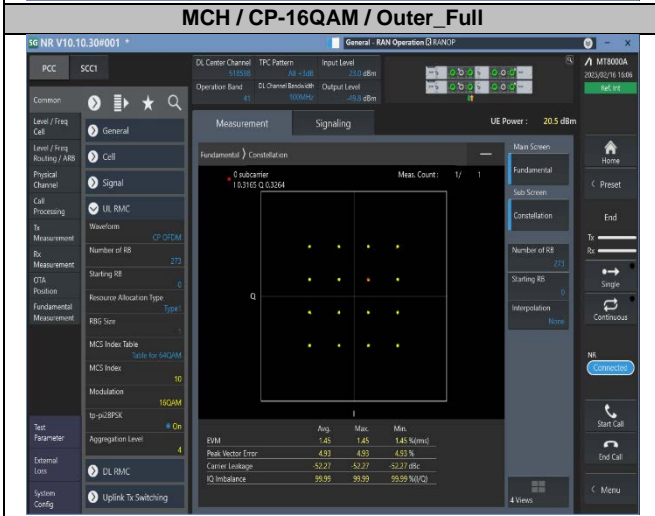
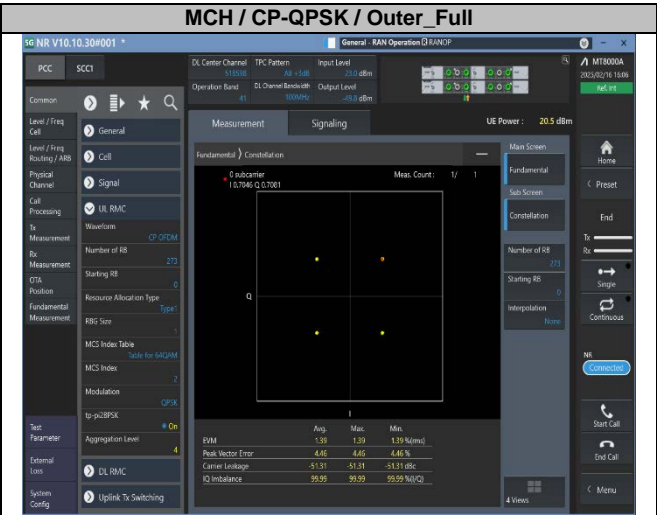
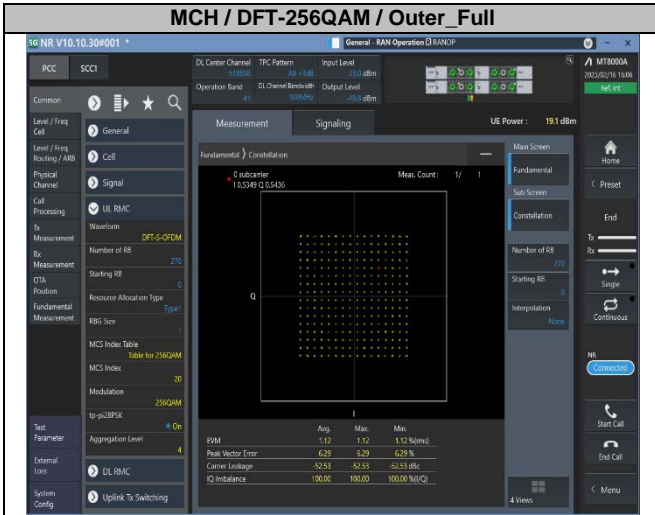




3. Modulation Characteristics

3.1. Test Plots for SCS=30KHz





Intentionally Blank

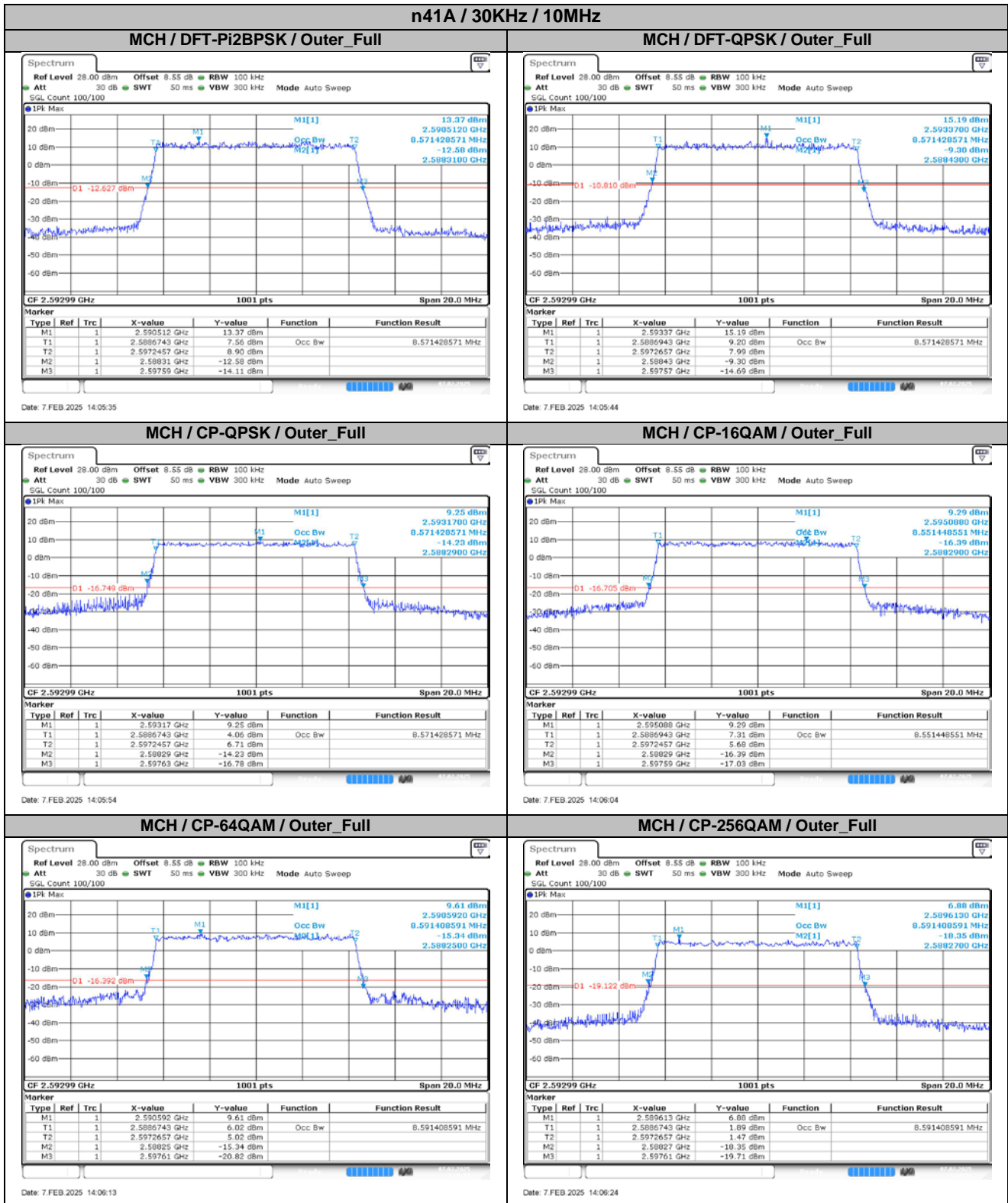
4. 99% Occupied Bandwidth & 26dB Emission Bandwidth

4.1. Test Results

SCS	Bandwidth	Modulation	RB	99% Occupied Bandwidth (MHz)	26dB Emission Bandwidth (MHz)	Verdict
30KHz	10MHz	DFT-Pi2BPSK	Outer_Full	8.57	9.28	Pass
30KHz	10MHz	DFT-QPSK	Outer_Full	8.57	9.14	Pass
30KHz	10MHz	CP-QPSK	Outer_Full	8.57	9.34	Pass
30KHz	10MHz	CP-16QAM	Outer_Full	8.55	9.30	Pass
30KHz	10MHz	CP-64QAM	Outer_Full	8.59	9.36	Pass
30KHz	10MHz	CP-256QAM	Outer_Full	8.59	9.34	Pass
30KHz	15MHz	DFT-Pi2BPSK	Outer_Full	12.89	13.74	Pass
30KHz	15MHz	DFT-QPSK	Outer_Full	12.86	13.71	Pass
30KHz	15MHz	CP-QPSK	Outer_Full	13.58	14.58	Pass
30KHz	15MHz	CP-16QAM	Outer_Full	13.58	14.52	Pass
30KHz	15MHz	CP-64QAM	Outer_Full	13.67	14.52	Pass
30KHz	15MHz	CP-256QAM	Outer_Full	13.61	14.49	Pass
30KHz	20MHz	DFT-Pi2BPSK	Outer_Full	17.86	18.72	Pass
30KHz	20MHz	DFT-QPSK	Outer_Full	17.82	18.76	Pass
30KHz	20MHz	CP-QPSK	Outer_Full	18.18	19.20	Pass
30KHz	20MHz	CP-16QAM	Outer_Full	18.22	19.20	Pass
30KHz	20MHz	CP-64QAM	Outer_Full	18.18	19.20	Pass
30KHz	20MHz	CP-256QAM	Outer_Full	18.22	19.16	Pass
30KHz	25MHz	DFT-Pi2BPSK	Outer_Full	22.83	24.05	Pass
30KHz	25MHz	DFT-QPSK	Outer_Full	22.83	23.95	Pass
30KHz	25MHz	CP-QPSK	Outer_Full	23.18	24.45	Pass
30KHz	25MHz	CP-16QAM	Outer_Full	23.23	24.40	Pass
30KHz	25MHz	CP-64QAM	Outer_Full	23.28	24.35	Pass
30KHz	25MHz	CP-256QAM	Outer_Full	23.23	24.45	Pass
30KHz	30MHz	DFT-Pi2BPSK	Outer_Full	26.79	28.14	Pass
30KHz	30MHz	DFT-QPSK	Outer_Full	26.79	28.14	Pass
30KHz	30MHz	CP-QPSK	Outer_Full	27.75	29.34	Pass
30KHz	30MHz	CP-16QAM	Outer_Full	27.87	29.40	Pass
30KHz	30MHz	CP-64QAM	Outer_Full	27.75	29.40	Pass
30KHz	30MHz	CP-256QAM	Outer_Full	27.87	29.46	Pass
30KHz	35MHz	DFT-Pi2BPSK	Outer_Full	32.10	34.02	Pass
30KHz	35MHz	DFT-QPSK	Outer_Full	32.24	33.81	Pass
30KHz	35MHz	CP-QPSK	Outer_Full	32.87	34.72	Pass
30KHz	35MHz	CP-16QAM	Outer_Full	32.87	34.72	Pass
30KHz	35MHz	CP-64QAM	Outer_Full	32.87	34.79	Pass
30KHz	35MHz	CP-256QAM	Outer_Full	32.87	34.79	Pass
30KHz	40MHz	DFT-Pi2BPSK	Outer_Full	35.72	37.60	Pass
30KHz	40MHz	DFT-QPSK	Outer_Full	35.80	37.68	Pass
30KHz	40MHz	CP-QPSK	Outer_Full	37.80	39.68	Pass
30KHz	40MHz	CP-16QAM	Outer_Full	37.88	39.84	Pass
30KHz	40MHz	CP-64QAM	Outer_Full	37.80	39.68	Pass
30KHz	40MHz	CP-256QAM	Outer_Full	37.72	39.68	Pass
30KHz	45MHz	DFT-Pi2BPSK	Outer_Full	38.57	40.41	Pass
30KHz	45MHz	DFT-QPSK	Outer_Full	38.57	40.50	Pass
30KHz	45MHz	CP-QPSK	Outer_Full	42.44	44.46	Pass
30KHz	45MHz	CP-16QAM	Outer_Full	42.53	44.55	Pass
30KHz	45MHz	CP-64QAM	Outer_Full	42.44	44.46	Pass
30KHz	45MHz	CP-256QAM	Outer_Full	42.44	44.28	Pass
30KHz	50MHz	DFT-Pi2BPSK	Outer_Full	45.75	47.70	Pass
30KHz	50MHz	DFT-QPSK	Outer_Full	45.65	47.80	Pass
30KHz	50MHz	CP-QPSK	Outer_Full	47.45	49.50	Pass
30KHz	50MHz	CP-16QAM	Outer_Full	47.45	49.40	Pass
30KHz	50MHz	CP-64QAM	Outer_Full	47.45	49.50	Pass
30KHz	50MHz	CP-256QAM	Outer_Full	47.35	49.40	Pass
30KHz	60MHz	DFT-Pi2BPSK	Outer_Full	57.78	60.60	Pass
30KHz	60MHz	DFT-QPSK	Outer_Full	57.66	60.60	Pass
30KHz	60MHz	CP-QPSK	Outer_Full	57.78	60.72	Pass
30KHz	60MHz	CP-16QAM	Outer_Full	57.90	60.60	Pass

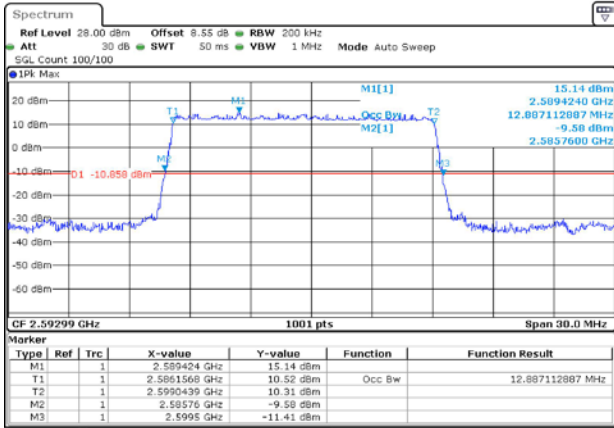
30KHz	60MHz	CP-64QAM	Outer_Full	58.02	60.72	Pass
30KHz	60MHz	CP-256QAM	Outer_Full	57.78	60.72	Pass
30KHz	70MHz	DFT-Pi2BPSK	Outer_Full	64.06	67.06	Pass
30KHz	70MHz	DFT-QPSK	Outer_Full	64.06	67.34	Pass
30KHz	70MHz	CP-QPSK	Outer_Full	67.41	70.42	Pass
30KHz	70MHz	CP-16QAM	Outer_Full	67.27	70.28	Pass
30KHz	70MHz	CP-64QAM	Outer_Full	67.41	70.42	Pass
30KHz	70MHz	CP-256QAM	Outer_Full	67.27	70.42	Pass
30KHz	80MHz	DFT-Pi2BPSK	Outer_Full	76.88	80.32	Pass
30KHz	80MHz	DFT-QPSK	Outer_Full	76.88	80.16	Pass
30KHz	80MHz	CP-QPSK	Outer_Full	77.36	80.48	Pass
30KHz	80MHz	CP-16QAM	Outer_Full	77.36	80.48	Pass
30KHz	80MHz	CP-64QAM	Outer_Full	77.36	80.64	Pass
30KHz	80MHz	CP-256QAM	Outer_Full	77.36	80.48	Pass
30KHz	90MHz	DFT-Pi2BPSK	Outer_Full	86.49	89.82	Pass
30KHz	90MHz	DFT-QPSK	Outer_Full	86.49	89.82	Pass
30KHz	90MHz	CP-QPSK	Outer_Full	87.21	90.72	Pass
30KHz	90MHz	CP-16QAM	Outer_Full	87.21	90.54	Pass
30KHz	90MHz	CP-64QAM	Outer_Full	87.03	90.54	Pass
30KHz	90MHz	CP-256QAM	Outer_Full	87.21	90.54	Pass
30KHz	100MHz	DFT-Pi2BPSK	Outer_Full	96.10	99.60	Pass
30KHz	100MHz	DFT-QPSK	Outer_Full	95.90	99.60	Pass
30KHz	100MHz	CP-QPSK	Outer_Full	97.10	100.80	Pass
30KHz	100MHz	CP-16QAM	Outer_Full	97.10	100.60	Pass
30KHz	100MHz	CP-64QAM	Outer_Full	97.30	100.80	Pass
30KHz	100MHz	CP-256QAM	Outer_Full	97.10	100.60	Pass

4.2. Test Plots for SCS=30KHz

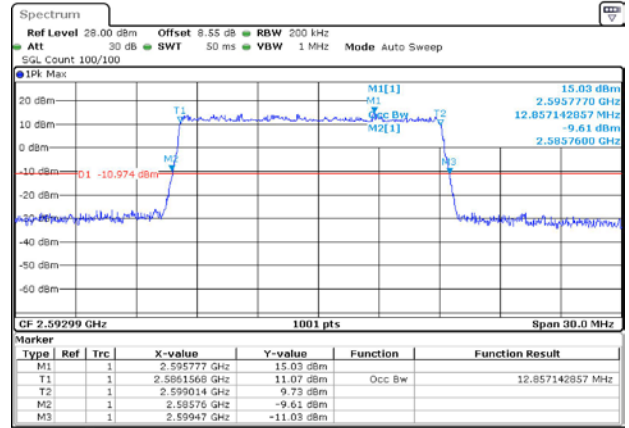


n41A / 30KHz / 15MHz

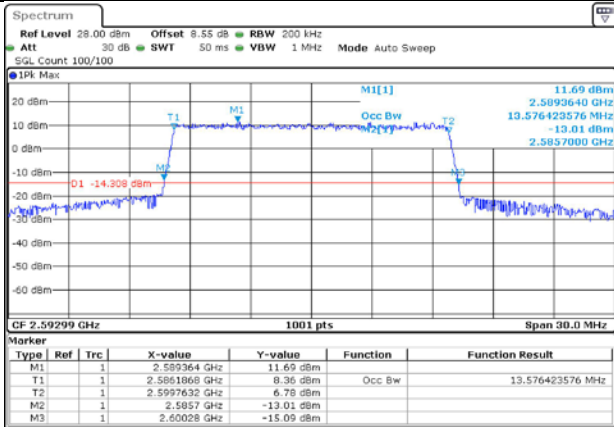
MCH / DFT-Pi2BPSK / Outer_Full



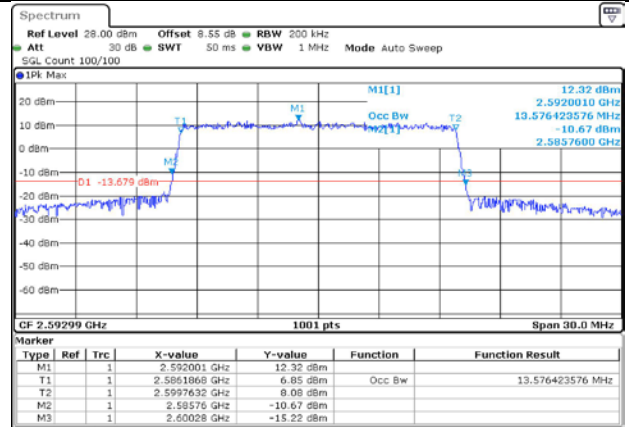
MCH / DFT-QPSK / Outer_Full



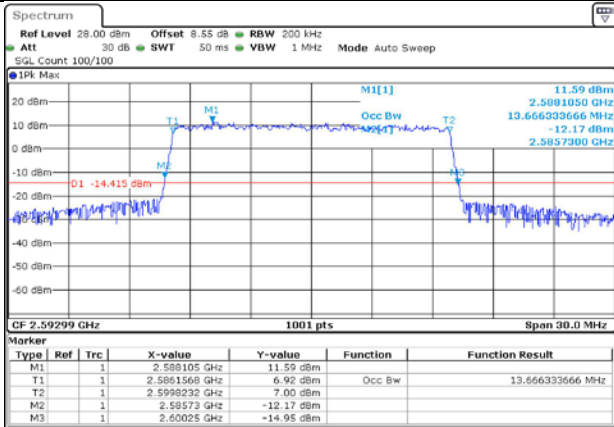
MCH / CP-QPSK / Outer_Full



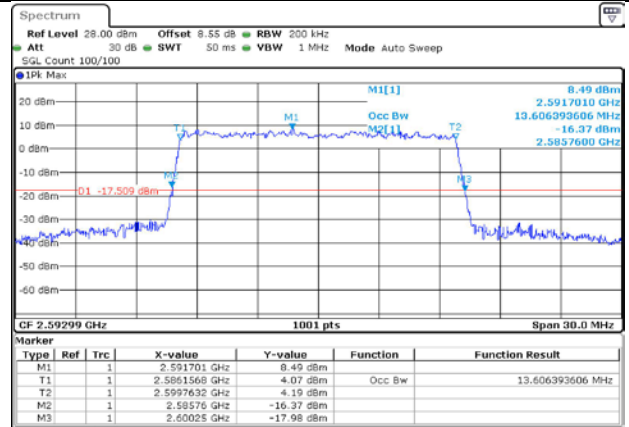
MCH / CP-16QAM / Outer_Full

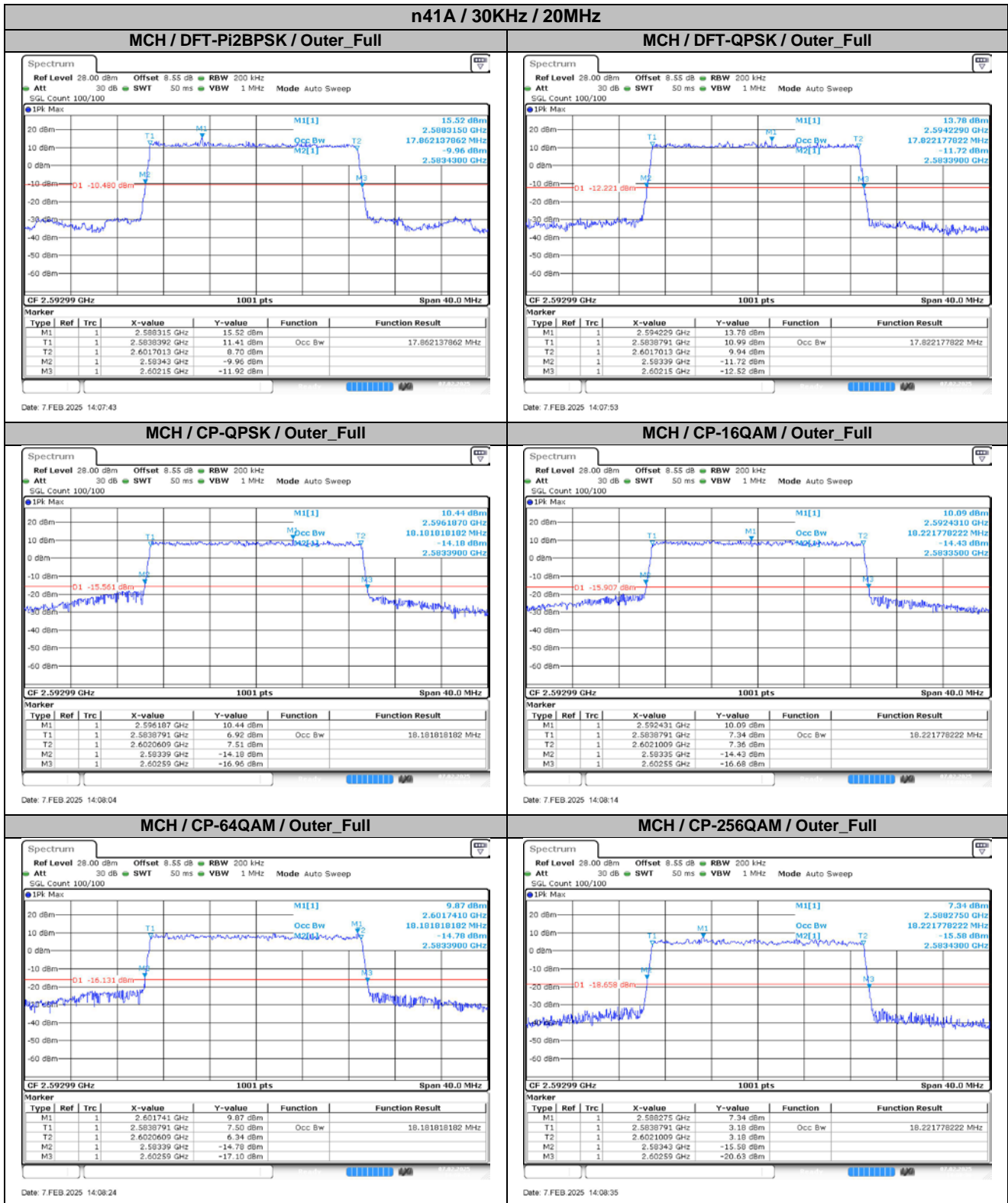


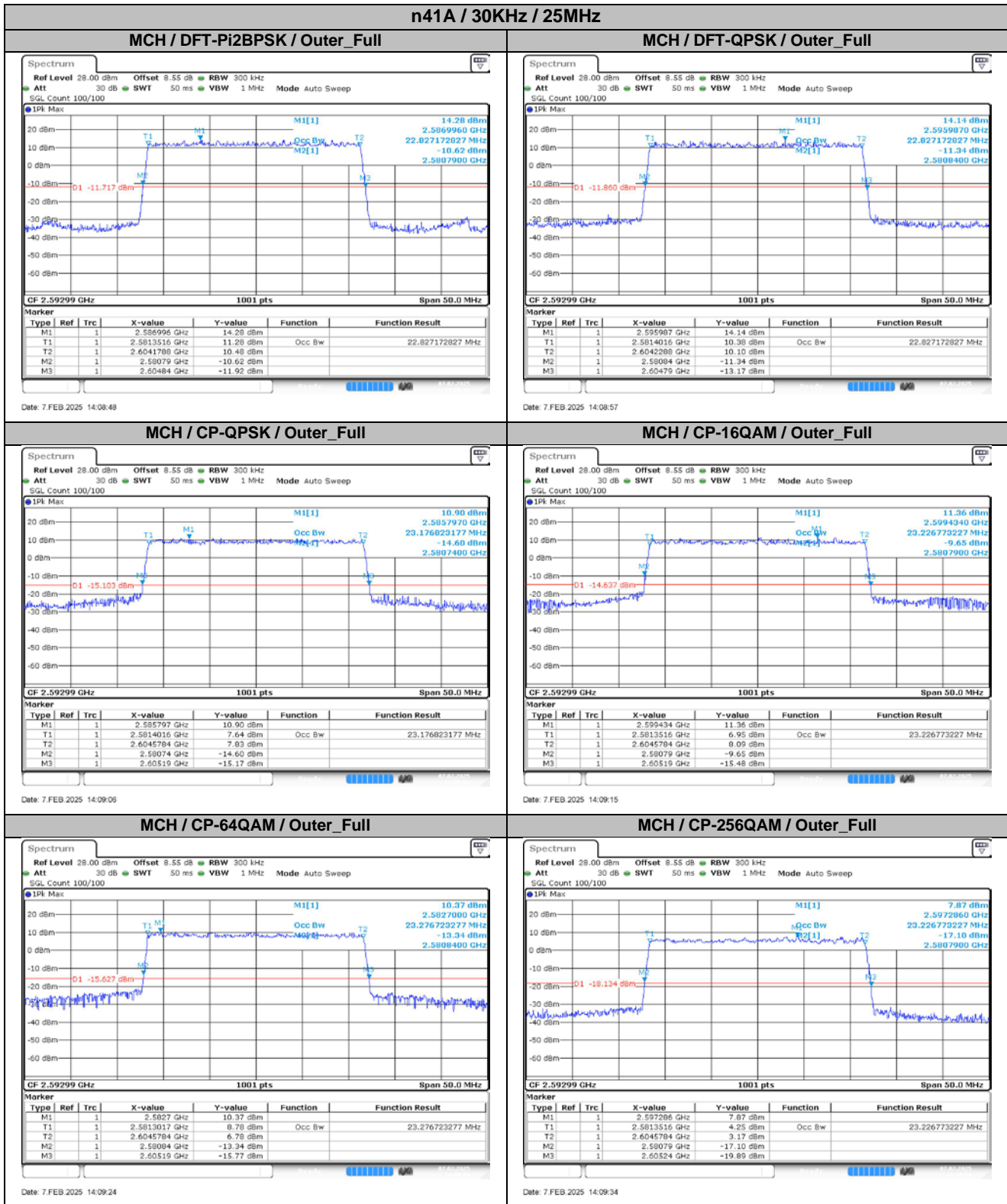
MCH / CP-64QAM / Outer_Full

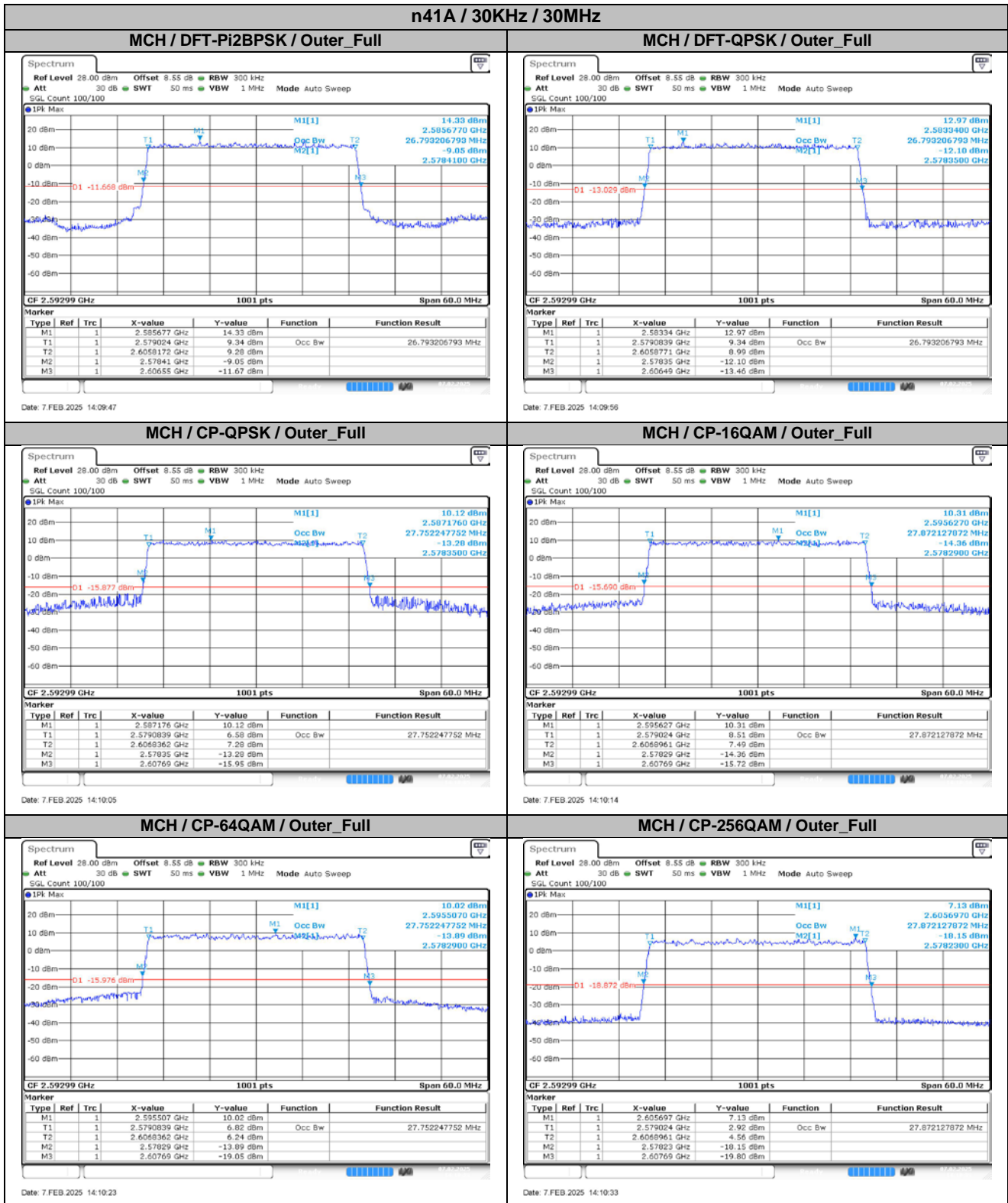


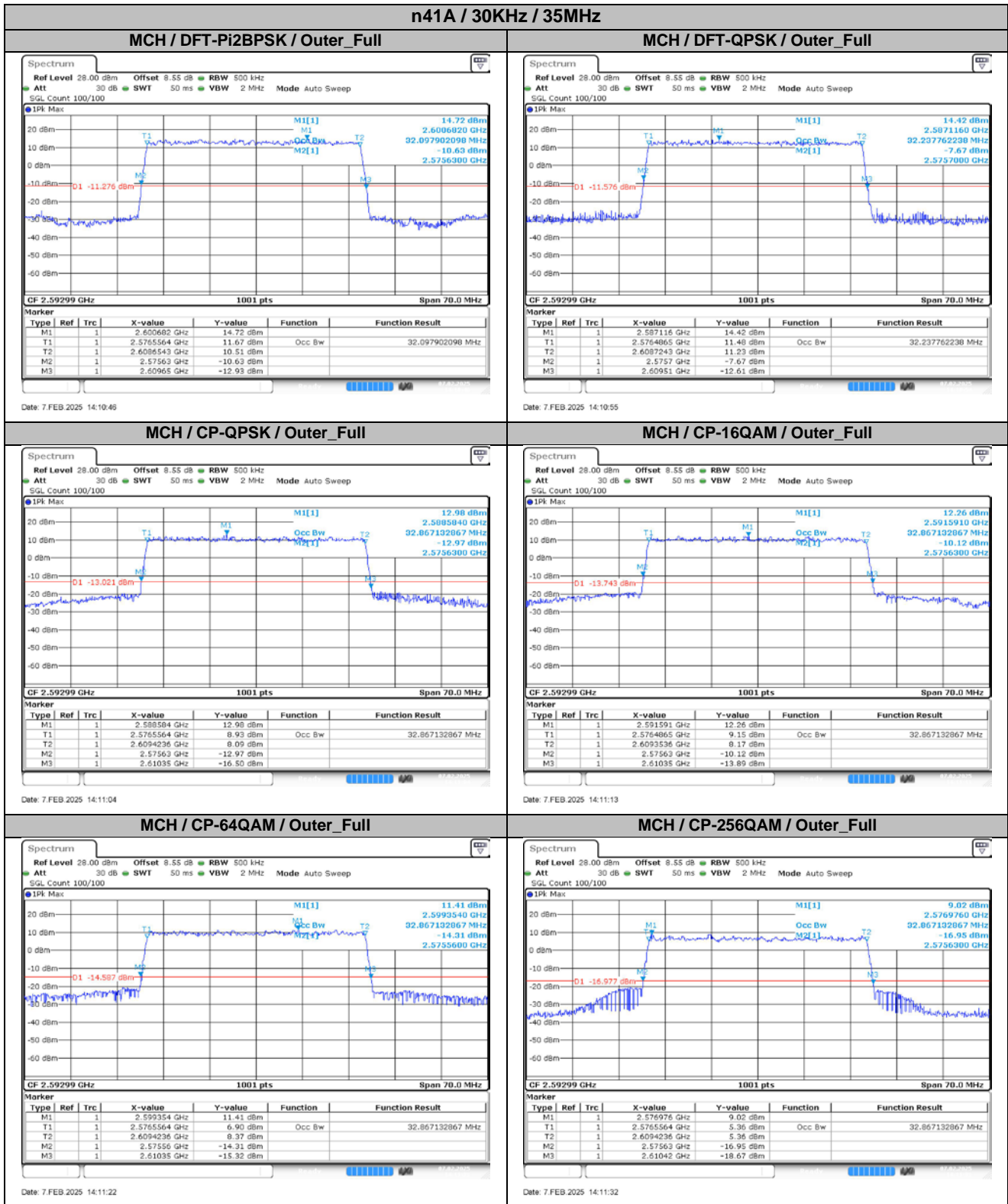
MCH / CP-256QAM / Outer_Full

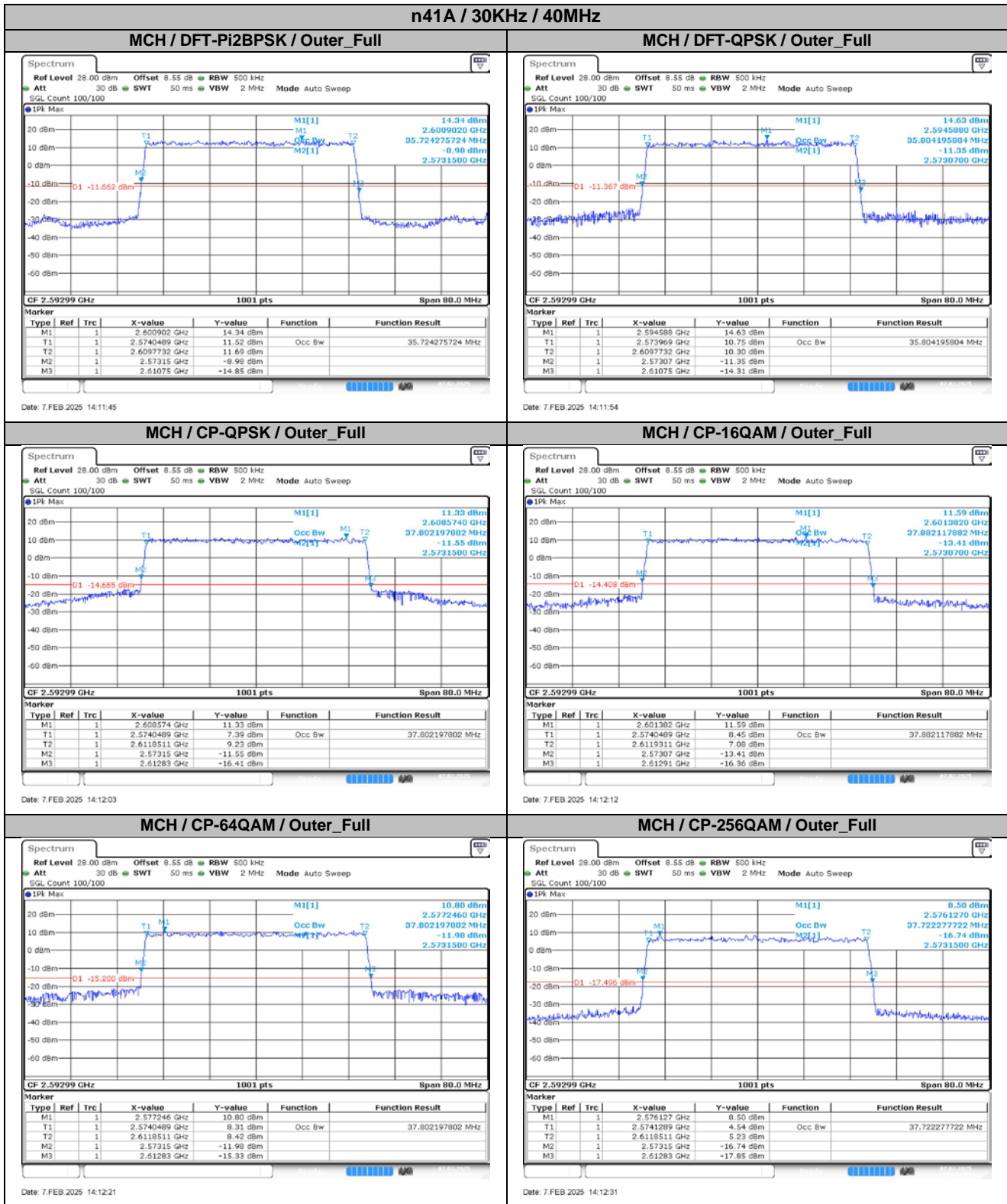






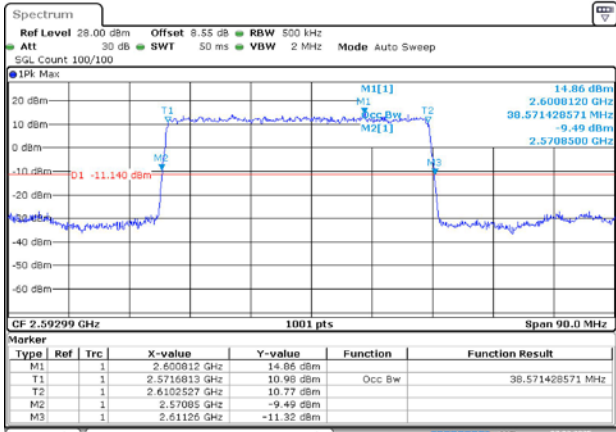






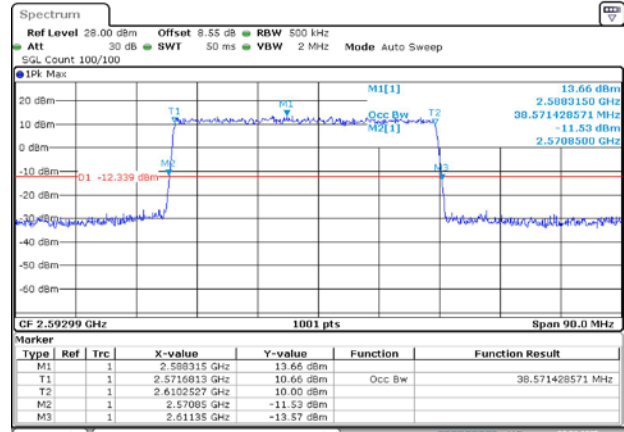
n41A / 30KHz / 45MHz

MCH / DFT-Pi2BPSK / Outer_Full



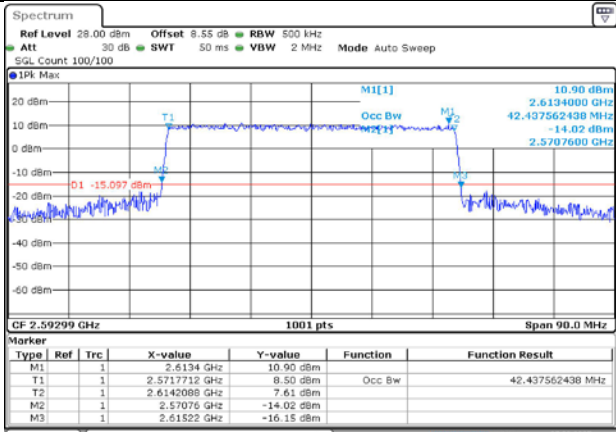
Date: 7.FEB.2025 14:12:44

MCH / DFT-QPSK / Outer_Full



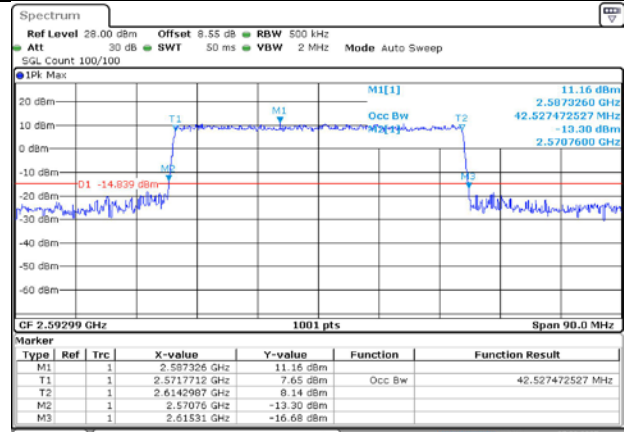
Date: 7.FEB.2025 14:12:52

MCH / CP-QPSK / Outer_Full



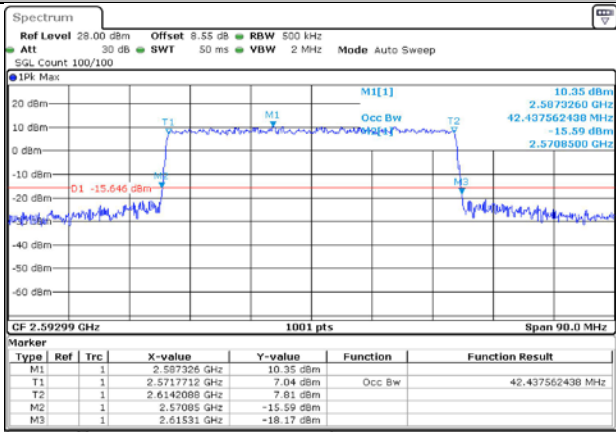
Date: 7.FEB.2025 14:13:02

MCH / CP-16QAM / Outer_Full



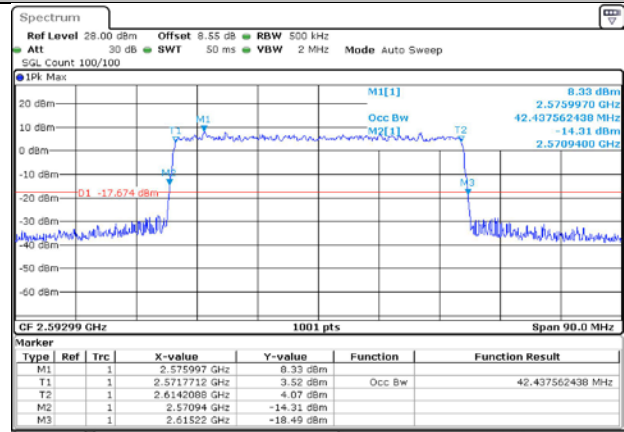
Date: 7.FEB.2025 14:13:10

MCH / CP-64QAM / Outer_Full



Date: 7.FEB.2025 14:13:19

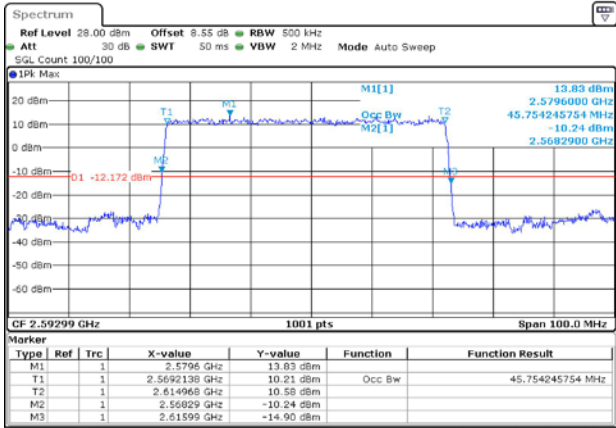
MCH / CP-256QAM / Outer_Full



Date: 7.FEB.2025 14:13:29

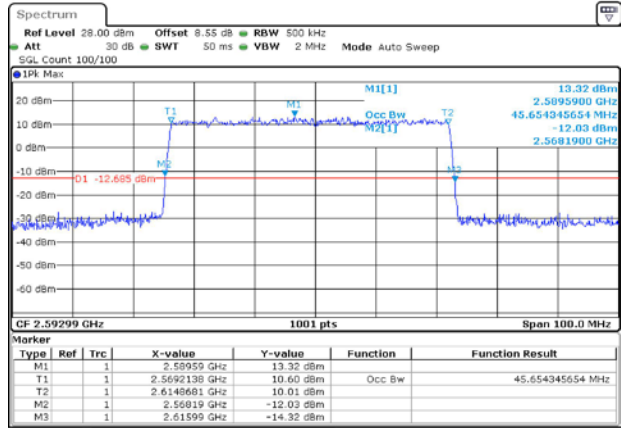
n41A / 30KHz / 50MHz

MCH / DFT-Pi2BPSK / Outer_Full



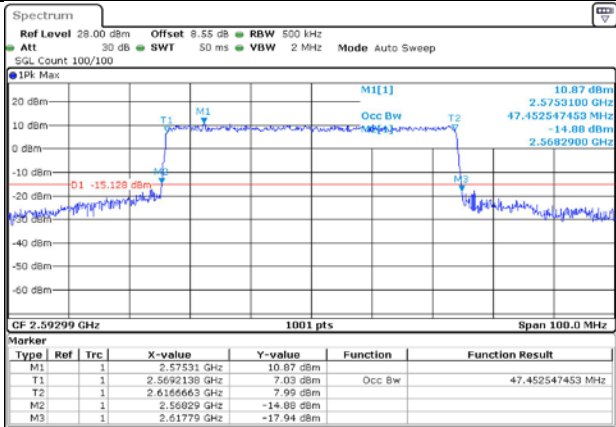
Date: 7.FEB.2025 14:13:42

MCH / DFT-QPSK / Outer_Full



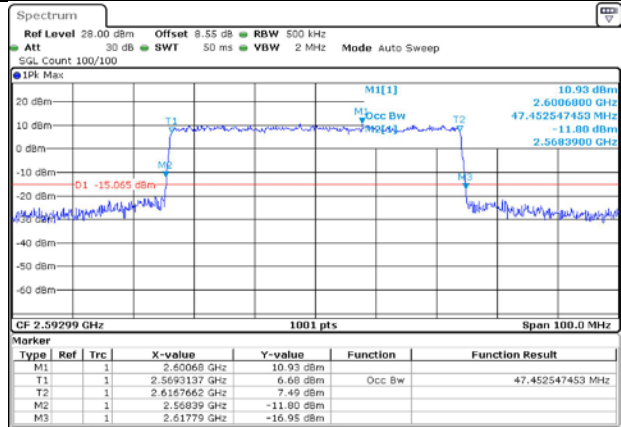
Date: 7.FEB.2025 14:13:51

MCH / CP-QPSK / Outer_Full



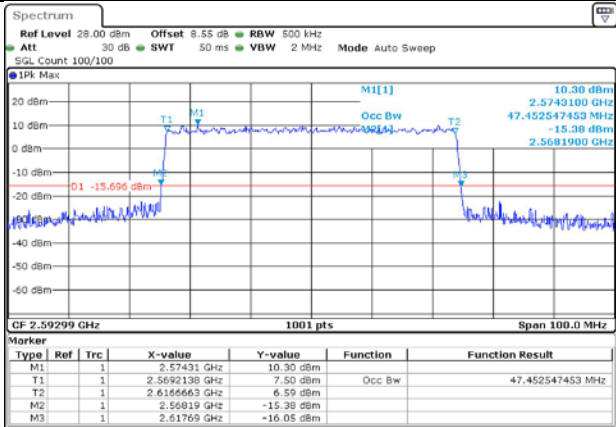
Date: 7.FEB.2025 14:14:00

MCH / CP-16QAM / Outer_Full



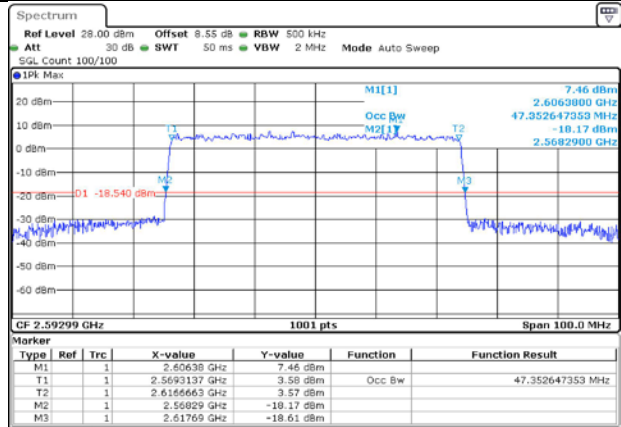
Date: 7.FEB.2025 14:14:09

MCH / CP-64QAM / Outer_Full



Date: 7.FEB.2025 14:14:18

MCH / CP-256QAM / Outer_Full



Date: 7.FEB.2025 14:14:28

