

**Appendix
for
n38A
(2570-2620)**

Catalogue

1.	EFFECTIVE ISOTROPIC RADIATED POWER	3
1.1.	TEST RESULTS @ ANT2 (ANTENNA GAIN=-3.00DBI).....	3
2.	PEAK-TO-AVERAGE RATIO	5
2.1.	TEST RESULTS	5
2.2.	TEST PLOTS FOR SCS=30KHZ.....	5
3.	MODULATION CHARACTERISTICS	6
3.1.	TEST PLOTS FOR SCS=30KHZ.....	6
4.	99% OCCUPIED BANDWIDTH & 26DB EMISSION BANDWIDTH	8
4.1.	TEST RESULTS	8
4.2.	TEST PLOTS FOR SCS=30KHZ.....	9
5.	CONDUCTED BAND EDGES	15
5.1.	TEST PLOTS FOR SCS=30KHZ.....	15
6.	CONDUCTED SPURIOUS EMISSION	23
6.1.	TEST PLOTS FOR SCS=30KHZ.....	23
7.	FREQUENCY STABILITY	29
7.1.	TEST RESULTS	29

1. Effective Isotropic Radiated Power

1.1. Test Results @ Ant2 (Antenna Gain=-3.00dBi)

SCS	Bandwidth	Channel	Modulation	Conducted Result (dBm)			Max EIRP (dBm)	Limit (dBm)	Verdict
				Inner_1RB_Left	Inner_1RB_Right	Inner_Full			
30KHz	10MHz	LCH	DFT-Pi2BPSK	23.17	22.69	23.65	20.65	33.00	Pass
30KHz	10MHz	LCH	DFT-QPSK	23.71	22.68	23.57	20.71	33.00	Pass
30KHz	10MHz	LCH	DFT-16QAM	22.56	22.51	22.69	19.69	33.00	Pass
30KHz	10MHz	LCH	DFT-64QAM	21.16	21.01	21.31	18.31	33.00	Pass
30KHz	10MHz	LCH	DFT-256QAM	19.20	19.13	19.32	16.32	33.00	Pass
30KHz	10MHz	LCH	CP-QPSK	22.25	22.14	22.14	19.25	33.00	Pass
30KHz	10MHz	MCH	DFT-Pi2BPSK	22.86	22.78	23.65	20.65	33.00	Pass
30KHz	10MHz	MCH	DFT-QPSK	22.77	22.79	23.61	20.61	33.00	Pass
30KHz	10MHz	MCH	DFT-16QAM	22.69	22.71	22.79	19.79	33.00	Pass
30KHz	10MHz	MCH	DFT-64QAM	21.21	21.29	21.39	18.39	33.00	Pass
30KHz	10MHz	MCH	DFT-256QAM	19.27	19.25	19.44	16.44	33.00	Pass
30KHz	10MHz	MCH	CP-QPSK	22.28	22.27	22.21	19.28	33.00	Pass
30KHz	10MHz	HCH	DFT-Pi2BPSK	23.63	23.63	23.57	20.63	33.00	Pass
30KHz	10MHz	HCH	DFT-QPSK	23.66	23.65	23.60	20.66	33.00	Pass
30KHz	10MHz	HCH	DFT-16QAM	22.54	22.60	22.70	19.70	33.00	Pass
30KHz	10MHz	HCH	DFT-64QAM	20.99	21.03	21.30	18.30	33.00	Pass
30KHz	10MHz	HCH	DFT-256QAM	19.10	19.11	19.36	16.36	33.00	Pass
30KHz	10MHz	HCH	CP-QPSK	22.04	22.02	22.17	19.17	33.00	Pass
30KHz	15MHz	LCH	DFT-Pi2BPSK	23.33	23.32	22.97	20.33	33.00	Pass
30KHz	15MHz	LCH	DFT-QPSK	23.34	23.33	23.76	20.76	33.00	Pass
30KHz	15MHz	LCH	DFT-16QAM	22.59	22.53	22.74	19.74	33.00	Pass
30KHz	15MHz	LCH	DFT-64QAM	21.08	21.23	21.36	18.36	33.00	Pass
30KHz	15MHz	LCH	DFT-256QAM	19.25	19.26	19.27	16.27	33.00	Pass
30KHz	15MHz	LCH	CP-QPSK	22.05	22.10	22.30	19.30	33.00	Pass
30KHz	15MHz	MCH	DFT-Pi2BPSK	23.43	23.37	23.01	20.43	33.00	Pass
30KHz	15MHz	MCH	DFT-QPSK	23.43	23.39	23.00	20.43	33.00	Pass
30KHz	15MHz	MCH	DFT-16QAM	22.64	22.66	22.89	19.89	33.00	Pass
30KHz	15MHz	MCH	DFT-64QAM	21.16	21.18	21.41	18.41	33.00	Pass
30KHz	15MHz	MCH	DFT-256QAM	19.30	19.23	19.34	16.34	33.00	Pass
30KHz	15MHz	MCH	CP-QPSK	22.23	21.99	22.41	19.41	33.00	Pass
30KHz	15MHz	HCH	DFT-Pi2BPSK	23.37	23.23	23.68	20.68	33.00	Pass
30KHz	15MHz	HCH	DFT-QPSK	23.34	23.21	23.33	20.34	33.00	Pass
30KHz	15MHz	HCH	DFT-16QAM	22.58	22.47	22.68	19.68	33.00	Pass
30KHz	15MHz	HCH	DFT-64QAM	21.02	20.99	21.29	18.29	33.00	Pass
30KHz	15MHz	HCH	DFT-256QAM	19.20	19.14	19.20	16.20	33.00	Pass
30KHz	15MHz	HCH	CP-QPSK	22.09	22.03	22.23	19.23	33.00	Pass
30KHz	20MHz	LCH	DFT-Pi2BPSK	23.19	23.29	23.21	20.29	33.00	Pass
30KHz	20MHz	LCH	DFT-QPSK	23.13	23.23	23.28	20.28	33.00	Pass
30KHz	20MHz	LCH	DFT-16QAM	22.68	22.58	22.77	19.77	33.00	Pass
30KHz	20MHz	LCH	DFT-64QAM	21.31	21.31	21.28	18.31	33.00	Pass
30KHz	20MHz	LCH	DFT-256QAM	19.29	19.32	19.30	16.32	33.00	Pass
30KHz	20MHz	LCH	CP-QPSK	22.22	22.23	22.29	19.29	33.00	Pass
30KHz	20MHz	MCH	DFT-Pi2BPSK	23.21	23.28	23.34	20.34	33.00	Pass
30KHz	20MHz	MCH	DFT-QPSK	23.24	23.22	23.24	20.24	33.00	Pass
30KHz	20MHz	MCH	DFT-16QAM	22.64	22.66	22.94	19.94	33.00	Pass
30KHz	20MHz	MCH	DFT-64QAM	21.27	21.22	21.41	18.41	33.00	Pass
30KHz	20MHz	MCH	DFT-256QAM	19.29	19.22	19.36	16.36	33.00	Pass
30KHz	20MHz	MCH	CP-QPSK	22.26	22.17	22.35	19.35	33.00	Pass
30KHz	20MHz	HCH	DFT-Pi2BPSK	23.22	23.13	23.14	20.22	33.00	Pass
30KHz	20MHz	HCH	DFT-QPSK	23.25	23.12	23.23	20.25	33.00	Pass
30KHz	20MHz	HCH	DFT-16QAM	22.66	22.51	22.76	19.76	33.00	Pass
30KHz	20MHz	HCH	DFT-64QAM	21.13	21.18	21.24	18.24	33.00	Pass
30KHz	20MHz	HCH	DFT-256QAM	19.20	19.18	19.26	16.26	33.00	Pass
30KHz	20MHz	HCH	CP-QPSK	22.25	22.18	22.25	19.25	33.00	Pass
30KHz	25MHz	LCH	DFT-Pi2BPSK	22.87	23.05	23.05	20.05	33.00	Pass
30KHz	25MHz	LCH	DFT-QPSK	22.85	22.97	23.16	20.16	33.00	Pass
30KHz	25MHz	LCH	DFT-16QAM	22.57	22.61	22.83	19.83	33.00	Pass
30KHz	25MHz	LCH	DFT-64QAM	21.16	21.26	21.33	18.33	33.00	Pass
30KHz	25MHz	LCH	DFT-256QAM	19.28	19.32	19.32	16.32	33.00	Pass

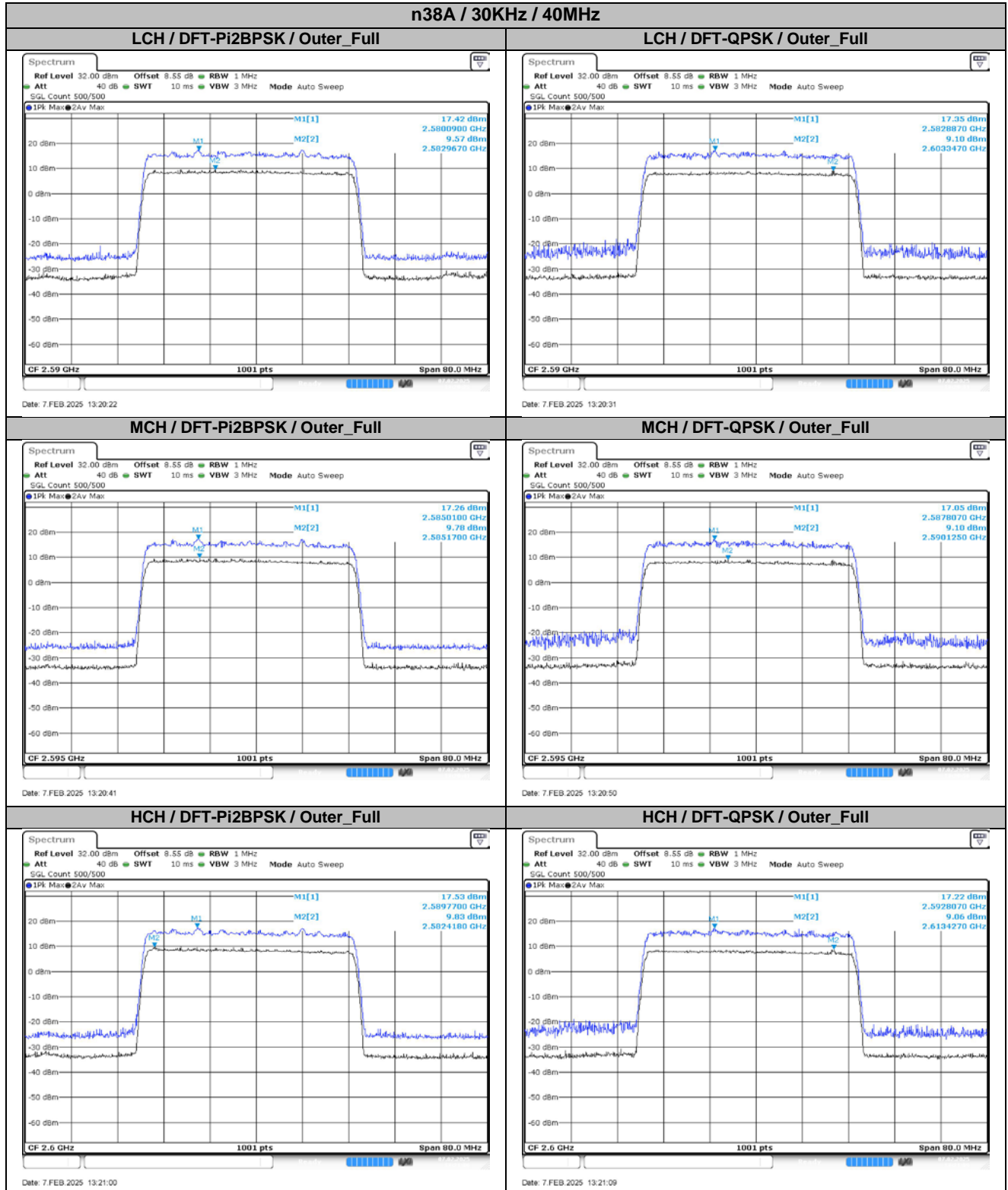
30KHz	25MHz	LCH	CP-QPSK	22.25	22.30	22.35	19.35	33.00	Pass
30KHz	25MHz	MCH	DFT-Pi2BPSK	22.94	23.04	23.09	20.09	33.00	Pass
30KHz	25MHz	MCH	DFT-QPSK	22.86	22.91	23.15	20.15	33.00	Pass
30KHz	25MHz	MCH	DFT-16QAM	22.59	22.52	22.82	19.82	33.00	Pass
30KHz	25MHz	MCH	DFT-64QAM	21.21	21.03	21.39	18.39	33.00	Pass
30KHz	25MHz	MCH	DFT-256QAM	19.23	19.15	19.36	16.36	33.00	Pass
30KHz	25MHz	MCH	CP-QPSK	22.25	22.16	22.36	19.36	33.00	Pass
30KHz	25MHz	HCH	DFT-Pi2BPSK	22.96	22.96	23.03	20.03	33.00	Pass
30KHz	25MHz	HCH	DFT-QPSK	22.94	22.92	23.00	20.00	33.00	Pass
30KHz	25MHz	HCH	DFT-16QAM	22.50	22.57	22.72	19.72	33.00	Pass
30KHz	25MHz	HCH	DFT-64QAM	21.14	20.99	21.32	18.32	33.00	Pass
30KHz	25MHz	HCH	DFT-256QAM	19.23	19.14	19.25	16.25	33.00	Pass
30KHz	25MHz	HCH	CP-QPSK	22.12	22.03	22.23	19.23	33.00	Pass
30KHz	30MHz	LCH	DFT-Pi2BPSK	23.70	23.24	23.52	20.70	33.00	Pass
30KHz	30MHz	LCH	DFT-QPSK	23.69	22.79	23.40	20.69	33.00	Pass
30KHz	30MHz	LCH	DFT-16QAM	22.54	22.69	22.93	19.93	33.00	Pass
30KHz	30MHz	LCH	DFT-64QAM	21.24	21.34	21.33	18.34	33.00	Pass
30KHz	30MHz	LCH	DFT-256QAM	19.28	19.33	19.28	16.33	33.00	Pass
30KHz	30MHz	LCH	CP-QPSK	22.30	22.39	22.28	19.39	33.00	Pass
30KHz	30MHz	MCH	DFT-Pi2BPSK	23.73	23.27	23.34	20.73	33.00	Pass
30KHz	30MHz	MCH	DFT-QPSK	23.72	22.73	23.41	20.72	33.00	Pass
30KHz	30MHz	MCH	DFT-16QAM	22.58	22.50	22.89	19.89	33.00	Pass
30KHz	30MHz	MCH	DFT-64QAM	21.02	21.14	21.37	18.37	33.00	Pass
30KHz	30MHz	MCH	DFT-256QAM	19.20	19.18	19.34	16.34	33.00	Pass
30KHz	30MHz	MCH	CP-QPSK	22.20	22.25	22.30	19.30	33.00	Pass
30KHz	30MHz	HCH	DFT-Pi2BPSK	23.57	23.52	23.59	20.59	33.00	Pass
30KHz	30MHz	HCH	DFT-QPSK	23.53	23.53	23.57	20.57	33.00	Pass
30KHz	30MHz	HCH	DFT-16QAM	22.39	22.46	22.59	19.59	33.00	Pass
30KHz	30MHz	HCH	DFT-64QAM	20.96	20.93	21.01	18.01	33.00	Pass
30KHz	30MHz	HCH	DFT-256QAM	18.98	18.94	19.02	16.02	33.00	Pass
30KHz	30MHz	HCH	CP-QPSK	21.77	21.84	22.02	19.02	33.00	Pass
30KHz	40MHz	LCH	DFT-Pi2BPSK	23.46	23.63	23.64	20.64	33.00	Pass
30KHz	40MHz	LCH	DFT-QPSK	23.43	23.59	23.52	20.59	33.00	Pass
30KHz	40MHz	LCH	DFT-16QAM	22.22	22.37	22.57	19.57	33.00	Pass
30KHz	40MHz	LCH	DFT-64QAM	20.95	21.01	21.10	18.10	33.00	Pass
30KHz	40MHz	LCH	DFT-256QAM	18.97	19.02	19.06	16.06	33.00	Pass
30KHz	40MHz	LCH	CP-QPSK	21.96	22.06	21.99	19.06	33.00	Pass
30KHz	40MHz	MCH	DFT-Pi2BPSK	23.49	23.58	23.59	20.59	33.00	Pass
30KHz	40MHz	MCH	DFT-QPSK	23.48	23.57	23.58	20.58	33.00	Pass
30KHz	40MHz	MCH	DFT-16QAM	22.34	22.41	22.61	19.61	33.00	Pass
30KHz	40MHz	MCH	DFT-64QAM	20.93	20.96	21.10	18.10	33.00	Pass
30KHz	40MHz	MCH	DFT-256QAM	18.95	19.00	19.07	16.07	33.00	Pass
30KHz	40MHz	MCH	CP-QPSK	21.95	22.08	21.98	19.08	33.00	Pass
30KHz	40MHz	HCH	DFT-Pi2BPSK	23.42	23.58	23.59	20.59	33.00	Pass
30KHz	40MHz	HCH	DFT-QPSK	23.38	23.54	23.56	20.56	33.00	Pass
30KHz	40MHz	HCH	DFT-16QAM	22.30	22.50	22.52	19.52	33.00	Pass
30KHz	40MHz	HCH	DFT-64QAM	20.82	20.96	21.03	18.03	33.00	Pass
30KHz	40MHz	HCH	DFT-256QAM	18.86	18.98	19.01	16.01	33.00	Pass
30KHz	40MHz	HCH	CP-QPSK	21.74	21.94	22.05	19.05	33.00	Pass

2. Peak-to-Average Ratio

2.1. Test Results

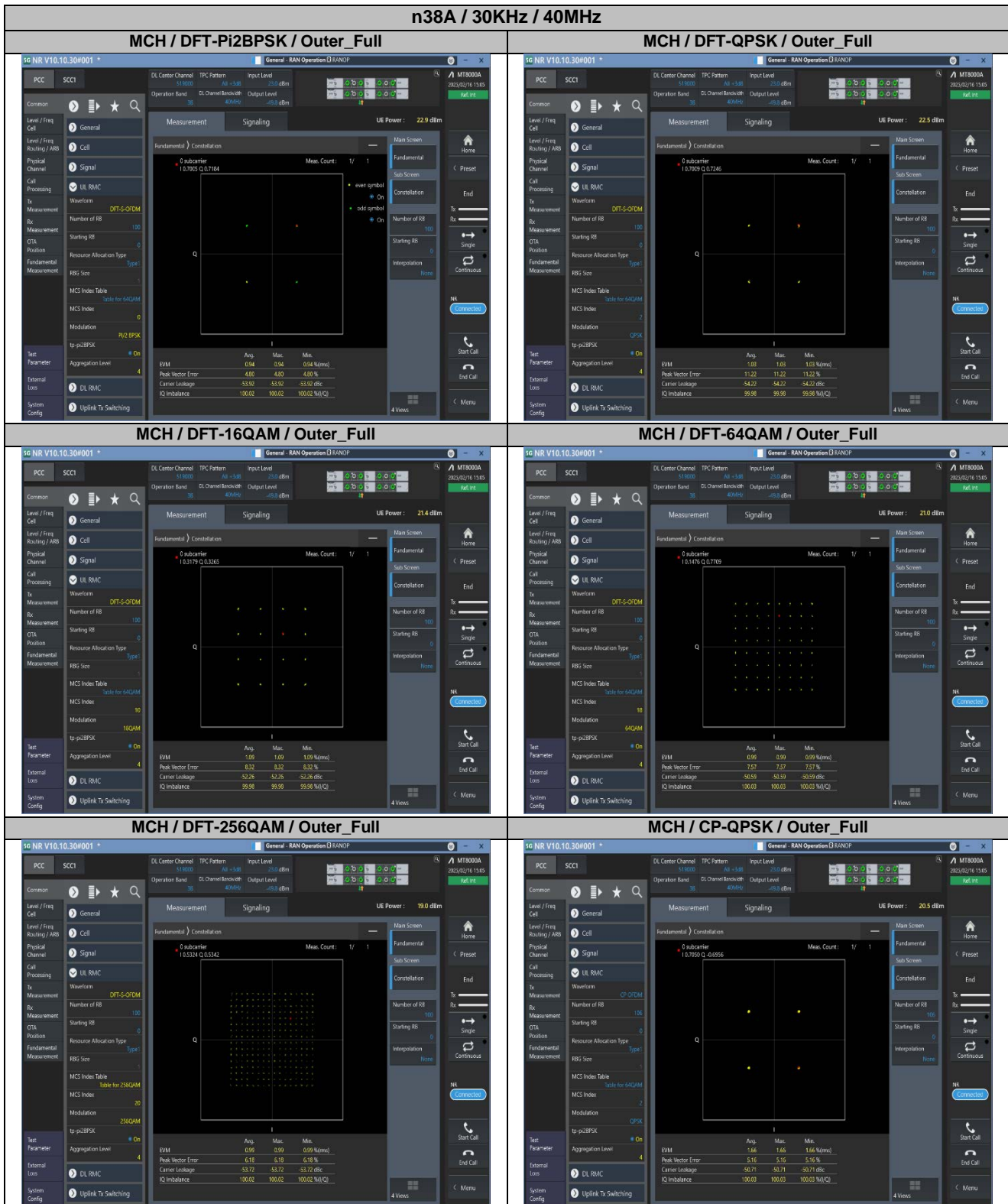
SCS	Bandwidth	Channel	RB	Result (dB)		Limit (dB)	Verdict
				DFT-Pi2BPSK	DFT-QPSK		
30KHz	40MHz	LCH	Outer_Full	7.85	8.25	13.00	Pass
30KHz	40MHz	MCH	Outer_Full	7.48	7.94	13.00	Pass
30KHz	40MHz	HCH	Outer_Full	7.70	8.15	13.00	Pass

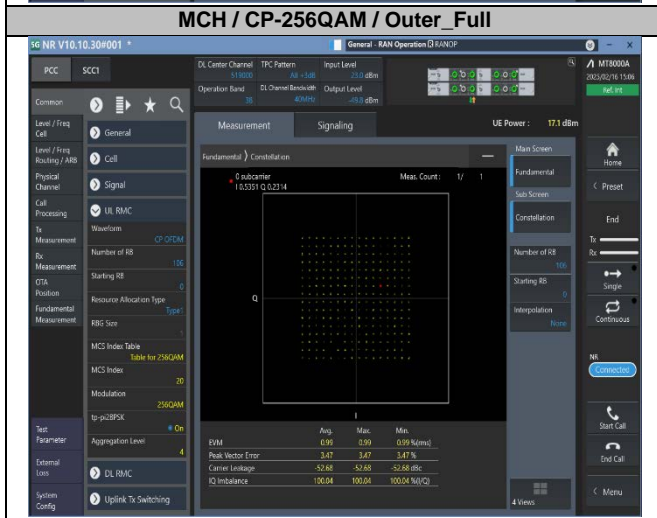
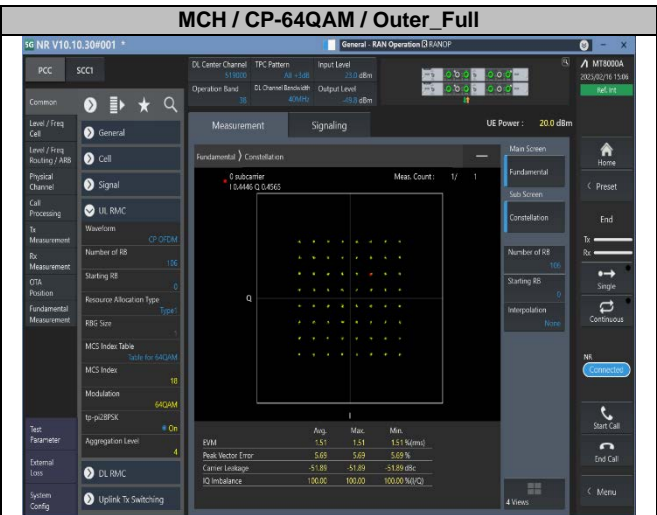
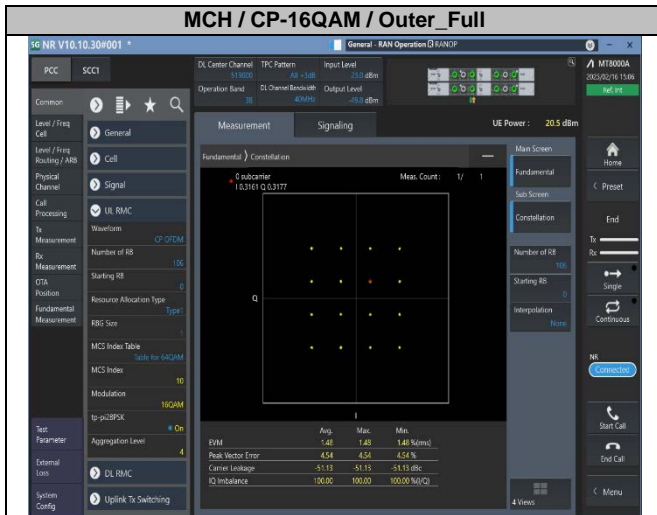
2.2. Test Plots for SCS=30KHz



3. Modulation Characteristics

3.1. Test Plots for SCS=30KHz





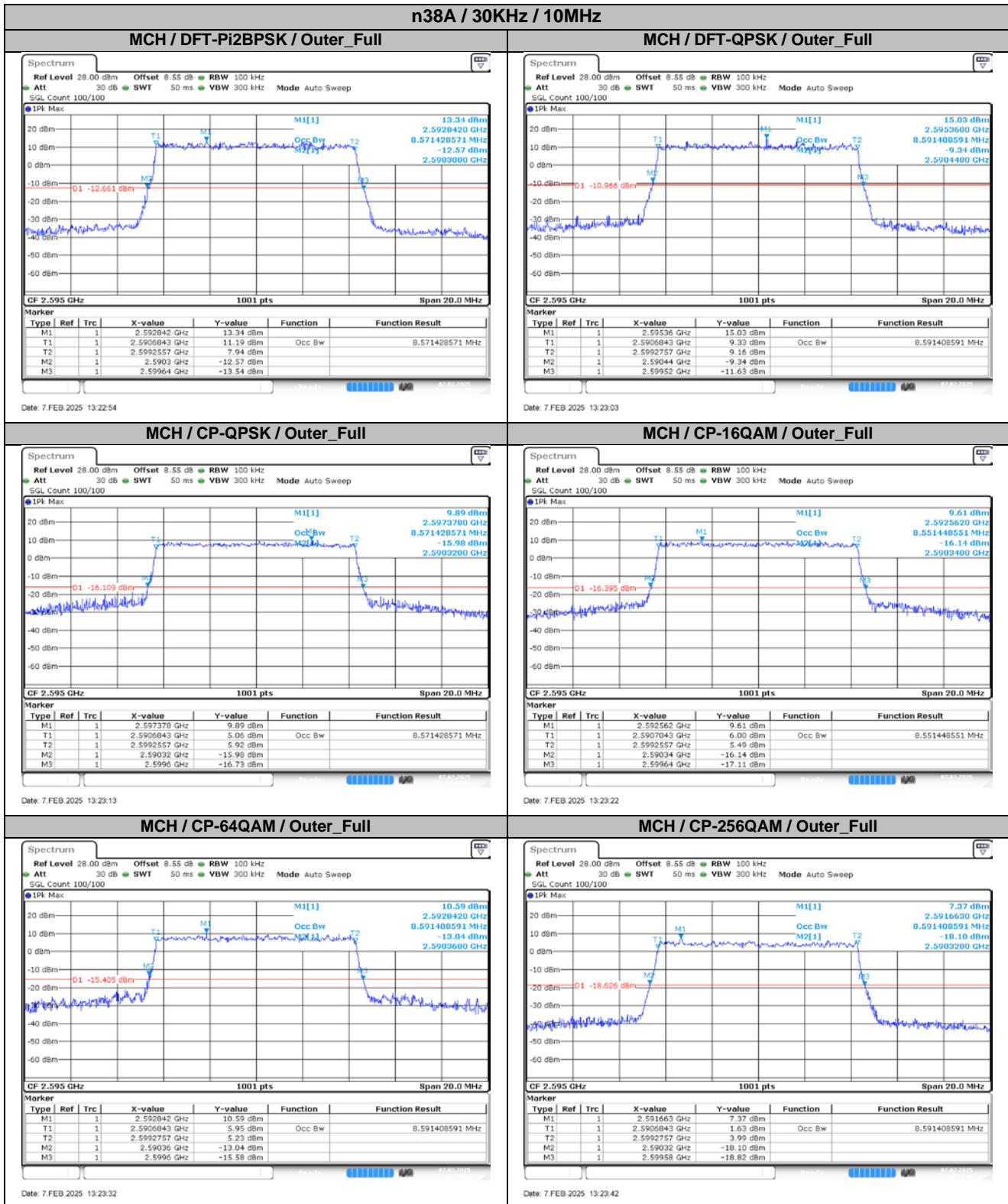
Intentionally Blank

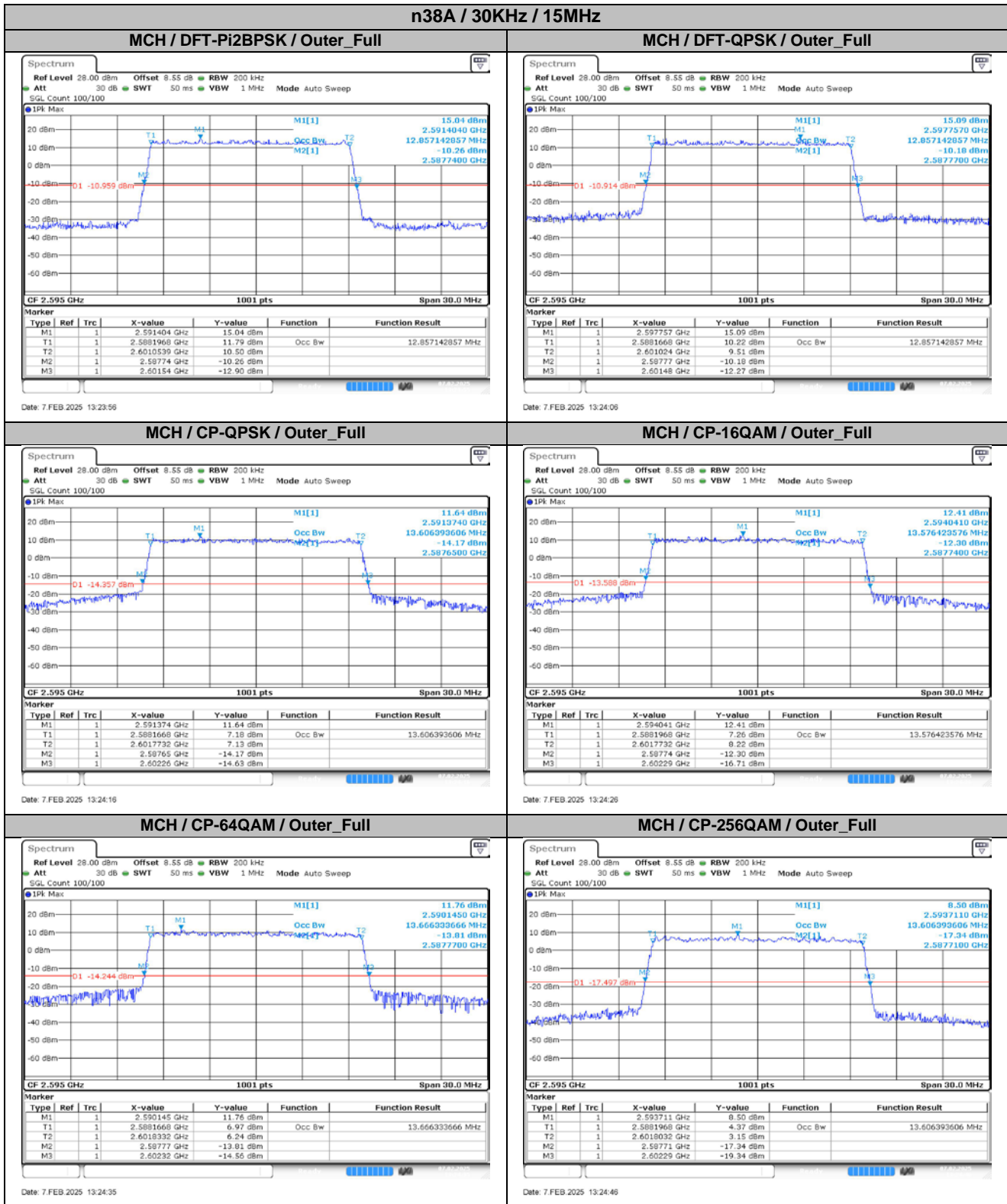
4. 99% Occupied Bandwidth & 26dB Emission Bandwidth

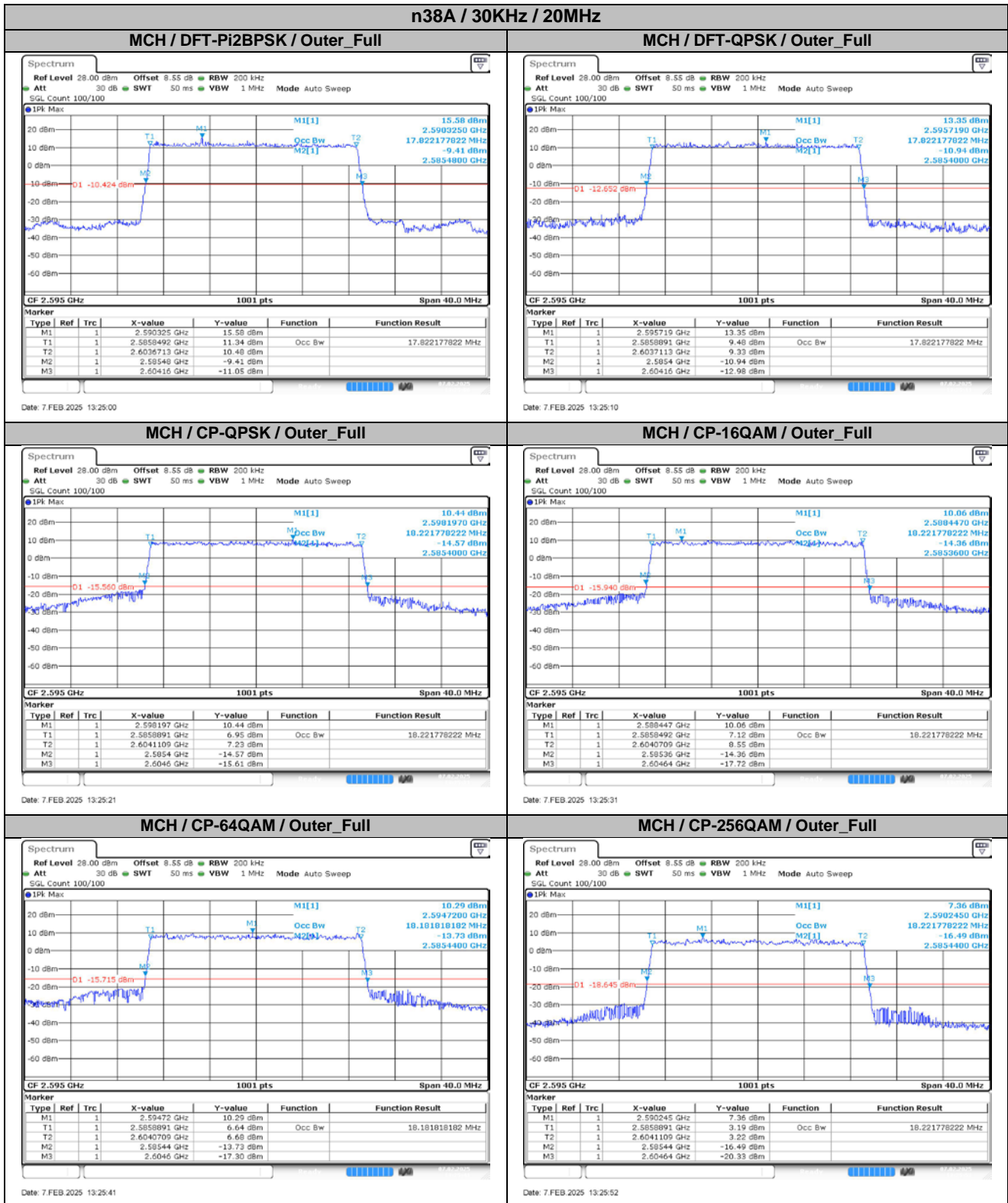
4.1. Test Results

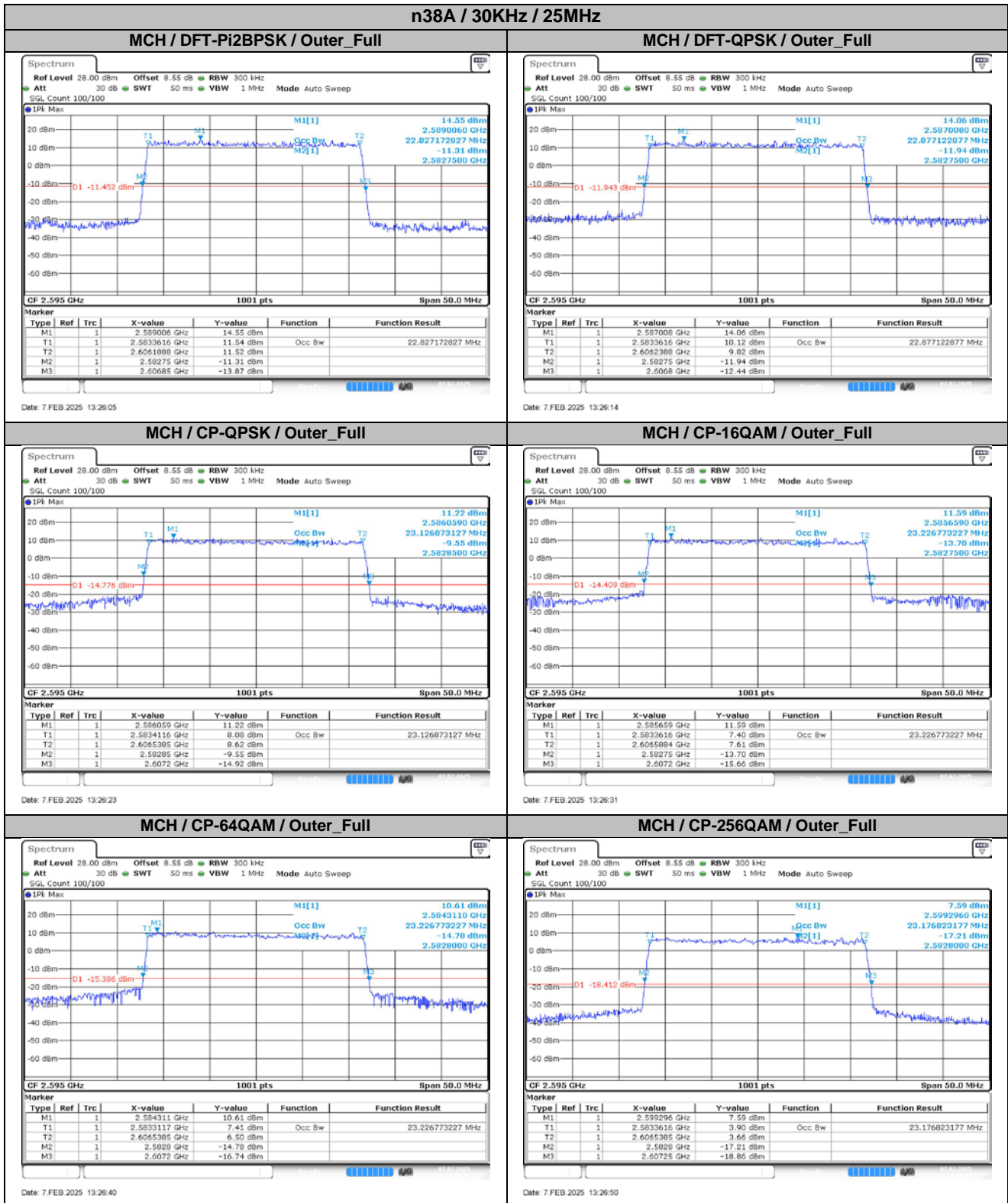
SCS	Bandwidth	Modulation	RB	99% Occupied Bandwidth (MHz)	26dB Emission Bandwidth (MHz)	Verdict
30KHz	10MHz	DFT-Pi2BPSK	Outer_Full	8.57	9.34	Pass
30KHz	10MHz	DFT-QPSK	Outer_Full	8.59	9.08	Pass
30KHz	10MHz	CP-QPSK	Outer_Full	8.57	9.28	Pass
30KHz	10MHz	CP-16QAM	Outer_Full	8.55	9.30	Pass
30KHz	10MHz	CP-64QAM	Outer_Full	8.59	9.24	Pass
30KHz	10MHz	CP-256QAM	Outer_Full	8.59	9.26	Pass
30KHz	15MHz	DFT-Pi2BPSK	Outer_Full	12.86	13.80	Pass
30KHz	15MHz	DFT-QPSK	Outer_Full	12.86	13.71	Pass
30KHz	15MHz	CP-QPSK	Outer_Full	13.61	14.61	Pass
30KHz	15MHz	CP-16QAM	Outer_Full	13.58	14.55	Pass
30KHz	15MHz	CP-64QAM	Outer_Full	13.67	14.55	Pass
30KHz	15MHz	CP-256QAM	Outer_Full	13.61	14.58	Pass
30KHz	20MHz	DFT-Pi2BPSK	Outer_Full	17.82	18.68	Pass
30KHz	20MHz	DFT-QPSK	Outer_Full	17.82	18.76	Pass
30KHz	20MHz	CP-QPSK	Outer_Full	18.22	19.20	Pass
30KHz	20MHz	CP-16QAM	Outer_Full	18.22	19.28	Pass
30KHz	20MHz	CP-64QAM	Outer_Full	18.18	19.16	Pass
30KHz	20MHz	CP-256QAM	Outer_Full	18.22	19.20	Pass
30KHz	25MHz	DFT-Pi2BPSK	Outer_Full	22.83	24.10	Pass
30KHz	25MHz	DFT-QPSK	Outer_Full	22.88	24.05	Pass
30KHz	25MHz	CP-QPSK	Outer_Full	23.13	24.35	Pass
30KHz	25MHz	CP-16QAM	Outer_Full	23.23	24.45	Pass
30KHz	25MHz	CP-64QAM	Outer_Full	23.23	24.40	Pass
30KHz	25MHz	CP-256QAM	Outer_Full	23.18	24.45	Pass
30KHz	30MHz	DFT-Pi2BPSK	Outer_Full	26.79	28.26	Pass
30KHz	30MHz	DFT-QPSK	Outer_Full	26.79	28.26	Pass
30KHz	30MHz	CP-QPSK	Outer_Full	27.75	29.46	Pass
30KHz	30MHz	CP-16QAM	Outer_Full	27.81	29.28	Pass
30KHz	30MHz	CP-64QAM	Outer_Full	27.81	29.22	Pass
30KHz	30MHz	CP-256QAM	Outer_Full	27.87	29.34	Pass
30KHz	40MHz	DFT-Pi2BPSK	Outer_Full	35.80	37.60	Pass
30KHz	40MHz	DFT-QPSK	Outer_Full	35.72	37.60	Pass
30KHz	40MHz	CP-QPSK	Outer_Full	37.80	39.76	Pass
30KHz	40MHz	CP-16QAM	Outer_Full	37.80	39.76	Pass
30KHz	40MHz	CP-64QAM	Outer_Full	37.88	39.76	Pass
30KHz	40MHz	CP-256QAM	Outer_Full	37.80	39.76	Pass

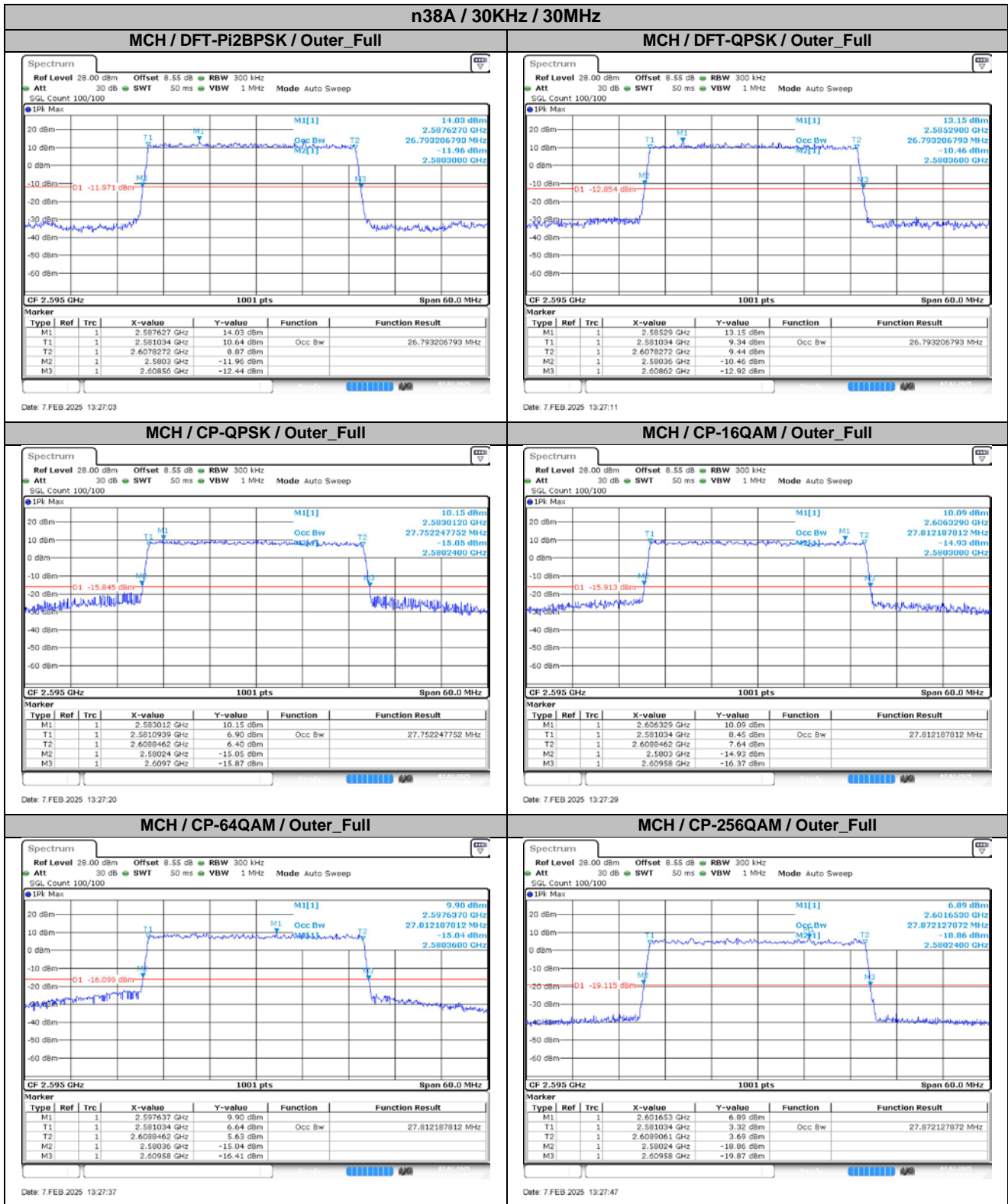
4.2. Test Plots for SCS=30KHz

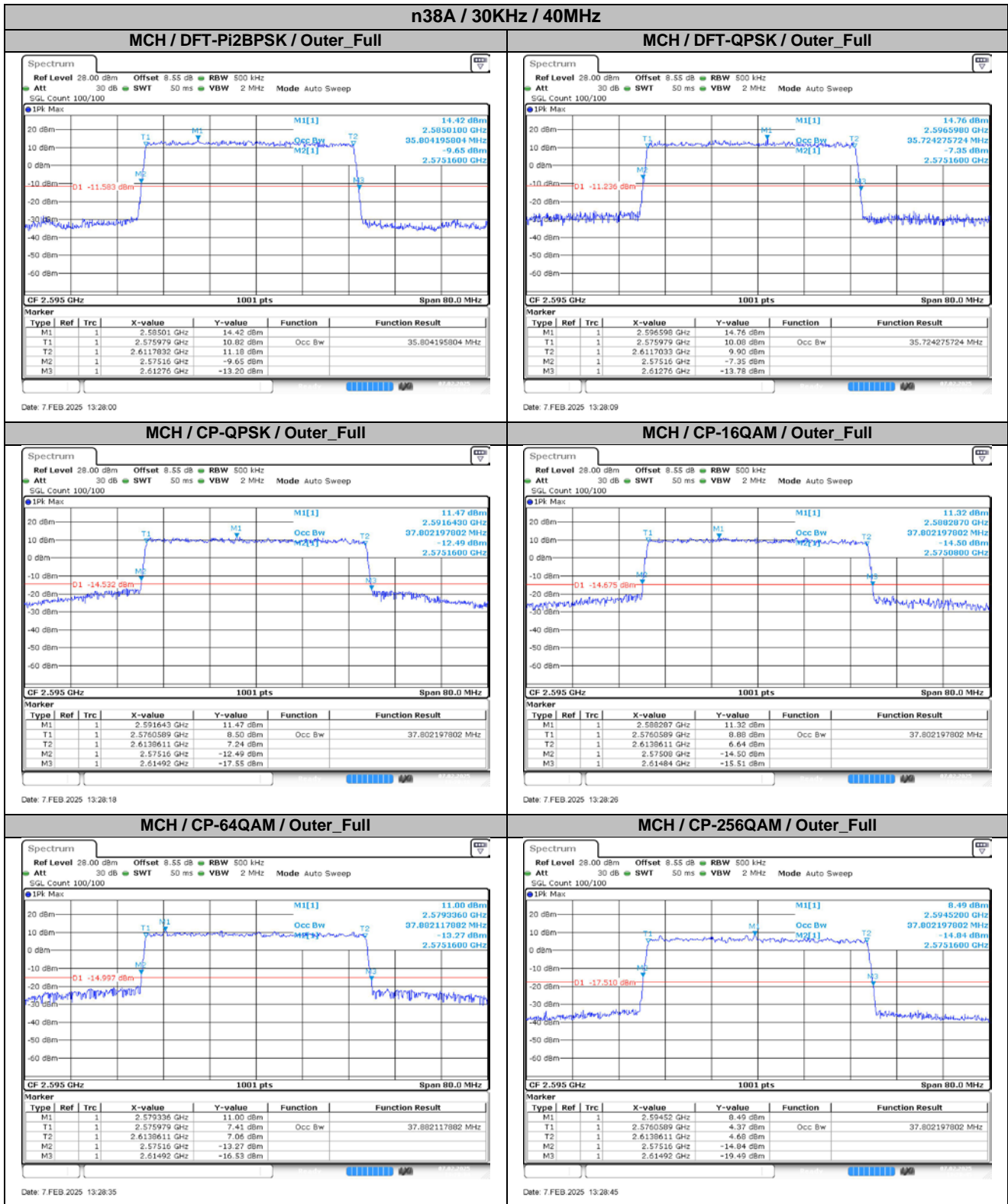












5. Conducted Band Edges

5.1. Test Plots for SCS=30KHz

