

# DASY8 Module WPT Measurement Report

## Device under test

Info:  
V-Coil35085

## Tool info

DASY software version:  
DASY8 Module WPT 2.8.0.5184

## Scan info

Center location:  
x: 59.16 mm, y: -2.62 mm, z: 35.01 mm

Probe model, serial no. and configuration date:  
MAGPy-8H3D+E3Dv2, WP000211, 2025/06/05

Dimensions:  
x: 389.0 mm, y: 521.0 mm, z: 36.7 mm

Software version:  
2.8.8, backend: 2.2.36

Resolution:  
x: 7.33 mm, y: 7.33 mm, z: 7.33 mm

Completed on:  
2025/07/08

## Measurement results

Maximum H-field [RMS]:

MAGNITUDE: 139.63 A/m

x: 116.02 A/m, y: 53.98 A/m, z: 55.86 A/m

Maximum H-field location relative to DUT:

x: 77.00 mm, y: 99.00 mm, z: 8.50 mm

Maximum E-field [RMS]:

MAGNITUDE: 361.56 V/m

x: 4.26 V/m, y: 3.45 V/m, z: 361.52 V/m

Maximum E-field location relative to DUT:

x: 88.00 mm, y: 146.67 mm, z: 0.00 m

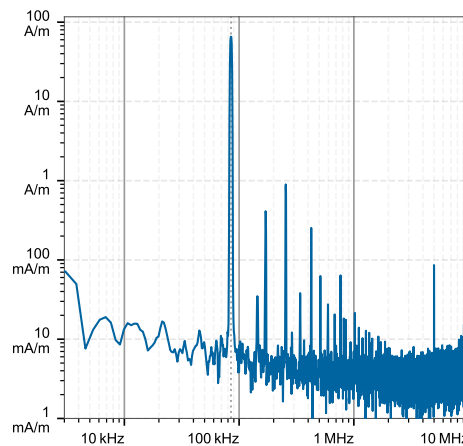
Distance to -20.0 dB boundary:

62.66 mm

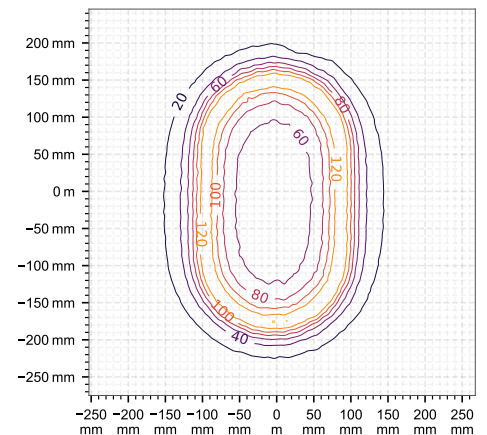
Offset relative to DUT:

x: 0.00 m, y: 0.00 m, z: 1.00 mm

## H-field magnitude [RMS] at center location



## H-field magnitude [RMS] at lowest plane



## Incident fields and induced fields in the homogeneous phantom at the peak frequency

Distance [mm]	Peak incident fields [RMS]		Peak E <sub>ind</sub> [V/m, RMS]			Peak J <sub>ind</sub> [A/m <sup>2</sup> , RMS]	psSAR [mW/kg]		H-field extent
	H <sub>inc</sub> [A/m]	E <sub>inc</sub> [V/m]	Cube avg.	Local	Line avg.	Surface avg.	1g avg.	10g avg.	-20 dB radius [mm]
0.00	221	362	3.52	3.56	3.57	2.48	7.24	5.41	181
2.00	200	328	3.33	3.36	3.37	2.34	6.49	4.92	183

## Compliance evaluation (Field values at the peak frequency)

Distance [mm]	ICNIRP 2010/2020				ICNIRP 1998				IEEE 2019				FCC				HC Code 6			
	RL [RMS]	BR [RMS]	RL [RMS]	BR [RMS]	ERL [RMS]	DRL [RMS]	MPE [RMS]	BR [RMS]	RL [RMS]	BR [RMS]	RL [RMS]	BR [RMS]	RL [RMS]	BR [RMS]	RL [RMS]	BR [RMS]	RL [RMS]	BR [RMS]		
0.00	221	362	26.5	5.41	221	362	2.49	5.41	221	362	13.8	5.41	221	362	N/A	7.24	221	362	37.7	7.24
2.00	200	328	25.1	4.92	200	328	2.35	4.92	200	328	13.1	4.92	200	328	N/A	6.49	200	328	35.8	6.49

Coverage factors:  $w_{E_{ind, cube avg.}} = [7.51, 7.54]$ ,  $w_{E_{ind, local}} = [10.61, 10.66]$ ,  $w_{E_{ind, line avg.}} = [3.86, 3.88]$

## Compliance evaluation (Exposure ratios) (with multi-frequency enhancement, total field evaluation, coverage evaluation)

Distance [mm]	ICNIRP 2010/2020				ICNIRP 1998				IEEE 2019				FCC				HC Code 6									
	NS	TH	NS	TH	NS	TH	NS	TH	NS	TH	NS	TH	NS	TH	NS	TH	NS	TH	NS	TH	NS	TH				
0.00	10.5	N/A	14.7	N/A	2.31	N/A	44.1	14.0	14.7	N/A	1.35	N/A	1.98	N/A	0.78	N/A	2.45	8.51	N/A	N/A	2.45	N/A	14.7	N/A	3.29	N/A
2.00	9.54	N/A	13.3	N/A	2.19	N/A	40.1	12.7	13.9	N/A	1.23	N/A	1.8	N/A	0.73	N/A	2.23	7.72	N/A	N/A	2.23	N/A	13.3	N/A	3.12	N/A

Coverage factors:  $w_{E_{ind, cube avg.}} = [7.51, 7.54]$ ,  $w_{E_{ind, local}} = [10.61, 10.66]$ ,  $w_{E_{ind, line avg.}} = [3.86, 3.88]$