

Date: 2024-12-02

System Check_Head_13MHz**DUT: CLA13 - SN:1023**

Communication System: ; Frequency: 13.000

Medium: HSL. Medium parameters used: $f= 13.000$ MHz; $\sigma= 0.757$ S/m; $\epsilon_r=53.7$

Ambient Temperature: 23.2°C; Liquid Temperature: 22.6°C

DASY6 Configuration:

- Probe: EX3DV4 - SN7706; ConvF(16.1, 16.1, 16.1); Calibrated: 2024-01-24
- Sensor-Surface: 1.4 mm
- Electronics: DAE4 Sn1649; Calibrated: 2024-07-03
- Phantom: ELI V8.0 (20deg probe tilt); Serial: 2135
- Measurement Software: 16.4.0.5005

Area Scan (40.0 mm x 90.0 mm): Measurement Grid: 15.0 mm x 15.0 mm

SAR (1g) = 0.130 W/kg; SAR (10g) = 0.089 W/kg;

Zoom Scan (32.0 mm x 32.0 mm x 30.0 mm): Measurement Grid: 6.0 mm x 6.0 mm x 1.5 mm;

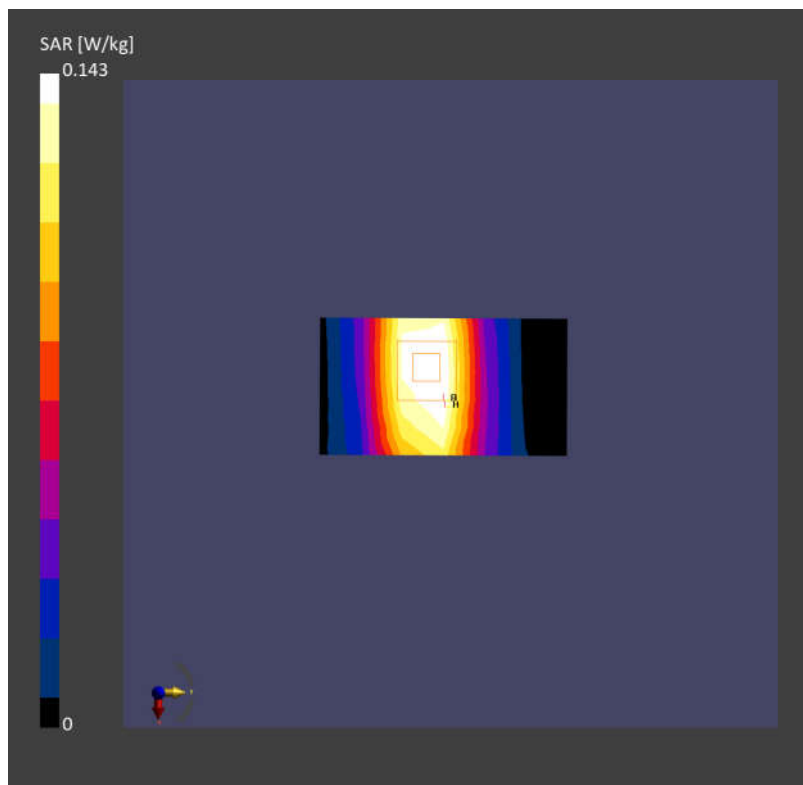
Graded Ratio:1.4

Power Drift = 0.05 dB

SAR (1g) = 0.143 W/kg; SAR (10g) = 0.090 W/kg;

Smallest distance from peaks to all points 3dB below is 15.7 mm

Ratio of SAR at M2 to SAR at M1 = 73.9 %



Test Laboratory: Sporton International Inc. SAR/HAC Testing Lab

Date: 2024/12/10

System Check_Head_13MHz**DUT: CLA-13 - SN:1023**

Communication System: UID 0, CW (0); Frequency: 13 MHz; Duty Cycle: 1:1

Medium: HSL_13 Medium parameters used: $f = 13$ MHz; $\sigma = 0.726$ S/m; $\epsilon_r = 54.258$; $\rho = 1000$ kg/m³

Ambient Temperature : 23.2 °C; Liquid Temperature : 22.6 °C

DASY5 Configuration:

- Probe: EX3DV4 - SN7706; ConvF(16.1, 16.1, 16.1); Calibrated: 2024/1/24
- Sensor-Surface: 1.4mm (Mechanical Surface Detection)
- Electronics: DAE4 Sn1279; Calibrated: 2024/8/20
- Phantom: Twin-SAM V5.0 (30deg probe tilt); Type: QD 000 P40 CD; Serial: 1842
- Measurement SW: DASY52, Version 52.10 (4); SEMCAD X Version 14.6.14 (7501)

Pin=250mW/Area Scan (161x161x1): Interpolated grid: dx=1.500 mm, dy=1.500 mm
 Maximum value of SAR (interpolated) = 0.148 W/kg

Pin=250mW/Zoom Scan (5x5x7)/Cube 0: Measurement grid: dx=8mm, dy=8mm, dz=5mm

Reference Value = 14.01 V/m; Power Drift = 0.02 dB

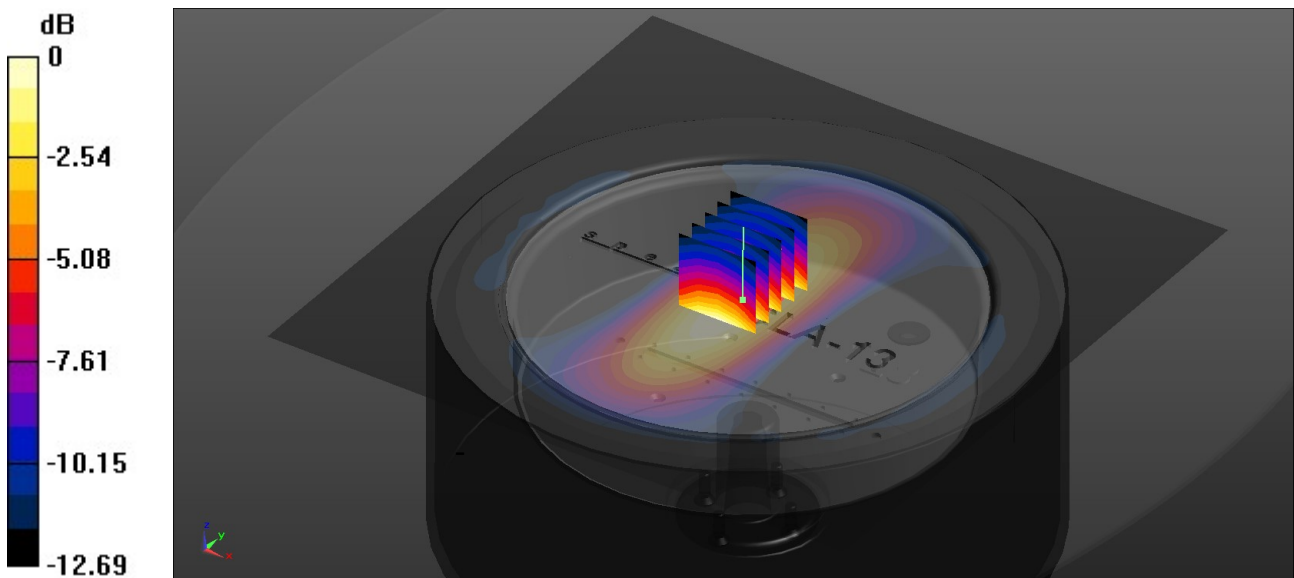
Peak SAR (extrapolated) = 0.186 W/kg

SAR(1 g) = 0.145 W/kg; SAR(10 g) = 0.084 W/kg

Ratio of SAR at M2 to SAR at M1 = 58.7%

Smallest distance from peaks to all points 3 dB below = 8.4 mm

Maximum value of SAR (measured) = 0.146 W/kg



0 dB = 0.146 W/kg = 8.36 dBW/kg