



FCC RF Test Report

APPLICANT : Motorola Mobility LLC
EQUIPMENT : Mobile Cellular Phone
BRAND NAME : Motorola
MODEL NAME : XT2517-1, XT2517-2, XT2517-3, XT2517V
FCC ID : IHDT56AT8
STANDARD : 47 CFR Part 27(M)
CLASSIFICATION : PCS Licensed Transmitter Held to Ear (PCE)
TEST DATE(S) : Nov. 10, 2024 ~ Dec. 07, 2024

We, Sporton International Inc. (Kunshan), would like to declare that the tested sample has been evaluated in accordance with the procedures given in ANSI C63.26-2015 and shown compliance with the applicable technical standards.

This report contains data that were produced under subcontract by Sporton International Inc. (Shenzhen).

The test results in this report apply exclusively to the tested model / sample. Without written approval of Sporton International Inc. (Kunshan), the test report shall not be reproduced except in full.

Jason Jia

Approved by: Jason Jia



Sporton International Inc. (Kunshan)

**No. 1098, Pengxi North Road, Kunshan Economic Development Zone Jiangsu Province 215300
People's Republic of China**



TABLE OF CONTENTS

REVISION HISTORY 3
SUMMARY OF TEST RESULT 4
1 GENERAL DESCRIPTION 5
1.1 Applicant 5
1.2 Manufacturer 5
1.3 Product Feature of Equipment Under Test 5
1.4 Product Specification of Equipment Under Test 6
1.5 Modification of EUT 7
1.6 Maximum EIRP Power and Emission Designator 7
1.7 Testing Location 8
1.8 Test Software 9
1.9 Applicable Standards 9
1.10 Specification of Accessory 10
2 TEST CONFIGURATION OF EQUIPMENT UNDER TEST 11
2.1 Test Mode 11
2.2 Connection Diagram of Test System 12
2.3 Support Unit used in test configuration and system 13
2.4 Measurement Results Explanation Example 13
2.5 Frequency List of Low/Middle/High Channels 13
3 CONDUCTED TEST ITEMS 17
3.1 Measuring Instruments 17
3.2 Test Setup 17
3.3 Test Result of Conducted Test 17
3.4 Conducted Output Power and EIRP 18
3.5 Peak-to-Average Ratio 20
3.6 Occupied Bandwidth 21
3.7 Conducted Band Edge 22
3.8 Conducted Spurious Emission 23
3.9 Frequency Stability 24
4 RADIATED TEST ITEMS 25
4.1 Measuring Instruments 25
4.2 Test Setup 25
4.3 Test Result of Radiated Test 26
4.4 Radiated Spurious Emission 27
5 LIST OF MEASURING EQUIPMENT 28
6 MEASUREMENT UNCERTAINTY 29
APPENDIX A. TEST RESULTS OF CONDUCTED TEST
APPENDIX B. TEST RESULTS OF RADIATED TEST
APPENDIX C. TEST SETUP PHOTOGRAPHS



SUMMARY OF TEST RESULT

Report Section	FCC Rule	Description	Limit	Result	Remark
3.4	§2.1046	Conducted Output Power	-	Report Only	-
	§27.50(h)(2)	Equivalent Isotropic Radiated Power (Band 7) (Band 38) (Band 41)	EIRP < 2Watt	PASS	-
3.5	N/A	Peak-to-Average Ratio	<13 dB	PASS	-
3.6	§2.1049	Occupied Bandwidth	-	Report Only	-
3.7	§27.53(m)(4)	Conducted Band Edge Measurement (Band 7) (Band 38) (Band 41)	§27.53(m)(4)	PASS	-
3.8	§2.1051 §27.53(m)(4)	Conducted Spurious Emission (Band 7) (Band 38) (Band 41)	< 55+10log ₁₀ (P[Watts])	PASS	-
3.9	§2.1055 §27.54	Frequency Stability Temperature & Voltage	Within Authorized Band	PASS	-
4.4	§2.1053 §27.53(m)(4)	Radiated Spurious Emission (Band 7) (Band 38) (Band 41)	< 55+10log ₁₀ (P[Watts])	PASS	Under limit 21.36 dB at 10342.00 MHz

Conformity Assessment Condition:

- The test results (PASS/FAIL) with all measurement uncertainty excluded are presented against the regulation limits or in accordance with the requirements stipulated by the applicant/manufacturer who shall bear all the risks of non-compliance that may potentially occur if measurement uncertainty is taken into account.
- The measurement uncertainty please refer to each test result in the section "Measurement Uncertainty"

Disclaimer:

The product specifications of the EUT presented in the test report that may affect the test assessments are declared by the manufacturer who shall take full responsibility for the authenticity.



1 General Description

1.1 Applicant

Motorola Mobility LLC
222 W,Merchandise Mart Plaza, Chicago IL 60654 USA

1.2 Manufacturer

Motorola Mobility LLC
222 W,Merchandise Mart Plaza, Chicago IL 60654 USA

1.3 Product Feature of Equipment Under Test

Product Feature	
Equipment	Mobile Cellular Phone
Brand Name	Motorola
Model Name	XT2517-1, XT2517-2, XT2517-3, XT2517V
FCC ID	IHDT56AT8
IMEI Code	Conducted: 358926210031872 Radiation: 358926210036111
HW Version	DVT2
SW Version	VVA35.34
EUT Stage	Identical Prototype

Remark: The four model name XT2517-1, XT2517-2, XT2517-3, XT2517V are the same product except model name different for market segment.



1.4 Product Specification of Equipment Under Test

Standards-related Product Specification	
Tx Frequency	LTE Band 7 : 2500 MHz ~ 2570 MHz LTE Band 38 : 2570 MHz ~ 2620 MHz LTE Band 41 : 2496 MHz ~ 2690 MHz
Rx Frequency	LTE Band 7 : 2620 MHz ~ 2690 MHz LTE Band 38 : 2570 MHz ~ 2620 MHz LTE Band 41 : 2496 MHz ~ 2690 MHz
Bandwidth	LTE Band 7 : 5MHz / 10MHz / 15MHz / 20MHz LTE Band 38 : 5MHz / 10MHz / 15MHz / 20MHz LTE Band 41 : 5MHz / 10MHz / 15MHz / 20MHz
Maximum Output Power to Antenna	<ANT1>: LTE Band 7 : 21.66 dBm LTE Band 38 : 22.72 dBm LTE CA_38C : 22.56 dBm LTE Band 41 : 25.82 dBm LTE CA_41C : 25.70 dBm <ANT3>: LTE Band 38 : 16.78 dBm LTE Band 41 : 22.55 dBm LTE CA_41C : 22.02 dBm <ANT6>: LTE Band 38 : 22.83 dBm LTE Band 41 : 24.62 dBm LTE CA_41C : 24.48 dBm <ANT9>: LTE Band 7 : 23.29 dBm LTE Band 38 : 23.32 dBm LTE CA_38C : 23.09 dBm LTE Band 41 : 26.14 dBm LTE CA_41C : 25.95 dBm
Antenna Gain	<ANT1>: LTE Band 7 : -0.2 dBi LTE Band 38 : -0.2 dBi LTE Band 41 : -0.2 dBi <ANT3>: LTE Band 38 : -2.0 dBi LTE Band 41 : -2.0 dBi <ANT6>: LTE Band 38 : -3.5 dBi LTE Band 41 : -3.2 dBi <ANT9>: LTE Band 7 : -0.2 dBi LTE Band 38 : -0.2 dBi LTE Band 41 : -0.2 dBi
Type of Modulation	QPSK / 16QAM / 64QAM / 256QAM

Note :

1. The maximum EIRP is calculated from max output power and max antenna gain, so only the maximum EIRP of Antenna 9 are shown in the report.
2. LTE B41/41C support HPUE mode.



1.5 Modification of EUT

No modifications are made to the EUT during all test items.

1.6 Maximum EIRP Power and Emission Designator

LTE Band 7		QPSK		16QAM/64QAM/256QAM	
BW (MHz)	Frequency Range (MHz)	Maximum EIRP(W)	Emission Designator (99%OBW)	Maximum EIRP(W)	Emission Designator (99%OBW)
5	2502.5 ~ 2567.5	0.1977	4M54G7D	0.2004	4M53W7D
10	2505.0 ~ 2565.0	0.1972	9M07G7D	0.1968	9M01W7D
15	2507.5 ~ 2562.5	0.1986	13M5G7D	0.1959	13M4W7D
20	2510.0 ~ 2560.0	0.2037	18M0G7D	0.2023	17M9W7D
LTE Band 38		QPSK		16QAM/64QAM/256QAM	
BW (MHz)	Frequency Range (MHz)	Maximum EIRP(W)	Emission Designator (99%OBW)	Maximum EIRP(W)	Emission Designator (99%OBW)
5	2572.5 ~ 2617.5	0.2042	4M49G7D	0.1995	4M48W7D
10	2575.0 ~ 2615.0	0.2023	9M09G7D	0.2000	9M05W7D
15	2577.5 ~ 2612.5	0.2018	13M4G7D	0.1972	13M5W7D
20	2580.0 ~ 2610.0	0.2051	17M9G7D	0.2014	18M0W7D
LTE Band 41		QPSK		16QAM/64QAM/256QAM	
BW (MHz)	Frequency Range (MHz)	Maximum EIRP(W)	Emission Designator (99%OBW)	Maximum EIRP(W)	Emission Designator (99%OBW)
5	2498.5 ~ 2687.5	0.3890	4M49G7D	0.3837	4M48W7D
10	2501.0 ~ 2685.0	0.3837	9M09G7D	0.3882	9M05W7D
15	2503.5 ~ 2682.5	0.3864	13M4G7D	0.3855	13M5W7D
20	2506.0 ~ 2680.0	0.3926	17M9G7D	0.3908	18M0W7D
LTE Band 38 CA		QPSK		16QAM/64QAM/256QAM	
BW (MHz)		Maximum EIRP(W)	Emission Designator (99%OBW)	Maximum EIRP(W)	Emission Designator (99%OBW)
15MHz+15MHz		0.1888	28M8G7D	0.1945	28M8W7D
20MHz+20MHz		0.1884	37M7G7D	0.1936	37M6W7D



LTE Band 41 CA	QPSK		16QAM/64QAM/256QAM	
BW (MHz)	Maximum EIRP(W)	Emission Designator (99%OBW)	Maximum EIRP(W)	Emission Designator (99%OBW)
5MHz+20MHz	0.3319	23M2G7D	0.3184	23M2W7D
10MHz+20MHz	0.3319	27M9G7D	0.3192	27M9W7D
10MHz+15MHz	0.3258	23M4G7D	0.3184	23M3W7D
15MHz+15MHz	0.3296	28M8G7D	0.3206	28M8W7D
15MHz+20MHz	0.3266	33M1G7D	0.3162	32M8W7D
15MHz+10MHz	0.3273	23M6G7D	0.3214	23M7W7D
20MHz+5MHz	0.3327	23M2G7D	0.3177	23M4W7D
20MHz+10MHz	0.3296	28M0G7D	0.3206	28M1W7D
20MHz+15MHz	0.3281	32M8G7D	0.3155	32M9W7D
20MHz+20MHz	0.3758	37M7G7D	0.3304	37M6W7D

Note:

1. LTE Band 41/41C overlaps the entire frequency range of LTE Band 38. Therefore, the test results provided in this report covers Band 41/41C as well as Band 38.
2. All modulations have been tested, and only the worst test results of PSK & QAM are shown in the report.

1.7 Testing Location

Sporton International Inc. (Kunshan) is accredited to ISO/IEC 17025:2017 by American Association for Laboratory Accreditation with Certificate Number 5145.02.

Test Firm	Sporton International Inc. (Kunshan)		
Test Site Location	No. 1098, Pengxi North Road, Kunshan Economic Development Zone Jiangsu Province 215300 People's Republic of China TEL : +86-512-57900158		
Test Site No.	Sporton Site No.	FCC Designation No.	FCC Test Firm Registration No.
	03CH04-KS	CN1257	314309



Sporton International Inc. (ShenZhen) is accredited to ISO/IEC 17025:2017 by American Association for Laboratory Accreditation with Certificate Number 5145.01.

Test Firm	Sporton International Inc. (ShenZhen)		
Test Site Location	1/F, 2/F, Bldg 5, Shiling Industrial Zone, Xinwei Village, Xili, Nanshan, Shenzhen, 518055 People's Republic of China TEL: +86-755-86379589 FAX: +86-755-86379595		
Test Site No.	Sporton Site No.	FCC Designation No.	FCC Test Firm Registration No.
	TH01-SZ	CN1256	421272

Test data subcontracted: Conducted test case in section 3 of this report.

1.8 Test Software

Item	Site	Manufacture	Name	Version
1.	03CH04-KS	AUDIX	E3	210616

1.9 Applicable Standards

According to the specifications of the manufacturer, the EUT must comply with the requirements of the following standards:

- 47 CFR Part 27(M)
- ANSI C63.26-2015
- FCC KDB 971168 D01 Power Meas License Digital Systems v03r01
- FCC KDB 412172 D01 Determining ERP and EIRP v01r01

Remark:

1. All test items were verified and recorded according to the standards and without any deviation during the test.
2. This EUT has also been tested and complied with the requirements of FCC Part 15, Subpart B, recorded in a separate test report.



1.10 Specification of Accessory

Accessories Information				
Battery 1	Brand Name	Motorola(COSMX)	Model Name	RH50
Battery 2	Brand Name	Motorola(SUNWODA)	Model Name	RH50
USB Cable 1	Brand Name	LUXSHARE	Model Name	SC18E08103
USB Cable 2	Brand Name	Saibao	Model Name	SC18D86731
Stylus	Brand Name	Techson	Model Name	SO28E49329



2 Test Configuration of Equipment Under Test

2.1 Test Mode

Antenna port conducted and radiated test items listed below are performed according to KDB 971168 D01 Power Meas License Digital Systems v03r01 with maximum output power.

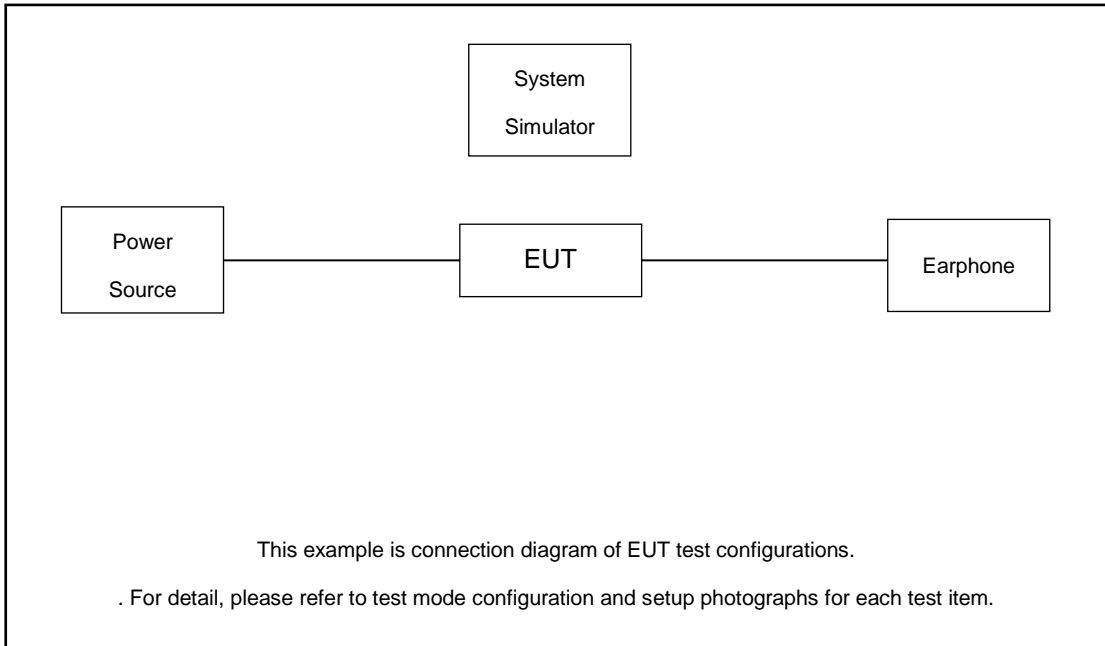
Radiated measurements are performed by rotating the EUT in three different orthogonal test planes to find the maximum emission. (Y Plane)

Test Items	Band	Bandwidth (MHz)						Modulation				RB #			Test Channel			
		1.4	3	5	10	15	20	QPSK	16 QAM	64 QAM	256 QAM	1	Half	Full	L	M	H	
Max. Output Power	7	-	-	v	v	v	v	v	v	v	v	v	v	v	v	v	v	v
	38	-	-	v	v	v	v	v	v	v	v	v	v	v	v	v	v	v
	41	-	-	v	v	v	v	v	v	v	v	v	v	v	v	v	v	v
Peak-to-Average Ratio	7	-	-				v	v	v	v				v		v		
	41	-	-				v	v	v	v				v		v		
26dB and 99% Bandwidth	7	-	-	v	v	v	v	v	v					v		v		
	41	-	-	v	v	v	v	v	v					v		v		
Conducted Band Edge	7	-	-	v	v	v	v	v	v	v			v		v			v
	41	-	-	v	v	v	v	v	v	v			v		v			v
Conducted Spurious Emission	7	-	-	v	v	v	v	v					v			v	v	v
	41	-	-	v	v	v	v	v					v			v	v	v
Frequency Stability	7	-	-		v			v							v		v	
	41	-	-		v			v							v		v	
E.R.P / E.I.R.P	7	-	-	v	v	v	v	v	v	v	v	v	v	v	v	v	v	v
	38	-	-	v	v	v	v	v	v	v	v	v	v	v	v	v	v	v
	41	-	-	v	v	v	v	v	v	v	v	v	v	v	v	v	v	v
Radiated Spurious Emission	7	Worst Case													v	v	v	
	41	Worst Case													v	v	v	
Note	1. The mark "v" means that this configuration is chosen for testing 2. The mark "-" means that this bandwidth is not supported. 3. The device is investigated from 30MHz to 10 times of fundamental signal for radiated spurious emission test under different RB size/offset and modulations in exploratory test. Subsequently, only the worst case emissions are reported. 4.																	



Test Items	Band	Bandwidth (MHz)										Modulation			RB #			Test Channel			
		20+20	20+15	15+20	20+10	10+20	20+5	5+20	15+15	15+10	10+15	QPSK	16 QAM	64 QAM	256 QAM	1	Half	Full	L	M	H
Max. Output Power	38C_CA	v	-	-	-	-	-	-	v	-	-	v	v	v	v	v		v	v	v	v
	41C_CA	v	v	v	v	v	v	v	v	v	v	v	v	v	v	v			v	v	v
26dB and 99% Bandwidth	41C_CA	v	v	v	v	v	v	v	v	v	v	v	v					v		v	
Conducted Band Edge	41C_CA	v	v	v	v	v	v	v	v	v	v	v	v	v		v		v	v		v
Conducted Spurious Emission	41C_CA	v	v	v	v	v	v	v	v	v	v	v				v			v	v	v
E.I.R.P.	38C_CA	v	-	-	-	-	-	-	v	-	-	v	v	v	v	v		v	v	v	v
	41C_CA	v	v	v	v	v	v	v	v	v	v	v	v	v	v	v			v	v	v
Radiated Spurious Emission	41C_CA	Worst Case																v	v	v	
Note	1. The mark "v" means that this configuration is chosen for testing 2. The mark "-" means that this bandwidth is not supported. 3. The device is investigated from 30MHz to 10 times of fundamental signal for radiated spurious emission test under different RB size/offset and modulations in exploratory test. Subsequently, only the worst case emissions are reported. 4. For QAM modulation mode, the whole testing has assessed 16QAM&64QAM mode by referring to the higher conducted power.																				

2.2 Connection Diagram of Test System





2.3 Support Unit used in test configuration and system

Item	Equipment	Trade Name	Model No.	FCC ID	Data Cable	Power Cord
1.	Power Supply	GWINSTEK	PSS-2002	N/A	N/A	Unshielded, 1.8 m
2.	LTE Base Station	Anritsu	MT8820C	N/A	N/A	Unshielded, 1.8 m
3.	Earphone	N/A	N/A	N/A	N/A	N/A

2.4 Measurement Results Explanation Example

For all conducted test items:

The offset level is set in the spectrum analyzer to compensate the RF cable loss and attenuator factor between EUT conducted output port and spectrum analyzer. With the offset compensation, the spectrum analyzer reading level is exactly the EUT RF output level.

The spectrum analyzer offset is derived from RF cable loss and attenuator factor.

Offset = RF cable loss + attenuator factor.

Following shows an offset computation example with cable loss 5.0 dB and 10dB attenuator.

Example :

$$\begin{aligned}
 \text{Offset(dB)} &= \text{RF cable loss(dB)} + \text{attenuator factor(dB)}. \\
 &= 5.0 + 10 = 15.0 \text{ (dB)}
 \end{aligned}$$

2.5 Frequency List of Low/Middle/High Channels

LTE Band 7 Channel and Frequency List				
BW [MHz]	Channel/Frequency(MHz)	Lowest	Middle	Highest
20	Channel	20850	21100	21350
	Frequency	2510	2535	2560
15	Channel	20825	21100	21375
	Frequency	2507.5	2535	2562.5
10	Channel	20800	21100	21400
	Frequency	2505	2535	2565
5	Channel	20775	21100	21425
	Frequency	2502.5	2535	2567.5



LTE Band 38 Channel and Frequency List				
BW [MHz]	Channel/Frequency(MHz)	Lowest	Middle	Highest
20	Channel	37850	38000	38150
	Frequency	2580	2595	2610
15	Channel	37825	38000	38175
	Frequency	2577.5	2595	2612.5
10	Channel	37800	38000	38200
	Frequency	2575	2595	2615
5	Channel	37775	38000	38225
	Frequency	2572.5	2595	2617.5

LTE Band 41 Channel and Frequency List				
BW [MHz]	Channel/Frequency(MHz)	Lowest	Middle	Highest
20	Channel	39750	40620	41490
	Frequency	2506	2593	2680
15	Channel	39725	40620	41515
	Frequency	2503.5	2593	2682.5
10	Channel	39700	40620	41540
	Frequency	2501	2593	2685
5	Channel	39675	40620	41565
	Frequency	2498.5	2593	2687.5

LTE Band 38C_CA Channel and Frequency List					
BW [MHz]	Channel/Frequency(MHz)	Lowest	Middle	Highest	
20 + 20	PCC	Channel	37850	37901	37952
		Frequency	2580.0	2585.1	2590.2
	SCC	Channel	38048	38099	38150
		Frequency	2599.8	2604.9	2610.0
15+ 15	PCC	Channel	37825	37925	38025
		Frequency	2577.5	2587.5	2597.5
	SCC	Channel	37975	38075	38175
		Frequency	2592.5	2602.5	2612.5



LTE Band 41C_CA Channel and Frequency List					
BW [MHz]	Channel/Frequency(MHz)		Lowest	Middle	Highest
20 + 20	PCC	Channel	39750	40521	41292
		Frequency	2506.0	2583.1	2660.2
	SCC	Channel	39948	40719	41490
		Frequency	2525.8	2602.9	2680.0
20 + 15	PCC	Channel	39750	40546	41341
		Frequency	2506.0	2585.6	2665.1
	SCC	Channel	39921	40717	41512
		Frequency	2523.1	2602.7	2682.2
15 + 20	PCC	Channel	39728	40523	41319
		Frequency	2503.8	2593.3	2662.9
	SCC	Channel	39899	40694	41490
		Frequency	2520.9	2600.4	2680.0
20 + 10	PCC	Channel	39750	40571	41391
		Frequency	2506.0	2588.1	2670.1
	SCC	Channel	39894	40715	41535
		Frequency	2520.4	2602.5	2684.5
10 + 20	PCC	Channel	39705	40526	41346
		Frequency	2501.5	2583.6	2665.6
	SCC	Channel	39849	40670	41490
		Frequency	2515.9	2598.0	2680.0



LTE Band 41C_CA Channel and Frequency List					
20 + 5	PCC	Channel	39750	40595	41440
		Frequency	2506.0	2590.5	2675.0
	SCC	Channel	39867	40712	41557
		Frequency	2517.7	2602.2	2686.7
5 + 20	PCC	Channel	39683	40528	41373
		Frequency	2499.3	2583.8	2668.3
	SCC	Channel	39800	40645	41490
		Frequency	2511.0	2595.5	2680.0
15 + 15	PCC	Channel	39725	40545	41365
		Frequency	2503.5	2585.5	2667.5
	SCC	Channel	39875	40695	41515
		Frequency	2518.5	2600.5	2682.5
10 + 15	PCC	Channel	39703	40549	41395
		Frequency	2501.3	2585.9	2670.5
	SCC	Channel	39823	40669	41515
		Frequency	2513.3	2597.9	2682.5
15 + 10	PCC	Channel	39725	40571	41417
		Frequency	2503.5	2588.1	2672.7
	SCC	Channel	39845	40691	41537
		Frequency	2515.5	2600.1	2684.7

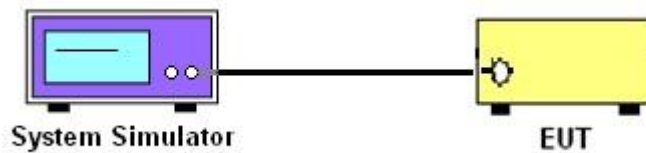
3 Conducted Test Items

3.1 Measuring Instruments

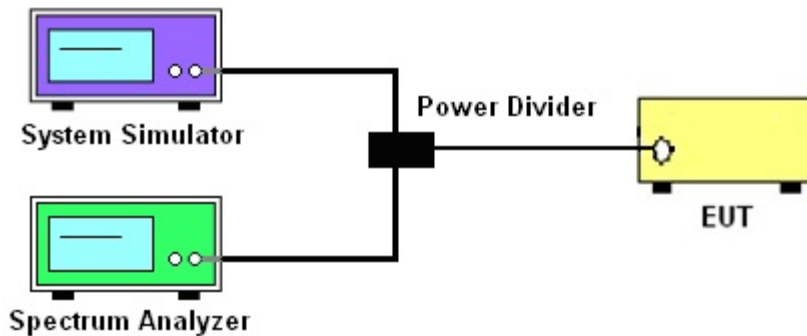
See list of measuring instruments of this test report.

3.2 Test Setup

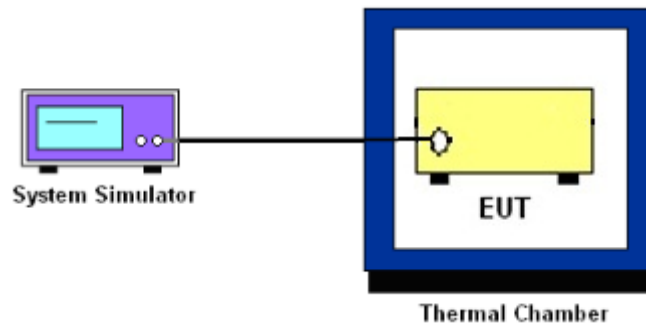
3.2.1 Conducted Output Power



3.2.2 Peak-to-Average Ratio, Occupied Bandwidth ,Conducted Band-Edge and Conducted Spurious Emission



3.2.3 Frequency Stability



3.3 Test Result of Conducted Test

Please refer to Appendix A.



3.4 Conducted Output Power and EIRP

3.4.1 Description of the Conducted Output Power Measurement and EIRP Measurement

A system simulator was used to establish communication with the EUT. Its parameters were set to force the EUT transmitting at maximum output power. The measured power in the radio frequency on the transmitter output terminals shall be reported.

The EIRP of mobile transmitters must not exceed 2 Watts for LTE Band 7 and Band 38 and Band 41.

According to KDB 412172 D01 Power Approach,

$EIRP = P_T + G_T - L_C$, $ERP = EIRP - 2.15$, where

P_T = transmitter output power in dBm

G_T = gain of the transmitting antenna in dBi

L_C = signal attenuation in the connecting cable between the transmitter and antenna in dB

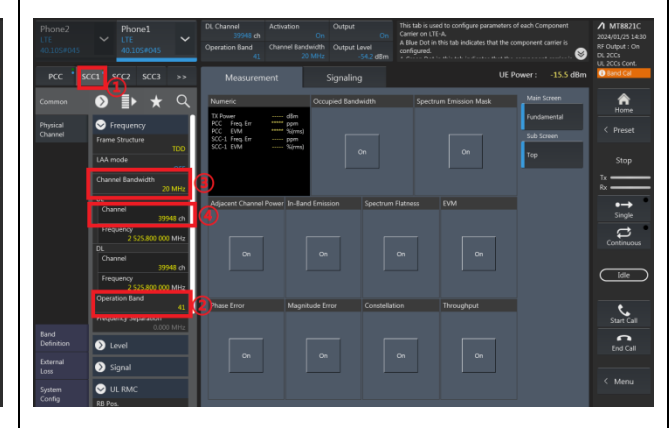
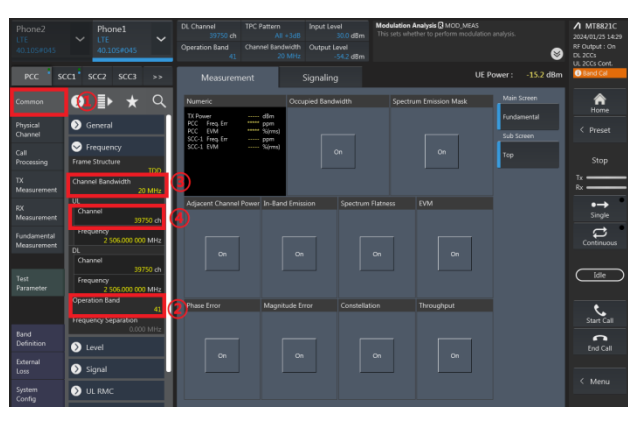
3.4.2 Test Procedures

1. The testing follows ANSI C63.26 Section 5.2
2. The transmitter output port was connected to the system simulator.
3. Set EUT at maximum power through the system simulator.
4. Select lowest, middle, and highest channels for each band and different modulation.
5. Measure and record the power level from the system simulator.

3.4.3 Test Procedures for LTE ULCA

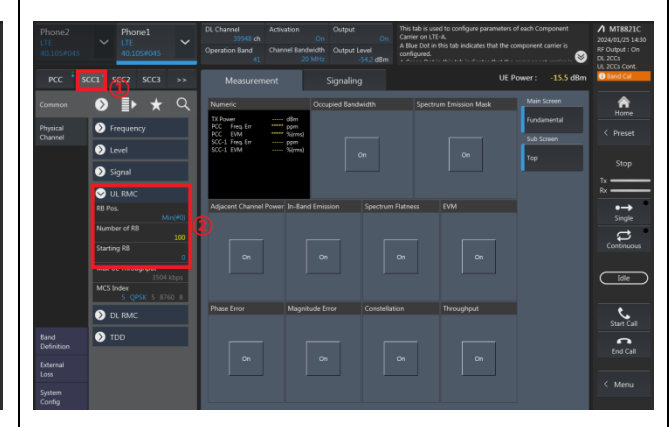
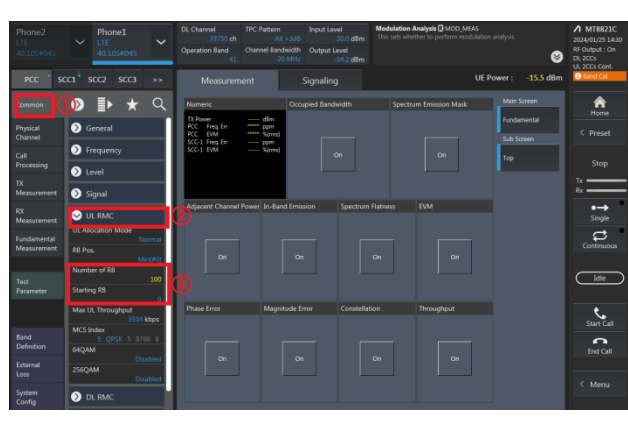
1. The testing follows ANSI C63.26 Section 5.2
2. The transmitter PCC & SCC output ports were connected to the system simulator.
3. Set EUT at maximum power, set the PCC/SCC CA band, channel, bandwidth and RB config.

PCC config_(Channel Bandwidth / Channel / Band) SCC config_(Channel Bandwidth / Channel / Band)



PCC config_(Number of RB / Starting RB)

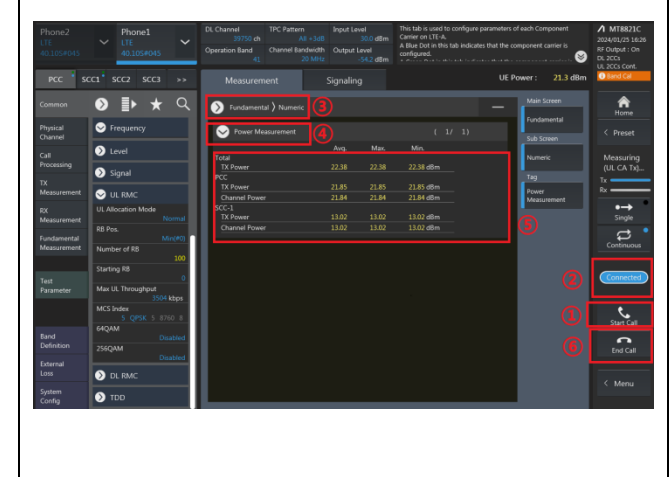
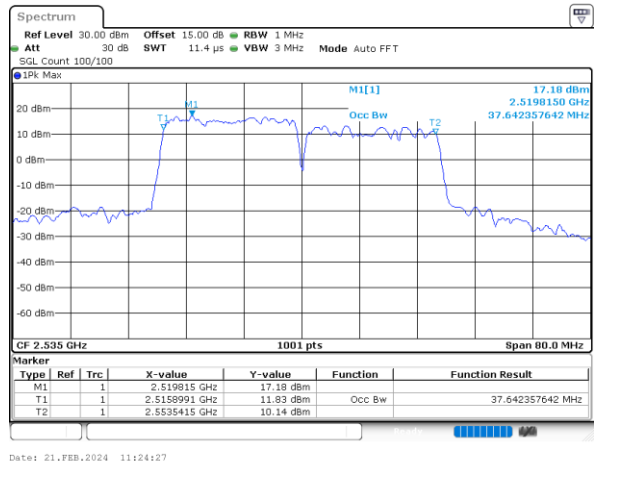
SCC config_(Number of RB / Starting RB)



4. Select lowest, middle, and highest channels for each ULCA band and different modulation.
5. Check the ULCA spectrum and record the total power from the system simulator.

Check the ULCA spectrum (eg. 20M+20M)

Read the Total UL CA output power (PCC+SCC)





3.5 Peak-to-Average Ratio

3.5.1 Description of the PAR Measurement

Power Complementary Cumulative Distribution Function (CCDF) curves provide a means for characterizing the power peaks of a digitally modulated signal on a statistical basis. A CCDF curve depicts the probability of the peak signal amplitude exceeding the average power level. Most contemporary measurement instrumentation include the capability to produce CCDF curves for an input signal provided that the instrument's resolution bandwidth can be set wide enough to accommodate the entire input signal bandwidth. In measuring transmissions in this band using an average power technique, the peak-to-average ratio (PAR) of the transmission may not exceed 13 dB.

3.5.2 Test Procedures

1. The testing follows ANSI C63.26 Section 5.2.3.4 (CCDF).
2. The EUT was connected to spectrum and system simulator via a power divider.
3. Set the CCDF (Complementary Cumulative Distribution Function) option in spectrum analyzer.
4. The highest RF powers were measured and recorded the maximum PAPR level associated with a probability of 0.1 %.
5. Record the deviation as Peak to Average Ratio.



3.6 Occupied Bandwidth

3.6.1 Description of Occupied Bandwidth Measurement

The occupied bandwidth is the width of a frequency band such that, below the lower and above the upper frequency limits, the mean powers emitted are each equal to a specified percentage 0.5% of the total mean transmitted power.

The 26 dB emission bandwidth is defined as the frequency range between two points, one above and one below the carrier frequency, at which the spectral density of the emission is attenuated 26 dB below the maximum in-band spectral density of the modulated signal. Spectral density (power per unit bandwidth) is to be measured with a detector of resolution bandwidth equal to approximately 1.0% of the emission bandwidth.

3.6.2 Test Procedures

1. The testing follows ANSI C63.26 Section 5.4
2. The EUT was connected to spectrum analyzer and system simulator via a power divider.
3. The spectrum analyzer center frequency is set to the nominal EUT channel center frequency. The span range for the spectrum analyzer shall be between two and five times the anticipated OBW.
4. The nominal resolution bandwidth (RBW) shall be in the range of 1 to 5 % of the anticipated OBW, and the VBW shall be at least 3 times the RBW.
5. Set the detection mode to peak, and the trace mode to max hold.
6. Determine the reference value: Set the EUT to transmit a modulated signal. Allow the trace to stabilize. Set the spectrum analyzer marker to the highest level of the displayed trace.
(this is the reference value)
7. Determine the “-26 dB down amplitude” as equal to (Reference Value – X).
8. Place two markers, one at the lowest and the other at the highest frequency of the envelope of the spectral display such that each marker is at or slightly below the “-X dB down amplitude” determined in step 6. If a marker is below this “-X dB down amplitude” value it shall be placed as close as possible to this value. The OBW is the positive frequency difference between the two markers.
9. Use the 99 % power bandwidth function of the spectrum analyzer and report the measured bandwidth.



3.7 Conducted Band Edge

3.7.1 Description of Conducted Band Edge Measurement

27.53(m)(4)

For mobile digital stations, the attenuation factor shall be not less than $40 + 10 \log (P)$ dB on all frequencies between the channel edge and 5 megahertz from the channel edge, $43 + 10 \log (P)$ dB on all frequencies between 5 megahertz and X megahertz from the channel edge, and $55 + 10 \log (P)$ dB on all frequencies more than X megahertz from the channel edge, where X is the greater of 6 megahertz or the actual emission bandwidth as defined in paragraph (m)(6) of this section. In addition, the attenuation factor shall not be less than $43 + 10 \log (P)$ dB on all frequencies between 2490.5 MHz and 2496 MHz and $55 + 10 \log (P)$ dB at or below 2490.5 MHz. Mobile Satellite Service licensees operating on frequencies below 2495 MHz may also submit a documented interference complaint against BRS licensees operating on channel BRS Channel 1 on the same terms and conditions as adjacent channel BRS or EBS licensees.

3.7.2 Test Procedures

1. The testing follows ANSI C63.26 section 5.7
2. The EUT was connected to spectrum analyzer and system simulator via a power divider.
3. The band edges of low and high channels for the highest RF powers were measured.
4. Set RBW $\geq 1\%$ / 2% EBW in the 1MHz band immediately outside and adjacent to the band edge.
5. Beyond the 1 MHz band from the band edge, RBW=1MHz was used or a narrower RBW was used and the measured power was integrated over the full required measurement bandwidth of 1 MHz.
6. Set spectrum analyzer with RMS detector.
7. The RF fundamental frequency should be excluded against the limit line in the operating frequency band.
8. Checked that all the results comply with the emission limit line.

Example:

The limit line is derived from $43 + 10\log(P)$ dB below the transmitter power P(Watts)

$$= P(W) - [43 + 10\log(P)] \text{ (dB)}$$

$$= [30 + 10\log(P)] \text{ (dBm)} - [43 + 10\log(P)] \text{ (dB)} = -13\text{dBm.}$$

9. For LTE Band 7, 38, 41, the other 40 dB, and 55 dB have additionally applied same calculation above.
10. When using the integration method, the starting frequency of the integration shall be centered at one-half of the RBW away from the band edge.



3.8 Conducted Spurious Emission

3.8.1 Description of Conducted Spurious Emission Measurement

The power of any emission outside of the authorized operating frequency ranges must be lower than the transmitter power (P) by a factor of at least $43 + 10 \log (P)$ dB.

For Band 7,38,41:

The power of any emission outside of the authorized operating frequency ranges must be lower than the transmitter power (P) by a factor of at least $55 + 10 \log (P)$ dB.

It is measured by means of a calibrated spectrum analyzer and scanned from 30 MHz up to a frequency including its 10th harmonic.

3.8.2 Test Procedures

1. The testing follows ANSI C63.26 section 5.7
2. The EUT was connected to spectrum analyzer and system simulator via a power divider.
3. The RF output of EUT was connected to the spectrum analyzer by RF cable and attenuator. The path loss was compensated to the results for each measurement.
4. The middle channel for the highest RF power within the transmitting frequency was measured.
5. The conducted spurious emission for the whole frequency range was taken.
6. Make the measurement with the spectrum analyzer's RBW = 1MHz, VBW = 3MHz.
7. Set spectrum analyzer with RMS detector.
8. Taking the record of maximum spurious emission.
9. The RF fundamental frequency should be excluded against the limit line in the operating frequency band.
10. The limit line is derived from $43 + 10\log(P)$ dB below the transmitter power P(Watts)
 $= P(W) - [43 + 10\log(P)]$ (dB)
 $= [30 + 10\log(P)]$ (dBm) - $[43 + 10\log(P)]$ (dB)
 $= -13$ dBm.
11. For Band 7, 38, 41
The limit line is derived from $55 + 10\log(P)$ dB below the transmitter power P(Watts)
 $= P(W) - [55 + 10\log(P)]$ (dB)
 $= [30 + 10\log(P)]$ (dBm) - $[55 + 10\log(P)]$ (dB)
 $= -25$ dBm.



3.9 Frequency Stability

3.9.1 Description of Frequency Stability Measurement

The frequency stability shall be measured by variation of ambient temperature and variation of primary supply voltage to ensure that the fundamental emission stays within the authorized frequency block.

3.9.2 Test Procedures for Temperature Variation

1. The testing follows ANSI C63.26 section 5.6.4
2. The EUT was set up in the thermal chamber and connected with the system simulator.
3. With power OFF, the temperature was decreased to -30°C and the EUT was stabilized before testing. Power was applied and the maximum change in frequency was recorded within one minute.
4. With power OFF, the temperature was raised in 10°C step up to 50°C. The EUT was stabilized at each step for at least half an hour. Power was applied and the maximum frequency change was recorded within one minute.

3.9.3 Test Procedures for Voltage Variation

1. The testing follows ANSI C63.26 section 5.6.5
2. The EUT was placed in a temperature chamber at 20±5°C and connected with the system simulator.
3. The power supply voltage to the EUT was varied from 85% to 115% of the nominal value for other than hand carried battery equipment.
4. For hand carried, battery powered equipment, reduce the primary ac or dc supply voltage to the battery operating end point, which shall be specified by the manufacturer.
5. The variation in frequency was measured for the worst case.

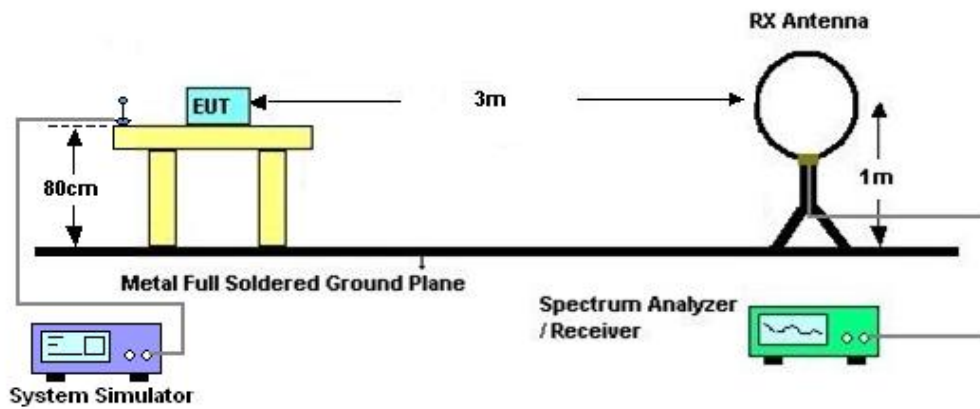
4 Radiated Test Items

4.1 Measuring Instruments

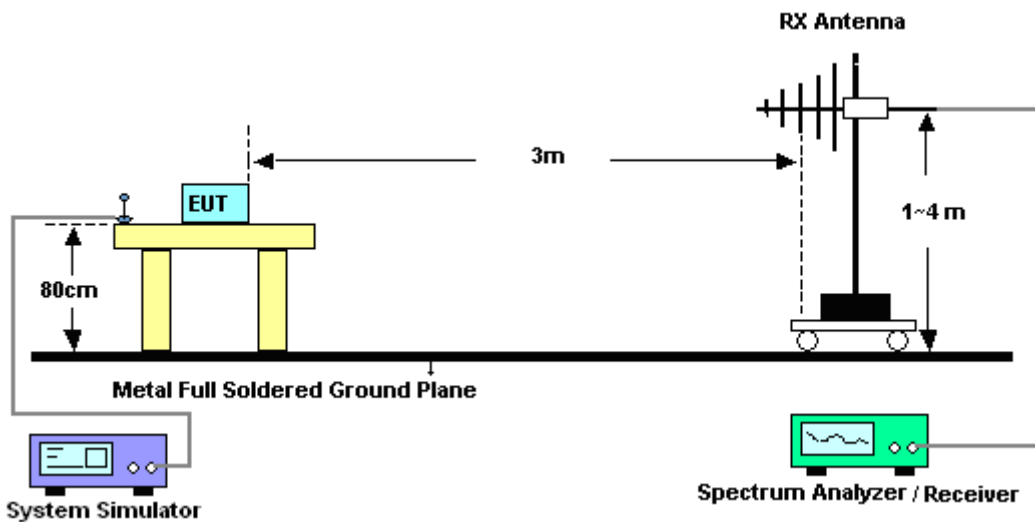
See list of measuring instruments of this test report.

4.2 Test Setup

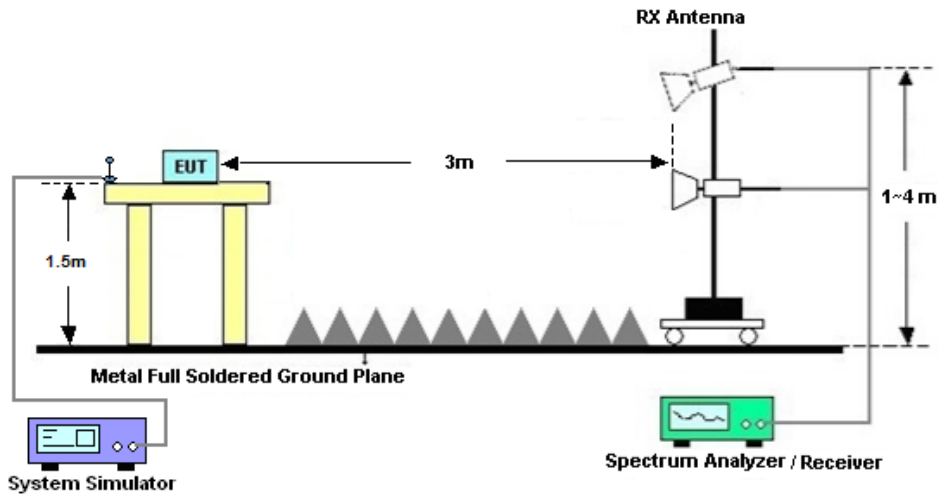
4.2.1 For radiated test below 30MHz



4.2.2 For radiated test from 30MHz to 1GHz



4.2.3 For radiated test above 1GHz



4.3 Test Result of Radiated Test

The low frequency, which started from 9 kHz to 30MHz, was pre-scanned and the result which was 20dB lower than the limit line was not reported.

Please refer to Appendix B.



4.4 Radiated Spurious Emission

4.4.1 Description of Radiated Spurious Emission

The radiated spurious emission was measured by substitution method according to ANSI C63.26. The power of any emission outside of the authorized operating frequency ranges must be attenuated below the transmitter power (P) by a factor of at least $43 + 10 \log (P)$ dB.

For Band 7, 38, 41

The power of any emission outside of the authorized operating frequency ranges must be attenuated below the transmitter power (P) by a factor of at least $55 + 10 \log (P)$ dB.

The spectrum is scanned from 30 MHz up to a frequency including its 10th harmonic.

4.4.2 Test Procedures

1. The testing follows ANSI C63.26 Section 5.5
2. The EUT was placed on a turntable with 0.8 meter height for frequency below 1GHz and 1.5 meter height for frequency above 1GHz respectively above ground.
3. The EUT was set 3 meters from the receiving antenna mounted on the antenna tower.
4. The table was rotated 360 degrees to determine the position of the highest spurious emission.
5. The height of the receiving antenna is varied between 1m to 4m to search the maximum spurious emission for both horizontal and vertical polarizations.
6. During the measurement, the system simulator parameters were set to force the EUT transmitting at maximum output power.
7. Make the measurement with the spectrum analyzer's RBW = 1MHz, VBW = 3MHz, taking the record of maximum spurious emission.
8. A horn antenna was substituted in place of the EUT and was driven by a signal generator.
9. Tune the output power of signal generator to the same emission level with EUT maximum spurious emission.
10. $EIRP (dBm) = S.G. Power - Tx Cable Loss + Tx Antenna Gain$
11. $ERP (dBm) = EIRP - 2.15$
12. The RF fundamental frequency should be excluded against the limit line in the operating frequency band.

The limit line is derived from $43 + 10\log(P)$ dB below the transmitter power P(Watts)
 $= P(W) - [43 + 10\log(P)] (dB)$
 $= [30 + 10\log(P)] (dBm) - [43 + 10\log(P)] (dB)$
 $= -13dBm.$

13. For Band 7, 38, 41:

The limit line is derived from $55 + 10\log(P)$ dB below the transmitter power P(Watts)



5 List of Measuring Equipment

Instrument	Manufacturer	Model No.	Serial No.	Characteristics	Calibration Date	Test Date	Due Date	Remark
Spectrum Analyzer	R&S	FSV40	101078	10Hz~40GHz	Apr. 09, 2024	Nov. 10, 2024~Nov. 26, 2024	Apr. 08, 2025	Conducted (TH01-SZ)
DC Power Supply	TTI	PL330P	290070	Max 32V, 3A	Oct. 15, 2024	Nov. 10, 2024~Nov. 26, 2024	Oct. 14, 2025	Conducted (TH01-SZ)
Power Divider	TOJOIN	PS-2SM-04 265	60.06.020.007 7	0.4GHz~26.5GHz	Dec. 25, 2023	Nov. 10, 2024~Nov. 26, 2024	Dec. 24, 2024	Conducted (TH01-SZ)
Thermal Chamber	Ten Billion Hongzhangroup	LP-150U	H2014081803	-40~+150°C	Jul. 03, 2024	Nov. 10, 2024~Nov. 26, 2024	Jul. 02, 2025	Conducted (TH01-SZ)
EXA Spectrum Analyzer	Keysight	N9010A	MY55370528	10Hz-44G,MAX 30dB	Oct. 11, 2024	Dec. 07, 2024	Oct. 10, 2025	Radiation (03CH04-KS)
Loop Antenna	R&S	HFH2-Z2E	101125	9kHz~30MHz	Sep. 08, 2024	Dec. 07, 2024	Sep. 07, 2025	Radiation (03CH04-KS)
Bilog Antenna	TeseQ	CBL6111D	44483	30MHz-1GHz	Dec. 05, 2024	Dec. 07, 2024	Dec. 04, 2025	Radiation (03CH04-KS)
Double Ridge Horn Antenna	ETS-Lindgren	3117	00227860	1GHz~18GHz	Aug. 16, 2024	Dec. 07, 2024	Aug. 15, 2025	Radiation (03CH04-KS)
SHF-EHF Horn	Com-power	AH-840	101070	18GHz~40GHz	Jan. 27, 2024	Dec. 07, 2024	Jan. 26, 2025	Radiation (03CH04-KS)
Amplifier	SONOMA	310N	413740	9KHz-1GHz	Jan. 03, 2024	Dec. 07, 2024	Jan. 02, 2025	Radiation (03CH04-KS)
Amplifier	EM	EM18G40G A	060728	18~40GHz	Jan. 02, 2024	Dec. 07, 2024	Jan. 01, 2025	Radiation (03CH04-KS)
high gain Amplifier	EM	EM01G18G A	060840	1Ghz-18Ghz	Oct. 09, 2024	Dec. 07, 2024	Oct. 08, 2025	Radiation (03CH04-KS)
Amplifier	EM	EM01G18G A	060892	1Ghz-18Ghz	Oct. 09, 2024	Dec. 07, 2024	Oct. 08, 2025	Radiation (03CH04-KS)
AC Power Source	Chroma	61601	F104090004	N/A	NCR	Dec. 07, 2024	NCR	Radiation (03CH04-KS)
Turn Table	ChamPro	EM 1000-T	060762-T	0~360 degree	NCR	Dec. 07, 2024	NCR	Radiation (03CH04-KS)
Antenna Mast	ChamPro	EM 1000-A	060762-A	1 m~4 m	NCR	Dec. 07, 2024	NCR	Radiation (03CH04-KS)

NCR: No Calibration Required



6 Measurement Uncertainty

The measurement uncertainties shown below were calculated in accordance with the requirements of ANSI 63.26-2015. All the measurement uncertainty value were shown with a coverage K=2 to indicate 95% level of confidence. The measurement data show herein meets or exceeds the CISPR measurement uncertainty values specified in CISPR 16-4-2 and can be compared directly to specified limit to determine compliance.

Uncertainty of Conducted Measurement

Test Item	Uncertainty
Conducted Spurious Emission & Bandedge	±1.34 dB
Occupied Channel Bandwidth	±0.012 MHz
Conducted Power	±1.34 dB
Peak to Average Ratio	±1.34 dB
Frequency Stability	±1.3 Hz

Uncertainty of Radiated Emission Measurement (30 MHz ~ 1000 MHz)

Measuring Uncertainty for a Level of Confidence of 95% (U = 2Uc(y))	2.83 dB
---	---------

Uncertainty of Radiated Emission Measurement (1 GHz ~ 18 GHz)

Measuring Uncertainty for a Level of Confidence of 95% (U = 2Uc(y))	2.83 dB
---	---------

Uncertainty of Radiated Emission Measurement (18 GHz ~ 40 GHz)

Measuring Uncertainty for a Level of Confidence of 95% (U = 2Uc(y))	2.82 dB
---	---------

----- THE END -----



Appendix A. Test Results of Conducted Test

Test Engineer :	Nina Cheng	Temperature :	24~26°C
		Relative Humidity :	50~53%

Conducted Output Power(Average power) and EIRP

LTE Band 7_ANT9:

BW [MHz]	Modulation	RB Size	RB Offset	Power Low Ch. / Freq.	Power Middle Ch. / Freq.	Power High Ch. / Freq.	EIRP(W)		
Channel				20850	20850	21350			
Frequency (MHz)				2510	2535	2560	L	M	H
20	QPSK	1	0	23.05	23.29	23.07	0.1928	0.2037	0.1936
20	QPSK	1	49	23.03	23.23	23.03	0.1919	0.2009	0.1919
20	QPSK	1	99	23.01	23.24	23.01	0.1910	0.2014	0.1910
20	QPSK	50	0	23.01	23.16	23.05	0.1910	0.1977	0.1928
20	QPSK	50	24	22.95	23.11	22.96	0.1884	0.1954	0.1888
20	QPSK	50	50	22.91	23.15	22.94	0.1866	0.1972	0.1879
20	QPSK	100	0	23.01	23.12	23.00	0.1910	0.1959	0.1905
20	16QAM	1	0	22.88	23.25	22.91	0.1854	0.2018	0.1866
20	16QAM	1	49	22.92	23.26	23.03	0.1871	0.2023	0.1919
20	16QAM	1	99	22.95	23.11	23.04	0.1884	0.1954	0.1923
20	16QAM	50	0	21.95	22.40	22.09	0.1496	0.1660	0.1545
20	16QAM	50	24	22.01	22.38	22.06	0.1517	0.1652	0.1535
20	16QAM	50	50	22.11	22.26	21.96	0.1552	0.1607	0.1500
20	16QAM	100	0	22.07	22.40	22.09	0.1538	0.1660	0.1545
20	64QAM	1	0	21.98	22.21	22.09	0.1507	0.1589	0.1545
20	64QAM	1	49	22.02	22.41	21.97	0.1521	0.1663	0.1503
20	64QAM	1	99	22.16	22.17	22.16	0.1570	0.1574	0.1570
20	64QAM	50	0	21.05	21.24	21.01	0.1216	0.1271	0.1205
20	64QAM	50	24	21.11	21.27	20.97	0.1233	0.1279	0.1194
20	64QAM	50	50	21.08	21.29	21.05	0.1225	0.1285	0.1216
20	64QAM	100	0	20.96	21.29	21.18	0.1191	0.1285	0.1253
20	256QAM	1	0	19.04	19.17	18.99	0.0766	0.0789	0.0757
20	256QAM	1	49	18.95	19.35	19.11	0.0750	0.0822	0.0778
20	256QAM	1	99	19.16	19.19	19.01	0.0787	0.0793	0.0760
20	256QAM	50	0	19.10	19.23	18.97	0.0776	0.0800	0.0753
20	256QAM	50	24	19.11	19.22	18.95	0.0778	0.0798	0.0750
20	256QAM	50	50	19.13	19.25	19.08	0.0782	0.0804	0.0773
20	256QAM	100	0	19.01	19.26	18.99	0.0760	0.0805	0.0757
Channel				20825	21100	21375	EIRP(W)		
Frequency (MHz)				2507.5	2535	2562.5	L	M	H
15	QPSK	1	0	22.91	23.18	23.00	0.1866	0.1986	0.1905
15	QPSK	1	37	22.95	23.18	22.90	0.1884	0.1986	0.1862



15	QPSK	1	74	22.88	23.09	22.92	0.1854	0.1945	0.1871
15	QPSK	36	0	22.98	23.05	22.93	0.1897	0.1928	0.1875
15	QPSK	36	20	22.87	22.96	22.84	0.1849	0.1888	0.1837
15	QPSK	36	39	22.86	23.10	22.88	0.1845	0.1950	0.1854
15	QPSK	75	0	22.84	22.98	22.92	0.1837	0.1897	0.1871
15	16QAM	1	0	22.79	23.10	22.73	0.1816	0.1950	0.1791
15	16QAM	1	37	22.84	23.12	22.95	0.1837	0.1959	0.1884
15	16QAM	1	74	22.92	22.98	22.96	0.1871	0.1897	0.1888
15	16QAM	36	0	21.93	22.28	21.94	0.1489	0.1614	0.1493
15	16QAM	36	20	21.92	22.23	21.96	0.1486	0.1596	0.1500
15	16QAM	36	39	22.06	22.12	21.88	0.1535	0.1556	0.1472
15	16QAM	75	0	22.04	22.38	22.00	0.1528	0.1652	0.1514
15	64QAM	1	0	21.83	22.14	21.92	0.1455	0.1563	0.1486
15	64QAM	1	37	21.93	22.32	21.92	0.1489	0.1629	0.1486
15	64QAM	1	74	22.13	22.09	22.06	0.1560	0.1545	0.1535
15	64QAM	36	0	20.88	21.11	20.93	0.1169	0.1233	0.1183
15	64QAM	36	20	21.02	21.25	20.84	0.1208	0.1274	0.1159
15	64QAM	36	39	21.06	21.17	20.94	0.1219	0.1250	0.1186
15	64QAM	75	0	20.81	21.19	21.02	0.1151	0.1256	0.1208
15	256QAM	1	0	18.92	19.00	18.88	0.0745	0.0759	0.0738
15	256QAM	1	37	18.80	19.22	19.03	0.0724	0.0798	0.0764
15	256QAM	1	74	19.14	19.13	18.89	0.0783	0.0782	0.0740
15	256QAM	36	0	18.98	19.07	18.92	0.0755	0.0771	0.0745
15	256QAM	36	20	19.03	19.08	18.79	0.0764	0.0773	0.0723
15	256QAM	36	39	19.08	19.11	18.93	0.0773	0.0778	0.0746
15	256QAM	75	0	18.98	19.16	18.82	0.0755	0.0787	0.0728
Channel				20800	21100	21400	EIRP(W)		
Frequency (MHz)				2505	2535	2565	L	M	H
10	QPSK	1	0	22.89	23.15	22.97	0.1858	0.1972	0.1892
10	QPSK	1	25	22.89	23.08	22.94	0.1858	0.1941	0.1879
10	QPSK	1	49	22.97	23.06	22.98	0.1892	0.1932	0.1897
10	QPSK	25	0	22.96	23.00	22.99	0.1888	0.1905	0.1901
10	QPSK	25	12	22.80	22.95	22.85	0.1820	0.1884	0.1841
10	QPSK	25	25	22.89	23.01	22.86	0.1858	0.1910	0.1845
10	QPSK	50	0	22.98	23.07	22.82	0.1897	0.1936	0.1828
10	16QAM	1	0	22.73	23.08	22.86	0.1791	0.1941	0.1845
10	16QAM	1	25	22.77	23.14	22.92	0.1807	0.1968	0.1871
10	16QAM	1	49	22.77	23.02	22.91	0.1807	0.1914	0.1866
10	16QAM	25	0	21.85	22.33	22.06	0.1462	0.1633	0.1535
10	16QAM	25	12	21.84	22.26	21.89	0.1459	0.1607	0.1476
10	16QAM	25	25	22.09	22.15	21.90	0.1545	0.1567	0.1479
10	16QAM	50	0	21.98	22.36	21.95	0.1507	0.1644	0.1496
10	64QAM	1	0	21.86	22.07	21.96	0.1466	0.1538	0.1500
10	64QAM	1	25	21.98	22.36	21.95	0.1507	0.1644	0.1496
10	64QAM	1	49	22.05	22.10	22.02	0.1531	0.1549	0.1521
10	64QAM	25	0	21.00	21.16	20.98	0.1202	0.1247	0.1197
10	64QAM	25	12	21.05	21.23	20.80	0.1216	0.1268	0.1148



10	64QAM	25	25	20.92	21.12	20.87	0.1180	0.1236	0.1167
10	64QAM	50	0	20.92	21.23	21.05	0.1180	0.1268	0.1216
10	256QAM	1	0	18.92	19.12	18.81	0.0745	0.0780	0.0726
10	256QAM	1	25	18.88	19.30	19.00	0.0738	0.0813	0.0759
10	256QAM	1	49	19.06	19.14	18.90	0.0769	0.0783	0.0741
10	256QAM	25	0	19.00	19.05	18.83	0.0759	0.0767	0.0729
10	256QAM	25	12	19.00	19.11	18.84	0.0759	0.0778	0.0731
10	256QAM	25	25	19.02	19.21	19.00	0.0762	0.0796	0.0759
10	256QAM	50	0	18.91	19.12	18.88	0.0743	0.0780	0.0738
Channel				20775	21100	21425	EIRP(W)		
Frequency (MHz)				2502.5	2535	2567.5	L	M	H
5	QPSK	1	0	23.01	23.16	22.96	0.1910	0.1977	0.1888
5	QPSK	1	12	22.98	23.13	22.88	0.1897	0.1963	0.1854
5	QPSK	1	24	22.90	23.12	22.95	0.1862	0.1959	0.1884
5	QPSK	12	0	22.99	23.04	22.98	0.1901	0.1923	0.1897
5	QPSK	12	7	22.85	23.09	22.86	0.1841	0.1945	0.1845
5	QPSK	12	13	22.74	22.99	22.87	0.1795	0.1901	0.1849
5	QPSK	25	0	22.93	23.00	22.86	0.1875	0.1905	0.1845
5	16QAM	1	0	22.81	23.09	22.82	0.1824	0.1945	0.1828
5	16QAM	1	12	22.75	23.22	23.00	0.1799	0.2004	0.1905
5	16QAM	1	24	22.79	23.05	23.01	0.1816	0.1928	0.1910
5	16QAM	12	0	21.79	22.24	22.04	0.1442	0.1600	0.1528
5	16QAM	12	7	21.89	22.29	21.89	0.1476	0.1618	0.1476
5	16QAM	12	13	22.05	22.11	21.81	0.1531	0.1552	0.1449
5	16QAM	25	0	22.02	22.25	22.06	0.1521	0.1603	0.1535
5	64QAM	1	0	21.87	22.10	21.95	0.1469	0.1549	0.1496
5	64QAM	1	12	21.90	22.25	21.87	0.1479	0.1603	0.1469
5	64QAM	1	24	22.11	22.12	22.05	0.1552	0.1556	0.1531
5	64QAM	12	0	20.89	21.08	20.83	0.1172	0.1225	0.1156
5	64QAM	12	7	21.03	21.20	20.83	0.1211	0.1259	0.1156
5	64QAM	12	13	20.91	21.15	20.91	0.1178	0.1245	0.1178
5	64QAM	25	0	20.78	21.11	21.14	0.1143	0.1233	0.1242
5	256QAM	1	0	18.94	19.03	18.90	0.0748	0.0764	0.0741
5	256QAM	1	12	18.80	19.24	19.01	0.0724	0.0802	0.0760
5	256QAM	1	24	19.04	19.15	18.87	0.0766	0.0785	0.0736
5	256QAM	12	0	19.05	19.18	18.92	0.0767	0.0791	0.0745
5	256QAM	12	7	18.99	19.08	18.81	0.0757	0.0773	0.0726
5	256QAM	12	13	19.04	19.22	19.04	0.0766	0.0798	0.0766
5	256QAM	25	0	18.90	19.16	18.96	0.0741	0.0787	0.0752



LTE Band 38_ANT9:

BW [MHz]	Modulation	RB Size	RB Offset	Power Low Ch. / Freq.	Power Middle Ch. / Freq.	Power High Ch. / Freq.	EIRP(W)		
Channel				37850	38000	38150	EIRP(W)		
Frequency (MHz)				2580	2595	2610	L	M	H
20	QPSK	1	0	23.17	23.32	23.25	0.1982	0.2051	0.2018
20	QPSK	1	49	23.05	23.22	23.07	0.1928	0.2004	0.1936
20	QPSK	1	99	23.15	23.20	23.22	0.1972	0.1995	0.2004
20	QPSK	50	0	23.12	23.29	23.19	0.1959	0.2037	0.1991
20	QPSK	50	24	23.08	23.28	23.15	0.1941	0.2032	0.1972
20	QPSK	50	50	23.08	23.23	23.13	0.1941	0.2009	0.1963
20	QPSK	100	0	23.09	23.18	23.08	0.1945	0.1986	0.1941
20	16QAM	1	0	23.01	23.15	23.10	0.1910	0.1972	0.1950
20	16QAM	1	49	23.02	23.23	23.19	0.1914	0.2009	0.1991
20	16QAM	1	99	23.12	23.24	23.16	0.1959	0.2014	0.1977
20	16QAM	50	0	22.25	22.28	22.36	0.1603	0.1614	0.1644
20	16QAM	50	24	22.13	22.32	22.36	0.1560	0.1629	0.1644
20	16QAM	50	50	22.19	22.26	22.34	0.1581	0.1607	0.1637
20	16QAM	100	0	22.21	22.29	22.13	0.1589	0.1618	0.1560
20	64QAM	1	0	22.23	22.36	22.32	0.1596	0.1644	0.1629
20	64QAM	1	49	22.24	22.29	22.24	0.1600	0.1618	0.1600
20	64QAM	1	99	22.18	22.27	22.17	0.1578	0.1611	0.1574
20	64QAM	50	0	21.22	21.24	21.33	0.1265	0.1271	0.1297
20	64QAM	50	24	21.22	21.27	21.32	0.1265	0.1279	0.1294
20	64QAM	50	50	21.15	21.41	21.17	0.1245	0.1321	0.1250
20	64QAM	100	0	21.18	21.36	21.15	0.1253	0.1306	0.1245
20	256QAM	1	0	19.24	19.30	19.34	0.0802	0.0813	0.0820
20	256QAM	1	49	19.19	19.25	19.21	0.0793	0.0804	0.0796
20	256QAM	1	99	19.18	19.40	19.27	0.0791	0.0832	0.0807
20	256QAM	50	0	19.10	19.27	19.23	0.0776	0.0807	0.0800
20	256QAM	50	24	19.16	19.26	19.28	0.0787	0.0805	0.0809
20	256QAM	50	50	19.07	19.42	19.27	0.0771	0.0836	0.0807
20	256QAM	100	0	19.07	19.31	19.21	0.0771	0.0815	0.0796
Channel				37825	38000	38175	EIRP(W)		
Frequency (MHz)				2577.5	2595	2612.5	L	M	H
15	QPSK	1	0	23.10	23.19	23.12	0.1950	0.1991	0.1959
15	QPSK	1	37	23.02	23.07	23.01	0.1914	0.1936	0.1910
15	QPSK	1	74	23.06	23.09	23.07	0.1932	0.1945	0.1936
15	QPSK	36	0	23.10	23.16	23.16	0.1950	0.1977	0.1977
15	QPSK	36	20	23.01	23.25	23.04	0.1910	0.2018	0.1923
15	QPSK	36	39	23.06	23.10	23.06	0.1932	0.1950	0.1932
15	QPSK	75	0	22.96	23.14	22.91	0.1888	0.1968	0.1866
15	16QAM	1	0	22.92	23.06	23.06	0.1871	0.1932	0.1932
15	16QAM	1	37	22.96	23.05	23.01	0.1888	0.1928	0.1910
15	16QAM	1	74	23.04	23.15	22.99	0.1923	0.1972	0.1901
15	16QAM	36	0	22.22	22.21	22.20	0.1592	0.1589	0.1585
15	16QAM	36	20	21.97	22.24	22.26	0.1503	0.1600	0.1607



15	16QAM	36	39	22.16	22.12	22.31	0.1570	0.1556	0.1626
15	16QAM	75	0	22.10	22.16	22.03	0.1549	0.1570	0.1524
15	64QAM	1	0	22.06	22.29	22.27	0.1535	0.1618	0.1611
15	64QAM	1	37	22.13	22.11	22.11	0.1560	0.1552	0.1552
15	64QAM	1	74	22.14	22.09	22.00	0.1563	0.1545	0.1514
15	64QAM	36	0	21.17	21.17	21.22	0.1250	0.1250	0.1265
15	64QAM	36	20	21.17	21.23	21.30	0.1250	0.1268	0.1288
15	64QAM	36	39	21.08	21.30	21.11	0.1225	0.1288	0.1233
15	64QAM	75	0	21.10	21.32	21.02	0.1230	0.1294	0.1208
15	256QAM	1	0	19.10	19.12	19.32	0.0776	0.0780	0.0817
15	256QAM	1	37	19.04	19.13	19.10	0.0766	0.0782	0.0776
15	256QAM	1	74	19.11	19.26	19.21	0.0778	0.0805	0.0796
15	256QAM	36	0	19.03	19.11	19.12	0.0764	0.0778	0.0780
15	256QAM	36	20	19.06	19.19	19.18	0.0769	0.0793	0.0791
15	256QAM	36	39	19.04	19.28	19.24	0.0766	0.0809	0.0802
15	256QAM	75	0	19.02	19.15	19.13	0.0762	0.0785	0.0782
Channel				37800	38000	38200	EIRP(W)		
Frequency (MHz)				2575	2595	2615	L	M	H
10	QPSK	1	0	23.12	23.22	23.22	0.1959	0.2004	0.2004
10	QPSK	1	25	22.89	23.13	23.00	0.1858	0.1963	0.1905
10	QPSK	1	49	23.01	23.16	23.09	0.1910	0.1977	0.1945
10	QPSK	25	0	23.09	23.25	23.10	0.1945	0.2018	0.1950
10	QPSK	25	12	22.91	23.26	23.08	0.1866	0.2023	0.1941
10	QPSK	25	25	23.01	23.15	23.06	0.1910	0.1972	0.1932
10	QPSK	50	0	23.04	23.11	23.01	0.1923	0.1954	0.1910
10	16QAM	1	0	22.90	23.04	23.03	0.1862	0.1923	0.1919
10	16QAM	1	25	22.94	23.21	23.03	0.1879	0.2000	0.1919
10	16QAM	1	49	23.05	23.15	23.13	0.1928	0.1972	0.1963
10	16QAM	25	0	22.13	22.16	22.30	0.1560	0.1570	0.1622
10	16QAM	25	12	22.01	22.18	22.25	0.1517	0.1578	0.1603
10	16QAM	25	25	22.11	22.20	22.24	0.1552	0.1585	0.1600
10	16QAM	50	0	22.12	22.20	22.04	0.1556	0.1585	0.1528
10	64QAM	1	0	22.05	22.29	22.19	0.1531	0.1618	0.1581
10	64QAM	1	25	22.09	22.12	22.09	0.1545	0.1556	0.1545
10	64QAM	1	49	22.02	22.21	22.01	0.1521	0.1589	0.1517
10	64QAM	25	0	21.08	21.20	21.17	0.1225	0.1259	0.1250
10	64QAM	25	12	21.14	21.17	21.28	0.1242	0.1250	0.1282
10	64QAM	25	25	21.10	21.32	21.06	0.1230	0.1294	0.1219
10	64QAM	50	0	21.05	21.19	21.03	0.1216	0.1256	0.1211
10	256QAM	1	0	19.07	19.13	19.24	0.0771	0.0782	0.0802
10	256QAM	1	25	19.02	19.13	19.11	0.0762	0.0782	0.0778
10	256QAM	1	49	19.08	19.34	19.23	0.0773	0.0820	0.0800
10	256QAM	25	0	19.01	19.17	19.08	0.0760	0.0789	0.0773
10	256QAM	25	12	19.06	19.16	19.25	0.0769	0.0787	0.0804
10	256QAM	25	25	18.92	19.29	19.14	0.0745	0.0811	0.0783
10	256QAM	50	0	19.03	19.22	19.08	0.0764	0.0798	0.0773
Channel				37775	38000	38225	EIRP(W)		
Frequency (MHz)				2572.5	2595	2617.5	L	M	H



5	QPSK	1	0	23.14	23.30	23.10	0.1968	0.2042	0.1950
5	QPSK	1	12	22.97	23.09	22.98	0.1892	0.1945	0.1897
5	QPSK	1	24	23.12	23.06	23.12	0.1959	0.1932	0.1959
5	QPSK	12	0	22.98	23.25	23.16	0.1897	0.2018	0.1977
5	QPSK	12	7	22.95	23.12	23.09	0.1884	0.1959	0.1945
5	QPSK	12	13	22.94	23.18	22.95	0.1879	0.1986	0.1884
5	QPSK	25	0	22.95	23.05	23.03	0.1884	0.1928	0.1919
5	16QAM	1	0	22.95	23.03	23.07	0.1884	0.1919	0.1936
5	16QAM	1	12	22.97	23.20	23.03	0.1892	0.1995	0.1919
5	16QAM	1	24	23.03	23.16	23.04	0.1919	0.1977	0.1923
5	16QAM	12	0	22.18	22.11	22.24	0.1578	0.1552	0.1600
5	16QAM	12	7	22.11	22.29	22.26	0.1552	0.1618	0.1607
5	16QAM	12	13	22.05	22.16	22.18	0.1531	0.1570	0.1578
5	16QAM	25	0	22.10	22.14	21.98	0.1549	0.1563	0.1507
5	64QAM	1	0	22.09	22.22	22.20	0.1545	0.1592	0.1585
5	64QAM	1	12	22.07	22.18	22.12	0.1538	0.1578	0.1556
5	64QAM	1	24	22.09	22.12	22.07	0.1545	0.1556	0.1538
5	64QAM	12	0	21.19	21.19	21.22	0.1256	0.1256	0.1265
5	64QAM	12	7	21.05	21.23	21.19	0.1216	0.1268	0.1256
5	64QAM	12	13	21.10	21.27	21.01	0.1230	0.1279	0.1205
5	64QAM	25	0	21.14	21.30	21.12	0.1242	0.1288	0.1236
5	256QAM	1	0	19.07	19.21	19.22	0.0771	0.0796	0.0798
5	256QAM	1	12	19.11	19.09	19.04	0.0778	0.0774	0.0766
5	256QAM	1	24	19.11	19.26	19.21	0.0778	0.0805	0.0796
5	256QAM	12	0	19.06	19.13	19.09	0.0769	0.0782	0.0774
5	256QAM	12	7	19.02	19.16	19.12	0.0762	0.0787	0.0780
5	256QAM	12	13	19.01	19.31	19.22	0.0760	0.0815	0.0798
5	256QAM	25	0	18.92	19.22	19.09	0.0745	0.0798	0.0774

LTE Band 41_ANT9:

BW [MHz]	Modulation	RB Size	RB Offset	Power Low Ch. / Freq.	Power Middle Ch. / Freq.	Power High Ch. / Freq.	EIRP(W)		
Channel				39750	40620	41490			
Frequency (MHz)				2506	2593	2680	L	M	H
20	QPSK	1	0	26.10	26.14	25.96	0.3890	0.3926	0.3767
20	QPSK	1	49	26.04	26.09	25.82	0.3837	0.3882	0.3648
20	QPSK	1	99	26.07	26.10	25.79	0.3864	0.3890	0.3622
20	QPSK	50	0	26.02	26.08	25.85	0.3819	0.3873	0.3673
20	QPSK	50	24	25.92	26.06	25.82	0.3733	0.3855	0.3648
20	QPSK	50	50	25.98	25.98	25.83	0.3784	0.3784	0.3656
20	QPSK	100	0	25.97	26.05	25.93	0.3776	0.3846	0.3741
20	16QAM	1	0	26.06	26.09	25.90	0.3855	0.3882	0.3715
20	16QAM	1	49	25.97	26.12	25.91	0.3776	0.3908	0.3724
20	16QAM	1	99	25.96	26.00	25.79	0.3767	0.3802	0.3622
20	16QAM	50	0	25.05	25.15	24.99	0.3055	0.3126	0.3013
20	16QAM	50	24	25.01	25.08	24.90	0.3027	0.3076	0.2951



20	16QAM	50	50	25.12	25.02	24.97	0.3105	0.3034	0.2999
20	16QAM	100	0	25.16	25.22	25.00	0.3133	0.3177	0.3020
20	64QAM	1	0	25.05	25.20	24.84	0.3055	0.3162	0.2911
20	64QAM	1	49	25.20	25.11	24.90	0.3162	0.3097	0.2951
20	64QAM	1	99	25.04	25.18	25.01	0.3048	0.3148	0.3027
20	64QAM	50	0	24.00	24.12	24.07	0.2399	0.2466	0.2438
20	64QAM	50	24	24.02	24.04	23.87	0.2410	0.2421	0.2328
20	64QAM	50	50	24.08	24.22	23.94	0.2443	0.2523	0.2366
20	64QAM	100	0	24.15	24.10	23.91	0.2483	0.2455	0.2350
20	256QAM	1	0	22.01	22.06	21.87	0.1517	0.1535	0.1469
20	256QAM	1	49	22.19	22.25	21.95	0.1581	0.1603	0.1496
20	256QAM	1	99	22.06	22.09	22.08	0.1535	0.1545	0.1542
20	256QAM	50	0	22.02	22.16	22.04	0.1521	0.1570	0.1528
20	256QAM	50	24	22.08	22.23	22.06	0.1542	0.1596	0.1535
20	256QAM	50	50	22.21	22.16	21.87	0.1589	0.1570	0.1469
20	256QAM	100	0	22.06	22.04	22.08	0.1535	0.1528	0.1542
Channel				39725	40620	41515	EIRP(W)		
Frequency (MHz)				2503.5	2593	2682.5	L	M	H
15	QPSK	1	0	25.98	25.98	25.89	0.3784	0.3784	0.3707
15	QPSK	1	37	25.95	25.95	25.69	0.3758	0.3758	0.3540
15	QPSK	1	74	26.01	26.07	25.63	0.3811	0.3864	0.3491
15	QPSK	36	0	25.92	25.96	25.70	0.3733	0.3767	0.3548
15	QPSK	36	20	25.76	26.03	25.79	0.3597	0.3828	0.3622
15	QPSK	36	39	25.90	25.88	25.79	0.3715	0.3698	0.3622
15	QPSK	75	0	25.93	25.91	25.81	0.3741	0.3724	0.3639
15	16QAM	1	0	26.01	25.97	25.77	0.3811	0.3776	0.3606
15	16QAM	1	37	25.79	26.06	25.85	0.3622	0.3855	0.3673
15	16QAM	1	74	25.90	25.90	25.65	0.3715	0.3715	0.3508
15	16QAM	36	0	24.94	25.02	24.87	0.2979	0.3034	0.2931
15	16QAM	36	20	24.92	25.04	24.79	0.2965	0.3048	0.2877
15	16QAM	36	39	24.95	24.92	24.80	0.2985	0.2965	0.2884
15	16QAM	75	0	25.07	25.09	24.97	0.3069	0.3083	0.2999
15	64QAM	1	0	24.95	25.05	24.67	0.2985	0.3055	0.2799
15	64QAM	1	37	25.11	24.95	24.76	0.3097	0.2985	0.2858
15	64QAM	1	74	24.92	25.07	24.94	0.2965	0.3069	0.2979
15	64QAM	36	0	23.88	24.02	23.95	0.2333	0.2410	0.2371
15	64QAM	36	20	23.98	24.01	23.74	0.2388	0.2404	0.2259
15	64QAM	36	39	23.98	24.15	23.78	0.2388	0.2483	0.2280
15	64QAM	75	0	24.05	24.03	23.81	0.2427	0.2415	0.2296
15	256QAM	1	0	21.96	21.91	21.71	0.1500	0.1483	0.1416
15	256QAM	1	37	22.14	22.10	21.77	0.1563	0.1549	0.1435
15	256QAM	1	74	22.04	21.97	21.92	0.1528	0.1503	0.1486
15	256QAM	36	0	21.96	22.08	21.94	0.1500	0.1542	0.1493
15	256QAM	36	20	21.90	22.16	22.02	0.1479	0.1570	0.1521
15	256QAM	36	39	22.18	22.12	21.72	0.1578	0.1556	0.1419
15	256QAM	75	0	22.01	21.91	21.90	0.1517	0.1483	0.1479
Channel				39700	40620	41540	EIRP(W)		
Frequency (MHz)				2501	2593	2685	L	M	H



10	QPSK	1	0	26.04	25.96	25.86	0.3837	0.3767	0.3681
10	QPSK	1	25	25.94	25.97	25.69	0.3750	0.3776	0.3540
10	QPSK	1	49	25.90	25.94	25.73	0.3715	0.3750	0.3573
10	QPSK	25	0	25.84	25.94	25.73	0.3664	0.3750	0.3573
10	QPSK	25	12	25.75	25.98	25.67	0.3589	0.3784	0.3524
10	QPSK	25	25	25.91	25.90	25.79	0.3724	0.3715	0.3622
10	QPSK	50	0	25.91	25.96	25.84	0.3724	0.3767	0.3664
10	16QAM	1	0	25.88	26.01	25.84	0.3698	0.3811	0.3664
10	16QAM	1	25	25.85	26.09	25.81	0.3673	0.3882	0.3639
10	16QAM	1	49	25.89	25.84	25.68	0.3707	0.3664	0.3532
10	16QAM	25	0	24.97	25.02	24.86	0.2999	0.3034	0.2924
10	16QAM	25	12	24.85	24.98	24.79	0.2917	0.3006	0.2877
10	16QAM	25	25	25.03	24.89	24.90	0.3041	0.2944	0.2951
10	16QAM	50	0	25.11	25.04	24.89	0.3097	0.3048	0.2944
10	64QAM	1	0	25.00	25.14	24.76	0.3020	0.3119	0.2858
10	64QAM	1	25	25.16	25.07	24.82	0.3133	0.3069	0.2897
10	64QAM	1	49	24.93	25.12	24.94	0.2972	0.3105	0.2979
10	64QAM	25	0	23.92	23.95	23.97	0.2355	0.2371	0.2382
10	64QAM	25	12	23.93	23.96	23.78	0.2360	0.2377	0.2280
10	64QAM	25	25	23.91	24.10	23.89	0.2350	0.2455	0.2339
10	64QAM	50	0	24.02	23.94	23.82	0.2410	0.2366	0.2301
10	256QAM	1	0	21.89	21.91	21.84	0.1476	0.1483	0.1459
10	256QAM	1	25	22.09	22.21	21.79	0.1545	0.1589	0.1442
10	256QAM	1	49	21.90	22.01	21.98	0.1479	0.1517	0.1507
10	256QAM	25	0	21.94	22.09	21.94	0.1493	0.1545	0.1493
10	256QAM	25	12	22.00	22.11	22.02	0.1514	0.1552	0.1521
10	256QAM	25	25	22.09	22.12	21.84	0.1545	0.1556	0.1459
10	256QAM	50	0	22.00	21.93	21.94	0.1514	0.1489	0.1493
Channel				39675	40620	41565	EIRP(W)		
Frequency (MHz)				2498.5	2593	2687.5	L	M	H
5	QPSK	1	0	25.99	26.10	25.86	0.3793	0.3890	0.3681
5	QPSK	1	12	25.86	25.95	25.66	0.3681	0.3758	0.3516
5	QPSK	1	24	25.91	25.94	25.63	0.3724	0.3750	0.3491
5	QPSK	12	0	25.86	25.94	25.77	0.3681	0.3750	0.3606
5	QPSK	12	7	25.89	26.03	25.74	0.3707	0.3828	0.3581
5	QPSK	12	13	25.83	25.91	25.71	0.3656	0.3724	0.3556
5	QPSK	25	0	25.91	25.99	25.83	0.3724	0.3793	0.3656
5	16QAM	1	0	26.03	25.93	25.87	0.3828	0.3741	0.3690
5	16QAM	1	12	25.81	26.04	25.78	0.3639	0.3837	0.3614
5	16QAM	1	24	25.84	25.85	25.76	0.3664	0.3673	0.3597
5	16QAM	12	0	24.89	25.13	24.86	0.2944	0.3112	0.2924
5	16QAM	12	7	24.91	25.04	24.79	0.2958	0.3048	0.2877
5	16QAM	12	13	25.07	24.94	24.80	0.3069	0.2979	0.2884
5	16QAM	25	0	25.13	25.20	24.95	0.3112	0.3162	0.2985
5	64QAM	1	0	24.89	25.09	24.81	0.2944	0.3083	0.2891
5	64QAM	1	12	25.02	25.06	24.78	0.3034	0.3062	0.2871
5	64QAM	1	24	25.02	25.16	24.94	0.3034	0.3133	0.2979
5	64QAM	12	0	23.94	23.96	24.00	0.2366	0.2377	0.2399



5	64QAM	12	7	23.86	23.90	23.80	0.2323	0.2344	0.2291
5	64QAM	12	13	24.05	24.11	23.83	0.2427	0.2460	0.2307
5	64QAM	25	0	24.05	24.04	23.83	0.2427	0.2421	0.2307
5	256QAM	1	0	21.94	21.90	21.83	0.1493	0.1479	0.1455
5	256QAM	1	12	22.05	22.16	21.79	0.1531	0.1570	0.1442
5	256QAM	1	24	22.01	21.98	22.03	0.1517	0.1507	0.1524
5	256QAM	12	0	21.96	22.01	22.00	0.1500	0.1517	0.1514
5	256QAM	12	7	21.99	22.09	21.89	0.1510	0.1545	0.1476
5	256QAM	12	13	22.09	22.00	21.85	0.1545	0.1514	0.1462
5	256QAM	25	0	21.96	22.01	21.92	0.1500	0.1517	0.1486

LTE Band 38C_ANT9:

Combination 20MHz+20MHz (100RB+100RB)							
Channel	Modulation	PCC		SCC		Measured Power	EIRP(W)
		RB Size	RB offset	RB Size	RB offset		
L 37850_38048	QPSK	Max	0	Max	0	22.90	0.1862
	QPSK	1	0	1	Max	22.94	0.1879
	QPSK	1	Max	1	0	22.79	0.1816
M 37901_38099	QPSK	Max	0	Max	0	22.87	0.1849
	QPSK	1	0	1	Max	22.95	0.1884
	QPSK	1	Max	1	0	22.93	0.1875
H 37952_38150	QPSK	Max	0	Max	0	22.89	0.1858
	QPSK	1	0	1	Max	22.85	0.1841
	QPSK	1	Max	1	0	22.83	0.1832
L 37850_38048	16QAM	Max	0	Max	0	22.89	0.1858
	16QAM	1	0	1	Max	22.95	0.1884
	16QAM	1	Max	1	0	23.05	0.1928
M 37901_38099	16QAM	Max	0	Max	0	22.82	0.1828
	16QAM	1	0	1	Max	22.96	0.1888
	16QAM	1	Max	1	0	22.99	0.1901
H 37952_38150	16QAM	Max	0	Max	0	22.93	0.1875
	16QAM	1	0	1	Max	23.07	0.1936
	16QAM	1	Max	1	0	23.03	0.1919
L 37850_38048	64QAM	Max	0	Max	0	22.16	0.1570
	64QAM	1	0	1	Max	22.13	0.1560
	64QAM	1	Max	1	0	22.02	0.1521
M 37901_38099	64QAM	Max	0	Max	0	22.08	0.1542
	64QAM	1	0	1	Max	22.05	0.1531
	64QAM	1	Max	1	0	22.00	0.1514
H 37952_38150	64QAM	Max	0	Max	0	22.06	0.1535
	64QAM	1	0	1	Max	21.98	0.1507
	64QAM	1	Max	1	0	21.96	0.1500
L 37850_38048	256QAM	Max	0	Max	0	19.14	0.0783
	256QAM	1	0	1	Max	19.05	0.0767
	256QAM	1	Max	1	0	19.16	0.0787
M 37901_38099	256QAM	Max	0	Max	0	19.06	0.0769
	256QAM	1	0	1	Max	19.01	0.0760



	256QAM	1	Max	1	0	19.11	0.0778
H 37952_38150	256QAM	Max	0	Max	0	19.01	0.0760
	256QAM	1	0	1	Max	18.98	0.0755
	256QAM	1	Max	1	0	19.15	0.0785
Combination 15MHz+15MHz (75RB+75RB)							
Channel	Modulation	PCC		SCC		Measured Power	EIRP(W)
		RB Size	RB offset	RB Size	RB offset		
L 37825_37975	QPSK	Max	0	Max	0	22.89	0.1858
	QPSK	1	0	1	Max	22.85	0.1841
	QPSK	1	Max	1	0	22.95	0.1884
M 37925_38075	QPSK	Max	0	Max	0	22.72	0.1786
	QPSK	1	0	1	Max	22.96	0.1888
	QPSK	1	Max	1	0	22.84	0.1837
H 38025_38175	QPSK	Max	0	Max	0	22.83	0.1832
	QPSK	1	0	1	Max	22.82	0.1828
	QPSK	1	Max	1	0	22.86	0.1845
L 37825_37975	16QAM	Max	0	Max	0	22.88	0.1854
	16QAM	1	0	1	Max	22.88	0.1854
	16QAM	1	Max	1	0	22.93	0.1875
M 37925_38075	16QAM	Max	0	Max	0	22.96	0.1888
	16QAM	1	0	1	Max	23.07	0.1936
	16QAM	1	Max	1	0	23.09	0.1945
H 38025_38175	16QAM	Max	0	Max	0	22.90	0.1862
	16QAM	1	0	1	Max	22.98	0.1897
	16QAM	1	Max	1	0	22.99	0.1901
L 37825_37975	64QAM	Max	0	Max	0	22.06	0.1535
	64QAM	1	0	1	Max	21.97	0.1503
	64QAM	1	Max	1	0	22.01	0.1517
M 37925_38075	64QAM	Max	0	Max	0	22.07	0.1538
	64QAM	1	0	1	Max	21.94	0.1493
	64QAM	1	Max	1	0	22.11	0.1552
H 38025_38175	64QAM	Max	0	Max	0	22.10	0.1549
	64QAM	1	0	1	Max	22.10	0.1549
	64QAM	1	Max	1	0	22.07	0.1538
L 37825_37975	256QAM	Max	0	Max	0	19.04	0.0766
	256QAM	1	0	1	Max	19.02	0.0762
	256QAM	1	Max	1	0	19.12	0.0780
M 37925_38075	256QAM	Max	0	Max	0	19.04	0.0766
	256QAM	1	0	1	Max	18.91	0.0743
	256QAM	1	Max	1	0	19.12	0.0780
H 38025_38175	256QAM	Max	0	Max	0	18.97	0.0753
	256QAM	1	0	1	Max	19.04	0.0766
	256QAM	1	Max	1	0	19.18	0.0791



LTE Band 41C_ANT9:

Combination 20MHz+20MHz (100RB+100RB)							
Channel	Modulation	PCC		SCC		Measured Power	EIRP(W)
		RB Size	RB offset	RB Size	RB offset		
L	QPSK	1	Max	1	0	25.95	0.3758
M	QPSK	1	Max	1	0	25.33	0.3258
H	QPSK	1	Max	1	0	25.32	0.3251
L	16QAM	1	Max	1	0	25.38	0.3296
M	16QAM	1	Max	1	0	25.39	0.3304
H	16QAM	1	Max	1	0	25.34	0.3266
L	64QAM	1	Max	1	0	24.39	0.2624
M	64QAM	1	Max	1	0	24.42	0.2642
H	64QAM	1	Max	1	0	24.56	0.2729
L	256QAM	1	Max	1	0	21.49	0.1346
M	256QAM	1	Max	1	0	21.46	0.1337
H	256QAM	1	Max	1	0	21.30	0.1288
Combination 20MHz+15MHz (100RB+75RB)							
Channel	Modulation	PCC		SCC		Measured Power	EIRP(W)
		RB Size	RB offset	RB Size	RB offset		
L	QPSK	1	Max	1	0	25.36	0.3281
M	16QAM	1	Max	1	0	25.19	0.3155
Combination 15MHz+20MHz (75RB+100RB)							
Channel	Modulation	PCC		SCC		Measured Power	EIRP(W)
		RB Size	RB offset	RB Size	RB offset		
L	QPSK	1	Max	1	0	25.34	0.3266
M	16QAM	1	Max	1	0	25.20	0.3162
Combination 15MHz+15MHz (75RB+75RB)							
Channel	Modulation	PCC		SCC		Measured Power	EIRP(W)
		RB Size	RB offset	RB Size	RB offset		
L	QPSK	1	Max	1	0	25.38	0.3296
M	16QAM	1	Max	1	0	25.26	0.3206
Combination 20MHz+10MHz (100RB+50RB)							
Channel	Modulation	PCC		SCC		Measured Power	EIRP(W)
		RB Size	RB offset	RB Size	RB offset		
L	QPSK	1	Max	1	0	25.38	0.3296
M	16QAM	1	Max	1	0	25.26	0.3206
Combination 10MHz+20MHz (50RB+100RB)							
Channel	Modulation	PCC		SCC		Measured Power	EIRP(W)
		RB Size	RB offset	RB Size	RB offset		
L	QPSK	1	Max	1	0	25.41	0.3319
M	16QAM	1	Max	1	0	25.24	0.3192
Combination 15MHz+10MHz (75RB+50RB)							
Channel	Modulation	PCC		SCC		Measured Power	EIRP(W)
		RB Size	RB offset	RB Size	RB offset		
L	QPSK	1	Max	1	0	25.35	0.3273
M	16QAM	1	Max	1	0	25.27	0.3214
Combination 10MHz+15MHz (50RB+75RB)							
Channel	Modulation	PCC		SCC		Measured Power	EIRP(W)
		RB Size	RB offset	RB Size	RB offset		
L	QPSK	1	Max	1	0	25.33	0.3258
M	16QAM	1	Max	1	0	25.23	0.3184



Combination 20MHz+5MHz (100RB+25RB)							
Channel	Modulation	PCC		SCC		Measured Power	EIRP(W)
		RB Size	RB offset	RB Size	RB offset		
L	QPSK	1	Max	1	0	25.42	0.3327
M	16QAM	1	Max	1	0	25.22	0.3177
Combination 5MHz+20MHz (25RB+100RB)							
Channel	Modulation	PCC		SCC		Measured Power	EIRP(W)
		RB Size	RB offset	RB Size	RB offset		
L	QPSK	1	Max	1	0	25.41	0.3319
M	16QAM	1	Max	1	0	25.23	0.3184



LTE Band 7

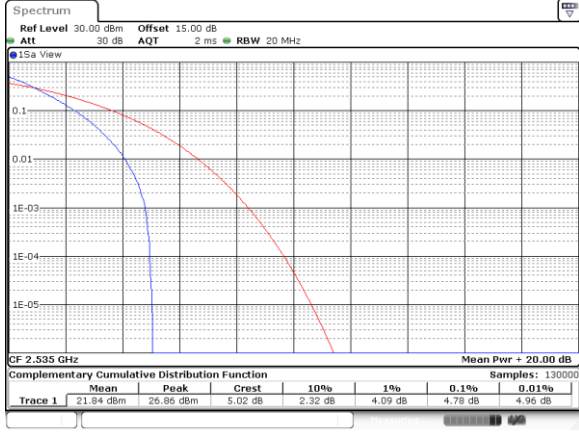
Peak-to-Average Ratio

Mode	LTE Band 7 / 20MHz			
Mod.	QPSK	16QAM	64QAM	Limit: 13dB
RB Size	Full RB	Full RB	Full RB	Result
Middle CH	4.78	5.71	6.23	PASS



LTE Band 7 / 20MHz / QPSK

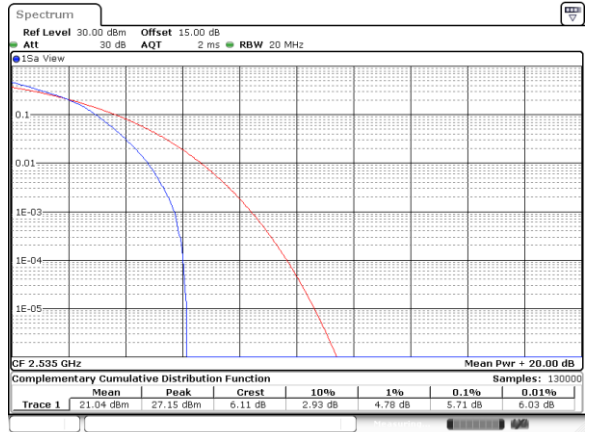
Middle Channel / Full RB



Date: 23.NOV.2024 16:26:39

LTE Band 7 / 20MHz / 16QAM

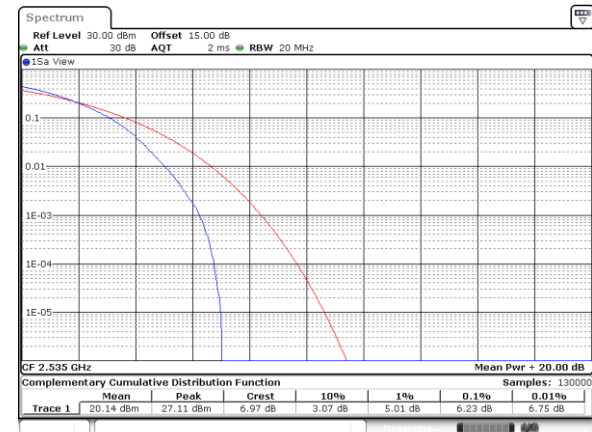
Middle Channel / Full RB



Date: 23.NOV.2024 16:27:29

LTE Band 7 / 20MHz / 64QAM

Middle Channel / Full RB



Date: 23.NOV.2024 16:39:12



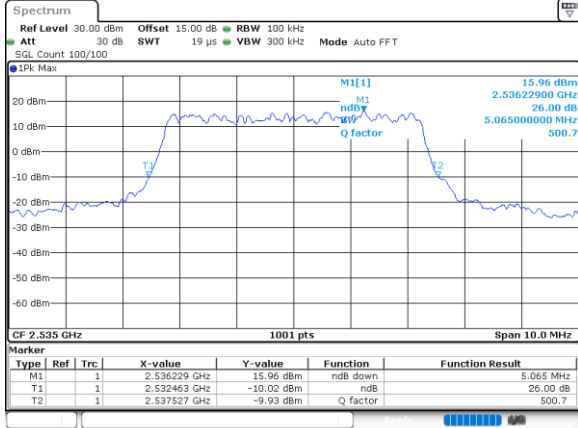
26dB Bandwidth

Mode	LTE Band 7 : 26dB BW(MHz)											
	1.4MHz		3MHz		5MHz		10MHz		15MHz		20MHz	
Mod.	QPSK	16QAM	QPSK	16QAM	QPSK	16QAM	QPSK	16QAM	QPSK	16QAM	QPSK	16QAM
Middle CH	-	-	-	-	5.07	4.92	9.75	9.65	14.57	14.63	19.02	19.10



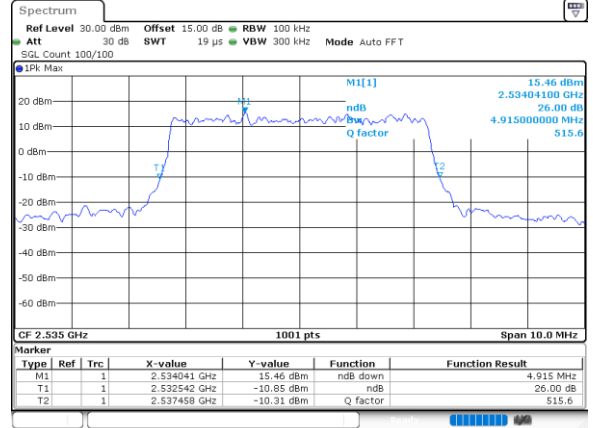
LTE Band 7

Middle Channel / 5MHz / QPSK



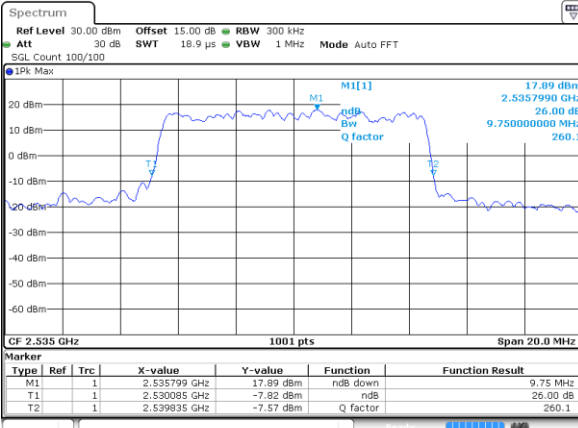
Date: 23.NOV.2024 16:17:25

Middle Channel / 5MHz / 16QAM



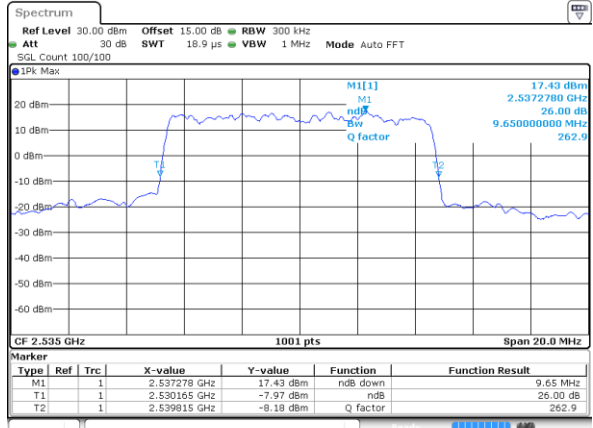
Date: 23.NOV.2024 16:18:04

Middle Channel / 10MHz / QPSK



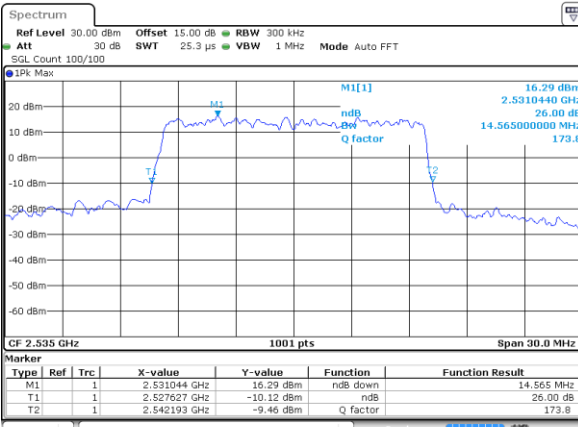
Date: 11.NOV.2024 12:43:35

Middle Channel / 10MHz / 16QAM



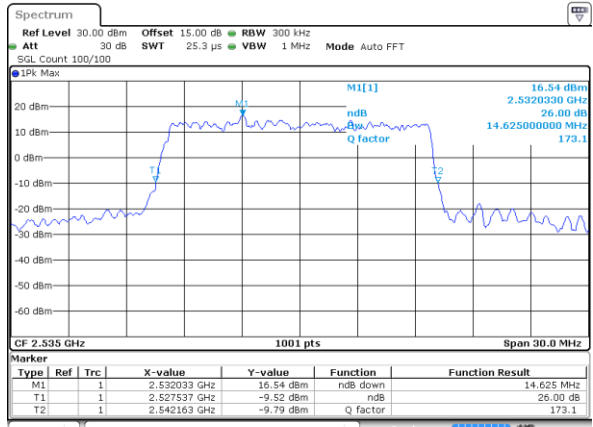
Date: 11.NOV.2024 12:44:14

Middle Channel / 15MHz / QPSK



Date: 11.NOV.2024 12:58:18

Middle Channel / 15MHz / 16QAM

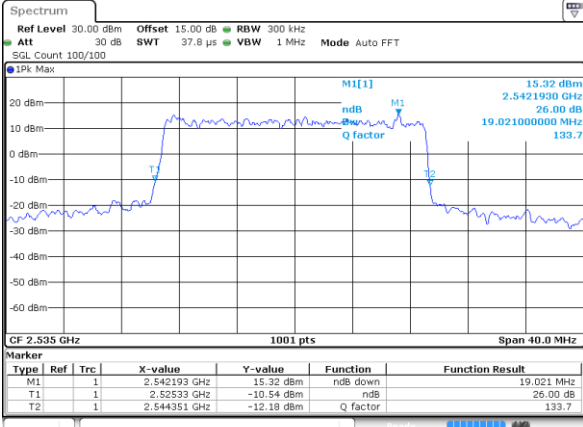


Date: 11.NOV.2024 12:58:57



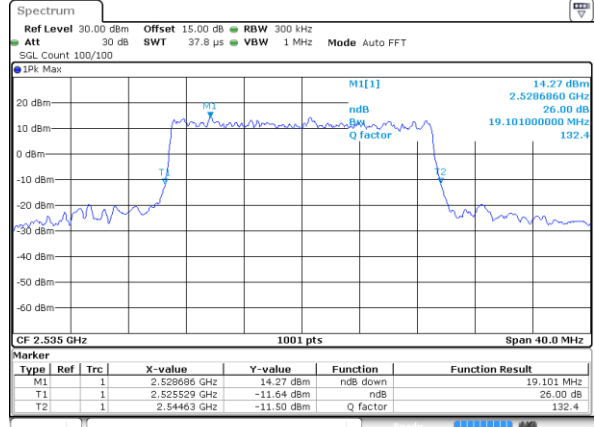
LTE Band 7

Middle Channel / 20MHz / QPSK



Date: 11 NOV 2024 13:13:36

Middle Channel / 20MHz / 16QAM



Date: 11 NOV 2024 13:14:16



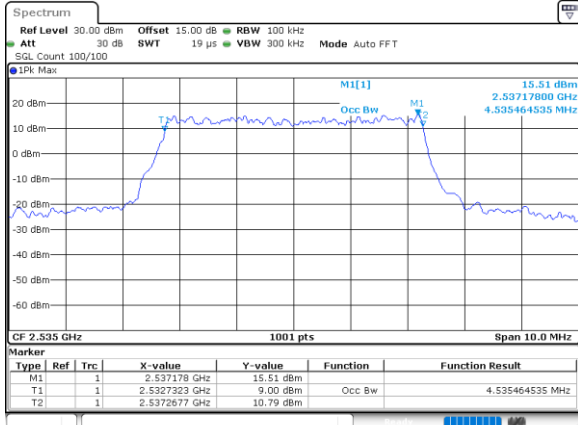
Occupied Bandwidth

Mode	LTE Band 7 : 99%OBW(MHz)											
	1.4MHz		3MHz		5MHz		10MHz		15MHz		20MHz	
Mod.	QPSK	16QAM	QPSK	16QAM	QPSK	16QAM	QPSK	16QAM	QPSK	16QAM	QPSK	16QAM
Middle CH	-	-	-	-	4.54	4.53	9.07	9.01	13.46	13.40	18.02	17.90



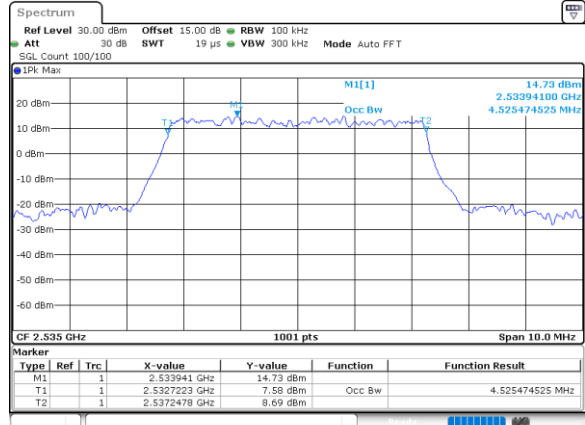
LTE Band 7

Middle Channel / 5MHz / QPSK



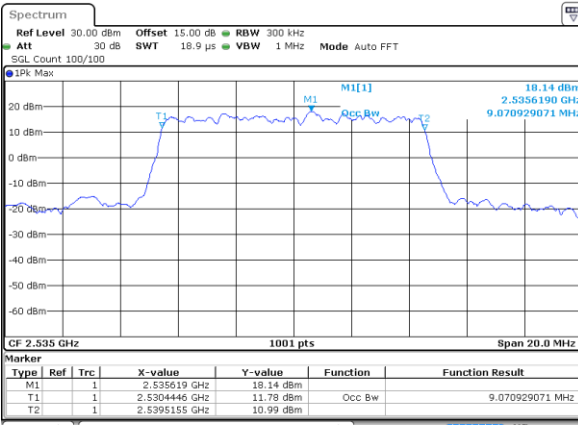
Date: 23.NOV.2024 16:17:11

Middle Channel / 5MHz / 16QAM



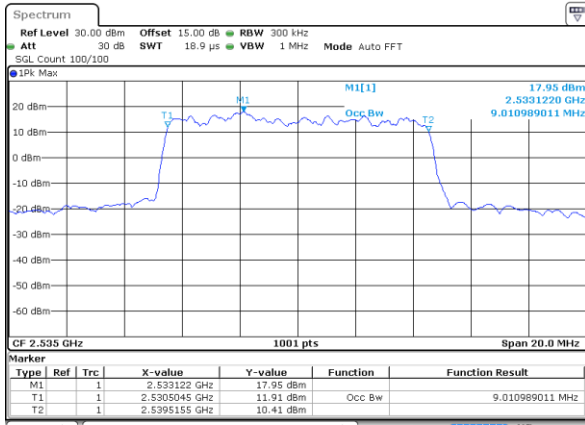
Date: 23.NOV.2024 16:17:50

Middle Channel / 10MHz / QPSK



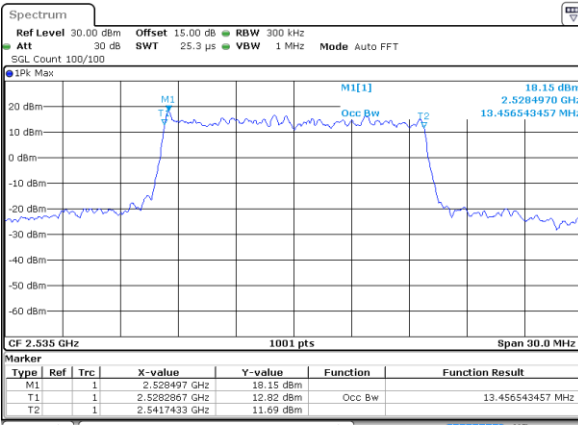
Date: 11.NOV.2024 12:42:39

Middle Channel / 10MHz / 16QAM



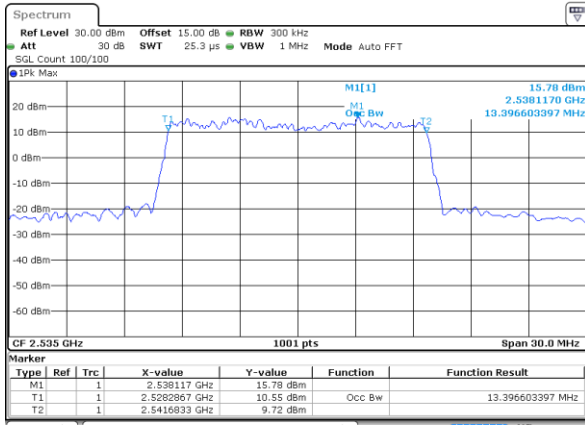
Date: 11.NOV.2024 12:44:00

Middle Channel / 15MHz / QPSK



Date: 11.NOV.2024 12:58:04

Middle Channel / 15MHz / 16QAM

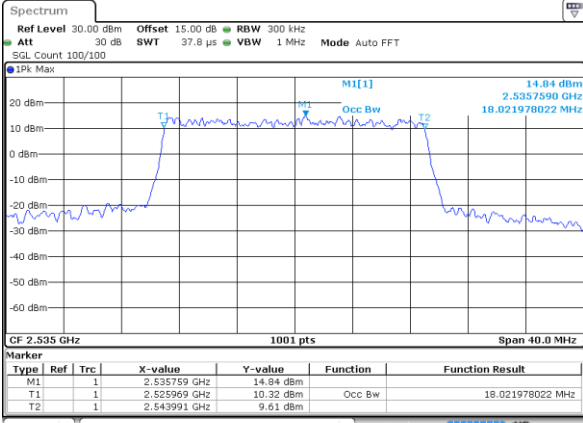


Date: 11.NOV.2024 12:58:43



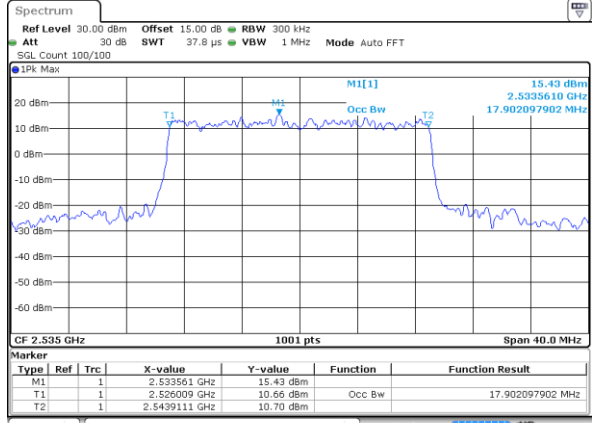
LTE Band 7

Middle Channel / 20MHz / QPSK



Date: 11 NOV 2024 13:13:22

Middle Channel / 20MHz / 16QAM



Date: 11 NOV 2024 13:14:02

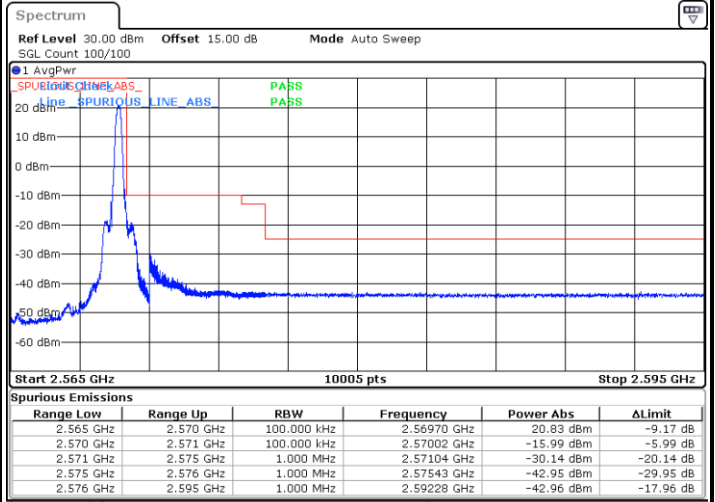
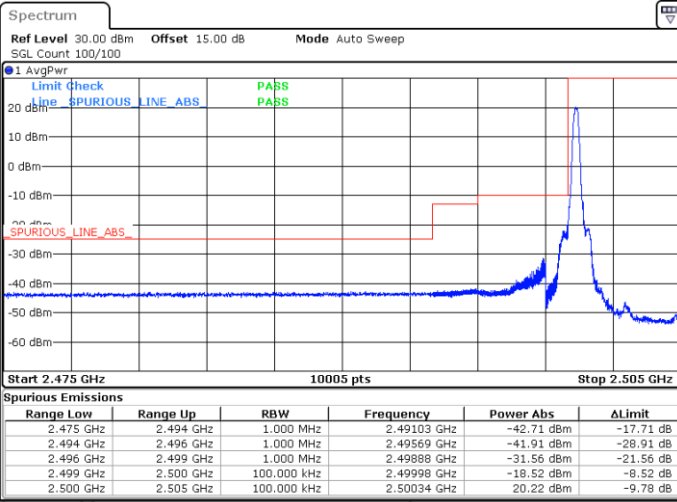


Conducted Band Edge

LTE Band 7 / 5MHz / QPSK

Lowest Band Edge / 1 RB

Highest Band Edge / 1 RB

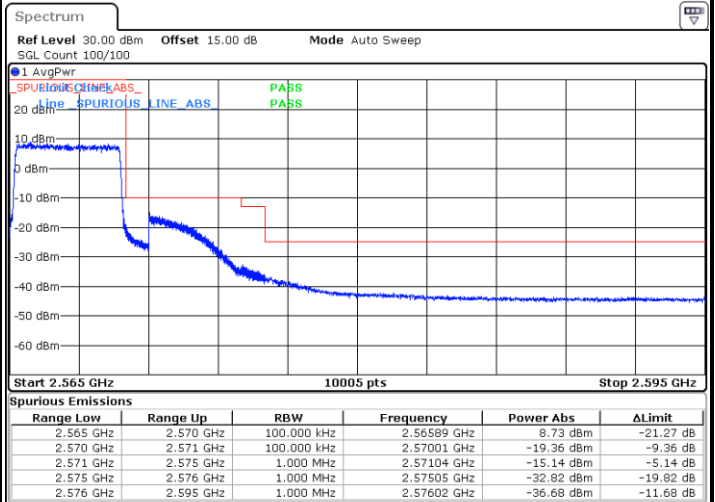
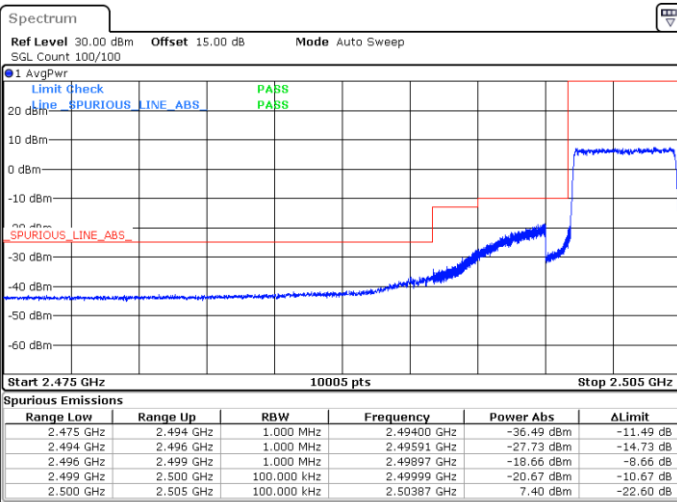


Date: 23.NOV.2024 16:28:57

Date: 23.NOV.2024 16:31:38

Lowest Band Edge / Full RB

Highest Band Edge / Full RB



Date: 23.NOV.2024 16:30:34

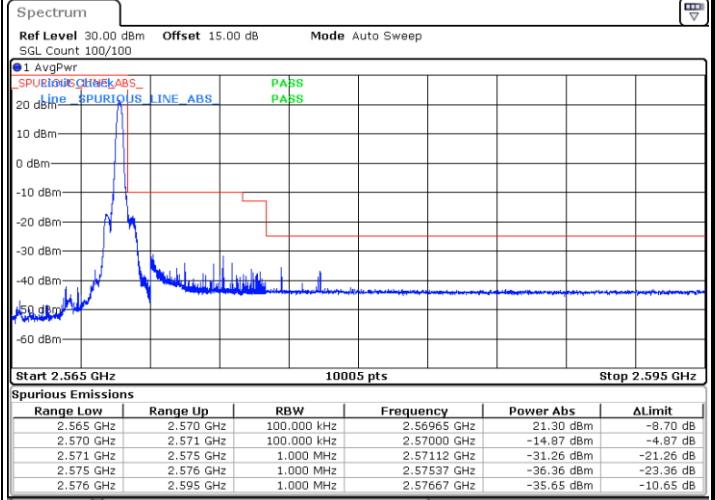
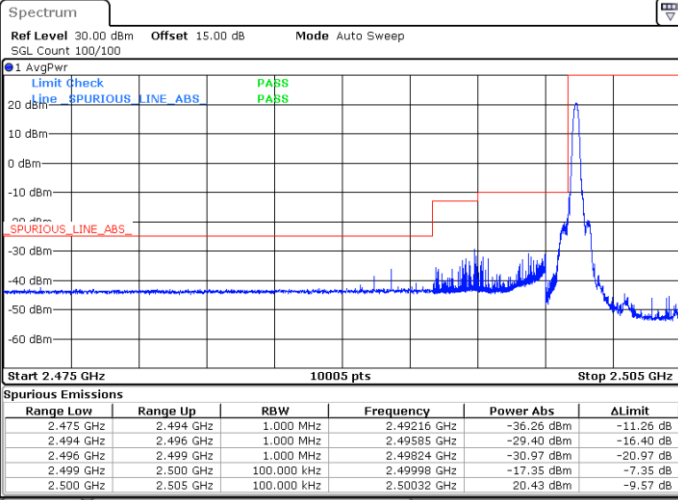
Date: 11.NOV.2024 12:31:52



LTE Band 7 / 5MHz / 16QAM

Lowest Band Edge / 1RB

Highest Band Edge / 1 RB

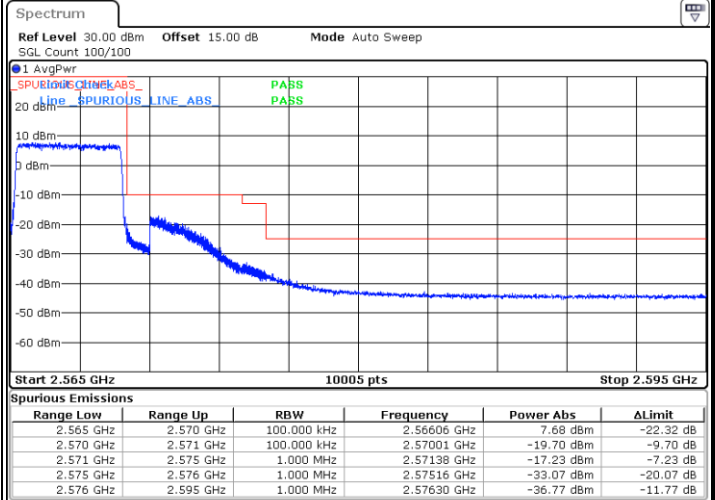
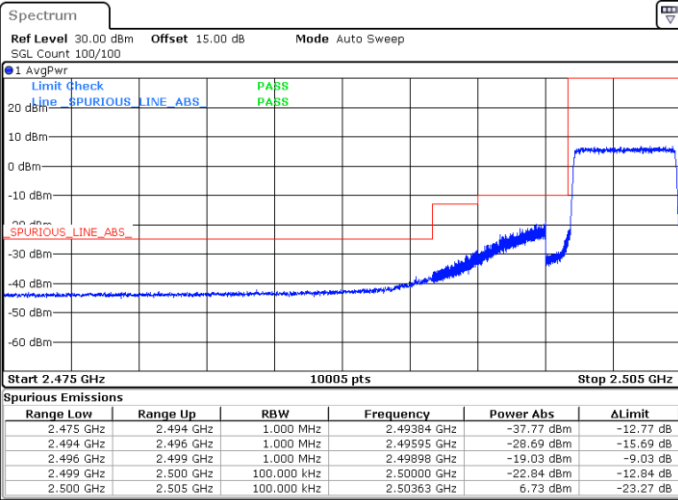


Date: 23.NOV.2024 16:29:29

Date: 23.NOV.2024 16:32:10

Lowest Band Edge / Full RB

Highest Band Edge / Full RB



Date: 23.NOV.2024 16:31:06

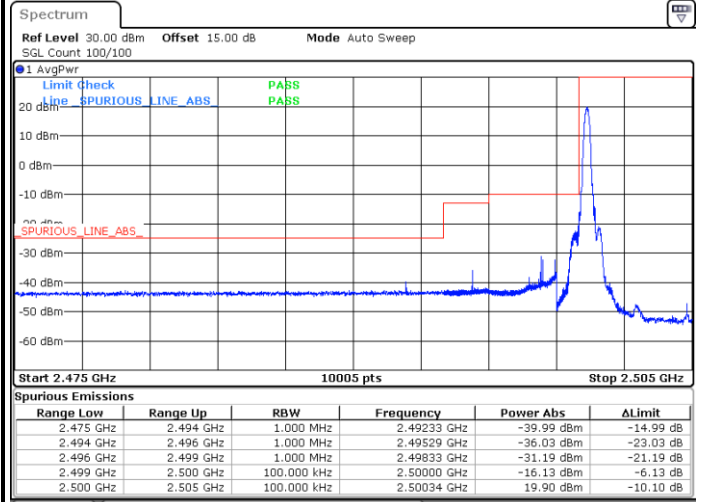
Date: 11.NOV.2024 12:32:40



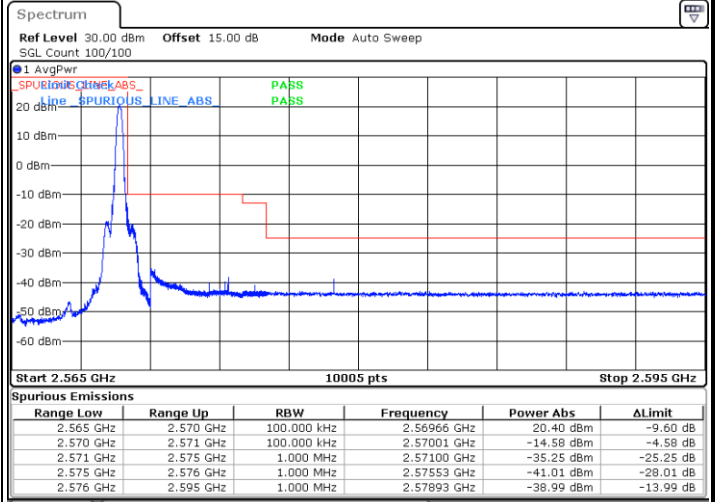
LTE Band 7 / 5MHz / 64QAM

Lowest Band Edge / 1RB

Highest Band Edge / 1 RB



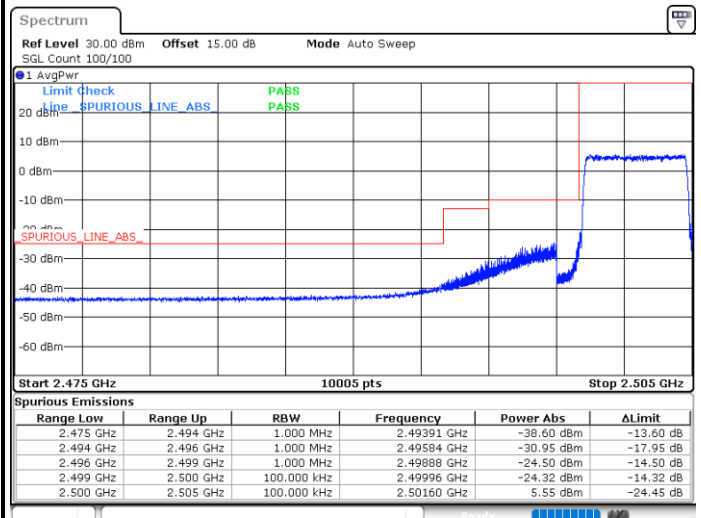
Date: 23.NOV.2024 16:30:01



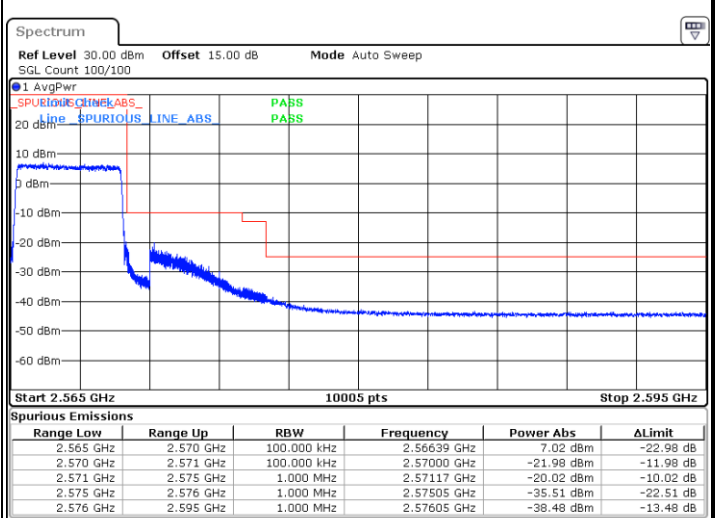
Date: 23.NOV.2024 16:32:42

Lowest Band Edge / Full RB

Highest Band Edge / Full RB



Date: 23.NOV.2024 16:36:18

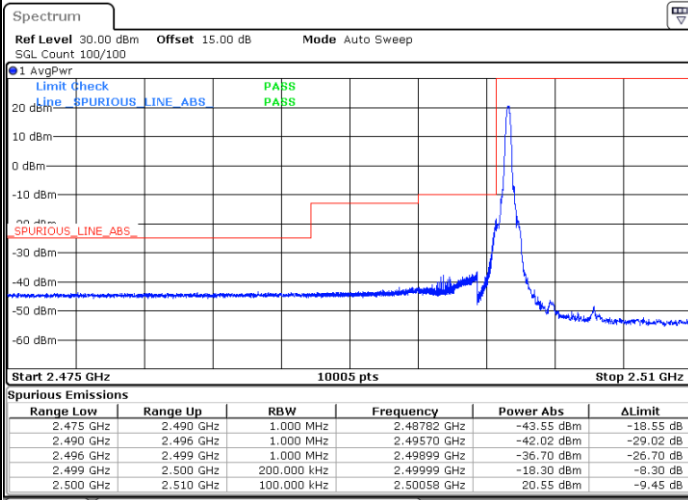


Date: 11.NOV.2024 12:33:26



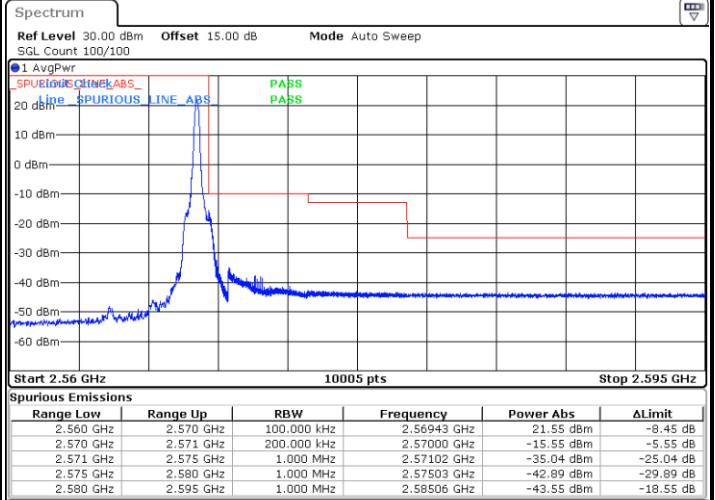
LTE Band 7 / 10MHz / QPSK

Lowest Band Edge / 1 RB



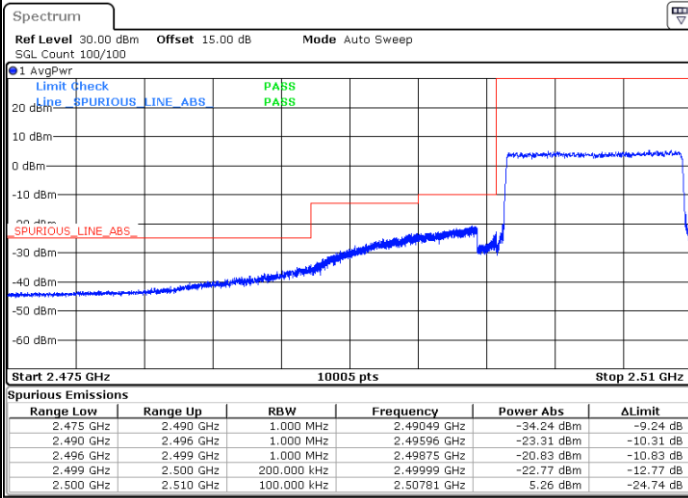
Date: 11.NOV.2024 12:38:04

Highest Band Edge / 1 RB



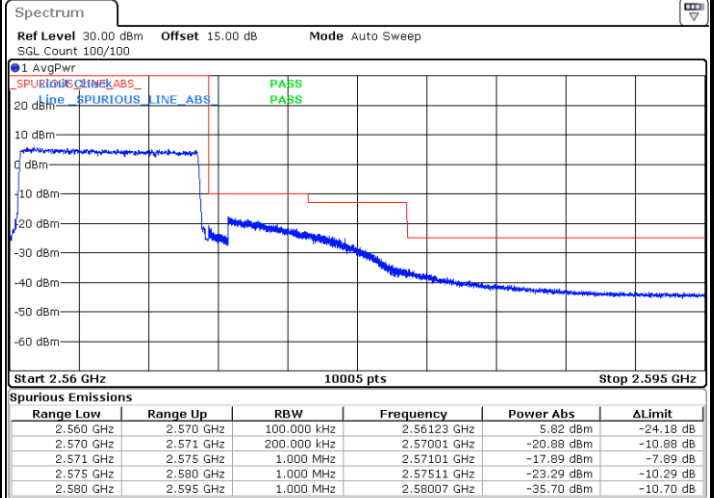
Date: 11.NOV.2024 12:44:59

Lowest Band Edge / Full RB



Date: 11.NOV.2024 12:38:22

Highest Band Edge / Full RB

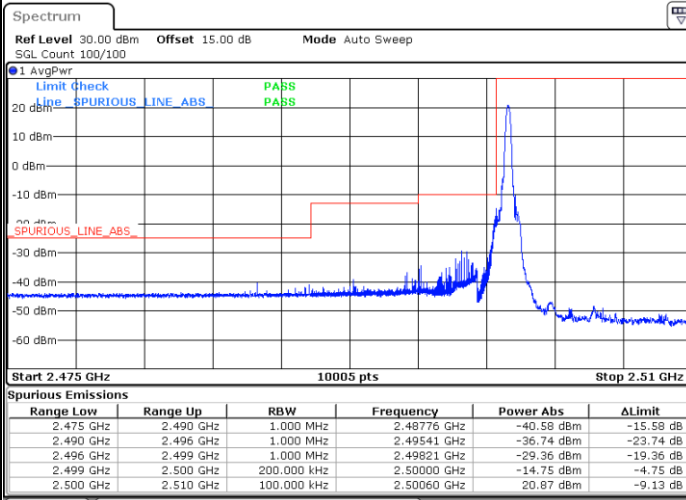


Date: 11.NOV.2024 12:47:17



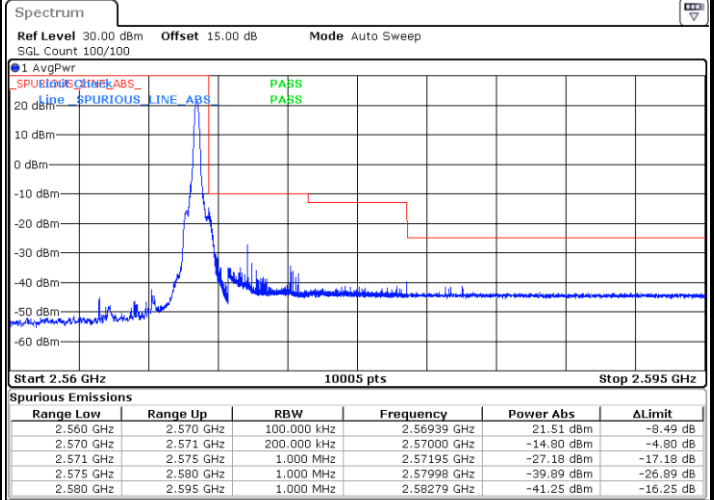
LTE Band 7 / 10MHz / 16QAM

Lowest Band Edge / 1RB



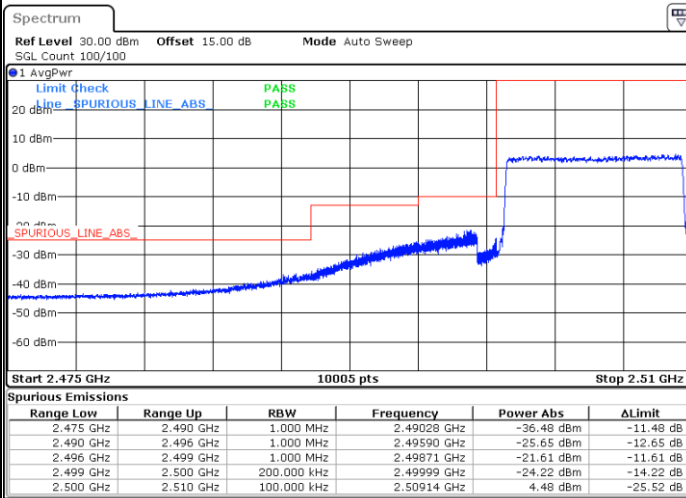
Date: 11.NOV.2024 12:38:50

Highest Band Edge / 1 RB



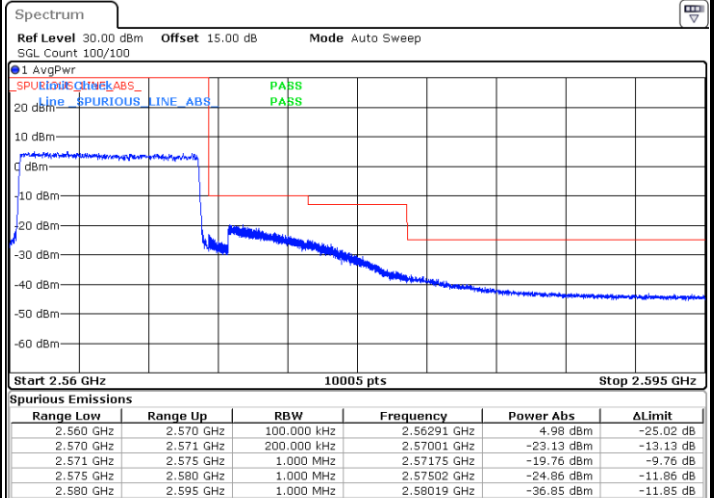
Date: 11.NOV.2024 12:45:45

Lowest Band Edge / Full RB



Date: 11.NOV.2024 12:39:08

Highest Band Edge / Full RB

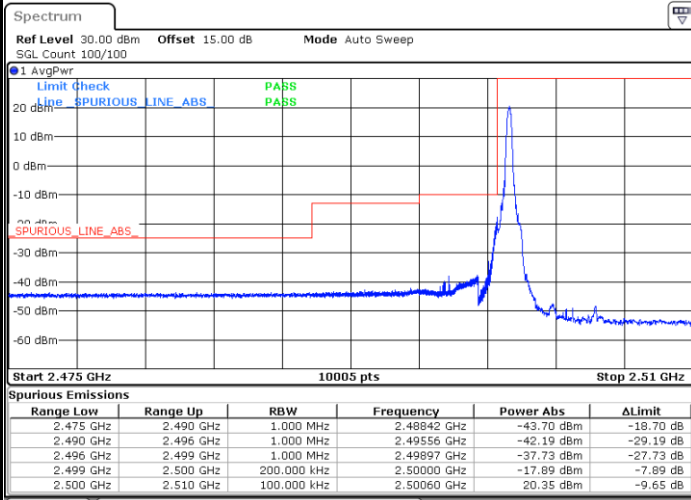


Date: 11.NOV.2024 12:48:03



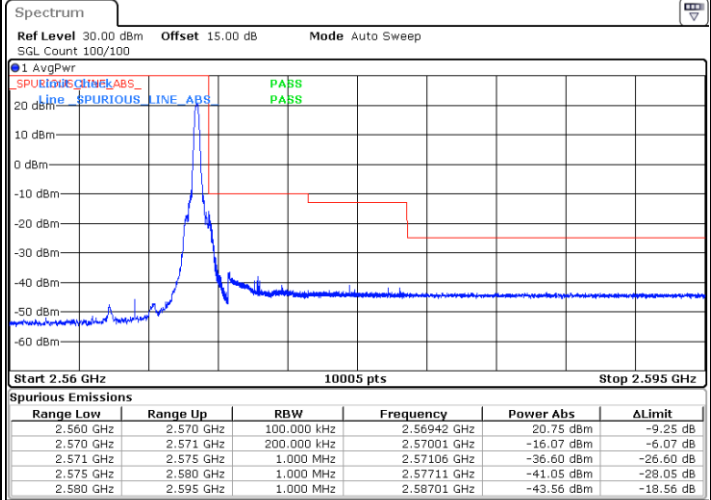
LTE Band 7 / 10MHz / 64QAM

Lowest Band Edge / 1RB



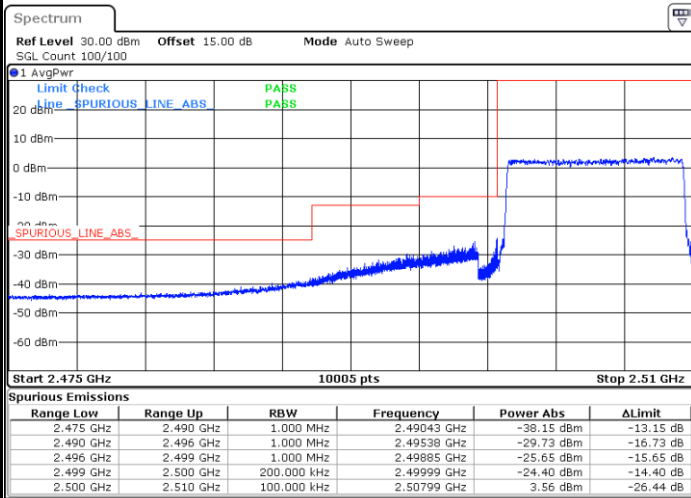
Date: 11.NOV.2024 12:37:36

Highest Band Edge / 1 RB



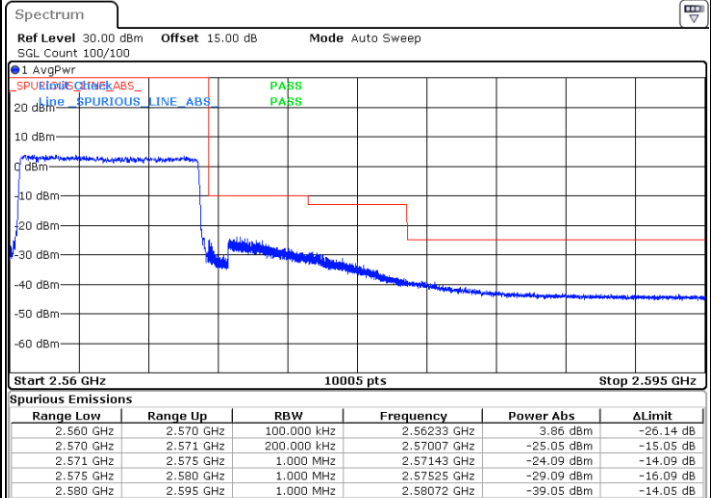
Date: 11.NOV.2024 12:46:31

Lowest Band Edge / Full RB



Date: 11.NOV.2024 12:39:54

Highest Band Edge / Full RB

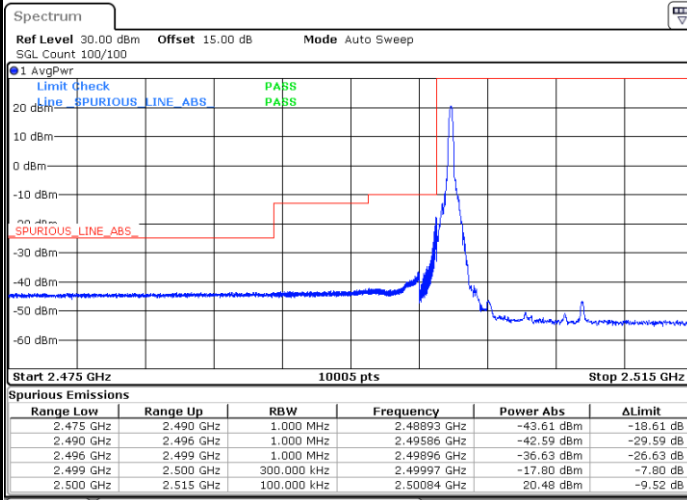


Date: 11.NOV.2024 12:48:49



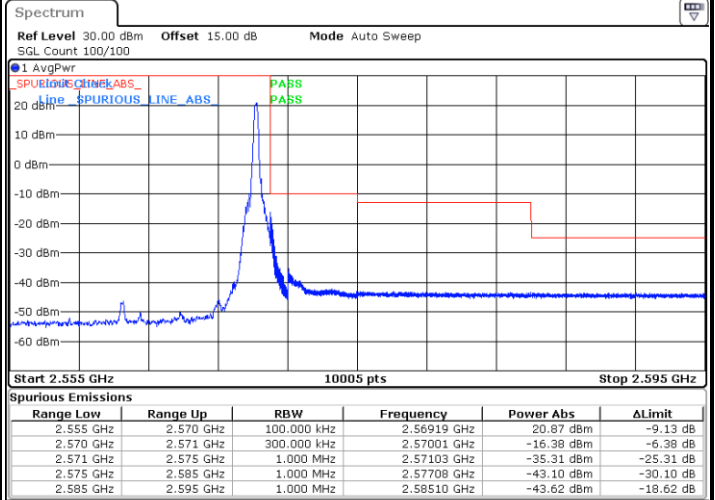
LTE Band 7 / 15MHz / QPSK

Lowest Band Edge / 1 RB



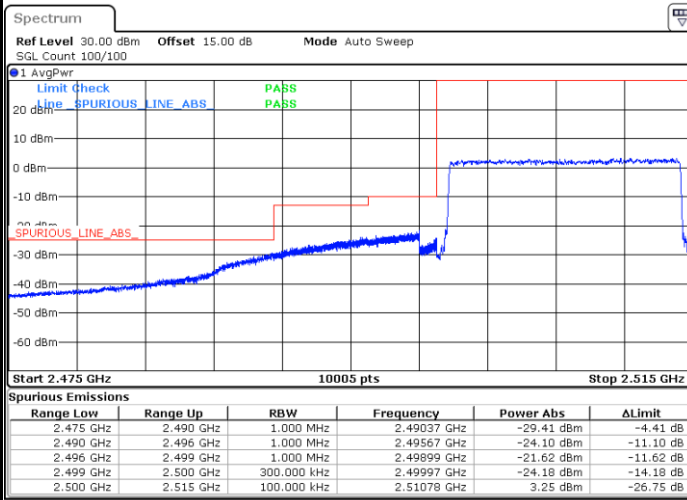
Date: 11.NOV.2024 12:51:27

Highest Band Edge / 1 RB



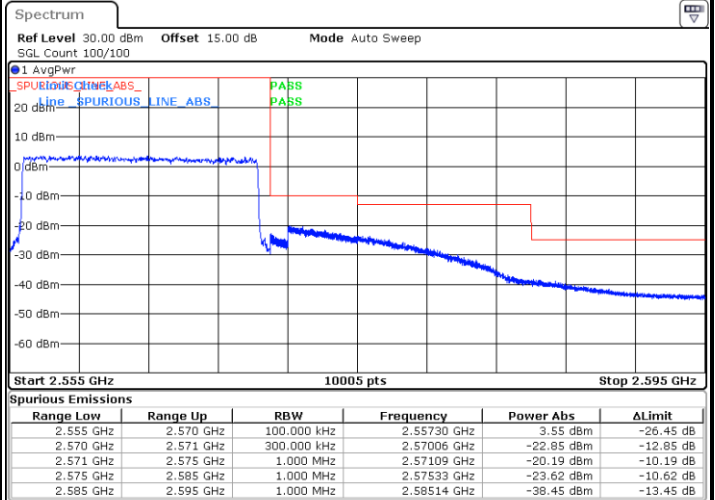
Date: 11.NOV.2024 12:59:43

Lowest Band Edge / Full RB



Date: 11.NOV.2024 12:53:46

Highest Band Edge / Full RB



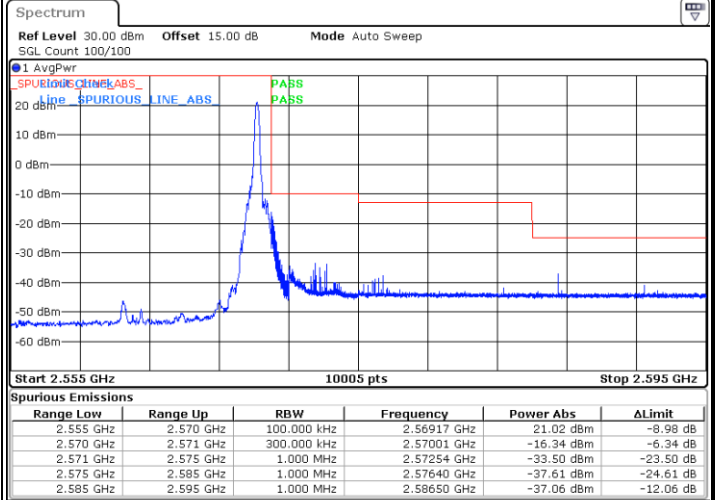
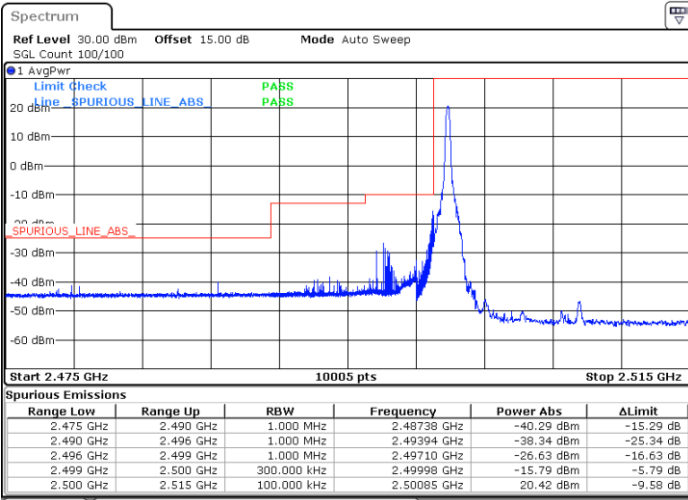
Date: 11.NOV.2024 13:02:04



LTE Band 7 / 15MHz / 16QAM

Lowest Band Edge / 1RB

Highest Band Edge / 1 RB

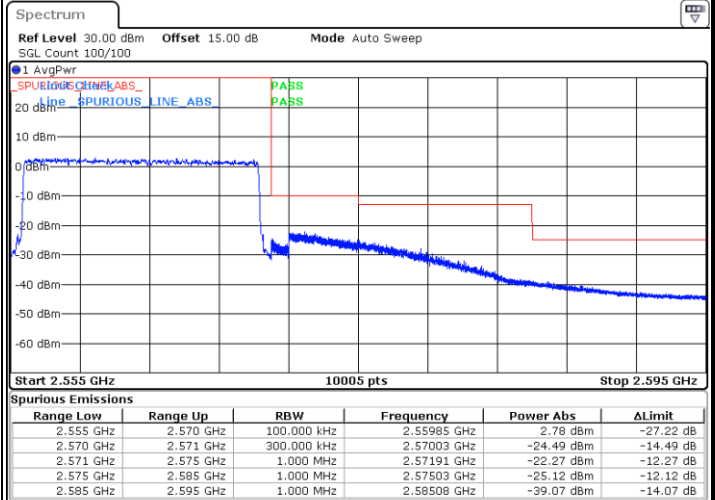
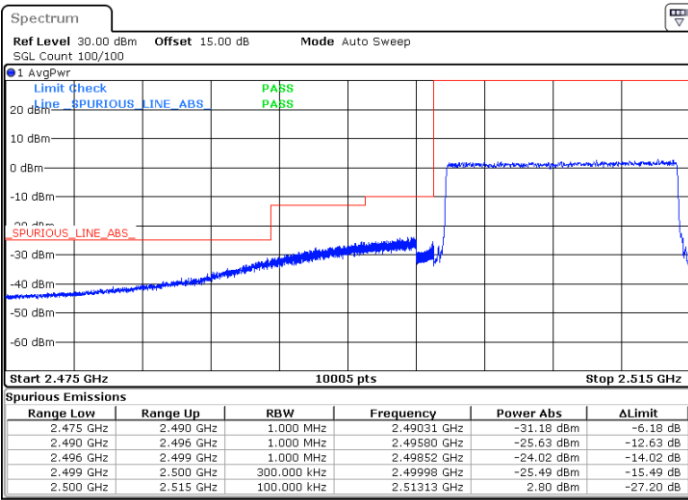


Date: 11.NOV.2024 12:52:14

Date: 11.NOV.2024 13:00:30

Lowest Band Edge / Full RB

Highest Band Edge / Full RB



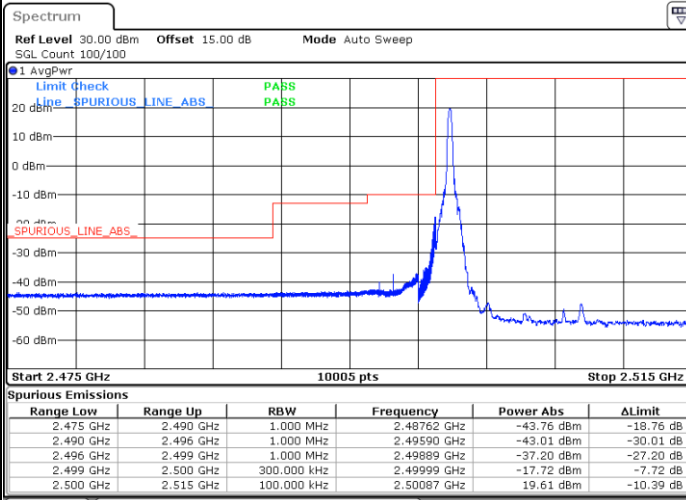
Date: 11.NOV.2024 12:54:32

Date: 11.NOV.2024 13:02:51



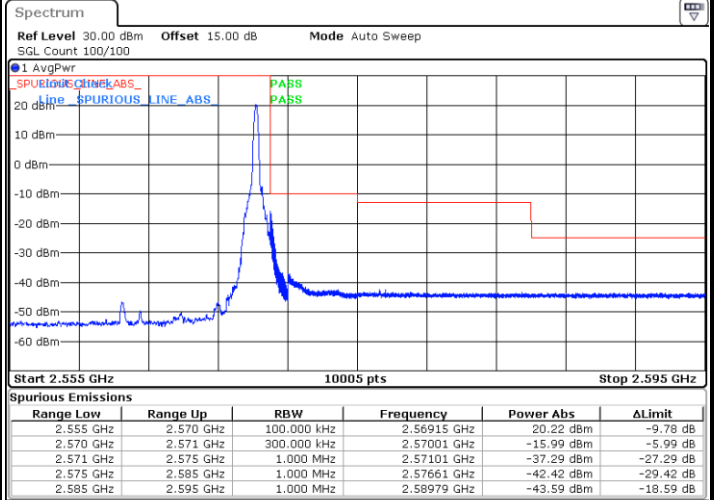
LTE Band 7 / 15MHz / 64QAM

Lowest Band Edge / 1RB



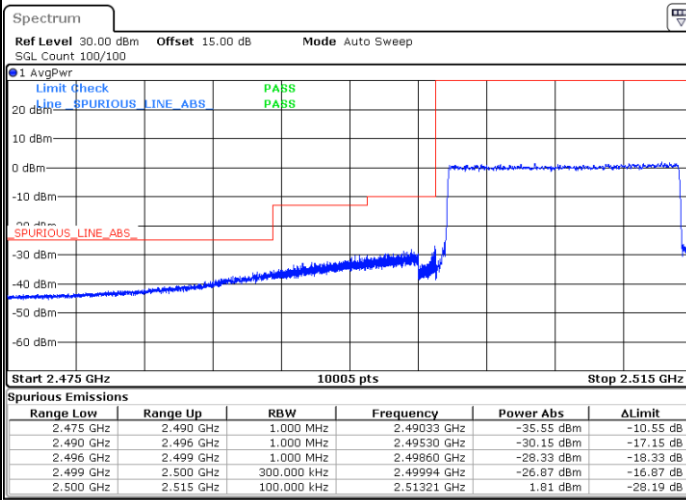
Date: 11.NOV.2024 12:53:00

Highest Band Edge / 1 RB



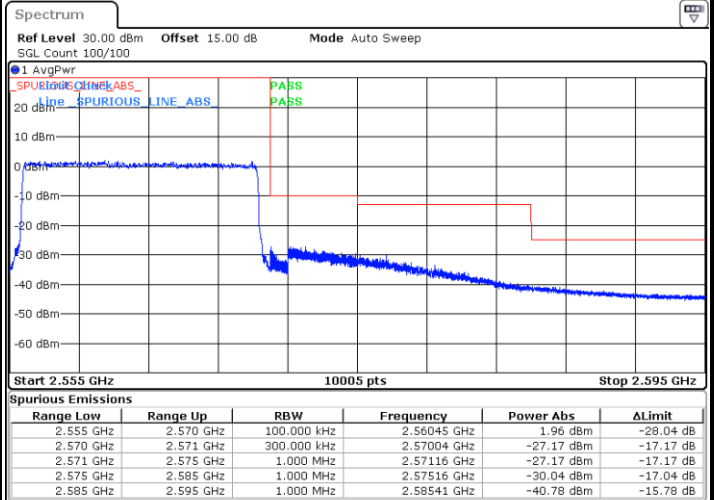
Date: 11.NOV.2024 13:01:16

Lowest Band Edge / Full RB



Date: 11.NOV.2024 12:55:19

Highest Band Edge / Full RB

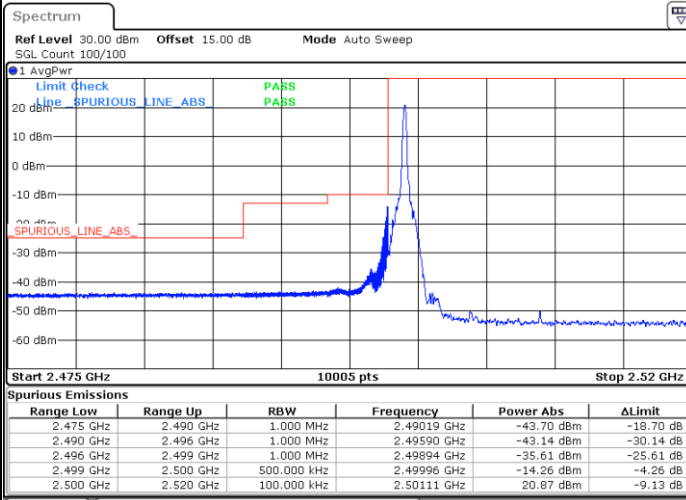


Date: 11.NOV.2024 13:03:37



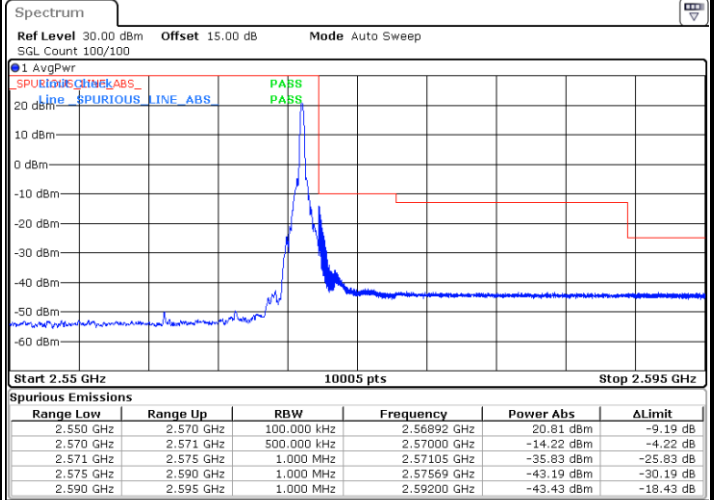
LTE Band 7 / 20MHz / QPSK

Lowest Band Edge / 1 RB



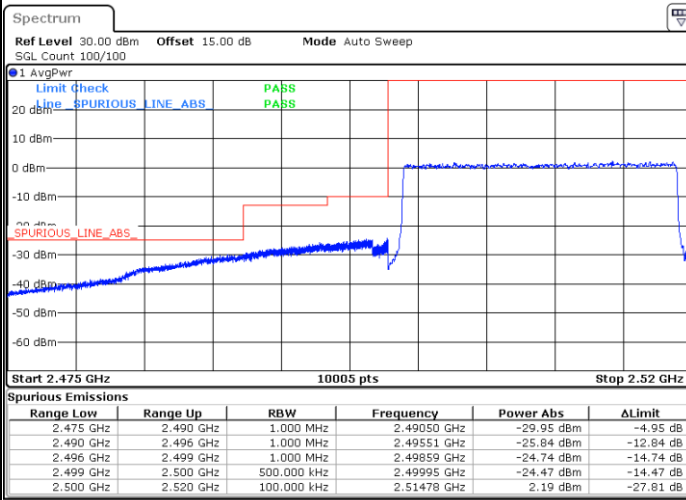
Date: 11.NOV.2024 13:06:19

Highest Band Edge / 1 RB



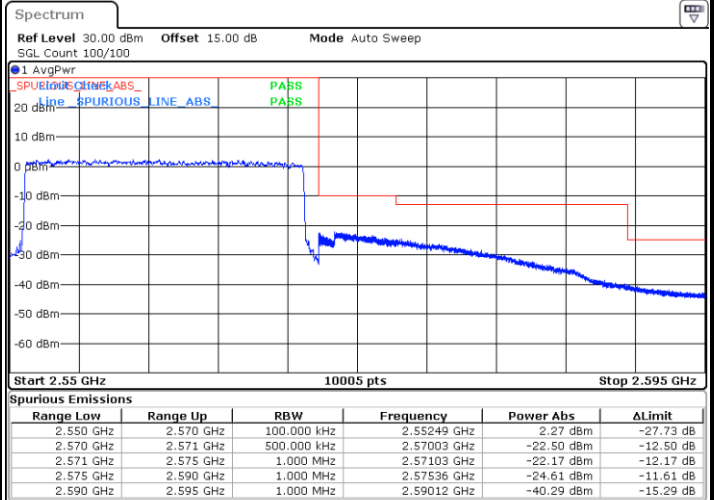
Date: 11.NOV.2024 13:15:01

Lowest Band Edge / Full RB



Date: 11.NOV.2024 13:08:40

Highest Band Edge / Full RB

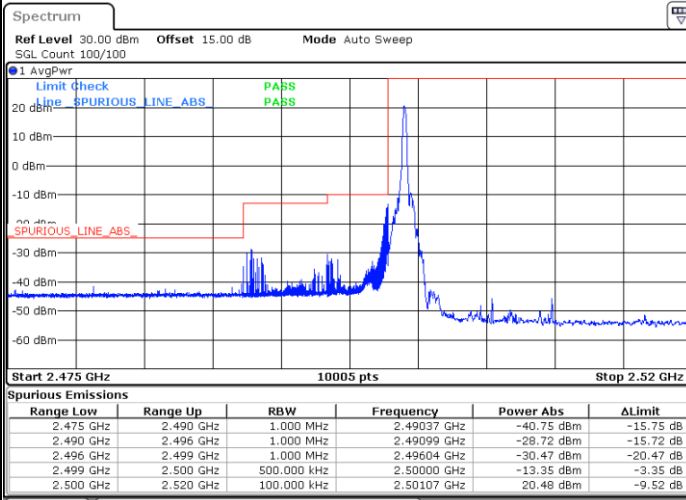


Date: 11.NOV.2024 13:17:22



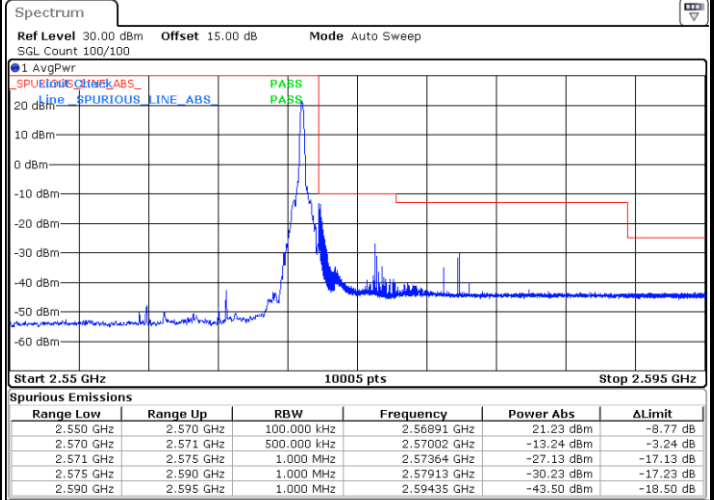
LTE Band 7 / 20MHz / 16QAM

Lowest Band Edge / 1RB



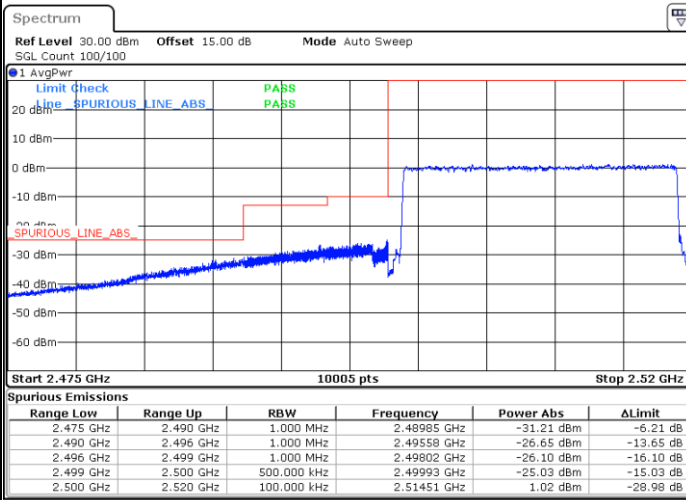
Date: 11.NOV.2024 13:07:05

Highest Band Edge / 1 RB



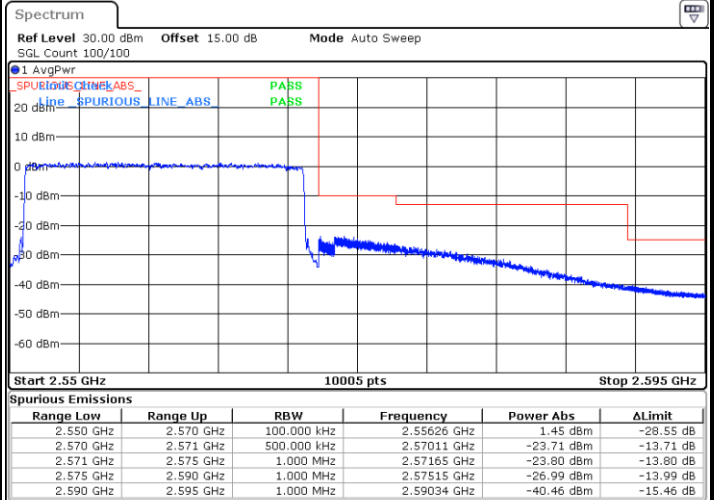
Date: 11.NOV.2024 13:15:47

Lowest Band Edge / Full RB



Date: 11.NOV.2024 13:09:26

Highest Band Edge / Full RB

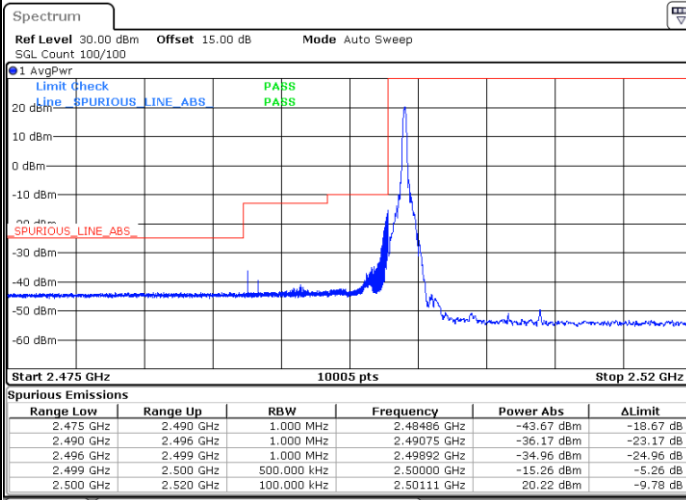


Date: 11.NOV.2024 13:18:09



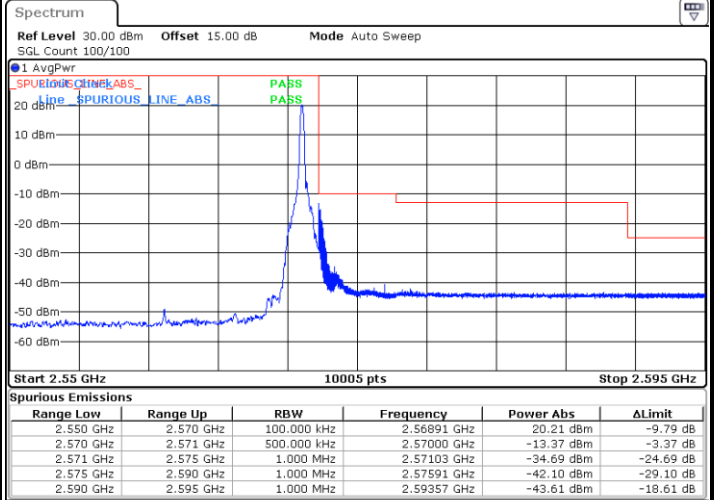
LTE Band 7 / 20MHz / 64QAM

Lowest Band Edge / 1RB



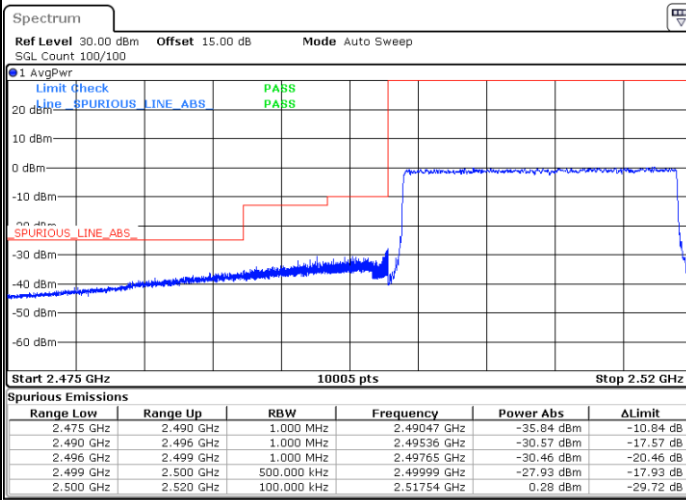
Date: 11.NOV.2024 13:07:53

Highest Band Edge / 1 RB



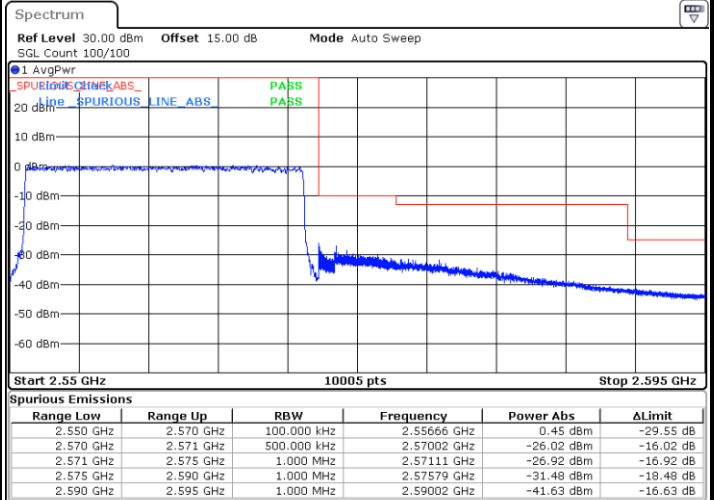
Date: 11.NOV.2024 13:16:36

Lowest Band Edge / Full RB



Date: 11.NOV.2024 13:10:13

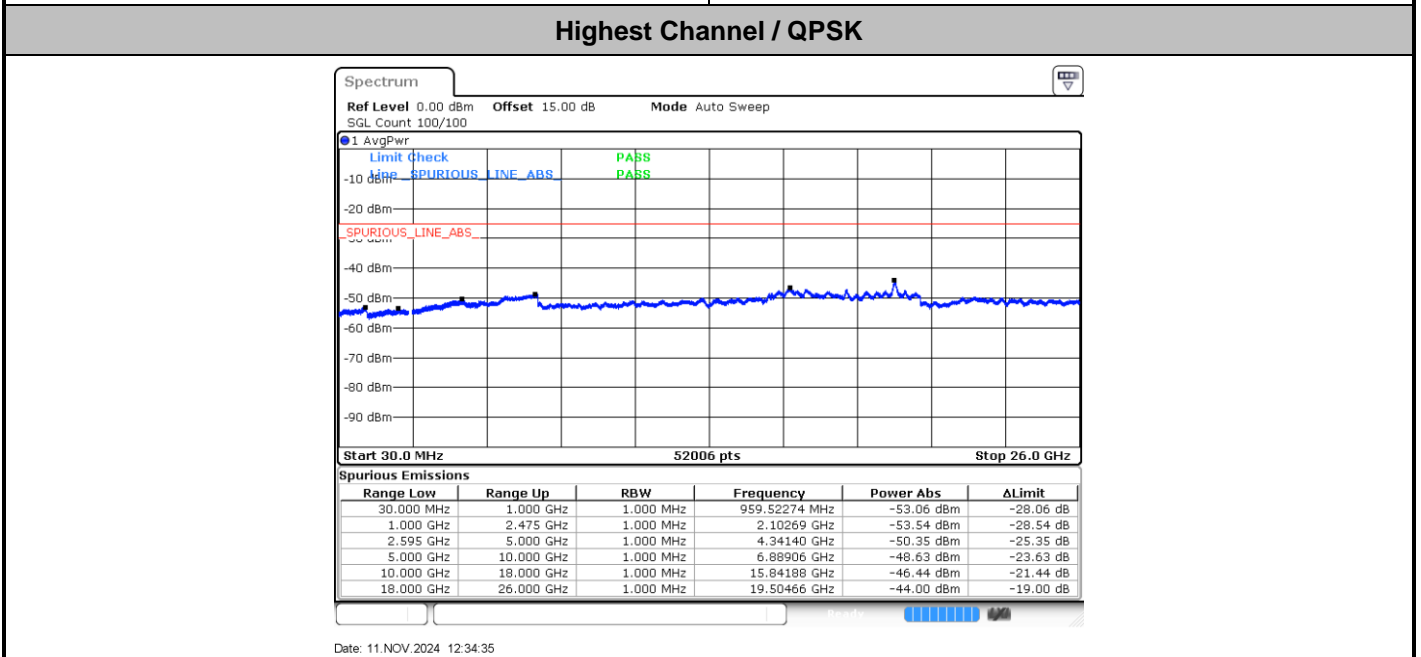
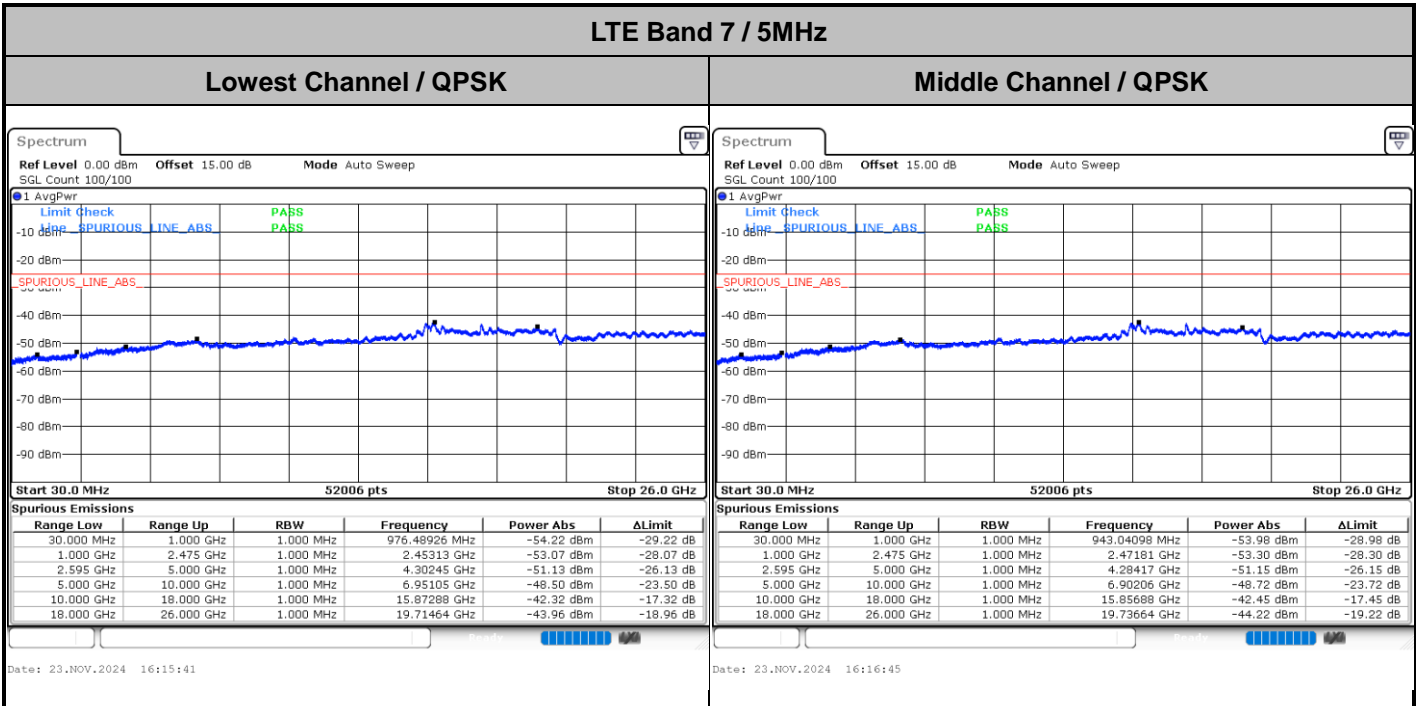
Highest Band Edge / Full RB



Date: 11.NOV.2024 13:18:55



Conducted Spurious Emission

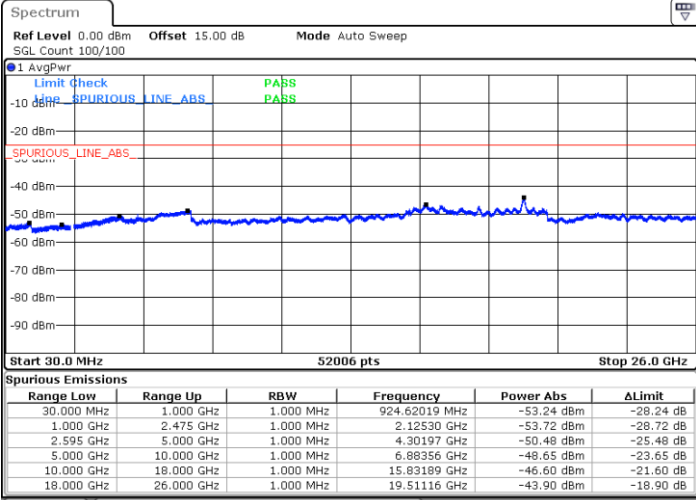




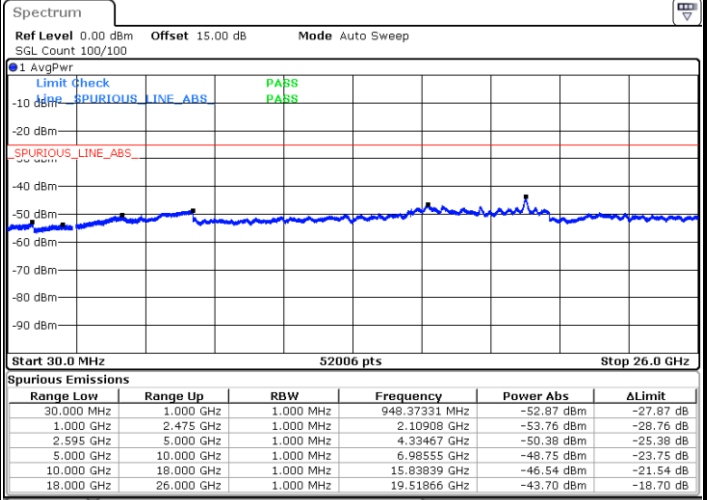
LTE Band 7 / 10MHz

Lowest Channel / QPSK

Middle Channel / QPSK

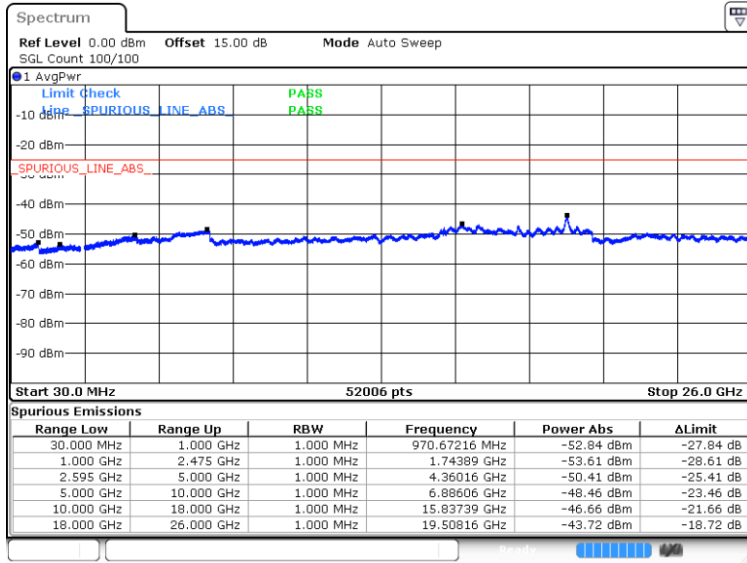


Date: 11.NOV.2024 12:41:04



Date: 11.NOV.2024 12:42:13

Highest Channel / QPSK

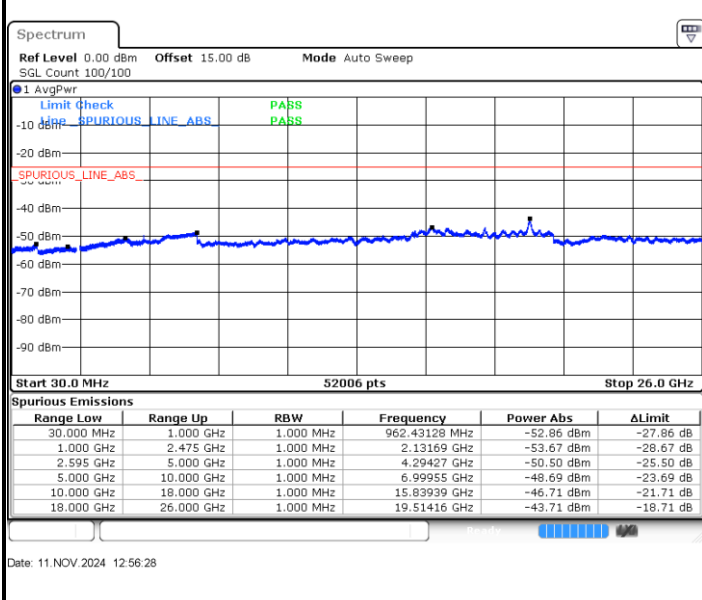


Date: 11.NOV.2024 12:49:59

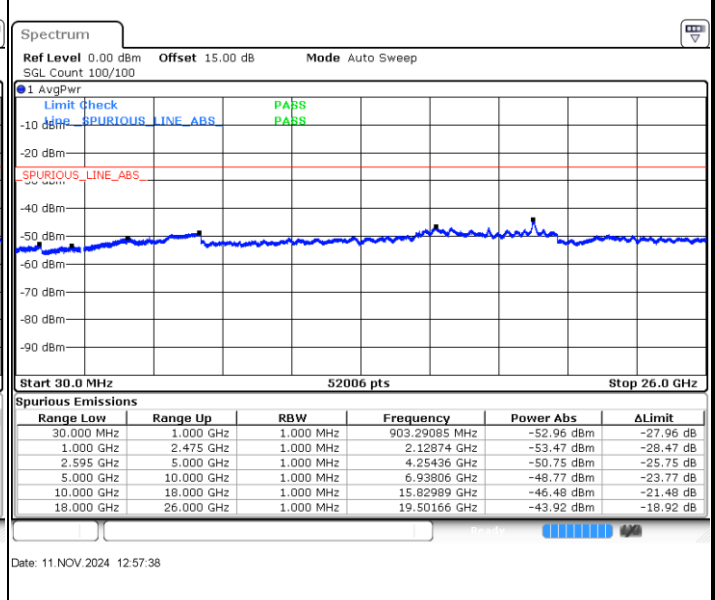


LTE Band 7 / 15MHz

Lowest Channel / QPSK



Middle Channel / QPSK



Highest Channel / QPSK

