

Test Laboratory: Sporton International Inc. SAR/HAC Testing Lab

Date: 2025/5/18

System Check_13MHz

DUT: CLA13-SN:1023

Communication System: UID 0, CW (0); Frequency: 13.56 MHz; Duty Cycle: 1:1

Medium: HSL_13 Medium parameters used: $f = 13.56$ MHz; $\sigma = 0.739$ S/m; $\epsilon_r = 56.332$; $\rho = 1000$ kg/m³

Ambient Temperature : 23.4 °C; Liquid Temperature : 22.4 °C

DASY5 Configuration:

- Probe: EX3DV4 - SN7641; ConvF(17.87, 19.97, 18.31); Calibrated: 2024/6/3
- Sensor-Surface: 1.4mm (Mechanical Surface Detection)
- Electronics: DAE4 Sn1210; Calibrated: 2024/12/17
- Phantom: ELI V8.0 (Left); Type: QD OVA 004 AA; Serial: 2131
- Measurement SW: DASY52, Version 52.10 (4); SEMCAD X Version 14.6.14 (7483)

Pin=1000mW/Area Scan (141x141x1): Interpolated grid: dx=1.500 mm, dy=1.500 mm

Maximum value of SAR (interpolated) = 0.632 W/kg

Pin=1000mW/Zoom Scan (5x5x7)/Cube 0: Measurement grid: dx=8mm, dy=8mm, dz=5mm

Reference Value = 28.76 V/m; Power Drift = -0.11 dB

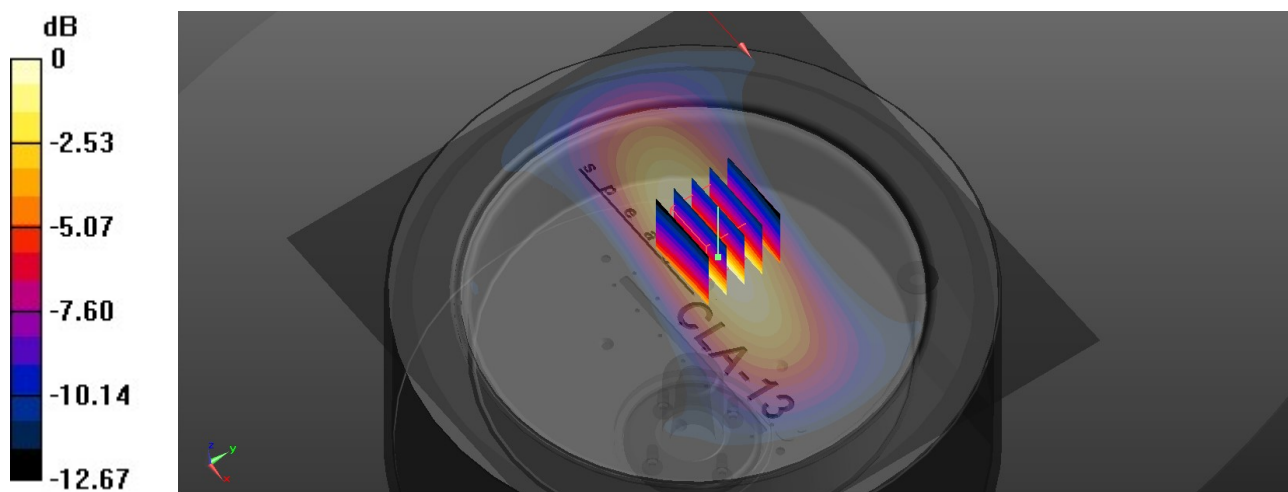
Peak SAR (extrapolated) = 0.638 W/kg

SAR(1 g) = 0.562 W/kg; SAR(10 g) = 0.349 W/kg

Smallest distance from peaks to all points 3 dB below = 14.5 mm

Ratio of SAR at M2 to SAR at M1 = 56.5%

Maximum value of SAR (measured) = 0.614 W/kg



0 dB = 0.614 W/kg = -0.21 dBW/kg